

FREE

WEEKLY

TRADER

MAGAZINE

Vol. 25 No.49

MARCH 14, 2019

800-543-8271 • 800-665-8875

Find us on Facebook

@myweeklytrader

Auctions - Pg. 26

MYWEEKLYTRADER.COM

CONNECTING BUYERS & SELLERS

Got Land
to Sell?



We've got buyers looking!
Let us get it **SOLD!**



MOSSY OAK[®]
PROPERTIES
OF THE HEARTLAND
 Farm & Home Sales, LLC

Call your local agent today!
417-276-4868

SEEGER MADNESS



Our Latest and Greatest Deals!

P9489	2018 TOYOTA CAMRY	\$17,988	7389B	2013 RAM 1500	\$19,988	7507A	2015 TOYOTA AVALON HYBRID ...	\$16,988
P9490	2018 TOYOTA COROLLA	\$14,988	P9478	2007 TOYOTA FJ CRUISER	\$13,988	P9461	2018 NISSAN ROGUE	\$18,988
7345A	2008 TOYOTA TUNDRA	\$16,588	7461A	2004 TOYOTA TACOMA	\$8,988	7322A	2015 CHEVY SILVERADO 1500....	\$25,988
7365A	2014 TOYOTA PRIUS	\$15,988	P9476	2016 GMC SIERRA 1500	\$35,988	6940A	2014 TOYOTA TUNDRA	\$27,988
7151A	2012 TOYOTA RAV4	\$14,988	7554A	2018 TOYOTA CAMRY HYBRID	\$27,988	6801A	2016 CHEVY SILVERADO 1500.....	\$31,988
7201A	2015 MAZDA CX-9	\$17,988	P9468	2018 TOYOTA RAV4	\$20,588	7440A	2015 TOYOTA AVALON	\$21,988
7258D	2011 FORD FIESTA	\$5,588	P9469	2018 TOYOTA RAV4	\$22,588	7304A	2017 TOYOTA COROLLA	\$16,588
7381A	2017 TOYOTA TACOMA	\$30,988	P9470	2018 TOYOTA RAV4	\$22,588	7308B	2017 JEEP WRANGLER UNLIMITED	\$31,988
7602A	2016 FORD MUSTANG	\$27,988	P9471	2018 TOYOTA RAV4	\$22,588	7258B	2018 CHEVY SONIC	\$15,988
7609A	2017 TOYOTA HIGHLANDER	\$24,988	7427A	2013 TOYOTA TACOMA	\$26,988	7444A	2016 JEEP WRANGLER	\$25,988
7612A	2017 TOYOTA TACOMA	\$32,988	7492A	2016 CHEVY CRUZE	\$13,988	P9454	2012 TOYOTA TUNDRA	\$30,988
P9481	2017 DODGE GRAND CARAVAN	\$17,988	7515A	2016 TOYOTA TUNDRA	\$37,988	7358A	2016 GMC SIERRA 1500	\$26,988
P9482	2017 DODGE GRAND CARAVAN	\$18,988	7527A	2018 TOYOTA AVALON HYBRID	\$30,988	7415A	2017 TOYOTA 4RUNNER	\$32,988
P9483	2018 NISSAN MURANO	\$22,988	7526A	2017 HONDA CIVIC	\$19,988	P9441	2016 FORD ESCAPE	\$17,988
P9484	2017 NISSAN ROGUE	\$21,988	7041A	2016 TOYOTA 4RUNNER	\$26,988	P9437	2017 HYUNDAI SANTA FE....	\$21,988
P9480	2017 TOYOTA PRIUS	\$23,988	7513A	2016 TOYOTA RAV4 HYBRID	\$23,988	P9433	2012 TOYOTA HIGHLANDER.....	\$18,988
7595A	2014 TOYOTA TUNDRA	\$27,988	7191B	2015 JEEP WRANGLER	\$22,988			
7557A	2017 TOYOTA TACOMA	\$28,988	7043A	2017 BUICK ENCLAVE	\$29,988			
7215A	2011 TOYOTA TACOMA	\$17,588	P9462	2015 HONDA PILOT	\$22,988			



TOYOTA
Let's Go Places

Doing Business
the Right Way
The Seeger Way



ENGINES FOR LIFE

Call for details
Non-Factory Lifetime Limited Warranty
Good at participating dealerships

SATURDAY SERVICE 8AM-4PM

Seeger
TOYOTA of St Robert

Toll Free:
800-844-6026

Next to Walmart, St Robert
573-336-7111
SeegerTOYOTA.net



SEEGER CARE
PREOWNED VEHICLES
COME WITH SEEGER CARE!
1 **FREE** (3) SCHEDULED OIL AND FILTER CHANGES
2 **FREE** MULTI-POINT INSPECTION WITH EVERY OIL CHANGE
3 **FREE** EXTERIOR CAR WASH WITH EVERY SERVICE VISIT
4 **FREE** LIFETIME SAFETY AND EMISSION TESTING
5 **FREE** SAME-DAY SERVICE LOANER CAR
6 **FREE** TANK OF GAS
Service Only at Seeger St Robert/St Louis

†Does not include tax, title, and license. * Seeger Care offer good for Less than 85K Miles and Less than 10 years old Prices do not include any College Grad or Military Rebate. See sales rep to see if you would qualify for additional savings. Prices does not include \$199 dealer administrative fee. Cannot be combined with any other offer. Prior sales final. See dealer for details. Advertisd vehicle may not be exactly as pictured and are subject to prior sale. We cannot be responsible for typography or photography. ** St. Robert, Mo. Inventory

SPECS DON'T LIE.

TEST DRIVE THE MAHINDRA RETRIEVER FOR YOURSELF.



Shown: Retriever 1000



60 MPH TOP SPEED



83 HP LEADING HORSEPOWER



2500 LBS LEADING TOWING



3 YEAR LEADING WARRANTY

THE MAHINDRA RETRIEVER LEADS THE WAY IN PERFORMANCE

AGRI ENTERPRISES
For Outstanding Products & Service

1-1/2 Miles South Of Licking, MO On Hwy 63
573-674-2203 | 1-800-653-7152
www.agri-enterprises.com



Mahindra
Tractors & Utility Vehicles

SMALL FARM: 40 acres, near Ellington, MO, spring, 2 ponds, barn, part pasture, electric, well, livable building, highway access. \$65,500. 573-637-2450, 573-697-1016.

3208T CATERPILLAR CORE ENGINE: Was running when removed, ask for details. \$750. 573-459-6488.

2015 GMC: 3500 HD, leather, Duramax, 4WD. 18,500 miles, hydra-bale bed. \$43,500. Plato, 417-458-4520.

AUCTION REMINDER: Online Auction going on now. Atterberry Auctions. Please see our Auction Directory for more information.

VERONA MISSOURI HISTORY: 1868-1968. 100 year history. \$22.50. Lebanon, 417-532-2045.

LEBANON JUNIOR HIGH SCHOOL 1966 YEARBOOK: \$12.50. Lebanon, 417-532-2045.

VOTED #1 BEST Preowned Car Dealership

TIM'S USED CARS

(573) 341-3828 • 1334 South Bishop (Hwy. 63) • Rolla, MO
Next to Hwy. CC • www.tims-used-cars.com

 <p>2015 FORD F250 SUPER DUTY CREW CAB XL, 4X4, 6.2 LT V-8, AUTO, POWER EQUIPPED 94, XXX MILES ONLY \$21,900</p>	 <p>2016 NISSAN FRONTIER CREW CAB 4X4, SV, 4.0 V-6, POWER EQUIPPED 86, XXX MILES ONLY \$19,400</p>
 <p>2010 CHEVY 1500 LT EXT CAB 4X4 Z71, 5.3 V-8, POWER EQUIPPED 116,XXX MILES ONLY \$16,500</p>	 <p>2014 RAM 2500 TRADESMAN CREW CAB 4X4, 6.4 LT V-8, POWER EQUIPPED 100, XXX MILES ONLY \$21,900</p>

LARGE SELECTION OF CARS, TRUCKS, SUVs & VANS!

USED EQUIPMENT

New at Used Price!

- Mahindra 2565 with loader, cab, 4WD, 13 hours
- Mahindra 4500 w/loader, 45HP
- Mahindra 4110 w/loader, 41HP
- Mahindra 6530 2WD w/loader & shuttle shift
- Kubota B7200 4 WD, w/Belly Mower • MF 50, Diesel
- Gehl Silage Chopper • NH 163 Tedder
- 6' & 7' Brush Cutter • Landpride 10' Brush Cutter
- JD 10' Multipacker • 3pt. 3 bottom plow
- 12' Spring Tooth Harrow 3pt. 2 Disc Disc Plow
- Gravely 2T 2148XL Zero Turn Mower Rider
- Other Misc Equipment

For Outstanding Products & Service

AGRI-ENTERPRISES

1-1/2 Miles South Of Licking, MO On Hwy 63
573-674-2203 • 1-800-653-7152
www.agri-enterprises.com

JOHN DEERE 420: 2cylinder, wide front, 3pt, Late 50's, extensive work mechanically, too much to list, with a fresh paint job, seat and new tires, Parade ready. \$3850. 573-205-7860.

Offering the Area's LOWEST METAL PRICES!



Custom Homes • Metal Roofs

Pole Barn Packages

24'x32'x10' materials only	\$5,075	30'x60'x10' materials only	\$8,600
24'x40'x10' materials only	\$5,775	40'x60'x12' materials only	\$11,525
30'x40'x10' materials only	\$6,550		

Plus Sales Tax And Delivery.
Labor available at additional cost.
Call for quote.

Compare Before You Buy.

We Use Only The **Highest Quality** Materials!



ALL MATERIAL PACKAGES INCLUDE...

- ✓ #1 Yellow Pine Lumber
- ✓ #1-40 Yr. Painted
- Metal w/Screws
- ✓ 1-10' Overhead Door
- ✓ 1-36" Entry Door

Fully Insured



PORTABLE BUILDINGS

Rent to Own
No Credit Check

29 Gauge
#1 PAINTED METAL

- ★ Lifetime Warranty - \$70.00 Sq.
- ★ 40 Year Warranty - \$67.00 Sq.
- ★ 20 Year Warranty - \$64.00 Sq.
- ★ 25 Year Galvalume - \$54.00 Sq.

Labor prices will be higher in locations over 75 miles from Marshfield, MO

1049 SCHOOLVIEW DR.
Marshfield, MO



Marshfield BUILDINGS

www.marshfieldbuildings.com



417-859-7744

Toll Free 1-866-859-7733

GERMAN SHORT-HAIR POINTER PUPS: championship blood lines, shots and wormed, 12wk old. \$375each. Niangua, 417-838-3109.

ONE MUELLER 600gal. MILK TANK. 573-498-6685.

JOHN DEERE: Commercial mower, 5spd, 36in cut, walk-behind, good tires, blades, etc. \$195-gun trade. Rolla, 573-364-7465.

FERGUSON-TO-30: 12volt, good tractor w/5' wood mower. \$2800. Bourbon, 314-960-6652.

WANTED: old Franklin County Plat books. 573-468-4924

1993 FREIGHTLINER DUMP TRUCK w/ Pup trailer for sale: Runs good, tires fair, everything works good. For information, 573-247-1862, Salem, MO.

Buildings - Hunter's Cabins - Lawn Furniture

JAMCO Portable Buildings 800-688-2064
307 Enterprise Dr. • Seymour, MO www.jamcobuilders.com

Rent-To-Own Plan

INCREASE YOUR PROFITABILITY!
Lewis Cattle Oiler. 417-286-3540 or 774-696-2344.

AUCTION REMINDER: Cow Sale Every March 16th 1pm. Cattle Sale every Monday at Noon. Salem Livestock. Please see our Auction Directory for more information.

IHC 684: Diesel tractor w/loader, 62hp. \$9850. 573-765-4406.

JOHN DEERE 2640 DIESEL TRACTOR: Canopy, 70hp. \$8,750. 573-765-4406

JOHN DEERE 535: Round Baler, monitor, kicker, net wrap. \$7,200. 573-765-4406.

WEEKLY TRADER MAGAZINE

Vol. 25 March 14, 2019 No. 49
Published By
Lebanon Publishing Co. Inc.
PO Box 192, Lebanon, MO 65536
417-532-9131
www.myweeklytrader.com

Everything advertised in this publication must be made available purchase, use or patronage without regard to race, creed, color, sex, age or national origin of the purchaser, user or patron. The Publisher will not be responsible for misinformation, misprints, typographical errors, etc. Opinions expressed are not necessarily those of the Publisher. All rights reserved. No part of this material may be reproduced by any means without permission in writing from the Publisher. We reserve the right to refuse any ad if we deem necessary. Our list and map indicate counties in which the Weekly Trader delivered. The magazine is not necessarily placed in all communities a particular county. A list of all retail drops for a county may be obtained by contacting the Weekly Trader office at PO Box 192, Lebanon, MO 65536.



THE RIGHT EQUIPMENT FOR EVERY JOB

Always ready when YOU need it.

+ From general construction to manufacturing, and every project in between, Fabick Cat is ready to serve your industry. We have the equipment you need to get the job done.

+ NEW | USED | RENTAL | SERVICE
WE DO IT ALL

800.845.9188 | www.fabickcat.com

"TO EVER SERVE OUR CUSTOMERS BETTER"



CDL IN ONE DAY!!: Family owned and operated, Insured, Over 10 years of experience, Training available for all states, Short wait time for appointments, Contact us today to schedule your appointment!! CREDIT CARDS EXCEPTED. (573-353-2853).

WWW.MYWEEKLYTRADER.COM

INCREASE YOUR PROFITABILITY!
Lewis Cattle Oiler. 417-286-3540, 774-696-2344.

WOMENS MERREL: Insulated Snow Boots, sz 8M, waterproof, mid calf height, easy pull on style, fur trim at top, dark chocolate brown color. Nice! \$35, 417-718-5347.

VINTAGE CAPPERS WEEKLY SEARCHLIGHT RECIPE COOKBOOK:
\$15. Lebanon, 417-532-2045.

AUCTION REMINDER: Saturday, March 16th, 9am. Buckner & Gately Auctions. Please see our Auction Directory for more information.

See Service Spray Foam Insulation

Closed cell or open cell form available
Choose the thickness of your insulation

Closed Cell

- Higher R. value
- Vapor barrier
- Structural benefit
- Fire Resistant

Open Cell

- Lower Cost
- Sound Deadening
- Fire resistant

Both types of foam fill voids and stay where they are put to provide better insulation than fiberglass or cellulose

Call Joseph See
(417) 733-6936
Located near Buffalo, MO

Is Your Log Home UGLY?

Starting To Look
Professional Staining & Repair
(Log Homes & Wood Siding)

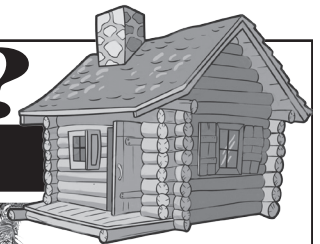
Call

Pine Ridge Rustic

Log Home Building Supplies

573-729-7226

www.pineridgerustic.com



FERGUSON TRACTOR MANUALS: \$20.
636-932-4429. Herman

LOGS WANTED. S&S LUMBER Buying
Cut logs. Halfway, MO. 417-399-4381.

WANTED PINBALL MACHINES. 573-424-7200.

BARE CYLINDER HEAD: for 361/407 IH Diesel tractor engine. \$200. 573-459-6488.

AUCTION REMINDER: 14th Annual Consignment and Donation Auction. Saturday, April 6 Consign now. Hartville Lions Club. Please see our Auction Directory for more information.

417-967-3004

S. Hwy. 63 • Houston, MO
M-F 9am-5pm
Sat 9am-12noon



We have been in business since 1984 and we appreciate every Customer - Big or Small!



FAITH, FAMILY & PANELS

John 14:6 Jesus said to him, "I am the way, the truth, and the life. No one comes to the Father except through Me."

TARTER TARTER TARTER TARTER

FARM AND RANCH EQUIPMENT
CATLEMASTERS Series 3
Automatic or Manual Headgate

- Single person operated.
- Single-piece top linkage for smooth operation.
- Constructed of quality heavy-duty 2-3/8" tubular steel
- Features our durable, corrosion-resistant powder coat red finish.



Retail Price \$867⁹⁹

Sale \$655

FARM AND RANCH EQUIPMENT
CATLEMASTERS Series 3
Squeeze Chute



- Dropback Gate, Side Exit Available in Manual or Auto, Double sided Squeeze, Drop Down Horseshoes

Retail Price \$2,721⁹⁹ while supplies last

Sale \$1,799

FARM AND RANCH EQUIPMENT
CATLEMASTERS Series 6
Heavy Duty Squeeze Chute
Automatic or Manual Headgate



- Side Exit, Scissor Back Gate, Auto Headgate, Adjustable Sides, Double sided Squeeze, Drop Down Horseshoes

Retail Price \$4,518⁹⁹ while supplies last

Sale \$2,799

180° Open Sweep



Retail Price \$4,848⁹⁹

Sale \$3,250 while supplies last

w/Adjustable 20' Alley Way (does not include Squeeze Chute)



CWSS1A1P

All 6' Tall Heavy 8-Bar Galvanized Panels
Retail \$4,601

~~Reg. Sale Price \$2,311~~

Special Price \$2,015

CWSFS2P

All 6' Tall Heavy 8-Bar Galvanized Panels
Retail \$4,601

~~Reg. Sale Price \$4,051~~

Special Price \$3,950



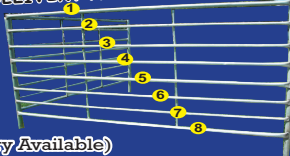
WE WILL HELP DESIGN CUSTOM CORRALS FOR ANY SIZE OPERATION!

Buy **20** Panels
Get **5** FREE Panels

Special \$99⁹⁵

White Supplies Last Reg. \$109.95

DELIVERY AVAILABLE



or Buy **10** Panels
Get **2** FREE Panels

(Bring flatbed trailer & ratchet straps or Delivery Available)

✓ **Out the Average for 25 Panels \$79⁹⁶ Average**

Heavy Galvanized \$99⁹⁵
6'x10' 8-Bar Panels 20panels

OVER 500 PANELS IN STOCK AT ALL TIMES!

plus \$10⁰⁰ OFF Additional Pieces



Reg. \$135.95

Special \$105⁹⁵
Galvanized Frame 10' Poly Feed Bunk



\$1,595

GWS 3 Ton Stationary Bulk Feed Bin's With Site Glass & Ladder

\$1,895

GWS 5 Ton Stationary Bulk Feed Bin's With Site Glass & Ladder



Positive Feed
cooked tubs
All in One
30% Protein with Mineral

225 lbs \$98.95

\$5 Off each w/purchase of 4 Tubs

PRO-LIX Liquid Feed 35% Protein

- Dry Matter 65%
- Vitamins A, D and E
- Trace Mineral
- Organic Mineral



Special \$56⁹⁵

5'x10' Regular #2 Panel

TARTER 3PC ROUND HAY RINGS: 3 styles in stock. \$175+up. 573-205-7860, Owensville.

IHC DIESEL TRACTOR: W.F. 3pt with loader \$7,800. (573)765-4406

BUGGY HORSES. 6 year old, standard bred Morgan-Cross mare, broke single or double, 14.1H, TSS, good for anybody. \$3,000. And 2 year old standard bred Draft-Cross gelding. Broke single or double, 15H, TSS. \$2,500. 573-578-5017.

WANTED TO BUY: 57 Chevy car 2dr complete to fix up. Call 573-768-0068.

STOCK TRAILER: 2000, 6.8ftX20ft, Goose-neck, great condition. \$2500. Vienna, 573-422-3748.

★ ★ ★ ★ ★ ★ ★ ★ ★ ★ ★ ★ ★ ★ ★ ★

★ A HERITAGE OF ★

GETTING WORK DONE

1023E SUB-COMPACT TRACTOR

\$99 per month¹

+ 10-Year Powertrain Warranty*



10 YEAR WARRANTY

HERITAGE TRACTOR EXCLUSIVE

heritagetractor.com/tractorwarranty

Legendary Products. Extraordinary Service.



JOHN DEERE



Heritage TRACTOR

Find your local Heritage Tractor location or request a quote at HeritageTractor.com

(1) Offer valid on new 1023E Compact Tractor purchases made between 3/1/19 and 4/30/19. Subject to approved instalment credit with John Deere Financial. Up to a 20% down payment may be required. Example: Based on a purchase of \$10,419 with \$2,084 down payment, monthly payment of \$99 at 0% APR for 84 months. Taxes, freight, set up and delivery charges could increase monthly payment. Available at participating U.S. dealers. Price and model availability may vary by dealer. Offer available on new equipment and in the U.S. only. Prices and savings in U.S. dollars. *Offer ends 10/31/19. Heritage Tractor Powertrain 10 year warranty details are located at heritagetractor.com/tractorwarranty. Eligible on 1-5E (3Cyl) models. See the warranty manual for full details. Some restrictions may apply.

HTRAX70314WT-4C



Wright Spray Foam Insulators, Inc.

Commercial & Residential

Call For A FREE Estimate

417-746-1953

417-746-4932

Norwood, Missouri

WOOD BUSHING: For Ferguson disk. \$20. 636-932-4429. Herman

STOCK DOG PUPS: 1/2 Border Collie, 1/2 Australian Shepherd, Shots/wormed. 3Blk. Tri. females. \$100. B.12/12/18. Levi Beechy, 639 Smith Road, Seymour, leave message, 417-935-2048.

DARDEN PROFESSIONAL TIMBER HARVESTING, BUYING STANDING TIMBER: Great prices, improve wildlife habitat and improve forest health. State Certified & Fully Insured! 573-247-4808 or 573-739-1122. Salem

PARTING OUT ALLIS-CHALMERS D14, D17, WC, WD, AND CA. Jefferson City, 573-690-9406.

2 SPEED REAR-END: Air Brake, Dayton style wheels, from a 1988 C-70 Diesel Truck. \$500. 573-459-6488.

REGISTERED HEREFORD & ANGUS BULLS: Home raised, Some Show-Me Select Qualified. 573-701-7828. Belgrade

PETERSON SURFACING TABLE: 24"x50", 14" wheel, with air box, recent rebuilt motor. \$1300. West Plains, 417-270-1513.

SOLD CATTLE DOGS FOR 40YRS: in bad health wanting to get rid of older dogs. Warsaw, 660-553-2333

BRUSH CLEARING: 417-650-0596. www.brushmasterlandclearing.com

2014 OPEN RANGE 5TH WHEEL: w/3 slides, excellent condition. 573-259-4291 for details.

TARTER CATTLEMEN: Series 6, squeeze chutes, auto headcatch, new. \$2,975 Series 3S1875. 573-205-7860, Owensville.

POOL TABLES: Installations, moves, recovery, repairs, accessories, etc. 573-646-1700.

92 PLYMOUTH ACCLAIM: auto, air, 129,000miles, very good condition. \$800. 314-616-9862.

MOTORIZED 26" FLYER BIKE: 80mpg, 40mph, Karaoke brand. \$185firm. 573-872-9821

GOOSENECK FLATBED: 24' 1,400 lbs gvwr, \$3,000. Ava, 417-543-0278.

CAB, FRONT CLIP, 8' BED: for 1991 W250 Dodge, No drive trane. Ask for details \$500. 573-459-6488.

KUSTER LOGGING
BUYER of Standing Timber Oak and Walnut
Dozing Now Available
417-259-0047
 References Available



MASSEY FERGUSON HOOD EMBLEM. \$20. 636-932-4429. Herman

ONE STAYRITE MILK PUMP: w/motor. One Delaval Milk pump. One Delaval 76 Vacuum pump. Four super-flow Delval milk Claws. 573-498-6685.

AUCTION REMINDER: Sunday, March 17th, 10am. Brehe Auction. Please see our Auction Directory for more information.

AKC GERMAN SHEPHERD PUPPIES: Available in March, papered, black, 5 left. \$650. 417-208-7646, Ava.

WE SELL HIGH TENSILE FENCE: All woven, barbed, smooth! Best prices! Call Michael 417-322-0161, Lebanon.

TARTER 7' HDD7: disk, 3pt, adjustable gangs, new, heavy duty. \$1850. 573-205-7860, Owensville.

WANT TO BUY: Chainlink Dog Pen Panels, 6ft tall. Also want Peacocks! 417-718-4787.

AUCTION REMINDER: Every Wednesday at 10:30 am. Farmington Livestock. Please see our Auction Directory for more information.

AUCTION REMINDER: Tuesday, March 19th @ 11am. Rick Dixon Auction. Please see our Auction Directory for more information.

L2501D KUBOTA: 4wd tractor with loader, 25HP, hydro transmission, with 5' Landpride bush hog. \$16,900. 417-270-1505.

AUCTION REMINDER: Saturday, March 16th, 10:00 AM. Please see our Auction Directory for more information.

PUREBRED HEREFORD BULL: 3 years old. \$1,400. 573-690-1277, leave message.

KING 3B TROMBONE: With F-attachment, pro model. \$1,100. 573-226-5993.

MIDWEST CONSTRUCTION
 Free Estimates!



- Pole Barn • Garages • Framing
- Remodels • Roofing • Concrete
- Decks & Porches

Contact Abner Glick
417-664-1794

VILLA HOMES IN ROLLA: Has NEW and USED Mobile Homes. Call David for info: 573-578-8072.

2007 HARLEY DAVIDSON STREET RIDE: 96 ci engine, 22,000 miles, lots of chrome and extras. \$12,000. 573-743-6018, 314-348-4965 cell.

JEFFERSON NICKEL BOOK: coin set from 1938-1964. \$200. 573-764-3517. call in p.m.

2000 BOX TRUCK: new rubber, passed safety inspection, runs but needs work. \$2000. Bourbon, 314-960-6652.

110 ELECTRIC HEATER: Like new, Lasako. \$125 or trade. 573-327-9068.

JOHN DEERE 4240: Diesel cab and air tractor, power shift, 3900hrs, very nice, 110hp. \$29500. 573-765-4406

FOR SALE 1978 INTERNATIONAL ROAD TRACTOR: Only 263,304 miles, near new recaps on rear rome offset disk H.D. Cat 60 Flat bottom Scrapey Lincoln Pipeliner welder on trailer. Belle, 573-619-2533.

JOHN DEERE: 6x30in Planter, no till. \$3350. 573-765-4406.

GREAT PYRNEES PUPPIES: All white, 8 wks, wormed/shot. \$200. 417-926-2470, Norwood.

3PT HEAVY 3 SHANK RIPPER: good. \$950. 573-765-4406.

610 ROADRANGER TRANSMISSION: Was behind 7.8 474 Ford Diesel Truck. \$500. 573-459-6488.

WANTED HORSE MANURE: Bourbon, 314-960-6652.

U-JOINT 1810 DANA SPICER: NIB 5-281x. \$65. 314-303-7857, Cedar Hill.

Starnes Auto LLC
 22115 Rt. 66 • Lebanon, MO 65536
 417.588.3159 Office • 417.718.2707 Cell
www.starnesauto.com

1998 CHEVY S10 REG CAB, GOOD TITLE.....	\$CALL
2000 GRAND PRIX GOLD, 184,XXX MILES.....	\$2,500
2001 CHEVY MALIBU GOLD, 64, XXX MILES.....	\$3,250
2003 OLDSMOBILE SILHOUETTE 110, XXX MILES.....	\$3,500
2004 CHEVY CAVALIER GOLD, 58,XXX MILES.....	\$CALL
2005 GMC YUKON XL 142,XXX MILES.....	\$8,250
2005 HYUNDAI SONATA BLUE/GREEN, 77,XXX MILES.....	\$CALL
2006 CHEVY SUBURBAN LS BLUE, 2WD, 185,XXX MILES.....	\$5,200
2006 CHEVY MALIBU BLACK, 115,XXX MILES.....	\$CALL
2006 PONTIAC G6 GT WHITE, CONV, 73,XXX MILES.....	\$6,250
2007 SATURN AURA GOLD, 48,XXX MILES.....	\$5,800
2008 PONTIAC G6 SILVER, 63,XXX MILES.....	\$CALL
2009 CHEVY COBALT BLUE, 49,XXX MILES.....	\$CALL
2009 SATURN OUTLOOK GOLD, 117,XXX MILES.....	\$5,700
2009 SATURN AURA GREEN, 121,XXX MILES.....	\$4,000
2010 CHEVY MALIBU MAROON, 47,000 MILES.....	\$CALL
2010 GMC TERRAIN WHITE, 118,XXX MILES.....	\$8,250
2012 GMC TERRAIN SL BLUE, 98,XXX MILES.....	\$9,450
2014 CHEVY EQUINOX LT WHITE, 88,XXX MILES.....	\$13,250
2014 CHEVY IMPALA BLACK, 86,XXX MILES.....	\$CALL
2014 GMC TERRAIN SILVER, 50,XXX MILES.....	\$13,500
2015 CHEVY EQUINOX GOLD, 75,XXX MILES.....	\$10,500
2015 CHEVY EQUINOX LS LIGHT BLUE, GOOD TITLE, 68,XXX MILES.....	\$11,250
2015 CHEVY EQUINOX LT MAROON, SUNROOF, GOOD TITLE, 39,XXX MILES.....	\$14,500
2015 GMC TERRAIN BLACK, GOOD TITLE, 65,XXX MILES.....	\$CALL
2017 BUICK ENCORE 8,XXX MILES.....	\$17,500

WE DO ALIGNMENTS!

BLACK ANGUS BULLS: Farm raised, tested, objective T510 bloodlines, 24 months old, 3 to choose. \$2100each. 573-205-7860. Owensville

JOHN DEERE 275: 9ft, disc mower. \$5,150. 573-765-4406.

L3400D KUBOTA: 4wd tractor with loader, 34HP, gear drive, low hours with 5' bush hog. \$16,900. 417-270-1505

COMPOUND BOW WITH ARROWS: \$25. Birch Tree, 573-872-9821.

\$99.⁰⁰ Remnant BLOW OUT SALE!	
12 x 8 ⁸ Saw Grass	
REG \$260.00	\$99.00
12 x 12 Thyme	
REG \$289.00	\$99.00
12 x 10 ⁷ Blonde	
REG \$324.00	\$99.00
12 x 13 ³ Beach Front	
REG \$353.00	\$99.00
13 x 10 ¹ Cameo	
REG \$568.00	\$99.00
12 x 12 ¹⁰ Hunter Green	
REG \$463.00	\$99.00
12 x 10 ⁴ Galaxy	
REG \$371.00	\$99.00
12 x 9 ⁶ Walnut Ridge	
REG \$240.00	\$99.00
12 x 12 ¹ Khaki	
REG \$482.00	\$99.00
13 ² x 12 ⁸ Loki	
REG \$183.00	\$99.00
12 x 11 ¹⁰ Sapphire	
REG \$157.00	\$99.00

LARGE SELECTION AVAILABLE ONLINE. CHECK OUT OUR WEBSITE FOR PICTURES AND MORE DETAILS AT WWW.FALCONFLOORCOVERING.COM



WANTED, TIMBER TO LOG ON SHARES: Honest, reliable, references. 417-533-4607, 417-664-1195.

BARE CYLINDER HEAD: #R61521, For Late 4430-4040 JD diesel tractor. \$350. 573-459-6488.

ROCK AND COUNTRY ALBUMS AND METAL BEER SIGNS: Humansville, 573-366-0556.

JOHN DEERE 2940: Diesel tractor, 80HP, good. \$12,500. (573)765-4406

NEW 4.420" PISTON & RINGS for 401 Ford Tractor Engine: .020 material removed from piston tops, 1.5" pin. ductile rings. \$400 set. 573-459-6488.

20 ACRES: with deeded easement to the Niangua River, lots of road frontage, electric on property. \$47,000. 417-830-3555.

AUSTRALIAN SHEPHERD PUPPIES: Born 12/4/2018, UTD on shots, wormed, ready for new homes, Red Tri in color. Asking \$200. 417-458-1047, cell 417-967-6493, Roby.

NEW STOCK!!! Wow, do these look **GOOD!!!** Call 573-657-2176 amegamobile-homes.com

I BUY.....used mobile homes. Call or text, 573-338-6250 or e-mail GregS.CDH@outlook.com.

GM 1/2 TON WD FRONT AXLE HOUSING: w/3.07 gears, 77-87. \$80. 314-303-7857, Cedar Hill.

HUNTING AND RECREATIONAL LAND: Land located West of Bennett Spring. 9.26 acres-\$16,000. Will finance or discount for cash. 417-830-3555.

GOOD PROVEN 3YR OLD: Black Angus Bull. \$2100obo. Emery Hershberger Pinok Rd. Summersville, 22654.

3 TON PORTABLE CATTLE CREEP FEEDER: new, creep gates, \$2,275, 2ton, Portable grain/feed bin, new. \$1850. 573-205-7860, Owensville.

I BUY....USED MOBILE HOMES. Call or text 573-338-6250 or email GregS.CDH@outlook.com

JOHN DEERE 730 PARTS. Call 417-241-0006.

cowntownusainc.com - See Video'."/>

INDIAN ARCHERY 1950'S: wood, recurve bow, with original box of Ben Pearson arrows. \$195. Rolla, 573-364-7465.

AUCTION REMINDER: Every Wed. @10:30AM Farmington Livestock. Please see our Auction Directory for more information.

50 CLASSIC CARS AND TRUCKS: If you're needing an older classic, give me a call for more information. Thomasville, MO 417-247-1689.

JOHN DEERE 635 DISKBINE: with Roller, field ready. \$9,850. (573)765-4406.

GREAT PYRENEES PUPS: 3boys, be ready 4-20-19, shots and wormed, \$125 each. Salem, 573-453-5398.

NEW NEW NEW DISPLAY HOUSE!!! Call Marla to hear what is new inside 573-657-7040, chateauhomes.net.

YOU GOTTA SEE THESE NEW HOUSES!!! Brand new inventory on sale !! 573-499-9993, columbiadiscountohomes.com.

FLIES ARE COMING! Lewis Cattle Oiler. 417-286-3540 or 774-696-2344.

MASSEY FERGUSON 231 TRACTOR: 40 HP, 2,000 hours, with nice loader, \$8,950. 573-765-4406.

20 LAYING HENS: Golden Comets, 2 yrs old, \$5 each. 573-392-5403.

2 BILLY GOATS: 2yrs old, producers. \$125each. Salem, 573-453-5398.

CATTLE HOLDING CHUTES: W/AI cage, Tarter auto head catch, new. \$2,000. 573-205-7860, Owensville.

WWW.MYWEEKLYTRADER.COM



R-FAB BINS
(660)281-3078

Bucket Bins
Stationary or Portable

Overhead Bins
Located in Warsaw, MO

JERSEY/HEREFORD CROSS BULL: 8 months old. \$500obo. Salem, 573-453-5398.

AUCTION REMINDER: Saturday, March 16 @ 9:30AM. Quick Auction Service. Please see our Auction Directory for more information.

ONE SURGE PULSATOR CONTROL BOX. Eight Surge Pulsators. One Milk Tank Washer. 573-498-6685.

AKC REGISTERED AKITA PUPPIES: Ready March 23, very healthy, vaccinations UTD. Jim, 417-58-4242.

GOT TIMBER? Give us a call. Satisfaction is our goal. 417-589-0207, leave message.

ONE BREAST COLLAR BUGGY HARNESS and 1 Collar Buggy Harness. \$100 each. 479-236-5027.

LIMOUSIN BULLS: 18-30 mos. old, Homo Black, polled, AI sired. 573-301-2316, 573-301-2074.

FOR SALE: Bare cylinder head #R20504R, for JD 4010 Diesel Tractor, cut for 4020 valves. \$200. 573-459-6488.

FIREARMS: Professional Repairs and Restorations. Baron's Gunsmithing. 573-363-5801, Camdenton.

WHOLESALE PRICES "Fertilizer/ Chemicals/Seed". Trailer loads fertilizer delivered. Example 17-17-17. \$315. 800-807-9612.

AUCTION REMINDER: Consignment Auction, Saturday, March 16 @ 10:00. Capon Auction. Please see our Auction Directory for more information.

METZ AXLES & SPRINGS: \$200. 870-430-5277, Cotter, Arkansas.

PAYING TOP DOLLAR for nice pine logs. 417-589-0207, leave message.

BARN WOOD SIDING: 8" & 10" wide. 573-729-7226. www.pineridgerustic.com

WANTED PIGEONS TOP PAY: 660-553-2333



Husqvarna

PZT 60 w/ Kawasaki
*Only 2 Left
Free 545 18" Chainsaw, Free 525 BX Blower, Free 525L Trimmer, Free Set of Blades, Free Service Kit
\$7,934³⁰

MZ 48 23HP KOH 125B Free Blower 525LK Free Trimmer \$4,499⁹⁹	MZ 54 23HP KOH 125B Free Blower and 525LK Free Trimmer \$4,699⁹⁹	MZ 61 27HP BRIGGS 125B Free Blower and 525LK Free Trimmer \$4,999⁹⁹
--	--	---

MZT 52 w/ Briggs Free 525BX Blower, Free 545 16" Chainsaw, Free 525L Trimmer \$5,574⁸⁴	MZT 61 w/Briggs Free 525BX Blower, Free 545 16" Chainsaw, Free 525L Trimmer \$5,975⁸⁴
---	--

YTH22V42 Riding Mower
*Only 1 Left
Free 128CD Reman Trimmer
\$1,699⁹⁵

Z246 Husqvarna
Free Husqvarna 122CR Trimmer
\$2,499⁹⁵

DIAMOND R EQUIPMENT
Full service shop work on any models.
2312 E McCarty St., Jefferson City, MO
4012 Hwy. 63, Freeburg, MO
573-635-4500

TRUCK LOAD OF FLEA MARKET & AUCTION ITEMS: \$200, trade wood or gun. 573-327-9068

NEW NEW NEW DISPLAY HOUSE!!! Call Marla to hear what is new inside 573-657-7040. chateauhomes.net.

NEW STOCK!!! Wow, do these look **GOOD!!!** Call 573-657-2176 amegamobile-homes.com

JOHN DEERE 55 COMBINE: good condition w/13ft quick attach head. \$1500, 417-241-0006

CUSTOM SAW MILLING: Lebanon. 417-533-4607, 417-664-1195.

3 METAL DETECTORS: \$15, \$25 and \$75. Birch Tree, 573-872-9821.

CASE ELEPHANT TOE KNIFE: good condition. \$500. Eminence, 573-226-5993.

DISHWASHER: Black, works. \$50. Lebanon, 417-532-3734.

LOOKING FOR WATER BICYCLE: Any shape. Leave message, 618-758-2830.

COMPOUND BOW WITH ARROWS: \$25. Birch Tree, 573-872-9821.



MOW, LOAD, DIG, HOIST AND HAUL.

Ready to move from that ride-around mower to a real working tractor? Step up to the Massey Ferguson® GC1700 Series, with the largest engine in its class and a standard front end loader and backhoe.

www.masseyferguson.us

MASSEY FERGUSON GC1710

22.5HP TRACTOR, LOADER & BACKHOE

\$208 PER MONTH*

Marshfield Machinery
INC.

222 E. Madison • Marshfield, MO
417-859-2117 • www.marshfieldmach.com

©2018 AGCO Corporation. Massey Ferguson is a worldwide brand of AGCO Corporation. AGCO and Massey Ferguson are trademarks of AGCO. All rights reserved. *On select models with approved credit from AGCO Finance®, LLC. Down payment required. Attachments and implements are included in program offer, but sold separately. Restrictions may apply. Contact your participating dealer for more details. Offer ends soon and may be subject to change without notice.

NEW MASSEY TRACTORS

4710 4WD CAB & LDR 99HP	IN STOCK
4708 4WD & LDR 80HP	IN STOCK
4707 4WD & LDR 70 HP	IN STOCK
2706E 4WD & LDR 57HP	IN STOCK
2705E 4WD & LDR 48HP	IN STOCK
1739E 4WD & LDR 38HP	IN STOCK
1734E 4WD & LDR 34HP	IN STOCK
1726E 4WD & LDR 24HP	IN STOCK
1526 4WD & LDR 24HP	IN STOCK
GC1720 4WD, LDR, BACKHOE	IN STOCK
GC1710 4WD, LDR, BACKHOE	IN STOCK
GC1705 4WD & LDR 22.5 HP	IN STOCK

USED TRACTORS

MAHINDRA 2565 CAB LDR 65HP	28,500
----------------------------	--------

MAHINDRA 1526 4WD, LDR 26HP	15,500
MF GC1705 4WD, LDR 23HP	10,500
MF GC1705 4WD, MWR 23HP	10,500
MF GC1705 4WD 23HP	7,750
IHC 460 49 HP	3,500

USED ROUND BALERS

MF 2946A 4X6 MESH	24,000
MF 2846A 4X6 MESH	24,000
MF 2846A 4X6 MESH	20,000
HESSTON 5546A 4X6 MESH	12,500
MF 2745 4X5 MESH	12,500
MF 1745 4X5	9,500
HESSTON 845 4X5	7,500
GEHL 2480 4X5	4,500
HESSTON 545 4X5	4,500

HESSTON 555T 4X6	4,500
CASE IH RS451 4X5	4,500
HESSTON 560 5X6	4,000
NH 850 5X5	1,500

USED DISC MOWERS

MF 1383 13FT MOWER/COND	19,500
JD 275 9FT 3PT	3,500
HESSTON 1120 MOWER/COND	2,000

USED RAKES

GEHL 418 8 WHEEL	2,000
VERMEER WR20 8 WHEEL	1,950

USED MISC.

BUSH HOG 3615 15FT	9,000
BUSH HOG M346 LOADER	3,500

BoatAngel

FREE 4-NIGHT VACATION!
Donate Car • Boat • RV • Motorcycle

1-800-CarAngel

www.boatangel.org

AUCTION REMINDER: Every Wednesday at 10:30 am. Farmington Livestock. Please see our Auction Directory for more information.

LADIES CARHART: deep green blanket lined jacket, size Large, adjustable waist tabs, zipper front, Excellent condition. \$35. 417-718-5347.

MATCHING COFFEE & END TABLES: Sturdy wood with glass partition, Tops are 38"x38" & 24" x 28". \$50. 314-303-7857, Cedar Hill.

WILLARD MO HISTORY BOOK: From Prairie to Present, A Centennial Story 1976. Out of print book. \$25. Lebanon, 417-532-2045.



Cheyenne Acres
Horse & Tack

BUY - SELL - TRADE

by Rolla, MO
Call For Directions & Availability

Call Kip
573-368-9402



REAR MOUNT BALE CARRIER: No 3rd arm used. \$100. Rogersville, 417-753-2747, 417-766-1991.

CEDAR GAP TOPSOIL: Garden Ready topsoil, Only water required, delivery within 50-mile radius, Seymour. 417-935-2877. For more info: www.cedargaptopsoil.com

AUSTRALIAN SHEPHERD PUPPIES: Purebred, no papers, six females, three males, all colors. \$150. Maynard, AR. 262-290-1619.

REGISTERED BLACK ANGUS BULLS: 417-453-6332. Plato

MOTORIZED 26" FLYER BIKE: 80mpg, 40mph, Karaoke brand. \$185firm. 573-872-9821

20- 14' PORTABLE CATTLE PANELS: Light-medium weight, 2 chains \$80each 9-8'panels 66#, \$68each. 573-205-7860



TAX REFUND SALE



 2018 Chrysler 300 S V6, Leather, Sunroof, Nav, 18k miles P-7722 \$23,400	 2018 Dodge Challenger SXT Plus; Htd/Cld Leather; Sunroof; 20s; Technology Group; 13k miles P-7730 \$25,495	 2017 Dodge Charger RT DAYTONA 5.7 Hemi; Leather, Tech. Group NAV., 11k miles P-14804A \$32,500	 2018 Dodge Charger SXT Plus; V6; 24k miles P-7626 \$21,600	 2016 Chrysler 300C V6, Htd/Cld Leather; Nav; 26k miles P-7643A \$18,800	 2018 Chrysler 300 Touring, Chrome App. Pkg., 7K miles P-14483A \$20,495
 2016 Chevy Malibu LT; 57k miles P-14880A \$14,500	 2018 Ford Mustang GT 5.0 V8, 6spd., 9k miles P-14613A \$29,495	 2018 Dodge Charger RT392 Scat Pack, Htd/Cld Leather, Navigation, Sunroof, 11K miles P-14884A \$36,995	 2018 Chevy Impala LT; V6, Nav; 31k miles P-7652 \$18,500	 2017 Dodge Challenger RT 392; 6.4 Hemi; Auto; Leather; Nav; Sunroof; 24k miles P-14496A \$32,400	 2018 Chevy Camaro LT; RS; Sunroof; 20s; 25k miles P-7685 \$22,600
 2018 Dodge Challenger SXT; V6; 18k miles P-7692 \$22,000	 2012 Dodge Charger SXT, Rallye, Sunroof, 20's, 51K miles P-7706C \$15,995	 2018 Chevy Cruze Hatchback; LT; 14k mile P-7782 \$15,700	 2018 BMW X3 xdrive30i, AWD, Sunroof, Nav., 360° Camera, Loaded, 9k miles T-14939A \$41,995	 2017 Chrysler Pacifica Touring-L Plus; Leather; U Connect Theater; Nav; Hands Free Doors; 25k miles T-14911A \$28,000	 2017 Dodge Grand Caravan SXT, 50k miles T-7746 \$16,300
 2018 Chrysler Pacifica Touring-L; Leather; Nav; 16k miles T-7703 \$26,500	 2016 Chrysler Town & Country Touring; Leather; DVD; 72k miles T-14856A1 \$14,900	 2016 Chrysler Town & Country Touring; Leather; DVD; 60k miles T-14937A \$16,800	 2018 Jeep Grand Cherokee Limited, 4x4, Htd Leather, Navigation, 19K miles T-7812 \$32,995	 2018 Jeep Grand Cherokee Limited, 4x4, Htd/Cld Leather, Dual Sunroof, Navigation, 23K miles T-7838 \$33,995	 2018 Jeep Compass Limited, 4x4, Leather, Navigation, Safety & Security Group, 17K miles T-7840 \$23,495
 2018 Jeep Renegade Lat; 4X4; 20k miles T-7656 \$18,500	 2018 Hyundai Santa Fe Sport; AWD; 28k miles T-7661 \$17,700	 2018 Jeep Cherokee Trailhawk; 4X4; 4cyl; Uconnect 8.4; 20k miles T-7635 \$23,500	 2017 GMC Terrain SLE; FWD; 27k miles T-7586 \$17,700	 2019 Jeep Cherokee Overland; 4X4; 2.0 Turbo; Htd/ Cld Lthr; Tech. Grp; 22k miles T-7711 \$28,500	 2018 Jeep Compass Latitude, 4x4, Pop, Equip Group, Safety & Sec. Grp, 22K miles T-7843 \$19,995

Not all actual photo's shown

LINDSAY CHRYSLER/DODGE PRE-OWNED

573-336-2698

809 MISSOURI AVE., ST. ROBERT, MO • OPEN 8 A.M. - 6:30 P.M. MON.-FRI. & SAT. - 9 A.M. - 5 P.M.

LINDSAY CHRYSLER/DODGE PRE-OWNED IN ST. ROBERT



Use Your Tax Refund Toward Your Down Payment!

over 400 vehicles online or on the lot – we've got what you want!

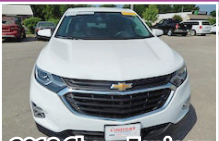
WWW.LINDSAYCHRYSLERDODGE.COM



2016 Honda CR-V
EX-L; FWD; Sunroof;
Leather; 41k miles
T-7575A **\$20,000**



2015 Buick Encore
FWD, 37k miles
T-7831 **\$15,995**



2018 Chevy Equinox
LT; FWD; 12k miles
T-7537 **\$19,500**



2019 Jeep Cherokee
Lat. Plus; 4X4; 4 Cyl;
20k miles
T-7752 **\$22,495**



2015 Jeep Grand Cherokee Laredo
4x4, 66k miles
T-7678A **\$18,500**



2018 Chevy Suburban LT
4x4, Leather, Sunroof, DVD,
22k miles
T-7784 **\$46,995**



2015 Dodge Durango
Citadel, AWD, Nav, DVD,
Sunroof, 81k miles
T-14932A **\$28,000**



2018 Dodge Journey
GT; V6; Leather;
14k miles
T-7688 **\$19,400**



2014 Jeep Grand Cherokee Limited; 4X2; Hemi;
Leather; 22k miles
T-7622A **\$20,700**



2013 Dodge Durango SXT
AWD, V6, Nav., 3rd Row
Seat, 89k miles
T-14817A **\$16,995**



2012 Ram 1500
Quad, 4x4, Express, Hemi,
20's, 100k miles
T-7654A **\$17,995**



2018 Chevy 1500
Dbl. Cab; 4X4; LT; V8;
28k miles
T-7774 **\$29,495**



2018 Chevy Colorado
Crew, 4x4, LT, Nav,
23k miles
T-7758 **\$28,995**



2019 Ram 1500
Classic, Crew, 4x4 SLT,
Hemi, 20k miles
T-7829 **\$31,495**



2016 Ford F150
Crew; 4X4; Lariat; EcoBoost 3.5;
Nav Sunroof; 19k miles
T-14672B **\$38,900**



2018 Ram 1500
Quad, 4x4, SLT, V6,
22k miles
T-7806 **\$26,495**



2018 Ram 1500
Quad; 4x4; SLT; V6;
15k miles
T-7794 **\$26,995**



2016 Chevy Colorado
Crew; 4X4; Z71; V6; 50k miles
T-14628B **\$26,800**



2018 Ram 1500
Quad, 4x2; SLT; V6;
26k miles
T-7793 **\$23,495**



2003 F150
Salvage Title, Ext cab, XLT,
4x4, 100k miles
T-7562B **\$8,495**



2008 Pontiac G6
Coupe, GXP, Leather,
Sunroof, 90k miles
P-7572A **\$6,495**



2014 Nissan Versa
S, 105k miles
P-7786 **\$8,995**



2010 Subaru Impreza
AWD; Sunroof; 127k miles
P-7674A **\$6,995**



2014 Dodge Avenger
SE; 4 cyl; 33k miles
P-7587A **\$10,995**



2012 Chevy Captiva
FWD, LS, 127K miles
T-7791 **\$7,995**



2006 Chevy HHR
LT, Leather, Sunroof,
124k miles
T-7771 **\$5,995**



2008 Dodge Charger
RT Hemi, Leather, Sunroof,
70k miles
P-7807 **\$9,995**



2009 Jeep Grand Cherokee
Laredo; 4X4; 122k miles
T-7796A **\$9,495**



2012 Mitsubishi Outlander Sport
SE; FWD; 118k miles
T-7675 **\$7,500**



2005 Honda Shadow
750cc, 9k miles
T-14487C **\$2,500**

573-336-2698

Not all actual photo's shown

809 MISSOURI AVE., ST. ROBERT, MO • OPEN 8 A.M. - 6:30 P.M. MON.-FRI. & SAT. - 9 A.M. - 5 P.M.
LINDSAY CHRYSLER/DODGE PRE-OWNED IN ST. ROBERT

TONNEAU COVER: fits almost any size truck/with 6'6"x5'8" wide. Good condition/Clamp's/Struts. \$300 OBO. 417-852-1088, Pittsburg, MO.

3 METAL DETECTORS: \$15, \$25 and \$75. Birch Tree, 573-872-9821.

L4400 KUBOTA: 4wd tractor with loader. \$21,500. 417-270-1505.

0% for 4 Years*



*with approved credit
Outdoor Wood Furnace
as low as
HEATMOR™ \$168 per month

HEATMOR MIDWEST

Licking, MO 65542
573-674-2962

HUSQVARNA 23HP RIDING LAWN-MOWER: w/only 146 hours. Cost \$2,500 new. Will sacrifice for the first \$1,000. Don't need anymore. 573-435-0026.

6BAR CONTINUOUS FENCE: 15 Sections, 16ga, 3cross supports, 20' long-55" tall, 1 1/4 tubing. \$85each. 573-205-7860.

MASSEY FERGUSON 285: Diesel tractor, w/loader. \$11,000. Farmington, 573-631-4352.

2000 FORD F650: Cab + Tilt Hood + Radiator + Frame. No engine, no transmission, no rear axle. Was 5.9 Cummins. \$1,000 OMO. 573-459-6488.



2001 CAT 525B Log Skidder
No winch, good working condition
\$27,000 • 573-569-3693

AGRICULTURAL APPRAISER: Earn \$60,000/year part-time in the Livestock or Farm Equipment appraisal business. Agricultural background required. Home Study Course is available. 800-488-7570 or www.amagappraisers.com

M8540 KUBOTA: 4wd tractor with loader, 85HP, open station, low hours, hydraulic shuttle, 12 speed. \$32,500. 417-270-1505.

CLEANING OUT KITCHEN CABINETS & CUPBOARDS: Inside only. \$125 or trade. 573-327-9068.

CAN BUILD WAUKASHA VRD283 + POSSIBLE VRD310 ENGINES. Call for detail 573-459-6488.

CHECKERED WALNUT WOOD STOCK PISTOL GRIP: for Marlin Model 336 or 1895. \$100. Washington. 636-239-2695.

LIONEL TRAIN SET: Steam engine, tender, caboose and other car, track and transformer. \$195. 573-364-7465, Rolla.

YOU GOTTA SEE THESE NEW HOUSES!!! Brand new inventory on sale !! 573-499-9993. columbiadiscountshomes.com.

SELL IT HERE!



WEEKLY
TRADER
MAGAZINE

417-532-2800 • www.myweeklytrader.com

AUCTION REMINDER: Construction Equipment Auction. Wednesday, March 28th @10am. BID NOW! Purple Wave Auction. Please see our Auction Directory for more information.

AUCTION REMINDER: Livestock Auction. Every Wednesday at 10:30 AM. Farmington Livestock Auction. Please see our Auction Directory for more information.

STUDEBAKER 1963 2 DR HT DAYTONA: good paint, V8 automatic, dual ex bucket seats, needs interior. \$4250obo or trade up or down on 1964 GT Hawk. Drury, 417-293-4399.

JOHN DEERE 10ft OFFSET DISK. \$4,250. 573-765-4406

TAKING CONSIGNMENTS: For school auction, 5-11-19, need quilts, crafts, machinery etc. Deadline April 1st, Contact Lavern or Levi Floyd, Wheatland, 417-461-4943, 417-466-8584, 417-309-3145.

CRANKSHAFT & BALANCER: for 268 Ford Tractor Diesel Engine. \$500. 573-459-6488.

2004 OPEN RANGE FIFTH WHEEL CAMPER: 34', all weather, in good condition. \$10,500. Lebanon, 417-718-5520.

NEW HOLLAND: L785 Diesel Skid Steer Loader, 57hp. \$7,750. 573-765-4406.

FOR SALE D-14 ALLIS CHALMERS: Lots of new parts. \$4700. 573-619-4928.

\$2,500 - \$11,000 LOT

Lindsay Chevrolet & Lindsay Ford

Mon.-Fri. 8 am - 7 pm
Sat. 8 am - 5 pm
Not responsible for typos.
* with approved credit

417-588-7995

West City Route 66
& South Monroe
Lebanon, MO

Bobby Rogers, Manager • Aaron Wehner, Finance • Mike Forner, Steve "Whitey" Helton, Larry Davis, Sales

Cars

QC75331	2003 FORD T-BIRD CONV. V8, AUTO, FWD, GRAY.....	\$11,900
QC75376	2010 HONDA CIVIC LX 4CYL., AUTO, FWD, BLACK	\$10,600
LC28434	2013 VOLTSWAGON JETTA TDI 4CYL., AUTO, FWD, BLUE	\$9,900
LC28429	2013 VOLTSWAGON JETTA TDI 4CYL., AUTO, FWD, WHITE	\$9,800
QC75340	2013 NISSAN ALTIMA SV 4CYL., AUTO, FWD, RED	\$8,900
QC75399	2013 CHEVY CRUZE LT 4CYL., AUTO, FWD, WHITE	\$8,900
LC28325A	2014 CHEVY MALIBU LS 4CYL., AUTO, FWD, BLACK	\$10,900
QC75336	2014 TOYOTA CAMRY LE 4CYL., AUTO, FWD, SILVER.....	\$11,900
LC28359	2014 CHEVY SONIC LT 4CYL., AUTO, FWD, RED	\$9,400
LC28344A	2014 CHEVY IMPALA LTZ V6, AUTO, FWD, WHITE.....	\$9,700
LC28385	2014 CHEVY SPARK LT 4CYL., AUTO, FWD, WHITE	\$9,800
LC25367	2014 CHEVY IMPALA LS V6, AUTO, FWD, BLACK.....	\$9,700
LC28469	2015 CHEVY SONIC LS 4CYL., AUTO, FWD, WHITE	\$10,900
QC75358	2015 FORD FOCUS SE 4CYL., AUTO, FWD, GRAY	\$10,600
QC75386	2015 CHRYSLER 200 LIMITED 4CYL., AUTO, FWD, BLUE	\$9,400
LC7050A	2015 CHEVY SPARK LS 4CYL., 5SPD., FWD, BLUE.....	\$9,300
LC28361	2015 CHEVY SONIC LTZ 4CYL., AUTO, FWD, WHITE	\$9,700
QC75332	2015 NISSAN SENTRA 4CYL., AUTO, FWD, GRAY	\$9,300
QC75363	2016 CHEVY CRUZE LS 4CYL., AUTO, FWD, RED	\$11,400
QC75424	2016 FORD FOCUS SE 4CYL., AUTO, FWD, RED	\$11,900
LC28383	2017 FORD FIESTA S 4CYL., 5SPD., WHITE.....	\$8,900

Trucks

QT75292	2005 DODGE RAM CREW V8, AUTO, 4WD, BEIGE.....	\$10,900
LT7061A	2006 FORD F450 6.0 D. MOTOR AUTO, RWD, FLAT BED, WHITE	\$8,400
LT28260	2006 CHEVY SILVERADO V6, AUTO, 2WD, BLACK.....	\$6,800
LT28393	2011 DODGE DAKOTA ST EXT. CAB, V6, AUTO, RWD, WHITE.....	\$7,900

Trucks

QT57489A1	2011 CHEVY SILVERADO LT EXT. CAB, V8, AUTO, RWD, WHITE	\$9,900
QT75289	2012 DODGE RAM REG. CAB V8, AUTO, RWD, NICE TRUCK, BLACK	\$12,400
QT75395	2012 GMC CANYON SLE REG. CAB, 5CYL., AUTO, RWD, BLUE.....	\$9,400

SUVs

QT75114A	2005 FORD ESCAPE XLT V6, AUTO, 4WD, GRAY.....	\$6,600
QT75263A	2006 FORD EXPEDITION XLT V8, AUTO, 4WD, WHITE.....	\$7,600
LT28332	2008 SUZUKI XLT PREMIUM V6, AUTO, FWD, SILVER	\$6,500
QT75226	2008 HYUNDAI ENTOURAGE GLS V6, AUTO, FWD, MAROON	\$5,700
LT28465A	2010 SATURN VUE XE 4CYL., AUTO, FWD, SILVER.....	\$6,800
LT28377	2012 FORD ESCAPE XLT V6, AUTO, FWD, WHITE.....	\$10,900
LT28418A	2013 CHEVY CAPTIVA SPORT LT 4CYL., AUTO, FWD, SILVER.....	\$10,400
QC75392A	2013 HYUNDAI SONATA LIMITED 4CYL., AUTO, FWD, BLUE, 71K MILES	\$10,900
QT75335	2014 JEEP COMPASS 4CYL., AUTO, 4WD, SPORT, RED	\$11,200
QT75405A2	2014 CHEVY CAPTIVA SPORT LTZ 4CYL., AUTO, FWD, 88K MILES, SILVER	\$11,600

Vans

QT75396	2013 DODGE GRAND CARAVAN SXT V6, AUTO, FWD, GRAY, 79K MILES.....	\$12,700
QC75394	2016 DODGE GRAND CARAVAN SE V6, AUTO, FWD, GRAY.....	\$12,900
QT75394	2016 DODGE GRAND CARAVAN SE V6, AUTO, FWD, 107K MILES	\$12,900

\$5,000 or Less!

QC75359A	2005 PONTIAC GRAND PRIX V6, AUTO, FWD, GOLD	\$3,600
QC75437A	2008 SCION T.C. 4CYL., AUTO, FWD, SILVER.....	\$4,900
QT75375	2008 MITSUBISHI ENDEAVOR LS V6, AUTO, 4WD, BLACK.....	\$4,900
QT75037A	2010 JEEP COMPASS 4CYL., AUTO, FWD, ORANGE.....	\$4,999

OVER 90 PRE-OWNED UNITS IN STOCK!

WWW.LINDSAYAUTOGROUP.COM

MALIBU BLOW OUT SALE!



New remaining 2018 Malibu's
up to **25% Off!**

Starting as low as \$18,795 or \$273 per month!



CHEVROLET 

FIND NEW ROADS™

LINDSAY CHEVROLET

"Where The Trucks Are"

OPEN: M-F 8-7 • SAT. 8-5 IN LEBANON AT 285 W. ELM • 417-532-3114



David Bean
Manager

Jeremy Johnson
Sales

Brent Hale
Sales

Dennis Nash
Asst. Manager

Shelby Cole
Finance



www.lindsaychevroletlebanon.com

DRIVE AWAY WITH A 2018 CHEVROLET TRUCK TODAY!

Limited amount of trucks available



New remaining 2018 Chevrolet Silverado Crew Cab, 1/2 Ton, 4x4, Trucks

MARKED DOWN as much as **\$12,000** OFF MSRP

Payments as low as \$536* per month!

*with approved credit



CHEVROLET 

FIND NEW ROADS™

LINDSAY CHEVROLET

"Where The Trucks Are"

OPEN: M-F 8-7 • SAT. 8-5 IN LEBANON AT 285 W. ELM • 417-532-3114

David Bean
Manager

Jeremy Johnson
Sales

Brent Hale
Sales

Dennis Nash
Asst. Manager

Shelby Cole
Finance

www.lindsaychevroletlebanon.com





LINDSAY CHEVROLET USED CAR & TRUCK DEPT.



330 W. ELM • LEBANON, MO

417-532-3114

MON.-FRI. 8-7; SAT. 8-5

Joe Jeffery, Manager • Nikki Keller, Finance, Brent Snook, Bryan Sien, Frankie Doublin & Tina Riesinger, Sales — Not responsible for typos.

CARS

LC28352 2018 Chevrolet Malibu LS Dk Blue, 1.5L Turbo, Air Cond, Loaded GM Program Vehicle	\$15,900
LC28114 2018 Chevrolet Malibu LT Gray, 1.5L Turbo, Air Cond, Loaded Off Lease Vehicle	\$16,700
LC28179 2018 Chevrolet Malibu LT White 1.5L Turbo, Air Cond, Loaded GM Program Vehicle GM CERTIFIED	\$18,500
LC28330 2018 Chevrolet Malibu LT White, 1.5L Turbo, Air Cond, Loaded GM Program Vehicle	\$16,700
LC28273 2018 Chevrolet Malibu LT Brown, 1.5L Turbo, Air Cond, Loaded GM Program Vehicle	\$16,700
LC28452 2018 Chevrolet Malibu LT Pearl White, 1.5L Turbo, Air Cond, Loaded Local Trade	\$16,900



2018 Chevrolet Malibu LT
Silver 1.5L Turbo, Air Cond, Loaded Off Lease Vehicle

LC28439
\$16,700

0 Down
72 Months 4.99%
\$269 per month

SUVS

LT28371 2018 Chevrolet Express 1T LT White, 4.3LV6, Air Cond, 15 Pass Seating, Loaded GM Program Vehicle	\$26,900
LT28346 2018 Chrysler Pacifica Touring L Plus White, 3.6LV6, Air Cond, Leather, Fully Loaded Off Lease Vehicle	\$31,400
LT28267 2017 Dodge Gr Caravan Sxt Maroon, 3.6LV6, Air Cond, Leather, Loaded Off Lease Vehicle	\$16,700
LT28261 2017 Buick Enclave Convenience White, 3.6LV6, Air Cond, 3rd Row Seats, Loaded Off Lease Vehicle	\$26,900
LT28343 2014 Buick Encore Conv FWD Blue, 1.4L Turbo, Air Cond, Loaded Off Lease Vehicle	\$14,700
LT28404 2018 Buick Envision Premium AWD Silver, 2.0L Turbo, Air Cond, Leather, Loaded GM Program Vehicle	\$29,900
LT28430 2018 Buick Enclave Essence AWD Maroon, 3.6LV6, Air Cond, Sunroof, Leather, Loaded GM Program Vehicle	\$34,900
LT28137 2015 Buick Enclave Premium AWD White Diamond, 3.6LV6, Air Cond, Leather, Loaded Off Lease Vehicle	\$24,700
LT 28280 2017 Chevrolet Equinox LT AWD Burgundy, 2.4L 4cyl, Air Cond, Loaded GM Off Lease Vehicle	\$17,900
LT 28299 2018 Chevrolet Equinox LT AWD White, 1.5L Turbo, Air Cond, Loaded GM Program Vehicle	\$21,700
LT28338 2018 Chevrolet Equinox LT AWD White 1.5L Turbo Air Cond, Loaded GM Program Vehicle	\$20,900
LT28450 2018 Chevrolet Equinox LT AWD Silver, 1.5L Turbo, Air Cond, Loaded GM Program Vehicle	\$20,900
LT28200 2017 Chevrolet Equinox LT FWD White, 2.4L 4cyl, Air Cond, Heated Seats Loaded Off Lease Vehicle	\$17,800
LT28240 2017 Chevrolet Equinox LT FWD Gray, 2.4L 4cyl, Air Cond, Loaded Off Lease Vehicle	\$17,700
LT28422 2017 Chevrolet Equinox LT FWD Maroon, 2.4L 4cyl, Air Cond, Sunroof, Loaded Off Lease Vehicle	\$16,900
LT28337 2018 Chevrolet Equinox Premier AWD Silver, 1.5L Turbo, Air Cond, Leather, Loaded GM Program Vehicle	\$23,800
LT28431 2018 Chevrolet Equinox Premier AWD White 1.5L Turbo, Air Cond, Leather, Loaded GM Program Vehicle	\$24,500
LT28309 2018 Chevrolet Equinox Premier AWD White, 1.5L Turbo, Air Cond, Leather, Loaded GM Program Vehicle	\$21,800
LT28303 2018 Chevrolet Equinox Premier FWD Silver 1.5L Turbo, Air Cond Leather, Loaded GM Program Vehicle with 11XXX Miles	\$22,800
LT28353 2018 Chevrolet Equinox Premier FWD Silver, 1.5L Turbo, Air Cond, Leather, Loaded GM Program Vehicle	\$21,800
LT28276 2018 Chevrolet Suburban LT 4X4 Silver, 5.3LV8, Air Cond., Leather, Loaded Off Lease Vehicle	\$38,900
LT28184 2018 Chevrolet Tahoe LT 4 X 4 Black, 5.3LV8, Air Cond, Leather, Loaded GM Program Vehicle	\$41,500
LT28416 2018 Chevrolet Traverse 3LT AWD Pearl White, 3.6LV6, Air Cond, Sunroof, Leather, 3rd Row Seats, Loaded	\$36,900
LT28410 2018 Chevrolet Traverse LT AWD Gray, 3.6LV6, Air Cond, Heated Seats, Loaded GM Program Vehicle	\$30,900
LT28432 2018 Chevrolet Traverse Premier AWD Maroon, 3.6LV6, Air Cond, Leather, Loaded GM Program Vehicle	\$36,500
LT28399 2019 Chevrolet Trax LS FWD Blue, 1.4L Turbo, Air Cond, Loaded GM Vehicle with 200 Miles	\$19,900
LT28428 2015 Chevrolet Trax LT FWD Orange, 1.4L Turbo, Air Cond, Loaded Off Lease Vehicle	\$15,900

QT56909 2017 Ford Edge Sel AWD Burgundy, 2.0L EcoBoost, Air Cond, Nav, Leather, Sunroof, Less than 100 Miles	\$29,500
QT74921A 2015 Ford Edge Titanium AWD Black, 2.0L EcoBoost, Air Cond Leather, Loaded Local Trade	\$23,700
QT57316A 2017 Ford Escape Se FWD Maroon 1.5L EcoBoost Air Cond, Loaded Local Trade	\$17,300
QT57284A 2013 Ford Expedition EL Limited Black, 5.4LV8, Air Cond, Sunroof, Leather, Navigation, Loaded	\$17,900
QT75384A 2016 Ford Explorer XLT 4 X 4 Black 3.5LV6 Air Cond, Leather, Sunroof, 3rd Row Seats, Loaded Local Trade	\$27,900
QT5742C1 2016 Ford Explorer XL T 4 X 4 Black, 2.3L EcoBoost, Air Cond, 3rd Row Seats, Loaded	\$26,900
LT28245 2018 GMC Acadia SLE AWD Maroon, 2.5L 4cyl, Air Cond, Loaded GM Program Vehicle	\$28,800
LT28130; 2018 GMC Acadia SLE FWD White Pearl, 2.5L 4cyl, Air Cond, Loaded GM Program Vehicle	\$26,500
LT28227 2018 GMC Terrain SLE AWD Brown, 1.5L Turbo, Air Cond, Loaded GM Program Vehicle	\$23,500
LT71208 2014 GMC Terrain SLT FWD White, 3.6LV6, Air Cond, Leather, Sunroof, Loaded Local Trade	\$14,800
LT28263A 2017 Jeep Cherokee Trailhawk 4 X 4 Hydro Blue, 2.4L 4cyl, Air Cond, Leather, Loaded Local Trade	\$24,900
LT28425 2018 Jeep Compass Latitude 4 X 4 Blue, 2.4L 4cyl, Air Cond, Loaded and Only 7XXX-Miles	\$22,700
LT28412A 2016 Jeep Grand Cherokee Limited White, 3.6LV6, Air Cond, Sunroof, Leather, Loaded Local Trade with 18XXX Miles	\$29,900
LT28448 2018 Jeep Grand Cherokee Oveland White, 3.6LV6, Air Cond, Leather, Sunroof, Navigation Sys, Loaded Off Lease	\$37,900
QT57468A 2017 Jeep Renegade Trailhawk Red, 2.4L 4cyl, Air Cond, Loaded Local Trade	\$18,500
QT75254A 2014 Jeep Wrangler Sahara 2dr Black, 3.6LV6, Air Cond, Leather, 9500# Winch, Custom Bumpers, Lift Kit, 27XXX Miles	\$31,900
LT6882A 2018 Volkswagen Atlas SEL AWD White, 3.6LV6, Air Cond, Sunroof, Leather, 3rd Row Seats, Loaded	\$36,900



2018 Chevrolet Equinox LT Awd
Silver, 1.5L Turbo Air Cond, Htd seats Loaded GM GM Program Vehicle

LT28347
\$20,800

0 Down
72 Months 4.99%
\$335 per month

TRUCKS

LT7203A 2016 Chevrolet Colorado Crew LT 4 X 4 Red, 3.6LV6, Air Cond, Loaded Local Trade with only 12XXX Miles	\$27,900
LT7194A 2016 Chevrolet Silverado 2500 Crew High Country 4 X 4 Black, Duramax, Air Cond, Leather, Sunroof, Htd/Cooled Seats, Loaded Local Trade	\$45,800
LT6985A 2018 Chevrolet Silverado 2500 Crew LTZ 4 X 4 Black, Duramax, Air Cond, Leather, Sunroof, Htd/Cooled Seats, Loaded Local Trade	\$54,800
QT57412A 2011 Chevrolet Silverado 3500 Crew LTZ 4X4 White, Duramax, Air Cond. Leather, Loaded Local Trade with 43XXX Miles	\$37,900
LT28230 2017 Chevrolet Silverado DBL Cab LT 4 X 4 White, 5.3LV8, Air Cond, Loaded Off Lease Vehicle	\$29,500
LT28364 2018 Chevrolet Silverado DBL Cab LT 4 X 4 Red, 5.3LV8, Air Cond Alloy Wheels Loaded Off Lease Vehicle	\$28,900
LT28389 2015 Ford F150 Crew Lariat 4 X 4 Black/Bronze, 3.5L EcoBoost, Air Cond, Leather, Loaded Local Trade	\$30,900
QT57334A 2017 Ford F150 Crew XLT 4 X 4 Maroon, 2.7L EcoBoost, Air Cond, Loaded Local Trade with 26XXX Miles	\$32,900
QT57306A 2017 Ford F250 Crew Platinum FX4 4 X 4 Wht Plat, 6.7L Diesel, Air Cond, Leather, Fully Loaded	\$58,900
QTS7369A 2015 Ford F350 Crew XL T 4 X 4 Bronze Fire, 6.7L Diesel, Air Cond, Loaded Local Trade Prior Paint Repair	\$39,900
LT28222 2008 Ford F350 Ext XL T 4 X 4 Sand, 6.4L Diesel, Air Cond, Bale Bed, Prior Salvage Title	\$18,500
QTS7236B 2007 GMC Sierra 2500 Crew W/T 4 X 4 Red, 6.0LV8, Air Cond, Loaded Local Trade	\$12,900
LT28253 2018 Nissan Frontier Crew Pro-4x 4 X 4 Black, 4.0LV6, Air Cond, Navigation, XM Radio, Loaded Off Lease Vehicle	\$26,300

AUCTION REMINDER: POSTPONED!
Public Auction, Saturday, March 9@ 10am .
Please see our Auction Directory for more information.

GREAT PYRENEES ANATOLIAN GUARD DOG PUPPIES: Born and raised with sheep. Ready now. \$175. 660-337-6650.
No Sunday calls. Fortuna.

AUCTION REMINDER: Cow Sale Every March 16th 1pm. Cattle Sale every Monday at Noon. Salem Livestock. Please see our Auction Directory for more information.

facebook

Email or Phone
 Password
[Forgot account?](#)

WT

WEEKLY TRADER MAGAZINE

TRADER

WEEKLY MAGAZINE

Weekly Trader
@myweeklytrader

Home

About

Photos

Reviews

issuu

Posts

Community

Info and Ads

Create a Page

KEN & KATHLEEN ARD AUCTION

August 11, 2018 • 9:30am
HWY 19 S to CR 6250, Gladden, MO

VEHICLES & EQUIPMENT Dodge Grand Caravan 172K Chuckwagon 4x2 UTV Arma 46" Zero-turn mower 2246 bed trailer John Deere 845e Island Round Baler 545 twine Ferguson 725 Mower Conditioner Rickle Jawsper Kerator GUNS ing bolt action 25-06 w/scope Double barrel shotgun 30A 22-R w/scope gton 1100 12ga modified choke 2-3/4 erg pump 20ga Hams 54 cal muzzleloader He Stack-on 24 gun 885 8mer g blind HOUSEHOLD glassware r couch recliner cedar log bed bed and mattress	Glass and wood display cabinet Occasional chair Lot of misc kitchen ware Miscellaneous knick knacks TV trays OUTDOOR BBQ grill made from fuel tank 2 - Outdoor swings Bird Houses Cookers Lawn chairs 5 piece patio set Rakes Shovels Misc yard tools TOOLS Chest tool cabinet 2 sets of MAC tools Various MAC tools Ball Joint sockets Lot misc tools 34-ton log splitter Nail guns Sahr 290 chainsaw Table saw Wood planer Woodworking tools Levels	
--	--	--

Gary Sexton Auctioneers

ABSOLUTE REAL ESTATE AUCTION

SATURDAY, AUGUST 11, 10:00 A.M.

For Auction Items or participating online bidding:
 418 E. 1st St., 1612 Ash Grove, MO. From West Plains, MO. Travel east on Hwy. 160 approx.
 0.800 mi. past Highway 160, turn left on Hwy. 160, turn right on Hwy. 160, turn right on Hwy. 160.

OUTSTANDING REAL ESTATE

The Home at Julliff Spring

OUTSTANDING PERSONAL PROPERTY

CHUCK & MELISSA SWIFT, OWNERS

2 Howell, Oregon & Clark Counties Since 1978

www.garysextonauctions.com

707 N. Hwy 160, West Plains, MO. 477-255-2000

www.garysextonauctions.com

www.Zero-Turn-Baling-Mower-Furniture-Antiques-Collectibles Etc.

Search for posts on this Page

Broadcasting & Media Production Company
in Lebanon, Missouri

5.0 ★★★★★

Community See All

324 people like this

333 people follow this

About See All

TRADER

WEEKLY MAGAZINE

AKC GOLDEN RETRIEVER PUPPIES:
Born 1-4-19, UTD shots. Beautiful puppies.
\$300. 573-392-5371, Barnett. MO.

PINE LOG SIDING SALE: \$1.19 per L.F.
www.pineridgerustic.com 573-729-7226,
573-247-2823.

WISCONSIN 2 CYLINDER ENGINE: Not running but loose. \$200obo. Rolla, 573-308-5884.

RED ANGUS BULLS: 20 months old, Red Balancers, 15 months old. Pinnacle Ranch. 417-679-4269, 417-679-2330, Gainesville. MO.

AUCTION REMINDER: Estate Auction. Saturday, March 16 @ 10am. Nance Auction. Please see our Auction Directory for more information.

GERMAN SHORT-HAIR POINTER PUPS: championship blood lines, shots and wormed, 12wk old. \$375each. Niangua, 417-838-3109.

NOTES

AUCTION REMINDER: Friday, March 22, 6pm. Lorts Auction. Please see our Auction Directory for more information.

LOGS WANTED. S&S LUMBER Buying Cut logs. Halfway, MO. 417-399-4381.

FERGUSON TRACTOR MANUALS: \$20. 636-932-4429. Herman

1998 3500 4WD Dodge Dually Truck: No engine or transmission, was 12V Cummins, automatic. \$2,000. 573-459-6488.

40FT TANDEM DUALY: 102" wide trailer. metal floor. \$6,500. 573-765-4406

IHC 684: Diesel tractor w/loader, 62hp. \$9850. 573-765-4406.

Meet...

Shawna Bradley

Your Auction Specialist



Call or email me today to get your next auction in Central Missouri's #1 Shopper!



WEEKLY TRADER MAGAZINE

office: 417-532-9131 ext. 215 • 417-895-9324
cell: 417-322-3814 • shawna@weekly-trader.com

1993 FREIGHTLINER DUMP TRUCK w/ Pup trailer for sale: Runs good, tires fair, everything works good. For information, 573-247-1862, Salem, MO.

AUCTION REMINDER: Saturday, March 16th, 9am. Buckner & Gately Auctions. Please see our Auction Directory for more information.

WANTED GOOD USED MOBILE HOMES: Singles & doubles. Call David Hayes, 573-578-8072.

AUCTION REMINDER: Saturday, March 16th, 10:30am. Worth Auction. Please see our Auction Directory for more information.

OLIVER 1650 TRACTOR: 65hp, 6cyl, gas, 2wd, open station, good rubber, front-end loader, w/bale spear. \$7250. 573-205-7860

WOMENS MERREL: Insulated Snow Boots, sz 8M, waterproof, mid calf height, easy pull on style, fur trim at top, dark chocolate brown color. Nice! \$35, 417-718-5347.

INCREASE YOUR PROFITABILITY!
Lewis Cattle Oiler. 417-286-3540, 774-696-2344.

3208T CATERPILLAR CORE ENGINE: Was running when removed, ask for details. \$750. 573-459-6488.

2015 GMC: 3500 HD, leather, Duramax, 4WD. 18,500 miles, hydra-bale bed. \$43,500. Plato, 417-458-4520.

AUCTION REMINDER: Online Auction going on now. Atterberry Auctions. Please see our Auction Directory for more information.

FERGUSON-TO-30: 12volt, good tractor w/5' wood mower. \$2800. Bourbon, 314-960-6652.

JOHN DEERE 2640 DIESEL TRACTOR: Canopy, 70hp. \$8,750. 573-765-4406

JOHN DEERE 535: Round Baler, monitor, kicker, net wrap. \$7,200. 573-765-4406.

WANTED: old Franklin County Plat books. 573-468-4924

VINTAGE CAPPERS WEEKLY SEARCHLIGHT RECIPE COOKBOOK: \$15. Lebanon, 417-532-2045.

You pull it, we sell it... CHEAP!



U★PULL★IT
SELF SERVICE AUTO PARTS

Lebanon, MO
22395 Rt. 66
417-588-3555
Fax 417-588-8955

Mon-Fri 8am - 6pm • Sat 8am - 4:30pm • Sun 9am - 4pm

WWW.SSUPULLIT.COM
Located next to S&S Recycling.



S&S RECYCLING
LEBANON - MTN. GROVE
417-588-3555 417-926-3360

Roll-off, Trailer, and Mobile Crushing Services Available

For All Your Metal Recycling Needs

Lebanon, MO **Mtn. Grove, MO**
22395 Rt. 66 • 417-588-3555 8930 First Rd • 417-926-3360
Fax 417-588-8955 Fax 417-926-0180

Monday-Friday 8:00am-4:30pm (Closed 12pm-1pm Lunch)
Saturday 8:00am-Noon
email: contact@ss-recycling.com
Buyer of all types of scrap metal.

WILLIAMS PEEP SIGHT: with target knobs. Fits Marlin Model 39a. \$50. 636-239-2695. Washington.

WWW.MYWEEKLYTRADER.COM

TENT CAMPER UTILITY TRAILER: 5x8. \$250. Vienna, 573-759-7143.

LAUGHING DOVES FOR SALE: Must have large cage, many colors. \$100 OBO. 573-612-4351.

SMALL FARM: 40 acres, near Ellington, MO, spring, 2 ponds, barn, part pasture, electric, well, livable building, highway access. \$65,500. 573-637-2450, 573-697-1016.

TITUS BENTON BOOK: "The Football Field". Half price. Paid \$20, Sell for \$10. 573-689-2490, Bunker.

ONE MUELLER 600gal. MILK TANK. 573-498-6685.

VERONA MISSOURI HISTORY: 1868-1968. 100 year history. \$22.50. Lebanon, 417-532-2045.

LEBANON JUNIOR HIGH SCHOOL 1966 YEARBOOK: \$12.50. Lebanon, 417-532-2045.

JOHN DEERE 420: 2cylinder, wide front, 3pt, Late 50's, extensive work mechanically, too much to list, with a fresh paint job, seat and new tires, Parade ready. \$3850. 573-205-7860.

INCREASE YOUR PROFITABILITY!
Lewis Cattle Oiler. 417-286-3540 or 774-696-2344.

JOHN DEERE: Commercial mower, 5spd, 36in cut, walk-behind, good tires, blades, etc. \$195-gun trade. Rolla, 573-364-7465.

IHC DIESEL TRACTOR: W.F. 3pt with loader \$7,800. (573)765-4406

CDL IN ONE DAY!: Family owned and operated, Insured, Over 10 years of experience, Training available for all states, Short wait time for appointments, Contact us today to schedule your appointment!! CREDIT CARDS EXCEPTED. (573-353-2853).

WANTED PINBALL MACHINES. 573-424-7200.

BARE CYLINDER HEAD: for 361/407 IH Diesel tractor engine. \$200. 573-459-6488.

TARTER 3PC ROUND HAY RINGS: 3 styles in stock. \$175+up. 573-205-7860, Owensville.

BRUSH CLEARING: 417-650-0596. www.brushmasterlandclearing.com

PETERSON SURFACING TABLE: 24"x50", 14" wheel, with air box, recent rebuilt motor. \$1300. West Plains, 417-270-1513.

AUCTION REMINDER: 14th Annual Consignment and Donation Auction. Saturday, April 6 Consign now. Hartville Lions Club. Please see our Auction Directory for more information.

2014 OPEN RANGE 5TH WHEEL: w/3 slides, excellent condition. 573-259-4291 for details.

ONE STAYRITE MILK PUMP: w/motor. One Delaval Milk pump. One Delaval 76 Vacuum pump. Four super-flow Delval milk Claws. 573-498-6685.

STOCK TRAILER: 2000, 6.8ftX20ft, Gooseneck, great condition. \$2500. Vienna, 573-422-3748.

WOOD BUSHING: For Ferguson disk. \$20. 636-932-4429. Herman

SOLD CATTLE DOGS FOR 40YRS: in bad health wanting to get rid of older dogs. Warsaw, 660-553-2333

AUCTION REMINDER: Sunday, March 17th, 10am. Brehe Auction. Please see our Auction Directory for more information.

92 PLYMOUTH ACCLAIM: auto, air, 129,000miles, very good condition. \$800. 314-616-9862.

MOTORIZED 26" FLYER BIKE: 80mpg, 40mph, Karaoke brand. \$185firm. 573-872-9821

GOOSENECK FLATBED: 24' 1,400 lbs gvwr, \$3,000. Ava, 417-543-0278.

CAB, FRONT CLIP, 8' BED: for 1991 W250 Dodge, No drive trane. Ask for details \$500. 573-459-6488.



WEEKLY TRADER MAGAZINE

Let us help you grow your business!

For your advertising needs

Call Debbie Calvin • 573.465.3753

weeklytrader@gmail.com

BUGGY HORSES. 6 year old, standard bred Morgan-Cross mare, broke single or double, 14.1H, TSS, good for anybody. \$3,000. And 2 year old standard bred Draft-Cross gelding. Broke single or double, 15H, TSS. \$2,500. 573-578-5017.

TARTER CATTLEMEN: Series 6, squeeze chutes, auto headcatch, new. \$2,975 Series 3\$1875. 573-205-7860, Owensville.

POOL TABLES: Installations, moves, repairs, accessories, etc. 573-646-1700.

WANTED TO BUY: 57 Chevy car 2dr complete to fix up. Call 573-768-0068.

DARDEN PROFESSIONAL TIMBER HARVESTING, BUYING STANDING TIMBER: Great prices, improve wildlife habitat and improve forest health. State Certified & Fully Insured! 573-247-4808 or 573-739-1122. Salem

STOCK DOG PUPS: 1/2 Border Collie, 1/2 Australian Shepherd, Shots/wormed. 3Blk. Tri. females. \$100. B.12/12/18. Levi Beechy, 639 Smith Road, Seymour, leave message, 417-935-2048.

REGISTERED HEREFORD & ANGUS BULLS: Home raised, Some Show-Me Select Qualified. 573-701-7828. Belgrade

AKC GERMAN SHEPHERD PUPPIES: Available in March, papered, black, 5 left. \$650. 417-208-7646, Ava.

WE SELL HIGH TENSILE FENCE: All woven, barbed, smooth! Best prices! Call Michael 417-322-0161, Lebanon.

FOR SALE 1978 INTERNATIONAL ROAD TRACTOR: Only 263,304 miles, near new recaps on rear rome offset disk H.D. Cat 60 Flat bottom Scrapey Lincoln Pipeliner welder on trailer. Belle, 573-619-2533.

MASSEY FERGUSON HOOD EMBLEM. \$20. 636-932-4429. Herman

2 SPEED REAR-END: Air Brake, Dayton style wheels, from a 1988 C-70 Diesel Truck. \$500. 573-459-6488.

TARTER 7' HDD7: disk, 3pt, adjustable gangs, new, heavy duty. \$1850. 573-205-7860, Owensville.

L2501D KUBOTA: 4wd tractor with loader, 25HP, hydro transmission, with 5' Landpride bush hog. \$16,900. 417-270-1505.

AUCTION REMINDER: Saturday, March 16th, 10:00 AM. Please see our Auction Directory for more information.

JEFFERSON NICKEL BOOK: coin set from 1938-1964. \$200. 573-764-3517. call in p.m.

JOHN DEERE: 6x30in Planter, no till. \$3350. 573-765-4406.

www.gatorjetboats.com



Jet Drive & Performance Parts

IN-STOCK!

(573) 885-0052

86 Hwy. UU Cuba, MO (2 Miles East of Cuba)

Custom Built Aluminum Inboard Jets

WANT TO BUY: Chainlink Dog Pen Panels, 6ft tall. Also want Peacocks! 417-718-4787.

AUCTION REMINDER: Every Wednesday at 10:30 am. Farmington Livestock. Please see our Auction Directory for more information.

AUCTION REMINDER: Tuesday, March 19th @ 11am. Rick Dixon Auction. Please see our Auction Directory for more information.

KING 3B TROMBONE: With F-attachment, pro model. \$1,100. 573-226-5993.

PUREBRED HEREFORD BULL: 3 years old. \$1,400. 573-690-1277, leave message.

VILLA HOMES IN ROLLA: Has NEW and USED Mobile Homes. Call David for info: 573-578-8072.

2007 HARLEY DAVIDSON STREET RIDE: 96 ci engine, 22,000 miles, lots of chrome and extras. \$12,000. 573-743-6018, 314-348-4965 cell.

110 ELECTRIC HEATER: Like new, Las-ko. \$125 or trade. 573-327-9068.

Gooseneck and Winchester Star pipe cattle trailers the best in the business here and ready...



10% Down \$152 Per Mo 60 Month w.a.c \$8,900

Cowtown USA

1-44 Exit 203 • 413 Daniels Rd.
Cuba, MO • 573-885-6300
www.cowtownusainc.com

PARTING OUT ALLIS-CHALMERS D14, D17, WC, WD, AND CA. Jefferson City, 573-690-9406.

2000 BOX TRUCK: new rubber, passed safety inspection, runs but needs work. \$2000. Bourbon, 314-960-6652.

JOHN DEERE 4240: Diesel cab and air tractor, power shift, 3900hrs, very nice, 110hp. \$29500. 573-765-4406

GREAT PYRNEES PUPPIES: All white, 8 wks, wormed/shot. \$200. 417-926-2470, Norwood.

3PT HEAVY 3 SHANK RIPPER: good. \$950. 573-765-4406.

610 ROADRANGER TRANSMISSION: Was behind 7.8 474 Ford Diesel Truck. \$500. 573-459-6488.

WANTED HORSE MANURE: Bourbon, 314-960-6652.

U-JOINT 1810 DANA SPICER: NIB 5-281x. \$65. 314-303-7857, Cedar Hill.

BLACK ANGUS BULLS: Farm raised, tested, objective T510 bloodlines, 24 months old, 3 to choose. \$2100each. 573-205-7860. Owensville

JOHN DEERE 275: 9ft, disc mower. \$5,150. 573-765-4406.

JOHN DEERE 730 PARTS. Call 417-241-0006.

Custom Homes, Pole Barns and Remodels

Amish Built Insured



Siding • Roofing • Decks • Foundations (Stem Walls & Footings) • Excavator & Dozer Work.

Brian Williams Excavation & Construction

Major Credit Cards Accepted **417-245-0147**



ON THE FARM

OR

**We've
got you
covered!**

LETTERMAN

TRIPLE T REPAIR LLC

TRUCKS, TRAILERS,
& TRACTORS

417-630-2249

417-664-0829

739 Honey Locust Rd. • Niangua, MO 65713



*Proud to Serve
Our Family Farms*

Custom Mixes | Bulk Feed | Commodity Feed of All Types | Semi - Loads



Located in Conway
739 Honey Locust Rd, Niangua, MO
417-589-8135



WEEKLY TRADER MAGAZINE



AUCTION DIRECTORY

Thursday, March 14

11:00 am Mid Missouri Stockyards..... 40

Saturday, March 16

9:00 am Buckner & Gately Auction Service . 40

9:30 am Quick Auction Service 28

10:00 am Nance Auction Service 29

10:00 am Capon Auction Service..... 30

10:00 am Easterly Auction Co 31

10:00 am Coleman's Auction Service 32

10:00 am Chadwell Auction Service 37

10:00 am Sam Crawford Auction Service 39

10:30 am Worth Auction Service 36

12:00 pm Buffalo Livestock Market 38

1:00 pm Salem Livestock Auction 41

Sunday, March 17

11:00 am Brehe Auctioneering Service 38

Tuesday, March 19

11:00 am Rick Dixon Auction Service..... 33

Wednesday, March 20

10:30 am Farmington Livestock..... 39

Friday, March 22

6:00 pm Rolla Horse Auction/Lorts Auction Service 40

Saturday, March 23

9:30 am Bruce & Le'AN Auction..... 34

10:00 am Crawford Auction Service 27

Monday, March 25

12:30 pm Atterberry Auction & Realty 39

Thursday, March 28

10:00 am Purple Wave Auction 41

Saturday, March 30

10:00 am Southwest Auction Service 38

Sunday, March 31

10:00 am Southwest Auction Service 38

Monday, April 1

10:00 am Gary Sexton Auctioneers 40

Friday, April 5

5:00 pm Diamond S Auction 35

Saturday, April 6

10:00 am Diamond S Auction 35

TBA Hartville Lions Club 39

Call 1-800-665-8875 to get your auction listed in the Weekly Trader.

AUCTIONEERS

Did you know the WEEKLY TRADER covers more counties in rural Missouri than any other publication?

Firm deadline is 12:00 PM Friday, prior to next week's Thursday publication date.

Sam
CRAWFORD AUCTION SERVICE LLC

As I'm moving closer to family, will sell the following located from Hermitage, Mo., 3 miles South on Hwy. 254 to Carson's Corner, then South on Co. Rd. 295, 1/2 mile to Eastwinds Rd. (Lakeview Lodge) #21497. Watch for signs. (Limited parking, please be courteous.)

Saturday, March 23, 2019 – 10 a.m.

VAN – TRAVEL TRAILER – HOUSEHOLD – MISC.



Van/Travel Trailer

Sell @ 12 Noon

'01 Chrysler Town & Country van, 3.8 motor
'03 Colorado fifth wheel 36' travel trailer, 3 slides



Household

Oak dining table & 6 chairs, hutch & buffet
End tables, small tables; Lamps
Wood office desk; Hat tree
Pictures, mirrors; Wall decor
2-3 Living room chairs
Some dishes; Small appliances
Sev totes, holiday decorations, misc.
Hardback books
BBQ grill; 2 Smokers



Antiques/Collectibles

Oak sq. China cabinet
4 Pc. bedroom set; Mirror
10-15 Crock prs-jugs, 10 gal-down
2 Blue crock pitchers
2 Sad irons; Kerosene heater
(2) 10 gal & 5 gal milkcans
Cast iron pot; Box wood stove
5-6 Pc's Guardian ware
Other items

Tools/Misc

Homelite HG 600 port. generator
Pancake air compressor
Craftsman tool box base
Asst sockets, wrenches, hand tools
Push trimmer
Tradesman table saw
Some power hand tools
2 Lawn cars; Lawn seeder
Long handle tools
Folding Alum ladder
Alum ext ladder; Ext cords
Gas cans; Lawn supplies
Garden hose
Some ham radio equipment
Wood pic-nic table & benches
2 Wood patio chairs
Wood porch swing
10-12 Plastic lawn chairs
Other misc.

See website for more pictures!

Sam
CRAWFORD LLC
Auction Service



Cross Timbers, Mo.
CrawfordAuctionService.com

417-998-6629



STARTING 75th YEAR OF SALES AND SERVICE

TERMS: Cash or good check. Nothing removed until settled for. Not responsible for accidents. Lunch available. Statements made day of sale take precedence over printed matter. All items sell as is. No warranties given or implied.



Sam 417-328-9137 Chase 417-399-1904 Chance, CAI 417-298-1751 Tom Poynter Jack Lancast-

Phyllis Joyce Schroedel

PUBLIC AUCTION

March 16, 2019 at 9:30 am

CR 5620 off of A HWY 1 mile, Bunker, MO

HOUSEHOLD - TOOLS - FURNITURE - VEHICLES - TRACTOR - BANDSAW MILL - QUILTING MACHINE

HOUSEHOLD

Curio Cabinet
Gas Fireplace
Wooden table and chair
Swivel rockers
End tables
2 - Small freezers
Plastic folding tables
Lot of decorations (Christmas, etc)
Gammill Quilting Machine - reserve

OUTDOOR

Cub Cadet GX 54 riding mower
Cub Cadet 1045 riding mower
Husquvarna 460 Rancher chainsaw
Weedeaters
Mini Tiller
MTA Gold Rear Tine Tiller
Lot of yard tools Old front tine tiller
Poulan Pro chainsaw
Coolers
Lawnchairs
Patio table and 4 chairs
Old metal lawn furniture - 2 chairs, 2 side tables and loveseat glider
Coolers
Old metal minnow bucket
Propane tailgater grill
12 and 20 foot gates
Old leaf vacuum needs work
Fiberglass canoe
Fish cooker
Shepherd hooks
Ornamental yard fence
Old metal calf feeders
50 HP Johnson Boat motor prop
Trolling motor
Fishing rods and reals
Boat seats
7 ft Windmill
Chicken feeders, waterers, misc

TOOLS

Jobsite Box
Enercraft Baker 18 - 20HP Honda motor Bandmill
Cherry picker
Engine stand
Floor jacks
Loading ramps
Lot of mechanic tools
Taskforce Tool Cabinet
Lot of wood clamps
220 BTU Salamander
Power Washer
Generator
Grinder
Grizzly Bandsaw
Shop stove
Craftsman Radial Arm saw
Wooden workbench
Shop-Vac
Central Machinery sander
Grizzly Drill Press
Porter Cable tools
Scroll Saw
Lincoln AC225 Arc welder
Campbell Hausfield Air Compressor 6.5 HP
Air nail gun
Lot of battery powered tools
Old air compressor
Lot of nails and screws
Drill bits
Wood chisel set
Electric sewer snake
Kobalt Miter Saw
Handheld grinder
Battery chargers
Vices
Hay hooks
Shelves
3x4 Wooden workbox with outlets on wheels
Lot of extension cords
Lot Scrap Iron



AUTOMOBILES & MACHINERY

2000 Ford V10 extended cab dually 4x4
185K (50K on new crate motor) - reserve



1996 Ford 1-ton crew cab dually 4x4
Power Stroke diesel - not running
1999 Ford F250 4x4 automatic 5.4 - not running
Allis Chalmers HD5 Dozer - not running
Farmall H tractor
Kawasaki Bayou 220 4-wheeler
3-point Hay Sycle mower
1996 Bouncer Motorhome 454 motor, 31 ft, 108K miles
3-point 6 ft blade
2008 Keystone Laredo 31 ft bumper pull camper



Most of this sale will be inside. All vehicles will have clear titles on site. Trucks and machinery will sell around 12:30. More items to be added.
. Raymond

Owners: The Late Jim Smith and Debra Smith

TERMS: Cash or
Approved check
Nothing removed
until settled for
Refreshments
Available

QUICK Auction Service

Col. Raymond Quick (573)-247-3834 Col. Brady Hagler

ANNOUNCEMENTS AT AUCTION TAKE PRECEDENCE OVER PRINTED MATTER

Rain or Shine
Not responsible
for accidents

ESTATE AUCTION

Saturday, March 16th, 2019 ~ 10:00 AM
LOCATION: #1 Shamrock Drive, Lamar, MO (Watch For Signs)
Auction For Terry & Karen Riegel



Antique, Modern Furniture & Related Items

Lg Ant Kitchen Table W/2 Leaves & 10 Chairs, Lg Ant China Cabinet, Ant Buffet/Side Server, Ant Wood Child's Table & Chairs, Ant Queen Anne Leg Chair & Ottoman, Ant Queen Anne Leg Chair W/Arms, Neat Corner Handmade Curio Cabinet, Prim Nightstand, Lg Oak Dresser W/Mirror, Oak Armoire, Lg Wardrobe, 3 Oak Barstools, Oak Stand, Queen Bed W/Metal Headboard, Several Neat Pictures & Ornate Frames, Matching Dresser W/Mirror & Nightstand, Child's Highchair That Will Also Make Into A Table, Area Rugs, Iron Glass Top Tables, Mantle Clock, U Gaming Table, Sm Safe, 4 Drawer File Cabinet, Futon, Curved Bar Top, Approx 6 Folding Tables, Air Hockey Table, Weight Bench W/Barbell & Weights, 2 Marking Boards W/Easels, Stereo Speakers, Pioneer Stereo, Flat Screen Computer, Lg Flat Screen TV, TV W/ VHS Player Built In, DVD Player, Ant TV, Other Items Not Listed

Antique, Collectibles & Households

Ant Framed Gold Club Collection, Golf Pictures & Memorabilia, Ant Mickey Mouse Phone, Several Pc Of Memorabilia From 1996 Atlanta Olympic Games, Red Rider & Other BB Guns, Boy Scout Items, Lg Lot Of Oil Lamps Inc Aladdin & LE. Smith, Colored Pyrex Dishes, Lots Of Cast Iron Inc Waggoner & Griswold, Waggoner Ware Magnalite Pcs, Old Marbles, Ant Glass Flytrap, Ant Perfume

Bottles, Lots Of Lead & Cut Crystal Glass (Some Unusual), Vintage Hanging Rain Oil Lamp W/ Windmill, Vintage Table Rail Oil Lamp W/Nude Venus Figure, Unique Vintage Lamps Inc Art Deco, Retro & Danish Modern, Old Tins, Old Bottles & Jars (Some Unusual), Galvanized Washtub, Old Records, Old & Costume Jewelry, Precious Moments & Other Collectible Figurines, Collectible Corvette Books, Sterling Silver Décor, Beanie Babies, Hallmark Holiday Collectibles, Old Books Inc Cookbooks, Old China Set, Linens Inc Tableclothes, Curtains & Others, Old Toys, Old Board Games, Plate Set, Kitchenware Items, Sm Electrical Appliances, Tupperware, Luggage, Office Supplies, Holiday Décor Of Various Kinds, Wii Game System & Games, Lg Lot Of Play Station Games, Lg Lot Of DVD & VHS Movies, Other Items Not Listed

Tools & Outdoor Related Items

Rare 1950's David Bradley Chainsaw, Alum Extension Ladder, Long Handle Tools, Sm Electrical Tools, Gas Leaf Blower, Electric Chainsaw, Sump Pump, Extension Cords, Garden Hoses, Chiminea, BBQ Grill, Outdoor Patio Furniture & Décor, Tennis Rackets & Balls, Golf Ball Pickup, Several Fishing Poles, Lots Of Fishing Tackle, Tackle Boxes, Minnow Sane, Trout Lines, Fishing Float Lights, Coolers, Bushnell Binoculars, Hunting Clothes, Other Items Not Listed



Auctioneers Note: It Is An Honor To Be Conducting This Auction For The Riegel Family As I Have Known Terry Since I Was Very Young. The Riegel's Have Been Very Good To Our Family For Many, Many Years And Was An Honor To Work With Them At O'Sullivan Industries. This Auction Will Be One Of The Cleanest Auctions We Will Conduct All Year With Everything In Impeccable Condition. Furniture Is Top Of The Line, Antiques & Households Are Excellent As Well. This Is An Auction You Do Not Want To Miss As There Is Something Here For Everyone. Please Plan Now To Attend. **Sale Order: Furniture Will Sell First Followed By Antiques, Collectibles & Households. Tools & Outdoor Items Will Finish Auction. See Ya There!!!**

Terms: Cash or check with proper ID. Now accepting most major credit cards. Nothing removed until settled for. Statements made the day of sale takes precedence over printed material. Everything sold as is where is. Not responsible for accidents. Restroom available. Concessions Provided. Check our website for upcoming auctions and for additional pictures!!



NANCE AUCTION SERVICE

No Matter How BIG or small, We Do Them All!!!

Col. Bill Nance 417-214-0093

CONSIGNMENT AUCTION

SATURDAY, MARCH 16 • 10 A.M.

AUCTION WILL BE HELD AT ...

Capon Team & Auction Company Office
 312 West Clinton Avenue, Seymour, MO 65476

REAL ESTATE SELLS AT 10:30 A.M. SALE DAY
— WATCH FOR CAPON AUCTION SIGNS —

225 N. FRANCES ST. SEYMOUR, MO 65746

Perfect fixer upper and would make a perfect rental!
 Two bedrooms, one bath, metal roof, carport, all in
 a good location close to all the town's businesses.

VERY MOTIVATED SELLER! COME TO BUY!

Terms 10 % down day of sale balance in 30 days at
 closing. We will be accepting offers on the property
 up to day of sale to be considered in the auction.



HORSE-DRAWN MACHINERY

Horse-Drawn Manure Spreader • 14' Horse-Drawn Wagon On Steel Wheels • Single-Bottom Horse-Drawn Plow • 8' Land Pride Cutter • 10' Single Row Disc • #7 Horse-Drawn Mower, 5' Bar (Field Ready) • Hay Rake On Steel Wheels • Four-Cart On Steel Wheels • John Deere Corn Binder • #7 McCormick Mower • 8' Tandem Disc • Cattle Head Shoot • Garden Disc • 13-Hole John Deere Grain Drill • 20' Storage Container • John Deere Big Four Mower • Covered Horse-Drawn Wagon With Hydraulic Brakes • Draft Harness • 2-Section Drag Harrow • #9 - 6' Bar (Field Ready) • John Deere Corn Binder • Four-Cart With Metal Wheels & New Tongue On Steel Wheels • Horse-Drawn Road Grader • Corn Cultivator • Pioneer Plow With KV Bottom • Covered Horse-Drawn Buggy • International Silage Chopper/Blower • 4-Wheel Flatbed Wagon On Rubber Tires • Oliver Corn Planter With Extra Plates • 15" Simco Saddle & More!

TRACTORS, FARM MACHINERY AND MISCELLANEOUS

WD 45 Allis Chalmers With Loader • 418 Gehl Hydraulic V Rake • 3-Pt. Post Hole Digger • 3-Pt. Blade • 2-Wheel Garden Trailer • Various Hand Tools • (2) Used Backhoe Tires • 3-Pt. 6' Bushhog • Post Hole Digger • 3-Pt. Boom Pole • 3-Pt. Bale Spike • Homemade Box Trailer 12' Long With Title • Metal Angle Cutter (In Original Box) • 1986 - 16' Ponderosa Stock Trailer With Title • 250-Gallon Propane Tank • (30) T-Posts • Charter Oak Wood Cookstove & More!

GUNS (PISTOLS & RIFLES) AND KNIVES

Comanche .22-Caliber Rifle • Savage Axis .270 With Scope • Bolt-Action .410 Shotgun • .22 Pistol • Jimenez Arms .380 Pistol • .308 British Rifle • 410 Mossberg Bolt-Action • Mossberg Bolt-Action 20-Gauge • (2) Mossberg Bolt-Action 12-Gauges • K 98 Mauser • (2) Automatic .22 Revelations • Astra 9mm Pistol • Damascus Knives • Assorted Ammo & Supplies & More!

CARS & TRUCKS

2005 Chevy Quad Cab, 5.3L V8 (Automatic), 4x4 • 1992 Buick Car, 4-Door • Chevy S-10 Pickup, Long Bed • 2014 Chevy Spark With Title, 77,000 Miles, 4-Door Automatic Transmission, 2-Owner Vehicle, 35-40 MPG!

COLLECTIBLE COINS AND SILVER

1820 & 1851 U.S. Large Cents • Old Two-Cent Pieces • Three-Cent Pieces • Large Lot Of Indian-Head Pennies From 1881 To 1908 • Silver Mercury & Roosevelt Dimes • Morgan & Peace Silver Dollars • Silver Half Dollars • Many More Assorted Coins, Many More Than 100 Years Old ... If You're A Coin Collector, You'll Want To Be Here!

OLD SPORTS CARDS, MOST FROM 1960S AND 1970S

Several Boxes Of Old Sports Cards With Cards From The 1960s To Present • Individual Baseball, Basketball, Football & Hockey Cards From The 1960s & 1970s • More Than 100 Cards From Hall Of Fame Members, Such As Michael Jordan, Roger Staubach, Tom Seaver And Many More • Large & Small Lots, No Cards Newer Than Early 1980s • Assorted Sports Cards Of All Types!

**CONSIGNMENTS
 TAKEN UNTIL
 DAY OF SALE!**

**LOTS OF MISCELLANEOUS ITEMS TOO NUMEROUS TO MENTION!
 WILL HOLD SALE, RAIN OR SHINE**



**Dusty Capon,
 Auctioneer**
417-830-8623

SEE MORE AT FACEBOOK
 & AUCTIONZIP.COM



TERMS & CONDITIONS: CASH OR GOOD CHECK WITH PROPER I.D. ITEMS SOLD AS IS, WHERE IS. NO ITEMS MOVED UNTIL PAID FOR. ANY QUESTIONS, CALL AUCTIONEER AT 417-830-8623. ANNOUNCEMENTS MADE DAY OF SALE TAKE PRECEDENCE OVER PRINTED MATERIAL.

DICKINSON LIVING ESTATE AUCTION

SATURDAY, MARCH 16, 2019 @ 10:00 AM

916 E. Redbud Lane • Springfield, MO 65806

DIRECTIONS: From Kansas expressway & Norton, turn East on Norton, left on N. Summit ave which becomes E. Smith street, turn left on N. farm road 159, turn right on E. Redbud lane auction will be on right.



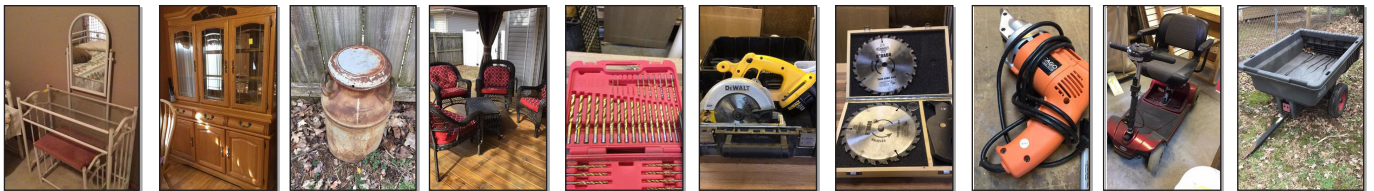
This home has approx 1897 sq ft of living space with, 4 bedrooms, 2 full baths, eat in kitchen, ceiling fans, hardwood floors, gas fireplace, pella windows, large patio, and a large Shop building. It has had several updates done such as a new heating & cooling unit, termite inspection, & new deck. Appliances will stay with house. This home has been well cared for and you can tell by the beautiful woodwork throughout the home.

Legal: Hill and dale 6th addition lot 15 **Taxes:** \$1478.86 **Terms:** 10% down Day of auction with balance due at closing. Possession at closing with closing in 45 days or less from auction date.



Absentee bid at <https://easterlyauctionco.hibid.com/catalog/161219/dickinson-living-estate/>

Solid Oak China Cabinet; Solid Oak Double Tress Table; Solid Oak Kitchen Island; Set of Oak End Tables; Tan Sofa; Set of Brass Lamps; Tan Recliner; Solid Oak Coffee Table; Tan loveseat; Recliner; Solid oak sofa table; Glass top sofa table; Indian Pattern Area rug; Black three shelf rolling cart; Small oak kitchen island; Glass Top Vanity; Metal Daybed; Chest of Drawers; Vintage ironing board; Nice foot stool; Off white embossed linen; Five piece patio set; Wood Cabinet; Cub Cadet Riding Lawn Mower; Oscillating Spindle Sander; Master Cuts tile saw; Porter cable stapler; Black & Decker drill and bit set; Utility wagon; 24 inch high velocity shop fan central machinery; Frigidaire small deep-freeze; Drill bit set; Dremel set missing some; Bostitch nailer/stapler; Craftsman router; Metal horseshoe set; Porter cable air nailer; Mastercraft drill bit set; Dewalt cordless circular saw; Cummins dado set; Cummins titanium hole saw set; Drill bit set; Hitachi electric drill; Craftsman belt sander; Router bits; Coleman lanterns; Router bit set; Chicago dual dowel jointer; Wood carving set; 10 piece router template guide; Craftsman wood bits; Cummins cordless grill with charger; Air plus air paint gun; Craftsman tool set; 16 piece Forster drill bit set; Box of screws; Assorted saw blades; Roto zip; Router bits; Router bits in wooden box; Assorted chemical flat; Door makers mid set; Drill bit set; Haul master aluminum ramps; Tapered drill counter sink; Hitch mounted carry all; 30 foot retractable cord reel; Black and decker saw; Electric drill; Work gloves; Brink & cotton Vise; Grizzly doweling jig; Bostitch nailer stapler; Saw blade sharpener; Reversible air Drill; Craftsman air ranch; Bostitch finish nailer; Hand grinder; Craftsman air wrench; Craftsman shop vac; Bostitch pneumatic stapler; A box of Walter wheels; Central pneumatic touch up spray gun; Knee kicker carpet installer; Craftsman wood sign maker; Central forge carpet floor repair kit; drill bits, sanding wheels, etc; Digital caliper Lot; Wrench Lot; Door makers bit set; Socket lot; Grizzly bit set; Wood chisels; Lot of screwdrivers; Straight lines; Doormaker's bit set; A flat of wood bits; Lot of electrical; Miscellaneous screws and bits; Lot of push sticks and brushes; Lot of assorted bolts and screws; Lot of assorted bolts and screws; Miscellaneous nuts and bolts; Shopsmith lathe tools; Saw blade lot; Cutter; One lot of C clamps; One lot of pliers; Power tool lot; Floor jack; Battery charger and cables; 10 piece T handle hex key set; Wall bin organizer; Miscellaneous shop tools; A lot of cabinet clamps; Coleman folding chairs; My garage my toys my tools my rules sign; Wood working clamps; Skil sander in case; Mr. fix-it sign; Roadkill Café; A lot of sea clamps; Plastic hand clamps; Four cabinet clamps; Four metal cabinet clamps; Eight metal cabinet clamps; Lot of sand paper; Two small saws pencil sharpeners; Lot of new shelf brackets; Lot of sand paper; One large miscellaneous shop tools; Assorted tool lot; One lot of hand saws; GE. Automatic Double Fan; Miscellaneous shop equipment; One set of frame clamps; Squirrel Cage Fan; Folding Work Bench; Furniture clamp lot; Lot of Fishing Poles; Craftsman groove bits; Organizing cabinets; Coleman powermatic heater With tank; Lot of wood on floor; One whole shelf of lumber; pipe clamps metal new in packaging, tape measures; A shelf of miscellaneous lumber; Top shelf of old Barnwood; Craftsman molding set and electrical lot; Vintage Kenmore fan; Pry bar; Plastic trash can on wheels; Chicago Brand nibbler tool sheet metal Cutter; One lot of sand belt paper; Black and decker sanders; One lot of gas cans; Jig saws; Pair of palm sanders; Pair of palm sanders; Bolen's 25CC weed eater; Handmade workshop table beautiful; Handcrafted mailbox; High velocity fan; Speed air air compressor on rollers; Joiner planer; Delta shop master scroll saw; Drum sander; Oak workbench; Two sheets of shelving board; Grizzly dust collection system; Revo electric scooter; Rally Push mower; Protech contractor Series 13 inch Portable planer; Shop smith with attachments; Shopsmith Band saw with stand; Craftsman belt sander; Craftsman 12 inch two speed band saw; Craftsman 10 inch table saw; Central machinery mortising machine; Dewalt miter saw with firestorm Stand; Comfort Glow wall mount heater; Cummins 16 speed floor drill press; Drill press 8"; Metal bar clamp lot; Wooden organizer; Wooden cabinet; Craftsman five drawer Metal tool cabinet; Aluminum step ladder; Handmade wooden router table; Rubbermaid yard cart; Love seat tan; Oak coffee table; Black max power washer; Gameo whisper fusio pellet gun



FOR MORE INFORMATION GO TO WWW.EASTERLYAUCTIONCO.COM OR CALL EASTERLY'S AT 417-833-9494

EASTERLY
AUCTION CO.

Go to www.EasterlyAuction.com



auctionzip.com
ID#14770



Mike Easterly Auctioneer
417-833-9494

Not Responsible for accidents or theft.

For more information call: Easterly Auction Company, Springfield, MO.

Auction Terms: Bank Letter Of Credit Required.

Visa, Mastercard, Cash, Cashier's check or checks with proper I.D.

Announcements day of sale take precedence over printed material. Auction Notes: Although information is obtained from sources deemed reliable, auctioneer makes no warranty or guarantee expressed or implied.

Buyers should themselves take the opportunity to make their own inspection prior to sale.

ANTIQUA AUCTION

SATURDAY, MARCH 16TH • 10:00 AM
Heated Inside - Rain or Shine • Washington County Fairgrounds
Hwy 8 & Hwy 185 Intersection - Potosi, MO 63664

ANTIQUES • TOOLS GOLD & SILVER JEWELRY • COINS • GUNS

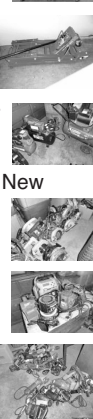
ANTIQUA FURNITURE

Oak Side Board
 Eastlake Dresser w/Mirror
 Mahogany 3 Drawer Chest
 Kimball Pump Organ
 Chair & Rocker Set
 Oak & Mahogany Parlor Tables
 Claw Foot Wall Game Table
 2 - Old Library Desks
 Drop Leaf Table - 6 Chairs
 3 - Old Rockers • School Desk
 Walnut Folding Table
 Copperlined Dry Sink
 Mahogany Table - 8 Chairs
 Child's Tin Bath Tub
 Oak & Leather Lg. Rocker
 Oak Vanity w/Mirror
 Baker's Cabinet
 Drop Leaf Table w/Drawer
 And More...



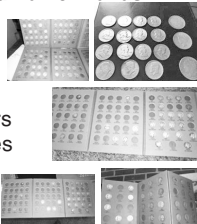
TOOLS

New 40 Volt Ryobi Mower
 with Charger & 2 Batteries
 Big Red 1500 lb. Floor Jack
 Ryobi Chopsaw - Like New
 Hitachi Lazer Chop Saw Like New
 4 - Chainsaws • Air Nailers
 4 - Stihl Weed Eaters
 6 - Portable Air Compressors
 Lots of Electric Hand Tools
 Electric Blowers • Lg. Vise
 Campbell Wire Feed Welder
 Aluminum Ladders
 Long Handle Tools
 20 Battery Power Drills
Tools are Assorted Name Brands



SILVER COINS

3 - 1921 Dollars
 14 - Halves
 27 - Silver Quarters
 33 - Mercury Dimes
 84 - Silver Dimes



JEWELRY

14 Kt. Dinner Ring
 10 Kt. Bracelet & Earrings
 7 - 10 Kt. Rings
 8 - Pcs. of Sterling
 10 Kt. Phillips 66 Pin



GUNS

{Browning Lite 12 Auto S
 12 ga. Belgium Made}
 Remington Model 742 Semi .308
 Savage Over/Under 20 ga - 22 mag
 w/Scope
 Winchester .22 Bolt Action
 Winchester .22 Semi Auto
 Ithaca 16 ga. Double Barrel
 2 - Ithaca 12 ga. Pump Feather Lite

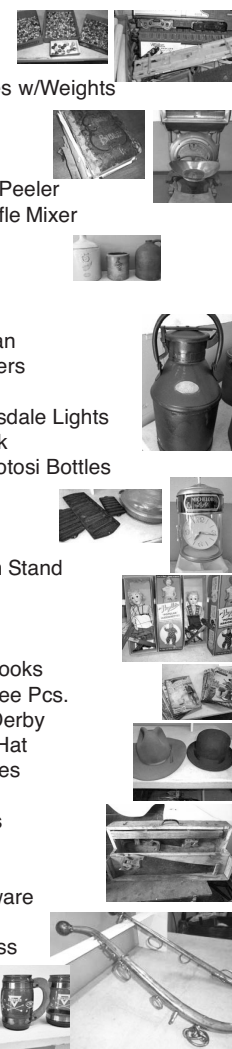


ANTIQUA COLLECTIBLES

32" Birge Mallory 8 Day Clock
 25" Seth Thomas Clock
 Ingraham Oak Mantel Clock
 Model T Ford Payment Bank
 '52 Chevy Dealer Bank
 JC Higgins Rod & Reel
 1959 Wells Fargo Gun Rack
 Jimmy Hacking Hatchet
 Winchester Hatchet
 Keen Kutter Hatchets
 Miniature Singer Sewing Machine
 Old Piggy Banks
 Regal #381 Cookie Jar
 7 - Handmade Quilts
 1972 Gunsmoke Lunch Box
 Wrigley's Gum Rack



Seth Thomas Mantel Clock
 100s of Marbles
 Lionel Train Set
 Wall Coffee Grinder
 Fairbanks Food Scales w/Weights
 Lg. 1892 Bible
 Lg. Pine Wall Clock
 Iron Frame Mirror
 Cherry Picker • Apple Peeler
 Wagner Miniature Waffle Mixer
 Toledo Store Scales
 Wood Barrel & Boxes
 Redwing 5 Gal. Crock
 2-3-6-8 Gal. Cocks
 Standard Oil 5 Gal. Can
 3 - Copper Water Boilers
 Busch & Miller Lights
 Pair Budweiser Clydesdale Lights
 Michelob Light w/Clock
 Coke - Dr. Pepper - Potosi Bottles
 3 - Alladin lamps
 Butter Bowl w/Lid
 Asst. Crock Bowls
 Lg. Grinding Wheel on Stand
 7 - Mobil Glasses
 4 - Old Conoco Mugs
 Shirley Temple Items
 10 & 15 cent Comic Books
 Fenton - Hull - Shawnee Pcs.
 Reynolds Men Shop Derby
 Miller Shoes Cowboy Hat
 2 - Hazelles Marionettes
 Set of Long Horns
 Metal & Cast Iron Toys
 Old Medicine Cabinet
 Carpenter Box
 3 - Sets of Old Silverware
 Old Baseball Bats
 Chrome Set of Harness



**More Listed & Photos at
 Colemansauctions.com &
 Auctionzip.com ID # 12275**

Terms: Cash or Check with Proper
 Identification Nothing is to be
 removed until paid for.

Owner and Auction Personnel Not
 Responsible for Accidents at Sale Site.

Coleman's Auction Service

Personal - Farm - Business
Chapman Coleman
 Cell: 573-366-7611

ANNOUNCEMENTS
 MADE DAY OF SALE TAKE
 PRECEDENCE OVER
 ANY OTHER MATERIAL.

FARM AUCTION

Tuesday, March 19, 2019 • 11 a.m.

LOCATION: 9369 Roubidoux Rd. Bucyrus, MO 65444

DIRECTIONS: From Houston MO, take Hwy 17 west, go 14 miles to AN Hwy, go 2 miles to end of paved road to Roubidoux Rd, turn left, go 1 1/2 miles to auction. From Success MO, take Hwy 17 south 2 miles to AN Hwy, then same as above. From Licking MO, take Hwy 32 west 15 miles to Success MO, then same as above. Watch for Rick Dixon auction signs off AN Hwy.

Visit us on the web at www.rickdixonauctions.com

• TRACTORS • TRAILER • TRUCK • FARM EQUIPMENT •



- 2030 John Deere diesel tractor, w/ John Deere 145 front end loader, runs good • 830 John Deere diesel tractor, runs good • MT John Deere tractor • Ford 8N tractor • F-12 Farmall tractor • 1990 WW 16 ft gooseneck stock trailer • 1995 Chevy 1/2 ton, 4x4 reg cab pickup, 350 V8 5 speed, 62XXX miles • 1999 Chevy Prizm, 4 dr • 505 Super I Vermeer round baler • Massey Ferguson 35 combine • John Deere 336 square hay baler • Danuser pto-driven post driver • 451 New Holland sickle hay mower • 3 pt hyd wood splitter • John Deere FB-B grain drill • Pomeo bale handling system bale unroller • 24 ft square bale elevator • concrete-filled 6 ft roller • homemade 16 ft flatbed trailer • 3 pt grader blade • 15 hp Lincoln portable welder • steel stock rack • John Deere 3 pt hitch 2 bottom plow • 6 ft rome plow • pop-up bale loader • 3 pt bale unroller • spike tooth harrow • pull-type cultivator with steel wheels • 3 pt cultivator • 2 wheel farm trailer • 3 pt carry all • 5 ft drag type disk • John Deere 3 pt hitch 3 bottom plow • ground driven manure spreader • 300 gal fuel tank on stand • cement mixer • ATV sprayer •

• TOOLS • ANTIQUE SEED CLEANER • OUTDOOR ITEMS •

- antique seed separator "The Clipper" brand • Guardian drill press • Craftsman 220 vt welder • bolts & nuts • wheels & tires • calf puller • Coats 705 tire changer • small steel welding table • 55 gal barrel • bee hives • tire chains • steel rollers • 2 Comet grain bin dryers • metal cutting band saw • table saw • scrap metal • garden hose • squirrel cage blower • metal shelves • wood shelves • drop cords • hand tools • fishing rod • Snapper riding mower •

• FURNITURE • HOUSEHOLD • ANTIQUES •

- Houston Pineymo albums from 1972-1981 • White Westinghouse refrigerator • bike • old wood cookstove with warmer top • chest-type freezer • old Coke machine • 3 wooden rocking chairs • cream cans • old wringer washer • quilting frames • fruit jars • old chairs • stools • old pop bottles • Kenmore washer & elec dryer • pots & pans • cleaning supplies • dishes • elec fans • Maytag 2 dr refrigerator • elec kitchen appliances • kitchen table & chairs • 3 bar stools • hutch • antique china cabinet • John Deere cookie jar • wooden quilt rack • elec lamps • cabinet-type stereo • oak dining table & 6 chairs • metal bed frame • wooden desk • Kirby vacuum • 2 Evo Pro sewing machines • horse hame mirror • towels & linens • (2) 3 piece full-size bedroom sets • Dual fit giant exercise bike • 241-12 Singer industrial sewing machine • elec heater •

Norma Percy Trust

AUCTIONEERS NOTE: Please be with us for this nice farm auction! Note the date and time - **Tuesday March 19, 2019 at 11 am.** We look forward to seeing you at the auction, and we always appreciate your business. Thanks, *Rick*

TERMS: Cash or good check. Major credit cards accepted with 5% convenience fee. Driver's license or picture identification required to obtain bid number, which must match check. Nothing loaded or removed until paid for, and everything sells where is, as is. Not responsible for accidents, lost, stolen or broken items. List subject to additions or deletions. Nothing sold before auction; please do not ask. Auction day announcements take precedence over all previous advertisements.



Rick Dixon Auction Service LLC
www.rickdixonauctions.com

Rick 417-967-6604 • Josh 417-217-9627

**ESTATE
AUCTION
WILLARD, MO**

AUCTION

We will sell the following Automobiles, Tractor, Trailers, Tools, Guns, Household and Misc. at the Home located 1 mile south of the Jct. of 123 & 160 Highway at Willard, Mo. to F.R. 76 go West & South 2 miles to Placer Lane to the Auction on:

Sat. March 23, 2019 at 9:30 a.m.

**WATCH FOR AUCTION COMPANY SIGNS • LUNCH SERVED
FOR MORE PICTURES GO TO: WWW.BRUCEANDLEANAUCTION.COM**



AUTOMOBILES & TRAILERS

- 2010 Dodge Caravan SXT Handicapped Accessible Van Automatic Transmission, PW, PL, Load & Unload Lift w/Sonic Scooter 66280 Miles
- 2004 Dodge Ram 2500 Crew Cab Pickup Diesel, 6 Speed Trans. 6' Bed, PW, PL, Power Seat, 213,000 miles, Runs Good (small dent in bed)
- 2011 Continental Tail Wind 8' X 5' Single Axle Cargo Trailer
- 2003 Alumina 12' X 6'-6" Single Axle Aluminum Bumper Trailer w/3' Drop End Gate
- 26' X 8 1/2" Homemade 3 Axle Pindle Hitch Heavy Duty Trailer w/Ramps
- 27' RV Tandem Axle Trailer Frame (no floor)
- 8' X 52" Drop Gate Single Axle Trailer (damage on tongue)

TRACTOR-EQUIPMENT

- John Deere 5420 Open Deck Diesel 60 h.p. Tractor 3 Speed-3 Range Sync-Shuttle Transmission, 1075 hrs. 3 pt. Hitch, Dual Hyd. Good Rubber, Good Condition
- 8' Water Filled Roller
- 9' 3 Point Tandem Disk (with serrated blades)
- 6' 3 Point Box Blade
- 3 Point Bale Spike
- 8' 3 Point Chain Harrow
- 3 Point 3 Bottom Plow
- 3 Point 12 Volt Grass Seeder
- Billy Goat Gruff Chute & Alleyway (used very little)
- 8' Concrete Feed Bunk
- Large Pipe Hay Feeder
- Poly Bunk & Stock Tank
- Approx. 75 Steel Post 5' & 6'
- Approx. 60-8' H/D 2 1/2" Pipe Post
- Spinning Jenny
- 8' 6" 20" H/D Pipe
- 60 Gallon Fuel Tank W/15 Gpm Fill Rite 12 Volt Pump
- 15 & 25 Gallon 12 Volt Sprayers
- Misc. Scrap Iron

MOWER-GATOR-TOOLS

- John Deere 6X4 Gator 1156 Hrs. Good Tires, Dump Bed
- Troy Z-Master 72" Zero Turn Riding Mower 2534 Hrs.
- 13 HP. American 7000 Watt Generator
- Lincoln 225 amp Welder W/Rod & Hoods
- Craftsman 3 1/2 HP 25 Gallon Air Compressor
- MS 211C Stihl Chain Saw
- Cement Mixer
- Cherry Picker
- Alum Ext. Ladder
- 6' & 8' Poly Step Ladders
- 6 Drawer Craftsman Roll around Tool Box
- 5 Drawer Craftsman Tool Box
- Act. Torch Set W/Small Bottles

- Bosch TS3000 Folding Table Saw on Stand
- Porter Cable Framing Nailer
- Bosch & Ridged Hammer Drill
- Schumacher 200 amp Battery Charger
- Air Hose Reel
- 6" Bench Grinder
- Generac 2800 PSI Pressure Washer
- Porter Cable Transit & Stand
- Ext. Cords
- 100,000 BTU Space Heater
- Handyman Jack
- Air Tank
- 12 Volt Winch
- 8' Metal Racking Shelf
- FSE 60 Electric Stihl Weedeater
- Hand-Lawn & Garden Tools
- Smoke Hollow Propane Smoker
- Propane Grill
- Glass Top Patio Table W/4 Chairs
- Large Poly Garden Storage Box



- NEW CONDITION)
- Misc. Fishing Equipment
 - Chain Link Dog Pen
 - Extra Large Dog House

HOUSEHOLD & COLLECTIBLES

- Auto-Go 12 volt Convalescent Scooter
- Convalescent Items
- 52" Sony Flat Screen TV
- 32" Dynex Flat Screen TV
- Samsung Sound Bar
- 2 Divan & Love Seat sets
- Samsung Electric Dryer (like new)
- GE Automatic Washer
- Lazyboy Recliner
- 3 Pc. Set Coffee & End Table Set (nice)
- Very Large Entertainment Center w/Curio & Storage Cabinets on ea. end
- Sq. Claw Footed Dining Table W/6 Chairs
- King & Queen Size Hollywood Beds
- 5 Drawer Highboy Chest
- Large 3 Door Wardrobe W/Beveled Mirror
- Cedar Chest
- Computer Desk
- Office Chairs
- 5 Collector Corvette Cars
- Several Die-cast Collector Cars
- JD Toy Tractors
- Tonka Fire Truck
- Several Misc. Collectibles
- Poly Folding Tables
- Lots of Luggage
- 4 Vacc. Sweepers
- Misc. Linens & Bedding
- Carhart Men's Clothing
- Sm. Cast Pot Belly Stove
- Bakers Rack
- 3 Oak Cabinets
- One Lot of Kitchen Misc

GUNS-SAFES-ARTIFACTS

- Stack-on Total Defense Digital 38 Gun 30" X 63" Gun Safe
- Champion 32 Gun W/Large storage area 51" X 6' Gun Safe
- Approx. 35 Arrowheads
- Indian Artifacts (Pipes, Stones, Pictures old & reproduction)
- Bobcat Mount
- Winchester 1894 Saddle Ring 32 Cal. Mfg 1923 Lever Action Rifle SN 930869
- Winchester 1894 Lever Action 32ws Cal. Special Rifle SN 1453929
- 2- Winchester 1892 25/20 Saddle Ring Rifles 1919 & 1922 WCF SN 873978 and 910714
- Winchester 1892 44/40 WCF Oct. Barrel Mfg 1896 SN 281920
- Winchester 1894 30-30 Lever Action Saddle Ring Rifle Mfg 1898 W/Lyman Site SN 118550
- Marlin Model 1892 32 Cal. Lever Action Rifle W/Oct. Barrel C7620
- Colt Match/Target Second Series 22 cal. Semi-Auto Pistol Mfg 1947-50
- SN 3140-S
- Colt Diamondback 22 Cal. 6 Shot DA Revolver 6" Barrel SN S83758
- Colt Python 357 Mag 6 Shot DA Revolver SN V11396
- Colt Python 357 Mag 6 Shot DA Revolver 72071
- Smith & Wesson 9MM Model MP9 Shield Semi-Automatic Pistol
- Ruger 9MM Model SR9C Semi-Automatic Pistol
- Beretta 9MM Model BU9 Nano Semi-Automatic Pistol
- (ALMOST ALL OF THESE GUNS ARE IN LIKE

AUCTIONEERS NOTE
This is a very nice offering something for everybody, several items not listed, a very nice offering of Guns that will not be on site until sale day. For more info contact Auction Co.

OWNER CONCORDE GROUP INC.

TERMS: CASH or CHECK with I.D. Nothing removed until settled for. Not responsible for accidents. Statements made sale day take precedence over printed matter.

SALE CONDUCTED BY **BRUCE & Le'AN AUCTION & APPRAISAL, LLC**
THE AUCTION COMPANY THAT APPRECIATES YOUR BUSINESS

For more information and pictures go to our website at www.bruceandleanauction.com

RONNIE BRUCE - Fair Play, MO
417-777-1685 or 417-654-2214
colronbruce@gmail.com

BRANDON BRUCE
Fair Play, MO

BILLY BRUCE - Stockton, MO
417-399-4800
colbbuce@gmail.com

2 - DAY AUCTION



REAL ESTATE & CLASSIC CAR AUCTION



SELLING OVER 12 CLASSIC & MUSCLE CARS

FRIDAY, APRIL 5 • 5:00 PM
The Gantvoort Residence • 19912 Highway HH • Lebanon, MO



EQUIPMENT AUCTION

- Heavy Construction Equipment
- Trucks & Trailers
- Semi Trucks & Trailers
- Drilling Tools



SATURDAY, APRIL 6 • 10:00 AM
Trans Am Construction • 23898 Park Dr. • Lebanon, MO



Voted Best Auctioneer's In The Ozarks...Seven Years Running!



1-877-907-3000 • 417-326-2828 • www.diamond-s-auction.com

**VISIT
WEBSITE
FOR
PICTURES**

OUTSTANDING FARM AUCTION

VEHICLES • TRACTORS • HAY • FARM EQUIP. • LAWN & GARDEN • ETC.

SATURDAY, MARCH 16th - 10:00 A.M.

Location: Rt 1, Box 286, Ava, MO 65608

Directions: From Ava, MO: Take Hwy 5 North approx 2.3 miles to B Hwy. Turn left go approx 1/2 mile to FR 503 on left. Go 1/4 mile to auction on right. **WATCH FOR CHADWELL AUCTION SIGNS.**

Payment System: Cash • Debit Card • Credit Card (Debit / Credit Card Fee Will Apply)
Checks approved if known by auction company. **VISIT: WWW.CHADWELLAUCTIONS.COM**

**Howard
PRICE**

VEHICLES

1996 Ford Ranger XLT 2wd 4spd 126,xxx Miles • 1989 GMC 3/4 ton auto 4wd extended cab flatbed • 1968 Chevrolet 1 ton dually 2wd 4spd (Good Condition) • 2002 Ford F250 Super Duty extended cab auto 4wd 7.3 Diesel Power Stroke loaded 78,xxx Miles • 1992 Ford F150 XLT 4wd automatic power window lock tilt cruise • 1996 Chevrolet 1 ton dually 5spd 4wd 104,xxx Miles • 1964 Big Window Chevrolet 6 cylinder pickup w/parts to rebuild (RARE!) • 1947 2 door Chevy Coupe • 3 Wheel Trike Motorcycle (Needs work)



TRACTORS

2006 6320 John Deere 4x4 cab tractor (100 Hp) w/ 640 self leveling loader, heat, air, radio, shuttle shift power quad trans (2400 hours) • 2001 6410 John Deere cab tractor (100 Hp) w/ 640 self leveling loader, heat, air, radio (2860 hours) • 2007 Case JX80 w/ canopy 4spd trans, dual hydraulics (453 hours) • 4610 Ford tractor w/ canopy & 7210 Ford joystick loader, 8spd 60 Hp (2900 hours) • 8N Ford tractor



**2009 - 650 ARTIC CAT
TBX H1 4X4 ATV, LIKE NEW**

HAY

500 m/l mixed round bales stored in barn • Alfalfa square bales

TOKHEIM GAS PUMP



**277B CAT SKID STEER
7' BUCKET W/ RIPPER
TEETH, RUBBER TRACKS,
JOY STICK REMOTE
(2069 HRS)**

OUTDOOR ~ MISC. ITEMS

Milk crates • Coolers • (4) 15" rims • BBQ gas grill • Wooden extension ladders • 20' alum ext ladder • 12v trolling motor • 26 ton 8hp wood splitter • Crean cans • Misc fishing poles & tackle • Fruit jars • Exercise equipment • Large lot of fruit jars • Patio furniture • Fish cooker • Brinkman smoker • Trash cans • Whiskey barrell • Wagon wheel • Commercial infrared charcoal • Dog crates • Stove pipe • Wood furnace • Pressure cookers • Other

ANTIQUES & COLLECTIBLES

Cream separator (2) • School chair • Gulbranser radio • 1950 4 pc Cherry bedroom suite • German wall clock

FARM EQUIP. ~ FARM RELATED

New Holland BR 7060 4x5 net wrap baler xtra sweep (approx baled 4000 bales) • 1409 New Holland disc bine • Kuhn SR 108 8 wheel speed rake • Sitrex ST 520 H 18' teter • 2515 Batwing brush hog • Schaben 200 gal 3pt sprayer • Gooseneck 3 axle 26' tilt trailer • 2012 Rivercraft 16' bumper trailer w/ dove tail & ramps • 24' Blue Diamond 2 axle gooseneck flatbed trailer w/ ramps • 1995 24' Travelton gooseneck stock trailer • New Idea manure spreader • HD 4 wheel hay wagon • Douglas 9' field roller • JD 3pt 4' tiller • 3pt bale unroller • Tuffline 3pt 8' HD angle blade • Concrete feed bunks • 12' cattle panels • 10' cattle panels • Elk River squeeze chute • (2) Li Kreeper feeders • 600 gal fuel tank • (3) 300 gal fuel tanks on stand • Plastic stock tanks • Ring bale feeders • Mineral feeders • Patriot Par-Mak & Stafix electric fence chargers • 100 gal fuel tank • Hydraulic bed bale sphere • Horse feeders • Farm Star hydraulic 3pt post driver • Pacific 7500 watt diesel generator (1 hour ~ Like New) • ATV 12v sprayer • Electrical fencing supplies • Barbed wire • Cow lifts • 1600 gal water tank • 16' wire cattle panels • Chicken wire • Cattle dehorners • Fence stretchers • Post driver • Misc steel pipe • Blue Mule squeeze chute on wheels • Agrex 3pt feeder • Flotec high pressure pump • Lincoln gas portable welder on wheels AC/DC • Surge single cow milking machine • Other



LAWN & GARDEN

46" Cub Cadet 1045 LT hydrostat lawn mower (297 hours) • Stihl FS45 weed eater • Murray 22" push mower • Snapper leaf blower • Electric weed eater • Stihl FS56 RC weed eater • Stihl FS90 R weed eater • Stihl MS 250 chain saw • Stihl MS 290 chain saw • (3) Featherlite weed eaters • Yard seeders • Yard cart • Walnut picker • Troybilt front tire garden tiller • Yard roller • Wheel barrow • Garden hoses • Planters • JD yard cart • Lawn chairs • Park bench • Wooden bench • Misc hand tools • Bird feeders • Apple picker • Portable canopy tent • Hand sprayers • Other

SHOP EQUIPMENT ~ TOOLS

Porter Cable 14" chop saw (New in box) • 10 gal sandblaster (New in box) • Pacific HD commercial 2200 psi power washer • Kobalt 17 gal air compressor on wheels • Shop lights • Extension cords • Dewalt power drill • Skil saw • Drill bits • Soldering gun • Socket sets • Oil & solvents • Ryobi power washer 2800 psi • Electric drill • Tire chains • Ratchet straps • Tool box on casters • Sears portable heater • Wrenches • Grease guns • Craftsman tool box • Tarps • Steel work bench on castors • Battery charger • CE Stark 195 Mig welder • Acetylene torch set • 2 ton floor jack • Jumper cables • Creepers • 2 ton engine crane • Hydraulic transmission jack stands • Upright air compressor • Air tanks • Hose reel • Chains • Fuel cans • Funnels • Makita chop saw • Nut & bolt bins • Steel cable • 5 spd HD drill press • Brass couplings • Car ramps • Pacific 8 gal air compressor • Power tools • High lift jack • Bolt cutters • Campbell Hausfield 60 gal upright air compressor • Welding helmet • Air jacks • Log chains • Bench vise • Hitachi grinder • Milwaukee grinder • Air hose • Levels • 2 ton Olympia chain hoist • Chicago 8000 lb. HD wench • Metal shelving • Com-a-long • Other

HOUSEHOLD

Oak table w/ 6 chairs & hutch • German wall clock • 3 pc living room set (Like New) • Coffee table w/ matching end tables • Sanyo 54" flatscreen TV • Kenmore chest type freezer • Crosley chest type freezer • Kenmore refrigerator • GE refrigerator • Trunk • Wooden mirror • Misc dishes • Sausage grinder • Misc wall decor • Oak entertainment stand • Bible table • Queen bedroom suite • Swivel wooden chair • 32" Emerson flatscreen TV • Office desk & chair • Dresser • Coffee table • 2 pc microfiber living room set • Other

SADDLES & TACK

Tex Tan Hereford 16" show saddle (Like New) • (2) Abetta saddles • Horse tack • Bridles • Halters • Easy Ride D Hedgpath saddle

AUCTIONEER'S NOTE: This will be one of the cleanest farm auctions you will ever attend. All equipment has been stored in shed. **Thanks, Shawn**
LARGE EQUIPMENT SELLS AT NOON!

DRIVER'S LICENSE OR PICTURE I.D. REQUIRED • TERMS: CASH, APPROVED CHECK, DEBIT OR CREDIT CARD   **OR** 



Auction Service, LLC
www.chadwellauctions.com

Auctioneer:
SHAWN CHADWELL
417-746-4038
Cell: 417-830-0209
Farm Equipment & Livestock Specialist
Ringman: **John Williams Jr.**

Clerk:
SHELLY CHADWELL
Cell: 417-880-8449
Cashiers:
Shawn Irby
Kati Roberts

PROFESSIONAL SALES MANAGEMENT
LUNCH WAGON • APPRAISAL SERVICE • RAIN OR SHINE
All announcements made day of sale take precedence over any printed matter.
Not responsible for lost or stolen merchandise. Not responsible for accidents.

BUFFALO LIVESTOCK MARKET LLC

276 Hwy 32 West
Buffalo, Missouri



March 9th, 2019

Receipts: 1339 Head

Feeders \$2-\$5 Higher 575# down;
Steady 580# and up; Cows \$3 Higher.

Representative Steers

- 300-400 @ 170.00 to 190.00
- 400-500 @ 162.00 to 187.00
- 500-600 @ 164.00 to 178.00
- 600-700 @ 147.00 to 165.00
- 700-800 @ 135.00 to 143.00
- 800-900 @ 130.00 to 135.00

Representative Heifers

- 300-400 @ 146.00 to 164.00
- 400-500 @ 145.00 to 156.50
- 500-600 @ 138.00 to 155.00
- 600-700 @ 126.00 to 133.00
- 700-800 @ 118.00 to 125.00
- 800-900 @ 110.00 to 118.00

Feeder Bulls

- 400-500 @ 135.00 to 170.00
- 500-600 @ 139.00 to 152.00
- 600-700 @ 124.00 to 149.00
- 700-800 @ 115.00 to 128.00
- 800-900 @ 105.00 to 110.00

Bred Cows:

850.00 to 1250.00 per head

Slaughter Cows:

- Fleshy @ 55.00 to 65.50
- Boning Utilities @ 58.00 to 63.00
- Cutters @ 47.00 to 57.00
- XThin @ 46.00 down

Slaughter Bulls:

- High Dressers @ 89.00 to 95.00
- Med Dressers @ 71.00 to 88.00

**Join us each Saturday at Noon
for great cattle year-round!**

MON-WED MARKET REPORT

Listen to KJEL 103.7FM • Lebanon or
KYOO 99FM • Bolivar

VIEW OUR SALES AT CATTLEUSA.COM

CALL FOR TRUCKING OR ON-FARM VISIT

- Lyle Caselman • Owner-Manager
417-345-7876 • mobile 417-533-2944
- Leon Caselman • Owner
417-345-4514 • mobile • 417-588-6185
- Howard Miller • Owner 417-345-8122

2-DAY AUCTION!!

**SAT., MARCH 30TH
@ 10:00 AM**

151 STE HWY 76, ROCKY COMFORT, MO
(WHEATON)

HUGE GUN AUCTION!

Featuring over 150+ vintage
gun sellout for Martin
Olszewski. Accepting
consignments on Guns,
Bows, Knives, Hunting Gear
& Sporting Goods.
(FFL Rules Apply).

**SUN., MARCH 31ST
@ 10:00 AM**

151 STE HWY 76, ROCKY COMFORT, MO
(WHEATON)

**SPRING EQUIPMENT
CONSIGNMENT AUCTION**

Taking consignments on Farm
Machinery, Trucks, Trailers,
Tools, Shop, Outdoor. Featuring
a complete estate sellout of the
late James Arnold of Monett.
LOTS OF TOOLS!

Early consignments include:
Pallet Racking, Low Rise 10,000
Lift, Prius Car, Chevy Blazer, '91
Freightliner Semi, 1902 Wilson
Hopper Trailer, '95 Diamond
D Stock Trailer, Glenn Phelps
Farm Equipment: TYM T903
Cab Tractor, Belarus 6345 Cab
Tractor, KMC 4755 Disc Mower,
BR740 NH Round Baler, '52
Chevy Dumptruck, Lots of misc
farm equip & implements, misc
cattle supplies & more!

Call (417) 652-7540 or
email: kathy@swaauction.com

for more info or visit:
www.swaauction.com

Early consignments will be photographed
& advertised! www.swaauction.com



417-652-7540 Wheaton, MO

LENGER ESTATE AUCTION

The Personal Representatives of the Henry
Lenger Estate will sell personal property and real
estate of the Estate at public auction on:

Sunday, March 17th, 2019, Beginning at 11:00 AM

Location: 1086 Mill Hill Road Saint Clair Mo 63077
Directions: From Interstate 44, take Exit #240 take Highway 47/Main Street South
through light 1.25 miles, then just over RR tracks, turn left on S Frisco Street. Take first
right on Mill Hill Road 1/2 mile to auction. Roads will be marked day of sale.

REAL ESTATE (sell at 1:00 PM)

Real estate consists of house on acreage. House has 1496 square foot
living area, partial basement of 936 square feet, 2 bedrooms and 2
baths. There is large closet in master bedroom, ceiling fans, dining
area with bay window and cabinets, open breakfast counter, and a
den/or 3rd bedroom. Exterior has vinyl siding, front covered porch,
covered patio and a carport. The home has a new roof, new septic and
new well. There is a 468 square foot barn with lean-to on each side.
All this sits nicely high on 6.6 acres just minutes from town. Would be
a great starter home or rental property. **The home will sell absolute
after opening bid of \$53,000, below recent appraisal of \$64,000.**
There will be a showing of the property on Sunday, March 10th
from 1-3 PM. **TERMS OF REAL ESTATE:** There is 10% non-
refundable earnest money due day of sale with remainder due
in 30 days at closing. Closing will be at Hansen Franklin County
Abstract and Title Co in Union Mo.

STORAGE SHEDS (will sell after real estate)

Aluminum box-18'X8' with sliding rear door-side main door, 16'X12'
storage shed-double front door-insulated-metal exterior

TRACTORS / JD MOWER (sell after real estate at 1:00)

International 574 diesel tractor-3 point-single hydraulics-rear weights-60
HP with 2250 Mount-O-Matic heavy duty loader with 6' bucket, Kubota
L355SS diesel tractor-4x4-3 point-new tires-512 hours, Oliver Super
55 diesel tractor-Serial #7770-518-3 point-hi-low transmission-new
tires-13-6-28 rear tires, MOWER: 2010 John Deere LA145 riding
mower-48" deck-new battery-Hydrostatic transmission-22 HP

TRAILERS / FARM EQUIPMENT

Stillwater tandem axle trailer-6.5'X16' with ramps, single axle 5'X10'
trailer with drop ramp. **EQUIPMENT:** John Deere 506 3 point brush
hog 5', 3 point potato plow, 3 pt 6' blade, 3 pt John Deere 6' blade, 3 pt
5' brush hog, 3 pt 6' wide carryall, 3 pt Dearborn 214" plow, 3 pt bale
spear, 3 pt slip scoop, 3 pt 6' Woods finish mower, new 3 pt post hole
digger, 65 gallon plastic spray tank, pickup camper shell

GUNS / COINS (will sell at Noon)

Savage Model 10 .243 caliber bolt action rifle w/sling, Higgins Model
60 12 gauge semi-auto shotgun with Poly choke, Winchester Model 290
.22 caliber semi-auto rifle, Sentinal 10 gun security cabinet, Military
uniforms, US Army training books-Engineers 76th Battalion books, doe
mount, COINS: 1921 Morgan dollar, 3-1894-0 dollars, 1896 Morgan,
Peace dollar-1923, 20 Eisenhower dollars, 10 1964 Kennedy halves,
20 Washington quarters 40's-1964, silver dimes, Buffalo nickels, wheat
pennies, steel pennies, proof and mint sets from 70's-80's

FURNITURE / HOUSEHOLD / COLLECTIBLES

Oak-iron treadle sewing machine, oak chifferobe with mirror, drop front
desk, shelf units, oak pedestal rd dining table on castors, counter stools, 2
tier table, coffee-end tables, vanity/dresser and matching 4 post bed, corner
table, night stands, whicker rocker, dressers, chest drawers, rolling cart, TV
cart, microwave stand, 2/4 drawer file cabinets, plant pedestals, pole lamps,
table lamps, wall mirrors, console sewing machines, Westinghouse sewing
machine cabinet, single bed, serpentine front dresser, old easy chairs,
blonde dresser, shelves, small chest drawers, metal cabinets, stereo console,
albums, books, TV VHS movies, portable sun-heat lamps, luggage, upright
vacuums, rug cleaner, framed art, material, sewing-material-thread, lot
Christmas decorations, folding table, weights, **APPAREL:** Kenmore
side by side w/ice-water dispenser, Whirlpool washer, **KITCHEN:**
Melmac dishes, platters, serving trays, vegetable bowls, utensils, flatware,
baking dishes, cookie sheets, muffin pans, plates, mugs, hand mixer, rolling
pins, roasters, crock pots, electric roasters, Corningware dishes, salad
bowls, pots, canisters, iron skillets, coffee maker, cookie jar, microwave,
trivets, pitcher-bowl sets, **COLLECTIBLES:** Griswold-Wagner skillets,
water glass set-carrier, Staffelf beer glasses, beer mugs, Ducks Unlimited
Miller stein, McGwire 3 ball set, John Deere mugs-serving tray-clock, lot
costume jewelry, beads, 64 Washington Yearbook, Panasonic Model
70 Panapet radio, wedding dress, fur stoles, galvanized buckets-wash
tubs, enamel top cabinet, hand held radio set, CB radio base, glass paper
weight, Avon, 3D Jesus picture, carnival glass, milk glass, small crocks,
CLOCKS: mother-of-pearl seashell clocks, metal case mantle clock, pot
metal horse clocks, Hammond clock, Centurian 35 day clock, Seth Thomas
wall clock, Linden train clock, pole lamp w/clock, Noah's Ark clock, wall
clocks, alarm clocks

TOOLS / OUTDOOR

Aluminum box-18'X8' with sliding rear door-side main door, 16'X12'
storage shed-double front door-insulated-metal exteriorRedi Arc stick
welder, welding helmets, Yard Machine front line tiller, Husky 1800 PSI
electric power washer, gas power washer (needs work), bar clamps, air
spray painter, log chains, pruners, hedge shears, meat saw, hand saws,
extension cords, chalk line, funnels, 4 way lug wrenches, large wrenches,
solder iron, grass shears, parts bins, hose reel, shovels, rakes, aluminum
scoop shovel, fiberglass step ladder, 18' fiberglass extension ladder, step
ladders, wheelbarrow, tarps, gas cans, seeder, rope, lot lumber, siding,
saw horses, post hole diggers, concrete yard statuary-jockeydeer family,
cast iron bench set, metal porch furniture, chaise lounge, porch glider,
camping lantern, camping chairs, picnic table, metal storage shelves

LUNCH WILL BE SERVED BY CAROLS CATERING

VIEW OUR PHOTO GALLERY ON www.breheauction.com

BREHE AUCTIONEERING SERVICE, LLC

Union, MO: (636) 583-0841 Owensville, MO: (573) 437-3454

LICENSED AUCTIONEERS: www.breheauction.com
Kerry Brehe 314.954.3798 Josh Brehe 314.603.3129 Harry Engelhart 636.399.3743

Announcements made day of sale supersede all printed material.

TERMS: CASH, PERSONAL CHECKS WITH PROPER ID, BUSINESS CHECKS WITH BANK LETTER AND NO
OUT OF STATE CHECKS UNLESS APPROVED BY SELLER. Email Us At kkauction@gsbbol.net
Everything sells as is with no guarantees.

ONLINE AUCTION

**Bobcat Skid Steer • Scissor Lifts
Tools • Party Supplies**

1600 Old Hwy 63 South, Columbia, MO

**Bidding Ends Monday,
March 25th at 12:30PM**

**This Auction Features Staggered Ending
Times & Extended Bidding On All Lots.
Bid Online At Atterberryauction.com**



****SALES TAX WILL BE CHARGED ON ALL
NON-TITLED ITEMS****

Preview:

Friday, March 22nd from 11:00AM to 1:00PM

Payment & Pick-Up:

Tuesday, March 26th from 11:00AM to 1:00PM

All Items Will Need To Be Picked Up On March 26th.

All Items Not Picked Up On March 26th Will Be Forfeited.

Haulotte HA46JRT Man Lift & Scissor Lifts

2012 Bobcat S150 Skid Steer • Heavy Duty Forklift

Ditch Witch • Commercial Walk-Behind Tillers

Lawn Equipment • Generators • Floor Machines

Power & Hand Tools • Log Chains, Jacks, Replacement Parts

Bounce Houses • Party & Event Decorations & Supplies

Much More Listed On Our Website!

**For complete terms, listing,
catalog, pictures & bidding,
visit: atterberryauction.com,**

email: contactus@atterberryauction.com, or

call: (573) 474-9295

**Please contact our office if you need
help with the online bidding process.**

Seller: U.S. Rents-It

"WE MAKE BUYING AND SELLING AT AUCTION EASY!"

Atterberry MEMBERS
Auction & Realty Co., LLC. www.atterberryauction.com

L3400D KUBOTA: 4wd tractor with loader, 34HP, gear drive, low hours with 5' bush hog. \$16,900. 417-270-1505

COMPOUND BOW WITH ARROWS: \$25. Birch Tree, 573-872-9821.

WANTED, TIMBER TO LOG ON SHARES: Honest, reliable, references. 417-533-4607, 417-664-1195.

BARE CYLINDER HEAD: #R61521, For Late 4430-4040 JD diesel tractor. \$350. 573-459-6488.

FARMINGTON LIVESTOCK

Hwy 67 • Farmington, MO
Office Phone: **573-756-5769**

**Regular Sale
Every Week
Wednesday**

Starting at 10:30 am

All Consignments Welcome

Keith Robertson

Cell: **314-560-3285**

Home Ph: **573-732-4987**

ROCK AND COUNTRY ALBUMS AND METAL BEER SIGNS: Humansville, 573-366-0556.

JOHN DEERE 2940: Diesel tractor, 80HP, good. \$12,500. (573)765-4406

NEW 4.420" PISTON & RINGS for 401 Ford Tractor Engine: .020 material removed from piston tops, 1.5" pin. ductile rings. \$400 set. 573-459-6488.

20 ACRES: with deeded easement to the Niangua River, lots of road frontage, electric on property. \$47,000. 417-830-3555.

AUSTRALIAN SHEPHERD PUPPIES: Born 12/4/2018, UTD on shots, wormed, ready for new homes, Red Tri in color. Asking \$200. 417-458-1047, cell 417-967-6493, Roby.

NEW STOCK!!! Wow, do these look **GOOD!!!** Call 573-657-2176 amegamobile-homes.com

I BUY.....used mobile homes. Call or text, 573-338-6250 or e-mail GregS.CDH@outlook.com.

GM 1/2 TON WD FRONT AXLE HOUSING: w/3.07 gears, 77-87. \$80. 314-303-7857, Cedar Hill.

GOOD PROVEN 3YR OLD: Black Angus Bull. \$2100obo. Emery Hershberger Pinodk Rd. Summersville, 22654.

2 BILLY GOATS: 2yrs old, producers. \$125each. Salem, 573-453-5398.

POSTPONED! PUBLIC AUCTION

Due to the death of my husband and sold the farm, will sell the following in Branch, Mo. on Hwy. 73 (3-1/2 miles West of Macks Creek, Mo. on Hwy 54 to Hwy. 73, then 1-1/2 miles South). Watch for Crawford Auction signs.

**SATURDAY, MARCH 16
10:00AM**

**TOOLS • HOUSEHOLD
ANTIQUES & COLLECTIBLES**

**See website for photos!
crawfordauctionservice.com**

Judy Varner

**Sam Crawford
Auction Service**

Cross Timbers, MO • 417-998-6629

3 TON PORTABLE CATTLE CREEP FEEDER: new, creep gates, \$2,275, 2ton, Portable grain/feed bin, new. \$1850. 573-205-7860, Owensville.

I BUY....USED MOBILE HOMES. Call or text 573-338-6250 or email GregS.CDH@outlook.com

INDIAN ARCHERY 1950'S: wood, recurve bow, with original box of Ben Pearson arrows. \$195. Rolla, 573-364-7465.

AUCTION REMINDER: Every Wed. @10:30AM Farmington Livestock. Please see our Auction Directory for more information.

50 CLASSIC CARS AND TRUCKS: If you're needing an older classic, give me a call for more information. Thomasville, MO 417-247-1689.

JOHN DEERE 635 DISKBINE: with Roller, field ready. \$9,850. (573)765-4406.

20 LAYING HENS: Golden Comets, 2 yrs old, \$5 each. 573-392-5403.

HARTVILLE LIONS CLUB

**Consignment & Donation
14th Annual Auction**

Saturday, April 6th

Good Consignments Needed
Low Fee Commissions
Donations Appreciated

To consign or donate items, contact:

Dan	Lonnie	Scott	Charlie
531-3329	741-2095	741-0082	464-8166

Consign early by March 20th for sale bill listing



MID MISSOURI STOCKYARDS

REGULAR SALE EVERY THURSDAY 11AM

SPECIAL COW SALE APRIL 6TH @ 6PM

For Farm Visits, Market Updates, or Trucking
 Call **Zach Cox 417-777-1320**
Dan Romine 573-578-4939

**Competitive Buyers!
 Competitive Commission!
 Competitive Market!**

Barn: 417-532-9292  
I-44 • Exit 123 "just outside of Lebanon"
17505 Route 66, Phillipsburg, MO 65722
 For weekly market updates, visit us at www.midmostockyards.com



Saturday, March 16 • 9:00 a.m.

LOCATION: In Licking, Mo. on Cedar St. at Old Rawlings Building. Watch for signs.
 To view photos and complete listing go to auctionzip.com. This is only a partial listing.

EARLY START! Auctioneer #28367 EARLY START!

Household	Dishes
Collectibles	Furniture
Saddles	Horse Tack – Like New
Tools, Lawn and Garden	

You will need to come and check it out. Thanks. Steve and Neal

Terms-Cash or Approved Check. Nothing Removed Until Settled For. Not Responsible For Accidents. Announcements Made Day Of Sale Take Precedence Over Printed Matter. All Guarantees are Between Buyer and Seller.

Auctioneers
Steve Buckner 573-674-2686 Neal Gately 573-202-3132

GREAT PYRENEES PUPS: 3boys, be ready 4-20-19, shots and wormed, \$125 each. Salem, 573-453-5398.

HUNTING AND RECREATIONAL LAND: Land located West of Bennett Spring. 9.26 acres-\$16,000. Will finance or discount for cash. 417-830-3555.

NEW NEW NEW DISPLAY HOUSE!!!
 Call Marla to hear what is new inside 573-657-7040, chateauhomes.net.

AUCTION REMINDER: Saturday, March 16 @ 9:30AM. Quick Auction Service. Please see our Auction Directory for more information.

YOU GOTTA SEE THESE NEW HOUSES!!! Brand new inventory on sale !! 573-499-9993. columbiadiscountshomes.com.

FLIES ARE COMING! Lewis Cattle Oiler. 417-286-3540 or 774-696-2344.

MASSEY FERGUSON 231 TRACTOR: 40 HP, 2,000 hours, with nice loader, \$8,950. 573-765-4406.

CATTLE HOLDING CHUTES: W/AI cage, Tarter auto head catch, new. \$2,000. 573-205-7860, Owensville.

JERSEY/HEREFORD CROSS BULL: 8 months old. \$500obo. Salem, 573-453-5398.

ONE SURGE PULSATOR CONTROL BOX. Eight Surge Pulsators. One Milk Tank Washer. 573-498-6685.

AKC REGISTERED AKITA PUPPIES: Ready March 23, very healthy, vaccinations UTD. Jim, 417-58-4242.

GOT TIMBER? Give us a call. Satisfaction is our goal. 417-589-0207, leave message.

ONE BREAST COLLAR BUGGY HARNESS and 1 Collar Buggy Harness. \$100 each. 479-236-5027.

METZ AXLES & SPRINGS: \$200. 870-430-5277, Cotter, Arkansas.



New Merchandise Sale

Evening Sale Overstock items

Friday March 22nd • 6:00 PM

Two miles North of St James on Hwy 68 N at Rolla Horse Auction

Shop Tools, Household, & Collectables

Lots of surprises, no telling what they will come up with.
 Sale will be held indoors, will be nice and warm

Terms: Cash or check with photo I.D. –Not responsible for accidents or losses, should they occur. Nothing removed until paid for. Lunch Served – ALL ANNOUNCEMENTS MADE SALE DAY TAKE PRECEDENCE OVER ALL PRINTED MATERIALS –

ROLLA HORSE AUCTION/LORTS AUCTION SERVICE
INFO: 573-263-4232 DAY OF SALE: 573-265-8813


OUTSTANDING COMMERCIAL REAL ESTATE HIGH TRAFFIC INCOME PRODUCING

Monday, April 1st 10:00 AM & 1 PM

Locations - 608 N Main, Mtn Grove, MO at 10 AM & 808 Porter Wagner Blvd, West Plains, MO at 1 PM

Contact Gary Sexton
Auctioneers: 417-255-7001

Auctioneers Notes - Low starting bids on both parcels - company has instructions is to sell!
 Both auctions will be sold on site:



- **LOCATED at Tract #1**
- 608 N Main, Mtn Grove, MO, 65711
- At public Auction:
- 2 Large Commercial Lots
- 90'x125' & 75'x125' - (Parcel #21-2.0-04-019.00 & 21-2.0-04-020.00)
- 2018 Taxes \$155.87 with excellent location and perfect office building - pavement and LOTS of parking area! **Selling at 10:00am sharp on site at 608 N N Main in Mtn. Grove, MO!**

.....



- **LOCATED at Tract #2**
- 808 Porter Wagoner Blvd, West Plains, MO.
- Commercial Building on 145'x145'
- (irregular) with 1,680 sq ft office building
- (both are currently rented!) High traffic volume - Excellent Location! **Selling at 1:00 p.m. on site at 808 Porter Wagoner in West Plains, MO! Terms**
- 10% down day of the auction, balance upon closing inspection.

Gary Sexton AUCTIONEERS
 REAL ESTATE • HEAVY EQUIPMENT • ESTATE LIQUIDATION

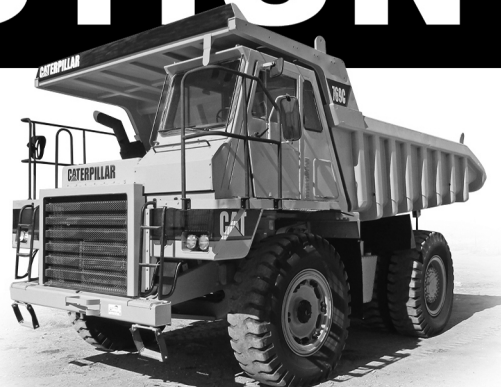
Thanks for attending!

CONSTRUCTION EQUIPMENT AUCTION

THUR., MAR. 28

200+ ITEMS SELL REGARDLESS OF PRICE!

Bidding closes at 10 a.m. CDT



DB6797 '83 CAT 769C haul truck



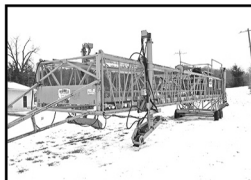
FQ9571 '13 John Deere 350G excavator



FQ9638 '12 John Deere 850K dozer



DF3286 '05 Kenworth W900 dump truck



DF7111 Bidwell 5000 concrete paver

INVENTORY INCLUDES: telehandlers, backhoes, skid steers, bucket trucks, tractors, equipment trailers, motor graders, flatbed trucks and more. *All items are sold "AS IS." 10% buyers premium applies. 866.608.9283*



BID NOW!

purplewave.com

LIMOUSIN BULLS: 18-30 mos. old, Homo Black, polled, AI sired. 573-301-2316, 573-301-2074.

FOR SALE: Bare cylinder head #R20504R, for JD 4010 Diesel Tractor, cut for 4020 valves. \$200. 573-459-6488.

FIREARMS: Professional Repairs and Restorations. Baron's Gunsmithing. 573-363-5801, Camdenton.

WANTED PIGEONS TOP PAY: 660-553-2333

BARN WOOD SIDING: 8" & 10" wide. 573-729-7226. www.pineridgerustic.com

AUCTION REMINDER: Consignment Auction, Saturday, March 16 @ 10:00. Capon Auction. Please see our Auction Directory for more information.

PAYING TOP DOLLAR for nice pine logs. 417-589-0207, leave message.

TRUCK LOAD OF FLEA MARKET & AUCTION ITEMS: \$200, trade wood or gun. 573-327-9068

COW SALE Sat., Mar. 16th 1:00 pm

- 21 Blk, BWF & Herford Cows, 3-4 yrs, 2nd & 3rd stage, bred to Wiles Reg. Angus Bull
- 10 Blk Cows, 5 yrs, w/150 lb calves
- 145 Blk Cows, running ages, 50 with calves, bal. 2nd & 3rd stage, bred to Blk Bulls • **COMPLETE SELL OUT** •
- 3 Reg. Angus Bulls, 18-24 months, will be tested
- 3 Blk Cow/Clf pairs, young
- 3 Hereford Cow/Clf pairs, young
- 10 Blk Cows, 3 yrs, 2nd & 3rd stage, bred to Reg. Angus Bull
- 45 Blk. & BWF Cows, 2-5 yrs, spring calvers bred to Blk Bull
- 15 Mixed Cows (Longhorn & Eared Cows), running ages, few w/ calves, bal. 2nd & 3rd stage
- 30 Blk & Char Cows, running ages, 2nd & 3rd stage, bred to Blk Bull
- 84 Blk, BWF & Red Cows, 4-7 yrs, HOME RAISED, 50 w/ calves, bal. 2nd & 3rd stage, bred to Blk Angus Bull • **COMPLETE SELL OUT** •
- 51 Blk Cows, 4 yrs, will start calving in Sept., bred to Blk Bulls
- 29 Mixed Cows, 4-7 yrs, few w/ calves, bal. 3rd stage, bred to Blk or Red Bull
- 1 Beefmaster X Bull, 22 months, will be tested
- 27 Char Cows, 5 yrs-SS some w/ calves, bal. 2nd & 3rd stage, bred to Blk Bull • **COMPLETE SELL OUT** •
- 1 Blk Bull
- 12 Red Cows, 4-7 yrs, all w/300 lb. Char X calves
- 18 Blk Cows, 3-6 yrs, 2nd & 3rd stage

Cattle Sale Every Monday at 12:00

Feeder Calves to sell at 12:00 pm Butcher Cows & Stock Cows following

All Consignments Welcome Up Until Sale We Appreciate Your Business!
Salem Livestock Auction
 Hwy 32 Salem, Mo
 Barn - 573-729-8880

Allen Thompson 417-932-4097	Terms of Sale: Cash or Approved Check!	Renee Lauderdale 417-926-2682
Chuck Thompson 417-257-5610		Keith Robertson 314-560-3285

NEW NEW NEW DISPLAY HOUSE!!! Call Marla to hear what is new inside 573-657-7040. chateauhomes.net.

NEW STOCK!!! Wow, do these look **GOOD!!!** Call 573-657-2176 amegamobile-homes.com

WHOLESALE PRICES "Fertilizer/ Chemicals /Seed". Trailer loads fertilizer delivered. Example 17-17-17. \$315. 800-807-9612.

3 METAL DETECTORS: \$15, \$25 and \$75. Birch Tree, 573-872-9821.

ST PATRICK'S DAY SALES

DON VANCE AUTO GROUP OVER 1000 VEHICLES IN STOCK!

FIND YOUR NEXT CAR @ DONVANCEAUTOGROUP.COM

2013 Ford fusion SE



Turbo • FWD
Mileage 102,733
Stock # 29842A

\$9,990

2017 Ford Fiesta S



FWD • Automatic • Black
Mileage 24,412
Stock # 29893A

\$10,990

2014 Ford Edge SEL



3.5L V6 • AWD • Gray
Mileage 101,068
Stock # 28983C

\$14,990

2013 Ford Mustang GT



5.0L V8 • RWD • Black
Mileage 30,626
Stock # 28970A

\$19,975

2014 Chevrolet Captiva Sport Fleet LS



Flexible Fuel • Automatic • FWD
Black • Mileage 85,067
Stock # 1631ua

Call for pricing

2010 Jeep Wrangler Sport Convertible



3.8L V6 • 4WD • Manual
Mango Orange • Mileage 99,781
Stock # 29888A

\$16,475

2015 Jeep Grand Cherokee Laredo



3.6L V6 • Flexible Fuel • Automatic
Bright White • Mileage 51,186
Stock # 29058A

\$20,475

2008 Chevrolet Silverado 1500 Work Truck



Extended Cab • 5.3L V8 • 4WD
Automatic • Red • Mileage 236,673
stock #

\$7,990

2017 Jeep Compass Latitude



2.4L 4WD • Automatic
Black • Mileage 9
Stock # 1628U

\$20,975

2016 Jeep Wrangler Unlimited



Rubicon • Convertible • 3.6L V6
4WD • Automatic • Silver
Mileage 38,080 • Stock # 29204A

\$31,975

2017 Jeep Compass Trailhawk



2.4L • 4WD • Automatic
Diamond Black • Mileage 19
Stock # 1631U

\$26,975

2013 Chrysler 200 Touring



4 door • FWD • Automatic
Metallic • Mileage 27,450
Stock # 28258A

\$10,475

2014 Dodge Journey SXT



3.6L Fwd • White • Automatic
Mileage 81,934
Stock # 29366A

\$10,475

2014 Dodge Journey SXT



3.6L V6 • FWD • Automatic
White • Mileage 81,934
Stock # 29366A

\$10,475

2014 Chevrolet Captiva Sport Fleet LS



Flexible Fuel • FWD • Automatic
Black • Mileage 60,144
Stock # 29279B

\$10,975

2017 Cadillac XT5 Platinum AWD



6 Cyl • Automatic • White
Mileage 31,094
Stock # 8383A

\$38,475

2007 Chevy Tahoe LT



Flexible Fuel • 4wd • Automatic
White • Mileage 177,126
Stock # 29343A

\$10,990

2011 Chrysler 300c



v8 • Flexible Fuel • Black
Mileage 57,971
Stock # 28929A

\$13,975

2006 Dodge Ram 1500 SLT



8 Cyl • RWD • Silver
Mileage 146,470
Stock # 8445A

\$7,990

2014 Chevrolet Silverado 1500 LTZ



Crew Cab • 4WD • Automatic
Mileage 66,456
Stock # 28790A

\$27,975

Actual Vehicle May Differ From Photo

HOME OF UPFRONT PRICING!



SEE SALESMAN FOR DETAILS. ALL VEHICLES IN STOCK AT TIME OF AD SUBMISSION BUT SUBJECT TO SALE PRIOR TO PRINTING. NOT RESPONSIBLE FOR TYPOGRAPHICAL ERRORS & OMISSIONS. GRAPHICS MAY NOT ACCURATELY REPRESENT AD VEHICLE. PAYMENTS BASED ON 3.99% @ 72 MONTHS SUBJECT TO CREDIT APPROVAL AND PRODUCT AVAILABILITY.

ONLY 17 MINUTES EAST OF SPRINGFIELD ON 1-44 • DONVANCEAUTOGROUP.COM
800-947-7567 • 417-859-2600



20- 14' PORTABLE CATTLE PANELS: Light-medium weight, 2 chains \$80each 9-8"panels 66#, \$68each. 573-205-7860

TONNEAU COVER: fits almost any size truck/with 6'6"x5'8" wide. Good condition/Clamp's/Struts. \$300 OBO. 417-852-1088, Pittsburg, MO.

3 METAL DETECTORS: \$15, \$25 and \$75. Birch Tree, 573-872-9821.

L4400 KUBOTA: 4wd tractor with loader. \$21,500. 417-270-1505.

HUSQVARNA 23HP RIDING LAWN-MOWER: w/only 146 hours. Cost \$2,500 new. Will sacrifice for the first \$1,000. Don't need anymore. 573-435-0026.

6BAR CONTINUOUS FENCE: 15 Sections, 16ga, 3cross supports, 20' long-55"tall, 1 1/4 tubing. \$85each. 573-205-7860.

MASSEY FERGUSON 285: Diesel tractor, w/loader. \$11,000. Farmington, 573-631-4352.

2000 FORD F650: Cab + Tilt Hood + Radiator + Frame. No engine, no transmission, no rear axle. Was 5.9 Cummins. \$1,000 OMO. 573-459-6488.

AGRICULTURAL APPRAISER: Earn \$60,000/year part-time in the Livestock or Farm Equipment appraisal business. Agricultural background required. Home Study Course is available. 800-488-7570 or www.amagappraisers.com

M8540 KUBOTA: 4wd tractor with loader, 85HP, open station, low hours, hydraulic shuttle, 12 speed. \$32,500. 417-270-1505.

CLEANING OUT KITCHEN CABINETS & CUPBOARDS: Inside only. \$125 or trade. 573-327-9068.

CAN BUILD WAUKASHA VRD283 + POSSIBLE VRD310 ENGINES. Call for detail 573-459-6488.

AUCTION REMINDER: Construction Equipment Auction. Wednesday, March 28th @10am. BID NOW! Purple Wave Auction. Please see our Auction Directory for more information.

JOHN DEERE 10ft OFFSET DISK. \$4,250. 573-765-4406

CHECKERED WALNUT WOOD STOCK PISTOL GRIP: for Marlin Model 336 or 1895. \$100. Washington. 636-239-2695.

LIONEL TRAIN SET: Steam engine, tender, caboose and other car, track and transformer. \$195. 573-364-7465, Rolla.

FOR SALE D-14 ALLIS CHALMERS: Lots of new parts. \$4700. 573-619-4928.

2004 OPEN RANGE FIFTH WHEEL CAMPER: 34', all weather, in good condition. \$10,500. Lebanon, 417-718-5520.

NEW HOLLAND: L785 Diesel Skid Steer Loader, 57hp. \$7,750. 573-765-4406.



BUICK



IT'S MARCH MADNESS GET A SWEET

26% BELOW MSRP¹

ON THIS 2018 BUICK ENCORE



2018 BUICK ENCORE SPORT TOURING, FWD

Sik#32440	
MSRP	\$27,130
Selling Price	\$25,679
Customer Cash	-\$3,569
Conquest Cash ²	-\$2,000
FINAL PRICE	\$20,110

OR

2018 BUICK REGAL TOURX ESSENCE, AWD

Sik#32527	
MSRP	\$42,200
SELLING PRICE	\$39,483
Customer Cash	-\$5,091
FINAL PRICE	\$34,392

2018 BUICK REGAL TOURX ESSENCE, AWD

Sik#32528	
MSRP	\$40,400
Selling Price	\$37,890
Customer Cash	-\$4,965
FINAL PRICE	\$32,925

¹Offer includes purchase allowance and price reduction below MSRP. Not available with lease, special finance and some other offers. Take retail delivery by 4/1/19. See participating dealer for details. ²MUST BE A CURRENT OWNER OF A 1999 MODEL YEAR OR NEWER NON-GM VEHICLE. Based on MSRP of \$27,130. Not available with special finance, lease, and some other offers. Take retail delivery by 4/1/19. See participating dealer for details. ©2019 General Motors. All rights reserved. Buick® Encore® NCAA is a registered trademark of the National Collegiate Athletic Association



FAIRGROUND
Auto Plaza
DRIVEN TO SERVE YOU BEST...

100 Fairgrounds Road
Rolla, Missouri
(573) 364-1002
www.FairgroundGM.com

CRANKSHAFT & BALANCER: for 268 Ford Tractor Diesel Engine. \$500. 573-459-6488.

YOU GOTTA SEE THESE NEW HOUSES!!! Brand new inventory on sale !! 573-499-9993. columbiadiscounthomes.com

AUCTION REMINDER: Saturday, March 16th, 10:30am. Worth Auction. Please see our Auction Directory for more information.

OLIVER 1650 TRACTOR: 65hp, 6cyl, gas, 2wd, open station, good rubber, front-end loader, w/bale spear. \$7250. 573-205-7860

40FT TANDEM DUALY: 102" wide trailer. metal floor. \$6,500. 573-765-4406

WANTED GOOD USED MOBILE HOMES: Singles & doubles. Call David Hayes, 573-578-8072.

VERONA MISSOURI HISTORY: 1868-1968. 100 year history. \$22.50. Lebanon, 417-532-2045.

IHC 684: Diesel tractor w/loader, 62hp. \$9850. 573-765-4406.

AUCTION REMINDER: Friday, March 22, 6pm. Lorts Auction. Please see our Auction Directory for more information.

JOHN DEERE 2640 DIESEL TRACTOR: Canopy, 70hp. \$8,750. 573-765-4406

We Buy White Oak Logs!

Independent Stave Company welcomes all white oak suppliers!

- ✓ Top prices for your logs
- ✓ Experienced log buyers
- ✓ Professional service

www.independentstavecompany.com

Chad Cook | Salem Wood Products
417.718.2950
5 miles north of Salem, MO on Hwy 19



NEW BIG TEX 14LX DUMP TRAILER

facebook

JIM'S Motors TRAILERS
I-44 at Exit 208 • Cuba, MO
www.jimsmotors.com
(573)885-2595
(800)897-9840

GREAT SERVICE!
1957-2018 GREAT PRICES!

1998 3500 4WD Dodge Dually Truck: No engine or transmission, was 12V Cummins, automatic. \$2,000. 573-459-6488.

GREAT PYRENEES ANATOLIAN GUARD DOG PUPPIES: Born and raised with sheep. Ready now. \$175. 660-337-6650. No Sunday calls. Fortuna.

TENT CAMPER UTILITY TRAILER: 5x8. \$250. Vienna, 573-759-7143.

JOHN DEERE 420: 2cylinder, wide front, 3pt, Late 50's, extensive work mechanically, too much to list, with a fresh paint job, seat and new tires, Parade ready. \$3850. 573-205-7860.

TAKING CONSIGNMENTS: For school auction, 5-11-19, need quilts, crafts, machinery etc. Deadline April 1st, Contact Lavern or Levi Floyd, Wheatland, 417-461-4943, 417-466-8584, 417-309-3145.

AUCTION REMINDER: Livestock Auction. Every Wednesday at 10:30 AM. Farmington Livestock Auction. Please see our Auction Directory for more information.

AUCTION REMINDER: POSTPONED! Public Auction, Saturday, March 9@ 10am . Please see our Auction Directory for more information.

AKC GOLDEN RETRIEVER PUPPIES: Born 1-4-19, UTD shots. Beautiful puppies. \$300. 573-392-5371, Barnett. MO.

RED ANGUS BULLS: 20 months old, Red Balancers, 15 months old. Pinnacle Ranch. 417-679-4269, 417-679-2330, Gainesville. MO.

PINE LOG SIDING SALE: \$1.19 per L.F.
www.pineridgerustic.com 573-729-7226, 573-247-2823.

WILLIAMS PEEP SIGHT: with target knobs. Fits Marlin Model 39a. \$50. 636-239-2695. Washington.

AUCTION REMINDER: Estate Auction. Saturday, March 16 @ 10am. Nance Auction. Please see our Auction Directory for more information.

AUCTION REMINDER: Cow Sale Every March 16th 1pm. Cattle Sale every Monday at Noon. Salem Livestock. Please see our Auction Directory for more information.

2001 LEGEND 18FT BOAT

SOLD

2000 Johnson Motor, Low Hours, 2001 Bobcat Boat Trailer.

\$7,500 obo • 573-308-8091

WISCONSIN 2 CYLINDER ENGINE: Not running but loose. \$200obo. Rolla, 573-308-5884.

GERMAN SHORT-HAIR POINTER PUPS: championship blood lines, shots and wormed, 12wk old. \$375each. Niangua, 417-838-3109.

Cowtown Express Car Wash

Highway 63 South, Rolla, MO
Call Wade 573-368-1430 Or 573-426-2500

\$4,500
And 10% Down
\$95 Per MO
w.a.c.

NEW Winchester Star & Bale Trailers

Powder Coated 18+2, 7,000 Axles

www.cowtownusainc.com

LOGS WANTED. S&S LUMBER Buying Cut logs. Halfway, MO. 417-399-4381.

WANTED PINBALL MACHINES. 573-424-7200.

NOTES

WOMENS MERREL: Insulated Snow Boots, sz 8M, waterproof, mid calf height, easy pull on style, fur trim at top, dark chocolate brown color. Nice! \$35, 417-718-5347.

SMALL FARM: 40 acres, near Ellington, MO, spring, 2 ponds, barn, part pasture, electric, well, livable building, highway access. \$65,500. 573-637-2450, 573-697-1016.

1993 FREIGHTLINER DUMP TRUCK w/ Pup trailer for sale: Runs good, tires fair, everything works good. For information, 573-247-1862, Salem, MO.

JOHN DEERE: Commercial mower, 5spd, 36in cut, walk-behind, good tires, blades, etc. \$195-gun trade. Rolla, 573-364-7465.

FERGUSON-TO-30: 12volt, good tractor w/5' wood mower. \$2800. Bourbon, 314-960-6652.

JOHN DEERE 535: Round Baler, monitor, kicker, net wrap. \$7,200. 573-765-4406.

VINTAGE CAPPERS WEEKLY SEARCHLIGHT RECIPE COOKBOOK: \$15. Lebanon, 417-532-2045.



TASK. TASK. DONE.

RTR12 SERIES 

ROTARY TILLERS
15-60 HP 42", 50", 58", 66", 74"

- Reverse rotation
- Offset capabilities
- Lower clevis hitch for easy hook-up
- Steel plate upper hitch
- Seven position skid shoes
- 15" Rotor swing
- 4 'C' shaped blades per flange

For Outstanding Products & Service
AGRI ENTERPRISES
1-1/2 Miles South Of Licking, MO On Hwy 63
573-674-2203
1-800-653-7152

 www.landpride.com www.agri-enterprises.com

LAUGHING DOVES FOR SALE: Must have large cage, many colors. \$100 OBO. 573-612-4351.

3208T CATERPILLAR CORE ENGINE: Was running when removed, ask for details. \$750. 573-459-6488.

INCREASE YOUR PROFITABILITY! Lewis Cattle Oiler. 417-286-3540, 774-696-2344.

AUCTION REMINDER: Online Auction going on now. Atterberry Auctions. Please see our Auction Directory for more information.

LEBANON JUNIOR HIGH SCHOOL 1966 YEARBOOK: \$12.50. Lebanon, 417-532-2045.

ONE MUELLER 600gal. MILK TANK. 573-498-6685.

INCREASE YOUR PROFITABILITY! Lewis Cattle Oiler. 417-286-3540 or 774-696-2344.

AUCTION REMINDER: Saturday, March 16th, 9am. Buckner & Gately Auctions. Please see our Auction Directory for more information.

WANTED: old Franklin County Plat books. 573-468-4924

CDL IN ONE DAY!!: Family owned and operated, Insured, Over 10 years of experience, Training available for all states, Short wait time for appointments, Contact us today to schedule your appointment!! CREDIT CARDS EXCEPTED. (573-353-2853).

FERGUSON TRACTOR MANUALS: \$20. 636-932-4429. Herman

BRUSH CLEARING: 417-650-0596. www.brushmasterlandclearing.com

AUCTION REMINDER: 14th Annual Consignment and Donation Auction. Saturday, April 6 Consign now. Hartville Lions Club. Please see our Auction Directory for more information.

2015 GMC: 3500 HD, leather, Duramax, 4WD. 18,500 miles, hydra-bale bed. \$43,500. Plato, 417-458-4520.

TITUS BENTON BOOK: "The Football Field". Half price. Paid \$20, Sell for \$10. 573-689-2490, Bunker..

IHC DIESEL TRACTOR: W.F. 3pt with loader \$7,800. (573)765-4406

WEEKLY TRADER MAGAZINE

YOUR AD GOES HERE!

Add YELLOW Color For An Additional \$3 Per Reader Ad

All ads will include Phone Number (unless requested to be deleted by advertiser) and City Or Town, Phone Number with Area Code counts as one word. City or Town counts as one word.

RATE: 80¢ Per Word. All Classified Ads Require Payment Before Print.

(1) 80¢	(2) \$1.60	(3) \$2.40	(4) \$3.20
(5) \$4.00	(6) \$4.80	(7) \$5.60	(8) \$6.40
(9) \$7.20	(10) \$8.00	(11) \$8.80	(12) \$9.60
(13) \$10.40	(14) \$11.20	(15) \$12.00	(16) \$12.80
(17) \$13.60	(18) \$14.40	(19) \$15.20	(20) \$16.00
(21) \$16.80	(22) \$17.60	(23) \$18.40	(24) \$19.20
(25) \$20.00	(26) \$20.80	(27) \$21.60	(28) \$22.40
(29) \$23.20	(30) \$24.00	(31) \$24.80	(32) \$25.60
(33) \$26.40	(34) \$27.20	(35) \$28.00	(36) \$28.80
(37) \$29.60	(38) \$30.40	(39) \$31.20	(40) \$32.00

Place your Classified Ad TODAY!

417-532-2800 • 800-665-8875

Fax: 417-532-8140

Or Mail To: P.O. Box 192 • Lebanon, MO 65536

For your convenience we accept MasterCard, Visa, Discover or American Express



DEADLINE FOR CLASSIFIED ADS: MONDAY 12 NOON!!

Name _____

Address _____

City _____ Email _____

State _____ Zip Code _____ Phone _____

Ad Total \$ _____ X # Weeks _____ = Amount Enclosed \$ _____

MAKE TIME

TO DO THE THINGS YOU LOVE

Hustler's residential family of mowers are built stronger and perform faster, allowing you to quickly maneuver around obstacles with ease, including life's most difficult obstacle time.



HUSTLER[®]

For Outstanding Products & Service

AGRI-ENTERPRISES

1-1/2 Miles South Of Licking, MO On Hwy 63

573-674-2203 • 1-800-653-7152

www.agri-enterprises.com