

FREE WEEKLY TRADER MAGAZINE



Find us on Facebook

@myweeklytrader

Auctions - Pg. 24

MYWEEKLYTRADER.COM

0% APR for 60 MOS

ZERO DOWN

SPRING INTO PACKAGE DEALS

KEEP IT SIMPLE WITH QUARLES SUPPLY

RATES SUBJECT TO CHANGE
*With approved credit. Tax/insurance not included.
Some restrictions may apply. See dealer for details.



New 23HP Kubota Package Deal!

B2301HSD \$18,910
Financing Price

NEW Kubota B2301HSD 4wd, DIESEL, AG TIRES, KUBOTA LOADER, 4' CUTTER, 4' BLADE, NEW 16' KODIAK TRAILER W/RAMPS& NEW TIRES



New 33HP Kubota Package Deal!

L3301HST \$23,900
Financing Price

NEW Kubota L3301HST 4wd, DIESEL, AG TIRES, KUBOTA LOADER, 5' CUTTER, 5' BLADE, NEW 18' KODIAK TRAILER W/RAMPS& NEW TIRES

PRICING REFLECTS ALL CURRENT KUBOTA PROGRAMS
*DOES NOT INCLUDE TAX AND INSURANCE
BLENDED RATES MAY APPLY ON NON KUBOTA ITEMS



New 47HP Kubota Package Deal!

L4701HST \$31,110
Financing Price

NEW Kubota L4701HST 4wd, DIESEL, AG TIRES, KUBOTA LOADER, 6' CUTTER, 6' BLADE, NEW 18' KODIAK TRAILER W/RAMPS& NEW TIRES



QUARLES SUPPLY COMPANY INC.

quarleskubota.com

Just off Business 13 in Bolivar, MO

Open 8:00-5:00 Monday-Friday

Saturday 8:00-12:00

(417) 777-2391

KEEP IT SIMPLE WITH QUARLES SUPPLY

417-967-3004

S. Hwy. 63 • Houston, MO
M-F 9am-5pm
Sat 9am-12noon



We have been in business since 1984 and we appreciate every Customer - Big or Small!



FAITH, FAMILY & PANELS

John 14:6 Jesus said to him, "I am the way, the truth, and the life. No one comes to the Father except through Me."



CWSS1A1P

All 6' Tall Heavy
8-Bar Galvanized Panels

~~Reg. Sale Price \$2,311~~

Special Price \$2,015

CWSFS2P

All 6' Tall Heavy
8-Bar Galvanized Panels

Retail \$4,601

~~Reg. Sale Price \$4,051~~

Special Price \$3,950



WE WILL HELP DESIGN CUSTOM CORRALS FOR ANY SIZE OPERATION!

Buy **20** Panels
Get **5** FREE Panels

Special
\$99⁹⁵
While Supplies Last
Reg. \$109.95

DELIVERY AVAILABLE



or Buy **10** Panels
Get **2** FREE Panels

(Bring flatbed trailer & ratchet straps or Delivery Available)

Out the Average for 25 Panels
Heavy Galvanized 6'x10' 8-Bar Panels **\$99⁹⁵**
\$79⁹⁶ Average

OVER 500 PANELS IN STOCK AT ALL TIMES!

plus **\$10⁰⁰ OFF**
Additional Pieces

6'T POST

USA Built
\$3.79 each
(Bundle)
Reg. \$3.89 each



OKLAHOMA WIRE

12 1/2 gauge
Reg \$75 each
Special
\$66 each



SUPREMO WIRE

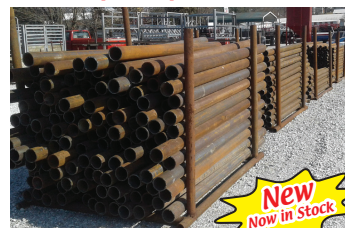


15 1/2 Gauge

\$37 each

STEEL PIPE

for all your fencing needs.
Caps & Clips Available



New Now in Stock

1 7/8" X 8' = **\$10⁰⁰**
2 7/8" X 8' = **\$18⁰⁰**
3 1/2" X 8' = **\$22⁰⁰**



225 lbs
\$98.95

\$5 Off each w/purchase of 4 Tubs

Positive Feed

cooked tubs
All in One
30% Protein
with Mineral

2011 Chevy 1500 Crew Cab, LT, 4x4

5.3, PW, PL,
After market
Wheels

Reg. \$15,995

Sale Price \$12,290



2008 Cadillac Excalade

6.2, Leather,
3rd Row, PW,
PL, Cruise, Tilt

Reg. \$13,995

Sale Price \$9,990



MAKE TIME

TO DO THE THINGS YOU LOVE



Hustler's residential family of mowers are built stronger and perform faster, allowing you to quickly maneuver around obstacles with ease, including life's most difficult obstacle time.



For Outstanding Products & Service
AGRI-ENTERPRISES

1-1/2 Miles South Of Licking, MO On Hwy 63
573-674-2203 • 1-800-653-7152
www.agri-enterprises.com

25HP HUSQVAVARNA RIDING MOWER: 54" cut can deliver, pull behind cart and aerator. \$1,250. 636-239-4124.

AKC GOLDEN RETRIEVER PUPPIES: Born 1-4-19, UTD shots. Beautiful puppies. \$300. 573-392-5371, Barnett. MO.

GRIZZLY TABLESAW: 10", left tilt, w/ extension table. \$1,200. AOM paint sprayer. \$250. Kremlin pump & spray gun. Lebanon, 573-247-2598.

MASSEY FERGUSON HOOD EMBLEM. \$20. 636-932-4429. Herman

50 CLASSIC CARS AND TRUCKS: If you're needing an older classic, give me a call for more information. Thomasville, MO 417-247-1689.

WANTED PINBALL MACHINES. 573-424-7200.

VOTED #1 BEST Preowned Car Dealership

TIM'S USED CARS
 (573) 341-3828 • 1334 South Bishop (Hwy. 63) • Rolla, MO
 Next to Hwy. CC • www.tims-used-cars.com

	<p>2011 CHEVY 1500 CREW CAB LTZ Z76, 4X4, 5.3 V-8, 154, XXX MILES ONLY \$19,500</p>		<p>2009 CHEVY 1500 CREW CAB LT Z71, 4X4, 5.3 V-8, POWER EQUIPPED 150, XXX MILES ONLY \$14,800</p>
	<p>2009 VOLKSWAGEN ROUTAN SEL LEATHER, SUNROOF, 139, XXX MILES ONLY \$6,900</p>		<p>2013 DODGE CHALLENGER RT 5.7 HEMI, AUTO, LEATHER, 68, XXX MILES ONLY \$17,800</p>

LARGE SELECTION OF CARS, TRUCKS, SUVs & VANS!

USED EQUIPMENT

New at Used Price!

- Mahindra 2565 with loader, cab, 4WD, 13 hours
- Mahindra 4110 w/loader, 41HP
- Kubota B7200 4 WD, w/Belly Mower • MF 50, Diesel
- Gehl Silage Chopper • NH 163 Tedder
- 6' & 7' Brush Cutter • Landpride 10' Brush Cutter
- JD 10' Cultipacker • 3pt. 3 bottom plow
- 12' Spring Tooth Harrow 3pt. 2 Disc Disc Plow
- Gravelly 2T 2148XL Zero Turn Mower Rider
- Other Misc Equipment

For Outstanding Products & Service
AGRI-ENTERPRISES
 1-1/2 Miles South Of Licking, MO On Hwy 63
573-674-2203 • 1-800-653-7152
www.agri-enterprises.com

FOUR 17" TIRES FOR VAN. \$35. 573-734-2822, Bismarck.

DANUSER HYD. POST DRIVER: Nice. \$1,950. 573-765-4406.

Offering the Area's LOWEST METAL PRICES!



Custom Homes • Metal Roofs

Pole Barn Packages

24'x32'x10' materials only	\$5,075	30'x60'x10' materials only	\$8,600
24'x40'x10' materials only	\$5,775	40'x60'x12' materials only	\$11,525
30'x40'x10' materials only	\$6,550		

Plus Sales Tax And Delivery.
Labor available at additional cost.
Call for quote.

Compare Before You Buy.

We Use Only The **Highest Quality** Materials!



- ALL MATERIAL PACKAGES INCLUDE...
- ✓ #1 Yellow Pine Lumber
 - ✓ #1-40 Yr. Painted
 - Metal w/Screws
 - ✓ 1-10' Overhead Door
 - ✓ 1-36" Entry Door

Fully Insured



PORTABLE BUILDINGS
Rent to Own
No Credit Check

29 Gauge

#1 PAINTED METAL

- ★ Lifetime Warranty - \$70.00 Sq.
- ★ 40 Year Warranty - \$67.00 Sq.
- ★ 20 Year Warranty - \$64.00 Sq.
- ★ 25 Year Galvalume - \$54.00 Sq.

Labor prices will be higher in locations over 75 miles from Marshfield, MO

1049 SCHOOLVIEW DR.
Marshfield, MO



Marshfield
BUILDINGS

www.marshfieldbuildings.com



417-859-7744

Toll Free 1-866-859-7733

WE SELL HIGH TENSILE FENCE: All woven, barbed, smooth! Best prices! Call Michael 417-322-0161, Lebanon.

CASE 580D: Diesel backhoe loader, cab, 2400hrs, power shuttle. \$12,000. 573-765-4406.

AUCTION REMINDER: Every Wed. @10:30AM Farmington Livestock. Please see our Auction Directory for more information.

WHIRLPOOL UNDERCOUNTER DISH-WASHER: 1 year old, excellent condition, white. \$250. 573-286-8423.

2000 BOX TRUCK: new rubber, passed safety inspection, runs but needs work. \$2000. Bourbon, 314-960-6652.

INDIAN ARCHERY 1950'S: wood, recurve bow, with original box of Ben Pearson arrows. \$195. Rolla, 573-364-7465.

Cheyenne Acres
Horse & Tack
BUY - SELL - TRADE
by Rolla, MO
Call For Directions & Availability
Call Kip
573-368-9402

JD 555G

from
\$18,500 to \$23,500

Call Mark @ (314) 560-3112

CHEVY 6-CYLINDER MOTOR: fit 1947-52 car or truck. \$200 or trade. 573-734-2822, Bismarck.

AUCTION REMINDER: Real Estate and Personal Property Auction. Saturday, April 6@ 10am. Rocking R Auction. Please see our Auction Directory for more information.

GM 1/2 TON WD FRONT AXLE HOUSING: w/3.07 gears, 77-87. \$80. 314-303-7857, Cedar Hill.

1999 KODIAK 24' FLATBED GN TRAILER: Wood floor, slide out ramps, dual jacks, tandem axle, 14,000 GVW, elec brakes, 14 Ply tires. \$3,800. Conway, 417-718-5347.

WEEKLY TRADER MAGAZINE

Vol. 25 March 28, 2019 No. 51
Published By
Lebanon Publishing Co. Inc.
PO Box 192, Lebanon, MO 65536
417-532-9131
www.myweeklytrader.com

Everything advertised in this publication must be made available purchase, use or patronage without regard to race, creed, color, sex, age or national origin of the purchaser, user or patron. The Publisher will not be responsible for misinformation, misprints, typographical errors, etc. Opinions expressed are not necessarily those of the Publisher. All rights reserved. No part of this material may be reproduced by any means without permission in writing from the Publisher. We reserve the right to refuse any ad if we deem necessary. Our list and map indicate counties in which the Weekly Trader delivered. The magazine is not necessarily placed in all communities a particular county. A list of all retail drops for a county may be obtained by contacting the Weekly Trader office at PO Box 192, Lebanon, MO 65536.



**Built for bigger yards.
Priced for smaller payments.**

Smooth controls driven by a commercial-grade transmission. The Z400 KommanderPRO brings the biggest yards down to size. And gets the job done right every time. Now available with payments cut to your liking. Visit us today.



\$102 A MONTH 48 MONTHS



**Get Unmatched Kubota Quality!
Kubota Designed, Engineered & Built.
Visit Us In TWO Locations!**

8665 Outer Road • Mtn Grove
417-926-5454 • 877-926-5458
4973 W. US Hwy 160 • West Plains
417-256-0420 • 800-766-0420

KubotaUSA.com

© Kubota Tractor Corporation 2019. 0.00% A.P.R., 20% down, financing for 48 months on purchases of new Z400 models from participating dealers in-stock inventory is available to qualified purchasers through Kubota Credit Corporation USA, subject to credit approval. Example: 48 monthly payments of \$20.83 per \$1,000 financed. Example amount based on sales price of \$9,999. Each dealer sets own price. Prices and payments may vary. Offer expires 6/30/19. This material is for descriptive purposes only. Kubota disclaims all representations and warranties, express or implied, or any liability from the use of this material. For complete warranty, safety and product information, consult your local Kubota dealer. For the complete disclaimer, go to KubotaUSA.com/dealers and see the posted disclaimer.



**KUBOTA BV SERIES
LESS WORK. BETTER BALES.**



Unmatched dependability and efficiency is built in. Field after field these hard-working round balers create dense bales and tight outer layers with hassle-free engineering designed to help you have your best season yet.

Visit us to find out why the BV is the right baler for you.



**Get Unmatched Kubota Quality!
Kubota Designed, Engineered & Built.
Visit Us In TWO Locations!**

8665 Outer Road • Mtn Grove
417-926-5454 • 877-926-5458
4973 W. US Hwy 160 • West Plains
417-256-0420 • 800-766-0420

KubotaUSA.com

Optional equipment may be shown.



© Kubota Tractor Corporation, 2018

RED ANGUS BULLS: 20 months old, Red Balancers, 15 months old. Pinnacle Ranch. 417-679-4269, 417-679-2330, Gainesville. MO.

JEFFERSON NICKEL BOOK: coin set from 1938-1964. \$200. 573-764-3517. call in p.m.

WOMENS MERREL: Insulated Snow Boots, sz 8M, waterproof, mid calf height, easy pull on style, fur trim at top, dark chocolate brown color. Nice! \$35, 417-718-5347.

I BUY....USED MOBILE HOMES. Call or text 573-338-6250 or email GregS.CDH@outlook.com

2004 MERCURY MOUNTAINEER: good for parts, still runs. \$500. Ava, 417-543-2702.

U-JOINT 1810 DANA SPICER: NIB 5-281x. \$65. 314-303-7857, Cedar Hill.

2 BILLY GOATS: 2yrs old, producers. \$125each. Salem, 573-453-5398.

**See Service
Spray Foam Insulation**

Closed cell or open cell form available
Choose the thickness of your insulation

Closed Cell	Open Cell
• Higher R. value	• Lower Cost
• Vapor barrier	• Sound Deadening
• Structural benefit	• Fire resistant
• Fire Resistant	

Both types of foam fill voids and stay where they are put to provide better insulation than fiberglass or cellulose

**Call Joseph See
(417) 733-6936
Located near Buffalo, MO**

Rotating Hay Carriage

\$5,150
\$510 Down
\$90 Per Week
w.a.c.

Cowtown USA • 1-800-258-6898
I-44 & Hwy F • Exit 203 • Cuba, MO
View At cowtownusainc.com - See Video

**NEW BIG TEX
14LX DUMP TRAILER**

facebook

JIM'S Motors
TRAILERS
I-44 at Exit 208 • Cuba, MO
www.jimsmotors.com
(573) 885-2595
GREAT SERVICE!
1957-2018 GREAT PRICES!
(800) 897-9840

FERGUSON TRACTOR MANUALS: \$20. 636-932-4429. Herman

LARGE BIRD CAGE OR COCKATIAL CAGE: \$85. 636-239-4124

JOHN DEERE 7000: 6X30in Planter, no till. \$3,350. 573-765-4406.

ANTIQU 12 GAUGE: Single barrel, shotgun. \$175. Desloge, 573-327-9068.

SEEGER MADNESS



Our Latest and Greatest Deals!

7513B	2012 BUICK VERANO	\$10,988	7612A	2017 TOYOTA TACOMA	\$32,988	7526A	2017 HONDA CIVIC	\$19,988
7589A	2015 FORD TAURUS	\$15,988	P9481	2017 DODGE GRAND CARAVAN	\$17,988	7191B	2015 JEEP WRANGLER	\$22,988
P9494	2017 HYUNDAI TUCSON	\$17,988	P9482	2017 DODGE GRAND CARAVAN	\$18,988	7043A	2017 BUICK ENCLAVE	\$28,988
6859A	2016 JEEP RENEGADE	\$16,988	P9483	2018 NISSAN MURANO	\$22,988	P9462	2015 HONDA PILOT	\$20,988
P9493A	2015 HONDA ACCORD	\$17,988	P9484	2017 NISSAN ROGUE	\$21,988	P9461	2018 NISSAN ROGUE	\$17,988
P9492	2017 TOYOTA CAMRY	\$15,988	P9480	2017 TOYOTA PRIUS	\$23,988	7507A	2015 TOYOTA AVALON HYBRID	\$15,988
6829A	2006 TOYOTA TUNDRA	\$10,988	7595A	2014 TOYOTA TUNDRA	\$27,988	7440A	2015 TOYOTA AVALON	\$21,988
7603A	2007 CHEVY SILVERADO 1500 CLASSIC	\$12,588	7215A	2011 TOYOTA TACOMA	\$17,588	6801A	2016 CHEVY SILVERADO 1500	\$30,988
7630A	2017 TOYOTA TUNDRA	\$24,588	P9478	2007 TOYOTA FJ CRUISER	\$13,988	7304A	2017 TOYOTA COROLLA	\$16,588
P9488A	2007 JEEP COMPASS	\$6,988	P9476	2016 GMC SIERRA 1500	\$35,988	7308B	2017 JEEP WRANGLER UNLIMITED	\$30,988
7415B	2016 JEEP WRANGLER UNLIMITED	\$31,988	P9468	2018 TOYOTA RAV4	\$20,588	7258B	2018 CHEVY SONIC	\$14,988
P9489	2018 TOYOTA CAMRY	\$17,988	P9470	2018 TOYOTA RAV4	\$22,588	P9454	2012 TOYOTA TUNDRA	\$29,988
P9490	2018 TOYOTA COROLLA	\$14,988	P9471	2018 TOYOTA RAV4	\$22,588	P9441	2016 FORD ESCAPE	\$17,988
7365A	2014 TOYOTA PRIUS	\$15,988	7554A	2018 TOYOTA CAMRY HYBRID	\$27,988	P9437	2017 HYUNDAI SANTA FE	\$21,988
7151A	2012 TOYOTA RAV4	\$14,988	7492A	2016 CHEVY CRUZE	\$13,988			
7201A	2015 MAZDA CX-9	\$17,988	7527A	2018 TOYOTA AVALON HYBRID	\$29,988			
7258D	2011 FORD FIESTA	\$5,588						
7381A	2017 TOYOTA TACOMA	\$31,988						



PROUD WINNER OF THE PRESIDENT'S AWARD FOR THE 2ND YEAR IN A ROW!



TOYOTA
Let's Go Places

Doing Business
the Right Way
The Seeger Way



ENGINES FOR LIFE

Call for details
Non-Factory Lifetime Limited Warranty
Good at participating dealerships



SATURDAY SERVICE 8AM-4PM



Toll Free:
800-844-6026

Next to Walmart, St Robert
573-336-7111
SeegerTOYOTA.net



SEEGER CARE
PREOWNED VEHICLES
COME WITH SEEGER CARE!

- 1 **FREE** (3) SCHEDULED OIL AND FILTER CHANGES
- 2 **FREE** MULTI-POINT INSPECTION WITH EVERY OIL CHANGE
- 3 **FREE** EXTERIOR CAR WASH WITH EVERY SERVICE VISIT
- 4 **FREE** LIFETIME SAFETY AND EMISSION TESTING
- 5 **FREE** SAME-DAY SERVICE LOANER CAR
- 6 **FREE** TANK OF GAS

Service Only at Seeger St Robert/St Louis

†Does not include tax, title, and license. * Seeger Care offer good for Less than 85K Miles and Less than 10 years old Prices do not include any College Grad or Military Rebate. See sales rep to see if you would qualify for additional savings. Prices does not include \$199 dealer administrative fee. Cannot be combined with any other offer. Prior sales final. See dealer for details. Advertised vehicle may not be exactly as pictured and are subject to prior sale. We cannot be responsible for typography or photography. ** St. Robert, Mo. Inventory



DIAMONDS AREN'T THE ONLY THINGS THAT LAST FOREVER.

Grasshopper zero-turn mowers are built to last and outlast, delivering the same picture-perfect cut season after season. That's why so many Grasshoppers are passed down from generation to generation.



IT'S SO MUCH MOWER®

ASK ABOUT **ZERO%** FINANCING*

OPEN HOUSE
MARCH 30, 2019 • 8AM-NOON



KUBOTA OF THE OZARKS

1660 E CHESTNUT EXPWY
SPRINGFIELD, MO
417-866-5588

*WAC. See store associate for details. ©The Grasshopper Company

BARN WOOD SIDING: 8" & 10" wide.
573-729-7226. www.pineridgerustic.com

WANTED GOOD USED MOBILE HOMES: Singles & doubles. Call David Hayes, 573-578-8072.

2013 POLARIS RANGER: \$4,000. Steel-ville, 573-241-3051.

22 LR TRACKER TAURUS PISTOL: 7" barrel. Private Collection. \$400. 417-322-0085.

Starnes Auto LLC
22115 Rt. 66 • Lebanon, MO 65536
417.588.3159 Office • 417.718.2707 Cell
www.starnesauto.com

1989 TOYOTA PICKUP

SILVER **\$CALL**

1998 CHEVY S10

REG CAB, GOOD TITLE **\$4,000**

2000 GRAND PRIX

GOLD, 184,XXX MILES **\$2,500**

2003 OLDSMOBILE SILHOUETTE

110, XXX MILES **\$3,500**

2004 CHEVY CAVALIER

GOLD, 58,XXX MILES **\$4,000**

2005 GMC YUKON XL

CHARCOAL, 142,XXX MILES **\$8,250**

2005 HYUNDAI SONATA

BLUE/GREEN, 77,XXX MILES **\$3,800**

2006 CHEVY SUBURBAN LS

BLUE, 2WD, 185,XXX MILES **\$5,200**

2006 PONTIAC G6 GT

WHITE, CONV, 73,XXX MILES **\$6,250**

2008 CHEVY IMPALA

RED **\$CALL**

2010 GMC TERRAIN

WHITE, 118,XXX MILES **\$8,250**

2013 CHEVY EQUINOX

GOLD, 58,XXX MILES **\$CALL**

2014 CHEVY EQUINOX LT

WHITE, 88,XXX MILES, GOOD TITLE **\$11,000**

2014 CHEVY IMPALA

BLACK, 86,XXX MILES **\$8,200**

2014 GMC TERRAIN

SILVER, 50,XXX MILES **\$13,500**

2015 CHEVY EQUINOX LS

LIGHT BLUE, GOOD TITLE, 68,XXX MILES **\$11,250**

2015 CHEVY EQUINOX LT

MAROON, SUNROOF, GOOD TITLE, 39,XXX MILES

..... **\$14,500**

2015 GMC TERRAIN

BLACK, GOOD TITLE, AWD, 65,XXX MILES **\$15,900**

2015 GMC TERRAIN

WHITE, 26,XXX MILES **\$CALL**

2017 BUICK ENCORE

WHITE, 8,XXX MILES **\$17,500**

WE DO ALIGNMENTS!

2004 ADAM JULITE HORSE TRAILER: No leaks, good floor, good tires, 2 escape doors, tack room. \$5,000 OBO. Call or text 417-349-0919, Plato, MO.

AUCTION REMINDER: Huge Gun Auction. Saturday, March 30th @10am Southwest Auction Service. Please see our Auction Directory for more information.

AUCTION REMINDER: Horse Sale Wednesday, April 3rd @ 6PM. Roberts Bros. Sale Barn. Please see our Auction Directory for more information.

www.gatorjetboats.com

ATORBOATS JET

Jet Drive & Performance Parts

IN-STOCK!

(573) 885-0052

86 Hwy. UU Cuba, MO (2 Miles East of Cuba)

Custom Built Aluminum Inboard Jets

TWO GAITED TRAIL GELDINGS, Registered purebred Arabian horses and Nubian goats. Rabbits \$7, Free roosters. Raymondville, 573-548-0219, 573-201-5901.



R-FAB BINS
(660)281-3078

Bucket Bins
Stationary or Portable

Overhead Bins
Located in Warsaw, MO

AUCTION REMINDER: Estate Auction. Saturday, Mar 30 @ 10:00am. Foster Auction. Please see our Auction Directory for more information.



MIDWEST CONSTRUCTION

Free Estimates!

- Pole Barn • Garages • Framing
- Remodels • Roofing • Concrete
- Decks & Porches

Contact Abner Glick
417-664-1794

ACR CONSTRUCTION: Spray Foam Insulation, Septic Systems, Backhoe Services and Basements, free estimates. 573-453-6191.

HUGE SEMI TIRE SALE: Trailer 11R-24-5, 16-ply. \$292. A/P 16-ply. \$280. 11R-22-5 16-ply. \$247. A/P 16-ply. \$265. 295-75-22-5 16-ply. \$275. A/P 14-ply. \$248. 285-75-24-5 14-ply. \$238. A/P 14-ply. \$267. Free Petroleum Gift with purchase of 8. F-Warranty, F-Delivery. Call 417-276-2435.

AUCTION REMINDER: Special stock cow Sale Saturday, March 30 @ 6 PM. Please see our Auction Directory for more information.

2009 HARLEY ULTRA ELECTRIC GLIDE CLASSIC: 12,000mi., Asking \$13,000 or trade for Side by side four wheeler drive and or small jon boat for fishing. 812-390-1128, 417-265-1121. Thornfield.

STARTS SATURDAY: Lawn Tractors like new. Yardman & Ariens, Troybilt Chipper, Troybilt Chipper & Vacuum, Two Rear Tine Tillers, (one like new, other needs work), Two Generator's (4,000 & 5,000 watt), Cherry Picker, Motorized Bike-good condition, Honda 250 Fourtrax, Much More. 573-263-2732.

C-HWY PRODUCE AUCTION: FRIDAYS 10AM STARTING APRIL 5th, RUNNING THRU END OF APRIL. THEN TUESDAYS AND FRIDAYS MAY THRU OCTOBER. *COLE CROPS *BEDDING PLANTS *EARLY PRODUCE *FLOWERS-HANGING BASKETS. NORTH OF SEYMOUR, MO ON HWY C FIVE MILES, 1/4 MILE EAST ON SHORT STATES HWY P. FOR MORE INFORMATION CONTACT SAMMY J.M. SCHWARTS 4773 HAZELWOOD DR. SEYMOUR. AUCTIONEER: STEVE CANTRELL, (417)380-0562. DON'T FORGET ANNUAL MOTHER'S DAY FLOWER SALE MAY 3rd!

WHOLESALE PRICES "Fertilizer/ Chemicals /Seed". Trailer loads or divide. Example 46% urea \$385/delivered, DAP \$475, Blending anything we are the farmers friend. 800-807-9612.

AR 15 RIFLE: Has scope and lazer w/3 magazines. Private collection. \$600. 417-322-0085.



Buildings - Hunter's Cabins - Lawn Furniture

JAMCO Portable Buildings 800-688-2064
307 Enterprise Dr. • Seymour, MO www.jamcobuilders.com

Rent-To-Own Plan

BLACK ANGUS BULLS: Farm raised, tested, objective T510 bloodlines, 24 months old, 3 to choose. \$2100each. 573-205-7860. Owensville

SOLID WOOD TWIN BED: 4ft high, nice storage underneath, with covered new mattress, still in plastic. \$100obo. Rolla, 928-514-0505.



Built Stronger to Last Longer
Gooseneck
Trailer Mfg. Co., Inc.

Savings Start Here!

24 x 6'8" Gooseneck Brand Stock Trailer
Several In Stock
Same day financing with Ag Direct (with approved credit)

LET US BE YOUR PEOPLE!!
WESTGATE TRAILER & EQUIP.
417-351-6974 • 417-926-7733
www.westgatetrailer.net
8920 W Business 60 • Mtn. Grove, MO
7136 W Farm Road 140 • Springfield, MO
FULL SERVICE SHOP
OPEN: Mon.-Fri. 8-5 And "YES!" Sat. 8-Noon!

3 METAL DETECTORS: \$15, \$25 and \$75. Birch Tree, 573-872-9821.

JOHN DEERE: 7300 air planter, 3pt, 8row, 36sp, vertical fold. \$5500. Viola, 870-458-2580.



KUSTER LOGGING

BUYER of Standing Timber
Oak and Walnut

Dozing Now Available
417-259-0047
References Available

AUCTION REMINDER: Consignment Auction! Sunday, March 31st @10am, Southwest Auction Service. Please see our Auction Directory for more information.

KELTEC 9MM COMPACT PISTOL: Comes w/extra magazines, Uplula Automatic loader. \$300. Private Collection. 417-322-0085.

SMALL FARM: 40 acres, near Ellington, MO, spring, 2 ponds, barn, part pasture, electric, well, livable building, highway access. \$65,500. 573-637-2450, 573-697-1016.

MATCHING COFFEE & END TABLES: Sturdy wood with glass partition, Tops are 38"x38" & 24" x 28". \$50. 314-303-7857, Cedar Hill.

One STOP Material Yard

- Bulk Rock
- Bulk Mulch
- Rail Road Ties
- Blocks
- Decorate Rock (48 bins to choose from, something for everyone!)
- Mexican Yard Art
- Pottery
- Luxcraft Outdoor Furniture

Bring this ad in for 10% OFF all your bulk materials!

573-346-4096 • Hours: Mon.-Sat. 8am-5pm
On top of hill - corner of Hwy. 54 & A Road • Camdenton

Larry Heisel Rentals
LARGE or SMALL...
We Rent!
Crawler Loaders • Excavators • Backhoes
Call Larry! *We Deliver!*
573-779-1500
www.larryheiselequipment.com
Rental Available in 636 or 573 area code

IHC 684: Diesel tractor w/loader, 62hp. \$9850. 573-765-4406.

YOU GOTTA SEE THESE NEW HOUSES!!! Brand new inventory on sale !! 573-499-9993. columbiadiscounthomes.com.

CUSTOM SAW MILLING: Lebanon. 417-533-4607, 417-664-1195.

DARDEN PROFESSIONAL TIMBER HARVESTING, BUYING STANDING TIMBER: Great prices, improve wildlife habitat and improve forest health. State Certified & Fully Insured! 573-247-4808 or 573-739-1122. Salem

OLD LINN CREEK, HA HA TONKA & CAMDEN COUNTY BOOK: "Before the Dam Waters" by Victor Jeffries. 72 pages, \$6.50. \$2.00 postage if mailed. Lebanon, 417-532-2045.

LIONEL TRAIN SET: Steam engine, tender, caboose and other car, track and transformer. \$195. 573-364-7465, Rolla.

JOHN DEERE 265 DISK MOWER: 3pt, nice, 300 acres. \$6900. Viola, 870-458-2580.

TWO BUMPERS: For 62-64 Chevy 2 Nova. \$100. 573-734-2822, Bismarck.

OSAGE 17' CANOE: \$150. Lebanon, 573-247-2598.

BARE CYLINDER HEAD: for 361/407 IH Diesel tractor engine. \$200. 573-459-6488.

OLD 20 GAUGE: Single barrel shotgun. \$175. Desloge, 573-327-9068.

JD 6140M: Cab, 4WD, triple remotes, 16-speed. \$46,500. 870-458-2580, Viola.

COMPOUND BOW WITH ARROWS: \$25. Birch Tree, 573-872-9821.

10HP AIR COMPRESSOR: 3 phase. \$300. Ellsinore, 573-714-5779.

NEW NEW NEW DISPLAY HOUSE!!! Call Marla to hear what is new inside 573-657-7040, chateauhomes.net.

Early Spring Special

2019 Forest River Flagstaff Tent MAC/LTD 206LTD

Retail **\$12,536** | Now **\$9,910**
A/C INCLUDED AND INSTALLED
Brand New!

I-44 Exit 123 - 4 miles West of Lebanon, MO
417-533-7530
www.happytrailsvrcenter.com

Komatsu WB 156

Low hours, cab, air, 4x4
\$22,500

Call Mark (314) 560-3112

2007 HARLEY DAVIDSON STREET GLIDE: 96 ci engine, 22,000 miles, lots of chrome and extras. \$12,000. 573-743-6018, 314-348-4965 cell.

AUCTION REMINDER: Estate Auction. Saturday, March 31 @ 1pm. Nance Auction. Please see our Auction Directory for more information.

3 TON PORTABLE CATTLE CREEP FEEDER: new, creep gates, \$2,275, 2ton, Portable grain/feed bin, new. \$1850. 573-205-7860, Owensville.

HYDRABED

BY TRIPLE C, INC.

- 3,000 lb. Lift Capacity
- Synchronized Bale Arms
- Engine Driven Hydraulics
- Free-Float Bale Unrolling
- 12" Total Main Hinge Length
- Six Sizes Available
- Full Two Year Warranty

Starting At **\$9,225** Installed

Several Sizes in Stock



LET YOUR SAVINGS BEGIN NOW!
2 Toolboxes for \$575.00
Prices Good On In Stock Beds Only!

LET US BE YOUR PEOPLE!!

WESTGATE TRAILER & EQUIP.

417-351-6974 • 417-926-7733
www.westgatetrailer.net

8920 W Business 60 • Mtn. Grove, MO
7136 W Farm Road 140 • Springfield, MO

FULL SERVICE SHOP
OPEN: Mon.-Fri. 8-5 And "YES!" Sat. 8-Noon!



MOW, LOAD, DIG, HOIST AND HAUL.

Ready to move from that ride-around mower to a real working tractor? Step up to the Massey Ferguson® GC1700 Series, with the largest engine in its class and a standard front end loader and backhoe.

www.masseyferguson.us

MASSEY FERGUSON GC1710
22.5HP TRACTOR, LOADER & BACKHOE

\$208 PER MONTH*

Marshfield Machinery INC.

222 E. Madison • Marshfield, MO
417-859-2117 • www.marshfieldmach.com

©2018 AGCO Corporation. Massey Ferguson is a worldwide brand of AGCO Corporation. AGCO and Massey Ferguson are trademarks of AGCO. All rights reserved. *On select models with approved credit from AGCO Finance®, LLC. Down payment required. Attachments and implements are included in program offer, but sold separately. Restrictions may apply. Contact your participating dealer for more details. Offer ends soon and may be subject to change without notice.

NEW NEW NEW DISPLAY HOUSE!!!
Call Marla to hear what is new inside 573-657-7040, chateauhomes.net.

SACAGAWEA GOLDEN DOLLARS: Face value \$1. Original issue 2000, uncirculated. In rolls of 5. \$30. 417-686-0032, Ava.

JOHN DEERE 55 COMBINE: good condition w/13ft quick attach head. \$1500, 417-241-0006

2 MENS LEATHER MOTORCYCLE JACKETS: size 44 and 42, one like new. \$50 each. Mammoth Spring, 870-966-3483.

NEW MASSEY TRACTORS		MF GC1705 4WD, LDR 23HP	10,500	HESSTON 555T 4X6	4,500
4710 4WD CAB & LDR 99HP	IN STOCK	MF GC1705 4WD, MWR 23HP	10,500	CASE IH RS451 4X5	4,500
4708 4WD & LDR 80HP	IN STOCK	MF GC1705 4WD 23HP	7,750	HESSTON 560 5X6	4,000
2706E 4WD & LDR 57HP	IN STOCK	IHC 460 49 HP	3,500	NH 850 5X5	1,500
2705E 4WD & LDR 48HP	IN STOCK	USED UTV		USED DISC MOWERS	
1739E 4WD & LDR 38HP	IN STOCK	MAHINDRA 750 CREW XTV	8,500	MF 1383 13FT MOWER/COND	19,500
1734E 4WD & LDR 34HP	IN STOCK	USED ROUND BALERS		JD 275 9FT 3PT	3,500
1726E 4WD & LDR 24HP	IN STOCK	MF 2946A 4X6 MESH	24,000	HESSTON 1120 MOWER/COND	2,000
1526 4WD & LDR 24HP	IN STOCK	MF 2846A 4X6 MESH	24,000	USED RAKES	
GC1720 4WD, LDR, BACKHOE	IN STOCK	MF 2846A 4X6 MESH	20,000	BUSH HOG BSR10	3,500
GC1710 4WD, LDR, BACKHOE	IN STOCK	HESSTON 5546A 4X6 MESH	12,500	GEHL 418 8 WHEEL	2,000
GC1705 4WD & LDR 22.5 HP	IN STOCK	MF 2745 4X5 MESH	12,500	VERMEER WR20 8 WHEEL	1,950
USED TRACTORS		MF 1745 4X5	9,500	USED MISC.	
MAHINDRA 105P CAB LDR 105HP	45,500	HESSTON 845 4X5	7,500	HAYBUSTER 107C NOTIL DRILL	16,500
MAHINDRA 2565 CAB LDR 65HP	28,500	GEHL 2480 4X5	4,500	BUSH HOG 3615 15FT	9,000
MAHINDRA 1526 4WD, LDR 26HP	15,500	HESSTON 545 4X5	4,500	BUSH HOG M346 LOADER	3,500

Gooseneck and Winchester Star pipe cattle trailers the best in the business here and ready...

10% Down \$152 Per Mo 60 Month w.a.c \$8,900



COWTOWN USA
I-44 Exit 203 • 413 Daniels Rd.
Cuba, MO • 573-885-6300
www.cowtownusainc.com

10FT 3PT BLADE: \$525. 573-765-4406.

PAYING CASH for Used Doublewides & Select Singles. Call Charlie, 573-205-7252.

BRUSH CLEARING: 417-650-0596. www.brushmasterlandclearing.com

28FT ELECTRA 5TH WHEEL CAMPER: \$4,500. 573-747-3767.

STOCK TRAILER: 2000, 6.8ftX20ft, Gooseneck, great condition. \$2500. Vienna, 573-422-3748.

WOODS 15' BUSHHOG: Chains excellent condition, paint on blades. \$8,750. 870-458-2238.

NEW STOCK!!! Wow, do these look GOOD!!! Call 573-657-2176 amegamobile-homes.com

LITTLE TYKES TOYS: 8 Different large pieces, like washer and dryer, doll house and desk. All for \$125. 636-239-4124.

JD "B" 1947: Runs, restorable. \$1300. Stockton, 417-276-8347.

HYDRAULIC POWER SUPPLY FOR SAWMILL: \$600. Ellsinore, 573-714-5779.

FORD DEARBORN: 2 bottom, 3pt plow. \$250. 573-765-4406.

AKC AKITA PUPPIES: Born Jan 26. \$500. 417-458-4242.

DOG PEN AND DOG HOUSE: 6ft tall. \$160. 636-239-4124.

JOHN DEERE 2955: Diesel, cold air, tractor, with JD 148 Loader. \$17,500. (573)765-4406

JOHN DEERE 337: Square Baler. \$2,250. 573-765-4406.

★ A HERITAGE OF ★
GETTING WORK DONE

1023E SUB-COMPACT TRACTOR

\$99 per month¹
+ 10-Year Powertrain Warranty*



heritagetractor.com/tractorwarranty

Legendary Products. Extraordinary Service.
Find your local Heritage Tractor location or request a quote at HeritageTractor.com

 **JOHN DEERE** | *Heritage* TRACTOR

(1) Offer valid on new 1023E Compact Tractor purchases made between 3/1/19 and 4/30/19. Subject to approved instalment credit with John Deere Financial. Up to a 20% down payment may be required. Example: Based on a purchase of \$10,419 with \$2,084 down payment, monthly payment of \$99 at 0% APR for 84 months. Taxes, freight, set up and delivery charges could increase monthly payment. Available at participating U.S. dealers. Price and model availability may vary by dealer. Offer available on new equipment and in the U.S. only. Prices and savings in U.S. dollars. *Offer ends 10/31/19. Heritage Tractor Powertrain 10 year warranty details are located at heritagetractor.com/tractorwarranty. Eligible on 1-5E (3Cyl) models. See the warranty manual for full details. Some restrictions may apply.

HTRAX70314WT-4C

Hydraulic Dovetail Trailers

By the Best Manufacturers in America!



PJ TRAILERS | IRONBULL

32' Hydraulic Dovetail Trailers
in stock today starting at \$12,000

Low Profile • 10k Dexter Axles • Dual Spring Loaded Jacks • Radial Tires • Torque Tube Underframe Bridging

LET US BE YOUR PEOPLE!!

WESTGATE TRAILER & EQUIP.

417-351-6974 • 417-926-7733
www.westgatetrailer.net

8920 W Business 60 • Mtn. Grove, MO
7136 W Farm Road 140 • Springfield, MO

FULL SERVICE SHOP
OPEN: Mon.-Fri. 8-5 And "YES!" Sat. 8-Noon!

20- 14' PORTABLE CATTLE PANELS:
Light-medium weight, 2 chains \$80each
9-8' panels 66#, \$68each. 573-205-7860

WANTED, TIMBER TO LOG ON SHARES: Honest, reliable, references. 417-533-4607, 417-664-1195.

IHC 806 DIESEL TRACTOR: 90hp, W.F. 3pt with loader \$7,800. (573)765-4406

0% for 4 Years*



*with approved credit
Outdoor Wood Furnace
as low as
HEATMOR \$168 per month

HEATMOR MIDWEST

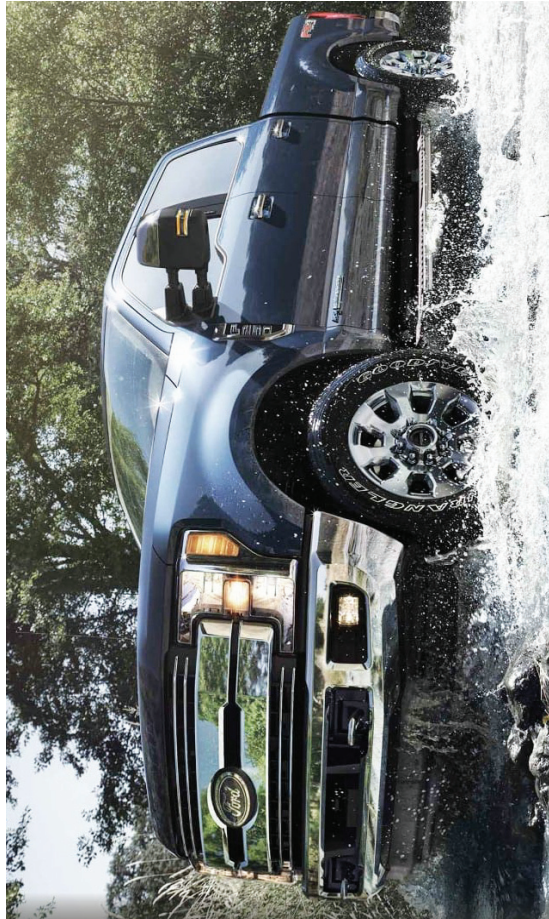
Licking, MO 65542
573-674-2962

WILLIAMS PEEP SIGHT: with target knobs. Fits Marlin Model 39a. \$50. 636-239-2695. Washington.

WOOD STOVE: cast iron, front opening, on legs, used only one season. Rolla, 928-514-0505.

VINTAGE CAPPERS WEEKLY SEARCHLIGHT RECIPE COOKBOOK: \$15. Lebanon, 417-532-2045.

H&R 12 GA SINGLE SHOT SHOTGUN: 3" shells w/Williams sights and screw in choke. \$180. 636-239-2695.



BUILT *Ford* PROUD

TRUCK MONTH



New 2019 Ford F-250 Crew Cab

6.7L V-8 Cyl, 6 Speed Automatic, 4x4, Ruby Red Metallic, Exterior Parking Camera, Trailer Sway Control, Split Folding Rear Seat.
0T57448

MSRP \$67,575

SALE \$61,440

Ford F-Superduty Retail Customer Cash \$1,250
Ford Credit Retail Bonus Customer Cash \$500
Ford "Vin Specific" Select Inventory Retail Customer Cash \$500



New 2018 Ford F-250 Crew Cab

6.7L V-8 Cyl, 6 Speed Automatic, 4x4, Ingot Silver, Exterior Parking Camera, Trailer Sway Control, Split Folding Rear Seat.
0T57492

MSRP \$65,945

SALE \$63,697

Ford F-Superduty Retail Customer Cash \$1,250
Ford Credit Retail Bonus Customer Cash \$500
Ford "Vin Specific" Select Inventory Retail Customer Cash \$500



New 2018 Ford Lariat Super-Crew Cab

3.0L V-6 Cyl, 10 Speed Automatic, 4x4, Ingot Silver, Navigation System, Leather Upholstery, Wireless Phone Connectivity, Blind Spot Sensor, Automatic Temperature Control, Power Moonroof, Parking Sensors.
0T57359

MSRP \$61,675

SALE \$53,768

Ford Retail Customer Cash \$1,250
Ford Credit Retail Bonus Customer Cash \$1,000
Ford "Vin Specific" Select Inventory Retail Customer Cash \$500



New 2018 Ford F-150 XLT Super-Crew Cab

3.3L V-6 Cyl, 6 Speed Automatic, 4x2, Shadow Black, Exterior Parking Camera Rear, Perimeter/Approach Lights, Shering Wheel Mounted Audio Controls, Wireless Phone Connectivity, Remote Keyless Entry.
0T57398

MSRP \$37,800

SALE \$28,820

Ford Retail Customer Cash \$2,500
Ford Credit Retail Bonus Customer Cash \$1,000
Ford "Vin Specific" Select Inventory Retail Customer Cash \$1,500

New 2019 Ford F-350 Chassis Super-Crew Cab

6.7L V-8 Cyl, 6 Speed Automatic, 4x4, Ingot Silver, Exterior Parking Camera, Remote Keyless Entry System, Auto-Dimming Rearview Mirror, Steering Wheel Mounted Audio Controls.
0T57338

MSRP \$56,495

SALE \$50,397

Ford F-Superduty Retail Customer Cash \$1,250
Ford Credit Retail Bonus Customer Cash \$500
2019 Ford Commercial Connection Uprift Bonus Cash \$1,000



New 2018 Ford F-150 XL Regular Cab

3.3L V-6 Cyl, 6 Speed Automatic, 4x2, Oxford White, Exterior Parking Camera, Trailer Sway Control, Trailer Hitch Receiver, Fully Automatic Headlights.
0T56919

MSRP \$29,845

SALE \$23,339

Ford Retail Customer Cash \$1,250
Ford Credit Retail Bonus Customer Cash \$1,000
Ford Bonus Customer Cash \$1,500
Ford "Vin Specific" Select Inventory Retail Customer Cash \$500



New 2018 Ford F-150 XLT Super-Crew Cab

5.0L V-8 Cyl, 10-Speed Automatic, 4x4, Ingot Silver, Navigation System, Wireless Phone Connectivity, Exterior Parking Camera Rear, Chrome Wheels.
0T56929

MSRP \$50,975

SALE \$40,301

Ford Retail Customer Cash \$2,500
Ford Special Package Retail Customer Cash \$1,000
Ford Credit Retail Bonus Customer Cash \$1,000
Ford "Vin Specific" Select Inventory Retail Customer Cash \$1,500



New 2018 Ford F-150 XLT SuperCrew Cab



5.0L V-8 Cyl, 10 Speed Automatic, 4X4, Race Red, Navigation System, Wireless Phone Connectivity, Exterior Parking Camera Rear, Chrome Wheels, Power Moonroof, Parking Sensors, Auto-Dimming Rearview Mirror.
0157135

MSRP \$53,740
SALE \$42,868

Ford Retail Customer Cash.....\$2,500
Ford Special Package Retail Customer Cash.....\$1,000
Ford Credit Retail Bonus Customer Cash.....\$1,000
Ford "Win Specific" Select Inventory Retail Customer Cash.....\$1,500
Ford Bonus Customer Cash.....\$500

New 2018 Ford F-150 SuperCrew Cab



3.0L V-6 Cyl, 4X4, Oxford White, Exterior Parking Camera, Trailer Sway Control, Split Folding Rear Seat.
0157358

MSRP \$63,730
SALE \$55,658

Ford Retail Customer Cash.....\$1,250
Ford Credit Retail Bonus Customer Cash.....\$1,000
Ford "Win Specific" Select Inventory Retail Customer Cash.....\$500

New 2018 Ford F-150 XLT SuperCrew Cab



5.0L V-8 Cyl, 10-Speed Automatic, 4X4, Race Red, Wireless Phone Connectivity, Exterior Parking Camera Rear, Chrome Wheels, Perimeter/Approach Lights, Remote Keyless Entry.
0157311

MSRP \$46,165
SALE \$36,941

Ford Retail Customer Cash.....\$2,500
Ford Credit Retail Bonus Customer Cash.....\$1,000
Ford "Win Specific" Select Inventory Retail Customer Cash.....\$1,500
Ford Bonus Customer Cash.....\$500

New Ford F-150 BLACK WIDOW SuperCrew Cab




5.0L V-8 Cyl, Automatic, 4X4, White, 22" Wheels, 6" Suspension Lift, Alloy Wheels, Bed Liner, Black 5" Oval Wheel To Wheel Side Steps, Black Widow Custom Stitched Headrest, Black Widow Exterior Badging.
0157522

MSRP \$76,415
SALE \$66,750

Ford Credit Retail Bonus Customer Cash.....\$250
Ford Retail Customer Cash.....\$3,000
Ford Special Package Retail Customer Cash.....\$750
Ford Bonus Customer Cash.....\$1,000
Ford Credit Retail Bonus Customer Cash.....\$750

New 2018 Ford F-150 XLT SuperCrew Cab



3.5L V-6 Cyl, 10-Speed Automatic, 4X4, Magna Red, Navigation System, Wireless Phone Connectivity, Chrome Wheels, Parking Sensors, Auto-Dimming Rearview Mirror.
0157308

MSRP \$52,965
SALE \$42,173

Ford Retail Customer Cash.....\$2,500
Ford Special Package Retail Customer Cash.....\$1,000
Ford Credit Retail Bonus Customer Cash.....\$1,000
Ford "Win Specific" Select Inventory Retail Customer Cash.....\$1,500
Ford Bonus Customer Cash.....\$500

New 2018 Ford F-150 Raptor SuperCrew Cab



3.5L V-6 Cyl, 10 Speed Automatic, 4X4, Oxford White, Navigation System, Lane Departure, Leather Upholstery, Blind Spot Sensor, Power Moonroof.
0157299

MSRP \$72,010
SALE \$70,012

New 2019 Ford F-150 Platinum SuperCrew Cab



5.0L V-8 Cyl, 10 Speed Automatic, 4X4 Agile Black, Navigation System, Lane Departure, Leather Upholstery, Blind Spot Sensor, Power Moonroof, Distance Pacing Cruise Control, Automatic Temperature Control.
0157462

MSRP \$64,690
SALE \$55,853

Ford Retail Customer Cash.....\$1,750
Ford Credit Retail Bonus Customer Cash.....\$750
Ford "Win Specific" Select Inventory Retail Customer Cash.....\$750
Ford Retail Bonus Customer Cash.....\$500

New 2019 Ford F-150 XL SuperCrew Cab



3.3L V-6 Cyl, 6 Speed Automatic, Race Red, Exterior Parking Camera Rear, Remote Keyless Entry, Wireless Phone Connectivity.
0157461

MSRP \$39,540
SALE \$32,418

Ford Retail Customer Cash.....\$1,750
Ford Bonus Customer Cash.....\$750
Ford Credit Retail Bonus Customer Cash.....\$250
Ford "Win Specific" Select Inventory Retail Customer Cash.....\$750
Ford Retail Bonus Customer Cash.....\$500

New 2019 Ford F-150 XLT SuperCrew Cab



5.0L V-8 Cyl, 10 Speed Automatic, 4X4, Ruby Red Tinted, Navigation System, Exterior Parking Camera Rear, Wireless Phone Connectivity, Parking Sensors, Chrome Wheels.
0157447

MSRP \$53,160
SALE \$43,393

Ford Retail Customer Cash.....\$3,000
Ford Credit Retail Bonus Customer Cash.....\$250
Ford Special Package Retail Customer Cash.....\$1,000
Ford Retail Bonus Customer Cash.....\$750
Ford "Win Specific" Select Inventory Retail Customer Cash.....\$750
Ford Bonus Customer Cash.....\$500



LINDSAY FORD



260 W. Elm St • Lebanon, MO • Mon-Fri 8am - 6:30pm • Sat 8am - 5pm • John Roper, Alex King, Ed Compton, Luke Feeney, Russell Hedges & Amber Uder

417-532-3146 • www.lindsayautogroup.com



**With approved credit. See dealer for details. Not responsible for typos. Actual vehicle may vary from photo.*

REGISTERED ADULT GERMAN SHEPHERD MALE. \$100. 417-741-2198, Hartsville.

TWO NEW VINYL WINDOWS: Open upright, double pane. 62.5x38.5 \$100 OBO. 49.5x36.5 \$75 OBO. Rolla, 928-514-0505.

\$99.⁰⁰ Remnant BLOW OUT SALE!

12 x 8⁸ Saw Grass	
REG \$260.00	\$99.00
12 x 12 Thyme	
REG \$289.00	\$99.00
12 x 10² Blonde	
REG \$324.00	\$99.00
12 x 13³ Beach Front	
REG \$353.00	\$99.00
13 x 10¹ Cameo	
REG \$568.00	\$99.00
12 x 12¹⁰ Hunter Green	
REG \$463.00	\$99.00
12 x 10⁴ Galaxy	
REG \$371.00	\$99.00
12 x 9⁶ Walnut Ridge	
REG \$240.00	\$99.00
12 x 12¹ Khaki	
REG \$482.00	\$99.00
13²x 12⁸ Loki	
REG \$183.00	\$99.00
12 x 11¹⁰ Sapphire	
REG \$157.00	\$99.00

LARGE SELECTION AVAILABLE ONLINE.
CHECK OUT OUR WEBSITE FOR PICTURES
AND MORE DETAILS AT
WWW.FALCONFLOORCOVERING.COM



FALCON
FLOOR COVERING
Family Owned Since 1972
417-532-3118
109 E. Commercial, Lebanon, MO

DISHWASHER: Black, works. \$50. Lebanon, 417-532-3734.

AUCTION REMINDER: Every Wednesday at 10:30 am. Farmington Livestock. Please see our Auction Directory for more information.

WANTED TO BUY, SELL OR TRADE Hagger Pottery. Festus area. 314-413-9065, calls only, no text.

PORTER CABLE NAIL GUN: BN138, 18ga brad nailer, new in case, manual, 1 3/8th-1 5/8th. \$48 OBO. Ava, 417-686-0032

Custom Homes, Pole Barns and Remodels



*Siding • Roofing • Decks • Foundations
(Stem Walls & Footings) • Excavator & Dozer Work.*

Amish Built Insured



Brian Williams Excavation & Construction
Major Credit Cards Accepted **417-245-0147**



TARTER CATTLEMEN: Series 6, squeeze chutes, auto headcatch, new. \$2,975 Series 3\$1875. 573-205-7860, Owensville.

PUT MORE \$\$\$ IN YOUR POCKET!!
Lewis Cattle Oiler. 417-286-3540 or 774-696-2344.

OLIVER 1650 TRACTOR: 65hp, 6cyl, gas, 2wd, open station, good rubber, front-end loader, w/bale spear. \$7250. 573-205-7860

3 OUTBOARD MOTOR PROPELLERS: 1 is 11.4x10, 1 is 10x13, 1 is 14.5x15. good to like new condition. \$95all. Rolla, 573-364-7465.

2 BIG PARAKEET CAGES: and misc. \$200 for all. 417-646-8807.

PUPPIES TO GIVE AWAY: Black Lab, Australian Shepherd and Great Pyrenees mix. Black. Wormed, ready to go. 573-202-4105.

Is Your Log Home Starting To Look UGLY?

Professional Staining & Repair
(Log Homes & Wood Siding)

Call **Pine Ridge Rustic**
Log Home Building Supplies

573-729-7226

www.pineridgerustic.com



CDL IN ONE DAY!!: Family owned and operated, Insured, Over 10 years of experience, Training available for all states, Short wait time for appointments, Contact us today to schedule your appointment!! CREDIT CARDS EXCEPTED. (573-353-2853).

GREAT PYRENEES PUPS: 3boys, be ready 4-20-19, shots and wormed, \$125 each. Salem, 573-453-5398.

25HP MOTOR/ 3 PHASE CONVERTOR: 573-747-3767.

TIRES FOR SALE: set of 4, 255x50xR20s. \$100. Richland, 573-286-8423.

AUCTION REMINDER: Cattle Sale every Monday at Noon. Salem Livestock. Please see our Auction Directory for more information.

\$2,500 - \$11,000 LOT

Lindsay Chevrolet & Lindsay Ford

Mon.-Fri. 8 am - 7 pm
Sat. 8 am - 5 pm
Not responsible for typos.
* with approved credit

417-588-7995

West City Route 66
& South Monroe
Lebanon, MO

Bobby Rogers, Manager • Aaron Wehner, Finance • Mike Forner, Steve "Whitey" Helton, Larry Davis, Sales

Cars

QC75331	2003 FORD T-BIRD CONV. V8, AUTO, FWD, GRAY.....	\$11,900
QC75376	2010 HONDA CIVIC LX 4CYL., AUTO, FWD, BLACK	\$10,600
QC75444	2013 FIAT 500 POP 4CYL., AUTO, FWD, BRONZE.....	\$8,800
LT28470	2013 NISSAN JUKE S 4CYL., AUTO, FWD, GRAY	\$8,900
LC28434	2013 VOLTSWAGON JETTA TDI 4CYL., AUTO, FWD, BLUE	\$9,900
QC75443	2014 CHEVY SONIC LS 4CYL., AUTO, FWD, BLACK	\$8,900
LC28499	2014 CHEVY SPARK LT 4CYL., AUTO, FWD.....	\$9,900
QC75336	2014 TOYOTA CAMRY LE 4CYL., AUTO, FWD, SILVER.....	\$11,900
LC28359	2014 CHEVY SONIC LT 4CYL., AUTO, FWD, RED	\$9,400
LC28344A	2014 CHEVY IMPALA LTZ V6, AUTO, FWD, WHITE.....	\$9,700
LC28385	2014 CHEVY SPARK LT 4CYL., AUTO, FWD, WHITE	\$9,800
LC25367	2014 CHEVY IMPALA LS V6, AUTO, FWD, BLACK.....	\$9,700
LC28469	2015 CHEVY SONIC LS 4CYL., AUTO, FWD, WHITE	\$10,900
QC75386	2015 CHRYSLER 200 LIMITED 4CYL., AUTO, FWD, BLUE	\$9,400
LC7050A	2015 CHEVY SPARK LS 4CYL., 5SPD., FWD, BLUE.....	\$9,300
LC28361	2015 CHEVY SONIC LTZ 4CYL., AUTO, FWD, WHITE	\$9,700
QC75363	2016 CHEVY CRUZE LS 4CYL., AUTO, FWD, RED	\$11,400

Trucks

QT75292	2005 DODGE RAM CREW V8, AUTO, 4WD, BEIGE.....	\$10,900
LT7061A	2006 FORD F450 6.0 D. MOTOR AUTO, RWD, FLAT BED, WHITE	\$8,400
LT28260	2006 CHEVY SILVERADO V6, AUTO, 2WD, BLACK.....	\$6,800
LT28393	2011 DODGE DAKOTA ST EXT. CAB, V6, AUTO, RWD, WHITE	\$7,900
QT57489A1	2011 CHEVY SILVERADO LT EXT. CAB, V8, AUTO, RWD, WHITE	\$9,900

Trucks

QT75289	2012 DODGE RAM REG. CAB V8, AUTO, RWD, NICE TRUCK, BLACK	\$12,400
QT75395	2012 GMC CANYON SLE REG. CAB, 5CYL., AUTO, RWD, BLUE.....	\$9,400

SUVs

QT75114A	2005 FORD ESCAPE XLT V6, AUTO, 4WD, GRAY.....	\$6,600
QT75268	2007 DODGE NITRO R/T V6, AUTO, 4WD, WHITE.....	\$8,900
QT75456	2008 HUMMBER H3 5CYL., AUTO, AWD, RED.....	\$10,900
LT28504A	2008 SATURN OUTLOOK XR V6, AUTO, FWD, LOADED, BLUE	\$6,600
LT28332	2008 SUZUKI XLT PREMIUM V6, AUTO, FWD, SILVER	\$6,500
LT28465A	2010 SATURN VUE XE 4CYL., AUTO, FWD, SILVER.....	\$6,800
QT75196B2	2011 CHEVY EQUINOX LT 4CYL., AUTO, AWD, GRAY	\$11,900
LT28377	2012 FORD ESCAPE XLT V6, AUTO, FWD, WHITE.....	\$10,900
LT28418A	2013 CHEVY CAPTIVA SPORT LT 4CYL., AUTO, FWD, SILVER.....	\$10,400
QC75392A	2013 HYUNDAI SONATA LIMITED 4CYL., AUTO, FWD, BLUE, 71K MILES	\$10,900
QT75335	2014 JEEP COMPASS 4CYL., AUTO, 4WD, SPORT, RED.....	\$11,200
QT75405A2	2014 CHEVY CAPTIVA SPORT LTZ 4CYL., AUTO, FWD, 88K MILES, SILVER	\$11,600

Vans

QC75394	2016 DODGE GRAND CARAVAN SE V6, AUTO, FWD, GRAY.....	\$12,900
QT75394	2016 DODGE GRAND CARAVAN SE V6, AUTO, FWD, 107K MILES	\$12,900

\$5,000 or Less!

LT28334A	2007 SUZUKI GR. VITRA V6, AUTO, 4WD, GRAY.....	\$4,700
QT75375	2008 MITSUBISHI ENDEAVOR LS V6, AUTO, 4WD, BLACK.....	\$4,900

OVER 90 PRE-OWNED UNITS IN STOCK!

WWW.LINDSAYAUTOGROUP.COM

MALIBU BLOW OUT SALE!



New remaining 2018 Malibu's
up to **25% Off!**

Starting as low as \$18,795 or \$273 per month!



CHEVROLET 

FIND NEW ROADS™

LINDSAY CHEVROLET

"Where The Trucks Are"

OPEN: M-F 8-7 • SAT. 8-5 IN LEBANON AT 285 W. ELM • 417-532-3114

David Bean
Manager

Jeremy Johnson
Sales

Brent Hale
Sales

Dennis Nash
Asst. Manager

Shelby Cole
Finance

www.lindsaychevroletlebanon.com



DRIVE AWAY WITH A 2018 CHEVROLET TRUCK TODAY!

Limited amount of trucks available



New remaining 2018 Chevrolet Silverado Crew Cab, 1/2 Ton, 4x4, Trucks

MARKED DOWN as much as **\$12,000** OFF MSRP

Payments as low as \$536* per month!

*with approved credit



CHEVROLET 

FIND NEW ROADS™

LINDSAY CHEVROLET

"Where The Trucks Are"

OPEN: M-F 8-7 • SAT. 8-5 IN LEBANON AT 285 W. ELM • 417-532-3114



David Bean
Manager

Jeremy Johnson
Sales

Brent Hale
Sales

Dennis Nash
Asst. Manager

Shelby Cole
Finance

www.lindsaychevroletlebanon.com





LINDSAY CHEVROLET USED CAR & TRUCK DEPT.



330 W. ELM • LEBANON, MO

417-532-3114

MON.-FRI. 8-7; SAT. 8-5

Joe Jeffery, Manager • Nikki Keller, Finance, Brent Snook, Bryan Sien, Frankie Doublin & Tina Riesinger, Sales — Not responsible for typos.

CARS

LC28352 2018 Chevrolet Malibu LS Dk Blue, 1.5L Turbo, Air Cond, Loaded GM Program Vehicle	\$15,900
LC28114 2018 Chevrolet Malibu LT Gray, 1.5L Turbo, Air Cond, Loaded Off Lease Vehicle	\$16,700
LC28179 2018 Chevrolet Malibu LT White 1.5L Turbo, Air Cond, Loaded GM Program Vehicle GM CERTIFIED	\$18,500
LC28330 2018 Chevrolet Malibu LT White, 1.5L Turbo, Air Cond, Loaded GM Program Vehicle	\$16,700
LC28273 2018 Chevrolet Malibu LT Brown, 1.5L Turbo, Air Cond, Loaded GM Program Vehicle	\$16,700
LC28452 2018 Chevrolet Malibu LT Pearl White, 1.5L Turbo, Air Cond, Loaded Local Trade	\$16,900



2018 Chevrolet Malibu LT
Silver 1.5L Turbo, Air Cond, Loaded Off Lease Vehicle

LC28439
\$16,700

0 Down
72 Months 4.99%
\$269 per month

SUVS

LT28371 2018 Chevrolet Express 1T LT White, 4.3LV6, Air Cond, 15 Pass Seating, Loaded GM Program Vehicle	\$26,900
LT28346 2018 Chrysler Pacifica Touring L Plus White, 3.6LV6, Air Cond, Leather, Fully Loaded Off Lease Vehicle	\$31,400
LT28267 2017 Dodge Gr Caravan Sxt Maroon, 3.6LV6, Air Cond, Leather, Loaded Off Lease Vehicle	\$16,700
LT28261 2017 Buick Enclave Convenience White, 3.6LV6, Air Cond, 3rd Row Seats, Loaded Off Lease Vehicle	\$26,900
LT28343 2014 Buick Encore Conv FWD Blue, 1.4L Turbo, Air Cond, Loaded Off Lease Vehicle	\$14,700
LT28404 2018 Buick Envision Premium AWD Silver, 2.0L Turbo, Air Cond, Leather, Loaded GM Program Vehicle	\$29,900
LT28430 2018 Buick Enclave Essence AWD Maroon, 3.6LV6, Air Cond, Sunroof, Leather, Loaded GM Program Vehicle	\$34,900
LT28137 2015 Buick Enclave Premium AWD White Diamond, 3.6LV6, Air Cond, Leather, Loaded Off Lease Vehicle	\$24,700
LT 28280 2017 Chevrolet Equinox LT AWD Burgundy, 2.4L 4cyl, Air Cond, Loaded GM Off Lease Vehicle	\$17,900
LT 28299 2018 Chevrolet Equinox LT AWD White, 1.5L Turbo, Air Cond, Loaded GM Program Vehicle	\$21,700
LT28338 2018 Chevrolet Equinox LT AWD White 1.5L Turbo Air Cond, Loaded GM Program Vehicle	\$20,900
LT28450 2018 Chevrolet Equinox LT AWD Silver, 1.5L Turbo, Air Cond, Loaded GM Program Vehicle	\$20,900
LT28200 2017 Chevrolet Equinox LT FWD White, 2.4L 4cyl, Air Cond, Heated Seats Loaded Off Lease Vehicle	\$17,800
LT28240 2017 Chevrolet Equinox LT FWD Gray, 2.4L 4cyl, Air Cond, Loaded Off Lease Vehicle	\$17,700
LT28422 2017 Chevrolet Equinox LT FWD Maroon, 2.4L 4cyl, Air Cond, Sunroof, Loaded Off Lease Vehicle	\$16,900
LT28337 2018 Chevrolet Equinox Premier AWD Silver, 1.5L Turbo, Air Cond, Leather, Loaded GM Program Vehicle	\$23,800
LT28431 2018 Chevrolet Equinox Premier AWD White 1.5L Turbo, Air Cond, Leather, Loaded GM Program Vehicle	\$24,500
LT28309 2018 Chevrolet Equinox Premier AWD White, 1.5L Turbo, Air Cond, Leather, Loaded GM Program Vehicle	\$21,800
LT28303 2018 Chevrolet Equinox Premier FWD Silver 1.5L Turbo, Air Cond Leather, Loaded GM Program Vehicle with 11XXX Miles	\$22,800
LT28353 2018 Chevrolet Equinox Premier FWD Silver, 1.5L Turbo, Air Cond, Leather, Loaded GM Program Vehicle	\$21,800
LT28276 2018 Chevrolet Suburban LT 4X4 Silver, 5.3LV8, Air Cond., Leather, Loaded Off Lease Vehicle	\$38,900
LT28184 2018 Chevrolet Tahoe LT 4 X 4 Black, 5.3LV8, Air Cond, Leather, Loaded GM Program Vehicle	\$41,500
LT28416 2018 Chevrolet Traverse 3LT AWD Pearl White, 3.6LV6, Air Cond, Sunroof, Leather, 3rd Row Seats, Loaded	\$36,900
LT28410 2018 Chevrolet Traverse LT AWD Gray, 3.6LV6, Air Cond, Heated Seats, Loaded GM Program Vehicle	\$30,900
LT28432 2018 Chevrolet Traverse Premier AWD Maroon, 3.6LV6, Air Cond, Leather, Loaded GM Program Vehicle	\$36,500
LT28399 2019 Chevrolet Trax LS FWD Blue, 1.4L Turbo, Air Cond, Loaded GM Vehicle with 200 Miles	\$19,900
LT28428 2015 Chevrolet Trax LT FWD Orange, 1.4L Turbo, Air Cond, Loaded Off Lease Vehicle	\$15,900

QT56909 2017 Ford Edge Sel AWD Burgundy, 2.0L EcoBoost, Air Cond, Nav, Leather, Sunroof, Less than 100 Miles	\$29,500
QT74921A 2015 Ford Edge Titanium AWD Black, 2.0L EcoBoost, Air Cond Leather, Loaded Local Trade	\$23,700
QT57316A 2017 Ford Escape Se FWD Maroon 1.5L EcoBoost Air Cond, Loaded Local Trade	\$17,300
QT57284A 2013 Ford Expedition EL Limited Black, 5.4LV8, Air Cond, Sunroof, Leather, Navigation, Loaded	\$17,900
QT75384A 2016 Ford Explorer XLT 4 X 4 Black 3.5LV6 Air Cond, Leather, Sunroof, 3rd Row Seats, Loaded Local Trade	\$27,900
QT5742C1 2016 Ford Explorer XL T 4 X 4 Black, 2.3L EcoBoost, Air Cond, 3rd Row Seats, Loaded	\$26,900
LT28245 2018 GMC Acadia SLE AWD Maroon, 2.5L 4cyl, Air Cond, Loaded GM Program Vehicle	\$28,800
LT28130; 2018 GMC Acadia SLE FWD White Pearl, 2.5L 4cyl, Air Cond, Loaded GM Program Vehicle	\$26,500
LT28227 2018 GMC Terrain SLE AWD Brown, 1.5L Turbo, Air Cond, Loaded GM Program Vehicle	\$23,500
LT71208 2014 GMC Terrain SLT FWD White, 3.6LV6, Air Cond, Leather, Sunroof, Loaded Local Trade	\$14,800
LT28263A 2017 Jeep Cherokee Trailhawk 4 X 4 Hydro Blue, 2.4L 4cyl, Air Cond, Leather, Loaded Local Trade	\$24,900
LT28425 2018 Jeep Compass Latitude 4 X 4 Blue, 2.4L 4cyl, Air Cond, Loaded and Only 7XXX-Miles	\$22,700
LT28412A 2016 Jeep Grand Cherokee Limited White, 3.6LV6, Air Cond, Sunroof, Leather, Loaded Local Trade with 18XXX Miles	\$29,900
LT28448 2018 Jeep Grand Cherokee Oveland White, 3.6LV6, Air Cond, Leather, Sunroof, Navigation Sys, Loaded Off Lease	\$37,900
QT57468A 2017 Jeep Renegade Trailhawk Red, 2.4L 4cyl, Air Cond, Loaded Local Trade	\$18,500
QT75254A 2014 Jeep Wrangler Sahara 2dr Black, 3.6LV6, Air Cond, Leather, 9500# Winch, Custom Bumpers, Lift Kit, 27XXX Miles	\$31,900
LT6882A 2018 Volkswagen Atlas SEL AWD White, 3.6LV6, Air Cond, Sunroof, Leather, 3rd Row Seats, Loaded	\$36,900



2018 Chevrolet Equinox LT Awd
Silver, 1.5L Turbo Air Cond, Htd seats Loaded GM GM Program Vehicle

LT28347
\$20,800

0 Down
72 Months 4.99%
\$335 per month

TRUCKS

LT7203A 2016 Chevrolet Colorado Crew LT 4 X 4 Red, 3.6LV6, Air Cond, Loaded Local Trade with only 12XXX Miles	\$27,900
LT7194A 2016 Chevrolet Silverado 2500 Crew High Country 4 X 4 Black, Duramax, Air Cond, Leather, Sunroof, Htd/Cooled Seats, Loaded Local Trade	\$45,800
LT6985A 2018 Chevrolet Silverado 2500 Crew LTZ 4 X 4 Black, Duramax, Air Cond, Leather, Sunroof, Htd/Cooled Seats, Loaded Local Trade	\$54,800
QT57412A 2011 Chevrolet Silverado 3500 Crew LTZ 4X4 White, Duramax, Air Cond. Leather, Loaded Local Trade with 43XXX Miles	\$37,900
LT28230 2017 Chevrolet Silverado DBL Cab LT 4 X 4 White, 5.3LV8, Air Cond, Loaded Off Lease Vehicle	\$29,500
LT28364 2018 Chevrolet Silverado DBL Cab LT 4 X 4 Red, 5.3LV8, Air Cond Alloy Wheels Loaded Off Lease Vehicle	\$28,900
LT28389 2015 Ford F150 Crew Lariat 4 X 4 Black/Bronze, 3.5L EcoBoost, Air Cond, Leather, Loaded Local Trade	\$30,900
QT57334A 2017 Ford F150 Crew XLT 4 X 4 Maroon, 2.7L EcoBoost, Air Cond, Loaded Local Trade with 26XXX Miles	\$32,900
QT57306A 2017 Ford F250 Crew Platinum FX4 4 X 4 Wht Plat, 6.7L Diesel, Air Cond, Leather, Fully Loaded	\$58,900
QTS7369A 2015 Ford F350 Crew XL T 4 X 4 Bronze Fire, 6.7L Diesel, Air Cond, Loaded Local Trade Prior Paint Repair	\$39,900
LT28222 2008 Ford F350 Ext XL T 4 X 4 Sand, 6.4L Diesel, Air Cond, Bale Bed, Prior Salvage Title	\$18,500
QTS7236B 2007 GMC Sierra 2500 Crew W/T 4 X 4 Red, 6.0LV8, Air Cond, Loaded Local Trade	\$12,900
LT28253 2018 Nissan Frontier Crew Pro-4x 4 X 4 Black, 4.0LV6, Air Cond, Navigation, XM Radio, Loaded Off Lease Vehicle	\$26,300

BEAUTIFUL DOBERMAN PINSCHER PUPPIES: Males \$650, Females, \$500. Parents are Double Registered AKC and CKC. Puppies are CKC Registered. UTD on shots, come with health records. Tails docked and dewclaws removed. 417-532-0483.

JET 4" JOINTER: \$100. Grizzly Hydraulic Lift Table. \$100. Lebanon, 573-247-2598.

TARTER 3PC ROUND HAY RINGS: 3 styles in stock. \$175+up. 573-205-7860, Owensville.

LOOKING FOR WATER BICYCLE: Any shape. Leave message, 618-758-2830.

1987 SHELBY TURBO Z DAYTONA: 74,000 miles, excellent condition. \$5,500. 314-616-9862.

We Buy White Oak Logs!

Independent Stave Company welcomes all white oak suppliers!

- ✓ Top prices for your logs
- ✓ Experienced log buyers
- ✓ Professional service

www.independentstavecompany.com

Chad Cook | Salem Wood Products

417.718.2950

5 miles north of Salem, MO on Hwy 19



Cowtown Express Car Wash
 Highway 63 South, Rolla, MO
 Call Wade 573-368-1430 Or 573-426-2500

\$4,500 And 10% Down \$95 Per MO W.A.C.

NEW Winchester Star & Bale Trailers
 Powder Coated 18+2, 7,000 Axles
www.cowtownusainc.com

LAKE OF THE OZARKS- Family Fun-2 lot Special \$6,995-\$95 down, \$89 per month. Own for investment. Owner Financing. Free lake access and boat ramps. Also: close to a handicapped accessible covered fishing dock with lighted area. Prices goes through APRIL 15th. Take Lake Road 135-12 to Ivy Bend Office. Open Thurs, Fri, Sat, Sun, Mon and Tues. Call until 7PM everyday. 573-372-6493.

WANTED CONVERSION VAN: 2000-2010 GMC, Chevy, or Dodge, prefer one owner, high top, low miles, excellent condition. Reasonably priced. Smoke Free. Doniphan, MO 573-255-3191.

JOHN DEERE 730 PARTS. Call 417-241-0006.

JERSEY/HEREFORD CROSS BULL: 8 months old. \$500obo. Salem, 573-453-5398.

NEW HOLLAND: 1411 diskbine. \$7,250. 573-765-4406.

You pull it, we sell it... CHEAP!

Lebanon, MO
 22395 Rt. 66
 417-588-3555
 Fax 417-588-8955

Mon-Fri 8am - 6pm • Sat 8am - 4:30pm • Sun 9am - 4pm

WWW.SSUPULLIT.COM
 Located next to S&S Recycling.

Roll-off, Trailer, and Mobile Crushing Services Available

For All Your Metal Recycling Needs

Lebanon, MO	Mtn. Grove, MO
22395 Rt. 66 • 417-588-3555	8930 First Rd • 417-926-3360
Fax 417-588-8955	Fax 417-926-0180

Monday-Friday 8:00am-4:30pm (Closed 12pm-1pm Lunch)
 Saturday 8:00am-Noon
 email: contact@ss-recycling.com
Buyer of all types of scrap metal.

8FT OFFSET DISK: good blades. \$2,500. 573-765-4406.

WWW.MYWEEKLYTRADER.COM

RED BONE COON HOUND: hunts good. 417-362-9423.

FOR SALE 1996 F-250: 4x4 Diesel truck. 573-697-5627.

BOBCAT 853 DIESEL SKID STEER LOADER: Cab, 58hp. \$8,950. 573-765-4406.

TENT CAMPER UTILITY TRAILER: 5x8. \$250. Vienna, 573-759-7143.

Fresh Spring Specials

Hurry in for the best selection because these deals won't last!

DON VANCE AUTO GROUP OVER 1000 VEHICLES IN STOCK!

FIND YOUR NEXT CAR @ DONVANCEAUTOGROUP.COM

FORD



2013 Ford Fusion SE
Stock #: 29842A
Mileage: 102,793 • Blue
1.6L Turbo • FWD

\$9,990



2015 Ford Taurus SEL
Stock #: 28960A
Mileage: 94,821 • Dark Side Metallic
3.5L V6 • Flexible Fuel

\$11,975



2014 Ford Escape SE
Stock #: 30039A
Mileage: 91,360 • Magnetic
Turbo • Sport Utility • AWD

\$13,990



2008 Ford Super Duty F-250 SRW
Stock #: 29996A
Mileage: 183,084 • Blue
6.4L V8 Turbo Diesel
Crew Cab Pickup • 4WD

\$14,990



2010 Ford Fiesta S
Stock #: 29819A
Mileage: 101,596 • Silver
3.5L V6 • FWD • Automatic

\$10,990



2012 Ford Edge Limited
Stock #: 30120A
Mileage: 100,219 • Red Candy
3.5L V6 • Station Wagon

\$12,990



2011 Ford Ranger Sport
Stock #: 30113A
Mileage: 102,346 • Red • 4.0L V6
Extended Cab Pickup • 4WD

\$14,990



2012 Ford F-150 XLT
Stock #: 28751A
Mileage: 84,588 • Blue • 5.0L V8 Flexible Fuel
Regular Cab Pickup • 4WD

\$16,990

CHEVROLET



2007 Chevrolet Tahoe LT
Stock #: 29343A
Mileage: 177,126 • Summit White
5.3L V8 Flexible Fuel • Sport Utility • 4WD

\$10,990



2012 Chevrolet Colorado LT w/ 1LT
Stock #: 29312B
Mileage: 87,851 • Victory Red
4WD • Crew Cab Pickup

\$14,975



2014 Chevrolet Silverado 1500
Stock #: 29353A
Mileage: 72,241 • Black • 5.3L V8
Crew Cab Pickup • Automatic • RWD

\$22,975



2005 Chevrolet Impala
Stock #: 8542B
Mileage: 217,998 • White
6 Cyl • Automatic FWD

\$4,990



2010 Chevrolet Camaro 1LT
Stock #: 29505B
Mileage: 76,474 • Black
3.6L V6 • Manual

\$13,990



2013 Chevrolet Silverado 1500 LT
Stock #: 28889B
Mileage: 71,840 • Summit White
5.3L V8 • Double Cab • RWD

\$17,975



2017 Chevrolet Colorado 4WD Z71
Stock #: 29446A
Mileage: 14,072 • Cajun Red • 3.6L V6
Crew Cab Pickup • Automatic • 4WD

\$29,975



2016 Chevrolet Equinox LT
Stock #: 7923A
Mileage: 41,674
Pearl White • 4 Cyl • FWD
Automatic

\$15,975

DODGE



2015 Dodge Charger SE
Stock #: 29555A
Mileage: 68,886 • Red Line Red
3.6L V6 • Automatic • RWD

\$14,990



2008 Dodge Nitro SXT
Stock #: 8379B
Mileage: 124,028 • Light Gray • 6 Cyl
Automatic • Sport Utility • 8.4WD

\$7,990



2010 Dodge Grand Caravan SXT
Stock #: 8255A
Mileage: 125,860 • Bright Silver
Mini-Van Passenger • 6 Cyl • FWD

\$9,990



2015 Dodge Dart GT
Stock #: 8554A
Mileage: 61,363 • Bright White
4 Cyl • Manual • FWD

\$12,990



2015 Dodge Challenger SXT
Stock #: 29730A
Mileage: 33,520 • Pitch Black
3.6L V6 • 2 Door • RWD • Automatic

\$18,975



2007 Dodge Ram 1500 SLT
Stock #: 8501B
Mileage: 180,220 • 10. Blue • 8 Cyl
Crew Cab Pickup • 13.4WD

\$9,990



2013 Dodge Journey SXT
Stock #: 7150S
Mileage: 133,178 • Storm Grey
Station Wagon • 6 Cyl • AWD

\$10,990



2007 Dodge Ram 3500 SLT
Stock #: 7792A
Mileage: 180,315 • Inferno Red • 6 Cyl
Crew Cab Pickup • 4WD • Automatic

\$19,475

VARIETY AND QUALITY



2010 Jeep Wrangler Sport
 Stock #: 29888A
 Mileage: 99,781 • Mango Tango Pearl
 Convertible • 3.6L V6 • Manual
\$16,475



2017 Jeep Compass Latitude
 Stock #: 1628U
 Mileage: 948 • Diamond Black
 Sport Utility • 4WD • Automatic
\$20,975



2016 Jeep Wrangler Unlimited Rubicon
 Stock #: 29204A
 Mileage: 38,080 • Billet Silver • 3.6L V6
 Convertible • 4WD • Automatic
\$31,975



2016 Jeep Patriot Sport
 Stock #: 1647U
 Mileage: 29,488 • Granite Crystal
 4 Cyl • FWD • Variable Transmission
\$13,990



2017 Jeep Renegade Latitude
 Stock #: 29570A
 Mileage: 39,083 • Alpine White
 4 Cyl • Sport Utility • 4WD
\$17,990



2019 Jeep Cherokee Limited
 Stock #: 30056A
 Mileage: 12,031 • Bright White
 Sport Utility • 3.2L V6 • Automatic
\$28,990



2014 Jeep Compass Sport
 Stock #: 6552RA
 Mileage: 47,229 • Billet Silver • 4 Cyl
 Sport Utility • 4WD • Automatic
\$13,990



2011 Jeep Wrangler Sport
 Stock #: 8454A
 Mileage: 46,554 • Cosmos Blue
 Convertible • 6 Cyl • Automatic • 4WD
\$18,475



2013 RAM 1500 Tradesman
 Stock #: 29790A
 Mileage: 87,590 • Bright White
 Regular Cab Pickup • 4WD • Automatic
\$18,990



2015 RAM 1500 Big Horn
 Stock #: 28242B
 Mileage: 84,929 • Granite Silver
 Crew Cab Pickup • 5.7L V7
 4WD • Automatic
\$24,990



2016 RAM 1500 Big Horn
 Stock #: 29456A
 Mileage: 32,270 • Bright White
 Crew Cab Pickup • 3.0L V6
 Turbo Diesel • 4WD • Automatic
\$20,975



2017 RAM 3500 Limited
 Stock #: 1633U
 Mileage: 985 • Red • Crew Cab Pickup
 Turbo Diesel • 4WD • Automatic
\$63,975



2013 RAM 1500 Express
 Stock #: 28847D
 Mileage: 48,110 • Bright White • Crew Cab
 Pickup • 5.7L V8 • 4WD • Automatic
\$21,990



2015 RAM 1500 Sport
 Stock #: 1632UA
 Mileage: 33,387 • Flame Red
 5.7L V8 • Automatic • RWD
 Regular Cab Pickup
\$35,990



2011 RAM 2500 Laramie
 Stock #: 29722A
 Mileage: 137,215 • Bright Silver • Crew Cab Pickup
 Turbo Diesel • 4WD • Automatic
\$31,990



2014 RAM 1500 Express
 Stock #: 8515A
 Mileage: 180,918 • Black
 Crew Cab Pickup • 4WD • Automatic
\$12,990



2016 Buick Encore
 Stock #: 28788A
 Mileage: 36,868 • Summit White
 Sport Utility • FWD • Automatic
\$14,990



2014 Honda CR-V LX
 Stock #: 30089A
 Mileage: 17,710 • Silver
 Automatic • FWD • Sport Utility
\$16,990



2007 Lexus GX 470
 Stock #: 8273A
 Mileage: 128,220 • Black
 8 Cyl • Sport Utility • 4WD
\$14,990



2017 Cadillac XT5 Platinum AWD
 Stock #: 8383A
 Mileage: 31,094 • Crystal White
 6 Cyl • Automatic
\$38,475



2010 Honda Pilot Touring
 Stock #: 29677A
 Mileage: 154,775 • Silver
 Automatic • 6 Cyl • 4WD
\$10,990



2017 Buick Cascada Sport Touring
 Stock #: 30089A
 Mileage: 7,338 • True Blue
 FWD • Automatic
\$26,990



2016 Honda Civic Coupe EX-L
 Stock #: 8605A
 Mileage: 55,811 • Gray • 4 Cyl
 Variable Transmission • FWD
\$17,990



2013 Audi Q7 3.0T S Line Prestige
 Stock #: 29761A
 Mileage: 125,216 • Gray • 3.0L V6
 Supercharged • Sport Utility • AWD
\$15,990



Actual Vehicle May Differ From Photo

HOME OF UPFRONT PRICING!



ONLY 17 MINUTES EAST OF SPRINGFIELD ON I-44 • DONVANCEAUTOGROUP.COM

800-947-7567 • 417-859-2600



SEE SALESMAN FOR DETAILS. ALL VEHICLES IN STOCK AT TIME OF AD SUBMISSION BUT SUBJECT TO SALE PRIOR TO PRINTING. NOT RESPONSIBLE FOR TYPOGRAPHICAL ERRORS & OMISSIONS. GRAPHICS MAY NOT ACCURATELY REPRESENT AD VEHICLE. PAYMENTS BASED ON 3.99% @ 72 MONTHS SUBJECT TO CREDIT APPROVAL AND PRODUCT AVAILABILITY.

Which Kubota Is Right For You?

Kubota *THE RIGHT EQUIPMENT IS RIGHT AROUND THE CORNER.* **Kubota**

L2501 DT PACKAGE DEAL



25HP Kubota diesel engine***
4WD, Ag Tires, 18' Trailer,
5' Box Blade, Kubota Loader,
5' Land Pride Brush Hog,
6 Year Power Train Warranty***
**\$0 Down, 0% A.P.R.
for 60 months****
\$20,495



ALL-NEW GAS-POWERED RTV-XG850 SIDEKICK

POWER • PERFORMANCE • HANDLING • STYLE

48HP***, 40 mph transport speed, gasoline engine.
Sidekick is a multi-purpose utility vehicle. 4 colors to choose from.

\$0 Down, 0% A.P.R. for 48 months*

L3901 DT PACKAGE DEAL



39 Kubota diesel engine***, 4WD, Ag Tires, 18' Trailer,
5' Box Blade, Kubota Loader, 5' Rotary Cutter,
6 Year Power Train Warranty***
**\$0 Down, 0% A.P.R.
for 60 months****
\$24,795

L3301 DT PACKAGE DEAL



33 Kubota diesel engine***
4WD, Ag Tires, 18' Trailer, 5'
Box Blade, Kubota Loader,
5' Land Pride Brush Hog,
6 Year Power Train Warranty***
**\$0 Down, 0% A.P.R.
for 60 months****
\$23,495

L4701 DT PACKAGE DEAL



47 Kubota diesel engine***, 4 cyl., 4WD, Ag Tires,
18' Trailer, 6' Box Blade, Kubota Loader,
6' Land Pride Rotary Cutter,
6 Year Power Train Warranty***
**\$0 Down, 0% A.P.R.
for 60 months****
\$30,995



Get unmatched Kubota quality. Kubota designed, engineered and built. More package deals available.

Visit Us In TWO Locations!

8665 Outer Road, Mtn. Grove
417-926-5454 • 877-926-5458

4973 W. US Hwy. 160, West Plains
417-256-0420 • 800-766-0420

* \$0 Down, 0% A.P.R. for 48 months. Qualifying Equipment: RTV-XG850. \$0 Down, 0% A.P.R. financing for up to 48 months on purchases of select new Kubota RTV-XG850 equipment from participating dealers' in-stock inventory is available to qualified purchasers through Kubota Credit Corporation, U.S.A.; subject to credit approval. Some exceptions apply. Example: 48 monthly payments of \$20.83 per \$1,000 financed. Offer expires 3/31/19. See us or go to KubotaUSA.com for more information. ** \$0 Down, 0% A.P.R. for 60 months. Qualifying Equipment: BX, B, L, MX and M, MH(M7), RB, DMC, DM, RA and TE Series. \$0 Down, 0% A.P.R. financing for up to 60 months on purchases of select new Kubota L2501 DT, L3301 DT, L3901 DT or L4701 DT equipment from participating dealers' in-stock inventory is available to qualified purchasers through Kubota Credit Corporation, U.S.A.; subject to credit approval. Some exceptions apply. Example: 60 monthly payments of \$16.67 per \$1,000 financed. Offer expires 3/31/19. See us or go to KubotaUSA.com for more information. *** For complete warranty, safety and product information, consult your local Kubota dealer and the product operator's manual. Power (HP/KW) and other specifications are based on various standards or recommended practices. **** Only terms and conditions of Kubota's standard Limited Warranty apply. For warranty terms, see Kubota's Limited Warranty at www.KubotaUSA.com or authorized Kubota dealers.

NEW STOCK!!! Wow, do these look **GOOD!!!** Call 573-657-2176 amegamobile-homes.com

AUCTION REMINDER: Online Auction going on now. Atterberry Auctions. Please see our Auction Directory for more information.

CHECKERED WALNUT WOOD STOCK PISTOL GRIP: for Marlin Model 336 or 1895. \$100. Washington. 636-239-2695.

1989 VOLVO FE6: Turbo, diesel, 6 cylinder, 5 speed. 16' flatbed, only 35K miles, impact resistant hitch. Warsaw, 660-723-4688.

AUCTION REMINDER: Saturday, April 6th, 9am. Brehe Auction. Please see our Auction Directory for more information.

WHIRLPOOL RANGE: white, self-cleaning, double oven, electric, glass-top w/warm zone, works perfect. \$375. 573-286-8423.

John Deere 160CLC Excavator



\$23,500, 2 available.

Call Mark (314) 560-3112

1993 FREIGHTLINER DUMP TRUCK w/ Pup trailer for sale: Runs good, tires fair, everything works good. For information, 573-247-1862, Salem, MO.

LIMOUSIN BULLS: 18-30 mos. old, Homo Black, polled, AI sired. 573-301-2316, 573-301-2074.

GUN SHOW

APRIL 5TH - APRIL 7TH

Friday: 3PM-7PM • Saturday: 9AM-5PM • Sunday: 9AM-3PM

~ Cape Girardeau, MO ~

Cape Drury Hotel & Conference Center

(3351 Percy Dr.)

BUY • SELL • TRADE

INFO: 563-927-8176 • www.rkshows.com



THE RIGHT EQUIPMENT FOR EVERY JOB

Always ready when YOU need it.

+ From general construction to manufacturing, and every project in between, Fabick Cat is ready to serve your industry. We have the equipment you need to get the job done.

+ NEW | USED | RENTAL | SERVICE
WE DO IT ALL

800.845.9188 | www.fabickcat.com

"TO EVER SERVE OUR CUSTOMERS BETTER"



2015 KUBOTA TRACTOR: 25hp, 4x4 w/ hydrostat, includes loader, boxblade and disc. \$16,500. Rolla, 573-308-2550.

FOR SALE: Bare cylinder head #R20504R, for JD 4010 Diesel Tractor, cut for 4020 valves. \$200. 573-459-6488.

6BAR CONTINUOUS FENCE: 15 Sections, 16ga, 3cross supports, 20' long-55" tall, 1 1/4 tubing. \$85each. 573-205-7860.

AKC GERMAN SHEPHERD PUPPIES: Available in March, papered, black, 5 left. \$650. 417-208-7646, Ava.

CLEANING OUT KITCHEN CABINETS & CUPBOARDS: Inside only. \$125 or trade. 573-327-9068.

AUCTION REMINDER: Spring Firearms April 13, 10 a.m. J&J Sales. Please see our Auction Directory for more information.

AUCTION REMINDER: Real Estate & Business Liquidation Auction. Saturday March 30 @ 10:00 am. Nance Auction. Please see our Auction Directory for more information.

STANDARD BRED 9yr old STALLION: 14.2 HH, Bay, Pacer, Rides, purebred, no papers. \$1,200. Grey 4yr old, grade, Quarter Horse stud, Rides. \$1,200. Purebred Quarter Horse Buckskin yearling colt, muscled, growthy. \$1,200. Mammoth Jack-Ass: 15HH, Dun. \$2,500. Delivery fee, \$100. Maynard, Arkansas, 262-290-1619.

2001 FORD WINDSTAR: St. James 573-699-4651.

17 JD HX-15 BUSHHOG: Chains like new. \$14,750. 870-458-2238.

REGISTERED BLACK ANGUS BULLS: 417-453-6332. Plato.

TRUCK, TRAILER, AND SEMI TIRES

on sale now!

LETTERMAN
TRIPLE T
REPAIR LLC
TRUCKS, TRAILERS, & TRACTORS
 417-630-2249
 417-664-0829

*Tax not included

<p>MASTERTRACK Trailer Tire (265/75/16) 10-Ply • Mounted \$121.44*</p> <p>FALKEN AT3 Wild Peak (265/75/16) \$150.00*</p>	<p>YOKOHAMA (295/75/22) 5Ry617 • Steer \$419.00*</p> <p>Ironman 1208 Drive Tire Close Shoulder • 11R22.5 \$293.76*</p>
--	--

739 Honey Locust Rd. • Niangua, MO 65713

WEEKLY TRADER MAGAZINE



AUCTION DIRECTORY

Thursday, March 28

12:00 PM Freeman Auctions & Appraisals 38

Saturday, March 30

10:00 AM Southwest Auction Service 25

10:00 AM Nance Auction Service 32

10:00 AM Foster Auction & Appraisal 37

12:00 PM Buffalo Livestock Market 36

6:00 PM Wheeler Livestock Auction 28

Sunday, March 31

10:00 AM Southwest Auction Service 25

1:00 PM Nance Auction Service 33

Monday, April 1

10:00 AM Gary Sexton Auctioneers 37

12:00 PM Salem Livestock Auction 37

Tuesday, April 2

10:30 AM Farmington Livestock 37

Online Atterberry Auction 36

Wednesday, April 3

6:00 PM Roberts Bros. Sale Barn 36

Thursday, April 4

11:00 AM Mid Missouri Stockyards 37

Friday, April 5

5:00 PM Diamond S Auction 31

Saturday, April 6

9:00 AM Bruce & Le'AN Auction 26

9:00 AM Brehe Auctioneering Service 27

10:00 AM Diamond S Auction 31

10:00 AM Danahy Auction 34

10:00 AM Rocking R Auction 35

6:00 PM Mid Missouri Stockyards 37

Tuesday, April 9

6:00 PM Salem Livestock Auction 37

Saturday, April 13

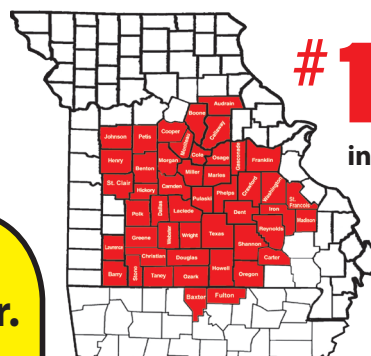
10:00 AM J&J Sales 29

Friday, May 10

3:00 PM Prairie Grove Amish/Mennonite 30

Saturday, May 11

9:00 AM Prairie Grove Amish/Mennonite 30



#1 Rural Shopper

in Central Missouri

Reader's Choice!

Call 1-800-665-8875 to get your auction listed in the Weekly Trader.

AUCTIONEERS Did you know the WEEKLY TRADER covers more counties in rural Missouri than any other publication?

Firm deadline is 12:00 PM Friday, prior to next week's Thursday publication date.

SOUTHWEST AUCTION SERVICE 2-DAY AUCTION!

Location: 151 Ste Hwy 76, Rocky Comfort, MO (outside of Wheaton)

Rain or Shine! Concessions Available! TAKING CONSIGNMENTS UP TO 9:00 am Auction Day!

SALE DIRECTIONS: FROM WHEATON, MO: Take Hwy 86 one mile South to Hwy 76, turn West, go 1/4 mile to sale on south side of road. Look for 3 green barns. **FROM CASSVILLE, MO:** Take Hwy 86/76 West 14 miles, stay West on Hwy 76, go 1/2 mile to sale on south side. **FROM ANDERSON, MO:** Take Hwy 76 East approx. 25 to 30 miles to Rocky Comfort, Mo. Go 3 miles on Hwy 76 to sale on south side of road. **FROM MONETT, MO:** Take Hwy 37 South, go 10 miles to Purdy, Mo. Turn West on Hwy B, go 10 miles to Hwy 86, turn South. Go 4 miles to Wheaton (follow Wheaton directions). **FROM NEOSHO, MO:** Take Hwy 60 North/East 4 miles to Hwy 86. Turn East, go 25 miles to Wheaton. SW Auction Physical Address is: 151 State Hwy 76, Rocky Comfort, MO 64861 (Just outside of Wheaton). OFFICE: (417) 652-7540 OR EMAIL: Kathy@swaauction.com Website: www.swaauction.com

GUN DISPERSAL & CONSIGNMENT AUCTION!

FEATURING A LARGE ESTATE OF GUNS FROM MARTIN OLSZEWSKI & SEVERAL CONSIGNMENTS!

SATURDAY, MARCH 30th @ 10:00 AM

Listing of Guns for Martin Olszewski; Pistols: Lee Arms .32 Cal Red Jacket #4; Vacaro Style Red Jacket .32 Cal #6; Hopkins & Allen .32 Cal Bluejacket Rim Fire #2 Hopkins & Allen .32 Cal Range Model; Bluejacket .22 Cal 1871 (very small); Bluejacket #1 .22 Cal 1871; Hopkins & Allen .38 Cal Double Action #6; Hopkins & Allen .32 Cal Red Handle Dictator Hopkins & Allen .32 Cal; .38 Cal of NY; Marquis of Lorne Revolver .32 Cal TER; 1875 .32 Cal; Capt Jack 1871 .22 Cal; Eagle .22 Cal; Continental .32 Cal #2; Continental .32 Cal; Royal .32 Cal; Liberty .32 Cal; Express .32 Cal; Hopkins & Allen XL #2 .32 Cal 1871; Hopkins & Allen XL Pearl Handle .22 Cal 1871 Hopkins & Allen #1 .22 Cal; Hopkins & Allen XL #1 Pearl Handle .22 Cal Hopkins & Allen XL #1 .22 Cal; Hopkins & Allen # 3 .32 Cal; Hopkins & Allen #5 .38 Cal Dbl Action Center Fire Hopkins & Allen Police Safety .32 Cal; Hopkins & Allen XL #6 .32 Cal double action; 38 Cal (No brand); Hopkins & Allen .38 Cal; (2) .22 Cal Pistol; Capt Jack .22 Cal (see through handle); Robin Hood #1 Long .22 Cal; Hopkins & Allen Ranger No. 1 .22 Cal; Break Over .32 Cal; American Bulldog .32 Cal; Double Action 36 .32 Cal; Harrington & Richardson .32 Cal 1895; Ranger .22 Cal; Hopkins & Allen .38 Cal XL #5; German Arminius Hammerless .8mm; Beretta Model 21A .22 Cal LR; Smith & Wesson Secret Service Special .32 Cal; Allen & Wheelock 1858 Side Hammer .22 Cal; Czar .22 Cal (T&R) on handle; Colt Replica 1862 Pocket Police Black Powder (in box) Colt Replica 1851 Navy BP (in box); Colt 2nd Dragoon (in box); Harrington & Richardson 632 6 shot .32 Cal w/holster Iver Johnson Target Sealed 8 (dbl action) .22 Cal Harrington & Richardson Sportsman dbl action .22 LR Sentinel Deluxe .22 Cal Hi Standard; **Long Rifles/Shotguns:** Int'l dbl barrel, dbl hammer/dbl Trigger .12 ga Neumann .12 ga side by side; (3) Hopkins & Allen .12 ga side by side; Richards .12 ga side by side, dbl hammer, dbl trigger (2) Hopkins & Allen Rolling Block .12 ga; Hopkins & Allen Rolling Block .20 ga; (2) Hopkins & Allen .12 ga; Hopkins & Allen .20 ga; Dumoulin 8 .12 ga; N.R. Davis & Co. 10 ga; LC Smith .10 ga; American Gun Co. 12 ga; American Gun Co. 16 ga; (2) Hopkins & Allen Falling Block .44 Shotguns; (2) .32 Cal hex barrel Rifles; Falling Block .22 Cal hex barrel; Hopkins & Allen .32 Cal; Hopkins & Allen Model 722 .22 Cal; (2) Hopkins & Allen .32 Cal Falling Block; Hopkins & Allen Model 722 Falling Block .22 Cal Hopkins & Allen Falling Block .38 Cal hex barrel Hopkins & Allen Falling Block .32 Cal; Remington 1901 Model 6 .32 Cal short or long, Hopkins & Allen Model 722 .22 Cal, (2) Hopkins & Allen Junior .32 Cal, Hopkins & Allen .32 Cal Falling block hex barrel, J. Stevens .22 Cal hex barrel Falling block, Fras M80 French Gun from 1874 Revolutionary War, Hopkins & Allen .22 Cal No. 922, Hopkins & Allen .32 Cal falling block hex barrel; (2) Hopkins & Allen No. 822 .22 Lever Action, Hopkins & Allen Junior .22 Cal; Bay State Arms .32 Cal 1885 hex barrel, falling block, Stevens Ideal .32 Cal, Stevens .22 Long Stevens .32 Cal long falling block, Stevens Crack Shot .26, Stevens .32 Cal, Stevens Crack Shot .26 1913, Remington Model 514 .22 Cal long/short, Ranger .22 Cal S/L Single bolt, Remington Model 33 .22 Short/Long single bolt, Amadeo Rossi .22 Cal short/long or long pump, Winchester .22 Cal 1890 hex barrel pump, Westernfield .22 Cal pump hex barrel, Remington Gallery Special .22 short hex barrel pump, Marlin .22 Cal pump, Stevens Model 59 .22 Cal single shot, bolt action. Marksman Pellet Gun, Old pump pellet guns, Daisy Powerline 880 pellet gun. **Additional Guns Consigned:** Ruger Mark II M77 .204 Cal w/ Weaver Scope (SS, Laminated Wood Stock); Weatherby Mark V.300 Cal Win Mag (bolt action, fluted barrel, deluxe stock); ; Smith & Wesson Model 15 AR; ; Howa Model 1500 7mm Mag w/ Full Kryp-tek Scope, Ruger .308 Winchester w/VX6; Leupold Scope, Stevens Model 620-A .12 ga, Remington "collectors" Model 1873-left handed cocking lever, Glenfield Model 60 .22 cal semi auto, Wards Westernfield .22 Cal No. 48, Marlin Pre-64 30-30, Springfield .20 ga single shot, Savage Model 340 30-30 bolt action, Ruger American .308 Cal, Smith & Wesson M&P .22 cal AR15, Walther P22 Pistol w/laser site, Marlin Model 25 MN .22 Cal, Ruger LCP .380 cal w/ ammo, Olym-pia .22 cal auto pistol in box, Webley & Scott Flare Gun WWI, Astra engraved .25 auto Pistol, Stoeger .22 cal pistol, Colt Police Posi-tive Special 32-20, AMT Backup .45 ACP, Smith & Wesson Air Weight .38 S&W, Winchester 1906 .22 Cal (S,L,LR); Winchester 1903 .22 Cal auto, Remington 121 Fieldmaster .22 (S,L,LR), Winchester 62A .22 Cal (S,L,LR), Remington Model 12 pump .22 cal, Ithaca 16ga dbl barrel, Colt Huntsman .22 Cal (S,L,LR), Smith & Wesson K22 .22 LR, GP100 .22 Cal LR 10 Shot Pistol (NEW), Sig Sauer P238 .380 Cal, Ruger 10-22 LR Take Down-Walnut Stock, Ruger 10-22 LR Take Down-Stainless Steel; Winchester 69A .22 Cal (S,L,LR); Remington 510 single shot .22 cal; Remington Screamster 511 .22 Cal (S,L,LR w/mag), Jimenez 9mm Pistol, Charles; Daly .12 ga (2 3/4, 3, 3 1/2 w/chokes), Savage 30-06 w/ Weaver 3x9 Scope, Remington 30-06 Springfield 742 Woodmaster auto w/ 3x9 scope & case, Benelli .12 ga (2 3/4, 3, 3 1/2) in case, Hi Point Model JHP .45 ACP-New in Box, Old Italian Black Powder pistol in case, Winchester Model 94 30-30 lever action, Old single shot .12 ga Electrosteel choke barrel, Stevens .410 bolt action (2 3/4, 3"), Sav-age .22 cal mag Model 4M Deluxe w/ Barska Scope, Diamondback Firearms AR15 w/laser scope, Smith & Wesson Bodyguard .38 cal w/insight laser, Marlin 444 lever action w/ "JM" initials on barrel-rifle has only been shot twice (comes w/ Bushnell Banner 3x9x40 Scope & Case), Ruger 10-22 Semi-auto w/ Tasco 3x9x40 Scope, Benjamin Legacy 177 Cal Break-open Pellet Rifle. *15 Quest AMP 40-70lb Draw Bow, BowTech Assassin Cross-bow, 1000 Rd of 8mm Ammo & LOTS of Misc Ammo! Binoculars, Scopes, Gun Cases & Stocks, Knives, New! Zeiss Scope long range, lighted recticle 6x24x50 AOMC & more misc sporting goods! [MORE ITEMS ADDED DAILY!!](#)

SPRING EQUIPMENT CONSIGNMENT AUCTION!

FEATURING AN ESTATE SELLOUT FOR THE LATE JAMES ARNOLD OF MONETT & LIVING ESTATE SELLOUT FOR GLENN PHELPS OF WHEATON, MO.

SUNDAY, MARCH 31st @ 10:00 AM!

James Arnold Estate Items: Vehicles, ATVs & Trailers: '01 Chevy Blazer V6, '06 Toyota Prius, '94 Chevy Silverado dually, Utility Trail-ers, Artic Cat 650 4x4, Artic Cat 375 2wd. **Lawn & Garden:** 42" Poulan Riding Mower, 42" Murray Riding Mower, Lawnpup elec mower, Briggs & Stratton push mower, JD GX 75 antique lawn mower, Set of Stihl electric Limb Saw, Weedeater & blower, Kobalt elec Chainsaw & weedeater, BD Weedeaters, hedgetrim-mers, Poulan Chainsaw, Lots of gardening tools, Chipper/Shredder, Craftsman Lawn edger, Toro Tiller, lawn seeder and more misc! **Shop & Tools:** Bridgeport Milling Machine w/ digital read out, Metal Lathe, Handyman CNC Milling machine, Generac GT5500 Generator, Predator 3500 Watt generator, Acetylene Torch set, Various air-compressors, motorcycle jack, 3000 Watt generator, 12,000lb Badland Winch, Hobart Stickmaster LX Welder, Portapower, Campbell Hausfeld Nail Gun set in case, Scaffolding, Campbell hausfeld Pressure Washer, SkilSaw Tile Cutter, Vermont Router, Wellsway Bandsaw, Power battery charger, Stihl gas power 1/2" Drill, Transmission jacks, (3) Cherry Pickers, Pressure tanks, air tanks, Delta chop saw, Dremel sets, lots of home tool kits, Bench vices, Truck cooler, shop lites, ext cords, saw blades, gaskets, Milwaukee bits, (3) General Rolling tool boxes, LOTS of small tool boxes & organizers, totes, LOTS of Wrenches, Sockets, Screwdrivers, drill bits, Socket sets, Allen wrenches, Storage Cabinets, Dewalt Skil Saw, Air tools, Campbell Hausfeld Power tools, tire repair kit, bottle jacks Ryobi rotor, battery charger, Mitutoyo gage blocks sets, misc drill chucks, Milwaukee bits, Set of Irwin quick grips, 6" Grizzly Grinder (New!), Ext Ladders, Lots of Black & Decker Power tools, Floor jacks, Power City 200 Watt power supply, Levels, Lincoln Welder, SS Carts, Pneumatic Stapler-New, Craftsman Brad Nailier-New, Drill Presses, jumper cables, air hoses, winches, pipe cutters, tool belts, Lots of hand tools, small motors (8hp Tecumseh), log chains, Forge, Anvil, welding helmets, Hoist balancer, 58pc deluxe steel clamp-ing kits, gauge racks, saw horses, copper fittings, Lots of electrical wiring, supplies, Shop Vac, North St. Sprayer & much, much more! **Furniture & Misc household:** (2) Bedroom Sets, Antique dressers, Armoire, China Hutches & Cabinets, Sofa & Love seat, Storage type cabinets, end tables, lamps, dining room table, chairs, kitchen table, coffee tables, computer desk, misc buffet tables, rolling cabinets, LOADS of computer supplies & repair parts, lots of storage bins, flat screen TV, Kenmore Washer & Dryer, misc quilts, blankets, baskets, coins, jewelry & jewelry boxes, oil lamps, some dishes, Antique wash bowl, (2) Drones, Wagner skilnet, Toy Train sets, vacuum cleaner, filing cabinets, LOTS of computer supplies, some decor, Lots of sewing supplies, Lots of Electronic gadgets & much, much more! **Glenn Phelps Estate Items:** 2013 TYM T903 Cab Tractor-4WD w/ LT900 Front end loader w/only 455 hrs-quick attach Ottawa Bale Spike & Bucket. 2000 Belarus 6345 Cab Tractor 60hp-1400 hrs, diesel, Rhino 12 wheel BF 12 Hydraulic Rake, BR740 New Holland Round Baler-totally reconditioned by S&H-4x6 stwing wrap w/ computer, KMC 4755 10' Disc Mower, JD 500 gal Spray Rig, '52 Chevy Dumptruck w/ hoist, '98 Chaparral Gooseneck 20' Stock Trailer, Homemade gooseneck Trailer w/tool boxes & 2' dovetail, Portable fuel tank, Concrete feed buckets, 10 gal w/ Corral panels, Misc Saddles & horse tack, 3pt Bale spike, King Kutter Receiver Hitch, I-beam Drag, 10' grooved Roller, HD Bale Spike, Austin Box Blade 6', old single spade plows, Danuser 3pt Post Driver, 100 gal propane tank for Pickup, Chainlink dog pen & dog house, Diehard quick battery charger, Craftsman 8 1/2 hp Pressure Washer, Dewalt tools, Husky tools, Craftsman power tools, Stock tank heaters, bench grinders, boomers, chains, log chains, cow kickers, emas-culators, pitchforks, hayforks, misc garden tools, sledge hammers, post hole diggers, shovels, mole traps, heavy wire, Collars, Hanes, hand saws, air hoses, grease guns, tractor pins, sharpener for sickle blade, cross cut saws, Lift jacks, draw bars, top links, seed broadcasters, wire stretchers, stock tanks, bench grinders, alum ladders, fans, galv tubs, metal milk crate, fluids, oils, leaf blowers, Longhorn skull & more misc! **Early Consigned items:** Low Rise 10,000lb Lift, Pallet & Tire Racking 12'tall/18"wide, '91 Freightliner 400hp Detroit-rod & main bearings redone at 200,000 miles & lots of new parts!, 1902 Wilson Hopper Trailer-new tires, brakes, drums, etc, '95 Diamond D Stock Trailer, Homemade Wagon Wheels, Tele-phone Poles, '16 Kubota ATV 11200 diesel, 7' 3pt sidewinder Bushhog w/ 2 new blades, '04 Honda Rancher 350cc auto-good condition, Kawasaki 610 Mule 4WD, Yamaha Rhino 450 ATV 4wd, Polaris 570 Ranger 4wd, Dump Trailer, Bad boy Zero Turn Mower, Skaggs Zero Turn Mower, 16' pull trailer, T-Posts, (2) Utility Bucket Trucks, Steel Flatbed off of '02 Chevy, Gooseneck Stock Trailer, (10) 8'x12' Steel frame Panels, (8) 6'x12' Steel frame panels, Radial Arm Saw, steel steps, 32' Tandem 24k axle Tilt Trailer, '03 Skil Mercedes Compressor-85k miles. 24' Dovetail gooseneck tandem axle and much, much more! [MORE ITEMS COMING IN DAILY!](#)

Bob Hughes
417-236-5888

Chad Hughes
417-236-5487



SOUTHWEST AUCTION SERVICE & MARKETING
www.swaauction.com
417.652.7540

PICTURES AVAILABLE ON OUR WEBSITE!
www.swaauction.com

TAKING CONSIGNMENTS UP TO 9:00 AM AUCTION DAY!
CALL (417) 652-7540 or email: Kathy@swaauction.com WEBSITE: www.swaauction.com

TERMS OF THIS AUCTION: At this auction, we accept CASH & GOOD CHECK with PROPER ID & Visa or MasterCard (5% Convenience fee for credit cards). We are not responsible for accidents to man, woman, child or animal. We are not responsible for lost, stolen or damaged articles or property! All accounts must be settled prior to removal of auction item! Please remove your items as soon as possible. Any items left over 30 days will become property of SW Auction. Statements made day of auction take precedence over all printed material. For more information & pictures, visit our website: www.swaauction.com.

PUBLIC AUCTION

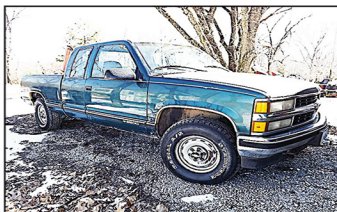
AUCTION

HUMANSVILLE, MO

As we have sold our home we will sell the following Autos, Trailers, Ranger, Guns, Tools, Household, Collectables and Misc. at the Home located 6 ½ miles West of Humansville, Mo. on N hwy. to F.R. 2021 go South & West ¾ mile to F.R. 620 go West to the Auction on

Sat. April 6, 2019 at 9:00 a.m.

WATCH FOR AUCTION COMPANY SIGNS • LUNCH SERVED
FOR MORE PICTURES GO TO: WWW.BRUCEANDLEANAUCTION.COM



- Mossberg 835 Ultra Mag 3" Pump 12 Ga Shotgun
- Browning Semi-Auto 16 Ga. Shot Gun S.N. 50756
- Browning Light 12 Ga Semi Auto W/Rib Belgium S.N. 72G7818
- Browning Light 12 Ga Semi Auto W/Rib (stock damage) S.N. 69G77512

- 6' Blade 3 Pt.
- Blk. Max 80 Gallon 220V Industrial Air Compressor (like new)
- Hobart 210 Iron Man Wire Welder (good)
- 2 Lincoln 225 amp Stick Welders
- Act. Torch Outfit W/Lrg. Bottles & Cart
- Mac. Sand Blaster Box
- Sand Blaster Pot
- 30 Ton Press
- Electric Band Saw
- Cherry Picker
- Motor Stand
- 20 Gallon Parts Washer
- Wheel Tronic 110v Floor Car Lift
- 9 Drawer Snap-on Top Tool Box
- Black Hawk 5 Drawer Bottom Box
- Craftsman 15 Drawer Tool Box
- One Large Lot of Wrench's & Hand Tools (Several Snap-on & Craftsman)
- Dewalt Portable Air Compressor
- Body Tool Set
- Craftsman Floor Jack
- Craftsman 10" Radial Arm Saw
- Craftsman 10" Miter Saw
- Craftsman Bench Grinder
- Dewalt Air Nailers
- Dewalt Battery Set Power Tools
- Milw. Angle Drill
- One Lot of Hand Power Tools
- Kobalt Tile Saw on Stand
- Shop Vacc's
- Furniture & Bar Clamps
- Foldup Ladders
- MS Stihl Chain Saw
- Stihl 034 AV Chain Saw
- Husqvarna Gas Trimmer
- Brave 24 Ton Wood Splitter
- John Deere D110 Riding Mower 19 HP
- Cub Cadet LTX 1040 Riding Mower
- Craftsman 26" Snow Blower (like new)
- JD Lawn Spreader
- 4 wheel Pony wagon
- 2 Wheel Pony Cart
- Big Bale Ring
- 2 Poly Water Tanks
- Misc. Metal Gates
- Steel Post
- 300 Gallon Poly Tank
- Log Chains
- Porch Rockers & Benches
- 3 Pc. Patio Set
- Large Lot of unseen Boxed items
- One lot of Misc.

AUTOMOBILES-TRAILERS

- 1995 Chevy ¾ Ton 4 X 4 Ext. Cab Pickup V-8 Motor, Auto Trans. Electric Bale Spike, Good Rubber
- 1976 Twilight Bungalow 25' Fifth Wheel Camper Trailer (good condition)
- 1997 Harley Davidson Ultra Glide 1340 cc full dress Motor Cycle (has been sitting)
- 1949 Chevy 2 Door Car (no title, to be restored)
- 1939 Dodge and Hudson Cars (to be restored)
- Challenger 18' Tandem axle Bumper Trailer, W/Dove Tail, Pullout Ramps, Steel Floor & 12 volt Winch
- 5' X 8' Single Axle Trailer, Drop End Gate, Expanded Metal Floor (like new)
- 4' X 8' Single Axle Metal Trailer W/2' Sides
- Boat Trailer W/Older Fiberglass Boat & Motor

RANGER & GUNS

- 2013 Polaris 4 X 4 Ranger W/Windshield, Cab Kit, Dump Bed, Electric Winch, Front Blade one owner 1427 Miles
- John Deere 4 X 2 Gator 455 Hrs. Dump Bed (no top)
- Remington 20 Gun Combination Safe
- Ruger Stainless 357 Mag 6 Shot DA Revolver
- H & H 22 Cal. Model 66 Revolver
- RG-23 Revolver 22 Cal. 6 shot
- North American 22 Cal. 5 Shot Stainless Derringer
- Remington Model 66 Nylon 22 Cal. Semi Auto Rifle
- Diamond Arms SS 12 Ga Shot Gun
- Remington Pump 22 Cal. Rifle
- Remington Model 1100 Semi-Auto 12 Ga. Shot Gun W/Rib
- Winchester Model 1300 Pump 20 Ga. Shot Gun 3"

- 2- SKS 7,62 X 39 Semi Auto Rifles
- One lot of Misc. Fishing Equipment
- 9 Antique Boat Motors (Johnson, Elgin, Champion, Martin 60, Evinrude)
- Lot of Deer Horns
- Live Trap
- Lead Melt Pot
- 12' V Bottom Alum. Boat

HOUSEHOLD & COLLECTABLES

- Whirlpool Stainless Refrigerator W/Freezer on Bottom (one year old)
- Frigidaire 30" Gas Stainless Range
- Whirlpool Front Load Washer & Dryer (washer needs minor repair)
- Kenmore 13 cu Upright Freezer
- Round Oak Kitchen Table W/6 Pattern Back Chairs
- 7' Glass Fronted Kitchen Cabinet
- 54" Vizio Flat Screen TV
- 4' Tin Fronted Cabinet
- Lazy Boy Recliner (like new)
- 6' Oak Cabinet
- Electric Fire Place
- One Lot of Pots, Pans & Dishes
- Misc. Wooden Boxes
- 5' Metal Gillette Tire Sign
- Blk. Hawk Corn Sheller

TRACTORS-TOOLS - MISC.

- 8-N Ford Tractor (good rubber)
- International Cub Tractor Restored & Painted W/Attachments
- 5' 3 Pt. Brush Hog
- Cosmo 500 Cone Seeder
- 2 Bottom 3 Pt. Plow

OWNER: STEVE ROSS

TERMS: CASH or CHECK with I.D. Nothing removed until settled for. Not responsible for accidents. Statements made sale day take precedence over printed matter.

SALE CONDUCTED BY **BRUCE & Le'AN AUCTION & APPRAISAL, LLC**
THE AUCTION COMPANY THAT APPRECIATES YOUR BUSINESS

For more information and pictures go to our website at www.bruceandleanauction.com

RONNIE BRUCE - Fair Play, MO
417-777-1685 or 417-654-2214
colronbruce@gmail.com

BRANDON BRUCE
Fair Play, MO

BILLY BRUCE - Stockton, MO
417-399-4800
colbbruce@gmail.com

CIBULKA TRUST FARM AUCTION



The Trustees of the Jack & Virginia Cibulka Revocable Trust will sell the personal property of the Trust at public auction on:

Saturday, April 6th 2019, Beginning at 9:00 AM

Location: 8765 Seminary Road, Sullivan Mo 63080

Directions: From Interstate 44, take Exit #225, go North on Highway 185 3 miles, straight on Highway H 1/2 mile, then left on Seminary Road 4.2 miles to auction. From Highway 50, go South on 185 from Beaufort then right on Highway H, left on Seminary. Roads will be marked day of sale.

DUMP TRUCK / TRAILERS (will sell after guns at 1:00 PM)



2003 International 4300 diesel DT466 single axle dump truck-straight 6 speed transmission-10' Gravel Star bed-new tires-31,000 LB rear axle-10,000 LB front axle, **TRAILERS;** 2004 PJ tandem axle gooseneck flatbed trailer-dual 10,000 LB axles-27' bed with beavertail and ramps, 2008 Load Master 29' flatbed gooseneck trailer-2 7,000 LB axles-new tires-ramps, 16' bumper hitch trailer, 8 bale bumper hitch bale hauler trailer

GUNS (will sell at 1:00 PM)



TRACTOR / HIGH LIFTS / UTILITY VEHICLE / MOWER (will sell after guns)



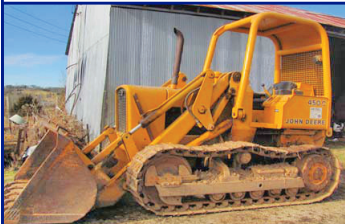
Ford 6610 diesel tractor-dual hydraulics-with TH26QT Westendorf loader-6' bucket, **HIGHLIFTS;** John Deere 450C diesel-636 hours on rebuilt engine-good undercarriage, John Deere 450C diesel-5090 hours-rebuilt injector pump-Serial #320840T, **UTILITY VEHICLE/RIDING MOWER;** 2009 Honda Model 700 Big Red RTVdump bed-windshield-one owner, Kubota TG1860 diesel-hydraulic riding mower, power steering, 50" cut, gas powered log splitter, New 6,000 watt generator with electric start

Winchester M #12 12 ga pump trap gun, Winchester M1200 12 ga pump w/choke, Remington M #1100 12 ga semi-auto, Winchester M #120 12 ga, Revelation 410 pump shotgun, White Powder Wonder 12 ga single shot, Winchester M94 30-30, Remington Woodmaster M#742 .280 caliber, Marlin M #30A 30-30 lever action rifle, Stevens .22 ca Crack Shot, Savage M #110 .243 bolt action rifle w/scope, Savage M #110 .7MM bolt action w/scope, Savage Axis .30-.06 w/scope, Remington M #700 .223 ca bolt action, Winchester M #70 30-06 bolt action w/scope, Rossi M #R243 .243 ca single shot youth gun, **PISTOLS;** Remington Speedmaster M#552 .22 ca, Targa M #GT27B .25 ca pistol, .32 ca revolver, Walther M #P22 .22 ca semi-auto, laser sight, Lorcin M #L380 .380 ca semi-auto w/laser sight, Taurus M Judge .45 ca / 410 6.5" barrel, Taurus M Judge w/3" barrel, Traditions .50 ca black powder-lefthanded, S&Wesson shooting glasses, pocket knives

TOOLS

Dewalt metal cut off miter saw, Delta drill press, Craftsman bench scroll saw, small table saw, Lincoln Idealcar SP200 electric welder, welding helmets, welding magnets, transfer lease on welding tanks, welding torches, Snap On rolling tool chest, rolling tool cabinet, 20 ton hydraulic press, Hartman Model 50 Rapid Battery charger, Little Giant wooden case tap-die set, set large wrenches, large lot ratchets-sockets-lot sets, large C clamps, C clamps, pipe clamps, chain hoist, lot wrenches, parts bins, circular saw, drills, sander, nut driver, Ω" drill, screw guns, lot pipe wrenches, offset pipe wrench, bench grinders, large bench vise, pliers, nippers, vise grips, crescent wrenches, screwdrivers, drill bits, tape measures, squares, floor jacks, bottle jacks, 4 way lug wrenches, jumper cables, tow balls, portable air tank, air compressor, metal work stands, grease guns, hand saws, work lights, tool boxes, lots hardware-nuts-bolts, hammers, 4' level, allen wrenches, small anvil, 3' bolt cutters, **OUTDOOR;** Stihl 029 chain saw, Husqvarna 455 Rancher, Stihl gas cultivator, axes, pitchforks, shovels, step ladder, log logging chains, log roller, barrels, come-a-longs, fencing supplies, top links, clevis hooks, belts, metal stock, binders, hatchet, sledge hammers, port-a-power- car creeper, buckets, live trap, gas cans, funnels, bicycles, rope, cables, tiller, push string trimmer, lawn cart, log rack, yard statuary, rabbit cages, misc steel

HAY-FARM EQUIPMENT / GRAIN BIN (sell after guns)



New Idea 5209 discbine with rollers-one owner, New Idea 4227 4 basket hydraulic fold tedder-one owner, New Holland BR750 round baler-electric tie-w/monitor, Tonutti TCR8 Pro 8 wheel hydraulic fold V rake, New Holland 273 square baler, New Holland 256 side delivery rake, New Holland 2 ton grinder-mixer, Land Pride 15' batwing brush hog-safety chains-one owner, KingKutter II 6' rear tine tiller-like new, New Holland 450 3 point sickle mower, Ford 3 pt 4-16" bottom plow, Kewanee 11" wheel disk w/cylinder-good blades, 3 section rollup harrow, 3 point 2 row cultivator, John Deere 4 row planter-for parts, 200 bushel gravity flow wagon, Helix 75 bushel auger wagon, (2) pull type 3 ton cattle self-feeders, front bale spear, 3 point heavy duty blade, 4" grain auger, cattle syringe, **GRAIN BIN;** Columbian 374 3,000 bushel(approx.) grain bin with blower-will have 60 days to move

ANTIQUES / COLLECTIBLES

Wooden sleds, hand scythes, brush scythe, wooden boxes, milk cans, metal bed, gas pump handles, barn hay hook, beam scales, Tepfer mini ringger-washer, enamel pots/pans, oil lamps, miniature oil lamps, blue glass qt-2qt jars, Old Judge jar, soda bottles, bushel baskets, **SALT&PEPPER SETS;** 1,000 or so including; Shawnee-Hull Red Riding Hood-Vess-Falstaff-liquor-Coke-Mickey/Minnie-chickens-Santas-Hall, chalk pieces-bank, food chopper, kitchen scale, Falstaff metal mugs, post cards, wash board, crock bowls, crock pitcher, McCoy Aunt Jemima cookie jar, hen on nest, banks, small blue crock bowl, jadeite flour shaker, paper mache rabbit, **QUILTS;** 12 hand made quilts, 12 baby quilts, quilt tops, quilt blocks, afghans, **TOYS;** Japanese R-35battery op robot, doll house furniture, child's kitchen set, child's rocker-chairs-iron rockers, old games, Breyer horses, tractors-Tru Scale-Ertl-wooden, Fisher Price, Greyhound buses, Marx George Drummer, Tonka loader-dump truck, 15 child's tea sets, dozens stuffed animals, vinyl-rubber dolls, Cabbage Patch doll, old barbie dolls, doll clothes, lot children's books, old school books, Ohio Art tin bank, small tin globe banks, **MUSICAL;** acoustic guitar, electric guitar with Whammy bar, children's guitars, Hohner mouth piano, baseball glove, old hankies, souvenir lighter sets

HOUSEHOLD

Cedar chest, single bed, chest of drawers dresser, wooden storage cabinets, metal storage cabinets, book shelf, folding chairs, dining table-chairs, child gates, tall chest drawers, Pfaff Hobby 1016 sewing machine, Singer sewing machine console, lot sewing supplies, sewing basket, lot fabric, unpainted ceramic figures, lot craft items, wood burning pieces, wooden trinket boxes, horse bookends, albums, bedding, wheelchair, yardsticks, holiday decorations, books, bird cages, metal shelves, treadmill, stair stepper, weight bench, coolers, jugs, **KITCHEN;** dining dishes, flatware, utensils, cake plates, square pedestal cake plate, Pyrex dishes, colored mixing bowls, wooden bowls, rolling pins, lot sifters, meat cleavers, baking dishes, canisters, Ovenware covered dish, **APPLIANCES;** Whirlpool front load washer, Samsung dryer, microwave

LUNCH WILL BE SERVED BY JAPAN 4-H CLUB

VIEW OUR PHOTO GALLERY ON www.breheauction.com

BREHE AUCTIONEERING SERVICE, LLC
 Union, MO: (636) 583-0841 Owensville, MO: (573) 437-3454
www.breheauction.com
 LICENSED AUCTIONEERS:
 Kerry Brehe 314.954.3798 Josh Brehe 314.603.3129 Harry Engelhart 636.399.3743
 Announcements made day of sale supersede all printed material.
 TERMS: CASH, PERSONAL CHECKS WITH PROPER I.D., BUSINESS CHECKS WITH BANK LETTER AND NO OUT OF STATE CHECKS UNLESS APPROVED BY SELLER, Email Us At kkauction@sbcglobal.net
 Everything sells as is with no guarantees.

AUCTIONEERS NOTE: auction will begin at 9:00 AM with tools and second ring will start at 10:00 AM selling household and then antiques. Guns will sell at 1:00 PM followed by vehicles and large equipment.



Wheeler Livestock Auction, Inc.

SPECIAL STOCK COW SALE



SATURDAY, MARCH 30, 2019 • 6:00 P.M.

Expecting 700 head of heifers, cow/calf pairs, cows, and breeding bulls.

Gaffney Family Cattle-

- 14 Blk Ang bulls, 16-20 mos., LBW Calving ease bulls, AI sired bulls, out of Black Granite, Payweight, & Frontman. 1-Blk Sim Ang bull, 18 mos., sired by Hooks Broadway

End of the Road Red Angus-

- 3 Red Angus Bulls, 15 mos., 70-85 lb. bw. Best of breeding good bulls

Ellis Cattle Co-

- 4 Red Angus bulls, 18 mos. 1,400 lbs., 1 Chi-Ang bull blk, 18 mos., 1450 lbs., 19% Chi 81% Ang.

Steffens Farm-

- 1 Blk Ang Bull, 2 yrs., 83 lb. bw., 1 Blk Sim-Ang bull 2 yrs, 81 lb. bw. CE 10

Rapp Premium Genetics-

- 2-RWF bulls, 2 yrs., ¾ Herf. ¼ Sim Ang., 75 & 80 lb bw.

Davis Ranch-

- 23 Fancy Ang hfrs., 900 lbs., open. All heifers pelvic measured, calfhooded, complete vac program. Gentle home raised heifers.

S & P Farms-

- 38 Red Ang hfrs., 1,100 lbs., Show-Me Select, AI sired calves born last week of Jan. calves all worked & tagged to match. Hfrs are open.

T & S Ranch-

- 20 Char-Red Ang X hfrs., 2 yrs., 1,150 lbs w/ Red Ang calves 200 lbs., Hfrs. selling open, calves tagged to match & complete Vac. Program.

Harmon Farm-

- 13 Fancy Red Ang cows, 6-7 yrs., 1,350 lbs., w/ 13 Red Ang calves 200 lbs., Cows are gentle & fancy, had all shots. 26 Fancy Red Ang cows, 6-7 yrs., 1,350 lbs., Bred 3rd to Red Ang bull. The above 39 are all gentle & home raised. 10 Blk cows, 5-7 yrs., 1,250 lbs., bred 3rd period.

C & S Farm Complete Dispersal Lost Lease-

- 14 Blk cows., 3 yrs., 1,110 lbs., w/ 14 Blk & BWF calves 400 lbs. 14 Blk cows, 1,200 lbs., w/ 14 Blk & BWF calves 400 lbs., 8 Blk & BWF cows., 6 yrs., 1,200 lbs., w/ Blk & BWF calves 400 lbs., 4 mix cows, S & S, 1,200 lbs., w/ Blk & BWF calves 400 lbs., The above 40 pair are gentle, calves worked, bred to Herf. or Sim Ang bulls.

Marshall Ranch Dispersal-

- 40 Red Ang X cows, 3-6 yrs., 1,300 lbs., bred 2nd & 3rd. 45 Blk & BWF cows, 3-6 yrs., 1,300 lbs., bred 2nd & 3rd. 20 Yell Char X cows, 3-6 yrs., 1,300 lbs., bred 2nd & 3rd. Above 125 cows all bred to Ang or Sim Ang bulls. Selling cows going to steers.

Gaydon Farm-

- 30 Blk & Red cows, 5-6 yrs., 1,200 lbs. w/ Ang calves born in Feb. out of Ang bull. Cows selling open

A & R Farm-

- 20 Blk Ang cows, 5-6 yrs., 1,200 lbs., Bred to Lucas Ranch Sim Ang bulls 2nd & 3rd.

Needy Farm-

- 10 Blk cows, 6-SS, 1,200 lbs. w/ BWF calves.

Many more consignments by sale day

Next Special Feeder Calf Sale Thursday April 4, 2019

Next Special Stock Cow Sale Saturday April 27, 2019

Wheeler Livestock Auction, Inc.

Osceola, MO • 685 SE 13 Hwy., PO Box 560 • BARN 417-646-8102

Byron Wheeler, 417-777-0897 • Austin Shelby, 417-309-1350 • Darwin Harting, 417-296-1029
Gator Hutchinson, 417-876-7477 • Burleigh Wheeler, 417-840-6561 • Skyler Fisher, 417-298-9051
Jeff Shelenhamer, 417-326-9929 • Les Tennis, 417-466-8786

Office Manager: Weston Shelby, 417-298-1316

Bid online on CattleUSA • www.wheelerlivestock.com

Like us on Facebook-Wheeler Livestock Auction

WHEELER

LIVESTOCK

AUCTION

INC.



OSCEOLA, MISSOURI

Spring Firearms Auction

Saturday, April 13, 2019 • 10 a.m. Sale Preview - Friday, April 12th • 6-9 p.m.

Location: The Red Shed • 169 Truman St / Hwy T • Doolittle, MO 65550 • I-44 to exit 179



LOT 025



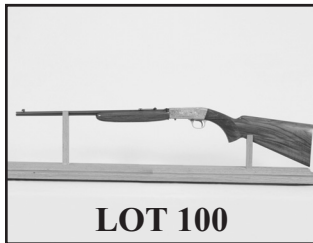
LOT 069



LOT 075



LOT 080



LOT 100

Selling 344 firearms WITHOUT RESERVE. Some of the highlights are:

- Belgium Browning Grade III .22
- Ed Brown 1911 Centennial .45ACP New
- Belgium Browning Hi-Power 9mm NIB
- Winchester Model 42 .410
- Grunel Super Target 200 .308 Target Rifle
- Franchi SPAS-12L 12ga
- Colt Python .357 • Colt King Cobra .357
- Colt 1911 LW Commander .45
- Colt SAA .357 2nd Gen • Colt 1902 .38 Rimless
- Ruger 77 Custom 25-06 • Ruger 77 Magnum 416 Rigby
- Smith & Wesson Revolvers Models 10, 25, 27, 29
- 296 Titanium, 625, 629, 642
- Smith & Wesson M&P 9mm Competition,
- Glock Models 17, 20, 21, 23, 26, 30
- Ruger Revolvers Red Hawks, Black Hawks,
- Security Six, Single Six
- Nice Selection of Nikko and SKB Over/Under Shotguns
- LC Smith, Parker, LeFever Side by Sides
- Collection of Remington Model 11-48 Shotguns – 12ga, 16ga,
- 20ga, 28ga & 410
- Winchester Models 61, 62, 63 and 1890



LOT 102



LOT 139



LOT 245

For Military Collectors Over 100 Military Handguns:

- Large selection of Webley Revolvers of every description including two Webley Fosbery Revolvers.
- Eighteen Luger Pistols – Some with Swiss, Dutch, Portuguese Proofs. Also a German Artillery Model and a German Royal Navy Model
- Swiss 1882 and 1929 7.5 caliber revolvers
- Colt New Service .455 Eley with British Proofs
- Smith & Wesson 1st Model .455 CF with British Proofs
- Adams 1872 .450 Adams caliber Revolver
- Tranter 1868 .450 Boxer caliber Revolver
- Kongsberg 1914 11.25 caliber Pistol
- Kaufmann 2nd Model .455 Revolver
- Springfield M1 National Match 30-06
- Springfield M1A National Match .308



LOT 250



LOT 311

J & J Sales, LLC

jjsales@fidmail.com Additional pictures on www.auctionzip.com (auctioneer ID #28053)

573-341-5450
Office

573-465-4647
Julie Reagan

573-465-0642
JD Roach, Auctioneer

573-762-2227
Sale Day Number

NEW ATF RULE - For ATF Form 4473, current name & address must exactly match the photo ID such as drivers license. **MUST MATCH!!** If not, we need supplemental government issued documentation with matching current address such as vehicle registration, property taxes, county or city utility bill. Cannot be a PO Box!

Terms of Sale: Sale day announcements supercede any and all printed material. Photo I.D. required for buyer's number. No buyer's premium. Payment accepted by cash, check, debit/credit card. There is a 3% convenience fee unless paid by cash or check. Nothing removed until settled for. All state and federal firearms regulations will be followed. Not responsible for loss or accidents.

ATTENTION

We Have Moved The Date

9th Annual Spring

Prairie Grove Amish Mennonite School

CONSIGNMENT AUCTION

2nd
Weekend
Of May

Friday, May 10 • 3 p.m.

Saturday, May 11 • 9 a.m.

To Consign or for more information contact:

Nathan Kropf (Misc. Equip)	417-327-6240
Vernon Kropf (Tractors & Machinery)	417-733-2600
Eldon Swartzentruber (Titled Vehicles)	417-327-6348
Tobe Hostetler (Furniture, Crafts & Cattle Equipment)	417-733-2710
Nathan Blosser (Lawn, Garden, Flowers)	417-327-4670
Mrs. Ron Eigsti (Quilts)	417-327-7168
Herman Hostetler (Guns)	417-327-7720
Den Blosser (Questions)	417-326-9788

Taking
Consignments!

Auction will be held on school grounds
12 Winding Creek Drive, Buffalo, MO 65622

Suggested Consignments (No Junk Please)

Handmade Quilts • Small and Large Antiques • New and Used Furniture • Good Household Items • Lawn & Garden Machines & Tools (Good Condition) • Hand Tools • Shop Tools • Misc. Farming Items • Farm Machinery • Farm Tractors • Cattle Equipment • Horse Related Tack & Saddles • Small Caged Animals, Exotic, Etc.

The Sooner Consigned, The Better Advertised!

2 - DAY AUCTION



REAL ESTATE & CLASSIC CAR AUCTION



SELLING OVER 12 CLASSIC & MUSCLE CARS

FRIDAY, APRIL 5 • 5:00 PM
The Gantvoort Residence • 19912 Highway HH • Lebanon, MO



EQUIPMENT AUCTION

- Heavy Construction Equipment
- Trucks & Trailers
- Semi Trucks & Trailers
- Drilling Tools



SATURDAY, APRIL 6 • 10:00 AM
Trans Am Construction • 23898 Park Dr. • Lebanon, MO



Voted Best Auctioneer's In The Ozarks...Seven Years Running!



1-877-907-3000 • 417-326-2828 • www.diamond-s-auction.com

REAL ESTATE & BUSINESS LIQUIDATION AUCTION

Saturday, March 30th, 2019 ~ 10:00 AM

LOCATION: 124 East Walnut, Nevada, MO (Watch For Signs)

Auction For Cavener's Office Supply Liquidation



Real Estate Sells First At 10:00 AM

Real Estate Consists Of A 2 Section Empty Building, Both Sections Have Garage Doors & Walk In Door, Each Have Glass Window For Visibility, Both Have Good Lighting & Electricity, Both Do Have Water Access & Availability But Are Currently Not Hooked Up Or Being Used, Each Have Their Own Electric Meters & Both Have Own Heat Furnace & Air Units. This Would Make Great Office Area Or Mechanic Area &/Or Perfect For Storage Area. To Preview Contact Greg @ 417-448-7916 Or Bill @ 417-214-0093.

Terms: 10% Down Day Of Sale With Signed Contract And Balance Due In 45 Days Or When Closing Date Set By Abstract Office. Seller Has The Right To Accept Or Reject Any And All Bids.

Office Furniture, Store Displays, Computers, & Related Items

Ant Challenge Paper Cutter, 4 Flat Screen Computers, Fax Machine, Printer, Mini Fridge, Sm Safe, Electric Scales, Open Sign, Typewriters, Space Heaters, Several Display Racks, Glass Dry Erase Board, Office Clock, Office Telephone System, L-Shaped Reception Desk, Several Computer Desks, Stand Up Desk For 2 Computer Monitors, Office Desk W/ Hutch, Several Office Worktables, Conference Room Tables, Several Office Chairs, Conference Table Tops, Lateral Files, Several Bookcases (Some Primitive), Several Wood & Metal File Cabinets (Some Mobile), Fireproof File Cabinet, Several Folding Tables Of Various Sizes, Folding Chairs, Plastic Stacking Chairs, Coffee Table W/Glass Inlay, End Tables, Vacuum Sweeper, Several Pcs Of New Furniture Still In Boxes Unassembled, Several Other Pcs Of Furniture Not Listed

Office Supplies & Related Items

Lg Lot Of New Office Supplies Of Various Kinds, Several Reams Of New Paper (Some Colored), Unibind Machine & Supplies, Clear Enclosed Display Board, New Letter Board W/Lock, Several New Dry Erase & Cork Boards, Several Desk Accessories, Several Boxes Of New Binders, Science Fair Boards, New Chair Mats, Several Boxes Of New Folders, Desk Calendars, New Adding Machine Tape, New Storage Boxes & Shipping Boxes, Electric Stapler, Industrial Paper Shredder, Pricing Gun, Paper Holder & Cutter, Lg Lot Of New Books, Lg Lot Of Ink Cartridges, Lg Lot Of Art Supplies, Lots Of Peg Board Shelving, Boxes Of Peg Hooks, Metal Shelving, Office Room Dividers, Rolling Step Stool, Sm Rolling Cart, Roll Around Basket Cart, Shrink Wrap, Two Wheel Dolly's, Hundreds Of Other Items Not Listed, Only A Partial Listing.

There Will Be Sales Tax Added To Some Of The New Office Supply Items.

Autos, Fork Lift, Pallet Racks, & Related Items

2012 Dodge Ram 3/4 Ton 4x4 Crew Cab Gas Truck, Is Fully Loaded W/Long Bed & Lots Of Extras, Has 5.7 Hemi Motor, Auto Trans & Approx 133,000 Miles, 2011 Ford Utility Cargo Van, Has V8 Motor, Auto Trans & Approx 302,000 Miles But Are Not Hard Miles, 2002 GMC 1 Ton Box Delivery Truck W/Lift Gate, Has V8 Motor, Auto Trans & Approx 126,000 Miles, Nissan 8000 Lb Propane Forklift (Like New), Pallet Lift Jack, Pallet Racking, Some Pallets, Lg Portable Steps, Flat Dolly Cart, Shop Light, Organizers, Other Items Not Listed

Auctioneers Note: It Is An Honor To Be Conducting This Auction For The Cavener Family. Cavener 's Office Supply Has Been In Business & A Mainstay In Nevada For Many, Many Years. It Is Sad To See Them Close But Is A Great Opportunity For You To Purchase New & Outstanding Office Items. Autos, Fork Lift & Related Type Items Are Outstanding As Well. This Will Be A Very Great & Clean Auction. Only A Partial Listing. Please Plan Now To Attend. **Sale Order: Real Estate Sells First Then In No Particular Order Will Sell Office Supplies & Furniture Items. At Approx 12:00 Noon Will Offer Autos, Fork Lift, Pallet Racks & Related Items. Remainder Of Smalls & Tool Type Items Will Finish Auction. See Ya There!!!**

Terms: Cash or check with proper ID. Now accepting most major credit cards. Nothing removed until settled for. Statements made the day of sale takes precedence over printed material. Everything sold as is where is. Not responsible for accidents. Restroom available. Concessions Provided. Check our website for upcoming auctions and for additional pictures!!



NANCE AUCTION SERVICE

No Matter How BIG or small, We Do Them All!

www.nanceauctionservice.com

Col. Bill Nance 417-214-0093

ESTATE AUCTION

Sunday, March 31st, 2019 ~ 1:00 PM

LOCATION: Sheldon Community Building, 6th & Main, Sheldon, MO
(Watch For Signs)

Auction For Bud & Diane Patrick Estate



Antique & Primitive Furniture

Ant Dresser W/Mirror, Ant Red Velvet Top Vanity Bench, Ant Oak Mantle Clock, Ant Bentwood Sitting Chair, Ant Pictures & Mirrors, Ant Wood Child's Folding Chairs, Ant Wood Smoking Stand, Sm Oak Washstand, Neat Hand Made Square Wood Table, 2 Ant Child's Metal Folding Chairs, Prim Wood Table W/Drawer That Has Glass Green Knob, Ant 2 Wheel Metal Shopping Cart, Prim Wood Side Table W/Drawer In Bottom, Prim Wood Painted Kitchen Chairs, Several Prim Wood Child's Chairs, Red Childs Rocker, Wood Shelves, Old Medicine Cabinet, Leather Ottoman, Wood Stools, Old Store Bust Form, Old Wig Or Hat Holder, Ant Retro Metal Yard Furniture, Iron & Wood Park Bench, Other Items Not Listed

Antique Cast Iron & Crocks

Over 200 Plus Pes Of Cast Iron 90% Are Griswold & Waggoner To Inc Lg & Sm Block Also Some Slant Lettered, Several Rare Pes Inc #14 Lg Block & Lid, 2 Diamond Shape Hand Skilletes, Tea Kettles, Griddles, Muffin Pans, 2 Double Burner Cookers, & Electric Cast Fryer, Other Cast Iron Brands Inc Favorite, Crescent, Martin, Vollrath, Puritan, Mi Pet, & Others, This Is A Very Lg & Nice Collection, **Cast Iron Will Sell At Approx 4:00 PM**, Approx 40 Plus Ant Crocks Inc Red Wing #2, #3, #4, #5, #6, #8, #12, & #25 Gal That Have The Red Wing Insignia Most Are Lg Wings, #2 & #10 Gal Maple Leaf, Rare #12 Red Wing Sweetheart, #5 & #10 Red Wing Arrows, Rare #15 Buckeye Blue Ribbon, #2 & #4 Bullseye Label Buckeyes, #2 & #25 Gal Western, Rare #2 Macom, #2 Whites-Hull, #4 Glazed Manmouth, 2 Gal Red Wing Water Crock, 4 Gal Blue Band & Crown Water Crock, Brown & Green Water Crock W/Dripping Bowl, Rare Western Carry Water Crock, #4 Redwing & #5 Buckeye Ribbon Jugs, Several Crock Churns From 1 Gal Thru 6 Gal Inc Rare 1 Gal Buckeye W/Indian Chief, Other Crocks Not Listed,

This Is A Very Rare & Nice Collection, **Crocks Will Sell At Approx 3:00 PM.**

Antiques & Primitives

Ant Metal Gas Can Collection Inc Keen Kutter, DX, Wanda, SnoBil, Co-Op, & Others, Ant Push Plow, Ant String Holder, Advertising Sacks Inc Rare Popcorn Gunny Sack, Old Skeleton & Clock Keys, Several Wood Advertising Boxes (Some Unusual), Ant Stainless Milker Can, Old Pocket Watches, Old Belt Buckles, Ant Milk Bottle Carrier, Rare Wood 1800's Mink Soda Carrier Crate, Rare Allis Chalmers Work Hat, Old Wash Boards, Several Ant Metal Scoops, Ant Knife Sharpening Steel, Old Collector Tins, Ant Store & Coffee Jars, Old Milk Bottles (Most Unusual), Galvanized Pes, Old Graniteware, Prim Wire Baskets, Prim Carpenter Boxes, Ant Wire Egg Baskets, Crock Pitchers, S & W 38 Special Pistol Military Issue Box, Old Auto Manual & Service Books, Old Comic Books Inc 10, 12, & 15 Cents, Approx 20 Beetles Record Albums, The Prairie Man Lunch Box, Prim Wood Workbox, Ant All Wood Handle Coal Shovel, Lots Of Prim Ant Tools Inc Rare U.S. Saddle Hammer, Rare Ox Yoke Tool, Sm Crescent Wrench Collection, & Others, Old Hand Done Stitched Towels, Rare Alum Colored Spoons, Ant Aladdin Oil Lamps W/Tall Aladdin Chimneys, Approx 40 Plus Pes Of Colored Pyrex Dishes, Fiesta Dishes, Fenton Glass, Colored Glass Birds Most Are Fenton, Ant Glass Cracker Jar, Ruby Red & Green Depression Glass, Ant Cruet Silver & Glass Table Display, Old Rolling Pins, Green Hull Swimming Duck Set, 2 Ant Shawnee Duck Pitchers, Shawnee Elephant Cream Pitcher, Ant Oriental Royal Copley Girl & Rare Hull Mrs. Puss N Boots Planters, Redwing Bowl, Irish Setter Dog Knick Knack Pes, Other Items Not Listed

Auctioneers Note: Mr. & Mrs. Patrick Were Lifelong Antique Collectors. This Is A Rare Opportunity To Purchase Such Outstanding Cast Iron, Crock Pes & Hundreds Of Great Antique & Collectible Pes. There Is No Misc. Household Or Box Row Items. This Is A True Blue Antique, Collectible & Primitive Auction. A Rare Opportunity That You Do Not Want To Miss As All Auction Items Speak For Themselves. Please Plan Now To Attend. **Sale Order: Antique & Primitive Furniture Will Sell First Followed By Antiques & Primitives. At Approx 3:00 PM Will Offer Crocks And At Approx 4:00 PM Will Offer Cast Iron. See Ya There!!!**
Terms: Cash or check with proper ID. Now accepting most major credit cards. Nothing removed until settled for. Statements made the day of sale takes precedence over printed material. Everything sold as is where is. Not responsible for accidents. Restroom available. Concessions Provided. Check our website for upcoming auctions and for additional pictures!!



NANCE AUCTION SERVICE

No Matter How BIG or small, We Do Them All!!!

Col. Bill Nance 417-214-0093

PUBLIC AUCTION

SATURDAY, APRIL 6TH 2019 • 10:00 AM

RAIN OR SHINE

499 NORTH SERVICE ROAD • BOURBON MO.

WATCH FOR AND FOLLOW DANAHY AUCTION SIGNS

INVENTORY REDUCTION

Metal Tube Containers

HEAVY DUTY HOSES STEEL HOSE • LARGE RUBBER RIBBED HOSES • HUTCHINSON MFR 6262 • BLACK RUBBER • BURLAP SACKS • HANCOR AASHITO M252 3 WAYS
 • 10" (254MM) • 8" (203MM) • 4" WRE (102) M252 • 4" TEE AASHIOM 252 • 4 • CONNECTOR • 10" (254 MM) END CAPS • 8 WAYS • 10: W/ 8" REDUCE 3 WAY • 10" 3 WAY
 • 10" END CAPS WITH HOLE • 10: 3 WAY PLUGS • VARIETY OF 3 WAY, PLUG AND END CAPS • CANDY • DOG TREATS • MASONRY TOOLS • FUN PACKS • FURNITURE • TOOLS
 • T.V.S • BLANKETS • WELDING RODS • CASTERS • DOLL CLOTHES • MEDICAL SUPPLIES • SWEATSHIRTS • T SHIRTS • HEATER DUCT PORTABLE 120,000BTU 1/10TH HOURS
 • ALUMINUM TENT POLES • ARIEL DELIVERY CARGO NETS • PALLET OF TENT POLES • PALLET OF INDIVIDUAL MILITARY NYLON BELTS • PALLET OF INDIVIDUAL CANTEN
 COVERS • NECK PAD ASSEMBLY • CIRCUIT BREAKER BOXES • HOSPITAL BED • MILITARY BED MATS • MILITARY BOOT LINERS • MILITARY TENT POLES • MILITARY GREEN
 THREAD ON SPOOLS • WADER BOOTS • DROP BASKETS • 1 CASE LARGE AIR FILTERS • 19 CASES 4 CASE KIDDLE WATER JEL BLANKETS • 52 CASES OF KIDDLE BRACKET
 ASSEMBLY • 1 GREEN ARMY BOX WITH MISC • 2 FLANGES • 76 CIRCUIT BREAKER BOX 3'X6" • 15 LARGE CIRCUIT BREAKER BOXES • ANTI ITCH • BOXES OF MISC WALL
 HANGERS • THERMAL PAPER • 2 DRY ERASE BOARDS • CASES OF AIR FRESHENERS • TELEPHONE ADAPTERS • 2 PARACHUTES • 19" RED BUFFING PADS • 1 METAL BOX
 WITH PORTABLE OPTOMETRY CHAIR AND STOOL • 1 BOX OF LENS, MASKS AND BREATHING FILTERS • RUBBER BOOTS • 1 BAG MOLLE 11 1 QT CANTEN PURPOSE POUCH
 • 8 INTAKE AIR CLEANERS • 2- 500' NORDX/CDT CABLE • 10 HEADPHONE W MOUTHPIECE • 16 CASES MALLEABLE IRON ZINC PLATED 1-1/2" HUB STRAIGHT CONNECTORS
 • 13 VDO PRESSURE GAUGE 150 PSI 124 VOLTS • ELECTRIC METER • 6 SQUARED CAGES • BOX OF AIR FILTER MASKS • CORD OF FIBEROUS GLASS 1 SPOOL • BOX OF
 WEATHER SEALS • BROOM HEADS • ROOSTER LETTER HOLDER • LOCKER PEDESTAL • LIGHTS STEEL CASE SHELL LIGHT 2' PLUGIN • 33 CASES CYLINDRICAL REAGENT
 BOTTLE 500 ML • 25 CASES 20 CASE CYLINDRICAL LOCKSET • 59 LAMP SHADES • SHIPPING TAGS • 8 CASES 28 CASE COPPER WIRING DEVICES (LAMP HOLDERS) • 38 CASES
 PAPER • 1 CASE OF 6.5' ROUND NUSTONE PLATES • 1 CASE HOMER LAUGHTIN U.S.A. 6" DINNER PLATES; SHOWER CURTAIN • 2 CASES PNEUMATIC PILLOWS • 5 CASES 60"X
 102" BED SHEETS • 2 CASES 20.5"X32.5 PILLOW CASES • BAG OF TOWELS • MILITARY SIGN MAKING KITS (MSRP \$692) • POWER HAMMER • FOAM BOARD • SET OF HUGE
 CASTERS • 57 SEAT CUSHIONS • 4 BOXES MISC HARDWARE • CEILING HOOKS • ROUND GLASS ASHTRAYS • SQUARE GLASS ASHTRAYS • 4 CASES OF RAZORS • 12 MILITARY
 BACKPACK FRAMES • 20 PC SYNTHETIC RUBBER O RING • WASHERS • THERMO COUPLE • 5 BOXES TUBE HOLDER DALE • CASSETTE RADIOGRAPHIC PAPER AND DEVELOPER
 ASSEMBLY • 3/8" BY 10" USE WITH POLAROID FILM • RADIOLOGICAL FALL OUT PREDICTOR MILITARY MAP • TRANSMITTER LIQUID QUANTITY • TRANSFER PAPER
 • ASCO AUTOMATIC SWITCH CO CONTROL PANEL • 1 SET OF CASTERS HEAVY DUTY • 2 SETS OF LEAD JACKETS WITH LEAD GLOVES • 7' 3000 VOLT WIRE • 1 PKG O RINGS
 • 1 ROLL MILITARY 100 YARD TOW STRAPS • CRYSTAL AIR ELECTROSTATIC AIR CLEANER • GALVANIZED YELLOW WIRE ROPE CLIPS • HEAVY DUTY HOSES STEEL RIBBED HOSE
 • LARGE RUBBER RIBBED HOSES • BLACK RUBBER • BURLAP SACKS • HANCOR AASHITO M252 3 WAYS • 10" (254 MM) • PICTURE FRAMES • METAL STOOLS • ROCKY CHEST
 PROTECTORS • ASHTRAYS AND SAFETY ASHTRAYS • GERMAN FATIGUES • MILITARY DUFFLE BAG FILLED WITH SOCCER BALLS • TARPS (MISC SIZES) • COMPUTER MOUNT
 • LENT ROLLERS AND REFILLS • VARIETY OF TENTS • 1 CASE OF EXPLORER 98-99 TALL LIGHT ASSEMBLY • 6 CASES BEVELED FAUCET WASHERS 8 CASES 4 INNER BOX
 • 1 CASES MEDI VAC NON CONTAINERS SUCTION TUBE • 1 CASE 5MM CONNECTING TUBES • 1 CASE MOP HEADS • SAMPLE CONTAINERS • PLASTIC TUBES • RECEIPT PAPER
 • TERMINAL BATTERY PULLER • 12 BROOMS • 12 HEAVY DUTY KEIFER BRUSHES • 2 CASES ECCO LAB SCRUB BRUSHES • 18 CASES LABEL STICKERS • 28 CASES OF STAPLES
 • 7 CASES 5" SANDING DISCS • 1 CASE MILITARY GOGGLES • 1 CASE BEANIE BABIES • CROCKS • BLOOD LABELS • 1 SET DUMB BELLS • 5 CASES 72 CASE HOT GLUE GUNS
 • 1 CASE OF OIL FILTER WRENCHES • WHISTLES • LEGSTATS • GREASE GUN • 8600 DIGITAL MULTIMETER • 40 FOOT SHIPPING CONTAINERS • 20 FOOT SHIPPING CONTAINERS
 • 6 HUMMER TIRES • AXLES • SOLAR POWERED ROAD SIGNS • MILITARY FIBERGLASS SHIPPING AND STORAGE CONTAINERS (20) 27' X 42' X 61' (14) 54'X 84'X 122'

AUCTION NOTES

LIST PROVIDED BY OWNER • THIS WILL BE VERY LARGE
 INVENTORY REDUCTION AUCTION WITH SOMETHING FOR EVERYONE • PLAN TO ATTEND EARLY AND STAY LATE

OWNER L & S WHOLESALE

CALL DANAHY AUCTION

FOR ALL YOUR AUCTION NEEDS!

417.256.9667

Not Responsible For Accidents • Everything Sold As Is

Ark. License: #2269



REAL ESTATE AND PERSONAL PROPERTY AUCTION

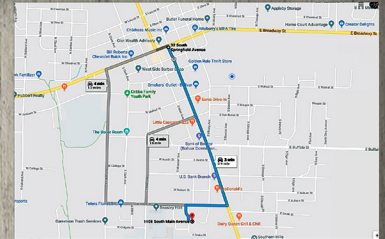
**Sat. April 6 • 10 a.m.
Real Estate Sells at Noon**

Rocking R Auction Note

Hey Folks! We've got a great home for sale along with lots of antiques, household items, and furniture. The home sits on a quiet street and is handy to SBU and shopping. Help us kick off Spring, bring a friend, and spend the day with us!

**Location:
1108 S Main Ave
Bolivar, Missouri**

**From square of Bolivar, head south on Springfield Ave for 3/4 of a mile. Turn right (west) onto South St and turn left (north) onto Main st to Auction on left.
*Watch for the Rocking R Auction signs!***



Keith and Donna Parminter Trust



- 3 Bedroom, 2 Bath
- 1200 Sq Ft M/L
- Close to SBU
- Quiet Street

**Open House March 31 from 2 to 4pm.
Call 417-326-8141 for Private Showing!**



FURNITURE • ANTIQUES • HOUSEHOLD



FURNITURE

- Maple Bedroom Set With Full Size Bed, 8 Drawer Chest & 5 Drawer Dresser
- Oak Bedroom Set With 5 Drawer Chest & 6 Drawer Dresser & Mirror
- Oak Roll Top Cabinet
- Print Couch, excellent condition
- Print Sleeper Sofa
- Power Lift Chair/Recliner
- Brown Rocking Recliner
- Carved Oak End Table
- Stereo in Cabinet
- Two Wicker Sewing Rockers
- Walnut End Table
- Antique Telephone Desk
- Cherry Secretary Desk
- Mantel Clocks
- China Cabinets
- Plus More!

COLLECTIBLES

- Hummel Figurines
- Several Ceramic Dolls
- TOOLS, LAWN & GARDEN**
- Herbicides, Insecticides, and More
- Several Hand Tools
- Plus More!

KITCHENWARE & GLASSWARE

- Lots of Pots, Pans, and Utensils
- Pitchers
- Glasses
- China Sets
- Plates
- Small Kitchen Appliances
- Plus More!

APPLIANCES

- Whirlpool Side by Side Refrigerator
- Washer / Dryer Set
- Three Older Televisions
- 46" Samsung Flat screen TV

HOUSEHOLD & MISC

- Mirrors, Pictures, & Wall Décor
- Linens and Towels
- Several Longaberger Baskets

SEE WWW.ROCKINGRAUCTION.COM FOR MORE PICTURES!

**Estates • Personal Property • Business Liquidation
Real Estate • Benefit Fundraisers • Estate Buying**

Alan Roberts (417) 830 - 8740 alan@rockingrauction.com
Lucas Roberts (417) 298 - 2704 lucas@rockingrauction.com

WWW.ROCKINGRAUCTION.COM



Statements made day of sale take precedent over printed matter. Purchase of real estate requires 10% down in cash or check on day of sale with closing to occur within 30 days. Real estate and personal property sold as is, where is, with no contingencies on inspection, financing or appraisal. We accept cash, check, and credit cards. Rocking R Auction is not responsible for property damage, accidents or injuries made on site or otherwise.



Horse Sale

1st Wednesday of each month
April 3rd, 2019

New Tack will start @ 6:00pm
then Horses to follow
Expecting Several
Head of Horses.

All Consignments Welcome
Buyers From All Across the U.S.
All Classes of Horses

For more information or
consignments, please call:

Kip: (573) 368-9402

Isaac (417) 327-2355

Denver: (417) 399-2701

Steve: (417) 894-1070

Trucking Available

Restaurant Open @ 5:00 pm

**Come See What
We Have To Offer!**

"Celebrating our 60th year"

Roberts Bros. Sale Barn

1416 E. Hwy. 32 - Bolivar, MO
(417) 326-5815

Like Us On Facebook!

SALE EVERY SATURDAY @ 10 AM
Hay, Wood, Chickens, Ducks,
Rabbits, Goats, Pigs, Cattle

HEAVY DUTY WALKER: 400 lb rated,
brand spanking new, large seat/storage, four
7" pivoting wheels, hand brakes. \$200. 417-
686-0032, Ava.

AUCTION REMINDER: Every Wednesday
at 10:30 am. Farmington Livestock. Please
see our Auction Directory for more informa-
tion.

AUCTION REMINDER: Estate Auction.
Saturday, April 6 @ 9:00 a.m. Bruce and
Le'An Auction. Please see our Auction Direc-
tory for more information.

ONLINE AUCTION

Collector Cars • Antique Gas Pump
JD Doctor's Buggy

502 Main St., Concordia, MO 64020

Bidding Ends Tuesday, April 2nd at
12:30PM

This Auction Features Staggered Ending
Times & Extended Bidding On All Lots.
Bid Online At Atterberryauction.com



Preview: Monday, April 1st
from 12:00PM to 3:00PM

Payment & Pick-Up: Wednesday, April 3rd
from 12:00PM to 3:00PM

1940 Packard 120 18th Series 4-Door Convertible

1949 Plymouth Super Deluxe Woody Wagon

1955 Ford Fairlane • 1959 Edsel

1960 Edsel Ranger • 1958 Edsel Citation

Sinclair Refining Co. Visible Gas Pump

Petroliana Items • 1912 John Deere Doctor's Buggy

HUGE Selection Of Rims, Hubcaps, Wheels & Tires

Advertising Signs • Oils Cans • License Plates


Assorted Parts • LARGE QUANTITY Of Antique

Service & Shop Manuals

For complete terms, listing, catalog,
pictures & bidding,
visit atterberryauction.com,
email contactus@atterberryauction.com,
or call (573) 474-9295.

Please contact our office if you need help
with the online bidding process.

Sellers: The Estate Of Paul Wobus

"WE MAKE BUYING AND SELLING AT AUCTION EASY"
Atterberry MEMBERS
Auction & Realty Co., LLC. 
573-474-9295 www.atterberryauction.com

LOOKING FOR PEOPLE who know SAM
RUGGLES, from Lebanon. Call 417-664-
8317.

GOOSENECK FLATBED: 24' 1,400 lbs
gvwr, \$3,000. Ava, 417-543-0278.

JOHN DEERE 4240: Diesel cab and air trac-
tor, power shift, 3900hrs, very nice, 110hp.
\$29500. 573-765-4406

27HP X-MARK ZERO TURN: 5ft deck,
runs great, can deliver. \$2,900 636-239-4124.
tion.

BUFFALO LIVESTOCK MARKET

276 Hwy 32 West
Buffalo, Missouri
March 23RD, 2019

Receipts: 1921 Head

Feeders Steady
Slaughter Cows & Bulls \$3-6 lower

Representative Steers

300-400 @ 176.00 to 196.00
400-500 @ 167.00 to 189.00
500-600 @ 156.00 to 175.00
600-700 @ 148.00 to 162.50
700-800 @ 133.00 to 145.00
800-900 @ 127.50 to 133.00

Representative Heifers

300-400 @ 154.00 to 172.00
400-500 @ 140.00 to 157.00
500-600 @ 133.00 to 152.00
600-700 @ 127.00 to 142.00
700-800 @ 117.00 to 133.00
800-900 @ 112.00 to 120.00

Feeder Bulls

400-500 @ 150.00 to 180.00
500-600 @ 140.00 to 159.00
600-700 @ 125.00 to 140.00
700-800 @ 113.00 to 127.00
800-900 @ 100.00 to 114.00

Holst. Steer

400-500 @ 70.00 to 80.00
500-750 @ 70.00

Bred Cows:

700.00 to 1075.00 per head

Slaughter Cows:

Fleshy @ 54.00 to 62.50
Med Flesh @ 40.00 to 50.00
Thin @ 35.00 to 45.00

Slaughter Bulls:

High Dressers @ 80.00 to 86.50
Med Dressers @ 70.00 to 80.00
Low Dressers @ 62.00 to 70.00

Join us each Saturday at Noon
for great cattle year-round!

MON-WED MARKET REPORT

Listen to KJEL 103.7FM • Lebanon or
KYOO 99FM • Bolivar

VIEW OUR SALES AT CATTLEUSA.COM


CALL FOR TRUCKING OR ON-FARM VISIT

Lyle Caselman • Owner-Manager
417-345-7876 • mobile 417-533-2944
Leon Caselman • Owner
417-345-4514 • mobile • 417-588-6185
Howard Miller • Owner 417-345-8122

Over 25 Years In The Livestock Business

Cattle Sale

Every Monday at 12:00



Feeder Calves
to sell at 12:00 pm

**Butcher Cows
& Stock Cows**
following

Goat, Sheep & Hog Sale

2nd Tuesday of the Month • 6 pm

Feed & Water Pens Available

**All Consignments Welcome
Up Until Sale**

We Appreciate Your Business!

Salem Livestock Auction

**Hwy 32 Salem, Mo
Barn- 573-729-8880**

Allen Thompson 417-932-4097	Terms of Sale: Cash or Approved Check!	Renee Lauderdale 417-926-2682
Chuck Thompson 417-257-5610		Keith Robertson 314-560-3285

ESTATE AUCTION

Sat., March, 30th • 10A.M.


14757 Lawrence 1250, Billings, Mo.

Directions: From Billings take Hwy. 14 west 2.7 mi. then left on Poinsetta Rd. 1/4 to Sale. *Watch for Signs* Breakfast, lunch & Restrooms Available.

Antique Tractors - Farm: Minneapolis Moline R Tractor, (complete with good sheet metal); Minneapolis M602 LP, Ran good when parked 2 years ago; Allis - Chalmers WD Tractor, Ran good when parked 2 years ago; Massey Ferguson 6ft. Bush Hog (pull type); 3pt. King Cutter 6ft. Blade; **Mowers - Tools - Scrap:** 10hp. Snapper Riding Mower; 10hp. Snapper Riding Mower (Parts); 5hp. Garden Tiller (front tine); Sanborn 22gal. Portable Air Compressor; Wards Powr Kraft 295 Amp Arc Welder; Buckeye Railroad Jack; McCullough Mac 3200 Chainsaw; 1978 Chrysler Lebaron (complete for salvage); **1964 1/2 Mustang - Boats:** 1964 1/2 Mustang, 6cyl. 3 Spd., all original, (was running when parked in barn in 1979); Old Studebaker Pickup Tailgate; 14ft. Richline Aluminum Bottom Boat with 20hp. Mercury Motor & Trailer; Vintage Starcraft Ski Boat with 40hp. Elgin Motor (no trailer); **Antiques - Collectibles:** Western Stoneware 10 gal Crock Jar w/ Fruit decoration and bail handles; Dazey 1 Gallon Butter Churn; Winchester wood Shotgun Shell Box; White Mountain Ice Cream Freezer (nice); Sunshine Coffee Jar; Old 5 Gallon Metal Gas Cans; Red Coleman Lantern; Old Wood & Metal 2 Wheel Dolly; Single & Double Tree's; Red Rotary Dial Telephone; (10+) Sheets Used Galvanized Tin; **Misc. Furniture-Appliances Not Listed**

Estate of Ed Lyon

Auctioneer's note: Tractors & Car sell at 12:00 Noon. See our website fosterauctions.com for 100's of pictures & a full list.



Larry Foster
Auctioneer
Galena, Mo
Phone: (417) 723-8329
Cell: (417) 839-6860
www.fosterauctions.com
Email: bidnowsold@aol.com

GREAT PYRENEES PUPPIES: All white, 8 wks, wormed/shot. \$200. 417-926-2470, Norwood.

L2501D KUBOTA: 4wd tractor with loader, 25HP, hydro transmission, with 5' Landpride bush hog. \$16,900. 417-270-1505.

CEDAR GAP TOPSOIL: Garden Ready topsoil, Only water required, delivery within 50-mile radius, Seymour. 417-935-2877. For more info: www.cedargaptopsoil.com

POOL TABLES: Installations, moves, recoveries, repairs, accessories, etc. 573-646-1700.

OUTSTANDING COMMERCIAL REAL ESTATE HIGH TRAFFIC INCOME PRODUCING



Monday, April 1st
10:00 AM & 1 PM


Locations - 608 N Main, Mtn Grove, MO at 10 AM & 808 Porter Wagner Blvd, West Plains, MO at 1 PM

Contact Gary Sexton
Auctioneers: 417-255-7001

Auctioneers Notes - Low starting bids on both parcels - company has instructions is to sell! Both auctions will be sold on site:

- **LOCATED at Tract #1**
- 608 N Main, Mtn Grove, MO, 65711
- At public Auction:
- 2 Large Commercial Lots
- 90'x125' & 75'x125' - (Parcel #21-2.0-04-019.00 & 21-2.0-04-020.00)
- 2018 Taxes: \$155.87 with excellent location and perfect office building - pavement and LOTS of parking area! **Selling at 10:00am sharp on site at 608 N N Main in Mtn. Grove, MO!**
-
- **LOCATED at Tract #2**
- 808 Porter Wagoner Blvd, West Plains, MO.
- Commercial Building on 145'x145'
- (irregular) with 1,680 sq ft office building
- (both are currently rented!) High traffic volume - Excellent Location! **Selling at 1:00 p.m. on site at 808 Porter Wagoner in West Plains, MO! Terms**
- 10% down day of the auction, balance upon closing inspection.



Thanks for attending!

REAL ESTATE | HEAVY EQUIPMENT | ESTATE LIQUIDATION

FARMINGTON LIVESTOCK

Hwy 67 • Farmington, MO
Office Phone: **573-756-5769**

Regular Sale

Every Week

Wednesday

Starting at 10:30 am

All Consignments Welcome
Keith Robertson
Cell: **314-560-3285**
Home Ph: **573-732-4987**

TARTER 7' HDD7: disk, 3pt, adjustable gangs, new, heavy duty. \$1850. 573-205-7860, Owensville.

AUCTION REMINDER: Land Auction Thursday, March 28 at 12pm. Freeman Auctions & Appraisals. Please see our Auction Directory for more information.

MOTORIZED 26" FLYER BIKE: 80mpg, 40mph, Karaoke brand. \$185firm. 573-872-9821

AUCTION REMINDER: 2 Commercial Real Estate, Monday, April 1st @ 10am and 1pm. Gary Sexton Auctions. Please see our Auction Directory for more information.



MID MISSOURI STOCKYARDS

REGULAR SALE EVERY THURSDAY 11 AM

SPECIAL COW SALE APRIL 6TH @ 6PM

For Farm Visits, Market Updates, or Trucking
Call **Zach Cox 417-777-1320**
Dan Romine 573-578-4939

Competitive Buyers!

Competitive Commission!

Competitive Market!

Barn: 417-532-9292 Use a Facebook

I-44 • Exit 123 "just outside of Lebanon"
17505 Route 66, Phillipsburg, MO 65722

For weekly market updates, visit us at www.midmostockyards.com

AUCTION TIME!

**THURSDAY
MARCH 28TH
12 NOON**

Estate of Cora Beth Gates

**SELLING
20 ACRES m/l ON
W. FARM ROAD 26
GREENE COUNTY,
MISSOURI**

Directions: From I-44 & Glenstone, north on Glenstone/H 5.2 miles. Continue left on Hwy. H 4.7 miles to Farm Road 26. West on FR 26 7/10s mile.

This 20 acres m/l is all wooded. A beautiful building site where your closest neighbors are the deer, turkey, squirrels and an occasional possum.

Terms: 10% down day of auction with full balance due on or before April 25th, 2019. Sells subject to probate court approval.

**Personal Representative:
Joyce A. Anderson
Estate Attorney: Allen Rose**

**FREEMAN AUCTIONS
& APPRAISALS, LLC**
Auctioneer: Steve Freeman
(417)343-1891
sfactiontime.com

FLIES ARE COMING! Lewis Cattle Oiler. 417-286-3540 or 774-696-2344.

REGISTERED HEREFORD & ANGUS BULLS: Home raised, Some Show-Me Select Qualified. 573-701-7828. Belgrade

WOOD BUSHING: For Ferguson disk. \$20. 636-932-4429. Herman

AUCTION REMINDER: Estate Auction Saturday, April 6 @ 10am. Danahy Auctions. Please see our Auction Directory for more information.

QUALITY BEEF FOR SALE: No stress, no hormones, no anti-biotics. Available April 25th. We're proud of our beef! Ethical operation and integrity. Gatewood, 573-255-3191.

JOHN DEERE 420: 2cylinder, wide front, 3pt, Late 50's, extensive work mechanically, too much to list, with a fresh paint job, seat and new tires, Parade ready. \$3850. 573-205-7860.

WANTED HORSE MANURE: Bourbon, 314-960-6652.



**TASK.
TASK.
DONE.**

RTR12 SERIES

ROTARY TILLERS
15-60 HP 42", 50", 58", 66", 74"

- Reverse rotation
- Offset capabilities
- Lower clevis hitch for easy hook-up
- Steel plate upper hitch
- Seven position skid shoes
- 15" Rotor swing
- 4" C shaped blades per flange

AGRI ENTERPRISES

For Outstanding Products & Service

1-1/2 Miles South Of Licking, MO On Hwy 63

573-674-2203
1-800-653-7152

www.landpride.com www.agri-enterprises.com

3 YEAR
Warranty

96 FIREBIRD TRANS-AM: \$4,500. 573-747-3767.

1-HORSE WALK BEHIND PLOW: Very good condition. \$175. 417-457-1023, Raymondville.

750 GAL FIELD SPRAYER: Big tire Hyd pump single jet. \$2,750. 573-765-4406.

YOU GOTTA SEE THESE NEW HOUSES!!! Brand new inventory on sale !! 573-499-9993. columbiadiscountshomes.com.

PINE LOG SIDING SALE: \$1.19 per L.F. www.pineridgerustic.com 573-729-7226, 573-247-2823.

QUILT BOOKS FOR SALE: 101 Fabulous Rotary Cut Quilts. \$10. The Quilting Bible, over 30 quilting projects. \$8.50. Charm Quilts. \$6.50. Lebanon, 417-532-2045.

JOHN DEERE 535: Round Baler, monitor, kicker, net wrap. \$7,200. 573-765-4406.

WANTED: old Franklin County Plat books. 573-468-4924

REGISTERED BLACK ANGUS BULLS: 417-453-6332. Plato

2012 KUBOTA RTV 1100: Cab heat/air, new tires, diesel, camo color, 1430hrs. \$9200. 417-543-5164

VILLA HOMES IN ROLLA: Has NEW and USED Mobile Homes. Call David for info: 573-578-8072.

FERGUSON-TO-30: 12volt, good tractor w/5' wood mower. \$2800. Bourbon, 314-960-6652.

2004 OPEN RANGE FIFTH WHEEL CAMPER: 34', all weather, in good condition. \$10,500. Lebanon, 417-718-5520.

I BUY.....used mobile homes. Call or text, 573-338-6250 or e-mail GregS.CDH@outlook.com.

CATTLE HOLDING CHUTES: W/AI cage, Tarter auto head catch, new. \$2,000. 573-205-7860, Owensville.

MASSEY FERGUSON 231 DIESEL TRACTOR: 40 HP, 2,000 hours, with nice loader, \$8,950. 573-765-4406.

FIREARMS: Professional Repairs and Restorations. Baron's Gunsmithing. 573-363-5801, Camdenton.



NEW MAHINDRA ROXOR FRESH OFF THE ASSEMBLY LINE!!

- Steel Body no plastic to break
- 5 Speed Manual Transmission no belt to break
- Fully-boxed, ladder-construction, steel truck-style frame
- Turbo Diesel 4 cycle engine which produces 144 ft lbs of torque and 3490 lbs of towing capacity to get your jobs done. • Made in Detroit
- 2 YEAR WARRANTY OR 12,000 MILES • Starting at \$15,999

Visit us at www.cowtownusainc.com

WINCHESTER MODEL-61 PUMP-22:
\$1,100. Rolla. 573-308-2550.

JOHN DEERE 260: 3pt, Disk mower. \$2500.
573-765-4406.

RIGID 14" Bandsaw: \$200, Lebanon, 573-247-2598.

PARTING OUT ALLIS-CHALMERS D14, D17, WC, WD, AND CA. Jefferson City, 573-690-9406.

CATTLE RACK: Metal, slide-in for 16' trailer. \$425. 636-239-4124.



SAVE \$300
— UNTIL MAY 31, 2019 —

GET YOUR TRUCK OUTFITTED WITH A CHISHOLM TRAIL HAYBED TODAY!

LET US BE YOUR PEOPLE!

WESTGATE TRAILER & EQUIP.

417-351-6974 • 417-926-7733
www.westgatetrailer.net
8920 W Business 60 • Mtn. Grove, MO
7136 W Farm Road 140 • Springfield, MO
FULL SERVICE SHOP
OPEN: Mon.-Fri. 8-5 And "YES!" Sat. 8-Noon!

WEEKLY TRADER MAGAZINE **YOUR AD GOES HERE!**

Add **YELLOW** Color For An Additional **\$3** Per Reader Ad

All ads will include Phone Number (unless requested to be deleted by advertiser) and City Or Town, Phone Number with Area Code counts as one word. City or Town counts as one word.

RATE: 80¢ Per Word. All Classified Ads Require Payment Before Print.

(1)	80¢	(2)	\$1.60	(3)	\$2.40	(4)	\$3.20
(5)	\$4.00	(6)	\$4.80	(7)	\$5.60	(8)	\$6.40
(9)	\$7.20	(10)	\$8.00	(11)	\$8.80	(12)	\$9.60
(13)	\$10.40	(14)	\$11.20	(15)	\$12.00	(16)	\$12.80
(17)	\$13.60	(18)	\$14.40	(19)	\$15.20	(20)	\$16.00
(21)	\$16.80	(22)	\$17.60	(23)	\$18.40	(24)	\$19.20
(25)	\$20.00	(26)	\$20.80	(27)	\$21.60	(28)	\$22.40
(29)	\$23.20	(30)	\$24.00	(31)	\$24.80	(32)	\$25.60
(33)	\$26.40	(34)	\$27.20	(35)	\$28.00	(36)	\$28.80
(37)	\$29.60	(38)	\$30.40	(39)	\$31.20	(40)	\$32.00

Place your Classified Ad TODAY!
417-532-2800 • 800-665-8875
Fax: 417-532-8140
Or Mail To: P.O. Box 192 • Lebanon, MO 65536

For your convenience we accept MasterCard, Visa, Discover or American Express



DEADLINE FOR CLASSIFIED ADS: MONDAY 12 NOON!!

Name _____

Address _____

City _____ Email _____

State _____ Zip Code _____ Phone _____

Ad Total \$ _____ X # Weeks _____ = Amount Enclosed \$ _____

SWITCH INTO A NEW CHEVY TODAY.



2019 CRUZE LT
Stk# 32689



FOR CURRENT COMPETITIVE OWNERS

21% BELOW MSRP

ON MOST MODELS WHEN YOU FINANCE WITH GM FINANCIAL¹

^{\$3,768 PURCHASE CASH + \$1,228 PRICE REDUCTION BELOW MSRP}

THAT'S **\$4,996** BELOW MSRP

ON THIS CRUZE PREMIER WHEN YOU FINANCE WITH GM FINANCIAL²

2019 MALIBU 1LT
Stk# 32668



FOR CURRENT COMPETITIVE OWNERS

21% BELOW MSRP

ON MOST MODELS WHEN YOU FINANCE WITH GM FINANCIAL¹

^{\$4,515 PURCHASE CASH + \$1,571 PRICE REDUCTION BELOW MSRP}

THAT'S **\$6,086** BELOW MSRP

ON THIS MALIBU PREMIER WHEN YOU FINANCE WITH GM FINANCIAL²

2019 TRAX LT
Stk# 32700



FOR CURRENT COMPETITIVE OWNERS

21% BELOW MSRP

WHEN YOU FINANCE WITH GM FINANCIAL³

^{\$4,109 PURCHASE CASH + \$1,066 PRICE REDUCTION BELOW MSRP}

THAT'S **\$5,175** BELOW MSRP

ON THIS TRAX PREMIER WHEN YOU FINANCE WITH GM FINANCIAL⁴

2019 EQUINOX LT
Stk# 32717



FOR CURRENT COMPETITIVE OWNERS

21% BELOW MSRP

ON MOST MODELS WHEN YOU FINANCE WITH GM FINANCIAL¹

^{\$5,007 PURCHASE CASH + \$2,246 PRICE REDUCTION BELOW MSRP}

THAT'S **\$7,253** BELOW MSRP

ON THIS EQUINOX PREMIER WHEN YOU FINANCE WITH GM FINANCIAL²

2019 COLORADO 4 WD, Z71
Stk# 32750



FOR CURRENT COMPETITIVE OWNERS

14% BELOW MSRP

ON MOST PICKUPS⁵

^{\$2,965 PURCHASE CASH + \$2,707 PRICE REDUCTION BELOW MSRP}

THAT'S **\$5,672** BELOW MSRP

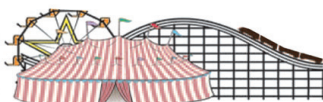
ON THIS COLORADO Z71⁶

FIND NEW ROADS[®]

CHEVROLET



1 Excludes L models. Offer includes price reduction below MSRP and cash allowance. Must show proof of a current ownership or lease of a 1999 model year or newer non-GM vehicle for at least 30 days prior to the new vehicle sale. Must finance with GM Financial. Some customers may not qualify. Not available with special financing, lease and some other offers. Take new retail delivery by 4/1/19. See participating dealer for details. 2 Based on 2019 Cruze \$23,795. MSRP. Based on 2019 Malibu \$28,985 MSRP. Based on 2019 Equinox \$34,540 MSRP. Must show proof of a current ownership or lease of a 1999 model year or newer non-GM vehicle for at least 30 days prior to the new vehicle sale. Must finance with GM Financial. Some customers may not qualify. Not available with special financing, lease and some other offers. Take new retail delivery by 4/1/19. See participating dealer for details. 3 Offer includes price reduction below MSRP and cash allowance. Must show proof of a current ownership or lease of a 1999 model year or newer non-GM vehicle for at least 30 days prior to the new vehicle sale. Must finance with GM Financial. Some customers may not qualify. Not available with special financing, lease and some other offers. Take new retail delivery by 4/1/19. See participating dealer for details. 4 Based on \$24,645 MSRP. Must show proof of a current ownership or lease of a 1999 model year or newer non-GM vehicle for at least 30 days prior to the new vehicle sale. Must finance with GM Financial. Some customers may not qualify. Not available with special financing, lease and some other offers. Take new retail delivery by 4/1/19. See participating dealer for details. 5 Excludes Base models. Offer includes price reduction below MSRP and cash allowance. Must show proof of a current ownership or lease of a 1999 model year or newer non-GM vehicle for at least 30 days prior to the new vehicle sale. Not available with special financing, lease and some other offers. Take new retail delivery by 4/1/19. See participating dealer for details. 6 Based on \$40,520 MSRP. Must show proof of a current ownership or lease of a 1999 model year or newer non-GM vehicle for at least 30 days prior to the new vehicle sale. Not available with special financing, lease and some other offers. Take new retail delivery by 4/1/19. See participating dealer for details. ©2019 General Motors.



FAIRGROUND
Auto Plaza

DRIVEN TO SERVE YOU BEST...

100 Fairgrounds Road
Rolla, Missouri
(573) 364-1002

www.FairgroundGM.com

