

Vol. 27 No. 01

APRIL 9, 2020

800-543-8271 • 800-665-8875

WEEKLY TRADER MAGAZINE



Find us on
Facebook

@myweeklytrader

FREE

Auctions - Pg. 8

MYWEEKLYTRADER.COM

THE HUNT FOR THE STRONGEST, MOST ADVANCED SILVERADO COMES TO AN END.

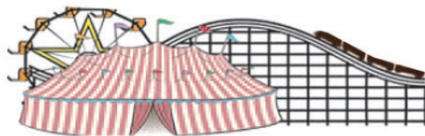
CHEVY SILVERADO

When your truck is the strongest, most advanced Silverado ever, there is no off-season. Whether it's work or play, go outside and get it done all year round. Chevy is proud to be an Official Partner of the Rocky Mountain Elk Foundation.



FIND NEW ROADS™

CHEVROLET



FAIRGROUND

Auto Plaza

DRIVEN TO SERVE YOU BEST...

100 Fairgrounds Road

Rolla, Missouri

(573) 364-1002

www.FairgroundGM.com



Fishing Season is almost here!

We have a great supply of: Berkley Flicker Shads
Charlie Brewers
Slider Grubs
Swimming Minos
& Jig Heads!

Craig's
OUTDOOR
Sports

9435 HWY N. Suite A (417) 926-0255
Mtn. Grove, MO craigsoutdoorsports.com

Mon-Fri 9am-5pm • Sat 9am-Noon

600 SQFT USED 5" DOUBLE LAP,
CREAM COLOR VINYL SIDING: \$75,
417-457-1015.

GENTLE 4 YEAR OLD: black Angus bull.
Good build \$1,600. Raymondville. 417-457-
1015,

55 ANGUS BRED BLACK HEIFERS:
2nd Stage, home raised. Start calving Sept.
1st. Extra nice and gentle. Show Me select
qualified. Foundation type heifers. Weighing
1100lbs now. Take one or more. J.W. Henson.
417-343-9488. Conway

WANTED, TIMBER TO LOG ON
SHARES: Honest, reliable, references. 417-
533-4607, 417-664-1195.

AR15 W/BUMP FIRE: includes scope.
\$550. 417-741-6323, Hartville.

CUSTOM SAW MILLING: Lebanon. 417-
533-4607, 417-664-1195.

TROYBILT RIDING LAWNMOWER:
17HP, for parts. \$25. 636-297-1747.

WANTED PINBALL MACHINES. 573-
424-7200.

FESCUE SEED: 50 cents. 573-578-2651.
Belle.

4 BASKET HYDRAULIC FOLD TED-
DER: \$2,500. 573-765-4406.

WANTED TO BUY SMALL CATTLE
FARM WITH HOME AND BUILDINGS:
75-100ac/m/l, mostly open, 85% m/l, one mile
or so from paved road, short term contract.
563-529-0612.

GERMAN SHEPHERD KENNEL RE-
DUCTION: Registered adults & 1 puppy.
Call for pricing. Hartville, 417-741-2198.

L4400 KUBOTA: 4wd tractor with loader
and 3rd function valve, Low hours. \$21,500.
417-270-1505.

Come to Sakelaris Ford Lincoln Rolla At Our New Location
Where the customer is always #1!



see what's
new!

Come Enjoy Our All NEW Super Clean Facility!

Get A Fantastic Deal On Your New Ford Vehicle!

BUILT TO LEND A HAND | BUILT *Ford* PROUD
**FORD WILL DEFER 3 PAYMENTS
AND MAKE 3 PAYMENTS, FOR
PEACE OF MIND UP TO 6 MONTHS.***
(Qualified Buyers Financed with Ford Credit)

6-MONTH PAYMENT RELIEF

ON SELECT NEW 2019, 2020 & 2021 FORD VEHICLES.



Pick Up & Delivery Service Available on ALL Sales, Trade-ins & Service Vehicles!

*Excludes leases. Available on select 2019/2020/2021 Ford vehicles. Must finance through Ford Credit Financing. Customer can defer payment up to 120 days. Maximum Bonus Cash amount is capped and varies by vehicle. Some restrictions may apply. Take new retail delivery from authorized Ford dealer's stock by 04/30/2020. See dealer for qualifications and complete details on all incentives.

BUILT *Ford* PROUD

SALES TEAM



Al Morgan



Caleb White



Jon Reed



Lance Lewis



Carol Harris



Chase Marler



Sara Myers



Brian Parker



Zach Courtway



Sakelaris
Ford Lincoln Of Rolla

Sales Hours:
Mon.-Fri. 8AM-6PM
Sat. 8AM-4PM

www.sakelarisfordrolla.com

573-364-1211 • 800-325-1211 • 1621 Martin Springs Drive, Rolla, MO 65404



LINCOLN
Service Hours:
Mon.-Fri. 8AM-6PM
Sat. 8AM-4PM



\$100 OFF

Dash & Raptor Family
models. Available
April 1 - April 30, 2020

See Hustler dealer for complete details.



For Outstanding Products & Service
AGRI-ENTERPRISES

1-1/2 Miles South Of Licking, MO On Hwy 63
573-674-2203 • 1-800-653-7152 • www.agri-enterprises.com

TAKUCHI 135 DIESEL EXCAVATOR:
\$15,000. 573-765-4406.

LIONEL TRAIN SET: Steam engine, tender,
caboose and other car, track and transformer.
\$195. 573-364-7465, Rolla.

ROSSI 410 SHOTGUN: Like brand new.
\$120. 870-283-5417, Evening Shade, Arkan-
sas.

12FT CHISEL PLOW: W/stalk-sod disk-cut-
ters. \$950. 417-322-0161.

**LOOKING FOR USED COMPLETE
HOOD FOR LX176 JOHN DEERE LAWN
MOWER. 573-465-3753.**

POOL TABLES: Installations, moves, recov-
ers, repairs, accessories, etc. 573-646-1700.



WANTED JERSEY GUERNSEY STEERS:
600 lbs. 417-399-3118, Conway.

KUHN 10FT 3 POINT DISK MOWER:
\$4,850. 573-765-4406.

QUALITY REPLACEMENT COWS:
80 BLACK SECOND & THIRD PERIOD
COWS, 20 Red 2nd & 3rd period cows, 4-7yrs
old, avg weight 1250lb-1300lbs, de-wormed,
vaccinated, preg checked, trucking available.
Otterville, 660-619-5190.

**PULL BEHIND LAWNMOWER DUMP
TRAILER:** Hard rubber tires. \$75. 636-297-
1747.

IHC 766 DIESEL TRACTOR: cab and air,
80HP, new engine overhaul. \$8,500. 573-765-
4406.

**D&H OUTDOOR WOOD FURNACES
SINCE 1986:** Forced air, 90% efficient, fire
proof insulated, thermostat control. Complete
Heating and Cooling Systems. 573-743-6943,
Salem.

BUYING PRE-1960 BEER SIGNS:
FALSTAFF, LEMP, CAPITOL,
GRIESEDIACK, STAG, any brands. 573-
680-5377.

WHEEL FOR FORD 8N TRACTOR: 3"X
19". \$30. Gerald, 573-764-2270.

BARN WOOD SIDING: 8" & 10" wide.
573-729-7226. www.pineridgerustic.com

ROME 8FT OFFSET DISK: \$3,750. 573-
765-4406.

REMINGTON MODEL 7400 270: Auto-
matic. \$550. 573-743-3394.

**4X5 FIRST & SECOND CUTTING AL-
FLAFA & GRASS ROUNDS:** Prices \$40-
\$75. Alfalfa Orchard Grass, second cut, small
squares. \$8. All stored inside. No Sunday
calls, 417-532-1113.

VOTED #1 BEST Preowned Car Dealership

TIM'S USED CARS

(573) 341-3828 • 1334 South Bishop (Hwy. 63) • Rolla, MO
Next to Hwy CC • www.tims-used-cars.com

	2014 CHEVY SILVERADO 1500 LT Crew Cab, 4x4, Leather, 5.3 V8, 100,xxx Miles ONLY \$23,900		2010 DODGE RAM 3500 SLT Crew Cab, Dually, 4x4, Diesel, Auto, Power Equipped, 161,xxx Miles ONLY \$25,900
	2015 RAM 3500 LARAMIE Crew Cab, Dually, 4x4, Diesel, Auto, Loaded with Options Only \$34,900		2010 DODGE RAM 1500 SPORT Crew Cab, 4x4, 5.7 Hemi, Loaded with Options, 160,xxx Miles Only \$15,500

LARGE SELECTION OF CARS, TRUCKS, SUVs & VANS!

USED EQUIPMENT

4' Brush Cutter • JD 10' Cultipackerr
Gehl Silage Chopper • 3pt. 3 bottom plow
12' Spring Tooth Harrow 3pt. 2 Disc Disc Plow
Plus Other Misc Equipment Not Listed
TRACTORS

Mahindra 6075 w/loader, Cab,
4WD, Remainder 5 -1/2 Year Powertrain
Warranty. Low Hours

For Outstanding Products & Service
AGRI-ENTERPRISES
1-1/2 Miles South Of Licking, MO On Hwy 63
573-674-2203 • 1-800-653-7152
www.agri-enterprises.com

EARN \$60,000/YR: Part-Time in the Live-
stock of Farm Equipment Appraisal Business.
Agricultural background required. Home
Study Course available. 800-488-7570 or
www.amagappraisers.com

R-FAB BINS
(660)281-3078

Bucket Bins
Stationary or Portable

Overhead Bins
Located in Warsaw, MO

WINCHESTER 12 GAUGE SINGLE SHOT SHOTGUN: \$200. Desloge, 573-327-9068.

FENCE! FIXED KNOT 10% Off: High tensile woven, barbed, smooth. Cattle/Sheep panels! High-powered fencers! Best Prices! Ozark Farm, 417-322-0161.

VILLA HOMES IN ROLLA: Has NEW and USED Mobile Homes. Call David for info: 573-578-8072.

JOHN DEERE 567 ROUND BALER: monitor, kicker, wide pick-up, cover, net wrap. \$9,650. 573-765-4406.

SWISHER PULL BEHIND MOWER: 44 inch cut, 10.5 horsepower motor, with electric start, new tires, \$875. Gainesville, 636-225-2985.

Cheyenne Acres
Horse & Tack
BUY - SELL - TRADE
by Rolla, MO
Call For Directions & Availability
Call Kip
573-368-9402

FERTILIZER: Semi-loads wholesale/delivered. 800-807-9612.

KIDS LITTLE TYKES RED CAR BED: w/mattress. \$150. Desloge, 573-327-9068.

2019 DODGE GRAND CARAVAN: w/deluxe Braun wheelchair conversion, in-floor illuminated side power ramp, 24,000+ miles. \$54,000 OBO. 417-532-4405 Noon-3pm.

BRUSHOG 6FT OFFSET DISK: \$1,950. 573-765-4406.

American Made Metal Roofing
40 Year Warranty Metal.....\$1.95 (\$60.94 Per Sq)
*29 Gauge 10 Year.....\$1.75 (\$54.69 Per Sq)

****WHILE SUPPLIES LASTS****

29 Gauge #1 Galvalume.....~~\$1.69~~.....\$1.39 (\$43.44 Per Sq)
26 Gauge 40 Year.....\$2.25 (\$70.31 Per Sq)

- ★ 17 Colors To Choose From
- ★ 21 Years In Business
- ★ We Manufacture Our Own Metal and Trusses



3 Locations To Serve You!

1239 W. Kingshighway Paragould, AR 870-810-2494	1100 Pace Rd. Pocahontas, AR. 870-609-1900	35 Killdeer Rd. Seymour, MO. 417-952-7143
---	--	---

*Possibly not American made. Prices always subject to change.

Build In A Box
Stud Wall & Pole Barn Kits

Non-Warranty Metal	10 Year Warranty	40 Year Warranty
24x30x8..... \$3,350\$3,700\$3,850
30x40x10... \$4,950\$5,350\$5,600
40x60x12... \$9,300\$10,000\$10,200

*Precut Packages Also Available

MX5100 KUBOTA: 4wd tractor with loader, 52 HP, open station, low hours. \$20,000. 417-270-1505.

HORSE HAY: Square bales, weed free, Big Blue stem, 80% pure. \$5 bale, mixed grass hay, \$4.50/bale. 573-368-1794, Rolla.

FIREARMS: Professional Repairs and Restorations. Baron's Gunsmithing. 573-363-5801, Camdenton.

DOUBLE SET OF WHEEL CHOCKS: Color is Safety Yellow. \$30. 636-239-2695, Washington

1991 TOYOTA: fixer-upper or parts. \$500. 417-844-9287.

92 KW T600A: Cabin Chassis, 60 series Detroit 9-speed, 8 airbags suspension and pony axle, tires are good to new. \$7,500 OBO. Sheldon, 417-464-0002, Seymour.

Buildings • Hunter's Cabins • Lawn Furniture

JAMCO BUILDERS

JAMCO Portable Buildings
800-688-2064 • 307 Enterprise Dr. • Seymour, MO • www.jamcobuilders.com

Rent To Own Plan

STAINED GLASS THEATRE COOKBOOK. \$6.50. **RESTAURANT RECIPES OF MISSOURI.** \$7.50. **FANNIE FARMER 1896 COOKBOOK,** Reprint, 567 pages. \$6. **THE CAKE DOCTOR COOKBOOK.** \$6.50. 417-532-2045, Lebanon. (Leave Phone Number).

HAY FOR SALE: Small square, 4x5 round & 4x6 round bales. Licking, 573-578-7210.

IHC 1066 DIESEL TRACTOR: Open station, Nice. \$9,500. 573-765-4406.

1999 HONDA 750 NIGHTHAWK: \$1,500. Perryville, 573-547-7249, leave message.

LAWNMOWERS FOR PARTS: 10-total. \$500. 417-844-9287.

1997 CHANDLER 28 x 52: 3 bedroom 2 bath, new shingle roof, new electric furnace, vinyl skirting, ac unit, stove and refrigerator, one owner, free delivery and set up \$24,995. Call Charlie 573-205-7252. Steelville.

RUGER MINI 14: \$600. 573-743-3394.

Starnes Auto LLC
22115 Rt. 66 • Lebanon, MO 65536
417.588.3159 Office • 417.718.2707 Cell
www.starnesauto.com

1995 OLDS CUTLESS MAROON.....	\$CALL
1996 GMC SIERRA GREEN, EXT. CAB, 2WD, 222,XXX MI	\$1,750
1999 FORD RANGER MAROON.....	\$CALL
2001 GMC SIERRA 1500 GREEN, EXT CAB, SLT, 4X4, 225,XXX MI	\$3,950
2001 HYUNDAI XG300 PEARL WHITE, 230,XXX MILES	\$1,250
2003 CHEVY S-10 PEWTER, 74,XXX MILES.....	\$4,950
2004 CHEVY MALIBU LT GREEN, 82,XXX MILES	\$3,650
2004 CHEVY SILVERADO 1500 EXT. CAB, 4WD, 152,XXX MILES	\$6,500
2005 CHEVY SUBURBAN BLUE, 4X4, 202,XXX MILES	\$4,200
2006 PONTIAC TORRENT SILVER, 153,XXX MILES.....	\$3,200
2007 CHEVY SILVERADO 2500 CLASSIC, 137,XXX MILES	\$10,750
2007 CHEVY TAHOE PEWTER, 239,XXX MILES.....	\$7,250
2007 PONTIAC G6 RED, 172,XXX MILES	\$2,650
2007 SATURN OUTLOOK BLUE/GOLD, 156,XXX MILES.....	\$5,200
2008 CHEVY EQUINOX LT TEAL, AWD, 124,XXX MILES.....	\$4,500
2009 CHEVY EQUINOX SPORT SILVER, AWD, 118,XXX MILES.....	\$6,200
2009 SCION XB MAROON, 144,XXX MILES.....	\$4,200
2010 PONTIAC G6 MAROON, 161,XXX MILES.....	\$3,450
2010 PONTIAC G6 WHITE, 121,XXX MILES.....	\$5,200
2012 CADILLAC SRX RED, PERFORMANCE, AWD, 67,XXX MI	\$13,750
2012 FORD FUSION MAROON, 80,XXX MILES.....	\$6,450
2013 GMC TERRAIN SILVER, 122,XXX MILES	\$7,450
2013 CHEVY EQUINOX LT BLUE, 2WD, 55,XXX MILES.....	\$11,500
2013 CHEVY IMPALA LT RED, GOOD TITLE, 113,000 MILES	\$6,450

WE DO ALIGNMENTS!

DARDEN PROFESSIONAL TIMBER HARVESTING, BUYING STANDING TIMBER: Great prices, improve wildlife habitat and improve forest health. State Certified & Fully Insured! 573-247-4808 or 573-739-1122. Salem

T215X70 R14: 1/4" tread. \$20/each. 573-764-2270.

MODEL DC CASE TRACTOR: RUNS GREAT, GOOD RUBBER, \$900. 573-353-6317

GET YOUR WORK DONE, AMERICA

FOR JUST
\$261 PER MONTH*



4540 2WD

- SIMPLE** to operate
- ECO-FRIENDLY**, NO DPF engine
- HEAVY-DUTY** steel construction not plastic

MAHINDRA 4540 41HP, 2WD, TRACTOR AND LOADER.

Marshfield Machinery Inc.

222 E. Madison • Marshfield, MO 65706
417-859-2117 • www.marshfieldmachinery.com



*Payment is for tractor and loader only and is calculated at 10% down and 84 months financing. With approved credit. Program restrictions may apply. See dealer for details. All offers expire April 30, 2020.

WORLD'S #1 SELLING TRACTOR

Mahindra
Tractors

NEW MAHINDRA TRACTORS

7085 4WD & LDR 85HP	IN STOCK
6075 4WD & LDR 71HP	IN STOCK
6065 4WD & LDR 63HP	IN STOCK
2655 4WD CAB & LDR 55HP	IN STOCK
2655 4WD, BACKHOE 55HP	IN STOCK
2655 4WD & LDR 55HP	IN STOCK
4540 4WD & LDR 41HP	IN STOCK
4540 2WD & LDR 41HP	IN STOCK
1626 4WD & LDR 26HP	IN STOCK
MAX26XL & LDR 26HP	IN STOCK

USED TRACTORS

MF 4710 CAB 4WD LDR 99HP	49,500
MAHINDRA 2565 CAB LDR 65HP	26,500
MF GC1710 LDR BACKHOE 22HP	14,500
MAHINDRA MAX26XL LDR 26HP	12,500
MAHINDRA EMAX22 LDR 22HP	10,000
CASE IH 485 LDR 43HP	6,500
MF 150 38HP	4,500
CASE IH 235 W/ MOWER 18HP	3,500
IHC 184 W/ MOWER 18HP	3,500

USED SIDE BY SIDES

MAHINDRA 750 CREW XTV	7,500
MAHINDRA 750 XTV	6,500

USED ROUND BALERS

MF 2745 4X5 MESH	12,500
HESSTON 745 4X5	7,500
VERMEER 5400 REBEL 4X5	6,500
HESSTON 555 4X6	4,500
HESSTON 560 5X6	4,000
HESSTON 550 4X6	3,500
HESSTON 530	3,500
NH 850 5X5	1,500
MF 224 SQUARE BALER	2,500

USED RAKES

SITREX 12WHEEL	3,500
DURABUILT 8 WHEEL	1,950
VERMEER WR20 8 WHEEL	1,950
GEHL 418 8WHEEL	1,500
M&W 8 WHEEL	1,500

USED HAY MOWERS

CASE IH DCX 131 13FT	9,750
NH H6750 9FT 3PT	6,500
MF 1329 9FT 3PT	5,500
LELY 270 9FT 3PT	3,500
HESSTON 1091 9FT	1,000

USED MISC.

HAYBUSTER 107C DRILL	17,500
FRONTIER BALE PROCESSOR	8,500
RHINO 12FT FLEXWING	8,500
BUSH HOG 3008 8FT 3PT	2,500
BUSH HOG 3008 8FT 3PT	2,000

Marshfield Machinery Inc.
222 E. Madison • Marshfield, MO 65706
417-859-2117
www.marshfieldmachinery.com

ANTIQUE BRASS KITCHEN CABINET HARDWARE: 2 sets of 44. \$50 per set. 636-239-2695

FREE HOSPITAL BED. 417-532-4405.

ARE YOU KIDDING ME???-Used double-wide. \$19,900!!!! delivery & set-up. 3 bedroom, 2 bath. Call 573-499-9993 comlum-biadiscounthomes.com

FORD A66 DIESEL ARTICULATING 4-WHEEL DRIVE: good. \$10,500. 573-765-4406.

HAROLD BELL WRIGHT BOOKS FOR SALE. The Eyes of the World, The Calling of Dan Matthews and Their Yesterdays. \$15 each. 417-532-2045, Lebanon. Leave message.

CARRY-ALL 3pt PLATFORM CARRIER: Like new. \$150. 417-399-6687.

DETROLA MUSIC MACHINE: Plays CD'S, Records, Cassettes, AM-FM Radio, excellent condition, 20x18x12, oak finish, antique look. \$65. 573-364-7465, Rolla.

ALFALFA HAY FOR SALE: 4X5 Round Bales 22% protein 166 Bales, high moisture, weighing 1500#s 226 bales dry hay weighing 1000#s \$100 each at the Yard Delivery Available 417-343-4958 Karen Asher

HAY FOR SALE: 5x4 Round Bales, plastic twine, always shedded. \$65 bale. St James, MO. 573-467-5043.

VINYL WINDOW: Double pane, 50x33. \$40. 417-322-4432.

NEW/REBUILT/USED: Agriculture/Construction/Semi's Vehicles Parts, all brands/types. 800-807-9612.

NEW HOLLAND 853 ROUND BALER: \$1,800. 573-765-4406.

JOHN DEERE HX-10: Pull-type, 10 ft, brushcutter. \$4,200. 573-765-4406.

CUB CADET CHALLENGER 500 ATV: Purchased October 2018, \$9,000. Want \$6,800. 400 hrs, new condition w/canvas cover, heater, cable winch. 573-697-5828, Ironton.

JOHN DEERE 925 DISKBINE: \$6750. 573-765-4406.

2017 26' KZ SPORTSMAN TRAVEL TRAILER: like new, approx 3,000 miles. \$13,500. 417-955-1724.

2007 DODGE RAM 3500 DUALY: 4wd, double cab, 6-speed manual, 6.7 Cummins, 140K miles. \$22,500. 417-255-1823, Leave message.

Pine Ridge Rustic

Log Home Building Supplies

Services Offered!

- Installation
- Pre-finishing available on interior & exterior
- Dealer for exterior stains

- Log Siding
- Beveled Siding
- Car Siding • Red Cedar
- Western Cedar • Pine

www.pineridgerustic.com

523 CR 2410 • Salem, MO 65560 • Ph: 573-729-7226

JOHN DEERE 4240: Diesel Tractor, cab and cold air, power shift, low hours, nice. \$29,500 573-765-4406.

JOHN DEERE 2630: Diesel tractor, 70HP, w/145 JD loader. \$8,650. (573)765-4406.

AR15 DPMS. \$500. 573-743-3394.

2008 CANAM SPYDER: Premier edition, anti-lock brakes, traction control, cruise control, emergency brakes, all options, excellent condition. \$5,400. Phone 573-338-0368.

IHC 806 DIESEL TRACTOR: w/Loader, bucket, bale spike with 8ft Brushhog, brushcutter, all for \$9,800. 573-765-4406.

\$19,900 USED DOUBLE WIDE: nice 3 bedroom, 2 bath delivered & set-up.....Hurry, This house will NOT last long! Call now 573-657-2176 amegamobilehomes.com

WE REBIND BIBLES: TEXT BOOKS, ANY KIND OF BOOKS. FIRST IMPRESSIONS BOOKBINDING, CENTERTOWN. 573-893-6898.

MURRAY RIDING MOWER: Good tires, deck, blades, 5-speed, needs motor. \$150-gun trade. 573-364-7465.

PINE LOG SIDING. www.pineridgerustic.com 573-729-7226.

TRUCK FLOAT WHEEL: 22.5" deep inset, for super single front tire, good condition. \$30. Cedar Hill, 314-303-7857.

5.3M/L ACRES WITH MARKETABLE TIMBER: Good well and electric. \$32,500. Houston, 417-217-1022.

WANTED: Older 42 inch rider mower, 6 speed, not automatic, years 2000 up. engine not be any good, leave message, clearly. Bruner 417-830-5309

CABLE PULLING JAW GRIP: Klein #1684-5, excellent condition. \$150. Cedar Hill, 314-303-7857.

18 STUB GUARDS: for Hesston PT7 or 10 Haybine. \$15. Gerald, 573-764-2270.

RYOBI 10" TABLE SAW: 15 amp. \$75 OBO. Text, 417-533-0779.

REGISTERED HEREFORD & ANGUS BULLS: Home raised, Some Show-Me Select Qualified. 573-701-7828. Belgrade

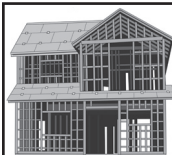
15HP TECUMSEH LAWMOWER MOTOR: Down shaft. \$25. 636-297-1747.

OLD LINN CREEK, HA HA TONKA & CAMDEN CO BOOK, "Before the Dam Waters", BY T. VICTOR JEFFRIES. \$5.50 each post paid. To order: 417-532-2045, Lebanon (leave message.)

HOLLYWOOD 4-BIKE HITCH MOUNT RACK: Excellent condition, Includes (2) Allen Stabilizer tension bars and keyed alike locking hitch pin and cable. \$175. Conway, 417-718-5347.

FIREPLACE LOG GRATE: 28" wide. \$25. 636-239-2695, Washington.

ATTN, GREAT CALL USERS: New Jitterbug Smart2 Phone. Went back to flip phone. \$60 OBO. 417-457-1023.



MIDWEST CONSTRUCTION

Free Estimates!

- Pole Barn • Garages • Framing
- Remodels • Roofing • Concrete
- Decks & Porches

Contact Abner Glick
417-664-1794

MODULAR STOCK SALE - It is time to move our inventory. **TRUE MODS** - Save Thousands. Call Marla, better than 20 years experience. 573-657-7040, chateauhomes.net.

CASH FOR COMIC BOOKS: From 1935-1975 and comic related toys and vintage sports cards. 636-390-2043. Washington, Mo.

FREE PUPPIES: Born December 2019. 417-741-0042.

2004 DODGE RAM 3500 DUALY: 4wd, auto, double cab, 5.9 Cummins, 58K miles. \$26,500. 417-270-1505.

1969 CHEVROLET ALUMINUM POWERGLIDE TRANSMISSION: \$200, Trades? 417-683-7843

WWW.MYWEEKLYTRADER.COM

ENTIRE LARGE ESTATES

COMPLETELY ONLINE!

CALL US TODAY TO SCHEDULE YOUR NEXT AUCTION!

AUCTIONS ENDING EACH SUNDAY



WWW.OZARKBID.COM



SHIPPING ON
AVAILABLE ON
MOST ITEMS

SELL YOUR ITEMS
NATIONWIDE

SAVE TIME, SAVE
MONEY, SHOP AT
ONLINE AUCTION

- Online

CRAWFORD Auction Service LLC

Register and bid online
@ www.OzarkBid.com **Ozarkbid**

Contact Chase Crawford, Crawford Auction Service for more info @ 417-399-1904



ONLINE EQUIPMENT AUCTION

FRIDAY, APRIL 24

Bidding closes at 11:00 am CST

Inventory includes: Crawler loaders, wheel loaders, dump trucks, hay equipment,

BID NOW!

www.SextonAuctioneers.com

417.372.0124



2004 John Deere 310SG (low Hrs)



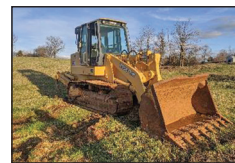
2006 John Deere 310SG (low hrs)



2003 Mack Triaxle Dump Truck



2011 Caterpillar 953D



2006 John Deere 755C Series II (new engine)



1990 Caterpillar IT28B Wheel Loader



2016 Bad Boy Commercial Mower (low hrs)



2016 Polaris



2003 Link-Belt 330 LX



2008 Reitnauer Drop-Deck Curtainside



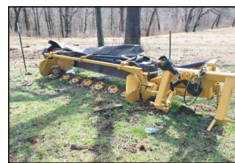
2013 Kalyn Siebert 55 Ton, HYD Detach Trailer



1986 Bomag Recycler MPH100R



Vermeer 605 Super M



Vermeer M7040 Disc Mower



2013 Chevy Silverado 2500 LT, 6.6L, Diesel



2003 Mack CV713 With Remack Engine



2001 Bobcat 341D



2017 Honda Grom



2011 Elite Trailer Manufacturing Stock trailer



Two 2013 Volvo VNL

Consignment Deadline For This Auction is April 17th, 2020

2020 Equipment Auction Dates

Friday, April 24

Friday, June 26

Friday, October 23

Friday, December 16

Call today To Consign Your equipment And real estate



417-372-0124

www.SextonAuctioneers.com

email: Tyler@Sextonauctioneers.com



WILBER'S FISH BRANCH ANGUS: Large selection of bulls available. Yearling & 2yr old bulls, very docile. High Performance. Calving ease and good growth. Mexico, MO, 573-473-6019. www.fish-branch.com

AKC FRENCHIE PUPPIES: Chocolate Fawn, black-mask, blues, other colors, shots, guarantee. \$1,200/males, \$1,800/females. 573-238-3873/573-421-7007.

PICK UP TRUCK BEDLINER: Standard size Ford, Fits F150-F350, good condition. \$40. Cedar Hill, 314-303-7857.

1994 SHADOW CRUISER: 5th Wheel, Excellent condition, 29 ft. Located in Conway, MO. \$3,700. 417-664-8823.

KUBOTA L3400: Hydrostatic with loader, industrial tires, 680 hours, showroom condition, 1-owner. \$15,900o.b.o. 417-399-6687.

PRECISION PAINTING

Bringing your ideas to life since 1997

Residential • Commercial
Exterior & Interior

417-345-4566
2nd Generation Painting
BUFFALO

10" SLIDING COMPOUND MITRE SAW: Shopmaster/Delta 526-263L. New in Box, \$75. Text, 417-533-0779.

TRUCK LOAD OF FLEA MARKET & AUCTION ITEMS: \$200 or trade. 573-327-9068

600 SQFT USED 5" DOUBLE LAP, CREAM COLOR VINYL SIDING: \$75, 417-457-1015.

GENTLE 4 YEAR OLD: black Angus bull. Good build \$1,600. Raymondville. 417-457-1015,

55 ANGUS BRED BLACK HEIFERS: 2nd Stage, home raised. Start calving Sept. 1st. Extra nice and gentle. Show Me select qualified. Foundation type heifers. Weighing 1100lbs now. Take one or more. J.W. Henson. 417-343-9488. Conway

CUSTOM SAW MILLING: Lebanon. 417-533-4607, 417-664-1195.

WANTED, TIMBER TO LOG ON SHARES: Honest, reliable, references. 417-533-4607, 417-664-1195.

AR15 W/BUMP FIRE: includes scope. \$550. 417-741-6323, Hartville.

TROYBILT RIDING LAWNMOWER: 17HP, for parts. \$25. 636-297-1747.

WANTED PINBALL MACHINES. 573-424-7200.

FESCUE SEED: 50 cents. 573-578-2651. Belle.

4 BASKET HYDRAULIC FOLD TEDDER: \$2,500. 573-765-4406.

WANTED TO BUY SMALL CATTLE FARM WITH HOME AND BUILDINGS: 75-100ac/m/l, mostly open, 85%am/l, one mile or so from paved road, short term contract. 563-529-0612.

KUSTER LOGGING
BUYER of Standing Timber Oak and Walnut
Dozing Now Available
417-259-0047
References Available



GERMAN SHEPHERD KENNEL REDUCTION: Registered adults & 1 puppy. Call for pricing. Hartville, 417-741-2198.

L4400 KUBOTA: 4wd tractor with loader and 3rd function valve, Low hours. \$21,500. 417-270-1505.

TAKUCHI 135 DIESEL EXCAVATOR: \$15,000. 573-765-4406.

LIONEL TRAIN SET: Steam engine, tender, caboose and other car, track and transformer. \$195. 573-364-7465, Rolla.

ROSSI 410 SHOTGUN: Like brand new. \$120. 870-283-5417, Evening Shade, Arkansas.

12FT CHISEL PLOW: W/stalk-sod disk-cutters. \$950. 417-322-0161.

ROME 8FT OFFSET DISK: \$3,750. 573-765-4406.

Sam CRAWFORD AUCTION SERVICE LLC

As I have moved closer to family, will sell the following located from Urbana, Mo., 1-1/2 miles North on Hwy. 65 to Bower Rd., then East 7/10 mile to North Atlantic, then South 1/4 mile. Watch for Crawford Auction Service signs.

Saturday, April 18, 2020 – 12 Noon

REAL ESTATE ONLY
No Machinery or Small Items

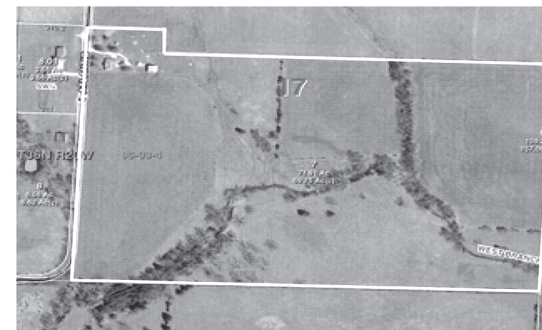


71 Acre farm, stock farm mostly all open pasture and hay land. Perimeter fenced and cross fenced, small creek. 3 Bedroom, 2 bath brick home, 1,800 sq. ft. with double car garage, built in 1989. Lots nice cabinets, large built in book shelf. Large front porch, rear patio area, central heat and air, well/septic, 500 gal. propane tank stays. Well built, well cared for home. Large older barn, metal covered, loft. 3 Other smaller metal covered buildings, auto waterer near barn. Skyline School.

Great location...great property. Serious sellers, shown by appointment with auctioneers.

• Phone bids accepted by contacting auctioneers prior to auction.

For more information, contact auctioneers
Sam, 417-328-9137 • Chase, 417-399-1904 • Chance, 417-298-1751



★ ★ Please practice the social distancing at the auction site ★ ★

Sam CRAWFORD Auction Service LLC
Cross Timbers, Mo.
CrawfordAuctionService.com
417-998-6629

NAA Auctioneer **CAGA CERTIFIED APPRAISER** **1944 CELEBRATING 75 YEARS 2019** **STARTING 75th YEAR OF SALES AND SERVICE**

MPAA AUCTIONEER

TERMS: Cash or good check. Nothing removed until settled for. Not responsible for accidents. Lunch available. Statements made day of sale take precedence over printed matter. All items sell as is. No warranties given or implied.

Chance • Sam • Chase

Sam 417-328-9137 Chase 417-399-1904 Chance, CAI 417-298-1751 Tom Poynter Jack Lancaster



10th Annual Spring

Prairie Grove Amish Mennonite School

CONSIGNMENT AUCTION



*LAST YEAR'S AUCTION PHOTOS



FRIDAY, MAY 8TH

3PM - SALE STARTS
7PM - GUNS

SATURDAY, MAY 9TH

7:30 - 10AM - BREAKFAST
9AM - SALE STARTS
1:30PM - QUILTS

**TAKING
CONSIGNMENTS!**

Suggested Consignments:

Handmade Quilts • Small & Large Antiques • New & Used Furniture • Good Household Items • Hand Tools • Shop Tools • Lawn & Garden Machines & Tools • Farm Machinery • Cattle Equipment • Farm Tractors, Etc.

NO JUNK PLEASE

Auction held on School Grounds

12 WINDING CREEK DR. | BUFFALO, MO | 65622

To consign, or for more information, contact:

417.327.6240	Nathan Kropf (Misc. Equip)
417.733.2600	Vernon Kopf (Tractors & Machinery)
417.327.6348	Eldon Swartzentruber (Titled Vehicles)
417.733.2710	Tobe Hostetler (Furniture, Crafts, Cattle Equip.)
417.327.4670	Nathan Blosser (Lawn, Garden, Flowers)
417.327.7168	Mrs. Ron Eigsti (Quilts)
417.327.7720	Herman Hostetler (Guns)
417.326.9788	Den Blosser (Questions)

THE SOONER CONSIGNED, THE BETTER ADVERTISED!

MONITEAU COUNTY REAL ESTATE AUCTION

**SATURDAY, APRIL 11, 2020
AT 10 AM**

AUCTION & PROPERTY LOCATION: From High Point, MO take Highway C west 1 mile to Highway CC, turn right and go north 1 mile to Coal Banks Road, turn left and go west 2 1/2 miles to Pleasant Hill Road, turn right and go north 3/4 mile to property on the left OR from Latham, MO take Highway F south 1 1/2 miles to Highway C, turn left and go east 1 3/4 miles to Pleasant Hill Road, turn right and go south 2 3/4 miles to property on the right.
(For GPS purposes the next-door neighbor's address is 39450 Pleasant Hill Road at High Point, MO.)

175.03 ACRES TOTAL TO BE OFFERED IN 4 TRACTS RANGING FROM 20 +/- ACRES TO 75 +/- ACRES (ACTUAL SURVEY TO GOVERN) USING THE CHOICE METHOD. THE PROPERTY LIES IN TOWNSHIP 43N, RANGE 16W, SECTIONS 10 AND 11 IN MONITEAU COUNTY.

TRACT 1 consist of 20 +/- acres and will have access off Pleasant Hill Road in the southeast corner, in addition it will have a 60-foot right-away along the south side for ingress and egress and utility purposes.

TRACT 2 consist of 75 +/- acres and will be accessed over the 60-foot roadway easement along the south end. Tract 2 has lots of open ground that is currently being used both for row crop production and permanent pasture and hay production. The balance is in mature hardwood timber and a beautiful 3 1/2-acre lake.

TRACT 3 consist if 40 +/- acres and will be accessed from the 60-foot roadway easement that comes in from the east and runs down the east side of the tract. Tract 3 will have a combination of open crop land and permanent pasture with a wooded draw that runs through the middle.

TRACT 4 consist of 40 +/- acres and lies at the end of the 60-foot access easement. It is basically all open and currently in hay production.

Visit wheelerauctions.com for more information



SELLERS: L & D PARTNERSHIP

Wheeler 
AUCTIONS & REAL ESTATE

23101 HWY. 24, PARIS, MO 65275 | 660-327-5890
WWW.WHEELERAUCTIONS.COM

For more information call
Charlie Nordwald at 636-795-4552,
or visit wheelerauctions.com.

Larry Heisel Rentals
Crawler Loaders
Excavators
Backhoes



Call Larry!
Rental Available in 636 or 573 Area Codes
573-779-1500
www.larryheiselequipment.com

LOOKING FOR USED COMPLETE HOOD FOR LX176 JOHN DEERE LAWN MOWER. 573-465-3753.

POOL TABLES: Installations, moves, recoveries, repairs, accessories, etc. 573-646-1700.

EARN \$60,000/YR: Part-Time in the Livestock of Farm Equipment Appraisal Business. Agricultural background required. Home Study Course available. 800-488-7570 or www.amagappraisers.com

WANTED JERSEY GUERNSEY STEERS: 600 lbs. 417-399-3118, Conway.

KUHN 10FT 3 POINT DISK MOWER: \$4,850. 573-765-4406.

QUALITY REPLACEMENT COWS: 80 BLACK SECOND & THIRD PERIOD COWS, 20 Red 2nd & 3rd period cows, 4-7yrs old, avg weight 1250lb-1300lbs, de-wormed, vaccinated, preg checked, trucking available. Otterville, 660-619-5190.

PULL BEHIND LAWMOWER DUMP TRAILER: Hard rubber tires. \$75. 636-297-1747.

IHC 766 DIESEL TRACTOR: cab and air, 80HP, new engine overhaul. \$8,500. 573-765-4406.

D&H OUTDOOR WOOD FURNACES SINCE 1986: Forced air, 90% efficient, fire proof insulated, thermostat control. Complete Heating and Cooling Systems. 573-743-6943, Salem.

BUYING PRE-1960 BEER SIGNS: FALSTAFF, LEMP, CAPITOL, GRIESE DIECK, STAG, any brands. 573-680-5377.

WHEEL FOR FORD 8N TRACTOR: 3"X19". \$30. Gerald, 573-764-2270.

MID MISSOURI STOCKYARDS
REGULAR SALE EVERY THURSDAY 11AM

SPECIAL STOCK COW SALE TO BE ANNOUNCED

For Farm Visits, Market Updates, or Trucking
Call Zach Cox 417-777-1320
Dan Romine 573-578-4939

**Competitive Buyers!
Competitive Commission!
Competitive Market!**

Barn: 417-532-9292 
I-44 • Exit 123 "just outside of Lebanon"
17505 Route 66, Phillipsburg, MO 65722
For weekly market updates, visit us at
www.midmoststockyards.com

BARN WOOD SIDING: 8" & 10" wide. 573-729-7226. www.pineridgerustic.com

REMINGTON MODEL 7400 270: Automatic. \$550. 573-743-3394.

4X5 FIRST & SECOND CUTTING ALFLAFA & GRASS ROUNDS: Prices \$40-\$75. Alfalfa Orchard Grass, second cut, small squares. \$8. All stored inside. No Sunday calls, 417-532-1113.

WINCHESTER 12 GAUGE SINGLE SHOT SHOTGUN: \$200. Desloge, 573-327-9068.

FENCE! FIXED KNOT 10% Off: High tensile woven, barbed, smooth. Cattle/Sheep panels! High-powered fencers! Best Prices! Ozark Farm, 417-322-0161.

VILLA HOMES IN ROLLA: Has NEW and USED Mobile Homes. Call David for info: 573-578-8072.



**TASK.
TASK.
DONE.**

RB16 SERIES

- REAR BLADES
20-40 HP 60", 74", 84" Widths
- Cat. 1 hitch
 - 7 Forward angles; 3 Reverse angles
 - 5 Tilt positions
 - 12" Offset left or right
 - 14" Moldboard height
 - 1/4" Moldboard thickness
 - Landscape Rake adaptable

AGRI ENTERPRISES

For Outstanding Products & Service

1-1/2 Miles South Of Licking, MO On Hwy 63
573-674-2203
1-800-653-7152



www.landpride.com

www.agri-enterprises.com

Over 25 Years In The Livestock Business

Cattle Sale
Every Monday at 12:00

Feeder Calves
to sell at 12:00 pm
Butcher Cows & Stock Cows
following



Goat, Sheep & Hog Sale
2nd Tuesday of the Month • 6 pm
Feed & Water Pens Available
All Consignments Welcome
Up Until Sale
We Appreciate Your Business!

Salem Livestock Auction
Hwy 32 Salem, Mo
Barn- 573-729-8880

Allen Thompson 417-932-4097
Chuck Thompson 417-257-5610
Renee Lauderdale 417-926-2682
Keith Robertson 314-560-3285

Terms of Sale: Cash or Approved Check!


JOHN DEERE 567 ROUND BALER: monitor, kicker, wide pick-up, cover, net wrap. \$9,650. 573-765-4406.

SWISHER PULL BEHIND MOWER: 44 inch cut, 10.5 horsepower motor, with electric start, new tires, \$875. Gainesville, 636-225-2985.

FERTILIZER: Semi-loads wholesale/delivered. 800-807-9612.

DOUBLE SET OF WHEEL CHOCKS: Color is Safety Yellow. \$30. 636-239-2695, Washington

BUFFALO LIVESTOCK MARKET LLC



276 Hwy 32 West
Buffalo, Missouri
April 4th, 2020
Receipts: 679 Head

**Feeders \$5 to \$10 Lower,
Butcher Cows \$5 to \$8 Lower**

Representative Steers
300-400 @ 165.00 to 180.00
400-500 @ 140.00 to 160.00
500-600 @ 142.00 to 155.00
600-700 @ 117.00 to 138.00
700-800 @ 100.00 to 120.00

Representative Heifers
300-400 @ 125.00 to 149.00
400-500 @ 125.00 to 136.75
500-600 @ 113.00 to 124.00
600-700 @ 107.00 to 120.00

Feeder Bulls
400-500 @ 120.00 to 150.00
500-600 @ 100.00 to 126.00
600-700 @ 100.00 to 117.00

Slaughter Cows
1400# Fleshy Cows 55 to 58
Boner Cows 46.00 to 54.00
Thin Cows 35.00 to 45.00
XThin 35 down

Slaughter Bulls
High Dressers 81 to 85
Med 78 to 80
Low Dressers or Light Wt.
60 to 75

**April Stock Cow Sale Cancelled
Due to Covid-19 Restrictions.
Watch for May Sale Ads.**

Sheep & Goat Sale April 28th @ 6pm

MON-WED MARKET REPORT
Listen to KJEL 103.7FM • Lebanon or KYOO 99FM • Bolivar

VIEW OUR SALES AT CATTLEUSA.COM

CALL FOR TRUCKING OR ON-FARM VISIT
Lyle Caselman • Owner-Manager
417-345-7876 • mobile 417-533-2944
Leon Caselman • Owner
417-345-4514 • mobile • 417-588-6185
Howard Miller • Owner 417-345-8122

All ads will include Phone Number (unless requested to be deleted by advertiser) and City Or Town, Phone Number with Area Code counts as one word. City or Town counts as one word.

RATE: 80¢ Per Word. All Classified Ads Require Payment Before Print.

(1)	80¢	(2)	\$1.60	(3)	\$2.40	(4)	\$3.20
(5)	\$4.00	(6)	\$4.80	(7)	\$5.60	(8)	\$6.40
(9)	\$7.20	(10)	\$8.00	(11)	\$8.80	(12)	\$9.60
(13)	\$10.40	(14)	\$11.20	(15)	\$12.00	(16)	\$12.80
(17)	\$13.60	(18)	\$14.40	(19)	\$15.20	(20)	\$16.00
(21)	\$16.80	(22)	\$17.60	(23)	\$18.40	(24)	\$19.20
(25)	\$20.00	(26)	\$20.80	(27)	\$21.60	(28)	\$22.40
(29)	\$23.20	(30)	\$24.00	(31)	\$24.80	(32)	\$25.60
(33)	\$26.40	(34)	\$27.20	(35)	\$28.00	(36)	\$28.80
(37)	\$29.60	(38)	\$30.40	(39)	\$31.20	(40)	\$32.00

Place your Classified Ad TODAY!

417-532-2800 • 800-665-8875

Fax: 417-532-8140

Or Mail To: P.O. Box 192 • Lebanon, MO 65536

For your convenience we accept MasterCard, Visa, Discover or American Express



DEADLINE FOR CLASSIFIED ADS: MONDAY 12 NOON!!

Name _____

Address _____

City _____ Email _____

State _____ Zip Code _____ Phone _____

Ad Total \$ _____ X # Weeks _____ = Amount Enclosed \$ _____

BIG TEX 140T
OVER THE AXEL, POWER TILT,
8.5 FOOT WIDE, 24 FOOT LONG, 7K AXELS.

Like Us On **facebook**

JIM'S Motors
TRAILERS I-44 at Exit 208 • Cuba, MO
www.jimsmotors.com
TRUCKS and TRAILERS (800) 897-9840
Great Service! Great Prices! Since 1957

KIDS LITTLE TYKES RED CAR BED: w/ mattress. \$150. Desloge, 573-327-9068.

2019 DODGE GRAND CARAVAN: w/deluxe Braun wheelchair conversion, in-floor illuminated side power ramp, 24,000+ miles. \$54,000 OBO. 417-532-4405 Noon-3pm.

BRUSHOG 6FT OFFSET DISK: \$1,950. 573-765-4406.

MX5100 KUBOTA: 4wd tractor with loader, 52 HP, open station, low hours. \$20,000. 417-270-1505.

HORSE HAY: Square bales, weed free, Big Blue stem, 80% pure. \$5 bale, mixed grass hay, \$4.50/bale. 573-368-1794, Rolla.

FIREARMS: Professional Repairs and Restorations. Baron's Gunsmithing. 573-363-5801, Camdenton.

DARDEN PROFESSIONAL TIMBER HARVESTING, BUYING STANDING TIMBER: Great prices, improve wildlife habitat and improve forest health. State Certified & Fully Insured! 573-247-4808 or 573-739-1122. Salem

JOHN DEERE 2630: Diesel tractor, 70HP, w/145 JD loader. \$8,650. (573)765-4406.

AR15 DPMS. \$500. 573-743-3394.

10 WEEKS OLD

Guard Dog Puppies,
Working Parents!
Akbash, Anatolian, Pyreneese.
Best of Three Breeds
to Guard Your
Animals, Children & You!

573-593-4406

Land

For Sale

Ava, MO | 118 Acres



\$199,950

- Great cattle property with rotational grazing, excellent fencing, water and hunting
- Property has breathtaking views and multiple homesite locations to make this your dream property
- This property has a nice gentle roll to it
- 65% pasture consisting of fescue, timothy orchard brome grass, 35% timber consisting of oak, hickory & walnut
- Property is fenced and cross fenced New water well and electricity all in place
- Nice brush and timber for excellent hunting - the deer and turkey hunting is incredible
- Great trail and road system Multiple auto waterers and pond for excellent water to farm
- More land has been cleared than aerials show



Missouri's Top Land Specialist in 2014,
2015, 2016, 2017, 2018 and 2019

WHITETAIL PROPERTIES REAL ESTATE

HUNTING | RANCH | FARM | TIMBER

Brian Utecht | 417-766-5595

Brian.Utecht@whitetailproperties.com

WHITETAILPROPERTIES.COM

