

FREE

WEEKLY TRADER MAGAZINE

Vol. 26 No. 43

JANUARY 30, 2020

800-543-8271 • 800-665-8875



Find us on
Facebook

@myweeklytrader

Auctions - Pg. 13

MYWEEKLYTRADER.COM

Serving Central Missouri! in 32 counties!



- Boone
- Callaway
- Camden
- Cedar
- Christian
- Cole
- Crawford
- Dallas
- Dent
- Douglas
- Franklin
- Gasconade
- Greene
- Hickory
- Howell
- Iron
- Laclede
- Maries
- Miller
- Montgomery
- Oregon
- Osage
- Ozark
- Phelps
- Polk
- Pulaski
- St. Clair
- St. Francois
- St. Louis
- Taney
- Texas
- Vernon
- Washington
- Webster
- Wright

WEEKLY TRADER MAGAZINE

417-532-2800

100 E. Commercial St.,
Lebanon, MO 65536

WWW.MYWEEKLYTRADER.COM



@myweeklytrader

Land

For Sale

Lebanon, MO | 205 Acres

Schneider Farm

\$565,000



- Schneider Farm is a solid cattle operation at its best on Barn River
- Beautiful 2,200 S/F home that is 3 bed and 3 bath on blacktop road with excellent access
- Amazing fertile bottom ground farm with excellent fence, two sets of working pens and water
- Giant bucks abound with perfect food plots, bedding areas, ridges and pinch points
- The huntability and quality of deer is second to none; great for growing and holding whitetail
- 40 acres of hardwoods and 165 acres of rolling hills and bottom ground for pasture or crops estimated
- 6 ponds, 2 water wells, 7 pastures, 3 fountains and 6 entrances into farm off blacktop
- Property has 5 fruit trees and large vegetable garden
- Low taxes and utilities • Located in Lebanon Schools
- 15 miles to Lebanon; 185 miles to St. Louis; 25 miles from Mt. Grove; 60 miles to Springfield



Missouri's Top Land Specialist in 2014,
2015, 2016, 2017, 2018 and 2019

WHITETAIL PROPERTIES REAL ESTATE

HUNTING | RANCH | FARM | TIMBER

Brain Utecht | 417-766-5595

Brian.Utecht@whitetailproperties.com

WHITETAILPROPERTIES.COM





RESIDENTIAL FAMILY
STARTING AT

\$2,199



AGRI-ENTERPRISES *For Outstanding Products & Service*

1-1/2 Miles South Of Licking, MO On Hwy 63
573-674-2203 • 1-800-653-7152 • www.agri-enterprises.com

4X5 ROUND BALES BROME HAY: in barn, no weeds, horse hay. \$45/bale. Sullivan, 573-259-3216.

CASE DC TRACTORS: One, wide front, PS, 7' rear sickle. \$2,200. One, narrow front, 12' rear sickle. \$1,800. One, narrow front w/3pt lift. \$1,600. 417-848-8754, Springfield.

4X5 ROUND BALES: excellent quality hay. \$65/bale. Lebanon, 417-322-0161

SECTIONAL COUCH: Good condition. \$250. Springfield, 573-631-0046.

WANTED OUTSIDE WOOD FURNACE: Used. Also, 3pt 6' Brush Hog. 636-239-4124.

SHAYER WOOD FURNACE for sale: Heats water for house. Used 4 seasons. Ready to hook-up. \$3,500. 417-967-2292, Bucyrus, MO.

ACOUSTIC ALVAREZ GUITAR: W/electric pick-up, w/hard case. \$200 or trade. Gerald. 573-764-4435.



TIM'S USED CARS

(573) 341-3828 • 1334 South Bishop (Hwy. 63) • Rolla, MO
Next to Hwy. CC • www.tims-used-cars.com

 <p>2016 RAM 2500 TRADESMAN CREW CAB 4X4, 6.4 HEMI, AUTO, POWER EQUIPPED, 67,XXX MILES. PRICED TO SELL!</p>	 <p>2015 RAM 3500 LARAMIE CREW CAB DUALY, AUTO, 4X4, 6.7 DIESEL, 173,XXX MILES, LOADED WITH OPTIONS. ONLY \$34,900</p>
 <p>2012 RAM 1500 BIG HORN QUAD CAB 4X4, 5.7 HEMI, POWER EQUIPPED, 138,XXX MILES. ONLY \$15,500</p>	 <p>2008 FORD F-150 XL, CREW CAB 2WD, 4.6 V-8, AUTO, POWER EQUIPPED. ONLY \$6,800</p>

LARGE SELECTION OF CARS, TRUCKS, SUVs & VANS!

USED EQUIPMENT

- Mahindra 5525 w/loader. Less than 100 hours.
- Mahindra 6075 w/loader, Cab, 4WD, Remainder 5 - 1/2 Year Powertrain Warranty. Low Hours
- Gehl Silage Chopper • 6' & 7' Brush Cutter
- JD 10' Cultipacker • 3pt. 3 bottom plow
- 12' Spring Tooth Harrow 3pt. 2 Disc Disc Plow
- Other Misc Equipment

For Outstanding Products & Service

AGRI-ENTERPRISES

1-1/2 Miles South Of Licking, MO On Hwy 63
573-674-2203 • 1-800-653-7152
www.agri-enterprises.com

DINING TABLE & 4-CHAIRS: like new. \$200. 417-531-1116.

MODEL A REAR CAR AXLE. \$135. 417-293-0568.

CATTLE DOGS, HUNTING DOG, GUARD DOGS: And great companions, UKC Registered, Catahoula Leopard puppies, born 10-24-19. \$300. 660-620-2113, no Sunday calls.

CASE 580C: Diesel Backhoe, Loader. \$8,850. 573-765-4406.

**2002 Pumper Truck
C6500 Series**



• Ready to go!
• 1,800 gallons
• Vacuum pressure pump
\$30,000
Truck will not last long! 573-431-1135

5 PIECE SET W/LIDS OF BLUE FLOWER CORNINGWARE: no chips, good condition. \$65. 417-532-2344.

1993 FORD RANGER: 5speed 4.0. \$2,500. 2010 Prius: 1 owner. \$5,000. Waynesville, 573-528-7317.

5055E JOHN DEERE TRACTOR: Open station, MFWD, H240 loader, like new, 109hours, private owner. \$26,500. Consider offers. 417-599-8089.

HALF GERMAN SHORT-HAIR POINTERS: 4 females/1 male, no paper, no shots, tails not cut. Rehoming fee. 417-588-6129, leave message.

CLASSIFIED AD DEADLINE CHANGE

**Due to a change in our press schedule,
we have adjusted our deadlines accordingly.**

As of January 23, 2020, deadlines are as follows:

Display Advertising: Friday Noon
Classified Line Listings: Friday 4:00pm

**WEEKLY
TRADER
MAGAZINE**

Thank you for your patronage!

417-532-9131 • P.O. Box 192
Lebanon, MO 65536
www.myweeklytrader.com

REGISTERED HEREFORD & ANGUS BULLS: Home raised, Some Show-Me Select Qualified. 573-701-7828. Belgrade

TAKUCHI DIESEL EXCAVATOR: with Hyd Thumb starts and runs good. \$15,000. 573-765-4406.

AUNT JEMIMA COLLECTION. \$200 All. 573-327-9068.

MONEY MAKER 21 NEW BLACK MAX GENERATORS: In boxes. 4,500 start watt. 3,600 run watt. \$5,250. 417-399-6383.

1953 FORD JUBILEE: new tires, runs good, excellent condition. \$3,000. 417-664-3425.

6FT FOLD OUT LOADING RAMPS: Like new, used once. \$75 firm. Gerald 573-764-4435.

JOHN DEERE 2630: Diesel tractor, 70HP, w/145 JD loader. \$8,650. (573)765-4406.

FORD A66 DIESEL ARTICULATING 4WHEEL LOADER: \$10,500. 573-765-4406.

FIREARMS: Professional Repairs and Restorations. Baron's Gunsmithing. 573-363-5801, Camdenton.

HORSE BUCKBOARD: 8'x32" pneumatic tires. \$575. Niangua, 417-880-0025.

\$1000 SIGN ON BONUS

ASPLUNDH

TREE EXPERT, LLC

Is seeking **EXPERIENCED Line Clearance Tree Trimmers,
Bucket Operator and Forepersons**

For work in the Lebanon and surrounding areas. **Excellent Benefits:**

401K, Health, Dental, Vision Paid Vacations and Holidays.

Must be a safe and productive worker pass a pre-employment drug test, and have valid driver's license.

\$21-\$24 per hour

Call 636-583-1175 or apply online • Asplundh.ourcareerpages.com

**WEEKLY
TRADER
MAGAZINE**

Vol. 26 January 30, 2020 No. 43

Published By

Lebanon Publishing Co. Inc.
PO Box 192, Lebanon, MO 65536

417-532-2800

www.myweeklytrader.com

Everything advertised in this publication must be made available for purchase, use or patronage without regard to race, creed, color, sex, age or national origin of the purchaser, user or patron. The Publisher will not be responsible for misinformation, misprints, typographical errors, etc. Opinions expressed are not necessarily those of the Publisher. All rights reserved. No part of this material may be reproduced by any means without permission in writing from the Publisher. We reserve the right to refuse any ad if we deem necessary. Our list and map indicate counties in which the Weekly Trader is delivered. The magazine is not necessarily placed in all communities in a particular county. A list of all retail drops for a county may be obtained by contacting the Weekly Trader office at PO Box 192, Lebanon, MO 65536.

We Buy White Oak Logs!

**Independent Stave Company
welcomes all white oak suppliers!**

- ✓ Top prices for your logs
- ✓ Experienced log buyers
- ✓ Professional service

www.independentstavecompany.com

Chad Cook | Salem Wood Products

417.718.2950

5 miles north of Salem, MO on Hwy 19



PATRIOT 250 SKID STEER LOADER: great for cleaning stalls. \$4,600. 573-765-4406.

2006 CURLY TOBIANO MARE: 45" high, registered ICHO/NAC, Broke to drive, has had one foal. \$1,750. Niangua, 417-880-0025.

COMMERCIAL RABBIT HUTCHES. 10' sections, 4 hutches per section, 11.5inch feeders, automatic waterers, \$60 per 10' section. 870-895-2719.

WOODWORKING EQUIPMENT: w/5HP planer and smaller planer, several different items. 573-480-7524/573-480-7523.

HOLLYWOOD 4-BIKE HITCH MOUNT RACK: Excellent condition, Includes (2) Allen Stabilizer tension bars and keyed alike locking hitch pin and cable. \$175. Conway, 417-718-5347.

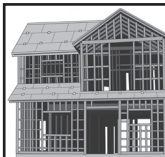
JOHN DEERE MODEL A: for sale, 1947. \$2,200. Ford Jubilee. \$1,200 Windyville, 417-770-3834.

04 DAKOTA XST: 4X4, 5speed, V6, reg cab, 176,000miles. \$4,675obo. 417-399-6383

AKC FRENCHIE PUPPIES: Chocolate Fawn, black-mask, blues, other colors, shots, guarantee. \$1,500 and up. 573-238-3873/573-208-6269.

FREE TO GOOD HOME: Wire Mouth & Blue Heeler Cross puppies, 6 weeks old. 417-256-3235, West Plains.

RARE 1937 CIVILIAN CONSERVATION CORPS (CCC) 7TH CORPS AREA OFFICIAL MANUAL. \$20. 417-532-2045, Lebanon (Leave Phone Number).



**MIDWEST
CONSTRUCTION**

Free Estimates!

- Pole Barn • Garages • Framing
- Remodels • Roofing • Concrete
- Decks & Porches

**Contact Abner Glick
417-664-1794**

DOUBLE SET OF WHEEL CHOCKS: Color is Safety Yellow. \$30. 636-239-2695, Washington

WANTED, TIMBER TO LOG ON SHARES: Honest, reliable, references. 417-533-4607, 417-664-1195.

4x5 NET-WRAPPED FESCUE & RED CLOVER. First & second cutting, fertilized. \$45/bale. 417-818-6210.

BROME HAY FOR SALE: \$5/square. 573-539-2060.

WANTED: 1966-1977 Ford Bronco. 816-838-6254.



★ American Made Metal Roofing ★

40 Year Warranty Metal.....\$1.99 (\$62.18 Per Sq)



***29 Gauge 10 Year\$1.79 (\$55.93 Per Sq)**

****While Supplies Last****

29 Gauge #1 Galvalume\$1.69.....\$1.39 (\$43.44 Per Sq)

29 Gauge 40 Year *Saddle Tan*\$1.69 (\$52.81 Per Sq)

Building In A Box

Stud Wall & Pole Barn Kits

Non-Warranty Metal	10Year Warranty	40Year Warranty
24x30x8.....\$3,350\$3,700\$3,850
30x40x10.....\$4,950\$5,350\$5,600
40x60x12.....\$9,300\$10,000\$10,200

Pre-cut Packages Also Available

- ★ 17 Colors To Choose From
- ★ 20 Years In Business
- ★ We Manufacture Our Own Metal and Trusses



3 Locations To Serve You!

6952 E. 7th St. Joplin, MO. 417-317-7961
1100 Pace Rd. Pocahontas, AR. 870-609-1900
35 Killdeer Rd. Seymour, Mo. 417-952-7143

**possibly not American made*



**Wright Spray Foam
Insulators, LLC**
Commercial & Residential
Call for FREE Estimates!

Ervin Gingerich
417-926-2052
B. Eli Yoder
417-746-4932

STARRETT OUTSIDE MICROMETER SET: #224, 2"-6", NIB. \$500obo. 573-374-1307.

2013 31ft COACHMAN CATALINA: Deluxe Edition model, ACAT31RLS, Sleeps 7-9 people. Excellent condition. \$14,500. 573-216-2079, pictures sent on request.

START SOMETHING NEW

SALES EVENT



T-14841

2019 RAM 1500 EXPRESS

5.7, CREW, CLASSIC, 4X4, 20" WHEELS, ANTISPIN DIFFERENTIAL, TOW PKG.



MSRP	\$47,050
SALE	\$43,600
CONSUMER CASH	-\$3,000
CHRYSLER CAPITAL BONUS	-\$2,000
RETAIL BONUS CASH	-\$750
BONUS CASH	-\$1,000
MILITARY	-\$500**

SALES EVENT PRICE
\$36,350

T-15042

2019 RAM 1500 BIG HORN

5.7, CREW, CLASSIC, 4X4, 20" WHEELS, HEATED SEATS, 8.4 RADIO, TOW PKG.



MSRP	\$49,920
SALE	\$46,500
CONSUMER CASH	-\$2,000
CHRYSLER CAPITAL BONUS	-\$1,000*
RETAIL BONUS CASH	-\$2,000
BONUS CASH	-\$1,750
MILITARY	-\$500**

SALES EVENT PRICE
\$39,250

T-14922

2018 RAM 3500 TRADESMAN CHASSIS CAB

6.4, CREW, 4X4, AISIN TRANSMISSION



MSRP \$47,750

SALE PRICE
\$37,250

T-14967

2019 RAM 1500 CREW LARAMIE, 4X4

5.7, E TORQUE, LEVEL 2, SPORT APPEARANCE, 20" WHEELS, ADV SAFETY, 8.4 WINAVIGATION, ANTISPIN



MSRP	\$62,030
SALE	\$56,000
CONSUMER CASH	-\$2,000
RETAIL BONUS CASH	-\$500
BONUS CASH	-\$1,500
RAM DT V-8 E-TORQUE	
ENGINE BONUS CASH	-\$500
CHRYSLER CAPITAL BONUS	-\$1,000*
TRUCK OWNER	
CONQUEST 1/2T	-\$1,000*
MILITARY	-\$500**

SALES EVENT PRICE
\$49,000

T-15119

2019 RAM 2500, CREW, 4X4

TRADESMAN, 6.4, LEVEL 2, CHROME APP, SNOW CHIEF



MSRP	\$45,955
SALE	\$43,300
CONSUMER CASH	-\$1,000
COMMERCIAL B+E	-\$1,000**
FCA CONQUEST	-\$500
MILITARY	-\$500**
ON THE JOB	-\$500
MIDWEST BONUS CASH	-\$1,000

SALES EVENT PRICE
\$39,800

T-15100

2019 RAM 2500, TRADESMAN

CREW, 4X4, DIESEL 6.7, CHROME APPEARANCE, 5TH WHEEL/GOOSENECK TOW, LEVEL 2, ANTI SPIN, 8.4 RADIO, SPRAY BED LINER.



MSRP	\$56,820
SALE	\$53,200
CONSUMER CASH	-\$1,000
COMMERCIAL B+E	-\$1,000**
FCA CONQUEST	-\$500
MILITARY	-\$500**
ON THE JOB	-\$500
MIDWEST BONUS CASH	-\$1,000

SALES EVENT PRICE
\$48,700

T-15126

2019 RAM 3500 TRADESMAN

CREW, 4X4, 6.7 DIESEL



MSRP	\$58,050
SALE	\$54,600
CONSUMER CASH	-\$1,000
COMMERCIAL B+E	-\$1,000**
ON THE JOB	-\$500
MILITARY	-\$500**
FCA CONQUEST	-\$500
MIDWEST BONUS CASH	-\$1,000

SALES EVENT PRICE
\$50,100

T-15127

2020 RAM 1500 BIG HORN CREW

4X4, SPORT, LEVEL 1, REMOTE START, 5.7, ANTI-SPIN



MSRP	\$50,405
SALE	\$47,400
CONSUMER CASH	-\$2,000
BONUS CASH	-\$1,000
BONUS CASH	-\$500
CHRYSLER CAPITAL BONUS	-\$500*
TRUCK OWNER CONQUEST 1/2 T	-\$1,000*
MILITARY	-\$500**

SALES EVENT PRICE
\$41,900

*Must finance with Chrysler Capital **must own a farm or a business to qualify. *Must own a 1/2 ton truck (you do not have to trade in). **Active or Retired Military. Offer expires 01.31.20. See dealer for details. Actual photos may not be shown.

LINDSAY



809 MISSOURI AVE. • ST. ROBERT, MO • 573-336-3000

START SOMETHING NEW

SALES EVENT



T-14965

2019 JEEP WRANGLER SAHARA, 4X4

3.6, HARD TOP, 6 SPD MANUAL,
UNLIMITED, HEATED SEATS,
TRAILER TOW, 8.4 W/NAV.



MSRP	\$46,405
SALE	\$43,000
BONUS CASH	- \$3,000
MILITARY	- \$500**

SALES EVENT PRICE
\$39,500

T-14993

2019 JEEP WRANGLER UNLIMITED SPORT S

2.0 TURBO, E TORQUE, HARD TOP,
HEATED SEATS, REMOTE START,
7.0 RADIO



MSRP	\$43,595
SALE	\$39,000
BONUS	- \$4,000
MILITARY	- \$500**

SALE PRICE
\$34,500

T-14963

2019 JEEP GRAND CHEROKEE LAREDO

4X4, 3.6, 20" BLACK WHEELS,
8.4 W/NAV, ALPINE 9 AMP SPEAKER,
HEATED SEATS & STEERING,
REMOTE START



MSRP	\$42,230
------	----------

SALE PRICE
\$37,250

T-14913

2019 JEEP GRAND CHEROKEE LIMITED X

3.6, 20" WHEELS, 8.4 W/NAV.,
LEATHER HEATED SEATS & STEERING,
SPORT HOOD, ADAP CRUISE,
DUAL PANE PANORAMIC,
SUNROOF, PARK ASSIST,
LANE DEPT. CROSS PATH



MSRP	\$51,725
------	----------

SALE PRICE
\$45,100

T-14934

2019 DODGE DURANGO GT PLUS

3.6, LEATHER,
HEATED 1 & 2 ROW
AND STEERING, SUNROOF,
20" WHEELS,
2ND ROW BUCKETS, 8.4 W/NAV.,
9 AMP SPEAKERS W/SUB



MSRP	\$49,565
------	----------

SALE PRICE
\$42,000

T-14693

2019 JEEP CHEROKEE LATITUDE

FWD, 17" ALUMINUM WHEELS,
HEATED SEATS & STEERING,
REMOTE START, SAT RADIO



MSRP	\$27,145
------	----------

SALE PRICE
\$22,140

T-15074

2019 JEEP CHEROKEE TRAILHAWK, 4X4

3.2, 8.4 RADIO,
REMOTE START, HEATED
SEATS & STEERING



MSRP	\$37,350
------	----------

SALE PRICE
\$32,300

P-15111

2019 DODGE CHALLENGE GT

3.6, BLACK TOP, 8.4 W/NAV., 276 WATT AMPLIFIER,
20" BLACK WHJEELS



MSRP	\$34,725
SALE	\$34,000
CONSUMER CASH	\$3,050
BONUS	\$1,000
MILITARY	\$500**

SALES EVENT PRICE
\$29,450

*Must finance with Chrysler Capital **must own a farm or a business to qualify. **Must own a 1/2 ton truck (you do not have to trade in). **Active or Retired Military. Offer expires 01.31.20. See dealer for details. Actual photos may not be shown.

www.lindsaychryslerdodge.com

809 MISSOURI AVE. • ST. ROBERT, MO • 573-336-3000

LET'S PLAN AHEAD

It won't be cold much longer

**WE KNOW YOU'VE GOT A LOT OF DECISIONS TO MAKE.
SO WE'LL HELP YOU OUT WITH THIS ONE!**

Choose the LS MT225 • F/R on the column • 4WD Compact Tractor with Front Loader

**PARTS and
LABOR**



**With the BEST 6 year warranty
on the market**

CHECK OUT WHAT ALL YOU GET HERE!

ALL For \$18,199

PACKAGE DEAL

- 25HP TRACTOR WITH LOADER
This is the compact 25HP-NOT the Sub-Compact
(so the bigger size-same size as the 35HP)
- 4FT Box Blade
- 18FT DELUXE FLATBED TRAILER
- 48 PALLET FORKS
- Free Pressure Washer-A NICE ONE!



LS TRACTOR
The Major Brand Maker

SIMPLE NO HASSLE FINANCING AVAILABLE WITH 84 MONTH TERM - THEY TAKE EVERYONE OUT 84 MONTHS. YOU GET A NICER MORE AFFORDABLE PAYMENT WITH NO EARLY PAY PENALTY-MOST EVERYONE IS NO \$\$ DOWN--BASED ON 5% for 84 months. * DOWN PAYMENT AND PAYMENT ARE APPROXIMATE AND ARE BASED ON CREDIT APPROVAL. SEE DEALER FOR YOUR QUALIFICATION. HURRY, THIS IS A TIME LIMITED OFFER.

**THIS PACKAGE MONTHLY PAYMENT IS
Only \$250/MONTH --NOW THAT'S AFFORDABLE!!**

COLE'S TRACTOR & EQP, INC.

GIVE ME A CALL TODAY! • 573-756-4353

1 mile east of Farmington on Highway 32

CHURCH FOR SALE: Sturgeon, MO. All new outside, remodeled inside, holds 80-90 people, nice kitchen, 2 nice restrooms, on 6 corner lots. Also could be used as Daycare business etc. Call only, 573-881-2006.

30 GAL FUEL TANK: Fiberglass. \$50. 417-753-2747, 417-766-1991, Rogersville.

www.gatorjetboats.com

(573) 885-0052

86 Hwy. UU Cuba, MO (2 Miles East of Cuba)

Custom Built Aluminum Inboard Jets

Jet Drive & Performance Parts

IN-STOCK!

SMALL SQUARE BROME HAY: 70LB, horse quality, delivery available. 417-532-6686, 417-531-6686.

16FT 6-TYPE GALVANIZED GATE: \$100. 417-293-0568.

KIDS LITTLE TYKES RED CAR BED: w/ mattress. \$150. Desloge, 573-327-9068.

DIAMOND BASEBALL CATCHERS GLOVE: Like new. \$95obo. 573-374-1307.

COZY SECLUDED ONE BEDROOM HOME: in gated area, includes all utilities except telephone, trash and satellite, 7 miles south of St. James. \$450/month 573-699-4351

2011 CHEVROLET IMPALA: 4-door, new tires, never wrecked, 107,000miles. \$7,500. 417-531-1116.

REAR BALE STABBER: 2pt. \$25. 417-646-8807.

ANTIQUE MODEL (A) vehicle rear end axle. \$150. 417-293-0568.

4 BASKET HYDRAULIC FOLD TEDDER: \$2,500. 573-765-4406.

PYRENEES/ANATOLIAN PUPPIES: currently in training, parents are excellent sheep/guard dogs. \$250. 417-322-0161.

VERY RARE CROSSMAN 101 22CAL PELLET GUN: made between 1923-1925, good condition. \$200obo. 636-497-6056.

LOT OF 72: "The Antiques Journal" Magazines, years- 1974-75, 1978-80, Mar-Dec 1977, Jan-Feb 1981. \$30 for all. Grovespring, 417-533-9484.

BOAT TRAILER: for 14' boat or make good flat bed trailer, good tires. \$125, trade. 417-683-7843, Tecumseh.

60 ACRES M/L: 2 Ponds, 2 automatic waterers, fenced, 40x52 newer barn, well, septic, trailer that needs work, will consider Owner Financing with \$80,000 down, Cost is \$175,000. 573-743-3420

MEDIUM CHEST DEEP FREEZE: works good. \$50. 417-531-1116.

BARN WOOD SIDING: 8" & 10" wide. 573-729-7226. www.pineridgerustic.com

JOHN DEERE HX-10: Pull-type 10ft, brush-cutter. \$4,200. 573-765-4406.

REGISTERED GERMAN SHEPHERD PUPPIES: Ready now, Cute! \$350. Hartville, 417-741-2198.

MONEY MAKER 30 RYOBI GAS CHAINSAWS: Reconditioned 18", 16", 14", like new. \$2,450. 417-399-6383.

POSTER BED. \$99 Round table. \$40. Duncan Phyfe Table. \$90. 417-741-1232 or 417-241-5193.

VILLA HOMES IN ROLLA: Has NEW and USED Mobile Homes. Call David for info: 573-578-8072.

HARDY WOODBURNING WATER FURNACE. \$3,500. 630-687-0705.

NEW HOLLAND TC-40 AT DIESEL 4-WHEEL DRIVE COMPACT TRACTOR: with New Holland loader. \$14,500. 573-765-4406.

BUTLER TRAILER: All steel, tilt bed, tandem axle, pintle hitch. Asking \$1,100 OBO. 314-223-8539, Eureka.

MAYTAG EXTRA LARGE CAPACITY: Heavy duty, 2 speed washer, white. \$100. Washington, 636-239-2695.

Pine Ridge Rustic
Log Home Building Supplies

Services Offered!

- Installation
- Pre-finishing available on interior & exterior
- Dealer for exterior stains

www.pineridgerustic.com

523 CR 2410 • Salem, MO 65560 • Ph: 573-729-7226

- Log Siding
- Beveled Siding
- Car Siding • Red Cedar
- Western Cedar • Pine

**DON'T FLUSH AWAY YOUR MONEY
HIRE THE PROS!**

- SEPTIC TANKS Installed & Serviced
- State Licensed On-Site Waste Water Treatment
- All Kinds of BACKHOE Work & LIGHT HAULING
- Driveways & Road Ditches Cleaned.

573-202-6491 or 573-578-3813

1943 LESTER UPRIGHT QUALITY PIANO: Ivory keys, matching bench, needs casters. \$800 or trade. 573-226-3219.

\$19,900 USED DOUBLE WIDE: nice 3 bedroom, 2 bath delivered & set-up.....Hurry, This house will **NOT** last long! Call now 573-657-2176 amegamobilehomes.com

RENTAL NEEDED ASAP: Moving to area, and need rental house w/pasture for our horses. Leave message, 641-226-2431 or 573-578-6476.

MURRAY RIDING MOWER: Good tires, deck, blades, 5-speed, needs motor. \$150-gun trade. 573-364-7465.

WANTED PINBALL MACHINES. 573-424-7200.

IVY CORELLE DISHES: Mixed setting. \$45. 417-532-2344.

ROD AND REELS: fishing season is coming. \$5 and up. Conway, 417-589-8200.

WOOD STOVE: Uses 3' long wood, good condition. \$75. 636-239-4124.

RUNNING 235 CHEVROLET MOTOR: Hear run before you buy. \$200. 417-683-7843.

BoatAngel

FREE 4-NIGHT VACATION!
Donate Car • Boat • RV • Motorcycle

1-800-CarAngel

www.boatangel.org

SECOND & THIRD CUTTING: Fescue & Clover, 5x5.5 Round bales, stored inside. \$65. Net wrapped Rye: 5x4.5 Bales. \$50. Third & Fourth Cutting Alfalfa & Orchard Grass: 2x3 square. \$50. Small Square \$8. NO Rain. \cf2 Versailles, 573-378-4974.

EARN \$60,000/YR: Part-Time in the Live-stock of Farm Equipment Appraisal Business. Agricultural background required. Home Study Course available. 800-488-7570 or www.amagappraisers.com

2000 FORD EXPEDITION: 4x4, Eddie Bauer edition, very dependable, just serviced. \$2,700obo. Springfield, 417-848-8754.

Larry Heisel Rentals

**Crawler Loaders
Excavators
Backhoes**

We Deliver!

Rental Available in 636 or 573 Area Codes

573-779-1500

www.larryheiselequipment.com

HAY FOR SALE: 5X5.5 Round bales of Grass Hay \$45. 5x6 Straw bales, \$65. 573-539-2060

15FT BATWING BRUSH-HOG: Heavy duty. \$4,900. 417-322-0161

2011 Ford F150 Platinum SuperCrew Cab

**4X4, 3.5L V6 Ecoboost,
Black, New Tires,
Drives Great, 99,XXX Miles,
Salvage Title, Very Minor
Damage Repaired**

\$15,900

417-718-5347 • Conway



ARE YOU KIDDING ME??? Used double-wide, \$19,900!!!! delivery & set-up, 3 bedroom, 2 bath. Call 573-499-9993 comlumbiadiscounthomes.com

05 CANYON SLE: 4X4, extended cab, 4dr, 155,000 miles, 30,000 on new motor. \$6,475obo. 417-399-6383

TRAINER WANTED: Bred sows and registered Nubian does. \$200. Registered Arabian horses. 2 bedroom furnished house. \$500/month. Raymondville, 573-548-0219. ashley-creekhorseco.com

WONDERLUX DUEL FUEL WOOD CIRCULATOR: W/Blower. \$275. 417-531-1116.

AC 840 DIESEL ARTICULATING 4-WHEEL DRIVE LOADER: \$7,250. 573-765-4406.

IHC 1086 DIESEL TRACTOR: Cab & Cold Air. \$8,750. 573-765-4406.

ALFALFA HAY FOR SALE: 4X5 Round Bales 22% protein 166 Bales, high moisture, weighing 1500#s 226 bales dry hay weighing 1000#s \$100 each at the Yard Delivery Available 417-343-4958 Karen Asher

DETROLA MUSIC MACHINE: Plays CD'S, Records, Cassettes, AM-FM Radio, excellent condition, 20x18x12, oak finish, antique look. \$65. 573-364-7465, Rolla.

The Orr

Boho Clothing • Smoke Shop • CBD
Largest Selection of Body Jewelry in SW MO
Gems • Stones and Crystals

535 East Elm Street | Lebanon, MO 65536
417-532-8044 • Theozz420@gmail.com

See Service

Spray Foam Insulation

Closed cell or open cell form available
Choose the thickness of your insulation

Closed Cell	Open Cell
• Higher R. value	• Lower Cost
• Vapor barrier	• Sound Deadening
• Structural benefit	• Fire resistant
• Fire Resistant	

Both types of foam fill voids and stay where they are put to provide better insulation than fiberglass or cellulose

FINANCING AVAILABLE **WE ACCEPT**
VISA

Call Joseph See
(417) 733-6936
Located near Buffalo, MO

555E NEW HOLLAND BACKHOE: 4WD. 3,700 hours, diesel engine, good tires, new battery, 24" bucket, \$18,000 OBO. 314-223-8539, Eureka

4X5 HORSE QUALITY MIXED GRASS HAY: fertilized, net wrapped, grain free. \$40/bale. Rogersville, 417-350-3523.

2007 FORD TAURUS: 171,000 miles-all highway, loaded. \$2,250. 417-531-1496.

FLARE WAGON WITH HOIST: \$200. 573-764-2270.

5 MOUNTED TIRES: size 12-20, \$200. 417-753-2747, 417-766-1991, Rogersville.

DOUBLE SET OF WHEEL CHOCKS: Color is Safety Yellow. \$30. 636-239-2695, Washington

1 COMPLETE SET OF SERVICE MANUALS: parts, electrical, engine and fuel for International Cub Cadet series 82 lawn tractors. \$65. 636-239-2695.

GET YOUR WORK DONE, AMERICA

FOR JUST

\$243

PER MONTH*



4540 2WD

- ✓ **SIMPLE** to operate
- ✓ **ECO-FRIENDLY**, NO DPF engine
- ✓ **HEAVY-DUTY** steel construction not plastic

MAHINDRA 4540 41HP, 2WD, TRACTOR AND LOADER.

Marshfield Machinery Inc.
222 E. Madison • Marshfield, MO 65706
417-859-2117 • www.marshfieldmachinery.com

7 YEAR
 LIMITED POWERTRAIN
WARRANTY

*Payment is for tractor and loader only and is calculated at 10% down and 84 months financing. With approved credit. Program restrictions may apply. See dealer for details. All offers expire January 31, 2020.

WORLD'S #1 SELLING TRACTOR

Mahindra
Tractors

NEW MAHINDRA TRACTORS

7085 4WD & LDR 85HP	IN STOCK
6075 4WD & LDR 71HP	IN STOCK
2655 4WD CAB & LDR 55HP	IN STOCK
2655 4WD, BACKHOE 55HP	IN STOCK
2655 4WD & LDR 55HP	IN STOCK
4540 4WD & LDR 41HP	IN STOCK
4540 2WD & LDR 41HP	IN STOCK
2638 4WD & LDR 38HP	IN STOCK
1626 4WD & LDR 26HP	IN STOCK
MAX26XL & LDR 26HP	IN STOCK

USED TRACTORS

MAHINDRA 105P CAB LDR	
105HP	45,500
MAHINDRA MAX26XL LDR	
26HP	12,500
MAHINDRA MAX22 W/ BACKHOE	
	11,500
MAHINDRA EMAX22 LDR	
22HP	10,000
CASE IH 485 LDR 43HP	8,500
FORD 5000 LDR 60HP	8,500
MF 135 W/LDR 36HP	5,500
MF 150 38HP	4,500
CASE IH 235 W/ MOWER 18HP	3,500
IHC 184 W/ MOWER	
18HP	3,500

USED SIDE BY SIDES

MAHINDRA 750 CREW XTV	8,500
MAHINDRA 750 XTV	7,500

USED ROUND BALERS

MF 2846A 4X6 MESH	20,000
MF 2745 4X5 MESH	12,500
HESSTON 745 4X5	7,500
HESSTON 555 4X6	4,500
HESSTON 560 5X6	4,000
HESSTON 550 4X6	3,500
NH 850 5X5	1,500
MF 224 SQUARE BALER	2,500

USED RAKES

SITREX 12WHEEL	3,500
DURABUILT 8 WHEEL	1,950
VERMEER WR20 8 WHEEL	1,950
M&W 8 WHEEL	1,500

USED HAY MOWERS

CASE IH DCX131 13FT	9,750
NH H6750 9FT 3PT	6,500
MF 1329 9FT 3PT	5,500
NI 5409 9FT 3PT	4,500
LELY 270 9FT 3PT	3,500

USED MISC.

HAYBUSTER 107C DRILL	17,500
RHINO 12FT FLEX WING	8,500
BUSH HOG 3008 8FT 3PT	3,000

Marshfield Machinery Inc.
222 E. Madison • Marshfield, MO 65706
417-859-2117
www.marshfieldmachinery.com

KUSTER LOGGING

**BUYER of Standing
Timber
Oak and Walnut**

Dozing Now Available

417-259-0047

References Available



HORSE HAY: Square bales, weed free, Big Blue stem, 80% pure. \$5 bale, mixed grass hay, \$4.50/bale. 573-368-1794, Rolla.

DOG PEN: 8'x8', 4' tall and dog house. \$125. 636-239-4124.

L4400 KUBOTA: 4wd tractor with loader and 3rd function valve, Low hours. \$21,500. 417-270-1505.

NEW HOLLAND 1411 DISKBINE: with rollers. \$7,250. 573-765-4406.

TWO TRUCK TIRES: 750x16 1/4 inch tread. \$25 each. Gerald, 573-764-2270.

BUTCHER BEEF: Grain fed, ready to go. Some long horns w/nice head/horns for good wall mount. 573-701-6637, 573-579-0361.



Custom Welding & Repair!

Custom Welding & Repair on Farm Machinery & All types of trailers including semi | Alum Welding | Lights & Brakes Repair

JR's Fabrication

Levi K. Zook • 417-741-2312 • 4875 Hwy BB Hartville

GREAT PYRENEES PUPS FOR SALE: 417-664-8781.

POOL TABLES: Installations, moves, recoverers, repairs, accessories, etc. 573-646-1700.

REMINGTON 11: 12 gauge. \$200. 573-569-4669, Versailles.

CUSTOM SAW MILLING: Lebanon. 417-533-4607, 417-664-1195.

PINE LOG SIDING.. www.pineridgerustic.com 573-729-7226.

HAY FOR SALE: Small square, 4x5 round & 4x6 round bales. Licking, 573-578-7210.

"Clear the Lot"

Winter Savings Event

Scoop up our best deals of the season now!



2013 Ford Explorer XLT

Stock #19200A
3.5L V6, FWD, Auto, 6-Speed

NOW \$14,950



2017 Chevy Cruze LT

Stock #18142B
1.4L 4 cyl, FWD, Auto 6-Spd

NOW \$15,550



2013 GMC Sierra 1500

Stock #19192B
4.3L V6, 4WD, Auto 4-Spd

NOW \$17,950



2018 Kia Sorento LX

Stock #19193A
2.4L 4 cyl, FWD, Auto 6-Spd

NOW \$18,950



2018 Dodge Journey GT

Stock #P1141
3.6L V6, AWD, Auto 6-Spd

NOW \$21,950



2015 Dodge Charger R/T

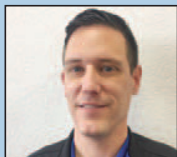
Stock #19202A
5.7L V8, RWD, Auto 8-Speed

NOW \$26,450

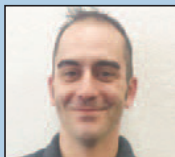
*For incentives, must finance through Chrysler Capital. Not all buyers will qualify. Some restrictions may apply. See dealer for qualifications and complete details. Current Incentives end 1/31/2020.

Also Offering Great Deals on New Chrysler, Dodge, Jeep & Ram Vehicles!

SALES STAFF



Nick Petersen



Mike Miller



Jeremy Nicewaner



Paul McGhee



Don McGhee



Jermie Shelton,
General Mgr.

TAYLOR



www.taylorchryslerrolla.com

705 Highway 63 South
Rolla, MO 65401
573-364-1233



Visit Us On Facebook

WEEKLY TRADER MAGAZINE

AUCTION DIRECTORY



Saturday, February 1

10:00 AM	Bruce Scheets Auctions	15
9:00 AM	Buckner Auction	16
12:00 PM	Buffalo Livestock	19
11:00 AM	Mid MO Stockyards	20

Thursday, February 6

9:27 AM	Chupps Auction	18
6:00 PM	Callaway Livestock	13

Friday, February 7

12:00 PM	Salem Livestock	19
----------	-----------------	----

Saturday, February 8

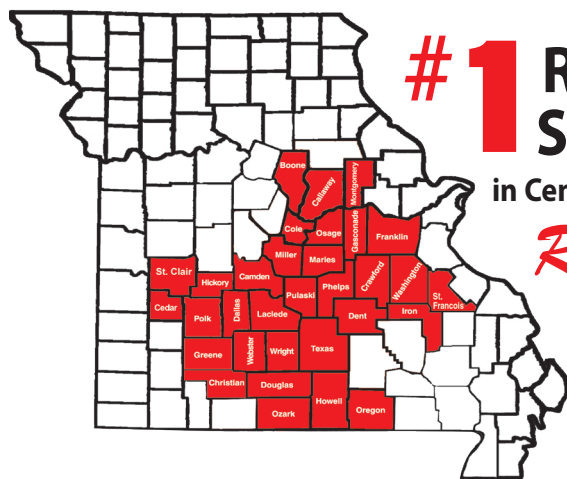
9:30 AM	Crawford Auction	14
TBD	Glen Fahrni Auction	18

Saturday, February 29

10:00 AM	Wheeler Auctions	19
----------	------------------	----

Weekly Online Auctions

Sunday	Crawford Auctions	17
Wednesday	Trophy Properties	20



#1 Rural Shopper
in Central Missouri
Reader's Choice!

Call 1-800-665-8875 to get your auction listed in the Weekly Trader.

AUCTIONEERS Did you know the WEEKLY TRADER covers more counties in rural Missouri than any other publication?

Firm deadline is 12:00 PM Friday, prior to next week's Thursday publication date.

CHICKS, DUCKS AND MORE: Cackle Hatchery, 417-532-4581. Lebanon, MO. We Ship!

T215X70 R14: 1/4" tread. \$25/each. 573-764-2270.

3 NUBIAN/BOAR Goats: 1 older male, 2 younger males. Neutered, w/5 bales hay. \$300 all, Cash. 630-687-0705.

WOOD FURNACE: Heats over 2,000 sqft home, good condition. \$525. Can deliver. 636-239-4124, Washington, MO.

2015 YELLOW SILVER TOBIANO CURLY MARE: 43" high, registered ISHA, willing and gentle, saddled but not ridden. \$1,100. Niangua, 417-880-0025.

GLIDER ROCKING CHAIR: Mint condition, green cushion. \$40 firm. Gerald, 573-764-4435.

JOHN DEERE 435 ROUND BALER: monitor, kicker, 4X6. \$5,600. 573-765-4406.

MEDIUM-LARGE DOGHOUSE: wood floor, covered w/metal. \$55. 417-293-0568.

Callaway Livestock Center, Inc.

Kingdom City, MO

Watch live or bid online thru D.V. Auctions
www.CallawayLivestock.com

SPECIAL COW SALE

THURSDAY NIGHT
FEB. 6th, 2020 AT 6:00PM

Estimating 600 to 700 hd of Bred Cows,
Cow/Calf Pairs & Breeding Bulls.

Early Consignments

Bred Heifers:

- 24** Home raised Blk or Blk WF 1st calf Hfrs A-I Bred to SAV Platinum, due March 7th, 2 rounds Scourguard IBR. Wormed 2 times, pelvic measured, very gentle. Weigh 1100 Fancy King Heifers are fetal sexed. Sell with either Bull or Hfr. calves.
- 30** Home raised Blk or Blk WF 1st calf Hfrs. Very gentle, weigh 1050-1100 Bred Natural Sire to Nichols. Easy Calving Angus Bulls Heifers. Start calving March 1st for 30 days. Heifers are pelvic checked over 160. Current on all shots and dewormed.
- 40** Fancy home raised Blk or Blk WF 1st calf Hfrs. Cow herd these Heifers out of all all SyGen Genetics. They will be bred to SyGen calving ease bulls, weigh 1100-1200. Due March 1st for 45 days.
- 22** Fancy Blk home raised 1st calf Heifers. This herd these Heifers came out of are Circle A Genetics. Heifers have had 2 rounds of all vaccinations. Bred to easy calving Circle A Bulls. 15 of these Hfrs. are due March 1st, the other 6 Hfrs. will be due April 1st.

Cows:

- 101** Blk or Blk WF Cows, be a few Red Angus Cows. Bred to Lucas or New Day Sim Angus Bulls. Cows due Feb. 1st. Cows weigh 1100-1200 lbs. Selling due to health reasons, fancy kind.
- 20** Fancy 4yr. old Blk Cows, SyGen bred. These cows are all sisters, bred to SyGen Excede, due March 10th 60 days. Gentle, all vaccinations current.
- 30** Fancy Blk or Blk WF Cows. Few Red Angus Cows 3 or 4 yrs. old. Bred to Angus Bulls, all shots current, due March 1st, cows weigh 1200 lbs.
- 20** Fancy Blk Cows. Cows will be 4-8 yrs. old with Fancy 200-300 lbs. calves running by side. Been with an Angus Bull since Dec. 15th.

Pending:

- 60** Blk or Blk WF Cows. Cows will be 5-8 yrs. old. 34 will have fancy Blk or Blk WF calves by side, rest will be 3rd period. Bred Angus Bulls.
- 30** Fancy Angus Cows. Complete sell out. 17 of these cows will be Spring-Calvers. Bred to Angus. 8 of these will be Blk 1st Calf Hfrs. Bred Angus, 1st period calf Sept. 5 of these have 300 lb. Blk calves by side, rebred. 1 - 2yr. old Angus Bull, no papers.
- 30** Blk or Blk WF Cows, weigh 1200 lbs. Nice, kind, heavy, 3rd period.
- 10** Char Cross Cows, weigh 1200 lbs. Cows be in 3rd period.
- 30** Blk or Blk WF Cows, weigh 1100-1200 lbs. These cows will be 2nd period.
- 1** Fancy 2 yr. old Horned Hereford Bull.

This ad was prepared 2 weeks before sale. Many more expected by sale day. All bulls sell at the start of the sale at 6:00pm.

For more information contact:
Jack Harrison 573-999-7197 • John P. Harrison 573-220-1482
Roger Temmen 573-680-4538 • Glenn Stagman 573-619-8495
Claude Niemeyer 573-470-1017 • Justin Oberling 217-440-7724
Carson Harrison 573-825-7134 • Wayne McCluggage 573-473-6314

CALLAWAY LIVESTOCK CENTER INC.
573-642-7486

Sam CRAWFORD AUCTION SERVICE LLC

Will sell the following located in the Humansville Community Building, Humansville, Mo., Jct. of Highways 123 and Business 13.
Watch for Crawford auction signs.

Saturday, Feb. 8, 2020 – 9:30 a.m.

ANTIQUES – COLLECTIBLES – MISC



Assorted toys, dolls, cars & trucks
Belt buckles
4-5 Elvis dolls
3-4 Jars marbles
Lot assorted figurines

Copper & brass pieces
Silverware, knives
Silver coffee service
2 Ice shavers
2 Coffee grinders
2 Wall telephones
3 Butter molds
Phonograph w/large horn/speaker
2 Singer sewing machines
5-6 Pie safes/cabinets
Lot wood chairs
2 Corner cabinets
Spool cabinet
2 Dressers w/mirrors
Sev small tables
4-5 Floor lamps
Sev oil lamps
2 Bird cages

Primitive storage box
Wicker pieces
2 Ice cream chairs
Spinning wheel
Watling step on coin operated scales
2 Plinko games
4-5 Peanut/gumball machine
Blue fruit jars
Bottles Lard tins
Other tins
2 Crock churns
(2) 5 gal crocks
Other crocks jars, jugs
Asst granite ware
Asst cast iron
Sad irons, trivets
Lots dish & china sets
Pitchers, cookie jars
Lot green & pink depression
Lot clear depression
Gold & blue carnival

See
website for
more
pictures!

Frankoma, Pyrex, Fire King
Roseville & Hull, USA pottery
Fiesta, Blue Willow
Lot cookbooks, other books
Speed Queen Adv.
'54 Ford p/u Adv.
Christmas Seal Adv. for 1940
Lot framed pictures
2 Lightning rods
4-5 Glass lightning rod balls
Lots more

This is a partial list. Lots & lots of items to sell. Mae & Nolan collected & sold for many years. Lots of good times.

Sam CRAWFORD Auction Service LLC



Cross Timbers, Mo.
CrawfordAuctionService.com

417-998-6629



TERMS: Cash or good check. Nothing removed until settled for. Not responsible for accidents. Lunch available. Statements made day of sale take precedence over printed matter. All items sell as is. No warranties given or implied.



Sam
417-328-9137

Chase
417-399-1904

Chance, CAI
417-298-1751

Tom Poynter
Jack Lancaster

Mae Boyle (Poor Girls Antiques)

OUTSTANDING LIVING ESTATE AUCTION

SATURDAY, FEBRUARY 1st - 10:00 AM

Location: Chamber of Commerce Building, Texas County Fairgrounds- 1585 N. Hwy 63, Houston, MO. **Climate controlled facility with seating available.**
Directions: From Houston at Hwy 63 & Hwy 17 stoplight, go north on Hwy 63 one mile to auction location. Watch for Bruce Scheets Auctions Signs.
 Visit www.brucescheetsauctions.com to view more photos!
PAYMENT SYSTEM: Cash • Checks accepted with proper identification • Mastercard, Visa, & Discover Credit/Debit Cards Will Be Accepted with a 3% Processing Fee.

Living Estate of Rick Arthur & Guests

ARTHUR

1991 FORD 1 TON BUCKET TRUCK, 7.3 Diesel w/ 30 ft. Lift ~ 2001 FORD 350 V10 Utility Bed Truck w/ 12 Ton Winch



1946 MOVIE POSTER It's A Wonderful Life (Jimmy Stewart & Donna Reed)

COINS

1822-CC GSA Black Box silver dollar w/ card, choice, unc. • 1876-CC seated half, rare • 1890-CC silver dollar, nice • 1891-CC silver dollar • 68 Indian cents • 24 Buffalo nickels • \$2.75 in silver coins • 1854 seated half dollar, arrows • 1859 seated half, very choice+ • 1879-P silver dollar • 1888-P silver dollar, gem BU • 1885-P silver dollar • 1904-O choice BU silver dollar • Three 1921 Morgan silver dollars • Two 1922 Peace dollar • 1923 Peace dollar, BU • 1926 Peace dollar • 2002 silver eagle • 1970 unc. U.S. mint set sealed • 1971 unc. U.S. mint set • 1960 U.S. silver proof set • 1961 U.S. silver proof set • 1962 U.S. silver proof set • 1962 U.S. silver proof set 1964 U.S. silver proof set • 1974 proof set • 1975 proof set • 1992 silver U.S. proof set • 1997 silver U.S. proof set • 2003 silver U.S. proof set • 1971 proof silver like • 1943 steel pennies • & other misc. coins **Kennedy Half Dollars:** 1992-S PR 67 • 2000-S PRG 69 • Bicentennial PR 69 • 2001-S • PR 70 • 1993 PR 70 • 1976-S PR 70 • 2004-S PR 69 • 2004-S proof • 1968 40% silver proof • 1969 40% silver proof • 1976 proof • 1999-S PR 69 • 1974 2 headed half • 1993 proof • 2007-S PR 69

POLARIS TRAIL BOSS 4 WHEELER

1948 MOVIE POSTER SANDS of Iwo-Jima (John Wayne)

KNIVES ~ INCLUDING MILITARY

Approximately 20 knives including: Case • Gerber • Buck • Sheffield • Old Timer • Schrade • Cattaraugus • Stag • USMC • Navy diver's knife • Other

GRISWOLD CHROME DUTCH OVEN & SKILLET - both w/ lids

HOUSEHOLD ~ OUTDOOR & MISC.

Magic Chef gas range • Vanguard VS250 safe 18x22x23 • Speed Queen wringer washer • Whirlpool washing machine • Estate H/D washer • Office chair • Leather wing-backed chairs • 2 pressure cookers • Wall mirrors • Baskets • White wood dresser • 2 Cracker Barrel white rockers • Small acetylene torch set (like new) • Fishing tackle boxes • 2 large rolls of rope • Other

GOLD COINS ~ 1882-S Five Dollar Liberty Gold & 1905-S Five Dollar Liberty Gold & 1909-S Ten Dollar Indian Gold, Scarce

ANTIQUES & COLLECTIBLES

Metal Tonka Toys some NIB • Retro Radio Flyer Scooter • Western Auto Ertl Toy Truck • Budweiser hanging light • Hummel & Goebel Figurines approx 50 • Griswold & Wagner Cast Iron pieces • #8 & #9 Dutch Ovens w/ lids • Waffle iron • Cornbread pans & other • Schlitz horse drawl beer wagon (cast) • Schlitz lighted clock • Beer advertising wall pictures • Cheers dartboard • Toy train set (#3 Nascar driver Dale Earnhart) • Oak buffet w/ mirror • Dr. Pepper & Coke wall clocks • Alum. airplane prop • Civil War chronological battlefield map • Canes • Mason & Ball jars (incl. 1858)



• Old Judge coffee jars • Planter's Peanut jar • Sunshine coffee jars • McCoy Aunt Jeremiah & Clown cookie jars • Elgin outboard motor circa 1940's or 1950's • Wood cradle • Anchor Hocking nesting set incl. 4pc orange set • Pyrex 4pc mixing bowl set • Anchor Hocking bowls (4pc set) • US Congressional glass paper weight • Presidential memorabilia • Kerosene lamps incl. Aladdin Lincoln Drape • Fire King tulip mixing bowl • Royal Racer child's sled • Wood level • Washboards • Large aluminum pots • Firewood cradles • Cedar slab wall clock • Build A Bears 16" • Store jar • Dr. Seuss Bear & other • Galvanized tray • 2 padded rocking horses • Metal trunk • Galvanized toy box • M&M collectible pieces • Cake carrier • Snake basket • Metal bread box • Aluminum & metal coffee pots • Jaguar table lights • Stag baskets • Aluminum wash pan • Rolling pin • Grantware • Picnic baskets • Large vintage juicer • Old wood ext. ladder • Paul Revere decanter • Charlie Chaplin figurine • Bookends • Poppy mailbox planter • Rooster figurines • Crocks • Jars of marbles • WWII ration books • Sterling silver flatware • Camel cigarette lighter NIB • Military trunk • Dianne China set • Wrought pole lamp w/ jadeite glass • Salisbury pewter • Canadian stamp collection • Well pulley • Sad irons • Shoe last • Boy Scout drum • Jars of buttons • Ice tongs • Trivets • Enterprise cherry pitter • Oil squirt cans • Budweiser steins • Wooden picnic basket in original box • Maid or Honor meat grinder • Enamelware • 2 bottom horse drawn garden plow • 1 bottom horse drawn plow • Garden push plow • 2 large cowbells • Military lantern • Model A battery • Chicken waterer • Royal cast iron heating stove (oval) • 2 chrome dinette tables • Kerosene can • Vintage Aluminum cooler • Wood advertising boxes • H/D metal trunks • Yard well pump • Minnow bucket • White metal kitchen cabinet • Wood rocking horse • Advertising & road signs • Other

GUNS

Colt M4 Carbine 556 cal • Remington model 700 BDL 243 cal Custom Deluxe bolt • Remington 742 30-06 cal • Remington model 870 Express 12 ga pump (wood) • Remington model 783 30-06 w/ scope adj. trigger • Smith & Wesson 30-06 cal I-bolt • marlin model 336 lever action 30-30 cal • Stevens model 320 12 ga pump • CVA Buckhorn 50 cal • H&R Pardner 12 go • Marlin model 60 22 LR • Savage Axis 223 cal bolt • Savage model 93 R-17 HMR bolt • Savage 93 F22 WMR 22 mag bolt • Savage 62 22 cal LR semi auto • Arasaka Mauser 7.7 cal • H&R Pardner 12 ga cammo • Revelation model 350 410 ga 3" • Mossberg model 500A 12 ga • Ithaca model M66 20 ga 3" • H&R model 88 12 ga • Revelation model 150M 22 LR (by Marlin) • Belgium double barrel shotgun Coach model Hammer gun • **Pistols:** Bryco Arms model 38 380 cal auto • H&R 22 cal revolver w/ scope • **Misc:** 20 ga ammo • Simmons 10x50 & 20x60 binoculars • Gun cases • Other

AUCTIONEER'S NOTE: The 2020 auction season is here! Join us for an excellent, well-rounded auction with something for everyone! We have a great variety of antiques, collectibles, coins, guns and miscellaneous items - many items not listed. We look forward to seeing you at the auction! *Thanks, Bruce*

DRIVER'S LICENSE OR PICTURE I.D. REQUIRED • TERMS: CASH OR APPROVED CHECK **OR**

BRUCE SCHEETS AUCTIONS

www.brucescheetsauctions.com • HOUSTON, MO • We Accept Mastercard, Visa & Discover

Auctioneers:
COL. BRUCE SCHEETS
 417-967-2510
 Cell: 417-260-2118
COL. TRAVIS TOOLEY



All announcements made day of sale take precedence over any printed matter. Not responsible for lost or stolen merchandise. Not responsible for accidents.

LUNCH WAGON • APPRAISAL SERVICE • RAIN OR SHINE

Cashiers / Clerks:
Andi & Chyenne Scheets, Shelly Mutzebaugh, Suzanne Smith, Shelly Caldwell, Jennifer Tooley
 Ringmen:
Jarid Scheets, Terry McCallister, Kirby Caldwell, Josh Wheeler



**Buckner
& Gately
Auction
Service**

Saturday, February 1, 2020 • 9:00 a.m.

LOCATION: In Licking, Mo., on Cedar St. at old Rawlings Bldg. Watch for signs.

EARLY START!!!

Go to auctionzip.com to view photos. Auctioneer #28367

EARLY START!!!

Furniture

Oak Kitchen Table & 4 Chairs
Bar Stools
Wooden T.V. Trays
Round Oak Coffee Table w/Claw Feet
Oak Corner Computer Cabinet
End Tables
Leather Couch & Loveseat – Charcoal
Lift Chair
Maple Table w/4 chairs
Chest Deep Freezer
G.E. Washer
Queen Size Bed
Full Size Bed
42" Sanyo Flat Screen T.V. w/XTREAM
Hide-A-Bed
Oak File Cabinet
Old Round Oak Table w/4 Leaves
Buffet w/Beveled Mirror
Reclining Couch
Lamps
Small Hutch
Secretary (nice)
Recliners
Tea Cart
Wrought Iron Barstool
Microwave Cabinet
Small Fridge
Glass Coffee & End Tables
Dresser w/Mirror
Bench
Desk w/Chair
Library Table
Metal Patio Set
Horseshoe Chair
Wrought Iron Table & 2 Chairs
Wrought Iron Gate
Cast Iron Pot
Cream Can
Concrete Yard Ornaments
OK Joe Smoker
Sheffield Stove
Infrared Cooker
Electric Grill
Propane Tank
Dr. Pepper Grill
George Foreman Propane Grill
Pepsi Cooler 5 gallon
Frosty Water Cooler
Cast Iron Kettle
Coffee Grinder w/Glass Jar
Silverware
Tea Sets
Old Crow Advertising
Robert E. Perry Decanter

Rocky Mtn. Springwater Lighted Clock
Jewelry
Brass Lantern
Bread Box
Canister Set
Wild Turkey Mirror
Brass Dipper
Resistol Hat
Wooden Radio
Food Saver
Antler Lamps
Avon Bottles
Hardy Boys Books
Big Glass Water Jug
4 Window Air Conditioners
Dehumidifier
Push Plow
Bow Targets
Metal Shooting Targets
Branding Iron
Galvanized Buckets
Bird Feeder
Owl
Metal Oil Cans
Sad Irons
Cow Kickers
Iron Tractor Seats
Singletrees
Corn Planter
Old Barn Door Hinges
Fence Stretcher
Horseshoes
Old Metal Level
Gas Lantern
Model A Trunk Box
Rubber Boots
Bait Box
Tree Harness
No. 1 Dinner Bell
Louis L'Amour Books
Yale Chronicles Books
R.V. Attachments
Horseshoe Coat Rack
Coolers
John Wayne Movies
Gerber Multi Tool
Buttons
Hats
Bacon Press
Cast Iron Skillets
Hand-painted Satellite Dish
Spittoon
Ice Cream Freezer
Belts
Microwave

Bissell Spot Remover
2 Rolls of Industrial Carpet
Tack Strips
Carpet Stretchers
Large Roll of Ship Rope
Jazzy Power Chair
KYMCO Scooter Power Chair
Buggy Seat
Wooden Box

Tools

Ladders
Reese Hitch Carry All
Sprayers
Gas Cans
Big Pipe Wrench
Shovels, Axes, Posthole Diggers, Rakes, Post
Maul, Pitchforks, Picks, Hoes,
T-Post Driver
Crosscut Saws
Car Ramps
Craftsman Tool Chest
Clarke 9 Drawer Tool Box
Truck Box
Cant Hooks
Tire Chains
Punch Bar
Chimney Brush
13 Drawer U.S. General Toolbox
Kobalt Truck Box
Big Wagon
Pond Aerator
Troy-Bilt Weedeater on Wheels
Craftsman Rear-tine Tiller
Floor Jack
Power Washer
Weather Guard for bed of truck
Craftsman Band Saw
Grinder on Stand
3 point Quick Hitch
Walk Behind Brush Cutter
Blower
Ladder Rack
Lincoln Welder
Hose Reels
Paint Sprayer
Screwdrivers, Wrenches, Sockets, Vice
Grips, Pliers, Box End Wrenches
Funnels
Electric Cords
Leaf Blower
Hammers
Chains
20" Crescent Wrench
Drill Bits
Wedges

Grease Guns
Toplink for Tractor
Boomers
Turnbuckles
Battery Charger
Homemade Anvil
Torque Wrenches
Ratchet Straps
Hedge Trimmers
Pulleys
Sanders
Craftsman Dolly
Right Angle Drill Adaptor
Chain Hoist
Baseboard Heater
30' Fiberglass Ext. Ladder
Paint Cabinet
Slide Hammers
Lot of Body Working Tools
Shelf Brackets
Bolt Bonds
Staplers
Bug Shield
Löwenbräu Sign
Air Sanders
Powder Coating System
Hand Snakes
Roll of 10/3 Wire
Motion Lights
Thermax Steam Cleaner
Metric Wrenches
Come-Along
Pry Bars
Port-A-Power
Pipe Bender
Salamander Heater
Clamps
Kobalt Battery Power Weedeater
Skil Saws
Drills
Nailers
Hand Grinders
Bead Roller
Dent Puller
Fender Stand
Rope Lights
Dolly-2 wheel
Christmas Tree
Lots and lots more items not listed.
See you at the auction.
Thanks, **Steve and Neal**

Moyer & Rouse - Owners

Terms-Cash or Approved Check. Nothing Removed Until Settled For. Not Responsible For Accidents.
Must show ID to get Buyers #. Announcements Made Day Of Sale Take Precedence Over Printed Matter.

Buckner & Gately Auction Service

Auctioneers

Steve Buckner 573-674-2686

Neal Gately 573-202-3132



**Connecting
Buyers &
Sellers Of
Old Coins**

SELL YOUR ESTATE

**NOW ACCEPTING
CONSIGNMENTS!**

Online

WWW.OZARKBID.COM



**SHIPPING ON
AVAILABLE ON
MOST ITEMS**

**SELL YOUR ITEMS
NATIONWIDE**

**SAVE TIME, SAVE
MONEY, SHOP AT
ONLINE AUCTION**

- Online -

CRAWFORD
Auction Service

Register and bid online
@ www.OzarkBid.com



Ozarkbid

Contact Chase Crawford, Crawford Auction Service for more info @ 417-399-1904

AUCTION

February 8

**J.D. Tractors
- Machinery
800 ROUND
BALES OF HAY
Lots of Balage
- Dry Hay
Alfalfa/Sudan/
Fescue Mix**

**RUBEN ZIMMERMAN
VIEW AUCTIONARROWS.COM**

**573-378-4172
25 MILES WEST OF
JEFFERSON CITY ON ROUTE C**

PINNACLE RANCH: 12mo Red Angus and Red Gelviah Bulls/Red Angus & Red Gelviah Heifers for sale. 417-679-4269, Gainesville.

DARDEN PROFESSIONAL TIMBER HARVESTING, BUYING STANDING TIMBER: Great prices, improve wildlife habitat and improve forest health. State Certified & Fully Insured! 573-247-4808 or 573-739-1122. Salem

07 FORD F-150 4X4 CREW CAB: 216,000Miles, runs and drives good. \$5,000. 417-646-8807.

HANTZ DRYWALL: 35yrs, references. 417-322-0014.

WHITE METAL BABY BED: W/mattress, converts to toddler bed, very good. \$100. 417-531-1116.

Put more \$\$ in your pocket. Bring your calves to market sooner, eliminate flies, lice and ticks. How?? Prairie Phoenix Cattle Care System. Call LOCAL Dealer at 417-286-3540 or 774-696-2344.

SMALL SQUARE HAY BALES: Timothy, Alfalfa & Orchard Grass mixed. \$6. Alfalfa grass mixed. \$5.50. Long Lane, 417-345-5634

Real Estate and Public Auction

Thursday, February 6, 2020

STARTS @ 9:27 A.M.

For more information and pics: www.chuppsauction.com

DIRECTIONS: Located on the West side of Skiatook, at the Jct of WC Rogers Blvd (Hwy 20) and N 52nd W Ave/N Javine Hill (flashing light), go North on N 52nd W Ave for ½ mile. Turn left (West) on W Country Rd and go ¼ mile. Property is on the left. Follow auction signs.

29 Acres⁺/- in Skiatook Selling in 2 Parcels

5676 W. County Road • Skiatook, OK 74070

PARCEL 1: 8.6 Acres w/ 4377 sq ft Custom built home, built in 2009. Home is Timber frame construction with natural pine interior. Features include: 1 1/2 stories, 4 bedrooms, 3 bathrooms, 2 car garage, granite countertops, stained concrete floors, natural pine loft floor, fireplace, game room, large loft and balcony. All new paint and carpet 2019. This energy efficient home has 3 geothermal units, energy efficient windows, doors, lighting and appliances which results in low utilities! Exterior features include: Koi pond, 2nd detached 2 car garage, dog run, pond, creek and more. Beautiful parklike setting!

PARCEL 2: 20.4 Acres w/ 40x100 Shop w/ bathroom and 60x100 covered open air work area, w/ concrete floor, ramps & built for trolley hoist system. Acreage is native grass and includes 20x30 loafing shed.

OPEN HOUSES: Monday, Jan 27 & Feb 3 from 3-5 pm

(REAL ESTATE ONLY)

TERMS: 5% down day of sale, non refundable, no contingencies, close in 30 days. 4% Buyers Premium on Real Estate only.

Dale & Maria Chupp

Coldwell Banker Neokla Select

(918) 630-0495

REAL ESTATE
WILL SELL
@ 12:01 PM

**BACKHOES, DOZER, VEHICLES, OILFIELD EQUIP, OIL JACKS,
PULLING UNIT TRUCK, 1000s OILFIELD PARTS, TRAILERS,
TRACTOR, SHOP & SPECIALTY TOOLS, PIPE & SCRAP METAL**

Owner: K Y Park Oil Company LLC

LARGER ITEMS
SELL AFTER
REAL ESTATE

Auctioneer's Note: The owners of KY Park Oil Company have been in business since 1964 and have decided to retire from the oil business to pursue other ventures. **REAL ESTATE WILL SELL AT 12:01 PM. Everything must be removed by 2/13/20. Auction will have 1-2 rings.** Pasture parking. Follow us on Facebook for updates or our website for pics at www.chupps

NOT RESPONSIBLE FOR ACCIDENTS. ANY ANNOUNCEMENTS DAY OF SALE SUPERSEDES PREVIOUS ADVERTISING.

CHUPPS AUCTION & REAL ESTATE

Stan Chupp
(918) 638-1157

Dale Chupp, Realtor
Coldwell Banker Neokla Select
(918) 630-0495

E. J. Chupp

JOHN DEERE 567 ROUND BALER: monitor, kicker, wide pick-up, cover net wrap. \$9,650. 573-765-4406.

MARLIN GLENFIELD 22CAL BOLT ACTION: shoots short or long rifle, good condition. \$150obo. 636-497-6056.

HAROLD BELL WRIGHT BOOKS: God and The Groceryman and The Re-Creation of Brian Kent. \$10 each. Lebanon, 417-532-2045 (Leave Phone Number).

AUCTION REMINDER: Public Auction Saturday, February 8th @ 9:30am. Sam Crawford Auction Service. Please see our Auction Directory for more information.

OLDER ELECTRIC CORN MEAL/ FLOUR GRINDER. \$100. 417-646-8807.

MAYTAG EXTRA LARGE CAPACITY: Heavy duty, 2 speed washer, white. \$100. Washington, 636-239-2695.

NEW OAK ENTERTAINMENT CENTER: on wheels. \$100. 573-327-9068.

2004 DODGE RAM 3500 DUALY: 4wd, auto, double cab, 5.9 Cummins, 58K miles. \$26,500. 417-270-1505.

30 GAL PROPANE TANK: Has new valve. \$75. 417-683-7843, Tecumseh.

QUALITY REPLACEMENT COWS: 80 BLACK SECOND & THIRD PERIOD COWS, 20 Red 2nd & 3rd period cows, 4-7yrs old, avg weight 1250lb-1300lbs, de-wormed, vaccinated, preg checked, trucking available. Otterville, 660-619-5190.

IT'S A GAS SWAP MEET: Gas & Oil Collectibles, Advertising, Coin-Op - No Auto Parts. Saturday, February 8th, 8am to Noon. Cowan Civic Center, Lebanon, MO. \$5 Admission. For more information, call Nancy (573) 864-1336. Website: www.itsa-gasswapmeet.com

NICE PAIR OF 1" BELTA DRIVING LINES: for team of horses. \$50 for set. 417-718-5347, Conway.

BORDER COLLIE/AUSTRALIAN SHEPHERDS: Ready 12/29/19. Also purebred Border Collies: Ready 01/04/20. Females \$150, Males \$100. 417-349-1386, Hartville.

BUSINESS OPPORTUNITY FOR SALE: Complete, metal "panel forming" equipment, and inventory. Customform Willow Springs, Sharon Bacon, 417-252-1941.

BUFFALO LIVESTOCK MARKET LLC



276 Hwy 32 West
Buffalo, Missouri

January 25th, 2020

Receipts: 478 Head
(due to weather)

Feeders steady
Cows \$4-\$6 Higher
Kill Bulls \$7-\$12 Higher

Representative Steers

300-400 @ 180.00 to 190.00
400-500 @ 165.00 to 180.00
500-600 @ 149.00 to 176.00
600-700 @ 149.00 to 156.00
700-800 @ 138.00 to 143.00

Representative Heifers

300-400 @ 139.00 to 157.00
400-500 @ 143.00 to 158.00
500-600 @ 130.00 to 144.00
600-700 @ 127.00 to 132.00
700-800 @ 127.00 to 129.00

Slaughter Cows

Fleshy 1500# up 64.00 to 69.00
Boning Utility 47.00 to 55.00
Thin 45.00 Down

Slaughter Bulls

High Dressing 90.00 to 95.00
Med Dressing 80.00 to 89.50

MON-WED MARKET REPORT

Listen to KJEL 103.7FM • Lebanon or KY00 99FM • Bolivar

VIEW OUR SALES AT CATTLEUSA.COM

CALL FOR TRUCKING OR ON-FARM VISIT

Lyle Caselman • Owner-Manager
417-345-7876 • mobile 417-533-2944
Leon Caselman • Owner
417-345-4514 • mobile • 417-588-6185
Howard Miller • Owner 417-345-8122

Salem Livestock Auction

Hwy. 32 Salem, MO • 573-729-8880
Over 40 Years in the Livestock Business

Upcoming Special Sales!

Friday, February 7th

Pre Vac Sale at 12:00 pm
*Cattle must be weaned 45 days with at
least 1 round of shots*

Tuesday, February 11th

Goat, Hog & Sheep Sale at 6:00 pm

Saturday, February 15th

Stock Cow Sale at 1:00 pm

Luke Peterson • 417-259-0036

Shawn Chadwell • 417-830-0209

Bryce Lauderdale • 417-255-5124

Field Representatives

Wright & Surrounding Counties
We Appreciate Your Business!

Cattle Sale Every Monday at 12:00

Feeder Calves to sell at 12:00 pm
Butcher Cows & Stock Cows following

All Consignments Welcome Up Until Sale

We Appreciate Your Business!

Allen Thompson Renee Lauderdale
417-932-4097 417-926-2682

Chuck Thompson Brandon Barton
417-257-5610 417-259-1597

Terms of Sale: Cash or Approved Check!

1989 CHEVROLET PICK-UP: Rough.
\$350. 417-531-1496.

**WR CASE & SONS Cookbook & Historical
Companion.** \$7.50. 417-532-2045, Lebanon.

MODULAR STOCK SALE - It is time to
move our inventory. **TRUE MODS -** Save
Thousands. Call Marla, better than 20 years
experience. 573-657-7040, chateauhomes.
net.

REMINGTON 11: 12 gauge. \$200. 573-569-
4669, Versailles.

Kilmer Farm Equipment CONSIGNMENT AUCTION

SATURDAY, FEB. 29 • 10 A.M.

14769 Cattle Lane

Versailles, MO

(1 Mile North of Versailles, MO
on Hwy 5 then ½ Mile East)

AD DEADLINE:

FEB. 5, 2020

SELLER:

**KILMER FARM
EQUIPMENT**

**CONTACT DANIEL KILMER
FOR MORE INFORMATION
(573) 378-6615**

Wheeler
AUCTIONS & REAL ESTATE

23101 HWY. 24, PARIS, MO 65275 | 660-327-5890
WWW.WHEELERAUCTIONS.COM

RITCHEY MO. HISTORY: A small village
in the Missouri Ozarks, (Newton County
1925-1950). \$20. Lebanon, 417-532-2045
(Leave Phone Number).

CASE DC TRACTORS: One, wide front,
PS, 7' rear sickle. \$2,200. One, narrow front,
12' rear sickle. \$1,800. One, narrow front
w/3pt lift. \$1,600. 417-848-8754, Springfield.

**OLD LINN CREEK, HA HA TONKA &
CAMDEN CO BOOK** "Before the Dam
Water", by T. Victor Jeffries. \$3.50 plus \$2
if mailed. 417-532-2045, Lebanon (Leave
Phone Number).

97 Freightliner, Cabover, M11 Cummins
Engine, 21ft. Steel Bed, FM13 Ditch Witch
Pump & Tanks \$7,500

John Deere 420, Wide Front, Recent
Overhaul, Good Paint & Tires \$4,800

David Brown 1212 Diesel QA Loader,
2 Sets of Remotes, 65 HP \$5,900

Ford 8N Sherman Transmission,
Good Condition \$1,800

Steel Flatbed 7.7'x9' \$400

Generac Generator 4,000 \$350

3.8 Ft. Disc \$900

DU-AL Loader QA \$1,400

STARR TRACTOR • ROGERSVILLE
417-753-2747 • 417-766-1991

MID MISSOURI STOCKYARDS

REGULAR SALE EVERY THURSDAY 11AM

SPECIAL STOCK COW SALE FEBRUARY 1ST @ 6PM

For Farm Visits, Market Updates, or Trucking
Call Zach Cox 417-777-1320
Dan Romine 573-578-4939

Competitive Buyers!
Competitive Commission!
Competitive Market!

Barn: 417-532-9292 
I-44 • Exit 123 "just outside of Lebanon"
17505 Route 66, Phillipsburg, MO 65722
 For weekly market updates, visit us at
www.midmostockyards.com

FOR SALE: 146 ACRE M/L FARM w/ 0 in Licking, MO: Two metal barns, Three bedroom mobile. \$441,900. Also 83 Acre M/L recreational or mini farm. \$324,900. Call Lena Berg, Red Caboose Real Estate, Connie Culp, Broker, 573-578-2887. redcabooserealty.com

COMMERCIAL MEAT SLICER: Toledo scale, model-5401. \$500obo. 573-374-1307.

4X5 ROUND BALES BROME HAY: in barn, no weeds, horse hay. \$45/bale. Sullivan, 573-259-3216.

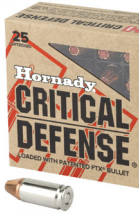
4X5 HORSE QUALITY MIXED GRASS HAY: fertilized, net wrapped, grain free. \$40/bale. Rogersville, 417-350-5323.

Is handgun ammo
 getting difficult to find in
 your area? Come get yours
 today at:

Craig's OUTDOOR Sports

9435 HWY N. Suite A (417) 926-0255
 Mtn. Grove, MO craigsooutdoorsports.com

Mon-Fri 9am-5pm • Sat 9am-Noon



SQUARE BALES OF TIMOTHY HAY FOR SALE: \$5 Bale. 573-690-9406, Jefferson City.

1998 BOUNDER 30FT MOTOR HOME: Good condition. Approx. 74,000 miles, new tires in 2019. \$9,450/OBO. 417-327-6240.

CAMDEN COUNTY MISSOURI Land iAuction



Tract 3: 64 ACRES
 Tract 4: 84 ACRES
 Tract 2: 90 ACRES
 Tract 1: 0.5 ACRES & IMPROVEMENTS

Address: 5166 Chapel Bluff Rd., Macks Creek MO 65786

Bidding Ends Wednesday, February 5th at 10am
Open House Saturday, January 18th from 10am-Noon

Call Phil Brown 314-753-7444
Bid Now at TrophyPA.com

278± ACRES! 4 TRACTS

TROPHY PROPERTIES AND AUCTION
 LAND | RECREATIONAL | RESIDENTIAL

NAA

WHEEL FOR FORD 8N TRACTOR: 3"X 19". \$30. Gerald, 573-764-2270.

LIONEL TRAIN SET: Steam engine, tender, caboose and other car, track and transformer. \$195. 573-364-7465, Rolla.

4X5 ROUND BALES BROME HAY: in barn, no weeds, horse hay. \$45/bale. Sullivan, 573-259-3216.

CASE DC TRACTORS: One, wide front, PS, 7' rear sickle. \$2,200. One, narrow front, 12' rear sickle. \$1,800. One, narrow front w/3pt lift. \$1,600. 417-848-8754, Springfield.

4X5 ROUND BALES: excellent quality hay. \$65/bale. Lebanon, 417-322-0161

MODEL A REAR CAR AXLE. \$135. 417-293-0568.

CATTLE DOGS, HUNTING DOG, GUARD DOGS: And great companions, UKC Registered, Catahoula Leopard puppies, born 10-24-19. \$300. 660-620-2113, no Sunday calls.

SECTIONAL COUCH: Good condition. \$250. Springfield, 573-631-0046.

WANTED OUTSIDE WOOD FURNACE: Used. Also, 3pt 6' Brush Hog. 636-239-4124.

ACOUSTIC ALVAREZ GUITAR: W/electric pick-up, w/hard case. \$200 or trade. Gerald. 573-764-4435.

SPECIALIZING IN HEAVY DUTY GATES

Cow Country Gate Sales



Call Randy: 573-569-4754
or Home: 573-539-2528
Located at: Zimmerman Welding
16889 Hwy 52, Barnett, MO

SHAVEN WOOD FURNACE for sale: Heats water for house. Used 4 seasons. Ready to hook-up. \$3,500. 417-967-2292, Bucyrus, MO.

DINING TABLE & 4-CHAIRS: like new. \$200. 417-531-1116.

5 PIECE SET W/LIDS OF BLUE FLOWER CORNINGWARE: no chips, good condition. \$65. 417-532-2344.

COMMERCIAL RABBIT HUTCHES. 10' sections, 4 hutches per section, 11.5inch feeders, automatic waterers, \$60 per 10' section. 870-895-2719.

1993 FORD RANGER: 5speed 4.0. \$2,500. 2010 Prius: 1 owner. \$5,000. Waynesville, 573-528-7317.

AUNT JEMIMA COLLECTION. \$200 All. 573-327-9068.

30 GAL FUEL TANK: Fiberglass. \$50. 417-753-2747, 417-766-1991, Rogersville.

SMALL SQUARE BROME HAY: 70LB, horse quality, delivery available. 417-532-6686, 417-531-6686.

REGISTERED HEREFORD & ANGUS BULLS: Home raised, Some Show-Me Select Qualified. 573-701-7828. Belgrade

HORSE BUCKBOARD: 8'x32" pneumatic tires. \$575. Niangua, 417-880-0025.

★ A HERITAGE OF ★
MAKING ANY JOB LOOK EASY



DIY DIGGER PACKAGE

Includes 1025R, 120R Loader & 260B Backhoe

\$340 per month¹

- Powerful Final Tier 4-compliant diesel engine
- New, easy-lift hood with dual gas-charged lift struts

Z945M

\$500 off³

- 7-Iron™ PRO mowing deck
- Mulch On Demand™ available
- Electronic fuel injection
- Gasoline engine

4 STATE PACKAGE

Includes 3032E Tractor and 300E Loader

\$347 per month²

- Four-wheel drive for maximum traction
- Hydro transmission with Twin Touch™ pedals



JOHN DEERE

Heritage
TRACTOR

Legendary Products. Extraordinary Service.

Find your local Heritage Tractor location or request a quote at HeritageTractor.com

(1) Offer ends 1/31/20. Subject to approved installment credit with John Deere Financial. Based on a 0% down payment and financing of 0% APR for 84 months. Taxes, freight, set up and delivery charges could increase the monthly payment. Price and model availability may vary. (2) Offer ends 1/31/20. Subject to approved installment credit with John Deere Financial. Based on a 0% down payment and financing of 0% APR for 60 months. Taxes, freight, set up and delivery charges could increase the monthly payment. (3) Offer ends 1/31/20. Prices and model availability may vary by dealer. Some restrictions apply; other special rates and terms may be available, so see your dealer for details and other financing options. Available at participating dealers.

HTR4X70102WT-4C

5055E JOHN DEERE TRACTOR: Open station, MFWD, H240 loader, like new, 109hours, private owner. \$26,500. Consider offers. 417-599-8089.

1953 FORD JUBILEE: new tires, runs good, excellent condition. \$3,000. 417-664-3425.

HALF GERMAN SHORT-HAIR POINTERS: 4 females/1 male, no paper, no shots, tails not cut. Rehoming fee. 417-588-6129, leave message.

CASE 580C: Diesel Backhoe, Loader. \$8,850. 573-765-4406.

Starnes Auto LLC
22115 Rt. 66 • Lebanon, MO 65536
417.588.3159 Office • 417.718.2707 Cell
www.starnesauto.com

1999 CHEVY SUBURBAN
WHITE, 2WD, 179,XXX MILES **\$2,950**

2001 CHEVY TAHOE
GREEN, 4WD, 303,XXX MILES **\$2,800**

2001 CHEVY TRACKER
RED, 5-SPEED, 2WD, 130,XXX MI **\$1,750**

2001 GMC SIERRA 1500
EXT CAB, SLT, 4X4, 225,XXX MILES **\$3,950**

2003 CHEVY S10 EXT
PEWTER, 68,XXX MILES **\$4,200**

2003 GMC YUKON DENALI
BLACK, AWD, 188,XXX MILES **\$CALL**

2005 CHEVY SUBURBAN
BLUE, 4X4, 202,XXX MILES **\$4,200**

2005 CHEVY TAHOE LT
PEWTER, 4WD, 207,XXX MILES **\$4,450**

2005 GMC YUKON DENALI
CHARCOAL, AWD, 199,XXX MILES **\$4,200**

2007 CHEVY TAHOE
PEWTER, 239,XXX MILES **\$7,250**

2008 PONTIAC G6
SILVER, 4 CYL, 120,XXX MILES **\$4,250**

2009 GMC ACADIA
SILVER, 106,XXX MILES **\$7,250**

2013 CHEVY EQUINOX LT
BLUE, 2WD, 55 XXX MILES **\$11,500**

2013 HONDA CRV
BLACK, AWD, 113 XXX MILES **\$10,500**

2014 CHEVY EQUINOX LT
WHITE, 2WD, 69,XXX MILES **\$CALL**

2015 CHEVY EQUINOX LT
GOLD, 2WD, 72,XXX MILES **\$CALL**

WE DO ALIGNMENTS!

TAKUCHI DIESEL EXCAVATOR: with Hyd Thumb starts and runs good. \$15,000. 573-765-4406.

FREE TO GOOD HOME: Wire Mouth & Blue Heeler Cross puppies, 6 weeks old. 417-256-3235, West Plains.

MONEY MAKER 21 NEW BLACK MAX GENERATORS: In boxes. 4,500 start watt. 3,600 run watt. \$5,250. 417-399-6383.

6FT FOLD OUT LOADING RAMPS: Like new, used once. \$75 firm. Gerald 573-764-4435.



NEW BIG TEX 14LX DUMP TRAILER

facebook

JIM'S Motors TRAILERS

I-44 at Exit 208 • Cuba, MO
www.jimsmotors.com
(573)885-2595
(800)897-9840

GREAT SERVICE!
1957-2018 GREAT PRICES!

FORD A66 DIESEL ARTICULATING 4WHEEL LOADER: \$10,500. 573-765-4406.

FIREARMS: Professional Repairs and Restorations. Baron's Gunsmithing. 573-363-5801, Camdenton.

PATRIOT 250 SKID STEER LOADER: great for cleaning stalls. \$4,600. 573-765-4406.

2006 CURLY TOBIANO MARE: 45" high, registered ICHO/NAC, Broke to drive, has had one foal. \$1,750. Niangua, 417-880-0025.



Cheyenne Acres
Horse & Tack

BUY - SELL - TRADE
by Rolla, MO
Call For Directions & Availability

Call Kip
573-368-9402

RARE 1937 CIVILIAN CONSERVATION CORPS (CCC) 7TH CORPS AREA OFFICIAL MANUAL. \$20. 417-532-2045, Lebanon (Leave Phone Number).

JOHN DEERE 2630: Diesel tractor, 70HP, w/145 JD loader. \$8,650. (573)765-4406.

04 DAKOTA XST: 4X4, 5speed, V6, reg cab, 176,000miles. \$4,675obo. 417-399-6383

AKC FRENCHIE PUPPIES: Chocolate Fawn, black-mask, blues, other colors, shots, guarantee. \$1,500 and up. 573-238-3873/573-208-6269.



**TASK.
TASK.
DONE.**

RB16 SERIES

REAR BLADES

- 20-40 HP 60", 74", 84" Widths
- Cat. 1 hitch
- 7 Forward angles; 3 Reverse angles
- 5 Tilt positions
- 12" Offset left or right
- 14" Moldboard height
- 1/4" Moldboard thickness
- Landscape Rake adaptable

Agri ENTERPRISES

For Outstanding Products & Service

1-1/2 Miles South Of Licking, MO On Hwy 63

573-674-2203
1-800-653-7152

www.landpride.com

www.agri-enterprises.com

HOLLYWOOD 4-BIKE HITCH MOUNT RACK: Excellent condition, Includes (2) Allen Stabilizer tension bars and keyed alike locking hitch pin and cable. \$175. Conway, 417-718-5347.

JOHN DEERE MODEL A: for sale, 1947. \$2,200. Ford Jubilee. \$1,200 Windyville, 417-770-3834.

DOUBLE SET OF WHEEL CHOCKS: Color is Safety Yellow. \$30. 636-239-2695, Washington

KIDS LITTLE TYKES RED CAR BED: w/ mattress. \$150. Desloge, 573-327-9068.

BROME HAY FOR SALE: \$5/square. 573-539-2060.

2013 31ft COACHMAN CATALINA: Deluxe Edition model, ACAT31RLS, Sleeps 7-9 people. Excellent condition. \$14,500. 573-216-2079, pictures sent on request.

CHURCH FOR SALE: Sturgeon, MO. All new outside, remodeled inside, holds 80-90 people, nice kitchen, 2 nice restrooms, on 6 corner lots. Also could be used as Daycare business etc. Call only, 573-881-2006.

16FT 6-TYPE GALVANIZED GATE: \$100. 417-293-0568.



Buildings • Hunter's Cabins • Lawn Furniture

JAMCO BUILDERS

JAMCO Portable Buildings

800-688-2064 • 307 Enterprise Dr. • Seymour, MO • www.jamcobuilders.com

Rent To Own Plan

WOODWORKING EQUIPMENT: w/5HP planer and smaller planer, several different items. 573-480-7524/573-480-7523.

WANTED, TIMBER TO LOG ON SHARES: Honest, reliable, references. 417-533-4607, 417-664-1195.

DIAMOND BASEBALL CATCHERS GLOVE: Like new. \$95obo. 573-374-1307.

\$19,900 USED DOUBLE WIDE: nice 3 bedroom, 2 bath delivered & set-up.....Hurry, This house will NOT last long! Call now 573-657-2176 amegamobilehomes.com

WEEKLY TRADER MAGAZINE

YOUR AD GOES HERE!

Add **YELLOW** Color
For An Additional
\$3 Per Reader Ad

All ads will include Phone Number (unless requested to be deleted by advertiser) and City Or Town, Phone Number with Area Code counts as one word. City or Town counts as one word.

RATE: 80¢ Per Word. All Classified Ads Require Payment Before Print.

(1) 80¢	(2) \$1.60	(3) \$2.40	(4) \$3.20
(5) \$4.00	(6) \$4.80	(7) \$5.60	(8) \$6.40
(9) \$7.20	(10) \$8.00	(11) \$8.80	(12) \$9.60
(13) \$10.40	(14) \$11.20	(15) \$12.00	(16) \$12.80
(17) \$13.60	(18) \$14.40	(19) \$15.20	(20) \$16.00
(21) \$16.80	(22) \$17.60	(23) \$18.40	(24) \$19.20
(25) \$20.00	(26) \$20.80	(27) \$21.60	(28) \$22.40
(29) \$23.20	(30) \$24.00	(31) \$24.80	(32) \$25.60
(33) \$26.40	(34) \$27.20	(35) \$28.00	(36) \$28.80
(37) \$29.60	(38) \$30.40	(39) \$31.20	(40) \$32.00

Place your Classified Ad TODAY!

417-532-2800 • 800-665-8875

Fax: 417-588-7911

Or Mail To: P.O. Box 192 • Lebanon, MO 65536

For your convenience we accept MasterCard, Visa, Discover or American Express



DEADLINE FOR CLASSIFIED ADS: FRIDAY 4:00PM!

Name _____

Address _____

City _____ Email _____

State _____ Zip Code _____ Phone _____

Ad Total \$ _____ X # Weeks _____ = Amount Enclosed \$ _____

\$2,500 - \$11,000 LOT

Lindsay Chevrolet & Lindsay Ford

Mon.-Fri. 8 am - 7 pm
Sat. 8 am - 5 pm
Not responsible for typos.
* with approved credit

417-588-7995

West City Route 66
& South Monroe
Lebanon, MO

Bryan Sien, Manager • Aaron Wehner, Finance • Mike Forner, Steve "Whitey" Helton, Larry Davis, Sales

CARS

LC28931A	2013 CHRYSLER 300 C BLACK, 5.7L HIMI, LEATHER, SUNROOF, NAV	\$11,900
QC75687	2012 CHRYSLER 300 LIMITED, 3.6L, MAROON, LEATHER, SUNROOF ..	\$10,400
QC75728	2012 DODGE CHALLENGER SXT COUPE BLUE, 3.6L, V6, AUTO	\$10,800
QC75632	2012 CHRYSLER 200 LIMITED SEDAN 2.4L, AUTO, CRYSTAL BLUE, PEARL COAT.....	\$8,900
LC28884	2015 CHRYSLER 200 LIMITED SEDAN 2.4L, AUTO, WHITE, 61,XXX.....	\$10,800
QC75760	2016 CHRYSLER 200 LX SEDAN GRAY, 2.4L, AUTO.....	\$10,000
LC28847	2014 CHEVROLET CRUZE LS 1.8L, AUTO, 82,XXX	\$8,500
LC2887A	2015 CHEVROLET CRUZE LTZ MAROON, LEATHER, SUNROOF, 90,XXX	\$10,900
LC26691	2015 CHEVROLET MALIBU LS SEDAN, 2.5L, AUTO, 66,XXX.....	\$11,500
LC6943A	2009 CHEVROLET IMPALA LT SEDAN, MAROON, 3.5L, V6	\$6,900
LC7408A	2008 CHEVROLET IMPALA LS SEDAN, BLUE, 102,XXX MILES	\$6,400
QC75528A	2005 CHEVROLET MONTE CARLO LS COUPE GREY, 3.4L, V6, AUTO	\$5,500
QC75699A	2013 FORD FUSION SE SEDAN, WHITE, 1.6L, ECO BOOST, LEATHER	\$9,900
QC72624	2011 FORD FUSION SE SEDAN, 2.5L, AUTO, MAROON, 90,XXX	\$6,900
QC75724	2017 NISSAN VERSA S SEDAN, BLACK, 1.6L, AUTO, 51,XXX	\$8,900
QC75686	2017 KIA RIO LX SEDAN SIGNAL RED, 1.6L, 4CYL, MANUAL, 53,XXX	\$9,900
LC28874	2013 HYUNDAI VELOSTER COUPE RED, 1.6L, 4CY, AUTO, 78,XXX.....	\$9,900
QC75584A	2013 FIAT 500 POP HATCHBACK, BLACK, 1.4L, AUTO, 95,XXX	\$7,900

TRUCKS

QT75642	2008 FORD F-150 SUPER CREW XLT WHITE, 4.6L, V8, AUTO, 4 X4, 119,XXX.....	\$10,600
QT75697	2010 FORD F-150, SUPER CAB XLT SILVER, 4X4, 4.6L, V8, AUTO, 91,XXX.....	\$CALL
QT75698	2011 DODGE RAM 1500 QUAD CAB 4.7L, V8, AUTO, 4X4, WHITE	\$12,900
LT28914A	2007 DODGE RAM 1500 SLT QUAD CAB 4WD, SILVER, 5.7L, HEMI, AUTO.....	\$8,900
QT75707	2006 DODGE RAM 1500 SLT QUAD CAB 2WD, 5.7L, HEMI, AUTO, BLACK, 124,XXX.....	\$8,900
QT75717	2011 DODGE RAM 1500 SLT CREW CAB GOLD, 4.7L, V8, AUTO, 4X4.....	\$CALL
QT75594C	2007 DODGE RAM 1500 SLT/TRX OFF ROAD, QUAD CAB, 5.7L, HEMI, 4X4, GRAY ...	\$10,900

TRUCKS

QT75705	2011 FORD RANGER XLT SUPER CAB 4X4, WHITE, 4.0L, MANUAL	\$10,900
QT75625	2004 TOYOTA TACOMA PRE-RUNNER GRAY, 3.4L, V6, AUTO, 2WD.....	\$8,900
QT75759	2007 NISSAN FRONTIER SE CREW CAB, GRAY, 2WD, MANUAL, 4.0L, 6CYL	\$8,500
LT28851A	2005 CHEVROLET SILVERADO 1500 LT CREW CAB, WHITE, 5.3L, 2WD	\$7,500
QT57610B	2007 GMC SIERRA 1500 REG CAB PEWTER, 5.3L, AUTO, 4X4. LIFT KIT, 112,XXX.....	\$CALL
QT75763	2011 CHEVROLET SILVERADO 1500 REG CAB, 4X4, SHORT BED, BLACK.....	\$CALL
QT57641A	2008 FORD F-350 CHASSIS POWER STROKE REG CAB, WHITE, 6.4L, AUTO, 4X4	\$12,900
QT75597	2009 FORD E-450 CUTAWAY TRUCK, WHITE, 6.8L V-10, AUTO	\$6,900
LT28806A	2008 ISUZU BOX TRUCK CUBE 6.1L, V8, GAS, AUTO, WHITE. W/LIFT GATE	\$8,700

SUVS & VANS

LT28743A	2014 CHEVROLET CAPTIVA SPORT LT MAROON, 2.4L 4CYL, AUTO, LEATHER. SUNROOF, 110,XXX	\$9,000
LT7539B	2008 GMC ACADIA SLE FWD WHITE, 3.6L V6	\$8,900
LT7471D	2008 CHEVROLET TRAILBLAZER LS SUV, 4WD, MAROON, 4.2L, V6, AUTO	\$6,400
QT75495A	2016 JEEP RENEGADE LATITUDE 4X4 SUV GRAY, 1.4L 4CYL., MANUAL 88,XXX.....	\$12,600
QT57646B	2013 JEEP PATRIOT SPORT SUV BLACK, 2.4L, AUTO, 4X4, 104,XXX	\$9,400
LT28709A	2002 JEEP WRANGLER X SILVER, 4.0L V6, AUTO, 4X4, HARD TOP, 119,XXX, LOCAL TRADE.....	\$10,000
QT75628	2013 FORD ESCAPE SE SUV 1.6L ECOBOOST, FWD, BLACK.....	\$10,900
QT75539A	2013 FORD ESCAPE SEL 2.0L ECOBOOST, 4X4, LEATHER, WHITE DIAMOND.....	\$11,700
QT75640	2014 DODGE JOURNEY SE SUV BLUE, 2.4 4CYL., AUTO, FWD	\$8,900
QT75766	2012 FORD EDGE SE MAROON, 3.5L V6, 117,XXX	\$CALL
QT75641	2014 MITSUBISHI OUTLANDER ES SUV, BLACK, FWD, 2.4L AUTOMATIC	\$8,600
QT75509	2012 KIA SOUL BASE (A6) HATCHBACK SHADOW, 1.6L 4CYL., MANUAL, FWD	\$5,500
QT75614	2006 H3 HUMMER BLUE, 3.5L 5CYL., AUTO, 4X4.....	\$9,400
QT75748	2008 CHEVROLET AVALANCE 1500 CREW CAB 4X4, SILVERADO, CLOTH	\$12,900
QT75719A	2004 CHEVROLET AVALANCHE 1500 CREW CAB 4X4, 5.3L, GREEN, LEATHER	\$CALL

WWW.LINDSAYAUTOGROUP.COM