

FREE
WEEKLY
TRADER
MAGAZINE

Vol. 26 No.8

MAY 30, 2019

800-543-8271 • 800-665-8875



Find us on
Facebook

@myweeklytrader

Auctions - Pg. 17

MYWEEKLYTRADER.COM

*Specializing in selling farms,
ranches, & wooded properties*



1221 Acres

This spectacular ranch is comprised of 1221 contiguous acres in coveted Henry County, Missouri. This is arguably the finest cattle ranch to come to market! With the current owners' hard work, knowledge of great grazing practices, wise stewardship and love of the land. This is a must see for hard-working cattlemen... and anyone dreaming of owning a remarkable ranch.



FARM & HOME
888-300-0555 **SALES** LLC

Call your local agent today!
417-276-4868



Seeger's Military Support Month

Our Latest Used Inventory!

7349A	2017 RAM 1500	\$34,988	7529B	2014 TOYOTA HIGHLANDER	\$23,988	7497A	2016 TOYOTA 4RUNNER.....	\$31,988
7353A	2012 CHEVY IMPALA	\$7,988	P9505B	2014 MERCEDES BENZ CLA 250	\$18,988	P9512	2018 TOYOTA CAMRY	\$23,988
P9533	2016 TOYOTA RAV4	\$20,988	7611A	2013 TOYOTA RAV4	\$16,988	7654B	2015 LINCOLN MKS	\$20,988
P9534	2016 TOYOTA SIENNA	\$23,988	7674B	2013 FORD F150	\$21,988	7550A	2016 TOYOTA TUNDRA.....	\$28,988
7751A	2017 TOYOTA HIGHLANDER HYB	\$35,988	6854B	2007 TOYOTA TUNDRA.....	\$12,988	P9509	2016 TOYOTA COROLLA.....	\$15,988
P9532	2018 TOYOTA CAMRY	\$18,988	7502A	2016 KIA SEDONA	\$18,988	7542C	2015 NISSAN ALTIMA.....	\$15,988
P9531	2017 NISSAN FRONTIER	\$29,988	7483B	2017 CHEVY TRAX	\$16,988	P9499A	2017 JEEP COMPASS	\$14,588
7670A	2016 RAM 2500	\$34,988	7498A	2019 TOYOTA TACOMA	\$31,988	P9500	2018 TOYOTA COROLLA.....	\$15,588
7754A	2013 TOYOTA AVALON	\$15,988	7310B	2014 JEEP WRANGLER UNLIMITED.....	\$24,588	P9501	2018 TOYOTA COROLLA.....	\$15,588
P9528	2018 CHEVY MALIBU	\$18,588	P9521	2018 NISSAN ALTIMA.....	\$15,988	P9503	2018 TOYOTA RAV4	\$22,988
P9529	2018 TOYOTA SEQUOIA	\$39,988	P9522	2019 NISSAN PATHFINDER.....	\$26,588	P9504	2019 TOYOTA SIENNA	\$33,988
P9496B	1997 TOYOTA COROLLA.....	\$2,988	7605A	2012 JEEP WRANGLER	\$20,988	P9482A	2016 TOYOTA SCION IM	\$13,988
P9525A	2015 FORD MUSTANG.....	\$27,988	7632A	2017 TOYOTA RAV4 HYBRID.....	\$22,988	7542A	2013 TOYOTA RAV4	\$12,988
7756A	2015 JEEP WRANGLER UNLIMITED.....	\$30,988	P9519	2016 TOYOTA HIGHLANDER.....	\$28,588	7633A	2016 TOYOTA TACOMA	\$31,988
7564A	2016 DODGE CHALLENGER.....	\$34,988	7687A	2016 TOYOTA COROLLA.....	\$11,988	7589A	2015 FORD TAURUS.....	\$15,988
P9493B	2011 TOYOTA CAMRY	\$10,988	P9518	2018 TOYOTA COROLLA.....	\$15,988	7381A	2017 TOYOTA TACOMA	\$31,288
7608A	2017 TOYOTA TACOMA	\$31,588	P9517	2018 JEEP WRANGLER UNLIMITED.....	\$29,888	7612A	2017 TOYOTA TACOMA	\$31,988
7328A	2019 TOYOTA TACOMA	\$38,988	P9515	2019 TOYOTA CAMRY	\$23,988	P9468	2018 TOYOTA RAV4	\$18,988
7401A	2013 AUDI A4 2.0T QUATTRO.....	\$11,988						



PROUD WINNER OF THE PRESIDENT'S AWARD FOR THE 2ND YEAR IN A ROW!



Doing Business the Right Way The Seeger Way



ENGINES FOR LIFE
Call for details
Non-Factory Lifetime Limited Warranty
Good at participating dealerships



SATURDAY SERVICE 8AM-4PM



Toll Free: 800-844-6026
Next to Walmart, St Robert
573-336-7111
SeegerTOYOTA.net



SEEGER CARE
PREOWNED VEHICLES COME WITH SEEGER CARE!

- 1 FREE (3) SCHEDULED OIL AND FILTER CHANGES
- 2 FREE MULTI-POINT INSPECTION WITH EVERY OIL CHANGE
- 3 FREE EXTERIOR CAR WASH WITH EVERY SERVICE VISIT
- 4 FREE LIFETIME SAFETY AND EMISSION TESTING
- 5 FREE SAME-DAY SERVICE LOANER CAR
- 6 FREE TANK OF GAS

 Service Only at Seeger St Robert/St Louis

†Does not include tax, title, and license. * Seeger Care offer good for Less than 85K Miles and Less than 10 years old Prices do not include any College Grad or Military Rebate. See sales rep to see if you would qualify for additional savings. Prices does not include \$199 dealer administrative fee. Cannot be combined with any other offer. Prior sales final. See dealer for details. Advertisd vehicle may not be exactly as pictured and are subject to prior sale. We cannot be responsible for typography or photography. ** St. Robert, Mo. Inventory, Expires 05.31.19

STARTING AT
\$2,199

PRICE SUBJECT TO CHANGE WITHOUT NOTICE.
SEE DEALER FOR DETAILS



www.agri-enterprises.com

For Outstanding Products & Service

AGRI-ENTERPRISES

1-1/2 Miles South Of Licking, MO On Hwy 63
573-674-2203 • 1-800-653-7152

Mahindra
Rise.

1962 MASSEY FERGUSON BULL: w/ loader, needs paint. \$4,500. 573-315-9009, Potosi.

2004 OPEN RANGE FIFTH WHEEL CAMPER: 34', all weather, in good condition. \$10,500. Lebanon, 417-718-5520.

1966 EL CAMINO: to restore, needs paint, have new parts. \$4,000. West Plains. 417-256-2561.

AUCTION REMINDER: Every Wednesday at 10:30 am. Farmington Livestock. Please see our Auction Directory for more information.

CUB CADET 50IN MOWER DECK: for zero turn mower, will fit most 48" - 54" mowers, excellent condition, with 3 blades. \$195. 573-364-7465.

PURE BRED BORDER COLLIES: Pups ready 5-20-19 \$100ea. Border collie/Australian Shepherd pups \$100ea. Ready 5-31-19. Hartville, 417-259-9738.

VOTED #1 BEST Preowned Car Dealership

TIM'S USED CARS
(573) 341-3828 • 1334 South Bishop (Hwy. 63) • Rolla, MO
Next to Hwy. CC • www.tims-used-cars.com

 <p>2011 CHEVY SUBURBAN LT 4X4, 5.3, V-8, LEATHER, POWER EQUIPPED, 171, XXX MILES ONLY \$12,900</p>	 <p>2010 JEEP LIBERTY RENEGADE 4X4, V-6, AUTO, LEATHER, SUNROOF, NAVIGATION, 100, XXX MILES ONLY \$10,500</p>
 <p>2015 RAM PROMASTER 2500 3.0 DIESEL, POWER EQUIPPED, 74, XXX MILES ONLY \$24,900</p>	 <p>2018 DODGE CHARGER SXT V-6, POWER EQUIPPED, 13, XXX MILES ONLY \$22,900</p>

LARGE SELECTION OF CARS, TRUCKS, SUVs & VANS!

USED EQUIPMENT

- Kubota B7200 4 WD, w/Belly Mower MF 50, Diesel
- Gehl Silage Chopper • NH 163 Tedder 6' & 7' Brush Cutter
- Landpride 10' Brush Cutter
- JD 10' Cultipacker
- 3pt. 3 bottom plow
- 12' Spring Tooth Harrow 3pt. 2 Disc Disc Plow
- Other Misc Equipment

For Outstanding Products & Service

AGRI-ENTERPRISES
1-1/2 Miles South Of Licking, MO On Hwy 63
573-674-2203 • 1-800-653-7152
www.agri-enterprises.com

3 WINCHESTER 101 BLACK DIAMOND SHOTGUNS: 4 barrel competition grade, skeet set, in hard case, slightly used. \$3,500, Trap Gun slightly used. \$1,500, Trap Combo, \$1,500. 573-690-2786, 573-496-3391.

Offering the Area's LOWEST METAL PRICES!



Custom Homes • Metal Roofs

Pole Barn Packages

24'x32'x10' materials only	\$5,075	30'x60'x10' materials only	\$8,600
24'x40'x10' materials only	\$5,775	40'x60'x12' materials only	\$11,525
30'x40'x10' materials only	\$6,550		

Plus Sales Tax And Delivery.
Labor available at additional cost.
Call for quote.

Compare Before You Buy.

We Use Only The **Highest Quality** Materials!



ALL MATERIAL PACKAGES INCLUDE...

- ✓ #1 Yellow Pine Lumber
- ✓ #1-40 Yr. Painted
- Metal w/Screws
- ✓ 1-10' Overhead Door
- ✓ 1-36" Entry Door

Fully Insured



PORTABLE BUILDINGS

Rent to Own
No Credit Check

29 Gauge
#1 PAINTED METAL

- ★ Lifetime Warranty - \$70.00 Sq.
- ★ 40 Year Warranty - \$67.00 Sq.
- ★ 20 Year Warranty - \$64.00 Sq.
- ★ 25 Year Galvalume - \$54.00 Sq.

Labor prices will be higher in locations over 75 miles from Marshfield, MO

Marshfield BUILDINGS

www.marshfieldbuildings.com

1049 SCHOOLVIEW DR.
Marshfield, MO



417-859-7744

Toll Free 1-866-859-7733

REGISTERED BLACK ANGUS BULLS:
AI bred. \$1,250-\$2,950. Hartville, 417-259-2520.

LIONEL TRAIN SET: Steam engine, tender, caboose and other car, track and transformer. \$195. 573-364-7465, Rolla.

ALUMINUM WHEELS: 4 15X10 mid 90's Chevy Pick-up 2WD. \$95. 573-368-6633, Rolla.

BEAUTIFUL NEW HANDMADE QUILTS: One purple, green shades, one blue, one white, queen size. \$350 custom orders welcome. 417-741-2198. Hartville.

PORTABLE 10,000 WATT GENERATOR: Electric start, 30' power cord, electric hook-up. \$1,000. No answer, leave message 870-431-4281.

French Bulldog Puppies: Blues, Chocolate & Lilac Carriers, Whites, Sable Pieds, M/F, Guaranteed. \$895-\$2,500. 573-238-3873, 573-208-0485, Glenn Allen.

Pine Ridge Rustic
Log Home Building Supplies

Services Offered!

- Installation
- Pre-finishing available on interior & exterior
- Dealer for exterior stains

www.pineridgerustic.com

523 CR 2410 • Salem, MO 65560 • Ph: 573-729-7226



- Log Siding
- Beveled Siding
- Car Siding • Red Cedar
- Western Cedar • Pine

ROD AND REELS: fishing season is coming. \$5 and up. Conway, 417-589-8200

15FT BUSHHOG: 3715 Heavy-duty, good condition. \$10,500. 417-766-6504.

27 GAL FUEL TANK: Fiberglass. \$60. Rogersville. 417-753-2747, 417-766-1991.

FARM & HOME SERVICES, WELDING & CONSTRUCTION. \$40-\$65 per hour. 417-664-7841, Stoutland.

HEAVY DUTY PALLET FORKS: clamp on style for loader buckets, adjustable stabilizer, #4000 capacity, new in box. \$150. Conway, 417-718-5347.

WEEKLY TRADER MAGAZINE

Vol. 26 May 30, 2019 No. 8

Published By
Lebanon Publishing Co. Inc.
PO Box 192, Lebanon, MO 65536

417-532-2800

www.myweeklytrader.com

Everything advertised in this publication must be made available for purchase, use or patronage without regard to race, creed, color, sex, age or national origin of the purchaser, user or patron. The Publisher will not be responsible for misinformation, misprints, typographical errors, etc. Opinions expressed are not necessarily those of the Publisher. All rights reserved. No part of this material may be reproduced by any means without permission in writing from the Publisher. We reserve the right to refuse any ad if we deem necessary. Our list and map indicate counties in which the Weekly Trader is delivered. The magazine is not necessarily placed in all communities in a particular county. A list of all retail drops for a county may be obtained by contacting the Weekly Trader office at PO Box 192, Lebanon, MO 65536.

SUMMER SAVINGS

Starts Here!

DELUXE BUILDING PACKAGES



24x40x10	Galvalume	\$5,797.55
	Painted	\$6,401.76
24x32x10	Galvalume	\$5,616.66
	Painted	\$6,098.95
30x40x10	Galvalume	\$6,430.69
	Painted	\$7,099.08
30x40x12	Galvalume	\$6,886.06
	Painted	\$7,598.22
40x60x12	Galvalume	\$11,272.16
	Painted	\$12,461.71

All Buildings Quoted Have #2 Lumber And #1 Galvalume Or Limited Lifetime Painted Metal

All Buildings Are Heavy 29 Ga. Metal, Three 2"x6" T&G Splashboards, All Poles 5"x5" Or Larger, CCA Treated, Fully Trimmed With One 3'x6' Walk-Through Door & One Large Sliding Door.

Plus Tax. Labor & Delivery Available On All Building Packages.
Prices may vary due to local code restrictions.

Metal Roofs Designed To Look Great On Your Home!

HEAVY 29 Ga. METAL # 1
 Limited LIFETIME WARRANTY
29 Ga. & 26 Ga. Painted
 CUT TO LENGTH PANELS



Ask About Our Quick Service.
 Over **20** Colors and Several Styles To Choose!

GALVALUME METAL UNPAINTED
25 YEAR WARRANTY

\$48.50

#1 Standard Panels, 29 Ga.

Good quality, quick service

DECK PACKAGES AVAILABLE AT BYLER BUILDING SUPPLY



Roof Is Optional
 Additional Sizes & Custom Shapes Available!
 8x10 • 8x16 • 10x14 • 12x16

CALL FOR PRICING!

- 1 Set of Steps
- Handrails
- 2x2 Balusters
- All Deck Boards & Railing Screwed, Up To 4' High, All #2 Treated



**You pull it,
we sell it...
CHEAP!**



U★PULL★IT
SELF-SERVICE AUTO PARTS

**We also have a large
inventory of used tires and
be sure to check out
our used car lot!**

Lebanon, MO
22395 Rt. 66
417-588-3555
Fax 417-588-8955

Mon-Fri 8am - 6pm • Sat 8am - 4:30pm • Sun 9am - 4pm

WWW.SSUPULLIT.COM
Located next to S&S Recycling.



Roll-off, Trailer, and Mobile Crushing Services Available

For All Your Metal Recycling Needs

Lebanon, MO

22395 Rt. 66 • 417-588-3555
Fax 417-588-8955

Mtn. Grove, MO

8930 First Rd • 417-926-3360
Fax 417-926-0180

Monday-Friday 8:00am-4:30pm (Closed 12pm-1pm Lunch)
Saturday 8:00am-Noon
email: contact@ss-recycling.com
Buyer of all types of scrap metal.

VERMEER TM-700 DISK MOWER: excellent condition. \$10,000. Salem, 573-265-5166/573-263-1875.

REESE 2070W DRUM MOWER: 6'9" cut. \$2,000. Potosi, 573-438-2672.

AC 185 DIESEL TRACTOR: Near new tires, GB-440, loader, nice. \$9,450. 573-765-4406.

ANTIQUE HAND CARVED CIGAR STORE WOODEN INDIAN: 5' tall. \$800. Seymour, 417-279-8224.

NEW/USED PARTS: For all vehicles/machinery. (Warranted/delivery). 800-807-9612.

CHECKERED WALNUT WOOD STOCK PISTOL GRIP: for Marlin Model 336 or 1895. \$100. Washington. 636-239-2695.

\$\$\$\$\$ MOBILE HOME SAVINGS That is what we are about for the last 36 years. New, Used, All Sizes. 573-657-2176 amegamobile-homes.com

1999 KODIAK 24' FLATBED GN TRAILER: Wood floor, slide out ramps, dual jacks, tandem axle, 14,000 GVW, elec brakes, 14 Ply tires. \$3,800. Conway, 417-718-5347.

NAT'L GEOGRAPHIC MAGAZINES: Jan 1985-Dec 1990, in hard boxes, plus 140 assorted magazines. 417-247-1689, Thomasville.

FOR SALE. 2005 32' Cardinal 5th wheel camper: 2 slides, new tires, good condition. **\$13,500 OBO. 573-291-3248.**

WHITE-TAIL MOUNT: 3x4. \$150. 5pm-8pm, 417-270-1776.

METAL DETECTOR: \$125 or trade. 573-327-9068.

4 REGISTERED POLLED HEREFORD 2YR BULLS: CHB-Top 48%, Baldy Maternal-Top 44%, DNA Tested, Gentle. **\$1,900-\$2,100 OBO. 573-244-3157.**

140 ACRES FOR SALE. Located in new Amish community, 1/2 open, Alton, MO. Morgan Realty, 417-264-4900, Thayer, MO.

JD 7520

FWA, 741 Loader, 6700 Hrs.



\$47,000

573-864-0450 • Pilot Grove

MF-50-GAS W/LIVE POWER: \$2,350. 573-714-5779.

AGCO NEW IDEA 5410 DISCMOWER: 10ft. \$3,950. 573-765-4406.

We Buy White Oak Logs!

Independent Stave Company
welcomes all white oak suppliers!

- ✓ Top prices for your logs
- ✓ Experienced log buyers
- ✓ Professional service

www.independentstavecompany.com

Chad Cook | Salem Wood Products

417.718.2950

5 miles north of Salem, MO on Hwy 19



INDEPENDENT
STAVE COMPANY

Log Procurement & Sales



WHICH KUBOTA IS RIGHT FOR YOU?

Kubota THE RIGHT EQUIPMENT IS RIGHT AROUND THE CORNER.



Come Check Out our ALL-NEW GAS-POWERED RTV-XG850 SIDEKICK!
Power • Performance • Handling • Style

- ✓ 48HP** ✓ 40mph transport speed
 - ✓ gasoline engine.
 - ✓ Sidekick is a multi-purpose utility vehicle.
 - ✓ 4 colors to choose from.
- 0% Down, 0% A.P.R. for 48 months***

L2501 DT PACKAGE DEAL



- ✓ 25HP Kubota diesel engine***
 - ✓ 4WD, Ag Tires ✓ 18' Trailer,
 - ✓ 5' Box Blade
 - ✓ Kubota Loader,
 - ✓ 5' Land Pride Brush Hog.
 - ✓ 6 Year Power Train Warranty****
- \$0 Down, 0% A.P.R. for 60 months****
- \$20,495**

L3901 DT PACKAGE DEAL



- ✓ 39 Kubota diesel engine***
 - ✓ 4WD, Ag Tires
 - ✓ 18' Trailer,
 - ✓ 5' Box Blade
 - ✓ Kubota Loader,
 - ✓ 5' Rotary Cutter.
 - ✓ 6 Year Power Train Warranty****
- \$0 Down, 0% A.P.R. for 60 months****
- \$24,795**

L3301 DT PACKAGE DEAL



- ✓ 33 Kubota diesel engine***
 - ✓ 4WD, Ag Tires
 - ✓ 18' Trailer,
 - ✓ 5' Box Blade
 - ✓ Kubota Loader,
 - ✓ 5' Land Pride Brush Hog.
 - ✓ 6 Year Power Train Warranty****
- \$0 Down, 0% A.P.R. for 60 months****
- \$23,495**

L4701 DT PACKAGE DEAL



- ✓ 47 Kubota diesel engine***
 - ✓ 4 cyl., 4WD Ag Tires
 - ✓ 18' Trailer,
 - ✓ 6' Box Blade
 - ✓ Kubota Loader,
 - ✓ 6' Land Pride Rotary Cutter.
 - ✓ 6 Year Power Train Warranty****
- \$0 Down, 0% A.P.R. for 60 months****
- \$30,995**



Get unmatched Kubota quality. Kubota designed, engineered and built.

Visit Us in TWO Locations!

8665 Outer Road, Mtn Grove | 4973 W. US Hwy 160, West Plains
417-926-5454 • 877-926-5458 | 417-256-0420 • 800-766-0420

More Package Deals To Choose From!

* \$0 Down, 0% A.P.R. for 48 months. Qualifying Equipment: RTV-XG850. \$0 A.P.R. financing for up to 48 months on purchase of select new Kubota RTV-XG850 equipment from participating dealers' in-stock inventory is available to qualified purchasers through Kubota Credit Corporation, U.S.A.; subject to credit approval. Some exceptions apply. Example: 48 monthly payments of \$20.83 per \$1,000 financed. Offer expires 6-30-2019. See us or go to KubotaUSA.com for more information. ** \$0 Down, 0% A.P.R. for 60 months. Qualifying Equipment: BX, B, L, MX and M, MH(M7), RB, DMC, DM, RA and TE Series. \$0 Down, 0% A.P.R. financing for up to 60 months on purchases of select new Kubota L2501 DT, L3901 DT or L4701 DT equipment from participating dealers' in-stock inventory is available to qualified purchasers through Kubota Credit Corporation, U.S.A.; subject to credit approval. Some exceptions apply. Example: 60 monthly payments of \$16.67 per \$1,000 financed. Offer expires 6-30-2019. See us or go to KubotaUSA.com for more information. ***For complete warranty, safety and product information, consult your local Kubota dealer and the product operator's manual. Power (HP/KW) and other specifications are based on various standards or recommended practices. ****Only terms and conditions of Kubota's standard Limited Warranty apply. For warranty terms, see Kubota's Limited Warranty at www.KubotaUSA.com or authorized Kubota dealers.

FOR SALE 91 CHEVY PICKUP SMALL STEPSIDE BED: Small damage to front end, v6, no rust, great for parts. Call after 6pm. 417-533-5370.

FARMALL SUPER-C: W/2pt disk and plow. \$2,200. 573-714-5779.

BOBCAT 853 DIESEL SKID STEER LOADER: Cab, 58hp. \$8,950. 573-765-4406.

FREE AKC REG. GERMAN SHEPHERD: 1 year old, black & tan, very friendly, good behavior. 630-687-0705.

GERMAN SHEPHERDS: Two males, 3 mo old, one adult male. \$100 each. 417-741-2198.

ALLIS CHALMERS 6080 DIESEL TRACTOR: Cab and air, 80hp, Westendorf Loader. \$9,850. 573-765-4406.

DAEWOO FORKLIFT

Model GC25S-2
Serial No 06-02352

- Propane
- Hook attachment
- Everything works great
- Always kept in a building

Call for more information!

417-532-9131 • LEBANON



Rotating Hay Carriage



\$5,150
\$510 Down
\$90 Per Week
w.a.c.

Cowtown USA • 1-800-258-6898

I-44 & Hwy F • Exit 203 • Cuba, MO

View At cowtownusa.com - See Video

2007 CHEVY 1500 Z71 SILVERADO CLASSIC: extended cab w/A.R.E. cap and Tonneau Cover, loaded, excellent condition, original owner, all maintenance records, 116,000miles. \$13,500. 417-322-0243.

WANTED, TIMBER TO LOG ON SHARES: Honest, reliable, references. 417-533-4607, 417-664-1195.

USED AMERICAN FAMILY DOUBLE-WIDE These do not last! Excellent condition. Call Quick, 573-499-9993 columbiadiscountshomes.com.

WANTED CUT STOCK, Cants, Slabs, trees length + 45" long scragg blocks. 417-650-0402.

1997 ROADTREX MOTORHOME: 94,000miles, 318-engine, fully-equipped, generator. \$14,000. Hermann, 573-694-2565.

NEW NEW NEW DISPLAY HOUSE!!! Call Marla to hear what is new inside 573-657-7040, chateauhomes.net.

1996 CHEVY 1/2-TON: 1 owner, 177,500miles. \$4,900. Rogersville, 573-308-5944.

1964 FORD F100 DRAGSTER : 460 C6 auto on Ford 9" rear end, dual exhaust, electric fan, new belt/hoses. \$6,500. 573-422-3992.

2003 THUNDERBIRD: Black and white, very good condition, 47,000 miles. \$15,000. 573-832-1473.

I BUY.... used mobile homes. Call or text 573-338-6250 or email GregS.CDH@outlook.com

3PT TRACTOR BALE SPEAR: 42" spear with 14" stabilizer bars. \$150. Conway, 417-718-5347.

NEW 4-RIB BELT FOR 1431 N.H. CONDITIONER: \$60. 417-646-8807.

AUCTION REMINDER: Thursday, June 6 at 9: 03 am. Chupps Auction. Please see our Auction Directory for more information.

FREE TO GOOD HOME. 3 male Rat terrier pups. 573-308-7781, leave message.

Built Stronger to Last Longer
Gooseneck
 Trailer Mfg. Co., Inc.

Savings Start Here!



24 x 6'8" Gooseneck Brand Stock Trailer
Several In Stock
 Same day financing with Ag Direct (with approved credit)

LET US BE YOUR PEOPLE!

WESTGATE TRAILER & EQUIP.

417-351-6974 • 417-926-7733
www.westgatetrailer.net
 8920 W Business 60 • Mtn. Grove, MO
 7136 W Farm Road 140 • Springfield, MO
FULL SERVICE SHOP
 OPEN: Mon.-Fri. 8-5 And "YES!" Sat. 8-Noon!

METRO MOTORS INC.
R.V. SALES

**NEW GREY WOLF, CHEROKEE & ROCKWOOD!
 GREAT SELECTION OF NEW & PREOWNED RVs**

•2019 26 DBH Greywolf TRL Large Slide-out.....	\$20,900	•2019 16 BHS Wolf Pup	\$12,500
•2019 214W Rockwood A-Frame Loaded!	\$14,900	•2016 17BH Greywolf TRL	\$15,500
•2019 228 BHESP Rockwood Pop-up Loaded!	\$14,900	•2000 34' Allegro Bay V-10 Ford, 71,xxx Miles.....	Sale Price \$24,500
•2019 26RP Greywolf Toy Hauler Loaded!	\$19,900	•2018 122 S Rockwood A Frame	\$12,500
•2012 350RL Brookstone 5th Wheel, 3 Slides, King Bed	\$28,500	•2017 210 RB I-Go Cloud Trailer/New	\$17,500
		•2018 82975 5th Wheel, Ext. Living Room, R/King Bed, 4 Slides.	\$37,500

"Where Your Satisfaction Really Counts"
 2727 S. Campbell - Springfield, MO - Visit our website at www.metro-motors.biz
417-882-6800

RUBBER BELTING: Assortment sizes. 573-378-5180

4 CHROME GMC WHEELS & CAPS: 16". \$150. Belle, 573-859-6574.

JOHN DEERE XUV WINDSHIELD. \$150. Belle, 573-859-6574.

CASE 960 COMBINE PARTS: Belts, Sivs, clover screen. 573-308-5884, Rolla.

IRRIGATION OR TRASH PUMP HOSE: (Blue, Lay Flat) 3" & 2". \$50. 417-322-0161.

DYNO CHARGE 990 ELECTRIC FENCER: Solid state for 20 miles. \$50. 636-239-2695.

ANTIQUE REVOLVER + FIREARM'S ACCESSORIES: \$175. 573-764-3517, Call in P.M.

SITREX: 6 basket, hyd fold tedder. Good. \$6,500. 573-765-4406.

SIDEWINDER TIRE DRIVE: 6ft, 3pt brushcutter, very nice. \$1,350. 573-765-4406.

GLEANER L-24FT RIGID HEADER: good. \$750. 417-646-8807.

SILVER DOLLAR COLLECTION: \$200. 573-764-3517, Call in P.M.

CRAFTSMAN FLOOR DRILL PRESS. \$150. 55 gallon hand Fuel Pump. \$50 573-378-5180

MF 165-GAS W/LIVE POWER: w/loader. \$6,000. 573-714-5779.

1987 SHELBY DAYTONA: Excellent condition. \$5,500. 314-616-9862.

TRUCK RACK FOR FORD TRUCK: \$125. 5pm- 8pm. 417-270-1776.

LOOKING FOR WATER BICYCLE: Any shape. Leave message, 618-758-2830.

UTV FOR SALE. 2016 Polaris Ranger 570: full size, 1135 Hours. \$7,000. 573-247-1125, Lebanon.

FIREPLACE LOG GRATE: 28" wide. \$25. 636-239-2695, Washington

AUCTION REMINDER: Online Mechanic Equipment Ends Tuesday, June 4th, 12:30p.m. Atterberry Auctions. Please see our Auction Directory for more information.

BUYING OLD BARNs AND LUMBER: 417-298-3509.

REGISTERED HEREFORD & ANGUS BULLS: Home raised, Some Show-Me Select Qualified. 573-701-7828. Belgrade

GUN BOXES: Several shapes & sizes. \$10 and up. 417-589-8200.

20X22 CARPORT: can be seen at 190 Jesse Lebanon Mo. asking \$1,650. 417-991-1495 417-718-9176.

FIVE ANGUS BRED HEIFERS: to Byergo Bull. \$2,100. 660-337-6311.

WANTED HOOD FOR JOHN DEERE RIDING MOWER 225: 573-859-6574.

BRUSH GUARD: Fits 97'-03' F-150. \$200. 5pm to 8pm. 417-270-1776.

FOR SALE. ALLIS CHALMERS D17: Wide front, power steering, 3pt. \$1,950. 573-690-9406.

FORD 2000-GAS: w/bushog. \$2,500. 573-714-5779.

40 PLUS OLD CAR MAGAZINES For Sale: Street Rodder, Hot Rod, etc. \$15 all. 417-457-1023.

FOR SALE: Tow behind 6' John Deere Brush hog. \$600. 417-259-2203 Grovespring.

TWO LAMBS: 1 Ewe and 1 Ram, 5 months old. \$100 each. Will delivery. 314-683-6457.

FIREARMS: Professional Repairs and Restorations. Baron's Gunsmithing. 573-363-5801, Camdenton.

OLD FARM TABLE: 10' long, 38" wide, seats 12. \$300. 417-742-1234.

AUCTION REMINDER: Cattle Sale every Monday at Noon. Salem Livestock. Please see our Auction Directory for more information.

SPARTAN MOWERS MADE IN USA WITH AMERICAN STEEL

STARTING AT \$3,999

AWESOMEMOWERS.COM
417-532-9132

FORT AWESOME POWERSPORTS
2410 Evergreen Pkwy, Lebanon
(next to Heartland Antique Mall)

See Service
Spray Foam Insulation

Closed cell or open cell form available
Choose the thickness of your insulation

Closed Cell	Open Cell
• Higher R. value	• Lower Cost
• Vapor barrier	• Sound Deadening
• Structural benefit	• Fire resistant
• Fire Resistant	

Both types of foam fill voids and stay where they are put to provide better insulation than fiberglass or cellulose

FINANCING AVAILABLE **WE ACCEPT** VISA

Call Joseph See
(417) 733-6936
Located near Buffalo, MO

JOHN DEERE-2210: 24hp, diesel, 4wd compact tractor with John Deere 210-loader and 62" belly-mower, tractor is mint condition, with 180 original hours. \$10,900obo. Lebanon. 417-718-4787

WANTED PINBALL MACHINES. 573-424-7200.

FOR SALE: 1/2 Simmental 1/2 Angus Bulls, 10 months old. A.I Sired, very gentle, \$1750. ALSO: 110 gal. pull type sprayer. \$1000. Like new. J.W. Henson, 417-343-9488

POOL TABLES: Installations, moves, recoverers, repairs, accessories, etc. 573-646-1700.

1988 LINCOLN CONTINENTAL: 4 door, 302, 90,000miles, clean. \$4,000. 417-859-5951.

CIVIL WAR GREAT MAPS BOOK: Hard-back. \$12.50. Lebanon 417-532-2045.

JOHN DEERE 2940: Diesel tractor, 80HP. \$8,500. (573)765-4406.

PINE LOG SIDING SALE: \$1.19 per L.F. www.pineridgerustic.com 573-729-7226, 573-247-2823.

AUCTION REMINDER: Saturday, June 1st, 10 am. Wulff Auction. Please see our Auction Directory for more information.

ADORABLE ACA REGISTERED LAB PUPPIES: yellows/blacks. Ready 6/24/19. \$250. Hartville. 417-741-2198.

AUCTION REMINDER: Saturday, June 1st, 8am. Lorts Auction. Please see our Auction Directory for more information.

AUCTION REMINDER: Thursday, June 6 @ 6pm. Callaway Livestock Auction. Please see our Auction Directory for more information.

CASE 580D: Diesel backhoe, Loader. \$8,850. 573-765-4406.

JOHN DEERE 635 DISKBINE: with Roller, field ready. \$9,850. (573)765-4406.

LEBANON HIGH SCHOOL 1913 YEAR-BOOK: \$20. Lebanon, 417-532-2045.

JOHN DEERE 310A DIESEL BACKHOE LOADER: \$8,850. 573-765-4406.

1984 FORD GRILL & HEADLIGHT TRIM. \$40. 573-308-5884.

NEW HOLLAND: 1411 diskbine w/roller. \$8,250. 573-765-4406.

GOLDEN RETRIEVER: Beautiful Female, 5 months. \$600. 314-808-1496.

3pt TWO-SECTION HARROW. \$200. Rogersville. 417-753-2747, 417-766-1991.

JOHN DEERE 5055E DIESEL TRACTOR: 55HP, 311 hours. \$14,000 OBO. 573-301-2609.

JOHN DEERE 435: Round Baler, monitor, kicker, 4x6. \$5,750. 573-765-4406.

DARDEN PROFESSIONAL TIMBER HARVESTING, BUYING STANDING TIMBER: Great prices, improve wildlife habitat and improve forest health. State Certified & Fully Insured! 573-247-4808 or 573-739-1122. Salem

AUGER: 8x57, good condition. \$2,500. 573-378-5180.

ELVIS PRESLEY BOOK- THE FAMILY ALBUM: \$10 ; **THE PRIVATE LIFE OF ELVIS PRESLEY.** \$6.50. 417-532-2045.

TAYLOR TRUCKS & EQUIPMENT
417-924-2026 • 2676 Hwy. 5, Mansfield, MO

863 Bob Cat Skid-Steer with LOW hours and hand control
New Mowers! Bush-Whacker, Big Bee
 5' and 6' Rotary Tillers
 Farm Tires, PTO's & Parts for Rotary Mowers,
 Storage Containers & Dry Vans - 20' - 53'
 Farm Tractor Implements
Plows, Discs, and More Skidsteer Attachments: Pallet Forks, Buckets, Grapples, Hay Spears & Tree Sheers - RR Ties

TRAILER PARTS & REPAIR

NEW SEMI TIRES - DRIVE & STEER

We Invite You To Come By & Look Us Over! Located 2.5 Miles North Of Mansfield, MO On Hwy 5

100# PROPANE GAS CYLINDER: 24 gallon with regulator and cap. \$50. Conway, 417-718-5347.

FOR SALE. CATERPILLAR DOZER 07-17A: Hydraulic, N/BITS, good dozer. 660-341-3627.

POTS AND PANS CANNED GOODS AND MORE. \$125 or trade. 573-327-9068.

BARN WOOD SIDING: 8" & 10" wide. 573-729-7226. www.pineridgerustic.com

Model 9410 Singer Sewing Machine: \$50. 417-532-8048.

AUCTION REMINDER: Real Estate & Estate Auction. Sunday May 19th @ 1pm. Nance Auction. Please see our Auction Directory for more information.

BLACKTOPPING BUSINESS: Everything! Income-\$30,000-\$50,000 yearly. \$6,000. 573-604-0674. 800-807-9612.

HESTON 5500 5X5 ROUND BALER: \$1,800. 573-438-2672.

3600 FORD TRACTOR: Very nice. \$6,500. 573-766-5640.

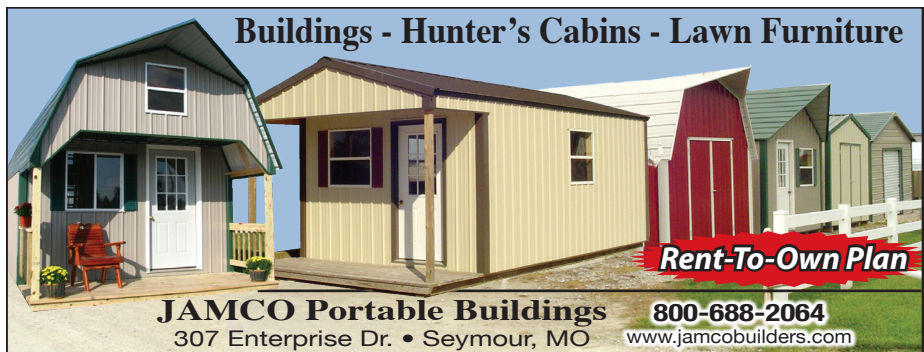
FLIES ARE HERE!! Lewis Cattle Oiler. 417-286-3540 or 774-696-2344.

MURRAY RIDING MOWER: Good Tires, deck etc. needs motor. Only \$195/mower trade. 573-364-7465.

2001 MUSTANG GT: 573-508-8386.

CUSTOM SAW MILLING: Lebanon. 417-533-4607, 417-664-1195.

Buildings - Hunter's Cabins - Lawn Furniture



JAMCO Portable Buildings **800-688-2064**
 307 Enterprise Dr. • Seymour, MO www.jamcobuilders.com

Rent-To-Own Plan

1860'S MODEL CALVARY REENACTMENT SET: with Naval Model Black Powder pistol. 417-300-6006.

FESCUE WANTED TO COMBINE ON SHARES. Phone 417-327-6240.

PUT MORE \$\$\$ IN YOUR POCKET!! Lewis Cattle Oiler. 417-286-3540 or 774-696-2344.

JOHN DEERE 466 ROUND BALER: kick-er net wrap, 4x6. \$9,500. 573-765-4406.

Remnant BLOW OUT SALE!

12⁵ X 11⁶ AYERS HILL LEVEL LOOP
 REG. 322.00 **\$199**

12 X 9 SYMPHANY LEVEL LOOP
 REG. 157.00 **\$99**

12 X 23² TEXTURED CHOICE HEAVY FREIZE
 REG. 587.00 **\$399**

12 X 21³ WILD OATS SMART STRAND
 REG. 650.00 **\$396**

12 X 16 AGAPE BLUE HEAVY SCULPTURE
 REG. 469.00 **\$199**

11⁹ X 99 FAMOUS
 REG. 390.00 **\$59**

12 X 24⁷ ISLAND SAND SOFT PLUSH
 REG. 654.00 **\$299**

12 X 10⁸ AFTERNOON TEA
 REG. 255.00 **\$99**

12 X 19⁵ CHARIOT/WITH PAD
 REG. 697.00 **\$499**

12 X 20⁶ SMOOTH BEIGE
 REG. 683.00 **\$299**

15 X 12¹⁰ SHELL BEACH HEAVY BERBER
 REG. 497.00 **\$199**

6 X 8 INDOOR/OUTDOOR AREA RUG
 4 COLORS **\$199⁵**

LARGE SELECTION AVAILABLE ONLINE. CHECK OUT OUR WEBSITE FOR PICTURES AND MORE DETAILS AT WWW.FALCONFLOORCOVERING.COM

FALCON
 FLOOR COVERING
 Family Owned Since 1972
 417-532-3118
 109 E. Commercial,
 Lebanon, MO

E-GLEANER COMBINE: Shedded, good. \$1,500. 417-646-8807.

AUCTION REMINDER: Friday, June 7th @ 10am. Gary Sexton Auctions. Please see our Auction Directory for more information.

2001 19FT DUTCHMEN TRAVEL TRAILER: very clean, everything works. \$4,200. 417-345-5634.

FRONTIER 4-BASKET HYD FOLD TEDDER: \$4,250. 573-765-4406.

KRONE 9FT 3PT DISK MOWER: nice. \$6,100. 573-765-4406.

DELAVAL BUCKET MILKER: w/old Surge vacuum pump and some parts. \$350 OBO. 417-247-1689, Thomasville.

27 GAL FUEL TANK: Fiberglass. \$60. Rogersville. 417-753-2747, 417-766-1991.

LIONEL TRAIN SET: Steam engine, tender, caboose and other car, track and transformer. \$195. 573-364-7465, Rolla.

TRUCK, TRAILER, AND SEMI TIRES

on sale now!








MASTERTRACK Trailer Tire (265/75/16) 10-Ply • Mounted **\$121.44***

FALKEN AT3 Wild Peak (265/75/16) **\$150.00***

YOKOHAMA (295/75/22) 5Ry617 • Steer **\$419.00***

Ironman 1208 Drive Tire Close Shoulder • 11R22.5 **\$293.76***

*Tax not included

739 Honey Locust Rd. • Niangua, MO 65713



417-630-2249
417-664-0829

COLT FIREARM'S DEALER CATALOG'S: illustrated prices, circa #1950's-1960's. \$150. 573-764-3517. Call in P.M.

BRUSH CLEARING: 417-650-0596. www.brushmasterlandclearing.com

7' NEW HOLLAND SICKLE MOWER MODEL-451: \$800. Rogersville. 417-753-2747, 417-766-1991.

AUCTION REMINDER: Saturday, June 1 @ 10am. Richard Moffat Auction Service Please see our Auction Directory for more information.

TRUCK LOAD OF FLEA MARKET & AUCTION ITEMS: \$200, trade wood or gun. 573-327-9068

WE SELL HIGH TENSILE FENCE: All woven, barbed, smooth! Best prices! Call Michael 417-322-0161, Lebanon.

CASE 533 45 HP DIESEL TRACTOR: w/loader, wide front end, PS, 6' brush-hog. \$5,400. 573-694-0299.

SMALL TRAILER: Wood floor and wood sides, 3.5'x6'. \$100. Rogersville, 417-753-2747, 417-766-1991.

VERMEER 10WHEEL FOLD UP RAKE: \$1,750. 573-765-4406.

1962 MASSEY FERGUSON BULL: w/loader, needs paint. \$4,500. 573-315-9009, Potosi.

AUCTION REMINDER: Every Wednesday at 10:30 am. Farmington Livestock. Please see our Auction Directory for more information.

2004 OPEN RANGE FIFTH WHEEL CAMPER: 34', all weather, in good condition. **\$10,500. Lebanon, 417-718-5520.**

CUB CADET 50IN MOWER DECK: for zero turn mower, will fit most 48" - 54" mowers, excellent condition, with 3 blades. \$195. 573-364-7465.

1966 EL CAMINO: to restore, needs paint, have new parts. \$4,000. West Plains. 417-256-2561.

PURE BRED BORDER COLLIES: Pups ready 5-20-19 \$100ea. Border collie/Australian Shepherd pups \$100ea. Ready 5-31-19. Hartville, 417-259-9738.

15FT BUSHHOG: 3715 Heavy-duty, good condition. \$10,500. 417-766-6504.

Hydraulic Dovetail Trailers

By the Best Manufacturers in America!



PJ TRAILERS | IRONBULL

32' Hydraulic Dovetail Trailers
in stock today starting at **\$12,000**

Low Profile • 10k Dexter Axles • Dual Spring Loaded Jacks • Radial Tires • Torque Tube Underframe Bridging

LET US BE YOUR PEOPLE!!

WESTGATE TRAILER & EQUIP.

417-351-6974 • 417-926-7733

www.westgatetrailer.net
8920 W Business 60 • Mtn. Grove, MO
7136 W Farm Road 140 • Springfield, MO
FULL SERVICE SHOP
OPEN: Mon.-Fri. 8-5 And "YES!" Sat. 8-Noon!

3 WINCHESTER 101 BLACK DIAMOND SHOTGUNS: 4 barreled competition grade, skeet set, in hard case, slightly used. \$3,500, Trap Gun slightly used. \$1,500, Trap Combo, \$1,500. 573-690-2786, 573-496-3391.

REGISTERED BLACK ANGUS BULLS: AI bred. \$1,250-\$2,950. Hartville, 417-259-2520.

BEAUTIFUL NEW HANDMADE QUILTS: One purple, green shades, one blue, one white, queen size. \$350 custom orders welcome. 417-741-2198. Hartville.

PORTABLE 10,000 WATT GENERATOR: Electric start, 30' power cord, electric hook-up. \$1,000. No answer, leave message 870-431-4281.

CHECKERED WALNUT WOOD STOCK PISTOL GRIP: for Marlin Model 336 or 1895. \$100. Washington. 636-239-2695.

\$2,500 - \$11,000 LOT

Lindsay Chevrolet & Lindsay Ford

Mon.-Fri. 8 am - 7 pm
Sat. 8 am - 5 pm
Not responsible for typos.
* with approved credit

417-588-7995

West City Route 66
& South Monroe
Lebanon, MO

Bobby Rogers, Manager • Aaron Wehner, Finance • Mike Forner, Steve "Whitey" Helton, Larry Davis, Sales

Cars

QC75528	2002 CHEVY MONTE CARLO SS PACE CAR, V6, AUTO, YELLOW	\$7,900
QC75331	2003 FORD T-BIRD CONV. V8, AUTO, FWD, GRAY	\$11,900
QC75482	2005 FORD MUSTANG V6, AUTO, RED	\$7,495
QC75336A	2007 LEXUS ES 350 V6, AUTO, FWD, WHITE	\$9,750
LC28608A	2008 INFINITI FX35 V6, AUTO, FWD, BLUE	\$8,950
LC28428B	2009 HONDA ACCORD EX-L V6, AUTO, FWD, SILVER	\$7,900
QC75376	2010 HONDA CIVIC LX 4CYL., AUTO, FWD, BLACK	\$10,600
LC28603	2011 KIA SOUL 4CYL., AUTO, FWD, BLUE	\$7,800
QC75419	2011 NISSAN ALTIMA 4CYL., AUTO, MAROON	\$8,600
QT75509	2012 KIA SOUL 4CYL., 5SPD., FWD, BLACK	\$7,900
QC75501	2012 FORD FOCUS SE 4CYL., AUTO, FWD, RED	\$8,400
QC75215B	2013 CHRYSLER 200 LX 4CYL., AUTO, FWD, MAROON	\$7,700
QC75444	2013 FIAT 500 POP 4CYL., AUTO, FWD, BRONZE	\$8,800
QT75526	2014 FIAT 500L 4CYL., AUTO, FWD, BLACK	\$8,900
QC75320	2014 DODGE DART SXT 4CYL., AUTO, SEDAN, FWD, BLUE	\$8,900
LC28496	2014 FORD FOCUS S 4CYL., AUTO, FWD, BLACK	\$10,200
QC75443	2014 CHEVY SONIC LS 4CYL., AUTO, FWD, BLACK	\$8,900
LC28469	2015 CHEVY SONIC LS 4CYL., AUTO, FWD, WHITE	\$10,900
QC75386	2015 CHRYSLER 200 LIMITED 4CYL., AUTO, FWD, BLUE	\$9,400
LC7050A	2015 CHEVY SPARK LS 4CYL., 5SPD., FWD, BLUE	\$8,900
QC75363	2016 CHEVY CRUZE LS 4CYL., AUTO, FWD, RED	\$11,400

Trucks

QT75474A	2003 GMC SONOMA EXT. CAB V6, AUTO, 4WD, PEWTER	\$5,900
QT75496	2006 DODGE RAM CREW LARAMIE V8, AUTO, 4WD, RED	\$10,900
QT75536	2006 FORD F150 REG. CAB V6, AUTO, 2WD, GRAY	\$8,150

Trucks

LT7061A	2006 FORD F450 6.0 D. MOTOR AUTO, RWD, FLAT BED, WHITE	\$5,900
QT75552	2007 DODGE DAKOTA CREW SLT V8, AUTO, 4WD, BLACK	\$9,300
QT75507	2007 DODGE RAM CREW V8, AUTO, 4WD, GOLD	\$14,500
LT28352A	2007 CHEVY AVALANCHE LT V8, AUTO, 2WD, RED	\$11,900
QT75530	2009 DODGE RAM SLT CREW V8, AUTO, 2WD, SILVER	\$12,900
QT75395	2012 GMC CANYON SLE REG. CAB, 5CYL., AUTO, RWD, BLUE	\$9,400

SUVs

QT75505	2005 NISSAN X-TERRA SE V6, AUTO, 4WD, WHITE	\$8,600
LT28568	2007 CHEVY TAHOE LTZ V8, AUTO, 4WD, BLACK	\$14,525
QT75529	2007 TOYOTA RAV4 4CYL., AUTO, 4WD, BLUE	\$10,400
QT75532	2007 CHEVY TRAILBLAZER LT V6, AUTO, 2WD, WHITE	\$7,900
QT75420	2007 CHEVY SUBURBAN LS V8, AUTO, 4WD, BLUE	\$11,900
QT57284B	2011 KIA SPORTAGE SX 4CYL., AUTO, FWD, ORANGE	\$11,425
QC75392A	2013 HYUNDAI SONATA LIMITED 4CYL., AUTO, FWD, BLUE, 71K MILES	\$10,900
LT28543	2014 DODGE JOURNEY SXT 4CYL., AUTO, FWD, WHITE	\$9,450
QT75335	2014 JEEP COMPASS 4CYL., AUTO, 4WD, SPORT, RED	\$9,900

Vans

QC75394	2016 DODGE GRAND CARAVAN SE V6, AUTO, FWD, GRAY	\$12,900
---------	--	----------

\$5,000 or Less!

LC28260A	2000 LINCOLN TOWN CAR V8, AUTO, SILVER	\$4,900
QT75375	2008 MITSUBISHI ENDEAVOR LS V6, AUTO, 4WD, BLACK	\$4,900
QC75393	2009 CHEVY AVEO LS 4CYL., 5SPD., FWD, SEDAN, WHITE	\$4,900
LT28320B	2010 CHEVY HHR LS 4CYL., 5 SPD., BLUE	\$4,200

2018 Model Year CLOSEOUT PRICES!

Prices you have to see to believe!

NEW 2018 CHEVROLET SILVERADO 1500 LT

MSRP**\$48,660**
 as low as.....**\$36,500***

Or 0% Financing for 72 months

PLUS \$1,500 OFF

Or payments as low as **\$529** per month! w.a.c



NEW 2018 CHEVROLET MALIBU LT'S

MSRP**\$27,090**
 as low as.....**\$21,200***
Only 4 Remaining!!!



**0% Financing
 for 72 months
 on New 2019
 Chevrolet Tahoe
 or Chevrolet
 Suburbans**



Additional incentives may apply, see a sales representative today before these 2018 models go away!



CHEVROLET 

FIND NEW ROADS™

LINDSAY CHEVROLET

"Where The Trucks Are"

OPEN: M-F 8-6:30 • SAT. 8-5 IN LEBANON AT 285 W. ELM • 417-532-3114



David Bean
Manager

Jeremy Johnson
Sales

Brent Hale
Sales

Dennis Nash
Asst. Manager

Shelby Cole
Finance



www.lindsaychevroletlebanon.com

*Requires Financing with GM Financial



NEW MAHINDRA ROXOR FRESH OFF THE ASSEMBLY LINE!!

- Steel Body no plastic to break
- 5 Speed Manual Transmission no belt to break
- Fully-boxed, ladder-construction, steel truck-style frame
- Turbo Diesel 4 cycle engine which produces 144 ft lbs of torque and 3490 lbs of towing capacity to get your jobs done. • Made in Detroit
- 2 YEAR WARRANTY OR 12,000 MILES • Starting at \$15,999

Visit us at www.cowtownusainc.com

ROD AND REELS: fishing season is coming. \$5 and up. Conway, 417-589-8200

FARM & HOME SERVICES, WELDING & CONSTRUCTION. \$40-\$65 per hour. 417-664-7841, Stoutland.

HEAVY DUTY PALLET FORKS: clamp on style for loader buckets, adjustable stabilizer, #4000 capacity, new in box. \$150. Conway, 417-718-5347.

French Bulldog Puppies: Blues, Chocolate & Lilac Carriers, Whites, Sable Pieds, M/F, Guaranteed. \$895-\$2,500. 573-238-3873, 573-208-0485, Glenn Allen.

VERMEER TM-700 DISK MOWER: excellent condition. \$10,000. Salem, 573-265-5166/573-263-1875.

REESE 2070W DRUM MOWER: 6'9" cut. \$2,000. Potosi, 573-438-2672.

AC 185 DIESEL TRACTOR: Near new tires, GB-440, loader, nice. \$9,450. 573-765-4406.

NEW/USED PARTS: For all vehicles/machinery. (Warranted/delivery). 800-807-9612.



Cheyenne Acres
Horse & Tack
BUY - SELL - TRADE
by Rolla, MO
Call For Directions & Availability
Call Kip
573-368-9402

MF-50-GAS W/LIVE POWER: \$2,350. 573-714-5779.

AGCO NEW IDEA 5410 DISCMOWER: 10ft. \$3,950. 573-765-4406.

CHECKERED WALNUT WOOD STOCK PISTOL GRIP: for Marlin Model 336 or 1895. \$100. Washington. 636-239-2695.

\$\$\$\$\$ MOBILE HOME SAVINGS That is what we are about for the last 36 years. New, Used, All Sizes. 573-657-2176 amegamobile-homes.com

FARMALL SUPER-C: W/2pt disk and plow. \$2,200. 573-714-5779.

GLEANER L-24FT RIGID HEADER: good. \$750. 417-646-8807.

FOR SALE. 2005 32' Cardinal 5th wheel camper: 2 slides, new tires, good condition. \$13,500 OBO. 573-291-3248.

WHITE-TAIL MOUNT: 3x4. \$150. 5pm-8pm, 417-270-1776.

1999 KODIAK 24' FLATBED GN TRAILER: Wood floor, slide out ramps, dual jacks, tandem axle, 14,000 GVW, elec brakes, 14 Ply tires. \$3,800. Conway, 417-718-5347.

SELL IT HERE!



WEEKLY TRADER MAGAZINE

417-532-2800 • www.myweeklytrader.com

FOR SALE 91 CHEVY PICKUP SMALL STEPSIDE BED: Small damage to front end, v6, no rust, great for parts. Call after 6pm. 417-533-5370.

SITREX: 6 basket, hyd fold tedder. Good. \$6,500. 573-765-4406.

USED AMERICAN FAMILY DOUBLE-WIDE These do not last! Excellent condition. Call Quick, 573-499-9993 columbiadiscountohomes.com.

SIDEWINDER TIRE DRIVE: 6ft, 3pt brushcutter, very nice. \$1,350. 573-765-4406.

METAL DETECTOR: \$125 or trade. 573-327-9068.

4 REGISTERED POLLED HEREFORD 2YR BULLS: CHB-Top 48%, Baldy Maternal-Top 44%, DNA Tested, Gentle. \$1,900-\$2,100 OBO. 573-244-3157.

140 ACRES FOR SALE. Located in new Amish community, 1/2 open, Alton, MO. Morgan Realty, 417-264-4900, Thayer, MO.

MF 165-GAS W/LIVE POWER: w/loader. \$6,000. 573-714-5779.

BOBCAT 853 DIESEL SKID STEER LOADER: Cab, 58hp. \$8,950. 573-765-4406.

ANTIQUE HAND CARVED CIGAR STORE WOODEN INDIAN: 5' tall. \$800. Seymour, 417-279-8224.

FREE AKC REG. GERMAN SHEPHERD: 1 year old, black & tan, very friendly, good behavior. 630-687-0705.

NAT'L GEOGRAPHIC MAGAZINES: Jan 1985-Dec 1990, in hard boxes, plus 140 assorted magazines. 417-247-1689, Thomasville.

GERMAN SHEPHERDS: Two males, 3 mo old, one adult male. \$100 each. 417-741-2198.

WANTED CUT STOCK, Cants, Slabs, trees length + 45" long scragg blocks. 417-650-0402.

1997 ROADTREX MOTORHOME: 94,000miles, 318-engine, fully-equipped, generator. \$14,000. Hermann, 573-694-2565.

RUBBER BELTING: Assortment sizes. 573-378-5180

4 CHROME GMC WHEELS & CAPS: 16". \$150. Belle, 573-859-6574.

JOHN DEERE XUV WINDSHIELD. \$150. Belle, 573-859-6574.

AUCTION REMINDER: Thursday, June 6 at 9: 03 am. Chupps Auction. Please see our Auction Directory for more information.

IRRIGATION OR TRASH PUMP HOSE: (Blue, Lay Flat) 3" & 2". \$50. 417-322-0161.

FREE TO GOOD HOME. 3 male Rat terrier pups. 573-308-7781, leave message.

SILVER DOLLAR COLLECTION: \$200. 573-764-3517, Call in P.M.

R-FAB BINS
(660)281-3078

Bucket Bins
Stationary or Portable

Overhead Bins
Located in Warsaw, MO

FORT AWESOME POWERSPORTS
2410 Evergreen Pkwy,
Lebanon, MO

417-532-9253

THE ALL NEW GC1K CREW
fortawesomepowersports.com

NEW NEW NEW DISPLAY HOUSE!!!
Call Marla to hear what is new inside 573-657-7040, chateauhomes.net.

I BUY.... used mobile homes. Call or text 573-338-6250 or email GregS.CDH@outlook.com

3PT TRACTOR BALE SPEAR: 42" spear with 14" stabilizer bars. \$150. Conway, 417-718-5347.

1996 CHEVY 1/2-TON: 1 owner, 177,500miles. \$4,900. Rogersville, 573-308-5944.

LOOKING FOR WATER BICYCLE: Any shape. Leave message, 618-758-2830.

FIREPLACE LOG GRATE: 28" wide. \$25. 636-239-2695, Washington

ALLIS CHALMERS 6080 DIESEL TRACTOR: Cab and air, 80hp, Westendorf Loader. \$9,850. 573-765-4406.

1964 FORD F100 DRAGSTER : 460 C6 auto on Ford 9" rear end, dual exhaust, electric fan, new belt/hoses. \$6,500. 573-422-3992.

2007 CHEVY 1500 Z71 SILVERADO CLASSIC: extended cab w/A.R.E. cap and Tonneau Cover, loaded, excellent condition, original owner, all maintenance records, 116,000miles. \$13,500. 417-322-0243.

WANTED, TIMBER TO LOG ON SHARES: Honest, reliable, references. 417-533-4607, 417-664-1195.

CASE 960 COMBINE PARTS: Belts, Sivs, clover screen. 573-308-5884, Rolla.

NEW 4-RIB BELT FOR 1431 N.H. CONDITIONER: \$60. 417-646-8807.

1987 SHELBY DAYTONA: Excellent condition. \$5,500. 314-616-9862.

TRUCK RACK FOR FORD TRUCK: \$125. 5pm- 8pm. 417-270-1776.

2003 THUNDERBIRD: Black and white, very good condition, 47,000 miles. \$15,000. 573-832-1473.

CRAFTSMAN FLOOR DRILL PRESS. \$150. 55 gallon hand Fuel Pump. \$50 573-378-5180

KUSTER LOGGING

BUYER of Standing Timber Oak and Walnut

Dozing Now Available

417-259-0047

References Available

UTV FOR SALE. 2016 Polaris Ranger 570: full size, 1135 Hours. \$7,000. 573-247-1125, Lebanon.

LEBANON HIGH SCHOOL 1913 YEAR-BOOK: \$20. Lebanon, 417-532-2045.

DYNO CHARGE 990 ELECTRIC FENC-ER: Solid state for 20 miles. \$50. 636-239-2695.

CIVIL WAR GREAT MAPS BOOK: Hard-back. \$12.50. Lebanon 417-532-2045.

40 PLUS OLD CAR MAGAZINES For Sale: Street Rodder, Hot Rod, etc. \$15 all. 417-457-1023.

JOHN DEERE 2940: Diesel tractor, 80HP. \$8,500. (573)765-4406.

ADORABLE ACA REGISTERED LAB PUPPIES: yellows/blacks. Ready 6/24/19. \$250. Hartville. 417-741-2198.

TWO LAMBS: 1 Ewe and 1 Ram, 5 months old. \$100 each. Will delivery. 314-683-6457.

Gooseneck and Winchester Star pipe cattle trailers the best in the business here and ready...



Cowtown USA
I-44 Exit 203 • 413 Daniels Rd.
Cuba, MO • 573-885-6300
www.cowtownusainc.com

ANTIQU REVLVER + FIREARM'S ACCESSORIES: \$175. 573-764-3517, Call in P.M.

AUCTION REMINDER: Online Mechanic Equipment Ends Tuesday, June 4th, 12:30p.m. Atterberry Auctions. Please see our Auction Directory for more information.

BUYING OLD BARNS AND LUMBER: 417-298-3509.

REGISTERED HEREFORD & ANGUS BULLS: Home raised, Some Show-Me Select Qualified. 573-701-7828. Belgrade

GUN BOXES: Several shapes & sizes. \$10 and up. 417-589-8200.

20X22 CARPORT: can be seen at 190 Jesse Lebanon Mo. asking \$1,650. 417-991-1495 417-718-9176.

FIVE ANGUS BRED HEIFERS: to Byergo Bull. \$2,100. 660-337-6311.

WANTED PINBALL MACHINES. 573-424-7200.

FOR SALE: 1/2 Simmental 1/2 Angus Bulls, 10 months old. A.I Sired, very gentle, \$1750. ALSO: 110 gal. pull type sprayer. \$1000. Like new. J.W. Henson, 417-343-9488

POOL TABLES: Installations, moves, recovers, repairs, accessories, etc. 573-646-1700.

1988 LINCOLN CONTINENTAL: 4 door, 302, 90,000miles, clean. \$4,000. 417-859-5951.

Meet...

Shawna Bradley

Your Auction Specialist



Call or email me today to get your next auction in Central Missouri's #1 Shopper!



WEEKLY TRADER MAGAZINE

office: 417-532-9131 ext. 215 • 417-895-9324
cell: 417-322-3814 • shawna@weekly-trader.com

AUCTION REMINDER: Saturday, June 1st, 10 am. Wulff Auction. Please see our Auction Directory for more information.

WANTED HOOD FOR JOHN DEERE RIDING MOWER 225: 573-859-6574.

AUCTION REMINDER: Saturday, June 1st, 8am. Lorts Auction. Please see our Auction Directory for more information.

CASE 580D: Diesel backhoe, Loader. \$8,850. 573-765-4406.

WEEKLY TRADER MAGAZINE



AUCTION DIRECTORY

Friday, May 31

- 10:00 AM Nance Auction Service30
- 10:00 AM Crawford Auction Service.....33

Saturday, June 1

- 8:00 AM Lorts Auction Service26
- 9:00 AM Warden Auction Service.....28
- 10:00 AM Darren Scheets Auctions20
- 10:00 AM Wulff Auction24
- 10:00 AM R&R Auction Service29
- 10:00 AM Nance Auction Service31
- 10:00 AM Diamond R Auction Company.....32
- 10:00 AM Richard Moffat Auction Service.....34
- 1:00 PM MO-KAN Livestock Market, Inc36

Monday, June 3

- 1:00 PM Salem Livestock Auction.....34

Tuesday, June 4

- Online Atterberry Auction & Realty36

Wednesday, June 5

- 10:00 AM Crawford Auction Service.....33
- 6:00 PM Roberts Bros. Sale Barn.....37

Thursday, June 6

- 9:03 AM Chupps Auction & Real Estate35
- 11:00 AM Mid Missouri Stockyards35
- 6:00 PM Callaway Livestock Center.....34
- Online Purple Wave Auction.....33

Friday, June 7

- 10:00 AM Gary Sexton Auctioneers, LLC.....37

Saturday, June 8

- 9:00 AM Bruce & Le'AN Auction18
- 10:00 AM Easterly Auction Co.....21
- 10:00 AM Crawford Auction Service.....22
- 10:00 AM Stevens Auction Service.....23
- 10:00 AM Drenon Auction.....25

Sunday, June 9

- 9:00 AM Bruce & Le'AN Auction19

Friday, June 14

- 12:00 PM Freeman Auction & Appraisals, LLC.27

#1 Rural Reader's Choice!
Shopper in Central Missouri

Call 1-800-665-8875 to get your auction listed in the Weekly Trader.

AUCTIONEERS Did you know the WEEKLY TRADER covers more counties in rural Missouri than any other publication?

Firm deadline is 12:00 PM Friday, prior to next week's Thursday publication date.

2-DAY SALE! 2-DAY SALE! 2-DAY SALE!

PUBLIC AUCTION
AURORA, MO

AUCTION

As we have sold our Farms we will sell the following Household, Antiques, Collectables, Auto's, Tractors, Equipment and Tools at the Farm located 2 miles North of Aurora, Mo. on K hwy. to ZZ hwy. go East 1 ¼ miles to F.R. 1210 go North 2 miles to the Auction on:

Saturday, June 8, 2019 at 9:00 am

WATCH FOR AUCTION COMPANY SIGNS • LUNCH SERVED

FOR MORE PICTURES GO TO: WWW.BRUCEANDLEANAUCTION.COM



HOUSEHOLD

- St. Croix Pellet Stove w/Thermostat
- 10 Bags of Wood Pellets
- Frigidaire Refrig.
- 3 Cushion Divan
- Occasional chairs
- Propane Heating Stove
- 3 pc. Pine Poster Bedroom set
- Several Chest & Upright Freezers (various sizes)
- Kitchen Table w/4 Chairs
- Bar Stools
- One lot of Misc. Pots, Pans & Dishes
- Free Stand Electric Heaters
- 4' Oak Church Pew

ANTIQUES-COLLECTIBLES

- Oak Mirrored Back Buffet
- Oak Hat Box Dresser
- Oak Glass Fronted Pie Safe
- 3 Pc. Poster Bedroom Set
- Glass Fronted Kitchen Cabinet
- 5 Drawer Oak Office Desk
- 2-Oak Wash Stands
- Ornate Stand Table
- Oak Rockers
- Lrg. Oak Table
- Oak Table w/ Chairs
- Oak Hoosier Kitchen Cabinet
- Oak Single Door Sm. Ice Box (KC Mo.)
- 3 Drawer Low Dresser
- Full Size Metal Bed
- 3 Cap Cast Wood Cook Stove
- 5 Cast & Porcelain Wood Cook Stoves (Globe-Green Mountain)
- Western Electric Crank Telephone
- Camel & Flat Back Trunks
- 5 Wooden Barrel Butter Churns
- Quart Glass Butter Churn (St. Louis Mo.)
- Approx. 20 Daisy & Other Butter Churns (1/2 Gal. to 1 1/2 Gal.)
- Metal Butter Churn
- Wooden Dasher Butter Churns
- Approx. 60 Named Milk Bottles
- Milk Bottle Rack w/Bottles
- 2 Metal Cream Buckets
- Cream Separator
- Several Butter Molds
- Lincoln Drape Aladdin Lamp
- 6 Aladdin Lamps
- Hanging Aladdin Electrified Lamp
- Approx. 20 plus Kerosene Lamps
- Murray Metal Diesel Pedal Tractor

- Metal Pedal Car
- Childs 4 Wheel Wagon
- 2 Iron Wheeled Milk Can Carts
- Milk Cans
- Cast Iron Kettles Various Sizes
- 3 Cast Hand well Pumps
- 2-10 Hole Metal Chicken Nest
- Lard Press
- Pitcher Pumps
- Metal Egg Baskets
- Glass & Stone Chicken Waters
- Well Buckets
- Platform Scales
- Lot of Fruit Jars
- Several Wooden Boxes
- Egg Crates
- Galv. Wash Tubs & Buckets
- 2 Wooden Chicken Coops
- Sev. Garden Plows
- One Row Garden Planters
- Horse Drawn Potato Digging Plow
- Turnip Planter
- Several Pcs. Cast Iron (Griswold & others)
- Corn Sheller's
- Stone Bowl Collection (blue, green, brown and others)
- Several Stone Jars 1 Gallon to 6 Gallon (Western & Others)
- Stone Churns
- Wooden Barrels
- Wooden Grape Press
- Pink Depression glass
- Jewel T Bowls
- 2-Copper Wash Boiler
- Hand & Machine Sewn Quilts
- Large Lot of Kitchen Collectables & Primitives
- Approx. 25 Longaberger Baskets

BUGGY'S-WAGONS ANT. TRACTORS

- 2-4 Wheel Single seat Amish Style Buggy's
- 4 Wheel Restored Sm. Open Top Wagon Ash Lumber
- 4 Wheel High Wheel Springfield Wagon Sold by Billings Hardware (original, good condition)
- 4 Wheel High Wheel Wooden Wagon built by J. L. Kramer Clinton, Iowa (original, good condition)
- 4 Wheel High Wheel Wooden Wagon Dated 1897 Sold by G Pieper Gret.NA. Man (original, good condition)
- 4 Wheel Wagon And Buggy in Knock Down
- McCormick Deering-Farmall F-20 Tractor Restored single front Wheel

- Farmall F-12 Tractor (stored inside)
- John Deere B Tractor (stored inside)
- Sulky Rakes
- Several Pcs. of Horse Drawn Equipment
- Cast J. D. Seat
- 60 Lb. Anvil
- Post Drill
- 4 Sm. Wagon Wheels
- 3 Sets of Buggy Runners
- Buggy Jack
- 3 sets of Harness (good condition)
- Several Horse Collars
- 3 Riding Saddles
- One lot of Misc. Tack
- Saddle Stands
- 2 Older Harness Sewing Machines
- Sev. Misc. Wagon items
- Sev. Iron wheels Various Sizes
- A.T. Ferrell & Co. Fanning Clipper Mill
- Sev. Hundred Ft. of Native Lumber stored inside (Oak, Cedar, Pine)

CAR-MOWER-CARPORT-MISC.

- 1994 Buick Regal 3.8 V-6 Motor, Auto Trans, 128,000 miles
- 1979 Ford Thunderbird (not running been sitting in barn)
- Bad Boy Pro-Series Zero Turn Mower, 660 Hours, 27 HP, 60" Cut
- Snapper 12 HP Riding Mower
- 10' x 10' Metal Portable Building
- 12' X 20' Metal Carport 10' Tall
- 5' X 7' Metal Storm Safe Room F-5
- Craftsman Radial Arm Saw
- Ryobi Table Saw
- Titan 8 hp. Gas Air Compressor
- 4 Frame Honey Extractor
- Misc. Bee keeping items
- Master Built Electric Smoker
- Chain Saws
- One lot of Misc.

AUCTIONEERS NOTE

The Fulps have collected a lot of nice and unusual items for many years. This is a very large auction. Will start the auction with household followed by Antiques/Collectables, at noon selling Car, Wagons, Buggy's

OWNERS FULP & GRIMM DAIRY FARMS

TERMS: CASH or CHECK with I.D. Nothing removed until settled for. Not responsible for accidents. Statements made sale day take precedence over printed matter.

SALE CONDUCTED BY **BRUCE & Le'AN AUCTION & APPRAISAL, LLC**
THE AUCTION COMPANY THAT APPRECIATES YOUR BUSINESS

For more information and pictures go to our website at www.bruceandleanauction.com

RONNIE BRUCE - Fair Play, MO
417-777-1685 or 417-654-2214
colronbruce@gmail.com

BRANDON BRUCE
Fair Play, MO

BILLY BRUCE - Stockton, MO
417-399-4800
colbbruce@gmail.com

2-DAY SALE! 2-DAY SALE! 2-DAY SALE!

PUBLIC AUCTION
AURORA, MO

AUCTION

As we have sold our farms we will sell the following Tractors, Equipment, Trucks, Milking & Cattle Equip, Tools and Misc. at the farm located 2 miles north of Aurora on K hwy. to ZZ, go East 1 ¼ mile to F.R. 1210 go North 2 miles to the Auction on:

Sunday, June 9, 2019 at 9:00 am

WATCH FOR AUCTION COMPANY SIGNS • LUNCH SERVED

FOR MORE PICTURES GO TO: WWW.BRUCEANDLEANAUCTION.COM



TRUCKS & TRAILERS

- 1993 Freightliner Semi Tractor Air Ride Suspension, Cat 425 Motor, 9 Speed Trans, w/Double Sleeper
- 1985 Hobbs 39 1/2' Frameless End Dump Trailer w/Full Length Liner
- 1980 Fontaine 45' Drop Deck Trailer
- 2004 Ford F-150 Lariat 4 Door 4X4 Pickup, 5.4 Triton, Automatic, PW, PL, Leather Interior, Bed Cover, 136,000 Miles, One Owner
- 2001 Ford F-350 Ext. Cab, 4 X 4, Pickup, V-10 Gas, Automatic, PW, PL, One Owner 134,500 Miles (body damage on bed)
- 1990 Ford F-350 Diesel 4X4 Truck w/Dew Ezzel Model 275 Hyd. Bale Bed
- 1972 Dodge 2 ton Truck w/18' Metal Hyd. Dump Bed, 361 V-8 Motor, 5/2 Speed Trans, 43,068 Miles
- 1999 Soft-Touch 26' X 7' X 7' Tall Aluminum Stock Trailer, 2 Divide Gates
- E-Z Haul 36' Gooseneck Flat Bale Wagon
- 7' X 22' Flatbed Gooseneck Trailer
- 24' 3 Axle Gooseneck Flatbed Trailer (no title)

- Cab Tractor W/4219 Hrs. & Allied 795 Frontend Loader Bucket & Spike
- Minneapolis Moline M-670 Open Deck Propane Tractor (good rubber)
- Massey Ferguson 1143 Combine W/Corn & Bean Head
- Tube Line TLR-5000 AXZ inline Big Bale Wrapper W/Honda GX390 motor
- 4 Rolls 30" Wrap
- Hesston 4755 In-Line Big Sq. Baler 1000 PTO
- New Holland BR7070 Round Baler W/Net Wrap or Twine (540 PTO 21,000 bales)
- New Holland 570 Sm. Sq. Baler
- 2-Sq. Bale Grapples
- Hoelscher 10 Bale Accumulator
- New Holland 1431 Discbine 1000 RPM PTO (rollers)
- New Holland H7450 Discbine (rollers)
- New Holland 216 Hyd. Twin Driven Bar Rake
- Fanex 523-T Twin Row Tedder
- New Holland Hay Inverter Model 166
- BestWay 1000 Gallon Field Pro-2 Boom 60' Sprayer W/Foam Marker
- 300 Gallon Ag 30' Boom Sprayer 1 year old
- Spra-Coops 200 Gallon Self Propelled Sprayer 50' Booms
- Kuhn Knight Vertical Maxx VSL150 Mixer Wagon 540 PTO
- Better Built Model 3400 PTO Tank Manure Spreader
- Calumet 8' PTO Pit Pump
- Kuhn Knight 1130 Manure Spreader
- 2615 Legend 15' Brush Hog
- Great Plains Solid Stand 16 hole No-Till Drill (recent rebuild)
- 2 New Holland Model 790 Choppers (2 corn & 2 pickup Heads)
- AC 333 4 Row Planter
- IHC 5100 21 Hole Planter
- NH F628 Silage Wagon
- New Holland 18' Silage Wagon
- Badger 18' Silage Wagon
- 3 Silage Wagons (need work)
- Kewanee 18' Tandem Disc.
- Krause 12' Offset Disc.
- Krause 20' Tandem Disc
- 9 Shank Chisel Plow
- 10' X 3' Water Filled Roller
- Work Saver 3pt Hyd. Post Driver
- 3pt 5' Tire Blade
- Large Gravity Grain Wagon
- Danhusser 3pt. Post Hole Digger
- 60,000 & 100,000 KW PTO Generators
- Redline 24' Carted Flex Harrow
- 8' Utility Box P/U Bed
- Big Bale Grabber
- 3PT Bale Unroller

- 20 Calf Blankets, Misc. Buckets & Bottles
- Calf Warmer Box
- Pneu-Dart Air Rifle
- Approx. 35-8' Concrete Feed Bunks
- 10 Section of J-Bunks
- 18-6' Concrete Bunker Blocks
- 12 Poly Bottom Bunks
- Approx. 80-10' & 12' Portable Corral Panels
- 4 new BMW Gates 12'-16'
- Large Lot of Steel Post
- Large Lot of Electric Fencing
- Electric & Solar Cencers
- 8 Big Bale Rings
- Tarter Poly Bottom Creep Feeder
- Several Stock Tanks (galv. & poly)
- Approx. 50 Welded wire 16' Panels
- Several 3' & 4' Barn Fans
- Older Squeeze Chute
- 2-10'X15' Open Fronted Sheds



LOADERS-SKID STEER-UTV'S

- Bobcat S250 Skid Steer 3518 Hours, New Rubber, 7' Quick Attach, Bucket, Bale Spike
- Caterpillar 951 Track Loader w/80" Clam Shell Bucket
- Allis Chalmers 840 Wheel Loader, Diesel, 7' Bucket
- 2018 Polaris 900HD Ranger XP Side by Side Pro Star 4X4 (top & windshield)
- 2011 Kioti Mechron 2200 UTV 4X4, Diesel, Top, Windshield, Dump Bed w/355 Hours
- Kawasaki Bayou 4X4 Four Wheeler New Tires, Front & Rear Racks
- Polaris Trail Boss 250cc Four Wheeler (has been sitting)
- New Holland L783 Skid Steer (been sitting needs work)

TRACTORS & EQUIPMENT

- International 1086 Cab 130 HP Tractor (Good Rubber, Recent Restore)
- International 1086 Cab 130 HP Tractor W/TA-26 Westendorf Loader
- International 1586 Cab 175 HP Tractor 4 speed HI/LO TA (like new rear rubber)
- International 1586 Cab 175 HP Tractor W/Duals (no TA)
- International 1566 Open Deck 160 HP Tractor W/Turbo
- International 1486 Cab 145 HP Tractor
- International 705 Open Deck 73 HP Tractor (wide front, new front rubber)
- International 784 Open Deck 70 HP Tractor w/ Frontend Loader
- International 686 Open Deck 65 HP Tractor (TA-5 Speed)
- International 1086 Cab Tractor (Motor Good, needs other work)
- New Holland TN65 Open Deck 65 HP Tractor 3700 One Owner Hrs. W/M446 Front End Loader W/Bucket & Bale Spike
- New Holland TC-30 Open Deck 30 HP 4X4 Tractor W/New Holland 7308 Frontend Loader W/Bucket
- John Deere 4440 Cab 130 HP Tractor 4539 Hrs. Second Owner, W/TA-46 Frontend Loader Bucket & Spike (good rubber)
- John Deere 4020 Tractor 100 HP (sync-roll transmission)
- John Deere 4010 Tractor W/158 JD Loader (needs transmission work)
- White 2-135 Series 3 Field Boss 135 HP Cab Tractor 6 Speed Trans. (good rubber)

- Kuhn Knight Vertical Maxx VSL150 Mixer Wagon 540 PTO
- Calumet 8' PTO Pit Pump
- Kuhn Knight 1130 Manure Spreader
- 2615 Legend 15' Brush Hog
- Great Plains Solid Stand 16 hole No-Till Drill (recent rebuild)
- 2 New Holland Model 790 Choppers (2 corn & 2 pickup Heads)
- AC 333 4 Row Planter
- IHC 5100 21 Hole Planter
- NH F628 Silage Wagon
- New Holland 18' Silage Wagon
- Badger 18' Silage Wagon
- 3 Silage Wagons (need work)
- Kewanee 18' Tandem Disc.
- Krause 12' Offset Disc.
- Krause 20' Tandem Disc
- 9 Shank Chisel Plow
- 10' X 3' Water Filled Roller
- Work Saver 3pt Hyd. Post Driver
- 3pt 5' Tire Blade
- Large Gravity Grain Wagon
- Danhusser 3pt. Post Hole Digger
- 60,000 & 100,000 KW PTO Generators
- Redline 24' Carted Flex Harrow
- 8' Utility Box P/U Bed
- Big Bale Grabber
- 3PT Bale Unroller

CATTLE & MILKING EQUIPMENT

- Chore Time 2 & 6 Ton Galv. Feed Bins
- 40' X 6' PTO Auger
- Mueller 800 Gallon Milk Bulk Tanks
- 8 & 16 Unit Delaval Milking Machines
- One lot of Misc. Milk Barn Items (cleaners & equipment)
- Stainless Milker Buckets
- 1 1/2 HP Jet Pump Washer
- 3 Semen Tanks
- Approx. 40 Poly Calf Hutches (calf-tel & others)

TOOLS & MISC.

- 500 Gallon Fuel Tank W/110 volt 13 gpm Fill Rite Pump
- Fill Rite 110 volt 15 gpm Fuel Pump
- Hobart Champion 10,000 watt Generator/Welder
- 6 1/2 HP Upright 60 Gallon Air Compressor
- Coats Air Tire Changer
- 8' X 20' Truck Bed Storage Container
- Reddy Heater Space Heater
- Stanley Tool Box
- 11 Drawer Tool Box
- Floor Model Drill Press
- 1" Air Impact
- Battery Grease Gun
- Porta Power
- 5 HP Water Pump
- Several Bags of Fescue Seed, Brome, Grazer Wheat Seed
- 7 Gallon Weeder 64
- 40 Sheets New Metal 8' to 12' (Burgundy)
- Lot of used Tin
- A Frame Hoist
- One Lot of Misc. Hand Tools
- Large lot of Tractor Filters & Misc.
- Large Floor Jacks
- Cherry Picker
- 2 Large 50 bin Organizers
- One lot of Misc. Hand Tools

AUCTIONEERS NOTE

This is a very large offering Note 9:00 am start time. Starting with Tools & Misc. 12 noon selling Trucks, Tractors & Equipment.

OWNERS FULP & GRIMM DAIRY FARMS

TERMS: CASH or CHECK with I.D. Nothing removed until settled for. Not responsible for accidents. Statements made sale day take precedence over printed matter.

SALE CONDUCTED BY **BRUCE & Le'AN AUCTION & APPRAISAL, LLC**
THE AUCTION COMPANY THAT APPRECIATES YOUR BUSINESS

For more information and pictures go to our website at www.bruceandleanauction.com

RONNIE BRUCE - Fair Play, MO
417-777-1685 or 417-654-2214
colronbruce@gmail.com

BRANDON BRUCE
Fair Play, MO

BILLY BRUCE - Stockton, MO
417-399-4800
colbbruce@gmail.com

PUBLIC AUCTION

Saturday, June 1 @ 10AM

Location: 15510 Camden Drive • Bucyrus, MO
Directions: From Houston Take Hwy 17 West 14 Miles to Hwy AA. Go 4 1/2 miles to end of blacktop onto Crane take Crane to Camden Lane. Follow signs to Auction.

ESTATE OF JAMES MELTON

* REAL ESTATE *

20 acres with 4 bedroom, 4 bath home on 3/4 basement with outdoor entrance, utility room, dining room, two car garage. Public/Rural Water. Sells with owner confirmation. Sells as is with no contingencies. 10% down day of sale to close in 30 days. Open House scheduled for May 26th from 1:00 - 2:30.



HOUSEHOLD * FURNITURE * ANTIQUES

Whirlpool Washer and Dryer * Magic Chef Refrigerator * Upright Freezer * Kelvinator Refrigerator * Coffee and End Tables * Lazy Boy Rocker Recliner * Couch * King Bedroom Set * Blonde Bedroom Set * Two Queen Bedroom Sets * * Haegar Planters * Kitchen table and Chairs * Dining Room Table and Chairs * Tupper Ware * Preferred Stock Pots and Pans * Juicer * Oil Lamps * Old Albums * ACME Adjustable Dress Form Size * Hero City Toy Set * Quilts * Sanyo VCR * Sausage Grinder * Old Formica Table * Pool Table and Pool cues * Fans * Firestone Vintage Bike * Square Galvanized Wash Tub * Galvanized Gas Can * Glass Minnow Trap * Croquet Set * Seth Thomas Grandfather Clock * Sad Irons * Cream Can * Enamelware, Polaris Telescope * Old Scales * Metal Detector * 10 Gallon Crock(has stress crack) * Concrete Figurines * Emmett Kelley Pictures * Antique Brownie Hawkeye Camera * Old 330 Polaroid Camera

CAR * LAWN MOWER * TOOLS * BOAT * ATV * TILLER * TRACTOR * BOAT

2001 Mercury Grand Marquis LS, leather interior, keyless entry, loaded * Husqvarna Lawn Mower, LGT2554 54 inch cut Hydrostat * Farnall Cub LoBoy With Belly Mower * Log chain * Car Ramps * Battery Charger * Snapper Weedeater * Yamaha Moto 4 * Aluminum Extension Ladder * Werner Step Ladder * Two Piece Napa Toolbox * Wheelbarrow * Snapper Mower for Parts * John Deere Mower for Parts * Misc Wrenches * Cement Tools * Oil Cans * Curry Comb * Heated Water Bucket * Troy Bilt Bronc Rear Tine Tiller * Western Auto Wizard Rear Tine Tiller * String Trim Mower * Air Tank * Tomato Cages * Cords * Hand Tools * Small Fishing Boat with two seats * Gligging Pole * Post Maul * Craftsman Scroll Saw * Electric Chainsaw * Trolling Motor * Wire Minnow Bucket * Sump Pump * Saw Horses * Coleman Lantern * Fishing Tackle * Hand Scycle * Hand Plow * Vises * Gas Powered Wood Chipper * Bench Grinder * Wood Clamps * Chainsaw Sharpener * Poulan Chainsaw

Auctioneers Note: Don't miss this chance to own this four bedroom home and 20 acres, owners are very motivated to sell.
This is a partial listing, come see what else we find!



Darren SCHEETS AUCTIONS

(417) 457-6638 • (417) 926-8575
www.scheetsauctions.com



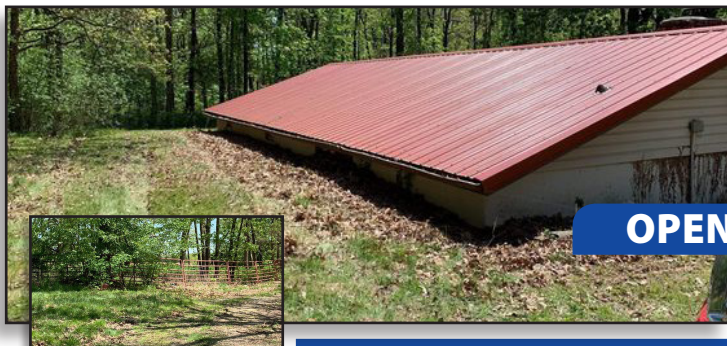
TERMS OF AUCTION: Cash or check with picture ID. Nothing loaded or removed until paid for. Everything sells as is, where is. Not responsible for accidents, lost or stolen items. Auction day announcements take precedence over all previous advertisements.

REAL ESTATE AND PERSONAL PROPERTY AUCTION

SATURDAY, JUNE 8, 2019 @ 10:00AM

155 Red Clover Rd • Strafford, MO 65757

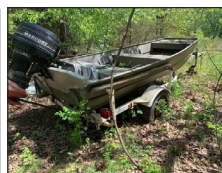
DIRECTIONS: From Springfield, take I-44 east, take MO-B exit 96 toward Northview, turn left onto State HWY B/MO-B, turn left on Evergreen Rd, turn right on Red Clover Rd. Auction will be on the left.



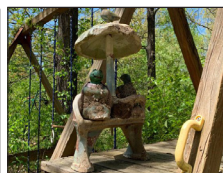
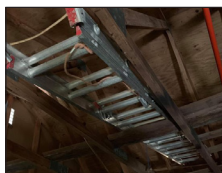
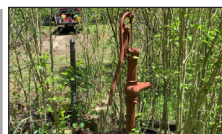
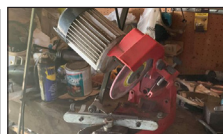
1830 Sq. Ft home with 3 bedrooms and 2 bathrooms and large covered porch

OPEN VIEWING: JUNE 2, 2019 2-4PM

LEGAL: N 1/2 S 1/2 SE NW
TERMS: 10% DOWN DAY OF AUCTION WITH BALANCE DUE AT CLOSING. POSSESSION AT CLOSING WITH CLOSING WITHIN 45 DAYS OR LESS OF AUCTION DATE.



INVENTORY LIST: 2014 Harley Trike Glide 103 Cubic Inch Stock - Bought New 2400 Miles; Parker 10 Mm Stainless Steel Pistol; Browning 300 300 Winchester Mag With Game Stalker Scope; Remington Model 7400 To-80 With Scope; Bsa Ithaca 12 Gauge 3 Inch Mag Automatic; John Deere 1050 Diesel Tractor With Bucket; Metal Fencing; Assorted Items In Barn; Ladder; Tools; Patio Table And Benches; Plow; Sickle; Manure Spreader; Carry All; Cattle Panels; Refrigerator; Bicycle; Bench; Plastic Toolbox; Sleeping Bag; Fishing Poles; Fold Up Bed; Cement Outdoor Turtle Statue; Wood Swing Set; Water Pump ; Brush Hog; Scrap Metal ; Fishing Boat With Mercury Jet Motor/Trailer; Rolls Barbwire; Roto Tiller; Old Manure Spreader; Post Hole Digger; And More!



FOR MORE INFORMATION GO TO WWW.EASTERLYAUCTIONCO.COM OR CALL EASTERLY'S AT 417-833-9494

EASTERLY AUCTION CO.

Go to www.EasterlyAuction.com



auctionzip.com
ID#14770

Mike Easterly Auctioneer 417-833-9494

Not Responsible for accidents or theft.

For more information call: Easterly Auction Company, Springfield, MO.

Auction Terms: Bank Letter Of Credit Required.

Visa, Mastercard, Cash, Cashier's check or checks with proper I.D.

Announcements day of sale take precedence over printed material. Auction Notes: Although information

is obtained from sources deemed reliable, auctioneer makes no warranty or guarantee expressed or implied.

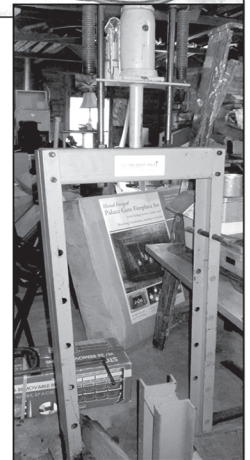
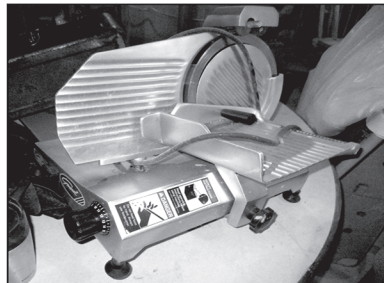
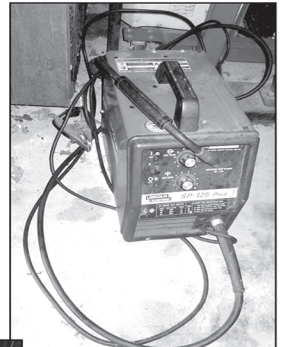
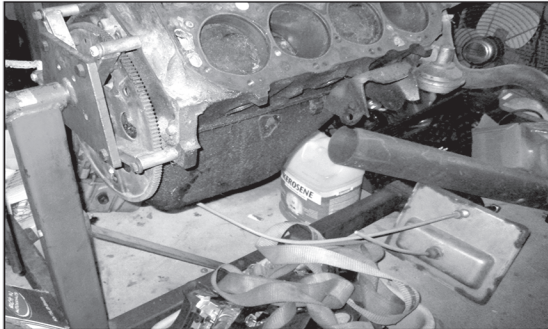
Buyers should themselves take the opportunity to make their own inspection prior to sale.

Sam
CRAWFORD AUCTION SERVICE LLC

Due to the death of my husband, will sell the following located from Lebanon, Mo., Jct. of Hwy. 64 & 5, North 4 miles on Hwy. 5 to Hazel Rd. Watch for Crawford Auction Service signs.

Saturday, June 8, 2019 – 10 a.m.

AUTOMOTIVE – TOOLS – RESTAURANT EQUIPMENT – Misc.



See website for more pictures!

Automotive Parts

- 6-8 Chev blocks (454?)
- Sev sets heads
- Set Chev p/u 6 hole wheels & tires
- Headers; Lot asst parts
- 2 Sets alum running boards
- Set new alum power forge pistons
- Go-cart frame; Alum motorcycle frame
- Set ATV tires & wheels; Other items

Tools-Misc.

- 12 Ton press; Hyd motor lift
- Lincoln SP-125 welder; Elec welder
- Old HD drill press frame
- Standup drill press
- Cutting torch, complete
- PR cutting torch bottles
- Sears air compressor
- 12 gal. air tank; Sand blasting cabinet
- Power drain auger; 2 Motor stands
- Clarke parts washer; Bostitch air nailer
- Asst. power hand tools
- Some asst wrenches/tools
- Gas hedge trimmer; 5 HP rear tine tiller
- Kerosene heater; Gas cans
- Citgo plastic sign
- 4x10 Senor Pepper lighted sign
- Asst small signs & banners
- Glass building blocks
- Some metal roofing; PR alum farm gates
- 14' Above ground pool
- 2 Rolls carpet & padding
- Other misc.

Raptor
Sells @ 12 Noon
 '04 Yamaha Raptor

Restaurant Equipment, Misc

- 3 Door freezer; 3 Door cooler
- Stainless double sink
- Drop in buffet, NIB; Port. buffet
- Nacho machine; Margarita machine
- 2 Basket deep fryer, gas
- General stainless meat slicer
- Napoli projector; Older gas range
- 6-8 Cafe tables; Lot stacking chairs
- Stereos; Pool table; Duct work
- Antique chrome table; Cast iron skillet
- 4 Cases sugar caddies
- Lot plastic drink glasses
- Homemade cedar chest/box
- F/P set, NIB; Other Misc.

Household

- Oak dining table, 6 chairs
- Console TV
- Leather sofa & love seat
- Hot tub
- Wood heating stove
- Other items

Rhonda's late husband was well know in the area for his love of cars and they owned a Mexican Restaurant at one time.

Sam
CRAWFORD LLC
Auction Service



Cross Timbers, Mo.
 CrawfordAuctionService.com

417-998-6629



STARTING 75th YEAR OF SALES AND SERVICE

TERMS: Cash or good check. Nothing removed until settled for. Not responsible for accidents. Lunch available. Statements made day of sale take precedence over printed matter. All items sell as is. No warranties given or implied.



Sam 417-328-9137 Chase 417-399-1904 Chance, CAI 417-298-1751 Tom Poynter Jack Lancaster

Rhonda Smith

Real Estate Auction

Saturday, June 8th. 10:00 am

30375 Forthview Rd. Edwards, MO. 65326

Sharon K. Johnson

Directions: From Warsaw take Hwy 65 to MO-7 Follow MO- 7 To Left on Hwy M Continue for 10.5 Miles to Left onto Forthview Rd. Follow for 0.7 Miles to Auction On Left. Look For Stevens Auction Service Signs!



Real Estate

Spectacular cabin located in the Lake Of The Ozarks Community!

Don't miss out on this great opportunity! 2 Bedroom 1 Full Bath home that is situated in a peaceful location and is also close to all the action on the Lake!

Home features a large living area with vaulted ceiling & recessed lighting. There is a huge sunroom that could be converted to a secondary living area or 3rd bedroom. Large laundry room, walk in closet, Vinyl & laminate flooring throughout.

Several upgrades including, roof, double hung tilt in windows, and more!

Shown By Appointment

Forced Air Heat & Cooling

Heat Source: Electric Heat Pump

Square Feet: 788

Taxes: \$210.15

Lot Size: .82 Acre +/-

Water: Private Well

Sewer: Septic

Terms: 10% down day of auction balance due within 30 days at closing.

Also Featuring Personal Property! Antiques & Collectibles!

McCoy collection* Fenton collection* Uncirculated dimes* Bavarian China*Iron Wagon Wheels* Antique Toys* Hot Wheel & Matchbox Cars* Vintage Costume Jewelry* Sarah Coventry* Pyrex* Norman Rockwell Collectibles* Occupied Japan* MAD Comic Books* Antique Children's Books* WWF Wrestling Collectibles* Elvis Collection* Brass Bells* Velvet Indian Paintings* Indian Artifacts* Vintage Marbles* Card Tables*Fishing Equip* Antique Desk* Antique Lunch Boxes* Antique Pinocchio Collectibles*Porcelain Dolls* Jewelry Boxes* Trolls* Vintage Fisher Price Toys* Antique Lamps* Larkin CO. Buffalo NY Antique Hutch w/ stained glass inlay* Antique Double Drop Leaf Table w/ drawer* Thimble Collection* Blue Willow* Vintage Texasware Bowls* Vintage KHOM Siamese Cat Lamp* Antique Chest Of Drawers* Antique Post Card Collection* Porcelain Dolls* Campbell Soup Collection* Coca Cola Collection* Small Cast Iron Wood Stoves* Aunt Jemima Collectibles

Furniture, Tools & Household

Wooden Shelving* Coleman Cot* Dryer* Bird House* Buffet Hutch* Linens* Bakers Rack* Filing Cabinet* Portable Safe* Microwave Stand* Apartment Size Refrigerator* Pet Carriers* Metal Shelving*



Stevens
AUCTION SERVICE



Announcements made day of sale takes precedence over any printed matter. All items sold as-is with no guarantee. Payment: Cash / Check Or Credit

AUCTIONEER: LAREDO STEVENS

417-459-5041

www.StevensAuctionService.com

ESTATE AUCTION

SATURDAY, JUNE 1 • 10:00 A.M.

Directions: SALEM - Take Hwy. 32 west to F Hwy. south 2.5 miles to CR 6400. Follow 1 mile to sale on left. Watch for signs.

HOUSEHOLD • GUNS • TOOLS • FARM EQUIP • MISC.

Hoveround Wheelchair - Eureka Vacuum Cleaner - Remington 870 Express 20ga. w/Extra Barrel NIB - Remington 870 Express 20ga. Magnum VR - Mossberg 100 ATR 30-06 Tasco 3x9 Scope - Browning A-5 Heavy 12 St. Louis 3" Mag - Stevens Model 820B 12ga. Rossi Model 62 22. LR Pump Remington 1100 2 3/4 12ga. Ruger 10/22 243-34064 Simmons 3x9 H&R .410 3" Single Shot 18 Boxes of 20ga. Shells - Crock Bowls Dresser - Pictures - Old End Table Several Old Cookie Jars, 5+ 2 Oak Chairs - GE Refrigerator, Clean Tappan Electric Stove - Old School Desk Office Chair - Floor Ramp - Wall Mirror HP Printer - Glass-top Coffee Table Round Coffee Table - Big Metal Star Hay Saw - Coping Saw - Buck Saw Leather Loveseat & Couch - Shoe Last 2 Saddles - Recliner - Bookcase

Old Tins - Primitives - 2, 2-Bottom Plows 3pt. 1-Bottom Plow - 3pt. Corn Cultivator 2, 3pt. Spring Tooth Harrow 3pt. Post Hole Digger, 2 Augers 3pt. Fork Bale Mover - 5' 3pt. Disc 2, 3pt. 5' Bush Hog - 3pt. Bale Mover 3pt. 6' Blade - Oliver 3pt. Harrow Tooth Spike Gin Pole - Priefert Head Gate 25+ 5.5' T-posts, Used - 6x10 Tilt Trailer, Title 16' Bumper Pull Trailer, Title - 6' 3pt. Box Blade 901 Ford Tractor, Runs Good, Good Shape John Deere 820 Tractor, Good Tractor 3 Used 42" Riding Mowers: JD, Murray, Yard Man Fishing Items - Lot Handles - Shovels Tater Forks - Electrical Tools

Kids Bike - Bench Vise - Rear Tine Tiller Hobbler & Driving Harness for Horses Kerosene Heater - 2 Front Tine Tillers Weedeater - Step Ladder 1 3/4 Rolls, Red Brand Barbed Wire 1/2 Roll Woven Wire - Lincoln AC 225 Arc Welder Air Compressor, 20 Gallon 8' Aluminum Step Ladder - Folding Table 12 Volt Battery Charger Metal Toolbox - John Deere 820 Tractor @2013 Dodge Dart, 68,530 miles 2000 Buick Century - Homemade Wood Splitter 6" Bench Grinder - Philco Upright Freezer

AUCTIONEER'S NOTE: Nice clean sale.

See you there! - Tom



ESTATE OF: THE LATE JR. INMAN

ANNOUNCEMENTS AT AUCTION TAKE PRECEDENCE OVER PRINTED MATTER

WULFF AUCTION

Auctioneers:

Col. Tom Wulff - Col. David Wulff
498 Hwy. B, Salem, MO 65560
573-729-8476

Clerk: Tracy Strange Cashier: Nancy Inman

See Wulff Auctions at www.thesalemnews.com/auctions

TERMS: CASH OR APPROVED CHECK
I.D. REQUIRED
NOTHING REMOVED UNTIL SETTLED FOR

Licensed Appraisals



RAIN OR SHINE
OWNER & AUCTION
PERSONNEL NOT
RESPONSIBLE FOR
ACCIDENTS AT
SALE SITE

LARRY DRENON AUCTION

ESTATE AUCTION

14042 Dodge Pond Ave • Cole Camp, Mo

To settle the Estate of Robert Louis Bettenhausen, the following will sell located from Cole Camp 1 1/2 miles east on Hwy 52 to Dodge Pond Ave, then 1/2 mile to sale on:

SATURDAY, JUNE 8TH • 10 AM

REAL ESTATE

NICE HOME ON 10 ACRES!!!! Sells at 11

Beautiful home built in 2006 features 3 bedrooms and 2 1/2 baths on main level. You can see quality throughout with the heavy wood 6 panel doors, beautiful oak cabinetry in the kitchen, ceiling fan fixtures in all the bedrooms, whirlpool tub in master bathroom, and numerous other amenities. Downstairs, there is a built-in safe room, and water/drain lines are stubbed in to the basement for future finishing. The basement walks out to the back yard and the bulk of the acreage beyond that. The main level has easy-clean tilt-in windows with inside grilles. There is a walk-out French door from the living room to a back covered deck. The super sized double garage has front and back drive-through doors. Also on the property is a 42 x 70 machinery/shop building with tall garage and walk-through doors. The acreage is mostly open, and could have a variety of uses.

Terms of Sale: This property sells subject to Probate Court approval of Sale. The highest bidder will be required to pay 20% of purchase price down day of auction, which will be held for approx. 10 days until it is approved by the judge. If it is not approved, the earnest money check will be returned to buyer. If approved, the balance of the purchase price will be due at closing, approx. 45 days from sale date. Taxes to be prorated, seller will furnish good deed and title insurance.

Note: It is not often that a property like this is offered at auction! You will want to take a look, so be sure to call auctioneers for showing.



CLASSIC CAR

1993 Corvette Convertible, Limited Edition 40th Anniversary, only 71,200 miles sharp!!!



PICKUP

2003 Ford 350 extended cab, 4x4, 6.0 diesel engine, one owner, 285k



CARS

2002 Ford Crown Victoria only 50,600 miles, one owner, good car; 1997 Buick Century custom, only 85,000 miles



SEMI TRUCK AND TRAILERS

Kenworth tractor, 13 spd, 350 Big Cam, runs good, air ride, reg. tractor cut and stretched to accommodate reefer trailer; Great Dane 48' reefer trailer; 27' Reefer trailer

GUNS AND SAFE

2- Eastern Arms .410 shotguns; Liberty upright safe

TOOLS

Miller mig welder/generator; Miller Spoolmate 200; Ingersoll Rand T30 air compressor, 5 hp, 60 gal; Sears air compressor; 15" Craftsman drill press; Leroi 3 phase Air compressor, 200 gal; Skillsaws, Milwaukee drills, grinders, etc; Triple Snap-On tool chest; Triple Craftsman tool chest; Other heavy steel tool cabinets; Snap-On tool chest; Snap On- Blue Point

and Craftsman air tools; Lot of quality hand tools, Snap-On, Craftsman sockets, Box and open end wrenches, 1 13/16th, lot others; Snap-On table top tool chest; Acetylene set w/extra O2; Poulan concrete saw; Floor jack; Lot shop lights; 6-12 Battery charger; Elston catalytic heater; HD ramps; Aluminum step ladders; Pressure washer; McCullough chainsaw

AUTOMOTIVE

Pneumatic jack for road trailer; 2 Ton engine hoist; Set of Big Block Mopar Hemi 426 valve covers, late '60's; 4 - Transforce LT 275-70 R18 tires; 2 new, 1 used Bridgestone Semi tires, R2299; Lot of tires and wheels; Roll of new 1 1/2" discharge hose; Pintel hitch

HOUSEHOLD

Whirlpool 25 cu ft 5x5 refrigerator, stainless front, ice and water in door; Maytag Bravos top load washer; Kenmore dryer; Antique dining table, and matching buffet w/inlaid wood; Antique liquor cabinet; Antique bachelor chest and matching dresser; Leather over-size chair and ottoman; King size bed w/ under storage; Queen size bed; Bose Home Theater System receiver, surround sound speakers, sub woofer; Portable DVD player; Small curio cabinet; 3 Bar stools; 6 heavy wood dining chairs; 8 Upholstered stacking reception chairs; China hutch; Cuisinart toaster, Toaster oven, other small kitchen appliances; Correlle, Corningware, Tupperware, other kitchen items; Oreck XL vac; Air mattresses; American Tourister luggage, others

OFFICE

Office desk with left handed L; Lg 6 drawer lateral filing cabinet; 6-5 drawer metal upright filing cabinets; 5-4 drawer metal filing cabinets; 2-3drawer metal filing cabinets; 2 Drawer filing cabinet

COLLECTIBLES

Nascar collectible in orig. boxes; 2-Snap-On Low ball glasses pat#3273430; Antique Western Union clock; Old tube radio; 45 rpm vinyls; St. Louis Cardinals Bear and pillows; Moriyama SGK china, 12 place setting; Royal Albert tea cups; Chocolate set, Japan, various other Japanware; 22 ct gold trimmed vase

MOWER

Cub Cadet LT1050 lawn tractor, 50"; 5X7 Utility trailer

BAR AND PATIO

2 Piece Bar cabinet set; Patio Bar and 4 chairs; Wrought iron patio furniture; Strohs hanging light; Jack Daniels, Budweiser, and other mirrors and lights; Lighted "Open" sign; Brinkman grill

MISCELLANEOUS

Several Commercial sodium vapor lamps; Snow blower attachment for Allis; HD sump pump; Kerosene torpeddo heater; Fire hose spool; HD metal shelving

Estate of Robert Louis Bettenhausen Karen Whittenberg Bettenhausen

Terms: Cash, approved check, or credit/debit cards (convenience fee applied). Nothing to be removed until settled for. Not responsible for accidents. Statements made day of sale take precedence over printed material. Lunch served.

LARRY DRENON AUCTION



Larry
660-596-8515

Lacey
660-723-1104

Laramie
660-221-4386

660-547-2646

Early
Start
Time

ESTATE AUCTION

Early
Start
Time

Due to the death of **Otto Lottmann**, we will sell the following personal property, located from St. James, Missouri, take Hwy. KK east 4 1/2 miles to Hwy. U. Continue on Hwy. U 1 1/2 miles to private drive. Follow Lorts Auction Today signs on

Saturday, June 1, 2019 • 8 A.M.

CARS • WOODWORKING EQUIPMENT • ANTIQUES • GUNS

Woodworking & Shop Equipment, Tools & Related Items

Shop work lights — 10 gallon, 6 hp. shop vac — Lot of 6-8 inch wooden clamps — Bar clamps — RedMax-weedeater — 2 wheel furniture mover — Black & Decker 400 workmate — Hand clamps — Tape measure — 4 inch grinder — Wiring — C clamps — Bench type emery wheel — Hammers — Miter box — Band saw blades — Wood stains — Number stamps — Alphabet stamps — Wheel coaster — Tap & dye set — Dremel tools — Kreg jig system — Flat irons — Corner clamps — Mustang metal detector — Squares — Saws — Router bits — Punches — Wood chisels — Chisels — Hardware sets Dremel saber saw — Set of kitchen cabinets (wall to floor) — B&D drills — 8x8 dog pen (chainlink, 4 ft. tall) Palm sanders — Tool Craft drill press — Delta bench type jigsaw — 3 ft. wood lathe — Grizzly 6 inch bench grinder — Assorted sizes of electric motors — Wood vise — Delta 12 inch compound miter saw — Oil cans Delta Boss bench oscillating spindle sander — Delta 12 inch portable planer on stand — 18x20 metal 2 car carport (to be removed) — 8x10 barnstyle portable building — 10x16 barn style building w/double doors on skids (like new) — Craftsman router w/table — Air hose supplies — Craftsman industrial air compressor (tube tank style) — Mr. Heater propane bottle — Store display case — Black & Decker cordless jigsaw, drills & sanders Delta Homecraft 4 inch jointer w/stand — Craftsman 10 inch radial arm saw — Tow chains — Dremel contour sander w/variable speed — Grizzly 1 1/4 brad nailer (air operated) — Car creeper — Grizzly staple gun (air

operated) — Car ramps — DeWalt plate joiner — DeWalt reciprocating saw — Craftsman miter saw — Router tools — Freud wood chisel sets — Craftsman laser track level — Flat wood bits — Drill bits — Hardware Rakes — Rockler thin rip table saw jigs — Shovels Bosch deluxe router guide — Ryobi biscuit joiner — Porter-Cable 3x24 sander — Ryobi variable speed router — Dremel multi-max — Craftsman 1 hp. 3 inch belt sander — Milwaukee 5 inch orbit sander — Hydraulic jack — Porter-Cable finish nailer (NIB) — INCRA Jig Ultra woodworking system w/table saw & router table system Craftsman 16 gallon shop vac — Grizzly comb sander w/6 inch belt & 9 inch disc — Delta jigsaw/band saw on stand — Fold out sawhorses — Schumacher 6-2 battery charger — Socket sets — Work Sharp wood tool sharpener WS3000 (NIB) — Sears 12 inch Craftsman band saw w/stand — Craftsman roll around tool box — Jack stands — Old wooden carpenters trunk — Crescent wrenches — Plywood & particle boards — Open end wrenches — Lot of wood for woodworkers — 2 wheel lawn trailer — 16 ft. & 18 ft. aluminum extension ladders 5 ft. 3 pt. bushhog — 6 ft. 3 pt. bushhog — Murray trans-axle 11 hp. 36 inch cut riding mower — Wheelbarrows Pickup tool box — Garden tiller — Grizzly industrial shop vac system on rollers — 4 ft. shop lights (NIB) — Mortising woodwork machine — Lot of shop cabinets & benches — Grease guns — Drill Doctor bit sharpener Kennedy machinist chest — Karcher 2000 portable sprayer power washer

Household, Antiques & Collectibles

Oak 2 leaf dining table w/pedestal, claw legs & 6 chairs Oak bookcase — 2 oak bar stools w/high backs — A-frame bookcase — Benchcraft sofa & loveseat (blue) American Boiler Foundry Co. woodstove (from Milan, MI) — Oak ironing board (makes into chair, w/craft pattern) — Square glass top coffee table — Leather recliner (brown) — Antique wooden settee (blue upholstery) Bookcase — Small wooden vanity w/side jewelry — Oak end tables — Wood lamp tables Metal shelving — Fold up tables — Wool coat w/fur — Mink stole — Wooden dry sink — **2-3 person 5 ft. x 4 ft. 6 ft. tall infrared sauna** — 4 piece maple bedroom set w/full size bed — Coffee pots — Lots of cookware Wall hangings & decorations — Jugs — Cane chair & footstool — Small wooden desk — Oil lamp — Hard maple dark stain kitchen table & 6 chairs, 2 leaves & China hutch — 8 foot bookcase w/adjustable shelves Utensils — Lot of Visionware — Pie plates — Cake plates — Glass plates — Sunbeam mixer w/bowl

Tea set — Oster blender — Bread machine — Dirt Devil vacuum — Westbend slow cooker — Magic Chef microwave — Farberware warming oven — Bread boxes Table lamps — Whirlpool washer — Kenmore dryer Cookbooks — Cast iron griddles — Cookie sheets — Cookie jars — Frigidaire electric stove (old) — VCR tapes — Hall trees — Picnic basket — Copper wash boiler — Water jugs — Christmas decorations — Lot of decorations — Granite roaster — Coleman lantern — 33 & 78 records — Wooden boxes — Punch bowl sets Wash cloths — Hand painted China — Stone soup bowl set — Handicap items — Set of Dynasty dishes Towels — Radio Flyer 90 wagon — Squeeze strainer set Directors chair — Sewing hoops — Window fan — Carousel rocking horse — Recency ceiling fan (NIB) — Centurion wind up wall clock — Patio fire pit — Child's high chair — Iron patio chair & love seat — Army trucks Sunbeam heater — Crochet set — Wolfgang Puck stainless cookware set

Many more articles too numerous to mention

"like" us on Facebook - Lorts Auction Service or view this auction online at www.threeriverspublishing.com or auctionzip.com (auctioneer ID #42353)

Owner: Lottmann family
16328 State Hwy. U, St. James, MO 65559

TERMS: Cash or check with photo I.D. • Not responsible for accidents or losses, should they occur. • Nothing removed until paid for. • No buyers fee. Lunch Served — ALL ANNOUNCEMENTS MADE SALE DAY TAKE PRECEDENCE OVER ALL PRINTED MATERIALS —

SALE CONDUCTED BY LORTS AUCTION SERVICE • ST. JAMES, MO 65559 • 573-699-4308 • 573-263-0243
AUCTIONEERS: Larry W. Lorts & Gary R. Lorts Licensed and Bonded

Vehicles

2015 Ford Escape, 4 door, 4 wheel drive, automatic, 80,xxx miles, silver w/gray interior

1994 Mercedes V12 hardtop convertible, red w/tan interior, shows 76,300 miles, diesel, good rubber on Michelin tires

1973 Mercedes 450 SL hardtop convertible, red w/tan & black interior, shows 10,200 miles, diesel



Guns

Amory upright gun safe (black, 22 gun) Remington 870 Express Magnum 12 gauge pump Remington 788 w/Tasco scope (bolt action) Remington 572 Fieldmaster 22 w/scope Shooting table Treadlock Security Safe gunsafe (chest type)

Camera Equipment

Lot of darkroom equipment — Track light rails Developing equipment — Tripods Collection of old Kodak & Browning cameras

Diamond Ring

Engagement/wedding band w/certificate, total weight is 1.1 carat

AUCTIONEER'S NOTE: Lots of real nice, clean items on this auction. Parking will be in a field, bring your pickups! Mark your calendar for Saturday, June 1 and plan to attend.

Lorts Auction Service

AUCTION TIME!

FRIDAY JUNE 14TH AT 12 NOON

Selling on behalf of TABLE ROCK COMMUNITY BANK
SOUTH BRANSON BUSINESS CENTER

101 State Drive • Hollister, Missouri

Directions: South Hwy. 65 to Hollister Bus. 65 Exit (mile marker 9), stay right up to Hwy. 165. Take Hwy. 165 1.3 miles to State Drive.



ALL ON AN ATTRACTIVE 1.78 ACRES

Built in 1994, this beautiful complex is partitioned into 23 individual office spaces which are all accessed by central interior corridors. Units range from 112 sq. ft. to 2,120 sq. ft. Zoned C-3, All city utilities. This building has 13,078 gross square footage with 8,720 square feet of rental space.

PARKING: There is approximately 16,000 sq. ft. of asphalt paved and striped parking.

To view this property, contact the auctioneer.



Terms & Conditions: 5% down day of auction with full balance due on or before July 26th, 2019. Property sells subject to the approval of Table Rock Community Bank and the USDA.

Freeman Auction & Appraisals, LLC

Auctioneer: Steve Freeman
 (417)343-1891 sfauctiontime.com

GO TO THE AUCTION • GO TO THE AUCTION • GO TO THE AUCTION • GO TO THE AUCTION • GO TO THE AUCTION •

PUBLIC AUCTION

SATURDAY, JUNE 1, 2019
STARTING AT 9:00 AM

Location: 14950 Carthage Road, Dixon, MO 65459

Directions: From Hwy 28 in Dixon turn on Chestnut Street (beside the VFW) and follow to the Dixon Cemetery. At the Cemetery bear left onto Carthage Road and follow to sale site. Watch for signs.

Household & Collectibles

- Enormous Amount of Doll
- House Miniatures
- About 23 Hand Quilted Quilts
- Vintage Coach Leather Purse
- Pink Depression Glass
- Drafting Desk w/ Inkwell
- Horse Drawn Farm Implements
- Antique Sewing Basket/Table
- Howard Miller Regulator Clock (nice)
- McCoy Aunt Jemima Cookie Jar



- Lots of Cast Iron-Teapot, Kettle, etc
- Mirror Hall Tree
- Stool w/ Cast Iron Base
- Lot of Frankoma Pottery
- Civil War Sword
- Revolutionary War Bayonet
- Lots of Cocks of many sizes
- Crock Churns
- Pottery
- Wooden Cheese Boxes
- Post Vise
- Lenox Glass
- Staffordshire
- Balleck
- Royal Dalton
- Micen
- Majolica
- Oil Lamps

- Lots of Wooden Boxes
- Lot of Coins
- Some Native American Artifacts
- Wood/Glass Counter/display cases
- Hooked Rugs
- Braided Rugs
- Antique Dolls
- Czech/Bavarian Glass
- Child's Primitive Cabinet

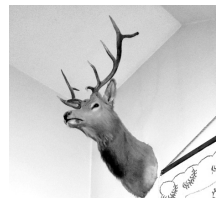


- Shop & Outdoor**
- Several Nuts & Bolt Bins
 - Craftsman Tool Chest
 - Vice on Stand
 - Copper Fittings
 - Lots of tools
 - Some New Vintage Automotive

Guns



- Ruger P94 .40S&W
- Iver Johnson .32 cal breaktop
- H&R 929 revolver .22 cal
- Springfield 1911 A-1 .45Auto
- Old .38 Special Revolver
- H&R M-1 Garand 1953
- Remington .243 Win
- Savage .243 Win
- Winchester Mod 72 .22 rifle
- Hopkins & Allen .22 rifle
- Ranger .22 rifle
- Marlin 1891 .22short
- Browning A-5 .20ga (Belgium)
- J.C. Higgins .20ga
- Winchester .12ga Dbl Barrel
- Hamilton .22 rifle
- Wards Westernfield .22 rifle
- Lots of Ammunition
- Knives
- Ammo Cans
- Elk Mount



This is Monty's "Starting Over" Auction. There is way too much to list or photograph. Come and spend the day. Hillbilly Boys BBQ will have lunch available. We may run 2 rings during the day, so bring a friend. Ed

Seller: Monty Chadbourne

Sale Conducted by

WARDEN AUCTION SERVICE

Ed Warden – Auctioneer

(573) 528-0729 or (573) 336-2367

www.wardenauction.com

TERMS

Cash, Credit,
Debit or Approved
Check

ID Required for
Bid Number

TERMS

Not Responsible
For Accidents
or Losses

Nothing Removed
Until Settled For

GO TO THE AUCTION • GO TO THE AUCTION • GO TO THE AUCTION • GO TO THE AUCTION • GO TO THE AUCTION •

R&R AUCTION SERVICE

ESTATE AUCTION SATURDAY, JUNE 1ST • 10:00AM

149 Hayes Road • Buffalo, MO
Estate of Charles and Pauline Hayes



Items Are Being Added To This Auction Daily As More And More Treasures Are Uncovered.

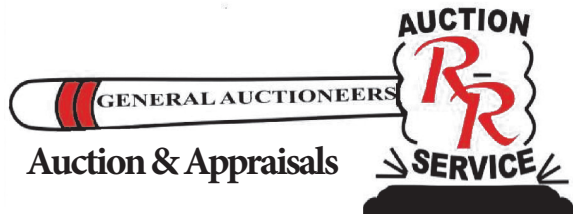
Here Are Several Items We Now Know About...Model 67 Winchester 22, Another 22 Rifle In Need Of Major Repair, Trolling Motor, Kenmore Dishwasher, Whirlpool Side By Side Refrigerator, Lots Of Vacuums, Drop Front Desk, Red Metal Bistro Set, Oak Office Chair, Entertainment Center, Coffee Table, Sliding Glass Vinyl Door, Cement Mixer, Sulky Rake, 2 Garden Tractors, Dearborn Model 14-15 Sickle Mower, Flat Blade For Craftsman Garden Plow, Tiller, 2 Craftsman Riding Mowers, 2 Walk Behind Trimmers- Yardman And Craftsman, Several Push Mowers, Attachments For Garden Tractor, 2 Large Booms, Large Oval Galvanized Wash Tub, Window, Big Glass Jugs, Round Outdoor Table, Treadle Sewing Machine Base, White Cabinet, Hen And Chicks Pot, Williams Gas Heating Stove, Dresser, Solid Wood Cabinets, Chest Of Drawers, Oil Lamps, 2 Big Pressure Cooker (Canners), Wood Trash Bin, Knick Knacks, Laminate Flooring, Computer Chair, Leather Headboard, Hollywood Frame, Old Crib, Old Wooden Boxes, Coke Glasses, Old Coke Carrier, Small Table, Sewing Accessories, Sewing Machines, Hamilton Beach Microwave, Steel Trap, Old Wash Tubs Various Sizes, Ironware, Sad Iron, Frigidaire Upright Freezer, Jars, Drop Leaf Table, 31 Day Wall Clock, End Table, Puzzles, Snack Bar Cabinet, Walkers, Home Stereo, Record Albums, Wall Shelves, Quilts, Blankets, Milk Cans, Silage Fork, Log Chain, Ford Hub Caps, Blue Jars, Chicken Waterers, Metal Dresser, Old Canister Set, Old Wrenches, 4 Tine Pitch Fork, Old Lantern, Weed Hooks, Dog House, Push Plow, Metal Gas Can, Old Buttons, Old Marbles, Shop Vac, Maul, Roll Around Tool Chest, Egg Plates, Metal Rolling Foot Stool, Bookshelf With Glass Door, Old Irons, Misc. Dishes, Rolling Pin, Steel, Meat Bhammer, Ice Cream Scoop, Glass Mixing Bowls, Anchor Hocking, Polaroid Camera, Horse Collar, Several Area Rugs, Sunbeam Mixer, Cake Pans, Canes, Ge Grill/Sandwich Maker, Heater, Fans, Couches- Leather And Suede, Estate Dryer, Leather Loveseat And Chair, Electric Skillet, Minnow Trap, Granite Pail, Yarn, Metal Mailbox, Desk, Police Scanner, Canister Set, Old Manual Typewriter, Pop Bottles, Crate, Old Lantern, Quilting Pieces, Mirrors, Card Table, Binoculars, Metal Bed Frame- Full Size, Glasses, Glass Pitcher, Minnow Bucket, Old Rogers Silverware, Old Kitchen Utensils, Panasonic 5 Disc Dvd, Swag Light, Pot Holders, Embroidered Tea Towels, Collapsible Aluminum Cup, Rival Soft Serve Ice Cream Maker, Old Ladies Hankies, Pictures, Table Lamp, Small Kitchen Table, Recliner, Coolers, Afghan, Old Cookie Cutters, Old Disc, Shot Glasses, Many More Items Too Numerous To Mention.



Pre-bid online at www.rrauctionservice.com

TERMS: Cash, check, or credit card with proper I.D. nothing removed until settled for A 3% fee will be added to credit card purchases. Not responsible for errors in listing. Any announcement made sale night will take precedence over any printed matter. **Note:** Service will take every precaution to prevent accidents, but will not be responsible should any occur.

**For more information contact Professional Auctioneer Russ Weeks
at 417-576-7357 or check out www.rrauctionservice.com**



Serving this area's
auction needs since 1997 with
honesty and professionalism.
www.rrauctionservice.com
(417) 576-7357 or
(417) 345-4140



CAGA
CERTIFIED
APPRAISER

REAL ESTATE & ESTATE AUCTION

Friday, May 31st, 2019 ~ 10:00 AM

LOCATION: 1120 West Lee Street; 1/2 Block West Of Nevada High School,
Nevada, MO (Watch For Signs)

Auction For Jim & Shirley Gragg Estate



Real Estate Sells First At 10:00 AM

Tract 1: Approx 1400 Sq Ft 2 Bedroom 1 Bath Home That Has Kitchen, Dining, Living, Family, Utility & Office Rooms. Home Has Central Heat & Air, New Roof, Lots Of Cabinet Space & Attic Setting On 2 Lots, Only 1/2 Block From High School On Very Quiet Street. Has Large 30x30 Shop Building W/Concrete Floor, Electricity, With Bathroom & Office Area, Shop Is Built To Be Converted Into A 2 Car Garage Easily As Well. Very Clean, Nice Home & Shop.

Tract 2: 1 Corner Large Lot That Has 1 Car Garage W/ Concrete Floor & Electricity. Lot Is Already Set Up For Building A Home W/Electric & Water Access. To Preview Properties Contact Phil At 417-622-3889 Or Bill At 417-214-0093.

Terms: 10% Down Day Of Sale With Signed Contract And Balance Due In 45 Days Or When Closing Date Set By Abstract Office. Seller Has The Right To Accept Or Reject Any And All Bids.

Antique, Modern Furniture & Appliances

Ant Oak Sellers Kitchen Cabinet, Ant Oak Pie Safe, Ant Oak Buffet, Ant Oak Buffet Mirror, Ant Oak Sewing Machine, Ant Oak Glass Claw & Ball Foot Organ Stool, Ant Oak 6 Leg Oval Table, Ant Wood Highchair, Ant Oak Wood Desk, Ant Wood Trunk, Ant Wood Shelf, Ant Setting Chair, Several Ant Pictures & Mirrors (Some Unusual), Gossip Bench, Curio Cabinet, China Hutch, 3 Pc Retro Bedroom Suite Inc Full Bed, Dresser W/Mirror, Chest Of Drawers, Ant Davey Crockett Lamp & Other Ant Lamps, Wood Wash Stand, Ant Mantle Clock, 4 Pc Solid Wood Bedroom Suite Inc Queen Bed, Dresser W/ Mirror, Armoire, Nightstand, Wood Quilt Rack, Wood End Tables, Piano, Dual Recliner Couch & Matching Reclining Loveseat, 3 Cushion Couch, Swivel Rocking Chair, Newer Lawyer Style Book Case, Oval Kitchen Table & Chair, Pantry Cabinet, Several Shelf Units, File Cabinets, Computer Desk, Treadmill, Console Stereo, 2 Flat Screen TV's, Washer & Electric Dryer, Flat Top Electric Cook Stove, Refrigerator, 5 Cu Ft Chest Deep Freeze, Other Items Not Listed

Antiques, Collectibles & Households

Old Crocks, Old Crock Bowls, Ant Oil Lamps, #3 Pittsburg Pottery Crock Butter Churn, Ant Coffee Grinder, Old Hand School Bell, Cast Iron Pcs, Cast Iron Banks, Caboose Lantern, Old Cow Bells, Ant Counter Scales, Old Jars & Bottles, Old Linens Inc Quilts, Lg Ant Spoon Collection W/holders, Lots Of National Finals Rodeo Collectibles Inc Numbered 194 Of 500 Silver Spurs, Several NFR Belt Buckles, NFR Frosted Mugs & Jackets, Lionel Train Set, Ant Red Wagon, Ant Toy Firetruck, Lg Lot Of Ant Toys (Several Metal), Lg Lot Of Beanie Babies, Old Dolls, Old Designer Purses, Lg Lot Of Western Books Inc Louis Lamoure, Zane Gray & Others, US Ammo Pouch, Ant Chalk Pcs, Old Records, Galvanized Pcs, Graniteware, Old Silver Pcs, Several 1800's Books, Black Memorabilia, Old Paper Goods, Very Lg Lot Of Old & Unique Knick Knacks, Old Walking Canes, Prim Tools, Old Sad Irons, Old Baskets, Old Pfaltzgraph Dishes, Hull Vase, Jewel T Dishes, Old Carnival Glass, Old Fenton Glass, Several Old Glass Ornate Vases, Old Blue Glass, Pink & Green, Depression Glass, Very Old Clear & Hobnail Glass, Kitchen Appliances, Tupperware, Pots, Pans & Dishes (Some Old), Other Items Not Listed

Car, Portable Storage Shed, Hand Made Saddles, Mounts, Tools & Outdoor Items

2013 Chrysler 300 All Wheel Drive 4 Door Car, Fully Loaded W/ Extras, Auto Trans, 3.6 Ltr Motor, & Only Approx 94,000 Original Miles, Very Nice Car, 10x12 Shingle Roof Portable Shed, 2 J.P. Gragg Handmade Saddles (Very Nice), Handmade J.P. Gragg Saddle Bags, Saddle Making Bench, 4 Saddle Racks & Other Horse Supplies, Elk Mount, Mule Deer Mount, Elk Rug, Elk Horns, Bear Trap, Fishing Poles & Tackle, Lawn Mower Yard Cart, Chainsaw, Sm Hand Tools, Long Handle Tools, Mountain Bike, Yard Ornaments, Other Items Not Listed

Auctioneers Note: It Is An Honor To Be Conducting This Auction For The Gragg Estate. This Is An Outstanding Real Estate Property Opportunity. Very Clean & Nice House On 2 Lots As Well As Excellent Building Site On Corner Lot With Garage. Antique, Modern Furniture & Appliances Are Very Excellent, Small Antiques, Collectibles & Primitives Are Excellent As Well. NFR Items Are Neat & Some Unique. Car, Shed, Mounts & Tool Items Are All Great & In Working Order. This Is An Auction You Do Not Want To Miss. Please Plan Now To Attend. **Sale Order: Real Estate Sells First Followed By Antique, Modern Furniture & Appliances Then Antiques, Collectibles & Households. At Approx 1:00 PM Will Sell Car, Shed, Saddles, Mounts & Related Items. Tools & Outdoor Items Will Finish Auction. See Ya There!!!**

Terms: Cash or check with proper ID. Now accepting most major credit cards. Nothing removed until settled for. Statements made the day of sale takes precedence over printed material. Everything sold as is where is. Not responsible for accidents. Restroom available. Concessions Provided By Connie's Concessions. Check our website for upcoming auctions and for additional pictures!!



NANCE AUCTION SERVICE

No Matter How BIG or small, We Do Them All!

www.nanceauctionservice.com

Col. Bill Nance 417-214-0093

In God We Trust

Philippians 4:13

REAL ESTATE & ESTATE AUCTION

Saturday, June 1st, 2019 ~ 10:00 AM

LOCATION: 215 North Osage, Nevada, MO (Watch For Signs)

Auction For Ketter Motors & The Personal Property Of Randy & Debbie Ketter



Real Estate Sells First At 10:00 AM

Real Estate Consists Of 2000 Sq Ft Shop Building With Large Office Area, 3 Work Bays & 1 Wash Bay, Shop Has Concrete Floor, Electric Throughout & Is Heavy Wired Even For 220. Office Has Gas Heat & Window Air, Large Glass Front Door & Is Finished This Building Is On A Very Heavy Traffic Area & Prime Location On Osage. This Shop Would Be Perfect For Any Mechanic Looking For Perfect Location Or Would Also Make An Excellent Spot For Car Dealership As Well As A Great Spot For Car Detailing Shop. This Shop Is Setting On A Large Open Lot With Plenty Of Room For Parking & Display. Perfect Business Opportunity Location. Do Not Miss Out!!! To Preview Contact Debbie @ 417-448-7375 Or Bill @ 417-214-0093.

Terms: 10% Down Day Of Sale With Signed Contract And Balance Due In 45 Days Or When Closing Date Set By Abstract Office. Seller Has The Right To Accept Or Reject Any And All Bids.

Antique, Modern Furniture, Appliances Also Antiques, Collectibles, Memorabilia

Ant Oak Buffet, Ant Oak Sideboard Buffet, Ant Oak Record Cabinet, Ant Chest Of Drawers W/Carved Cow Skulls & Leather Handles, Ant Table, Oak China Hutch, Oak Kitchen Table & 6 Chairs, Oak Rolltop Desk, Several Vintage Prints & Pictures Some W/Ornate Frames All Originals, Chrome End Table W/Glass Top, Lg Leather Sectional (Very Nice), Wood Coffee & End Tables, Several Office Chairs & Desks, Stereo W/Turntable, Speakers & Sub Woofers, Several NWTF Prints & Collectibles, Ducks Unlimited Collectibles Inc Bar Seat, Refrigerator, 4 Cu Ft Chest Deep Freeze, Dishwasher, Rare Little Debbie Snack Cake Metal Pedal Car New In Box, Kingsford Charcoal Race Car Pedal Car New In Box, Both Cars Have Only Been Out Of Box To Take Pictures For Auction, Lg Lot Of Collector Memorabilia Inc Chiefs, Royals, KU & Others Some Autographed, Uncut Post Baseball Cards, Vintage Coca Cola Hanging Lamp, Vintage Coca Cola Wooden Wagon, NIB Coca Cola Regulator Clock, Rare Estee Lauder Perfume Solids & Compacts Most In Original Boxes, Old & Costume Jewelry, Old Watches, Several Scale Cars & Trucks, Old Cookie Jars, Cut & Crystal Glass, Cambridge Rose Point Stemware, Fostoria Romance Stemware, 10 Atomic Glass Tumblers, Rare 10 Pc Sunflower Covered Bowl Set, Rare Corel Casserole Dishes, Lg Lot Most Rare Hammered Alum Pcs, Old Glass Sets, Old Games, Old Picnic Basket, Beer Advertising Collectibles Inc Rare Bad Frog Beer, Old Movie & Concerts Posters Inc

Signed Rolling Stones, Lg Lot Of Pug Dog Memorabilia Inc Prints, Figures & Statues, Lg Set Of Christmas Dishes W/Extras, Rare McCoy Unipet Treat Bowls, McCoy Dog Food Dish, Weller Jardiniere, Roseville, McCoy & Other Old Pottery, Millennium & Rare Beanie Babies, Teletubies & Furby Collectibles, This Is Only A Partial Listing Of Excellent Antiques & Collectibles, Several Boxes Not Uncovered

Boat, Guns, Arrowheads, Hunting & Fishing Items

1992 Lowe 19 Ft Deck Boat W/Johnson 120 Motor, 1996 & 2000 Jet Skis, Double Jet Ski Trailer, Scuba Diving Equip, Spear Gun, Several Fishing Poles, Vintage Fly Rods, Vintage Lures, Arrowheads, Rem 270 Model 7400 Rifle, Rem 30-06 Model 742BDL, British 303 Rifle, Rem Model 870 Shotgun, Maverick 12 Ga Shotgun, US Arms 12 Ga Double Barrel, F.F. Forbes Double Barrel, Stevens Model 240 Over/Under 410, Savage 24C Camper Special 22/20 Ga Over/Under, Savage 22/410 Over/Under, Savage Model 24D Over/Under 22/20 Ga, Smith & Wesson 357 Pistol, High Standard 9 Shot 22 Revolver, Tarus 380 Pistol, Crossbow, Multiple Deer Stands, Deer Cart, Deer Mount, Approx 10 European Mounts, Mac Reloader, Ant Hard Body Turkey Decoys, Hunting & Fishing Clothing & Attire (Some New), Other Items Not Listed

Autos, Shop Tools, Woodworking Tools, Auto Body Tools & Car Parts

Cars To Inc If Not Sold Before Auction Date: 2006 Chevy Malibu, 2007 Dodge Caravan, 2009 Nissan Sentra, 2006 Ford Freestyle, 2000 Dodge Caravan That Is Handicap Accessible, 1988 Eddie Bauer Ford Bronco II Collector, 1992 GMC Rally Van W/Salvage Title, 1996 Jeep Grand Cherokee (Wrecked), Several Motors, Transmissions, Alternators, Starters & Radiators For Various Cars & Trucks, Hoods For 88-2000 Chevy Truck, Chevy Cavalier, Toyota Corolla 03-05, Toyota Celica, Several Used Fenders & Other Parts, Craftsman Roll Around Toolbox, Several Sm Hand Tools Most Major Brands, Air Tools, Sm Electrical Tools, Body Work Stinger, Sheet Metal Brake, Body Shop Tools, Supplies & Paint, Lg Lot Of Nuts, Screws & Bolts, Ladders, Craftsman Trimmer, Table Saw, Radial Arm Saw, Ceramic Floor Tile, 2- 10 Speed Bikes, Multiple BBQ Grills & Coolers, Lg Lot Of Shop Related Items Not Listed

Auctioneers Note: It Is An Honor To Be Conducting This Auction For Mr. & Mrs. Ketter As We Have Been Friends For Many Years. The Ketter's Are Retiring & Will Be Relocating So We Will Be Offering A Lifetime Of Outstanding Antiques, Collectibles & Memorabilia. A lot Of Rare & Unique Items Will Be Offered In This Auction That You Just Do Not See Every Day, Autographed Items As Well. Outstanding Boat, Jet Skis & Guns Will Be Offered As Well. As They Are Closing Down Their Business Will Offer An Outstanding Real Estate Property & Several Autos As Well. This Is A Very Rare Opportunity To Purchase Outstanding Items. This Is A Large Auction. Please Plan Now To Attend. **Sale Order: Real Estate Will Sell First Followed By Antique, Modern Furniture & Appliances Then Move To Antiques, Collectibles & Memorabilia. At Approx 1:00 PM Will Offer Autos, Boat, Jet Skis, Arrowheads, Guns, Hunting & Fishing Items. Tools, Car Parts & Outdoor Will Finish Auction. See Ya There!!!**

Terms: Cash or check with proper ID. Now accepting most major credit cards. Nothing removed until settled for. Statements made the day of sale takes precedence over printed material. Everything sold as is where is. Not responsible for accidents. Restroom available. Concessions Provided By Connie's Concessions. Check our website for upcoming auctions and for additional pictures!!!



NANCE AUCTION SERVICE

No Matter How BIG or small, We Do Them All!

www.nanceauctionservice.com

Col. Bill Nance 417-214-0093

In God We Trust

Philippians 4:13

MULTI-ESTATE AUCTION

SATURDAY, JUNE 1, 2019 • 10:00 A.M.

**ESTATES OF BRIAN & JACQUE GRABHER, JACK & THE LATE JUANITA
DICKSON & MITZI, JERRY PRUETT, ALZINA WILSON AND OTHERS.
HELD AT: 1925 STATE HWY. O, SEYMOUR, MO 65746**

DIAMOND R INDOOR AUCTION FACILITY ON HWY. O, ABOUT 1.2 MILES NORTH OF DIGGINS, MISSOURI

Equipment • Tools • Farm Supplies • Guns • Antiques • Household & Much More!



EQUIPMENT, TOOLS, FARM SUPPLIES: Good Taylor Way Disc • 300-Gallon Fuel Tank With Stand • 3-Point 6' Brush Hog • 3-Point 6' Rock Rake • 3 Point Bale Unroller • Pull-Type Garden Disc • 3-Point Lift Arm • 3-Point Post Driver • Several Steel Farm Gates • Large 8' Job Box • Small Job Box • 2 Sections 5 Scaffolding With 4 Casters • Large Cable With Hooks • Steel Storage Shelves • Truck Aluminum Tool Boxes • Truck Side Boxes • Folding Lawn Mower Ramps • Large 4'x4' Rolling Shop Cart • 2-Wheel Trailer With No Floor (NO TITLE) • Truck Fuel Tanks • Big Truck 5th Wheel Hitch • T-Post Drivers • Grease Guns • Chisels • Punches • Hacksaws & Blades • Hammers • Utility Knives • Roofing Hatchet • Torpedo Levels • Measuring Tapes • Pry Bars • Transit • Mitre Boxes • Extension Cords • Hard Hats • Dremel Tools With Bits • Ford Code Scanner • Large Lot Screwdrivers • 1/4" - 1/2" Ratchets • 3 Cutting Torch Sets (No Bottles) • Torch Cart • Tool Aprons • Paint Brushes & Rollers • Welding Gloves • Small & Large Parts Shop Organizer Bins • A/C Gauges • Socket Sets • Wrenches • Cutting Wheels • Large Lot Files • Large Bench Vise • Nut Drivers • Gas Cans • 3 Plastic 50-Gallon Barrels • Clamps • Ryobi 9" Band Saw (Like New) • Saw Zalls • Makita Cordless Drill Kit With/ Flashlight • Block Plane • Black & Decker Jig Saw • Dayton 1" Belt 8" Disc Sander • CanOBD 2 & 1 Tool Kit Code Reader • Pliers • Pipe Wrenches • Lug Wrenches • Tubing Cutters • Bostitch Brad Nailer • Pneumatic Staple Gun • Pneumatic Grinder • Pneumatic Paint Gun • Like New Central Pneumatic 115V 2 HP 8-Gallon Air Compressor • Like New Valley Brand Pickup 5th Wheel Receiver • Lincoln Arc Welder With Leads on 2-Wheel Cart • Black & Decker 1.5 HP Router • Craftsman 3x21" Belt Sander • Heavy Duty 3-Ton Long Arm Jack • Makita Grinder • Halogen Work Lights • 6V/12V Battery Chargers • Propane Brush Torch • Shop Vacs • Tool Boxes • Sump Pump • 5' Aluminum Step Ladder • 8' Aluminum Step Ladder



GUNS, KNIVES, HUNTING, FISHING & OUTDOORS: Colt Python .357 Magnum With/ Holster • Winchester Model 70 7MM WSM • Ruger .30-06 M77 With Leopold Scope • Browning Invector-Plus BPS Special Plus 24" Barrel Chambered 3.5" • Kimber Model Micro CDP 380 ACP Semi-Auto Barrel Length 2.75" With/ Laser Light • Springfield Armory XD .45 ACP NIB • Springfield Armory XD .45 GAP • Wyoming Arms Parker .40 MM • Ruger Blackhawk .41 Cal • Kahr CW9 9MM • CZ 2075 Rami P • Intatec Sport 22 .22 Cal • CZ 527 Classic .223 Savage MD 11 .308 • Marlin 39A .22 • Remington Speed Master .22 • Remington 512 Sportmaster .22 • Marlin MD60 .22 • Winchester 37A 12g • Winchester 1200 12g • (2) Franchi Auto 12g • Over 500 Rounds .22 Ammo • 12g Ammo • 10MM Ammo • .45 GAP Ammo • Lot New Damascus Steel Knives • Pine 12 Gun Cabinet • Gun Cabinet • Several New In Box Mtech DX-50 Cross Bows • Several New M-Tech Hunting Knives • Other New Knives • New Fixed Blade Knives • Large Army Tent Approx. 20x20 • Several Fish Reels • Several Fishing Poles • Bow Case • Ammo Box • Grand Slam Supreme Model GS-2500MS Tree Stand • Several Ice Chest & Coolers • Fish Net • Mercury Force 5 HP 2 Cycle Boat Motor • Coleman Lanterns • Tackle Boxes • 3 Fish Cookers • 1 Double Fish Cooker • R.V. Ice Maker • Camping Stove



ANTIQUES & COLLECTIBLES: Magic Chef Propane Cook Stove • 4' Wooden Level • Maid Rite Wash Board • Wash Board • Vintage Upholstered Sitting Chair • Treadle Sewing Machine • Walts Pop Crate • 5-Drawer Chest of Drawers • China Hutch • Accordion In Box • Small Hall Table • Oak Chair • Wood Rocking Horse



APPLIANCES, HOUSEHOLD & OFFICE FURNITURE: Nice Wood Square Table With 4 Chairs • Oak Bookcase • Upright Freezer • Electric Fireplace in Oak Mantle • Multiple Ventless Propane Heaters • Matching Wood Coffee Table & 2 Hexagon End Tables • Brown Microfiber Couch With Recliners • Large Floral Sofa • Navajo Print Sleeper Sofa • 2 Green Upholstered Bar Stools • 2 Blue Matching Rockers (Seats Worn) • Nice Rustic Pine Armoire With Matching 4-Drawer Hutch • Multiple Nice Microwaves • Dark Wood Chairs With Leather Inset • 2 Flatscreen Smaller TVs • Whirlpool Electric Clothes Dryer • Several Nice Rugs (Large & Small) • Foreign Authentic Rugs • Artist Painting Easel • Several Wall Pictures • Grill Mate Electric Grill • Electric Grill With Warming Tray • Food Processor • Food Dehydrators • Several Table Lamps • Meat Grinders • Electric Can Opener • Several Dish Sets • Tupperware Bowls & Containers • Kitchen Utensils • Decorative Vases Set of 6 Solid Wood Dining Chairs (2 With Arms) • Set of 5 Solid Wood Dining Chairs With Floral Padded Seats • Sofa Pillows • Large Trunk • Plastic Storage Organizers With Drawers • Large Oak Entertainment Center • Coffee Pots • Ironing Boards • Various End Tables & Coffee Tables • Tea Towels • Linens • Kitchen Knives • Round Oak End Table • Oak Entry Wall Mirror With Coat & Hat Hooks • Quilt Rack • Vanity Mirror/Medicine Cabinet • Lasko Floor Heater With/ Fan • 2 Small Rolling Carts • Several House Fans (Floor & Standing) • 2 Large Rolling Carts • Several Book Cases • Toaster Oven • Indoor Doggy Play Pen • Dog Crate • Several DVD Movies • Waring Pro Electric Deep Fryer • White Mountain Hand Crank Ice Cream Freezer • Rival Rice Cooker • Juiceman Jr. Juicer • Black & Decker Lids Off Jar Opener • George Foreman Grill • Room Humidifier • Several Books • Several Nice Wicker Baskets (All Sizes) • Mirrors • 2 Corner Shelves With Doors • 2 Nice Oak High Back Dining Chairs • Wood & Cushion Rocker • Oak Office Desk • Countertop Ice Maker • Pine Indoor Park Bench • Set Of 4 Wooden Dining Chairs • Oak Bar Stool • Rolling Chairs • Clocks • Beds & Bed Frames • Electric Fireplace • Solid Wood China Hutch • Apartment Fridge • Wood & Glass Octagon Coffee Table • Wood Entry Table With Glass Cover • Office Chairs • Wooden Corner Office Desk • Nice L-Shaped Oak Office Desk With File Drawers • Iron Bakers Rack • Several New Digital Kitchen Scales • 2 Wicker Style Bar Stools



LAWN, GARDEN & OUTDOOR: 2 Stihl Straight Shaft Weed Eaters • Murray 22" Push Mower With Briggs 3.75 HP • Craftsman 5 HP High Wheel Pushmower • Good Rear Tine Garden Tiller • Great States Engineless Pushmower • Wicker Love Seat With 2 Matching Chairs & Cushions • 4 Matching Plastic Patio Chairs • Pool Side Lounge Chair • Backpack Pump Sprayer • 2 Walnut Pickers • Pool Volleyball Net • Wooden Patio Bench • 3 Gas BBQ Grills • Pump Sprayers • Planters • Flower Pots • Kids Wooden Picnic Table • Outdoor Figurines • Nice Dog House • Kids Patio Chairs • Wicker & Glass Patio End Table • Bird Houses • Barn-Style Mailbox • Oval Galvanized Tub • Galvanized Bucket • Small Charcoal Grill • Large Bird Bath • Concrete Garden Bench • 2-Wheel Seeder/Spreaders



SADDLE, HEAT & AIR SYSTEM, EXERCISE, HANDICAP & MISC.: 2 Hospital Beds (New To Like New) • 2 Wheeled Walkers • 2 Walkers • Shower Seats • 2 Bed Side Toilets • Wheelchair • Like New Bowflex TC100 Tread Climber (Approx \$1,800 New) • Big Wheel Tricycle • Lifestyle 2808 Electric Tread Mill • 2 Exercise Bikes (1 Like New) • Hello Kitty Girls Bike (Nice) • Zip Board • Skate Board • Snow Sleds • Several Pieces Ggd Luggage • Men's Size Med. Inter Trench Coat • Men's Lg. Leather Jacket • Men's Lg/XL Leather Motorcycle Coat • Men's Lg. Wool Trench Coat • Several Women's Purses • 4 Clothing Racks • Kids 14" King Saddle • Halter • Bridle • Commercial Glass Doors With Aluminum Frame • Gibson 3.5 Ton R-22 10 SEER A/C Unit With York 3.5-Ton Electric Furnace With 20 KW Heater • Trump 2020 Hats • Licensed Military Hats • Motorcycle Helmets



**MUCH, MUCH MORE THAT IS NOT LISTED!
CONCESSIONS AVAILABLE ALL DAY • HOPE TO SEE YOU THERE!
SEE FULL LISTING AND PICTURES AT: www.auctionzip.com**

**TERMS OF AUCTION: EVERYTHING SOLD AS IS WITH NO WARRANTY OR GUARANTEE IMPLIED.
ANNOUNCEMENTS MADE DAY OF SALE TAKE PRECEDENCE OVER ANY PRINTED MATTER. CASH, GOOD CHECK OR CREDIT CARDS ACCEPTED.**

DIAMOND R AUCTION COMPANY
Ricky Swarengin, Auctioneer • Seymour, Missouri

417-935-4072 • WWW.DIAMONDRAUCTIONS.COM

CONSTRUCTION EQUIPMENT AUCTION



DD2252
'13 Hyundai
Robex 520LC-9A
excavator

THUR., JUNE 6

Bidding starts
to close at
10 a.m. CDT

190+ ITEMS SELL REGARDLESS OF PRICE!



DG1062 '14 John Deere
333E skid steer



DE3468 '03 CAT 950G
Series II wheel loader



DE7777 '95 CAT 140H
motor grader



FM9331 '08 Vermeer D20X
22 Ser. II dir. boring unit

INVENTORY INCLUDES: wheel loaders, backhoes, skid steers, boring units, motor graders, bucket trucks, crane trucks, boom lifts, dozers, pickup trucks, chipper trucks, conveyors, vacuum trucks, water wagons excavators, digger derrick trucks more. All items are sold "AS IS." 10% buyers premium applies.



BID NOW! purplewave.com

JOHN DEERE-2210: 24hp, diesel, 4wd compact tractor with John Deere 210-loader and 62" belly-mower, tractor is mint condition, with 180 original hours. \$10,900obo. Lebanon. 417-718-4787

BRUSH GUARD: Fits 97'-03' F-150. \$200. 5pm to 8pm. 417-270-1776.

FOR SALE. ALLIS CHALMERS D17: Wide front, power steering, 3pt. \$1,950. 573-690-9406.

FORD 2000-GAS: w/bushog. \$2,500. 573-714-5779.

PINE LOG SIDING SALE: \$1.19 per L.F.
www.pineridgerustic.com 573-729-7226,
573-247-2823.

AUCTION REMINDER: Thursday, June 6 @ 6pm. Callaway Livestock Auction. Please see our Auction Directory for more information.

FOR SALE: Tow behind 6' John Deere Brush hog. \$600. 417-259-2203 Grovespring.

FIREARMS: Professional Repairs and Restorations. Baron's Gunsmithing. 573-363-5801, Camdenton.

PUBLIC AUCTION

Due to the passing of Paul Mann, will sell the following from Urbana, Missouri, 2.7 miles west on HH to CR 316, 2.9 miles to CR 327, then 1/2 mile to Peckerwood Dr. Watch for Crawford Auction Service signs.

Wednesday, June 5, 2019
10:00 a.m.

**TOOLS - TRENCHER
BOATS/MOTORS
VEHICLES -**



ONLINE BIDDING AVAILABLE ON MANY ITEMS

See website for photos!
crawfordauctionservice.com

Paul & Jan Mann

**Sam Crawford
Auction Service**
Cross Timbers, MO • 417-998-6629

JOHN DEERE 5055E DIESEL TRACTOR: 55HP, 311 hours. \$14,000 OBO. 573-301-2609.

AUCTION REMINDER: Real Estate & Estate Auction. Sunday May 19th @ 1pm. Nance Auction. Please see our Auction Directory for more information.

Sam CRAWFORD AUCTION SERVICE LLC

Will sell the following located 2 miles East of Halfway, Mo. on Hwy. 32 to Hwy. FF, then South 7 miles to Co Rd S 245, to Rd E 385. Watch for Crawford Auction Service signs.

★ RESCHEDULED ★
Friday, May 31, 2019 - 10 a.m.

HOUSEHOLD - ANTIQUES - TRACTOR - TRUCKS - FARM MISC.

Legend Echoes Ranch
Bernice Hosier

CRAWFORD Auction Service


Chance - Sara - Chase 417-998-6629 Sam 417-328-9157 Chase 417-399-9904 Chance, CA 417-268-1751 Tom Payne Jack Lancaster

TERMS: Cash or purchase order. Selling as presented. No warranties. No returns. Local pickup only. Bidders must be at least 18 years old and have a valid driver's license. All transactions are final. No refunds.

Over 25 Years In The Livestock Business

Cattle Sale

Every Monday at 12:00



Feeder Calves
to sell at 12:00 pm
**Butcher Cows
& Stock Cows**
following

Goat, Sheep & Hog Sale

2nd Tuesday of the Month • 6 pm

Feed & Water Pens Available
All Consignments Welcome
Up Until Sale

We Appreciate Your Business!

Salem Livestock Auction

Hwy 32 Salem, Mo
Barn- 573-729-8880

Allen Thompson 417-932-4097	Terms of Sale: Cash or Approved Check!	Renee Lauderdale 417-926-2682
Chuck Thompson 417-257-5610		Keith Robertson 314-560-3285

AUCTION REMINDER: Cattle Sale every Monday at Noon. Salem Livestock. Please see our Auction Directory for more information.

JOHN DEERE 635 DISKBINE: with Roller, field ready. \$9,850. (573)765-4406.

JOHN DEERE 310A DIESEL BACKHOE LOADER: \$8,850. 573-765-4406.

1984 FORD GRILL & HEADLIGHT TRIM. \$40. 573-308-5884.

NEW HOLLAND: 1411 diskbine w/roller. \$8,250. 573-765-4406.

OLD FARM TABLE: 10' long, 38" wide, seats 12. \$300. 417-742-1234.

GOLDEN RETRIEVER: Beautiful Female, 5 months. \$600. 314-808-1496.

3pt TWO-SECTION HARROW. \$200. Rogersville. 417-753-2747, 417-766-1991.

100# PROPANE GAS CYLINDER: 24 gallon with regulator and cap. \$50. Conway, 417-718-5347.

FOR SALE. CATERPILLAR DOZER 07-17A: Hydraulic, N/BITS, good dozer. 660-341-3627.

Callaway Livestock Center, Inc.

Kingdom City, MO
www.CallawayLivestock.com

SPECIAL COW SALE THURSDAY NIGHT JUNE 6th, 2019 AT 6:00PM

Estimating 700 to 800 head of Bred Cows,
Cow/Calf Pairs and Breeding Bulls.

Early Consignments

- 10+10** Angus 2 yr. old Hfrs. SyGen Genetics with spring born Angus calves by side. Complete vaccinations. Gentle, fancy. Running back with SyGen Angus Bull.
- 41+41** Red Angus 3 yr. old. 2nd calvers with Red Angus calves by side. Complete vaccinations. Gentle, fancy.
- 42** Blk - Blk W/F Cows. 4 to BM yrs. old. 35 with Blk calves. Remainder bred to Angus Bull.
- 41** Angus Cows 4 to BM yrs. old. 10 with Blk calves by side, remainder bred to Angus Bull for fall calving.
- 1** Angus Bull. 3 yrs. old. Semen & Trich tested.
- 20** Angus or Charlois Cows. 4 to 7 yrs. old with big calves by side.
- 31** Angus Cows. 5 to 8 yrs. old. 20 with 300 lbs. calves by side, remainder bred to Angus Bull.
- 21** Blk - Blk W/F Cows. 3 to 5 yrs. old. 3rd period preg., bred to Angus Bulls. Complete vaccinations, Longrange. Fancy.
- 42** Blk - Blk W/F Cows. 3 to 5 yrs. old. 2nd period preg., bred to Angus Bulls. Complete vaccinations, Longrange.
- 12** Blk - Blk W/F Cows. 3 to 5 yrs. old. 1st period preg., bred to Angus Bulls. Complete vaccinations.
- 10** Red Angus Cows. 3 to 5 yrs. old. 2nd or 3rd period preg., bred to Angus Bulls.
- 15** Blk - Blk W/F Cows. 7 to BM yrs. old. 2nd or 3rd period preg.
- 20** Angus Cows. 3 to 6 yrs. old. 3rd period preg.
- 33** Blk - Blk W/F. 3 to 5 yrs. old. Fall calvers, 2nd period preg.
- 10** Angus Cows. 3 to 5 yrs. old. 1st period preg.
- 2** Red Angus Bulls. 18 months old. Semen tested, virgin bulls.
- 1** Blk Composite Bull. 2 yrs. old. Semen & Trich tested. Angus/Saler breeding.
- 1** Blk Composite Bull. 3 yrs. old. Semen & Trich tested. Angus/Saler Breeding.
- 1** Purebred Angus Bull. 3 yrs. old. Semen & Trich tested.
- 8** Registered Angus Bulls. 20-26 months old. P.P.D.'s top 30% of Angus breed. Semen & Trich tested.

This ad was prepared 2 weeks before sale. Many more expected by sale day. All bulls sell at the start of the sale at 6:00pm.

For more information contact:
Jack Harrison 573-999-7197
John P. Harrison 573-220-1482 / 573-386-5150
David Means 573-220-0472/573-642-9753
Claude Niemeyer 573-324-2942

CALLAWAY LIVESTOCK CENTER INC.
573-642-7486

PUBLIC AUCTION

**SATURDAY,
JUNE 1, 2019
10:00 A.M.**

**3500 NORTH TEN MILE DRIVE
JEFFERSON CITY, MO**

ANTIQUE AUTO

1931 Ford Model A Deluxe 6 Wheel Roadster w/ Rumble Seat, Trunk, Rock Guard, Quail Radiator Cap, Chrome Over Spare Tire. Blue & Black. Restored in Excellent Condition. Note: Sells with reserve. Owner can approve final bid.

CAR PARTS

Flat Head Motor; Flat Heads; Model A Motor & Transmission; Model A Bumper, Linkage, State, Generator, Carburetor, Hood, Radiators; Model T Lamp; Fender Skirts; Other Old Car Parts; 525-550-18 Tires.

ANTIQUES & COLLECTIBLES

Cast Iron Christmas Tree Stand; Old Hex Barrel .22; Single Shot 12 Gauge; Arrow Heads; Indian Relics; Cast Iron Scales; Cut Rocks; Round Oak #18 Cast Iron Pot Belly Stove out of Old General Store; Griswold Skillets & Waffle Iron; Dazey 40 Churn; Crocks & Jugs; Marbles; Budweiser Beer Light; 1960's Lincoln Yearbooks; Cookie Jars - Apple, Stove Tea Kettle; 5 Aladdin Oil Lamps - Green Washington Drape, Clear Beehive, Venetian Moonstone & Vaseline; Ruby Hanging Exit Light; Weller & Roseville Pieces; Collectible Texaco Filing Station Buildings; Mobilgas Oil Barrel; Brass Ships Light; Shell Oil Can; Alemite Fluid Display; Barrel Pumps; Cast Iron Fence Sections & Gate Post; Cast Iron Kettle; Cast Iron Trivets; Shoe Cast; 2 Cast Iron Child's Crescent Stoves; Cast Iron Double Wheel Elgin Coffee Grinder; Croquet Set; Old Display Case; 4 Wheel Industrial Cart; Broad Axes; Lighting Rods w/ Glass Balls; Cross Cut Saw; Popcorn Popper; Philco Floor Model Radio; Motorola Floor Model Radio; Model Steam Engine; Cast Iron Penny Bank; Brass Pans; Cast Iron Puppies; Cowboy Boots; Saddle; Horseshoes; Old Soda Bottles - JC, Chamois, Etc.; Old Bottles & Jars; Granite Ware; Cast Iron Implement Seat; Juice Box - Seeburg Select O Matic 100, Happy Days, works.

SAND BLASTER & MISC

Large Commercial Sand Blaster, good condition; Acetylene Hoses & Heads; Mineral Feeder; Water Hydrant; ATV Sprayer; Traeger Pellet Grill; Boomers; Misc Old Tools; Lots of misc not listed.

OWNER: RON & LINDA BOGG

NOTE: Ron & Linda have collected for several years. They have decided it is time to sell some of their items. The Ford Model A is as nice as you will find. Auction will be held inside warehouse. See you at the sale. See website for photos. — Thanks Rick.

TERMS: Cash or good check with proper identification. All sales are final. Everything sells as is, where is. Proper identification is necessary to obtain a buyer's number. Announcements day of sale supersede all printed material.

RICHARD MOFFAT AUCTION SERVICE

708 E. McCarty St., Jefferson City
MO 65101 - Business Office

Auctioneers:

Richard Moffat Matt Michelson
573-761-4293 573-680-6188
Jefferson City, MO Jefferson City, MO

The Moffat Center
573-897-4004
Linn, MO



www.moffatauction.com

Retirement & Real Estate Auction

Thursday, June 6, 2019

STARTS @ 9:03 A.M.

For more info and pictures: www.chuppsauction.com

ADDRESS: 10351 S 4230 Rd Chelsea, OK 74016
 DIRECTIONS: From Chelsea, OK, at the Jct of E 6th St & Hwy 66, go South on Hwy 66 for approx 6 mi. Turn left on E 380 Rd and go 1 mi. Turn right on S 4230 Rd and go 1/4 mi. Property on the left. From Foyil, OK, at the Jct of Hwy 66 & Hwy 28A, go East on Hwy 28A for 3 mi. Turn left on S 4230 Rd and go 1 1/4 mi. Property on the right. From Adair, OK, at the Jct of Hwy 69 & Hwy 28W, go West on Hwy 28 for 11 mi. Turn right on S 4230 Rd and go 1 1/4 mi. Property on the right.

NO RESERVE!

PRIVATE ACREAGE!

17.8 Acres +/- with 115x33 Shop w/ 2 bed 1 bath, living quarters, covered front porch & wash bay. Includes 24x33 barn w/ 2 horse stalls, large pond, lots of mature trees, fenced & cross fenced. Absolute auction!

REAL ESTATE WILL SELL @ 12:01 PM

OPEN HOUSES: Monday, May 20, June 3 from 4 - 6 pm (REAL ESTATE ONLY)

TERMS: 5% down day of sale, min. \$5,000 non-refundable, no contingencies, close in 30 days. 5% Buyers Premium. NO RESERVE! See chuppsauction.com for complete terms.

DALE & MARIA CHUPP

Coldwell Banker Neokla Select

(918) 630-0495

VEHICLES, TRACTOR/LOADER, DOZER, TRAILERS, GOATS, HORSES, FARM IMPLEMENTS, CATTLE PANELS/GATES, 1 BEDROOM HOUSE, COINS, CAR PORT, GRAIN BIN, STORAGE CONTAINER, ZERO TURN MOWER, SHOP & YARD TOOLS, COLLECTIBLES, SADDLES/TACK, SCRAP METAL

LARGER ITEMS & ANIMALS WILL SELL @ 12:46 PM

OWNER: Callie Brown

Auctioneer's Note: Callie has decided to retire and move back to her hometown. REAL ESTATE SELLS at 12:01 pm. VEHICLES, TRACTOR, GOATS, HORSES & LARGER ITEMS WILL SELL AT 12:46 PM. AUCTION WILL HAVE 2 RINGS. Pasture parking. Follow us on Facebook for updates or visit our website for pictures at www.chuppsauction.com.

NOT RESPONSIBLE FOR ACCIDENTS. ANY ANNOUNCEMENTS DAY OF SALE SUPERSEDES PREVIOUS ADVERTISING.

CHUPPS AUCTION & REAL ESTATE

Stan Chupp
(918) 638-1157

Dale Chupp, Realtor
Coldwell Banker Neokla Select
(918) 630-0495

E. J. Chupp

JOHN DEERE 435: Round Baler, monitor, kicker, 4x6. \$5,750. 573-765-4406.

POTS AND PANS CANNED GOODS AND MORE. \$125 or trade. 573-327-9068.

BARN WOOD SIDING: 8" & 10" wide. 573-729-7226. www.pineridgerustic.com

Model 9410 Singer Sewing Machine: \$50. 417-532-8048.

1860'S MODEL CALVARY REENACTMENT SET: with Naval Model Black Powder pistol. 417-300-6006.

FESCUE WANTED TO COMBINE ON SHARES. Phone 417-327-6240.

DARDEN PROFESSIONAL TIMBER HARVESTING, BUYING STANDING TIMBER: Great prices, improve wildlife habitat and improve forest health. State Certified & Fully Insured! 573-247-4808 or 573-739-1122. Salem

BLACKTOPPING BUSINESS: Everything! Income-\$30,000-\$50,000 yearly. \$6,000. 573-604-0674. 800-807-9612.

HESTON 5500 5X5 ROUND BALER: \$1,800. 573-438-2672.

3600 FORD TRACTOR: Very nice. \$6,500. 573-766-5640.

FLIES ARE HERE!! Lewis Cattle Oiler. 417-286-3540 or 774-696-2344.

MURRAY RIDING MOWER: Good Tires, deck etc. needs motor. Only \$195/mower trade. 573-364-7465.

2001 MUSTANG GT: 573-508-8386.

CUSTOM SAW MILLING: Lebanon. 417-533-4607, 417-664-1195.

PUT MORE \$\$\$ IN YOUR POCKET!! Lewis Cattle Oiler. 417-286-3540 or 774-696-2344.

JOHN DEERE 466 ROUND BALER: kicker net wrap, 4x6. \$9,500. 573-765-4406.

AUGER: 8x57, good condition. \$2,500. 573-378-5180.

ELVIS PRESLEY BOOK- THE FAMILY ALBUM: \$10 ; THE PRIVATE LIFE OF ELVIS PRESLEY. \$6.50. 417-532-2045.

TRUCK LOAD OF FLEA MARKET & AUCTION ITEMS: \$200, trade wood or gun. 573-327-9068



MID MISSOURI STOCKYARDS

REGULAR SALE EVERY THURSDAY 11AM

For Farm Visits, Market Updates, or Trucking
 Call **Zach Cox 417-777-1320**
Dan Romine 573-578-4939

**Competitive Buyers!
 Competitive Commission!
 Competitive Market!**

Barn: 417-532-9292 
I-44 • Exit 123 "just outside of Lebanon"
17505 Route 66, Phillipsburg, MO 65722
 For weekly market updates, visit us at www.midmostockyards.com

E-GLEANER COMBINE: Shedded, good. \$1,500. 417-646-8807.

AUCTION REMINDER: Friday, June 7th @ 10am. Gary Sexton Auctions. Please see our Auction Directory for more information.

2001 19FT DUTCHMEN TRAVEL TRAILER: very clean, everything works. \$4,200. 417-345-5634.

FRONTIER 4-BASKET HYD FOLD TEDDER: \$4,250. 573-765-4406.

COLT FIREARM'S DEALER CATALOG'S: illustrated prices, circa #1950's-1960's. \$150. 573-764-3517. Call in P.M.

BRUSH CLEARING: 417-650-0596. www.brushmasterlandclearing.com

7' NEW HOLLAND SICKLE MOWER MODEL-451: \$800. Rogersville. 417-753-2747, 417-766-1991.

AUCTION REMINDER: Saturday, June 1 @ 10am. Richard Moffat Auction Service Please see our Auction Directory for more information.

WE SELL HIGH TENSILE FENCE: All woven, barbed, smooth! Best prices! Call Michael 417-322-0161, Lebanon.

CASE 533 45 HP DIESEL TRACTOR: w/ loader, wide front end, PS, 6' brush-hog. \$5,400. 573-694-0299.

KRONE 9FT 3PT DISK MOWER: nice. \$6,100. 573-765-4406.




MO-KAN
Livestock Market, Inc.

Butler, MO

Stock Cow Sale

SATURDAY, JUNE 1, 2019 • 1 P.M.

Expecting 800 head of bred cows, pairs and breeding bulls.
Bulls semen and trich tested prior to selling.

To view cattle photos and a detailed listing of consigned cattle visit the MO-Kan Livestock website at www.mo-kanlivestock.com.

Questions? Give Jim or Steve a call!

Announcing
Lynn Crouch
as our newest Field Rep.
Contact Lynn at
417-399-4148

MO-KAN Livestock Market, Inc.

Located 5 miles North of Butler at the Passaic Exit #136 • 660-679-6535

Jim Hertzog, Owner Steve Wheeler, Cow Sale Mgr.
816-289-3011 417-840-4149

www.mo-kanlivestock.com • Like us on Facebook & follow us on Twitter @MokanLivestock

SMALL TRAILER: Wood floor and wood sides, 3.5'x6'. \$100. Rogersville, 417-753-2747, 417-766-1991.

DELAVAL BUCKET MILKER: w/old Surge vacuum pump and some parts. \$350 OBO. 417-247-1689, Thomasville.

PORTABLE 10,000 WATT GENERATOR: Electric start, 30' power cord, electric hook-up. \$1,000. No answer, leave message 870-431-4281.

VERMEER 10WHEEL FOLD UP RAKE: \$1,750. 573-765-4406.

1962 MASSEY FERGUSON BULL: w/loader, needs paint. \$4,500. 573-315-9009, Potosi.

AUCTION REMINDER: Every Wednesday at 10:30 am. Farmington Livestock. Please see our Auction Directory for more information.

2004 OPEN RANGE FIFTH WHEEL CAMPER: 34', all weather, in good condition. \$10,500. Lebanon, 417-718-5520.

CUB CADET 50IN MOWER DECK: for zero turn mower, will fit most 48" - 54" mowers, excellent condition, with 3 blades. \$195. 573-364-7465.

PURE BRED BORDER COLLIES: Pups ready 5-20-19 \$100ea. Border collie/Australian Shepherd pups \$100ea. Ready 5-31-19. Hartville, 417-259-9738.

1966 EL CAMINO: to restore, needs paint, have new parts. \$4,000. West Plains. 417-256-2561.

3 WINCHESTER 101 BLACK DIAMOND SHOTGUNS: 4 barrel competition grade, skeet set, in hard case, slightly used. \$3,500, Trap Gun slightly used. \$1,500, Trap Combo, \$1,500. 573-690-2786, 573-496-3391.

REGISTERED BLACK ANGUS BULLS: AI bred. \$1,250-\$2,950. Hartville, 417-259-2520.

BEAUTIFUL NEW HANDMADE QUILTS: One purple, green shades, one blue, one white, queen size. \$350 custom orders welcome. 417-741-2198. Hartville.

ROD AND REELS: fishing season is coming. \$5 and up. Conway, 417-589-8200

15FT BUSHHOG: 3715 Heavy-duty, good condition. \$10,500. 417-766-6504.

27 GAL FUEL TANK: Fiberglass. \$60. Rogersville. 417-753-2747, 417-766-1991.

LIONEL TRAIN SET: Steam engine, tender, caboose and other car, track and transformer. \$195. 573-364-7465, Rolla.

FARM & HOME SERVICES, WELDING & CONSTRUCTION. \$40-\$65 per hour. 417-664-7841, Stoutland.

HEAVY DUTY PALLET FORKS: clamp on style for loader buckets, adjustable stabilizer, #4000 capacity, new in box. \$150. Conway, 417-718-5347.

French Bulldog Puppies: Blues, Chocolate & Lilac Carriers, Whites, Sable Pieds, M/F, Guaranteed. \$895-\$2,500. 573-238-3873, 573-208-0485, Glenn Allen.

ONLINE MECHANIC EQUIPMENT & TOOL AUCTION

Car Lifts • Tire Changers Automotive Tools

1307 W. Monroe St., Mexico, MO
Bidding Ends Tuesday, June 4th at 12:30PM
This Auction Features Staggered Ending Times & Extended Bidding On All Lots.
Bid Online At Atterberryauction.com



Preview: Monday, June 3rd from
3:00PM to 5:30PM

Payment & Pick-Up: Wednesday, June 5th
from 12:00PM to 5:30PM

Car Lifts • Tire Changers Air Compressor • Snap-On Tool Box & Others Lots Of Quality Snap-On Blue-Point & Other Brand Tools

Assorted Automotive Chemicals
Much More Listed On Our Website!

For complete terms, listing, catalog,
pictures & bidding
visit atterberryauction.com
email contactus@atterberryauction.com
or call (573) 474-9295.
Please contact our office if you need
help with the online bidding process.

Seller: GT Automotive

"WE MAKE BUYING AND SELLING AT AUCTION EASY"
Atterberry MEMBERS
Auction & Realty Co., LLC. 
573-474-9295 www.atterberryauction.com

ALUMINUM WHEELS: 4 15X10 mid 90's Chevy Pick-up 2WD. \$95. 573-368-6633, Rolla.

VERMEER TM-700 DISK MOWER: excellent condition. \$10,000. Salem, 573-265-5166/573-263-1875.

REESE 2070W DRUM MOWER: 6'9" cut. \$2,000. Potosi, 573-438-2672.

1999 KODIAK 24' FLATBED GN TRAILER: Wood floor, slide out ramps, dual jacks, tandem axle, 14,000 GVW, elec brakes, 14 Ply tires. \$3,800. Conway, 417-718-5347.



Horse Sale

**1st Wednesday of each month
June 5th, 2019 • 6PM**

For more information or consignments, please call:
Kip: (573) 368-9402
Isaac (417) 327-2355
Denver: (417) 399-2701
Steve: (417) 894-1070
Trucking Available

Top Selling Horses May 1:
Mule \$1100 • Buckskin Geld \$2850;
Grulla Geld \$2700; Grade Bay Geld
\$1150; Top Loose Horse \$650.



**60th
"SALE"
BRATION
SAT.
JUNE 8
11AM**

Customer Appreciation
**HAMBURGERS, HOT DOGS & DRINKS
DRAWING AT NOON - MUST BE PRESENT TO WIN**

Roberts Bros. Sale Barn

1416 E. Hwy. 32 – Bolivar, MO • (417) 326-5815
Like Us On Facebook!

SALE EVERY SATURDAY @ 10 AM
Hay, Wood, Chickens, Ducks,
Rabbits, Goats, Pigs, Cattle

AC 185 DIESEL TRACTOR: Near new tires, GB-440, loader, nice. \$9,450. 573-765-4406.

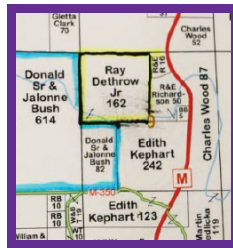
ANTIQUE HAND CARVED CIGAR STORE WOODEN INDIAN: 5' tall. \$800. Seymour, 417-279-8224.

NEW/USED PARTS: For all vehicles/machinery. (Warranted/delivery). 800-807-9612.

BOBCAT 853 DIESEL SKID STEER LOADER: Cab, 58hp. \$8,950. 573-765-4406.

PUBLIC AUCTION FRIDAY, JUNE 7, 10:00 A.M.

Location: From West Plains, Mo. Travel 15 miles east on Hwy. 63 to Koshkonong, Mo. Then take Hwy. M approx. 5 miles to drive on left, then approx. 1/2 mile to property.
Legal: A part of Sec. 9 TWP 23N Rng. 6W, Oregon County, Mo



APPROXIMATELY 162 ACRES COURT ORDERED LAND AUCTION

On site auction. Approx. 100 acres open ground (remainder timber). Well, ponds and the famous "black hole" fishing! Outstanding building sites. Perfect investment opportunity!

TERMS: 10% escrow day of auction. Balance due upon closing.
CONDITIONS: Highest bid submitted to all legal parties and court. Property sells subject to any restriction of record.
INSPECTION: Contact Gary Sexton, 417-255-7001 or Todd Hornback, 417-270-0681.



www.garysexton.com
417-255-7001
1028 Porter Wagoner
West Plains, MO
E-Mail:
gary@garysexton.com
AR Broker #PB00043890
AR License #1568

RAY DETHROW ESTATE

Gary Sexton
Since 1978 Auctioneers, LLC

Todd Hornback
Oregon Co. Rep

Gene Summers
Ozark Co. Rep



All announcements made day of the sale supersede any written material. Not responsible for lost or stolen property or accidents.

MF-50-GAS W/LIVE POWER: \$2,350. 573-714-5779.

AGCO NEW IDEA 5410 DISCMOWER: 10ft. \$3,950. 573-765-4406.

CHECKERED WALNUT WOOD STOCK PISTOL GRIP: for Marlin Model 336 or 1895. \$100. Washington. 636-239-2695.

\$\$\$\$\$ MOBILE HOME SAVINGS That is what we are about for the last 36 years. New. Used. All Sizes. 573-657-2176 amegamobile-homes.com

NAT'L GEOGRAPHIC MAGAZINES: Jan 1985-Dec 1990, in hard boxes, plus 140 assorted magazines. 417-247-1689, Thomasville.

FOR SALE. 2005 32' Cardinal 5th wheel camper: 2 slides, new tires, good condition. \$13,500 OBO. 573-291-3248.

WHITE-TAIL MOUNT: 3x4. \$150. 5pm-8pm, 417-270-1776.

2007 CHEVY 1500 Z71 SILVERADO CLASSIC: extended cab w/A.R.E. cap and Tonneau Cover, loaded, excellent condition, original owner, all maintenance records, 116,000miles. \$13,500. 417-322-0243.

METAL DETECTOR: \$125 or trade. 573-327-9068.

4 REGISTERED POLLED HEREFORD 2YR BULLS: CHB-Top 48%, Baldy Maternal-Top 44%, DNA Tested, Gentle. \$1,900-\$2,100 OBO. 573-244-3157.

140 ACRES FOR SALE. Located in new Amish community, 1/2 open, Alton, MO. Morgan Realty, 417-264-4900, Thayer, MO.

FOR SALE 91 CHEVY PICKUP SMALL STEPSIDE BED: Small damage to front end, v6, no rust, great for parts. Call after 6pm. 417-533-5370.

FARMALL SUPER-C: W/2pt disk and plow. \$2,200. 573-714-5779.

FREE AKC REG. GERMAN SHEPHERD: 1 year old, black & tan, very friendly, good behavior. 630-687-0705.

GERMAN SHEPHERDS: Two males, 3 mo old, one adult male. \$100 each. 417-741-2198.

ALLIS CHALMERS 6080 DIESEL TRACTOR: Cab and air, 80hp, Westendorf Loader. \$9,850. 573-765-4406.

Stay In The Know About Your Favorite Pastime With
TROUT TALK

Get your monthly subscription started today for all the information you'll need to plan your next trip to Bennett Spring State Park and the Lebanon Area.

Plus, all the latest news about fishing, hiking, camping, floating, and so much more! We'll see you there!

**All 8 Issues
 Delivered
 To Your Home
 for only**

\$21⁰⁰

Published Once Per Month March-September

YES! Start My Trout Talk Subscription

Name: _____

Address: _____

Phone: _____

Email: _____

Mail a \$21⁰⁰ check to: Trout Talk c/o Lebanon Publishing Company
 P.O. Box 192 • Lebanon, MO 65536 or Call 417-532-9131

Please include your name, address, city, state, and zip code



WANTED, TIMBER TO LOG ON SHARES: Honest, reliable, references. 417-533-4607, 417-664-1195.

WANTED CUT STOCK, Cants, Slabs, trees length + 45" long scragg blocks. 417-650-0402.

USED AMERICAN FAMILY DOUBLE-WIDE These do not last! Excellent condition. Call Quick, 573-499-9993 columbiadiscounthomes.com.

AUCTION REMINDER: Online Mechanic Equipment Ends Tuesday, June 4th, 12:30p.m. Atterberry Auctions. Please see our Auction Directory for more information.

CRAFTSMAN FLOOR DRILL PRESS. \$150. 55 gallon hand Fuel Pump. \$50 573-378-5180

NEW NEW NEW DISPLAY HOUSE!!! Call Marla to hear what is new inside 573-657-7040, chateauhomes.net.

SITREX: 6 basket, hyd fold tedder. Good. \$6,500. 573-765-4406.

SIDEWINDER TIRE DRIVE: 6ft, 3pt brushcutter, very nice. \$1,350. 573-765-4406.

GLEANER L-24FT RIGID HEADER: good. \$750. 417-646-8807.

FOR SALE. ALLIS CHALMERS D17: Wide front, power steering, 3pt. \$1,950. 573-690-9406.

CROWN

Power & Equipment

SERVING YOU IN 8 LOCATIONS!

HAY

- 66411 Pequea TT6000 Tedder-6 Basket..... **\$8,450.00**
- New Holland H7230 Roller, Discbine..... **\$15,900.00**
- 60892 Massey Ferguson 2756 Round Baler, 5x6, Net..... **\$7,500.00**

TRACTORS

- Kubota L4300 DT Tractor 4WD, w/Ldr..... **\$14,300.00**
- Massey Ferguson 65 Gas..... **\$5,500.00**
- Massey Ferguson 135G Tractor..... **\$3,750.00**
- Kubota 7200HST..... **\$2,750.00**
- Kubota M7040 Tractor, 4WD, w/Ldr..... **\$36,850.00**
- Allis 185 Tractor, w/Ldr..... **\$8,995.00**
- Kubota L4701 DT Tractor, w/Ldr, 250Hrs..... **\$19,500.00**
- John Deere 2030 Tractor W/ Loader..... **\$6,500.00**
- New Holland TC40 Tractor, 4WD, w/ Loader..... **\$14,900.00**
- Massey Ferguson 471 Tractor, w/ Loader, 1183 Hrs. **\$14,250.00**
- Massey Ferguson 4345 Tractor, Cab, 2WD, Ldr., 800 Hrs. **\$21,900.00**

Eldon, MO

3369 Hwy 52 W. • 573-392-0230

www.crown-power.com

Sales: (Ag) Gene Klein and (Ce) Chris Scott

TRACTORS

- Ford 4600 Tractor, Diesel..... **\$6,000.00**
- Case IH 695 Tractor, w/ Loader..... **\$9,500.00**

MISCELLANEOUS

- 61520 BHZT220 Mower, Zero Turn, Bush Hog..... **\$2,950.00**
- KMC House Cleaner..... **\$5,500.00**
- Case IH 2388 Combine, 4x4..... **\$58,000.00**
- John Deere 445G 54" Lawn Tractor w/ bagger..... **\$2,970.00**
- Sidewinder 7 ft. Pull Cutter..... **\$1,250.00**
- Ogden 8 Wheel Rake..... **\$1,750.00**

CONSTRUCTION

- John Deere 85D Mid. Excavator..... **\$CALL**
- Kubota SVL95 Cab, Air, 750 Hrs..... **\$53,900.00**
- BobCat 5185 Tracks, Cab, AC..... **\$19,250.00**
- Kubota KX057 Cab, Thumb, 550 Hrs..... **\$63,600.00**



1997 ROADTREX MOTORHOME: 94,000miles, 318-engine, fully-equipped, generator. \$14,000. Hermann, 573-694-2565.

JOHN DEERE XUV WINDSHIELD. \$150. Belle, 573-859-6574.

CASE 960 COMBINE PARTS: Belts, Sivs, clover screen. 573-308-5884, Rolla.

DYNO CHARGE 990 ELECTRIC FENCER: Solid state for 20 miles. \$50. 636-239-2695.

2003 THUNDERBIRD: Black and white, very good condition, 47,000 miles. \$15,000. 573-832-1473.

1996 CHEVY 1/2-TON: 1 owner, 177,500miles. \$4,900. Rogersville, 573-308-5944.

1964 FORD F100 DRAGSTER : 460 C6 auto on Ford 9" rear end, dual exhaust, electric fan, new belt/hoses. \$6,500. 573-422-3992.

ANTIQUA REVOLVER + FIREARM'S ACCESSORIES: \$175. 573-764-3517, Call in P.M.

AUCTION REMINDER: Thursday, June 6 at 9: 03 am. Chupps Auction. Please see our Auction Directory for more information.

SILVER DOLLAR COLLECTION: \$200. 573-764-3517, Call in P.M.

JOHN DEERE-2210: 24hp, diesel, 4wd compact tractor with John Deere 210-loader and 62" belly-mower, tractor is mint condition, with 180 original hours. \$10,900obo. Lebanon. 417-718-4787

RUBBER BELTING: Assortment sizes. 573-378-5180

4 CHROME GMC WHEELS & CAPS: 16". \$150. Belle, 573-859-6574.

CIVIL WAR GREAT MAPS BOOK: Hard-back. \$12.50. Lebanon 417-532-2045.

I BUY.... used mobile homes. Call or text 573-338-6250 or email GregS.CDH@outlook.com

3PT TRACTOR BALE SPEAR: 42" spear with 14" stabilizer bars. \$150. Conway, 417-718-5347.

NEW 4-RIB BELT FOR 1431 N.H. CONDITIONER: \$60. 417-646-8807.

IRRIGATION OR TRASH PUMP HOSE: (Blue, Lay Flat) 3" & 2". \$50. 417-322-0161.

FREE TO GOOD HOME. 3 male Rat terrier pups. 573-308-7781, leave message.

MF 165-GAS W/LIVE POWER: w/loader. \$6,000. 573-714-5779.

FOR SALE: 1/2 Simmental 1/2 Angus Bulls, 10 months old. A.I Sired, very gentle, \$1750. **ALSO:** 110 gal. pull type sprayer. \$1000. Like new. J.W. Henson, 417-343-9488

1987 SHELBY DAYTONA: Excellent condition. \$5,500. 314-616-9862.

TRUCK RACK FOR FORD TRUCK: \$125. 5pm- 8pm. 417-270-1776.

LOOKING FOR WATER BICYCLE: Any shape. Leave message, 618-758-2830.

UTV FOR SALE. 2016 Polaris Ranger 570: full size, 1135 Hours. \$7,000. 573-247-1125, Lebanon.

FIREPLACE LOG GRATE: 28" wide. \$25. 636-239-2695, Washington

BUYING OLD BARNS AND LUMBER: 417-298-3509.

REGISTERED HEREFORD & ANGUS BULLS: Home raised, Some Show-Me Select Qualified. 573-701-7828. Belgrade

GUN BOXES: Several shapes & sizes. \$10 and up. 417-589-8200.

20X22 CARPORT: can be seen at 190 Jesse Lebanon Mo. asking \$1,650. 417-991-1495 417-718-9176.

FIVE ANGUS BRED HEIFERS: to Byergo Bull. \$2,100. 660-337-6311.

WANTED PINBALL MACHINES. 573-424-7200.

POOL TABLES: Installations, moves, recover, repairs, accessories, etc. 573-646-1700.

1988 LINCOLN CONTINENTAL: 4 door, 302, 90,000miles, clean. \$4,000. 417-859-5951.

WANTED HOOD FOR JOHN DEERE RIDING MOWER 225: 573-859-6574.

BRUSH GUARD: Fits 97'-03' F-150. \$200. 5pm to 8pm. 417-270-1776.

FORD 2000-GAS: w/bushog. \$2,500. 573-714-5779.

40 PLUS OLD CAR MAGAZINES For Sale: Street Rodder, Hot Rod, etc. \$15 all. 417-457-1023.

JOHN DEERE 2940: Diesel tractor, 80HP. \$8,500. (573)765-4406.

PINE LOG SIDING SALE: \$1.19 per L.F. www.pineridgerustic.com 573-729-7226, 573-247-2823.

NEW HOLLAND: 1411 diskbine w/roller. \$8,250. 573-765-4406.

WEEKLY TRADER MAGAZINE



Let us help you grow your business!

For your advertising needs

Call Debbie Calvin • 573.465.3753

weeklytrader@gmail.com

AUCTION REMINDER: Saturday, June 1st, 10 am. Wulff Auction. Please see our Auction Directory for more information.

ADORABLE ACA REGISTERED LAB PUPPIES: yellows/blacks. Ready 6/24/19. \$250. Hartville. 417-741-2198.

Larry Heisel Rentals
 HEISEL 573-779-1500
 RENTAL SALES & SERVICE 636-432-9460
 Larry's Cell
We Deliver!
Crawler Loaders
Excavators, Backhoes
 Call Larry!
 Rental Available in 636 or 573 Area Codes
573-779-1500

AUCTION REMINDER: Saturday, June 1st, 8am. Lorts Auction. Please see our Auction Directory for more information.

AUCTION REMINDER: Thursday, June 6 @ 6pm. Callaway Livestock Auction. Please see our Auction Directory for more information.

FOR SALE: Tow behind 6' John Deere Brush hog. \$600. 417-259-2203 Grovespring.

1860'S MODEL CALVARY REENACTMENT SET: with Naval Model Black Powder pistol. 417-300-6006.

BoatAngel
FREE 4-NIGHT VACATION!
 Donate Car • Boat • RV • Motorcycle
1-800-CarAngel
 www.boatangel.org

TWO LAMBS: 1 Ewe and 1 Ram, 5 months old. \$100 each. Will delivery. 314-683-6457.

FIREARMS: Professional Repairs and Restorations. Baron's Gunsmithing. 573-363-5801, Camdenton.

BLACKTOPPING BUSINESS: Everything! Income-\$30,000-\$50,000 yearly. \$6,000. 573-604-0674. 800-807-9612.

AUCTION REMINDER: Cattle Sale every Monday at Noon. Salem Livestock. Please see our Auction Directory for more information.

JD 9410 COMBINE
 4WD, 3000/2200, Level Land,
 \$18,000 spent in Ag power shop
\$37,500!
 573-864-0450 • Pilot Grove

DARDEN PROFESSIONAL TIMBER HARVESTING, BUYING STANDING TIMBER: Great prices, improve wildlife habitat and improve forest health. State Certified & Fully Insured! 573-247-4808 or 573-739-1122. Salem

OLD FARM TABLE: 10' long, 38" wide, seats 12. \$300. 417-742-1234.

CASE 580D: Diesel backhoe, Loader. \$8,850. 573-765-4406.

JOHN DEERE 635 DISKBINE: with Roller, field ready. \$9,850. (573)765-4406.

MIDWEST CONSTRUCTION
 Free Estimates!
 • Pole Barn • Garages • Framing
 • Remodels • Roofing • Concrete
 • Decks & Porches
Contact Abner Glick
417-664-1794

LEBANON HIGH SCHOOL 1913 YEAR-BOOK: \$20. Lebanon, 417-532-2045.

JOHN DEERE 310A DIESEL BACKHOE LOADER: \$8,850. 573-765-4406.

FOR SALE. CATERPILLAR DOZER 07-17A: Hydraulic, N/BITS, good dozer. 660-341-3627.

1984 FORD GRILL & HEADLIGHT TRIM. \$40. 573-308-5884.

AUCTION REMINDER: Real Estate & Estate Auction. Sunday May 19th @ 1pm. Nance Auction. Please see our Auction Directory for more information.

NEW BIG TEX 22GN FLATBED TRAILER
Jim's Motors
 facebook
JIM'S MOTORS TRAILERS
 GREAT SERVICE!
 1957-2018 GREAT PRICES!
 I-44 at Exit 208 • Cuba, MO
 www.jimsmotors.com
(573)885-2595
(800)897-9840

GOLDEN RETRIEVER: Beautiful Female, 5 months. \$600. 314-808-1496.

3pt TWO-SECTION HARROW. \$200. Rogersville. 417-753-2747, 417-766-1991.

JOHN DEERE 5055E DIESEL TRACTOR: 55HP, 311 hours. \$14,000 OBO. 573-301-2609.

JOHN DEERE 435: Round Baler, monitor, kicker, 4x6. \$5,750. 573-765-4406.

100# PROPANE GAS CYLINDER: 24 gallon with regulator and cap. \$50. Conway, 417-718-5347.

POTS AND PANS CANNED GOODS AND MORE. \$125 or trade. 573-327-9068.

BARN WOOD SIDING: 8" & 10" wide. 573-729-7226. www.pineridgerustic.com

Model 9410 Singer Sewing Machine: \$50. 417-532-8048.

FESCUE WANTED TO COMBINE ON SHARES. Phone 417-327-6240.

HESTON 5500 5X5 ROUND BALER: \$1,800. 573-438-2672.

3600 FORD TRACTOR: Very nice. \$6,500. 573-766-5640.

COLT FIREARM'S DEALER CATALOG'S: illustrated prices, circa #1950's-1960's. \$150. 573-764-3517. Call in P.M.

FLIES ARE HERE!! Lewis Cattle Oiler. 417-286-3540 or 774-696-2344.

MURRAY RIDING MOWER: Good Tires, deck etc. needs motor. Only \$195/mower trade. 573-364-7465.

2001 MUSTANG GT: 573-508-8386.

CUSTOM SAW MILLING: Lebanon. 417-533-4607, 417-664-1195.

AUCTION REMINDER: Every Wednesday at 10:30 am. Farmington Livestock. Please see our Auction Directory for more information.

AUCTION REMINDER: Friday, June 7th @ 10am. Gary Sexton Auctions. Please see our Auction Directory for more information.

2001 19FT DUTCHMEN TRAVEL TRAILER: very clean, everything works. \$4,200. 417-345-5634.

FRONTIER 4-BASKET HYD FOLD TEDDER: \$4,250. 573-765-4406.

BRUSH CLEARING: 417-650-0596. www.brushmasterlandclearing.com

AUGER: 8x57, good condition. \$2,500. 573-378-5180.

CASE 533 45 HP DIESEL TRACTOR: w/ loader, wide front end, PS, 6' brush-hog. \$5,400. 573-694-0299.

SMALL TRAILER: Wood floor and wood sides, 3.5'x6'. \$100. Rogersville, 417-753-2747, 417-766-1991.

DELAVAL BUCKET MILKER: w/old Surge vacuum pump and some parts. \$350 OBO. 417-247-1689, Thomasville.

AUCTION REMINDER: Saturday, June 1 @ 10am. Richard Moffat Auction Service Please see our Auction Directory for more information.

#1 SELLING TRACTOR IN THE WORLD



BETTER TRACTION, STABILITY & CONTROL



"Get Superior performance with a Mahindra"



Mahindra eMax 25

25 HP, 4WD, HST, with Loader

0%*

up to
60 Months

Or

\$2,000

CASH DISCOUNT
(In Lieu of Low Rate Financing)

\$285

PER MONTH*
(AT 0% UP TO 60 MONTHS.
PAYMENT APPROX)

*10% down with approved credit, must finance thru Mahindra. Expires 06.30.19. Subject to change. See dealer for details.

www.agri-enterprises.com

For Outstanding Products & Service

AGRI-ENTERPRISES

1-1/2 Miles South Of Licking, MO On Hwy 63
573-674-2203 • 1-800-653-7152

Mahindra
Rise.

PUT MORE \$\$\$ IN YOUR POCKET!! Lewis Cattle Oiler. 417-286-3540 or 774-696-2344.

JOHN DEERE 466 ROUND BALER: kick-net wrap, 4x6. \$9,500. 573-765-4406.

ELVIS PRESLEY BOOK- THE FAMILY ALBUM: \$10 ; THE PRIVATE LIFE OF ELVIS PRESLEY. \$6.50. 417-532-2045.

E-GLEANER COMBINE: Sheded, good. \$1,500. 417-646-8807.

TRUCK LOAD OF FLEA MARKET & AUCTION ITEMS: \$200, trade wood or gun. 573-327-9068

WE SELL HIGH TENSILE FENCE: All woven, barbed, smooth! Best prices! Call Michael 417-322-0161, Lebanon.

3 WINCHESTER 101 BLACK DIAMOND SHOTGUNS: 4 barrel competition grade, skeet set, in hard case, slightly used. \$3,500, Trap Gun slightly used. \$1,500, Trap Combo, \$1,500. 573-690-2786, 573-496-3391.

CHECKERED WALNUT WOOD STOCK PISTOL GRIP: for Marlin Model 336 or 1895. \$100. Washington. 636-239-2695.

1962 MASSEY FERGUSON BULL: w/ loader, needs paint. \$4,500. 573-315-9009, Potosi.

HEAVY DUTY PALLET FORKS: clamp on style for loader buckets, adjustable stabilizer, #4000 capacity, new in box. \$150. Conway, 417-718-5347.

2004 OPEN RANGE FIFTH WHEEL CAMPER: 34', all weather, in good condition. \$10,500. Lebanon, 417-718-5520.

CUB CADET 50IN MOWER DECK: for zero turn mower, will fit most 48" - 54" mowers, excellent condition, with 3 blades. \$195. 573-364-7465.

7' NEW HOLLAND SICKLE MOWER MODEL-451: \$800. Rogersville. 417-753-2747, 417-766-1991.

1966 EL CAMINO: to restore, needs paint, have new parts. \$4,000. West Plains. 417-256-2561.

LIONEL TRAIN SET: Steam engine, tender, caboose and other car, track and transformer. \$195. 573-364-7465, Rolla.

REGISTERED BLACK ANGUS BULLS: AI bred. \$1,250-\$2,950. Hartville, 417-259-2520.

BEAUTIFUL NEW HANDMADE QUILTS: One purple, green shades, one blue, one white, queen size. \$350 custom orders welcome. 417-741-2198. Hartville.

NEW/USED PARTS: For all vehicles/machinery. (Warranted/delivery). 800-807-9612.

FARM & HOME SERVICES, WELDING & CONSTRUCTION. \$40-\$65 per hour. 417-664-7841, Stoutland.

CHECKERED WALNUT WOOD STOCK PISTOL GRIP: for Marlin Model 336 or 1895. \$100. Washington. 636-239-2695.

French Bulldog Puppies: Blues, Chocolate & Lilac Carriers, Whites, Sable Pieds, M/F, Guaranteed. \$895-\$2,500. 573-238-3873, 573-208-0485, Glenn Allen.

VERMEER TM-700 DISK MOWER: excellent condition. \$10,000. Salem, 573-265-5166/573-263-1875.



Reliability comes in all sizes.

Rugged versatility is what makes Kubota tractors the perfect choice for getting every job done right. And now the payment plan is as efficient as the machines. Get \$0 down, 0% A.P.R. financing for 60 months. Visit us today.

BX Series B Series L Series MX Series

Kubota
Shape your world.

\$0 DOWN 0% APR 60 MONTHS

EDGELLER AND HARPER
FARM EQUIPMENT

Get Unmatched Kubota Quality!
Kubota Designed, Engineered & Built.
Visit Us In TWO Locations!

8665 Outer Road • Mtn Grove
417-926-5454 • 877-926-5458
4973 W. US Hwy 160 • West Plains
417-256-0420 • 800-766-0420

KubotaUSA.com
© Kubota Tractor Corporation 2019. \$0 Down, 0% A.P.R. financing for up to 60 months on purchases of select new Kubota B900 equipment from participating dealers! In-stock inventory is available to qualified purchasers through Kubota Credit Corporation, U.S.A.; subject to credit approval. Some exceptions apply. Example: 60 monthly payments of \$16.67 per \$1,000 financed. Offer expires 6/30/19. See us or go to KubotaUSA.com for more information.



KUBOTA BV SERIES
LESS WORK. BETTER BALES.

Unmatched dependability and efficiency is built in. Field after field these hard-working round balers create dense bales and tight outer layers with hassle-free engineering designed to help you have your best season yet.

Visit us to find out why the BV is the right baler for you.

EDGELLER AND HARPER
FARM EQUIPMENT

Get Unmatched Kubota Quality!
Kubota Designed, Engineered & Built.
Visit Us In TWO Locations!

8665 Outer Road • Mtn Grove
417-926-5454 • 877-926-5458
4973 W. US Hwy 160 • West Plains
417-256-0420 • 800-766-0420

KubotaUSA.com
Optional equipment may be shown.

Instagram, Facebook, YouTube icons
© Kubota Tractor Corporation, 2018

KRONE 9FT 3PT DISK MOWER: nice. \$6,100. 573-765-4406.

PURE BRED BORDER COLLIES: Pups ready 5-20-19 \$100ea. Border collie/Australian Shepherd pups \$100ea. Ready 5-31-19. Hartville, 417-259-9738.

15FT BUSHHOG: 3715 Heavy-duty, good condition. \$10,500. 417-766-6504.

27 GAL FUEL TANK: Fiberglass. \$60. Rogersville. 417-753-2747, 417-766-1991.

PORTABLE 10,000 WATT GENERATOR: Electric start, 30' power cord, electric hook-up. \$1,000. No answer, leave message 870-431-4281.

\$\$\$\$\$ MOBILE HOME SAVINGS That is what we are about for the last 36 years. New, Used, All Sizes. 573-657-2176 amegamobile-homes.com

AC 185 DIESEL TRACTOR: Near new tires, GB-440, loader, nice. \$9,450. 573-765-4406.

REESE 2070W DRUM MOWER: 6'9" cut. \$2,000. Potosi, 573-438-2672.

MF-50-GAS W/LIVE POWER: \$2,350. 573-714-5779.

AGCO NEW IDEA 5410 DISCMOWER: 10ft. \$3,950. 573-765-4406.

1999 KODIAK 24' FLATBED GN TRAILER: Wood floor, slide out ramps, dual jacks, tandem axle, 14,000 GVW, elec brakes, 14 Ply tires. \$3,800. Conway, 417-718-5347.

140 ACRES FOR SALE. Located in new Amish community, 1/2 open, Alton, MO. Morgan Realty, 417-264-4900, Thayer, MO.

VERMEER 10WHEEL FOLD UP RAKE: \$1,750. 573-765-4406.



- 3,000 lb. Lift Capacity
- Synchronized Bale Arms
- Engine Driven Hydraulics
- Free-Float Bale Unrolling
- 12" Total Main Hinge Length
- Six Sizes Available
- Full Two Year Warranty

Starting At \$9,225
Several Sizes in Stock
Installed



LET YOUR SAVINGS BEGIN NOW!
2 Toolboxes for \$575.00
Prices Good On In Stock Beds Only!!
LET US BE YOUR PEOPLE!!

WESTGATE TRAILER & EQUIP.

417-351-6974 • 417-926-7733
www.westgatetrailer.net
8920 W Business 60 • Mtn. Grove, MO
7136 W Farm Road 140 • Springfield, MO
FULL SERVICE SHOP
OPEN: Mon.-Fri. 8-5 And "YES!" Sat. 8-Noon!

ROD AND REELS: fishing season is coming. \$5 and up. Conway, 417-589-8200

FARMALL SUPER-C: W/2pt disk and plow. \$2,200. 573-714-5779.

FOR SALE 91 CHEVY PICKUP SMALL STEPSIDE BED: Small damage to front end, v6, no rust, great for parts. Call after 6pm. 417-533-5370.

SITREX: 6 basket, hyd fold tedder. Good. \$6,500. 573-765-4406.

USED AMERICAN FAMILY DOUBLE-WIDE These do not last! Excellent condition. Call Quick, 573-499-9993 columbiadiscount homes.com.

BOBCAT 853 DIESEL SKID STEER LOADER: Cab, 58hp. \$8,950. 573-765-4406.

4 REGISTERED POLLED HEREFORD 2YR BULLS: CHB-Top 48%, Baldy Maternal-Top 44%, DNA Tested, Gentle. \$1,900-\$2,100 OBO. 573-244-3157.

GLENER L-24FT RIGID HEADER: good. \$750. 417-646-8807.

SIDEWINDER TIRE DRIVE: 6ft, 3pt brushcutter, very nice. \$1,350. 573-765-4406.

NAT'L GEOGRAPHIC MAGAZINES: Jan 1985-Dec 1990, in hard boxes, plus 140 assorted magazines. 417-247-1689, Thomasville.



Freedom to roam is closer than you think.

With best-in-class acceleration and handling with cargo*, the new gas-powered Sidekick delivers durability and speed. All the way up to 40 mph. And with a great offer available, tasting freedom just got a whole lot sweeter. Visit us today.




Best-in-Class acceleration and handling with cargo
40mph • Gas Powered • 2 year/1000 hour warranty



\$0 DOWN \$196 A MONTH FOR 72 MONTHS

KUBOTA OF THE OZARKS
1660 E CHESTNUT EXPWY
SPRINGFIELD, MO
417-866-5588

SCHAEPERKOETTER'S

**2715 HWY A
MT. STERLING, MO
573-943-6323**

**1102 W HWY 28
OWENSVILLE, MO
573-437-4421**

SINCE 1893

Sidekick.KubotaUSA.com

*Class is based on these models: Polaris Ranger XP 900, John Deere XUV835M & Kawasaki Mule PRO-FXR. The handling comparison was performed on the FSAE SKIDPAD course in gravel conditions. © Kubota Tractor Corporation 2019. 2.99% A.P.R., 0% down, financing for 72 months on purchases of a new Sidekick model from participating dealers' in-stock inventory is available to qualified purchasers through Kubota Credit Corporation USA, subject to credit approval. Example: 72 monthly payments of \$15.19 per \$1,000 financed. Example amount based on sales price of \$12,849. Each dealer sets own price. Prices and payments may vary. Offer expires 6/30/19. This material is for descriptive purposes only. Kubota disclaims all representations and warranties, express or implied, or any liability from the use of this material. For complete warranty, safety and product information, consult your local Kubota dealer. For the complete disclaimer, go to KubotaUSA.com/disclaimers and see the posted disclaimer.

FOR SALE. 2005 32' Cardinal 5th wheel camper: 2 slides, new tires, good condition. \$13,500 OBO. 573-291-3248.

WHITE-TAIL MOUNT: 3x4. \$150. 5pm-8pm, 417-270-1776.

TRUCK RACK FOR FORD TRUCK: \$125. 5pm- 8pm. 417-270-1776.

2003 THUNDERBIRD: Black and white, very good condition, 47,000 miles. \$15,000. 573-832-1473.

Starnes Auto LLC

22115 Rt. 66 • Lebanon, MO 65536
417.588.3159 Office • 417.718.2707 Cell
www.starnesauto.com

- 1998 GMC SONOMA**
PEWTER, FLARESIDE, 131,XXX MILES **\$5,200**
 - 1998 CHEVY S-10**
PEWTER, 2WD, REG CAB..... **\$4,200**
 - 2000 BUICK LESABRE**
BLUE, 141,XXX MILES **\$2,800**
 - 2001 CHEVY S-10**
MAROON, 2WD, RED CAB, 122,XXX MILES **\$CALL**
 - 2001 CHEVY S-10**
RED, REG CAB, 133,XXX MILES..... **\$CALL**
 - 2001 CHEVY S-10 BLAZER**
PEWTER, 4X 4, GOOD TITLE, 140,XXX MILES **\$CALL**
 - 2001 GMC YUKON**
BLACK, 237,XXX MILES..... **\$4,200**
 - 2002 CHEVY S-10**
BROWN, 4 DOOR, 184,XXX MILES..... **\$2,800**
 - 2003 GMC SONOMA**
PEWTER, 4 X 4, EXT CAB, 131,XXX MILES **\$5,200**
 - 2004 CHEVY CAVALIER**
TAN, 4 DOOR, 38XXX MILES **\$3,850**
 - 2004 GMC SIERRA**
CHARCOAL, REG CAB, **\$CALL**
 - 2004 JEEP LIBERTY**
WHITE, LEATHER, SUNROOF, V6, 114,XXX MILES **\$5,200**
 - 2005 CHEVY SILVERADO**
PEWTER, 4DOOR, 4X4 195,XXX MILES..... **\$CALL**
 - 2005 GMC SIERRA**
WHITE, EX CAB, 2 WD, 155,XXX MILES **\$6,350**
 - 2007 SATURN OUTLOOK**
WHITE..... **\$CALL**
 - 2009 SATURN AURA**
SILVER, 110,XXX MILES **\$5,200**
 - 2010 CHEVY EQUINOX**
BLACK, 88,XXX MILES..... **\$CALL**
 - 2012 CADILLAC SRX PERFORMANCE**
BROWN, 71,XXX MILES..... **\$13,900**
 - 2014 KIA SOUL**
GRAY, 68,XXX MILES, GOOD TITLE **\$7,600**
 - 2015 TOYOTA SCION**
WHITE..... **\$CALL**
 - 2015 CHEVY EQUINOX LT**
BLACK, 54,XXX MILES..... **\$13,500**
 - 2016 BUICK ENCORE**
WHITE, 28,XXX MILES..... **\$13,500**
 - 2017 FORD FIESTA**
WHITE, 59,XXX MILES..... **\$CALL**
- COMING SOON**
- 1997 BUICK CENTUR**.....BLUE, 51,XXX MILES
 - 2008 SATURN VUE**..... BLUE, 86,XXX MILES
 - 2011 CHEVY MALIBU**..... MAROON, 67,XXX MILES
 - 2011 GMC TERRAIN**..... WHITE, 116,XXX MILES
 - 2015 CHEVY EQUINOX LT**..... 54,XXX MILES
 - 2015 CHEVY EQUINOX LT**.....BLACK, 46,XXX MILES
 - 2015 KIA SOUL**..... WHITE, 24,XXX MILES

WE DO ALIGNMENTS!

ANTIQUE HAND CARVED CIGAR STORE WOODEN INDIAN: 5' tall. \$800.
Seymour, 417-279-8224.

METAL DETECTOR: \$125 or trade. 573-327-9068.

MF 165-GAS W/LIVE POWER: w/loader. \$6,000. 573-714-5779.

FREE AKC REG. GERMAN SHEPHERD: 1 year old, black & tan, very friendly, good behavior. 630-687-0705.

1964 FORD F100 DRAGSTER : 460 C6 auto on Ford 9" rear end, dual exhaust, electric fan, new belt/hoses. \$6,500. 573-422-3992.



★ American Made Metal Roofing ★

40 Year Warranty Metal.....\$1.99 (\$62.18 Per Sq)



*29 Gauge 10 Year\$1.79 (\$55.93 Per Sq)

****While Supplies Last****

29 Gauge #1 Galvalume ~~\$1.69~~ \$1.39 (\$43.44 Per Sq)
29 Gauge 40 Year *Saddle Tan*\$1.69 (\$52.81 Per Sq)

- ★ 17 Colors To Choose From
- ★ 20 Years In Business
- ★ We Manufacture Our Own Metal and Trusses



3 Locations To Serve You!

- 6952 E. 7th St. Joplin, MO. 417-317-7961
- 1100 Pace Rd. Pocahontas, AR. 870-609-1900
- 35 Killdeer Rd. Seymour, Mo. 417-952-7143

*possibly not American made

Building In A Box

Stud Wall & Pole Barn Kits

Non-Warranty Metal	10Year Warranty	40Year Warranty
24x30x8.....\$3,350\$3,700\$3,850
30x40x10....\$4,950\$5,350\$5,600
40x60x12....\$9,300\$10,000\$10,200

Precut Packages Also Available

GERMAN SHEPHERDS: Two males, 3 mo old, one adult male. \$100 each. 417-741-2198.

ALLIS CHALMERS 6080 DIESEL TRACTOR: Cab and air, 80hp, Westendorf Loader. \$9,850. 573-765-4406.

WANTED, TIMBER TO LOG ON SHARES: Honest, reliable, references. 417-533-4607, 417-664-1195.

WANTED CUT STOCK, Cants, Slabs, trees length + 45" long scragg blocks. 417-650-0402.

1997 ROADTREX MOTORHOME: 94,000miles, 318-engine, fully-equipped, generator. \$14,000. Hermann, 573-694-2565.

RUBBER BELTING: Assortment sizes. 573-378-5180

4 CHROME GMC WHEELS & CAPS: 16". \$150. Belle, 573-859-6574.

JOHN DEERE XUV WINDSHIELD. \$150. Belle, 573-859-6574.

AUCTION REMINDER: Thursday, June 6 at 9: 03 am. Chupps Auction. Please see our Auction Directory for more information.

CASE 960 COMBINE PARTS: Belts, Sivs, clover screen. 573-308-5884, Rolla.

NEW 4-RIB BELT FOR 1431 N.H. CONDITIONER: \$60. 417-646-8807.

1987 SHELBY DAYTONA: Excellent condition. \$5,500. 314-616-9862.

CRAFTSMAN FLOOR DRILL PRESS. \$150. 55 gallon hand Fuel Pump. \$50 573-378-5180

2007 CHEVY 1500 Z71 SILVERADO CLASSIC: extended cab w/A.R.E. cap and Tonneau Cover, loaded, excellent condition, original owner, all maintenance records, 116,000miles. \$13,500. 417-322-0243.

FOR SALE: 1/2 Simmental 1/2 Angus Bulls, 10 months old. A.I Sired, very gentle, \$1750. ALSO: 110 gal. pull type sprayer. \$1000, Like new. J.W. Henson, 417-343-9488

SILVER DOLLAR COLLECTION: \$200. 573-764-3517, Call in P.M.

WEEKLY TRADER MAGAZINE

YOUR AD GOES HERE!

Add YELLOW Color For An Additional \$3 Per Reader Ad

All ads will include Phone Number (unless requested to be deleted by advertiser) and City Or Town, Phone Number with Area Code counts as one word. City or Town counts as one word.

RATE: 80¢ Per Word. All Classified Ads Require Payment Before Print.

(1) 80¢	(2) \$1.60	(3) \$2.40	(4) \$3.20
(5) \$4.00	(6) \$4.80	(7) \$5.60	(8) \$6.40
(9) \$7.20	(10) \$8.00	(11) \$8.80	(12) \$9.60
(13) \$10.40	(14) \$11.20	(15) \$12.00	(16) \$12.80
(17) \$13.60	(18) \$14.40	(19) \$15.20	(20) \$16.00
(21) \$16.80	(22) \$17.60	(23) \$18.40	(24) \$19.20
(25) \$20.00	(26) \$20.80	(27) \$21.60	(28) \$22.40
(29) \$23.20	(30) \$24.00	(31) \$24.80	(32) \$25.60
(33) \$26.40	(34) \$27.20	(35) \$28.00	(36) \$28.80
(37) \$29.60	(38) \$30.40	(39) \$31.20	(40) \$32.00

Place your Classified Ad TODAY!

417-532-2800 • 800-665-8875

Fax: 417-532-8140

Or Mail To: P.O. Box 192 • Lebanon, MO 65536

For your convenience we accept MasterCard, Visa, Discover or American Express



DEADLINE FOR CLASSIFIED ADS: MONDAY 12 NOON!!

Name _____

Address _____

City _____ Email _____

State _____ Zip Code _____ Phone _____

Ad Total \$ _____ X # Weeks _____ = Amount Enclosed \$ _____

0% APR for 60 MOS

ZERO DOWN

SUMMER SAVINGS

KEEP IT SIMPLE WITH QUARLES SUPPLY

RATES SUBJECT TO CHANGE
*With approved credit. Tax Insurance not included.
Some restrictions may apply. See dealer for details.



New 23HP Kubota Package Deal!

B2301HSD \$19,555
Financing Price

NEW Kubota B2301HSD 4wd, DIESEL, R4 TIRES, KUBOTA LOADER, 4' CUTTER, 4' BLADE, NEW 16' KODIAK TRAILER W/RAMPS& NEW TIRES



New 33HP Kubota Package Deal!

L3301HST \$24,085
Financing Price

NEW Kubota L3301HST 4wd, DIESEL, AG TIRES, KUBOTA LOADER, 5' CUTTER, 5' BLADE, NEW 18' KODIAK TRAILER W/RAMPS& NEW TIRES

PRICING REFLECTS ALL CURRENT KUBOTA PROGRAMS

*DOES NOT INCLUDE TAX AND INSURANCE

BLENDED RATES MAY APPLY ON NON KUBOTA ITEMS



New 47HP Kubota Package Deal!

L4701HST \$32,555
Financing Price

NEW Kubota L4701HST 4wd, DIESEL, AG TIRES, KUBOTA LOADER, 6' CUTTER, 6' BLADE, NEW 18' KODIAK TRAILER W/RAMPS& NEW TIRES



QUARLES
SUPPLY COMPANY INC.

quarleskubota.com

Just off Business 13 in Bolivar, MO

Open 8:00-5:00 Monday-Friday

Saturday 8:00-12:00

(417) 777-2391