

**FREE**  
**WEEKLY**  
**TRADER**  
**MAGAZINE**

Vol. 26 No. 32

**NOVEMBER 14, 2019**

800-543-8271 • 800-665-8875



Find us on  
**Facebook**

@myweeklytrader

Auctions - Pg. 14

**MYWEEKLYTRADER.COM**

**You pull it,  
we sell it...**

**CHEAP!**



**Lebanon, MO**

22395 Rt. 66

**417-588-3555**

Fax 417-588-8955



**U★PULL★IT**

**SELF-SERVICE AUTO PARTS**

We also have a large inventory  
of used tires and be sure to check  
out our used car lot!

Mon.-Fri. 8:00am-6:00pm • Sat. 8:00am-4:30pm • Sun. 9:00am-4:00pm

**WWW.SSUPULLIT.COM**

Located next to S&S Recycling.



**For All Your Metal Recycling Needs**

**Lebanon, MO**

22395 Rt. 66

**417-588-3555**

Fax 417-588-8955

**Mtn. Grove, MO**

8930 First Rd

**417-926-3360**

Fax 417-926-0180

Roll-off, Trailer, and  
Mobile Crushing  
Services Available

Monday-Friday 8:00am-4:30pm (Closed 12pm-1pm Lunch)  
Saturday 8:00am-Noon

email: [contact@ss-recycling.com](mailto:contact@ss-recycling.com)

**Buyer of all types of scrap metal.**

# \$2,500 - \$11,000 LOT

Lindsay Chevrolet & Lindsay Ford

Mon.-Fri. 8 am - 7 pm  
Sat. 8 am - 5 pm  
Not responsible for typos.  
\* with approved credit

## 417-588-7995

West City Route 66  
& South Monroe  
Lebanon, MO

Bobby Rogers, Manager • Aaron Wehner, Finance • Mike Forner, Steve "Whitey" Helton, Larry Davis, Sales

### TRUCKS

LT28796A2	2005 DODGE DAKOTA CREW 2WD, BLUE .....	\$5,900
LT7302B	2010 FORD F150 CREW V8 4WD, TAN .....	\$13,900
LT7364A1	2014 DODGE RAM REG CAB V6, AUTO, 2WD, RED .....	\$10,500
QT75625	2004 TOYOTA TACOMA EXT CAB V6, AUTO, SILVER .....	\$9,750
QT75567	2005 DODGE RAM CREW V8, AUTO, 4WD PURPLE .....	\$9,800
QT75455A	2006 DODGE RAM ST REG CAB V8, AUTO, 2WD, WHITE .....	\$5,950
QT75587	2007 CHEVY SILVERADO LT EXT CAB RED .....	\$8,900
QT75552	2007 DODGE DAKOTA SLT V8, AUTO, 4WD, BLACK .....	\$8,200
QT75635	2007 CHEVY AVALANCHE LT V8, AUTO, 4WD, MARRON.....	\$11,400
QT75637	2009 FORD F150 REG CAB V8, AUTO, 2WD, RED .....	\$10,900

### CARS

QC75622	2012 FIAT 500 SPORT 4CYL, AUTO, FWD, BLACK .....	\$7,400
QC75616	2012 HYUNDAI VELOSTER COUPE, 4CYL, 5SPD, RED .....	\$10,350
QT75509	2012 KIA SOUL 4CYL, 5SPD, FWD, BLACK .....	\$5,900
QC75547	2012 CADILLAC CTS V6, AUTO, FWD, SILVER.....	\$7,900
QC75569	2013 FORD FUSION 4CYL, AUTO, FWD, WHITE .....	\$8,200
QC75584A	2013 FIAT 500 POP 4CYL, AUTO, FWD, BLACK .....	\$7,900
QC57473A	2015 FORD FOCUS SE 4CYL, AUTO, FWD, RED .....	\$8,900
QC75574A	2015 CHEVY CRUZE LT 4CYL, AUTO, FWD, GREEN .....	\$9,900

### SUVS & VANS

LT28801A	2008 BUICK ENCLAVE CXL V6, FWD, DARK CRIMSON .....	\$6,900
LT28772B	2012 NISSAN ROGUE 4CYL, AWD, WHITE .....	\$8,300
LT28824	2012 CHEVY TRAVERSE V6, AWD, SILVER .....	\$10,600
QT75614	2006 HUMMER H3 5CYL, AUTO, 4WD, BLUE .....	\$9,400
QT75566	2007 TOYOTA RAV 4 SPORT 4CYL, AUTO, FWD, WHITE .....	\$8,900
QT57457B2A	2011 TOYOTA SIENNA LE V6, AUTO, FWD, TAN .....	\$8,700
QT75609A	2011 FORD ESCAPE XLS 4CYL, FWD, WHITE .....	\$7,150
QT75539A	2013 FORD ESCAPE SEL 4CYL, AUTO, 4WD, WHITE .....	\$11,700
QT75366A	2013 SUBARU OUTBACK PREMIUM 4CYL, AUTO, BLUE .....	\$7,900
QT75636	2013 FORD EXPLORER XLT V6, AUTO, 4WD, WHITE .....	\$11,900
QT57729B	2013 FORD FLEX SE V6, AUTO, FWD, BLACK .....	\$11,900
QT57646B	2013 JEEP PATRIOT SPORT 4CYL, AUTO, 4WD, GREEN \$ .....	9,400
QT75628	2013 FORD ESCAPE SE 4CYL, AUTO, FWD, MARRON .....	\$10,900
QT75641	2014 MITSUBISHI OUTLAND 4CYL, AUTO, FWD, BLACK .....	\$8,600
QT75640	2014 DODGE JOURNEY SE 4CYL, AUTO, FWD, BLUE .....	\$8,900
QT75495A	2016 JEEP RENEGADE LATITUDE 4CYL, 5SPD, 4WD, GRAY .....	\$13,400



QT57685B2 **16 TRACKER 18X60 GRIZZLEY**  
60HR, 4 STROKE, MERCURY, TILT & TRIM,  
TROLLING MOTOR & FISH FINDER ..... **\$9,700**

### CARS

LC28795	2013 CHEVY IMPALA LS V6, FWD, BLACK .....	\$9,800
LC28713	2014 CHEVY CRUZE LS 4CYL, AUTO, RED .....	\$8,800
LC28811	2014 NISSAN VERSA S 4CYL, AUTO, SILVER .....	\$6,700
LC28803A	2014 CHEVY IMPALA LS V6, AUTO, FWD, WHITE .....	\$8,800
QC75331	2003 FORD T-BIRD V8, AUTO, COUPE, GRAY .....	\$8,900
QC75528A	2005 CHEVY MONTE CARLO LS V6, AUTO, GRAY .....	\$5,900
QC75533	2010 FORD TAURUS SHO V6, AUTO, FWD, BLACK .....	\$9,200
QC75632	2012 CHRYSLER 200 LIMITED 4CYL, AUTO, FWD, BLUE.....	\$8,900

**WWW.LINDSAYAUTOGROUP.COM**



Cutting **Land Pride**  
**GET WORK DONE.**

**RCR18 SERIES**

**ROTARY CUTTERS**

20-65 HP 60", 72"- Widths

- Cat. 1 Hitch
- 2" Cutting capacity
- Fully welded deck
- Full length skid shoes



**LP** CONSISTENTLY LEADING THE WAY...

**AGRI-ENTERPRISES**  
*For Outstanding* Products & Service  
 1-1/2 Miles South Of Licking, MO On Hwy 63  
**573-674-2203 • 1-800-653-7152**  
**www.agri-enterprises.com**

**COMPLETE SCRAGG & PALLET OPERATION:** Property, Equipment, Timber contracts, Lots more, Selling due to health reasons, Too Much to List, may separate & owner finance. 417-650-0402

**KILL LICE DEAD: PRAIRIE PHOENIX CATTLE CARE SYSTEM.** 417-286-3540.

**AC 840 DIESEL ARTICULATING 4-WHEEL DRIVE LOADER:** \$7,250. 573-765-4406.

**#32 SANITARY SKILL Meat Grinder:** Complete & works. \$700. #22 Sanitary Skill: Complete and works. \$300. Hartville, 417-349-1386.

**MX5100 KUBOTA:** 4wd tractor w/loader, low hours. \$21,500. 417-270-1505.

**LANDPRIDE RCF3010:** pull type brush hog, 10'. \$5,900. 417-270-1505.

**2017 FORD ESCAPE:** like new, 7,792miles. \$15,000. 417-818-5369

**VOTED #1 BEST Preowned Car Dealership**

**TIM'S USED CARS**  
 (573) 341-3828 • 1334 South Bishop (Hwy. 63) • Rolla, MO  
 Next to Hwy. CC • www.tims-used-cars.com

<p><b>2003 DODGE RAM 2500</b>                  QUAD CAB, 4X4,                  LARAMIE, 5.7 HEMI, AUTO,                  160,XXX, MILES  <b>PRICED TO SELL!</b></p>	<p><b>2011 JEEP GRAND CHEROKEE LAREDO</b>                  4X4, V-6 AUTO,                  159,XXX MILES  <b>ONLY \$10,900</b></p>
<p><b>2010 FORD ESCAPE XLT</b>                  FWD, V-6,                  149,XXX, MILES.  <b>ONLY \$5,400</b></p>	<p><b>2017 CHEVY IMPALA LT</b>                  4 CYL, POWER EQUIPPED,                  61,XXX MILES  <b>ONLY \$15,500</b></p>

LARGE SELECTION OF CARS, TRUCKS, SUVs & VANS!

USED EQUIPMENT

920 Cat Wheel Loader

Gehl Silage Chopper  
 7' Brush Cutter  
 JD 10' Cultipacker  
 3pt. 3 bottom plow  
 12' Spring Tooth Harrow 3pt. 2 Disc Disc Plow  
 Other Misc Equipment

*For Outstanding* Products & Service

AGRI-ENTERPRISES

1-1/2 Miles South Of Licking, MO On Hwy 63  
 573-674-2203 • 1-800-653-7152  
 www.agri-enterprises.com

**MODEL A REAR CAR AXLE.** \$150. 417-293-7113.

**BS201 BALE SPIKE:** w/Bush Hog quick tach system. \$400. 417-270-1505.

**DOUBLE SET OF WHEEL CHOCKS:** Color is Safety Yellow. \$30. 636-239-2695, Washington

**26 ACRES,** 16x24 cabin, HH Road frontage, electric, telephone, open ground, no flooding, timber, fenced. One side, can sub divide. Farm, Hunt, 9 miles clear water lake. 4000 Ford Tractor. \$89,000. All good view site. 573-663-7769



**Cheyenne Acres**  
Horse & Tack  
**BUY - SELL - TRADE**  
by Rolla, MO  
Call For Directions & Availability  
**Call Kip**  
**573-368-9402**

**OPEN AMISH BUGGY:** 1 seat, fiberglass shafts, new brakes, new cushioned seat. \$650. 417-533-9484, Grovespring.

**MASSEY FERGUSON:** 231 diesel tractor, 3pt, power steering, low hours. \$5,500. 573-765-4406.

**WOOD FURNACE:** heats whole house, blower, ash clean-out door, uses 2ft wood. \$575. 636-239-4124.

**24 cu ft UPRIGHT FREEZER and 22 cu ft Chest Freezer.** \$150 each OBO. Hartville, 417-349-1386, 417-531-3311.

**WANTED 305 FORD MOTOR:** For 2005 Mazda. Cash paid. 573-636-8000, JC.

**PULL BEHIND LAWN LEAF CATCHER:** 38" and lawn dump cart. Both \$200. 636-239-4124.

**26 ROUND BALES:** Wrapped, mixed grass, 1st cutting. \$20 each. Good used lumber. Make offer. 417-532-8048.



**MIDWEST CONSTRUCTION**  
Free Estimates!  
•Pole Barn •Garages •Framing  
•Remodels •Roofing •Concrete  
• Decks & Porches  
**Contact Abner Glick**  
**417-664-1794**

**CUSTOM SAW MILLING:** Lebanon. 417-533-4607, 417-664-1195.

**ROME 8FT OFFSET DISK:** \$3,750. 573-765-4406.

**BLUE HEELER PUPPIES:** Good working stock, UTD. \$150. 417-664-5926.

**M7040 KUBOTA 4WD LOADER:** bucket, 2300 hours, double remotes, power reverser, open station. \$21,500. 573-539-2273, Barnett.

**3PT 2 SECTION HARROW.** \$150. Rogersville. 417-753-2747, 417-766-1991.

**PUPPIES FOR SALE:** Beagle/Dachhund mixed. Silver, Tri-Color and Chocolate colors. \$250 males, \$300 females. 417-322-0833.

**DARK BROWN LARGE STORAGE OTTOMAN:** Or coffee table with lid. PERFECT. \$75. 417-588-2176.

**ADORABLE MALTESE PUPPIES:** \$400. 417-664-9565.



**KUSTER LOGGING**  
**BUYER of Standing Timber**  
**Oak and Walnut**  
**Dozing Now Available**  
**417-259-0047**  
**References Available**

**BEAUTIFUL DOBERMAN PUPPIES:** Born 8/26, one Red/Rust and one Black/Rust male. \$650. One Red/Rust female. \$500. Parents are Double Registered AKC & CKC. Puppies are CKC Registered. UTD on shots and come with Health Records. Tails docked and declaws removed. 417-531-0483.

**JOHN DEERE 567 ROUND BALER:** monitor, kicker, wide pick-up, cover wrap. \$9,650. 573-765-4406.

**2001 IMPALA:** Runs good, body rough. \$500 OBO. 1999 Cavalier: Runs good, paint fair. \$750 OBO. 573-257-0782.

**We Buy White Oak Logs!**

**Independent Stave Company**  
welcomes all white oak suppliers!

- Top prices for your logs
- Experienced log buyers
- Professional service

[www.independentstavecompany.com](http://www.independentstavecompany.com)

Chad Cook | Salem Wood Products  
**417.718.2950**  
5 miles north of Salem, MO on Hwy 19



**INDEPENDENT STAVE COMPANY**  
*Log Procurement & Sales*



**Vol. 26 November 14, 2019 No. 32**

*Published By*  
**Lebanon Publishing Co. Inc.**  
PO Box 192, Lebanon, MO 65536  
**417-532-2800**  
[www.myweeklytrader.com](http://www.myweeklytrader.com)

Everything advertised in this publication must be made available for purchase, use or patronage without regard to race, creed, color, sex, age or national origin of the purchaser, user or patron. The Publisher will not be responsible for misinformation, misprints, typographical errors, etc. Opinions expressed are not necessarily those of the Publisher. All rights reserved. No part of this material may be reproduced by any means without permission in writing from the Publisher. We reserve the right to refuse any ad if we deem necessary. Our list and map indicate counties in which the Weekly Trader is delivered. The magazine is not necessarily placed in all communities in a particular county. A list of all retail drops for a county may be obtained by contacting the Weekly Trader office at PO Box 192, Lebanon, MO 65536.



**AUCTION REMINDER:** Public Auction, Saturday, November 23rd@ 9:30am. Sam Crawford Auction. Please see our Auction Directory for more information.

**7 COWS FOR SALE:** 5 are 2-3 stage, 2-open 1-calf. \$6,700 Rogersville, 417-753-2747, 417-766-1991.

**4 CHAIN LINK DOG PENS:** 3 dog houses, 3 metal cages with trays, 3 plastic cages w/ doors. Make Offer. 636-239-4124.

**CRAFTSMAN 18V CIRCULAR SAW & 1/2" DRILL:** W/2 Batteries, charger, carrying case, never used. \$75firm. Hermann, 636-932-4429.

**TEAM WAGON:** 8'3"L, 3'8"W, team pole, double tree, rear hydraulic, brakes bench seats. Pics available. \$500. Greenville, 573-712-4108.

**COYOTE NX5010 CAB TRACTOR:** 4x4, hydrastat trans, w/loader, 460 hrs, excellent condition. \$26,900obo. 417-293-1767.

# GET YOUR WORK DONE, AMERICA

FOR JUST

# \$241 PER MONTH\*



**4540 2WD**

- SIMPLE** to operate
- ECO-FRIENDLY**, NO DPF engine
- HEAVY-DUTY** steel construction not plastic

MAHINDRA 4540 41HP, 2WD, TRACTOR AND LOADER.

**Marshfield Machinery Inc.**  
222 E. Madison • Marshfield, MO 65706  
417-859-2117 • www.marshfieldmachinery.com

**7 YEAR**  
LIMITED POWERTRAIN  
**WARRANTY**

WORLD'S #1 SELLING TRACTOR



\*Payment is for tractor and loader only and is calculated at 10% down and 84 months financing. With approved credit. Program restrictions may apply. See dealer for details. All offers expire November 30, 2019.

NEW MAHINDRA TRACTORS	
9125 4WD CAB & LDR 125HP	IN STOCK
7085 4WD & LDR 85HP	IN STOCK
6075 4WD & LDR 71HP	IN STOCK
6065 4WD & LDR 62HP	IN STOCK
2655 4WD CAB & LDR 55HP	IN STOCK
2655 4WD, BACKHOE 55HP	IN STOCK
2655 4WD & LDR 55HP	IN STOCK
4540 4WD & LDR 41HP	IN STOCK
4540 2WD & LDR 41HP	IN STOCK
MAX26XL & LDR 26HP	IN STOCK
USED TRACTORS	
NH T5.115 CAB 4WD LDR 115HP	55,000
MAHINDRA 105P CAB LDR 105HP	45,500
MAHINDRA M85 CAB LDR 85HP	30,000
MAHINDRA MAX26XL LDR 26HP	12,500
MAHINDRA MAX22 W/BACKHOE	11,500
CASE IH 235 W/ MOWER 18HP	3,500
IHC 184 W/ MOWER 18HP	3,500
USED SIDE BY SIDES	
MAHINDRA 750 CREW XTV	8,500
MAHINDRA 750 XTV	7,500
USED ROUND BALERS	
MF 2745 4X5 MESH	12,500
HESSTON 745 4X5	7,500
HESSTON 555 4X6	4,500
HESSTON 560 5X6	4,000
HESSTON 550 4X6	3,500
NH 850 5X5	1,500
MF 224 SQUARE BALER	2,500
USED RAKES	
SITREX 12WHEEL	3,500
DURABUILT 8 WHEEL	1,950
VERMEER WR20 8 WHEEL	1,950
RHINO 10 WHEEL	1,750
M&W 8 WHEEL	1,500
USED MISC.	
HAYBUSTER 107C DRILL	17,500
HAYBUSTER 107C DRILL	9,500
TRUFX 7FT NOTIL DRILL	3,500
NEW HOLLAND 185 SPREADER	3,500
BUSH HOG 3008 8FT 3PT	3,000

Marshfield Machinery Inc.  
222 E. Madison • Marshfield, MO 65706  
417-859-2117  
www.marshfieldmachinery.com

## EMMONS RESOLUTIONS LLC

- > Brick Restoration
- > Tuck Pointing
- > Sealing

- > Caulking
- > Red Iron Construction
- > Framing

Colton Emmons 417-664-8350  
Eddy Torrey 417-630-2670

**2012 29' COACHMAN CATALINA DELUXE:** 29' Bumper-pull travel trailer w/ super slide. Very good condition, garaged. \$12,500. 417-989-1867, Dora.

**BRUSHOGS:** 5 to choose from, 5ft-6ft, 3pt and/or pull. \$350/up. Disc 8ft tandem, like new. \$900. 417-753-2747/417-766-1991, Rogersville.

**COWBOY CORGI PUPPIES:** 6 wks, ready to go. \$300. 417-241-1216, Seymour.

**CASE SUPER M SERIES 2 BACKHOE:** 4WD, extend-a-hoe, heat/air, new rear tires, extra buckets, flip-over pads, 3,970 hrs. \$40,000 OBO. 573-967-5355

**CHECKERED WALNUT WOOD STOCK PISTOL GRIP:** for Marlin Model 336 or 1895. \$100. Washington. 636-239-2695.

# 0% for 4 Years\*

\*with approved credit



**Outdoor Wood Furnace**

as low as

\$168

per month

HEATMOR MIDWEST

Licking, MO 65542  
573-674-2962

**BARN WOOD SIDING:** 8" & 10" wide. 573-729-7226. www.pineridgerustic.com

**BOSTON TERRIER PUPPIES:** 573-548-2428, 573-453-8376.

**C FARMALL FENDERS:** \$100. 417-533-7126.

**2014 4DR CHEVY 4X4:** One owner truck. \$19,900, 573-210-0595.

**2008 GMC ACADIA:** new tires. \$3,200. 417-880-7782.

**ENCLOSED TRAILER:** 22', bumper style. \$3,200. 573-636-8000, JC.



**USED OAK BARN WOOD FOR BUILDING OR KINDLING.** \$30. 417-293-7113, West Plains.

**SHORTBED PICK-UP BED:** step-side, Z71, older model truck. \$200 or trade. 573-734-2822.

**PONY/HORSE CART** with trailer. Team pole with neck yoke. double tree, vehicle tow tongue, bench seats, rub brakes. Pics available. \$400. Greenville, 573-712-4108.

**9 HEALER PUPPIES:** 5 males, 4 females. 8 wks old. \$200. 417-533-4994. Grovespring.

**DANUSER HYD. POST DRIVER:** Nice. \$1,950. 573-765-4406.

**ALLIS CHALMERS WD:** gas, XL cab, wide front, PS, 3pt, loader w/forks, good tires & paint. \$3,000. Rogersville. 417-753-2747, 417-766-1991.

**AUCTION REMINDER:** Estate Auction. Saturday, November 16th @ 10am. Johnson Bay Auction. Please see our Auction Directory for more information.

**9 RED ANGUS BULLS:** registered, 2 1/2 yr old. 573-300-8112, after 7pm 573-593-4299.

**NARROW HYDRAULIC BUCKET:** mounted on Massey Harris. \$250obo Also several Massey Harris tractors for restoration. 417-254-1001.

**Awesome Truck Load Sale**

- 1st Quality OSB Sheathing in 7/16" thickness with straight edges - 7.75 each
- 1st Quality OSB Tongue and Groove 3/4" Sheathing - 16.50 each
- 6x6 Treated Posts up to 24' lengths - 2.00 per running foot



**DG Lumber**  
in Norwood, MO  
2440 S. Highway E  
**417-259-0994**  
We Offer Good Value With Great Customer Service



**Wright Spray Foam Insulators, Inc.**  
Commercial & Residential  
**Call for FREE Estimates!**

Mose Gingerich 417-746-1953  
B. Eli Yoder 417-746-4932

**2004 HONDA PILOT:** AWD, 3rd row seat, high mileage. Runs, drives & operates good. Sell or consider trade for pick-up. 417-599-8089.

**HAY FOR SALE:** Round and Square, call for prices. 417-345-5634

**AKC GERMAN SHEPHERD PUPPIES:** UTD, vet-checked, large breed. 417-589-2039.

**WANTED CATTLE FARM TO LEASE OR PURCHASE:** within 20 miles of Belle, Mo. 573-578-3945.

Built Stronger to Last Longer  
**Gooseneck**  
Trailer Mfg. Co., Inc.

**Savings Start Here!**



24 x 6'8" Gooseneck Brand Stock Trailer  
**Several In Stock**  
Same day financing with Ag Direct (with approved credit)

**LET US BE YOUR PEOPLE!**

**WESTGATE TRAILER & EQUIP.**

**417-351-6974 • 417-926-7733**  
www.westgatetrailer.net  
8920 W Business 60 • Mtn. Grove, MO  
7136 W Farm Road 140 • Springfield, MO  
**FULL SERVICE SHOP**  
OPEN: Mon.-Fri. 8-5 And "YES!" Sat. 8-Noon!

**MODULAR STOCK SALE -** It is time to move our inventory. **TRUE MODS -** Save Thousands. Call Marla, better than 20 years experience. 573-657-7040, chateauhomes.net.

**PORTABLE LAYING HOUSE:** \$700. 417-259-3437.

**See Service**  
Spray Foam Insulation

Closed cell or open cell form available  
Choose the thickness of your insulation

<b>Closed Cell</b>	<b>Open Cell</b>
• Higher R. value	• Lower Cost
• Vapor barrier	• Sound Deadening
• Structural benefit	• Fire resistant
• Fire Resistant	

Both types of foam fill voids and stay where they are put to provide better insulation than fiberglass or cellulose

FINANCING AVAILABLE **WE ACCEPT**  
VISA MASTERCARD

Call Joseph See  
(417) 733-6936  
Located near Buffalo, MO

**CAROLINA CARPORTS**  
Carports, Garages - Barns, RV Covers  
**Starting At \$1095.00**  
Delivered and Installed



**RENT TO OWN • NO CREDIT CHECK**

**Sale!** Limited Time  
10% Off \$2,000 to \$4,999  
12% Off over \$5,000

**METAL PANELS**

**NEW LOW PRICES!**  
29ga 40 Year Warranty Painted..... \$64.00 sq  
29ga 20 Year Warranty Galvalume..... \$49.00 sq

**JENKINS BUILDINGS, LLC**  
Since 1964  
Showroom & Sales Office  
Bolivar, Missouri 65613  
**(417) 326-4228**  
Next to Smith's Restaurant  
Hwy. 13 & U

Corporate Office  
Polk, Missouri 65727  
**(417) 852-4228**  
2 Miles South of Pittsburg  
on Hwy. 64

Find us on **facebook**  
**JenkinsBuildings.com**  
Prices Subject to Change

**VISIT US @ JENKINSBUILDINGS.COM**

# COLE'S TRACTOR & EQP, INC.

1 mile east of Farmington on Highway 32 • 573-756-4353

## LS MT235E 35HP 4WD DIESEL TRACTOR PACKAGE

No Payment for  
**90 DAYS\***  
Limited Time Offer

- With Deluxe Skid Steer
- QA Bucket Front Loader
- 5FT Brush Hog
- 5FT Box Blade
- AND 7000LB GVW Deluxe
- Car Hauler Flatbed Trailer

### ★★ SPECIAL PROMOTION ★★

**BUY THIS PACKAGE AND YOU GET A FREE PRESSURE WASHER WITH 2 RATCHET TIE DOWNS!**

**PLUS YOU GET THE BEST 6 YEAR PARTS AND LABOR WARRANTY!**

**ALL THIS FOR ONLY \$21,495**  
*Financing Available on Location!*



\* 4.99% with a 90 Day No Payment option for the holiday shopper. Must finance thru Wells Fargo Equipment Finance. Based on buyers qualification. Limited Time offer. See Dealer for details.



**VILLA HOMES IN ROLLA:** Has NEW and USED Mobile Homes. Call David for info: 573-578-8072.

**WANTED, TIMBER TO LOG ON SHARES:** Honest, reliable, references. 417-533-4607, 417-664-1195.

**AUCTION REMINDER:** Online Home Auction in Columbia ends Thursday November 21st at 12:30pm. Atterberry Auctions. Please see our Auction Directory for more information.

**Gooseneck and Winchester Star Pipe Cattle Trailers**  
*the best in the business*  
**HERE AND READY!!!!**

Starting at **\$9,685**



**Cowtown USA**  
 I-44 Exit 203 • 413 Daniels Rd.  
 Cuba, MO • 573-885-6300  
 www.cowtownusainc.com

**ANTIQUE LOG CABINS FOR SALE.** Built in 1800's. Also Peg Barns. If you have always wanted a REAL LOG CABIN that has survived since Civil War, I have them! Prices start at \$4,000 and up accordingly to size/condition. Build it yourself or let us. 573-744-5343, 573-578-1082.

**2007 TOYOTA CAMRY:** 250,000 miles (Commuter Car), well maintained, gray color, good tires. REAL NICE CAR. \$2,500. 417-533-2228.

**ALFALFA/ORCHARD 4X5 LARGE ROUND:** 2nd cutting, net wrapped, barn stored, excellent quality. \$85/bale, delivery available. 417-532-6686, 417-531-6686.

**\$17,900, 2010 DODGE CARAVAN:** Wheelchair accessible van only, 72,000 miles, very good condition, power wheelchair included. 573-216-8844.

**MINT WINCHESTER MODEL 63.** \$1,200. 573-346-7575.

**INTERNATIONAL TRACK LOADER TD9:** W/clam shell bucket, excellent shape. \$7,950. 573-377-4872, leave message.

**GERMAN SHEPHERD KENNEL REDUCTION:** Good breeding stock. \$50. Also pets. Hartville, 417-741-2198.

**HOLLYWOOD 4-BIKE HITCH MOUNT RACK:** Excellent condition, Includes (2) Allen Stabilizer tension bars and keyed alike locking hitch pin and cable. \$175. Conway, 417-718-5347.

**TRUCK LOAD OF FLEA MARKET & AUCTION ITEMS:** \$200 or trade. 573-327-9068

**DARK BROWN LARGE STORAGE OTTOMAN:** Or coffee table with lid, perfect. \$75. 417-588-2176.

**3 HEALER PUPPIES: 12wks, males.** \$50. 417-533-4994. Grovespring.

**FIREARMS:** Professional Repairs and Restorations. Baron's Gunsmithing. 573-363-5801, Camdenton.

**10 TASTE OF HOME Hardback cookbooks.** \$2.50 each or all for \$20. 417-532-2045, Lebanon.

**CLIPPER SEED CLEANER:** \$150. 417-646-8807.



**RHINO AG**

*Fall Clearance Sale*  
**on Select Rhino Cutters**

**3150 15ft. Flex Wing**  
 with Chains & Lam Tires

*Only \$13,500*

\*Financing Available. See Dealer for Details.

**WCT Farm & Lawn LLC**  
 3299 Evergreen Rd., Strafford, MO  
 417-859-4311  
 www.wctfarmandlawn.com



**2004 OPEN RANGE FIFTH WHEEL CAMPER:** 34', all weather, in good condition. \$10,500. Lebanon, 417-718-5520.

**BRAND NEW INTERTHERM ELECTRIC FURNACES:** For mobile homes. \$550. Factory Warranty. Call Charlie 573-786-4003, Steelville.

**3PT BALE CARRIER:** \$100. Rogersville. 417-753-2747, 417-766-1991.

**2012 GMC ACADIA SLT:** 80,000 miles, red w/tan interior, leather/power heated seats, 3rd row seats, double sunroof, lots extras, new tires/brakes. \$13,500. 417-718-0085.

**BEEFALO,** The Forage Fed Breed: weaning age bulls and heifers. \$950. 573-732-5763, Bourbon

**A&M SAWMILL: Buying Cedar Logs.** Monday, Wednesday & Friday. 3626 S 21st Rd, Dunnegan, MO 65640. 417-754-1173.

**JERSEY HEIFER:** \$600. Jersey Steers. \$500 each. Jersey Steers, \$250 each. Steelville, 573-775-2564.

**AUCTION REMINDER:** Real Estate & Estate Auction. Saturday November 16th @ 10am. Sellers Auction. Please see our Auction Directory for more information.



# SEEGER TOYOTA'S BLACK FRIDAY SALE

**\$500 REBATE**

On all Preowned in stock!\*

Expires 11-30-2019

7251C	2017 TOYOTA TUNDRA PLATINUM ...	\$37,988	7927A	2016 TOYOTA SIENNA LTD PREMIUM...	\$25,988	P9600A	2016 CHEVROLET IMPALA LIMITED LT .....	\$12,988
7352A	2017 CHEVROLET TRAVERSE LT.....	\$22,988	7932A	2017 TOYOTA PRIUS FOUR.....	\$19,988	P9601	2011 FORD F-150 KING RANCH .....	\$16,988
7357B	2013 TOYOTA PRIUS C ONE .....	\$8,988	7956A	2017 TOYOTA TACOMA SR .....	\$24,988	P9602	2017 TOYOTA TACOMA SR5 .....	\$29,988
7388A	2018 JEEP GRAND CHEROKEE LIMITED .....	\$32,588	7977A	2015 MINI COOPER PACEMAN S.....	\$11,988	P9603	2019 TOYOTA CAMRY LE .....	\$20,588
7435A	2013 JEEP WRANGLER SAHARA .....	\$23,988	7978A	2017 NISSAN ROGUE SV .....	\$17,988	P9604	2019 TOYOTA CAMRY LE .....	\$20,588
7533B	2002 HONDA CIVIC LX.....	\$5,988	7981A	2018 KIA STINGER GT1 .....	\$34,988	P9605	2019 TOYOTA COROLLA LE.....	\$15,988
7584A	2018 RAM 1500 BIG HORN.....	\$33,988	7991A	2013 ACURA ILX TECH PKG .....	\$10,988	P9606	2019 TOYOTA COROLLA LE.....	\$15,988
7593A	2015 CHEVROLET TAHOE LTZ .....	\$34,988	7994A	2018 JEEP GRAND CHEROKEE ALTITUDE.....	\$33,988	P9607	2019 TOYOTA HIGHLANDER SE .....	\$36,988
7636B	2018 GMC SIERRA 1500 SLT .....	\$41,988	7998A	2014 CHEVROLET IMPALA LT .....	\$11,588	P9608	2018 CHRYSLER 300 LIMITED .....	\$22,988
7678A	2016 FORD EXPLORER LIMITED .....	\$24,988	8002A	2017 JEEP CHEROKEE TRAILHAWK L PLUS .....	\$25,988	P9609	2017 TOYOTA CAMRY SE.....	\$17,988
7692A	2013 TOYOTA TUNDRA 4WD TRUCK LTD.....	\$29,988	8013A	2017 FORD F-150 PLATINUM .....	\$37,988	P9610A	2016 FORD EDGE SEL.....	\$20,988
7703E	2013 TOYOTA FJ CRUISER SR.....	\$25,988	8020A	2017 TOYOTA TACOMA SR5 .....	\$27,988	P9611	2017 TOYOTA CAMRY XLE.....	\$18,988
7708A	2017 SUBARU WRX STI.....	\$29,988	8034A	2002 TOYOTA 4RUNNER SR5 .....	\$7,988	P9613	2016 TOYOTA RAV4 XLE.....	\$19,988
7741A	2015 CHEVROLET MALIBU LT .....	\$10,988	8058A	2002 FORD F-150 LARIAT.....	\$8,988	P9615	2019 TOYOTA RAV4 XLE.....	\$25,988
7766B	2013 FORD EDGE LIMITED .....	\$13,988	8068A	2018 TOYOTA CAMRY HYBRID LE.....	\$26,588	P9616	2019 TOYOTA RAV4 XLE.....	\$25,988
7786C	2009 HONDA ACCORD SDN EX.....	\$8,988	8071A	2017 ACURA MDX .....	\$34,988	P9617	2018 TOYOTA CAMRY LE .....	\$18,988
7822B	2016 TOYOTA SIENNA LE.....	\$22,988	8073A	2010 JEEP WRANGLER SPORT .....	\$15,988	P9618	2018 TOYOTA CAMRY LE .....	\$18,988
7824B	2016 FORD EXPLORER SPORT .....	\$23,988	8075A	2018 TOYOTA HIGHLANDER XLE .....	\$32,988	P9619	2019 TOYOTA RAV4 XLE.....	\$24,588
7825A	2017 HONDA CIVIC HATCHBACK EX-L NAVI.....	\$19,988	MC01	2008 DODGE RAM 3500 SLT .....	\$29,988	P9620	2019 TOYOTA 4RUNNER TRD OFF ROAD PREMIUM.....	\$36,988
7827A	2016 CHRYSLER TOWN & COUNTRY TOURING .....	\$16,988	P9557B	2016 DODGE GRAND CARAVAN SXT ..	\$15,988	P9621	2019 TOYOTA 4RUNNER SR5 .....	\$32,988
7830A	2014 CHEVROLET CRUZE 1LT .....	\$9,288	P9580B	2007 FORD F-150 XL.....	\$8,988	P9622	2018 TOYOTA CAMRY SE.....	\$18,988
7831A	2015 FORD FUSION SE.....	\$13,588	P9585	2013 TOYOTA 4RUNNER SR5 .....	\$21,588	P9623	2017 JEEP COMPASS LIMITED.....	\$23,988
7833B	2015 GMC ACADIA SLE.....	\$21,988	P9587	2016 TOYOTA HIGHLANDER LIMITED .....	\$33,988			
7854B	2012 TOYOTA TACOMA .....	\$14,988	P9592	2018 FORD MUSTANG GT .....	\$27,988			
7886A	2017 TOYOTA HIGHLANDER LIMITED ..	\$33,588	P9593	2014 TOYOTA CAMRY XLE .....	\$11,988			
7892A	2018 TOYOTA C-HR XLE PREMIUM .....	\$20,988	P9594	2016 FORD EXPLORER SPORT .....	\$26,988			
7895B	2015 JEEP GRAND CHEROKEE ALTITUDE.....	\$24,988	P9596	2017 TOYOTA COROLLA LE.....	\$13,988			
7916A	2015 FORD ESCAPE TITANIUM.....	\$17,588	P9597	2019 TOYOTA COROLLA LE.....	\$16,988			
			P9598	2017 TOYOTA CAMRY SE.....	\$18,588			
			P9599	2016 TOYOTA COROLLA S.....	\$15,988			

**FREE RECALL VIN CHECK!**



**PROUD WINNER OF THE PRESIDENT'S AWARD FOR THE 2ND YEAR IN A ROW!**



**TOYOTA**  
Let's Go Places

Doing Business  
the Right Way  
The Seeger Way



**ENGINES FOR LIFE**

Call for details  
Non-Factory Lifetime Limited Warranty  
Good at participating dealerships



**SATURDAY SERVICE 8AM-4PM**



EXPERIENCE THE LOOK  
EXPERIENCE THE FEEL  
EXPERIENCE THE ATMOSPHERE



**800-844-6026**

Next to Walmart, St Robert | 573-336-7111 | SeegerTOYOTA.net

\*Does not include tax, title, and license. \* Seeger Care offer good for Less than 85K Miles and Less than 10 years old Prices do not include any College Grad or Military Rebate. See sales rep to see if you would qualify for additional savings. Prices does not include \$199 dealer administrative fee. Cannot be combined with any other offer. Prior sales final. See dealer for details. Advertised vehicle may not be exactly as pictured and are subject to prior sale. We cannot be responsible for typography or photography.

**SEEGER CARE\***

- PREOWNED VEHICLES COME WITH SEEGER CARE!**
- 1 **FREE** (3) SCHEDULED OIL AND FILTER CHANGES
  - 2 **FREE** MULTI-POINT INSPECTION WITH EVERY OIL CHANGE
  - 3 **FREE** EXTERIOR CAR WASH WITH EVERY SERVICE VISIT
  - 4 **FREE** LIFETIME SAFETY AND EMISSION TESTING
  - 5 **FREE** SAME-DAY SERVICE LOANER CAR
  - 6 **FREE** TANK OF GAS
- Service Only at Seeger St Robert/St Louis

**2018  
MODEL CLOSEOUT  
SALE**

**ONLY 3  
2018'S REMAINING!**

**NEW 2018 FORD TAURUS LIMITED**

QC57070 | 3.5L, V-6 Cyl, Front Wheel Drive, 6 Speed Automatic, White Platinum Tri-Coat, Leather Upholstery, Power Moonroof, Rear Spoiler, Voice-Activated Touchscreen Navigation System

MSRP \$41,335 *Sale Price \$29,513*



**SAVINGS OF \$11,822!**



**SAVINGS OF \$8,336!**

**NEW 2018 FORD FUSION SPORT**

QC56994 | 2.7L, V-6 Cyl, All-Wheel Drive, 6 Speed Automatic, White Platinum Tri-Coat, Leather Upholstery, Power Moonroof, Wireless Phone Connectivity

*Sale Price \$27,979*

MSRP \$36,315

**2018 FORD F-150 XLT TRUCK SUPERCAB**

QT57398 | 3.3L, V-6 Cyl, 6 Speed Automatic, 4X2 Drivetrain, Shadow Black, Wireless Phone Connectivity, Exterior Parking Camera Rear, Remote Keyless Entry, Steering Wheel Mounted Audio Controls, Class IV Trailer Hitch Receiver

MSRP \$28,320 *Sale Price \$26,320*



**LINDSAY FORD**



260 W. St. • Lebanon, MO • Mon.-Fri. 8am-6:30pm • 8am-5pm • John Roper, Alex King, Ed Compton, Amber Uder and Russell Hedges

**417-532-3146 • [www.lindsayautogroup.com](http://www.lindsayautogroup.com)**

*\*With approved credit. See dealer for details. Not responsible for typos. Actual vehicle may vary from photo.*



**KUBOTA TRACTOR M7060HD:** front loader, 8' brush-hog. \$35,000. 417-300-5146, Pleasant Hope.

**2006 FORD 14 PASSENGER SHUTTLE VAN:** 80,000miles, great condition, bad engine. \$900obo. 417-254-1001

**SMALL SQUARE BROME HAY:** 70LB, horse quality, delivery available. 417-532-6686, 417-531-6686.

**LIKE NEW PEDESTAL:** for front loader washer or dryer, 12"x24 3/8"x 27". \$50. Gerald, 573-764-2270.

**GIBSON HEATING & COOLING UNIT:** Working condition. \$400. Whirlpool 25' cu ft side-by-side refrigerator freezer, excellent condition. \$400. Whirlpool, 40gal electric water heater, extra heat elements. \$100. Kenmore Elite dishwasher. \$25. GE Dryer \$25. Will negotiate, make offer. 417-241-0394, Hartville.



# Relax

*On a one of a kind property*

For Sale: 83 acres with approx. 25 open balance in marketable timber. Has a 3 ac. m/l lake stocked with blue gill, catfish and bass. Seller states 28 ft deep In middle. Two story cabin overlooking this lake, two smaller cabins, two large metal buildings, 3 older buildings, two ponds small orchard and garden spot, some of the most beautiful views and rock formations you will ever see. Plus there is 8 RV hookups, beautiful pines and oak trees, small spring with walk over rock formation. Sellers states some excellent hunting. If you are looking for seclusion, privacy, hunting or retirement here it is.




**\$324,900**

**Call or text Lena Berg, agent @ 573-578-2887 to view this property!**



**Red Caboose Real Estate LLC**

Licking Missouri and Missouri Ozarks Real Estate



**Office: (573) 674-4933 • Connie Culp, Broker**

**2018 JOHN DEERE 3025 4WD TRACTOR:** loader, bale spike, 6' bushhog, yard trailer, John Deere fertilizer spreader w/3pt attachment, very low hours, still under warranty, Always garage kept. \$16,500. 573-247-0084, West Plains.

**18 STUB GUARDS:** for Hesston PT7 or 10 Haybine. \$15. Gerald, 573-764-2270.

**3 DOZEN MALLARD DECOYS:** Mostly Flambeau, some new, weighed and ready to hunt. \$40 per dozen. Buffalo, 417-345-4562.



**NEW BIG TEX 14LX DUMP TRAILER**

facebook

**JIM'S Motors TRAILERS**

I-44 at Exit 208 • Cuba, MO  
www.jimsmotors.com  
**(573)885-2595**  
**(800)897-9840**

GREAT SERVICE!  
1957-2018 GREAT PRICES!

**2 BARREL WOOD STOVE:** Good Condition. \$80. 636-239-4124.

**AUCTION REMINDER:** Secluded Home Online Estate Auction Ends Friday, November 22nd at 12:30pm. Atterberry Auctions. Please see our Auction Directory for more information.

**NEW TURKEY FRYER:** With all accessories. \$100. 573-327-9068.

**AUCTION REMINDER:** Real Estate Auction, Saturday, November 16th @10am, Joyce Auctioneering & Real Estate. Please see our Auction Directory for more information.



**FREE 4-NIGHT VACATION!**  
Donate Car • Boat • RV • Motorcycle

**1-800-CarAngel**

**www.boatangel.org**

**TAKUCHI 135 DIESEL EXCAVATOR:** W/ hyd thumb, good. \$15,000. 573-765-4406.

**AKC GERMAN SHEPHERDS:** 7wks, 9wks, 16wks. \$400. 417-260-0266.



# We Specialize in Selling Agricultural and Recreational Farms!



**MOSSY OAK<sup>®</sup>**  
**PROPERTIES**  
**OF THE HEARTLAND**  
 Land & Lakes Properties  
 America's Land Specialist

## CALL US TODAY!!!

**Rolla Office:**

**12647 S. Hwy 63, Rolla • 573-308-4868**

**Cole Camp Office:**

**14981 Centerline Ave, Cole Camp • 660-668-4868**

**MOLandandLakes.com • 660.668.HUNT**



### Camden Co-57 Acres

**\$110,000**

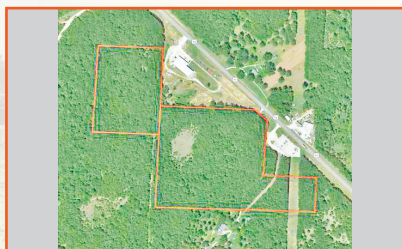
You can literally have it all with this 57+/- acres! There is an almost 10 acre open pasture with a pond & storage shed. It's completely fenced & ready for your livestock. There is also an old well on this parcel-the condition of the well is unknown. Then, you have approximately 47 acres of timberland that's perfect for hunting deer & turkey. Owner saw several turkeys last time he was out there & has seen many nice deer & found a shed from a 10 pointer! The property has been surveyed & is staked. Logging trails allow access through the property via quad or side by side! With electricity at the road, this would be a perfect place to build! **Call Pamela Dempsey today to schedule a showing at 660-553-8677**



### Camden Co-11 Acres

**\$89,900**

11+/- Acres in Climax Springs, MO with approximately 286 ft of dock able shoreline!! Owner states they had a permit at one point for a 5 slip boat dock! There are so many possibilities awaiting you at this 11 acres with lake frontage at the 60 MM. There is already a road running through the property from Oval Road down to the lake. All it's waiting for is you to come put in a dock and fulfill your dreams. The new owner will need to apply for a new dock permit. The property has been surveyed and stakes are in place. **Hurry and call Pamela Dempsey today at 660-553-8677 for more information!**



### Hickory Co-28 Acres

**\$49,500**

This property already has an established drive onto Highway 54. You'd have enough space here to open a business and still use the property for hunting and/or recreation. I will have pictures online soon, but don't wait to call and schedule your showing. You're not going to want to miss your chance to get such a great deal on a versatile piece of property. **Call Pamela Dempsey today for more information at 660-553-8677**



### Hickory Co-14 Acres

**\$23,900**

Timbered Acres surrounded by farmland. Don't miss your opportunity to snatch up this land while it's available. There will be pictures coming soon. This is sure to be a wildlife haven with the surrounding farms. Whether you plan to hunt, build, or both, this could be the perfect place for you! **Pamela Dempsey at 660-553-8677 to schedule a showing today!**



### Hickory Co-40 Acres

**\$59,900**

Here's your chance to own a great 40 acre parcel for a wonderful price! Don't wait or it'll be gone. More pictures will be coming soon. This is an excellent location with easy access to the Highway, but still out far enough to be peaceful. You will be able to enjoy hunting, nature watching, and camping on your very own piece of property. **Call Pamela Dempsey today to set up a showing at 660-553-8677**



**WR CASE & SONS Cookbook & Historical Companion. \$7.50. 417-532-2045, Lebanon.**

**JOHN DEERE 4240:** Diesel Tractor, cab and cold air, power shift, very nice. \$29,500 573-765-4406.

**DYNO CHARGE 990 ELECTRIC FENCER:** Solid state for 20 miles. \$50. 636-239-2695.

**MUSTANG 2040 DIESEL SKID STEER LOADER:** \$8,500. 573-765-4406.

**AUCTION REMINDER:** Tuesday, November 26th at 9:27am. Chupps Auction Co. Please see our Auction Directory for more information.

**JOHN DEERE HX 15:** hyd fold, 15ft brushcutter. \$9,750. 573-765-4406.

Meet...

# Shawna Bradley

Your Auction Specialist



Call or email me today to get your next auction in Central Missouri's #1 Shopper!



**WEEKLY**  
**TRADER**  
**MAGAZINE**

office: 417-532-9131 ext. 215 • 417-895-9324  
cell: 417-322-3814 • shawna@weekly-trader.com

**CDL IN ONE DAY!!:** Family owned and operated, Insured, Over 10 years of experience, Training available for all states, Short wait time for appointments, Contact us today to schedule your appointment!! **CREDIT CARDS EXCEPTED.** (573-353-2853).

**1979 LITTLE RED EXPRESS:** 39,700mi, all original, air. \$15,500. 573-518-4620. Bonne-Terre.

**CAT #12 ROAD GRADER:** \$3,500. 417-664-2090.

**SALE!! 25%-50% OFF TARTER CATTLE HANDLING EQUIPMENT MSPR:** Select items include: Sweep tub systems, squeeze chutes, headgates, maternity pens, alley slide gate and alley panels. Nov 4-18th 2019, Pre-paid orders only, details and ordering. Call 573-205-7860.

**JOHN DEERE HX-10:** Pull-type brushcutter. \$4,200. 573-765-4406.

**CAST IRON WOOD STOVE:** w/2 front cast iron bi-fold doors. \$150. 636-239-4124.

**2016 HONDA 4-WHEELER: 500 Foreman Rubicon, 4WD, perfect condition. \$5,500. 417-274-7407.**

**AUCTION REMINDER:** Public Auction Saturday, November 23rd 9AM. Bruce & Le'AN Auction. Please see our Auction Directory for more information.

**LEBANON HISTORY BOOK-A PART OF OUR LIVES, 1949-1976. \$10. 417-532-2045.**

**AUCTION REMINDER:** Online Land/Home Auction Ends Wednesday, November 20th @ 12:30pm. Atterberry Auctions. Please see our Auction Directory for more information.

**CRAFTSMAN PROFESSIONAL 10" TABLE SAW:** On rollers, Model 315-228-510, never used, missing guard and fence. \$150firm. Hermann, 636-932-4429.

**D7 CATERPILLAR DOZER for sale:** 17A Series, HYD 95% Undercarriage, 10' blade, new parts, ROPS-CAB. 660-341-3627.

**AUCTION REMINDER:** SPECIAL Consignment Auction Friday November 15th @ 6pm. Please see our Auction Directory for more information.

**ACA REGISTERED LAB PUPPIES:** good breeding stock, 6 months old. \$50. Hartville. Also mature dogs. 417-741-2198.

**JOHN DEERE 535 ROUND BALER:** monitor, kicker, net wrap. \$5,250. 573-765-4406.

**110 ELECTRIC HEATER:** New, Lasko. \$125 or trade. 573-327-9068.

# WEEKLY TRADER MAGAZINE



## AUCTION DIRECTORY

### Friday, November 15

6:00 PM R&R Auction Service .....24

### Saturday, November 16

10:00 AM Joyce Auctioneering & Real Estate... 15  
10:00 AM Sellers Auction Service .....19  
10:00 AM Melton Auction & Realty Co .....20  
10:00 AM Johnson Bay Auction Service.....22  
10:00 AM Larinda's Auction Service.....25  
12:00 PM Buffalo Livestock Market.....28

### Tuesday, November 19

6:30 PM Buffalo Livestock Market.....28

### Wednesday, November 20

Online Atterberry Auction & Realty .....26  
Online Trophy Properties & Auction .....31

### Thursday, November 21

11:00 AM Mid Missouri Stockyards.....31  
Online Atterberry Auction & Realty .....26

### Friday, November 22

12:00 PM Easterly Auction Co.....16  
Online Atterberry Auction & Realty .....26

### Saturday, November 23

9:00 AM Bruce & Le'AN Auction & Appraisal.. 18  
9:30 AM Crawford Auction Service.....23  
10:00 AM Easterly Auction Co.....17  
10:00 AM R&R Auction Service .....24

### Monday, November 25

Online Atterberry Auction & Realty .....27

### Tuesday, November 26

9:27 AM Chupps Auction & Real Estate .....30

### Monday, December 2

11:00 AM Salem Livestock Auction.....28

### Wednesday, December 4

Online Purple Wave Auction .....29

### Friday, December 6

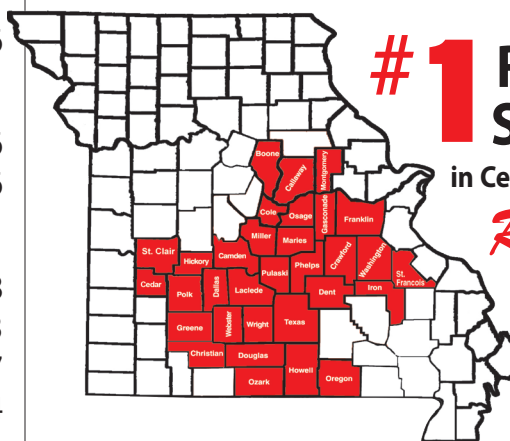
12:00 PM Salem Livestock Auction.....28

### Friday, December 13

6:30 PM Salem Livestock Auction.....28

### Saturday, December 14

Online Dream Dirt.....21



**#1 Rural Shopper**  
in Central Missouri  
*Reader's Choice!*

Call 1-800-665-8875 to get your auction listed in the Weekly Trader.

**AUCTIONEERS** Did you know the WEEKLY TRADER covers more counties in rural Missouri than any other publication?

Firm deadline is 12:00 PM Friday, prior to next week's Thursday publication date.



# Huge Real Estate & Personal Property Auction

## Saturday November 16 • 10am

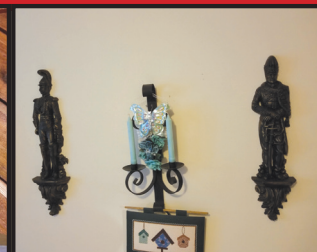
### 209 S. Mapeltree Lane • Strafford, MO



**Directions:** From Springfield, take I-44 east to exit 88 Strafford/ Fairgrove Exit, take a right on to 125 south. Follow 125 South to Route 66, take a right on Route 66, follow Route 66 to Mapeltree Lane. Follow Mapeltree Lane the auction, will be on the left, watch for signs.



**The home is a 3bed, 2bath with a fenced back yard, in a good neighborhood with good schools. Also there will be antiques and collectibles primitives and much more!**



**Please see Auctionzip or our Facebook page for more photos and information.**



All items sold as is – where is. Accepted Payment Forms: Cash, Good Check, Credit, or Debit (3% added for credit & debit transactions)  
Check out our online listing at [www.auctionzip.com](http://www.auctionzip.com) — Auctioneer ID# 30607

# Joyce

**Auctioneering & Real Estate**



**JON JOYCE** Auctioneer, Licensed Agent | Lic. #200

(417) 859-2700 - Business | (417) 859-2724 - Fax  
(417) 207-5412 - Cell | [jjoyce24.jj@gmail.com](mailto:jjoyce24.jj@gmail.com)





# ABSOLUTE REAL ESTATE & BUSINESS AUCTION

## FRIDAY, NOVEMBER 22, 2019 AT NOON

941 & 943 N. Main Ave. • Springfield, Mo 65802

**DIRECTIONS:** From the intersection of Kansas Expressway & Chestnut Expressway turn East on Chestnut expressway, turn left on N.Main ave auction will be on left.



## REAL ESTATE

The history of this property dates back a grocery store being built in 1903 and then as a cafe in 1933. It had the first beer by the drink license in Springfield after prohibition but today 943 N. Main endures as the oldest continuously operating restaurant location in Springfield and is one of the last old-fashioned neighborhood places left.

**The auction of this business will be for a turn key operation.**

**Legal:** Root & Tracy 2nd add S 30 ft E 60 Ft lot 6 & all lot 7 **Taxes:** \$1733.01  
**Terms:** 10% down day of auction with balance due at closing. Possession at closing with closing within 45 days or less from auction date.



FOR MORE INFORMATION GO TO [WWW.EASTERLYAUCTIONCO.COM](http://WWW.EASTERLYAUCTIONCO.COM) OR CALL EASTERLY'S AT 417-833-9494

**EASTERLY AUCTION CO.**

Go to [www.EasterlyAuction.com](http://www.EasterlyAuction.com)



[auctionzip.com](http://auctionzip.com)  
ID#14770

**Mike Easterly Auctioneer**  
417-833-9494

Not Responsible for accidents or theft.

For more information call: Easterly Auction Company, Springfield, MO.

Auction Terms: Bank Letter Of Credit Required.

Visa, Mastercard, Cash, Cashier's check or checks with proper I.D.

Announcements day of sale take precedence over printed material. Auction Notes: Although information

is obtained from sources deemed reliable, auctioneer makes no warranty or guarantee expressed or implied.

Buyers should themselves take the opportunity to make their own inspection prior to sale.

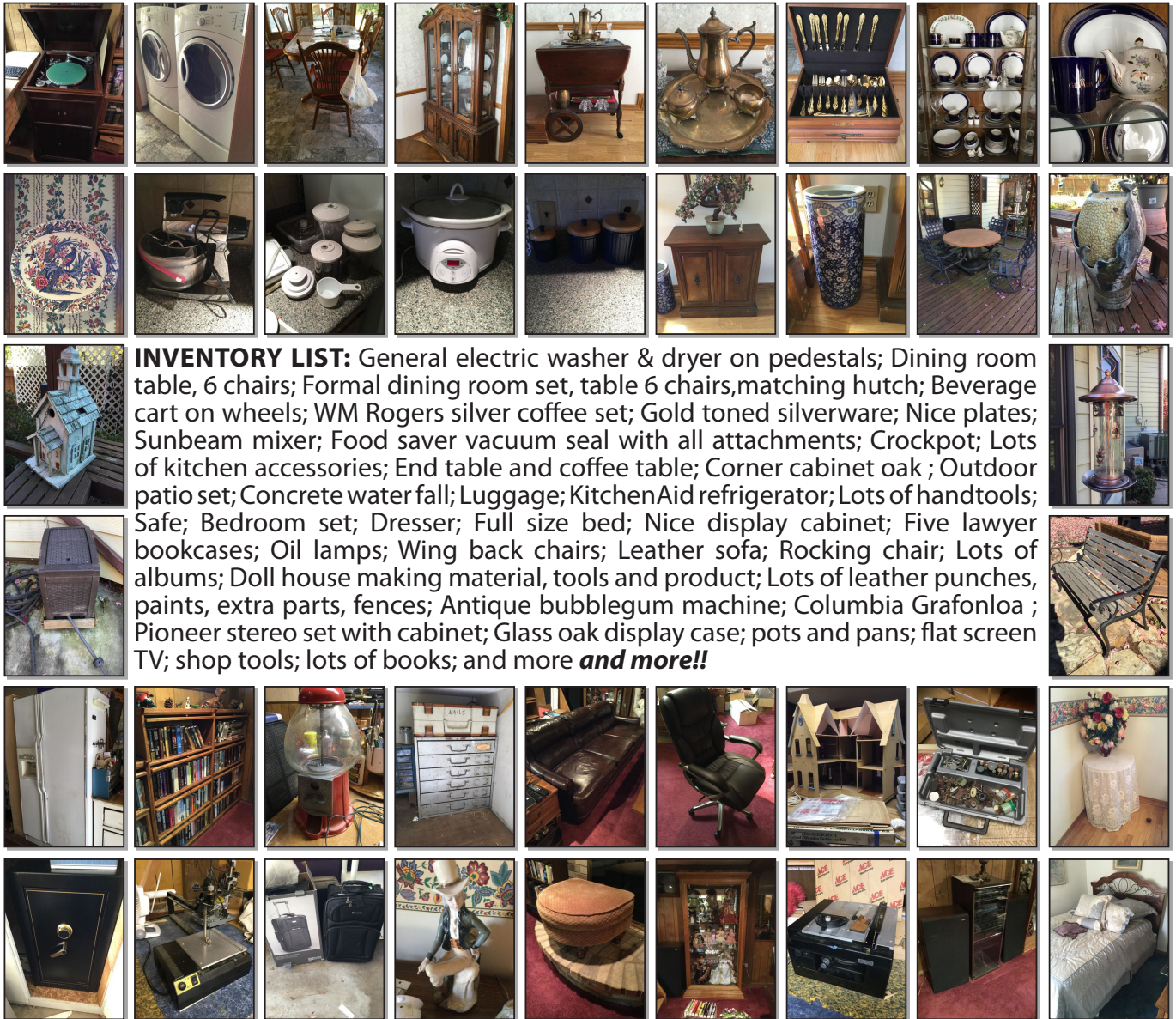


# PERSONAL PROPERTY AUCTION

## SATURDAY, NOVEMBER 23, 2019 @ 10:00AM

### 1447 W. Highland Street • Springfield, MO 65807

**DIRECTIONS:** Intersection of Kansas Expressway & Battlefield, go south south on Kansas Expressway, turn left on W.Walnut lawn, right on S.Kansas Ave, Left on W. Highland street and auction is on left.



**INVENTORY LIST:** General electric washer & dryer on pedestals; Dining room table, 6 chairs; Formal dining room set, table 6 chairs, matching hutch; Beverage cart on wheels; WM Rogers silver coffee set; Gold toned silverware; Nice plates; Sunbeam mixer; Food saver vacuum seal with all attachments; Crockpot; Lots of kitchen accessories; End table and coffee table; Corner cabinet oak; Outdoor patio set; Concrete water fall; Luggage; KitchenAid refrigerator; Lots of handtools; Safe; Bedroom set; Dresser; Full size bed; Nice display cabinet; Five lawyer bookcases; Oil lamps; Wing back chairs; Leather sofa; Rocking chair; Lots of albums; Doll house making material, tools and product; Lots of leather punches, paints, extra parts, fences; Antique bubblegum machine; Columbia Grafonloa; Pioneer stereo set with cabinet; Glass oak display case; pots and pans; flat screen TV; shop tools; lots of books; and more **and more!!**

FOR MORE INFORMATION GO TO [WWW.EASTERLYAUCTIONCO.COM](http://WWW.EASTERLYAUCTIONCO.COM) OR CALL EASTERLY'S AT 417-833-9494

**EASTERLY**  
AUCTION CO.

Go to [www.EasterlyAuction.com](http://www.EasterlyAuction.com)



[auctionzip.com](http://auctionzip.com)  
ID#14770

**Mike Easterly Auctioneer**  
417-833-9494

Not Responsible for accidents or theft.

For more information call: Easterly Auction Company, Springfield, MO.

Auction Terms: Bank Letter Of Credit Required.

Visa, Mastercard, Cash, Cashier's check or checks with proper I.D.

Announcements day of sale take precedence over printed material. Auction Notes: Although information

is obtained from sources deemed reliable, auctioneer makes no warranty or guarantee expressed or implied.

Buyers should themselves take the opportunity to make their own inspection prior to sale.



# PUBLIC AUCTION

FAIR PLAY, MO

# AUCTION

As we have sold our Farm we will sell the following Pickup, Tractor, Equipment, UTV, Guns, Tools, Tack, Household and Misc. at the Farm located 2 ¼ miles West of Fair Play, Mo. on 32 Hwy. to 245 Hwy. go South 2 ¾ miles to Farm Road 2070 go East to the Auction on

## Sat. November 23, 2019 at 9:00 am

WATCH FOR AUCTION COMPANY SIGNS • LUNCH SERVED

FOR MORE PICTURES GO TO: [WWW.BRUCEANDLEANAUCTION.COM](http://WWW.BRUCEANDLEANAUCTION.COM)



### PICKUP-TRAILERS-UTV

- 2004 Dodge 3500 Ram 4 Door One Owner Cummins Diesel 4X4 Pickup 77,935 miles, Automatic Transmission, PW, PL, Power Seat, Gooseneck Hookup, Good Rubber, (good straight truck no modifications)
- 2014 Polaris XP 800cc Side By Side One Owner, Top, Windshield, Electric Dump Bed, 340 Hours (good condition)
- 2006 Kodiak 20' X 8' Gooseneck Flat Bed Trailer W/4' Dove Tail & Ramps
- 10' X 6' Single Axle Flat Bed Trailer W/Drop End Gate

### TRACTOR-EQUIPMENT

- 2008 Kubota M7040 Cab 4X4 Tractor 70 HP 8 Speed Hyd. Shuttle Trans. 284 One Owner Hours, Wheel Weights, W/Kubota LA 1153 Front End Loader, W/6' Bucket
- 2019 Land Pride Commander Seris 2 RC5615 H/D 15' Brush Hog W/Air Plane Tires
- 2008 Plainsman RCR 3515 15' Brush Hog W/Air Plane Tires
- 200 Gallon 3 Pt. Boomless Sprayer
- Atlas 7' Box Blade
- 6' 3 Pt. Blade
- 6' 3 Pt. Rock Rake
- Skid Steer Pallet Forks
- 3 Pt. Land Pride FDR1660 Finish Mower 5'
- 3 Pt. Cosmo PTO Grass Seeder
- 3 Pt. Danuser Post Hole Digger W/9 & 12" Augers
- 3 Pt. King Kutter II 48" Rear Tine Tiller
- 100 Gallon Fuel Tank W/Hand Pump
- Approx. 100-6' Steel Post
- 4 Poly Stock Tanks
- Misc. Gates
- One Lot of Electric Fencing

### MOWER-TOOLS-TACK

- Craftsman GT-6000 Riding Mower 26 HP 54" Cut
- Craftsman 20 Gallon Upright 1 ½ HP Air Compressor
- Craftsman Miter Saw on Stand
- Tradesman 10" Table Saw
- Bosch H/D Hammer Drill
- Air Nailers
- Makita Reciprocating Saw
- Several Electric Hand Tools
- Craftsman 7 ¾ HP 2700 PSI Pressure Washer
- Craftsman 5600 Watt 10 HP Generator
- 3250 Watt 208cc Generator
- G1000 M Briggs Generator
- 1 HP Portable Air Compressor
- Ryobi Double Stone Grinder
- Craftsman 4 Drawer Poly Roll around Tool Box
- Professional Electric Painter
- Stihl MS 290 Chain Saw
- Craftsman Chain Saw
- Poulan 330 Chain saw
- Electric Pole saw
- Little Giant Folding Ladder
- Tucker Endurance Saddle
- 12" Synthic Childs Saddle
- 3 Stack Saddle Stand
- Large Lot of Horse Blankets, Halters and Misc. Tack
- 4' Poly Roller
- 2 Wheel Metal Lawn Trailer
- 15 Gallon 12 Volt Sprayer
- Poly 2 Wheel, Wheel Barrow
- 3 Live Traps
- 2 Poly storage Cabinets
- 2 Wooden Spoke Wagon Wheels

### GUNS

- Winchester 24 Gun Combination Gun Safe
- Glenfield Model 60 Semi-Auto 22 Cal. Rifle W/Scope
- Browning 12 Ga Pump 3" Shot Gun BPS Special, Field 24" Rib Barrel, Poly Stock
- Savage Model 110 Bolt Action 30-06 Rifle W/Poly Stock, Simmons Scope, Shooting Stick
- 44 Cal. Reproduction Cap & Ball Pistol
- Misc. Ammo
- 7- Armor Grade Metal Firearm Targets

### HOUSEHOLD-PATIO-FURNITURE

- Kenmore Side by Side Refrigerator W/Ice & Water in Door
- 4 Pc. Pine Bedroom set W/Pillow Top Mattress
- 2-3 Drawer Floral Fronted Chest
- Oak S Roll Top Desk
- Office Chair
- 2 Oak Wooden 2 Drawer File Cabinets
- Ant. Singer Treadle sewing Machine
- Foot ton
- Sharp TV
- Gateway Windows 10 Computer
- Tan 3 Cushion Divan
- Large Green Egg Grill on Stand (like new)
- Large Kenmore Stainless Propane Grill
- Lrg. Patio Table W/6 Chairs
- 3 Pc. Metal Patio set
- Sq. Patio Propane Fire Pit
- Swivel Patio Chairs
- Lrg. Planters
- House Plants
- One lot of Misc.

**AUCTIONEERS NOTE:** The Montana's have sold their Home & Farm and are relocating. Here is an opportunity to buy some Late Model Equipment with Low Hours & Low Miles, There is several items on this Auction in like new condition and will be selling to the Highest Bidder for more information contact Auction Co.

## OWNERS: MR. & MRS. MIKE MONTANA

TERMS: Everything sells as is, where is. Nothing is to be removed until settled for. Payment of Cash, Check with Proper ID, or Credit Cards. Auction Company or the Owners will not be responsible for loss of items or accidents. Statements made the Day of the Auction take Precedence over Printed Matter.

SALE CONDUCTED BY **BRUCE & Le'AN AUCTION & APPRAISAL, LLC**  
THE AUCTION COMPANY THAT APPRECIATES YOUR BUSINESS

For more information and pictures go to our website at [www.bruceandleanauction.com](http://www.bruceandleanauction.com)

RONNIE BRUCE - Fair Play, MO  
417-777-1685 or 417-654-2214  
colonbruce@gmail.com

BRANDON BRUCE  
Fair Play, MO

BILLY BRUCE - Stockton, MO  
417-399-4800  
colbbruce@gmail.com



# REAL ESTATE & ESTATE AUCTION

To Settle the Estate of Len & Doris Walderich, we will sell the following Real Estate and Personal Property on:

## Sat. November 16, 2019 @ 10AM

**DIRECTIONS:** (898 Angus Valley Dr. Rolla, MO) From Bishop Ave/63 and 10th street, travel 10th street 1.3 miles to Angus Valley Drive on the right, then 500 ft. on left. Follow Sellers Auction Signs Day of Sale



### REAL ESTATE WILL SELL AT NOON

**House is 1392sq.ft.** – 3 Bedroom 2 Bath Home with attached 1 Car Garage. Built in 1965 Home sits on a .29 acre lot measuring 68.21ft. wide by 198.94ft. deep. New Furnace & Air in 2015. The Walderich's purchased this House in 1970 and lived there till their passing. For More Information or to view property contact auction company @ 573-480-4400.

*10% Down Sale day of nonrefundable funds, balance at closing Property sells "as is where is" with no warranties whatsoever Seller guarantees good title and taxes will be paid up to date Closing split 50/50 between buyer and seller Buyer will be required to enter into a written contract at the close of the auction*

**Antiques, Furniture & Misc.:** Syrian Brass Clad Sailor's Trunk ~ Adamantine Antique Mantle Clock ~ H Grindley England Pitcher & Bowl w/Bath Accessories ~ Camel Blanket ~ Baroque By Wallace Tea Set w/Tray ~ New Style White Cedar Cylinder Churn No.3, 7gal. ~ 1894 Rand McNally & Co. Atlas ~ 1912 Cram's Ideal Reference Atlas of the World ~ 1927 New Reference Atlas ~ 1908 World's Greatest Events Complete 5 Volumes ~ 4pc Set of Spode Copeland ~ Rosenthale Germany Dishes ~ Pink Depression Cookie Jar ~ 8pc Johann Haviland Bavaria ~ Crystal Bowls ~ Tobacco Stand ~ Corningware ~ Large Lot of Jewelry including Silver & Gold ~ Queen bed w/Night Stand, Dresser & Chest ~ Bernina Sewing Machine ~ Queen Bed ~ Couch ~ Dresser w/Mirror ~ Chest ~ File Cabinets ~ Desk ~ Book Shelf ~ Love Seat ~ Recliner ~ End Tables ~ Ethan Allen Drop Leaf Table ~ Chairs ~ Fabric ~ Large Lot of Household including Dishes, Pans, Utensils, Linens & Small Appliances ~ Many More Items too Numerous to Mention...



**Auctioneer's Note:** Very nice home in a great neighborhood. Opportunity to buy a home not on the market for almost 50 years. Very nice and some unique items at this auction.

**Sellers Auction Service**  
"We Were Born Sellers"

Complete Auction Service

[www.sellersauctionservice.com](http://www.sellersauctionservice.com)

**Terms:** Cash or Check with proper I.D. Not responsible for accidents or losses. Items will be sold As Is/Where Is with No Guarantees. Nothing to be removed until paid for. Refreshments available. Announcements made on sale day take precedence over any printed materials.



**GREGG SELLERS, AUCTIONEER**  
**573-480-4400**



# REAL ESTATE-AUTOMOBILE-FURNITURE-ANTIQUE GLASSWARE-DISHES-LAWN MOWER

## Real Estate & Personal Property

# AUCTION

### SATURDAY, NOVEMBER 16, 2019 10:00 AM

LOCATED: 125 REMINGTON CIRCLE, HOUSTON MO: FROM SOUTH CITY LIMITS ON HWY 63, TURN WEST ON REMINGTON CIRCLE TO SECOND HOUSE ON LEFT. FOLLOW SALE SIGNS.



## REAL ESTATE

APPROX 1800 SQ FT 3 BEDROOM, 2 BATH HOME WITH BRICK AND VINYL SIDING, OPEN FLOOR PLAN WITH VAULTED CEILINGS, HARDWOOD FLOORS, LARGE KITCHEN WITH BREAKFAST BAR, CHERRY CABINETS, GRANITE COUNTER TOPS. MASTER SUITE OFFERS TREY CEILING, LARGE MASTER BATH WITH 2 WALK IN CLOSETS. 2 CAR ATTACHED GARAGE, COVERED BACK DECK, DECK OFF MASTER SUITE, CITY WATER, CITY SEWER, ALSO SELLING WITH THE REAL ESTATE 10' X 24' STORAGE BUILDING. BUILT IN 2006 SITTING ON 0.48 ACRE LOT.

2018 TAXES: \$878.15

TO PREVIEW CALL 417-830-0153

TERMS: 10% DOWN DAY OF AUCTION, BALANCE @ CLOSING WITHIN 30 DAYS OR BEFORE

## AUTOMOBILE

2014 BUICK ENCLAVE, LEATHER LOADED, 1 OWNER 67,000 MILES



## FURNITURE-APPLIANCES

ASHLEY LEATHER DUAL RECLINING ELECTRIC SOFA\* (2) ASHLEY LEATHER RECLINERS\* LAZY BOY LEATHER RECLINER\* OAK ENTERTAINMENT CENTER\* OAK CLAW FOOT COFFEE/END TABLES\* OAK DROP LEAF TABLE\* 11 PC OAK DINETTE SET\* (2) OAK CORNER CURIO CABINETS\* OAK WASH STAND\* (3) OAK ROUND FRONT CURIO CABINETS\* LG OAK CHINA CABINET\* ANTIQUE OAK ENTRY TABLE W/MIRROR AND MARBLE TOP\* OAK BAR STOOLS\* CHERRY 5 PC BEDROOM SUITE\* OAK 5 PC BEDROOM SUITE\* MAPLE 5 PC BEDROOM SUITE\* ANTIQUE OAK CLAW AND GLASS BALL SWIVEL CHAIR\* NUMEROUS SMALL FURNITURE PC'S\* GE LG CAPACITY MATCHING WASHER/DRYER SET\* ROPER WHITE REFRIGERATOR\* MAIAR CHEST DEEP FREEZE

## DISHES-KITCHENWARE-ANTIQUE GLASSWARE

LG COLLECTION OF AMERICAN FOSTORIA TO INCLUDE SEVERAL HARD TO FIND PIECES\* LG COLLECTION OF CRYSTAL BLUE BIRD GLASSWARE\* FIRE KING BLUE DELPHITE TEAR DROP BOWL SET\* SEVERAL PIECES OF FIRE KING BLUE DELPHITE\* FIRE KING BLUE DELPHITE SALT/PEPPER SHAKER SETS\* REDWING CROCK ROLLING PIN\* LG SET OF ANTIQUE MIKASA DISHWARE\* MCKEE ROOSTER BOWL SET\* (2) SETS BANDED CROCK BOWL SETS USA\* FIRE KING MODERN TULIP BOWL SET W/GREASER AND SHAKERS\* FIRE KING KITCHEN AID DESIGN BOWL SET W/GREASER AND SHAKERS\* MCKEE RED DOT BOWL SET\* LG COLLECTION OF BLUE LONGABERGER DISHWARE\* LONGABERGER AMERICAN PRIDE DISHWARE\* LONGABERGER IVORY DISHWARE\* LONGABERGER BLUE SERVING WARE\* PYREX IVY BOWL SET\* PYREX BLUE FLOWER BOWL SET\* PYREX RARE PINK BOWL SET\* KITCHEN AID WHITE MIXER W/ATTACHMENTS\* (2) COMPLETE SETS OF SALADMASTER COOKWARE\* SALADMASTER OIL FILLED ELECTRIC FRYING PAN\* SEVERAL STAINLESS STEEL BOWL AND SETS\* (2) SETS ONEIDA MICHELANGELO FLATWARE\* HULL TEAPOTS\* MCCOY PIECES\* SEVERAL PIECES OF CORNINGWARE\* FIRE KING JADEITE SALT AND PEPPER\* FIRE KING JADEITE PIECES\* MCKEE HOLIDAY DOT PUNCH BOWL AND CUP SET\* SEVERAL MCKEE SALT AND PEPPER SETS\* LG COLLECTION OR RARE "EYE WINKLER" PATTERN GLASSWARE\* SEVERAL PIECES OF CLEAR SANDWICH PATTERN GLASSWARE\* WAGNER CAST IRON SKILLET\* GRISWOLD CAST IRON SKILLET\*

## LAWN MOWER AND OUTDOOR ITEMS

TROY BILT PONY RIDING LAWN MOWER\* GARDEN CART TRAILER\* SEVERAL GARDEN TOOLS\* CAST IRON FLORAL CHAIR SET\* DECORATIVE FLOWER FOUNTAIN\* METAL OUTDOOR BENCH\* METAL OUTDOOR PATIO CHAIRS\* METAL OUTDOOR PATIO TABLE AND CHAIR SET\* CAST IRON PATIO TABLE AND CHAIR SET\* SEVERAL SMALL OUTDOOR CONCRETE STATUES\*

FOR MORE PICTURES SEE WEBSITE OR AUCTION ZIP.COM

OWNER: ESTATE OF WILMER & BETTIE HILL

SALE CONDUCTED BY: **MELTON AUCTION & REALTY CO LLC**

ROGER MELTON, NIXA MO • PH 417-830-0153 OR 417-725-1801

BRAD COLE NIXA MO PH 417-840-2950

ANNOUNCEMENTS MADE ON SALE DAY WILL TAKE PRECEDENCE OVER ANY OTHER PRINTED MATERIALS. NOT RESPONSIBLE FOR ACCIDENTS OR LOSS OF ARTICLES ON OR NEAR SALE SITE.

EMAIL: [roger@meltonauction.com](mailto:roger@meltonauction.com) • WEBSITE: [MELTONAUCTION.COM](http://MELTONAUCTION.COM)



# TAKING CONSIGNMENTS NOW LIVE & ONLINE AUCTION

## Saturday, December 14, 2019

21194 Maries County Rd 444  
Vichy, MO 65580

**Taking Consignments Until  
Friday, December 13, 2019!**



**2008 John Deere 160 DLC Excavator**  
with bucket, grapple will be sold separately



Austin Western Grader



John Deere 5575 Skid steer



Several Forklifts



24' Triple Axle Gooseneck Trailer



39' 4wd Diesel Snorkle Lift with 8' bucket



40' Sided Scrap Trailer



631 Liebherr Crawler Loader with Cab and heat



644 Lull Telehandler 34' 4wd 4 wheel steer



1986 F800 Ford Dump Truck Gas



1988 Ford F800 Diesel Dump Truck



1993 Mack Day Cab Twins Crew Tractor



2000 Transcraft 35 ton triple axle lowboy



Bobcat 853 Skid steer

Contact Mike Conaway @ 573 205 8037  
or Jim Fleshman @ 573 465 7766 to consign  
your item or items, [bid.dreamdirt.com](http://bid.dreamdirt.com)



**MIKE CONAWAY**  
FarmBid Representative  
☎ (573) 205-8037  
✉ [MConaway@DreamDirt.com](mailto:MConaway@DreamDirt.com)

Facebook, Twitter, Instagram icons @DreamDirt



100 4x5 2nd cutting bales of good weed free mixed grass hay already consigned



Cat 955L Loader Crawler with ripper



Ford 6610 Tractor with loader, bucket and bale spike

**AUCTIONS | REAL ESTATE | MACHINERY | FARM BID**

# BID NOW! Bid.DreamDirt.com

# Estate Auction

**17949 Hwy 0 • Gravois Mills, Mo. 65037**

**Directions:** From intersection of 5 hwy and O Hwy in Laurie, go East on O hwy 6 miles to auction on left. Watch for signs on sale day. We will sell the following at public auction on:

**Saturday, November 16, 2019 • 10:00 A.M**

## TOOLS, EQUIPMENT & MISC.

Grizzly model G5777 Radial drilling/milling machine; Grizzly model 67300 8" grinder/buffer; Grizzly dust collector; Grizzly wood lathe 3' bed; Bridgewood Big Boy 80 horizontal/ vertical sanding machine 220 volt; Bridgewood 20" wood plainer 220 volt; Bridgewood sharper (lot cutters & blades) 220 volt; Bridgewood wood band saw model PBS-500; Bridgewood 8' joiner Puma 60 gal. single stage dual cyl. Air compressor 5 hp. 220 volt; 16" Dewalt radial arm saw with 8' table; Black Hawk bench top drill press; Horizontal metal band saw; Power-Craft free standing drill press; Radial arm saw; Gas weed eaters; 2.5 hp bench grinder; Craftsman shaper; Craftsman band saw; Chop saw; Pota-power; Dewalt miter saw; 10" Heavy duty table saw; Scrool saw; Craftsman table saw; Cub Cabet RT65 rear tine tiller (like new); Sanyo 60" flat screen t.v.; Cutting torch set; Transit & Tripod; Lot reloading supplies & equipment; Lot powder brass & dies (.357, 9mm, 45 ACP, 45LC, 45/70,

270 and others), ammo; Lot fishing poles & tackle; Remote control planes motors & parts; Drafting table; Vintage SABA Hi-Fi home stereo; Telescope; Wooden patio set; Gas grill; Engine stand; 2- Electric heaters; Lot cast iron; Brother sewing machine; Fire place insert; Schumacher battery charger; Homelite Chain Saw; 40+- 20' sticks 5/8" roundstock; Cutting torch tips; Drill bits; Lg lot sand paper; Shop vac; Gas cans; Lot electrical wire; Lot 2X lumber some native; Lg. roll 3/8" alum. Cable; Ele. furnace; LARGE lot scrap metal & copper; Lot concrete tools; Bench grinder; Chain saw sharpener; 2- Ele. plainer; Air sander; 2 - Floor jacks; Floor sander; Lot hyd. jacks; Lot paint guns; air nailers/brad nailers; Broadwater 30' cabin cruiser inboard (no trailer); Large lot electric tools & hand tools; Lg lot sockets & wrenches; Roll around tool box; Lot bar clamps; Anvil 110#; Lot big c-clamps; Large vise; Wood vise; Yale chain hoist on trolley w/beam; Lot long handled tools; Lot well pipe



## VEHICLES, EQUIPMENT & MISC.

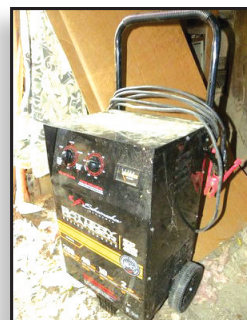
GMC 24' motor home (runs); Ultra-Star 30' motor home (runs); 1991 37' Winnebago Elante (runs); International D-20 dozer (runs); International dozer 500 series-C w/ ripper model number 57198 (runs); Artic Cat 700 four-wheeler w/winch, "Fireball six-140" Fireball Gray marine in line six cyl. (Found in crate); Mercruiser 165hp. in line 6, 1971 Mark IV Lincoln Continental 460ci 4bbl (needs love); Cadillac Eldorado; 1979 or 80 Dodge 30 manual 2wd pickup; Dodge W-20 pickup; 2-Chevy luvs one is

diesel; Wave runner trailer; 18' Bumper hitch flatbed trailer needs floor; Utility trailer; Sea Ray boat on trailer; Chris Craft boat on trailer; Car dolly.



**Auctioneer Note:** MANY more treasures to be found come pre-pared to spend the day, Concessions provided by the Sweet Ole Gals of Benton County.

**Many More Items Too Numerous to Mention**



**TRUMAN WEBB**



• Farm • Antiques • Livestock  
• Real Estate • Household • General

# JOHNSON BAY AUCTION SERVICE



Third Generation  
Family Tradition  
Since 1942

Russell "Rusty" Johnson  
660-221-4067

Phillip Yoder  
660-723-3389

For Full Listing, Pictures and Details—[www.auctionzip.com](http://www.auctionzip.com) (ID# 20300)

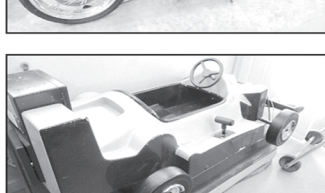


# Sam CRAWFORD AUCTION SERVICE LLC

As we have sold the building, will sell the following located 4 miles East of Macks Creek, Mo or 9 miles West of Camdenton, Mo on Hwy. 54. Watch for Crawford auction signs.

## Saturday, Nov. 23, 2019 – 9:30 a.m.

### VEHICLE – TRAILERS – HOUSEHOLD – COLLECTIBLES



#### Vehicles-Bike -Trailers

- '74 Buick LeSabre convertible, leather interior, V8 auto, shedded & good
- '88 Chev Corvette convertible 350, 6 spd (California car), shedded & good
- '02 Ford 350 1 ton, 7.3 dsl, crew cab, 5 spd, flatbed, 4x4, good
- '07 Grand Caravan mini van, runs good
- '04 Land Rover SE7, doesn't run
- '02 Geo Tracker 2x4, runs
- '07 Chopper Works custom show bike, Rev Tech 1200 mtr, really nice
- '18 Heartland 20' car hauler B/H flatbed, like new
- GN 16' flatbed, single axle 5x10 mesh floor trailer, no title
- Tandem axle boat trailer, single axle boat trailer, no title
- Sea Nymph alum boat & trailer, 70hp Yamaha mtr, no title
- Small single axle flatbed, no title
- Old F/G boat & trailer, no title
- Small boat trailer, no title
- Older Great Dane semi trailer for storage
- Older Prowler travel trailer, for parts

#### Consigned

- 3 Odes side by sides, 4x4, 2-1,000 double seat, 1-800 single seat

See website for more pictures!

#### Tools-Misc

- Kobalt professional 2 tier tool box, 20 drawer, nice
- MBC 2 tier tool box
- Lot asst wrenches, sockets
- 5-6 Rolling metal work tables
- Double grinder on stand
- Asst power hand tools
- Gorilla folding ladder; Bolt bin Rolling ladder
- 1-1/2 ton chain hoist
- Rolling HD welding table
- Rolling tire rack
- Upright compressor tank
- Magna Force upright air compressor, 7hp
- Long handle tools
- Lg shop fan
- Craftsman radial arm saw
- 12' F/G step ladder
- Compressed air lift
- Bundle of 16' crown mold
- 7 Florescent light fixtures
- Ariens R13 32 lawn mower w/bagger
- '16 Craftsman 24hp 46" lawn tractor
- Mercury 9.9 outboard mtr, no title
- 3 wheel delivery bike
- Stingray 3 wheel bike
- Harley Chopper bike
- Sev small kids bikes
- Lot metal store shelving
- Steel & plastic barrels
- Lot Christmas decor
- 6 Wood park benches
- Plastic pipe; Cast iron bath tub
- Jet ski holder/dock
- Metal spiral staircase
- Pool slide
- Sq. ploy water tank w/cage, 250 gal
- Sq alum water tank over 500 gal
- P/U ladder rack; Kerosene tank 200 gal
- Older Datsun fork lift
- Lot misc scrap metal, wire

#### Collectibles

- Lot 1-18 Harley Davidson toy bikes
- 2 Harley lamps; Texaco gas can
- Approx 600 match box cars
- Beetles hot wheels; Ant brass bed
- Sev Precious Moments figurines
- Some "JD" & "Cat" toys
- Lg rd. metal "Coke" sign
- Corner upholstered "Coke" booth & table, ex nice
- Reach-in "Coke" hinged top cooler, ex nice
- "Bud" lighted sign, approx. 4'x5'
- Ex large model H.O. train set & display w/lots accessories, real nice
- Deer head mt; Other items

#### Household-Misc

- Lg Kenmore upright freezer, like new
- Med Kenmore upright freezer, ex good
- True reach in upright "Coke" cooler
- Dining table & 6 chairs on rollers
- Dining table & 4 chairs
- Rd coffee table, other smaller tables
- Lg couch & love seat
- Lg Pit group; Hideabed
- Lg patio table & 6 chairs
- Display shelves; 5 Draw file cabinet
- 2-3 Display cabinet
- Nice wood office desk, chair
- Wood fire place mantle
- Mannequins; Other misc

## Sam CRAWFORD Auction Service LLC



Cross Timbers, Mo.  
CrawfordAuctionService.com

417-998-6629



1944 CELEBRATING 75 YEARS 2019  
STARTING 75th YEAR OF SALES AND SERVICE

TERMS: Cash or good check. Nothing removed until settled for. Not responsible for accidents. Lunch available. Statements made day of sale take precedence over printed matter. All items sell as is. No warranties given or implied.



Sam  
417-328-9137

Chase  
417-399-1904

Chance, CAI  
417-298-1751

Tom Poynter  
Jack Lancaster

# Kim Willey



# R&R AUCTION SERVICE

## SPECIAL CONSIGNMENT AUCTION

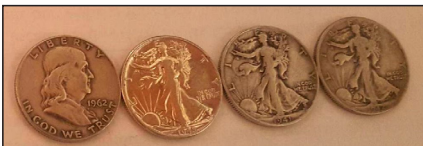
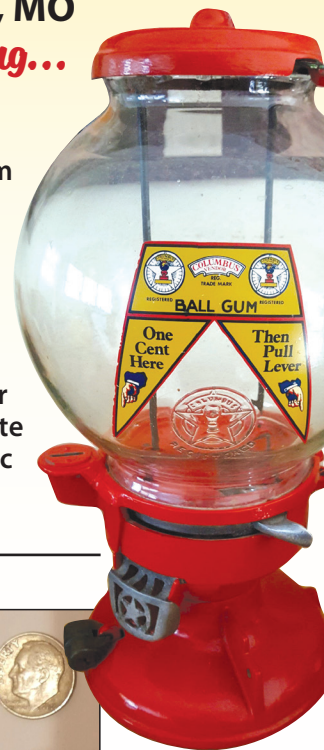
### FRIDAY, NOVEMBER 15 AT 6:00PM

R&R Auction House • 1644 South Ash • Buffalo, MO

*On this special consignment night, we have a little bit of everything...*

*including the kitchen sink!*

Lots of old collectibles - like metal lawn chairs, cream separator with motor and hand crank, Columbus gumball machine - old original and complete with keys, Hand pump, push plows, antique book press, Old candy store scales (Birmingham-made in England), Old heavy duty vise from Parker Vise Div of Union Mfg, Pampered Chef, Miscellaneous household and kitchen items, furniture, Old silver coins, 54" steel spoke buggy wheels, very ornate antique wood heating stove, several bicycles, Misc box lots, and more coming in everyday!



Pre-bidding available online!  
Please watch our website for added pictures.

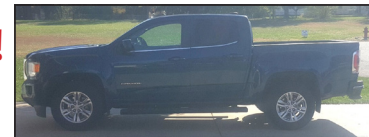
# Join Us!

## SATURDAY, NOVEMBER 23 AT 10:00AM

for one of the years cleanest auctions!

318 Holly Drive in Buffalo, MO

Owners: Kenneth & Thelma Owens



**CHECK OUT NEXT WEEK'S TRADER AD AND WATCH WEBSITE [WWW.RRAUCTIONSERVICE.COM](http://WWW.RRAUCTIONSERVICE.COM)**

**TERMS:** Cash, check, or credit card with proper I.D. nothing removed until settled for A 3% fee will be added to credit card purchases. Not responsible for errors in listing. Any announcement made sale night will take precedence over any printed matter. **Note:** Service will take every precaution to prevent accidents, but will not be responsible should any occur.

**For more information contact Professional Auctioneer Russ Weeks at 417-576-7357 or check out [www.rrauctionservice.com](http://www.rrauctionservice.com)**



Serving this area's auction needs since 1997 with honesty and professionalism.  
[www.rrauctionservice.com](http://www.rrauctionservice.com)  
**(417) 576-7357 or (417) 345-4140**



**CAGA CERTIFIED APPRAISER**



# ESTATE AUCTION

**SATURDAY, NOVEMBER 16 • 10:00 A.M.**

**Location: SALEM - 300 East Franklin (Salem Auction Center.) INSIDE SALE! Watch for signs.**

**This Auction Has Very Nice, Good Quality  
FURNITURE & ACCESSORIES • VINTAGE ITEMS • PICTURES & MORE  
Will Have Preview Friday, Nov. 15, 4:00 - 7:00 p.m.**

**FURNITURE - VINTAGE ITEMS -  
LINENS - QUILTS - GUNS**

Brown Sofa & Loveseat w/Recliners  
Brown Recliner - China Cabinet  
4pc. Marble Top End & Coffee Tables  
Sofa & Loveseat w/Recliners, Heather Blue Tweed  
Leather Top Footstool - Table Lamps  
Serving Cabinet w/Drawers, Nice  
7pc. Dining Room Suite - China Cabinet  
Console Stereo - Light Oak Sofa Table  
Square Dining Room Table w/4 Chairs, Oak, Matching Buffet  
3pc. Glass Top Oak End Tables  
Small Curio Cabinet - Nice Roll-top Desk  
Corner Desk, L-shaped & Chair  
Oak Bookcase w/Glass Doors  
2, Swivel Black Leather 24" Bar Stools  
Sleeper Sofa, Queen, Blue & Gray  
Duncan Phyfe Drop-leaf Table w/4 Chairs  
Kenmore Automatic Washer  
Tappan 2-Door Refrigerator  
Oak Bedroom Suite: Triple Dresser w/ Mirror, Armoire, Full Size Bed, Oak & Wicker

Oak Bedroom Suite: Triple Dresser w/ Mirror, Armoire, Queen Bed & Night Stand  
Lane Chest - 5-Drawer Chest  
Small Desk - End Tables  
Several Pictures, Matted: Deer, Dogs, Etc.  
Wall Mirrors - Desk Lamps  
Floor Lamp - Table Lamps

**KITCHEN ITEMS - LINENS**

Lot Pampered Chef Items  
Lot Pots & Pans - Lot Cookware  
Lot Small Electronic Appliances, Some New Items in Boxes  
Lot Linens & Table Cloths  
Lot Blankets, Comforters & Sheets  
Lot New Items: Sheets, & Other Items Still in Packages  
Lot Quilts, Some Hand-stitched

**GLASSWARE - VINTAGE ITEMS -  
MISC.**

Lot Home Interior Items  
Set of McCoy Pottery Bowls  
FireKing Dishes - Crosley Record Player  
Fisher Radio & Tape, Surround Sound Speaker System

Salem Advertising Items - Lot Cookbooks  
Figurines: Ducks, Etc. - 10 Gallon Crock  
Crock Items - Depression Glass  
Lead Crystal - Set of Stoneware Dishes  
Set of China - Vintage Pitcher & Glass Sets  
Pyrex & Corningware - Vintage Items  
Area Rugs - Kerosene Lamps, 1 Green  
Large Vase - Treadmill - Magazine Rack  
Plastic Storage Shelves - Small Safe  
Many Other Items Not Mentioned

**GUNS CONSIGNED**

Mouser w/Scope Rifle  
Remington Model 552, 22 Auto  
Savage 12ga Pump Model 30F  
Stevens 22 Single Shot  
Marksman Air Rifle  
Revelation Model 22 w/Scope  
Winchester Model 30-30 Lever Action

**AUCTIONEER'S NOTE:**

**Preview from 4:00 to 7:00 p.m.  
Friday, November 15.  
See you there! - Larry**



TERMS: CASH OR APPROVED CHECK.  
I.D. REQUIRED. NOTHING  
REMOVED UNTIL SETTLED FOR.  
RAIN OR SHINE.  
OWNER & AUCTION PERSONNEL  
NOT RESPONSIBLE FOR  
ACCIDENTS AT SALE SITE.

Appraisals



ANNOUNCEMENTS AT AUCTION TAKE  
PRECEDENCE OVER PRINTED MATTER

TO VIEW AD ONLINE GO TO:  
[www.thesalemnewsonline.com/auctions](http://www.thesalemnewsonline.com/auctions)  
[www.auctionzip.com](http://www.auctionzip.com)

CHECK US OUT ON FACEBOOK:  
Larinda's Auction Service LLC

AUCTIONEERS: LARRY EDWARDS • AUSTIN ROGERS

P.O. Box 708 • Salem, MO 65560 • 573-729-5629 • Cell: 573-247-2256 / 573-247-2259 • rogersaustin12@yahoo.com

# ONLINE LAND & HOME AUCTION

**27 Acres +/-  
(Open & Wooded)**



**Inspection Dates:**

Wed. Nov. 6th, 3:00 - 4:30 p.m.  
& Nov. 13th, 12:00 - 1:30 p.m.

**American Colonial Style Home  
Centralia Schools**

- 5 Bedroom, 3 Bath Home
- Living Room W/ Fireplace & Wet Bar
- Lower Level Family Room W/ Fireplace
- Spacious Master Suite W/ Vaulted Ceiling
  - Formal Living & Dining Rooms
  - 1 Ac. +/- Stocked Pond
  - 24' x 24' Metal Building
- 2 Car Garage & Redwood Rear Deck

**Note: Property Sells To High Bidder With No Reserve.** Conveniently Located Just South of Centralia On Hwy. 124. Property Could Be Developed Or Pasture For Livestock. Seller Wants The New Owner To Give This Home The TLC It Deserves.

**Online Bidding Ends Wednesday,  
November 20th At 12:30PM  
19700 N. Hwy 124, Centralia, MO**

"WE MAKE BUYING AND SELLING AT AUCTION EASY" MEMBERS

**Atterberry**  
Auction & Realty Co., LLC. 573-474-9295 www.atterberryauction.com

**For Terms, Details, Or Bidding Assistance, Call Your Real Estate At Auction Specialists: Atterberry Auction & Realty Co, 573-474-9295 Or Email: [contactus@atterberryauction.com](mailto:contactus@atterberryauction.com)**

**CASE 660 TRENCHER:** 4-wheel steering, 6-way blade, approximately 1000 hrs. \$9,500 OBO. 573-967-5355

**AUCTION REMINDER:** Saturday, November 16th @ 10a.m, Larinda's Auction Service. Please see our Auction Directory for more information.

**POOL TABLES:** Installations, moves, recoveries, repairs, accessories, etc. 573-646-1700.

**FRONT BUMPER:** Chrome, brackets, Dodge 2009-2018 pickup. \$475 OBO. 417-298-1271. Preston.

# Wonderful Family Home In Vanderveen Crossing Offered At Online Auction



**Open House / Inspection:**

Friday, Nov. 8th, 3:00 to 4:00 p.m.  
& Nov. 14th, 3:30 to 4:30 p.m.

- 2,200 +/- Sq. Ft., 3 Bdrm., 2 Ba. Ranch Style Home
- Spacious Master Suite W/ Jetted Tub
- Lg. Living Room W/ Gas Fireplace
  - Lower Level Family Room
  - Walkout Basement & Workshop Area
- 2 Car Garage, Rear Deck & Concrete Patio

**Note: This Is Truly A Nice Home That Is Perfect For A Young Family, Professional Or Retiree.**

You Will Love This Move-In Ready Home Located On A Quiet Cul-De-Sac Street!

**3704 Jaguar Ct., Columbia, MO  
Online Bidding Ends: Thursday,  
November 21st @ 12:30 p.m.**

"WE MAKE BUYING AND SELLING AT AUCTION EASY" MEMBERS

**Atterberry**  
Auction & Realty Co., LLC. 573-474-9295 www.atterberryauction.com

**For Information On How To Buy This Home At Auction, Or How To Obtain Financing, Please Call Your Real Estate At Auction Specialists at (573) 474-9295 Or Email: [contactus@atterberryauction.com](mailto:contactus@atterberryauction.com)**

**BULLS- Limousin- Limflex- Red Angus registered bulls for sale. 13-18 months old. AI sired & semen tested. Contact Josh at 417-664-0913.**

**1995 MERCURY COUGAR:** 4.6 V8. \$800obo, 573-315-5990

**AKC PUG: male 8 mos. \$500. AKC Male Pug: 4 mos.; \$800. Credit cards accepted. 417-458-1424, Plato.**

**2000 FORD EXPEDITION:** 4x4, Eddie Bauer Edition, 190,000mi, over \$2000 new parts. Asking \$3,300 OBO. 417-848-8754.

# SECLUDED HOME ON WOODED ACREAGE ONLINE AUCTION

**ENJOY SOUTHERN BOONE COUNTY LIVING ON 7+ AC**



**Open House / Inspection Dates:**

Friday, November 8th & 15th,  
12:00 p.m. - 1:00 p.m.

- 2,400+/-Sq. Ft., 4 Bedroom, 2 1/2 Bath
  - Cozy Living Room W/ Woodburning Stove
  - Kitchen/Dining Combination
  - Beautiful Hardwood Floors
- Covered Front Porch & Rear Wood Deck
- Two Car Garage & Lawn Shed

**Note: A Private Wooded Driveway Leads You Back To This Very Charming One Level Home. Quick Access To Hwy 63 And Located Between Columbia And Jefferson City.**

**11622 S. Blackhawk Trail, Ashland, MO  
Online Bidding Ends:  
Friday, November 22nd @ 12:30 p.m.**

**For Additional Terms Or Details visit: [atterberryauction.com](http://atterberryauction.com) or Call Your Real Estate At Auction Specialists: Atterberry Auction & Realty (573) 474-9295 Or Email: [contactus@atterberryauction.com](mailto:contactus@atterberryauction.com)**

"WE MAKE BUYING AND SELLING AT AUCTION EASY" MEMBERS

**Atterberry**  
Auction & Realty Co., LLC. 573-474-9295 www.atterberryauction.com

**NORWEGIAN ELKHOUND PUPPIES:** Cute, family raised on farm, very friendly parents. Will make good family pets. Starting at \$100. 417-241-0394, Hartville.

**CRAFTSMAN 10" STATIONARY TABLE SAW:** 3600RPM, 120V, Locking wheels, Rip Fence, Front rail/scale, miter gauge, bevel scale. Excellent condition. \$325. 417-718-5347. Morgan

**FRESIANS AND ARABIANS:** For sale and Stallion service. Piglets \$30. Hogs and Nubian goats. Bees and equipment. Raymondville, 573-548-0219, 931-292-0151.



# ONLINE AUCTION

**Two Properties In Williamsburg Sells To High Bidder!**



**10718 Old Hwy. 40:**

- 2 Bedroom, 1 Bath Ranch Style Home
  - Eat-In Kitchen & Living Room
  - Partially Fenced Backyard
  - Home Needs TLC
- Large Lot Near Crane's Country Store

**3810 CR 1005:**

- 744 Sq. Ft. Building on Concrete Slab
- Blacktop Frontage • Building Needs TLC
- Large Lot Next To Williamsburg Post Office
- Online Personal Property Auction Bidding Ends Monday, November 25th At 3:00PM

**Open House / Inspection: Monday, Nov. 18th | 11:00 – 1:00 pm**

**Note:** The two properties will be offered separately with online bidding ending at 12:30 pm on the home & at 1:30 pm on the building.

**Bidding Ends: Monday, November 25th**

“WE MAKE BUYING AND SELLING AT AUCTION EASY”  
  
 Auction & Realty Co., LLC  
 573-474-9295 www.atterberryauction.com

**For Information On How To Buy This Home At Auction Or Terms, Visit: www.atterberryauction.com Or Call Your Real Estate Auction Specialists: Atterberry Real Estate Auctioneers: 573-474-9295**

**AUCTION REMINDER:** 2 Properties Online Land/Home Auction Ends Monday, November 25th. Atterberry Auctions. Please see our Auction Directory for more information.

**IHC 1086 DIESEL TRACTOR CAB & COLD AIR:** \$8,750. 573-765-4406.

**OLD LINN CREEK, HA HA TONKA & CAMDEN CO BOOK “Before the Dam Water”, by T. Victor Jeffries. \$3.50 plus \$2 if mailed. 417-532-2045, Lebanon.**

**6”x52’ TRANSPORT AUGER** 573-437-2076.

# ONLINE ESTATE AUCTION

**Low-Mileage 2014 Dodge Journey Lawn Mower Alcohol Advertising Signs**



**3810 County Rd. 1005 Williamsburg, MO**

(Next To The Williamsburg Post Office & Near Crane's Country Store)

Bidding Ends Monday, November 25th at 12:30PM

This Auction Features Staggered Ending Times & Extended Bidding On All Lots.

**Bid Online At Atterberryauction.com**

**Preview:** Monday, November 18th from 11:00AM to 1:00PM

**Payment & Pick-Up: Tuesday, November 26th from 2:00PM to 6:00PM**

Low-Mileage 2014 Dodge Journey Lawn Mower • 500? Gal. Propane Tank Firearms • Jewelry • Coins Alcohol Advertising Signs Pepsi & Other Coolers • Tools • Electronics Furniture & More Listed Online!

“WE MAKE BUYING AND SELLING AT AUCTION EASY”  
  
 Auction & Realty Co., LLC  
 573-474-9295 www.atterberryauction.com

**For complete terms, listing, catalog, pictures & bidding, visit atterberryauction.com, email contactus@atterberryauction.com, or call (573) 474-9295. Please contact our office if you need help with the online bidding process.**

**AMERICAN BULLDOG PUPPIES:** 573-548-2428, 573-453-8376.

**RARE 1937 CIVILIAN CONSERVATION CORPS (CCC) 7TH CORPS AREA OFFICIAL MANUAL. \$20. 417-532-2045, Lebanon.**

**THOMPSON CENTER INLINE** 50 cal black powder rifle, Black Diamond model w/ scope bases. \$125. Buffalo, 41-345-4562.

**3PT HITCH:** Fits Farmall HorM or other Internationals. \$200. Rogersville. 417-753-2747/417-766-1991.

**PRAIRIE PHOENIX CATTLE CARE SYSTEM:** Simpler, stronger, cheaper. 417-286-3540.

**REGISTERED HEREFORD & ANGUS BULLS:** Home raised, Some Show-Me Select Qualified. 573-701-7828. Belgrade

**HAY FOR SALE:** Sqaure bales/\$4.50, Round bales 4x5/\$50, good mixed grass hay, no weeds. 573-368-1794.

**L4400 KUBOTA:** 4wd tractor with loader and 3rd function valve, Low hours. \$22,500. 417-270-1505.

**BLACK ANGUS BULL: 5yrs. \$1500. 573-436-0487, Potosi.**

**1988 HALLMARK MEMORY TREE SHADOW BOX:** Holds 27 miniature ornaments, ornaments still in box. \$75. 573-689-2490, Bunker.

**25 JIGSAW PUZZLES:** Bought new, worked once. \$3 each. 573-689-2490, Bunker.

**WANTED:** UTV (used, good condition, fair price). 270-970-8243, Lebanon.

**BORDER COLLIE PUPPIES:** Dewormed, first shots. \$150. working parents from Canada. Amos, 20269 Maries CR635, Dixon, MO 65459.

**AUCTION REMINDER:** Online Estate Auction Ends Monday, November 25th. Atterberry Auctions. Please see our Auction Directory for more information.

**PINE LOG SIDING.. www.pineridgerustic.com 573-729-7226.**

**OLIVER TRACTORS.** 77NF, \$2,500. 37 Hart/Parr, NF, \$1,750. 88WF, \$2,000. 417-865-4173, 417-839-5248. Springfield.

**AUCTION REMINDER:** Special Sales Coming Up. Cattle Sale every Monday at Noon. Goat, Sheep & Hog sale 2nd Tuesday of Month @ 6pm. Salem Livestock. Please see our Auction Directory for more information.

**PYRENEES/ANATOLIAN PUPPIES. Cuties!** Excellent pets/guard/sheep dogs. \$250. In time for Christmas! Reserve yours now. 417-322-0161.

**RDS 60GAL ALUMINUM AUXILIARY TANK:** excellent. \$350obo. 417-298-1271

**NEW STAINLESS STEEL TUBE GRILL:** for 73-86 Chevy pick-up. \$50 or trade. 573-734-2822.

**Salem Livestock Auction**  
 Hwy. 32 Salem, MO • 573-729-8880  
 Over 40 Years in the Livestock Business

**Upcoming Special Sales!**

**Monday, December 2<sup>nd</sup>**  
 Customer Appreciation Day!  
 Lunch will be served 11:00 am - 2:00 pm

**Friday, December 6<sup>th</sup>**  
 Pre Vac Sale at 12:00 pm  
 Cattle must be weaned 45 days with at least 1 round of shots

**Friday, December 13<sup>th</sup>**  
 Stock Cow Sale at 6:30 pm

**Cattle Sale Every Monday at 12**  
 Feeder calves to sell at 12, butcher cows & stock cows following

**All Consignments Welcome Up Until Sale**

Allen Thompson 417-932-4097	Renee Lauderdale 417-926-2682	
Chuck Thompson 417-257-5610	Brandon Barton 417-259-1597	

Terms of Sale: Cash or Approved Check!

**BUFFALO LIVESTOCK MARKET LLC**  
 276 Hwy 32 West, Buffalo, Missouri 65622  
 417.345.8122 Barn

**Special Stock Cow & Bull Sale**  
 Tuesday, Nov. 19<sup>th</sup> • 6:30PM

Expecting 350 Cows & Bulls  
**EARLY CONSIGNMENTS:**

**Herd Dispersal #1:** 32 Blk BWF + RWF Cows, running ages, some w/ calves.

**Herd #2:** 4 Angus Cow-Calf pairs, 3-6 yrs., 2 Angus Springers, 1 3 yr. old Reg. Angus Bull.

**Herd #3:** 22 Blk Angus Cows, 6 w/ calves, 3-6 yrs. old.

**Breeding Bulls -**  
**Bradley:** 5 Reg. Angus, 2 yrs. old w/ EPDs & papers.  
**Gast:** 2 Yellow Char & Red Angus Composite Bulls.  
**Burns:** 1 3.5 yr. Horned Hereford  
**MC:** 1 Red Angus, 2 yrs. old  
**MC:** 1 Blk Angus, 18mo., no papers  
**Bennett:** 1 Sim-Angus, 19mo., good EPD.

To Consign or For Info: 417-345-8122

**Lyle Caselman • Owner-Manager**  
 417-345-7876 • mobile 417-533-2944  
**Leon Caselman • Owner**  
 417-345-4514 • mobile • 417-588-6185

**BUFFALO LIVESTOCK MARKET LLC**  
 276 Hwy 32 West  
 Buffalo, Missouri

**November 9<sup>th</sup>, 2019**  
**Receipts: 2163 Head**

**Feeders wean vac specials \$5 to 15 Higher. Unwean calves steady. Cows Steady.**

**Representative Steers**

300-400 @ 160.00 to 177.00  
 400-500 @ 156.00 to 170.00  
 500-600 @ 148.00 to 170.00  
 600-700 @ 139.00 to 152.00  
 700-800 @ 142.00 to 148.75  
 800-900 @ 137.50 to 144.50

**Representative Heifers**

300-400 @ 120.00 to 147.00  
 400-500 @ 120.00 to 150.00  
 500-600 @ 115.00 to 138.00  
 600-700 @ 120.00 to 143.00  
 700-800 @ 120.00 to 137.00  
 800-900 @ 120.00 to 135.25

**Feeder Bulls**

300-400 @ 140.00 to 168.00  
 400-500 @ 125.00 to 149.00  
 500-600 @ 120.00 to 137.00  
 600-700 @ 105.00 to 136.00  
 700-800 @ 100.00 to 128.00  
 800-900 @ 100.00 to 106.50

**Bred Cows**  
 700.00 to 1100.00

**Slaughter Cows**  
 Fleshy 1400#+ up  
 60.00 to 70.00  
 Med Flesh 40 to 54.00  
 Thin 32.00 to 40.00

**Kill Bulls**  
 Med Dress. 70.00 to 77.00  
 Low Dress. 65.50 to 70.00

**Wean-Vac Sale November 9**  
 Call to Consign

**MON-WED MARKET REPORT**  
 Listen to KJEL 103.7FM • Lebanon or KY00 99FM • Bolivar

**VIEW OUR SALES AT CATTLEUSA.COM**

**CALL FOR TRUCKING OR ON-FARM VISIT**

**Lyle Caselman • Owner-Manager**  
 417-345-7876 • mobile 417-533-2944  
**Leon Caselman • Owner**  
 417-345-4514 • mobile • 417-588-6185  
**Howard Miller • Owner 417-345-8122**

**ARE YOU KIDDING ME???**-Used double-wide, \$19,900!!!! delivery & set-up, 3 bedroom, 2 bath, Call 573-499-9993 comlumbiadiscounthomes.com

**\$19,900 USED DOUBLE WIDE:** nice 3 bedroom, 2 bath delivered & set-up.....Hurry, This house will **NOT** last long! Call now 573-657-2176 amegamobilehomes.com

**BALES GOOSENECK 14' DUMP TRAILER:** w/ramps and tie-downs. 573-437-2944, Owensville.

**CASE 580C:** Diesel Backhoe, Loader. \$8,850. 573-765-4406.

**SET OF NYLON DOUBLE HARNESS: W/ collars. \$450. 417-533-9484, Grovespring.**

**JOHN DEERE 2640:** Diesel tractor, 70HP, Canopy. \$8,750. (573)765-4406.

**TRACTORS:** Massey Harris-30, w/3pt lift. \$2,200. Farmall-H w/triploader bucket and Bushhog. Only \$2,500. 417-848-8754.

**WHEEL FOR FORD 8N TRACTOR:** 3"X 19". \$30. Gerald, 573-764-2270.

**OLDER FRONT-TINE TILLER:** 5HP, Runs Good. \$125 OBO. 573-257-0782.

**SNOWBLOWER:** Craftsman, 46", like new. \$200. Rogersville, 417-753-2747, 417-766-1991.

**WANTED PINBALL MACHINES.** 573-424-7200.

**1955-56 CHEVROLET TRUNK LID:** good shape. \$100. 573-734-2822.

**AKC FRENCH BULLDOG PUPPIES: 9 wks. Raise in my home. \$1,200, credit cards accepted. 417-458-1424, Plato.**

**2005 IMPALA:** PW, tilt, cruise, AM-FM/CD, 3.4, cloth seats, 212,000 miles. \$1,750. 636-931-2451, Festus.

**SMALL DISK:** could be pulled by 4-wheeler. \$35. Rogersville. 417-753-2747, 417-766-1991.

**COMPLETE SCRAGG & PALLET OPERATION:** Property, Equipment, Timber contracts, Lots more, Selling due to health reasons, Too Much to List, may separate & owner finance. 417-650-0402

**#32 SANITARY SKILL Meat Grinder:** Complete & works. \$700. #22 Sanitary Skill: Complete and works. \$300. Hartville, 417-349-1386.



# VEHICLES & EQUIPMENT AUCTION

## 385+ ITEMS SELL NO RESERVE! WEDNESDAY, DECEMBER 4



**G19459** '99 Jeep Wrangler SUV



**D12661** '09 Buick Enclave CXL SUV



**DH1651** '06 Chevy C4500 flatbed truck



**EY9488** RM Johnson E-Z crusher



**EY9474** '97 John Deere 790E LC excavator



**FJ9821** '17 Keystone Bullet Premier BL30RIPR17 camper

**INVENTORY INCLUDES:** semi trucks, pickup trucks, excavators, flatbed trucks, campers, SUVs, tractors, stump grinder, dump trucks, utility trucks, equipment trailers and more. *All items are sold "AS IS."* 10% buyers premium applies. **866.608.9283**

**purple wave**  
AUCTION

## BID NOW! purplewave.com

**KILL LICE DEAD: PRAIRIE PHOENIX CATTLE CARE SYSTEM.** 417-286-3540.

**AC 840 DIESEL ARTICULATING 4-WHEEL DRIVE LOADER:** \$7,250. 573-765-4406.

**MX5100 KUBOTA:** 4wd tractor w/loader, low hours. \$21,500. 417-270-1505.

**LANDPRIDE RCF3010:** pull type brush hog, 10'. \$5,900. 417-270-1505.

**2017 FORD ESCAPE:** like new, 7,792 miles. \$15,000. 417-818-5369

**MODEL A REAR CAR AXLE.** \$150. 417-293-7113.

**BS201 BALE SPIKE:** w/Bush Hog quick tach system. \$400. 417-270-1505.

**DOUBLE SET OF WHEEL CHOCKS:** Color is Safety Yellow. \$30. 636-239-2695, Washington

**CUSTOM SAW MILLING:** Lebanon. 417-533-4607, 417-664-1195.

**ROME 8FT OFFSET DISK:** \$3,750. 573-765-4406.

**DARK BROWN LARGE STORAGE OTTOMAN:** Or coffee table with lid. PERFECT. \$75. 417-588-2176.

**ADORABLE MALTESE PUPPIES:** \$400. 417-664-9565.

**26 ACRES,** 16x24 cabin, HH Road frontage, electric, telephone, open ground, no flooding, timber, fenced. One side, can sub divide. Farm, Hunt, 9 miles clear water lake. 4000 Ford Tractor. \$89,000. All good view site. 573-663-7769

**OPEN AMISH BUGGY:** 1 seat, fiberglass shafts, new brakes, new cushioned seat. \$650. 417-533-9484, Grovespring.

**MASSEY FERGUSON:** 231 diesel tractor, 3pt, power steering, low hours. \$5,500. 573-765-4406.

**WOOD FURNACE:** heats whole house, blower, ash clean-out door, uses 2ft wood. \$575. 636-239-4124.

**24 cu ft UPRIGHT FREEZER and 22 cu ft Chest Freezer.** \$150 each OBO. Hartville, 417-349-1386, 417-531-3311.

**WANTED 305 FORD MOTOR:** For 2005 Mazda. Cash paid. 573-636-8000, JC.

**PULL BEHIND LAWN LEAF CATCHER:** 38" and lawn dump cart. Both \$200. 636-239-4124.

**26 ROUND BALES:** Wrapped, mixed grass, 1st cutting. \$20 each. Good used lumber. Make offer. 417-532-8048.

**BLUE HEELER PUPPIES:** Good working stock, UTD. \$150. 417-664-5926.

**M7040 KUBOTA 4WD LOADER:** bucket, 2300 hours, double remotes, power reverser, open station. \$21,500. 573-539-2273, Barnett.

**3PT 2 SECTION HARROW.** \$150. Rogersville. 417-753-2747, 417-766-1991.

**PUPPIES FOR SALE:** Beagle/Dachshund mixed. Silver, Tri-Color and Chocolate colors. \$250 males, \$300 females. 417-322-0833.

**BOSTON TERRIER PUPPIES:** 573-548-2428, 573-453-8376.

**2014 4DR CHEVY 4X4:** One owner truck. \$19,900, 573-210-0595.

**USED OAK BARN WOOD FOR BUILDING OR KINDLING.** \$30. 417-293-7113, West Plains.

**TEAM WAGON:** 8'3"L, 3'8"W, team pole, double tree, rear hydraulic, brakes bench seats. Pics available. \$500. Greenville, 573-712-4108.

**BEAUTIFUL DOBERMAN PUPPIES:** Born 8/26, one Red/Rust and one Black/Rust male. \$650. One Red/Rust female. \$500. Parents are Double Registered AKC & CKC. Puppies are CKC Registered. UTD on shots and come with Health Records. Tails docked and declaws removed. 417-531-0483.

**JOHN DEERE 567 ROUND BALER:** monitor, kicker, wide pick-up, cover wrap. \$9,650. 573-765-4406.

**2001 IMPALA:** Runs good, body rough. \$500 OBO. 1999 Cavalier: Runs good, paint fair. \$750 OBO. 573-257-0782.

**AUCTION REMINDER:** Public Auction, Saturday, November 23rd @ 9:30am. Sam Crawford Auction. Please see our Auction Directory for more information.

**7 COWS FOR SALE:** 5 are 2-3 stage, 2-open 1-calf. \$6,700 Rogersville, 417-753-2747, 417-766-1991.

**BARN WOOD SIDING: 8" & 10" wide.** 573-729-7226. [www.pineridgerustic.com](http://www.pineridgerustic.com)

**C FARMALL FENDERS:** \$100. 417-533-7126.

**4 CHAIN LINK DOG PENS:** 3 dog houses, 3 metal cages with trays, 3 plastic cages w/ doors. Make Offer. 636-239-4124.

**CRAFTSMAN 18V CIRCULAR SAW & 1/2" DRILL:** W/2 Batteries, charger, carrying case, never used. \$75 firm. Hermann, 636-932-4429.

**COYOTE NX5010 CAB TRACTOR:** 4x4, hydrastat trans, w/loader, 460 hrs, excellent condition. \$26,900obo. 417-293-1767.

**2012 29' COACHMAN CATALINA DELUXE:** 29' Bumper-pull travel trailer w/ super slide. Very good condition, garaged. \$12,500. 417-989-1867, Dora.

**BRUSHOGS:** 5 to choose from, 5ft-6ft, 3pt and/or pull. \$350/up. Disc 8ft tandem, like new. \$900. 417-753-2747/417-766-1991, Rogersville.

**COWBOY CORGI PUPPIES:** 6 wks, ready to go. \$300. 417-241-1216, Seymour.

**ENCLOSED TRAILER:** 22', bumper style. \$3,200. 573-636-8000, JC.

\*\*\*\*\*  
**HUGE** Estate Auction  
 \*\*\*\*\*

Tuesday, November 26, 2019 **RUNNING 2-3 RINGS ALL DAY** STARTS @ 9:27 AM

Address: Mayes County Fairgrounds • 2150 NE 1st St. • Pryor, OK

Directions: From Jct Hwy 69 & Hwy 20 in Pryor, OK go E on Hwy 20 1/2 mile to Elliott St. Turn L onto Elliott St. and then immediately R onto NE 1st St./ Old Hwy 20. Go E 1 1/4 miles- Fair Grounds on R. Watch for auction signs.

For More Info & Pictures:  
[www.chuppsauction.com](http://www.chuppsauction.com)

**GMC PICKUP, FORD MODEL A TRUCK, CLASSIC KIT CARS, VEHICLES, UNIMOG, MOTORCYCLE with SIDE CAR, TRACTOR, TRAILERS, MOTORHOME, SHOPSMITH, SHOP TOOLS & EQUIPMENT and ANTIQUES**

- 2014 GMC Sierra Z71 truck, 4 door, 4x4, loaded, tow pkg, approx 26k miles, Nice - 1 Owner
- John Deere 1025R tractor, 4x4 w/ 120R loader, hydrostatic, diesel, 50 hrs, like new
- 1931 Ford Model A pickup, shows 30828 mi, restored, (5) Model A tires/wheels, original
- 1980 Ford Model A coupe (1934 style kit car), rumble seat, luggage rack, 4 speed, shows 5803 mi
- 1981 Thunderbird (1955 style kit car), runs & drives, hardtop convertible, white wall tires, auto, 15626 miles

- 1929 Mercedes Benz (kit car), auto, V8, 280 stroker, Edelbrock carb, 7 miles since kit completion, runs & drives
- 2006 Yamaha Road Star 1700 motorcycle w/ side car, approx 20k mi
- 1963 Mercedes Unimog, 4x4, diesel, std, 10' tarped bed (shows 22958 mi/km)
- 1989 GMC Sierra Step Side truck, auto, shift kit, 383 stroke motor, bucket seats, Edelbrock headers, spray in liner, 22' chrome low profile tires (will have new tires by the sale)

**GUNS SELL @ 12:33 pm FOLLOWED BY VEHICLES**

**GUNS, AMMO, GUN ACCESSORIES, KNIVES, WILDLIFE DECOR, HIDES**

ESTATE OF: Jim Barnes OWNER: Jim Barnes Trust

**Auctioneer's Note:** Due to the passing of Jim, his family is selling his estate. He loved classic cars and motorcycles. GUNS WILL SELL AT 12:33 PM FOLLOWED BY VEHICLES AND LARGER ITEMS. We will have 2-3 Auction Rings. Lots of parking. Follow us on Facebook for updates or visit our website for pictures at [www.chuppsauction.com](http://www.chuppsauction.com)

TERMS: Cash - Credit Cards - Check with Proper ID - OK Sales Tax Applies unless exemption is shown. NOT RESPONSIBLE FOR ACCIDENTS. ANY ANNOUNCEMENTS DAY OF SALE SUPERSEDES PREVIOUS ADVERTISING.

**CHUPPS AUCTION & REAL ESTATE**

Stan Chupp  
 (918) 638-1157

Dale Chupp, Realtor  
 Coldwell Banker Neokla Select  
 (918) 630-0495

E. J. Chupp

**CASE SUPER M SERIES 2 BACKHOE:** 4WD, extend-a-hoe, heat/air, new rear tires, extra buckets, flip-over pads, 3,970 hrs. \$40,000 OBO. 573-967-5355

**CHECKERED WALNUT WOOD STOCK PISTOL GRIP:** for Marlin Model 336 or 1895. \$100. Washington. 636-239-2695.

**2008 GMC ACADIA:** new tires. \$3,200. 417-880-7782.

**SHORTBED PICK-UP BED:** step-side, Z71, older model truck. \$200 or trade. 573-734-2822.

**PONY/HORSE CART** with trailer. Team pole with neck yoke. double tree, vehicle tow tongue, bench seats, rub brakes. Pics available. \$400. Greenville, 573-712-4108.

**ANTIQUÉ LOG CABINS FOR SALE.** Built in 1800's. Also Peg Barns. If you have always wanted a REAL LOG CABIN that has survived since Civil War, I have them! Prices start at \$4,000 and up accordingly to size/condition. Build it yourself or let us. 573-744-5343, 573-578-1082.

**AKC GERMAN SHEPHERD PUPPIES:** UTD, vet-checked, large breed. 417-589-2039.

**9 HEALER PUPPIES: 5 males, 4 females. 8 wks old.** \$200. 417-533-4994. Grovespring.

**DANUSER HYD. POST DRIVER:** Nice. \$1,950. 573-765-4406.

**2004 HONDA PILOT:** AWD, 3rd row seat, high mileage. Runs, drives & operates good. Sell or consider trade for pick-up. 417-599-8089.

**HAY FOR SALE:** Round and Square, call for prices. 417-345-5634

**ALLIS CHALMERS WD:** gas, XL cab, wide front, PS, 3pt, loader w/forks, good tires & paint. \$3,000. Rogersville. 417-753-2747, 417-766-1991.

**AUCTION REMINDER:** Estate Auction. Saturday, November 16th @ 10am. Johnson Bay Auction. Please see our Auction Directory for more information.

**9 RED ANGUS BULLS:** registered, 2 1/2 yr old. 573-300-8112, after 7pm 573-593-4299.

**NARROW HYDRAULIC BUCKET:** mounted on Massey Harris. \$250obo Also several Massey Harris tractors for restoration. 417-254-1001.





**2007 TOYOTA CAMRY:** 250,000 miles (Commuter Car), well maintained, gray color, good tires. REAL NICE CAR. \$2,500. 417-533-2228.

**ALFALFA/ORCHARD 4X5 LARGE ROUND:** 2nd cutting, net wrapped, barn stored, excellent quality. \$85/bale, delivery available. 417-532-6686, 417-531-6686.

**\$17,900, 2010 DODGE CARAVAN:** Wheelchair accessible van only, 72,000 miles, very good condition, power wheelchair included. 573-216-8844.

**TRUCK LOAD OF FLEA MARKET & AUCTION ITEMS:** \$200 or trade. 573-327-9068

**DARK BROWN LARGE STORAGE OTTOMAN:** Or coffee table with lid, perfect. \$75. 417-588-2176.

**3PT BALE CARRIER:** \$100. Rogersville. 417-753-2747, 417-766-1991.

**2004 OPEN RANGE FIFTH WHEEL CAMPER:** 34', all weather, in good condition. \$10,500. Lebanon, 417-718-5520.

**JERSEY HEIFER:** \$600. Jersey Steers. \$500 each. Jersey Steers, \$250 each. Steelville, 573-775-2564.

**3 HEALER PUPPIES:** 12wks, males. \$50. 417-533-4994. Grovespring.

**FIREARMS:** Professional Repairs and Restorations. Baron's Gunsmithing. 573-363-5801, Camdenton.

**10 TASTE OF HOME Hardback cookbooks.** \$2.50 each or all for \$20. 417-532-2045, Lebanon.



**WEEKLY TRADER MAGAZINE**

**Let us help you grow your business!**

**For your advertising needs**  
**Call Debbie Calvin • 573.465.3753**  
**weeklytrader@gmail.com**

**INTERNATIONAL TRACK LOADER TD9:** W/clam shell bucket, excellent shape. \$7,950. 573-377-4872, leave message.

**GERMAN SHEPHERD KENNEL REDUCTION:** Good breeding stock. \$50. Also pets. Hartville, 417-741-2198.

**2012 GMC ACADIA SLT:** 80,000 miles, red w/tan interior, leather/power heated seats, 3rd row seats, double sunroof, lots extras, new tires/brakes. \$13,500. 417-718-0085.

**BRAND NEW INTERTHERM ELECTRIC FURNACES:** For mobile homes. \$550. Factory Warranty. Call Charlie 573-786-4003, Steelville.

**AUCTION REMINDER:** Real Estate & Estate Auction. Saturday November 16th @ 10am. Sellers Auction. Please see our Auction Directory for more information.

**MUSTANG 2040 DIESEL SKID STEER LOADER:** \$8,500. 573-765-4406.

**BEEFALO,** The Forage Fed Breed: weaning age bulls and heifers. \$950. 573-732-5763, Bourbon

**HOLLYWOOD 4-BIKE HITCH MOUNT RACK:** Excellent condition, Includes (2) Allen Stabilizer tension bars and keyed alike locking hitch pin and cable. \$175. Conway, 417-718-5347.

**2 BARREL WOOD STOVE:** Good Condition. \$80. 636-239-4124.






**FARM FEST PRE-SALE  
SAVE \$300**  
*Limited Quantities Available*

**Now installing beds in both locations!  
GET YOUR TRUCK OUTFITTED WITH A  
CHISHOLM TRAIL HAYBED TODAY!  
LET US BE YOUR PEOPLE!!**

**WESTGATE TRAILER  
& EQUIP.**

**417-351-6974 • 417-926-7733**  
www.westgatetrailer.net  
8920 W Business 60 • Mtn. Grove, MO  
7136 W Farm Road 140 • Springfield, MO  
**FULL SERVICE SHOP**  
OPEN: Mon.-Fri. 8-5 And "YES!" Sat. 8-Noon!

**2006 FORD 14 PASSENGER SHUTTLE VAN:** 80,000miles, great condition, bad engine. \$900obo. 417-254-1001

**2018 JOHN DEERE 3025 4WD TRACTOR:** loader, bale spike, 6' bushhog, yard trailer, John Deere fertilizer spreader w/3pt attachment, very low hours, still under warranty, Always garage kept. \$16,500. 573-247-0084, West Plains.

**SMALL SQUARE BROME HAY:** 70LB, horse quality, delivery available. 417-532-6686, 417-531-6686.

**LIKE NEW PEDESTAL:** for front loader washer or dryer, 12"x24 3/8"x 27". \$50. Gerald, 573-764-2270.

**3 DOZEN MALLARD DECOYS:** Mostly Flambeau, some new, weighed and ready to hunt. \$40 per dozen. Buffalo, 417-345-4562.

**NEW TURKEY FRYER:** With all accessories. \$100. 573-327-9068.

**JOHN DEERE 4240:** Diesel Tractor, cab and cold air, power shift, very nice. \$29,500 573-765-4406.

**GIBSON HEATING & COOLING UNIT:** Working condition. \$400. Whirlpool 25' cu ft side-by-side refrigerator freezer, excellent condition. \$400. Whirlpool, 40gal electric water heater, extra heat elements. \$100. Kenmore Elite dishwasher. \$25. GE Dryer \$25. Will negotiate, make offer. 417-241-0394, Hartville.

**Buildings • Hunter's Cabins • Lawn Furniture**



**JAMCO Portable Buildings**  
800-688-2064 • 307 Enterprise Dr. • Seymour, MO • www.jamcobuilders.com

**Rent To Own Plan**

**A&M SAWMILL:** Buying Cedar Logs. Monday, Wednesday & Friday. 3626 S 21st Rd, Dunnegan, MO 65640. 417-754-1173.

**MINT WINCHESTER MODEL 63.** \$1,200. 573-346-7575.

**18 STUB GUARDS:** for Hesston PT7 or 10 Haybine. \$15. Gerald, 573-764-2270.

**AKC GERMAN SHEPHERDS:** 7wks, 9wks, 16wks. \$400. 417-260-0266.

**CDL IN ONE DAY!!:** Family owned and operated, Insured, Over 10 years of experience, Training available for all states, Short wait time for appointments, Contact us today to schedule your appointment!! CREDIT CARDS EXCEPTED. (573-353-2853).

**DYNO CHARGE 990 ELECTRIC FENCER:** Solid state for 20 miles. \$50. 636-239-2695.

**INVESTOR'S DREAM**



**FOR SALE**  
**Mobile Home Park in Rolla, MO**  
\$345,000

20+ Lot Park w/ House on 4.88+/- Acres • \$50,400+ Annual Income  
**Outstanding Cap Rate of 12.5%**  
For info. Call Dayna Williams, Owner/Agent • 314-602-7706

**KUBOTA TRACTOR M7060HD:** front loader, 8' brush-hog. \$35,000. 417-300-5146, Pleasant Hope.

**AUCTION REMINDER:** Real Estate Auction, Saturday, November 16th @10am, Joyce Auctioneering & Real Estate. Please see our Auction Directory for more information.

**WR CASE & SONS Cookbook & Historical Companion.** \$7.50. 417-532-2045, Lebanon.

**AUCTION REMINDER:** Secluded Home Online Estate Auction Ends Friday, November 22nd at 12:30pm. Atterberry Auctions. Please see our Auction Directory for more information.

**Cowtown Express Car Wash**  
Highway 63 South, Rolla, MO  
Call Wade 573-368-1430 Or 573-426-2500



**Sale Price \$4,950**

**NEW Winchesteer Star & Bale Trailers**  
Powder Coated 18+2, 7,000 Axles  
www.cowtownusainc.com

**ACA REGISTERED LAB PUPPIES:** good breeding stock, 6 months old. \$50. Hartville. Also mature dogs. 417-741-2198.

**TAKUCHI 135 DIESEL EXCAVATOR:** W/ hyd thumb, good. \$15,000. 573-765-4406.

**1979 LITTLE RED EXPRESS:** 39,700mi, all original, air. \$15,500. 573-518-4620. Bonne-Terre.

**CAT #12 ROAD GRADER:** \$3,500. 417-664-2090.

**CAST IRON WOOD STOVE:** w/2 front cast iron bi-fold doors. \$150. 636-239-4124.

**2016 HONDA 4-WHEELER: 500 Foreman Rubicon, 4WD, perfect condition. \$5,500. 417-274-7407.**

**POOL TABLES:** Installations, moves, recoveries, repairs, accessories, etc. 573-646-1700.

**AMERICAN BULLDOG PUPPIES:** 573-548-2428, 573-453-8376.

**JOHN DEERE 535 ROUND BALER:** monitor, kicker, net wrap. \$5,250. 573-765-4406.

**CASE 660 TRENCHER: 4-wheel steering, 6-way blade, approximately 1000 hrs. \$9,500 OBO. 573-967-5355**



**Custom Welding & Repair!**

Custom Welding & Repair on Farm Machinery & All types of trailers including semi | Alum Welding | Lights & Brakes Repair

**JR's Fabrication**

Levi K. Zook • 417-741-2312 • 4875 Hwy BB Hartville



**Pine Ridge Rustic**  
Log Home Building Supplies

**Services Offered!**

- Installation
- Pre-finishing available on interior & exterior
- Dealer for exterior stains

**www.pineridgerustic.com**

**523 CR 2410 • Salem, MO 65560 • Ph: 573-729-7226**

- Log Siding
- Beveled Siding
- Car Siding • Red Cedar
- Western Cedar • Pine

**AUCTION REMINDER:** Tuesday, November 26th at 9:27am. Chupps Auction Co. Please see our Auction Directory for more information.

**JOHN DEERE HX 15:** hyd fold, 15ft brush-cutter. \$9,750. 573-765-4406.

**SALE!! 25%-50% OFF TARTER CATTLE HANDLING EQUIPMENT MSPR:** Select items include: Sweep tub systems, squeeze chutes, headgates, maternity pens, alley slide gate and alley panels. Nov 4-18th 2019, Pre-paid orders only, details and ordering. Call 573-205-7860.

**LEBANON HISTORY BOOK-A PART OF OUR LIVES, 1949-1976. \$10. 417-532-2045.**

**CRAFTSMAN PROFESSIONAL 10" TABLE SAW:** On rollers, Model 315-228-510, never used, missing guard and fence. \$150firm. Hermann, 636-932-4429.

**6"x52' TRANSPORT AUGER 573-437-2076.**

**FRONT BUMPER:** Chrome, brackets, Dodge 2009-2018 pickup. \$475 OBO. 417-298-1271. Preston.

**110 ELECTRIC HEATER:** New, Lasko. \$125 or trade. 573-327-9068.

**AUCTION REMINDER:** Saturday, November 16th @ 10a.m, Larinda's Auction Service. Please see our Auction Directory for more information.

**AUCTION REMINDER: SPECIAL** Consignment Auction Friday November 15th @ 6pm. Please see our Auction Directory for more information.

**IHC 1086 DIESEL TRACTOR CAB & COLD AIR:** \$8,750. 573-765-4406.



**Larry Heisel Rentals**

HEISEL 573-779-1500  
RENTAL SALES & SERVICE 636-432-9460  
Larry's Call

**We Deliver!**

**Crawler Loaders  
Excavators, Backhoes**

Call Larry!  
Rental Available in 636 or 573 Area Codes

**573-779-1500**

**JOHN DEERE HX-10:** Pull-type brushcutter. \$4,200. 573-765-4406.

**D7 CATERPILLAR DOZER for sale:** 17A Series, HYD 95% Undercarriage, 10' blade, new parts, ROPS-CAB. 660-341-3627.



**DAEWOO FORKLIFT**

**Model GC25S-2**  
Serial No 06-02352

- Propane
- Hook attachment
- Everything works great
- Always kept in a building

*Call for more information!*

**417-532-9131 • LEBANON**



**\$1000 SIGN ON BONUS**

# ASPLUNDH

## TREE EXPERT, LLC

Is seeking **EXPERIENCED Line Clearance Tree Trimmers, Bucket Operator and Forepersons**

For work in the Lebanon and surrounding areas. **Excellent Benefits:**  
*401K, Health, Dental, Vision Paid Vacations and Holidays.*  
 Must be a safe and productive worker pass a pre-employment drug test, and have valid driver's license.

**\$21-\$24 per hour**

**Call 636-583-1175 or apply online • [Asplundh.ourcareerpages.com](http://Asplundh.ourcareerpages.com)**



*In addition to doing custom welding and fabrication, we offer...*

**Crownline Flat Beds — sales and installation**  
**Move Bumpers — assembly and installation**  
**Custom Mini Trailers • Corral Panels**

*Call us if you have a special project*  
**417-730-9357 • Hwy. 60, Seymour, MO.**

**AUCTION REMINDER:** Online Land/Home Auction Ends Wednesday, November 20th @ 12:30pm. Atterberry Auctions. Please see our Auction Directory for more information.

**AUCTION REMINDER:** Public Auction Saturday, November 23rd 9AM. Bruce & Le'AN Auction. Please see our Auction Directory for more information.

**BULLS- Limousin- Limflex- Red Angus registered bulls for sale. 13-18 months old. AI sired & semen tested. Contact Josh at 417-664-0913.**

**1995 MERCURY COUGAR: 4.6 V8. \$800obo, 573-315-5990**

**AKC PUG: male 8 mos. \$500. AKC Male Pug: 4 mos.; \$800. Credit cards accepted. 417-458-1424, Plato.**

**2000 FORD EXPEDITION: 4x4, Eddie Bauer Edition, 190,000mi, over \$2000 new parts. Asking \$3,300 OBO. 417-848-8754.**

**CRAFTSMAN 10" STATIONARY TABLE SAW: 3600RPM, 120V, Locking wheels, Rip Fence, Front rail/scale, miter gauge, bevel scale. Excellent condition. \$325. 417-718-5347. Morgan**

**FRESIANS AND ARABIANS:** For sale and Stallion service. Piglets \$30. Hogs and Nubian goats. Bees and equipment. Raymondville, 573-548-0219, 931-292-0151.

**AUCTION REMINDER:** 2 Properties Online Land/Home Auction Ends Monday, November 25th. Atterberry Auctions. Please see our Auction Directory for more information.

**OLD LINN CREEK, HA HA TONKA & CAMDEN CO BOOK "Before the Dam Water", by T. Victor Jeffries. \$3.50 plus \$2 if mailed. 417-532-2045, Lebanon.**

**NORWEGIAN ELKHOUND PUPPIES:** Cute, family raised on farm, very friendly parents. Will make good family pets. Starting at \$100. 417-241-0394, Hartville.

**THOMPSON CENTER INLINE 50 cal black powder rifle, Black Diamond model w/ scope bases. \$125. Buffalo, 41-345-4562.**



## ★ American Made Metal Roofing ★

**40 Year Warranty Metal.....\$1.99 (\$62.18 Per Sq)**



**\*29 Gauge 10 Year .....\$1.79 (\$55.93 Per Sq)**

**\*\*While Supplies Last\*\***

**29 Gauge #1 Galvalume .... \$1.69....\$1.39 (\$43.44 Per Sq)**

**29 Gauge 40 Year \*Saddle Tan\* ....\$1.69 (\$52.81 Per Sq)**

- ★ 17 Colors To Choose From
- ★ 20 Years In Business
- ★ We Manufacture Our Own Metal and Trusses



**3 Locations To Serve You!**

6952 E. 7th St. Joplin, MO. 417-317-7961	1100 Pace Rd. Pocahontas, AR. 870-609-1900	35 Killdeer Rd. Seymour, Mo. 417-952-7143
--	--	---

\*possibly not American made

### Building In A Box

Stud Wall & Pole Barn Kits

	Non-Warranty Metal	10Year Warranty	40Year Warranty
<b>24x30x8.....</b>	<b>\$3,350</b>	<b>\$3,700</b>	<b>\$3,850</b>
<b>30x40x10.....</b>	<b>\$4,950</b>	<b>\$5,350</b>	<b>\$5,600</b>
<b>40x60x12.....</b>	<b>\$9,300</b>	<b>\$10,000</b>	<b>\$10,200</b>

Precut Packages Also Available




**NEW MAHINDRA ROXOR FRESH OFF THE ASSEMBLY LINE!!**

- Steel Body no plastic to break
- 5 Speed Manual Transmission no belt to break
- Fully-boxed, ladder construction, steel truck-style frame
- Turbo Diesel 4 cycle engine which produces 144 ft lbs of torque and 3490 lbs of towing capacity to get your jobs done. • Made in Detroit
- 3 YEAR WARRANTY OR 12,000 MILES • Starting at \$15,999
- **MADE IN THE USA**

[Visit us at www.cowtownusa.com](http://www.cowtownusa.com)

**BLACK ANGUS BULL: 5yrs. \$1500. 573-436-0487, Potosi.**

**RDS 60GAL ALUMINUM AUXILIARY TANK: excellent. \$350obo. 417-298-1271**

**NEW STAINLESS STEEL TUBE GRILL:** for 73-86 Chevy pick-up. \$50 or trade. 573-734-2822.

**RARE 1937 CIVILIAN CONSERVATION CORPS (CCC) 7TH CORPS AREA OFFICIAL MANUAL. \$20. 417-532-2045, Lebanon.**

**3PT HITCH:** Fits Farmall HorM or other Internationals. \$200. Rogersville. 417-753-2747/417-766-1991.

**AUCTION REMINDER:** Online Estate Auction Ends Monday, November 25th. Atterberry Auctions. Please see our Auction Directory for more information.

**R-FAB BINS**  
(660)281-3078



**Bucket Bins**  
Stationary or Portable

**Overhead Bins**  
Located in Warsaw, MO

**PRAIRIE PHOENIX CATTLE CARE SYSTEM:** Simpler, stronger, cheaper. 417-286-3540.

**REGISTERED HEREFORD & ANGUS BULLS:** Home raised, Some Show-Me Select Qualified. 573-701-7828. Belgrade

**Barnett Repair**  
573-392-3050

18425 Buttercup Rd  
Barnett, MO 65011

- ENGINE OVERHAULS
- TRANSMISSION REPAIR
- GENERAL REPAIR ON FARM MACHINERY

**\$30 HOUR**  
Owners:  
Paul & Levi Leinbach



**HAY FOR SALE:** Square bales/\$4.50, Round bales 4x5/\$50, good mixed grass hay, no weeds. 573-368-1794.

**AUCTION REMINDER:** Special Sales Coming Up. Cattle Sale every Monday at Noon. Goat, Sheep & Hog sale 2nd Tuesday of Month @ 6pm. Salem Livestock. Please see our Auction Directory for more information.

**L4400 KUBOTA:** 4wd tractor with loader and 3rd function valve, Low hours. \$22,500. 417-270-1505.

**1988 HALLMARK MEMORY TREE SHADOW BOX:** Holds 27 miniature ornaments, ornaments still in box. \$75. 573-689-2490, Bunker.

**25 JIGSAW PUZZLES:** Bought new, worked once. \$3 each. 573-689-2490, Bunker.

**WANTED:** UTV (used, good condition, fair price). 270-970-8243, Lebanon.

**WHEEL FOR FORD 8N TRACTOR:** 3"X 19". \$30. Gerald, 573-764-2270.

**R & A FARM LLC**

**Trailer Repair**

- » Welding » Wiring
- » Portbale Welding



417-664-5954 • 30566 HWY BB LEBANON  
FB: R&A FARM LLC • ROBERT BARBEAU

**BORDER COLLIE PUPPIES:** Dewormed, first shots. \$150. working parents from Canada. Amos, 20269 Maries CR635, Dixon, MO 65459.

**PINE LOG SIDING..** www.pineridgerustic.com 573-729-7226.

**HYDRA BED**  
BY TRIPLE C, INC.

- 3,000 lb. Lift Capacity
- Synchronized Bale Arms
- Engine Driven Hydraulics
- Free-Float Bale Unrolling
- 12" Total Main Hinge Length
- Six Sizes Available
- Full Two Year Warranty

Starting At **\$9,225**  
Installed

Several Sizes in Stock



**LET YOUR SAVINGS BEGIN NOW!**  
2 Toolboxes for \$575.00  
Prices Good On In Stock Beds Only!!  
**LET US BE YOUR PEOPLE!!**

**WESTGATE TRAILER & EQUIP.**

417-351-6974 • 417-926-7733  
www.westgatetrailer.net  
8920 W Business 60 • Mtn. Grove, MO  
7136 W Farm Road 140 • Springfield, MO  
**FULL SERVICE SHOP**  
OPEN: Mon.-Fri. 8-5 And "YES!" Sat. 8-Noon!

**OLIVER TRACTORS.** 77NF, \$2,500. 37 Hart/Parr, NF, \$1,750. 88WF, \$2,000. 417-865-4173, 417-839-5248. Springfield.

**PYRENEES/ANATOLIAN PUPPIES.** Cuties! Excellent pets/guard/sheep dogs. \$250. In time for Christmas! Reserve yours now. 417-322-0161.

**METRO MOTORS INC.**  
**R.V. SALES**

**NEW GREY WOLF, CHEROKEE & ROCKWOOD!**  
**GREAT SELECTION OF NEW & PREOWNED RVs**

•2000 34' Allegro Bay V10 Ford, Lg. Slideout, 71,000 Miles.....	\$16,900	•2017 17' R-pod w/ slide.....	\$13,900
•2003 M237 Nomad 5th Wheel w/ slideout.....	\$6,900	•NEW! 2018 1225 A-Frame by Rockwood.....	\$12,500
•2006 28RL Laredo 5th Wheel Lg. slideout.....	\$12,900	•NEW! 2018 8297S Rockwood Signature 5th Wheel 4 Slide Outs, Retails \$52,000.....	Sale Price \$37,900
•2011 32' Zinger Trailer Lg. slideout.....	\$10,900	•NEW! 25RL Greywolf Trailer w/ slide.....	\$15,900
•2015 24' Z-211 RD Trailer.....	\$12,900	•NEW! 2019 2440 BS Rockwood 5th Wheel 2 Slideouts.....	\$28,900
•2016 17BH Greywolf Trailer.....	\$12,900	•NEW! 2019 214 HW A-Frame by Rockwood Huge Shower & Stoll.....	\$14,900

**"Where Your Satisfaction Really Counts"**  
2727 S. Campbell - Springfield, MO - Visit our website at [www.metro-motors.biz](http://www.metro-motors.biz)  
**417-882-6800**



**MODEL A REAR CAR AXLE.** \$150.  
417-293-7113.

**TRACTORS:** Massey Harris-30, w/3pt lift. \$2,200. Farmall-H w/triploader bucket and Bushhog. Only \$2,500. 417-848-8754.

**2017 FORD ESCAPE:** like new, 7,792miles. \$15,000. 417-818-5369

**DOUBLE SET OF WHEEL CHOCKS:** Color is Safety Yellow. \$30. 636-239-2695, Washington

**WANTED PINBALL MACHINES.** 573-424-7200.

**SMALL DISK:** could be pulled by 4-wheeler. \$35. Rogersville. 417-753-2747, 417-766-1991.

**Starnes Auto LLC**  
22115 Rt. 66 • Lebanon, MO 65536  
417.588.3159 Office • 417.718.2707 Cell  
[www.starnesauto.com](http://www.starnesauto.com)

**2002 CHEVY S-10**  
PEWTER, REG CAB, 2 WD, 5 SPEED, 254,XXX MI.. **\$2,400**

**2002 TRAILBLAZER**  
WHITE, 183,XXX MILES ..... **\$1,850**

**2003 CHEVY S10**  
BLUE, 2WD, 103,XXX MILES..... **\$3,500**

**2003 CHEVY SILVERADO Z71**  
WHITE, EXT CAB ,4X4, 230,XXX MILES ..... **\$5,200**

**2003 GMC YUKON**  
WHITE, 4X4, 210,XXX MILES..... **\$4,850**

**2005 CHEVY SILVERADO HD**  
EXT CAB, LONG BED, 8100, 210,XXX MILES..... **\$7,250**

**2005 GMC ENVOY**  
SILVER, 2WD, 172,XXX MILES ..... **\$2,650**

**2006 GMC SIERRA**  
GREEN, CREW CAB, 2WD, 69,XXX MILES ..... **\$8,950**

**2008 PONTIAC G6**  
BLUE GOLD, 215,XXX MILES..... **\$2,200**

**2011 GMC ACADIA SLE**  
CHARCOAL, 110, XXX MILES..... **\$8,500**

**2011 CHEVY MALIBU LS**  
WHITE, GOOD TITLE, 90, XXX MILES..... **\$6,200**

**2011 BUICK ENCLAVE**  
WHITE, 125 XXX MILES..... **\$9,200**

**2012 CHEVY MALIBU LT**  
RED, 120, XXX MILES ..... **\$5,850**

**2014 CHEVY MALIBU**  
GOLD, GOOD TITLE, 59,XXX MILES..... **\$9,200**

**2014 TOYOTA SCION XB**  
WHITE, 21,XXX MILES..... **\$9,850**

**2015 NISSAN FRONTIER**  
CHARCOAL, 73,XXX MILES, GOOD TITLE ..... **\$14,950**

**2017 CHEVY IMPALA LT**  
BLACK, V6, 47,XXX MILES, ..... **\$14,500**

**2017 CHEVY IMPALA LT**  
BLACK, V6, 47,XXX MILES ..... **\$14,500**

**WE DO ALIGNMENTS!**

[www.gatorjetboats.com](http://www.gatorjetboats.com)



*Jet Drive & Performance Parts*  
**IN-STOCK!**

(573) 885-0052  
86 Hwy. UU Cuba, MO (2 Miles East of Cuba)  
**Custom Built Aluminum Inboard Jets**

**ARE YOU KIDDING ME???**-Used double-wide, \$19,900!!!! delivery & set-up, 3 bedroom, 2 bath. Call 573-499-9993 [comlumbiadiscounthomes.com](http://comlumbiadiscounthomes.com)

**\$19,900 USED DOUBLE WIDE:** nice 3 bedroom, 2 bath delivered & set-up.....Hurry, This house will **NOT** last long! Call now 573-657-2176 [amegamobilehomes.com](http://amegamobilehomes.com)

**BALES GOOSENECK 14' DUMP TRAILER:** w/ramps and tie-downs. 573-437-2944, Owensville.

**CASE 580C:** Diesel Backhoe, Loader. \$8,850. 573-765-4406.

**SET OF NYLON DOUBLE HARNESS: W/ collars.** \$450. 417-533-9484, Grovespring.

**JOHN DEERE 2640:** Diesel tractor, 70HP, Canopy. \$8,750. (573)765-4406.

**AC 840 DIESEL ARTICULATING 4-WHEEL DRIVE LOADER:** \$7,250. 573-765-4406.

**HIGH COUNTRY**  
**TimberStone LLC**



573-674-3979 • 573-247-3989  
11749 Crest Ln., Licking, MO

**1955-56 CHEVROLET TRUNK LID:** good shape. \$100. 573-734-2822.

**AKC FRENCH BULLDOG PUPPIES: 9 wks.** Raise in my home. \$1,200, credit cards accepted. 417-458-1424, Plato.

**2005 IMPALA:** PW, tilt, cruise, AM-FM/CD, 3.4, cloth seats, 212,000 miles. \$1,750. 636-931-2451, Festus.

**COMPLETE SCRAGG & PALLET OPERATION:** Property, Equipment, Timber contracts, Lots more, Selling due to health reasons, Too Much to List, may separate & owner finance. 417-650-0402

**KILL LICE DEAD: PRAIRIE PHOENIX CATTLE CARE SYSTEM.** 417-286-3540.

**#32 SANITARY SKILL Meat Grinder:** Complete & works. \$700. #22 Sanitary Skill: Complete and works. \$300. Hartville, 417-349-1386.

**MX5100 KUBOTA:** 4wd tractor w/loader, low hours. \$21,500. 417-270-1505.

**LANDPRIDE RCF3010:** pull type brush hog, 10'. \$5,900. 417-270-1505.

**26 ACRES,** 16x24 cabin, HH Road frontage, electric, telephone, open ground, no flooding, timber, fenced. One side, can sub divide. Farm, Hunt, 9 miles clear water lake. 4000 Ford Tractor. \$89,000. All good view site. 573-663-7769

**OPEN AMISH BUGGY: 1 seat,** fiberglass shafts, new brakes, new cushioned seat. \$650. 417-533-9484, Grovespring.

**BS201 BALE SPIKE:** w/Bush Hog quick tach system. \$400. 417-270-1505.

**SNOWBLOWER:** Craftsman, 46", like new. \$200. Rogersville, 417-753-2747, 417-766-1991.

**OLDER FRONT-TINE TILLER:** 5HP, Runs Good. \$125 OBO. 573-257-0782.

**WOOD FURNACE:** heats whole house, blower, ash clean-out door, uses 2ft wood. \$575. 636-239-4124.

**MASSEY FERGUSON:** 231 diesel tractor, 3pt, power steering, low hours. \$5,500. 573-765-4406.

**WANTED 305 FORD MOTOR:** For 2005 Mazda. Cash paid. 573-636-8000, JC

**24 cu ft UPRIGHT FREEZER and 22 cu ft Chest Freezer.** \$150 each OBO. Hartville, 417-349-1386, 417-531-3311.

**PULL BEHIND LAWN LEAF CATCHER:** 38" and lawn dump cart. Both \$200. 636-239-4124.

**26 ROUND BALES:** Wrapped, mixed grass, 1st cutting. \$20 each. Good used lumber. Make offer. 417-532-8048.

**CUSTOM SAW MILLING:** Lebanon. 417-533-4607, 417-664-1195.

**ROME 8FT OFFSET DISK:** \$3,750. 573-765-4406.

**BLUE HEELER PUPPIES:** Good working stock, UTD. \$150. 417-664-5926.



**Rotating Hay Carriage**

**Cowtown USA • 1-800-258-6898**  
I-44 & Hwy F • Exit 203 • Cuba, MO  
View At [cowtownusainc.com](http://cowtownusainc.com) - See Video

**M7040 KUBOTA 4WD LOADER:** bucket, 2300 hours, double remotes, power reverser, open station. \$21,500. 573-539-2273, Barnett.

**3PT 2 SECTION HARROW.** \$150. Rogersville. 417-753-2747, 417-766-1991.

**PUPPIES FOR SALE:** Beagle/Dachshund mixed. Silver, Tri-Color and Chocolate colors. \$250 males, \$300 females. 417-322-0833.

**DARK BROWN LARGE STORAGE OTTOMAN:** Or coffee table with lid. PERFECT. \$75. 417-588-2176.

**COYOTE NX5010 CAB TRACTOR:** 4x4, hydrastat trans, w/loader, 460 hrs, excellent condition. \$26,900obo. 417-293-1767.

**BEAUTIFUL DOBERMAN PUPPIES:** Born 8/26, one Red/Rust and one Black/Rust male. \$650. One Red/Rust female. \$500. Parents are Double Registered AKC & CKC. Puppies are CKC Registered. UTD on shots and come with Health Records. Tails docked and declaws removed. 417-531-0483.

**JOHN DEERE 567 ROUND BALER:** monitor, kicker, wide pick-up, cover wrap. \$9,650. 573-765-4406.

**2001 IMPALA:** Runs good, body rough. \$500 OBO. 1999 Cavalier: Runs good, paint fair. \$750 OBO. 573-257-0782.

**AUCTION REMINDER:** Public Auction, Saturday, November 23rd@ 9:30am. Sam Crawford Auction. Please see our Auction Directory for more information.

**7 COWS FOR SALE:** 5 are 2-3 stage, 2-open 1-calf. \$6,700 Rogersville, 417-753-2747, 417-766-1991.

**SHORTBED PICK-UP BED:** step-side, Z71, older model truck. \$200 or trade. 573-734-2822.



**STARTING AT \$2,199**

PRICE SUBJECT TO CHANGE WITHOUT NOTICE. SEE DEALER FOR DETAILS

**HUSTLER**

**AGRI-ENTERPRISES** For Outstanding Products & Service

1-1/2 Miles South Of Licking, MO On Hwy 63  
573-674-2203 • 1-800-653-7152  
[www.agri-enterprises.com](http://www.agri-enterprises.com)

**BARN WOOD SIDING:** 8" & 10" wide. 573-729-7226. [www.pineridgerustic.com](http://www.pineridgerustic.com)

**PONY/HORSE CART with trailer.** Team pole with neck yoke. double tree, vehicle tow tongue, bench seats, rub brakes. Pics available. \$400. Greenville, 573-712-4108.

**2014 4DR CHEVY 4X4:** One owner truck. \$19,900, 573-210-0595.

**TEAM WAGON:** 8'3"L, 3'8"W, team pole, double tree, rear hydraulic, brakes bench seats. Pics available. \$500. Greenville, 573-712-4108.

**C FARMALL FENDERS:** \$100. 417-533-7126.

**4 CHAIN LINK DOG PENS:** 3 dog houses, 3 metal cages with trays, 3 plastic cages w/ doors. Make Offer. 636-239-4124.

**CHECKERED WALNUT WOOD STOCK PISTOL GRIP:** for Marlin Model 336 or 1895. \$100. Washington. 636-239-2695.

**CRAFTSMAN 18V CIRCULAR SAW & 1/2" DRILL:** W/2 Batteries, charger, carrying case, never used. \$75firm. Hermann, 636-932-4429.

**BOSTON TERRIER PUPPIES:** 573-548-2428, 573-453-8376.

**2012 29' COACHMAN CATALINA DELUXE:** 29' Bumper-pull travel trailer w/ super slide. Very good condition, garaged. \$12,500. 417-989-1867, Dora.

**BRUSHOGS:** 5 to choose from, 5ft-6ft, 3pt and/or pull. \$350/up. Disc 8ft tandem, like new. \$900. 417-753-2747/417-766-1991, Rogersville.

**COWBOY CORGI PUPPIES:** 6 wks, ready to go. \$300. 417-241-1216, Seymour.

**CASE SUPER M SERIES 2 BACKHOE:** 4WD, extend-a-hoe, heat/air, new rear tires, extra buckets, flip-over pads, 3,970 hrs. \$40,000 OBO. 573-967-5355

**2008 GMC ACADIA:** new tires. \$3,200. 417-880-7782.

**ADORABLE MALTESE PUPPIES:** \$400. 417-664-9565.

**ENCLOSED TRAILER:** 22', bumper style. \$3,200. 573-636-8000, JC.

**USED OAK BARN WOOD FOR BUILDING OR KINDLING.** \$30. 417-293-7113, West Plains.

**9 HEALER PUPPIES:** 5 males, 4 females. 8 wks old. \$200. 417-533-4994. Grovespring.

**DANUSER HYD. POST DRIVER:** Nice. \$1,950. 573-765-4406.

**HAY FOR SALE:** Round and Square, call for prices. 417-345-5634



# WEEKLY TRADER MAGAZINE

## YOUR AD GOES HERE!

Add **YELLOW** Color For An Additional **\$3** Per Reader Ad

All ads will include Phone Number (unless requested to be deleted by advertiser) and City Or Town, Phone Number with Area Code counts as one word. City or Town counts as one word.

**RATE: 80¢ Per Word. All Classified Ads Require Payment Before Print.**

(1) 80¢	(2) \$1.60	(3) \$2.40	(4) \$3.20
(5) \$4.00	(6) \$4.80	(7) \$5.60	(8) \$6.40
(9) \$7.20	(10) \$8.00	(11) \$8.80	(12) \$9.60
(13) \$10.40	(14) \$11.20	(15) \$12.00	(16) \$12.80
(17) \$13.60	(18) \$14.40	(19) \$15.20	(20) \$16.00
(21) \$16.80	(22) \$17.60	(23) \$18.40	(24) \$19.20
(25) \$20.00	(26) \$20.80	(27) \$21.60	(28) \$22.40
(29) \$23.20	(30) \$24.00	(31) \$24.80	(32) \$25.60
(33) \$26.40	(34) \$27.20	(35) \$28.00	(36) \$28.80
(37) \$29.60	(38) \$30.40	(39) \$31.20	(40) \$32.00

### Place your Classified Ad TODAY!

**417-532-2800 • 800-665-8875**

**Fax: 417-532-8140**

**Or Mail To: P.O. Box 192 • Lebanon, MO 65536**

For your convenience we accept MasterCard, Visa, Discover or American Express



**DEADLINE FOR CLASSIFIED ADS: MONDAY 12 NOON!!**

Name \_\_\_\_\_

Address \_\_\_\_\_

City \_\_\_\_\_ Email \_\_\_\_\_

State \_\_\_\_\_ Zip Code \_\_\_\_\_ Phone \_\_\_\_\_

**Ad Total \$ \_\_\_\_\_ X # Weeks \_\_\_\_\_ = Amount Enclosed \$ \_\_\_\_\_**



# BLACK FRIDAY SALES EVENT

# 20% BELOW MSRP

ON SELECT 2019 CHEVY MODELS<sup>1</sup>

VISIT [CHEVYBLACKFRIDAYSALE.COM](http://CHEVYBLACKFRIDAYSALE.COM) FOR ELIGIBLE MODELS

## OR GET THESE OTHER CURRENT OFFERS

### ALL-NEW 2019 SILVERADO DOUBLE CAB



**20%** BELOW MSRP

ON ALL 2019 DOUBLE CAB PICKUPS<sup>2</sup>

THAT'S **\$9,267** BELOW MSRP

ON THIS SILVERADO DOUBLE CAB LT ALL STAR Z71<sup>3</sup>

\$6,750 PURCHASE CASH + \$2,517 PRICE REDUCTION BELOW MSRP

### ALL-NEW 2019 SILVERADO CREW CAB



**19%** BELOW MSRP

ON MOST 2019 CREW CAB PICKUPS<sup>2</sup>

THAT'S **\$9,705** BELOW MSRP

ON THIS SILVERADO CREW CAB LT ALL STAR Z71<sup>3</sup>

\$6,693 PURCHASE CASH + \$3,012 PRICE REDUCTION BELOW MSRP

### 2019 SILVERADO 2500 HD CREW CAB LTZ



\$6,000 TOTAL CASH ALLOWANCE

\$4,601 PRICE REDUCTION BELOW MSRP

+ \$750 OPTION PACKAGE DISCOUNT

**\$11,351** TOTAL VALUE

WHEN YOU FINANCE WITH GM FINANCIAL<sup>4</sup>

1 Visit ChevyBlackFridaySale.com for vehicle eligibility. Offer available on select models and includes price reduction below MSRP and cash allowance. Not available on select base trims, with special financing, lease and some other offers. Take new retail delivery by 12/2/19. See dealer for details. 2 Offer includes price reduction below MSRP and cash allowance. Not available with special financing, lease and some other offers. Take new retail delivery by 12/2/19. See dealer for details. 3 Based on All-New 2019 Chevy Silverado Double Cab LT All Star Z71 \$45,600 MSRP. Based on All-New 2019 Chevy Silverado Crew Cab LT All Star Z71 \$51,075 MSRP. Not available with special financing, lease and some other offers. Take new retail delivery by 12/2/19. See dealer for details. 4 Based on \$68,815 MSRP. Must finance with GM Financial. Some customers may not qualify. Not available with special financing, lease and some other offers. Take new retail delivery by 12/2/19. See dealer for details. ©2019 General Motors. All rights reserved.

FIND NEW ROADS™

CHEVROLET



**FAIRGROUND**  
*Auto Plaza*  
DRIVEN TO SERVE YOU BEST...

100 Fairgrounds Road  
Rolla, Missouri  
(573) 364-1002  
[www.FairgroundGM.com](http://www.FairgroundGM.com)