

Vol. 25 No. 46

FEBRUARY 21, 2019

800-543-8271 • 800-665-8875

FREE WEEKLY TRADER MAGAZINE

Find us on Facebook
@myweeklytrader

Auctions - Pg. 27

MYWEEKLYTRADER.COM

All NEW GMC February Over Age Event!

GMC We are Professional GRADE

GET 15% BELOW MSRP²

ON THESE SELECT MODELS IN STOCK THE LONGEST WHEN YOU FINANCE THROUGH GM FINANCIAL¹

2019 GMC Terrain SLE AWD
Stk# 32626

Was **\$33,560** *Now* **\$28,525**

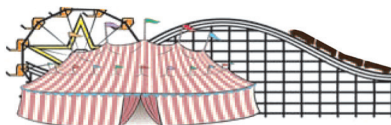


2019 GMC Acadia SLE-2 AWD
Stk# 32610

Was **\$38,935** *Now* **\$33,094**



¹Must finance through GM Financial. Some customers may not qualify. Take retail delivery by 2/28/19. ²Acadia oldest 15% and Terrain oldest 15% of select vehicles in dealer stock while stock lasts. Acadia based on MSRP of \$38,935. Terrain based on MSRP of \$33,560. Must finance through GM Financial. Some customers may not qualify. Take retail delivery by 2/28/19. Not available with some other offers. See participating dealer for details. ©2019 General Motors. All rights reserved. GMC®Sierra®Acadia®Terrain®



FAIRGROUND

Auto Plaza
DRIVEN TO SERVE YOU BEST...

100 Fairgrounds Road
Rolla, Missouri
(573) 364-1002

www.FairgroundGM.com



0% APR for 60 MOS

ZERO DOWN

KEEP IT SIMPLE WITH QUARLES SUPPLY

RATES SUBJECT TO CHANGE
*With approved credit. Tax/Insurance not included.
Some restrictions may apply. See dealer for details.

SPRING SAVINGS TRACTOR PACKAGES



New 23HP Kubota Package Deal!

B2301HSD \$19,110
Financing Price

NEW Kubota B2301HSD 4wd, DIESEL, AG TIRES, KUBOTA LOADER, 4' CUTTER, 4' BLADE, NEW 16' KODIAK TRAILER W/RAMPS & NEW TIRES



New 33HP Kubota Package Deal!

L3301HST \$23,700
Financing Price

NEW Kubota L3301HST 4wd, DIESEL, AG TIRES, KUBOTA LOADER, 5' CUTTER, 5' BLADE, NEW 18' KODIAK TRAILER W/RAMPS & NEW TIRES

PRICING REFLECTS ALL CURRENT KUBOTA PROGRAMS

*DOES NOT INCLUDE TAX AND INSURANCE

BLENDED RATES MAY APPLY ON NON KUBOTA ITEMS



New 47HP Kubota Package Deal!

L4701HST \$31,410
Financing Price

NEW Kubota L4701HST 4wd, DIESEL, AG TIRES, KUBOTA LOADER, 6' CUTTER, 6' BLADE, NEW 18' KODIAK TRAILER W/RAMPS & NEW TIRES



QUARLES
SUPPLY COMPANY INC.

quarleskubota.com
Just off Business 13 in Bolivar, MO
Open 8:00-5:00 Monday-Friday
Saturday 8:00-12:00

(417) 777-2391

SPECS DON'T LIE.

TEST DRIVE THE MAHINDRA RETRIEVER FOR YOURSELF.



Shown: Retriever 1000



60 MPH TOP SPEED



83 HP LEADING HORSEPOWER



2500.LBS LEADING TOWING



3 YEAR LEADING WARRANTY

THE MAHINDRA RETRIEVER LEADS THE WAY IN PERFORMANCE

AGRI ENTERPRISES *For Outstanding Products & Service*

1-1/2 Miles South Of Licking, MO On Hwy 63
573-674-2203 | 1-800-653-7152
www.agri-enterprises.com



Mahindra
Tractors & Utility Vehicles

PINE LOG SIDING SALE: \$1.19 per L.F.
www.pineridgerustic.com 573-729-7226,
573-247-2823.

AUCTION REMINDER: Auction, Saturday, February 23 @ 10am. Horn's Auction. Please see our Auction Directory for more information

CEDAR GAP TOPSOIL: Garden Ready topsoil, Only water required, delivery within 50-mile radius, Seymour. 417-935-2877. For more info: www.cedargaptopsoil.com

JOHN DEERE 4240: Diesel cab and air tractor, power shift, 3900hrs, very nice, 110hp. \$29500. 573-765-4406

CASE ELEPHANT TOE KNIFE: good condition. \$500. Eminence, 573-226-5993.




100LB BLACKSMITH ANVIL: \$600. Waynesville, 573-855-7083.

OVERSIZED LA-Z-BOY RECLINER: Brown, good condition. \$75. 417-532-6561.

VOTED #1 BEST Preowned Car Dealership

TIM'S USED CARS

(573) 341-3828 • 1334 South Bishop (Hwy. 63) • Rolla, MO
Next to Hwy. CC • www.tims-used-cars.com

| | |
|--|--|
|  <p>2007 CHEVY TRAILBLAZER LT 4X4, LEATHER SUNROOF, 148,XXX MILES ONLY \$6,900</p> |  <p>2003 FORD EXPEDITION EDDIE BAUER 4X4, LOADED WITH OPTIONS, 152,XXX MILES ONLY \$4,900</p> |
|  <p>2002 LEXUS RX 300 4X4, LOADED WITH OPTIONS ONLY \$5,200</p> |  <p>2007 NISSAN SENTRA SE AUTO, SUNROOF 74,XXX MILES ONLY \$6,800</p> |

LARGE SELECTION OF CARS, TRUCKS, SUVs & VANS!

USED EQUIPMENT

Several LIKE NEW Used Tractors at Great Savings!

New at Used Price!

- Mahindra 2565 with loader, cab, 4WD, 13 hours
- Mahindra M85 w/loader & cab, 105 Hours

Mahindra 6530 2WD w/loader & shuttle shift
Gehl Silage Chopper • NH 163 Tedder
6' & 7' Brush Cutter • Landpride 10' Brush Cutter
JD 10' Cultipacker • 3pt. 3 bottom plow
12' Spring Tooth Harrow 3pt. 2 Disc Disc Plow
Gravely 2T 2148XL Zero Turn Mower Rider
Other Misc Equipment

For Outstanding Products & Service

AGRI-ENTERPRISES

1-1/2 Miles South Of Licking, MO On Hwy 63
573-674-2203 • 1-800-653-7152
www.agri-enterprises.com

WANTED: old Franklin County Plat books. 573-468-4924

BEAGLE PUP: Lemon, White. Out of Good Rabbit dogs. 573-308-7537.



THE RIGHT EQUIPMENT FOR EVERY JOB

Always ready when YOU need it.

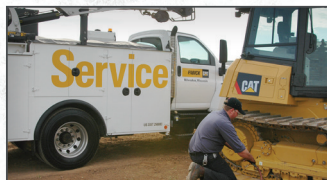
+ From general construction to manufacturing, and every project in between, Fabick Cat is ready to serve your industry. We have the equipment you need to get the job done.

+ NEW | USED | RENTAL | SERVICE

WE DO IT ALL

800.845.9188 | www.fabickcat.com

"TO EVER SERVE OUR CUSTOMERS BETTER"



HEAVY DUTY WALKER: 400 lb rated, brand spanking new, large seat/storage, four 7" pivoting wheels, hand brakes. \$200. 417-686-0032, Ava.

78 F250 CUSTOM: 400cu-in, 4spd, engine good, body good, no bed. \$900. Waynesville, 573-855-7083.

JOHN DEERE 2510 TRACTOR: W.F. 3 pt with Westendorf WL-21 Loader. \$4,750. 573-765-4406.

AUCTION REMINDER: Online Home Auction going on now. Atterberry Auctions. Please see our Auction Directory for more information.

JOHN DEERE 10ft OFFSET DISK. \$4,250. 573-765-4406

JOHN DEERE 7000: 6 Row 30in Planter, no till. \$3350. 573-765-4406.

1987 BUICK GRAND NATIONAL: \$20,000. 870-430-5277, Cotter, Arkansas.

Buildings - Hunter's Cabins - Lawn Furniture

JAMCO Portable Buildings 800-688-2064
307 Enterprise Dr. • Seymour, MO www.jamcobuilders.com

Rent-To-Own Plan

AUSTRALIAN SHEPHERD PUPPIES: Purebred, no papers, six females, three males, all colors. \$150. Maynard, AR. 262-290-1619.

FRONT END LOADER: Du-all 125. quick attach, 6' bucket. \$1,400. AC 7' Sickle Mower. \$400. Rogersville, 417-753-2747, 417-766-1991

VERONA MISSOURI HISTORY: 1868-1968. 100 year history. \$22.50. Lebanon, 417-532-2045.

www.myweeklytrader.com

SITREX 12 WHEEL: Bi fold rake. \$4,750. 573-765-4406.

WEEKLY TRADER MAGAZINE

Vol. 25 February 21, 2019 No. 46
Published By
Lebanon Publishing Co. Inc.
PO Box 192, Lebanon, MO 65536
417-532-9131
www.myweeklytrader.com

Everything advertised in this publication must be made available purchase, use or patronage without regard to race, creed, color, sex, age or national origin of the purchaser, user or patron. The Publisher will not be responsible for misinformation, misprints, typographical errors, etc. Opinions expressed are not necessarily those of the Publisher. All rights reserved. No part of this material may be reproduced by any means without permission in writing from the Publisher. We reserve the right to refuse any ad if we deem necessary. Our list and map indicate counties in which the Weekly Trader delivered. The magazine is not necessarily placed in all communities a particular county. A list of all retail drops for a county may be obtained by contacting the Weekly Trader office at PO Box 192, Lebanon, MO 65536.



CHC Home Centers and Do it Centers



\$32⁹⁷

4-Shelf Greenhouse
705912



40 lb. Top Soil
714518
\$1⁴⁹

RAILROAD TIES



\$10⁹⁹ ea. **#2 Used Railroad Ties**
Also available #1 Grade Ties \$15.49



Fiberglass Handle Shovel
Square or round point
\$9⁹⁷ ea. 761615
761606

Husqvarna
Front Tine Tiller
FT900



\$469⁹⁵

PRE-SPRING SPECIAL!
Get a Free \$25 CHC Gift Card with the purchase of any Husqvarna tiller!



PAINTED METAL

\$71 per sq.

45-Year Warranty,
Painted 29 Gauge
Choose from 12 Colors

\$63 per sq.

20-Year Warranty
Painted 29 Gauge
Choose from 8 colors, cut to your length



Vinyl Windows

White Vinyl,
Insulated Glass with Screen

2'x3'
171328

\$89
With Grilles

\$99

3'x3'
171360

\$105
With Grilles

\$124

RUSTIC SHIP LAP



As Low As

86¢

per lineal foot

1" x 6" unfinished white pine
*product varies from image shown



T1-11 Pine Siding
4'x8' Sheets

\$19⁹⁹

#2 Grade
8"
on-center
groove pattern

\$31⁹⁹

#1 Grade
4", 8" or 12"
on-center
groove pattern



CABOOL

Near Hwy 60
at 107 South Hwy 181
(417) 962-4535
Mon.-Sat.
8 a.m.-5:30 p.m.

HOUSTON

Hwy 63
(By the Super Center)
1453 Sam Houston Blvd
(417) 967-4179
Mon.-Sat.
8 a.m.-5:30 p.m.

MARSHFIELD

Hwy 38 at
360 McNabb Rd
I-44 Exit #100
(417) 468-6262
Mon.-Sat.
8 a.m.-5:30 p.m.

ROGERSVILLE

Hwy 60, 2 Blocks
South on Mill St.
(417) 753-2500
Mon.-Sat.
7:30 a.m.-6 p.m.

540668th

MARTHA WASHINGTON COOKBOOK: \$6.50. THE OLD FARMHOUSE KITCHEN COOKBOOK, recipes and old-time nostalgia. \$6.50. STAINED GLASS THEATRE COOKBOOK. \$6.50. THE DEEN BROTHERS (PAUL DEEN) COOKBOOK.L \$7.50. Lebanon, 532-2045.

ANTIQUe MIRROR: Partially framed in ornate wood. \$50. Call and I'll email pictures. \$100. 573-364-1779.

CHECKERED WALNUT WOOD STOCK PISTOL GRIP: for Marlin Model 336 or 1895. \$100. Washington. 636-239-2695.

AUCTION REMINDER: March 2, 10 a.m. J&J Sales. Please see our Auction Directory for more information.

REGISTERED HEREFORD & ANGUS BULLS: Home raised, Some Show-Me Select Qualified. 573-701-7828. Belgrade



R-FAB BINS
(660)281-3078

Bucket Bins
Stationary or Portable

Overhead Bins
Located in Warsaw, MO

AUCTION REMINDER: Friday March 1st and Saturday, March 2nd both days @ 9am. Magee Auction. Please see our Auction Directory for more information.

WANTED, TIMBER TO LOG ON SHARES: Honest, reliable, references. 417-533-4607, 417-664-1195.

37X12.5R 16.5 ON BEADLOCK RIMS: for Dodge or Chevy 8/6.5. \$200. Lebanon, 417-286-3540.

MENS LONDON FOG: Trench Coat, sz 40 Reg, dark taupe color, zip out liner, double breasted w/belt. Very nice. \$35. 417-718-5347.



Cheyenne Acres
Horse & Tack

BUY - SELL - TRADE
by Rolla, MO
Call For Directions & Availability

Call Kip
573-368-9402

LIMOUSIN BULLS: 18-30 mos. old, Homo Black, polled, AI sired. 573-301-2316, 573-301-2074.

FRESH PECAN HALVES: 2 cups- \$7.50. Seymour, 417-300-1344.

ROD AND REELS: fishing season is coming. \$5 and up. Conway, 417-589-8200.

We Buy White Oak Logs!

Independent Stave Company
welcomes all white oak suppliers!

- Top prices for your logs
- Experienced log buyers
- Professional service

www.independentstavecompany.com

Chad Cook | Salem Wood Products
417.718.2950
5 miles north of Salem, MO on Hwy 19



INDEPENDENT STAVE COMPANY
Log Procurement & Sales

2004 OPEN RANGE FIFTH WHEEL CAMPER: 34', all weather, in good condition. \$10,500. Lebanon, 417-718-5520.

1997 DODGE RAM 1500: 4x4, Reg cab, 128,000miles. \$3,900. Licking, 417-217-1823.

AUCTION REMINDER: Estate Auction Saturday, March 2 @ 10am. Danahy Auctions. Please see our Auction Directory for more information.

JOHN DEERE: 6-row, 7000 no-til planter, 30in good. \$3250. Linn, 573-897-2772.

SPECIALIZING IN NEW CONSTRUCTION

- Pole Barns
- Metal Roofing & Siding
- Garages
- Windows, Doors & More
- Remodeling
- Horse Barns

FREE ESTIMATES



TK Construction
TIM HELMUTH
417-746-0178 • NORWOOD, MO

LOOKING FOR WATER BICYCLE: Any shape. Leave message, 618-758-2830.

WORLD WAR 1: Bolo fighting knife, heavy duty. \$125. Farmington, 573-218-9231.

TRUCK LOAD OF FLEA MARKET & AUCTION ITEMS: \$200, trade wood or gun. 573-327-9068

I BUY...USED MOBILE HOMES. Call or text 573-338-6250 or email GregS.CDH@outlook.com

CUSTOM SAW MILLING: Lebanon. 417-533-4607, 417-664-1195.

GIRLS HUFFY BICYCLE: 26". \$85. 417-589-8200.

LOGS WANTED. S&S LUMBER Buying
Cut logs. Halfway, MO. 417-399-4381.

1965 BUICK SKYLARK GS: \$5,000. 870-430-5277, Cotter, Arkansas.

BARN WOOD SIDING: 8" & 10" wide.
573-729-7226. www.pineridgerustic.com

WALKER 4TON JACK STANDS: \$30.
417-268-0647.

ELECTRIC CORNMEAL AND FLOUR GRINDER: \$150. 417-646-8807.

2x4 SOLID OAK RAW BOARDS: 1/2 pallet. \$100 OBO. Rolla, 928-514-0505.



MOW, LOAD, DIG, HOIST AND HAUL.

Ready to move from that ride-around mower to a real working tractor? Step up to the Massey Ferguson® GC1700 Series, with the largest engine in its class and a standard front end loader and backhoe.

www.masseyferguson.us

MASSEY FERGUSON GC1710
22.5HP TRACTOR, LOADER & BACKHOE

\$208 PER MONTH*

Marshfield Machinery INC.

222 E. Madison • Marshfield, MO
417-859-2117 • www.marshfieldmach.com

©2018 AGCO Corporation. Massey Ferguson is a worldwide brand of AGCO Corporation. AGCO and Massey Ferguson are trademarks of AGCO. All rights reserved. *On select models with approved credit from AGCO Finance®, LLC. Down payment required. Attachments and implements are included in program offer, but sold separately. Restrictions may apply. Contact your participating dealer for more details. Offer ends soon and may be subject to change without notice.

NEW MASSEY TRACTORS

| | |
|--------------------------|----------|
| 4710 4WD CAB & LDR 99HP | IN STOCK |
| 4708 4WD & LDR 80HP | IN STOCK |
| 4707 4WD & LDR 70 HP | IN STOCK |
| 2706E 4WD & LDR 57HP | IN STOCK |
| 2705E 4WD & LDR 48HP | IN STOCK |
| 1739E 4WD & LDR 38HP | IN STOCK |
| 1734E 4WD & LDR 34HP | IN STOCK |
| 1726E 4WD & LDR 24HP | IN STOCK |
| 1526 4WD & LDR 24HP | IN STOCK |
| GC1720 4WD, LDR, BACKHOE | IN STOCK |
| GC1710 4WD, LDR, BACKHOE | IN STOCK |
| GC1705 4WD & LDR 22.5 HP | IN STOCK |

USED TRACTORS

| | |
|----------------------------|--------|
| MF 4610 4WD CAB LDR 99HP | 39,500 |
| MAHINDRA 2565 CAB LDR 65HP | 28,500 |

| | |
|-----------------------------|--------|
| MAHINDRA 5570 4WD, LDR 70HP | 24,500 |
| MAHINDRA 1526 4WD, LDR 26HP | 15,500 |
| MF GC1705 4WD, LDR 23HP | 10,500 |
| MF GC1705 4WD, MWR 23HP | 10,500 |
| MF GC1705 4WD 23HP | 7,750 |
| IHC 460 49 HP | 3,500 |

USED ROUND BALERS

| | |
|-------------------|--------|
| MF 2946A 4X6 MESH | 24,000 |
| MF 2846A 4X6 MESH | 24,000 |
| MF 2846A 4X6 MESH | 20,000 |
| MF 1745 4X5 | 9,500 |
| HESSTON 845 4X5 | 7,500 |
| GEHL 2480 4X5 | 4,500 |
| HESSTON 545 4X5 | 4,500 |

| | |
|-------------------|-------|
| HESSTON 555T 4X6 | 4,500 |
| CASE IH RS451 4X5 | 4,500 |
| HESSTON 560 5X6 | 4,000 |
| NH 850 5X5 | 1,500 |

USED DISC MOWERS

| | |
|-------------------------|--------|
| MF 1383 13FT MOWER/COND | 19,500 |
| JD 275 9FT 3PT | 3,500 |
| HESSTON 1120 MOWER/COND | 2,000 |

USED RAKES

| | |
|----------------------|-------|
| GEHL 418 8 WHEEL | 2,000 |
| VERMEER WR20 8 WHEEL | 1,950 |

USED MISC.

| | |
|-----------------------|-------|
| BUSH HOG 3615 15FT | 9,000 |
| BUSH HOG M346 LOADER | 3,500 |
| WORKSAVER POST DRIVER | 1,750 |

Cowtown Express Car Wash
Highway 63 South, Rolla, MO
Call Wade 573-368-1430 Or 573-426-2500

\$4,500
And 10% Down
\$95 Per MO
w.a.c.

NEW Winchester Star & Bale Trailers
Powder Coated 18+2, 7,000 Axles
www.cowtownusainc.com

AUCTION REMINDER: Gun Auction Consignment, Saturday, February 23rd, Noon. Please see our Auction Directory for more information.

GOT TIMBER? Give us a call. Satisfaction is our goal. 417-589-0207, leave message.

FOR SALE: Solid Stainless steel Container. Great for outdoor fish cooking, etc. Lebanon, 417-532-6570.

POOL TABLES: Installations, moves, recoverers, repairs, accessories, etc. 573-646-1700.

AUCTION REMINDER: Every Wed. @10:30AM Farmington Livestock. Please see our Auction Directory for more information.

1954 Chevy BelAir
Good Condition, Been Stored Inside

\$10,000 obo

573-308-8091

SMALL SQUARE HAY BALES: Alfalfa, Timothy and mixed grass. \$7.50-\$9. 573-378-7326, Versailles.

GRIP-RITE AIR COMPRESSOR: GR152-CM, perfect for finishing tools, twin tanks, rated #1 in tool guide, manual. \$185obo. Ava, 417-686-0032.

1938 CHEVROLET: 2 door, unfinished project. \$8,500. 870-430-5277, Cotter, Arkansas.

JOHN DEERE: Commercial mower, 5spd, 36in cut, walk-behind, good tires, blades, etc. \$195-gun trade. Rolla, 573-364-7465.

JOHN DEERE 275: 9ft, disc mower. \$5,150. 573-765-4406.

GREAT PYRENEES ANATOLIAN SHEPHERD CROSS: Dewormed, first shots, weaned, out of working parents with sheep. \$100. 573-422-3574, Vienna.



Makes Tax Time A Great Time!

| | | | | | | | | |
|-------|----------------------------------|----------|-------|--------------------------------|----------|-------|-----------------------------|----------|
| P9479 | 2017 TOYOTA CAMRY | \$15,988 | 7526A | 2017 HONDA CIVIC..... | \$20,988 | 7358A | 2016 GMC SIERRA 1500..... | \$27,988 |
| 7506A | 2017 JEEP WRANGLER UNLIMITED.... | \$38,588 | P9463 | 2014 CHEVY SILVERADO 1500..... | \$25,588 | 7415A | 2017 TOYOTA 4RUNNER | \$32,988 |
| 7506B | 2012 TOYOTA CAMRY | \$11,988 | 7041A | 2016 TOYOTA 4RUNNER | \$28,988 | P9451 | 2010 TOYOTA CAMRY | \$7,988 |
| 7461A | 2004 TOYOTA TACOMA | \$8,988 | 7513A | 2016 TOYOTA RAV4 HYBRID..... | \$25,888 | 7453A | 2017 TOYOTA TUNDRA | \$35,988 |
| P9476 | 2016 GMC SIERRA 1500..... | \$35,988 | 7191B | 2015 JEEP WRANGLER..... | \$22,988 | 7442A | 2011 TOYOTA VENZA | \$14,988 |
| 7406B | 2015 JEEP WRANGLER..... | \$24,988 | 7043A | 2017 BUICK ENCLAVE..... | \$30,988 | 7229A | 2014 TOYOTA TUNDRA | \$31,988 |
| 7219A | 2017 TOYOTA TACOMA | \$26,988 | 7389A | 2016 KIA OPTIMA..... | \$16,988 | P9441 | 2016 FORD ESCAPE..... | \$18,988 |
| P9472 | 2013 TOYOTA COROLLA..... | \$8,988 | P9462 | 2015 HONDA PILOT..... | \$22,988 | 6819A | 2017 TOYOTA COROLLA..... | \$16,588 |
| P9473 | 2013 TOYOTA COROLLA..... | \$9,988 | 7507A | 2015 TOYOTA AVALON HYBRID... | \$16,988 | P9436 | 2016 HYUNDAI SONATA | \$13,988 |
| 7554A | 2018 TOYOTA CAMRY HYBRID.... | \$27,988 | P9461 | 2018 NISSAN ROGUE..... | \$18,988 | P9437 | 2017 HYUNDAI SANTA FE..... | \$22,988 |
| P9468 | 2018 TOYOTA RAV4 | \$20,588 | 7322A | 2015 CHEVY SILVERADO 1500.... | \$25,988 | P9438 | 2017 TOYOTA CAMRY | \$15,988 |
| P9469 | 2018 TOYOTA RAV4 | \$22,588 | 6940A | 2014 TOYOTA TUNDRA | \$27,988 | P9439 | 2017 TOYOTA YARIS..... | \$12,988 |
| P9470 | 2018 TOYOTA RAV4 | \$22,588 | 6801A | 2016 CHEVY SILVERADO 1500.... | \$31,988 | P9440 | 2017 TOYOTA COROLLA..... | \$15,988 |
| P9471 | 2018 TOYOTA RAV4 | \$22,588 | 7491A | 2009 TOYOTA VENZA | \$11,988 | 7096A | 2014 TOYOTA 4RUNNER | \$31,588 |
| 7427A | 2013 TOYOTA TACOMA | \$26,988 | 7440A | 2015 TOYOTA AVALON | \$21,988 | P9433 | 2012 TOYOTA HIGHLANDER..... | \$19,988 |
| 7492A | 2016 CHEVY CRUZE | \$13,988 | 7304A | 2017 TOYOTA COROLLA..... | \$16,588 | | | |
| 7258C | 2015 TOYOTA RAV4 | \$17,988 | 7308B | 2017 JEEP WRANGLER UNLIMITED | \$31,988 | | | |
| 7308D | 2013 GMC ACADIA | \$21,588 | 7258B | 2018 CHEVY SONIC..... | \$16,988 | | | |
| 7515A | 2016 TOYOTA TUNDRA | \$37,988 | 7444A | 2016 JEEP WRANGLER..... | \$25,988 | | | |
| 7527A | 2018 TOYOTA AVALON HYBRID... | \$30,988 | 7293A | 2015 NISSAN VERSA | \$8,988 | | | |
| 6884A | 2016 FORD EDGE | \$20,988 | P9454 | 2012 TOYOTA TUNDRA | \$30,988 | | | |



TOYOTA
Let's Go Places

Doing Business
the Right Way
The Seeger Way



ENGINES FOR LIFE
Call for details
Non-Factory Lifetime Limited Warranty
Good at participating dealerships

SATURDAY SERVICE 8AM-4PM



Toll Free:
800-844-6026

Next to Walmart, St Robert
573-336-7111
SeegerTOYOTA.net



SEEGER CARE
PREOWNED VEHICLES
COME WITH SEEGER CARE!
1 **FREE** (3) SCHEDULED OIL AND FILTER CHANGES
2 **FREE** MULTI-POINT INSPECTION WITH EVERY OIL CHANGE
3 **FREE** EXTERIOR CAR WASH WITH EVERY SERVICE VISIT
4 **FREE** LIFETIME SAFETY AND EMISSION TESTING
5 **FREE** SAME-DAY SERVICE LOANER CAR
6 **FREE** TANK OF GAS
Service Only at Seeger St Robert/St Louis

†Does not include tax, title, and license. * Seeger Care offer good for Less than 85K Miles and Less than 10 years old Prices do not include any College Grad or Military Rebate. See sales rep to see if you would qualify for additional savings. Prices does not include *199 dealer administrative fee. Cannot be combined with any other offer. Prior sales final. See dealer for details. Advertised vehicle may not be exactly as pictured and are subject to prior sale. We cannot be responsible for typographical or photographic. ** St Robert, Mo. Inventory Expires: 02.28.19

AUCTION REMINDER: Kilmer Farm Equipment Consignment Auction. Wednesday, March 2nd @ 10am. Wheeler Auctions. Please see our Auction Directory for more information.

MARLIN 30-30: Model 36G, lever action w/case, great condition. \$585. Spokane, MO 507-440-6007.

www.myweeklytrader.com

AUSTRALIAN SHEPHERD PUPPIES: Born 12/4/2018, UTD on shots, wormed, ready for new homes, Red Tri in color. Asking \$200. 417-458-1047, cell 417-967-6493, Roby.

QC
MOTO

Our sales team does NOT work on commission!

Customer service is our top priority at QC Moto Powersports. We invite you to find your next adventure with us! Call QC Moto Powersports TODAY!

5183 E Kearney (Exit 84 on I-44) | Springfield, MO 65803
417.862.4343 | QCMOTO.COM

NEW BIG TEX 14GX DUMP TRAILER

[facebook](#)

I-44 at Exit 208 • Cuba, MO
www.jimsmotors.com
(573)885-2595
(800)897-9840

**GREAT SERVICE!
1957-2018 GREAT PRICES!**

METZ AXLES & SPRINGS: \$200. 870-430-5277, Cotter, Arkansas.

TRUCK BED MAT: Heavy rubber, 5'4"x7'6". \$50. Pittsburg, MO 417-852-1088.

STEEL METAL FLATBED: for truck. \$200 or trade. Bismarck, 573-734-2822.

CARPET CLEANING MACHINE: Pro Heat 2X made by Bissell, cleans carpet & hard floors. \$85. 573-364-1779.

AUCTION REMINDER: Kilmer Farm Equipment Consignment Auction. Wednesday, March 2nd @ 10am. Wheeler Auctions. Please see our Auction Directory for more information.

2001 LEGEND 18FT BOAT

**2000 Johnson Motor, Low Hours,
2001 Bobcat Boat Trailer.**

\$7,500 obo • 573-308-8091

10 JIGSAW PUZZLES: bought new, no missing pieces, \$5 each. Bunker, 573-689-2490.

INDIAN ARCHERY 1950'S: wood, recurve bow, with original box of Ben Pearson arrows. \$195. Rolla, 573-364-7465.

GREAT PYRENEES ANATOLIAN GUARD DOG PUPPIES: Born and raised with sheep. Ready now. \$175. 660-337-6650. No Sunday calls. Fortuna.

NERF BARS: for 80's and 90's Jeeps with brackets. \$85. Farmington, 573-218-9231.

AUCTION REMINDER: Cattle Sale Every Monday at Noon. Salem Livestock. Please see our Auction Directory for more information.

OLDER FLAT SCREEN TV: cable ready. \$100. Excellent condition. 417-217-9089.

Now Stocking
Large Selection
 of
Plumbing
 PEX, PVC, & CPVC
 and
Electrical
 Supplies!



STOCKING
Porter Paints
PPG
Commercial
Paints
Sikkens
Stains

Seymour, Missouri 417-935-4201

Sale Ends February 28, 2019



Pole Barns & Post Framed Buildings!

| | | | |
|---|---|---|---|
| 23'x32'x10' \$4,099 Material Only \$5,199 Labor Included | 23'x40'x10' \$4,779 Material Only \$6,179 Labor Included | 30'x40'x10' \$5,699 Material Only \$7,499 Labor Included | 40'x60'x12' \$10,099 Material Only \$13,999 Labor Included |
|---|---|---|---|

Call for free quote, brochure & color chart.
 Other sizes also available.



NOBODY, BUT NOBODY BEATS OUR PRICES!!!

10 ft. Slider • Engineered Trusses 8' O.C. • 2x6 Treated Bottom Wrap • Screws • 2x10 Top Wrap • 2x4 Purlins • Full 29 Gauge Steel • Plus 3 ft. Entry Door with Lock
 OPTIONS: Sidewall Heights on all Buildings 10', 12', 14' & 16'. Overhead Garage Door. Skylights. Insulation. Wainscoting. Insulated Vinyl Windows. Cupolas. Labor Rates Slightly Higher over 50 Miles from Seymour. Call for YOUR FREE QUOTE TODAY!!!!

| | |
|---|---------|
| PAINTED WHITE, GREEN OR TAN METAL | \$69.99 |
| 10' - \$22.10 12' - \$26.52 16' - \$35.36 | |
| MIX & MATCH METAL | \$39.99 |
| 8' - \$10.13 10' - \$12.67 12' - \$15.21 | |
| GALVALUME METAL | \$52.50 |
| 10' - \$16.60 12' - \$19.92 16' - \$26.56 | |
| GALVANIZED CORRUGATED METAL | \$56.75 |
| 8' - \$9.84 10' - \$12.30 12' - \$14.75 16' - \$19.67 | |

IN STOCK

40yr Painted Metal
\$72.99

KNOTTY PINE DOORS
 Starting at
\$109.99

LP SMARTSIDE T-5 LAP B GRADE \$43.59SQ

Car Siding!
 1x6 White Pine Siding **43¢** in ft
 1x8 White Pine Siding **54¢** in ft
 * 4 Profiles to choose from!
 Broken Bundles Add 10¢ Per Ft.

4x8 Sheeting
 Less than full units Add \$1 per sheet

| | |
|----------------------|---------|
| 3/8" Beaded Paneling | \$15.99 |
| 5/8" T111 Siding | \$19.99 |
| Paneling | \$9.99 |
| 1/2" Plywood | \$19.99 |
| 3/4" Plywood | \$23.99 |
| 3/16 Pegboard | \$12.99 |

Sales and Servicing

PROFESSIONAL POWER DONE RIGHT

NEW PACKAGE HOMES

Shown with Available Options
 Your Choice of either:
 Stock 5/8" T111 Wood Siding w/1x4 Pine Window & Door Trim - or -
 7/16" OSB & House Wrap ready for other finish options

2x6—16" on center-Exterior Stud Walls
 Residential Roof Trusses-2' on center
 4/12 pitch with 1' over hang
 40 year Painted Metal roofing in 20 Different Colors
 Profile Ridge Vent - Ventilated Ridge Cap
 Vinyl Center Vent Soffit
 Color Matched Metal Fascia & Gable Trim
 2 - 3' 6 Panel Entry Doors
 4 - 3'x4' Vinyl Insulated Windows

ALL FIGURED FOR SUITABLE CUSTOMER SUPPLIED SLAB OR SUB-FLOOR

Price for Basic Materials Package & Labor

| | | | | |
|--------------------|--------------------|--------------------|---------------------|---------------------|
| 20x24(480 sq. ft.) | 20x32(640 sq. ft.) | 20x40(800 sq. ft.) | 28x40(1120 sq. ft.) | 28x48(1344 sq. ft.) |
| \$8,229 | \$9,650 | \$11,019 | \$13,855 | \$15,545 |

REAL WOOD SIDING
 2x6 Log Siding - 1.09¢ in ft
 1x8 Beveled Cedar - 49¢ in ft
 5/8 T1-11 Siding from \$19.99

DECK PACKAGES
 Materials Only

| | | | |
|-------------|----------|-------------|----------|
| 8x6 | \$199.99 | 10x12 | \$419.99 |
| 8x8 | \$239.99 | 10x16 | \$549.99 |
| 10x10 | \$349.99 | 12x12 | \$499.99 |
| 12x16 | \$649.99 | | |

QUAKER Now Stocking Quaker Vinyl Windows

| | |
|-------------------|-------------------|
| 2030 \$ 99.99 | 3030 \$119.99 |
| 3040 \$129.99 | 3052 \$145.99 |
| 3040Twin \$279.99 | 3052Twin \$314.99 |

LUCKY DISCOUNT LUMBER
 417-935-4201
 455 State Hwy C • Seymour MO 65746
 www.luckydiscountlumber.com

*Some restrictions apply see store for details

BULL & BRED HEIFER SALE: Sunday, March 10, 2pm. Laclede County Fairgrounds in Lebanon. Offering 25 Limousin, Limflex and Red Angus bulls, 12 months-2 years old. Plus 15 spring calving heifers. Call Josh at 417-664-0913 for info and a catalog. Or view the catalog at www.mc-marketingmanagement.com.

AK-47 3PIECE: Laminated, wood stock, woodstock only. \$85. Farmington, 573-218-9231.

AUCTION REMINDER: Gun Auction Consignment, Saturday, February 23rd, Noon. Please see our Auction Directory for more information.

MINI REX BUNNIES: Pedigreed. \$25. Booted self and Harlequin colors, Jersey wooly bunnies: pedigreed. \$25. Others: \$15 to \$50. 417-770-3054, Lebanon.

AUCTION REMINDER: Sat. March 2, 10am. Billy Sexton Auctions. See our Auction Directory for more information.

TRUCK, TRAILER, AND SEMI TIRES
on sale now!



IRONMAN TIRES
YOKOHAMA
MASTERTRACK
FALKEN TIRE

LETTERMAN TRIPLE T REPAIR LLC
TRUCKS, TRAILERS, & TRACTORS
417-630-2249
417-664-0829

| | | |
|--|---|-------------------|
| MASTERTRACK Trailer Tire (265/75/16) 10-Ply • Mounted \$121.44* | YOKOHAMA (295/75/22) 5Ry617 • Steer \$419.00* | *Tax not included |
| FALKEN AT3 Wild Peak (265/75/16) \$150.00* | Ironman 1208 Drive Tire Close Shoulder • 11R22.5 \$293.76* | |

739 Honey Locust Rd. • Niangua, MO 65713

PAYING TOP DOLLAR for nice pine logs. 417-589-0207, leave message.

AUCTION REMINDER: Sat. March 2, 10am. Billy Sexton Auctions. See our Auction Directory for more information.

JEFFERSON NICKEL BOOK: coin set from 1938-1964. \$200. 573-764-3517. call in p.m.

BIG LOT OF FURNITURE: \$200 or trade. Bismarck, 573-734-2822.

Gooseneck and Winchester Star pipe cattle trailers the best in the business here and ready...



10% Down \$152 Per Mo 60 Month w.a.c \$8,900

Cowtown USA
I-44 Exit 203 • 413 Daniels Rd.
Cuba, MO • 573-885-6300
www.cowtownusainc.com

AUCTION REMINDER: Online Construction Equipment Auction Ends Thursday Feb 28 10am. Please see our Auction Directory for more information.

2006 DODGE GRAND CARAVAN: \$2,800. 1988 Dodge Dakota 4x4: long bed, w/shell. \$2,200. Call for details, 636-629-4713, Lonedell.

AUCTION REMINDER: Saturday, February 23rd, 9AM. Allen Auction Please see our Auction Directory for more information.

GUN SHOW

FEBRUARY 23RD - FEBRUARY 24TH
Saturday: 9 AM – 5 PM • Sunday: 9 AM – 3 PM

~ Lebanon, MO ~
Cowan Civic Center
(500 E. Elm St.)

BUY • SELL • TRADE
INFO: 563-927-8176 • www.rkshows.com

JD 555G



from **\$18,500 to \$23,500**

Call Mark @ (314) 560-3112

TRIPOD STAND: for video camera, new. \$25. Copy printer: new. \$40. 417-217-9089.

NEW HOLLAND: L785 Diesel Skid Steer Loader, 57hp. \$7,750. 573-765-4406.

SUZUKI KING-QUAD 400-FFI: 200miles, like new. \$3800. Mtn.Grove, 417-936-1614.

JOHN DEERE 730 PARTS. Call 417-241-0006.

IHC 806 DIESEL TRACTOR: with loader \$7,800, 3pt. (573)765-4406

STOCK DOG PUPS: 1/2 Border Collie, 1/2 Australian Shepherd, Shots/wormed. 3Blk. Tri. females. \$100. B.12/12/18. Levi Beechy, 639 Smith Road, Seymour, leave message, 417-935-2048.

TAKING CONSIGNMENTS: For school auction, 5-11-19, need quilts, crafts, machinery etc. Deadline April 1st, Contact Lavern or Levi Floyd, Wheatland, 417-461-4943, 417-466-8584, 417-309-3145.



MIDWEST CONSTRUCTION
Free Estimates!

- Pole Barn • Garages • Framing
- Remodels • Roofing • Concrete
- Decks & Porches

Contact Abner Glick
417-664-1794

WILLIAMS PEEP SIGHT: with target knobs. Fits Marlin Model 39a. \$50. 636-239-2695. Washington.

LOOKING FOR FARM HOUSE TO RENT. In Washington, Phelps, Franklin, Jefferson, St Louis County or St Louis City. No counties refused. Must accept pets-9 dogs well taken care of. Must be secluded. Couple is dependable, pays rent on time. Husband has criminal record-has changed, will explain. Excellent references from other landlords. Please call or text, 314-728-1286.

WANTED GOOD USED MOBILE HOMES: Singles & doubles. Call David Hayes, 573-578-8072.



FREE 4-NIGHT VACATION!
Donate Car • Boat • RV • Motorcycle

1-800-CarAngel
www.boatangel.org



BX SERIES



B SERIES



\$0 DOWN | 0% A.P.R. FINANCING FOR 60 MONTHS!*

L SERIES



MX SERIES



KUBOTA OF THE OZARKS
1660 E CHESTNUT EXPWY
SPRINGFIELD, MO
417-866-5588

SCHAEPERKOETTER'S


2715 HWY A
MT. STERLING, MO
573-943-6323

1102 W HWY 28
OWENSVILLE, MO
573-437-4421

SINCE 1893

*0% Down, 0% A.P.R. financing for up to 60 months on purchases of select new Kubota BX, B, L & MX Series equipment from participating dealers' in-stock inventory is available to qualified purchasers through Kubota Credit Corporation, U.S.A.; subject to credit approval. Some exceptions apply. Example: 60 monthly payments of \$16.67 per \$1,000 financed. Offer expires 3/31/19. See us or go to KubotaUSA.com for more information. Optional equipment may be shown.

KubotaUSA.com



© Kubota Tractor Corporation, 2019

INTERNATIONAL 490: 12ft wheel disk, big blades. \$1850. Linn, 573-897-2772.

1955 CHEVY 1/2 TON: 1st Series. \$35,000. 1953 Chevy 1/2 ton. \$3,500. Low Boy 24' trailer. \$4,750. 314-603-9869, Ironton.

AUCTION REMINDER: Estate Auction Saturday, March 2 @ 10am. Danahy Auctions. Please see our Auction Directory for more information.

110 ELECTRIC HEATER: Like new, Las-ko. \$125 or trade. 573-327-9068.

AUCTION REMINDER: All Breed Horse Sale, Saturday, April 6th. Tack at 11am. Horses to follow. World Fox Trotting. Please see our Auction Directory for more information.

JOHN DEERE 2640 DIESEL TRACTOR: Canopy, 70hp. \$8,750. 573-765-4406

\$2,500 - \$11,000 LOT

Lindsay Chevrolet & Lindsay Ford

Mon.-Fri. 8 am - 7 pm
Sat. 8 am - 5 pm
Not responsible for typos.
* with approved credit

417-588-7995

West City Route 66
& South Monroe
Lebanon, MO

Bobby Rogers, Manager • Aaron Wehner, Finance • Mike Forner, Steve "Whitey" Helton, Larry Davis, Sales

Cars

| | | |
|----------|---|----------|
| QC75331 | 2003 FORD T-BIRD CONV. V8, AUTO, FWD, GRAY..... | \$11,900 |
| QC75391 | 2007 PONTIAC G5 4CYL., AUTO, FWD, BLACK | \$5,800 |
| LC28459 | 2009 CHEVY COBALT SS V6, 5SPD., FWD, BLACK | \$6,900 |
| QC75393 | 2009 CHEVY AVEO LS 4CYL., AUTO, FWD, WHITE | \$5,900 |
| LC7143B | 2010 CHEVY IMPALA LT V6, AUTO, LOADED, MAROON | \$6,900 |
| QC75376 | 2010 HONDA CIVIC LX 4CYL., AUTO, FWD, BLACK | \$10,600 |
| QC75102 | 2010 HONDA FIT HATCHBACK 4CYL., AUTO, FWD, BLUE | \$6,300 |
| QC75241A | 2011 CHEVY IMPALA LT V6, AUTO, FWD, BLACK..... | \$10,400 |
| QC75330 | 2012 NISSAN LEAF SV 24 K.W. ELECTRIC, AUTO, FWD, BLUE..... | \$9,400 |
| QC75340 | 2013 NISSAN ALTIMA SV 4CYL., AUTO, FWD, RED | \$8,900 |
| QC75399 | 2013 CHEVY CRUZE LT 4CYL., AUTO, FWD, WHITE | \$8,900 |
| QC75221 | 2013 FORD FUSION SE 4CYL., AUTO, FWD, BLACK | \$9,900 |
| LC28359 | 2014 CHEVY SONIC LT 4CYL., AUTO, FWD, RED | \$9,400 |
| LC28370 | 2014 DODGE DART SXT 4CYL., AUTO, FWD, RED | \$9,900 |
| LC28344A | 2014 CHEVY IMPALA LTZ V6, AUTO, FWD, WHITE..... | \$10,900 |
| LC28385 | 2014 CHEVY SPARK LT 4CYL., AUTO, FWD, WHITE | \$9,800 |
| LC28392 | 2014 FORD FOCUS SE 4CYL., AUTO, FWD, RED | \$10,700 |
| LC25367 | 2014 CHEVY IMPALA LS V6, AUTO, FWD, BLACK..... | \$10,900 |
| LC7050A | 2015 CHEVY SPARK LS 4CYL., 5SPD., FWD, BLUE..... | \$9,300 |
| LC28361 | 2015 CHEVY SONIC LTZ 4CYL., AUTO, FWD, WHITE | \$9,700 |
| QC75332 | 2015 NISSAN SENTRA 4CYL., AUTO, FWD, GRAY | \$9,300 |
| LC28383 | 2017 FORD FIESTA S 4CYL., 5SPD., WHITE..... | \$8,900 |

Trucks

| | | |
|---------|---|----------|
| QT75292 | 2005 DODGE RAM CREW V8, AUTO, 4WD, BEIGE..... | \$10,900 |
| LT7061A | 2006 FORD F450 6.0 D. MOTOR AUTO, RWD, FLAT BED, WHITE | \$8,400 |
| LT28260 | 2006 CHEVY SILVERADO V6, AUTO, 2WD, BLACK..... | \$6,800 |
| QT75423 | 2008 FORD RANGER EXT. CAB FX4, V6, AUTO, 4WD, MAROON | \$11,700 |
| LT28393 | 2011 DODGE DAKOTA ST EXT. CAB, V6, AUTO, RWD, WHITE..... | \$7,900 |
| QT75408 | 2011 FORD F150 EXT. CAB STX V6, AUTO, 4WD, PEWTER..... | \$13,600 |

Trucks

| | | |
|-----------|---|----------|
| QT57489A1 | 2011 CHEVY SILVERADO LT EXT. CAB, V8, AUTO, RWD, WHITE | \$9,900 |
| LT28175B | 2011 KIA SORENTO EX V6, AUTO, FWD, BURGUNDY..... | \$7,500 |
| QT75289 | 2012 DODGE RAM REG. CAB V8, AUTO, RWD, NICE TRUCK, BLACK | \$12,400 |
| QT75395 | 2012 GMC CANYON SLE REG. CAB, 5CYL., AUTO, RWD, BLUE..... | \$9,400 |

SUVs

| | | |
|-----------|---|----------|
| LT28345A2 | 1998 JEEP WRANGLER SAHARA V6, AUTO, 4WD, HARD TOP | \$8,400 |
| QT75114A | 2005 FORD ESCAPE XLT V6, AUTO, 4WD, GRAY..... | \$6,600 |
| QT75263A | 2006 FORD EXPEDITION XLT V8, AUTO, 4WD, WHITE..... | \$7,600 |
| | V6, AUTO, 4WD, BLUE..... | \$5,600 |
| QT75268 | 2007 DODGE NITRO R/T V6, AUTO, 4WD, WHITE..... | \$9,900 |
| LT28191 | 2007 FORD EXPEDITION LIMITED V8, AUTO, 4WD, WHITE..... | \$6,600 |
| LT28332 | 2008 SUZUKI XLT PREMIUM V6, AUTO, FWD, SILVER..... | \$6,500 |
| QT75226 | 2008 HYUNDAI ENTOURAGE GLS V6, AUTO, FWD, MAROON | \$5,700 |
| QT75378 | 2010 CHEVY EQUINOX LT 4CYL., AUTO, FWD, WHITE | \$10,900 |
| LT28407B | 2012 CHEVY TRAVERSE AWD LT, V6, AUTO, MAROON | \$10,900 |
| LT7229A | 2012 BUICK ENCLAVE AWD V6, AUTO, LOADED, WHITE..... | \$10,900 |
| LT28377 | 2012 FORD ESCAPE XLT V6, AUTO, FWD, WHITE..... | \$10,900 |
| QC75392A | 2013 HYUNDAI SONATA LIMITED 4CYL., AUTO, FWD, BLUE, 71K MILES | \$10,900 |
| QT75350 | 2013 FORD EDGE SE 4CYL., AUTO, FWD, SILVER..... | \$10,200 |
| QT75405A2 | 2014 CHEVY CAPTIVA SPORT LTZ 4CYL., AUTO, FWD, 88K MILES, SILVER | \$11,600 |
| LT28174A | 2014 CHEVY CAPTIVA LT 4CYL., AUTO, FWD, WHITE | \$9,400 |

Vans

| | | |
|---------|--|----------|
| QT75277 | 2012 NISSAN QUEST S V6, AUTO, FWD, TAN..... | \$7,900 |
| QT75396 | 2013 DODGE GRAND CARAVAN SXT V6, AUTO, FWD, GRAY, 79K MILES..... | \$12,700 |
| QT75383 | 2014 CHRYSLER TOWN & COUNTRY TOURING V6, AUTO, FWD, GOLD, 83K MILES | \$11,500 |
| QT75394 | 2016 DODGE GRAND CARAVAN SE V6, AUTO, FWD, 107K MILES | \$12,900 |

\$5,000 or Less!

| | | |
|-----------|--|---------|
| QT75405A1 | 2002 FORD F150 REG. CAB XL V8, AUTO, RWD, PEWTER..... | \$4,995 |
| QT75375 | 2008 MITSUBISHI ENDEAVOR LS V6, AUTO, 4WD, BLACK..... | \$4,900 |

GO AHEAD, TREAT YOURSELF.

2019 EQUINOX

\$4,500

Total Cash Allowance on select 2019 Equinox vehicles in stock when you finance with GM

-----THAT'S-----

16%

Below MSRP on this 2019 Equinox LT when you finance with GM Financial±

NEW 2019 CHEVROLET SPARK LT

MSRP \$17,095
SAVE \$1,630



SALE PRICE >

\$15,465

LC7013

2019 CHEVROLET CRUZE LT

MSRP \$22,990
SAVE \$3,559



SALE PRICE >

\$19,431***

LC7062

ALL REMAINING 2018 CHEVROLET MALIBU'S

Up to \$6,000* OFF** MSRP or payments on 0% APR as low as **\$390 W.A.C.**



LC6930

2018 CHEVROLET TRAX AWD PREMIER

MSRP \$28,790
SAVE \$6,942



SALE PRICE >

\$21,848***

LT6679

2019 CHEVROLET EQUINOX LT

MSRP \$30,240
SAVE \$4,395



SALE PRICE >

\$25,845***

or available 0% APR for 60 months W.A.C. LT7204



CHEVROLET

FIND NEW ROADS™

LINDSAY CHEVROLET

"Where The Trucks Are"

OPEN: M-F 8-6:30 • SAT. 8-5 IN LEBANON AT 285 W. ELM • 417-532-3114

David Bean
Manager

Jeremy Johnson
Sales

Brent Hale
Sales

Dennis Nash
Asst. Manager

Shelby Cole
Finance

www.lindsaychevroletlebanon.com



*GMF Down Payment Assistance; Cash only usable if financed through a supported GMF.

M Financial+



CHEVROLET COLORADO CREW LT7147

MSRP \$33,305
SAVE \$3,862



SALE PRICE 
\$29,443**

LT7039

2018 CHEVROLET SILVERADO 1500 CREW LT 4WD

MSRP \$47,890
SAVE \$12,303



SALE PRICE 
\$35,587***

LT6860

2018 CHEVROLET SILVERADO 2500 CREW LTZ 4WD

MSRP \$69,405 • SAVE \$8,371



SALE PRICE 
\$61,034***

LT6996

2019 CHEVROLET SILVERADO 1500 CREW LT 4WD

MSRP \$50,065
SAVE \$6,442



SALE PRICE 
\$43,643*

LT7012

NEW 2018 CHEVROLET SILVERADO 3500 CREW LTZ 4WD

MSRP \$69,540
SAVE \$7,930*



SALE PRICE 
\$61,610

LT6983



CHEVROLET 

FIND NEW ROADS™

LINDSAY CHEVROLET

"Where The Trucks Are"

OPEN: M-F 8-6:30 • SAT. 8-5 IN LEBANON AT 285 W. ELM • 417-532-3114



David Bean
Manager

Jeremy Johnson
Sales

Brent Hale
Sales

Dennis Nash
Asst. Manager

Shelby Cole
Finance



www.lindsaychevroletlebanon.com

*GMF Down Payment Assistance; Cash only usable if financed through a supported GMF.



LINDSAY CHEVROLET USED CAR & TRUCK DEPT.



330 W. ELM • LEBANON, MO

417-532-3114

MON.-FRI. 8-7; SAT. 8-5

Joe Jeffery, Manager • Nikki Keller, Finance, Brent Snook, Bryan Sien, Frankie Doublin & Tina Riesinger, Sales — Not responsible for typos.

CARS

| | |
|---|----------|
| LC28352 2018 Chevrolet Malibu LS Dk Blue, 1.5L Turbo, Air Cond, Loaded GM Program Vehicle | \$15,900 |
| LC28114 2018 Chevrolet Malibu LT Gray, 1.5L Turbo, Air Cond, Loaded Off Lease Vehicle | \$16,700 |
| LC28179 2018 Chevrolet Malibu LT White 1.5L Turbo, Air Cond, Loaded GM Program Vehicle GM CERTIFIED | \$18,500 |
| LC28330 2018 Chevrolet Malibu LT White, 1.5L Turbo, Air Cond, Loaded GM Program Vehicle | \$16,700 |
| LC28273 2018 Chevrolet Malibu LT Brown, 1.5L Turbo, Air Cond, Loaded GM Program Vehicle | \$16,700 |
| LC28452 2018 Chevrolet Malibu LT Pearl White, 1.5L Turbo, Air Cond, Loaded Local Trade | \$16,900 |



2018 Chevrolet Malibu LT
Silver 1.5L Turbo, Air Cond, Loaded Off Lease Vehicle

LC28439

\$16,700

0 Down
72 Months 4.99%
\$269 per month

SUVS

| | |
|--|----------|
| LT28371 2018 Chevrolet Express 1T LT White, 4.3LV6, Air Cond, 15 Pass Seating, Loaded GM Program Vehicle | \$26,900 |
| LT28346 2018 Chrysler Pacifica Touring L Plus White, 3.6LV6, Air Cond, Leather, Fully Loaded Off Lease Vehicle | \$31,400 |
| LT28267 2017 Dodge Gr Caravan Sxt Maroon, 3.6LV6, Air Cond, Leather, Loaded Off Lease Vehicle | \$16,700 |
| LT28261 2017 Buick Enclave Convenience White, 3.6LV6, Air Cond, 3rd Row Seats, Loaded Off Lease Vehicle | \$26,900 |
| LT28343 2014 Buick Encore Conv FWD Blue, 1.4L Turbo, Air Cond, Loaded Off Lease Vehicle | \$14,700 |
| LT28404 2018 Buick Envision Premium AWD Silver, 2.0L Turbo, Air Cond, Leather, Loaded GM Program Vehicle | \$29,900 |
| LT28430 2018 Buick Enclave Essence AWD Maroon, 3.6LV6, Air Cond, Sunroof, Leather, Loaded GM Program Vehicle | \$34,900 |
| LT28137 2015 Buick Enclave Premium AWD White Diamond, 3.6LV6, Air Cond, Leather, Loaded Off Lease Vehicle | \$24,700 |
| LT 28280 2017 Chevrolet Equinox LT AWD Burgundy, 2.4L 4cyl, Air Cond, Loaded GM Off Lease Vehicle | \$17,900 |
| LT 28299 2018 Chevrolet Equinox LT AWD White, 1.5L Turbo, Air Cond, Loaded GM Program Vehicle | \$21,700 |
| LT28338 2018 Chevrolet Equinox LT AWD White 1.5L Turbo Air Cond, Loaded GM Program Vehicle | \$20,900 |
| LT28450 2018 Chevrolet Equinox LT AWD Silver, 1.5L Turbo, Air Cond, Loaded GM Program Vehicle | \$20,900 |
| LT28200 2017 Chevrolet Equinox LT FWD White, 2.4L 4cyl, Air Cond, Heated Seats Loaded Off Lease Vehicle | \$17,800 |
| LT28240 2017 Chevrolet Equinox LT FWD Gray, 2.4L 4cyl, Air Cond, Loaded Off Lease Vehicle | \$17,700 |
| LT28422 2017 Chevrolet Equinox LT FWD Maroon, 2.4L 4cyl, Air Cond, Sunroof, Loaded Off Lease Vehicle | \$16,900 |
| LT28337 2018 Chevrolet Equinox Premier AWD Silver, 1.5L Turbo, Air Cond, Leather, Loaded GM Program Vehicle | \$23,800 |
| LT28431 2018 Chevrolet Equinox Premier AWD White 1.5L Turbo, Air Cond, Leather, Loaded GM Program Vehicle | \$24,500 |
| LT28309 2018 Chevrolet Equinox Premier AWD White, 1.5L Turbo, Air Cond, Leather, Loaded GM Program Vehicle | \$21,800 |
| LT28303 2018 Chevrolet Equinox Premier FWD Silver 1.5L Turbo, Air Cond Leather, Loaded GM Program Vehicle with 11XXX Miles | \$22,800 |
| LT28353 2018 Chevrolet Equinox Premier FWD Silver, 1.5L Turbo, Air Cond, Leather, Loaded GM Program Vehicle | \$21,800 |
| LT28276 2018 Chevrolet Suburban LT 4X4 Silver, 5.3LV8, Air Cond., Leather, Loaded Off Lease Vehicle | \$38,900 |
| LT28184 2018 Chevrolet Tahoe LT 4 X 4 Black, 5.3LV8, Air Cond, Leather, Loaded GM Program Vehicle | \$41,500 |
| LT28416 2018 Chevrolet Traverse 3LT AWD Pearl White, 3.6LV6, Air Cond, Sunroof, Leather, 3rd Row Seats, Loaded | \$36,900 |
| LT28410 2018 Chevrolet Traverse LT AWD Gray, 3.6LV6, Air Cond, Heated Seats, Loaded GM Program Vehicle | \$30,900 |
| LT28432 2018 Chevrolet Traverse Premier AWD Maroon, 3.6LV6, Air Cond, Leather, Loaded GM Program Vehicle | \$36,500 |
| LT28399 2019 Chevrolet Trax LS FWD Blue, 1.4L Turbo, Air Cond, Loaded GM Vehicle with 200 Miles | \$19,900 |
| LT28428 2015 Chevrolet Trax LT FWD Orange, 1.4L Turbo, Air Cond, Loaded Off Lease Vehicle | \$15,900 |

| | |
|---|----------|
| QT56909 2017 Ford Edge Sel AWD Burgundy, 2.0L EcoBoost, Air Cond, Nav, Leather, Sunroof, Less than 100 Miles | \$29,500 |
| QT74921A 2015 Ford Edge Titanium AWD Black, 2.0L EcoBoost, Air Cond Leather, Loaded Local Trade | \$23,700 |
| QT57316A 2017 Ford Escape Se FWD Maroon 1.5L EcoBoost Air Cond, Loaded Local Trade | \$17,300 |
| QT57284A 2013 Ford Expedition EL Limited Black, 5.4LV8, Air Cond, Sunroof, Leather, Navigation, Loaded | \$17,900 |
| QT75384A 2016 Ford Explorer XLT 4 X 4 Black 3.5LV6 Air Cond, Leather, Sunroof, 3rd Row Seats, Loaded Local Trade | \$27,900 |
| QT5742C1 2016 Ford Explorer XL T 4 X 4 Black, 2.3L EcoBoost, Air Cond, 3rd Row Seats, Loaded | \$26,900 |
| LT28245 2018 GMC Acadia SLE AWD Maroon, 2.5L 4cyl, Air Cond, Loaded GM Program Vehicle | \$28,800 |
| LT28130; 2018 GMC Acadia SLE FWD White Pearl, 2.5L 4cyl, Air Cond, Loaded GM Program Vehicle | \$26,500 |
| LT28227 2018 GMC Terrain SLE AWD Brown, 1.5L Turbo, Air Cond, Loaded GM Program Vehicle | \$23,500 |
| LT71208 2014 GMC Terrain SLT FWD White, 3.6LV6, Air Cond, Leather, Sunroof, Loaded Local Trade | \$14,800 |
| LT28263A 2017 Jeep Cherokee Trailhawk 4 X 4 Hydro Blue, 2.4L 4cyl, Air Cond, Leather, Loaded Local Trade | \$24,900 |
| LT28425 2018 Jeep Compass Latitude 4 X 4 Blue, 2.4L 4cyl, Air Cond, Loaded and Only 7XXX-Miles | \$22,700 |
| LT28412A 2016 Jeep Grand Cherokee Limited White, 3.6LV6, Air Cond, Sunroof, Leather, Loaded Local Trade with 18XXX Miles | \$29,900 |
| LT28448 2018 Jeep Grand Cherokee Oveland White, 3.6LV6, Air Cond, Leather, Sunroof, Navigation Sys, Loaded Off Lease | \$37,900 |
| QT57468A 2017 Jeep Renegade Trailhawk Red, 2.4L 4cyl, Air Cond, Loaded Local Trade | \$18,500 |
| QT75254A 2014 Jeep Wrangler Sahara 2dr Black, 3.6LV6, Air Cond, Leather, 9500# Winch, Custom Bumpers, Lift Kit, 27XXX Miles | \$31,900 |
| LT6882A 2018 Volkswagen Atlas SEL AWD White, 3.6LV6, Air Cond, Sunroof, Leather, 3rd Row Seats, Loaded | \$36,900 |



2018 Chevrolet Equinox LT Awd
Silver, 1.5L Turbo Air Cond, Htd seats Loaded GM GM Program Vehicle

LT28347

\$20,800

0 Down
72 Months 4.99%
\$335 per month

TRUCKS

| | |
|--|----------|
| LT7203A 2016 Chevrolet Colorado Crew LT 4 X 4 Red, 3.6LV6, Air Cond, Loaded Local Trade with only 12XXX Miles | \$27,900 |
| LT7194A 2016 Chevrolet Silverado 2500 Crew High Country 4 X 4 Black, Duramax, Air Cond, Leather, Sunroof, Htd/Cooled Seats, Loaded Local Trade | \$45,800 |
| LT6985A 2018 Chevrolet Silverado 2500 Crew LTZ 4 X 4 Black, Duramax, Air Cond, Leather, Sunroof, Htd/Cooled Seats, Loaded Local Trade | \$54,800 |
| QT57412A 2011 Chevrolet Silverado 3500 Crew LTZ 4X4 White, Duramax, Air Cond. Leather, Loaded Local Trade with 43XXX Miles | \$37,900 |
| LT28230 2017 Chevrolet Silverado DBL Cab LT 4 X 4 White, 5.3LV8, Air Cond, Loaded Off Lease Vehicle | \$29,500 |
| LT28364 2018 Chevrolet Silverado DBL Cab LT 4 X 4 Red, 5.3LV8, Air Cond Alloy Wheels Loaded Off Lease Vehicle | \$28,900 |
| LT28389 2015 Ford F150 Crew Lariat 4 X 4 Black/Bronze, 3.5L EcoBoost, Air Cond, Leather, Loaded Local Trade | \$30,900 |
| QT57334A 2017 Ford F150 Crew XLT 4 X 4 Maroon, 2.7L EcoBoost, Air Cond, Loaded Local Trade with 26XXX Miles | \$32,900 |
| QT57306A 2017 Ford F250 Crew Platinum FX4 4 X 4 Wht Plat, 6.7L Diesel, Air Cond, Leather, Fully Loaded | \$58,900 |
| QTS7369A 2015 Ford F350 Crew XL T 4 X 4 Bronze Fire, 6.7L Diesel, Air Cond, Loaded Local Trade Prior Paint Repair | \$39,900 |
| LT28222 2008 Ford F350 Ext XL T 4 X 4 Sand, 6.4L Diesel, Air Cond, Bale Bed, Prior Salvage Title | \$18,500 |
| QTS7236B 2007 GMC Sierra 2500 Crew W/T 4 X 4 Red, 6.0LV8, Air Cond, Loaded Local Trade | \$12,900 |
| LT28253 2018 Nissan Frontier Crew Pro-4x 4 X 4 Black, 4.0LV6, Air Cond, Navigation, XM Radio, Loaded Off Lease Vehicle | \$26,300 |

WATSON REG. POLLED HEREFORDS: Service age bulls, semen tested, heifers & cows, younger bulls. 417-962-3759, Cabool.

2 GOOD PUSH MOWERS. \$50 each.. 573-218-9231, Farmington. MO.

JOHN DEERE 2940: Diesel tractor, 80HP, good. \$12,500. (573)765-4406

DADE COUNTY MO HISTORY BOOK: 1905-1985 By John K Hulston. \$12.50. Lebanon, 417-532-2045.

FIREARMS: Professional Repairs and Restorations. Baron's Gunsmithing. 573-363-5801, Camdenton.

WANTED PINBALL MACHINES. 573-424-7200.

Carolina Carports
Quality Is Our First Priority!

Happy New Years

Thank you for your continued support, To show our appreciation We Are Offering: **\$1,195 - \$9,999 = 10% OFF** **Over \$10,000 = 12% OFF** Limited Time Offer

JENKINS Since 1964
Showroom & Sales Office Bolivar, Missouri 65613 **(417) 326-4228** Next to Smith's Restaurant, Hwy. 13 & U

Corporate Office Polk, Missouri 65727 **(417) 852-4228** 2 Miles South of Pittsburg on Hwy. 64

Find us on **facebook**
JenkinsBuildings.com
Pricing Subject to Change

Rotating Hay Carriage

\$5,150
\$510 Down
\$90 Per Week w.a.c.

Cowtown USA • 1-800-258-6898
I-44 & Hwy F • Exit 203 • Cuba, MO
View At cowtownusainc.com - See Video

HUNTING AND RECREATIONAL LAND: Land located West of Bennett Spring. 9.26 acres-\$16,000. Will finance or discount for cash. 417-830-3555.

AUCTION REMINDER: Livestock Auction. Every Wednesday at 10:30 AM. Farmington Livestock Auction. Please see our Auction Directory for more information.

AUCTION REMINDER: Cattle Sale Every Monday at Noon. Salem Livestock. Please see our Auction Directory for more information.

RED ANGUS BULLS: 20 months old, Red Balancers, 15 months old. Pinnacle Ranch. 417-679-4269, 417-679-2330, Gainesville. MO.

AUCTION REMINDER: Saturday. February 23 @ 10am. Gary Sexton Auctions. Please see our Auction Directory for more information.

REGISTERED BLACK ANGUS BULLS: 417-453-6332. Plato

KVK LAND AND CATTLE will be offer at INTERSTATE REGIONAL STOCK-YARDS on FEBRUARY 22ND at 6:30 PM. 40 home raised Gerloff influenced Angus heifers, along with 60 select home raised black and black baldy cows. (3 to 6) year old to start calving March 1 for a 60 days calving period to calving ease Angus bulls. Complete health program including scour guard. For questions, call Morgan at 573-263-5580 or Kevin at 573-659-3946.

2 METAL CULVERTS: 199" long x 1' round, new, never used. \$200 OBO both, Paid \$350. \ cf2 Rolla, 928-514-0505.

COWS SKULL: Curl-down horns. Horns and skull good condition & clean. Call and I'll email pictures. \$100. 573-364-1779.

AUCTION REMINDER: Saturday. February 23 @ 10am. Gary Sexton Auctions. Please see our Auction Directory for more information.

1992 FORD F250 FOR SALE: 2-wheel drive, 460 engine, C6 automatic, AC, black & chrome. Sharp! \$1,250. Rolla, 573-308-5310.

GUN SHOW

MARCH 1ST - MARCH 3RD

Fri. 4PM - 8PM • Sat. 9AM - 5PM • Sun. 9AM - 3PM

~ Joplin, MO ~

Jack Lawton Webb Convention Center
(5300 S. Range Lind Rd.)

BUY • SELL • TRADE

INFO: 563-927-8176 • www.rkshows.com

See Service

Spray Foam Insulation

Closed cell or open cell form available
Choose the thickness of your insulation

| | |
|----------------------|-------------------|
| Closed Cell | Open Cell |
| • Higher R. value | • Lower Cost |
| • Vapor barrier | • Sound Deadening |
| • Structural benefit | • Fire resistant |
| • Fire Resistant | |

Both types of foam fill voids and stay where they are put to provide better insulation than fiberglass or cellulose

Call Joseph See
(417) 733-6936
Located near Buffalo, MO

AUCTION REMINDER: Online Home Auction going on now. Atterberry Auctions. Please see our Auction Directory for more information.

PORTER CABLE NAIL GUN: BN138, 18ga brade nailer, new in case, manual, 1 3/8th - 1 5/8th. \$480bo. Ava, 417-686-0032

SIX 18 SCALE AMERICAN MUSCLE STOCK CARS. Most rare or limited numbered editions. 573-365-5331.

TONNEAU COVER: 6'6"x5'8", good condition/clamps & Struts. \$300 OBO. Pittsburg, MO, 417-852-1088.

AUCTION REMINDER: Online Estate Auction going on now. Atterberry Auctions. Please see our Auction Directory for more information.

8N FORD: W/5' trailer type bush hog, 6' blade, post auger, single pt. plow. \$2,000. Waynesville, 573-855-7083.

LADIES CARHART: deep green blanket lined jacket, size Large, adjustable waist tabs, zipper front, Excellent condition. \$35. 417-718-5347.

VILLA HOMES IN ROLLA: Has NEW and USED Mobile Homes. Call David for info: 573-578-8072.

POULAN PRO 220 CHAINSAW: 20" bar, carrying case. \$100. 573-756-3969, Fredericktown, MO.



SERVING YOU IN 8 LOCATIONS!

HAY

- 66411 Pequea TT6000 Tedder-6 Basket..... **\$8,450.00**
- New Holland H7230** Roller, Discbine..... **\$15,900.00**
- 60892 Massey Ferguson 2756 Round Baler, 5x6, Net **\$7,500.00**

TRACTORS

- Kubota L4300 DT** Tractor 4WD, w/Ldr **\$14,300.00**
- Massey Ferguson 2-165** w/Ldr **\$4,950.00**
- John Deere 6400** Cab, 4WD, Tractor **\$20,900.00**
- Massey Ferguson 65** Gas **\$5,500.00**
- Massey Ferguson 135G** Tractor..... **\$3,750.00**
- John Deere 2032R** Compact, 4WD, Frt. Blade **\$15,900.00**
- Kubota 7200HST**..... **\$2,750.00**
- Massey Ferguson 231** Tractor **\$5,790.00**
- Kubota M7040** Tractor, 4WD, w/Ldr..... **\$36,850.00**
- Allis 185** Tractor, w/Ldr..... **\$8,995.00**
- Kubota L4701 DT** Tractor, w/Ldr, 250Hrs. **\$19,500.00**

Eldon, MO

3369 Hwy 52 W. • 573-392-0230

www.crown-power.com

Sales: (Ag) Gene Klein and (Ce) Chris Scott

TRACTORS

- Ford 5610 4WD**, Tractor, w/Ldr **\$18,500.00**
- Case IH 885 2WD**, Tractor, w/Ldr **\$14,300.00**

MISCELLANEOUS

- 61520 **BH220 Mower**, Zero Turn, Bush Hog..... **\$2,950.00**
- KMC House Cleaner** **\$5,500.00**
- Case IH 2388** Combine, 4x4 **\$58,000.00**
- John Deere 445G 54"** Lawn Tractor w/ bagger..... **\$2,970.00**
- Sitrex Exp 10** Wheel Rake **\$6,000.00**
- Sidewinder 7 ft.** Pull Cutter..... **\$1,250.00**
- 7 ft. Blade** **\$125.00**
- Bush Hog 2615L** Wing Cutter **\$8,995.00**
- Ogden 8** Wheel Rake **\$1,750.00**

CONSTRUCTION

- New Holland LS180** Skid Loader..... **\$12,650.00**
- Case 1845C** Skid Steer Loader **\$7,950.00**
- John Deere 85D** Mid. Excavator **\$CALL**
- Kubota SVL95** Cab, Air, 750 Hrs. **\$53,900.00**



LIONEL TRAIN SET: Steam engine, tender, caboose and other car, track and transformer. \$195. 573-364-7465, Rolla.

TOYOTAS: 1988 4X4 5-speed, solid body, no rust, 22R motor. Runs good. \$2,250. **1996 Toyota Tacoma:** V6, 4x4, extended cab, auto. Prior salvage, runs good. \$2,750. 417-962-0464, 417-254-3089, Cabool.

2003 DODGE 3500 DIESEL: 4 door, 4x4 6-speed auto, flatbed, single wheel, new parts. Runs excellent. \$8,250. 417-962-0464, 417-254-3089, Cabool.

100 OLD CAR BROCHURES. \$100. 573-365-5331.

GERMAN SHORT-HAIR POINTER PUPS: championship blood lines, shots and wormed, 12wk old. \$375each. Niangua, 417-838-3109.

FEDERAL DUCK STAMPS: from 1950-70's, 10 for \$50. \u0022 Bunker, 573-689-2490

WOMENS MERREL: Insulated Snow Boots, sz 8M, waterpooof, mid calf height, easy pull on style, fur trim at top, dark chocolate brown color. Nice! \$35, 417-718-5347.

TOYOTA: 5 speed trans, bell-housing transfer, excellent shape. \$350. Headache rack, \$250 call after 5. 417-872-7217.

DIRECTV: Over 145 channels, cost \$29.99/month. Free installation. Free HD channels. Free Movie Channels. Call Home Trends! 417-299-8479. Authorized DirecTV Dealer.

BRUSH CLEARING: 417-650-0596. www.brushmasterlandclearing.com

AUCTION REMINDER: On-Line Auction going on NOW. Atterberry Auctions. Please see our Auction Directory for more information.

4-SALE: 3yr old Gelbvieh bull, very gentle, registered calves onsite. David Hershberger, 4953 Marquis rd, Summersville, MO 65571. \$2200 obo.

Stay In The Know About Your Favorite Pastime With TROUT TALK

Get your monthly subscription started today for all the information you'll need to plan your next trip to Bennett Spring State Park and the Lebanon Area.

Plus, all the latest news about fishing, hiking, camping, floating, and so much more! We'll see you there!

All 8 Issues
Delivered
To Your Home
for only

\$14⁰⁰

Published Once Per Month March-September

YES! Start My Trout Talk Subscription

Name: _____

Address: _____

Phone: _____

Email: _____

Mail a \$14⁰⁰ check to: Trout Talk c/o Lebanon Publishing Company
P.O. Box 192 • Lebanon, MO 65536 or Call 417-532-9131

Please include your name, address, city, state, and zip code



50FT ROLLS OF TV CABLE: \$15 Each. 417-286-0647.

IHC 684: Diesel tractor w/loader, 62hp. \$9850. 573-765-4406.

100LB BLACKSMITH ANVIL: \$600. Waynesville, 573-855-7083.

3'x2' 1940's PINBALL MACHINE. \$85. 573-218-9231, Farmington. MO.

CASE ELEPHANT TOE KNIFE: good condition. \$500. Eminence, 573-226-5993.

OVERSIZED LA-Z-BOY RECLINER: Brown, good condition. \$75. 417-532-6561.

Proud to support all area FFA Chapters!

Ironbull Dump Trailers Equipped with:

- Dexter Axles • 10 Gauge Steel
- Sherwin Williams Powder Coat Paint
- KTI Hydraulics
- USA Made Sissor Lifts
- Tarp Kits • Slide in Ramps
- Multi Function Gate
- 110 Powered Invertor

WESTGATE TRAILER & EQUIP.
www.westgatetrailer.net

"Let Us Be Your People!"
Now open in two locations:

| | |
|---|---|
| 8920 West Bus. 60, Mtn. Grove, Mo M-F 8-5 • Sat. 8-12 | 7136 West Farm Road 140, Springfield, Mo. M-F 9-5 • Sat. 8-12 |
|---|---|

417-926-7733 417-259-1774

Built to serve all your dump trailer needs!!! Several sizes in stock both Gooseneck and Bumper Pull.

KUSTER LOGGING

BUYER of Standing Timber Oak and Walnut

Dozing Now Available

417-259-0047

References Available

CEDAR GAP TOPSOIL: Garden Ready topsoil, Only water required, delivery within 50-mile radius, Seymour. 417-935-2877. For more info: www.cedargapsoil.com

DARDEN PROFESSIONAL TIMBER HARVESTING, BUYING STANDING TIMBER: Great prices, improve wildlife habitat and improve forest health. State Certified & Fully Insured! 573-247-4808 or 573-739-1122. Salem

CLEANING OUT KITCHEN CABINETS & CUPBOARDS: Inside only. \$125 or trade. 573-327-9068.

AUCTION REMINDER: 62nd Annual Farm Equipment Sale. Friday March 1st and Saturday, March 2nd both days @ 9am. Magee Auction. Please see our Auction Directory for more information.

Komatsu WB 156

Low hours, cab, air, 4x4
\$22,500

Call Mark (314) 560-3112

4 WHEELS FOR 2000 POLARIS 4-WHEELER. \$85. 573-218-9231, Farmington. MO.

MACHINE QUILTING: twin-\$35, full-\$45, queen-\$55, fast turn around. Salem, 573-729-2429, 573-247-9114.

AKC GERMAN SHEPHERD PUPPIES: Available in March, papered, black. \$750. 417-208-7646, Ava.

CARHART: Quilted Duck Coveralls Mens 38R or women's Large, used but very good condition. \$30. 417-718-5347.

PLASTIC NURSERY CONTAINERS: 200 plus 2 1/2 qt-bigger. \$30 for all. 636-239-2695.

LEBANON JUNIOR HIGH SCHOOL 1966 YEARBOOK: \$12.50. Lebanon, 417-532-2045.

JOHN DEERE 10ft OFFSET DISK. \$4,250.
573-765-4406

JOHN DEERE 7000: 6 Row 30in Planter, no till. \$3350. 573-765-4406.

Larry Heisel Rentals
LARGE or SMALL...

We Rent!

Crawler Loaders • Excavators • Backhoes

Call Larry! We Deliver!

573-779-1500
www.larryheiselequipment.com

Rental Available in 636 or 573 area code

AUCTION REMINDER: Online Home Auction going on now. Atterberry Auctions. Please see our Auction Directory for more information.

LINCOLN 225 WELDER: Electric, excellent shape. \$200 or trade for tools, bacon or pork sausage. Bismark, 573-734-2822.

SMALL WELDING SHOP BUSINESS FOR SALE: in Columbia. Text or call for information, 573-772-3018.

AUCTION REMINDER: Every Wednesday at 10:30 am. Farmington Livestock. Please see our Auction Directory for more information.

PINE LOG SIDING SALE: \$1.19 per L.F.
www.pineridgerustic.com 573-729-7226,
573-247-2823.

AUCTION REMINDER: Auction, Saturday, February 23 @ 10am. Horn's Auction. Please see our Auction Directory for more information

JOHN DEERE 4240: Diesel cab and air tractor, power shift, 3900hrs, very nice, 110hp. \$29500. 573-765-4406

WANTED: old Franklin County Plat books. 573-468-4924

BEAGLE PUP: Lemon, White. Out of Good Rabbit dogs. 573-308-7537.

JOHN DEERE 2510 TRACTOR: W.F. 3 pt with Westendorf WL-21 Loader. \$4,750. 573-765-4406.

SITREX 12 WHEEL: Bi fold rake. \$4,750.
573-765-4406.

1987 BUICK GRAND NATIONAL:
\$20,000. 870-430-5277, Cotter, Arkansas.

FRESH PECAN HALVES: 2 cups- \$7.50.
Seymour, 417-300-1344.

ROD AND REELS: fishing season is coming. \$5 and up. Conway, 417-589-8200.

SELL IT HERE!



WEEKLY
TRADER
MAGAZINE

417-532-2800 • www.myweeklytrader.com

HEAVY DUTY WALKER: 400 lb rated, brand spanking new, large seat/storage, four 7" pivoting wheels, hand brakes. \$200. 417-686-0032, Ava.

78 F250 CUSTOM: 400cu-in, 4spd, engine good, body good, no bed. \$900. Waynesville, 573-855-7083.

AUSTRALIAN SHEPHERD PUPPIES: Purebred, no papers, six females, three males, all colors. \$150. Maynard, AR. 262-290-1619.

VERONA MISSOURI HISTORY: 1868-1968. 100 year history. \$22.50. Lebanon, 417-532-2045.

MARTHA WASHINGTON COOKBOOK: \$6.50. THE OLD FARMHOUSE KITCHEN COOKBOOK, recipes and old-time nostalgia. \$6.50. STAINED GLASS THEATRE COOKBOOK. \$6.50. THE DEEN BROTHERS (PAUL DEEN) COOKBOOK.L \$7.50. Lebanon, 532-2045.

AUCTION REMINDER: Friday March 1st and Saturday, March 2nd both days @ 9am. Magee Auction. Please see our Auction Directory for more information.

WANTED, TIMBER TO LOG ON SHARES: Honest, reliable, references. 417-533-4607, 417-664-1195.

37X12.5R 16.5 ON BEADLOCK RIMS: for Dodge or Chevy 8/6.5. \$200. Lebanon, 417-286-3540.

LIMOUSIN BULLS: 18-30 mos. old, Homo Black, polled, AI sired. 573-301-2316, 573-301-2074.

MENS LONDON FOG: Trench Coat, sz 40 Reg, dark taupe color, zip out liner, double breasted w/belt. Very nice. \$35. 417-718-5347.

ANTIQU MIRROR: Partially framed in ornate wood. \$50. Call and I'll email pictures. \$100. 573-364-1779.

Winter Sales

DON VANCE AUTO GROUP

OVER 1000 VEHICLES IN STOCK!

FIND YOUR NEXT CAR @ DONVANCEAUGROUP.COM

| | | | | |
|--|--|---|---|---|
| <p>2017 Ford Mustang GT</p>  <p>5.0L V8 • RWD • Manual Race Red • Mileage 15,714 Stock # 29107A</p> <p>\$25,975</p> | <p>2011 Ford Fusion SE</p>  <p>FWD Mileage 181,067 Stock # 28908A</p> <p>\$7,990</p> | <p>2014 Ford Edge SEL</p>  <p>3.5L V6 • AWD • Gray Mileage 101,068 Stock # 28983C</p> <p>\$14,990</p> | <p>2013 Ford Mustang GT</p>  <p>5.0L V8 • RWD • Black Mileage 30,626 Stock # 28970A</p> <p>\$21,475</p> | <p>2017 Chevy Equinox LT</p>  <p>FWD • Automatic White • Mileage 45,133 Stock # 29484B</p> <p>\$15,975</p> |
| <p>2010 Jeep Wrangler Sport Convertible</p>  <p>3.8L V6 • 4WD • Manual Mango Orange • Mileage 99,781 Stock # 29888A</p> <p>\$16,990</p> | <p>2015 Jeep Grand Cherokee Laredo</p>  <p>3.6L V6 • Flexible Fuel • Automatic Bright White • Mileage 51,186 Stock # 29058A</p> <p>\$20,990</p> | <p>2014 Jeep Patriot Latitude</p>  <p>4Cyl FWD • Red Mileage 52,298 Stock # 7879A</p> <p>\$12,075</p> | <p>2017 Jeep Compass Latitude</p>  <p>2.4L 4WD • Automatic Black • Mileage 9 Stock # 1628U</p> <p>\$21,975</p> | <p>2016 Jeep Wrangler Unlimited</p>  <p>Rubicon • Convertible • 3.6L V6 4WD • Automatic • Silver Mileage 38,080 • Stock # 29204A</p> <p>\$32,975</p> |
| <p>2017 Jeep Compass Trailhawk</p>  <p>2.4L • 4WD • Automatic Diamond Black • Mileage 19 Stock # 1631U</p> <p>\$26,975</p> | <p>2012 Dodge Charger SE</p>  <p>6 Cyl • RWD • Automatic Red • Mileage 96,060 Stock # 8033A</p> <p>\$10,275</p> | <p>2014 Dodge Journey SXT</p>  <p>3.6L Fwd • White • Automatic Mileage 81,934 Stock # 29366A</p> <p>\$11,475</p> | <p>2014 Dodge Journey SXT</p>  <p>3.6L V6 • FWD • Automatic White • Mileage 81,934 Stock # 29366A</p> <p>\$11,475</p> | <p>2014 Hyundai Sonata GLS</p>  <p>2.4L • FWD • Automatic Silver • Mileage 76,742 Stock # 28138N</p> <p>\$9,990</p> |
| <p>2017 Cadillac XT5 Platinum AWD</p>  <p>6 Cyl • Automatic • White Mileage 31,094 Stock # 8383A</p> <p>\$41,990</p> | <p>2006 Lincoln Town Car Signature Limited</p>  <p>8 Cyl • RWD • Automatic Gold • Mileage 82,504 Stock # 7215B</p> <p>\$6,775</p> | <p>2011 Chrysler 300c</p>  <p>v8 • Flexible Fuel • Black Mileage 57,971 Stock # 28929A</p> <p>\$13,975</p> | <p>2006 Dodge Ram 1500 SLT</p>  <p>8 Cyl • RWD • Silver Mileage 146,470 Stock # 8445A</p> <p>\$7,990</p> | <p>2016 Honda HR-VLX</p>  <p>Variable Transmission Red • Mileage 46,406 Stock # 28922A</p> <p>\$16,975</p> |

Actual Vehicle May Differ From Photo

HOME OF UPFRONT PRICING!



SEE SALESMAN FOR DETAILS. ALL VEHICLES IN STOCK AT TIME OF AD SUBMISSION BUT SUBJECT TO SALE PRIOR TO PRINTING. NOT RESPONSIBLE FOR TYPOGRAPHICAL ERRORS & OMISSIONS. GRAPHICS MAY NOT ACCURATELY REPRESENT AD VEHICLE. PAYMENTS BASED ON 3.99% @ 72 MONTHS SUBJECT TO CREDIT APPROVAL AND PRODUCT AVAILABILITY.

ONLY 17 MINUTES EAST OF SPRINGFIELD ON I-44 • DONVANCEAUGROUP.COM
800-947-7567 • 417-859-2600



Thankful For 50 Years!



50 YEARS

1968 - 2018

We are thankful for your friendship and support over the past fifty years and look forward to serving you for many more.

DELUXE BUILDING PACKAGES NOW IS THE TIME TO BUY!

Investing in a new building could save on taxes.



Savings You Can't Beat!



| | | | | |
|--|--|--|--|--|
| 24x40x10 Galvalume.. \$5,797.44 Painted..... \$6,401.76 | 24x32x10 Galvalume.. \$5,616.66 Painted..... \$6,098.95 | 30x40x10 Galvalume.. \$6,430.69 Painted..... \$7,099.08 | 30x40x12 Galvalume.. \$6,886.06 Painted..... \$7,598.22 | 40x60x12 Galvalume...\$11,272.16 Painted..... \$12,461.71 |
|--|--|--|--|--|

Plus Tax, Labor & Delivery Available On All Building Packages. Prices may vary due to local code restrictions.

All Buildings Quoted Have #2 • Lumber And #1 Galvalume Or Limited Lifetime Painted Metal

All Buildings Are Heavy 29 Ga. Metal, Three 2"x6" T&G Splashboards,
All Poles 5"x5" Or Larger, CCA Treated, Fully Trimmed With One 3'x6' • Walk-Through Door & One Large Sliding Door.

Metal Roofs Designed To Look Great On Your Home!



**HEAVY 29 Ga.
METAL # 1**

Limited LIFETIME WARRANTY
29 Ga. & 26 Ga. Painted

CUT TO LENGTH PANELS



Ask About Our Quick Service.

Over 20 Colors and Several Styles To Choose!

GALVALUME METAL UNPAINTED
25 YEAR WARRANTY

#1 Standard Panels, 29 Ga.

\$48.50

WWW.BYLERSUPPLY.COM



BYLER BUILDING SUPPLY, LLC



2 1/2 MILES EAST OF SEYMOUR ON 60, 1/4 MILE NORTH AT AUTO SALVAGE • WWW.BYLERSUPPLY.COM
877-556-8855 MON.-FRI. 7:30-5 SAT. 8-12 FAX NO. 417-935-2995 417-771-3100

GIRLS HUFFY BICYCLE: 26". \$85. 417-589-8200.

WORLD WAR 1: Bolo fighting knife, heavy duty. \$125. Farmington, 573-218-9231.

WALKER 4TON JACK STANDS: \$30. 417-268-0647.

JOHN DEERE: 6-row, 7000 no-til planter, 30in good. \$3250. Linn, 573-897-2772.

CUSTOM SAW MILLING: Lebanon. 417-533-4607, 417-664-1195.

1965 BUICK SKYLARK GS: \$5,000. 870-430-5277, Cotter, Arkansas.

Meet...

Shawna Bradley

Your Auction Specialist



Call or email me today to get your next auction in Central Missouri's #1 Shopper!



WEEKLY TRADER MAGAZINE

office: 417-532-9131 ext. 215 • 417-895-9324
cell: 417-322-3814 • shawna@weekly-trader.com

John Deere 160CLC Excavator



\$23,500, 2 available.

Call Mark (314) 560-3112

ELECTRIC CORNMEAL AND FLOUR GRINDER: \$150. 417-646-8807.

1997 DODGE RAM 1500: 4x4, Reg cab, 128,000miles. \$3,900. Licking, 417-217-1823.

LOGS WANTED. S&S LUMBER Buying Cut logs. Halfway, MO. 417-399-4381.

POOL TABLES: Installations, moves, recoverers, repairs, accessories, etc. 573-646-1700.

AUCTION REMINDER: Estate Auction Saturday, March 2 @ 10am. Danahy Auctions. Please see our Auction Directory for more information.

I BUY...USED MOBILE HOMES. Call or text 573-338-6250 or email GregS.CDH@outlook.com



Wright Spray Foam Insulators, Inc.

Commercial & Residential

Call For A FREE Estimate

417-746-1953

417-746-4932

Norwood, Missouri

AUCTION REMINDER: March 2, 10 a.m. J&J Sales. Please see our Auction Directory for more information.

2004 OPEN RANGE FIFTH WHEEL CAMPER: 34', all weather, in good condition. \$10,500. Lebanon, 417-718-5520.

REGISTERED HEREFORD & ANGUS BULLS: Home raised, Some Show-Me Select Qualified. 573-701-7828. Belgrade

CHECKERED WALNUT WOOD STOCK PISTOL GRIP: for Marlin Model 336 or 1895. \$100. Washington. 636-239-2695.

TRUCK LOAD OF FLEA MARKET & AUCTION ITEMS: \$200, trade wood or gun. 573-327-9068

SMALL SQUARE HAY BALES: Alfalfa, Timothy and mixed grass. \$7.50-\$9. 573-378-7326, Versailles.

WEEKLY TRADER MAGAZINE



AUCTION DIRECTORY

Thursday, February 21

11:00 AM Mid Missouri Stockyards..... 41

Saturday, February 23

9:00 AM Allen Auction & Real Estate 35

9:00 AM Show-Me Auction Company 41

9:30 AM Crawford Auction Service 34

10:00 AM Gary Sexton Auctioneers 28

10:00 AM Horn's Auction Service 38

12:00 PM Rolla Horse Auction..... 37

6:00 PM Wheeler Livestock Auction..... 33

Monday, February 25

12:00 PM Salem Livestock Auction 40

Tuesday, February 26

12:30 PM Atterberry Auction & Realty 39

Wednesday, February 27

10:00 AM Trophy Properties & Auction..... 37

10:30 AM Farmington Livestock..... 40

12:30 PM Atterberry Auction & Realty 39

Thursday, February 28

10:00 AM Purple Wave Auction 38

Friday, March 1

9:00 AM Magee Auction & Realty 31

1:07 PM Mickey Duckett Pro. Auctioneer 27

Saturday, March 2

10:00 AM Easterly Auction Co 29

10:00 AM Danahy Auction 30

10:00 AM J&J Sales, LLC 32

10:00 AM Billy Sexton Auctioneers..... 36

10:00 AM Wheeler Auctions & Real Estate..... 37

Saturday, March 30

10:00 AM Southwest Auction Service 39

Saturday, April 6

11:00 AM World Foxtrotting Horse Sales 41

#1 Rural Shopper *Reader's Choice!*
in Central Missouri

Call 1-800-665-8875 to get your auction listed in the Weekly Trader.

AUCTIONEERS Did you know the WEEKLY TRADER covers more counties in rural Missouri than any other publication?

Firm deadline is 12:00 PM Friday, prior to next week's Thursday publication date.



Mickey Duckett
CAL. MPPA, AARE, CES

Mickey Duckett Professional Auctioneer

P.O. Box 1575, Ozark, MO 65721

(417) 353-2768

www.mickeyduckettproauction.com



SENSATIONAL REAL ESTATE & PERSONAL PROPERTY AUCTION

120 Porter Rd., Forsyth

ONLINE BIDDING ONLY!!

Auction Ends: Fri., March 1st, @ 1:07 p.m. Preview: Sat., Feb. 23rd, 12-3

Here's a great opportunity to get the workshop you've always wanted and have your residence too! Terrific approximately 2,900 sq. ft. building that has approx. 1,200 sq. ft., 2 bed/2.5 bath living area with spacious living room, large kitchen with lots of cabinets, and an approximately 1,700 sq. ft. workshop area!! All of this is situated on approximately 2.2 fenced in acres and has Hwy 76 frontage. Just minutes to Branson and all that it has to offer, yet close to Forsyth for all your everyday needs!

If you're looking for it, we probably have it!! This sale has it all: Cars, Trailers, Camper, Outdoor Shed, Small Implements, **LOTS OF TOOLS--SOME NEW, INCREDIBLE AMOUNT OF COLLECTIBLES--SOME HARD TO FIND**, Antiques, Sporting Goods, Office furniture & supplies, Home Furnishings and decorative items, Dishes, Pots/Pans, Glassware, Appliances, Electronics, Building Supplies, Lawn & Garden Items, Several Power Chairs, **AND SO MUCH MORE!** Check out our catalog, **there's over 950+ items to bid on!!**

Seller: Winfield & Judy Scott

Auctioneer Note: SOMETHING FOR EVERYONE!! For more photos, auction terms and register to bid, go to our website at www.mickeyduckettproauction.com! Call Mickey at 417-353-2768 for more information.



THOMAS OUTSTANDING PUBLIC MOVING AUCTION

SATURDAY, FEBRUARY 23, 2019 • 10:00AM

Location: 2999 St. Rt. U, Willow Springs, Mo. 65793

Directions: From West Plains, Mo. Travel North on 63 Approx. 8 Miles to Hwy UU, Then Right 2-1/2 Miles to U, Then Left 1-1/2 miles to Private Drive on Left.

Reason for Auction: We Have Sold Our Home

CAMPER – TRACTORS – UTV – SKEET THROWER



2014 Sandpiper (Model 346 Rets). 5th Wheel Camper with 3 Slide Outs, 5500 Watt Generator, Awning, Electric Jacks, Electric Levelers, Central Vac, and a Fireplace. One Owner – Very Nice! 1996 970 John Deer Diesel Tractor; MWFD 770 One Owner Hours, 440 Front Loader, ROPS – Very Clean! 613 John Deer Brush Hog; 2002 Polaris UTV with only 278 hours – Nice! Skeet Thrower.

SHOP & WOOD WORKING TOOLS - LOADER FORKS

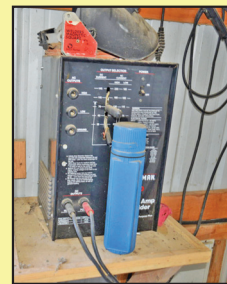
Craftsman Radial Arm Saw; Craftsman Pro Series Table Saw; Craftsman Vacuum; Grizzly 6" Belt Sander; Jet Dust Collector; 6" Craftsman Professional planer; Craftsman Power Washer; Grizzly 1" Sander; Craftsman Router; Levels; Performax 16" Sander; 14" Professional 1-1/2 HP Band Saw; Cabinets Full of Cabinet Makers Supplies; Ladders; Craftsman Welder; Posts; Tool Box; Loader Forks. Lots of Good High Quality Shop Tools!

GARDEN/LAWN ITEMS – HORSE TACK- MOTORS – MISC.

Horse Tack; Stock Tank. Lawn Roller; JD Lawn Spreader; Compost Sifter 8' Aluminum; 2 Antique Johnson Sea Horse Motors; Bike Carrier.

APPLIANCES – FURNITURE - HOUSEHOLD

Fisher & Paykel Washer & Dryer – Nice! Televisions; Single Beds; C.L. Bailey Co. Slate Pool Table; King Size Largo Bed/Justice Mattress; Duncan Phyfe Chippendale Antique Maple Dining Table with 4 Chairs; Largo Bar Stools; Dining Chair's; Green Leather Sofa & Loveseat; Oak Cabinet; Antique Rocking Chair; Tapestries; Nice Linens/Comforters; Acoma Serene Spa Massage Table; Wall Décor; Patio Furniture; Shredder; Books; Art Supplies; 2 Gun Safes-Freedom 16; Light Fixtures; Golf Clubs; Radios; 17 Folding Chairs; Little Omen Keg; Dishes, Pots & Pans; Couches; Rolling TV Stand/By Richard Green. *This List subject to Additions/Deletions.* **Auctioneers Notes:** Very Clean Public Auction. Everything is very Clean & Outstanding Shop Full of High Quality Tools & Wood Working Equipment. Thanks for Attending.



Owners: Dan & Jane Thomas

Serving South Central Missouri & Northern Arkansas Since 1978

Gary Sexton

www.garysexton.com

West Plains, MO. 417-255-7001

Gene Summers, Auctioneer 417-293-2757

Tyler Sexton, Auctioneer 417-372-0124



E-mail: gary@garysexton.com



Auctioneers, LLC

AR Broker #PB00043890
AR License #1568

All announcements made day of sale supersede any written material. Not responsible for lost or stolen property or accidents.

COMMERCIAL REAL ESTATE & MOTORCYCLE BUSINESS MOVING AUCTION

SATURDAY, MARCH 2, 2019 @ 10:00 AM

314 E. Chestnut Street • Springfield, MO 65806

DIRECTIONS: From the intersection of Kansas Expressway & Chestnut Expressway turn East on Chestnut Expressway, Turn Right on N. Jefferson Ave, Turn Right on Chestnut Street and auction will be on your left.



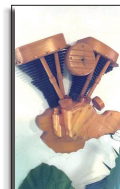
This concrete block commercial building has a total square feet of 3900 sq ft +/- . It is divided into two areas the showroom has 1500 sq ft +/- with a private office and bathroom and the shop area has 2400 sq ft +/- . The shop area has a bathroom, 2 overhead doors, water and air lines. There is a fenced in area behind the shop. This property has great visibility from Chestnut Expressway.

OPEN VIEWING : February 24, 2019 from 2-4

Legal: BEG 100 FT E SE COR ROBBERSON & CHESTNUT STS S 130 FT E 75 FT S 1.5 FT E 20 FTN 141.5 FT W; **Taxes:** \$4966.34
Terms: 10% down day of auction with balance due at closing. Possession at closing with closing in 45 days or less from auction date.

INVENTORY LIST:

2003 Harley Springer Motorcycle; Custom Frigidaire refrigerator; Mercury Racing Motor; Mercury Outboard Motor Stand; David Mann Print; Harley Davidson Saddle Bags; Old Harley Photo; Custom Chrome Clock; New leather motorcycle seats and bags; Motorcycle tires; Diecast cars and display case; Hydraulic Motorcycle Stand; AC Delco from amateur; Metal signs; New Leather jackets and suits; Signage and Clocks; Old candy dispensing machine; Cast iron cars and cabinet; Winchester 30 30 Rifle Ten year anniversary; Oil lamps; Harley Davidson clock; Neon Motorcycle Sign; Loggers book cabinet; Harley Davidson Neon Sign; Shelf; Eagles; Harley Davidson neon sign; Metal display rack glass doors; Neon Harley Davidson sign; Dart board; Wild pig pipe advertising display; Harley Davidson; Electric bicycle zoom with charger; Shelving; Shelving unit; Harley Davidson clock; V twin metal sign; Wooden shelving unit; Wooden Panhead clock; Motorcycle wheels and tires; Display cases; Wooden display case; Various Harley Davidson parts; Butcher block workstation; K & N Display; Die cast Motorcycles; Packard thermometer; A lot of metal signs; Paseadena Motorcycle club picture; Electric hoist; and more



FOR MORE INFORMATION GO TO WWW.EASTERLYAUCTIONCO.COM OR CALL EASTERLY'S AT 417-833-9494

EASTERLY AUCTION CO.

Go to www.EasterlyAuction.com



auctionzip.com
ID#14770

Mike Easterly Auctioneer
417-833-9494

Not Responsible for accidents or theft.

For more information call: Easterly Auction Company, Springfield, MO.

Auction Terms: Bank Letter Of Credit Required.

Visa, Mastercard, Cash, Cashier's check or checks with proper I.D.

Announcements day of sale take precedence over printed material. Auction Notes: Although information

is obtained from sources deemed reliable, auctioneer makes no warranty or guarantee expressed or implied.

Buyers should themselves take the opportunity to make their own inspection prior to sale.

ESTATE AUCTION

SATURDAY MARCH 2ND 2019 • 10:00 AM

1365 RAMSEUR ROAD, WEST PLAINS, MO

**BEHIND JC PENNEYS AND BIG LOTS
WATCH FOR AND FOLLOW DANAHY AUCTION SIGNS**

HOUSEHOLD • ANTIQUES

WHIRLPOOL GLASS TOP ELE. RANGE • ANTIQUE ORNATE CAST IRON QUEEN SIZE BED • CAST IRON TRUNDLE BED; CHINA HUTCH WITH BEVELED LEADED GLASS DOORS • ROLL TOP DESK • BOOK SHELVES • 3 DESKS • KIMBALL OAK PIANO BENCH; KITCHEN HUTCHS; WOODEN BREAD BOX; PINE PANTRY • ANTIQUE DRESSER WITH MIRROR • ANTIQUE WOODEN HALL TREE WITH SEAT STORAGE • DRESSER • 4 WOODEN FILE CABINETS • 2 ROUND OAK KITCHEN TABLES • 6 DINING CHAIRS • SQUARE OAK TABLE WITH 2 CHAIRS • 2 ROUND CARD TABLES • OAK ROCKING CHAIR • WOODEN BENCH • NEW GREY LAZYBOY ROCKER RECLINER • CEDAR CHEST • COFFEE TABLE • END TABLES • SMALL ENTERTAINMENT SHELVES • 2 ANTIQUE DINING CHAIRS • ANTIQUE (NEW ROYAL) TREDDLE TYPE SEWING MACHINE • ANTIQUE WOODEN YARN REEL • WOODEN QUILT RACKS • DECORATIVE BARN WOOD BENCH • 2 NEW IN BOX ARMOIRES • NEW IN BOX BOOKCASE • 10' WOOD LAMINATE KITCHEN COUNTERTOP • BROWNING BOW WITH CASE • QUIVER • SMALL BLACK KITCHEN CABINET • CURVED GLASS CURIO NEW IN BOX • ANTIQUE BABY BED • COSCO HIGH CHAIR NEW IN BOX • GRACO PAY PEN • ANTIQUE CHURCH PEW • NO 6 PICKLE CROCK • ANTIQUE TYPE SET • SPALDING GOLF CLUBS • TENNIS RACKETS • NEW IN THE BOX MARTIN HOUSE • PINK WALKER • GEORGE FOREMAN GRILL • VARIETY OF SIZES OF CROCK POTS • LEAD CRYSTAL BASKET • ONEIDA COOK PAN SET • PAMPERED CHEF PIE PLATE • MISC. GLASSWARE • CAST IRON SKILLETS • BAKING PANS • LARGE ROASTING PANS • RIVAL FOOD SLICER • BLACK & DECKER FOOD PROCESSOR • CROFTON AIR FRYER • CROFTON WAFFLE MAKER • SILVER TEA SET • ELECTRIC KNIFE • CORELLE DISHES • NEW IN BOX SHOE AND ACCESSORY SHELF • GOLD'S GYM ELECTRIC EXERCISE BIKE • VARIETY OF WEIGHTS, SMALL EXERCISE EQUIPMENT • OLD VINYL RECORDS, CASSETTE TAPES • CDS • 6 BOXES OAK HARDWOOD FLOORING • VINYL FLOORING • HOME DECOR BASKETS • NEW KITCHEN TOWELS AND WASHCLOTHS • NEW CURTAINS AND CURTAIN RODS; DECORATIVE THROW PILLOWS • QUILTS • NEW BEDDING • OFFICE CHAIR • HUMIDIFIERS • SHOWER BENCH • WALKER • BEDSIDE COMODE • 2 WOODEN TABLES • BATHROOM SHELVING • SUNBEAM MIX MASTER WITH BOWLS • FOLDING CHAIRS; HOME DECOR • LARGE COLLECTION OF CHICKEN FIGURINES • CHICKEN PLATES • CHICKEN CLOCKS • CHICKEN PICTURES • FISH TANKS • NEW IN BOX HP PRINTER • NEW HP SCANNER IN BOX • HOME DECOR VASES • KITCHEN CANISTER SET • MULTIPLE NEW WALL SHELVES • NEW SMOKE ALARMS • NEW BEAUTY PRODUCTS • PRECIOUS MOMENTS COLLECTIBLES • FIREPLACE TOOLS AND ACCESSORIES
• SEVERAL FLOOR LAMPS • TABLE LAMPS • LARGE VARIETY OF HOME INTERIOR PICTURES AND FRAMES.

LAWN • GARDEN

WEED EATER FRONT TINE GARDEN TILLER • WEDEATER 22" PUSH MOWER • CRAFTSMAN 42" RIDING LAWNMOWER • CAST IRON KETTLE • RANGE MASTER GAS GRILL; SMALL CHARCOAL GRILL • SMOKER • WOODEN SAW HORSES • MINTCRAFT GARDEN CART 1200 LB CAPACITY • LAWN SEEDER • PATIO TABLE, CHAIRS, UMBRELLA • 16 FT LADDER • COSCO STEP LADDER • LARGE BUG ZAPPER • SMALL GREEN HOUSE • BLACK & DECKER LEAF BLOWER • LAWN DECORATIONS • LAWN CARE PRODUCTS • GARDENING TOOLS • POTS • SEED STARTERS • CAMPING SUPPLIES • LAWN CHAIRS; DOG BOXES

SEWING • CRAFTS

SURGE SEWING MACHINE • NEW AND VINTAGE SEWING MATERIAL • BATTING • MUSLIN FABRIC • VINTAGE SEWING PATTERNS; SEWING ACCESSORIES • YARN • THREAD; CROSTITCH PATTERNS • ART SUPPLIES; ACRYLIC PAINT • MISC. SIZES CANVASES • MISC. CRAFT SUPPLIES • KIDS CRAYON CART NEW IN BOX • CRAYOLA COLLECTIBLES AND DECOR

AUCTION NOTES

AUCTION WILL BE HELD INSIDE RAIN OR SHINE. THIS WILL BE A LARGE AUCTION WITH SEVERAL PIECES OF FURNITURE AND LOTS OF NEW ITEMS STILL IN THE BOX. ALSO THERE WILL BE ANTIQUES AND COLLECTABLES. THIS IS AN AUCTION WITH SOMETHING FOR EVERYONE. PREVIEW THE AUCTION FRIDAY MARCH 1ST FROM 10AM TILL 4 PM

THE ESTATE OF THE LATE SHERRILL THOMPSON

CALL DANAHY AUCTION

FOR ALL YOUR AUCTION NEEDS!

417.256.9667

Not Responsible For Accidents • Everything Sold As Is

Ark. License: #2269

62nd Annual Open & Absolute FARM EQUIPMENT

AUCTION

FRIDAY, MARCH 1st, 2019 & SATURDAY, MARCH 2nd, 2019

NOTE EARLY START TIME – 9:00 A.M. EACH DAY

LOCATION:
MAGEE FARM EQUIPMENT COMPANY LOT
2 Miles East of Poplar Bluff on Hwy B – Physical
Address: 1266 Hwy. B
POPLAR BLUFF, MISSOURI

AUCTIONEER'S NOTE: This is the 62nd Annual Open & Absolute Farm Equipment Auction at this location, and will be bigger and better than ever. Lots of good used equipment will be at this sale. More equipment coming in daily, that is not listed on sale bill. For more information on this sale contact Doug or Mike at 573-785-2025. Personnel on site now to receive your equipment. Plan to spend both days with us.

TRACTORS

- Case IH 7240, FWA
- Case 7140, w/ auto steer
- JD 4840, '82 model, 8300 hrs., 42" duals
- JD 4760, cab h/a, 2 wd
- JD 4640, 6000 hrs.
- JD 1050 w/Loader
- JD 301
- Ford 4000
- Montana 4340, 4x4, cab w/Loader
- Montana 5740, 4x4, cab w/Loader
- Montana 3130 HST w/Loader, 190 hours
- Farm Trac 60
- Long 260C
- Long 510 w/Loader
- Kubota B6200, 4x4
- New Holland CT29 w/Loader
- AC DC-17, gas

TERMS

ALL SALES FINAL- Complete payment day of sale. Cash, certified or cashier's check. Personal or company checks will be accepted and MUST be accompanied by a letter of credit from your bank unless you have established recent, satisfactory financial status with Magee Auction Company. All purchases are subject to verification with your bank or financial institution. Immediate possession of all merchandise upon proper settlement. Not responsible for accident, injury or theft and all items at buyer's risk as soon as sold. Equipment sold as is, where is, no warranties or guarantees implied. List subject to change. RULES AND CONDITIONS-Anyone wishing to bid on items at the auction must register and obtain a bidder's card. Anyone bidding for an account other than their own must register as such. Auctioneer reserves the right to reject the bid of anyone who is not a registered bidder.

CONSTRUCTION

- JD Dozer #450C
- JD Wide Track #700 J, 6-way blade, cab/heat & air, 4100 hours
- Cat Mini Excavator #303C CR
- Gallion Grader #110

COMBINE

- Case IH #1660 w/AFX Rotar

LOCAL FARMER SELLING AT 11 A.M. FRIDAY ----

- Versatile 875 Tractor, c/a, 4x4, w/duals
- JD 8520 Tractor, FWA, 4429 hours, 50" duals
- JD 8300 Tractor, FWA, 46 " duals
- JD 8300, 2WD, 5400 hours
- 2- JD 925 Headers
- And other miscellaneous equipment

MOWERS

- Cub Cadet #LT1042
- Cub Cadet #LTX1042
- Grasshopper #725K, 52 inch deck
- JD #757, Ztrack, 60 inch
- Bad Boy Pro, 60 inch, Commercial
- Artic Cat #650 Hi, 4 wd
- Lots of Mowers and 4-wheelers

LAND PLANES

- JD Land Plane
- Proctor Land Plane

DIRT EQUIPMENT

- Reynolds Dirt Scoop, 6 yard, New hose/paint/ready to go
- Ashland Dirt Scoop, 6 yard, w/Dolly wheel
- Ashland Dirt Scoop, 6 yard

IRRIGATION EQUIPMENT

- Lot- Re-Lift Pumps

FIELD EQUIPMENT

- AC Planter, pull type, 6 row
- JD Planter #1890 CCS, 42 ft., New

blades & boots

- JD 1590, No-Till Drill, 20 ft., like new
- 1-Lot Bush Hogs, 4 to 10 ft.
- 1-Lot PTO Ditchers
- Brillion Roller, hyd. flow, 25 foot
- 1-Lot Breaking Plow, 2 to 5 bottom
- 1-Lot Chisel Plows
- 1-Lot Cultivators
- 1-Lot Boom Poles, some hydraulic
- Brandt Hipper Roller #HR 26
- Forrest City Hipper, 6 row
- Forrest City Hipper, 12 row, 30 inch
- 1-Lot Level Plows
- 1-Lot Grader Blades, some w/hyd.
- JD #630 Disk, 32 foot, 20 inch blades, narrow spacing
- 1-Lot Grinder Mixers, MF, Brandy
- 2-Offset Disks # mo. D2428-2420, NEW
- MF Disk #280 25 ft.
- MF Disk #280, 32 ft.
- Disk Bush Bog, w/ hyd. wheels
- JD Cultipacker, 12 foot
- JD Grain Drill #8300, 12 foot

HAY EQUIPMENT

- Tedder, 2-basket
- JD Baler #510
- Vermeer Baler Super F #605
- New Holland Square Baler #310
- Farm Rotary Mower, Like New

SELLING SATURDAY AT NOON

- Local farmer has decided to regroup and sell the following at this sale:
- Kubota Tractor #M7640, cab/air, 2WD w/ 1153 Loader, less than 500 hours
- IH 1066, 4 post canopy—Nice
- Vermeer Round Baler #5420 Rebel, 4x5
- Vermeer Disc Mower, #6040, 8 foot
- Rhino Wheel Hay Rake, #SWR8, 8 foot
- Rhino 2 Basket Tedder #PT207
- Lots of small implements



MAGEE

AUCTION & REALTY

Gary N. Magee, Auctioneer

Ramona Magee, Broker

AR Lic. #3 – Est. 1970
 3908 Heritage Park Road, Piggott, AR 72454
 Phone 870-598-2689 • Cell 870-598-7334 • Fax 870-324-4117
 Visit our website at www.garymageeauction.com

GUN STORE LIQUIDATION AUCTION

After 19 years in business, Ralph & Diane Hess have decided to close Smokey Acres Trading Company.

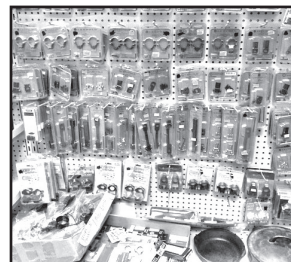
We will auction all remaining inventory on:

Saturday, March 2nd at 10 a.m
at The Red Shed Event Center

169 Truman Street, Doolittle, MO • I-44 to Exit 179

INVENTORY TO INCLUDE:

- Ammunition
- Reloading Supplies
- Selection of Knives
- Holsters
- Gun Care Supplies
- Weaver (El Paso) Scope Collection
- Assorted Scopes
- Scope Bases & Rings
- Collection of Pepsi Trays & Tins
- Some Store Fixtures & Decorations
- Assortment of Small Wooden Boxes
- Collection of Cigar Boxes (40+)
- Assorted Tin Signs
- Collection of Metal 1/24 Scale Die Cast Cars & Trucks (100+)
- Collection of Old Plumb Bobs
- Gun Patch Collection



FIREARMS TO INCLUDE:

- Weatherby Vanguard 30-06
- Savage 340 .222
- Norinco SKS 7.62x39
- Browning BPS 12ga. 31/2" Mag
- Winchester Model 12 12ga.
- Remington 887 12ga.
- Hatfield SAS 12ga.
- US Auto Weapon M-4 5.56
- FN FNS40 .40 S&W
- Ruger P-85 MK II 9mm
- Excell MP-22 .22 Mag
- Rossi .223/.410
- Remington 770 .300 Win Mag
- Mossberg 464 30-30
- Ruger Single Six 91/2" .22/.22 Mag
- Colt L.E. AR15 M-4 5.56
- Winchester 50 12ga.
- Savage 24 S-E .22/.410
- Chiappa 1911 .22
- Mossberg 702 Plinkster .22
- Charter Arms Bulldog .44SP
- Charter Arms 4" Pathfinder .22
- Savage Axis Youth .223 NIB
- Custom Mauser 7x57
- Ruger Mini 14 Stainless Ranch Rifle w/scope .223
- Ruger Mini 14 Non/Ranch .223 (mfg 1975)
- Ruger Mini 14 Ranch .223 with scope
- Remington 870 Tactical 12ga. (New)
- Mossberg 500 .410 NIB
- DPMS AR15 .300 BLACKOUT
- Savage Model 10 .223 Left Hand
- Savage Model 111 25-06 NIB
- Baikal Over/Under 12 ga
- Mossberg 485B 20 ga
- Ruger EC9S 9mm NIB
- Two AR15 Dummy Training Rifles
- 3- Air Rifles
- JC Higgins 10116 .22 Rifle
- Remington 597 .22
- Chiappa 1873-22 .22 Revolver
- Browning A-Bolt .270
- Winchester 77 .22
- Smith & Wesson M&P .22
- Glock 42 .380
- Browning BPS 12ga.
- Remington 870 12ga.
- Smith & Wesson Body Guard .380
- Springfield XD 40 .40 S&W
- Mitchell 15/22 .22 Rifle



NEW ATF RULE

For ATF Form 4473, current name & address must exactly match the photo ID such as drivers license. **MUST MATCH!!**
 If not, we need supplemental government issued documentation with matching current address such as vehicle registration, property taxes, county or city utility bill.
 Cannot be a PO Box!

Terms of Sale: Sale day announcements supercede any and all printed material. Photo I.D. required for buyer's number. No buyer's premium. Payment accepted by cash, check, Visa, MasterCard, and Discover. There is a 3% convenience fee unless paid by cash or check. Nothing removed until settled for. All state and federal firearms regulations will be followed. Not responsible for loss or accidents.

Breakfast & Lunch
 Concessions
 Served

Let us help you with the sale of your firearms collection

J & J Sales, LLC

jjsales@fidmail.com Additional pictures on www.auctionzip.com (auctioneer ID #28053)

573-341-5450
 Office

573-465-4647
 Julie Reagan

573-465-0642
 JD Roach, Auctioneer

573-762-2227
 Sale Day Number



Wheeler Livestock Auction, Inc.

SPECIAL STOCK COW SALE



SATURDAY, FEBRUARY 23, 2019 • 6:00 P.M.

Expecting 700 head of heifers, cow/calf pairs, cows, and breeding bulls.

End of the Road Red Angus-

- 2 Red Angus bulls, 18 mos., 1 Red Angus bull, 2 yrs.
Best of breeding, good stout bulls, 2 are heifer bulls.

Ellis Cattle Co-

- 5 Red Angus bulls, 18 mos., LBW bulls ready to go to work.

Bartling Ranch-

- 58 Fancy horned Herf. Hfrs., 2yrs, 1,000 lbs. Bred to calving ease Horned Herf. Bulls, 68-74 lb. bw. All heifers home raised & dehorned, calve Mar. 5th for 45 days.

C Bar C-

- 31 F1 BWF cows, 4 & 5 yrs, 1,300 lbs w/ 31 Ang sired calves, 400 lbs. 36 Angus cows, 5 & 6 yrs, 1,150 lbs w/ 36 Ang calves, 300 lbs. The above 67 cows are bred back to Char or Red Ang bulls. Bulls put in 12-1-18. All cows & calves complete Vac. Program.

Denny Wheeler-

- 68 Red Ang/Gelv X cows, 6 & 7 yrs, 1,300 lbs., w/ 68 Red Balancer calves, 450 lbs., Cows bred back to Char bulls 12-1-18. Complete Vac program. 8 Blk cows, 5 yrs, 1,200 lbs., w/ 500 lb. Ang calves.

Tillotson Farm-

- 20 Char X Cows, 1,200 lbs., 4-6 yrs., bred 2nd. 10 Blk cows, 1,100 lbs., w/ 300 lb calves. Bred Char or Herf bull.

B.R. Farm-

- 32-Blk Cows, 5-6 yrs., 1,300 lbs., w/ 32 Ang calves 400 lbs., sired by Blk Granite. Cows bred back to Horned Herf bull. 8 Blk cows, 7-SS, w/ 450 lb calves. All cows & calves worked.

Tim Shrout-

- 25 Blk Ang cows, 3-6 yrs, 1,250 lbs, Bred 2nd to Ang or Herf. Bulls, selling all fall calvers.

Pinkman Farm Complete Disp.-

- 25 Red & Yell Gelv. X cows, 7 yrs-BM. 1,200 lbs, w/ 300 lb calves. 15 Red cows, 3-5 yrs., 1,050 lbs, Bred 2nd to Red Balancer or Red Bfmstr Bull. 1-3 yr Red Balancer Bull, 1,600 lbs. 1-3 yr Red Bfmstr Bull, 1,500 lbs.

Mark Lee-

- 20 Blk Ang cows, 5 & 6 yrs, 1,200 lbs, w/ 20 BWF calves, 350 lbs. Cows bred to Vaughan Bfmstr Bull. 8-Blk Cows, 1,200 lbs., Bred 2nd to Bfmstr Bull

Willinger Farm-

- 15 Blk Ang cows, 4 & 5 yrs., 1,300 lbs w/300 Bfmstr calves. 20 Red & Yellow cows, 1,100 lbs., 7-BM., w/ 300 lb calves. All cows bred back to Bfmstr bull. 1 Red Bfmstr bull 4 yrs, 1,600 lbs. 1 Red Bfmstr bull 2 yrs, 1,100 lbs.

Smith Farm-

- 20 Blk & BWF cows, 4-6 yrs, 1,150 lbs., w/ 200 lb calves. Cows running back w/ Blk bulls

C & C Farm-

- 25 Blk cows, 3-6 yrs, 1,200 lbs., bred 2nd & 3rd to Blk bulls.

Turkey Creek Farm-

- 20 Blk & Char X cows, 4-7 yrs, 1,150 lbs., bred 2nd & 3rd to Blk bulls.

Many more consignments by sale day

Seedstock Plus RED REWARD Bull & Female Sale-March 9th, 2019 12:00 p.m.
Selling 75 Red Gelbvieh, Balancer, & Red Angus Bulls & 100 Red open Heifers.
Next Special Stock Cow Sale-March 30th @ 6:00 p.m.

Wheeler Livestock Auction, Inc.

Osceola, MO • 685 SE 13 Hwy., PO Box 560 • BARN 417-646-8102

Byron Wheeler, 417-777-0897 • Austin Shelby, 417-309-1350 • Darwin Harting, 417-296-1029
Gator Hutchinson, 417-876-7477 • Burleigh Wheeler, 417-840-6561 • Skyler Fisher, 417-298-9051
Jeff Shelenhamer, 417-326-9929 • Les Tennis, 417-466-8786

Office Manager: Weston Shelby, 417-298-1316

Bid online on CattleUSA • www.wheelerlivestock.com

Like us on Facebook-Wheeler Livestock Auction





Will sell the following located 5 miles North of Cross Timbers, Mo., on Hwy. 65
Watch for Crawford Auction Service signs.

SATURDAY, FEB. 23, 2019 – 9:30 A.M.

★ COINS ★ GUNS ★ TRACTORS ★ TRUCKS ★ MACHINERY ★ MISC.



See website for more photos!



More items by sale day!
Tractor available—Loader on-site

TRUCK-TRAILERS

- Pequea big bale feeder trailer, 20', good
- 16' B/H stock trailer
- Older GN 20' stock trailer
- 5x8 2 wheel trailer
- 21' HD flat bed, fold down ramps, Pintle hitch
- '72 Chev V8 4-2spd, 14' grain bed & hoist, good
- '97 14' bumper hitch, HD utility trailer
- GN 14' dump trailer
- '15 GN 40' Sure Pull flatbed tandem, duals, new tires

TRACTORS SELL NEAR NOON

- '16 John Deere 5075E cab FWA w/ John Deere H240 loader, shedded under 200hrs (sold farm)
- "H" Farmall N/F original & good
- "H" Farmall N/F motor stuck
- Deutz 50HP
- John Deere 3020 dsl w/F
- John Deere 2510 gas N/F
- Kubota RTV 900 dsl, 4x4, power steering

MISC

- Lawn vac trailer
- 40-50 12' port. panels, new
- (4) 15" tires & wheels, new
- Amana central air unit
- 2-3 Trailer loads tools
- Other misc

GUNS SELL AT 9:45 A.M.

- LC Smith 12 ga, double barrel, 1907
- LaFever 12 ga, double barrel
- Remington 1911, 12 ga, semi auto, 1919
- Gardone 12 ga single shot mag
- Remington 700 classic 222, 1993
- Ruger Blackhawk 357, prewarning
- Ruger Bisley 44, special
- Ruger Bisley 32, H&R mag
- Ruger MKI 22, semi auto, target 6-7/8
- Ruger 308 w/Nikon scope
- Winchester 264 Win Mag w/weaver scope
- Lot asst ammo (30-30, 220 Swift, 357, 38 Spec, 222, 45 Colt, 9mm, 380, 308, 243, 17HMR, 12ga, 16 ga, other)

MACHINERY

- John Deere MX10 10' brush cutter, pull type, like new (sold farm)
- 3pt Bush hog 6' finish mower, ex. good
- 3pt 5' finish mower
- 3pt power washer, like new
- 3pt 16" single bottom plow
- Rhino 3pt 5' brush cutter
- Woods "Brush Bull" 8' pull type, brush cutter, ex. nice
- Bush Hog 3008 spt HD brush cutter 8', good
- Danuser 3pt HD post hole digger, no boom
- 10' Field roller, new
- Older 7' field roller; 3pt bale fork
- 3pt carryall; 3pt blade
- 3pt 5' brush cutter
- Front loader bale spike
- 3pt bale unroller, shop built

COINS SELL AT 9:30 A.M.

- (2)1882 P \$5 gold coins
- 1910 \$2-1/2 gold coin
- 1882-83-90 CC silver dollars
- 1887-96-1900 silver dollars
- (4) 1921 Morgan silver dollars
- 40 Silver dollars
- 60 Silver dimes
- 40 Silver quarters

SAM CRAWFORD AUCTION SERVICE LLC



Cross Timbers, Mo.
CrawfordAuctionService.com

417 998-6629



TERMS: Cash or good check. Nothing removed until settled for. Not responsible for accidents. Lunch available. Statements made day of sale take precedence over printed matter. All items sell as is. No warranties given or implied.

Tom Poynter
Jack Lancaster





ANNUAL SPRING CONSIGNMENT AUCTION
SATURDAY, FEBRUARY 23, 2019 @ 9:00 AM
ALLEN AUCTION SALE'S LOT • 490 S. HWY 47 • HAWK POINT, MO, 63349

Directions: Allen Auction Sale's Lot. From Hawk Point, MO, Take Hwy 47 South 2.5 miles, Auction on Left Side. Watch for Signs Day of Auction.

Please Note: We will be checking in machinery **Saturday 2/16** from 8-4 & **Sunday 2/17** from 9-4. We will also be unloading & checking in machinery all week. Look forward to seeing you!

DEVCOM UTILITIES CONTRACTOR - Retirement Sell Out (EQUIPMENT, TRUCKS & TRAILERS)

Any questions on this machinery call Shea Devins 636-368-2235
 Ditch Witch SK 500 Dingo, tracks, w/ rock bucket & straight bucket, 909 Hrs
 Komatsu Backhoe, model WB140, cab, air, 4x4, 3927 Hrs, 2nd owner
 2000 Ditch Witch 4020 Boring machine, 2880 hrs., 1200' of rod
 2007 JD 35D Mini-Excavator, diesel, 3225 hrs., w/ 12', 18', & 24' Bucket
 2011 Bobcat, 324 Mini Excavator, w/ Adjustable tracks, push blade, 2770 hrs.
 Early 2000's, Ditch Witch 1720 for parts, approx. 250' of rod
 2007 Ditch Witch JT 2026 Mach 1 Boring machine, 450' of rod, w/ 4,6,8,12, & 16 Reams w/ sub side electronics
 Approx. 20 Round metal Reels
 Ditch Witch AMM9 Poly tanks, 1000 gallon
 Ditch Witch 500 gallon tank
 2007 GMC 3500 HD, 4x4, 82,300 miles, auto, work truck pkg., ext. cab, Knapheide service bed, gas
 2007 GMC 3500, 4x4, 170,000 miles, w/ racks, pullout drawers, Knapheide bed, single cab, set up for 220 V, gas
 2007 GMC 3500, 4x4, 206,xxx miles, w/ fuel tank, air compressor, service body, ext. cab, set up for 110 V, regulator for air compressor, for air Chisel/Hammering, gas
 2005 Chevy Duramax, 2500, 4x4, 235,xxx miles, P/W, P/L, 4 door, needs gaskets
 1987 International Road Tractor, 13 Spd, 818,xxx miles, 20' Flat Bed, 2000 poly tanks, tandem Dually axles, CAT Model 340613 motor, 14 GL, 425 HP, hasn't ran in 10 years
 2005 Chevy C5500 Truck, Duramax, 171,xxx miles, 4 door, P/W, P/L, Adj. air ride, 8' flat bed, 500 Gallon tank, full FM 13 mixing station, dually
 2011 Doolittle Master Dump trailer, 8214HD, roll tarp, gooseneck, w/ adj. bed, hyd. lift
 2000 Wells Cargo, storage-side door, 18'
 2001 Millennium M90 trailer, tandem dually, dove tail, w/ ramp, pintle hitch, 20' w/ 4' dove
 Roose MFG Reel Trailer, triple reel, pintle hitch, tandem, no year
 1993 Eager Beaver trailer, 20' w/ 4' dove, 10,000 axles
 1999 Wheeler Reeler, triple reel trailer, pintle hitch, Slabach model Tag Along Arrow trailer, single axle
 1998 Belshie Drill trailer, pintle hitch, w/ drop ramps
 1999 Belshie tandem dump trailer, 14' w/ electric dump
 Tag Along storage trailer, 16' drop down, Roadmaster, 2000 ?
 Vac Tron high pressure machine, 147 Hrs., PMP-800 DT Tank/Model, Diesel motor, w/ 200 Gallon extra poly tank, pintle hitch trailer
 1986 single reel pintle hitch trailer
 1995 Belshie Trailer, pintle hitch trailer
 1999 Belshie Tag Along trailer w/ Dove tail, 20' w/ 4' dove, ramps, pintle hitch
 Belshie Heavy duty trailer, Model T-10, pintle hitch, w/ 500 gallon tank, air brakes, 30' w/ 5' Dove Tail, Heavy ramps
 1999 Belshie Heavy duty trailer, Model T-10, pintle hitch, air brakes, 20,000 axles
 2007 Belshie trailer, triple axle, w/ ramps, pintle hitch
 2000 Fleetwood Pop up Camper, Tag Along, Coleman

RALPH BRANDT - RETIRING FARMER LIST
Any questions call Ralph Brandt 573-690-0112

2005 JD 7420 tractor, MFWD, w/JD741 self-leveling loader w/ smooth bucket, cab, air, IVT trans, dual hyd., PTO, 18x4x38 duals, 3991 hours, 2nd owner, very nice tractor
 2 - Ag Rain 3570 irrigation, 1/4 mile hose
 K&K sprayer trailer, tandem, 9' to 11' adjustable
 900-gallon poly sprayer set up w/ Briggs engine
 Adams 10' fertilizer spreader
 JD water pump, 359 model, on cart
 JD 336 square baler, twine
 International 11 shank disk chisel

G&P CONCRETE - EXCESS EQUIPMENT SALE

2001 Bobcat S310 skid loader, approx. 3800 hrs. smooth bucket w/teeth
 1997 Ford F300 truck, ext. cb, 8' bed, 5 spd, m 190,xxx miles
 1987 Ford 800 dump truck, 7.8 diesel, 10' bed, dually, saddle tanks w/roll tarp, good tires, approx. 240,000 miles
 2004 Tag along trailer, 12 w/drop gate
 1999 Brooks Brothers steel bottom skid loader trailer, 2-7,000 axles, drop ramps, 16'

ALL CONSIGNED ITEMS

COMBINES & HEADS
 IH 1660 combine w/6 row head

TRACTORS

2001 JD 5410, MFWD w/541 loader, 5800 hrs
 JD 4010 Diesel, WF, 3 Pt.
 JD 4010 Gas, WF, 3 Pt.
 1980 JD 301A tractor, diesel
 Ford 8700 tractor, turbo, cab, air, heat, 8400 hrs.
 Ford 2120 tractor, MFWD, diesel, 3 pt., PTO, 3626 hrs
 Ford 5000 w/loader
 Ford 8N, good rubber
 Ford 6610 series 2, cab, air, dual hyd., 3 pt.1800 hrs., one owner
 87300 Kubota, 299 hrs., 3 pt.
 2013 Kubota 500 SX tractor
 2009 Kubota 3400, FWA, diesel, 60" mower deck
 Balarus 572 tractor, MFWD, 67 HP, cab, diesel
 MF 1010 Tractor, Series 2961, 795 hrs., 3pt., New Front tires, new battery
 MF 85 tractor, WF, converted gas to propane, good rubber, 3 pt, PTO, single hyd.
 1962 Massey Ferguson 35 gas tractor, live power, no smoke, runs good
 Fordson Extra tractor, reverse polarity, PTO, 3 pt., diesel
 IH 300 NF, TA, does not run

FARM EQUIPMENT

JD 7100 row planter, no-till, counters/corn meters
 6 Precision bean meters
 JD 7000 split row planter, 6-11, w/markers
 JD 7000 planter, 6 row, narrow w/monitor
 JD 7000 planter 4 row w/fertilizer
 Kinze 4 row wide planter, corn/bean cups, no monitor
 White 4 row seed boss planter, 30', air planter
 JD 494A planter, 4 row, w/extra plates
 JD 8300 drill, pull type w/chains
 IH 510 drill
 JD 630 disk, 22' w/new Remlinger bar basket
 IH 496 disk, 21 Bush Hog hyd. fold disk, 16"
 IH 4800 field cultivator, 24'
 IH Vibra Shank field cultivator
 12 IH field cultivator
 JD mounted cultivator
 JD 400 4 row cultivator
 12 IH field cultivator
 JD pull type rotary hoe
 Spike tooth harrow, pull behind
 Plows, 2 bottom, 3 bottom, 5 bottom, 6 bottom
 Home made 750 gallon fertilizer spreader, used 2 seasons, inline filter
 Spray Coupe 3630, 2136 hrs, 5 speed, 12.4x24 rears, 9x24 front, Ravens Controls, 300 gallon tank, 60'booms, 20' centers, plumbed for 30' drops, foam markers, farmer owned
 Blue Jet NH3 anhydrous applicator, 11 shank, w/Raven control 3 Pt. Landpride 5' Finish Mower Brush hog, 3 pt.
 Finish mower, 3 pt.
 Big Bee brush hog, HD, 7'
 HD 7' Big Bee Line Brush Hog New Holland manure spreader
 Blades, 5', 6', 8',
 Ford Dearborn loader
 Kowker 210 front loader
 Westhoff loader w/bucket, bale spear, pallet forks
 Bush Hog 2445 loader, flat bucket, pallet forks, bale spear
 Sickle mowers
 Horse drawn 1-way disk
 Kubota BL-52-C Tiller, 3 pt. hitch
 Tiller, 5', 3 pt, PTO
 Tiller, 5', 3 pt.
 Land Pride tiller, 4'; 3 pt.
 Dirt scoops
 Fox 2 row silage chopper
 Case manure spreader, good floor
 Portable Bin sweep, for 30' bin
 Westfield 31 Grain auger
 Bulk bin 5x12
 Cumberland bulk bin 9x191/2
 Bulk bin 5x8
 Danuser post hole digger

CONSTRUCTION

CAT 953B High lift, cab, 75%, 10,xxx hrs., good paint, new batteries
 Cat D6C, serial # 10K13391, brush cab, power control winch, w/tree pusher, hyd. blade, w/CROPS & SWEEPS

JD 750 Dozer, 10' Blade, ROPS, Good Undercarriage
 JD 310E backhoe, ca, heat & air, 4x4, extend a hoe
 Bobcat 853 Skid loader, w/bucket, diesel, needs motor work
 JD CT332 skid loader, 1280 hours
 CAT 247B Skid loader, tracks, turbo, w/ smooth bucket
 Bobcat 553 Skid loader, hard tires, smooth bucket
 Reynolds 572 dirt scraper
 Ditch Witch 400xs Vibrator Plow
 Rubber Tracks - Prowler 300-52.5-80 fits Bobcat 331 excavator and JD 27, others possible,
 5 - buckets fit JD backhoe, quick coupler system, sizes 12, 18, 24, 30, 36
 3 - Vibratory plate compactors 12 & 24 inch attach to JD quick coupler
 Set of bucket forks, auger drive w/multiple size auger bits that fit JD quick coupler
 10' Snow plow for skid steer
 Grapple Bucket
 Set heavy duty forks for loader

NEW SKID LOADER EQUIPMENT

Lowe Hyd. Auger 750 w/ 12' skid steer quick attach
 Stout Brush Grapple 66-9 w/ skid steer quick attach
 Stout Brush Grapple HD 72-8 w/ skid steer quick attach
 Stout Brush Grapple HD 72-4 close-tine w/ skid steer quick attach
 Stout Brush Grapple XHD 84-6 w/ skid steer quick attach
 Stout Brush Grapple XHD 84-6 w/ skid steer quick attach
 Stout Grapple Bucket HD 72-FB w/ skid steer quick attach
 Stout Rock Bucket Grapple HD 72-3 w/ skid steer quick attach
 Stout Rock Bucket Grapple HD 72-3 w/ skid steer quick attach
 Stout Rock Bucket Grapple Combo HD 72-3 Open-End w/ skid steer quick attach
 Stout Tree & Post Puller w/ skid steer quick attach
 Stout Walk-Through Pallet Forks 48" w/ skid steer quick attach
 Regular Pallet Forks 48" w/ skid steer quick attach
 5500 lb. walk throw pallet fork hd 60" tines
 5500 lb. walk throw pallet fork hd 48" tines
 5500 lb. extreme duty shaft style walk throw pallet for 48" 3 - 3/8" hd weld on qt plates
 2 - receiver plates
 Double tine bale spear
 Tree/post puller

HEAVY DUTY VEHICLES & VEHICLES

2006 Freightliner road tractor, day cab, 10 spd, 14L Detroit
 2006 GMC 2500HD, 4x4, 6.6 Duramax, 234,xxx miles
 2004 Ford Escort, auto, air, PW/PL
 2004 Chevy 4500 flat bed truck, 2WD, 6.6 Duramax, 10' bed w/tool boxes, 154,xxx miles
 2004 GMC Yukon, SLT model, 4 door, new battery, 4x4, nice
 2001 GMC Sonoma
 1993 GMC Topkick rollback truck, Cat engine
 1981 Int'l single axle Dump Truck, 466 engine, nice truck
 1985 Chevy pickup, v-8, auto, w/camper
 1976 Corvette, does not run
 1999 F250, 2-wheel drive

HAY EQUIPMENT

Case IH 8465 round baler, 5'x6', twine, nice
 New Holland 850 round baler
 New Holland 848 baler, 4x5', twine, nice
 12 - 5x4 net wrapped big round bales (grass/hay mix, 2nd cut)
 New Idea 5409 Disk mower, 7'
 New Idea 5209 disk mower conditioner, new bearings & seals, cutting bar 4 years, 9 3/4" cut, works good
 Goosen straw chopper
 JD side delivery hay rake
 JD 640 hay rake
 JD 3pt. rake
 Case 960 bar rake

TRAILERS & WAGONS

JD 500 grain cart
 1999 Kilbros 375 wagon, model 1280, w/ 12 ton running gear
 1999 Kilbros 375 wagon, model 1280, w/ 12 ton running gear, w/ 15' Kilbros hyd. auger
 2004 Millennium Trailer
 1989 Gooseneck trailer, FFA Built 20' w/ 4' dove tail & slide out ramps, 7000 lb. tandem axle, w/ title
 Gooseneck tandem axle tandem wheel trailer, 20'
 Brooks Brothers skid loader trailer, 14'

Jerry James trailer, 16'
 12' Lark Trailer
 2011 Calico livestock trailer, 12', bumper hitch, shedded, good floor
 1973 Homemade utility trailer
 Home made spray coupe trailer, good ramps, no welds or breaks, titled
 Pull type header wagon
 Tag along pup trailer, 16', hyd
 Tag along trailer, 12', w/sides

LIVESTOCK EQUIPMENT & SUPPLIES

Cattle squeeze chute
 Stainless steel feeder
 Gehl 100 grinder mixer

LAWN & GARDEN

2 - JD L100 riding mower
 JD LX280 riding mower
 JD 757 zero turn mower, ZTR model
 JD 757 zero turn mower, oil leak on engine
 JD X304 riding mower
 JD X475 riding mower
 JD X485 riding mower
 JD 2485 zero turn mower, ZTR model
 JD 138 riding mower
 JD 108 riding mower
 JD GX85 riding mower
 JD 160 riding mower
 JD riding mower, Scott Turf Edition
 JD I10 riding mower
 JD GT235 riding mower
 Emark LCT4818 walk behind mower
 Emark LZ27K60 zero turn mower
 Emark LZ940EK6 ZTR zero turn mower
 Husqvarna tractor style lawn mower GT52XLSI, 52" cut, Briggs & Stratton 24 hp engine
 Husqvarna zero turn commercial mower M-ZT61, 61" cut w/23 HP Kawasaki engine
 Snapper 8 HP Rear tine tiller
 Snapper wood chipper

RECREATION

2015 Kawasaki Mule Pro FXT, roof, vented windshield, twin bench seats, 4x4, P/S, differential lock, new tires, serviced 2/19
 2015 Massimo ATV model MSV500, 4x4, approx. 46 hrs, like new
 2011 Big Muddy 500, side by side, winch, turn signals, roof & windshield, 461 miles
 2008 Polaris 700 Ranger, 4x4, 4 seater, crew cab, windshield, 350 hrs, like new
 1998 Polaris 500 ATV, 6 Wheel, Bed, 4 wd, 6x6, 548 hrs, nice machine
 Kawasaki 3010 Mule 4x4
 2002 Honda Odyssey, well maintained
 EZ Go gas Golf cart, w/ bed
 Club car, gas, golf cart
 1999 Carter go cart, 2 seater, 5 1/2 HP Honda eng.
 1994 Suzuki motorcycle
 Boat & trailer, no title
 Flat bottom boat
 Aluminum boat
 Bass boat

SHOP EQUIPMENT, TOOLS

11,000-watt generator, 50' leads, gas, Kohler Eng
 2017 Miller Bobcat 225 welder, AC/DC,
 Lincoln 220 AC stick welder on cart
 Large lot - Shop equipment
 Large lot - Tools
MISCELLANEOUS
 T-Posts
 Hog panels & Cattle panels
 Lot - Steel
 Lot - Lumber
 500-gallon propane tank w/concrete slabs
 Whiskey barrels

PARTIAL LIST - GO TO WEBSITE FOR FULL LIST, UPDATES AND PHOTOS

Auctioneer's Note : This is a partial list. We will be running 2 auction rings. Please come prepared with extra bidders.

Any questions on any of the equipment, feel free to give us a call at the office. Thanks Nick and Kyle.

ALLEN AUCTION & REAL ESTATE SERVICE LLC
(636) 338-4805 • Hawk Point, MO • www.allenauction.net

The Auctioneers, Nick Allen (636) 358-2900 • Kyle Allen (636) 236-2344 • Tec Parr (573) 239-6745 • Elden Foster (636) 661-5775

PUBLIC AUCTION

SATURDAY, MARCH 2, 10:00 A.M.

Location: 4000 US Hwy. 160, West Plains, Mo. (on the old Spears Dairy Farm) 5.5 miles west of Walmart on 160.
Farm Equipment Dispersal. Reason for auction: Relocating to Ohio. Lunch & bake sale by Amish ladies.

TRACTORS & EQUIPMENT

Tractors 2003 JD 7220 4WD with 741 loader, bucket & bale spears, 16 speed, 3 SCV, like new Radial tires, cab heat & air, 6300 hrs, serviced ready to go, 1000, & 540 pt, 2017 JD 5100E with loader bucket & bale spear. 1000 & 540 pto, 24 speed, still under warranty, Radial tires, 85%, nice, like new (1500 hrs) cab heat & air, serviced and ready to go. 2017 JD 5085E 24 speed loaded, ready, rubber 85%, still under warranty, cab heat & air, like new, serviced. JD 4320 open station, 2WD, runs good, hours unknown, been on TMR mixer, use daily, good tractor. JD 18.4 38 snap on duals.

HAY EQUIPMENT

All serviced and field ready. JD 567 baler, mega wide pu, silage kit, string & net, 9,000 bales. 2016 JD 459 silage special, mega wide pu, string & net with applicator, 9000 plus bales. JD 835 MOCO center pivot flail cond. Nice. 2016 OM5070 Frontier 3 pt. disc mower, like new, 2015 Ogden 12 wheel hay rake. TL5500 Tubeline bale wrapper inline. New Holland 648 baler, autowrap, wide pick up. New Holland 270 sq. bale; 2014 JD MX5 bushhog; BMB 10' bushhog; Woods 15' batwing bushhog; New Holland 790 Forge chopper with 2-row corn & forge head; New Holland 790 Forge chopper for parts; two 18' Meyers Forge wagons with tandem gears; Trioliet TMR mixer scales new knives; Artsway grinder mixer scales & screens Hyd. Augers; Knight 8018 sideslinger manure spreader; two flatbed wagons on JD gears, one 16', one 20'. JD 7200 Notill 6-row 30" corn planter with dry fert. Box; JD Dickey monitor; JD 8300 grain drill. JD 14' field Cultivator with sweep & harrow; JD 100 chisel plow, spring shanks. JD 6 shank subsoiler. 22' field cultivator. 3 pt. carry all. Danuser 3 pt. posthole digger, 14" with Hyd. down pressure. 14' bumper pull cattle trailer with title. Two pickup bed trailers. Larson laser 20' ski boat inboard motor with trailer, clean title, lake ready, Yamaha Grizzly, 660 4 wheeler. Kubota ZD 25 diesel 60" deck 1500 hrs, JD GT 235 48", 309 hours. JD X300.

DAIRY SUPPLIES & MISC.

20 plus 2x2x4 concrete blocks; fence line feeders; feed bunks; self feeder; bale feeders; water tank; County Line squeeze chute; 2 Priefert headgates; portable milking unit with bucket; 6' fiberglass 1 1/4" post; gates; creep feeder panels; denormers; calf puller; milk bottles; seman tank; AI breeder kit; 3 stall calf pens; shade covers.

SHOP TOOLS

A Frame shop hoist; drill press; Weldco deluxe welder; North Industrial 125 welder; GP 15000E Generac generator; 10,000 watt generator; DeWalt portable gas air compressor; 2 electric air compressors; Barnett pallet jack; 3/4" socket set; lots of misc. shop tools; equipment parts.

CONSTRUCTION TOOLS

Air nailers; DeWalt cordless tools; Milwaukee tools; misc. lumber & metal roofing.

HOUSEHOLD

Double reclining sofa & love seat; dresser; chest of drawers; meat grinder #32 with gas engine; old lard press with plates; work bench; RV refrigerator. GUNS: 2 Remington Woodsmaster Model 742 30-06 with 3x9x40 Leupold scope; Browning Belgium 12 ga. semi auto, full choke.

OWNERS: RAY & ELLEN YODER



BILLY SEXTON

AUCTIONEERS

683 Missouri Avenue, West Plains, MO • Office: 417-255-2744 • Billy Sexton 417-257-4595
Justin Kraft 417-274-0073 • www.sextonauctions.com • Not Responsible For Accidents

KILMER FARM EQUIPMENT *Consignment Auction*

SATURDAY, MARCH 2, 2019 • 10 AM
14769 Cattle Lane, Versailles, MO 65084

Directions: At the Intersection of Hwy 5 and Hwy 52 in Versailles, go North on Hwy 5 for 1 mile to Cattle Ln then turn Right or East and go ¾ mile to Sale Site.

**TRACTORS, PLANTERS AND SPRAYERS, CONSTRUCTION EQUIPMENT, TRUCKS AND TRAILERS,
GRAIN CARTS AND WAGONS, MANURE SPREADERS, CUTTERS, TILLAGE, COMBINE AND HEADS,
FEED MIXERS, MISC. EQUIPMENT, HAY EQUIPMENT, SILAGE EQUIPMENT**





**2 RINGS WILL RUN
DAY OF SALE**

For more info and photos:
www.wheelerauctions.com

KILMER FARM EQUIPMENT, LLC

14270 Hwy. 52, Versailles, MO 65084
(573) 378-6615

Gun Auction *Consignment Sale*

Sat., Feb. 23, 2019

Guns & Other Hunting Related Items
accepted Friday 2-6 pm
and Saturday after 7 am

CONSIGN NOW

Sales Begin at 12 Noon • Doors Open at 8 am

Info: 573-263-4232

Rolla Horse Auction
I-44 Exit #195
on 68N 2 miles
St. James, Missouri

**Handguns
Welcome!**

DRIVERS LICENSE
REQUIRED
TO BUY OR SELL
All FFL Rules Apply

FRONT END LOADER: Du-all 125. quick attach, 6' bucket. \$1,400. AC 7' Sickle Mower. \$400. Rogersville, 417-753-2747, 417-766-1991

JOHN DEERE: Commercial mower, 5spd, 36in cut, walk-behind, good tires, blades, etc. \$195-gun trade. Rolla, 573-364-7465.

GRIP-RITE AIR COMPRESSOR: GR152-CM, perfect for finishing tools, twin tanks, rated #1 in tool guide, manual. \$185obo. Ava, 417-686-0032.

LOOKING FOR WATER BICYCLE: Any shape. Leave message, 618-758-2830.

JOHN DEERE 275: 9ft, disc mower. \$5,150. 573-765-4406.

GREAT PYRENEES ANATOLIAN SHEPHERD CROSS: Dewormed, first shots, weaned, out of working parents with sheep. \$100. 573-422-3574, Vienna.

AUCTION REMINDER: Every Wed. @10:30AM Farmington Livestock. Please see our Auction Directory for more information.

BARN WOOD SIDING: 8" & 10" wide. 573-729-7226. www.pineridgerustic.com

2x4 SOLID OAK RAW BOARDS: 1/2 pallet. \$100 OBO. Rolla, 928-514-0505.

AUCTION REMINDER: Gun Auction Consignment, Saturday, February 23rd, Noon. Please see our Auction Directory for more information.

GOT TIMBER? Give us a call. Satisfaction is our goal. 417-589-0207, leave message.

FOR SALE: Solid Stainless steel Container. Great for outdoor fish cooking, etc. Lebanon, 417-532-6570.

1938 CHEVROLET: 2 door, unfinished project. \$8,500. 870-430-5277, Cotter, Arkansas.

AUCTION REMINDER: Kilmer Farm Equipment Consignment Auction. Wednesday, March 2nd @ 10am. Wheeler Auctions. Please see our Auction Directory for more information.

10 JIGSAW PUZZLES: bought new, no missing pieces, \$5 each. Bunker, 573-689-2490.

INDIAN ARCHERY 1950'S: wood, recurve bow, with original box of Ben Pearson arrows. \$195. Rolla, 573-364-7465.

MARLIN 30-30: Model 36G, lever action w/case, great condition. \$585. Spokane, MO 507-440-6007.

www.myweeklytrader.com

GREAT PYRENEES ANATOLIAN GUARD DOG PUPPIES: Born and raised with sheep. Ready now. \$175. 660-337-6650. No Sunday calls. Fortuna.

MISSOURI LAND FOR SALE AT AUCTION

ST. LOUIS COUNTY - 279.9 SURVEYED ACRES

BIDDING ENDS: Wednesday, February 27th @ 10 AM

CALL OR TEXT **Ken Dayley (314) 409-4568** OR **Jason Wallingford (314) 882-6971**

• Excellent Hunting • Mature Hardwood Timber and Hay Crop • Great Location

Bid now at TrophyPA.com



TROPHY
PROPERTIES AND AUCTION
LAND | RECREATIONAL | RESIDENTIAL



CONSTRUCTION EQUIPMENT AUCTION

THUR., FEB. 28

110+ ITEMS SELL REGARDLESS OF PRICE!

Bidding starts to close at 10 a.m. CST



DE8784 '13 Freightliner Business Class M2 bucket truck



DB6989 '08 CAT D6T LGP dozer



DB6987 '10 CAT 289C skid steer



DG3816 '04 Western Star 4900FA dump truck



DG3339 '12 Komatsu PC200LC-8 excavator

INVENTORY INCLUDES: excavators, equipment trailers, bucket trucks, scrapers, backhoes, motor graders, vacuum trucks, dozers and more. All items are sold "AS IS." 10% buyers premium applies. **866.608.9283**



BID NOW! purplewave.com

NERF BARS: for 80's and 90's Jeeps with brackets. \$85. Farmington, 573-218-9231.

AUSTRALIAN SHEPHERD PUPPIES: Born 12/4/2018, UTD on shots, wormed, ready for new homes, Red Tri in color. Asking \$200. 417-458-1047, cell 417-967-6493, Roby.

METZ AXLES & SPRINGS: \$200. 870-430-5277, Cotter, Arkansas.

TRUCK BED MAT: Heavy rubber, 5'4"x7'6". \$50. Pittsburg, MO 417-852-1088.

STEEL METAL FLATBED: for truck. \$200 or trade. Bismarck, 573-734-2822.

CARPET CLEANING MACHINE: Pro Heat 2X made by Bissell, cleans carpet & hard floors. \$85. 573-364-1779.

AUCTION REMINDER: Cattle Sale Every Monday at Noon. Salem Livestock. Please see our Auction Directory for more information.

OLDER FLAT SCREEN TV: cable ready. \$100. Excellent condition. 417-217-9089.

AUCTION

Saturday, Feb. 23 at 10:00 A.M.

Location: From Lebanon, take I-44 West to Exit 123. Go right, turn left on Hwy W. Go 1 mile to 17695 Hwy W on the right (Next to Mid Missouri Stockyards). Watch for signs.

TRACTORS, TRAVEL TRAILER, & GUNS

1953 JD 70 Tractor with Live PTO and Hyd. & Loader, 135 MF Diesel Tractor with 6 Forward and 2 Reverse Gears High-Low Range, 14' 1991 Utility Trailer w/ Title, 1986 Yellowstone 30' Travel Trailer with Pullout Awning Completely Furnished with Built-In Vacuum System Everything Battery and Electric, New Holland Hay Bind with Stub Guards, 6' 3pt. Blade, 2 5' Bush Hogs, 3 pt. Carry All, 110 Gallon Sprayer (With Boom and Hand Sprayer), 5' Harrow, Old 3 pt. Disc, Big Cart on Rollers, Golden 50 Model 30 Lever Action Glenfield Marlin 30-30 with Glenfield 4x32 Scope, Mossburg Pump 410 Shotgun (2 1/2 and 3" Shells)

SHOP, GARDEN, & HOUSEHOLD ITEMS

1500 Square Foot Pellet Stove, Grease Guns, Speed Daire Upright Air Compressor, Lots of Air Hoses, Lincoln 225 Stick Welder, Electric Start 5500 Watt Portable Generator, Acetylene Torch Set, Napa Battery Charger, Bush Hog 48" Commercial Hydrostatic 0 Turn Lawnmower, Oak Work Bench, Echo 510 E.V.L. Chainsaw, 3/4" Drive Socket Set, Several Wrenches (Metric and Standard), Portable Tool Chest, Lots of Sockets, Pliers, and Screwdrivers, Thread Dies, Vice and Grinder, Battery Powered Weed Eaters, Lots of Nuts and Bolts, 55,000 BTU Reddy Heater, Wood or Metal Bandsaw, 10" Montgomery Ward Table Saw, Portable 10" Rigid Table Saw, Air and Electric Hand Tools, Milwaukee Chop Saw, Heavy Duty 16 Speed Drill Press, Chain Hoist, Lots of Gas Cans, Several Long Handle Tools, Electric Pole Saw, Barrel Hand Pump, 4' Farm Gate, 5 1/2' and 6' New Tee Post, JD Tractor Rim, 12' Step and 28' Extension Aluminum Ladders, Load Binders, High Lift Jack, Craftsman 5 HP Rear Tine Garden Tiller, Push Yard Seeder with Fertilize Attachment, Pull Type Yard Seeder, Small Viper Garden Tiller, Push Garden Tiller, Craftsman Electric Start 6 HP Weed Eater on Wheels, 2x4 and 2x6 Lumber, Barn Metal, Tomato Stakes, Honda Push Mower with Bagger, Yard Wagon, 48" Upright Freezer, Whirlpool Washer and Dryer, Maytag Washer and Dryer, Small Window AC, Electric Cook Stove, Hotpoint Refrigerator, Lots of Pots and Pans, Antique Drop Leaf Table Cart, Queen Wood Bed with Pillow Top Mattress and Chest, 4 TVs, Wood Shelves, Metal Shelves, Microwaves and Cart, Portable Thru the Wall AC, Small Magic Chef Refrigerator, Apartment Sized Refrigerator, Several New Hot and Cold Water Heater Hoses, Outside Yard Water Fountain with Pump, Wood Table with Padded Chairs, 6 Padded Chairs, Water Softener, Kenmore Vacuum Sweeper, Necchi Sewing Machine with Desk, Lots of Canning Jars, Chest Freezer, New Pressure Tank, Craftsman 18 Volt and Bosch 12 Volt Battery Drills, Used Doors, Antique Chest with Glass Front Top Shelves, and Many More Items

Auctioneer Note: Reason for auction: Owner has sold farm. Tractors, Travel Trailer, and Guns will sell at 11:30am. Go to auctionzip.com for pictures. Due to muddy conditions there is lots of parking space at the Mid Missouri Stockyard Sale Barn.

OWNER: George & Geraldine Tussing

SALE CONDUCTED BY: HORN'S AUCTION SERVICE AUCTIONEER: KENT HORN (417)531-3968

Auction firm and owner not responsible for accidents. Announcements the day of the sale take precedent over printed material. TERMS: CASH or APPROVED CHECK NOTHING REMOVED UNTIL PAYMENT IS RECEIVED.

ONLINE LAND & HOME AUCTION

20 Acres +/- (Mainly Open)

Inspection Dates:
Wed. Feb. 13, 12 – 1:30 p.m. &
Feb. 20, 4 – 5:30 p.m.



Affordable Property With A Great Starter Home In Hallsville Schools

- Ranch Style 2 Bedroom W/ Potential 3rd Bdrm.
- Full Unfinished Basement
- Spacious Living Room W/ Fireplace
- Enclosed Sun Porch & 2 Car Garage
- 36' x 60' Metal Pole Barn W/ Garage Area
- Older Livestock Barn
- Newer 30' x 40' Metal Pole Barn
- Windmill, Grain Bins & Hay Barn

Note: **Property Sells To High Bidder With No Reserve.** If You're Looking For Peace & Tranquility Here It Is! Conveniently Located Just West of Hallsville off Hwy. 124. Perfect for Livestock. Home Needs TLC.

Online Bidding Ends
Wed., Feb. 27th At 12:30PM
13351 N. Caldwell Rd., Hallsville, MO

“WE MAKE BUYING AND SELLING AT AUCTION EASY”

Atterberry MEMBERS
 Auction & Realty Co., LLC. MarkNet
 573-474-9295 www.atterberryauction.com

For Terms, Details, Or Bidding Assistance,
 Call Your Real Estate At Auction Specialists:
Atterberry Auction & Realty Co, 573-474-9295
 Or Email: contactus@atterberryauction.com

BULL & BRED HEIFER SALE: Sunday, March 10, 2pm. Laclede County Fairgrounds in Lebanon. Offering 25 Limousin, Limflex and Red Angus bulls, 12 months-2 years old. Plus 15 spring calving heifers. Call Josh at 417-664-0913 for info and a catalog. Or view the catalog at www.mc-marketingmanagement.com.

BIG LOT OF FURNITURE: \$200 or trade. Bismarck, 573-734-2822.

AUCTION REMINDER: Sat. March 2, 10am. Billy Sexton Auctions. See our Auction Directory for more information.

ONLINE SORIN ESTATE AUCTION

Gold & Silver Coins • Glass • Furniture

15 Sappington Dr.,
 Columbia, MO 65203
 Bidding Ends Tuesday,
 February 26th at 12:30PM

This Auction Features Staggered Ending Times & Extended Bidding On All Lots.
Bid Online At Atterberryauction.com

Note: Ben & Lucy Sorin were longtime business owners in Columbia, MO. Ben, along with his brother, operated Columbia Auto Parts from 1931 - 1995. Lucy owned and operated House Beautiful Beauty Salon in Downtown Columbia for 35 years. They enjoyed collecting all the items in their auction. There are lots of quality Gold and Silver coins, nice glass pieces, antique and modern furniture, silver-plate items and much more! All of the items in this auction would make great additions to your collections! **Make sure to attend the preview to see these items in person!**



Preview: Monday, February 25th
 from 3:00PM to 5:30PM

Payment & Pick-Up: Wednesday, February 27th
 from 2:00PM to 5:30PM

HUGE Collection Of Quality Gold & Silver Coins
Nice Glass • Antique & Modern Furniture
Silver-Plate Items • Appliances • Rugs • Household
Quilts • Collectibles • Women's Apparel • Tools
Many More Items Listed Online!

For complete terms, listing, catalog, pictures & bidding, visit atterberryauction.com, email contactus@atterberryauction.com, or call (573) 474-9295.

Please contact our office if you need help with the online bidding process.

Sellers: The Ben & Lucy Sorin Family

“WE MAKE BUYING AND SELLING AT AUCTION EASY”

Atterberry MEMBERS
 Auction & Realty Co., LLC. MarkNet
 573-474-9295 www.atterberryauction.com

JOHN DEERE 730 PARTS. Call 417-241-0006.

AUCTION REMINDER: Kilmer Farm Equipment Consignment Auction. Wednesday, March 2nd @ 10am. Wheeler Auctions. Please see our Auction Directory for more information.

PAYING TOP DOLLAR for nice pine logs. 417-589-0207, leave message.

IHC 806 DIESEL TRACTOR: with loader \$7,800, 3pt. (573)765-4406

2-DAY AUCTION!!

SAT., MARCH 30TH
@ 10:00 AM

151 STE HWY 76, ROCKY COMFORT, MO (WHEATON)

HUGE GUN AUCTION!

Featuring over 150+ vintage gun sellout for Martin Olszewski. Accepting consignments on Guns, Bows, Knives, Hunting Gear & Sporting Goods.
 (FFL Rules Apply).

SUN., MARCH 31ST
@ 10:00 AM

151 STE HWY 76, ROCKY COMFORT, MO (WHEATON)

SPRING EQUIPMENT CONSIGNMENT AUCTION

Taking consignments on Farm Machinery, Trucks, Trailers, Tools, Shop, Outdoor. Featuring a complete estate sellout of the late James Arnold of Monett.
LOTS OF TOOLS!

Call (417) 652-7540 or email: kathy@swaauction.com
 for more info or visit: www.swaauction.com
 Early consignments will be photographed & advertised! www.swaauction.com

Bob Hughes

SOUTHWEST AUCTION SERVICE
 Chadd Hughes
 417-652-7540 Wheaton, MO

AK-47 3PIECE: Laminated, wood stock, woodstock only. \$85. Farmington, 573-218-9231.

AUCTION REMINDER: Online Construction Equipment Auction Ends Thursday Feb 28 10am. Please see our Auction Directory for more information.

STOCK DOG PUPS: 1/2 Border Collie, 1/2 Australian Shepherd, Shots/wormed. 3Blk. Tri. females. \$100. B.12/12/18. Levi Beechy, 639 Smith Road, Seymour, leave message, 417-935-2048.

CONSIGNMENT AUCTION

Saturday, February 23rd • 9:00 a.m.

SHOW-ME AUCTION COMPANY
17829 Shadey Brook Dr. • Versailles, MO 65084

FURNITURE & MISCELLANEOUS HOUSEHOLD: Sofa & Matching Chair; 4 Recliners; Reclining Love Seat; 2 Love Seats; 2 Serving Tables; 2 Antique Writing Desks; Antique Oak Wash Stand; Cedar Chest; Antique Book Cabinet; 2 Antique Oak Dressers; King Size Solid Oak 4-Pc Bedroom Set; Queen Size Bedroom Set; Full Size Bedroom Set; 3 Kitchen Tables; Matching Washer & Electric Dryer; Lots of Bed Sets & Sheets; 12-Qt Pressure Cooker; Hammer Dulcimer; Lots of furniture and misc. household still being consigned.

WOOD WORKING TOOLS & MISCELLANEOUS - Nice Consignment of Very Good Quality & Name Brand Wood Working Equipment: Delta 8" Jointer - Model 37 315; Parks 12" Planer; Powermatic 18" Planer; Model 180 Powermatic 12" Table Saw - 72A; Powermatic Mortiser Machine Model 400; ; Sears Jig Saw; Delta 10" Table Saw; Delta 14" Radial Arm Saw ; 20" Jointer; Moak 36" Band Saw - 99" Tall, 16" Cut- Big Machine; Predator 4000 Watt Generator, Like New; 6-Gallon Craftsman Air Compressor; 10" Ryobi Table Saw; 1.25-Hp Makita Router; Ryobi Angle Grinder; Dremmel Rotary Router; Oscillating Saw; Ridgid Coil Screw Gun; Ryobi Skill Saw; Extension Cords; Saw Blades; 6 Saddles & Horse Tack; Pony Cart; Lots of miscellaneous tools and hardware of all kinds still being consigned. **Machinery is in very good condition!**

COINS : 6 - 1923 Peace Dollars; 16 - 1922 Peace Dollars; 4 - 1921-S Morgan; 1924-P Peace Dollar Choice B.U.; 1924 Peace Dollar; 1883-P Morgan; 1883-0 Morgan Gem Unc; 1880-S Morgan Gem B.U.; 1891-CC Morgan Choice; 1878-S Trade Silver Dollar; 1829 Bust Dime; 1851-0 Seated Half Dollar; 1976-S Silver Proof Ike Gem Proof; 2000 Super Proof Silver Dollar; 1900-P Silver Dollar Gem Unc.; 1900-0 Silver Dollar; 1881-S Silver Dollar Gem B.U.; 1881-S Silver Dollar Gem Unc.; 1881-S Silver Dollar B.U.; 1881-S Silver Gem B.U.; 1881-S Silver Dollar Choice B.U.; 1852 One Dollar Gold Choice; 1962 Mint Set; 1964 Mint Set; 2-1986 Unc. Coin Set; 1979 Susan B Anthony Mint Set; 1925 Peace Dollar; 1926 Peace Dollar; 1882-0 Dollar; 1884 Silver Dollar; 2 - 1886-0 Silver Dollar; 1890-S Silver Dollar; 1896 Silver Dollar; 1897 Silver dollar; 1900 Silver Dollar; 1850's Gold Coin; 17 - Silver Half Dollars, 1949-1963; 25 - Silver Quarters, 1934-1945; 48- Roosevelt Dimes 1946-1964; 24 - Mercury Dimes 1918-1945; 54 - Silver Nickels, 1939-1961

GUNS : 9mm Luger Hand Gun w/2 Clips Model AB-10; Western Auto 243 w/Scope; Remington Wingmaster 12 Ga. Model 870; Smith & Wesson 300 Win Mag Model 1500 w/Scope; J.C. Higgins 22 Pump Model 33

MISC. : New 2018 7x14 Cargo Trailer w/Ramp Door; 40+ Collector Tractors & Toys; 3-P 1 o- Auger; 3-Pt Rock Packer; 3-Pt Box Grader

For Consignments or Questions, Call WILLARD MILLER 573-378-4908

Not responsible for accidents. Terms: Cash or check with proper I.D. All statements made date of sale take precedence over printed material.

TRAIL HORSE SUPER SALE

Saturday, April 6, 2019
All Breed Horse Sale
Tack at 11:00 a.m. Horses to follow



Catalog Deadline: March 23, 2019

McNail Multi-Purpose Indoor Arena

30695 Hwy 5 • Lebanon, MO 65536
6 miles North of Lebanon on Hwy 5 at BB Junction (Right before Mike's Country Store)
On-Site Coggins Testing
No "NO SALE" Fee

Please send a copy of your registration papers with your comments to:

WORLD FOXTROTting HORSE SALES

P.O. Box 955 • Rolla, MO 65402

For More Information please contact: **Ralph VanKirk 573-368-1277**
Craig Johnson 712-370-0702

www.worldfoxtrottinghorsesales.com

TAKING CONSIGNMENTS: For school auction, 5-11-19, need quilts, crafts, machinery etc. Deadline April 1st, Contact Lavern or Levi Floyd, Wheatland, 417-461-4943, 417-466-8584, 417-309-3145.

AUCTION REMINDER: All Breed Horse Sale, Saturday, April 6th. Tack at 11am. Horses to follow. World Fox Trotting. Please see our Auction Directory for more information.

WATSON REG. POLLED HEREFORDS: Service age bulls, semen tested, heifers & cows, younger bulls. 417-962-3759, Cabool.

2 GOOD PUSH MOWERS. \$50 each.. 573-218-9231, Farmington. MO.

HUNTING AND RECREATIONAL LAND: Land located West of Bennett Spring. 9.26 acres-\$16,000. Will finance or discount for cash. 417-830-3555.

AUCTION REMINDER: Saturday. February 23 @ 10am. Gary Sexton Auctions. Please see our Auction Directory for more information.

FIREARMS: Professional Repairs and Restorations. Baron's Gunsmithing. 573-363-5801, Camdenton.



MID MISSOURI STOCKYARDS

REGULAR SALE EVERY THURSDAY 11AM

SPECIAL COW SALE MARCH 2ND @ 6PM

For Farm Visits, Market Updates, or Trucking
Call **Zach Cox 417-777-1320**
Dan Romine 573-578-4939

**Competitive Buyers!
Competitive Commission!
Competitive Market!**

Barn: 417-532-9292 
1-44 • Exit 123 "just outside of Lebanon"
17505 Route 66, Phillipsburg, MO 65722
For weekly market updates, visit us at
www.midmostockyards.com

WANTED PINBALL MACHINES. 573-424-7200.

AUCTION REMINDER: Livestock Auction. Every Wednesday at 10:30 AM. Farmington Livestock Auction. Please see our Auction Directory for more information.

AUCTION REMINDER: Saturday. February 23 @ 10am. Gary Sexton Auctions. Please see our Auction Directory for more information.

1992 FORD F250 FOR SALE: 2-wheel drive, 460 engine, C6 automatic, AC, black & chrome. Sharp! \$1,250. Rolla, 573-308-5310.

AUCTION REMINDER: Online Home Auction going on now. Atterberry Auctions. Please see our Auction Directory for more information.

PORTER CABLE NAIL GUN: BN138, 18ga brade nailer, new in case, manual, 1 3/8th - 1 5/8th. \$48obo. Ava, 417-686-0032

SIX 18 SCALE AMERICAN MUSCLE STOCK CARS. Most rare or limited numbered editions. 573-365-5331.

LIONEL TRAIN SET: Steam engine, tender, caboose and other car, track and transformer. \$195. 573-364-7465, Rolla.

AUCTION REMINDER: Cattle Sale Every Monday at Noon. Salem Livestock. Please see our Auction Directory for more information.

JOHN DEERE 2640 DIESEL TRACTOR: Canopy, 70hp. \$8,750. 573-765-4406

FROM OUR LOT TO YOUR DRIVEWAY



2018 Chrysler 300 S
3 to Choose from! Miles from 8k to 18k; All with leather, dual sunroof, Nav.
\$23,900 TO \$24,900



2018 Dodge Challenger
SXT Plus; Htd/Cld Leather; Sunroof; 20s; Technology Group; 13k miles
P-7730 **\$25,495**



2017 Dodge Charger RT
DAYTONA 5.7 Hemi; Leather, Tech. Group NAV., 11k miles
P-14804A **\$33,500**



2018 Dodge Charger
SXT Plus; V6; 24k miles
P-7626 **\$21,800**



2016 Chrysler 300C
V6, Htd/Cld Leather; Nav; 26k miles
P-7643A **\$19,400**



2016 Scion iM
16k miles
P-14700A **\$13,700**



2016 Chevy Malibu
LT; 57k miles
P-14880A **\$14,700**



2018 Ford Mustang GT
5.0 V8, 6spd., 9k miles
P-14613A **\$29,495**



2018 Dodge Charger
RT 392; 6.4 Hemi; Leather; Nav; Sunroof; 6k miles
P-14644B **\$35,800**



2018 Chevy Impala
LT; V6, Nav; 31k miles
P-7652 **\$18,800**



2017 Dodge Challenger
RT 392; 6.4 Hemi; Auto; Leather; Nav; Sunroof; 24k miles
P-14496A **\$32,800**



2018 Chevy Camaro
LT; RS; Sunroof; 20s; 25k miles
P-7685 **\$22,600**



2018 Dodge Challenger
SXT; V6; 18k miles
P-7692 **\$22,000**



2016 Dodge Dart
SXT; Rallye; Nav; Sunroof; Only 4k miles
P-14490A **\$14,500**



2018 Chevy Cruze
Hatchback; LT; 14k mile
P-7782 **\$15,700**



2018 BMW X3
xdrive30i, AWD, Sunroof, Nav., 360° Camera, Loaded, 9k miles
T-14939A **\$41,995**



2017 Chrysler Pacifica
Touring-L Plus; Leather; U Connect Theater; Nav; Hands Free Doors; 25k miles
T-14911A **\$28,500**



2015 Chrysler Town & Country
Touring; Leather; DVD; 40k miles
T-7648 **\$16,700**



2018 Chrysler Pacifica
Touring-L; Leather; Nav; 16k miles
T-7703 **\$26,800**



2016 Chrysler Town & Country
Touring; Leather; DVD; 72k miles
T-14856A1 **\$15,400**



2016 Chrysler Town & Country
Touring; Leather; DVD; 60k miles
T-14937A **\$17,400**



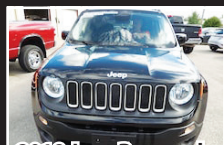
2014 Chrysler T & C
Touring - L; Leather; Dual DVD; Nav; 54k miles
T-7578B **\$16,400**



2018 Jeep Grand Cherokee Altitude
4x4, Leather, Nav., 20s, 22k miles
T-14925A **\$31,995**



2018 Jeep Grand Cherokee Limited
4x4, Leather, Nav., 21k miles
T-7810 **\$32,995**



2018 Jeep Renegade
Lat; 4X4; 20k miles
T-7656 **\$18,700**



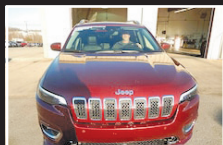
2018 Hyundai Santa Fe
Sport; AWD; 28k miles
T-7661 **\$18,500**



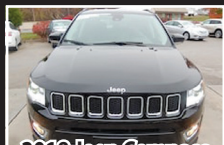
2018 Jeep Cherokee
Trailhawk; 4X4; 4cyl; Uconnect 8.4; 20k miles
T-7635 **\$23,800**



2017 GMC Terrain
SLE; FWD; 27k miles
T-7586 **\$18,300**



2019 Jeep Cherokee
Overland; 4X4; 2.0 Turbo; Htd/Cld Lthr; Tech. Grp; 22k miles
T-7711 **\$28,800**



2018 Jeep Compass
Limited 4x4
Leather; Nav.; Advanced Safety & Lighting Group; 11k miles
T-7701 **\$22,800**

Not all actual photo's shown

LINDSAY CHRYSLER/DODGE PREOWNED

573-336-2698

809 MISSOURI AVE., ST. ROBERT, MO • OPEN 8 A.M. - 6:30 P.M. MON.-FRI. & SAT. - 9 A.M. - 5 P.M.

LINDSAY CHRYSLER/DODGE PRE-OWNED IN ST. ROBERT

OVER 500 VEHICLES

@LINDSAYCHRYSLERDODGE.COM



2016 Honda CR-V
EX-L; FWD; Sunroof;
Leather; 41k miles
T-7575A **\$20,500**



2016 Jeep Grand Cherokee Overland
4x4, Hemi, Sunroof, Nav., 35k miles
T-14695A **\$33,995**



2018 Chevy Equinox
LT; FWD; 12k miles
T-7537 **\$20,500**



2019 Jeep Cherokee
Lat. Plus; 4X4; 4 Cyl;
20K miles
T-7752 **\$22,495**



2015 Jeep Grand Cherokee Laredo
4x4, 66k miles
T-7678A **\$18,800**



2018 Chevy Suburban LT
4x4, Leather, Sunroof, DVD,
22k miles
T-7784 **\$46,995**



2018 Dodge Journey
SE; Black top;
4 cyl; 2k miles
T-7658 **\$18,700**



2018 Dodge Journey
GT; V6; Leather;
14k miles
T-7688 **\$19,800**



2014 Jeep Grand Cherokee Limited; 4X2; Hemi;
Leather; 22k miles
T-7622A **\$20,800**



2013 Dodge Durango SXT
AWD, V6, Nav., 3rd Row
Seat, 89k miles
T-14817A **\$16,995**



2012 Ram 1500
Quad, 4x4, Express, Hemi,
20's, 100k miles
T-7654A **\$17,995**



2018 Chevy 1500
Dbl. Cab; 4X4; LT; V8;
28k miles
T-7774 **\$29,495**



2018 Ram 1500
Crew; 4X4 Big Horn; Hemi;
20's; 24k miles
T-7690 **\$32,900**



2013 Ford F150
Reg. Cab, 4x2, XL, 5.0 V8,
79k miles
T-7667C **\$12,995**



2016 Ford F150
Crew; 4X4; Lariat; EcoBoost 3.5;
Nav Sunroof; 19k miles
T-14672B **\$39,500**



2014 Ford F150
Crew; 4X4; Platinum; EcoBoost
3.5; Sunroof; 103k miles
T-14565B **\$23,800**



2018 Ram 1500
Quad; 4x4; SLT; V6;
15K miles
T-7794 **\$26,995**



2016 Chevy Colorado
Crew; 4X4; Z71; V6; 50k miles
T-14628B **\$27,700**



2018 Chevy 1500
Crew; LT; 4X4; Z71;
8k miles
T-14794A **\$36,900**



2018 Ram 1500
Quad, 4x2; SLT; V6;
26k miles
T-7793 **\$23,495**



2006 Dodge Dakota
Quad; 4X2; SLT; V-8;
113k miles
T-14840B2 **\$8,300**



2006 Honda Ridgeline RT
AWD
T-7799A **\$7,495**



2012 Mitsubishi Outlander Sport
SE; FWD; 118k miles
T-7675 **\$7,700**



2009 Jeep Grand Cherokee
Laredo; 4X4; 122k miles
T-7796A **\$9,495**



2007 Chevy Trailblazer
LS; 4X4; 1247k miles
T-14569B **\$7,495**



2014 Dodge Avenger
SE; 4 cyl; 33k miles
P-7587A **\$10,995**



2013 Kia Optima LX
106k miles
P-7736A **\$7,995**



2013 Ford Taurus
Limited; Leather;
125k miles
P-14508B **\$8,800**



2010 Subaru Impreza
AWD; Sunroof; 127k miles
P-7674A **\$6,995**



2015 Nissan Sentra
SV; 63k miles
P-7715 **\$10,400**

573-336-2698

809 MISSOURI AVE., ST. ROBERT, MO • OPEN 8 A.M. - 6:30 P.M. MON.-FRI. & SAT. - 9 A.M. - 5 P.M.
LINDSAY CHRYSLER/DODGE PRE-OWNED IN ST. ROBERT

JOHN DEERE 2940: Diesel tractor, 80HP, good. \$12,500. (573)765-4406

JOHN DEERE 535: Round Baler, monitor, kicker, net wrap. \$7,200. 573-765-4406.

KING 3B TROMBONE: With F-attachment, pro model. \$1,100. 573-226-5993.

100 OLD CAR BROCHURES. \$100. 573-365-5331.

50FT ROLLS OF TV CABLE: \$15 Each. 417-286-0647.

MF DIESEL TRACTOR: with loader, 2,000 hours, nice. \$8,950. 573-765-4406.

facebook

Email or Phone Password [Forgot account?](#)

Weekly Trader
@myweeklytrader

Home
About
Photos
Reviews
issuu
Posts
Community
Info and Ads

Create a Page

WEEKLY TRADER MAGAZINE

Like Share ...

Photos

KEN & KATHLEEN ARD AUCTION
August 11, 2018 • 9:30am
HWY 19 S to CR 6250, Gladden, MO

VEHICLES & EQUIPMENT
Jodge Grand Caravan 172K
Chuckwagon 4x2 UTV
John Deere 48" Zero-turn mower 2246
best trailer
John Deere rake
oland Round Baler 545 twine
Ferguson 725 Mower Conditioner
Sweeper
erator

GUNS
ing bolt action 28-06 w/scope
Double barrel shotgun
38A 22LR w/scope
john 1100 12ga modified choke 2-3/4
erg pump 20ga
Horns 54 cal muzzleloader
He Shack-on 24 gun
ises
amera
g blind

HOUSEHOLD
glassware
r couch
recliner
cedar log bed
to bed and mattress

Glass and wood display cabinet
Occasional chair
Lot of misc kitchen ware
Microbanous knock knocks
TV trays

OUTDOOR
2 - Outdoor swings
Bird Houses
Coolers
Lawn chairs
5 piece patio set
Rakes
Shovels
Misc yard tools

TOOLS
Chest tool cabinet
2 sets of MAC tools
Various MAC tools
Ball Joint sockets
Lot misc tools
34-ton log splitter
Nail guns
Sihl 230 chainsaw
Table saw
Wood planer
Woodworking tools
+ more

Gary Sexton Auctioneers
ABSOLUTE REAL ESTATE AUCTION
SATURDAY, AUGUST 11, 10:00 A.M.

OUTSTANDING REAL ESTATE

The Home at Jelliff Spring

OUTSTANDING PERSONAL PROPERTY

CHUCK & MELISSA SWIFT, OWNERS
Howell, Oregon & Clark Counties Since 1978
www.garysextion.com
New Home, No. 403-236-2861
1000 S. Adams, Astoria, OR 97103

REAL ESTATE
To be offered day of sale

ING ESTATE AUCTION
Sunday, August 12, 2018 @ 1 p.m.
Headlines From Barick, Mo. Sale 17 they to left on RR. Go again 1 mile north.
only 2000 Yards Rolling Missouri Furniture, Antiques, Collectibles, Etc.
1 Mile 202 - 107 Highway 2000 Yards rolling
1000 S. Adams, Astoria, OR 97103

Search for posts on this Page

Broadcasting & Media Production Company in Lebanon, Missouri
5.0 ★★★★★

Community See All
324 people like this
333 people follow this

About See All

WEEKLY TRADER MAGAZINE

DADE COUNTY MO HISTORY BOOK: 1905-1985 By John K Hulston. \$12.50. Lebanon, 417-532-2045.

20 ACRES: with deeded easement to the Niangua River, lots of road frontage, electric on property. \$47,000. 417-830-3555.

VILLA HOMES IN ROLLA: Has NEW and USED Mobile Homes. Call David for info: 573-578-8072.

2 METAL CULVERTS: 199" long x 1' round, new, never used. \$200 OBO both, Paid \$350. cf2 Rolla, 928-514-0505.

4 WHEELS FOR 2000 POLARIS 4-WHEELER. \$85. 573-218-9231, Farmington. MO.

POULAN PRO 220 CHAINSAW: 20" bar, carrying case. \$100. 573-756-3969, Fredericktown, MO.

AUCTION REMINDER: Real Estate & Personal Property Auction. On-Line bidding ONLY. Auction ends Friday, March 1st at 1:07Pm. Mickey Duckett Auctioneer. Please see our Auction Directory for more information.

CARHART: Quilted Duck Coveralls Mens 38R or women's Large, used but very good condition. \$30. 417-718-5347.

IHC 684: Diesel tractor w/loader, 62hp. \$9850. 573-765-4406.

BEAGLE PUP: Lemon, White. Out of Good Rabbit dogs. 573-308-7537.

LINCOLN 225 WELDER: Electric, excellent shape. \$200 or trade for tools, bacon or pork sausage. Bismark, 573-734-2822.

Pine Ridge Rustic
Log Home Building Supplies

Services Offered!

- Installation
- Pre-finishing available on interior & exterior
- Dealer for exterior stains

www.pineridgerustic.com

523 CR 2410 • Salem, MO 65560 • Ph: 573-729-7226



- Log Siding
- Beveled Siding
- Car Siding • Red Cedar
- Western Cedar • Pine






NEW MAHINDRA ROXOR FRESH OFF THE ASSEMBLY LINE!!

- Steel Body no plastic to break
- 5 Speed Manual Transmission no belt to break
- Fully-boxed, ladder-construction, steel truck-style frame
- Turbo Diesel 4 cycle engine which produces 144 ft lbs of torque and 3490 lbs of towing capacity to get your jobs done. • Made in Detroit
- 2 YEAR WARRANTY OR 12,000 MILES • Starting at \$15,999

Visit us at www.cowtownusainc.com

GERMAN SHORT-HAIR POINTER PUPS: championship blood lines, shots and wormed, 12wk old. \$375each. Niangua, 417-838-3109.

AUCTION REMINDER: Annual Spring Consignment, Saturday, February 23rd, 9AM. Allen Auction Please see our Auction Directory for more information.

TONNEAU COVER: 6'6"x5'8", good condition/clamps & Struts. \$300 OBO. Pittsburg, MO, 417-852-1088.

KVK LAND AND CATTLE will be offer at INTERSTATE REGIONAL STOCK-YARDS on FEBRUARY 22ND at 6:30 PM. 40 home raised Gerloff influenced Angus heifers, along with 60 select home raised black and black baldy cows. (3 to 6) year old to start calving March 1 for a 60 days calving period to calving ease Angus bulls. Complete health program including scour guard. For questions, call Morgan at 573-263-5580 or Kevin at 573-659-3946.

COWS SKULL: Curl-down horns. Horns and skull good condition & clean. Call and I'll email pictures. \$100. 573-364-1779.

WOMENS MERREL: Insulated Snow Boots, sz 8M, waterproof, mid calf height, easy pull on style, fur trim at top, dark chocolate brown color. Nice! \$35, 417-718-5347.

BRUSH CLEARING: 417-650-0596. www.brushmasterlandclearing.com

AUCTION REMINDER: Online Estate Auction going on now. Atterberry Auctions. Please see our Auction Directory for more information.

LADIES CARHART: deep green blanket lined jacket, size Large, adjustable waist tabs, zipper front, Excellent condition. \$35. 417-718-5347.

8N FORD: W/5' trailer type bush hog, 6' blade, post auger, single pt. plow. \$2,000. Waynesville, 573-855-7083.

DIRECTV: Over 145 channels, cost \$29.99/month. Free installation. Free HD channels. Free Movie Channels. Call Home Trends! 417-299-8479. Authorized DirecTV Dealer.

TOYOTAS: 1988 4X4 5-speed, solid body, no rust, 22R motor. Runs good. \$2,250. 1996 Toyota Tacoma: V6, 4x4, extended cab, auto. Prior salvage, runs good. \$2,750. 417-962-0464, 417-254-3089, Cabool.

TAYLOR TRUCKS & EQUIPMENT

417-924-2026 • 2676 Hwy. 5, Mansfield, MO

863 Bob Cat Skid-Steer with LOW hours and hand control
New Mowers! Bush-Whacker, Big Bee
5' and 6' Rotary Tillers
Farm Tires, PTO's & Parts for Rotary Mowers,
Storage Containers & Dry Vans - 20' - 53'
Farm Tractor Implements
Plows, Discs, and More Skidsteer Attachments: Pallet Forks, Buckets, Grapples, Hay Spears & Tree Shears - RR Ties

TRAILER PARTS & REPAIR

NEW SEMI TIRES - DRIVE & STEER

We Invite You To Come By & Look Us Over! Located 2.5 Miles North Of Mansfield, MO On Hwy 5

CUB CADET

20 HP Kohler Motor, Hydrostatic Drive Trans., 42" Deck With Smart Jet Deck Wash System, Cruise Control. Looks & Runs Like New With Only 183 Hours.



PRIVATE OWNED. \$1,100.
573-435-0026

TOYOTA: 5 speed trans, bell-housing transfer, excellent shape. \$350. Headache rack, \$250 call after 5. 417-872-7217.

FEDERAL DUCK STAMPS: from 1950-70's, 10 for \$50. \u001\u0022 Bunker, 573-689-2490

3'x2' 1940's PINBALL MACHINE. \$85. 573-218-9231, Farmington. MO.

WANTED: old Franklin County Plat books. 573-468-4924

JOHN DEERE 4240: Diesel cab and air tractor, power shift, 3900hrs, very nice, 110hp. \$29500. 573-765-4406

CASE ELEPHANT TOE KNIFE: good condition. \$500. Eminence, 573-226-5993.

AUCTION REMINDER: On-Line Auction going on NOW. Atterberry Auctions. Please see our Auction Directory for more information.

AUCTION REMINDER: Every Wednesday at 10:30 am. Farmington Livestock. Please see our Auction Directory for more information.

AUCTION REMINDER: Friday March 1st and Saturday, March 2nd both days @ 9am. Magee Auction. Please see our Auction Directory for more information.

Starnes Auto LLC

22115 Rt. 66 • Lebanon, MO 65536
417.588.3159 Office • 417.718.2707 Cell
www.starnesauto.com

| | |
|--|----------|
| 1997 CHEVY LUMINA | |
| MAROON, 51,XXX MILES..... | \$4,200 |
| 1999 PONTIAC GRAND AM GT | |
| WHITE, 4DR..... | \$1,950 |
| 2000 GRAND PRIX | |
| GOLD, 184,XXX MILES..... | \$2,500 |
| 2003 CHEVY SILVERADO | |
| WHITE, 141,XXX MILES..... | \$5,200 |
| 2004 CHEVY SILVERADO | |
| PEWTER, EXT CAB, 2WD, 5.3, 164,XXX MILES..... | \$5,200 |
| 2004 CHEVY SUBURBAN | |
| WHITE, LEATHER, 4X4, 272,XXX MILES..... | \$4,200 |
| 2004 GMC ENVOY XUV | |
| SILVER, 2WD, V8, 179,XXX MILES..... | \$4,250 |
| 2004 PONTIAC GRAND AM | |
| RED, 180,XXX MILES..... | \$1,800 |
| 2006 CHEVY SUBURBAN LS | |
| BLUE, 2WD, 185,XXX MILES..... | \$5,200 |
| 2006 CADILLAC ESCALADE | |
| BLACK, AWD, 216,XXX MILES..... | \$5,500 |
| 2006 PONTIAC G6 GT | |
| WHITE, CONV, 73,XXX MILES..... | \$6,250 |
| 2007 SATURN AURA | |
| GOLD, 48,XXX MILES..... | \$5,800 |
| 2008 SATURN AURA | |
| MAROON, 89,XXX MILES..... | \$5,450 |
| 2009 SATURN OUTLOOK | |
| GOLD, 117,XXX MILES..... | \$5,700 |
| 2010 BUICK ENCLAVE CXL | |
| SILVER, 78,XXX MILES..... | \$9,850 |
| 2010 CHEVY EQUINOX | |
| PEAL WHITE, LEATHER, SUNROOF, 77,XXX MILES..... | \$9,450 |
| 2010 CHEVY EQUINOX LTZ | |
| WHITE, SUNROOF, V6, 140,XXX MILES..... | \$6,500 |
| 2010 CHEVY MALIBU LTZ | |
| WHITE, 89,500 MILES..... | \$6,900 |
| 2012 GMC TERRAIN SL | |
| BLUE, 98,XXX MILES..... | \$9,450 |
| 2013 GMC TERRAIN SLE | |
| MAROON, 4CYL, 101,XXX MILES..... | \$8,200 |
| 2014 CHEVY EQUINOX LTZ | |
| MAROON, AWD, SUNROOF, NAVIGATION V6..... | \$16,500 |
| 2014 GMC TERRAIN SLE | |
| CHARCOAL, V6, 107,XXX MILES..... | \$9,200 |
| 2014 CHEVY EQUINOX LTZ | |
| WHITE, 88,XXX MILES..... | \$13,025 |
| 2015 CHEVY EQUINOX | |
| GOLD, 75,XXX MILES..... | \$9,850 |
| 2015 CHEVY EQUINOX LTZ | |
| MAROON, AWD, SUNROOF, NAVIGATION V6 72,XXX MILES..... | \$15,500 |
| 2015 CHEVY EQUINOX LS | |
| LIGHT BLUE, 68,XXX MILES..... | \$11,250 |

WE DO ALIGNMENTS!

4-SALE: 3yr old Gelbvieh bull, very gentle, registered calves onsite. David Hershberger, 4953 Marquis rd, Summersville, MO 65571. \$2200 obo.

TWO NEW VINYL WINDOWS: Open upright, double pane. 62.5x38.5 \$100 obo, 49.5x36.5 \$75 obo, deal for both. Rolla, 928-514-0505.



TASK. TASK. DONE.

RTR12 SERIES
ROTARY TILLERS
15-60 HP 42", 50", 58", 66", 74"
• Reverse rotation
• Offset capabilities
• Lower clevis hitch for easy hook-up
• Steel plate upper hitch
• Seven position skid shoes
• 15" Rotor swing
• 4" C' shaped blades per flange

3 YEAR Limited Gearbox Warranty

For Outstanding Products & Service

AGRI ENTERPRISES

1-1/2 Miles South Of Licking, MO On Hwy 63
573-674-2203
1-800-653-7152

www.landpride.com www.agri-enterprises.com

AUCTION REMINDER: 62nd Annual Farm Equipment Sale. Friday March 1st and Saturday, March 2nd both days @ 9am. Magee Auction. Please see our Auction Directory for more information.

JOHN DEERE 10ft OFFSET DISK. \$4,250. 573-765-4406

SMALL WELDING SHOP BUSINESS FOR SALE: in Columbia. Text or call for information, 573-772-3018.

MENS LONDON FOG: Trench Coat, sz 40 Reg, dark taupe color, zip out liner, double breasted w/belt. Very nice. \$35. 417-718-5347.

METRO MOTORS INC.

R.V. SALES

**NEW GREY WOLF, CHEROKEE & ROCKWOOD!
GREAT SELECTION OF NEW & PREOWNED RVs**

| | |
|--|---|
| <ul style="list-style-type: none"> •2012 350RL Brookstone 5th Wheel, 3 Slides, King Bed..... \$28,500 •2016 274RK Cherokee TRL Lg. Slide..... \$17,500 •2019 274DBH Cherokee TRL Lg. Slide-Out, Fireplace, 15,000 BTU AC, Enclosed Tanks..... \$22,900 •2019 16 BHS Wolf Pup..... \$12,500 •2018 2906WS Rockwood TRC 3 Slides..... \$30,900 | <ul style="list-style-type: none"> •2016 17BH Greywolf TRL..... \$15,500 •2000 34' Allegro Bay V-10 Ford, 71,xxx Miles..... Sale Price \$24,500 •2018 122 S Rockwood A Frame..... \$12,500 •2017 210 RB I-Go Cloud Trailer/New \$17,500 •2009 24' Winnebag View 6 Cyl., Myrcedes Diesel, 59,xxx Miles, 2 Slides..... \$43,900 •2018 8297S 5th Wheel, Ext. Living Room, R/King Bed, 4 Slides. \$37,500 |
|--|---|

"Where Your Satisfaction Really Counts"
2727 S. Campbell - Springfield, MO - Visit our website at www.metro-motors.biz
417-882-6800

AUCTION REMINDER: Auction, Saturday, February 23 @ 10am. Horn's Auction. Please see our Auction Directory for more information

CEDAR GAP TOPSOIL: Garden Ready topsoil, Only water required, delivery within 50-mile radius, Seymour. 417-935-2877. For more info: www.cedargaptopsoil.com

JOHN DEERE 7000: 6 Row 30in Planter, no till. \$3350. 573-765-4406.

1987 BUICK GRAND NATIONAL: \$20,000. 870-430-5277, Cotter, Arkansas.

WANTED, TIMBER TO LOG ON SHARES: Honest, reliable, references. 417-533-4607, 417-664-1195.

WEEKLY TRADER MAGAZINE

YOUR AD GOES HERE!

Add **YELLOW** Color For An Additional **\$3** Per Reader Ad

All ads will include Phone Number (unless requested to be deleted by advertiser) and City Or Town, Phone Number with Area Code counts as one word. City or Town counts as one word.

RATE: 80¢ Per Word. All Classified Ads Require Payment Before Print.

| | | | |
|--------------|--------------|--------------|--------------|
| (1) 80¢ | (2) \$1.60 | (3) \$2.40 | (4) \$3.20 |
| (5) \$4.00 | (6) \$4.80 | (7) \$5.60 | (8) \$6.40 |
| (9) \$7.20 | (10) \$8.00 | (11) \$8.80 | (12) \$9.60 |
| (13) \$10.40 | (14) \$11.20 | (15) \$12.00 | (16) \$12.80 |
| (17) \$13.60 | (18) \$14.40 | (19) \$15.20 | (20) \$16.00 |
| (21) \$16.80 | (22) \$17.60 | (23) \$18.40 | (24) \$19.20 |
| (25) \$20.00 | (26) \$20.80 | (27) \$21.60 | (28) \$22.40 |
| (29) \$23.20 | (30) \$24.00 | (31) \$24.80 | (32) \$25.60 |
| (33) \$26.40 | (34) \$27.20 | (35) \$28.00 | (36) \$28.80 |
| (37) \$29.60 | (38) \$30.40 | (39) \$31.20 | (40) \$32.00 |

Place your Classified Ad TODAY!

417-532-2800 • 800-665-8875

Fax: 417-532-8140

Or Mail To: P.O. Box 192 • Lebanon, MO 65536

For your convenience we accept MasterCard, Visa, Discover or American Express



DEADLINE FOR CLASSIFIED ADS: MONDAY 12 NOON!!

Name _____

Address _____

City _____ Email _____

State _____ Zip Code _____ Phone _____

Ad Total \$ _____ X # Weeks _____ = Amount Enclosed \$ _____

#1 Selling Tractor in the World



Better traction, stability & control

“Get Superior performance with a Mahindra”

Great Time To Buy!

Special Factory Discount!

Plus

Agri-Enterprises Discounts!

Mahindra M85

85 HP, 4WD,
Cab, A/C Heat
with Loader



0%*
60 Months
Limited Time Offer

Mahindra 2538

38 HP, 4WD,
Cab, A/C Heat
with Loader



*10% down with approved credit, must finance thru Mahindra.
Limited time offer. Subject to change. See dealer for details.

www.agri-enterprises.com

For Outstanding Products & Service

AGRI-ENTERPRISES

1-1/2 Miles South Of Licking, MO On Hwy 63
573-674-2203 • 1-800-653-7152

Mahindra
Rise.