

FREE
WEEKLY
TRADER

MAGAZINE

Vol. 26 No. 37
DECEMBER 19, 2019

800-543-8271 • 800-665-8875



Find us on
Facebook

@myweeklytrader

Auctions - Pg. 19

MYWEEKLYTRADER.COM

WAYDES
EQUIPMENT

CUBA
(573)-677-0707

UNION
(636)-583-8830
WAYDESEQUIMENT.COM



Kubota



\$0 DOWN

0% A.P.R. FINANCING FOR 60 MONTHS!*

*\$0 Down, 0%A.P.R. financing for up to 60 months on purchases of select new Kubota equipment from participating dealers' in-stock inventory is available to qualified purchasers through Kubota Credit Corporation, U.S.A.; subject to credit approval. Some exceptions apply. Example: 60 monthly payments of \$16.67 per \$1,000 financed. Offer expires 12/31/19. For complete warranty, safety and product information see dealer or KubotaUSA.com.



BX Series



B Series



L Series



MX Series

**Lower your taxes when you buy new Kubota equipment by Dec. 31
with the Section 179 tax deduction.***

*Limitations under Section 179 may apply. See a qualified tax professional for advice on your specific situation



Kubota

Shape your world.



CHEVY EMPLOYEE DISCOUNT FOR EVERYONE



ALL -NEW 2019 SILVERADO CREW CAB LT ALL STAR Z71



\$ 6,000 TOTAL CASH ALLOWANCE
\$ 4,888 EMPLOYEE DISCOUNT FOR EVERYONE
+ \$ 500 OPTION PACKAGE DISCOUNT

\$11,388 TOTAL VALUE²

2020 EQUINOX LT



\$ 3,250 TOTAL CASH ALLOWANCE
+ \$ 2,627 EMPLOYEE DISCOUNT FOR EVERYONE

\$5,877 BELOW MSRP³

2020 TRAX LT FWD



\$ 3,000 TOTAL CASH ALLOWANCE
+ \$ 1,487 EMPLOYEE DISCOUNT FOR EVERYONE

\$4,487 BELOW MSRP³

ALL-NEW 2019 BLAZER PREMIER AWD



\$ 4,067 EMPLOYEE DISCOUNT FOR EVERYONE
+ \$ 1,000 CASH ALLOWANCE

\$5,067 BELOW MSRP³

FIND NEW ROADS

CHEVROLET



1 Visit chevroletemployeeediscout.com for offer and vehicle eligibility. Not available with fleet sales and some other offers. Take new retail delivery by 1/2/20. 2 Total Value based on \$51,270 MSRP. Not available with special financing, lease, fleet sales and some other offers. Take new retail delivery by 1/2/20. See dealer for details. 3 Based on AWD Equinox Premier AWD \$30,740 MSRP. Based on 2019 Trax LT FWD \$24,645 MSRP. Based on 2019 Blazer Premier AWD \$50,975 MSRP. Not available with special financing, lease, fleet sales and some other offers. Take new retail delivery by 1/2/20. See dealer for details. ©2019 General Motors. All rights reserved.



FAIRGROUND

Auto Plaza
DRIVEN TO SERVE YOU BEST...

100 Fairgrounds Road
Rolla, Missouri
(573) 364-1002

www.FairgroundGM.com



#1 Selling Farm Tractor in the World

Better traction, stability & control

"Get Superior performance with a Mahindra"

- Potential Tax Savings
- Many Financing Choices

.99%* For 60 Months

1.99%* For 72 Months

2.99%* For 84 Months

OR
Special **\$4,000+**
Aged Discount

PLUS
Finance at
5.59%*
For 60 Months



Mahindra 1533

Shuttle shift or hydrostat, 4WD, with loader

* Must Qualify and finance with Mahindra. + On select models Limited Time offer. See deals for details.

www.agri-enterprises.com

For Outstanding Products & Service

AGRI-ENTERPRISES

1-1/2 Miles South Of Licking, MO On Hwy 63
573-674-2203 • 1-800-653-7152

Mahindra
Rise.



LOT OF 72: "The Antiques Journal" Magazines, years- 1974-75, 1978-80, Mar-Dec 1977, Jan-Feb 1981. \$60 for all. Grovespring, 417-533-9484.

LARGE VICTOR WOOD FURNACE: and late model 3ton Air Conditioner. \$950. 636-239-4124

FOR SALE DARK OAK CURIO CABINET: \$170. 1-636-388-5810, Leslie.

1985 FORD F250 Grill & Light Trim: \$40. 573-308-5884, Rolla.

VINYL WINDOW: Double pane, 50x33. \$50. 417-322-4432.

20 GAUGE SHOTGUN RELOADING WADS: 9bags of WAA20s, 15bags of WAA20F1. \$5/bag. Osage Beach, 573-302-0890.

WANTED, TIMBER TO LOG ON SHARES: Honest, reliable, references. 417-533-4607, 417-664-1195.

TIM'S USED CARS

(573) 341-3828 • 1334 South Bishop (Hwy. 63) • Rolla, MO
Next to Hwy. CC • www.tims-used-cars.com

2013 FORD F150 XLT, CREW CAB,
4X4, 5.0 V-8, POWER EQUIPPED, 90,XXX MILES.
ONLY \$18,900

2011 TOYOTA TUNDRA SR5, DOUBLE CAB,
4X4, 5.7 V-8.
ONLY \$12,800

2008 DODGE 2500 SLT, LONE STAR, QUAD CAB,
4X4, 6.7 DIESEL, AUTO, 168,XXX MILES.
ONLY \$19,500

2017 RAM 2500 TRADESMAN, CREW CAB,
4X4, 6.4 HEMI, POWER EQUIPPED, 28,XXX MILES.
ONLY \$34,500

LARGE SELECTION OF CARS, TRUCKS, SUVs & VANS!

USED EQUIPMENT

- Mahindra 5525 w/loader. Less then 100 hours.
- Mahindra 6075 w/loader, Cab, 4WD, Remainder 5 - 1/2 Year Powertrain Warranty. Low Hours
- 920 Cat Wheel Loader
- Gehl Silage Chopper • 5', 6' & 7' Brush Cutter
- JD 10' Cultipacker • 3pt. 3 bottom plow
- 12' Spring Tooth Harrow 3pt. 2 Disc Disc Plow
- Other Misc Equipment

For Outstanding Products & Service

AGRI-ENTERPRISES

1-1/2 Miles South Of Licking, MO On Hwy 63
573-674-2203 • 1-800-653-7152
www.agri-enterprises.com

WANTED PINBALL MACHINES. 573-424-7200.

AUNT JEMIMA COLLECTION. \$200 All. 573-327-9068.

Offering the Area's LOWEST METAL PRICES!



Custom Homes • Metal Roofs

Pole Barn Packages

| | | | |
|----------------------------|---------|----------------------------|----------|
| 24'x32'x10' materials only | \$5,300 | 30'x60'x10' materials only | \$8,950 |
| 24'x40'x10' materials only | \$6,075 | 40'x60'x12' materials only | \$12,100 |
| 30'x40'x10' materials only | \$6,825 | | |

Plus Sales Tax And Delivery.
Labor available at additional cost.
Call for quote.

Compare Before You Buy.

We Use Only The **Highest Quality** Materials!



- ALL MATERIAL PACKAGES INCLUDE...
- ✓ #1 Yellow Pine Lumber
 - ✓ #1-40 Yr. Painted Metal w/Screws
 - ✓ 1-10' Overhead Door
 - ✓ 1-36" Entry Door

Fully Insured



PORTABLE BUILDINGS
Rent to Own
No Credit Check

29 Gauge
#1 PAINTED METAL
★ Lifetime Warranty - \$70.00 Sq.
★ 40 Year Warranty - \$67.00 Sq.
★ 20 Year Warranty - \$64.00 Sq.
★ 25 Year Galvalume - \$54.00 Sq.

Labor prices will be higher in locations over 75 miles from Marshfield, MO

Marshfield
BUILDINGS
www.marshfieldbuildings.com

1049 SCHOOLVIEW DR.
Marshfield, MO



417-859-7744

ROME 8FT OFFSET DISK: \$3,750. 573-765-4406.

TRUCK BED. 9' metal bed. \$450. 417-741-1232 or 417-241-5193.

HOLLYWOOD 4-BIKE HITCH MOUNT RACK: Excellent condition, Includes (2) Allen Stabilizer tension bars and keyed alike locking hitch pin and cable. \$175. Conway, 417-718-5347.

MODULAR STOCK SALE - It is time to move our inventory. **TRUE MODS** - Save Thousands. Call Marla, better than 20 years experience. 573-657-7040, chateauhomes.net.

JOHN DEERE 925 Diskbine. \$6750. 573-765-4406.

USED FLAT BEDS: 2 DRW, SRW. 636-671-3800

CHRISTMAS SPECIAL: 766 Farmall pedal tractor, very nice. \$290, 417-859-6574

TAYLOR TRUCKS & EQUIPMENT
417-924-2026 • 2676 Hwy. 5, Mansfield, MO

Bush-Whacker Heavy Duty Rotary Cutter

New Mowers! Bush-Whacker, Big Bee
Farm Tires, PTO's & Parts for Rotary Mowers,
Storage Containers & Dry Vans - 20' - 53'
Farm Tractor Implements

Plows, Discs, and More Skidsteer Attachments: Pallet Forks, Buckets, Grapples, Hay Spears & Tree Shears - RR Ties
CLEARANCE ON 5' AND 6' ROTARY TILLERS

TRAILER PARTS & REPAIR | **NEW SEMI TIRES - DRIVE & STEER**

We Invite You To Come By & Look Us Over! Located 2.5 Miles North Of Mansfield, MO On Hwy 5

2015 YELLOW SILVER TOBIANO CURLY MARE: 43" high, registered ISHA, willing and gentle, saddled but not ridden. \$1,100. Niangua, 417-880-0025.

2018 KZ SPORTSMAN 363FL DESTINATION RV: Lebanon. Call for price. 309-678-0057.

PYRENEES/ANATOLIAN PUPPIES. Cuties! Excellent pets/guard/sheep dogs. \$250. In time for Christmas! Reserve yours now. 417-322-0161.

WOOD FURNACE: Heats over 2,000 sqft home, good condition. \$575. 636-239-4124.

WEEKLY TRADER
MAGAZINE

Vol. 26 December 19 2019 No. 57

Published By
Lebanon Publishing Co. Inc.
PO Box 192, Lebanon, MO 65536
417-532-2800
www.myweeklytrader.com

Everything advertised in this publication must be made available for purchase, use or enjoyment without regard to race, creed, color, sex, age, marital status, or the purchase of goods or services. The advertiser will be responsible for advertisements, notices, typographical errors, etc. Copyright reserved - no part of this publication may be reproduced by any means without permission in writing from the Publisher. We reserve the right to discontinue all Pre-arranged orders. Credit and non-refundable in advance. The Publisher is not responsible for any loss of mail or delivery of this publication. The publisher is not responsible for any loss of mail or delivery of this publication. The publisher is not responsible for any loss of mail or delivery of this publication. The publisher is not responsible for any loss of mail or delivery of this publication.

JOHN DEERE 3020 TRACTOR: W/John Deere 148 Loader, good rubber, power shuttle, strong running diesel tractor, stored inside. \$11,500obo, **6' BUSH HOG CUTTER**, new blades, good condition \$900. Lebanon, 573-247-7161, 417-533-0877.

2015 CHEVROLET COLORADO: 4 door, extended, 4 cylinder, auto, air, 92,xxx miles. Free Carfax. \$13,900. 573-364-5008. www.jimsmotorsrolla.com.

PUPPIES FOR SALE: Beagle/Dachhund mixed. Silver and Tri-Colors. UTD shots/worming. \$150/males, \$200/females. 417-322-0833. MUST SELL by Christmas.

2004 FORD MUSTANG GT. \$6,500 OBO. 417-741-1232 or 417-241-5193.

SMALL SQUARE HAY BALES: Timothy, Alfalfa & Orchard Grass mixed. \$6. Alfalfa grass mixed. \$5.50. Long Lane, 417-345-5634

LANDPRIDE RCF3010: pull type brush hog, 10'. \$5,900. 417-270-1505.

MINI CHOPPER. \$125. 417-683-7843, Tecumseh.

5HP ARIENS Horizontal Shaft gas engine, pull start. \$50 OBO. 573-286-1957, Eldon.

06 DODGE DAKOTA: 4 door, V6, 4x4, new tires, needs transmission, red in color, 188,000 miles. \$2,000. (417)260-2177, Houston.

CHIP BOX DUMP TRUCK: 1997 GMC-6500, very good condition. Mtn Home, ARK, 480-313-5758.

VILLA HOMES IN ROLLA: Has NEW and USED Mobile Homes. Call David for info: 573-578-8072.

LIONEL TRAIN SET: Steam engine, tender, caboose and other car, track and transformer. \$195. 573-364-7465, Rolla.

SELL IT HERE!



WEEKLY TRADER MAGAZINE

417-532-2800 • www.myweeklytrader.com

JOHN DEERE 535 ROUND BALER: monitor, kicker, net wrap. \$5,250. 573-765-4406.

2017 BUICK ENCORE PREFERRED SUV: 24,xxx miles, white auto, air. Free Carfax. \$16,500. 573-364-5008. www.jimsmotorsrolla.com.

JOHN DEERE 4020 TRACTOR: with Koyker 500 loader, 90% rubber, power shuttle, strong running diesel, stored inside. \$12,500obo. Lebanon, 573-247-7161, 417-533-0877.

DARDEN PROFESSIONAL TIMBER HARVESTING, BUYING STANDING TIMBER: Great prices, improve wildlife habitat and improve forest health. State Certified & Fully Insured! 573-247-4808 or 573-739-1122. Salem

QUALITY REPLACEMENT COWS: 80 BLACK SECOND & THIRD PERIOD COWS, 20 Red 2nd & 3rd period cows, 4-7yrs old, avg weight 1250lb-1300lbs, de-wormed, vaccinated, preg checked, trucking available. Otterville, 660-619-5190.

- John Deere 420, Wide Front, Recent Overhaul, Good Paint & Tires \$4,800
- John Deere 2010, Recent Overhaul \$6,600
- David Brown 1212 Diesel QA Loader, 2 Sets of Remotes, 65 HP \$5,900
- Ford 8N Sherman Transmission, Good Condition \$1,800
- Generator PTO 15,000 \$500
- Generac Generator 4,000 \$350
- 3.8 Ft. Disc \$900
- DU-AL Loader QA \$1,400

STARR TRACTOR • ROGERSVILLE
417-753-2747 • 417-766-1991

RARE 1937 CIVILIAN CONSERVATION CORPS (CCC) 7TH CORPS AREA OFFICIAL MANUAL. \$20. 417-532-2045, Lebanon.

WANTED G-SERIES ALLIS CHALMERS. Running condition. 314-800-6592.

2 REAR FENDERS FOR 1946-48 CHEVY COUPE: \$200 or trade. Bismark, 573-734-2822.

HAROLD BELL WRIGHT BOOKS: God and The Groceryman and The Recreation of Brian Kent. \$10 each. Lebanon, 417-532-2045.

5 MOUNTED TIRES: size 12-20, \$200. 417-753-2747, 417-766-1991, Rogersville.

KILL LICE DEAD: PRAIRIE PHOENIX CATTLE CARE SYSTEM. 417-286-3540.

NEW CHROME RUNNING BOARDS: For 2019 Chevy 1500 Crew cab. \$200. 417-646-8807.

HARLEY SPORTSTER 900CC: electric start primary cover. \$150. 573-764-3517. Call in PM

Now Stocking
Large Selection
 of
Plumbing
 PEX, PVC, & CPVC
 and
Electrical
 Supplies!



STOCKING
 Porter Paints
PPG
 Commercial Paints
Sikkens
 Stains

Seymour, Missouri 417-935-4201

Sale Ends November 30, 2019



Pole Barns & Post Framed Buildings!

Call for free quote, brochure & color chart.
 Other sizes also available.

| | | | |
|---|---|---|---|
| 23'x32'x10' \$4,099 Material Only \$5,319 Labor Included | 23'x40'x10' \$4,799 Material Only \$6,329 Labor Included | 30'x40'x10' \$5,699 Material Only \$7,699 Labor Included | 40'x60'x12' \$10,099 Material Only \$14,359 Labor Included |
|---|---|---|---|



NOBODY, BUT NOBODY BEATS OUR PRICES!!!

10 ft. Slider • Engineered Trusses 8' O.C. • 2x6 Treated Bottom Wrap • Screws • 2x10 Top Wrap • 2x4 Purlins • Full 29 Gauge Steel • Plus 3 ft. Entry Door with Lock
 OPTIONS: Sidewall Heights on all Buildings 10', 12', 14' & 16'. Overhead Garage Door, Skylights, Insulation, Wainscoting, Insulated Vinyl Windows, Cupolas. Labor Rates Slightly Higher over 50 Miles from Seymour. Call for YOUR FREE QUOTE TODAY!!!

| | |
|---|-----------------|
| PAINTED WHITE, GREEN OR TAN METAL\$69.99 | IN STOCK |
| 10' - \$22.10 12' - \$26.52 16' - \$35.36 | |
| MIX & MATCH METAL\$39.99 | |
| 8' - \$10.13 10' - \$12.67 12' - \$15.21 | |
| GALVALUME METAL\$52.50 | |
| 10' - \$16.60 12' - \$19.92 16' - \$26.56 | |
| GALVANIZED CORRUGATED METAL\$56.75 | |
| 8' - \$9.84 10' - \$12.30 12' - \$14.75 16' - \$19.67 | |

40yr Painted Metal
\$72.99

KNOTTY PINE DOORS
 Starting at
\$109.99

LP SMARTSIDE T-5 LAP B GRADE \$43.59/SQ

Car Siding!
 1x6 White Pine Siding **43¢** in ft
 1x8 White Pine Siding **54¢** in ft
 * 4 Profiles to choose from!
 Broken Bundles Add 10¢ Per Ft.

4x8 Sheeting
 Less than full units Add \$1 per sheet

| | |
|----------------------|---------|
| 3/8" Beaded Paneling | \$15.99 |
| 5/8" T111 Siding | \$19.99 |
| Paneling | \$9.99 |
| 1/2" Plywood | \$19.99 |
| 3/4" Plywood | \$23.99 |
| 3/16 Pegboard | \$12.99 |

Sales and Servicing

PROFESSIONAL POWER DONE RIGHT

NEW PACKAGE HOMES

Shown with Available Options

Your Choice of either:
 Stock 5/8" T111 Wood Siding w/1x4 Pine Window & Door Trim - or -
 7/16" OSB & House Wrap ready for other finish options

2x6—16" on center-Exterior Stud Walls
 Residential Roof Trusses-2' on center
 4/12 pitch with 1' over hang
 40 year Painted Metal roofing in 20 Different Colors
 Profile Ridge Vent - Ventilated Ridge Cap
 Vinyl Center Vent Soffit
 Color Matched Metal Fascia & Gable Trim
 2 - 3' 6 Panel Entry Doors
 4 - 3'x4' Vinyl Insulated Windows

ALL FIGURED FOR SUITABLE CUSTOMER SUPPLIED SLAB OR SUB-FLOOR

Price for Basic Materials Package & Labor

| | | | | |
|--------------------|--------------------|--------------------|---------------------|---------------------|
| 20x24(480 sq. ft.) | 20x32(640 sq. ft.) | 20x40(800 sq. ft.) | 25x40(1120 sq. ft.) | 25x48(1344 sq. ft.) |
| \$9,050 | \$10,615 | \$12,119 | \$15,242 | \$17,075 |

REAL WOOD SIDING
 2x6 Log Siding - 1.09¢ In ft
 1x8 Beveled Cedar from- 64¢ In ft
 5/8 T1-11 Siding from \$19.99

DECK PACKAGES
 Materials Only

| | |
|---------------------|---------------------|
| 8x6\$199.99 | 10x12\$419.99 |
| 8x8\$239.99 | 10x16\$549.99 |
| 10x10\$349.99 | 12x12\$499.99 |
| 12x16\$649.99 | |

QUAKER Now Stocking Quaker Vinyl Windows

| | |
|-------------------|-------------------|
| 2030 \$ 99.99 | 3030 \$119.99 |
| 3040 \$129.99 | 3052 \$145.99 |
| 3040Twin \$279.99 | 3052Twin \$314.99 |

LUCKY DISCOUNT LUMBER
 417-935-4201
 455 State Hwy C • Seymour MO 65746
 www.luckydiscountlumber.com

*Some restrictions apply see store for details

2011 Ford F150 Platinum SuperCrew Cab

**4X4, 3.5L V6 Ecoboost,
Black, New Tires,
Drives Great, 99,XXX Miles,
Salvage Title, Very Minor
Damage Repaired**



\$15,900

417-718-5347 • Conway

1979 CHEVY PICK-UP: 2WD, Custom 10, 350, V-8, Automatic, new interior, new tires, new bed liner and cover, new rear bumper, runs and drives like a dream. \$7,500. 573-934-0014.

AUSTRALIAN SHEPHERD PUPPIES: fathers gray murle Australian Shepherd, mother red and white half Australian half English Shepherd, 573-663-7459.

30 GAL FUEL TANK: Fiberglass. \$50. 417-753-2747, 47-766-1991, Rogersville.

WR CASE & SONS Cookbook & Historical Companion. \$7.50. 417-532-2045, Lebanon.

IHC 966 DIESEL TRACTOR: Turbo, good rubber, strong tractor. \$9,000. 573-765-4406.

CHEVROLET FLY WHEEL: Fits small block 283, 327, 350 etc. New with slight surface rust. \$95. 573-364-7465, Rolla.

BARN WOOD SIDING: 8" & 10" wide. 573-729-7226. www.pineridgerustic.com

15FT BUSHWHACKER BRUSHOG: \$4,900. 417-322-0161

PYRENEES/ANATOLIAN PUPPIES: parents are excellent sheep/guard dogs. \$250. 417-322-0161.

COZY SECLUDED ONE BEDROOM HOME: in gated area, includes all utilities except telephone, trash and satellite, 7 miles south of St. James. \$450/month 573-699-4351

3PT BALE CARRIER: \$100. 417-753-2747, 417-766-1991, Rogersville.



Wright Spray Foam Insulators, Inc. Commercial & Residential
Call for FREE Estimates!
Mose Gingerich 417-746-1953
B. Eli Yoder 417-746-4932

INSIDE COMPLETE VICTOR WOOD FURNACE: Heat exchangers and inside firebox all rebuilt. \$200. 573-729-5808.

JOHN DEERE 2940: Diesel Tractor, 80HP with G.B. 900 hy reach loader. \$11,000. 573-765-4406.

1953 FORD JUBILEE: new tires, runs good, excellent condition. \$3,000. 417-664-3425.

PINNACLE RANCH/12mo Red Angus and Red Balancer Bulls/Red Angus & Red Balancer Heifers for sale. 417-679-4269, Gainesville.



★ American Made Metal Roofing ★

40 Year Warranty Metal.....\$1.99 (\$62.18 Per Sq)



*29 Gauge 10 Year\$1.79 (\$55.93 Per Sq)

****While Supplies Last****

29 Gauge #1 Galvalume \$1.69.....\$1.39 (\$43.44 Per Sq)

29 Gauge 40 Year *Saddle Tan*\$1.69 (\$52.81 Per Sq)

★ 17 Colors To Choose From
★ 20 Years In Business
★ We Manufacture Our Own Metal and Trusses

3 Locations To Serve You!

6952 E. 7th St. Joplin, MO. 417-317-7961
1100 Pace Rd. Pocahontas, AR. 870-609-1900
35 Killdeer Rd. Seymour, Mo. 417-952-7143



*possibly not American made

Building In A Box

Stud Wall & Pole Barn Kits

| | Non-Warranty Metal | 10Year Warranty | 40Year Warranty |
|---------------|--------------------|-----------------|-----------------|
| 24x30x8..... | \$3,350 |\$3,700 |\$3,850 |
| 30x40x10..... | \$4,950 |\$5,350 |\$5,600 |
| 40x60x12..... | \$9,300 |\$10,000 |\$10,200 |

Pre-cut Packages Also Available



MIDWEST CONSTRUCTION

Free Estimates!

- Pole Barn • Garages • Framing
- Remodels • Roofing • Concrete
- Decks & Porches

Contact Abner Glick
417-664-1794

BEAGLE PUPS FOR SALE: Males/- Females. Ready for Christmas. \$100 each. 417-260-1536.

AUCTION REMINDER: Online Estate Auction Going on Now. Bidding closes Tuesday, Jan 7th. Schneider Auctioneers. Please see our Auction Directory for more information.

BRANDENBURGER CRAFTS: Open Friday, Saturday & Sunday. 9am-5pm. From Cuba, Hwy 19 North, 14 miles to Enky Road, turn left, follow signs. 573-437-2950.

4X5 MIXED HAY: excellent quality. \$65/-bale. 417-322-0161

HIGH COUNTRY
Timber & Stone LLC

- Log Cabin & Home Construction
- Masonry
- Masonry Supplies
- Hunting Blinds

573-674-3979 • 573-247-3989
 11749 Crest Ln., Licking, MO

150 GAL PROPANE TANK: Needs new valve. \$75. 417-683-7843, Tecumseh.

PICK UP TRUCK BEDLINER: Standard size Ford, Fits F150-F350, good condition. \$40. Cedar Hill, 314-303-7857.

FORD 4000 DIESEL: W/Loader, \$10,500. Potosi, 573-747-2722.

16FT 6-TYPE GALVANIZED GATE: \$100. 417-293-0568.

EMMONS RESOLUTIONS LLC

- > Brick Restoration
- > Tuck Pointing
- > Sealing
- > Caulking
- > Red Iron Construction
- > Framing

Colton Emmons 417-664-8350
 Eddy Torrey 417-630-2670

REGISTERED GERMAN SHEPHERD PUPPIES: Ready now, Cute!. \$150. Hartville, 417-741-2198.

1994 GMC PICKUP: Ext. cab, southern comfort conversion. Asking, \$1,550. 573-368-6633. Rolla.

AUCTION REMINDER: Public Auction Friday December 27th@ 10am. Knight Auction. Please see our Auction Directory for more information.

MERRY CHRISTMAS

To all the people who
 are dear to me,
 I wish all of you nothing but the
 joy and happiness that this
 Christmas brings!
 Merry Christmas to all and God Bless!

Debbie Calvin

JOHN DEERE 4240: Diesel Tractor, cab and cold air, power shift, 3,900 hours. \$29,500 573-765-4406.

FOR SALE: 6', 3pt, Disk Brand, new, never been in dirt. \$985. 417-322-3404.

RENTAL NEEDED ASAP: Moving to area, and need rental house w/pasture for our horses. Leave message, 641-226-2431 or 573-578-6476.

ROUND HAY BALES: Alfalfa grass mixed. \$35-\$40. Long Lane, 417-345-5634

Custom Welding & Repair!

Custom Welding & Repair on Farm Machinery & All types of trailers including semi | Alum Welding | Lights & Brakes Repair

JR's Fabrication
 Levi K. Zook • 417-741-2312 • 4875 Hwy BB Hartville

CUSTOM SAW MILLING: Lebanon. 417-533-4607, 417-664-1195.

CHAINLINK DOG PEN :6ftx6ftx10ft long and dog house. \$160. 636-239-4124.

1 COMPLETE SET OF SERVICE MANUALS: parts, electrical, engine and fuel for International Cub Cadet series 82 lawn tractors. \$65. 636-239-2695.

CABLE PULLING JAW GRIP: Klein #1684-5, excellent condition. \$150. Cedar Hill, 314-303-7857.

Barnett Repair
 18425 Buttercup Rd
 Barnett, MO 65011
 573-392-3050

- ENGINE OVERHAULS
- TRANSMISSION REPAIR
- GENERAL REPAIR ON FARM MACHINERY

\$30 HOUR
 Owners:
 Paul & Levi Leinbach

JOHN DEERE 2630: Diesel tractor, 70HP, w/145 JD loader. \$8,650. (573)765-4406.

1998 FORD CONTOUR FOR SALE: Brake problems. \$400 OBO. 417-464-1432.

ELECTRIC SICKLE SHARPENER: Works good. \$40. 417-646-8807.

JOHN DEERE 567 ROUND BALER: monitor, kicker, wide pick-up, cover net wrap. \$9,650. 573-765-4406.

OLD LINN CREEK, HA HA TONKA & CAMDEN CO BOOK "Before the Dam Water", by T. Victor Jeffries. \$3.50 plus \$2 if mailed. 417-532-2045, Lebanon.

MOTORHOME: 1998, F350, Catalina Sport, 22', good shape, new tires, 67K. \$8,000. 573-261-0513.

L4400 KUBOTA: 4wd tractor with loader and 3rd function valve, Low hours. \$22,500. 417-270-1505.

POSTER BED. \$125 Round table. \$45. Duncan Phyfe Table. \$100. 417-741-1232 or 417-241-5193.

PINE LOG SIDING..www.pineridgerustic.com 573-729-7226.

1984 CHEVROLET MOTOR HOME: trade for trucks. Bismark, 573-734-2822.

SMALL SQUARES MIXED GRASS: small squares Brome. \$5/each, Large squares mixed grass, \$45 & \$65. 573-539-2060

TAKUCHI 135 EXCAVATOR: One Owner. \$15,000. 573-765-4406.

AUCTION REMINDER: Saturday, December 21st, @ 10am. Wheeler Auctions. Please see our Auction Directory for more information.

WANTED: LP Gas kitchen range w/standing pilots, and 125gal LP tank. 417-746-4440.

DETROLA MUSIC MACHINE: Plays CD'S, Records, Cassettes, AM-FM Radio, excellent condition, 20x18x12, oak finish, antique look. \$65. 573-364-7465, Rolla.

SINGLE BRAHMA HARNESS: Like new, Standardbred size. \$250. 417-533-9484, Grovespring.

HORSE DRAWN BUCKET CART: plywood body, wooden wheels. \$650obo. Buckboard, 8'x32" pneumatic tires. \$575. Niangua, 417-880-0025.

3 PUPPIES, POMERANIANS-ACA REGISTERED: 2 Brothers-White. 1 black female (not related), Age 3-4 mos, UTD shots/wormed, All 3-\$900. 2-\$700, 1-\$375. Cash only. For more information 417-426-5767, Ask for Amy, Eldridge.

CHRISTMAS PUPPIES: Anatolian/Akbash, excellent herd guardians or companions, will hold until Christmas, UTD on shots. \$300. 573-337-2164/417-458-1535.



Which Kubota Is Right For You?



Kubota THE RIGHT EQUIPMENT IS RIGHT AROUND THE CORNER. Kubota

L2501 DT PACKAGE DEAL



25HP Kubota diesel engine***
4WD, Ag Tires, 18' Trailer,
5' Box Blade, Kubota Loader,
5' Land Pride Brush Hog,
6 Year Power Train Warranty***
\$0 Down, 0% A.P.R.
for 60 months**
\$20,995

**ONLY \$249*
per mo W.A.C.**



**Sale Ends
12/31/19**

L3901 DT PACKAGE DEAL



39 Kubota diesel engine***, 4WD, Ag Tires, 18' Trailer, 5' Box Blade, Kubota Loader, 5' Rotary Cutter, 6 Year Power Train Warranty***
\$0 Down, 0% A.P.R.
for 60 months**
\$24,795

L3301 DT PACKAGE DEAL



33 Kubota diesel engine***
4WD, Ag Tires, 18' Trailer, 5' Box Blade, Kubota Loader, 5' Land Pride Brush Hog, 6 Year Power Train Warranty***
\$0 Down, 0% A.P.R.
for 60 months**
\$23,995

**ALL-NEW GAS-POWERED
RTV-XG850 SIDEKICK**

POWER • PERFORMANCE • HANDLING • STYLE

48HP***, 40 mph transport speed, gasoline engine.
* Price per month does not include insurance and sales tax if applicable.
Includes \$1,000 rebate and 3.99% APR financing for 60 mo. with approved credit**
Other purchase and finance options available. See dealer for details.

L4701 DT PACKAGE DEAL



47 Kubota diesel engine***, 4 cyl., 4WD, Ag Tires, 18' Trailer, 6' Box Blade, Kubota Loader, 6' Land Pride Rotary Cutter.
6 Year Power Train Warranty***
\$0 Down, 0% A.P.R.
for 60 months**
\$30,995



Get unmatched Kubota quality. Kubota designed, engineered and built. More package deals available.

Visit Us In TWO Locations!

8665 Outer Road, Mtn. Grove
417-926-5454 • 877-926-5458

4973 W. US Hwy. 160, West Plains
417-256-0420 • 800-766-0420

* \$0 Down, 0% A.P.R. for 48 months. Qualifying Equipment: RTV-XG850. \$0 Down, 0% A.P.R. financing for up to 48 months on purchases of select new Kubota RTV-XG850 equipment from participating dealers' in-stock inventory is available to qualified purchasers through Kubota Credit Corporation, U.S.A.; subject to credit approval. Some exceptions apply. Example: 48 monthly payments of \$20.83 per \$1,000 financed. Offer expires 12/31/19. See us or go to KubotaUSA.com for more information. ** \$0 Down, 0% A.P.R. for 60 months. Qualifying Equipment: BX, B, L, MX and M, MH(M7), RB, DMC, DM, RA and TE Series. \$0 Down, 0% A.P.R. financing for up to 60 months on purchases of select new Kubota L2501 DT, L3301 DT, L3901 DT or L4701 DT equipment from participating dealers' in-stock inventory is available to qualified purchasers through Kubota Credit Corporation, U.S.A.; subject to credit approval. Some exceptions apply. Example: 60 monthly payments of \$16.67 per \$1,000 financed. Offer expires 12/31/19. See us or go to KubotaUSA.com for more information. *** For complete warranty, safety and product information, consult your local Kubota dealer and the product operator's manual. Power (HP/KW) and other specifications are based on various standards or recommended practices. **** Only terms and conditions of Kubota's standard Limited Warranty apply. For warranty terms, see Kubota's Limited Warranty at www.KubotaUSA.com or authorized Kubota dealers.

SEASONED FIREWOOD for sale. \$165 cord, free delivery within 15 miles from Grovespring, 417-259-2203.

CHURCH FOR SALE: Sturgeon, MO. All new outside, remodeled inside, holds 80-90 people, nice kitchen, 2 nice restrooms, on 6 corner lots. Also could be used as Daycare business etc. Call only, 573-881-2006.

4 NEW SCHRADE OLD TIMER BOWIE KNIVES: In package. \$33/each . 417-293-0568.

AUCTION REMINDER: Closed Dec 23 and 30. Jan 10 Pre-Vac Noon. Stock Cow sale, January 18th @ 1pm. Salem Livestock. Please see our Auction Directory for more information.

AUCTION REMINDER: Public Auction, Saturday, December 28th@ 9:30am. Sam Crawford Auction. Please see our Auction Directory for more information.

2 FRONT FENDERS FOR 1947-1953 TON AND HALF CHEVY TRUCK: \$100 or trade. Bismark, 573-734-2822.

CHECKERED WALNUT WOOD STOCK PISTOL GRIP: for Marlin Model 336 or 1895. \$100. Washington. 636-239-2695.

NEW HOLLAND TC-40 DIESEL M.F.D. TRACTOR: with New Holland 16-a loader, nice. \$14,500. 573-765-4406.

D&H OUTDOOR WOOD FURNACES SINCE 1986: Forced air, 90% efficient, fire proof insulated, thermostat control. Complete Heating and Cooling Systems. 573-743-6943, Salem.

JOHN DEERE HX-10: Pull-type 10ft, brushcutter. \$4,200. 573-765-4406.


HARLEY 45 SOLO: rear brake drum+sprocket unit. \$125. 573-764-3517, Call in PM.

IHC 1086 DIESEL TRACTOR: Cab & Cold Air. \$8,750. 573-765-4406.


7.3 POWER STROKE 2001, F250-XL, Super Duty, automatic, regular cab, 2WD, excellent. \$5,175. 417-399-6383.

FIREPLACE INSERT: Very heavy duty, or free standing. \$150. 636-239-4124.

FIREARMS: Professional Repairs and Restorations. Baron's Gunsmithing. 573-363-5801, Camdenton.




"Right Here!"
"Right Now!"



chhomecenter.com
Prices good thru December 28, 2019

Pole Buildings and Barn Packages



Basic Packages Include:
All #2 or better lumber, painted metal w/warranty, standard trim package, painted screws, and wood trusses 8' on center.


Have Your NEW BUILDING in less than 6 WEEKS! Don't Wait Any Longer!

*Delivery is available, please see store for delivery fees.

| Pole Building Packages | Material Only | You can arrange to have the building installed, based on local contractor construction rates, for as low as* |
|---|---------------|--|
| 24' x 24' 10" sidewalls 1-16' x 7' overhead and 1-3' walk door | \$4,099 | \$5,329 |
| 24' x 32' 10" sidewalls 1-10' x 7' sliding & 1-3' walk door | \$4,389 | \$5,809 |
| 30' x 40' 10" sidewalls 1-10' sliding & 1-3' walk door | \$5,739 | \$7,989 |


*Within 35 miles of store

10' Vinyl Bottom Bunk Feeder (VBBunk)



\$124

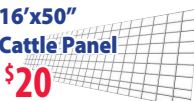
Galvanized Steel Bale Feeder (RBALEFEDERHD)



\$190

*Units Vary Slightly From Images Shown

16'x50" Cattle Panel



\$20


NOW OPEN IN MTN. GROVE!

CABOOL
Near Hwy 60
at 107 South Hwy 181
(417) 962-4535
Mon.-Sat. 8 a.m.-5:30 p.m.

HOUSTON
Hwy 63 (By the Super Center)
1453 Sam Houston Blvd
(417) 967-4179
Mon.-Sat. 8 a.m.-5:30 p.m.

ROGERSVILLE
Hwy 60, 2 Blocks
South on Mill St.
(417) 753-2500
Mon.-Sat. 7:30 a.m.-6 p.m.

MTN. GROVE
Near the Square
402 East 1st Street
(417) 926-3086
Mon.-Sat. 8 a.m.-5:30 p.m.



MARSHFIELD
Hwy 38 at 360 McNabb Rd
I-44 Exit #100
(417) 468-6262
Mon.-Sat. 8 a.m.-5:30 p.m.

TAKING ON JOBS BIG & SMALL

★ THAT'S OUR HERITAGE ★



RANCHER SPECIAL

5075E Tractor

\$395

per month¹

- 73 engine hp¹
- Best-in-class visibility
- Thick, comfortable seat



317G TRACK LOADER

0%

for 60 months²

- Net power: 45.6 kW (61 hp¹) @ 2,600 rpm
- Rated operating capacity: 965 kg (2,125 lb.)
- Tipping load: 2,756 kg (6,070 lb.)

DIY DIGGER PACKAGE

Includes 1025R, 120R Loader & 260B Backhoe

\$340

per month³

- Powerful Final Tier 4-compliant diesel engine
- New, easy-lift hood with dual gas-charged lift struts



Legendary Products. Extraordinary Service.
Find your local Heritage Tractor location or request a quote at HeritageTractor.com




(1) Offer ends 12/31/19. Subject to approved installment credit with John Deere Financial. Based on a 0% down payment and financing of 0% APR for 60 months. Taxes, freight, set up and delivery charges could increase the monthly payment. (2) Offer valid on qualifying purchases made before 12/31/19. Offer includes new John Deere 317G Track loaders. Subject to approved installment credit with John Deere Financial. For commercial use only. 20% down payment required. 0% APR is for 60 months only. Taxes, freight, set up and delivery charges could increase monthly payment. Available at participating U.S. dealers. Prices and models may vary by dealer. Some restrictions apply; other special rates and terms may be available, so see your local John Deere dealer for details and other financing options. (3) Offer ends 1/31/20. Subject to approved installment credit with John Deere Financial. Based on a 0% down payment and financing of 0% APR for 84 months. Taxes, freight, set up and delivery charges could increase the monthly payment. Price and model availability may vary. ¹The engine horsepower information is provided by the engine manufacturer to be used for comparison purposes only. Actual operating horsepower will be less. Offers valid in the United States. Prices in U.S. dollars.

AMBITIOUS CLEANERS for Donkey Barn. Pays well. Roby, 417-458-1481

MENS SIZE 11 ROLLER BLADES: Black good conditino. \$30. Cedar Hill, 314-303-7857.

BB & PELLET RIFLE. \$75 each. 573-327-9068.

NICE PAIR OF 1" BELTA DRIVING LINES: for team of horses. \$50 for set. 417-718-5347, Conway.

NEW OAK ENTERTAINMENT CENTER: on wheels. \$100. 573-327-9068.

SMALL SQUARE BROME HAY: 70LB, horse quality, delivery available. 417-532-6686, 417-531-6686.

EVEREST ELITE HOLOFIL II Insulated sleeping bag by Slumberjack. (Dupont). \$70. castlesprings55@gmail.com or 573-645-7876.

MODEL A REAR CAR AXLE. \$135. 417-293-7113/417-293-0568.

FORD 4000 DIESEL: W/Loader, \$10,500. Potosi, 573-747-2722.



1994 Shadow Cruiser
27ft. 5th Wheel
Excellent Condition

417-664-8823 • CONWAY

AUCTION REMINDER: Coin & Collectors Auction. Saturday, December 21st @ 10am. Nance Auction. Please see our Auction Directory for more information.

2019 FARM TAX DEDUCTION: Prairie Phoenix Cattle Care System. 417-286-3540.

15FT ALUMINUM CANOE W/PADDLES: good condition. \$350. Osceola, 417-646-8807.

2006 CURLY TOBIANO MARE: 45" high, registered ICHO/NAC, Broke to drive, has had one foal. \$1,750. Niangua, 417-880-0025.

BRUSHOG 6FT OFFSET DISK: \$1,950. 573-765-4406.

NEW HOLLAND 1411 DISKBINE. \$7,250. 573-765-4406.

Wishing our Friends and Family a Joyous Holiday filled with Peace, Love, and Prosperity. Best Wishes for a Healthy New Year!

Merry Christmas and Happy New Year

The Larry Heisel Family
Larry, Cathy, Jeremy, Amy, Adalynn, Cody, Julie, Carson & Carlie

RITCHEY MO. HISTORY: A small village in the Missouri Ozarks, (Newton County 1925-1950). \$20. Lebanon, 417-532-2045.

REGISTERED HEREFORD & ANGUS BULLS: Home raised, Some Show-Me Select Qualified. 573-701-7828. Belgrade

2007 DODGE 3500: 4wd, double cab, 6.7 Cummins, 6 speed manual, 139K miles. Very good condition. \$21,500. 417-270-1505.

BRAND NEW INTERTHERM ELECTRIC FURNACES: For mobile homes. \$550. Factory Warranty. Call Charlie 573-786-4003, Steelville.

\$19,900 USED DOUBLE WIDE: nice 3 bedroom, 2 bath delivered & set-up.....Hurry, This house will **NOT** last long! Call now 573-657-2176 amegamobilehomes.com

BIG TEX 140T
OVER THE AXEL, POWER TILT,
8.5 FOOT WIDE, 24 FOOT LONG, 7K AXELS.

Like Us On **facebook**

JIM'S Motors TRAILERS I-44 at Exit 208 • Cuba, MO
www.jimsmotors.com
TRUCKS and TRAILERS (800) 897-9840
Great Service! Great Prices! Since 1957

ELECTRIC CABELA'S MEAT GRINDER: works good. \$85. 417-646-8807.

ARE YOU KIDDING ME???-Used double-wide, \$19,900!!!! delivery & set-up. 3 bedroom, 2 bath, Call 573-499-9993 comlumbiadiscounthomes.com

HAY FOR SALE: Square bales/\$4.50, Round bales 4x5/\$50, good mixed grass hay, no weeds. 573-368-1794.

LSK LEBANON
Powersports & Marine

MERRY CHRISTMAS
from LSK Lebanon! Bring this ad in and redeem for **\$100 off** any new & in-stock SSR Motorcycle or SXS.
Available units range from 70cc—300cc!

417.588.3550
801 N. Jefferson Ave
Lebanon, MO
LSKLebanon.com

SSR WE KNOW DIRT
SSR PIT BIKES
5 MODEL SIZES • 13 TYPES

70 CC SR70C | SR70MTO
110 CC SR110 | SR110GSM | SR110DX
125 CC SR125 | SR125GSM | SR125AULTD
TR SERIES SR110TR | SR120TR | SR140TR | SR170TR
TX SERIES SR170TX

6 BEDROOM, 3 BATH HOUSE on 10 acres, Lebanon area, River access, wooded, 417-322-5725.

SUGAR PLUM COLLECTION: Not separable. \$50. 417-288-9641.

LAWN DUMP CART AND LAWN AERATOR: both pull behind. \$200 for both. 636-239-4124.

MX5100 KUBOTA: 4wd tractor w/loader, low hours. \$21,500. 417-270-1505.

BRADFORD GRAVITY WAGON: 10 ton, good shape. \$1,000. Stockton, 417-276-6664

1999 JEEP CHEROKEE 4x4: Straight 6 engine, new tires, good body. \$600 OBO. 573-263-2732.

NEW STARTER FOR 1960's, 70's & 80's 302 & 351 Ford Windsor Motors. \$60 OBO. 573-286-1957, Eldon.

HORSE HAY: Square bales, weed free, Big Blue stem, 80% pure. \$5 bale. 573-368-1794, Rolla.

MAYTAG EXTRA LARGE CAPACITY: Heavy duty, 2 speed washer, white. \$100. Washington, 636-239-2695.

CRAFTSMAN HORIZONTAL BAND SAW: Good Blade. \$50 OBO. 573-286-1957, Eldon.

PUPPIES FOR SALE: Beagle/Dachshund mixed. Silver and Tri-Colors. UTD shots/-worming. \$150/males, \$200/females. 417-322-0833. MUST SELL by Christmas.

VINYL WINDOW: Double pane, 50x33. \$50. 417-322-4432.



40 Acre Farm For Sale

- 2,200 Sq. Ft. House
- 7,280 Sq. Ft. Greenhouse, Optional

\$190,000

CALL: 417-718-1485 • 5 Miles from Bennett Springs

FOR SALE: 2006 Woodmizer superhydraulic, 51HP, diesel, 5,350hrs, runs everyday. \$22,750. 314-972-2903

3/4 TON GMC FARM TRUCK: w/hydraulic Dew-Ease bale bed. Truck runs, bale bed works good. \$4,000 OBO. 417-259-0396, Mtn Grove.

BIG SHOP TORPEDO HEATER: \$200 or trade. Bismark, 573-734-2822.

FOR SALE: 190 Allis: Diesel, good condition. \$4,295. Ford Loader with hydraulic pump. \$800 OBO. 801 Power Workmaster: almost new rubber. \$2,895. 9N Ford: good rubber. \$1,200. Rt 66 Tractor Repair, Old Hwy 66, St James, MO. 573-263-2732.

FANCA 4 BASKET Hydraulic Fold Tedder. Good. \$4,350. 573-765-4406.

2014 MERCEDES E350: 4-matic, 102K miles, like new, loaded. \$18,500 OBO 417-383-8200.

2000 S-10 PICK-UP: 159,000 miles. \$3,000. 417-532-4108.

1986 OLDSMOBILE CUTLASS: 4 DR, V-6, loaded, excellent condition/transportation. 42,500 actual miles. \$2,900obo. 573-873-3440, Camdenton.

LARGE VICTOR WOOD FURNACE: and late model 3ton Air Conditioner. \$950. 636-239-4124

Starnes Auto LLC

22115 Rt. 66 • Lebanon, MO 65536
417.588.3159 Office • 417.718.2707 Cell
www.starnesauto.com

| | |
|--|-----------------|
| 1990 CHEVY PICK UP RED/WHITE, 2WD | \$1,500 |
| 1996 JEEP CHEROKEE BLACK, 213,XXX MILES | \$1,250 |
| 1999 CHEVY SUBURBAN WHITE, 2WD, 179,XXX MILES | \$2,950 |
| 2001 CHEVY TRACKER RED, 5-SPEED, 2WD, 130,XXX MILES | \$1,750 |
| 2001 GMC SIERRA 1500 EXT CAB, SLT, 4X4, 225,XXX MILES | \$3,950 |
| 2002 TRAILBLAZER WHITE, 183,XXX MILES | \$1,850 |
| 2003 CHEVY S10 EXT PEWTER, 68,XXX MILES | \$4,200 |
| 2003 JEEP LIBERTY GOLD, 209,XXX MILES | \$3,700 |
| 2004 CHEVY SILVERADO 1500 GOLD, EXT CAB, 4WD. 174XXX MILES | \$6,450 |
| 2005 CHEVY SILVERADO HD WHITE, EXT CAB, LONG BED, 8100, 210,XXX MI | \$7,250 |
| 2005 CHEVY SUBURBAN BLUE, 4X4, 202,XXX MILES | \$4,200 |
| 2005 GMC SIERRA WHITE, 4WD, CREW CAB, 261,XXX MILES | \$5,850 |
| 2005 GMC YUKON DENALI CHARCOAL, AWD, 199,XXX MILES | \$4,200 |
| 2006 JEEP LIBERTY SILVER, 179,XXX MILES | \$3,550 |
| 2006 GMC SIERRA GREEN, CREW CAB, 2WD, 69,XXX MILES | \$8,950 |
| 2006 PONTIAC GRAND PRIX GOLD, 65,XXX MILES | \$4,850 |
| 2006 PONTIAC TORRENT SIVLER, 219,XXX MILES | \$2,250 |
| 2007 SATURN AURA XE SILVER, 73,XXX MILES | \$4,850 |
| 2008 CHEVY UPLANDER LS 74,XXX MILES | \$4,250 |
| 2008 PONTIAC G6 SILVER, 68,XXX MILES | \$4,750 |
| 2011 GMC ACADIA SLE CHARCOAL, 110, XXX MILES | \$8,500 |
| 2013 CHEVY EQUINOX LT BLUE, 2WD, 55 XXX MILES | \$11,500 |
| 2013 HONDA CRV BLACK, AWD, 113 XXX MILES | \$10,500 |
| 2017 CHEVY IMPALA LT BLACK, V6, 47,XXX MILES | \$14,500 |
| 2017 BUICK ENCORE WHITE, 9,XXX MILES | \$13,500 |

WE DO ALIGNMENTS!

Buildings • Hunter's Cabins • Lawn Furniture



JAMCO Portable Buildings
800-688-2064 • 307 Enterprise Dr. • Seymour, MO • www.jamcobuilders.com

Rent To Own Plan

CASE MANURE SPREADER: Good condition. \$800. 573-308-5884, Rolla.

TAXIDERMY SUPPLIES: for list and prices call 573-259-9318.

AUNT JEMIMA COLLECTION. \$200 All. 573-327-9068.

ROME 8FT OFFSET DISK: \$3,750. 573-765-4406.

WOOD FURNACE: Heats over 2,000 sqft home, good condition. \$575. 636-239-4124.

TRUCK BED. 9' metal bed. \$450. 417-741-1232 or 417-241-5193.

BORDER COLLIE/AUSTRALIAN SHEPHERDS; Ready 12/29/19. Also purebred Border Collies: Ready 01/04/20. Females \$150, Males \$100. 417-349-1386, Hartville.

MODULAR STOCK SALE - It is time to move our inventory. **TRUE MODS** - Save Thousands. Call Marla, better than 20 years experience. 573-657-7040, chateauhomes.net.

2015 YELLOW SILVER TOBIANO CURLY MARE: 43" high, registered ISHA, willing and gentle, saddled but not ridden. \$1,100. Niangua, 417-880-0025.

You pull it, we sell it... CHEAP!



U-PULL-IT
SELF SERVICE AUTO PARTS

We also have a large inventory of used tires and be sure to check out our used car lot!

Lebanon, MO
22395 Rt. 66
417-588-3555
Fax 417-588-8955

Mon-Fri 8am - 6pm • Sat 8am - 4:30pm • Sun 9am - 4pm

WWW.SSUPULLIT.COM

Located next to S&S Recycling.



S&S RECYCLING
LEBANON - MTN. GROVE
417-588-3555 417-926-3360

Roll-off, Trailer, and Mobile Crushing Services Available

For All Your Metal Recycling Needs

Lebanon, MO **Mtn. Grove, MO**
22395 Rt. 66 • 417-588-3555 8930 First Rd • 417-926-3360
Fax 417-588-8955 Fax 417-926-0180

Monday-Friday 8:00am-4:30pm (Closed 12pm-1pm Lunch)
Saturday 8:00am-Noon
email: contact@ss-recycling.com
Buyer of all types of scrap metal.

30 GAL PROPANE TANK: Has new valve. \$75. 417-683-7843, Tecumseh.

LOT OF 72: "The Antiques Journal" Magazines, years- 1974-75, 1978-80, Mar-Dec 1977, Jan-Feb 1981. \$60 for all. Grovespring, 417-533-9484.

FOR SALE DARK OAK CURIO CABINET: \$170. 1-636-388-5810, Leslie.

WANTED, TIMBER TO LOG ON SHARES: Honest, reliable, references. 417-533-4607, 417-664-1195.

WANTED PINBALL MACHINES. 573-424-7200.

2018 KZ SPORTSMAN 363FL DESTINATION RV: Lebanon. Call for price. 309-678-0057.

JOHN DEERE 925 Diskbine. \$6750. 573-765-4406.

2015 CHEVROLET COLORADO: 4 door, extended, 4 cylinder, auto, air, 92,xxx miles. Free Carfax. \$13,900. 573-364-5008. www.jimsmotorsrolla.com.

CHRISTMAS SPECIAL: 766 Farmall pedal tractor, very nice. \$290, 417-859-6574



Cheyenne Acres
Horse & Tack
BUY - SELL - TRADE
by Rolla, MO
Call For Directions & Availability
Call Kip
573-368-9402

0% for 4 Years*



*with approved credit
Outdoor Wood Furnace
as low as
HEATMOR \$168 per month

HEATMOR MIDWEST
Licking, MO 65542
573-674-2962

KUSTER LOGGING
BUYER of Standing Timber
Oak and Walnut
Dozing Now Available
417-259-0047
References Available



1985 FORD F250 Grill & Light Trim: \$40. 573-308-5884, Rolla.

20 GAUGE SHOTGUN RELOADING WADS: 9bags of WAA20s, 15bags of WAA20F1. \$5/bag. Osage Beach, 573-302-0890.

USED FLAT BEDS: 2 DRW, SRW. 636-671-3800

HOLLYWOOD 4-BIKE HITCH MOUNT RACK: Excellent condition, Includes (2) Allen Stabilizer tension bars and keyed alike locking hitch pin and cable. \$175. Conway, 417-718-5347.

PYRENEES/ANATOLIAN PUPPIES. Cuties! Excellent pets/guard/sheep dogs. \$250. In time for Christmas! Reserve yours now. 417-322-0161.

JOHN DEERE 3020 TRACTOR: W/John Deere 148 Loader, good rubber, power shuttle, strong running diesel tractor, stored inside. \$11,500obo, **6' BUSH HOG CUTTER**, new blades, good condition \$900. Lebanon, 573-247-7161, 417-533-0877.

JOHN DEERE 535 ROUND BALER: monitor, kicker, net wrap. \$5,250. 573-765-4406.



NOW AVAILABLE ON SELECT 2019 RAM MODELS AND 2020 RAM MODELS.

EMPLOYEE PRICING **PLUS**
AT THE
BIG FINISH 2019

Now Get Up To **\$10,799** Off M.S.R.P.*



New 2019 RAM 1500

PLUS \$500 CHRYSLER CAPITAL BONUS CASH*

PLUS \$1,000 CONQUEST BONUS CASH*

ON SELECT NEW 2019 RAM 1500 MODELS

*For incentives, must finance through Chrysler Capital. For well qualified buyers. Not available on all models. Not all buyers will qualify. Residency and other restrictions may apply. See dealer for qualifications and complete details. Must take retail delivery by 01/02/2020.

Also, Offering Great Deals on New Chrysler, Dodge, Jeep & Ram Vehicles!

SALES STAFF



Jason Locklear



Dalton Friend



Nick Petersen



Mike Miller



Jeremy Nicewaner



Paul McGhee



Jermie Shelton,
General Mgr.

TAYLOR



**705 Highway 63 South
Rolla, MO 65401
573-364-1233**

www.taylorchryslerrolla.com


Visit Us On Facebook

DAEWOO FORKLIFT

Model GC25S-2

Serial No 06-02352

- Propane
- Hook attachment
- Everything works great
- Always kept in a building

Call for more information!

417-532-9131 • LEBANON



2017 BUICK ENCORE PREFERRED SUV: 24,xxx miles, white auto, air. Free Carfax. \$16,500. 573-364-5008. www.jims-motorsrolla.com.

JOHN DEERE 4020 TRACTOR: with Koyker 500 loader, 90% rubber, power shuttle, strong running diesel, stored inside. \$12,500obo. Lebanon, 573-247-7161, 417-533-0877.

SMALL SQUARE HAY BALES: Timothy, Alfalfa & Orchard Grass mixed. \$6. Alfalfa grass mixed. \$5.50. Long Lane, 417-345-5634

LANDPRIDE RCF3010: pull type brush hog, 10'. \$5,900. 417-270-1505.

MINI CHOPPER. \$125. 417-683-7843, Tecumseh.

5HP ARIENS Horizontal Shaft gas engine, pull start. \$50 OBO. 573-286-1957, Eldon.

2004 FORD MUSTANG GT. \$6,500 OBO. 417-741-1232 or 417-241-5193.

DARDEN PROFESSIONAL TIMBER HARVESTING, BUYING STANDING TIMBER: Great prices, improve wildlife habitat and improve forest health. State Certified & Fully Insured! 573-247-4808 or 573-739-1122. Salem

5 MOUNTED TIRES: size 12-20, \$200. 417-753-2747, 417-766-1991, Rogersville.

See Service

Spray Foam Insulation

Closed cell or open cell form available
Choose the thickness of your insulation

| | |
|----------------------|-------------------|
| Closed Cell | Open Cell |
| • Higher R. value | • Lower Cost |
| • Vapor barrier | • Sound Deadening |
| • Structural benefit | • Fire resistant |
| • Fire Resistant | |

Both types of foam fill voids and stay where they are put to provide better insulation than fiberglass or cellulose

FINANCING AVAILABLE **WE ACCEPT**
VISA

Call Joseph See
(417) 733-6936
Located near Buffalo, MO

QUALITY REPLACEMENT COWS: 80 BLACK SECOND & THIRD PERIOD COWS, 20 Red 2nd & 3rd period cows, 4-7yrs old, avg weight 1250lb-1300lbs, de-wormed, vaccinated, preg checked, trucking available. Otterville, 660-619-5190.

06 DODGE DAKOTA: 4 door, V6, 4x4, new tires, needs transmission, red in color, 188,000 miles. \$2,000. (417)260-2177, Houston.

1979 CHEVY PICK-UP:2WD, Custom 10, 350, V-8, Automatic, new interior, new tires, new bed liner and cover, new rear bumper, runs and drives like a dream. \$7,500. 573-934-0014.

Why God Said, "I am not a man"

Welcome to Bible Basics! If there was ever a time in America's history that true knowledge of the God of our founding fathers is needed, that time is now! Our nation was founded on the precepts of the Holy bible and faith in the God who gave it for all man-kind. All scripture is God breathed and is useful for teaching, rebuking, correcting and training in righteousness. (2 Tim. 3:160)

The discovery of the Dead Sea scrolls is proof that God's Bible, written by over forty writers is, unlike the "lone ranger" books of false prophets and teachers, truly to be trusted.

In the Book of Numbers, (23:16-19) we have the account of a meeting God had with Balaam. He commanded him to tell Balak that "God is not a man, that he should lie, nor a son of man."

In the book of Hosea 11:9 we read these words: For I am God, and not man..., Our Lord and Savior, Jesus Christ, said: God is spirit, and those who worship Him must worship Him in spirit and truth. (John 4:24). It is because God is spirit and not a man that He was able to "speak the world into existence. What power! What a mighty God! In closing consider (John 4:23) This is a verse still true for today! Jesus said "But the hour is coming and now is, when the true worshipers will worship the Father in spirit and truth; for the Father is seeking such to worship him."

Our Father in heaven, I pray you will send a great, sweeping revival to our sinful nation with mighty convicting power that only Your spirit can give, and I ask this in the only name by which any can be saved. The precious name of Jesus. Thank You for Him and His promise that "God so loved the world that He gave His only begotten Son, that whoever believes in Him should not perish but have everlasting life. (John 3:16). Amen

Aunt Idee of the Ozarks



FREE 4-NIGHT VACATION!
Donate Car • Boat • RV • Motorcycle

1-800-CarAngel

www.boatangel.org

AUSTRALIAN SHEPHERD PUPPIES: fathers gray murlle Australian Shepherd, mother red and white half Australian half English Shepherd, 573-663-7459.For

EMPLOYEE PRICING **PLUS**

— AT THE —

BIG FINISH 2019



T-15097

2020 RAM 1500 REBEL CREW, 4X4

5.7, PANORAMIC SUNROOF • LEATHER • NAVIGATION • MULTI FUNCTION TAILGATE
4 CORNER AIR SUSPENSION • RAM BOX



| | |
|---------------------------|----------|
| MSRP | \$65,780 |
| EMPLOYEE PRICE | \$58,560 |
| BONUS CASH | - 500 |
| TRUCK OWNER CONQUEST 1500 | - 1,000* |
| MILITARY | - 500** |
| CHRYSLER CAPITAL BONUS | - 500* |

SALE PRICE
\$56,060

T-14919

2019 RAM 1500 BIGHORN

QUAD 4X4 LEVEL 1 EQUIP



| | |
|------------------------|----------|
| MSRP | \$45,150 |
| EMPLOYEE PRICE | \$40,573 |
| MILITARY | - 500** |
| REBATES | - 3000 |
| CHRYSLER CAPITAL BONUS | - 500* |

SALE PRICE
\$36,573

T-15042

2019 RAM 1500 SLT

CREW 4X4, 5.7 CLASSIC



| | |
|------------------------|----------|
| MSRP | \$49,920 |
| EMPLOYEE PRICE | \$44,637 |
| MILITARY | - 500** |
| REBATES | - 4750 |
| CHRYSLER CAPITAL BONUS | - 1000* |

SALE PRICE
\$38,387

T-14967

2019 RAM 1500 LARAMIE CREW, 4X4

5.7, LEVEL 2 ACCESSORY PACKAGE
SPORT APPEARANCE
ADVA NEED SAFETY • 8.4 NAVIGATION



| | |
|---------------------------|-----------|
| MSRP | \$62,030 |
| REBATE | - \$3,500 |
| MILITARY | - \$500** |
| TRUCK OWNER CONQUEST 1500 | - 1,000* |
| CHRYSLER CAPITAL BONUS | - 1,000* |

EMPLOYEE PRICE
\$48,861

T-15027

2019 RAM 2500 BIGHORN

CREW 4X4, 6.4 LEVEL 2



| | |
|------------------|----------|
| MSRP | \$57,365 |
| EMPLOYEE PRICE | \$51,139 |
| MILITARY | - 500** |
| REBATES | - 1000 |
| COMMERCIAL BONUS | - 1000** |

SALE PRICE
\$48,639

T-15093

2019 RAM 2500 TRADESMAN

CREW 4X4, 6.7 LEVEL 2 EQUIP
8.4 RADIO



| | |
|------------------|----------|
| MSRP | \$57,020 |
| EMPLOYEE PRICE | \$50,912 |
| MILITARY | - 500** |
| REBATES | - 1000 |
| COMMERCIAL BONUS | - 1000** |

SALE PRICE
\$48,412

T-15043

2019 RAM 2500 LIMITED

CREW 4X4, 6.7 LEVEL 1 EQUIP



| | |
|------------------|----------|
| MSRP | \$82,125 |
| EMPLOYEE PRICE | \$72,273 |
| MILITARY | - 500** |
| REBATES | - 1000 |
| COMMERCIAL BONUS | - 1000** |

SALE PRICE
\$69,773

T-15058

2019 RAM 3500 LARAMIE

CREW 4X4, 6.7 AISIN TRANS.
S.R. LEVEL 2 EQUIP



| | |
|------------------|----------|
| MSRP | \$81,230 |
| EMPLOYEE PRICE | \$71,963 |
| MILITARY | - 500** |
| REBATES | - 1000 |
| COMMERCIAL BONUS | - 1000** |

SALE PRICE
\$69,463

*Must finance with Chrysler Capital **must own a farm or a business to qualify. *Must own a 1/2 ton truck (you do not have to trade in)** Active or Retired Military. Offer expires 12.31.19. See dealer for details. Actual photos may not be shown.

LINDSAY



809 MISSOURI AVE. • ST. ROBERT, MO • 573-336-3000

EMPLOYEE PRICING **PLUS**

— AT THE —

BIG FINISH 2019



T-15069

2019 CHRYSLER PACIFICA TOURING I

NAVIGATION, LEATHER, 3.6



| | |
|------------------------|----------|
| MSRP | \$41,570 |
| EMPLOYEE PRICE | \$38,288 |
| MILITARY | - 500** |
| REBATES | - 500 |
| CHRYSLER CAPITAL BONUS | - 1000* |

SALE PRICE
\$36,288

T-15108

2020 JEEP COMPASS LATITUDE

FWD, 2.4 AUTO POWER SEATS



| | |
|------------------------|----------|
| MSRP | \$27,195 |
| EMPLOYEE PRICE | \$25,613 |
| CUSTOMER CASH | - 500 |
| CHRYSLER CAPITAL BONUS | - 500* |
| MILITARY | - 500** |

SALE PRICE
\$23,363

T-14693

2019 JEEP CHEROKEE LATITUDE

FWD, 2.4



| | |
|------------------------|----------|
| MSRP | \$27,145 |
| EMPLOYEE PRICE | \$25,741 |
| MILITARY | - 500** |
| REBATES | - 3000 |
| CHRYSLER CAPITAL BONUS | - 1000* |

SALE PRICE
\$21,241

T-15074

2019 JEEP CHEROKEE TRAILHAWK 4X4

3.2



| | |
|------------------------|----------|
| MSRP | \$37,350 |
| EMPLOYEE PRICE | \$34,744 |
| MILITARY | - 500** |
| REBATES | - 2500 |
| CHRYSLER CAPITAL BONUS | - 1000* |

SALE PRICE
\$30,744

T-14949

2019 JEEP GRAND CHEROKEE LAREDO 4X4

3.6



| | |
|------------------------|----------|
| MSRP | \$41,435 |
| EMPLOYEE PRICE | \$38,770 |
| MILITARY | - 500** |
| REBATES | - 2000 |
| CHRYSLER CAPITAL BONUS | - 1000* |

SALE PRICE
\$35,270

T-14934

2019 DODGE DURANGO G+

AWD, LEATHER, BLACK TOP, CAPTAIN CHAIRS 2 ROW



| | |
|----------------|----------|
| MSRP | \$49,565 |
| EMPLOYEE PRICE | \$45,136 |
| MILITARY | - 500** |
| REBATES | - 1950 |

SALE PRICE
\$42,686

T-14918

2019 JEEP GRAND CHEROKEE LIMITED

4X4, LEATHER, SUNROOF



| | |
|------------------------|----------|
| MSRP | \$51,725 |
| EMPLOYEE PRICE | \$47,106 |
| REBATES | - 1500 |
| MILITARY | - 500** |
| CHRYSLER CAPITAL BONUS | - 1000* |

SALE PRICE
\$44,106

T-15000

2019 JEEP WRANGLER UNLIMITED

RUBICON 4X4, 2.0



| | |
|--------------|----------|
| MSRP | \$58,430 |
| DEALER PRICE | \$52,000 |
| MILITARY | - 500** |
| REBATES | - 1000 |

SALE PRICE
\$50,500

*Must finance with Chrysler Capital **must own a farm or a business to qualify. *Must own a 1/2 ton truck (you do not have to trade in). ** Active or Retired Military. Offer expires 12.31.19. See dealer for details. Actual photos may not be shown.

www.lindsaychryslerdodge.com

809 MISSOURI AVE. • ST. ROBERT, MO • 573-336-3000

VISIT US!
WWW.WEEKLYTRADER.COM

WANTED G-SERIES ALLIS CHALMERS. Running condition. 314-800-6592.

CHIP BOX DUMP TRUCK: 1997 GMC-6500, very good condition. Mtn Home, ARK, 480-313-5758.

VILLA HOMES IN ROLLA: Has NEW and USED Mobile Homes. Call David for info: 573-578-8072.

HARLEY SPORTSTER 900CC: electric start primary cover. \$150. 573-764-3517. Call in PM

LIONEL TRAIN SET: Steam engine, tender, caboose and other car, track and transformer. \$195. 573-364-7465, Rolla.

RARE 1937 CIVILIAN CONSERVATION CORPS (CCC) 7TH CORPS AREA OFFICIAL MANUAL. \$20. 417-532-2045, Lebanon.

2 REAR FENDERS FOR 1946-48 CHEVY COUPE: \$200 or trade. Bismark, 573-734-2822.

HAROLD BELL WRIGHT BOOKS: God and The Groceryman and The Re-Creation of Brian Kent. \$10 each. Lebanon, 417-532-2045.

KILL LICE DEAD: PRAIRIE PHOENIX CATTLE CARE SYSTEM. 417-286-3540.

AUSTRALIAN SHEPHERD PUPPIES: fathers gray murle Australian Shepherd, mother red and white half Australian half English Shepherd, 573-663-7459.

WR CASE & SONS Cookbook & Historical Companion. \$7.50. 417-532-2045, Lebanon.

IHC 966 DIESEL TRACTOR: Turbo, good rubber, strong tractor. \$9,000. 573-765-4406.

BEAGLE PUPS FOR SALE: Males/-Females. Ready for Christmas. \$100 each. 417-260-1536.

BARN WOOD SIDING: 8" & 10" wide. 573-729-7226. www.pineridgerustic.com

15FT BUSHWHACKER BRUSHOG: \$4,900. 417-322-0161

JOHN DEERE 2630: Diesel tractor, 70HP, w/145 JD loader. \$8,650. (573)765-4406.

COZY SECLUDED ONE BEDROOM HOME: in gated area, includes all utilities except telephone, trash and satellite, 7 miles south of St. James. \$450/month 573-699-4351

FORD 4000 DIESEL: W/Loader, \$10,500. Potosi, 573-747-2722.

150 GAL PROPANE TANK: Needs new valve. \$75. 417-683-7843, Tecumseh.

Meet...

Shawna Bradley

Your Auction Specialist



Call or email me today to get your next auction in Central Missouri's #1 Shopper!



WEEKLY TRADER MAGAZINE

office: 417-532-9131 ext. 215 • 417-895-9324
cell: 417-322-3814 • shawna@weekly-trader.com

PYRENEES/ANATOLIAN PUPPIES: parents are excellent sheep/guard dogs. \$250. 417-322-0161.

AUCTION REMINDER: Online Estate Auction Going on Now. Bidding closes Tuesday, Jan 7th. Schneider Auctioneers. Please see our Auction Directory for more information.

CHEVROLET FLY WHEEL: Fits small block 283, 327, 350 etc. New with slight surface rust. \$95. 573-364-7465, Rolla.

3PT BALE CARRIER: \$100. 417-753-2747, 417-766-1991, Rogersville.

16FT 6-TYPE GALVANIZED GATE: \$100. 417-293-0568.



WEEKLY TRADER MAGAZINE

AUCTION DIRECTORY

Thursday, December 19

11:00 AM Mid Missouri Stockyards28

Saturday, December 21

10:00 AM Nance Auction Service.....21

10:00 AM Chadwell Auction Service.....23

10:00 AM Wheeler Auctions & Real Estate27

12:00 PM Buffalo Livestock Market.....28

6:00 PM Wheeler Livestock Auction22

Sunday, December 22

Online Crawford Online Auction Service24

Friday, December 27

10:00 AM Knight Auction Service.....28

Saturday, December 28

9:30 AM Crawford Auction Service.....20

Wednesday, January 1

10:00 AM Tooley Auction Services26

Tuesday, January 7

Online Schneider Auctioneers25

Friday, January 10

12:00 PM Salem Livestock Auction.....27

Call 1-800-665-8875 to get your auction listed in the Weekly Trader.

AUCTIONEERS Did you know the WEEKLY TRADER covers more counties in rural Missouri than any other publication?

Firm deadline is 12:00 PM Friday, prior to next week's Thursday publication date.

INSIDE COMPLETE VICTOR WOOD FURNACE: Heat exchangers and inside firebox all rebuilt. \$200. 573-729-5808.

JOHN DEERE 2940: Diesel Tractor , 80HP with G.B. 900 hy reach loader. \$11,000. 573-765-4406.

1953 FORD JUBILEE: new tires, runs good, excellent condition. \$3,000. 417-664-3425.

PINNACLE RANCH/12mo Red Angus and Red Balancer Bulls/Red Angus & Red Balancer Heifers for sale. 417-679-4269, Gainesville.

BEAGLE PUPS FOR SALE: Males/-Females. Ready for Christmas. \$100 each. 417-260-1536.

BRANDENBURGER CRAFTS: Open Friday, Saturday & Sunday. 9am-5pm. From Cuba, Hwy 19 North, 14 miles to Enky Road, turn left, follow signs. 573-437-2950.

4X5 MIXED HAY: excellent quality. \$65/-bale. 417-322-0161

TAKUCHI 135 EXCAVATOR: One Owner. \$15,000. 573-765-4406.

PICK UP TRUCK BEDLINER: Standard size Ford, Fits F150-F350, good condition. \$40. Cedar Hill, 314-303-7857.

AUCTION REMINDER: Public Auction Friday December 27th@ 10am. Knight Auction. Please see our Auction Directory for more information.

REGISTERED GERMAN SHEPHERD PUPPIES: Ready now, Cute!. \$150. Hartville, 417-741-2198.

1994 GMC PICKUP: Ext. cab, southern comfort conversion. Asking, \$1,550. 573-368-6633. Rolla.

JOHN DEERE 4240: Diesel Tractor, cab and cold air, power shift, 3,900 hours. \$29,500 573-765-4406.

FOR SALE: 6', 3pt, Disk Brand, new, never been in dirt. \$985. 417-322-3404.

RENTAL NEEDED ASAP: Moving to area, and need rental house w/pasture for our horses. Leave message, 641-226-2431 or 573-578-6476.

CABLE PULLING JAW GRIP: Klein #1684-5, excellent condition. \$150. Cedar Hill, 314-303-7857.

ROUND HAY BALES: Alfalfa grass mixed. \$35-\$40. Long Lane, 417-345-5634

1998 FORD CONTOUR FOR SALE: Brake problems. \$400 OBO. 417-464-1432.

L4400 KUBOTA: 4wd tractor with loader and 3rd function valve, Low hours. \$22,500. 417-270-1505.

ELECTRIC SICKLE SHARPENER: Works good. \$40. 417-646-8807.

JOHN DEERE 567 ROUND BALER: monitor, kicker, wide pick-up, cover net wrap. \$9,650. 573-765-4406.

1984 CHEVROLET MOTOR HOME: trade for trucks. Bismark, 573-734-2822.

SMALL SQUARES MIXED GRASS: small squares Brome. \$5/each, Large squares mixed grass, \$45 & \$65. 573-539-2060

1 COMPLETE SET OF SERVICE MANUALS: parts, electrical, engine and fuel for International Cub Cadet series 82 lawn tractors. \$65. 636-239-2695.

SEASONED FIREWOOD for sale. \$165 cord, free delivery within 15 miles from Grovespring, 417-259-2203.

Sam CRAWFORD AUCTION SERVICE LLC

As we have sold our farm and moving, will sell the following located from Climax Springs, Mo, 2 miles West on Hwy. 7 to Hwy. AA, then West 1/2 mile to Waisner Rd, then South 1.7 miles. Watch for Crawford auction signs.

Saturday, Dec. 28, 2019 – 9:30 a.m.

GUNS – TRAILERS – MACHINERY – TOOLS – HOUSEHOLD – MISC.



See website for more pictures!

Tools-Other

Guns

Sell @ 9:30 a.m.

- Smith & Wesson 19 357 mag, 4" BL custom grip
- Taurus 1911, 45 ACP
- Weatherby Mark V 300 mag, new
- Weatherby Deluxe Vanguard 7mm mag, nice
- Marlin 1895 45-70 carbine
- Winchester '94 30-30, nice
- Savage Mark II 22, bull barrel, scope
- Stevens 410 single shot
- Charles Daily 12ga double barrel
- Remington 11-87, 12ga camo
- Remington 870 Wingmaster Special Field 12ga
- H&R 20ga single shot

Guns not on site till sale day

Musical

Sell after guns

- Alvarez 12 string acoustic guitar
- Oscar Schmidt auto harp
- Antique C melody saxophone
- Crate P.A. system
- Older Harmony 50w amp
- Music man amp
- Johnson 50w guitar amp
- (2) 15" speakers

Houshold

- Whirlpool refrigerator
- Frigidaire chest freezer
- Older upright freezer
- Hidabed; Couch, loveseat, chair
- Liftchair; Recliner; Computer cabinet
- Daybed; Tile top dining table & 6 chairs
- Lg Danish modern dining table, hutch, 6 chairs
- Samsung 40" flat screen TV
- Bass Pro wildlife picture
- Coffee table & end tables, lamp tables
- JVC receiver; Surround sound
- Asst lamps, wall decor; Bakers rack
- Ernest Trova painting, "Falling Man"
- 4 Twin beds
- 5-6 Chest of drawers, dressers
- Bookshelves; Gun cabinet
- Cedar chest; Small home safe
- Glider rocker; 2 Other rockers
- Folding chairs; Misc. pots & pans
- Canner; Asst small appliances
- Lot fruit jars; Bedding, towels, vacuum
- Kimball elec organ; Exercise bike
- Standing jewelry box



Large auction with lots of good items. Furniture is all extra nice.

- Craftsman air compressor
- Lincoln elec welder; Ryobi 10" table saw
- 2 Craftsman 10" miter saw
- Ryobi 10" planer; 16" Scroll saw
- Craftsman band saw
- Porter cable band saw
- Ryobi spindle sander
- Rouner; Foley 220 sander
- 2 Upright drill presses
- Elec chain saw sharpener
- Coleman 5000w port. generator
- 3 Ton floor jack; Hyd bottle jacks
- Husqvarna 455 chain saw, ex good
- 2 Other chain saws
- Box wood stove, new
- 2 Burner camp stove, new
- 2 Coleman lanterns, tent, awning
- Live traps; Log chains
- Lot long handle tools
- Asst power hand tools
- Good asst wrenches & sockets
- 3/4 socket set; Tool boxes

- C Clamps; Bar clamps
- Fence ratchet; 2 Post drivers; 2 Fencers
- 20-25 Steel posts; 4-5 Farm gates
- 25-30 Sq bales hay; (5) 12' panels
- (3) 10' panels; Bale ring; 2 Poly feeders
- 3-4 Poly & galv. water tanks
- 2 Western saddles; Some tack
- P/U dsl tank, approx. 75 gal.
- Some lumber; Some metal
- Lot nails, bolts, oil; (2) 2 wheelers
- Alum ext ladder; Wood ladders; Chain hoist

- John Deere D-100 lawn tractor, 17.5 hp
- Snapper lawn tractor 24hp, 46"
- Craftsman 20 hp lawn tractor
- Lawn cart; (2) Craftsman rear tine tiller
- Small tiller; 3 Push mowers; Push trimmer
- Swisher 28 ton wood splitter, 11.5 hp
- 17' Alum canoe sq back
- 16' Utility trailer w/slide in stock racks
- Small utility trailer; 2 Wheel farm trailer
- 3pt bale spear; 3pt carryall; 3pt scoop
- 3pt blade; 3pt 2 row cultivator
- 3pt 5' bush hog finish mower, needs belt
- Yard Master side by side UTV 4x4, needs starter
- Lot other misc.

Collectibles

- 2 Rinse tubs w/stand
- Lg galv tub; 2 Copper boilers
- 2 Brass elec lamp
- 2 Brass plated sad irons
- Brass plated 10 gal milk can
- Brass chandelier
- Maytag wringer washer
- Singer treadle sewing machine
- 2 Cross cut saws; Kids sled
- 50+ handmade toy trucks, cars, planes, animals, all nice (made by Larry's father)
- Deer horns; 6-8 Cow skulls; Other items

European standing wood fireplace screen from 1800's Very unusual, very nice

Sam CRAWFORD Auction Service LLC



Chance · Sam · Chase

Cross Timbers, Mo. CrawfordAuctionService.com

417-998-6629



TERMS: Cash or good check. Nothing removed until settled for. Not responsible for accidents. Lunch available. Statements made day of sale take precedence over printed matter. All items sell as is No warranties given or implied.



Sam 417-328-9137

Chase 417-399-1904

Chance, CAI 417-298-1751

Tom Poynter Jack Lancaster

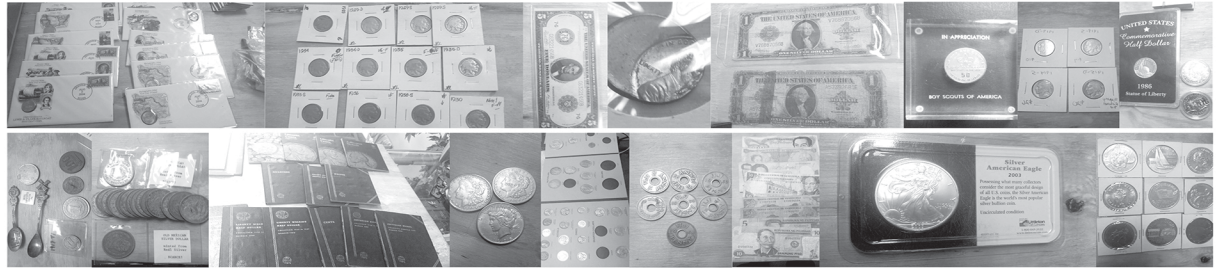
Larry & Barb Vitacek

COIN & COLLECTORS AUCTION

Saturday, December 21st, 2019 ~ 10:00 AM

LOCATION: The Donaldson Building At Sheldon United Methodist Church,
106 N. 2nd Street, Sheldon, MO (Watch For Signs)

Large Coin, Sports, Stamps, Toy & Jewelry Auction



Coins & Currency To Inc: Gold, Silver Inc Morgan Dollars, Seated & Standing Liberty Quarters, Silver Mercury & Other Dimes, Franklin & Walking Liberty Halves, Commemorative Halves, Buffalo & V-Nickels, Pennies Of Various Kinds, Several Type Coins Inc Half Dimes, 2 Cent Pcs, Large Cents & Others, Currency To Inc Lg Size Currency, Silver Certificates & Others, Several Metals & Tokens Of Various Kinds, This Is A Partial Listing As Short Notice Of Listing Auction. Watch Website For Full Listing.

Sports Cards & Memorabilia Of Various Kinds: Very Lg Lot Of Sports Cards Inc Baseball, Some Unopened Boxes & Containers, Several Rookies, Some Names Inc Nolan Ryan, George Brett, Pete Rose, Ken Griffey Sr. & Jr., Bo Jackson, Barry Bonds, Alex Rodriguez, Sammy Sosa, Mark McGuire, & Hundreds More. Football To Inc Dan Marino, Jim Kelly, Bruce Smith & Others, Also Some Rookies, Basketball To Inc Michael Jordan #23 & #45 After Retirement, Charles Barkley, Magic Johnson, Some Rookies & Hundreds Of Others. This Is Only A Partial Listing. Several Sets As Well.

Stamps, Nascar Collectibles, Comic Books, Toys, Gold & Silver Jewelry: Items To Inc Stamps, Stamp Books, First Day Covers, Old Comic Books, Some Collector Toys, Gold, Silver & Costume Jewelry, Nascar Collectibles Of Various Kinds.



Auctioneers Note: If You Are A Coin Collector, Sports Card Or Memorabilia Collector, Stamp, Comic Book & Toy Collector & Jewelry Buyer You Do Not Want To Miss This Auction. If You Are Looking For Last Minute Christmas Items For Your Collector Or Friends This Is The Auction You Want To Be At So Please Plan Now To Attend. We Will Start Auction With Toys, Comic Books, Nascar & Related Items Then Will Sell Stamps & Related Items Then Move Into Sports Cards & Memorabilia Then Gold & Silver Jewelry. Coins Will Sell Last At Approx 1:00 PM. The Earliest We Would Start On Coins Would Be 12:30 PM If All Other Items Have Been Sold So Please Plan Accordingly.

Terms: Cash or check with proper ID. Now accepting most major credit cards. Nothing removed until settled for. Statements made the day of sale takes precedence over printed material. Everything sold as is where is. Not responsible for accidents. Restroom available. Concessions Provided. Check our website for upcoming auctions and for additional pictures!!



NANCE AUCTION SERVICE

No Matter How BIG or small, We Do Them All!

www.nanceauctionservice.com

Col. Bill Nance 417-214-0093

In God We Trust

Philippians 4:13



Wheeler Livestock Auction, Inc.

SPECIAL STOCK COW & BREEDING BULL SALE



SAT., DEC. 21, 2019 • 6:00 P.M.

Expecting 800 head of breeding bulls, young cow/calf pairs, and bred cows.

Coble Farms

- 22 Sim-Ang hfrs., 1,150 lbs., AI bred to Worthington Angus All Profit on 5-6-19, Cleaned up for 45 days, heifers are fancy & gentle. Pelvic measured, had all shots.

Villine Farms

- 20 Yel. Char/Red Ang. X hfrs., 1,050 lbs., bred Red Ang. 25 Red & Blk Ang. hfrs., 1,050 lbs., bred Red Ang. All heifers home raised, pelvic measured, had all shots. Starts calving Feb. 10th for 60 days.

Ashley Farms Complete Dispersal

- 48 Fancy Blk & Bwf cows, 1,300 lbs., 3-8 yrs., Bred Balancer or Brangus. Calve Feb 10th for 60 days. All cows born & raised on farm. Owner Retiring

5-M Ranch

- 20 Ang. cows, 5 yrs., 1,250 lbs., cows bred Ang. or Horn Herf. Cows are Sydgen Genetics, had all shots. Calve Feb. 1st for 60 days.

Jim & David Munsterman Complete Dispersal

- 45 Blk cows, Ang & Bal X., 6-BM, 1,300 lbs., w/ 250 lb. Blk Bal. clvs. Cows & Calves all worked & tagged to match, Blk Bal. bulls put in Nov. 13th. 86 Blk cows, Ang & Bal. X, 6-BM, 1,250 lbs., bred 2nd & 3rd to Blk Bal. bulls, start calving Mar. 1st. 5 Blk Balancer bulls, 3-5 yrs., Brett Foster breeding.

3-C Farms

- 54 Red Ang/Herf X cows, 1,200 lbs., 4 yrs., bred 3rd to Blk Sim Ang bulls. All cows born & raised together, had all shots, good calf raisers.

Henderson Ranch

- 30 Mix cows, 6-BM, 1,100 lbs., w/ Blk clvs., 200 lbs., all cows & calves worked & tagged to match.

Josh Vance

- 65 Blk cows, 3-5 yrs., 1,250 lbs., bred 3rd to Sim-Ang or Char. Bulls, 15 Blk cows, 3-5 yrs., w/ calves up to 250 lbs., Lost lease reason for selling.

Leroy Raymond-

- 12 Blk cows, 4-6 yrs., 1,200 lbs, w/ 200 lb. calves. 8 Char & Red X cows, 4-6 yrs., 1,200 lbs., w/ 200 lb. calves.

S & B Farms

- 30 Blk & Red Ang cows, 3-4 yrs., 1,100 lbs., bred 2nd. 40 Blk & Red Ang cows, 3-4 yrs., 1,100 lbs., bred 3rd to Blk. bulls.

Sherman Farms

- 20 Red Ang cows, 3-6 yrs., 1,100 lbs., bred 3rd to Red Ang bulls, 19 Red Ang cows, 3-6 yrs., 1,100 lbs., w/ 19 Red Ang clvs., cows bred to Red Ang bull. 1 Red Ang bull, 3 yrs., 1,500 lbs.,

Tadlock Farm

- 20 Brng. X hfr., 1,050 lbs., bred 3rd to lbw Ang bull. 20 Blk hfrs., 950 lbs., bred 2nd & 3rd to Ang bulls. All heifers gentle & had all shots

Steve Pickens

- 30 Blk cows, 1,200 lbs., 6-BM. w/ 20 clvs. 350 lbs., rest of cows bred 2nd & 3rd to Ang bull.

Simpson Farm

- 45 Red cows, 3-5 yrs., 1,100 lbs., w/ 8 calves up to 200 lbs., rest bred 2nd & 3rd to Red Balancer bulls.

Lightning Creek

- 5 Blk Ang. cows, 3 yrs., 1,100 lbs., w/ 200 lb. calves.

Brubaker Farms

- 3 Red cows, 4 yrs. w/ calves weighing 250 lbs. good gentle cows with 2nd calf.

MANY MORE CONSIGNMENTS PENDING AND EXPECTED BY SALE DAY

Special Feeder Calf Sale - December 19th, 2019 & January 2nd, 2020 Next Special Stock Cow Sale - January 25th, 2020.

Note: December Sale is one week early. No weekly sale on Thursday, December 26th, 2019.



Wheeler Livestock Auction, Inc.

Osceola, MO • 685 SE 13 Hwy., PO Box 560 • BARN 417-646-8102

Byron Wheeler, 417-777-0897 • Austin Shelby, 417-309-1350 • Darwin Harting, 417-296-1029

Charlie Proctor 417-326-9467 • Burleigh Wheeler, 417-840-6561 • Skyler Fisher, 417-298-9051

Jeff Shelenhamer, 417-326-9929 • Les Tennis, 417-466-8786

Office Manager: Weston Shelby, 417-298-1316

Bid online on CattleUSA • www.wheelerlivestock.com

Like us on Facebook-Wheeler Livestock Auction

COMPLETE LIQUIDATION AUCTION ~ NO RHYME OR REASON FLEA MARKET

FURNITURE • ANTIQUES & COLLECTIBLES • MISCELLANEOUS
1800's HARNESS-SADDLE-MAKER w/ BOX

SATURDAY, DECEMBER 21ST - 10:00 A.M.

Location: 118 East First Street, Mountain Grove, MO **Directions:** Southwest Corner of the Square, Mountain Grove.
Look for **CHADWELL AUCTION SIGNS.** **Payment System:** Cash • Debit Card • Credit Card (Debit / Credit Card Fee Will Apply) Checks approved if known by auction company.
VISIT: WWW.CHADWELLAUCTIONS.COM

FURNITURE

Barn Wood Benches • Magazine Racks • Display Cases • Floor Lamps • Sewing Cabinets • Assorted Wooden Chairs • Lighted Bamboo Shelf • Large Lot of Assorted Mirrors • Large Lot of Restaurant Tables • End Tables • Wooden Rockers • Ashley Furniture Beveled Mirrors NIB • Wooden Head Boards • Large Lot of Round Tables • Allis Chalmers Tractor Seat • Assorted Wooden Tables • Drop Leaf Table • Quilt Rack • Chifferobe • Game Table • Wooden Lawn Chairs • Marble Drum Table • Upholstered Bench • Dinette Tables • Twin Bed Frames • Hutch • Other



ANTIQUES • COLLECTIBLES

Blue Ribbon 15 Crock • Crown 20 Crock • Kraut Cutter • Granite Ware • Cast Iron • Corn Planter • Grain Scales • Cotton Scales • Scythe • Hames • Hay Knife • Hay Hook • Coleman Lanterns • Galvanized Waterer • Kerosene Lamps • Corn Sheller • Salesman Sample Scales • Zippo Lighters • Texas Ware • Bull Durham Tobacco Poster • Life Saver Cast Iron Toy • Belt Buckle Collection • Costume Jewelry • Watches • Arrowheads • Ford Wrench • 1874 State of Mo Debt War Claim • Assorted Glass Ware • Glass Insulators • Marbles • Copper Kettles • Coca Cola Items • Rug Beaters • Vintage Night Stand • Cruets Figurines • Beer Steins • Mason Jars w/ Zinc lids • Fuel Cans • Lionel Train Poster • Shoe Last • Wooden Canes • Coke & Pepsi Wooden Boxes • Wooden Keg • Oil Cans • Wooden Plane • Metal Pulleys • Scissors • Cast Iron Smelting Pot • Hand Saws • Old Scales • Kenmore Button Sewer • Ice Tongs • Emmitt Kelley Clown • Old Feed Sack • USA Vases • School Desk • Busch Light Race Car Hood • Miller Light Race Car Hood • Assorted Frames • Assorted Pictures • Wooden/Cast Iron School Desk • Wooden Shutters • Large Lot of Wooden Desk • Wagon Wheel Chandelier • Cast Iron Mail Box • Pitcher & Bowls • Metal Lockers • Virginia Maid Cedar Chest • Baby Carriages • Crocks • Wooden Mortar Box • Wooden Windows • Window Weights • Other



LARGE LOT OF DRIFT WOOD

1800's HARNESS-SADDLE -MAKER w/BOX

MISCELLANEOUS

Punch Bowl • Horse Tack • Large Lot of Metal Shelving • Hoses for Acetylene Torch • Hand Tools • Large Lot of Tools • Dewalt Sanders • Cordless Drill • Wrenches • Large Lot of Plastic Shelving • C Clamps • Extension Cords • Nuts & Bolts • Assorted Electronics • Vacuum Cleaners • Shop Vacs • Peg Board Hooks • Dolly Cart • Stand Fan • GE Refrigerator • GE Range • Commercial Mop Bucket • Assorted Kitchen Ware • Cutlery • Christmas Decor • Fishing Poles & Tack • Porcelain Sink NIB • Throw Pillows • Large Chalk Boards • Cherry Burl Hornets Nest • Carpenter Box • Filing Cabinets • Oils & Solvents • Wooden Work Benches • Chicken Wire • Other

AUCTIONEER'S NOTE: This is just a partial listing, as there are too many items to list. All items sell to the highest bidder! *Thanks, Shawn*

DRIVER'S LICENSE OR PICTURE I.D. REQUIRED • TERMS: CASH OR APPROVED CHECK **OR**

Chadwell
Auction Service, LLC
www.chadwellauctions.com

Auctioneer:
SHAWN CHADWELL
417-746-4038
Cell: 417-830-0209

Clerk:
SHELLY CHADWELL
Cell: 417-880-8449

Ringmen: **John Williams Jr.**
Weston Chadwell

Cashiers:
Shawn Irby • Kati Roberts
Marla Chadwell

PROFESSIONAL SALES MANAGEMENT

LUNCH WAGON • APPRAISAL SERVICE • RAIN OR SHINE
All announcements made day of sale take precedence over any printed matter.
Not responsible for lost or stolen merchandise. Not responsible for accidents.

CRAWFORD *Online* AUCTION

HERMITAGE, MISSOURI

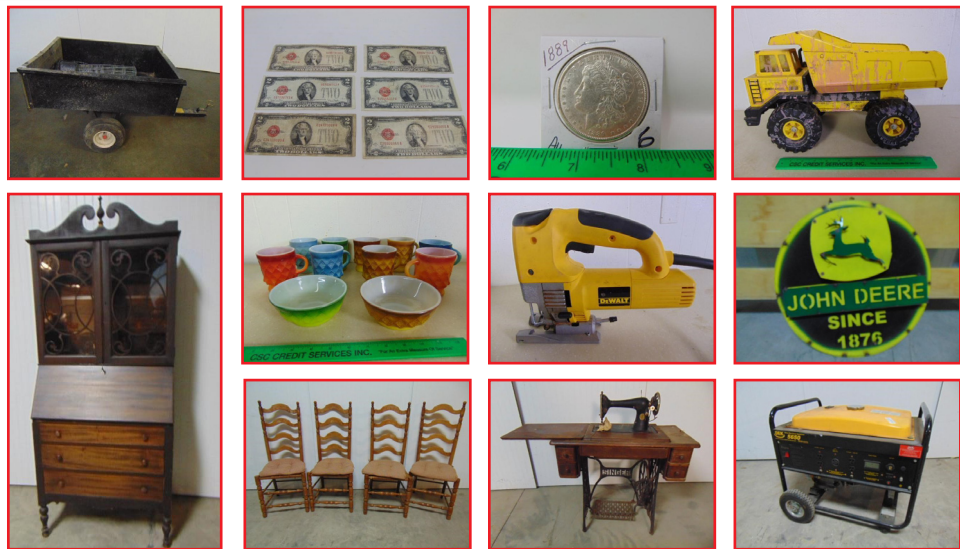
WEEKLY ONLINE CONSIGNMENT AUCTIONS

Specializing In Antique Collections, Tools, Household and Estate Items

Online Bidding Through Sunday Evenings at 7:00 PM



WWW.OZARKBID.COM



SHIPPING ON
AVAILABLE ON
MOST ITEMS

SELL YOUR ITEMS
NATIONWIDE

SAVE TIME, SAVE
MONEY, SHOP AT
ONLINE AUCTION

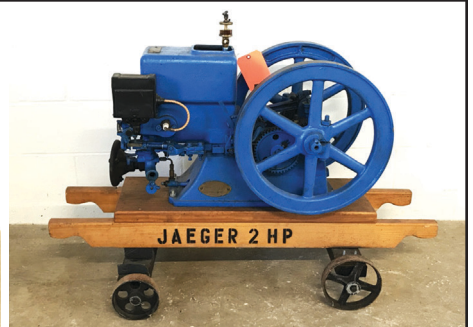
Online
CRAWFORD
Auction Service LLC

Register and bid online
@ www.OzarkBid.com *Ozarkbid*



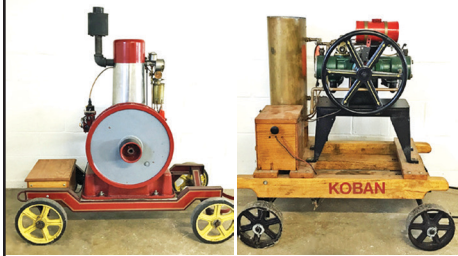
Contact Chase Crawford, Crawford Auction Service for more info @ 417-399-1904





ONLINE ESTATE AUCTION

**BID NOW! BIDDING CLOSSES
TUESDAY, JANUARY 7TH**

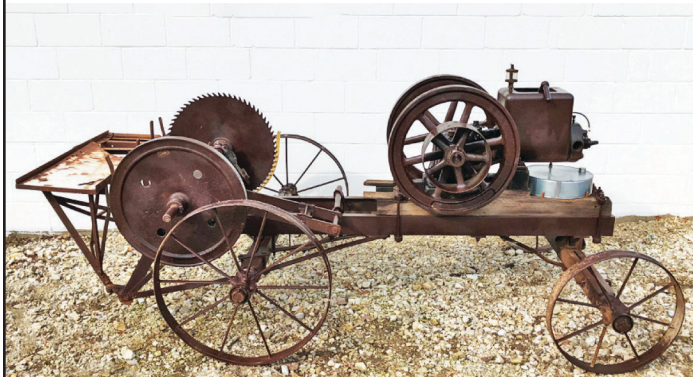


Item Preview Dates:

Wednesday, January 1st (1PM-4PM) or Saturday, January 4th (9AM-1PM)
Other preview times by appointment.

Item Preview Location:

4076 Hwy. VV, Berger, MO 63014



- 80+ ANTIQUE ENGINES
- Snap-On, Mac, Craftsman & other mechanics tools
- Antique tools including woodworking planes
- Copper & iron antique kettles
- 6 Sausage stuffers
- Cast iron cookware
- 14 iron implement seats
- 83 Coleman lanterns
- Furniture, antiques, collectibles
- Pocket knives



All items sell regardless of price.
All items start at only \$1.



SCHNEIDER

Auctioneers LLC

573-834-2207 • 573-291-8075
www.SchneiderAuctioneers.com

Antiques, Collectibles, Guns, Coins & More

Wednesday, January 1st, 2020 ★ 10 A.M.

Location: Texas County Fairgrounds Building – 1585 North US Highway 63 Houston, MO

1910 Gold Quarter Eagle \$2.50 piece, nice; Vintage wooden post office boxes cabinet with clerk station from Solo, Missouri; WWII German helmet; Horse drawn buggies – 1 set up for 2 horses, single seat with canopy, hydraulic brakes on the back & the other is single horse 2 seats with manual brakes on the back, locally built by Amish; Carousel horse; St. Louis fire hydrant

Antiques & Collectibles

Dazey Churns- includes #40, #4 Red Ball with tulip base and #8 Red Ball with tulip base; Cocks- includes #12 UHL, #10 Western, #6 Blue Ribbon; Red Wing covered dish; 8 pc Fire King Turquoise Blue snack set in box; Griswold muffin pan; #3 Wagoner skillet; #8 Wagoner skillet; #10 Wagoner skillet; Armour 25# tin; Vess Soda crate; Blue Ridge soda crate; Monmouth crock bowl w/ lid; WWII German helmet; Pyrex – includes pink and primary bowl set; cast iron skillets; Jim Beam Republican whiskey decanter; Jim Beam Democrat whiskey decanter; Toby mugs; pink depression glass; Sheffield coffee pot; Bubble Up soda glasses; Ulysess S Grant framed picture; wooden ironing board; Elvis records; Beatles trading cards; printer trays; Wooden Golf Clubs w/ bag- includes #1-7 and #9 club; large woven basket w/ lid; Kodak film canister; dice; marbles; Skotch Jug w/ glass inside; Stromberg Carlson telephone; Lionel train; train set, various transformers, train track; vintage suitcase/hat box; Quality food chopper; buggy steps; US bridle; tobacco cutter; block carrier; nail puller; shoe lass; buggy spoke trimmer; cookstove hand tools; wagon hub wrench; carding wool tool; handsaw tooth setter; copper horse bit; tire patcher; Stewart Ball Bearing #8 sheep shearer; gear puller; double cherry pitter; curry combs; hand clippers; John Deere planter bin cover; Hobart Dayton store scales; asbestos cutter; Shotgun shell burlap bags; meat saws; cast iron coin banks; 1950's Coca Cola cooler w/ plug and bottle opener; oil lamps; large Planters Peanut jars; Singer sewing machine w/ case; 2 pink barber chairs; oil lamps; Solo Missouri post office; rope bed; stained glass; Trump signs; Roseville pottery; Lodge cast iron Wok; Kraft Bear Glass Piggy Banks; antique wooden baby high chair; horse hames mirror; Sophia Pachinko game w/ balls; Aladdin kerosene lamps; 3 gallon Mason Star & Eagle 1858 jar; Old Judge gallon jar; Railroad lanterns; Jars- includes green Atlas, green Ball; Cream bottles; Grapette piggy bank; galvanized feed scoop, tubs, buckets and gas cans; Pepsi and Coke soda crates; Coffee jars – Old Judge, MFA and Sunshine; metal lawn chairs; single trees; hames; cow skulls with horns; rustic framed John Wayne picture, one of a kind; calf skin; various horse bits and spurs; butcher block table; lobster trap; copper washer; metal churn; seed/cranberry scoop; grinding wheel; seed cleaner; whiskey crocks; Liberty Blue plates, cups, saucers and mugs; Demi-Tasse sign; Nectarose sign; vintage decanters; St. Louis Cardinals 2013 National League Championship replica ring in box; 1946 St. Louis Cardinals replica ring in box; 1926 St. Louis Cardinals replica ring in box; 2006 St Louis Cardinal replica rings- Wainwright and Molina; Barbara Mock 30x36 Framed Print "Her Garden"; Steve Hanks 17x31 Framed Print "Bookends"-No longer in print; Stoupe Mirror Co. Bevel Mirror; 40's Era Rice Paper Umbrella; 1960's German Porcelain Vase/Furstenberg Mid Century Modern "Atomic Age"; Wrought Iron Peacock Design Garden Loveseat and Table; Schlottenhof porcelain teapot and Coffee pot; Demitasse/Mocca Cup-Martinroda Porcelain Company; Pierre Joseph Redoute "Rosa Gallica" & "Rosa Indica Cruenta" prints; Ted Mundorff Botanical Lithographs "Bird of Paradise" and "Anthurium"; milkglass punch bowl with 28 cups, pyrex enamelware coffee pot; Pepsi signs; 7 UP sign; neon Miller Light beer signs; Purina sign; Buckeye Mfg. railroad car jacks

Guns and Knives

Marlin 30-30 Model 336; H&R 1871 LLC 20 ga; Mossberg 500A 12 ga; Mossberg 30-30 Model 464; Rossi 20 ga; Sears Roebuck & Co 20 ga double barrel; "Revelation" Western Auto by Marlin 22LR Model 150M; Remington 870 Express Magnum 20 ga; Mossberg 16 ga model 190; Savage Axis Bolt action 243, syntactic stock, with weaver 3x9 scope; Stevens pump action 12 gauge; Charles Daly/KBI pump action camo 20 ga.; Eclipse double barrel made in Belgium; Stevens 20 ga model 94H; Rohm GMBH Sontheim 22 LR model 66 revolver w/ holster; Remington 7mm model 770; Ammo- includes 16 ga & 20 ga, 7mm 158 grain; hunting knives; collector knives; Horton Crossbow HD150 Explorer; clay target thrower; clay targets

Toys

Tonka Excavator; Slick Toys Cargo truck; Tonka US Army truck; Strutco Excavator; cast dump bed for Tonka truck; metal truck/trailer; 1960's Fisher Price Toys; Rock'em Sock'em Robots; Tonka Farms live-stock truck; Marx farm truck; Tinker Toys

Coins

1964 Kennedy Half dollars; Bicentennial Half dollars; 1874 Shield Nickel; 1916 D Walking Liberty Half dollar; 1936 D Walking Liberty Half dollar; 1937 D Walking Liberty Half dollar; 1942 D (UNC) Walking Liberty Half dollar; 1943 D (BU) Liberty Half dollar; 1943 D (Choice) Liberty Half dollar; 1937 D Washington Quarter; 1865 Three Cent; Morgan Silver Dollars – Listed as follows - 1878 CC; 1879 CC; 1880 P; 1881 S; 1883 P; 1885 P; 1887 P; 1889 P; 1890 P; 1890 CC; 1890 O; 1892 CC; 1892 S (Rare); 1892 CC; 1893 CC; 1896 P; 1897 S; 1898 P; 1898 S; 1900 P; 1902 O; 1903 S (Super Rare); 1921 P; 1921 S; Peace Dollars – 1922 P, 1923 P; 1910 Gold Quarter Eagle \$2.50; Wheat Pennies

Auctioneers Note: Auction will be held in a climate controlled building with seating, restrooms and concessions available. Come out and start the New Year with us at this great auction. Great quality antiques, guns & coins. More items to be added by sale day. For more info call Travis at 417-293-6909. See you on the 1st!!!

Tooley Auction Services, LLC

417-293-6909 • Willow Springs, MO • tooleyauctions@gmail.com



Travis Tooley, Auctioneer
Bruce Scheets, Auctioneer



is what we say best.



Follow us on Facebook!
Tooley Auction Services, LLC

Drivers license or photo ID. Cash or check. Announcements made on the day of the sale take precedence over any printed material. Not responsible for accidents, theft or lost articles.

Clerks & Cashiers: Jennifer Tooley, Penny Tooley, Shelly Cauldwell
Ringmen: Josh Wheeler, Vance Farmer, Terry McCallister

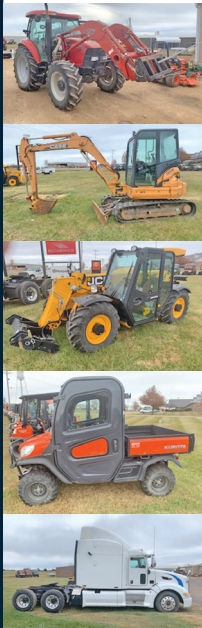


Inventory Liquidation

AUCTION

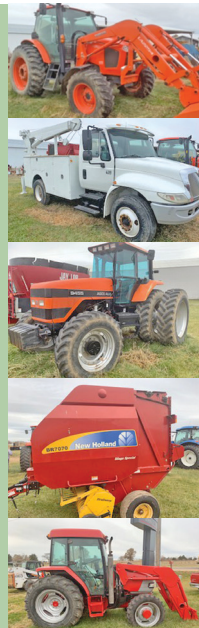
SATURDAY, DEC. 21 • 10 AM

**AUCTION LOCATION: SCHAEPERKOETTER SALES & SERVICE CO,
1102 West Highway 28, Owensville, MO 65066**



**TRACTORS, COMBINE AND HEADS,
PLANTERS AND SPRAYERS,
CONSTRUCTION EQUIPMENT,
TRUCKS AND VEHICLES,
GRAIN CARTS AND WAGONS,
MANURE SPREADERS, CUTTERS,
TILLAGE, MISC. EQUIPMENT,
UTV'S, LAWN MOWERS**

The Schaeperkoetter family has been in the implement business in for over 100 years, they have had an international harvester franchise since 1929. Having sold their business to Crown Power and Equipment they will host an inventory liquidation auction at their Owensville, MO location, please join us!



Wheeler
AUCTIONS & REAL ESTATE
23101 HWY. 24, PARIS, MO 65275 | 660-327-5890
WWW.WHEELERAUCTIONS.COM

**2 RINGS MAY RUN
DAY OF SALE**

Live Online Bidding Powered By proxibid

**SELLER: SCHAEPERKOETTER
SALES & SERVICE CO.
OWENSVILLE, MO | 573-437-4421**

For more info and photos:
www.wheelerauctions.com

CUSTOM SAW MILLING: Lebanon. 417-533-4607, 417-664-1195.

4 NEW SCHRADE OLD TIMER BOWIE KNIVES: In package. \$33/each . 417-293-0568.

OLD LINN CREEK, HA HA TONKA & CAMDEN CO BOOK "Before the Dam Water", by T. Victor Jeffries. \$3.50 plus \$2 if mailed. 417-532-2045, Lebanon.

MOTORHOME: 1998, F350, Catalina Sport, 22', good shape, new tires, 67K. \$8,000. 573-261-0513.

CHURCH FOR SALE: Sturgeon, MO. All new outside, remodeled inside, holds 80-90 people, nice kitchen, 2 nice restrooms, on 6 corner lots. Also could be used as Daycare business etc. Call only, 573-881-2006.

DETROLA MUSIC MACHINE: Plays CD'S, Records, Cassettes, AM-FM Radio, excellent condition, 20x18x12, oak finish, antique look. \$65. 573-364-7465, Rolla.

POSTER BED. \$125 Round table. \$45. Duncan Phyfe Table. \$100. 417-741-1232 or 417-241-5193.

Salem Livestock Auction

Hwy. 32 Salem, MO • 573-729-8880
Over 40 Years in the Livestock Business



**We Will Be Closed Dec. 23 & 30
First Sale of New Year on Jan. 6**

Upcoming Special Sales!

Friday, January 10th

Pre Vac Sale at 12:00 pm
Cattle must be weaned 45 days with at least 1 round of shots

Saturday, January 18th

Stock Cow Sale at 1:00 pm

Luke Peterson • 417-259-0036

Shawn Chadwell • 417-830-0209

Bryce Lauderdale • 417-255-5124

Field Representatives

Wright & Surrounding Counties
We Appreciate Your Business!

Cattle Sale Every Monday at 12:00

Feeder Calves to sell at 12:00 pm
Butcher Cows & Stock Cows following

All Consignments Welcome Up Until Sale

We Appreciate Your Business!

Allen Thompson **Renee Lauderdale**
417-932-4097 417-926-2682

Chuck Thompson **Brandon Barton**
417-257-5610 417-259-1597

Terms of Sale: Cash or Approved Check!

AUCTION REMINDER: Saturday, December 21st, @ 10am. Wheeler Auctions. Please see our Auction Directory for more information.

WANTED: LP Gas kitchen range w/standing pilots, and 125gal LP tank. 417-746-4440.

SINGLE BRAHMA HARNESS: Like new, Standardbred size. \$250. 417-533-9484, Grovespring.

2 FRONT FENDERS FOR 1947-1953 TON AND HALF CHEVY TRUCK: \$100 or trade. Bismark, 573-734-2822.



MID MISSOURI STOCKYARDS

REGULAR SALE EVERY THURSDAY 11AM

For Farm Visits, Market Updates, or Trucking
 Call Zach Cox 417-777-1320
 Dan Romine 573-578-4939

**Competitive Buyers!
 Competitive Commission!
 Competitive Market!**

Barn: 417-532-9292 

I-44 • Exit 123 "just outside of Lebanon"
 17505 Route 66, Phillipsburg, MO 65722

For weekly market updates, visit us at
www.midmostockyards.com

CHAINLINK DOG PEN :6ftx6ftx10ft long and dog house. \$160. 636-239-4124.

AMBITIOUS CLEANERS for Donkey Barn. Pays well. Roby, 417-458-1481

AUCTION REMINDER: Closed Dec 23 and 30. Jan 10 Pre-Vac Noon. Stock Cow sale, January 18th @ 1pm. Salem Livestock. Please see our Auction Directory for more information.

RITCHEY MO. HISTORY: A small village in the Missouri Ozarks, (Newton County 1925-1950). \$20. Lebanon, 417-532-2045.


AUCTION REMINDER: Public Auction, Saturday, December 28th@ 9:30am. Sam Crawford Auction. Please see our Auction Directory for more information.

HORSE DRAWN BUCKET CART: plywood body, wooden wheels. \$650obo. Buckboard, 8"x32" pneumatic tires. \$575. Niangua, 417-880-0025.

3 PUPPIES, POMERANIANS-ACA REGISTERED: 2 Brothers-White. 1 black female (not related), Age 3-4 mos, UTD shots/wormed, All 3-\$900. 2-\$700, 1-\$375. Cash only. For more information 417-426-5767, Ask for Amy, Eldridge.

CHRISTMAS PUPPIES: Anatolian/Akbash, excellent herd guardians or companions, will hold until Christmas, UTD on shots. \$300. 573-337-2164/417-458-1535.

JOHN DEERE HX-10: Pull-type 10ft, brushcutter. \$4,200. 573-765-4406.



BUFFALO LIVESTOCK MARKET LLC
 276 Hwy 32 West
 Buffalo, Missouri

December 14th, 2019
Receipts: 2928 Head
 Feeders steady to \$4 higher.
 Cows steady.

Representative Steers

| |
|-----------------------------|
| 300-400 @ 170.00 to 200.00 |
| 400-500 @ 148.00 to 172.00 |
| 500-600 @ 140.00 to 163.00 |
| 600-700 @ 138.00 to 145.50 |
| 700-800 @ 135.00 to 141.75 |
| 800-900 @ 134.00 to 139.50 |
| 900-1000 @ 120.00 to 130.00 |

Representative Heifers

| |
|----------------------------|
| 300-400 @ 125.00 to 148.00 |
| 400-500 @ 128.00 to 152.00 |
| 500-600 @ 125.00 to 142.00 |
| 600-700 @ 126.00 to 135.00 |
| 700-800 @ 118.00 to 130.00 |

Feeder Bulls

| |
|----------------------------|
| 500-600 @ 133.00 to 143.00 |
| 600-700 @ 127.00 to 133.00 |
| 700-800 @ 112.00 to 128.00 |
| 800-900 @ 85.00 to 90.00 |

Slaughter Cows

| |
|---------------------------------|
| 1500# Fat Cows 54.00 to 63.50 |
| Boning Med Flesh 40.00 to 53.00 |
| Lean Cows 25.00 to 40.00 |
| XThin 25 Down |

Slaughter Bulls

| |
|------------------------------|
| Med. Dressing 71.00 to 76.50 |
| Low Dressing 61.00 to 69.00 |

Bred Cows 650.00 to 975.00

Cow Calves 900.00 to 1175.00

No Sales Dec. 21st or 28th

MON-WED MARKET REPORT
 Listen to KJEL 103.7FM • Lebanon or KYOO 99FM • Bolivar

VIEW OUR SALES AT CATTLEUSA.COM

CALL FOR TRUCKING OR ON-FARM VISIT

Lyle Caselman • Owner-Manager
 417-345-7876 • mobile 417-533-2944
 Leon Caselman • Owner
 417-345-4514 • mobile • 417-588-6185
 Howard Miller • Owner 417-345-8122

PERSONAL PROPERTY AUCTION





Directions: Travel West of Lebanon, MO 9 miles on Highway 32 to 12350 Hwy 32 West. Watch for sign.

FRIDAY DECEMBER 27
 Starting At 10:00AM

TRACTORS- FARM MACHINERY & TOOLS

Kioti Dk55 4x4 diesel tractor w Kioti KL551 loader and spike, John Deere 2040 diesel tractor w JD 520 loader and spike, David Brown 1212 diesel tractor w loader and spike, Patriot 250 skid steer, Vermeer 605J round baler, Agco round baler, Gehl 1165 discbine, Grace tree shear for front end loader, Grace brush rake for front end loader, Woods GTC60 pto tiller, Worksaver hyd post driver, Danuser post auger, Fimco 3 pt seeder, 3 pt 6' rotary cutter, 1995 Ford xl150 pickup auto w under 100k miles (rough), like new CM 16' bumper stock trailer, 18' tandem bumper trailer, pipe tub and alley system, pipe gates, Elk River squeeze chute w palp cage and Tru test scales, Elk River creep feeder, 150 bu green creep feeder, 2 heavy hay saver bale rings, big bale trailer, new 10,000 watt gas generator, new 7000 watt diesel generator, new gas trash pump, Husqvarna RZ5424 zero turn mower, Craftsman garden tractor, Cub Cadet rear tine tiller, 2 Stihl chainsaws, Kobalt air compressor, vise, chains, Yard Machine 8 ton ,log splitter, Schumacher battery charger, Earthway garden seeder, torch set, gas air compressor, hand and power tools, upright freezer.

Note: Not a large auction but very clean and ready to work equipment! A sale you will want to attend!

MR AND MRS JAMES TISHER

Go to www.knightauctionservice.com for complete list and pictures!

TERMS: Cash, Approved Check w/ID, Visa or Mastercard.

Sale By
KNIGHT AUCTION SERVICE, LLC
 417-532-7497 Lebanon, MO
 "Complete Sale Service"

www.knightauctionservice.com

NEW HOLLAND 1411 DISKBINE.
\$7,250. 573-765-4406.

BRAND NEW INTERTHERM ELECTRIC FURNACES: For mobile homes. \$550. Factory Warranty. Call Charlie 573-786-4003, Steelville.

NEW STARTER FOR 1960's, 70's & 80's 302 & 351 Ford Windsor Motors. \$60 OBO. 573-286-1957, Eldon.

1999 JEEP CHEROKEE 4x4: Straight 6 engine, new tires, good body. \$600 OBO. 573-263-2732.

ELECTRIC CABELA'S MEAT GRINDER: works good. \$85. 417-646-8807.

HORSE HAY: Square bales, weed free, Big Blue stem, 80% pure. \$5 bale. 573-368-1794, Rolla.

Don we now our worst apparel...

UGLY CHRISTMAS SWEATER CONTEST

Now until December 24th
come in dressed to unimpress
with your **UGLIEST Christmas Sweater**
and get photographed for a chance to win in store gift card
1st place \$100 • 2nd place \$50 • 3rd place \$25
Winner will be announced on December 26th

UNIQUE-A-TOKE 42 CAMDEN COURT SE, CAMDENTON MO 65020
573-434-2788 • Online - UNIQUE@TOKE.COM

FIREPLACE INSERT: Very heavy duty, or free standing. \$150. 636-239-4124.

FOR SALE: 2006 Woodmizer superhydraulic, 51HP, diesel, 5,350hrs, runs everyday. \$22,750. 314-972-2903

MX5100 KUBOTA: 4wd tractor w/loader, low hours. \$21,500. 417-270-1505.

\$19,900 USED DOUBLE WIDE: nice 3 bedroom, 2 bath delivered & set-up.....Hurry, This house will **NOT** last long! Call now 573-657-2176 amegamobilehomes.com

BRADFORD GRAVITY WAGON: 10 ton, good shape. \$1,000. Stockton, 417-276-6664

3/4 TON GMC FARM TRUCK: w/hydraulic Dew-Ease bale bed. Truck runs, bale bed works good. \$4,000 OBO. 417-259-0396, Mtn Grove.

BIG SHOP TORPEDO HEATER: \$200 or trade. Bismark, 573-734-2822.

HAY FOR SALE: Square bales/\$4.50, Round bales 4x5/\$50, good mixed grass hay, no weeds. 573-368-1794.

FOR SALE: 190 Allis: Diesel, good condition. \$4,295. Ford Loader with hydraulic pump. \$800 OBO. 801 Power Workmaster: almost new rubber. \$2,895. 9N Ford: good rubber. \$1,200. Rt 66 Tractor Repair, Old Hwy 66, St James, MO. 573-263-2732.

"Right Here!" "Right Now!"

chhomecenter.com
Prices good thru December 28, 2019

Construction Framing Lumber

2" x 4" x 8'
Standard #2 Grade
Over 30 more sizes in stock!

Starting at \$2.65 each

1/2" x 4' x 8' Drywall (SR1248)

Cash & Carry Price!
\$8.44 each

7/16' 4'x8' OSB Sheeting (WABD716)

Cash & Carry Price!
\$7.97 each

NOW OPEN IN MTN. GROVE!

MARSHFIELD
Hwy 38 at 360 McNabb Rd
I-44 Exit #100
(417) 468-6262
Mon.-Sat. 8 a.m.-5:30 p.m.

ROGERSVILLE
Hwy 60, 2 Blocks
South on Mill St.
(417) 753-2500
Mon.-Sat. 7:30 a.m.-6 p.m.

CABOOL
Near Hwy 60
at 107 South Hwy 181
(417) 962-4535
Mon.-Sat. 8 a.m.-5:30 p.m.

HOUSTON
Hwy 63 (By the Super Center)
1453 Sam Houston Blvd
(417) 967-4179
Mon.-Sat. 8 a.m.-5:30 p.m.

MTN. GROVE
Near the Square
402 East 1st Street
(417) 926-3086
Mon.-Sat. 8 a.m.-5:30 p.m.

Is Your Log Home Starting To Look UGLY?
Professional Staining & Repair
(Log Homes & Wood Siding)

Call Pine Ridge Rustic
Log Home Building Supplies

573-729-7226

www.pineridgerustic.com

CASE MANURE SPREADER: Good condition. \$800. 573-308-5884, Rolla.

30 GAL PROPANE TANK: Has new valve. \$75. 417-683-7843, Tecumseh.

FANCA 4 BASKET Hydraulic Fold Tedder. Good. \$4,350. 573-765-4406.

TAXIDERMY SUPPLIES: for list and prices call 573-259-9318.

VINYL WINDOW: Double pane, 50x33. \$50. 417-322-4432.

2000 S-10 PICK-UP: 159,000 miles. \$3,000. 417-532-4108.

BYLER SUPPLY **the builder's choice!**

Metal Roofs Designed To Look Great On Your Home!

HEAVY 29 Ga. METAL # 1
 Limited LIFETIME WARRANTY
29 Ga. & 26 Ga. Painted
 CUT TO LENGTH PANELS



NEXT BUSINESS DAY SERVICE
Call for details.



Ask About Our Quick Service.
Over **20** Colors and Several Styles To Choose!

GALVALUME METAL UNPAINTED 25 YEAR WARRANTY

\$48.50

#1 Standard Panels, 29 Ga.

Good quality, quick service

DECK PACKAGES AVAILABLE AT BYLER BUILDING SUPPLY



Roof Is Optional
Additional Sizes & Custom Shapes Available!
8x10 • 8x16 • 10x14 • 12x16

- 1 Set of Steps
- Handrails
- 2x2 Balusters
- All Deck Boards & Railing Screwed, Up To 4' High, All #2 Treated

CALL FOR PRICING!

Labor & Material INCLUDED!

DELUXE BUILDING PACKAGES



| | | |
|-----------------|-----------------|-------------|
| 24x40x10 | Galvalume | \$5,797.55 |
| | Painted | \$6,401.76 |
| 24x32x10 | Galvalume | \$5,616.66 |
| | Painted | \$6,098.95 |
| 30x40x10 | Galvalume | \$6,430.69 |
| | Painted | \$7,099.08 |
| 30x40x12 | Galvalume | \$6,886.06 |
| | Painted | \$7,598.22 |
| 40x60x12 | Galvalume | \$11,272.16 |
| | Painted | \$12,461.71 |

All Buildings Quoted Have #2 Lumber And #1 Galvalume Or Limited Lifetime Painted Metal

All Buildings Are Heavy 29 Ga. Metal, Three 2"x6" T&G Splashboards, All Poles 5"x5" Or Larger, CCA Treated, Fully Trimmed With One 3'x6' Walk-Through Door & One Large Sliding Door.

Plus Tax. Labor & Delivery Available On All Building Packages.
Prices may vary due to local code restrictions.

ARE YOU KIDDING ME???-Used double-wide, \$19,900!!!! delivery & set-up, 3 bedroom, 2 bath, Call 573-499-9993 comlumbiadiscounthomes.com

FOR SALE DARK OAK CURIO CABINET: \$170. 1-636-388-5810, Leslie.



JET Vertical Milling Machine
 Very Good Condition.
 Comes with Digital Readout!
\$3,900
573-578-4605

MAYTAG EXTRA LARGE CAPACITY: Heavy duty, 2 speed washer, white. \$100. Washington, 636-239-2695.

2014 MERCEDES E350: 4-matic, 102K miles, like new, loaded. \$18,500 OBO 417-383-8200.

1986 OLDSMOBILE CUTLASS: 4 DR, V-6, loaded, excellent condition/transportation. 42,500 actual miles. \$2,900obo. 573-873-3440, Camdenton.

LARGE VICTOR WOOD FURNACE: and late model 3ton Air Conditioner. \$950. 636-239-4124

LOT OF 72: "The Antiques Journal" Magazines, years- 1974-75, 1978-80, Mar-Dec 1977, Jan-Feb 1981. \$60 for all. Grovespring, 417-533-9484.



Big To-Do?
 Call Ken!
Nancy's Painting & Maintenance Service
417-650-6467

1985 FORD F250 Grill & Light Trim: \$40. 573-308-5884, Rolla.

WANTED, TIMBER TO LOG ON SHARES: Honest, reliable, references. 417-533-4607, 417-664-1195.

2018 KZ SPORTSMAN 363FL DESTINATION RV: Lebanon. Call for price. 309-678-0057.

JOHN DEERE 535 ROUND BALER: monitor, kicker, net wrap. \$5,250. 573-765-4406.

VILLA HOMES IN ROLLA: Has NEW and USED Mobile Homes. Call David for info: 573-578-8072.

LIONEL TRAIN SET: Steam engine, tender, caboose and other car, track and transformer. \$195. 573-364-7465, Rolla.

GET YOUR WORK DONE, AMERICA

FOR JUST **\$243** PER MONTH*



Mahindra
TOUGHEST TRACTORS ON EARTH

4540 2WD

- SIMPLE** to operate
- ECO-FRIENDLY**, NO DPF engine
- HEAVY-DUTY** steel construction not plastic

MAHINDRA 4540 41HP, 2WD, TRACTOR AND LOADER.

Marshfield Machinery Inc.
 222 E. Madison • Marshfield, MO 65706
 417-859-2117 • www.marshfieldmachinery.com

7 YEAR
LIMITED POWERTRAIN
WARRANTY

*Payment is for tractor and loader only and is calculated at 10% down and 84 months financing. With approved credit. Program restrictions may apply. See dealer for details. All offers expire December 31, 2019.

WORLD'S #1 SELLING TRACTOR

Mahindra
 Tractors

NEW MAHINDRA TRACTORS

| | |
|--------------------------|----------|
| 9125 4WD CAB & LDR 125HP | IN STOCK |
| 7085 4WD & LDR 85HP | IN STOCK |
| 6075 4WD & LDR 71HP | IN STOCK |
| 6065 4WD & LDR 62HP | IN STOCK |
| 2655 4WD CAB & LDR 55HP | IN STOCK |
| 2655 4WD, BACKHOE 55HP | IN STOCK |
| 2655 4WD & LDR 55HP | IN STOCK |
| 4540 4WD & LDR 41HP | IN STOCK |
| 4540 2WD & LDR 41HP | IN STOCK |
| MAX26XL & LDR 26HP | IN STOCK |

USED TRACTORS

| | |
|-----------------------------|--------|
| MAHINDRA 105P CAB LDR 105HP | 45,500 |
| MAHINDRA M85 CAB LDR 85HP | 30,000 |
| MAHINDRA 4035 4WD LDR 40HP | 17,000 |
| MAHINDRA MAX26XL LDR 26HP | 12,500 |
| MAHINDRA MAX22 W/ BACKHOE | 11,500 |
| MAHINDRA EMAX22 LDR 22HP | 10,000 |
| CASE IH 235 W/ MOWER 18HP | 3,500 |
| IHC 184 W/ MOWER 18HP | 3,500 |

USED SIDE BY SIDES

| | |
|-----------------------|-------|
| MAHINDRA 750 CREW XTV | 8,500 |
| MAHINDRA 750 XTV | 7,500 |

USED ROUND BALERS

| | |
|---------------------|--------|
| MF 2745 4X5 MESH | 12,500 |
| HESSTON 745 4X5 | 7,500 |
| HESSTON 555 4X6 | 4,500 |
| HESSTON 560 5X6 | 4,000 |
| HESSTON 550 4X6 | 3,500 |
| NH 850 5X5 | 1,500 |
| MF 224 SQUARE BALER | 2,500 |

USED RAKES

| | |
|----------------------|-------|
| SITREX 12WHEEL | 3,500 |
| DURABUILT 8 WHEEL | 1,950 |
| VERMEER WR20 8 WHEEL | 1,950 |
| RHINO 10 WHEEL | 1,750 |
| M&W 8 WHEEL | 1,500 |

USED NOTIL DRILLS

| | |
|-----------------------|--------|
| HAYBUSTER 107C DRILL | 17,500 |
| HAYBUSTER 107 DRILL | 11,500 |
| HAYBUSTER 107C DRILL | 9,500 |
| TRUEX 7FT NOTIL DRILL | 3,500 |

USED MISC.

| | |
|--------------------------|-------|
| RHINO 12FT FLEX WING | 8,500 |
| NEW HOLLAND 185 SPREADER | 3,500 |
| BUSH HOG 3008 8FT 3PT | 3,000 |

Marshfield Machinery Inc.
 222 E. Madison • Marshfield, MO 65706
 417-859-2117
www.marshfieldmachinery.com

2 REAR FENDERS FOR 1946-48 CHEVY COUPE: \$200 or trade. Bismark, 573-734-2822.

30 GAL FUEL TANK: Fiberglass. \$50. 417-753-2747, 47-766-1991, Rogersville.

WR CASE & SONS Cookbook & Historical Companion. \$7.50. 417-532-2045, Lebanon.

USED FLAT BEDS: 2 DRW, SRW. 636-671-3800



DECEMBER 26TH & JANUARY 2ND HOLIDAY ISSUE:

We are taking a week off to be with our families, so this special two-week issue will be the last chance to advertise in 2019!

Display Advertising Deadline: Wednesday, December 18 at Noon

Classifieds Deadline: Friday, December 20 at Noon

Delivery: Thursday, December 26 & Friday, December 27

THERE WILL BE NO JANUARY 2ND ISSUE PUBLISHED!

Merry Christmas & Happy New Year!

T WEEKLY
TRADER
MAGAZINE

417-532-9131 • 800-665-8875 • 100 E. Commercial, Lebanon, MO

WWW.MYWEEKLYTRADER.COM

WCT Year End Savings on ALL LS TRACTOR Packages



XJ2025H Pkg ONLY \$18,100

LS XJ2025H

25hp, Hydrostatic, 4wd
QA Loader & Bucket
Rhino CBX48, 4ft Box Blade
Rhino TW14, Rotary Cutter
Kodiak 18ft Utility Trailer

MT345E Pkg ONLY \$27,700

LS MT345E

Economy 45hp, 4wd
QA Loader & Bucket
Rhino TW16, 6ft Rotary Cutter
Rhino SBX72, 6ft Box Blade
TrailerMan 20ft Car Hauler



TrailerMan Dump Trailers

14 ft Gooseneck
Dump w/Tarp,
(2) 7K axles



ONLY \$8,000

14 ft Tongue Pull Dump
w/Tarp, (2) 7K axles



ONLY \$7,500



WCT Farm & Lawn LLC
3299 Evergreen Rd, Strafford, MO 65757
417-859-4311
www.wctfarmandlawn.com

We Specialize in Selling Agricultural and Recreational Farms!



MOSSY OAK[®]
PROPERTIES
OF THE HEARTLAND
 Land & Lakes Properties
 America's Land Specialist

CALL US TODAY!!!

Rolla Office:

12647 S. Hwy 63, Rolla • 573-308-4868

Cole Camp Office:

14981 Centerline Ave, Cole Camp • 660-668-4868

MOlandandLakes.com • 660.668.HUNT



Sullivan Co-147 Acres

\$399,500

Wow this is a nice place! 147 acres of hardwoods, crops, and fields. Throw in a good size pond stocked full of fish, and some of the best hunting around and you have a wildlife paradise! The land is rolling with timber draws, and secluded fields, perfect for food plotting. Owner has several acres of corn planted and leaves out for the wildlife. We saw a big flock of turkeys in the bottom food plot. The deer have been devouring the radishes here. Owner will leave 15 tree stands including box blinds. There is the possibility of \$ 10,000 in income on the hay and crops on the farm, along with a hunting lease. There is a nice 1375 sq foot hunting cabin with all utilities, perfect for 3-4 guys. Very accessible with hwy frontage and also a gravel road for access to all your hunting spots. Trails are cut through the woods to get you around the farm. Located north of Green City, Mo in Sullivan county. This part of the country has some great deer and turkey hunting. For more information contact **Mike Stoner at 573-774-9775 Update... Owner is throwing in 20,000 in farm equipment on the deal. A Case 1175 Tractor, 15 Ft Brush hog, box blade, 12 ft disk.**



Benton Co-117 Acres

\$234,000

This place had rubs and scrapes all over it, every place I looked trees had been rubbed and by a lot of different bucks it appears. Deer trails and scrapes were scattered throughout the property. Williams creek borders the property along the north side. The creek is a live full time creek with some decent deeper spots. The owner used to get paid for the rock and gravel taken from the creek, With a little work you could have some great food plots here, or a nice open area to build a home. There is electric available along the road. The hill sides are loaded with nice big mature timber, it looks like it's all virgin timber. With just enough elevation change for great whitetail deer and turkey hunting. South of Cole Camp and only a few minutes from town. Benton county is always close to the top for deer harvest numbers. For more information contact **Mike Stoner at 573-774-9775 Cell or email mstoner@mossyoakproperties.com**

CRAFTSMAN HORIZONTAL BAND SAW: Good Blade. \$50 OBO. 573-286-1957, Eldon.

BORDER COLLIE/AUSTRALIAN SHEPHERDS; Ready 12/29/19. Also pure-bred Border Collies: Ready 01/04/20. Females \$150, Males \$100. 417-349-1386, Hartville.

20 GAUGE SHOTGUN RELOADING WADS: 9bags of WAA20s, 15bags of WAA20F1. \$5/bag. Osage Beach, 573-302-0890.

MODULAR STOCK SALE - It is time to move our inventory. **TRUE MODS -** Save Thousands. Call Marla, better than 20 years experience. 573-657-7040, chateauhomes.net.

2015 YELLOW SILVER TOBIANO CURLY MARE: 43" high, registered ISHA, willing and gentle, saddled but not ridden. \$1,100. Niangua, 417-880-0025.

WOOD FURNACE: Heats over 2,000 sqft home, good condition. \$575. 636-239-4124.

HARLEY SPORTSTER 900CC: electric start primary cover. \$150. 573-764-3517. Call in PM

JOHN DEERE 3020 TRACTOR: W/John Deere 148 Loader, good rubber, power shuttle, strong running diesel tractor, stored inside. \$11,500obo, **6' BUSH HOG CUTTER**, new blades, good condition \$900. Lebanon, 573-247-7161, 417-533-0877.

CHIP BOX DUMP TRUCK: 1997 GMC-6500, very good condition. Mtn Home, ARK, 480-313-5758.

Rustic Ozark Log Cabins, LLC

BEAUTIFUL CUSTOM HANDCRAFTED NATURAL LOG HOMES



Native Missouri Yellow Pine Logs

- Our Log Homes Exceed the Energy Efficiency of an R-24
- Low to NO Maintenance Log Homes!

Turn Key Packages

Starting at \$110 Per. Sq. Ft.
Get only the Log Skeleton
\$25-30 Per. Sq. Ft.

- Complete Material Packages
- Builders and Do It Yourself?
- In-House Designing
- We help one and all!

FREE ESTIMATES!

- We Guarantee our Workmanship

TREES

- The Renewable Natural Resource! GO GREEN-GO LOG!

O: 417-533-0644 C: 573-247-7161
Lebanon, Mo • www.RusticOzarkLogCabins.com

WANTED PINBALL MACHINES. 573-424-7200.

JOHN DEERE 925 Diskbine. \$6750. 573-765-4406.

AUNT JEMIMA COLLECTION. \$200 All. 573-327-9068.

ROME 8FT OFFSET DISK: \$3,750. 573-765-4406.

PYRENEES/ANATOLIAN PUPPIES. Cuties! Excellent pets/guard/sheep dogs. \$250. In time for Christmas! Reserve yours now. 417-322-0161.

SMALL SQUARE HAY BALES: Timothy, Alfalfa & Orchard Grass mixed. \$6. Alfalfa grass mixed. \$5.50. Long Lane, 417-345-5634

TRUCK BED. 9' metal bed. \$450. 417-741-1232 or 417-241-5193.

HOLLYWOOD 4-BIKE HITCH MOUNT RACK: Excellent condition, Includes (2) Allen Stabilizer tension bars and keyed alike locking hitch pin and cable. \$175. Conway, 417-718-5347.

CHRISTMAS SPECIAL: 766 Farmall pedal tractor, very nice. \$290, 417-859-6574

2015 CHEVROLET COLORADO: 4 door, extended, 4 cylinder, auto, air, 92,xxx miles. Free Carfax. \$13,900. 573-364-5008. www.jimsmotorsrolla.com.

2004 FORD MUSTANG GT. \$6,500 OBO. 417-741-1232 or 417-241-5193.

LANDPRIDE RCF3010: pull type brush hog, 10'. \$5,900. 417-270-1505.

MINI CHOPPER. \$125. 417-683-7843, Tecumseh.

3PT BALE CARRIER: \$100. 417-753-2747, 417-766-1991, Rogersville.

COLE'S TRACTOR & EQP, INC.

1 mile east of Farmington on Highway 32 • 573-756-4353

SPECIAL PROMOTION

FREE PRESSURE WASHER for the MONTH of DECEMBER!

AND STILL THE MOST FAVORED WARRANTY ON THE MARKET — 6 YEARS!!!

Baby It's Cold Outside

KEEP WARM ON THE FARM THIS WINTER

\$34,799

LS XU6168

*with Heat and A/C
and Front Loader
with Skid Steer Quick
Attach Bucket*

- 68HP
- 4 WD (FRONT WHEEL MECHANICAL ASSIST)
- GO FROM 2WD TO 4WD WITH A SIMPLE MOVE OF A LEVER
- SYNCHRO SHUTTLE
- INDEPENDENT PTO
- REMOTE HYDRAULICS
- DELUXE ROOMY CAB
- FENDER MOUNTED CONTROLS FOR EASE OF USE
- EXTENDABLE LOWER LINKS
- STANDARD TILT & POWER STEERING
- ERGONOMICALLY DESIGNED 3-POINT HITCH WITH HYDRAULIC AUTO-LIFT CONTROL
- EASY OPEN ONE-PIECE HOOD
- DELUXE ADJUSTABLE SEAT WITH ARM RESTS AND RETRACTABLE SEAT BELT
- MORE STANDARD FEATURES AND OPTIONS AVAILABLE @LSTRACTORUSA.COM



PARTS and LABOR



PUPPIES FOR SALE: Beagle/Dachshund mixed. Silver and Tri-Colors. UTD shots/worming. \$150/males, \$200/females. 417-322-0833. MUST SELL by Christmas.

2017 BUICK ENCORE PREFERRED SUV: 24,xxx miles, white auto, air. Free Carfax. \$16,500. 573-364-5008. www.jims-motorsrolla.com.

R & A FARM LLC
Trailer Repair
 >Welding >Wiring
 >Portable Welding



417-664-5954 • 30566 HWY BB LEBANON
 FB: R&A FARM LLC • ROBERT BARBEAU

JOHN DEERE 4020 TRACTOR: with Koyker 500 loader, 90% rubber, power shuttle, strong running diesel, stored inside. \$12,500obo. Lebanon, 573-247-7161, 417-533-0877.

5HP ARIENS Horizontal Shaft gas engine, pull start. \$50 OBO. 573-286-1957, Eldon.

DARDEN PROFESSIONAL TIMBER HARVESTING, BUYING STANDING TIMBER: Great prices, improve wildlife habitat and improve forest health. State Certified & Fully Insured! 573-247-4808 or 573-739-1122. Salem

QUALITY REPLACEMENT COWS: 80 BLACK SECOND & THIRD PERIOD COWS, 20 Red 2nd & 3rd period cows, 4-7yrs old, avg weight 1250lb-1300lbs, de-wormed, vaccinated, preg checked, trucking available. Otterville, 660-619-5190.

06 DODGE DAKOTA: 4 door, V6, 4x4, new tires, needs transmission, red in color, 188,000 miles. \$2,000. (417)260-2177, Houston.

15FT BUSHWHACKER BRUSHOG: \$4,900. 417-322-0161

RARE 1937 CIVILIAN CONSERVATION CORPS (CCC) 7TH CORPS AREA OFFICIAL MANUAL. \$20. 417-532-2045, Lebanon.

PICK UP TRUCK BEDLINER: Standard size Ford, Fits F150-F350, good condition. \$40. Cedar Hill, 314-303-7857.

HAROLD BELL WRIGHT BOOKS: God and The Groceryman and The Re-Creation of Brian Kent. \$10 each. Lebanon, 417-532-2045.

AUSTRALIAN SHEPHERD PUPPIES: fathers gray murle Australian Shepherd, mother red and white half Australian half English Shepherd, 573-663-7459.

1979 CHEVY PICK-UP:2WD, Custom 10, 350, V-8, Automatic, new interior, new tires, new bed liner and cover, new rear bumper, runs and drives like a dream. \$7,500. 573-934-0014.

JOHN DEERE 567 ROUND BALER: monitor, kicker, wide pick-up, cover net wrap. \$9,650. 573-765-4406.



TASK. TASK. DONE.

RB16 SERIES
 REAR BLADES
 20-40 HP 60", 74", 84" Widths
 • Cat. 1 hitch
 • 7 Forward angles; 3 Reverse angles
 • 5 Tilt positions
 • 12" Offset left or right
 • 14" Moldboard height
 • 1/4" Moldboard thickness
 • Landscape Rake adaptable

AGRI ENTERPRISES
 For Outstanding Products & Service
 1-1/2 Miles South Of Licking, MO On Hwy 63
573-674-2203
1-800-653-7152

www.landpride.com www.agri-enterprises.com

NEW CHROME RUNNING BOARDS: For 2019 Chevy 1500 Crew cab. \$200. 417-646-8807.

WANTED G-SERIES ALLIS CHALMERS. Running condition. 314-800-6592.

5 MOUNTED TIRES: size 12-20, \$200. 417-753-2747, 417-766-1991, Rogersville.

INSIDE COMPLETE VICTOR WOOD FURNACE: Heat exchangers and inside firebox all rebuilt. \$200. 573-729-5808.

COZY SECLUDED ONE BEDROOM HOME: in gated area, includes all utilities except telephone, trash and satellite, 7 miles south of St. James. \$450/month 573-699-4351

150 GAL PROPANE TANK: Needs new valve. \$75. 417-683-7843, Tecumseh.

AUCTION REMINDER: Public Auction Friday December 27th@ 10am. Knight Auction. Please see our Auction Directory for more information.

We Buy White Oak Logs!

Independent Stave Company
 welcomes all white oak suppliers!

- Top prices for your logs
- Experienced log buyers
- Professional service

www.independentstavecompany.com

Chad Cook | Salem Wood Products
417.718.2950
 5 miles north of Salem, MO on Hwy 19



INDEPENDENT STAVE COMPANY
 Log Procurement & Sales

WEEKLY TRADER MAGAZINE

YOUR AD GOES HERE!

Add YELLOW Color For An Additional \$3 Per Reader Ad

All ads will include Phone Number (unless requested to be deleted by advertiser) and City Or Town, Phone Number with Area Code counts as one word. City or Town counts as one word.

RATE: 80¢ Per Word. All Classified Ads Require Payment Before Print.

| | | | |
|--------------|--------------|--------------|--------------|
| (1) 80¢ | (2) \$1.60 | (3) \$2.40 | (4) \$3.20 |
| (5) \$4.00 | (6) \$4.80 | (7) \$5.60 | (8) \$6.40 |
| (9) \$7.20 | (10) \$8.00 | (11) \$8.80 | (12) \$9.60 |
| (13) \$10.40 | (14) \$11.20 | (15) \$12.00 | (16) \$12.80 |
| (17) \$13.60 | (18) \$14.40 | (19) \$15.20 | (20) \$16.00 |
| (21) \$16.80 | (22) \$17.60 | (23) \$18.40 | (24) \$19.20 |
| (25) \$20.00 | (26) \$20.80 | (27) \$21.60 | (28) \$22.40 |
| (29) \$23.20 | (30) \$24.00 | (31) \$24.80 | (32) \$25.60 |
| (33) \$26.40 | (34) \$27.20 | (35) \$28.00 | (36) \$28.80 |
| (37) \$29.60 | (38) \$30.40 | (39) \$31.20 | (40) \$32.00 |

Place your Classified Ad TODAY!

417-532-2800 • 800-665-8875

Fax: 417-532-8140

Or Mail To: P.O. Box 192 • Lebanon, MO 65536

For your convenience we accept MasterCard, Visa, Discover or American Express



DEADLINE FOR CLASSIFIED ADS: MONDAY 12 NOON!!

Name _____

Address _____

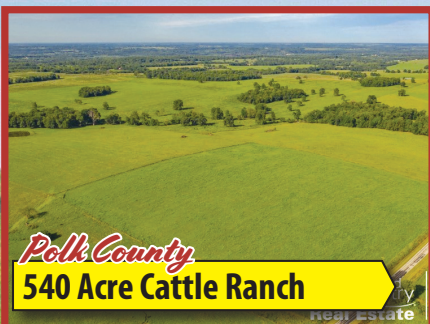
City _____ Email _____

State _____ Zip Code _____ Phone _____

Ad Total \$ _____ X # Weeks _____ = Amount Enclosed \$ _____

CONNECTING BUYERS & SELLERS

Specializing in selling farms, ranches, & wooded properties



Farm & Home Sales LLC
417-276-4868

WWW.UCFARMANDHOMESALES.COM