

Vol. 26 No. 2
APRIL 18, 2019
 800-543-8271 • 800-665-8875

FREE WEEKLY TRADER MAGAZINE

Find us on Facebook
 @myweeklytrader

Auctions - Pg. 23
 MYWEEKLYTRADER.COM



TRUCK MONTH

ALL-NEW 2019 SILVERADO CREW CAB LT ALL STAR Z71

FOR WELL-QUALIFIED BUYERS

0% APR FOR 72 MONTHS¹ OR

Stk# 32793

THIS DEAL GETS STRONGER FOR CURRENT COMPETITIVE OWNERS
 \$4,000 TOTAL CASH ALLOWANCE
 \$2,949 PRICE REDUCTION BELOW MSRP
 \$2,000 COMPETITIVE OWNER CASH
 + \$500 OPTION PACKAGE DISCOUNT

\$9,449 TOTAL VALUE²

WHEN FINANCING WITH GM FINANCIAL

FIND NEW ROADS™

CHEVROLET 

1 Monthly payment is \$13.89 for every \$1,000 you finance. Example down payment: 4.0%. Must finance with GM Financial. Some customers may not qualify. Not available with lease and some other offers. Take new retail delivery by 4/30/19. See dealer for details. 2 Total Value based on \$50,475 MSRP. Must be a current owner of a 2005 model year or newer non-GM vehicle for at least 30 days prior to the new vehicle sale. Must finance with GM Financial. Some customers may not qualify. Not available with special financing, lease and some other offers. Take new retail delivery by 4/30/19. See dealer for details. ©2019 General Motors.



FAIRGROUND
Auto Plaza
 DRIVEN TO SERVE YOU BEST...

100 Fairgrounds Road
 Rolla, Missouri
 (573) 364-1002

www.FairgroundGM.com 



P9496A	2010 TOYOTA PRIUS	\$8,988
7539A	2015 TOYOTA TACOMA	\$25,588
7654B	2015 LINCOLN MKS	\$20,988
P9489A	2011 HYUNDAI SONATA	\$7,988
6801B	2012 KIA OPTIMA	\$9,988
7644A	2013 TOYOTA PRIUS	\$11,988
7542A	2013 TOYOTA RAV4.....	\$12,988
7308E	2015 JEEP Patriot.....	\$13,588
P9482A	2016 TOYOTA SCION IM	\$13,988
P9500	2018 TOYOTA COROLLA	\$14,588
P9501	2018 TOYOTA COROLLA	\$14,588
P9499A	2017 JEEP Compass	\$14,588
7483A	2016 KIA OPTIMA	\$14,988
P9492	2017 TOYOTA CAMRY	\$15,988
P9509	2016 TOYOTA COROLLA	\$15,988
7542C	2015 NISSAN ALTIMA	\$15,988
7589A	2015 FORD TAURUS	\$15,988
P9495	2017 TOYOTA CAMRY	\$16,588
6859A	2016 JEEP RENEGADE	\$16,988

P9461	2018 NISSAN Rogue	\$17,988
P9481	2017 DODGE GRAND CARAVAN.....	\$17,988
P9494	2017 HYUNDAI Tucson.....	\$17,988
P9511	2015 TOYOTA RAV4.....	\$17,988
P9493A	2015 HONDA ACCORD... ..	\$17,988
7043B	2014 BUICK Enclave.....	\$18,988
P9508	2016 TOYOTA RAV4.....	\$19,988
P9468	2018 TOYOTA RAV4.....	\$20,588
7440A	2015 TOYOTA Avalon.....	\$20,988
P9462	2015 HONDA Pilot	\$20,988
P9484	2017 NISSAN Rogue	\$21,988
P9502	2018 TOYOTA RAV4.....	\$21,988
P9483	2018 NISSAN Murano.....	\$22,988
P9503	2018 TOYOTA RAV4.....	\$22,988
P9480	2017 TOYOTA PRIUS	\$23,988
P9510	2015 TOYOTA SIENNA	\$25,988
7550A	2016 TOYOTA Tundra.....	\$27,988
7554A	2018 TOYOTA CAMRY HYBRID	\$27,988
7595A	2014 TOYOTA Tundra.....	\$27,988

P9507	2016 TOYOTA HIGHLANDER	\$28,988
P9505A	2015 FORD MUSTANG ...	\$28,988
7527A	2018 TOYOTA Avalon Hybrid.....	\$29,988
7191C	2017 RAM 1500.....	\$29,988
7633A	2016 TOYOTA TACOMA	\$31,988
7381A	2017 TOYOTA TACOMA..	\$31,988
P9498	2018 JEEP Wrangler Unlimited	\$32,988
6854A	2018 TOYOTA TACOMA	\$32,988
7612A	2017 TOYOTA TACOMA	\$32,988
P9504	2019 TOYOTA SIENNA....	\$33,988
P9506	2019 TOYOTA Tundra.....	\$34,988
P9476A	2016 CHEVY TAHOE.....	\$36,988



PROUD WINNER OF THE PRESIDENT'S AWARD FOR THE 2ND YEAR IN A ROW!

TOYOTA
Let's Go Places

Doing Business the Right Way The Seeger Way

LIFETIME ENGINE WARRANTY

ENGINES FOR LIFE
Call for details
Non-Factory Lifetime Limited Warranty
Good at participating dealerships

PRESIDENT'S AWARD
2018
President's Award North America

SATURDAY SERVICE 8AM-4PM



Toll Free:
800-844-6026
Next to Walmart, St Robert
573-336-7111
SeegerTOYOTA.net



SEEGER CARE
PREOWNED VEHICLES COME WITH SEEGER CARE!

- FREE** (3) SCHEDULED OIL AND FILTER CHANGES
- FREE** MULTI-POINT INSPECTION WITH EVERY OIL CHANGE
- FREE** EXTERIOR CAR WASH WITH EVERY SERVICE VISIT
- FREE** LIFETIME SAFETY AND EMISSION TESTING
- FREE** SAME-DAY SERVICE LOANER CAR
- FREE** TANK OF GAS

Service Only at Seeger St Robert/St Louis

†Does not include tax, title, and license. * Seeger Care offer good for Less than 85K Miles and Less than 10 years old Prices do not include any College Grad or Military Rebate. See sales rep to see if you would qualify for additional savings. Prices does not include †199 dealer administrative fee. Cannot be combined with any other offer. Prior sales final. See dealer for details. Advertisd vehicle may not be exactly as pictured and are subject to prior sale. We cannot be responsible for typography or photography. ** St. Robert, Mo. Inventory

SPECS DON'T LIE.

TEST DRIVE THE MAHINDRA RETRIEVER FOR YOURSELF.



Shown: Retriever 1000



60 MPH TOP SPEED



83 HP LEADING HORSEPOWER



2500 LBS LEADING TOWING



3 YEAR LEADING WARRANTY

THE MAHINDRA RETRIEVER LEADS THE WAY IN PERFORMANCE

AGRI ENTERPRISES

1-1/2 Miles South Of Licking, MO On Hwy 63
573-674-2203 | 1-800-653-7152
www.agri-enterprises.com



Mahindra
Tractors & Utility Vehicles

I BUY.... used mobile homes. Call or text 573-338-6250 or email GregS.CDH@outlook.com

L4400 KUBOTA: 4wd tractor with loader. \$21,500. 417-270-1505.

IHC 684: Diesel tractor w/loader, 62hp. \$9850. 573-765-4406.

2008 CHEVY 2500 PICKUP: Black, Crew Cab, 4WD, Diesel, Performance upgrades deleted & tuned, 191,000 miles. 660-998-6046.




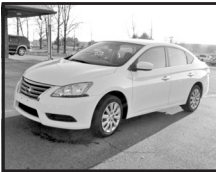
25HP HUSQVAVARNA RIDING MOWER: 54" cut can deliver, pull behind cart and aerator. \$1,250. 636-239-4124.

NEED SOMEONE TO MOW LAWN: Rolla, MO, 573-201-1790.

AUCTION REMINDER: Online House Auction going on now. Atterberry Auctions. Please see our Auction Directory for more information.

VOTED #1 BEST Preowned Car Dealership

TIM'S USED CARS
(573) 341-3828 • 1334 South Bishop (Hwy. 63) • Rolla, MO
Next to Hwy. CC • www.tims-used-cars.com

 <p>2013 DODGE CHALLENGER R/T 5.7 HEMI, AUTO, LEATHER, 68,XXX MILES ONLY \$17,800</p>	 <p>2014 DODGE GRAND CARAVAN SE POWER EQUIPPED, 97,XXX MILES ONLY \$9,900</p>
 <p>2015 KIA RIO LX 4 CYL, AUTO, POWER EQUIPPED, 84,XXX MILES ONLY \$7,400</p>	 <p>2015 NISSAN SENTRA SV 4 CYL, AUTO POWER EQUIPPED, 83,XXX MILES ONLY \$9,400</p>

LARGE SELECTION OF CARS, TRUCKS, SUVs & VANS!

USED EQUIPMENT

New at Used Price!

- Mahindra 2565 with loader, cab, 4WD, 13 hours
- Mahindra 4110 w/loader, 41HP
- Kubota B7200 4 WD, w/Belly Mower • MF 50, Diesel
- Gehl Silage Chopper • NH 163 Tedder
- 6' & 7' Brush Cutter • Landpride 10' Brush Cutter
- JD 10' Cultipacker • 3pt. 3 bottom plow
- 12' Spring Tooth Harrow 3pt. 2 Disc Disc Plow
- Gravelly 2T 2148XL Zero Turn Mower Rider
- Other Misc Equipment

For Outstanding Products & Service

AGRI-ENTERPRISES

1-1/2 Miles South Of Licking, MO On Hwy 63
573-674-2203 • 1-800-653-7152
www.agri-enterprises.com

SILVER DOLLAR COLLECTION: \$200. 573-764-3517, Call in P.M.

LARGE BIRD CAGE OR COCKATIAL CAGE: \$85. 636-239-4124

Offering the Area's LOWEST METAL PRICES!



Custom Homes • Metal Roofs

Pole Barn Packages

24'x32'x10' materials only	\$5,075	30'x60'x10' materials only	\$8,600
24'x40'x10' materials only	\$5,775	40'x60'x12' materials only	\$11,525
30'x40'x10' materials only	\$6,550		

Plus Sales Tax And Delivery.
Labor available at additional cost.
Call for quote.

Compare Before You Buy.

We Use Only The **Highest Quality** Materials!



ALL MATERIAL PACKAGES INCLUDE...

- ✓ #1 Yellow Pine Lumber
- ✓ #1-40 Yr. Painted
- Metal w/Screws
- ✓ 1-10' Overhead Door
- ✓ 1-36" Entry Door

Fully Insured



PORTABLE BUILDINGS

Rent to Own
No Credit Check

29 Gauge
#1 PAINTED METAL

- ★ Lifetime Warranty - \$70.00 Sq.
- ★ 40 Year Warranty - \$67.00 Sq.
- ★ 20 Year Warranty - \$64.00 Sq.
- ★ 25 Year Galvalume - \$54.00 Sq.

Labor prices will be higher in locations over 75 miles from Marshfield, MO

1049 SCHOOLVIEW DR.
Marshfield, MO



Marshfield BUILDINGS

www.marshfieldbuildings.com



417-859-7744

Toll Free 1-866-859-7733

CASE IH FARMALL : 110HP, 2014, Bought new in 2015, 634hrs, Case-IH Front Loader, cab, a/c and heat, tractor has many features. \$46,000. New Holland BR750 round baler, net wrap or twine, 4x6 bale size, w/bale command, nice! \$10,500. Ava. 417-683-3595.

2007 FIFTH WHEEL: 38' Wyoming by Coachman, 4 Seasons, 3 Slides. \$13,750. 417-399-6383.

PUPPIES TO GIVE AWAY: Black Lab, Australian Shepherd and Great Pyrenees mix. Black. Wormed, ready to go. 573-202-4105.

GRILL GUARD OFF POLARIS RANGER: \$25. 417-646-8807.

AUCTION REMINDER: Online Acreage Auction going on now. Atterberry Auctions. Please see our Auction Directory for more information.

2011 Ford F150 Platinum SuperCrew Cab

4X4, 3.5L V6 Ecoboost, Black, New Tires, Drives Great, 95,XXX Miles, Salvage Title, Very Minor Damage Repaired

\$17,500



417-718-5347 • Conway

WEEKLY TRADER MAGAZINE

Vol. 26 April 18, 2019 No. 2

Published By

Lebanon Publishing Co. Inc.
PO Box 192, Lebanon, MO 65536

417-532-2800

www.myweeklytrader.com

Everything advertised in this publication must be made available for purchase, use or patronage without regard to race, creed, color, sex, age or national origin of the purchaser, user or patron. The Publisher will not be responsible for misinformation, misprints, typographical errors, etc. Opinions expressed are not necessarily those of the Publisher. All rights reserved. No part of this material may be reproduced by any means without permission in writing from the Publisher. We reserve the right to refuse any ad if we deem necessary. Our list and map indicate counties in which the Weekly Trader is delivered. The magazine is not necessarily placed in all communities in a particular county. A list of all retail drops for a county may be obtained by contacting the Weekly Trader office at PO Box 192, Lebanon, MO 65536.

CROWN

Power & Equipment

SERVING YOU IN 8 LOCATIONS!

HAY

- 66411 Pequea TT6000 Tedder-6 Basket..... **\$8,450.00**
- New Holland H7230 Roller, Discbine..... **\$15,900.00**
- 60892 Massey Ferguson 2756 Round Baler, 5x6, Net **\$7,500.00**

TRACTORS

- Kubota L4300 DT Tractor 4WD, w/Ldr **\$14,300.00**
- Massey Ferguson 65 Gas **\$5,500.00**
- Massey Ferguson 135G Tractor..... **\$3,750.00**
- Kubota 7200HST **\$2,750.00**
- Kubota M7040 Tractor, 4WD, w/Ldr **\$36,850.00**
- Allis 185 Tractor, w/Ldr..... **\$8,995.00**
- Kubota L4701 DT Tractor, w/Ldr, 250Hrs. **\$19,500.00**
- John Deere 2030 Tractor w/ Loader..... **\$6,500.00**
- New Holland TC40 Tractor, 4WD, w/ Loader..... **\$14,900.00**
- Massey Ferguson 471 Tractor, w/ Loader, 1183 Hrs. **\$14,250.00**
- Massey Ferguson 4345 Tractor, Cab, 2WD, Ldr., 800 Hrs. **\$21,900.00**

Eldon, MO

3369 Hwy 52 W. • 573-392-0230

www.crown-power.com

Sales: (Ag) Gene Klein and (Ce) Chris Scott

TRACTORS

- Ford 4600 Tractor, Diesel **\$6,000.00**
- Case IH 695 Tractor, w/ Loader **\$9,500.00**

MISCELLANEOUS

- 61520 BHZT220 Mower, Zero Turn, Bush Hog..... **\$2,950.00**
- KMC House Cleaner **\$5,500.00**
- Case IH 2388 Combine, 4x4 **\$58,000.00**
- John Deere 445G 54" Lawn Tractor w/ bagger..... **\$2,970.00**
- Sidewinder 7 ft. Pull Cutter..... **\$1,250.00**
- Ogden 8 Wheel Rake..... **\$1,750.00**

CONSTRUCTION

- John Deere 85D Mid. Excavator **SCALL**
- Kubota SVL95 Cab, Air, 750 Hrs. **\$53,900.00**
- BobCat 5185 Tracks, Cab, AC..... **\$19,250.00**
- Kubota KX057 Cab, Thumb, 550 Hrs..... **\$63,600.00**



WINCHESTER MODEL-61 PUMP-22: \$1,100. Rolla. 573-308-2550.

\$\$\$\$\$ MOBILE HOME SAVINGS That is what we are about for the last 36 years. New, Used, All Sizes. 573-657-2176 amegamobile-homes.com

A HISTORY OF PULASKI COUNTY, MO & FORT LEONARD WOOD: "Lest We Forget," by Mabel Manes Mottaz, dated 1960. \$12.50. Lebanon, 417-532-2045.

BB & PELLET RIFLES: \$75 each. 573-327-9068.

JOHN DEERE 4240: Diesel Tractor, cab and air, power shift, 3,900hrs, nice. \$29,500. 573-765-4406

VILLA HOMES IN ROLLA: Has NEW and USED Mobile Homes. Call David for info: 573-578-8072.

KUSTER LOGGING
BUYER of Standing Timber
Oak and Walnut
Dozing Now Available
417-259-0047
 References Available 

TAYLOR TRUCKS & EQUIPMENT
417-924-2026 • 2676 Hwy. 5, Mansfield, MO
863 Bob Cat Skid- Steer with LOW hours and hand control
New Mowers! Bush-Whacker, Big Bee
 5' and 6' Rotary Tillers
 Farm Tires, PTO's & Parts for Rotary Mowers,
 Storage Containers & Dry Vans – 20' - 53'
 Farm Tractor Implements
Plows, Discs, and More Skidsteer Attachments: Pallet Forks, Buckets, Grapples, Hay Spears & Tree Sheers - RR Ties
 We Invite You To Come By & Look Us Over! Located 2.5 Miles North Of Mansfield, MO On Hwy 5

TRAILER PARTS & REPAIR
NEW SEMI TIRES - DRIVE & STEER

PINE LOG SIDING SALE: \$1.19 per L.F. www.pineridgerustic.com 573-729-7226, 573-247-2823.

NEW HOLLAND: 1411 diskbine with rollers. \$7,250. 573-765-4406.

POOL TABLES: Installations, moves, recoveries, repairs, accessories, etc. 573-646-1700.

RIGID 14" Bandsaw: \$200, Lebanon, 573-247-2598.

L3400D KUBOTA: 4wd tractor with loader, 34HP, gear drive, low hours with 5' bush hog. \$16,900. 417-270-1505

WANTED: Old Military Rifles and Pistols. 816-838-6254.

JOHN DEERE 337 SQUARE BALER. \$2,250. 573-765-4406.

SAM MILLERS LOGGING looking for standing timber. 417-589-0346

NEW NEW NEW DISPLAY HOUSE!!! Call Marla to hear what is new inside 573-657-7040, chateauhomes.net.

3600 FORD TRACTOR: Very nice. \$6,500. 573-766-5640.

1995 GOLDWING: Ultimate road bike. One owner. \$3,250. 417-399-6383.

NEW HEAVY DUTY 3PT BALE UN-ROLLER: \$925. 573-765-4406.

DOG PEN AND DOG HOUSE: 6ft tall. \$160. 636-239-4124.

CHEVY RALLY WHEELS: 75/60R15, 5 Hole, Set of 4. \$35 each. Rolla, 573-578-4605.

STANDING KENMORE FREEZER: working, light, easy to move. \$50. 636-297-1747.



SAVE \$300
UNTIL MAY 31, 2019
GET YOUR TRUCK OUTFITTED WITH A CHISHOLM TRAIL HAYBED TODAY!
LET US BE YOUR PEOPLE!!
WESTGATE TRAILER & EQUIP.
417-351-6974 • 417-926-7733
 www.westgatetrailer.net
 8920 W Business 60 • Mtn. Grove, MO
 7136 W Farm Road 140 • Springfield, MO
FULL SERVICE SHOP
 OPEN: Mon.-Fri. 8-5 And "YES!" Sat. 8-Noon!

BERETTA 22 AUTO PISTOL: Like new, accurate, 2-10 round clips. \$325. Preston, 417-309-3257

IHC 806 DIESEL TRACTOR: with loader \$7,800, W.F. 3pt. (573)765-4406.

FREE HOSPITAL BED: Extra long in good condition. 417-426-5370.

FOR SALE OR TRADE: 1992 KW T600 Cat 9-speed, fair shape. \$16,000. Would consider parting out. 1996 Dodge Stratus: V6, Auto, many new parts, low miles, clean. \$2,450. 1985 F150 for parts. 573-247-4606, Salem.

AB MACHINE: lay down on. \$35. 636-297-1747.

4 REGISTERED POLLED HEREFORD BULLS: 2yr, CHB-Top 48%, Baldy Maternal-Top 44%, DNA Tested. \$2,100-\$2,300 OBO. 573-244-3157.

GET YOUR WORK DONE, AMERICA

FOR JUST

\$238 PER MONTH*



4540 2WD

- SIMPLE** to operate
- ECO-FRIENDLY**, NO DPF engine
- HEAVY-DUTY** steel construction not plastic

MAHINDRA 4540 41HP, 2WD, TRACTOR AND LOADER.

Marshfield Machinery Inc.
 222 E. Madison • Marshfield, MO 65706
 417-859-2117 • www.marshfieldmachinery.com

7 YEAR
LIMITED POWERTRAIN
WARRANTY

*Payment is for tractor and loader only and is calculated at 10% down and 84 months financing. With approved credit. Program restrictions may apply. See dealer for details. All offers expire May 30, 2019.

WORLD'S #1 SELLING TRACTOR



NEW MAHINDRA TRACTORS

9125 4WD CAB & LDR 125HP	IN STOCK
7085 4WD & LDR 85HP	IN STOCK
6065 4WD & LDR 62HP	IN STOCK
5570 2WD & LDR 70HP	IN STOCK
2655 4WD, CAB & LDR 55HP	IN STOCK
2655 4WD, BACKHOE 55HP	IN STOCK
2655 4WD & LDR 55HP	IN STOCK
2555 4WD & LDR 55HP	IN STOCK
4540 4WD & LDR 41HP	IN STOCK
4540 2WD & LDR 41HP	IN STOCK
2638 4WD & LDR 37HP	IN STOCK
2538 4WD, CAB & LDR 37HP	IN STOCK
1626 4WD, BACKHOE 26HP	IN STOCK
1626 4WD & LDR 26HP	IN STOCK

USED TRACTORS

MAHINDRA 105P CAB LDR 105HP	45,500
MAHINDRA 2565 CAB LDR 65HP	28,500
MF GC1710 BACKHOE 23HP	12,500
MF GC1705 4WD, LDR 23HP	10,500
MF GC1705 4WD, MWR 23HP	10,500
MF GC1705 4WD 23HP	7,750
IHC 460 49 HP	3,500

USED UTV

MAHINDRA 750 CREW XTV	8,500
-----------------------	-------

USED ROUND BALERS

MF 2946A 4X6 MESH	24,000
MF 2846A 4X6 MESH	24,000
MF 2846A 4X6 MESH	20,000
MF 2745 4X5 MESH	12,500
NH RB750A 4X6 MESH	9,500
MF 1745 4X5	9,500
HESSTON 845 4X5	7,500
GEHL 2480 4X5	4,500
HESSTON 545 4X5	4,500
HESSTON 555 4X6	4,500
CASE IH RS451 4X5	4,500
HESSTON 560 5X6	4,000
NH 850 5X5	1,500

USED DISC MOWERS

MF 1383 13FT MOWER/COND	19,500
HESSTON 1008 10.5 FT 3PT	5,500
JD 275 9FT 3PT	3,500
HESSTON 1120 MOWER/COND	2,000

USED RAKES

BUSH HOG BSRT0	3,500
GEHL 418 8 WHEEL	2,000
VERMEER WR20 8 WHEEL	1,950

USED MISC.

HAYBUSTER 107C NOTIL DRILL	16,500
BUSH HOG 2615 15FT	6,000

Marshfield Machinery Inc.
 222 E. Madison • Marshfield, MO 65706
 417-859-2117
 www.marshfieldmachinery.com

2006 CHEVY UPLANDER VAN: Very dependable. \$3,000 OBO. Hartville, 417-741-7829 or 417-260-1751.

AUCTION REMINDER: Public Auction, Friday, April 26th@ 10am . Please see our Auction Directory for more information.

GRIZZLY TABLESAW: 10", left tilt, w/ extension table. \$1,200. AOM paint sprayer. \$250. Kremlin pump & spray gun. Lebanon, 573-247-2598.

ROD AND REELS: fishing season is coming. \$5 and up. Conway, 417-589-8200.



CHC Home Centers and Do it Centers



LANDSCAPING AND OUTDOOR LIVING



#2 USED RAILROAD TIES
\$10⁴⁴
 ea.

Also available #1 Grade Ties \$15.49



TREATED WOOD LANDSCAPE TIMBERS
\$3⁹⁴ Trland
 ea.



APOLLO LANDSCAPE BLOCKS
\$1⁴⁹ • 4 colors to choose from
 • Blocks are 3½" H, 11½" W, 7" D



10'x12' Package..... **\$597⁰⁰**
 10'x16' Package..... **\$772⁰⁰**
 2' standard height on both packages
 *Balusters sold separately. Sizes vary from image shown.

FIBERGLASS HANDLE GARDEN TOOLS

Choose from a Round or Square Point shovel, a Bow Rake, or a Garden Hoe.

\$10⁹⁷

(761606, 761615, 761624, 761633)



40 LB. TOP SOIL
\$1⁵⁹ (714518)

ASSORTED MULCHES



\$2⁹⁴ bag
 2 cu. ft. bags

Choose from Cedar, Hardwood, Brown, and Red Mulches

ADIRONDACK CHAIR



\$17⁹⁷ (800728)

Includes all colors in stock

RELAXER LOUNGE CHAIR



\$39⁹⁹

Choose from Blue, Red or Tan
 (800330, 800669, 800670)

BUILDING MATERIALS



Vinyl Windows

White Vinyl, Insulated Glass with Screen
 3'x3' (171360, 05B3030WH6/6)

With Grilles **\$118**
 No Grilles **\$105**



Heritage Architectural Shingles

Limited Lifetime Warranty! **\$73⁰⁰** SQ. Cash and Carry



PAINTED METAL

\$71 per sq.
 45-Year Warranty

Painted 29 Gauge
 Choose from 12 Colors

\$63 per sq.
 20-Year Warranty

Painted 29 Gauge
 Choose from 8 colors
 Cut to your length

OUTDOOR POWER EQUIPMENT



ZERO TURN MOWERS



24 Hp, 54" Cut **\$2,899⁹⁵** (RZ5424)
 23 Hp, 52" Cut, Light Duty Commercial **\$4,599⁹⁵** (MZ252ZT)



FRONT TINE TILLER
 (FT900)

\$449⁹⁵



POULAN PRO HIGH WHEEL PUSH MOWER
 (741927)

\$197⁰⁰



CABOOL

Near Hwy 60
 at 107 South Hwy 181
(417) 962-4535
 Mon.-Sat.
 8 a.m.-5:30 p.m.

HOUSTON

Hwy 63
 (By the Super Center)
 1453 Sam Houston Blvd
(417) 967-4179
 Mon.-Sat.
 8 a.m.-5:30 p.m.

MARSHFIELD

Hwy 38 at
 360 McNabb Rd
 I-44 Exit #100
(417) 468-6262
 Mon.-Sat.
 8 a.m.-5:30 p.m.

ROGERSVILLE

Hwy 60, 2 Blocks
 South on Mill St.
(417) 753-2500
 Mon.-Sat.
 7:30 a.m.-6 p.m.

Prices Good thru April 27, 2019

chhomecenter.com

HOUSE FOR SALE: In Stoutland. \$15,000. <https://loz.craigslist.org/reo/6863736950.html> 417-234-3376, leave message.

WR-20 8-WHEEL RAKE: \$1,500. 417-322-9727.

8 BORDER COLLIE PUPS: born 2/9/19 up-to-date shots, working parents, farm raised, \$150 each, Mansfield, 417-830-8374.

4 NEW AT25x11-10 TIRES AND WHEELS: off UV, 5hole. \$60/piece. 417-321-1928.

2005 INTERNATIONAL EAGLE SEMI: Good condition, many new parts. 417-679-4355, Wasola.

JOHN DEERE 7000: 6x30in Planter, no till. \$3350. 573-765-4406.



MIDWEST CONSTRUCTION
Free Estimates!

- Pole Barn • Garages • Framing
- Remodels • Roofing • Concrete
- Decks & Porches

Contact Abner Glick
417-664-1794



Pine Ridge Rustic
Log Home Building Supplies

Services Offered!

- Installation
- Pre-finishing available on interior & exterior
- Dealer for exterior stains

www.pineridgerustic.com

523 CR 2410 • Salem, MO 65560 • Ph: 573-729-7226



- Log Siding
- Beveled Siding
- Car Siding • Red Cedar
- Western Cedar • Pine

2011 FORD F150 PLATINUM SUPER CREW CAB: 4x4, 3.5L, V6 EcoBoost, Black, new tires, drive great, 95,000 miles, salvage title, very minor damage repaired. \$17,500. Conway, 417-718-5347.

AUCTION REMINDER: Gun Auction Consignment, Saturday, April 27th, Noon. Please see our Auction Directory for more information.

\$\$\$\$\$ MOBILE HOME SAVINGS That is what we are about for the last 36 years. New, Used, All Sizes. 573-657-2176 amegamobile-homes.com

COMMERCIAL BUILDING FOR SALE: Stoutland. \$30,000. <https://loz.craigslist.org/reo/6863765712.html> 417-234-3376, leave message.

AUCTION REMINDER: Saturday, April 27th, 9:32am. Chupps Auction. Please see our Auction Directory for more information.

JET 4" JOINTER: \$100. Grizzly Hydraulic Lift Table. \$100. Lebanon, 573-247-2598.

8-WHEEL V-RAKE: Hydraulic fold. \$1,800. Eldridge, 573-363-5213.

You pull it, we sell it... CHEAP!



U★PULL★IT
SELF SERVICE AUTO PARTS

We also have a large inventory of used tires and be sure to check out our used car lot!

Lebanon, MO
22395 Rt. 66
417-588-3555
Fax 417-588-8955

Mon-Fri 8am - 6pm • Sat 8am - 4:30pm • Sun 9am - 4pm

WWW.SSUPULLIT.COM
Located next to S&S Recycling.



S&S RECYCLING
LEBANON - MTN. GROVE
417-588-3555 417-926-3360

Roll-off, Trailer, and Mobile Crushing Services Available

For All Your Metal Recycling Needs

Lebanon, MO 22395 Rt. 66 • 417-588-3555 Fax 417-588-8955

Mtn. Grove, MO 8930 First Rd • 417-926-3360 Fax 417-926-0180

Monday-Friday 8:00am-4:30pm (Closed 12pm-1pm Lunch)
Saturday 8:00am-Noon
email: contact@ss-recycling.com
Buyer of all types of scrap metal.

LITTLE TYKES TOYS: 8 Different large pieces, like washer and dryer, doll house and desk. All for \$125. 636-239-4124.

2004 CHEVY Z71: 4X4 extended cab, 4-door. 190,000 miles. \$5,975. 417-399-6383.

BOBCAT 853 DIESEL SKID STEER LOADER: Cab, 58hp. \$8,950. 573-765-4406.

LIMOUSIN BULLS: 18-30 mos. old, Homo Black, polled, AI sired. 573-301-2316, 573-301-2074.

ANTIQU GE ICEBOX: working. \$200. 636-297-1747.

GUN BOXES: Several shapes & sizes. \$10 and up. 417-589-8200.

HEAVY DUTY WALKER: 400 lb rated, brand spanking new, large seat/storage, four 7" pivoting wheels, hand brakes. \$200. 417-686-0032, Ava.

AUCTION REMINDER: Public Auction, Saturday, April 27th @ 10AM. Ozark Realty & Auction Group. Please see our Auction Directory for more information.

CUB CADET FT-24 TILLER: excellent condition. \$399. 573-836-2530.

ANTIQUe REVOLVER ACCESSORIES: \$175. 573-764-3517, Call in P.M.

Larry Heisel Rentals
 Have Rock? How about 3,500 lbs. of Hammer
 Call Larry! **573-779-1500**
 www.larryheiselequipment.com
 Rental Available in 636 or 573 area code

18' DECK BOAT AND TRAILER: 135hp, Evinrude outboard, good condition. \$3,500. 573-261-0271.

JOHN DEERE MODEL-60 TRACTOR: overall good condition. \$2,500. 636-584-3605.

ALLIS CHALMERS 6080 DIESEL TRACTOR: Cab and air, 80hp, 3700hrs, nice. \$14,750. 573-765-4406.

WANTED TO BUY: Rokon two wheel drive trail breaker. Camdenton, 573-480-3664.

CLIPPER SEED CLEANER. \$200, needs motor. 417-321-1928.

TIRES FOR SALE: set of 4, 255x50xR20s. \$100. Richland, 573-286-8423.

BARN WOOD SIDING: 8" & 10" wide. 573-729-7226. www.pineridgerustic.com

Cowtown Express Car Wash
 Highway 63 South, Rolla, MO
 Call Wade 573-368-1430 Or 573-426-2500

\$4,500
 And 10% Down
 \$95 Per MO w.a.c.

NEW Winchester Star & Bale Trailers
 Powder Coated 18+2, 7,000 Axles
 www.cowtownusainc.com

LIONEL TRAIN SET: Steam engine, tender, caboose and other car, track and transformer. \$195. 573-364-7465, Rolla.

H&R 12 GA SINGLE SHOT SHOTGUN: 3" shells w/Williams sights and screw in choke. \$180. 636-239-2695.

AUCTION REMINDER: Gun Auction Consignment, Saturday, April 27th @ Noon. Rick Dixon Auction. Please see our Auction Directory for more information.

SPRING TOOTH HARROW AND DOUBLE CULTI PACKER: 9ft pull-type. \$350. Bumper Hitch 6x18ft Livestock trailer, no title, \$1,200. 417-766-1991.

LOOKING FOR WATER BICYCLE: Any shape. Leave message, 618-758-2830.

CATTLE RACK: Metal, slide-in for 16' trailer. \$425. 636-239-4124.

NEW BIG TEX 14LX DUMP TRAILER

facebook

JIM'S Motors TRAILERS
 I-44 at Exit 208 - Cuba, MO
 www.jimsmotors.com
(573)885-2595
(800)897-9840
 GREAT SERVICE!
 1957-2018 GREAT PRICES!

AUCTION REMINDER: Thursday, April 25th, 9:47am. Chupps Auction. Please see our Auction Directory for more information.

AUCTION REMINDER: Every Wednesday at 10:30 am. Farmington Livestock. Please see our Auction Directory for more information.

2010 LAYTON SKYLINE 5TH WHEEL: 31Ft, large slide-out, excellent condition. \$12,000. 573-729-4275.

AUCTION REMINDER: Callaway Co Land Online Auction going on now, ends May 7, 12:30pm Atterberry Auctions. Please see our Auction Directory for more information.

We Buy White Oak Logs!

Independent Stave Company welcomes all white oak suppliers!

- ✓ Top prices for your logs
- ✓ Experienced log buyers
- ✓ Professional service

www.independentstavecompany.com

Chad Cook | Salem Wood Products
417.718.2950
 5 miles north of Salem, MO on Hwy 19

INDEPENDENT STAVE COMPANY
 Log Procurement & Sales

See Service
 Spray Foam Insulation

Closed cell or open cell form available
 Choose the thickness of your insulation

Closed Cell	Open Cell
• Higher R. value	• Lower Cost
• Vapor barrier	• Sound Deadening
• Structural benefit	• Fire resistant
• Fire Resistant	

Both types of foam fill voids and stay where they are put to provide better insulation than fiberglass or cellulose

Call Joseph See
 (417) 733-6936
 Located near Buffalo, MO

WILLIAMS PEEP SIGHT: with target knobs. Fits Marlin Model 39a. \$50. 636-239-2695. Washington.

ADORABLE REGISTERED GERMAN SHEPHERD PUPPIES: Ready 4-15, UTD, shots, wormed. \$300. \$100. 417-741-2198.

AUCTION REMINDER: Cow Sale, April 20th, 1pm. Cattle Sale every Monday at Noon. Salem Livestock. Please see our Auction Directory for more information.

CHECKERED WALNUT WOOD STOCK PISTOL GRIP: for Marlin Model 336 or 1895. \$100. Washington. 636-239-2695.

SACAGAWEA GOLDEN DOLLARS: Face value \$1. Original issue 2000, uncirculated. In rolls of 5. \$30. 417-686-0032, Ava.

RICHLAND HIGH SCHOOL: 1964, 1967 & 1968 yearbooks. \$12.50. 417-532-2045.

facebook

Email or Phone Password **Log In**

Forgot account?

WT
WEEKLY TRADER MAGAZINE

Weekly Trader
@myweeklytrader

Home
About
Photos
Reviews
issueu
Posts
Community
Info and Ads

Create a Page

Like Share ...

Send Message

Search for posts on this Page

Broadcasting & Media Production Company in Lebanon, Missouri

5.0 ★★★★★

Community See All

324 people like this

333 people follow this

About See All

WEEKLY TRADER MAGAZINE

SANDBLASTER: 5 gallon, helmet. \$70 417-646-8807.

FOR SALE: Set of 4 tires, 255-50/R20. \$100. 573-765-3603, 573-692-1492.

CASE 580D: Diesel backhoe loader, 2400hrs, power shuttle, nice. \$12,000. 573-765-4406.

REGISTERED BLACK ANGUS BULLS: AI bred. \$1,250-\$2,950. Hartville, 417-259-2520.

MURRAY RIDING MOWER: Good Tires, deck etc. needs motor. Only \$195/mower trade. 573-364-7465.

1997 FORD F-150 FLARE-SIDE PICKUP: 150,000miles, regular cab, no rust, runs great. 573-308-6045.

FRENCH BULLDOG PUPPIES: Blue/Black, Chocolate & Lilac Carriers, M/F. White/Cream Male. 6wks-8mos. Guarantee, \$1,500-\$2,500. 573-238-3873, 573-208-0485, Glenn Allen.

2009 HONDA ACCORD EXL: Loaded 150,000 miles, nice. \$6,500. 417-399-6383.

TV ANTENNA, SICKLE Grinder & SERVICER. \$100 for all. 417-646-8807.

BASEBALL CARD SETS: From 80's & 90's. 417-260-5371, Houston.

BRUSHOG HEAVY DUTY: 3pt disk, Nice. \$1,600. 573-765-4406.

Starnes Auto LLC
22115 Rt. 66 • Lebanon, MO 65536
417.588.3159 Office • 417.718.2707 Cell
www.starnesauto.com

- 2000 GRAND PRIX**
GOLD, 184,XXX MILES..... **\$2,500**
- 2000 BUICK LESABRE**
BLUE, 141,XXX MILES **\$2,800**
- 2001 NISSAN FRONTIER SE**
2WD, 145, XXX MILES **\$4,650**
- 2003 OLDSMOBILE SILHOUETTE**
110, XXX MILES..... **\$3,500**
- 2006 CHEVY TRAILBLAZER EXT LT**
SILVER, 4WD, 162,XXX MILES **\$4,200**
- 2006 CHEVY SUBURBAN LS**
BLUE, 2WD, 185,XXX MILES..... **\$5,200**
- 2013 CHEVY EQUINOX**
GOLD, 58,XXX MILES..... **\$11,500**
- 2015 CHEVY EQUINOX LS**
LIGHT BLUE, GOOD TITLE, 68,XXX MILES **\$11,250**
- 2015 GMC TERRAIN**
WHITE, 26,XXX MILES..... **\$17,500**
- 2015 GMC TERRAIN DENALI**
WHITE, AWD, V6, 62,XXX MILES **\$17,500**
- 2016 BUICK ENCOR**
WHITE, 28,XXX MILES..... **\$13,500**
- 2017 BUICK ENCORE**
WHITE, 8,XXX MILES..... **\$17,500**

WE DO ALIGNMENTS!

DRIVERS CDL-A OTR: Home Every Week! No Gimmicks, just Respect. Assigned Trucks/Rider Program. 1 year OTR min. 866-325-1584.

FOR SALE: Farm Utility Trailer steel floor, removable wood sides, 14'x7'6" tandem axle. \$800. Beaufort, 636-584-3605.



★ **American Made Metal Roofing** ★
40 Year Warranty Metal.....\$1.99 (\$62.18 Per Lin Ft)



*29 Gauge 10 Year\$1.79 (\$55.93 Per Lin Ft)
*29 Gauge 25 Year #1 Galvalume....\$1.69 (\$52.81 Per Lin Ft)

- ★ 17 Colors To Choose From
- ★ 20 Years In Business
- ★ We Manufacture Our Own Metal and Trusses



3 Locations To Serve You!

6952 E. 7th St. | 1100 Pace Rd. | 35 Killdeer Rd.
Joplin, MO. | Pocahontas, AR. | Seymour, Mo.
417-317-7961 | 870-609-1100 | 417-952-7143

Building In A Box		
Stud Wall & Pole Barn Kits		
Non-Warranty Metal	10Year Warranty	40Year Warranty
24x30x8.....\$3,350\$3,700\$3,850
30x40x10....\$4,950\$5,350\$5,600
40x60x12....\$9,300\$10,000\$10,200

Precut Packages Also Available

**possibly not American made*

JOHN DEERE 535 ROUND BALER: monitor, kicker, net wrap, good. \$7,200. 573-765-4406.

AGCO ALLIS 6690 DIESEL TRACTOR: cab & air, 80hp, with Westendorf TA 26 Loader. \$15,750. 573-765-4406.

2014 OPEN RANGE 5TH WHEEL: w/3 slides, excellent condition. 573-259-4291 for details. Pics available upon request

CATAHOULA PUPPIES. \$150. 417-543-4816.

1-HORSE WALK BEHIND PLOW: Very good condition. \$175. 417-457-1023, Raymondville.

DARDEN PROFESSIONAL TIMBER HARVESTING, BUYING STANDING TIMBER: Great prices, improve wildlife habitat and improve forest health. State Certified & Fully Insured! 573-247-4808 or 573-739-1122. Salem

M8540 KUBOTA: 4wd tractor with loader, 85HP, open station, low hours, hydraulic shuttle, 12 speed. \$32,500. 417-270-1505.

AUCTION REMINDER: Estate Auction Saturday, April 20 @ 10am. Danahy Auctions. Please see our Auction Directory for more information.

PUT MORE \$\$\$ IN YOUR POCKET!!
Lewis Cattle Oiler. 417-286-3540 or 774-696-2344.

10x10x6 DOG PEN: With gate. \$125. Lebanon, 815-904-4248.

METAL DETECTOR: \$125 or trade. 573-327-9068.

CEDAR GAP TOPSOIL: Garden Ready topsoil, Only water required, delivery within 50-mile radius, Seymour. 417-935-2877. For more info: www.cedargaptopsoil.com

TAYLOR 8FT OFFSET DISK, very little use. \$4,850. 573-765-4406.

FOUR COOPER 245X75X16 TIRES: No cuts, plugs, patches, 10 ply. \$175. 417-399-6687.

AUCTION REMINDER: Liquidation Auction Saturday, April 2th at 10am. Rough Country Rustic Furniture Freeman Auctions & Appraisals. Please see our Auction Directory for more information.

PORTER CABLE NAIL GUN: BN138, 18ga brad nailer, new in case, manual, 1 3/8th-1 5/8th. \$48 OBO. Ava, 417-686-0032

SLIDE IN PICK-UP GAS TANK: W/12volt pump. \$300. 417-321-1928.

LINDSAY CHRYSLER/DODGE PREOWNED

DRIVE ONE HOME TODAY



2018 Dodge Challenger
SXT +, Htd/Cld Leather, Sunroof,
20's Tech Grp, 11K miles
P-7732 **\$24,900**



2018 Dodge Challenger
SXT Plus; Htd/Cld Leather;
Sunroof; 20s; Technology
Group; 13K miles
P-7730 **\$24,000**



2016 Chevy Impala
LT, 39k miles
P-7714A **\$15,800**



2018 Dodge Charger
SXT Plus; V6; 24K miles
P-7626 **\$20,400**



2018 Chevy Malibu
LT, 33K miles
P-7691 **\$15,800**



2018 Chrysler 300
Touring, Chrome App. Pkg.,
7K miles
P-14483A **\$20,500**



2016 Chevy Malibu
LT; 57K miles
P-14880A **\$13,700**



2018 Ford Mustang GT
5.0 V8, 6spd., 9K miles
P-14613A **\$29,495**



2018 Chrysler 300
AWD, Limited, HD/CD
Leather, Navigation, Dual
Sunroof, 14K miles
P-7851 **\$24,995**



2019 Chevy Impala
Lt, 20K miles
P-7865 **\$22,495**



2018 Chevy Cruze
LT, 17K miles
P-7783 **\$15,500**



2018 Chevy Camaro
LT; RS; Sunroof; 20s;
25K miles
P-7685 **\$22,500**



2014 Ford Mustang
V6, Auto 60K miles
P-7798A **\$13,995**



2017 Honda Accord
Sport, 4 cyl, 37K miles
P-14853A **\$20,995**



2018 Chevy Cruze
Hatchback; LT; 14k miles
P-7782 **\$15,500**



2016 Chevy Camaro
LT, V6, 52K miles
P-7537A **\$18,495**



2016 Chrysler T & C
Touring - L, Leather, DVD,
Navigation, 37K miles
T-14920A **\$23,495**



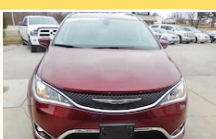
2017 Dodge Grand Caravan
SXT, 50K miles
T-7746 **\$15,800**



2018 Chrysler Pacifica
Touring-L, Leather,
22K miles
T-7750 **\$26,800**



2016 Chrysler Town & Country
Touring; Leather; DVD; 72K miles
T-14856A1 **\$14,700**



2018 Chrysler Pacifica
Touring-L Plus, Leather, Navigation,
UConnect Theater, 34K miles
T-7762 **\$28,995**



2018 Jeep Grand Cherokee
Limited, 4x4, Htd Leather,
Navigation, 19K miles
T-7812 **\$32,995**



2018 Jeep Grand Cherokee
Limited, 4x4, Htd/Cld Leather, Dual
Sunroof, Navigation, 23K miles
T-7838 **\$33,995**



2018 Jeep Compass
Limited, 4x4, Leather,
Navigation, Safety &
Security Group, 17K miles
T-7840 **\$23,495**



2018 Jeep Renegade
Lat; 4X4; 20K miles
T-7656 **\$17,800**



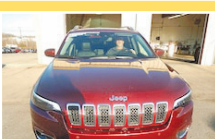
2018 Hyundai Santa Fe
Sport; AWD; 28K miles
T-7661 **\$17,700**



2018 Dodge Durango
GT, AWD, Leather, 32K miles
T-7770 **\$31,495**



2012 Jeep Grand Cherokee
Laredo; 4X4, 98K miles
T-14580A **\$15,995**



2019 Jeep Cherokee
Overland; 4X4; 2.0 Turbo; Htd/
Cld Lthr; Tech. Grp; 22K miles
T-7711 **\$27,700**



2018 Jeep Compass
Latitude, 4x4, Pop, Equip Group,
Safety & Sec. Grp, 22K miles
T-7843 **\$19,995**

Not all actual photo's shown

LINDSAY CHRYSLER/DODGE PRE-OWNED

573-336-2698

809 MISSOURI AVE., ST. ROBERT, MO • OPEN 8 A.M. - 6:30 P.M. MON.-FRI. & SAT. - 9 A.M. - 5 P.M.

LINDSAY CHRYSLER/DODGE PRE-OWNED IN ST. ROBERT

Over 400 Vehicles Online or on the lot - We've got what you Want!

WWW.LINDSAYCHRYSLERDODGE.COM



2016 Honda CR-V
EX-L; FWD; Sunroof;
Leather; 41K miles
T-7575A **\$19,500**



2014 Jeep Grand Cherokee
Limited, 4x4, Htd/Cld
Leather, Dual Sunroof,
Navigation, 20's 63K miles
T-14807A **\$23,500**



2018 Jeep Grand Cherokee
Limited, 4x4, Htd/Cld
Leather, Dual Sunroof,
Navigation, 24K miles
T-7848 **\$33,495**



2019 Jeep Cherokee
Lat. Plus; 4X4; 4 Cyl;
20K miles
T-7752 **\$22,495**



2018 Jeep Grand Cherokee
Overland, 4x4, Htd/Cld Leather,
Dual Sunroof, Navigation,
Trailer Tow Grp IV, 22K miles
T-7849 **\$37,495**



2018 Jeep Wrangler
Unlimited
Sahara, 4x4, Auto,
Hard Top, 31K miles
T-7842 **\$30,995**



2018 Jeep Grand Cherokee
Summit, 4x4, V6, HD/CD
Leather, Navigation, Dual
Sunroof, Loaded, 22K miles
T-7847 **\$39,495**



2018 Dodge Journey
GT; V6; Leather;
14K miles
T-7688 **\$18,800**



2018 Dodge Journey
SE, 4cyl, Blacktop Pkg,
Only 2500 miles
T-7659 **\$18,200**



2013 Dodge Durango SXT
AWD, V6, Nav., 3rd Row
Seat, 89K miles
T-14817A **\$15,500**



2014 Ram 1500
Quad, 4x2, Express, Hemi,
20s, 42K miles
T-14667A **\$18,900**



2018 Chevy 1500
Dbl. Cab; 4X4; LT; V8;
28K miles
T-7774 **\$29,495**



2018 Chevy Colorado
Crew, 4x4, LT, Nav,
23K miles
T-7758 **\$28,995**



2019 Ram 1500
Classic, Crew, 4x4 SLT,
Hemi, 20K miles
T-7829 **\$31,495**



2018 Ram 2500
Crew, 4x4, SLT, Diesel,
Auto, 35K miles
T-7854 **\$41,995**



2018 Ram 1500
Quad, 4x4, SLT, V6,
22K miles
T-7806 **\$26,495**



2018 Ram 1500
Quad; 4x4; SLT; V6;
15K miles
T-7794 **\$26,995**



2016 Chevy 2500
Crew; LT; 4X4; 6.0;
42K miles
T-14820A1 **\$34,995**



2018 Ram 1500
Quad, 4x2; SLT; V6;
26K miles
T-7793 **\$23,495**



2003 F150
Salvage Title, Ext cab, XLT,
4x4, 100K miles
T-7562B **\$8,495**



2007 Honda Civic
EX, Auto, 131K miles
P-7836A **\$5,995**



2011 VW GTI
6 Speed, Heated Cloth,
107K miles
P-7809B **\$9,495**



2014 Nissan Versa
S, 105K miles
P-7786 **\$8,995**



2009 Nissan Maxima
Leather, Sunroof,
142K miles
P-7701A **\$5,995**



2009 Dodge Journey
SXT; V6; 3rd Row Seat;
T-14800A **\$6,995**



2004 Dodge Ram 1500
Quad; 4X4; Sport; Hemi;
T-14757A **\$8,495**



2009 Jeep Grand Cherokee
Laredo; 4X4; 122K miles
T-7796A **\$9,495**



2012 Chevy Captiva
FWD, LS, 127K miles
T-7791 **\$7,700**



2006 Chevy HHR
LT, Leather, Sunroof,
124K miles
T-7771 **\$5,995**



2011 Harley Davidson
Fat Bob; 96 c.i.; Aftermarket
Pipes & Acc. 9K miles
T-7789 **\$7,500**

573-336-2698

Not all actual photo's shown

**809 MISSOURI AVE., ST. ROBERT, MO • OPEN 8 A.M. - 6:30 P.M. MON.-FRI. & SAT. - 9 A.M. - 5 P.M.
LINDSAY CHRYSLER/DODGE PRE-OWNED IN ST. ROBERT**



THE RIGHT EQUIPMENT FOR EVERY JOB

Always ready when YOU need it.

+ From general construction to manufacturing, and every project in between, Fabick Cat is ready to serve your industry. We have the equipment you need to get the job done.

+ NEW | USED | RENTAL | SERVICE

WE DO IT ALL

800.845.9188 | www.fabickcat.com

"TO EVER SERVE OUR CUSTOMERS BETTER"



GRASSHOPPER 120 LAWN MOWER: 48in cut, 20hp Kohler, 211hrs. \$2,500. Rogersville, 417-753-2747, 417-766-1991.

AUCTION REMINDER: Every Wednesday at 10:30 am. Farmington Livestock. Please see our Auction Directory for more information.

INDIAN ARCHERY 1950'S: wood, recurve bow, with original box of Ben Pearson arrows. \$195. Rolla, 573-364-7465.

USED AMERICAN FAMILY DOUBLE-WIDE These do not last! Excellent condition. Call Quick, 573-499-9993 columbiadiscount homes.com.

MYOTONIC FAINTING GOATS: Moms w/kids. Mom & buckling. \$200. Mom & female. \$300. OBA, 417-741-1375, Hartville.

AUCTION REMINDER: Living Estate Auction. Saturday, April 27th @ 10:00. Drenon Auction. Please see our Auction Directory for more information.

BoatAngel

FREE 4-NIGHT VACATION!
Donate Car • Boat • RV • Motorcycle

1-800-CarAngel

www.boatangel.org

HEAVY 10FT FIELD ROLLER: \$1,500. 573-765-4406.

JOHN DEERE 2940: Diesel tractor, 80HP. \$8,500. (573)765-4406.

One STOP Material Yard

- Bulk Rock
- Bulk Mulch
- Rail Road Ties
- Blocks
- Decorate Rock (48 bins to choose from, something for everyone!)
- Mexican Yard Art
- Pottery
- Luxcraft Outdoor Furniture

Bring this ad in for 10% OFF all your bulk materials!

573-346-4096 • Hours: Mon.-Sat. 8am-5pm
On top of hill - corner of Hwy. 54 & A Road • Camdenton

CUSTOM SAW MILLING: Lebanon. 417-533-4607, 417-664-1195.

2004 OPEN RANGE FIFTH WHEEL CAMPER: 34', all weather, in good condition. \$10,500. Lebanon, 417-718-5520.

AUCTION REMINDER: Every Wed. @10:30AM Farmington Livestock. Please see our Auction Directory for more information.

1967 JD 30/20 GAS TRACTOR: \$4500. 417-241-0006. CONWAY

VERMEER 505 SUPER I ROUND BAL-ER. Shedded. Excellent Paint. \$4,650. 573-247-1125, Lebanon.

COLT DEALER CATALOG'S: illustrated prices, circa #1950's-1960's. \$200. 573-764-3517. Call in P.M.

AUCTION REMINDER: Weekly Auctions held at Bryant Auctions Thursday April 18th @5pm, Saturday, April 27th @11am, Thursday May 2nd@ 5pm. Upcoming Auctions Exclusive Land Auction Tuesday May 7th ending at noon, Boats-watercraft-truck loads of new items Heavy equipment Saturday May 11th@10am, Summer gun Auction Saturday June 8th @ 10am. Please see our Auction Directory for more information.

Buildings - Hunter's Cabins - Lawn Furniture

Rent-To-Own Plan

JAMCO Portable Buildings 800-688-2064
307 Enterprise Dr. • Seymour, MO www.jamcobuilders.com

R-FAB BINS
(660)281-3078

Bucket Bins
Stationary or Portable

Overhead Bins
Located in Warsaw, MO

OLDER ELECTRIC FLOUR GRINDER: \$120. 417-321-1928.

FLIES ARE COMING! Lewis Cattle Oiler. 417-286-3540 or 774-696-2344.

WANTED PINBALL MACHINES. 573-424-7200.

2013 SUZUKI KING QUAD 4-WHEEL-ER: 4WD. \$2,800. Eldridge, 573-363-5213.

MOTORCYCLE 1/2 HELMET: \$25. Stearns Riding Gloves: large, new.\$20 417-457-1023.

NEW HOLLAND: 1411 diskbine w/roller, nice. \$9,850. 573-765-4406.

FOR SALE: JOHN DEERE RIDING MOWER: D170, 25HP, 54"cut, 124hrs. Very Nice! \$1,300. 573-859-6574

2001 FORD WINDSTAR: St. James 573-699-4651.

BRUSH CLEARING: 417-650-0596. www.brushmasterlandclearing.com

CLARINET: with case. \$125 or trade. 573-327-9068.

QUALITY BEEF FOR SALE: No stress, no hormones, no anti-biotics. Available April 25th. We're proud of our beef! Ethical operation and integrity. Gatewood, 573-255-3191.

REGISTERED BLACK ANGUS BULLS: 417-453-6332. Plato.

WANTED, TIMBER TO LOG ON SHARES: Honest, reliable, references. 417-533-4607, 417-664-1195.

14' GOOSENECK STOCK TRAILER: \$2,250. 573-699-4861.

METRO MOTORS INC.
R.V. SALES

NEW GREY WOLF, CHEROKEE & ROCKWOOD!
GREAT SELECTION OF NEW & PREOWNED RVs

•2019 26 DBH Greywolf TRL Large Slide-out.....	\$20,900	•2019 16 BHS Wolf Pup	\$12,500
•2019 214W Rockwood A-Frame Loaded!.....	\$14,900	•2016 17BH Greywolf TRL	\$15,500
•2019 228 BHESP Rockwood Pop-up Loaded!.....	\$14,900	•2000 34' Allegro Bay V-10 Ford, 71,xxx Miles.....	Sale Price \$24,500
•2019 26RP Greywolf Toy Hauler Loaded!.....	\$19,900	•2018 122 S Rockwood A Frame	\$12,500
•2012 350RL Brookstone 5th Wheel, 3 Slides, King Bed.....	\$28,500	•2017 210 RB I-Go Cloud Trailer	New \$17,500
		•2018 82975 5th Wheel, Ext. Living Room, R/King Bed, 4 Slides.	\$37,500

"Where Your Satisfaction Really Counts"
2727 S. Campbell – Springfield, MO – Visit our website at www.metro-motors.biz
417-882-6800

Gooseneck and Winchester Star pipe cattle trailers the best in the business here and ready...

10% Down
\$152 Per Mo
60 Month w.a.c
\$8,900

Cowtown USA
I-44 Exit 203 • 413 Daniels Rd.
Cuba, MO • 573-885-6300
www.cowtownusainc.com

FOR SALE: Whirlpool undercounter dishwasher, 1 year old. \$200. Works Perfect. 573-765-3603, 573-692-1492.

GIRLS HUFFY BICYCLE: Rode one time 26". \$75. 417-589-8200.

AUCTION REMINDER: Public Auction, Saturday, April 27th@ 10am . Please see our Auction Directory for more information.

VOYAGER MOTORCYCLE TANK BAG: Never out of original bag. \$50. 417-457-1023.



Cheyenne Acres
Horse & Tack
BUY - SELL - TRADE
by Rolla, MO
Call For Directions & Availability
Call Kip
573-368-9402

AIRBAGS OFF OF 96' DODGE: Like new condition. \$150. 417-766-1991 or 417-753-2747.

TWIN BED W/FRAME: With 4 sets of sheets, Clean. \$45. 815-904-4248.



1954 Chevy Bel Air
Good Condition,
Been Stored
Inside
\$10,000 obo
573-308-8091

27HP X-MARK ZERO TURN: 5ft deck, runs great, can deliver. \$2,900 636-239-4124.

TRANSMISSION AND TRANSFER CASE: 86 Ford F250. \$200obo. Rolla, 573-308-5884.



Wright Spray Foam Insulators, Inc.
Commercial & Residential
Call For A FREE Estimate
417-746-1953
417-746-4932
Norwood, Missouri

RED ANGUS 1/8TH GELBVIEH A-I BALANCER BULL: 16 1/2 months old, heifer bull. Pinnacle Ranch. 417-679-4269, Gainesville.

WILBER'S FISH BRANCH ANGUS: Large selection of yearling and 2yr old bulls available, Calving ease, good growth and carcass traits, very docile. Mexico, Mo. 573-473-6019. www.fishbranch.com

REGISTERED RED ANGUS HEIFERS For Sale: Fall calving, great disposition, real nice. \$1,700 per head. Dry Fork Red Angus, 573-453-4150, no Sunday calls please.

AUCTION REMINDER: Annual Antique Tractor/Toy Farm Consignment, Saturday, March 11th, 9AM. Allen Auction Please see our Auction Directory for more information.

L2501D KUBOTA: 4wd tractor with loader, 25HP, hydro transmission, with 5' Landpride bush hog. \$16,900. 417-270-1505.

AUCTION REMINDER: Union School House Online Auction going on now. Atterberry Auctions. Please see our Auction Directory for more information.



Built Stronger to Last Longer
Gooseneck
Trailer Mfg. Co., Inc.
Savings Start Here!
24 x 6'8" Gooseneck Brand Stock Trailer
Several In Stock
Same day financing with Ag Direct (with approved credit)
LET US BE YOUR PEOPLE!
WESTGATE TRAILER & EQUIP.
417-351-6974 • 417-926-7733
www.westgatetrailer.net
8920 W Business 60 • Mtn. Grove, MO
7136 W Farm Road 140 • Springfield, MO
FULL SERVICE SHOP
OPEN: Mon.-Fri. 8-5 And "YES!" Sat. 8-Noon!



TRUCK, TRAILER, AND SEMI TIRES
on sale now!
IRONMAN TIRES
YOKOHAMA
MASTERTRACK
FALKEN TIRE
LETTERMAN TRIPLE T REPAIR LLC
TRUCKS, TRAILERS, & TRACTORS
417-630-2249
417-664-0829
MASTERTRACK Trailer Tire (265/75/16) 10-Ply • Mounted \$121.44*
YOKOHAMA (295/75/22) 5Ry617 • Steer \$419.00*
FALKEN AT3 Wild Peak (265/75/16) \$150.00*
Ironman 1208 Drive Tire Close Shoulder • 11R22.5 \$293.76*
739 Honey Locust Rd. • Niangua, MO 65713
*Tax not included

AUCTION REMINDER: Farm Equipment Liquidation Auction! Friday 17th, May 17th @10am, Southwest Auction Service. Please see our Auction Directory for more information.

2014 FORD F-150 4X4: 6cyl, reg-cab, short bed, alloy wheels, 36,000miles, sharp, prior salvage. \$13,500. 417-924-6061.

PAYING CASH for Used Doublewides & Select Singles. Call Charlie, 573-205-7252.

1999 KODIAK 24' FLATBED GN TRAILER: Wood floor, slide out ramps, dual jacks, tandem axle, 14,000 GVW, elec brakes, 14 Ply tires. \$3,800. Conway, 417-718-5347.

\$2,500 - \$11,000 LOT

Lindsay Chevrolet & Lindsay Ford

Mon.-Fri. 8 am - 7 pm
Sat. 8 am - 5 pm
Not responsible for typos.
* with approved credit

417-588-7995

West City Route 66
& South Monroe
Lebanon, MO

Bobby Rogers, Manager • Aaron Wehner, Finance • Mike Forner, Steve "Whitey" Helton, Larry Davis, Sales

Cars

QC75331	2003 FORD T-BIRD CONV. V8, AUTO, FWD, GRAY	\$11,900
QC75393	2009 CHEVY AVEO LS 4CYL., 5SPD., WHITE.....	\$5,900
QC75376	2010 HONDA CIVIC LX 4CYL., AUTO, FWD, BLACK	\$10,600
QC57553A	2013 FORD FUSION SE 4CYL., AUTO, SILVER	\$8,900
QC75215B	2013 CHRYSLER 200 LX 4CYL., AUTO, FWD, MAROON	\$7,700
QC75444	2013 FIAT 500 POP 4CYL., AUTO, FWD, BRONZE.....	\$8,800
LT28470	2013 NISSAN JUKE S 4CYL., AUTO, FWD, GRAY	\$8,900
QC75320	2014 DODGE DART SXT 4CYL., AUTO, SEDAN, FWD, BLUE	\$9,600
LC28496	2014 FORD FOCUS S 4CYL., AUTO, FWD, BLACK	\$10,200
LC6541B	2014 FORD FUSION 4CYL., AUTO, FWD, BLUE	\$7,900
QC75443	2014 CHEVY SONIC LS 4CYL., AUTO, FWD, BLACK	\$8,900
LC28499	2014 CHEVY SPARK LT 4CYL., AUTO, FWD	\$9,900
LC28359	2014 CHEVY SONIC LT 4CYL., AUTO, FWD, RED	\$8,900
LC28385	2014 CHEVY SPARK LT 4CYL., AUTO, FWD, WHITE	\$9,800
LC28539	2015 CHEVY MALIBU LT 4CYL., AUTO, FWD, WHITE	\$11,200
LC28469	2015 CHEVY SONIC LS 4CYL., AUTO, FWD, WHITE	\$10,900
QC75386	2015 CHRYSLER 200 LIMITED 4CYL., AUTO, FWD, BLUE	\$9,400
LC7050A	2015 CHEVY SPARK LS 4CYL., 5SPD., FWD, BLUE	\$9,300
LC28497	2016 HYUNDAI ELANTRA 4CYL., AUTO, SILVER	\$11,700
QC75363	2016 CHEVY CRUZE LS 4CYL., AUTO, FWD, RED	\$11,400

Trucks

QT75292	2005 DODGE RAM CREW V8, AUTO, 4WD, BEIGE	\$9,900
LT7061A	2006 FORD F450 6.0 D. MOTOR AUTO, RWD, FLAT BED, WHITE	\$7,300

Trucks

QT75460	2007 FORD SPORTRACK V8, AUTO, 4WD, GRAY	\$12,400
QT75475	2008 FORD F150 REG. CAB V8, AUTO, 4WD, XL, WHITE	\$9,900
QT75446A	2008 FORD F150 CREW LARIAT V8, AUTO, 4WD, RED	\$9,800
QT75395	2012 GMC CANYON SLE REG. CAB, 5CYL., AUTO, RWD, BLUE	\$9,400

SUVs

QT75476	2005 JEEP GRAND CHEROKEE LIMITED V8, AUTO, 4WD, WHITE	\$7,900
QT75420	2007 CHEVY SUBURBAN LS V8, AUTO, 4WD, BLUE.....	\$11,900
LT28432A	2008 FORD ESCAPE XLT 4CYL., AUTO, FWD, GRAY	\$6,900
QT75456	2008 HUMMER H3 5CYL., AUTO, AWD, RED.....	\$10,900
QT57284B	2011 KIA SPORTAGE SX 4CYL., AUTO, FWD, ORANGE	\$11,425
LT28377	2012 FORD ESCAPE XLT V6, AUTO, FWD, WHITE	\$8,500
LT28418A	2013 CHEVY CAPTIVA SPORT LT 4CYL., AUTO, FWD, SILVER	\$10,400
QC75392A	2013 HYUNDAI SONATA LIMITED 4CYL., AUTO, FWD, BLUE, 71K MILES.....	\$10,900
LT28543	2014 DODGE JOURNEY SXT 4CYL., AUTO, FWD, WHITE	\$9,450
QT75335	2014 JEEP COMPASS 4CYL., AUTO, 4WD, SPORT, RED	\$10,900

Vans

QC75394	2016 DODGE GRAND CARAVAN SE V6, AUTO, FWD, GRAY	\$12,900
---------	--	----------

\$5,000 or Less!

QT57489B1	2002 DODGE RAM V8, AUTO, 2WD, REG. CAB, WHITE	\$4,900
QT75375	2008 MITSUBISHI ENDEAVOR LS V6, AUTO, 4WD, BLACK.....	\$4,900



AWARD-WINNING DEPENDABILITY. YEAR AFTER YEAR AFTER YEAR AFTER

AWARDS BASED ON 2013, 2014, 2015 AND 2016 YEAR VEHICLE



NEW 2019 CHEVROLET CRUZE, MALIBU'S EQUINOX



For a detailed list of eligible discounts and transparent pricing please visit
www.wherethetrucksare.com



CHEVROLET 

FIND NEW ROADS™

LINDSAY CHEVROLET

"Where The Trucks Are"

OPEN: M-F 8-6:30 • SAT. 8-5 IN LEBANON AT 285 W. ELM • 417-532-3114



David Bean
Manager

Jeremy Johnson
Sales

Brent Hale
Sales

Dennis Nash
Asst. Manager

Shelby Cole
Finance



www.lindsaychevroletlebanon.com

*Price includes all applicable factory rebates including GM Financial Cash which requires financing with GMF. Also included is dealer trade assist which requires trade in of 2005 or newer vehicle that is retail eligible. May also include GM Conquest Cash which requires ownership of 2005 or newer Non GM passenger vehicle or GM Loyalty which requires ownership of a 2005 or newer GM passenger vehicle. Silverado prices include GM Card Member earnings up to \$1500.

YEAR
VEHICLES.



ALMOST \$15,000 OFF



LC6144

Our NEW Fully Loaded 2017 Camaro 2LT!
Now ONLY \$25,000!



LT6860

UP TO \$16,500 OFF MSRP!

Close Out 2018 Silverado 1500 Crew Cab 4x4

ALMOST \$13,000 OFF



All New 2019 Silverado 1500 Crew Cab 4x4



CHEVROLET 

FIND NEW ROADS™

LINDSAY CHEVROLET

"Where The Trucks Are"

OPEN: M-F 8-6:30 • SAT. 8-5 IN LEBANON AT 285 W. ELM • 417-532-3114



David Bean
Manager

Jeremy Johnson
Sales

Brent Hale
Sales

Dennis Nash
Asst. Manager

Shelby Cole
Finance



www.lindsaychevroletlebanon.com

*Price includes all applicable factory rebates including GM Financial Cash which requires financing with GMF. Also included is dealer trade assist which requires trade in of 2005 or newer vehicle that is retail eligible. May also include GM Conquest Cash which requires ownership of 2005 or newer Non GM passenger vehicle or GM Loyalty which requires ownership of a 2005 or newer GM passenger vehicle. Silverado prices include GM Card Member earnings up to \$1500.

WEEKLY TRADER MAGAZINE

by mail!



Delivery Deals Week To Week

Simply return this completed Subscription Form with check or money order
to: **Weekly Trader, P.O. Box 192, Lebanon, MO 65536**



_____ 4 weeks	\$8.00
_____ 12 weeks	\$24.00
_____ 24 weeks	\$48.00
_____ 52 weeks	\$104.00

Name: _____

Address: _____

City, State, Zip: _____

Phone: _____

You may also call our office 417-532-2800
to subscribe with credit or debit card.

Spring is the Time Of Plans And Projects.



DELUXE BUILDING PACKAGES



24x40x10	Galvalume	\$5,797.55
	Painted	\$6,401.76
24x32x10	Galvalume	\$5,616.66
	Painted	\$6,098.95
30x40x10	Galvalume	\$6,430.69
	Painted	\$7,099.08
30x40x12	Galvalume	\$6,886.06
	Painted	\$7,598.22
40x60x12	Galvalume	\$11,272.16
	Painted	\$12,461.71

Plus Tax. Labor & Delivery Available On All Building Packages.
Prices may vary due to local code restrictions.

All Buildings Quoted Have #2 Lumber And #1 Galvalume Or Limited Lifetime Painted Metal

All Buildings Are Heavy 29 Ga. Metal, Three 2"x6" T&G Splashboards, All Poles 5"x5" Or Larger, CCA Treated, Fully Trimmed With One 3'x6' Walk-Through Door & One Large Sliding Door.

Metal Roofs Designed To Look Great On Your Home!

HEAVY 29 Ga. METAL # 1
Limited LIFETIME WARRANTY
29 Ga. & 26 Ga. Painted
CUT TO LENGTH PANELS



Ask About Our Quick Service.
Over **20** Colors and Several Styles To Choose!

GALVALUME METAL UNPAINTED
25 YEAR WARRANTY

\$48.50

#1 Standard Panels, 29 Ga.

Good quality, quick service

DECK PACKAGES AVAILABLE AT BYLER BUILDING SUPPLY



Roof Is Optional
Additional Sizes & Custom Shapes Available!

8x10.....	\$1145
8x16.....	\$1375
10x14.....	\$1478
12x16.....	\$1927

- 1 Set of Steps
- Handrails
- 2x2 Balusters
- All Deck Boards & Railing Screwed, Up To 4' High, All #2 Treated



BYLER BUILDING SUPPLY, LLC

2 1/2 MILES EAST OF SEYMOUR ON 60, 1/4 MILE NORTH AT AUTO SALVAGE WWW.BYLERSUPPLY.COM
877-556-8855 MON.-FRI. 7:30-5 SAT. 8-12 FAX NO. 417-935-2995 417-771-3100

VISIT US AT WWW.BYLERSUPPLY.COM

WEEKLY TRADER MAGAZINE



AUCTION DIRECTORY

Thursday, April 18

11:00 AM Mid Missouri Stockyards42

Saturday, April 20

9:00 AM Chadwell Auction Service LLC39
 9:30 AM Kelly Auction Co.31
 10:00 AM Rick Dixon Auction Service
 w/ Gary Sexton Auctioneers25
 10:00 AM Nance Auction Service36
 10:00 AM Danahy Auction Service40
 12:00 PM Freeman Auction & Appraisals28
 12:00 PM Buffalo Livestock Market42
 1:00 PM Salem Livestock Auction41

Tuesday, April 23

1:00 PM Rick Dixon Auction Service24

Wednesday, April 24

10:00 AM Crawford Auction Service33
 10:30 AM Farmington Livestock41

Thursday, April 25

9:47 AM Chupps Auction Co.44
 5:00 PM Crawford Auction Service34
 Online Atterberry Auction & Realty43

Friday, April 26

10:00 AM Crawford Auction Service35
 Thursday, April 18
 5:00 PM Bryant Auction38
 Online Mickey Duckett Pro. Auctioneer30

Saturday, April 27

9:00 AM Rick Dixon Auction Service24
 9:32 AM Chupps Auction Co.45

Saturday, April 27

10:00 AM Ozarks Realty & Auction Group26
 10:00 AM Freeman Auction & Appraisals29
 10:00 AM Drenon Auction37
 10:00 AM Crawford Auction Service44
 11:00 AM Bryant Auction38
 12:00 PM Rolla Horse Auction41

Tuesday, April 30

Online Atterberry Auction & Realty32

Thursday, May 2

5:00 PM Bryant Auction38

Tuesday, May 7

Online Bryant Auction38
 Online Atterberry Auction & Realty43

Wednesday, May 8

Online Atterberry Auction & Realty43

Friday, May 10

3:00 PM Prairie Grove Amish Mennonite27

Saturday, May 11

9:00 AM Prairie Grove Amish Mennonite27
 9:00 AM Allen Auction & Real Estate45
 10:00 AM Bryant Auction38

Wednesday, May 15

Online Atterberry Auction & Realty42

Friday, May 17

10:00 AM Southwest Auction Service41

Saturday, June 8

10:00 AM Bryant Auction38

Call 1-800-665-8875 to get your auction listed in the Weekly Trader.

AUCTIONEERS Did you know the WEEKLY TRADER covers more counties in rural Missouri than any other publication?

Firm deadline is 12:00 PM Friday, prior to next week's Thursday publication date.

ESTATE AUCTION

TUESDAY, APRIL 23, 2019 • 1 p.m.

LOCATION: 21905 King Drive, Summersville, MO 65571

DIRECTIONS: From **Summersville MO**, take Hwy 17 north 5 miles to W Hwy, go 6 miles to King Drive, go 1 mile to auction. Parking on county road only! Watch for Rick Dixon auction signs day of auction. For pictures, visit us on the web at www.rickdixonauctions.com

• OVER THE ROAD TRUCK • SKID • STEER • TRACTORS • TRUCK • TRAILERS • EQUIPMENT •

• 2009 Kenworth T2000, Detroit engine, 13 speed, 927,000 miles - had engine rebuilt approx. 1 year ago with APU unit • Case 40XT skid steer, 960 hours with Cummings engine, good machine • attachments for skid steer: forks, buckets, VersaTec grapple & Blue Diamond rock bucket • 2016 Kawasaki 610XC 4x4 Mule, with 111 hours, like new • 1994 GMC 1T 4x4 flatbed 5 speed V8, 65,XXX miles • 16 ft heavy bumper hitch implement trailer with ramps, fuel tank & pump • Case International 485 diesel tractor • Massey Ferguson 1240 tractor with Massey Ferguson 1246 loader, 3900 hours w/Woods ground breaker backhoe attachment • Halmark 12 ft cargo trailer • 16 ft. bumper hitch stock trailer • FMC SW-66 6 ft tire-driven 3 pi bush hog • 3 pt rock rake • 5 ft. 3 pi grader blade • 4x6 utility trailer o 5x10 utility trailer •

• TOOLS, LARGE & SMALL • MEAT • SAW • FARM ITEMS • MISC ITEMS •

• Stark mod 65039 meat saw w/ meat grinder, like new, used one time • Pulsar 28 gal air compressor, like new • DeWalt power miter saw on

stand • Ryobi 10" table saw • 8 ft metal brake, like new • Honda 5000 watt generator • Greenlee job tool box • air hose on reel • power tools • air tools • carpenter tools • elec cords • 2 wheel dolly • floating stock tank device • transit & tripod • Warner alum walk board • 4.3 gal compressor • 200 amp battery charger • alum ext ladders • fiberglass step ladders • lumber, various kinds • gas & diesel cans • pvc pipe • (6) 20 ft trusses • log chains • DeWalt drill bits • 6.5 hp power washer • chain boomers • nail guns & nails • fencing tools • fish cooker • Yard Pro rear tine tiller • DR all terrain mower, 10.5 hp • roping saddle • western saddle • lots of horse tack • plastic gun scabbard • 2 igloo goat houses • hay bale rings • approx. 100 new concrete blocks • farm gates •

• REAL ESTATE •

Approx. 35 acres of open and wooded land. Property is located on Texas County, MO- Twp 29 Rng 7. To view by appointment only, call Rick Dixon at 417-967-6604. **REAL ESTATE TERMS:** 10% down day of auction, balance due upon closing, to close within 30 days. Taxes prorated, closing costs paid for by buyer.

Cindy & the late Rick Mc Cormick

AUCTIONEERS NOTE: Please make plans to be with us for this nice auction. Note the date and time, Tuesday, April 23 at 1 pm.

Thanks for your attendance in advance. Thanks, *Rick*

TERMS: Cash or good check. Major credit cards accepted with 5% convenience fee. Driver's license or picture identification required to obtain bid number, which must match check. If not known personally to Rick Dixon Auction Service or Cindy McCormick, please bring a bank letter of credit addressed to Cindy McCormick. Nothing loaded or removed until paid for, and everything sells where is, as is. Not responsible for accidents, lost, stolen or broken items. List subject to additions or deletions. Nothing sold before auction; please do not ask. Auction day announcements take precedence over all previous advertisements. Lunch on grounds.



Rick Dixon
Auction Service, LLC

Rick 417-967-6604
Josh 417-217-9627

www.rickdixonauctions.com

INDUSTRIAL AUCTION

SATURDAY, APRIL 27, 2019 • 9 A.M.

Location: 1560 North Hwy 63 Houston, MO 65483

DIRECTIONS: From Houston MO, take US Hwy 63 north. Auction located next to MODOT shed. Watch for Rick Dixon auction signs day of auction. For photos, visit us on the web at www.rickdixonauctions.com

• EQUIPMENT • TRAILERS • TRUCKS • INDUSTRIAL SUPPLIES • BUILDING
• LARGE AMOUNT OF TRUCK TIRES & WHEELS, FROM LARGE TO SMALL, VARIOUS KINDS • HUGE AMOUNT OF TRUCK PARTS, INCLUDING REAR ENDS & FRAMES •

Sandra and the late Mike Manier, Owners

See next week's paper for full listing

For pictures, details and terms, visit www.rickdixonauctions.com



Rick Dixon
Auction Service, LLC

Rick 417-967-6604 • Josh 417-217-9627
www.rickdixonauctions.com



NO RESERVE MACHINERY RETIREMENT AUCTION

Jenkins Farms · Falcon MO

SATURDAY APRIL 20, 2019 AT 10:00 A.M. CDT

12292 Hwy Z, Falcon, MO, 65470 (Competition Area)

DIRECTIONS: From Lebanon MO, take Hwy 5 south 12 miles to O Hwy, go 14 miles to Z Hwy, turn left, go 1 1/2 miles to auction. From Mt. Grove MO, take Hwy 95 north 22 miles to AF Hwy, go 4 miles to O Hwy, turn left, go 4 miles to Z Hwy, turn right, go 1 1/2 miles to auction. Watch for auction signs off O and Z Hwy day of auction.



Equipment Questions: Wesley 417-247-9239 • 704-902-3108

JOHN DEERE TRACTORS - HARVESTERS - PLANTER

- 1980 JD 4840 Tractor New Cab Kit
New John Deere Stamped Re-manufactured JD Crate Motor (#18,000), Duals, LWD - 6 Cyl.
- 4450 JD Tractor, 120 hp - 2WD, 2000 Hours On New Motor Rebuild
- 2003 6850 JD Forage Harvester (Self Propelled) Very Good Condition
6 Row Kemper head, 3200 Hours
- 2000-2001 1750 John Deere 6 Row Planter, Air Vacuum, Rigid 3 Bushel seed hoppers (1 Job to go Relinquish date after sale)
- 1999 750 JD Grain Drill, Yetter Marking arms, good Condition - Low Use!
- 1517 JD Bat Wing Brush Hog
- 220 JD Semi Mount 5 Bottom Plow, New hoses - Shedded
- 220 JD 22' Folding disk, good condition!
- 1210A JD Grain Cart 500 bushel, 1988 JD 500 Bushel grain cart; 110 JD Grain Wagon
- 7' JD Front H.D. Bucket Fits 10-20-30 Series

COMBINES - HAY EQUIPMENT - GRAIN HANDLING

- 1660 Case - International Combine 3800 hours Field Ready
- 25' Seed Head Platform
- 25' Header Wagon
- Tindenberg 10' hyd. Box Blade
- N5 Gleaner Diesel Combine 315 Head 3750 hours
- 1989 International Cab Over Semi Tractor 440 Cummins 9 Speed - Sleeper
- 48' Timpote hopper grain trailer good condition
- Krause 24' Fold up disk good condition
- 60' & 80' Fertil - West Grain Augers with belly pans
- 1998 Prentice 210 E Boom Model K8385 Loggers Cherry Picker
- SR112 G11 Kuhn 12 Wheel Hay Rake Like New
- 3710 Hesston Hay Tedder
- 65 & 55 Gehl Grinder Mixers, 352 NH Grinder Mixer

FARM EQUIPMENT - IMPLEMENTS - TOOLS - MISC.

- 250 Bushel gravity Flow Wagon
- 112 Scat Hoe Backhoe (Fits Skid Steer)
- Clark 500 gal. Sprayer 45' Booms
- 2-4X4 Farm Pickups, 4 Wheeler dump Trailer
- 2006 Arctic Cat Prowler KT650 4wd
- Can-Am 4 Wheeler - 650 - 500cc
- Bush Hog 5 Shank Ripper, HD Field Roller
- Several NH Farm Wagons
- 400 gal Fuel Trailer, Ford 3 pt disk
- Case Field Cultivator, Skid Steer ID Tree Puller
- 1200 gal Tip Tank, Grain augers
- 8"X6" Irrigation pipe
- Hay elevator, Feed Bunks, 3 Pt wood splitter. Nice
- JD Goat Wagon, 1300# of JD Weights, Pipe/Steel
- Picnic table, Chick Coops, Trailer axles
- Shop of Tools - Acetylene Torch Sets - ATV Sprayer
- Chain Saws - Salt Treated Lumber - Farm Supplies
- VAC Slab Saw, Some Farm House Antiques
- Household - Furniture Items
- Bins Full of New Backup Farm Machinery Parts!

Terms of Auction: Cash or good check with positive ID. If personally not known to auction company or Wesley Jenkins. Please have a bank letter of credit addressed to Wesley Jenkins (NO EXCEPTIONS). Drivers license or picture ID required to obtain bid number. Auction day announcements take precedence over all previous advertisements. List subject to Additions/Deletions.

Jenkins Farms · Falcon MO

AUCTIONEERS NOTE:

After a long successful farm career Wesley is retiring. Majority of items were purchased new. Very few small items - be prompt! Lunch will be on the grounds. Not Responsible for accidents.

Auction Managers

RICK DIXON 417-967-6604
Info@rickdixonauctions.com
GARY SEXTON 417-255-7001 • gary@garysexton.com

Rick Dixon
Auction Service, LLC
www.rickdixonauctions.com



Gary Sexton
Auctioneers LLC
www.garysexton.com

FOR ADDITIONAL PHOTO'S GO TO AUCTIONEER'S WEBSITE

Public Auction

52 ac. of Real Estate 1 mile from City Limits

April 27th, 10:00 A. M.

Direction: From Downtown Houston (63 & 17 jct.), North on 63 2.1 miles to Oak Hill Road, West (left, across from Napa Auto parts) on Oak Hill Road 0.2 miles to Fisher Drive, North (rt.) on Fisher Drive to end of road approximately 1 mile to Sale. Watch for Auction Signs!

4 Bedroom, 2 Bath **Log Home** On **52 AC.** M/L at the edge of Houston, Mo. Guest Lodge that has 3 private bedrooms, 3 1/2 Baths, Commercial Kitchen and Laundry. Call any number below to set up your private showing.



This property has it all! The 4 BR, 2 BA log home sits on 52 acres and was built in 1982. The log home has beautiful beamed ceilings, pine floors, covered porch and country kitchen with windows all around. It has a gorgeous backyard view and much more! The Bed and Breakfast was established in 2007, is 20x80 and features 3 Bedroom, 3.5 Bath, motel style lodge with laundry area, commercial kitchen, large open setting room for guests to visit and a 10x80 covered porch. 40x68 shop, 38x80 barn with concrete floor, 4 horse stalls, feed room, 8 door dog kennel and 2 ponds. Beautiful raised garden, flowerbeds and fruit trees. Chicken house with a fenced run. 2 car detached garage with nice shop area. Rotational pasture set up and ready to go! Great spot for horseback riding/hiking. Whether you like to hunt, fish, garden, hike, farm, entertain guests, ride horses, or just simply love to be outdoors and enjoy the beautiful scenery...this place is it! Short drive to Montauk State Park, Current River, and Piney River.

[Go to WWW.OzarksLandAndHome.Com](http://WWW.OzarksLandAndHome.Com) listing number 24032-18451 for video, map and more info.

Terms: No reasonable offer will be refused, 10% down the day of sale with funds approved prior to sale day, to be placed in escrow within 5 days, balance due in full at closing and upon delivery of marketable title within 30 days. Title insurance and closing cost to be split 50/50 buyer/ seller. Taxes to be prorated to day of closing. Have all due diligence and financing arrangements done prior to sale day. Any announcements made the day of auction supersede all advertising. Property is being sold "as is, where is" with no contingencies. All information has been taken from sources believed reliable, however no guarantee is being made by the auction company or the seller.

All announcements day of sale supersede any and all advertising

Ozarks Realty & Auction Group

Licking - Mountain View - Mountain Grove - Mansfield



**Ozarks
Land and Home
Realty and Auction**

Licking, Mo.

Ozarks Land and Home Realty & Auction
(573) 674-1424

Riverways Realty
(417) 934-2427

Will Jett Broker Assoc./Auctioneer
(417) 293-3120

Johnny Mote
Realtor/Auctioneer
(417) 204-2416

Mark Jett
Realtor
(417) 257-4695

Ridgeway
Real Estate
(417) 924-3208

Ozarks Country
Living Real Estate
(417) 926-5445



ATTENTION

We Have Moved The Date

9th Annual Spring

Prairie Grove Amish Mennonite School

CONSIGNMENT AUCTION

**2nd
Weekend
Of May**

Friday, May 10 • 3 p.m.

Saturday, May 11 • 9 a.m.

To Consign or for more information contact:

- | | |
|---|--------------|
| Nathan Kropf (Misc. Equip) | 417-327-6240 |
| Vernon Kropf (Tractors & Machinery) | 417-733-2600 |
| Eldon Swartzentruber (Titled Vehicles) | 417-327-6348 |
| Tobe Hostetler (Furniture, Crafts & Cattle Equipment) | 417-733-2710 |
| Nathan Blosser (Lawn, Garden, Flowers) | 417-327-4670 |
| Mrs. Ron Eigsti (Quilts) | 417-327-7168 |
| Herman Hostetler (Guns) | 417-327-7720 |
| Den Blosser (Questions) | 417-326-9788 |

**Taking
Consignments!**

**Auction will be held on school grounds
12 Winding Creek Drive, Buffalo, MO 65622**

Suggested Consignments *(No Junk Please)*

- Handmade Quilts • Small and Large Antiques • New and Used Furniture • Good Household Items • Lawn & Garden Machines & Tools (Good Condition) • Hand Tools • Shop Tools • Misc. Farming Items • Farm Machinery • Farm Tractors • Cattle Equipment • Horse Related Tack & Saddles • Small Caged Animals, Exotic, Etc.

The Sooner Consigned, The Better Advertised!

AUCTION TIME!

By order of the United States Bankruptcy Court, Western District, Southern Division of Missouri
we will be liquidating the assets at public auction formerly doing business as

ROUGH COUNTRY RUSTIC FURNITURE

539 West Norwood Street Norwood, Missouri

**SATURDAY, APRIL 20TH
AT 12 NOON**

Directions: U.S. Highway 60 east to the Norwood exit.
South on "C" 2/10s mile to the stop sign. Now west 6/10s
of a mile to 539 West Norwood Street.

**A 26,000 square foot plant where they
manufactured hand-crafted gun concealment
rustic furniture and concealment wall art.**

This inventory includes: chairs, bookshelves,
dressers, nightstands, approximately 26 head
and footboard sets, many partially finished
gun concealment wall art pieces. **PLUS!** wood
benches, wood shelving, pallet shelving and a
large quantity of lumber.

Note: The entire plant inventory will be offered in its entirety.

ONE BID BUYS IT ALL!



Freeman Auction & Appraisals, LLC

Auctioneers: Steve Freeman & Jon Joyce
(417)343-1891 sfauctionetime.com

AUCTION TIME!

By order of the United States Bankruptcy Court, Western District, Southern Division of Missouri
Re: Joseph Victor Ross & Ashley Nichole Dillard

fdba ROUGH COUNTRY RUSTIC FURNITURE

4533 State Highway J • Marshfield, Missouri

SATURDAY, APRIL 27TH AT 10 AM



TOOLING: Five Grizzly & Shop Fox dust collection systems, Grizzly GO631 79" x 28" downdraft table, Kreg DK1100FP pneumatic, single spindle pocket hole boring machine, Shop Fox W1824 table saw, Wagner paint sprayer, two Puma 5hp vertical air compressors, portable air compressor, three Bosch CM10GD miter saws. Plus! Floor dollies, pallet jacks, shop lights, roller toolboxes, several palm sanders, air hoses, Halide lamps, MaxAir industrial fan, Haier fridge, Whynter fridge, Avalon water cooler.

250 – 300 HAND-CRAFTED GUN CONCEALMENT WALL ART UNITS

HAND CRAFTED FURNITURE (Much of which is gun concealment): Night stands, side table, occasional tables, coffee tables, bookshelves, big rustic dining tables with benches, stools, rocking chairs, dressers, sideboards, mirrors.

ALSO: FOUR GLASS DISPLAY CASES, wood display units, metal 2-glass door cabinet, clay pigeon thrower.

TACTICAL GEAR: Knives, watches, gloves, flashlights, AR rifle barrels, Red Dot scopes, MagPul accessories & various magazines, holsters, muzzle breaks, assorted Glock clips, Cobra hand extension, vests, plated vests, backpacks, water hydration, belts, sniper bags, gun cases, shooter mats, mag holders, handcuff holders, helmets, elbow & knee pads, metal & paper targets, pants & shirts, boots, ammo including 22, 12 ga slug, 223/5.56, 300 black out, ammo boxes.

Re: Jamie L. Flint & Kimberly Dawn Flint Note: At the conclusion of the Rough Country Rustic Furniture auction, bankruptcy trustee Fred C. Moon will offer the following....**PISTOLS** Ruger MK3 Hunter .22lr with 2 mags, North American Arms .22 mag stainless revolver, Walther P22 .22 pistol with 2 mags, laserdot & case. Glock 26 9 mm pistol with Glaco ankle holster, Ruger Single 6 Hunter revolver .22 mag. **Note: These pistols are subject to BATF guidelines and fees will apply.** Also...Remington 870 Tactical pump 12 ga., Rossi matched pair 20 ga./22lr, several holsters and a Century 8 gun safe.



Freeman Auction & Appraisals, LLC

Auctioneers: Steve Freeman & Jon Joyce
 (417)343-1891 sfauctionetime.com



Mickey Duckett
CAL, MPPA, AARE, CES

Mickey Duckett Professional Auctioneer

P.O. Box 1575, Ozark, MO 65721

(417) 353-2768

www.mickeyduckettproauction.com



AMAZING 178+/- ACRE REAL ESTATE AUCTION

768 E. 380th Rd., Dunnegan ONLINE BIDDING ONLY!!

Auction Ends: Fri., April 26th, @ 1:07 Preview: Sat., April 20th, 12-3

Directions: Hwy 13 to 380th Rd., East approximately 1.5 miles to property and follow auction signs.

Looking for acreage?? Here it is! Located just off of Hwy 13, it's only 10 miles from Bolivar and less than an hour from Springfield. Highly desirable land with 90% pasture and 10% woods. Property has 2 ponds, small wet weather creek and a larger running creek. Lots of wildlife including deer and turkey. Build your new home here, put your own herd on it or rent it!! This property has current rental income of \$6,500 per year! **With so many choices, what would you do??**

Owner: Trudi Carlson

Real Estate Terms: 5% Buyer's Premium. 10% down to be placed into escrow the first business day after Auction, balance due in thirty (30) days. Auction Company to receive deposit from Internet Bidders no later than Mon., March 4th. Taxes prorated to day of closing. **Sale subject to meeting seller's reserve. NOT SUBJECT TO FINANCING!** Auctioneer or Seller does not guarantee the accuracy of information obtained from outside sources. Announcements the day of auction take precedence over any and all printed and/or internet materials.

Auctioneer Note: Terrific acreage with lots of possibilities! Check out our Online Catalog!! For more photos and register to bid, go to our website at www.mickeyduckettproauction.com!! Call Mickey at 417-353-2768 for more information or private showing.



OUTSTANDING FARM AUCTION!

Owners Dennis & Teresa Freeman - 417-926-3990

Saturday, April 20, 2019 at 9:30 a.m. SHARP!

Location: From Mountain Grove, MO, go south on 95 Hwy 2 miles to ZZ Hwy, turn right, go 1 mile to Fox Creek Road, turn left, go 1/2 mile to the Auction on the left. Watch for signs! Lunch & Restrooms Available.

TRACTORS - DOZER BACKHOE ATTACHMENTS

- 990 David Brown Selectomatic, Diesel, Hi-Lo Trans, 6 Speed, 54 H.P., Ex. Hydraulics, Sells with Freeman Front End Loader, Nice Tractor! - 441 CASE, Gas, 43 H.P., Ext. Hydraulics, 12 Speed, Triple Range Transmission w/ Case Front End Loader - Allis-Chalmers HD 16 Dozer, Cable, Good Under Carriage, Runs Good, Rear Cable, 175 H.P., Owners & Service Manuals - Brad-Co 3 pt. Backhoe Attachment, good! - 2420 Farm Pro Diesel, 3 Cyl. Tractor, Canopy, Roll Bar, Ft. Wts., PTO, 3 Pt., 540/1000 RPM, 24 H.P., NICE! - 6' King Cutter Grooming Lawn Mower, 3 Pt, 2003 Model - Massey-Ferguson 231 Series Diesel Tractor, 48 H.P. w/ Great Bend Front End Loader, 750+ Hours, Cab, Good Rubber, 3 Pt., 2004 Model! Nice!

FARM EQUIPMENT & SHOP RELATED ITEMS

- 7' Offset Plow, hyd - Handi-Clasp Cattle Head Catch Gate - Priefert Cattle Head Gate - 3 pt. Sidewinder, Tire Driven Bush Hog, 6' Cut, Good Condition! - Wood 10' Bush Hog, Hydraulic Lift - 3 Pt. Post Auger, 12" Bit - 10' Bush Hog Field Disc - 7.5' Steel, Concrete Filled, Field Roller w/ Swivel Tongue, 24" Diameter, Heavy Duty! - Like New 5 Star, 3 pt. Seeder, Big Hopper - 3 Pt. Hydraulic Bale Un-Roller - 3 Pt. Pallet Style Bale Mover - 6 Big Round Bale Rings - Universal Bale Spike - Plastic Feeders - 12 Panel Portable Cattle Corral w/ walk-thru Gate - Bush Hog 3 Pt., 6' Box Blade w/ Rippers - 3 Pond Windmills - PTO Hydraulic Pump & Tank - (2) 28" Tractor Rims - John Deere Side Delivery Hay Rake - (3) Alum. Extension Ladders 16'-18', 22' - Campbell/Haus Upright, 26 Gal., 1.7 H.P.
 - Fishing Equipment, Rods, Reels - 2 Solar Powered Fence Chargers - 1 Electric Fence Charger - Husquavarna Model 41 Chainsaw, 16" Bar - Homelite Leaf Blower, Backpack model - Craftsman 19 H.P. - 42" Cut Riding Lawn Mower - Metal Parts Rack Bin, 36"x84" - 15 Bin Steel Bolt Storage, H.D., 28"x25" - New 3 Pt. Gooseneck Hitch - 126" Metal Break - Stihl Gas Weedeater, Weedeater Leaf Blower - Several 6' New Steel Fence Posts - 24"x24" Steel Fuel Tank w/ Hand Tank - 2 Rubber Tired Wheel Barrows - Dump Yard Cart - Old US. Military Hand Pump w/ (2) 5 gal. Jerry Cans - Miller Side Kick Wire Welder - 30"x36" Steel Welding Table - 12 Speed H.D. King Drill Press - 4" Pipe Vise on Stand - Propane Torch & Bottles - Lincoln 225 Arc Welder - Craftsman Portable Air Compressor - Barrel Stand - 22" Squirrel Cage Fan - Oval Stock Tank - 10" Table Saw w/ Extensions - Briggs & Stratton Power Generator, Like New! 10 H.P. (4) 110 volt Outlets, (1) 220 volt Outlet, 5550 Watt, 8550 Starting Watts - 200 sq. ft. of Cultured Stone Siding, Castle Rock Design, Light Colored - 6" Bench Grinder on Table - Large Lot of new Brick, Blocks, Tile - Minnow Traps - New barn roofing, used metal - Aluminum Dog Box, 2 Hole, 30"x42"x27" - Cattle Rules

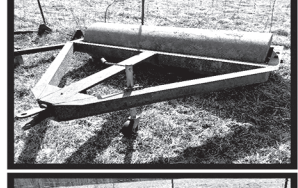
TRUCK - CAR - TRAILERS

- 2000 Toyota Solara SLE Car, convertible, V6, 160,246 miles, automatic (Arizona originated) - 16' Martin Gooseneck Flatbed Trailer, Shedd, Treated Floor, Like New! - 8' Snow Plow w/ Wings, New Pump and Mounts - 4' Farm Pro Rear Mount PTO Garden Tiller, No Tines, Like New! - 6' Dump Utility Trailer - 16' Canoe - 22 Ton Wood Splitter, on Trailer, Cradle, Needs Motor - Set of Garage Doors - Polaris 500 H.O. 4 Wheeler, 4WD, Runs Good! Excellent Tires! - 400 Polaris 4 Wheeler, needs repair - King Kutter 6' 3 pt. Bush Hog - 19' Pendle Hitch Tilt Deck Equipment Hauling Trailer

CLASSIC COLLECTOR'S PICK-UP....1978 Chevrolet Scottsdale, 4 WD, 350 Auto, Air, Tilt, Back Sliding Glass, Dual Exhaust, Rally Wheels, Dual Gas Tanks, 93,000 Miles, Owned by 2nd Owner or 34 years. Sells w/ extra new bed sides & carpet. Note: This Truck Sells w/ Reserve

HOUSEHOLD ITEMS

- Glassware, assorted - Chimaneach Outside Fireplace - 3 Bikes, One Mountain Bike - Large Oak Rocker - Old Oak Drafting School Desk - Wood Box Stove - Beautiful 4 Poster Queen Bed, Oak - Nice Oak Bedroom Set, Queen, Chest, Dresser - Treadmill - Body Glide - End Tables - Coffee Table - Oak Corner Shelf - Oak Side Board - Oak Straight Shelf - Oak Quilt Shelf - Oak Dresser - (3) Leather Bottom Chairs - Glider Canopy Swing - Garden Hose Reels - Old Antique Reel Type Push Lawn Mower



Auction Co.
417-257-8385

Auctioneer: Reg Kelly
www.KellyAuctionCo.com

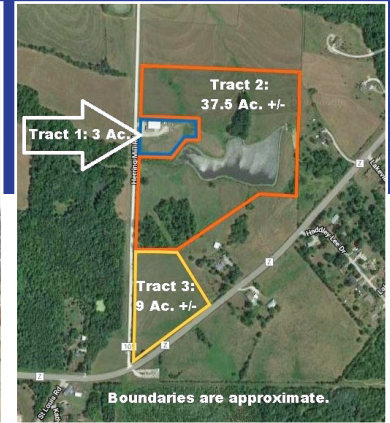
Facebook.com/
Kelly-Auction-Company

AuctionZip.com
Search Code:
14413

Auctioneer Note:
*Dennis & Teresa have sold their farm and are moving. This is a great auction, clean and has something for everyone!
See you at the Auction! - Reg*

View more Pictures Online @
www.KellyAuctionCo.com

Commercial – Development – Grazing Land Online Auction – Sells To High Bidder!



49 +/- Acres Offered In Combinations & The Entirety
Located Only 2 ½ Miles From Downtown Fulton

Preview / Inspection Dates:

Tuesday, April 16th & 23rd, 12:00 - 1:30 p.m.

Tract 1: 3 +/- Acres With A Well Built 7,400 +/- Sq. Ft. Steel Framed Metal Building Which Includes An Attractive Brick & Stone Front Office W/ Lg. Reception Area & Breakroom. Shop Area Has Several Overhead Doors, Commercial Lighting and Insulation, Workshop Room With Heated Floors & Loft Area.

Tract 2: 37 +/- Acres With A Nice Lake, Gently Rolling With Good Road Frontage, Great Building Sites, Possible Development

Tract 3: 9 +/- Acres With Hwy. Z & County Road Frontage. Zoned R-2 Residential Development Potential.

5276 County Road 105, Fulton, MO

Online Bidding Ends: Tuesday, April 30th @ 12:30 p.m.

Note: This Is A Wonderful Property With Tons Of Possibilities! Convert The Office Into Living Quarters & Have Your Own Shouse Or A Great Place For Your Business. This Is A Pretty Piece Of Land With Great Building Sites.

**For Information On How To Buy This Property At Auction Or Other Questions,
 Call Your Real Estate At Auction Specialists: Atterberry Auction & Realty Co. 573-474-9295 Or
 Email: contactus@atterberryauction.com**

“WE MAKE BUYING AND SELLING AT AUCTION EASY”



Atterberry

Auction & Realty Co., LLC.

MEMBERS



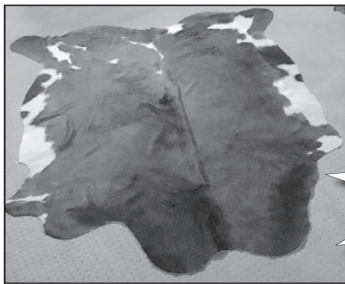
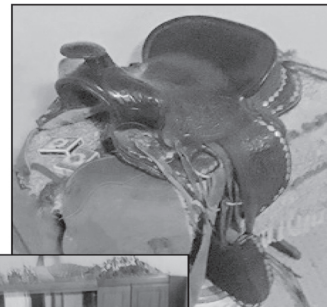
573-474-9295 www.atterberryauction.com

Sam CRAWFORD AUCTION SERVICE

As the home has sold, will sell the following located from Warsaw, Mo., 6 miles West on Hwy. 7 to Hwy. Z, then West 6.7 miles. Watch for Crawford Auction Service signs.

Wednesday, April 24, 2019 – 10 a.m.

TOOLS – FURNITURE – HOUSEHOLD – ANTIQUES – MISC



See website for more pictures!

Furniture – Household

Kenmore upright freezer
Older Amana double door refrigerator/ freezer
2 Dorm size refrigerator
Queen bed mirror headboard & storage
King bed; Chest of drawers
Wood trundle bed
Lg oak storage chest
Oak dining table & 6 chairs
Rustic pine stool & table
3 Wood bar stools; 4-5 Recliners
1 Leather recliner
2 L/R chairs & 1 ottoman
La-Z-Boy love seat w/ end recliners
Glider rocker; Oak swivel office chair
Kenmore sewing machine
Fans, heaters; Asst lamps, floor lamps

4 Sofa tables; 3-4 Striking wall clocks
Asst. small decorator table
Sev nice framed pictures (most are western theme)
Other wall mirrors & smaller pictures
Clown figurines; Sheet music
Paul Jenkins console piano
Asst artificial flowers & tree
Dell computer system
Asst pots & pans, glassware
Asst small kitchen appliances
Lot bedding, towels, quilts
Lot ladies shoes & boats in plastic containers, 8-9
2-3 Leather coats; Rd patio table
Asst patio chairs; Fire ring; Other misc.

Antiques–Collectibles

Oak buffet; Oak wall telephone
Sev lamp tables
Oak oval poker dealers table
Door/hall tree; Aladden amber lamp
Oak rocking high chair; Baby stroller
Oak dresser w/wishbone mirror
Vanity dresser & bench
RoeAMI Juke Box, full of records, works & good shape
Lot 45 records; Quilts
Budweiser neon guitar light
2 Budweiser mirrors
Coors neon rd clock
2 Cow hides; Coyote hide
Lot Western pictures, decorations, stars, plaques
Longhorn skull & horns; Pony saddle
Kids chaps; Set spurs
Lot framed country music star pictures w/ autographs
Baskets; 2 Stone jars
Galv tub & bucket; Other misc.

Tools–Miscellaneous

Porter cable 1.5hp air compressor
Small air compressor
Power miter saw; Table top drill press
Bench grinders
Asst. power hand tools
Drill bits; Long handle tools
3 Ton floor jack; 12V sprayer
Hand sprayers
Craftsman 7hp power washer
Lawn cart; Alum ext. ladder
6' F/G step ladder
4 sheet 1/2" plywood
Some lumber; Fire ring
Decorative metal yard lamp post/light
Poly lawn storage chest
Small lawn ornaments
Ext. cords; Garden hose
Pro Form treadmill
Plastic folding pic nic table
Chrome table
10-12 rods & reels; Other misc.

Sam CRAWFORD Auction Service LLC



Cross Timbers, Mo.
CrawfordAuctionService.com

417-998-6629



TERMS: Cash or good check. Nothing removed until settled for. Not responsible for accidents. Lunch available. Statements made day of sale take precedence over printed matter. All items sell as is. No warranties given or implied.



Sam
417-328-9137

Chase
417-399-1904

Chance, CAI
417-298-1751

Tom Poynter
Jack Lancaster

Sam
CRAWFORD AUCTION SERVICE

REAL ESTATE AUCTION

Will sell the following at 1461 Hwy. 73, in Branch, Mo. Watch for Crawford Auction Service signs.

Thursday, April 25, 2019 – 5 p.m.



– Sells Absolute –

Older 4 bedroom home on 2-1/2 acres.
 Well, lagoon, small pond. Perimeter fenced, several large oak trees.
 House has been vacant and needs work.
 Good location...Good acreage.
 Macks Creek School

Sam
CRAWFORD
 Auction Service LLC

Cross Timbers, Mo.
 CrawfordAuctionService.com

417-998-6629

NAA Auctioneer
CAGA CERTIFIED APPRAISER
MPAA AUCTIONEER

1944 **CELEBRATING 75 YEARS** 2019
 STARTING 75th YEAR OF SALES AND SERVICE

TERMS: Cash or good check. Nothing removed until settled for. Not responsible for accidents. Lunch available. Statements made day of sale take precedence over printed matter. All items sell as is. No warranties given or implied.

Chance Sam Chase
 417-328-9137 417-399-1904 417-298-1751

Tom Poynter
 Jack Lancast-

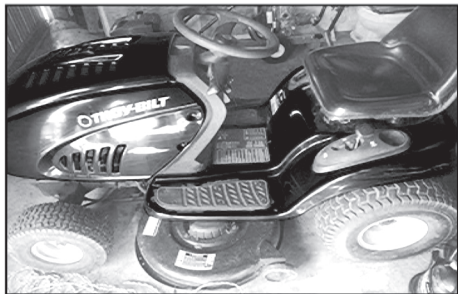
Theлма F. Knutter Trust

Sam CRAWFORD AUCTION SERVICE

Will sell the following in Camdenton, Mo., West Hwy. 54, to Blair Ave., then North to 102 Blair Ave.
Watch for Crawford Auction Service signs.

Friday, April 26, 2019 – 10 a.m.

HOUSEHOLD – ANTIQUES – GUNS – TOOLS – MISC.



Guns-Coins Sell @ 10 a.m.

Remington 12ga single shot
Winchester 290 semi auto 22
Sears 200 12ga pump
Model G 22 single shot
(2) 1881 Morgan silver dollars
8-10 Franklin halves; 6-8 Ike dollars
Approx. 100 wheat pennies
Foreign paper money; Other coins



Household

Breakfast table & 4 chairs, hutch
2 Recliners; 2 Swivel rockers; Couch
Trundle bed; 4Pc B/R set, full
Elec hospital bed; Home safe
Microwave & cabinet
Older upright freezer
Caper elec organ; Elec fireplace
Computer center/desk
Office chair; Stools
Radios; 3 Flatscreen TVs
Jewelry boxes; Bedding & towels
Asst pots & pans; Utensils
Flatware; Misc. glassware
Corelle & Corning ware
Asst. boxes of household misc

Antiques-Collectibles

2 Oil lamps; PR vanity lamps
5-6 Old cameras; Sq. galv tubs
4 Metal lawn chairs
Set Nortake China for 12 w/ stemware
(brought home from WWII)
Set wild rose China
Other misc. dishes
15-20 Older dolls
Glass bell collection
Music box collection; Lot nic nacks
Curved glass China cabinet
Dining table 6 chairs, hutch, buffet
Kay banjo; Older acoustic guitar
Other items

Tool-Miscellaneous

Troy Bilt lawn tractor 18hp, 42", ex. nice
Push mower 6.5hp
MTM power washer, Honda mtr, new
Kobalt 26 gal air compressor
Hitachi twin tank air compressor
Elec blower; 4 Gas weed eaters
2 Battery chargers
Shop vac; F/G 7' stepladder
Alum ext ladder; Yard cart
2 Ton floor jack; Sev. jack stands
Ariens front tine tiller
Remline 2 tier tool box
Other tool boxes
Good selection wrenches, sockets
Bar clamps

Lot hammers, bars, screwdrivers
2 Planes, handsaws
Craftsman radial arm saw
Saw blade sharpener
Good asst. power hand tools
Long handle tools; Sev rods & reels
Fishing tackle; Yard windmill
6-8 Yard ornaments; Garden hose
Ext. cords; Gas cans
Some lumber; Reddy heater
12' Alum flat bottom boat
2 Part roll chain link
Yard gate; Wood pic nic table
Lot jars, buckets, nails, bolts, screws, misc.
Oil, anti-freeze; Other misc.

Sam CRAWFORD Auction Service LLC



Cross Timbers, Mo.
CrawfordAuctionService.com

417-998-6629



STARTING 75th YEAR OF SALES AND SERVICE



TERMS: Cash or good check. Nothing removed until settled for. Not responsible for accidents. Lunch available. Statements made day of sale take precedence over printed matter. All items sell as is No warranties given or implied.



Sam
417-328-9137

Chase
417-399-1904

Chance, CAI
417-298-1751

Tom Poynter
Jack Lancast-

Corkey & Janice Anderson Estate

ESTATE COIN AUCTION

Saturday, April 20th, 2019 ~ 10:00 AM

LOCATION: Sheldon Community Building, 6th & Main, Sheldon, MO
(Watch For Signs)

Large Estate Coin Auction

Gold To Inc 1857 2 1/2 Liberty, 1891CC \$10 Liberty, 1913 \$5 Indian, 1851O 2 1/2 Its 1/1, 1907 \$10 Liberty, 1932 \$10 Indian, 1853 Type I \$1, 2006 \$50 Buffalo First Strike, Other Gold Coins, Rare Hard To Find Key Type & Collector Coins Inc 1875S 20 Cent Pc, Very Rare 1930D German Zeppelin 3 Mark Silver, 1877 Trade Dollar, 1814 & 1835 Bust Dimes, 1807 Half Cent, 1807/6 Lg Cent, 1814 Classic Head Lg Cent, Cert. 1832 Half Cent, Cert. 1860 Three Cent Silver, 1853O, 1853, 1854, 1856, 1857O Half Dimes, 1908S Indian, 1863 Copper Nickel Indian, 1909S VDB Lincoln, Cert. 1854 Lg Cent, Cert. 1868 Three Cent Nickel, 1864, 1865, & 1869 Two Cent Pcs, Other Rare Coins, Several Key Morgan & Peace Dollars Inc 1878CC, 1879CC, 1880CC, 1881CC, 1882CC, 1883CC, 1890CC, 1891CC, 1892CC, 1878S DMPL, 1879S, 1884O, 1881S, 1885, 1889, 1886, 1880O, 1893O, 1890S, 1883O/O, 1879S Third Reverse, 1921S, 1921D, 1888, 1888O, 1935S, 1901O, Several Are Graded, Halves Inc 1814 Capped Bust Half, 1825 & 1835 Bust, 1855O, 1853, 1861, 1874, 1877 Seated, 1899, 1898S, 1902S, 1904 Barber, 1916D, 1917D Obv., 1917S Obv, 1918S, 1919, 1919D, 1929S, 1938D Walking Lib, 1952D, 1954D, 1958D, & 1960D Franklins, Bust, Seated, Standing & Washington Quarters Inc 1857, 1853, 1876S, 1877S, 1891, 1877CC, 1842O, 1854, 1896O, 1897S, 1909D, 1909, 1914S, 1914D, 1896O, 1896, 1894O, 1892, 1897, 1932D, 1934D, 1950, Seated, Barber & Mercury Dimes Inc 1942/1D, 1941, 1916, 1921, 1921D, 1911D, 1911S, 1916D, 1912D, 1914D, 1916S, 1842, 1854, 1873, Shield, V, Buffalo & Jefferson Nickels Inc 1931S, 1913S Type II, 1924D, 1938D, 1943S, 1917D, 1868, 1935 Hobo, 1934D, 1916D, 1883 NC, 1897, 1899, 1857 & 1858LL Flying Eagle, Indians Inc 1864L, 1863, 1865, 1897, 1864 Pointed Bust, 1865, 1873, Lincolns Inc 1918S, 1924S, 1931D, 1943 P/D/S, Large Cents Inc 1838 Smoking The Pipe Variety, 1829, 1844, 1849, 1850, 1851, 1854, 1856, Several Silver Rounds & Bars Of Various Kinds, Several Partial & Complete Book Sets Of Various Kinds, Several Proof & Mint Sets Some Key, Several Key Foreign Gold & Silver Pcs, Currency To Inc 1917 \$1 Legal Tender, 1863 & 1874 Ten Cent Notes, 1928A Funny Back, 1935A Hawaii, 1907 \$5 Wood Chopper, 1922 \$10 Gold Certificate, 1914 \$5 & \$10 Federal Reserve Notes, 1934D \$5 Note, 1953A \$2 Red Seal Star Note, 4 Each Uncut \$2 Star Notes, 1966 \$100 Red Seal, 1934A \$500 Federal Note, Some Gold & Silver Jewelry, Several Key Error Coins, Several Key Commemorative Coins, Several Other Coins Not Listed. See Website For Complete Listing. Please Plan Now To Attend This Very Rare & Unique Coin Auction. Contact Bill At 417-214-0093 For Any Questions. Doors Will Open At 8:00 AM For Preview. Police Officer Will Be On Site During Auction. You May Be Asked To Have Your Photo Taken So Please Be Prepared.



NANCE AUCTION SERVICE

No Matter How **BIG** or small, We Do Them All!!!

www.nanceauctionservice.com

Col. Bill Nance 417-214-0093

LARRY DRENON AUCTION

LIVING ESTATE AUCTION

19517 Davis Ave • Lincoln, MO

As we are selling our farm, we will sell the following at auction located from Lincoln 1½ miles north (or from Sedalia, Mo 21 miles south) on Hwy 65 to Dulaban Rd. then East on Dulaban, bear right at the fork, follow Davis Ave 1/4 mile to sale on:

SATURDAY, APRIL 27TH • 10 AM



CAR

2009 Buick Lacrosse, 4 door, only 72,833 miles, white, sharp

PICKUP

1994 Chevy Silverado ext cab, 4x4 V-8, 4 spd, only 79,376 miles, good cond!

TRACTORS

Farmall 560 Diesel tractor
Allis Chalmers D14 w/sickle mower attachment; CA Allis tractor
Int. 300 utility tractor, Torque Amplifier

HOUSEHOLD & COLLECTIBLES

54" Oak table, leaves, 6 oak chairs
Duncan Phyfe table, leaves, 5 Harp back chairs
Antique library table
Sofa and love seat; Wurlitzer piano
3 pc. Bedroom set
Tiger eye oak chest of drawers
Antique lamp table
Antique metal bed
Oval kitchen table, laminate, 3 leaves, 4 chairs
Vanity dresser and chest of drawers
Set of bunk beds
Antique dresser w/trifold mirror
Antique wooden rocker

Antique kitchen cabinet
Whirlpool 22 cu ft refrigerator w/top freezer

HE Centennial washer
Old wooden baby bassinet
Old children's book and toys
Vintage games
Jumbo Nylint metal dump truck
Old electric typewriter
Small wooden desk
Oak hall mirror; Brass plate bed
Misc small furniture
Old wooden folding chairs
Lot sewing items
Corelle, stoneware dishes
FireKing gold Lustre dishes
Cobalt blue pitcher
Colored pyrex bowls
Various other collectible dishes
Ball jars w/lids, bacon press, crocks, etc
Small kitchen appliances

Small computer desk
Old steamer trunk

TOOLS & MISC

Old International dump truck for parts
Lot used woven hog wire
Gilson tiller; Kobalt air compressor
Some hand tools; Scrap metal
Many, many other items too numerous to mention

The following will be sold by a neighbor:

Antiques

#4 Indian Head crock butter churn, #5 Crock butter churn, #5 Monmouth crock jar, Old coffee grinder, chalk dog

Farm

Farm gates, diff. sizes, Lot used steel fence posts, Metal slide-in pickup racks, other items



Note: Rufus and Margaret have lived on this farm for 50+ years. There will be much more to sell than what is listed here!

Terms: Cash, approved check, credit/debit card (convenience fee applied). Nothing to be removed until settled for. Not responsible for accidents. Statements made day of sale take precedence over printed material. Lunch served.

RUFUS AND MARGARET KAISER

LARRY
DRENON AUCTION



Larry
660-596-8515

Lacey
660-723-1104

Laramie
660-221-4386

660-547-2646



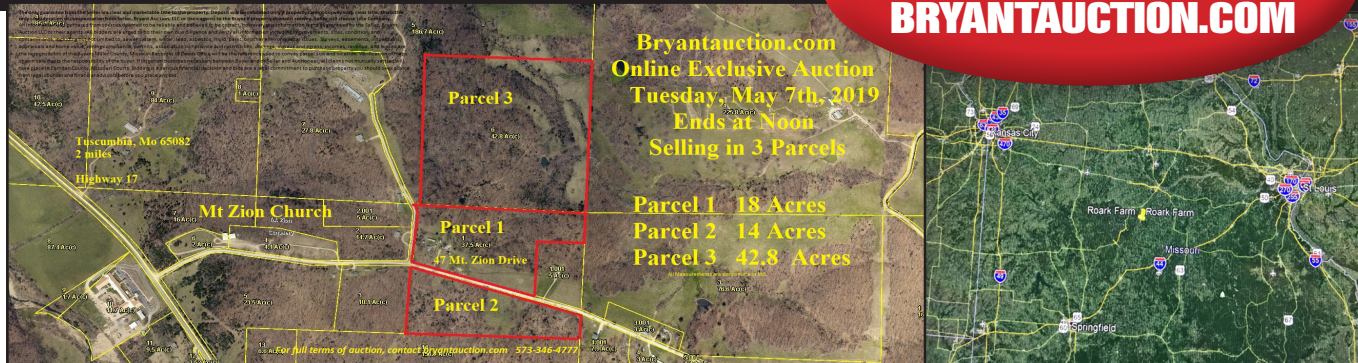
ONLINE ONLY EXCLUSIVE LAND AUCTION

TUESDAY, MAY 7TH, 2019 • NOON

77 Acres M/L, Prime Hunting Ground!

Selling in 3 Parcels - Sells To High Bidder!
Well, Septic, and Electric in place.

BID NOW
BRYANTAUCTION.COM



Go to BryantAuction.com for full terms. Sold as is - where is, no warranty. Maps are for reference only. Not guaranteed by survey or public record. Miller Co. GIS was used for reference.

BOATS-WATERCRAFT

TRUCK LOADS OF NEW ITEMS - HEAVY EQUIPMENT

SATURDAY, MAY 11 • 10 AM

Onsite Auction, Bagnell Dam Strip at the Dam • Lake Ozark, Mo 65049

Over 40 New and Used Boats-
Sea Doo-Pontoon Boats

Iguana Marine Group - Boat Sales, Owner

40 Watercraft!

Large selection of Hurricane Boats, Sea Doo, and Godfrey Pontoon Boats - Fork lifts-Loaders-Trailers - Drive watercraft Lifts-Tubes-Personal Flotation Jackets



SUMMER GUN AUCTION

SATURDAY, JUNE 8 • 10 AM

Consign now for National Marketing Campaign

Appreciate the most from your guns

LIVE AND ONLINE

SIMULTANEOUS BIDDING

Specializing in Estate Settlement-

Estate preparation, large and

specialty collection marketing

Our gun auctions average hundreds of bids and thousands of dollar in bids before auction time!

THOUSANDS ARE WAITING TO BID ON YOUR GUNS!



Thursday 5 PM & Saturday 11 AM Auctions

Vehicles-Trucks-Boats-Furniture-Guns

Bryant Auction - 355 N. Frontage Rd, Osage Beach, MO

Check BryantAuction.com for dates!

Thur. Apr. 18th at 5 PM • Sat. Apr. 27th at 11 AM

Thur. May 2nd at 5 PM

2018 testimonials

“Marketed our Fathers guns, sold them all over the nations, marketed, sold, collected and shipped! My Sister and I did nothing but spend the money! Thank you Dad, and Bryant Auction” (150 guns)

“We had our home listed for 14 months-two showings- no offers. Call Bryant's they marketed, sold, and closed on our Farm in 47 days! 5% total Cost! Bam! Dumb not to use them!”

BRYANTAUCTION.COM

SOLD!



573 346-4777
sold@BryantAuction.com

ANGELA SCHEJBAL | OFFICE MANAGER sold@bryantauction.com
RICK BRYANT | PRESIDENT/AUCTIONEER rick@bryantauction.com
573-346-4777 Office • 573-346-4068 Fax
Facebook Bryant Auction
Mail to: 335 North Frontage Rd., Osage Beach, MO 65065

**VISIT
WEBSITE
FOR
PICTURES**

ESTATE AUCTION

REAL ESTATE • SHOP ITEMS • OUTDOOR • ANTIQUES • GUNS & AMMO

SATURDAY, APRIL 20th - 9:00 A.M.

Location: 9357 Elliot Rd. Mountain Grove, MO 65711
Directions: From Mountain Grove Business 60 4-Way Stop: Take North Main Street 2 miles to Elliot Rd. on left. Go 1 mile to Auction. **WATCH FOR CHADWELL AUCTION SIGNS.**
Payment System: Cash • Debit Card • Credit Card (Debit / Credit Card Fee Will Apply)
 Checks approved if known by auction company. **VISIT: WWW.CHADWELLAUCTIONS.COM**

**Marvin
ROSENKOETTER**

REAL ESTATE ~ SELLS AT NOON

3 bedroom, 2 bath, 2 car garage, brick home sitting on 2 acres m/l. Has beautiful vaulted ceilings and fire places in the living room and dining room. Fenced in back yard with patio, a 12x24 ft. storage building and a separate 30x50 shop with concrete floor and 2 overhead doors. **Home shown by appointment, call Shawn 417-830-0209.**



SHOP ITEMS • TOOLS • WELDERS

24' Werner alum ladder • Wheel barrow • Extension cords • Wooden work bench • Saw horses • 8 volt batter charger • Oils & solvents • Fuel cans • Electric heaters • Electrical wire • Brass fittings • Lead • 5 hp Briggs & Stratton motor • Dayton shop stand fan • Acetylene torch set w/ cart • Oil cans • Stand lights • Hand trowel • Shop stools • Propane bottles • Circular saw blades • Levels • HD rope • Welding rod • Heated storage • Welding helmet • Hand saws • Craftsman 10" table saw • Wood clamps • Old drafting table • 5" vise w/stand • Box fans • Drill bits • Walker Turner drill press • Nut & bolt bins • Nuts & bolts • Chisels • Hammers • Screwdrivers • Carolina Industrial bad saw • Ryobi miter saw • Metal cart • Roller stand • Craftsman chest type tool box on casters • Letter dye set • Floor jack • Hole saw drill bits • Enco bench grinder 8" wheel • Ryobi Router • Craftsman 12" planer • Conduit bender • Bottle jacks • Bench grinder • Work benches • Portable pancake compressor • Wooden clamps • Porter cable sander • Powr Kraft transit • Central pneumatic nail guns • Porter cable Sawzall • Pipe wrenches • Tool belts • Hand saws • Wood lathe tools • Jumper cables • Ratchet straps • Misc. electrical supplies • Hydraulic 2.5 ton floor jack • Craftsman drill • Bench grinder • Roofing nails • Air ratchet • Com-a-longs • Socket sets • Craftsman impact gun • Impact socket sets • Tarps • Shop broom • 5' wooden ladder • Shop vacs • Large lot of metal shelving • Lincoln AC 225-S welder • Miller 180 wire feed welder (like new) • Sears 100 psi air compressor on wheels • Powermate 5,000 watt elec. generator 120 volt • Other



**1994 FORD F-150 XLT EXT. CAB
AUTOMATIC 140,XXX MILES**



**16FT BUMPER HITCH TRAILER
WITH DOVETAIL & RAMP**

SMALL ANTIQUES • COLLECTIBLES

Novell Shapleigh lard press Harware Co # 60 St. Louis Missouri • Coffee mill • Apple peeler • Kraut cutters • Wooden pepsi 6 pack crate • Healthometer bathroom scale • Wooden egg basket • Picnic basket • German nazi belt buckles • Bow saw • Wooden folding chairs • Large lot cast iron • Large lot oil lamps • Wooden advertising boxes • Mantle clocks • Shelf clocks • HE sessions mantle clock • Sifting screens • Drill press • Emerson fans • Ice tongs • Other



LAWN & GARDEN • OUTDOOR

Garden hose • Troybilt pony 7 sp, 44" cut riding lawn mower • 2- Murray push mowers • Troybilt weed eater • Yard seeders • Poulan Pro Limb saw • Troybilt leaf blower • Lawn chairs • Poulan chain saw • Homelite chain saw • Electric concrete mixer • Lot of lawn and garden hand tools • Troybilt pull type wood chipper (like new) • Other

(2) ANTIQUE COPPER APPLE BUTTER KETTLES W/HANDLE



**500 GALLON
PROPANE TANK
CUB CADET REAR
TINE GARDEN
TILLER (LIKE NEW)**

GLASSWARE • CROCKERY • GRANITE

Noritake Ivory china set • Pyrex ware • Granite ware • Enamel ware • Corningware • Juicer • Pitchers • Shot glasses (large lot) • Homer Laughlin • Japanese cup set • German tureen w/ 6mugs • Whiskey jugs • Large lot of assorted crocks • Crock chicken waterer • Other

HOUSEHOLD

Vizio 48" TV • Sofa table • Magazine rack • Office chairs • 34" flatscreen Emerson TV • Assorted lamps • Beer mugs & stines • Assorted cast iron & ceramic dog figurines • A&W mugs • Pitcher & bowl • Assorted silver items • Hall tree • Pots & pans • Assorted kitchen utensils • Flatware • Cast iron ware • Wooden twin bed • Oak night stand • Chest of drawers • Wooden office desk w/ chair • Cedar chest • Cutting boards • Canisters • Baking dishes • Pie plates • Kitchen scale • Assorted brassware • Ironing board • Linen • Large lot of cookbooks & books • Other

TEXACO GASBOY PUMP



APPLIANCES

Galaxy side by side refrigerator • Kenmore microwave • GE washer • Maytag Dryer • Estate washer • Assorted small appliances • Roaster • Kitchen Aide stand mixer • Hamilton Beach table top oven • Other

**ANTIQUE
OAK ICEBOX
- GIBSON,
EXCELLENT
CONDITION**



ANTIQUE & COLLECTIBLE FURNITURE

Library tables • Secretary desk • Wardrobe • Wood dining table w/6 chairs • 1941 4 pc bedroom set w/original paperwork • Chest of drawers • Wooden rocker • Entryway table • Other

GUNS & AMMO ~ SELL AT 11:30

Remington Model 700 30-06 Springfield w/ Bushnell adjustable scope • Sport King Carbine "High Standard" 22 cal Model A-101 semi-automatic • Mossberg 410 ga Model 183D-A, Bolt Action • Savage 22 cal Bolt Action w/scope & sling Model 425A Marlin 4x32 • Mossberg 20 ga, Bolt Action w/ clip, Model 385 KB w/ adjustable choke • Remington Model 10, 20 ga Pump • German Mauser, Model 98 8mm Sporterized • Remington Model 110, 20 ga, semi-automatic • BPI Connecticut Valley Arms, Buckhorn Magnum, black powder .50 cal 1:28 twist, bolt action w/ Bushnell scope • Large lot of assorted ammo • Large lot of reloading supplies • **Guns NOT on premises.**

2011 FORD ESCAPE V-6 AUTO LOADED 200,XXX MILES

AUCTIONEER'S NOTE: Good clean merchandise! Well taken care of. Many unopened boxes. Come spend a full day with us. **Thanks, Shawn**

DRIVER'S LICENSE OR PICTURE I.D. REQUIRED • TERMS: CASH, APPROVED CHECK, DEBIT OR CREDIT CARD



Chadwell

Auction Service, LLC

www.chadwellauctions.com

Auctioneer:
SHAWN CHADWELL
 417-746-4038
 Cell: 417-830-0209
 Farm Equipment & Livestock Specialist
 Ringman: **John Williams Jr.**

Clark:
SHELLY CHADWELL
 Cell: 417-880-8449
Cashiers:
Shawn Irby
Kati Roberts

PROFESSIONAL SALES MANAGEMENT

LUNCH WAGON • APPRAISAL SERVICE • RAIN OR SHINE

All announcements made day of sale take precedence over any printed matter. Not responsible for lost or stolen merchandise. Not responsible for accidents.

RAIN OR SHINE**RAIN OR SHINE**

PUBLIC AUCTION

SATURDAY, April 20TH, 10:00 AM**Location: 1365 RAMSEUR ROAD, WEST PLAINS, MO****LOCATED BEHIND J.C. PENNEY****FURNITURE • APPLIANCES
TOOLS & MISCELLANEOUS****AUCTION PREVIEW:
FRIDAY APRIL 19TH,
10 AM TILL 4 PM.****AUCTION PREVIEW:
FRIDAY APRIL 19TH,
10 AM TILL 4 PM.**

2 COUCHES; WOODEN BEDROOM SUITE; 9 DRAWER WOODEN DRESSER WITH MIRROR; 5 DRAWER UPRIGHT DRESSER; WOODEN JEWELRY BOX; 2 WOODEN NIGHTSTANDS; WOODEN DINING ROOM TABLE WITH 6 CHAIRS; MATCHING CHINA HUTCH WITH GLASS FRONT AND GOLD TRIM; 8 DRAWER DRESSER WITH MIRROR; 5 DRAWER UPRIGHT DRESSER; 3 FT WOODEN SIDE TABLE; ANTIQUE METAL BIRD CAGE WITH STAND; 2 SMALL WOODEN TRUNKS; NUMEROUS METAL PLANT STANDS; 4 DRAWER WOODEN DRESSER; CABINET STYLE SEWING MACHINES (NECCHI AND DELUXE STYLE MODEL 756 SINGER); WOODEN DINING ROOM TABLE WITH 6 CHAIRS; MARBLE TOP END TABLE; METAL PATIO TABLE WITH 4 CHAIRS; 2 WOODEN CORNER BOOKSHELVES; 6 WOODEN BOOKSHELVES; WOODEN ENTERTAINMENT CENTER; SMALL WOODEN ENTERTAINMENT CENTER; OAK ENTERTAINMENT CENTER; ELECTRIC RECLINER; 9 DRAWER ANTIQUE DRESSER; ROUND CARD TABLE; TODDLER BED; FULL SIZED BED; WOODEN CABINET STYLE SEWING MACHINE; BOOKSHELVES; GLASS TV STAND; CORNER WOODEN SHELF; METAL SHELVES; SMALL WOODEN BENCH; WOODEN SHELVES; 3 SMALL WOODEN TABLES; 10 DRAWER DRESSER WITH MIRROR; WOODEN CABINETS; HEADBOARDS; END TABLES; CARD TABLES AND CHAIRS; WOODEN DESK; 6 DRAWER WOODEN DRESSER; BROYHILL TABLE AND 6 CHAIRS; CHINA HUTCH; WATERFALL VANITY; ANTIQUE NIGHTSTAND; SOLID OAK ROLL TOP DESK; FUTON; TAPPAN GAS RANGE; MAYTAG ELECTRIC RANGE; AMANA SIDE BY SIDE REFRIGERATOR; WHIRLPOOL UPRIGHT FREEZER; MAGIC CHEF REFRIGERATOR; KENMORE WASHER; APEX FLAT SCREEN TV; TOSHIBA FLAT SCREEN TV; WHEELER WILSON ELECTRIC SEWING MACHINE AND CABINET; CRAFTSMAN 16" SCROLL SAW; BOLT CUTTERS; MISC. HAND TOOLS; PORTA POWER; 5 HORSE BRIGGS AND STRATTON MOTOR; 2 HORSE BRIGGS AND STRATTON MOTOR; ROLLER STAND; 5 HORSE BRIGGS AND STRATTON MOTOR WITH 2 " TRASH PUMP; SUCTION HOSE; DISCHARGE HOSE; MANTIS TILLER; 16" FLORESCENT SHOP LIGHTS; 220 CRAFTSMAN AIR COMPRESSOR; CRAFTSMAN SCROLL SAW; CRAFTSMAN 10" TABLE SAW; CRAFTSMAN ROUTER AND TABLE; CRAFTSMAN BENCH TOP SHAPER; 4 1/2" ELECTRIC BAND SAW; SANDERS; CORDLESS DRILLS; HANDSAWS; WOODEN WORKBENCH; SMUDGE POTS; CRAFTSMAN 900 SERIES 17" REAR TINE TILLER; ELECTRIC JOINTER; ALUMINUM STEPLADDER; CRAFTSMAN EZ-WALK PUSH MOWER; DOVETAIL JIG; CHICKEN WATERS AND FEEDERS; LAWN CART; METAL CAR RAMPS; EXTENSION CORDS; NUMEROUS LAWN AND GARDEN TOOLS; HAND TOOLS AND MISCELLANEOUS; FIRE EXTINGUISHERS; CREAM CANS; ANIMAL CAGE; TIERED PLANT STAND.

AUCTION NOTES: THIS AUCTION WILL HAVE A LOT OF GOOD FURNITURE AND TOOLS WITH SEVERAL MISC. ITEMS MIXED IN THAT IS TOO NUMEROUS TO MENTION IN THE AD. **AUCTION PREVIEW: FRIDAY APRIL 19TH, 10 AM TILL 4 PM.**

Call us for all your auction needs.**Danahy Auction Service**

Terry Danahy

417-256-9667

Rich Harrel

Auctioneer

Ark. License: #2269

417-257-5531

Not Responsible For Accidents • Everything Sold As Is

COW SALE
Sat., April. 20th
1:00 pm

- 97 Black Cows, 5yrs, Home Raised
 67 • Cows, will be 2nd & 3rd stage, bred to BLK or Hereford Bulls
 30 • Cows, w/250lbs calves
 Cows, & calves have been worked—**COMPLETE SELL OUT**
- 13 Black & Charolais Heifers, will start calving in May,
 bred to Red Angus Bull
- 27 Black cows, running ages, 250lb calves bal, 2nd & 3rd stage,
 bred to Black Bull
- 21 Black cows, 3-5yrs, 2nd stage, Bred to Black or Hereford Bull
- 26 Black Cows, 6yrs, SS, 2nd & 3rd Stage
- 25 Black & Charolais X Cows, 3-6yrs, 2nd & 3rd stage
- 30 Mix cows, running ages, few w/calves, bal, 2nd & 3rd stage
- 22 BLK Cows 3-5yrs- 2nd & 3rd stage- Bred to BLK or Hereford Bull,
SELL OUT

-COMPLETE SELL OUT-

- 35 Hereford cows, 4-8yrs all w/calves running back w/Angus Bull
- 15 Angus cows, 4-8 yrs w/calves, running back w/Journagan
 Registered Bull
- 2 BWF Heifers, 15 months, Bonebrake & Kaczmarek bloodlines

- 2 Reg. Hereford Bulls, 18 months old
- 2 Reg. Angus Bulls, 22 months old
- 2 Reg. Angus Bulls, 16 months old

Cattle Sale Every Monday at 12:00

Feeder Calves to sell at 12:00 pm Butcher Cows & Stock Cows following

All Consignments Welcome Up Until Sale
 We Appreciate Your Business!

Salem Livestock Auction
Hwy 32 Salem, Mo
Barn - 573-729-8880

Allen Thompson 417-932-4097	Terms of Sale: Cash or Approved Check!	Renee Lauderdale 417-926-2682
Chuck Thompson 417-257-5610		Keith Robertson 314-560-3285

AUCTION REMINDER: Real Estate Auction Thursday, April 25th, 5pm. Please see our Auction Directory for more information.

NEW NEW NEW DISPLAY HOUSE!!!
 Call Marla to hear what is new inside 573-657-7040, chateauhomes.net.

1999 FORD RANGER: 105,000 miles, 2WD, extended cab, 4-door. \$5,175. 417-399-6383.

I BUY.... used mobile homes. Call or text 573-338-6250 or email GregS.CDH@outlook.com

GUN AUCTION
CONSIGNMENT SALE

Saturday, April 27

Guns & Other Hunting Related
 Items accepted Friday 2-6pm
 and Saturday after 7am

CONSIGN NOW

Handguns Welcome! Sale Begins at 12 Noon
 Doors Open at 8am
 Off I-44, Exit 195 On 68W, 2 miles
 St. James, MO

Info: 573 263-4232
Day of Sale: 573 265-8813

Drivers License Required To Buy Or Sell
All FFL Rules Apply

We appreciate your business - Terry & Myrna

L4400 KUBOTA: 4wd tractor with loader.
 \$21,500. 417-270-1505.

IHC 684: Diesel tractor w/loader, 62hp.
 \$9850. 573-765-4406.

USED AMERICAN FAMILY DOUBLE-WIDE These do not last! Excellent condition. Call Quick, 573-499-9993 columbia-discounthomes.com.

C-HWY PRODUCE AUCTION: FRIDAYS 10AM STARTING APRIL 5th, RUNNING THRU END OF APRIL. THEN TUESDAYS AND FRIDAYS MAY THRU OCTOBER. *COLE CROPS *BEDDING PLANTS *EARLY PRODUCE *FLOWERS-HANGING BASKETS. NORTH OF SEYMOUR, MO ON HWY C FIVE MILES, 1/4 MILE EAST ON SHORT STATES HWY P. FOR MORE INFORMATION CONTACT SAMMY J.M. SCHWARTS 4773 HAZELTAWOOD DR. SEYMOUR. AUCTIONEER: STEVE CANTRELL, (417)380-0562. DON'T FORGET ANNUAL MOTHER'S DAY FLOWER SALE MAY 7th!

AUCTION REMINDER: Liquidation Auction Saturday, April 20 at 2:00pm. Rough Country Rustic Furniture Freeman Auctions & Appraisals. Please see our Auction Directory for more information.

AUCTION REMINDER: Saturday, April 20th @ 10am. Gary Sexton Auctions. Please see our Auction Directory for more information.

TRAILERS NEW CAR HAULER: 18x82, 7,000GVW, loaded. \$2,475. 417-399-6383.

FARMINGTON LIVESTOCK

Hwy 67 • Farmington, MO
 Office Phone: **573-756-5769**

Regular Sale
Every Week
Wednesday

Starting at 10:30 am

All Consignments Welcome
 Keith Robertson
 Cell: **314-560-3285**
 Home Ph: **573-732-4987**

TWO GAITED TRAIL GELDINGS, Registered purebred Arabian horses and Nubian goats. Rabbits \$7, Free roosters. Raymondville, 573-548-0219, 573-201-5901.

QUILT BOOKS FOR SALE: 101 Fabulous Rotary Cut Quilts. \$10. The Quilting Bible, over 30 quilting projects. \$8.50. Charm Quilts. \$6.50. Lebanon, 417-532-2045.

2008 CHEVY 2500 PICKUP: Black, Crew Cab, 4WD, Diesel, Performance upgrades deleted & tuned, 191,000 miles. 660-998-6046.

SILVER DOLLAR COLLECTION: \$200. 573-764-3517, Call in P.M.

FARM EQUIPMENT LIQUIDATION AUCTION

FRIDAY, MAY 17TH
@ 10:00 AM

For Dan Goostree & Rick Christman
 1354 Harrell Rd • Rocky Comfort, MO

**Lots of Farm Machinery,
 Equipment & Poultry
 Supplies**

Details coming soon!

Photos on website: www.swaauction.com
 Southwest Auction Service (417) 652-7540





MID MISSOURI STOCKYARDS

REGULAR SALE EVERY THURSDAY 11AM

SPECIAL COW SALE MAY 4TH @ 6PM

For Farm Visits, Market Updates, or Trucking
Call **Zach Cox 417-777-1320**
Dan Romine 573-578-4939

**Competitive Buyers!
Competitive Commission!
Competitive Market!**

Barn: 417-532-9292 
I-44 • Exit 123 "just outside of Lebanon"
17505 Route 66, Phillipsburg, MO 65722
For weekly market updates, visit us at
www.midmostockyards.com

LARGE BIRD CAGE OR COCKATIAL CAGE: \$85. 636-239-4124

25HP HUSQVAVARNA RIDING MOWER: 54" cut can deliver, pull behind cart and aerator. \$1,250. 636-239-4124.

NEED SOMEONE TO MOW LAWN: Rolla, MO, 573-201-1790.

AUCTION REMINDER: Online House Auction going on now. Atterberry Auctions. Please see our Auction Directory for more information.

CASE IH FARMALL : 110HP, 2014, Bought new in 2015, 634hrs, Case-IH Front Loader, cab, a/c and heat, tractor has many features. \$46,000. New Holland BR750 round baler, net wrap or twine, 4x6 bale size, w/bale command, nice! \$10,500. Ava. 417-683-3595.

2007 FIFTH WHEEL: 38' Wyoming by Coachman, 4 Seasons, 3 Slides. \$13,750. 417-399-6383.

PUPPIES TO GIVE AWAY: Black Lab, Australian Shepherd and Great Pyrenees mix. Black. Wormed, ready to go. 573-202-4105.

GRILL GUARD OFF POLARIS RANGER: \$25. 417-646-8807.

PINE LOG SIDING SALE: \$1.19 per L.F. www.pineridgerustic.com 573-729-7226, 573-247-2823.

WINCHESTER MODEL-61 PUMP-22: \$1,100. Rolla. 573-308-2550.

SELLS TO HIGH BIDDER, NO RESERVE

All Brick Ranch Home In Great Location!

**Inspection / Viewing Date:
Saturday, April 27th
12:00 to 1:30 p.m.**




- 1,900 + Sq. Ft., 3 Bedrooms & 2 ½ Baths
- Spacious Living Room & Formal Dining Room W/ 11ft. Ceiling & Gas Fireplace
- Eat-in Kitchen W/ Oak Cabinets & Hardwood Floors
- Nice Master Suite W/ Rear Deck Overlooking Large Privacy Fenced Backyard
- Three Car Garage

Attention – First Time Buyers, Young Families, Retirees Or Professionals. This Is Your Opportunity To Own A One Level Home In A Family Neighborhood. You Name The Price!

511 N. Ellen St., Nixa, MO
**Online Auction Bidding Ends:
Wednesday, May 15 at 12:30 p.m.**

For Information On How To Buy This Home At Auction Or Other Questions, Call Atterberry Auction & Realty Co. (573) 474-9295 Or Email: contactus@atterberryauction.com

“WE MAKE BUYING AND SELLING AT AUCTION EASY”




Atterberry MEMBERS
Auction & Realty Co., LLC. MarkNet
573-474-9295 www.atterberryauction.com

\$\$\$\$\$ MOBILE HOME SAVINGS That is what we are about for the last 36 years. New, Used, All Sizes. 573-657-2176 amegamobile-homes.com

AUCTION REMINDER: Online Acreage Auction going on now. Atterberry Auctions. Please see our Auction Directory for more information.

A HISTORY OF PULASKI COUNTY, MO & FORT LEONARD WOOD: “Lest We Forget,” by Mabel Manes Mottaz, dated 1960. \$12.50. Lebanon, 417-532-2045.



BUFFALO LIVESTOCK MARKET LLC

276 Hwy 32 West
Buffalo, Missouri

April 13th, 2019

Receipts: 1701 Head
Feeders \$3-\$5 Higher; Cows \$3-\$4 Higher

Representative Steers

300-400 @ 180.00 to 207.00
400-500 @ 170.00 to 192.00
500-600 @ 160.00 to 181.50
600-700 @ 153.00 to 165.00
700-800 @ 140.00 to 149.50
800-900 @ 130.00 to 137.00
900-1000 @ Pkg. 120.00

Representative Heifers

300-400 @ 155.00 to 173.00
400-500 @ 150.00 to 179.00
500-600 @ 135.00 to 157.75
600-700 @ 132.00 to 145.00
700-800 @ 124.00 to 130.25
800-900 @ 111.00 to 126.00

Feeder Bulls

400-500 @ 150.00 to 179.00
500-600 @ 140.00 to 159.00
600-700 @ 135.00 to 145.00
700-800 @ 118.00 to 137.00
800-900 @ 100.00 to 108.00
900-1000 @ 89.00 to 96.00

Holstein Steers

500-650 @ 70.00 to 80.00

Bred Cows

750.00 to 1050.00

Slaughter Cows

Big Fleshy 50.00 to 57.00
Med. Boner Flesh 48.00 to 57.00
Thin Cutter 40.00 to 48.00
X-Thin, Cripples, Light Carcass 39.00
Down (some old poor cows, thin & cripples, have \$0 value)

Slaughter Bulls

High Dressing 85.00 to 92.00
Med. Dressers 78.00 to 84.00
Low Dressing 60.00 to 70.00

MON-WED MARKET REPORT
Listen to KJEL 103.7FM • Lebanon or KY00 99FM • Bolivar

VIEW OUR SALES AT CATTLEUSA.COM

CALL FOR TRUCKING OR ON-FARM VISIT

Lyle Caselman • Owner-Manager
417-345-7876 • mobile 417-533-2944
Leon Caselman • Owner
417-345-4514 • mobile • 417-588-6185
Howard Miller • Owner 417-345-8122

Wonderful Home In A Family Neighborhood



(Sells To High Bidder, Regardless Of Price!)

- **Gorgeous Colonial Style 2 Story Home W/ Stone Front & Vinyl Siding**
 - 2,400 + Sq. Ft. Living Space, 5 Bedrooms, 3 1/2 Baths & Hardwood Flooring
- **Newer Main Level Addition - Master Suite W/ Rear Screened-in Porch & Laundry Room**
- **Spacious Family Room W/ FP, Dining Room & Eat-In Kitchen**
- **Large 2 Car Garage & Full Basement**

Note: This One Owner Home Is Very Well Cared For, Backs-Up To Green Space, YMCA & Is Close To Schools. Newer Updates Include - Main Level Master Suite, Newer Roof & Windows.

607 Kleewood Ave., Fulton, MO
Online Bidding Ends:
Thursday, April 25th @ 12:30 p.m.
Inspection Dates:
Thurs., April 11th & 18th
12:00 to 1:00 p.m.

For Information On How To Buy This Home At Auction Or To Obtain Financing, Call Your Real Estate At Auction Specialists:

Atterberry Auction & Realty Co.
(573) 474-9295 Or

Email: contactus@atterberryauction.com

"WE MAKE BUYING AND SELLING AT AUCTION EASY"
Atterberry MEMBERS
 Auction & Realty Co., LLC.
 573-474-9295 www.atterberryauction.com

CALLAWAY COUNTY LAND ONLINE AUCTION

Viewing/Inspection:
Tuesday, April 30th, 4:30 to 5:30 p.m.

19 + Acres, Perfect To Build On Or Pasture Livestock



- 700 Ft. +/- Blacktop Road Frontage
- Gently Rolling Open Land With Some Woods
- Just West Of New Bloomfield, MO
- Build Your Dream Home

Located In Section 34, Township 46 North, Range 11 West. 3& 4/10 Miles West Of New Bloomfield On State Hwy. MM.

State Hwy. MM(West of Hwy. J)
Online Bidding Ends:
Tuesday, May 7th, 12:30 p.m.

For Information On How To Buy This Property At Auction Or Other Questions, Call Your Real Estate At Auction Specialists:
Atterberry Auction & Realty Co.
573-474-9295 Or
Email: contactus@atterberryauction.com

"WE MAKE BUYING AND SELLING AT AUCTION EASY"
Atterberry MEMBERS
 Auction & Realty Co., LLC.
 573-474-9295 www.atterberryauction.com

Sells To High Bidder, Regardless Of Price! 1892 Union School House



- **One Room, Union School House on 1 Acre +/-**
- **Corner Of Blacktop & Gravel Road**
- **Hardwood Floors, 11'7" Ceiling Height**
- **Covered Front Porch - 7' x 23'8"**
 - **Wood Stage - 7'10" x 23'5"**
- **Metal Roof & Painted Lap Siding**
- **Men's & Women's 3 Hole Outouses**
- **Located In Southeast Howard County, Missouri. From Hwy. 40 & Rt. J, North On Rt. J Approx. 3 & 4/10 Miles To Hwy. EE, Left On Hwy. EE For 3 Miles. Property On Left Side Of Road. Approx. 10 Miles From Fayette, MO.**

Inspection / Open House: Wed., May 1st
5:30 p.m. to 6:30 p.m.

Note: Own A Part Of History In Howard County. This Is A Neat Property That Needs Some TLC, But Could Make A Great Get-A-Way.

County Rd. 431 & Hwy EE, Howard Co., MO
Online Bidding Ends:
Wednesday, May 8th at 12:30 p.m.

For More Information, Call Your Real Estate At Auction Specialists:
Atterberry Auction & Realty Co.
(573) 474-9295 Or
Email: contactus@atterberryauction.com

"WE MAKE BUYING AND SELLING AT AUCTION EASY"
Atterberry MEMBERS
 Auction & Realty Co., LLC.
 573-474-9295 www.atterberryauction.com

POOL TABLES: Installations, moves, recovery, repairs, accessories, etc. 573-646-1700.

BB & PELLET RIFLES: \$75 each. 573-327-9068.

RIGID 14" Bandsaw: \$200, Lebanon, 573-247-2598.

NEW HOLLAND: 1411 diskbine with rollers. \$7,250. 573-765-4406.

WANTED: Old Military Rifles and Pistols. 816-838-6254.

L3400D KUBOTA: 4wd tractor with loader, 34HP, gear drive, low hours with 5' bush hog. \$16,900. 417-270-1505

JOHN DEERE 4240: Diesel Tractor, cab and air, power shift, 3,900hrs, nice. \$29,500. 573-765-4406

VILLA HOMES IN ROLLA: Has NEW and USED Mobile Homes. Call David for info: 573-578-8072.

JOHN DEERE 337 SQUARE BALER. \$2,250. 573-765-4406.

SAM MILLERS LOGGING looking for standing timber. 417-589-0346

NEW NEW NEW DISPLAY HOUSE!!!
Call Marla to hear what is new inside 573-657-7040, chateauhomes.net.

3600 FORD TRACTOR: Very nice. \$6,500. 573-766-5640.

4 REGISTERED POLLED HEREFORD BULLS: 2yr, CHB-Top 48%, Baldy Maternal-Top 44%, DNA Tested. \$2,100-\$2,300 OBO. 573-244-3157.

PUBLIC AUCTION

Thursday, April 25, 2019

STARTS @ 9:47 A.M.

Address: 8014 N 169th E Ave • Owasso, OK 74055

Directions: From the South side of Owasso, OK, at the Jct of Hwy 169 and E 76th St N, go East on E 76th St N and go 4 mi. Turn left (North) onto N 177th E Ave and go 1/2 mi. Turn left (West) onto E 80th St N and go 1/2 mi. Turn right onto N 169th E Ave and auction is on the left. From the East side of Owasso, OK, at the Jct of Hwy 20 and N 177th E Ave, go South on N 177th E Ave for approx 4 mi. Turn right (West) onto E 80th St N and go 1/2 mi. Turn right onto N 169th E Ave and auction is on the left. Watch for auction signs. *Street parking only. Please be considerate of other neighbors and driveways.*

For More Info & Pictures
www.chuppsauction.com

RV, JEEP TRUCK, TRAILER, SHOP TOOLS,
FENDER GUITAR, WAR MEMORABILIA,
ANTIQUES & COLLECTIBLES, WELDERS,
SHOP & SPECIALITY TOOLS,
SNAP ON TOOLS, ZERO TURN MOWER,
MISC HOUSEHOLD, 2 POST CAR LIFT

LARGE EQUIP,
VEHICLES
and RV will sell
after GUNS!

COINS and
JEWELRY will sell
@ 11:01 am
then GUNS!

HUGE COIN COLLECTION, JEWELRY,
GUNS, GUN SAFE, AMMO, GUN CASES

Owners: NICKY and JACKIE KING

Auctioneer's Note: Due to health reasons, Nicky and Jackie are downsizing. Both are Navy veterans. Nicky was a pilot and has a love for airplanes, hot rods, cars and motorcycles. Jackie is a fantastic quilter who often presents her quilts as gifts. COINS AND JEWELRY WILL SELL AT 11:01 AM, FOLLOWED BY GUNS, VEHICLES AND RV. Please follow us on Facebook for updates or visit our website for pictures at www.chuppsauction.com

TERMS: Cash – Credit Cards – Check with Proper ID – OK Sales Tax Applies unless exemption is shown.
NOT RESPONSIBLE FOR ACCIDENTS. ANY ANNOUNCEMENTS DAY OF SALE SUPERSEDES PREVIOUS ADVERTISING.

CHUPPS AUCTION CO.

Stan Chupp
(918) 638-1157

Dale Chupp, Realtor
Coldwell Banker Neokla Select
(918) 630-0495

E. J. Chupp

1995 GOLDWING: Ultimate road bike. One owner. \$3,250. 417-399-6383.

BERETTA 22 AUTO PISTOL: Like new, accurate, 2-10 round clips. \$325. Preston, 417-309-3257

IHC 806 DIESEL TRACTOR: with loader \$7,800, W.F. 3pt. (573)765-4406.

FREE HOSPITAL BED: Extra long in good condition. 417-426-5370.

FOR SALE OR TRADE: 1992 KW T600
Cat 9-speed, fair shape. \$16,000. Would consider parting out. 1996 Dodge Stratus: V6, Auto, many new parts, low miles, clean. \$2,450. 1985 F150 for parts. 573-247-4606, Salem.

AB MACHINE: lay down on. \$35. 636-297-1747.

NEW HEAVY DUTY 3PT BALE UNROLLER: \$925. 573-765-4406.

DOG PEN AND DOG HOUSE: 6ft tall. \$160. 636-239-4124.

ROD AND REELS: fishing season is coming. \$5 and up. Conway, 417-589-8200.

2006 CHEVY UPLANDER VAN: Very dependable. \$3,000 OBO. Hartville, 417-741-7829 or 417-260-1751.

AUCTION REMINDER: Public Auction, Friday, April 26th@ 10am . Please see our Auction Directory for more information.

CHEVY RALLY WHEELS: 75/60R15, 5 Hole, Set of 4. \$35 each. Rolla, 573-578-4605.

STANDING KENMORE FREEZER: working, light, easy to move. \$50. 636-297-1747.

HOUSE FOR SALE: In Stoutland. \$15,000.
<https://loz.craigslist.org/reo/6863736950.html> 417-234-3376, leave message.

WR-20 8-WHEEL RAKE: \$1,500. 417-322-9727.

2011 FORD F150 PLATINUM SUPER CREW CAB: 4x4, 3.5L, V6 EcoBoost, Black, new tires, drive great, 95,000 miles, salvage title, very minor damage repaired. \$17,500. Conway, 417-718-5347.

AUCTION REMINDER: Gun Auction Consignment, Saturday, April 27th, Noon. Please see our Auction Directory for more information.

PUBLIC AUCTION

Will sell the following located from Lincoln, Mo., 7 miles West on Hwy. C to Hwy. E, then North 1 mile to Garreson Rd., then West 1-1/2 miles to corner of McEntyre and Crouch. Watch for Crawford Auction Service signs.

Saturday, April 27, 2019
10:00 a.m.

**REAL ESTATE - TRAILERS - VEHICLES -
TRACTOR - TOOLS - BUILDING MATERIALS**



REAL ESTATE - SELLS @ 12 NOON

3 Bedroom, 3 bath, 2,100 sq. ft country home on 1 acre. Newly remodeled interior, new heat pump, recessed ceilings, newer metal roof. Storage building, 2 open side car ports, well and lagoon. Lincoln school.

VEHICLES- TRAILERS-TRACTOR

'87 GMC Safari van, '92 Chev van, mtr needs work, '94 Grand Am, runs(?), HD 18' bumper hitch flatbed trailer w/ ramps, Doolittle 5x10 enclosed trailer 5x10 Lawn mower trailer w/ rear, gate/ramp, Older 5x10 utility trailer, GMC P/U bed, '89-'93, 28' Semi van trailer for storage Older F/G ski boat, motor, trailer H Farnall, like new rear rubber, runs

HOUSEHOLD

Dining table & 4 chairs, Lg entertainment center, Other items

BUILDING MATERIALS - OTHER

7x16 Alum garage door, new Approx. 100 sheets 1/2 & 3/4 plywood 4x8 Sheets grooved siding, Some new wood trim, Some asst. new doors & windows New lighting; Electrical, 2 Barrels plastic pipe fittings

TOOLS - MISCELLANEOUS

Other misc.; Commerical hoppers 2 Spray hoppers; 3 Dry-wall machines Asst. drywall tools; Power tools; 2 Deer stands; ATV 44" pull mower Lot other misc.

See website for photos!
crawfordauctionservice.com

Ed Winfrey

**Sam Crawford
Auction Service**

Cross Timbers, MO • 417-998-6629

LITTLE TYKES TOYS: 8 Different large pieces, like washer and dryer, doll house and desk. All for \$125. 636-239-4124.

2004 CHEVY Z71: 4X4 extended cab, 4-door. 190,000 miles. \$5,975. 417-399-6383.

BOBCAT 853 DIESEL SKID STEER LOADER: Cab, 58hp. \$8,950. 573-765-4406.

AUCTION REMINDER: Saturday, April 27th, 9:32am. Chupps Auction. Please see our Auction Directory for more information.



**Annual Antique
Tractor / Toy
& Farm Equipment
Consignment Auction**

**SATURDAY May 11th, 2019
@ 9:00 a.m.**

Allen Auction Sale's Lot, Hawk Point, MO

**Directions: 1 1/2 miles South of
Hawk Point on Hwy 47. Look for
signs the day of sale.**

**Accepting consignments for
Antique Tractors, Toys, Pedal
Tractors, Tractors, Construction &
Farm Equipment,
Cattle & Hog Equipment thru
Friday May 10th, 2019.
To be included in our Nationwide
Advertising, contact us by April
26th, 2019 with your list.**

To have one of our auction
representatives meet with you to
look at your equipment,
please give us a call. We look
forward to hearing from you!

**To consign your
items call, fax, e-mail or
stop by our office:**

**ALLEN AUCTION & REAL
ESTATE SERVICE LLC**
Hawk Point, MO
Phone: (636) 338-4805
Nick's Cell: (636) 358-2900
Kyle's Cell: (636) 236-2344
Fax (636) 338-4823
E-mail (sandy@allenauction.net)

**For updates on list
& photos
check our website
www.allenauction.net**

City of Tulsa Auction

**SATURDAY, APRIL 27, 2019 RUNNING
3 AUCTION
RINGS! STARTS @ 9:32 A.M.**

Address: 108 N. Trenton • Tulsa, OK

Directions: If coming from the East I-244: Take Ulca (Exit 7). Turn right onto Ulca and go 3 blocks and turn left to auction site. If coming from US-75 North or I-44 East take I-244 east, then take Ulca (Exit 7) and turn left on Ulca. Go 3 blocks and turn left to auction site. If coming from US-75 South, take I-244 east then take Ulca (Exit 7) and turn left onto Ulca. Go 3 blocks and turn left to auction site. Watch for auction signs.

*For More Info & Pictures:
www.chuppsauction.com*

**DUMP TRUCKS, BOX TRUCK, VEHICLES, TRAILERS,
GATORS, SALT SPREADERS, FINISH MOWER, WELDERS,
BRASS WATER METERS, PORTABLE BASKETBALL SYSTEM,
ARENA PAD SYSTEM, CAR LIFT, VEHICLE MOTORS & PARTS,
HIGH PERFORMANCE BICYCLES, SHOP TOOLS, 6X12 DIGITAL
DISPLAY BOARD, COINS, OFFICE FURNITURE & EQUIPMENT,
COMPUTERS & ELECTRONICS**

***Auctioneer's Note:** Selling City Vehicles, Equipment, Confiscated items and City Surplus to the highest auction bidder. Register and preview on Friday, April 26th from 9 am until 4 pm. The gate will reopen on Saturday morning at 7:30am. We will be running 3 AUCTION RINGS ALL DAY so bring your friends - NO PETS. ASSISTANCE LOADING available day of auction only. Additional loading days: Mon., April 29th - Wed., May 1st from 7:30 until 3:00 p.m. Please read all terms and conditions of the auction! Due to insurance restrictions no person under 16 years of age will be admitted. Buyers will be required to sign City of Tulsa's Terms and Conditions before getting a buyer's number. All payments will be made to City of Tulsa. All titles will be assigned to the buyer's name on your invoice. Bring your TAX EXEMPT CARDS FOR PROOF OF TAX STATUS. Visit our website for complete terms, auction catalog and pictures at www.chuppsauction.com, or follow us on Facebook for updates. **TERMS: All Sales AS IS. Cash, MasterCard, Visa, or Check with Bank Letter.** All purchases must be paid day of auction. Sales Tax will apply unless you show your tax exemption card. Despite our efforts to avoid withdrawal of items from the sale list after they are advertised, it is sometimes necessary for the City of Tulsa to do so in order to fulfill certain responsibilities to its citizens. **See complete terms at www.chuppsauction.com** *NOTE: Light bars, radio & decals will be removed before the vehicle can leave the property.* Most vehicles are 2000 and up. Additional items may be added.*

NOT RESPONSIBLE FOR ACCIDENTS. ANY ANNOUNCEMENTS DAY OF SALE SUPERSEDES PREVIOUS ADVERTISING.

CHUPPS AUCTION CO.

Stan Chupp
(918) 638-1157

Dale Chupp, Realtor
Coldwell Banker Neokla Select
(918) 630-0495

E. J. Chupp

\$\$\$\$\$ MOBILE HOME SAVINGS That is what we are about for the last 36 years. New, Used, All Sizes. 573-657-2176 amegamobile-homes.com

COMMERCIAL BUILDING FOR SALE: Stoutland. \$30,000. <https://loz.craigslist.org/reo/6863765712.html> 417-234-3376, leave message.

LIMOUSIN BULLS: 18-30 mos. old, Homo Black, polled, AI sired. 573-301-2316, 573-301-2074.

ANTIQU GE ICEBOX: working. \$200. 636-297-1747.

2005 INTERNATIONAL EAGLE SEMI: Good condition, many new parts. 417-679-4355, Wasola.

JOHN DEERE 7000: 6x30in Planter, no till. \$3350. 573-765-4406.

JET 4" JOINTER: \$100. Grizzly Hydraulic Lift Table. \$100. Lebanon, 573-247-2598.

AUCTION REMINDER: Public Auction, Saturday, April 27th @ 10AM. Ozark Realty & Auction Group. Please see our Auction Directory for more information.

8-WHEEL V-RAKE: Hydraulic fold. \$1,800. Eldridge, 573-363-5213.

HEAVY DUTY WALKER: 400 lb rated, brand spanking new, large seat/storage, four 7" pivoting wheels, hand brakes. \$200. 417-686-0032, Ava.

CUB CADET FT-24 TILLER: excellent condition. \$399. 573-836-2530.

ANTIQU REVOLVER ACCESSORIES: \$175. 573-764-3517, Call in P.M.

18' DECK BOAT AND TRAILER: 135hp, Evinrude outboard, good condition. \$3,500. 573-261-0271.

JOHN DEERE MODEL-60 TRACTOR: overall good condition. \$2,500. 636-584-3605.

ALLIS CHALMERS 6080 DIESEL TRACTOR: Cab and air, 80hp, 3700hrs, nice. \$14,750. 573-765-4406.

WANTED TO BUY: Rokon two wheel drive trail breaker. Camdenton, 573-480-3664.

CLIPPER SEED CLEANER. \$200, needs motor. 417-321-1928.

GRIZZLY TABLESAW: 10", left tilt, w/ extension table. \$1,200. AOM paint sprayer. \$250. Kremlin pump & spray gun. Lebanon, 573-247-2598.

8 BORDER COLLIE PUPS: born 2/9/19 up-to-date shots, working parents, farm raised, \$150 each, Mansfield, 417-830-8374.

4 NEW AT25x11-10 TIRES AND WHEELS: off UV, 5hole. \$60/piece. 417-321-1928.

GUN BOXES: Several shapes & sizes. \$10 and up. 417-589-8200.

Your hunt for the right offer ends at Don Vance

Find the Best Deals Here

No Dealer Fees

Our lowest prices of the season on hundreds of new and pre-owned vehicles.

FIND YOUR NEXT CAR @ DONVANCEAUTOGROUP.COM

<p>2013 Ford Fusion SE</p>  <p>Turbo • FWD Mileage 102,733 Stock # 29842A</p> <p>\$8,975</p>	<p>2017 Ford Fiesta S</p>  <p>FWD • Automatic • Black Mileage 24,412 Stock # 29893A</p> <p>\$9,475</p>	<p>2014 Ford Edge SEL</p>  <p>3.5L V6 • AWD • Gray Mileage 101,068 Stock # 29883C</p> <p>\$13,475</p>	<p>2015 Ford Taurus SEL</p>  <p>Dark Side Metallic • 3.5L V6 • Flexible Fuel • Mileage 94,821 Stock # 28960A</p> <p>\$11,975</p>	<p>2012 Ford Edge Limited</p>  <p>Red Candy • 3.5L V6 • Station Wagon Mileage 100,219 Stock # 30120A</p> <p>\$11,775</p>
<p>2014 Ford Escape S</p>  <p>Silver • FWD • Automatic Mileage 116,161 Stock # 29139A</p> <p>\$8,975</p>	<p>2017 Jeep Renegade Latitude</p>  <p>Alpine White • 4 Cyl • Sport Utility 4WD • Mileage 39,083 Stock # 29570A</p> <p>\$16,975</p>	<p>2010 Dodge Grand Caravan SXT</p>  <p>Bright Silver • Mini- Van Passenger 6 Cyl • FWD • Mileage 125,860 stock # 8255A</p> <p>\$7,975</p>	<p>2017 Jeep Compass Latitude</p>  <p>2.4L 4WD • Automatic Black • Mileage 9 Stock # 1628U</p> <p>\$20,975</p>	<p>2017 Ford Fiesta S</p>  <p>Black • FWD • Automatic Mileage 24,46 Stock # 29893A</p> <p>\$9,475</p>
<p>2015 Dodge Dart GT</p>  <p>Bright White • 4 Cyl • Manual FWD • Mileage 61,363 Stock # 8554A</p> <p>\$12,990</p>	<p>2011 Ford Ranger Sport</p>  <p>Red • 4.0L V6 Extended Cab Pickup • 4WD • Mileage: 102,346 Stock #: 30113A</p> <p>\$12,975</p>	<p>2014 Jeep Compass Sport</p>  <p>Billet Silver • 4 Cyl • Sport Utility 4WD • Automatic • Mileage 47,229 Stock # 6552RA</p> <p>\$13,990</p>	<p>2016 Jeep Patriot Sport</p>  <p>Granite Crystal • 4 Cyl • FWD Variable Transmission • Mileage 29,488 Stock # 1647U</p> <p>\$13,990</p>	<p>2016 Chevrolet Equinox LT</p>  <p>Pearl White • 4 Cyl • FWD Automatic • Mileage 41,674 Stock # 7923A</p> <p>\$15,975</p>
<p>2017 Cadillac XT5 Platinum AWD</p>  <p>6 Cyl • Automatic • White Mileage 31,094 Stock # 8383A</p> <p>\$38,975</p>	<p>2013 Nissan Altima 2.5 S</p>  <p>Pearl White • 4 Dr • FWD Mileage 99,914 Stock 30205B</p> <p>\$9,990</p>	<p>2014 Ford Escape SE</p>  <p>Magnetic • Turbo • Sport Utility 4WD • Mileage 91,360 Stock # 30039A</p> <p>\$12,475</p>	<p>2015 Dodge Challenger SXT</p>  <p>Pitch Black • 3.6L V6 • 2 Door RWD Automatic • Mileage 33,520 Stock # 29730A</p> <p>\$18,475</p>	<p>2016 Jeep Patriot Sport</p>  <p>Blue • Sport Utility • FWD Mileage 60,636 Stock # 1645V</p> <p>\$10,990</p>

Actual Vehicle May Differ From Photo



DON VANCE

AUTO GROUP

Upfront pricing. Downhome service. donvanceautogroup.com



SEE SALESMAN FOR DETAILS. ALL VEHICLES IN STOCK AT TIME OF AD SUBMISSION BUT SUBJECT TO SALE PRIOR TO PRINTING. NOT RESPONSIBLE FOR TYPOGRAPHICAL ERRORS & OMISSIONS. GRAPHICS MAY NOT ACCURATELY REPRESENT AD VEHICLE. PAYMENTS BASED ON 3.99% @ 72 MONTHS SUBJECT TO CREDIT APPROVAL AND PRODUCT AVAILABILITY.

ONLY 17 MINUTES EAST OF SPRINGFIELD ON I-44 • DONVANCEAUTOGROUP.COM
800-947-7567 • 417-859-2600



AUCTION REMINDER: Callaway Co Land Online Auction going on now, ends May 7, 12:30pm Atterberry Auctions. Please see our Auction Directory for more information.

CHECKERED WALNUT WOOD STOCK PISTOL GRIP: for Marlin Model 336 or 1895. \$100. Washington. 636-239-2695.

CATAHOULA PUPPIES. \$150. 417-543-4816.

SANDBLASTER: 5 gallon, helmet. \$70 417-646-8807.

SACAGAWEA GOLDEN DOLLARS: Face value \$1. Original issue 2000, uncirculated. In rolls of 5. \$30. 417-686-0032, Ava.

FOR SALE: Set of 4 tires, 255-50/R20. \$100. 573-765-3603, 573-692-1492.

MURRAY RIDING MOWER: Good Tires, deck etc. needs motor. Only \$195/mower trade. 573-364-7465.

1997 FORD F-150 FLARE-SIDE PICKUP: 150,000miles, regular cab, no rust, runs great. 573-308-6045.

2009 HONDA ACCORD EXL: Loaded 150,000 miles, nice. \$6,500. 417-399-6383.

JOHN DEERE 535 ROUND BALER: monitor, kicker, net wrap, good. \$7,200. 573-765-4406.

1-HORSE WALK BEHIND PLOW: Very good condition. \$175. 417-457-1023, Raymondville.

AGCO ALLIS 6690 DIESEL TRACTOR: cab & air, 80hp, with Westendorf TA 26 Loader. \$15,750. 573-765-4406.



WEEKLY TRADER MAGAZINE

Let us help you grow your business!

For your advertising needs

Call Debbie Calvin • 573.465.3753

weeklytrader@gmail.com

REGISTERED BLACK ANGUS BULLS: AI bred. \$1,250-\$2,950. Hartville, 417-259-2520.

ADORABLE REGISTERED GERMAN SHEPHERD PUPPIES: Ready 4-15, UTD, shots, wormed. \$300. \$100. 417-741-2198.

DRIVERS CDL-A OTR: Home Every Week! No Gimmicks, just Respect. Assigned Trucks/Rider Program. 1 year OTR min. 866-325-1584.

AUCTION REMINDER: Cow Sale, April 20th, 1pm. Cattle Sale every Monday at Noon. Salem Livestock. Please see our Auction Directory for more information.

FOR SALE: Farm Utility Trailer steel floor, removable wood sides, 14'x7'6" tandem axle. \$800. Beaufort, 636-584-3605.

2014 OPEN RANGE 5TH WHEEL: w/3 slides, excellent condition. 573-259-4291 for details. Pics available upon request

DARDEN PROFESSIONAL TIMBER HARVESTING, BUYING STANDING TIMBER: Great prices, improve wildlife habitat and improve forest health. State Certified & Fully Insured! 573-247-4808 or 573-739-1122. Salem

FRENCH BULLDOG PUPPIES: Blue/Black, Chocolate & Lilac Carriers, M/F. White/Cream Male. 6wks-8mos. Guarantee, \$1,500-\$2,500. 573-238-3873, 573-208-0485, Glenn Allen.

0% APR for 60 MOS

72 MONTH & 84 MONTH FINANCING ALSO AVAILABLE

KEEP IT SIMPLE WITH QUARLES SUPPLY

RATES SUBJECT TO CHANGE
*With approved credit. Tax/Insurance not included. Some restrictions may apply. See dealer for details.

ZERO DOWN

SPRING SAVINGS TRACTOR PACKAGES



New 26HP Kubota Package Deal!

B2650HSD \$20,555
Financing Price

NEW Kubota L250HST, 4wd, DIESEL, R4 TIRES, KUBOTA LOADER, 4' CUTTER, 4' BLADE, NEW 16' KODIAK TRAILER W/RAMPS& NEW TIRES



New 47HP Kubota Package Deal!

L4701HST \$31,110
Financing Price

NEW Kubota L390HST, 4wd, DIESEL, AG TIRES, KUBOTA LOADER, 6' CUTTER, 6' BLADE, NEW 18' KODIAK TRAILER W/RAMPS& NEW TIRES



New 52HP Kubota Package Deal!

MX5200HST \$33,600
Financing Price

NEW Kubota MX5200HST, 4wd, DIESEL, AG TIRES, KUBOTA LOADER, 6' CUTTER, 6' BLADE, NEW 20' KODIAK TRAILER W/RAMPS& NEW TIRES

PRICING REFLECTS ALL CURRENT KUBOTA PROGRAMS

**DOES NOT INCLUDE TAX AND INSURANCE*

BLENDED RATES MAY APPLY ON NON KUBOTA ITEMS

QUARLES
SUPPLY COMPANY INC.



quarleskubota.com

Just off Business 13 in Bolivar, MO

Open 8:00-5:00 Monday-Friday

(417) 777-2391

10x10x6 DOG PEN: With gate. \$125. Lebanon, 815-904-4248.

METAL DETECTOR: \$125 or trade. 573-327-9068.

FLIES ARE COMING! Lewis Cattle Oiler. 417-286-3540 or 774-696-2344.

OLDER ELECTRIC FLOUR GRINDER: \$120. 417-321-1928.

WANTED PINBALL MACHINES. 573-424-7200.

CUSTOM SAW MILLING: Lebanon. 417-533-4607, 417-664-1195.



HYDRABED

- 3,000 lb. Lift Capacity
- Synchronized Bale Arms
- Engine Driven Hydraulics
- Free-Float Bale Unrolling
- 12" Total Main Hinge Length
- Six Sizes Available
- Full Two Year Warranty

Starting At **\$9,225**
Several Sizes in Stock
Installed



LET YOUR SAVINGS BEGIN NOW!
2 Toolboxes for \$575.00
Prices Good On In Stock Beds Only!!
LET US BE YOUR PEOPLE!!

WESTGATE TRAILER & EQUIP.

417-351-6974 • 417-926-7733
www.westgatetrailer.net
8920 W Business 60 • Mtn. Grove, MO
7136 W Farm Road 140 • Springfield, MO
FULL SERVICE SHOP
OPEN: Mon.-Fri. 8-5 And "YES!" Sat. 8-Noon!

BASEBALL CARD SETS: From 80's & 90's. 417-260-5371, Houston.

M8540 KUBOTA: 4wd tractor with loader, 85HP, open station, low hours, hydraulic shuttle, 12 speed. \$32,500. 417-270-1505.

AUCTION REMINDER: Estate Auction Saturday, April 20 @ 10am. Danahy Auctions. Please see our Auction Directory for more information.

TV ANTENNA, SICKLE Grinder & SERVICER. \$100 for all. 417-646-8807.

BRUSHOG HEAVY DUTY: 3pt disk, Nice. \$1,600. 573-765-4406.

PUT MORE \$\$\$ IN YOUR POCKET!! Lewis Cattle Oiler. 417-286-3540 or 774-696-2344.

SLIDE IN PICK-UP GAS TANK: W/12volt pump. \$300. 417-321-1928.



Freedom to roam is closer than you think.

With best-in-class acceleration and handling with cargo*, the new gas-powered Sidekick delivers durability and speed. All the way up to 40 mph. And with a great offer available, tasting freedom just got a whole lot sweeter. Visit us today.




Best-in-Class acceleration and handling with cargo
40mph • Gas Powered • 2 year/1000 hour warranty



\$0 DOWN \$196 A MONTH FOR 72 MONTHS

KUBOTA OF THE OZARKS
1660 E CHESTNUT EXPWY
SPRINGFIELD, MO
417-866-5588

SCHAEPERKOETTER'S
2715 HWY A
MT. STERLING, MO
573-943-6323

1102 W HWY 28
OWENSVILLE, MO
573-437-4421

SINCE 1893

Sidekick.KubotaUSA.com

*Class is based on these models: Polaris Ranger XP 900, John Deere XUV835M & Kawasaki Mule PRO-FXR. The handling comparison was performed on the FSAE SKIDPAD course in gravel conditions. © Kubota Tractor Corporation 2019. 2.99% A.P.R., 0% down, financing for 72 months on purchases of a new Sidekick model from participating dealers' in-stock inventory is available to qualified purchasers through Kubota Credit Corporation USA; subject to credit approval. Example: 72 monthly payments of \$15.19 per \$1,000 financed. Example amount based on sales price of \$12,849. Each dealer sets own price. Prices and payments may vary. Offer expires 6/30/19. This material is for descriptive purposes only. Kubota disclaims all representations and warranties, express or implied, or any liability from the use of this material. For complete warranty, safety and product information, consult your local Kubota dealer. For the complete disclaimer, go to KubotaUSA.com/disclaimers and see the posted disclaimer.

CEDAR GAP TOPSOIL: Garden Ready topsoil, Only water required, delivery within 50-mile radius, Seymour. 417-935-2877. For more info: www.cedargaptopsoil.com

TAYLOR 8FT OFFSET DISK, very little use. \$4,850. 573-765-4406.

FOUR COOPER 245X75X16 TIRES: No cuts, plugs, patches, 10 ply. \$175. 417-399-6687.

MYOTONIC FAINTING GOATS: Moms w/kids. Mom & buckling. \$200. Mom & female. \$300. OBA, 417-741-1375, Hartville.

USED AMERICAN FAMILY DOUBLE-WIDE These do not last! Excellent condition. Call Quick, 573-499-9993 columbiadiscounthomes.com.

AUCTION REMINDER: Every Wednesday at 10:30 am. Farmington Livestock. Please see our Auction Directory for more information.

AUCTION REMINDER: Living Estate Auction. Saturday, April 27th @ 10:00. Drenon Auction. Please see our Auction Directory for more information.



Fore...
Heads up! Pay attention!

If you are a golfer, It has never been more affordable for you and your family to enjoy all the benefits of being a GreatLife golf/fitness member. Where else can you work up a sweat, then cool off in a beautiful pool overlooking a gorgeous 18 hole golf course?

Come see for yourself.
We'll be happy to show you around.

It's all included with the Golf and Fitness membership...

- No green fees for members.
- 18 hole golf course
- Driving range - \$4 buckets for members
- Special discount prices on cart rental for members - \$15 per person for members
- Huge state-of-the-art fitness center
- Special classes available
- Personal Training available
- Outdoor pool
- Bar and Grill

GreatLife Golf & Fitness is offering great ways to save money and stay in shape.

Golf and Fitness Membership \$29 Per Month
If you join with a friend by April 30, 2019

Join by yourself \$44 per month or \$528 annually
Every membership is a family membership!
Give Mike, Zach or Doug a call or just stop by!

16744 Highway 64 (417) 532-2901







Hydraulic Dovetail Trailers
By the Best Manufacturers in America!



PJ TRAILERS | IRONBULL

32' Hydraulic Dovetail Trailers
in stock today starting at \$12,000

Low Profile • 10k Dexter Axles • Dual Spring Loaded Jacks • Radial Tires • Torque Tube Underframe Bridging

LET US BE YOUR PEOPLE!!

WESTGATE TRAILER & EQUIP.

417-351-6974 • 417-926-7733
www.westgatetrailer.net
8920 W Business 60 • Mtn. Grove, MO
7136 W Farm Road 140 • Springfield, MO
FULL SERVICE SHOP
OPEN: Mon.-Fri. 8-5 And "YES!" Sat. 8-Noon!

AUCTION REMINDER: Liquidation Auction Saturday, April 2th at 10am. Rough Country Rustic Furniture Freeman Auctions & Appraisals. Please see our Auction Directory for more information.

AUCTION REMINDER: Weekly Auctions held at Bryant Auctions Thursday April 18th @5pm, Saturday, April 27th @11am, Thursday May 2nd@ 5pm. Upcoming Auctions Exclusive Land Auction Tuesday May 7th ending at noon, Boats-watercraft-truck loads of new items Heavy equipment Saturday May 11th@10am, Summer gun Auction Saturday June 8th @ 10am. Please see our Auction Directory for more information.

PORTER CABLE NAIL GUN: BN138, 18ga brad nailer, new in case, manual, 1 3/8th-1 5/8th. \$48 OBO. Ava, 417-686-0032

INDIAN ARCHERY 1950'S: wood, recurve bow, with original box of Ben Pearson arrows. \$195. Rolla, 573-364-7465.

GRASSHOPPER 120 LAWN MOWER: 48in cut, 20hp Kohler, 211hrs. \$2,500. Rogersville, 417-753-2747, 417-766-1991.

FOR SALE: JOHN DEERE RIDING MOWER: D170, 25HP, 54"cut, 124hrs. Very Nice! \$1,300. 573-859-6574

WEEKLY TRADER MAGAZINE

This is...

WEEKLY TRADER COUNTRY!



Place Your Ad With Us Today!

417-532-9131 CHECK US OUT ONLINE AT: myweeklytrader.com

Now Stocking
Large Selection
 of
Plumbing
 PEX, PVC, & CPVC
 and
Electrical
 Supplies!



LARSON
Storm Doors for life.

LUCKY DISCOUNT LUMBER

NOBODY BEATS OUR PRICES

STOCKING
Porter Paints
PPG
Commercial
Paints
Sikkens
Stains

Seymour, Missouri 417-935-4201

Sale Ends April 30, 2019



PPG
PORTER® PAINTS

Call for free quote, brochure & color chart.
 Other sizes also available.

Pole Barns & Post Framed Buildings!

23'x32'x10' \$4,099 Material Only \$5,319 Labor Included	23'x40'x10' \$4,799 Material Only \$6,329 Labor Included	30'x40'x10' \$5,699 Material Only \$7,699 Labor Included	40'x60'x12' \$10,099 Material Only \$14,359 Labor Included
---	---	---	---



NOBODY, BUT NOBODY BEATS OUR PRICES!!!

10 ft. Slider • Engineered Trusses 8' O.C. • 2x6 Treated Bottom Wrap • Screws • 2x10 Top Wrap • 2x4 Purlins • Full 29 Gauge Steel • Plus 3 ft. Entry Door with Lock
 OPTIONS: Sidewall Heights on all Buildings 10', 12', 14' & 16'. Overhead Garage Door. Skylights. Insulation. Wainscoting. Insulated Vinyl Windows. Cupolas. Labor Rates Slightly Higher over 50 Miles from Seymour. Call for YOUR FREE QUOTE TODAY!!!

PAINTED WHITE, GREEN OR TAN METAL	\$69.99
10' - \$22.10 12' - \$26.52 16' - \$35.36	
MIX & MATCH METAL	\$39.99
8' - \$10.13 10' - \$12.67 12' - \$15.21	
GALVALUME METAL	\$52.50
10' - \$16.60 12' - \$19.92 16' - \$26.56	
GALVANIZED CORRUGATED METAL	\$56.75
8' - \$9.84 10' - \$12.30 12' - \$14.75 16' - \$19.67	

IN STOCK

40yr Painted Metal
\$72.99

KNOTTY PINE DOORS
 Starting at
\$109.99

LP SMARTSIDE T-5 LAP B GRADE \$43.59SQ

Car Siding!

1x6 White Pine Siding **43¢** in ft
 1x8 White Pine Siding **54¢** in ft

* 4 Profiles to choose from!
 Broken Bundles Add 10¢ Per Ft.

4x8 Sheeting
 Less than full units Add \$1 per sheet

3/8" Beaded Paneling	\$15.99
5/8" T111 Siding	\$19.99
Paneling	\$9.99
1/2" Plywood	\$19.99
3/4" Plywood	\$23.99
3/16 Pegboard	\$12.99

Sales and Servicing



NEW PACKAGE HOMES



2x6—16" on center-Exterior Stud Walls
 Residential Roof Trusses-2' on center
 4/12 pitch with 1' over hang
 40 year Painted Metal roofing in 20 Different Colors
 Profile Ridge Vent - Ventilated Ridge Cap
 Vinyl Center Vent Soffit
 Color Matched Metal Fascia & Gable Trim
 2 - 3' 6 Panel Entry Doors
 4 - 3'x4' Vinyl Insulated Windows

ALL FIGURED FOR SUITABLE CUSTOMER SUPPLIED SLAB OR SUB-FLOOR

Your Choice of either:
 Stock 5/8" T111 Wood Siding w/1x4 Pine Window & Door Trim - or -
 7/16" OSB & House Wrap ready for other finish options

Price for Basic Materials Package & Labor

20x24(480 sq. ft.)	20x32(640 sq. ft.)	20x40(800 sq. ft.)	28x40(1120 sq. ft.)	28x48(1344 sq. ft.)
\$8,229	\$9,650	\$11,019	\$13,855	\$15,545

REAL WOOD SIDING

2x6 Log Siding - 1.09¢ in ft
1x8 Beveled Cedar - 49¢ in ft
5/8 T1-11 Siding from \$19.99

DECK PACKAGES

Materials Only

8x6\$199.99	10x12\$419.99
8x8\$239.99	10x16\$549.99
10x10\$349.99	12x12\$499.99
12x16\$649.99	



Now Stocking Quaker Vinyl Windows

2030 \$ 99.99	3030 \$119.99
3040 \$129.99	3052 \$145.99
3040Twin \$279.99	3052Twin \$314.99



LUCKY DISCOUNT LUMBER
417-935-4201
455 State Hwy C • Seymour MO 65746
www.luckydiscountlumber.com



*Some restrictions apply see store for details

WEEKLY TRADER MAGAZINE

YOUR AD GOES HERE!

Add **YELLOW** Color For An Additional **\$3** Per Reader Ad

All ads will include Phone Number (unless requested to be deleted by advertiser) and City Or Town, Phone Number with Area Code counts as one word. City or Town counts as one word.

RATE: 80¢ Per Word. All Classified Ads Require Payment Before Print.

(1) 80¢	(2) \$1.60	(3) \$2.40	(4) \$3.20
(5) \$4.00	(6) \$4.80	(7) \$5.60	(8) \$6.40
(9) \$7.20	(10) \$8.00	(11) \$8.80	(12) \$9.60
(13) \$10.40	(14) \$11.20	(15) \$12.00	(16) \$12.80
(17) \$13.60	(18) \$14.40	(19) \$15.20	(20) \$16.00
(21) \$16.80	(22) \$17.60	(23) \$18.40	(24) \$19.20
(25) \$20.00	(26) \$20.80	(27) \$21.60	(28) \$22.40
(29) \$23.20	(30) \$24.00	(31) \$24.80	(32) \$25.60
(33) \$26.40	(34) \$27.20	(35) \$28.00	(36) \$28.80
(37) \$29.60	(38) \$30.40	(39) \$31.20	(40) \$32.00

Place your Classified Ad TODAY!

417-532-2800 • 800-665-8875

Fax: 417-532-8140

Or Mail To: P.O. Box 192 • Lebanon, MO 65536

For your convenience we accept MasterCard, Visa, Discover or American Express



DEADLINE FOR CLASSIFIED ADS: MONDAY 12 NOON!!

Name _____

Address _____

City _____ Email _____

State _____ Zip Code _____ Phone _____

Ad Total \$ _____ X # Weeks _____ = Amount Enclosed \$ _____

MAKE TIME

TO DO THE THINGS YOU LOVE

Hustler's residential family of mowers are built stronger and perform faster, allowing you to quickly maneuver around obstacles with ease, including life's most difficult obstacle time.



HUSTLER[®]

For Outstanding Products & Service

AGRI-ENTERPRISES

1-1/2 Miles South Of Licking, MO On Hwy 63

573-674-2203 • 1-800-653-7152

www.agri-enterprises.com