

**FREE**  
**WEEKLY**  
**TRADER**  
**MAGAZINE**

Vol. 26 No. 28

**OCTOBER 17, 2019**

800-543-8271 • 800-665-8875

 Find us on Facebook

@myweeklytrader

**Auctions - Pg. 17**

**MYWEEKLYTRADER.COM**



**TRUCK MONTH**



**NO MONTHLY PAYMENTS FOR 90 DAYS**  
**FOR WELL-QUALIFIED BUYERS WHEN YOU FINANCE WITH GM FINANCIAL<sup>1</sup>**

**OR GET THESE OTHER CURRENT OFFERS ON SILVERADO**

**New 2019 SILVERADO 1500 LT**  
**All Star Edition, Crew Cab, 4x4**



TOTAL VEHICLE PRICE	
PLUS OPTIONS .....	\$51,335
OPTION PACKAGE DISCOUNT .....	-\$500
	<b>\$50,835</b>
TOTAL CASH ALLOWANCE.....	\$5,652
PRICE REDUCTION BELOW MSRP.....	-\$3,874
PRICE AFTER ALL OFFERS <sup>2</sup> .....	<b>\$41,309</b>

STK. #32673

**TOTAL VALUE \$10,026**

**New 2019 SILVERADO 1500 LTZ**  
**CREW CAB, 4X4**



TOTAL VEHICLE PRICE	
PLUS OPTIONS .....	\$60,400
TOTAL CASH ALLOWANCE.....	\$5,750
PRICE REDUCTION BELOW MSRP.....	-\$4,785
PRICE AFTER ALL OFFERS <sup>2</sup> .....	<b>\$49,865</b>

STK. #32846

**TOTAL VALUE \$10,535**

<sup>1</sup> Must finance with GM Financial. Some customers will not qualify. Down payment required at signing, if applicable. Finance charges accrue from date of financing. Not available with lease and some other offers. Take new retail delivery by 10/31/19. See dealer for details. <sup>2</sup> Tax, title and license fees extra. Not available with special financing, lease and some other offers. Take new retail delivery by 10/31/19. See dealer for details. ©2019 General Motors. All rights reserved.

**FIND NEW ROADS**

**CHEVROLET** 



**FAIRGROUND**  
*Auto Plaza*  
 DRIVEN TO SERVE YOU BEST...

100 Fairgrounds Road  
 Rolla, Missouri  
 (573) 364-1002

www.FairgroundGM.com 

# SEEGER FEST

## BELOW MARKET PRICING

### 15 LENDERS THRU 10.31.19

**250  
PREOWNED  
AVAILABLE**

P9598	2017 TOYOTA CAMRY.....	\$18,988
P9599	2016 TOYOTA COROLLA .....	\$14,988
P9600	2016 TOYOTA RAV4.....	\$18,988
P9601	2011 FORD F150.....	\$16,988
8001A	2016 TOYOTA RAV4.....	\$18,988
7824B	2016 FORD EXPLORER.....	\$22,988
P9582B	2018 JEEP COMPASS.....	\$19,888
7994A	2018 JEEP GRAND CHEROKEE....	\$33,988
P9578B	2008 JEEP GRAND CHEROKEE....	\$8,988
P9596	2017 TOYOTA COROLLA .....	\$13,988
7678A	2016 FORD EXPLORER.....	\$24,988
P9591A	2018 TOYOTA 4RUNNER.....	\$32,988
7571A	2015 TOYOTA HIGHLANDER.....	\$26,988
7884B	2014 GMC SIERRA 1500.....	\$29,988
7895B	2015 JEEP GRAND CHEROKEE....	\$24,988
7991A	2013 ACURA ILX.....	\$10,988
7998A	2014 CHEVY IMPALA.....	\$11,588
7703D	2016 TOYOTA TACOMA.....	\$29,988
7446A	2006 TOYOTA TUNDRA.....	\$11,988
7533A	2017 TOYOTA 4RUNNER.....	\$32,588
P9594	2016 FORD EXPLORER.....	\$26,988
7983A	2015 TOYOTA SIENNA.....	\$24,988
P9557B	2016 DODGE GRAND CARAVAN ...	\$15,988
7636B	2018 GMC SIERRA 1500.....	\$41,988
7981A	2018 KIA SPECTRA.....	\$34,988
7831A	2015 FORD FUSION.....	\$13,588
7786B	2017 CHRYSLER PACIFICA.....	\$19,588
P9590A	2013 HONDA CIVIC.....	\$11,988
P9593	2014 TOYOTA CAMRY.....	\$11,988
7593A	2015 CHEVY TAHOE.....	\$34,988
7357B	2013 TOYOTA PRIUS C.....	\$8,988
7957A	2019 HONDA PASSPORT.....	\$39,888
7822A	2013 TOYOTA PRIUS C.....	\$10,988
7822B	2016 TOYOTA SIENNA.....	\$22,988
P9592	2018 FORD MUSTANG.....	\$29,988

7827A	2016 CHRYSLER TOWN & COUNTRY..	\$16,988
7766B	2013 FORD EDGE.....	\$13,988
P9580A	2017 CHRYSLER 300C.....	\$23,988
7892A	2018 TOYOTA C-HR.....	\$20,988
7941A	2014 BUICK ENCLAVE.....	\$16,988
7540A	2018 TOYOTA 4RUNNER.....	\$37,988
7435A	2013 JEEP WRANGLER.....	\$24,988
7584A	2018 RAMT 1500.....	\$33,988
P9587	2016 TOYOTA HIGHLANDER.....	\$33,988
P9547A	2011 DODGE GRAND CARAVAN....	\$10,988
7882A	2018 TOYOTA CAMRY.....	\$24,988
7059A	2019 TOYOTA C-HR.....	\$22,988

7388A	2018 JEEP GRAND CHEROKEE....	\$33,988
7352A	2017 CHEVY TRAVERSE.....	\$23,988
7573A	2014 DODGE GRAND CARAVAN....	\$11,588
P9569A	2012 TOYOTA CAMRY.....	\$11,988
7334A	2016 JEEP GRAND CHEROKEE....	\$29,988
P9528A	2016 JEEP PATRIOT.....	\$13,988
7855B	2015 TOYOTA 4RUNNER.....	\$23,988
7692A	2013 TOYOTA TUNDRA.....	\$31,988
P9536A	2011 CHEVY TRAVERSE.....	\$10,988
7349C	2010 CHEVY SILVERADO 1500....	\$15,988
7664A	2010 CHEVY SILVERADO 1500....	\$19,988
7821D	2017 FORD ESCAPE.....	\$16,988
P9525B	2016 FORD MUSTANG.....	\$21,988
7251B	2017 FORD F350.....	\$57,988
P9574	2018 TOYOTA RAV4.....	\$22,988
7788A	2014 HYUNDAI AZERA.....	\$17,988
7825A	2017 HONDA CIVIC.....	\$21,988
7607A	2016 RAM 1500.....	\$28,988
7605B	2015 GMC TERRAIN.....	\$14,988
P9573	2017 TOYOTA HIGHLANDER....	\$32,988
P9570	2018 TOYOTA RAV4.....	\$22,988

**With Purchase of a Preowned Vehicle during Seeger Fest You Will Receive A**

# \$300<sup>00</sup>

**Rebate**  
10-04-19 thru 10-31-19

7708A	2017 SUBA WRX.....	\$30,988
7922A	2017 GMC ACADIA.....	\$23,988
7796C	2014 KIA FORTE.....	\$9,988
P9586	2016 TOYOTA RAV4.....	\$22,988
7833B	2015 GMC ACADIA.....	\$22,988
P9585	2013 TOYOTA 4RUNNER.....	\$22,988

### FREE RECALL VIN CHECK!



**PROUD WINNER OF THE PRESIDENT'S AWARD FOR THE 2ND YEAR IN A ROW!**



**TOYOTA**  
Let's Go Places

**Doing Business the Right Way The Seeger Way**



### ENGINES FOR LIFE

Call for details  
Non-Factory Lifetime Limited Warranty  
Good at participating dealerships



**SATURDAY SERVICE 8AM-4PM**



ENJOY THE LOOK  
ENJOY THE FEEL  
ENJOY THE ATMOSPHERE

**800-844-6026**



### SEEGER CARE\*

- PREOWNED VEHICLES COME WITH SEEGER CARE!**
- FREE** (3) SCHEDULED OIL AND FILTER CHANGES
  - FREE** MULTI-POINT INSPECTION WITH EVERY OIL CHANGE
  - FREE** EXTERIOR CAR WASH WITH EVERY SERVICE VISIT
  - FREE** LIFETIME SAFETY AND EMISSION TESTING
  - FREE** SAME-DAY SERVICE LOANER CAR
  - FREE** TANK OF GAS
- Service Only at Seeger St Robert/St Louis

Next to Walmart, St Robert | 573-336-7111 | SeegerTOYOTA.net

\*Does not include tax, title, and license. \* Seeger Care offer good for Less than 85K Miles and Less than 10 years old Prices do not include any College Grad or Military Rebate. See sales rep to see if you would qualify for additional savings. Prices does not include \$199 dealer administrative fee. Cannot be combined with any other offer. Prior sales final. See dealer for details. Advertised vehicle may not be exactly as pictured and are subject to prior sale. We cannot be responsible for typography or photography.



# MAKE TIME

TO DO THE THINGS YOU LOVE



Hustler's residential family of mowers are built stronger and perform faster, allowing you to quickly maneuver around obstacles with ease, including life's most difficult obstacle time.



## AGRI-ENTERPRISES

*For Outstanding* Products & Service

1-1/2 Miles South Of Licking, MO On Hwy 63

573-674-2203 • 1-800-653-7152

[www.agri-enterprises.com](http://www.agri-enterprises.com)

**PORTABLE OXYGEN GENERATOR:** Invacare, used 4 months. \$1,500. Plato, 417-217-1197.

**AKC MALE MINIATURE DACHSHUND PUPPY:** 4months old, black/tan short-haired. \$400obo 417-322-0833. vghiselene@gmail.com

**WANTED PINBALL MACHINES.** 573-424-7200.

**JOHN DEERE HX 10 FT:** Pull-type brush-cutter. \$4,200. 573-765-4406.

**FOUR TIRES:** Size 245-60 R18 Michelin. No patches. \$90 firm. 417-532-2344.





**JOHN DEERE 567 ROUND BALER:** monitor, kicker, wide pick-up, cover wrap. \$9,650. 573-765-4406.

**AUCTION REMINDER:** Personal Property Auction Sun. October 20th@ 1:15 PM. Please see our Auction Directory for more information.

**VOTED #1 BEST Preowned Car Dealership**

### TIM'S USED CARS

(573) 341-3828 • 1334 South Bishop (Hwy. 63) • Rolla, MO  
Next to Hwy. CC • [www.tims-used-cars.com](http://www.tims-used-cars.com)

	<b>2018 CHEVY TAHOE LT</b> 4X4, 5.3 V8, 3RD ROW SEAT, LEATHER, DVD, 27,XXX MILES <b>ONLY \$44,900</b>		<b>2014 DODGE GRAND CARAVAN SE</b> V6, POWER EQUIPPED, 97,XXX MILES <b>ONLY \$9,900</b>
	<b>2015 CHEVY EQUINOX LTZ</b> AWD, V6, LOADED WITH OPTIONS 49,XXX MILES <b>PRICED TO SELL</b>		<b>2016 CHEVY IMPALA LS</b> 4CYL, 110,XXX MILES <b>ONLY \$9,900</b>

**LARGE SELECTION OF CARS, TRUCKS, SUVs & VANS!**

### USED EQUIPMENT

#### 920 Cat Wheel Loader

Gehl Silage Chopper

7' Brush Cutter

JD 10' Cultipacker

3pt. 3 bottom plow

12' Spring Tooth Harrow 3pt. 2 Disc Disc Plow

Other Misc Equipment

### AGRI-ENTERPRISES

*For Outstanding* Products & Service

1-1/2 Miles South Of Licking, MO On Hwy 63

573-674-2203 • 1-800-653-7152

[www.agri-enterprises.com](http://www.agri-enterprises.com)

**AUCTION REMINDER:** Leadmine Consignment Auction. Sunday, October 26 @ 9:00am. Leadmine Community Consignment Auction. Please see our Auction Directory for more information.

**CUISINART ELECTRIC PRESSURE COOKER 600 SERIES W/MANUAL:** High/Low Pressure, browns, sautes, simmers. Like new. Used twice. \$75. Conway, 417-718-5347.

**DAVID BROWN 1212:** 65HP diesel, quick-attach loader, wide front, 3pt, PS, 2 set of Hydraulics. \$6,100. AC narrow-front w/ belly mower. \$1,200. Rogersville. 417-753-2747, 417-766-1991.

**AUCTION REMINDER:** Auction, Sunday, October 20th, Noon, Lorts Auction. Please see our Auction Directory for more information.

**1999 FORD PICK-UP:** 4x4, extended cab, no rust, needs motor. \$1,800, trade for guns, 4x4 4-wheeler. 417-839-2196, Hermitage.

**WANTED:** Someone with a skid-steer outside of Cherryville to clean a large stall and around a corral. 573-743-3420.

**CUSTOM SAW MILLING:** Lebanon. 417-533-4607, 417-664-1195.

**FARMALL 766 PEDAL TRACTOR:** wide front-end, Mint! Rare. \$375. 573-859-6574

**You pull it, we sell it... CHEAP!**



**U-PULL-IT**  
SELF-SERVICE AUTO PARTS

We also have a large inventory of used tires and be sure to check out our used car lot!

Lebanon, MO  
22395 Rt. 66  
417-588-3555  
Fax 417-588-8955

Mon-Fri 8am - 6pm • Sat 8am - 4:30pm • Sun 9am - 4pm

[WWW.SSUPULLIT.COM](http://WWW.SSUPULLIT.COM)  
Located next to S&S Recycling.



**S&S RECYCLING**  
LEBANON - MTN. GROVE  
417-588-3555 417-926-3360

Roll-off, Trailer, and Mobile Crushing Services Available

**For All Your Metal Recycling Needs**

**Lebanon, MO**      **Mtn. Grove, MO**  
22395 Rt. 66 • 417-588-3555      8930 First Rd • 417-926-3360  
Fax 417-588-8955      Fax 417-926-0180

Monday-Friday 8:00am-4:30pm (Closed 12pm-1pm Lunch)  
Saturday 8:00am-Noon  
email: [contact@ss-recycling.com](mailto:contact@ss-recycling.com)  
**Buyer of all types of scrap metal.**

**2005 INTERNATIONAL EAGLE:** double bunk, good truck, local owner, auto, 500Cummins, all re-conditioned, have paperwork. \$15,000 will take a trade. 417-679-4355.

**JOHN DEERE HX 15 FT:** hyd fold brushcutter, 540 P.T.O, good. \$9,750. 573-765-4406.

**WANTED, TIMBER TO LOG ON SHARES:** Honest, reliable, references. 417-533-4607, 417-664-1195.

**BAIKAL MODEL-210:** 410-gauge, double barrel, silver receiver. \$550. 573-756-1065.

**AUCTION REMINDER:** Real Estate & Personal Property Auction, Saturday, October 19th @ 10am Knight Auction. Please see our Auction Directory for more information.

**CABLE PULLING JAW GRIP:** Klein brand, model 1684-5, excellent condition. \$195. Cedar Hill, 314-303-7857.



**★ American Made Metal Roofing ★**

**40 Year Warranty Metal.....\$1.99 (\$62.18 Per Sq)**



\*29 Gauge 10 Year .....\$1.79 (\$55.93 Per Sq)

**\*\*While Supplies Last\*\***

29 Gauge #1 Galvalume ..... \$1.69.....\$1.39 (\$43.44 Per Sq)

29 Gauge 40 Year \*Saddle Tan\* .....\$1.69 (\$52.81 Per Sq)

**Building In A Box**

Stud Wall & Pole Barn Kits

	Non-Warranty Metal	10Year Warranty	40Year Warranty
24x30x8.....	\$3,350	.....\$3,700	.....\$3,850
30x40x10.....	\$4,950	.....\$5,350	.....\$5,600
40x60x12.....	\$9,300	.....\$10,000	.....\$10,200

Pre-cut Packages Also Available

- ★ 17 Colors To Choose From
- ★ 20 Years In Business
- ★ We Manufacture Our Own Metal and Trusses



**3 Locations To Serve You!**

6952 E. 7th St.      1100 Pace Rd.      35 Killdeer Rd.  
Joplin, MO.      Pocahontas, AR.      Seymour, Mo.  
417-317-7961      870-609-1900      417-952-7143

\*possibly not American made

**WEEKLY TRADER MAGAZINE**

Vol. 26    October 17, 2019    No. 28

Published By

**Lebanon Publishing Co. Inc.**  
PO Box 192, Lebanon, MO 65536

**417-532-2800**

[www.myweeklytrader.com](http://www.myweeklytrader.com)

Everything advertised in this publication must be made available for purchase, use or patronage without regard to race, creed, color, sex, age or national origin of the purchaser, user or patron. The Publisher will not be responsible for misinformation, misprints, typographical errors, etc. Opinions expressed are not necessarily those of the Publisher. All rights reserved. No part of this material may be reproduced by any means without permission in writing from the Publisher. We reserve the right to refuse any ad if we deem necessary. Our list and map indicate counties in which the Weekly Trader is delivered. The magazine is not necessarily placed in all communities in a particular county. A list of all retail drops for a county may be obtained by contacting the Weekly Trader office at PO Box 192, Lebanon, MO 65536.



**560 INTERNATIONAL W/LOADER:** \$4,500. 573-315-9009.

**1953 JOHN DEERE 40:** Restored w/original manual. \$5,695. 417-207-2224, Fair Grove.

**INTERNATIONAL TRACK LOADER:** W/ clam shell bucket, excellent shape. \$8,750. 573-377-4872, leave message.

**DYNO CHARGE 990 ELECTRIC FENCER:** Solid state for 20 miles. \$50. 636-239-2695.

**HARDY OUTSIDE WOOD FURNACE:** \$2,500. 636-586-6776.

**WANTED PLUMBER IN CRAWFORD CO** to replace bathtub faucet and shower. 573-743-3420.

# We Buy White Oak Logs!

**Independent Stave Company welcomes all white oak suppliers!**

- ✓ Top prices for your logs
- ✓ Experienced log buyers
- ✓ Professional service

[www.independentstavecompany.com](http://www.independentstavecompany.com)

Chad Cook | Salem Wood Products

**417.718.2950**

5 miles north of Salem, MO on Hwy 19



**INDEPENDENT STAVE COMPANY**  
Log Procurement & Sales

**AUTOBODY PAINTING & LIGHT MECHANIC WORK:** Affordable new facility. Quality Auto-Body work. Over 35 years experience. Professional Paint jobs-complete or partial, whatever needed. No job too big or small. Estimates on spot. Located outside Richland. Contact John 573-855-4877 or Don 573-512-2059.

**RIVER PROPERTY ON GASCONADE:** 2.43 acres, 3 bedroom, 1 bath, 2 car garage, Dixon schools, Junction O Hwy & K Road. For rent or Sale: \$800 rent. \$155,000 sale price. 573-759-4432.

**DEER RIFLE:** 30.06, Savage model 110. \$300. Columbia, 573-999-1803.

**Gooseneck and Winchester Star Pipe Cattle Trailers**  
*the best in the business*  
**HERE AND READY!!!!**

**Starting at \$9,685**

**Cowtown USA**  
I-44 Exit 203 • 413 Daniels Rd.  
Cuba, MO • 573-885-6300  
[www.cowtownusainc.com](http://www.cowtownusainc.com)

**DEALS ON WHEELS!** 2012 Dodge Ram 2500 Crew: 2WD, gas, 190,000 miles. \$11,750. 2006 F150: 4x4 Crew, Lariat. 180,000 miles. \$8,500. 2012 Transverse LS: FWD, 171,000 miles. \$5,000. 2010 Transverse LTZ: Loaded. 170,000 miles. \$5,000. 2010 Buick Enclave CXL: 140,000 miles, \$8,500. 2009 Outback: AWD, 89,000 miles. \$7,250. 2007 Escape: XLT, AWD. 138,000 miles. \$4,775. 2006 Outback: AWD, Limited, 178,000 miles. \$5,475. 417-399-6383.

**AUCTION REMINDER:** Online Auction Bidding ends Tuesday, November 12th @ 12:30p.m. Atterberry Auctions. Please see our Auction Directory for more information.

**METRO MOTORS INC.**  
**R.U. SALES**

**NEW GREY WOLF, CHEROKEE & ROCKWOOD!**  
**GREAT SELECTION OF NEW & PREOWNED RVs**

•1996 263RK Jayco 5th Wheel.....	\$4,900	•2011 32' Zinger Trailer w/ slide.....	\$10,900
•2000 34' Allegro Bay V10 Ford, Lg. Slideout, 71,000 Miles.....	\$16,900	•2015 24' Z-211 RD Trailer Loaded!.....	\$12,500
•2003 M237 Nomad 5th Wheel w/ slide.....	\$6,900	•2016 17BH Greywolf Trailer.....	\$12,900
•2006 28RL Laredo 5th Wheel w/ slide.....	\$14,500	•2017 210 I-Go Cloud Trailer 1 slide.....	\$SOLD!
•2008 10' Sedona Pop-up.....	\$3,900	•2017 17' R-pod w/ slide.....	\$13,500
•2010 827VRB Palomino Trailer w/ slide.....	\$SOLD!	•NEW! 2018 122S Rockwood A-Frame.....	\$12,500

**"Where Your Satisfaction Really Counts"**  
2727 S. Campbell - Springfield, MO - Visit our website at [www.metro-motors.biz](http://www.metro-motors.biz)  
**417-882-6800**

**0% for 4 Years\***  
\*with approved credit

**Outdoor Wood Furnace**  
as low as **\$168** per month

**HEATMOR MIDWEST**  
Licking, MO 65542  
573-674-2962

**AUCTION REMINDER:** Online Construction Equipment Auction. Thursday, October 31st @10am. BID NOW! Purple Wave Auction. Please see our Auction Directory for more information.

**AUCTION REMINDER:** Saturday, October 19th, 10:00 AM. Please see our Auction Directory for more information.

**HOLLYWOOD 4-BIKE HITCH MOUNT RACK:** Excellent condition, Includes (2) Allen Stabilizer tension bars and keyed alike locking hitch pin and cable. \$175. Conway, 417-718-5347.

**NEW & USED PARTS FOR ANYTHING.** 800-807-9612.



**Barnett Repair**  
573-392-3050

18425 Buttercup Rd  
Barnett, MO 65011

- ENGINE OVERHAULS
- TRANSMISSION REPAIR
- GENERAL REPAIR ON FARM MACHINERY

**\$30 HOUR**  
Owners:  
Paul & Levi Leinbach

**GERMAN SHEPHERD KENNEL REDUCTION:** Good breeding stock. \$100. Also pets. Hartville, 417-741-2198.

**HUGE INSIDE SALE:** Fri-Sun, 7am-? 30009 Sunnyside Rd, Richland Mo. (outside Laquey on South 17) Indian decor, quilting, hand-carved ducks, collectable dolls, Pampered Chef, Nascar!!, HotWheels, Christmas, Halloween, clocks, tools, hunting, Too Much to List!!!! 573-368-8892/573-337-5031.

**ELMO ENGINTHRON'S BORDERLAND REBELLIONS-history of the Civil War on the Missouri-Arkansas border. \$12.50. Lebanon, 417-532-2045.**

**AUCTION REMINDER:** Auction, Saturday, October 26th, 9am. Lorts Brothers. Please see our Auction Directory for more informaton.

**AUCTION REMINDER:** Real Estate & Personal Property Auction, Saturday, October 26th at 10am. Easterly Auction Company. Please see our Auction Directory for more information.

**A SETTLEMENT HISTORY OF FORT WOOD AREA: including Bloodland and other towns in Pulaski Co. \$15, Out of print book. Lebanon, 417-532-2045.**

**FORD 8N TRACTOR:** Sherman transmission, good condition. \$1,800. Rogersville. 417-753-2747, 417-766-1991.

**WANTED TO BUY** Your Broken Arrow-heads. A can full to a truckload. Pay cash on spot for any Indian Relics. Richard Brown, 126 Honeysuckle, Eldon, MO. 65026, 573-392-3039.

**IHC 1086 DIESEL CAB & AIR TRACTOR:** New A/C System. \$8,750. 573-765-4406.

**AUCTION REMINDER:** Saturday, October 19th @ 10a.m. Hurst Auction Service. Please see our Auction Directory for more information.



**MIDWEST CONSTRUCTION**  
Free Estimates!

- Pole Barn • Garages • Framing
- Remodels • Roofing • Concrete
- Decks & Porches

**Contact Abner Glick**  
417-664-1794

**BLACK ANGUS BULL & 3 BRED COWS. Bull 5yrs, Cows 3yrs. 573-436-0487, Potosi.**

**APPLE CORRELE DISHES:** 8 Place setting. \$40. 532-2344.

**BEAUTIFUL DOBERMAN PUPPIES:** Born 8/26, one Red/Rust and one Black/Rust male. \$650. One Red/Rust female. \$500. Parents are Double Registered AKC & CKC. Puppies are CKC Registered. UTD on shots and come with Health Records. Tails docked and declaws removed. 417-531-0483.

**AC 840 DIESEL ARTICULATING 4-WHEEL DRIVE LOADER:** \$7,250. 573-765-4406.

**2000 S-10 PICK-UP:** Regular cab, 158,000miles. \$3,200. 417-532-4108.

**GERMAN SHEPHERD MIXED:** male, red colored 1yr, gentle. Good with other dogs. Free. Edgar Springs, 573-308-6189.

**VILLA HOMES IN ROLLA:** Has NEW and USED Mobile Homes. Call David for info: 573-578-8072.

**WANTED:** American, European, Japanese Cars and Motorcycles. 1900 to 1980. Local cash buyer. 573-694-3774.

**THE RECOLLECTIONS OF TEXAS CO DEPUTY SHERIFF LOYD MITCHELL & Summersville Deputy. \$8.50. Lebanon, 417-532-2045.**

**BOBCAT 853 DIESEL SKID STEER LOADER:** 57hp, good. \$8,950. 573-765-4406.

**GLASS SHOWCASE:** 6' long, 3' high, 2' deep, lighted w/glass shelves, glass top/sides, sliding rear doors. \$195. 573-364-7465, Rolla.

**AUCTION REMINDER:** Online Auction Bidding ends Tuesday, October 29th @ 12:30p.m. Atterberry Auctions. Please see our Auction Directory for more information.



**CHISHOLM TRAIL BALE BEDS**

**FARM FEST PRE-SALE SAVE \$300**  
— Limited Quantities Available —  
**Now installing beds in both locations!**  
**GET YOUR TRUCK OUTFITTED WITH A CHISHOLM TRAIL HAYBED TODAY!**  
**LET US BE YOUR PEOPLE!!**

**WESTGATE TRAILER & EQUIP.**  
417-351-6974 • 417-926-7733  
www.westgatetrailer.net  
8920 W Business 60 • Mtn. Grove, MO  
7136 W Farm Road 140 • Springfield, MO  
**FULL SERVICE SHOP**  
OPEN: Mon.-Fri. 8-5 And "YES!" Sat. 8-Noon!

**MISSOURI GHOSTS, SPIRITS, HAUNTS & RELATED LORE BOOK. \$10, Out of print book. Lebanon, 417-532-2045.**

**2010 JOHN DEERE TRAC LOADER:** Rebuilt, new paint, diesel. \$6,600. 417-766-1991.

**KIDS LITTLE TYKES RED CAR BED:** w/ mattress. \$150. Desloge, 573-327-9068.

**AUCTION REMINDER:** Fall Consignment Auction Sat. October 19th @ 10am. Please see our Auction Directory for more information.

**WANTED:** Small, 4-cyl Chrysler car, 1995 or below. Must have good body, doesn't need to run. 636-584-9476.

**MINIATURE AUSTRALIAN SHEPHERD: ASDR. \$550. 417-259-9255.**



**JOHN DEERE 535 ROUND BALER:** monitor, kicker, net wrap. \$5,250. 573-765-4406.

**AKC LAB PUPPIES:** 5/male, 4/female, all yellow, shots and wormed, ready, parents on premises. \$400, call/text for pics. 417-349-0919.

**NEW HOLLAND TC-40-AT DIESEL COMPACT M.F.D. TRACTOR:** with New Holland loader, 2000hrs, nice. \$14,500. 573-765-4406.

**WHEAT STRAW.** \$4 Bale, 20 or more, \$3.75. 573-378-7326.

**JOHN DEERE 2630:** Diesel tractor, 70HP, w/145 JD loader. \$8,650. (573)765-4406.

**AUCTION REMINDER:** Auction. Thursday, October 24th @ 9:51AM. Chupps Auction Co. Please see our Auction Directory for more information.



**Z560**  
\* Only 2 Left  
Free 525 BX Blower,  
Free 525L Trimmer,  
Free Set Of Blades,  
Free Service Kit  
**\$6,750 + Taxes  
& Finance Fees**  
Approx.  
**\$154/Month**  
No Trades At This Price.  
Kawasaki Engine,  
5 Year Warranty



**Z246**  
**Husqvarna**  
Free Husqvarna  
122CR Trimmer  
**\$2,499.95**  
Approx.  
**\$58/Month**



**MZ54**  
Kawasaki Engine  
54" Fabricated Deck,  
Hydrogear  
Transmission,  
Large Rear Tires,  
4 Year Warranty, ROPS  
**\$4,499**  
Plus Taxes  
& Finance Fees.  
Approx.  
**\$104/Month**



**MZT52**  
w/ **Kawasaki**  
**Engine**  
Free 525BX Blower,  
525L Trimmer  
**\$5,699.99**  
Approx.  
**\$131/Month**

**MZ61**  
24 HP Kawasaki Engine, 125B Free Blower  
& 525LK Free Trimmer - **\$5,199**

**MZT 61 w/ Kawasaki Engine**  
Free 525BX Blower, Free 525 Trimmer  
**\$5,999.99**

**DIAMOND R EQUIPMENT**

Full service shop work on any models.

6 Miles North Of Freeburg  
573-455-2617  
Higginsville, MO  
660-584-8757

**R-FAB BINS**  
**(660)281-3078**

**Bucket Bins**  
Stationary or Portable  
**Overhead Bins**  
Located in Warsaw, MO

**JESSE JAMES & THE CIVIL WAR IN MISSOURI** by Robert Dyer. \$10. Lebanon, 417-532-2045.

**WANTED 12 BUTCHER HOGS:** 150# plus. 417-322-0161.

**CHECKERED WALNUT WOOD STOCK PISTOL GRIP:** for Marlin Model 336 or 1895. \$100. Washington. 636-239-2695.

**LEBANON HISTORY BOOK-A PART OF OUR LIVES, 1949-1976.** \$10. 417-532-2045.

**AUSTRALIAN SHEPHERD PUPPIES:** out of working parents, shots-first round. 573-663-7459.

**3PT 2 SECTION HARROW.** \$150. Rogersville. 417-753-2747, 417-766-1991.

**Cheyenne Acres**  
Horse & Tack  
**BUY - SELL - TRADE**  
by Rolla, MO  
Call For Directions & Availability  
**Call Kip**  
**573-368-9402**

**YARD CART:** for riding lawnmower, tilts, excellent shape. \$50 or trade. 573-734-2822.

**NEW IDEA 2 ROW PULL TYPE CORN PICKER:** \$1,000. 573-765-4406.

**COMPLETE SCRAGG & PALLET OPERATION:** Property, Equipment, Timber contracts, Lots more, Selling due to health reasons, Too Much to List, may separate & owner finance. 417-650-0402

**"AUCTIONS" GO TO** midwestauctions.hi-bid.com 800-807-9612.

**1950 6 CYLINDER CAR/TRUCK MOTOR.** \$200 or trade. 573-734-2822.



# COLE'S TRACTOR & EQP, INC.

1 mile east of Farmington on Highway 32 • 573-756-4353

## LS MT235E 35HP 4WD DIESEL TRACTOR PACKAGE

No Payment for  
**90 DAYS\***  
Limited Time Offer

- With Deluxe Skid Steer
- QA Bucket Front Loader
- 5FT Brush Hog
- 5FT Box Blade
- AND 7000LB GVW Deluxe
- Car Hauler Flatbed Trailer

★★ **SPECIAL PROMOTION** ★★  
**BUY THIS PACKAGE AND YOU GET A FREE PRESSURE  
 WASHER WITH 2 RATCHET TIE DOWNS!**  
 PLUS YOU GET THE BEST 6 YEAR PARTS AND LABOR WARRANTY!

**ALL THIS FOR ONLY \$21,495**  
*Financing Available on Location!*



\* 4.99% with a 90 Day No Payment option for the holiday shopper. Must finance thru Wells Fargo Equipment Finance. Based on buyers qualification. Limited Time offer. See Dealer for details.



**DOUBLE SET OF WHEEL CHOCKS:** Color is Safety Yellow. \$30. 636-239-2695, Washington

**TAKEUCHI DIESEL EXCAVATOR:** W/ hyd thumb. \$15,000. 573-765-4406.

**STEEL BUILDING:** 18x9x7. \$3,350. 417-407-0544.

**29 ACRES,** Old house, well, on highway. 15 miles west of Doniphan, MO. \$42,000. 573-714-5779.

**GUARDIANWARE:** 1930-1950's, Turkey roaster with lid. \$195. 573-364-7465.

**HAY- SMALL SQUARES:** 4th cutting, alfalfa/grass, no chemicals, \$7/bale. 417-322-0161.

**Starnes Auto LLC**  
 22115 Rt. 66 - Lebanon, MO 65536  
 417.588.3159 Office • 417.718.2707 Cell  
 www.starnesauto.com

<b>1995 BUICK CENTURY</b> WHITE, 121,XXX MILES.....	<b>\$1,450</b>
<b>2002 CHEVY S-10</b> PEWTER, REG CAB, 2 WD, 5 SPD, 254,XXX MI .....	<b>\$2,400</b>
<b>2002 KIA SPECTRA</b> BLUE, 63,XXX MILES .....	<b>\$1,950</b>
<b>2002 CHEVROLET AVALANCHE</b> GREEN, 192,XXX MILES .....	<b>\$5,200</b>
<b>2003 CHEVY S10</b> BLUE, 2WD, 103,XXX MILES.....	<b>\$3,500</b>
<b>2003 CHEVY SILVERADO</b> WHITE, EXT CAB, 4X4, 230,XXX MILES .....	<b>\$4,200</b>
<b>2004 GMC SIERRA</b> CHARCOAL, REG CAB, 104,XXX MILES .....	<b>\$6,200</b>
<b>2004 NISSAN XTERRA XE</b> MAROON, 4WD, 86,XXX MILES .....	<b>\$5,650</b>
<b>2005 CHEVY SILVERADO HD</b> EXT CAB, LONG BED, 8100, 210,XXX MILES.....	<b>\$7,250</b>
<b>2005 GMC ENVOY</b> SILVER, 2WD, 172,XXX MILES .....	<b>\$2,650</b>
<b>2006 CHEVROLET TRAILBLAZER</b> PEWTER, 195,XXX MILES.....	<b>\$2,950</b>
<b>2006 GMC SIERRA</b> GREEN, 69,XXX MILES.....	<b>\$8,750</b>
<b>2010 PONTIAC G6</b> BLACK, 133,XXX MILES.....	<b>\$4,250</b>
<b>2012 BUICK ENCLAVE</b> SILVER, LEATHER, 131, XXX MILES .....	<b>\$8,750</b>
<b>2014 TOYOTA SCION XB</b> WHITE, 21,XXX MILES.....	<b>\$9,850</b>
<b>2015 NISSAN FRONTIER</b> CHARCOAL, 73,XXX MILES, GOOD TITLE .....	<b>\$14,950</b>
<b>2015 CHEVY EQUINOX LT</b> BLUE, 56,XXX MILES, .....	<b>\$12,500</b>
<b>2016 CHEVY EQUINOX</b> BLACK, 53 XXX MILES .....	<b>\$13,500</b>

**WE DO ALIGNMENTS!**



**Wright Spray Foam Insulators, Inc.**  
 Commercial & Residential  
 Call for FREE Estimates!

Mose Gingerich  
417-746-1953  
B. Eli Yoder  
417-746-4932

**REGISTERED BLACK ANGUS BULL:** AI Bred, 15mos old. \$1,250. Hartville 417-259-2520.

**1986 OLDSMOBILE CUTLASS: 41,XXX miles, excellent condition, V6, 4DR, all records, \$3,500obo. 573-873-3440, Camden-ton.**

**AUCTION REMINDER:** Saturday, October 19th @ 10am. Rick Dixon Auction. Please see our Auction Directory for more information.

**2006 GMC DENALI: high mileage, new motor, new tires, excellent condition. \$5,500 OBO. 417-935-2176.**

**PICK-UP TRUCK BED LINER:** Standard size Ford F150-F350. Good condition. \$40. Cedar Hill, 314-303-7857.

**R & A FARM LLC**  
 Trailer Repair

- Welding
- Wiring
- Portbale Welding

417-664-5954 • 30566 HWY BB LEBANON  
 FB: R&A FARM LLC • ROBERT BARBEAU



**Custom Welding & Repair!**

Custom Welding & Repair on Farm Machinery & All types of trailers including semi | Alum Welding | Lights & Brakes Repair

**JR's Fabrication**  
 Levi K. Zook • 417-741-2312 • 4875 Hwy BB Hartville

**NORWEGIAN ELKHOUND PUPPIES:** Cute, family raised on farm, very friendly parents. Will make good family pets. Starting at \$100. 417-241-0394, Hartville.

**T'S FENCE LINE COW CATCHER,** an easy way to halter break calves. \$200. Herrman. 636-932-4429.

**TWO 8 MONTH OLD BERKSHIRE BOARS.** \$150 each. 417-998-6666, leave message, Cross Timbers.

**REGISTERED HEREFORD & ANGUS BULLS:** Home raised, Some Show-Me Select Qualified. 573-701-7828. Belgrade

**FORD JUBILEE INDUSTRIAL FRONT LOADER:** Wide front, 3pt, runs and stops, power steering not working. \$1,800. Rogersville. 417-753-2747/417-766-1991.

**EMMONS RESOLUTIONS LLC**

- Brick Restoration
- Tuck Pointing
- Sealing
- Gaulking
- Red Iron Construction
- Framing

Colton Emmons 417-664-8350  
 Eddy Torrey 417-630-2670

**AMERICAN BULLDOG PUPPIES:** 573-548-2428

**FIVE 12X20 TIRES:** Mounted w/wheels. \$200. Rogersville. 417-753-2747, 417-766-1991.

**ITHACA MODEL-37:** Featherlight 16-gauge, pump. \$325. 573-756-1065.

**40 PRIME KATAHDIN EWES:** Born spring 2018 and 2019, (hopping genetics), \$250, also selected rams, \$225. 417-322-0161.

**2007 CHEVY 2500 CLASSIC DURAMAX:** Single cab, 4x4, 97,000 miles. \$18,500. 573-480-4441.

**ROME 8FT OFFSET DISK:** \$3,750. 573-765-4406.

**MARLIN MODEL-30A 30-30:** lever action, with scope. \$325. Mossberg Model-500 Slugster: 12-gauge, rifle sights. \$225. 573-756-1065.

**NEW TUBE GRILL** to fit 73-83 Chevrolet pick-up. \$50. 573-734-2822.

**LOOKING FOR AN EXPERIENCED HEAD SAWYER**

Mill is located in Crawford County (Bourbon MO).  
Pay will be based on experience.

**Call 573-205-3540**  
or apply in person at:

**Simmerly Timber**  
1316 Rock Rd  
Bourbon Mo 65441

**2004 OPEN RANGE FIFTH WHEEL CAMPER:** 34', all weather, in good condition. \$10,500. Lebanon, 417-718-5520.

**MODULAR STOCK SALE** - It is time to move our inventory. TRUE MODS - Save Thousands. Call Marla, better than 20 years experience. 573-657-7040, chateauhomes.net.

**FOR SALE:** 1999 Chevy Silverado 3 door extended cab, rusty, 5.3 Vortec, V-8 engine. 417-543-8261.

**Cowtown Express Car Wash**

Highway 63 South, Rolla, MO  
Call Wade 573-368-1430 Or 573-426-2500



**Sale Price \$4,950**

**NEW Winchester Star & Bale Trailers**  
Powder Coated 18+2, 7,000 Axles  
[www.cowtownusainc.com](http://www.cowtownusainc.com)

**\$19,900 USED DOUBLE WIDE:** nice 3 bedroom, 2 bath delivered & set-up.....Hurry, This house will NOT last long! Call now 573-657-2176 amegamobilehomes.com

**6410 JOHN DEERE:** w/640 loader, new tires, PQ, low hours. \$29,900. 573-392-3050

**AUCTION REMINDER:** Cow sale. Friday, October 18th @ 6:30pm. Interstate Regional Livestock. Please see our Auction Directory for more information.

**1999 JEEP CHEROKEE:** 6 cylinder. \$3,000. Protom, 417-340-7890.

**HYDRA BED**  
BY TRIPLE C, INC.

- 3,000 lb. Lift Capacity
- Synchronized Bale Arms
- Engine Driven Hydraulics
- Free-Float Bale Unrolling
- 12" Total Main Hinge Length
  - Six Sizes Available
  - Full Two Year Warranty

Starting At **\$9,225** Installed  
Several Sizes in Stock



**LET YOUR SAVINGS BEGIN NOW!**  
2 Toolboxes for \$575.00  
Prices Good On In Stock Beds Only!!  
**LET US BE YOUR PEOPLE!!**

**WESTGATE TRAILER & EQUIP.**

**417-351-6974 • 417-926-7733**  
[www.westgatetrailer.net](http://www.westgatetrailer.net)  
8920 W Business 60 • Mtn. Grove, MO  
7136 W Farm Road 140 • Springfield, MO  
**FULL SERVICE SHOP**  
OPEN: Mon.-Fri. 8-5 And "YES!" Sat. 8-Noon!

**AUCTION REMINDER:** Online Auction Bidding for 1800's home ends Wednesday, November 6th @ 12:30p.m. Atterberry Auctions. Please see our Auction Directory for more information.

**TINY HOUSE/SHED:** Swiss A-Style, 6x8, furnished. Vienna. \$600. 573-759-7143.

**GIBSON HEATING & COOLING UNIT:** Working condition. \$400. Whirlpool 25' cut ft side-by-side refrigerator freezer, excellent condition. \$400. Whirlpool, 40gal electric water heater, extra heat elements. \$100. Kenmore Elite dishwasher. \$25. GE Dryer \$25. Will negotiate, make offer. 417-241-0394, Hartville.

**6x52 TRANSPORT AUGER** and 5,000 Bushel Grain Bin w/drying floor, fan, & unloading auger. Good condition. 573-437-2076.

**WANTED: DOUBLE PWC TRAILER.** 573-480-5074, Tuscumbia.

**PRAIRIE PHOENIX CATTLE CARE SYSTEM:** Missed us at Farm Fest? We'll come see you!! 417-286-3540.

**AUCTION REMINDER:** Sat, October 16th at 10am. Billy Sexton Auctions. See our Auction Directory for more information.

**ROLLA SADDLE CLUB FUN SHOWS**

October 19<sup>th</sup>  
Starting @ 2:00

**Fun Show Classes**

- Halter-Pony • Halter-Gelding • Halter-Mare
- Showmanship • Bareback Dollar\*\*
- Lead Line(Rider 6 & Under) • Walk/Trot
- Western Pleasure • Gaited Pleasure
- Hunter Under Saddle • Trail • Poles
  - Barrels • Flag Race • Key Hole
  - Costume Class\*\*

**Costume Contest Prize Money**  
\$35.00 - first  
\$25.00 - second  
\$15.00 - third

**Divisions**

- Pony • Youth (12 & under)
- Teen (13-18)
- Adult (19 and Over)

Hi-Point Award per Division  
Costumer Class not considered point class

Find us on Face Book at: Rolla Saddle Club  
**I-44 to exit 185 to St. Rte. E,  
Turn left onto St Rte Y, Saddle Club is 1/2 mile on the right.**  
Current coggins required. Cook shack on grounds.  
**COME JOIN IN THE FUN!!!!**

**JOHN DEERE 2040:** w/520 loader and joy stick, bucket, front/rear bale spikes, 6' bush-hog. Kept inside w/2200 hrs. \$15,900. 417-926-9300.

**AUCTION REMINDER:** Cow Sale, October 19th. Cattle Sale every Monday at Noon. Goat, Sheep & Hog sale 2nd Tuesday of Month @ 6pm. Salem Livestock. Please see our Auction Directory for more information.

**MASSEY FERGUSON:** 231 diesel tractor, W.F., 3pt, power steering, dual hyd. \$5,500. 573-765-4406.

**2008 CANAM SPYDER:** Premier edition, anti-lock brakes, traction control, cruise control, emergency brakes, new tires, VGC. \$5,800. Phone 573-338-0368.

**AUCTION REMINDER:** Auction, Saturday, October 19th, 9am, Lorts Auction. Please see our Auction Directory for more information.



**AUCTION REMINDER:** Online Auction Bidding ends Wednesday, October 16th @ 12:30p.m. Atterberry Auctions. Please see our Auction Directory for more information.

**COLLECTION OF AUNT JEMIMA STUFF:** \$200. Desloge, 573-327-9068.

**BARN WOOD SIDING: 8" & 10" wide.** 573-729-7226. [www.pineridgerustic.com](http://www.pineridgerustic.com)

**AUCTION REMINDER:** Public Auction Saturday October 26th @ 10am. See our Auction Directory for details. Wade Auction Service.

**DO YOU STILL BELIEVE** in the one true God? Inviting ALL for in depth Bible studies, John17:3. Please call the Remnant, 417-664-8257.

**JOHN DEERE 925 DISKBINE:** W/rollers. \$6,750. 573-765-4406.

# GET YOUR WORK DONE, AMERICA

FOR JUST **\$241** PER MONTH\*



**4540 2WD**

- SIMPLE** to operate
- ECO-FRIENDLY**, NO DPF engine
- HEAVY-DUTY** steel construction not plastic

MAHINDRA 4540 41HP, 2WD, TRACTOR AND LOADER.

**Marshfield Machinery Inc.**  
222 E. Madison • Marshfield, MO 65706  
417-859-2117 • [www.marshfieldmachinery.com](http://www.marshfieldmachinery.com)

**7 YEAR**  
LIMITED POWERTRAIN  
**WARRANTY**

WORLD'S #1 SELLING TRACTOR

\*Payment is for tractor and loader only and is calculated at 10% down and 84 months financing. With approved credit. Program restrictions may apply. See dealer for details. All offers expire October 31, 2019.

**NEW MAHINDRA TRACTORS**

- 9125 4WD CAB & LDR 125HP IN STOCK
- 7085 4WD & LDR 85HP IN STOCK
- 6075 4WD & LDR 71HP IN STOCK
- 6065 4WD & LDR 62HP IN STOCK
- 2655 4WD CAB & LDR 55HP IN STOCK
- 2655 4WD, BACKHOE 55HP IN STOCK
- 2655 4WD & LDR 55HP IN STOCK
- 4540 4WD & LDR 41HP IN STOCK
- 4540 2WD & LDR 41HP IN STOCK
- 3640 4WD & LDR 40HP IN STOCK
- 2638 4WD & LDR 38HP IN STOCK
- 1626 4WD & LDR 26HP IN STOCK
- MAX26XL & LDR 26HP IN STOCK

**USED TRACTORS**

- |                             |        |
|-----------------------------|--------|
| MAHINDRA 105P CAB LDR 105HP | 45,500 |
| MAHINDRA MAX26XL LDR 26HP   | 12,500 |
| MAHINDRA MAX22 W/ BACKHOE   | 11,500 |
| MF 230 34HP                 | 5,000  |
| CASE IH 235 W/ MOWER 18HP   | 3,500  |
| IHC 184 W/ MOWER 18HP       | 3,500  |

**USED SIDE BY SIDES**

- |                       |       |
|-----------------------|-------|
| MAHINDRA 750 CREW XTV | 8,500 |
| MAHINDRA 750 XTV      | 7,500 |

**USED ROUND BALERS**

- |                     |        |
|---------------------|--------|
| MF 2745 4X5 MESH    | 12,500 |
| HESSTON 745 4X5     | 7,500  |
| HESSTON 555 4X6     | 4,500  |
| HESSTON 560 5X6     | 4,000  |
| HESSTON 550 4X6     | 3,500  |
| NH 850 5X5          | 1,500  |
| MF 224 SQUARE BALER | 2,500  |

**USED RAKES**

- |                      |       |
|----------------------|-------|
| SITREX 12WHEEL       | 3,500 |
| DURABUILT 8 WHEEL    | 1,950 |
| VERMEER WR20 8 WHEEL | 1,950 |
| RHINO 10 WHEEL       | 1,750 |
| M&W 8 WHEEL          | 1,500 |

**USED MISC.**

- |                       |        |
|-----------------------|--------|
| HAYBUSTER 107C DRILL  | 17,500 |
| BUSH HOG 3210 10FT    | 8,000  |
| BUSH HOG 3008 8FT 3PT | 3,000  |

Marshfield Machinery Inc.  
222 E. Madison • Marshfield, MO 65706  
417-859-2117  
[www.marshfieldmachinery.com](http://www.marshfieldmachinery.com)

## HIGH COUNTRY

Timber & Stone LLC



573-674-3979 • 573-247-2989  
11749 Crest Ln., Licking, MO

**GERMAN SHEPHERD:** Pups are Ready, females only, full blooded, vet checked, black saddle, first shots. \$200. 417-630-9291 leave message.

**AUCTION REMINDER:** Fall Consignment Auction Saturday October 19th @ 10am. See our Auction Directory for details. Wade Auction Service.

**USDA INSPECTED BISON/BUFFALO Meat.** Ground Burger, Roasts, Steaks, & Patties. Quantity discounts. 417-718-1409. Mtn Grove, MO.

**CHILDREN'S BOOKS FOR LEARNING TO READ:** \$1/piece. Desloge, 573-327-9068.

## NEW BIG TEX 14LX DUMP TRAILER



facebook

**JIM'S Motors TRAILERS** I-44 at Exit 208 • Cuba, MO  
[www.jimsmotors.com](http://www.jimsmotors.com)  
**(573)885-2595**  
**(800)897-9840**

GREAT SERVICE!  
1957-2018 GREAT PRICES!

**PRAIRIE PHOENIX CATTLE CARE SYSTEM:** Your Southern Missouri dealer. 417-286-3540.

**YOUTH BED:** with mattress, good condition. \$20. 417-532-2344.

**LIONEL TRAIN SET:** Steam engine, tender, caboose and other car, track and transformer. \$195. 573-364-7465, Rolla.

**BOSTON TERRIER PUPPIES:** 573-548-2428.

**PINE LOG SIDING..** [www.pineridgerustic.com](http://www.pineridgerustic.com) 573-729-7226.

**14 OPEN BLACK ANGUS HEIFERS.** \$700 each. John Deere 1508 15' batwing bush-hog. \$2,000. 573-714-2012.

# \$2,500 - \$11,000 LOT

Lindsay Chevrolet & Lindsay Ford

Mon.-Fri. 8 am - 7 pm  
Sat. 8 am - 5 pm  
Not responsible for typos.  
\* with approved credit

## 417-588-7995

West City Route 66  
& South Monroe  
Lebanon, MO

Bobby Rogers, Manager • Aaron Wehner, Finance • Mike Forner, Steve "Whitey" Helton, Larry Davis, Sales

### TRUCKS

LT7364A2	2002 CHEVY SILVERADO EXT CAB ¾ TON, 4WD, WHITE.....	\$9,400
LT28796A2	2005 DODGE DAKOTA CREW 2WD, BLUE.....	\$5,900
LT28728	2007 CHEVY SILVERADO REG CAB 2WD, WHITE .....	\$7,900
LT7302B	2010 FORD F150 CREW V8 4WD, TAN .....	\$12,900
LT7364A1	2014 DODGE RAM REG CAB V6, AUTO, 2WD, RED.....	\$11,800
QT75625	2004 TOYOTA TACOMA EXT CAB V6, AUTO, SILVER.....	\$9,750
QT75567	2005 DODGE RAM CREW V8, AUTO, 4WD PURPLE .....	\$9,800
QT75583A	2006 FORD F150 CREW V8, AUTO, 4WD, BLUE .....	\$10,900
QT75455A	2006 DODGE RAM ST REG CAB V8, AUTO, 2WD, WHITE .....	\$5,950
QT75587	2007 CHEVY SILVERADO LT EXT CAB RED .....	\$11,400
QT75552	2007 DODGE DAKOTA SLT V8, AUTO, 4WD, BLACK .....	\$8,600
QT75635	2007 CHEVY AVALANCHE LT V8, AUTO, 4WD, MARRON .....	\$11,400
QT75637	2009 FORD F150 REG CAB V8, AUTO, 2WD, RED.....	\$10,900

QC75533	2010 FORD TAURUS SHO V6, AUTO, FWD, BLACK .....	\$9,900
QC75388A	2011 BUICK LUCERNE CXL V6, AUTO, FWD, SILVER .....	\$11,600
QC75632	2012 CHRYSLER 200 LIMITED 4CYL, AUTO, FWD, BLUE .....	\$8,900
QC75622	2012 FIAT 500 SPORT 4CYL, AUTO, FWD, BLACK .....	\$7,400
QC75616	2012 HYUNDAI VELOSTER COUPE, 4CYL, 5SPD, RED .....	\$10,350
QT75509	2012 KIA SOUL 4CYL, 5SPD, FWD, BLACK .....	\$6,400
QC75547	2012 CADILLAC CTS V6, AUTO, FWD, SILVER .....	\$8,600
QC75569	2013 FORD FUSION 4CYL, AUTO, FWD, WHITE .....	\$8,900
QC75584A	2013 FIAT 500 POP 4CYL, AUTO, FWD, BLACK .....	\$7,900
QC75554	2013 KIA OPTIMA LX 4CYL, FWD, GRAY .....	\$8,900
QC57473A	2015 FORD FOCUS SE 4CYL, AUTO, FWD, RED .....	\$8,900
QC75574A	2015 CHEVY CRUZE LT 4CYL, AUTO, FWD, GREEN .....	\$10,900

### SUVS & VANS

LT28577B	2007 CHEVY SUBURBAN LT AUTO, 2WD, GRAY .....	\$8,900
LT28845	2008 FORD EXPEDITION KING RANCH 4WD, WHITE .....	\$9,900
LT28801A	2008 BUICK ENCLAVE CXL V6, FWD, DARK CRIMSON .....	\$6,900
LT28772B	2012 NISSAN ROGUE 4CYL, AWD, WHITE .....	\$8,300
LT28824	2012 CHEVY TRAVERSE V6, AWD, SILVER .....	\$10,600
QT75614	2006 HUMMER H3 5CYL, AUTO, 4WD, BLUE .....	\$9,400
QT75566	2007 TOYOTA RAV 4 SPORT 4CYL, AUTO, FWD, WHITE .....	\$9,400
QT57457B2A	2011 TOYOTA SIENNA LE V6, AUTO, FWD, TAN.....	\$8,700
QT75609A	2011 FORD ESCAPE XLS 4CYL, FWD, WHITE .....	\$7,150
QT75539A	2013 FORD ESCAPE SEL 4CYL, AUTO, 4WD, WHITE .....	\$11,700
QT75366A	2013 SUBARU OUTBACK PREMIUM 4CYL, AUTO, BLUE .....	\$7,900
QT75636	2013 FORD EXPLORER XLT V6, AUTO, 4WD, WHITE .....	\$11,900
QT57729B	2013 FORD FLEX SE V6, AUTO, FWD, BLACK .....	\$11,900
QT57646B	2013 JEEP PATRIOT SPORT 4CYL, AUTO, 4WD, GREEN \$ .....	\$9,400
QT75628	2013 FORD ESCAPE SE 4CYL, AUTO, FWD, MARRON .....	\$10,900
QT75641	2014 MITSUBISHI OUTLAND 4CYL, AUTO, FWD, BLACK .....	\$8,600
QT75504	2014 BUICK ENCORE 4CYL, AUTO, FWD, GRAY .....	\$10,900
QT75640	2014 DODGE JOURNEY SE 4CYL, AUTO, FWD, BLUE .....	\$8,900
QT75519A	2015 CHEVY TRAX LT 4CYL, AUTO, FWD, SILVER \$ .....	\$10,975
QT75495A	2016 JEEP RENEGADE LATITUDE 4CYL, 5SPD, 4WD, GRAY .....	\$13,400



QT57685B2 **16 TRACKER 18X60 GRIZZLEY**  
60HR, 4 STROKE, MERCURY, TILT & TRIM,  
TROLLING MOTOR & FISH FINDER ..... **\$9,700**

### CARS

LC28784B	2009 CHEVY IMPALA LT V6, FWD, WHITE .....	\$5,900
LC28596A	2012 CHEVY MALIBU LT 4CYL, FWD, SILVER .....	\$5,700
LC28795	2013 CHEVY IMPALA LS V6, FWD, BLACK .....	\$10,900
LC28691	2014 CHEVY CRUZE LT 4CYL, AUTO, BLUE .....	\$9,300
LC28713	2014 CHEVY CRUZE LS 4CYL, AUTO, RED.....	\$8,800
LC28811	2014 NISSAN VERSA S 4CYL, AUTO, SILVER .....	\$7,900
LC28496	2014 FORD FOCUS S 4CYL, AUTO, BLACK .....	\$7,700
LC28803A	2014 CHEVY IMPALA LS V6, AUTO, FWD, WHITE .....	\$8,800
QC75331	2003 FORD T-BIRD V8, AUTO, COUPE, GRAY.....	\$9,900
QC75528A	2005 CHEVY MONTE CARLO LS V6, AUTO, GRAY .....	\$5,900
QC75578	2007 CHRYSLER CROSS FIRE LIMITED, BLUE .....	\$6,900
QC75546	2008 PONTIAC G6 V6, AUTO, FWD, BLACK .....	\$7,400

**WWW.LINDSAYAUTOGROUP.COM**



# WEEKLY TRADER MAGAZINE

*by mail!*



## Delivery Deals Week To Week

Simply return this completed Subscription Form with check or money order  
to: **Weekly Trader, P.O. Box 192, Lebanon, MO 65536**



_____ 4 weeks .....	\$8.00
_____ 12 weeks .....	\$24.00
_____ 24 weeks .....	\$48.00
_____ 52 weeks .....	\$104.00

Name: \_\_\_\_\_

Address: \_\_\_\_\_

City, State, Zip: \_\_\_\_\_

Phone: \_\_\_\_\_

You may also call our office 417-532-2800  
to subscribe with credit or debit card.



# We Specialize in Selling Agricultural and Recreational Farms!



**MOSSY OAK**  
**PROPERTIES**  
**OF THE HEARTLAND**  
 Land & Lakes Properties  
 America's Land Specialist

## CALL US TODAY!!!

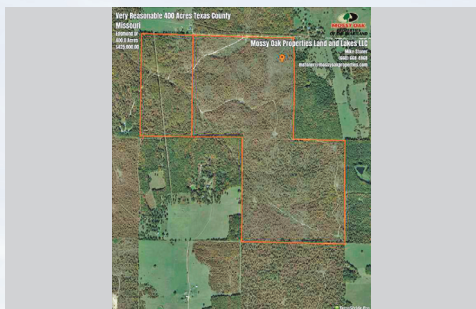
**Rolla Office:**

**12647 S. Hwy 63, Rolla • 573-308-4868**

**Cole Camp Office:**

**14981 Centerline Ave, Cole Camp • 660-668-4868**

**MOLandandLakes.com • 660.668.HUNT**



### Texas Co-400 Acres

**\$425,000**

Close to the town of Hartshorn-property has appx 40 acres of open ground, seller is in the process of cleaning up some areas & planting in wheat. There will be several areas that will have food plots in the woods. Property has been logged, but is growing back nicely & so there are plenty of trails to get around the property on. We saw deer & turkey while out looking at the property-this is going to make someone a hunting paradise. The ground is good enough to make one heck of a cattle farm out of as well, you could clear 80% of it and make a lot of grass here! Down a very private but easily accessible county road, not many houses here. Several creeks run through the farm & most had water in them the day we toured the property. Contact **Mike Stoner at 573-774-9775**



### Texas Co-80 Acres

**\$92,000**

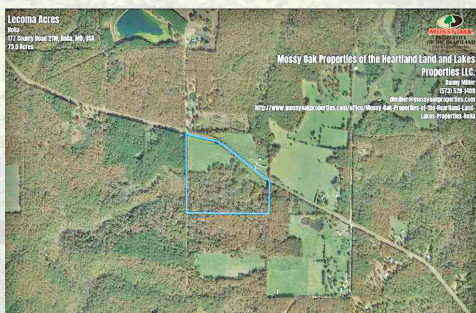
There are 2 80 acre tracts here the seller will sell, both priced at 1150 an acre. Lays well with some open ground, owner has some clearings done with some wheat planted. We saw both deer and turkey while touring the property. Great access bordering good county road. Land lays well, with just enough contour for hunting different wind directions for whitetail deer noses. Wet weather creek runs through the farm with just enough water for the wildlife. There was a tree harvest done some years back, and it is starting to really grow back quickly. Texas county is always in the top for deer numbers and harvest. The town of Hartshorn is just a few miles away. Owner has 400 acres here for sale , so more land is available. For more information please call **Mike Stoner at 573-774-9775**



### Texas Co-80 Acres

**\$299,750**

Looking for a farm that offers unlimited hunting in the Mark Twain National Forest that borders two sides? Look no further than this well-kept eighty acre property located just off HWY 32 between Plato & Roby Missouri. The owner has an efficient cattle working setup that includes a metal pipe pen for sorting and vaccinations, a freeze proof waterer is worth its weight in gold when the watering ponds freeze over and one end of the machine shed has stalls for those baby calves that need bottle fed. The farm is about 50 acres of pasture with cross fencing for rotational grazing and the owner runs 24 cow/calf pair plus a bull. Deer and turkey are plentiful on the farm and the bordering National Forest offers hundreds of additional acres for hunting. The home is a 1600 sq ft ranch on a crawl space, with 3 bedrooms, 2 1/2 baths, a 26' x30' double car garage, large living room & large kitchen/dining area. A sunroom provides the ideal place for morning coffee with a view of the farm. Double doors on both ends of the 30' x 60' hay barn make it easy to store your winter hay, and the machine shed will hold your tractor and implements. This is a turn key farm that won't last long. To schedule a viewing call **Danny L. Miller at 573-528-1489**



### Dent Co-32 Acres

**\$56,000**

Northern Dent County property with one quarter mile State Highway frontage now on the market. Thirty two acre (with an adjoining 40 acres also available) mix of open field and oak timber bordering the R. F. Clement Missouri Department of Conservation five hundred twenty acre tract. Whitetail deer and turkey are in abundance and the parcel is only fourteen miles from Rolla, Missouri. A small pond provides water for the wildlife and the hay field is loaded with clover. Secluded and quiet, yet easy access makes this a very attractive location for a new residence or hunting base camp. For a viewing call **Danny L. Miller at 573-528-1489** or email at **dlmiller@mossyoakproperties.com**



**Built Stronger to Last Longer**  
**Gooseneck**  
 Trailer Mfg. Co., Inc.

**Savings Start Here!**



24 x 6'8" Gooseneck Brand Stock Trailer  
**Several In Stock**  
 Same day financing with Ag Direct (with approved credit)

**LET US BE YOUR PEOPLE!**

**WESTGATE TRAILER & EQUIP.**

**417-351-6974 • 417-926-7733**  
 www.westgatetrailer.net

8920 W Business 60 • Mtn. Grove, MO  
 7136 W Farm Road 140 • Springfield, MO

**FULL SERVICE SHOP**  
 OPEN: Mon.-Fri. 8-5 And "YES!" Sat. 8-Noon!

**BORDER COLLIES PUPS:** Farm raised, livestock working or companion, shots/wormed. 417-967-3657, Upton.

**AUCTION REMINDER:** Consignment Auction. Friday October 18th, 6 pm. R&R Auction. Please see our Auction Directory for more information.

**EVEREST INSULATED SLEEPING BAG** by Slumberjack. \$70. Email Spiritfm89.9@gmail.com or 573-645-7876.

**DARDEN PROFESSIONAL TIMBER HARVESTING, BUYING STANDING TIMBER:** Great prices, improve wildlife habitat and improve forest health. State Certified & Fully Insured! 573-247-4808 or 573-739-1122. Salem

**MASSEY FERGUSON 255 TRACTOR:** W/front loader, solid tractor. \$6,300. 573-674-3948.

**2000 CHEVY 2500:** 6.0, 4x2, single cab, no dents or rust. kept inside, new tires, brakes. \$4,900. 417-399-6687.

**TITANIUM BY GLENDALE 2004 36' FIFTH WHEEL:** 2 slide-outs, very clean, newer AC & water heater. \$8,000. 573-261-4081 St James.

**1965 FORD 1 TON TRUCK:** 12' flatbed. \$3,500. 1959 Chevrolet 38 1 ton truck: 10' dump bed. \$4,500. Best offers considered, 573-729-0272, Salem.

**AUCTION REMINDER:** Real Estate Auction, Friday, October 18th @ noon. Kollmeier Auction. Please see our Auction Directory for more information.

**WANTED CATTLE FARM TO LEASE OR PURCHASE:** within 20 miles of Belle, Mo. 573-578-3945.

**Buildings • Hunter's Cabins • Lawn Furniture**

**JAMCO BUILDERS**

**JAMCO Portable Buildings**  
 800-688-2064 • 307 Enterprise Dr. • Seymour, MO • www.jamcobuilders.com

**Rent To Own Plan**

**AUCTION REMINDER:** Antique & Estate Auction. Friday October 18th @ 10am. Nance Auction. Please see our Auction Directory for more information.

**POOL TABLES:** Installations, moves, repairs, accessories, etc. 573-646-1700.

**AUCTION REMINDER:** Online Auction Bidding ends Tuesday, October 22nd @ 12:30p.m. Atterberry Auctions. Please see our Auction Directory for more information.

**MEAT RABBITS FOR SALE:** 417-664-5684.

**TAYLOR** CHRYSLER DODGE Jeep RAM

705 S Bishop (Hwy 63 S), Rolla, MO 65401 (573) 364-1233

**2017 Ram 3500 Laramie**  
 4WD, Auto 6-speed, 6.7L Diesel, Dually

**\$45,450** Stk # 19159A

**2018 Ram 3500 Laramie Longhorn**  
 4WD, Auto 6-speed, 6.7L Diesel, Dually

**\$55,950** Stk # 19167A

**TaylorChryslerRolla.com**

*The Orr*

Boho Clothing • Smoke Shop • CBD  
 Largest Selection of Body Jewelry in SW MO  
 Gems • Stones and Crystals

535 East Elm Street | Lebanon, MO 65536  
**417-532-8044** • Theozz420@gmail.com

**FRESIANS AND ARABIANS:** For sale and Stallion service. Piglets \$30. Hogs and Nubian goats. Bees and equipment. Raymondville, 573-548-0219, 931-292-0151.

**WR CASE & SONS Cookbook & Historical Companion. \$7.50. 417-532-2045, Lebanon.**

**3PT 2 SECTION HARROW.** \$150. Rogersville. 417-753-2747, 417-766-1991.

**Rotating Hay Carriage**

Starting at \$4,995

**Cowtown USA • 1-800-258-6898**  
I-44 & Hwy F • Exit 203 • Cuba, MO  
View At [cowntownusainc.com](http://cowntownusainc.com) - See Video

**DUAL GMPN Condensing Gas Furnace Heat Pump/Central Air:** Heats 2,400 sq ft home. \$4,000. 417-407-0544.

**FIREARMS:** Professional Repairs and Restorations. Baron's Gunsmithing. 573-363-5801, Camdenton.

**NEW IDEA** 1-row pull type corn picker with wagon. Ready to use. \$3,000. 5x4 Orchard Grass Hay. \$30 each picked up. 573-678-2132, Sullivan.

**WANTED TRUCK:** ElCamino, Corvette, old tractor, old wrecker, old car to restore. 573-734-2822.

**WANTED: OLDER 1/2 TON** six or eight cylinder with low miles and solid body. Contact 618-303-4642.

**FOUR TIRES:** Size 245-60 R18 Michelin. No patches. \$90 firm. 417-532-2344.

**Larry Heisel Rentals**  
LARGE or SMALL...  
**We Rent!**  
Crawler Loaders • Excavators • Backhoes  
Call Larry! **We Deliver!**  
**573-779-1500**  
[www.larryheiselequipment.com](http://www.larryheiselequipment.com)  
Rental Available in 636 or 573 area code

**AUCTION REMINDER:** Estate Coin Auction. Saturday October 19th @ 10am. Nance Auction. Please see our Auction Directory for more information.

**!\$200ARE YOU KIDDING ME???**-Used double-wide. \$19,900!!!! delivery & set-up. 3 bedroom, 2 bath. Call 573-499-9993 [comlum-biadiscounthomes.com](http://comlum-biadiscounthomes.com)

**WANTED PINBALL MACHINES.** 573-424-7200.

**AUCTION REMINDER:** Estate Auction, Saturday, October 19th @10am, Joyce Auctioneering & Real Estate. Please see our Auction Directory for more information.

**AUCTION REMINDER:** Leadmine Consignment Auction. Sunday, October 26 @ 9:00am. Leadmine Community Consignment Auction. Please see our Auction Directory for more information.

**KUSTER LOGGING**  
**BUYER of Standing Timber**  
Oak and Walnut  
Dozing Now Available  
**417-259-0047**  
References Available

**AUCTION REMINDER:** Real Estate & Personal Property Auction, Saturday October 19th @ 10:30am. See our auction directory for details. Darrell Slaughter Auctions.

**10 TASTE OF HOME** Hardback cookbooks. \$2.50 each or all for \$20. 417-532-2045, Lebanon.

**HEAVY DUTY CULVERT PIPE:** New, 18"x16' long. \$130. Cedar Hill, 314-303-7857.

**JOHN DEERE HX 10 FT:** Pull-type brush-cutter. \$4,200. 573-765-4406.

**See Service**  
Spray Foam Insulation  
Closed cell or open cell form available  
Choose the thickness of your insulation

<b>Closed Cell</b>	<b>Open Cell</b>
• Higher R. value	• Lower Cost
• Vapor barrier	• Sound Deadening
• Structural benefit	• Fire resistant
• Fire Resistant	

Both types of foam fill voids and stay where they are put to provide better insulation than fiberglass or cellulose

FINANCING AVAILABLE **WE ACCEPT**  
VISA MASTERCARD

Call Joseph See  
(417) 733-6936  
Located near Buffalo, MO

**ASPLUNDH**  
**TREE EXPERT, LLC**

Is seeking **EXPERIENCED Line Clearance Tree Trimmers, Bucket Operator and Forepersons**

For work in the Lebanon and surrounding areas. **Excellent Benefits:**  
401K, Health, Dental, Vision Paid Vacations and Holidays.

Must be a safe and productive working pass a pre-employment drug test, and have valid driver's license.

**\$21-\$24**  
per hour

Call 636-583-1175 or apply online • [Asplundh.ourcareerpage.com](http://Asplundh.ourcareerpage.com)



# WEEKLY TRADER MAGAZINE



## AUCTION DIRECTORY

### Friday, October 18

10:00 AM	Nance Auction Service.....	26
12:00 PM	Bob Kollmeier Auction.....	40
6:00 PM	R&R Auction Service .....	31
6:30 PM	Interstate Regional Stockyards.....	43

### Saturday, October 19

9:00 AM	Lorts Auction Service .....	37
9:30 AM	Warden Auction Service.....	24
10:00 AM	Wulff Auction .....	21
10:00 AM	Bruce Scheets Auction.....	23
10:00 AM	Nance Auction Service.....	27
10:00 AM	Hurst Auction Service .....	28
10:00 AM	Joyce Auctioneering & Real Estate .....	29
10:00 AM	Knight Auction Service LLC.....	39
10:00 AM	D&G Auction Service .....	44
10:00 AM	Welschmeyer Auction Service .....	44
10:00 AM	Wade Auction Service .....	45
10:30 AM	Slaughter Auction.....	43
11:00 AM	Heritage Livestock.....	38
12:00 PM	Buffalo Livestock Market LLC .....	37
1:00 PM	Salem Livestock Auction.....	38

### Sunday, October 20

12:00 PM	Lorts Auction Service .....	37
1:15 PM	Darren Scheets Auction .....	25

### Tuesday, October 22

Online	Atterberry Auction & Realty.....	41
--------	----------------------------------	----

### Thursday, October 24

9:51 AM	Chupps Auction & Real Estate .....	39
---------	------------------------------------	----

### Saturday, October 26

9:00 AM	Leadmine Community Auction.....	19
9:00 AM	Lorts Brothers Auction.....	20
9:00 AM	Tooley Auction Services .....	34
10:00 AM	Billy Sexton Auctioneers .....	30

### Saturday, October 26

10:00 AM	Easterly Auction Co.....	32
10:00 AM	Integrity Outlet.....	33
10:00 AM	Bob Kollmeier Auction.....	35
10:00 AM	Wade Auction Service.....	36
10:00 AM	Rick Dixon Auction Service.....	43

### Sunday, October 27

9:00 AM	Glenworth Auction Service.....	18
---------	--------------------------------	----

### Tuesday, October 29

Online	Atterberry Auction & Realty.....	40
--------	----------------------------------	----

### Thursday, October 31

Online	Purplewave Auction .....	22
Online	Atterberry Auction & Realty.....	41

### Saturday, November 2

6:00 PM	Mid Missouri Stockyards .....	45
---------	-------------------------------	----

### Wednesday, November 6

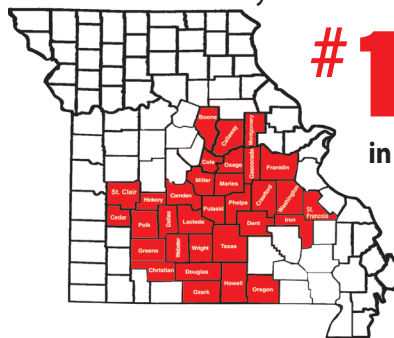
10:00 AM	Trophy Properties and Auction .....	40
Online	Atterberry Auction & Realty.....	42

### Saturday, November 9

10:00 AM	Tooley Auction Services .....	45
----------	-------------------------------	----

### Tuesday, November 12

Online	Atterberry Auction & Realty.....	41
--------	----------------------------------	----



**#1 Rural Shopper**  
in Central Missouri

*Reader's Choice!*

Call 1-800-665-8875 to get your auction listed in the Weekly Trader.

# AUCTIONEERS

Did you know the WEEKLY TRADER covers more counties in rural Missouri than any other publication?

Firm deadline is 12:00 PM Friday, prior to next week's Thursday publication date.

# PUBLIC AUCTION

**Sunday October 27, 2019 • 9:00AM**

**940 S Iron Mountain Rd • Fordland, MO 65652**

**Directions:** From Springfield Take Hwy 60 East 18 Miles To Iron Mtn. Rd. Turn North Across Hwy 60 Onto Iron Mtn. Rd. To Auction. Watch For Auction Signs.  
**-Equipment Selling Around Noon-**

## Vehicles, Equipment & Tractors- 12:00

JD 323D Skid Loader w/ Heat & Air Cab & 960hrs \* 2014 Bobcat 5510 w/ 973 Hrs- Excellent Condition \* MF 383 4cyl Dsl Tractor w/ Front End Loader, Dual Remotes & 495hrs- 1 Owner \* 2010 Mahindra 4025 Tractor w/ Loader & Bucket- 1 Owner 2006 MF2635 Dsl 4cyl 8 Speed Tractor w/ Dual Remotes w/ \* 366hrs- 1 Owner \* JD 4230 w/ Cab, Heat & Air \* Zetor 4x4 10641 Tractor w/ 2500hrs & Front Loader \* White 270 Tractor w/ 280hrs, New Motor, New Brakes \* Oliver Super 55 Tractor \* 2018 Trailerman 35' Gooseneck Trailer w/ 5' Dovetail Dual \* Tandem Axle w/ Triple Ramps & 10,000lb Axles \* 2017 12' Bumper Hitch Livestock Trailer w/ Title \* 1987 Featherlite 32' 6 Horse Air Ride Trailer w/ Title \* 25' Triple Axle Pintle Hook Dovetail Equipment Trailer w/ Ramps 1995 International 4900 DT466 Crew Cab Automatic Dump Truck 1959 Ford Dump Truck 5x2, 8 Cyl, Gas w/ 10' Bed & Low Miles 2007 Dodge 1500 2wd Single Cab w/ Title \* 2004 Chevy Avalanche w/ Leather Seats, Remote Start 4wd & \* 150,XXX Miles \* 2002 Buick Regal \* 1974 Jeep w/ Title \* Trailer w/ Title \* 1997 GMC Bluebird School Bus Cat 3116 Automatic \* 2004 Polaris Ranger \* JD 328 Square Baler- Field Ready \* 10' Bush Hog Brand Bushog- Like New \* 3pt Carryall \* Spray Rig w/ Booms \* 10' Rhino Bushog \* 3pt Post Pounder Priefert Head Chute & Palp Cage \* Loading Chute \* Poly Tank HD Box Blade \* 3pt Boom Pole \* Skidsteer Post Driver \* 110gal Fuel Tank \* Head Chute \* 55+ Round Hay Bales \* 10pc Corral System \* Corral Panels

## Cattle

4 Cow Calf Pairs - 6Yrs Old Bred To Red Angus Bull

## Guns, Hunting, Fishing Misc- Selling Around 1PM

1878 Colt SxS Dim 12g\* 2- LC Smith Field Grade SxS\* Ithaca Gun Co SxS\* Premier Regent SxS 410\* Rem 721 243\* Rem 1100 LW 410\* Spikes Tac ST15-AR15\* AH Fox 16g SxS\* Fox Sterlingworth SxS\* Henry Tolley SxS Dim\* 1893 Mauser\* Win SXP 12g\* Stoeger 12g HDMAXS\* Federal Arms 20g Mossberg 12g Crown Grade\* Escort Youth 487 20g\* Weatherby Mark 5 257 Weatherby Mag\* Federal Arms 12g\* Weatherby Mark 5 300 Weatherby Mag\* Ruger M77 30-06\* Weatherby Centurion 2 12g\* Federal Arms FX3 20g \* Ruger Premark 1 22\* Jiminez Arms JA-9\* Win 1917 \* Stevens Model 320 12g\* Stevens 320 Pump 12g\* Ariska 7.7\* Centurion Model 30-06\* Mossberg 46-B 22\* Savage B Mag 17 Thompson 50cal BP\* Savage Model 110 300win Mag Springfield 30 Express 30-06\* Mossberg 500C 20g\* CAI 12g Stevens M0325 30-30\* Rem M770 30-06\* Rem 783 308\* Thompson Center Impact 50C\* Savage Axis 6.5 Creed Mossberg ATR 308\* Mauser 17386 8mm German\* Copper Ruger American 270\* Mossberg 308\* Win 670A 30-06 Weatherby 7mm\* Rem 783 270\* Howa M1500 30-06 Mossberg M100-30-06\* Savage M111 270Win\* Rem M783 270 Rem Arms M783 308\* Savage M111 7mm\* Stevens M200 25-6 Mossberg 100ATR 270Win\* Mossberg Patriot 30-06\* Mossberg ATR 308\* Savage Axis 308 Threaded Barrel Savage Axis 25-06\* Ruger M77 Mark II 280 Rem\* Daisy M2201 Mossberg Trophy Hunter 270\* Savage M116 7mm \* Daisy M2201 22\* Rem M770 308\* Savage Axis 308 \* Stevens M325B 30-30\* JC Higgins M101.16 22\* Rem 700 284 Stevens M94 20g\* Savage Axis 270\* Ruger 243 AM Predator New Haven M740T 22 Win Mag\* Parker Bros SxS\* Ruger SR45 JC Needham SxS\* Rem Model 720 270win\* Glenfield Model 60\* Win Model 70 270win\* 2- CZ 452-2E 22 LR\* Ruger 10/22 22LR Marlin 455 30-06\* Utg 7.62x39\* Win 37 410\* Barrel 1100LW Pocket Pistol 22cal\* Sig P238\* Ruger LCP 380\* Ruger LC 380\* Antique Pistol\* Beretta 25ACP\* Ammo Cans\* Gun Cases \* M87 Bullet\* Savage 116 338Win\* Marlin 336 30-30\* H&R32 Spain Armas 410\* Kronicle Crossbow\* Horton Crossbow \* SA Crossbow\* Scopes\* Reloading Supplies\* Pocket Knives\* Fishing Supplies\* GPS Trail Cameras\*

Underwater Camera\* Misc Flashlights\* Tents\* Sleeping Bags\* Folding Chairs\* Knives\* Cleaning Kits\* Powder Horns\* Oil Cans\* Antique Shells\* Primer Lots Of Ammo\* Antique Boxes\* Antique Ammo\* Tree Stands

## Coins & Rolex Watch

Gents Rolex Datejust Gold Stainless w/ Diamond Face 1855 Liberty Gold \$2.50\* 50+ Morgans\* 50+ Peace\* Gold Indian \$2.50- 1911, 1912, 1914D, 1914, 1915, 1926, 1928, 1928D, 1929 \* Franklin & Walking Liberty Half Dollars\* Silver Dimes Buffalo Nickels\* Lincoln Wheat Cents & More

## Furniture & Appliances

Frigidaire SS Gas Range\* Jennair SS Electric Range\* TV \* GE Profile Microwave\* Fireplace Heater\* Massage Table Whirlpool SS Side By Side Refrigerator\* Lighted China Cabinet French Door Freezer Bottom Refrigerator\* Twin Trundle Bed Samsung Front Load Washer & Dryer\* Upright Freezer\* Recliners\* Gliders\* King Bed- Complete\* Twin Beds- Complete Round Dining Table & 4 Upholstered Chairs\* Buffet\* Desk Oak Pedestal Table & 6 Chairs\* Full Bed- Complete\* Quilt Racks Occasional Chairs\* 9' Carved Ornate Wood Mirror\* End Tables Lawyers Bookcase\* Sofa & Chaise Lounger\* Chair & Ottoman Oak Buffet\* Large Armoire\* Dressers\* Night Stands\* Sofa \* 3 White Dressers\* Childs Wicker Chair\* Exercise Equipment Oriental Cabinet\* Double Drop Leaf Table\* Dressers\* Wash Stands\* Queen Bed- Complete\* Chest Of Drawers Coffee Table\* Bakers Rack\* Entertainment Centers\* Pub Table Roll Top Desk\* 2- Grandfather Clocks

## Restaurant Equipment

Walk In Cooler\* 3- Exhaust Hoods\* Display Case\* Dish Machine w/ Hood\* Concession Trailer

## Tools, Lawn & Garden

Dixie Chopper Zero Turn 60" Cut Mower w/ Low Hours \* Miller Welder w/ 152hrs & Cart\* Generator\* Power Washer\* Lawn Mowers\* Powermax 1000 Plasma Cutter\* Nail Guns\* AC Units\* Coolers\* Power Washers\* Tool Chests On Wheels Hot Water Pressure Washer\* Craftsman & Snapon Tools\* Bits Fluxcore 80 Welder\* Lots Of Hand & Power Tools\* Set Of Tires & Wheels\* Saws\* Ext Cords\* Ladders\* Socket Sets Rotozip\* Craftsman Belt Sander\* Pliers\* Wrenches\* Sanders Screwdrivers\* Wood Ladder\* Air Compressors\* Chopsaws\* Vice Router On Stand\* Table Saws\* 10" Radial Arm Saw\* Yard Tools Dollys\* Cordless Drills\* Scrollsaws\* Drill Press\* Air Hose\* 10" Table Saw\* Craftsman Routers\* Bar Clamps\* Shop Vac Craftsman Edger\* Heat Gun\* Saws On Stands\* Paint Kits- NIB 2- B&D 20v Lithium Circular Saws- NIB\* LED Path Lights- NIB Roof & Flashing Cement- NIB\* Rust Cap- NIB\* Big Killer- NIB Lots Of Simpson Strong Ties Timber Screws 10" & Under- NIB Blowers\* Videostik\* Nail Guns\* Boat Parts\* Levels\* Plus More!

## Antiques, Collectibles & Household

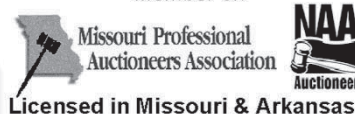
Wheel Chair Lift\* Baseball Cards\* Photographer Camera\* Rugs Large Collection Of Jadeite Dishes\* Golf Club Sets\* Well Buckets Kenmore Sewing Machine w/ Cabinet\* Cast Iron Skillets Home Interior Decor & Pictures\* Christmas Decor\* Floral Decor Pet Stroller\* Luggage\* Rooster Collectibles\* Birdhouses \* Lots Of Fruit Jars\* Books\* DVDs\* Wooden Rocking Horse Lots Of Watches\* Sandwich Glass\* Quilting Material & Yarn Lots Of Cookware\* Dishes\* Wine Glasses\* Grape Decor\* Dolls Military Uniform\* Oriental Figures & Collectibles\* Resistol Hats- NIB\* Desk Lamps- NIB\* Lighters- NIB \* New Kitchen Utensils\* Soda Streamers- NIB\* Food Choppers- NIB\* Cleaning Supplies\* Office Supplies

Auction Conducted by:

# Glenworth

**Auction Service & Realty  
Glen Yutzy, Auctioneer/Broker**

Member of:



Phone: (417) 767-4345

Fax: (417) 767-4222

Not responsible for accidents. Announcements made day of sale take precedence over any printed matter.  
 Terms: CASH or CHECK Visit our website for more information at [www.glenworth.com](http://www.glenworth.com) Lunch available



# ANNUAL Leadmine Community Consignment AUCTION

**Saturday, October 26, 2019 - Start Time 9:00 am**

**LOCATION:** 839 Hwy T, Tunas, MO 65764 @ The Leadmine Produce Auction Facility.

**DIRECTIONS:** From Buffalo, MO, go North on Hwy 73, Turn Right on Hwy E (at Tunas, MO). Go 4 miles to Hwy T, Turn Right and go South 1/2 mile to Auction Site on the right.

**THIS IS ONLY A PARTIAL LISTING! MORE CONSIGNMENTS WELCOME!!**

**Consignment unloading will be October 23, 24, 25 - 9:00am-6:00pm**

For Consigning Contact Kenneth Wenger at 207 School Road in Tunas, or CALL Herman Hostetler @ 417.327.7720

**A BAKE SALE WILL BE HELD ON SITE. FOOD, INCLUDING BREAKFAST AND BBQ CHICKEN, WILL BE SERVED BY THE MENNONITE LADIES.**

**FARM/HORSE DRAWN EQUIPMENT**

Oliver Plow  
McCormick two horse cultivator  
New Idea pull type spreader (Nice)  
488 NH Haybine (1 bad roller)  
20' Horse trailer w/sleeping quarters (rebuilt and repainted)  
20' Bumper hitch flat bed trailer (2018)  
Fencing Supplies  
3 Set draft harness  
Collars, tugs, lines, and hames  
15" Roping saddle  
Old corn sheller w/box  
Primitive stuff

**HORSES**

2 Yr. old standard bred cross mare  
1 Yr. old standard bred cross stud colt  
Weaning colt

**SHOP TOOLS, ETC.**

Bench grinders  
Step ladders  
Extension ladder  
Small table saw  
Cordless screw gun  
Electric Sawzall & drills  
Pneumatic tools  
Lincoln welder generator

**LAWN AND GARDEN**

New outhouse well head cover  
New 5x8 backyard chicken coop  
New 6x8 playhouse  
New cedar planters  
T14 Martin house w/pole  
Long handle tools  
Garden plows  
Lawn mowers  
Electric chipper  
55 R Stihl weedeater  
Mums  
Fruit trees etc.  
Shrubs  
Craftsman weedeater

**HOUSEHOLD**

Furniture  
2 Tub SS sink  
20 + pieces Griswold, Wagnerware  
Bunk bed  
Deep freeze  
Empire propane heater  
Fisher wood stove - Like new  
Fireplace insert (Buckstove)  
Good cond.  
Pioneer cook stove

**BUILDING MATERIALS**

Red Cedar lumber  
Grizzly well pump  
Misc. metal roofing and trim

**GUNS - SELLING AT 12:00 NOON**

Marlin Model 60 S.S. .22  
Savage Model 110 .270 w/scope  
Remington 870 12ga. Supermag  
Remington Model 7600 .270 (exc. cond.)  
w/Redfield 3-9x40 scope  
Mossburg 702 Plink Star w/scope .22  
.22 cal. Auto Hi Standard pistol & holster  
.22 Cal. Buntline pistol Hi Standard  
w/scope & holster  
Taurus 357 Mag. revolver  
Mossburg 12 ga. Model 835 chambered for 2.75"-3.5"  
Assorted Ammo

**OUTDOORS**

16 ft. Alweld boat 20hp Mercury jet motor & trailer  
2 camping cots



- **Terms & Conditions:** Cash or Check w/ valid ID.
- Nothing removed until paid for.
- Not Responsible for Accidents, Lost or Stolen Items.
- No Smoking inside building.
- Announcements made Day of Sale take precedence over printed matter.



Larry Martin

Loren Martin

**Notes: This will be a large Auction - We will be selling two (2) rings.**

# ESTATE AUCTION

Due to the death of the late Lloyd E. Workman, the following will sell at public auction located from the junction of Hwy. 63 and Hwy. 42 in Vienna, Missouri, take Hwy. 42 west 1/4 mile, turn south on Hwy. V and continue 300 feet to auction on left. Follow signs on

## Saturday, October 26, 2019

### Auction will start at 9 a.m.

#### REAL ESTATE

3 bedroom, 2 bath brick home, approximately 1600 square feet, w/new HVAC system in 2016, full unfinished basement, circle drive, handicap accessible on 120'x200' lot in Vienna, Missouri. 10% down day of auction w/letter of credit approval and closing in 30 days. Open House being held from 1-3 p.m. on Sunday, October 20.

#### HOUSEHOLD & FURNITURE

TV stands, sofa sleeper, 2 electric lift chairs, floral high back chair w/stool, end tables, drop leaf table, TV trays, Atomic weather clock, lamps, floor lamps, old wall mirror, sofa table, figurines & knick knacks, paintings & pictures, queen bed w/frame & wood headboard, dresser w/mirror, 2 brown recliners, fan, 2 brown wood nightstands, lamps, black luggage set on wheels, books, cowboy hats & caps, oil lamp, queen bed w/wood headboard & newer mattress & box springs, VHS tapes, quilt rack w/shelf, wooden chairs, plant stand, microwave cart, solid wood kitchen table w/6 chairs (nice), stereo, stone crocks, Tupperware, microwave, thermos, glassware, electric can opener, coffee mugs, lunch boxes, coffee maker, salt & pepper shakers, gravy boats, measuring cups, pie plates, stone canister set, bowls, set of glasses, glass measuring cups, silverware set, pots & pans, utensils, granite boilers, stock pots, Corningware baking dishes, loaf pans, rolling pins, Better Homes & Garden cook book, Maytag washer & dryer, 3 ft. chest freezer, old cookie jar, Shark vacuum, ironing boards, towels & linens, wheelchair, antique trunk, double wash tub & stand

#### TOOLS & OUTDOOR RELATED ITEMS

Hunting & work jackets, Carhartt bibs, work boots, canteen, hunting supplies, knives, camp chairs, misc. ammunition (.308, 12 ga., 30-06), turkey decoys, pheasant mount, full turkey mount, deer head mount, antlers, picnic table, concrete bird bath, antique metal chairs, metal trash cans, concrete tools, bull float w/handles, fence posts, antique feed scoop, chicken wire, lumber & plywood, wooden walk board, wooden ladders, antique shingle cutter, water hoses, wheelbarrow, copper water lines, life jackets, antique miter box, hand grinding wheel, remote control boat, T-squares, vises, hand saws, framing squares, auger bits in wooden case, stair gauge, Stanley hand plane, blow torches, brace & bits, drywall tools, knee pads, 100 ft. steel tapes, pipe wrenches, crowbars, old well bucket, old pulleys, granite pots, TV antenna, wooden box, Weather Guard aluminum tool box (like new), metal rolling cart, folding chairs, PVC pipe, wooden nail keg, tackle boxes, fishing rods & reels, dip nets, fish gigs, propane burners, Coleman lanterns, minnow buckets & traps, coolers, army cot, square wash tub, lawn sweeper, Evinrude 10 hp. outboard motor w/title, wooden carpenter boxes & crates, painter bench, nails, nuts & bolts, window weights, pole saw/pruner, antique transit w/wooden legs, metal toolboxes, truck gun racks, set horseshoes w/pegs, copper & brass plumbing fittings, Coleman metal coolers, antique metal 7-Up cooler, water jugs, wire press, Johnny Stewarts coyote game call, heavy gauge extension cords, work lights, saw horses, skill saws, drills, screwdrivers, wrenches, pliers, tin snips, utility knives, files, portable air tanks, hydraulic cylinders, vise, bench grinder, clamps, Schumacher battery charger, potato fork, leaf rakes, garden hoses, shovels, aluminum scoop shovel, pitch forks, brooms, grease guns, gas cans, splitting mauls, chains, rock hammers & much more

#### FARM EQUIPMENT & GUNS

2014 John Deere X300 riding lawn mower w/127 hours & 42" cut (nice, like new), Rugid lawn trailer (like new), Farmall C (original condition), 6 ft. bush hog, 2 bottom plows, 2 bottom disc plow, 7 ft. pull type disc, 1 section drag harrow, Browning Bar II 30-06 Springfield w/ Safari engraving & scope, Remington 22 552 speedmaster, Browning (Belgium) auto 12 gauge A-500 G, Remington model 1100 12 gauge, Browning light twelve 12 gauge, Marlin 22 semi-automatic model 60 stainless w/scope, Remington model 742 Woodsmaster 30-06 w/scope, Remington model 740 Woodsmaster .308 w/scope

#### AUCTIONEER'S NOTE

Real estate will sell at 12 p.m. with guns and equipment to follow. Guns are very clean. Riding lawn mower is like new! Nice bedroom sets and household items. Mark your calendar and come spend the day in Vienna, Missouri with Lorts Brothers Auction Service!

## LORTS BROTHERS



**AUCTION SERVICE**  
ST. JAMES, MISSOURI  
JUSTIN T. LORTS & DYLAN R. LORTS  
(573)263-2690

## Estate of Lloyd E. Workman

### 112 Hwy. V, Vienna, MO

**TERMS:** Cash or check with photo I.D. • Not responsible for accidents or losses, should they occur. • Nothing removed until paid for. • Lunch Served  
**ANNOUNCEMENTS MADE SALE DAY TAKE PRECEDENCE OVER PRINTED MATERIALS**



# ESTATE AUCTION

## SATURDAY, OCTOBER 19 • 10:00 A.M.

**Directions:** FROM SALEM - Take Hwy. 72 north approx. 14 miles.  
FROM ROLLA - Take Hwy. 72 south approx. 14 miles. Watch for signs.

**HOUSEHOLD • ANTIQUES/COLLECTIBLES • HOME • FARM EQUIP. • MISC.**

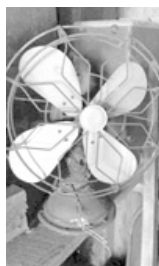
Cookbooks - Bakeware - Kenmore Refrigerator  
 Flatware - Lamps - Arkansas Glass  
 Organ - Large Vases - 10 Point Deer Mount  
 Schlitz Sign - Several Figurines  
 Whiskey Decanters - Pictures  
 Book Shelves - Dressers - Kitchen Table  
 Oil Lamps - Metal Lawn Chair  
 Porch Swing - Boat Trailer  
 3 pt. Spring Cultivator - 3 pt. Corn Cultivator  
 Old Wooden Ladder - Exit Sign - Old Tins  
 6' Pull-type Brush Cutter  
 2 Homemade Trailers - Pull Disk  
 3 pt. Disk Plow - Deer Horns  
 Pull-type 6' Brush Cutter, Needs Work  
 BBQ Grill - Hope Chest - Round Wash Tub  
 Metal Gas Cans - Wheelbarrow  
 8' Wooden Step Ladder - Old Cool Spot Fan  
 Lot of Primitive Tools - 3 pt. Pond Scoop  
 Old Prop Boat Motor, Elgin  
 Several Sizes of Canning Pressure Cooker  
 Old Advertisement Cans - Metal Trash Cans  
 Canning Jars - Old Dodge Advertisement  
 Hay Hooks - Electric Cords

Coca-Cola Thermometer  
 Troybilt 42" Riding Mower  
 Old Ringer Washer - 10+ Kitchen Chairs  
 MayTag Washer & Dryer  
 Old Krout Cutter - Queen Size Bedroom Suite  
 Several Stock Pots - 2 Wash Basins  
 2, 1 Gallon Cocks - Microwave - Pots & Pans  
 Perculator - Roasters - Corningware  
 Massey-Ferguson 65, Runs, Needs Work  
 Blue Jars - Chicken Heaters  
 Blacksmith Vice - 3 Yard Plows  
 Scoop Shovels - Bench Vise  
 Rope - Old Chain Saws  
 Loads of Scrap Iron - 10 Gallon Crock  
 3 Gallon Whiskey Crock

**TO BE OFFERED: Ranch Style House, 3 Bedroom, 1 1/2 Bath, Kitchen, Dining Room, Living Room. 2-Car Attached Garage. Lagoon, Drilled Well & Septic System sitting on 43+ Acres or More. Great Investment, Needs Fixing.**

**AUCTIONEER'S**

**NOTE: Many more items not listed. See you there! - Tom**



**ESTATE OF: ROBERT & FREDIA ADAMICK - EXECUTOR JESS PARKS**

ANNOUNCEMENTS AT AUCTION TAKE PRECEDENCE OVER PRINTED MATTER

## WULFF AUCTION

TERMS: CASH OR APPROVED CHECK - I.D. REQUIRED  
 NOTHING REMOVED UNTIL SETTLED FOR

Licensed Appraisals

**Auctioneers:**  
**Col. Tom Wulff - Col. David Wulff**  
**498 Hwy. B, Salem, MO 65560 • 573-729-8476**  
 Clerk: Tracy Strange      Cashier: Nancy Inman



RAIN OR SHINE OWNER & AUCTION PERSONNEL NOT RESPONSIBLE FOR ACCIDENTS AT SALE SITE

**See Wulff Auctions at [www.thesalemnews.com/auctions](http://www.thesalemnews.com/auctions)**

# CONSTRUCTION EQUIPMENT AUCTIONS

**200+ ITEMS SELL  
NO RESERVE!**  
Straight. Simple. Sold.  
866.608.9283



## THURSDAY, OCTOBER 31

Bidding closes at 10 a.m. CDT

**DG4222**  
'08 CAT  
D6T XL  
dozer



**DG4221** '05 Komatsu  
D155AX-5 dozer



**DE8001** '06 Hydro Ax 421E  
mulcher



**DG4185** '05 CAT 330C L  
excavator



**DE8004** '05 Case 580 Super  
M Series 2 backhoe



**DG4228** '05 CAT 938G  
wheel loader



**FU9512** '11 New Holland  
C236 skid steer



**DE7992** '99 Tesmec  
TRS1075 rock saw



**DH1578** '16 Bobcat E26  
mini excavator

**INVENTORY INCLUDES:** **DOZERS:** '08 Komatsu D65EX-15EO, '05 Case 1150H LT, '00 CAT D6M XL **SKID STEER:** '07 New Holland C185 **WHEEL LOADER:** '05 CAT 966G Series II **MOTOR GRADER:** '96 CAT 135H **EXCAVATOR:** '07 John Deere 350D LC **BACKHOE:** '93 CAT 436B **COMPACT UTILITY LOADER:** '15 Vermeer S725TX **LOWBOY EQUIPMENT TRAILER:** '99 Eager Beaver 50GSL/3 **BUCKET TRUCK:** '12 Ford F550 Super Duty and more.

All items are sold "AS IS." | 10% buyers premium applies.

# BID NOW!

# purplewave.com



# ESTATE AUCTION

## SATURDAY, OCTOBER 19<sup>TH</sup> - 10:00 AM

**Location:** 16678 Ridge Road, Houston, MO

**Directions: From Houston** Go East on Hwy 17 approximately ½ mile to the 1<sup>st</sup> gravel road on the left, it will be the second house on right - less than a ¼ mile down the gravel road.

Watch for Bruce Scheets Auctions Signs. • Visit [www.brucescheetsauctions.com](http://www.brucescheetsauctions.com) to view more photos! **PAYMENT SYSTEM:** Cash • Checks accepted with proper identification Debit/Credit Card (Amount up to \$1500)

Estate of  
**Earnest & Nelda  
GASTON**

### ANTIQUES & COLLECTIBLES

Avon Bottle Collection – Several Hundred Different ones with some still in the box and many duplicates • Wooden Shoes - Dutch • Several German Clocks – Wooden • State Plates – about 40 different States • Depression Glass • Carnival Glass – Dark Blue • Crystal Glass Items • Silver Plated Oneida Tea Set • Royal Typewriter in Case – Pink circa 1955 • Old Time Wagon Parts – Needs wood replaced • Milk Can • Old Time Wash Set (pitcher/bowl) • Several Boxes of Kids Toys • Board Games • Other

### DOG KENNEL ITEMS

Roll of Corrugated Kennel Wire • Pile of one-inch square metal tubing for making dog kennels • Portable Pet Carriers – Numerous • Several Metal Dog Cages • Two Metal Dog Houses • 55 Gallon Dog Houses • Three Dog Runs • 5 Wooden Dog Cages • Some Kennel Supplies • Heating Pads • Water Dispensers • Feed Dispensers • Other

### FARM EQUIPMENT

8N Jubilee Ford Tractor – Not Running • Flatbed trailer w/metal bed approx. 7x14 • Ford 552 Round Baler / Parts • 200 Gallon Diesel Tank/Stand • Old Disc/Cultivator • Logging Binders • Cement Mixer • Other

### FURNITURE

Washer • Refrigerator • Freezer • 3-piece sectional sofa with a fold out bed • Recliner • Chair Deco Style • Coffee and End Tables • TV Stand with Side Shelves • 2 Full size China Cabinets with storage area • Dining Room Table with 6 chairs w/ middle section • Microwave Stand • Small desk • Makeup Chair • 3 Piece Bedroom Set (headboard/footboard with mattress/box springs) Matching Chest of Drawers with a dresser with a mirror • King Size Bed with Headboard and Box Springs and Mattress • Chest of Drawers with 2 matching Nightstands • Bed Foot Sofa – Bench style • End Table Marble top • Several other night stands folding Metal Chairs • Small Air Conditioner • Other

### HOUSEHOLD ITEMS & MISC

Grandfather clock – wall style • Refractor Telescope 41 to 450 power • Cypress Stump Block • Ceramic Wall Hangings – Old Ship • Several lamps – some antique • Wooden Toy Box • Electric Space Heaters (10 or more) • Wall Mirrors • Box of Sofa Pillows • VCR Tapes and VCR Cabinets • Box of Candles • Pots & Pans • Silverware • Household Supplies • Walnut Boards – Sawmill Hewn • Landscape Pavers (grey cement and red cement) • Large Box of VCR Tapes • Lots of Cassette Tapes • Some Vinyl Albums/Records • Small Box of Flashlights • Small Box of Cookbooks • 30 boxes of Puzzles • Shoes & boots incl. cowboy boots (some new) • Several Window Fans • Exercise Equipment

**AUCTIONEERS NOTE:** Large Assortment of items including the remnants of several past businesses: dog kennel/salvage yard & a sawmill. Lifetime collection. Many items still to be unboxed - something for everyone! Look forward to seeing you on auction day!  
*Bruce*

**DRIVER'S LICENSE OR PICTURE I.D. REQUIRED • TERMS: CASH OR APPROVED CHECK**   **OR** 

## BRUCE SCHEETS AUCTIONS

[www.brucescheetsauctions.com](http://www.brucescheetsauctions.com) • HOUSTON, MO • We Accept Mastercard, Visa & Discover

Auctioneers:  
**COL. BRUCE SCHEETS**  
417-260-2118  
**COL. TRAVIS TOOLEY**  
417-293-6909



All announcements made day of sale take precedence over any printed matter. Not responsible for lost or stolen merchandise. Not responsible for accidents.

**LUNCH WAGON • APPRAISAL SERVICE • RAIN OR SHINE**

Ringmen:  
**Terry McCallister, Josh Wheeler,**  
**Vance Farmer**  
Cashier/Clerk:  
**Andi Scheets, Chyenne Scheets,**  
**Suzanne Smith, Jennifer Tooley**

### SCRAP METAL ITEMS

Old School Bus – For Salvage • Truck Cab • Numerous piles of metal for salvage • Several Old Freezers and refrigerators for scrap • Heavy Chop Cut saw - salvage • Several large lots of nuts and bolts • Pile of Aluminum for salvage • Pile of Brass items for salvage • Pile of Alternators • Pile of Compressors • Other

### VEHICLES

1989 GMC Vandura 2500 (last driven about 15 years ago) ( 5.0 Liter Motor) • 1984 GMC 4x4 pickup w/steel flatbed & hyd. bale spike (not running) • (5) Mid-1980's Pontiac Fiero's – parts only • 2004 Sunfire – Bill of Sale – No motor or Transmission • 2001 Cavalier – Bill of Sale – No motor or Transmission



**2008 PONTIAC TORENT SUV  
W/ 81,242 MILES**

### MUSICAL INSTRUMENTS

Starr Piano approx. 1950 walnut • Violin with case • Saxophone w/ case – Evette & Schaffer by Buffet – Paris France

### TOOLS

Miller Wire Welder • Portable Spot Welder • Engine Hoist • Oxygen/Acetylene Torch Set with Bottles • Pickup Tool Box • Air Compressor – Large • Portable Table Saw – Folding Style • Several lots of Sockets/Wrenches • Air & Hand Sanders • Assortment of Hand Winches • Auto Body Hammers & Dent Working Tools • 10 Ton Frame Puller – Hooks in I-Beam • Front End alignment items – not complete • Jack Stands • Car Ramps • Floor Jacks • Drills • Assortment of Hammers • Portable Air Tank • Portable Gas Cans • Spool of Electric Wire • Animal Trap • Electric Grinder • Fishing Poles & Equipment • Weed Eater • Other

GO TO THE AUCTION • GO TO THE AUCTION • GO TO THE AUCTION • GO TO THE AUCTION • GO TO THE AUCTION •

# PUBLIC AUCTION

## SATURDAY, OCTOBER 19, 2019 STARTING AT 9:30 A.M.

**Location: 14272 Hwy 64, Lebanon, MO 65536**  
(Located between Lebanon and Bennett Springs)

### Household

Old Corner Curio,  
Dark wood w/Glass in  
Doors  
3-Sided Curio  
Entertainment Center  
3 Seat Sofa (Floral  
Stripe)  
Rocker Recliner  
Framed Art  
Set International Silver  
Plate Flatware  
Lot Crystal and  
Stemware  
Dining Table (Tile Inset)  
w/6 Chairs  
Large Set of "Golden  
Wheat" Dishes  
Edinpure Heater  
Duraflame Heater

Chest of Drawers  
Dresser  
Queen Headboard  
Small Blonde Table  
Ornate Brocade Chair  
3 pc. Suitcases, Brocade  
Anniversary Clock  
Bakeware  
2 2-Drawer File Cabinets  
Roll Top Desk  
Water Cooler  
Christmas Décor

### Collectibles

**1905 Old Towne Canoe,  
Beautifully Restored**  
Framed Bucolic Scene  
purchased in 1941  
Old Zenith Radio/  
Record Player

Oil Lamps  
Some GI Joe Toys

### Tools & Outdoor

Shenandoah Oil Furnace,  
Ceiling hung, w/ Tank  
**1958 Harley Davidson  
Motorcycle (will start)**  
Troy Bilt Storm 5024  
Snowblower/Thrower  
Craftsman Table Saw,  
2.5 hp  
Hand Tools  
Coke Vending Machine  
(working)  
5 pc. Patio Set  
**Marlin Model 80 .22**  
**Many more items too  
numerous to mention**

## Refreshments and lunch available by Fry Daddyzzz

Owner: **Marguerite (Vickie) Vandergrift**

Announcements Day Of Auction Take Precedence Over Any Other Advertising

3% Convenience fee added to all credit/debit card transactions

Sale Conducted by

## WARDEN AUCTION SERVICE

### Ed Warden – Auctioneer

**(573) 528-0729 or (573) 336-2367**

**[www.wardenauction.com](http://www.wardenauction.com)**

#### TERMS

Cash, Credit,  
Debit or Approved  
Check

ID Required for  
Bid Number

#### TERMS

Not Responsible  
For Accidents  
or Losses

Nothing Removed  
Until Settled For

GO TO THE AUCTION • GO TO THE AUCTION • GO TO THE AUCTION • GO TO THE AUCTION • GO TO THE AUCTION •

TO THE AUCTION • GO TO THE AUCTION • GO TO THE AUCTION • GO TO THE AUCTION • GO TO THE AUCTION •

TO THE AUCTION • GO TO THE AUCTION • GO TO THE AUCTION • GO TO THE AUCTION • GO TO THE AUCTION •



# PERSONAL PROPERTY AUCTION

## Sunday, October 20 @ 1:15 PM

**Location:** Texas County Fairgrounds • North Highway 63 • Houston, MO

**Directions:** Take Hwy 63 North One Mile from Houston, Missouri 65483. Watch for Auction signs day of sale!

**OWNER: RICK HILL**

### TRUCK

2008 GMC pickup with 5.8 Liter V-8, AT, Good Truck \* 12 Ft trailer flatbed with brakes \* 2004 12 ft Boat with trailer and Minn-Kota Trolling Motor - Nice

### TOOLS AND EQUIPMENT

7500 Watt Generator with Electric Start - Never Started \* Hitachi Sliding Compound Miter Saw with Stand \* Stihl 250 Chainsaw with extra chain \* Craftsman Chainsaw with case - New \* Stihl FS130 Weedeater with Brush Blades \* Husqvarna Weedeater \* Battery Charger \* Four Gallon Backpack Sprayer - New \* 20 Ft Log Chain \* Heavy Duty Capacity Lawn Wagon \* Wheelbarrow \* Stanley Saw Horses \* Craftsman 18" Tiller \* 6 Ft Step Ladders \* 8 Ft Step Ladder \* 22 ft Extension Ladder \* Bolt Cutter \* Scotts Fertilizer Spreader \* Lots of Misc Hand Tools \* Barbwire Roll \* Barbwire Unroller \* Post Driver \* Come-A-Long \* Fishing Poles, tackle box, knives \* 2019 Toyota Pickup Wheels \* Misc. Not Listed

### GUNS

308 Savage Model 10 \* 30-06 Marlin Model XL7 \* The Judge Taurus \* Ruger Mach 1 - 22 LR Pistol \* Rough Rider 22LR/22Mag Pistol \* Charter Arms 44 \* EEA 38 Pistol \* Jennings 22LR \* Rohm 38 Special \* Titan 11 380 Pistol \* Trustworthy 12 gauge \* Springfield 410 Shotgun \* Harrington & Richardson 22-250 \* Savage 22LR with Nikon Scope \* Misc. Ammo

### HOUSEHOLD \* MISC

21 cubic Foot Frigidaire Freezer \* 8 Ft Stainless Counter/Table \* Bookcase \* Outside George Foreman Grill \* Small Wood Serving Table \* Sewing Machine - wood cabinet \* Barbeque Grill \* Wood Cabinet with CDs \* Wood Heating Stove \* Misc. Dishes

### LOTS OF MENS AND WOMENS JEWELRY

**Auctioneers Note:** This a good clean auction you don't want to miss. Pickup sales with owner conformation.

# Darren SCHEETS AUCTIONS

(417) 457-6638 • (417) 926-8575

[www.scheetsauctions.com](http://www.scheetsauctions.com)



**TERMS OF AUCTION:** Cash or check with picture ID. Nothing loaded or removed until paid for. Everything sells as is, where is. Not responsible for accidents, lost or stolen items. Auction day announcements take precedence over all previous advertisements.

# ANTIQU & ESTATE AUCTION

Friday, October 18, 2019 ~ 10:00 AM

Location: 289 Oak Street, Asbury, MO

**Auction For Christy & John Tripp**



## Antique, Primitive Furniture, Store Counters, & Store Shelving Items

Ant 1 Door Wardrobe W/Mirror & Drawer On Bottom, Ant Cream & Green Gas Granite Cookstove, Ant Oak Round Front China Cabinet W/Lead Glass, Ant Oak Pulpit, Ant Metal Bathtub, Ant Drop Leaf Kitchen Table W/Rare Drawer In The Middle, Ant Oak Office Chair, Ant Stagecoach Trunk, Ant Chest Of Drawers, Ant Teal Roll Top Desk, Ant Granite Top Sewing Machine Table, Several Sm Ant Tables Of Various Kinds, Prim Vanity, Prim Wood Kitchen Cabinet, Prim Corner Shelf & Other Prim Shelves, Pie Tier Tables, Prim Chest Of Drawers, Old Mantle Clocks, Prim Wood Desk, Several Prim Kitchen Chairs, Several Prim Setting Upholstered Chairs, Several Ant Pictures Of Various Kinds, Several Ant Mirrors, Ant Vanity, Old Wood Trunks, Oak Gossip Bench, Prim Doors & Windows, Oak Wash Stand, Ant Kitchen Table W/Claw Feet, Ant Wood Highchair, Oak Library Table Originally From Pitt State University, Wood Ironing Boards, Old Light Fixtures, Wood End Tables, Old & Ornate Lamps, Wicker Pcs, Lots Of Beer & Cigarette Advertising Clocks & Lights, Matching Chair & Loveseat, Wood Shutters, Wringer Washer Tub On Stand, Metal Outdoor Chairs, 6 Store Display Counters, Several Store Display Items, Pepsi Store Cooler, Mini Fridge, Other Items Not Listed

## Antiques, Primitives, & Collectibles

Prim Advertising Boxes, Prim Coke & Pepsi Crates, Old Crock Pcs, Old Cast Iron Pcs, Galvanized Pcs, Old Bikes, Old Advertising Gas & Oil Cans, Graniteware, Old Toys (Several

Metal), RxR Items, Old Cream Cans, Old Metal Signs, Old Pocket Watches, Old Wood Wire Spools, Old GMC Hood, Old Iron Wheels, Old Copper & Wood Box, Old Pipes, Tobacco Advertising Pcs, Old Decanters, Old Jars & Bottles (Some Unusual), Lg Lot Of Old Paper Goods (Some Unusual), Old Produce Scales, Old Baskets, Old Dolls & Doll Clothes, Old Insulators, Old Push Plow, Lg Lot Of Sm Prim Tools, Very, Very Lg Lot Of Old Records, Old & Costume Jewelry, Some Old Coins & Tokens, Wood Ladders, Ant Shopping Cart, Lg Lot Of Cookbooks, Ant Child's Doll Buggy, Old Buttons, Old Salt & Pepper Shakers, Old Cans, Chalk Pcs, Old Marbles, Lg Lot Of Old Pottery Of Various Kinds, Clown Collectibles, Several Old Ladies & Men's Hats, Pyrex & Fire King Dishes, Old Cookie Jars, Old Kitchen Utensils, Old Books (Some 1800's), Very, Very Lg Lot Of Old Knick Knacks, Clown Collectibles, Several Old Various Kinds (Most Are Collectible), Very Lg Lot Of Christmas & Other Holiday Décor From New To Vintage, Lg Lot Of Sm Prim Items. This Is Only A Partial Listing Of Antiques, Primitives & Sm Collectibles, Hundreds Of Items Added Sale Day.

## VW Bug, Tractor, Carports & Outdoor Items

2007 VW Bug Car W/Approx 120,000 Miles, Massey 160 Gas Tractor, 1 Car Carport, 2 Car Carport, Sm Tools, Outdoor Décor Pcs, Industrial Metal Shelving, Fishing & Hunting Related Items (Some Old), Several Other Items Not Listed In This Category Due To Being Stored In Barn At Another Location.

**Auctioneers Note:** It Is An Honor To Be Conducting This Auction For Mr. & Mrs. Tripp As They Have Been Great Friends Of Ours. This Auction Is Totally Amazing With Antiques, Primitives & Collectibles Of All Kinds From Furniture, Primitive Collectibles, Glassware, Pottery, Very Good Collectibles & Hundreds & Hundreds Of Items Not Listed. VW Bug Is Excellent, Carports Are Good As Well. This Is An Outstanding Auction That You Do Not Want To Miss If You Are Into Antiques & Collectibles Of Any Kind. Amazing Auction!!! Please Plan Now To Attend. This Is A Large Auction So Please Plan To Be There All Day. **Sale Order: As Items Are Scattered Throughout The Building We Will Do Our Best To Offer Furniture & Store Display Items First But There Will Be Some Mixture Throughout Then We Will Move Into Antiques, Primitive & Collectible Items. At Approx 1:00 PM Will Offer VW Bug, Tractor, Carports & Larger Items. Remainder Of Smalls & Outdoor Items Will Finish Auction. See Ya There!!!**

Terms: Cash or check with proper ID. Now accepting most major credit cards. Nothing removed until settled for. Statements made the day of sale takes precedence over printed material. Everything sold as is where is. Not responsible for accidents. Restroom available. Concessions Provided By Red Barn Smokehouse 417-214-0600. Check our website for upcoming auctions and for additional pictures!!



## NANCE AUCTION SERVICE

No Matter How BIG or small, We Do Them All!

www.nanceauctionservice.com

Col. Bill Nance 417-214-0093

In God We Trust

Philippians 4:13



# ESTATE COIN AUCTION

**Saturday, October 19th, 2019 ~ 10:00 AM**

LOCATION: America's Best Value Inn & Suites, 2345 E Marvel Road, Nevada,  
MO (Watch For Signs)

## Large Estate Coin Auction

Gold Inc 1899S \$5, 1908 \$5, 1853 Type I \$1, 1853O Type I \$1 (Rare), 1874 Type III \$1, 1904 Liberty 2 1/2, Type I \$1 Love Token, 1 & 2 1/2 Grams, Other Gold, Morgan Dollars Inc 1878 W/8 TF, 1879, 1883O, 1893, 1894, 1878S, 1881S, 1900O, 1903, 1879S Reverse Of 1878 (Rare), 1884S, 1894O, 1883S, 1891S, 1900O/CC, & Others, Peace Dollars Inc 1924S, 1928S, 1926D, 1927, & Others, 1798 Draped Bust Silver Dollar, Lots Of High Grade Seated & Bust Halves Inc 1838, 1896O, 1902O, 1902S, 1874, 1875CC, 1894S, 1898O, 1899O, 1900S, & Others, Commemorative Old Half Dollars, Quarters Inc Standing, Seated, Barber & Washington Inc 1818, 1825, 1834, 1876CC, 1919S, 1950 Double Die Reverse Error, 1950 D/D (Rare), 1950 D/S (Rare), 1917D Type I W/Full Head, 1854 W/Arrows, 1854, & Others, Barber, Seated & Mercury Dimes Inc 1901S Rare, 1902S, 1905S, 1907S, 1839O, 1842, 1887, Buffalo & V-Nickels Inc 1913D, 1917S, 1918D, 1937, 1916D, 1928S, 1918S, 1924S Rare, 1883/2, & Others, Two Cent Pieces, 3 Cent Silver Pcs, 3 Cent Nickels, Lots Of Lincoln, Indian & Flying Eagles Inc 1858 SL & LL, 1864L, 1866/6, 1909, & Others, Large Cents Inc 1797, 1798, 1803, 1802, 1839, 1814, & Others, Half Cents Inc 1807, 1810, 1829, 1811 Rare, 1835, & Others, Several Proof Sets, Coin Sets & More, Several Ancient & Foreign Rare Coins. Several Rare Half Dimes Inc 1834, 1854 W/Arrows, 1855 W/Arrows, 1866S Rare, 1844/84 Rare, 1853O W/Arrows, 1868S Rare, & Others. This Is Only A Partial Listing As There Are Hundreds Of Rare Type & Collector Coins Not Listed. Please Check Website For Complete Coin List. There Will Be Hundreds Of Other Coins Added As Well As Currency & Other Oddity Coins.

**Please Plan Now To Attend This Very Rare & Unique Coin Auction. Contact Bill At 417-214-0093 For Any Questions. Doors Will Open At 8:00 AM For Preview. Police Officer Will Be On Site During Auction. You May Be Asked To Have Your Photo Taken So Please Be Prepared.**



## NANCE AUCTION SERVICE

No Matter How **BIG** or small, We Do Them All!!!

[www.nanceauctionservice.com](http://www.nanceauctionservice.com)

Col. Bill Nance 417-214-0093

# PUBLIC AUCTION

FARM




To settle the estate of Clarence and Francis Falter, the items listed below will be offered at Public Auction.  
**Directions:** From Vienna, take Highway 42 West for five miles to right on Highway T, then five miles to farm or from Argyle, go two miles south on Highway T to farm. Watch for sale signs on:

## Saturday ~ October 19, 2019

### 10:00 a.m. ~ Argyle, Missouri

**- TRUCK, TRACTORS, FARM MACHINERY and MISCELLANEOUS -**

*(Truck and Tractors Sell @ Noon)*

2013 Ford F150 Truck (4x4, XLT, Regular Cab, 23,000 miles) – 2006 Ranger Si (4x4) - Kubota M6060 Cab Tractor (4x4, LA1154 Loader, 500 hours) – New Holland TC40 Tractor (4x4, Loader, Bale Spike) – 3 Pt. 7 Ft. Field Cultivator – 3 Pt. Bush Hog – New Holland 472 Haybine – Tedder – Three Bottom Plow – 3 Pt. Disc – 3 Pt. Grader Blade – K-Gleaner Combine with Corn and Bean Heads – 10' Gleaner Head (salvage) - Hay Wagon with Spoke Wheels – 3 Pt. Seed Spreader - 3 Pt. Hydraulic Wood Splitter – Lincoln Welder – Generator – Garden Tiller – Lawn Mower – Hand Seeder – Four Wheeler Sprayer - Weed Eater – Air Compressor – Stihl Chainsaws – 200 Gallon Gas Tank with Stand – Assortment of Oil - Log Chain – Step Ladder – Socket Sets – Open Wrenches – Craftsman Skil Saw – 4' Disc Grinder – Impact Wrench – Drills – Band Saw – Heat Lamps - Hand Tools – Fence Stretchers - Fencing Tools – Electric Fence Post - Feed Troughs – Head Cattle Chute – Cattle Panels – Homemade Calf Feed Bin - Hay Bale Rings – 80 Large Round 4x5 Hay Bales – Seasoned Fire Wood – Live Traps – Dog Box, Waterers and Carriers – Beaver Traps – Minnow Bucket - Buckets

**- ANTIQUES, HOUSEHOLD and MISCELLANEOUS -**

Crock - Sausage Stuffer – Meat Grinder – Bacon Slicer – Black Butcher Pot – Beam Scale – Metal Bucket – Apple Peeler - Old Refrigerator – Tables - Wood Stove – Gas Cook Stove – Vintage Kitchen Table with Six Chairs – Oak Dining Table with Six Chairs and Two Extra Leaves – Card Table and Chairs – Folding Chairs – 8' Folding Table - Wood Desk – Kids Red Wagon – Gun Cabinet - Matching Sofa and Love Seat – Recliners – Sofas – Coffee and End Tables – TVs – TV Stand - Lamps – Figurines – Pictures – Radio – Clock – Fans - Bedroom Sets – Storage Chest - Stetson 22 Karat Gold Trim/ 1940's Greek Key China (8 place setting with extra pieces) – Wheat Pattern Stoneware – Glasses - Dishes – Soup Cups - Glassware – Bread Pans – Pie Plates – Cookie Sheets - Bakeware – Cake Decorating Items - Corningware – Bowls – Casserole Dishes – Ice Buckets – Knife Set – Utensils – Silverware - Bread Box – Roasters – Pots and Pans – Coffee Pots – Toasters – Mixers – Pressure Cooker – Canning Jars – Canner - Tupperware – Microwave – Deep Fryer – Crock Pot – Electric Skillet – Toaster Oven – Blenders – Electric Roasters – Rotisserie Oven - Sewing Machine – Quilts – Material – Christmas Decorations – Pack-n-Play - Washer – Dryer – Rainbow Vacuum – Air Purifier – Dehumidifiers - Bed Linens – Towels – Patio Set – Picnic Table – Swing – Wooden Glider – Two Wooden Lawn Chairs – Yard Ornaments – Lawn Chairs – Coolers - Gas BBQ Grill – Smoker - Exercise Bike - Wheelchair – Medical Items - **Other Items Too Numerous To Mention**

*Auctioneers' Note ~ Items are very clean and some are like new. Plan to attend!*

## Clarence and Francis Falter Estate

Terms: Cash or Approved Check – **Photo ID** Required for Bid Number – Lunch Available - Not Responsible for Accidents or Losses  
 Nothing to be Removed Until Settled For – Announcements Day of Auction Take Precedence Over All Printed Matter

# HURST AUCTION SERVICE

**Auctioneers: Franklin, Jim and Tom Hurst**

Telephone: (573) 229-4835, 229-4330 or 229-4675

Clerk - Cashier: Sue Feltrop and Judy Kempker



# Estate Auction

## Saturday, October 19 • 10:00AM

### 3755 Frisco Road • Niangua, MO

**Directions:** From I44 East take exit 170 toward Sampson Rd/Sparkle Brook Rd then turn right on to Co Road 158 then turn right on to Rte 66 then left onto Frisco Road Auction will be on your right watch for signs.



#### VEHICLES AND EQUIPMENT

1979 Ford F800 dump truck • 2001 GMC 4x4 half ton with apx 163574 miles • John Deere 2640 tractor with apx 102 hour's • John Deere 146 frontend loader • 1997 P.J. gooseneck trailer • Club Car gas golf cart • Bobcat zero turn mower with apx 1271 hours • Miller ARC welder • Single axel 6ft trailer • DEK 5650 generator



#### HOUSEHOLD ITEMS

Sofa • Stand glass lamps • Maytag washer and dryer set • Queen bed • Chest freezer • Recliners • Kitchen table and four chairs • Home décor • Picnic table • Barbecue Grill

#### TOOLS AND FARM SUPPLIES

Round bale hay feeder • 4 plastic feeder troughs • Barrel stand • Hand tools • Chain link fence • Barrels • Fiberglass ladders

**Please see Auction zip or our Facebook page for more photos and information.**



**JON JOYCE** Auctioneer, Licensed Agent | Lic. #200

All items sold as is – where is. Accepted Payment Forms: Cash, Good Check, Credit, or Debit (3% added for credit & debit transactions)  
Check out our online listing at [www.auctionzip.com](http://www.auctionzip.com) — Auctioneer ID# 30607

# Joyce

*Auctioneering & Real Estate*



(417) 859-2700 - Business | (417) 859-2724 - Fax  
(417) 207-5412 - Cell | [jjoyce24.jj@gmail.com](mailto:jjoyce24.jj@gmail.com)



# PUBLIC AUCTION

## SATURDAY, OCTOBER 26 • 10:00 A.M.

**Location:** 4797 Lemon Drive, Hartville, Mo, 65667. Directions: From Hartville, 1 mile north on Hwy. 5, turn right on Z Hwy. approximately 5 ½ miles to Lemon Drive on right. (Watch for auction signs.) Reason for auction: Retiring from farming.

### Tractors – Trailers – Four-Wheelers – ATV – RTV

2011 Kubota M110X w/Kubota LA 1953 loader, cab, 4-wheel drive, bucket, spike, back glass screen, power shuttle shift, pre-def, 1416 hours, 110 HP; 2011 Kubota M135X w/Kubota LA 2253 loader, cab, power shuttle, 4-wheel drive, pre-def, 135 HP; 2005 Kubota M105S w/Kubota LA 1301s loader, cab, 4-wheel drive, back screen, shuttle shift, pre-def, 2850 hours, 105 HP; 2013 Kubota L 3800 w/Kubota LA 524 loader, 38 HP, canopy, 4-wheel drive, 461 hours, pre-def. 20' gooseneck flatbed trailer, 16' utility bumper trailer, 12' bumper trailer with 4' fold-up ramp, Delta 12' bumper pull stock trailer, Featherlite 32'; dual tandem flatbed with fold up ramps new tires and brakes; 2 pickup bed trailers; other misc. trailers; ATV, RTV; 2011 Kubota 1100 RTV w/hydraulic dump bed, heat and air, diesel, power, loaded, 2013 Honda Foreman 500 four-wheeler camo 4x4 498 miles, Honda Foreman ES 500 w/winch; Kubota industrial tires w/rims mounted.

### Hay Equipment- Manure Spreader

2016 Vermeer 6640 rancher 4x5 round baler; 2016 Vermeer MC 3300 mower conditioner; Long 10-wheel hay rake; Rhino PT 405H 4-basket w/hydraulic lift; New Holland 320 small square baler; Farm Hand Square bale accumulator; Farm Hand 8-bale hydraulic grapple; 3 pt. bale spikes; 3 pt. bale unroller; Sitrex 12 wheel bifold hay rake; New Holland 218 manure spreader, new chain and floor.

### Farm Implements- Cattle Equipment

Rome 8' offset plow; 10' wheel disc; John Deere 2-bottom plow; 3 pt. Danuser post driver; 3 pt. LDT roto tiller; 3 pt. Shaver stump grinder; 3 pt. seeder; 3 pt. post hole auger; 3 pt. carry all; Woods D596 8' bushhog; Woods 5' bushhog; Woods 15' Batwing bushhog w/foam filled tires; 10' field roller/concrete filled; 6' field roller; 7' utility blade; 3 pt. 8' blade; 8' box blade w/ripper; 3 pt. 9-tooth tiller, 5' disc; Steel corral system; approximately 25 panels sweep alley and gates; portable cattle chute w/dolly; Sureweight 2000 lbs scales; extra alley way; 20 round bale feeders, poly feed bunks.

### Generators – Mowers – Shop – Tools

Pincor 30,000 watt PTO generator w/dolly; Troybilt 7550 generator, 13,500 watt, electric start; Miller Bobcat 225 welder; oxygen and acetylene tanks w/torch, Husqvarna Z254 zero turn mower, 2017 model; Murray and Craftsman 42" riding mowers; two rear-tine tillers, 2 sets of ¾ inch sockets; toolboxes; 300 gallon fuel tank w/pump; 4 fuel tanks w/stands; Kwik Way tire changer; chains; boomers; few hand tools.

**Auctioneer Notes:** Outstanding line of tractors, equipment, implements, shop items. Don't miss this outstanding auction!

### OWNERS: Jim and Shiela Lemons

For information: Jim Lemons 417-464-3280 or 417-741-6023



# BILLY SEXTON

## AUCTIONEERS

683 Missouri Avenue, West Plains, MO • Office: 417-255-2744 • Billy Sexton 417-257-4595  
Justin Kraft 417-274-0073 • [www.sextonauctions.com](http://www.sextonauctions.com) • Not Responsible For Accidents



# R&R AUCTION SERVICE

## CONSIGNMENT AUCTION

### FRIDAY NIGHT, OCTOBER 18 AT 6PM

1644 South Ash • Buffalo, MO

*Join us for an amazing commercial/industrial auction!*

We have combined merchandise, equipment, parts, tools, and fixtures from several businesses to make a fantastic auction. We have product from Beauty salon, restaurant, ce cream parlor, HVAC, Auto Body, and a Mechanic garage.

*Items include but are not limited to...* Beauty shop chairs, several exterior AC units some new, 19 drawer roll around

Snap-on shop tool chest, golf cart gas powered 16 HP motor, custom-built flatbed golf cart trailer, new cozy floor furnace still in box, flow Hood, fan controls, fan parts, limiter switches, recovery units, A coils, oxygen acetylene sets, several electric motors, lots of Snap-on wrenches, Craftsman tools, Mac Tools, meters, gauges, water fountain, Lincoln Wire-Matic 255 welder, Lincoln idealarc sp-100 welder, tube bender set, vacuum gauge, vice grips, display rack, large store counter, bar stools, desks, office chairs, engine lift, Auto Body Work tools, 10 ton and 4 ton port-a-power, motor stand, tie rod remover, vintage Ice cream freezer and counter top display, tea serving urns, small refrigerator, full size refrigerator, royal cash register, 3 hot bars, Soda fountain, milk shake machines, Farberware carousel warmer, vintage ice cream cone dispenser, Husky truck tool box, lots of air tools.



*So much miscellaneous we can't list it all!*



**KEEP WATCH ON OUR WEBSITE FOR PICS AND PRE-BIDS. WWW.RRAUCTIONSERVICE.COM**

## STORAGE AUCTION

SATURDAY, OCTOBER 26 AT 9AM

**NORTHSIDE RENTALS**  
corner of Stanley & Locust St.  
THEN MOVING TO  
**BUFFALO SELF STORAGE**  
on South Ash Street  
**WATCH WEBSITE FOR DETAILS**

**TERMS:** Cash, check, or credit card with proper I.D. nothing removed until settled for A 3% fee will be added to credit card purchases. Not responsible for errors in listing. Any announcement made sale night will take precedence over any printed matter. **Note:** Service will take every precaution to prevent accidents, but will not be responsible should any occur.

**For more information contact Professional Auctioneer Russ Weeks at 417-576-7357 or check out [www.rrauctionservice.com](http://www.rrauctionservice.com)**



Serving this area's auction needs since 1997 with honesty and professionalism.  
[www.rrauctionservice.com](http://www.rrauctionservice.com)  
**(417) 576-7357 or (417) 345-4140**



**CAGA**  
CERTIFIED APPRAISER

# REAL ESTATE & PERSONAL PROPERTY AUCTION

## SATURDAY, OCTOBER 26 @ 10:00 AM

### 58 E. Hickory Street • Fair Grove, MO 65648

**DIRECTIONS:** Take 65 N from Springfield, take MO-125 exit, turn right on MO-125, turn left on N. Main Street, Right on E. Hickory street and auction will be on right.



## REAL ESTATE

This home has approx. 1311 sq ft of living space with 2+bedrooms,1 bath, living room, dining room,kitchen, mudroom, laundry room. This home has a great location across from the school. With a little TLC this home would make a nice starter home or investment property.

### OPEN VIEWING SUNDAY, OCTOBER 20, 2019 • 2-4 PM

**Legal:** Fair Grove N 127.60 Ft E 100 ft lot 2 BLK 8 **Taxes:** \$463.15 **Terms:** 10% down day of auction with balance due at closing. Possession at closing with closing within 45 days or less from auction date.



**INVENTORY LIST:** Entertainment center; Lots of dolls and diecast cars; Antique radio; Stereo cassette player; hutch; Hammond cadet Organ; Flat screen TV; Electric stove; Whirlpool refrigerator; Stand alone dishwasher; Dining room table with chairs; Cast iron ornament approximately 10" x 10"; Howard miller grandfather clock; Assortment of VHS movies DVD movies records; Yard tools; Hose reel; Miscellaneous shop tools and parts; Miscellaneous carnival glass; Rival crockpot; Tread mill; Oyster ice cream maker; Hamilton Beach handmixer; Salem china dish set; Condiment holders; Old BMW motorcycle; Lots of shop manuals; Desk lamp; Kansas City Chiefs train set; Miscellaneous decorations; Washer and dryer; Pool cues with cases; Kirby vacuum with attachments; Hoover carpet cleaner; Magnavox stereo in cabinet; Golf clubs; Eight track tapes; Craftsman table saw; End table coffee tables; Lamps; Sanyo TV; Emerson DVD player; televisions; Assortment coffee cups; Bedroom set ; Baby shoes; Afghan and throws; Lawnmowers bicycles tiller; Assortment Christmas decorations; Birdcage; Assortment kitchen plates coffee cups; Crockpot; sunbeam toaster; Hamilton Beach can opener; Rooster cookie jar; Craftsman radial arm saw; Black & Decker coffee pot; Assortment drinking glasses; Assortment pots and pans; Kitchen knives; Lawn furniture gas grill; Silverware; Assortment kitchen utensils; Microwave cart; Radio; Panasonic stereo system; Panasonic TV VCR combo; Smith corona portable typewriter; Elgin clock; File cabinets; Sewing machines; coffee tables; miscellaneous furniture; riding lawn mowers; **AND MORE!**



FOR MORE INFORMATION GO TO [WWW.EASTERLYAUCTIONCO.COM](http://WWW.EASTERLYAUCTIONCO.COM) OR CALL EASTERLY'S AT 417-833-9494

# EASTERLY AUCTION CO.

Go to [www.EasterlyAuction.com](http://www.EasterlyAuction.com)



[auctionzip.com](http://auctionzip.com)  
ID#14770

## Mike Easterly Auctioneer 417-833-9494

Not Responsible for accidents or theft.

For more information call: Easterly Auction Company, Springfield, MO.

Auction Terms: Bank Letter Of Credit Required.

Visa, Mastercard, Cash, Cashier's check or checks with proper I.D.

Announcements day of sale take precedence over printed material. Auction Notes: Although information

is obtained from sources deemed reliable, auctioneer makes no warranty or guarantee expressed or implied.

Buyers should themselves take the opportunity to make their own inspection prior to sale.



# HUGE OVERSTOCK BUILDING MATERIAL AUCTION



**THIS IS NOT A CONSIGNMENT AUCTION! ALL ITEMS FOR SALE BELONG TO INTEGRITY OUTLET!**

## SATURDAY, OCTOBER 26TH, 2019 @ 10:00 AM

1105 W 9th Avenue, Winfield, KS 67156 • At Winfield Fairgrounds

**Auction Inside - will be held regardless of weather**

*Includes New & Overstock Inventory*

**DIMENSIONAL LUMBER – 2x4's, 2x8's, and 2x12's - #2 – some fire treated – yellow pine, douglas fir, and SPF –**  
 - Check back for available lengths (longer length's)

**SIDING – 1000s of ln ft available in each**  
 - 1"x8" beveled cedar

**CEDAR –**  
 - 1x6 T&G V-Match

**DECKING – 1000s of ln ft**  
 - 1"x6" 50 yr Acetylated Stainable pine - pre-primed

**PINE – several 1000 ft**  
 - 1"x6" v-match T&G

**TILE including WOOD LOOK –**  
 - varying styles, colors, & sizes as well as several styles and colors of **MOSAIC TILE**

**SUBWAY TILE –**  
 - 3"x6" white

**OTHER FLOORING – -**

- **ENGINEERED BACK** – several 1000 ft - 7" wide Unfinished White Oak – random length, T&G, Beveled Edge, reversible – Select Grade on one side - Cabin Grade on the other – see pics!

- **LAMINATE**  
 - **LVT Flooring**

**SHIPLAP – several 1000 ln ft –**  
 - 1"x6" T&G primed MDF

**TRIM – all primed MDF**  
 - crown, base & casing

**WINDOWS – vinyl windows**

**KITCHEN CABINETS** - multiple sets!! –  
 - all wood. Will be sold as complete sets, tops & bottoms.  
 - Ice White Shaker  
 - Greystone Shaker  
 - Signature Pearl  
 - Espresso Shaker

**ICE & WATER SHIELD –**  
 - several rolls available

**APPLIANCES – truckload of new appliances** – name brand, including Kenmore - if you need new appliances you do not want to miss this!  
 - stainless steel french door refrigerators  
 - mini-fridges (Kenmore 4.4 cu. in. compact; 4.5 cu. ft. Frigidaire)  
 - dryers  
 - gas grill

**GENERATORS – all new, great selection**  
 - Briggs & Stratton 3000 watt –

Powersmart series, quiet power technology, linkable for your RVs – allows you to connect two units together!  
 - Pulsar 7500 watt – gasoline engine

**STOVES –**  
 - Electric fireplace  
 - Amazablaze Corn Stoves – Model 2100

**KITCHEN SINKS – several styles to choose from**  
 – drop in, undermount, and including Stainless Steel -Farmhouse

**TOILETS**

**FREE STANDING TUB**

**VANITIES –**  
 - New stock of vanities, several to choose from

**FAUCETS** - variety of kitchen, bath and freestanding tub fillers

**LIGHTING** - various lighting fixtures & styles including high end chandeliers

**CEILING FANS**

ITEMS & PICTURES WILL BE ADDED AS THE PICTURES ARE CAPTURED SO **CHECK AUCTION ZIP REGULARLY FOR UPDATES!!**

**IF YOU ARE REMODELING OR BUILDING A NEW HOME YOU MAY NEVER FIND A BETTER DEAL ON NEW BUILDING MATERIALS, bring your trucks and trailers, there is plenty of parking for long trailers.**

**Loadout - Sale Day - until dark; Sunday – 8:00 – 12:00; All items MUST BE REMOVED by 12:00 Sunday. No Buyers Premium.**  
 \* Loadout Assistance Available - Including Forklift After Auction Ends, All Items left over 30 days will be forfeited!

# INTEGRITY OUTLET

**CONTACTS - CALL OR TEXT MIKE @ 870-754-4428 • TEXT ONLY @ 870-715-5479 or 870-715-2326**



*All announcements made the day of auction will supersede previous advertising.*

# Multi Consignment Auction

**Saturday, October 26th ★ 9 A.M.**

**Location:** Texas County Fairgrounds Building – climate controlled building with seating

**Directions:** Approximately 1 mile north of Houston on highway 63 to the fairgrounds on the right

## Household, Furniture, Appliances

Oak kitchen table w/ 4 chairs • Kenmore small chest freezer • Crosley small chest freezer • Whirlpool washer and dryer, matching • Maytag side by side refrigerator • chest of drawers • dresser • queen size hide-a-bed • 5 drawer desk • organ w/ bench, great shape • full size bed • plaid chair • 4 drawer file cabinet • end tables • lamps • 2 twin size beds • bookshelves • various Christmas decorations • 2- 4ft folding tables • 5x8 area rug, new • infrared heater • radiator style electric heaters • piano bench • Smith Corona electric typewriter • Philips DVD player • Puzzles • Casio Cash Register • Sharper Image Headphones • 6 ft. folding table • radiator electric heaters • oak table • walnut drop leaf table w/ 4 chairs • 2 oak china cabinets • Oak 8 gun Gun Cabinet • Kenmore canister vacuum cleaner • picture frames • wall art décor • coffee mugs • electric skillet • large electric griddle • fish cooker • desk chair • metal frame with 4 glass shelves • hall tree • medicine cabinet • books • luggage • sofa table • pyrex, clear • dishes • kitchen island • oak crown molding • table with chairs

**Pleather Trinity Brand Lift Chair, Nice • Hospital Bed, excellent condition • Wheel Chair • side table for hospital bed • canes/grabbers • walker with wheels and seat**

## Antiques & Collectibles

Dunkin Fife round table • Melodica Mouth Organ, Germany • old Smith typewriter • Lionel train set • train sets • 1 – 45 Elvis record, never played • Jane Carroll painting 1984 • John Deere Pictures – 1 signed by Edward Schafner 1984 • record player • 47 – “78” vinyl records • pitcher collection • ceramic chicken • wooden folding ironing board • Radio Flyer red wagon • Coleman lanterns • WW11 army blanket • marble mantle clock • antique wood cook stove • 1930's jukebox, does not work • antique chest and trunks • Hoosier cabinets, need work • wood stove • Model A wheels • iron wheels • vintage doors, various types • T-Bucket cab • church pews • industrial antique wood ice box, needs work • glassware • Fireking, jadite, Carl Eriksson, Hazel Atlas, L.G. Wright, Blue Willow, green Depression glass, Red Willow, Carnival glass • Big Chief Coca Cola bottle • Country Club Dairy and Okino Dairy milk bottles, various state plates 1930-1940, 1940's • James Chatelaine Plaza design china set, white w/ platinum edge • hand painted, raised edge German bowl, late 1800 or early 1900's • various oil lamps • cedar chest • 2 glass door bookcases • vintage vanity with stool, vintage armoire/highboy dresser • large collection of seashells • various collectible decanters, most with original boxes, some full • antique cast iron Ruud water heater

## Outdoor, Tools, Garden & Miscellaneous

Porter Cable bench top Band Saw • Belt Sander • Dremel • woodworking tools • Troy Bilt wood chipper • squirrel cage fan • Rockwell 14 in floor model band saw • Delta tabletop Router/Shaper • Delta 10 in Contractors saw • Craftsman radial arm saw • Delta benchtop drill press • Makita sliding 10 in compound miter saw • Makita compound saw • drill press clamps • Grizzly G1066Z 24 in drum sander • Grizzly 1 HP dust collector • saw horses • tool bins • Extension ladder • Mantis composter • Rigid 6 HP shop vac • various wood clamps • Hegner scroll saw • misc. power tools • screwdrivers • wrenches • sockets • pliers • hand saws • bench vise • squares • levels • air staplers • clamps • Krewg jigs • saw horses • Air America 5HP 20 gallon air compressor • Craftsman 6 in joiner • Tool Shop 5 speed bench drill press • Ryobi oscillating sander • work lights • Makita 12 in sliding miter saw, like new • Worx Electric Trimmer, 32 volt • Generac electric power washer • 10 drawer tool box • Metal folding chairs • yard benches • bird baths • 5x10 dog pen • wind chimes • wheel barrows • 4 ft and 10 ft raised garden bed • red metal yard wagon • metal 4 shelf shop shelf • pull behind lawn cart • DR Trimmer • Car ramps • Poulan Pro rear tine tiller, like new • live trap • dolly • wooden ladder • Walnut lumber • golf clubs • Club Car Golf Cart • golf bag cart

# Tooley Auction Services, LLC

417-293-6909 • Willow Springs, MO • tooleyauctions@gmail.com



Travis Tooley, Auctioneer  
Bruce Scheets, Auctioneer



is what we say best.



Follow us on Facebook!  
Tooley Auction Services, LLC

Drivers license or photo ID. Cash or check. Announcements made on the day of the sale take precedence over any printed material. Not responsible for accidents, theft or lost articles.

**Clerks & Cashiers:** Jennifer Tooley, Penny Tooley, Shelly Cauldwell

**Ringmen:** Josh Wheeler, Vance Farmer, Terry McCallister





# YOUR Real Estate Auction Specialist



**Bob Kollmeier CAI, CAGA**  
**Auctions/Appraisals/**  
**Real Estate • 417-882-5664**

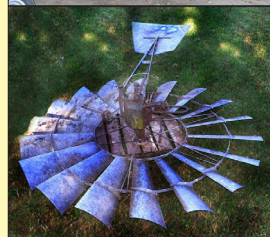


**RON SEYL, LIFETIME ACCUMULATION**  
**MODEL T'S & MODEL A'S, VAN, DODGE POWER WAGONS, JEEPS,**  
**TRAILERS & TRACTORS, MODEL T, JEEP & ANTIQUE CAR PARTS,**  
**HOUSEHOLD, ANTIQUES & COLLECTIBLES**

▶▶▶ **AUCTION**

**SATURDAY, OCTOBER 26, 10:00 AM**  
**3555 W. REPUBLIC RD, SPRINGFIELD, MO**  
**OWNERS, RON & GAIL SEYL**

**DIRECTIONS:** From S. Kansas Expressway & Republic Rd., GO West on Republic Rd. to the Auction. Watch for signs!  
**AUCTIONEER'S NOTE:** Ron Seyl has been an avid collector his entire life! The following is only a partial listing of an unusual collection. Ron has been an avid car club & car show enthusiast all over the United States! Due to the volume of merchandise to be sold we will be running 2 rings part of the day. Sure to be lots of surprises!



**TERMS:** credit w/3% convenience fee, personal or company checks accepted only if known by us or w/a bank letter made to RLK, Inc. No Exceptions, no out of state checks! All items paid for day of Auction! All items sold As Is Where Is.



SL-0000426478

**Bob Kollmeier**  
**AUCTIONS**  
APPRAISALS & REAL ESTATE  
**417.882.5664**



**RICHARD JEAN**  
**AUCTIONEER**  
**417.299.8401**



**RUSS SMITH**  
**AUCTIONEER/SET UP MANAGER**  
**417.844.0205**





# PUBLIC AUCTION

As I am moving, I will offer the following real estate & personal property located at 18148 County road 199, Wheatland, MO 65779. From Wheatland, MO go east approx 1 1/2 miles To county road 199, then north 3/4 mile to auction. Watch for signs.

## Saturday, October 26, 2019 10:00 A.M.

### REAL ESTATE - TO SELL AT 12:30 P.M.

\*\*\***Tract 1:** Beautiful 4,200 sq. ft. 3 or possibly 4 bedroom home, 3 full baths, nice kitchen with oak cabinetry, large family room, dining room, utility room w/full finished walk-out basement. Summer kitchen w/attached 2 car garage, raised composite deck. Storm shelter in basement under front porch, Home has Geo-Thermal heat & air system sitting on 60 acres m/1 with a 24'x45' Morton building style shop as well as a 20'x30' shop. Fenced, 1 pond, lots of shade trees, vinyl siding. This is a very clean and well-kept home in move in condition.

\*\*\***Tract 2:** 90 acres m/1 of mixed timber, plenty of wildlife. Ground borders Murphy Memorial State Forest & Wildlife Area on West side.

\*\*\***Tract 3:** A combination of tract 1 & 2.

**Terms of Real Estate:** 10% down day of sale with remainder due at closing 30 days or less with date agreeable to both parties. To view property contact Kevin at 660-492-3279, Tyler at 660-492-7764 or Bryan 660-492-3740.



- Oak roll top desk
- Oak Queen Size bed
- Oak Dresser w/mirror
- (2) Oak Bar stools
- Oak TV stand
- Mitsubishi DLP 60" Flat screen TV
- Dynex 42" Flat screen TV
- Magnavox 25" Flat screen TV
- Sharp 19" Flat screen TV
- (2) Barrister's Book cases
- Blonde dresser
- Large Oak Entertainment center
- (2) Oak end tables
- Floral couch
- (2) Floral setting chairs w/ottomans
- Glider rocker w/ottoman
- Wooden trundle bed
- Queen Anne style chair
- Kenmore Elite Up-right Freezer
- Whirlpool Electric cook stove
- Microwave
- Microwave cart
- Office chairs
- HP Office Jet 4622 Printer
- (4) Wooden folding chairs
- Small Kitchen appliances
- Rooster Figurines
- Stoneware set
- Decorative Cake pans
- (2) Portable sewing machines
- Electric Oil heater
- Misc. dish & glass ware
- Fiesta ware Plates, bowls & cups
- Single room Portable Air conditioner

### FIREARMS & HUNTING

- Marlin Golden 39A Lever action 22 rifle
- Thompson Center 50 cal black powder
- Marlin Model 336 Gold trigger 30-30 w/wide angle scope
- Remington Model 788 308 Win w/scope - Left handed
- Stevens Model 77C 12 ga. 2 3/4" w/Compensator
- I-U gartechea Eibar Spanish made double barrel 12 ga.
- Central Arms single shot 20 ga.

- PSE Polaris Compound bow
- Hoyt 60" recurve bow
- K-Bar USMC knife
- Hunting knives
- Bricks of 22 ammo
- 12 ga. Ammo
- 308 ammo
- 30-30 ammo
- 30-06 ammo
- Range finder
- Binoculars



### TOOLS

- Ryobi backpack blower
- Great neck torque wrench
- Craftsman 1/2" sockets
- Craftsman Roll-around tool box
- Craftsman Scroll saw w/stand
- Craftsman 9" table saw
- Buffalo 8" bench grinder
- Speedway 8" bench grinder
- Ryobi Palm sander
- Delta 12" compound miter saw
- Milwaukee Super saws all
- Grip-rite Framing nailer
- Craftsman Radial arm saw
- Dremel tool
- Craftsman router & table
- 2 ton Floor jack
- Furniture clamps
- Crescent wrenches
- Central Pneumatic air compressor
- Pipe wrenches
- Chain boomers
- Log chains
- Bolt cutters
- Porter Cable circular saw
- Craftsman Belt sander
- Vise grips
- Dayton 60 amp booster/charger
- Misc. wrenches
- Central Pneumatic Pancake compressor
- Little Giant ladder
- Creepers
- New set Scaffolding

### LAWN & MISC.

- WW2 Pot Belly Stove

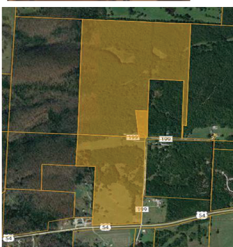
- Harmony 22" self-propelled mower
- Craftsman 6.75 hp. 22" cut weed eater
- Mantis Garden Tiller
- Works Leaf blower vac.
- Electric hedge trimmers
- Poulan Predator Chain saw
- Stihl 028 Chain saw
- SMV 25 gallon Pull type lawn sprayer w/booms
- 15 gallon ATV sprayer
- Scott's Lawn seeder
- Dump lawn cart
- Red Devil weed burner
- Wooden patio set w/4 chairs & bench
- Wrought iron patio table w/glass top
- Expanded metal patio table w/2 chairs
- Gazebo - New
- 6'x10' dog kennel
- Grill hut
- Weber gas grill w/side burner
- Weber charcoal grill
- 3 Rubbermaid Storage containers
- Cricut & Cartridges
- Inversion Table
- Incumbent exercise bike
- Bow Flex Power pro exercise station
- Fishing supplies
- Stainless steel sink station
- Igloo dog house
- Bird houses
- Figurines & craft items
- Antique feed wagon - needs repair
- Brooder house heater
- Cast iron Kettle
- GS Bell Company School Bell
- Antique Wire recorder
- Canvas tarps
- Coleman Cook stove
- Concrete blocks
- Double window fan
- Christmas décor
- Other items too numerous to mention

**TRACTOR & UTV**  
New Holland TC29D Utility tractor, Hydro-stat drive, 4x4, 540 PTO, 3 pt. 3 cylinder Diesel w/New Holland 7308 loader, ROPS, 843 hours

2015 Kobota RVT500 side by side, 4x4, dump bed, 71 hours  
5ft. 3pt. Bushhog  
3 pt. Rock rake

### **FURNITURE, APPLIANCE & HOUSEHOLD**

Oak Dining set w/6 chairs & large Glass front china hutch  
Round oak claw-foot kitchenette w/4 chairs



**TERMS OF SALE:** Cash or good check w/ proper ID. Nothing to be removed until settled for. Statements made day of sale take Precedence over printed materials. Lunch served and toilets on site.

## Owner: Linda & The Late Dennis Wolfe

Sale Conducted by:

## Wade Auction Service

Appleton City, MO

Col. Kevin Wade, Mobile 660-492-3279

Col. Bryan Wade, Mobile 660-492-3740

Tyler Wade, Mobile 660-492-7764

Clerks: Irby & Wade

To view ad online go to [www.auctionzip.com](http://www.auctionzip.com)

Auctioneer ID: 24103

Visit us on Facebook at Wade Auction Service



**Auctioneer's note:**  
This is a wonderful opportunity to purchase well cared for property & home close to Pomme De Terre Lake. Everything is extremely well cared for. Be sure to attend.





**BUFFALO LIVESTOCK MARKET LLC**  
 276 Hwy 32 West  
 Buffalo, Missouri



**October 12<sup>th</sup>, 2019**  
**Receipts: 1146 Head**

**Feeders Weaned Steady \$5 Up**  
**Unweaned weak.**

**Representative Steers**

- 300-400 @ 145.00 to 173.00
- 400-500 @ 150.00 to 176.00
- 500-600 @ 140.00 to 160.50
- 600-700 @ 135.00 to 150.00
- 700-800 @ 134.00 to 144.50
- 800-900 @ 132.00 to 138.00

**Representative Heifers**

- 300-400 @ 123.00 to 145.00
- 400-500 @ 120.00 to 135.00
- 500-600 @ 124.00 to 136.00
- 600-700 @ 123.00 to 140.00
- 700-800 @ 127.00 to 134.50
- 800-900 @ 117.00 to 125.00

**Feeder Bulls**

- 400-500 @ 117.00 to 146.00
- 500-600 @ 127.00 to 141.00
- 600-700 @ 120.00 to 127.50
- 700-800 @ 113.00 to 125.00
- 800-900 @ 80.00 to 105.00

**Cow Calf**

850-1300

**Bred Cows**

800-1025

**Slaughter Cows**

- Big Fleishy 1500lb up 63-70
- Boning Med Flesh 50-60
- Thin Flesh 43-47
- XThin 43 Down
- Slaughter Bulls**
- High Dressing 82-84.50
- Med. Dressing 74-81
- Low Dressing 62-73

**SHEEP & GOAT SALE**  
 TUESDAY, OCT. 22 - 6 PM

**MON-WED MARKET REPORT**

Listen to KJEL 103.7FM • Lebanon or KYOO 99FM • Bolivar

**VIEW OUR SALES AT CATTLEUSA.COM**

**CALL FOR TRUCKING OR ON-FARM VISIT**

- Lyle Caselman • Owner-Manager  
 417-345-7876 • mobile 417-533-2944
- Leon Caselman • Owner  
 417-345-4514 • mobile • 417-588-6185
- Howard Miller • Owner 417-345-8122

**ESTATE FARM AUCTION**

Due to the death of **Gene Bartle**, we will sell the following personal property at auction. From St. James, Missouri take Hwy. 68 west 1 mile to CR 1050 (Republican Road) and continue 1 1/2 miles to auction. Follow Lorts Auction Today signs on

**Sun., October 20, 2019 • 12 p.m.**

**Farm Machinery & Tools**

- John Deere 318 riding mower w/ Onan engine, 42 inch cut & wheel weights
- 1965 Massey Ferguson tractor w/3 pt. (all original)
- 5 ft. 3 pt. Sidewinder bushhog
- 16 ft. x 6.5 ft. pull type trailer w/ ramps
- Massey Ferguson 50 (for parts)
- Massey Ferguson 50-65 parts
- 3 pt. spring tooth cultivator
- 3 bottom disc plow on steel
- 8 ft. drag harrow
- 3 pt. 5 1/2 ft. John Deere disc
- 3 pt. 2 bottom 12 ft. plows
- 5 ft. 3 pt. blade
- John Deere 318 garden tractor (parts)
- 220 twin cylinder heavy duty air compressor
- Push lawn mower
- Two wheel lawn cart — Metal tubs Scaffolding
- Assortment of lumber (new & old)
- Barn sheet iron
- Horse drawn A-frame garden cultivator
- King wood circulator stove
- Kobalt aluminum truck tool box

**Vehicles**

- 1998 Dodge Ram 1500 V8
- Magnum 1/2 ton w/360 automatic 5.9 motor, brown & silver, 273k miles
- 2004 Nissan Maximum SE, V6, 4 door, silver, 170k miles

**Household & Furniture**

- Amana deep freeze
- Kitchen table w/4 chairs
- Correlle dishes — Milk bottles
- Corningware cookware w/lids
- Old buffet
- Tupperware
- Assorted Griswold cast iron pans
- Wagner cast iron
- Wagner cornbread pans
- GE Electric 30x30 kitchen stove
- Maytag heavy duty washer & electric dryer
- Visio flat screen 42 inch TV w/stand
- Columbia Grafonola crank Victrola (NOB65002, good condition)
- Leather loveseat w/recliners
- 5 piece Broyhill medium oak color queen size bedroom set (like new)
- 3 piece waterfall bedroom set (full size)
- Kitchen Aid mixer
- Toastermaster toaster
- 16 quart pressure cooker

Many more articles too numerous to mention

"like" us on facebook - Lorts Auction Service or view this auction online at auctionzip.com (auctioneer ID #42353).

**Owner: Bartle family**

15519 CR 1050, St. James, MO 65559

**AUCTIONEER'S NOTE:** Lots of nice clean items on this auction. Off the road parking available. Come spend the afternoon with us!  
 Lorts Auction Service

**TERMS:** Cash or check with photo I.D. • Not responsible for accidents or losses, should they occur.  
 Nothing removed until paid for.  
 Lunch Served — ALL ANNOUNCEMENTS MADE SALE DAY TAKE PRECEDENCE OVER ALL PRINTED MATERIALS —

SALE CONDUCTED BY **LORTS AUCTION SERVICE**  
 ST. JAMES, MO 65559 • 573-699-4308 • 573-263-0243  
 AUCTIONEERS: Larry W. Lorts & Gary R. Lorts  
 Licensed and Bonded

**FOR RENT LAKEFRONT HOUSE:** 4 bedrooms, 3 baths, has all appliances. First and last months rent plus deposit. Phone 816-583-2421 and leave message.

**AKC MALE MINIATURE DACHSHUND PUPPY:** 4months old, black/tan short-haired. \$400obo 417-322-0833. vghiselene@gmail.com

**CUISINART ELECTRIC PRESSURE COOKER 600 SERIES W/MANUAL:** High/Low Pressure, browns, sautes, simmers. Like new. Used twice. \$75. Conway, 417-718-5347.

**PUBLIC AUCTION**

Due to downsizing my cabinet shop, I will sell the following personal property at auction, located from St. James, Missouri, take Old Springfield Road west 1 1/2 miles past the Nelson Hart Park to CR 3290. Turn left and continue 1/2 mile to auction. Follow Lorts Auction Today signs on

**Saturday, October 19, 2019 • 9 a.m.**

**Household, Antiques & Vintage Items**

- Singer treadle type sewing machine (all access w/wood carving)
- Wicker baby buggy (1913 circa)
- Victor windup phonograph floor model w/records & papers (1921 circa)
- Brass 25 power captain's telescope w/stand
- Revere 1960 clock
- Thomas A. Edison standard model D cylinder wind up phonograph w/extra cylinders
- Collection of Breyer horses
- Rocking horse (made of walnut, maple & cherry)
- Ruckles 3 gallon butter churn
- 1904 St. Louis World Fair book
- Collection of handmade vintage horse drawn 1/16 scale wagons (handmade)
- 7 ft. book cases w/concealed speakers & Sherwood amplifier
- Aluminum Shocker Nex 2G mountain bike w/new seat & helmet
- 6 ft. tall walnut wardrobe
- Radio controlled sailboat (handmade)

**Vintage Woodworking Saws, Tools & Related Items**

- Saylor-Bell air compressor, 80 gallon upright w/2 stage compressor, 220v (USA)
- Stihl HT70 pole saw —
- Bostitch pneumatic frame nailer
- Porter Cable 16 inch dove tail jig 5x5 table w/farm barn model (handmade)
- John Deere horse drawn hayloader (1910 circa, handmade)
- Delta 10 inch table saw w/48 inch extension on wheels, 110v
- Powermatic dust collector, 3 hp. motor, 220v
- 36 inch floor model SpeedSander w/ extra belts (SN#B00133, USA) (1950 circa)
- ShopSmith ER series w/stand (1950 circa)
- Face frame dowel machine w/stand & 1/2 hp. motor
- 70 ft. of 4 inch dust collection pipe system w/8 gates (dismantled from wall) • Sand Blaster
- 10 ft. SSC sheet/plywood panel saw
- Lots of cabinet & woodworking hardwood
- Porter-Cable 16 inch dove tail jig, #5116
- Lietz transit w/stand
- Unhanded Fililister plane (1840 circa)
- Handed Fililister plane — Squares
- Miller Falls 2 spd. brace drill mod.#2
- Stanley #45 plane combination w/ cutter & original box (1911)
- Fliptover ATV disc — Pull type ATV seeder
- 3 pt. 48 inch Howe brush hog

**Vintage Woodworking Tools**

- 15 inch treadle power scroll saw (1900s circa)
- Pedal power scroll saw w/seat, all original from WF&J Barnes in Rockford, IL (demonstrated last 20 plus years at Old Iron Works Days, 1876 circa)

Many more articles too numerous to mention

"like" us on facebook - Lorts Auction Service or view this auction online at auctionzip.com (auctioneer ID #42353).

**Owner: Paul Rueff**

11996 CR 3290, St. James, MO 65559

**AUCTIONEER'S NOTE:** Lots of nice quality items on this auction. Paul is a very skilled hand crafter. Held inside shop if needed. Off the road parking available. Mark your calendar!  
 Lorts Auction Service

**TERMS:** Cash or check with photo I.D. • Not responsible for accidents or losses, should they occur. • Nothing removed until paid for. — No buyers fee. Lunch Served — ALL ANNOUNCEMENTS MADE SALE DAY TAKE PRECEDENCE OVER ALL PRINTED MATERIALS —

SALE CONDUCTED BY **LORTS AUCTION SERVICE**  
 ST. JAMES, MO 65559 • 573-699-4308 • 573-263-0243  
 AUCTIONEERS: Larry W. Lorts & Gary R. Lorts  
 Licensed and Bonded

**AUCTION REMINDER:** Estate Auction Sat. October 19th 10Am BRUCE SCHEETS AUCTION. Please see our Auction Directory for more information.

**1989 TOYOTA:** could run. 1994-parts. A lot of antiques. \$5,900 Buffet. Wood cookstove. 870-662-1977.

**PORTABLE OXYGEN GENERATOR:** Invacare, used 4 months. \$1,500. Plato, 417-217-1197.

**560 INTERNATIONAL W/LOADER:** \$4,500. 573-315-9009.



## FALL CONSIGNMENT AUCTION

— Saturday, October 19, 2019 - 11:00 a.m. start —

Heritage Livestock, LLC - 11196 Lawrence 1165, Mt. Vernon, MO 65712

Farm & Ranch Auction, Equipment, High Quality Tack, Group of Angus 1st calvers, big & gentle, '99 International 2 ton Detroit Engine, Several Nice Tractors, Draft Driving Team, Horse & Stock Trailers. And, as always a huge selection of tack, gear, collectibles, and no telling what else!

Sales at Heritage Livestock attract quality consignors and quality buyers.

Please call to consign: Dennis Raucher - 417-316-0023.

Manager has right to accept or reject all consignments.

Check our website [www.heritagelivestock.com](http://www.heritagelivestock.com) and our FB event for updates.

**JOHN DEERE 567 ROUND BALER:** monitor, kicker, wide pick-up, cover wrap. \$9,650. 573-765-4406.

**AUCTION REMINDER:** Personal Property Auction Sun. October 20th @ 1:15 PM. Please see our Auction Directory for more information.

**1999 FORD PICK-UP:** 4x4, extended cab, no rust, needs motor. \$1,800, trade for guns, 4x4 4-wheeler. 417-839-2196, Hermitage.

**2005 INTERNATIONAL EAGLE:** double bunk, good truck, local owner, auto, 500 Cummins, all re-conditioned, have paperwork. \$15,000 will take a trade. 417-679-4355.

**BAIKAL MODEL-210:** 410-gauge, double barrel, silver receiver. \$550. 573-756-1065.

**DAVID BROWN 1212:** 65HP diesel, quick-attach loader, wide front, 3pt, PS, 2 set of Hydraulics. \$6,100. AC narrow-front w/ belly mower. \$1,200. Rogersville. 417-753-2747, 417-766-1991.

**WANTED:** Someone with a skid-steer outside of Cherryville to clean a large stall and around a corral. 573-743-3420.

**JOHN DEERE HX 15 FT:** hyd fold brushcutter, 540 P.T.O., good. \$9,750. 573-765-4406.

**AUCTION REMINDER:** Real Estate & Personal Property Auction, Saturday, October 19th @ 10am Knight Auction. Please see our Auction Directory for more information.

**FARMALL 766 PEDAL TRACTOR:** wide front-end, Mint! Rare. \$375. 573-859-6574

**AUCTION REMINDER:** Auction, Sunday, October 20th, Noon, Lorts Auction. Please see our Auction Directory for more information.

**CUSTOM SAW MILLING:** Lebanon. 417-533-4607, 417-664-1195.

**WANTED, TIMBER TO LOG ON SHARES:** Honest, reliable, references. 417-533-4607, 417-664-1195.

**CABLE PULLING JAW GRIP:** Klein brand, model 1684-5, excellent condition. \$195. Cedar Hill, 314-303-7857.

**INTERNATIONAL TRACK LOADER:** W/ clam shell bucket, excellent shape. \$8,750. 573-377-4872, leave message.

**AUTOBODY PAINTING & LIGHT MECHANIC WORK:** Affordable new facility. Quality Auto-Body work. Over 35 years experience. Professional Paint jobs-complete or partial, whatever needed. No job too big or small. Estimates on spot. Located outside Richland. Contact John 573-855-4877 or Don 573-512-2059.

**1953 JOHN DEERE 40:** Restored w/original manual. \$5,695. 417-207-2224, Fair Grove.

**DYNO CHARGE 990 ELECTRIC FENCER:** Solid state for 20 miles. \$50. 636-239-2695.

**RIVER PROPERTY ON GASCONADE:** 2.43 acres, 3 bedroom, 1 bath, 2 car garage, Dixon schools, Junction O Hwy & K Road. For rent or Sale: \$800 rent. \$155,000 sale price. 573-759-4432.

## Salem Livestock Auction

Hwy. 32 Salem, MO • 573-729-8880

Over 40 Years in the Livestock Business

### Stock Cow Sale

Saturday • Oct. 19<sup>th</sup> @ 1 pm

- 21 Mix Cows, all young, 2nd & 3rd stage, bred to Black Bull
- 47 Black Cows, 3-4yrs, 2nd & 3rd stage, bred to Angus Bull
- 31 Mix Cows, Running Ages, several with calves, bal 2nd & 3rd stage, bred Black Bull, • **COMPLETE SELL OUT** •
- 1 Black Bull
- 21 Red Angus Cows, 3-6yrs, all with 350-450lbs calves, Cows are running back with the same Red Angus Bull
- 23 Mix Cows, Young, all with calves, running back with a Black Bull
- 29 Char x & Black Cows, 2-6yrs, 2nd & 3rd stage
- 23 Black & Bwf Cows, 3-6yrs, few with calves, bal 2nd & 3rd, bred to Hereford Bull
- 24 Black Cows, 4-7yrs, few with calves, bal 3rd stage, bred to Black Bull
- 1 Red Angus Bull, 4yrs
- 12 1st Calf Hereford Hfrs, bred to Reg Angus Bull
- 27 Blk & Bwf Cows, 3-6 yrs, bred to Black Angus Bull
- 17 Mix Cows, Running Ages, w/ 300-500lb calves bred back to Angus Bull
- 1 Angus Bull
- 19 Black Cows, Running Ages, 12 w/ calves, bal. 3rd stage, bred to Black Bull, • **COMPLETE SELL OUT** •
- 1 Black Bull
- 12 1st Calf Hereford Heifers 1000lb, 2nd & 3rd stage, bred to Black Bull
- 1 Black Bull
- 18 Black & Bwf Cows, 5-8yrs, 7 with 250lb calves, bal. 3rd stage, bred to Black Bull
- 70 Black Cows, 5-7 yrs, few SS, half with calves, bal. 3rd stage, bred to Black Bull, • **FANCY** •
- 17 Mix Cows, running Ages with 300-500lb calves, bred to Angus Bull
- 1 Angus Bull
- 19 Black Cows, running Ages, 13 with calves, bal. 3rd stage, bred to Black Bull, • **Sell Out** •
- 1 Black Bull
- 3 Longhorn Cows, young, with calves
- 3 Registered Jordan Angus Bulls, 18-24 months, Virgin bulls will be tested

### Cattle Sale Every Monday at 12:00

Feeder Calves to sell at 12:00 pm Butcher Cows & Stock Cows following

**All Consignments Welcome Up Until Sale**  
*We Appreciate Your Business!*

Allen Thompson 417-932-4097  
Renee Lauderdale 417-926-2682

Chuck Thompson 417-257-5610  
Brandon Barton 417-259-1597

Terms of Sale: Cash or Approved Check!





# AUCTION

Travel 7 miles North of Lebanon, MO on Highway 5 then left on Julia 2 miles, then left on Jaybird 100 yds to **18162 Jaybird Ln, Lebanon, MO**

## SATURDAY OCTOBER 19

Starting At 10:00 AM

## REAL ESTATE



Country Farmette close to town! Property includes a 2 bedroom mobile home, near new 40x50 pole barn with horse stalls in middle for a riding arena and several outbuildings. All situated on 3.5 acre tract. **Terms on Real Estate:** 10% down sale day with balance due at closing.

### ALSO SELLING Buildings • Mowers • Fishing • Camping and More!

3 storage sheds sold to be moved, 2 car carport enclosed to be moved, 13 year old quarter horse, pipe gates, 2 riding mowers, utility trailer, chain hoist, steel traps, large lot of fishing tackle and rods and reels, large amount of camping supplies, dog kennel, lawn cart, lawn and garden tools, horse tack, feed tubs, propane wall heater, roll top desk, near new mattress, much, much more!

**ROGER STARNES**

Go to [www.knightauctionservice.com](http://www.knightauctionservice.com) for complete list and pictures!

TERMS: Cash, Approved Check w/ID, Visa or Mastercard.



Sale By  
**KNIGHT AUCTION  
SERVICE, LLC**  
417-532-7497 Lebanon, MO  
"Complete Sale Service"

[www.knightauctionservice.com](http://www.knightauctionservice.com)

# Farm Auction

Thursday, October 24, 2019

STARTS @ 9:51 am

Address: 20150 Hwy 75, Okmulgee • OK 74447

Directions: From Okmulgee, OK, go South on Hwy 75 approx 3 miles. Turn off to the left is just past the Okmulgee stockyards. Auction is on the east side of the road. Watch for auction signs.

Don't Be Late  
Not Many  
Small Items!

For More Info & Pictures  
[www.chuppsauction.com](http://www.chuppsauction.com)

## TRACTORS, HAY EQUIPMENT, FARM TRUCKS, FARM IMPLEMENTS, TRAILERS, VEHICLES, PECAN HARVESTING EQUIPMENT, FEED BIN, ATVS, CATTLE PANELS / GATES, SCRAP METAL and SHOP TOOLS

Owners: ROY & BERNICE PRATER

**Auctioneer's Note:** Roy is 91 years old and his doctor told him it was time to slow down. He was raised on a farm and has been farming his whole life. Roy also takes care of his wife of 40 years. His equipment is in EXCELLENT CONDITION. Some haven't been used in 2 - 3 years. Several are 1 owner. THERE WILL BE 1-2 AUCTION RINGS. Please follow us on Facebook for updates or visit our website for pictures at [www.chuppsauction.com](http://www.chuppsauction.com).

TERMS: Cash - Credit Cards - Check with Proper ID - OK Sales Tax Applies unless exemption is shown. NOT RESPONSIBLE FOR ACCIDENTS. ANY ANNOUNCEMENTS DAY OF SALE SUPERSEDES PREVIOUS ADVERTISING.

## CHUPPS AUCTION & REAL ESTATE

Stan Chupp  
(918) 638-1157

Dale Chupp, Realtor  
Coldwell Banker Neokla Select  
(918) 630-0495

E. J. Chupp

**DEER RIFLE:** 30.06, Savage model 110. \$300. Columbia, 573-999-1803.

**HARDY OUTSIDE WOOD FURNACE:** \$2,500. 636-586-6776.

**WANTED PLUMBER IN CRAWFORD CO** to replace bathtub faucet and shower. 573-743-3420.

**DEALS ON WHEELS!** 2012 Dodge Ram 2500 Crew: 2WD, gas, 190,000 miles. \$11,750. 2006 F150: 4x4 Crew, Lariat, 180,000 miles. \$8,500. 2012 Transverse LS: FWD, 171,000 miles. \$5,000. 2010 Transverse LTZ: Loaded. 170,000 miles. \$5,000. 2010 Buick Enclave CXL: 140,000 miles, \$8,500. 2009 Outback: AWD, 89,000 miles. \$7,250. 2007 Escape: XLT, AWD, 138,000 miles. \$4,775. 2006 Outback: AWD, Limited, 178,000 miles. \$5,475. 417-399-6383.

**AUCTION REMINDER:** Online Auction Bidding ends Tuesday, November 12th @ 12:30p.m. Atterberry Auctions. Please see our Auction Directory for more information.

**AUCTION REMINDER:** Online Construction Equipment Auction. Thursday, October 31st @10am. BID NOW! Purple Wave Auction. Please see our Auction Directory for more information.

**AUCTION REMINDER:** Saturday, October 19th, 10:00 AM. Please see our Auction Directory for more information.

**HOLLYWOOD 4-BIKE HITCH MOUNT RACK:** Excellent condition, Includes (2) Allen Stabilizer tension bars and keyed alike locking hitch pin and cable. \$175. Conway, 417-718-5347.

**NEW & USED PARTS FOR ANYTHING.** 800-807-9612.

**GERMAN SHEPHERD KENNEL REDUCTION:** Good breeding stock. \$100. Also pets. Hartville, 417-741-2198.

**HUGE INSIDE SALE:** Fri-Sun, 7am-? 30009 Sunnyside Rd, Richland Mo. (outside Laquey on South 17) Indian decor, quilting, hand-carved ducks, collectable dolls, Pampered Chef, Nascar!!, HotWheels, Christmas, Halloween, clocks, tools, hunting, Too Much to List!!! 573-368-8892/573-337-5031.

**ELMO ENGINTHRON'S BORDERLAND REBELLIONS-history of the Civil War on the Missouri-Arkansas border. \$12.50. Lebanon, 417-532-2045.**

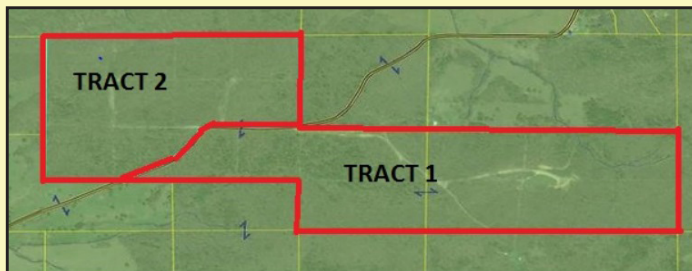
**2000 S-10 PICK-UP:** Regular cab, 158,000miles. \$3,200. 417-532-4108.

# YOUR Real Estate Auction Specialist

240 Vacant Wooded Acres  
 Pine Ridge Estates, Platted Subdivision • Offered in 2 Tracts  
**REAL ESTATE AUCTION**

Friday, October 18, 12:00 NOON • Sargent Rd., Cabool, MO

DIRECTIONS: From Cabool, MO take Hwy 60 East to Hwy AV (at Gardin Inn Truck Stop) then go Left on Hwy AV to end of pavement, go across RR track to Sargent Rd. then Right on Sargent Rd. 8/10mi. to property on both sides of road. Watch for signs!



**SELLS AT 12NOON!**

Don't miss this opportunity to buy this 240 acres vacant, wooded land platted into 22 lots called Pine Ridge Estates. This property would make a wonderful investment to build your secluded residence, a hunting retreat or market the lots as a development! Property also has good roads and Tract 1 has a small lake.

## 240 VACANT WOODED ACRES

TRACT 1 – 140 acres m/l of vacant land in 12 platted lots from 6.97 acres to 20.86 acres.  
 TRACT 2 – 100 acres m/l vacant land in 10 platted lots from 7.6 acres to 11.85 acres.

TERMS: 10% down auction day, balance due on or before 30 days after auction. REAL ESTATE SELLS "as is, where is". If buyer desires home inspection prior to auction call office at 417-882-5664

**AUCTIONEER'S NOTE:** We will be offering this unique property in 2 tracts and then in combination as a whole and will see whichever way brings most money for the seller. Currently no lots have been sold individually and will not be offered as individual lots but as total acres.

	<b>Bob Kollmeier</b>		
	AUCTIONS / REAL ESTATE	RICHARD JEAN AUCTIONEER	RUSS SMITH AUCTIONEER/SET UP MANAGER
	CAI, CAGA	417.299.8401	417.844.0205
	<b>417.882.5664</b>		

Onsite/Online Auctions

SL-0000442338

For more info call Bob 417-882-5664  
 "FOR LISTING AND PICTURES VISIT  
**BOBKAUCTIONS.COM OR AUCTIONZIP.COM"**

**AUCTION REMINDER:** Auction, Saturday, October 26th, 9am. Lorts Brothers. Please see our Auction Directory for more information.

**AUCTION REMINDER:** Real Estate & Personal Property Auction, Saturday, October 26th at 10am. Easterly Auction Company. Please see our Auction Directory for more information.

**AUCTION REMINDER:** Online Auction Bidding ends Tuesday, October 29th @ 12:30p.m. Atterberry Auctions. Please see our Auction Directory for more information.

**APPLE CORRELE DISHES:** 8 Place setting. \$40. 532-2344.



## ONLINE AUCTION ONE LEVEL HOME

**SELLS TO HIGH BIDDER**

**Open House / Inspection:**  
 Tuesday, October 15th & 22nd,  
 12:00 p.m. to 1:00 p.m.

- 2,000 +/- Sq. Ft. Brick Ranch Home
- 3 Bedrooms, 2 1/2 Baths
- Rear Wood Deck & Two Car Garage
- Lg. Living & Family Rooms W/Fireplace
- Hardwood Flooring
- Near Schools On South End Of Town

**Note:** This Home Could Use Some Updating, However It Is Located In A Nice Family Neighborhood, Perfect For Young Families, Retirees Or Investment Property.

**Online Bidding Ends:**  
 Tuesday, October 29th at 12:30 p.m.  
 9 Mayes Meadows, Centralia, MO

For Additional Information, How To Buy This Home At Auction, Or For Financing Help, Call Your Real Estate Auction Specialists: Atterberry Auction & Realty Co  
**(573) 474-9295** Or  
 Email: [contactus@atterberryauction.com](mailto:contactus@atterberryauction.com)

"WE MAKE BUYING AND SELLING AT AUCTION EASY"

**Atterberry** MEMBERS  
 Auction & Realty Co., LLC.   
 573-474-9295 [www.atterberryauction.com](http://www.atterberryauction.com)

**A SETTLEMENT HISTORY OF FORT WOOD AREA:** including Bloodland and other towns in Pulaski Co. \$15, Out of print book. Lebanon, 417-532-2045.

**FORD 8N TRACTOR:** Sherman transmission, good condition. \$1,800. Rogersville. 417-753-2747, 417-766-1991.

**MINIATURE AUSTRALIAN SHEPHERD:** ASDR. \$550. 417-259-9255.

**IHC 1086 DIESEL CAB & AIR TRACTOR:** New A/C System. \$8,750. 573-765-4406.

Crawford County

# MISSOURI

Land For Sale at iAuction

**MERAMEC RIVER FRONTAGE**

**Bidding Ends Wednesday, November 6th at 10am**

**TROPHY PROPERTIES AND AUCTION**  
 LAND (RECREATIONAL) RESIDENTIAL

Call Phil Brown **(314) 753-7444**  
 Bid Now At **TrophyPA.com**



# ONLINE AUCTION

**Low-Mileage Chrysler Van • Tools  
Appliances • Collectibles**  
9 Mayes Meadows, Centralia, MO  
Bidding Ends Tuesday, October 22<sup>nd</sup> at 12:30 PM  
This Auction Features Staggered  
Ending Times & Extended Bidding On All Lots.  
Bid Online At [Atterberryauction.com](http://Atterberryauction.com)



**Preview:** Monday, October 21<sup>st</sup>  
From 3:00 PM to 6:00 PM  
**Payment & Pick-Up:**  
Wednesday, October 23<sup>rd</sup>  
From 3:00 PM to 6:00 PM

**Low-Mileage 1999 Chrysler Town & Country  
Van • Woodworking Equipment & Tools  
Appliances • Electronics • Fishing  
Equipment • Game Bird Prints • Pfaltzgraff  
& Other Dishes • Books • Precious  
Moments • Collectibles • Glass  
Household • Quilts & Linens  
Much More Listed On Our Website!**

For complete terms, listing, catalog,  
pictures & bidding,  
visit [atterberryauction.com](http://atterberryauction.com),  
email [contactus@atterberryauction.com](mailto:contactus@atterberryauction.com), or  
call (573) 474-9295.  
Please contact our office if you  
need help with the online bidding process.

“WE MAKE BUYING AND SELLING AT AUCTION EASY”  
**Atterberry** MEMBERS NAA MarkNet  
Auction & Realty Co., L.L.C.  
573-474-9295 [www.atterberryauction.com](http://www.atterberryauction.com)

**JOHN DEERE 535 ROUND BALER:** mon-  
itor, kicker, net wrap. \$5,250. 573-765-4406.

**BEAUTIFUL DOBERMAN PUPPIES:**  
Born 8/26, one Red/Rust and one Black/Rust  
male. \$650. One Red/Rust female. \$500. Par-  
ents are Double Registered AKC & CKC.  
Puppies are CKC Registered. UTD on shots  
and come with Health Records. Tails docked  
and declaws removed. 417-531-0483.

**AUCTION REMINDER:** Saturday, Oc-  
tober 19th @ 10a.m. Hurst Auction Service.  
Please see our Auction Directory for more in-  
formation.

# Great Starter House or Investment Property Online Auction

**Property Sells To High Bidder,  
No Minimum or Reserve**

- 1 Bedroom, 1 Bath Plus Two Partially Finished  
Potential Bedrooms • Living Room W/  
Laminate Floor • Newer Appliances & HVAC
- Corner Lot W/ Large Yard with Mature Trees
- Lawn Shed • Easy Access To I-70 &  
Only 35 Minutes From Whiteman Military Base

**Open House / Inspection:**  
Thursday, Oct. 24th | 12:00 p.m. – 1:00 p.m.



Attention: First Time Homebuyer, Military  
Personnel, Investment Buyer or Retiree!  
This property can very easily be made into a  
three-bedroom home.  
There is definitely lots of great potential with this  
home and you can name the price!!

**502 North Miller, Sweet Springs, MO**

**Online Bidding Ends:**  
Thursday, October 31 at 12:30 p.m.

For More Information  
Or How To Bid & Buy This Home At  
Auction, Call Your Real Estate  
At Auction Specialists:  
**Atterberry Auction & Realty Co.**  
(573) 474-9295 Or  
Email: [contactus@atterberryauction.com](mailto:contactus@atterberryauction.com)

“WE MAKE BUYING AND SELLING AT AUCTION EASY”  
**Atterberry** MEMBERS NAA MarkNet  
Auction & Realty Co., L.L.C.  
573-474-9295 [www.atterberryauction.com](http://www.atterberryauction.com)

**WANTED TO BUY** Your Broken Arrow-  
heads. A can full to a truckload. Pay cash on  
spot for any Indian Relics. Richard Brown,  
126 Honeysuckle, Eldon, MO. 65026, 573-  
392-3039.

**BLACK ANGUS BULL & 3 BRED COWS.**  
Bull 5yrs, Cows 3yrs. 573-436-0487, Potosi.

**AC 840 DIESEL ARTICULATING  
4-WHEEL DRIVE LOADER:** \$7,250. 573-  
765-4406.

**WHEAT STRAW.** \$4 Bale, 20 or more,  
\$3.75. 573-378-7326.

# ONLINE AUCTION

## FAMILY HOME CLOSE TO PARK & SCHOOLS!



**Open House / Inspection:**  
Tues., Oct. 29th, 4:30 – 5:30 pm  
& Nov. 5th, 12:00 – 1:00 pm

**Sells With No Minimum  
To The High Bidder!**

- 3 Bedroom, 2 Bath Brick Ranch
- Unfinished Basement
- Eat-in Kitchen & Dining Room
- Newer Central Air & Roof
- Located On Dead-End Street
- Lg. Two Car Garage

**Note:** You're Sure To Love This Well  
Cared For Home. Within Walking  
Distance of Southern Boone Middle  
School, High School & Pool.

**Bidding Ends:**  
Tuesday, November 12th @ 12:30 p.m.  
404 E. Meadowmere View, Ashland, MO

For Terms, Information or How To  
Purchase This Property At Auction,  
Call Your Real Estate At Auction  
Specialists: **Atterberry Real Estate**  
Auctioneers at 573-474-9295 or  
Email: [contactus@atterberryauction.com](mailto:contactus@atterberryauction.com)

“WE MAKE BUYING AND SELLING AT AUCTION EASY”  
**Atterberry** MEMBERS NAA MarkNet  
Auction & Realty Co., L.L.C.  
573-474-9295 [www.atterberryauction.com](http://www.atterberryauction.com)

**GERMAN SHEPHERD MIXED:** male, red  
colored 1yr, gentle. Good with other dogs.  
Free. Edgar Springs, 573-308-6189.

**VILLA HOMES IN ROLLA:** Has NEW and  
USED Mobile Homes. Call David for info:  
573-578-8072.

**WANTED:** American, European, Japanese  
Cars and Motorcycles. 1900 to 1980. Local  
cash buyer. 573-694-3774.

**WANTED:** Small, 4-cyl Chrysler car, 1995 or  
below. Must have good body, doesn't need to  
run. 636-584-9476.



## Beautifully Renovated Late 1800's Home & Shop

# ONLINE AUCTION

- 2,600 +/- Sq. Ft., 1 & ½ Story Home
- Well Maintained 2 Bedroom, 1 Bath
- Potential 3rd Bedroom / Office
- Spacious Eat-in Kitchen W/ Custom Cherry Cabinets
- Upstairs Bonus Room
- Family Room W/ Woodburning FP
- 30' x 33' Shop W/ Mother-In-Law Apt.
- Lg. Covered Front Porch, Sunroom and Rear Enclosed Porch

**Note:** This Is Absolutely A Must See Property! This Home Has Original Hardwood Floors, Wide Baseboard & Door Trim Throughout, Plus Mature Landscaping, Fruit Trees, Raised Garden Beds & More!

**Open House /  
Inspection Dates:**  
**Wednesday, Oct. 23<sup>rd</sup>,**  
12:00 – 1:30 pm &  
**Oct. 30<sup>th</sup>,** 4:30 to 6:00 p.m.

**Online Bidding Ends:**  
**Wednesday,**  
**November 6<sup>th</sup>**  
at 12:30 pm

**305 S. Main St.,  
Ashland, MO**

Ask Us How You Can Buy This Property! For Information & Terms Call Your Real Estate Auction Specialists: Atterberry Auction & Realty Co., (573) 474-9295 Or Email: [contactus@atterberryauction.com](mailto:contactus@atterberryauction.com)

“WE MAKE BUYING AND SELLING AT AUCTION EASY”



# Atterberry

Auction & Realty Co., LLC.

573-474-9295 [www.atterberryauction.com](http://www.atterberryauction.com)

MEMBERS





# AUCTION

**SATURDAY, OCT. 26, 2019**  
**10 a.m.**

**LOCATION:** 17337 Varvel Rd. Willow Springs, MO 65793  
**DIRECTIONS:** From Willow Springs MO, take Hwy 137 north 12 miles to U Hwy, go 3.5 miles to Varvel Rd, go 1 mile auction. From Mtn. View MO, take Y Hwy north 16 miles to Hwy 137, go south 1 mile to U Hwy, go 3.5 miles to Varvel Rd, go 1 mile to auction. From Cabool MO, take US Hwy 63 north 2 miles to U Hwy, go 10 miles to Varvel Rd, go 1 mile to auction. Watch for Rick Dixon auction signs. Visit us on the web at [www.rickdixonauctions.com](http://www.rickdixonauctions.com)

- TRACTOR • TRAILER •
- 4 WHEELER • EQUIPMENT •
- FURNITURE • ANTIQUES •
- COLLECTIBLES •
- HOUSEHOLD ITEMS •
- TOOLS • GUNS •
- REAL ESTATE •

**For your private viewing, contact Rick Dixon at 417-967-6604.**



• 74 acres m/l with approx 30 ac open land, and the balance in timber. Two bedroom, 1 bath home that has been remodeled. Includes a

shop and metal barn, all located with all the privacy you could want PLUS about 1/4 of a mile of Jacks Fork River frontage!! This property has it all, whether you want it for a small farm, a hunting retreat or your year-round paradise! **REAL ESTATE TERMS:** 10% down day of auction, balance due upon closing, to close within 30 days. Taxes prorated, closing costs paid for by the buyer. Sells as is, with no contingencies of any kind. Sells with owner confirmation.

**Allen Craig, Owner**



**Rick Dixon**  
 Auction Service, LLC

**Rick 417-967-6604**  
**Josh 417-217-9627**  
[www.rickdixonauctions.com](http://www.rickdixonauctions.com)

**THE RECOLLECTIONS OF TEXAS CO DEPUTY SHERIFF LOYD MITCHELL & Summersville Deputy. \$8.50. Lebanon, 417-532-2045.**

**BOBCAT 853 DIESEL SKID STEER LOADER:** 57hp, good. \$8,950. 573-765-4406.

**GLASS SHOWCASE:** 6' long, 3' high, 2' deep, lighted w/glass shelves, glass top/sides, sliding rear doors. \$195. 573-364-7465, Rolla.

**KIDS LITTLE TYKES RED CAR BED:** w/ mattress. \$150. Desloge, 573-327-9068.



**Regional Stockyards, Inc.**  
 P.O. Box 97 Cuba, MO. 65453  
 I-44 & Hwy. DD North Service Rd.  
 Barn: (573) 885-7431  
[www.irslivestock.com](http://www.irslivestock.com)

Scott Abolt: 573-259-9115  
 Mary Beth Abolt: 314-520-3211

## SPECIAL COW SALE

**Friday, Oct. 18th, 2019 • 6:30 pm**

### Early Consignments Include:

#### L & W Farms

- 10<sup>th</sup> - Charolais Cross Cows 5yrs to Short & Solid bred to Maple Oaks Red Angus Bull
- 22<sup>th</sup> - Black Cows 5yrs to short & Solid bred to Maple Oaks Red Angus Bull
- 20<sup>th</sup> - Red Cows 5yrs to Short & Solid. Some will have bwf calves by side

#### D & L Farms (all home raised)

45<sup>th</sup> Black / Bwf pairs cows are 4 to short & solid. Summer and fall calves by side all have been running back with a Registered Black Angus Bull since May.

14<sup>th</sup> Black/Bwf bred Cows 4 to short & solid. Bred to Registered Black Angus Bull.

1<sup>st</sup> Registered 3yrs old Black Angus Bull with papers

30<sup>th</sup> Hereford and Red Angus Cross Cows. Ages 4 to 6 years old. Home raised, some with calves by side - the rest bred to Black Angus Bulls

#### Matt / Mark Anderson Farms:

2 Virgin Gardner Angus Bulls, two years old

**Expecting 400 head Consignments Welcome**

**For More info call 573-885-7431**  
**REGULAR SALE EVERY TUESDAY @ 1:00PM**

website: [www.irslivestock.com](http://www.irslivestock.com)  
 Or Follow Us On Facebook

**MISSOURI GHOSTS, SPIRITS, HAUNTS & RELATED LORE BOOK. \$10, Out of print book. Lebanon, 417-532-2045.**

**2010 JOHN DEERE TRAC LOADER:** Rebuilt, new paint, diesel. \$6,600. 417-766-1991.

**AUCTION REMINDER:** Fall Consignment Auction Sat. October 19th @ 10am. Please see our Auction Directory for more information.

**NEW IDEA 2 ROW PULL TYPE CORN PICKER:** \$1,000. 573-765-4406.

## REAL ESTATE & PERSONAL PROPERTY AUCTION

**25945 118<sup>th</sup> Trail • Marshall, MO**  
**Saturday, October 19th**  
**10:30am**

From the Junction of I-70 and 65 Highway, take 65 Hwy North ¼ mile to 118th Trail (Outer Road). Turn right (East) on 118th Trail and continue 7-tenths of a mile to the sale site on the left.

**21.5 Acres m/l on the NE corner of 65 Hwy and I-70 at the Marshall Jct.**

### Real Estate Features Include:

4500 sq. ft. Commercial Building, Campground w/ 28 electric / water pull thru sites, 15'x30' open-sided Pavilion, 10' x20' storage building, playground area for kids. 24'x60' - 3bd 2 bath Double wide Mobile Home, 24'x50' shop/garage.

**Acresage** 21.5 acres, Visible from I-70 and 65 Hwy with 2,200 ft of road frontage on the I-70 outer road. 2-acre lake, Marshall City water and Marshall school district.

**Also Selling: Restaurant Equipment, Home Furniture, Truck, Yamaha Golf Cart, John Boat, Tractor, Jet ski, Misc. Equipment**

**For a Complete Listing, Details and Pictures visit Auctionzip.com #28114 or contact Auctioneers Scott Slaughter (660)568-3492 Gene Cornine (660)287-7639**

or Owner: **Darrell Slaughter at 660-879-4411** Statements made day of sale take precedence over all printed material. Not responsible for accidents. All items will be sold "as is" "where is". Cash or check w/ proper I.D.

**AKC LAB PUPPIES:** 5/male, 4/female, all yellow, shots and wormed, ready, parents on premises. \$400, call/text for pics. 417-349-0919.

**YARD CART:** for riding lawnmower, tilts, excellent shape. \$50 or trade. 573-734-2822.

**NEW HOLLAND TC-40-AT DIESEL COMPACT M.F.D. TRACTOR:** with New Holland loader, 2000hrs, nice. \$14,500. 573-765-4406.

**AMERICAN BULLDOG PUPPIES:** 573-548-2428

# FALL CONSIGNMENT AUCTION

**Sat., Oct. 19, 2019**  
**10:00 AM**  
**25696 Nightingale Dr.,**  
**Lebanon, MO**

- Suzuki 400 quad runner • Westinfield 12 gauge pump • 22/250 Remington • 22 Winchester automatic • H&R 12 gauge pump • 2003 12 passenger Oats Bus • 1999 Transit Bus, 22 passenger, wheelchair accessible, double doors • 2006 I-280 Isuzu, 2WD, 5spd., ext. can reverse rear doors • 2006 Dodge Caravan, stow & go seats • Couch • Loveseat • Recliner • Tools • '99 Bed cover • Household appliances

**Several more items to come!**



**Auctioneer:**  
**Donnie Gibbs**  
**417-322-3601**

**COMPLETE SCRAGG & PALLET OPERATION:** Property, Equipment, Timber contracts, Lots more, Selling due to health reasons, Too Much to List, may separate & owner finance. 417-650-0402

**JOHN DEERE 2630:** Diesel tractor, 70HP, w/145 JD loader. \$8,650. (573)765-4406.

**AUCTION REMINDER:** Auction. Thursday, October 24th @ 9:51AM. Chupps Auction Co. Please see our Auction Directory for more information.

**JESSE JAMES & THE CIVIL WAR IN MISSOURI** by Robert Dyer. \$10. Lebanon, 417-532-2045.

**WANTED 12 BUTCHER HOGS:** 150# plus. 417-322-0161.

**CHECKERED WALNUT WOOD STOCK PISTOL GRIP:** for Marlin Model 336 or 1895. \$100. Washington. 636-239-2695.

**LEBANON HISTORY BOOK-A PART OF OUR LIVES, 1949-1976.** \$10. 417-532-2045.

**AUSTRALIAN SHEPHERD PUPPIES:** out of working parents, shots-first round. 573-663-7459.

*A Big Thank you to*  
*Summersville, Mo.*  
*Horse*  
*Auction!*

*Pat & I would like to thank*  
*the owner's Chad & Stephanie*  
*Bell for doing a tremendous*  
*job on our herd dispersal of*  
*Missouri Fox Trotters.*

*We would highly*  
*recommend that if you have*  
*any horses needing sold to*  
*contact Chad or Stephanie*  
*at 417-247-8051*

*A sincere thank you,*  
*Pat & Steve Buckner*



**3PT 2 SECTION HARROW.** \$150. Rogersville. 417-753-2747, 417-766-1991.

**"AUCTIONS" GO TO** midwestauctions.hibid.com 800-807-9612.

**1950 6 CYLINDER CAR/TRUCK MOTOR.** \$200 or trade. 573-734-2822.

**DOUBLE SET OF WHEEL CHOCKS:** Color is Safety Yellow. \$30. 636-239-2695, Washington

**TAKEUCHI DIESEL EXCAVATOR:** W/ hyd thumb. \$15,000. 573-765-4406.

**REGISTERED BLACK ANGUS BULL:** AI Bred, 15mos old. \$1,250. Hartville 417-259-2520.

**1986 OLDSMOBILE CUTLASS: 41,XXX miles, excellent condition, V6, 4DR, all records, \$3,500obo.** 573-873-3440, Camden-ton.

**AUCTION REMINDER:** Saturday, October 19th @ 10am. Rick Dixon Auction. Please see our Auction Directory for more information.

**STEEL BUILDING:** 18x9x7. \$3,350. 417-407-0544.

## Estate Auction

**Saturday, October 19th, 2019 • 10:00 a.m.**

TO SETTLE THE ESTATE OF CHARLES RAY (CHARLIE). ALL ITEMS WILL BE SOLD TO HIGHEST BIDDER.  
 FROM DIXON: Take Hwy C to 133, go South 2 miles to Cress Road, turn Right and go 1 mile to Cape Rd. or Hwy BB to County Road 635. Road will be marked

### TRACTORS

Late 2000 J.D. 6110 2-Wheel Drive, 65 H.P. Serial# P297567. Cab and Air. Late Model 2000 J.D. 6210, 72 H.P., 2-Wheel Drive. Serial# L06210-H282345. W/Loader 620, W/Bucket & Bale Spike, Cab and Air. Late Model 2010 5383 E, Low Hrs w/553 Loader, w/Bucket Bale Spike, Cab and Air. Serial # LV5083 E 261339, 83 H.P., 4-Wheel Drive. All Tractors are Field Ready. Tires 80% Rubber to New Tires, and Very Low Hrs.

### TRUCK & EQUIPMENT

1999 GMC Sierra 3500 Tow Truck w/Bale Bed & Auto. Transmission. 2000 20-Ft. Flatbed Gooseneck Trailer • 15-Ft. Woods Brush Hog 8-Ft. Offset Disk (New Ground) • W.H. 355 Grinder Mixer w/Load Elev. Shaver Ft. Mount Post Driver • 1988 16-Ft. Dymastor Pen. Hitch Tandem Axles • Homemade Farm Trailer • 5-Ft. Pull Type Bush Hog 20-Ft. Pasture Drag, H/D on Wheels & Cyl. 100 Bu. Grain-O-Vator Auger Wagon • 200 Bu. Grain-O-Vator Auger Wagon

### TOOLS & MISCELLANEOUS

Lincoln 225 Welder • Large Air Compressor • 1 Lot New Oil (Engine & Hyd.) 1 Lot Hand Tools • 1 Lot Wrenches & Sockets 1 Lot Tires & Wheels • 2 Fuel Tanks & Stands  
**OTHER ITEMS TOO NUMEROUS TO MENTION**

**Owner: The Late Charles Ray**

**EVERYTHING SELLS AS IS, WHERE IS.  
 NO PROPERTY REMOVED UNTIL SETTLED FOR.**

**Welschmeyer Auction Service**  
**THE SOUND THAT SELLS -- 573-308-6656**

**FIVE 12X20 TIRES:** Mounted w/wheels. \$200. Rogersville. 417-753-2747, 417-766-1991.

**29 ACRES,** Old house, well, on highway. 15 miles west of Doniphan, MO. \$42,000. 573-714-5779.

**2006 GMC DENALI: high mileage, new motor, new tires, excellent condition. \$5,500 OBO.** 417-935-2176.

**PICK-UP TRUCK BED LINER:** Standard size Ford F150-F350. Good condition. \$40. Cedar Hill, 314-303-7857.

**ITHACA MODEL-37:** Featherlight 16-gauge, pump. \$325. 573-756-1065.

**40 PRIME KATAHDIN EWES:** Born spring 2018 and 2019, (hopping genetics), \$250, also selected rams, \$225. 417-322-0161.

**GUARDIANWARE:** 1930-1950's, Turkey roaster with lid. \$195. 573-364-7465.

**HAY- SMALL SQUARES:** 4th cutting, alfalfa/grass, no chemicals, \$7/bale. 417-322-0161.

**6410 JOHN DEERE:** w/640 loader, new tires, PQ, low hours. \$29,900. 573-392-3050



# Real Estate Auction

**Saturday, November 9, 2019 ★ 10 A.M.**

**Location:** 1722 County Road 1030, Willow Springs, MO  
**Directions:** Willow Springs business route turn on 10th street across from fire department then immediate left on Old Springfield Road and stay left at the fork, follow approx. 2 miles to auction.

## Real Estate

Located just off of blacktop county road close to town, sits this 3 bed 2 bath home on 8 to 10 acres. (survey will be done by auction day to determine land amount) Home features an office, oversized utility/mudroom, recently updated kitchen, steel siding, architectural shingled roof, spacious cover front deck and cover concrete back patio. Property has a 24x36 garage/workshop, small green house and garden shed. Terms: 10% down day of auction, balance at closing in 30 to 45 days. Highest bid presented to family for acceptance or rejection. Taxes to be prorated to closing date. Buyer and Seller split title closing cost 50/50. Call Travis at 417-293-6909 for an appointment to view the property in advance.

**Personal Property**  
 Tools, Household, Appliances,  
 Garden, Misc.

**Auctioneers Note:** Great opportunity to own a very well maintained, conveniently located home. Come prepared to buy and ready to move! See you at the auction.

## Tooley Auction Services, LLC

417-293-6909 • tooleyauctions@gmail.com



Travis Tooley, Auctioneer  
 Bruce Scheets, Auctioneer



is what we say best.

Drivers license or photo ID. Cash or check. Announcements made on the day of the sale take precedence over any printed material. Not responsible for accidents, theft or lost articles.

Follow us on Facebook!  
 Tooley Auction Services, LLC

**Clerks & Cashiers:** Jennifer Tooley,  
 Penny Tooley, Shelly Cauldwell  
**Ringmen:** Josh Wheeler, Vance Farmer, Terry McCallister



**NORWEGIAN ELKHOUND PUPPIES:** Cute, family raised on farm, very friendly parents. Will make good family pets. Starting at \$100. 417-241-0394, Hartville.

**T'S FENCE LINE COW CATCHER,** an easy way to halter break calves. \$200. Herriman. 636-932-4429.

**TWO 8 MONTH OLD BERKSHIRE BOARS.** \$150 each. 417-998-6666, leave message, Cross Timbers.

**AUCTION REMINDER:** Cow sale. Friday, October 18th @ 6:30pm. Interstate Regional Livestock. Please see our Auction Directory for more information.

**REGISTERED HEREFORD & ANGUS BULLS:** Home raised, Some Show-Me Select Qualified. 573-701-7828. Belgrade

**FORD JUBILEE INDUSTRIAL FRONT LOADER:** Wide front, 3pt, runs and stops, power steering not working. \$1,800. Rogersville. 417-753-2747/417-766-1991.

**2007 CHEVY 2500 CLASSIC DURAMAX:** Single cab, 4x4, 97,000 miles. \$18,500. 573-480-4441.

**ROME 8FT OFFSET DISK:** \$3,750. 573-765-4406.

**MARLIN MODEL-30A 30-30:** lever action, with scope. \$325. Mossberg Model-500 Slugster: 12-gauge, rifle sights. \$225. 573-756-1065.

**NEW TUBE GRILL** to fit 73-83 Chevrolet pick-up. \$50. 573-734-2822.

**2004 OPEN RANGE FIFTH WHEEL CAMPER:** 34', all weather, in good condition. \$10,500. Lebanon, 417-718-5520.

**MODULAR STOCK SALE - It is time to move our inventory. TRUE MODS - Save Thousands. Call Marla, better than 20 years experience. 573-657-7040, chateauhomes.net.**

**FOR SALE: 1999 Chevy Silverado** 3 door extended cab, rusty, 5.3 Vortec, V-8 engine. 417-543-8261.

**\$19,900 USED DOUBLE WIDE:** nice 3 bedroom, 2 bath delivered & set-up.....Hurry, This house will NOT last long! Call now 573-657-2176 amegamobilehomes.com

**1999 JEEP CHEROKEE:** 6 cylinder. \$3,000. Protem, 417-340-7890.

**AUCTION REMINDER:** Online Auction Bidding for 1800's home ends Wednesday, November 6th @ 12:30p.m. Atterberry Auctions. Please see our Auction Directory for more information.

**MASSEY FERGUSON:** 231 diesel tractor, W.F., 3pt, power steering, dual hyd. \$5,500. 573-765-4406.

**2008 CANAM SPYDER:** Premier edition, anti-lock brakes, traction control, cruise control, emergency brakes, new tires, VGC. \$5,800. Phone 573-338-0368.

**LIONEL TRAIN SET:** Steam engine, tender, caboose and other car, track and transformer. \$195. 573-364-7465, Rolla.



**MID MISSOURI STOCKYARDS**

**REGULAR SALE EVERY THURSDAY 11AM**

**SPECIAL STOCK COW SALE NOVEMBER 2 @ 6PM**

For Farm Visits, Market Updates, or Trucking  
 Call Zach Cox 417-777-1320  
 Dan Romine 573-578-4939

**Competitive Buyers!  
 Competitive Commission!  
 Competitive Market!**

Barn: 417-532-9292   
**I-44 • Exit 123 "just outside of Lebanon"**  
**17505 Route 66, Phillipsburg, MO 65722**  
 For weekly market updates, visit us at  
[www.midmostockyards.com](http://www.midmostockyards.com)

**FALL CONSIGNMENT AUCTION**

**SATURDAY, OCTOBER 19 • 10:00 AM**

8035 NW Hwy AA • Appleton City, MO 64724  
 From Appleton City: go east 2 miles on 52 hwy to A, go south on A hwy ¼ mile to AA. Then east on AA hwy to auction.

**GUNS • VEHICLES & CAMPER**

**• TRACTORS • TRAILERS • UTV/ATV & BELT LOADER • EQUIPMENT**

**• LIVESTOCK EQUIPMENT**

**• TOOLS & MISC.**

**TERMS OF SALE:** Cash or good check w/ proper ID. Nothing to be removed until settled for. Statements made day of sale take precedence over printed materials. Lunch served and toilets on site.

**WADE AUCTION SERVICE**

Appleton City, MO

Clerks: Irby & Wade • Col. Kevin Wade Mobile 660-492-3279  
 Col. Bryan Wade Mobile 660-492-3740 Tyler Wade Mobile 660-492-7764  
 To view ad online go to [www.auctionzip.com](http://www.auctionzip.com) Auctioneer ID: 24103  
 Visit us on Facebook at Wade Auction Service

**TINY HOUSE/SHED:** Swiss A-Style, 6x8, furnished. Vienna. \$600. 573-759-7143.

**AUCTION REMINDER:** Auction, Saturday, October 19th, 9am, Lorts Auction. Please see our Auction Directory for more information.

**AUCTION REMINDER:** Sat, October 16th at 10am. Billy Sexton Auctions. See our Auction Directory for more information.

**COLLECTION OF AUNT JEMIMA STUFF:** \$200. Desloge, 573-327-9068.

**PRAIRIE PHOENIX CATTLE CARE SYSTEM:** Your Southern Missouri dealer. 417-286-3540.

**14 OPEN BLACK ANGUS HEIFERS.** \$700 each. John Deere 1508 15' batwing bush-hog. \$2,000. 573-714-2012.

**CHILDREN'S BOOKS FOR LEARNING TO READ:** \$1/piece. Desloge, 573-327-9068.

**MASSEY FERGUSON 255 TRACTOR:** W/front loader, solid tractor. \$6,300. 573-674-3948.

**JOHN DEERE 925 DISKBINE:** W/rollers. \$6,750. 573-765-4406.



**NEW MAHINDRA ROXOR FRESH OFF THE ASSEMBLY LINE!!**

- Steel Body no plastic to break
- 5 Speed Manual Transmission no belt to break
- Fully-boxed, ladder construction, steel truck-style frame
- Turbo Diesel 4 cycle engine which produces 144 ft lbs of torque and 3490 lbs of towing capacity to get your jobs done. • Made in Detroit
- 3 YEAR WARRANTY OR 12,000 MILES • Starting at \$15,999
- MADE IN THE USA

Visit us at [www.cowtownusainc.com](http://www.cowtownusainc.com)



**Cutting Land Pride GET WORK DONE.**

**RCR18 SERIES**  
 ROTARY CUTTERS  
 20-65 HP 60", 72" Widths

- Cat. 1 Hitch
- 2" Cutting capacity
- Fully welded deck
- Full length skid shoes

**LP** CONSISTENTLY LEADING THE WAY...

**AGRI-ENTERPRISES**  
 The Outstanding Products & Service  
 1-1/2 Miles South Of Licking, MO On Hwy 63  
 573-674-2203 • 1-800-653-7152  
[www.agri-enterprises.com](http://www.agri-enterprises.com)

**GIBSON HEATING & COOLING UNIT:** Working condition. \$400. Whirlpool 25' cut ft side-by-side refrigerator freezer, excellent condition. \$400. Whirlpool, 40gal electric water heater, extra heat elements. \$100. Kenmore Elite dishwasher. \$25. GE Dryer \$25. Will negotiate, make offer. 417-241-0394, Hartville.

**6x52 TRANSPORT AUGER** and 5,000 Bushel Grain Bin w/drying floor, fan, & unloading auger. Good condition. 573-437-2076.

**PRAIRIE PHOENIX CATTLE CARE SYSTEM:** Missed us at Farm Fest? We'll come see you!! 417-286-3540.

**JOHN DEERE 2040:** w/520 loader and joy stick, bucket, front/rear bale spikes, 6' bush-hog. Kept inside w/2200 hrs. \$15,900. 417-926-9300.

**AUCTION REMINDER:** Cow Sale, October 19th. Cattle Sale every Monday at Noon. Goat, Sheep & Hog sale 2nd Tuesday of Month @ 6pm. Salem Livestock. Please see our Auction Directory for more information.

**GERMAN SHEPHERD: Pups are Ready,** females only, full blooded, vet checked, black saddle, first shots. \$200. 417-630-9291 leave message.

**AUCTION REMINDER:** Online Auction Bidding ends Wednesday, October 16th @ 12:30p.m. Atterberry Auctions. Please see our Auction Directory for more information.

**WANTED: DOUBLE PWC TRAILER.** 573-480-5074, Tuscumbia.

**YOUTH BED:** with mattress, good condition. \$20. 417-532-2344.

**BARN WOOD SIDING: 8" & 10" wide.** 573-729-7226. [www.pineridgerustic.com](http://www.pineridgerustic.com)

**BOSTON TERRIER PUPPIES:** 573-548-2428.

**DO YOU STILL BELIEVE** in the one true God? Inviting ALL for in depth Bible studies, John 17:3. Please call the Remnant, 417-664-8257.

**MEAT RABBITS FOR SALE:** 417-664-5684.

**WANTED CATTLE FARM TO LEASE OR PURCHASE:** within 20 miles of Belle, Mo. 573-578-3945.



**Pine Ridge Rustic**  
 Log Home Building Supplies

**Services Offered!**

- Installation
- Pre-finishing available on interior & exterior
- Dealer for exterior stains

[www.pineridgerustic.com](http://www.pineridgerustic.com)  
 523 CR 2410 • Salem, MO 65560 • Ph: 573-729-7226

- Log Siding
- Beveled Siding
- Car Siding • Red Cedar
- Western Cedar • Pine

**PINE LOG SIDING..** [www.pineridgerustic.com](http://www.pineridgerustic.com) 573-729-7226.

**BORDER COLLIES PUPS:** Farm raised, livestock working or companion, shots/wormed. 417-967-3657, Upton.

**EVEREST INSULATED SLEEPING BAG** by Slumberjack. \$70. Email Spiritfm89@gmail.com or 573-645-7876.

**WR CASE & SONS Cookbook & Historical Companion.** \$7.50. 417-532-2045, Lebanon.

**3PT 2 SECTION HARROW.** \$150. Rogersville. 417-753-2747, 417-766-1991.

**1965 FORD 1 TON TRUCK:** 12' flatbed. \$3,500. 1959 Chevrolet 38 1 ton truck: 10' dump bed. \$4,500. Best offers considered, 573-729-0272, Salem.



# WEEKLY TRADER MAGAZINE

# YOUR AD GOES HERE!

Add **YELLOW** Color For An Additional **\$3** Per Reader Ad

All ads will include Phone Number (unless requested to be deleted by advertiser) and City Or Town, Phone Number with Area Code counts as one word. City or Town counts as one word.

**RATE: 80¢ Per Word. All Classified Ads Require Payment Before Print.**

(1) 80¢	(2) \$1.60	(3) \$2.40	(4) \$3.20
(5) \$4.00	(6) \$4.80	(7) \$5.60	(8) \$6.40
(9) \$7.20	(10) \$8.00	(11) \$8.80	(12) \$9.60
(13) \$10.40	(14) \$11.20	(15) \$12.00	(16) \$12.80
(17) \$13.60	(18) \$14.40	(19) \$15.20	(20) \$16.00
(21) \$16.80	(22) \$17.60	(23) \$18.40	(24) \$19.20
(25) \$20.00	(26) \$20.80	(27) \$21.60	(28) \$22.40
(29) \$23.20	(30) \$24.00	(31) \$24.80	(32) \$25.60
(33) \$26.40	(34) \$27.20	(35) \$28.00	(36) \$28.80
(37) \$29.60	(38) \$30.40	(39) \$31.20	(40) \$32.00

## Place your Classified Ad TODAY!

### 417-532-2800 • 800-665-8875

### Fax: 417-532-8140

### Or Mail To: P.O. Box 192 • Lebanon, MO 65536

For your convenience we accept MasterCard, Visa, Discover or American Express



**DEADLINE FOR CLASSIFIED ADS: MONDAY 12 NOON!!**

Name \_\_\_\_\_

Address \_\_\_\_\_

City \_\_\_\_\_ Email \_\_\_\_\_

State \_\_\_\_\_ Zip Code \_\_\_\_\_ Phone \_\_\_\_\_

Ad Total \$ \_\_\_\_\_ X # Weeks \_\_\_\_\_ = Amount Enclosed \$ \_\_\_\_\_

**0% APR for 60 MOS**

**ZERO DOWN**

**KEEP IT SIMPLE WITH QUARLES SUPPLY**

RATES SUBJECT TO CHANGE  
\*With approved credit. Tax/Insurance not included.  
Some restrictions may apply. See dealer for details.

# FALL SAVINGS



**New 26HP Kubota Package Deal!**

**B2650HSD \$21,405**  
Financing Price

**NEW Kubota B2650HSD, 4wd, DIESEL, R4 TIRES, KUBOTA LOADER, 4' CUTTER, 4' BLADE, NEW 16' KODIAK TRAILER W/RAMPS& NEW TIRES**



**New 33HP Kubota Package Deal!**

**L3301HST \$24,155**  
Financing Price

**NEW Kubota L3301HST, 4wd, DIESEL, AG TIRES, KUBOTA LOADER, 5' CUTTER, 5' BLADE, NEW 18' KODIAK TRAILER W/RAMPS& NEW TIRES**

**PRICING REFLECTS ALL CURRENT KUBOTA PROGRAMS**

\*DOES NOT INCLUDE TAX AND INSURANCE

**BLENDED RATES MAY APPLY ON NON KUBOTA ITEMS**



**New 52HP Kubota Package Deal!**

**MX5200HST \$34,635**  
Financing Price

**NEW Kubota MX5200HST, 4wd, DIESEL, AG TIRES, KUBOTA LOADER, 6' CUTTER, 6' BLADE, NEW 20' KODIAK TRAILER W/RAMPS& NEW TIRES**



**QUARLES**  
SUPPLY COMPANY INC.

[quarleskubota.com](http://quarleskubota.com)  
Just off Business 13 in Bolivar, MO  
Open 8:00-5:00 Monday-Friday  
Saturday 8:00-12:00

**(417) 777-2391**