

Vol. 26 No.10

JUNE 13, 2019

800-543-8271 • 800-665-8875

FREE WEEKLY TRADER MAGAZINE

 Find us on Facebook

@myweeklytrader

Auctions - Pg. 28

MYWEEKLYTRADER.COM

You pull it, we sell it...

CHEAP!



Lebanon, MO

22395 Rt. 66

417-588-3555

Fax 417-588-8955



U★PULL★IT

SELF-SERVICE AUTO PARTS

We also have a large inventory
of used tires and be sure to check
out our used car lot!

Mon.-Fri. 8:00am-6:00pm • Sat. 8:00am-4:30pm • Sun. 9:00am-4:00pm

WWW.SSUPULLIT.COM

Located next to S&S Recycling.



417-588-3555 417-926-3360

For All Your Metal Recycling Needs

Lebanon, MO

22395 Rt. 66

417-588-3555

Fax 417-588-8955

Mtn. Grove, MO

8930 First Rd

417-926-3360

Fax 417-926-0180

Roll-off, Trailer, and
Mobile Crushing
Services Available

Monday-Friday 8:00am-4:30pm (Closed 12pm-1pm Lunch)
Saturday 8:00am-Noon

email: contact@ss-recycling.com

Buyer of all types of scrap metal.

LET'S MAKE A DEAL

**SAVE UP
TO \$1400
ON A 2019
RANCHER**



**2019 TRX420FM1K
Rancher 4x4
SRP* \$6,399
SALE \$4,999**



**2019 TRX420TM1K
Rancher 2x4
MSRP* \$5,349
SALE \$3,999**

**Our Price Promise.
If you find a verified
better price in MO we
will meet or beat it.
Guaranteed.**



**2018 TRX250TMJ
Recon
MSRP* \$4,099
SALE \$2,899**

**2055 East Kerr St.
Springfield, MO
(417) 862 - 4686**

**Honda
OF THE
OZARKS**



HondaOfTheOzarks.com

honda.com UTILITY ATVs ARE RECOMMENDED ONLY FOR RIDERS 16 YEARS OF AGE AND OLDER. ATVs CAN BE HAZARDOUS TO OPERATE. FOR YOUR SAFETY, BE RESPONSIBLE. READ THE OWNER'S MANUAL. ALWAYS WEAR A HELMET, EYE PROTECTION AND PROTECTIVE CLOTHING. BE CAREFUL ON DIFFICULT TERRAIN. ALL ATV RIDERS SHOULD TAKE A TRAINING COURSE (FREE FOR NEW BUYERS. ASK YOUR DEALER OR CALL ASI AT 800-887-2887). NEVER RIDE UNDER THE INFLUENCE OF DRUGS OR ALCOHOL, ON PAVED SURFACES, ON PUBLIC ROADS, WITH PASSENGERS, OR AT EXCESSIVE SPEEDS. NO STUNT RIDING. RESPECT THE ENVIRONMENT WHEN RIDING. *MSRP excludes destination charge of \$400. Set up/PDI is \$189 on all units shown. Prices and availability subject to change. Rancher® is a registered trademark of Honda Motor Co. (06/19)

#1 SELLING TRACTOR IN THE WORLD



BETTER TRACTION, STABILITY & CONTROL



"Get Superior performance with a Mahindra"



Mahindra eMax 25

25 HP, 4WD, HST, with Loader

\$285
PER MONTH*
(AT 0% UP TO 60 MONTHS.
PAYMENT APPROX)

0%*
up to
60 Months

Or **\$2,000**
CASH DISCOUNT
(In Lieu of Low Rate Financing)

*10% down with approved credit, must finance thru Mahindra. Expires 06.30.19. Subject to change. See dealer for details.

www.agri-enterprises.com

For Outstanding Products & Service

AGRI-ENTERPRISES

1-1/2 Miles South Of Licking, MO On Hwy 63
573-674-2203 • 1-800-653-7152

Mahindra
Rise.

WANTED CUT STOCK, Cants, Slabs, trees length + 45" long scragg blocks. 417-650-0402.

MICHIGAN 85 WHEEL LOADER FOR SALE. 3.5 yard bucket, articulated steering, disc brakes, Ford 460 repowered engine, good tires & spare. \$8,500. Rolla, 573-308-5310.

FRENCH BULLDOG PUPPIES: Blues, Chocolate & Lilac Carriers, Whites, Sable Pieds, M/F, Guaranteed. \$895-\$2,500. 573-238-3873, 573-208-0485, Glenn Allen.

2004 OPEN RANGE FIFTH WHEEL CAMPER: 34', all weather, in good condition. \$10,500. Lebanon, 417-718-5520.

DEARBORN 2-DISK PLOW: new disk. \$300. 417-247-8200.

BLACK SMITHING ANVIL. \$600. 417-349-2901.

WINCHESTER 30/30 1940'S: wood storage case, ammo. \$500. Marshfield, 417-241-3330.

VOTED #1 BEST Preowned Car Dealership

TIM'S USED CARS
(573) 341-3828 • 1334 South Bishop (Hwy. 63) • Rolla, MO
Next to Hwy. CC • www.tims-used-cars.com

 <p>2015 Ford F-250 XL, Crew Cab, long bed, 4x4, 6.2 V-8, Power Equipped, 134,xxx miles, Only \$20,800</p>	 <p>2014 Ford F150, FX4, X-Cab, 4x4, 5.0 V-8, Power Equipped, 84,xxx miles, Only \$22,900</p>
 <p>2009 GMC Yukon Denali, AWD 6.2 V-8, loaded with options, Only \$9,800</p>	 <p>2012 Toyota Camry SE, V-6, Power Equipped, 130,xxx miles Only \$10,500</p>

LARGE SELECTION OF CARS, TRUCKS, SUVs & VANS!

USED EQUIPMENT

- 920 Cat Wheel Loader
- 4035 Mahindra 4wd power shuttle with loader
- MF 50, Diesel
- Gehl Silage Chopper • NH 163 Tedder
- 6' & 7' Brush Cutter
- Landpride 10' Brush Cutter
- JD 10' Cultipacker
- 3pt. 3 bottom plow
- 12' Spring Tooth Harrow 3pt. 2 Disc Disc Plow
- Other Misc Equipment

For Outstanding Products & Service

AGRI-ENTERPRISES
1-1/2 Miles South Of Licking, MO On Hwy 63
573-674-2203 • 1-800-653-7152
www.agri-enterprises.com

AUCTION REMINDER: Personal Property & Real Estate Auction Saturday June 15 at 9am. Cheyney Auction Company LLC. Please see our Auction Directory for more information.

QUALITY BONUS AVAILABLE
Increase your profit by 4¢ per lb.

Kentucky-31 Tall Fescue Producers

ADD PROFIT TO YOUR OPERATION

RECORD HIGH FESCUE SEED PRICES

65¢ per lb., Dry Seed

With over 30 buying stations, there's a station near you!
CALL for the Pennington Seed Fescue Buying Station nearest you

417-456-3338



THE PREFERRED FESCUE SEED BUYER since 1972
Toll Free 1-800-658-0410, 303 S. Grand Street, Greenfield, MO 65661

LEBANON HISTORY BOOK-A PART OF OUR LIVES, 1949-1976. \$10. 417-532-2045.

AUCTION REMINDER: Every Wednesday at 10:30 am. Farmington Livestock. Please see our Auction Directory for more information.

WANTED PINBALL MACHINES. 573-424-7200.

3pt TWO-SECTION HARROW. \$200. Rogersville. 417-753-2747, 417-766-1991.

1962 CHEVY IMPALA: 4dr. Sedan. \$9,000. 1-573-697-5065.

PINE LOG SIDING SALE: \$1.19 per L.F.
www.pineridgerustic.com 573-729-7226, 573-247-2823.

NEEDING TO RE-HOME wonderful dog. 2.5 year Boxer Mix: obedience /crate trained, great traveling dog. Good w/animals and people. Great companion. 224-637-5988.



Cheyenne Acres
Horse & Tack
BUY - SELL - TRADE
by Rolla, MO
Call For Directions & Availability
Call Kip
573-368-9402



R-FAB BINS
(660)281-3078




Bucket Bins
Stationary or Portable
Overhead Bins
Located in Warsaw, MO

FARM & HOME SERVICES, WELDING & CONSTRUCTION. \$40-\$65 per hour. 417-664-7841, Stoutland.

2005 YAMAHA 1100 SILVERADO, 14,000 Miles, bought new, many extras, new tires. new condition, always garaged. \$5,600 OBO. 573-259-2648.

PURE BRED BORDER COLLIES: Pups ready 5-20-19 \$100ea. Border collie/Australian Shepherd pups \$100ea. Ready 5-31-19. Hartville, 417-259-9738.

BLUE HEELER PUPS: Raised for 40 years. Good livestock dogs or pets. Already working. \$85 each. 660-631-5019 Warsaw.

WEEKLY TRADER MAGAZINE

Vol. 26 June 13, 2019 No. 10
Published By
Lebanon Publishing Co. Inc.
PO Box 192, Lebanon, MO 65536
417-532-2800
www.myweeklytrader.com

Everything advertised in this publication must be made available for purchase, use or patronage without regard to race, creed, color, sex, age or national origin of the purchaser, user or patron. The Publisher will not be responsible for misinformation, misprints, typographical errors, etc. Opinions expressed are not necessarily those of the Publisher. All rights reserved. No part of this material may be reproduced by any means without permission in writing from the Publisher. We reserve the right to refuse any ad if we deem necessary. Our list and map indicate counties in which the Weekly Trader is delivered. The magazine is not necessarily placed in all communities in a particular county. A list of all retail drops for a county may be obtained by contacting the Weekly Trader office at PO Box 192, Lebanon, MO 65536.



KUBOTA BV SERIES
LESS WORK. BETTER BALES.

Unmatched dependability and efficiency is built in. Field after field these hard-working round balers create dense bales and tight outer layers with hassle-free engineering designed to help you have your best season yet.

Visit us to find out why the BV is the right baler for you.

EDGELLER AND HARPER
FARM EQUIPMENT

Get Unmatched Kubota Quality!
Kubota Designed, Engineered & Built.
Visit Us In TWO Locations!

8665 Outer Road • Mtn Grove
417-926-5454 • 877-926-5458
4973 W. US Hwy 160 • West Plains
417-256-0420 • 800-766-0420

KubotaUSA.com
Optional equipment may be shown.



A CUT ABOVE THE REST.

Operating Angle of 35° Up and Down
Fully Welded Cutterbar
Non-Stop Breakaway System

DM Series

Get Unmatched Kubota Quality!
Kubota Designed, Engineered & Built.
Visit Us In TWO Locations!

8665 Outer Road • Mtn Grove
417-926-5454 • 877-926-5458
4973 W. US Hwy 160 • West Plains
417-256-0420 • 800-766-0420

EDGELLER AND HARPER
FARM EQUIPMENT

KubotaUSA.com
Optional equipment may be shown.

MUST SELL DUE TO HEALTH: Beautiful custom ordered, mint condition, flexsteel, three cushion, 84" sofa with matching 60" loveseat. \$450. Must see. 573-699-4351.

REGISTERED HEREFORD & ANGUS BULLS: Home raised, Some Show-Me Select Qualified. 573-701-7828. Belgrade

CRAFTSMAN FLOOR DRILL PRESS. \$150. 55 gallon hand Fuel Pump. \$50 573-378-5180

AUCTION REMINDER: Real Estate & Personal Property Auction, Sunday, June 22 at 10am. Easterly Auction Company. Please see our Auction Directory for more information.

10' CONCRETE FEED BUNKS. Johnson automatic waterers, assorted gates. 573-819-1768, Columbia.

4 MUD TIRES: Goodyear Wrangler, LT285/75R16 Dura Trac, good tread left. \$100 Call Don, leave message for call back 314-808-5680.



American Made Metal Roofing
40 Year Warranty Metal.....\$1.99 (\$62.18 Per Sq)

*29 Gauge 10 Year\$1.79 (\$55.93 Per Sq)

****While Supplies Last****

29 Gauge #1 Galvalume \$1.69....\$1.39 (\$43.44 Per Sq)
29 Gauge 40 Year *Saddle Tan*\$1.69 (\$52.81 Per Sq)

Building In A Box
Stud Wall & Pole Barn Kits

	Non-Warranty Metal	10Year Warranty	40Year Warranty
24x30x8.....	\$3,350	\$3,700	\$3,850
30x40x10.....	\$4,950	\$5,350	\$5,600
40x60x12.....	\$9,300	\$10,000	\$10,200

Pre-cut Packages Also Available

17 Colors To Choose From
20 Years In Business
We Manufacture Our Own Metal and Trusses

3 Locations To Serve You!

6952 E. 7th St. Joplin, MO. 417-317-7961
1100 Pace Rd. Pocahontas, AR. 870-609-1900
35 Killdeer Rd. Seymour, Mo. 417-952-7143

OVERMAN
INSULATED SUPPLY

*possibly not American made



Cowtown Express Car Wash
Highway 63 South, Rolla, MO
Call Wade 573-368-1430 Or 573-426-2500

\$4,500
And 10% Down
\$95 Per Mo w.a.c.

NEW Winchester Star & Bale Trailers
Powder Coated 18+2, 7,000 Axles
www.cowtownusainc.com

NICE BASSETT QUEEN BEDROOM SET: \$400. Clever, 417-268-5586.

1987 SHELBY DAYTONA: Excellent condition. \$5,500. 314-616-9862.

FREE AKC REG. GERMAN SHEPHERD: 1 year old, black & tan, very friendly, good behavior. 630-687-0705.

DARDEN PROFESSIONAL TIMBER HARVESTING, BUYING STANDING TIMBER: Great prices, improve wildlife habitat and improve forest health. State Certified & Fully Insured! 573-247-4808 or 573-739-1122. Salem

GENT'S VINTAGE WATCH COLLECTION: Over 40 Classic models. \$150. 573-764-3517, call in pm.

FOUR REGISTERED QUARTER MARES: 100% Foundation Bred. 573-528-7436.

1965 FORD FAIRLANE: 4 door sedan, 289 V8, automatic, driveable car, fair condition. \$2,500 OBO. Salem 573-729-0272.

1902 REM MOD 6 32 CAL RIFLE. \$400. 573-218-9231, Farmington.

FESCUE WANTED TO COMBINE ON SHARES. Phone 417-327-6240.

15FT BUSHHOG: 3715 Heavy-duty, good condition. \$10,500. 417-766-6504.

MF 550 COMBINE: RWA hydro, 1,923 hours. \$15,000. 636-278-6065.

JOHN DEERE 566 ROUND BALER: monitor, kicker, net wrap. \$7,500. 573-765-4406.

5AC OZARK COUNTY: Near Bull Shoals Lake. \$9,995. 417-255-6640.

BARN WOOD SIDING: 8" & 10" wide. 573-729-7226. www.pineridgerustic.com

ALUMINUM WHEELS: 4 15X10 mid 90's Chevy Pick-up 2WD. \$95. 573-368-6633, Rolla.

9N FORD TRACTOR: runs good, looks good, 70% tires. \$1,050. 573-468-7689, Sullivan.

AUCTION REMINDER: Farm Equipment Auction, Sat Jun 22@10:30am. Case Auction. Please see our Auction Directory for more information.

See Service
Spray Foam Insulation

Closed cell or open cell form available
Choose the thickness of your insulation

Closed Cell	Open Cell
• Higher R. value	• Lower Cost
• Vapor barrier	• Sound Deadening
• Structural benefit	• Fire resistant
• Fire Resistant	

Both types of foam fill voids and stay where they are put to provide better insulation than fiberglass or cellulose

FINANCING AVAILABLE  WE ACCEPT

Call Joseph See
(417) 733-6936
Located near Buffalo, MO

DAEWOO FORKLIFT

Model GC25S-2
Serial No 06-02352

- Propane
- Hook attachment
- Everything works great
- Always kept in a building

Call for more information!

417-532-9131 • LEBANON



GOLDEN RETRIEVER: Beautiful Female, 5 months. \$600. 314-808-1496.

NEW NEW NEW DISPLAY HOUSE!!!
Call Marla to hear what is new inside 573-657-7040, chateauhomes.net.

FREE MALE CAT to loving home: neutered, great indoors and outdoors. 417-664-9940.

H&S 12 WHEEL BI-FOLD RAKE: \$2,500. 573-765-4406.

NEW 4-RIB BELT FOR 1431 N.H. CONDITIONER: \$60. 417-646-8807.

RUBBER BELTING: Assortment sizes. 573-378-5180

HESSTON 5500 5X5 ROUND BALER: \$1,800. 573-438-2672.

NEW HOLLAND 320 SQUARE BALER: \$2,950. 573-765-4406.

100# PROPANE GAS CYLINDER: 24 gallon with regulator and cap. \$50. Conway, 417-718-5347.

2006 36FT TRAILER: 2 Slides. \$8,500. 417-664-3162.

13' DUMP BED FOR SALE: Hoist & tank included. \$1,200. Rolla, 573-308-5310.

WANTED OLDER MODEL ROLLBACK CAR HAULER: excellent shape. 573-734-2822.

6FT FARMKING FINISH MOWER: good shape. \$650. 417-247-8200.

8FT OFFSET DISK: \$2,500. 573-765-4406.

IHC 1086 DIESEL CAB&AIR TRACTOR: \$8,400. 573-765-4406.

1890 SOUTH BEND GRAIN SEEDER: Shoulder held, wood w/iron gears. \$100. 573-764-3517, call in pm.

FIVE ANGUS BRED HEIFERS: to Byergo Bull. \$2,100. 660-337-6311.

SET OF WHEEL CHOCKS: Color is Safety Yellow. \$25. 636-239-2695, Washington

1962 MASSEY FERGUSON BULL: w/loader, needs paint. \$4,500. 573-315-9009, Potosi.

AUCTION REMINDER: Real Estate & Personal Property Auction, Sunday, June 23 at 10am. Easterly Auction Company. Please see our Auction Directory for more information.

NO PAY SUMMER!

SEEGER'S




P9544
2018 TOYOTA HIGHLANDER
\$34,988

- P9521A 2009 LINCOLN MKZ\$9,988
- 7717A 2011 TOYOTA TUNDRA.....\$19,988
- 7717B 2016 NISSAN MURANO.....\$16,988
- P9542 2018 TOYOTA TUNDRA.....\$41,988
- 7488A 2014 CHEVY CRUZE.....\$10,988
- 7581A 2015 LEXUS RX.....\$25,588
- 7623A 2015 TOYOTA 4RUNNER.....\$32,788
- 7674C 2007 FORD F150.....\$10,988
- P9537 2015 TOYOTA TACOMA.....\$27,588
- P9538 2018 DODGE GRAND CARAVAN.....\$19,988
- P9539 2018 NISSAN SENTRA.....\$14,588
- P9540 2018 TOYOTA 4RUNNER.....\$32,988
- P9541 2018 NISSAN MAXIMA.....\$22,588
- P9512A 2018 HONDA ODYSSEY.....\$34,588
- 7758A 2014 TOYOTA COROLLA.....\$11,788
- 7776A 2015 TOYOTA HIGHLANDER.....\$28,588
- P9536 2014 FORD MUSTANG.....\$23,988
- 7497B 2015 FORD FLEX.....\$20,988

- 7529C 2016 DODGE CHARGER.....\$20,988
- 7632B 2014 CHEVY SONIC.....\$10,988
- 7634A 2016 CHEVY TAHOE.....\$42,588
- P9517A 2016 GMC TERRAIN.....\$23,988
- 7423A 2018 FORD EXPLORER.....\$32,988
- 7740A 2012 TOYOTA SEQUOIA.....\$23,988
- 7349A 2017 RAM 1500.....\$34,988
- 7353A 2012 CHEVY IMPALA.....\$7,988
- P9534 2016 TOYOTA SIENNA.....\$23,988
- 7751A 2017 TOYOTA HIGHLANDER HYB.....\$35,988
- P9532 2018 TOYOTA CAMRY.....\$18,988
- P9531 2017 NISSAN FRONTIER.....\$29,988
- 7670A 2018 RAM 2500.....\$34,988
- 7754A 2013 TOYOTA AVALON.....\$15,988
- P9528 2018 CHEVY MALIBU.....\$18,588



7550A
2016 TOYOTA TUNDRA
\$28,988

- P9522 2019 NISSAN PATHFINDER.....\$26,588
- 7605A 2012 JEEP WRANGLER.....\$20,988
- P9519 2016 TOYOTA HIGHLANDER.....\$28,588
- P9515 2019 TOYOTA CAMRY.....\$23,988
- 7654B 2015 LINCOLN MKS.....\$20,988
- P9509 2016 TOYOTA COROLLA.....\$15,988
- P9499A 2017 JEEP COMPASS.....\$14,588
- P9500 2018 TOYOTA COROLLA.....\$15,588
- P9501 2018 TOYOTA COROLLA.....\$15,588
- P9503 2018 TOYOTA RAV4.....\$22,988
- P9504 2019 TOYOTA SIENNA.....\$33,988
- 7633A 2016 TOYOTA TACOMA.....\$31,988
- 7589A 2015 FORD TAURUS.....\$15,988
- 7381A 2017 TOYOTA TACOMA.....\$31,288



7756A
2015 JEEP WRANGLER UNLIMITED
\$30,988

- P9529 2018 TOYOTA SEQUOIA.....\$39,988
- P9525A 2015 FORD MUSTANG.....\$26,988
- 7564A 2016 DODGE CHALLENGER.....\$34,988
- 7608A 2017 TOYOTA TACOMA.....\$31,588
- 7328A 2019 TOYOTA TACOMA.....\$38,988
- P9505B 2014 MERCEDES BENZ CLA 250.....\$18,988
- 6854B 2007 TOYOTA TUNDRA.....\$12,988
- 7502A 2016 KIA SEDONA.....\$18,988
- 7483B 2017 CHEVY TRAX.....\$16,988
- 7310B 2014 JEEP WRANGLER UNLIMITED.....\$24,588




7774B
2008 DODGE CALIBER
\$6,988



7542C
2015 NISSAN ALTIMA
\$15,988

PROUD WINNER OF THE PRESIDENT'S AWARD FOR THE 2ND YEAR IN A ROW!



Doing Business the Right Way The Seeger Way



ENGINES FOR LIFE
Call for details
Non-Factory Lifetime Limited Warranty
Good at participating dealerships



SATURDAY SERVICE 8AM-4PM



**FRESH NEW LOOK
FRESH NEW FEEL
FRESH NEW ATMOSPHERE**



Toll Free: 800-844-6026

Next to Walmart, St Robert | 573-336-7111 | SeegerTOYOTA.net

*Does not include tax, title, and license. Prices do not include any College Grad or Military Rebate. See sales rep to see if you would qualify for additional savings. Prices exclude 199 dealer administrative fee. Cannot be combined with any other offer. Prior sales final. See dealer for details. †Advertised vehicle may not be exactly as pictured and are subject to prior sale. We cannot be responsible for typographical or photographic error. * No payment for 90 days from purchase with approved credit. Offer ends 06-30-19.

SEEGER CARE
PRE-OWNED VEHICLES COME WITH SEEGER CARE!

- 1 **FREE** (3) SCHEDULED OIL AND FILTER CHANGES
- 2 **FREE** MULTI-POINT INSPECTION WITH EVERY OIL CHANGE
- 3 **FREE** EXTERIOR CAR WASH WITH EVERY SERVICE VISIT
- 4 **FREE** LIFETIME SAFETY AND EMISSION TESTING
- 5 **FREE** SAME-DAY SERVICE LOANER CAR
- 6 **FREE** TANK OF GAS

Service Only at Seeger St Robert/St Louis

VERMEER 504N BALER: Like new, only 1,200 bales. Cuba, 573-885-2730.

SWAP MEET: June 29th. VENDORS WANTED. 417-532-6666. Treasures, 1060 Tower Rd, Lebanon. On Facebook-Treasures LLC.

MOTORS: 302 Ford C6. \$500. 429 Cadillac, turbo 400. \$400. 4.3 V6, automatic. \$400. 417-679-4355.

WANTED OLD FIREWORKS: Rolla. Leave Message, 573-465-3561.

\$\$\$\$\$ MOBILE HOME SAVINGS That is what we are about for the last 36 years. New, Used, All Sizes. 573-657-2176 amegamobile-homes.com

AC 840 DIESEL ARTICULATING 4-WHEEL DRIVE LOADER: \$7,250. 573-765-4406.

AC 6080 DIESEL TRACTOR: Cab and Cold air. \$14,950. 573-765-4406.

JOHN DEERE 310A DIESEL BACKHOE LOADER: \$8,850. 573-765-4406.

1998 DODGE 1500 EX CAB: 4x4, V-8 automatic, 70,000+ miles on motor/transmission, daily driver. \$2,800 OBO, trade for conversion van or tractor. 573-259-2648.

CUSTOM SAW MILLING: Lebanon. 417-533-4607, 417-664-1195.

FOR SALE ROSSI HAY TEDDER: Hyd Fold, 4-Basket. \$1,500. Belle, 573-619-2533.

JACK RUSSELL PUPPIES: 8 weeks old June 1st, no shots, farm raised. \$150. 573-392-3748.

SPARTAN MOWERS MADE IN THE USA WITH AMERICAN STEEL

STARTING AT \$3,999

AWESOMEMOWERS.COM
417-532-9132

FORT AWESOME POWERSPORTS
2410 Evergreen Pkwy, Lebanon
(next to Heartland Antique Mall)

1966 283 w/ power glide, running when pulled. \$600 OBO. 417-679-4355.

BEILER FENCING: New, clean, repair. Call us for an estimate. 417-217-2755.

IHC 1086 DIESEL CAB&AIR TRACTOR: \$13,500. 573-765-4406.

2004 LLY DURAMAX: 245K miles, single cab, white, 2500 GMC 4 wheel drive, very clean. \$8,000. 573-979-0223, phone/text.

REAR TINE TILLER: good shape. \$250. 573-468-7689, Sullivan.

AUCTION REMINDER: Saturday, June 15th, 10 am. Wulff Auction. Please see our Auction Directory for more information.

OLD FARM TABLE: 10' long, 38" wide, seats 12. \$300. 417-742-1234.

VARIOUS RACING DECALS. NHRA, Jeggs, Summit Racing, Mr Horsepower, Comp Cams. Set of 10, \$15 each. 573-854-8132, Salem, Can text.

REGISTERED BLACK ANGUS BULLS: AI bred. \$1,250-\$2,950. Hartville, 417-259-2520.

NEW ROSSIE LEVER ACTION: 410 Cal Rifle. \$450. 573-218-9231, Farmington.

FOR SALE: Oak, 2x6-8-10x16's. Potosi, 314-972-2903.

2 REGISTERED POLLED HEREFORD 2YR BULLS: Baldy Maternal-Top 46%, DNA Tested, Gentle. \$1,800-\$2,000. OBO. Belgrade, 573-244-3157.

AUCTION REMINDER: Public Auction. Saturday, June 15th @ 9:00 AM. Dunker Auctions. Please see our Auction Directory for more information.

AUCTION REMINDER: Saturday, June 15th, 8am. Buckner & Gately Auctions. Please see our Auction Directory for more information.

4020 JOHN DEERE DIESEL TRACTOR: w/48 J/D loader, good condition, nice paint, excellent rubber. \$13,500. 417-763-5240, Tunas.

FOR SALE: 1/2 Simmental 1/2 Angus Bulls, 10 months old. A.I Sired, very gentle, \$1750. **ALSO:** 110 gal. pull type sprayer. \$1000. Like new. J.W. Henson, 417-343-9488

KRONE 3PT DISK MOWER: nice. \$6,100. 573-765-4406.

NEW/USED PARTS: For all vehicles/machinery. (Warranted/delivery). 800-807-9612.

NEW HOLLAND TN65 DIESEL TRACTOR: W/Loader, 65hp. \$10,700. 573-765-4406.

WANTED OLDER SCAMP CAMPER TRAILER. wrangler99@ymail.com. 573-364-0152.

5 -16" JEEP/RANGER AFTER MARKET ALUMINUM WHEELS AND TIRES: \$199. 573-218-9231.

HUGE NEW TIRE SALE: Best Prices. Highest Quality. Free Warranty. Delivery. Semi 11R-22-5 (Tall) Drive Closed shoulder 16-ply. \$279. Trailer 16-ply. \$259. Steer 16-ply. \$258. Michelin Retreads available. Trailer ST-750-R16, 14-ply Radial. \$105. All-Steel. \$135. Tractor 18-4-38. \$550. Call 417-276-2435.

BUYING OLD BARNS AND LUMBER: 417-298-3509.

FRENCHIE PUPPIES: Most colors, M/F, shots, guarantee. Prices \$895-\$3,000. 573-238-3873, 573-208-0485.

AUCTION REMINDER: Cattle Sale every Monday at Noon. Salem Livestock. Please see our Auction Directory for more information.

2003 THUNDERBIRD: Black and white, very good condition, 47,000 miles. \$15,000. 573-832-1473.

NEW TUBE GRILL for 1972 Chevy Pick up. \$100 or trade. 573-734-2822.

FOR SALE IH 7250 PEDAL TRACTOR: wide front w/wagon. \$300: 573-859-6574.

JOHN DEERE 5055E DIESEL TRACTOR: 55HP, 311 hours. \$14,000 OBO. 573-301-2609.

BOBCAT 853 DIESEL SKID STEER LOADER: Cab. \$8,950. 573-765-4406.

DYNO CHARGE 990 ELECTRIC FENCER: Solid state for 20 miles. \$50. 636-239-2695.

YAMAHA SMALL FINISH MOWER: \$150 or trade. 573-734-2822.

57 FORD 961-TRACTOR: live power, power steering, hydraulic hook-up. \$3,500. 417-247-8200.

REESE 2070W DRUM MOWER: 6'9" cut. \$2,000. Potosi, 573-438-2672.

CAT 951 DIESEL TRACK LOADER: \$7,250. 573-765-4406.

27 GAL FUEL TANK: Fiberglass. \$60. Rogersville. 417-753-2747, 417-766-1991.

FOR SALE BRAMCO BALE BUMPER: Good Condition. \$1,150 OBO. Camdenton, 573-873-4312.

GUN SHOW

JUNE 22ND - JUNE 23RD

Saturday: 9AM-5PM • Sunday: 9AM-4PM

~ Springfield, MO ~
Ozarks Empire Fairgrounds

(3001 N. Grant Ave.)

BUY • SELL • TRADE

INFO: 563-927-8176 • www.rkshows.com

WANTED, TIMBER TO LOG ON SHARES: Honest, reliable, references. 417-533-4607, 417-664-1195.

FOR SALE: Pembroke Welsh Corgi Pups. Farm raised, AKC registered, available black tris & reds. 573-473-0633. Paris.

EARLY 1900'S EMBOSSED POSTCARD "TO MY VALENTINE": Great color. \$10. Have others. 573-854-8132, Salem.

NEW HOLLAND: 1411 diskbine. \$7,250. 573-765-4406.

CHECKERED WALNUT WOOD STOCK PISTOL GRIP: for Marlin Model 336 or 1895. \$100. Washington. 636-239-2695.

ANTIQUA 12 GAUGE: Single barrel, shotgun. \$175. Desloge, 573-327-9068.

EVINRUDE OUTBOARD 200 HP MOTOR: Overhauled, new power trim and lower unit. \$2,500. 870-405-5893, Midway.

WE SELL HIGH TENSILE FENCE: All woven, barbed, smooth! Best prices! Call Michael 417-322-0161, Lebanon.

FREE LAB & ROTTWEILER MIX PUP: Male, 2-3 mos old, black and brown, smaller dog. 417-532-6981.

1210 FORD 4X4 3 CYLINDER DIESEL TRACTOR: Needs work on transmission. \$850 for sale or trade. 417-818-2142, 417-926-3889.

40 PLUS OLD CAR MAGAZINES For Sale: Street Rodder, Hot Rod, etc. \$15 all. 417-457-1023.

1960 FORD THUNDERBIRD: New numbers matching 352 engine/transmission. Runs Great. \$10,000. 1-573-430-3005. 1-573-734-6348, Bismarck.

FREE FEMALE CAT to loving home: spayed, great with kids, good outdoors and indoors. 417-664-9940.



ALL RAM 1500'S 15-20% OFF!!

T-14799

2019 RAM 1500 LIMITED CREW 4X4

E TORQUE HEMI; LIMITED LEVEL 1 EQUIP GROUP; PANORAMIC SUNROOF; 22" WHEELS; PROTECTION GROUP; 3.92 REAR AXLE; TRAILER BRAKE CONTROLLER; TOO MUCH EQUIP. TO LIST!



MSRP \$67,295
15% OFF 10,094
SALE PRICE
\$50,500

T-14806

2019 RAM 1500 LONGHORN CREW 4X4

HEMI; FILIGREE LEATHER SEATS; LONGHORN LEVEL 1 EQUIP. GROUP; ADVANCED SAFETY GROUP; OFF ROAD GROUP; BED UTILITY GROUP; PANORAMIC SUNROOF; TOO MUCH EQUIP TO LIST!



MSRP \$64,705
15% OFF 9,705
SALE PRICE
\$48,900

T-15020

2019 RAM 1500 LARAMIE CREW 4X4

HEMI; BLACK APPEARANCE GROUP; LARAMIE LEVEL 2 EQUIP GROUP; UCONNECT 4C 12"; PANORAMIC SUNROOF; RAMBOX; BED UTILITY GROUP; ANTI - SPIN REAR AXLE; TOO MUCH EQUIP TO LIST!



MSRP \$63,715
15% OFF 9,557
SALE PRICE
\$49,400

T-14914

2019 RAM 1500 LARAMIE CREW 4X4

HEMI; LARAMIE LEVEL 2 EQUIPMENT GROUP; 20" WHEELS MUCH MORE EQUIP!



MSRP \$56,695
15% OFF 8,504
SALE PRICE
\$43,500

T-14886

2019 RAM 1500 REBEL CREW 4X4

E TORQUE HEMI; REBEL LEVEL 2 EQUIP GROUP; PANORAMIC SUNROOF; AIR SUSPENSION; U CONNECT 8.4 NAVIGATION; MUCH MORE EQUIPMENT



MSRP \$61,295
15% OFF 9,194
SALE PRICE
\$48,000

T-15013

2019 RAM 1500 BIG HORN CREW 4X4

E TORQUE HEMI; BIG HORN LEVEL 2 EQUIP GROUP; SPORT APPEARANCE PKG; 20" S; U CONNECT 8.4 NAVIGATION; BED UTILITY GROUP; MUCH MORE EQUIPMENT



MSRP \$54,460
15% OFF 8,169
SALE PRICE
\$43,000

T-14869

2019 RAM 1500 BIG HORN CREW 4X4

HEMI; BIG HORN LEVEL 1 EQUIPMENT GROUP; PROTECTION GROUP; REMOTE START; MUCH MORE EQUIP



MSRP \$48,270
15% OFF 7,240
SALE PRICE
\$37,800

T-14980

2019 RAM 1500 TRADESMAN QUAD 4X4

V6; TRADESMAN GROUP; CHROME APP. GROUP; PROTECTION GROUP; TRADESMAN LEVEL 1 EQUIP GROUP;



MSRP \$41,665
20% OFF 8,333
SALE PRICE
\$31,400

++ Must own a farm or business to qualify. Qualified buyers only. Terms may vary. **Limited Amount of Coupons-While Supplies Last. See dealer for details. Actual photos may not be shown. Offer expires 06.30.19 (unless noted). Hours: M-F 8am-6:30pm Sat. 9am - 5pm.

LINDSAY

809 MISSOURI AVE. • ST. ROBERT, MO • 573-336-3000



Jeep

CELEBRATION EVENT



T-14844

2018 RAM 2500 TRADESMAN CREW 4X4



Business/Farm Owners Receive An Additional **\$1,000****

6.7 CUMMINS DIESEL; AUTO; POP. EQUIP GROUP; CHROME APP. PKG; OFF - ROAD PKG; 5TH WHEEL/GOOSENECK PREP; SPRAY - IN LINER; BRAKE CONTROL; MORE EQUIPMENT

MSRP \$55,200
REBATE \$3,000
COUPONS** \$750

SALE PRICE
\$47,000

T-14926

2018 RAM 3500 TRADESMAN CREW 4X4



Business/Farm Owners Receive An Additional **\$1,000****

6.7 CUMMINS; AUTO; POP. EQUIP GROUP; CHROME APP. PKG; 5TH WHEEL/GOOSENECK PREP GROUP; DUALY; MORE EQUIPMENT

MSRP \$57,905
REBATE \$3,000
COUPONS** \$750

SALE PRICE
\$50,200

T-14922

2018 RAM 3500 CAB & CHASSIS TRADESMAN CREW 4X4



Business/Farm Owners Receive An Additional **\$1,500****

6.4 HEMI; AUTO; CHROME APP. PKG; KEYLESS ENTRY; UCONNECT 3.0; MORE EQUIPMENT

MSRP \$47,750
REBATE \$2,000

SALE PRICE
\$41,500

T-14927

2018 RAM 3500 CAB & CHASSIS TRADESMAN CREW 4X4



Business/Farm Owners Receive An Additional **\$1,500****

6.7 CUMMINS DIESEL; AISIN AUTO; CHROME APP GROUP; KEYLESS ENTRY; UCONNECT 3.0; MORE EQUIPMENT

MSRP \$55,445
REBATE \$1,750

SALE PRICE
\$48,250

T-14876

2018 JEEP WRANGLER RUBICON 4X4



2.0 TURBO E TORQUE; AUTO; LEATHER; INFOTAINMENT GROUP; STEEL BUMPER GROUP; HARD TOP; BODY COLOR FLARES; 17" BLACK WHEELS; MUCH MORE EQUIPMENT

MSRP \$52,535
BONUS CASH \$500

SALE PRICE
\$45,000

T-14888

2018 JEEP WRANGLER UNLIMITED SPORT 4X4



2.0 TURBO E TORQUE; S PKG SPORT; CONVENIENCE GROUP; COLD WEATHER GROUP; MORE EQUIPMENT

MSRP \$42,165
BONUS CASH \$500

SALE PRICE
\$36,500

T-14898

2018 JEEP WRANGLER UNLIMITED SAHARA 4X4



3.6 V6; AUTO; LEATHER; INFOTAINMENT GROUP; TRLR TOW & HD ELECTRIC GROUP; JEEP ACTIVE SAFETY GROUP; BODY COLOR HARD TOP; MUCH MORE EQUIPMENT

MSRP \$50,500
BONUS CASH \$500

SALE PRICE
\$44,250

T-14951

2018 JEEP WRANGLER UNLIMITED SAHARA 4X4



2.0 TURBO E TORQUE; LEATHER; SKY 1 - TOUCH POWER TOP; 8.4" RADIO & PREMIUM AUDIO GROUP; COLD WEATHER GROUP; JEEP ACTIVE SAFETY GROUP; LED LIGHTING GROUP; TRLR TOW & HD ELECTRICAL GROUP

MSRP \$56,480
BONUS CASH \$500

SALE PRICE
\$48,800

Must own a farm or business to qualify. Qualified buyers only. Terms may vary. *Limited Amount of Coupons-While Supplies Last. See dealer for details. Actual photos may not be shown. Offer expires 06.30.19 (unless noted). Hours: M-F 8am-6:30pm Sat. 9am - 5pm.

www.lindsaychryslerdodge.com

809 MISSOURI AVE. • ST. ROBERT, MO • 573-336-3000

POOL TABLES: Installations, moves, recover, repairs, accessories, etc. 573-646-1700.

2017 MASSEY FERGUSON TRACTOR: GC1705, 24hp, hydrostat, diesel, belly-mower, front-loader, 40hrs. \$12,500. 573-619-4488.

AUCTION REMINDER: Real Estate and Personal Property Auction. Saturday, June 15 @ 10am. Rocking R Auction. Please see our Auction Directory for more information.

I BUY.... used mobile homes. Call or text 573-338-6250 or email GregS.CDH@outlook.com

5 HP MTD WOOD CHIPPER: \$199. 573-218-9231.

GREAT FATHERS DAY GIFTS: Beagle Puppies! 314-974-6881.

LINCOLN 225 WELDER. \$100 or trade. 573-734-2822.

WANT STIHL GRASS TRIMMER SF5-45. Call after 6pm 417-532-6570.

MOVING SALE. 27752 O Hwy. (Hwy 5, South to O Hwy, Lebanon). Wednesday-Saturday, June 12-15. Antique, Furniture, Tools.

AUSTRALIAN SHEPHERD PUPPIES: Ready to go, Merles & Tri-Colors, UTD on shots. For sale or swap for farm animals. 417-458-1047, 417-967-6493.

05 INTERNATIONAL EAGLE SEMI: 10 speed automatic, Cummins motor 500 HP, double bunk, ready to go. \$14,000, will consider trade. 417-679-4355.

2005 HONDA 750 SHADOW SPIRIT: 17,500 miles, windshield, hard saddlebags, race tuned, Cobra pipes, new front/rear sprocket/chain. \$3,000 OBO. 417-399-4340, Flemington, call or text.

<p>2013 Ford F-150 King Ranch</p> <p>4x4 4dr SuperCrew Styleside 5.5 ft. SB 92k miles,</p>  <p>\$23,500</p>	<p>2014 Ford F-150 XLT</p> <p>4x4 4dr SuperCrew Styleside 5.5 ft. SB 59k miles</p>  <p>\$21,900</p>	<p>2001 Ford F-250 Super Duty Lariat</p> <p>4dr Crew Cab 4WD SB Gas V10</p>  <p>\$7,950</p>	<p>2005 Dodge Ram Pickup 2500 SLT</p> <p>4dr Quad Cab 4WD SB Cummins 24 valve, diesel 150k miles</p>  <p>\$12,900</p>
<p>2015 GMC Sierra 2500HD SLT</p> <p>4x4 4dr Double Cab LB 60k miles, DuraMax 6.6</p>  <p>\$39,900</p>	<p>2018 Chevrolet Silverado 2500HD</p> <p>High Country 4x4 4dr Crew Cab SB 5k miles, hard loaded,</p>  <p>\$56,900</p>	<p>2016 Chevrolet Traverse LTZ AWD</p> <p>4dr SUV 66k miles, loaded up</p>  <p>\$24,900</p>	
<p>2015 Jeep Cherokee Trailhawk</p> <p>4x4 4dr SUV \$18,900, loaded up, like new,</p>  <p>\$18,900</p>	<p>2012 Chevrolet Tahoe LT 4x4</p> <p>4dr SUV, Z71 package</p>  <p>\$17,900</p>	<p style="text-align: center;">BUY SELL & TRADE</p> <p style="text-align: center;"><i>Jack's Auto Sales</i></p> <p style="text-align: center;">MOUNTAIN HOME, AR</p> <p style="text-align: right;">1835 Hwy. 5 N Mtn. Home, AR 72653 (870) 425-3340 www.jacksautosales.com</p>	

PUT MORE \$\$\$ IN YOUR POCKET!! Lewis Cattle Oiler. 417-286-3540 or 774-696-2344.

GREAT PYRENEES PUPS. Also goats for sale. 417-664-8781, Richland.

FIREARMS: Professional Repairs and Restorations. Baron's Gunsmithing. 573-363-5801, Camdenton.

AUCTION REMINDER: Estate Auction, Friday June 21 @10AM, Inman Auction. Please see our Auction Reminder for more information.

1988 LINCOLN CONTINENTAL: 4 door, 302, 90,000miles, clean. \$4,000. 417-859-5951.

3 LOT of MLB, NFL, NBA ROOKIE CARDS \$10 sheet of 9. Text pics. 573-854-8132, Salem, Can text.

OLD WOODEN THREE DRAWER DRESSER: w/mirror. \$75. 573-327-9068.

AUCTION REMINDER: Public Auction. Saturday, June 22 @ 9am. Show-Me Auction. Please see our Auction Directory for more information.

52.64 ACRES: \$99,900. Abundant Deer & Turkey, ATV Paradise. Will divide Acreage. 30 acres w/year round creek through the center. \$2,400 per acre. 20 acres. \$2,100 per acre. Approximately 9 acres County Road access. \$2,000 per acre 2.5 miles from city limits. Located Cadet, MO out of city limits, quiet neighborhood.

B&W FIFTH WHEEL COMPANION HITCH for Ford factory installed Gooseneck Hitch. Used three times. Been stored in my garage in Battlefield, MO. Cost \$1,100, will sell for \$895 cash. Like new. Wife had cancer, had to sell RV. 417-425-3825.

FLIES ARE HERE!! Lewis Cattle Oiler.
417-286-3540 or 774-696-2344.

JOHN DEERE 275: 9ft, disc mower. \$5,150.
573-765-4406.

AUGER: 8x57, good condition. \$2,500. 573-378-5180.

OLDER FORD 3 POINT POST AUGER.
573-528-7436.

WILBER'S FISH BRANCH ANGUS:
Large selection 14-16month old bulls available, Calving ease, good growth and carcass traits, very docile. Mexico, Mo. 573-473-6019. www.fishbranch.com

GET YOUR WORK DONE, AMERICA

FOR JUST **\$238** PER MONTH*



4540 2WD

- SIMPLE** to operate
- ECO-FRIENDLY**, NO DPF engine
- HEAVY-DUTY** steel construction not plastic

MAHINDRA 4540 41HP, 2WD, TRACTOR AND LOADER.

Marshfield Machinery Inc.
222 E. Madison • Marshfield, MO 65706
417-859-2117 • www.marshfieldmachinery.com

7 YEAR
LIMITED POWERTRAIN
WARRANTY

World's #1 Selling Tractor **Mahindra** Tractors

*Payment is for tractor and loader only and is calculated at 10% down and 84 months financing. With approved credit. Program restrictions may apply. See dealer for details. All offers expire May 30, 2019.

NEW MAHINDRA TRACTORS

9125 4WD CAB & LDR 125HP	IN STOCK
7085 4WD & LDR 85HP	IN STOCK
6065 4WD & LDR 62HP	IN STOCK
5570 2WD & LDR 70HP	IN STOCK
2655 4WD, CAB & LDR 55HP	IN STOCK
2655 4WD, BACKHOE 55HP	IN STOCK
2655 4WD & LDR 55HP	IN STOCK
2555 4WD & LDR 55HP	IN STOCK
4540 4WD & LDR 41HP	IN STOCK
4540 2WD & LDR 41HP	IN STOCK
2638 4WD & LDR 37HP	IN STOCK
2538 4WD, CAB & LDR 37HP	IN STOCK
1626 4WD & LDR 26HP	IN STOCK

USED TRACTORS

MAHINDRA 105P CAB LDR 105HP	45,500
MF GC1705 4WD, LDR 23HP	9,500
MF GC1705 4WD, MWR 23HP	9,000
MF GC1705 4WD 23HP	7,750
MF 231 34HP	6,000
FORD 8000 105HP	5,000
ACD17	3,750

USED UTV

MAHINDRA 750 CREW XTV	8,500
MAHINDRA 750 XTV	7,500

USED ROUND BALERS

MF 2846A 4X6 MESH	24,000
MF 2846A 4X6 MESH	15,000
MF 2745 4X5 MESH	12,500
HESSTON 845 4X5	7,500
GEHL 2480 4X5	4,500
HESSTON 555T 4X6	4,500
HESSTON 555 4X6	4,500
CASE IH RS451 4X5	4,500
HESSTON 560 5X6	4,000
HESSTON 550 4X6	3,500
NH 850 5X5	1,500
MF 224 SQUARE BALER	3,000

USED DISC MOWERS

NH H7550 13FT M/C	14,500
HESSTON 3312 12FT M/C	9,500
HESSTON 1008 10.5 FT 3PT	5,500

USED RAKES

GEHL 418 8 WHEEL	2,000
VERMEER WR20 8 WHEEL	1,950
OGDEN 8 WHEEL	1,750

USED MISC.

HAYBUSTER 107C NOTIL DRILL	16,500
----------------------------	--------

Marshfield Machinery Inc.
222 E. Madison • Marshfield, MO 65706
417-859-2117
www.marshfieldmachinery.com

NEW BIG TEX 14LX DUMP TRAILER



[facebook](#)

JIM'S Motors TRAILERS

I-44 at Exit 208 • Cuba, MO
www.jimsmotors.com
(573)885-2595
(800)897-9840

GREAT SERVICE!
1957-2018 GREAT PRICES!

FANEX 4-BASKET HYD FOLD TEDDER: \$4,350. 573-765-4406.

CASE 533 45 HP DIESEL TRACTOR: w/ loader, wide front end, PS, 6' brush-hog. \$5,400. 573-694-0299.

AUCTION REMINDER: Estate Auction Sat. June 15th 10Am BRUCE SCHEETS AUCTION. Please see our Auction Directory for more information.

1890 OPTOMETRIST COMPLETE KIT: 250 lenses, German + English Eye Charts, leather case. \$200. 573-764-3517, call in pm.

FIVE QUILT BOOKS FOR SALE: American Quilt Story, American Heritage Quilts, A Garden of Quilts, American Patchwork & Quilting, Creative American Quilting, all hardback, excellent condition. \$5 each or all for \$20. 417-532-2045.

GUINEA PIGS: \$20 each, All ages, all colors. 636-629-0113. St. Clair.

AUCTION REMINDER: Saturday, June 15th, 9:30am, Larinda's Auction Service. Please see our Auction Directory for more information.

USED AMERICAN FAMILY DOUBLE-WIDE These do not last! Excellent condition. Call Quick, 573-499-9993 columbiadiscountohomes.com.

AUCTION REMINDER: Public Auction Saturday June 15th at 10 am. Knight Auction. Please see our Auction Directory for more information.

AUCTION REMINDER: Estate Auction Saturday June 15 10 AM. Please see our Auction Directory for more information.

BOSTON TERRIER PUPPIES: M, shots, guarantee. \$550. 573-238-3873, 573-208-0485, Glen Allen.

7 CHAROLAIS CROSS HEIFERS: Fall 2018, weaned, approximately 550#, real gentle. \$800 Each. 660-596-8515.

FIFTH WHEEL: Everest 36', 3 slides, new tires, good condition. \$10,000. 417-296-2463, leave message.

2005 LOWE CAMO ROUGHNECK 1760 BOAT MOTOR & TRAILER: \$6,500. Questions? 417-531-2510

2001 19FT DUTCHMEN TRAVEL TRAILER: very clean, everything works. \$4,200. 417-345-5634.

GERMAN SHEPHERDS: Two males, 3 mo old, one adult male. \$100 each. 417-741-2198.

HOME, 3 BEDROOM RANCH: 32.37ac, North St Francois County. \$185,000. 417-255-6640.

DEARBORN 2-DISK PLOW: new disk. \$300. 417-247-8200.

LEBANON HISTORY BOOK-A PART OF OUR LIVES, 1949-1976. \$10. 417-532-2045.

BLACK SMITHING ANVIL. \$600. 417-349-2901.

AUCTION REMINDER: Personal Property & Real Estate Auction Saturday June 15 at 9am. Cheyney Auction Company LLC. Please see our Auction Directory for more information.

SELL IT HERE!



WEEKLY TRADER MAGAZINE

417-532-2800 • www.myweeklytrader.com

CASE 580D: Diesel backhoe, Loader. \$8,850. 573-765-4406.

OLD 20 GAUGE: Single barrel shotgun. \$175. Desloge, 573-327-9068.

WANTED HOOD FOR JOHN DEERE RIDING MOWER 225: 573-859-6574.

WANTED CUT STOCK, Cants, Slabs, trees length + 45" long scragg blocks. 417-650-0402.

WINCHESTER 30/30 1940'S: wood storage case, ammo. \$500. Marshfield, 417-241-3330.

3PT TRACTOR BALE SPEAR: 42" spear with 14" stabilizer bars. \$150. Conway, 417-718-5347.

FRENCH BULLDOG PUPPIES: Blues, Chocolate & Lilac Carriers, Whites, Sable Pieds, M/F, Guaranteed. \$895-\$2,500. 573-238-3873, 573-208-0485, Glenn Allen.

2004 OPEN RANGE FIFTH WHEEL CAMPER: 34', all weather, in good condition. \$10,500. Lebanon, 417-718-5520.

WANTED PINBALL MACHINES. 573-424-7200.

Starnes Auto LLC

22115 Rt. 66 • Lebanon, MO 65536
417.588.3159 Office • 417.718.2707 Cell
www.starnesauto.com

1998 GMC SONOMA PEWTER, FLARESIDE, 55,XXX MILES	\$5,200
2000 BUICK LESABRE BLUE, 141,XXX MILES	\$2,800
2001 CHEVY S-10 MAROON, 2WD, RED CAB, 122,XXX MILES	\$CALL
2001 GMC YUKON BLACK, 237,XXX MILES	\$4,200
2002 CHEVY S-10 BROWN, 4 DOOR, 184,XXX MILES	\$2,800
2003 GMC SONOMA PEWTER, 4 X 4, EXT CAB, 131,XXX MILES	\$5,200
2003 CHEVY SILVERADO PEWTER, 4X4, 4 DOOR, 195,XXX MILES	\$CALL
2003 GMC SIERRA WHITE, EX CAB, 2WD, 155,XXX MILES	\$6,350
2004 GMC SIERRA CHARCOAL, REG CAB,	\$CALL
2004 JEEP LIBERTY WHITE, LEATHER, SUNROOF, V6, 114,XXX MILES	\$5,200
2007 SATURN OUTLOOK WHITE, 153,XXX MILES	\$5,200
2009 SATURN AURA SILVER, 110,XXX MILES	\$5,200
2010 CHEVY EQUINOX BLACK, 88,XXX MILES	\$CALL
2012 CADILLAC SRX PERFORMANCE BROWN, 71,XXX MILES	\$13,900
2014 KIA SOUL GRAY, 68,XXX MILES, GOOD TITLE	\$7,600
2015 TOYOTA SCION WHITE	\$CALL
2015 CHEVY EQUINOX LT BLACK, 54,XXX MILES	\$13,500
2016 BUICK ENCORE WHITE, 28,XXX MILES	\$13,500
2017 FORD FIESTA WHITE, 59,XXX MILES	\$CALL
COMING SOON	
1997 BUICK CENTUR.BLUE, 51,XXX MILES	
2008 SATURN VUEBLUE, 86,XXX MILES	
2011 CHEVY MALIBUMAROON, 67,XXX MILES	
2011 GMC TERRAINWHITE, 116,XXX MILES	
2015 CHEVY EQUINOX LT54,XXX MILES	
2015 CHEVY EQUINOX LTBLACK, 46,XXX MILES	
2015 KIA SOULWHITE, 24,XXX MILES	

WE DO ALIGNMENTS!

COLE'S TRACTOR & EQP, INC.

1 mile east of Farmington on Highway 32 • 573-756-4353

**LS XG3135 35HP
4WD DIESEL TRACTOR
PACKAGE**

★★ **SPECIAL PROMOTION** ★★
**BUY THIS PACKAGE AND YOU GET A FREE PRESSURE
WASHER WITH 2 RATCHET TIE DOWNS!**

PLUS YOU GET THE BEST 6 YEAR PARTS AND LABOR WARRANTY!

With Deluxe Skid Steer QA Bucket Front Loader

5FT Brush Hog

5FT Box Blade

AND

7000LB GVW Deluxe Car Hauler Flatbed Trailer

ALL THIS FOR ONLY **\$20,995**

Financing Available on Location!



LS TRACTOR
The Major Brand Maker

NOTES

AUCTION REMINDER: Every Wednesday at 10:30 am. Farmington Livestock. Please see our Auction Directory for more information.

FARM & HOME SERVICES, WELDING & CONSTRUCTION. \$40-\$65 per hour. 417-664-7841, Stoutland.

2005 YAMAHA 1100 SILVERADO, 14,000 Miles, bought new, many extras, new tires. new condition, always garaged. \$5,600 OBO. 573-259-2648.

REGISTERED HEREFORD & ANGUS BULLS: Home raised, Some Show-Me Select Qualified. 573-701-7828. Belgrade

4 MUD TIRES: Goodyear Wrangler, LT285/75R16 Dura Trac, good tread left. \$100 Call Don, leave message for call back 314-808-5680.

AUCTION REMINDER: Real Estate & Personal Property Auction, Sunday, June 22 at 10am. Easterly Auction Company. Please see our Auction Directory for more information.



Pine Ridge Rustic
Log Home Building Supplies



Services Offered!

- Installation
- Pre-finishing available on interior & exterior
- Dealer for exterior stains

www.pineridgerustic.com

- Log Siding
- Beveled Siding
- Car Siding • Red Cedar
- Western Cedar • Pine

523 CR 2410 • Salem, MO 65560 • Ph: 573-729-7226

3pt TWO-SECTION HARROW. \$200. Rogersville. 417-753-2747, 417-766-1991.

1962 CHEVY IMPALA: 4dr. Sedan. \$9,000. 1-573-697-5065.

PURE BRED BORDER COLLIES: Pups ready 5-20-19 \$100ea. Border collie/Australian Shepherd pups \$100ea. Ready 5-31-19. Hartville, 417-259-9738.

BLUE HEELER PUPS: Raised for 40 years. Good livestock dogs or pets. Already working. \$85 each. 660-631-5019 Warsaw.

MICHIGAN 85 WHEEL LOADER FOR SALE. 3.5 yard bucket, articulated steering, disc brakes, Ford 460 repowered engine, good tires & spare. \$8,500. Rolla, 573-308-5310.

PINE LOG SIDING SALE: \$1.19 per L.F. www.pineridgerustic.com 573-729-7226, 573-247-2823.

NEEDING TO RE-HOME wonderful dog. 2.5 year Boxer Mix: obedience /crate trained, great traveling dog. Good w/animals and people. Great companion. 224-637-5988.

MUST SELL DUE TO HEALTH: Beautiful custom ordered, mint condition, flexsteel, three cushion, 84" sofa with matching 60" loveseat. \$450. Must see. 573-699-4351.

1987 SHELBY DAYTONA: Excellent condition. \$5,500. 314-616-9862.

10' CONCRETE FEED BUNKS. Johnson automatic waterers, assorted gates. 573-819-1768, Columbia.

NICE BASSETT QUEEN BEDROOM SET: \$400. Clever, 417-268-5586.

FREE AKC REG. GERMAN SHEPHERD: 1 year old, black & tan, very friendly, good behavior. 630-687-0705.

DARDEN PROFESSIONAL TIMBER HARVESTING, BUYING STANDING TIMBER: Great prices, improve wildlife habitat and improve forest health. State Certified & Fully Insured! 573-247-4808 or 573-739-1122. Salem

GENT'S VINTAGE WATCH COLLECTION: Over 40 Classic models. \$150. 573-764-3517, call in pm.

FOUR REGISTERED QUARTER MARES: 100% Foundation Bred. 573-528-7436.

GOLDEN RETRIEVER: Beautiful Female, 5 months. \$600. 314-808-1496.

NEW NEW NEW DISPLAY HOUSE!!! Call Marla to hear what is new inside 573-657-7040, chateauhomes.net.

CRAFTSMAN FLOOR DRILL PRESS. \$150. 55 gallon hand Fuel Pump. \$50 573-378-5180

FREE MALE CAT to loving home: neutered, great indoors and outdoors. 417-664-9940.

H&S 12 WHEEL BI-FOLD RAKE: \$2,500. 573-765-4406.

NEW 4-RIB BELT FOR 1431 N.H. CONDITIONER: \$60. 417-646-8807.

RUBBER BELTING: Assortment sizes. 573-378-5180

HESSTON 5500 5X5 ROUND BALER: \$1,800. 573-438-2672.

13' DUMP BED FOR SALE: Hoist & tank included. \$1,200. Rolla, 573-308-5310.

WANTED OLDER MODEL ROLLBACK CAR HAULER: excellent shape. 573-734-2822.

6FT FARMKING FINISH MOWER: good shape. \$650. 417-247-8200.

8FT OFFSET DISK: \$2,500. 573-765-4406.

5AC OZARK COUNTY: Near Bull Shoals Lake. \$9,995. 417-255-6640.

SET OF WHEEL CHOCKS: Color is Safety Yellow. \$25. 636-239-2695, Washington

1962 MASSEY FERGUSON BULL: w/ loader, needs paint. \$4,500. 573-315-9009, Potosi.

AUCTION REMINDER: Real Estate & Personal Property Auction, Sunday, June 23 at 10am. Easterly Auction Company. Please see our Auction Directory for more information.

VERMEER 504N BALER: Like new, only 1,200 bales. Cuba, 573-885-2730.

417-532-6631 www.wheelsimple.net



WE ALIGN VALUE & TIRES

2410 Evergreen Pkwy, Lebanon (next to Heartland Antique Mall)



NEW MAHINDRA ROXOR FRESH OFF THE ASSEMBLY LINE!!

- Steel Body no plastic to break
- 5 Speed Manual Transmission no belt to break
- Fully-boxed, ladder-construction, steel truck-style frame
- Turbo Diesel 4 cycle engine which produces 144 ft lbs of torque and 3490 lbs of towing capacity to get your jobs done. • Made in Detroit
- 2 YEAR WARRANTY OR 12,000 MILES • Starting at \$15,999

Visit us at www.cowtownusainc.com

1965 FORD FAIRLANE: 4 door sedan, 289 V8, automatic, driveable car, fair condition. \$2,500 OBO. Salem 573-729-0272.

1902 REM MOD 6 32 CAL RIFLE. \$400. 573-218-9231, Farmington.

FESCUE WANTED TO COMBINE ON SHARES. Phone 417-327-6240.

15FT BUSHHOG: 3715 Heavy-duty, good condition. \$10,500. 417-766-6504.

MF 550 COMBINE: RWA hydro, 1,923 hours. \$15,000. 636-278-6065.

JOHN DEERE 566 ROUND BALER: monitor, kicker, net wrap. \$7,500. 573-765-4406.

100# PROPANE GAS CYLINDER: 24 gal-lon with regulator and cap. \$50. Conway, 417-718-5347.

2006 36FT TRAILER: 2 Slides. \$8,500. 417-664-3162.

BARN WOOD SIDING: 8" & 10" wide. 573-729-7226. www.pineridgerustic.com

ALUMINUM WHEELS: 4 15X10 mid 90's Chevy Pick-up 2WD. \$95. 573-368-6633, Rolla.

9N FORD TRACTOR: runs good, looks good, 70% tires. \$1,050. 573-468-7689, Sullivan.

AUCTION REMINDER: Farm Equipment Auction, Sat Jun 22@10:30am. Case Auction. Please see our Auction Directory for more information.

IHC 1086 DIESEL CAB&AIR TRACTOR: \$8,400. 573-765-4406.

1890 SOUTH BEND GRAIN SEEDER: Shoulder held, wood w/iron gears. \$100. 573-764-3517, call in pm.

FIVE ANGUS BRED HEIFERS: to Byergo Bull. \$2,100. 660-337-6311.

SWAP MEET: June 29th. VENDORS WANTED. 417-532-6666. Treasures, 1060 Tower Rd, Lebanon. On Facebook-Treasures LLC.

MOTORS: 302 Ford C6. \$500. 429 Cadillac, turbo 400. \$400. 4.3 V6, automatic. \$400. 417-679-4355.

WANTED OLD FIREWORKS: Rolla, Leave Message, 573-465-3561.

1966 283 w/ power glide, running when pulled. \$600 OBO. 417-679-4355.

BEILER FENCING: New, clean, repair. Call us for an estimate. 417-217-2755.

IHC 1086 DIESEL CAB&AIR TRACTOR: \$13,500. 573-765-4406.

2004 LLY DURAMAX: 245K miles, single cab, white, 2500 GMC 4 wheel drive, very clean. \$8,000. 573-979-0223, phone/text.

REAR TINE TILLER: good shape. \$250. 573-468-7689, Sullivan.

\$\$\$\$\$ MOBILE HOME SAVINGS That is what we are about for the last 36 years. New, Used, All Sizes. 573-657-2176 amegamobile-homes.com

NEW HOLLAND: 1411 diskbine. \$7,250. 573-765-4406.

FREE FEMALE CAT to loving home: spayed, great with kids, good outdoors and indoors. 417-664-9940.

NEW HOLLAND TN65 DIESEL TRACTOR: W/Loader, 65hp. \$10,700. 573-765-4406.

BUYING OLD BARNs AND LUMBER: 417-298-3509.

FREE LAB & ROTTWEILER MIX PUP: Male, 2-3 mos old, black and brown, smaller dog. 417-532-6981.

BOBCAT 853 DIESEL SKID STEER LOADER: Cab. \$8,950. 573-765-4406.

facebook

WT

WEEKLY TRADER MAGAZINE

Weekly Trader

@myweeklytrader

➡

WEEKLY TRADER MAGAZINE

Forgot account?

Home

About

Photos

Reviews

issues

Posts

Community

Info and Ads

Create a Page

👍 Like
➦ Share
⋮

💬 Send Message

Photos

KEN & KATHLEEN ARD AUCTION

August 11, 2018 • 9:30am
HWY 19 S to CR 6250, Gladden, MO

VEHICLES & EQUIPMENT	GUNS	HOUSEHOLD
Judge Grand Caravan 172K Chuckwagon 4x2 UTV Ima 46" Zero-turn mower Z246 bed trailer John Deere rake Holland Round Baler 545 twine Ferguson 725 Mower Conditioner Rickle sweeper kerator ing bolt action 25-06 w/scope Double barrel shotgun 308 22-R w/scope 308 1100 12ga modified choke 2-3/4 erg pump 20ga Harris 54 cal muzzleloader He Stack-on 24 gun ses amera g blind HOUSEHOLD r couch recliner oster leg bed e bed and mattress	Glass and wood display cabinet Occasional chair Lot of misc-kitchen ware Miscellaneous knick knacks TV trays OUTDOOR BBQ grill made from fuel tank 2 - Outdoor swings Bird Houses Cookers Lawn chairs 5 piece patio set Rakes Shovels Misc yard tools TOOLS Chest tool cabinet 2 sets of MAC tools Various MAC tools Ball Joint sockets Lot misc tools 34-ton log splitter Nail guns Shih 290 chainsaw Table saw Wood planer Woodworking tools Levels	REAL ESTATE To be offered day of sale

ABSOLUTE REAL ESTATE AUCTION

SATURDAY, AUGUST 11, 10:00 A.M.

For Auction Items are including and/or items:
 2 Br. 1 1/2 Bathrooms, MO. From Blue Plains, MO. front seat on Hwy. 160 approx.
 2002.25 Light Springs Rd. Hwy. 12 mile west. Search for Gary Seaton Auction Sign.

OUTSTANDING REAL ESTATE

The Home at Joliff Spring

OUTSTANDING PERSONAL PROPERTY

CHUCK & MELISSA SWIFT, OWNERS

Horelli, Oregon & Clark Counties Since 1978
 WWW.GARYSEATON.COM
 Gary Seaton
 1001 W. 3rd St., Blue Plains, MO. 647-285-3867

ING ESTATE AUCTION

Sunday, August 12, 2018 @ 1 p.m.

Horelli, Oregon & Clark Counties Since 1978
 1001 W. 3rd St., Blue Plains, MO. 647-285-3867
 Items Zero Turn Mowing Mower Furniture Antiques Collectibles Etc.

🔍 Search for posts on this Page

Broadcasting & Media Production Company
in Lebanon, Missouri

5.0 ★★★★★

Community See All

👍 324 people like this

👤 333 people follow this

About See All

WEEKLY TRADER MAGAZINE

KRONE 3PT DISK MOWER: nice. \$6,100. 573-765-4406.

NEW/USED PARTS: For all vehicles/machinery. (Warranted/delivery). 800-807-9612.

WANTED OLDER SCAMP CAMPER TRAILER. wrangler99@gmail.com. 573-364-0152.

YAMAHA SMALL FINISH MOWER: \$150 or trade. 573-734-2822.

JOHN DEERE 5055E DIESEL TRACTOR: 55HP, 311 hours. \$14,000 OBO. 573-301-2609.

I BUY.... used mobile homes. Call or text 573-338-6250 or email GregS.CDH@outlook.com

\$2,500 - \$11,000 LOT

Lindsay Chevrolet & Lindsay Ford

Mon.-Fri. 8 am - 7 pm
Sat. 8 am - 5 pm
Not responsible for typos.
* with approved credit

417-588-7995

West City Route 66
& South Monroe
Lebanon, MO

Bobby Rogers, Manager • Aaron Wehner, Finance • Mike Forner, Steve "Whitey" Helton, Larry Davis, Sales

Cars

QC75528	2002 CHEVY MONTE CARLO SS PACE CAR, V6, AUTO, YELLOW	\$7,900
QC75331	2003 FORD T-BIRD CONV. V8, AUTO, FWD, GRAY	\$10,900
QC75482	2005 FORD MUSTANG V6, AUTO, RED	\$7,495
QC75336A	2007 LEXUS ES 350 V6, AUTO, FWD, WHITE	\$9,750
QC75546	2008 PONTIAC G6 GXP V6, AUTO, FWD, BLACK	\$7,900
LC28608A	2008 INFINITI FX35 V6, AUTO, FWD, BLUE	\$8,950
LC28428B	2009 HONDA ACCORD EX-L V6, AUTO, FWD, SILVER	\$7,900
QC75376	2010 HONDA CIVIC LX 4CYL., AUTO, FWD, BLACK	\$9,800
LC28603	2011 KIA SOUL 4CYL., AUTO, FWD, BLUE	\$7,800
QC75419	2011 NISSAN ALTIMA 4CYL., AUTO, MAROON	\$8,600
QT75509	2012 KIA SOUL 4CYL., 5SPD., FWD, BLACK	\$7,900
QC75215B	2013 CHRYSLER 200 LX 4CYL., AUTO, FWD, MAROON	\$7,700
QC75444	2013 FIAT 500 POP 4CYL., AUTO, FWD, BRONZE	\$8,800
QT75526	2014 FIAT 500L 4CYL., AUTO, FWD, BLACK	\$8,900
QC75320	2014 DODGE DART SXT 4CYL., AUTO, SEDAN, FWD, BLUE	\$8,600
LC28496	2014 FORD FOCUS S 4CYL., AUTO, FWD, BLACK	\$8,900
QC75443	2014 CHEVY SONIC LS 4CYL., AUTO, FWD, BLACK	\$8,900
LC28469	2015 CHEVY SONIC LS 4CYL., AUTO, FWD, WHITE	\$8,900
QC75386	2015 CHRYSLER 200 LIMITED 4CYL., AUTO, FWD, BLUE	\$9,400
LC7050A	2015 CHEVY SPARK LS 4CYL., 5SPD., FWD, BLUE	\$8,500

Trucks

QT75525	2000 FORD F150 EXT. CAB V8, AUTO, 4WD, BLUE	\$5,400
QT75474A	2003 GMC SONOMA EXT. CAB V6, AUTO, 4WD, PEWTER	\$5,900
QT57511A	2005 ISUZU BOX TRUCK D-MOTOR, AUTO, 15" BOX	\$9,400
QT75496	2006 DODGE RAM CREW LARAMIE V8, AUTO, 4WD, RED	\$10,900
QT75536	2006 FORD F150 REG. CAB V6, AUTO, 2WD, GRAY	\$8,150

Trucks

QT75552	2007 DODGE DAKOTA CREW SLT V8, AUTO, 4WD, BLACK	\$9,300
QT75574	2008 CHEVY SILVERADO LT EXT. CAB, V8, AUTO, 4WD, BROWN	\$11,625
QT75530	2009 DODGE RAM SLT CREW V8, AUTO, 2WD, SILVER	\$12,900
QT75395	2012 GMC CANYON SLE REG. CAB, 5CYL., AUTO, RWD, BLUE	\$8,900

SUVs

QT75573	2005 DODGE DURANGO LIMITED V8, AUTO, 4WD, BLACK	\$8,200
QT75505	2005 NISSAN X-TERRA SE V6, AUTO, 4WD, WHITE	\$7,300
QT75566	2007 TOYOTA RAV4 SPORT 4CYL., AUTO, FWD, WHITE	\$9,400
LT28568	2007 CHEVY TAHOE LTZ V8, AUTO, 4WD, BLACK	\$12,500
QT75529	2007 TOYOTA RAV4 4CYL., AUTO, 4WD, BLUE	\$10,400
QT75532	2007 CHEVY TRAILBLAZER LT V6, AUTO, 2WD, WHITE	\$7,900
QT75420	2007 CHEVY SUBURBAN LS V8, AUTO, 4WD, BLUE	\$11,900
QT75468	2008 NISSAN PATHFINDER SE V6, AUTO, 4WD, WHITE	\$10,900
QT57478C	2008 CHEVY TRAILBLAZER LS V6, AUTO, 4WD, BURGUNDY	\$6,900
QT57284B	2011 KIA SPORTAGE SX 4CYL., AUTO, FWD, ORANGE	\$11,425
LT28543	2014 DODGE JOURNEY SXT 4CYL., AUTO, FWD, WHITE	\$8,800
QT75335	2014 JEEP COMPASS 4CYL., AUTO, 4WD, SPORT, RED	\$9,900

Vans

QC75394	2016 DODGE GRAND CARAVAN SE V6, AUTO, FWD, GRAY	\$11,800
---------	--	----------

\$5,000 or Less!

LC28260A	2000 LINCOLN TOWN CAR V8, AUTO, SILVER	\$4,900
LT7061A	2006 FORD F450 6.0 D. MOTOR AUTO, RWD, FLAT BED, WHITE	\$4,900
QT75375	2008 MITSUBISHI ENDEAVOR LS V6, AUTO, 4WD, BLACK	\$4,900
QC75393	2009 CHEVY AVEO LS 4CYL., 5SPD., FWD, SEDAN, WHITE	\$3,900
LT28320B	2010 CHEVY HHR LS 4CYL., 5 SPD., BLUE	\$3,900

2018 MODELS MUST GO

**AMAZING VEHICLES, UNBELIEVABLE REBATES,
LIMITED QUANTITIES AVAILABLE**

NEW 2018 CHEVROLET SILVERADO 1500 CREW LT 4X4

MSRP \$50,405
AS LOW AS
\$34,999*

**ONLY 4
2018 MODELS
REMAINING!**



LT6969

NEW 2018 CHEVROLET MALIBU LT

MSRP \$27,090
AS LOW AS
\$19,999**

**ONLY 4
2018 MODELS
REMAINING!**



LC6944

NEW 2018 CHEVROLET TRAX PREMIER MIDNIGHT EDITION

MSRP \$30,290
AS LOW AS
\$22,999**



LT6683



CHEVROLET 

FIND NEW ROADS

LINDSAY CHEVROLET

"Where The Trucks Are"

OPEN: M-F 8-6:30 • SAT. 8-5 IN LEBANON AT 285 W. ELM • 417-532-3114



David Bean
Manager

Jeremy Johnson
Sales

Brent Hale
Sales

Dennis Nash
Asst. Manager

Shelby Cole
Finance



www.lindsaychevroletlebanon.com

*Requires Financing with GM Financial

*Price includes dealer trade assist as well as dealer finance cash. See dealer for details

**Price includes GMF Finance bonus cash. See dealer for details

1960 FORD THUNDERBIRD: New numbers matching 352 engine/transmission. Runs Great. \$10,000. 1-573-430-3005. 1-573-734-6348, Bismarck.

5 -16" JEEP/RANGER AFTER MARKET ALUMINUM WHEELS AND TIRES: \$199. 573-218-9231.

NEW HOLLAND 320 SQUARE BALER: \$2,950. 573-765-4406.

DYNO CHARGE 990 ELECTRIC FENCER: Solid state for 20 miles. \$50. 636-239-2695.

AUCTION REMINDER: Cattle Sale every Monday at Noon. Salem Livestock. Please see our Auction Directory for more information.

2003 THUNDERBIRD: Black and white, very good condition, 47,000 miles. \$15,000. 573-832-1473.

NEW TUBE GRILL for 1972 Chevy Pick up. \$100 or trade. 573-734-2822.

AUCTION REMINDER: Real Estate and Personal Property Auction. Saturday, June 15@ 10am. Rocking R Auction. Please see our Auction Directory for more information.

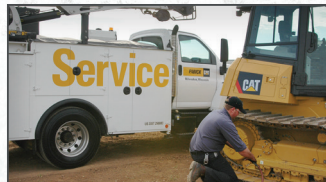
REESE 2070W DRUM MOWER: 6'9" cut. \$2,000. Potosi, 573-438-2672.

27 GAL FUEL TANK: Fiberglass. \$60. Rogersville. 417-753-2747, 417-766-1991.

FOR SALE BRAMCO BALE BUMPER: Good Condition. \$1,150 OBO. Camdenton, 573-873-4312.

POOL TABLES: Installations, moves, recoverers, repairs, accessories, etc. 573-646-1700.

GREAT PYRENEES PUPS. Also goats for sale. 417-664-8781, Richland.



THE RIGHT EQUIPMENT FOR EVERY JOB

Always ready when YOU need it.

+ From general construction to manufacturing, and every project in between, Fabick Cat is ready to serve your industry. We have the equipment you need to get the job done.

+ NEW | USED | RENTAL | SERVICE
WE DO IT ALL

800.845.9188 | www.fabickcat.com

"TO EVER SERVE OUR CUSTOMERS BETTER"

FABICK CAT

100 YEARS
OF SERVICE

HUGE NEW TIRE SALE: Best Prices. Highest Quality. Free Warranty. Delivery. Semi 11R-22-5 (Tall) Drive Closed shoulder 16-ply. \$279. Trailer 16-ply. \$259. Steer 16-ply. \$258. Michelin Retreads available. Trailer ST-750-R16, 14-ply Radial. \$105. All-Steel. \$135. Tractor 18-4-38. \$550. Call 417-276-2435.

FRENCHIE PUPPIES: Most colors, M/F, shots, guarantee. Prices \$895-\$3,000. 573-238-3873, 573-208-0485.

CAT 951 DIESEL TRACK LOADER: \$7,250. 573-765-4406.

FOR SALE IH 7250 PEDAL TRACTOR: wide front w/wagon. \$300: 573-859-6574.

1210 FORD 4X4 3 CYLINDER DIESEL TRACTOR: Needs work on transmission. \$850 for sale or trade. 417-818-2142, 417-926-3889.

57 FORD 961-TRACTOR: live power, power steering, hydraulic hook-up. \$3,500. 417-247-8200.

FIREARMS: Professional Repairs and Restorations. Baron's Gunsmithing. 573-363-5801, Camdenton.

2017 MASSEY FERGUSON TRACTOR: GC1705, 24hp, hydrostat, diesel, belly-mower, front-loader, 40hrs. \$12,500. 573-619-4488.

PUT MORE \$\$\$ IN YOUR POCKET!! Lewis Cattle Oiler. 417-286-3540 or 774-696-2344.

5 HP MTD WOOD CHIPPER: \$199. 573-218-9231.

2005 LOWE CAMO ROUGHNECK 1760 BOAT MOTOR & TRAILER: \$6,500. Questions? 417-531-2510

GREAT FATHERS DAY GIFTS: Beagle Puppies! 314-974-6881.

LINCOLN 225 WELDER. \$100 or trade. 573-734-2822.

WANT STIHL GRASS TRIMMER SF5-45. Call after 6pm 417-532-6570.

MOVING SALE. 27752 O Hwy. (Hwy 5, South to O Hwy, Lebanon). Wednesday-Saturday, June 12-15. Antique, Furniture, Tools.

CASE 580D: Diesel backhoe, Loader. \$8,850. 573-765-4406.

KUSTER LOGGING
BUYER of Standing Timber Oak and Walnut
Dozing Now Available
417-259-0047
 References Available



1988 LINCOLN CONTINENTAL: 4 door, 302, 90,000 miles, clean. \$4,000. 417-859-5951.

3 LOT of MLB, NFL, NBA ROOKIE CARDS \$10 sheet of 9. Text pics. 573-854-8132, Salem, Can text.

OLD WOODEN THREE DRAWER DRESSER: w/mirror. \$75. 573-327-9068.

AUCTION REMINDER: Public Auction. Saturday, June 22 @ 9am. Show-Me Auction. Please see our Auction Directory for more information.

AUSTRALIAN SHEPHERD PUPPIES: Ready to go, Merles & Tri-Colors, UTD on shots. For sale or swap for farm animals. 417-458-1047, 417-967-6493.

05 INTERNATIONAL EAGLE SEMI: 10 speed automatic, Cummins motor 500 HP, double bunk, ready to go. \$14,000, will consider trade. 417-679-4355.

2005 HONDA 750 SHADOW SPIRIT: 17,500 miles, windshield, hard saddlebags, race tuned, Cobra pipes, new front/rear sprocket/chain. \$3,000 OBO. 417-399-4340, Flemington, call or text.

OLDER FORD 3 POINT POST AUGER. 573-528-7436.

AUCTION REMINDER: Estate Auction, Friday June 21 @10AM, Inman Auction. Please see our Auction Reminder for more information.

7 CHAROLAIS CROSS HEIFERS: Fall 2018, weaned, approximately 550#, real gentle. \$800 Each. 660-596-8515.

B&W FIFTH WHEEL COMPANION HITCH for Ford factory installed Gooseneck Hitch. Used three times. Been stored in my garage in Battlefield, MO. Cost \$1,100, will sell for \$895 cash. Like new. Wife had cancer, had to sell RV. 417-425-3825.

MIDWEST CONSTRUCTION
 Free Estimates!



- Pole Barn • Garages • Framing
- Remodels • Roofing • Concrete
- Decks & Porches

Contact Abner Glick
417-664-1794

FLIES ARE HERE!! Lewis Cattle Oiler. 417-286-3540 or 774-696-2344.

JOHN DEERE 275: 9ft, disc mower. \$5,150. 573-765-4406.

AUCTION REMINDER: Estate Auction Saturday June 15 10 AM. Please see our Auction Directory for more information.

52.64 ACRES: \$99,900. Abundant Deer & Turkey, ATV Paradise. Will divide Acreage. 30 acres w/year round creek through the center. \$2,400 per acre. 20 acres. \$2,100 per acre. Approximately 9 acres County Road access. \$2,000 per acre 2.5 miles from city limits. Located Cadet, MO out of city limits, quiet neighborhood.

BOSTON TERRIER PUPPIES: M, shots, guarantee. \$550. 573-238-3873, 573-208-0485, Glen Allen.

AUGER: 8x57, good condition. \$2,500. 573-378-5180.

WILBER'S FISH BRANCH ANGUS: Large selection 14-16month old bulls available, Calving ease, good growth and carcass traits, very docile. Mexico, Mo. 573-473-6019. www.fishbranch.com

FANEX 4-BASKET HYD FOLD TEDDER: \$4,350. 573-765-4406.

CASE 533 45 HP DIESEL TRACTOR: w/loader, wide front end, PS, 6' brush-hog. \$5,400. 573-694-0299.

1890 OPTOMETRIST COMPLETE KIT: 250 lenses, German + English Eye Charts, leather case. \$200. 573-764-3517, call in pm.

FIFTH WHEEL: Everest 36', 3 slides, new tires, good condition. \$10,000. 417-296-2463, leave message.

2001 19FT DUTCHMEN TRAVEL TRAILER: very clean, everything works. \$4,200. 417-345-5634.

Ozark Country Boot Shoe & Boot Repair
 Resoling • Heelcaps • Halfsoles & More!



ALSO Saddle Repair!

1113 S. Dallas Co. Line Road, Conway, MO 65632
417-589-0262 • John Brenneman

FIVE QUILT BOOKS FOR SALE: American Quilt Story, American Heritage Quilts, A Garden of Quilts, American Patchwork & Quilting, Creative American Quilting, all hardback, excellent condition. \$5 each or all for \$20. 417-532-2045.

GUINEA PIGS: \$20 each, All ages, all colors. 636-629-0113. St. Clair.

AUCTION REMINDER: Saturday, June 15th, 9:30am, Larinda's Auction Service. Please see our Auction Directory for more information.

USED AMERICAN FAMILY DOUBLE-WIDE These do not last! Excellent condition. Call Quick, 573-499-9993 columbia-discounthomes.com.

AUCTION REMINDER: Public Auction Saturday June 15th at 10 am. Knight Auction. Please see our Auction Directory for more information.

AUCTION REMINDER: Estate Auction Sat. June 15th 10Am BRUCE SCHEETS AUCTION. Please see our Auction Directory for more information.

2005 YAMAHA 1100 SILVERADO, 14,000 Miles, bought new, many extras, new tires. new condition, always garaged. \$5,600 OBO. 573-259-2648.

NEEDING TO RE-HOME wonderful dog. 2.5 year Boxer Mix: obedience /crate trained, great traveling dog. Good w/animals and people. Great companion. 224-637-5988.

MUST SELL DUE TO HEALTH: Beautiful custom ordered, mint condition, flexsteel, three cushion, 84" sofa with matching 60" loveseat. \$450. Must see. 573-699-4351.

REGISTERED HEREFORD & ANGUS BULLS: Home raised, Some Show-Me Select Qualified. 573-701-7828. Belgrade

AUCTION REMINDER: Real Estate & Personal Property Auction, Sunday, June 22 at 10am. Easterly Auction Company. Please see our Auction Directory for more information.

GENT'S VINTAGE WATCH COLLEC-TION: Over 40 Classic models. \$150. 573-764-3517, call in pm.

FOUR REGISTERED QUARTER MARES: 100% Foundation Bred. 573-528-7436.

GOLDEN RETRIEVER: Beautiful Female, 5 months. \$600. 314-808-1496.

NEW NEW NEW DISPLAY HOUSE!!! Call Marla to hear what is new inside 573-657-7040, chateauhomes.net.

FREE MALE CAT to loving home: neutered, great indoors and outdoors. 417-664-9940.

FESCUE WANTED TO COMBINE ON SHARES. Phone 417-327-6240.

MF 550 COMBINE: RWA hydro, 1,923 hours. \$15,000. 636-278-6065.

JOHN DEERE 566 ROUND BALER: monitor, kicker, net wrap. \$7,500. 573-765-4406.

NEW HOLLAND 320 SQUARE BALER: \$2,950. 573-765-4406.

2006 36FT TRAILER: 2 Slides. \$8,500. 417-664-3162.

13' DUMP BED FOR SALE: Hoist & tank included. \$1,200. Rolla, 573-308-5310.

We Buy White Oak Logs!

Independent Stave Company
welcomes all white oak suppliers!

- Top prices for your logs
- Experienced log buyers
- Professional service

www.independentstavecompany.com

Chad Cook | Salem Wood Products

417.718.2950

5 miles north of Salem, MO on Hwy 19



INDEPENDENT STAVE COMPANY
Log Procurement & Sales

CRAFTSMAN FLOOR DRILL PRESS. \$150. 55 gallon hand Fuel Pump. \$50 573-378-5180

FARM & HOME SERVICES, WELDING & CONSTRUCTION. \$40-\$65 per hour. 417-664-7841, Stoutland.

10' CONCRETE FEED BUNKS. Johnson automatic waterers, assorted gates. 573-819-1768, Columbia.

DARDEN PROFESSIONAL TIMBER HARVESTING, BUYING STANDING TIMBER: Great prices, improve wildlife habitat and improve forest health. State Certified & Fully Insured! 573-247-4808 or 573-739-1122. Salem

15FT BUSHHOG: 3715 Heavy-duty, good condition. \$10,500. 417-766-6504.

RUBBER BELTING: Assortment sizes. 573-378-5180

HESSTON 5500 5X5 ROUND BALER: \$1,800. 573-438-2672.

1965 FORD FAIRLANE: 4 door sedan, 289 V8, automatic, driveable car, fair condition. \$2,500 OBO. Salem 573-729-0272.

WANTED OLDER MODEL ROLLBACK CAR HAULER: excellent shape. 573-734-2822.

100# PROPANE GAS CYLINDER: 24 gallon with regulator and cap. \$50. Conway, 417-718-5347.

ALUMINUM WHEELS: 4 15X10 mid 90's Chevy Pick-up 2WD. \$95. 573-368-6633, Rolla.

Gooseneck and Winchester Star pipe cattle trailers the best in the business here and ready...



10% Down
\$152 Per Mo
60 Month w.a.c
\$8,900

Cowtown USA
I-44 Exit 203 • 413 Daniels Rd.
Cuba, MO • 573-885-6300
www.cowtownusainc.com

6FT FARMKING FINISH MOWER: good shape. \$650. 417-247-8200.

8FT OFFSET DISK: \$2,500. 573-765-4406.

5AC OZARK COUNTY: Near Bull Shoals Lake. \$9,995. 417-255-6640.

1902 REM MOD 6 32 CAL RIFLE. \$400. 573-218-9231, Farmington.

BARN WOOD SIDING: 8" & 10" wide. 573-729-7226. www.pineridgerustic.com

AUCTION REMINDER: Farm Equipment Auction, Sat Jun 22@10:30am. Case Auction. Please see our Auction Directory for more information.

IHC 1086 DIESEL CAB&AIR TRACTOR: \$8,400. 573-765-4406.

1890 SOUTH BEND GRAIN SEEDER: Shoulder held, wood w/iron gears. \$100. 573-764-3517, call in pm.

FIVE ANGUS BRED HEIFERS: to Byergo Bull. \$2,100. 660-337-6311.

SET OF WHEEL CHOCKS: Color is Safety Yellow. \$25. 636-239-2695, Washington

1962 MASSEY FERGUSON BULL: w/ loader, needs paint. \$4,500. 573-315-9009, Potosi.

AUCTION REMINDER: Real Estate & Personal Property Auction, Sunday, June 23 at 10am. Easterly Auction Company. Please see our Auction Directory for more information.



Larry Heisel Rentals

We Rent!

Call Larry!
Rental Available in 636 or 573 Area Codes

573-779-1500
www.larryheiselequipment.com

VERMEER 504N BALER: Like new, only 1,200 bales. Cuba, 573-885-2730.

SWAP MEET: June 29th. VENDORS WANTED. 417-532-6666. Treasures, 1060 Tower Rd, Lebanon. On Facebook-Treasures LLC.

MOTORS: 302 Ford C6. \$500. 429 Cadillac, turbo 400. \$400. 4.3 V6, automatic. \$400. 417-679-4355.

WANTED OLD FIREWORKS: Rolla, Leave Message, 573-465-3561.

1966 283 w/ power glide, running when pulled. \$600 OBO. 417-679-4355.

BEILER FENCING: New, clean, repair. Call us for an estimate. 417-217-2755.

IHC 1086 DIESEL CAB&AIR TRACTOR: \$13,500. 573-765-4406.

2004 LLY DURAMAX: 245K miles, single cab, white, 2500 GMC 4 wheel drive, very clean. \$8,000. 573-979-0223, phone/text.

REAR TINE TILLER: good shape. \$250. 573-468-7689, Sullivan.

\$\$\$\$\$ MOBILE HOME SAVINGS That is what we are about for the last 36 years. New, Used, All Sizes. 573-657-2176 amegamobile-homes.com

AC 840 DIESEL ARTICULATING 4-WHEEL DRIVE LOADER: \$7,250. 573-765-4406.

AC 6080 DIESEL TRACTOR: Cab and Cold air. \$14,950. 573-765-4406.

4020 JOHN DEERE DIESEL TRACTOR: w/48 J/D loader, good condition, nice paint, excellent rubber. \$13,500. 417-763-5240, Tunas.



Douglass Steel, LLC Jct. MM & 60 Hwy | 11267
Dunn Dr. Mtn. Grove, MO
65711 (417)926-5589

All Types Structural Steel & Pipe - Culverts

Culvert • Continuous/Portable Panel • Pipe fence material
• Plate and Structural Metal • Heavy Duty Field Rollers •
Bargain square tube and pipe bundles \$.25 pound

JOHN DEERE 310A DIESEL BACKHOE LOADER: \$8,850. 573-765-4406.

AUCTION REMINDER: Saturday, June 15th, 10 am. Wulff Auction. Please see our Auction Directory for more information.

OLD FARM TABLE: 10' long, 38" wide, seats 12. \$300. 417-742-1234.

VARIOUS RACING DECALS. NHRA, Jeggs, Summit Racing, Mr Horsepower, Comp Cams. Set of 10, \$15 each. 573-854-8132, Salem, Can text.

FOR SALE: 1/2 Simmental 1/2 Angus Bulls, 10 months old. A.I Sired, very gentle, \$1750. ALSO: 110 gal. pull type sprayer. \$1000. Like new. J.W. Henson, 417-343-9488

REGISTERED BLACK ANGUS BULLS: AI bred. \$1,250-\$2,950. Hartville, 417-259-2520.

1998 DODGE 1500 EX CAB: 4x4, V-8 automatic, 70,000+ miles on motor/transmission, daily driver. \$2,800 OBO, trade for conversion van or tractor. 573-259-2648.

FOR SALE ROSSI HAY TEDDER: Hyd Fold, 4-Basket. \$1,500. Belle, 573-619-2533.

JACK RUSSELL PUPPIES: 8 weeks old June 1st, no shots, farm raised. \$150. 573-392-3748.

NEW ROSSIE LEVER ACTION: 410 Cal Rifle. \$450. 573-218-9231, Farmington.

WANTED, TIMBER TO LOG ON SHARES: Honest, reliable, references. 417-533-4607, 417-664-1195.

2 REGISTERED POLLED HEREFORD 2YR BULLS: Baldy Maternal-Top 46%, DNA Tested, Gentle. \$1,800-\$2,000. OBO. Belgrade, 573-244-3157.



BoatAngel

FREE 4-NIGHT VACATION!
Donate Car • Boat • RV • Motorcycle

1-800-CarAngel

www.boatangel.org

AUCTION REMINDER: Public Auction. Saturday, June 15th @ 9:00 AM. Dunker Auctions. Please see our Auction Directory for more information.

4 MUD TIRES: Goodyear Wrangler, LT285/75R16 Dura Trac, good tread left. \$100 Call Don, leave message for call back 314-808-5680.

AUCTION REMINDER: Saturday, June 15th, 8am. Buckner & Gately Auctions. Please see our Auction Directory for more information.

FOR SALE: Pembroke Welsh Corgi Pups. Farm raised, AKC registered, available black tris & reds. 573-473-0633. Paris.

EARLY 1900'S EMBOSSSED POSTCARD "TO MY VALENTINE": Great color. \$10 Have others. 573-854-8132, Salem.

NEW HOLLAND: 1411 diskbine. \$7,250. 573-765-4406.

CUSTOM SAW MILLING: Lebanon. 417-533-4607, 417-664-1195.

CHECKERED WALNUT WOOD STOCK PISTOL GRIP: for Marlin Model 336 or 1895. \$100. Washington. 636-239-2695.

ANTIQU 12 GAUGE: Single barrel, shotgun. \$175. Desloge, 573-327-9068.

HUGE NEW TIRE SALE: Best Prices. Highest Quality. Free Warranty. Delivery. Semi 11R-22-5 (Tall) Drive Closed shoulder 16-ply. \$279. Trailer 16-ply. \$259. Steer 16-ply. \$258. Michelin Retreads available. Trailer ST-750-R16, 14-ply Radial. \$105. All-Steel. \$135. Tractor 18-4-38. \$550. Call 417-276-2435.

EVINRUDE OUTBOARD 200 HP MOTOR: Overhauled, new power trim and lower unit. \$2,500. 870-405-5893, Midway.

1210 FORD 4X4 3 CYLINDER DIESEL TRACTOR: Needs work on transmission. \$850 for sale or trade. 417-818-2142, 417-926-3889.

NEW/USED PARTS: For all vehicles/machinery. (Warranted/delivery). 800-807-9612.

1960 FORD THUNDERBIRD: New numbers matching 352 engine/transmission. Runs Great. \$10,000. 1-573-430-3005. 1-573-734-6348, Bismarck.

Meet...

Shawna Bradley

Your Auction Specialist



Call or email me today to get your next auction in Central Missouri's #1 Shopper!



WEEKLY TRADER MAGAZINE

office: 417-532-9131 ext. 215 • 417-895-9324
cell: 417-322-3814 • shawna@weekly-trader.com

05 INTERNATIONAL EAGLE SEMI: 10 speed automatic, Cummins motor 500 HP, double bunk, ready to go. \$14,000, will consider trade. 417-679-4355.

AUCTION REMINDER: Real Estate and Personal Property Auction. Saturday, June 15@ 10am. Rocking R Auction. Please see our Auction Directory for more information.

Rotating Hay Carriage

\$5,150
\$510 Down
\$90 Per Week
w.a.c.

Cowtown USA • 1-800-258-6898
I-44 & Hwy F • Exit 203 • Cuba, MO
View At cowtownusainc.com - See Video

NEW HOLLAND TN65 DIESEL TRACTOR: W/Loader, 65hp. \$10,700. 573-765-4406.

WANTED OLDER SCAMP CAMPER TRAILER. wrangler99@ymail.com. 573-364-0152.

WE SELL HIGH TENSILE FENCE: All woven, barbed, smooth! Best prices! Call Michael 417-322-0161, Lebanon.

FREE LAB & ROTTWEILER MIX PUP: Male, 2-3 mos old, black and brown, smaller dog. 417-532-6981.

40 PLUS OLD CAR MAGAZINES For Sale: Street Rodder, Hot Rod, etc. \$15 all. 417-457-1023.

KRONE 3PT DISK MOWER: nice. \$6,100. 573-765-4406.

FREE FEMALE CAT to loving home: spayed, great with kids, good outdoors and indoors. 417-664-9940.

5 -16" JEEP/RANGER AFTER MARKET ALUMINUM WHEELS AND TIRES: \$199. 573-218-9231.

BUYING OLD BARNs AND LUMBER: 417-298-3509.

FRENCHIE PUPPIES: Most colors, M/F, shots, guarantee. Prices \$895-\$3,000. 573-238-3873, 573-208-0485.

WEEKLY TRADER MAGAZINE



AUCTION DIRECTORY

Friday, June 14

12:00 PM Freeman Auction & Appraisals, LLC.40

Saturday, June 15

- 8:00 AM Buckner & Gately Auction Service....36
- 9:00 AM Dunker Auction Service38
- 9:30 AM Larinda's Auction Service.....39
- 10:00 AM Rocking R Auction.....29
- 10:00 AM Bruce Scheets Auctions.....31
- 10:00 AM Wulff Auction35
- 10:00 AM R&R Auction Service37
- 10:00 AM Freeman Auction & Appraisals, LLC.41
- 10:00 AM Chadwell Auction Service, LLC42
- 10:00 AM Knight Auction Service, LLC.....43
- 12:00 PM Buffalo Livestock Market LLC43

Monday, June 17

12:00 PM Salem Livestock Auction.....43

Thursday, June 20

11:00 AM Mid Missouri Stockyards.....44

Friday, June 21

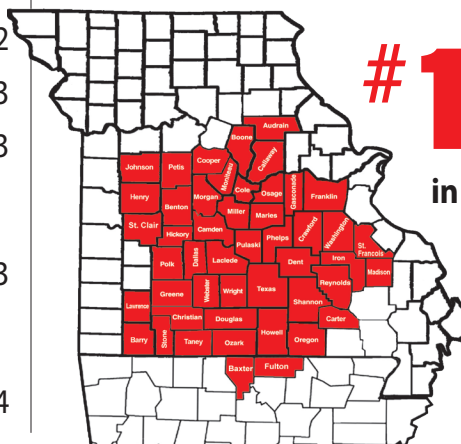
10:00 AM Iman Auction Company44

Saturday, June 22

- 9:00 AM Show-Me Auction Center30
- 10:00 AM Easterly Auction Co.....32
- 10:00 AM The Case Company34

Sunday, June 23

2:00 PM Easterly Auction Co.....33



#1 Rural Shopper
in Central Missouri

Reader's Choice!

Call 1-800-665-8875 to get your auction listed in the Weekly Trader.

AUCTIONEERS Did you know the WEEKLY TRADER covers more counties in rural Missouri than any other publication?

Firm deadline is 12:00 PM Friday, prior to next week's Thursday publication date.



REAL ESTATE AND PERSONAL PROPERTY AUCTION

Sat. June 15 • 10 a.m.
Real Estate Sells at Noon

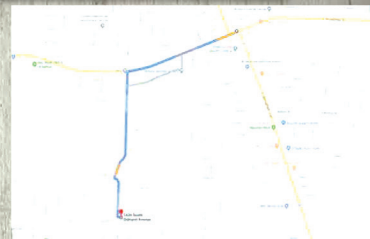
Rocking R Auction Note

Hey Folks! You'll be hard pressed to find a home like this on the market right now. Lots of square footage over an unfinished basement means plenty of room for everything you need. We'll also be selling lots of furniture and antiques. Bring a friend and spend the day with us!

Location:

**1426 S Oakland Ave
 Bolivar, Missouri**

From square of Bolivar, head west on Broadway St. Turn south on Oakland to auction on the left. *Watch for the Rocking R Auction signs!*



Estate of Gerald and Helen Stephens



- 3 Bedroom, 3 Bath
- 1,636 Square Feet
- Unfinished Basement
- 2 Fireplaces

**Open House June 2nd from 2 to 5pm.
 Call 417-326-8141 for Private Showing!**



FURNITURE • ANTIQUES • HOUSEHOLD



FURNITURE

- Pair of Chairs
- Desk Lamp
- Secretary Cabinet
- Blue Recliner
- End Table and Lamp
- Wall Mirror
- Currier Piano
- Antique Wall Clock
- Floral Print Couch
- Coffee Table
- End Table Stand
- Dining Table with 6 Chairs
- Decorative Wall Mirror
- Buffet Cabinet
- Solid Wood China Cabinet
- Dinette Table and Chairs
- Wall Table and Decor
- Antique Rocking Chair
- Dresser
- Office Desk
- Recliner Chair
- End Table Stand
- Large China Cabinet
- Dresser Stand
- Clothes Rack on Wheels
- Cedar Chest
- Cushion Stool Chair
- Patio Furniture
- Black Metal Patio furniture

HOUSEHOLD & MISC

- Books and Bookends
- Candles
- Large Flatscreen TV
- Black and Decker Mini Fridge
- Electric Candelabra
- Stereo System
- Candles and Holders
- Golf Caddy Bag
- Propane Grill
- Charcoal Grill
- Fire Pit
- Leaf Blower
- Animal Crate
- Computer Monitor
- Estate Washer
- Hotpoint Dryer

COLLECTIBLES

- Hummel Figurine
- Decorative Figurines
- Decorative Shoes
- Milk Glass Style Shoe Decor
- Ceramic Dog Statue
- Pheasant Figurines
- Rabbit Statue
- Paintings and Decorative Pictures
- Woven Fabric Picture
- Cookbooks
- Antique Royal Typewriter
- Shoe Shine Stands

KITCHENWARE & GLASSWARE

- White Pitcher
- Antique Decorative Pitcher
- Hob Knob Vase
- Blue Painted Jar
- Eastern Pitcher
- Flower Vase
- Glassware and China
- Large Metal Vase
- Antique Dinner Bowl
- Jug Pitcher
- Vintage Sugar Container
- Decorative Tea Kettle
- Fiesta Ware
- Glass Cups
- Dinner Plates and Bowls
- Casserole Dishes
- Proctor Silex Ice Cream Maker

MUSIC EQUIPMENT

- Large Ampeg Speaker BA-115HPT
- Twin Yamaha PA Speakers S115IV
- Mackie Power Amplifier
- Mixer Board Cart and Mackie 16 Channel Board 1604 VLZ Pro Tascam DA-20 MKIII

SEE WWW.ROCKINGRAUCTION.COM FOR MORE PICTURES!

**Estates • Personal Property • Business Liquidation
 Real Estate • Benefit Fundraisers • Estate Buying**

Alan Roberts
 (417) 830 - 8740
alan@rockingrauction.com

Lucas Roberts
 (417) 298 - 2704
lucas@rockingrauction.com

www.RockingRAuction.com



Statements made day of sale take precedent over printed matter. Purchase of real estate requires 10% down in cash or check on day of sale with closing to occur within 45 days. Real estate and personal property sold as is, where is, with no contingencies on inspection, financing or appraisal. We accept cash, check, and credit cards. Rocking R Auction is not responsible for property damage, accidents or injuries made on site or otherwise.

PUBLIC AUCTION

Saturday, June 22nd • 9:00 a.m.

SHOW-ME AUCTION CENTER

17829 Shadey Brook Dr. • Versailles, MO 65084



FURNITURE

- Small Oak Table & 2 Chairs
- Walnut Kitchen Island on Rollers
- Oak Extension Table with 10 Chairs
- Oak Curio Cabinet
- Small Oak Writing Desk
- Victorian Clock on Stand
- Black Entertainment Center
- Sectional Couch - Brown
- Oak Side Table
- Oak End Tables
- Large TV
- New Singer Sewing Machine
- Tall Mirror on Stand
- Maple Hutch
- Cedar Chest
- Lane Cedar Chest
- 4 Oak Barstools
- Floral Sofa
- Big Lot of Home Decor
- Big Chest Deep Freezer
- Microwave Table
- 2 Refrigerators
- Upright Freezer
- Small Deep Freezer
- Corner Cabinet
- Curio Cabinet

TOOLS

- Snap On Tool Sockets, Wrenches, Screwdriver, & More
- Chain Hoist
- Chainsaws
- Poulan Limb Saw
- Tablesaw
- Jacks
- Small Grinder
- Saw Horses
- Paint Buffer
- Shop Vac
- Pickup Toolbox
- Fiberglass Extension Ladder 24'
- Tile Saw
- Wooden Extension Ladder
- 2 - Step Ladders
- Shop Bench with Vise
- Air Compressor
- Coleman Generator - Electric Start

SAFE & FILE CABINETS

- Old Safe with Combination
- 2 - Fireproof File Cabinets - 4 Drawers
- 4 - File Cabinets - 4 Drawers
- 3 - File Cabinets - 2 Drawers

ANTIQUES

- Old Chest of Drawers
- Parlor Stove - Fancy
- 2 - Oak Lawyer's Bookcases - Nice
- Old Iron Baby Bed
- Oak Display Case
- Fireplace Mantel
- Oak Henredon Display Case
- Table & 6 Chairs - Purchased in France
- Marlboro Clock
- Lot of Wood Planes
- Old Wooden Pulleys
- 3 - Old Bicycles
- Brass Scales
- BF Goodrich Tire Advertisements
- Working Loom
- Antique Mirror
- 2 - Dentist Cabinet (Very Nice)
- 4 - United Delco Part Cabinets
- Iron Farm Implement Seats
- 98 Mercury Long Shaft Outboard Motor - Electric Start, No Title
- 2 - Old Outboard Motors
- Lot of Old Metal Signs
- Several Lanterns
- Well Pulleys
- 2 - Hand Cultivators
- Corn Shellers
- Lot of Cast Iron (Wagner)
- Large Collection of Knives
- Many More Small Items

HOUSEHOLD

- Lamps
- Wooden Shelves
- Lots of Glass
- Lot of Canned Food
- Fans
- Canning Jars
- Small Appliances
- Lot of Pot & Pan
- Pressure Cooker
- Kitchenware
- Dishes
- China
- Pfaltzgraff Soup Service
- Many, Many More Items

For more photos and information,
see auctionarrows.com and auctionzip.com

LAWN & GARDEN

- 2000 LS 180 New Holland, 1900 Hrs, Wheeled Skid Loader
- 1997 Massey Ferguson 1250 Tractor with 1246 Loader - 313 Hours, Excellent
- 6' Westondorf Blade
- 3-Pt Single Plow
- Homemade Trailer
- Weed Eaters - 1 New
- Pruners & Trimmers
- Very Large Lot of Hand Tools - Excellent Condition
- Wheelbarrow
- Garden Statues
- 2 - Grills
- 2 - Wicker Porch Sets
- Patio Chiminea Outdoor Fireplace
- Lot Yard Ornaments
- 5 - Propane Bottle Tanks
- Knapsack Sprayers
- 5 - Big Coolers
- Seeder
- Large Lot Gas Cans
- John Deere Snow Blower
- Lot Grocery Store Shelving
- Lawn Roller
- 14' Homemade Utility Trailer

SPORTING GOODS

- Large Gun Cabinet - 12 Guns
- Ammo Cases
- Shotgun Reloader - MEC Brand
- Powder, Primers, Wads
- 12-Gauge & 20-Gauge Dic BB Gun
- Live Traps
- Foot Traps
- Hunting Cloth & More

AUCTION NOTES: Most of this sale is from two estates. There are a lot of top-quality items that are clean and very well taken care of. See you Saturday!

Wilmer



Lunch will
be served

Show-Me Auction Center Owners:
WILMER & ANNIE HOOVER
573-378-4908

Auctioneers:
Col. Doug Dieckman - 660-287-1962
Col. Tony Stephens

For Information, Call
Earl Ray Zimmerman
573-378-4335

Not responsible for accidents. TERMS: Cash or Check with Proper I.D. • All statements made date of sale take precedence over printed material.

OUTSTANDING ESTATE AUCTION

SATURDAY, JUNE 15th - 10:00 AM

Location: Chamber of Commerce Building, Texas County Fairgrounds- 1585 N. Hwy 63, Houston, MO. Climate controlled facility with seating available.

Directions: From Houston at Hwy 63 & Hwy 17 stoplight, go north on Hwy 63 one mile to auction location. Watch for Bruce Scheets Auctions Signs.

Visit www.brucescheetsauctions.com to view more photos!

PAYMENT SYSTEM: Cash • Checks accepted with proper identification
Debit/Credit Card (Amount up to \$1500)

The Estate of
Diane & The Late Robert KRANTZ
& Guest Consignor Daniel Brewer

ANTIQUES & COLLECTIBLES

5 gal gas cans incl. Phillips 66 & Sunoco DX, Coop, Amoco • Wood sign Jones Freight Co. & Lilly & Co Cabool, MO • Cast iron decorated mailbox • Mantel clock • Railroad time tables & code books MO Pacific St. Louis & Southwestern Railway • Handmade quilts • Antique value books • Box clay poker chips • Small white primitive cabinet • Las Vegas trays • Collection of piggy banks • Pee Wee Herman doll NIB • Ernest T Worrell doll NIB • Large collection of military yearbooks • Nevada dice table • Slat back chair • Folgers coffee tins • Coffee jars • Medicine bottles • Stainless 3 gal coffee urn • Large selection vintage hand tools • Draw knives • Galvanized tubs • Granite ware • Child's toys • Snow globes • Western saddles • Iron implement wheels • Kerosene cans • Brass torch • Wood pulley • Cream can • Machinist wood tool box • 6' hollow log w/giant burl • Tin bread box • Ice tongs • Oil cans (spout & squirt) • Hay hooks • Metal signs • Hudson 300 lb brass scale • Walking stick & canes • Metal umbrella stand • 1940's - 1950's Popular Science magazines • National Geographic magazines • 3', 4', & 5' round saw blades • Large lot of primitive hand tools • Other

1940's JOHNSON SEAHORSE & ELGIN BOAT MOTORS

FARM EQUIPMENT

John Deere MX6 Brush cutter • Tuffline 3 pt blade • 3 pt 8' cultivator • John Deere Quick Tach front end bale spike • Log tongs • 3 pt. bale spike

2006 JOHN DEERE 5205 4 WHEEL DRIVE DIESEL TRACTOR W/ CANOPY, SYNC REVERSE & 522 JOHN DEERE QUICK TACH LOADER

1 Owner, 631 Hours, Excellent Condition



WOODWORKING & SHOP & MISC

Dayton floor model drill press • Dayton speed air compressor • Dunlap drill press table model • Mr. Heater propane 50,000 to 85,000 BTU • Ryobi table saw • Ryobi jigsaw • Ryobi 10" table saw • Delta table saw • Sears shop vac • Stablemate work table • Craftsman elect. Miter saw contractor series 2 hp • Craftsman 12" radial arm saw • Mac tool chest • Circle saws • Ryobi scroll saw • 100" Stanley tape • Bench vises • Bostitch nail gun • B&D Workmate tables • 19.2v drill circle saw & light • Dust collection system • Rotozip spiral saw • AMT bandsaw • Craftsman 1 1/2 hp router • Grizzly disc & belt sander • 10" wood workbench w/metal base • Dewalt electric hand planer • Ryobi palm sander • Dewalt sawsall • Dewalt 12v cordless drill • Chicago Electric corner sander • Craftsman angle grinder • Nut & bolt bins • Woodcrafts router bits • 16pc forstner drill bit set • 25 pc drill bit set • Craftsman drill • Dremel tool • Dewalt hand electric jointer • Nut & bolt bins • 36" shop fan • Metal shop cabinets • Clarke parts washer • Ryobi bench grinder (new) • Assorted levels • Assorted hand tools • Miter saw • 2 Lumark industrial light fixtures • Hardback books incl. woodworking, house construction, engineering & other • Mechanic Illustrated magazines • Other

2013 JOHN DEERE GATOR RSX850i w/ Glass Windshield, Stereo & Snow Plow



GUNS ~ BOWS ~ AMMO & MISC

American Arms Black Widow 22 cal. pistol • Marlin mod 60 22 cal auto • Hoyt Magnatech ZR200 bow w/quiver, 8 arrows, stabilizer case 60-70 lb pull, 28-31" draw(nice) • Matthews Adrenaline bow w/60-70 lb pull, 28-31" draw, release quiver & 6 arrows, stabilizer (nice) • Brick of 22 ammo • Red Head gun cleaning kits • Live traps • Winchester & Buck knives • Knife magazines • Other

HUSTLER FAST TRACK ZERO TURN LAWN MOWER 19hp Honda Motor (Nice)

COINS

1845 large cent • 1856 large cent • Book of Roosevelt dimes 1946-1964 w/ extras • 38 Liberty nickels • 1927-S Liberty half dollar • 1934-S Liberty half dollar • 1950 half dollar, choice • 1966 special mint set(2) • 1967 special mint set • 1961 silver proof set, sealed • 1962 silver proof set, sealed • 1963 silver proof set, sealed • 1998 U.S. silver proof set • 2003 U.S. silver proof set, rare • Two 2019 silver eagles • Two silver dollar rounds • Two Barber half silver rounds • 1878-CC silver dollar • 1890-CC silver dollar • 1879-P silver dollar • 1881-S silver dollar, B.U • 1883-O silver dollar • 1883-S silver dollar • 1921-S silver dollar • 1923-P Peace dollar • 1924 Peace dollar • Seven silver dollars

HOUSEHOLD

2 large glass display cabinets • 2 small dressers • Wardrobe • Ceiling fan (new) • Canister sets • Kerosun heater • Box fans • Fireplace tools • End tables & coffee tables • Fireplace screen • Exterior wood door • Corner cabinet w/glass door • Large wall mirrors • IBM electric typewriter • Office chairs • Drafting table & accessories • Other

1909-D FIVE DOLLAR INDIAN GOLD COIN, Choice

OUTDOOR & MISC

DEK 5650 wt generator • Craftsman chainsaw • Electric log splitter • Werner ladder • Lawn figurines • CharGriller gas or charcoal grill • 2 sets of golf clubs • 55 gal plastic barrels • Lawn carts • Metal lawn trellis • 5 gal water jug (new) • 16 bundles black Grand Manor shingles • Agri Fab lawn thatcher • Propane bottle • Pet carrier • Craftsman lawn dump cart • Ext. ladders • Step ladders • Lawn & garden tools • Coleman lantern • Other

AUCTIONEER'S NOTE: Outstanding auction with quality merchandise throughout. Look forward to seeing you on auction day! *Thanks, Bruce*

DRIVER'S LICENSE OR PICTURE I.D. REQUIRED • TERMS: CASH OR APPROVED CHECK   **OR** 

BRUCE SCHEETS AUCTIONS

www.brucescheetsauctions.com • HOUSTON, MO • We Accept Mastercard, Visa & Discover

Auctioneers:
COL. BRUCE SCHEETS
417-967-2510
Cell: 417-260-2118
COL. ERVIN BONTRAGER
COL. TRAVIS TOOLEY



All announcements made day of sale take precedence over any printed matter. Not responsible for lost or stolen merchandise. Not responsible for accidents.

LUNCH WAGON • APPRAISAL SERVICE • RAIN OR SHINE

Cashiers / Clerks:
Andi, Jennifer & Camryn Scheets,
Shelly Sigman, Lena Walsh
Ringmen:
Jarid Scheets, Martin Walsh,
Terry McCallister, Kirby Cauldwell

REAL ESTATE & PERSONAL PROPERTY AUCTION

SATURDAY, JUNE 22, 2019 @ 10:00AM

1624 N 9th St • Monett, MO 65708

DIRECTIONS: From I-44 west, Exit 44 toward Monett/Mt Vernon, turn left onto Mt Vernon Blvd/MO-H, turn left onto Hwy H/MO-H/9th St, auction will be on the right.



This 4 bedroom 4 bath house with loft space features two stone fireplaces, great room with pine wide plank floors, nice kitchen with pine cabinets; and rock and log bar, gourmet wood stove, several ornate windows featuring the lodge look. Large vaulted ceilings with log beams and lots of natural light. Beautiful log cabin look with cedar accent logs throughout the home! Large outside deck with the lodge look off of the main living area.

Legal: E180' OF S 5AC OF S1/2 NE NE, EX HWY R/W **Taxes:** \$839.84
REAL ESTATE TERMS: 10% DOWN DAY OF AUCTION WITH BALANCE DUE AT CLOSING.
 POSSESSION AT CLOSING WITH CLOSING IN 45 DAYS OR LESS FROM AUCTION DATE.

OPEN HOUSE: SUNDAY JUNE 16TH 2019 FROM 2-4

INVENTORY LIST: Antler chair; Leather loveseat with wooden ornate frame; Antique table; Sitting chair with wood trim; Blodgett pizza oven; Cast stand; Green vintage glassware; Red table; Champion meat grinder; Fabric love seat; Small safe; Word occasional table; Deer; Antique leather shoes; Iron planter; Road runner boot scraper; glass dome figurines; Black wall shelf; Antique ironing board; Minnow bucket light; Fish figurine; Antique milk bottles with wire rack; Duck statues; Moose Stand; Antique milk bottles; Cow; Porcelain pans; Leather couch with ornate wood frame; Jar and ect; Religious maps; Plastic pitcher and 4 glasses; Leather chair with ornate wood frame; Metal signs and holders; Taxidermy wild turkey; Chair and ottoman; Various voltive; Rug; Childs saddle stools; Rug; Chalk board; Decorative jars; Boy Scout backpack; Decorative pillows; 1845 Victorian Square antique grand piano With leather stool; Wall clock; Antique wooden washing machine, missing some parts; Coo-coo clock; Cast iron coat Rack; Woven hanging lamp; Multiple taxidermy animals Turkey; Star wall hanger; Antique ammo box; Wall clock; Metal leg stool; Floor lamp; Metal cabin thermometer; foam cushion; Concert posters Elvis and Neil diamond; Hotpoint 4 burner stove; Album covers and advertisements; Maytag dish washer; Christmas wrap; Coca-Cola napkin holder; Coca Cola memorabilia; Snoopy phone; Miscellaneous items; Vintage soda fountain 7 up; Vintage soda fountain fixtures; Fisher price barns; Soda fountain sink; Bottle caps; Vintage Coca Cola dispenser; Kids guitar; Coca Cola advertising; Kids toys; Vintage soda bottles many old bottles; Lincoln logs; Glasses; Vintage coke syrup bottle; Trays; Miscellaneous box; Coke glass pitchers; Bottle capper; Coca Cola dishes; Disney glassware; Lots of Coca Cola glasses, A and W mugs; Looney tunes; Coca Cola Clock; Box of curtains; Vintage dish set; WW II Canadian Special Ops (Grenada) trifold wood frame kayak made in England; Malt shake maker vintage; Ceiling fan; Vintage paper dolls and magazines; Metal Wall Coat Hanger; Popcorn buckets; Antique Elgin outboard motor; Media table with storage; Wooden antique boat wars; Box of hop along Cassidy, Dave Crockett western stuff; Kids albums; ATF Toys; Popeye stuff; Frigidaire upright freezer 21 sq ft; Kids record player; Maytag stainless side-by-side refrigerator freezer with water and ice in the door; Tub of tools; Miscellaneous games; Red and white soda booth set; Vintage chrome dinette set with four chairs; Porcelain pot; Marbles old; Cushion foam; Wouldn't Stump table; Gilbert erector Set; Stemmware; Quarter juke box; Coca Cola memorabilia; soda bottles; Duck decoys; Upright Freezer; Vintage Grabbers; Two stools and table; Commercial stainless steel serving counter; Coca-cola chairs and table; Wooden benches; Galvanized washtub; Old minnow bucket; Vintage Pepsi cooler; Charbroil cooker the big easy propane; Old metal oil cans; Vintage chain fall hoist; Antique children's toys cast iron; Old tin Toy; Washer & dryer; S cast iron banks; Wooden chair; Old toys; Metal Texico motor oil and gasoline sign Repo; Lots of antique and vintage collectibles; Old toys; Antique rail road lanterns; Bear mirror; Green chest; Bathroom accessories; Metal rack; Antique red jacket well pump; Hand made Wooden Replica Water Tower about 15' tall; Vintage fresh produce wagon; Huffy girls bicycle; Wooden Stump Table; Fresh roasted nuts cinnamon glazed selling cart; Old planter; Nine outdoor chairs; vintage roller; Outdoor lawn sit with glass top umbrella and six chairs; Lumber; Treated wooden fence; Antique wagon wheels; tools; vintage pinball game; Kids peddle tractor; wheelchair; Bird baths; Coca-Cola attachment; vintage boxes; Vintage lawn mower; Wooden radio; patio furniture; Chrome shelf; Wooden bookshelf; Glass door cabinet; Vintage pressure cooker; Cabinet; Cabinet top; Pressure cooker; Shower stall insert fiberglass; Vintage light fixture; Antique wooden cabinet; Chrome shelf; Cedar blanket chest; Ships steering wheel; Three more saddle seats; 07 Gold Town and Country Chrysler minivan; Toyota diesel warehouse shop forklift; 1978 Champion bass boat (150 Mercury Motor plus trailer it sits on); 1952 Farmall Red Tractor; Flat bed for 1 ton dually truck **AND MORE!**



FOR MORE INFORMATION GO TO WWW.EASTERLYAUCTIONCO.COM OR CALL EASTERLY'S AT 417-833-9494

EASTERLY AUCTION CO.

Go to www.EasterlyAuction.com



auctionzip.com
ID#14770

Mike Easterly Auctioneer
417-833-9494

Not Responsible for accidents or theft.

For more information call: Easterly Auction Company, Springfield, MO.

Auction Terms: Bank Letter Of Credit Required.

Visa, Mastercard, Cash, Cashier's check or checks with proper I.D.

Announcements day of sale take precedence over printed material. Auction Notes: Although information is obtained from sources deemed reliable, auctioneer makes no warranty or guarantee expressed or implied.

Buyers should themselves take the opportunity to make their own inspection prior to sale.

REAL ESTATE & PERSONAL PROPERTY AUCTION

SUNDAY, JUNE 23, 2019 @ 2:00 PM
1846 E. Valley Water Mill Road • Springfield, MO 65803

DIRECTIONS: From the intersection of I-44 & N. Glenstone Ave go North on Glenstone/Mo H, turn right on E. Valley Water mill road and auction will be on right.



This home has approx. 2740 sq. ft +/- of living space with 5 bedrooms, 2 full baths, oak cabinets, bay window in dining room, fireplace, Central heat & air with outbuildings for extra storage nestled on 1 acre close to town.

Legal: W 1A E 2A N 1/2 NW 1/4 W 1/2 LOT 4 NW 1/4 **Taxes:** \$994.79
Terms: 10% DOWN DAY OF AUCTION WITH BALANCE DUE AT CLOSING. POSSESSION AT CLOSING AND CLOSING WITHIN 45 DAYS OR LESS FROM AUCTION DATE.

OPEN HOUSE: SUNDAY JUNE 16TH 2019 FROM 2-4



INVENTORY LIST: 1991 Itasca 34 ft motor home; 1972 C-10 Chevy long bed truck; 2000 Toyota Tundra ex. Cab, SR5 2x2; 2006 Toyota Sienna CE; Ford 8 N Tractor; 5 ft. brush hog; Full bed; Queen bed headboard and footboard sleigh bed; Coffee table; Chest of drawers; Dresser with mirror; Movie Camera; Stuffed Bear; Stuffed Mickey Mouse; Gliders; Table Lamps; Dresser; Plates; Bowls; Coffee cups; Mixing bowls; Casserole dishes; Glasses; baking dishes; silverware; pots and pans; kitchen utensils; mixer; Golf clubs; Books; Twin bed; framed Pictures; Scale; Heater; White rug; Full bed; Saddle; Office Chairs; Frigidaire refrigerator and freezer; GE washer; Slow cooker; Vacuum; Desks; Whirlpool dryer; Fans; Coolers; Hen on a nest; Oil lamps; Twin bed headboard & footboard; school desks; Clock; Walker; Leather scribed clock; Motorized plane 5 foot wing span; Desk light; square table; TV tray; Visio flat screen TV; lawn Chair; Games; Table; Crescent waffle maker number eight cast-iron; Iron board; Tv; Figurines; Love seat; Canes; Recliners; The warrior and the Wolfpack by John D Shaw; Table and 4 chairs; They fought with what they had by John D Shaw; 3 shelf wire book shelf; Chairs; Ottoman; Carry all; Patio chair; small Patio table; Plane yard ornament; Grill; porch swing on stand; Patio chairs; Hose; Lots of motorized planes; Motorized scooters; Craftsman tool box; Drill press; Air compressor; hand Tools; Black and decker fan; Plane wheels; Storehorse folding sawhorses; Power tools; Machete; Car polisher; Grinder; welding helmets; jumper box; Rotary tool kit; Soldering gun kit; Angle grinders; **AND MORE!**



FOR MORE INFORMATION GO TO WWW.EASTERLYAUCTIONCO.COM OR CALL EASTERLY'S AT 417-833-9494

EASTERLY AUCTION CO.

Go to www.EasterlyAuction.com



auctionzip.com
 ID#14770

Mike Easterly Auctioneer
417-833-9494

Not Responsible for accidents or theft.

For more information call: Easterly Auction Company, Springfield, MO.

Auction Terms: Bank Letter Of Credit Required.

Visa, Mastercard, Cash, Cashier's check or checks with proper I.D.

Announcements day of sale take precedence over printed material. Auction Notes: Although information

is obtained from sources deemed reliable, auctioneer makes no warranty or guarantee expressed or implied.

Buyers should themselves take the opportunity to make their own inspection prior to sale.

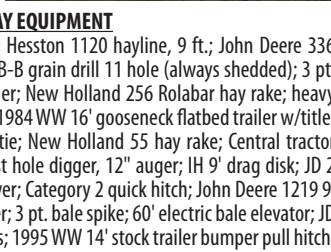
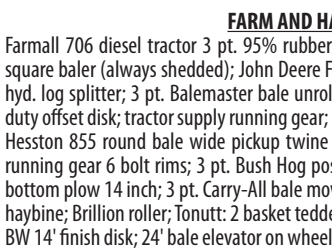
FARM EQUIPMENT AUCTION

**Saturday @ 10:30 AM
June 22, 2019**

**1435 Sampson Rd
Niangua, MO**

**Directions: From I-44 at Exit 107, follow
Sampson Road east 1 1/2 miles to auction site.**

Owners Elbert & Jean Cannon



FARM AND HAY EQUIPMENT

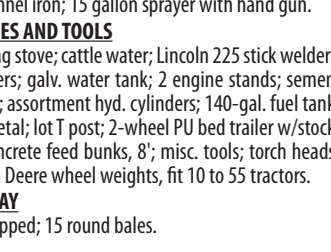
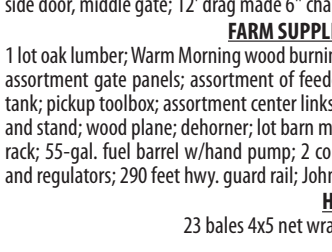
Farmall 706 diesel tractor 3 pt. 95% rubber; Hesston 1120 hayline, 9 ft.; John Deere 336 square baler (always shedded); John Deere FB-B grain drill 11 hole (always shedded); 3 pt. hyd. log splitter; 3 pt. Balemaster bale unroller; New Holland 256 Rolabar hay rake; heavy duty offset disk; tractor supply running gear; 1984 WW 16' gooseneck flatbed trailer w/title; Hesston 855 round bale wide pickup twine tie; New Holland 55 hay rake; Central tractor running gear 6 bolt rims; 3 pt. Bush Hog post hole digger, 12" auger; IH 9' drag disk; JD 2 bottom plow 14 inch; 3 pt. Carry-All bale mover; Category 2 quick hitch; John Deere 1219 9' haybine; Brillion roller; Tonutt: 2 basket tedder; 3 pt. bale spike; 60' electric bale elevator; JD BW 14' finish disk; 24' bale elevator on wheels; 1995 WW 14' stock trailer bumper pull hitch, side door, middle gate; 12' drag made 6" channel iron; 15 gallon sprayer with hand gun.

FARM SUPPLIES AND TOOLS

1 lot oak lumber; Warm Morning wood burning stove; cattle water; Lincoln 225 stick welder; assortment gate panels; assortment of feeders; galv. water tank; 2 engine stands; semen tank; pickup toolbox; assortment center links; assortment hyd. cylinders; 140-gal. fuel tank and stand; wood plane; dehorner; lot barn metal; lot T post; 2-wheel PU bed trailer w/stock rack; 55-gal. fuel barrel w/hand pump; 2 concrete feed bunks, 8'; misc. tools; torch heads and regulators; 290 feet hwy. guard rail; John Deere wheel weights, fit 10 to 55 tractors.

HAY

23 bales 4x5 net wrapped; 15 round bales.



Real Estate & Auction Services

Hoover Case - Auctioneer

Have questions, Let us know • 417.859.3204 or 417.844.6020
info@caseauction.com • auctionzip.com ID#24071 • www.caseauction.com

Terms: Announcements made sale day take precedence over all printed material-neither Case Auction nor property owner guarantees the absolute accuracy of supplied information.

ESTATE AUCTION

SATURDAY, JUNE 15 • 10:00 A.M.

Directions: 5168 Hwy. 119 - From SALEM - Take Hwy. 32 west to Junction 119, follow approx. 5 miles to sale site, 5168 Hwy. 119, close to Montauk State Park. Watch for signs.

VEHICLES • REAL ESTATE • HOUSEHOLD • COLLECTIBLES • OUTDOORS • MISC.

Old Encyclopedias - Old Trunk - 2 Wood Step Ladders
Old Sewing Cabinet - Fainting Couch
Old Mirror & Dresser - Queen-Size Bed
2 Day Beds - Desk Chairs - Wooden Desk Chair
Thimble Collection - Lot of Yard Sticks - Step Stools
Old Wood Boxes - Planters - Garden Tools
Wooden Chair - Wooden Door - Garden Gate
Tractor Seat - 8' & 6' Step Ladder, Werner
DR Weed Trimmer - Small Honda Garden Tillers
Fish Fryer - Portable Air Tank - Electric Wire
Nuts & Bolts - 2 Old Railroad Lights - Radio Flyer
Garden Stool - 15.5hp Kohler Riding Mower
Craftsman Mower - Air Compressor
Trash Cans - Air Hoses - Oils & Grease
8' Utility Trailer, Homemade - 150 Gallon Fuel Tank
Car Ramps - Wooden Sled
4 Metal Wagon Wheels - Wooden Ladder
Metal Milk Cans - Axes -Brace - Clamps
35lb. Propane Tanks - Gas Cans - B&D Miter Saw
Small Chain Saws - Electric Cement Mixer
Hammers - Yard Cart - 15 Gallon Electric Sprayer
3 Yard Wagons - Scrap Metal
Dishes - Chairs - End Tables - Lamps
Aerator Seeder - Round Tubs - Carts
Fish Gigs - 12' Fiberglass Ext. Ladder
10' Aluminum Ext. Ladder - Wheelbarrow
Saw Horses - Wooden Cabinet - 14.4v DeWalt Light
12' Flat Bottom Aluminum John Boat
18v DeWalt Impact - Ryobi Power Drill & Battery
Lantern Decoration - Stools - Christmas Items
Folding Chairs - Totes - Wooden Iron
Lots of Buckhorns - Wardrobe
Several Lots of Fishing Supplies
Rods - Reels - Tackle & Tackle Boxes

Fishing & Hunting Vest - Eagle Claw Denco Fly Rod
Decoys - Fly Tiers - Oak Lumber - Floor Rug
Troy-Bilt 3550 7hp OHV - Metal Chair
Ridgid Planer on Stand - Nuts, Bolts & Screws
Lots of Older Christmas Items - School Desk
Ryobi 12 5/16" Surface Planer - Coolers
C-Clamps - Bench Vise - 12 Grinder - Skill Saw
Craftsman 12" 2-Speed Bandsaw - Ryobi Sander
Jig Saw - Craftsman 5.5hp Shop Vac w/Bag
Craftsman 10" Radial Arm Saw
Hand Tools - Sockets - Wrenches - Levels
Tapes - Wood Chiseler
Fishing Poles: Graphite, Garcia Conolon
2 Zebco Pro Set Sea Rods - Olympic Sea Rod
2-Wheel Dolly - Wood Rocking Chair
Sanyo 36" TV - 2 Nice Clean Single Beds
3-Drawer Dresser, Wood - Fenton Glassware
Dept. 56 China - Brown China
Lot of Nice Stemware
Lots of Nice Pitchers
Several Neat Glass Cake Plates
Crystal Candlesticks
Colored Crock-Stock Holders
Cheese & Butter Mold - Tea Set
Nice Oil Lamps - Shot Glass Collection
Nice Buffet - Sharp 54" Flat Screen TV - Old Brown Jug
Stools - Books - VHS Tapes - Gibson Baskets
Egg Baskets - Red & Green Wingback Chairs
50cal. Black Powder Gun Kit
New Haven 22 Bolt Action - #10 Crock
Cuckoo Clock - Cross-Cut Saw - Bow Saw
2 Leather Recliners - Rocker, Padded
Full Set of Cutco - Milk Bottle, Troy, MO
3 Nice Crock Bowls - Lot of Pitchers - Stock Pot

Tupperware - Pile of Plates - Panasonic Microwave
Red Granite - Child's Crib - 4-Poster Iron Bed
Wall Mirror - Stetson - Large Claw-Foot Tub, No Feet
Wall Hangings - Heaters - Greenhouse Items
Wooden Tables - Longchamp Crystal, 2 Boxes
Cherished Teddy Bears - Shoe Box - Utensils
Amplifier - Martini Glasses - Wine Glasses
Checkers Shot Glasses - Glasses/Coffee Cups
Coleman Stove - Coleman Lantern - Foreman Grill
Camp Pal - Hall Rug, Off-white, Runner
Rock Collection - Misc. Baskets - Misc. Toys/Cups
Room Divider - Towel Warmer - Trash Can
Picture Frames - Fake Flowers - 2 Asian Vases
Serger Bernina Sewing Machine
2 White China Dishes w/Flowers
Decorative Plates - Green Dishes
Pictures: Beer Sign, Beauty & Beast, House (Oil)
2 White Chairs - Dishwasher - Tent
Cabinet Top & Bottom
White File Drawers - Tea Tray & Stand
Ford Bronco 4-Speed, 1989, 4x4, 282,934 Miles
2007 Dodge Durango, 90,000 Miles

BEAUTIFUL RANCH-STYLE HOME

SITTING ON 69 ACRES M/L: 3 BR, full walk-out basement, dining room, kitchen, family room, 2 BA, w/lofts, very neat woodwork, detached 30x45 and 21x24 concrete-floor buildings, some small fields, 2 ponds, some marketable timber, lots of privacy and wildlife. Must-see property. Offered w/10% non-refundable payment the day of the sale, 30-day closing.

AUCTIONEERS NOTE: Very clean, quality items! See you there! - Tom



ESTATE OF THE LATE KENNETH (MURPH) & DOROTHEA (DOT) MURPHY

ANNOUNCEMENTS AT AUCTION TAKE PRECEDENCE OVER PRINTED MATTER

WULFF AUCTION

TERMS: CASH OR APPROVED CHECK - I.D. REQUIRED
NOTHING REMOVED UNTIL SETTLED FOR

Licensed Appraisals

Auctioneers:
Col. Tom Wulff - Col. David Wulff
498 Hwy. B, Salem, MO 65560 • 573-729-8476 • Cell: 573-247-3884
Clerk: Tracy Strange Cashier: Nancy Inman

See Wulff Auctions at www.thesalemnewsonline.com/auctions



RAIN OR SHINE OWNER & AUCTION PERSONNEL NOT RESPONSIBLE

FOR ACCIDENTS AT SALE SITE



**Buckner
& Gately
Auction
Service**

Saturday, June 15, 2019 • 8:00a.m.

LOCATION: In Licking, Mo. on Cedar St. at Old Rawlings Building. Watch for signs.

EARLY START!!!

Go to auctionzip.com to view photos. Auctioneer# 28367

EARLY START!!!

Furniture	Wall Pockets	Glasses	(nice)	5x8 Tilt Trailer	McCoy Wishing Well
Flexsteel Reclining Sofa	Royal Copley Wall Pockets	Little Red Riding Hood	Lot of Home Interiors	Old Push Plow w/attachments	McCoy Owl • McCoy Turtle
3 Recliners • Oak Hutch	Boyd Bears • Bearington Bears	Matchbox	Oil Paintings	Power Washers	McCoy (213)
Entertainment Center	Katy Keene Comic Books	Jewelry • Buttons	Dresser Caddy	Hedge Trimmers	Pinocchio w/Fish Bowl
End Tables	Cast Iron Wall Hangings	McCoy Train Decanters	Squirrel • McCoy Bull	Bolt Bins • Tarps	American Bisque Clown
Lots of Bookshelves	Cast Iron Skillet	Standard Stamp Stand	Pelican • Kangaroo	Rotary Tool	American Bisque Puppy
Walnut Coat Rack	Beaded Purses	Tramp Art Boxes	Donkey • Wiener Dogs	Drill Bits • Drills	Turn About Bear
Plant Stands	Old Hats and Boxes	ACID Cigar Box	Royal Coach • Hobo	Shop Vac • Skill Saws	Brush Chef Rabbit
Old Revolving Bookcase	Terracotta Vases	Wooden Cars • Cedar Boxes	Crown • Japanese Girl	Hand Tools • Old Timer Knife	Clock • Hull Duck
Magazine Racks	Blue Canning Jars	Winchester Wooden Box	Skunk w/bank	Levels • Crowbars	German Jar • McCoy Stove
Walnut Table • Sanyo T.V.	Porcelain Egg Collection	Umbrella Stand	British Guard	Sander • Hand Saw	Miller • Frog
Metal Kitchen Cabinets	Large Collection Porcelain	Winchester Metal Signs	Hitchhiking Roo	Battery Charger	Pillsbury Dough Boy
Large Lot of Rugs	Dolls	Mermaids & Seashells	Silver Donkey	Propane Heater	Superman • Lefton Sweet Sue
Cedar Hope Chest	Lots of Christmas Décor	Jewelry Boxes	Hereford Bull	Pipe Wrenches	Miss Pots • A&B Cookies
Gone with the Wind Lamp	My Little Ponies	Cuckoo Clock	Mermaid • Knight	Punch Bar	& Milk
Serta Queen Bed	Cinderella Glasses	Large Pencil Collection	Burro • Octopus	Rock Hammer • Ax	McCoy Rocking Horse
Mirrors • Old Desk	Cast Iron Matchboxes	Twin Wittion Mugs	Whale • Horse Head	Rakes • Pitchfork	Derby Dan
Double Grape Lamp	Bull Planter • Globe Banks	Little Brown Jugs	McCoy Black Lion	Splitting Maul	McCoy Pontiac Indian
Stained Glass Hanging Light	Hot Wheels Cars & Tonka	M&M Candy Jars	Guns	Wagon	McCoy Teepee • Davy Crockett
Pie Safe • Carpet Shampooer	Trucks	Cast Iron Irish Setters	Smith & Wesson .22	Wrought Iron Benches	McCoy WC Fields
Vacuums • Large Gold Mirror	Longaberger Baskets	Sessions Girl Swinging Clock	Security-Six Ruger .357	Patio Glider • Birdhouses	Shawnee Puss & Boot (gold trim)
Library Table • Coffee Table	Schlitz Beer Sign	Royal Haeger Vases	Magnum	Garden Cart	Shawnee Smiley (60 w/bank)
Telephone Table	Large Old Orange Vase	Metal Plow Sign	Ruger .22 cal. (never been fired)	Concrete Yard Ornaments	Shawnee Clover
Marble-base Lamp	1954 Vintage Lane & Co.	Old Sci-fi Movie Posters	2-Ruger Mark Three Target Hunter .22 cal.	Birdbath • Driftwood	Miss Smiley
Hand-carved Mermaid	Mallard Lamp	Silverware	Smith & Wesson .357 Magnum	Electrical wire • Owl Garden	Smiley w/blue scarf
Marble-top Table	Shawnee Salt and Pepper	Royal Hand Carriage	Kel Tec PMR 30 .22 cal.	Tomato Cages • Wash Tubs	Mona Lisa
Four Large China Hutches	Ivy Collectibles	Barbies • Display Doll House	Colt Trooper MKIII .357	Crosscut Saw • Chain Hoist	Hull Red Riding Hoods
Kitchen Table w/4 Chairs and Hutch	Wizard Husky Fans	Board Games	Magnum	16 in Craftsman Scroll Saw	Jersey • Brush Pumpkin
Wrought Iron Shelf	Red Riding Hood Spice Set	Raggedy Ann & Andy	Ruger .22 cal. All Weather Rifle	10 in. Table Saw	West Germany
Microwave • File Cabinets	Red Riding Hood Milk Pitcher	Carnival Glass		Bench Grinder	Howdy Doody
Chest Deep Freezer	Fenton Basket	Irish Pitcher & Glasses	Ammo	Floor Jack • Ladders	Smokey Bear • Pioneer Women
Green Ornate Shelf	Fenton Shoes	Salt Cellars	.22 WMR • .22 MAG	Wrought Iron Patio Set	Dogs
Jewelry Armoire	Hull Wall Clock	Teacups & Saucers	.22 Long Rifle • .22 Shorts	Metal Lawn Chairs	Simba • Bart
Metal Floor Lamps	Cut Glass	Royal Hand Carriages	.410 • .380 Auto	Gas Grill • Shepard Hooks	Snow White • Kermit
Chest of Drawers • Dresser	Mastercrafters Clock Waterfall	Green Roosters	.38 Special	Flower Pots	Dopey • Penguin
Office Chair	Green Water Bottle	Deer Powder Dish	National Security 40 Gun Safe w/stagecoach	Wooden Benches	Brutus • F&F Scarlett O'Hara
Labrador Lamp	Coin Glass • Teapots	Roseville Vases	Gun Boxes	Oil Cans • Sun Dial	Miss Piggy • James & Beam
Sewing Machine w/cabinet	Dutch Boy and Girl	Flour-sack Tea-towels	Gun Cleaning Kits	Metal Rooster Sign	Hen (cal.)
Collectibles	Shaving Mugs	Panther Clock • Crock Bowls	Ear Muffs • Targets	Large Collection Cookie Jars	IGA Circus Train Set
Vintage Green Glass	Pyrex Bowls	Regal Vases	Set of Winchester Gun Books	(new and old)	Raggedy Ann
Minnow Trap	F&F Canister Set	Red Enamel Pans	Outdoor & Tools	Roy Rogers & Trigger	Keebler Elf • Louisville Pottery
McCoy Planters	Old Biscuit Jars	Lot of New Towels	Troy-bilt Super Bronco, 46-inch deck, 20 HP (like new)	James Dean • Dale Evans	F&F Sock Hoppers
Shawnee Planters	Bookends	Quilts • Lots of Linen	Agri-fab bagger, 900 Intek Series	Shawnee Mugsy	I Love Lucy
Shawnee Planters	Uncle Ben & Aunt Jemima Shaker Set	Art Work	Yard trailer w/fold down sides	Marilyn Monroe	F&F Elvis • Pfaltzgraff
King Kutter Grinder	Little Red Riding Hood Wolf	Eagle • Stag • Soda Fountain		Several Red Riding Hood	Aunt Jemima • F&F Rio Rita
Kerosene Lamps	Grease Jar	Pink Ribbon Crusade		Mickey Mouse	F&F Duck
Dietz Lantern • Coke Glasses	Printer Trays	Emmett Kelly		Winnie the Pooh	HUGE SALE! Only a partial listing. Highly collectible items. See you at the sale! - Steve and Neal
Wooden Mill from Holland	Brass Washboard	Norman Rockwell		Aladdin • Huckleberry Finn	
Brass Vases • Dresser Sets	Little Red Riding Hood	Old Red Riding Hood w/wolf		Dutch Girl	
Shadow Boxes • Glass IV Jar				Goldilocks (405) • Egg	

Estate of Dwight Lyle- Executor Scott Lyle

Terms-Cash or Approved Check. Announcements Made Day Of Sale Take Precedence Over Printed Matter. All guarantees are between seller and buyer. Nothing Removed Until Settled For. Not Responsible For Accidents. Must show ID to get Buyers#.

Buckner & Gately Auction Service
Auctioneers

Steve Buckner 573-674-2686

Neal Gately 573-202-3132

R&R AUCTION SERVICE

ESTATE AUCTION

SATURDAY, JUNE 15TH • 10:00AM

1644 South Ash • Buffalo, MO

Owner Marlene Gustke

Ms. Gustke has moved to downsize, her merchandise will be brought to the R&R Auction House and sale will begin at 10am.



Carpport, Vintage Univox electric guitar in case, Stevens 12 gauge single shot, Dikar - Spain .45 cal black powder rifle, Honda TRX200 four-wheeler, Massey Ferguson 210 - 4 four-wheel-drive tractor with front end loader, SE 5 - 5 foot Rhino brush hog, Simplicity 4212 riding mower, Troy-Bilt zero turn mower, Toro Zero Turn mower, Scott's 20 hp 46 inch cut riding mower with bagger, lawn mower cart, lawn roller, lawn aerator, weed eater, push mower, pressure washer, 24-foot extension ladder, 2 sectional recliners, rocker recliners, two #5 Crocks, a #2 crock, octagon dining table and 4 swivel chairs, lots of Native American decor and statues, floor lamp, table lamps, rugs, vintage gold scales in case, entertainment center, lawyers bookcase, Lane cedar chest, queen size four-poster bed, dresser with mirror, old metal fan, end table with lamp, washboard decoration, Atlantic glass washboard, a metal 3 drawer chest, gas iron, sad irons, Craftsman half horsepower garage door opener new in box, old metal toys, hand wood planes, lots of old tools, old aluminum measuring cups, old tins, bottles, kitchen utensils, Coleman lantern, Apothecary disinfectant comb jars, Fisher Price farm toy, Wagner power roller, chest of drawers, blue jars, colander, several old BB guns, vintage Airline radio, Cedar end table, several vacuum cleaners, old cap gun and Holster set, other old holster, California Raisins collection, what not shelves, knick knacks, lighted horse, oil lamp, a complete collection of wild west whiskey decanters, classic car Jim Beam whiskey decanters, old dishes, collector plates and bowls, small pictures and creamers, cake plates, paper plates, jadeite, Sanborn 5hp compressor, large feed scales (old) complete with weights, Pittsburgh 3 ton floor jack, two water cans, old Barbies, metal and other shelving, radiator heaters, old pop bottles, cream can, refrigerator dolly, metal cabinets, folding tables, GE electric roaster (like new), large waffle iron, vintage drill bit display case from hardware store, old torch, old pump sprayer, bench grinder, drill press, Vaughan Hatchet, Ryobi tool set, jack stands, large Allied Vice, Yamaha generator, Montgomery Ward power Kraft tool chest, lots of sockets, ratchets, nuts and bolts, clamps, wrenches, hammers, air impact, electric pole saw, squirrel cage blower, vintage metal cart, hose reel and air hose, gas cans, grease guns, Brake Buddy, vintage metal crate, dipnet, chainsaws, wheel barrels, come along, pull-behind seeder, T posts, barbecue grills, wooden loading ramps, spot sprayer for four-wheeler, lots of hand tools, limb saw, small tiller, post driver, Napa 85 - 1250 battery charger / starter, saw horses, steel barrels, Cherry Chest of drawers, canning jars, ice cream freezer, **AND SOOOOOO MUCH MORE WE CAN'T LIST IT ALL!!!**



Several toy train cars including ...
 Morton salt ahm freightcar 81 - 36, Tyco Santa Fe electric caboose 327-22, Athearn Trains Union Pacific powered diesel PA - 1, Athearn Trains Union Pacific 3 Bay covered Hopper, AHM Burlington Northern Freight car 81 - 36, a ESSO freightcar 81 - 36, Tyco Atlantic boxcar 50 foot plug door 339 E, Tyco Union Pacific Hopper car 344 E, Tyco tru-steel track, Tyco Planters peanuts covered Hopper car 3590, Tyco Santa Fe 4015 electric, AHM Heinz vinegars number 57 tank car 81 - 36, Tyco Union Pacific Center flow Hopper 3588, Toys & Hobbies Depot, Tyco Heinz 57 billboard reefer 355 F, Tyco dairymen's League reefer car 329 G, Hinckley and Schmidt water tank, farm set with barn Silo Water Tower Chicken Coop (12 sheep, 11 white, 1 black), troller Auto pulse momentum 1 model railroad power pack, Tyco power pack



Pre-bid available for select items at www.rrauctionservice.com

TERMS: Cash, check, or credit card with proper I.D. nothing removed until settled for A 3% fee will be added to credit card purchases. Not responsible for errors in listing. Any announcement made sale night will take precedence over any printed matter. **Note:** Service will take every precaution to prevent accidents, but will not be responsible should any occur.

For more information contact Professional Auctioneer Russ Weeks at 417-576-7357 or check out www.rrauctionservice.com

GENERAL AUCTIONEERS
Auction & Appraisals
AUCTION SERVICE

Serving this area's auction needs since 1997 with honesty and professionalism.
www.rrauctionservice.com
 (417) 576-7357 or
 (417) 345-4140



CAGA
CERTIFIED
APPRAISER

Gilliam Estate Auction

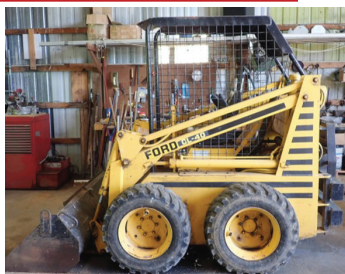
16009 Hwy N Bourbon, Mo.



Sat. June 15 2019 9:00am

Tools & Misc.

Directions: From exit 218 at Bourbon, Mo take Pine St. to right on Hwy N. Continue on Hwy N for 12 miles to farm on the right.



Finco 15 gal sprayer; Cherry picker; portable air compressor; Bench top drill press; Metal cut off saw; Lots of filters and parts; Pneumatic tool set; Ammo boxes; Bit sharpener; Weed eater edger (new); Lots of long handled tools; Large shop fan; Aluminum ramps; Red Devil paint mixer; Twentieth Century arc welder; Metal cabinets; Log chains; lots of hardware and organizers; Casters; Sewer snakes; Wire fishes; Vulcan anvil on stand; Manual tire changer; Welding tank carts; Enenrude boat motor (no title); Pullers; Welding table; Rolling carts; Scrap iron; Wheels and hub caps; Troy Built pressure washer; Weed eaters; Fishing weight molds; Pinole hitch; Solar powered light; 2 tractor seat chairs; Broad ax; Keen Kutter sharpening stone; 6" Craftsman Vise; Trailer and marker lights; Lawn mower lift; Wood stove (Kiechl & Housman); Hobart mig welder; Tile saw; Air Products arc welder; Weed eater gas blower; Battery chargers; Wheel barrow; Grinder on stand; Motor cycle helmets; Air horns; Poulan & Craftsman chain saws; B&D hedge trimmer; Diamond Plate tool box; Craftsman radial arm saw; B&D table saw; Car ramps; Tool cabinet; Top tool boxes; Golf cart charger; Pry bars; Hand saws; Block and pulleys; Hooks; Punches; Electric pumps; Small tool boxes; Pipe wrenches; Crescent wrenches; levels; Sets of wrenches (open & box end); 1/2" drills (Dewalt, Clark & others); Skil Jig saw; Pneumatic nail guns; Hose reels; Barrel pumps; 6.5 hp engine (new); Troy Built Chipper Lawn Vac; Pliers; Ring Pliers; Clevis & Pins; Vacuum heat Press w/vinyl; T-Allen wrenches;



Drill bits; Speed wrenches; Sockets (Snap-On, Craftsman, others); Taps & Dies; Chisels & punches; Metric impact set; Body work tools; 3/4" Socket set; Snap-On & Williams 3/4" ratchets; Torches & Gauges; Welding helmets; Baberley Shear; Transit & tripod (Berger-110C); Ratchet straps; Honda generator; Hilift jack; Bar clamps; Trailer jacks; 6000 & 12000lb winches (new); Lots of 3" Styrofoam sheets; Several fiberglass camper tops; Misc. tires & wheels; Dusk to dawn lamps; Boat oars; Tomato baskets; Misc. lumber; Bikes; Mic. lawn mowers (for parts); 32' extension ladder; Misc. engines (for rebuild or cores); Stainless steel milk tanks; Fuel transfer tank; 5th wheel hitch; Home made log splitter; 6' Southern Equipment tractor blade; Magna-Force 3hp 60gal vertical air compressor; ATV wenches

Guns: Winchester Model 190; Remington Woodsmaster 742 30-06; Moseburg Model 835 12ga; Winchester model 197 12ga; Sears & roback 200 12ga; Misc. Ammo; **Misc.** Walker; Fiberglass chairs; Cover alls; Mini Fridge; Muck boots; Several wood stoves; Baseball gloves Life jackets; Boat oars; Mustang center console; rail road lanterns; Wind Mill (no base); Metal lawn chair; Record Albums; CD's; Camerano Accordion; Dietz Lantern; Yamata industrial sewing machine; Sigglor Oil stove



Equipment, Trailers, Motorcycles & ATV

Ford CL-40 Skid Steer 1420 hrs. (gas); 1977 GMC Motor Home; 1973 Mercedes 450SI Convertible 106030mls. (Needs Restored); 18' Aluminum Canoe; 15' Flat botton Jon Boat; 1996 Yamaha Virago (Needs repair); Honda CT900-321-421 3874 mls (no title/needs work); Yamaha SECA2 (no title); Turf Blazer 727 Diesel 2608 hrs (still being used); Kawasaki 300 four wheeler; 5' 3pt Roto tiller; Pickup bed trailer (military frame); 15' Sail boat w/sails and trailer; Bobcat Jaguar Lawn mower; 16' Goose neck enclosed trailer; 18' Fiberglass boat w/ trailer/Evenrude 135 and Minkota trolling motor; 18' car trailer with dove tail; 20' Trailer frame; 18' Sky Witch; 2- 18' Boat Trailers;

Lunch Available Everything sells as is without guarantee

Not responsible for any accidents

www.dunkerauction.com

Dunker Auction Service
Bob Dunker: Licensed Auctioneer
 636-390-1805
 636-390-1804
 636-239-5500
dunkers@fidnet.com

Terms: Cash or Approved Check, Master Card, VISA, Discover
 (3% convenience fee on credit &debit cards)
 No Out of State Checks.
 Nothing removed until settled for.
 All announcements take precedence over printed material.

ESTATE AUCTION

SATURDAY, JUNE 15 • 9:30 A.M.

Location: - SALEM - 181 County Road 3233 • Hwy. 19 north 2 miles. Turn left on CR 3233. First place on left. Watch for signs.

**ANTIQUES • COLLECTIBLES • PRIMITIVES • GLASSWARE • COINS
ADVERTISING • TOYS • FURNITURE • APPLIANCES & MORE!**

ANTIQUES - PRIMITIVES - COLLECTIBLES

Texaco Gas Pump w/Globe, Sky Chief
Fire Chief Gas Pump w/o Globe
Wood Cook Stove, Nice, Cream & Green Color,
Porcelain, Has Warming Oven, Ideal
2 C.I. Wagons w/8 Clydesdale Horses Pulling
C.I. Horse & Buggy w/Man
Adv. Political Buttons & Badges
Lot Belt Buckles, Watches & Pocket Knives
Lot Vintage Games
Lot Blue Fruit Jars: Pint, Quart, Half Gallon
1903 Gilbert Clock w/Key, Works
Hamilton Mantle Clock w/Key, Works
1800s German Wall Clock w/Pendleton & Key
Old Pictures & Mirrors - Lot Ship Lights & More
2 Churns, Red Top, Daisy, #40 w/Screen
Collection of Marbles, Shooters, Jumbo, in Box
Toys: Cars, Tonka, Pull Toys, Hot Wheels,
Vintage
Old Wall Phone
Collection of Tobacco Tins & Cans
Collection of Cigarette Lighters
Straight Razors - Hunting Knives - Stop Signs
Other Metal Signs - Lot Iron Wheels, Dif. Sizes
Collection of Cross Cut Saws, Hand Saws
2 Square Wash Tubs on Legs - Cream Cans
Garden Plows - Lot Horse-drawn Equipment
Lot Hay Rakes - Oliver Cycle Mower
McCormick Cycle Mower, Etc.
Stationary Saws for Sawing Wood & Large Wheel
6 Horse Clocks - 3 Coffee Grinders
Treadle Sewing Machine - Pitcher Pumps
Lot Animals - Kerosene Lamps
Nice Pitcher & Bowl on Stand
2 Gallon Crock w/Lid - Lot Rolling Pins
4 Hay Forks & Trolley - Metal Lawn Chairs
Several Old Wheelbarrows w/Iron Wheels
Smoke Stand - Copper Bucket
Lot Steering Wheel Spinners
Cartoon Glasses, Looney Tunes
Shadow Box Mirror - Butter Mold
Stage Coach Light - Thermometer
Chrome Table w/Drawer, Drop-leaf, Red & White
Cap Guns - Dolls - Collection of Music Boxes
Jewelry Boxes - Old Projector - Match Holder
Green & Amber Kerosene Lamps

FURNITURE - HOUSEHOLD
2-Door Whirlpool Refrigerator
Maytag Automatic Washer
Electric Kenmore Dryer - 42" Flatscreen TV
Blue Sofa - 30" Kenmore Gas Range
Wood Table w/4 Chairs & 2 Leaves

Cabinet w/Glass on 3 Sides - Wood Cabinet
Secretary w/Glass Doors on Top
Lot Small Electric Appliances
China Cabinet - 2-Drawer Table - Small Hutch
Table w/4 Chairs - Small Tables - Metal Tables
Hospital Bed - Coffee & 2 End Tables
2 Bedroom Suites, Blonde, w/Chest, Dresser, Mirror,
Night Stand
Dry Sink, Serpentine Front w/Towel Bar

SILVER COINS & OTHERS - 33 SILVER DOLLARS

Morgan Silver Dollars, 1878, 1921, 1922, 1923,
1925, 1926, 1928, 1934
Silver Dimes - 1964 Silver Half Dollars
1960 Franklin Half - Wheat Pennies
1914 \$5.00 Federal Reserve Note, Atlanta, Georgia
Indian Head Pennies 1880, 1881, 1907

GLASSWARE

Limoges 22k Gold Dishes
Inarco Dishes, Cookie Jars, Canister Set
Blue Carnival - Lot Salt & Pepper
Measure Cups - Butter Dishes - Candy Dishes
Bowls - Pitchers - Baskets - Lead Crystal
Avon Birds - Figurines - Glass Basket
Cobalt Blue Dishes, Vases & Bowl
Shirley Temple Pitcher - Mini Juicer
Bird Figurines - Oriental Pitcher
Hen on Nest, All Colors
Old Red Mini Fenton Basket
Red, Amber Stems, Moon & Stars
Lot Christmas Items

SPORTING GOODS - MISC.

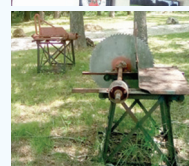
Fishing Rods & Reels
Board w/Fishing Poles - Bird Houses
Lot Flower Pots - Lot Red Brick
Lot Long Handle Tools - HD Jack Stands
Engine Hoist - Canoe - 2 Hay Wagons
3 Stock Water Tanks

CARS

1960 Dodge Pickup - 1941 Ford
1994 Lincoln Town Car

AUCTIONEER'S NOTE: This auction has a lot of
Quality Antiques and Collectibles! It's impossible
to list all of the small items. Hope you can be here to
see the items you have not been able to find.
I'm sure there is something for you!
The cars and gas pump will sell
at 1:00 p.m., coins at
1:30 p.m. See you there!

- Larry



ESTATE OF: BOB & MAGDLENE WHITE

TERMS: CASH OR APPROVED CHECK.
I.D. REQUIRED. NOTHING
REMOVED UNTIL SETTLED FOR. *Appraisals*
RAIN OR SHINE.
OWNER & AUCTION PERSONNEL
NOT RESPONSIBLE FOR
ACCIDENTS AT SALE SITE.



AUCTIONEERS: LARRY EDWARDS • AUSTIN ROGERS • STEVE WOFFORD

P.O. Box 708 • Salem, MO 65560 • 573-729-5629 • Cell: 573-247-2256 / 573-247-2259 • rogersaustin12@yahoo.com

ANNOUNCEMENTS AT AUCTION TAKE
PRECEDENCE OVER PRINTED MATTER.

TO VIEW AD ONLINE GO TO:
www.thesalemnewsonline.com/auctions

www.auctionzip.com

CHECK US OUT ON FACEBOOK:
Larinda's Auction Service LLC

AUCTION TIME!

FRIDAY JUNE 14TH AT 12 NOON

Selling on behalf of TABLE ROCK COMMUNITY BANK
SOUTH BRANSON BUSINESS CENTER

101 State Drive • Hollister, Missouri

Directions: South Hwy. 65 to Hollister Bus. 65 Exit (mile marker 9), stay right up to Hwy. 165. Take Hwy. 165 1.3 miles to State Drive.



ALL ON AN ATTRACTIVE 1.78 ACRES

Built in 1994, this beautiful complex is partitioned into 23 individual office spaces which are all accessed by central interior corridors. Units range from 112 sq. ft. to 2,120 sq. ft. Zoned C-3, All city utilities. This building has 13,078 gross square footage with 8,720 square feet of rental space.

PARKING: There is approximately 16,000 sq. ft. of asphalt paved and striped parking.

To view this property, contact the auctioneer.



Terms & Conditions: 5% down day of auction with full balance due on or before July 26th, 2019. Property sells subject to the approval of Table Rock Community Bank and the USDA.

Freeman Auction & Appraisals, LLC

Auctioneer: Steve Freeman
(417)343-1891 sfauctiontime.com

AUCTION TIME!

SATURDAY JUNE 15TH @ 10:00 AM

4533 State Highway J • Marshfield, Missouri

THIS IS A SHORT AUCTION BUT IT'S A DANDY



Benu Hydraulic Scaffolding



2015 Dodge Ram 3500

HAWTHORN BANK

BENNU HYDRAULIC SCAFFOLDING – SEVERAL PLATFORMS, TOWERS EXTENSIONS, SAFETY RAILS, TURNBUCKLES • 2015 DODGE RAM 3500 DRW HEAVY DUTY, CUMMINS 6.7 TURBO DIESEL, CREW CAB, 4X4, AUTOMATIC, BRADFORD BUILT BED, ONLY 99,190 MILES, LOADED! (As this truck is still under the 5 year 100,000 mile factory warranty, the Marshfield Dodge dealer put in a new rebuilt transmission, brake job and several other warranty fixes. THIS IS A NICE TRUCK!) • TRAVERSE EXTENSION LIFT, ROUGH-NEEDS HELP.

Note: If paying by check make payable to Hawthorn Bank.



Traverse Extension Lift

UNITED STATES BANKRUPTCY COURT ORDERED

Re: Joseph Victor Ross & Ashley Nichole Dillard

2017 FORD EXPEDITION XLT V-6 3.5 LITER AUTOMATIC, 4X4, LEATHER SEATS, ONLY 10,754 MILES, LOADED! • 2015 DOOLITTLE BULLITT SERIES CARGO TRAILER, 8' X 24' TANDEM AXLE, DROP RAMP, ESCAPE DOOR. *Note: If paying by check make payable to Fred C. Moon, Trustee.*



2015 Doolittle Bullitt Trailer



2017 Ford Expedition XLT

ALSO SELING

2007 KIOTI DK35SE, 38 HP SHUTTLE SHIFT, 4X4 WITH A KL351 QUICK ATTACH LOADER ONLY 935 HOURS • 2015 BIG TEX UTILITY TRAILER 7' X 16', 7K TANDEM AXLE, DROP GATE, (LIKE NEW) • 2002 POLARIS SPORTSMAN 500, 4X4, ELECTRIC START, LIQUID COOLED, GUN RACK, 441.7 HOURS • SPORTS KART TRAIL BUSTER DLX HONDA 13.0 ENGINE • 500 GALLON DIESEL TANK WITH STAND. *Note: If paying by check make payable to Freeman Auctions.*



Sports Kart Trail Buster DLX



2002 Polaris Sportsman 500



2015 Big Tex Utility Trailer



2007 Kioti DK35SE



500 Gallon Diesel Tank

Terms & Conditions: Cash or check only on all accounts.

Freeman Auction & Appraisals, LLC

Auctioneers: Steve Freeman & Jon Joyce

(417)343-1891 sfauctionetime.com

VISIT
WEBSITE
FOR
PICTURES

LIVING ESTATE AUCTION

**OUTDOOR • LAWN & GARDEN • FARM RELATED • SHOP ITEMS
ANTIQUES & COLLECTIBLES • HOUSEHOLD • SADDLES & TACK • GUNS**

SATURDAY, JUNE 15th - 10:00 A.M.

Location: 39400 Blackbird Lane, Falcon, MO 65470 **Directions:** From Lynchburg Store: Take Hwy 32 west 4 miles to Blackbird Road. Turn Left on Blackbird Road 1 mile to auction.
• **WATCH FOR CHADWELL AUCTIONS SIGNS.** • **Payment System:** Cash • Checks (With proper identification) Debit Card • Credit Card (Debit / Credit Card Fee Will Apply) • Visit www.chadwellauctions.com to view additional pictures!

**Estate of Gene & Judy
AMOS**

**1995 HONDA
FOURTRAX TRX 300
4-WHEELER**



**ARROWHEAD
COLLECTION
W/ DISPLAY TABLE**

OUTDOOR ~ LAWN GARDEN ~ MISC

Coyote mount • Brinkman Smoker • Fishing rods • FS80R Stihl Pro Weedeater • Bird baths • Fishing tackle • Rods & reels • Window air conditioner • Radio Flyer Wagon • Cow horns • Basketball goal • Deer horns • Squirrel cage fan • Sled • Hand tools • Steel traps • Homelite XL Chain Saw • 20' extension ladder • Step ladders • Empire gas stove • Gas wall heater unit • Trane heating unit • Spot light • Picnic table w/ benches • 2 Dog cots w/ mattresses • Large lot fruit jars • Handicap equip.

(2) 17' ALUMINUM CANOES

PLANTERS PEANUT CANISTER



**200
SALT & PEPPER
SHAKER
COLLECTION**



FARM RELATED

Large lot of mineral tubs • Dehorners • Hay elevator • Grain elevator • Homemade utility trailer • Large lot small animal cages • Stock racks • Tractor canopy • DeLaval milk pails • Fence stretchers • Calf bottles • Other

SADDLES ~ HORSE TACK

Hereford saddle w/ saddle bags • Handmade Doyle horton saddle • Western Champion saddle • Horse collars • Single tree • Large lot of horse tack • Farrowing supplies • Saddle racks

HOUSEHOLD

Frigidaire upright freezer • Round wooden table w/ leaf & 6 chairs • Futon couch • Wooden rocker • Catnapper lift chair like new • Clothes racks • Oak chest & dresser • End tables • Misc wall decor • Hutch • China set • Beveled wall shelf w/ claw feet • End tables • New Haven wall clock • Misc Christmas decor • Linens • Quilts • Mixing bowls • Galvanized mop bucket • Wooden 4 piece bedroom suite • Figurines

SHOP ITEMS

Vise • C clamps • Bottle jacks • Tool boxes • Tools • Tire chains • Wood clamps • Campbell Hausfeld air tank • 2 wheel dolly • Misc electrical wire • Jack stands • Stand light



**2004 MERCURY
GRAND MARQUIS GS
173,XXX MILES V8
LOADED**

ANTIQUES ~ COLLECTIBLES ~ GLASSWARE

Grinding wheel • Large buffet w/ mirror • Century ice box • Secretary • Whiskey jugs • Butter churn • Cream seperator • Old piggy bank • Cream cans • Cross cut saws • Zippo lighters • Level • Wooden tables • Minnow buckets • Blue mason jars • Carnival glass • Pink depression glass • Oatmeal glass • Fiesta ware • Green depression glass • Dresser w/ swing back mirror • Brunswick record player w/ records • Underwood typewriter • Mandolin harp • Pittsburgh diamond crock • Sad irons • Wooden chairs • Hay fork • Wash board • Wooden ironing board • Large lot of cast iron • Pie safe • Cookie jars • Eye glasses • Card table • Fire King ware • Coffee grinder • Wooden butter molds • Wooden baskets • Torch • Lanterns • Galvanized pails • Wash tubs & stands • Wooden milk crates • Metal tractor seats • Wooden advertising boxes • Large wooden boxes • Cast iron kettle • Large lot of iron wheels • Sifter • Wooden stool • (3) Philco radios • Push plow • Army cot • Well buckets • Milk strainers • Sythe • Metal stools • Tea kettle • Dressers • Well pulleys • Old buffet • Granite ware • Crocks • Copper ash buckets • Old metal toys • Dutch ovens • Crock bowls • USA vases • Lard tins • Assorted tins • Claw feet antique buffet • Hat boxes & hats • Cow kickers • Cast iron kettles • Fairbanks feed scales • Metal lawn chairs • Trunks • Meat grinder • Elgin ladies watch • Other



GUNS ~ HAND GUNS

Oak 8 gun rotating cabinet • Stevens Little Scout 22 long rifle 14.5" barrel • Belgium 16 ga double barrel Fine Twisted • Nitro Hunter 16 ga single shot shotgun • 50 cal black powder rifle • Winchester 22 short or long lever action w/ scope • Henry long rifle lever action • Remington Speedmaster model 552 automatic • 12 ga single shot Brazil made • Remington Wingmaster model 870 12 ga pump • Remington Wingmaster 16 ga pump w/ extra barrel • Marlin model 81-DL-22CAL bolt action w/ scope • (2) Remington model 514 22 bolt action single shot • Henry 22 long rifle lever action w/ octagon barrel • Stevens Crack Shot 22 long rifle • Savage model 1899 lever action 250-3000 • Remington model 33 22 short long bolt action single shot • Smith Wesson 38 Special pistol



AUCTIONEER'S NOTE: 75 Years worth of accumulation! Lots of unopened boxes! Very old & unique pieces! Come spend an enjoyable day with us! *Thanks, Shawn*

DRIVER'S LICENSE OR PICTURE I.D. REQUIRED • TERMS: CASH, APPROVED CHECK, DEBIT OR CREDIT CARD **OR**

Chadwell
Auction Service, LLC
www.chadwellauctions.com

Auctioneer:
SHAWN CHADWELL
417-746-4038
Cell: 417-830-0209
Farm Equipment & Livestock Specialist
Ringman: **John Williams Jr.**

Clerk:
SHELLY CHADWELL
Cell: 417-880-8449
Cashiers:
Shawn Irby
Kati Roberts

PROFESSIONAL SALES MANAGEMENT
LUNCH WAGON • APPRAISAL SERVICE • RAIN OR SHINE
All announcements made day of sale take precedence over any printed matter.
Not responsible for lost or stolen merchandise. Not responsible for accidents.

AUCTION

Directions: Directions from I44 take the 145 Exit and go South to AB outer road, turn left and go 4 miles to Smokey Rd, turn right and go 1 mile to 30020 Smokey Rd, Richland, MO

SAT., JUNE 15

Starting At 10:00 AM

SELLING A LARGE LOT TO INCLUDE:

1996 Circle J Conquest 3 horse slant with tack room and air conditioned living quarters, John Deere 70 diesel tractor (wide front), John Deere A tractor, John Deere M tractor, 93 Ford pick up w bent frame, 1953 truck chasis, 1945 Ford 1 1/2 ton truck, New Holland 479 haybine, John Deere 640 hay rake, John Deere 14T baler, John Deere sickle mower, 2 bottom plow, 12' John Deere wheel disc, MF drill, John deere offset disc, huge lot of rough cut lumber, fiberglass ladder, 3 wheel bike, yard roller, riding mowers, proto type 3 wheel vehicle, garden plows, go cart, multi ladder, commercial Middleby Marshall pizza oven, commercial steamer unit, vises, fencing supplies, sandblaster, pallet steps, shelving, fooseball table, small refrigerator, Pennzoil pedal car, Fire Chief pedal car, bench grinders, table saw, porcelain top elec range, stained glass light, 2 Dentist chairs, generator, office desk, large lot of new catering supplies, gumball machine, organizers and fastners, parking meter, elec scooter, floor jack, toys and games, back pack blower, back pack sprayer, shop fox rollers, battery charger, tractor seat stool, sled, car top carrier, lawn seeder, pop up canopy, scales, milk can, welding supplies, shop vac, tool boxes, parts washer, trash pump, gas motor, wood lathe, clamps, Craftsman band saw, power tools.

There will be a lot of surprises on sale day as many items were boxed and we have no idea what is there!!

MR AND MRS SCOTT PORTER

Go to www.knightauctionservice.com for complete list and pictures!

TERMS: Cash, Approved Check w/ID, Visa or Mastercard. Sale By



KNIGHT AUCTION SERVICE, LLC
417-532-7497 Lebanon, MO
"Complete Sale Service"

www.knightauctionservice.com

BUFFALO LIVESTOCK MARKET LLC

276 Hwy 32 West
Buffalo, Missouri

June 8th, 2019

Receipts: 1409 Head

Wean-Vac Special

Feeders wean vac. \$8-10 Higher than unweaned calves and last sale 6-1-2019

Representative Steers

300-400 @ 165.00 to 193.00
400-500 @ 155.00 to 174.00
500-600 @ 148.00 to 161.50
600-700 @ 145.00 to 152.50
700-800 @ 132.00 to 137.00
800-900 @ 124.00 to 129.00

Representative Heifers

300-400 @ 135.00 to 155.00
400-500 @ 132.00 to 148.00
500-600 @ 128.00 to 139.50
600-700 @ 122.00 to 130.00
700-800 @ 116.00 to 123.50

Feeder Bulls

400-500 @ 145.00 to 165.00
500-600 @ 130.00 to 148.00
600-700 @ 127.00 to 139.00
700-800 @ 117.00 to 131.00

Bred Cows

\$775.00 to \$960.00(Limited Test)

Cow-Calf

\$1000.00 to \$1200.00

Slaughter Cows

Boners 65.00 to 70.00
1400#lbs&up

Breakers 55.00 to 65.00

Cutters 50.00 to 55.00

X-Thin 50 Down

Slaughter Bulls

High Dressing No Test

Med. Dressing 77.00 to 80.00

Lower Dressing 70.00 to 76.00

Join us each Saturday at Noon for great cattle year-round!

MON-WED MARKET REPORT

Listen to KJEL 103.7FM • Lebanon or KYOO 99FM • Bolivar

VIEW OUR SALES AT CATTLEUSA.COM

CALL FOR TRUCKING OR ON-FARM VISIT

Lyle Caselman • Owner-Manager
417-345-7876 • mobile 417-533-2944
Leon Caselman • Owner
417-345-4514 • mobile • 417-588-6185
Howard Miller • Owner 417-345-8122

Over 25 Years In The Livestock Business

Cattle Sale

Every Monday at 12:00



Feeder Calves
to sell at 12:00 pm

Butcher Cows & Stock Cows
following

Goat, Sheep & Hog Sale

2nd Tuesday of the Month • 6 pm

Feed & Water Pens Available

All Consignments Welcome
Up Until Sale

We Appreciate Your Business!

Salem Livestock Auction

Hwy 32 Salem, Mo
Barn- 573-729-8880

Allen Thompson 417-932-4097	Terms of Sale: Cash or Approved Check!	Renee Lauderdale 417-926-2682
Chuck Thompson 417-257-5610		Keith Robertson 314-560-3285

AUCTION REMINDER: Cattle Sale every Monday at Noon. Salem Livestock. Please see our Auction Directory for more information.

2003 THUNDERBIRD: Black and white, very good condition, 47,000 miles. \$15,000. 573-832-1473.

NEW TUBE GRILL for 1972 Chevy Pick up. \$100 or trade. 573-734-2822.

FOR SALE IH 7250 PEDAL TRACTOR: wide front w/wagon. \$300: 573-859-6574.

JOHN DEERE 5055E DIESEL TRACTOR: 55HP, 311 hours. \$14,000 OBO. 573-301-2609.

BOBCAT 853 DIESEL SKID STEER LOADER: Cab. \$8,950. 573-765-4406.

DYNO CHARGE 990 ELECTRIC FENCER: Solid state for 20 miles. \$50. 636-239-2695.

YAMAHA SMALL FINISH MOWER: \$150 or trade. 573-734-2822.

57 FORD 961-TRACTOR: live power, power steering, hydraulic hook-up. \$3,500. 417-247-8200.



MID MISSOURI STOCKYARDS

REGULAR SALE EVERY THURSDAY 11AM

For Farm Visits, Market Updates, or Trucking
 Call **Zach Cox 417-777-1320**
Dan Romine 573-578-4939

**Competitive Buyers!
 Competitive Commission!
 Competitive Market!**

Barn: 417-532-9292 

I-44 • Exit 123 "just outside of Lebanon"
17505 Route 66, Phillipsburg, MO 65722

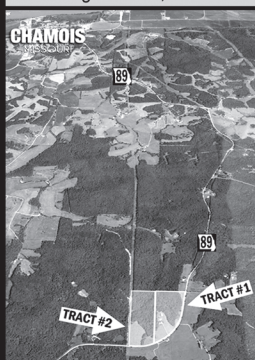
For weekly market updates, visit us at
www.midmostockyards.com




MAXWELL ESTATE AUCTION
 6671 HWY 89N, CHAMOIS, MO
FRIDAY, JUNE 21 @ 10 AM

Due to the death of my husband I will sell our farm, home & all our machinery at public auction. From the east edge of Linn, Mo take Hwy 50 north 13 1/2 miles to farm. Full Listing & Photos @ ImanAuction.com!

REAL ESTATE SELLS FIRST @ 10 AM. SURVEY WILL BE PROVIDED IF SOLD TO SEPARATE BUYERS!



TRACT 1: Consists of 24 acres m/l w/ a nice 4 bedroom, 2 1/2 bath ranch home – 2 Car garage – Newly remodeled kitchen – Dining area w/ window seats – Laundry off kitchen - Master bedroom w/ walk-in closet – 2nd Bedroom has balcony – Full basement w/ 2 bedrooms, full bath, nice family room & additional storage – Ground Source Heat & A/C - Outbuildings: 44x60' shop w/ lean to – 30x50' Hay/machine shed plus lean to & attached 30x56' Quonset building – Farm is fenced – Hwy frontage – Hard to find small acreage w/ this nice of a home!



TRACT 2: 28 Acres m/l of rolling pasture/hay ground – Hwy frontage – Great building site – Abundant game for hunting ****Real Estate Terms: 10% down Auction Day upon entry into Real Estate contracts with balance due and possession given at closing, preferably within 45 days. Real Estate sells with owner confirmation.**

To view Real Estate or for more info call Iman Auction Company 660-388-6235 or 660-788-4298

Mrs. Bob Barbara Maxwell, Seller
IMAN AUCTION COMPANY | 660-388-6235 | ImanAuction.com

REESE 2070W DRUM MOWER: 6'9"cut. \$2,000. Potosi, 573-438-2672.

CAT 951 DIESEL TRACK LOADER: \$7,250. 573-765-4406.

27 GAL FUEL TANK: Fiberglass. \$60. Rogersville. 417-753-2747, 417-766-1991.

FOR SALE BRAMCO BALE BUMPER: Good Condition. \$1,150 OBO. Camdenton, 573-873-4312.

POOL TABLES: Installations, moves, recoveries, repairs, accessories, etc. 573-646-1700.

2017 MASSEY FERGUSON TRACTOR: GC1705, 24hp, hydrostat, diesel, belly-mower, front-loader, 40hrs. \$12,500. 573-619-4488.

I BUY.... used mobile homes. Call or text 573-338-6250 or email GregS.CDH@outlook.com

PUT MORE \$\$\$ IN YOUR POCKET!!
Lewis Cattle Oiler. 417-286-3540 or 774-696-2344.

GREAT PYRENEES PUPS. Also goats for sale. 417-664-8781, Richland.

FIREARMS: Professional Repairs and Restorations. Baron's Gunsmithing. 573-363-5801, Camdenton.

FOR SALE: Oak, 2x6-8-10x16's. Potosi, 314-972-2903.

3 LOT of MLB, NFL, NBA ROOKIE CARDS \$10 sheet of 9. Text pics. 573-854-8132, Salem, Can text.

AUCTION REMINDER: Estate Auction, Friday June 21 @10AM, Inman Auction. Please see our Auction Reminder for more information.

5 HP MTD WOOD CHIPPER: \$199. 573-218-9231.

GREAT FATHERS DAY GIFTS: Beagle Puppies! 314-974-6881.

LINCOLN 225 WELDER. \$100 or trade. 573-734-2822.

WANT STIHL GRASS TRIMMER SF5-45. Call after 6pm 417-532-6570.

MOVING SALE. 27752 O Hwy. (Hwy 5, South to O Hwy, Lebanon). Wednesday-Saturday, June 12-15. Antique, Furniture, Tools.

1988 LINCOLN CONTINENTAL: 4 door, 302, 90,000miles, clean. \$4,000. 417-859-5951.

OLD WOODEN THREE DRAWER DRESSER: w/mirror. \$75. 573-327-9068.

AUCTION REMINDER: Public Auction. Saturday, June 22 @ 9am. Show-Me Auction. Please see our Auction Directory for more information.

AUSTRALIAN SHEPHERD PUPPIES: Ready to go, Merles & Tri-Colors, UTD on shots. For sale or swap for farm animals. 417-458-1047, 417-967-6493.

AUCTION REMINDER: Estate Auction Saturday June 15 10 AM. Please see our Auction Directory for more information.

2005 HONDA 750 SHADOW SPIRIT: 17,500 miles, windshield, hard saddlebags, race tuned, Cobra pipes, new front/rear sprocket/chain. \$3,000 OBO. 417-399-4340, Flemington, call or text.

52.64 ACRES: \$99,900. Abundant Deer & Turkey, ATV Paradise. Will divide Acreage. 30 acres w/year round creek through the center. \$2,400 per acre. 20 acres. \$2,100 per acre. Approximately 9 acres County Road access. \$2,000 per acre 2.5 miles from city limits. Located Cadet, MO out of city limits, quiet neighborhood.

B&W FIFTH WHEEL COMPANION HITCH for Ford factory installed Gooseneck Hitch. Used three times. Been stored in my garage in Battlefield, MO. Cost \$1,100, will sell for \$895 cash. Like new. Wife had cancer, had to sell RV. 417-425-3825.

FLIES ARE HERE!! Lewis Cattle Oiler. 417-286-3540 or 774-696-2344.

JOHN DEERE 275: 9ft, disc mower. \$5,150. 573-765-4406.

AUGER: 8x57, good condition. \$2,500. 573-378-5180.

OLDER FORD 3 POINT POST AUGER. 573-528-7436.

7 CHAROLAIS CROSS HEIFERS: Fall 2018, weaned, approximately 550#, real gentle. \$800 Each. 660-596-8515.

FIFTH WHEEL: Everest 36', 3 slides, new tires, good condition. \$10,000. 417-296-2463, leave message.

WILBER'S FISH BRANCH ANGUS: Large selection 14-16month old bulls available, Calving ease, good growth and carcass traits, very docile. Mexico, Mo. 573-473-6019. www.fishbranch.com

FANEX 4-BASKET HYD FOLD TEDDER: \$4,350. 573-765-4406.

CASE 533 45 HP DIESEL TRACTOR: w/ loader, wide front end, PS, 6' brush-hog. \$5,400. 573-694-0299.

WANTED HOOD FOR JOHN DEERE RIDING MOWER 225: 573-859-6574.

GUINEA PIGS: \$20 each, All ages, all colors. 636-629-0113. St. Clair.

AUCTION REMINDER: Saturday, June 15th, 9:30am, Larinda's Auction Service. Please see our Auction Directory for more information.

USED AMERICAN FAMILY DOUBLE-WIDE: These do not last! Excellent condition. Call Quick, 573-499-9993 columbiadiscounthomes.com.

DEARBORN 2-DISK PLOW: new disk. \$300. 417-247-8200.

AUCTION REMINDER: Estate Auction Sat. June 15th 10Am BRUCE SCHEETS AUCTION. Please see our Auction Directory for more information.

HOME, 3 BEDROOM RANCH: 32.37ac, North St Francois County. \$185,000. 417-255-6640.

LEBANON HISTORY BOOK-A PART OF OUR LIVES, 1949-1976. \$10. 417-532-2045.

CASE 580D: Diesel backhoe, Loader. \$8,850. 573-765-4406.

WHICH KUBOTA IS RIGHT FOR YOU?

THE RIGHT EQUIPMENT IS RIGHT AROUND THE CORNER.

Come Check Out our ALL-NEW GAS-POWERED RTV-XG850 SIDEKICK!
Power • Performance • Handling • Style

- ✓ 48HP** ✓ 40mph transport speed
- ✓ gasoline engine.
- ✓ Sidekick is a multi-purpose utility vehicle.
- ✓ 4 colors to choose from.

0% Down, 0% A.P.R. for 48 months*

L2501 DT PACKAGE DEAL ✓ 25HP Kubota diesel engine***
✓ 4WD, Ag Tires ✓ 18' Trailer,
✓ 5' Box Blade
✓ Kubota Loader,
✓ 5' Land Pride Brush Hog,
✓ 6 Year Power Train Warranty****

\$0 Down, 0% A.P.R. for 60 months**

\$20,495

L3901 DT PACKAGE DEAL ✓ 39 Kubota diesel engine***
✓ 4WD, Ag Tires
✓ 18' Trailer,
✓ 5' Box Blade
✓ Kubota Loader,
✓ 5' Rotary Cutter,
✓ 6 Year Power Train Warranty****

\$0 Down, 0% A.P.R. for 60 months**

\$24,795

L3301 DT PACKAGE DEAL ✓ 33 Kubota diesel engine***
✓ 4WD, Ag Tires
✓ 18' Trailer,
✓ 5' Box Blade
✓ Kubota Loader,
✓ 5' Land Pride Brush Hog,
✓ 6 Year Power Train Warranty****

\$0 Down, 0% A.P.R. for 60 months**

\$23,495

L4701 DT PACKAGE DEAL ✓ 47 Kubota diesel engine***
✓ 4 cyl., 4WD Ag Tires
✓ 18' Trailer,
✓ 6' Box Blade
✓ Kubota Loader,
✓ 6' Land Pride Rotary Cutter,
✓ 6 Year Power Train Warranty****

\$0 Down, 0% A.P.R. for 60 months**

\$30,995

Serving the Ozarks Since 1981

Get unmatched Kubota quality. Kubota designed, engineered and built.

Visit Us in TWO Locations!

8665 Outer Road, Mtn Grove | 4973 W. US Hwy 160, West Plains
417-926-5454 • 877-926-5458 | 417-256-0420 • 800-766-0420

More Package Deals To Choose From!

* \$0 Down, 0% A.P.R. for 48 months. Qualifying Equipment: RTV-XG850. \$0 A.P.R. financing for up to 48 months on purchase of select new Kubota RTV-XG850 equipment from participating dealers' in-stock inventory is available to qualified purchasers through Kubota Credit Corporation, U.S.A.; subject to credit approval. Some exceptions apply. Example: 48 monthly payments of \$20.83 per \$1,000 financed. Offer expires 6-30-2019. See us or go to KubotaUSA.com for more information. ** \$0 Down, 0% A.P.R. for 60 months. Qualifying Equipment: BX, B, L, MX and M, MH(M7), RB, DMC, DM, RA and TE Series. \$0 Down, 0% A.P.R. financing for up to 60 months on purchases of select new Kubota L2501 DT, L3901 DT or L4701 DT equipment from participating dealers' in-stock inventory is available to qualified purchasers through Kubota Credit Corporation, U.S.A.; subject to credit approval. Some exceptions apply. Example: 60 monthly payments of \$16.67 per \$1,000 financed. Offer expires 6-30-2019. See us or go to KubotaUSA.com for more information. ***For complete warranty, safety and product information, consult your local Kubota dealer and the product operator's manual. Power (HP/KW) and other specifications are based on various standards or recommended practices. ****Only terms and conditions of Kubota's standard Limited Warranty apply. For warranty terms, see Kubota's Limited Warranty at www.KubotaUSA.com or authorized Kubota dealers.

1890 OPTOMETRIST COMPLETE KIT: 250 lenses, German + English Eye Charts, leather case. \$200. 573-764-3517, call in pm.

FIVE QUILT BOOKS FOR SALE: American Quilt Story, American Heritage Quilts, A Garden of Quilts, American Patchwork & Quilting, Creative American Quilting, all hardback, excellent condition. \$5 each or all for \$20. 417-532-2045.

GERMAN SHEPHERDS: Two males, 3 mo old, one adult male. \$100 each. 417-741-2198.

AUCTION REMINDER: Public Auction Saturday June 15th at 10 am. Knight Auction. Please see our Auction Directory for more information.

2005 LOWE CAMO ROUGHNECK 1760 BOAT MOTOR & TRAILER: \$6,500. Questions? 417-531-2510

AUCTION REMINDER: Personal Property & Real Estate Auction Saturday June 15 at 9am. Cheyney Auction Company LLC. Please see our Auction Directory for more information.

OLD 20 GAUGE: Single barrel shotgun. \$175. Desloge, 573-327-9068.

WANTED CUT STOCK, Cants, Slabs, trees length + 45" long scragg blocks. 417-650-0402.

WINCHESTER 30/30 1940'S: wood storage case, ammo. \$500. Marshfield, 417-241-3330.

FRENCH BULLDOG PUPPIES: Blues, Chocolate & Lilac Carriers, Whites, Sable Pieds, M/F, Guaranteed. \$895-\$2,500. 573-238-3873, 573-208-0485, Glenn Allen.

NOTES

BLACK SMITHING ANVIL. \$600. 417-349-2901.

3PT TRACTOR BALE SPEAR: 42" spear with 14" stabilizer bars. \$150. Conway, 417-718-5347.

2001 19FT DUTCHMEN TRAVEL TRAILER: very clean, everything works. \$4,200. 417-345-5634.

2004 OPEN RANGE FIFTH WHEEL CAMPER: 34', all weather, in good condition. \$10,500. Lebanon, 417-718-5520.

NEEDING TO RE-HOME wonderful dog. 2.5 year Boxer Mix: obedience /crate trained, great traveling dog. Good w/animals and people. Great companion. 224-637-5988.

BLUE HEELER PUPS: Raised for 40 years. Good livestock dogs or pets. Already working. \$85 each. 660-631-5019 Warsaw.

MICHIGAN 85 WHEEL LOADER FOR SALE. 3.5 yard bucket, articulated steering, disc brakes, Ford 460 repowered engine, good tires & spare. \$8,500. Rolla, 573-308-5310.

MUST SELL DUE TO HEALTH: Beautiful custom ordered, mint condition, flexsteel, three cushion, 84" sofa with matching 60" loveseat. \$450. Must see. 573-699-4351.

1987 SHELBY DAYTONA: Excellent condition. \$5,500. 314-616-9862.

NICE BASSETT QUEEN BEDROOM SET: \$400. Clever, 417-268-5586.



TASK. TASK. DONE.

RTR12 SERIES

ROTARY TILLERS
15-60 HP 42", 50", 58", 66", 74"

- Reverse rotation
- Offset capabilities
- Lower clevis hitch for easy hook-up
- Steel plate upper hitch
- Seven position skid shoes
- 15" Rotor swing
- 4 'C' shaped blades per flange

3 YEAR Limited Gearbox Warranty

AGRI ENTERPRISES

For Outstanding Products & Service
1-1/2 Miles South Of Licking, MO On Hwy 63

573-674-2203
1-800-653-7152

www.landpride.com www.agri-enterprises.com

WANTED PINBALL MACHINES. 573-424-7200.

AUCTION REMINDER: Every Wednesday at 10:30 am. Farmington Livestock. Please see our Auction Directory for more information.

FARM & HOME SERVICES, WELDING & CONSTRUCTION. \$40-\$65 per hour. 417-664-7841, Stoutland.

2005 YAMAHA 1100 SILVERADO, 14,000 Miles, bought new, many extras, new tires. new condition, always garaged. \$5,600 OBO. 573-259-2648.

1962 CHEVY IMPALA: 4dr. Sedan. \$9,000. 1-573-697-5065.

PURE BRED BORDER COLLIES: Pups ready 5-20-19 \$100ea. Border collie/Australian Shepherd pups \$100ea. Ready 5-31-19. Hartville, 417-259-9738.

3pt TWO-SECTION HARROW. \$200. Rogersville. 417-753-2747, 417-766-1991.

REGISTERED HEREFORD & ANGUS BULLS: Home raised, Some Show-Me Select Qualified. 573-701-7828. Belgrade

10' CONCRETE FEED BUNKS. Johnson automatic waterers, assorted gates. 573-819-1768, Columbia.

PINE LOG SIDING SALE: \$1.19 per L.F. www.pineridgerustic.com 573-729-7226, 573-247-2823.

FREE AKC REG. GERMAN SHEPHERD: 1 year old, black & tan, very friendly, good behavior. 630-687-0705.

DARDEN PROFESSIONAL TIMBER HARVESTING, BUYING STANDING TIMBER: Great prices, improve wildlife habitat and improve forest health. State Certified & Fully Insured! 573-247-4808 or 573-739-1122. Salem

4 MUD TIRES: Goodyear Wrangler, LT285/75R16 Dura Trac, good tread left. \$100 Call Don, leave message for call back 314-808-5680.

WEEKLY TRADER MAGAZINE

YOUR AD GOES HERE!

Add YELLOW Color For An Additional \$3 Per Reader Ad

All ads will include Phone Number (unless requested to be deleted by advertiser) and City Or Town, Phone Number with Area Code counts as one word. City or Town counts as one word.

RATE: 80¢ Per Word. All Classified Ads Require Payment Before Print.

(1) 80¢	(2) \$1.60	(3) \$2.40	(4) \$3.20
(5) \$4.00	(6) \$4.80	(7) \$5.60	(8) \$6.40
(9) \$7.20	(10) \$8.00	(11) \$8.80	(12) \$9.60
(13) \$10.40	(14) \$11.20	(15) \$12.00	(16) \$12.80
(17) \$13.60	(18) \$14.40	(19) \$15.20	(20) \$16.00
(21) \$16.80	(22) \$17.60	(23) \$18.40	(24) \$19.20
(25) \$20.00	(26) \$20.80	(27) \$21.60	(28) \$22.40
(29) \$23.20	(30) \$24.00	(31) \$24.80	(32) \$25.60
(33) \$26.40	(34) \$27.20	(35) \$28.00	(36) \$28.80
(37) \$29.60	(38) \$30.40	(39) \$31.20	(40) \$32.00

Place your Classified Ad TODAY!

417-532-2800 • 800-665-8875

Fax: 417-532-8140

Or Mail To: P.O. Box 192 • Lebanon, MO 65536

For your convenience we accept MasterCard, Visa, Discover or American Express



DEADLINE FOR CLASSIFIED ADS: MONDAY 12 NOON!!

Name _____

Address _____

City _____ Email _____

State _____ Zip Code _____ Phone _____

Ad Total \$ _____ X # Weeks _____ = Amount Enclosed \$ _____



**STARTING AT
\$2,199**

PRICE SUBJECT TO CHANGE WITHOUT NOTICE.
SEE DEALER FOR DETAILS



For Outstanding Products & Service
AGRI-ENTERPRISES

1-1/2 Miles South Of Licking,
MO On Hwy 63

573-674-2203 • 1-800-653-7152

www.agri-enterprises.com