

FREE WEEKLY TRADER MAGAZINE

Vol. 26 No.15

JULY 18, 2019

800-543-8271 • 800-665-8875



Find us on
Facebook

@myweeklytrader

Auctions - Pg. 26

MYWEEKLYTRADER.COM

POWER, CONVENIENCE AND CAPABILITY FOR LESS.

\$7,879 TOTAL VALUE

\$38,495 TOTAL VEHICLE PRICE PLUS OPTIONS

\$1,629 PRICE REDUCTION BELOW MSRP

\$6,750 TOTAL CASH ALLOWANCE

\$30,616 PRICE AFTER ALL OFFERS¹



ALL-NEW 2019 SILVERADO CREW CAB CUSTOM 2WD V6

	ALL-NEW 2019 SILVERADO CREW CAB CUSTOM (2WD) 4.3L V6	2019 RAM CREW CAB BIG HORN (2WD) 3.6L V6	2019 FORD F-150 SUPERCREW® XLT (2WD) 3.3L V6
POWER			
TORQUE	305 LB.-FT. ✓	269 LB.-FT.	265 LB.-FT.
TOWING ²	7,700 LBS. ✓	6,520 LBS.	5,000 LBS.
CONVENIENCE			
REAR CORNERSTEP BUMPER	YES ✓	NO	NO
REAR LEG ROOM	44.5 IN. ✓	40.9 IN.	43.6 IN.
CAPABILITY			
CARGO SPACE	62.9 CU. FT. ✓	53.9 CU. FT.	52.8 CU. FT.
TIE-DOWNS - STANDARD	12 ✓	4	4
FOR LESS			
MSRP ³	\$38,959 ✓	\$40,435	\$41,015

FIND NEW ROADS™

CHEVROLET



1 Tax, title, license and dealer fees extra. Not available with special financing, lease and some other offers. Take new retail delivery by 07/31/19. See participating dealer for details. 2 Double Cab Standard Box and Crew Cab Short Box, 2WD. Before you buy a vehicle or use it for trailering, carefully review the Trailering section of the Owner's Manual. The weight of passengers, cargo and options or accessories may reduce the amount you can tow. 3 The Manufacturer's Suggested Retail Price excludes destination freight charge, tax, title, license, dealer fees and optional equipment. ©2019 General Motors.



FAIRGROUND
Auto Plaza

DRIVEN TO SERVE YOU BEST...

100 Fairgrounds Road
Rolla, Missouri
(573) 364-1002

www.FairgroundGM.com



0% APR for 60 MOS

ZERO DOWN

**KEEP IT SIMPLE
WITH QUARLES SUPPLY**

RATES SUBJECT TO CHANGE
*With approved credit. Tax/Insurance not included.
Some restrictions may apply. See dealer for details.



Kubota®

SUMMER SAVINGS



New 26HP Kubota Package Deal!

B2650HSD \$21,445
Financing Price

NEW Kubota B2650HSD, 4wd, DIESEL, R4 TIRES, KUBOTA LOADER, 4' CUTTER, 4' BLADE, NEW 16' KODIAK TRAILER W/RAMPS& NEW TIRES



New 33HP Kubota Package Deal!

L3301HST \$24,210
Financing Price

NEW Kubota L3301HST, 4wd, DIESEL, AG TIRES, KUBOTA LOADER, 5' CUTTER, 5' BLADE, NEW 18' KODIAK TRAILER W/RAMPS& NEW TIRES

PRICING REFLECTS ALL CURRENT KUBOTA PROGRAMS

*DOES NOT INCLUDE TAX AND INSURANCE

BLENDED RATES MAY APPLY ON NON KUBOTA ITEMS

QUARLES
SUPPLY COMPANY INC.



RTV-XG850 \$12,849
Starting At

The newly designed RTV-XG850 has set the standard for ruggedness and reliability.

The powerful 48 hp gasoline engine gives you the speed to get there fast, up to 40mph fast!

quarleskubota.com

Just off Business 13 in Bolivar, MO

Open 8:00-5:00 Monday-Friday

Saturday 8:00-12:00

(417) 777-2391



STARTING AT \$2,199

PRICE SUBJECT TO CHANGE WITHOUT NOTICE.
SEE DEALER FOR DETAILS



HUSTLER

For Outstanding Products & Service
AGRI-ENTERPRISES

1-1/2 Miles South Of Licking,
MO On Hwy 63

573-674-2203 • 1-800-653-7152

www.agri-enterprises.com



**JOHN DEERE 310A DIESEL BACKHOE
LOADER:** \$8,850. 573-765-4406.

**WOMEN'S APEX QUALITY GYM
SHOES:** White, pink and grey trim. Brand
new, reinforced stability plate, cushioned.
Paid \$143, \$75 firm. 417-686-0032, Ava

**10 TASTE OF HOME Hardback cook-
books.** \$2.50 each or all for \$20. 417-532-
2045, Lebanon.

SLIDE-IN PICK-UP FUEL TANK w/elec-
tric pump, 100 gallon, good condition. \$400.
417-646-8807.

WANTED: Tunnel Hull 16ft Landau jon boat,
ALSO 500lb Propane Tank, with pressure on
gauge. 573-512-2059.

**6 STRING ELECTRIC HARMONY GUI-
TAR:** pretty guitar, sunburst. \$75. Warrenton,
636-297-1747.




TIM'S USED CARS

(573) 341-3828 • 1334 South Bishop (Hwy. 63) • Rolla, MO
Next to Hwy. CC • www.tims-used-cars.com

 <p>2015 CHRYSLER 200 LIMITED 49,XXX MILES, 2.4 4-CYLINDER, AUTO, WHEELS, POWER EQUIPPED, AC, TILT, CRUISE. ONLY \$11,500</p>	 <p>2001 INTERNATIONAL 4900 DUMP TRUCK DT466, 7 SPEED, ONLY \$7,800</p>	 <p>2015 FORD F-250 SUPER DUTY 4X4, CREW CAB, XL, 134,XXX MILES, 6.2 V-8, AUTO, WHEELS, TOW PACKAGE, AC, CD, POWER EQUIPPED, TILT, CRUISE. ONLY \$20,800</p>
 <p>2015 FORD TRANSIT 250 CARGO 3.7 V-6, POWER EQUIPPED, 84,XXX MILES ONLY \$17,500</p>		

LARGE SELECTION OF CARS, TRUCKS, SUVs & VANS!

USED EQUIPMENT

- 920 Cat Wheel Loader
- JD 350 Sickle mower with 9' bar
- Gehl Silage Chopper
- 5' 6' & 7' Brush Cutter
- Landpride 10' Brush Cutter
- JD 10' Cultipacker
- 3pt. 3 bottom plow
- 12' Spring Tooth Harrow 3pt. 2 Disc Disc Plow
- Other Misc Equipment

For Outstanding Products & Service
AGRI-ENTERPRISES
1-1/2 Miles South Of Licking, MO On Hwy 63
573-674-2203 • 1-800-653-7152
www.agri-enterprises.com

**BOBCAT 853 DIESEL SKID STEER
LOADER:** Cab, 58hp. \$8,950. 573-765-4406.

NEW CANOPY FOR SMALL TRACTOR
for sale. \$250. 573-859-6574.

Offering the Area's LOWEST METAL PRICES!



Custom Homes • Metal Roofs

29 Gauge

#1 PAINTED METAL

- ★ Lifetime Warranty - \$70.00 Sq.
- ★ 40 Year Warranty - \$67.00 Sq.
- ★ 20 Year Warranty - \$64.00 Sq.
- ★ 25 Year Galvalume - \$54.00 Sq.

Labor prices will be higher in locations over 75 miles from Marshfield, MO

Pole Barn Packages

24'x32'x10' materials only	\$5,075	30'x60'x10' materials only	\$8,600
24'x40'x10' materials only	\$5,775	40'x60'x12' materials only	\$11,525
30'x40'x10' materials only	\$6,550		

Plus Sales Tax And Delivery.
Labor available at additional cost.
Call for quote.

Compare Before You Buy.

We Use Only The Highest Quality Materials!



ALL MATERIAL PACKAGES INCLUDE...

- ✓ #1 Yellow Pine Lumber
- ✓ #1-40 Yr. Painted
- ✓ Metal w/Screws
- ✓ 1-10' Overhead Door
- ✓ 1-36" Entry Door

Fully Insured

PORTABLE BUILDINGS

Rent to Own
No Credit Check



1049 SCHOOLVIEW DR.
Marshfield, MO



Marshfield
BUILDINGS

www.marshfieldbuildings.com



417-859-7744

Toll Free 1-866-859-7733

THE WEST PLAINS, MO DANCE HALL EXPLOSION BOOK. \$10. 417-532-2045, Lebanon.

1890 SOUTH BEND GRAIN SEEDER: Shoulder held, wood w/iron gears. \$100. 573-764-3517, call in pm.

AUCTION REMINDER: Annual July Consignment Auction. Saturday, July 27th @ 9am. Wheeler Auctions. Please see our Auction Directory for more information.

CLIPPER SEED CLEANER: \$200. 417-646-8807.

LIKE NEW: 2002 Springfield Armory M1 Garand Tanker 30.06. \$1,400. 573-218-9231, Farmington, MO.

WINCHESTER AMMO: 32 Cal long, round nose, 50 rounds. NIB. 1 Box \$20. 816-803-1834.

www.gatorjetboats.com

(573) 885-0052

86 Hwy. UU Cuba, MO (2 Miles East of Cuba)

Custom Built Aluminum Inboard Jets

Jet Drive & Performance Parts

IN-STOCK!

GREAT DANE AKC PUPS: s/w, micro-chipped, \$500 & up 417-859-0844. Marshfield, www.greatdanes4u.com

PULLABLE BBQ PIT : 52"LX30"D, 30"L fire box, 2 thermostats, 15" tires, double doors, 6"exhaust. \$2,000cash. Waynesville, 573-528-7317.

FLIES ARE HERE!! Lewis Cattle Oiler. 417-286-3540 or 774-696-2344.

LIVESTOCK WATERER: Big Husky, model 30. \$50. 417-753-2747/417-766-1991.

40 PLUS OLD CAR MAGAZINES For Sale: 60's-80's Street Rodder, Hot Rod, etc. \$15 all. 417-457-1023.

SCENIC DRIVING OF THE OZARKS BOOK: 317 pages. \$8.50 417-532-2045, Lebanon.

WANTED: NH 488, 9ft haybine, in very good to excellent condition, call 573-363-5473.

REFURBISHED CLASSIC POP-UP CAMPER. \$750, JD-165 Lawn tractor, \$250. Vienna, 573-759-7143.

WEEKLY TRADER MAGAZINE

Vol. 26 July 18, 2019 No. 15

Published By

Lebanon Publishing Co. Inc.
PO Box 192, Lebanon, MO 65536

417-532-2800

www.myweeklytrader.com

Everything advertised in this publication must be made available for purchase, use or patronage without regard to race, creed, color, sex, age or national origin of the purchaser, user or patron. The Publisher will not be responsible for misinformation, misprints, typographical errors, etc. Opinions expressed are not necessarily those of the Publisher. All rights reserved. No part of this material may be reproduced by any means without permission in writing from the Publisher. We reserve the right to refuse any ad if we deem necessary. Our list and map indicate counties in which the Weekly Trader is delivered. The magazine is not necessarily placed in all communities in a particular county. A list of all retail drops for a county may be obtained by contacting the Weekly Trader office at PO Box 192, Lebanon, MO 65536.

COLE'S TRACTOR & EQP, INC.

1 mile east of Farmington on Highway 32 • 573-756-4353

LS MT235E 35HP 4WD DIESEL TRACTOR PACKAGE

★★ **SPECIAL PROMOTION** ★★
**BUY THIS PACKAGE AND YOU GET A FREE PRESSURE
WASHER WITH 2 RATCHET TIE DOWNS!**

PLUS YOU GET THE BEST 6 YEAR PARTS AND LABOR WARRANTY!

With Deluxe Skid Steer
QA Bucket Front Loader

5FT Brush Hog

5FT Box Blade

AND

7000LB GVW Deluxe Car
Hauler Flatbed Trailer

ALL THIS FOR ONLY \$21,495

Financing Available on Location!



LS TRACTOR
The Major Brand Maker

LS MT125 SUB-COMPACT TRACTOR PACKAGE

With Front Loader

60" Belly Mower

Sub-mount Backhoe

ALL FOR ONLY \$16,899

Financing Available on Location!



LS TRACTOR
The Major Brand Maker



PLUS YOU GET
THE BEST
6 YEAR PARTS
AND LABOR
WARRANTY!

Now Stocking
Large Selection
 of
Plumbing
 PEX, PVC, & CPVC
 and
Electrical
 Supplies!



STOCKING
Porter Paints
PPG
Commercial
Paints
Sikkens
Stains

Seymour, Missouri 417-935-4201

Sale Ends July 31, 2019



Pole Barns & Post Framed Buildings!

Call for free quote, brochure & color chart.
 Other sizes also available.

23'x32'x10' \$4,099 Material Only \$5,319 Labor Included	23'x40'x10' \$4,799 Material Only \$6,329 Labor Included	30'x40'x10' \$5,699 Material Only \$7,699 Labor Included	40'x60'x12' \$10,099 Material Only \$14,359 Labor Included
---	---	---	---



NOBODY, BUT NOBODY BEATS OUR PRICES!!!

10 ft. Slider • Engineered Trusses 8' O.C. • 2x6 Treated Bottom Wrap • Screws • 2x10 Top Wrap • 2x4 Purlins • Full 29 Gauge Steel • Plus 3 ft. Entry Door with Lock

OPTIONS: Sidewall Heights on all Buildings 10', 12', 14' & 16'. Overhead Garage Door. Skylights. Insulation. Wainscoting. Insulated Vinyl Windows. Cupolas. Labor Rates Slightly Higher over 50 Miles from Seymour.

Call for YOUR FREE QUOTE TODAY!!!!

PAINTED WHITE, GREEN OR TAN METAL\$69.99

10' - \$22.10 12' - \$26.52 16' - \$35.36

MIX & MATCH METAL\$39.99

8' - \$10.13 10' - \$12.67 12' - \$15.21

GALVALUME METAL\$52.50

10' - \$16.60 12' - \$19.92 16' - \$26.56

GALVANIZED CORRUGATED METAL.....\$56.75

8' - \$9.84 10' - \$12.30 12' - \$14.75 16' - \$19.67

IN STOCK



LP SMARTSIDE T-5 LAP B GRADE \$43.59SQ

Sales and Servicing



NEW PACKAGE HOMES



Shown with Available Options

Your Choice of either:

Stock 5/8" T111 Wood Siding w/1x4 Pine Window & Door Trim - or -

7/16" OSB & House Wrap ready for other finish options

2x6—16" on center-Exterior Stud Walls
 Residential Roof Trusses-2' on center
 4/12 pitch with 1' over hang
 40 year Painted Metal roofing in 20 Different Colors

Profile Ridge Vent - Ventilated Ridge Cap
 Vinyl Center Vent Soffit
 Color Matched Metal Fascia & Gable Trim
 2 - 3' 6 Panel Entry Doors
 4 - 3'x4' Vinyl Insulated Windows

**ALL FIGURED FOR SUITABLE CUSTOMER
 SUPPLIED SLAB OR SUB-FLOOR**

Price for Basic Materials Package & Labor

20x24(480 sq. ft.) 20x32(640 sq. ft.) 20x40(800 sq. ft.) 28x40(1120 sq. ft.) 28x48(1344 sq. ft.)
\$8,229 \$9,650 \$11,019 \$13,855 \$15,545

Car Siding!

1x6 White Pine Siding **43¢** in ft

1x8 White Pine Siding **54¢** in ft

* 4 Profiles to choose from!

Broken Bundles Add 10¢ Per Ft.

4x8 Sheeting

Less than full units Add \$1 per sheet

3/8" Beaded Paneling **\$15.99**

5/8" T111 Siding **\$19.99**

Paneling **\$9.99**

1/2" Plywood **\$19.99**

3/4" Plywood **\$23.99**

3/16 Pegboard **\$12.99**

REAL WOOD SIDING

2x6 Log Siding - 1.09¢ in ft

1x8 Beveled Cedar - 49¢ in ft

5/8 T1-11 Siding from \$19.99

DECK PACKAGES

Materials Only

8x6\$199.99 10x12\$419.99

8x8\$239.99 10x16\$549.99

10x10\$349.99 12x12\$499.99

12x16\$649.99



Now Stocking Quaker Vinyl Windows

2030 \$ 99.99

3030 \$119.99

3040 \$129.99

3052 \$145.99

3040Twin \$279.99

3052Twin \$314.99



LUCKY DISCOUNT LUMBER

417-935-4201

455 State Hwy C • Seymour MO 65746

www.luckydiscountlumber.com



*Some restrictions apply see store for details

PRIVATE GUN COLLECTION: 417-664-3222.

MCDERMOTT POOL CUES: with cases. 573-315-7030. Bismarck

NEW HOLLAND 617 DISK MOWER: 9FT. \$3,950. 573-765-4406.

2014 GOOSENECK BRAND STOCK TRAILER: 24ft, low miles. 573-255-3340.

GREAT PYRENEES ANATOLIAN GUARD DOG PUPPIES: Born and raised with sheep. Born June 20th. Taking orders now. \$150. 660-337-6650. No Sunday calls. Fortuna.



GETTING WORK DONE
★ THAT'S OUR HERITAGE ★

1025R DIY DIGGER PACKAGE
Includes 1025R Tractor, 120R Loader
and 260B Backhoe

\$275 per month¹



JOHN DEERE



Legendary Products. Extraordinary Service.

Find your local Heritage Tractor location or request a quote at HeritageTractor.com

(1) Offer ends 7/31/19. Subject to approved installment credit with John Deere Financial. Up to a 5% down payment may be required. Example: based on a purchase of \$20,800 with \$1,040 down payment, monthly payment of \$275 at 0% APR for 72 months. Taxes, freight, set up and delivery charges could increase the monthly payment. Price and model availability vary by dealer. Valid only at participating US dealers.

HTR4X70523WT-4C

Cowtown Express Car Wash

Highway 63 South, Rolla, MO
Call Wade 573-368-1430 Or 573-426-2500



Sale Price \$4,950

NEW Winchester Star & Bale Trailers

Powder Coated 18+2, 7,000 Axles
www.cowtownusainc.com

AUCTION REMINDER: Farm Auction. Saturday, July 20 @ 10AM. Wheeler Livestock. Please see our Auction Directory for more information.

IHC 1086 DIESEL CAB&AIR TRACTOR: New rear rubber. \$8,400. 573-765-4406.

ALL NEW CABINET COUNTERTOP: Small sink, 24x60. \$100obo. Mtn View, 801-592-6301.

8 PRE-SMOKED BRIAR PIPES + HANGING PIPE RACK: Tobacco containers. \$60 all. 417-457-1023.

BoatAngel

FREE 4-NIGHT VACATION!
Donate Car • Boat • RV • Motorcycle

1-800-CarAngel

www.boatangel.org

JACK'S FORK RIVER KIKOS HERD for sale: AKGA registered, 5 Bucks, 7 Doelings, 16 Does including polled. Summersville, 703-595-7358.

AUCTION REMINDER: Every Wednesday at 10:30 am. Farmington Livestock. Please see our Auction Directory for more information.

AUCTION REMINDER: John Bill Greer Trust Auction. Saturday, July 27th @ 10AM. Case Auction. Please see our Auction Directory for more information.

VILLA HOMES IN ROLLA: Has NEW and USED Mobile Homes. Call David for info: 573-578-8072.

1994 GMC TOPKICK CRANE TRUCK: Cat motor, w/1988 12.5 ton JLG Crane. 76ft tip height, 118 w/jib 8LL transmission. \$34,000. Mtn Grove. 417-259-0772.

SWISHER TRAIL MOWER: 44" cut, electric start, new blade. \$400. 417-664-1862.

SUMMER SAVINGS

Starts Here!

DELUXE BUILDING PACKAGES



All Buildings Quoted Have #2 Lumber And #1 Galvalume Or Limited Lifetime Painted Metal

All Buildings Are Heavy 29 Ga. Metal, Three 2"x6" T&G Splashboards, All Poles 5"x5" Or Larger, CCA Treated, Fully Trimmed With One 3'x6' Walk-Through Door & One Large Sliding Door.

24x40x10	Galvalume	\$5,797.55
	Painted	\$6,401.76
24x32x10	Galvalume	\$5,616.66
	Painted	\$6,098.95
30x40x10	Galvalume	\$6,430.69
	Painted	\$7,099.08
30x40x12	Galvalume	\$6,886.06
	Painted	\$7,598.22
40x60x12	Galvalume	\$11,272.16
	Painted	\$12,461.71

Plus Tax. Labor & Delivery Available On All Building Packages.
Prices may vary due to local code restrictions.

Metal Roofs Designed To Look Great On Your Home!

**HEAVY 29 Ga.
METAL # 1**
Limited LIFETIME WARRANTY
**29 Ga. & 26 Ga.
Painted**

CUT TO LENGTH PANELS

**GALVALUME METAL UNPAINTED
25 YEAR WARRANTY**

#1 Standard Panels, 29 Ga.

**NEXT
BUSINESS
DAY SERVICE**
Call for details.

\$48.50

LIMITED
LIFETIME
PAINT
WARRANTY



Ask About Our Quick Service.

Over **20** Colors and Several Styles To Choose!

Good quality, quick service

DECK PACKAGES AVAILABLE AT BYLER BUILDING SUPPLY



Roof Is Optional
Additional Sizes & Custom Shapes Available!
8x10 • 8x16 • 10x14 • 12x16

CALL FOR PRICING!

- 1 Set of Steps
- Handrails
- 2x2 Balusters
- All Deck Boards & Railing Screwed, Up To 4' High, All #2 Treated

**Labor
& Material
INCLUDED!**



BYLER BUILDING SUPPLY, LLC

2 1/2 MILES EAST OF SEYMOUR ON 60, 1/4 MILE NORTH AT AUTO SALVAGE WWW.BYLERSUPPLY.COM
877-556-8855 MON.-FRI. 7:30-5 SAT. 8-12 FAX NO. 417-935-2995 417-771-3100

VISIT US AT WWW.BYLERSUPPLY.COM

CDL IN ONE DAY!!: Family owned and operated, Insured, Over 10 years of experience, Training available for all states, Short wait time for appointments, Contact us today to schedule your appointment!! CREDIT CARDS EXCEPTED. (573-353-2853).

NEW HOLLAND SQUARE HAY BALER 277: Field Ready, Hay Rake. \$2,950. 636-239-4124.

TECUMSEH 15HP MOTOR: down-shaft. \$100. 636-297-1747.

1966 CHEVY IMPALA: 2 door, 68,000 miles, needs restored. \$2,000 OBO. 636-577-5022, St James.

WINDMILL 25FT: 4 leg. 5ft air motor, use or ornament. \$1,750. 417-399-6383.

Carnival Rides • Truck and Tractor Pull Demo Derby • Livestock and Home Arts Exhibits

PHELPS COUNTY FAIR

All events, entertainment and carnival rides included in the price of admission
www.phelpscountyfair.com

Check us out on facebook!

Chris Scott and The John D. Hale Band are playing on Friday, August 2

July 31 - Aug. 3, 2019

Gooseneck and Winchester Star Pipe Cattle Trailers
the best in the business
HERE AND READY!!!!

Starting at **\$9,685**

Cowtown USA
 I-44 Exit 203 • 413 Daniels Rd.
 Cuba, MO • 573-885-6300
www.cowtownusainc.com

FREE GERMAN SHEPHERD MIX: Male, neutered, utd shots, smart, loves retrieving and great protection, obedience trained, 2 1/2 yrs old. Falcon, 630-687-0705.

AUCTION REMINDER: Online Sale. ends Tuesday, July 24th, 12:30p.m. Atterberry Auctions. Please see our Auction Directory for more information.

WANTED: Small, 4-cyl Chrysler car, 1995 or below. Must have good body, doesn't need to run. 636-584-9476.

PARAKEET CAGES: \$30 EACH. 417-646-8807.

AUCTION REMINDER: Kilmer Farm Equipment Consignment Auction. Saturday, August 31st @ 10am. Wheeler Auctions. Please see our Auction Directory for more information.

AUCTION REMINDER: Living Estate Auction, Friday, July 26th at 10am. Easterly Auction Company. Please see our Auction Directory for more information.

METAL DETECTOR: \$125 or trade. 573-327-9068.

1967 JD 30/20 GAS TRACTOR: \$3,950. 417-241-0006. Conway.

WANT TO BUY JOHN DEERE TRACTOR: Diesel in need of repair, 60-100HP. Call 573-768-0068.

AUCTION REMINDER: Saturday, July 20th, 9am. Brehe Auction. Please see our Auction Directory for more information.

24HP ZERO TURN MOWER EXMARK: 4ft mower deck hydraulic drive. \$2,500. 15.5 hp riding mower, 38in cut. \$400. 636-239-4124.

CRAFTSMAN RIDING MOWER: Good Tires, Deck etc. needs motor. Only \$195/ mower trade. 573-364-7465.

417-532-6631 www.wheelsimple.net

Oil changes too!

WHEEL SIMPLE TIRES

WANT TO GET AHEAD? GET SOME TRACTION!

2410 Evergreen Pkwy, Lebanon (next to Heartland Antique Mall)

MIDWEST CONSTRUCTION
 Free Estimates!

- Pole Barn • Garages • Framing
- Remodels • Roofing • Concrete
- Decks & Porches

Contact Abner Glick
417-664-1794

AUCTION REMINDER: Personal Property Auction. Saturday July 20th @ 10am. Easterly Auction. Please see our Auction Directory for more information.

HEAVY DUTY WALKER: 400 lb rated, brand spanking new, large seat/storage, four 7" pivoting wheels, hand brakes. \$200. 417-686-0032, Ava.

Over 500 Vehicles To Choose From

MARKDOWN SAVINGS!!!



2019 Chrysler 300
AWD, Limited, Heated/
Cooled Leather, 15K miles
P-7893 **\$27,495**



2019 Chrysler 300
Limited, Heated/Cooled
Leather, 26K miles
Sunroof, Navigation
P-7898 **\$26,495**



2018 Chrysler 300
Limited AWD
V6, Heated/Cooled Leather,
Dual Sunroof, Navigation,
Safety Tec Plus, 24K miles
P-7939 **\$25,495**



2019 Chrysler 300
Limited
V6, Heated/Cooled
Leather, 20's, 19K miles
P-7900 **\$25,995**



2019 Dodge
Challenger RT
5.7 Hemi, 8 Spd. Auto, 18K miles
P-7461 **\$29,995**



2018 Dodge
Challenger
SXT, V6, 26K miles
P-7891 **\$24,495**



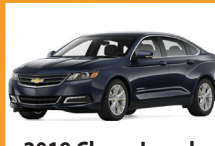
2014 Cadillac XTS
Luxury, Navigation,
Sunroof, 35K miles
P-15032A **\$19,800**



2019 Chevy Impala
LT, V6, 28K miles
P-7863 **\$21,000**



2016 Chrysler 300 C
V6, AWD, Heated/Cooled
Leather, Dual Sunroof,
Navigation, 67K miles
P-14899A **\$17,995**



2019 Chevy Impala
Lt, 20K miles
P-7865 **\$21,500**



2016 Ford Fusion
Titanium, AWD, 2.0 EcoBoost,
Navigation, 7K miles
P-7899A **\$20,995**



2018 Dodge
Challenger SXT
V6, 35K miles
P-7921 **\$23,495**



2014 Ford Mustang
V6, Auto 60K miles
P-7798A **\$12,700**



2014 Dodge
Challenger SXT
V6, Redline, Leather, 20's, 16K miles
P-14808A **\$20,995**



2017 Chrysler
Pacifica LX
V6, 8 Pass, Seating, 14K miles
T-14909A **\$21,495**



2019 Dodge Grand
Caravan GT
Leather, Navigation, 28K miles
T-7909 **\$24,495**



2018 Dodge Grand
Caravan
SE Plus, 43K miles
T-7908 **\$18,995**



2019 Chrysler Pacifica
Limited, Heated / Cooled Leather,
Navigation, Safety Tec, Hand Free
Doors & Liftgate, 14K miles
T-7960 **\$35,495**



2016 Jeep Grand
Cherokee
Laredo, 4x4, 27K miles
T-14526A **\$24,995**



2019 Dodge Grand
Caravan
SXT, Leather, 23K miles
T-7864 **\$23,000**



2014 Jeep Cherokee
Trailhawk, 4x4, V6, Leather,
Sunroof, 37K miles
T-7905 **\$19,800**



2018 Jeep Grand
Cherokee
Limited, 4x4, Htd Leather,
Navigation, 19K miles
T-7812 **\$31,500**



2018 Jeep Grand
Cherokee
Limited, 4x4, Htd/Cld Leather, Dual
Sunroof, Navigation, 23K miles
T-7838 **\$32,600**



2017 GMC Terrain
SLE, FWD, 19K miles
T-7867 **\$18,500**



2019 Jeep Cherokee
Lat plus, 4x4, 4 Cyl,
22K miles
T-7953 **\$23,495**



2016 Jeep Cherokee
Trailhawk; 4x4; V6; Heated
Cloth; Navigation; 42k miles
T-14705A **\$23,400**



2017 GMC Terrain
SLE, FWD, 16K miles
T-7780 **\$17,800**



2019 Jeep Cherokee
Trailhawk, 4x4, V6,
Heated Cloth, Only 3K miles
T-15006A **\$29,495**



2019 Jeep Compass
Limited, 4x4, Heated
Leather, 19K miles
T-7892 **\$23,995**



2019 Jeep Compass
Limited, 4x4, Heated Leather,
23K miles
T-7914 **\$24,995**

LINDSAY

CHRYSLER/DODGE PRE-OWNED

*Some actual photos not shown.

EXPLORE OUR USED INVENTORY AT WWW.LINDSAYCHRYSLERDODGE.COM



**2017 Jeep Wrangler
Unlimited**
Sport, 4x4, Auto, Hard Top,
25K miles

T-14916A **\$19,495**



2016 Jeep Renegade
Latitude, 4x4,
Heated Cloth, 6k miles

T-14904A **\$20,495**



**2018 Jeep
Grand Cherokee**
Limited, 4x4, Htd/Cld
Leather, Dual Sunroof,
Navigation, 24K miles

T-7848 **\$33,400**



**2016 Toyota
4 Runner**
SR5, 4x4, Leather, Sunroof,
Navigation, 93K miles

T-14759A **\$24,500**



**2018 Jeep
Grand Cherokee**
Overland, 4x4, Htd/Cld Leather,
Dual Sunroof, Navigation,
Trailer Tow Grp IV, 22K miles

T-7849 **\$36,500**



2015 Chevy Traverse
LT, FWD, 42K miles

T-14939C **\$20,495**



2018 Jeep Grand Cherokee
Summit, 4x4, V6, HD/CD
Leather, Navigation, Dual
Sunroof, Loaded, 22K miles

T-7847 **\$37,800**



2018 Chevy Trax
LT, AWD,
6K miles

T-14789A **\$19,495**



2015 RAM 1500
Quad, 4x2, SLT, Hemi,
20's, 66K miles

T-7714B **\$18,500**



2015 Ram 3500
Crew, 4x4, 6.4 Hemi, 10'
Besler Haybed, 37K miles

T-14852A1 **\$35,900**



2018 Ram 3500
Reg Cab, 4x4, Diesel,
Chisholm Haybed, 3K miles

T-14946A **\$49,000**



**2016 Nissan
Frontier**
Crew, 4x4, Pro - 4X,
47K miles

T-14792A **\$25,995**



2018 Ram 2500
Crew, 4x4, SLT, 5.7 Hemi,
14K miles

T-7956 **\$36,995**



2019 Ram 1500 Classic
Crew, 4x4, Big Horn, Hemi,
Navigation, Sunroof, Rambox,
17K miles

T-7936 **\$34,495**



2018 Ram 2500
Crew, 4x4, SLT, Diesel,
Auto, 35K miles

T-7854 **\$41,400**



2018 Ram 1500
Quad, 4x4, SLT, V6,
22K miles

T-7806 **\$24,800**



2018 Ram 1500
Quad; 4x4; SLT; V6;
15K miles

T-7794 **\$25,500**



2019 Chevy 1500
Dbl Cab, 4x4, V8, LT,
26K miles

T-7852 **\$30,600**



2018 Ram 1500
Quad, 4x2; SLT; V6;
26K miles

T-7793 **\$22,000**



2019 Ram 1500 Classic
Crew, 4x4, Big Horn, Hemi,
9K miles

T-7937 **\$32,995**



**2007 Dodge
Dakota**
Quad; 4x4; Laramie; V6;

T-14757B **\$10,495**



**2009 Dodge
Journey**
SXT; V6; 3rd Row Seat;

T-14800A **\$6,300**



2010 Dodge Nitro
Heat, 4x4, Sunroof; 20's,
112K miles

T-7765 **\$9,400**



2013 Dodge Journey
SXT, AWD, V6, 86K miles

T-7766 **\$9,800**



2011 Dodge Nitro
Heat, 4x4, V6, Sunroof,
74K miles

T-7955 **\$10,995**



2006 Chevy HHR
LT, Leather, Sunroof,
124K miles

T-7771 **\$3,900**



**2012 Hyundai
Veloster**
6 Spd, 126K miles

P-7930 **\$7,995**



2014 Nissan Versa
S, 105K miles

P-7786 **\$6,900**



**2011 Dodge Grand
Caravan**
Mainstreet, DVD

T-7861A **\$7,495**



**2014 BMW
S 1000RR**
11K miles

T-78882B2 **\$10,000**

573-336-2698

809 MISSOURI AVE. • ST. ROBERT, MO

OPEN 8 A.M. - 6:30 P.M. MON.-FRI. & • SA T. - 9 A.M. - 5 P.M.

SMALL SQUARE BAILS OF HAY: Alfalfa & Alfalfa mix. Call for prices. 417-345-5634.

JOHN DEERE 4240: Diesel Tractor, cab and air, power shift, 3900 hours, very nice. \$29,500. 573-765-4406.

70'S AERIAL PHOTO OF HUMANSVILLE: \$25. 417-321-1928.

AUCTION REMINDER: Estate Coin Auction. Sunday, June 21st @ 1pm. Nance Auction. Please see our Auction Directory for more information.

JOHN DEERE 337 SQUARE BALER. \$1,950. 573-765-4406.

AUCTION REMINDER: Public Auction Saturday July 20th at 10 am. Knight Auction. Please see our Auction Directory for more information.

We Specialize in Selling Agricultural and Recreational Farms!

CALL US TODAY!!!

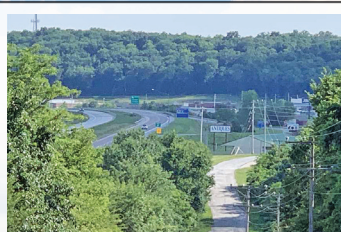


MOSSY OAK®
PROPERTIES
OF THE HEARTLAND
Land & Lakes Properties
America's Land Specialist

Rolla Office:
12647 S. Hwy 63, Rolla
573-308-4868

Cole Camp Office:
14981 Centerline Ave
Cole Camp
660-668-4868

MOlandandLakes.com
660.668.HUNT



Benton Co-88 Acres • \$239,000

This is a great development or commercial tract located by the city of Warsaw's city limits. Black top road along the north side of the property, and 65 Hwy is also all along the northern boundary. There is electric on the property as well. Call Mike Stoner at 573-774-9775



Benton Co-10 Acres • \$42,000

With unfinished cabin just S of Cole Camp. With a little work to finish the cabin, this property will provide you with a peaceful oasis nestled among the mature hardwoods. There are 2 ponds on the property one of which was stocked several years ago. There is an abundance of deer sign on the land. Could be your build site! Call Pamela Dempsey 660-553-8677



Johnson Co-90 Acres • \$499,990

Looking for your own potential crop or hay ground? This property has a beautiful area for a potential home site. This parcel is fenced on 3 sides, ready to be finished if needed. Current owners are utilizing ground for hay crops. There are two small ponds on the property. Could be used to run cattle also. No utilities are currently on the property. Close to Warrensburg, Concordia & Higginsville. Call Aleshia Gillespie agent 573-552-5401

DURABILT 10 WHEEL FOLDUP RAKE: \$1,750. 573-765-4406.

SAM MILLERS LOGGING looking for standing timber. Oak, Walnut, Sycamore, Hickory. 417-589-0346.

CLARINET: with case. \$125 or trade. 573-327-9068.

40 ACRES: Partially cleared, near Ellington, MO, well/electric on property/hwy frontage. \$68,200. 573-210-0595, 573-637-2450.

AUCTION REMINDER: Auction, Monday, August 3rd, @10am. Rick Dixon Auction. Please see our Auction Directory for more information.

550 OLIVER TRACTOR: Industrial, low hours. \$4,500. 500gal CROP SPRAYER, Needs pump, \$700obo. 573-301-2148.

LOOKING FOR Old Cotton Feed Sacks to finish quilts: prints or solids. 573-689-2490.

NEW AIR CONDITIONER: 8,000 BTU. Cash or trade for gun. \$200. 417-340-7890.

CASE 580C: Diesel backhoe, Loader. \$8,850. 573-765-4406.

AUCTION REMINDER: Online, Wednesday, July 24, 12:30p.m. Atterberry Auctions. Please see our Auction Directory for more information.

2 MALE PEACOCKS: \$50each. Kirkwood, 314-489-2614.

RURAL HOMEOWNER NEEDS Handyman Assistance. Conway area, 417-733-2818.

CHECKERED WALNUT WOOD STOCK PISTOL GRIP: for Marlin Model 336 or 1895. \$100. Washington. 636-239-2695.

CONSTRUCTION: Excavation, Brush hogging, Southern Contracting, LLC. FREE ESTIMATES. 417-718-2301.

30HP FARM PRO TRACTOR: Only 275 hours! Diesel, 4wd, canopy, wheel weights, front-end loader, brush-hog, tiller, hay-rake. \$11,000. Anne-573-747-8090/David-573-598-4639.

HUGE NEW MISCELLANEOUS ITEMS for sale. Skidsteer, trailer tire wheel combos, truck grader, semi tires x8, Official Little League World Series Baseballs. \$10 each x5. Baseball display cubes. \$5 each. CB's & CB accessories, Coca-Cola Glasses & mugs. Call 417-276-2435.

NEW HOLLAND: 1411 diskbine. \$7,250. 573-765-4406.

CUSTOM SAW MILLING: Lebanon. 417-533-4607, 417-664-1195.

2004 OPEN RANGE FIFTH WHEEL CAMPER: 34', all weather, in good condition. \$10,500. Lebanon, 417-718-5520.

FIREARMS: Professional Repairs and Restorations. Baron's Gunsmithing. 573-363-5801, Camdenton.

GROW LIGHT: Large metal, all growth spectrum, shop-lite style. \$100obo. Rolla, 928-514-0505.

ANGUS CATTLE HERD: 35 cows, calves, 10 yearlings, 2 bulls. 417-924-2080/417-924-2122, Mansfield

VEGETABLES. Burpless Cucumbers, Tomatoes, Sweet & Mild Chili Peppers, Yellow Squash. **CHARLIE'S FARMS,** Mile West Rt 66, Lebanon.

IHC 886 DIESEL TRACTOR: cab and cold air, T.A, \$12,500. (573)765-4406.

We Buy White Oak Logs!

**Independent Stave Company
welcomes all white oak suppliers!**

- ✓ Top prices for your logs
- ✓ Experienced log buyers
- ✓ Professional service

www.independentstavecompany.com

Chad Cook | Salem Wood Products

417.718.2950

5 miles north of Salem, MO on Hwy 19



MICROPHONES BEYER MODEL TGX280: Shure Model BG-10, perfect condition. \$35each. Fair Play, 417-399-6687.

AUCTION REMINDER: Sat. July 27th, 9:30AM. Voorheis Auction & Realty. Please see our Auction Directory for more information.

ROUND BAILS OF HAY: Grass, clover, and alfalfa's mix. All cut before June. Put up/dry. 250 bails \$50 each. 417-345-5634.

SACAGAWEA GOLDEN DOLLARS: Face value \$1. Original issue 2000, uncirculated. In rolls of 5. \$30. 417-686-0032, Ava.

BRUSHOG 8FT OFFSET DISK. \$2,500. 573-765-4406.

GENT'S VINTAGE WATCH COLLECTION: Over 40 Classic models. \$150. 573-764-3517, call in pm.

DYNO CHARGE 990 ELECTRIC FENCER: Solid state for 20 miles. \$50. 636-239-2695.

AUCTION REMINDER: Real Estate & Public Auction, Thursday, June 25th at 9:30 am. Chupps Auction. Please see our Auction Directory for more information.

BASS GUITAR: Global. \$75. Warrenton, 636-297-1747.

2001 19FT DUTCHMEN TRAVEL TRAILER: very clean, everything works. \$4,200. 417-345-5634.

FENCING: Commercial/Residential/Ag, Southern Contracting, LLC. FREE ESTIMATES. 417-718-2301.

2 PLASTIC CULVERTS: Double-lined, 18"x20", new \$200each. Used \$150for both. Preston, 417-722-1252.

WANTED, TIMBER TO LOG ON SHARES: Honest, reliable, references. 417-533-4607, 417-664-1195.

BEILER FENCING: New, clean, repair. Call us for an estimate. 417-217-2755.

AC 840 DIESEL ARTICULATING 4-WHEEL DRIVE LOADER: \$7,250. 573-765-4406.

POOL TABLES: Installations, moves, recoveries, repairs, accessories, etc. 573-646-1700.

TRUCK LOAD OF FLEA MARKET & AUCTION ITEMS: \$200, trade wood or gun. 573-327-9068

Rotating Hay Carriage



Cowtown USA • 1-800-258-6898

I-44 & Hwy F • Exit 203 • Cuba, MO

View At cowtownusainc.com - See Video

REGISTERED HEREFORD & ANGUS BULLS: Home raised, Some Show-Me Select Qualified. 573-701-7828. Belgrade

FORD JUBILEE INDUSTRIAL FRONT LOADER: Wide front, 3pt, runs and stops, power steering not working. \$1,800. Rogersville. 417-753-2747/417-766-1991.

LEBANON HISTORY BOOK-A PART OF OUR LIVES, 1949-1976. \$10. 417-532-2045.

WANTED RANCH-HAND: fencework, machinery maintenance hay and cattle, hardwork, dependable, honest, full-time, must furnish references. Aurora, 417-818-2265.

4 RAT TERRIER PUPS: 15 weeks old. \$50. Must go! 417-754-1174, Dunnegon.

LIKE NEW: 1994 Winchester Big Bore lever action rifle, 375 caliber. \$1,200. 573-218-9231, Farmington MO.

PUREBRED AIREDALE PUPS: 8 wks old, first shots, family raised. \$500. 573-280-3276, Barnett.

LARGE QUANTITY DVD'S: Like new, Excellent condition. \$2 each or \$200 all. Rolla, 928-514-0505.

OMAR'S LOGGING: Oak and Walnut, excellent prices, Amish owned and operated. 417-741-0440, leave message.

NEW HOLLAND 320 SQUARE BALER: \$2,950. 573-765-4406.

FANEX 5231 4-BASKET HYD FOLD TEDDER: Nice, \$4,350. 573-765-4406.

1995 GOLDWING: Ultimate road bike. One owner. \$3,250. 417-399-6383.

2018 TOYOTA 4-RUNNER: TRD off-road package, 30,000 miles. 573-945-2206.

1964 HONDA TWIN: Needs minor repair. \$300. 417-679-4355.

10 BLACK/WHITE FACE BRED HEIFERS: due to calve end of October, pelvic and pregnant checked, de-wormed, all shots, bred to registered low birth weight black Angus bull. \$1,600/each. 573-229-4636 or 573-301-7471.



Payments this low add up to a lot of work getting done.

The L2501DT was built to handle any job with ease. And get it done right. Available now with payments so low that putting it to work is anything but a burden. Visit us today.



Kubota
Shape your world.

\$139 A MONTH **84** MONTHS

Farm Equipment Sales Inc

909 E Karsch
Farmington, Mo 63640
573-756-4121

KubotaUSA.com

© Kubota Tractor Corporation 2019. 0% APR, 20% down, financing for 84 months on purchases of new Kubota L2501DT w/R4 tires from participating dealers in-stock inventory is available to qualified purchasers through Kubota Credit Corporation USA, subject to credit approval. Example: 84 monthly payments of \$11.90 per \$1,000 financed. Example amount based on sales price of \$14,595. Each dealer sets own price. Prices and payments may vary. Offer expires 6/30/19.



ROXOR
OFFROAD



Cowtown USA
CUBA, MO
573-885-6388



NEW MAHINDRA ROXOR FRESH OFF THE ASSEMBLY LINE!!

- Steel Body no plastic to break
- 5 Speed Manual Transmission no belt to break
- Fully-boxed, ladder construction, steel truck-style frame
- Turbo Diesel 4 cycle engine which produces 144 ft lbs of torque and 3490 lbs of towing capacity to get your jobs done. • Made in Detroit
- 3 YEAR WARRANTY OR 12,000 MILES • Starting at \$15,999
- **MADE IN THE USA**

Visit us at www.cowtownusainc.com

HANDYMAN SERVICES: Complete Home Services, Concrete, Wood Privacy Fences, Wood Decks, Roofing, Exterior Painting. 417-589-0121 ask for Chester, or 785-488-6002.

LIONEL TRAIN SET: Steam engine, tender, caboose and other car, track and transformer. \$195. 573-364-7465, Rolla.

AWESOME 06 F150 LARIAT: Crew, 4x4, loaded, sunroof, 180,000 miles. \$9,750. 417-399-6383.

16" ALUMINUM JEEP WHEELS AND TIRES: \$199. Farmington, 573-218-9231.

NEW 32' & 36' EZ HAUL HAY TRAILERS IN STOCK



32' \$4,895
36' \$4,995

Like Us On **facebook**

JIM'S Motors
TRAILERS

TRUCKS and TRAILERS
Great Service! Great Prices! Since 1957

I-44 at Exit 208 • Cuba, MO
www.jimsmotors.com
(800)897-9840

2 NEW MARINE BATTERIES: Large with cases. New. Buy 1 get 1 Free! \$125 both. Rolla, 928-514-0505.

G-3 2013 BASS BOAT: 70hp Yamaha 4-cycle motor, trolling motor 55lb thrust, w/trailer, 30gal live well. \$14,500. 573-291-9808.

PINE LOG SIDING SALE: \$1.19 per L.F. www.pineridgerustic.com 573-729-7226, 573-247-2823.

ALLIS 6080 DIESEL TRACTOR: Cab and cold air, 3700hrs, nice. \$14,950. 573-765-4406.

2017 FOREST RIVERS RV: 28', Queen bed, 2 bunk beds, sleep couch. Also free lot in Cherokee Village, Arkansas with sale. \$18,000. 417-741-9523.

JOHN DEERE 2640: Diesel tractor, Canopy, 70HP. \$8,500. (573)765-4406.

2007 ROCKWOOD ULTRA-LITE CAMPER: 33ft, w/slide-out. \$10,500. 417-426-5826.

IHC 684 DIESEL TRACTOR: 67 hp, w/ loader. \$9,500. (573)765-4406

BARN WOOD SIDING: 8" & 10" wide. 573-729-7226. www.pineridgerustic.com

MTD 5HP WOOD CHIPPER: needs carb work. \$175. Farmington, 573-218-9231.

KRONE 9FT 3PT DISK MOWER: very nice. \$6,100. 573-765-4406.

PUG PUPPIES: 12wks old, AKC Registered. \$900. 417-458-1424.



DG Lumber Has Summer Specials On Complete Buildings Installed On Your Level Site

Our "Deluxe Garage Package" Includes:

24' X 40' Building Includes 2 Overhead Doors – Soffit – Wainscoting – 12" Overhang – Service Door – Heavy 29 Gauge American Made Metal – Choice Of Colors

\$8,250 Other Options & Sizes Available

OPEN MONDAY – FRIDAY 8 – 5 – CLOSED ON SUNDAYS

LOCATED JUST 2.5 MILES NORTH OF NORWOOD MO OFF HWY 60 • 2440 S. HIGHWAY E • 417- 259-0994 • RETAIL AND WHOLESALE LUMBER SALES
WE ACCEPT CASH OR CHECK WITH PROPER ID • AMISH FAMILY OWNED & OPERATED

AUCTION REMINDER: Saturday, Aug 3rd @ 10am. Gary Sexton Auctions. Please see our Auction Directory for more information.

WR CASE & SONS Cookbook & Historical Companion. \$7.50. 417-532-2045, Lebanon.

190 Allis: Sheet metal in good condition, diesel, good tires. \$4,295 OBO. 573-263-2732.

ADORABLE ACA REGISTERED LAB PUPPIES: yellows, blacks. Ready NOW, up-to-date shots, wormed. \$250. Hartville. 417-741-2198.

DARDEN PROFESSIONAL TIMBER HARVESTING, BUYING STANDING TIMBER: Great prices, improve wildlife habitat and improve forest health. State Certified & Fully Insured! 573-247-4808 or 573-739-1122. Salem

AUCTION REMINDER: Online, Land & Home Auction, Thursday, Aug 1, 12:30p.m. Atterberry Auctions. Please see our Auction Directory for more information.

AUCTION REMINDER: Public Auction Wednesday, July 27th at 9:30am. Sam Crawford Auction Service. Please see our Auction Directory for more information.

2010 LAYTON SKYLINE 5TH WHEEL: 31Ft, large slide-out, 4 new tires, excellent condition. \$11,000. 573-729-4275.

NEW OR USED MOBILE HOMES - Tuffy at Amega in Ashland, 30 years experience, can get you anything you want. He has a used buyer to find what you want. Call now 573-657-2176 amegamobilehomes.com

WEIRD MISSOURI TRAVEL GUIDE BOOK. Missouri's local legends and best kept secrets. \$10. 417-532-2045, Lebanon.

MODULAR STOCK SALE - It is time to move our inventory. TRUE MODS - Save Thousands. Call Marla, better than 20 years experience. 573-657-7040, chateauhomes.net.

HOUSE FOR RENT: 3 bedroom 2 bath, new carpet. 417-664-8781. Lebanon area Great Pyrenees for sale

150HP EVINRUDE STARTER: Refurbished, fits other Evinrude, Johnson and other outboards, PN586957-06big. \$195. Rolla, 573-364-7465.

BELTED GALLOWAY CROSS CATTLE: heifers and bred cows, beautiful, gentle, lost rental farm having to down-size. 573-291-6695/573-764-2707.

DOUBLE GRASS BAGGER: For a Series 100 John Deere Lawnmower. \$150. 417-457-1023.

AUCTION REMINDER: Saturday, July 20th @ 10am. Berti Auction. Please see our Auction Directory for more information.

SEARS CRAFTSMAN 12" CONTRACTOR SERIES COMPOUND 3 1/2HP MITER SAW: w/adjustable aluminum table. Works great! \$175. 417-718-5347.

DAEWOO FORKLIFT

Model GC25S-2

Serial No 06-02352

- Propane
- Hook attachment
- Everything works great
- Always kept in a building

Call for more information!

417-532-9131 • LEBANON



GOLD'S GYM EXERCISE BIKE: Hardly used. \$100 or best offer. 417-664-1862.

FIBERGLASS TOPPER for long bed pickup. \$150. Rolla. No answer, Record, 573-364-8305.

LEWIS CATTLE OILER: See us at Laclede County Fair and Ozark Empire Fair. 417-286-3540 or 774-696-2344.

AUCTION REMINDER: Cattle Sale every Monday at Noon. Salem Livestock. Please see our Auction Directory for more information.

100# PROPANE GAS CYLINDER: 24 gallon with regulator and cap. \$50. Conway, 417-718-5347.

AUCTION REMINDER: Farm & Estate Auction. Friday July 19th @ 9am. Nance Auction. Please see our Auction Directory for more information.

AUCTION REMINDER: Cattle Sale every Monday at Noon. Salem Livestock. Please see our Auction Directory for more information.

WANTED: Logging help. 417-733-2987

CUISINART ELECTRIC PRESSURE COOKER 600 SERIES W/MANUAL: High/Low Pressure, browns, sautes, simmers. Like new. Used twice. \$75. Conway, 417-718-5347.

CLUB CAR/GOLF CART for sale: gas, Rally wheels/lift kit. \$2,000. 417-718-4937.

CALL FOR MOBILE HOME QUOTE - Anything you are interested in! New/Used we can get it. Call 573-499-9993 columbiadis-counthomes.com

CROWN

Power & Equipment

SERVING YOU IN 8 LOCATIONS!

HAY

New Holland H7230 Roller Discbine **\$15,900.00 EL**
 Massey Ferguson 2756 5x6 Baler, Net **\$7,500.00 EL**
 New Holland H7550 Disc Bine 13' Flail Center Pivot **\$18,150.00 EL**

TRACTORS

Ford 3000 Tractor..... **\$4,290.00 EL**
 Massey Ferguson 135G Tractor **\$3,750.00 EL**
 Kubota B7200 HST 4WD **\$2,750.00 EL**
 Case IH 695 Tractor w/ Loader **\$9,500.00 EL**
 Agco Allis ST45 Tractor, 4WD, w/ Loader **\$15,950.00 EL**

Eldon, MO

3369 Hwy 52 W. • 573-392-0230

www.crown-power.com

Sales: (Ag) Gene Klein and (Ce) Chris Scott

MISCELLANEOUS

Allis Chalmers Disc **\$1,045.00 EL**
 Kubota ZG332 72" Deck, Zero Turn, 345 Hours, **\$5,950.00 EL**
 61520 BHZT220 Mower Zero Turn Bush Hog..... **\$2,950.00 EL**
 KMC House Cleaner **\$5,500.00 EL**
 Case IH 2388 Combine 4x4..... **\$58,000.00 EL**
 Sidewinder 7 Ft Pull Cutter **\$1,250.00 EL**
 Red Line 24' Harrow Manual Fold..... **\$3,500.00 EL**

CONSTRUCTION

John Deere 410K Backhoe, 4WD, Cab, 3011 Hours..... **\$64,350.00 EL**
 Kubota SVL95 Cab, Air, 750 Hrs..... **\$53,900 EL**
 Kubota KX057 Excavator Cab, Thumb, 550 Hrs **\$63,600.00 EL**

CASE IH
 AGRICULTURE

AUCTION REMINDER: Public Auction. Saturday, July 21 at 12pm. Glenworth Auction. Please see our Auction Directory for more information.

Visit www.myweeklytrader.com each week for the latest issue!

CAT D6C 10K1855: 1969 Model, excellent condition, good under carriage. \$23,500. 573-378-5180.

1890 OPTOMETRIST COMPLETE KIT: 250 lenses, German + English Eye Charts, leather case. \$200. 573-764-3517, call in pm.

DOUBLE SET OF WHEEL CHOCKS: Color is Safety Yellow. \$30. 636-239-2695, Washington

CHEVY TRUCK: 1969, 30 Model, Dually, grain box, hoist, stock racks. 47,330 actual miles. \$3,700. Rogersville. 417-753-2747/417-766-1991.

NEW HOLLAND 451 SICKLE MOWER: 7FT, 3PT. \$875. 573-765-4406.

20FT ALUMINUM PONTOON AND TRAILER: no interior or motor, good for boat dock. \$1,900. 314-779-5815.

2010 CASITA SPIRIT DELUXE: 17' Travel trailer. Very good condition. \$8,900. West Plains, 417-257-0121.

PREGNANT SOWS: \$175. Weaned piglets. \$25. Rabbits & Ducks. \$5. Nubian Bucks. \$50. Does. \$100. Miniatures mare. \$100. Miniature spotted jacks. \$75. Registered Arabian Horses. Raymondville, 573-548-0219.

2007 CHEVY COBALT: 2DR, 4cyl, 5speed manual, 77,000mi, one owner, great mileage, always garaged, excellent condition. \$4,000 firm. Rolla, 573-578-3248.

WANTED CUT STOCK, Cants, Slabs,
trees length + 45" long scragg blocks. 417-
650-0402.

**JOHN DEERE 310A DIESEL BACKHOE
LOADER:** \$8,850. 573-765-4406.

1890 SOUTH BEND GRAIN SEEDER:
Shoulder held, wood w/iron gears. \$100. 573-
764-3517, call in pm.

**BOBCAT 853 DIESEL SKID STEER
LOADER:** Cab, 58hp. \$8,950. 573-765-4406.

SLIDE-IN PICK-UP FUEL TANK w/elec-
tric pump, 100 gallon, good condition. \$400.
417-646-8807.

WANTED: NH 488, 9ft haybine, in very good
to excellent condition, call 573-363-5473.

METRO MOTORS INC. R.V. SALES

**NEW GREY WOLF, CHEROKEE & ROCKWOOD!
GREAT SELECTION OF NEW & PREOWNED RVs**

•2018 129 Rockwood A-Frame	\$12,900	•2019 16BHG Geo-PXO Trailer	\$17,500
•2019 214 HW Rockwood A-Frame	\$14,900	Loaded.....	
•2018 82975 Rockwood 5th Wheel	\$37,900	•2019 26RR Greywolf Toy Hauler	\$19,900
4 Slide-outs, front living roomCLOSEOUT PRICE!		•2019 18KGB Wolf Pup Toy Hauler	\$14,900
•2019 19R00 Rockwood	\$18,500	•2019 1940LTD	\$9,900
Hybrid, Loaded		Pop-up, Loaded	\$9,900
•2019 16FQ Wolf Pup Trailer	\$12,900	•2019 1640ESP	\$9,900
•2019 16VHS Wolf Pup Trailer	\$12,900	Pop-up, Loaded	\$9,900
		•2019 2650 Rockwood 5th Wheel	\$36,900
		3 Slide-outs, Loaded	

"Where Your Satisfaction Really Counts"

2727 S. Campbell - Springfield, MO - Visit our website at www.metro-motors.biz

417-882-6800

52.64 ACRES: \$99,900. Abundant Deer &
Turkey, ATV Paradise. Will divide Acreage.
30 acres w/year round creek through the
center. \$2,400 per acre. 20 acres. \$2,100 per
acre. Approximately 9 acres County Road
access. \$2,000 per acre 2.5 miles from city
limits. Located Cadet, MO out of city limits,
quiet neighborhood. 573-438-2622.

NEW CANOPY FOR SMALL TRACTOR
for sale. \$250. 573-859-6574.

FLIES ARE HERE!! Lewis Cattle Oiler.
417-286-3540 or 774-696-2344.

**WOMEN'S APEX QUALITY GYM
SHOES:** White, pink and grey trim. Brand
new, reinforced stability plate, cushioned.
Paid \$143, \$75 firm. 417-686-0032, Ava

10 TASTE OF HOME Hardback cook-
books. \$2.50 each or all for \$20. 417-532-
2045, Lebanon.

Douglass Steel, LLC

Jct. MM & 60 Hwy | 11267
Dunn Dr. Mtn. Grove, MO
65711 (417)926-5589



All Types Structural Steel & Pipe - Culverts

Culvert • Continuous/Portable Panel • Pipe fence material
• Plate and Structural Metal • Heavy Duty Field Rollers •
Bargain square tube and pipe bundles \$.25 pound

WANTED: Tunnel Hull 16ft Landau jon boat,
ALSO 500lb Propane Tank, with pressure on
gauge. 573-512-2059.

**6 STRING ELECTRIC HARMONY GUI-
TAR:** pretty guitar, sunburst. \$75. Warrenton,
636-297-1747.

**THE WEST PLAINS, MO DANCE HALL
EXPLOSION BOOK.** \$10. 417-532-2045,
Lebanon.

IHC 1086 DIESEL CAB&AIR TRACTOR:
New rear rubber. \$8,400. 573-765-4406.

ALL NEW CABINET COUNTERTOP:
Small sink, 24x60. \$100obo. Mtn View, 801-
592-6301.

**You pull it,
we sell it...
CHEAP!**



Lebanon, MO
22395 Rt. 66
417-588-3555
Fax 417-588-8955

Mon-Fri 8am - 6pm • Sat 8am - 4:30pm • Sun 9am - 4pm

WWW.SSUPULLIT.COM

Located next to S&S Recycling.



**We also have a large
inventory of used tires and
be sure to check out
our used car lot!**



Roll-off, Trailer, and Mobile Crushing Services Available

For All Your Metal Recycling Needs

Lebanon, MO

22395 Rt. 66 • 417-588-3555
Fax 417-588-8955

Mtn. Grove, MO

8930 First Rd • 417-926-3360
Fax 417-926-0180

Monday-Friday 8:00am-4:30pm (Closed 12pm-1pm Lunch)

Saturday 8:00am-Noon

email: contact@ss-recycling.com

Buyer of all types of scrap metal.

GREAT DANE AKC PUPS: s/w, micro-chipped, \$500 & up 417-859-0844. Marshfield, www.greatdanes4u.com

PULLABLE BBQ PIT : 52"LX30"D, 30"L fire box, 2 thermostats, 15" tires, double doors, 6"exhaust. \$2,000cash. Waynesville, 573-528-7317.

0% for 4 Years*

*with approved credit

Outdoor Wood Furnace

as low as **\$168** per month

HEATMOR MIDWEST

Licking, MO 65542
573-674-2962

LIVESTOCK WATERER: Big Husky, model 30. \$50. 417-753-2747/417-766-1991.

AUCTION REMINDER: Annual July Consignment Auction. Saturday, July 27th @ 9am. Wheeler Auctions. Please see our Auction Directory for more information.

CLIPPER SEED CLEANER: \$200. 417-646-8807.

40 PLUS OLD CAR MAGAZINES For Sale: 60's-80's Street Rodder, Hot Rod, etc. \$15 all. 417-457-1023.

SCENIC DRIVING OF THE OZARKS BOOK: 317 pages. \$8.50 417-532-2045, Lebanon.

KUSTER LOGGING

BUYER of Standing Timber Oak and Walnut

Dozing Now Available

417-259-0047

References Available



REFURBISHED CLASSIC POP-UP CAMPER. \$750, JD-165 Lawn tractor, \$250. Vienna, 573-759-7143.

AUCTION REMINDER: Every Wednesday at 10:30 am. Farmington Livestock. Please see our Auction Directory for more information.

LIKE NEW: 2002 Springfield Armory MI Garand Tanker 30.06. \$1,400. 573-218-9231, Farmington, MO.

AUCTION REMINDER: Farm Auction. Saturday, July 20 @ 10AM. Wheeler Livestock. Please see our Auction Directory for more information.

TRUCK, TRAILER, AND SEMI TIRES

on sale now!

IRONMAN TIRES

YOKOHAMA

MASTERTRACK

FALKEN TIRE

LETTERMAN TRIPLE T REPAIR, LLC

TRUCKS, TRAILERS, & TRACTORS

417-630-2249
417-664-0829

MASTERTRACK Trailer Tire (265/75/16)
10-Ply • Mounted **\$121.44***

YOKOHAMA (295/75/22)
5Ry617 • Steer **\$419.00***

FALKEN AT3 Wild Peak (265/75/16)
..... **\$150.00***

Ironman 1208 Drive Tire
Close Shoulder • 11R22.5 **\$293.76***

739 Honey Locust Rd. • Niangua, MO 65713

*Tax not included

WINCHESTER AMMO: 32 Cal long, round nose, 50 rounds. NIB. 1 Box \$20. 816-803-1834.

PRIVATE GUN COLLECTION: 417-664-3222.

MCDERMOTT POOL CUES: with cases. 573-315-7030. Bismarck

2014 GOOSENECK BRAND STOCK TRAILER: 24ft, low miles. 573-255-3340.

GREAT PYRENEES ANATOLIAN GUARD DOG PUPPIES: Born and raised with sheep. Born June 20th. Taking orders now. \$150. 660-337-6650. No Sunday calls. Fortuna.

AUCTION REMINDER: John Bill Greer Trust Auction. Saturday, July 27th @ 10AM. Case Auction. Please see our Auction Directory for more information.

1994 GMC TOPKICK CRANE TRUCK: Cat motor, w/1988 12.5 ton JLG Crane. 76ft tip height, 118 w/jib 8LL transmission. \$34,000. Mtn Grove. 417-259-0772.

Buildings • Hunter's Cabins • Lawn Furniture

JAMCO BUILDERS

JAMCO Portable Buildings

800-688-2064 • 307 Enterprise Dr. • Seymour, MO • www.jamcobuilders.com

Rent To Own Plan



JACK'S FORK RIVER KIKOS HERD for sale: AKGA registered, 5 Bucks, 7 Doelings, 16 Does including polled. Summersville, 703-595-7358.

NEW HOLLAND 617 DISK MOWER: 9FT. \$3,950. 573-765-4406.

VILLA HOMES IN ROLLA: Has NEW and USED Mobile Homes. Call David for info: 573-578-8072.

8 PRE-SMOKED BRIAR PIPES + HANGING PIPE RACK: Tobacco containers. \$60 all. 417-457-1023.

The Summer of Seeger

Smokin' Hot Used Car Sale

HIGHEST QUALITY IN THE AREA!!



7529D
**2014 FORD
F150**
\$29,888

7484A	2013 TOYOTA PRIUS.....	\$13,988
7291A	2017 HYUNDAI ELANTRA.....	\$13,988
P9537A	2017 FORD FOCUS.....	\$17,988
7548A	2013 SUBARU XV CROSSTREK.....	\$13,588
P9567A	2007 CHEVY CORVETTE.....	\$19,988
7805A	2012 TOYOTA RAV4.....	\$14,988
7821A	2011 BUICK LUCERNE.....	\$12,988
7821B	2010 INFINITI G37.....	\$13,988
P9570	2018 TOYOTA RAV4.....	\$22,988
P9571	2018 TOYOTA RAV4.....	\$22,988
P9572	2018 TOYOTA 4RUNNER.....	\$36,988
P9569	2013 TOYOTA RAV4.....	\$14,588
7259A	2014 FORD EDGE.....	\$18,988
P9548A	2015 TOYOTA RAV4.....	\$20,588
7684A	2018 TOYOTA HIGHLANDER.....	\$35,988
7357A	2017 TOYOTA PRIUS.....	\$19,988
7384B	2013 TOYOTA RAV4.....	\$16,588
P9549A	2008 TOYOTA COROLLA.....	\$8,988
7683A	2011 TOYOTA FJ CRUISER.....	\$23,988
P9565	2016 TOYOTA RAV4.....	\$20,988
P9566	2016 TOYOTA RAV4.....	\$20,988
7740B	2011 TOYOTA SIENNA.....	\$12,988
P9563	2016 TOYOTA PRIUS C.....	\$15,588



P9560A
**2014
HONDA CR-V**
\$17,988

7280A	2018 TOYOTA AVALON.....	\$24,988
7801A	2014 MAZDA MAZDA 3.....	\$12,988
P9556	2016 TOYOTA HIGHLANDER.....	\$32,988
P9557	2016 TOYOTA HIGHLANDER.....	\$29,988
P9559	2016 TOYOTA COROLLA.....	\$13,988
P9561	2015 TOYOTA CAMRY.....	\$15,988
7768A	2010 TOYOTA COROLLA.....	\$8,688
7796A	2014 HONDA CR-Z.....	\$13,988
P9553	2016 TOYOTA RAV4.....	\$19,988
P9554	2017 TOYOTA CAMRY.....	\$17,988
P9550	2018 TOYOTA COROLLA.....	\$15,988



P9555
**2016 TOYOTA
CAMRY**
\$18,688

P9551	2016 TOYOTA AVALON.....	\$24,988
P9552	2018 TOYOTA RAV4.....	\$23,588
P9501A	2014 CHEVY IMPALA LIMITED.....	\$9,988
7785A	2013 NISSAN ROGUE.....	\$10,988
7703A	2016 TOYOTA 4RUNNER.....	\$39,988
7766A	2018 TOYOTA 4RUNNER.....	\$41,988
P9545	2015 TOYOTA SIENNA.....	\$23,988
P9547	2018 TOYOTA SEQUOIA.....	\$41,988
7488A	2014 CHEVY CRUZE.....	\$10,988
P9542	2018 TOYOTA TUNDRA.....	\$41,988
7623A	2015 TOYOTA 4RUNNER.....	\$32,788



2016
CONSUMER
SATISFACTION
AWARD
DealerRater



2017
CONSUMER
SATISFACTION
AWARD
DealerRater



2018
CONSUMER
SATISFACTION
AWARD
DealerRater



P9534
**2016 TOYOTA
SIENNA**
\$23,988

7774B	2008 DODGE CALIBER.....	\$6,988
P9538	2018 DODGE GRAND CARAVAN.....	\$19,988
P9539	2018 NISSAN SENTRA.....	\$14,588
P9540	2018 TOYOTA 4RUNNER.....	\$32,988
P9541	2018 NISSAN MAXIMA.....	\$22,588
P9512A	2018 HONDA ODYSSEY.....	\$34,588
7758A	2014 TOYOTA COROLLA.....	\$11,788
7776A	2015 TOYOTA HIGHLANDER.....	\$28,588
P9536	2014 FORD MUSTANG.....	\$23,988
7632B	2014 CHEVY SONIC.....	\$10,988
7634A	2016 CHEVY TAHOE.....	\$42,588
7423A	2018 FORD EXPLORER.....	\$32,988
7349A	2017 RAM 1500.....	\$34,988
7353A	2012 CHEVY IMPALA.....	\$7,988
P9531	2017 NISSAN FRONTIER.....	\$28,988
P9528	2018 CHEVY MALIBU.....	\$17,988
P9529	2018 TOYOTA SEQUOIA.....	\$39,988
P9525A	2015 FORD MUSTANG.....	\$26,988
7564A	2016 DODGE CHALLENGER.....	\$33,988
7483B	2017 CHEVY TRAX.....	\$15,988
7605A	2012 JEEP WRANGLER.....	\$19,988
7654B	2015 LINCOLN MKS.....	\$18,988
P9504	2019 TOYOTA SIENNA.....	\$30,988



P9522
**2019 NISSAN
PATHFINDER**
\$24,988

PROUD WINNER OF THE PRESIDENT'S AWARD FOR THE 2ND YEAR IN A ROW!



TOYOTA
Let's Go Places

Doing Business
the Right Way
The Seeger Way



ENGINES FOR LIFE

Call for details
Non-Factory Lifetime Limited Warranty
Good at participating dealerships



SATURDAY SERVICE 8AM-4PM

Seeger
TOYOTA of St Robert

ENJOY THE LOOK
ENJOY THE FEEL
ENJOY THE ATMOSPHERE

800-844-6026



SEEGER CARE*

- PREOWNED VEHICLES
COME WITH SEEGER CARE!**
- 1 **FREE** (3) SCHEDULED OIL AND FILTER CHANGES
 - 2 **FREE** MULTI-POINT INSPECTION WITH EVERY OIL CHANGE
 - 3 **FREE** EXTERIOR CAR WASH WITH EVERY SERVICE VISIT
 - 4 **FREE** LIFETIME SAFETY AND EMISSION TESTING
 - 5 **FREE** SAME-DAY SERVICE LOANER CAR
 - 6 **FREE** TANK OF GAS
- Service Only at Seeger St Robert/St Louis

Next to Walmart, St Robert | 573-336-7111 | SeegerTOYOTA.net

*Does not include tax, title, and license. * Seeger Care offer good for Less than 85K Miles and Less than 10 years old Prices do not include any College Grad or Military Rebate. See sales rep to see if you would qualify for additional savings. Prices does not include \$199 dealer administrative fee. Cannot be combined with any other offer. Prior sales final. See dealer for details. Advertised vehicle may not be exactly as pictured and are subject to prior sale. We cannot be responsible for typography or photography.

24HP ZERO TURN MOWER EXMARK: 4ft mower deck hydraulic drive. \$2,500. 15.5 hp riding mower, 38in cut. \$400. 636-239-4124.

PARAKEET CAGES: \$30 EACH. 417-646-8807.

METAL DETECTOR: \$125 or trade. 573-327-9068.

1967 JD 30/20 GAS TRACTOR: \$3,950. 417-241-0006. Conway.

WINDMILL 25FT: 4 leg. 5ft air motor, use or ornament. \$1,750. 417-399-6383.



Cheyenne Acres
Horse & Tack
BUY - SELL - TRADE
by Rolla, MO
Call For Directions & Availability
Call Kip
573-368-9402




1988 Yellowstone 57RB

Sleeps 5 • Awning • AC
51,174 Miles

PRICED TO SELL! \$4,995⁰⁰



HAPPY TRAILS
RV CENTER

I-44 Exit 123 - 4 miles West of Lebanon, MO

417-533-7530

www.happytrailsrvcenter.com

SWISHER TRAIL MOWER: 44" cut, electric start, new blade. \$400. 417-664-1862.

CDL IN ONE DAY!!: Family owned and operated, Insured, Over 10 years of experience, Training available for all states, Short wait time for appointments, Contact us today to schedule your appointment!! **CREDIT CARDS EXCEPTED.** (573-353-2853).

FREE GERMAN SHEPHERD MIX: Male, neutered, utd shots, smart, loves retrieving and great protection, obedience trained, 2 1/2 yrs old. Falcon, 630-687-0705.

AUCTION REMINDER: Kilmer Farm Equipment Consignment Auction. Saturday, August 31st @ 10am. Wheeler Auctions. Please see our Auction Directory for more information.

AUCTION REMINDER: Online Sale. ends Tuesday, July 24th, 12:30p.m. Atterberry Auctions. Please see our Auction Directory for more information.

WANTED: Small, 4-cyl Chrysler car, 1995 or below. Must have good body, doesn't need to run. 636-584-9476.

NEW HOLLAND SQUARE HAY BALER 277: Field Ready, Hay Rake. \$2,950. 636-239-4124.

TECUMSEH 15HP MOTOR: down-shaft. \$100. 636-297-1747.

AUCTION REMINDER: Living Estate Auction, Friday, July 26th at 10am. Easterly Auction Company. Please see our Auction Directory for more information.

1966 CHEVY IMPALA: 2 door, 68,000 miles, needs restored. \$2,000 OBO. 636-577-5022, St James.

WANT TO BUY JOHN DEERE TRACTOR: Diesel in need of repair, 60-100HP. Call 573-768-0068.

AUCTION REMINDER: Saturday, July 20th, 9am. Brehe Auction. Please see our Auction Directory for more information.

CRAFTSMAN RIDING MOWER: Good Tires, Deck etc. needs motor. Only \$195/ mower trade. 573-364-7465.

AUCTION REMINDER: Personal Property Auction. Saturday July 20th @ 10am. Easterly Auction. Please see our Auction Directory for more information.



Elite HOMES CENTER
Where you always get more home for your money!
SALE!!
on all display homes
starting at \$37.00 sq. ft. & up
We will meet any printed quote!
ELITEHOMESCENTER.COM

TWO LOCATIONS:
3444 West Sunshine Springfield, MO
Office: 417-881-7111 • Fax: 417-887-8141
3232 N. Hwy 63 West Plains, MO
Office: 417-257-0797
TOLL FREE 877-887-2282



If It's Not A Real Rhino, It Could Be A Real Dog.

FORT AWESOME
2410 Evergreen Pkwy, Lebanon (next to Heartland Antique Mall)
417-532-9253

Rhino Linings® were the world's first sprayed-on bed liner. Rhino Linings are the world's #1 sprayed-on bed liner. And scores of Johnny-come-latelies would love to have you believe that their coating are as good as Rhino Linings. But, they're not. Only Rhion Linings sprays on thick, forming an airtight, watertight bond that prevents rust and corrosion, Rhino Linings tough xxx stands up to xxx weather, chemicals, impact, and abrasion. It never cracks, wraps, or peels. And it's even environmentally friendly and solvent free. So see your Rhino Linings dealer. For the protection you can only get from a real Rhino.

DURABILT 10 WHEEL FOLDUP RAKE: \$1,750. 573-765-4406.

SMALL SQUARE BAILS OF HAY: Alfalfa & Alfalfa mix. Call for prices. 417-345-5634.

CLARINET: with case. \$125 or trade. 573-327-9068.

2 MALE PEACOCKS: \$50each. Kirkwood, 314-489-2614.

LOOKING FOR Old Cotton Feed Sacks to finish quilts: prints or solids. 573-689-2490.

NEW AIR CONDITIONER: 8,000 BTU. Cash or trade for gun. \$200. 417-340-7890.

★ American Made Metal Roofing ★
40 Year Warranty Metal.....\$1.99 (\$62.18 Per Sq)

***29 Gauge 10 Year\$1.79 (\$55.93 Per Sq)**

****While Supplies Last****

29 Gauge #1 Galvalume **\$1.69**...\$1.39 (\$43.44 Per Sq)
 29 Gauge 40 Year ***Saddle Tan***\$1.69 (\$52.81 Per Sq)

Building In A Box
 Stud Wall & Pole Barn Kits

Non-Warranty Metal	10Year Warranty	40Year Warranty
24x30x8.....\$3,350\$3,700\$3,850
30x40x10....\$4,950\$5,350\$5,600
40x60x12....\$9,300\$10,000\$10,200

Pre-cut Packages Also Available

17 Colors To Choose From
20 Years In Business
We Manufacture Our Own Metal and Trusses

3 Locations To Serve You!

6952 E. 7th St. Joplin, MO. 417-317-7961	1100 Pace Rd. Pocahontas, AR. 870-609-1900	35 Killdeer Rd. Seymour, Mo. 417-952-7143
--	--	---

*possibly not American made

HEAVY DUTY WALKER: 400 lb rated, brand spanking new, large seat/storage, four 7" pivoting wheels, hand brakes. \$200. 417-686-0032, Ava.

JOHN DEERE 4240: Diesel Tractor, cab and air, power shift, 3900 hours, very nice. \$29,500. 573-765-4406.

70'S AERIAL PHOTO OF HUMANSVILLE: \$25. 417-321-1928.

40 ACRES: Partially cleared, near Ellington, MO, well/electric on property hwy frontage. \$68,200. 573-210-0595, 573-637-2450.

RURAL HOMEOWNER NEEDS Handyman Assistance. Conway area, 417-733-2818.

550 OLIVER TRACTOR: Industrial, low hours. \$4,500. 500gal CROP SPRAYER, Needs pump, \$700obo. 573-301-2148.

TAYLOR TRUCKS & EQUIPMENT
417-924-2026 • 2676 Hwy. 5, Mansfield, MO

END OF SEASON CLEARANCE ON 5' AND 6' ROTARY TILLERS
New Mowers! Bush-Whacker, Big Bee
 Farm Tires, PTO's & Parts for Rotary Mowers,
 Storage Containers & Dry Vans - 20' - 53'
 Farm Tractor Implements
 Plows, Discs, and More Skidsteer Attachments: Pallet Forks,
 Buckets, Grapples, Hay Spears & Tree Sheers - RR Ties

TRAILER PARTS & REPAIR

NEW SEMI TIRES - DRIVE & STEER

We Invite You To Come By & Look Us Over! Located 2.5 Miles North Of Mansfield, MO On Hwy 5

SAM MILLERS LOGGING looking for standing timber. Oak, Walnut, Sycamore, Hickory. 417-589-0346.

AUCTION REMINDER: Estate Coin Auction. Sunday, June 21st @ 1pm. Nance Auction. Please see our Auction Directory for more information.

AUCTION REMINDER: Auction, Monday, August 3rd, @10am. Rick Dixon Auction. Please see our Auction Directory for more information.

CHECKERED WALNUT WOOD STOCK PISTOL GRIP: for Marlin Model 336 or 1895. \$100. Washington. 636-239-2695.

Starnes Auto LLC
22115 Rt. 66 • Lebanon, MO 65536
417.588.3159 Office • 417.718.2707 Cell
www.starnesauto.com

1998 GMC SONOMA
 PEWTER, FLARESIDE, 55,XXX MILES\$5,200

2001 CHEVY BLAZER LS
 MAROON, 4WD, 110,XXX MILES\$2,450

2002 CHEVY S-10
 BROWN, 4 DOOR, 184,XXX MILES.....\$2,800

2003 CHEVY SILVERADO
 MAROON, EXT CAB, 210,XXX MILES\$3,650

2003 GMC SIERRA
 WHITE, EX CAB, 2WD, 155,XXX MILES.....\$6,350

2004 GMC SIERRA
 CHARCOAL, REG CAB\$5,800

2005 CHEVY SILVERADO
 PEWTER, 4X4, 4-DOOR, 195,XXX MILES\$8,500

2007 PONTIAC G6
 WHITE, 149,XXX MILES.....\$3,200

2008 CHEVY EQUINOX LS
 WHITE, 88,XXX MILES.....\$5,250

2008 PONTIAC G6
 SILVER, 124,XXX MILES\$3,850

2009 CHEVY EQUINOX LS
 BLUE, 60,XXX MILES.....\$6,500

2011 CHEVY MALIBU
 BEIGE, 109,XXX MILES.....\$4,950

2011 CHEVY IMPALA LS
 RED, 99,XXX MILES.....\$4,750

2011 GMC TERRAIN
 WHITE, 116,XXX MILES.....\$8,200

2012 CHEVY MALIBU LT
 WHITE, 56,XXX MILES.....\$7,450

2013 FORD FIESTA SE
 RED, 4-DOOR, 53,XXX MILES\$5,600

2014 TOYOTA SCION
 WHITE, 21,XXX MILES.....\$9,850

2016 BUICK ENCORE
 WHITE, 28,XXX MILES.....\$13,500

2017 CHEVY EQUINOX LT
 SILVER, 23,XXX MILES\$15,500

COMING SOON
2005 PONTIAC GRAND PRIX BLACK, 70,XXX MILES
2015 CHEVY EQUINOX LT WHITE, 93,XXX MILES

WE DO ALIGNMENTS!

CASE 580C: Diesel backhoe, Loader. \$8,850. 573-765-4406.

CUSTOM SAW MILLING: Lebanon. 417-533-4607, 417-664-1195.

POOL TABLES: Installations, moves, recovery, repairs, accessories, etc. 573-646-1700.

AUCTION REMINDER: Online, Wednesday, July 24, 12:30p.m. Atterberry Auctions. Please see our Auction Directory for more information.

JOHN DEERE 337 SQUARE BALER. \$1,950. 573-765-4406.

BRUSHOG 8FT OFFSET DISK. \$2,500. 573-765-4406.



Wright Spray Foam Insulators, Inc.
Commercial & Residential

Call For A FREE Estimate

417-746-1953
417-746-4932
Norwood, Missouri

AUCTION REMINDER: Public Auction Saturday July 20th at 10 am. Knight Auction. Please see our Auction Directory for more information.

CONSTRUCTION: Excavation, Brush hogging, Southern Contracting, LLC. FREE ESTIMATES. 417-718-2301.

GROW LIGHT: Large metal, all growth spectrum, shop-lite style. \$100obo. Rolla, 928-514-0505.

IHC 886 DIESEL TRACTOR: cab and cold air, T.A, \$12,500. (573)765-4406.




In addition to doing custom welding and fabrication, we offer...

Crownline Flat Beds — sales and installation
Move Bumpers — assembly and installation
Custom Mini Trailers • Corral Panels

Call us if you have a special project
417-730-9357 • Hwy. 60, Seymour, MO.

30HP FARM PRO TRACTOR: Only 275 hours! Diesel, 4wd, canopy, wheel weights, front-end loader, brush-hog, tiller, hay-rake. \$11,000. Anne-573-747-8090/David-573-598-4639.

AUCTION REMINDER: Real Estate & Public Auction, Thursday, June 25th at 9:30 am. Chupps Auction. Please see our Auction Directory for more information.

FIREARMS: Professional Repairs and Restorations. Baron's Gunsmithing. 573-363-5801, Camdenton.

MICROPHONES BEYER MODEL TGX280: Shure Model BG-10, perfect condition. \$35each. Fair Play, 417-399-6687.

4 RAT TERRIER PUPS: 15 weeks old. \$50. Must go! 417-754-1174, Dunnegon.



CAROLINA CARPORTS
Carports, Garages - Barns, Rv Covers
Starting At \$1095.00
Delivered and Installed



RENT TO OWN • NO CREDIT CHECK

Summer Sale **Limited Time**
10% Off \$2,000 to \$4,999
12% Off over \$5,000

METAL PANELS

29ga 40 Year Warranty Painted.....	\$68.50 sq
29ga 25 Year Warranty Galvalume.....	\$54.00 sq
29ga NO Warranty - Painted - Limited Colors	\$58.00 sq



Showroom & Sales Office
Bolivar, Missouri 65613
(417) 326-4228
Next to Smith's Restaurant
Hwy. 13 & U

Corporate Office
Polk, Missouri 65727
(417) 852-4228
2 Miles South of Pittsburg
on Hwy. 64



Find us on facebook
JenkinsBuildings.com
Prices Subject to Change

VISIT US @ JENKINSBUILDINGS.COM

HUGE NEW MISCELLANEOUS ITEMS for sale. Skidsteer, trailer tire wheel combos, truck grader, semi tires x8, Official Little League World Series Baseballs. \$10 each x5. Baseball display cubes. \$5 each. CB's & CB accessories, Coca-Cola Glasses & mugs. Call 417-276-2435.

NEW HOLLAND: 1411 diskbine. \$7,250. 573-765-4406.

BEILER FENCING: New, clean, repair. Call us for an estimate. 417-217-2755.



♦ OZARK WINDOW MFG ♦
CUSTOM BUILT VINYL WINDOWS

- Double Hung • Slider • Picture • Casements •
- Replacements or New Construction •
- Insulated Glass Units With Low-E & Argon •

NORWOOD, MO ♦ 417-746-4440



2004 OPEN RANGE FIFTH WHEEL CAMPER: 34', all weather, in good condition. \$10,500. Lebanon, 417-718-5520.

BASS GUITAR: Global. \$75. Warrenton, 636-297-1747.

AUCTION REMINDER: Sat. July 27th, 9:30AM. Voorheis Auction & Realty. Please see our Auction Directory for more information.

ROUND BAILS OF HAY: Grass, clover, and alfalfa's mix. All cut before June. Put up/dry. 250 bails \$50 each. 417-345-5634.

WANTED RANCH-HAND: fencework, machinery maintenance hay and cattle, hardwork, dependable, honest, full-time, must furnish references. Aurora, 417-818-2265.

SACAGAWEA GOLDEN DOLLARS: Face value \$1. Original issue 2000, uncirculated. In rolls of 5. \$30. 417-686-0032, Ava.

1995 GOLDWING: Ultimate road bike. One owner. \$3,250. 417-399-6383.

NEW HOLLAND 320 SQUARE BALER: \$2,950. 573-765-4406.

FANEX 5231 4-BASKET HYD FOLD TEDDER: Nice, \$4,350. 573-765-4406.

10 BLACK/WHITE FACE BRED HEIFERS: due to calve end of October, pelvic and pregnant checked, de-wormed, all shots, bred to registered low birth weight black Angus bull. \$1,600/each. 573-229-4636 or 573-301-7471.

2007 ROCKWOOD ULTRA-LITE CAMPER: 33ft, w/slide-out. \$10,500. 417-426-5826.

IHC 684 DIESEL TRACTOR: 67 hp, w/loader. \$9,500. (573)765-4406

GET YOUR WORK DONE, AMERICA

FOR JUST
\$238 PER MONTH*



4540 2WD

- ✓ **SIMPLE** to operate
- ✓ **ECO-FRIENDLY**, NO DPF engine
- ✓ **HEAVY-DUTY** steel construction not plastic

MAHINDRA 4540 41HP, 2WD, TRACTOR AND LOADER.

Marshfield Machinery Inc.

222 E. Madison • Marshfield, MO 65706

417-859-2117 • www.marshfieldmachinery.com



*Payment is for tractor and loader only and is calculated at 10% down and 84 months financing. With approved credit. Program restrictions may apply. See dealer for details. All offers expire July 31, 2019.

WORLD'S #1 SELLING TRACTOR

Mahindra
Tractors

NEW MAHINDRA TRACTORS

9125 4WD CAB & LDR 125HP	IN STOCK
7085 4WD & LDR 85HP	IN STOCK
6065 4WD & LDR 62HP	IN STOCK
5570 2WD & LDR 70HP	IN STOCK
2655 4WD, BACKHOE 55H	IN STOCK
2555 4WD & LDR 55HP	IN STOCK
3640 4WD & LDR 40HP	IN STOCK
1626 4WD & LDR 26HP	IN STOCK
MAX26XL & LDR 26HP	IN STOCK

USED TRACTORS

MAHINDRA 105P CAB LDR 105H	45,500
MF 4608 4WD CAB & LDR 80HP	35,000
JD 5065E 4WD 65HP	26,500
MF GC1710 LDR & BACKHOE	13,500
MAHINDRA MAX22 W/ BACKHOE	11,500
JD 4020 W/ LOADER 95HP	11,000
MF GC1705 4WD, MWR 23HP	9,000
MF GC1705 4WD 23HP	7,750
AC 7030 CAB 130 HP	6,000
MF 231 34HP	6,000
FORD 8000 105HP	5,500
AC D17	3,750

USED UTV

MAHINDRA 750 CREW XTV	8,500
MAHINDRA 750 XTV	7,500

USED ROUND BALERS

MF 2745 4X5 MESH	12,500
HESSTON 845 4X5	7,500
GEHL 2480 4X5	4,500
HESSTON 555 4X6	4,500
CASE IH RS451 4X5	4,500
HESSTON 560 5X6	4,000
HESSTON 550 4X6	3,500
NH 850 5X5	1,500
MF 224 SQUARE BALER	3,000

USED DISC MOWER/COND.

NH H7550 13FT M/C	14,500
-------------------	--------

USED RAKES

SITREX 12WHEEL	3,500
GEHL 418 8 WHEEL	2,000
VERMEER WR20 8 WHEEL	1,950
M&W 10 WHEEL	1,750
GEHL 418 8WHEEL	1,500
M&W 8 WHEEL	1,500

USED MISC.

HAYBUSTER 107C NOTIL DRILL	16,500
BUSH HOG 3210 10FT	4,500

Marshfield Machinery Inc.
222 E. Madison • Marshfield, MO 65706
417-859-2117
www.marshfieldmachinery.com

Larry Heisel Rentals

We Rent!

Call Larry!
Rental Available in 636 or 573 Area Codes
573-779-1500
www.larryheiselequipment.com

FENCING: Commercial/Residential/Ag, Southern Contracting, LLC. FREE ESTIMATES. 417-718-2301.

2 PLASTIC CULVERTS: Double-lined, 18"x20", new \$200each. Used \$150for both. Preston, 417-722-1252.

WANTED, TIMBER TO LOG ON SHARES: Honest, reliable, references. 417-533-4607, 417-664-1195.

FORD JUBILEE INDUSTRIAL FRONT LOADER: Wide front, 3pt, runs and stops, power steering not working. \$1,800. Rogersville. 417-753-2747/417-766-1991.

See Service Spray Foam Insulation

Closed cell or open cell form available
Choose the thickness of your insulation

Closed Cell Open Cell

- Higher R. value
- Vapor barrier
- Structural benefit
- Fire Resistant
- Lower Cost
- Sound Deadening
- Fire resistant

Both types of foam fill voids and stay where they are put to provide better insulation than fiberglass or cellulose

FINANCING AVAILABLE

WE ACCEPT
VISA MASTERCARD

Call Joseph See
(417) 733-6936

Located near Buffalo, MO

GENT'S VINTAGE WATCH COLLECTION: Over 40 Classic models. \$150. 573-764-3517, call in pm.

DYNO CHARGE 990 ELECTRIC FENCER: Solid state for 20 miles. \$50. 636-239-2695.

ANGUS CATTLE HERD: 35 cows, calves, 10 yearlings, 2 bulls. 417-924-2080/417-924-2122, Mansfield

2001 19FT DUTCHMEN TRAVEL TRAILER: very clean, everything works. \$4,200. 417-345-5634.



10TH ANNUAL

LUCAS
SLICKMIST

USMTS
UNITED STATES MODIFIED TOURING SERIES

SHOW-ME SHOOTOUT

PRESENTED BY

FOLEY
EQUIPMENT

CAT

LUCAS OIL
Speedway
Wheatland, Missouri

AUG 3



GATES OPEN AT 4PM
HOT LAPS AT 6:30PM
AND RACING AT 7:05PM

ADULTS (16+) \$20 | SENIORS (62+) / MILITARY \$17 | YOUTH (6-15) \$10
KIDS (5 AND UNDER) FREE | FAMILY PASS \$50 | PIT PASS \$40

FOR ADVANCE TICKETS VISIT
LucasOilSpeedway.com | 417.282.5984



WEEKLY TRADER MAGAZINE



AUCTION DIRECTORY

Thursday, July 18

11:00 AM	Mid Missouri Stockyards.....	45
5:30 PM	Shetler Auctions.....	35

Friday, July 19

9:00 AM	Nance Auction Service	36
---------	-----------------------------	----

Saturday, July 20

9:00 AM	Brehe Auctioneering Service.....	28
10:00 AM	Cheyney Auction Company.....	27
10:00 AM	Berti Auction Service.....	29
10:00 AM	Easterly Auction Co.....	30
10:00 AM	R&R Auction Service	34
10:00 AM	Byron Wheeler Auction Service.....	38
10:00 AM	Knight Auction Service LLC	44
12:00 PM	Buffalo Livestock Market.....	43

Sunday, July 21

9:00 AM	Glenworth Auction Service.....	40
1:00 PM	Nance Auction Service	37

Monday, July 22

12:00 PM	Salem Livestock Auction.....	45
----------	------------------------------	----

Wednesday, July 24

Online	Atterberry Auction & Realty	44
--------	-----------------------------------	----

Thursday, July 25

9:03 AM	Chupps Auction & Real Estate	45
---------	------------------------------------	----

Friday, July 26

10:00 AM	Easterly Auction Co.....	31
----------	--------------------------	----

Saturday, July 27

9:00 AM	Wheeler Auctions & Real Estate	42
9:30 AM	Crawford Auction Service.....	39
9:30 AM	Voorheis Auction & Realty.....	43
10:00 AM	The Case Company	33
10:00 AM	Drenon Auction.....	41

Monday, July 29

10:00 AM	Rick Dixon Auction Service	43
----------	----------------------------------	----

Thursday, August 1

Online	Atterberry Auction & Realty	44
--------	-----------------------------------	----

Saturday, August 3

10:00 AM	Gary Sexton Auctioneers LLC.....	32
----------	----------------------------------	----

Saturday, August 31

10:00 AM	Wheeler Auctions & Real Estate	45
----------	--------------------------------------	----

#1 Rural *Reader's Choice!*
Shopper in Central Missouri

Call 1-800-665-8875 to get your auction listed in the Weekly Trader.

AUCTIONEERS

Did you know the WEEKLY TRADER covers more counties in rural Missouri than any other publication?

Firm deadline is 12:00 PM Friday, prior to next week's Thursday publication date.

AUCTION



Personal Property Auction July 20, 2019 at 10:00 AM

Directions: 701 Lyle St Ava, MO 65608 (Beside Heath & Sons Feed)

ANTIQUES • TOOLS • LAWN & GARDEN • CRAFTS & SEWING

LAWN & GARDEN



- Lawn mower- Cub Cadet Z-force S, 48" pro grade, 22 hp Kohler engine (only 12.8 hrs)
- Stihl MS 029 Chainsaw
- Stihl FS 70R Trimmer,
- Yard Machine garden cultivator
- 10" chopsaw, Aluminum scaffolding w/ aluminum walk boards, Shop vac, wheel barrow, aluminum saw horses/palm sander, electric drill, battery powered combo set, lots more hand tools, and garden tools



FURNITURE

(2) Flatscreen TVs, Micro leather dual reclining sofa, Micro leather electric recliner, kitchen table and 4 chairs, mirror back china hutch, recliner, China display cabinet, coffee and end tables, 2 VCRs, approximately 30-40 lamps



KITCHEN



Whirlpool side by side refrigerator, 2 microwaves, crock pot, mixer/blender, Corelle ware dish set, Pyrex mixing bowl set (6), pots, pans, and lots of miscellaneous dishes and silverware

GLASSWARE & CHINA

- Bavarian China set
- Milk Bone plates
- Fire King
- Pyrex
- Corelle



SEWING & QUILTING

- Crown Jewel, baby lock pro stitcher (computerized)
- Dress maker forms
- Vintage feed sack materials
- Boxes & boxes of fabric lace, ribbons, sewing supplies, porcelain doll making material, costume jewelry, and much



To view more photos go to our website cheyneyauctions.com or auctionzip.com.

NOTE: This list does not begin to describe the volume of items in this auction!! Please come spend the day with us. There will be something for everyone.

ANNOUNCEMENTS:
Made Day Of Sale By Auctioneer
Take Precedence over any
Printed Matter. *Not Responsible
For Accidents*



All items sold as is, where is, with no guarantee.

Cheyney Auction Company LLC.
at 417-543-8751 or cheyneyauctions.com

Terms of Sale:
Cash or check with valid
ID, Now accepting credit
& debit cards
w/ 3% convenience fee.

KOTTWITZ TRUST AUCTION



The Trustees of the Nora A Kottwitz Trust, will sell personal property of the Trust on:

Saturday, July 20th 2019, Beginning at 9:00 AM

Location: Lions Hall 1816 Krausetown Road, Owensville Mo 65066 (INSIDE-AIR CONDITIONED)

Directions: From Interstate 44, take Exit #247-Highway 50 West 30 miles, then left on Highway 28. Go 5.5 miles then left onto Krausetown Rd. (Owensville Lions Hall) Roads will be marked day of sale.

ANTIQUE CLOCKS (over 70 clocks)



Nice collection of collectible clocks, Tambour Style mantle clocks, Adamantine columned mantle clocks-Seth Thomas clocks-Sessions clocks-Tiffany & Co clock, British clock-chimes 4 times an hour-Gilbert columned clock-E Ingraham tambour clock-Sessions 8 day striking clock-British Perivale Clock Man. Co chimes 15 minutes, strikes on hour-Seth Thomas #4718 8 day pendulum-Sessions walnut/gold claw foot, columned clock-ornate wooden mantle clock-small Seth Thomas mantle clock-Waterbury Co gold trimmed, claw foot, columned, engraved clock-West German clock-Waterbury Clock Co gold columns, gold claw footed, gold lion, walnut clock-Ingraham Clock Co 1917, Roman Numerals, gold claw feet-Glenlivet Scotch advertising battery on clock-Coca Cola "Drink Coca Cola striking wall clock-Coca Cola striking wall clock with pendulum-Black Forest style hanging weights Coo Coo clocks, owl clock, Regulator wall clock, **CLOCK PARTS:** springs, pendulums, clock faces, glass, lot small parts, coo-coo clock trim, assembly stands for clock working

ROBERT GOZA ESTATE • GUNS (guns will sell at 12:00 Noon)



Amalite M15 5.56 rifle, Saginaw US carbine M1 .30 ca carbine, Ruger Mark II .22 w/scope, Rossi HMR .17-410 barrels synthetic stock, Ruger 10/22 carbine .22, Remington #514 .22 single shot, Remington #700 w/scope .243-bolt action, Browning 30-06 Belgian w/scope, Remington #572 Fieldmaster .22 pump rifle, Kessler Arms Model 228 F-R 16 ga bolt action, Stevens #311A12 ga double barrel SS, Ithaca #50020 ga dbl barrel over-under, **PISTOLS:** Ruger Single Six .22 Mag revolver, Colt 30 Python .357 Mag, Colt 39 Det Sp .38 special, Euroarms New Model Army .44 caliber, Ket Tec P-11 9MM, S&Wesson #469 9MM semi-auto, S&W 22A .22 semi-auto, CZ 75 semi compact 9MM, RG HS Model 21 .22 six shot revolver, ACP EAA .380 caliber purple polymer NIB, High Point .45 auto pistol, **AMMO-SUPPLIES:** lot ammo-9MM bulk, other ammo, lot holsters, extra magazines, **KNIVES:** lot pocket knives-Case-Uncle Henry-Old Timer-lot others, old fishing lures-some wooden, WWI bayonet

COINS / GOLD JEWELRY

(will sell in second ring if necessary beginning at 1:00, gold jewelry will have recent appraisals available)

GOLD COINS: 1913 2 1/2 dollar Indian, 1886s half Eagle-\$5, 1945 Mexican 2 1/2 Peso, 1912b Switzerland 20 Franc gold coin, COINS; 1876 Trade dollar, 1875s twenty cent coin, Morgan dollars; 1879-1885-1887-1889-1890-1896-1898-1903-others, Peace dollars; (13) 1922-23-24-26-27 1934D-1935D-1935S, **HALF DOLLARS:** 1828 Bust, 1834 Bust, 1853o Seated Liberty-1857o, 1865s, 1893 Columbus comm. half, (10) Walking Liberty halves, (10) Franklins, **QUARTERS:** 1854, 1876 Seated Liberty, (12) Barber quarters, Standing Liberty 1919VF-1928XF, (10) Standing Liberty quarters, **DIMES:** 1853 Seated Liberty dime w/arrows, (100) Mercury dimes 1917-40's, **NICKLES:** 1866 Shield w/rays, 1868, 1869 Shield nickels, (10) Liberty V nickles-1883 w/cents, 1889-1911, Buffalo nickels 1919XF40 (10) 1917-1938d, (20) silver war nickels, **PENNIES:** large cents-1819-1837-1843-1852, Indian Head 1862, (8) 1869-1889, (40) 1890-1907, (10) steel pennies, **TYPE COINS:** 1832 1/2 cent-holed, 2 cent coins-1864, 1866, 1869, 1870 3 cent nickel, **TOKENS:** Civil War token Frank L Gays, 1904 St Louis World's Fair, Foreign coins, Sterling silver pcs, **JEWELRY:** yellow gold nugget cross-chain-14K, gold Figaro 14K necklace, monogrammed 10K baby ring, Elgin 10K gold filled pocket watch-17 jewel-porcelain face, gold Masonic 10K ring w/ diamond, gold Fraternal ring-10K-enamel, Seiko titanium watch

AUCTIONEERS NOTE: auction will begin with antiques collectible, then clocks, then quilts and sewing. Guns will sell at Noon and coins and gold jewelry at 1:00 PM in second ring (if necessary). There are over 200 pictures at website: breheauction.com of clocks and quilts.

QUILTS / QUILT TOPS / SEWING (over 70 quilts and 10 quilt tops)



Hand stitched quilts-tulips-gold points-umbrella lady-cross stitched-embroidered quilts-orchids-yellow rose scalloped edges-bonnet lady-satin material quilt-double knit-wedding ring-tumble blocks-star patchwork blocks-star quilt-painted state birds-painted state flowers (48)- butterflies-some very old quilts-feed sack quilts-machine quilted quilts, **QUILT TOPS:** gold star-blue bird embroidered blocks-baby quilt-floral-embroidered- cross stitched-tacked quilts, quilt blocks, **SEWING SUPPLIES:** huge amount all types fabric-large bolts fabric-lot fabric pieces-cotton prints-single/double knit-backing-crochet pieces-feed sack materials-lot all types thread-embroidery thread, lot scissors-many Gingher, quilting books-magazines, quilt batting, patterns, chenille spreads, lot afghans, tea towels, embroidered pillow cases, babycloths, doilies, dresser scarves, hankies, **QUILT FRAMES:** Grace Wood quilting frame, baby quilt frame

ANTIQUES / COLLECTIBLES



Galvanized round-square wash tubs, buckets, double wash tubs on stand, sprinkling can, draw knife, pump bug sprayer, oil can Penn Royal 5 ga oil can, oil cans, old heavy metal fire truck, Tootsie toy car, 2 metal spring chairs, wash boards-glass front boards, enamel pans-red/white pots-wash pans-grey enamel bowl, yellow enamel pan, granite pots, granite canning pots, canning jars-blue pts-qts-2 qt, glass lid pts-qts, zinc lid jars, coffee jars, coffee tins, Lard can, ga milk jars, **CROCKERS:** 15 ga Monmouth-#4 Western-brown crock-crock w/lid, crock bowl, Hall mixing bowl, glass butter dishes, wooden butter mold, green depression cake plate-S&P set-vinegar cruet-measuring cup, milk glass platters, orange glass bowls, pink Pyrex bowl, FK orange bowl, vintage plastic canister set, metal trash can, water pitchers, tin bread box, crystal stemware-tumblers, smoking stands, thermos jugs, homemade soap, oak woven seat sewing chair, New Millard console sewing machine-enclosed cabinet, fern stands, lamp table, old pencil boxes, advertising thermometer, advertising tins, MFA cloth seed bag, Winchester-Remington cloth shot bags, lg porcelain dog-cat figurines, vintage ladies hats, old prints-Wilson's Snipe-1917, wool combs, vanity set, oil lamps, old spectacles, McGwire newspapers, Ozzie ball, football Cardinals glasses, advertising bottle openers, Griesedieck openerash tray, lighters-Winston-Cart Carb., **JEWELRY:** lot costume jewelry-all types, pearls, UAW pins, watches-bands, brooches, **MUSICAL:** Stradolin 535 amp, Custom Kraft electric guitar, Schylling toy accordion, Hohner German accordion, Supertone accordion, Kay tenor banjo, violin-Copy of Giovan Paolo Maggini, violin, bows, harmonicas-Marine Band #1896-German Marine Band-Blue Danube-Hohner #39, tambourine, Aldens stereo console w/pull down turntable, lot old records, Dianne Fowler original paintings, Glasscock oil prints

LUNCH WILL BE SERVED BY CAROLS CATERING

VIEW OUR PHOTO GALLERY ON www.breheauction.com



LICENSED AUCTIONEERS: Kerry Brehe 314.954.3798 Josh Brehe 314.603.3129 Harry Engelhart 636.399.3743

Announcements made day of sale supersede all printed material.

TERMS: CASH, PERSONAL CHECKS WITH PROPER I.D., BUSINESS CHECKS WITH BANK LETTER AND NO OUT OF STATE CHECKS UNLESS APPROVED BY SELLER. Email Us At kkauction@sbcglobal.net Everything sells as is with no guarantees.



HATTERSLEY FARM AUCTION

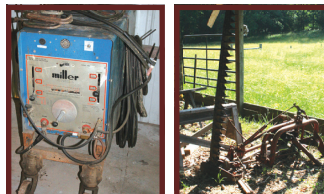
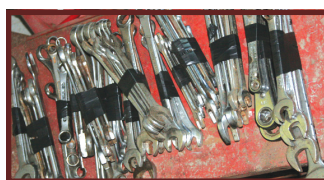
SATURDAY, JULY 20, 2019~10:00 A.M.

Owners: Dennis & Cathy Hattersley

Due to selling our farm and relocating, we, Dennis and Cathy Hattersley, will sell the following items to the highest bidder at auction located at 2451 Bailey Rd. in Cuba, MO. From Bourbon, take Hwy. C approximately 8 miles to Hwy. P. Turn left onto Hwy. P and go approximately 3 miles to Bailey Rd. Turn right onto Bailey Rd. Go approximately 3/10 mile to residence located on the right. Follow BERTI AUCTION signs day of auction.

FARM SUPPLIES

5 Bale Rings; 3 Feed Troughs; Barb Wire Unrollers; 1 Roll Barb Wire; 1 Lot Wire Stays; Wire Stretchers; Stock Tank; 15 and 25 Gal. Fimeo Sprayers; Post Driver; 6 Ft. T-Posts; Electric Fence Charger; 1 Lot Wire Clips; Cattle Supplies-Tattooer, Ear Tagger, etc.; Calf Medicine & Supplies; Drip Torch; Cultivator; Electric Seeder



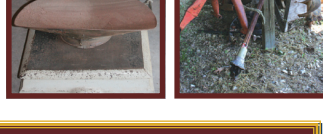
TRACTOR & IMPLEMENTS

New Holland TN755 Cab, Heat, Air, 33LA Loader, Super Steer, Under 1900 Hours with Loader Bucket and Bale Spike; Massey Ferguson 50 Utility Tractor-Runs Good; New Holland 853 Round Baler Makes 5x5 Bales, Bale Command-Good; New Holland 616 Disc Mower-Good; International 35 Hay Rake-Good; 3 Pt. Fork; Two 3 Pt. Plows; 6 Ft. Bush Hog Blade; 6 Ft. Disc; 6 Ft. Box Blade; Two 3 Pt. Bale Spikes Massey Ferguson 3 Pt. 7 Ft. Sickle Mower; 3 Pt. 40 Gal. Fimeo Sprayer; 3 Pt. Bush Hog Post Hole Digger 12" Auger; 9 Ft. Field Drag



HOUSEHOLD

Hobart Commercial Meat Grinder; Steel Desk; Filing Cabinets; Electric Knife Sharpener; Silverware; Table with 6 Chairs & 2 Leaves; Queen Size Oak 4 Poster Bed; Gun Cabinet; 1 Lot Hats; Picture Frames; Jig Saw Puzzles; Wicker Baskets; 1 Lot Books; Portable Singer Sewing Machine; Computer Desk; Canon Printer; 2 Computers & Key Boards; Humidifier; 1 Lot Book Shelves; Telescope; 1 Lot Christmas Decorations; Stereo; Nordic Track; Inversion Table; Roll Away Bed Frame; Bed Frame; Stuffed Toys; Cabinet



ANTIQUES, & COLLECTIBLES

Old Grain Planter; Oliver Horse Drawn Sickle Mower; Metal Wagon Wheel Rims; 1 Lot Old Drop Rake Tines; Old Slip; 1 Lot Horse Drawn Implement Point & Shears; Old Floor Fan from Sonny Boy's in Cuba; Some 67 Mustang Parts-Bumpers, Radiators, etc.; Old Milk Cans; Small Blacksmith Forge with Lots of Tools; 125 lb. Anvil; 6 Drawer Dresser with Mirror; Treadle Sewing Machine; Fireside Pyrex Bakeware; 4 1/2 Qt. White Roaster; 2 Pc. Roaster with Lid; Amber Glass Cheese Dish & Lid; Set of Wooden Canisters; 2 Old Alarm Clocks; Leather Bound Book; Cast Iron; Granite Pans; Old Budweiser Record Player; Box of Old Records; Old Record Cabinets; Old Trunk; Old Toy Truck; Primitive Cabinet; Dolls; Old Oak Cabinet; Enamel Camp Box with 3 Burner Stove, Pots, etc.; Cast Iron Dutch Oven, Pots, Pans, etc.; Detroit Automatic Scale-Up to 10 Pounds; 10, 8, 3, 1, 1/2, 1/4 Gallon Size Crock-Various Makes; Gal. Crock Jug; Old Desk; 9 Pt. Deer Horns; Metal China Cabinet

AUCTIONEER'S NOTE: Mr. Hattersley formerly ran Fanning Welding and has lots of items that have not yet been unboxed or listed. The Cuba Lions Club will be serving lunch. This is a super clean auction with merchandise that has been well cared for. There is no doubt you will find something you can use at this auction! Don't miss it!! See ya there!! Robby

Berti Auction Service, LLC and Appraisals

Col. Robby Berti, Licensed Auctioneer • Col. Meghan Berti, Licensed Auctioneer
7786 Seminary Rd., Sullivan, MO 63080

Your trusted name in auctioneering since 1940
573-468-5511



www.bertiauction.com

APPROVED CHECK OR CASH-ANNOUNCEMENTS
MADE DAY OF AUCTION TAKE PRECEDENCE
OVER ALL PRINTED MATTER
LUNCH SERVED-NOTHING REMOVED UNTIL
PAID FOR-“EVERYTHING SOLD “AS IS, WHERE IS”

PERSONAL PROPERTY AUCTION

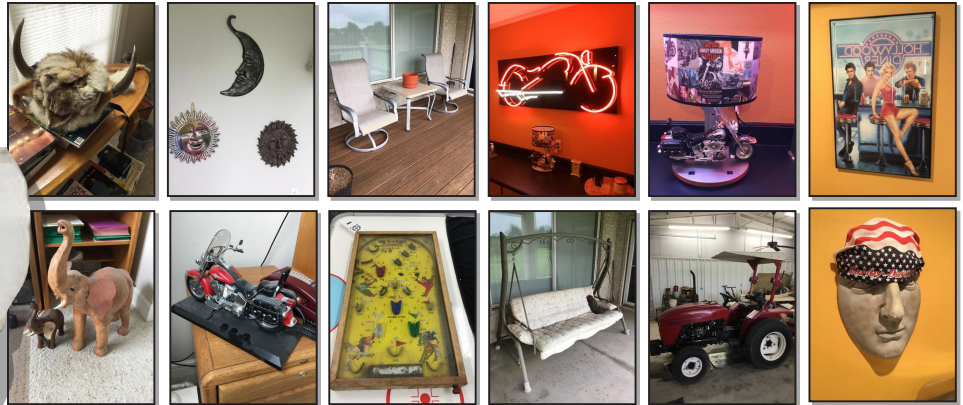
SATURDAY, JULY 20, 2019 @ 10:00

3855 S. Leigh Lane • Rogersville, MO 65742

DIRECTIONS: From the intersection of Hwy 65 & E. Battlefield street go East on East Battlefield street, Right on Farm road 187, Left on East Farm road 164 and 164 becomes S. state hwy J, Right on S. farm road 205, left on East farm road 168, right on S. Leigh lane to auction.

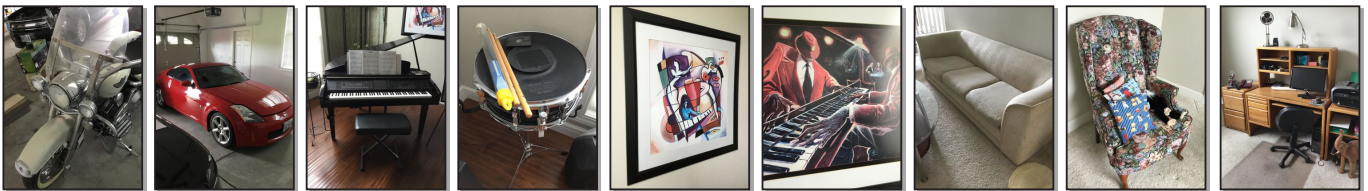


MARILYN
MONROE
CUTOUT



INVENTORY LIST: 2003 Harley Davidson 100 Year anniversary; 2013 Ford flex SEL; 2003 Nissan 350 Z, one owner; Yamaha Clavinova Electric baby grand piano; Ludwig dru; baskets; Glass top sofa table; Large vase; I robot sweeper; Yamaha portable electric grand YPG – 235; Brass giraffe; End tables; coffee table; coat rack; Floor lamp; Book case; Chest of Drawers; Rocking Chair; Wing back chair; Computer desk; Leather elephant; Computer; Printer; Harley Davidson phone; Coyote helmet; Roll top desk and chair; Lamp and fan; Harley Davidson helmets and apparel; assorted linens; Queen bedroom set; Moon & sun Wall hangings; Small sofa Harley pillows; Washer and dryer; Kitchen table,

four chairs; corner shelf; Fargo fan; Bar stools; Kitchen utensils, etc.; plates; measuring bowls; bowls; silverware; coffee cups; Glasses; Jennair Refrigerator; Patio furniture; Harley Davidson memorabilia; Harley Davidson table set; Harley Davidson neon sign ; Framed wall art; saucer Chairs; Leather sofa; chair & ottoman; Glass top table; Large Mitsubishi flatscreen and components; King bedroom set; Large pig statues; frog figurine; eagle figurine; Air hockey table by sportcraft; curio cabinet; Silver ware serving set in box; Safe; Vintage pinball machine; porch swings on stand ; basket ball stand; Homers farm pro 2420 2wd; Three point finish mower; Push mower; Floor fan; Drill press; Dewalt tablesaw; Craftsman saw; grinder; assortment of handtools; Oil changing cart; Jaw horse by Rockwell; jack stands; assortment Power tools; Milwaukee saws all; Drill bits; Stanley bostitch stapler; Craftsman stapler; Roto zip; Fuel cans; Air compressors; Weed eater; Floor jack; Motorcycle lift; Craftsman toolbox and tools; miscellaneous Harley parts; Plant stand and potts; Three point hitch sprayer; Large crock Number 10; Two trailer carts; Three point hitch CARRIE All; Golf course pull behind mower; Three point hitch broadcaster; 2005 mercury sable; crock pot; rotisserie oven; microwave; Antique dresser; Luggage; Antique phone; **and more!!**



FOR MORE INFORMATION GO TO WWW.EASTERLYAUCTIONCO.COM OR CALL EASTERLY'S AT 417-833-9494

EASTERLY
AUCTION CO.

Go to www.EasterlyAuction.com



auctionzip.com
ID#14770

Mike Easterly Auctioneer
417-833-9494

Not Responsible for accidents or theft.

For more information call: Easterly Auction Company, Springfield, MO.

Auction Terms: Bank Letter Of Credit Required.

Visa, Mastercard, Cash, Cashier's check or checks with proper I.D.

Announcements day of sale take precedence over printed material. Auction Notes: Although information is obtained from sources deemed reliable, auctioneer makes no warranty or guarantee expressed or implied.

Buyers should themselves take the opportunity to make their own inspection prior to sale.

MORTON & RUBY ROSE LIVING ESTATE AUCTION

FRIDAY, JULY 26TH, 2019 @ 10:00 AM

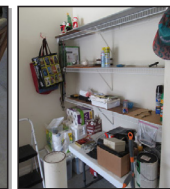
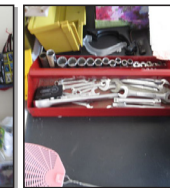
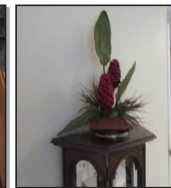
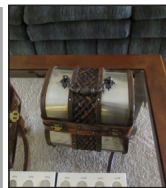
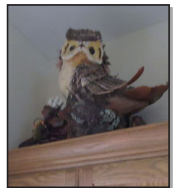
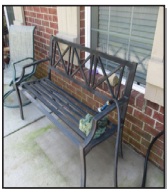
1587 West Riggs Court • Ozark, Mo 65721

DIRECTIONS: From the intersection of 65 Hwy & Mo CC/J, Ozark, go east on Mo CC to West Mo J, turn right on N state hwy NN, right W. Garton road, 3rd right onto W. Lifecare circle, right W. Riggs ct to auction on left.



INVENTORY LIST

Crescent Bedroom Set (Queen Bed, Two End Tables, Dresser); Queen Anne Arm Chair; Assortment Linens; Blanket; Table Cloth; Pillows; Rugs; Canister Set; Measuring Cups; Mixer; Iron; Plates; Bowls; Coffee Cups; Glasses; Tea Pots; Silverware; Kitchen Towels; Casserole Dishes; Misc. Purses; Pair Brass Lamps; Mechanical Hospital Bed; Framed Artwork; Queen Anne Style Washstand; Octagon End Table; Metal Filing Drawers; Collectible Dishes; Orrick Vacuum; Telephone System; Wall Shelf; Mirror; Lighthouse Collection; Oak Lawyers Book Cabinet; Samsung Flatscreen Tv; Entertainment Center; Maroon Recliner; Pair Of Rocking Chairs; Gliders; Fans; Computer; Small; Suitcase; Safe; Sofa Hide A Bed; Cherry Dining Room Table (2 Leaves, Six Chairs); Curio Cabinet; Pair Office Chairs; Marble Top Plant Stand; State Quarter Collection; Folding Chairs; Stanely Furniture Buffet; Oak Chest; Fiesta Set Of Plates, Bowls Coffee Cups; Pots & Pans; Electric Lift Chair; Portable Wardrobe; Skil Saw; Assortment Hand Tools; Fans; Picture Frames; Clocks; Figurines; Cherry End Table; Coffee Maker; Paper Shredder; Stereo System; Step Ladder; Assortment Hand Tools; Tackle Box; Baskets; Floral Arrangements; Yard Ornaments; Cast Iron Table; Patio Chairs; Patio Bench; Patio Storage Cabinet; Patio Storage Chest; Plant Stand; Pots; Small Patio Table; Small Patio Grill; Lawn Chairs; And More!



FOR MORE INFORMATION GO TO WWW.EASTERLYAUCTIONCO.COM OR CALL EASTERLY'S AT 417-833-9494

EASTERLY AUCTION CO.

Go to www.EasterlyAuction.com



auctionzip.com
ID#14770

Mike Easterly Auctioneer

417-833-9494

Not Responsible for accidents or theft.

For more information call: Easterly Auction Company, Springfield, MO.

Auction Terms: Bank Letter Of Credit Required.

Visa, Mastercard, Cash, Cashier's check or checks with proper I.D.

Announcements day of sale take precedence over printed material. Auction Notes: Although information

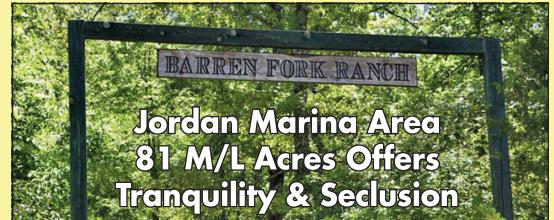
is obtained from sources deemed reliable, auctioneer makes no warranty or guarantee expressed or implied.

Buyers should themselves take the opportunity to make their own inspection prior to sale.

GARY SEXTON AUCTIONEERS OUTSTANDING REAL ESTATE AUCTION

SATURDAY, AUGUST 3 • 10:00 A.M.

Location: From Mountain Home, SE on 5/177, 15 Miles to Jordan Landing Road, then left 1 mile to Barren Ford Ranch Road, then Right 1.5 miles or From Pineville take 177 HWY 7 miles to Jordan Landing Road then right 1 mile to Barren Fork Ranch Road, then 1.5 miles: Watch for Gary Sexton Auction Signs. (791 Barren Fork Ranch Road)



AT PUBLIC AUCTION: Located close proximity to Jordan Marina, this custom cut douglas fir log home and approx. 81 acres offers tranquility and seclusion! It features an array of amenities including 4 bedrooms – 2 ½ baths- loft (3 levels) gorgeous kitchen and stunning vaulted ceilings and stairway! You will also enjoy the fabulous Jacuzzi – the sound of rain on the metal roof and a walk over to the Barren Fork Creek located on the property! The home features gleaming hardwood floors, bay windows – CH/AC – water softener and all copper manifold plumbing – 3 car garage plus a full walk out basement! This one of a kind home offers and array of luxury amenities – towering rock fireplace - safe/wine room – custom kitchen ovens – porches and decks and pole building! **TERMS:** 10% escrow paid upon contracting, balance due in 30 days! Sells at 11:00 – 11:30 am. **CONDITIONS:** Highest bid submitted to legal principals for acceptance or rejection! Any fair offer will be contracted! Low starting bid \$100,000! **INSPECTION:** Open House Sunday, July 14 & 28, 1:00-3:00 PM (or all day Friday, August 2nd) or by appointment!



FURNITURE – HOUSEHOLD – ANTIQUES

Oak dining table chairs – bedroom log furniture – sofa & living room furniture – cabin lamps – green eggs grill, old crocks, GE washer & dryer, oak roll top desk, televisions – slate pool table, bar stools, coffee end tables, kitchen appliances, dishes, pots, pans, old rocking chairs – freezer- antique chest of drawers, galvanized tubs, drop leaf table, mountain bikes, nice baskets, collectibles, antique glass, old wheel barrow, costume jewelry, office supplies, beds, old baby grand piano from Metro Opera CATSKILLS NY! 3 levels of unbelievable furnishings and unique items!



DOZERS – GUNS – BOATS – TOOLS

Canoes & john boat, Craftsman chest tool boxes, 10 hp drill press, Craftsman grinder, Craftsman wrenches, torch set, power washer, floor jacks, welders/ supplies. 6' brush hog, small Caterpillar dozer 5T 196 WSP(1951 D4) generator, Craftsman 9" Lathe, shop fan, old boat oars, Craftsman table saw, fishing items, 2 Winchester 1200 12 ga pump, tractor items – entire building full of tools – supplies! (This list is subject to change)



AUCTIONEER NOTES: Calvin has Massive logs from British Columbia (dried 2 years) – 81 acres all wooded – Please "No Trailers" day of auction – Limited parking on private lane (load out allowable on 8/4/19) Check out all photos on garysexton.com

Living Estate of Ted Swift

Gary Sexton
Since 1978
Auctioneers, LLC



www.garysexton.com • 417-255-7001
1028 Porter Wagoner • West Plains, MO



Todd Hornback
Oregon Co. Rep

Gene Summers
Ozark Co. Rep



E-mail: gary@garysexton.com
AR Broker #PB00043890, AR License #1568

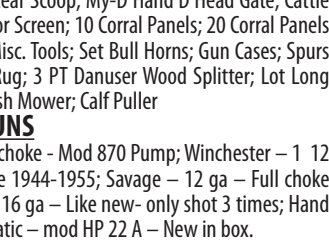
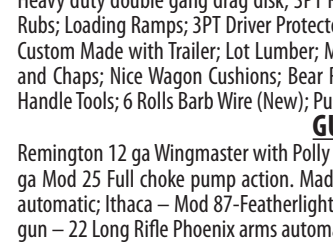
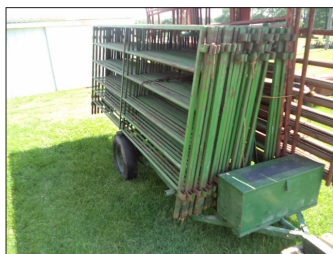
All announcements made day of sale supersede any written material. Not responsible for lost or stolen property or accidents.

John Bill Greer Trust AUCTION

**Saturday @ 10:00 AM
July 27th, 2019**

**639 Golf Course Road
Marshfield, MO 65706**

**Directions: Take Exit 100 and turn right onto Spur Drive.
Take a left onto Banning Street and follow for 1.2 miles.
Take a left onto Hubble/Hwy CC. Follow Hubble/Hwy CC to
North Elm and turn right. Turn left onto Golf Course Road
for 1 mile. Property on left. Watch for signs.**



TRACTORS

2635 Massey Ferguson 300 HRS (Like New) with Folding Roll Bar; Ford 3000 Gas Tractor with Canopy (Excellent Shape); Kawasaki 300 4-Wheeler Dual Mode-Differential with Comfort Cover; Ford 530 Square Baler; Ford 3PT Belt Drive Hay Rake; 8' Bush Hog Brand Bush Hog (Like New); Bush Hog Brand HD 6' Bush Hog; Danuser 3PT Post Driver (Near new); E ZEE Flow Spreader (Good); Tractor Mounted Post Hole Auger; 6 ft Offset Disk (Like New); Centrallo 5' 3 pt. Drum Mower; Portable Cattle Working Chute; Large assortment Panels and Gates; 3DT 6' Rhino Blade; Misc. Mineral Feeders; 16' Lone Star Aluminum Fishing Boat with 10 HP Boat Motor plus Trolling Motor; 8FT Heavy duty double gang drag disk; 3PT Rear Scoop; My-D Hand D Head Gate; Cattle Rubs; Loading Ramps; 3PT Driver Protector Screen; 10 Corral Panels; 20 Corral Panels Custom Made with Trailer; Lot Lumber; Misc. Tools; Set Bull Horns; Gun Cases; Spurs and Chaps; Nice Wagon Cushions; Bear Rug; 3 PT Danuser Wood Splitter; Lot Long Handle Tools; 6 Rolls Barb Wire (New); Push Mower; Calf Puller

GUNS

Remington 12 ga Wingmaster with Polly choke - Mod 870 Pump; Winchester - 12 ga Mod 25 Full choke pump action. Made 1944-1955; Savage - 12 ga - Full choke automatic; Ithaca - Mod 87-Featherlight 16 ga - Like new- only shot 3 times; Hand gun - 22 Long Rifle Phoenix arms automatic - mod HP 22 A - New in box.



Real Estate & Auction Services

Hoover Case - Auctioneer

**Have questions, Let us know • 417.859.3204 or 417.844.6020
info@caseauction.com • auctionzip.com ID#24071 • www.caseauction.com**

Terms: Announcements made sale day take precedence over all printed material-neither Case Auction nor property owner guarantees the absolute accuracy of supplied information.

R&R AUCTION SERVICE

ESTATE AUCTION

Saturday, July 20th • 10 AM

30 Riley Lane • Buffalo, MO

This auction contains mostly the estate of Lloyd Swanigan. It was purchased after his death with the property and is now being sold by current owner.

McCormick Farmall Model H Tractor, Case 1190 Tractor, Box Blade, gate, picnic table, scrap metal, cages, Scott's Riding mower, garden carts, wash tub, wheel barrel, sprinkle can, Mercury 40hp 402 boat motor, 1984 Scottsdale pickup, 2006 Ford Taurus, trailer jacks, big dog house, jack stands, roll of wire, crow bar, fence charger, post hole diggers, old hand plow, Fiberglass Kingfisher boat and trailer (no title), Hyrder tri-hull boat and trailer (no title), flat bottom john boat, large 2 car Carport, old stock trailer (no title), antique iron gate columns, 8 ft. blade, hauler trailer for propane tanks, pipe vise, sheet metal, 9'x2' propane tank, Frigidaire side by side refrigerator, fishing poles and reels, chest type deep freezers, upright freezer, lots of misc. hand tools, lots of power tools, Craftsman bench grinder, Central Machinery drill press, flaring set, pullers, Fuller bench vise, extension cords, push broom, bar stools, Dirt Devil, Craftsman 12 gal. wet/dry Shop Vac, Greenwood 12v 15 gal spot sprayer, old fiddle, Silvertone electric guitar, 10" Sears Craftsman Direct drive table saw, coolers, smoker grill, pipe clamps, bag chairs, Rockwell Delta Band saw, Joiner planer, Bunn 10 cup Velocity coffee maker, Antique oak buffet, Craftsman 2.75hp, 10" Radial Arm Saw, Timberline table saw from Westbilt Products Company with tilt, heavy duty metal cart, step ladders, Parker Cleaning Production Inc, 1200 psi 2SFX222E pressure pump, #2 corks, metal milk crate, old radiators, Homelite yardvark blower, John Deere Bell, reel to reel machine, misc. glassware, miniature oil lamps, antique table with storage, water skis, 100ft roll of poly tubing, cast iron skillet, Coleman refrigerated cooler, waterfall pump, tins, 200XL solid state 2 channel amplifier, Ampeg Reverberocket Amplifier, 5 gallon buckets, handmade knives, old bottles, planters, miter saw, boom, welding helmet, lawn and garden tools, battery charger, Fisher heat stove, milk can, fans, car ramps, metal lawn chair, well bucket, Char Broil BBQ grill, Igloo dog house, china cabinet, dresser, end tables, Christmas décor including 1 full box of Hallmark ornaments, Sport Art Fitness machine, construction riser, shelving, roll around cabinet, drywall tools, lumber, folding table, several chest of drawers, hall tree, pitcher and bowl set, bread maker, large framed pictures, side tables, china sets, Eden Pure heater, old doll, wood doll highchair, Wesley upright piano (good shape), shovels, wooden tv trays, books, bowling ball, misc. glassware, Raggedy Ann and Andy, safe, wooden shoes, tool boxes, Corning Ware, stereo equipment, Regulator wall clock, jars, hide a bed, recliner, pressure cooker, cookware, piano lamp, Oneida community silverware (turbo plate), big level, towels, sheets, microphone stand, office chairs, fire brick, some decorative rock, 2 concrete bird baths, - Craftsman 18 bushel lawn sweeper, lattice, monster maul and much, much more day of sale.

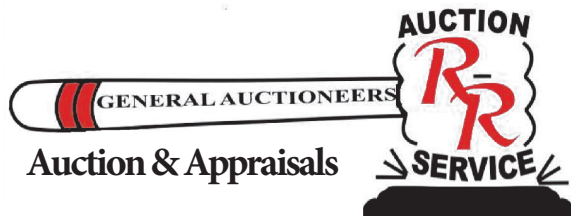


Pre-bid at www.rrauctionservice.com



TERMS: Cash, check, or credit card with proper I.D. nothing removed until settled for A 3% fee will be added to credit card purchases. Not responsible for errors in listing. Any announcement made sale night will take precedence over any printed matter. **Note:** Service will take every precaution to prevent accidents, but will not be responsible should any occur.

**For more information contact Professional Auctioneer Russ Weeks
at 417-576-7357 or check out www.rrauctionservice.com**



Serving this area's
auction needs since 1997 with
honesty and professionalism.
www.rrauctionservice.com
**(417) 576-7357 or
(417) 345-4140**



**CAGA
CERTIFIED
APPRAISER**

NEW MERCHANDISE AUCTION

Thursday July 18th • 5:30 pm



COME CHECK IT OUT NICE NICE STUFF! WE HAVE NEW APPLIANCES IN!

INCLUDING FRENCH DOOR SAMSUNG 24.5 CU FT REFRIGERATOR, WHIRLPOOL SIDE BY SIDE 24.5 CU FOOT REFRIGERATOR, FRIGIDAIRE TOP FREEZER 18.5 CU FT REFRIGERATOR, ALL STAINLESS AND BRAND NEW! ALSO HAVE SAMSUNG GAS STOVE, STAINLESS SAMSUNG ELECTRIC GLASS TOP STOVE, DARK STAINLESS FRIGIDAIRE STAINLESS DISHWASHER, BOSCH STAINLESS DISHWASHER.. IDYLIS 5 CU FT CHEST FREEZER, THOMPSON TOP FREEZER FRIDGE 7.5 CU FT STAINLESS, NEWAIR 52 BOTTLE WINE COOLER, LEATHER COUCH, LEATHER LOVESEAT, LEATHER RECLINERS, KING BED FRAME WITH HEADBOARD, KING MATTRESSES, HEKMAN WOODEN CHAIRS VERY SOLID NICE, GORGEOUS OUTDOOR PATIO SETS, FERRET CAGE, SEVILLE CLASSICS ROLLING TOOL BOX, MASSIVE STAINLESS GAS GRILL W SEARING STATION, BLACKSTONE GRIDDLE, WEBER CHARCOAL GRILL, 5 RACK SHELVING, LIFETIME OUTDOOR STORAGE BOXS, WOODEN OFFICE DESK, RYOBI ELECTRIC POWER WASHER 2000 PSI, PIT BOSS SMOKER, BOW CASE, WOODEN OUTDOOR SWING PLAYSET, LOTS AND LOTS AND LOTS OF KAYAKS KAYAKS, SMOKE HOLLOW SMOKER, WOODEN ROCKING CHAIRS. OLD WOODEN CHEST, ANTIQUE WOODEN BENCH UPHOLSTERED, TARPS, TENTS, LIFETIME FOLDING CHAIRS, 15 FOOT TRAMPOLINES WITH ENCLOSURE, 10000 BTU WINDOW AIR CONDITIONER UNIT, CHAMPION DUAL FUEL GENERATOR, PLASTIC PLANTING BOXS, LOTS OF DIAPERS AND BABY ITEMS, LOTS OF KIDS TOYS INCLUDING DOLLS, OUR GENERATION ITEMS, LEGOS AND MUCH MUCH MORE, ALSO 4X8 SHEETS OF 1" MDF PLYWOOD. 4X8 SHEETS UNDERLAYMENT, 4X8 SHEETS WHITE COATED BOARD, LOTS OF 2x4S AND MIXTURE OF OTHER LUMBER, LET'S NOT FORGET THE KIDS BIKES AND RIDEONS AND ADULT BIKES, FOLKS IF THERE'S BEEN ANX AUCTION NOT TO MISS THIS YEAR THIS IS IT!!! WE WILL ALSO HAVE A VARIETY OF SMALL APPLIANCES SUCH AS AIRFRYERS MICROWAVES AND KITCHENWARE COME CHECK IT OUT THERE WILL BE LOTS OF STUFF THAT IS NOT LISTED THERE WILL BE OVER 300 ITEMS IN THIS AUCTION!!!



Auction terms: Cash, Good Check or Credit Card. Not responsible for accidents. Announcements day of sale take precedence over printed matter.

Shetler
Auctions

Check out www.shetlerauctions.com for more pictures



417-254-4090



shetlerauctions@gmail.com

www.shetlerauctions.com

Shetler Auctions LLC

3099 Hwy. 95

Mtn. Grove, MO 65711

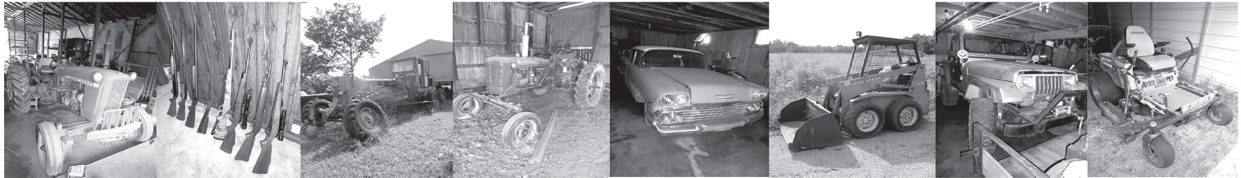
Inside Cooled Building • Thursday July 18th • 5:30 pm

FARM & ESTATE AUCTION

Friday, July 19th, 2019 ~ 9:00 AM

LOCATION: 879 Northwest 150th Lane, Liberal, MO; Directions: From Liberal Go Northwest Approx 8 Miles On K Hwy To 150th Ln Or From Arcadia, KS Go 3 Miles East To 150th Ln (Watch For Signs)

Auction For John Rawlings



Antique, Modern Furniture, Also Antiques, Primitives & Households

Ant Wood Bar W/Brass Foot Rail, Ant Dresser, Ant Fireplace Mantle, Ant Rocking Chair, Ant Iron Bed, Ant Sitting Chair, Several Pcs Of Prim Furniture, Oak Armoire, Cedar Chest, Roll Top Desk, Wood Tea Cart, Sm Curio Cabinet, Twin Bed, Coffee & End Tables, China Hutch, Kitchen Table & Chairs, Recliner, Jewelry Armoire, 2 Showbox Display Cases, Washer & Electric Dryer, 25 Cu Ft Deep Freeze, Shark Vacuum Sweeper, Microwave, Ant Horse Buggy, Some Horse Drawn Equipment, Ant Slave Locks, Ant Lanterns, Ant Cameras, Ant Cream & Green Wood Cookstove, Metal Porch Glider, Ant Hay Fork, Ant Feed Scales, Ant Spurs, Ant Tractor Seats, Ant Pitcher & Bowl Set, Crock Pcs, Cast Iron Pcs, Old Iron Wheels, Old Oil Lamps, Metal Egg Basket, Ant Child's Wagon, Old Toys, Granite Ware & Galvanized Pcs, Lots Of Prim Tools & Sm Prim Items, Old Wood Boxes, Cowboy Décor, Cowboy Hats & Boots, Old Linens Inc Quilts, Some Jewelry, Some Coins, Telescope, Pots, Pans & Dishes (Some Old, Some New), Lg Yard Décor Rocks, Hundreds Of Other Items Not Listed

Guns, Antique Car, Jeep, Boats, Mowers, Tools & Misc Items

Win Model 37A 12 Ga Shotgun, Westerfield Model 5506 20 Ga Shotgun, Ithaca 12 Ga Auto Shotgun, J. Stevens Crack Shot 22 W/ Saddle Ring, Win Model Range 30-06 Bolt Action W/Scope, Rem Model Mohawk 600 Bolt Action 243 W/Scope, Ruger 10/22 Rifle, Knight 50 Cal Black Powder, Thompson 50 Cal Black Powder, Germany Model RG20 Revolver 22, Classic 1958 Chevy 4 Door Car Has Three On The Tree & 6 Cy Motor, 1979 4 Sp 4x4 Mountain Jeep W/V8 Motor, 1980 Chevy Blazer, 2001 Toyota Van (Been Wrecked), 1990's Super Duty Truck, Chevy Luv Diesel Truck

(For Parts), 2003 Fisher 1610 Alum Boat W/Trailer & Mercury 25 Motor, Outchita Boat W/Trailer & 40 Johnson Motor, 14 Ft Alum Boat W/Trailer & Evanrude 40 Motor, Dixie Chopper Silver Eagle Comm Zero Turn Mower, Walker Comm Zero Turn Mower W/20 HP Motor & Only 355 Hours, Rare Chrysler E Riding Mower, Storage Building, 5th Wheel Hitch, Torch Set, Wire Feed Welder, Miller Welder, Roll Around Toolboxes, 100 Gal Alum Fuel Tank, Welding Table, Upright Air Compressor, 250 Gal Propane Tank, Sm Hand Tools, Battery Chargers, Sm Electrical Tools, Long Handle Tools, Power Cutter, Alum Ramps, Lg Lot Of Tires & Wheels, Fishing Poles & Tackle, Shooting Target Rack, BBQ Grill, Other Items Not Listed

Tractors, Skidsteer, Road Grader, Trucks, Trailers, Row Crop & Farm Equipment

JD 4020 Diesel Tractor, JD 1010 Tractor W/WFE, Hydraulics & Dual Power Takeoff, Ford 800 Diesel Tractor, Farmall 300 Tractor, IH Farmall Super C Tractor W/WFE, IH Farmall Super H Tractor, 2 IH Farmall H Tractors, Farmall F20 Tractor For Parts, IH Loader, JD 125 Skidsteer, Caterpillar 1480 Road Grader, Lacross 24 Ft Lowboy Trailer, 18 Ft Flatbed Trailer W/Metal Floor, Two 14 Ft Flatbed Trailers, 16 Ft Bumper Hitch Stock Trailer, 1955 Chevy Pickup Bed Trailer, Silen Air Portable Compressor, 1976 White Dump Truck, 1978 Mack Semi Truck, IH Grain Truck W/Hoist, 50's Crane Truck, NH 852 Chain Round Baler, JD 14 Ft Wheel Disc, Case Side Delivery Rake On Steel, 3 Pt 6 Ft Box Blade, Post Hole Digger, Lg Diesel Generator, 10 Ft Chisel, IH 7 Ft Pull Disc, Hydraulic Cylinders, Implement Tires, New Rolls Of Barbed Wire, Steel Posts, Portable Panels, Hedge Posts, Some Pipe & Pipe Rack, 1/2" Cable, Saddles & Tack, Hog Crate, Cattle Related Items, Lots Of Scrap Iron, Other Items Not Listed

Auctioneers Note: It Is An Honor To Be Conducting This Auction For Mr. Rawlings As We Have Known Him For Many Years. Antiques & Primitives, Guns Are Great As Well. Excellent Antique Tractors As Well As Good Mowers, Trailers, Boats & Equipment. This Auction Will Have Something For Everyone. It Is Also A Very Large Auction So Bring A Friend!! Please Plan Now To Attend. **Sale Order: Furniture & Appliances Will Sell First Followed By Antiques, Collectibles & Households Then Move Into Small Tools & Outdoor Items. At Approx 12:00 Noon Will Offer Guns, Boats & Mowers. Then At Approx 1:00 PM Will Offer Tractors, & Equipment. Remainder Of Tools & Outdoor Will Finish Auction. See Ya There!!!**

Terms: Cash or check with proper ID. Now accepting most major credit cards. Nothing removed until settled for. Statements made the day of sale takes precedence over printed material. Everything sold as is where is. Not responsible for accidents. Restroom available. Concessions Provided By Kathy's Snack Shack. Check our website for upcoming auctions and for additional pictures!!



NANCE AUCTION SERVICE

No Matter How BIG or small, We Do Them All!

www.nanceauctionservice.com

Col. Bill Nance 417-214-0093

In God We Trust

Philippians 4:13

ESTATE COIN AUCTION

Sunday, July 21st, 2019 ~ 1:00 PM

LOCATION: America's Best Value Inn & Suites, 2345 E Marvel Road, Nevada, MO (Watch For Signs)

Large Estate Coin Auction

Gold Inc 1835 Classic Head \$5, 1891CC \$10, Several Other Smaller Gold Coins, 1877 Trade Dollar, Morgan Dollars Inc 1878 7/8 Tail Feathers Strong AU+, 1880-O BU, 1882-CC, 1883-S (High Grade), 1884-S AU, 1884-O Rainbow Toned, 1885-S, 1886-O (High Grade Toned), 1887-S, 1887-O Cool Color, 1894-O AU, 1896-O AU+, 1897-S BU, 1903-S (High Grade), Peace Dollars Inc 1921 & 1928, Also Many, Many More Silver Dollars, Several Silver Pandas, Lots Of High Grade Seated & Barber Halves, 1914-S Barber Quarter, Several Early Date Standing Quarters, Seated Quarters Inc 1853, 1854 W/Arrows, 1856, 1861, Several High Grade, Isabella Quarter, Washington Quarters Inc 1932-S Key Date, 1936-D High Grade, 1942 Proof, & Others, Lots Of High Grade Seated & Bust Halves, Type Coins Inc 1854-O W/Arrows High Grade Half Dime, 1883 Hawaii Dime, Half Cents Inc 1884, 1829, 1835, 1851, Lg Cents Inc High Grade 1856 & Many, Many More, Two Cent Pcs Inc 1864 & 1866, Several Three Cent Pcs & Three Cent Nickel Pcs, Several Mercury & Roosevelt Dimes Several W/Key Dates, V-Nickels Inc 1884, 1886, 1888, 1892, 1897, 1902, 1904, 1907, 1911, 1912, & 1912-S, Shield Nickels Inc 1867, 1868, 1873, & 1882, Several Key Date Buffalo Nickels Inc Very Rare 1918/7D, Several Commemorative Half Dollars, 2 Slabbed Ancient Coins, Proof Sets Inc 1953, 1955 & Many More, Several Complete Or Near Complete Coin Books & Sets, Variety Of Modern Silver Dollars, Cents To Inc 1858LL Flying Eagle Unc, 1864L, 1869, 1899, & 1896 Unc, Key Cents Inc 1908-S, 1909-S, Many High Grade Red Lincoln Inc 1913, 1916-D, 1917-S, 1918, 1918-D, 1918-S, 1920-D, 1931-S, 1922 Plain & Many, Many Others. This Is Only A Partial Listing As We Received Coin In Short Notice & Unable To Go Through All For Listing. Please Check Website For Complete Coin List & Lots For All Coins. There Will Be Hundreds Of Other Coins Added As Well As Currency & Other Oddity Coins.

Please Plan Now To Attend This Very Rare & Unique Coin Auction. Contact Bill At 417-214-0093 For Any Questions. Doors Will Open At 11:00 AM For Preview. Police Officer Will Be On Site During Auction. You May Be Asked To Have Your Photo Taken So Please Be Prepared.



NANCE AUCTION SERVICE

No Matter How **BIG** or small, We Do Them All!!!

www.nanceauctionservice.com

Col. Bill Nance 417-214-0093

Mahlon & Katie Gingerich

FARM AUCTION

SATURDAY JULY 20, 2019 10:00 A.M.

6675 NE Hwy CC, Osceola, Mo. 3 miles North of Osceola, 3 miles South of Lowry City, to CC hwy, East 3 miles. Watch for Wheeler Auction Signs.

Household & Furniture

3 Oak kitchen dry sinks;
Kitchen cabinet w/ glass doors;
Nice oak secretary;
Two drawered oak box w/shelf;
Living room table;
Kitchen table;
2 Oak dressers;
3 Oak bed frames;
Several dressers;
Night stands and tables;
Cedar chest;
Assorted suit cases;
30 Day wind up clock oak;
Wood benches;
Children's rocker;
Fish tank w/cabinet;
School desk;
Exercise machines;
Ashland New Decade cook stove (good);
Pioneer Maid cook stove;
Pioneer Maid wood heater;

3 Burner oil stove;
Oil lamps;
Singer sewing machine;
Sewing machine heads;
Maytag washer for parts;
American Made 14 qt. pressure cooker (nice);
Iron skillets;
Pots & Pans;
Lots of canning jars & jugs;
Antique crout cutter;
Antique sugar bowl & milk pitcher;
2 Large plastic barrels w/lids;
Candle & soap supplies;
2 Dayton vegetable scales;
Lots of strawberry cups;
Lots of egg cartons;
Cast iron kettle;
Complete Carrom game;

Guns

Ruger 22 Cal. w/clip;
Marlin 22 Cal.;
Remington pump 12 ga.;
Winchester Ranger 30-06 Cal. w/scope;
Springfield Model 67 20 ga.;
Westfield M-172 B. 12 ga. Bolt

action;
Single shot 16 ga.;
Like new air gun;
Long bow;
Lots of ammo;
Old ammunition box;

Farm Machinery/Tools/Outdoor

Double-two seated buggy;
Top buggy-one seat;
Open buggy;
Hostetler wagon (no bed);
No. 3 John Deere mower;
Walking plow;
Garden disk;
Mower blades;
ZX 340 Linamar Motor (good);
Gasoline motors for parts;
Table Saw on wheels;
8 ft. Metal step ladder;
Small step ladder;
Old wooden levels;
Bow saws;
Band crimper;
Lumber binder;
Assorted wrenches;
Small vise;
Old buggy wheels;
Old buggy shaft/old collars;
16" Saddle;
Saddle rack;
Complete set of work harness;
Buggyharness;
Metal neck yoke;
Metal double tree;
Metal singletree;
180 lb. Anvil;
Horse shoeing box & tools;
Several cross cut saws;

Wheel barrow;
Boomers & chains;
Garden scratcher;
3 Push lawnmowers;
Old handmade well reel;
Dolly push cart;
Cement mixer;
Platform scale;
16 Pallets of sand stone;
8" CONcrete blocks;
Oak lumber;
Buzz saw blade;
Assorted pvc pipe;
Metal posts;
16' Cattle panels;
Chicken wire & feeders;
Small metal wheels;
Metal clothes line post;
Old chains;
Iron bed frame;
Old snagging Rod-Reel;
Lots of fishing rods, reels, and tackle;
17' Old Town Canoe;
10' Kayak;
Kerosene lanterns;
Metal tree stand;
Cobra Class 4 leather sewing machine-sews from 6 oz. to 7/8", good condition, clutch included.

**Owner: Mahlon & Katie
Gingerich - Osceola, MO**

BYRON WHEELER AUCTION SERVICE

Selling Livestock • Farm • Household Sales

Byron Wheeler, 417-777-0897 or 417-646-8102

Go to www.wheelerlivestock.com to view pictures

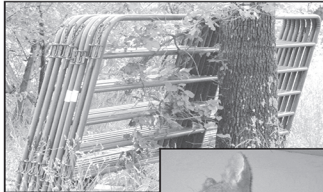
Terms of Sale: Cash or good check, anyone unknown to auctioneer or owner must have letter of credit on large items.

Sam CRAWFORD AUCTION SERVICE LLC

Will sell the following located from Buffalo, Mo. 8 miles North on Hwy. 73 to Hwy. 64, then East 9.4 miles (17 miles West of Lebanon, Mo. on Hwy. 64) Leadmine Rd. 1 mile North to Gap Rd., 1 mile to Post Oak to White Oak Rd., then North 1 mile. Watch for Crawford Auction Service signs.

Saturday, July 27, 2019 – 9:30 a.m.

GUNS – ATVs – TRACTORS – LAW EQUIPMENT – TOOLS – MISC



Guns- Deer MTS- Deer Stands

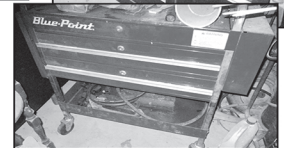
Sell @ 9:30am

Remington 700 270 Simmons scope
Remington 770 300 Win mag
Remington 11 20ga semi auto
Winchester 1300 XTR 12ga pump
2 Springfield 15 22 single shot
CVA 50 cal. black powder, camo
Ithaca M49 22 lever action
Iver Johnson 20ga single shot
3 Pellet rifles; H&R 650 22 pistol
High Standard 22 pistol; U.S. pistol 38?
8-10 Deer head mounts
3-4 Deer stands (1 NIB)

Tractors- Equipment- ATVs

Sell @ 1pm

Ford 8N
Case 22 Industrial w/front loader and side
mt. sickle mower, 3pt
3pt post hole digger
Bush hog 3pt 5' brush cutter
2 Older 3pt 5' brush cutter
(2) 3pt blades; ATV pull behind mower
P/U bed trailer; 2 Small 2 wheel trailer
12' Flat bottom alum boat & trailer
'86 Mazda p/u long bed, 2 wheel, hasn't run
for 2-3 years
'08 Yamaha Grizzly 700 camo 4-wheeler,
4x4, 1400 miles, nice
4 New ATV tires & wheels



Lawn Equipment

Cub Cadet RZT L ZTR 54" 24hp
Cub Cadet RZT ZTR 50" 24hp
5-6 Push mowers; Lawn cart
2-3 Older lawn tractors
8hp log splitter; Chipper/shredder
Stihl MM55 garden tiller
3 Older tillers; Stihl MS290 chain saw
Other chain saws; 4 Gas weed eaters
3 Gas blowers; Much more

Household- Misc.

Ant. dresser; Ant. dining table & 6 chairs
Ant. sq China hutch
Wicker desk (under paint)
Small roll top desk
Ant. Scandellie accordion
Ant. kitchen cabinet/pie safe
Lg cast iron kettle
Plastic & metal lawn chairs
Rd metal patio table
Wood pic nic table
Air Hockey table, regulation size
2 Window A/Cs; Household misc
Treadmill; Total gym

Auctioneers Note: Large auction with lots of good items. Will be running 2 rings after selling Guns. Plenty of shade. Loader on site day of action.

See website for more pictures!

Tool-Other

Matco professional tool cabinet, like new
Blue point rolling tool box/cart, like new
Remline 2 tier tool box; Other tool boxes
Lots Snap On, Mac, Matco wrenches/
sockets, accessories
Lot elec & cordless power tools
Snap On mechanics testers, gauges
Ryobi 8" bench grinder, NIB
Older metal lathe; 2 Air tanks
3 Air compressors (2 comm)
Cutting torch; Lot C clamps
L Tec Mig 130 welder; Some air tools
Campbell Hausfeld Flux Core 80 wire welder
Lincoln 225 welder
B/D bandsaw; Clarke drill press
Table top saw; Double wheel grinder
Other power tools; Tire balancer
Coats 40.40 SA tire machine
3 HD floor jacks; Hyd jack; Jack stands
Pipe vise; Pipe cutter; Elec cement mixer
Lawn mower jack, NIB
2 Motor stands; Motor lift
2 Sets alum. loading ramps

Car ramps; Lot gas cans
Lot long handle tools, handsaws, crosscut
saws, brace & bits
Lot hammers, hatches, screwdrivers, files
Lot drill bits; 2 Bolt bins, storage cabinets
3-4 Lg. metal job boxes; Lot bolts, nails, etc.
Sev ext cords, rope, air hose, garden hose,
work stools, fans
Lot oil, antifreeze, etc; Galv tubs & buckets
Sev F/G & alum step & ext ladders
3-4 Metal kitchen cabinets
Sev log chains; Lg chain hoist
300 gal fuel tank & stand
15-20 Steel & plastic barrels
Lg rd galv. water tank; 2 Oblong water tanks
(10) 12' Priefert portable cattle panels
Other gates & panels; Chain link fence
HD steel p/u rack
(8) Sections metal mesh panels, curved, 6'
tall, 6' long (used for peacock pen)
Mt. bike; 2 yard swings; Dump rake
Lots misc; Lot totes unopened
Used batteries; Scrap iron
Used tires & wheels; Lg. Igloo dog house
Sev. rods & reels; Fishing misc.

Sam
CRAWFORD
Auction Service LLC

Cross Timbers, Mo.
CrawfordAuctionService.com

417-998-6629



TERMS: Cash or good check. Nothing removed until settled for. Not responsible for accidents. Lunch available. Statements made day of sale take precedence over printed matter. All items sell as is. No warranties given or implied.



Chance · Sam · Chase

Sam
417-328-9137

Chase
417-399-1904

Chance, CAI
417-298-1751

Tom Poynter
Jack Lancaster

Barbara Rehg

PUBLIC AUCTION

Sunday July 21, 2019 • 9:00AM

940 S Iron Mountain Rd • Fordland, MO 65652

Directions: From Springfield Take Hwy 60 East 18 Miles To Iron Mtn. Rd. Turn North Across Hwy 60 Onto Iron Mtn. Rd. To Auction. Watch For Auction Signs.



Vehicles, Equipment & Misc- 12:00

2011 International Daycab Semi, Single Axle, Allison, Automatic, 208k Miles * 1984 Ford Dump Truck Single Axle, 8' Bed, Gas V8, 4spd w/ * Splitter (4x2) * 2004 GMC 4500 Duramax Crew Cab w/ Allison, Auto, Utility Bed, * 2wd, 300K Miles * 2000 Chevy Silverado V8, Auto, 109000 Miles w/ Bed Cover 1989 F700 6.6 Dsl Truck w/ Flatbed * 1996 Four Winds 24' 5th Wheel Camper w/ Slide Outs, Canopy * & Title * 2- Project Restoration Boats w/ Engines* 10pc Corral Round Pin Horse Drawn Doctors Buggy

Mobile Home & Buildings For Removal- 12:00

2000 Clayton 1200M/L Sq Ft w/ Addition Featuring New Carpet, New Paint, Trim & Molding, Large Living Room, Kitchen w/ Flat Top Range, Built In Microwave, New Dishwasher, Refrigerator & Pantry, 3 Bedrooms, 2 Bath, Newer Central AC Unit, New Metal Roof, Guttering, New Water Heater, Stack Washer & Dryer, Large Front Porch & More. * Buildings- For Removal * 20x20 2 Car Carport- Partially Sided/Part Open * Single Carport- Enclosed w/ Roll Up Door & Plywood Floor 12x16 Storage Building w/ Double Doors, Screen Doors & 1/2 Loft Overhead Storage * Wood Deck/ Gazebo w/ Wood Picnic Table * **Payment Due Day Of Sale * Selling At Glenworth Auction Building- 940 S Iron Mountain Rd * Fordland, MO * Mobile Home & Buildings Located At 220 N McMahan St Seymour, MO * -Call For Showing**

Guns, Knives, Ammo & Misc- 12:30

Large Centurion Safe* Gun Cases* Bowcase* Lots Of Ammo Davis Derringer 32Cal* Beretta PX4 Storm .40 * H&R 410 3" Model 88* Nato 1912-61 Waffenfabrik Steyr Western Auto Revelation 310B 16g* Rem Model 514 22 Westernfield 12g* Ruger LCR 38sp* Ruger 22/45 22LR* Davis 22s* Davis 22LR* BSA Scope* Trabitions Scope*

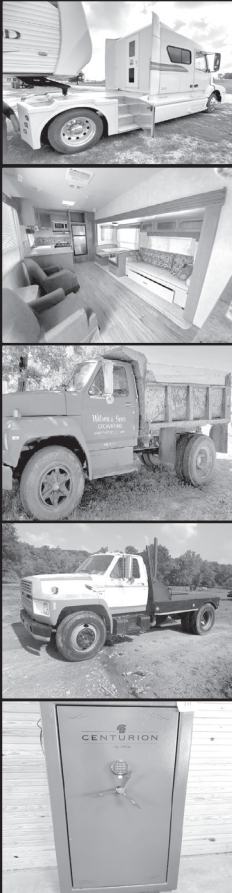
* Rifle Scope* Schmidt Rubin* Rock Island 1903 Rifle * 24 Morgan Silver Dollars * 1984 Olympic \$10 Gold * 4-1987 Constitution \$5 Gold * 30-Silver Eagle Proofs * 1921-35 Silver Peace Dollar no 1928* 11-Silver Eagles * 1986-2004 Silver Eagle Set* 1948-63 Franklin Half Dollar Set* 1964-2004 Kennedy Half Dollar Set* Several Half Dollar Proofs * 2-1932-64 Washington Quarter Sets Mostly Complete * Lots of Silver Half Dollars, Quarters, and Dimes * Indian Cent Set Prestige Sets With Silver Dollars* Buffalo Nickel Set* V Nickels 36 Silver Mexican Libertads* Several Silver Proof Sets Several US Commemorative Silver Proof Dollars * Brown Ikes Blue Ikes* Jefferson Nickel Set 1938-2004 * 1956-2015 Proof Sets* Indian Head Cents * 1965-2004 Mint Sets * Lincoln Wheat Cents * Some Canadian Proofs and Coins Plus Many More * -Selling On Prohibit-

Tools, Lawn & Garden

Simplicity Champion Zero Turn 44" Mower w/ 597cc Kohler * Engine & Warranty * Come-a-longs* Skilsaws* Deer Stand* Barbwire* Grinder*Saws Paint Guns* Yard Tools* Ramps* Waders* Leaf Blowers* Weedeaters* Trimmers* Chain Saw* Craftsman Trimmer* Cooler* Craftsman Upright Tool Box On Wheels- Full* Ladder Screw Drivers* Wrenches* Sockets* Craftsman Air Nailer * Air Tools* Shopvac* Levels* Sander* GMC Drill* * Battery Charger* Craftsman Drill* Chainsaw* Bushnell Binoculars Primitive Saws* Misc Hand Tools* Power Tools

Semi & 5th Wheel

1998 Volvo 10speed Semi w/ Cummins, Air Ride, Pull Out Sofa, * Back Door, Back Steps & More * 2013 Forest River Wild Wood 35' 5th Wheel Camper w/ Slide Out, Awning, Full Bathroom w/ Full Glass Door Shower, Queen Bed, 2 Rockers, Sleeper Sofa, Dinette Table, Full Kitchen w/ Double Sink, Microwave, SS Refrigerator & Much More- Very Nice!



Auction Conducted by:

Member of:

Glenworth

Auction Service & Realty
Glen Yutzy, Auctioneer/Broker

Missouri Professional
Auctioneers Association
Licensed in Missouri & Arkansas



Phone: (417) 767-4345

Fax: (417) 767-4222

Not responsible for accidents. Announcements made day of sale take precedence over any printed matter.
Terms: CASH or CHECK Visit our website for more information at www.glenworth.com Lunch available

LARRY DRENON AUCTION

ESTATE AUCTION

24974 Hwy BB • Warsaw, MO

Due to the deaths of Johnnie and Barbara Adams, the following will sell at public auction located from Warsaw, Mo., north on Hwy 65 5 miles to Hwy BB, then 7 ½ miles to sale on:

SATURDAY, JULY 27, 10AM

REAL ESTATE

Sells at 11 am

Located close to Lake of the Ozarks boat ramps, and minutes from Warsaw.

Earth contact home on 8+/- acres. 300 sq ft, 2 bedrooms, with a sunporch on the front that looks out over a valley. Outside is a 40 x 40 shop building with partial concrete floor. Right now from the front of the home you can see the lake, and the water tower at the North Shopping Area of Warsaw. A little TLC and the view would open up even more.



Terms: Sells subject to probate court approval, however come prepared to buy as the family would like to settle the estate in a timely manner. The highest bidder of the property will be required to give 20% down day of auction, to be held until it is approved by court. If approved, then it will go into escrow at the title company. Closing approx. 45 days. At closing the balance of purchase price, plus buyer's portion of closing costs will be due. Taxes to be prorated. Seller will furnish title insurance and clear deed.



JOHNNIE ADAMS ESTATE & BARBARA ADAMS ESTATE



FORK LIFT

Super 6 Pettibone model 6-33 telescopic handler, rough terrain Fork Lift, w/ Detroit diesel engine, good rubber

CANNON BARRELS AND MFG ITEMS

Half Scale Napoleon 1857 cannon barrel, 2 ¼" bore, 150 lbs, 3' long; Mountain Howitzer cannon barrel, 4 ½" bore, approx. 250 lbs, 3' 4" long, powder coated Six Pounder 1841 cannon barrel, 3 ½" bore, 850 lbs, 5' 6" long; Twenty Pounder Parrot cannon barrel, 3 ½" bore, approx. 1660 lbs, 7' 6" long; Lot of cheek and tongue end templates; Several pieces of steel, 1 ¾" & 2" x ¼" x 10' long; 2 Oak timbers, 9" square x 10' long

TRAILERS & LOG MOVING

Homemade crane for picking up logs, Homemade carts used for moving logs, 16' Car hauler flatbed trailer, Tandem axle trailer with 4x18' box, Utility



trailer with 9x4.5' box, 26' Camper trailer frame w/ tongue, tandem axle, Lot sawn logs, oak and cedar

SHOP EQUIPMENT AND TOOLS

Engine hoist on Overhead A-frame, 1 ½ ton Motor, Grizzly metal cutting band saw, 220, oil cooled, Grizzly metal cutting band saw, 110, Grizzly 40" wood lathe, Lot of lathe tools, Honda EG6500CJ generator, Chicago 2800w generator, Miller stick welder, Craftsman 40 gal air tank w/hose, 60 gal air tank, Chicago drill press, Sanborn air compressor, 2 hp, Bench top drill press, 16 spd, 60 drawer wooden parts cabinet, Vise on metal stand, 6 Level and other levels, Oxygen and Acetylene tanks, Victor cutting torch, Lot of hand tools, Several vises, 6/12 V charger, Lg shop lights, 6 Fiberglass step ladder, other ladders, Drywall T-square, Crescent wrenches, large bolt cutters, come -a-longs, furniture clamps, etc., Lg vise on stand, 2 small metal welding tables, Railroad jacks, Sq. head bolts, 24" x ¾", other bolts, nuts, etc., Electric concrete



mixer, Campbell Hausfeld pneumatic nail gun, Stihl 029 chainsaw, Lot new wood tool handles, hatchets, hand tools, etc.

HOUSEHOLD & COLLECTIBLES

Samsung front load washer and dryer, modern Merlot color, Whirlpool Stainless steel French Door refrigerator w/bottom freezer, Idylis small chest freezer, Small glass top coffee table, Kenmore Apt. 2.5 cu ft refrigerator, Hanging oil lamp with statue, Old kerosene lamps, figurines, other décor items, Small Haier chest type freezer, Double redining leather sofa, Oval kitchen tale, 4 chairs w/casters, Orion VCR, Magnavox 38" flat screen tv, TV stand, glass and enamel black, Chest of drawers, Other misc. small furniture pieces, Several vinyl records, C&W

CANOE

18' canoe, handmade to look like Vintage Mountain Main high-side river canoe

SHOTGUN & FISHING

Harrington Richardson Model 088 .410 shotgun, Catfish and other fishing rods and reels, 2-Old boat trailers

LAWN AND LANDSCAPE

Large lot of sandstone landscaping stones, 6'x4.5', 3.5'x4, 5'x5.5, other sizes, Craftsman yard vac/ chipper/shredder, 2 - 18" x 3 ¾" iron wheels, B&D trimmer, Large cast iron kettle, Pickup bed utility trailer

RAMPS AND DECKS

2- 5 ½' Aluminum square platform decks, 4- 8' & 1-6' EZ Access aluminum ramps, Lot of aluminum railing

MISCELLANEOUS

Duralast diamond plate aluminum pickup tool box, Keeler wood heating stove, Twin cylinder AC pump, Single cylinder, 2-40" wooden spoke wagon wheels,



Metal shelving, Canvas wall tent, 2- 15' Dock ramps, 100 gal aluminum tank, Several aluminum kegs, I beams & H beams, diff sizes, Lot 2x4, 2x6, and 2x8 pine lumber, Concrete wire, Piles of scrap iron, metal and other materials, Other miscellaneous items not seen due to being in storage.

Terms: Cash, approved check, credit/debit cards (convenience fee applied). Nothing to be removed until settled for. Not responsible for accidents. Statements made day of sale take precedence over printed material. Lunch served.

LARRY DRENON AUCTION

Larry
660-596-8515

Lacey
660-723-1104

Laramie
660-221-4386

660-547-2646



ANNUAL JULY CONSIGNMENT AUCTION

Saturday, July 27 at 9 am

WHEELER AUCTIONS LOT IN PARIS, MO

TRACTORS; COMBINES; PLATFORMS AND CORN HEADS;
PLANTERS AND DRILLS; TILLAGE TOOLS; HAY EQUIPMENT;
ROTARY CUTTERS; CONSTRUCTION PIECES; LAWN, GARDEN AND ATV'S;
GRAIN, FEED AND MATERIAL HANDLING; SPRAYERS AND APPLICATORS;
TRUCKS; TRAILERS; LOTS OF LIVESTOCK EQUIPMENT

ACCEPTING CONSIGNMENTS

MONDAY, JULY 8 - THURSDAY, JULY 25 (UNTIL NOON)

LOADING HOURS - MONDAY - FRIDAY, 8 AM TO 5 PM

SATURDAY, JULY 20 AND SUNDAY, JULY 21, 9 AM TO 3 PM

4 OR MORE AUCTION RINGS WILL RUN.

Wheeler 
AUCTIONS & REAL ESTATE

Live Online
Bidding

Powered By:
proxibid

23101 HWY. 24, PARIS, MO 65275 | 660-327-5890
WWW.WHEELERAUCTIONS.COM

**2500+ PIECES
OF MACHINERY**

BUFFALO LIVESTOCK MARKET LLC

276 Hwy 32 West
Buffalo, Missouri

July 13th, 2019

Receipts: 1098 Head

Feeders \$3-\$5 Higher on wean vac sale;

Cows Steady

Representative Steers

300-400 @ 170.00 to 205.00

400-500 @ 159.00 to 175.00

500-600 @ 148.00 to 163.00

600-700 @ 143.00 to 153.00

700-800 @ 137.00 to 144.25

Representative Heifers

300-400 @ 140.00 to 160.00

400-500 @ 138.00 to 153.00

500-600 @ 134.00 to 147.00

600-700 @ 129.00 to 140.00

700-800 @ 120.00 to 130.00

800-900 @ 105.00 to 114.00

Feeder Bulls

400-500 @ 135.00 to 157.00

500-600 @ 132.00 to 146.00

600-700 @ 126.00 to 145.00

700-800 @ 110.00 to 129.00

800-900 @ 100.00 to 106.00

Cow Calves No Test

Bred Cows No Test

Slaughter Cows

Breakers 63.00 to 69.50

Boners 54.00 to 63.00

Cutters 47.00 to 55.00

Slaughter Bulls

High Dressing 86.00 to 93.50

Med. Dressing 72.00 to 83.00

MON-WED MARKET REPORT

Listen to KJEL 103.7FM • Lebanon or KYOO 99FM • Bolivar

VIEW OUR SALES AT CATTLEUSA.COM

CALL FOR TRUCKING OR ON-FARM VISIT

Lyle Caselman • Owner-Manager

417-345-7876 • mobile 417-533-2944

Leon Caselman • Owner

417-345-4514 • mobile • 417-588-6185

Howard Miller • Owner 417-345-8122

OLD FASHIONED COUNTRY LIVE AUCTION

Selling items from the Don Palmer Estate located at 3751 Red Rock Road, Columbia, MO. From the west edge of Columbia take Stadium Road (Route E) north 10.5 miles to W. Benedict Rd., Then east 1.5 miles & continue onto W. Red Rock Rd. .8 mile to auction

SAT, JULY 27 • STARTS 9:30 AM

• REAL ESTATE (auctioned at noon)

Looking for an affordable home on 10 acres just a few minutes from Columbia. Here it is! 2 bedroom 1 bath 28' x 40' manufactured home on 10 acres in the country? Here it is! For your private viewing call Brent at 573-808-3989.

• TRACTORS (11) & EQUIP. (sell after real estate)

1954 Farmall Super M-TA tractor w/NF, hyd., fresh paint and looks super sharp • 1960 JD 630 gas w/3 pt., NF, fenders, new tires • 1958 IH 460 gas utility tractor, hyd., fast hitch • Ford 335 industrial diesel tractor w/loader • 1960 MF 65 gas tractor • Ford 8N tractor w/side distributor • JD A tractor w/3pt. • 1946 Farmall H tractor w/NF • 1950 Farmall M w/NF, hyd., 1958 JD 720 w/NF, PS • Farmall H tractor w/NF, SN 76057 • Ford 2 x 14' plow, 3 pt. • Sickle mower parts • Ferguson 3 pt. 2 row stiff shank cultivator • 6' 3 pt. blade • 3 pt. bale spear • 1 section harrow • 43" pull lawn roller • Small manure spreader • Long 6' rotary cutter w/3 pt. 3 pt. dirt scoop • Shopmade 3 pt. hyd. log splitter Concrete mixer w/electric motor.

GOOSENECK TRAILER

20' x 8' tandem flatbed gooseneck trailer with ramps

• LAWN TRACTOR

John Deere 455 diesel lawn tractor w/54" deck, 1807 hours, front snow blade

• TOOLS & OTHER (sells first)

• COLLECTIBLES & OTHER

AUCTIONEERS NOTE: Don loved older tractors and enjoyed going to tractor shows. There are some very nice tractors here along with good tools.

Donald Palmer Trust

Voorheis Auction & Realty

Brent Voorheis 573-808-3989

www.voorheisauction.com

AC 840 DIESEL ARTICULATING 4-WHEEL DRIVE LOADER: \$7,250. 573-765-4406.

TRUCK LOAD OF FLEA MARKET & AUCTION ITEMS: \$200, trade wood or gun. 573-327-9068

LEBANON HISTORY BOOK-A PART OF OUR LIVES, 1949-1976. \$10. 417-532-2045.

JOHN DEERE 2640: Diesel tractor, Canopy, 70HP. \$8,500. (573)765-4406.

REAL ESTATE • RESTAURANT EQUIP • FOOD TRUCKS AUCTION

Monday, July 29, 2019 • 10 a.m.

LOCATION: 218 S. Hwy 17, Summersville, MO 65571

DIRECTIONS: From the junction of Hwys 17 and 106 in Summersville MO, take Hwy 17 south 1/2 mile to auction. Watch for Rick Dixon auction signs day of auction. Visit us on the web at www.rickdixonauctions.com

• RESTAURANT EQUIPMENT • SPECIALTY ITEMS • FOOD TRUCKS • REAL ESTATE •



2.6 acres w/5000 sq ft steel-framed metal building on concrete raised-slab foundation. The building has 11 ft sidewalls with eaves

and is well-insulated. It has a loading dock, 2 handicap restrooms, is well-lighted, has central heat & air, and a double-sided rock fireplace. Currently set-up as a restaurant with large kitchen, seating room for 175-200 people, large serving area and a banquet room. In very nice condition with 16 camera security system and a 4'x8' electric sign with remote control. This building has great potential as a restaurant or other businesses - it would make an excellent church, bank, antique/flea market, branch campus/admin center, event center, furniture/appliance store, medical center, business complex, fitness/gym/dance center, rent-to-own store, nature center, sheriff substation, pizza/bar/coffee house, or even apartments or nursing home with some renovation! The possibilities are endless!!!

OPEN HOUSE

Monday, July 15 & 22 at 6:30pm

PREVIEW - Sunday, July 28 • 1-3 pm

Watch next week's publication for
FULL listing or visit us on the web
at www.rickdixonauctions.com



**Rick
Dixon**

Auction Service, LLC

Rick 417-967-6604

Josh 417-217-9627

www.rickdixonauctions.com

VEGETABLES. Burpless Cucumbers, Tomatoes, Sweet & Mild Chili Peppers, Yello Squash. **CHARLIE'S FARMS**, Mile West Rt 66, Lebanon.

REGISTERED HEREFORD & ANGUS BULLS: Home raised, Some Show-Me Select Qualified. 573-701-7828. Belgrade

2018 TOYOTA 4-RUNNER: TRD off-road package, 30,000 miles. 573-945-2206.

1964 HONDA TWIN: Needs minor repair. \$300. 417-679-4355.

ONLINE LAND & HOME AUCTION

**40 Acres +/-
(Open & Wooded)**

**Inspection Dates: Thurs., July 18th &
July 25th, 12:00 p.m. to 1:30 p.m.**



Secluded Property In Hallsville Schools

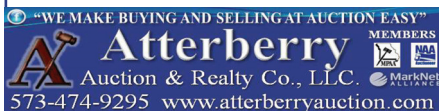
- 2,400 + Sq. Ft. Ranch Style 2 Bedroom Home W/ 2 Additional Non-Conforming Bedrooms
- Spacious Living Room W/ Brick Hearth & Woodstove Insert
- Covered Front & Rear Porches
- Updated Roof, Siding, Furnace & C/A
- 60' x 100' Metal Pole Barn W/ Shop Area & 40' x 80' Metal Pole Barn W/RV Storage
- Stocked Pond & Lots of Wildlife

Note: If You're Looking For Peace & Tranquility Here It Is! Conveniently Located 2 Miles East of Hallsville off Hwy. OO. Perfect for Livestock. Wonderful Place To Raise A Family!

Online Bidding Ends

**Thursday, August 1st At 12:30PM
9150 E. Owens School Rd.,
Hallsville, MO**

For Terms, Details, Or Bidding Assistance,
Call Your Real Estate At Auction Specialists:
Atterberry Auction & Realty Co.,
573-474-9295 Or
Email: contactus@atterberryauction.com



ONLINE AUCTION

Nice Affordable One Level Home

- 1,800 + Sq. Ft. 3 Bedroom Ranch Home
- Lg. Living & Family Rooms W/ Woodstove Insert
- Corner Lot & Fenced Backyard
- Hardwood Flooring
- Steel Siding, Updated Roof & HVAC
- Near Schools On South End Of Town

**Open House / Inspection:
Wednesday, July 10th &
17th, 12:00 p.m. to 1:00 p.m.**

Note: This Home Located In
A Nice Family Neighborhood,
Perfect For Young Families,
Retirees Or Investment Property.

Online Bidding Ends:

**Wednesday, July 24th at 12:30 p.m.
701 Doty Avenue, Centralia, MO**

For Additional Information, How To Buy This
Home At Auction, Or For Financing Help,
Call Your Real Estate Auction Specialists:
Atterberry Auction & Realty Co
(573) 474-9295 Or
Email: contactus@atterberryauction.com



AUCTION

Directions: from Lebanon, Mo, travel 11 miles North on Highway 5 then right on Highway VV, 1/4 mile to 34120 Highway VV Eldridge, MO.

SAT., JULY 20

Starting At 10:00 AM

SELLING A LARGE LOT TO INCLUDE:

1949 Chevrolet 3100 pickup (really straight!), IHC Cub Farmall tractor, Troy Bilt Super Bronco riding mower, 2 MTD riding mowers, 2 EAA 45 cal Cowboy action pistols, Remington 1138 20 ga, Norinco 97 cowboy action clone, Remington 550-1 .22, Savage Springfield 67 410 pump, Savage 120a 22, Sears 583 16 ga bolt, sickle mower, hand tools, barbed wire, bench grinder, power tools, cabinets, pocket watch, primitives, bear rug, refrigerator, washer and dryer, recliner, sofa and loveseat, gaming chair, curved china cabinet, drop down desk, low boy dresser, ant chest of drawers, full beds, dressers and chest of drawers, trunk, gun cabinet, rockers, hospital bed, wood circulator, spindle leg table, bench, dish and cookware, figurines, wall decor, lamps, much much more!

*There will be a lot of surprises on what we find! Pictures don't do justice on this one!
Very Clean Sale!*

THE ESTATE OF VERNON MOORE

**Go to www.knightauctionservice.com
for complete list and pictures!**

TERMS: Cash, Approved Check w/ID, Visa or Mastercard.
Sale By



**KNIGHT AUCTION
SERVICE, LLC**
417-532-7497 Lebanon, MO
"Complete Sale Service"

www.knightauctionservice.com

LIKE NEW: 1994 Winchester Big Bore lever action rifle, 375 caliber. \$1,200. 573-218-9231, Farmington MO.

PUREBRED AIREDALE PUPS: 8 wks old, first shots, family raised. \$500. 573-280-3276, Barnett.

LARGE QUANTITY DVD'S: Like new, Excellent condition. \$2 each or \$200 all. Rolla, 928-514-0505.

190 Allis: Sheet metal in good condition, diesel, good tires. \$4,295 OBO. 573-263-2732.

OMAR'S LOGGING: Oak and Walnut, excellent prices, Amish owned and operated. 417-741-0440, leave message.

2 NEW MARINE BATTERIES: Large with cases. New. Buy 1 get 1 Free! \$125 both. Rolla, 928-514-0505.

WR CASE & SONS Cookbook & Historical Companion. \$7.50. 417-532-2045, Lebanon.

G-3 2013 BASS BOAT: 70hp Yamaha 4cycle motor, trolling motor 55lb thrust, w/trailer, 30gal live well. \$14,500. 573-291-9808.

PINE LOG SIDING SALE: \$1.19 per L.F. www.pineridgerustic.com 573-729-7226, 573-247-2823.

ALLIS 6080 DIESEL TRACTOR: Cab and cold air, 3700hrs, nice. \$14,950. 573-765-4406.

AWESOME 06 F150 LARIAT: Crew, 4x4, loaded, sunroof, 180,000 miles. \$9,750. 417-399-6383.

16" ALUMINUM JEEP WHEELS AND TIRES: \$199. Farmington, 573-218-9231.

Real Estate and Public Auction

Thursday, July 25, 2019

STARTS @ 9:03 A.M.

For more information and pics: www.chuppsauction.com

DIRECTIONS: In Big Cabin, OK, at the Jct of Hwy 69 and E 330 Rd/Main St. Go West on E 330 Rd/Main St for 1/2 mile. The property will be on the left. Watch for auction signs. Pasture parking available.

71 Acres Selling in 2 Parcels

PARCEL 1: 31.98 Acres +/- w/ 3 bed 2 bath home, 1802 sq ft +/-, w/2 living areas, garage, storm cellar & large covered porch. New metal roof 2013 & new heat/ac 2017. Acreage is excellent native grass, is fenced and cross fenced and includes pond, 2 pipe corrals, working pens w/ squeeze chute, 2 Ritchie cattle waterers, 6 frost free hydrants, loading shed, 2nd garage & shop.

PARCEL 2: 39.31 Acres +/- excellent native grass with 2 story barn w/ leanto, Ritchie 2 hole waterer & city water tap.

Dale & Maria Chupp Coldwell Banker Neokla Select (918) 630-0495



OPEN HOUSES:

Monday, July 8 & 15
from 4 - 6 pm
(REAL ESTATE ONLY)

436255 E 330 Road • Big Cabin, OK 74332

TERMS: 5% down day of sale, min \$5000, non refundable, no contingencies, close in 30 days.
5% Buyers Premium on Real Estate only. See www.chuppsauction.com for complete terms.

**TRACTOR, DONKEYS, FARM IMPLEMENTS, TRAILERS,
UTILITY VEHICLES, 4 WHEELER, WELDER/GENERATORS,
CATTLE PANELS, SCRAP METAL, LAWN MOWERS & MISC**

Owners: Howard & Linda Otto

**LARGER ITEMS
SELL AFTER
REAL ESTATE**

Auctioneer's Note: Due to health reasons, Howard and Linda are downsizing. The REAL ESTATE WILL SELL at 12:01 pm. DONKEYS AND LARGER ITEMS will be sold after the real estate. 1-2 auction rings. Please follow us on Facebook for updates or visit our website for pictures at www.chuppsauction.com.

NOT RESPONSIBLE FOR ACCIDENTS. ANY ANNOUNCEMENTS DAY OF SALE SUPERSEDES PREVIOUS ADVERTISING.

CHUPPS AUCTION & REAL ESTATE

Stan Chupp
(918) 638-1157

Dale Chupp, Realtor
Coldwell Banker Neokla Select
(918) 630-0495

E. J. Chupp

Over 25 Years In The Livestock Business

Cattle Sale

Every Monday at 12:00



Feeder Calves
to sell at 12:00 pm
**Butcher Cows
& Stock Cows**
following

Goat, Sheep & Hog Sale

2nd Tuesday of the Month • 6 pm

Feed & Water Pens Available
All Consignments Welcome
Up Until Sale

We Appreciate Your Business!

Salem Livestock Auction

Hwy 32 Salem, Mo
Barn- 573-729-8880

Allen Thompson
417-932-4097

Chuck Thompson
417-257-5610

Terms of Sale: Cash or
Approved Check!

Renee Lauderdale
417-926-2682

Keith Robertson
314-560-3285

Kilmer Farm Equipment CONSIGNMENT AUCTION

SATURDAY, AUGUST 31 • 10 A.M.

14769 Cattle Lane Versailles, MO
(1 Mile North of Versailles, MO
on Hwy 5 then 1/2 Mile East)

**AD DEADLINE:
AUG. 9, 2019**

**SELLER:
KILMER FARM
EQUIPMENT**

CONTACT DANIEL KILMER FOR MORE
INFORMATION (573) 378-6615

Wheeler
AUCTIONS & REAL ESTATE

23101 HWY. 24, PARIS, MO 65275 | 660-327-5890
WWW.WHEELERAUCTIONS.COM



MID MISSOURI STOCKYARDS REGULAR SALE EVERY THURSDAY 11AM

For Farm Visits, Market Updates, or Trucking

Call **Zach Cox 417-777-1320**
Dan Romine 573-578-4939

**Competitive Buyers!
Competitive Commission!
Competitive Market!**

Barn: 417-532-9292



I-44 • Exit 123 "just outside of Lebanon"
17505 Route 66, Phillipsburg, MO 65722

For weekly market updates, visit us at
www.midmostockyards.com

HANDYMAN SERVICES: Complete Home Services, Concrete, Wood Privacy Fences, Wood Decks, Roofing, Exterior Painting. 417-589-0121 ask for Chester, or 785-488-6002.

LIONEL TRAIN SET: Steam engine, tender, caboose and other car, track and transformer. \$195. 573-364-7465, Rolla.

2017 FOREST RIVERS RV: 28', Queen bed, 2 bunk beds, sleep couch. Also free lot in Cherokee Village, Arkansas with sale. \$18,000. 417-741-9523.

AUCTION REMINDER: Saturday, Aug 3rd @ 10am. Gary Sexton Auctions. Please see our Auction Directory for more information.

ADORABLE ACA REGISTERED LAB PUPPIES: yellows, blacks. Ready NOW, up-to-date shots, wormed. \$250. Hartville. 417-741-2198.

DARDEN PROFESSIONAL TIMBER HARVESTING, BUYING STANDING TIMBER: Great prices, improve wildlife habitat and improve forest health. State Certified & Fully Insured! 573-247-4808 or 573-739-1122. Salem

AUCTION REMINDER: Online, Land & Home Auction, Thursday, Aug 1, 12:30p.m. Atterberry Auctions. Please see our Auction Directory for more information.

MTD 5HP WOOD CHIPPER: needs carb work. \$175. Farmington, 573-218-9231.

PUG PUPPIES: 12wks old, AKC Registered. \$900. 417-458-1424.

NOTES

DOUBLE GRASS BAGGER: For a Series 100 John Deere Lawnmower. \$150. 417-457-1023.

KRONE 9FT 3PT DISK MOWER: very nice. \$6,100. 573-765-4406.

WEIRD MISSOURI TRAVEL GUIDE BOOK. Missouri's local legends and best kept secrets. \$10. 417-532-2045, Lebanon.

GOLD'S GYM EXERCISE BIKE: Hardly used. \$100 or best offer. 417-664-1862.

Cutting **Land Pride**

GET WORK DONE.

RCR18 SERIES

ROTARY CUTTERS
20-65 HP 60", 72" Widths

- Cat 1 Hitch
- 2" Cutting capacity
- Fully welded deck
- Full length skid shoes



AGRI-ENTERPRISES
The Outstanding Products & Service
1-1/2 Miles South of Licking, MO On Hwy 63
573-674-2203 • 1-800-653-7152
www.agri-enterprises.com

LP CONSISTENTLY LEADING THE WAY...

AUCTION REMINDER: Public Auction Wednesday, July 27th at 9:30am. Sam Crawford Auction Service. Please see our Auction Directory for more information.

2010 LAYTON SKYLINE 5TH WHEEL: 31Ft, large slide-out, 4 new tires, excellent condition. \$11,000. 573-729-4275.

AUCTION REMINDER: Saturday, July 20th @ 10am. Berti Auction. Please see our Auction Directory for more information.

BARN WOOD SIDING: 8" & 10" wide. 573-729-7226. www.pineridgerustic.com

MODULAR STOCK SALE - It is time to move our inventory. TRUE MODS - Save Thousands. Call Marla, better than 20 years experience. 573-657-7040, chateauhomes.net.

HOUSE FOR RENT: 3 bedroom 2 bath, new carpet. 417-664-8781. Lebanon area Great Pyrenees for sale

FIBERGLASS TOPPER for long bed pick-up. \$150. Rolla. No answer, Record, 573-364-8305.

NEW HOLLAND 451 SICKLE MOWER: 7FT, 3PT. \$875. 573-765-4406.

Is Your Log Home **UGLY?**
Starting To Look
Professional Staining & Repair
(Log Homes & Wood Siding)

Call **Pine Ridge Rustic**
Log Home Building Supplies

www.pineridgerustic.com



573-729-7226

NEW OR USED MOBILE HOMES - Tuffy at Amega in Ashland, 30 years experience, can get you anything you want. He has a used buyer to find what you want. Call now 573-657-2176 amegamobilehomes.com

BELTED GALLOWAY CROSS CATTLE: heifers and bred cows, beautiful, gentle, lost rental farm having to down-size. 573-291-6695/573-764-2707.

WANTED: Logging help. 417-733-2987

150HP EVINRUDE STARTER: Refurbished, fits other Evinrude, Johnson and other outboards, PN586957-06big. \$195. Rolla, 573-364-7465.

20FT ALUMINUM PONTOON AND TRAILER: no interior or motor, good for boat dock. \$1,900. 314-779-5815.

WEEKLY TRADER MAGAZINE

YOUR AD GOES HERE!

Add **YELLOW** Color
For An Additional
\$3 Per Reader Ad

All ads will include Phone Number (unless requested to be deleted by advertiser) and City Or Town, Phone Number with Area Code counts as one word. City or Town counts as one word.

RATE: 80¢ Per Word. All Classified Ads Require Payment Before Print.

(1) 80¢	(2) \$1.60	(3) \$2.40	(4) \$3.20
(5) \$4.00	(6) \$4.80	(7) \$5.60	(8) \$6.40
(9) \$7.20	(10) \$8.00	(11) \$8.80	(12) \$9.60
(13) \$10.40	(14) \$11.20	(15) \$12.00	(16) \$12.80
(17) \$13.60	(18) \$14.40	(19) \$15.20	(20) \$16.00
(21) \$16.80	(22) \$17.60	(23) \$18.40	(24) \$19.20
(25) \$20.00	(26) \$20.80	(27) \$21.60	(28) \$22.40
(29) \$23.20	(30) \$24.00	(31) \$24.80	(32) \$25.60
(33) \$26.40	(34) \$27.20	(35) \$28.00	(36) \$28.80
(37) \$29.60	(38) \$30.40	(39) \$31.20	(40) \$32.00

Place your Classified Ad TODAY!

417-532-2800 • 800-665-8875

Fax: 417-532-8140

Or Mail To: P.O. Box 192 • Lebanon, MO 65536

For your convenience we accept MasterCard, Visa, Discover or American Express



DEADLINE FOR CLASSIFIED ADS: MONDAY 12 NOON!!

Name _____

Address _____

City _____ Email _____

State _____ Zip Code _____ Phone _____

Ad Total \$ _____ X # Weeks _____ = Amount Enclosed \$ _____

#1 SELLING TRACTOR IN THE WORLD



BETTER TRACTION, STABILITY & CONTROL

"Get Superior performance with a Mahindra"

Mahindra eMax 25

25 HP, 4WD, HST, with Loader



\$285

PER MONTH*

**(AT 0% UP TO 60 MONTHS.
PAYMENT APPROX)**

0%*
up to
60 Months

On

\$2,000

CASH DISCOUNT

(In Lieu of Low Rate Financing)

*10% down with approved credit, must finance thru Mahindra. Expires 07.31.19. Subject to change. See dealer for details.

www.agri-enterprises.com

For Outstanding Products & Service

AGRI-ENTERPRISES

1-1/2 Miles South Of Licking, MO On Hwy 63
573-674-2203 • 1-800-653-7152

Mahindra
Rise.