

Vol. 26 No.9
JUNE 6, 2019
 800-543-8271 • 800-665-8875

FREE WEEKLY TRADER MAGAZINE

Find us on Facebook
 @myweeklytrader

Auctions - Pg. 22
 MYWEEKLYTRADER.COM

0% APR for 60 MOS
 ZERO DOWN

KEEP IT SIMPLE WITH QUARLES SUPPLY

RATES SUBJECT TO CHANGE
 *All approved credit. Tax/insurance not included.
 Some restrictions may apply. See dealer for details.

SUMMER



SAVINGS



New 26HP Kubota Package Deal!
B2650HSD \$21,330
 Financing Price



New 33HP Kubota Package Deal!
L3301HST \$24,085
 Financing Price

NEW Kubota B2650HSD, 4wd, DIESEL, R4 TIRES, KUBOTA LOADER, 4' CUTTER, 4' BLADE, NEW 16' KODIAK TRAILER W/RAMPS& NEW TIRES

NEW Kubota L3301HST, 4wd, DIESEL, AG TIRES, KUBOTA LOADER, 5' CUTTER, 5' BLADE, NEW 18' KODIAK TRAILER W/RAMPS& NEW TIRES

PRICING REFLECTS ALL CURRENT KUBOTA PROGRAMS
 *DOES NOT INCLUDE TAX AND INSURANCE
 BLENDED RATES MAY APPLY ON NON KUBOTA ITEMS



RTV-XG850 \$12,849
 Starting At

The newly designed RTV-XG850 has set the standard for ruggedness and reliability. The powerful 48 hp gasoline engine gives you the speed to get there fast, up to 40mph fast!

QUARLES
 SUPPLY COMPANY INC.

quarleskubota.com
 Just off Business 13 in Bolivar, MO
 Open 8:00-5:00 Monday-Friday
 Saturday 8:00-12:00

(417) 777-2391



KEEP IT SIMPLE WITH QUARLES

WEEKLY TRADER MAGAZINE

by mail!



Delivery Deals Week To Week

Simply return this completed Subscription Form with check or money order
to: **Weekly Trader, P.O. Box 192, Lebanon, MO 65536**



_____ 4 weeks	\$8.00
_____ 12 weeks	\$24.00
_____ 24 weeks	\$48.00
_____ 52 weeks	\$104.00

Name: _____

Address: _____

City, State, Zip: _____

Phone: _____

You may also call our office 417-532-2800
to subscribe with credit or debit card.

STARTING AT \$2,199

PRICE SUBJECT TO CHANGE WITHOUT NOTICE.
SEE DEALER FOR DETAILS



For Outstanding Products & Service
AGRI-ENTERPRISES

1-1/2 Miles South Of Licking,
MO On Hwy 63

573-674-2203 • 1-800-653-7152

www.agri-enterprises.com



1967 1/2 ton DODGE: long-wheel base, new 360 Magnum motor, new tires. new front end, new exhaust system, needs paint. 573-756-3937 after 5pm.

GREAT PYRENEES PUPS. Also goats for sale. 417-664-8781, Richland.

ANTIQUE RIMLESS EYEGLASSES: Shuron 1/10th, 12K gold filled frame, chip in left lens, includes original case. \$70. 573-854-8132, Salem.

POOL TABLES: Installations, moves, recoveries, repairs, accessories, etc. 573-646-1700.

HOME, 3 BEDROOM RANCH: 32.37ac, North St Francois County. \$185,000. 417-255-6640.

2002 GMC 1ton DUMP TRUCK: low mileage, new tires, good shape, body nice. \$9,500. 573-468-7689, Sullivan.

TIM'S USED CARS

(573) 341-3828 • 1334 South Bishop (Hwy. 63) • Rolla, MO
Next to Hwy. CC • www.tims-used-cars.com

2011 RAM 1500
QUAD CAB 4X4 SLT,
4.7 V-8, AUTO, POWER
EQUIPPED.
ONLY \$10,900

**2013 FORD
EDGE SEL**
AWD, V-6, LEATHER,
97,XXX MILES.
ONLY \$12,500

**2012 JEEP GRAND
CHEROKEE LARADO**
4X4 V-6, LEATHER,
SUNROOF, 103,XXX
MILES.
ONLY \$13,500

**2013 PORSCHE
BOXSTER S
CONVERTIBLE**
LOADED WITH
OPTIONS 45,XXX MILES
PRICED TO SELL!

LARGE SELECTION OF CARS, TRUCKS, SUVs & VANS!

USED EQUIPMENT

- 920 Cat Wheel Loader
- 4035 Mahindra 4wd power shuttle with loader
- Kubota B7200 4 WD, w/Belly Mower
- MF 50, Diesel
- Gehl Silage Chopper • NH 163 Tedder
- 6' & 7' Brush Cutter
- Landpride 10' Brush Cutter
- JD 10' Cultipacker
- 3pt. 3 bottom plow
- 12' Spring Tooth Harrow 3pt. 2 Disc Disc Plow
- Other Misc Equipment

For Outstanding Products & Service

AGRI-ENTERPRISES

1-1/2 Miles South Of Licking, MO On Hwy 63
573-674-2203 • 1-800-653-7152
www.agri-enterprises.com

1995 FORD XLT-150 4x4: Farm Truck, 8 cylinder, automatic, 186,000, gooseneck. \$2,150, 6' box blade Brushhog. \$550. 3 saddles, 15" Simco. \$325. 17" seat 8405 Billy Cook. \$975. 573-729-2874.

Offering the Area's LOWEST METAL PRICES!



Custom Homes • Metal Roofs

Pole Barn Packages

24'x32'x10' materials only	\$5,075	30'x60'x10' materials only	\$8,600
24'x40'x10' materials only	\$5,775	40'x60'x12' materials only	\$11,525
30'x40'x10' materials only	\$6,550		

Plus Sales Tax And Delivery.
Labor available at additional cost.
Call for quote.

Compare Before You Buy.

We Use Only The **Highest Quality** Materials!

ALL MATERIAL PACKAGES INCLUDE...

- ✓ #1 Yellow Pine Lumber
- ✓ #1-40 Yr. Painted
- Metal w/Screws
- ✓ 1-10' Overhead Door
- ✓ 1-36" Entry Door

Fully Insured



PORTABLE BUILDINGS

Rent to Own
No Credit Check

29 Gauge
#1 PAINTED METAL

- ★ Lifetime Warranty - \$70.00 Sq.
- ★ 40 Year Warranty - \$67.00 Sq.
- ★ 20 Year Warranty - \$64.00 Sq.
- ★ 25 Year Galvalume - \$54.00 Sq.

Labor prices will be higher in locations over 75 miles from Marshfield, MO

1049 SCHOOLVIEW DR.
Marshfield, MO



Marshfield
BUILDINGS

www.marshfieldbuildings.com



417-859-7744

Toll Free 1-866-859-7733

WANTED, TIMBER TO LOG ON SHARES: Honest, reliable, references. 417-533-4607, 417-664-1195.

GUN BOXES: Several shapes & sizes. \$10 and up. 417-589-8200.

CRAFTSMAN FLOOR DRILL PRESS. \$150. 55 gallon hand Fuel Pump. \$50 573-378-5180

AUCTION REMINDER: Saturday, June 8th, 9am. Lorts Auction. Please see our Auction Directory for more information.

CUB CADET 50IN MOWER DECK: for zero turn mower, will fit most 48" - 54" mowers, excellent condition, with 3 blades. \$195. 573-364-7465.

FOR SALE: Pembroke Welsh Corgi Pups. Farm raised, AKC registered, available black tris & reds. 573-473-0633. Paris.

TAYLOR TRUCKS & EQUIPMENT

417-924-2026 • 2676 Hwy. 5, Mansfield, MO

863 Bob Cat Skid-Steer with LOW hours and hand control
New Mowers! Bush-Whacker, Big Bee
5' and 6' Rotary Tillers
Farm Tires, PTO's & Parts for Rotary Mowers,
Storage Containers & Dry Vans - 20' - 53'
Farm Tractor Implements
**Plows, Discs, and More Skidsteer Attachments: Pallet Forks,
Buckets, Grapples, Hay Spears & Tree Shears - RR Ties**

TRAILER PARTS & REPAIR

NEW SEMI TIRES - DRIVE & STEER

We Invite You To Come By & Look Us Over! Located 2.5 Miles North Of Mansfield, MO On Hwy 5

WANTED CUT STOCK, Cants, Slabs, trees length + 45" long scragg blocks. 417-650-0402.

FORD 2000-GAS: w/bushog. \$2,500. 573-714-5779.

BEILER FENCING: New, clean, repair. Call us for an estimate. 417-217-2755.

AUCTION REMINDER: Antique Estate Auction. Saturday June 8th@ 10am. Nance Auction. Please see our Auction Directory for more information.

JOHN DEERE 310A DIESEL BACKHOE LOADER: \$8,850. 573-765-4406.

WEEKLY TRADER MAGAZINE

Vol. 26 June 3, 2019 No. 9

Published By

Lebanon Publishing Co. Inc.
PO Box 192, Lebanon, MO 65536

417-532-2800

www.myweeklytrader.com

Everything advertised in this publication must be made available for purchase, use or patronage without regard to race, creed, color, sex, age or national origin of the purchaser, user or patron. The Publisher will not be responsible for misinformation, misprints, typographical errors, etc. Opinions expressed are not necessarily those of the Publisher. All rights reserved. No part of this material may be reproduced by any means without permission in writing from the Publisher. We reserve the right to refuse any ad if we deem necessary. Our list and map indicate counties in which the Weekly Trader is delivered. The magazine is not necessarily placed in all communities in a particular county. A list of all retail drops for a county may be obtained by contacting the Weekly Trader office at PO Box 192, Lebanon, MO 65536.

THE SUMMER of Seeger!

Best Selection of Pre-Owned In The Area!

Our Latest Used Inventory!

7497B	2015 FORD FLEX	\$21,988	P9525A	2015 FORD MUSTANG	\$27,988	P9518	2018 TOYOTA COROLLA	\$15,988
7529C	2016 DODGE CHARGER	\$20,988	7756A	2015 JEEP WRANGLER UNLIMITED	\$30,988	P9515	2019 TOYOTA CAMRY	\$23,988
7632B	2014 CHEVY SONIC	\$10,988	7564A	2016 DODGE CHALLENGER	\$34,988	P9512	2018 TOYOTA CAMRY	\$23,988
7634A	2016 CHEVY TAHOE	\$42,988	P9493B	2011 TOYOTA CAMRY	\$10,988	7654B	2015 LINCOLN MKS	\$20,988
7774A	2014 TOYOTA TUNDRA	\$33,988	7608A	2017 TOYOTA TACOMA	\$31,588	7550A	2016 TOYOTA TUNDRA	\$28,988
P9517A	2016 GMC TERRAIN	\$23,988	7328A	2019 TOYOTA TACOMA	\$38,988	P9509	2016 TOYOTA COROLLA	\$15,988
7423A	2018 FORD EXPLORER	\$32,988	P9505B	2014 MERCEDES BENZ CLA 250	\$18,988	7542C	2015 NISSAN ALTIMA	\$15,988
7740A	2012 TOYOTA SEQUOIA	\$23,988	7674B	2013 FORD F150	\$21,988	P9499A	2017 JEEP COMPASS	\$14,588
7349A	2017 RAM 1500	\$34,988	6854B	2007 TOYOTA TUNDRA	\$12,988	P9500	2018 TOYOTA COROLLA	\$15,588
7353A	2012 CHEVY IMPALA	\$7,988	7502A	2016 KIA SEDONA	\$18,988	P9501	2018 TOYOTA COROLLA	\$15,588
P9533	2016 TOYOTA RAV4	\$20,988	7483B	2017 CHEVY TRAX	\$16,988	P9503	2018 TOYOTA RAV4	\$22,988
P9534	2016 TOYOTA SIENNA	\$23,988	7498A	2019 TOYOTA TACOMA	\$31,988	P9504	2019 TOYOTA SIENNA	\$33,988
7751A	2017 TOYOTA HIGHLANDER HYB	\$35,988	7310B	2014 JEEP WRANGLER UNLIMITED	\$24,588	7633A	2016 TOYOTA TACOMA	\$31,988
P9532	2018 TOYOTA CAMRY	\$18,988	P9521	2018 NISSAN ALTIMA	\$15,988	7589A	2015 FORD TAURUS	\$15,988
P9531	2017 NISSAN FRONTIER	\$29,988	P9522	2019 NISSAN PATHFINDER	\$26,588	7381A	2017 TOYOTA TACOMA	\$31,288
7670A	2016 RAM 2500	\$34,988	7605A	2012 JEEP WRANGLER	\$20,988			
7754A	2013 TOYOTA AVALON	\$15,988	P9519	2016 TOYOTA HIGHLANDER	\$28,588			
P9528	2018 CHEVY MALIBU	\$18,588						
P9529	2018 TOYOTA SEQUOIA	\$39,988						



PROUD WINNER OF THE PRESIDENT'S AWARD FOR THE 2ND YEAR IN A ROW!



TOYOTA
Let's Go Places

Doing Business
the Right Way
The Seeger Way



ENGINES FOR LIFE

Call for details
Non-Factory Lifetime Limited Warranty
Good at participating dealerships



SATURDAY SERVICE 8AM-4PM



Toll Free:
800-844-6026



Next to Walmart, St Robert
573-336-7111
SeegerTOYOTA.net

SEEGER CARE

- PREOWNED VEHICLES COME WITH SEEGER CARE!**
- 1 **FREE** (3) SCHEDULED OIL AND FILTER CHANGES
 - 2 **FREE** MULTI-POINT INSPECTION WITH EVERY OIL CHANGE
 - 3 **FREE** EXTERIOR CAR WASH WITH EVERY SERVICE VISIT
 - 4 **FREE** LIFETIME SAFETY AND EMISSION TESTING
 - 5 **FREE** SAME-DAY SERVICE LOANER CAR
 - 6 **FREE** TANK OF GAS
- Service Only at Seeger St Robert/St Louis

†Does not include tax, title, and license. * Seeger Care offer good for Less than 85K Miles and Less than 10 years old Prices do not include any College Grad or Military Rebate. See sales rep to see if you would qualify for additional savings. Prices does not include \$199 dealer administrative fee. Cannot be combined with any other offer. Prior sales final. See dealer for details. Advertisd vehicle may not be exactly as pictured and are subject to prior sale. We cannot be responsible for typography or photography. ** St. Robert, Mo. Inventory.

3PT TRACTOR BALE SPEAR: 42" spear with 14" stabilizer bars. \$150. Conway, 417-718-5347.

GERMAN SHEPHERDS: Two males, 3 mo old, one adult male. \$100 each. 417-741-2198.

ALUMINUM WHEELS: 4 15X10 mid 90's Chevy Pick-up 2WD. \$95. 573-368-6633, Rolla.

USED AMERICAN FAMILY DOUBLE-WIDE These do not last! Excellent condition. Call Quick, 573-499-9993 columbiadiscount homes.com.

FIREARMS: Professional Repairs and Restorations. Baron's Gunsmithing. 573-363-5801, Camdenton.

BOBCAT 853 DIESEL SKID STEER: Cab, 57hp. \$8,950. 573-765-4406.

2003 THUNDERBIRD: Black and white, very good condition, 47,000 miles. \$15,000. 573-832-1473.

ROD AND REELS: fishing season is coming. \$5 and up. Conway, 417-589-8200.

16FT LANDAU ALUMINUM JOHN-BOAT AND TRAILER: 48" bottom, 21" deep sides w/other items included. \$700. 573-369-2906.



THE RIGHT EQUIPMENT FOR EVERY JOB

Always ready when YOU need it.

+ From general construction to manufacturing, and every project in between, Fabick Cat is ready to serve your industry. We have the equipment you need to get the job done.

+ NEW | USED | RENTAL | SERVICE
WE DO IT ALL

800.845.9188 | www.fabickcat.com

"TO EVER SERVE OUR CUSTOMERS BETTER"



2000 SILVERADO: no dents or rust, 109,000 miles. \$6,500. 417-935-2333, Seymour.

1979 CHEVROLET PICK-UP: short wheel-base, step-side bed, under construction. 573-756-3937 after 5pm.

MF 165-GAS W/LIVE POWER: w/loader. \$6,000. 573-714-5779.

TRUCK LOAD OF FLEA MARKET & AUCTION ITEMS: \$200, trade wood or gun. 573-327-9068

AC 185 DIESEL TRACTOR: GB-440, loader, low hours, nice. \$9,450. 573-765-4406.

KRONE 9FT 3PT DISK MOWER: nice. \$6,100. 573-765-4406.

DARDEN PROFESSIONAL TIMBER HARVESTING, BUYING STANDING TIMBER: Great prices, improve wildlife habitat and improve forest health. State Certified & Fully Insured! 573-247-4808 or 573-739-1122. Salem

AUCTION REMINDER: Monthly consignment auction October 5th@ 6PM. R&R Auction. Please see our auction Directory for more information

BARN WOOD SIDING: 8" & 10" wide. 573-729-7226. www.pineridgerustic.com

AUCTION REMINDER: Estate Auction, June 8th, 10 am. Public Auction, June 9th, 1pm. Rick Dixon Auction. Please see our Auction Directory for more information.

CASE 960 COMBINE PARTS: Belts, Sivs, clover screen. 573-308-5884, Rolla.

HESTON 5500 5X5 ROUND BALER: \$1,800. 573-438-2672.

PINE LOG SIDING SALE: \$1.19 per L.F. www.pineridgerustic.com 573-729-7226, 573-247-2823.

LEBANON HIGH SCHOOL 1913 YEAR-BOOK: \$20. Lebanon, 417-532-2045.

GOLDEN RETRIEVER: Beautiful Female, 5 months. \$600. 314-808-1496.

FOUR REGISTERED QUARTER MARES: 100% Foundation Bred. 573-528-7436.

GLENER K COMBINE: 12' head, good shape. \$1,500. Osceola, MO, 417-328-8080, 417-646-8837.

1996 CHEVY 1/2-TON: 1 owner, 177,500miles. \$4,900. Rogersville, 573-308-5944.

6 WEEKS OLD BEAGLE PUPPIES: out of good rabbit dogs, GREAT FATHERS DAY GIFT. \$75. 314-974-6881.

**You pull it,
we sell it...
CHEAP!**



U★PULL★IT
SELF SERVICE AUTO PARTS

We also have a large inventory of used tires and be sure to check out our used car lot!

Lebanon, MO
22395 Rt. 66
417-588-3555
Fax 417-588-8955

Mon-Fri 8am - 6pm • Sat 8am - 4:30pm • Sun 9am - 4pm

WWW.SSUPULLIT.COM
Located next to S&S Recycling.



S&S RECYCLING
LEBANON - MTN. GROVE
417-588-3555 417-926-3360

Roll-off, Trailer, and Mobile Crushing Services Available

For All Your Metal Recycling Needs

Lebanon, MO **Mtn. Grove, MO**
22395 Rt. 66 • 417-588-3555 8930 First Rd • 417-926-3360
Fax 417-588-8955 Fax 417-926-0180

Monday-Friday 8:00am-4:30pm (Closed 12pm-1pm Lunch)
Saturday 8:00am-Noon
email: contact@ss-recycling.com
Buyer of all types of scrap metal.

2006 36FT TRAILER: 2 Slides. \$8,500. 417-664-3162.

FIVE ANGUS BRED HEIFERS: to Byergo Bull. \$2,100. 660-337-6311.

OLD FARM TABLE: 10' long, 38" wide, seats 12. \$300. 417-742-1234.

CHECKERED WALNUT WOOD STOCK PISTOL GRIP: for Marlin Model 336 or 1895. \$100. Washington. 636-239-2695.

AUCTION REMINDER: Auction. Saturday June 8th@ 10am. Smittys Flea Market. Please see our Auction Directory for more information.

52.64 ACRES: \$99,900. Abundant Deer & Turkey, ATV Paradise. Will divide Acreage. 30 acres w/year round creek through the center. \$2,400 per acre. 20 acres. \$2,100 per acre. Approximately 9 acres County Road access. \$2,000 per acre 2.5 miles from city limits. Located Cadet, MO out of city limits, quiet neighborhood.

2 REGISTERED POLLED HEREFORD 2YR BULLS: Baldy Maternal-Top 46%, DNA Tested, Gentle. \$1,800-\$2,000. OBO. Belgrade, 573-244-3157.

CIVIL WAR GREAT MAPS BOOK: Hardback. \$12.50. Lebanon 417-532-2045.

AUSTRALIAN SHEPHERD PUPPIES: Ready to go, Merles & Tri-Colors, UTD on shots. For sale or swap for farm animals. 417-458-1047, 417-967-6493.

DAEWOO FORKLIFT

Model GC25S-2
Serial No 06-02352

- Propane
- Hook attachment
- Everything works great
- Always kept in a building

Call for more information!

417-532-9131 • LEBANON



0% for 4 Years*

*with approved credit

Outdoor Wood Furnace
as low as **\$168** per month

HEATMOR MIDWEST
Licking, MO 65542
573-674-2962

PURE BRED BORDER COLLIES: Pups ready 5-20-19 \$100ea. Border collie/Australian Shepherd pups \$100ea. Ready 5-31-19. Hartville, 417-259-9738.

2014 RAM 2500 4X4 LARAMIE LONG-HORN DIESEL: Loaded, 5th Wheel package, 46,000miles. \$44,000. Rolla, 757-921-2686.

AUCTION REMINDER: Online Wood-working Tools, Wednesday, June 12th, 12:30p.m. Atterberry Auctions. Please see our Auction Directory for more information.

OLDER FORD 3 POINT POST AUGER. 573-528-7436.

NEW HOLLAND: 1411 diskbine w/roller, 10ft cuts good. \$8,250. 573-765-4406.

ADORABLE ACA REGISTERED LAB PUPPIES: yellows/blacks. Ready 6/24/19. \$250. Hartville. 417-741-2198.

RUBBER BELTING: Assortment sizes. 573-378-5180

2001 19FT DUTCHMEN TRAVEL TRAILER: very clean, everything works. \$4,200. 417-345-5634.

HEIDER AUGER WAGON. Holds 3 ton. \$800. 573-498-6685 evenings.

AUCTION REMINDER: Personal Property Auction. Saturday June 15th @ 10am. Easterly Auction. Please see our Auction Directory for more information.

WILBER'S FISH BRANCH ANGUS: Large selection 14-16month old bulls available, Calving ease, good growth and carcass traits, very docile. Mexico, Mo. 573-473-6019. www.fishbranch.com

5AC OZARK COUNTY: Near Bull Shoals Lake. \$9,995. 417-255-6640.

AUCTION REMINDER: Personal Property & Real Estate Auction Saturday June 15 at 9am. Cheyney Auction Company LLC. Please see our Auction Directory for more information.

Kentucky-31 Tall Fescue Producers

**QUALITY
BONUS
AVAILABLE**

Increase
your profit
by 4¢ per lb.

ADD PROFIT TO YOUR OPERATION

RECORD HIGH FESCUE SEED PRICES

65¢ per lb., Dry Seed

With over 30 buying stations, there's a station near you!

CALL for the Pennington Seed Fescue Buying Station nearest you

417-456-3338

PENNINGTON

THE GRASS SEED PEOPLE®

THE PREFERRED FESCUE SEED BUYER since 1972

Toll Free 1-800-658-0410, 303 S. Grand Street, Greenfield, MO 65661

FREE LAB & ROTTWEILER MIX PUP: Male, 2-3 mos old, black and brown, smaller dog. 417-532-6981.

WANTED 16"x10"W DODGE W350 WHEELS: Aluminum, Chrome. 573-308-7064, leave message.

NEW NEW NEW DISPLAY HOUSE!!!
Call Marla to hear what is new inside 573-657-7040, chateauhomes.net.

BLUE HEELER PUPS: Raised for 40 years. Good livestock dogs or pets. Already working. \$85 each. 660-631-5019 Warsaw.

KUHN 4 BASKET TEDDER: \$3,250. 573-765-4406.

JOHN DEERE 2940: Diesel tractor, 80HP. \$8,500. (573)765-4406.

ANTIQUE REVOLVER + FIREARM'S ACCESSORIES: \$175. 573-764-3517, Call in P.M.

WANTED PINBALL MACHINES. 573-424-7200.

MF-50-GAS W/LIVE POWER: \$2,350. 573-714-5779.

HUGE NEW TIRE SALE: Best Prices. Highest Quality. Free Warranty. Delivery. Semi 11R-22-5 (Tall) Drive Closed shoulder 16-ply. \$279. Trailer 16-ply. \$259. Steer 16-ply. \$258. Michelin Retreads available. Trailer ST-750-R16, 14-ply Radial. \$105. All-Steel. \$135. Tractor 18-4-38. \$550. Call 417-276-2435.

1988 LINCOLN CONTINENTAL: 4 door, 302, 90,000miles, clean. \$4,000. 417-859-5951.

SILVER DOLLAR COLLECTION: \$200. 573-764-3517, Call in P.M.

BEAUTIFUL CATAHOULA PUPPIES:
417-543-4816.

POTS AND PANS CANNED GOODS AND MORE. \$125 or trade. 573-327-9068.

3pt TWO-SECTION HARROW. \$200. Rogersville. 417-753-2747, 417-766-1991.

AUGER: 8x57, good condition. \$2,500. 573-378-5180.

IHC 886 DIESEL TRACTOR: cab and air. 80hp, good. \$12,500. (573)765-4406

JOHN DEERE 337 SQUARE BALER. \$2,200. 573-765-4406.

GET YOUR WORK DONE, AMERICA

FOR JUST

\$ 238 PER MONTH*



Mahindra

TOUGHEST TRACTORS ON EARTH

4540 2WD

- SIMPLE** to operate
- ECO-FRIENDLY**, NO DPF engine
- HEAVY-DUTY** steel construction not plastic

MAHINDRA 4540 41HP, 2WD, TRACTOR AND LOADER.

Marshfield Machinery Inc.
222 E. Madison • Marshfield, MO 65706
417-859-2117 • www.marshfieldmachinery.com

7 YEAR

LIMITED POWERTRAIN

WARRANTY

*Payment is for tractor and loader only and is calculated at 10% down and 84 months financing. With approved credit. Program restrictions may apply. See dealer for details. All offers expire May 30, 2019.

Mahindra

Tractors

NEW MAHINDRA TRACTORS

9125 4WD CAB & LDR	IN STOCK
125HP	IN STOCK
7085 4WD & LDR 85HP	IN STOCK
6065 4WD & LDR 62HP	IN STOCK
5570 2WD & LDR 70HP	IN STOCK
2655 4WD, CAB & LDR 55HP	IN STOCK
2655 4WD, BACKHOE 55HP	IN STOCK
2655 4WD & LDR 55HP	IN STOCK
2555 4WD & LDR 55HP	IN STOCK
4540 4WD & LDR 41HP	IN STOCK
4540 2WD & LDR 41HP	IN STOCK
2638 4WD & LDR 37HP	IN STOCK
2538 4WD, CAB & LDR 37HP	IN STOCK
1626 4WD & LDR 26HP	IN STOCK

USED TRACTORS

MAHINDRA 105P CAB LDR 105HP	45,500
MF GC1705 4WD, LDR 23HP	9,500
MF GC1705 4WD, MWR 23HP	9,000
MF GC1705 4WD 23HP	7,750
MF 231 34HP	6,000
FORD 8000 105HP	5,000
ACD17	3,750

USED UTV

MAHINDRA 750 CREW XTV	8,500
MAHINDRA 750 XTV	7,500

USED ROUND BALERS

MF 2846A 4X6 MESH	24,000
MF 2846A 4X6 MESH	15,000
MF 2745 4X5 MESH	12,500
HESSTON 845 4X5	7,500
GEHL 2480 4X5	4,500
HESSTON 555T 4X6	4,500
HESSTON 555 4X6	4,500
CASE IH R5451 4X5	4,500
HESSTON 560 5X6	4,000
HESSTON 550 4X6	3,500
NH 850 5X5	1,500
MF 224 SQUARE BALER	3,000

USED DISC MOWERS

NH H7550 13FT M/C	14,500
HESSTON 3312 12FT M/C	9,500
HESSTON 1008 10.5 FT 3PT	5,500

USED RAKES

GEHL 418 8 WHEEL	2,000
VERMEER WR20 8 WHEEL	1,950
OGDEN 8 WHEEL	1,750

USED MISC.

HAYBUSTER 107C NOTIL DRILL	16,500
----------------------------	--------

Marshfield Machinery Inc.
222 E. Madison • Marshfield, MO 65706
417-859-2117
www.marshfieldmachinery.com






NEW MAHINDRA ROXOR FRESH OFF THE ASSEMBLY LINE!!

- Steel Body no plastic to break
- 5 Speed Manual Transmission no belt to break
- Fully-boxed, ladder-construction, steel truck-style frame
- Turbo Diesel 4 cycle engine which produces 144 ft lbs of torque and 3490 lbs of towing capacity to get your jobs done. • Made in Detroit
- 2 YEAR WARRANTY OR 12,000 MILES • Starting at *15,999

Visit us at www.cowtownusa.com

AUCTION REMINDER: Every Wednesday at 10:30 am. Farmington Livestock. Please see our Auction Directory for more information.

4 CHROME GMC WHEELS & CAPS: 16". \$150. Belle, 573-859-6574.

JOHN DEERE 568 ROUND BALER: monitor, kicker, mega wide pick-up, cover net wrap, big tines. \$16,000. 573-765-4406.

AUCTION REMINDER: Online Sale. ends Tuesday, June 11th, 12:30p.m. Atterberry Auctions. Please see our Auction Directory for more information.

See Service

Spray Foam Insulation

Closed cell or open cell form available
Choose the thickness of your insulation

Closed Cell	Open Cell
• Higher R. value	• Lower Cost
• Vapor barrier	• Sound Deadening
• Structural benefit	• Fire resistant
• Fire Resistant	

Both types of foam fill voids and stay where they are put to provide better insulation than fiberglass or cellulose

FINANCING AVAILABLE WE ACCEPT
VISA MASTERCARD

Call Joseph See
(417) 733-6936
Located near Buffalo, MO

NEW/USED PARTS: For all vehicles/machinery. (Warranted/delivery). 800-807-9612.

1860'S MODEL CALVARY REENACTMENT SET: with Naval Model Black Powder pistol. 417-300-6006.

AUCTION REMINDER: Auction, Saturday, June 8th @ 10:30am Knight Auction. Please see our Auction Directory for more information.

METAL DETECTOR: \$125 or trade. 573-327-9068.

FROM OUR LOT TO YOUR DRIVEWAY

 2019 Chrysler 300 AWD, Limited, Heated/Cooled Leather, 15K miles P-7893 \$27,495	 2019 Chrysler 300 Limited, Heated/Cooled Leather, 26K miles, Sunroof, Navigation P-7898 \$26,495	 2018 Chrysler 300 Limited, Heated/Cooled Leather, Sunroof, Navigation 9K miles P-7883 \$22,995	 2018 Dodge Charger SXT Plus; V6; 24K miles P-7626 \$21,500	 2018 Chevy Malibu LT, 33K miles P-7691 \$15,700	 2018 Dodge Challenger SXT, V6, 26K miles P-7891 \$24,495
 2014 Cadillac XTS Luxury, Navigation, Sunroof, 35K miles P-15032A \$20,995	 2019 Chevy Impala LT, V6, 28K miles P-7863 \$22,495	 2017 Ford Taurus SE 14k miles P-7578D \$17,995	 2019 Chevy Impala Lt, 20K miles P-7865 \$22,495	 2016 Ford Fusion Titanium, AWD, 2.0 EcoBoost, Navigation. 7K miles P-7899A \$20,995	 2016 Chevy Malibu LT; Leather; 56k miles P-7869 \$16,800
 2014 Ford Mustang V6, Auto 60K miles P-7798A \$12,700	 2017 Honda Accord Sport, 4 cyl, 37K miles P-14853A \$18,500	 2018 Chevy Cruze LT, Sedan, 9K miles P-7866A \$17,495	 2016 Chevy Camaro LT, V6, 52K miles P-7537A \$17,600	 2018 Dodge Grand Caravan SE Plus, 43K miles T-7908 \$18,995	 2019 Chrysler Pacifica Limited, Heated/Cooled Seats, Navigation, Sunroof, 13K miles T-7861 \$35,495
 2018 Chrysler Pacifica Touring-L, Leather, 22K miles T-7750 \$25,800	 2019 Dodge Grand Caravan SXT, Leather, 23K miles T-7864 \$24,495	 2018 Chrysler Pacifica Touring-L Plus, Leather, Navigation, UConnect Theater, 34K miles T-7762 \$28,200	 2018 Jeep Grand Cherokee Limited, 4x4, Htd Leather, Navigation, 19K miles T-7812 \$32,400	 2018 Jeep Grand Cherokee Limited, 4x4, Htd/Cld Leather, Dual Sunroof, Navigation, 23K miles T-7838 \$33,995	 2018 Jeep Compass Limited, 4x4, Leather, Navigation, Safety & Security Group, 17K miles T-7840 \$23,495
 2018 Jeep Renegade Lat; 4X4; 20K miles T-7656 \$16,700	 2016 Jeep Cherokee Trailhawk; 4x4; V6; Heated Cloth; Navigation; 42k miles T-14705A \$23,500	 2017 GMC Terrain SLE, FWD, 16K miles T-7780 \$18,500	 2012 Jeep Grand Cherokee Laredo; 4X4, 98K miles T-14580A \$15,600	 2019 Jeep Cherokee Overland; 4X4; 2.0 Turbo; Htd/Cld Lthr; Tech. Grp; 22K miles T-7711 \$26,900	 2014 Jeep Cherokee Trailhawk, 4x4 V6, Leather, Navigation, Sunroof, 50K miles T-14971A \$19,900

LINDSAY

CHRYSLER/DODGE PRE-OWNED

*Some actual photos not shown.

OVER 500 VEHICLES

@LINDSAYCHRYSLERDODGE.COM

 <p>2018 Dodge Journey Crossroad, AWD, V6, 16K miles</p> <p>T-7735 \$20,500</p>	 <p>2014 Dodge Durango SXT; AWD; Heated Cloth; 20's; 2nd Row Buckets 49k miles</p> <p>T-7703A \$21,495</p>	 <p>2018 Jeep Grand Cherokee Limited, 4x4, Htd/Cld Leather, Dual Sunroof, Navigation, 24K miles</p> <p>T-7848 \$33,495</p>	 <p>2016 Toyota 4 Runner SR5, 4x4, Leather, Sunroof, Navigation, 93K miles</p> <p>T-14759A \$25,500</p>	 <p>2018 Jeep Grand Cherokee Overland, 4x4, Htd/Cld Leather, Dual Sunroof, Navigation, Trailer Tow Grp IV, 22K miles</p> <p>T-7849 \$37,495</p>	 <p>2018 Jeep Wrangler Unlimited Sahara, 4x4, Auto, Hard Top, 31K miles</p> <p>T-7842 \$30,995</p>
 <p>2018 Jeep Grand Cherokee Summit, 4x4, V6, HD/CD Leather, Navigation, Dual Sunroof, Loaded, 22K miles</p> <p>T-7847 \$39,495</p>	 <p>2018 Dodge Journey GT, V6; Leather; 14K miles</p> <p>T-7688 \$18,200</p>	 <p>2015 RAM 1500 Quad, 4x2, SLT, Hemi, 20's, 66K miles</p> <p>T-7714B \$18,800</p>	 <p>2015 Ram 3500 Crew, 4x4, 6.4 Hemi, 10' Besler Haybed, 37K miles</p> <p>T-14852A1 \$36,495</p>	 <p>2018 Ram 3500 Reg Cab, 4x4, Diesel, Chisholm Haybed, 3K miles</p> <p>T-14946A \$49,995</p>	 <p>2018 Ram 1500 Crew, Big Horn; 4x4; Hemi; Suspension Lift; Navigation; Only 1K miles!</p> <p>T-14955A \$38,495</p>
 <p>2018 Chevy Colorado Crew, 4x4, LT, Nav, 23K miles</p> <p>T-7758 \$27,500</p>	 <p>2016 Ram 1500 Quad, 4x4, BigHorn, EcoDiesel, 28K miles</p> <p>T-7690B \$28,500</p>	 <p>2018 Ram 2500 Crew, 4x4, SLT, Diesel, Auto, 35K miles</p> <p>T-7854 \$41,995</p>	 <p>2018 Ram 1500 Quad, 4x4, SLT, V6, 22K miles</p> <p>T-7806 \$25,500</p>	 <p>2018 Ram 1500 Quad; 4x4; SLT; V6; 15K miles</p> <p>T-7794 \$25,800</p>	 <p>2019 Chevy 1500 Dbl Cab, 4x4, V8, LT, 26K miles</p> <p>T-7852 \$31,495</p>
 <p>2018 Ram 1500 Quad, 4x2; SLT; V6; 26K miles</p> <p>T-7793 \$22,500</p>	 <p>2010 Chevy Colorado Salvage Title, Crew, 4x4, LT, 91K miles</p> <p>T-14628C \$8,900</p>	 <p>2011 Chevy Equinox LT, AWD, Leather, Sunroof, 106K miles</p> <p>T-14962C \$10,995</p>	 <p>2010 Dodge Nitro Heat, 4x4, Sunroof, 20's, 112K miles</p> <p>T-7765 \$9,700</p>	 <p>2013 Dodge Journey SXT, AWD, V6, 86K miles</p> <p>T-7766 \$9,900</p>	 <p>2012 Chevy Captive LS, FWD, 127K miles</p> <p>T-7791 \$7,400</p>
 <p>2006 Chevy HHR LT, Leather, Sunroof, 124K miles</p> <p>T-7771 \$4,500</p>	 <p>2014 Ford Focus SE, Sedan, 81K miles</p> <p>P-7901A \$8,995</p>	 <p>2014 Nissan Sentra SV, 71K miles</p> <p>P-14802A \$9,995</p>	 <p>2014 Nissan Versa S, 105K miles</p> <p>P-7786 \$7,700</p>	 <p>2009 Dodge Journey SXT; V6; 3rd Row Seat;</p> <p>T-14800A \$6,995</p>	 <p>2011 Harley Davidson Fat Bob; 96 c.i.; Aftermarket Pipes & Acc. 9K miles</p> <p>T-7789 \$7,500</p>

573-336-2698

809 MISSOURI AVE. • ST. ROBERT, MO

OPEN 8 A.M. - 6:30 P.M. MON.-FRI. & • SA T. - 9 A.M. - 5 P.M.

3600 FORD TRACTOR: Very nice. \$6,500. 573-766-5640.

NICE BASSETT QUEEN BEDROOM SET: \$400. Clever, 417-268-5586.

Douglass Steel, LLC Jct. MM & 60 Hwy | 11267
Dunn Dr. Mtn. Grove, MO
65711 (417)926-5589



All Types Structural Steel & Pipe - Culverts

Culvert • Continuous/Portable Panel • Pipe fence material
• Plate and Structural Metal • Heavy Duty Field Rollers •
Bargain square tube and pipe bundles \$.25 pound

AUCTION REMINDER: Auction Saturday June 9th, 9 AM. Glenworth Auction. Please our Auction Directory for more information.

4 MUD TIRES: Goodyear Wrangler, LT285/75R16 Dura Trac, good tread left. \$100 Call Don, leave message for call back 314-808-5680.

Built Stronger to Last Longer
Gooseneck
Trailer Mfg. Co., Inc.

Savings Start Here!



24 x 6'8" Gooseneck Brand Stock Trailer
Several In Stock
Same day financing with Ag Direct (with approved credit)

LET US BE YOUR PEOPLE!!

WESTGATE TRAILER & EQUIP.

417-351-6974 • 417-926-7733
www.westgatetrailer.net
8920 W Business 60 • Mtn. Grove, MO
7136 W Farm Road 140 • Springfield, MO
FULL SERVICE SHOP
OPEN: Mon.-Fri. 8-5 And "YES!" Sat. 8-Noon!

WANTED HOOD FOR JOHN DEERE RIDING MOWER 225: 573-859-6574.

I BUY.... used mobile homes. Call or text 573-338-6250 or email GregS.CDH@outlook.com

FOR SALE IH 7250 PEDAL TRACTOR: wide front w/wagon. \$300: 573-859-6574.

IHC 806 DIESEL TRACTOR: with loader \$7,800. (573)765-4406.

GORGEOUS QUARTZ COUNTERTOPS

OATMEAL 25.5"x 85" - **\$360.00** or 36"x 85" - **\$500.00**
LIGHTNING 25.5"x 85" - **\$450.00** or 36"x 85" - **\$650.00**
SILVERY NIGHT 25.5"x 85" - **\$300.00** or 36"x 85" - **\$450.00**

Cuts are **\$1.00** Per Inch
Polish..... **\$1.00** Per Inch
Radius..... **\$25.00** Per Corner

Sinks:

Double Bowl **\$399.99**
Double Bowl
W/Wrap..... **\$299.99**
27" Single Bowl Sink .. **\$249.95**
Powder Coat Add **\$150.00**
Farm Sink W/ Apron Front
Double or Single..... **\$600.00**



19850 Houston Road | Lebanon, MO 65536
Phone: 888-776-0038 and 417-533-5080
Email: neighborhoods@hotmail.com

Business Hours
Monday to Friday: 8:00 a.m. – 5:00 p.m.
Saturday: 8:00 a.m. – 3:00 p.m.
Sunday: Closed

NEIGHBORHOOD'S HOME IMPROVEMENT STORE

FARM & HOME SERVICES, WELDING & CONSTRUCTION. \$40-\$65 per hour. 417-664-7841, Stoutland.

27 GAL FUEL TANK: Fiberglass. \$60. Rogersville. 417-753-2747, 417-766-1991.

AUCTION REMINDER: Estate Auction Sat. June 15th, 10am. Drenon Auction Service. Please see our Auction Directory for more information.

AUCTION REMINDER: Personal Property Auction. Tuesday June 11th @ 6pm. Easterly Auction. Please see our Auction Directory for more information.

CASE 533 45 HP DIESEL TRACTOR: w/ loader, wide front end, PS, 6' brush-hog. \$5,400. 573-694-0299.

97 CHEVY ASTRO VAN: 7passenger, very clean, well maintained, cold air. \$1,600. 417-763-5240.

FOR SALE: 1/2 Simmental 1/2 Angus Bulls, 10 months old. A.I Sired, very gentle, \$1750. ALSO: 110 gal. pull type sprayer. \$1000, Like new. J.W. Henson, 417-343-9488

COLT FIREARM'S DEALER CATALOG'S: illustrated prices, circa #1950's-1960's. \$150. 573-764-3517. Call in P.M.

4020 JOHN DEERE DIESEL TRACTOR: w/48 J/D loader, good condition, nice paint, excellent rubber. \$13,500. 417-763-5240, Tunas.

AUCTION REMINDER: Public Auction Saturday June 8th@ 10AM. Darren Scheets Auctions. Please see our Auction Directory for more information.

LOOKING FOR RIDING LAWNMOWERS: Running and non-running. Reasonable price. 417-718-6964, within 20 miles Lebanon.

CASE 580D: Diesel backhoe, Loader. \$8,850. 573-765-4406.

DURABILT 10 WHEEL FOLDUP RAKE: \$1,750. 573-765-4406.

NEW HOLLAND: 1411 diskbine w/roller. \$7,250. 573-765-4406.

FIREPLACE LOG GRATE: 28" wide. \$25. 636-239-2695, Washington

CUSTOM SAW MILLING: Lebanon. 417-533-4607, 417-664-1195.

BREEDING AGE: Female Tri-Color Welsh Corgi, AKC registered. \$1,150. 417-422-3728.



Freedom to roam is closer than you think.

With best-in-class acceleration and handling with cargo*, the new gas-powered Sidekick delivers durability and speed. All the way up to 40 mph. And with a great offer available, tasting freedom just got a whole lot sweeter. Visit us today.



Best-in-Class acceleration and handling with cargo
40mph • Gas Powered • 2 year/1000 hour warranty



\$0 DOWN \$196 A MONTH FOR 72 MONTHS

KUBOTA OF THE OZARKS

1660 E CHESTNUT EXPWY
SPRINGFIELD, MO
417-866-5588

SCHAEPERKOETTER'S

2715 HWY A
MT. STERLING, MO
573-943-6323

1102 W HWY 28
OWENSVILLE, MO
573-437-4421

SINCE 1893

Sidekick.KubotaUSA.com

*Class is based on these models: Polaris Ranger XP 900, John Deere XUV835M & Kawasaki Mule PRO-FXR. The handling comparison was performed on the FSAE SKIDPAD course in gravel conditions.
© Kubota Tractor Corporation 2019. 2.99% A.P.R., 0% down, financing for 72 months on purchases of a new Sidekick model from participating dealers' in-stock inventory is available to qualified purchasers through Kubota Credit Corporation USA; subject to credit approval. Example: 72 monthly payments of \$15.19 per \$1,000 financed. Example amount based on sales price of \$12,849. Each dealer sets own price. Prices and payments may vary. Offer expires 6/30/19. This material is for descriptive purposes only. Kubota disclaims all representations and warranties, express or implied, or any liability from the use of this material. For complete warranty, safety and product information, consult your local Kubota dealer. For the complete disclaimer, go to KubotaUSA.com/disclaimers and see the posted disclaimer.

Rotating Hay Carriage

\$5,150
\$510 Down
\$90 Per Week
w.a.c.

Cowtown USA • 1-800-258-6898
I-44 & Hwy F • Exit 203 • Cuba, MO
View At cowtownusainc.com - See Video

MURRAY RIDING MOWER: Good Tires, deck etc. needs motor. Only \$195/mower trade. 573-364-7465.

French Bulldog Puppies: Blues, Chocolate & Lilac Carriers, Whites, Sable Pieds, M/F, Guaranteed. \$895-\$2,500. 573-238-3873, 573-208-0485, Glenn Allen.

7' NEW HOLLAND SICKLE MOWER MODEL-451: \$800. Rogersville. 417-753-2747, 417-766-1991.

LOOKING FOR WATER BICYCLE: Any shape. Leave message, 618-758-2830.

Larry Heisel Rentals

LARGE or SMALL...

We Rent!

Crawler Loaders • Excavators • Backhoes

Call Larry! We Deliver!

573-779-1500

www.larryheiselequipment.com

Rental Available in 636 or 573 area code

ORIGINAL NES-001 NINTENDO CONSOLE: w/2 controllers, includes Duck Hunt/Mario Bros cartridge. \$25. 573-854-8132, Salem.

7 CHAROLAIS CROSS HEIFERS: Fall 2018, weaned, approximately 550#, real gentle. \$800 Each. 660-596-8515.

CLASSIC 1994 DODGE COACHMEN R-V/VAN: very good condition, 82,000, recent tune-up, new tires. \$10,900. 417-683-3115.

REAR TINE TILLER: good shape. \$250. 573-468-7689, Sullivan.

REGISTERED HEREFORD & ANGUS BULLS: Home raised, Some Show-Me Select Qualified. 573-701-7828. Belgrade

1987 SHELBY DAYTONA: Excellent condition. \$5,500. 314-616-9862.

SUMMER SAVINGS

Starts Here!

DELUXE BUILDING PACKAGES



24x40x10	Galvalume	\$5,797.55
	Painted	\$6,401.76
24x32x10	Galvalume	\$5,616.66
	Painted	\$6,098.95
30x40x10	Galvalume	\$6,430.69
	Painted	\$7,099.08
30x40x12	Galvalume	\$6,886.06
	Painted	\$7,598.22
40x60x12	Galvalume	\$11,272.16
	Painted	\$12,461.71

All Buildings Quoted Have #2 Lumber And #1 Galvalume Or Limited Lifetime Painted Metal

All Buildings Are Heavy 29 Ga. Metal, Three 2"x6" T&G Splashboards, All Poles 5"x5" Or Larger, CCA Treated, Fully Trimmed With One 3'x6' Walk-Through Door & One Large Sliding Door.

Plus Tax. Labor & Delivery Available On All Building Packages.
Prices may vary due to local code restrictions.

Metal Roofs Designed To Look Great On Your Home!

HEAVY 29 Ga. METAL # 1
 Limited LIFETIME WARRANTY
29 Ga. & 26 Ga. Painted
 CUT TO LENGTH PANELS



Ask About Our Quick Service.
 Over **20** Colors and Several Styles To Choose!

GALVALUME METAL UNPAINTED 25 YEAR WARRANTY

\$48.50

#1 Standard Panels, 29 Ga.

Good quality, quick service

DECK PACKAGES AVAILABLE AT BYLER BUILDING SUPPLY



Roof Is Optional
 Additional Sizes & Custom Shapes Available!
 8x10 • 8x16 • 10x14 • 12x16

CALL FOR PRICING!

- 1 Set of Steps
- Handrails
- 2x2 Balusters
- All Deck Boards & Railing Screwed, Up To 4' High, All #2 Treated



BYLER BUILDING SUPPLY, LLC

2 1/2 MILES EAST OF SEYMOUR ON 60, 1/4 MILE NORTH AT AUTO SALVAGE WWW.BYLERSUPPLY.COM
 877-556-8855 MON.-FRI. 7:30-5 SAT. 8-12 FAX NO. 417-935-2995 417-771-3100

VISIT US AT WWW.BYLERSUPPLY.COM

FREE AKC REG. GERMAN SHEPHERD: 1 year old, black & tan, very friendly, good behavior. 630-687-0705.

MUST SELL DUE TO HEALTH: Beautiful custom ordered, mint condition, flexsteel, three cushion, 84" sofa with matching 60" loveseat. Was \$3,600. Must see. 573-699-4351.

AUCTION REMINDER: Cattle Sale every Monday at Noon. Salem Livestock. Please see our Auction Directory for more information.

15FT BUSHHOG: 3715 Heavy-duty, good condition. \$10,500. 417-766-6504.

AUCTION REMINDER: Real Estate & Estate Auction. Sunday May 19th @ 1pm. Nance Auction. Please see our Auction Directory for more information.

3 WINCHESTER 101 BLACK DIAMOND SHOTGUNS: 4 barrel competition grade, skeet set, in hard case, slightly used. \$3,500, Trap Gun slightly used. \$1,500, Trap Combo, \$1,500. 573-690-2786, 573-496-3391.

AUCTION REMINDER: Restaurant & Lounge Auction Monday June 10@ 10AM. Rona Downs-Marion Restaurant Equipment. Please see our Auction Directory for more information.

BEAUTIFUL NEW HANDMADE QUILTS: One purple, green shades, one blue, one white, queen size. \$350 custom orders welcome. 417-741-2198. Hartville.

ALLIS CHALMERS 6080 DIESEL TRACTOR: Cab and air, 80hp, nice. \$14,750. 573-765-4406.

JACK RUSSELL PUPPIES: 8 weeks old June 1st, no shots, farm raised. \$150. 573-392-3748.

JOHN DEERE 4240: Diesel Tractor, cab and air, power shift, 3900 hours. \$29,950. 573-765-4406.



SERVING YOU IN 8 LOCATIONS!

HAY

- 66411 Pequea TT6000 Tedder-6 Basket..... **\$8,450.00**
- New Holland H7230** Roller, Discbine..... **\$15,900.00**
- 60892 Massey Ferguson 2756 Round Baler, 5x6, Net..... **\$7,500.00**

TRACTORS

- Kubota L4300 DT** Tractor 4WD, w/Ldr **\$14,300.00**
- Massey Ferguson 65** Gas **\$5,500.00**
- Massey Ferguson 135G** Tractor..... **\$3,750.00**
- Kubota 7200HST**..... **\$2,750.00**
- Kubota M7040** Tractor, 4WD, w/Ldr..... **\$36,850.00**
- Allis 185** Tractor, w/Ldr..... **\$8,995.00**
- Kubota L4701 DT** Tractor, w/Ldr, 250Hrs..... **\$19,500.00**
- John Deere 2030 Tractor** W/ Loader..... **\$6,500.00**
- New Holland TC40** Tractor, 4WD, w/ Loader..... **\$14,900.00**
- Massey Ferguson 471** Tractor, w/ Loader, 1183 Hrs. **\$14,250.00**
- Massey Ferguson 4345** Tractor, Cab, 2WD, Ldr., 800 Hrs. **\$21,900.00**

Eldon, MO

3369 Hwy 52 W. • 573-392-0230

www.crown-power.com

Sales: (Ag) Gene Klein and (Ce) Chris Scott

TRACTORS

- Ford 4600** Tractor, Diesel **\$6,000.00**
- Case IH 695** Tractor, w/ Loader **\$9,500.00**

MISCELLANEOUS

- 61520 **BH2T220** Mower, Zero Turn, Bush Hog..... **\$2,950.00**
- KMC House Cleaner** **\$5,500.00**
- Case IH 2388** Combine, 4x4 **\$58,000.00**
- John Deere 445G** 54" Lawn Tractor w/ bagger..... **\$2,970.00**
- Sidewinder** 7 ft. Pull Cutter..... **\$1,250.00**
- Ogden** 8 Wheel Rake..... **\$1,750.00**

CONSTRUCTION

- John Deere 85D** Mid. Excavator **\$CALL**
- Kubota SVL95** Cab, Air, 750 Hrs. **\$53,900.00**
- BobCat 5185** Tracks, Cab, AC..... **\$19,250.00**
- Kubota KX057** Cab, Thumb, 550 Hrs..... **\$63,600.00**



SMALL TRAILER: Wood floor and wood sides, 3.5'x6'. \$100. Rogersville, 417-753-2747, 417-766-1991.

\$\$\$\$\$ MOBILE HOME SAVINGS That is what we are about for the last 36 years. New. Used. All Sizes. 573-657-2176 amegamobile-homes.com

FREE MALE CAT to loving home: neutered, great indoors and outdoors. 417-664-9940.

1984 FORD GRILL & HEADLIGHT TRIM. \$40. 573-308-5884.

ELVIS PRESLEY BOOK- THE FAMILY ALBUM: \$10. THE PRIVATE LIFE OF ELVIS PRESLEY. \$6.50. 417-532-2045.

2004 LLY DURAMAX: 245K miles, single cab, white, 2500 GMC 4 wheel drive, very clean. \$8,000. 573-979-0223, phone/text.

9N FORD TRACTOR: runs good, looks good, 70% tires. \$1,050. 573-468-7689, Sul-livan.

FESCUE WANTED TO COMBINE ON SHARES. Phone 417-327-6240.

AUCTION REMINDER: Huge Estate Auction, Friday June 7th @6PM, Joyce Auctioneering & Real Estate. Please see our Auction Directory for more information.

LIONEL TRAIN SET: Steam engine, tender, caboose and other car, track and transformer. \$195. 573-364-7465, Rolla.

MODEL 9410 SINGER SEWING MACHINE: \$50. 417-532-8048.

BUYING OLD BARNS AND LUMBER: 417-298-3509.

REESE 2070W DRUM MOWER: 6'9"cut. \$2,000. Potosi, 573-438-2672.

JOHN DEERE-2210: 24hp, diesel, 4wd compact tractor with John Deere 210-loader and 62" belly-mower, tractor is mint condition, with 180 original hours. \$10,900obo. Lebanon, 417-718-4787

FARMALL SUPER-C: W/2pt disk and plow. \$2,200. 573-714-5779.

NEW 4-RIB BELT FOR 1431 N.H. CONDITIONER: \$60. 417-646-8807.

VISIT WWW.MYWEEKLYTRADER.COM OR FIND US ON FACEBOOK.

FREE FEMALE CAT to loving home: spayed, great with kids, good outdoors and indoors. 417-664-9940.

AUCTION REMINDER: Thursday, June 13th at 9: 19 am. Chupps Auction. Please see our Auction Directory for more information.

2004 OPEN RANGE FIFTH WHEEL CAMPER: 34', all weather, in good condition. \$10,500. Lebanon, 417-718-5520.

JOHN DEERE 5055E DIESEL TRACTOR: 55HP, 311 hours. \$14,000 OBO. 573-301-2609.

VERMEER TM-700 DISK MOWER: excellent condition. \$10,000. Salem, 573-265-5166/573-263-1875.

DYNO CHARGE 990 ELECTRIC FENCER: Solid state for 20 miles. \$50. 636-239-2695.

AUCTION REMINDER: Government Auction. Bidding Ends June 18th @10am. BID NOW! Purple Wave Auction. Please see our Auction Directory for more information.

REGISTERED BLACK ANGUS BULLS: AI bred. \$1,250-\$2,950. Hartville, 417-259-2520.

EARLY 1900'S EMBOSSED "TO MY VALENTINE": Great color. \$10 573-854-8132, Salem.

ANTIQUÉ RIMLESS EYEGLASSES: Shuron 1/10th, 12K gold filled frame, chip in left lens, includes original case. \$70. 573-854-8132, Salem.

POOL TABLES: Installations, moves, recoveries, repairs, accessories, etc. 573-646-1700.

AUCTION REMINDER: Antique Estate Auction. Saturday June 8th@ 10am. Nance Auction. Please see our Auction Directory for more information.

CUB CADET 50IN MOWER DECK: for zero turn mower, will fit most 48" - 54" mowers, excellent condition, with 3 blades. \$195. 573-364-7465.

FORD 2000-GAS: w/bushog. \$2,500. 573-714-5779.

AUCTION REMINDER: Estate Auction, June 8th, 10 am. Public Auction, June 9th, 1pm. Rick Dixon Auction. Please see our Auction Directory for more information.

417-532-6631 www.wheelsimple.net



SAVING MONEY MAKES A LOT OF ¢ENTS

2410 Evergreen Pkwy, Lebanon (next to Heartland Antique Mall)

JOHN DEERE 566 SILAGE ROUND BALER: monitor, kicker, net wrap. \$7,500. 573-765-4406.

1962 MASSEY FERGUSON BULL: w/loader, needs paint. \$4,500. 573-315-9009, Potosi.

100# PROPANE GAS CYLINDER: 24 gallon with regulator and cap. \$50. Conway, 417-718-5347.

40 PLUS OLD CAR MAGAZINES For Sale: Street Rodder, Hot Rod, etc. \$15 all. 417-457-1023.

1967 1/2 ton DODGE: long-wheel base, new 360 Magnum motor, new tires. new front end, new exhaust system, needs paint. 573-756-3937 after 5pm.

GREAT PYRENEES PUPS. Also goats for sale. 417-664-8781, Richland.

AUCTION REMINDER: Saturday, June 8th, 9am. Lorts Auction. Please see our Auction Directory for more information.

HOME, 3 BEDROOM RANCH: 32.37ac, North St Francois County. \$185,000. 417-255-6640.

2002 GMC 1ton DUMP TRUCK: low mileage, new tires, good shape, body nice. \$9,500. 573-468-7689, Sullivan.

1995 FORD XLT-150 4x4: Farm Truck, 8 cylinder, automatic, 186,000, gooseneck. \$2,150, 6' box blade Brushhog. \$550. 3 saddles, 15" Simco. \$325. 17" seat 8405 Billy Cook. \$975. 573-729-2874.

WANTED, TIMBER TO LOG ON SHARES: Honest, reliable, references. 417-533-4607, 417-664-1195.

WANTED CUT STOCK, Cants, Slabs, trees length + 45" long scragg blocks. 417-650-0402.

GUN BOXES: Several shapes & sizes. \$10 and up. 417-589-8200.

2000 SILVERADO: no dents or rust, 109,000 miles. \$6,500. 417-935-2333, Seymour.

Cowtown Express Car Wash
 Highway 63 South, Rolla, MO
 Call Wade 573-368-1430 Or 573-426-2500



\$4,500
 And 10% Down
 \$95 Per MO
 w.a.c.

NEW Winchesteer Star & Bale Trailers
 Powder Coated 18+2, 7,000 Axles
www.cowtownusainc.com

BEILER FENCING: New, clean, repair. Call us for an estimate. 417-217-2755.

JOHN DEERE 310A DIESEL BACKHOE LOADER: \$8,850. 573-765-4406.

CRAFTSMAN FLOOR DRILL PRESS. \$150. 55 gallon hand Fuel Pump. \$50 573-378-5180

BARN WOOD SIDING: 8" & 10" wide. 573-729-7226. www.pineridgerustic.com

ROD AND REELS: fishing season is coming. \$5 and up. Conway, 417-589-8200.

R-FAB BINS
 (660)281-3078



Bucket Bins
 Stationary or Portable

Overhead Bins
 Located in Warsaw, MO

AUCTION REMINDER: Monthly consignment auction October 5th@ 6PM. R&R Auction. Please see our auction Directory for more information

Now Stocking
Large Selection
 of
Plumbing
 PEX, PVC, & CPVC
 and
Electrical
 Supplies!



STOCKING
Porter Paints
PPG
Commercial
Paints
Sikkens
Stains

Seymour, Missouri 417-935-4201

Sale Ends June 29, 2019



Call for free quote, brochure & color chart.
 Other sizes also available.

Pole Barns & Post Framed Buildings!

23'x32'x10' \$4,099 Material Only \$5,319 Labor Included	23'x40'x10' \$4,799 Material Only \$6,329 Labor Included	30'x40'x10' \$5,699 Material Only \$7,699 Labor Included	40'x60'x12' \$10,099 Material Only \$14,359 Labor Included
---	---	---	---



NOBODY, BUT NOBODY BEATS OUR PRICES!!!

10 ft. Slider • Engineered Trusses 8' O.C. • 2x6 Treated Bottom Wrap • Screws • 2x10 Top Wrap • 2x4 Purlins • Full 29 Gauge Steel • Plus 3 ft. Entry Door with Lock
 OPTIONS: Sidewall Heights on all Buildings 10', 12', 14' & 16'. Overhead Garage Door, Skylights, Insulation, Wainscoting, Insulated Vinyl Windows, Cupolas, Labor Rates Slightly Higher over 50 Miles from Seymour, Call for YOUR FREE QUOTE TODAY!!!

PAINTED WHITE, GREEN OR TAN METAL	\$69.99
10' - \$22.10 12' - \$26.52 16' - \$35.36	
MIX & MATCH METAL	\$39.99
8' - \$10.13 10' - \$12.67 12' - \$15.21	
GALVALUME METAL	\$52.50
10' - \$16.60 12' - \$19.92 16' - \$26.56	
GALVANIZED CORRUGATED METAL	\$56.75
8' - \$9.84 10' - \$12.30 12' - \$14.75 16' - \$19.67	

IN STOCK

40yr Painted Metal
\$72.99

KNOTTY PINE DOORS
 Starting at
\$109.99

LP SMARTSIDE T-5 LAP B GRADE \$43.59/SQ

Car Siding!
 1x6 White Pine Siding **43¢** in ft
 1x8 White Pine Siding **54¢** in ft
 * 4 Profiles to choose from!
 Broken Bundles Add 10¢ Per Ft.

4x8 Sheeting
 Less than full units Add \$1 per sheet
 3/8" Beaded Paneling **\$15.99**
 5/8" T111 Siding **\$19.99**
 Paneling **\$9.99**
 1/2" Plywood **\$19.99**
 3/4" Plywood **\$23.99**
 3/16 Pegboard **\$12.99**

Sales and Servicing

PROFESSIONAL POWER DONE RIGHT

NEW PACKAGE HOMES

Shown with Available Options
 Your Choice of either:
 Stock 5/8" T111 Wood Siding w/1x4 Pine Window & Door Trim - or -
 7/16" OSB & House Wrap ready for other finish options

2x6—16" on center-Exterior Stud Walls
 Residential Roof Trusses-2' on center
 4/12 pitch with 1' over hang
 40 year Painted Metal roofing in 20 Different Colors
 Profile Ridge Vent - Ventilated Ridge Cap
 Vinyl Center Vent Soffit
 Color Matched Metal Fascia & Gable Trim
 2 - 3' 6 Panel Entry Doors
 4 - 3'x4' Vinyl Insulated Windows

ALL FIGURED FOR SUITABLE CUSTOMER SUPPLIED SLAB OR SUB-FLOOR

Price for Basic Materials Package & Labor

20x24(480 sq. ft.)	20x32(640 sq. ft.)	20x40(800 sq. ft.)	28x40(1120 sq. ft.)	28x48(1344 sq. ft.)
\$8,229	\$9,650	\$11,019	\$13,855	\$15,545

REAL WOOD SIDING
 2x6 Log Siding - 1.09¢ in ft
 1x8 Beveled Cedar - 49¢ in ft
 5/8 T1-11 Siding from \$19.99

DECK PACKAGES
Materials Only

8x6\$199.99	10x12\$419.99
8x8\$239.99	10x16\$549.99
10x10\$349.99	12x12\$499.99
	12x16\$649.99

QUAKER Now Stocking Quaker Vinyl Windows

2030 \$ 99.99	3030 \$119.99
3040 \$129.99	3052 \$145.99
3040Twin \$279.99	3052Twin \$314.99

LUCKY DISCOUNT LUMBER
 417-935-4201
 455 State Hwy C • Seymour MO 65746
 www.luckydiscountlumber.com

*Some restrictions apply see store for details

FOR SALE: Pembroke Welsh Corgi Pups. Farm raised, AKC registered, available black tris & reds. 573-473-0633. Paris.

GERMAN SHEPHERDS: Two males, 3 mo old, one adult male. \$100 each. 417-741-2198.

KRONE 9FT 3PT DISK MOWER: nice. \$6,100. 573-765-4406.

BOBCAT 853 DIESEL SKID STEER: Cab, 57hp. \$8,950. 573-765-4406.

1979 CHEVROLET PICK-UP: short wheel-base, step-side bed, under construction. 573-756-3937 after 5pm.

AC 185 DIESEL TRACTOR: GB-440, loader, low hours, nice. \$9,450. 573-765-4406.

★ ★

GETTING WORK DONE

★ THAT'S OUR HERITAGE ★

1025R DIY DIGGER PACKAGE
Includes 1025R Tractor, 120R Loader
and 260B Backhoe

\$275 per month¹





JOHN DEERE

Heritage

TRACTOR

Legendary Products. Extraordinary Service.

Find your local Heritage Tractor location or request a quote at HeritageTractor.com

(1) Offer ends 7/31/19. Subject to approved installment credit with John Deere Financial. Up to a 5% down payment may be required. Example: based on a purchase of \$20,800 with \$1,040 down payment, monthly payment of \$275 at 0% APR for 72 months. Taxes, freight, set up and delivery charges could increase the monthly payment. Price and model availability vary by dealer. Valid only at participating US dealers.

HTR4X70523WT-4C

Gooseneck and Winchester Star
pipe cattle trailers the best in
the business here and ready...



Cowtown USA

I-44 Exit 203 • 413 Daniels Rd.
Cuba, MO • 573-885-6300
www.cowtownusainc.com

TRUCK LOAD OF FLEA MARKET & AUCTION ITEMS: \$200, trade wood or gun. 573-327-9068

USED AMERICAN FAMILY DOUBLE-WIDE: These do not last! Excellent condition. Call Quick, 573-499-9993 columbiadiscountohomes.com.

FIREARMS: Professional Repairs and Restorations. Baron's Gunsmithing. 573-363-5801, Camdenton.

2006 36FT TRAILER: 2 Slides. \$8,500. 417-664-3162.

FIVE ANGUS BRED HEIFERS: to Byergo Bull. \$2,100. 660-337-6311.



Wright Spray Foam
Insulators, Inc.

Commercial & Residential

Call For A FREE Estimate

417-746-1953

417-746-4932

Norwood, Missouri

3PT TRACTOR BALE SPEAR: 42" spear with 14" stabilizer bars. \$150. Conway, 417-718-5347.

ALUMINUM WHEELS: 4 15X10 mid 90's Chevy Pick-up 2WD. \$95. 573-368-6633, Rolla.

GOLDEN RETRIEVER: Beautiful Female, 5 months. \$600. 314-808-1496.

MF 165-GAS W/LIVE POWER: w/loader. \$6,000. 573-714-5779.

CASE 960 COMBINE PARTS: Belts, Sivs, clover screen. 573-308-5884, Rolla.

FOUR REGISTERED QUARTER MARES: 100% Foundation Bred. 573-528-7436.

\$2,500 - \$11,000 LOT

Lindsay Chevrolet & Lindsay Ford

Mon.-Fri. 8 am - 7 pm
Sat. 8 am - 5 pm
Not responsible for typos.
* with approved credit

417-588-7995

West City Route 66
& South Monroe
Lebanon, MO

Bobby Rogers, Manager • Aaron Wehner, Finance • Mike Forner, Steve "Whitey" Helton, Larry Davis, Sales

Cars

QC75528	2002 CHEVY MONTE CARLO SS PACE CAR, V6, AUTO, YELLOW	\$7,900
QC75331	2003 FORD T-BIRD CONV. V8, AUTO, FWD, GRAY	\$10,900
QC75482	2005 FORD MUSTANG V6, AUTO, RED	\$7,495
QC75336A	2007 LEXUS ES 350 V6, AUTO, FWD, WHITE	\$9,750
LC28608A	2008 INFINITI FX35 V6, AUTO, FWD, BLUE	\$8,950
LC28428B	2009 HONDA ACCORD EX-L V6, AUTO, FWD, SILVER	\$7,900
QC75376	2010 HONDA CIVIC LX 4CYL., AUTO, FWD, BLACK	\$9,800
LC28603	2011 KIA SOUL 4CYL., AUTO, FWD, BLUE	\$7,800
QC75419	2011 NISSAN ALTIMA 4CYL., AUTO, MAROON	\$8,600
QT75509	2012 KIA SOUL 4CYL., 5SPD., FWD, BLACK	\$7,900
QC75215B	2013 CHRYSLER 200 LX 4CYL., AUTO, FWD, MAROON	\$7,700
QC75444	2013 FIAT 500 POP 4CYL., AUTO, FWD, BRONZE	\$8,800
QT75526	2014 FIAT 500L 4CYL., AUTO, FWD, BLACK	\$8,900
QC75320	2014 DODGE DART SXT 4CYL., AUTO, SEDAN, FWD, BLUE	\$8,600
LC28496	2014 FORD FOCUS S 4CYL., AUTO, FWD, BLACK	\$8,900
QC75443	2014 CHEVY SONIC LS 4CYL., AUTO, FWD, BLACK	\$8,900
LC28469	2015 CHEVY SONIC LS 4CYL., AUTO, FWD, WHITE	\$8,900
QC75386	2015 CHRYSLER 200 LIMITED 4CYL., AUTO, FWD, BLUE	\$9,400
LC7050A	2015 CHEVY SPARK LS 4CYL., 5SPD., FWD, BLUE	\$8,500
QC75363	2016 CHEVY CRUZE LS 4CYL., AUTO, FWD, RED	\$10,600

Trucks

QT75474A	2003 GMC SONOMA EXT. CAB V6, AUTO, 4WD, PEWTER	\$5,900
QT75496	2006 DODGE RAM CREW LARAMIE V8, AUTO, 4WD, RED	\$10,900
QT75536	2006 FORD F150 REG. CAB V6, AUTO, 2WD, GRAY	\$8,150

Trucks

QT75552	2007 DODGE DAKOTA CREW SLT V8, AUTO, 4WD, BLACK	\$9,300
QT75507	2007 DODGE RAM CREW V8, AUTO, 4WD, GOLD	\$12,900
LT28352A	2007 CHEVY AVALANCHE LT V8, AUTO, 2WD, RED	\$11,900
QT75530	2009 DODGE RAM SLT CREW V8, AUTO, 2WD, SILVER	\$12,900
QT75395	2012 GMC CANYON SLE REG. CAB, 5CYL., AUTO, RWD, BLUE	\$8,900

SUVs

QT75505	2005 NISSAN X-TERRA SE V6, AUTO, 4WD, WHITE	\$7,300
LT28568	2007 CHEVY TAHOE LTZ V8, AUTO, 4WD, BLACK	\$12,500
QT75529	2007 TOYOTA RAV4 4CYL., AUTO, 4WD, BLUE	\$10,400
QT75532	2007 CHEVY TRAILBLAZER LT V6, AUTO, 2WD, WHITE	\$7,900
QT75420	2007 CHEVY SUBURBAN LS V8, AUTO, 4WD, BLUE	\$11,900
QT57284B	2011 KIA SPORTAGE SX 4CYL., AUTO, FWD, ORANGE	\$11,425
LT28543	2014 DODGE JOURNEY SXT 4CYL., AUTO, FWD, WHITE	\$8,800
QT75335	2014 JEEP COMPASS 4CYL., AUTO, 4WD, SPORT, RED	\$9,900

Vans

QC75394	2016 DODGE GRAND CARAVAN SE V6, AUTO, FWD, GRAY	\$11,800
---------	--	----------

\$5,000 or Less!

LC28260A	2000 LINCOLN TOWN CAR V8, AUTO, SILVER	\$4,900
LT7061A	2006 FORD F450 6.0 D. MOTOR AUTO, RWD, FLAT BED, WHITE	\$4,900
QT75375	2008 MITSUBISHI ENDEAVOR LS V6, AUTO, 4WD, BLACK	\$4,900
QC75393	2009 CHEVY AVEO LS 4CYL., 5SPD., FWD, SEDAN, WHITE	\$3,900
LT28320B	2010 CHEVY HHR LS 4CYL., 5 SPD., BLUE	\$3,900

OVER 90 PRE-OWNED UNITS IN STOCK!

WWW.LINDSAYAUTOGROUP.COM

COLE'S TRACTOR & EQP, INC.

1 mile east of Farmington on Highway 32 • 573-756-4353

**LS XG3135 35HP
4WD DIESEL TRACTOR
PACKAGE**

★★ **SPECIAL PROMOTION** ★★
**BUY THIS PACKAGE AND YOU GET A FREE PRESSURE
WASHER WITH 2 RATCHET TIE DOWNS!**

PLUS YOU GET THE BEST 6 YEAR PARTS AND LABOR WARRANTY!

With Deluxe Skid Steer QA Bucket Front Loader

5FT Brush Hog

5FT Box Blade

AND

7000LB GVW Deluxe Car Hauler Flatbed Trailer

ALL THIS FOR ONLY **\$20,995**

Financing Available on Location!



LS TRACTOR
The Major Brand Maker

WEEKLY TRADER MAGAZINE



AUCTION DIRECTORY

Friday, June 7

- 6:00 PM Joyce Auctioneering & Real Estate.....26
- 6:00 PM R&R Auction Service27

Saturday, June 8

- 9:00 AM Lorts Auction Service44
- 10:00 AM Rick Dixon Auction Service31
- 10:00 AM Kelly Auction Company LLC.....32
- 10:00 AM Darren Scheets Auctions.....34
- 10:00 AM Stevens Auction Service.....35
- 10:00 AM Nance Auction Service.....38
- 10:00 AM Smitty's Outdoor Flea Market39
- 10:00 AM Knight Auction Service LLC.....40
- 12:00 PM Buffalo Livestock Market LLC43

Sunday, June 9

- 9:00 AM Glenworth Auction Service.....26
- 1:00 PM Rick Dixon Auction Service31

Monday, June 10

- 10:00 AM Maron Restaurant Equipment.....41
- 12:00 PM Salem Livestock Auction.....42

Tuesday, June 11

- 6:00 PM Easterly Auction Co.....28
- Online Atterberry Auction & Realty Co., LLC.....44

Wednesday, June 12

- Online Trophy Properties and Auction41
- Online Atterberry Auction & Realty Co., LLC.....44

Thursday, June 13

- 9:19 AM Chupps Auction & Real Estate40
- 11:00 AM Mid Missouri Stockyards43
- Online Mike Conaway, Dream Dirt39

Friday, June 14

- 12:00 PM Freeman Auction & Appraisals LLC.....36

Saturday, June 15

- 9:00 AM Cheyney Auction Company.....25
- 10:00 AM Drenon Auction.....23
- 10:00 AM Easterly Auction Co.....29
- 10:00 AM Martin Auction Company30
- 10:00 AM Crawford Auction Service LLC.....33
- 10:00 AM Freeman Auction & Appraisals LLC37

Tuesday, June 18

- Online Purple Wave Auction42

Friday, June 21

- 10:00 AM Iman Auction Company43

Call 1-800-665-8875 to get your auction listed in the Weekly Trader.

AUCTIONEERS Did you know the WEEKLY TRADER covers more counties in rural Missouri than any other publication?

Firm deadline is 12:00 PM Friday, prior to next week's Thursday publication date.

LARRY DRENON AUCTION

ESTATE AUCTION
839 Illinois St. • Warsaw, MO

To settle the estates of Robert and Doris Stone, the following will sell located from the East Gate Shopping Center in Warsaw, on Main Street driving west toward downtown, turn right on Illinois, then 4 blocks to sale on:

SATURDAY, JUNE 15TH • 10 AM

REAL ESTATE Sells at 11 am Well-maintained 3 bedroom home!

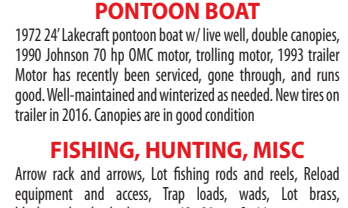
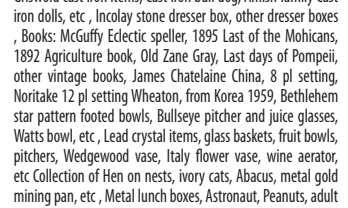
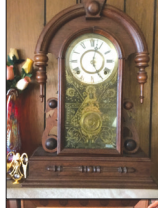
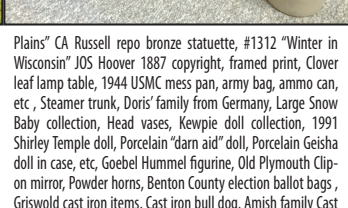
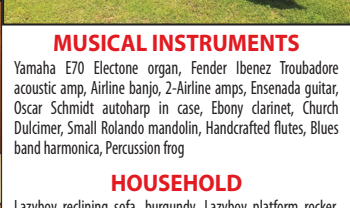


Centrally located just minutes from grocery store, library, and downtown services! You'll find this home in great condition, having been well-maintained and taken care of. Complete new furnace and air conditioning systems were installed just 8 years ago. Sets on a spacious lot, on the side of a cul-de-sac to make for minimal traffic.

Terms: Successful buyer will be required to pay 20% down day of auction in the form of a personal check, the balance to be paid at closing, in approx. 30 days. Seller will furnish clear deed and title insurance. Taxes will be prorated.

Sells subject to heir's confirmation, however get your finances in order and come prepared to buy as they would like to settle the estate in a timely manner.

Contact auctioneers to view this home.



MUSICAL INSTRUMENTS

Yamaha E70 Electone organ, Fender Ibanez Troubadore acoustic amp, Airline banjo, 2-Airline amps, Ensenada guitar, Oscar Schmidt autoharp in case, Ebony clarinet, Church Dulcimer, Small Rolando mandolin, Handcrafted flutes, Blues band harmonica, Percussion frog

HOUSEHOLD

Lazyboy reclining sofa, burgundy, Lazyboy platform rocker, brown, Reclining sofa and chair(gray), Lazyboy platform rocker (taupe), Early American standard size oak bedroom set, 3 pc Standard size bedroom set, Lane cedar chest, Claw foot curio cabinet, Curved glass front curio cabinet, Flat front glass curio cabinet, Maple table and 4 chairs, Kenmore refrigerator w/ cross top freezer, Kenmore washer and dryer, Kelvinator 20 chest freezer, 1200 w microwave, Westinghouse roasting pan, other Small kitchen appliances, Imperial Remington sewing machine in cabinet, Linden wall chime clock, 10 gun cabinet, 8 gun cabinet w/pistol display, Handmade computer desk, Handmade pine hamper, Jewelry boxes, Several good leather purses, Corningware, cookware, roasters, etc

ANTIQUES AND COLLECTIBLES

Antique oak pie safe, Enamel top kitchen utility table, 6 cane seat chairs, German mantle clock, New Haven mantle clock, Framed print – Girl with Flag- James C. Kirk, "Watcher of the

Plains" CA Russell repo bronze statuette, #1312 "Winter in Wisconsin" JOS Hoover 1887 copyright, framed print, Clover leaf lamp table, 1944 USMC mess pan, army bag, ammo can, etc , Steamer trunk, Doris' family from Germany, Large Snow Baby collection, Head vases, Kewpie doll collection, 1991 Shirley Temple doll, Porcelain "dam aid" doll, Porcelain Geisha doll in case, etc, Goebel Hummel figurine, Old Plymouth Clip-on mirror, Powder horns, Benton County election ballot bags , Griswold cast iron items, Cast iron bull dog, Amish family Cast iron dolls, etc , Incolay stone dresser box, other dresser boxes , Books: McGuffey Eclectic speller, 1895 Last of the Mohicans, 1892 Agriculture book, Old Zane Gray, Last days of Pompeii, other vintage books, James Chatelaine China, 8 pl setting, Noritake 12 pl setting Wheaton, from Korea 1959, Bethlehem star pattern footed bowls, Bullseye pitcher and juice glasses, Watts bowl, etc , Lead crystal items, glass baskets, fruit bowls, pitchers, Wedgewood vase, Italy flower vase, wine aerator, etc Collection of Hen on nests, ivory cats, Abacus, metal gold mining pan, etc , Metal lunch boxes, Astronaut, Peanuts, adult black, Stone jars: #8 Marshall, #2 & 3 Westerns, Stone jugs: Western, SPS, Stone bowls, etc, Old roller skates w/wooden rollers, #9, Fur stole, Bell collection, Oil lamps, old, Christmas ornaments, Handmade quilts, wool rugs, etc , #2 DLite Dietz Lantern, Broaches, necklaces, rings, bracelets, lots of jewelry, Stereo, cabinet style, '60s, Keen Kutter food grinder, Old kitchen utensils, rolling pins, Busy Bee wash board, etc , #55

Remote control fire truck, Train set board, Spirit of '76 train set, Tyco, sev pieces Southern Pacific, accessories

TOOLS

Sears air compressor, 6' Fiberglass ladder, Double wheel grinder, Belt sander on bench, Extension cords, drop lights, etc, Metal shop desk, Squirrel cage shop fan, Nut and bolt cabinets, Popular Mechanic and Handiman books and magazines

PONTOON BOAT

1972 24' Lakecraft pontoon boat w/ live well, double canopies, 1990 Johnson 70 hp OMC motor, trolling motor, 1993 trailer Motor has recently been serviced, gone through, and runs good. Well-maintained and winterized as needed. New tires on trailer in 2016. Canopies are in good condition

FISHING, HUNTING, MISC

Arrow rack and arrows, Lot fishing rods and reels, Reload equipment and access, Trap loads, wads, Lot brass, blackpowder, buck shot, etc, 12, 20 ga & 44 mag ammo, Minnow trap, fish baskets, Man's Murray Mtn. Bike, Paint easels, frames, painting supplies

LAWN AND GARDEN

MTD yard Machine chipper/shredder, Wheel seed planter, 10' Windmill yard ornament, Charcoal grill

ESTATES OF ROBERT AND DORIS STONE

Terms: Cash, approved check, debit/credit card (convenience applied). Nothing to be removed until settled for. Not responsible for accidents. Statements made day of sale take precedence over printed material. Lunch served.



Larry
660-596-8515

Lacey
660-723-1104

Laramie
660-221-4386

660-547-2646

PUBLIC AUCTION

Sunday, June 9, 2019 • 9:00AM

940 S Iron Mountain Rd Fordland, MO 65652

Directions: From Springfield Take Hwy 60 East 18 Miles To Iron Mtn. Rd. Turn North Across Hwy 60 Onto Iron Mtn. Rd. To Auction.

Equipment, Semis, Trailers, Vehicles & Farm- Selling Around Noon

2014 JD 6105M 4x4 Tractor w/ cab, Loader, 788hrs, 105hp* JD MX7 3pt Bushog* Clark Ranger 668 4x4 Dsl Log Skidder w/ Detroit, Hyd Blade & Winch* Fiat-Allis 545 Articulating Dsl Loader 4x4* Massey Ferguson 1540 Dsl 4x4w/ DL120 Loader & Bucket* EZ Boardwalk Sawmil* JD 2010 Track Loader* Ford Tractor* David Brown 1212 Dsl Tractor w/ 56L Loader & Bucket* 2009 Western Star Stratosphere Hightop Sleeper 60 Series Detroit 13sp, Excellent Rubber, New AC Compressor, Newer Brakes* 2007 Freightliner Classic, Recent Overhaul, Detroit 13sp, New Rear Brakes, Double Bunk Sleeper* 2001 GMC Sierra SL w/ 52,XXX Miles* 1999 Ford F250 w/ Flatbed, 7.3 Dsl, 157,XXX Miles* 2005 Gooseneck Triple Axle Trailer w/ Ramps* VW Beetle w/ Title Needs Motor* 100 Steel Fence Posts* Kubota RTV900 Dsl SxS, 4x4, Hyd Dump, Power Steering* Vicon RP1211 Baler* New Idea Spreader

Guns, Knives, Ammo, Coins & Misc- Selling After 1PM

Win 1400 12g* Stevens 820B 12g* Glenfield 75C 22LR* Savage 340E 223 Rem* Daisy Powerline 880 BB Gun* Marlin 30AW 30/30* Stevens 512 20g* Ithaca 500 12g* Win 1897 12g w/ Extra Barrel* Masterpiece Arms 45acp* Rem 742 30-06* Rem 770 30-06* H&R 900 22* Spain 10g* Browning Belgium 30-06* Sako 30-06* Ruger MKI 22* Rem 1100 20g* Howa 1500 30-06* Marlin 782 20g* Rem 742* Woods Master 30-06* Rem Nylon 66* Colt 1903 Auto* 2- Pre 64 Win 94 30-30* Ruger Mini 14 Ranch* Rem 770 270 Win* Henry Golden Boy 22LR- NIB* Kar 98-257 Roberts* Win 1400 12g* Marlin 1870 30-30* Rem 870 Mag 12g* Ruger American 308* New Haven 600ct 20g* LIG 10g SxS* Rem 870 Mag 12g* Rem 742 30-06* Stevens 820B 12g* Savage 340 223* Glenfield 75C 22LR* Rem 870 Mag* Rem Sportsman 74 30-06* 26.5mm Flare Gun* Mossberg 600ct 20g* 870 12g Slug Barrel* Stack On Gun Safe* 2-S&W Airweight 38sp* Grizzly Gun Safe* Redhead Gun Safe* 95 Fixed Blade Combat Knives- Case, Cattaraugus, Schrade, Kissing Crane, Boker, Queen, Uncle Henry, Kabar, Western, Bulldog, Camillus, Pal, Etc* 5- 1oz 999 Silver Bars* 9-Morgan Silver Dollars* Mint Sets* 4- Peace Silver Dollars* Walking Liberty Half Dollars* Several Franklin & Kennedy Silver Half Dollars* Proof Sets* 1999 Super Bowl 1 Oz Silver Round* Silver Certificate* 11 Coin Set Books (Partially Filled)* Buffalo Nickel* 120+ Silver Quarters* Variety Of Ammo* Gun Cases

Furniture & Appliances

Multiple Tables & Chairs* Chase Lounge Chair* Chair & Ottoman* Sleeper Sofa* Tile Top Island & 2 Chairs* Buffet w/ China Cabinet* Bar Stools* Rocking Chairs* Carved

Wood Chair* Roll Top Desks* Cast Iron Baby Bed* Ship Cargo Door Coffee Table* Side Chairs* Library Tables* Oak Dresser w/ Oval Mirror* 2- Cocacola Tables & Stools* Victorian Sofa & Chair* Bookcases* Wing Back Chairs* Drafting Tables* Full Bedroom Sets* Jewelry Armoire* Recliners* Futon* Deep Freeze* Exercise Equipment* China Hutch* Twin Bed* Queen Bed* Desks* Loveseats* Armoires* Chairs* Open Coolers* Whirlpool Washer & Dryer* Cedar Chest* Large Trunks* End Tables* Primitive Cupboard* Wrought Iron Shelf* Wash Stands* Night Stands* Displays* Wrought Iron Bed* Lighted China Cabinets

Glassware, Antiques, Collectibles & Household

Large Collection Of Vintage Clothes, Suits & Military Uniforms* International Time Recording Time Clock* 1983 Schwinn Twin Tandem Bike* Wurlitzer Americana Jukebox* Cream Cans* 50+ Pcs Of Fenton* Wheat Cradle* Cream Seperator* Antique Tin Toys* Saddles* Cherished Teddies* Green & Pink Depression* Lladro Collector Plates* Green Condiment Set* Haviland Limoge China* A&W Mugs* Cookware* Crystal* Rugs* Shot Glass Collection* Tiffany Style Lamps* Nascar Hats & Cars* Coca Cola Collection* Wolf & Eagle Figurines* Pennzoil Banks* Graniteware* Horse Collars* Suitcases* Fruit Jars* Dolls* Quilts* Sad Irons* Victrola* TV Trays* Velvet Tobacco Cans* Owl Collectibles* Hand & Needlework* Lite Beer Neon Signs* Mirrors* Cans* Old Photos & Frames* Small Kitchen Appliances* Snow Globes* Christmas Decor* Corningware* Vizio TV & Stand* Cameras* Samsung TV* Floor Lamps* Carpet Cleaners* Table Lamps* Stereo w/ Speakers* Fiesta* McCoy* Pottery* Holiday Decor* Electric Guitar & Amps* Saddles* Amber Glassware* Records* China Sets* Tupperware* Purses* Jewelry* Vintage Paper Goods* Books* Precious Moments* Goebels* David Winter Figures* Needlework* Milk Bottles* Primitive Gas Cans* Primitive Utensils* Antique Philco- Ford Radio* Antique Ice Skates* Crocks* Refrigerator Dishes* Pyrex* Mixing Bowls* Cookie Jars* Sunbeam Mixers* Pitcher & Bowl* Sports Cards* Baskets* Antique Fire Extinguisher

Tools, Lawn & Garden

Jet Metal Lathe 220V* CNC Metal Lethe 220V* Machinest Bits* Grizzly G4003G Gunsmith Lathe 220V- All New Gears & Drive* Simpson End Mill 110V* Tool Heads* Cutting Bits* Air Oilers* Bridgeport End Mill 3 Phase 440 w/ Single Phase 220 Converter & Series 1 Quick Adjust Head* Craftsman Riding Lawn Mower* Chainsaws* Martin House* Patio Table & 4 Chairs w/ Umbrella* Outboard Motor* Smoker* Lawn Mowers* Weedeaters* Misc Hand Tools* Fishing Tackle* Park Bench* Ladders* Ext Cords* Lawn Chairs* Chopsaw* Patio Heater* Craftsman Scrollsaw* Craftsman Bandsaw* Porter Cable Saws* Wheelbarrow* Lawn & Garden Tools

Plus More www.glenworth.com



Auction Conducted by:

Glenworth

Auction Service & Realty
Glen Yutzy, Auctioneer/Broker

Member of:

Missouri Professional
Auctioneers Association
Licensed in Missouri & Arkansas



Phone: (417) 767-4345

Fax: (417) 767-4222

Not responsible for accidents. Announcements made day of sale take precedence over any printed matter.
Terms: CASH or CHECK Visit our website for more information at www.glenworth.com Lunch available

REAL ESTATE & PERSONAL PROPERTY

Auction

Saturday, June 15, 2019 • 9AM

Estate of the late Mearle Moore • 1001 North Hovis St. • Mountain Grove, MO 65711

Directions: From Business Hwy 60 four way stop, take Business Hwy 60 East to Hovis St. Watch for Cheyney Auction signs.



Real Estate 11:00 AM

Beautiful 3 bedroom brick home featuring lower level kitchen with center work island, built in appliances and breakfast area, utility room with built in cabinets and off kitchen half bath. Dining room with built in china cabinet, foyer leading to large living room with gas corner fireplace, master bedroom with Jacuzzi bath and shower, large vanity, 1 regular closet and 2 cedar walk in closets. Upper level consists of two bedrooms and extra large bath, with cedar walk in closets. Two car garage with openers, large rear redwood deck. Natural gas heat and air. Carpet and hardwood flooring, detached 3 bay garage and workshop, 2200 sq ft m/l of living area, all setting on a 200 ft x 216 ft m/l corner lot with wooden privacy fence across back of lot.

Personal property 9:00 AM

Appliances; Amana double door refrigerator with ice and water in door; Frigidaire 20.6 cu ft refrigerator with ice maker; Frigidaire upright freezer; Frigidaire 21cu ft chest type freezer; Maytag 2000 series washer and dryer set, like new; Emerson microwave;

KitchenAid toaster oven; KitchenAid coffee maker; Mr Coffee coffee maker; B & D electric can opener; Magic Chef built in dishwasher; Hotpoint electric 4 burner range; Howard Miller Grandfather clock; Jewelry armoire and huge amount of costume jewelry.; Glassware – Figurines – Dinnerware; Currier & Ives China; Corningware; Carnival ware; Mixing bowls; Baking dishes; Large lot of assorted figurines; Corona dinnerware; Unique vases; King Crown compote; Canister set; Cookie jar; Misc China; Other; Household; King size 5 piece solid oak complete bedroom suite; Full size 4 piece complete bedroom suite; Queen size 4 piece complete bedroom suite; Matching sofa and loveseat; 2 oversized matching rocker recliners; Claw foot pedestal solid oak dining table with 2 captain and 2 regular Windsor back chairs (top of the line); Solid oak pedestal dining table with 4 chairs; Antique curio cabinet; Solid oak china cabinet; Serving cart; Microwave cabinet; Oversized rocker recliner; Swivel rocker recliner; Glider rocker; Credenza; Antique 6 drawer chest with wooden casters; Many assorted sizes wall mirrors; Foyer mirror and bench; Beautiful table and floor lamps, including Gone with the Wind, Brass, Leaded Stained glass, and more; Sofa table; Several wall clocks, some key wind; 3 tier marble stand; Wood bar stools; Space heaters; Area rugs; Oak desk; Oak wall hand crank telephone (not old); Plant stands, including Rosewood; Matching coffee table and 2 end tables; Sony flat screen 40" TV; Emerson 36" flat screen TV; 2 RCA VCRs; Polaroid 46" flat screen TV; Cedar chest; Foot board bench; World globe on stand; Lots of pots and pans; Large amount of cookbooks; Bedding and linens, some hand stitched; Large assortment of wall pictures; 5 drawer chest; Assorted chairs; Stamina exercise machine; Image electronic treadmill; Hall tree; Rainbow vacuum; Assorted end tables; 3 globe Victorian lamp; Roll top desk with chair; Oak entertainment center; Oak quilt chest; Bissell upright vacuum; Padded oak cedar chest; Bakers rack; Open shelf bookcase; Outdoor – Miscellaneous Items; Cast iron ornate lawn or patio furniture; Craftsman LT 1000 lawn tractor 17.5 hp OHV engine 42" cut; Murray 4 hp push mower; Yard Machine 3.5 hp edger; Wheel barrow, poly tub, rubber tire; Electric trimmer; 6 piece wrought iron patio set with umbrella; Several concrete planters; Concrete bird bath; 2 water hoses on reels; Lawn fertilizer spreader; Concrete yard ornaments; Metal storage cabinets; Assorted lawn and garden tools; Christmas decorations; Stainless steel restaurant serving cart; Handicap walker with seat; Brand new 50 gal gas hot water heater; And Much more!

Terms of Sale: 10% down the day of the auction, balance due on closing date, taxes pro-rated, closing costs split. Shown by appointment only. For more information or viewing, please contact Travis at 417-543-8751 or Warren at 417-766-5781. **Auctioneer Notes:** Outstanding real estate with some of the finest furnishings you'll ever find at auction. Everything is extra clean and well cared for. Come have a fun day with us! *Thanks, Travis and Warren*



Cheyney Auction Company, LLC

Real Estate • Livestock • Farm & Ranch • Equipment • Household • Antiques

Travis Cheyney & Warren Taylor, Auctioneers

417-543-8751 • cheyneyauctions.com

ANNOUNCEMENTS: Made Day Of Sale By Auctioneer Take Precedence over any Printed Matter. Not Responsible For Accidents.

REAL ESTATE & HUGE ESTATE AUCTION

Friday, June 7, 2019 • 6:00 PM

1071 State Hwy A • Marshfield, MO

Directions: from I44 East Take exit 100 for MO-38 toward Missouri W/Marshfield, turn right onto Mo38/E Spur Dr, turn right onto Rte 66/W Washington St, turn left onto George St, continue on to Commerce Road turn Right on to A HWY. Watch for signs.



**Antique Glassware • Antique Furniture
• Tools • Primitives • Collectibles • New
Halloween Decor • Art Work • Wicker Table
& Four Chairs • Onyx Table & Six Chairs**

See Auctionzip.com or Joyce Auctioneering & Real Estate Facebook page for more photos and information.



All items sold as is – where is. Accepted Payment Forms: Cash, Good Check, Credit, or Debit (3% added for credit & debit transactions)
Check out our online listing at www.auctionzip.com — Auctioneer ID# 30607



JON JOYCE Auctioneer, Licensed Agent | Lic. #200

Joyce

**Auctioneering
& Real Estate**



(417) 859-2700 - Business | (417) 859-2724 - Fax
(417) 207-5412 - Cell | jjoyce24.jj@gmail.com



R&R AUCTION SERVICE

CONSIGNMENT AUCTION

FRIDAY, JUNE 7TH • 6:00PM

1644 South Ash • Buffalo, MO

As always we will have a great evening filled with quality merchandise.

3 Gas Dryers, 2 Dish Washers, Electric Range, Deep Freeze, Small Appliances, Heaters, Furniture, Glassware, Collectibles, Toys, Record Albums, Old Wall Pocket, Pet Carriers, Old Compound Bow, Range Finder, Creep Feeders, Baseball Cards, Covergirl Makeup, Dolls, Nascar Ornaments, Christmas Decor, Old Trunk, Wooden Boxes, Old Bottles, Vizio Flat Screen TV, Old Rolling Pin.

Lot's of items are still coming in so keep watch on our website at www.rrauctionservice.com. Pre-bid online on select items if you can't make it in person. Much, much more to see day of sale!

Kitchen opens at 5 and you know the food is great.



LARGE ESTATE AUCTION! SATURDAY, JUNE 15 • 10AM

1644 SOUTH ASH, BUFFALO, MO • OWNER MARLENE GUSTKE

Ms. Gustke has moved to downsize, her merchandise will be brought to the R&R Auction House and sale will begin at 10am.

Partial list includes: Several toy train cars, 4 wheeler, tractor, brush hog, Mowers, Chain saws, Tools, Fine Furniture, Collectibles and much, much, more.

Mark your calendar now and watch next week's trader for complete list or check online at www.rrauctionservice.com



TERMS: Cash, check, or credit card with proper I.D. nothing removed until settled for A 3% fee will be added to credit card purchases. Not responsible for errors in listing. Any announcement made sale night will take precedence over any printed matter. **Note:** Service will take every precaution to prevent accidents, but will not be responsible should any occur.

For more information contact Professional Auctioneer Russ Weeks at 417-576-7357 or check out www.rrauctionservice.com



Serving this area's auction needs since 1997 with honesty and professionalism.
www.rrauctionservice.com
(417) 576-7357 or (417) 345-4140



**CAGA
CERTIFIED
APPRAISER**

PERSONAL PROPERTY AUCTION

TUESDAY, JUNE 11, 2019 @ 6:00 PM

2350 N. Clifton • Springfield, Mo 65803

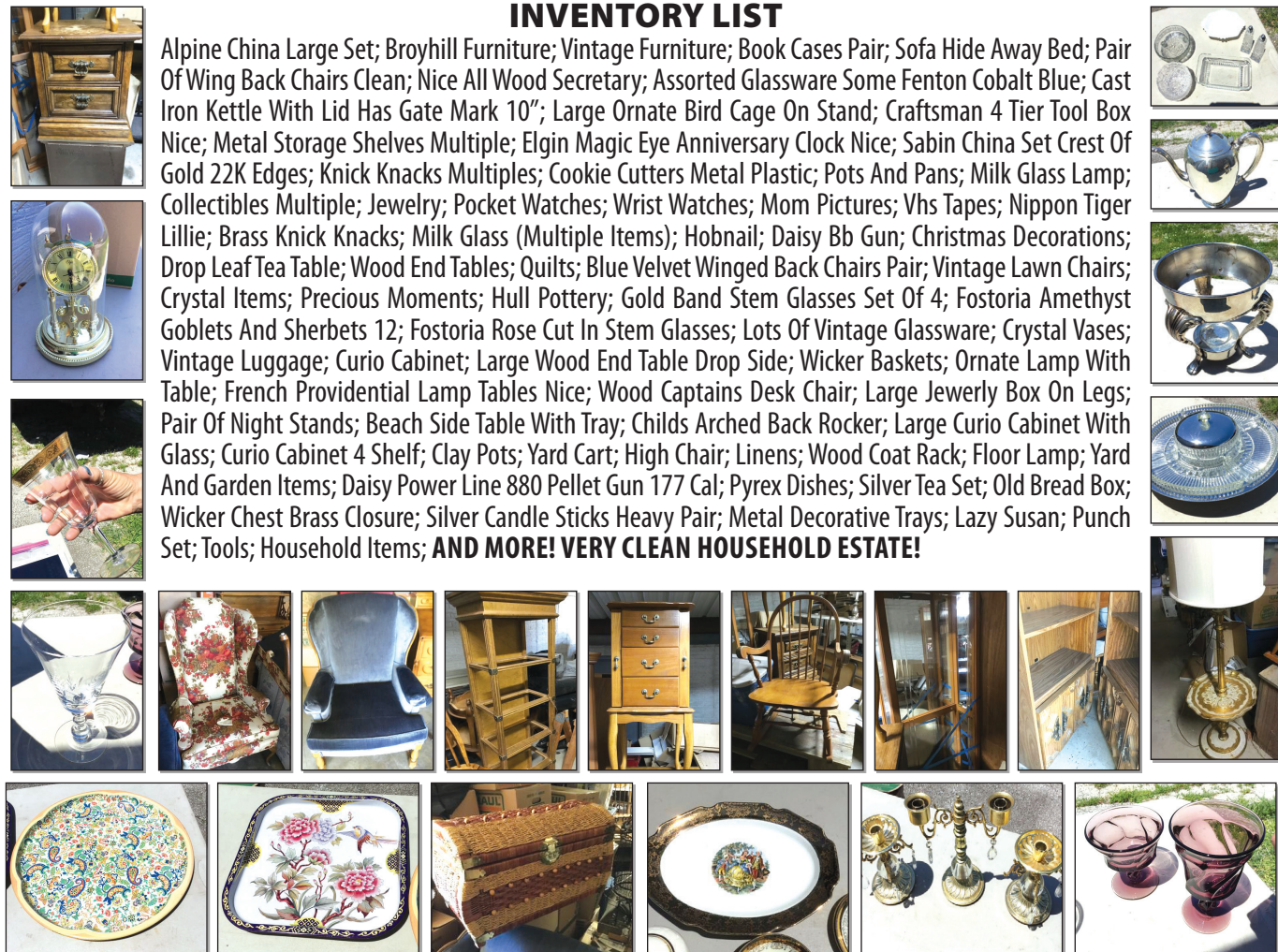
**SALE
INDOORS!**

Directions: From the intersection of Kansas expressway & Kearney go West on Kearney, Turn left on Clifton and auction will be on left.



INVENTORY LIST

Alpine China Large Set; Broyhill Furniture; Vintage Furniture; Book Cases Pair; Sofa Hide Away Bed; Pair Of Wing Back Chairs Clean; Nice All Wood Secretary; Assorted Glassware Some Fenton Cobalt Blue; Cast Iron Kettle With Lid Has Gate Mark 10"; Large Ornate Bird Cage On Stand; Craftsman 4 Tier Tool Box Nice; Metal Storage Shelves Multiple; Elgin Magic Eye Anniversary Clock Nice; Sabin China Set Crest Of Gold 22K Edges; Knick Knacks Multiples; Cookie Cutters Metal Plastic; Pots And Pans; Milk Glass Lamp; Collectibles Multiple; Jewelry; Pocket Watches; Wrist Watches; Mom Pictures; Vhs Tapes; Nippon Tiger Lillie; Brass Knick Knacks; Milk Glass (Multiple Items); Hobnail; Daisy Bb Gun; Christmas Decorations; Drop Leaf Tea Table; Wood End Tables; Quilts; Blue Velvet Winged Back Chairs Pair; Vintage Lawn Chairs; Crystal Items; Precious Moments; Hull Pottery; Gold Band Stem Glasses Set Of 4; Fostoria Amethyst Goblets And Sherbets 12; Fostoria Rose Cut In Stem Glasses; Lots Of Vintage Glassware; Crystal Vases; Vintage Luggage; Curio Cabinet; Large Wood End Table Drop Side; Wicker Baskets; Ornate Lamp With Table; French Providential Lamp Tables Nice; Wood Captains Desk Chair; Large Jewelry Box On Legs; Pair Of Night Stands; Beach Side Table With Tray; Childs Arched Back Rocker; Large Curio Cabinet With Glass; Curio Cabinet 4 Shelf; Clay Pots; Yard Cart; High Chair; Linens; Wood Coat Rack; Floor Lamp; Yard And Garden Items; Daisy Power Line 880 Pellet Gun 177 Cal; Pyrex Dishes; Silver Tea Set; Old Bread Box; Wicker Chest Brass Closure; Silver Candle Sticks Heavy Pair; Metal Decorative Trays; Lazy Susan; Punch Set; Tools; Household Items; **AND MORE! VERY CLEAN HOUSEHOLD ESTATE!**



FOR MORE INFORMATION GO TO WWW.EASTERLYAUCTIONCO.COM OR CALL EASTERLY'S AT 417-833-9494

EASTERLY

AUCTION CO.

Go to www.EasterlyAuction.com



auctionzip.com
ID#14770

Mike Easterly Auctioneer

417-833-9494

Not Responsible for accidents or theft.

For more information call: Easterly Auction Company, Springfield, MO.

Auction Terms: Bank Letter Of Credit Required.

Visa, Mastercard, Cash, Cashier's check or checks with proper I.D.

Announcements day of sale take precedence over printed material. Auction Notes: Although information

is obtained from sources deemed reliable, auctioneer makes no warranty or guarantee expressed or implied.

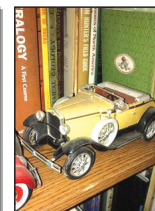
Buyers should themselves take the opportunity to make their own inspection prior to sale.

PERSONAL PROPERTY AUCTION

SATURDAY, JUNE 15, 2019 @10:00AM

2044 West Hyacinth Ct • Nixa, MO 65714

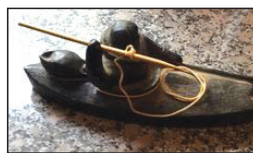
DIRECTIONS: From James River, go south on 160/MO 13. Turn right on W Mt Vernon/MO 14. Turn left on S Carroll Rd and left on W Hyacinth Court. Auction will be on the right.



INVENTORY LIST

Remington wing master 16 gauge; Ruger 19 1145 auto; Tactical 22 Ruger; Remington 870, 12gauge; Winchester 3030 lever action; H&R 32 caliber; Eagle arms 7.65 caliber pistol; 2007 Harley Davidson classic Hardtail 50K miles; Sovereign Tommy 22; Mossberg 500, 12 gauge; Solar 12ga; New Ithaca 12Ga. Double Barrel; die cast Cars; Steins; recliner; Hutch; contents of hutch; 4 shelf glass door cabinet; wine rack; Sleigh bed; slim wood shelf; Four drawer Chester drawers; Linen cabinet; wood cabinet; Electric Queen

bedroom set with headboard Chester; Crystal by c. Phil 1950 marked 7; 4 shelf knick knack stand; Small Chester drawers; sofa; snow globes / hummingbird figurines; Gentlemen Chest; knick knacks; glass paperweights; ship figures; vase with floral arrangement; gun rack; Remington horse statue; 1953 Mercury Monterey 302 V8 power steering power; Bass tinder 10.2 boat and trailer; John Deere zero turn mower; Smoker grill; 3.3 mercury outboard motor; Yard roller; Minnkota trolling motor; A set of steel ramps; Late-model Thunderbird hardtop caddy; Various shop equipment; Krastin 15 inch drill press one horse power like; Antique tools; tool box-; Antique Miller high life clock; Engine hoist; electric power tools; Farm boss stihl MS 290 chainsaw; dolly; Six Cylinder Engine and Transmission; Tric Trailer; TCI frame Heights super ride independent front; Minn Kota trolling motor; Bench grinder; Four sets of leather Harley saddlebags; Kerosene heater; 1951 Ford Pick up cab with chopped top and doors; Display cabinet; Homelite generator; Chopsaw; Delta 12 inch drill press; Black & Decker trimmer; 1932 Ford pick up fiberglass kit hood four; Mercury 9.9 hp outboard; Toolbox; sickle / scythe; Lots of Harley Davison parts; Black powder made in Italy. 44 revolver. Serial; BPI Connecticut Arms Black powder Rifle 50 Cal.; Crossbow with Scope; **and more!**



FOR MORE INFORMATION GO TO WWW.EASTERLYAUCTIONCO.COM OR CALL EASTERLY'S AT 417-833-9494

EASTERLY
AUCTION CO.

Go to www.EasterlyAuction.com



auctionzip.com
ID#14770

Mike Easterly Auctioneer
417-833-9494

Not Responsible for accidents or theft.

For more information call: Easterly Auction Company, Springfield, MO.

Auction Terms: Bank Letter Of Credit Required.

Visa, Mastercard, Cash, Cashier's check or checks with proper I.D.

Announcements day of sale take precedence over printed material. Auction Notes: Although information

is obtained from sources deemed reliable, auctioneer makes no warranty or guarantee expressed or implied.

Buyers should themselves take the opportunity to make their own inspection prior to sale.

Sporting Goods AUCTION

Saturday, June 15th, 2019 at 10a.m.

**Cooper County Youth Fairgrounds
Boonville, Missouri**

**KNIVES
FIREARMS
AND MORE**



Winchester Mod 12, 20ga

Winchester Mod 12, 12ga



Smith & Wesson Mod 29, 44Mag



Colt Post War Ace .22LR

S&W Mod 651



Winchester Mod 42, .410



Colt SAA 2nd Generation, .45cal

**High Quality
Pistols - Rifles - Shot Guns**

CHECK OUR WEBSITE FOR DETAILED CATALOG
PHOTOS AND GUN DESCRIPTIONS

Estate Gun & Knife Collection

Cody Martin
660-888-3460

Teresa Martin
660-888-9518

www.martinauctioncompany.com



**Martin Auction
M+A+C**

ESTATE AUCTION

Saturday, June 8, 2019 • 10 a.m.

LOCATION: 7981 Westwood Dr, Houston, MO 65483

DIRECTIONS: In Houston MO, take Hwy 17 west, go 3/4 mile to Airport Rd, go 1/4 mile to Hawthorne St, turn left, go 1 block to Westwood Dr, go 1.5 miles to auction. Watch for Rick Dixon auction signs day of auction. Visit us on the web at www.rickdixonauctions.com

**• HOUSEHOLD •
FURNITURE • ANTIQUES
• APPLIANCES •**

• old wooden small trunk • humidifier • elec fans • lots & lots of sewing items, some old • fabric & material • antique flat top trunk • antique walnut full-size bed • (2) antique walnut chests of drawers • antique walnut wash stand • cots • sleeping bags • lots of books • elec lamps • antique hat boxes • picture frames • quilts • linens • table cloths • full-size mattress & box springs • rugs • Hoover vacuum • VCR movies • cleaning supplies • several occupied Japan pieces • end tables & coffee tables • recliner • Bentley rocker • lounge chair • lots of what nots • silver-plated silver set • several small old tables • hall tree • lots of dishes & glassware, some old • old kerosene lamps • baskets • antique wooden high chair • board games • lots & lots of cookbooks • lots of antique kitchen utensils • antique oak kitchen table & 6 chairs • elec kitchen appliances • candles • Sportcraft treadmill • full-size poster bed • desk chair • oval wall mirror • lots of old kids toys, some dolls • old wooden butter churn • crocks & crock jugs • Frigidaire 2 dr refrigerator • antique bar stools • small spinning wheel • Stromberg-Carlson wall telephone • old medical books • cast iron tea kettle • 12 gun oak gun cabinet • old irons • stereo & speakers • lots of wall pictures • wooden desk • couches • rocking chairs • ottomans • file cabinet • wash board cabinet • kitchen stool • mops, brooms, vacuums • Whirlpool washer & elec dryer • trash compactor • canned goods & food • trash cans • old quilting frames • antique paper roll • graniteware pans • metal cabinets • wooden cabinets • lots of flower arrangements • Cramers fireproof store safe • wooden fold-up chairs • lots of Christmas items • metal stepstools • wheel chair • exercise bike • Whirlpool 20 cu ft chest freezer •

**• OUTDOOR ITEMS •
• TOOLS •**

• pipe vise • wheelbarrow • lots of hand & garden tools • old sled • small Campbell-Hausfield air compressor • old single tree • Husqvarna weedeater • Big-O 5 hp woodsplitter • yard cart • lawnmower trailer • tarps • garden hose • Werner 8 ft fiberglass stepladder • 4500 watt Dana generator • metal shelving • creeper • floor jack • 12vt trolling motor • lots of coolers • chain hoist • 12 hp 38" cut Craftsman riding lawnmower • lumber • smokers • fruit baskets • several metal lawnchairs • potting soil • bird feeders • garden supplies • firewood • plastic picnic table • concrete bird bath • folding metal lawnchairs • small toolbox & tools • small table saw • gas cans • Husqvarna 445 chainsaw • Husqvarna 7258 leaf blower • router table & router • spray paint • blow torch • battery charger • 6" bench grinder • old planes • old handsaws • elec power tools • carpenters tools • mechanics tools • camping equip • lots of fishing rods & tackle, some antique • deer mount & deer antlers • large cow bell • old wooden water skis • hammock • reloading equipment • Evans sports buckets • patio table • patio umbrellas •

**• PORTABLE BUILDING •
• PORTABLE CARPORT •
• TRAILER • CHAIRLIFT •**

• 8' x 12' portable building, good condition • one car portable carport • 2 wheel utility trailer, no title • Acorn 120 Superglide 186" chairlift, bought in 2011 •

• GUNS •

• Winchester mod 97 16 ga pump shotgun • Winchester mod 62 22 cal pump rifle • Winchester mod 676 30-06 bolt action rifle • Remington mod 11 12 ga auto shotgun (Browning patent) • Henry lever action 22 cal rifle • C.G.Bonehill 12 ga side-by-side double barrel shotgun • Browning Challenger 22 cal auto pistol •

• REAL ESTATE •

6 ac m/l with 4200 sq ft brick home. 3200 sq ft of finished living area, 4 bedroom, 3 bath with garage. Also 2 car detached garage and carport for your RV. This is a very well-built, all brick home with mature trees overlooking the Piney River - land runs to the river. To view, contact Rick Dixon at 417-967-6604. **REAL ESTATE TERMS:** 10% down day of auction, balance due upon closing, to close within 30 days. Taxes prorated, closing costs paid for by the buyer. Sells as is, with no contingencies of any kind, and with owner confirmation.

Dr. Joe & Carol Wall Estate

AUCTIONEERS NOTE: This piece of property, with its river frontage, is an opportunity for someone to have a wonderful forever home! Many other items not listed - mark your calendars for this great auction! Thanks for your attendance, *Rick*

TERMS: Cash or good check. Major credit cards accepted with 5% convenience fee. Driver's license or picture identification required to obtain bid number, which must match check. Nothing loaded or removed until paid for, and everything sells where is, as is. Not responsible for accidents, lost, stolen or broken items. List subject to additions or deletions. Nothing sold before auction; please do not ask. Auction day announcements take precedence over all previous advertisements.



Rick Dixon

Auction Service, LLC

**Rick 417-967-6604
Josh 417-217-9627**

www.rickdixonauctions.com

AUCTION

Sunday, June 9, 2019 • 1 p.m.

LOCATION: 1130 John St, Houston, MO 65483

DIRECTIONS: In Houston MO, take Hwy 17 west, go 3/4 mile to Airport Road, go 1/2 mile to John St. to auction. Watch for Rick Dixon auction signs day of auction. Visit us on the web at www.rickdixonauctions.com

**• FURNITURE •
• APPLIANCES •
• ANTIQUES • TOOLS •**

• Frigidaire 18 cu ft refrigerator • Amana 15 cu ft chest-type deep freeze • Kenmore washer • Kenmore gas dryer • couch & chair • 2 glider rockers • (4) piece blond full-size bedroom suite • (3) piece maple full-size bedroom suite • cedar twin-size bed • elec fans • quilts & linens • what nots • costume jewelry • small Canon copier • White sewing machine in cabinet • cedar jewelry boxes • wall pictures • 2 wheel dolly •

old fruit basket • old fruit boxes • metal shelving • luggage • Oreck XL vacuum • towels & washcloths • piano bench • fullsize bed, complete • dresser • Clover 31 day clock • lots of books, some old children's books • (2) bookshelves • elec lamps • end tables • small white table • maple hutch • kitchen utensils • elec kitchen appliances • dishes & glassware, some old • pots & pans • (2) filing cabinets • small tool boxes w/tools • garden tools • wicker picnic basket • walker • alum stepladder • fire extinguisher •

• REAL ESTATE •



3 bedroom, 2 bath, 1 car garage home, approx. 1300 sq ft, on nice sized lot in the King-Wells addition. Home is vinyl sided with vinyl windows - a well-kept, nice house in a good neighborhood! This will

make someone a wonderful home! **REAL ESTATE TERMS:** 10% down day of auction, balance due upon closing, to close within 30 days. Closing costs paid for by the buyer, taxes prorated, sells as is with no contingencies of any kind. Sells with owner confirmation. Have all your finances in order as Colleen is very motivated to sell!

Colleen Agee, Owner

AUCTIONEERS NOTE: Please make plans to be with us for this auction. Colleen is moving to be with her family. We look forward to seeing you at the auction, and we always appreciate your business. Thanks, *Rick*

TERMS: Cash or good check. Major credit cards accepted with 5% convenience fee. Driver's license or picture identification required to obtain bid number, which must match check. Nothing loaded or removed until paid for, and everything sells where is, as is. Not responsible for accidents, lost, stolen or broken items. List subject to additions or deletions. Nothing sold before auction; please do not ask. Auction day announcements take precedence over all previous advertisements.



Rick Dixon

Auction Service, LLC

**Rick 417-967-6604
Josh 417-217-9627**

www.rickdixonauctions.com

Outstanding Southern Missouri Ozarks REAL ESTATE & PERSONAL PROPERTY AUCTION!

1/2 mile
of Brush
Creek!

Owners: Mx2 Ranch & Sweetwater Farms

1/4 mile
of Little Brush
Creek!

Sat. June 8, 2019 - 10:00 A.M. SHARP!

LOCATION: (HC 73 Box 70, Drury, MO) 1 mile east of Gentryville, MO on MO Hwy 14 (Gentryville is south of Mtn. Grove; MO on Hwy 95, or west of West Plains, MO on Hwy 14; or east of Ava, MO on Hwy 14). Watch for signs! Lunch & Restrooms Available. Not responsible for accidents or loss of items. Two forms of I.D. Required.. Cash or Check only.

REAL ESTATE 111 Ac. m/l Selling Absolute!

TRACT 1: 48.2 Acres m/l with approximately 1/4 mile of "Little Brush Creek", 80% open and mowable, nice hay fields! House is 2 bedroom, 1 bath, 1,300 sq. ft., m/l older stucco home with large upstairs bedroom, solid! New 200 amp electrical service, new wiring, 3 new ceiling fans, 3 new window a/c units, new hot water heater, new electric stove, microwave, all sell with the home! Hay & Equipment Pole Barn w/ electric, sewer/water hook-up for R.V., 2,400+ sq. ft. Barn. New Well in 2016, 147' deep with up to 50 gallon per minute. 4 freeze proof water hydrants in the farm yard area. Old Tobacco Drying Shed now used as goat kidding shed. Garage...detached w/ electric and work bench. Septic System for the house. Lagoon for the R. V. hook-up and barn.

TRACT 2: 5.8 Acres m/l laying on the north side of tract 1. Has a new, 2018 well w/ pump, pressure tank, 225' deep, 18 gallon per minute. There is new power line and poles. The well and power set on a high overlook Knoll w/ view over Brush Creek. Has a paved drive off of the county road (14-247) up to the property. The owners had planned to build a new home here before health problems.

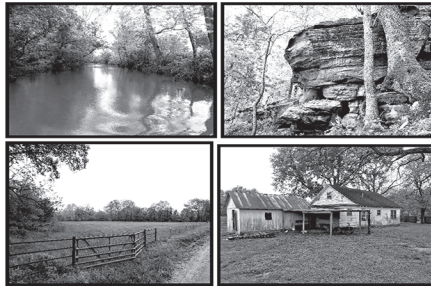
TRACT 3: 20.6 Acres m/l. This tract almost comes out to 14 Hwy, and has approximately 2000 ft. of County Road 14-247 along it. Note: This tract has 1/4 mile of Brush Creek flowing through it! Beautiful! Nice bottom field with wooded overlook hill. Has very large and pretty spring coming into Brush Creek. 50% open, 50% wooded. This tract lies west of, and across the road from Tract 1. Large Rock Bluffs...reports of small cave/bear den!

TRACT 4: 36.7 Acres m/l. This tract lies on the north side of Tract 3. Has 1/4 mile of Brush Creek flowing through it. Again 50% open bottom fields, 50% wooded hillsides and bluffs. This tract lays west of, and across from Tract 2.

General Real Estate Auction Information, Terms & Order of Auction:

1. Each tract has its own legal description without need of survey. To determine exact points by survey would be at the option and sole expense of buyers.
2. This is an ABSOLUTE AUCTION, meaning that it will sell to new owners day of auction.
3. TERMS: Property sells "as is, where is" for cash. 10% deposit day and location of auction, balance due at closing on or before June 25th, 2019. Personal check may be used for deposit. Buyers will sign a purchase contract day of auction. Possession 10 days after closing.
4. Tract 1 sells first. Tract 2 next. Then Tract 3 & 4 sells by the acre and winning bidder takes choice or both. The property will not be offered as a whole, or re-offered in any way. Buyers who wish to buy all the tracts may do so as described above. Any questions concerning terms or order of auction, call Reg Kelly, Auctioneer at 417-257-8385.
5. This property has 80% perimeter fencing, cross fencing, all less than 4 years old. Last year there were 140 big round bales put up, and 500+ small squares.
6. Owners are currently running both cattle and goats on the property. This is a unique, beautiful dream farm with live water, nice hay & pasture fields, abundant wild life, bluffs and springs.
7. Get your finances in order! It will have a new owner! Remember, the real estate sells first at 10:00 a.m. sharp!...followed immediately with all the personal property, equipment, etc. BE ON TIME!
8. There are 7 freeze-proof livestock water stations on Tract 1 for a rotational grazing system rated for 50 cow/calf pairs!
9. 2018 Property Taxes were approx. \$300.00

Visit KellyAuctionCo.com for more pictures & videos!



BACKHOE - TRACTOR - FARM EQUIP.

Ford 4500 diesel industrial Backhoe, canopy, good rubber, front bucket w/ spike attachments. Sells w/ a 1' Trench Bucket, 2' Digger & 2 extra Cylinders - 2 Backhoe Rear Tires, New, 16.9-24-8 ply, industrial tread - Case 310 Gas 3 speed Dozer, works good, has PTO - 460 Farmall 6 cylinder, gas Tractor w/ late model front end loader wide frt. - 300 Farm Fuel Tank on Stand - 150 gallon Fuel Tank - Bird Cages - Metal Siding - Several 4x4 Oak Posts, treated - 2 pt. 8' Field Disc - 4 Mobile Home Axles (2 brakes, 2 trolleys) - 2 pt. Field Cultivator - 3 pt. Blade - New Holland Hay Liner 58 Square Hay Baler, field ready, used last season - 20'x8' Gooseneck Flatbed Trailer w/ Triple Axles - Vermeer Baler 504 Super G Big Round Baler, used last season, extra belts - 16' Gooseneck Stock Trailer, 6' wide - Ford S.D. Hay Rake, good condition! Rubber Teeth - 2 pt. Hitch Hay Mower - M.F. Mower, needs work - Ford 501 Hay Mower - Fully adjustable H.D. Front Forks, fits Backhoe - Airplane Parts: 2 Cows, Tank for Crop Duster - Large Ham Radio Antenna - 6' 3 pt. H.D. Bush Hog - Several Steel Wheels & Tires



SHOP ITEMS

Electric commercial Roto Router System - Giant Margo Commercial Roto Router System, has extra reel & bits - Small Air Tanks - Assorted Electrical Wire, H.D. gauge - Electrical Boxes - Assorted Animal Cages - Some Doors - Mobile A.C. Unit - Conduit Pipe - Chain Link Fencing - (8) 10' Dog Pen Panels - 8'x16' Portable Building - Jensen Wood Furnace & Blower



2008 Sabre 38' RV

2008 Sabre 38' R.V. Gooseneck Trailer, 31 Reds, 2 Slide-outs. Heaters on all tanks, winterized. Made by Palomino. Very nice! Not used much! - Reese 16,000 lb. cantilever self-sliding 5th wheel hitch (sells separately)



HOUSEHOLD

Leather Couch - 50" Flat Screen TV - TV Stand - Side Tables - Heated Massage Chair - Lamps - Recliner - Outdoor Glass Top Table w/ 4 Chairs - Primitive Book Shelf - Futon Couch - Small Desk & Bookcase - Single Oak Bed w/ mattress - Oak Desk - Antique Rockers - LG Flat Screen TV - Queen Size Bed w/ Mattress & Box Springs - Small Electric Heater - Corner Shelf - Matching Oak Queen Size Bedroom Set w/ Dresser & Mirror, Headboard & Footboard, Mattress & Box Springs - Kenmore Stainless Steel Double Door Fridge - Antique Clothes Rack - Kenmore BBQ Grill w/ Cabinet



AUCTION
Company, LLC.
417-257-8385
Auctioneer: Reg Kelly

For more Pictures & Info VISIT:
www.KellyAuctionCo.com

Sam
CRAWFORD AUCTION SERVICE LLC

Will sell the following located from Tunas, Mo. 4 miles East on E hwy. to Leadmine, Mo. then North 5 miles (Celt) to private lane. Watch for Crawford Auction Service signs.

Saturday, June 15, 2019 – 10 a.m.

120 ACRE FARM – HOUSHOLD – TOOLS – MISC.



**Real Estate
 Sell @ 12 Noon**

5 Bedroom, 3 bath, 2800 + Sq. Ft. home. Built in 1996, 2 story with full walkout basement. Rustic wood siding and metal roof. Lg. Native Stone fireplace, interior finished in car siding, central heat and air. Hardy outside wood furnace, well. 120+ acres of hunting and fishing paradise and privacy. Great hunting property with lodge style home for hunting seasons or weekend getaways. Short distance to Niangua River. Lot public access property close by. Wildlife seen daily in front yard. County taxes approximately \$1,060 - Skyline school, Sells subject to court approval.



Tools - Misc.

Craftsman 4200 port genarator
 Craftmans & Popular mechanics 2 Tier tool boxes; Other tool boxes
 3 Push mowers; 20' Alum Extension ladder
 Large stand up shop fan
 Some wrenches, Misc. hand tools
 8-10 Rods & Reels
 Picnic table
 2 Picnic table frames
 210 Gal. milk cans; Metal kitchen cabinet
 Deer horns; Galvanized tub
 2 Mountain bikes; 2 Metal storage cabinets
 2 Older Western saddles
 Used tires & wheels; Yard Cart
 Nails; Bolts
 4 Cyl. Motor - Scrap
 Older 4-Wheeler for parts; Misc fencing
 Older 5' Brush cutter; Other misc.

Household - Misc.

Day bed
 Rd dining table & 4 chairs
 Drop leaf dining table
 VCR/DVD, VHS movies, Sanyo TV
 Someasst. dishes; Small appliances
 Pots & Pans
 Fruit Jars; Puzzles; Coffee table
 Christmas decorations
 2 Wood gun cases
 Old upright piano; Antler hall tree

See website for more pictures!

*** Narrow road after leaving Hwy.**



Sam
CRAWFORD LLC
Auction Service



Cross Timbers, Mo.
 CrawfordAuctionService.com
417-998-6629



TERMS: Cash or good check. Nothing removed until settled for. Not responsible for accidents. Lunch available. Statements made day of sale take precedence over printed matter. All items sell as is. No warranties given or implied.



Sam 417-328-9137 Chase 417-399-1904 Chance, CAI 417-298-1751 Tom Poynter Jack Lancast-

Shirley Sorensen Irrevocable Living Trust

PUBLIC AUCTION

Saturday, June 8th @ 10a.m.

Location: 11488 Cooper Road • Licking, MO

Directions: From Licking - Take Hwy 32 East at Stop light on Hwy 63. Go to Four Way Stop approximately .3 miles then go South on Hwy 137 for 2.1 miles to Hwy VV. Go 4.3 Miles to Sidney Road - and cross Cooper Road to Auction. Watch for Scheets Auction Signs Day of Sale.

OWNER:
GARY EDWARDS

HOUSEHOLD * FURNITURE * COLLECTIBLES

Gun Cabinet * China Hutch * Ashley Queen Bedroom Set * Rocking Chair * Entertainment Center * Floor Lamp * Heavy Made Coffee and End Tables * Couch * Lamps * Dining Room Table and four chairs * Hutch * Tricycle Table * Wooden Barrel Shelf * TV Stand * Bissel Proheat Carpet Shampooer * "Vintage" CD Player * Hall Shelf * Dolls * Carousel Horses * Globe on Stand * Glassware * Proform Electric Treadmill * DieCast Toys including MACTool, JCPENNEY, SEARS and US MAIL * Elvis Plates * LIONEL Train Set

GUNS * HUNTING * FISHING * ATV

Savage Model 16 Stainless 308, left handed * Bushmaster 223 AR * Henry Lever action 22 Magnum (never fired) * Henry Lever Action 22 S, L, LR Saddle Loop (never fired) * Remington 870 Express 410 * Savage 93R17 17 HMR Bull Barrel with Scope * Ruger 10/22 * Winchester 20 gauge Single Shot * Predator Shooting Rest * Caldwell Lead Sled * Fishing Poles * Net * Vest * Shooting Table

SHOP * TOOLS * OUTSIDE ITEMS

BBQ Grill * Masterbuilt Electric Smokers (2) * Lawn Furniture * Whiskey Barrel * Stihl FS100 TX Weedeater * Stihl Electric Leafblower * Stihl Gas powered Leafblower * Stihl MS211C Chainsaw * Stihl MS180C Chainsaw * Stihl MS55 Tiller * Troybilt 3100 Powerwasher with Honda Easy Start GCV190 * Craftsman 5HP 22 Gallon Air Compressor * Maryama Weedeater * TWo Ton Mac Floor Jack * Come Alongs * Hitches * Jack Stands * ShopVac * Bench Vise * Milwaukee Radio * Mac Toolbox * Mac, Snap-on and Craftsman Wrenches * Mac Screwdriver Set * Crafts, Mac and SnapOn Sockets * Screwdrivers * Mac and SnapOn Air tools * Craftsman Industrial 1/2 Impact Electric * Lots of Mac, SnapOn and Craftsman Tools * Porta Power * Body Tools * Cutoff Saw * Extension and Step Ladders * Hand Tools * Car Cleaning Supplies * Lifetime Table * Chimney Stove * Pull Behind Seeder * Air Tanks * Dolly * Log Chains * Aluminum Ramps * Finco ATV Sprayer * Pole Saw * Wheelbarrow * Schumacher Battery Charger * Commercial Extension Cord with Four outlets with fuses * Nails * Friction Jack * Coolers * Kerosene Heaters * Bar Mirror * Bird Cage * Paint Guns

UTV * BOAT * EQUIPMENT * SLOT MACHINE

Kubota RTV 400 CI 4 X 4 106 Hours * 12A Rivercraft Boat with Minnikota Trolling Motor and Trailer * Howse 5 Ft Box Blade * Lawn Trailer * Wheels off of a 2019 Toyota Tacoma * Yamasa Slot Machine* 2015 Honda Foreman Rubicon Approximately 400 Hours *



Darren SCHEETS AUCTIONS

(417) 457-6638 • (417) 926-8575
www.scheetsauctions.com



TERMS OF AUCTION: Cash or check with picture ID. Nothing loaded or removed until paid for. Everything sells as is, where is. Not responsible for accidents, lost or stolen items. Auction day announcements take precedence over all previous advertisements.

Real Estate Auction

Saturday, June 8th. 10:00 am

30375 Forthview Rd. Edwards, MO. 65326

Sharon K. Johnson

Directions: From Warsaw take Hwy 65 to MO-7 Follow MO- 7 To Left on Hwy M Continue for 10.5 Miles to Left onto Forthview Rd. Follow for 0.7 Miles to Auction On Left. Look For Stevens Auction Service Signs!



Real Estate

Spectacular cabin located in the Lake Of The Ozarks Community!

Don't miss out on this great opportunity! 2 Bedroom 1 Full Bath home that is situated in a peaceful location and is also close to all the action on the Lake!

Home features a large living area with vaulted ceiling & recessed lighting. There is a huge sunroom that could be converted to a secondary living area or 3rd bedroom. Large laundry room, walk in closet, Vinyl & laminate flooring throughout.

Several upgrades including, roof, double hung tilt in windows, and more!

Shown By Appointment

Forced Air Heat & Cooling

Heat Source: Electric Heat Pump

Square Feet: 788

Taxes: \$210.15

Lot Size: .82 Acre +/-

Water: Private Well

Sewer: Septic

Terms: 10% down day of auction balance due within 30 days at closing.

Also Featuring Personal Property! Antiques & Collectibles!

McCoy collection* Fenton collection* Uncirculated dimes* Bavarian China*Iron Wagon Wheels* Antique Toys* Hot Wheel & Matchbox Cars* Vintage Costume Jewelry* Sarah Coventry* Pyrex* Norman Rockwell Collectibles* Occupied Japan* MAD Comic Books* Antique Children's Books* WWF Wrestling Collectibles* Elvis Collection* Brass Bells* Velvet Indian Paintings* Indian Artifacts* Vintage Marbles* Card Tables*Fishing Equip* Antique Desk* Antique Lunch Boxes* Antique Pinocchio Collectibles*Porcelain Dolls* Jewelry Boxes* Trolls* Vintage Fisher Price Toys* Antique Lamps* Larkin CO. Buffalo NY Antique Hutch w/ stained glass inlay* Antique Double Drop Leaf Table w/ drawer* Thimble Collection* Blue Willow* Vintage Texasware Bowls* Vintage KHOM Siamese Cat Lamp* Antique Chest Of Drawers* Antique Post Card Collection* Porcelain Dolls* Campbell Soup Collection* Coca Cola Collection* Small Cast Iron Wood Stoves* Aunt Jemima Collectibles
2015 Mitsubishi Marage 75K miles 5 speed 40 MPG

Furniture, Tools & Household

Wooden Shelving* Coleman Cot* Dryer* Bird House* Buffet Hutch* Linens* Bakers Rack* Filing Cabinet* Portable Safe* Microwave Stand* Apartment Size Refrigerator* Pet Carriers* Metal Shelving*



Stevens
AUCTION SERVICE



Announcements made day of sale takes precedence over any printed matter. All items sold as-is with no guarantee.
Payment: Cash / Check Or Credit

AUCTIONEER: LAREDO STEVENS

417-459-5041

www.StevensAuctionService.com

AUCTION TIME!

FRIDAY JUNE 14TH AT 12 NOON

Selling on behalf of TABLE ROCK COMMUNITY BANK
SOUTH BRANSON BUSINESS CENTER

101 State Drive • Hollister, Missouri

Directions: South Hwy. 65 to Hollister Bus. 65 Exit (mile marker 9), stay right up to Hwy. 165. Take Hwy. 165 1.3 miles to State Drive.



ALL ON AN ATTRACTIVE 1.78 ACRES

Built in 1994, this beautiful complex is partitioned into 23 individual office spaces which are all accessed by central interior corridors. Units range from 112 sq. ft. to 2,120 sq. ft. Zoned C-3, All city utilities. This building has 13,078 gross square footage with 8,720 square feet of rental space.

PARKING: There is approximately 16,000 sq. ft. of asphalt paved and striped parking.

To view this property, contact the auctioneer.



Terms & Conditions: 5% down day of auction with full balance due on or before July 26th, 2019. Property sells subject to the approval of Table Rock Community Bank and the USDA.

Freeman Auction & Appraisals, LLC

Auctioneer: Steve Freeman
(417)343-1891 sfauctiontime.com

AUCTION TIME!

SATURDAY JUNE 15TH @ 10:00 AM

4533 State Highway J • Marshfield, Missouri

THIS IS A SHORT AUCTION BUT IT'S A DANDY



Bennu Hydraulic Scaffolding



2015 Dodge Ram 3500

HAWTHORN BANK

BENNU HYDRAULIC SCAFFOLDING – SEVERAL PLATFORMS, TOWERS EXTENSIONS, SAFETY RAILS, TURNBUCKLES • 2015 DODGE RAM 3500 DRW HEAVY DUTY, CUMMINS 6.7 TURBO DIESEL, CREW CAB, 4X4, AUTOMATIC, BRADFORD BUILT BED, ONLY 99,190 MILES, LOADED! (As this truck is still under the 5 year 100,000 mile factory warranty, the Marshfield Dodge dealer put in a new rebuilt transmission, brake job and several other warranty fixes. THIS IS A NICE TRUCK!) • TRAVERSE EXTENSION LIFT, ROUGH-NEEDS HELP.

Note: If paying by check make payable to Hawthorn Bank.



Traverse Extension Lift

UNITED STATES BANKRUPTCY COURT ORDERED

Re: Joseph Victor Ross & Ashley Nichole Dillard

2017 FORD EXPEDITION XLT V-6 3.5 LITER AUTOMATIC, 4X4, LEATHER SEATS, ONLY 10,754 MILES, LOADED! • 2015 DOOLITTLE BULLITT SERIES CARGO TRAILER, 8' X 24' TANDEM AXLE, DROP RAMP, ESCAPE DOOR. *Note: If paying by check make payable to Fred C. Moon, Trustee.*



2015 Doolittle Bullitt Trailer



2017 Ford Expedition XLT

ALSO SELING

2007 KIOTI DK35SE, 38 HP SHUTTLE SHIFT, 4X4 WITH A KL351 QUICK ATTACH LOADER ONLY 935 HOURS • 2015 BIG TEX UTILITY TRAILER 7' X 16', 7K TANDEM AXLE, DROP GATE, (LIKE NEW) • 2002 POLARIS SPORTSMAN 500, 4X4, ELECTRIC START, LIQUID COOLED, GUN RACK, 441.7 HOURS • SPORTS KART TRAIL BUSTER DLX HONDA 13.0 ENGINE • 500 GALLON DIESEL TANK WITH STAND. *Note: If paying by check make payable to Freeman Auctions.*



Sports Kart Trail Buster DLX



2002 Polaris Sportsman 500



2015 Big Tex Utility Trailer



2007 Kioti DK35SE



500 Gallon Diesel Tank

Terms & Conditions: Cash or check only on all accounts.

Freeman Auction & Appraisals, LLC

Auctioneers: Steve Freeman & Jon Joyce

(417)343-1891 sfauctionetime.com

ANTIQUUE ESTATE AUCTION

Saturday, June 8th, 2019 ~ 10:00 AM

LOCATION: 13818 South 1400 Rd, Nevada, MO; Directions: From Nevada At The Corner Of Ash & Highland Go Northwest On Ash Street Approx 2 Miles To 1400 Rd Then Turn Right On 1400 Rd Approx 1 Mile To Sale Site (Watch For Signs)

Auction For Don & Jean Flagor



Antique Furniture, Instruments & Horse Drawn Equipment

Ant Oak Sellers Kitchen Cabinet W/Sifter & Dry Rack, Ant Oak Kitchen Step Back Safe Cabinet, Ant Hoosier Style Kitchen Cabinet, Ant Child's Rocker, Ant Wood School Desk, Ant Metal Bird Cage & Stand, Ant Phenix Cast Iron Heat Stove, 2 Ant Lap harps, Ant Mandolin Guitar, Rare Ocapina 8 Hole Wood Flute, Ant Clarinet, Old Violin, Dulcimer, Case #5 Mower On Steel, IH Dearing Giant Mower On Steel, JD 2 Bottom Sulky Plow, Emerson 1 Bottom Sulky Plow, 3 Walk Behind Plows Inc JD & Lister, Walk Behind 3 Shovel Cultivator, 3 Pt 3 Bottom Plow, Other Items Not Listed

Rare Antiques & Primitive Items

2 Ant Tobacco Baskets Inc Rare Half Size, Ant Hubley Cast Iron Dog Doorstop, Cast Iron Pcs Inc Rare Hinged Corn Pan, Ant Metal Horse Weather Vain, Ant Cast Iron Banks, Ant Child's Toy Sewing Machine, Ant RxR Lanterns Inc Rare Inspectors Lantern, Ant RxR Cast Iron Spittoon, Ant Double Wood Ox Yolk, Ant Horse Collars Inc Rare Factory Made Wood Collar, Approx 12 Glass Butter Churns Inc Daisy #3, #4, #6, #8 & Rare Dandy #2, Ant Wood Tabletop Butter Churn, Ant Stand Up Metal Butter Churn, Rare Ant Sm Lard Press, Ant Cast Iron

Toys, 2 RxR Spike Hammers, 2 Ant Grain Scythe Inc 1 Rare Scythe, Ant Store Coffee Grinders Inc 1 Rare Metal, Ant Apple Press, Several Ant Saws Inc Rare Ice Saw, Ant Wood & Metal Egg Crates, Ant Crock Pcs Inc Rare Mammoth Red Handle Crock, Ant Egg Scales, Ant Tabletop Coffee Grinders, Ant Tobacco Cutters, Ant Well Buckets, Ant Store String Holders, Ant Tobacco Grinders, 2 Ant Cast Store Bolt Caddies, Rare Sm Little Giant Ice Breaker, Ant Wood Chicken Coop, Ant Cow Bells, Ant Hand Corn Grinders Some Unusual Brands, Ant Cistern Pump, Ant Ice Skates, 2 Radio Flyer Red Wagons, Ant Planters, Ant Milk Cans, Ant Wood Kegs, Ant Metal Roller Skates, Ant Medicine Mortars, Ant Traps, Ant Carbine Lights, Ant Well Pulleys, Ant Jacks, Old Wood Advertising Boxes, Old Tins, Ant Coal Shovels, Ant Ice Tongs, Ant JD Corn Sheller, Ant Matchbook Holders, Ant Sad Irons, Ant Apple Peeler, Ant Door Knob, Galvanized Pcs, Ant Bushel Baskets, Several Rare Prim Tools, Several Sales Man Sample Items, Hundreds Of Other Rare Antiques & Rare Primitives Not Listed

This Is The Second Of Two Rare & Unique Antique & Primitive Auctions. The Flagor's Have Traveled All Over The United States To Collect Unique & Rare Collectibles For Their Personal Collection. This Is A Rare Opportunity For You To Purchase Extremely Good Antiques & Primitives.



Auctioneers Note: It Is An Honor To Be Conducting This Rare Opportunity Of Antiques & Primitives For Mr. & Mrs. Flagor. Don & Jean Have Traveled All Over The United States For Over 50 Years Collecting Rare Items. If You Were At The First Auction You Know The Quality That Was There, If You Were Not Please Plan To Attend & See What You Missed Out On. There Truly Will Be Several Very Rare & Hard To Find Antiques & Primitives In This Auction That You Do Not Want To Miss Out On. As All Items Are Antique & Primitive There Is No Particular Sale Order. Please Plan Now To Attend. See Ya There!!!

Terms: Cash or check with proper ID. Now accepting most major credit cards. Nothing removed until settled for. Statements made the day of sale takes precedence over printed material. Everything sold as is where is. Not responsible for accidents. Restroom available. Concessions Provided By Connie's Concessions. Check our website for upcoming auctions and for additional pictures!!



NANCE AUCTION SERVICE

No Matter How BIG or small, We Do Them All!

www.nanceauctionservice.com

Col. Bill Nance 417-214-0093

In God We Trust

Philippians 4:13

ONLINE ONLY FARM EQUIPMENT AUCTION



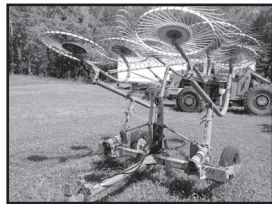
ENDS THURSDAY JUNE 13

Bidding closes at 2:00 PM

2017 John Deere 459 Mega Wide Plus Baler with monitor, approximately 2000 bales.



Frontier DM1270 Disc Mower 9'



Tonutti 8 wheel rake



Fiat Allis 745H articulating wheel loader, needs some brake work.



MIKE CONAWAY
FarmBid Representative
☎ (573) 205-8037
✉ MConaway@DreamDirt.com
f t i @DreamDirt

Consignment Auction
July 11, 2019
Let us list all your farm equipment!

AUCTIONS | REAL ESTATE | MACHINERY | FARM BID

BID NOW! Bid.DreamDirt.com

DARDEN PROFESSIONAL TIMBER HARVESTING, BUYING STANDING TIMBER: Great prices, improve wildlife habitat and improve forest health. State Certified & Fully Insured! 573-247-4808 or 573-739-1122. Salem

2003 THUNDERBIRD: Black and white, very good condition, 47,000 miles. \$15,000. 573-832-1473.

1996 CHEVY 1/2-TON: 1 owner, 177,500 miles. \$4,900. Rogersville, 573-308-5944.

16FT LANDAU ALUMINUM JOHN-BOAT AND TRAILER: 48" bottom, 21" deep sides w/other items included. \$700. 573-369-2906.

HESTON 5500 5X5 ROUND BALER: \$1,800. 573-438-2672.

PINE LOG SIDING SALE: \$1.19 per L.F. www.pineridgerustic.com 573-729-7226, 573-247-2823.

LEBANON HIGH SCHOOL 1913 YEAR-BOOK: \$20. Lebanon, 417-532-2045.

Smitty's Outdoor Flea Market AUCTION

Saturday, June 8 • 10AM

31840 N. Hwy. 5 • Lebanon
Directions: From Lebanon, take Hwy. 5 North approx. 8 miles. Location on right.

**Furniture
Appliances
Office Supplies
Lots of Miscellaneous**

Thomas Bradford, auctioneer

GLEANER K COMBINE: 12' head, good shape. \$1,500. Osceola, MO, 417-328-8080, 417-646-8837.

OLD FARM TABLE: 10' long, 38" wide, seats 12. \$300. 417-742-1234.

CHECKERED WALNUT WOOD STOCK PISTOL GRIP: for Marlin Model 336 or 1895. \$100. Washington. 636-239-2695.

AUCTION REMINDER: Auction. Saturday June 8th @ 10am. Smittys Flea Market. Please see our Auction Directory for more information.

52.64 ACRES: \$99,900. Abundant Deer & Turkey, ATV Paradise. Will divide Acreage. 30 acres w/year round creek through the center. \$2,400 per acre. 20 acres. \$2,100 per acre. Approximately 9 acres County Road access. \$2,000 per acre 2.5 miles from city limits. Located Cadet, MO out of city limits, quiet neighborhood.

CIVIL WAR GREAT MAPS BOOK: Hard-back. \$12.50. Lebanon 417-532-2045.

AUCTION REMINDER: Online Wood-working Tools, Wednesday, June 12th, 12:30p.m. Atterberry Auctions. Please see our Auction Directory for more information.

OLDER FORD 3 POINT POST AUGER. 573-528-7436.

NEW HOLLAND: 1411 diskbine w/roller, 10ft cuts good. \$8,250. 573-765-4406.

ADORABLE ACA REGISTERED LAB PUPPIES: yellows/blacks. Ready 6/24/19. \$250. Hartville. 417-741-2198.

4 MUD TIRES: Goodyear Wrangler, LT285/75R16 Dura Trac, good tread left. \$100 Call Don, leave message for call back 314-808-5680.

AUCTION

Location: 4 miles west of Lebanon, MO on highway 64, then right on McBride Dr to 25221 McBride Dr. Watch for signs.

SATURDAY, JUNE 8
Starting At 10:00 AM

SELLING A LARGE LOT TO INCLUDE:

John Deere 3025E diesel tractor with loader, box blade and Frontier bush hog (all less than 1 year old) 26 hours on tractor (selling as a package-opening bid 18k), Off Road Jeep Cherokee lifted with like new Mickey Thompson tires, Rat Rod Motorcycle, Dodge 3/4 ton aftermarket tires and wheels (Mickey Thompson), box blade, Rhino post auger, 6' finish mower, 3 pt blade, 3 pt hay spike, ATV sprayer, panels, water tank, feed trough, 3 pt rock rake, Jonsered chainsaw, generators, Craftsman air compressor, power tools, hand tools, grinders, vises, welders, wet saw, shop vac, lawn and garden tools, patio heater, manual shear, **HOUSEHOLD** - Tromm front load washer and dryer, portable a/c unit, John Deere pedal tractor, Clay pigeon thrower, desk, file cabinets, theater style sofa, Tiffany style lamp, Remington style lamp, Kurzwell electronic baby grand piano, recliner, occ chairs, china cabinet, twin beds, dressers and chest of drawers, antique cooler, bear rug, mounted strutting turkey, longhorn skulls, buffalo skulls, elk horns, much much more!

MR. AND MRS. DARREL IVEY, JR.

Go to www.knightauctionservice.com
for complete list and pictures!

TERMS: Cash, Approved Check w/ID, Visa or Mastercard.
Sale By



**KNIGHT AUCTION
SERVICE, LLC**
417-532-7497 Lebanon, MO
"Complete Sale Service"

www.knightauctionservice.com

FREE LAB & ROTTWEILER MIX PUP:
Male, 2-3 mos old, black and brown, smaller dog. 417-532-6981.

6 WEEKS OLD BEAGLE PUPPIES: out of good rabbit dogs, GREAT FATHERS DAY GIFT. \$75. 314-974-6881.

WANTED 16"x10"W DODGE W350 WHEELS: Aluminum, Chrome. 573-308-7064, leave message.

2 REGISTERED POLLED HEREFORD 2YR BULLS: Baldy Maternal-Top 46%, DNA Tested, Gentle. \$1,800-\$2,000. OBO. Belgrade, 573-244-3157.

2014 RAM 2500 4X4 LARAMIE LONGHORN DIESEL: Loaded, 5th Wheel package, 46,000miles. \$44,000. Rolla, 757-921-2686.

AUSTRALIAN SHEPHERD PUPPIES: Ready to go, Merles & Tri-Colors, UTD on shots. For sale or swap for farm animals. 417-458-1047, 417-967-6493.

AUCTION REMINDER: Personal Property Auction. Saturday June 15th @ 10am. Easterly Auction. Please see our Auction Directory for more information.

Vintage Vehicles, Car Parts, Antiques & Collectibles

RETIREMENT AUCTION

Thursday, June 13, 2019

STARTS @ 9:19 A.M.

Address: 50435 E Old Hwy 64 • Cleveland, OK 74020

Directions: From Cleveland OK, take Hwy 64E and go South for 2 miles to IEC (Indian Electric Co-op). Turn right and then an immediate left onto Old Hwy 64. Auction is on the right. From the Jct of Hwy 412 and Hwy 64W, take Hwy 64W and go North approx 6 miles to IEC (Indian Electric Co-op). Turn left and then an immediate left onto Old Hwy 64. Auction is on the right. Watch for auction signs. Pasture parking available.



**VINTAGE VEHICLES, VINTAGE VEHICLE PARTS,
TRAILERS, GAS PUMP, FURNITURE, SOUND EQUIPMENT,
ANTIQUES & COLLECTIBLES, SCRAP METAL**

Owners: Larry & Rose Mary Churchwell

FOR PICTURES & MORE INFO:
www.chuppsauction.com



Auctioneer's Note: Both Larry and Rose Mary are retired school teachers and have decided to downsize. Larry has an excellent collection of vintage cars, car parts, antiques & collectibles. All vehicles will need restoration. Titles will be confirmed auction day. **LARGER ITEMS WILL SELL AT 1:01 PM. 2-3 AUCTION RINGS.** Lots of items to still be uncovered. Please follow us on Facebook for updates or visit our website for pictures at www.chuppsauction.com

TERMS: Cash - Pay Day of Auction - Most Credit Cards Accepted - Check with Proper ID - Concession NOT RESPONSIBLE FOR ACCIDENTS. ANY ANNOUNCEMENTS DAY OF SALE SUPERSEDES PREVIOUS ADVERTISING.

CHUPPS AUCTION & REAL ESTATE

Stan Chupp
(918) 638-1157

Dale Chupp, Realtor
Coldwell Banker Neokla Select
(918) 630-0495

E. J. Chupp

PURE BRED BORDER COLLIES: Pups ready 5-20-19 \$100ea. Border collie/Australian Shepherd pups \$100ea. Ready 5-31-19. Hartville, 417-259-9738.

NEW NEW NEW DISPLAY HOUSE!!!
Call Marla to hear what is new inside 573-657-7040, chateauhomes.net.

BLUE HEELER PUPS: Raised for 40 years. Good livestock dogs or pets. Already working. \$85 each. 660-631-5019 Warsaw.

RUBBER BELTING: Assortment sizes. 573-378-5180

2001 19FT DUTCHMEN TRAVEL TRAILER: very clean, everything works. \$4,200. 417-345-5634.

HEIDER AUGER WAGON. Holds 3 ton. \$800. 573-498-6685 evenings.

KUHN 4 BASKET TEDDER: \$3,250. 573-765-4406.

AUCTION REMINDER: Auction, Saturday, June 8th @ 10:30am Knight Auction. Please see our Auction Directory for more information.

JOHN DEERE 2940: Diesel tractor, 80HP. \$8,500. (573)765-4406.

ANTIQUE REVOLVER + FIREARM'S ACCESSORIES: \$175. 573-764-3517, Call in P.M.

WANTED PINBALL MACHINES. 573-424-7200.

MF-50-GAS W/LIVE POWER: \$2,350. 573-714-5779.

WILBER'S FISH BRANCH ANGUS: Large selection 14-16month old bulls available, Calving ease, good growth and carcass traits, very docile. Mexico, Mo. 573-473-6019. www.fishbranch.com

5AC OZARK COUNTY: Near Bull Shoals Lake. \$9,995. 417-255-6640.

AUCTION REMINDER: Personal Property & Real Estate Auction Saturday June 15 at 9am. Cheyney Auction Company LLC. Please see our Auction Directory for more information.

1988 LINCOLN CONTINENTAL: 4 door, 302, 90,000miles, clean. \$4,000. 417-859-5951.

MARON RESTAURANT & LOUNGE LIQUIDATION
RESTAURANT EQUIPMENT
AUCTION
MONDAY, JUNE 10
10:00 AM
PLAZA RESTAURANT & LOUNGE
158 POINT ROYALE DR • BRANSON, MO
 AT THE CORNER OF HWY 165 & POINT ROYALE DR (SOUTH SIDE OF ROAD) WATCH FOR AUCTION DAY DIRECTIONAL SIGNAGE.

RESTAURANT & BAR EQUIPMENT
 Manitowoc 424 Lb Cube Ice Machine-2 Refrig Sandwich Prep Tables-Sgl Door Reachin Cooler-Dbl Door Reachin Freezer-True Keg Tapper Cooler-Hobart 20 Qt Flr Mdl Mixer-Acme Dough Sheeter-Univex Meat Slicer-Lincoln Impinger 1301 Elec Pizza Oven-Blodgett Elec Convection Oven, Sgl Ph-Apw Wyatt 3' Propane Gas Grill-American Range 3' Propane Charbroiler-2 Dean Propane Gas Deep Fryers-Seating Incl Hi Top Bar Tables, Dining Tables & Barstools-Ss 4 Comp Bar Sink-Bar Ice Bin-Ss 3 Comp Kitchen Sink-Several Nice Stainless Worktables, Eqpt Stands & Wire Shelving Units-Other Restaurant Equipment Too Numerous To List-Huge Amount Of China, New Bar Glassware & Smalls!

Note: fantastic, super clean equipment with everything hooked up & working! Super ice machine, sandwich prep tables, excellent grill & charbroiler, nice mixer, slicer & pizza oven! Nothing was kept in the restaurant that wasn't in top-of-the-line working order and exceptionally clean, clean, clean! This is only a partial & very small listing. Visit our website & click on the "auctions" tab for complete listing & photo gallery. Mark your calendar & make plans to attend this great auction!

RONA DOWNS & RICK NEWMAN,
AUCTIONEERS 417-327-5619
WWW.MARONRESTAURANTEQPT.COM

Sullivan
MISSOURI
Land For Sale
 at **iAuction**

250± ACRES 3 TRACTS

Bidding Ends Wed., June 12th at 10am

TROPHY PROPERTIES AND AUCTION
 LAND (RECREATIONAL/RESIDENTIAL)

Doug A. **314-623-3474** Jason W. **314-882-6971**
 Complete Details And Bid Now at **TrophyPA.com**

BEAUTIFUL CATAHOULA PUPPIES:
 417-543-4816.

POTS AND PANS CANNED GOODS AND MORE. \$125 or trade. 573-327-9068.

NEW/USED PARTS: For all vehicles/machinery. (Warranted/delivery). 800-807-9612.

1860'S MODEL CALVARY REENACTMENT SET: with Naval Model Black Powder pistol. 417-300-6006.

3pt TWO-SECTION HARROW. \$200. Rogersville. 417-753-2747, 417-766-1991.

AUGER: 8x57, good condition. \$2,500. 573-378-5180.

METAL DETECTOR: \$125 or trade. 573-327-9068.

IHC 886 DIESEL TRACTOR: cab and air. 80hp, good. \$12,500. (573)765-4406

JOHN DEERE 337 SQUARE BALER. \$2,200. 573-765-4406.

AUCTION REMINDER: Every Wednesday at 10:30 am. Farmington Livestock. Please see our Auction Directory for more information.

JOHN DEERE 568 ROUND BALER: monitor, kicker, mega wide pick-up, cover net wrap, big tines. \$16,000. 573-765-4406.

3600 FORD TRACTOR: Very nice. \$6,500. 573-766-5640.

AUCTION REMINDER: Online Sale. ends Tuesday, June 11th, 12:30p.m. Atterberry Auctions. Please see our Auction Directory for more information.

NICE BASSETT QUEEN BEDROOM SET: \$400. Clever, 417-268-5586.

AUCTION REMINDER: Auction Saturday June 9th, 9 AM. Glenworth Auction. Please see our Auction Directory for more information.

WANTED HOOD FOR JOHN DEERE RIDING MOWER 225: 573-859-6574.

I BUY.... used mobile homes. Call or text 573-338-6250 or email GregS.CDH@outlook.com

FARM & HOME SERVICES, WELDING & CONSTRUCTION. \$40-\$65 per hour. 417-664-7841, Stoutland.

27 GAL FUEL TANK: Fiberglass. \$60. Rogersville. 417-753-2747, 417-766-1991.

AUCTION REMINDER: Estate Auction Sat. June 15th, 10am. Drenon Auction Service. Please see our Auction Directory for more information.

AUCTION REMINDER: Personal Property Auction. Tuesday June 11th @ 6pm. Easterly Auction. Please see our Auction Directory for more information.

FREE MALE CAT to loving home: neutered, great indoors and outdoors. 417-664-9940.

1984 FORD GRILL & HEADLIGHT TRIM. \$40. 573-308-5884.

HUGE NEW TIRE SALE: Best Prices. Highest Quality. Free Warranty. Delivery. Semi 11R-22-5 (Tall) Drive Closed shoulder 16-ply. \$279. Trailer 16-ply. \$259. Steer 16-ply. \$258. Michelin Retreads available. Trailer ST-750-R16, 14-ply Radial. \$105. All-Steel. \$135. Tractor 18-4-38. \$550. Call 417-276-2435.


SILVER DOLLAR COLLECTION: \$200. 573-764-3517, Call in P.M.

4 CHROME GMC WHEELS & CAPS: 16". \$150. Belle, 573-859-6574.

Over 25 Years In The Livestock Business

Cattle Sale

Every Monday at 12:00



Feeder Calves
to sell at 12:00 pm
Butcher Cows
& **Stock Cows**
following

Goat, Sheep & Hog Sale
2nd Tuesday of the Month • 6 pm
Feed & Water Pens Available
All Consignments Welcome
Up Until Sale
We Appreciate Your Business!

Salem Livestock Auction

Hwy 32 Salem, Mo
Barn- 573-729-8880

Allen Thompson 417-932-4097	Terms of Sale: Cash or Approved Check!	Renee Lauderdale 417-926-2682
Chuck Thompson 417-257-5610		Keith Robertson 314-560-3285

CASE 533 45 HP DIESEL TRACTOR: w/ loader, wide front end, PS, 6' brush-hog. \$5,400. 573-694-0299.

97 CHEVY ASTRO VAN: 7passenger, very clean, well maintained, cold air. \$1,600. 417-763-5240.

FOR SALE IH 7250 PEDAL TRACTOR: wide front w/wagon. \$300: 573-859-6574.

IHC 806 DIESEL TRACTOR: with loader \$7,800. (573)765-4406.

FOR SALE: 1/2 Simmental 1/2 Angus Bulls, 10 months old. A.I Sired, very gentle, \$1750. **ALSO: 110 gal. pull type sprayer. \$1000,** Like new. J.W. Henson, 417-343-9488

COLT FIREARM'S DEALER CATALOG'S: illustrated prices, circa #1950's-1960's. \$150. 573-764-3517. Call in P.M.

4020 JOHN DEERE DIESEL TRACTOR: w/48 J/D loader, good condition, nice paint, excellent rubber. \$13,500. 417-763-5240, Tunas.

CASE 580D: Diesel backhoe, Loader. \$8,850. 573-765-4406.

GOVERNMENT AUCTION

TUESDAY, JUNE 18

DB8770 '14 Dodge
Charger Police



300+ ITEMS SELL REGARDLESS OF PRICE!



DE3961 '07 John Deere 6615 tractor



DE8413 '02 Sterling L-Line dump truck



DD4701 Case 621D wheel loader



EU9636 '98 Hyundai Robex 210LC-3 excavator

INVENTORY INCLUDES: skid steers, fire trucks, backhoes, school buses, vibratory drum rollers, tractors, motor graders, equipment trailers, passenger vehicles, wheel loaders, shuttle buses, SUVs, semi trucks, lawn mowers, vans, cargo trailers and more. All items are sold "AS IS." 10% buyers premium applies.



BID NOW!

purplewave.com

7' NEW HOLLAND SICKLE MOWER MODEL-451: \$800. Rogersville. 417-753-2747, 417-766-1991.

AUCTION REMINDER: Public Auction Saturday June 8th@ 10AM. Darren Scheets Auctions. Please see our Auction Directory for more information.

REAR TINE TILLER: good shape. \$250. 573-468-7689, Sullivan.

DURABILT 10 WHEEL FOLDUP RAKE: \$1,750. 573-765-4406.

LOOKING FOR RIDING LAWNMOWERS: Running and non-running. Reasonable price. 417-718-6964, within 20 miles Lebanon.

FIREPLACE LOG GRATE: 28" wide. \$25. 636-239-2695, Washington

1987 SHELBY DAYTONA: Excellent condition. \$5,500. 314-616-9862.

FREE AKC REG. GERMAN SHEPHERD: 1 year old, black & tan, very friendly, good behavior. 630-687-0705.

BUFFALO LIVESTOCK MARKET LLC
 276 Hwy 32 West
 Buffalo, Missouri



June 1st, 2019

Receipts: 1430 Head
Feeders \$10 Lower, Cows \$3 Higher.

Representative Steers

- 300-400 @ 155.00 to 180.00
- 400-500 @ 140.00 to 160.00
- 500-600 @ 144.00 to 159.00
- 600-700 @ 135.00 to 147.50
- 700-800 @ 129.00 to 134.00

Representative Heifers

- 300-400 @ 134.00 to 150.00
- 400-500 @ 126.00 to 140.00
- 500-600 @ 120.00 to 133.00
- 600-700 @ 118.00 to 130.00
- 700-800 @ 114.00 to 121.00

Feeder Bulls

- 400-500 @ 128.00 to 150.00
- 500-600 @ 120.00 to 142.00
- 600-700 @ 124.00 to 136.00
- 700-800 @ 115.00 to 128.00
- 800-900 @ 95.00 to 100.00

Bred Cows

2nd & 3rd young \$875.00 to 1075.00

Slaughter Cows

- Boning Utility 57.00 to 69.50
- Breakers 52.00 to 60.00
- Cutters 45.00 to 55.00
- X-Thin 45 Down

Slaughter Bulls

- High Dressing 82.00 to 90.00
- Med. Dressing 77.00 to 82.00
- Lower Dressing 61.00 to 70.00

Join us each Saturday at Noon
 for great cattle year-round!

MON-WED MARKET REPORT

Listen to KJEL 103.7FM • Lebanon or KYOO 99FM • Bolivar

VIEW OUR SALES AT CATTLEUSA.COM

CALL FOR TRUCKING OR ON-FARM VISIT

- Lyle Caselman • Owner-Manager
 417-345-7876 • mobile 417-533-2944
- Leon Caselman • Owner
 417-345-4514 • mobile • 417-588-6185
- Howard Miller • Owner 417-345-8122



MAXWELL ESTATE AUCTION

6671 HWY 89N, CHAMOIS, MO

FRIDAY, JUNE 21 @ 10 AM

Due to the death of my husband I will sell our farm, home & all our machinery at public auction. From the east edge of Linn, Mo take Hwy 50 north 13 1/2 miles to farm. Full Listing & Photos @ ImanAuction.com!



REAL ESTATE SELLS FIRST @ 10 AM. SURVEY WILL BE PROVIDED IF SOLD TO SEPARATE BUYERS!

TRACT 1: Consists of 24 acres m/l w/ a nice 4 bedroom, 2 1/2 bath ranch home – 2 Car garage – Newly remodeled kitchen – Dining area w/ window seats – Laundry off kitchen - Master bedroom w/ walk-in closet – 2nd Bedroom has balcony – Full basement w/ 2 bedrooms, full bath, nice family room & additional storage – Ground Source Heat & A/C - Outbuildings: 44x60' shop w/ lean to – 30x50' Hay/machine shed plus lean to & attached 30x56' Quonset building – Farm is fenced – Hwy frontage – Hard to find small acreage w/ this nice of a home!



TRACT 2: 28 Acres m/l of rolling pasture/hay ground – Hwy frontage – Great building site – Abundant game for hunting ****Real Estate Terms: 10% down Auction Day upon entry into Real Estate contracts with balance due and possession given at closing, preferably within 45 days. Real Estate sells with owner confirmation.**

To view Real Estate or for more info call Iman Auction Company 660-388-6235 or 660-788-4298

Mrs. Bob Barbara Maxwell, Seller
IMAN AUCTION COMPANY | 660-388-6235 | ImanAuction.com

ORIGINAL NES-001 NINTENDO CONSOLE: w/2 controllers, includes Duck Hunt/ Mario Bros cartridge. \$25. 573-854-8132, Salem.

CUSTOM SAW MILLING: Lebanon. 417-533-4607, 417-664-1195.

7 CHAROLAIS CROSS HEIFERS: Fall 2018, weaned, approximately 550#, real gentle. \$800 Each. 660-596-8515.

REGISTERED HEREFORD & ANGUS BULLS: Home raised, Some Show-Me Select Qualified. 573-701-7828. Belgrade

NEW HOLLAND: 1411 diskbine w/roller. \$7,250. 573-765-4406.

BREEDING AGE: Female Tri-Color Welsh Corgi, AKC registered. \$1,150. 417-422-3728.

MURRAY RIDING MOWER: Good Tires, deck etc. needs motor. Only \$195/mower trade. 573-364-7465.

French Bulldog Puppies: Blues, Chocolate & Lilac Carriers, Whites, Sable Pieds, M/F, Guaranteed. \$895-\$2,500. 573-238-3873, 573-208-0485, Glenn Allen.

LOOKING FOR WATER BICYCLE: Any shape. Leave message, 618-758-2830.

AUCTION REMINDER: Cattle Sale every Monday at Noon. Salem Livestock. Please see our Auction Directory for more information.

15FT BUSHHOG: 3715 Heavy-duty, good condition. \$10,500. 417-766-6504.

CLASSIC 1994 DODGE COACHMAN R-V/VAN: very good condition, 82,000, recent tune-up, new tires. \$10,900. 417-683-3115.

MUST SELL DUE TO HEALTH: Beautiful custom ordered, mint condition, flexsteel, three cushion, 84" sofa with matching 60" loveseat. Was \$3,600. Must see. 573-699-4351.

SMALL TRAILER: Wood floor and wood sides, 3.5'x6'. \$100. Rogersville, 417-753-2747, 417-766-1991.

FESCUE WANTED TO COMBINE ON SHARES. Phone 417-327-6240.



REGULAR SALE EVERY THURSDAY 11 AM

For Farm Visits, Market Updates, or Trucking
 Call Zach Cox 417-777-1320
 Dan Romine 573-578-4939

**Competitive Buyers!
 Competitive Commission!
 Competitive Market!**

Barn: 417-532-9292



**I-44 • Exit 123 "just outside of Lebanon"
 17505 Route 66, Phillipsburg, MO 65722**

For weekly market updates, visit us at
www.midmostockyards.com

ONLINE AUCTION

**Newer Jeep • Truck
Ammo • Coins**

7912 I-70 Dr. SE, Columbia, MO
Bidding Ends Tuesday, June 11th at 12:30PM
This Auction Features Staggered Ending
Times & Extended Bidding On All Lots.
Bid Online At Atterberryauction.com



Preview: Monday, June 10th from
11:00AM to 1:00PM

Payment & Pick-Up: Wednesday, June 12th
from 11:00AM to 1:00PM

**One-Owner, Low-Mileage Jeep Wrangler
Sport Unlimited
2003 Ford F-350 Dually Truck
2007 Chevrolet HHR
Dura By Rolan Air Gas-Powered
Portable Compressor • Gold Coins &
Others • Large Quantity Of Assorted
Ammo • Nice Wildlife Prints
Ducks Unlimited Wooden Decoys
Knife Collection • Household • Toys
More Items Listed In Catalog!**

For complete terms, listing, catalog,
pictures & bidding, visit
atterberryauction.com,
email contactus@atterberryauction.com,
or call (573) 474-9295.

Please contact our office if you need
help with the online bidding process.

"WE MAKE BUYING AND SELLING AT AUCTION EASY"
Atterberry MEMBERS
Auction & Realty Co., LLC.
573-474-9295 www.atterberryauction.com

ONLINE WOODWORKING TOOL AUCTION

**Forklift • Club Car
Quality Woodworking Tools**

11201 I-70 Dr. NE, Columbia, MO
Bidding Ends Wednesday, June 12th at 12:30PM
This Auction Features Staggered Ending
Times & Extended Bidding On All Lots.
Bid Online At Atterberryauction.com



Preview: Tuesday, June 11th from
3:00PM to 5:30PM

Payment & Pick-Up: Thursday, June 13th
from 12:00PM to 5:30PM

**Yale Industrial Forklift • Club Car XRT
1550SE • Grizzly Dust Collector Systems &
Other Woodworking Equipment
Quality, Brand Name Woodworking Power &
Hand Tools • Toolboxes & Work Benches
Chemicals • Hardware • Ladders
Assorted Lumber & Other Materials
Painting Supplies • Office Supplies
Much More Listed On Our Website!**

For complete terms, listing, catalog,
pictures & bidding,
visit atterberryauction.com
email contactus@atterberryauction.com
or call (573) 474-9295.
Please contact our office if you need
help with the online bidding process.

Seller: The Late Danny Sapp Family

"WE MAKE BUYING AND SELLING AT AUCTION EASY"
Atterberry MEMBERS
Auction & Realty Co., LLC.
573-474-9295 www.atterberryauction.com

ESTATE AUCTION

Due to the death of the late **Lloyd G. Glenn** and with our
mother **Dorothy Glenn** moving to residential care, we will sell
the following personal property at auction, located at 201 N.
Cedar Street in Rolla, Missouri (take Hwy. 72 to Walnut Street
and turn on Cedar). Follow Lorts Auction Today signs on
Saturday, June 8, 2019 • 9:00 A.M.

Antiques, Household & Furniture

Collection of Anheuser Busch
steins — Johann Havdard
set of China (service for 12)
Collection of creamer bottles
Collection of milk bottles
Foremost & Tucker Dairy
bottles — Carnival glass
Lot milk glass — Glass door
cabinet — Small stone
crock — Oak table w/leaf
& 6 chairs — Oak China
cabinet — Oak washstand
Oak dry sink/cabinet
Oak curved glass cabinet
Anheuser Busch car & truck
collection — John Deere
tractor & truck collection
Oil lamps — Collection of
dolls — Tea sets
Collection of bells — couch
& loveseat — recliner
Lift Chairs — Maytag
stacked washer & dryer
Stand up radio — Queen
size Lifestyles adjustable
bed — Tall chest of

Real Estate



3 bedroom home w/full
basement, metal siding,
central heat & air on corner
lot at East 2nd & North
Cedar Street in Rolla. Great
location, lot is 57 ft. x 114 ft.
Owner has right to reject the
last and final bid. 10% down,
day of auction. Closing in 30
days, non-refundable.

drawers — Sanyo TV
Oak gun cabinet (holds 12
Collection of coins)
GE refrigerator
Metal water cooler — Camel
back trunks — Hunting
clothes & coversalls

Tools & Related Items

Fishing rods & reels
Hiland Dairy clock
Allied socket set
Craftsman toolbox
Craftsman socket sets — Metal
milk can
1 gallon Foremost bottle
Outside milk box
Craftsman push mower
Metal tub
1015 Cub Cadet riding mower
w/32 inch cut
Tucker Dairy box
Homelite chainsaw — School
desk

"like" us on facebook - Lorts Auction Service or view this auction online at
www.threeriverspublishing.com or auctionzip.com (auctioneer ID #42353).

Glenn Estate
201 Cedar Street,
Rolla, MO 65401

AUCTIONEER'S NOTE: Nice clean
items on this auction, great oak
furniture! Make plans to attend!
Larry & Gary Lorts

TERMS: Cash or check with proper I.D. • Not responsible for accidents or
losses, should they occur. • Nothing removed until paid for.
Lunch Served — ALL ANNOUNCEMENTS MADE SALE DAY TAKE
PRECEDENCE OVER ALL PRINTED MATERIALS —

SALE CONDUCTED BY **LORTS AUCTION SERVICE**
ST. JAMES, MO 65559 • 573-699-4308 • 573-263-0243
AUCTIONEERS: Larry W. Lorts & Gary R. Lorts
Licensed and Bonded

\$\$\$\$\$ MOBILE HOME SAVINGS That is
what we are about for the last 36 years. New,
Used, All Sizes. 573-657-2176 amegamobile-homes.com

AUCTION REMINDER: Real Estate & Es-
tate Auction. Sunday May 19th @ 1pm.
Nance Auction. Please see our Auction Direc-
tory for more information.

**BEAUTIFUL NEW HANDMADE
QUILTS:** One purple, green shades, one blue,
one white, queen size. \$350 custom orders
welcome. 417-741-2198. Hartville.

**3 WINCHESTER 101 BLACK DIAMOND
SHOTGUNS:** 4 barrell competition grade,
skeet set, in hard case, slightly used. \$3,500,
Trap Gun slightly used. \$1,500, Trap Combo,
\$1,500. 573-690-2786, 573-496-3391.

AUCTION REMINDER: Restaurant
& Lounge Auction Monday June 10 @ 10AM.
Rona Downs-Maroon Restaurant Equipment.
Please see our Auction Directory for more in-
formation.

BUYING OLD BARN AND LUMBER:
417-298-3509.

**ELVIS PRESLEY BOOK- THE FAMILY
ALBUM: \$10. THE PRIVATE LIFE OF
ELVIS PRESLEY. \$6.50. 417-532-2045.**

2004 LLY DURAMAX: 245K miles, single
cab, white, 2500 GMC 4 wheel drive, very
clean. \$8,000. 573-979-0223, phone/text.

9N FORD TRACTOR: runs good, looks
good, 70% tires. \$1,050. 573-468-7689, Sul-
livan.

REESE 2070W DRUM MOWER: 6'9" cut.
\$2,000. Potosi, 573-438-2672.

JOHN DEERE-2210: 24hp, diesel, 4wd compact tractor with John Deere 210-loader and 62" belly-mower, tractor is mint condition, with 180 original hours. \$10,900obo. Lebanon. 417-718-4787

VISIT WWW.MYWEEKLYTRADER.COM OR FIND US ON FACEBOOK.

MODEL 9410 SINGER SEWING MACHINE: \$50. 417-532-8048.

BEILER FENCING: New, clean, repair. Call us for an estimate. 417-217-2755.

JOHN DEERE 310A DIESEL BACKHOE LOADER: \$8,850. 573-765-4406.

Meet...

Shawna Bradley

Your Auction Specialist



Call or email me today to get your next auction in Central Missouri's #1 Shopper!



WEEKLY TRADER MAGAZINE

office: 417-532-9131 ext. 215 • 417-895-9324
cell: 417-322-3814 • shawna@weekly-trader.com

ALLIS CHALMERS 6080 DIESEL TRACTOR: Cab and air, 80hp, nice. \$14,750. 573-765-4406.

JACK RUSSELL PUPPIES: 8 weeks old June 1st, no shots, farm raised. \$150. 573-392-3748.

FARMALL SUPER-C: W/2pt disk and plow. \$2,200. 573-714-5779.

NEW 4-RIB BELT FOR 1431 N.H. CONDITIONER: \$60. 417-646-8807.



MIDWEST CONSTRUCTION

Free Estimates!

- Pole Barn • Garages • Framing
- Remodels • Roofing • Concrete
- Decks & Porches

Contact Abner Glick
417-664-1794

JOHN DEERE 4240: Diesel Tractor, cab and air, power shift, 3900 hours. \$29,950. 573-765-4406.

AUCTION REMINDER: Huge Estate Auction, Friday June 7th @6PM, Joyce Auctioneering & Real Estate. Please see our Auction Directory for more information.

LIONEL TRAIN SET: Steam engine, tender, caboose and other car, track and transformer. \$195. 573-364-7465, Rolla.

FREE FEMALE CAT to loving home: spayed, great with kids, good outdoors and indoors. 417-664-9940.

JOHN DEERE 5055E DIESEL TRACTOR: 55HP, 311 hours. \$14,000 OBO. 573-301-2609.

AUCTION REMINDER: Thursday, June 13th at 9: 19 am. Chupps Auction. Please see our Auction Directory for more information.

VERMEER TM-700 DISK MOWER: excellent condition. \$10,000. Salem, 573-265-5166/573-263-1875.

2004 OPEN RANGE FIFTH WHEEL CAMPER: 34', all weather, in good condition. \$10,500. Lebanon, 417-718-5520.

DYNO CHARGE 990 ELECTRIC FENCER: Solid state for 20 miles. \$50. 636-239-2695.

1962 MASSEY FERGUSON BULL: w/loader, needs paint. \$4,500. 573-315-9009, Potosi.

GREAT PYRENEES PUPS. Also goats for sale. 417-664-8781, Richland.

Starnes Auto LLC

22115 Rt. 66 • Lebanon, MO 65536
417.588.3159 Office • 417.718.2707 Cell
www.starnesauto.com

1998 GMC SONOMA PEWTER, FLARESIDE, 55,XXX MILES	\$5,200
2000 BUICK LESABRE BLUE, 141,XXX MILES	\$2,800
2001 CHEVY S-10 MAROON, 2WD, RED CAB, 122,XXX MILES	\$CALL
2001 CHEVY S-10 RED, REG CAB, 133,XXX MILES	\$CALL
2001 GMC YUKON BLACK, 237,XXX MILES	\$4,200
2002 CHEVY S-10 BROWN, 4 DOOR, 184,XXX MILES	\$2,800
2003 GMC SONOMA PEWTER, 4 X 4, EXT CAB, 131,XXX MILES	\$5,200
2004 GMC SIERRA CHARCOAL, REG CAB,	\$CALL
2004 JEEP LIBERTY WHITE, LEATHER, SUNROOF, V6, 114,XXX MILES	\$5,200
2005 CHEVY SILVERADO PEWTER, 4DOOR, 4X4 195,XXX MILES	\$CALL
2005 GMC SIERRA WHITE, EX CAB, 2 WD, 155,XXX MILES	\$6,350
2007 SATURN OUTLOOK WHITE, 153,XXX MILES	\$5,200
2009 SATURN AURA SILVER, 110,XXX MILES	\$5,200
2010 CHEVY EQUINOX BLACK, 88,XXX MILES	\$CALL
2012 CADILLAC SRX PERFORMANCE BROWN, 71,XXX MILES	\$13,900
2014 KIA SOUL GRAY, 68,XXX MILES, GOOD TITLE	\$7,600
2015 TOYOTA SCION WHITE	\$CALL
2015 CHEVY EQUINOX LT BLACK, 54,XXX MILES	\$13,500
2016 BUICK ENCORE WHITE, 28,XXX MILES	\$13,500
2017 FORD FIESTA WHITE, 59,XXX MILES	\$CALL
COMING SOON	
1997 BUICK CENTUR.BLUE, 51,XXX MILES	
2008 SATURN VUE BLUE, 86,XXX MILES	
2011 CHEVY MALIBUMAROON, 67,XXX MILES	
2011 GMC TERRAIN WHITE, 116,XXX MILES	
2015 CHEVY EQUINOX LT54,XXX MILES	
2015 CHEVY EQUINOX LTBLACK, 46,XXX MILES	
2015 KIA SOUL WHITE, 24,XXX MILES	

WE DO ALIGNMENTS!

AUCTION REMINDER: Government Auction. Bidding Ends June 18th @10am. BID NOW! Purple Wave Auction. Please see our Auction Directory for more information.

REGISTERED BLACK ANGUS BULLS: AI bred. \$1,250-\$2,950. Hartville, 417-259-2520.

1995 FORD XLT-150 4x4: Farm Truck, 8 cylinder, automatic, 186,000, gooseneck. \$2,150, 6' box blade Brushhog. \$550. 3 saddles, 15" Simco. \$325. 17" seat 8405 Billy Cook. \$975. 573-729-2874.

POOL TABLES: Installations, moves, recovery, repairs, accessories, etc. 573-646-1700.

HOME, 3 BEDROOM RANCH: 32.37ac, North St Francois County. \$185,000. 417-255-6640.

2002 GMC 1ton DUMP TRUCK: low mileage, new tires, good shape, body nice. \$9,500. 573-468-7689, Sullivan.

WANTED, TIMBER TO LOG ON SHARES: Honest, reliable, references. 417-533-4607, 417-664-1195.

SPARTAN MOWERS MADE IN USA

STARTING AT \$3,999

AWESOMEMOWERS.COM
417-532-9132

FORT AWESOME POWERSPORTS
2410 Evergreen Pkwy, Lebanon
(next to Heartland Antique Mall)

EARLY 1900'S EMBOSSED "TO MY VALENTINE": Great color. \$10 573-854-8132, Salem.

JOHN DEERE 566 SILAGE ROUND BALER: monitor, kicker, net wrap. \$7,500. 573-765-4406.

100# PROPANE GAS CYLINDER: 24 gallon with regulator and cap. \$50. Conway, 417-718-5347.

40 PLUS OLD CAR MAGAZINES For Sale: Street Rodder, Hot Rod, etc. \$15 all. 417-457-1023.

1967 1/2 ton DODGE: long-wheel base, new 360 Magnum motor, new tires. new front end, new exhaust system, needs paint. 573-756-3937 after 5pm.

ANTIQUE RIMLESS EYEGLASSES: Shuron 1/10th, 12K gold filled frame, chip in left lens, includes original case. \$70. 573-854-8132, Salem.

AUCTION REMINDER: Saturday, June 8th, 9am. Lorts Auction. Please see our Auction Directory for more information.

WANTED CUT STOCK, Cants, Slabs, trees length + 45" long scragg blocks. 417-650-0402.

AUCTION REMINDER: Antique Estate Auction. Saturday June 8th@ 10am. Nance Auction. Please see our Auction Directory for more information.

GUN BOXES: Several shapes & sizes. \$10 and up. 417-589-8200.

CUB CADET 50IN MOWER DECK: for zero turn mower, will fit most 48" - 54" mowers, excellent condition, with 3 blades. \$195. 573-364-7465.

USED AMERICAN FAMILY DOUBLE-WIDE These do not last! Excellent condition. Call Quick, 573-499-9993 columbiadiscountohomes.com.

WEEKLY TRADER MAGAZINE

This is...

WEEKLY TRADER COUNTRY!



Place Your Ad With Us Today!

417-532-9131 CHECK US OUT ONLINE AT: myweeklytrader.com

NOTES

FORD 2000-GAS: w/bushog. \$2,500. 573-714-5779.

CRAFTSMAN FLOOR DRILL PRESS. \$150. 55 gallon hand Fuel Pump. \$50 573-378-5180

MF 165-GAS W/LIVE POWER: w/loader. \$6,000. 573-714-5779.

GERMAN SHEPHERDS: Two males, 3 mo old, one adult male. \$100 each. 417-741-2198.

AC 185 DIESEL TRACTOR: GB-440, loader, low hours, nice. \$9,450. 573-765-4406.

KRONE 9FT 3PT DISK MOWER: nice. \$6,100. 573-765-4406.

We Buy White Oak Logs!

Independent Stave Company
welcomes all white oak suppliers!

- ✓ Top prices for your logs
- ✓ Experienced log buyers
- ✓ Professional service

www.independentstavecompany.com

Chad Cook | Salem Wood Products
417.718.2950
5 miles north of Salem, MO on Hwy 19


INDEPENDENT STAVE COMPANY
Log Procurement & Sales

FOR SALE: Pembroke Welsh Corgi Pups. Farm raised, AKC registered, available black tris & reds. 573-473-0633. Paris.

ALUMINUM WHEELS: 4 15X10 mid 90's Chevy Pick-up 2WD. \$95. 573-368-6633, Rolla.

BOBCAT 853 DIESEL SKID STEER: Cab, 57hp. \$8,950. 573-765-4406.

2000 SILVERADO:no dents or rust, 109,000 miles. \$6,500. 417-935-2333, Seymour.

Buildings - Hunter's Cabins - Lawn Furniture



JAMCO Portable Buildings **800-688-2064**
307 Enterprise Dr. • Seymour, MO www.jamcobuilders.com

3PT TRACTOR BALE SPEAR: 42" spear with 14" stabilizer bars. \$150. Conway, 417-718-5347.

1979 CHEVROLET PICK-UP: short wheel-base, step-side bed, under construction. 573-756-3937 after 5pm.

2006 36FT TRAILER: 2 Slides. \$8,500. 417-664-3162.

GOLDEN RETRIEVER: Beautiful Female, 5 months. \$600. 314-808-1496.

FIVE ANGUS BRED HEIFERS: to Byergo Bull. \$2,100. 660-337-6311.

LEBANON HIGH SCHOOL 1913 YEAR-BOOK: \$20. Lebanon, 417-532-2045.

TRUCK LOAD OF FLEA MARKET & AUCTION ITEMS: \$200, trade wood or gun. 573-327-9068

HESTON 5500 5X5 ROUND BALER: \$1,800. 573-438-2672.

CIVIL WAR GREAT MAPS BOOK: Hard-back. \$12.50. Lebanon 417-532-2045.

AUCTION REMINDER: Estate Auction, June 8th, 10 am. Public Auction, June 9th, 1pm. Rick Dixon Auction. Please see our Auction Directory for more information.

16FT LANDAU ALUMINUM JOHN-BOAT AND TRAILER: 48" bottom, 21" deep sides w/other items included. \$700. 573-369-2906.

CHECKERED WALNUT WOOD STOCK PISTOL GRIP: for Marlin Model 336 or 1895. \$100. Washington. 636-239-2695.

WANTED PINBALL MACHINES. 573-424-7200.

AUGER: 8x57, good condition. \$2,500. 573-378-5180.

TRUCK, TRAILER, AND SEMI TIRES

on sale now!







417-630-2249
417-664-0829



MASTERTRACK Trailer Tire (265/75/16)
10-Ply • Mounted **\$121.44***

FALKEN AT3 Wild Peak (265/75/16)
..... **\$150.00***

YOKOHAMA (295/75/22)
5Ry617 • Steer **\$419.00***

Ironman 1208 Drive Tire
Close Shoulder • 11R22.5 **\$293.76***

*Tax not included

739 Honey Locust Rd. • Niangua, MO 65713

NEW BIG TEX 14LX DUMP TRAILER



facebook



GREAT SERVICE!
1957-2018 GREAT PRICES!

I-44 at Exit 208 • Cuba, MO
www.jimsmotors.com
(573)885-2595
(800)897-9840

FIREARMS: Professional Repairs and Restorations. Baron's Gunsmithing. 573-363-5801, Camdenton.

BARN WOOD SIDING: 8" & 10" wide. 573-729-7226. www.pineridgerustic.com

2003 THUNDERBIRD: Black and white, very good condition, 47,000 miles. \$15,000. 573-832-1473.

ROD AND REELS: fishing season is coming. \$5 and up. Conway, 417-589-8200.

1996 CHEVY 1/2-TON: 1 owner, 177,500 miles. \$4,900. Rogersville, 573-308-5944.

AUCTION REMINDER: Auction. Saturday June 8th@ 10am. Smittys Flea Market. Please see our Auction Directory for more information.

52.64 ACRES: \$99,900. Abundant Deer & Turkey, ATV Paradise. Will divide Acreage. 30 acres w/year round creek through the center. \$2,400 per acre. 20 acres. \$2,100 per acre. Approximately 9 acres County Road access. \$2,000 per acre 2.5 miles from city limits. Located Cadet, MO out of city limits, quiet neighborhood.

AUCTION REMINDER: Every Wednesday at 10:30 am. Farmington Livestock. Please see our Auction Directory for more information.

4 CHROME GMC WHEELS & CAPS: 16". \$150. Belle, 573-859-6574.

JOHN DEERE 568 ROUND BALER: monitor, kicker, mega wide pick-up, cover net wrap, big tines. \$16,000. 573-765-4406.

AUCTION REMINDER: Online Sale. ends Tuesday, June 11th, 12:30p.m. Atterberry Auctions. Please see our Auction Directory for more information.

NICE BASSETT QUEEN BEDROOM SET: \$400. Clever, 417-268-5586.

DARDEN PROFESSIONAL TIMBER HARVESTING, BUYING STANDING TIMBER: Great prices, improve wildlife habitat and improve forest health. State Certified & Fully Insured! 573-247-4808 or 573-739-1122. Salem

AUCTION REMINDER: Monthly consignment auction October 5th@ 6PM. R&R Auction. Please see our auction Directory for more information

OLD FARM TABLE: 10' long, 38" wide, seats 12. \$300. 417-742-1234.

CASE 960 COMBINE PARTS: Belts, Sivs, clover screen. 573-308-5884, Rolla.

PINE LOG SIDING SALE: \$1.19 per L.F. www.pineridgerustic.com 573-729-7226, 573-247-2823.

FOUR REGISTERED QUARTER MARES: 100% Foundation Bred. 573-528-7436.

GLEANER K COMBINE: 12' head, good shape. \$1,500. Osceola, MO, 417-328-8080, 417-646-8837.

www.gatorjetboats.com



GATORBOATS
JET

Jet Drive & Performance Parts

IN-STOCK!

(573) 885-0052
86 Hwy. UU Cuba, MO (2 Miles East of Cuba)
Custom Built Aluminum Inboard Jets

6 WEEKS OLD BEAGLE PUPPIES: out of good rabbit dogs, GREAT FATHERS DAY GIFT. \$75. 314-974-6881.

OLDER FORD 3 POINT POST AUGER. 573-528-7436.

NEW HOLLAND: 1411 diskbine w/roller, 10ft cuts good. \$8,250. 573-765-4406.

KUSTER LOGGING
BUYER of Standing Timber Oak and Walnut
Dozing Now Available
417-259-0047
 References Available



2 REGISTERED POLLED HEREFORD 2YR BULLS: Baldy Maternal-Top 46%, DNA Tested, Gentle. \$1,800-\$2,000. OBO. Belgrade, 573-244-3157.

AUCTION REMINDER: Online Woodworking Tools, Wednesday, June 12th, 12:30p.m. Atterberry Auctions. Please see our Auction Directory for more information.

ADORABLE ACA REGISTERED LAB PUPPIES: yellows/blacks. Ready 6/24/19. \$250. Hartville. 417-741-2198.

AUSTRALIAN SHEPHERD PUPPIES: Ready to go, Merles & Tri-Colors, UTD on shots. For sale or swap for farm animals. 417-458-1047, 417-967-6493.

2014 RAM 2500 4X4 LARAMIE LONGHORN DIESEL: Loaded, 5th Wheel package, 46,000miles. \$44,000. Rolla, 757-921-2686.

PURE BRED BORDER COLLIES: Pups ready 5-20-19 \$100ea. Border collie/Australian Shepherd pups \$100ea. Ready 5-31-19. Hartville, 417-259-9738.

FREE LAB & ROTTWEILER MIX PUP: Male, 2-3 mos old, black and brown, smaller dog. 417-532-6981.

WANTED 16"x10"W DODGE W350 WHEELS: Aluminum, Chrome. 573-308-7064, leave message.

NEW NEW NEW DISPLAY HOUSE!!! Call Marla to hear what is new inside 573-657-7040, chateauhomes.net.

BLUE HEELER PUPS: Raised for 40 years. Good livestock dogs or pets. Already working. \$85 each. 660-631-5019 Warsaw.

RUBBER BELTING: Assortment sizes. 573-378-5180

HEIDER AUGER WAGON. Holds 3 ton. \$800. 573-498-6685 evenings.

JOHN DEERE 2940: Diesel tractor, 80HP. \$8,500. (573)765-4406.

ANTIQU REvolver + FIREARM'S ACCESSORIES: \$175. 573-764-3517, Call in P.M.

MF-50-GAS W/LIVE POWER: \$2,350. 573-714-5779.

Is Your Log Home **UGLY?**
Starting To Look
Professional Staining & Repair
 (Log Homes & Wood Siding)
Call
Pine Ridge Rustic
 Log Home Building Supplies **573-729-7226**
www.pineridgerustic.com



2001 19FT DUTCHMEN TRAVEL TRAILER: very clean, everything works. \$4,200. 417-345-5634.

AUCTION REMINDER: Personal Property Auction. Saturday June 15th @ 10am. Easterly Auction. Please see our Auction Directory for more information.

KUHN 4 BASKET TEDDER: \$3,250. 573-765-4406.

AUCTION REMINDER: Personal Property Auction. Tuesday June 11th @ 6pm. Easterly Auction. Please see our Auction Directory for more information.

WILBER'S FISH BRANCH ANGUS: Large selection 14-16month old bulls available, Calving ease, good growth and carcass traits, very docile. Mexico, Mo. 573-473-6019. www.fishbranch.com

5AC OZARK COUNTY: Near Bull Shoals Lake. \$9,995. 417-255-6640.

NEW/USED PARTS: For all vehicles/machinery. (Warranted/delivery). 800-807-9612.

1860'S MODEL CALVARY REENACTMENT SET: with Naval Model Black Powder pistol. 417-300-6006.

METRO MOTORS INC.
R.V. SALES
 NEW GREY WOLF, CHEROKEE & ROCKWOOD!
GREAT SELECTION OF NEW & PREOWNED RVs

•2019 26 DBH Greywolf TRL	•2019 16 BHS Wolf Pup
Large Slide-out..... \$20,900 \$12,500
•2019 214W Rockwood A-Frame	•2016 17BH Greywolf TRL
Loaded!..... \$14,900 \$15,500
•2019 228 BHESP Rockwood Pop-up	•2000 34' Allegro Bay
Loaded!..... \$14,900	V-10 Ford, 71,xxx Miles..... Sale Price \$24,500
•2019 26RP Greywolf Toy Hauler	•2018 122 S Rockwood A Frame..... \$12,500
Loaded!..... \$19,900	•2017 210 RB I-Go Cloud Trailer
•2012 350RL Brookstone/New \$17,500
5th Wheel, 3 Slides, King Bed..... \$28,500	•2018 82975
	5th Wheel, Ext. Living Room, R/King Bed, 4 Slides. \$37,500

"Where Your Satisfaction Really Counts"
 2727 S. Campbell - Springfield, MO - Visit our website at www.metro-motors.biz
417-882-6800

AUCTION REMINDER: Personal Property & Real Estate Auction Saturday June 15 at 9am. Cheyney Auction Company LLC. Please see our Auction Directory for more information.

1988 LINCOLN CONTINENTAL: 4 door, 302, 90,000miles, clean. \$4,000. 417-859-5951.

METAL DETECTOR: \$125 or trade. 573-327-9068.

IHC 886 DIESEL TRACTOR: cab and air. 80hp, good. \$12,500. (573)765-4406

JOHN DEERE 337 SQUARE BALER. \$2,200. 573-765-4406.

97 CHEVY ASTRO VAN: 7passenger, very clean, well maintained, cold air. \$1,600. 417-763-5240.

FOR SALE IH 7250 PEDAL TRACTOR: wide front w/wagon. \$300: 573-859-6574.

IHC 806 DIESEL TRACTOR: with loader \$7,800. (573)765-4406.



★ American Made Metal Roofing ★

40 Year Warranty Metal.....\$1.99 (\$62.18 Per Sq)



*29 Gauge 10 Year\$1.79 (\$55.93 Per Sq)

****While Supplies Last****

29 Gauge #1 Galvalume \$1.69...\$1.39 (\$43.44 Per Sq)

29 Gauge 40 Year ***Saddle Tan***\$1.69 (\$52.81 Per Sq)

- ★ 17 Colors To Choose From
- ★ 20 Years In Business
- ★ We Manufacture Our Own Metal and Trusses



3 Locations To Serve You!

6952 E. 7th St. | 1100 Pace Rd. | 35 Killdeer Rd.
Joplin, MO. | Pocahontas, AR. | Seymour, Mo.
417-317-7961 | 870-609-1900 | 417-952-7143

*possibly not American made

Building In A Box

Stud Wall & Pole Barn Kits

Non-Warranty Metal	10Year Warranty	40Year Warranty
24x30x8.....\$3,350\$3,700\$3,850
30x40x10.....\$4,950\$5,350\$5,600
40x60x12.....\$9,300\$10,000\$10,200

Precut Packages Also Available

HUGE NEW TIRE SALE: Best Prices. Highest Quality. Free Warranty. Delivery. Semi 11R-22-5 (Tall) Drive Closed shoulder 16-ply. \$279. Trailer 16-ply. \$259. Steer 16-ply. \$258. Michelin Retreads available. Trailer ST-750-R16, 14-ply Radial. \$105. All-Steel. \$135. Tractor 18-4-38. \$550. Call 417-276-2435.

SILVER DOLLAR COLLECTION: \$200. 573-764-3517, Call in P.M.

BEAUTIFUL CATAHOULA PUPPIES: 417-543-4816.

POTS AND PANS CANNED GOODS AND MORE. \$125 or trade. 573-327-9068.

3pt TWO-SECTION HARROW. \$200. Rogersville. 417-753-2747, 417-766-1991.

AUCTION REMINDER: Auction, Saturday, June 8th @ 10:30am Knight Auction. Please see our Auction Directory for more information.

AUCTION REMINDER: Auction Saturday June 9th, 9 AM. Glenworth Auction. Please see our Auction Directory for more information.

3600 FORD TRACTOR: Very nice. \$6,500. 573-766-5640.

4 MUD TIRES: Goodyear Wrangler, LT285/75R16 Dura Trac, good tread left. \$100 Call Don, leave message for call back 314-808-5680.

WANTED HOOD FOR JOHN DEERE RIDING MOWER 225: 573-859-6574.

I BUY.... used mobile homes. Call or text 573-338-6250 or email GregS.CDH@outlook.com

FARM & HOME SERVICES, WELDING & CONSTRUCTION. \$40-\$65 per hour. 417-664-7841, Stoutland.

27 GAL FUEL TANK: Fiberglass. \$60. Rogersville. 417-753-2747, 417-766-1991.

CASE 533 45 HP DIESEL TRACTOR: w/ loader, wide front end, PS, 6' brush-hog. \$5,400. 573-694-0299.

AUCTION REMINDER: Estate Auction Sat. June 15th, 10am. Drenon Auction Service. Please see our Auction Directory for more information.



Cheyenne Acres
Horse & Tack

BUY - SELL - TRADE

by Rolla, MO
Call For Directions & Availability

Call Kip
573-368-9402



FOR SALE: 1/2 Simmental 1/2 Angus Bulls, 10 months old. A.I Sired, very gentle, \$1750. **ALSO:** 110 gal. pull type sprayer. \$1000. Like new. J.W. Henson, 417-343-9488

NEW HOLLAND: 1411 diskbine w/roller. \$7,250. 573-765-4406.



HYDRABED

- 3,000 lb. Lift Capacity
- Synchronized Bale Arms
- Engine Driven Hydraulics
- Free-Float Bale Unrolling
- 12" Total Main Hinge Length
- Six Sizes Available
- Full Two Year Warranty

Starting At \$9,225
Several Sizes In Stock *Installed*



LET YOUR SAVINGS BEGIN NOW!
2 Toolboxes for \$575.00
Prices Good On In Stock Beds Only!!

LET US BE YOUR PEOPLE!!

WESTGATE TRAILER & EQUIP.

417-351-6974 • 417-926-7733
www.westgatetrailer.net
8920 W Business 60 • Mtn. Grove, MO
7136 W Farm Road 140 • Springfield, MO
FULL SERVICE SHOP
OPEN: Mon.-Fri. 8-5 And "YES!" Sat. 8-Noon!

Stay In The Know About Your Favorite Pastime With
TROUT TALK

Get your monthly subscription started today for all the information you'll need to plan your next trip to Bennett Spring State Park and the Lebanon Area.

Plus, all the latest news about fishing, hiking, camping, floating, and so much more! We'll see you there!

**All 8 Issues
 Delivered
 To Your Home
 for only**

\$21⁰⁰

Published Once Per Month March-September

YES! Start My Trout Talk Subscription

Name: _____

Address: _____

Phone: _____

Email: _____

Mail a \$21⁰⁰ check to: Trout Talk c/o Lebanon Publishing Company
 P.O. Box 192 • Lebanon, MO 65536 or Call 417-532-9131

Please include your name, address, city, state, and zip code



COLT FIREARM'S DEALER CATALOG'S: illustrated prices, circa #1950's-1960's. \$150. 573-764-3517. Call in P.M.

REGISTERED HEREFORD & ANGUS BULLS: Home raised, Some Show-Me Select Qualified. 573-701-7828. Belgrade

CUSTOM SAW MILLING: Lebanon. 417-533-4607, 417-664-1195.

FREE MALE CAT to loving home: neutered, great indoors and outdoors. 417-664-9940.

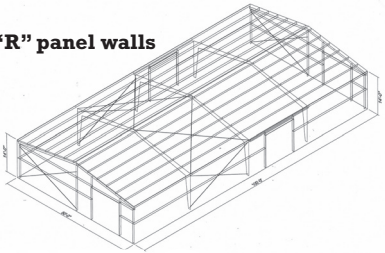
1984 FORD GRILL & HEADLIGHT TRIM. \$40. 573-308-5884.

1987 SHELBY DAYTONA: Excellent condition. \$5,500. 314-616-9862.

MUST SELL DUE TO HEALTH: Beautiful custom ordered, mint condition, flexsteel, three cushion, 84" sofa with matching 60" loveseat. Was \$3,600. Must see. 573-699-4351.

RED IRON BUILDING KIT

- 50'X100X14' - 2:12 pitch
- 26ga Galvalume "R" panel roof 26ga Painted "R" panel walls
- 4 @ 12'X12' Framed Openings - Does Not Include OH Doors
- 2 @ 3'X7' Passage Doors
- Bolt Together Design
- Insulation, Gutter and Down Spouts Available for Additional Fees
- Materials Only - \$32,849.00 Plus Tax/Freight



METAL PANELS


29ga 40 Year Warranty Painted\$68.50 sq
 29ga 25 Year Warranty Galvalume.....\$54.00 sq



JENKINS
Since 1964
BUILDINGS, LLC
MATERIALS & SUPPLIES

Showroom & Sales Office
Bolivar, Missouri 65613
(417) 326-4228
Next to Smith's Restaurant
Hwy. 13 & U

Corporate Office
Polk, Missouri 65727
(417) 852-4228
2 Miles South of Pittsburg
on Hwy. 64

Find us on
 **facebook**

JenkinsBuildings.com
Pricing Subject to Change

VISIT US @ JENKINSBUILDINGS.COM

4020 JOHN DEERE DIESEL TRACTOR: w/48 J/D loader, good condition, nice paint, excellent rubber. \$13,500. 417-763-5240, Tunnas.

AUCTION REMINDER: Public Auction Saturday June 8th@ 10AM. Darren Scheets Auctions. Please see our Auction Directory for more information.

LOOKING FOR RIDING LAWNMOWERS: Running and non-running. Reasonable price. 417-718-6964, within 20 miles Lebanon.

CASE 580D: Diesel backhoe, Loader. \$8,850. 573-765-4406.

FIREPLACE LOG GRATE: 28" wide. \$25. 636-239-2695, Washington

ORIGINAL NES-001 NINTENDO CONSOLE: w/2 controllers, includes Duck Hunt/Mario Bros cartridge. \$25. 573-854-8132, Salem.

REAR TINE TILLER: good shape. \$250. 573-468-7689, Sullivan.

DURABILT 10 WHEEL FOLDUP RAKE: \$1,750. 573-765-4406.

7 CHAROLAIS CROSS HEIFERS: Fall 2018, weaned, approximately 550#, real gentle. \$800 Each. 660-596-8515.

BREEDING AGE: Female Tri-Color Welsh Corgi, AKC registered. \$1,150. 417-422-3728.

MURRAY RIDING MOWER: Good Tires, deck etc. needs motor. Only \$195/mower trade. 573-364-7465.

French Bulldog Puppies: Blues, Chocolate & Lilac Carriers, Whites, Sable Pieds, M/F, Guaranteed. \$895-\$2,500. 573-238-3873, 573-208-0485, Glenn Allen.

7' NEW HOLLAND SICKLE MOWER MODEL-451: \$800. Rogersville. 417-753-2747, 417-766-1991.

LOOKING FOR WATER BICYCLE: Any shape. Leave message, 618-758-2830.

CLASSIC 1994 DODGE COACHMEN R-V/VAN: very good condition, 82,000, recent tune-up, new tires. \$10,900. 417-683-3115.

SMALL TRAILER: Wood floor and wood sides, 3.5'x6'. \$100. Rogersville, 417-753-2747, 417-766-1991.

Hydraulic Dovetail Trailers

By the Best Manufacturers in America!



PJ TRAILERS | IRONBULL

32' Hydraulic Dovetail Trailers
in stock today starting at \$12,000

Low Profile • 10k Dexter Axles • Dual Spring Loaded Jacks • Radial Tires • Torque Tube Underframe Bridging

LET US BE YOUR PEOPLE!!

WESTGATE TRAILER & EQUIP.

417-351-6974 • 417-926-7733

www.westgatetrailer.net
 8920 W Business 60 • Mtn. Grove, MO
 7136 W Farm Road 140 • Springfield, MO
FULL SERVICE SHOP
 OPEN: Mon.-Fri. 8-5 And "YES!" Sat. 8-Noon!

FREE AKC REG. GERMAN SHEPHERD: 1 year old, black & tan, very friendly, good behavior. 630-687-0705.

AUCTION REMINDER: Cattle Sale every Monday at Noon. Salem Livestock. Please see our Auction Directory for more information.

15FT BUSHHOG: 3715 Heavy-duty, good condition. \$10,500. 417-766-6504.

\$\$\$\$\$ MOBILE HOME SAVINGS That is what we are about for the last 36 years. New, Used, All Sizes. 573-657-2176 amegamobile-homes.com

AUCTION REMINDER: Restaurant & Lounge Auction Monday June 10@ 10AM. Rona Downs-Maroon Restaurant Equipment. Please see our Auction Directory for more information.

WEEKLY TRADER MAGAZINE

YOUR AD GOES HERE!

Add **YELLOW** Color For An Additional **\$3** Per Reader Ad

All ads will include Phone Number (unless requested to be deleted by advertiser) and City Or Town, Phone Number with Area Code counts as one word. City or Town counts as one word.

RATE: 80¢ Per Word. All Classified Ads Require Payment Before Print.

(1) 80¢	(2) \$1.60	(3) \$2.40	(4) \$3.20
(5) \$4.00	(6) \$4.80	(7) \$5.60	(8) \$6.40
(9) \$7.20	(10) \$8.00	(11) \$8.80	(12) \$9.60
(13) \$10.40	(14) \$11.20	(15) \$12.00	(16) \$12.80
(17) \$13.60	(18) \$14.40	(19) \$15.20	(20) \$16.00
(21) \$16.80	(22) \$17.60	(23) \$18.40	(24) \$19.20
(25) \$20.00	(26) \$20.80	(27) \$21.60	(28) \$22.40
(29) \$23.20	(30) \$24.00	(31) \$24.80	(32) \$25.60
(33) \$26.40	(34) \$27.20	(35) \$28.00	(36) \$28.80
(37) \$29.60	(38) \$30.40	(39) \$31.20	(40) \$32.00

Place your Classified Ad TODAY!

417-532-2800 • 800-665-8875

Fax: 417-532-8140

Or Mail To: P.O. Box 192 • Lebanon, MO 65536

For your convenience we accept MasterCard, Visa, Discover or American Express



DEADLINE FOR CLASSIFIED ADS: MONDAY 12 NOON!!

Name _____

Address _____

City _____ Email _____

State _____ Zip Code _____ Phone _____

Ad Total \$ _____ X # Weeks _____ = Amount Enclosed \$ _____

CONNECTING BUYERS & SELLERS

Specializing in selling farms, ranches, & wooded properties

347 Acres - Pomme De Terre

This is a rare opportunity to own 1.8 miles of Pomme De Terre River frontage. This spectacular property features 138 acres of pasture ground with 72 acres of river bottom pasture. The timberland boasts a variety of Oak, Hickory & Walnut with several mature logs ready to be harvested. This property features some incredible natural landforms with multiple build sites that feature panoramic views or total seclusion. The property is located off a chip & seal road just south of Bolivar with easy access to Highway 13. The opportunities for this property are endless, from Hunting, Fishing, Floating, running cattle and more. Come and enjoy the seclusion and country living while still being conveniently located to town.



225 Acres - Bear Creek

The property features include big fields of cattle pasture, river bottom hay fields, over a mile of Bear Creek, one nice pond, big mature timber, good fences, excellent deer and turkey hunting, and yes there is an old early 1900's farm house. The old but sturdy structure would make a great hunting cabin for the family, or a group of friends looking to purchase a great hunting/river recreational farm.

1221 Acres - Henry County

This spectacular ranch is comprised of 1221 contiguous acres in coveted Henry County, Missouri. This is arguably the finest cattle ranch to come to market! With the current owners' hard work, knowledge of great grazing practices, wise stewardship and love of the land. This is a must see for hard-working cattlemen... and anyone dreaming of owning a remarkable ranch.



Farm & Home Sales 417-276-4868