

Vol. 25 No. 39

JANUARY 3, 2019

800-543-8271 • 800-665-8875

FREE
WEEKLY
TRADER
MAGAZINE



Find us on
Facebook

@myweeklytrader

Auctions - Pg. 18

MYWEEKLYTRADER.COM

ON THE FARM
OR ON THE ROAD

**We've
got you
covered!**

LETTERMAN

**TRIPLE T
REPAIR LLC**

TRUCKS, TRAILERS,
& TRACTORS

417-630-2249

417-664-0829

739 Honey Locust Rd. • Niangua, MO 65713

SEEGER BOWL ³

50 Years in the TOYOTA Business

ALL PREOWNED VEHICLES COME WITH SEEGER CARE*

200+ PREOWNED VEHICLES AVAILABLE!



2015 FIAT 500
7021A **\$13,888**



2016 TOYOTA TACOMA
P9453 ONLY 7,472 MILES **\$29,988**



2013 FORD Escape
7157A **\$15,988**

HIGHEST QUALITY & BEST SELECTION OF PREOWNED IN THE AREA!

| | | |
|---|---|---|
| <p>7367A 2009 GMC Sierra 1500.....\$12,988</p> <p>7440A 2015 TOYOTA Avalon.....\$21,988</p> <p>6801A 2016 CHEVY SILVERADO 1500 ...\$31,988</p> <p>7491A 2009 TOYOTA Venza\$11,988</p> <p>7304A 2017 TOYOTA COROLLA.....\$16,588</p> <p>7406A 2016 TOYOTA Tundra.....\$27,588</p> <p>7480A 2014 JEEP Wrangler Unlimited....\$26,988</p> <p>7482A 2016 TOYOTA TACOMA.....\$33,988</p> <p>7443A 2015 TOYOTA Tundra.....\$35,588</p> <p>7478A 2014 FORD F150.....\$23,988</p> <p>7391B 2017 AUDI A4 2.0T Quattro\$27,988</p> <p>7308A 2016 TOYOTA Sequoia\$30,988</p> <p>7308B 2017 JEEP Wrangler Unlimited....\$31,988</p> <p>7444A 2016 JEEP WRANGLER.....\$25,988</p> <p>7258A 2014 TOYOTA TACOMA.....\$22,988</p> <p>7258B 2018 CHEVY Sonic.....\$16,988</p> <p>6630A 2014 TOYOTA Avalon.....\$15,988</p> <p>7293A 2015 NISSAN Versa.....\$8,988</p> <p>P9454 2012 TOYOTA Tundra.....\$32,988</p> <p>7358A 2016 GMC Sierra 1500.....\$27,988</p> <p>7415A 2017 TOYOTA 4RUNNER.....\$33,988</p> <p>P9406B 2018 FORD Fusion.....\$19,988</p> <p>P9444A 2016 KIA Forte.....\$11,988</p> | <p>7453A 2017 TOYOTA Tundra.....\$36,588</p> <p>P9451 2010 TOYOTA CAMRY\$8,588</p> <p>6979A 2011 TOYOTA Tundra.....\$21,988</p> <p>7442A 2011 TOYOTA Venza\$15,888</p> <p>7144A 2016 KIA Soul.....\$16,988</p> <p>7229A 2014 TOYOTA TUNDRA.....\$32,988</p> <p>7302A 2016 TOYOTA CAMRY\$16,988</p> <p>7366A 2016 TOYOTA CAMRY\$16,988</p> <p>P9443 2013 TOYOTA COROLLA.....\$10,988</p> <p>7283A 2017 JEEP RENEGADE.....\$17,988</p> <p>7356B 2016 GMC YUKON.....\$54,988</p> <p>6458A 2009 JEEP WRANGLER.....\$20,488</p> <p>7424A 2005 DODGE RAM 1500\$7,988</p> <p>P9442 2012 TOYOTA CAMRY\$10,988</p> <p>P9441 2016 FORD Escape.....\$19,988</p> <p>7260B 2013 FORD EXPEDITION.....\$19,988</p> <p>6819A 2017 TOYOTA COROLLA.....\$16,588</p> <p>P9436 2016 HYUNDAI SONATA.....\$14,988</p> <p>P9437 2017 HYUNDAI SANTA FE.....\$23,988</p> <p>P9438 2017 TOYOTA CAMRY\$15,988</p> <p>P9439 2017 TOYOTA YARIS.....\$12,988</p> <p>P9440 2017 TOYOTA COROLLA.....\$15,988</p> <p>7096A 2014 TOYOTA 4RUNNER.....\$32,588</p> | <p>7301A 2017 FORD Escape.....\$15,988</p> <p>P9433 2012 TOYOTA HIGHLANDER.....\$21,988</p> <p>P9386A 2018 TOYOTA COROLLA.....\$17,988</p> <p>7371A 2015 CHEVY TAHOE.....\$43,988</p> <p>6996A 2017 FORD Fusion.....\$15,988</p> <p>P9428 2016 TOYOTA SCION iM.....\$15,288</p> <p>7089A 2017 TOYOTA Prius v.....\$21,588</p> <p>P9425 2017 TOYOTA CAMRY\$16,988</p> <p>6817A 2010 TOYOTA RAV4.....\$11,588</p> <p>7300A 2013 CHEVY EQUINOX.....\$12,988</p> <p>6963D 2016 CHEVY Colorado.....\$31,988</p> <p>7200A 2011 CHEVY Avalanche.....\$14,988</p> <p>7110A 2013 FORD F150.....\$23,988</p> <p>6823C 2012 MAZDA3 Speed 3.....\$14,988</p> <p>7156A 2014 LINCOLN MKZ.....\$18,588</p> <p>P9419 2010 CHEVY Avalanche 1500.....\$15,988</p> <p>7127A 2016 NISSAN Rogue.....\$15,988</p> <p>6995A 2017 KIA RIO.....\$10,988</p> <p>P9414 2017 TOYOTA COROLLA.....\$14,988</p> |
|---|---|---|



Doing Business the Right Way The Seeger Way



ENGINES FOR LIFE
Call for details
Non-Factory Lifetime Limited Warranty
Good at participating dealerships

SATURDAY SERVICE 8AM-4PM



Toll Free:
800-844-6026

Next to Walmart, St Robert
573-336-7111
SeegerTOYOTA.net



SEEGER CARE

ALL PREOWNED VEHICLES COME WITH SEEGER CARE!

- 1 **FREE** (3) SCHEDULED OIL AND FILTER CHANGES
- 2 **FREE** MULTI-POINT INSPECTION WITH EVERY OIL CHANGE
- 3 **FREE** EXTERIOR CAR WASH WITH EVERY SERVICE VISIT
- 4 **FREE** LIFETIME SAFETY AND EMISSION TESTING
- 5 **FREE** SAME-DAY SERVICE LOANER CAR
- 6 **FREE** TANK OF GAS

Service Only at Seeger St Robert/St Louis

†Does not include tax, title, and license. * Seeger Care offer good for Less than 85K Miles and Less than 10 years old Prices do not include any College Grad or Military Rebate. See sales rep to see if you would qualify for additional savings. Prices does not include \$199 dealer administrative fee. Cannot be combined with any other offer. Prior sales final. See dealer for details. Advertised vehicle may not be exactly as pictured and are subject to prior sale. We cannot be responsible for typography or photography. ** St. Robert, Mo. Inventory

SPECS DON'T LIE.

TEST DRIVE THE MAHINDRA RETRIEVER FOR YOURSELF.



Shown: Retriever 1000



60 MPH TOP SPEED



83 HP LEADING HORSEPOWER



2500 LBS LEADING TOWING



3 YEAR LEADING WARRANTY

THE MAHINDRA RETRIEVER LEADS THE WAY IN PERFORMANCE

AGRI ENTERPRISES

For Outstanding Products & Service

1-1/2 Miles South Of Licking, MO On Hwy 63
573-674-2203 | 1-800-653-7152
www.agri-enterprises.com



Mahindra
Tractors & Utility Vehicles

LIONEL TRAIN SET: Steam engine, tender, caboose and other car, track and transformer. \$195. 573-364-7465, Rolla.

JOHN DEERE: 4050 MWFD, Cab, Air, Pow-ershift, New tires, call for details, Reduced price. \$28,500. Owensville, 573-205-7860.

9 AMISH BOOKS: clean, Christian fiction, \$7.50. Lebanon, 417-322-2727.

AUCTION REMINDER: Closed Dec 24 & 31, Cattle Sale every Monday 12 Noon. Salem Livestock. Please see our Auction Directory for more information.

WOMEN'S APEX QUALITY GYM SHOES: White, pink and grey trim. Brand new, reinforced stability plate, cushioned. Paid \$143, \$75 firm. 417-686-0032, Ava

AUCTION REMINDER: Sat. January 5th, @10am, Atkinson. Parker Auction Service. Please see our Auction Directory for more information.

VOTED #1 BEST Preowned Car Dealership

TIM'S USED CARS

(573) 341-3828 • 1334 South Bishop (Hwy. 63) • Rolla, MO
Next to Hwy. CC • www.tims-used-cars.com

| | |
|---|--|
|  <p>2013 TOYOTA RAV4 LE AWD, 4 CYL AUTO, POWER EQUIPPED ONLY \$12,900</p> |  <p>2014 FORD FLEX SCL FWD LEATHER SUNROOF, 3RD ROW SEATING, 78,XXX MILES ONLY \$17,500</p> |
|  <p>2016 JEEP WRANGLER SAHARA 4X4 V-6, 5 SPEED, LEATHER, 40,XXX MILES ONLY \$27,900</p> |  <p>2016 DODGE DART SXT AUTO, POWER EQUIPPED 51,XXX MILES ONLY \$10,500</p> |

LARGE SELECTION OF CARS, TRUCKS, SUVs & VANS!

USED EQUIPMENT

Several LIKE NEW Used Tractor's at Great Savings!

New at Used Price!
Mahindra 2565 with loader, cab, 4WD, 13 hours

1526 Mahindra w/loader & Backhoe 67 hours - Very Nice!
2240 JD w/Loader • Gehl Silage Chopper
NH 163 Tedder • 6' & 7' Brush Cutter
Rhino TW72 Brush Cutter • Landpride 10' Brush Cutter
JD 10' Cultipacker • 3pt. 3 bottom plow
12' Spring Tooth Harrow 3pt. 2 Disc Disc Plow
Gravely 2T 2148XL Zero Turn Mower Rider
Other Misc Equipment

For Outstanding Products & Service

AGRI-ENTERPRISES

1-1/2 Miles South Of Licking, MO On Hwy 63
573-674-2203 • 1-800-653-7152
www.agri-enterprises.com

REBEL WOOD CIRCULATOR: Triple flue pipe. \$800. 573-528-2699.

BARE CYLINDER HEAD: for 4010 JD. \$200. 573-459-6488, New Haven.

Offering the Area's LOWEST METAL PRICES!



Pole Barns

| | | | |
|----------------------------|---------|----------------------------|----------|
| 24'x32'x10' materials only | \$5,025 | 30'x60'x10' materials only | \$8,525 |
| 24'x40'x10' materials only | \$5,725 | 40'x60'x12' materials only | \$11,425 |
| 30'x40'x10' materials only | \$6,500 | | |

Plus Sales Tax And Delivery.
Labor available at additional cost.
Call for quote.

Compare Before You Buy.

We Use Only The **Highest Quality** Materials!

ALL MATERIAL PACKAGES INCLUDE...

- ✓ #1 Yellow Pine Lumber
- ✓ #1-20 Yr. Painted
- Metal w/Screws
- ✓ 1-10' Overhead Door
- ✓ 1-36" Entry Door

Fully Insured

PORTABLE BUILDINGS
Rent to Own
No Credit Check



Custom Homes • Metal Roofs

29 Gauge

#1 PAINTED METAL

- ★ 40 Year Warranty - \$70.00 Sq.
- ★ 20 Year Warranty - \$64.00 Sq.
- ★ 20 Year Galvalume - \$54.00 Sq.

Labor prices will be higher in locations over 75 miles from Marshfield, MO

Marshfield BUILDINGS

www.marshfieldbuildings.com

1049 SCHOOLVIEW DR.
Marshfield, MO



417-859-7744

Toll Free 1-866-859-7733

DARDEN PROFESSIONAL TIMBER HARVESTING, BUYING STANDING TIMBER: Great prices, improve wildlife habitat and improve forest health. State Certified & Fully Insured! 573-247-4808 or 573-739-1122. Salem

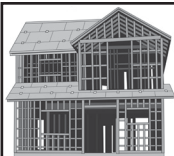
WWW.MYWEEKLYTRADER.COM

ROUND BALE TWINE: Netwrap, silage film, end of year sale. 573-205-7860, Owensville.

REMINGTON WINGMASTER: model-870, 12-gauge, \$275, Remington Express, model-870, 20-gauge, \$250. Doerun, 573-756-1065

YOU GOTTA SEE THESE NEW HOUSES!!! Brand new inventory on sale !! 573-499-9993. columbiadiscountshomes.com.

TARTER CATTLEMEN: Series 6, squeeze chutes, auto headcatch. \$2,975. 573-205-7860, Owensville.



MIDWEST CONSTRUCTION

Free Estimates!

- Pole Barn • Garages • Framing
- Remodels • Roofing • Concrete
- Decks & Porches

Contact Abner Glick
417-664-1794

KUSTER LOGGING

BUYER of Standing Timber Oak and Walnut

Dozing Now Available

417-259-0047

References Available



BUYING ALL BEER SIGNS: PRE 1960 FALSTAFF, HAMMS, STAG, ANHEUSER, GRIESEDECK. 573-680-5377.

PINNACLE RANCH: 2 year old & 18 mo old Red Balancer & Red Angus bulls, 12 mo old Red Balancer and Red Angus heifers. 417-679-4269, 417-679-2330, Gainesville.

TWO VIVINTECH LARGE WINDOWS: New from Lowes, double pane. 62.5x38.5 \$100 obo, 49.5x36.5 \$50 obo, deal for both. Rolla, 928-514-0505.

6400 SQ FT BUILDING FOR SALE: Located on historic route 66 in Cuba Mo. 573-205-7860.

WEEKLY TRADER MAGAZINE

Vol. 25 January 03, 2019 No. 39

Published By

Lebanon Publishing Co. Inc.
PO Box 192, Lebanon, MO 65536

417-532-9131

www.myweeklytrader.com

Everything advertised in this publication must be made available purchase, use or patronage without regard to race, creed, color, sex, age or national origin of the purchaser, user or patron. The Publisher will not be responsible for misinformation, misprints, typographical errors, etc. Opinions expressed are not necessarily those of the Publisher. All rights reserved. No part of this material may be reproduced by any means without permission in writing from the Publisher. We reserve the right to refuse any ad if we deem necessary. Our list and map indicate counties in which the Weekly Trader delivered. The magazine is not necessarily placed in all communities a particular county. A list of all retail drops for a county may be obtained by contacting the Weekly Trader office at PO Box 192, Lebanon, MO 65536.

SACAGAWEA GOLDEN DOLLARS: Face value \$1. Original issue 2000, uncirculated. In rolls of 5. \$30. 417-686-0032, Ava.

INDIAN HILLS LAKE LOTS: 2 Adjoining lots, close to entrance. Cuba Mo, 573-205-7860.

3 TON LIVESTOCK CREEP FEEDER: on wheels, new creep gates, new tires. \$2,275. 573-205-7860, Owensville.

FIREARMS: Professional Repairs and Restorations. Baron's Gunsmithing. 573-363-5801, Camdenton.

1996 Chevy 4X4: Heavy Half ex-cab, 8' bed, no cancer, nice interior/tires, new radiator, WP, belts, everything works, original. \$5,300 OBO. Will send pictures. 918-232-1521, Coweta, OK.

AUCTION REMINDER: Saturday, January 12 @ 9:00AM. Magee Auction. Please see our Auction Directory for more information.

BLACK ANGUS BULLS: Objective T510, Bloodline, 20 month old & up. \$1,850 & up. 573-205-7860, Owensville.

1991 VOLVO LOG TRUCK: With 8,000 hood loader and pup trailer. \$28,000. 573-546-0751, Ironton.

REGISTERED HEREFORD & ANGUS BULLS: Home raised, Some Show-Me Select Qualified. 573-701-7828. Belgrade

LAND CLEARING: 417-718-5564. Great Views Brush Clearing. www.GVBrush.com

New Stock!!! Wow, do these look Good!!! Call 573-657-2176 amegamobilehomes.com

FOR SALE OR TRADE: 2 Restored 9' Antique Pool Tables. \$3,500 each, may trade for guns. 573-248-0942, Hannibal.

AUCTION REMINDER: Every Wednesday at 10:30 am. Farmington Livestock. Please see our Auction Directory for more information.

TARTER 7' HDD7: disk, 3pt, adjustable gangs, new, heavy duty. \$1850. 573-205-7860, Owensville.

WOMENS LANDS END PARKA: Large (12-14) extreme Cold Weather long, black, quilted down parka with removable faux fur trimmed hood, knee length, worn once. Excellent Condition. \$100. 417-718-5347, Conway.

TRIM LUMBER: 1X4, 12' lengths. \$200. 636-239-2695.

PINE LOG SIDING SALE: \$1.19 per L.F. www.pineridgerustic.com 573-729-7226, 573-247-2823.

TOASTER OVEN: Like new. \$40. Lebanon, 417-532-8048.

WANTED, TIMBER TO LOG ON SHARES: Honest, reliable, references. 417-533-4607, 417-664-1195.

YOU GOTTA SEE THESE NEW HOUSES!!! Brand new inventory on sale !! 573-499-9993. columbiadiscountshomes.com

MAN'S NEW BEST FRIEND

INTRODUCING THE ALL-NEW MAHINDRA RETRIEVER.



Shown: Retriever 1000

THE MAHINDRA RETRIEVER LEADS THE WAY IN PERFORMANCE

| | | | |
|--|--|--|--|
|  60 MPH TOP SPEED |  LEADING HORSEPOWER |  LEADING TOWING |  LEADING WARRANTY |
|--|--|--|--|

Marshfield Machinery Inc.
222 E. Madison • Marshfield, MO 65706
417-859-2117 • www.marshfieldmachinery.com



Toughest Utility Vehicles ON EARTH



Tractors & Utility Vehicles

CLEARANCE PRICING ON SELECT MAHINDRA TRACTORS

| | |
|-----------------------------|--------|
| 2555 4WD & LDR 55HP SHUTTLE | 24,950 |
| 2538 4WD CAB & LDR 38HP | 28,300 |
| 2538 4WD & LDR 38HP HST | 19,950 |
| 4565 2WD & LDR 65HP | 17,950 |
| 1526 4WD & LDR 26HP HST | 14,500 |
| 1526 4WD & LDR 26HP SHUTTLE | 13,950 |
| MAX 26XL 4WD & LDR 26HP | 15,500 |

USED TRACTORS

| | |
|-----------------------------|--------|
| MAHINDRA 5570 4WD, LDR 70HP | 24,500 |
| MF 4243 CAB LDR 73HP | 22,000 |
| MAHINDRA 6500 4WD, LDR 65HP | 11,000 |
| MF GC1705 4WD, LDR 23HP | 10,500 |
| MF GC1705 4WD, MWR 23HP | 10,500 |
| MF GC1705 4WD 23HP | 7,750 |
| IHC 460 49 HP | 3,500 |

USED ROUND BALERS

| | |
|-------------------|--------|
| MF 2946A 4X6 MESH | 24,000 |
| MF 2846A 4X6 MESH | 20,000 |
| HESSTON 845 4X5 | 7,500 |
| NH 648 4X5 | 7,500 |
| GEHL 2480 4X5 | 4,500 |
| HESSTON 545 4X5 | 4,500 |
| HESSTON 555T 4X6 | 4,500 |
| CASE IH RS451 4X5 | 4,500 |
| HESSTON 560 5X6 | 4,000 |

USED DISC MOWERS

| | |
|----------------|-------|
| JD 275 9FT 3PT | 3,500 |
|----------------|-------|

USED RAKES

| | |
|------------------------|-------|
| SITREX MAGNUM 12 WHEEL | 3,000 |
| VERMEER WR20 8 WHEEL | 1,950 |
| JD 660 DOLLY WHL | 1,250 |

USED MISC.

| | |
|-------------------------|-------|
| BUSH HOG 3615 15FT | 9,000 |
| VERMEER 107 NOTIL DRILL | 7,500 |
| BUSH HOG M346 LOADER | 3,500 |
| WORKSAVER POST DRIVER | 1,750 |

Marshfield Machinery Inc.
222 E. Madison • Marshfield, MO 65706
417-859-2117
www.marshfieldmachinery.com

POULAN PRO 220 CHAINSAW: 20" bar, carrying case. \$100. 573-756-3969, Fredericktown, MO.

FOR SALE OR TRADE 96 FORD F-250: 4x4, Diesel truck. 573-697-5627.

CLARINET: In case, \$125 or trade. 573-327-9068.

ANTIQUe TOOLS BOOK: A price guide to E.C. Simmons Keen Kutter Tools and Cutlery Book. \$5. Lebanon, 417-532-2045.

REV UP YOUR NEW YEAR WITH HUGE SAVINGS AT DON VANCE AUTO GROUP OVER 1000 VEHICLES IN STOCK!

FIND YOUR NEXT CAR @ DONVANCEAUTOGROUP.COM

2017 Ford Mustang GT



5.0I V8 • RWD • Manual
Race Red • Mileage 15,714
Stock #: 29107A

\$26,475

2017 Ford Edge Titanium



Turbo • AWD • Automatic
White • Mileage 15,602
Stock #: 29659A

\$28,475

2016 Ford Fusion SE



4 CYL • FWD • Automatic
Black • Mileage 44,752
Stock #: 7290A

\$13,475

2017 Ford Explorer XLT



3.5L Flexible Fuel • 4WD
Automatic • Black • Mileage 25,396
Stock #: 28639A

\$27,990

2016 Chevrolet Colorado 4WD 271 Crew Cab Turbo Diesel



4WD Automatic • Black
Mileage 72,573 • Stock #: 28984A

\$26,475

2018 Jeep Wrangler Unlimited Rubicon



Convertible • 3.6L • 4WD
Bright White • Mileage 7,035
Stock #: 28412A

\$47,975

2014 Jeep Patriot Latitude



2.4L I4 16V MPFI DOHC
Automatic • 4WD • Mileage 52,298
Deep Cherry Red • Stock #: 7879A

\$12,075

2014 Jeep Patriot Latitude



4Cyl FWD • Red
Mileage 52,298
Stock #: 7879A

\$12,075

2017 Jeep Compass Latitude



2.4L 4WD • Automatic
Black • Mileage 9
Stock #: 1628U

\$21,975

2016 Jeep Wrangler Unlimited



Rubicon • Convertible • 3.6L V6
4WD • Automatic • Silver
Mileage 38,080 • Stock #: 29204A

\$32,975

2014 Jeep Grand Cherokee Limited



6 Cyl • 4WD • Automatic
Cashmere Pearlcoat
Mileage 102,057 • Stock #: 8134A

\$18,475

2017 Dodge Charger SRT Hellcat



6.2L V8 • Supercharged • RWD
Automatic • Go Mango
Mileage 2,720 • Stock #: 27782B

\$57,475

2014 Dodge Journey SXT



3.6L Fwd • White • Automatic
Mileage 81,934
Stock #: 29366A

\$12,990

2017 Dodge Journey Crossroad



4 Cyl • FWD • Automatic
Silver • Mileage 14,415
Stock #: 7590A

\$18,675

2016 Dodge Challenger SXT



6 Cyl • RWD Black
Mileage 18,560
Stock #: 7939R

\$20,975

2011 Cadillac Escalade ESV Luxury



Engine V8 • AWD • Silver
Mileage 120,393
Stock #: 29621A

\$19,900

2018 Chevrolet Silverado 1500 LT



5.3L V8 • Crew Cab
Automatic • Silver
Mileage 10,170 Stock #: 1623U

\$34,975

2011 Chrysler 300c



v8 • Flexible Fuel • Black
Mileage 57,971
Stock #: 28929A

\$13,975

2008 Dodge Ram 1500 ST



8 Cyl • Crew Cab • 4WD Automatic
Red • Mileage 138,148
Stock #: 7664A

\$10,575

2016 Honda HR-VLX



Variable Transmission
Red • Mileage 46,406
Stock #: 28922A

\$16,975

Actual Vehicle May Differ From Photo

HOME OF UPFRONT PRICING!



SEE SALESMAN FOR DETAILS. ALL VEHICLES IN STOCK AT TIME OF AD SUBMISSION BUT SUBJECT TO SALE PRIOR TO PRINTING. NOT RESPONSIBLE FOR TYPOGRAPHICAL ERRORS & OMISSIONS. GRAPHICS MAY NOT ACCURATELY REPRESENT AD VEHICLE. PAYMENTS BASED ON 3.99% @ 72 MONTHS SUBJECT TO CREDIT APPROVAL AND PRODUCT AVAILABILITY.

ONLY 17 MINUTES EAST OF SPRINGFIELD ON I-44 • DONVANCEAUTOGROUP.COM
800-947-7567 • 417-859-2600



MISSOURI BOOKS FOR SALE: Rising Stars & Ozark Constellations. \$6.50. Shepherd of the Hills by Harold Bell Wright. Mysteries of the Ozarks Vol II by Ellen Gray Massey. \$5. Trees of Missouri. \$5. Missouri's Forgotten Heroes by Ross Malone. \$5 417-532-2045, Lebanon.

FENCING: large rolls square metal, heavy duty, about 6 rolls, used. \$90 obo for all, Great buy! Rolla, 928-514-0505.

VILLA HOMES IN ROLLA: Has NEW and USED Mobile Homes. Call David for info: 573-578-8072.

NEW NEW NEW DISPLAY HOUSE!!! Call Marla to hear what is new inside 573-657-7040, chateauhomes.net.

WANTED GOOD USED MOBILE HOMES: Singles & doubles. Call David Hayes, 573-578-8072.

You pull it, we sell it... CHEAP!



U-PULL-IT
SELF SERVICE AUTO PARTS

We also have a large inventory of used tires and be sure to check out our used car lot!

Lebanon, MO
22395 Rt. 66
417-588-3555
Fax 417-588-8955

Mon-Fri 8am - 6pm • Sat 8am - 4:30pm • Sun 9am - 4pm

WWW.SSUPULLIT.COM
Located next to S&S Recycling.



S&S RECYCLING
LEBANON - MTN. GROVE
417-588-3555 417-926-3360

Roll-off, Trailer, and Mobile Crushing Services Available

For All Your Metal Recycling Needs

Lebanon, MO
22395 Rt. 66 • 417-588-3555
Fax 417-588-8955

Mtn. Grove, MO
8930 First Rd • 417-926-3360
Fax 417-926-0180

Monday-Friday 8:00am-4:30pm (Closed 12pm-1pm Lunch)
Saturday 8:00am-Noon
email: contact@ss-recycling.com
Buyer of all types of scrap metal.

TARTER 3PC ROUND HAY BALE RINGS: New, 3 styles. \$175. 573-205-7860, Owensville.

22,000 BTU BLUE FLAME HEATER: propane. \$75. 417-683-7843.

2 METAL COLVERTS: 199" long x 1' round, new never used, \$150. Rolla, 928-514-0505.

TO GIVE AWAY: Great Pyrenees/Australian Shepherd mix. Call 573-201-9430, Rolla.

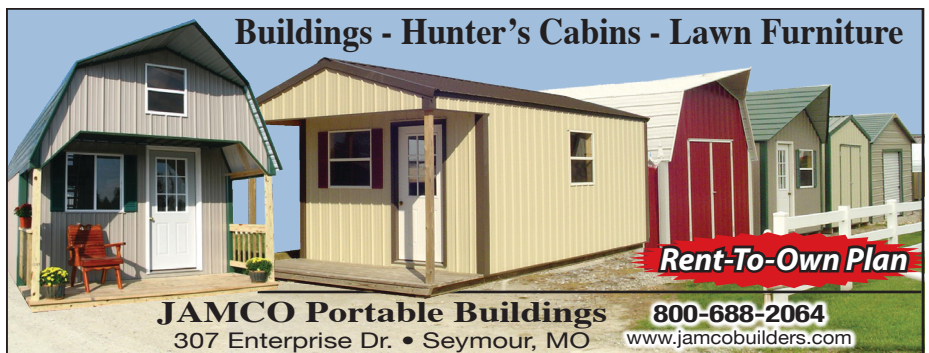
FOR-SALE FARM FRESH: Large brown eggs from free-range hens \$1.50/dozen, case discount. Levi Beechy 639 Smith Rd. Seymour MO 65746.

BROWNING: High power, 9mm 13 rounds. \$850. Pittsburg, 417-852-1088.

OLD 20 GAUGE: Single barrel shotgun. \$175. Desloge, 573-327-9068.

AUCTION REMINDER: Every Wed. @10:30AM Farmington Livestock. Please see our Auction Directory for more information.

INDIAN ARCHERY 1950'S: wood, recurve bow, with original box of Ben Pearson arrows. \$195. Rolla, 573-364-7465.



Buildings - Hunter's Cabins - Lawn Furniture

JAMCO Portable Buildings 800-688-2064
307 Enterprise Dr. • Seymour, MO www.jamcobuilders.com

Rent-To-Own Plan

BUY COMMERCIAL MAINTENANCE COATINGS DIRECT. 573-489-9346.

I DEAL in mobile homes, Free Lance...Call me for a quote, new or used, any style, size, or manufacturer. Carole, 636-384-0527.

ACA REGISTERED LAB PUPPIES: Will be UTD on shots/worming. Ready to go 1/24/19. Yellows & blacks available. \$350. 417-599-9451, Louisburg.

12 GA, BENELLI NOVA: Camo, pump, like new. \$450. Pittsburg, 417-852-1088.

POOL TABLE FOR SALE: Nice. good condition. \$500. 417-259-3437, Norwood.

HUGE NEW SEMI TIRE SALE: 11r-240-r5 16-ply, drive-CS, \$305. Trailer \$290. 11R-22-B5, 16-ply, Drive-CS, 16-ply, \$285. trailer, \$275. 295-75-R24-5, 16-ply, Drive-CS, \$290. Trailer, \$255. 285-75-R22-5, 16-ply, Drive-CS, \$265. trailer \$240. 22-R5 drive Michelin, 900Dyear, retreads, \$240.. F-warranty, F-delivery. Call 417-276-2435.

AUCTION REMINDER: Saturday, January 5th @ 10am. Bruce Sheets Auction. Please see our Auction Directory for more information.

I DEAL in mobile homes, Free Lance...Call me for a quote, new or used, any style, size, or manufacturer. Carole, 636-384-0527.

1929 CHEVROLET FRONT AXLE: Good for rat rod. \$60. 417-683-7843.

BARE 361/407 IH TRACTOR HEAD: \$200. 573-459-6488, New Haven.

PYRENESE/ANATOLIAN: puppies-cuties! parents are excellent sheep dogs, excellent pets, ready January 1st. \$250, reserve yours now! 417-322-0161.

ANTIQUE 12 GAUGE: Single barrel, shotgun. \$175. Desloge, 573-327-9068.

TED WILLIAMS WINCHESTER: model-1200, 12-gauge pump, \$225.00. J.C.Higgins, model-20, 12-gauge pump, \$225.00. Doerun, 573-756-1056.

BEAGLES: One male, One female. Rabbit dogs only. \$250. 573-729-5245.

WANTED TO BUY: Unstyle G John Deere for restoring. Send letter or call 573-768-0068, Jim Schlimme, HC 62, Box 62, Sedgewickville, MO. 63781.

AUCTION REMINDER: Real Estate Auction Tuesday January 8 @ 10 AM. Please see our Auction Directory for more information.

MOBILE HOME BIRD DOG-you tell me what you want, I Find It, new or used, tell me what you want. Carole, 636-384-0527.

REGISTERED BLACK HEREFORD BULLS: Caledonia, 573-210-3614.

436 IH CRANKSHAFT: needs reground. \$100. 573-459-6488, New Haven.

WWW.GVBRUSH.COM: Land Clearing. 417-718-5564. Great Views Brush Clearing

AUCTION REMINDER: Livestock Auction. Every Wednesday at 10:30 AM. Farmington Livestock Auction. Please see our Auction Directory for more information.

DIRECTV: Over 145 channels, cost \$29.99/month. Free installation. Free HD channels. Free Movie Channels. Call Home Trends! 417-299-8479. Authorized DirecTV Dealer.

Year End Savings On In Stock Trailers and Truck Beds!!

- Aluma Utility Trailers--all models..... \$100 off**
- Mission Aluminum Utility Trailers \$100 off**
- 2019 Delta 16' Stock Trailer \$4995**
- 2019 Gooseneck 28' Stock Trailer..... \$13900**
- 2019 Gooseneck 24' Aluminum Stock \$15800**
- 2019 Eby Maverick 24' Aluminum Stock \$18750**
- 2019 Travalum 24' Aluminum Stock..... \$15800**
- 2019 Ironbull Heavy Equipment Trailersstarting at \$4200**
- 2019 Ironbull 30' Hydraulic Dovetail/
Hydraulic Jacks/14 ply Tires..... \$14,250**
- 2019 Ironbull 32' Hydraulic Dovetail..... \$13000**
- 2019 Elite Flatbed Tandem Dual Trailers starting at..... \$8070**
- 2019 Doolittle 16' Cargo Trailer Ramp Door..... \$5200**
- 2019 Doolittle 16' Cargo Trailer Double Doors \$4995**
- 2018 Doolittle 20' Cargo Trailer Ramp Door \$6300**
- 2019 Doolittle 12' Cargo Trailer Ramp Door \$3500**
- 2019 Homesteader 16' Cargo Trailer Ramp Door..... \$4895**
- 2019 Homesteader 14' Cargo Trailer Ramp Door..... \$4695**
- 2019 Homesteader 12' Cargo Trailer Ramp Door \$3100**
- Crownline Haybeds Installed \$7000 and up**
- Chisholm Trail Haybeds Installed \$8600 and up**
- Chisholm Trail Haybeds w/ Dump Feature \$10225 & up**
- Hydrabed Engine Driven Beds \$9200 & up**
- Bradford Steel Flatbeds..... Installed \$2950**
- Bradford Aluminum 4 Box Flatbeds Installed \$4800**

Trailers--Truck Beds--Tires--Parts--Service

LET US BE YOUR PEOPLE!!

WESTGATE TRAILER & EQUIP.



866-833-7156 • 417-926-7733

www.westgatetrailer.net

7136 West Farm Road 140 • Springfield, MO

8920 W Business 60 • Mtn. Grove, MO

FULL SERVICE SHOP

OPEN: Mon.-Fri. 8-5 And "YES!" Sat. 8-Noon!

AUCTION REMINDER: Saturday, January 5 @ 9am. MR Clark Auction Service. Please see our Auction Directory for more information.

88 CHEVY PICK-UP FOR SALE: V8 350, 5-speed, manual transmission. \$1,800. 573-528-2699.

New Stock!!! Wow, do these look **Good!!!** Call 573-657-2176 amegamobilehomes.com

MOSSBERG MODEL-500: 20 or 12 gauge pumps, \$200 each. Doerun, 573-756-1065

CHECKERED WALNUT WOOD STOCK PISTOL GRIP: for Marlin Model 336 or 1895. \$100. Washington. 636-239-2695.

CONOR 9720E: Silage round bale hay wrapper, auto cut/tie, remote control, 3pt, new, demo model. \$16,000. 573-205-7860, Owensville.

TONNEAU COVER: 6'6"x5'8". \$350 OBO. Pittsburg, 417-852-1088.

CORRAL PANEL TRAILER: Almost new. \$750, trades considered. Salem 573-729-0272.

GUN FOR SALE: SKS with 260 rounds ammunition, plus 30 round clip. \$450. Text only, 314-608-4806, Owensville.

REGISTERED BLACK ANGUS BULLS: 417-453-6332. Plato

WWW.MYWEEKLYTRADER.COM

566 HESSTON TRACTOR: w/front-end loader. Norwood, 417-741-0135.

POOL TABLES: Installations, moves, recover, repairs, accessories, etc. 573-646-1700.

CORLEY SAWMILL: \$600. 417-241-0006.

LARGE BOOK ABOUT CATS: hardback, 384 pages. \$7.50. 417-532-2045, Lebanon.

MASH TV SHOW: 7 seasons "5-11" plus final season! \$15. Lebanon, 417-322-2727.

INDUSTRIAL BLIND STITCH SEWING MACHINE: works good. \$150. Stover, 573-377-4872. Please leave message.

41 WILLYS FIBERGLASS CAR FOR SALE: with or without 454HP blower motor. \$28,000. 573-528-2699.

HEAVY DUTY WALKER: 400 lb rated, brand spanking new, large seat/storage, four 7" pivoting wheels, hand brakes. \$200. 417-686-0032, Ava.

HAY FOR SALE: Small square bales alfalfa, timothy and mixed grass. 573-378-7326.

GUN SHOW

JANUARY 4TH - JANUARY 6TH

Fri. 4PM - 8PM • Sat. 9AM - 5PM • Sun. 9AM - 3PM

~ **St. Louis, MO** ~
Orlando Gardens
 (4300 Hoffmeister Ave.)

BUY • SELL • TRADE
INFO: 563-927-8176 • www.rkshows.com

Gooseneck and Winchester Star pipe cattle trailers the best in the business here and ready...



**10% Down
\$152 Per Mo
60 Month w.a.c.
\$8,900**

Cowtown USA
 I-44 Exit 203 • 413 Daniels Rd.
Cuba, MO • 573-885-6300
 www.cowtownusainc.com

CONTINUOUS PIPE FENCE: 6 bar 20'x55", 1.5" round tubing with 2 cross supports 36 sections, \$85 each never installed. Owensville, 573-205-7860.

FOR SALE OR TRADE: 1992 KW T600 Cat 9-speed, fair shape. \$16,000. Would consider parting out. 1996 Dodge Stratus: V6, Auto, many new parts, low miles, clean. \$2,450. 1985 F150 for parts. 573-247-4606, Salem.

BARN WOOD SIDING: 8" & 10" wide. 573-729-7226. www.pineridgerustic.com

REBEL WOOD CIRCULATOR: Triple flue pipe. \$800. 573-528-2699.

SANTA FE TRAIN SET: 2 diesel engines, 5 cars, track, transformer, original box and instructions. \$95/gun trade. Rolla, 573-364-7465.

2 TON PORTABLE GRAIN BIN: new. \$1,850. 573-205-7860, Owensville.

PEAFOWL FOR SALE: Males & females. 573-729-7226, Salem.

WOMEN'S APEX QUALITY GYM SHOES: White, pink and grey trim. Brand new, reinforced stability plate, cushioned. Paid \$143, \$75 firm. 417-686-0032, Ava

Is Your Log Home Starting To Look UGLY?

Professional Staining & Repair
 (Log Homes & Wood Siding)

Call Pine Ridge Rustic
 Log Home Building Supplies

573-729-7226

www.pineridgerustic.com





Cheyenne Acres
 Horse & Tack

BUY - SELL - TRADE
 by Rolla, MO
 Call For Directions & Availability
Call Kip
573-368-9402



CUSTOM SAW MILLING: Lebanon. 417-533-4607, 417-664-1195.

JOHN DEERE 730 PARTS. Call 417-241-0006.

BARE CYLINDER HEAD: for 4010 JD. \$200. 573-459-6488, New Haven.

HAYLAGE: Mixed grass, clover, long cut. \$25 ton. Clever, 417-818-1049.

CLARINET: In case, \$125 or trade. 573-327-9068.

9 AMISH BOOKS: clean, Christian fiction, \$7.50. Lebanon, 417-322-2727.

2004 OPEN RANGE FIFTH WHEEL CAMPER: 34', all weather, in good condition. \$10,500. Lebanon, 417-718-5520.

MOBILE HOME BIRD DOG-you tell me what you want, I Find It, new or used, tell me what you want. Carole, 636-384-0527.

CATTLE HOLDING CHUTES: W/AI cage, side exits, Tarter auto head catch. \$2,000. 573-205-7860, Owensville.

TRUCK BED MAT: Heavy rubber, 5'4"x7'6". \$50. Camo, pump, like new. \$50. Pittsburg, 417-852-1088.

NEW NEW NEW DISPLAY HOUSE!!! Call Marla to hear what is new inside 573-657-7040. chateauhomes.net.

Larry Heisel Rentals
Have Rock?
How about 3,500 lbs. of Hammer
Call Larry!
573-779-1500
www.larryheiselequipment.com
Rental Available in 636 or 573 area code

WILLIAMS PEEP SIGHT: with target knobs. Fits Marlin Model 39a. \$50. 636-239-2695. Washington.

MODEL A: Antique car rear axle. \$165. West Plains, 417-293-0568

PINNACLE RANCH: 2 year old & 18 mo old Red Balancer & Red Angus bulls, 12 mo old Red Balancer and Red Angus heifers. 417-679-4269, 417-679-2330, Gainesville.

ECONO 200 OUTDOOR WOOD FURNACE: Watertype, never used. \$2,850. 573-205-7860, Owensville.

JOHN DEERE SNOWBLOWER: Mounts on older 100 and 200 series lawn tractors, great shape. \$100. Mammoth Springs 870-966-3483.

REGISTERED GERMAN SHEPHERD PUPS: 1 male, 4 females, Fire is Grand Champion of Search and Rescue. \$200. 417-741-0440. Hartville.

FOR SALE OR TRADE 96 FORD F-250: 4x4, Diesel truck. 573-697-5627.

LIONEL TRAIN SET: Steam engine, tender, caboose and other car, track and transformer. \$195. 573-364-7465, Rolla.

AUCTION REMINDER: Closed Dec 24 & 31, Cattle Sale every Monday 12 Noon. Salem Livestock. Please see our Auction Directory for more information.

JOHN DEERE: 4050 MWFD, Cab, Air, Powershift, New tires, call for details, Reduced price. \$28,500. Owensville, 573-205-7860.

AUCTION REMINDER: Sat. January 5th, @10am, Atkinson. Parker Auction Service. Please see our Auction Directory for more information.

WWW.MYWEEKLYTRADER.COM

TWO VIVINTECH LARGE WINDOWS: New from Lowes, double pane. 62.5x38.5 \$100 obo, 49.5x36.5 \$50 obo, deal for both. Rolla, 928-514-0505.

6400 SQ FT BUILDING FOR SALE: Located on historic route 66 in Cuba Mo. 573-205-7860.

YOU GOTTA SEE THESE NEW HOUSES!!! Brand new inventory on sale !! 573-499-9993. columbiadiscountshomes.com.

TARTER CATTLEMEN: Series 6, squeeze chutes, auto headcatch. \$2,975. 573-205-7860, Owensville.

1929 CHEVROLET FRONT AXLE: Good for rat rod. \$60. 417-683-7843.

METRO MOTORS INC.

R.V. SALES

**NEW GREY WOLF, CHEROKEE & ROCKWOOD!
GREAT SELECTION OF NEW & PREOWNED RVs**

| | |
|---|--|
| <ul style="list-style-type: none"> •2019 274DBJ Cherokee TRL Lg. Slide-Out, Fireplace, 15,000 BTU AC, Enclosed Tanks \$22,900 •2019 16 BHS Wolf Pup \$12,500 •2017 26RL Greywolf TRL \$17,500 •2018 2906WS Rockwood TRC 3 Slides \$30,900 •2016 17BH Greywolf TRL \$15,500 | <ul style="list-style-type: none"> •2000 34' Allegro Bay V-10 Ford, 71,xxx Miles..... Sale Price \$24,500 •2006 26' Salem TRL Slide-Out \$8,500 •2018 122 S Rockwood A Frame \$12,500 •2017 210 RB I-Go Cloud Trailer /New \$17,500 •2009 24' Winnebago View 6 Cyl., Myrcedes Diesel, 59,xxx Miles, 2 Slides..... \$43,900 •2018 82975 5th Wheel, Ext. Living Room, R/King Bed, 4 Slides. \$37,500 |
|---|--|

"Where Your Satisfaction Really Counts"
2727 S. Campbell - Springfield, MO - Visit our website at www.metro-motors.biz
417-882-6800

BUYING ALL BEER SIGNS: PRE 1960 FALSTAFF, HAMMS, STAG, ANHEUSER, GRIESEDIECK. 573-680-5377.

ROUND BALE TWINE: Netwrap, silage film, end of year sale. 573-205-7860, Owensville.

REMINGTON WINGMASTER: model-870, 12-gauge, \$275, Remington Express, model-870, 20-gauge, \$250. Doerun, 573-756-1065

3 TON LIVESTOCK CREEP FEEDER: on wheels, new creep gates, new tires. \$2,275. 573-205-7860, Owensville.

New Stock!!! Wow, do these look Good!!! Call 573-657-2176 amegamobilehomes.com

SACAGAWEA GOLDEN DOLLARS: Face value \$1. Original issue 2000, uncirculated. In rolls of 5. \$30. 417-686-0032, Ava.

MISSOURI BOOKS FOR SALE: Rising Stars & Ozark Constellations. \$6.50. Shepherd of the Hills by Harold Bell Wright. Mysteries of the Ozarks Vol II by Ellen Gray Massey. \$5. Trees of Missouri. \$5. Missouri's Forgotten Heroes by Ross Malone. \$5 417-532-2045, Lebanon.

INDIAN HILLS LAKE LOTS: 2 Adjoining lots, close to entrance. Cuba Mo, 573-205-7860.

POULAN PRO 220 CHAINSAW: 20" bar, carrying case. \$100. 573-756-3969, Fredericktown, MO.

ANGUS REGISTERED BULLS FOR SALE: Smith Valley Angus. 16-24 mo old bulls, several AI sires. Starting \$2,200. smithvalleyangus.com. 573-729-3616, 573-247-7165, Salem.

FIREARMS: Professional Repairs and Restorations. Baron's Gunsmithing. 573-363-5801, Camdenton.

ANTIQUe TOOLS BOOK: A price guide to E.C. Simmons Keen Kutter Tools and Cutlery Book. \$5. Lebanon, 417-532-2045.

1996 Chevy 4X4: Heavy Half ex-cab, 8' bed, no cancer, nice interior/tires, new radiator, WP, belts, everything works, original. \$5,300 OBO. Will send pictures. 918-232-1521, Coweta, OK.

LAND CLEARING: 417-718-5564. Great Views Brush Clearing. www.GVBrush.com

AUCTION REMINDER: Every Wednesday at 10:30 am. Farmington Livestock. Please see our Auction Directory for more information.

TARTER 7' HDD7: disk, 3pt, adjustable gangs, new, heavy duty. \$1850. 573-205-7860, Owensville.

FOR SALE OR TRADE: 2 Restored 9' Antique Pool Tables. \$3,500 each, may trade for guns. 573-248-0942, Hannibal.

YOU GOTTA SEE THESE NEW HOUSES!!! Brand new inventory on sale !! 573-499-9993. columbiadiscounthomes.com.

TARTER 3PC ROUND HAY BALE RINGS: New, 3 styles. \$175. 573-205-7860, Owensville.

22,000 BTU BLUE FLAME HEATER: propane. \$75. 417-683-7843.

2 METAL COLVERTS: 199" long x 1'round, new never used, \$150. cf2 Rolla, 928-514-0505.

ACA REGISTERED LAB PUPPIES: Will be UTD on shots/worming. Ready to go 1/24/19. Yellows & blacks available. \$350. 417-599-9451, Louisburg.

I DEAL in mobile homes, Free Lance....Call me for a quote, new or used, any style, size, or manufacturer. Carole, 636-384-0527.



AMERICAN STAVE CO.

WANTED

WHITE OAK STAVE LOGS

- COMPETITIVE PRICES
- ON THE SPOT PAYMENT
- TRUCKING OPTIONS AVAILABLE
- KNOWLEDGEABLE BUYERS

Chad Cook
417-718-2950

Buying yard 5 miles north of Salem, Mo on Hwy 19
WWW.AMERICANSTAVECOMPANY.COM

- We need at least one semi load to send a buyer.
- We do not buy standing timber.



NEW MAHINDRA ROXOR FRESH OFF THE ASSEMBLY LINE!!

- Steel Body no plastic to break
- 5 Speed Manual Transmission no belt to break
- Fully-boxed, ladder-construction, steel truck-style frame
- Turbo Diesel 4 cycle engine which produces 144 ft lbs of torque and 3490 lbs of towing capacity to get your jobs done. • Made in Detroit
- 2 YEAR WARRANTY OR 12,000 MILES • Starting at \$15,999

Visit us at www.cowtownusainc.com

AUCTION REMINDER: Saturday, January 12 @ 9:00AM. Magee Auction. Please see our Auction Directory for more information.

BLACK ANGUS BULLS: Objective T510, Bloodline, 20 month old & up. \$1,850 & up. 573-205-7860, Owensville.

1991 VOLVO LOG TRUCK: With 8,000 hood loader and pup trailer. \$28,000. 573-546-0751, Ironton.

REGISTERED HEREFORD & ANGUS BULLS: Home raised, Some Show-Me Select Qualified. 573-701-7828. Belgrade

WANTED, TIMBER TO LOG ON SHARES: Honest, reliable, references. 417-533-4607, 417-664-1195.

WOMENS LANDS END PARKA: Large (12-14) extreme Cold Weather long, black, quilted down parka with removable faux fur trimmed hood, knee length, worn once. Excellent Condition. \$100. 417-718-5347, Conway.

TRIM LUMBER: 1X4, 12' lengths. \$200. 636-239-2695.

PINE LOG SIDING SALE: \$1.19 per L.F. www.pineridgerustic.com 573-729-7226, 573-247-2823.

TOASTER OVEN: Like new. \$40. Lebanon, 417-532-8048.

12 GA, BENELLI NOVA: Camo, pump, like new. \$450. Pittsburg, 417-852-1088.

FENCING: large rolls square metal, heavy duty, about 6 rolls, used. \$90 obo for all, Great buy! Rolla, 928-514-0505.

NEW NEW NEW DISPLAY HOUSE!!! Call Marla to hear what is new inside 573-657-7040, chateauhomes.net.

TO GIVE AWAY: Great Pyrenees/Australian Shepherd mix. Call 573-201-9430, Rolla.

FOR-SALE FARM FRESH: Large brown eggs from free-range hens \$1.50/dozen, case discount. Levi Beechy 639 Smith Rd. Seymour MO 65746.

BROWNING: High power, 9mm 13 rounds. \$850. Pittsburg, 417-852-1088.

POOL TABLE FOR SALE: Nice. good condition. \$500. 417-259-3437, Norwood.

OLD 20 GAUGE: Single barrel shotgun. \$175. Desloge, 573-327-9068.

BARE 361/407 IH TRACTOR HEAD: \$200. 573-459-6488, New Haven.

New Stock!!! Wow, do these look **Good!!!**
Call 573-657-2176 amegamobilehomes.com

MOSSBERG MODEL-500: 20 or 12 gauge pumps, \$200 each. Doerun, 573-756-1065

REGISTERED BLACK ANGUS BULLS: 417-453-6332. Plato

CORRAL PANEL TRAILER: Almost new. \$750, trades considered. Salem 573-729-0272.

436 IH CRANKSHAFT: needs reground. \$100. 573-459-6488, New Haven.

566 HESSTON TRACTOR: w/front-end loader. Norwood, 417-741-0135.

MASH TV SHOW: 7 seasons "5-11" plus final season! \$15. Lebanon, 417-322-2727.

HAY FOR SALE: Small square bales alfalfa, timothy and mixed grass. 573-378-7326.

JOHN DEERE 730 PARTS. Call 417-241-0006.

Carolina Carports
Quality Is Our First Priority!

Happy New Years

Thank you for your continued support, To show our appreciation We Are Offering: **\$1,195 - \$9,999 = 10% OFF** **Over \$10,000 = 12% OFF** Limited Time Offer

JENKINS Since 1964 BUILDINGS, LLC
Showroom & Sales Office Bolivar, Missouri 65613 **(417) 326-4228**
Next to Smith's Restaurant, Hwy. 13 & U

Corporate Office Polk, Missouri 65727 **(417) 852-4228**
2 Miles South of Pittsburg on Hwy. 64

Find us on **facebook**
JenkinsBuildings.com
Pricing Subject to Change

Rotating Hay Carriage

Cowtown USA

\$5,150
\$510 Down
\$90 Per Week
W.A.C.

Cowtown USA • 1-800-258-6898
I-44 & Hwy F • Exit 203 • Cuba, MO
View At cowtownusainc.com - See Video

WANTED TO BUY: Unstyle G John Deere for restoring. Send letter or call 573-768-0068, Jim Schlimme, HC 62, Box 62, Sedgewickville, MO. 63781.

AUCTION REMINDER: Real Estate Auction Tuesday January 8 @ 10 AM. Please see our Auction Directory for more information.

MOBILE HOME BIRD DOG-you tell me what you want, I Find It, new or used, tell me what you want. Carole, 636-384-0527.

DIRECTV: Over 145 channels, cost \$29.99/month. Free installation. Free HD channels. Free Movie Channels. Call Home Trends! 417-299-8479. Authorized DirecTV Dealer.

WWW.GVBRUSH.COM: Land Clearing. 417-718-5564. Great Views Brush Clearing

AUCTION REMINDER: Livestock Auction. Every Wednesday at 10:30 AM. Farmington Livestock Auction. Please see our Auction Directory for more information.

GUN FOR SALE: SKS with 260 rounds ammunition, plus 30 round clip. \$450. Text only, 314-608-4806, Owensville.

WWW.MYWEEKLYTRADER.COM

MOBILE HOME BIRD DOG-you tell me what you want, I Find It, new or used, tell me what you want. Carole, 636-384-0527.

CONTINUOUS PIPE FENCE: 6 bar 20"x55", 1.5" round tubing with 2 cross supports 36 sections, \$85 each never installed. Owensville, 573-205-7860.

INDUSTRIAL BLIND STITCH SEWING MACHINE: works good. \$150. Stover, 573-377-4872. Please leave message.

BARN WOOD SIDING: 8" & 10" wide. 573-729-7226. www.pineridgerustic.com

HEAVY DUTY WALKER: 400 lb rated, brand spanking new, large seat/storage, four 7" pivoting wheels, hand brakes. \$200. 417-686-0032, Ava.

OMAR'S LOGGING: Oak and Walnut, excellent prices, Amish owned and operated. 417-741-0440, leave message.

5030 FORD TRACTOR: with loader, 1995 model, 62HP, 1,814 original hours. 573-392-5371, Barnett. MO.

41 WILLYS FIBERGLASS CAR FOR SALE: with or without 454HP blower motor. \$28,000. 573-528-2699.

PEAFOWL FOR SALE: Males & females. 573-729-7226, Salem.

2004 OPEN RANGE FIFTH WHEEL CAMPER: 34', all weather, in good condition. \$10,500. Lebanon, 417-718-5520.

HAYLAGE: Mixed grass, clover, long cut. \$25 ton. Clever, 417-818-1049.

www.gatorjetboats.com

GATORBOATS JET

Jet Drive & Performance Parts

IN-STOCK!

(573) 885-0052

86 Hwy. UU Cuba, MO (2 Miles East of Cuba)

Custom Built Aluminum Inboard Jets

REGISTERED BLACK HERFORD BULLS: Caledonia, 573-210-3614.

CHECKERED WALNUT WOOD STOCK PISTOL GRIP: for Marlin Model 336 or 1895. \$100. Washington. 636-239-2695.

CONOR 9720E: Silage round bale hay wrapper, auto cut/tie, remote control, 3pt, new, demo model. \$16,000. 573-205-7860, Owensville.

TONNEAU COVER: 6'6"x5'8". \$350 OBO. Pittsburg, 417-852-1088.

POOL TABLES: Installations, moves, repairs, accessories, etc. 573-646-1700.

CORLEY SAWMILL: \$600. 417-241-0006.

LARGE BOOK ABOUT CATS: hard-back, 384 pages. \$7.50. 417-532-2045, Lebanon.

SANTA FE TRAIN SET: 2 diesel engines, 5 cars, track, transformer, original box and instructions. \$95/gun trade. Rolla, 573-364-7465.

WEEKLY TRADER MAGAZINE

by mail!



Delivery Deals Week To Week

Simply return this completed Subscription Form with check or money order
to: **Weekly Trader, P.O. Box 192, Lebanon, MO 65536**

WEEKLY
TRADER
MAGAZINE
by mail!

| | |
|----------------------|----------|
| _____ 4 weeks | \$8.00 |
| _____ 12 weeks | \$24.00 |
| _____ 24 weeks | \$48.00 |
| _____ 52 weeks | \$104.00 |

Name: _____

Address: _____

City, State, Zip: _____

Phone: _____

You may also call our office 417-532-2800
to subscribe with credit or debit card.

2 TON PORTABLE GRAIN BIN: new. \$1,850. 573-205-7860, Owensville.

MODEL A: Antique car rear axle. \$165. West Plains, 417-293-0568

CUSTOM SAW MILLING: Lebanon. 417-533-4607, 417-664-1195.

CATTLE HOLDING CHUTES: W/AI cage, side exits, Tarter auto head catch. \$2,000. 573-205-7860, Owensville.

JOHN DEERE SNOWBLOWER: Mounts on older 100 and 200 series lawn tractors, great shape. \$100. Mammoth Springs 870-966-3483.

JOHN DEERE: 4050 MWFD, Cab, Air, Powershift, New tires, call for details, Reduced price. \$28,500. Owensville, 573-205-7860.

BUYING ALL BEER SIGNS: PRE 1960 FALSTAFF, HAMMS, STAG, ANHEUSER, GRIESE DIECK. 573-680-5377.

Starnes Auto LLC
22115 Rt. 66 • Lebanon, MO 65536
417.588.3159 Office • 417.718.2707 Cell
www.starnesauto.com

| | |
|---|-----------------|
| 1997 FORD F150 EXT CAB WHITE & GOLD, 2WD, 195,XXX MILES | \$3,350 |
| 1999 DODGE RAM WHITE, REG CAB, 4WD, 261,XXX MILES | \$2,850 |
| 1999 PONTIAC GRAND AM GT WHITE, 4DR | \$1,950 |
| 1999 VOLKSWAGEN BEETLE RED, 5 SPEED | \$1,850 |
| 2000 GRAND PRIX GOLD, 184,XXX MILES | \$2,500 |
| 2001 CHEVY TAHOE WHITE, 219,XXX MILES | \$4,200 |
| 2001 GMC SONOMA PEWTER, 4 DOOR, 127,XXX MILES | \$5,500 |
| 2001 GMC YUKON BLACK, 4WD, 237,XXX MILES | \$4,200 |
| 2002 BUICK LESABRE GREEN | \$2,000 |
| 2003 PONTIAC GRAND AM BLACK, 59,XXX MILES | \$3,000 |
| 2004 CHEVY SILVERADO PEWTER, EXT CAB, 2WD, 5.3, 164,XXX MILES | \$5,200 |
| 2004 GMC ENVOY XUV SILVER, 2WD, V8, 179,XXX MILES | \$4,250 |
| 2005 BUICK TERRAZA SILVER, 185,XXX MILES | \$3,250 |
| 2005 GMC SIERRA REG CAB BLUE, 2WD, 132,XXX MILES | \$4,200 |
| 2006 CHEVY IMPALA LT SILVER, 123,XXX MILES | \$4,400 |
| 2006 PONTIAC TORRENT BLACK 199,XXX MILES | \$2,250 |
| 2006 PONTIAC G6 GT WHITE, CONV, 73,XXX MILES | \$6,250 |
| 2008 CHEVY EQUINOX WHITE, 2WD, SUNROOF, 167,XXX MILES | \$2,900 |
| 2008 SATURN OUTLOOK XR MAROON, 2WD, 171,XXX MILES | \$3,950 |
| 2008 CHEVY COBALT BLACK, 161,XXX MILES | \$1,950 |
| 2010 CHEVY HHR SILVER, 68,XXX MILES | \$4,500 |
| 2010 FORD FUSION GOLD, SUNROOF, LEATHER, 166,XXX MILES | \$3,650 |
| 2010 PONTIAC G6 SILVER, GOOD TITLE, 118,XXX MILES | \$4,800 |
| 2011 CHEVY EQUINOX BROWN, GOOD TITLE, 89,XXX MILES | \$7,950 |
| 2012 GMC TERRAIN TAUPE, 112,XXX MILES | \$7,250 |
| 2012 GMC TERRAIN BLACK, V6, 120,5XX MILES | \$8,200 |
| 2013 CHEVY EQUINOX CHARCOAL, 53,XXX MILES | \$10,950 |
| 2015 CHEVY EQUINOX BLACK, V6, 79,XXX | \$13,500 |
| 2016 BUICK ENCORE BROWN, 17,5XX MILES | \$14,850 |

WE DO ALIGNMENTS!

FOR SALE OR TRADE: 1992 KW T600 Cat 9-speed, fair shape. \$16,000. Would consider parting out. 1996 Dodge Stratus: V6, Auto, many new parts, low miles, clean. \$2,450. 1985 F150 for parts. 573-247-4606, Salem.

TAYLOR TRUCKS & EQUIPMENT

417-924-2026 • 2676 Hwy. 5, Mansfield, MO

| | |
|---|---|
| <p>New Mowers! Bush-Whacker, Big Bee</p> <p>5' and 6' Rotary Tillers</p> <p>Farm Tires, PTO's & Parts for Rotary Mowers, Storage Containers & Dry Vans – 20' - 53'</p> <p>Farm Tractor Implements</p> <p>Plows, Discs, and More Skidsteer Attachments: Pallet Forks, Buckets, Grapples, Hay Spears & Tree Shears - RR Ties</p> | <p>TRAILER PARTS & REPAIR</p> <hr/> <p>NEW SEMI TIRES - DRIVE & STEER</p> |
| <p>We Invite You To Come By & Look Us Over! Located 2.5 Miles North Of Mansfield, MO On Hwy 5</p> | |

ANGUS REGISTERED BULLS FOR SALE: Smith Valley Angus. 16-24 mo old bulls, several AI sires. Starting \$2,200. smithvalleyangus.com. 573-729-3616, 573-247-7165, Salem.

TRUCK BED MAT: Heavy rubber, 5'4"x7'6". \$50. Camo, pump, like new. \$50. Pittsburg, 417-852-1088.

NEW NEW NEW DISPLAY HOUSE!!! Call Marla to hear what is new inside 573-657-7040. chateauhomes.net.

WILLIAMS PEEP SIGHT: with target knobs. Fits Marlin Model 39a. \$50. 636-239-2695. Washington.

ECONO 200 OUTDOOR WOOD FURNACE: Watertype, never used. \$2,850. 573-205-7860, Owensville.

REGISTERED GERMAN SHEPHERD PUPS: 1 male, 4 females, Fire is Grand Champion of Search and Rescue. \$200. 417-741-0440. Hartville.

LIONEL TRAIN SET: Steam engine, tender, caboose and other car, track and transformer. \$195. 573-364-7465, Rolla.

WWW.MYWEEKLYTRADER.COM

AUCTION REMINDER: Closed Dec 24 & 31, Cattle Sale every Monday 12 Noon. Salem Livestock. Please see our Auction Directory for more information.

ROUND BALE TWINE: Netwrap, silage film, end of year sale. 573-205-7860, Owensville.

WOMEN'S APEX QUALITY GYM SHOES: White, pink and grey trim. Brand new, reinforced stability plate, cushioned. Paid \$143, \$75 firm. 417-686-0032, Ava

9 AMISH BOOKS: clean, Christian fiction, \$7.50. Lebanon, 417-322-2727.

AUCTION REMINDER: Sat. January 5th, @10am, Atkinson. Parker Auction Service. Please see our Auction Directory for more information.

REBEL WOOD CIRCULATOR: Triple flue pipe. \$800. 573-528-2699.

BARE CYLINDER HEAD: for 4010 JD. \$200. 573-459-6488, New Haven.

DARDEN PROFESSIONAL TIMBER HARVESTING, BUYING STANDING TIMBER: Great prices, improve wildlife habitat and improve forest health. State Certified & Fully Insured! 573-247-4808 or 573-739-1122. Salem

PINNACLE RANCH: 2 year old & 18 mo old Red Balancer & Red Angus bulls, 12 mo old Red Balancer and Red Angus heifers. 417-679-4269, 417-679-2330, Gainesville.

REMINGTON WINGMASTER: model-870, 12-gauge, \$275, Remington Express, model-870, 20-gauge, \$250. Doerun, 573-756-1065

1996 Chevy 4X4: Heavy Half ex-cab, 8' bed, no cancer, nice interior/tires, new radiator, WP, belts, everything works, original. \$5,300 OBO. Will send pictures. 918-232-1521, Coweta, OK.

\$2,500 - \$11,000 LOT

Lindsay Chevrolet & Lindsay Ford

Mon.-Fri. 8 am - 7 pm
Sat. 8 am - 5 pm
Not responsible for typos.
* with approved credit

417-588-7995

West City Route 66
& South Monroe
Lebanon, MO

Bobby Rogers, Manager • Aaron Wehner, Finance • Mike Forner, Steve "Whitey" Helton, Larry Davis, Sales

Cars

| | | |
|-----------|---|----------|
| LC27648D1 | 2006 CHEVY IMPALA LS V6, AUTO, FWD, SILVER | \$5,700 |
| LC28143A | 2007 MAZDA 3 S 4CYL., AUTO, FWD, BLUE | \$5,900 |
| QC75187 | 2007 PONTIAC G6 CONV. V6, AUTO, FWD, RED..... | \$7,300 |
| QC75102 | 2010 HONDA FIT HATCHBACK 4CYL., AUTO, FWD, BLUE | \$7,400 |
| QC75067 | 2011 TOYOTA CAMRY LE 4CYL., AUTO, FWD, GRAY | \$7,400 |
| QC74846A | 2012 HYUNDAI VELOSTER 3-D COUPE 4CYL., AUTO, FWD, BLUE | \$9,400 |
| QC75330 | 2012 NISSAN LEAF SV 24 K.W. ELECTRIC, AUTO, FWD, BLUE..... | \$9,400 |
| LC28045A | 2013 FORD FUSION SE 4CYL., AUTO, FWD, MAROON..... | \$9,900 |
| LC28091 | 2013 CHRYSLER 200 TOURING 4CYL., AUTO, FWD, BLACK | \$7,800 |
| QC75221 | 2013 FORD FUSION SE 4CYL., AUTO, FWD, BLACK | \$11,400 |
| QC75170 | 2014 FORD FIESTA SE 4CYL., AUTO, FWD, SILVER..... | \$8,900 |
| LC28298 | 2015 KIA SOUL WAGON 4CYL., AUTO, FWD, BLACK | \$11,400 |
| LC28171 | 2015 CHEVY SONIC LS 4CYL., AUTO, FWD, BLUE | \$8,400 |
| QC57286A | 2015 FORD FIESTA SE 4CYL., AUTO, FWD, WHITE | \$10,400 |

Trucks

| | | |
|----------|--|----------|
| QT75365 | 2000 GMC SIERRA SLT EXT. CAB V8, AUTO, 4WD, GRAY | \$7,900 |
| LT28032B | 2000 CHEVY SILVERADO EXT. CAB 3/4 TON, V8, AUTO, 4WD, MAROON..... | \$6,400 |
| LT6859A1 | 2002 FORD F150 EXT. CAB V8, AUTO, 4WD, RED..... | \$8,600 |
| LT28228A | 2004 CHEVY AVALANCHE CREW V8, AUTO, 4WD, MAROON | \$6,900 |
| LT7171A | 2005 DODGE RAM SL REG. CAB V8, MANUAL, 4WD, BLUE..... | \$8,400 |
| LT7171A | 2005 DODGE RAM REG. CAB V8, 5SPD., 3/4 TON, 4WD, BLUE..... | \$9,400 |
| QT75327 | 2005 FORD F150 EXT. CAB V8, AUTO, 4WD, BLACK..... | \$9,900 |
| QT75292 | 2005 DODGE RAM CREW V8, AUTO, 4WD, BEIGE..... | \$10,900 |
| LT28260 | 2006 CHEVY SILVERADO V6, AUTO, 2WD, BLACK..... | \$8,900 |
| QT75349 | 2007 CHEVY SILVERADO LT EXT. CAB V8, AUTO, 4WD, RED..... | \$11,900 |

Trucks

| | | |
|----------|---|----------|
| QT75276 | 2008 DODGE RAM QUAD CAB V8, AUTO, FWD, GRAY..... | \$10,400 |
| LT28175B | 2011 KIA SORENTO EX V6, AUTO, FWD, BURGUNDY..... | \$8,900 |
| LT7132B1 | 2012 CHEVY COLORADO EXT. CAB 5CYL., AUTO, 4WD, SILVER..... | \$9,800 |

SUVs

| | | |
|----------|--|----------|
| LT6999A | 2004 CHEVY TRAILBLAZER V6, AUTO, 4WD, MAROON | \$5,400 |
| QT75263A | 2006 FORD EXPEDITION XLT V8, AUTO, 4WD, WHITE..... | \$7,600 |
| QT75183 | 2006 FORD EXPLORER XLT V6, AUTO, 4WD, BLUE..... | \$6,500 |
| LT28191 | 2007 FORD EXPEDITION LIMITED V8, AUTO, 4WD, WHITE..... | \$7,500 |
| QT75226 | 2008 HYUNDAI ENTOURAGE GLS V6, AUTO, FWD, MAROON | \$7,400 |
| QT75097A | 2011 FORD ESCAPE XLS 4CYL., 5SPD., FWD, BLACK..... | \$5,900 |
| QT74910 | 2011 FORD EDGE SEL V6, AUTO, FWD, SILVER | \$9,300 |
| QT75152 | 2013 CHEVY CAPTIVA SPORT LS 4CYL., AUTO, FWD, WHITE | \$8,900 |
| LC25367 | 2014 CHEVY IMPALA LS V6, AUTO, FWD, BLACK..... | \$10,900 |
| LC28336A | 2014 KIA FORTE LX 4CYL., AUTO, FWD, WHITE | \$8,200 |
| LT28174A | 2014 CHEVY CAPTIVA LT 4CYL., AUTO, FWD, WHITE | \$9,800 |
| QT75179 | 2014 DODGE JOURNEY SXT V6, AUTO, FWD, SILVER | \$9,600 |

Vans

| | | |
|---------|---|---------|
| QT75357 | 2001 CHRYSLER TOWN & COUNTRY LXI V6, AUTO, FWD, GOLD | \$5,900 |
| QT75277 | 2012 NISSAN QUEST S V6, AUTO, FWD, TAN..... | \$7,900 |

\$5,000 or Less!

| | | |
|---------|---|---------|
| QT75318 | 2006 CHRYSLER TOWN & COUNTRY TOURING V6, AUTO, FWD, RED..... | \$4,900 |
|---------|---|---------|

OVER 90 PRE-OWNED UNITS IN STOCK!

WWW.LINDSAYAUTOGROUP.COM

CLARINET: In case, \$125 or trade. 573-327-9068.

3 TON LIVESTOCK CREEP FEEDER: on wheels, new creep gates, new tires. \$2,275. 573-205-7860, Owensville.

INDIAN HILLS LAKE LOTS: 2 Adjoining lots, close to entrance. Cuba Mo, 573-205-7860.

New Stock!!! Wow, do these look **Good!!!** Call 573-657-2176 amegamobilehomes.com

ANTIQUE TOOLS BOOK: A price guide to E.C. Simmons Keen Kutter Tools and Cutlery Book. \$5. Lebanon, 417-532-2045.

TONNEAU COVER: 6'6"x5'8". \$350 OBO. Pittsburg, 417-852-1088.

Meet...

Shawna Bradley

Your Auction Specialist



Call or email me today to get your next auction in Central Missouri's #1 Shopper!



WEEKLY TRADER MAGAZINE

office: 417-532-9131 ext. 215 • 417-895-9324
cell: 417-322-3814 • shawna@weekly-trader.com

FIREARMS: Professional Repairs and Restorations. Baron's Gunsmithing. 573-363-5801, Camdenton.

FOR SALE OR TRADE 96 FORD F-250: 4x4, Diesel truck. 573-697-5627.

LAND CLEARING: 417-718-5564. Great Views Brush Clearing. www.GVBrush.com

POULAN PRO 220 CHAINSAW: 20" bar, carrying case. \$100. 573-756-3969, Fredericktown, MO.

0% for 4 Years*



*with approved credit
Outdoor Wood Furnace
as low as **\$168** per month

HEATMOR MIDWEST

Licking, MO 65542
573-674-2962

TWO VIVINTECH LARGE WINDOWS: New from Lowes, double pane. 62.5x38.5 \$100 obo, 49.5x36.5 \$50 obo, deal for both. Rolla, 928-514-0505.

6400 SQ FT BUILDING FOR SALE: Located on historic route 66 in Cuba Mo. 573-205-7860.

YOU GOTTA SEE THESE NEW HOUSES!!! Brand new inventory on sale !! 573-499-9993. columbiadiscountshomes.com

TARTER CATTLEMEN: Series 6, squeeze chutes, auto headcatch. \$2,975. 573-205-7860, Owensville.

SACAGAWEA GOLDEN DOLLARS: Face value \$1. Original issue 2000, uncirculated. In rolls of 5. \$30. 417-686-0032, Ava.

AUCTION REMINDER: Saturday, January 12 @ 9:00AM. Magee Auction. Please see our Auction Directory for more information.

BLACK ANGUS BULLS: Objective T510, Bloodline, 20 month old & up. \$1,850 & up. 573-205-7860, Owensville.

1991 VOLVO LOG TRUCK: With 8,000 hood loader and pup trailer. \$28,000. 573-546-0751, Ironton.

REGISTERED HEREFORD & ANGUS BULLS: Home raised, Some Show-Me Select Qualified. 573-701-7828. Belgrade

FOR SALE OR TRADE: 2 Restored 9' Antique Pool Tables. \$3,500 each, may trade for guns. 573-248-0942, Hannibal.

CORRAL PANEL TRAILER: Almost new. \$750, trades considered. Salem 573-729-0272.

WEEKLY TRADER MAGAZINE



AUCTION DIRECTORY

Thursday, January 3

11:00 AM Mid Missouri Stockyards..... 24

Saturday, January 5

9:00 AM M.R. Clark Auction..... 19

10:00 AM Parker Auction Service 20

10:00 AM Bruce Scheets Auctions 22

12:00 PM Buffalo Livestock Market 24

Monday, January 7

12:00 PM Salem Livestock Auction 24

Tuesday, January 8

12:00 PM Bryant Auction 21

6:00 PM Salem Livestock Auction 24

Wednesday, January 9

10:30 AM Farmington Livestock 24

Saturday, January 12

9:00 AM Magee Auction & Realty 23

Happy New Year!

Call 1-800-665-8875

to get your auction listed in the Weekly Trader.

AUCTIONEERS

 Did you know the WEEKLY TRADER covers more counties in rural Missouri than any other publication?

Firm deadline is 12:00 PM Friday, prior to next week's Thursday publication date.

AUCTION REMINDER: Every Wednesday at 10:30 am. Farmington Livestock. Please see our Auction Directory for more information.

TARTER 7' HDD7: disk, 3pt, adjustable gang, new, heavy duty. \$1850. 573-205-7860, Owensville.

TOASTER OVEN: Like new. \$40. Lebanon, 417-532-8048.

TRIM LUMBER: 1X4, 12' lengths. \$200. 636-239-2695.

WOMENS LANDS END PARKA: Large (12-14) extreme Cold Weather long, black, quilted down parka with removable faux fur trimmed hood, knee length, worn once. Excellent Condition. \$100. 417-718-5347, Conway.

WANTED, TIMBER TO LOG ON SHARES: Honest, reliable, references. 417-533-4607, 417-664-1195.

YOU GOTTA SEE THESE NEW HOUSES!!! Brand new inventory on sale !! 573-499-9993. columbiadiscounthomes.com.

PINE LOG SIDING SALE: \$1.19 per L.F. www.pineridgerustic.com 573-729-7226, 573-247-2823.

INDIAN ARCHERY 1950'S: wood, recurve bow, with original box of Ben Pearson arrows. \$195. Rolla, 573-364-7465.

BUY COMMERCIAL MAINTENANCE COATINGS DIRECT. 573-489-9346.

I DEAL in mobile homes, Free Lance....Call me for a quote, new or used, any style, size, or manufacturer. Carole, 636-384-0527.

BAKER ESTATE TOY & ANTIQUE AUCTION

SATURDAY, JANUARY 5TH, 2019 • 9 AM

1007 EAST THIRD ST., WASHINGTON, MO 63090 • AMERICAN LEGION

Directions: In Washington, MO drive North on Hwy 47 (just past hospital-at the stop light), make Right turn onto Third Street to the American Legion, on the Left. Plenty of parking. **Watch for auction signs.** Auction route will be well marked on sale day.

Toys: International pedal tractor, ride on fire truck and ride on locomotives (2), early pedal car-green, fire engine pedal car, Hubley car, diving submarine toy WOB,NYFD snorkel unit #1 fire truck, Structo livestock hauler, Nylint overnight express tractor trailer, tin candle stick phone, wild west shooting bank USA, USA cast atomic bank shooting bank- Notch & Merryweather Machine co., Structo horse van, Tonka tow truck, Buddy L tow truck, vintage Mickey mouse radio, Coke bottle radio, Pepsi & Schlitz bottle flash lights, MFA world four seasons globe-tin, lot marbles, MOBO tin horse riding toy, rubber Mr. Clean action figure, JD toy skid loader, Ertl tandem dump truck, wooden wheeled fire truck, AMT model 60 corvette, other models, Archer bicycle radio AM/FM, airplane models, Japan tin space toy, plastic Canadian Mountie, Structo concrete truck, TM Planet Explorer space toy Japan, Marx wind up car, Buddy L race car hauler w/race car, cast iron plane, cast iron soldier bank, tubs of tin trucks/cars, German tin rubber and cast iron motorcycle toys, star wars fishing pole, scale die cast cars, toy rifle, Tonka dozer, spinning tops, various coin banks, tickle me Elmo, Nylint trash truck, Structo hydraulic dumper, Structo steam shovel, mold blown chocolate rabbit, Emiligo 2' robot, Bissell's little daisy child's sweeper, Fannie Farmer candies toy truck, group of BB guns, Tootsie toys, Nylint, Tonka items, cap, cork and movie prop guns, 3 pistol cross bows, Tonka sand loader Nylint aerial ladder fire truck, Star Wars toys, Hubley dump truck, Structo shovel excavators, Fisher price phonograph, Tonka u haul w/trailer, Handy Hauler bull dozer, hot wheel cars, leather tooling kit, Big Bang 5mm toy cannon IOB, Lionel train holiday edition, child's folding table, MUST SEE PICTURES ON WEBSITE!

Antiques, Collectibles, Advertising, Signs, Pottery, Glassware, Smalls: Four Roses light up clock, 1937 Chevy grill, tobacco flags, Acme bail churns cast iron lid, corn seed bag, German Hohner harmonica, group railroad wrenches, Marlboro poker cards, silver plate serving items, tobacco box, brass lighter, US Naval academy book, Tip Top watch, Polygraph Co. 1886 brass measuring tool, Sterling Lock Co. lock-no key, straight razor, MO-IL railroad ruler, #68 Stanley folding rule, eye wash cup, gold scale, old spectacles, silver plate utensils & jewelry, Daisy air rifle advertisement, concert tickets-Bobby Darin & Gene Autry, Charles Russell print placemats, scrap book w/aeronautical pictures, Charles Hubble Gun, American plane prints, small shave, Melo-tone harmonica, novelty law enforcement badges, Indian style blanket, Sun-maid raisin sign, She Wore A Yellow Ribbon poster, Cavalier cigarettes metal sign, western statuary pieces, nodder cigarette ash tray, Tower club wooden soda crates, cast iron raven door stop, leather riding gloves, cedar stump table, cast iron owl ash tray, cast iron crow, 3 small cannon balls, tobacco tin, Sturgis wild west days poster, US cotton flag, cattle horn water dipper, very ornate coffee grinder-English?, AB wall clock, assorted points/artifacts, cast iron string holder, signed crystal pc., Harley jacket patches, PA railroad lock, head jug, Sharps black powder pistol, cobalt bottles, Texaco & Shell grease cans, Force #10 kilogram scale w/glass weights, wood case clock, LED clock, box .410 Peters shells, small carved elephant head from tree knot, leather post cards, Burges battery tester, kerosene cans, MJB coffee can, JR ace first aid kit tin, coal oil lamp, licorice/wafer box, Platte Valley crock jug, Allens Popeye spinach can, small Kenmore fan, Swift corned beef wooden box, railroad lantern-C & ARY, string holder, Harley mugs, depression glass bowl, cased poker set, cookware, casseroles, crock bowls, Franciscan nesting set bowls, "One Time" plated tobacco can holder/the blue boar, milk glass hobnail pitcher, assorted figurines, Collins Wanettes trolley car ad, pottery, Mountain man fur cap, Sherwin Williams paint box, Dairy land milk crate, auto emblems, Miller Florescent clock-works, piano lamp, sheep skin, Pepsi carrier, wooden pike, furnished room/room for rent metal signs, dove decoys, bear skull, coke black board, Pepsi crate, Lucky Brand Dungarees sign, Cocks-#3 Western, #4 Western bail top jug, #5 applied top jug, photo enlarger, small wall tapestry, JD chalk board, repro mammy cast iron bank, cast iron covered wagon door stop, coke a cola collectibles, crock jar, stoneware

bottle, swivel head military flash light, minnow bucket, ford wrenches, oil ptg-Edward Fitzgerald picture, vintage kitchen utensil/bottle opener display, walking stick, For the Boys book-pin ups of WWII, assorted coke trays, Doctor Barkers Horse Liniment thermometers, movie poster prints framed, '83 Harley mug, The Great American Freedom Machine poster, a way of life tapestry, leather saddle bags, hand made Harley Davidson quilt, Harley collectables, Harley telephone, tea & coffee wooden box, sugar, salt & flour sacks, Demonte pineapple box, vintage safety can, AB Custer's last stand picture, Havoline & Camel store signs-metal and double sided, chocolate candy dispenser, Atlas powder box, Western blasting cap box, Ford gum dispenser, Diamond matches box, gopher trap, please flush tin bathroom sign, Saginaw dairy wooden crate, tip trays, cast Coca-Cola fountain display, Northern Reservation pencil pictures-set of 4, sand cast dog, cast iron monkey bank, wooden sweetheart soap box, Pelham puppet-wolf, Humo tin cigar box, lot lighters, wooden box marked Medical Department US Army, cardboard IL license plates, Mobilgas clock, Atlas beverage box, black Americana, Sky Chief gas pump glass, box of leather, Vienna beef hot dog sign tin, corona extra sign, cast iron fireplace closure, two wooden block pulleys, Dietz lantern, coca cola Happy holidays store display, dentist bag, smoking pipe, Pepsi thermometer, Land o Lakes butter thermometer, porcelain light fixtures, pelt stretcher-wooden, black light skull bulb, black light poster-groovy, wooden sun sweet prunes box, fishing reels, red glo9be lantern, gold pans, Motorcycle Mechanics electric training board Model #720, NYC letterman's jacket, men's hats, large Indian/southwest motif area rug, oil lamps, Pepsi box, U-Manometer, canes, lamps, bird cage, Valvoline/Pennzoil signs, golf pipe oil sign, oil bottles, peanut dispenser, branding irons, antique shade cutter, Sam-bo fishing lure, bulldog match strike, vintage Christmas tree stand, Lots of quality hard to find smalls, older Life, Playboy and Hustler magazines, **Large barber/shaving and dental collection including barber chair, straight razors, electric razors, shaving mugs and brushes, spectacles, goggles, dental/medical tools and more!**

Tools, Outdoor: Vintage wooden Snap-on tool chest, Coleman portable bug zapper, 1/2" pneumatic impact, Green Lee job box, 24" adjustable wrench, Craftsman 42cc chainsaw, velocity meter, Detecto platform scale, tackle box & tackle, creel, Eagle claw fly rod, small anvil, trimmers, Keen Kutter double bit ax head, flash lights, Heat-a-lot infrared heater, extension cords, oak tool chest, Industrial fan, humidifier, pressure gauges,

Knives: Sheath hand made knives, other sheath knives, old timer skinner knife, Barlow knife, fillet knives, razors in box, throwing knives, Schrade Old Timer, Franklin Mint collection of knives-Harley Davidson, Stevens A&T 22 pistol, Winchester knife sets, novelty daggers, mounts including skull, jack-a-lope, bob cat and fox, large collection of pocket knives too numerous to mention.

Furniture: small wooden storage trunk, 3' tall hanging mid century light fixture, yellow painted shelf, art deco hanging lamp-pendant type, dogs paying poker dogs ball room dancing, dogs riding goats pictures, billiard clock, small counter top steel medical cabinet,

Disney, Hannah Barbera, Commercial Movie Cells/Sketches: See Pictures. Original production animation cel paintings and sketches including Popeye, Krazy Kat, Daffy Duck, Wendy & Casper, Mickey Mouse, Aristocats, Charlie Brown, Sheriff Hoot Kloot & Fester, Huckelberry Hound, Casper, Porky Pig and Heathcliff, Cracker Jack Sailor, The Adventures of Whistling Sam, Walley Gator, Bugs Bunny, Wile E Coyote, Jiminy Cricket, and many others too numerous to mention. **This will be the first offering of these gallery certified cells and sketches. We have a large collection that will be divided into 2 auctions.**

Payment Terms: CASH, CHECKS WITH PROPER ID UP TO \$2,000.00. NO OUT OF STATE CHECKS, NO CREDIT CARD CHECKS, NO MONEY ORDERS AND NO TRAVELERS CHECKS. WE ALSO ACCEPT MASTER CARD, VISA, DISCOVER CARD, AMERICAN EXPRESS AND DEBIT CARDS ACCEPTED. ALL CARD PAYMENTS WILL REQUIRE A 4% PROCESSING FEE. NOTE: M R CLARK AUCTION AND STAFF, WILL NOT BE HELD LIABLE IF THE ELECTRONIC CARD READING SYSTEM IS UNABLE TO READ OR PROCESS YOUR CARD FOR ANY REASON. YOU WILL NEED TO PRESENT CASH.

BANK LETTER OF CREDIT REQUIRED FOR ALL CHECKS OVER \$2,000.00. ON ORIGINAL BANK LETTERHEAD-NO COPIES.

TERMS: Photo registration. Nothing to be removed until settled for. Everything sells "As Is, Where Is, Without Warranty." Not Responsible for accidents. Announcements made day of auction supersede printed material. Lunch will be available.

See this auction listing on our website: www.mrclarkauktion.com See many photos of what we are selling on Auctionzip.com Our auctionzip ID# 3218

Auctioneer's note: What a cool auction to start off the year with. Mr. Baker has collected over a lifetime and he has a great eye. You will not be disappointed with what you see here. Come on out and spend the day with us! **As always, we appreciate your attendance! Mike, Julie and the Whole Auction Team.**

M.R. CLARK AUCTION & APPRAISAL LTD

WASHINGTON, MO 63090

636-390-2220 • 314-650-7317

E MAIL: fasttalk@mrclarkauktion.com • www.mrclarkauktion.com

CAGA
Certified
Appraiser

Lunch will be available.
See this auction listing on our website:
www.mrclarkauktion.com

Lunch will be available.



PUBLIC AUCTION

SATURDAY, JANUARY 5TH, 10:00 AM.

Real Estate • Guns • Ammo • Personal Property

LOCATION: From West Plains, take South 63 approx. 14 miles just past Ozark Salvage, take Z Highway left go approx. 2 miles to CR 333 turn left go approx. 1 mile to CR 348 turn right go approx. 2 miles to sale at 1st house on left. 5 ac. m/l

REAL ESTATE

Super cute 2 bedroom w/ closets, 2 full baths, large living room, country kitchen with nice beautiful oak cabinets, separate dining room, partial basement for storage & shelter, several out buildings — 14' x 12' — 24' x 40' — 10' x 20' — 24' — 24' — 14' — 30' shop, sheds, garage, barn, home approx. 1200 sq. ft., well & septic, nice hobby farm good fence & cross fenced, central heat & air, electric & propane, private & quite garden spots.

Terms 10% down day of sale rest due at closing listing for guns — lots of ammo. For More Information or viewing call Parker Auction Service at 417-293-3215

AMMO

Box 7.62x39 15H Gr. Soft points, 1200 rds 22 long rifle, 600 rd case 7.62x54 brass, 2 — 500 rd cans 223, 900 rds 7.62x25, 4—440 rd cans 7.62x54 Gr. Steel core, approx. 1500 rds 7.62x39 tulammo full metal jacket, 75 rds of various 12 Ga. Ammo, dozens of boxes of 223 tulammo FMJ, hundreds of rds of 5.45x39 lead core & steel core, 9x19 & 9x18 will be available, boxes of .45 ACP, box of various black powder supplies, AK47/SKS cleaning kits, can Vietnam Era Flechettes, lots more ammo to much to list, AK47 — 75 rd drum steel NIB, 40 various high capacity assault weapon mags., 75 rd Rouger 10/22 drum mag NIB, various military surplus items, flare pistol w/ sub caliber accessories, couple SKS stocks, soumi full auto parts kit 9mm, PPS 43 full automatic machine gun kit.

GUNS

Pair Butler 22 cal. Pistols in wood box, Phoenix arms 22 pistol in box w/ accessories, 36 caliber double barrel black powder pistol, 36 caliber Navy Arms black powder pistol in box w/ all accessories, 9x18 Russian Makarov (nice), AK74 rifle (new), 50 caliber black powder rifle nice wood stock, 7.62x54 dragonov — needs scope & rail, ml garard descent bore, PPS 43 Plish Helwan 9mm pistol, 9mm pistol, ISSC M22 pistol, Savage 22 cal. Rifle, 58 caliber Union Army high quality reproduction, Colt 45 cal government model (like NIB), century arms C93 sporter similar to HK33E, high point M995 9mm carbine, Komaunian WASR 10 rifle, 3 — M9130 Russian rifles, century arms CIS 5:56 mm al style AR, 3 — Chinese SKS rifles, Ruger 10/22 rifle w/ 3x9 scope, Polish Tokeron pistol (nice), CZ52 pistol, (new) Helwan 9mm pistol, NIB AK47 bump stock, pair of NIB high quality transerver walkie talkies, backpack w/ military gas mask, military flak jacket, more items too many to mention. Holmac gun safe.

PICKUP — TRACTOR — SHOP — FARM

87 Ford pickup short wheel base 4x4 — 4 speed — 300 6 cylinder, Mccormick Farmall tractor, 5x10 2 wheel tilt bed trailer, Hitachi table saw, King Craft 2000wt. generator, like new Craftsman front tined tiller, skitsaw - sander— impact drill, bench hand grinder, Craftsman tool box, antique tool box, power tools, like new window 5000 air conditioner, extension cords, wrenches, sockets, pipe wrenches, tools, pliers, crescents, electric fence charger, electric fence insulators, post, metal roofing, sheets 4x6 alum, fuel oil tank, lawn spreader, 55 gal. barrel, rolls of smooth wire, rolls of alu. wire, live animal traps, antique sickle grinder, bell system step ladders, large handstacked & dried pine & oak lumber, stack of oak barn lumber, creeper, tackle box, electrical supplies, mounted boar head, fishing poles.

HOUSEHOLD — POOL TABLE — PINBALL

Pinball machine, upright deep freeze, sleeper sofa, small roll top desk, antique bar w/ refrigerator, Olympia beer sign, glider rocker, military trunk, old radio, like new 8 man tent, old silverware, pool table w/ stick & balls, new top quality handmade quilts, antique dresser, Gibson guitar, Peavey amplifier, globe, antique apple peeler, kitchen misc. canning jars, old metal bladed oscillating fan, new ceiling fan, hand carved bone chest set, record albums, Bongo drums, lots more too numerous to mention.

For information or viewing

PARKER AUCTION SERVICE

Real Estate - Farm - Personal - Auto - Machinery

For Any Kind Of Auction Call:

417-293-3215



MARVIN PARKER AUCTIONEER



Ark. License 2278



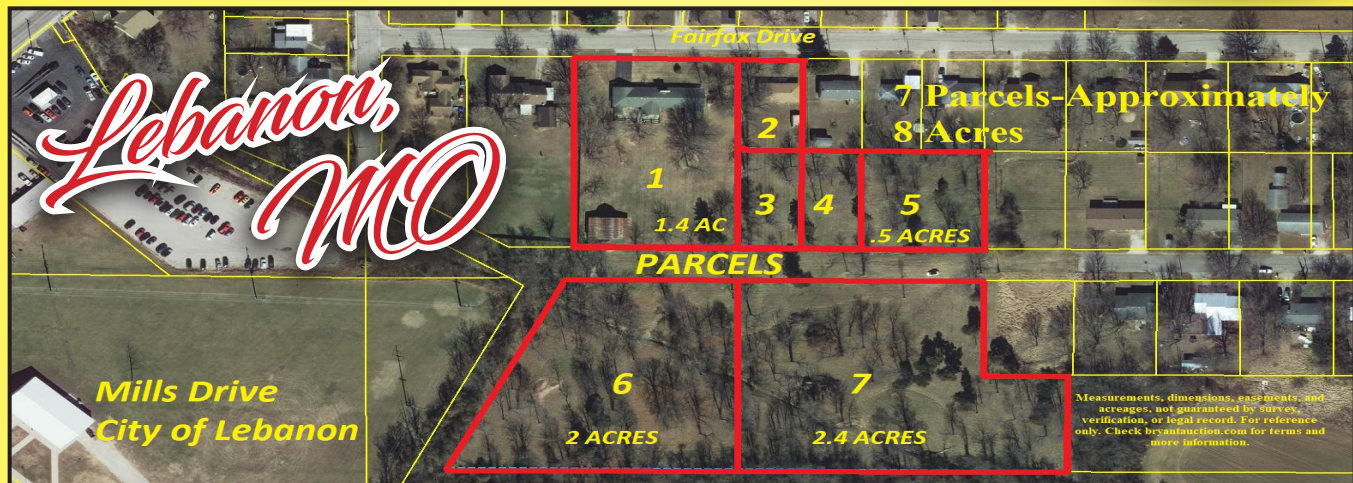
It's been another great year and I'm looking forward to working with you in 2019 for all your Auction needs.

I really appreciate your friendship, business and referrals over the years. Thank you!

- Marvin

2 HOMES ON 8 AC M/L TUES., JAN. 8TH, 2019 • NOON

SOLD IN 7 PARCELS



PARCEL 1: 180 Fairfax, Lebanon, MO, 3 bdrm., 2 ba., 2400 sq.ft. brick ranch, well maintained, setting on 1.4 acres with the perfect barn! (MLS#3508852)

PARCEL 2: 218 Fairfax, Lebanon, MO, 2 bdrm., 1 ba., with a dining room and garage. Setting on a 75' x 150' lot. Home needs completion of remodel. Great flip or fixer upper. Home would be an excellent extended family, or rental. Home sets next to 180 Fairfax.

PARCELS 3&4: 75'x150' lots 13 and 14 facing Babb Drive, Lebanon, MO. (Parcel 3 is immediately behind 218 Fairfax). Combine them and have a double lot or more! All parcels adjoin.

PARCEL 5: 150' x 150' lot 15 facing Babb Drive.

PARCEL 6: Approx. 2 acres that joins City of Lebanon property.

PARCEL 7: Approx. 2.4 acres.

**BID/BUY NOW
ONLINE AT
BRYANTAUCION.COM**

**Sign Up For Our
WEEKLY SNEAK PEEK
Of All Upcoming Auctions
On Bryantauction.com**

AUCTIONEER'S NOTE: These homes are part of a living estate from a loving family and the property shows pride in ownership. Times have changed and it's time to downsize. Our clients are very eager to sell to someone who will enjoy the property like they have.



**BryantAuction.com • 573-346-4777
sold@BryantAuction.com**

LARGE OUTSTANDING AUCTION

BASS BOAT • 4-WHEELER • GUNS • TRACTOR

SATURDAY, January 5th - 10:00 AM

Location: Chamber of Commerce Building, Texas County Fairgrounds-1585 N. Hwy 63, Houston, MO. Climate controlled facility with seating available.

Directions: From Houston at Hwy 63 & Hwy 17 stoplight, go north on Hwy 63 one mile to auction location. Watch for Bruce Scheets Auctions signs.

Visit www.brucescheetsauctions.com to view more photos!

PAYMENT SYSTEM: Cash • Checks accepted with proper identification • Debit/Credit Card (Amount up to \$1500)

**Living Estate of
Eddie & Linda Roberts
Nolan & Carmelita Howerton**

**2002 ALWELD 17 FT ALUMINUM BASS BOAT W/
MERCURY 75 HP 4 STROKE OUTBOARD- MINN KOTA
24V TROLLING MTR - GARMIN FISH LOCATOR- LIVE
WELLS- LAKE READY (NICE)!**



**KAWASAKI KFX 400
FOUR WHEELER
(LIKE NEW)**

**MASSEY
FERGUSON 65
TRACTOR W/F
(NEW FRONT
TIRES, LIKE NEW
REAR TIRES)**



ANTIQUES & COLLECTIBLES

Cutty Sark 2 gal whiskey bottle display • Old Grand-Dad 2 gal whiskey bottle display • Budweiser Millennium Limited Edition bottle • MFA coffee jar • Dubl-Handi washboard • Anheuser Busch, Coors Miller Lite, Bud Lite cast iron toy planes • 6 gal crock • NWTFF neon light • NWTFF pool balls • 2 Ibanez electric guitars • Ralph Perkins wood carved alligator 6 ft. • Graniteware • Green ball jars • Cast iron kettles w/lids • Huffly bicycle • Crosscut saw • Well pulleys • 10 gal cream can • Iron implement wheels
Antique Furniture: Oak secretary w/mirror • Oak wash stand w/ towel rack • walnut library table • Lot of other

OUTDOOR & MISC.

Agri Fab rear tine pull type garden tiller 5.5 hp Briggs • 4 wheel lawn cart • Craftsman electric hedge trimmer • Echo straight shaft weed eater • ¼ hp meat saw & grinder (used once) • Planed red oak and pine lumber • Rogue River 14' fiberglass canoe • 10 ft alum flat bottom boat • Coleman propane camp stove (new) • Tents • Child's picnic table • Fleet camping lights • Gas fish cooker • 4 ft & 6 ft plastic tables • John Deere lawn cart • Wheelbarrow • Hand tools • Lot of other

**GOLD HIBBARD UNION PACIFIC RAILROAD
DOUBLE BARREL 12 GA. HAMMER TYPE
SHOTGUN (SAME MODEL USED BY ANNIE
OAKLEY IN WILD WEST SHOWS!)**

AUCTIONEER'S NOTE: We are starting off the new year by combining two outstanding estate auctions! Large auction with more merchandise than can be listed on bill and absolutely something for everyone, we look forward to seeing you auction day! **Thanks, Bruce**

DRIVER'S LICENSE OR PICTURE I.D. REQUIRED • TERMS: CASH OR APPROVED CHECK   **OR** 

BRUCE SCHEETS AUCTIONS

www.brucescheetsauctions.com • HOUSTON, MO • We Accept Mastercard, Visa & Discover

Auctioneers:
COL. BRUCE SCHEETS
417-967-2510
Cell: 417-260-2118
COL. ERVIN BONTRAGER
COL. TRAVIS TOOLEY



All announcements made day of sale take precedence over any printed matter. Not responsible for lost or stolen merchandise. Not responsible for accidents.

LUNCH WAGON • APPRAISAL SERVICE • RAIN OR SHINE

Cashiers / Clerks:
Andi, Jennifer & Camryn Scheets,
Shelly Sigman, Lena Walsh
Ringmen:
Jarid Scheets, Martin Walsh,
Terry McCallister, Kirby Cauldwell

GUNS & AMMO

Rifles: Ruger 77 Old Style 7 mag • Rossi 44 mag lever action • Remington 700 Target 22 -250 heavy barrel laminate stock (NIB) • Savage Mod. 25 heavy barrel 22 cal (NIB) • Savage model 11 22-250 (NIB) • Ruger mod 77 338 WUM laminate stock muzzle brake (NIB) • Remington 700 heavy barrel 22-250 • Mod 25 Savage 22 Hornet (NIB) • Remington 700 243 (new) • Mossberg mod. 500 4/10 ga pump rib barrel • Mod. 94 Winchester 30-30 • Benjamin 17T air rifle **Pistols:** Thompson Contender 22 cal Target Barrel • Sig-S Saur P226 22 cal pistol 2 mags (NIB) • Fabric National 40 cal compact 3 clips (NIB) • Ganik #55 9mm pistol 2 mags (NIB) **Scopes:** Redfield 6x18 scope • Redfield Revenge 6-18x44 (NIB) • Redfield Revenge 3-9x42 • Nikon Prostaff 3-9 • Redfield 3-9 • 2 Simmons Pro Hunter scopes 2-6x32 new • AR-15 type Bushnell Red dot scope and BSA scope • other **Reloading Equipment, Supplies, And Gun-Related Items:** Pistol and rifle reloading items • Tumbler, dies, presses, powder, bullets, primers, new brass • 2 rifle bench rest vices • Shooting table • Scope rings & bases • Flip up AR-15 sights • AK-47 and AR-15 accessories • Assorted new gun screws • Gun cleaning kits • 8 boxes clay pigeons • Large lot of other **Ammo:** Case of 4/10 shotgun shells • 22 cal • 9mm • 38sp1 • 357 • 40 cal • 45 auto • 44 mag • 45 long colt • Rifle: 222 • 223 • 22-250 • 243 • 7x62x39 • 6mm • 6mm Lapua • 6spc • 308 • 7x62x51 • lot of other

5 X 6 AND 5 X 8 2 WHEEL TRAILERS

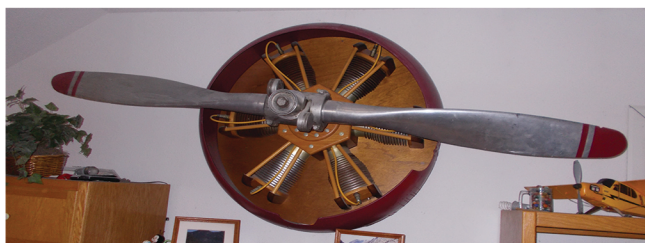
HOUSEHOLD & FURNITURE

Avanti apartment size freezer • Idylis apartment size freezer • Richmond electric ice cream maker • Steamliner pressure cooker • Fitcom electric treadmill • 2 uphol. Queen Anne chairs • Glass doored wood cabinet • XBox 360 • Lot of other

SHOP EQUIPMENT

Hobart Stickmate LX 235 welder • Hobart handler 140 wire feed welder • Wards 200 amp stick welder • Welding rod • Stihl weed eater • Dewalt cordless drills • Stihl BG72 leaf blower • Honda EX1000 generator • Milwaukee steel chop saw • Johnson laser transit • Craftsman bandsaw • Chicago Electric chop saw • Delta Pro alum diamond plate truck tool box • Metal workbench ½" steel • Craftsman stack tool chest • Century battery charger • Snap-on, Craftsman & Napa tools • ¾" Air impact • Drill bits, punches, wrenches • Craftsman Skilsaw • Craftsman 4 ½" angle grinder • Master Mechanic 4 1/2" angle grinder • Tap & die set • ¾" air impact Central Pneumatic • Gas cans • Coleman Powermate air compressor • Chain boomers & chains • Werner 6 ft fiberglass step ladder • 24 ft Louisville fiberglass ext ladder • Napa battery charger w/ boost • Napa 2 ton floor jack • Metal storage cabinet • Nut & bolt bins • Nuts & bolts • Hand tools • Lot of other

WALL DISPLAY RADIAL PROP ENGINE (POSSIBLE DC-3) W/ 6 FT ALUM CONSTANT SPEED PROP (MUST SEE)



46TH Annual Open & Absolute Farm Equipment AUCTION

SATURDAY, JANUARY 12, 2019- Paragould, AR
Early Start time at 9:00 A.M.

Location: Greene County Fairgrounds, Paragould, AR
Physical address: 1108 Hwy. 49B- Greene County Fairgrounds, Hwy. 49 South (business)

AUCTIONEER'S NOTE: GCT FFA Members will be on hand to check-in consignments on Sunday, January 6 starting at noon through 5 P.M. and Monday thru Friday, January 7 thru January 11, from 8 A.M. thru 5 P.M. Absolutely no equipment accepted on sale day. Bring equipment early, items will be sold as received, although we retain the right to regroup for bestselling purposes. GCT FFA will be available for loading out equipment on Sunday, January 13, 2019 thru Wednesday, January 15, 8 A.M. to 5 P.M. There will be a \$5 per lift load out fee. For more information call FFA Advisors Jason Murray, Casey Rogers, and Hannah Gray at 870-215-4460, ext. 6404 or Magee Auction @870-598-7334.

TRACTORS

Case IH Steiger, #450HD, c/a, 1 owner, duals front & back 4 remotes, sn#ZBF128962
JD 4850, 4x4, duals, wts., qk. Ht., 6700 hours, clean
JD 4020, diesel, 2 post canopy, 1 remote w/JD 148 Loader
JD 4010, diesel w/JD 46 Loader
JD 3010, diesel, wide front, good tires, remotes 2 post Canopy, Super Clean
JD 3010, gas, remotes, w/JD 48 Loader
JD 770, 2 whl. Drive, diesel
JD 6200, 2 post canopy, diesel, 2 remotes
JD 4200, 4X4, diesel w/ JD Loader JD 'H'
Kubota 3010, 2 whl. Drive, w/Loader IH 1486
IH 1086 c/a, double PTO shaft, good rubber, 3 remotes
IH 674, 60 hp, diesel, 3 pt.ht.
JD 574, 50 hp, diesel, 3 pt. ht.
Massey Harris, Pony Express MF Tractor #35

TRUCKS, TRAILERS

Ford '03, F650 XL Super Duty, auto w/ flat bed
IH, '02, mo. DT4300 w/26ft. dry box
Ford '03, 4x4, ¾ ton, diesel w/work bed
Tiger Low Boy Trailer, 20 ft., bumper ht.
Fuel Trailer, 300 gallon w/12 v. pump, real clean, always shedded
Header Trailer
Gooseneck Trailer, 16 ft.
Utility Trailer, 16 ft.
MF Stripper Header

CONSTRUCTION

Scoop-All, Big Foot Dirt Buggy, 20 yd., #2014C2, SN#0602091
Nissan Fork Lift, 5000 lb., mo#4765773

FIELD EQUIPMENT

Earthmaster, mo. 300, 40 ft, vertical till
JD Disk 2220, 7 ½ ft.
JD Disk #630 Disk, 6 ft.
Woods Finish Mower 6 ft.
Bush Hog Cutter #3308, 3 pt ht, like new, still in warranty
2-Woods Cutters, 5 ft.
Woods Ditch Bank Rotary Mower
JD Drain Drill #8300
Cultipacker, 10 ft.
Bush & Bog Disk, 5 ft. trailer type JD Disk
AC Chisel Plow w/ga. whls, 10 ft., 3 pt ht
AC Chisel Plow, trailer type, ga. whls, 8 ft.
Chisel Plow, 3 pt ht, 11 ft. 3 pt ht
Chisel Plow, trailer type w/ hyd. Cylinders, ga. wheels, 8 ft
JD Plow, 5 bottom
W&A Hippers, 8 row
Triple K Field Cultivator

HAY, CATTLE, GRAIN

New Holland Round Baler mo.#450, roll belt, net & string wrap
New Holland Round Hay Baler
Vermeer Round Hay Baler
New Holland Cutter Conditioner #1412
Kuhn Mower, GMD 3500TL

HAY, CATTLE, GRAIN

New Holland Hay Cutter
Howse Cutter, 7 ft., 3 pt ht
Manure Spreader
20- Cattle Panels, 10 ft.
Bale Spear
Calf Table
Poly Stock Tank
Feed Bunks, various lengths

IRRIGATION, DIRT EQUIPMENT

Namco Land Grader, 40 ft., hyd.
Levee Plow, 8 blade, 3 pt ht
Spill-a-Minute Gate Setter
Tiller, self propelled, 36 inch pull w/ lawnmower
Box Blade, 4 ft., 3 pt ht

MISCELLANEOUS

2-Chicken Houses, New, (12' long x 6' high) and (13' long x 7' high)
Coleman LP Camp Stove, 2 burner
RV Fridge/Freezer Combo, LP/electric
AM/FM Amplifier Tuner
Insulation for Metal Buildings, R10, new
Case Tractor Wheel Spacer
Tool Boxes
Case Tractor Tires
Quick Hitches
Trailer Ramps, 48 in x14 in
Spray Tank Rack fits Case 2590

ATV'S, 4-WHEELERS, RIDING MOWERS

Honda 3-Wheeler, Big Red
JD Riding Mower

SCHOOL BUSES

Amtran, '98 mo., Snub nose, 71 passenger, auto
Amtran, '96 mo., 71 passenger, auto
Bus, '99 mo., 15 passenger, diesel

**GREENE COUNTY ROAD DEPARTMENT
HAS CONSIGNED THE FOLLOWING EQUIPMENT TO THIS AUCTION.**

Ford Pickup, '02, F250, 2 whl. Drive
Ford Pickup, '97 w/flat bed
GMC '08, Sierra 1500
GMC Pickup, '04, Sierra 1500
Chevy Pickup, '07, Silverado 4x4
Ford Crown Victoria Car, '01 mo.
Fridgidaire Refrigerator, black
Dish washer, white
Kenmore Washer, white, top load
Estate Dryer, elec.
2-York Central Air Conditioners
Gibson Window AC Unit
Fridgidaire Cook Stove, electric
Electric Breaker Box, 200 amp
4-Cash Registers
10-Sheets Peg Board 4'x6'



Many other items not listed
No Buyer's Premium

VISIT OUR WEBSITE
WWW.GARYMAGEEAUCTION.COM
FOR MORE INFORMATION



MAGEE

Gary N. Magee, Auctioneer

AUCTION & REALTY

Ramona Magee, Broker

AR Lic. #3 - Est. 1970 • 3908 Heritage Park Road, Piggott, AR 72454
Phone 870-598-2689 • Cell 870-598-7334 • Fax 870-324-4117 • Visit our website at www.garymageeauction.com

FARMINGTON LIVESTOCK
 Hwy 67 • Farmington, MO
 Office Phone: **573-756-5769**

**Regular Sale
 Every Week
 Wednesday**
Starting at 10:30 am

All Consignments Welcome
 Keith Robertson
 Cell: **314-560-3285**
 Home Ph: **573-732-4987**

MISSOURI BOOKS FOR SALE: Rising Stars & Ozark Constellations. \$6.50. Shepherd of the Hills by Harold Bell Wright. Mysteries of the Ozarks Vol II by Ellen Gray Massey. \$5. Trees of Missouri. \$5. Missouri's Forgotten Heroes by Ross Malone. \$5 417-532-2045, Lebanon.

TARTER 3PC ROUND HAY BALE RINGS: New, 3 styles. \$175. 573-205-7860, Owensville.

22,000 BTU BLUE FLAME HEATER: propane. \$75. 417-683-7843.

BROWNING: High power, 9mm 13 rounds. \$850. Pittsburg, 417-852-1088.

 **MID MISSOURI STOCKYARDS**

REGULAR SALE EVERY THURSDAY 11AM


For Farm Visits, Market Updates, or Trucking
 Call Zach Cox 417-777-1320
 Dan Romine 573-578-4939

**Competitive Buyers!
 Competitive Commission!
 Competitive Market!**

Barn: 417-532-9292 
 I-44 • Exit 123 "just outside of Lebanon"
17505 Route 66, Phillipsburg, MO 65722
 For weekly market updates, visit us at
www.midmostockyards.com

Over 25 Years In The Livestock Business

Cattle Sale
 Every Monday at 12:00

 **Feeder Calves**
 to sell at 12:00 pm
Butcher Cows & Stock Cows
 following

Goat, Sheep & Hog Sale
 2nd Tuesday of the Month • 6 pm

Feed & Water Pens Available
**All Consignments Welcome
 Up Until Sale**
We Appreciate Your Business!

Salem Livestock Auction
 Hwy 32 Salem, Mo
 Barn- 573-729-8880

Allen Thompson 417-932-4097
 Chuck Thompson 417-257-5610
 Terms of Sale: Cash or Approved Check!
 Renee Lauderdale 417-926-2682
 Keith Robertson 314-560-3285

2 METAL COLVERTS: 199" long x 1" round, new never used, \$150. Rolla, 928-514-0505.

ACA REGISTERED LAB PUPPIES: Will be UTD on shots/worming. Ready to go 1/24/19. Yellows & blacks available. \$350. 417-599-9451, Louisburg.

I DEAL in mobile homes, Free Lance... Call me for a quote, new or used, any style, size, or manufacturer. Carole, 636-384-0527.

FENCING: large rolls square metal, heavy duty, about 6 rolls, used. \$90 obo for all, Great buy! Rolla, 928-514-0505.

NEW NEW NEW DISPLAY HOUSE!!!
 Call Marla to hear what is new inside 573-657-7040. chateauhomes.net.

TO GIVE AWAY: Great Pyrenees/Australian Shepherd mix. Call 573-201-9430, Rolla.

FOR-SALE FARM FRESH: Large brown eggs from free-range hens \$1.50/dozen, case discount. Levi Beechy 639 Smith Rd. Seymour MO 65746.

12 GA, BENELLI NOVA: Camo, pump, like new. \$450. Pittsburg, 417-852-1088.

2019
 Happy New Year

We hope your new year is filled with

Joy

There's plenty of excitement in the air as we count down to 2019, and we hope the brand new year hold all good things for you!

Happy New Year

and thanks for your patronage.

Leon, Howard & All The Staff

BUFFALO LIVESTOCK MARKET LLC 

Lyle Caselman • 417-533-2944
 Leon Caselman • 417-588-6185
 Howard Miller • 417-345-8122

**First Sale of 2019 - January 5th
 Pre-Vac Sale January 12th**

POOL TABLE FOR SALE: Nice, good condition. \$500. 417-259-3437, Norwood.

1929 CHEVROLET FRONT AXLE: Good for rat rod. \$60. 417-683-7843.

VILLA HOMES IN ROLLA: Has NEW and USED Mobile Homes. Call David for info: 573-578-8072.

New Stock!!! Wow, do these look **Good!!!** Call 573-657-2176 amegamobilehomes.com

MOSSBERG MODEL-500: 20 or 12 gauge pumps, \$200 each. Doerun, 573-756-1065

AUCTION REMINDER: Saturday, January 5th @ 10am. Bruce Sheets Auction. Please see our Auction Directory for more information.

BARE 361/407 IH TRACTOR HEAD: \$200. 573-459-6488, New Haven.

PYRENESE/ANATOLIAN: puppies-cuties! parents are excellent sheep dogs, excellent pets, ready January 1st. \$250, reserve yours now! 417-322-0161.

88 CHEVY PICK-UP FOR SALE: V8 350, 5-speed, manual transmission. \$1,800. 573-528-2699.

AUCTION REMINDER: Real Estate Auction Tuesday January 8 @ 10 AM. Please see our Auction Directory for more information.

MOBILE HOME BIRD DOG-you tell me what you want, I Find It, new or used, tell me what you want. Carole, 636-384-0527.

REGISTERED BLACK HEREFORD BULLS: Caledonia, 573-210-3614.

AUCTION REMINDER: Livestock Auction. Every Wednesday at 10:30 AM. Farmington Livestock Auction. Please see our Auction Directory for more information.

TRUCK, TRAILER, AND SEMI TIRES

on sale now!





MASTERTRACK Trailer Tire (265/75/16)
10-Ply • Mounted **\$121.44***

FALKEN AT3 Wild Peak (265/75/16)
..... **\$150.00***

YOKOHAMA (295/75/22)
5Ry617 • Steer **\$419.00***

Ironman 1208 Drive Tire
Close Shoulder • 11R22.5 **\$293.76***

**Tax not included*

739 Honey Locust Rd. • Niangua, MO 65713

LETTERMAN TRIPLE T REPAIR LLC
TRUCKS, TRAILERS, & TRACTORS
417-630-2249
417-664-0829



FREE 4-NIGHT VACATION!

Donate Car • Boat • RV • Motorcycle

1-800-CarAngel

www.boatangel.org

CHECKERED WALNUT WOOD STOCK PISTOL GRIP: for Marlin Model 336 or 1895. \$100. Washington. 636-239-2695.

CONOR 9720E: Silage round bale hay wrapper, auto cut/tie, remote control, 3pt, new, demo model. \$16,000. 573-205-7860, Owensville.

436 IH CRANKSHAFT: needs reground. \$100. 573-459-6488, New Haven.

WWW.GVBRUSH.COM: Land Clearing. 417-718-5564. Great Views Brush Clearing

GUN FOR SALE: SKS with 260 rounds ammunition, plus 30 round clip. \$450. Text only, 314-608-4806, Owensville.

REGISTERED BLACK ANGUS BULLS: 417-453-6332. Plato

WWW.MYWEEKLYTRADER.COM

566 HESSTON TRACTOR: w/front-end loader. Norwood, 417-741-0135.

SANTA FE TRAIN SET: 2 diesel engines, 5 cars, track, transformer, original box and instructions. \$95/gun trade. Rolla, 573-364-7465.

WANTED GOOD USED MOBILE HOMES: Singles & doubles. Call David Hayes, 573-578-8072.

OLD 20 GAUGE: Single barrel shotgun. \$175. Desloge, 573-327-9068.

AUCTION REMINDER: Every Wed. @10:30AM Farmington Livestock. Please see our Auction Directory for more information.

HUGE NEW SEMI TIRE SALE: 11r-240-r5 16-ply, drive-CS, \$305. Trailer \$290. 11R-22-B5, 16-ply, Drive-CS, 16-ply, \$285. trailer, \$275. 295-75-R24-5, 16-ply, Drive-CS, \$290. Trailer, \$255. 285-75-R22-5, 16-ply, Drive-CS, \$265. trailer \$240. 22-R5 drive Michelin, 900Dyear, retreads, \$240.. F-warranty, F-delivery. Call 417-276-2435.

BEAGLES: One male, One female. Rabbit dogs only. \$250. 573-729-5245.

ANTIQU 12 GAUGE: Single barrel, shotgun. \$175. Desloge, 573-327-9068.

TED WILLIAMS WINCHESTER: model-1200, 12-gauge pump, \$225.00. J.C.Higgins, model-20, 12-gauge pump, \$225.00. Doerun, 573-756-1056.

AUCTION REMINDER: Saturday, January 5 @ 9am. MR Clark Auction Service. Please see our Auction Directory for more information.

WANTED TO BUY: Unstyle G John Deere for restoring. Send letter or call 573-768-0068, Jim Schlimme, HC 62, Box 62, Sedgewickville, MO. 63781.

DIRECTV: Over 145 channels, cost \$29.99/month. Free installation. Free HD channels. Free Movie Channels. Call Home Trends! 417-299-8479. Authorized DirecTV Dealer.

Now Stocking
Large Selection
 of
Plumbing
 PEX, PVC, & CPVC
 and
Electrical
 Supplies!



STOCKING
Porter Paints
PPG
Commercial
Paints
Sikkens
Stains

Seymour, Missouri 417-935-4201

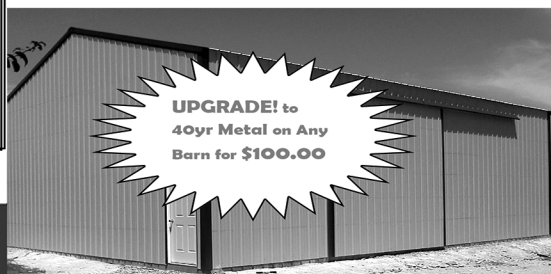
Sale Ends January 31, 2019



Pole Barns & Post Framed Buildings!

Call for free quote, brochure & color chart.
 Other sizes also available.

| | | | |
|---|---|---|---|
| 23'x32'x10' \$4,099 Material Only \$5,199 Labor Included | 23'x40'x10' \$4,779 Material Only \$6,179 Labor Included | 30'x40'x10' \$5,699 Material Only \$7,499 Labor Included | 40'x60'x12' \$10,099 Material Only \$13,999 Labor Included |
|---|---|---|---|



NOBODY, BUT NOBODY BEATS OUR PRICES!!!

10 ft. Slider • Engineered Trusses 8' O.C. • 2x6 Treated Bottom Wrap • Screws • 2x10 Top Wrap • 2x4 Purlins • Full 29 Gauge Steel • Plus 3 ft. Entry Door with Lock
 OPTIONS: Sidewall Heights on all Buildings 10', 12', 14' & 16'. Overhead Garage Door, Skylights, Insulation, Wainscoting, Insulated Vinyl Windows, Cupolas, Labor Rates Slightly Higher over 50 Miles from Seymour. Call for YOUR FREE QUOTE TODAY!!!

| | |
|---|-----------------|
| PAINTED WHITE, GREEN OR TAN METAL\$69.99 | IN STOCK |
| 10' - \$22.10 12' - \$26.52 16' - \$35.36 | |
| MIX & MATCH METAL\$39.99 | |
| 8' - \$10.13 10' - \$12.67 12' - \$15.21 | |
| GALVALUME METAL\$52.50 | |
| 10' - \$16.60 12' - \$19.92 16' - \$26.56 | |
| GALVANIZED CORRUGATED METAL\$56.75 | |
| 8'-\$9.84 10'-\$12.30 12'-\$14.75 16'-\$19.67 | |

40yr Painted Metal
\$72.99

KNOTTY-PINE DOORS
 Starting at
\$109.99

LP SMARTSIDE T-5 LAP B GRADE \$43.59SQ

Car Siding!
 1x6 White Pine Siding **43¢** in ft
 1x8 White Pine Siding **54¢** in ft
 * 4 Profiles to choose from!
 Broken Bundles Add 10¢ Per Ft.

4x8 Sheeting
 Less than full units Add \$1 per sheet
 3/8" Beaded Paneling **\$15.99**
 5/8" T111 Siding **\$19.99**
 Paneling **\$9.99**
 1/2" Plywood **\$19.99**
 3/4" Plywood **\$23.99**
 3/16 Pegboard **\$12.99**

Sales and Servicing



NEW PACKAGE HOMES

2x6—16" on center-Exterior Stud Walls
 Residential Roof Trusses-2' on center
 4/12 pitch with 1' over hang
 40 year Painted Metal roofing in 20 Different Colors
 Profile Ridge Vent - Ventilated Ridge Cap
 Vinyl Center Vent Soffit
 Color Matched Metal Fascia & Gable Trim
 2 - 3' 6 Panel Entry Doors
 4 - 3'x4' Vinyl Insulated Windows
ALL FIGURED FOR SUITABLE CUSTOMER SUPPLIED SLAB OR SUB-FLOOR

Shown with Available Options
 Your Choice of either:
 Stock 5/8" T111 Wood Siding w/1x4 Pine Window & Door Trim - or -
 7/16" OSB & House Wrap ready for other finish options

Price for Basic Materials Package & Labor

| | | | | |
|--------------------|--------------------|--------------------|---------------------|---------------------|
| 20x24(480 sq. ft.) | 20x32(640 sq. ft.) | 20x40(800 sq. ft.) | 28x40(1120 sq. ft.) | 28x48(1344 sq. ft.) |
| \$8,229 | \$9,650 | \$11,019 | \$13,855 | \$15,545 |

REAL WOOD SIDING
 2x6 Log Siding - 1.09¢ in ft
 1x8 Beveled Cedar - 49¢ in ft
 5/8 T1-11 Siding from \$19.99

DECK PACKAGES
Materials Only

| | |
|----------------------------|---------------------|
| 8x6\$199.99 | 10x12\$419.99 |
| 8x8\$239.99 | 10x16\$549.99 |
| 10x10\$349.99 | 12x12\$499.99 |
| 12x16\$649.99 | |

QUAKER Now Stocking Quaker Vinyl Windows

| | |
|-------------------|-------------------|
| 2030 \$ 99.99 | 3030 \$119.99 |
| 3040 \$129.99 | 3052 \$145.99 |
| 3040Twin \$279.99 | 3052Twin \$314.99 |

LUCKY DISCOUNT LUMBER
 417-935-4201
 455 State Hwy C • Seymour MO 65746
 www.luckydiscountlumber.com

*Some restrictions apply see store for details

POOL TABLES: Installations, moves, recoveries, repairs, accessories, etc. 573-646-1700.

CORLEY SAWMILL: \$600. 417-241-0006.

LARGE BOOK ABOUT CATS: hard-back, 384 pages. \$7.50. 417-532-2045, Lebanon.

MASH TV SHOW: 7 seasons "5-11" plus final season! \$15. Lebanon, 417-322-2727.

CONTINUOUS PIPE FENCE: 6 bar 20'x55", 1.5" round tubing with 2 cross supports 36 sections, \$85 each never installed. Owensville, 573-205-7860.

HEAVY DUTY WALKER: 400 lb rated, brand spanking new, large seat/storage, four 7" pivoting wheels, hand brakes. \$200. 417-686-0032, Ava.

41 WILLYS FIBERGLASS CAR FOR SALE: with or without 454HP blower motor. \$28,000. 573-528-2699.

BARN WOOD SIDING: 8" & 10" wide. 573-729-7226. www.pineridgerustic.com

REBEL WOOD CIRCULATOR: Triple flue pipe. \$800. 573-528-2699.

BARE CYLINDER HEAD: for 4010 JD. \$200. 573-459-6488, New Haven.

HAYLAGE: Mixed grass, clover, long cut. \$25 ton. Clever, 417-818-1049.

HAY FOR SALE: Small square bales alfalfa, timothy and mixed grass. 573-378-7326.

OMAR'S LOGGING: Oak and Walnut, excellent prices, Amish owned and operated. 417-741-0440, leave message.

WOMEN'S APEX QUALITY GYM SHOES: White, pink and grey trim. Brand new, reinforced stability plate, cushioned. Paid \$143, \$75 firm. 417-686-0032, Ava

CLARINET: In case, \$125 or trade. 573-327-9068.

9 AMISH BOOKS: clean, Christian fiction, \$7.50. Lebanon, 417-322-2727.

2004 OPEN RANGE FIFTH WHEEL CAMPER: 34', all weather, in good condition. \$10,500. Lebanon, 417-718-5520.

MOBILE HOME BIRD DOG-you tell me what you want, I Find It, new or used, tell me what you want. Carole, 636-384-0527.

CATTLE HOLDING CHUTES: W/AI cage, side exits, Tarter auto head catch. \$2,000. 573-205-7860, Owensville.

GUN SHOW

JANUARY 4TH - JANUARY 6TH

Fri. 4PM - 8PM • Sat. 9AM - 5PM • Sun. 9AM - 3PM

~ Osage Beach, MO ~

Tan Tar A Resort – Exhibit Hall

(494 Tan Tar A Drive)

BUY • SELL • TRADE

INFO: 563-927-8176 • www.rkshows.com

**NEW BIG TEX
22GN FLATBED TRAILER**



[facebook](#)



I-44 at Exit 208 • Cuba, MO
www.jimsmotors.com
(573)885-2595
(800)897-9840

GREAT SERVICE!
1957-2018 GREAT PRICES!

FOR SALE OR TRADE: 1992 KW T600 Cat 9-speed, fair shape. \$16,000. Would consider parting out. 1996 Dodge Stratus: V6, Auto, many new parts, low miles, clean. \$2,450. 1985 F150 for parts. 573-247-4606, Salem.

CUSTOM SAW MILLING: Lebanon. 417-533-4607, 417-664-1195.

JOHN DEERE 730 PARTS. Call 417-241-0006.

INDUSTRIAL BLIND STITCH SEWING MACHINE: works good. \$150. Stover, 573-377-4872. Please leave message.

5030 FORD TRACTOR: with loader, 1995 model, 62HP, 1,814 original hours. 573-392-5371, Barnett. MO.

2 TON PORTABLE GRAIN BIN: new. \$1,850. 573-205-7860, Owensville.

PEAFOWL FOR SALE: Males & females. 573-729-7226, Salem.

WILLIAMS PEEP SIGHT: with target knobs. Fits Marlin Model 39a. \$50. 636-239-2695. Washington.

MODELA: Antique car rear axle. \$165. West Plains, 417-293-0568

TRUCK BED MAT: Heavy rubber, 5'4"x7'6". \$50. Camo, pump, like new. \$50. Pittsburg, 417-852-1088.

NEW NEW NEW DISPLAY HOUSE!!! Call Marla to hear what is new inside 573-657-7040, chateauhomes.net.

PINNACLE RANCH: 2 year old & 18 mo old Red Balancer & Red Angus bulls, 12 mo old Red Balancer and Red Angus heifers. 417-679-4269, 417-679-2330, Gainesville.

ECONO 200 OUTDOOR WOOD FURNACE: Watertype, never used. \$2,850. 573-205-7860, Owensville.

3 TON LIVESTOCK CREEP FEEDER: on wheels, new creep gates, new tires. \$2,275. 573-205-7860, Owensville.

New Stock!!! Wow, do these look Good!!! Call 573-657-2176 amegamobilehomes.com

JOHN DEERE SNOWBLOWER: Mounts on older 100 and 200 series lawn tractors, great shape. \$100. Mammoth Springs 870-966-3483.

LIONEL TRAIN SET: Steam engine, tender, caboose and other car, track and transformer. \$195. 573-364-7465, Rolla.



Wright Spray Foam Insulators, Inc.
Commercial & Residential

Call For A FREE Estimate

417-746-1953
417-746-4932
Norwood, Missouri

REGISTERED GERMAN SHEPHERD PUPS: 1 male, 4 females, Fire is Grand Champion of Search and Rescue. \$200. 417-741-0440. Hartville.

FOR SALE OR TRADE 96 FORD F-250: 4x4, Diesel truck. 573-697-5627.

AUCTION REMINDER: Closed Dec 24 & 31, Cattle Sale every Monday 12 Noon. Salem Livestock. Please see our Auction Directory for more information.

REMINGTON WINGMASTER: model-870, 12-gauge, \$275, Remington Express, model-870, 20-gauge, \$250. Doerun, 573-756-1065



Elite HOMES CENTER
Where you always get more home for your money!
SALE! SALE! SALE!
Fall Close-Out Sale on all display homes starting at **\$37.00** sq. ft & up

ELITEHOMESCENTER.COM

TWO LOCATIONS:
3444 West Sunshine Springfield, MO
Office: 417-881-7111 • Fax: 417-887-8141
3232 N. Hwy 63 West Plains, MO
Office: 417-257-0797
TOLL FREE 877-887-2282

JOHN DEERE: 4050 MWFD, Cab, Air, Pow-ershift, New tires, call for details, Reduced price. \$28,500. Owensville, 573-205-7860.

AUCTION REMINDER: Sat. January 5th, @10am, Atkinson. Parker Auction Service. Please see our Auction Directory for more information.

1929 CHEVROLET FRONT AXLE: Good for rat rod. \$60. 417-683-7843.

1996 Chevy 4X4: Heavy Half ex-cab, 8' bed, no cancer, nice interior/tires, new radiator, WP, belts, everything works, original. \$5,300 OBO. Will send pictures. 918-232-1521, Coweta, OK.



OREGON
CHAINSAW CHAINS

16' \$18⁰⁰
18' \$19⁵⁰
20' \$21⁰⁰
24' \$24⁰⁰

Buy 2 Get 1 FREE!

2 miles west of Hartville on Hwy. 38

Bring in your old chain & we can make you one to match!

| | | |
|--------------------------------------|--------------------------------------|--|
| Chainsaw Sharpening Available | Hydraulic Hoses made to order | ADM & Crescent Bag Feed Available |
|--------------------------------------|--------------------------------------|--|

Fisher Feed & Farm Supply
417-741-6182
3710 Hwy 38 • Hartville, MO
M-F 8:00am-5:00pm • Sat. 8:00am-12:00pm

WWW.MYWEEKLYTRADER.COM

BUYING ALL BEER SIGNS: PRE 1960 FALSTAFF, HAMMS, STAG, ANHEUSER, GRIESE DIECK. 573-680-5377.

ROUND BALE TWINE: Netwrap, silage film, end of year sale. 573-205-7860, Owensville.

TWO VIVINTECH LARGE WINDOWS: New from Lowes, double pane. 62.5x38.5 \$100 obo, 49.5x36.5 \$50 obo, deal for both. Rolla, 928-514-0505.

6400 SQ FT BUILDING FOR SALE: Located on historic route 66 in Cuba Mo. 573-205-7860.

YOU GOTTA SEE THESE NEW HOUSES!!! Brand new inventory on sale !! 573-499-9993. columbiadiscounthomes.com.

TARTER CATTLEMEN: Series 6, squeeze chutes, auto headcatch. \$2,975. 573-205-7860, Owensville.

POULAN PRO 220 CHAINSAW: 20" bar, carrying case. \$100. 573-756-3969, Fredericktown, MO.

SACAGAWEA GOLDEN DOLLARS: Face value \$1. Original issue 2000, uncirculated. In rolls of 5. \$30. 417-686-0032, Ava.

MISSOURI BOOKS FOR SALE: Rising Stars & Ozark Constellations. \$6.50. Shepherd of the Hills by Harold Bell Wright. Mysteries of the Ozarks Vol II by Ellen Gray Massey. \$5. Trees of Missouri. \$5. Missouri's Forgotten Heroes by Ross Malone. \$5 417-532-2045, Lebanon.

INDIAN HILLS LAKE LOTS: 2 Adjoining lots, close to entrance. Cuba Mo, 573-205-7860.

ANGUS REGISTERED BULLS FOR SALE: Smith Valley Angus. 16-24 mo old bulls, several AI sires. Starting \$2,200. smithvalleyangus.com. 573-729-3616, 573-247-7165, Salem.

FIREARMS: Professional Repairs and Restorations. Baron's Gunsmithing. 573-363-5801, Camdenton.

AUCTION REMINDER: Every Wednesday at 10:30 am. Farmington Livestock. Please see our Auction Directory for more information.

ANTIQUE TOOLS BOOK: A price guide to E.C. Simmons Keen Kutter Tools and Cutlery Book. \$5. Lebanon, 417-532-2045.

ACA REGISTERED LAB PUPPIES: Will be UTD on shots/worming. Ready to go 1/24/19. Yellows & blacks available. \$350. 417-599-9451, Louisburg.

FOR SALE OR TRADE: 2 Restored 9' Antique Pool Tables. \$3,500 each, may trade for guns. 573-248-0942, Hannibal.

WANTED TO BUY: Unstyle G John Deere for restoring. Send letter or call 573-768-0068, Jim Schlimme, HC 62, Box 62, Sedgewickville, MO. 63781.

I DEAL in mobile homes, Free Lance....Call me for a quote, new or used, any style, size, or manufacturer. Carole, 636-384-0527.

FOR-SALE FARM FRESH: Large brown eggs from free-range hens \$1.50/dozen, case discount. Levi Beechy 639 Smith Rd. Seymour MO 65746.

GUN SHOW

JANUARY 11TH - JANUARY 13TH

Fri. 3PM - 8PM • Sat. 9AM – 5PM • Sun. 9AM – 3PM

~ **Cape Girardeau, MO** ~

Cape Drury Hotel & Conference Center

(3351 Percy Dr.)

BUY • SELL • TRADE

INFO: 563-927-8176 • www.rkshows.com

Cowtown Express Car Wash

Highway 63 South, Rolla, MO
Call Wade 573-368-1430 Or 573-426-2500



\$4,500
And 10% Down
\$95 Per MO
w.a.c.

NEW Winchester Star & Bale Trailers

Powder Coated 18+2, 7,000 Axles

www.cowtownusainc.com

AUCTION REMINDER: Saturday, January 12 @ 9:00AM. Magee Auction. Please see our Auction Directory for more information.

BLACK ANGUS BULLS: Objective T510, Bloodline, 20 month old & up. \$1,850 & up. 573-205-7860, Owensville.

1991 VOLVO LOG TRUCK: With 8,000 hood loader and pup trailer. \$28,000. 573-546-0751, Ironton.

REGISTERED HEREFORD & ANGUS BULLS: Home raised, Some Show-Me Select Qualified. 573-701-7828. Belgrade

WANTED, TIMBER TO LOG ON SHARES: Honest, reliable, references. 417-533-4607, 417-664-1195.

LAND CLEARING: 417-718-5564. Great Views Brush Clearing. www.GVBrush.com

TARTER 7' HDD7: disk, 3pt, adjustable gangs, new, heavy duty. \$1850. 573-205-7860, Owensville.

2 METAL COLVERTS: 199" long x 1'round, new never used, \$150. \cf2 Rolla, 928-514-0505.

YOU GOTTA SEE THESE NEW HOUSES!!! Brand new inventory on sale !! 573-499-9993. columbiadiscounthomes.com.

WOMENS LANDS END PARKA: Large (12-14) extreme Cold Weather long, black, quilted down parka with removable faux fur trimmed hood, knee length, worn once. Excellent Condition. \$100. 417-718-5347, Conway.

TRIM LUMBER: 1X4, 12' lengths. \$200. 636-239-2695.

PINE LOG SIDING SALE: \$1.19 per L.F. www.pineridgerustic.com 573-729-7226, 573-247-2823.

TOASTER OVEN: Like new. \$40. Lebanon, 417-532-8048.

12 GA, BENELLI NOVA: Camo, pump, like new. \$450. Pittsburg, 417-852-1088.

TARTER 3PC ROUND HAY BALE RINGS: New, 3 styles. \$175. 573-205-7860, Owensville.

22,000 BTU BLUE FLAME HEATER: propane. \$75. 417-683-7843.

FENCING: large rolls square metal, heavy duty, about 6 rolls, used. \$90 obo for all, Great buy! Rolla, 928-514-0505.

NEW NEW NEW DISPLAY HOUSE!!! Call Marla to hear what is new inside 573-657-7040, chateauhomes.net.

TO GIVE AWAY: Great Pyrenees/Australian Shepherd mix. Call 573-201-9430, Rolla.

88 CHEVY PICK-UP FOR SALE: V8 350, 5-speed, manual transmission. \$1,800. 573-528-2699.

See Service

Spray Foam Insulation

Closed cell or open cell form available
Choose the thickness of your insulation

| | |
|--|---|
| <p>Closed Cell</p> <ul style="list-style-type: none"> • Higher R. value • Vapor barrier • Structural benefit • Fire Resistant | <p>Open Cell</p> <ul style="list-style-type: none"> • Lower Cost • Sound Deadening • Fire resistant |
|--|---|

Both types of foam fill voids and stay where they are put to provide better insulation than fiberglass or cellulose

Call Joseph See
(417) 733-6936
Located near Buffalo, MO

WEEKLY TRADER MAGAZINE

YOUR AD GOES HERE!

Add **YELLOW** Color For An Additional \$3 Per Reader Ad

All ads will include Phone Number (unless requested to be deleted by advertiser) and City Or Town, Phone Number with Area Code counts as one word. City or Town counts as one word.

RATE: 80¢ Per Word. All Classified Ads Require Payment Before Print.

| | | | |
|--------------|--------------|--------------|--------------|
| (1) 80¢ | (2) \$1.60 | (3) \$2.40 | (4) \$3.20 |
| (5) \$4.00 | (6) \$4.80 | (7) \$5.60 | (8) \$6.40 |
| (9) \$7.20 | (10) \$8.00 | (11) \$8.80 | (12) \$9.60 |
| (13) \$10.40 | (14) \$11.20 | (15) \$12.00 | (16) \$12.80 |
| (17) \$13.60 | (18) \$14.40 | (19) \$15.20 | (20) \$16.00 |
| (21) \$16.80 | (22) \$17.60 | (23) \$18.40 | (24) \$19.20 |
| (25) \$20.00 | (26) \$20.80 | (27) \$21.60 | (28) \$22.40 |
| (29) \$23.20 | (30) \$24.00 | (31) \$24.80 | (32) \$25.60 |
| (33) \$26.40 | (34) \$27.20 | (35) \$28.00 | (36) \$28.80 |
| (37) \$29.60 | (38) \$30.40 | (39) \$31.20 | (40) \$32.00 |

Place your Classified Ad TODAY!

417-532-2800 • 800-665-8875

Fax: 417-532-8140

Or Mail To: P.O. Box 192 • Lebanon, MO 65536

For your convenience we accept MasterCard, Visa, Discover or American Express



DEADLINE FOR CLASSIFIED ADS: MONDAY 12 NOON!!

Name _____

Address _____

City _____ Email _____

State _____ Zip Code _____ Phone _____

Ad Total \$ _____ X # Weeks _____ = Amount Enclosed \$ _____

0% APR for **60** MOS

ZERO DOWN

**KEEP IT SIMPLE
WITH QUARLES SUPPLY**

RATES SUBJECT TO CHANGE
*With approved credit. Tax/Insurance not included.
Some restrictions may apply. See dealer for details.

2019 NEW YEAR



TRACTOR PACKAGES



New 26HP Kubota Package Deal!

B2650HSD \$20,600
Financing Price

**NEW Kubota B2650HSD, 4wd, DIESEL, AG TIRES, KUBOTA LOADER,
4' CUTTER, 4' BLADE, NEW 16' KODIAK TRAILER W/RAMPS& NEW TIRES**



New 33HP Kubota Package Deal!

L3301HST \$23,515
Financing Price

**NEW Kubota L3301HST, 4wd, DIESEL, AG TIRES, KUBOTA LOADER,
6' CUTTER, 6' BLADE, NEW 18' KODIAK TRAILER W/RAMPS& NEW TIRES**



New 52HP Kubota Package Deal!

MX5200HST \$33,715
Financing Price

**NEW Kubota MX5200HST, 4wd, DIESEL, AG TIRES, KUBOTA LOADER,
6' CUTTER, 6' BLADE, NEW 20' KODIAK TRAILER W/RAMPS& NEW TIRES**



**PRICING REFLECTS ALL CURRENT KUBOTA PROGRAMS
*DOES NOT INCLUDE TAX AND INSURANCE
BLENDED RATES MAY APPLY ON NON KUBOTA ITEMS**

QUARLES
SUPPLY COMPANY INC.

quarleskubota.com

Just off Business 13 in Bolivar, MO

Open 8:00-5:00 Monday-Friday

Saturday 8:00-12:00

(417) 777-2391

**KEEP IT
SIMPLE
WITH
QUARLES
SUPPLY**