

FREE WEEKLY **TRADER** MAGAZINE

Vol. 25 No. 50
MARCH 21, 2019
 800-543-8271 • 800-665-8875

Find us on Facebook
 @myweeklytrader

Auctions - Pg. 21
 MYWEEKLYTRADER.COM

TRUCK MONTH



ALL-NEW 2019 SILVERADO CREW CAB LT ALL STAR

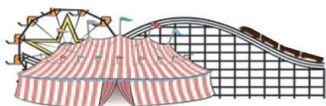
FOR WELL-QUALIFIED BUYERS

0% APR FOR 72 MONTHS¹

¹Monthly payment is \$13.89 for every \$1,000 you finance. Example down payment: 4.0%. Must finance with GM Financial. Some customers may not qualify. Not available with lease and some other offers. Take new retail delivery by 4/1/19. See dealer for details. ©2019 General Motors.

FIND **NEW** ROADS[™]

CHEVROLET



FAIRGROUND
Auto Plaza

DRIVEN TO SERVE YOU BEST...

100 Fairgrounds Road
 Rolla, Missouri
 (573) 364-1002

www.FairgroundGM.com



SPRING DAY SALES

DON VANCE AUTO GROUP

OVER 1000 VEHICLES IN STOCK!

FIND YOUR NEXT CAR @ DONVANCEAUTOGROUP.COM

2013 Ford fusion SE



Turbo • FWD
Mileage 102,733
Stock # 29842A

\$9,990

2017 Ford Fiesta S



FWD • Automatic • Black
Mileage 24,412
Stock # 29893A

\$10,990

2014 Ford Edge SEL



3.5L V6 • AWD • Gray
Mileage 101,068
Stock # 28983C

\$14,990

2013 Ford Mustang GT



5.0L V8 • RWD • Black
Mileage 30,626
Stock # 28970A

\$19,975

2014 Chevrolet Captiva Sport Fleet LS



Flexible Fuel • Automatic • FWD
Black • Mileage 85,067
Stock # 1631ua

Call for pricing

2010 Jeep Wrangler Sport Convertible



3.8L V6 • 4WD • Manual
Mango Orange • Mileage 99,781
Stock # 29888A

\$16,475

2015 Jeep Grand Cherokee Laredo



3.6L V6 • Flexible Fuel • Automatic
Bright White • Mileage 51,186
Stock # 29058A

\$20,475

2008 Chevrolet Silverado 1500 Work Truck



Extended Cab • 5.3L V8 • 4WD
Automatic • Red • Mileage 236,673
stock #

\$7,990

2017 Jeep Compass Latitude



2.4L 4WD • Automatic
Black • Mileage 9
Stock # 1628U

\$20,975

2016 Jeep Wrangler Unlimited



Rubicon • Convertible • 3.6L V6
4WD • Automatic • Silver
Mileage 38,080 • Stock # 29204A

\$31,975

2017 Jeep Compass Trailhawk



2.4L • 4WD • Automatic
Diamond Black • Mileage 19
Stock # 1631U

\$26,975

2013 Chrysler 200 Touring



4 door • FWD • Automatic
Metallic • Mileage 27,450
Stock # 28258A

\$10,475

2014 Dodge Journey SXT



3.6L Fwd • White • Automatic
Mileage 81,934
Stock # 29366A

\$10,475

2014 Dodge Journey SXT



3.6L V6 • FWD • Automatic
White • Mileage 81,934
Stock # 29366A

\$10,475

2014 Chevrolet Captiva Sport Fleet LS



Flexible Fuel • FWD • Automatic
Black • Mileage 60,144
Stock # 29279B

\$10,975

2017 Cadillac XT5 Platinum AWD



6 Cyl • Automatic • White
Mileage 31,094
Stock # 8383A

\$38,475

2007 Chevy Tahoe LT



Flexible Fuel • 4wd • Automatic
White • Mileage 177,126
Stock # 29343A

\$10,990

2011 Chrysler 300c



v8 • Flexible Fuel • Black
Mileage 57,971
Stock # 28929A

\$13,975

2006 Dodge Ram 1500 SLT



8 Cyl • RWD • Silver
Mileage 146,470
Stock # 8445A

\$7,990

2014 Chevrolet Silverado 1500 LTZ



Crew Cab • 4WD • Automatic
Mileage 66,456
Stock # 28790A

\$27,975

Actual Vehicle May Differ From Photo

HOME OF UPFRONT PRICING!



SEE SALESMAN FOR DETAILS. ALL VEHICLES IN STOCK AT TIME OF AD SUBMISSION BUT SUBJECT TO SALE PRIOR TO PRINTING. NOT RESPONSIBLE FOR TYPOGRAPHICAL ERRORS & OMISSIONS. GRAPHICS MAY NOT ACCURATELY REPRESENT AD VEHICLE.
PAYMENTS BASED ON 3.99% @ 72 MONTHS SUBJECT TO CREDIT APPROVAL AND PRODUCT AVAILABILITY.

ONLY 17 MINUTES EAST OF SPRINGFIELD ON 1-44 • DONVANCEAUTOGROUP.COM
800-947-7567 • 417-859-2600



MAKE TIME

TO DO THE THINGS YOU LOVE

Hustler's residential family of mowers are built stronger and perform faster, allowing you to quickly maneuver around obstacles with ease, including life's most difficult obstacle time.



For Outstanding Products & Service
AGRI-ENTERPRISES

1-1/2 Miles South Of Licking, MO On Hwy 63

573-674-2203 • 1-800-653-7152

www.agri-enterprises.com

AUCTION REMINDER: Large Restaurant, Bar & Ice Cream Parlor Auction, Monday, March 25, 10AM Shorty Small, Parlor 88 & Lexington Candy Shop and Luncheonette Rona Downs-Marion Restaurant Equipment. Please see our Auction Directory for more information.

3 METAL DETECTORS: \$15, \$25 and \$75. Birch Tree, 573-872-9821.

LADIES CARHART: deep green blanket lined jacket, size Large, adjustable waist tabs, zipper front, Excellent condition. \$35. 417-718-5347.

GM 1/2 TON WD FRONT AXLE HOUSING: w/3.07 gears, 77-87. \$80. 314-303-7857, Cedar Hill.

1999 CHEVY EXTENDED CAB: 4x4, Z71, newer engine and transmission. 417-321-1928.



TIM'S USED CARS

(573) 341-3828 • 1334 South Bishop (Hwy. 63) • Rolla, MO
Next to Hwy. CC • www.tims-used-cars.com

 <p>2015 FORD F250 SUPER DUTY CREW CAB XL, 4X4, 6.2 V-8, POWER EQUIPPED 134,XXX MILES ONLY \$20,900</p>	 <p>2013 RAM 1500 CREW CAB 4X4, TRADESMAN 5.7 HEMI, POWER EQUIPPED 89,XXX MILES ONLY \$18,900</p>
 <p>2004 DODGE RAM 1500 QUAD CAB 2WD 4.7 V-8, 144,XXX MILES. ONLY \$4,900</p>	 <p>2008 GMC YUKON DENALI AWD 6.2 V-8, LOADED WITH OPTIONS! ONLY \$14,900</p>

LARGE SELECTION OF CARS, TRUCKS, SUVs & VANS!

USED EQUIPMENT

New at Used Price!

• Mahindra 2565 with loader, cab, 4WD, 13 hours
Mahindra 4110 w/loader, 41HP
Kubota B7200 4 WD, w/Belly Mower • MF 50, Diesel
Gehl Silage Chopper • NH 163 Tedder
6' & 7' Brush Cutter • Landpride 10' Brush Cutter
JD 10' Cultipacker • 3pt. 3 bottom plow
12' Spring Tooth Harrow 3pt. 2 Disc Disc Plow
Gravely 2T 2148XL Zero Turn Mower Rider
Other Misc Equipment

For Outstanding Products & Service
AGRI-ENTERPRISES
1-1/2 Miles South Of Licking, MO On Hwy 63
573-674-2203 • 1-800-653-7152
www.agri-enterprises.com

17 JD HX-15 BUSHHOG: Chains like new. \$14,750. 870-458-2238.

TWO BUMPERS: For 62-64 Chevy 2 Nova. \$100. 573-734-2822, Bismarck.

CROWN

Power & Equipment

SERVING YOU IN 8 LOCATIONS!

HAY

66411	Pequea TT6000 Tedder-6 Basket.....	\$8,450.00
	New Holland H7230 Roller, Discbine.....	\$15,900.00
60892	Massey Ferguson 2756 Round Baler, 5x6, Net	\$7,500.00

TRACTORS

	Kubota L4300 DT Tractor 4WD, w/Ldr	\$14,300.00
	Massey Ferguson 2-165 w/Ldr	SOLD!
	John Deere 6400 Cab, 4WD, Tractor	SOLD!
	Massey Ferguson 65 Gas	\$5,500.00
	Massey Ferguson 135G Tractor.....	\$3,750.00
	John Deere 2032R Compact, 4WD, Frt. Blade	SOLD!
	Kubota 7200HST	\$2,750.00
	Massey Ferguson 231 Tractor	SOLD!
	Kubota M7040 Tractor, 4WD, w/Ldr	\$36,850.00
	Allis 185 Tractor, w/Ldr	\$8,995.00
	Kubota L4701 DT Tractor, w/Ldr, 250Hrs.	\$19,500.00
	John Deere 2030 Tractor W/ Loader	\$6,500.00

Eldon, MO

3369 Hwy 52 W. • 573-392-0230

www.crown-power.com

Sales: (Ag) Gene Klein and (Ce) Chris Scott

TRACTORS

Ford 5610 4WD, Tractor, w/Ldr	SOLD!
Case IH 885 2WD, Tractor, w/Ldr	SOLD!

MISCELLANEOUS

61520 BH2T220 Mower, Zero Turn, Bush Hog.....	\$2,950.00
KMC House Cleaner	\$5,500.00
Case IH 2388 Combine, 4x4	\$58,000.00
John Deere 445G 54" Lawn Tractor w/ bagger.....	\$2,970.00
Sitrex Exp 10 Wheel Rake	SOLD!
Sidewinder 7 ft. Pull Cutter	\$1,250.00
7 ft. Blade	SOLD!
Bush Hog 2615L Wing Cutter	SOLD!
Ogden 8 Wheel Rake	\$1,750.00

CONSTRUCTION

New Holland LS180 Skid Loader	SOLD!
Case 1845C Skid Steer Loader	SOLD!
John Deere 85D Mid. Excavator	\$CALL
Kubota SVL95 Cab, Air, 750 Hrs.	\$53,900.00
BobCat 5185 Tracks, Cab, AC	\$19,250.00

CASE IH
AGRICULTURE

HUGE SEMI TIRE SALE: Trailer 11R-24-5, 16-ply. \$292. A/P 16-ply. \$280. 11R-22-5 16-ply. \$247. A/P 16-ply. \$265. 295-75-22-5 16-ply. \$275. A/P 14-ply. \$248. 285-75-24-5 14-ply. \$238. A/P 14-ply. \$267. Free Petroleum Gift with purchase of 8. F-Warranty, F-Delivery. Call 417-276-2435.

CEDAR GAP TOPSOIL: Garden Ready topsoil, Only water required, delivery within 50-mile radius, Seymour. 417-935-2877. For more info: www.cedargaptopsoil.com

DISHWASHER: Black, works. \$50. Lebanon, 417-532-3734.

GREAT PYRENEES PUPPIES: All white, 8 wks, wormed/shot. \$200. 417-926-2470, Norwood.

REAR MOUNT BALE CARRIER: No 3rd arm used. \$100. Rogersville, 417-753-2747, 417-766-1991.

METRO MOTORS INC.

R.V. SALES

**NEW GREY WOLF, CHEROKEE & ROCKWOOD!
GREAT SELECTION OF NEW & PREOWNED RVs**

•2012 350RL Brookstone 5th Wheel, 3 Slides, King Bed	\$28,500	•2016 17BH Greywolf TRL	\$15,500
•2016 274RK Cherokee TRL Lg. Slide	\$17,500	•2000 34' Allegro Bay V-10 Ford, 71,xxx Miles.....	Sale Price \$24,500
•2019 274DBH Cherokee TRL Lg. Slide-Out, Fireplace, 15,000 BTU AC, Enclosed Tanks	\$22,900	•2018 122 S Rockwood A Frame	\$12,500
•2019 16 BHS Wolf Pup	\$12,500	•2017 210 RB I-Go Cloud Trailer	New \$17,500
•2018 2906WS Rockwood TRC 3 Slides	\$30,900	•2009 24' Winnebago View 6 Cyl., Myrcedes Diesel, 59,xxx Miles, 2 Slides.....	\$43,900
		•2018 82975 5th Wheel, Ext. Living Room, R/King Bed, 4 Slides.	\$37,500

"Where Your Satisfaction Really Counts"

2727 S. Campbell - Springfield, MO - Visit our website at www.metro-motors.biz

417-882-6800

WEEKLY TRADER MAGAZINE

Vol. 25 March 21, 2019 No. 50

Published By

Lebanon Publishing Co. Inc.
PO Box 192, Lebanon, MO 65536

417-532-9131

www.myweeklytrader.com

Everything advertised in this publication must be made available purchase, use or patronage without regard to race, creed, color, sex, age or national origin of the purchaser, user or patron. The Publisher will not be responsible for misinformation, misprints, typographical errors, etc. Opinions expressed are not necessarily those of the Publisher. All rights reserved. No part of this material may be reproduced by any means without permission in writing from the Publisher. We reserve the right to refuse any ad if we deem necessary. Our list and map indicate counties in which the Weekly Trader delivered. The magazine is not necessarily placed in all communities a particular county. A list of all retail drops for a county may be obtained by contacting the Weekly Trader office at PO Box 192, Lebanon, MO 65536.

AUCTION REMINDER: 2 Day consignment Auction! Saturday, March 30th @10am, Consignment Auction Sunday, March 31st @ 10am. Southwest Auction Service. Please see our Auction Directory for more information.

LOOKING FOR WATER BICYCLE: Any shape. Leave message, 618-758-2830.

NEW STOCK!!! Wow, do these look **GOOD!!!** Call 573-657-2176 amegamobile-homes.com

JOHN DEERE 337: Square Baler. \$2250. 573-765-4406.

AUCTION REMINDER: 2 Commercial Real Estate, Monday, April 1st @ 10am and 1pm. Gary Sexton Auctions. Please see our Auction Directory for more information.

REGISTERED ADULT GERMAN SHEPHERD MALE. \$100. 417-741-2198, Hartville.

CUSTOM SAW MILLING: Lebanon. 417-533-4607, 417-664-1195.

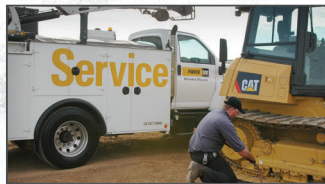
1984 2500 CHEVY: 454, TH400, low miles, rusty, delivery negotiable. \$1,675. 573-864-2611.

INDIAN ARCHERY 1950'S: wood, recurve bow, with original box of Ben Pearson arrows. \$195. Rolla, 573-364-7465.

VINTAGE CAPPERS WEEKLY SEARCHLIGHT RECIPE COOKBOOK: \$15. Lebanon, 417-532-2045.

GERMAN SHEPHERD PUPPIES: 8 weeks old, shots/wormed. \$300 up. 417-589-4383, Lebanon.

VERONA MISSOURI HISTORY: 1868-1968. 100 year history. \$22.50. Lebanon, 417-532-2045.



THE RIGHT EQUIPMENT FOR EVERY JOB

Always ready when YOU need it.

+ From general construction to manufacturing, and every project in between, Fabick Cat is ready to serve your industry. We have the equipment you need to get the job done.

+ NEW | USED | RENTAL | SERVICE
WE DO IT ALL

800.845.9188 | www.fabickcat.com

"TO EVER SERVE OUR CUSTOMERS BETTER"



CDL IN ONE DAY!!: Family owned and operated, Insured, Over 10 years of experience, Training available for all states, Short wait time for appointments, Contact us today to schedule your appointment!! CREDIT CARDS EXCEPTED. (573-353-2853).

20- 14' PORTABLE CATTLE PANELS: Light-medium weight, 2 chains \$80each 9-8'panels 66#, \$68each. 573-205-7860

MASSEY FERGUSON 285: Diesel tractor, w/loader. \$11,000. Farmington, 573-631-4352.

L2501D KUBOTA: 4wd tractor with loader, 25HP, hydro transmission, with 5' Landpride bush hog. \$16,900. 417-270-1505.

WOOD STOVE: cast iron, front opening, on legs, used only one season. Rolla, 928-514-0505.

JOHN DEERE: 7300 air planter, 3pt, 8row, 36sp, vertical fold. \$5500. Viola, 870-458-2580.

PUREBRED HEREFORD BULL: 3 years old. \$1, 400. 573-690-1277, leave message.

WOOD BUSHING: For Ferguson disk. \$20. 636-932-4429. Herman

10FT 3PT BLADE: \$525. 573-765-4406.

FOR SALE 1978 INTERNATIONAL ROAD TRACTOR: Only 263,304 miles, near new recaps on rear rome offset disk H.D. Cat 60 Flat bottom Scrapey Lincoln Pipeliner welder on trailer. Belle, 573-619-2533.

KITCHEN-AIDE CONVECTION STOVE/OVEN: used only 6mths, gas/propane. \$1400obo. Rolla, 928-514-0505.

AUCTION REMINDER: Saturday, March 23rd @ 9am. MR Clark Auction Service. Please see our Auction Directory for more information.

CAR DOLLY: No title. \$350. 417-321-1928.

Cowtown Express Car Wash
 Highway 63 South, Rolla, MO
 Call Wade 573-368-1430 Or 573-426-2500

\$4,500
 And 10% Down
 \$95 Per MO
 w.a.c.



NEW Winchester Star & Bale Trailers
 Powder Coated 18+2, 7,000 Axles
www.cowtownusainc.com

STUDEBAKER 1963 2 DR HT DAYTONA: good paint, V8 automatic, dual ex bucket seats, needs interior. \$4250obo or trade up or down on 1964 GT Hawk. Drury, 417-293-4399.

AUCTION REMINDER: Thursday, March 28th, 9:01 & 12:46pm. Chupps Auction. Please see our Auction Directory for more information.

CALVES BOTTLE AND WEANED: for sale call Ben. Grovespring, 417-241-0509.

JOHN DEERE 7000: 6X30in Planter, No till. \$3350. 573-765-4406.

BoatAngel

FREE 4-NIGHT VACATION!
 Donate Car • Boat • RV • Motorcycle

1-800-CarAngel
www.boatangel.org

TARTER CATTLEMEN: Series 6, squeeze chutes, auto headcatch, new. \$2,975 Series 3 \$1875. 573-205-7860, Owensville.

COMPOUND BOW WITH ARROWS: \$25. Birch Tree, 573-872-9821.

AUCTION REMINDER: Friday, March 22, 6pm. Lorts Auction. Please see our Auction Directory for more information.

HYDRAULIC POWER SUPPLY FOR SAWMILL: \$600. Ellsinore, 573-714-5779.

OLIVER 1650 TRACTOR: 65hp, 6cyl, gas, 2wd, open station, good rubber, front-end loader, w/bale spear. \$7250. 573-205-7860

JOHN DEERE 535: Round Baler, monitor, kicker, net wrap. \$7,200. 573-765-4406.

Husqvarna

PZT 60 w/ Kawasaki
 *Only 2 Left
 Free 545 18" Chainsaw, Free 525 BX Blower, Free 525L Trimmer, Free Set of Blades, Free Service Kit
\$7,934³⁰

		
MZ 48 23HP KOH 125B Free Blower 525LK Free Trimmer \$4,499⁹⁹	MZ 54 23HP KOH 125B Free Blower and 525LK Free Trimmer \$4,699⁹⁹	MZ 61 27HP BRIGGS 125B Free Blower and 525LK Free Trimmer \$4,999⁹⁹

	
MZT 52 w/ Briggs Free 525BX Blower, Free 545 16" Chainsaw, Free 525L Trimmer \$5,574⁸⁴	MZT 61 w/ Briggs Free 525BX Blower, Free 545 16" Chainsaw, Free 525L Trimmer \$5,975⁸⁴

	
YTH22V42 Riding Mower *Only 1 Left Free 128CD Reman Trimmer \$1,699⁹⁵	Z246 Husqvarna Free Husqvarna 122CR Trimmer \$2,499⁹⁵

DIAMOND R EQUIPMENT
 Full service shop work on any models.
 Just 6 Miles North of Freeburg on Hwy. 63
4012 Hwy. 63, Freeburg, MO
573-455-2617

2 BILLY GOATS: 2yrs old, producers. \$125each. Salem, 573-453-5398.

I BUY....USED MOBILE HOMES. Call or text 573-338-6250 or email GregS.CDH@outlook.com

M8540 KUBOTA: 4wd tractor with loader, 85HP, open station, low hours, hydraulic shuttle, 12 speed. \$32,500. 417-270-1505.

8FT OFFSET DISK, good blades. \$2,500. 573-765-4406.

SEEGER MADNESS



Our Latest and Greatest Deals!

P9437	2017 HYUNDAI SANTA FE...	\$21,988	7527A	2018 TOYOTA AVALON HYBRID	\$29,988	7201A	2015 MAZDA CX-9.....	\$17,988
P9441	2016 FORD ESCAPE.....	\$17,988	7492A	2016 CHEVY CRUZE.....	\$13,988	7258D	2011 FORD FIESTA.....	\$5,588
7358A	2016 GMC SIERRA 1500	\$26,988	7554A	2018 TOYOTA CAMRY HYBRID ...	\$27,988	7381A	2017 TOYOTA TACOMA	\$31,988
P9454	2012 TOYOTA TUNDRA	\$29,988	P9468	2018 TOYOTA RAV4	\$20,588	7365A	2014 TOYOTA PRIUS.....	\$15,988
7258B	2018 CHEVY SONIC	\$14,988	P9469	2018 TOYOTA RAV4	\$22,588	7345A	2008 TOYOTA TUNDRA	\$16,588
7308B	2017 JEEP WRANGLER UNLIMITED.....	\$30,988	P9470	2018 TOYOTA RAV4	\$22,588	P9489	2018 TOYOTA CAMRY.....	\$17,988
7304A	2017 TOYOTA COROLLA.....	\$16,588	P9471	2018 TOYOTA RAV4	\$22,588	P9490	2018 TOYOTA COROLLA.....	\$14,988
6801A	2016 CHEVY SILVERADO 1500.....	\$30,988	P9476	2016 GMC SIERRA 1500	\$35,988	7415B	2016 JEEP WRANGLER UNLIMITED.....	\$31,988
7440A	2015 TOYOTA AVALON.....	\$21,988	7215A	2011 TOYOTA TACOMA	\$17,588	P9488A	2007 JEEP COMPASS	\$6,988
7507A	2015 TOYOTA AVALON HYBRID	\$15,988	7595A	2014 TOYOTA TUNDRA	\$27,988	6829A	2006 TOYOTA TUNDRA	\$10,988
P9461	2018 NISSAN ROGUE	\$17,988	P9480	2017 TOYOTA PRIUS.....	\$23,988	7603A	2007 CHEVY SILVERADO 1500 CLASSIC.....	\$12,588
P9462	2015 HONDA PILOT	\$21,988	P9481	2017 DODGE GRAND CARAVAN....	\$17,988	7630A	2017 TOYOTA TUNDRA	\$24,588
7043A	2017 BUICK ENCLAVE	\$28,988	P9482	2017 DODGE GRAND CARAVAN....	\$18,988	P9492	2017 TOYOTA CAMRY.....	\$15,988
7513A	2016 TOYOTA RAV4 HYBRID	\$23,988	P9483	2018 NISSAN MURANO.....	\$22,988	P9493A	2015 HONDA ACCORD	\$17,988
7191B	2015 JEEP WRANGLER	\$22,988	P9484	2017 NISSAN ROGUE	\$21,988			
7041A	2016 TOYOTA 4RUNNER	\$26,988	7602A	2016 FORD MUSTANG	\$27,988			
7526A	2017 HONDA CIVIC	\$19,988	7612A	2017 TOYOTA TACOMA	\$32,988			
			7151A	2012 TOYOTA RAV4	\$14,988			



TOYOTA
Let's Go Places

Doing Business
the Right Way
The Seeger Way



ENGINES FOR LIFE

Call for details
Non-Factory Lifetime Limited Warranty
Good at participating dealerships

SATURDAY SERVICE 8AM-4PM



Toll Free:
800-844-6026

Next to Walmart, St Robert
573-336-7111
SeegerTOYOTA.net



SEEGER CARE

**PREOWNED VEHICLES
COME WITH SEEGER CARE!**

- 1 **FREE** (3) SCHEDULED OIL AND FILTER CHANGES
 - 2 **FREE** MULTI-POINT INSPECTION WITH EVERY OIL CHANGE
 - 3 **FREE** EXTERIOR CAR WASH WITH EVERY SERVICE VISIT
 - 4 **FREE** LIFETIME SAFETY AND EMISSION TESTING
 - 5 **FREE** SAME-DAY SERVICE LOANER CAR
 - 6 **FREE** TANK OF GAS
- Service Only at Seeger St Robert/St Louis

†Does not include tax, title, and license. * Seeger Care offer good for Less than 85K Miles and Less than 10 years old Prices do not include any College Grad or Military Rebate. See sales rep to see if you would qualify for additional savings. Prices does not include \$199 dealer administrative fee. Cannot be combined with any other offer. Prior sales final. See dealer for details. Advertised vehicle may not be exactly as pictured and are subject to prior sale. We cannot be responsible for typography or photography. ** St. Robert, Mo. Inventory

2012 KUBOTA RTV 1100: Cab heat/air, new tires, diesel, camo color, 1430hrs. \$9200. 417-543-5164

FOUR 17" TIRES FOR VAN. \$35. 573-734-2822, Bismarck.



2001 CAT 525B Log Skidder
No winch, good working condition
\$27,000 • 573-569-3693

1993 FREIGHTLINER DUMP TRUCK w/ Pup trailer for sale: Runs good, tires fair, everything works good. For information, 573-247-1862, Salem, MO.

3 TON PORTABLE CATTLE CREEP FEEDER: new, creep gates, \$2,275, 2ton, Portable grain/feed bin, new. \$1850. 573-205-7860, Owensville.

PLASTIC NURSERY CONTAINERS: 200 plus 2 1/2 qt-bigger. \$30 for all. 636-239-2695.

SMALL FARM: 40 acres, near Ellington, MO, spring, 2 ponds, barn, part pasture, electric, well, livable building, highway access. \$65,500. 573-637-2450, 573-697-1016.

WANTED PINBALL MACHINES. 573-424-7200.



Cheyenne Acres
Horse & Tack
BUY - SELL - TRADE
by Rolla, MO
Call For Directions & Availability
Call Kip
573-368-9402



JOHN DEERE 4240: Diesel cab and air tractor, power shift, 3900hrs, very nice, 110hp. \$29500. 573-765-4406

LIMOUSIN BULLS: 18-30 mos. old, Homo Black, polled, AI sired. 573-301-2316, 573-301-2074.

GREAT PYRENEES PUPS: 3boys, be ready 4-20-19, shots and wormed, \$125 each. Salem, 573-453-5398.

REGISTERED BLACK ANGUS BULLS: 417-453-6332. Plato.



JD 555G
from
\$18,500 to \$23,500
Call Mark @ (314) 560-3112

AUCTION REMINDER: Estate Auction. Saturday, Mar 30 @ 10:00am. Foster Auction. Please see our Auction Directory for more information.

FIREARMS: Professional Repairs and Restorations. Baron's Gunsmithing. 573-363-5801, Camdenton.

AUCTION REMINDER: Online Auction going on now. Atterberry Auctions. Please see our Auction Directory for more information.

TONNEAU COVER: fits almost any size truck/with 6'6"x5'8" wide. Good condition/Clamp's/Struts. \$300 OBO. 417-852-1088, Pittsburg, MO.

10HP AIR COMPRESSOR: 3 phase. \$300. Ellsinore, 573-714-5779.



Wright Spray Foam Insulators, Inc.
Commercial & Residential
Call For A FREE Estimate
417-746-1953
417-746-4932
Norwood, Missouri

TWO NEW VINYL WINDOWS: Open upright, double pane. 62.5x38.5 \$100 obo, 49.5x36.5 \$75 obo, Rolla, 928-514-0505.

CLEANING OUT KITCHEN CABINETS & CUPBOARDS: Inside only. \$125 or trade. 573-327-9068.

TENT CAMPER UTILITY TRAILER: 5x8. \$250. Vienna, 573-759-7143.

MOTORIZED 26" FLYER BIKE: 80mpg, 40mph, Karaoke brand. \$185firm. 573-872-9821

Starnes Auto LLC
22115 Rt. 66 • Lebanon, MO 65536
417.588.3159 Office • 417.718.2707 Cell
www.starnesauto.com

1998 CHEVY S10	
REG CAB, GOOD TITLE	\$CALL
2000 GRAND PRIX	
GOLD, 184,XXX MILES	\$2,500
2001 CHEVY MALIBU	
GOLD, 64, XXX MILES	\$3,250
2003 OLDSMOBILE SILHOUETTE	
110, XXX MILES	\$3,500
2004 CHEVY CAVALIER	
GOLD, 58,XXX MILES	\$4,000
2005 GMC YUKON XL	
142,XXX MILES	\$8,250
2005 HYUNDAI SONATA	
BLUE/GREEN, 77,XXX MILES	\$3,800
2006 CHEVY SUBURBAN LS	
BLUE, 2WD, 185,XXX MILES	\$5,200
2006 CHEVY MALIBU	
BLACK, 115,XXX MILES	\$4,200
2006 PONTIAC G6 GT	
WHITE, CONV, 73,XXX MILES	\$6,250
2009 CHEVY COBALT	
BLUE, 49,XXX MILES	\$4,200
2009 SATURN OUTLOOK	
GOLD, 117,XXX MILES	\$5,700
2010 CHEVY MALIBU	
MAROON, 47,000 MILES	\$CALL
2010 GMC TERRAIN	
WHITE, 118,XXX MILES	\$8,250
2014 CHEVY EQUINOX LT	
WHITE, 88,XXX MILES	\$13,250
2014 CHEVY IMPALA	
BLACK, 86,XXX MILES	\$8,200
2014 GMC TERRAIN	
SILVER, 50,XXX MILES	\$13,500
2015 CHEVY EQUINOX	
GOLD, 75,XXX MILES	\$10,500
2015 CHEVY EQUINOX LS	
LIGHT BLUE, GOOD TITLE, 68,XXX MILES	\$11,250
2015 CHEVY EQUINOX LT	
MAROON, SUNROOF, GOOD TITLE, 39,XXX MILES	\$14,500
2015 GMC TERRAIN	
BLACK, GOOD TITLE, 65,XXX MILES	\$15,900
2017 BUICK ENCORE	
8,XXX MILES	\$17,500

WE DO ALIGNMENTS!

YOU GOTTA SEE THESE NEW HOUSES!!! Brand new inventory on sale !! 573-499-9993. columbiadiscountshomes.com.

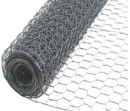
L3400D KUBOTA: 4wd tractor with loader, 34HP, gear drive, low hours with 5' bush hog. \$16,900. 417-270-1505

CHC Home Centers and Do it Centers

ALL YOUR SUPPLIES IN ONE PLACE!

Poultry Netting

763985



20% OFF

retail on all sizes in stock

12.5 Gauge Barbed Wire



\$59.00

700551

16'x50" Cattle Panel

\$21.74

Treated Wood Posts



\$10.22 5'x8"
\$11.00 6'x7"
\$18.00 7'x8"

Chicken Coop



\$597

METRO SIZE
2 Nests for 4-6 Birds

NEXT DAY DELIVERY AVAILABLE!

12% OFF

CHC's Price on all Dewalt Power tools in stock.



Pre-Cut Studs

2"x4"x92-5/8"
#2 Grade

\$2.67

Cash and Carry

Heritage Architectural Shingles



TAMKO
BUILDING PRODUCTS

\$72.00 sq.
Cash and Carry

Painted Metal



45 Year Warranty!
\$71.00 sq.
12 colors to choose from

Water Heaters



40 Gallon Electric
6 Year Warranty
\$319 401962
50 Gallon Electric
\$369 401984
40 Gallon Natural Gas
\$489 401887
40 Gallon LP Gas
\$524 401892

CHECK OUT OUR HUGE SELECTION!

TROY-BILT



21" 163cc Self
Propelled Mower
High Wheel

\$379

703826

Husqvarna



42" 18.5 HP
Lawn Tractor

\$1,499

704337

Husqvarna Zero Turn Mowers



As Low As

\$2,699

PLUS Get a

\$100 Rebate

on ALL zero turns, in the form of a CHC merchandise gift card!



Rear Tine Tiller
14" Tilling width

As Low As
\$554

After
Rebate

12% Rebate

on all Rear Tine Tillers in the form of a CHC merchandise gift card!

CREATE, PLANT, AND FERTILIZE!



KY31 Tall Fescue Seed

\$79.97 ea.
50 lb. bag
070420



Triple 12 Fertilizer

12-12-12
33 lb. bag **\$14.54** ea.
750734



Assorted Mulches

\$2.94 bag
2 cu. ft. bags

Choose from Cedar, Hardwood, Brown, and Red Mulches

Treated Landscape Timbers



\$3.94

Nice Large Timbers!



#2 Used Railroad Ties

\$10.44 ea.

Cash and Carry

cHc
Home Center

CABOOL

Near Hwy 60
at 107 South Hwy 181
(417) 962-4535
Mon.-Sat.
8 a.m.-5:30 p.m.

HOUSTON

Hwy 63
(By the Super Center)
1453 Sam Houston Blvd
(417) 967-4179
Mon.-Sat.
8 a.m.-5:30 p.m.

MARSHFIELD

Hwy 38 at
360 McNabb Rd
I-44 Exit #100
(417) 468-6262
Mon.-Sat.
8 a.m.-5:30 p.m.

ROGERSVILLE

Hwy 60, 2 Blocks
South on Mill St.
(417) 753-2500
Mon.-Sat.
7:30 a.m.-6 p.m.

Prices Good thru March 30, 2019

chhomecenter.com

WEEKLY TRADER MAGAZINE

This is...

WEEKLY TRADER COUNTRY!



Place Your Ad With Us Today!

417-532-9131 CHECK US OUT ONLINE AT: myweeklytrader.com

AGRICULTURAL APPRAISER: Earn \$60,000/year part-time in the Livestock or Farm Equipment appraisal business. Agricultural background required. Home Study Course is available. 800-488-7570 or www.amagappraisers.com

TARTER 7' HDD7: disk, 3pt, adjustable gangs, new, heavy duty. \$1850. 573-205-7860, Owensville.

POOL TABLES: Installations, moves, repairs, repairs, accessories, etc. 573-646-1700.

IHC 684: Diesel tractor w/loader, 62hp. \$9850. 573-765-4406.

VILLA HOMES IN ROLLA: Has NEW and USED Mobile Homes. Call David for info: 573-578-8072.



MOW, LOAD, DIG, HOIST AND HAUL.

Ready to move from that ride-around mower to a real working tractor? Step up to the Massey Ferguson® GC1700 Series, with the largest engine in its class and a standard front end loader and backhoe.

www.masseyferguson.us

MASSEY FERGUSON GC1710
22.5HP TRACTOR, LOADER & BACKHOE

\$208 PER MONTH*

Marshfield Machinery INC.

222 E. Madison • Marshfield, MO
417-859-2117 • www.marshfieldmach.com

©2018 AGCO Corporation. Massey Ferguson is a worldwide brand of AGCO Corporation. AGCO and Massey Ferguson are trademarks of AGCO. All rights reserved. *On select models with approved credit from AGCO Finance®, LLC. Down payment required. Attachments and implements are included in program offer, but sold separately. Restrictions may apply. Contact your participating dealer for more details. Offer ends soon and may be subject to change without notice.

NEW MASSEY TRACTORS

4710 4WD CAB & LDR 99HP IN STOCK
4708 4WD & LDR 80HP IN STOCK
2706E 4WD & LDR 57HP IN STOCK
2705E 4WD & LDR 48HP IN STOCK
1739E 4WD & LDR 38HP IN STOCK
1734E 4WD & LDR 34HP IN STOCK
1726E 4WD & LDR 24HP IN STOCK
1526 4WD & LDR 24HP IN STOCK
GC1720 4WD, LDR, BACKHOE IN STOCK
GC1710 4WD, LDR, BACKHOE IN STOCK
GC1705 4WD & LDR 22.5 HP IN STOCK

USED TRACTORS

MAHINDRA 105P CAB LDR 105HP45,500
MAHINDRA 2565 CAB LDR 65HP28,500
MAHINDRA 1526 4WD, LDR 26HP15,500

MF GC1705 4WD, LDR 23HP 10,500
MF GC1705 4WD, MWR 23HP 10,500
MF GC1705 4WD 23HP 7,750
IHC 460 49 HP 3,500

USED ROUND BALERS

MF 2946A 4X6 MESH 24,000
MF 2846A 4X6 MESH 24,000
MF 2846A 4X6 MESH 20,000
HESSTON 5546A 4X6 MESH 12,500
MF 2745 4X5 MESH 12,500
MF 1745 4X5 9,500
HESSTON 845 4X5 7,500
GEHL 2480 4X5 4,500
HESSTON 545 4X5 4,500
HESSTON 555T 4X6 4,500
CASE IH RS451 4X5 4,500

HESSTON 560 5X6 4,000
NH 850 5X5 1,500

USED DISC MOWERS

MF 1383 13FT MOWER/COND 19,500
JD 275 9FT 3PT 3,500
HESSTON 1120 MOWER/COND 2,000

USED RAKES

GEHL 418 8 WHEEL 2,000
VERMEER WR20 8 WHEEL 1,950

USED MISC.

HAYBUSTER 107C NOTIL DRILL 16,500
BUSH HOG 3615 15FT 9,000
BUSH HOG M346 LOADER 3,500

Gooseneck and Winchester Star pipe cattle trailers the best in the business here and ready...



Cowtown USA

I-44 Exit 203 • 413 Daniels Rd.
Cuba, MO • 573-885-6300
www.cowtownusainc.com

AUCTION REMINDER: Every Wednesday at 10:30 am. Farmington Livestock. Please see our Auction Directory for more information.

AUCTION REMINDER: Public Auction Friday, March 29, 10AM. Bruce & Le'AN Auction. Please see our Auction Directory for more information.

AUCTION REMINDER: Estate Auction. Saturday, March 23 @ 10am. Nance Auction. Please see our Auction Directory for more information.

I BUY.....used mobile homes. Call or text, 573-338-6250 or e-mail GregS.CDH@outlook.com

John Deere 160CLC Excavator



\$23,500, 2 available.

Call Mark (314) 560-3112

PETERSON SURFACING TABLE: 24"x50", 14" wheel, with air box, recent re-built motor. \$1300. West Plains, 417-270-1513.

AUCTION REMINDER: Every Wednesday at 10:30 am. Farmington Livestock. Please see our Auction Directory for more information.

JOHN DEERE 730 PARTS. Call 417-241-0006.

MASSEY FERGUSON HOOD EMBLEM. \$20. 636-932-4429. Herman

2007 HARLEY DAVIDSON STREET GLIDE: 96 ci engine, 22,000 miles, lots of chrome and extras. \$12,000. 573-743-6018, 314-348-4965 cell.

COMPOUND BOW WITH ARROWS: \$25. Birch Tree, 573-872-9821.



TAX REFUND SALE



2018 Chrysler 300 S
V6, Leather, Sunroof, Nav,
18k miles
P-7722 **\$23,400**



2018 Dodge Challenger
SXT Plus; Htd/Cld Leather;
Sunroof; 20s; Technology
Group; 13k miles
P-7730 **\$25,495**



2017 Dodge Charger RT
DAYTONA 5.7 Hemi; Leather,
Tech. Group NAV., 11k miles
P-14804A **\$32,500**



2018 Dodge Charger
SXT Plus; V6; 24k miles
P-7626 **\$21,600**



2016 Chrysler 300C
V6, Htd/Cld Leather; Nav;
26k miles
P-7643A **\$18,800**



2018 Chrysler 300
Touring, Chrome App. Pkg.,
7K miles
P-14483A **\$20,495**



2016 Chevy Malibu
LT; 57k miles
P-14880A **\$14,500**



2018 Ford Mustang GT
5.0 V8, 6spd., 9k miles
P-14613A **\$29,495**



2018 Chrysler 300
AWD, Limited, HD/CD Leather,
Navigation, Dual Sunroof, 14k miles
P-7851 **\$24,995**



2018 Chevy Impala
LT; V6, Nav; 31k miles
P-7652 **\$18,500**



2017 Dodge Challenger
RT 392; 6.4 Hemi; Auto; Leather;
Nav; Sunroof; 24k miles
P-14496A **\$32,400**



2018 Chevy Camaro
LT; RS; Sunroof; 20s;
25k miles
P-7685 **\$22,600**



2018 Dodge Challenger
SXT; V6; 18k miles
P-7692 **\$22,000**



2017 Honda Accord
Sport, 4 cyl, 37k miles
P-14853A **\$20,995**



2018 Chevy Cruze
Hatchback; LT; 14k mile
P-7782 **\$15,700**



2018 BMW X3
xdrive30i, AWD, Sunroof,
Nav., 360° Camera, Loaded,
9k miles
T-14939A **\$41,995**



2017 Chrysler Pacifica
Touring-L Plus; Leather;
U Connect Theater; Nav;
Hands Free Doors; 25k miles
T-14911A **\$28,000**



2017 Dodge Grand Caravan
SXT, 50k miles
T-7746 **\$16,300**



2018 Chrysler Pacifica
Touring-L; Leather; Nav;
16k miles
T-7703 **\$26,500**



2016 Chrysler Town & Country
Touring; Leather; DVD; 72k miles
T-14856A1 **\$14,900**



2016 Chrysler Town & Country
Touring; Leather; DVD; 60k miles
T-14937A **\$16,800**



2018 Jeep Grand Cherokee
Limited, 4x4, Htd Leather,
Navigation, 19K miles
T-7812 **\$32,995**



2018 Jeep Grand Cherokee
Limited, 4x4, Htd Leather, Dual
Sunroof, Navigation, 23K miles
T-7838 **\$33,995**



2018 Jeep Compass
Limited, 4x4, Leather,
Navigation, Safety &
Security Group, 17K miles
T-7840 **\$23,495**



2018 Jeep Renegade
Lat; 4X4; 20k miles
T-7656 **\$18,500**



2018 Hyundai Santa Fe
Sport; AWD; 28k miles
T-7661 **\$17,700**



2018 Jeep Cherokee
Trailhawk; 4X4; 4cyl;
Uconnect 8.4; 20k miles
T-7635 **\$23,500**



2017 GMC Terrain
SLE; FWD; 27k miles
T-7586 **\$17,700**



2019 Jeep Cherokee
Overland; 4X4; 2.0 Turbo; Htd/
Cld Lthr; Tech. Grp; 22k miles
T-7711 **\$28,500**



2018 Jeep Compass
Latitude, 4x4, Pop, Equip Group,
Safety & Sec. Grp, 22K miles
T-7843 **\$19,995**

Not all actual photo's shown

LINDSAY CHRYSLER/DODGE PRE-OWNED

573-336-2698

809 MISSOURI AVE., ST. ROBERT, MO • OPEN 8 A.M. - 6:30 P.M. MON.-FRI. & SAT. - 9 A.M. - 5 P.M.

LINDSAY CHRYSLER/DODGE PRE-OWNED IN ST. ROBERT



Use Your Tax Refund Toward Your Down Payment!

over 400 vehicles online or on the lot – we've got what you want!

WWW.LINDSAYCHRYSLERDODGE.COM



2016 Honda CR-V

EX-L; FWD; Sunroof;
Leather; 41k miles

T-7575A **\$20,000**



2015 Buick Encore

FWD, 37K miles

T-7831 **\$15,995**



2018 Chevy Equinox

LT; FWD; 12k miles

T-7537 **\$19,500**



2019 Jeep Cherokee

Lat. Plus; 4X4; 4 Cyl;
20k miles

T-7752 **\$22,495**



**2018 Jeep
Grand Cherokee**

Trailhawk, 4x4, V6,
HD/CD Leather, 17k miles

T-7850 **\$37,495**



**2018 Chevy
Suburban LT**

4x4, Leather, Sunroof, DVD,
22k miles

T-7784 **\$46,995**



**2018 Jeep Grand Cherokee
Summit, 4x4, V6, HD/CD
Leather, Navigation, Dual
Sunroof, Loaded, 22k miles**

T-7847 **\$39,495**



2018 Dodge Journey

GT; V6; Leather;
14k miles

T-7688 **\$19,400**



**2014 Jeep
Grand Cherokee
Limited; 4X2; Hemi;
Leather; 22k miles**

T-7622A **\$20,700**



**2013 Dodge
Durango SXT**

AWD, V6, Nav., 3rd Row
Seat, 89k miles

T-14817A **\$16,995**



2012 Ram 1500

Quad, 4x4, Express, Hemi,
20's, 100k miles

T-7654A **\$17,995**



2018 Chevy 1500

Dbl. Cab; 4X4; LT; V8;
28k miles

T-7774 **\$29,495**



**2018 Chevy
Colorado**

Crew, 4x4, LT, Nav,
23k miles

T-7758 **\$28,995**



2019 Ram 1500

Classic, Crew, 4x4 SLT,
Hemi, 20k miles

T-7829 **\$31,495**



2016 Ford F150

Crew; 4X4; Lariat; EcoBoost 3.5;
Nav Sunroof; 19k miles

T-14672B **\$38,900**



2018 Ram 1500

Quad, 4x4, SLT, V6,
22k miles

T-7806 **\$26,495**



2018 Ram 1500

Quad; 4x4; SLT; V6;
15k miles

T-7794 **\$26,995**



**2016 Chevy
Colorado**

Crew; 4X4; Z71; V6; 50k miles

T-14628B **\$26,800**



2018 Ram 1500

Quad, 4x2; SLT; V6;
26k miles

T-7793 **\$23,495**



2003 F150

Salvage Title, Ext cab, XLT,
4x4, 100k miles

T-7562B **\$8,495**



2011 Honda Accord

EX, 4 Cyl, Sunroof,
80k miles

P-7801 **\$11,995**



2011 VW GTI

6 Speed, Heated Cloth,
107k miles

P-7809B **\$9,495**



2014 Nissan Versa

S, 105k miles

P-7786 **\$8,995**



**2010 Subaru
Impreza**

AWD; Sunroof; 127k miles

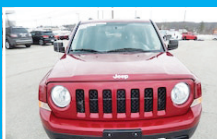
P-7674A **\$6,995**



2009 Nissan Maxima

Leather, Sunroof, 142k miles

P-7701A **\$5,995**



2012 Jeep Patriot

Latitude, 4x4, Heated
Cloth, 86k miles

T-7627B1 **\$10,995**



**2009 Jeep Grand
Cherokee**

Laredo; 4X4; 122k miles

T-7796A **\$9,495**



**2012 Chevy
Captiva**

FWD, LS, 127k miles

T-7791 **\$7,995**



2006 Chevy HHR

LT, Leather, Sunroof,
124k miles

T-7771 **\$5,995**



**2005 Honda
Shadow**

750cc, 9k miles

T-14487C **\$2,500**

573-336-2698

Not all actual photo's shown

809 MISSOURI AVE., ST. ROBERT, MO • OPEN 8 A.M. - 6:30 P.M. MON.-FRI. & SAT. - 9 A.M. - 5 P.M.
LINDSAY CHRYSLER/DODGE PRE-OWNED IN ST. ROBERT

SOLID WOOD TWIN BED: 4ft high, nice storage underneath, with covered new mattress, still in plastic. \$100obo. Rolla, 928-514-0505.

YARD SALE: Friday and Saturday, March 22-23, 9am-?, Highway 60 Storage, 14549 US-60, Cabool. Over 25 units have been invited to sale. Don't miss the bargains, see us on Facebook for upcoming sales.

WILLARD MO HISTORY BOOK: From Prairie to Present, A Centennial Story 1976. Out of print book. \$25. Lebanon, 417-532-2045.

AUCTION REMINDER: Cattle Sale every Monday at Noon. Salem Livestock. Please see our Auction Directory for more information.

LIONEL TRAIN SET: Steam engine, tender, caboose and other car, track and transformer. \$195. 573-364-7465, Rolla.

DARDEN PROFESSIONAL TIMBER HARVESTING, BUYING STANDING TIMBER: Great prices, improve wildlife habitat and improve forest health. State Certified & Fully Insured! 573-247-4808 or 573-739-1122. Salem

STOCK TRAILER: 2000, 6.8ftX20ft, Gooseneck, great condition. \$2500. Vienna, 573-422-3748.

JOHN DEERE 420: 2cylinder, wide front, 3pt, Late 50's, extensive work mechanically, too much to list, with a fresh paint job, seat and new tires, Parade ready. \$3850. 573-205-7860.

FERGUSON-TO-30: 12volt, good tractor w/5' wood mower. \$2800. Bourbon, 314-960-6652.

CATTLE HOLDING CHUTES: W/AI cage, Tarter auto head catch, new. \$2,000. 573-205-7860, Owensville.

2000 BOX TRUCK: new rubber, passed safety inspection, runs but needs work. \$2000. Bourbon, 314-960-6652.

NEW HOLLAND: 1411 diskbine. \$7,250. 573-765-4406.

AUCTION REMINDER: 14th Annual Consignment and Donation Auction. Saturday, April 6 Consign now. Hartville Lions Club. Please see our Auction Directory for more information.

LONG 1110 TRACTOR: 92HP, cab, needs TLC. \$1500. 417-646-8807.

REGISTERED HEREFORD & ANGUS BULLS: Home raised, Some Show-Me Select Qualified. 573-701-7828. Belgrade

92 PLYMOUTH ACCLAIM: auto, air, 129,000miles, very good condition. \$800. 314-616-9862.

50 CLASSIC CARS AND TRUCKS: If you're needing an older classic, give me a call for more information. Thomasville, MO 417-247-1689.

IHC 806 DIESEL TRACTOR: with loader \$7,800. (573)765-4406



Work ethic comes standard.

Where there's work to be done, there's Kubota equipment ready to get it done right. With reliable diesel engines and an array of attachments, it's time to conquer every task. Visit us today.



L Series



RTV-X Series



SSV Series



Grand L Series

OPEN HOUSE MARCH 30, 2019



KUBOTA OF THE OZARKS

1660 E CHESTNUT EXPWY
SPRINGFIELD, MO
417-866-5588

SCHAEFERKOETTER'S

2715 HWY A
MT. STERLING, MO
573-943-6323

1102 W HWY 28
OWENSVILLE, MO
573-437-4421

SINCE 1893

KubotaUSA.com

© Kubota Tractor Corporation 2019. This material is for descriptive purposes only. Kubota disclaims all representations and warranties, express or implied, or any liability from the use of this material. For complete warranty, safety and product information, consult your local Kubota dealer. For the complete disclaimer, go to KubotaUSA.com/disclaimers and see the posted disclaimer.

MASSEY FERGUSON 231 TRACTOR: 40 HP, 2,000 hours, with nice loader, \$8,950. 573-765-4406.

DANUSER HYD. POST DRIVER: Nice. \$1,950. 573-765-4406.

AKC GERMAN SHEPHERD PUPPIES: Available in March, papered, black, 5 left. \$650. 417-208-7646, Ava.

BARE CYLINDER HEAD: for 361/407 IH Diesel tractor engine. \$200. 573-459-6488.

\$2,500 - \$11,000 LOT

Lindsay Chevrolet & Lindsay Ford

Mon.-Fri. 8 am - 7 pm
Sat. 8 am - 5 pm
Not responsible for typos.
* with approved credit

417-588-7995

West City Route 66
& South Monroe
Lebanon, MO

Bobby Rogers, Manager • Aaron Wehner, Finance • Mike Forner, Steve "Whitey" Helton, Larry Davis, Sales

Cars

QC75331	2003 FORD T-BIRD CONV. V8, AUTO, FWD, GRAY.....	\$11,900
QC75376	2010 HONDA CIVIC LX 4CYL., AUTO, FWD, BLACK	\$10,600
QC75444	2013 FIAT 500 POP 4CYL., AUTO, FWD, BRONZE	\$8,800
LT28470	2013 NISSAN JUKE S 4CYL., AUTO, FWD, GRAY	\$8,900
LC28434	2013 VOLTSWAGON JETTA TDI 4CYL., AUTO, FWD, BLUE	\$9,900
QC75399	2013 CHEVY CRUZE LT 4CYL., AUTO, FWD, WHITE	\$8,900
QC75445	2014 CHEVY CRUZE LT 4CYL., AUTO, FWD, BLUE	\$9,900
QC75443	2014 CHEVY SONIC LS 4CYL., AUTO, FWD, BLACK	\$8,900
LC28499	2014 CHEVY SPARK LT 4CYL., AUTO, FWD.....	\$9,900
QC75336	2014 TOYOTA CAMRY LE 4CYL., AUTO, FWD, SILVER.....	\$11,900
LC28359	2014 CHEVY SONIC LT 4CYL., AUTO, FWD, RED	\$9,400
LC28344A	2014 CHEVY IMPALA LTZ V6, AUTO, FWD, WHITE.....	\$9,700
LC28385	2014 CHEVY SPARK LT 4CYL., AUTO, FWD, WHITE	\$9,800
LC25367	2014 CHEVY IMPALA LS V6, AUTO, FWD, BLACK.....	\$9,700
LC28469	2015 CHEVY SONIC LS 4CYL., AUTO, FWD, WHITE	\$10,900
QC75358	2015 FORD FOCUS SE 4CYL., AUTO, FWD, GRAY	\$10,600
QC75386	2015 CHRYSLER 200 LIMITED 4CYL., AUTO, FWD, BLUE	\$9,400
LC7050A	2015 CHEVY SPARK LS 4CYL., 5SPD., FWD, BLUE.....	\$9,300
LC28361	2015 CHEVY SONIC LTZ 4CYL., AUTO, FWD, WHITE	\$9,700
QC75332	2015 NISSAN SENTRA 4CYL., AUTO, FWD, GRAY	\$9,300
QC75363	2016 CHEVY CRUZE LS 4CYL., AUTO, FWD, RED	\$11,400
LC28383	2017 FORD FIESTA S 4CYL., 5SPD., WHITE.....	\$8,900

Trucks

QT75440	2004 CHEVY SILVERADO LS EXT. CAB, V8, AUTO, 4WD, BLACK	\$10,850
QT75292	2005 DODGE RAM CREW V8, AUTO, 4WD, BEIGE.....	\$10,900
LT7061A	2006 FORD F450 6.0 D. MOTOR AUTO, RWD, FLAT BED, WHITE	\$8,400
LT28260	2006 CHEVY SILVERADO V6, AUTO, 2WD, BLACK.....	\$6,800

Trucks

LT28393	2011 DODGE DAKOTA ST EXT. CAB, V6, AUTO, RWD, WHITE	\$7,900
QT57489A1	2011 CHEVY SILVERADO LT EXT. CAB, V8, AUTO, RWD, WHITE	\$9,900
QT75289	2012 DODGE RAM REG. CAB V8, AUTO, RWD, NICE TRUCK, BLACK	\$12,400
QT75395	2012 GMC CANYON SLE REG. CAB, 5CYL., AUTO, RWD, BLUE.....	\$9,400

SUVs

QT75114A	2005 FORD ESCAPE XLT V6, AUTO, 4WD, GRAY.....	\$6,600
QT75268	2007 DODGE NITRO R/T V6, AUTO, 4WD, WHITE.....	\$8,900
QT75456	2008 HUMMER H3 5CYL., AUTO, AWD, RED	\$10,900
LT28504A	2008 SATURN OUTLOOK XR V6, AUTO, FWD, LOADED, BLUE	\$6,600
LT28332	2008 SUZUKI XLT PREMIUM V6, AUTO, FWD, SILVER	\$6,500
LT28273A	2009 MERCURY MARINER 4CYL., AUTO, FWD, WHITE	\$8,600
QT5294A	2010 MAZDA CX7 4CYL., AWD, SILVER	\$6,500
LT28465A	2010 SATURN VUE XE 4CYL., AUTO, FWD, SILVER.....	\$6,800
QT75196B2	2011 CHEVY EQUINOX LT 4CYL., AUTO, AWD, GRAY	\$11,900
LT28377	2012 FORD ESCAPE XLT V6, AUTO, FWD, WHITE.....	\$10,900
LT28418A	2013 CHEVY CAPTIVA SPORT LT 4CYL., AUTO, FWD, SILVER.....	\$10,400
QC75392A	2013 HYUNDAI SONATA LIMITED 4CYL., AUTO, FWD, BLUE, 71K MILES	\$10,900
QT75335	2014 JEEP COMPASS 4CYL., AUTO, 4WD, SPORT, RED	\$11,200
QT75405A2	2014 CHEVY CAPTIVA SPORT LTZ 4CYL., AUTO, FWD, 88K MILES, SILVER	\$11,600

Vans

QC75394	2016 DODGE GRAND CARAVAN SE V6, AUTO, FWD, GRAY.....	\$12,900
QT75394	2016 DODGE GRAND CARAVAN SE V6, AUTO, FWD, 107K MILES	\$12,900

\$5,000 or Less!

QC75359A	2005 PONTIAC GRAND PRIX V6, AUTO, FWD, GOLD	\$3,600
LT28334A	2007 SUZUKI GR. VITRA V6, AUTO, 4WD, GRAY.....	\$4,700
QT75375	2008 MITSUBISHI ENDEAVOR LS V6, AUTO, 4WD, BLACK.....	\$4,900

WWW.LINDSAYAUTOGROUP.COM

MALIBU BLOW OUT SALE!



New remaining 2018 Malibu's
up to **25% Off!**

Starting as low as \$18,795 or \$273 per month!



CHEVROLET 

FIND NEW ROADS™

LINDSAY CHEVROLET

"Where The Trucks Are"

OPEN: M-F 8-7 • SAT. 8-5 IN LEBANON AT 285 W. ELM • 417-532-3114

David Bean
Manager

Jeremy Johnson
Sales

Brent Hale
Sales

Dennis Nash
Asst. Manager

Shelby Cole
Finance

www.lindsaychevroletlebanon.com



DRIVE AWAY WITH A 2018 CHEVROLET TRUCK TODAY!

Limited amount
of trucks
available



New remaining 2018 Chevrolet Silverado
Crew Cab, 1/2 Ton, 4x4, Trucks

MARKED DOWN as much as **\$12,000**
OFF MSRP

Payments as low as \$536* per month!

*with approved credit



CHEVROLET 

FIND NEW ROADS™

LINDSAY CHEVROLET

"Where The Trucks Are"

OPEN: M-F 8-7 • SAT. 8-5 IN LEBANON AT 285 W. ELM • 417-532-3114

David Bean
Manager

Jeremy Johnson
Sales

Brent Hale
Sales

Dennis Nash
Asst. Manager

Shelby Cole
Finance

www.lindsaychevroletlebanon.com





LINDSAY CHEVROLET USED CAR & TRUCK DEPT.

330 W. ELM • LEBANON, MO
417-532-3114
MON.-FRI. 8-7; SAT. 8-5

Joe Jeffery, Manager • Nikki Keller, Finance, Brent Snook, Bryan Sien, Frankie Doublin & Tina Riesinger, Sales — Not responsible for typos.

CARS

LC28352 2018 Chevrolet Malibu LS Dk Blue, 1.5L Turbo, Air Cond, Loaded GM Program Vehicle	\$15,900
LC28114 2018 Chevrolet Malibu LT Gray, 1.5L Turbo, Air Cond, Loaded Off Lease Vehicle	\$16,700
LC28179 2018 Chevrolet Malibu LT White 1.5L Turbo, Air Cond, Loaded GM Program Vehicle GM CERTIFIED	\$18,500
LC28330 2018 Chevrolet Malibu LT White, 1.5L Turbo, Air Cond, Loaded GM Program Vehicle	\$16,700
LC28273 2018 Chevrolet Malibu LT Brown, 1.5L Turbo, Air Cond, Loaded GM Program Vehicle	\$16,700
LC28452 2018 Chevrolet Malibu LT Pearl White, 1.5L Turbo, Air Cond, Loaded Local Trade	\$16,900



2018 Chevrolet Malibu LT
Silver 1.5L Turbo, Air Cond, Loaded Off Lease Vehicle

LC28439
\$16,700
0 Down
72 Months 4.99%
\$269 per month

SUVS

LT28371 2018 Chevrolet Express 1T LT White, 4.3LV6, Air Cond, 15 Pass Seating, Loaded GM Program Vehicle	\$26,900
LT28346 2018 Chrysler Pacifica Touring I Plus White, 3.6LV6, Air Cond, Leather, Fully Loaded Off Lease Vehicle	\$31,400
LT28267 2017 Dodge Gr Caravan Sxt Maroon, 3.6LV6, Air Cond, Leather, Loaded Off Lease Vehicle	\$16,700
LT28261 2017 Buick Enclave Convenience White, 3.6LV6, Air Cond, 3rd Row Seats, Loaded Off Lease Vehicle	\$26,900
LT28343 2014 Buick Encore Conv FWD Blue, 1.4L Turbo, Air Cond, Loaded Off Lease Vehicle	\$14,700
LT28404 2018 Buick Envision Premium AWD Silver, 2.0L Turbo, Air Cond, Leather, Loaded GM Program Vehicle	\$29,900
LT28430 2018 Buick Enclave Essence AWD Maroon, 3.6LV6, Air Cond, Sunroof, Leather, Loaded GM Program Vehicle	\$34,900
LT28137 2015 Buick Enclave Premium AWD White Diamond, 3.6LV6, Air Cond, Leather, Loaded Off Lease Vehicle	\$24,700
LT 28280 2017 Chevrolet Equinox LT AWD Burgundy, 2.4L 4cyl, Air Cond, Loaded GM Off Lease Vehicle	\$17,900
LT 28299 2018 Chevrolet Equinox LT AWD White, 1.5L Turbo, Air Cond, Loaded GM Program Vehicle	\$21,700
LT28338 2018 Chevrolet Equinox LT AWD White 1.5L Turbo Air Cond, Loaded GM Program Vehicle	\$20,900
LT28450 2018 Chevrolet Equinox LT AWD Silver, 1.5L Turbo, Air Cond, Loaded GM Program Vehicle	\$20,900
LT28200 2017 Chevrolet Equinox LT FWD White, 2.4L 4cyl, Air Cond, Heated Seats Loaded Off Lease Vehicle	\$17,800
LT28240 2017 Chevrolet Equinox LT FWD Gray, 2.4L 4cyl, Air Cond, Loaded Off Lease Vehicle	\$17,700
LT28422 2017 Chevrolet Equinox LT FWD Maroon, 2.4L 4cyl, Air Cond, Sunroof, Loaded Off Lease Vehicle	\$16,900
LT28337 2018 Chevrolet Equinox Premier AWD Silver, 1.5L Turbo, Air Cond, Leather, Loaded GM Program Vehicle	\$23,800
LT28431 2018 Chevrolet Equinox Premier AWD White 1.5L Turbo, Air Cond, Leather, Loaded GM Program Vehicle	\$24,500
LT28309 2018 Chevrolet Equinox Premier AWD White, 1.5L Turbo, Air Cond, Leather, Loaded GM Program Vehicle	\$21,800
LT28303 2018 Chevrolet Equinox Premier FWD Silver 1.5L Turbo, Air Cond Leather, Loaded GM Program Vehicle with 11XXX Miles	\$22,800
LT28353 2018 Chevrolet Equinox Premier FWD Silver, 1.5L Turbo, Air Cond, Leather, Loaded GM Program Vehicle	\$21,800
LT28276 2018 Chevrolet Suburban LT 4X4 Silver, 5.3LV8, Air Cond., Leather, Loaded Off Lease Vehicle	\$38,900
LT28184 2018 Chevrolet Tahoe LT 4 X 4 Black, 5.3LV8, Air Cond, Leather, Loaded GM Program Vehicle	\$41,500
LT28416 2018 Chevrolet Traverse 3LT AWD Pearl White, 3.6LV6, Air Cond, Sunroof, Leather, 3rd Row Seats, Loaded	\$36,900
LT28410 2018 Chevrolet Traverse LT AWD Gray, 3.6LV6, Air Cond, Heated Seats, Loaded GM Program Vehicle	\$30,900
LT28432 2018 Chevrolet Traverse Premier AWD Maroon, 3.6LV6, Air Cond, Leather, Loaded GM Program Vehicle	\$36,500
LT28399 2019 Chevrolet Trax LS FWD Blue, 1.4L Turbo, Air Cond, Loaded GM Vehicle with 200 Miles	\$19,900
LT28428 2015 Chevrolet Trax LT FWD Orange, 1.4L Turbo, Air Cond, Loaded Off Lease Vehicle	\$15,900

QT56909 2017 Ford Edge Sel AWD Burgundy, 2.0L EcoBoost, Air Cond, Nav, Leather, Sunroof, Less than 100 Miles	\$29,500
QT74921A 2015 Ford Edge Titanium AWD Black, 2.0L EcoBoost, Air Cond Leather, Loaded Local Trade	\$23,700
QT57316A 2017 Ford Escape Se FWD Maroon 1.5L EcoBoost Air Cond, Loaded Local Trade	\$17,300
QT57284A 2013 Ford Expedition EL Limited Black, 5.4LV8, Air Cond, Sunroof, Leather, Navigation, Loaded	\$17,900
QT75384A 2016 Ford Explorer XLT 4 X 4 Black 3.5LV6 Air Cond, Leather, Sunroof, 3rd Row Seats, Loaded Local Trade	\$27,900
QT5742C1 2016 Ford Explorer XL T 4 X 4 Black, 2.3L EcoBoost, Air Cond, 3rd Row Seats, Loaded	\$26,900
LT28245 2018 GMC Acadia SLE AWD Maroon, 2.5L 4cyl, Air Cond, Loaded GM Program Vehicle	\$28,800
LT28130; 2018 GMC Acadia SLE FWD White Pearl, 2.5L 4cyl, Air Cond, Loaded GM Program Vehicle	\$26,500
LT28227 2018 GMC Terrain SLE AWD Brown, 1.5L Turbo, Air Cond, Loaded GM Program Vehicle	\$23,500
LT171208 2014 GMC Terrain SLT FWD White, 3.6LV6, Air Cond, Leather, Sunroof, Loaded Local Trade	\$14,800
LT28263A 2017 Jeep Cherokee Trailhawk 4 X 4 Hydro Blue, 2.4L 4cyl, Air Cond, Leather, Loaded Local Trade	\$24,900
LT28425 2018 Jeep Compass Latitude 4 X 4 Blue, 2.4L 4cyl, Air Cond, Loaded and Only 7XXX-Miles	\$22,700
LT28412A 2016 Jeep Grand Cherokee Limited White, 3.6LV6, Air Cond, Sunroof, Leather, Loaded Local Trade with 18XXX Miles	\$29,900
LT28448 2018 Jeep Grand Cherokee Overland White, 3-6LV6, Air Cond, Leather, Sunroof, Navigation Sys, Loaded Off Lease	\$37,900
QT57468A 2017 Jeep Renegade Trailhawk Red, 2.4L 4cyl, Air Cond., Loaded Local Trade	\$18,500
QT75254A 2014 Jeep Wrangler Sahara 2dr Black, 3.6LV6, Air Cond, Leather, 9500# Winch, Custom Bumpers, Lift Kit, 27XXX Miles	\$31,900
LT6882A 2018 Volkswagen Atlas SEL AWD White, 3.6LV6, Air Cond, Sunroof, Leather, 3rd Row Seats, Loaded	\$36,900



2018 Chevrolet Equinox LT Awd

Silver, 1.5L Turbo Air Cond, Htd seats Loaded GM GM Program Vehicle

LT28347
\$20,800
0 Down
72 Months 4.99%
\$335 per month

TRUCKS

LT7203A 2016 Chevrolet Colorado Crew LT 4 X 4 Red, 3.6LV6, Air Cond, Loaded Local Trade with only 12XXX Miles	\$27,900
LT7194A 2016 Chevrolet Silverado 2500 Crew High Country 4 X 4 Black, Duramax, Air Cond, Leather, Sunroof, Htd/Cooled Seats, Loaded Local Trade	\$45,800
LT6985A 2018 Chevrolet Silverado 2500 Crew LTZ 4 X 4 Black, Duramax, Air Cond, Leather, Sunroof, Htd/Cooled Seats, Loaded Local Trade	\$54,800
QT57412A 2011 Chevrolet Silverado 3500 Crew LTZ 4X4 White, Duramax, Air Cond. Leather, Loaded Local Trade with 43XXX Miles	\$37,900
LT28230 2017 Chevrolet Silverado DBL Cab LT 4 X 4 White, 5.3LV8, Air Cond, Loaded Off Lease Vehicle	\$29,500
LT28364 2018 Chevrolet Silverado DBL Cab LT 4 X 4 Red, 5.3LV8, Air Cond Alloy Wheels Loaded Off Lease Vehicle	\$28,900
LT28389 2015 Ford F150 Crew Lariat 4 X 4 Black/Bronze, 3.5L EcoBoost, Air Cond, Leather, Loaded Local Trade	\$30,900
QT57334A 2017 Ford F150 Crew XLT 4 X 4 Maroon, 2.7L EcoBoost, Air Cond, Loaded Local Trade with 26XXX Miles	\$32,900
QT57306A 2017 Ford F250 Crew Platinum FX4 4 X 4 Whit Plat, 6.7L Diesel, Air Cond, Leather, Fully Loaded	\$58,900
QT57369A 2015 Ford F350 Crew XL T 4 X 4 Bronze Fire, 6.7L Diesel, Air Cond, Loaded Local Trade Prior Paint Repair	\$39,900
LT28222 2008 Ford F350 Ext XL T 4 X 4 Sand, 6.4L Diesel, Air Cond, Bale Bed, Prior Salvage Title	\$18,500
QT57236B 2007 GMC Sierra 2500 Crew W/T 4 X 4 Red, 6.0LV8, Air Cond, Loaded Local Trade	\$12,900
LT28253 2018 Nissan Frontier Crew Pro-4x 4 X 4 Black, 4.0LV6, Air Cond, Navigation, XM Radio, Loaded Off Lease Vehicle	\$26,300

www.lindsayautogroup.com

CHEVY 6-CYLINDER MOTOR: fit 1947-52 car or truck. \$200 or trade. 573-734-2822, Bismarck.

JOHN DEERE 265 DISK MOWER: 3pt, nice, 300 acres. \$6900. Viola, 870-458-2580.

TITUS BENTON BOOK: "The Football Field". Half price. Paid \$20, Sell for \$10. 573-689-2490, Bunker.

JOHN DEERE 260: 3pt, Disk mower. \$2500. 573-765-4406.



Services Offered!

- Installation
- Pre-finishing available on interior & exterior
- Dealer for exterior stains

www.pineridgerustic.com

523 CR 2410 • Salem, MO 65560 • Ph: 573-729-7226



- Log Siding
- Beveled Siding
- Car Siding • Red Cedar
- Western Cedar • Pine

FOR SALE: Two Registered polled Hereford bulls, ready for service. Both nearly two years old. From champion genetics. \$1,500-\$2,000. Lebanon, MO 417-350-6259.

REGISTERED BLACK ANGUS BULLS: 417-453-6332. Plato

WANTED CONVERSION VAN: 2000-2010 GMC, Chevy, or Dodge, prefer one owner, high top, low miles, excellent condition. Reasonably priced. Smoke Free. Doniphan, MO 573-255-3191.

1987 CHEVY: Custom Del, 1/2 ton, 350 V-8, T.B.Inj. Automatic, PS, PB, A/C, long bed, black. \$3,500. 573-438-3947, Potosi, MO.

YOU GOTTA SEE THESE NEW HOUSES!!! Brand new inventory on sale !! 573-499-9993. columbiadiscounthomes.com.

BUGGY HORSES. 6 year old, standard bred Morgan-Cross mare, broke single or double, 14.1H, TSS, good for anybody. \$3,000. And 2 year old standard bred Draft-Cross gelding. Broke single or double, 15H, TSS. \$2,500. 573-578-5017.

INCREASE YOUR PROFITABILITY! Lewis Cattle Oiler. 417-286-3540, 774-696-2344.

AUCTION REMINDER: Online Auction going on now. Schneider Auctioneers. Please see our Auction Directory for more information.

2009 HARLEY ULTRA ELECTRIC GLIDE CLASSIC: 12,000mi., Asking \$13,000 or trade for Side by side four wheeler drive and or small jon boat for fishing. 812-390-1128, 417-265-1121. Thornfield.

BEAUTIFUL DOBERMAN PINSCHER PUPPIES: Males \$650, Females, \$500. Parents are Double Registered AKC and CKC. Puppies are CKC Registered. UTD on shots, come with health records. Tails docked and dewclaws removed. 417-532-0483.

NEW BIG TEX 22GN FLATBED TRAILER




facebook



GREAT SERVICE!
1957-2018 GREAT PRICES!

I-44 at Exit 208 • Cuba, MO
www.jimsmotors.com
(573)885-2595
(800)897-9840

79 CHEVROLET 250: 6cyl, manual transmission, new starter and alternator, running when taken out for V8 changeover. \$200. call after, 573-756-3937.

LEBANON JUNIOR HIGH SCHOOL 1966 YEARBOOK: \$12.50. Lebanon, 417-532-2045.

WILLIAMS PEEP SIGHT: with target knobs. Fits Marlin Model 39a. \$50. 636-239-2695. Washington.

OLD LINN CREEK, HA HA TONKA & CAMDEN COUNTY BOOK: "Before the Dam Waters" by Victor Jeffries. 72 pages, \$6.50. \$2.00 postage if mailed. Lebanon, 417-532-2045.

You pull it, we sell it... CHEAP!



U★PULL★IT
SELF SERVICE AUTO PARTS

Now Open

Lebanon, MO
22395 Rt. 66
417-588-3555
Fax 417-588-8955

Mon-Fri 8am - 6pm • Sat 8am - 4:30pm • Sun 9am - 4pm

WWW.SSUPULLIT.COM
Located next to S&S Recycling.



S&S RECYCLING
LEBANON - MTN. GROVE
417-588-3555 417-926-3360

Roll-off, Trailer, and Mobile Crushing Services Available

For All Your Metal Recycling Needs

Lebanon, MO
22395 Rt. 66 • **417-588-3555**
Fax 417-588-8955

Mtn. Grove, MO
8930 First Rd • **417-926-3360**
Fax 417-926-0180

Monday-Friday 8:00am-4:30pm (Closed 12pm-1pm Lunch)
Saturday 8:00am-Noon
email: contact@ss-recycling.com
Buyer of all types of scrap metal.

WANTED GOOD USED MOBILE HOMES: Singles & doubles. Call David Hayes, 573-578-8072.

FOR SALE 1996 F-250: 4x4 Diesel truck. 573-697-5627.

FOR SALE: Bare cylinder head #R20504R, for JD 4010 Diesel Tractor, cut for 4020 valves. \$200. 573-459-6488.

JD 6140M: Cab, 4WD, triple remotes, 16-speed. \$46,500. 870-458-2580, Viola.

JEFFERSON NICKEL BOOK: coin set from 1938-1964. \$200. 573-764-3517. call in p.m.

CASE 580D: Diesel backhoe loader, cab, 2400hrs, power shuttle. 573-765-4406.

facebook

Email or Phone
Password

Log In

Forgot account?



Weekly Trader
@myweeklytrader



 Like
 Share

 Send Message

Home

About

Photos

Reviews

issues

Posts

Community

Info and Ads

Create a Page

Photos

KEN & KATHLEEN ARD AUCTION
August 11, 2018 • 9:30am
HWY 19 S to CR 6250, Gladden, MO

VEHICLES & EQUIPMENT
Jodge Grand Caravan 172K
Chuckwagon 4x2 UTV
Yamaha 40" Zero-turn mower Z246
best trailer
John Deere Rake
Ireland Round Baler 5x5 twine
Ferguson 725 Mower Conditioner
rickle
Sweeper
Generator
GUNS
ing bolt action 25-06 w/scope
Double barrel shotgun
30A 22LR w/scope
john 1100 12ga modified choke 2-3/4
erg pump 20ga
Hans 54 cal muzzleloader
He Stack-on 24 gun
pss
amera
g blind
HOUSEHOLD
glassware
r couch
recliner
cedor log bed
in bed and mattress

OUTDOOR
BBQ grill made from fuel tank
2 - Outdoor swings
Bird Houses
Coolers
Lawn chairs
5 piece patio set
Rakes
Shovels
Misc yard tools
TOOLS
Chest tool cabinet
2 sets of MAC tools
Various MAC tools
Ball Joint sockets
Let misc tools
34-ton log splitter
Nail guns
Saw 280 chainsaw
Table saw
Wood planer
Woodworking tools

GARY SEXTON AUCTIONEERS
ABSOLUTE REAL ESTATE AUCTION
SATURDAY, AUGUST 11, 10:00 A.M.
For Auction: Owners are purchasing another home.
216 1/2 The 1811 Hutchinson, MO. Four Bed House, MO. Great spot on Hwy 160 approx. 0.853333 Acres. Call Gary Sexton at 417-226-1888 for more info.

CHUCK & MELISSA SWIFT, OWNERS
1 Howell, Oregon & Clark Counties Since 1978
www.garysexton.com
Howell, Mo. 417-226-1888

ING ESTATE AUCTION
Sunday, August 12, 2018 @ 1 p.m.
Location: 1100 S. 1st St. (at Hwy 160) in Lebanon, MO. Call Gary Sexton at 417-226-1888 for more info.

Search for posts on this Page

Broadcasting & Media Production Company in Lebanon, Missouri
5.0 ★★★★★

Community See All
324 people like this
333 people follow this

About See All




INCREASE YOUR PROFITABILITY!
Lewis Cattle Oiler. 417-286-3540 or 774-696-2344.

U-JOINT 1810 DANA SPICER: NIB 5-281x. \$65. 314-303-7857, Cedar Hill.

FLIES ARE COMING! Lewis Cattle Oiler.
417-286-3540 or 774-696-2344.

AUCTION REMINDER: Every Wed. @10:30AM Farmington Livestock. Please see our Auction Directory for more information.

JD "B" 1947: Runs, restorable. \$1300. Stockton, 417-276-8347.

FORD 2300 MOTOR & TRANSMISSION: Low mileage, fit Ranger pick-up. 573-734-2822, Bismarck.

WEEKLY TRADER MAGAZINE



AUCTION DIRECTORY

Friday, March 22

6:00 PM Rolla Horse Auction
w/ Lorts Auction Service 35

Saturday, March 23

9:00 AM M.R. Clark Auction 25
9:00 AM Warden Auction Service 26
10:00 AM Nance Auction Service 24
12:00 PM Buffalo Livestock Market 33
Online Easterly Auction Co 32

Monday, March 25

10:00 AM Maron Restaurant Equipment 31
12:00 PM Salem Livestock Auction 37

Tuesday, March 26

Online Schneider Auctioneers 29
Online Atterberry Auction & Realty 36

Wednesday, March 27

10:30 AM Farmington Livestock 35

Thursday, March 28

9:01 AM Chupps Auction Co 34
11:00 AM Mid Missouri Stockyards 35
12:00 PM Freeman Auctions & Appraisals 33
Online Purple Wave Auction 36

Friday, March 29

10:00 AM Bruce & Le'AN Auction 23

Saturday, March 30

10:00 AM Drenon Auction 28
10:00 AM Southwest Auction Service 33
10:30 AM JB Consignment Auction
w/ Richards Auction Service 22
11:00 AM Crawford Auction Service 30

Sunday, March 31

10:00 AM Southwest Auction Service 33

Monday, April 1

10:00 AM Gary Sexton Auctioneers 34

Friday, April 5

5:00 PM Diamond S Auction 27

Saturday, April 6

10:00 AM Diamond S Auction 27
11:00 AM World Foxtrotting Horse Sales 37
TBA Hartville Lions Club 37

Wednesday, April 10

10:00 AM Trophy Properties & Auction 35

Call 1-800-665-8875 to get your auction listed in the Weekly Trader.

AUCTIONEERS

Did you know the WEEKLY TRADER covers more counties in rural Missouri than any other publication?

Firm deadline is 12:00 PM Friday, prior to next week's Thursday publication date.



PUBLIC AUCTION

Saturday, March 30th ~10:30am

JB Consignment Auction At Ranch & Farm Ag Services
8011 Enterprise Drive, Bloomsdale, MO

From I-55 at the Bloomsdale Exit, go west and make immediate right onto Enterprise Drive.
 Go past Loves Gas station about 1/2 mile. **Questions call Jon 573-535-8607 or Brandie 573-883-0074**



TRACTORS

2555 John Deere 4WD Model 245 (front end loader with bucket and bail spear)
 B7200 Kubota Diesel with 5' Mower, 3pt, (P/s HST 900hrs)
 3000 Ford with Finish Mower
 4020 John Deere Diesel Power Shift, Rebuilt Trans & mechanically worked over
 706 International Diesel Turbo (late 60's)
 826 International Diesel (new clutch) 80HP
 135 Massey Ferguson Diesel
 3840 Iseke Diesel 4x4 PTO 3pt hitch
 2N Ford Tractor

HAY EQUIPMENT

100 John Deere Large 3' Square Baler
 269 New Holland Square Baler
 532 Ford Square Baler
 505 Vermier Super I Round Baler
 678 New Holland Belt 5x5 Round Baler
 688 New Holland Round Baler (new belts)
 John Deere Hay Tedders
 256 New Holland Side Delivery Hay Rake
 John Deere Hay Tedder
 39 John Deere 7' Sickle Mower & parts mower
 2 Basket Tedder
 114 New Holland Mower Conditioner
 350 John Deere Sickle Mower
 8 Round Bale Hay Trailer

MISCELLANEOUS

100 Gallon Pick-up Fuel Tank
 Wood Splitter
 Utility Truck Bed for dually 1-ton with tommy lift
 Troybuilt Chipper/Shredder 8HP
 Craftsman 17.5HP Lawn Mower w/bagger
 X300 JD 42" Riding Lawn Mower 17HP
 LT160 JD 42" Riding Lawn Mower 16HP
 LX266 JD 42" Riding Lawn Mower 16HP

X304 JD 42" Riding Lawn Mower 17HP
 1000 Gal Water Tank
 3 pt Concrete Mixer
 1500 Gal Water Tank
 7 Bar 16' Field Gates
 44" Pull Behind Swisher Mower
 3pt concrete weight
 JD Monitor & Wiring harness
 10 plastic tubs; Port Air Compressors
 Wagon full of misc.; Military Generator
 3pt Hitch Boom Pole
 Tarter Squeeze chute (1y/o)
 Ratchet Straps
 300 Gal Pick-up Diesel Tank
 4000 Watts Generator
 Cyclone Yard Woodland 9Vacuum 5HP
 3/4 Ton Truck Tires on Rims
 Cedar posts
 Portable Miller Gas Welder
 PTO Truck Wench
 Troy Built Power Washer
 Cattle Head Catches
 Farm Hand Front End Loader & Bale Spear

EQUIPMENT

665 New Holland 1998 Skid-Steer
 630f John Deere Grain Head 2004
 5100 White Corn Planter 12 Row, 30" Rows
 245C Patriot Seed Tender- (scale, Honda motor, remote, conveyor belt)
 6000 John Deere Sprayer 320g tank, (60' hydraulic booms, EZ guide, AC Deisel)
 6510 Ditch Witch 66HP with Backhoe Attach
 Broyhill 200 Gallon Sprayer 3pt. 26'spray wd
 7100 John Deere Plate Planter, 4 Row 3pt Hitch, 30" spacing, bean plates
 Honda Mini Truck 4x4
 Sm Manure spreaders
 IH Pull Type Disc Chisel
 John Deere Gator 4 Seater 825I
 12' Field Cultivator 3pt with Harrow

First Choice 5' Finish Mower
 6200 Progressive Anhydrous Applicator (16 row, Raven Controller)
 510 New Holland Manure Spreader
 IH Mixer Mill Feed Grinder; Disc Chisel
 455 John Deere Manure Spreader
 18' Fold up Field Cult; Ditch Plow
 1250 IH Feed Mixer/Grinder
 Seed Treater; IH 4 Bottom Semi-mount Plow
 H&S Feed Wagon
 620 IH Grain Drill; Seed Wagon; JD Wheat Drill
 Westfield 30' unloading Truck Augger
 Ford 3-14" Bottom Plow 3pt
 JD 3 Bottom Plow; 3pt Potato Plows
 3 pt Bale Carrier; 3 pt Sub Soiler
 Ford 3pt Reversible Dirt Scoop
 3pt 7' Pasture Renevator
 Shaver Front Mount Post Driver (IH mount)
 TA26 Westondorf Loader (standard pins)
 1360 Iseki 60" Tiller 3pt PTO
 18' 2004 Jerry James Trailer
 3pt Weed Wipe
 JD V Ripper 5-Shank ('80s)
 5' Bush Hogs 3pt; 6' Blades
 Tractor Supply Finish Mower
 Small PTO Driven Elevator
 Small Ripper for Food plot
 Small PTO Boom Sprayer
 Pull behind Harrow
 2 bottom field Plow
 First Choice 5' Box Blade (new)
 2 Bottom Plow
 IH Chisel Plow 3pt 7 Shank
 Lely Hay Wrapper
 16 Precision Meters & 11 Parts Meters

GUNS (sell at 12pm)

300 Gal Sprayer 3pt hitch with folding boom
 Marlin 30/30 Lever Acti on
 Remington Model 870 Pump Action 12 guage
 Remington 241 Speed Master

For more pictures, seach JB Consignments on auctionzip.com or Facebook

RICHARDS AUCTION SERVICE

Jeff Richards 573-518-4029

**NOT RESPONSIBLE
FOR ACCIDENTS**

**PUBLIC
AUCTION**

MT. VERNON, MO

AUCTION

As we are changing our farming operation we will sell the following Tractor's, Hay & Silage Equipment, Feed & Grain Bins, Cattle Equipment and Misc. at the Lions Club Grounds just North of Freistatt, Mo. From the junction of 39 & H highway in Mount Vernon, Mo. go South & West 9 miles to the Auction on:

Friday March 29, 2019 @ 10:00 a.m.

**WATCH FOR AUCTION COMPANY SIGNS • LUNCH SERVED
FOR MORE PICTURES GO TO: WWW.BRUCEANDLEANAUCTION.COM**

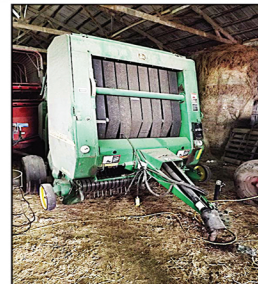


TRACTORS

- 7700 John Deere 1994 Cab Tractor 100 H.P. 9300 Hrs. Power Shift Trans. Suitcase Weights
- 1086 International 130 H.P. Cab Tractor 6180 Hrs. 4 Speed High/Low Trans. Torque Amplifier, Good Rubber
- 4040 John Deere 100 H.P. Cab Tractor W/Koyker Frontend Loader with 7 ft. Bucket
- 180 Allis Chalmers 70 H.P. Diesel Tractor 6840 Hrs.

EQUIPMENT

- 2012 Jay Lor Model 4575 Feed/Mixer Wagon, 540 PTO, Single Axle
- Peerless 500 Grinder Mixer/Roller Mill W/Scales
- John Deere Model 946 Rubber Roller 13' Center Pivot 2 point Disc. Mower/Conditioner
- John Deere 567 Mega Wide Round Baler, 1000 rpm bale count 20,000
- Sitrex 12 Wheel Hay Rake W/Center Kicker Wheels
- Sitrex 18' Model RT5800 Twin Row Tedder
- 2012 John Deere HX20' Brush Hog 1000 rpm W/Heavy ply tires
- John Deere Model 3940 Silage Chopper W/5 1/2' Pickup Head & 2 Row Narrow Corn Head
- G-6000 Silage Bagger 9' X 200' long
- New Holland Model 30 Silage Blower 1000 rpm
- Badger BN950 Tandem Axle Silage Wagon
- New Holland 716 Tandem Axle Silage Wagon
- Gehl 960 Tandem Axle Silage Wagon
- John Deere 125 Silage Wagon
- Knight 8024 Tandem Axle Pro Twin Slinger Manure Spreader W/Lid
- Badger Model BN 103 PTO Manure Pump 6" line



- John Deere Model 7000 6 Row Corn Planter (narrow)
- Krause 18' Foldup Tandem Disk
- Hesston 22' Model 2240 Field Cultivator
- Kuker 500 Gallon Sprayer W/40' Electric Booms, Foam Marker
- International Model 510 Drill 16 hole Double Disc. 8" space
- DMI 4 Bottom Wide Expandable Plow 14" to 20"
- Hesston Model 4500 Square Baler
- New Holland older 5 Bar Rake
- Front Tractor Mount Shaver Hyd. Post Driver

GRAIN BINS-TRAILER-MISC.

- 6' X 20' Gooseneck Homemade Stock Trailer W/Divide Gate, Solid Top and Good Floor
- 2 Ton Sq. Feed Bin
- 6 Ton Sq. Overhead Load Bin
- Circle 4 Ton Round Galv. Feed Bin W/Auger
- GSI 6 Ton Round Galv. Feed Bin W/Auger
- 2 Cumberland 14 Ton Round Galv. Feed Bins W/Augers
- 2-Butler 3000 Bushel Bins W/Drying Floors (combination auger)
- Golden Grain 7000 Bushel Grain Bin

- W/Drying Floor
- West Field 8" X 51' Auger W/Swing Hopper
- Allied 6" X 40' Auger
- 2-3 Point Quick Hitches
- 4 Silage Wagon Quick Hitches
- Extra Planlitory Gear Box (for Jay-Lor Mixer)
- 10 Commodity 8' Concrete Feed Bunks
- 18-8' Concrete Feed Bunks
- 15 plus Portable Corral Panels
- 6 Bale Rings
- 6 Sets of Locking Stanchions
- Set of 18-38 Rear Tractor Duals (fair tread)
- 20 Galv. Quonset Calf Huts
- Calf Buckets & Bottles



AUCTIONEERS NOTE

The Bracht's have been running there Dairy farm for many years, they are changing their operation. This Equipment has been serviced, maintained, shedded and is field ready. There is very few small Misc. items don't be late, The Grain Bins are located 1 mile north of sale location, For more information contact Auction Co.

OWNERS: MERLIN & CHERYL BRACHT

TERMS: CASH or CHECK with I.D. Nothing removed until settled for. Not responsible for accidents. Statements made sale day take precedence over printed matter.

SALE CONDUCTED BY **BRUCE & Le'AN AUCTION & APPRAISAL, LLC**
THE AUCTION COMPANY THAT APPRECIATES YOUR BUSINESS

For more information and pictures go to our website at www.bruceandleanauction.com

RONNIE BRUCE - Fair Play, MO
417-777-1685 or 417-654-2214
colronbruce@gmail.com

BRANDON BRUCE
Fair Play, MO

BILLY BRUCE - Stockton, MO
417-399-4800
colbbruce@gmail.com

ESTATE AUCTION

Saturday, March 23rd, 2019 ~ 10:00 AM

LOCATION: 300 South Hwy F, Ash Grove, MO; Directions: From 4 Way Stop In Ash Grove Go South On F Hwy To Sale Site (Watch For Signs)

Auction For Steve Dixon Estate



Antique & Modern Furniture

Ant Oak Tin Side Pie Safe, Several Ant Oak Sm Tables Some Ornate, Ant China Hutch, Ant Buffet, Ant Buffet Mirror, Ant Kitchen Table, Ant Eastlake Style Shelves From Old Ash Grove Hotel Also Doors & Trim From Old Hotel, Ant Eastlake Glider/Rocker, Ant Ornate Couch, Ant Loveseat, Ant Setting Chairs, Ant Full Size Bed, Ant 4 Leg Hall Tree, Ant Kitchen Chairs, Ant Oak Drop Leaf Table, Ant Oak Seth Thomas Clocks, Ant Sm Fold Up Rocker, Ant Magazine Rack, Ant Cedar Chest, Lg Prim Corner Cabinet, Prim Opossum Belly Cabinet Base, Prim Kitchen Table & Other Prim Tables, Prim Stools & Benches, Prim Vanity, Ant Vanity Bench, Ant Metal Fan, Several Ant Pictures & Paintings Inc Real Goya Painting Of Madrid, Ant School Desk, Retro China Cabinet, Wicker Pcs, Oak Corner Cabinet, Sm Corner Table W/Drawer, Walnut Dresser, Wood Desk, Breakfast Table & Chairs, Oak File Cabinet, 2 Twin Headboards, Prim Doors & Windows, Gaming Table, Bakers Rack, Recliner, Glider/Rocker, 3 Cushion Couch, Bookshelves, Lamps, Treadmill, Stereo, TV, Other Items Not Listed

Antiques, Collectibles, Primitives & Households

Ant School Bell, Ant Crosscut & Bow Saws, Ant Hay Knife, Several Cast Iron Pcs, Ant Roller & Ice Skates, Ant Lantern, Ant Locks, Ant Child's Indian Moccasins, Ant Miners Pail, Old Crock Pcs, Ant Leather Bank, Ant Dough Bowls, Ant Umbrella Stand, Ant Bassinet, Ant Bottles & Jars (Some Unusual), Rare 25 Lb Sad Iron, Ant Pitcher Pump, Old License Plates, Keen Cutter Apple Peeler, Prim Wood Boxes, Lg Lot Of Sm Prim Items, Lots Of Ant Prim Tools, Lg Lot Of Vintage Ladies Hats (Some Unusual), Some Vintage Clothing, Old Canes, Old Books, Old Post Vise, Old Red Wagon, Old Linens, Coca Cola Rack, Old Graniteware & Galvanized Pcs, Carnival Glass, Depression Glass, Old Clear Crystal Glass, Hand Painted Plates, Old Knick Knacks, Drinking Glass Sets, Kids Toys, Sm Electrical Appliances, Tupperware, Pots, Pans & Dishes (Some Old), Only A Partial Listing, Tons Of Sm Antiques, Primitives & Households Not Listed

Tools & Outdoor Related Items

Grinder, Sm Electrical Tools, Sm Hand Tools, Long Handle Tools, Seeder, Camping Supplies, Hard Gun Case, Kids Bike, Ant Bikes, Coolers, Dolly, Patio Furniture, Yard Décor, Old Golf Clubs, Golf Balls, Basketball Goal, Other Items Not Listed



Auctioneers Note: It Is An Honor To Be Conducting This Auction For The Steve Dixon Estate As Steve & Our Family Were Great Friends For Many Years. He Was A Great Man & Will Be Sadly Missed. This Is A Large Outstanding Antique, Primitive, Collectible & Household Auction. Some Very Great & Hard To Find Pieces In This Auction. This Is Only A Partial Listing As There Are Hundreds Of Items Not Listed & Boxes Not Gone Through So Please Join Us In The Surprises On Sale Day. You Do Not Want To Miss This Sale. Please Plan Now To Attend. **Sale Order: Furniture Sells First Followed By Antiques, Collectibles, Primitives & Households. Tools & Outdoor Items Will Finish Auction. See Ya There!!!**

Terms: Cash or check with proper ID. Now accepting most major credit cards. Nothing removed until settled for. Statements made the day of sale takes precedence over printed material. Everything sold as is where is. Not responsible for accidents. Restroom available. Concessions Provided. Check our website for upcoming auctions and for additional pictures!!



NANCE AUCTION SERVICE

No Matter How BIG or small, We Do Them All!

www.nanceauctionservice.com

Col. Bill Nance 417-214-0093

DON BEZOLD ESTATE AUCTION

SATURDAY, MARCH 23RD, 2019 • 9 AM

#3 RIVERBEND, WASHINGTON, MO 63090

Directions: In Washington at the intersection of Hwy 100 and East Fifth Street (by Bank of Washington), make turn onto East Fifth Street approx. 1 mile to Left onto Southbend to Right on Riverbend, to the residence. Plenty of street parking. Please be mindful of residents driveways.

Watch for auction signs. Auction route will be well marked on sale day.

Firearms Sell At Noon.

1. Winchester Model 1897 12ga pump #386786
2. Remington Model 12 Hex barrel 22LR pump
3. Browning Medallion 30-06 bolt action w/Leupold 2 1/2 x 8 scope
4. Browning A-Bolt 25-06 w/Tasco 3x9 Japan scope
5. Browning BLR Model 81 in 257 Roberts w/Leupold 2 x 7 Variable
6. Remington Model 870 12ga model w/vent rib
7. Belgium Browning 12ga O/U #95631

8. Browning A5 Twenty w/vent rib #65742
9. Browning A5 Sweet Sixteen w/vent rib #5285
10. Browning A5 12ga Fabrique Nationale 12ga full w/solid raised rib #165386
11. Browning A5 12ga Magnum full w/vent rib #24955
12. Browning Arms USA Made Challenger II 22LR semi-auto #655PY17494
13. Sheridan Mod. 397- .177 cal
14. Sheridan Shurline Streak air rifle

Gold Coin, Jewelry, Flatware: 1915 2 1/2 Dollar Indian Gold, State 25 cent with 1807 Barber 25 cent, cuff links & tie clips, men's Omega Watch, Minolta -16 spy style pocket camera, Elgin pocket watch, Rodgers silver plate, Gold Tone Cutlery, Westmoreland Sterling, International Deep Silver, small lot of ladies costume jewelry.

2008 Volvo XC70 AWD-(station wagon) 3.2 I- V6-VIN#YV4BZ982481028735, keyless start, CD player, leather interior, sunroof, roof rack, receiver hitch, serviced and maintained regularly, always in temperature controlled garage, 83,000 miles (at time of listing) Vehicle Sells At Noon. Note: If paying by check, you must have a bank letter guaranteeing funds. NO Exceptions.

Hunting Outdoor Related: antler mounts, DU signed wooden duck, Bushnell 8 x 21 binoculars, Luna binoculars, Sure Shot predator call, Bushnell 20 x 40 Spotting Scope, Western sheath knife - Buck, box turkey calls, small lot ammo, Fly Reel South bend, Garcia aluminum colonel fly rod, Pelouze hanging produce scale,

Furniture, Appliances: Hand made roll top desk/step back oak cupboard, oak pedestal table, four pressed back chairs, tobacco twist ball & claw lamp table, vinyl folding table, card table/chairs, oak plant pedestals, pine stool, Broyhill three drawer chest, cane seat chairs, 5 ft. round oriental rug, pedestal claw feet round table, pine entertainment center, single drawer lamp table, computer desk, rolling office chair, two bent back tavern style chairs, Swing Arm lamp, Electric Recliner, Brown Leather Sofa and oversize chair, Phillips flat screen, ebony TV stand, child's folding chair, pedestal lamp tables, oak end tables, marble top walnut three drawer dresser, pine rocker, green painted night stand, roper freezer on top fridge 18 cu. Ft., G.E. top load washer, Whirlpool dryer, faux marble top end tables, floral wingback chairs, Rocco style sofa, maple dining table w/6 chairs, cupboard, handmade fern stand, Eastlake style wall mirror, drop front secretary, large display cabinet, pine rocker, spoon carved Eastlake bedroom furniture including bed, chest w/mirror and dresser, French Prov.? bedroom set, two handmade entry tables, oak office chair bent back, Amana French door fridge w/ice/water in the door, fireplace tools, Jack Davis signed print, decorator pictures, handmade industrial style stools, convex framed picture, glider, park/lawn benches, folding wooden chairs, Suncast outdoor storage shed, filing cabinet,

Glass, Crystal, China: Crystal pitchers, crystal cake plate, vases, bowls, Lefton flowers, Haviland blue garland service for 4, Fenton basket, approx.60 Swarovski crystals, Pyrex Bowls Green and Red, Universal Priscilla bowls, coin glass, Westmoreland c&s, Fenton carnival glass basket and other assorted carnival glass, stemware, Wawel Polish China Rose pattern service for 12+, Fairfield China Service for 10, Cobalt flash pitcher/tumblers,

Collectibles, Smalls: Military bars/patches, cast aluminum rabbit cake mold, Bergen Enkheim regulator clock, Ingraham mantle clock, prism lamp, West German barometer, floral picture -Nice frame, handmade butter churn, Mid-Century Sony Radio, Bose Wave radio, Hand made Nut Crackers, Fox Fire Books, Takumar Lens, general store/butcher paper roller w/string holder, table linens,

Wood Working Shop Equipment & Tools: Hegner Scroll Saw Multi Cut II, Jet Lathe, 2500 PSI power washer, Craftsman 5 HP 22 gal vertical air compressor, Shop Vac, Delta Drill Press, rolling work bench, few pieces of rough cut walnut lumber, Makita palm sander, Porter Cable circular saw, heat gun, Porter cable plunge router, Ridged drum and horizontal sander, Porter Cable pneumatic stapler, Porter Cable brad nailer Dewalt brad nailer, Porter Cable 12 dovetail jig, Charles Buck offset gouges and chisels, drill bits, hole saws, augers, squares, Scribes (Ebony & Brass), Stanley chisels, dividers, draw knives (folding handle & offset), vise, organizers, MAG Lite, rules, furniture clamps, buck saws, hand saws, wood workers vise, braces, meat saw, calipers, levels, straight edges, lathe tools, few mechanics tools, frame clamps, gooseneck lamp, Stanley miter box, saber saw, machinist vice, board foot measuring stick,

Plane Collection: (Planes are listed as they were photo'd)

- Set Cutting Rounds and Blades (6H, 6R, 8H, 8R, 10H, 10R, 43, 44, 45, 47, 55, 57),
- Stanley # 39, 1/4, 3/8, 1/2, 5/8, 3/4, 7/8, 1" Stanley #190, 191, 192
- AA Woods 1/2-1 1/4" Stanley # 113 compass plane
- Stanley #45 molding plane • Stanley Bedrock #605, 605 1/2 grooved
- Stanley #70 • Stanley #50 and cutters for #50
- Stanley #45 w/box w/original label/two boxes of cutters and paperwork
- Stanley #444 dovetail tongue and groove • Union # 43
- Stanley Bailey #4 grooved, 4 1/2, 3 • Stanley #33
- Stanley #95 • Stanley #2, 10 • Stanley # 40 1/2, 40, 604
- Stanley #98, 99 • Stanley #100 1/2 • Stanley Bailey #5 1/2, 5, w/grooved
- Stanley #60 • Stanley Bedrock R&L Co. #605 1/2 w/grooves, Stanley #603, 605 1/2
- Stanley #112 • Stanley lockset plane • Stanley Bailey #5 1/2, Stanley #5, 5 w/grooves
- Stanley Bedrock #605 1/2, 605 w/grooves • Stanley Bedrock #606 w/grooves
- Stanley Bedrock #605 w/grooves, 605, 607
- Stanley Bedrock #7 w/grooves, #608 w/grooves,
- Stanley Bedrock #6 w/grooves & w/o • Stanley #97
- Stanley Bedrock #604 • Stanley Bedrock #62
- Stanley Bailey #7, #8 (both with w/grooves)
- Stanley Bailey #7, #8 (both smooth) • Shapleigh plane
- Stanley Bailey transition plane • Keen Kutter transition plane
- Stanley 220-Burgandy • Stanley hand drills
- Bung/timber frame auger • Yankee drill
- Stanley #113 • Stanley #55 complete full set-IOB

Lawn & Outdoor: Stihl BG55 blower, Shindaiwa straight shaft gas trimmer, Assorted long handled tools, radio flyer wagon, pull behind lawn aerator, aluminum ladders, lawn cart, witch motif weather vane, painters ladder/ stool,

Items To Numerous To Mention: bake ware, kitchen electrics, Sunbeam Stand Mixer, Oreck Vacuum, Maxam cutlery set, kitchen utensils, checker board set, pedestal fan, kitchen cleaning supplies, home is full!

Payment Terms: CASH, CHECKS WITH PROPER ID UP TO \$2,000.00. NO OUT OF STATE CHECKS, NO CREDIT CARD CHECKS, NO MONEY ORDERS AND NO TRAVELERS CHECKS. WE ALSO ACCEPT MASTER CARD, VISA, DISCOVER CARD, AMERICAN EXPRESS AND DEBIT CARDS ACCEPTED. ALL CARD PAYMENTS WILL REQUIRE A 4% PROCESSING FEE. NOTE: M R CLARK AUCTION AND STAFF, WILL NOT BE HELD LIABLE IF THE ELECTRONIC CARD READING SYSTEM IS UNABLE TO READ OR PROCESS YOUR CARD FOR ANY REASON. YOU WILL NEED TO PRESENT CASH.

BANK LETTER OF CREDIT REQUIRED FOR ALL CHECKS OVER \$2,000.00. ON ORIGINAL BANK LETTERHEAD-NO COPIES.

TERMS: Photo registration. Nothing to be removed until settled for. Everything sells "As Is, Where Is, Without Warranty." Not Responsible for accidents. Announcements made day of auction supersede printed material.

Lunch will be available.

See this auction listing on our website: www.mrclarkauction.com See many photos of what we are selling on Auctionzip.com Our auctionzip ID# 3218

Auctioneer's note: As always, we appreciate your attendance! Mike, Julie and the Whole Auction Team.

M.R. CLARK AUCTION & APPRAISAL LTD

WASHINGTON, MO 63090

636-390-2220 • 314-650-7317

E MAIL: fasttalk@mrclarkauction.com • www.mrclarkauction.com

CAGA
Certified
Appraiser

Lunch will be available.
See this auction listing on our website:
www.mrclarkauction.com

Lunch will be available.



GO TO THE AUCTION • GO TO THE AUCTION • GO TO THE AUCTION • GO TO THE AUCTION • GO TO THE AUCTION •

PUBLIC AUCTION

Saturday, March 23, 2019

Starting at 9:00 a.m.

Location: 28876 Hwy NN, Laquey, MO 65534

Directions: From I-44 take Exit 153, turn south on Hwy 17 to Hwy NN. Turn on NN & follow to sale site.

Household

Grandfather Clock
Curved Front Oak Curio
Maytag Ceramic Top Range
Fridgidaire Chest Freezer
Lg. Lot Bakery Racks (15+many NIB)
Sofa & Love Seat
3 Recliners
Pair End Tables
Upholstered Rocker
Magazine Rack/End Table
Wooden Waste Basket
Dark Wood End Tables
Several Bookshelves
Dining Table w/6, 2 Capt. Chairs & Hutch
Lot Glassware
Spice Rack
Sunbeam Steamer
Lot Kitchen Appliances
Dough Boy Cookie Jar
2 Sets Mushroom Style Canisters
Corelle, Green Flower
Lg. Kenmore Upright Freezer
Microwave Cart
Wooden Recipe Box
Waterless Cookware Set
Set Non-Stick Cookware
Full BR Suite w/Hutch HB
Shark Pro Vacuum
Dirt Devil Vacuum
Old Rainbow Vacuum
Lot Wall Décor & Pictures
4 Poster, Full BR Suite
Dressers, Chests
Quilts, Bedding, Linens,
King BR Suite
Lot File Cabinets
Computer Desk & Chair
Wall Hung Jewelry Box
3 Bar Stools
Box Fans
Hanging Oil Lamp
Hot Point Fridge/Freezer
Tappan Elec. Range

Rustic King Bed
Hospital Bed
Huge Lot Fabric & Sewing Notions, incl.
Wedding Dress Fabric
Lot Patterns
Quilting Frame
Dress Form
Lg. Lot Yarn
Older Singer Portable
Commercial Trousers Rack
Card Table
Kitchen Table w/Leaf
Pressure & Water Bath Canners
Metal Cake Taker
Folding Cot w/Mattress
Metal Shelves & Cabinets
Ping Pong Table
4 Gallon Crock
Cutty Sark Model Ship
Pants Stretchers

Shop and Outdoor

Ford 8N Tractor, good hydraulics
5' Bush Hog
6' Heavy Blade
18' Gooseneck Trailer
100 Gal. Sprayer B&S 5hp motor mounted on trailer
Craftsman Router on Table
Craftsman 6" Vise
Craftsman 20" & Other Scroll Saws
Craftsman Radial Arm Saw
Craftsman Band Saw
Craftsman 10" Table Saw
Belt Sanders (2" & 6")
Craftsman Arc Welder 295 amp
Craftsman Jointer on Sewing Machine base
Central Pneumatic 2hp 8 gal, 125 psi
Compressor (nearly new)
14" Cut Off Saw
Disc Sander
16 Speed Drill Press
12 Ton Shop Press
Bench Grinder on Stand
3 Step & 4 Step Ladders

Little Giant Ladder
Lot Scrap Lumber
Wheel barrow
Seeders, Spreaders
Hvy. Duty Garden Wagon
Squirrel Cage Fan
Pull Behind Roller
Hose Reel
Large Lot of 8' T-Posts
2 Rolls 4pt. Barbed Wire
Corral/Cattle Panels
Feed Bunk
Water Tanks
Steel Pipe
Barrel Stove
Whiskey Barrel
3 Lg. Roof Vents w/Motors (Never Used)
Scaffold Jacks
Catalytic Heaters
Metal Porch Swing
4' Wooden Sled
Large Dust Vacuum
Pancake Compressor
Live Trap
Army Gas Cans & Ammo box
Galv. Gravity Feeder (dog size)
Home Made Hot Water Power Washer
Brown Gutters
50 gal. Parts Washer
Bank of Small Lockers
2012 Kia Sorento
128,XXX miles
1966 Ford Box Truck, needs work.

Huge Lot Wood Working Craft Jigs, Patterns, & Parts. There are boxes & boxes of patterns, hardware, & supplies.

Many, many more items, too numerous to mention here.

We may be running 2 rings throughout the day. Ed

Owners: James E. and Margaret L. Marshall

Sale conducted by

WARDEN AUCTION SERVICE

(573) 336-2367 or (573) 528-0729

Auctioneers: Ed Warden, Chad Ray & Jacob Boucher

www.wardenauction.com

GO TO THE AUCTION • GO TO THE AUCTION • GO TO THE AUCTION • GO TO THE AUCTION • GO TO THE AUCTION •

2 - DAY AUCTION



REAL ESTATE & CLASSIC CAR AUCTION



SELLING OVER 12 CLASSIC & MUSCLE CARS

FRIDAY, APRIL 5 • 5:00 PM
The Gantvoort Residence • 19912 Highway HH • Lebanon, MO



EQUIPMENT AUCTION

- Heavy Construction Equipment
- Trucks & Trailers
- Semi Trucks & Trailers
- Drilling Tools



SATURDAY, APRIL 6 • 10:00 AM
Trans Am Construction • 23898 Park Dr. • Lebanon, MO



DIAMOND S AUCTION
REAL ESTATE CO.

Voted Best Auctioneer's In The Ozarks...Seven Years Running!



1-877-907-3000 • 417-326-2828 • www.diamond-s-auction.com

LARRY DRENON AUCTION

1255 SE Hwy 7 • Clinton, Mo

We will sell the following at auction located 1 ½ miles east of Tightwad (or 15 miles west of Warsaw, or 15 miles east of Clinton) on Hwy 7 (across from Tree Farm) on:

SAT, MAR 30TH, 2019 • 10 AM

UTV

Case Scout 4x4 utility vehicle, sharp

PONTOON BOAT

1996 20' PlayCraft Pontoon w/Evinrude 70 hp. Motor recently overhauled with new parts

SKID STEER

Case 1845C skid steer, 60 hp, well-maintained, new chain drives and gears, rubber track, 3400 hrs, good cond.

SKID STEER ATTACHMENTS

HyReach XD6351 tree shear w/remote * Tree X Terminator, 6', used very little * Stinger S-72 grapple Lackender boomer * McMillen 12' post hole digger * Perfect tree saw

FEED BIN

Pax 4 ton feed bin

FARM EQUIPMENT

MTD 20 ton log splitter, V&H, 5 hp * Bale stingers for JD and Case loaders * 8' Harrow * 3 pt 6' Blade * 3 pt Bale carrier * Crafton Hydraulic big bale unroller

FARM ITEMS

20-12' port. Cattle panels * 3-8' port. Cattle panels * 3-12' Horse panels * 18-12' Alum. Cattle panels * 12-16'x4' wire panels * 6- Gates, diff sizes * 2- 110v 30 mile electric fence chargers * Lot used metal and electric fence posts * Roller, cable, wire, springs, crimper, for high-tensile fencing * Barb wire and hog wire stretchers * Barbed, Woven & High tensile wire * 200 gal Poly lick tank * 12' metal and 2- 10' poly feed bunks * Metal stock tank * Rubber mineral feeder

TOOLS

Campbell Hausfeld 20 gal air compressor * Makita chop saw on stand w/vise * Milwaukee Sawzall * Milwaukee drill * Coleman 5000 generator * Lincoln Electric welder * Acetylene torch set, extra tanks * elding workbench * Porter Cable air nail gun * Milwaukee ½" hd impact * Angle grinder, other power tools * Drill Doctor bit sharpener * PSI air nail gun, Air drill * Hitachi framing air nail gun * Sev. Clamps, bolt cutter, Pipe wrenches, pipe cutter, small hand

tools, etc * Delta bench top drill press * Double wheel bench grinder * 4 Board Roller Stands * Wood shop bench, 21 drawers and 2 doors, full of small hardware * Work bench on wheels, 6' x 30" * Shop cabinet with parts bins * Set B&D bits in folding container * Lg shop fan Socket sets, B&O end wrenches, etc * 2 ton floor jack, handman jack, jack stands * Furniture dollys, nut & bolt cabinets, etc.

ANTIQUES AND HOUSEHOLD

Antique oak wardrobe, c-1930's * Antique 2-drawer oak chest * Antique oak buffet * Antique mantle clock * Rocker/recliner, green * Kenmore SxS refrigerator w/ice & water in door, 21 cu ft * Frigidaire 18 cu ft chest freezer * Small oak entertainment cabinet * Butcher block, free standing * Library table, c-1930's * Wooden rocker, Sev. Cane back chairs, Hall table & mirror, Rocker w/ottoman, Coffee table, Rollaway bed other small furniture items * Brass plate queen bed * Haier AC window air conditioner * 3 drawer oak chest * RCA 21" flat screen tv w/ DVD player * Love seat & matching chair, burgundy & tan * Home Interior items, Lot Christmas décor, Lot Country Woman magazine, old egg box, other small collectibles * 10' church pew, 10 metal folding chairs * Antique sewing cabinet * Portable electric fireplace * Older dryer, gas * #7 & 10 iron skillets, Corningware, other kitchen goods * Nice area rugs, deer and others * Green depression ware, Rose Cameo, Princess, other * Pink depression ware, American Sweetheart * Antique spinning wheel, needs repair * 2 Small metal school desks * Orion VCR player, Lot Western VCR tapes * Antique chainsaw, hay knife, 2 man saw, other collectibles

LAWN / GARDEN / PATIO

Patio table, glass top rectangle, & 4 chairs * Power washer w/ B&S engine * Troy Bilt TB146 EC cultivator w/ electric start * 3 pt FarmStar seeder * 15 and 20 gal sprayers for ATV application * 4' Yard roller

MISC.

6' Ramps * 12'x12" Aluminum whistle * 4" Aluminum pipe * 10-8' & 10' light poles * Partial role of 24" aluminum * Vinyl sheeting * Fishing items, inc: poles, lot lead weights, etc * Scrap flat metal, pipe, angle iron, copper tubing



NOTE: Something for everyone here! We will be running two rings, so bring a friend and enjoy this clean, nice auction. Lunch wagon, portable toilets, and shelter in case of rain available.

Terms: Cash, approved check, debit/credit card (convenience fee applied). Nothing to be removed until settled for. Not responsible for accidents. Statements made day of sale take precedence over printed material. Lunch served

DALE AND RUTH HARPER



Larry
660-596-8515

Lacey
660-723-1104

Laramie
660-221-4386

660-547-2646



The Bernard Laune Collection ONLINE AUCTION

BID NOW! BIDDING CLOSES MARCH 26



Signs, Thermometers & Calendars

Sinclair
MFA Oil
Skelly
ISO-VIS Motor Oil
Firestone
Fisk Tires
International Harvester
Texaco
AAA
Falstaff
Dad's Root Beer
Nehi
Texaco
Barry Ice Cream
St. Charles Dairy Ice Cream
True Value Hardware
Sunkist
De Laval
Hebbeler's Ice Cream
John Deere
Alpen Brau
Diamond Motor Oil
Diamond Tires
Chesterfield Cigarettes
American Paints
Wolf's Head Oil
Corno Feed
B-1 Soda
Quaker State
Coca-Cola
Falstaff
Busch
Griesedieck Beer
Pontiac
Pabst Beer
Keen Kutter-Hanold
Hardware
Prestone

Cutlery by Remington
Peters Shoes
Missouri Pacific Railroad
Motorola Television
P-A-G Growers
Kohler Engines
Dekalb
7-Up
Double Cola
Pepsi
Teem
Philip Morris
Winston
Marlboro
Railway Express Agency
Winchester
Anheuser-Busch
Funk's Seed
Stag Beer
Mil-Kay
Pegus Feeds
B.F. Goodrich Tires
Oltimer-Stern Brau Beer
Eagle Stamps
Dr. Pepper
905 Beer
Lombard Chain Saws
Meadow Gold Ice Cream
Ram Chain Saws
Hires Root Beer
Massey Harris
Shell Oil
Schlitz Beer
Stroh's Beer
Mobilgas
Purina Feeds
L&M Cigarettes
Fram Filter
Mail Pouch Tobacco
Rexall

Other Advertising Collectibles:

MFA glass gas pump globe
Blank's Coffee wooden bin
Falstaff domed metal tray
Falstaff round cooler
Bull Durham Tobacco framed ad
Mercantile Cigar jar
Havoline glass oil jar
Planters Peanut jar
Many oil cans
Soda & beer trays
Local advertising shot glasses

Advertising

Clocks:

Kendall Oil neon spinner
Buescher Pipes-Washington
Grant Batteries
Larro Feeds
Pepsi

Other Antiques & Collectibles:

1919 Franklin County atlas
& 1925 biog. directory
Standard Time large wall clock
Antique weather vane
Fuel delivery measures
Wooden model wagon by Herb Zastrow
Die-cast metal toy cars
Toy truck & tractors
Monmouth 15 gallon crock jar
5-gallon crock jug
C.S. Bell #3 bell with yoke

Item Preview Dates:

Sunday, March 24 (12PM-4PM)

Item Preview Location:

4076 Hwy. VV, Berger, MO 63014

 **SCHNEIDER**
Auctioneers LLC

573-834-2207 • 573-291-8075
www.SchneiderAuctioneers.com

Sam CRAWFORD AUCTION SERVICE LLC

As we are selling our home and moving out of state, will sell the following located from Urbana, Mo., 1 mile North on Hwy. 65 to Hwy. NN, then West 2-1/2 miles to Co Rd 385, then North 1/8 mile. Watch for Crawford Auction signs.

Saturday, March 30, 2019 – 11 a.m.

MOTOR HOME – POLARIS RANGER – TRAILER – LAWN EQUIPMENT – FURNITURE



Motor Home

'14 ACE by Thor, 29.2' motor home, 14,000 one owner miles, Ford chassis, gas mtr, 1 slide, leather interior, loaded, queen bed, 2 TV's, bath, lots cabinet & counter space, 4 solar panels, like new, shedded

These 3 items are all LIKE NEW and will sell near 12 Noon!

See website for more pictures!

Trailer-Polaris

10' Utility trailer, full fold down rear ramps, used 1 time
Polaris 500 Ranger 4x4 (still on first tank of gas) nice.

Lawn Equipment

Troy Bilt "Bronco" 20hp 42" lawn tractor
Lawn cart; Gas post hole digger
Husqvarna push mower
Wheel barrow
Little Giant ladder
2 Wheel cart for hauling deer out of woods
Sev gas cans; 3 Plastic barrels
Sev plastic planters
3-4 Plastic storage shelves
Garden hose; 25+ paving blocks
Some concrete blocks
Approx 2 cords wood
Metal frame work for greenhouse, approx. 8x20
2 Rolls new plastic for greenhouse cover
PVC frame work; 4-5 Raised beds

Blue Ox tow bar; 2 Elec heaters
1 Propane space heater
Other misc.

Household

Double recliner w/center console
Leather chair; Office desk
Leather office chair
Rd end table light base
Small drop leaf table
Bookcase; Lg TV cabinet
Golds Gym Treadmill
2 Wicker chairs
B/D dorm refrigerator
Indoor water fountain
Framed Missouri puzzle
2 Computer monitors
2 TV's; Stereo/radio; Other misc.

Sam CRAWFORD Auction Service LLC



Cross Timbers, Mo.
CrawfordAuctionService.com

417-998-6629



TERMS: Cash or good check. Nothing removed until settled for. Not responsible for accidents. Lunch available. Statements made day of sale take precedence over printed matter. All items sell as is. No warranties given or implied.



Sam
417-328-9137

Chase
417-399-1904

Chance, CAI
417-298-1751

Tom Poynter
Jack Lancaster

Tom & Marlene Dutcher



LARGE RESTAURANT, BAR & ICE CREAM PARLOR AUCTION

MONDAY, MARCH 25 – 10:00 AM
 CONTENTS FORMERLY OF SHORTY SMALLS, PARLOR EIGHTY-EIGHT
 & LEXINGTON CANDY SHOP & LUNCHEONETTE
104 W THIRD ST • FAIR PLAY, MO

LOCATION: FROM JCT HWYS 13 & 32 IN BOLIVAR, MO; WEST ON HWY 32
 APPROX 8 MILES TO FAIR PLAY THEN NORTH ON WALNUT THEN EAST ON THIRD.
WATCH FOR AUCTION DAY DIRECTIONAL SIGNAGE.

SELLING ➡

ANTIQUES, COLLECTIBLES & DÉCOR ITEMS: AUTHENTIC 2 PERSON AMISH BUGGY, FOR ACTUAL USE OR FANTASTIC FLEA MARKET ATTENTION GETTER OUT FRONT! SUPER NEAT 1950'S OR 1960'S FORMICA LUNCH COUNTER W/7 CHROME BASE SWIVEL BARSTOOLS & CHROME FOOTRAIL-STAINLESS INDOOR FIRE PIT HOOD, SUPER EXPENSIVE-PARLOR EIGHTY-EIGHT LOUNGE NEON EXTERIOR BUILDING SIGN, NICE-LOTS OF DELTA & NW AIRLINES MARKED CHINA!

RESTAURANT, BAR & ICE CREAM EQUIPMENT: 2 HOSHIZAKI 500 LB CUBE ICE MACHINES-ELECTRO FREEZE SGL HEAD CTR MDL SGL PH SOFT SERVE ICE CREAM MACHINE-WARING 3 SPINDLE MALT MIXER-ICE CREAM DISPLAY MERCHANDISER DIPPING CABINET FREEZER-2 OTHER DIP CAB-ICE CREAM TOPPING SGL DOOR COOLER W/TOP CONTAINERS & PUMPS-NOVELTY BOX FREEZER-TRUE 2 DOOR SANDWICH PREP TABLE-TRUE RAISED RAIL PIZZA PREP TABLE-REACHINS & REFRIGERATION-TRUE DBL SLIDE TOP BOTTLE BOX BEER COOLER-3 PASTRY CASES-REFRIGERATED PIE CASE-5 MIXERS INCL UNIVEX 30 QT, HOBART 20 QT, HOBART & 2 KITCHEN AID 5 QT, SUPER NICE! HOBART 1712 AUTOMATIC MEAT SLICER-LINCOLN IMPINGER 1301 SS ELECTRIC CONVEYOR PIZZA OVEN, 16" WIDTH, 1 PH, NICE-STAR HOLMAN 210HX MINIVEYOR PIZZA OR SANDWICH OVEN-BLODGETT & BAKER'S PRIDE SS CTR MDL STONE DECK ELEC PIZZA OVENS-PIZZA WARMER DISPLAYS-SOUTHBEND SS 10 BURNER NAT GAS RANGE W/DBL OVENS, NICE-RANKIN DELUX 24" & SS 4' NAT GAS GRILLS-2 DEAN MATCH SS FLR MODEL NAT GAS FRYERS, NICE-PITCO SS CTR MDL PROPANE FRYER-CLEVELAND 12 GAL ELEC TILT KETTLE-CLEVELAND STEAMCRAFT SGL DOOR STEAMER-VOLLRATH 5 COMP STEAMTABLE-PORT ICE SALAD BAR-STAR CONVENIENCE STORE TYPE HOT FOOD MERCHANDISER WARMER-SEATING INCL LOTS OF EXCELLENT TABLES, CHAIRS, BARSTOOLS & BOOTHS! MICROS POS SYSTEM-CONCESSION & CONVENIENCE STORE ITEMS INCL PRETZEL WARMER, 3 HOTDOG ROLLER GRILLS, CRATHCO 2 HEAD REFRIGERATED BEVERAGE MACHINE, PASS THRU SANDWICH, PIZZA & HOT FOOD DISPLAY WARMERS, ETC-2 PANINI GRILLS-WORKTABLES, DISHWASHER DRAIN TABLES, CAN RACKS, SHELVING & MORE! OTHER RESTAURANT & LOUNGE EQUIPMENT PLUS HUGE AMOUNT OF SMALLWARES TOO NUMEROUS TO LIST!

NOTE: THIS IS ONLY A PARTIAL & VERY SMALL LISTING AS SHORT NOTICE OF AUCTION! OUR BUILDING IS FULL, FULL, FULL! THIS WILL BE THE ONLY ADVERTISING NOTICE PRIOR TO AUCTION SO MARK YOUR CALENDAR & MAKE PLANS TO ATTEND THIS GREAT AUCTION! VISIT OUR WEBSITE & CLICK ON "AUCTIONS" TAB AT TOP FOR PHOTOS & FULL LISTING. HOPE TO SEE YOU THERE!

MARON RESTAURANT EQUIPMENT, LLC & AUCTIONS

RONA DOWNS & RICK NEWMAN, AUCTIONEERS

P O BOX 110, COLLINS, MO • 417-327-5619

AUCTIONZIP.COM/AUCTIONEER ID #29686

ONLINE ONLY PERSONAL PROPERTY AUCTION

Saturday, March 23, 2019 @ 12:00PM

4536 S. Jefferson Ave • Springfield, MO 65803

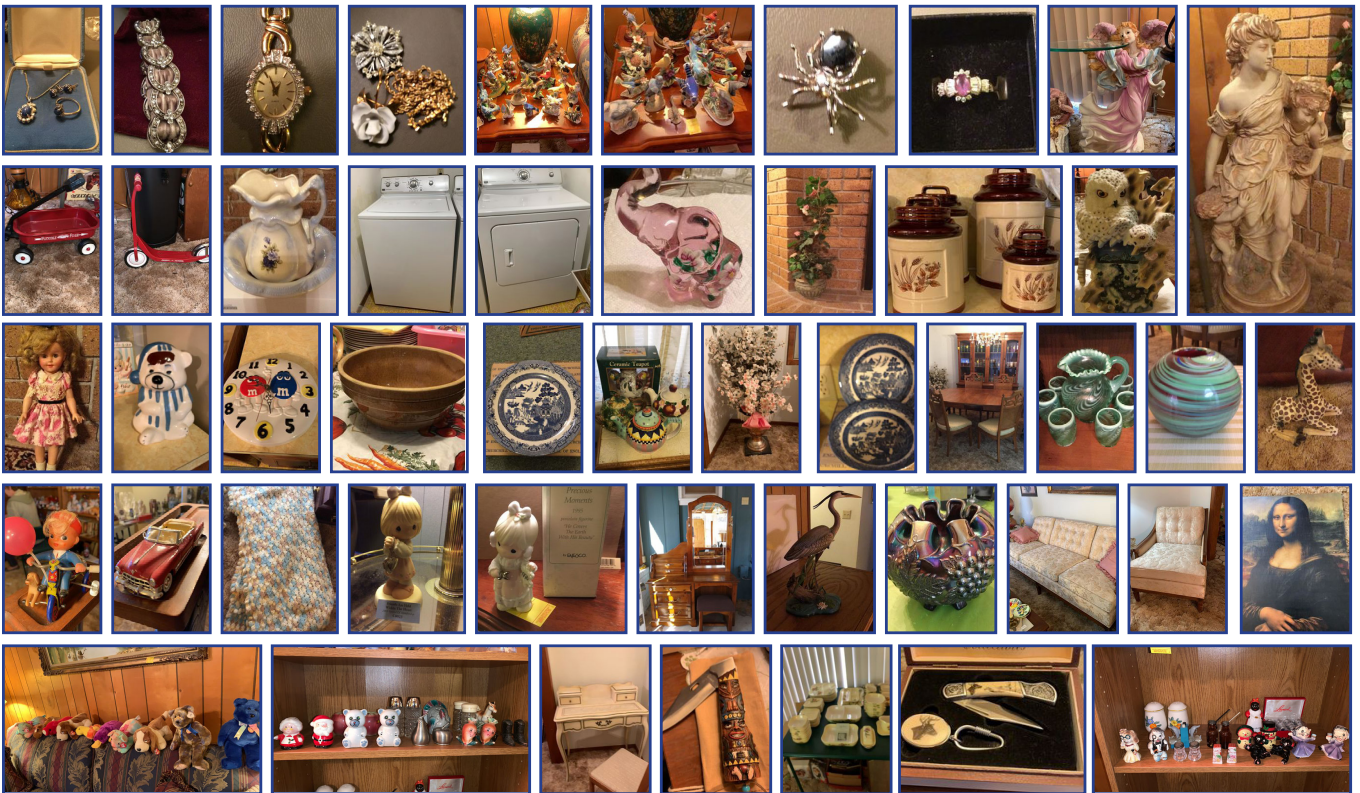
Directions: From James river freeway & Campbell go South on Campbell (160), Left on Buena vista, Left on Jefferson and it is on right.



588 LOTS

JEWELRY, FIGURINES, FURNITURE,
GLASSWARE, COLLECTIBLES & MORE

Pickup Sunday, March 24 from 2:00-4:00pm



FOR MORE INFORMATION GO TO WWW.EASTERLYAUCTIONCO.COM OR CALL EASTERLY'S AT 417-833-9494

EASTERLY AUCTION CO.

Go to www.EasterlyAuction.com



auctionzip.com
ID#14770



Mike Easterly Auctioneer
417-833-9494

Not Responsible for accidents or theft.

For more information call: Easterly Auction Company, Springfield, MO.

Auction Terms: Bank Letter Of Credit Required.

Visa, Mastercard, Cash, Cashier's check or checks with proper I.D.

Announcements day of sale take precedence over printed material. Auction Notes: Although information

is obtained from sources deemed reliable, auctioneer makes no warranty or guarantee expressed or implied.

Buyers should themselves take the opportunity to make their own inspection prior to sale.

2-DAY AUCTION!!**SAT., MARCH 30TH
@ 10:00 AM**

151 STE HWY 76, ROCKY COMFORT, MO (WHEATON)

HUGE GUN AUCTION!

Featuring over 150+ vintage gun sellout for Martin Olszewski. Accepting consignments on Guns, Bows, Knives, Hunting Gear & Sporting Goods.

(FFL Rules Apply).

**Additional Guns & Sporting Goods added daily.
Preliminary gun list online!****SUN., MARCH 31ST
@ 10:00 AM**

151 STE HWY 76, ROCKY COMFORT, MO (WHEATON)

**SPRING EQUIPMENT
CONSIGNMENT AUCTION**

Taking consignments on Farm Machinery, Trucks, Trailers, Tools, Shop, Outdoor. Featuring a complete estate sellout of the late James Arnold of Monett.

LOTS OF TOOLS!**Early consignments include:**Yamaha Rhino 450 ATV 4x4, Artic Cat 650 4x4, Artic Cat 375 2WD, Kubota RTV 1120D
New Holland Zero Turn Mower
7' 3pt Sidewinder H7D Bushhog
Lots of Shop Tools, Generators, Implements & More! Pallet Racking, Low Rise 10,000 Lift, Prius Car, Chevy Blazer, '91 Freightliner Semi, 1902 Wilson Hopper Trailer, '95 Diamond D Stock Trailer, Glenn Phelps Farm Equipment: TYM T903 Cab Tractor, Belarus 6345 Cab Tractor, KMC 4755 Disc Mower, BR740 NH Round Baler, '52 Chevy Dumptruck, Lots of misc farm equip & implements, misc cattle supplies & more!Call (417) 652-7540 or
email: kathy@swaauction.com

for more info or visit:

www.swaauction.comEarly consignments will be photographed
& advertised! www.swaauction.com

417-652-7540

Wheaton, MO

**AUCTION
TIME!****THURSDAY
MARCH 28TH
12 NOON**

Estate of Cora Beth Gates

**SELLING
20 ACRES m/l ON
W. FARM ROAD 26
GREENE COUNTY,
MISSOURI****Directions:** From I-44 & Glenstone, north on Glenstone/H 5.2 miles. Continue left on Hwy. H 4.7 miles to Farm Road 26. West on FR 26 7/10s mile.**This 20 acres m/l is all
wooded. A beautiful
building site where
your closest neighbors
are the deer, turkey,
squirrels and an
occasional possum.****Terms:** 10% down day of auction with full balance due on or before April 25th, 2019. Sells subject to probate court approval.**Personal Representative:
Joyce A. Anderson****Estate Attorney: Allen Rose****FREEMAN AUCTIONS
& APPRAISALS, LLC**
Auctioneer: Steve Freeman
(417)343-1891
sfauctionetime.com**BUFFALO
LIVESTOCK MARKET LLC**

276 Hwy 32 West

Buffalo, Missouri

March 16th, 2019**Receipts: 1408 Head**

Feeder Heifers 3-5 higher

Steers steady \$5 higher

Representative Steers300-400 @ 175.00 to 200.00
400-500 @ 165.00 to 190.00
500-600 @ 164.00 to 185.00
600-700 @ 145.00 to 160.00
700-800 @ 132.00 to 138.00
800-900 @ 129.00 to 132.00**Representative Heifers**300-400 @ 150.00 to 166.00
400-500 @ 142.00 to 165.00
500-600 @ 134.00 to 154.00
600-700 @ 128.00 to 138.00
700-800 @ 118.00 to 129.00
800-900 @ 115.00 to 127.00**Feeder Bulls**400-500 @ 150.00 to 170.00
500-600 @ 140.00 to 151.00
600-700 @ 133.00 to 154.00
700-800 @ 124.00 to 127.00
800-900 @ 98.00 to 106.00**Bred Cows:**

850.00 to 1200.00 per head

Cow Calve Pairs:

Few: 900.00 to 1150.00

Slaughter Cows:Big Fleshy @ 56.00 to 65.50
Boning Utilities @ 50.00 to 58.00
Cutters @ 49.00 to 55.00
XThin @ 49.00 down**Slaughter Bulls:**High Dressers @ 88.00 to 91.00
Med Dressers @ 78.00 to 86.00**Join us each Saturday at Noon for
great cattle year-round!****MON-WED MARKET REPORT**Listen to KJEL 103.7FM • Lebanon or
KYOO 99FM • Bolivar**VIEW OUR SALES AT CATTLEUSA.COM****CALL FOR TRUCKING OR ON-FARM VISIT**Lyle Caselman • Owner-Manager
417-345-7876 • mobile 417-533-2944
Leon Caselman • Owner
417-345-4514 • mobile • 417-588-6185
Howard Miller • Owner 417-345-8122

3 OUTBOARD MOTOR PROPELLERS: 1 is 11.4x10, 1 is 10x13, 1 is 14.5x15. good to like new condition. \$95all. Rolla, 573-364-7465.

AKC GOLDEN RETRIEVER PUPPIES: Born 1-4-19, UTD shots. Beautiful puppies. \$300. 573-392-5371, Barnett. MO.

3 METAL DETECTORS: \$15, \$25 and \$75. Birch Tree, 573-872-9821.

RESTORED JOHN DEERE: child's pedal tractor, with trailer. \$395. Farmington, 573-756-3189.

FERGUSON TRACTOR MANUALS: \$20. 636-932-4429. Herman

WANT TO BUY JOHN DEERE TRACTOR: Diesel in need of repair. Call 573-768-0068.

2015 GMC: 3500 HD, leather, Duramax, 4WD. 18,500 miles, hydra-bale bed. \$43,500. Plato, 417-458-4520.

MOTORIZED 26" FLYER BIKE: 80mpg, 40mph, Karaoke brand. \$185firm. 573-872-9821

GREAT PYRENEES ANATOLIAN SHEPHERD CROSS: Dewormed, shots, weaned, out of working parents, running with ewes and new lambs earning their keep. \$100. 573-422-3574, Vienna.

WISCONSIN 2 CYLINDER ENGINE: Not running but loose. \$200obo. Rolla, 573-308-5884.

WHOLESALE PRICES "Fertilizer/ Chemicals /Seed". Trailer loads or divide. Example 46% urea \$385/delivered, DAP \$475, Blending anything we are the farmers friend. 800-807-9612.

BRUSH CLEARING: 417-650-0596. www.brushmasterlandclearing.com

2014 OPEN RANGE 5TH WHEEL: w/3 slides, excellent condition. 573-259-4291 for details.

AUCTION REMINDER: All Breed Horse Sale, Saturday, April 6th. Tack at 11am. Horses to follow. World Fox Trotting. Please see our Auction Directory for more information.

WANTED: old Franklin County Plat books. 573-468-4924

2 BIG PARAKEET CAGES: and misc. \$200 for all. 417-646-8807.

***** **HUGE** ***** *Public Auction* **Thursday, March 28, 2019** **STARTS @ 9:01 AM & 12:46 PM**

Location: Riverbend Arena • 12900 E 600 Rd • Inola, OK

Directions: From Hard Rock Casino Tulsa (Catoosa), take Hwy 412 East approx 9 miles to S 4160 Rd. Turn right (South) and go 3/10 mi to the stop sign. Take a left then immediate right and continue on S 4160 Rd for 1 mi. Auction is on the right. In Inola, OK, at the Jct of Hwy 88 & Hwy 412, go West on Hwy 412 for 4 1/2 mi to S 4160 Rd. Turn left (South) and go 3/10 mi to the stop sign. Take a left then immediate right and continue on S 4160 Rd for 1 mi. Auction is on the right. Watch for Auction signs.

**RUNNING
2-3 RINGS
ALL DAY!**

**For More Info & Pictures-
www.chuppsauction.com**

TRACTORS, HUMMER MILITARY HUMVEE, ROAD GRADER, SKIDSTEER, DOZER, ASPHALT MACHINE, VEHICLES, TRAILERS, IMPLEMENTS, CATTLE PANELS/GATES, PIPE, ELECTRICAL / PLUMBING SUPPLIES, TOOLS, SCRAP METAL, BLEACHERS, SHIPPING CONTAINER

RESTAURANT / CATERING EQUIPMENT & SUPPLIES, COOLERS/FREEZERS, RESTAURANT BOOTHS & TABLES, BANQUET TABLES & CHAIRS, COIN-OP POOL TABLES, WESTERN FURNITURE & DECOR, ANTIQUES & COLLECTIBLES, MISC TACK

OWNER: Riverbend Arena and Chow House / Derek & Alyssa Sanders

Auctioneer's Note: The Sanders have decided to sell their home and businesses to move closer to family. Large equipment, vehicles, trailers, boat and cattle panels will sell at 10:31 am. THE AUCTION WILL STOP @ APPROX 12:01 PM FOR THE SALE OF THE REAL ESTATE AND WILL RESUME ONCE THE REAL ESTATE SELLS. Restaurant equipment & supplies, furniture and antiques will sell at approximately 12:46 pm. Be prepared to disconnect equipment and ALL ITEMS MUST BE REMOVED by Wednesday, April 3rd. This Auction will have 2-3 rings. Please follow us on Facebook for updates or visit our website for pictures at www.chuppsauction.com.

TERMS: Cash - Credit Cards - Check with Proper ID - OK Sales Tax Applies unless exemption is shown. NOT RESPONSIBLE FOR ACCIDENTS. ANY ANNOUNCEMENTS DAY OF SALE SUPERSEDES PREVIOUS ADVERTISING.

CHUPPS AUCTION CO.

Stan Chupp
(918) 638-1157

Dale Chupp, Realtor
Coldwell Banker Neokla Select
(918) 630-0495

E. J. Chupp

AUCTION REMINDER: Land Auction Thursday, March 28 at 12pm. Freeman Auctions & Appraisals. Please see our Auction Directory for more information.

JOHN DEERE 55 COMBINE: good condition w/13ft quick attach head. \$1500, 417-241-0006

PINE LOG SIDING SALE: \$1.19 per L.F. www.pineridgerustic.com 573-729-7226, 573-247-2823.

RED ANGUS BULLS: 20 months old, Red Balancers, 15 months old. Pinnacle Ranch. 417-679-4269, 417-679-2330, Gainesville. MO.

OUTSTANDING COMMERCIAL REAL ESTATE HIGH TRAFFIC INCOME PRODUCING

Monday, April 1st

10:00 AM & 1 PM

Locations - 608 N Main, Mtn Grove, MO at 10 AM & 808 Porter Wagner Blvd, West Plains, MO at 1 PM

Contact Gary Sexton

Auctioneers: 417-255-7001

Auctioneers Notes - Low starting bids on both parcels - company has instructions is to sell! Both auctions will be sold on site:

Gary Sexton
AUCTIONEERS
REAL ESTATE • HEAVY EQUIPMENT • ESTATE LIQUIDATION

Thanks for attending!

- **LOCATED at Tract #1**
- 608 N Main, Mtn Grove, MO, 65711
- At public Auction:
- 2 Large Commercial Lots
- 90'x125' & 75'x125' - (Parcel #21-2.0-04-019.00 & 21-2.0-04-020.00)
- 2018 Taxes \$155.87 with excellent location and perfect office building - pavement and LOTS of parking area! **Selling at 10:00am sharp on site at 608 N N Main in Mtn. Grove, MO!**
-
- **LOCATED at Tract #2**
- 808 Porter Wagoner Blvd, West Plains, MO.
- Commercial Building on 145'x145'
- (irregular) with 1,680 sq ft office building
- (both are currently rented!) High traffic volume - Excellent Location! **Selling at 1:00 p.m. on site at 808 Porter Wagoner in West Plains, MO! Terms**
- 10% down day of the auction, balance upon closing inspection.





Tract 1 - 118+/- Acres

269+/- ACRES!

Tract 2 - 151+/- Acres

Gently rolling wooded land offering excellent Hunting & Recreation.

Miller County
MISSOURI
Land For Sale at iAuction
Bidding Ends Wed., April 10th at 10am



TROPHY
 PROPERTIES AND AUCTION
 LAND | RECREATIONAL | RESIDENTIAL

Jason Wallingford, CAI
314-882-6971



Bid Now at **TrophyPA.com**

PARTING OUT ALLIS-CHALMERS D14, D17, WC, WD, AND CA. Jefferson City, 573-690-9406.

BLACK ANGUS BULLS: Farm raised, tested, objective T510 bloodlines, 24 months old, 3 to choose. \$2100each. 573-205-7860. Owensville

FOR SALE D-14 ALLIS CHALMERS: Lots of new parts. \$4700. 573-619-4928.

NEW NEW NEW DISPLAY HOUSE!!! Call Marla to hear what is new inside 573-657-7040, chateauhomes.net.

WOODS 15' BUSHHOG: Chains excellent condition, paint on blades. \$8,750. 870-458-2238.

AUCTION REMINDER: Online Only Personal Property Auction. Saturday March 23 @ 12pm. Easterly Auction. Please see our Auction Directory for more information.

2004 OPEN RANGE FIFTH WHEEL CAMPER: 34', all weather, in good condition. \$10,500. Lebanon, 417-718-5520.

JERSEY/HEREFORD CROSS BULL: 8 months old. \$500obo. Salem, 573-453-5398.

GOOD PROVEN 3YR OLD: Black Angus Bull. \$2100obo. Emery Hershberger Pinodk Rd. Summersville, 22654.

NEW STOCK!!! Wow, do these look **GOOD!!!** Call 573-657-2176 amegamobile-homes.com

ANTIQUE 12 GAUGE: Single barrel, shotgun. \$175. Desloge, 573-327-9068.

OLD 20 GAUGE: Single barrel shotgun. \$175. Desloge, 573-327-9068.

TARTER 3PC ROUND HAY RINGS: 3 styles in stock. \$175+up. 573-205-7860, Owensville.

WANT TO BUY: Chainlink Dog Pen Panels, 6ft tall. Also want Peacocks! 417-718-4787.

2 MENS LEATHER MOTORCYCLE JACKETS: size 44 and 42, one like new. \$50 each. Mammoth Spring, 870-966-3483.

GOOSENECK FLATBED: 24' 1,400 lbs gvwr, \$3,000. Ava, 417-543-0278.

WANTED HORSE MANURE: Bourbon, 314-960-6652.

CHECKERED WALNUT WOOD STOCK PISTOL GRIP: for Marlin Model 336 or 1895. \$100. Washington. 636-239-2695.

750 GAL FIELD SPRAYER: Big tire Hyd pump single jet. \$2,750. 573-765-4406.

BOBCAT 853 DIESEL SKID STEER LOADER: Cab, 58hp. \$8,950. 573-765-4406.

FARMINGTON LIVESTOCK
 Hwy 67 • Farmington, MO
 Office Phone: **573-756-5769**

Regular Sale Every Week Wednesday
Starting at 10:30 am

All Consignments Welcome
 Keith Robertson
 Cell: **314-560-3285**
 Home Ph: **573-732-4987**

Public Auction

New Merchandise Sale
Evening Sale Overstock items
Friday March 22nd • 6:00 PM

Two miles North of St James on Hwy 68 N at Rolla Horse Auction

Shop Tools, Household, & Collectables

Lots of surprises, no telling what they will come up with.
 Sale will be held indoors, will be nice and warm

Terms: Cash or check with photo I.D. -Not responsible for accidents or losses, should they occur. Nothing removed until paid for. Lunch Served - ALL ANNOUNCEMENTS MADE SALE DAY TAKE PRECEDENCE OVER ALL PRINTED MATERIALS -

ROLLA HORSE AUCTION/LORTS AUCTION SERVICE
INFO: 573-263-4232 DAY OF SALE: 573-265-8813

MID MISSOURI STOCKYARDS

REGULAR SALE EVERY THURSDAY 11AM

SPECIAL COW SALE APRIL 6TH @ 6PM

For Farm Visits, Market Updates, or Trucking
 Call **Zach Cox 417-777-1320**
Dan Romine 573-578-4939

**Competitive Buyers!
 Competitive Commission!
 Competitive Market!**

Barn: 417-532-9292
1-44 • Exit 123 "just outside of Lebanon"
17505 Route 66, Phillipsburg, MO 65722
 For weekly market updates, visit us at www.midmostockyards.com

ONLINE AUCTION

**Furniture • New Painting Supplies
Tools**

**525 Highland Waye,
Jefferson City, MO**

**Bidding Ends Tuesday,
March 26th at 12:30PM**

**This Auction Features Staggered Ending
Times & Extended Bidding On All Lots.
Bid Online At Atterberryauction.com**



Preview: Monday, March 25th
from 3:00PM to 5:30PM

Payment & Pick-Up: Wednesday, March 27th
from 3:00PM to 5:30PM

**Nice Office Furniture & Other Beautiful
Pieces Of Furniture • Tools
HUGE Selection Of New Paintbrushes,
Rollers & Other Painting Supplies
Char-Broil Commercial Series
Dual Fuel Grill • Home Décor
Holiday Decorations • Household
Glass • Lamps • Collectibles & More!**

**For complete terms, listing,
catalog, pictures & bidding,
visit atterberryauction.com,
email contactus@atterberryauction.com,
or call (573) 474-9295.**

**Please contact our office if you need
help with the online bidding process.**

"WE MAKE BUYING AND SELLING AT AUCTION EASY"
Atterberry MEMBERS
Auction & Realty Co., LLC. www.atterberryauction.com
573-474-9295

WOMENS MERREL: Insulated Snow Boots, sz 8M, waterproof, mid calf height, easy pull on style, fur trim at top, dark chocolate brown color. Nice! \$35, 417-718-5347.

LADIES CARHART: deep green blanket lined jacket, size Large, adjustable waist tabs, zipper front, Excellent condition. \$35. 417-718-5347.

MATCHING COFFEE & END TABLES: Sturdy wood with glass partition, Tops are 38"x38" & 24" x 28". \$50. 314-303-7857, Cedar Hill.

CONSTRUCTION EQUIPMENT AUCTION

THUR., MAR. 28

**200+ ITEMS SELL
REGARDLESS
OF PRICE!**

Bidding closes
at 10 a.m. CDT



DB6797 '83 CAT 769C haul truck



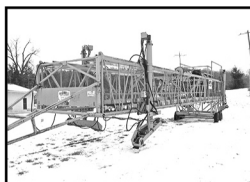
**FQ9571 '13 John Deere
350G excavator**



**FQ9638 '12 John Deere
850K dozer**



**DF3286 '05 Kenworth
W900 dump truck**



**DF7111 Bidwell 5000
concrete paver**

INVENTORY INCLUDES:
telehandlers, backhoes,
skid steers, bucket trucks,
tractors, equipment
trailers, motor graders,
flatbed trucks and more.
*All items are sold "AS
IS." 10% buyers premium
applies. 866.608.9283*

**purple
wave**
AUCTION

BID NOW! purplewave.com

NEW NEW NEW DISPLAY HOUSE!!!
Call Marla to hear what is new inside 573-657-7040, chateauhomes.net.

6BAR CONTINUOS FENCE: 15 Sections, 16ga, 3cross supports, 20' long-55"tall, 1 1/4 tubing. \$85each. 573-205-7860.

L4400 KUBOTA: 4wd tractor with loader. \$21,500. 417-270-1505.

**GM 1/2 TON WD FRONT AXLE HOUS-
ING:** w/3.07 gears, 77-87. \$80. 314-303-7857, Cedar Hill.

AUCTION REMINDER: Large Restaurant, Bar & Ice Cream Parlor Auction, Monday, March 25, 10AM Shorty Small, Parlor 88 & Lexington Candy Shop and Luncheonette Rona Downs-Maroon Restaurant Equipment. Please see our Auction Directory for more information.

3 METAL DETECTORS: \$15, \$25 and \$75. Birch Tree, 573-872-9821.

NEW STOCK!!! Wow, do these look **GOOD!!!** Call 573-657-2176 amegamobile-homes.com

Over 25 Years In The Livestock Business

Cattle Sale

Every Monday at 12:00



Feeder Calves
to sell at 12:00 pm
**Butcher Cows
& Stock Cows**
following

Goat, Sheep & Hog Sale

2nd Tuesday of the Month • 6 pm

Feed & Water Pens Available
All Consignments Welcome
Up Until Sale
We Appreciate Your Business!

Salem Livestock Auction

Hwy 32 Salem, Mo
Barn- 573-729-8880

Allen Thompson 417-932-4097
Chuck Thompson 417-257-5610
Renee Lauderdale 417-926-2682
Keith Robertson 314-560-3285

Terms of Sale: Cash or
Approved Check!

AUCTION REMINDER: Construction Equipment Auction. Wednesday, March 28th @10am. BID NOW! Purple Wave Auction. Please see our Auction Directory for more information.

1999 CHEVY EXTENDED CAB: 4x4, Z71, newer engine and transmission. 417-321-1928.

17 JD HX-15 BUSHHOG: Chains like new. \$14,750. 870-458-2238.

MASSEY FERGUSON 285: Diesel tractor, w/loader. \$11,000. Farmington, 573-631-4352.

TRAIL HORSE SUPER SALE

Saturday, April 6, 2019
All Breed Horse Sale
Tack at 11:00 a.m. Horses to follow



Catalog Deadline: March 23, 2019

McNail Multi-Purpose Indoor Arena

30695 Hwy 5 • Lebanon, MO 65536
6 miles North of Lebanon on Hwy 5 at BB
Junction (Right before Mike's Country Store)
On-Site Coggins Testing
No "NO SALE" Fee

Please send a copy of your registration papers with your comments to:

WORLD FOXTROTting HORSE SALES

P.O. Box 955 • Rolla, MO 65402

For More Information please contact: Ralph
VanKirk 573-368-1277
Craig Johnson 712-370-0702

www.worldfoxtrottinghorsesales.com

HUGE SEMI TIRE SALE: Trailer 11R-24-5, 16-ply. \$292. A/P 16-ply. \$280. 11R-22-5 16-ply. \$247. A/P 16-ply. \$265. 295-75-22-5 16-ply. \$275. A/P 14-ply. \$248. 285-75-24-5 14-ply. \$238. A/P 14-ply. \$267. Free Petroleum Gift with purchase of 8. F-Warranty, F-Delivery. Call 417-276-2435.

CEDAR GAP TOPSOIL: Garden Ready topsoil, Only water required, delivery within 50-mile radius, Seymour. 417-935-2877. For more info: www.cedargaptopsoil.com

20- 14' PORTABLE CATTLE PANELS: Light-medium weight, 2 chains \$80each 9-8'panels 66#, \$68each. 573-205-7860

LIONS HARTVILLE LIONS CLUB
Consignment & Donation
14th Annual Auction
Saturday, April 6th

Good Consignments Needed
Low Fee Commissions
Donations Appreciated

To consign or donate items, contact:

Dan 531-3329	Lonnie 741-2095	Scott 741-0082	Charlie 464-8166
-----------------	--------------------	-------------------	---------------------

Consign early by March 20th for sale bill listing

DISHWASHER: Black, works. \$50. Lebanon, 417-532-3734.

GREAT PYRENEES PUPPIES: All white, 8 wks, wormed/shot. \$200. 417-926-2470, Norwood.

REAR MOUNT BALE CARRIER: No 3rd arm used. \$100. Rogersville, 417-753-2747, 417-766-1991.

AUCTION REMINDER: 2 Day consignment Auction! Saturday, March 30th @10am, Consignment Auction Sunday, March 31st @10am. Southwest Auction Service. Please see our Auction Directory for more information.

LOOKING FOR WATER BICYCLE: Any shape. Leave message, 618-758-2830.

JOHN DEERE 337: Square Baler. \$2250. 573-765-4406.

TWO BUMPERS: For 62-64 Chevy 2 Nova. \$100. 573-734-2822, Bismarck.

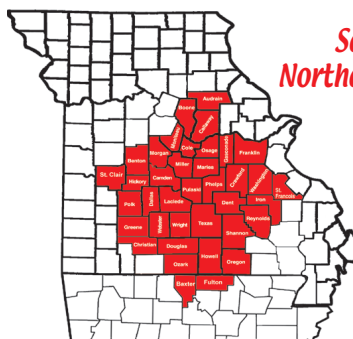
CDL IN ONE DAY!!: Family owned and operated, Insured, Over 10 years of experience, Training available for all states, Short wait time for appointments, Contact us today to schedule your appointment!! CREDIT CARDS EXCEPTED. (573-353-2853).

PUREBRED HEREFORD BULL: 3 years old. \$1,400. 573-690-1277, leave message.

**WEEKLY
TRADER
MAGAZINE**

Kasey Moore
MARKETING CONSULTANT

cell: 417-322-0929 | kasey@weekly-trader.com | office: 417-532-9131 Ext. 224



*Serving Missouri and
Northern Arkansas since 1994*

P.O. Box 192
100 E. Commercial St.
Lebanon, MO 65536

Fax: 417-532-9998
417-532-8140



WWW.MYWEEKLYTRADER.COM

AUCTION REMINDER: 2 Commercial Real Estate, Monday, April 1st @ 10am and 1pm. Gary Sexton Auctions. Please see our Auction Directory for more information.

REGISTERED ADULT GERMAN SHEPHERD MALE. \$100. 417-741-2198, Hartville.

CUSTOM SAW MILLING: Lebanon. 417-533-4607, 417-664-1195.

KITCHEN-AIDE CONVECTION STOVE/OVEN: used only 6mths, gas/propane. \$1400obo. Rolla, 928-514-0505.

1984 2500 CHEVY: 454, TH400, low miles, rusty, delivery negotiable. \$1,675. 573-864-2611.

L2501D KUBOTA: 4wd tractor with loader, 25HP, hydro transmission, with 5' Landpride bush hog. \$16,900. 417-270-1505.

WOOD STOVE: cast iron, front opening, on legs, used only one season. Rolla, 928-514-0505.

JOHN DEERE: 7300 air planter, 3pt, 8row, 36sp, vertical fold. \$5500. Viola, 870-458-2580.

INDIAN ARCHERY 1950'S: wood, recurve bow, with original box of Ben Pearson arrows. \$195. Rolla, 573-364-7465.

VINTAGE CAPPERS WEEKLY SEARCHLIGHT RECIPE COOKBOOK: \$15. Lebanon, 417-532-2045.

GERMAN SHEPHERD PUPPIES: 8 weeks old, shots/wormed. \$300 up. 417-589-4383, Lebanon.

VERONA MISSOURI HISTORY: 1868-1968. 100 year history. \$22.50. Lebanon, 417-532-2045.

WOOD BUSHING: For Ferguson disk. \$20. 636-932-4429. Herman

FOR SALE 1978 INTERNATIONAL ROAD TRACTOR: Only 263,304 miles, near new recaps on rear rome offset disk H.D. Cat 60 Flat bottom Scrapey Lincoln Pipeliner welder on trailer. Belle, 573-619-2533.

AUCTION REMINDER: Saturday, March 23rd @ 9am. MR Clark Auction Service. Please see our Auction Directory for more information.

CALVES BOTTLE AND WEANED: for sale call Ben. Grovespring, 417-241-0509.

AUCTION REMINDER: Estate Auction. Saturday, Mar 30 @ 10:00am. Foster Auction. Please see our Auction Directory for more information.

SMALL FARM: 40 acres, near Ellington, MO, spring, 2 ponds, barn, part pasture, electric, well, livable building, highway access. \$65,500. 573-637-2450, 573-697-1016.



Getting Fit

just became enjoyable
and awe inspiring.

There are lots of fitness center options out there, but only GreatLife offers a state of the art, 24/7 fitness center with a view like no other overlooking our beautiful 18 hole golf course.

Come see for yourself.

We'll be happy to show you around.

- Huge state-of-the-art fitness center
- Special classes available
- Personal Training available
- Outdoor pool
- Bar and Grill

\$15

Per Month
If you join with a friend
by April 1, 2019

Join by yourself
\$25 per month or \$300 annually
Every membership is a family membership!

**Give Mike, Zach or Doug
a call or just stop by!**



16744 Highway 64

(417) 532-2901






PETERSON SURFACING TABLE: 24"x50", 14" wheel, with air box, recent re-built motor. \$1300. West Plains, 417-270-1513.

AUCTION REMINDER: Online Auction going on now. Atterberry Auctions. Please see our Auction Directory for more information.

AUCTION REMINDER: Friday, March 22, 6pm. Lorts Auction. Please see our Auction Directory for more information.

10FT 3PT BLADE: \$525. 573-765-4406.

CAR DOLLY: No title. \$350. 417-321-1928.

STUDEBAKER 1963 2 DR HT DAYTONA: good paint, V8 automatic, dual ex bucket seats, needs interior. \$4250obo or trade up or down on 1964 GT Hawk. Drury, 417-293-4399.



MIDWEST CONSTRUCTION

Free Estimates!

- Pole Barn • Garages • Framing
- Remodels • Roofing • Concrete
- Decks & Porches

Contact Abner Glick
417-664-1794

AUCTION REMINDER: Thursday, March 28th, 9:01 & 12:46pm. Chupps Auction. Please see our Auction Directory for more information.

JOHN DEERE 7000: 6X30in Planter, No till. \$3350. 573-765-4406.

TARTER CATTLEMEN: Series 6, squeeze chutes, auto headcatch, new. \$2,975 Series 3 \$1875. 573-205-7860, Owensville.

COMPOUND BOW WITH ARROWS: \$25. Birch Tree, 573-872-9821.

HYDRAULIC POWER SUPPLY FOR SAWMILL: \$600. Ellsinore, 573-714-5779.

I BUY....USED MOBILE HOMES. Call or text 573-338-6250 or email GregS.CDH@outlook.com

OLIVER 1650 TRACTOR: 65hp, 6cyl, gas, 2wd, open station, good rubber, front-end loader, w/bale spear. \$7250. 573-205-7860

JOHN DEERE 535: Round Baler, monitor, kicker, net wrap. \$7,200. 573-765-4406.

AUCTION REMINDER: Every Wednesday at 10:30 am. Farmington Livestock. Please see our Auction Directory for more information.

FOUR 17" TIRES FOR VAN. \$35. 573-734-2822, Bismarck.

AGRICULTURAL APPRAISER: Earn \$60,000/year part-time in the Livestock or Farm Equipment appraisal business. Agricultural background required. Home Study Course is available. 800-488-7570 or www.amagappraisers.com

M8540 KUBOTA: 4wd tractor with loader, 85HP, open station, low hours, hydraulic shuttle, 12 speed. \$32,500. 417-270-1505.

8FT OFFSET DISK, good blades. \$2,500. 573-765-4406.

R-FAB BINS

(660)281-3078



Bucket Bins
Stationary or Portable

Overhead Bins
Located in Warsaw, MO

2012 KUBOTA RTV 1100: Cab heat/air, new tires, diesel, camo color, 1430hrs. \$9200. 417-543-5164

1993 FREIGHTLINER DUMP TRUCK w/ Pup trailer for sale: Runs good, tires fair, everything works good. For information, 573-247-1862, Salem, MO.

3 TON PORTABLE CATTLE CREEP FEEDER: new, creep gates, \$2,275, 2ton, Portable grain/feed bin, new. \$1850. 573-205-7860, Owensville.

PLASTIC NURSERY CONTAINERS: 200 plus 2 1/2 qt-bigger. \$30 for all. 636-239-2695.

WANTED PINBALL MACHINES. 573-424-7200.

JOHN DEERE 4240: Diesel cab and air tractor, power shift, 3900hrs, very nice, 110hp. \$29500. 573-765-4406

LIMOUSIN BULLS: 18-30 mos. old, Homo Black, polled, AI sired. 573-301-2316, 573-301-2074.

GREAT PYRENEES PUPS: 3boys, be ready 4-20-19, shots and wormed, \$125 each. Salem, 573-453-5398.

TARTER 7' HDD7: disk, 3pt, adjustable gangs, new, heavy duty. \$1850. 573-205-7860, Owensville.

TENT CAMPER UTILITY TRAILER: 5x8. \$250. Vienna, 573-759-7143.

MOTORIZED 26" FLYER BIKE: 80mpg, 40mph, Karaoke brand. \$185firm. 573-872-9821

REGISTERED BLACK ANGUS BULLS: 417-453-6332. Plato.

FIREARMS: Professional Repairs and Restorations. Baron's Gunsmithing. 573-363-5801, Camdenton.

Larry Heisel Rentals

Crawler Loaders
Excavators
Backhoes



Call Larry! We Deliver!

Rental Available in 636 or 573 Area Codes

573-779-1500

www.larryheiselequipment.com

TONNEAU COVER: fits almost any size truck/with 6'6"x5'8" wide. Good condition/Clamp's/Struts. \$300 OBO. 417-852-1088, Pittsburg, MO.

10HP AIR COMPRESSOR: 3 phase. \$300. Ellsinore, 573-714-5779.

TWO NEW VINYL WINDOWS: Open upright, double pane. 62.5x38.5 \$100 obo, 49.5x36.5 \$75 obo, Rolla, 928-514-0505.

CLEANING OUT KITCHEN CABINETS & CUPBOARDS: Inside only. \$125 or trade. 573-327-9068.

YOU GOTTA SEE THESE NEW HOUSES!!! Brand new inventory on sale !! 573-499-9993. columbiadiscounthomes.com.

L3400D KUBOTA: 4wd tractor with loader, 34HP, gear drive, low hours with 5' bush hog. \$16,900. 417-270-1505

JOHN DEERE 730 PARTS. Call 417-241-0006.

POOL TABLES: Installations, moves, recoverers, repairs, accessories, etc. 573-646-1700.

2 BILLY GOATS: 2yrs old, producers. \$125each. Salem, 573-453-5398.

MASSEY FERGUSON HOOD EMBLEM. \$20. 636-932-4429. Herman

IHC 684: Diesel tractor w/loader, 62hp. \$9850. 573-765-4406.

VILLA HOMES IN ROLLA: Has NEW and USED Mobile Homes. Call David for info: 573-578-8072.

AUCTION REMINDER: Every Wednesday at 10:30 am. Farmington Livestock. Please see our Auction Directory for more information.

KUSTER LOGGING
BUYER of Standing Timber Oak and Walnut
Dozing Now Available
417-259-0047
 References Available



AUCTION REMINDER: Public Auction Friday, March 29, 10AM. Bruce & Le'AN Auction. Please see our Auction Directory for more information.

AUCTION REMINDER: Estate Auction. Saturday, March 23 @ 10am. Nance Auction. Please see our Auction Directory for more information.

I BUY.....used mobile homes. Call or text, 573-338-6250 or e-mail GregS.CDH@outlook.com.

2007 HARLEY DAVIDSON STREET GLIDE: 96 ci engine, 22,000 miles, lots of chrome and extras. \$12,000. 573-743-6018, 314-348-4965 cell.

COMPOUND BOW WITH ARROWS: \$25. Birch Tree, 573-872-9821.

SOLID WOOD TWIN BED: 4ft high, nice storage underneath, with covered new mattress, still in plastic. \$100obo. Rolla, 928-514-0505.

YARD SALE: Friday and Saturday, March 22-23, 9am-?, Highway 60 Storage, 14549 US-60, Cabool. Over 25 units have been invited to sale. Don't miss the bargains, see us on Facebook for upcoming sales.

DANUSER HYD. POST DRIVER: Nice. \$1,950. 573-765-4406.

JOHN DEERE 420: 2cylinder, wide front, 3pt, Late 50's, extensive work mechanically, too much to list, with a fresh paint job, seat and new tires, Parade ready. \$3850. 573-205-7860.

WILLARD MO HISTORY BOOK: From Prairie to Present, A Centennial Story 1976. Out of print book. \$25. Lebanon, 417-532-2045.

AUCTION REMINDER: Cattle Sale every Monday at Noon. Salem Livestock. Please see our Auction Directory for more information.

92 PLYMOUTH ACCLAIM: auto, air, 129,000miles, very good condition. \$800. 314-616-9862.

2000 BOX TRUCK: new rubber, passed safety inspection, runs but needs work. \$2000. Bourbon, 314-960-6652.

LONG 1110 TRACTOR: 92HP, cab, needs TLC. \$1500. 417-646-8807.

REGISTERED HEREFORD & ANGUS BULLS: Home raised, Some Show-Me Select Qualified. 573-701-7828. Belgrade

We Buy White Oak Logs!

Independent Stave Company
 welcomes all white oak suppliers!

- ☒ Top prices for your logs
- ☒ Experienced log buyers
- ☒ Professional service

www.independentstavecompany.com

Chad Cook | Salem Wood Products

417.718.2950

5 miles north of Salem, MO on Hwy 19



LIONEL TRAIN SET: Steam engine, tender, caboose and other car, track and transformer. \$195. 573-364-7465, Rolla.

DARDEN PROFESSIONAL TIMBER HARVESTING, BUYING STANDING TIMBER: Great prices, improve wildlife habitat and improve forest health. State Certified & Fully Insured! 573-247-4808 or 573-739-1122. Salem

STOCK TRAILER: 2000, 6.8ftX20ft, Gooseneck, great condition. \$2500. Vienna, 573-422-3748.

FERGUSON-TO-30: 12volt, good tractor w/5' wood mower. \$2800. Bourbon, 314-960-6652.

CATTLE HOLDING CHUTES: W/AI cage, Tarter auto head catch, new. \$2,000. 573-205-7860, Owensville.

IHC 806 DIESEL TRACTOR: with loader \$7,800. (573)765-4406

AUCTION REMINDER: 14th Annual Consignment and Donation Auction. Saturday, April 6 Consign now. Hartville Lions Club. Please see our Auction Directory for more information.

NEW HOLLAND: 1411 diskbine. \$7,250. 573-765-4406.

MASSEY FERGUSON 231 TRACTOR: 40 HP, 2,000 hours, with nice loader, \$8,950. 573-765-4406.

50 CLASSIC CARS AND TRUCKS: If you're needing an older classic, give me a call for more information. Thomasville, MO 417-247-1689.

AKC GERMAN SHEPHERD PUPPIES: Available in March, papered, black, 5 left. \$650. 417-208-7646, Ava.

LEBANON JUNIOR HIGH SCHOOL 1966 YEARBOOK: \$12.50. Lebanon, 417-532-2045.

Spring ^{is the} Time Of Plans And Projects.



DELUXE BUILDING PACKAGES



All Buildings Quoted Have #2 Lumber And #1 Galvalume
Or Limited Lifetime Painted Metal

All Buildings Are Heavy 29 Ga. Metal, Three 2"x6" T&G Splashboards, All Poles
5"x5" Or Larger, CCA Treated, Fully Trimmed With One 3'x6' Walk-Through
Door & One Large Sliding Door.

24x40x10	Galvalume	\$5,797.55
	Painted	\$6,401.76
24x32x10	Galvalume	\$5,616.66
	Painted	\$6,098.95
30x40x10	Galvalume	\$6,430.69
	Painted	\$7,099.08
30x40x12	Galvalume	\$6,886.06
	Painted	\$7,598.22
40x60x12	Galvalume	\$11,272.16
	Painted	\$12,461.71

Plus Tax. Labor & Delivery Available On All Building Packages.
Prices may vary due to local code restrictions.

Metal Roofs Designed To Look Great On Your Home!

**HEAVY 29 Ga.
METAL # 1**
Limited LIFETIME WARRANTY
**29 Ga. & 26 Ga.
Painted**

CUT TO LENGTH PANELS



**NEXT
BUSINESS
DAY SERVICE**
Call for details.

**GALVALUME METAL UNPAINTED
25 YEAR WARRANTY**

#1 Standard Panels, 29 Ga.

\$48.50



Ask About Our Quick Service.

Over **20** Colors and Several Styles To Choose!

Good quality, quick service

DECK PACKAGES AVAILABLE AT BYLER BUILDING SUPPLY



Roof Is Optional

Additional Sizes & Custom Shapes Available!

8x10.....	\$1145
8x16.....	\$1375
10x14.....	\$1478
12x16.....	\$1927

- 1 Set of Steps
- Handrails
- 2x2 Balusters
- All Deck Boards & Railing
Screwed, Up To 4' High, All
#2 Treated

**Labor
& Material
INCLUDED!**



BYLER BUILDING SUPPLY, LLC

2 1/2 MILES EAST OF SEYMOUR ON 60, 1/4 MILE NORTH AT AUTO SALVAGE WWW.BYLERSUPPLY.COM
877-556-8855 MON.-FRI. 7:30-5 SAT. 8-12 FAX NO. 417-935-2995 417-771-3100

VISIT US AT WWW.BYLERSUPPLY.COM

NOTES

BARE CYLINDER HEAD: for 361/407 IH Diesel tractor engine. \$200. 573-459-6488.

CHEVY 6-CYLINDER MOTOR: fit 1947-52 car or truck. \$200 or trade. 573-734-2822, Bismarck.

JOHN DEERE 265 DISK MOWER: 3pt, nice, 300 acres. \$6900. Viola, 870-458-2580.

FOR SALE: Two Registered polled Hereford bulls, ready for service. Both nearly two years old. From champion genetics. \$1,500-\$2,000. Lebanon, MO 417-350-6259.

REGISTERED BLACK ANGUS BULLS: 417-453-6332. Plato

WILLIAMS PEEP SIGHT: with target knobs. Fits Marlin Model 39a. \$50. 636-239-2695. Washington.

JOHN DEERE 260: 3pt, Disk mower. \$2500. 573-765-4406.

BUGGY HORSES. 6 year old, standard bred Morgan-Cross mare, broke single or double, 14.1H, TSS, good for anybody. \$3,000. And 2 year old standard bred Draft-Cross gelding. Broke single or double, 15H, TSS. \$2,500. 573-578-5017.

INCREASE YOUR PROFITABILITY!
Lewis Cattle Oiler. 417-286-3540, 774-696-2344.

AUCTION REMINDER: Online Auction going on now. Schneider Auctioneers. Please see our Auction Directory for more information.

3 METAL DETECTORS: \$15, \$25 and \$75. Birch Tree, 573-872-9821.

One STOP Material Yard

- Bulk Rock
- Bulk Mulch
- Rail Road Ties
- Blocks
- Decorative Rock Art

573-346-4096 • Hours: Mon.-Sat. 8am-5pm
On top of hill - corner of Hwy. 54 & A Road • Camdenton

Bring this ad in for 10% OFF all your bulk materials!

WANTED CONVERSION VAN: 2000-2010 GMC, Chevy, or Dodge, prefer one owner, high top, low miles, excellent condition. Reasonably priced. Smoke Free. Doniphan, MO 573-255-3191.

1987 CHEVY: Custom Del, 1/2 ton, 350 V-8, T.B.Inj. Automatic, PS, PB, A/C, long bed, black. \$3,500. 573-438-3947, Potosi, MO.

YOU GOTTA SEE THESE NEW HOUSES!!! Brand new inventory on sale !! 573-499-9993. columbiadiscounthomes.com.

TITUS BENTON BOOK: "The Football Field". Half price. Paid \$20, Sell for \$10. 573-689-2490, Bunker.

2009 HARLEY ULTRA ELECTRIC GLIDE CLASSIC: 12,000mi., Asking \$13,000 or trade for Side by side four wheeler drive and or small jon boat for fishing. 812-390-1128, 417-265-1121. Thornfield.

BEAUTIFUL DOBERMAN PINSCHER PUPPIES: Males \$650, Females, \$500. Parents are Double Registered AKC and CKC. Puppies are CKC Registered. UTD on shots, come with health records. Tails docked and dewclaws removed. 417-532-0483.

79 CHEVROLET 250: 6cyl, manual transmission, new starter and alternator, running when taken out for V8 changeover. \$200. call after, 573-756-3937.

OLD LINN CREEK, HA HA TONKA & CAMDEN COUNTY BOOK: "Before the Dam Waters" by Victor Jeffries. 72 pages, \$6.50. \$2.00 postage if mailed. Lebanon, 417-532-2045.

WANTED GOOD USED MOBILE HOMES: Singles & doubles. Call David Hayes, 573-578-8072.

FOR SALE 1996 F-250: 4x4 Diesel truck. 573-697-5627.

INCREASE YOUR PROFITABILITY! Lewis Cattle Oiler. 417-286-3540 or 774-696-2344.

U-JOINT 1810 DANA SPICER: NIB 5-281x. \$65. 314-303-7857, Cedar Hill.

AUCTION REMINDER: Land Auction Thursday, March 28 at 12pm. Freeman Auctions & Appraisals. Please see our Auction Directory for more information.

JEFFERSON NICKEL BOOK: coin set from 1938-1964. \$200. 573-764-3517. call in p.m.

GREAT PYRENEES ANATOLIAN SHEPHERD CROSS: Dewormed, shots, weaned, out of working parents, running with ewes and new lambs earning their keep. \$100. 573-422-3574, Vienna.

RED ANGUS BULLS: 20 months old, Red Balancers, 15 months old. Pinnacle Ranch. 417-679-4269, 417-679-2330, Gainesville. MO.

RESTORED JOHN DEERE: child's pedal tractor, with trailer. \$395. Farmington, 573-756-3189.

FERGUSON TRACTOR MANUALS: \$20. 636-932-4429. Herman

2015 GMC: 3500 HD, leather, Duramax, 4WD. 18,500 miles, hydra-bale bed. \$43,500. Plato, 417-458-4520.

MOTORIZED 26" FLYER BIKE: 80mpg, 40mph, Karaoke brand. \$185firm. 573-872-9821

BLACK ANGUS BULLS: Farm raised, tested, objective T510 bloodlines, 24 months old, 3 to choose. \$2100each. 573-205-7860. Owensville

TRUCK, TRAILER, AND SEMI TIRES

on sale now!

IRONMAN TIRES
YOKOHAMA
MASTERTRACK
FALKEN TIRE

MASTERTRACK Trailer Tire (265/75/16)
10-Ply • Mounted **\$121.44***

FALKEN AT3 Wild Peak (265/75/16)
..... **\$150.00***

YOKOHAMA (295/75/22)
5Ry617 • Steer **\$419.00***

Ironman 1208 Drive Tire
Close Shoulder • 11R22.5 **\$293.76***

*Tax not included

739 Honey Locust Rd. • Niangua, MO 65713

LETTERMAN TRIPLE T REPAIR LLC
TRUCKS, TRAILERS, & TRACTORS
417-630-2249
417-664-0829

FOR SALE: Bare cylinder head #R20504R, for JD 4010 Diesel Tractor, cut for 4020 valves. \$200. 573-459-6488.

JD 6140M: Cab, 4WD, triple remotes, 16-speed. \$46,500. 870-458-2580, Viola.

WANT TO BUY JOHN DEERE TRACTOR: Diesel in need of repair. Call 573-768-0068.

AUCTION REMINDER: All Breed Horse Sale, Saturday, April 6th. Tack at 11am. Horses to follow. World Fox Trotting. Please see our Auction Directory for more information.

AUCTION REMINDER: Every Wed. @10:30AM Farmington Livestock. Please see our Auction Directory for more information.

JD "B" 1947: Runs, restorable. \$1300. Stockton, 417-276-8347.

FORD 2300 MOTOR & TRANSMISSION: Low mileage, fit Ranger pick-up. 573-734-2822, Bismarck.

3 OUTBOARD MOTOR PROPELLERS: 1 is 11.4x10, 1 is 10x13, 1 is 14.5x15. good to like new condition. \$95all. Rolla, 573-364-7465.

AKC GOLDEN RETRIEVER PUPPIES: Born 1-4-19, UTD shots. Beautiful puppies. \$300. 573-392-5371, Barnett. MO.

GOOD PROVEN 3YR OLD: Black Angus Bull. \$2100obo. Emery Hershberger Pinodk Rd. Summersville, 22654.

WISCONSIN 2 CYLINDER ENGINE: Not running but loose. \$200obo. Rolla, 573-308-5884.

BRUSH CLEARING: 417-650-0596. www.brushmasterlandclearing.com

2014 OPEN RANGE 5TH WHEEL: w/3 slides, excellent condition. 573-259-4291 for details.

WANTED: old Franklin County Plat books. 573-468-4924

2 BIG PARAKEET CAGES: and misc. \$200 for all. 417-646-8807.

JERSEY/HEREFORD CROSS BULL: 8 months old. \$500obo. Salem, 573-453-5398

See Service

Spray Foam Insulation

Closed cell or open cell form available
Choose the thickness of your insulation

Closed Cell	Open Cell
• Higher R. value	• Lower Cost
• Vapor barrier	• Sound Deadening
• Structural benefit	• Fire resistant
• Fire Resistant	

Both types of foam fill voids and stay where they are put to provide better insulation than fiberglass or cellulose

Call Joseph See
(417) 733-6936
Located near Buffalo, MO

WHOLESALE PRICES "Fertilizer/ Chemicals /Seed". Trailer loads or divide. Example 46% urea \$385/delivered, DAP \$475, Blending anything we are the farmers friend. 800-807-9612.

CASE 580D: Diesel backhoe loader, cab, 2400hrs, power shuttle. 573-765-4406.

FLIES ARE COMING! Lewis Cattle Oiler. 417-286-3540 or 774-696-2344.

Rotating Hay Carriage

\$5,150
\$510 Down
\$90 Per Week
w.a.c.

Cowtown USA • 1-800-258-6898
I-44 & Hwy F • Exit 203 • Cuba, MO
View At cowtownusainc.com - See Video

JOHN DEERE 55 COMBINE: good condition w/13ft quick attach head. \$1500, 417-241-0006

PINE LOG SIDING SALE: \$1.19 per L.F.
www.pineridgerustic.com 573-729-7226,
573-247-2823.

PARTING OUT ALLIS-CHALMERS D14, D17, WC, WD, AND CA. Jefferson City, 573-690-9406.

Komatsu WB 156

Low hours,
cab, air, 4x4
\$22,500

Call Mark (314) 560-3112

FOR SALE D-14 ALLIS CHALMERS: Lots of new parts. \$4700. 573-619-4928.

NEW NEW NEW DISPLAY HOUSE!!!
Call Marla to hear what is new inside 573-657-7040, chateauhomes.net.

OLD 20 GAUGE: Single barrel shotgun. \$175. Desloge, 573-327-9068.

WOODS 15' BUSHHOG: Chains excellent condition, paint on blades. \$8,750. 870-458-2238.

AUCTION REMINDER: Online Only Personal Property Auction. Saturday March 23 @ 12pm. Easterly Auction. Please see our Auction Directory for more information.

ANTIQUE 12 GAUGE: Single barrel, shotgun. \$175. Desloge, 573-327-9068.

TAYLOR TRUCKS & EQUIPMENT
417-924-2026 • 2676 Hwy. 5, Mansfield, MO

863 Bob Cat Skid- Steer with LOW hours and hand control
New Mowers! Bush-Whacker, Big Bee
5' and 6' Rotary Tillers
Farm Tires, PTO's & Parts for Rotary Mowers,
Storage Containers & Dry Vans - 20' - 53'
Farm Tractor Implements
Plows, Discs, and More Skidsteer Attachments: Pallet Forks,
Buckets, Grapples, Hay Spears & Tree Shears - RR Ties

TRAILER PARTS & REPAIR
NEW SEMI TIRES - DRIVE & STEER

We Invite You To Come By & Look Us Over! Located 2.5 Miles North Of Mansfield, MO On Hwy 5

2004 OPEN RANGE FIFTH WHEEL CAMPER: 34', all weather, in good condition. \$10,500. Lebanon, 417-718-5520.

NEW STOCK!!! Wow, do these look **GOOD!!!** Call 573-657-2176 amegamobile-homes.com

TARTER 3PC ROUND HAY RINGS: 3 styles in stock. \$175+up. 573-205-7860, Owensville.

WANT TO BUY: Chainlink Dog Pen Panels, 6ft tall. Also want Peacocks! 417-718-4787.

CHECKERED WALNUT WOOD STOCK PISTOL GRIP: for Marlin Model 336 or 1895. \$100. Washington. 636-239-2695.

750 GAL FIELD SPRAYER: Big tire Hyd pump single jet. \$2,750. 573-765-4406.

WOMENS MERREL: Insulated Snow Boots, sz 8M, waterproof, mid calf height, easy pull on style, fur trim at top, dark chocolate brown color. Nice! \$35, 417-718-5347.

BOBCAT 853 DIESEL SKID STEER LOADER: Cab, 58hp. \$8,950. 573-765-4406.

AUCTION REMINDER: Construction Equipment Auction. Wednesday, March 28th @10am. BID NOW! Purple Wave Auction. Please see our Auction Directory for more information.

MATCHING COFFEE & END TABLES: Sturdy wood with glass partition, Tops are 38"x38" & 24" x 28". \$50. 314-303-7857, Cedar Hill.

Buildings - Hunter's Cabins - Lawn Furniture

Rent-To-Own Plan

JAMCO Portable Buildings
307 Enterprise Dr. • Seymour, MO 800-688-2064
www.jamcobuilders.com

2 MENS LEATHER MOTORCYCLE JACKETS: size 44 and 42, one like new. \$50 each. Mammoth Spring, 870-966-3483.

GOOSENECK FLATBED: 24' 1,400 lbs gvwr, \$3,000. Ava, 417-543-0278.

WANTED HORSE MANURE: Bourbon, 314-960-6652.

AUCTION REMINDER: 2 Day consignment Auction! Saturday, March 30th @10am, Consignment Auction Sunday, March 31st @10am. Southwest Auction Service. Please see our Auction Directory for more information.

6BAR CONTINUOUS FENCE: 15 Sections, 16ga, 3cross supports, 20' long-55" tall, 1 1/4 tubing. \$85each. 573-205-7860.

NEW NEW NEW DISPLAY HOUSE!!!
Call Marla to hear what is new inside 573-657-7040, chateauhomes.net.

L4400 KUBOTA: 4wd tractor with loader. \$21,500. 417-270-1505.

AUCTION REMINDER: Large Restaurant, Bar & Ice Cream Parlor Auction, Monday, March 25, 10AM Shorty Small, Parlor 88 & Lexington Candy Shop and Luncheonette Rona Downs-Maroon Restaurant Equipment. Please see our Auction Directory for more information.

1999 CHEVY EXTENDED CAB: 4x4, Z71, newer engine and transmission. 417-321-1928.

HUGE SEMI TIRE SALE: Trailer 11R-24-5, 16-ply. \$292. A/P 16-ply. \$280. 11R-22-5 16-ply. \$247. A/P 16-ply. \$265. 295-75-22-5 16-ply. \$275. A/P 14-ply. \$248. 285-75-24-5 14-ply. \$238. A/P 14-ply. \$267. Free Petroleum Gift with purchase of 8. F-Warranty, F-Delivery. Call 417-276-2435.

17 JD HX-15 BUSHHOG: Chains like new. \$14,750. 870-458-2238.

LOOKING FOR WATER BICYCLE: Any shape. Leave message, 618-758-2830.

NEW STOCK!!! Wow, do these look GOOD!!! Call 573-657-2176 amegamobile-homes.com

GREAT PYRENEES PUPPIES: All white, 8 wks, wormed/shot. \$200. 417-926-2470, Norwood.

20- 14' PORTABLE CATTLE PANELS: Light-medium weight, 2 chains \$80each 9-8'panels 66#, \$68each. 573-205-7860

SELL IT HERE!



WEEKLY TRADER MAGAZINE

417-532-2800 • www.myweeklytrader.com

3 METAL DETECTORS: \$15, \$25 and \$75. Birch Tree, 573-872-9821.

LADIES CARHART: deep green blanket lined jacket, size Large, adjustable waist tabs, zipper front, Excellent condition. \$35. 417-718-5347.

GM 1/2 TON WD FRONT AXLE HOUSING: w/3.07 gears, 77-87. \$80. 314-303-7857, Cedar Hill.

AUCTION REMINDER: 2 Commercial Real Estate, Monday, April 1st @ 10am and 1pm. Gary Sexton Auctions. Please see our Auction Directory for more information.

TWO BUMPERS: For 62-64 Chevy 2 Nova. \$100. 573-734-2822, Bismarck.

DISHWASHER: Black, works. \$50. Lebanon, 417-532-3734.

CDL IN ONE DAY!!!: Family owned and operated, Insured, Over 10 years of experience, Training available for all states, Short wait time for appointments, Contact us today to schedule your appointment!! CREDIT CARDS EXCEPTED. (573-353-2853).

REAR MOUNT BALE CARRIER: No 3rd arm used. \$100. Rogersville, 417-753-2747, 417-766-1991.






NEW MAHINDRA ROXOR FRESH OFF THE ASSEMBLY LINE!!

- Steel Body no plastic to break
- 5 Speed Manual Transmission no belt to break
- Fully-boxed, ladder-construction, steel truck-style frame
- Turbo Diesel 4 cycle engine which produces 144 ft lbs of torque and 3490 lbs of towing capacity to get your jobs done. • Made in Detroit
- 2 YEAR WARRANTY OR 12,000 MILES • Starting at \$15,999

Visit us at www.cowtownusa.com

MASSEY FERGUSON 285: Diesel tractor, w/loader. \$11,000. Farmington, 573-631-4352.

REGISTERED ADULT GERMAN SHEPHERD MALE. \$100. 417-741-2198, Hartville.

CUSTOM SAW MILLING: Lebanon. 417-533-4607, 417-664-1195.

1984 2500 CHEVY: 454, TH400, low miles, rusty, delivery negotiable. \$1,675. 573-864-2611.

JOHN DEERE 337: Square Baler. \$2250. 573-765-4406.

L2501D KUBOTA: 4wd tractor with loader, 25HP, hydro transmission, with 5' Landpride bush hog. \$16,900. 417-270-1505.

CEDAR GAP TOPSOIL: Garden Ready topsoil, Only water required, delivery within 50-mile radius, Seymour. 417-935-2877. For more info: www.cedargaptopsoil.com

WOOD STOVE: cast iron, front opening, on legs, used only one season. Rolla, 928-514-0505.

CAR DOLLY: No title. \$350. 417-321-1928.

NOTES

JOHN DEERE: 7300 air planter, 3pt, 8row, 36sp, vertical fold. \$5500. Viola, 870-458-2580.

INDIAN ARCHERY 1950'S: wood, recurve bow, with original box of Ben Pearson arrows. \$195. Rolla, 573-364-7465.

VERONA MISSOURI HISTORY: 1868-1968. 100 year history. \$22.50. Lebanon, 417-532-2045.

KITCHEN-AIDE CONVECTION STOVE/OVEN: used only 6mths, gas/propane. \$1400obo. Rolla, 928-514-0505.



TASK. TASK. DONE.

RTR12 SERIES **3 YEAR**
Limited Lifetime
Warranty

ROTARY TILLERS
15-60 HP 42", 50", 58", 66", 74"

- Reverse rotation
- Offset capabilities
- Lower clevis hitch for easy hook-up
- Steel plate upper hitch
- Seven position skid shoes
- 15" Rotor swing
- 4 'C' shaped blades per flange

AGRI ENTERPRISES
For Outstanding Products & Service

1-1/2 Miles South Of Licking, MO On Hwy 63
573-674-2203
1-800-653-7152

 www.landpride.com www.agri-enterprises.com

PUREBRED HEREFORD BULL: 3 years old. \$1,400. 573-690-1277, leave message.

VINTAGE CAPPERS WEEKLY SEARCHLIGHT RECIPE COOKBOOK: \$15. Lebanon, 417-532-2045.

GERMAN SHEPHERD PUPPIES: 8 weeks old, shots/wormed. \$300 up. 417-589-4383, Lebanon.

AUCTION REMINDER: Saturday, March 23rd @ 9am. MR Clark Auction Service. Please see our Auction Directory for more information.

WOOD BUSHING: For Ferguson disk. \$20. 636-932-4429. Herman

10FT 3PT BLADE: \$525. 573-765-4406.

FOR SALE 1978 INTERNATIONAL ROAD TRACTOR: Only 263,304 miles, near new recaps on rear rome offset disk H.D. Cat 60 Flat bottom Scrapey Lincoln Pipeliner welder on trailer. Belle, 573-619-2533.

AUCTION REMINDER: Thursday, March 28th, 9:01 & 12:46pm. Chupps Auction. Please see our Auction Directory for more information.

Custom Homes, Pole Barns and Remodels



**Amish Built
Insured**



**Siding • Roofing • Decks • Foundations
(Stem Walls & Footings) • Excavator & Dozer Work.**

Brian Williams Excavation & Construction

Major Credit Cards
Accepted

417-245-0147



WEEKLY TRADER MAGAZINE

YOUR AD GOES HERE!

Add **YELLOW** Color
For An Additional
\$3 Per Reader Ad

All ads will include Phone Number (unless requested to be deleted by advertiser) and City Or Town, Phone Number with Area Code counts as one word. City or Town counts as one word.

RATE: 80¢ Per Word. All Classified Ads Require Payment Before Print.

(1) 80¢	(2) \$1.60	(3) \$2.40	(4) \$3.20
(5) \$4.00	(6) \$4.80	(7) \$5.60	(8) \$6.40
(9) \$7.20	(10) \$8.00	(11) \$8.80	(12) \$9.60
(13) \$10.40	(14) \$11.20	(15) \$12.00	(16) \$12.80
(17) \$13.60	(18) \$14.40	(19) \$15.20	(20) \$16.00
(21) \$16.80	(22) \$17.60	(23) \$18.40	(24) \$19.20
(25) \$20.00	(26) \$20.80	(27) \$21.60	(28) \$22.40
(29) \$23.20	(30) \$24.00	(31) \$24.80	(32) \$25.60
(33) \$26.40	(34) \$27.20	(35) \$28.00	(36) \$28.80
(37) \$29.60	(38) \$30.40	(39) \$31.20	(40) \$32.00

Place your Classified Ad TODAY!

417-532-2800 • 800-665-8875

Fax: 417-532-8140

Or Mail To: P.O. Box 192 • Lebanon, MO 65536

For your convenience we accept MasterCard, Visa, Discover or American Express



DEADLINE FOR CLASSIFIED ADS: MONDAY 12 NOON!!

Name _____

Address _____

City _____ Email _____

State _____ Zip Code _____ Phone _____

Ad Total \$ _____ X # Weeks _____ = Amount Enclosed \$ _____

0% APR for 60 MOS

ZERO DOWN

SPRING INTO PACKAGE DEALS

**KEEP IT SIMPLE
WITH QUARLES SUPPLY**

RATES SUBJECT TO CHANGE
*With approved credit. Tax/Insurance not included.
Some restrictions may apply. See dealer for details.



New 26HP Kubota Package Deal!

B2650HSD \$20,555
Financing Price

**NEW Kubota B2650HSD, 4wd, DIESEL, R4 TIRES, KUBOTA LOADER,
4' CUTTER, 4' BLADE, NEW 16' KODIAK TRAILER W/RAMPS& NEW TIRES**



New 33HP Kubota Package Deal!

L3301HST \$23,900
Financing Price

**NEW Kubota L3301HST, 4wd, DIESEL, AG TIRES, KUBOTA LOADER,
5' CUTTER, 5' BLADE, NEW 18' KODIAK TRAILER W/RAMPS& NEW TIRES**



New 52HP Kubota Package Deal!

MX5200HST \$33,600
Financing Price

**NEW Kubota MX5200HST, 4wd, DIESEL, AG TIRES, KUBOTA LOADER,
6' CUTTER, 6' BLADE, NEW 20' KODIAK TRAILER W/RAMPS& NEW TIRES**

PRICING REFLECTS ALL CURRENT KUBOTA PROGRAMS

*DOES NOT INCLUDE TAX AND INSURANCE

BLENDED RATES MAY APPLY ON NON KUBOTA ITEMS

QUARLES
SUPPLY COMPANY INC.



quarleskubota.com

Just off Business 13 in Bolivar, MO

Open 8:00-5:00 Monday-Friday

Saturday 8:00-12:00

(417) 777-2391