

Vol. 27 No. 06

MAY 14, 2020

800-543-8271 • 800-665-8875

WEEKLY TRADER MAGAZINE



Find us on Facebook

@myweeklytrader

FREE

MYWEEKLYTRADER.COM

AS CLOSE TO INVINCIBLE AS MERE MORTALS GET.



\$0 DOWN 0% APR 60 MONTHS

PLUS

NO PAYMENTS FOR 90 DAYS

The proven 96.4 HP* Kubota engine powers the beast with 7,961 pounds of breakout force. A wider cab entrance, optimized AC and full-suspension seat provide all-day comfort. And an integrated mainframe and undercarriage handles any terrain, making the Kubota SVL95-2s seem almost unstoppable.

\$0 DOWN 0% APR FOR UP TO 60 MONTHS*

KubotaUSA.com

*For complete warranty, safety and product information, consult your local Kubota dealer and the product operator's manual. Power (HP/KW) and other specifications are based on various standards or recommended practices. *\$0 Down, 0% A.P.R. financing for up to 60 months on purchases of select new Kubota K006, K008, K010, K012, SVL, SSV, TLB Series equipment from participating dealers. In-stock inventory is available to qualified purchasers through Kubota Credit Corporation, U.S.A.; subject to credit approval. Some exceptions apply. Example: 60 monthly payments of \$16.67 per \$1,000 financed. Offer expires 6/30/20. Terms subject to change. This material is for descriptive purposes only. Kubota disclaims all representations and warranties, express or implied, or any liability from the use of this material. For complete warranty, disclaimer, safety, incentive offer and product information, consult your local Dealer or go to KubotaUSA.com. © Kubota Tractor Corporation, 2020.



New L2501DT w/Loader Deal!



L2501DT w/loader \$19,995 Financing Price

- NEW Kubota L2501DT
- 4wd, DIESEL, AG TIRES
- KUBOTA LOADER
- 5' ROTARY CUTTER
- 5' BOX BLADE
- NEW 18' KODIAK TRAILER W/RAMPS

KEEP IT SIMPLE WITH QUARLES SUPPLY

\$0 DOWN 0% APR 60 MONTHS PLUS

NO PAYMENTS FOR 90 DAYS

QUARLES SUPPLY COMPANY INC.

(417) 777-2391

quarleskubota.com
Just off Business 13 in Bolivar, MO
Open 8:00-5:00 Monday-Friday
Saturday 8:00-12:00

Keep It Simple With Quarles Supply

0% Financing and No Payments for 90 Days*

Disclaimer:
© Kubota Tractor Corporation 2020. *0% APR financing on purchases of select new equipment from participating dealers. In-stock inventory is available to qualified purchasers through Kubota Credit Corporation, U.S.A.; subject to credit approval. Monthly terms may vary. Some exceptions apply. Offer expires 6/30/20. Contract term begins from the date of first payment which is due 90 days from the contract date. Example: Purchase made on 4/1/20, first monthly payment is due 7/1/20. 90 day no payment offer expires 5/31/20. Terms subject to change. This material is for descriptive purposes only. Kubota disclaims all representations and warranties, express or implied, or any liability from the use of this material. For complete warranty, disclaimer, safety, incentive offer and product information, consult your local Dealer or KubotaUSA.com.

Land

For Sale

Long Lane, MO | 660 Acres



\$1,195,000

- 200 acres in pasture with 4-acre stocked lake
- 50 acres planted in soybeans
- Lush clover fields on the property make this parcel a great staging area for whitetail deer and a fantastic roost for the long beards
- Gently rolling terrain makes for easy access and hunting
- Multiple box blinds and food plots
- 30 acres of developed food plots

- Property is partially fenced for cattle
- Nice shop that consist of over 2,400 s/f of storage for tractors and equipment
- Water well and electric to shop
- Easy access, only 9 miles off I-44, and located on a well-maintained county road
- Property is 55 minutes to Springfield, 25 minutes to Lebanon and 2.5 hours to St. Louis



WHITETAIL PROPERTIES REAL ESTATE

HUNTING | RANCH | FARM | TIMBER

Brian Utecht | 417-766-5595

Brian.Utecht@whitetailproperties.com

WHITETAILPROPERTIES.COM

Missouri's Top Land Specialist in 2014,
2015, 2016, 2017, 2018 and 2019





\$100 OFF

Dash & Raptor Family
models. Available
April 1 - April 30, 2020

See Hustler dealer for complete details.



For Outstanding Products & Service
AGRI-ENTERPRISES

1-1/2 Miles South Of Licking, MO On Hwy 63
573-674-2203 • 1-800-653-7152 • www.agri-enterprises.com

Offering the Area's LOWEST METAL PRICES!



Custom Homes • Metal Roofs

29 Gauge

#1 PAINTED METAL

- ★ Lifetime Warranty - \$74.00 Sq.
- ★ 40 Year Warranty - \$70.00 Sq.
- ★ 20 Year Warranty - \$68.00 Sq.
- ★ 25 Year Galvalume - \$57.00 Sq.

Labor prices will be higher in locations over 75 miles from Marshfield, MO

1049 SCHOOLVIEW DR. Marshfield, MO

Marshfield
BUILDINGS
www.marshfieldbuildings.com

Pole Barn Packages

24'x32'x10' materials only	\$5,425	30'x60'x10' materials only	\$9,150
24'x40'x10' materials only	\$6,200	40'x60'x12' materials only	\$12,325
30'x40'x10' materials only	\$6,975		

Plus Sales Tax And Delivery.
Labor available at additional cost.
Call for quote.

Compare Before You Buy.

We Use Only The **Highest Quality** Materials!

ALL MATERIAL PACKAGES INCLUDE...

- ✓ #1 Yellow Pine Lumber
- ✓ #1-40 Yr. Painted
- Metal w/Screws
- ✓ 1-10' Overhead Door
- ✓ 1-36" Entry Door

Fully Insured

PORTABLE BUILDINGS

Rent to Own
No Credit Check



417-859-7744

USED EQUIPMENT

4' Brush Cutter • JD 10' Cultipackerr
Gehl Silage Chopper • 3pt. 3 bottom plow
12' Spring Tooth Harrow 3pt. 2 Disc Disc Plow
Plus Other Misc Equipment Not Listed

TRACTORS

Mahindra 6075 w/loader, Cab,
4WD, Remainder 5 -1/2 Year Powertrain
Warranty. Low Hours

For Outstanding Products & Service
AGRI-ENTERPRISES
1-1/2 Miles South Of Licking, MO On Hwy 63
573-674-2203 • 1-800-653-7152
www.agri-enterprises.com

OUTSIDE SECURITY CAMERAS (4) SYSTEM: New never used. \$150. 417-217-9656.

CUSTOM SAW MILLING: Lebanon. 417-533-4607, 417-664-1195.

CHARLIE'S FARMS: vegetable & sweet potato plants available, 1 Mile West on Rt66 Lebanon.

ONE PIECE: 70'S desk/chair for young student. \$15 G.C. Cedar Hill, 314-303-7857

98 MUSTANG 3.8 V6: motor, runs good, over 100,000 miles. \$150. Call 417-531-3605.

JOHN DEERE: 1518 batwing bushog, 1000 pto rpm, \$4,500. txt 417-533-0779 for pics.

QUALITY REPLACEMENT COWS: COW/CALF PAIRS, BRED HEIFERS AND BREEDING BULLS, TRUCKING AVAILABLE. Otterville, 660-619-5190.

2000 S-10 PICK-UP: 169,000 miles. bedliner, automatic, 4 cyclender \$2,800. 417-532-4108.

6'7"x16' FLATBED: utility trailer, wood, good tires, several spares, \$700. txt 417-533-0779 for pics/details.

0% for 4 Years

HEATMOR
Outdoor Wood
Furnace

as low as **\$168** per month

HEATMOR MIDWEST
Licking, MO 65542 • 573-674-2962

Fishing Season is here!
 We have a great supply of: Berkley Flicker Shads
 Charlie Brewers Slider Grubs
 Swimming Minnows & Jig Heads!

Craig's OUTDOOR Sports

9435 HWY N. Suite A (417) 926-0255
 Mtn. Grove, MO craigsoutdoorsports.com

Mon-Fri 9am-5pm • Sat 9am-Noon

STAINED GLASS THEATRE COOK-BOOK. \$6.50. RESTAURANT RECIPES OF MISSOURI. \$7.50. THE CAKE DOCTOR COOKBOOK. \$6.50. 417-532-2045, Lebanon. (Leave Phone Number).

OLD CROSSMAN: BB rifle, \$100. Old Pioneer Pellet Rifle \$100. 573-327-9068.

ANTIQUE BRASS KITCHEN CABINET HARDWARE: 2 sets of 44. \$50 per set. 636-239-2695

DOUBLE SET OF WHEEL CHOCKS: Color is Safety Yellow. \$30. 636-239-2695, Washington

WANTED ESTIMATE FOR ROOF REPAIR: Preston area. 563-529-0612.

MASSEY FERGUSEN 65 TRACTOR: Wide front, power steering, runs good, gas motor. \$4,250. 636-239-4124.

VIRUS SALE - mobile home inventory, entire stock, first come basis, 3 & 4 bedroom, 2 bath, Hurry and call for info 573-499-9993 columbiadiscounthomes.com

AC 840 DIESEL ARTICULATING 4-WHEEL DRIVE LOADER: \$7,250. 573-765-4406.

BORDER COLLIE: PUPPIES, FIRST SHOTS, DEWORMED, READY MAY 20, \$100, CALL 573-759-2347, 20269 MCR 635, DIXON.



Wright Spray Foam Insulators, LLC
 Commercial & Residential
 Call for FREE Estimates!

Ervin Gingerich 417-926-2052
B. Eli Yoder 417-746-4932

Sakelaris Ford Lincoln, Where the Customer is Always #1!

Come See Us at Our NEW LOCATION!



**ALL NEW Super Clean, Safe Facility
 at 1621 Martin Springs Drive in Rolla, MO**

Get COVID-19 Relief On A New Ford Vehicle!

BUILT TO LEND A HAND | BUILT *Ford* PROUD

NEW VEHICLE PURCHASES

3 MONTHS* DEFERRED | 3 MONTHS PAID* | 6 MONTHS

RELIEF

FOR PEACE OF MIND

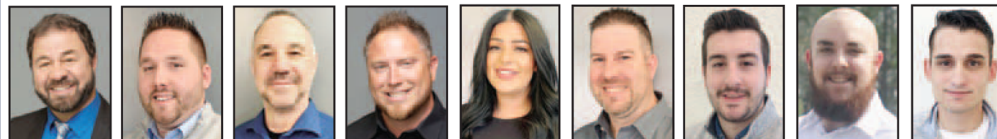
(Qualified Buyers Financed with Ford Credit)

**ON SELECT NEW 2019, 2020
 & 2021 FORD VEHICLES.**

*Excludes leases. Available on select 2019/2020/2021 Ford vehicles. Must finance through Ford Credit Financing. Not all buyers will qualify for Ford Credit financing. Customer can defer first payment up to 120 days. Some restrictions may apply. Take new retail delivery from authorized Ford dealer's stock by 06/01/2020. See dealer for qualifications and complete details on all incentives.



SALES TEAM



Al Morgan Caleb White Jon Reed Lance Lewis Sara Myers Brian Parker Zach Courtway Jordan Earker Chris Cates



Sakelaris
 Ford Lincoln Of Rolla



Sales Hours:
 Mon.-Fri. 8 AM-6 PM
 Sat. 8 AM-4 PM

Service Hours:
 Mon.-Fri. 8 AM-6 PM
 Saturday 8 AM-4 PM

www.sakelarisfordrolla.com
 573-364-1211 • 800-325-1211 • 1621 Martin Springs Drive, Rolla, MO 65401

**0% APR
 for 72 mos.***

Ford Credit Financing
 for Qualified Buyers
**PLUS: Defer Three
 Payments*** on Select
 New 2020 Ford
 Vehicles

**ALSO Available
 on Select New
 Ford Vehicles:
 \$500 Bonus
 Cash of MSRP***

**0% APR
 for 84 mos.***

Ford Credit Financing
 for Qualified Buyers
**PLUS: Defer Three
 Payments*** on Select
 New 2019 Ford
 Vehicles

**PICK UP &
 Delivery
 Service
 Available on
 ALL Sales,
 Trade-ins
 & Service
 Vehicles!**

\$2,500 - \$11,000 LOT

Lindsay Chevrolet & Lindsay Ford

417-588-7995

Bryan Sien, Manager • Aaron Wehner, Finance • Larry Davis & Ed Compton, Sales

Mon.-Fri. 8 am - 7 pm
Sat. 8 am - 5 pm
Not responsible for typos.
* with approved credit

West City Route 66
& South Monroe
Lebanon, MO

CARS

QC75778A	1996 FORD TAURUS GL 4D SEDAN, GREEN, 3.0L V6, 105,XXX MI	\$3,995
QC75745B	2010 ACURA TL SEDAN GRAY, 3.7L V6, AUTO, SH AWD, LEATHER, NAV, SUNROOF DUAL P/W SEATS, ALLOY WHEELS, 263XXX MI	\$7500
QC75747A	2012 TOYOTA CAMRY XLE 4DR SEDAN GRAY, 2.5L, HYBRID, AUTO, A/C, P/W DR SEAT, 147XXX MI	\$8,900
LC7358A1	2013 CHEVY CRUZE LT SEDAN WHITE, 1.4L T/C, AUTOMATIC, CLOTH, PW, P/L, A/C, KEYLESS ENTRY 173XXX MI	\$5,500
LC29015A	2013 FORD FOCUS SE SEDAN BLACK, 2.0L, AUTOMATIC, P/W, P/M, SUNROOF, HEATED CLOTH, ALLOY WHEELS, 94XXX MI	\$6,900
QC75725	2014 CHEVY IMPALA LS 4D SEDAN BLUE, 4CYL., AUTO, 111,XXX MI	\$10,300
QC75824	2014 DODGE AVENGER SE SEDAN RED, 2.4L 4CYL, AUTO, ALLOY WHEELS, P/W, P/L, A/C, CLOTH, SAT RADIO, REMOTE ENTRY 107XXX MI	\$7,900
QC75833	2014 FORD MUSTANG BASE BLUE, 3.7L V6, 5SPD, MANUAL, A/C, CLOTH P/W, P/L, CRUISE, 128XXX MI	\$11,900
QC75839	2014 FORD FOCUS 4D, TITANIUM, HB WHITE, 2.0L, AUTO, LEATHER, SUNROOF, NAV, P/W SEATS, HEATED SEATS, CAMERA, REM. START, 147XXX MI	\$8,900
QC75828	2016 CHEVROLET SONIC LT 4DR SEDAN BLACK, 1.4L T/C, AUTO, CLOTH, SAT RADIO P/W, P/L, TILT, CRUISE, A/C, 64XXX MI	\$8,900
LC29041	2016 CHEVY IMPALA LT SEDAN 3.6L, V6, 93,XXX MI	\$10,500
QC75788	2016 CHEVY MALIBU LS SEDAN GRAY, 2.5L, 4CYL., AUTO, 94,XXX MI	\$10,800
LC29068A	2017 KIA RIO LX 4DR SEDAN SILVER, 1.5L 4CYL, 6SPD, MANUAL, A/C SAT. RADIO, REAR CAMERA, 44XXX MI	\$8,900

TRUCKS

QT75822	2000 CHEVROLET SILVERADO 4X4 GRAY, 5.3L V8, AUTOMATIC, AC, P/W, P/L, TOW, ALLOY WHEELS, CLOTH, 149XXX MI	\$8,900
QT75818	2002 DODGE RAM 1500 BLACK, 4.7L V8, AUTO, 4X4, CLOTH, P/W, DRIVER SEAT, P/W, P/L, REMOTE ENTRY, SLIDING REAR WINDOW, NERF BARS, TOW, 151XXX MI	\$8,900
LT28915B	2004 FORD F150 XLT 4X4 BLUE, 5.4L V8, AUTO, CLOTH, A/C, P/M, P/W, CRUISE, TOW, ALLOY WHEELS, BED LINER, 168XXX MI	\$9,500
QT57910A	2004 F250 XL 4X4 BLACK, 5.4L V8, AUTOMATIC, VINYL SEATS, RUBBER FLOOR, CRANK WINDOWS, ONE OWNER 73XXX MI	\$12,900
QT57457C	2004 DODGE RAM 1500 4X4 PURPLE, 4.7L V8, AUTO, CLOTH, A/C, P/S, P/B, TOW HITCH, ALLOY WHEELS, 131XXX MI	\$10,900
QT75659	2005 FORD F150 4X4 BLACK, 5.4L V8, AUTO, P/S, P/B, TILT, CRUISE, A/C, NERF BARS, TOW, 159XXX MI	\$10,800
LT28851B	2006 CHEVY SILVERADO 1500 WT REG. CAB, 2WD, SHORT BED, 4.3 V6, AUTO, BLUE, SALVAGE TITLE, 123,XXX MI	\$6,900
QT75793	2007 CHEVY SILVERADO 1500 LT 4X4 EXT. CAB, 5.3L V8, AUTO, BLUE, 144,XXX MI	\$11,900
QT75831	2007 CHEVY SILVERADO 4X4 GRAY, 5.3L V8, AUTOMATIC, AC, P/W, P/L, TOW, ALLOY WHEELS, 167XXX MI	\$11,800
QT75834	2008 CHEVY SILVERADO 1500 Z-71, 4X4 BLUE, 5.3L V8, AUTO, TOW, A/C, TILT, CRUISE, P/W, REMOTE START, 156XXX MI	\$11,900
QT75835	2008 CHEVY SILVERADO 1500 4X4 BLACK, 5.3L V8, AUTO, CLOTH, P/W, A/C, TILT, CRUISE, ALLOY WHEELS, TOW, FIBERGLASS, BED COVER, REMOTE START, 153XXX MI	\$11,900
LT29139	2010 GMC SIERRA 1500 RED 4.3L, V6, AUTO 2WD, A/C, P/W, P/L, P/M, BLACK CLOTH INTERIOR, TOW, ALLOY WHEELS 55XXX MI	\$11,900
QT75716A	2010 FORD F150 XLT 4X4 SILVER, 4.6L V8, AUTOMATIC, A/C, P/W P/L, TILT, CRUISE, RUNNING BOARDS, TOW, CLOTH INTERIOR, 92,XXX MI	\$13,900

QT75813	2010 DODGE RAM 1500 4X4 BLACK, 4.7L, V8, AUTOMATIC, TRX, OFF ROAD, CLOTH SEATS, A/C, P/W, P/M, BED LINER, TOW 148XXX MI	\$12,900
LT29115	2011 FORD F350 SUPER CREW WHITE, 5.4L V8, AUTOMATIC, P/S, P/B, A/C, 14' BOX VAN, ROLL UP DOOR, HYDRAULIC TOMMY LIFT, GVWR, 12500LBS, 118XXX MI	\$9,500

SUVS

QT57469B	2006 FORD ESCAPE XLT 4X4 SILVER, 3.0L V6, AUTOMATIC, A/C, CLOTH, POWER DRIVER SEAT, P/W, TRAILER HITCH, 179XXX MI	\$3,900
QT75768	2007 FORD EXPEDITION EDDIE BAUER 4X4 5.4L, V8, BLACK120,XXX MI	\$9,800
LT7358B1	2007 JEEP LIBERTY SPORT 4X4 BLACK, 3.7L V6, AUTO, CLOTH, P/S, P/B, P/W, P/L, TILT, CRUISE, A/C, TOW, ALLOY WHEELS, 128XXX MI	CALL
LT29103A	2007 LINCOLN MKX AWD BLACK 3.5L V6, NAV, P/W, P/L, P/LIFTGATE, SUNROOF, LEATHER ALLOY WHEELS, 114XXX MI	\$8,900
QT75744A	2008 GMC YUKON SLT 4X4 5.3L, V8, SILVERBIRCH, LOADED, LEATHER, DVD, SUNROOF	\$12,900
QT75677A	2009 FORD EXPLORER XLT 4X4 RED, 4.0L, V6, AUTO, CLOTH, TILT, CRUISE, A/C, TOW 157XXX MI	\$6,900
QT75741B	2010 FORD EXPEDITION EL XLT 4X4 5.4L, V8, STERLING GRAY, 178,XXX MI	\$9,900
QT57915A	2010 FORD EDGE SPORT AWD BLUE, 3.5L V6, AUTO, A/C, MP3, HEATED CLOTH, P/DRIVER SEAT, REMOTE START, 173XXX MI	\$8,900
LT29128A	2011 CHEVROLET TRAVERSE LS FWD BLUE, 3.6L, V6, GRAY CLOTH, 3RD ROW SEATING, P/W, P/L, REMOTE KEYLESS ENTRY, 99XXX MI	CALL
LT28972A	2012 GMC TERRAIN SLE FWD, SILVER, 2.4L 4CYL., 143,XXX MI	\$7,995
LT29010A	2012 BUICK ENCLAVE FWD MOCHA, 3.6L V6, AUTO, LEATHER, POWER HEATED SEATS, POWER LIFTGATE, REMOTE START, 3RD ROW SEATING, LOADED, 156XXX MI	\$7,500
LT29052A	2012 CHEVY EQUINOX LT AWD SILVER, 2.4L, AUTO, HEATED CLOTH SEATS, P/W DRIVER SEAT, P/W, P/L, P/M, BOSE STEREO, REAR CAMERA, REMOTE START, 143XXX MI	\$9,500
QT75811A	2012 FORD FLEX LIMITED AWD 3.5L, V6, BHEATED LEATHER SEATS, P/W, P/L, P/LIFT GATE PREMIUM STEREO, 119XXX MI	\$11,900
LT28753B	2012 FORD FLEX SEL FWD BLACK, 3.5L V6, AUTO, LEATHER, SUNROOF, 162XXX MI	\$9,500
LT7280B	2013 FORD ESCAPE SE AWD GRAY, 1.6L, ECOBOOST, AUTO, NSAT RADIO, CLOTH, P/W, P/M, P/L, CRUISE, REMOTE START	\$10,900
QT57665B	2014 FORD ESCAPE SE FWD SUNSET ORANGE, 1.6L, ECOBOOST, A/C, CLOTH, SUNROOF	\$9,900
QT57665B	2014 FORD ESCAPE SE FWD SUNSET ORANGE, 1.6L, ECOBOOST, A/C, CLOTH, SUNROOF	\$9,900
LT29000A	2014 CHEVY CAPTIVA LT SPORT FWD BLACK, 2.4L, 4CYL., LEATHER, SUNROOF, 106,XXX MI	\$9,800
QT75791	2014 CHEVY CAPTIVA LTZ FWD 2.4L, 4CYL., SUNROOF, LEATHER, GOLD, 110,XXX MI	\$9,900
LT28958A	2015 CHEVY TRAX LT AWD 1.4L, T/C, 4CYL., AUTO, WHITE, 74,XXX MI	\$11,900
QT75784	2016 KIA SOUL 4DR WAGON BASE WHITE, 1.6L, 6SPD, MANUAL, BLACK CLOTH, P/W, P/L, SAT RADIO A/C, LUGGAGE RACK, 55XXX MI	\$9,900

Vans

QT75680	2008 TOWN & COUNTRY LWB LIMITED BLACK, 4.0L, V6, TAN HEATED LEATHER, DVD, SUNROOF, LOADED, 93XXX MI	\$7,800
QT75597	2009 FORD E-450 SHUTTLE VAN CUTAWAY OXFORD WHITE, 6.8L V10, AUTOMATIC, 153XXX MI	\$5,700
QT75794	2013 CHRYSLER TOWN & COUNTRY TOURING LWB CHERRY RED PEARLCOAT, 3.6L, TAN LEATHER, CAPTAIN SEATS, DVD, REAR CAMERA, 133XXX MI	\$8,900
QT75787	2013 DODGE CARAVAN SE WAGON TAN, 3.6L, V6, AUTO, A/C, DUAL CLIMATE, QUAD SEATS, P/W, DRIVER SEAT, P/W, P/L, P/M, REMOTE ENTRY, 136XXX MI	\$8,900

Larry Heisel Rentals
Crawler Loaders
Excavators
Backhoes

Call Larry!
Rental Available in 636 or 573 Area Codes
573-779-1500
www.larryheiselequipment.com

DARDEN PROFESSIONAL TIMBER HARVESTING, BUYING STANDING TIMBER: Great prices, improve wildlife habitat and improve forest health. State Certified & Fully Insured! 573-247-4808 or 573-739-1122. Salem

BODY SHOP CUTTING TORCH: TIPS, GAUGES, BOX OF BRAND NEW STUFF \$500 VALUE Sacrifice FOR \$200 OR TRADE. 573-734-2822.

WERNER: 8' fiberglass step ladder, excellent condition, \$50 txt 417-533-0779.

ITALIAN MAREMMA GUARD DOGS: 9 male pups, 8 to 14 weeks old, raised with sheep, very beautiful, quite friendly. \$200 each. 417-682-1746.

ZERO TURN WALK BEHIND MOWER: Hydraulic drive, electric start, 5ft cut, Kawasaki Motor, and bagger. \$1,500. 636-239-4124.

REGISTERED HEREFORD & ANGUS BULLS: Home raised, Some Show-Me Select Qualified. 573-701-7828. Belgrade

JOHN DEERE HX-10: Pull-type, 10 ft, brushcutter. \$4,200. 573-765-4406.

NEW BIG TEX 22GN FLATBED TRAILER

JIM'S Motors
TRAILERS

I-44 at Exit 208 - Cuba, MO
www.jimsmotors.com
(573)885-2595
(800)897-9840

GREAT SERVICE!
1957-2018 GREAT PRICES!

WWW.LINDSAYAUTOGROUP.COM

LIVING ESTATE AUCTION

TUESDAY, MAY 19, 2020 • 10 a.m.

LOCATION: 620 Hovis Street, Mtn. Grove, MO 65711

DIRECTIONS: Off Bus Hwy 60 in Mtn. Grove MO, take Hovis St, go 3 blocks to auction. Watch for Rick Dixon Auction signs day of auction. Visit us on the web at www.rickdixonauctions.com

• QUALITY ANTIQUES • FURNITURE •

• camel back trunk • washboard • old baskets • well pulley • antique crank-type telephone • kerosene lantern • old wall pictures, some advertisements • old wall pictures, some shoe advertisements • cast iron skillets • shoe stretchers • Duncan Phyfe walnut table & chairs • walnut hutch • antique dishes & glassware, various kinds • crock jug • oxen yoke • small antique tables • wicker bottom & back sewing rocker • oak mission-style library table • coffee table & end tables • oak kitchen chair • 6 ft dressing mirror • 3 piece antique bedroom suite inc. poster bed, dresser w/mirror & chest of drawers • small wooden boxes • coffee grinder • old jars • lots of antique pictures • magazine rack • metal lawn chairs • crank-type cash register • wooden stool • old kids toys • old picture frames • pine kitchen cabinet • old school desk • old cabinet-type radio • graniteware coffee pot • #2 washtub • old saddle • old horse collar • old gas cans • old nail keg • 1948 Diamond T Red Wing Shoes toy truck •

antique oak kitchen table & chairs • old 1940's Frigidaire refrigerator •

• HOUSEHOLD ITEMS •

• wooden bookshelves • elec lamps • (2) couch & chair • (3) swivel rockers • elec fans • wooden bowls • cabinet-type stereo • radios • card tables • oak 3 piece full-size bedroom suite • blankets, linens, towels • hamper • full-size bed & dresser • vacuums • pots & pans • baking dishes • kitchen utensils • Kenmore microwave • roll-around dishwasher • elec kitchen appliances • elec heaters • radios • lots of books • rugs • file cabinet • (2) banquet tables • trash cans • Kenmore washer & dryer •

• AUTO • MOWER • TOOLS •

• 2000 MITS Montero Sport, 6 cyl, 4x4, 189,000 miles, cold air, heated seats • Cub Cadet Zero Turn, 22 hp, 50" cut, new blades, new belts, ready to go! • Twin cylinder 5 hp compressor 220 • garden hoses • yard seeder • wooden trim • wheelbarrow • hand & garden tools, some old • stepladder • shed full of boxed items we can't see! •

Emmagine Owen Parker Living Estate

AUCTIONEERS NOTE: Mrs. Parker and her family owned Dryer Parker Shoe Store in Mtn. Grove for many years. She is moving to assisted care and has a very nice auction you won't want to miss! Thank you for your attendance and business - Thanks, *Rick*

TERMS: Cash or good check. Major credit cards accepted with 5% convenience fee. Driver's license or picture identification required to obtain bid number, which must match check. Nothing loaded or removed until paid for, and everything sells where is, as is. Not responsible for accidents, lost, stolen or broken items. List subject to additions or deletions. Nothing sold before auction; please do not ask. Auction day announcements take precedence over all previous advertisements.



Rick Dixon Auction Service LLC

www.rickdixonauctions.com

Rick 417-967-6604 • Josh 417-217-9627

FENCE! WE STOCK FIXED KNOT10%

Off: High tensile, woven, barbed, smooth. Cattle/Sheep panels! Unbeatable Prices!! Ozark Farm, 417-322-0161.

MOBILE HOMESshop on-line..... Call Tuff with questions 573-657-2176 amegamobilehomes.com

WANTED: Walk behind commercial lawn mowers needing repair. 314-550-9314

NEW IDEA: 5410 Disk Mower, \$4,450. 573-765-4406.

JOHN DEERE 275: Disk mower. Nice. \$6,250. 573-765-4406.

VOTED #1 BEST Preowned Car Dealership

TIM'S USED CARS

(573) 341-3828 • 1334 South Bishop (Hwy. 63) • Rolla, MO
Next to Hwy CC • www.tims-used-cars.com

2011 RAM 1500 BIG HORN
Crew Cab, 4x4, 5.7 Hemi, Power Equipped, 118,xxx Miles
ONLY \$16,900

2012 RAM 1500 LARAMIE
Crew Cab, 2WD, 5.7 Hemi, Loaded w/ Options, 131,xxx Miles
Only \$16,900

2014 CHEVY SILVERADO LT
Crew Cab, 4x4, 5.3 V8, Leather, 100,xxx Miles
Only \$23,900

2015 RAM 3500 HD LARAMIE
Crew Cab, 4x4, 6.7 Diesel, Loaded w/ Options
Only \$34,900

LARGE SELECTION OF CARS, TRUCKS, SUVs & VANS!

GET YOUR WORK DONE, AMERICA

FOR JUST
\$261 PER MONTH*



4540 2WD

- SIMPLE to operate
- ECO-FRIENDLY, NO DPF engine
- HEAVY-DUTY steel construction not plastic

MAHINDRA 4540 41HP, 2WD, TRACTOR AND LOADER.

Marshfield Machinery Inc.

222 E. Madison • Marshfield, MO 65706
417-859-2117 • www.marshfieldmachinery.com



*Payment is for tractor and loader only and is calculated at 10% down and 84 months financing. With approved credit. Program restrictions may apply. See dealer for details. All offers expire May 31, 2020.

WORLD'S #1 SELLING TRACTOR

Mahindra
Tractors

NEW MAHINDRA TRACTORS

7085 4WD & LDR 85HP	IN STOCK
6075 4WD & LDR 71HP	IN STOCK
6065 4WD & LDR 63HP	IN STOCK
2655 4WD, BACKHOE 55HP	IN STOCK
2655 4WD & LDR 55HP	IN STOCK
4540 4WD & LDR 41HP	IN STOCK
4540 2WD & LDR 41HP	IN STOCK
1635 4WD & LDR 36HP	IN STOCK
1626 4WD & LDR 26HP	IN STOCK
MAX26XL & LDR 26HP	IN STOCK

USED TRACTORS

MAHINDRA EMAX22 LDR 22HP	10,000
MF 2315 45HP	7,500
MF 150 38HP	4,500
AC D17 SERIES 3	4,500
CASE IH 235 W/ MOWER 18HP	3,500
IHC 184 W/ MOWER 18HP	3,500

USED ROUND BALERS

MF 2745 4X5 MESH	12,500
HESSTON 745 4X5	7,500
GEHL 2480 4X5	6,500
JD 435 4X6 MESH	6,500
HESSTON 555 4X6	4,500
HESSTON 560 5X6	4,000
HESSTON 550 4X6	3,500
HESSTON 530	3,500
HESSTON 5500 5X5	1,500
NH 850 5X5	1,500
MF 224 SQUARE BALER	2,500

USED RAKES

SITREX 12WHEEL	3,500
VERMEER WR20 8 WHEEL	1,950
M&W 8 WHEEL	1,500

USED HAY MOWERS

CASE IH DCX 131 13FT	9,750
NH H6750 9FT 3PT	6,500
MF 1329 9FT 3PT	5,500
LELY 270 9FT 3PT	3,500

USED MISC.

HAYBUSTER 107C DRILL	17,500
HAYBUSTER 107C DRILL	10,500
FRONTIER BALE PROCESSOR	8,500
LANDPRIDE 8FT PULL	4,000
BUSH HOG 3008 8FT 3PT	2,500
BUSH HOG 3008 8FT 3PT	2,000

Marshfield Machinery Inc.
222 E. Madison • Marshfield, MO 65706
417-859-2117
www.marshfieldmachinery.com

TAYLOR TRUCKS & EQUIPMENT

417-924-2026 • 2676 Hwy. 5, Mansfield, MO

Bush-Whacker
Heavy Duty Rotary Cutter



CLEARANCE ON 5' AND 6' ROTARY TILLERS

New Mowers! Bush-Whacker, Big Bee
Farm Tires, PTO's & Parts for Rotary Mowers,
Storage Containers & Dry Vans - 20' - 53'
Farm Tractor Implements
Plows, Discs, and More Skidsteer Attachments: Pallet Forks,
Buckets, Grapples, Hay Spears & Tree Shears - RR Ties

TRAILER PARTS & REPAIR

NEW SEMI TIRES - DRIVE & STEER

We Invite You To Come By & Look Us Over! Located 2.5 Miles North Of Mansfield, MO On Hwy 5

WWW.MYWEEKLYTRADER.COM

YOUR LAND AND FARM EXPERTS!



Benton Co-12 Acres

\$349,999

On AB Hwy S of Cole Camp with a Unbelievable, Spacious, Open Floor Plan 5000 Sq Ft Shop Home! Home was completely remodeled in 2012 and then was added onto in 2018. Also, comes with a 24x32 outbuilding with a concrete floor to hold all your outdoor accessories. Sit out in the newly built screened in back porch- over look the beautiful views of the timber hillsides and watch the deer and turkey in your back yard. Property is constructed with a concrete driveway off of AB highway. As you enter the driveway it has a remarkable view of the lake! The home is heated and cooled with two central air heat pumps and has secondary heat with a wood fireplace and a gas fireplace. This home consists of 2 living rooms, 2 kitchens, 2 large bedrooms, 2 car garage, 2 full size bathrooms with 1 walk in shower. Stunning new wood grain tile has been installed throughout half of the home. Call now to request a showing- **Trenton Scott (660)-351-3201**



Benton Co-32 Acres

\$56,000

This is a wonderful hunting or residential parcel with paved road frontage in Lincoln, MO. This property offers several creeks and mature timber that provide food and water sources for deer and other animals. There is also a power line easement that runs across the width of the land. This provides an excellent clearing to hunt. I have jumped several deer while walking the property and deer and turkey sign is abundant! You won't be disappointed by this one. Please call **Pamela Dempsey at 660-553-8677** for more information and to set up a tour of the property.



Morgan Co-40 Acres

\$59,000

If you're looking for the perfect, secluded hunting getaway, you've found it!! This property sits on a very nice, drivable easement road behind a locked gate. It is at the end of the easement and is extremely private and peaceful. There are more rubs on this property than I have ever seen before! I also found a turkey feather and turkey scratch as I was walking the land. You'll also be amazed by the enormous timber. It doesn't get much better than this, and at this price, it's sure to sell fast. So call **Pamela Dempsey today at 660-553-8677** for more information and to schedule a tour of the property.



St. Clair 176 Acres

\$298,320

Minutes from Osceola. Down a very secluded road with very little traffic, sits behind a locked gate. There is a nice big concrete slab for your RV with 200 amp service, a 360 foot drilled well with an in ground pressure tank. There is a septic tank with 500 feet of laterals. You could even build a nice cabin on the slab. Trails all over the property, to get to your favorite hunting spot. Several areas for nice food plots, with one big field you can draw deer for miles around. The road leading past the property dead ends in the water. There is a lot of wildlife here, with good numbers of deer and turkey. You also have access to 1000+ acres of corp land to hunt. I can see this being someone's honey hole for years to come. Located conveniently off Hwy B, with three locked pipe gates entering the property. All three lakes close to this property, including Truman, Stockton and Pomme De Terre. For more information contact **Mike Stoner at 573-774-9775**



Morgan Co-126 Acres

\$176,900

Property has several trails running through the property to get around, either by hiking or ATV riding. Good timber with a select cut done 15 plus years ago, the regrowth really made some great deer habitat. Lots of big timber, and could be select cut again. There is a electric line and gas easement that would make a great spot for a nice big food plot. One small wildlife pond, and a wet weather creek runs through the property. There was deer rubs everywhere! A great place to build a cabin right off the paved road, with electric available. A boat ramp to Lake of the Ozarks is less than 4 miles away Wigwam School Boat Ramp Call **Mike Stoner at 573-774-9775**

MISSOURI
LAND
COMPANY

Farm, Home & Hunting Properties

www.missourilandco.com • 660-668-HUNT

Rolla Office:
12647 S. Hwy 63, Rolla
573-308-4868

Cole Camp Office:
14981 Centerline Ave.,
Cole Camp
660-668-4868



Toll FREE number for both locations
844-974-1850

SUMMER VACATION

IS JUST AROUND THE CORNER!

- 691J **2019 Jayco SLX 232RB**
MSRP-\$23,511..... **\$15,230**
- 659J **2019 Jayco SLX 195RB**
MSRP-\$19,131..... **\$12,995**
- 711D **2020 Dutchmen Astoria**
2503 RLF MSRP-\$49,714 .. **\$36,611**
- 714D **2020 Dutchmen Astoria**
3273 MBF MSRP-\$57,850 .. **\$57,850**
- 719D **2020 Dutchmen Aspen Trail**
1760BH MSRP-\$15,994 **\$12,778**
- 709D **2020 Dutchmen Aspen Trail**
2850 BHS MSRP-\$28,736 .. **\$21,282**
- 729D **2020 Dutchmen Kodiak**
248BHS MSRP-\$31,570 **\$22,851**
- 732D **2020 Dutchmen Kodiak Cub**
185 MSRP-\$24,994..... **\$18,791**

WehrRVs
11311 Bus. 60, Mtn. Grove, MO
1-800-288-6827
www.wehrfordofmountaingrove.com

THREE JOHN DEERE 4440'S: buy choice, 5,000-8,000 actual hours, 2 have new tires, All are quad range transmission. 417-818-9087 or 417-861-2189.

AUCTION REMINDER: Living Estate Auction. Saturday, May 16th @ 10am. Johnson Bay Auction. Please see our Auction Directory for more information.

AUCTION REMINDER: Spring Equipment Consignment Auction. Saturday, June 7th @ 10am. Southwest Auction. Please see our Auction Directory for more information.

FIREARMS: Professional Repairs and Restorations. Baron's Gunsmithing. 573-363-5801, Camdenton.

VALLEY SHOP
Repairs, Rebuilt
Tractors & Equipment
660-458-6747
Latham, Mo



Buildings • Hunter's Cabins • Lawn Furniture



JAMCO Portable Buildings
800-688-2064 • 307 Enterprise Dr. • Seymour, MO • www.jamcobuilders.com

Rent To Own Plan

HANTZ DRYWALL: 35yrs, add-ons and repairs, references. 417-322-0014.

IHC 806 DIESEL TRACTOR: w/Loader, bucket, bale spike with 8ft Brushhog, \$9,800. 573-765-4406.

SWAP MEET: At Treasures, 1060 Tower Road, Lebanon, June 5th & 6th, Vendors Wanted, 417-532-6666.

WILBER'S FISH BRANCH ANGUS: Registered Yearling bulls, for sale, calving ease, good growth trait, Registered cow/calf pairs also available, 5-9yr old cows. March born calves, can be registered. Mexico, MO, 573-473-6019. www.fishbranch.com

ROME 8FT OFFSET DISK: \$3,750. 573-765-4406.

IHC 1086 DIESEL TRACTOR: Cab & Cold Air. \$8,750. 573-765-4406.

AUSTRALIAN SHEPHERD PUPPIES: out of working parents, shots-first round. 573-663-7459.

AUCTION REMINDER: 10th Annual Spring Consignment Auction, Tuesday, June 2nd/Wednesday, June 3rd. Please see our Auction Directory for more information.

AUCTION REMINDER: Public Auction. Sunday, May 24th @ 2pm. Johnson Auction. Please see our Auction Directory for more information.

2 KITCHEN TABLES: WITH CHAIRS \$100 OR TRADE. 573-734-2822.

HAROLD BELL WRIGHT BOOKS FOR SALE. The Eyes of the World, The Calling of Dan Matthews and Their Yesterdays. \$15 each. 417-532-2045, Lebanon. Leave message.

WERNER: 20' (16' working length) fiberglass extension ladder. \$100 txt 417-533-0779.

FENCING SUPPLIES - UNBEATABLE PRICES!! Ozark Farm, 417-322-0161

WANTED TO BUY: Broken down J.D. Tractor, diesel, Call 573-768-0068.

1986 OLDSMOBILE CUTLASS: 43,xxx actual miles, loaded, excellent condition. Best offer over \$2,000. 573-873-3440.

AUCTION REMINDER: Personal Property and Farm Auction, Saturday, May 23rd @ 10 am. Please see our Auction Directory for more information.

15' 6" COLEMAN SCANOES: used 3 times, like new condition \$650.00 (green). ~ 17-foot (red) canoe used 4 times, like new condition, \$330.00. ~ 573-241-1351.

OLD LINN CREEK, HA HA TONKA & CAMDEN CO BOOK, "Before the Dam Waters", BY T. VICTOR JEFFRIES. \$5.50 each post paid. To order: 417-532-2045, Lebanon (leave message.)

Is Your Log Home UGLY?
Starting To Look Professional Staining & Repair
(Log Homes & Wood Siding)

Call Pine Ridge Rustic
Log Home Building Supplies **573-729-7226**

www.pineridgerustic.com



REAL ESTATE AUCTION

Friday, May 15th @ 6:00 p.m.

Location: 805 Bryan St., Houston Mo. 65483

Directions: From the stop light in Houston take Hwy. 17 west to Bryan St. follow Bryan St. to Auction

Adorable Home



on a nice corner lot!

2 or 3 bedroom home with 2 bathrooms on a nice corner lot. Has dining room, living room, kitchen, mud room and a one car attached garage. Has central heat and air, metal roof, vinyl siding and new windows. Also has a small out building. This would make a great starter home to be completed as you would like. Also would make a good rental property.

Terms and conditions: \$5,000 down day and location of sale. Closing cost will be split between buyer and seller. Taxes will be prorated. Sells as is with no contingencies. Sells with owner conformation.

Auctioneers Note: Don't miss a chance to purchase this house with lots of potential. Sellers are very motivated please have your finances in order

Darren SCHEETS AUCTIONS
(417) 457-6638 • (417) 926-8575
www.scheetsauctions.com



TERMS OF AUCTION: Cash or check with picture ID. Nothing loaded or removed until paid for. Everything sells as is, where is. Not responsible for accidents, lost or stolen items. Auction day announcements take precedence over all previous advertisements.

ESTATE AUCTION BOLIVAR, MO

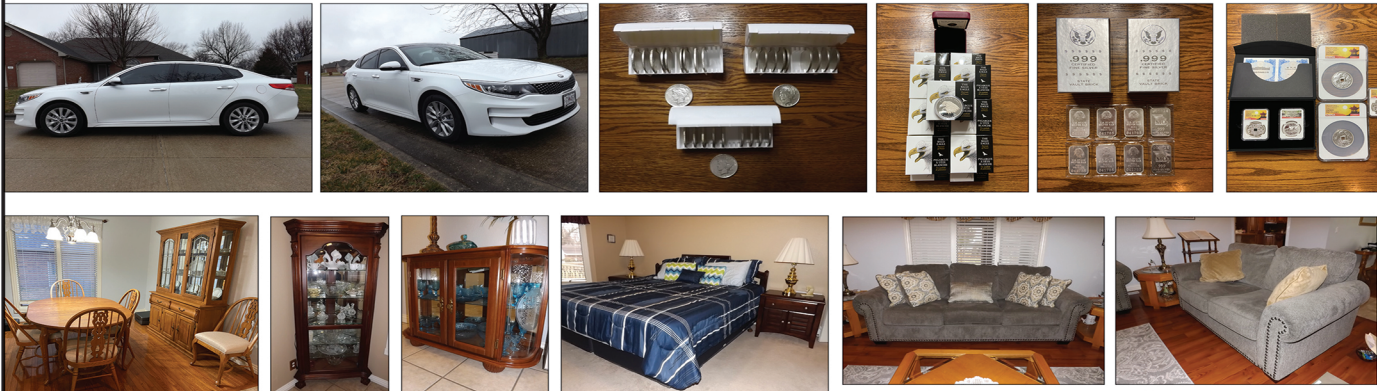
AUCTION

Due to the Deaths of the late Leo & Glee Leblanc we will sell the following Automobile, Household, Collectibles, Coins, Jewelry, Tools and Misc. at the Home located at 1685 South Hedgewood in Bolivar, Mo. (southwest part of town) on

Sat. May 23, 2020 at 9:00 am

WATCH FOR AUCTION COMPANY SIGNS • LUNCH SERVED

FOR MORE PICTURES GO TO: WWW.BRUCEANDLEANAUCTION.COM



AUTOMOBILE

- 2018 Kia Optima EX 4 Door Automobile 19,000 one owner miles, 2.4L Engine,
- Automatic Transmission, Fully Loaded, Leather Heated/Cooled Seats, Sun Roof, Like New Condition

HOUSEHOLD & COLLECTIBLES

- Kenmore Side by Side Refrigerator/Freezer W/ Ice & Water in Door
- Whirlpool Cabrio Automatic Washing Machine
- Maytag Neptune Dryer
- Frigidaire Upright Deep Freeze
- 7' Mirrored Back Corner Curio Cabinet
- 55" Samsung Flat Screen TV
- 31" Dynex Flat Screen TV
- 4' Curio Cabinet
- Oak Dining Table W/6 Chairs (2 captains)
- 6' Oak Mirrored Back Buffet Hutch
- 4 Pc. King Size Bedroom Set W/Beauty Rest Mattress
- 3 Cushion Grey Divan (like new)
- 2 Cushion Matching Grey Loveseat (like new)
- 3 Pc. Glass Top Coffee & End Table Set
- 2 TV Cabinets
- Cedar Chest
- Queen Pillow Top, Mattress Set
- Night Stands
- Electric Fireplace Style Heater
- Shark Upright Vacuum
- 8 Drawer Office Desk

HOUSEHOLD & COLLECTIBLES CONT.

- Swivel Office Chair
- 2 Swivel Bar Stools
- Set of Rogers Stainless Ware
- 12 Place Setting of Pfaltzgraff Napoli Dishes
- 12 Place Setting of China
- Pots, Pans and Dishes
- Several Pcs. of Blue Glassware
- Mirror 22 Qt. Pressure Cooker

TILLERS-TOOLS-MISC

- Troy-Bilt Bronco 5 HP CRT Rear Tine Tiller
- Snapper 2650 PSI 6 3/4 HP Pressure Washer
- Allpower 6000 Watt Generator (like new)
- Craftsman Roll around Tool Box
- Misc. Hand Tools
- Worx Cordless Weed Eater
- Card Table W/Chairs
- 2 Metal Shelving Units W/Adjustable Shelves
- New Dyna Glo Kerosene Heater
- Large Gas Grill
- Garden Hose
- Lawn Ornaments
- 25 Plus 5 Gallon Loaded Survival Food Buckets
- 4 Pc. Wicker Patio Set (Divan, 2 Chairs, Table)
- 2 Wheel Dolly
- 2 Wheel Chairs
- Wheeled Walker
- Folding Lawn Chairs
- Child's Sled
- One lot of Misc.

COINS-JEWELRY-GUN

- Savage Mark II Bolt Action 22 Rifle
- Mans 1 1/4 Carat Diamond Ring
- Ladies Cluster Diamond Ring
- Costume Jewelry
- 31-Liberty Silver Dollars 1922-1929
- 73-1-oz Boston Tea Party Silver Bullion Coins
- 20-1987 1-oz Silver Eagle's Bullion Coins
- 20-1998 1-oz Silver Eagle's Bullion Coins
- 19-1990 1-oz Eagle Liberty Bullion Coins
- 21- Liberty 1-oz Liberty Bullion Coins
- 20- Liberty 1963 Half Dollars
- 2017 Trump 1oz Silver Bullion Coin
- 5-2018 Silver Bullion 1 & 2 oz Coins
- 2015 Australian Koala 5 oz Silver Bullion Coin
- 8-US Missouri State 1 oz Silver Bars
- 48-Canadian 1960-1966 One Dollar Silver Rounds
- 20-Canadian 1964 Silver .50 Coins
- 16-Canadian 2013 1 oz Fine Silver Coins
- 40-Mexican 1948 Mex Pesos Silver Coins
- 100-2017 Elizabeth II NIUE 1/2 oz One Dollar Silver Coins
- 2000-US 2005 Uncirculated Buffalo Nickels (\$1.25 per Roll)
- Misc. Pre-1964 Coins

AUCTIONEERS NOTE:

This is a very nice offering of several items in Like New Condition. Late Model One Owner Automobile Garaged and in Very Good Condition, Several Nice Household Items, and a Nice Offering of Coins, Silver and Rings. Do not be late there is not a lot of small Misc.

OWNER: ESTATE OF LEO & GLEE LEBLANC

TERMS: Everything sells as is, where is. Nothing is to be removed until settled for. Payment of Cash, Check with Proper ID, or Credit Cards. Auction Company or the Owners will not be responsible for loss of items or accidents. Statements made the Day of the Auction take Precedence over Printed Matter.

SALE CONDUCTED BY **BRUCE & Le'AN AUCTION & APPRAISAL, LLC**
THE AUCTION COMPANY THAT APPRECIATES YOUR BUSINESS

For more information and pictures go to our website at www.bruceandleanauktion.com

RONNIE BRUCE - Fair Play, MO
417-777-1685 or 417-654-2214
colronbruce@gmail.com

BRANDON BRUCE
Fair Play, MO

BILLY BRUCE - Stockton, MO
417-399-4800
colbruce@gmail.com

CLINES EQUIPMENT CO., LLC CONSIGNMENT AUCTION

20133 Lawrence 2220
Aurora, MO 65605
Saturday May 16, 2020
Starting at 9:00 am
RAIN OR SHINE

Direction: 1 mile east of Jct. 39 & 60 or .09 miles west from Bus. 60 On Hwy 60 Local Health Dept advises social distancing. Hand Sanitizer and antibacterial soaps will be available on site.

FOR MORE INFORMATION CALL
OFFICE 417-678-0049
OR CELL 417-830-0912

Online bidding will be available through Proxibid.
<https://www.auctionzip.com/Listings/3429093.html>
TRACTORS & INDUSTRIAL EQUIPMENT
SKID STEER ATTACHMENTS
(3) ABSOLUTE SELLOUTS
WITH NO RESERVES
THIS WILL BE A VERY LARGE AUCTION!

HOLLYWOOD 4-BIKE HITCH MOUNT RACK: Excellent condition, Includes (2) Allen Stabilizer tension bars and keyed alike locking hitch pin and cable. \$175. Conway, 417-718-5347.

AUCTION REMINDER: Development Land Auction. Saturday, June 13th @ 10am. Johnson Bay Auction. Please see our Auction Directory for more information.

PINE LOG SIDING.. www.pineridgerustic.com 573-729-7226.



**MID
MISSOURI
STOCKYARDS**

**REGULAR SALE EVERY
THURSDAY 11AM**

WATCH OUR WEEKLY SALE IN REAL
TIME ON DVAUCTION.COM

For Farm Visits, Market Updates, or Trucking

Call **Zach Cox 417-777-1320**
Dan Romine 573-578-4939

**Competitive Buyers!
Competitive Commission!
Competitive Market!**

Barn: 417-532-9292



I-44 • Exit 123 "just outside of Lebanon"
17505 Route 66, Phillipsburg, MO 65722

For weekly market updates, visit us at
www.midmostockyards.com

WANTED PINBALL MACHINES. 573-424-7200.

ALLIS CHALMERS WD-45: wide-front, factory power-steering, new rubber, good restoration tractor. \$2,400 573-353-6317.

GERMAN SHEPHERD PUPPIES: born 3-29-20, 2-males, 2-females. best offer or trade. Grovespring, 417-322-0066, leave message

KUHN DISK MOWER: 10ft Nice. \$4,850. 573-765-4406.

VILLA HOMES IN ROLLA: Has NEW and USED Mobile Homes. Call David for info: 573-578-8072.

IHC 1066 OPEN STATION TRACTOR: Nice. \$9,500. 573-765-4406.

TRUCK LOAD OF FLEA MARKET & AUCTION ITEMS: \$200 or trade. 573-327-9068

SOUTHERN OVEN COOKBOOK: The Savories, The Sweets, by Jean Anderson, hardback, 272 pages. \$6.50 417-532-2045. Leave Message.

SHINGLES: (new in plastic) 26 bundles (8-2/3 square) Owens Corning Sierra gray, \$40.00 a square, can deliver. txt 417-533-0779.

AUCTION REMINDER: Large Guns and Ammo Auction, Saturday, May 16th @ 10am. Please see our Auction Directory for more information.

Living Estate Auction



275 Pervis Dr. Sunrise Beach, Mo. 65079

Directions: From Laurie at hwy 5 and Chelsie Rd. go West on Chelsie Rd. 2 miles to Pervis Rd. to auction site on left top of hill. Watch for signs day of sale. We will sell the following at public auction on:

**MEMORIAL DAY
WEEKEND!**

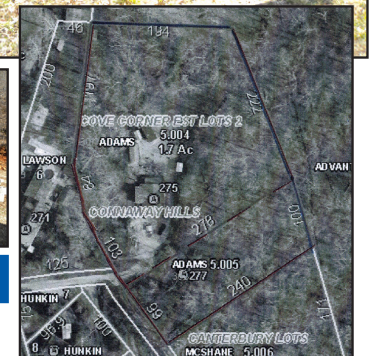
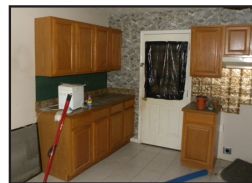
Sunday May 24, 2020 • 2:00 p.m.

REAL ESTATE

1,150sqft. 3 - Bedroom, 2 - Bath log home, 2 screened-in 8'x20' porches, wood or gas heat, open kitchen wood cabinets lots storage, tile & laminate floors, Large de-tached 22'x30' garage/ mancave w/loft. All located on two large lots overlooking a scenic view of Lake of the Ozarks.



Real Estate Terms: 10% Nonrefundable Escrow down day of Sale, to close 30 days if not sooner, Taxes Prorated, Seller to Provide Title Insurance. All inspections & financial arrangements to be finalized Prior to sale time, Sale not Conditioned upon Finance. Seller reserves the right to accept or reject any bids, **Will co-broke with licensed realtor to register qualified buy 24 hrs prior to sale time.**



OTHER BUILDINGS TO BE SOLD AFTER THE REAL ESTATE

11'x18' Storage shed w/porch - insulated w/electricity. Green House 9'x12'; Wooden octagon gazebo 10'x10'; 8'x12' Storage shed; Lot Misc. land scaping bricks & pavers to be sold also.



**NOAH
ADAMS**

Auctioneer Note: If your looking for a nice lake home with lots of potential, opportunity is knocking. This home is not an absolute sale, BUT family ABSOLUTELY wants to sell. We are extremely proud to assist Noah Adams a TRUE American Hero (Okinawa purple heart recipient) in selling his late daughter "Brinda Adams" lake home.



**JOHNSON
AUCTION SERVICE**

"Third Generation Family Tradition since 1942"

Russell "Rusty" Johnson (660) 221-4067 • Phillip Yoder (660) 723-3389

For Full Listing,
Pictures
and Details
auctionzip.com
(ID# 20300)

LIVE & ONLINE AUCTION

CLASSIC CAR, BOAT & MISC TOOLS

SATURDAY, MAY 23, 2020 @ 10:00AM

Rt. 4 Box 188 • Ava, Mo 65608

Online Bidding for this auction is available through AuctionZip!



INVENTORY LIST FOR ONSITE ONLY:

INTERNATIONAL 3414 TRACTOR	CHAIN SAWS • WEED EATER
FLOOR JACKS	CIRCULAR SAW
CRAFTSMAN PRESSURE WASHER	ELECTRIC HOIST
METAL TRUSSES	YARD TOOLS • TORCH SET
PORTABLE AIR COMPRESSOR	METAL PANELS • BBQ GRILL
TABLE SAW	TRUCK TOOL BOXES
PORTABLE GENERATOR	HOMEMADE GAS POWERED
LINCOLN WELDER	YARD CART
CENTRAL PNEUMATIC AIR	3 POINT BLADE • POSTS
COMPRESSOR	3 POINT ROTOR TILLER
GAS POWERED SPRAYER	SMALL BOAT TRAILER
BRUSHMONSTER ATTACHMENT	STEEL SUCKER ROD
FEEDER • ENGINE STAND	METAL GATES
CENTURY WELDER	HEDGE TRIMMER • DRILL
KING CUTTER BRUSH HOG	ELECTRIC HAND TOOLS
ATTACHMENT	ANTIQUY YARD CART
TRANSMISSION FOR A CUMMINS	SCRAP METAL
DIESEL	

THE FOLLOWING 10 ITEMS WILL BE BOTH ONLINE & ONSITE BIDDING AT 11:00AM

LOT: 1 - 1956 THUNDERBIRD 312, V8 AUTOMATIC TRANSMISSION, HAS A DENT ON FRONT PASSENGER SIDE

LOT: 2 - 1987 SEA RAY 300, 30FT, 2 TWIN 454 INBOARD, GENERATOR, TRAILER

LOT: 3 - 1985 BAYLINER, 275 VOLVO PENTA, TRAILER

LOT: 4 - 2018 DOOLITTLE BULLET TRAILER V NOSE, 8.5X20, SIDE DOOR, DUAL AXLE

LOT: 5 - HORSE TRAILER, THREE

LOT: 6 - 2001 FORD F-150 CREW CAB, V8 TRITON, BURNT VALVE

LOT: 7 - 1965 ALUMINUM BOAT, 85 SUZUKI, 36 VOLT TOLLING MOTOR

LOT: 8 - 1983 MERCEDES BOAT, 18', 6 CYLINDER

LOT: 9 - 1986 CARVER, 27', NO TRAILER

LOT: 10 - 1999 HOLIDAY RAMBLER MOTORHOME VACATIONER, 39'45XXX, FORD DRIVE TRAIN, SLIDE OUT

PRECISION PAINTING

Bringing your ideas to life since 1997

Residential • Commercial
Exterior & Interior

417-345-4566

2nd Generation Painting
BUFFALO

AUCTION REMINDER: Farm Auction, Thursday, May 21st, 5:30 pm. Please see our Auction Directory for more information.

JON BOAT TRAILER: READY TO GO WITH LIGHTS, WENCH, EVERYTHING. \$200 OR TRADE. 573-734-2822.

FENCE! WE STOCK ELECTRIC FENCE SUPPLIES: High-Powered fencers! Unbeatable Prices! Ozark Farm, 417-322-0161

12 ACRES GRASS AND CLOVER HAY: 3-miles W of Lebanon 417-532-8048.

I BUY....used mobile homes. Call or text 573-338-6250 or email GregS.CDH@outlook.com

2019 DODGE GRAND CARAVAN: w/deluxe Braun wheelchair conversion, in-floor illuminated side power ramp, 24,000+ miles. Still under warranty. Asking \$45,000. 417-532-4405 Noon-3pm.

RED CEDAR FENCE POST: 6 1/2 feet long, 10 for \$49. Cedar Hill, 314-303-7857.

WANTED: Ponies/Mini horses and beginner's horse. 417-241-0509 Grovespring.

JOHN DEERE 567 ROUND BALER: monitor, kicker, wide pick-up, cover, net wrap. \$9,650. 573-765-4406.

JOHN DEERE 2630: Diesel tractor, 70HP, w/ JD 146 loader. \$8,650. (573)765-4406.

LINCOLN MODEL AC/DC: 225/125 welder, copper windings, works great \$300. txt 417-533-0779

MEN'S SIZE 11: Rollar blades, skates. G.C. Cedar Hill 314-303-7857.

KITCHEN FAUCET MOEN: single lever, sprayer, new cartage. \$70. 636-239-2695.

BLUE/RED HEELER PUPS: Raised for 40 years. Good livestock dogs or pets. \$100 each. 660-553-2333 Cole Camp.

We will be practicing social distancing as required, bring face masks, hand sanitize stations onsite.



FOR MORE INFORMATION GO TO WWW.EASTERLYAUCTIONCO.COM OR CALL EASTERLY'S AT 417-833-9494

EASTERLY

AUCTION CO.

Mike Easterly Auctioneer • 417-833-9494

Not Responsible for accidents or theft. For more information call: Easterly Auction Company, Springfield, MO. Auction Terms: Bank Letter Of Credit Required. Visa, Mastercard, Cash, Cashier's check or checks with proper I.D. Announcements day of sale take precedence over printed material. Auction Notes: Although information is obtained from sources deemed reliable, auctioneer makes no warranty or guarantee expressed or implied. Buyers should themselves take the opportunity to make their own inspection prior to sale.

www.EasterlyAuction.com • auctionzip.com ID#14770



La Crosse Lumber Co. Spring Cleaning Of Building Materials Online Auction

Concrete & Construction Rental Equipment
 • James Hardie & LP Smartside Products
 • Vinyl Siding Accessories • Simonton,
 Andersen, Silverline, Jeld Wen & Others
 - Vinyl New Construction & Replacement
 Windows • James Hardie Shake Shingles
 • Vinyl Fence Post & Accessories
 • Tamko TAM-Rail • Masonite Prehung
 Interior & Exterior Doors
 • Schlage & Kwikset Hardware



401 W. Highway 22, Centralia, MO
**Bidding Ends: Tuesday,
 May 19th at 12:30 PM**
 Bid Online At Atterberryauction.com

Preview: Monday, May 18th
 from 4:00 to 6:00PM

Payment & Pick-Up: Wednesday, May 20th
****SALES TAX WILL BE CHARGED
 ON ALL ITEMS****

Note: La Crosse Lumber Co. has been
 spring cleaning and has an abundance of
 inventory stored away that they want to offer
 to the public, here is your chance to take
 advantage of these great products!!

For complete terms, listing, catalog, pictures
 & bidding, visit atterberryauction.com, email
contactus@atterberryauction.com, or call

(573) 474-9295. Please contact our office if you
 need assistance with the online bidding process.



**For Terms, Details, Or Bidding
 Assistance, Call Your Real Estate At
 Auction Specialists:
 Atterberry Auction & Realty Co.,
 573-474-9295 or
 Email: contactus@atterberryauction.com**

FOR SALE: In Missouri, fishing cabin on
 private owned lot at family oriented, gated
 campground at beautiful Lake Hanna, off
 Hwy 221, only 4 miles from shopping and fine
 dining. Year round boating, fishing and ATV
 accessibility. INTERESTED? Call or Text
 Wayne@ 573-707-3152.

MASSEY FERGUSON: diesel tractor, 50
 hp. \$5,500. 573-765-4406.

**WANTED, TIMBER TO LOG ON
 SHARES:** Honest, reliable, references. 417-
 533-4607, 417-664-1195.

HARDWARE STORE SELL OUT FORMERLY THARP HARDWARE SATURDAY, MAY 16TH- 9:00 A.M.

Location: From 4-Way Stop in Norwood. Go South on Eagle St. 4/10 mile across RR Tracks. Auction on Right.
WATCH FOR CHADWELL AUCTION SIGNS. Payment System: Cash • Debit Card • Credit Card (Debit / Credit
 Card Fee Will Apply) Checks approved if known by auction company. **VISIT: WWW.CHADWELLAUCTIONS.COM**

25,000 WATT WINCO PTO GENERATOR ON WHEELS



HARDWARE SUPPLIES

Locksmith Key Maker & Keys • Light Fixtures • Pipe Fittings • Hammers • Bow
 Saws • Large Lot of New Tools • Large Lot of Shelving • Gloves • Jumper Cables •
 Stand Light • Large Lot Nuts & Bolts • Nut & Bolt Bins • Concrete Tools • Assorted
 Tape • Roofing Supplies • Large Lot Drill Bits • Glue • Painting Supplies • Assorted
 Saw Blades • Grinding Wheels • Plastic Sheeting • Door Knobs • Sawzall Blades
 • Chalk Line & Chalk • Lufkin Wheel Meter • Caulking • Zip Ties • Large Lot Spray
 Paint • Mailbox • Sand Paper • Lettering • Locks • Door Hinges
 • Jacks • Large Lot Gate Hinges • Shop Rags • Flash Lights
 • Pro Series Construction Light • Fireside Oil Lamps • 33 Gal-
 lon Trash Bags • Nails • Kero- sene • Camp Fuel • Smoke
 Alarms • Tarps • Barrel Stove
 Kit • Batteries • Battery Termi-
 nal Cleaner • Sisal Rope • Antifreeze • De Icer • Hand Cleaner • Ratchet Straps
 • Dryer Vents • Barn Door Latches • Large Lot of Nails • Regulator Hose • Dowel
 Rods • Warm Morning Stove 20,000 BTU (NIB) • Swivel Hitch Pins • Heater Hose •
 Chimney Caps • Lynch Pins • Clevis • Large Lot Electrical Supplies • Stove Board
 • Drop Cords • Breakers • Large Lot Furnace Air Filters • Security Lights • Light
 Bulbs • Chain • Tow Light Kit • Grease Guns • Trailer Balls • 7 way Trailer Hook Up
 • Kitchen Faucet • Bathroom Faucet • Overflow Kits • Kitchen Sink • Drain Traps
 • Plungers • Toilet Seats • Roof Flashing • Vent Registers • Large Lot o Rings •
 115 Volt Utility Pump • Stove Pipe • Stove Dampers • Large Lot Assorted Rope •
 Large Lot Plumbing Supplies • Large Lot Brass Fittings • Die Cast Pulleys • Toilet
 Gaskets • Washer Outlet Box • Ice maker Kits • Drain Bladders • Basket Strainers •
 Pex Waterline • Large Lot of Valves • PVC Cement • Large Lot Repair Couplings •
 Thermocouple • Thermostats • Florescent Light Bulbs • Pipe Insulation • Large Lot
 Monroe Shocks • Commercial Popcorn Machine • Commercial Mop Bucket • Metal
 Grinder • Time Clock • Ceiling Fan
 • Mansfield Toilet • Pressure Test
 Gas Gauge • Carpet & Padding •
 Screen • 1/2hp Monarch Indus-
 trial Pump • Milwaukee Circular
 Saw • New Power Drain Cleaner
 • Copper Piping • 3" Schedule 40
 PVC Pipe • Various Sizes Con-
 duit • 35,000 BTU Ready Heater
 • Antifreeze Tester • Other



RESTAURANT ITEMS

Restaurant Table & Chairs • Ice Machines • Taylor Ice Cream Machine • Hobart
 Potato Peeler • Other

VANGUARD SAFE ON CASTERS

AUCTIONEER'S NOTE: Hardware Store Sell Out most all items will be New in Packages. This is just a generalized list as there are too
 many items to mention. There will also be a large lot of abandoned storage unit items lots of surprises. **Thanks, Shawn**

DRIVER'S LICENSE OR PICTURE I.D. REQUIRED • TERMS: CASH OR APPROVED CHECK **OR**

Chadwell
 Auction Service, LLC
www.chadwellauctions.com

Farm ~ Outdoor ~ Lawn & Garden

Live Traps • Large Lot New Bogg Boots • Dog Food • Rabbit Food • Fly Spray •
 Lawn & Garden Supplies • Weed Killer • Lawn Seed • Brush Killer • Tordon • Hand
 Seeders • Fuel Cans • Hummingbird Feed • Miracle Gro • Pet Feeder & Storage
 Bins • Poultry Feeders • Sportmix Dog Treats • Needles & Syringes • Calf Bottles
 • Buckets • Rabbit Feeders • Rabbit Waterers • Pet Stakes • Cow Bells • Floating
 Tank De Icer • Vet Supplies • Large Lot Hydraulic Fluid • Heat Lamps • Electric
 Fence Wire • Electric Fence Insulators • Par Mak Fence Chargers • Fence Stretch-
 ers • Polybraid Wire • Electric Fence Posts • Hand Tools • Post Drivers • Hog Rings
 • Pecan Picker • Garden Hoses • PTO Adapter • Park Bench • Ariens ST 622 DR
 Trimmer • Troybilt Rear Tine Tiller • Craftsman 7hp 19" Rear Tine Tiller (like new) •
 3pt ATV Seeder • Splash Blocks • Craftsman Shop Vac • 30 Gallon Drum of Wheat
 Seed • Wheel Barrow Tubs • Camping Cots • Other

8X10 STORAGE BUILDING ON SKIDS



LARGE LOT OF STORAGE BUILDING CLEAN OUTS



ROTATING METAL NAIL BIN

Household ~ Antiques ~ Collectibles

Oak Table w/4 Chairs • Desk • Filing Cabinet • Hall Tree • Brass Full Bed Frame
 • Queen Oak Bed Frame • Homeade Tile Top Table w/chairs • Art Deco Waterfall
 Bedroom Suite • Steamer Trunks • Ceramic Molds • Wash Tubs • Old School Desk
 • Push Plow • Push Lawn Mower • Cane Fishing Poles • Prince Albert Tins • Wood-
 en Plane • Hand Grinders • Sythe • Cream Cans • Stimpson True Weight Scales •
 Fairbanks Scales • Suitcases • Hand Saw • Other

Auctioneer:
SHAWN CHADWELL
 417-746-4038 ~ Cell: 417-830-0209
 Ringmen:
John Williams Jr. ~ 417-349-0480
Weston Chadwell ~ 417-349-0727

Clerk:
SHELLY CHADWELL
 Cell: 417-880-8449
 Cashiers:
Shawn Irby • Maria Chadwell
Kati Roberts • Emily Chadwell

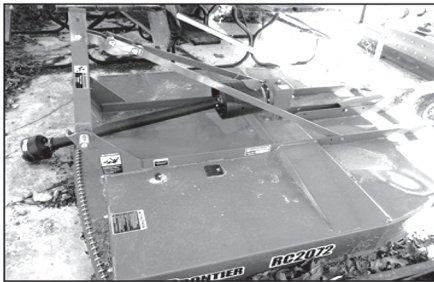
PROFESSIONAL SALES MANAGEMENT
 LUNCH WAGON • APPRAISAL SERVICE • RAIN OR SHINE
 All announcements made day of sale take precedence over any printed matter.
 Not responsible for lost or stolen merchandise. Not responsible for accidents.

Sam CRAWFORD AUCTION SERVICE LLC

As I've sold my RV Park, will sell the following located at Sportsman Boat & RV Storage, 29001 Old Hwy. 65, Warsaw, MO. Watch for Crawford Auction signs.

Saturday, May 23, 2020 - 10 a.m.

TRACTOR - MOWER - MACHINERY - CLASSIC CAR - Misc.



Tractor & Equipment (Sells at Noon)

'17 John Deere 4052 R dsl. 4x4 w/John Deere 440 loader, Hydro trans. Folding ROPS, 3pt quick hitch, 51.5 engine H.P., 34.4 hrs., shedded & like new
John Deere Frontier 3pt 6' brushcutter
John Deere 3pt 6' blade
3pt 6' Box blade
3pt 6' Rock rake
3pt Sprayer

Tools - Misc.

UTV & Car (Sells after tractor)

'18 Polaris Ranger side by side XP1000 dual seats, 4x4, shedded & like new
'57 Chevrolet Belair 2 door 350 auto, 76K miles, leather interior, black in color, lots of chrome, shedded & extra nice

Trailer

16' Bumper hitch utility trailer

Lang smoker/bbq grill on 2 wheel trailer, shedded - good
Bad Boy ZTR mower 60" cut, 747cc motor, folding ROPS, good shape
Country Tuff 35 ton woods splitter, 277cc
Craftsman 7.75 power washer
Craftsman 1.5 hp air compressor
12V 15gal. sprayer
12V pull sprayer
Battery charger
Assorted Elec. power tools
Table top drill press
Chain saw sharpener
Some air power tools
Asst. long handled tools
Floor jack
Extension cords
HD RV power cord
Garden hose
Shindaina backpack blower
Shindaina pole saw
Pole type hedge trimmers

Pull type lawn spreader
Trailer hitch dolly
Trailer hitches
4-5 jackstands
2 Large steel trap; Live trap
5-6 Metal & plastic shelves
Folding plastic picnic table
2 Picnic table frames
Hammock; 5-6 Rods & reels
Asst. lures & tackle
Fish fryer; 2 Cast iron pots
10 gal. crock
Squirrel cage fan
Screws - nails - etc.
Oil - antifreeze
2 6' Alum. step ladders
12' fiberglass step ladder
2 Bar clamps
Fiberglass ext. ladder
Little Giant ladder
Alum. walk board; Pex pipe
Some plastic pipe
Compound Bow & case

New screen door
4-5 Logs chains
Plastic gas cans; 3' Shop fan
Townie & Roadmaster Bikes
16' I beam 4"
150 gal. fuel tank & stand
3pc Metal porch rail
Misc. concrete blocks - lumber - concrete steps
4 Elec./oil heaters
Shampooer
2 Antique metal lawn chairs
Kids doll house approx. 4' tall
5-6 boxes misc. dishes - some antique other misc.

* Major items are like new and really well cared for!

See website for more pictures!

Salem Livestock Auction

Hwy. 32 Salem, MO • 573-729-8880

Over 40 Years in the Livestock Business

Stock Cow Sale

Saturday • May 16th @ 1:00 pm

- 25 Blk Cows, 3-5 yrs., 2 w/ calves, bal. 2nd stage, bred to Blk Bull - COMPLETE SELLOUT!
- 15 Blk Cows, 3-5 yrs., 2nd stage, bred to Blk Bull
- 2 Sim Angus Bulls, 20 months old
- 12 Blk Cows, 3-6 yrs., 2nd & 3rd stage
- 8 Blk Cows, 305 yrs., 2nd stage, bred to Red Angus Bull
- 22 Blk & Char Cows, 305 yrs., 2nd & 3rd stage, bred to Angus Bull
- 1 Blk Angus Bull, 3 yrs.
- 2 Char Bulls, 14 months old, AI Sired
- 82 Blk Cows, 4-7 yrs., 60 w/calves, bal 2nd & 3rd stage, bred to Blk Angus Bull, calves have had 1 round of shots-wormed - cut w/ knife - COMPLETE HERD DISPERSAL
- 3 Blk Angus Bulls, 3-5 yrs.
- 35 Blk & BWf Cows, 5-7 yrs., 16 w/250 lb. calves, bal 2nd & 3rd stage, bred to Blk Bull.
- 1 Blk Bull, 5 yrs.
- 23 Blk Cows, 4-7 yrs. all w/ calves - COMPLETE SELLOUT
- 1 Reg Angus Bulls, 3 yrs.
- 23 Blk Cows, 4-5 yrs., 2 w/calves bred to Reg Blk Angus Bull. The cows are coming up with their 3rd calf, they have been ultra soundend and are 4-5 months bred, Home raised - COMPLETE SELLOUT
- 5 Red Angus Hfns - OPEN

CATTLE SALE - EVERY MONDAY AT 12:00

Feeder Calves to sell at 12:00pm • Butcher & stock cows following

All Consignments Welcome Up Until Sale

Allen Thompson Renee Lauderdale

417-932-4097 417-926-2682

Chuck Thompson Brandon Barton

417-257-5610 417-259-1597

Terms of Sale: Cash or Approved Check!



NEW HOLLAND 7230 DISKBINE: with very rollers. Nice. \$14,500. 573-765-4406.

NEW HOLLAND 472 HAYBINE: field ready. \$1,800. Linn. 573-897-2772.

2017 KIA FORTE LX: approx. 61k miles \$10,000. text218-966-8287.

CHOCOLATE LABRADOR RETRIEVER FOR FREE: 417-532-5944

41 DRILL BITS FOR BIT AND BRACE: \$50 417-457-1023.

Sam CRAWFORD Auction Service LLC



Chance • Sam • Chase

Cross Timbers, Mo.
CrawfordAuctionService.com

417-998-6629



1944 CELEBRATING 75 YEARS 2019
STARTING 75th YEAR OF SALES AND SERVICE



Sam
417-328-9137

Chase
417-399-1904

Chance, CAI
417-298-1751

Tom Poynter
Jack Lancaster

Les Waggoner



MIDWEST CONSTRUCTION

Free Estimates!

- Pole Barn • Garages • Framing
- Remodels • Roofing • Concrete
- Decks & Porches

Contact Abner Glick
417-664-1794

1995 DODGE: 1/2 ton, short bed, 4x4, V-8, 195,000 miles, very little rust, good looking truck, red in color. \$1,500. txt 417-533-0779 for pictures.

WWW.MYWEEKLYTRADER.COM

LARGE PLASTIC HOSE REEL ON WHEELS: \$25. 417-457-1023.

FULL SIZE SERTA: Boxspring and mattress, hollywood frame, wood headboard, bought 2 years ago for guest room, \$40.00 txt 417-533-0779.

BARN WOOD SIDING: 8" & 10" wide. 573-729-7226. www.pineridgerustic.com

CHISEL PLOW: 12FT, Pull-type. \$950 417-322-0161

AUCTION REMINDER: Classic Car/Boat & Misc Tool Auction, Saturday, May 23rd @ 10am. Easterly Auction. Please see our Auction Directory for more information.

DREAM HOUSE - Online, chateauhomes.net Call Marla 573-657-7040

CASH FOR COMIC BOOKS: From 1935-1985 and comic related toys and vintage sports cards. 636-390-2043. Washington, Mo.

OUTSIDE SECURITY CAMERAS (4) SYSTEM: New never used. \$150. 417-217-9656.

CUSTOM SAW MILLING: Lebanon. 417-533-4607, 417-664-1195.

CHARLIE'S FARMS: vegetable & sweet potato plants available, 1 Mile West on Rt66 Lebanon.

ONE PIECE: 70'S desk/chair for young student. \$15 G.C. Cedar Hill, 314-303-7857

JOHN DEERE: 1518 batwing bushog, 1000 pto rpm, \$4,500. txt 417-533-0779 for pics.

Rescheduled

10th Annual Spring

Prairie Grove Amish Mennonite School

CONSIGNMENT AUCTION

*LAST YEAR'S AUCTION PHOTOS



Tuesday, June 2nd

3PM - SALE STARTS
7PM - GUNS

Wednesday, June 3rd

7:30 - 10AM - BREAKFAST
9AM - SALE STARTS
1:30PM - QUILTS

**TAKING
CONSIGNMENTS!**

Suggested Consignments:

Handmade Quilts • Small & Large Antiques • New & Used Furniture • Good Household Items • Hand Tools • Shop Tools • Lawn & Garden Machines & Tools • Farm Machinery • Cattle Equipment • Farm Tractors, Etc.

NO JUNK PLEASE

Auction held on School Grounds

12 WINDING CREEK DR. | BUFFALO, MO | 65622

To consign, or for more information, contact:

417.327.6240	Nathan Kropf (Misc. Equip)
417.733.2600	Vernon Kopf (Tractors & Machinery)
417.327.6348	Eldon Swartzentruber (Titled Vehicles)
417.733.2710	Tobe Hostetler (Furniture, Crafts, Cattle Equip.)
417.327.4670	Nathan Blosser (Lawn, Garden, Flowers)
417.327.7168	Mrs. Ron Eigsti (Quilts)
417.327.7720	Herman Hostetler (Guns)
417.326.9788	Den Blosser (Questions)

THE SOONER CONSIGNED, THE BETTER ADVERTISED!

Living Estate Auction

11902 Ware Rd. Green Ridge Mo. 65332

As we have sold our home & downsizing, we will sell the following at public Auction on:

Saturday, May 16th, 2020 • 10:00am

Directions: Go South of Sedalia on 65 hwy. 9 mi. to West 52 hwy. turn Right (West) on 52 hwy. go 3.5 mi. to E hwy. on Right (North) Take E hwy. 3 mi. to Ware Rd. on Left, to Auction on Left, Watch for signs on Sale day.

2006 F-350 "KING RANCH"

Lariat super duty pickup 6.0 power stroke Diesel (studded heads), 4x4, crew cab, dual wheels, 179K miles, new batteries, like new Michelin tires, B&W fifth wheel ball, spray in bed liner, tuned - set for towing. This is an extremely nice truck, adult driven, ready to go.

2005 YAMAHA 550 "RINO"

Side by side, 4x4, dump bed, radio.

GUNS

Savage 270 (polly stock) Simmons scope, **Marlin** Glenfield mod. 60 .22 cal., **Daisey** BB gun,

HOUSEHOLD & MISC.

"**Summit Furniture**" Oak King size bed & chest of drawers (High quality hand carved accents) this is a true MUST-SEE set, **Samsung** 2 yr old washer & dryer, **Haier** 7.1 cft chest freezer, Leather sofa & matching love seat, Matching pair of upholstered over stuffed recliners, Coffee & end table set, 42" ele. fireplace, dinette set w/4 arrow spindle backed chairs, blonde chest of drawers, maple armoire, 55" & 47" **LG** flat screen TVs, 32" **TCL** flat screen w/roku, 2 - LG blue ray DVD players, wood TV stand w/storage, misc. floor lamps,

HOUSEHOLD & MISC.

lg beveled glass mirror, office chair, HP printer scanner, **Shark** "Professional" sweeper & attachments, **Bissell** carpet cleaner w/heat, **Kitchen Aid** mixer, Portable DVD video player, Lg tile topped patio table w/6 chairs (2 swivel), **Masterbuilt** electric smoker, **Char Griller** BBQ/Smoker, Polly deck box,

SHOP TOOLS & MISC.

2 - roll around tool boxes, lot misc. hand tools, 3/4" socket set, ATV sprayer, 4-jack stands, **Ryobi** power miter saw, bench top drill press, **Black Max** 60 gal. upright air compressor 220v 6 hp, Clark Mig Welder 130EN, **DeWalt** chop saw, **Craftsman** 9" radial arm saw on stand, 6" bench grinder, Low profile floor jack, portable air compressor, hyd. valve & cylinder, motorcycle jack, ATV ramps, 4' **Werner** fiberglass step ladder, lot long handled tools, lg lot gardening items, B&D cordless 18v drill, Ele. **Remington** pole saw, oxygen & propane torch set, lot used treated lumber

Many More Items Too Numerous to Mention

Auctioneer Note: Going to be a great Auction something for everyone. Concessions provided by the Sweet Ole Gals of Benton Co.

CRAIG SCROGGINS & CHERYL RICE



JOHNSON AUCTION SERVICE

"Third Generation Family Tradition since 1942"

Russell "Rusty" Johnson (660) 221-4067 • Phillip Yoder (660) 723-3389

For Full Listing,
Pictures
and Details
auctionzip.com
(ID# 20300)

BUFFALO LIVESTOCK MARKET LLC



276 Hwy 32 West Buffalo, Missouri
417-345-8122

SPECIAL STOCK COW & BULL SALE

Tuesday May 19th 6:30pm

Early Consignment Expecting 850 Cow & Bulls • 29 Black Cows • 15 Calves by side • 14 Will be Early Fall Calves • Bred Polled Herford • 1 Reg Polled Herford Bull 3 yr old
23 Blk • Color Cows Fall Calves
1 Beefmaster Cow w/baby
2 Limosine Cows w/400lb Calves
7 Red Angus Cows Fall Calves
22 Blk Beef Cows Fall Calves 3-5 yr olds
Bred Angus
10 Blk & Beef Char x Cows 5 to 7 yr.
2&3rd stage 1 w/Calf
5 Blk Sim Angus Bred Heifers
1 Herford Bull (Bone Broke Bloodlines)
2 Charolais Bulls 2yr Olds
2 Angus Bulls 2yr Olds

533-2944

Lyle Caselman

588-6185

Leon Caselman

98 MUSTANG 3.8 V6: motor, runs good, over 100,000 miles. \$150. Call 417-531-3605.

QUALITY REPLACEMENT COWS: COW/CALF PAIRS, BRED HEIFERS AND BREEDING BULLS, TRUCKING AVAILABLE. Otterville, 660-619-5190.

2000 S-10 PICK-UP: 169,000 miles. bedliner, automatic, 4 cyclender \$2,800. 417-532-4108.

STAINED GLASS THEATRE COOK-BOOK. \$6.50. RESTAURANT RECIPES OF MISSOURI \$7.50. THE CAKE DOCTOR COOKBOOK. \$6.50. 417-532-2045, Lebanon. (Leave Phone Number).

OLD CROSSMAN: BB rifle, \$100. Old Pioneer Pellet Rifle \$100. 573-327-9068.

ANTIQUE BRASS KITCHEN CABINET HARDWARE: 2 sets of 44. \$50 per set. 636-239-2695

WERNER: 8' fiberglass step ladder, excellent condition, \$50 txt 417-533-0779.

WANTED ESTIMATE FOR ROOF REPAIR: Preston area. 563-529-0612.

**SOUTHWEST AUCTION SERVICE
SPRING EQUIPMENT
CONSIGNMENT AUCTION!**

SUNDAY, JUNE 7TH • 10:00 AM
151 Ste Hwy 76, Rocky Comfort, Mo 64861

**Taking consignments on Farm Machinery, Shop,
Tools, Trucks, Trailers, Outdoor, Sporting Goods, etc...**

SOME EARLY CONSIGNMENTS INCLUDE: Komatsu 25 forklift, Twister Safe skid steer, 7' & 8' 3pt. Brush Hogs, 14' dump trailer, JD 2425 54" zero turn mower, Exmark stand-up mower, Exmark Lazer zero turn mower, Grasshopper 618 SL52 zero turn mower, full set of woodworking tools & supplies, lot of shop tools & equip, generators, pressure washers, farm implements, scaffolding, '05 Sprinter Copper Canyon Camper-29' 5th wheel w/gooseneck adapter.

Semi Truck parts, Harley Davidson accessories, Lots of Plumbing & Electrical, Skid Steer attachments, Lots of Office Supplies & furniture, Paddle Boat, Jon Boat & much more!
Full sale flyer coming soon!

Call 417-652-7540 or email: kathy@swaauction.com
Website: www.swaauction.com

Early consignments will be photographed & advertised!

DOUBLE SET OF WHEEL CHOCKS:

Color is Safety Yellow. \$30. 636-239-2695, Washington

MASSEY FERGUSEN 65 TRACTOR:

Wide front, power steering, runs good, gas motor. \$4,250. 636-239-4124.

VIRUS SALE - mobile home inventory, en-

**tire stock, first come basis, 3 & 4 bedroom,
2 bath, Hurry and call for info 573-499-9993
columbiadiscounthomes.com**

AC 840 DIESEL ARTICULATING

4-WHEEL DRIVE LOADER: \$7,250. 573-765-4406.

BORDER COLLIE: PUPPIES, FIRST

**SHOTS, DEWORMED, READY MAY 20,
\$100, CALL 573-759-2347, 20269 MCR 635,
DIXON.**

DARDEN PROFESSIONAL TIMBER

**HARVESTING, BUYING STANDING
TIMBER: Great prices, improve wildlife
habitat and improve forest health. State
Certified & Fully Insured! 573-247-4808 or
573-739-1122. Salem**

BODY SHOP CUTTING TORCH: TIPS ,

**GAUGES, BOX OF BRAND NEW STUFF
\$500 VALUE Sacrifice FOR \$200 OR
TRADE. 573-734-2822.**

JOHN DEERE 275: Disk mower. Nice.

\$6,250. 573-765-4406.

6'7"x16' FLATBED: utility trailer, wood,

**good tires, several spares, \$700. txt 417-533-
0779 for pics/details.**

PUBLIC AUCTION AUCTION
GOODSON, MO

Due to the Death of the late Norman White we will sell the following Real Estate, Household, Automobile, Guns, Tools and Misc. at the Home Located North of Goodson, Mo. From Halfway, Mo. Take P Hwy. North 7 1/4 Miles to E.R. 210 go North 1 Mile to the Auction on

Monday May, 25, 2020 at 9:00am

WATCH FOR AUCTION COMPANY SIGNS • LUNCH SERVED

FOR MORE PICTURES GO TO: WWW.BRUCEANDLEANAUCTION.COM

REAL ESTATE



Selling 2 1/2 Acres m/l with a 1996 3 Bedroom, 2 Bath Modular Double Wide Home, of approx. 1150 sq. ft. Home has a Metal Roof, 10' X 18' Covered Front Porch, Electric Heat, Central Air and Pellet Stove. Home has mostly hardwood floors throughout, Real Estate has a 500 sq. ft. Shop Building. Real Estate is in Good Repair and Ready to Move in. Come Prepared to Buy as Seller is Motivated to Sell Real Estate will Sell at 12 Noon. For More Info Contact Bruce Le'An Auction Co.



HOUSEHOLD-COLLECTIBLES

- Kenmore Side by Side Refrigerator/Freezer
- Whirlpool 30" Smooth Top Electric Range
- Sm. Frigidaire Refrigerator
- Primo Water Machine
- Tan Dual Recliner
- Rocker Recliner
- Oak Cabinet
- Kitchen Table W.2 Chairs
- Ant. Royal Baker 6 cap Green & Cream Colored Enamel Wood Cook Stove W/Warming Closet
- Handmade Cabinet
- 4' Handmade Timber Bench
- Maple Dresser
- White Chest
- Twin Bed
- White Desk
- Sm. Drop Front Sec. Desk
- 4 Stack new Stack Book Case
- Cedar Chest
- Ashley Sleep Twin Bed
- Pots, Pans and Dishes
- Tru-Scale Tractor & Loader
- Toy Trucks
- School Desk

GUNS-SPORTING CONT.

- 20 AR Clips
- 35 Plus Hunting Knives (Old Timer, Sheffield, Buck, Gerber, Kobalt and others)
- Several Folding Knives
- 2-AR 15 Tools new
- AR Speed Loader
- Several Pairs of Western, Work & Hunting Boots
- One lot of Hunting Clothes med size
- Compound Bow
- Camping Equipment
- Shooting Sticks
- Tacktable Vest
- Handmade Turtle Shell Ammo Bag
- Bushnell Binoculars
- Bushnell Flash Lights
- Several Scopes
- Gun Stocks
- Western Safety Megaphone PA System
- 7 Stack Poly Containers
- Plastic Ammo Boxes
- Gun Cases & Holsters
- Challenger Metal Detector
- Army Helmets
- Police Badges
- Sentry Combination Safe
- Bow Target
- Lrg. Lot of Misc. Hunting & Gun Items
- Propane Turkey Cooker
- Misc. Fishing Items
- Poly Kayak
- Receiver Hitch Carryall

GUNS-SPORTING

- Walther 22 Cal. Semi-Automatic Pistol German Made
- Taurus PT-111 G-2 9MM Brazilian Millennium Semi-Auto Pistol
- Springfield Army USA 9X19 XD-9 4.5 Pistol W/Case, Holster & Extra Clips
- Henry US Survival 22 Cal. Rifle
- Glenfield Semi-Auto 22 Cal. Rifle (painted)
- Remington Model 522 Viper Semi-Automatic 22 Cal. Rifle (poly stock)
- Remington Black Hawk 12 Ga. 3 1/2" Shotgun W/Adjustable Poly Stock & Rib
- Mossberg International Model 715 T Rifle W/Center Point Scope
- Windham Weaponey Model WW15 USA 223 Cal. Semi-Auto Rifle
- Connecticut Valley Arms 45 Cal. Cap & Ball Rifle
- Several 1000's Rounds 22 Ammo
- Several 100's Rounds of 9MM Ammo
- Large Lot of AR 5.56 Clipped Ammo
- 6 Boxes 150 Round Packs Full Metal Jacket
- Lot of 223 Ammo

AUTO-TRAILER-POOL

- 2003 Jeep Grand Cherokee Limited SUV PW, PL, Auto Trans. 4.7 V-8 Motor, 243,000 Miles
- 1993 Single Axle 5' X 9' Bumper Trailer
- Intex 2018 Above Ground 26' X 4' Swimming Pool W/ Sand & Salt Filter

MOWERS-TOOLS-MISC.

- Gravely ZTX Zero Turn Riding Mower 24 HP. 42" Cut 109 Hours
- Craftsman 5 HP Rear Tine Tiller
- Honda 5 HP Power Washer
- Porter Cable 20 Gallon Air Compressor
- Husky 26 Gallon 1 1/2 HP Air Compressor
- Pro Air II Sm. Air Compressor

MOWERS-TOOLS-MISC. CONT.

- Porter Cable Folding Table Saw
- New Cement Mixer W/Motor
- 110 Volt Chicago 90 amp Flex Wire Welder
- 029 Stihl Chain Saw W/Case
- Poulan Wood Shark Chain Saw
- Chicago Chain Saw Sharpener
- Kobalt Compound Miter Saw
- Central Belt/Disk Sander
- Bench Drill Press
- Chicago Cutoff Saw
- Chicago 1" Like New Hammer Drill
- Dewalt Saws all
- Reddy Space Heater
- Dewalt Tool Box
- Bostitch 18 Volt Drill Like New
- Porter Cable 18V Tool Set
- Transit
- Weed Burner
- Shop Vacc
- Several Clamps
- 2-5" Vise's
- Remington Electric Pole Saw
- Milwaukee Roll Around Stackable Polly Tool Box (new)
- Lrg. Pickup Poly Tool Box
- Lot of Wood Working Tools
- Lot of Misc. Hand Tools
- Poly Step Ladder
- 2-Alum Ext. Ladders
- Log Chains
- Copper Wiring
- Live Traps
- Wagon Wheels
- Garden Plow & Tools
- 2 Rolls 5' Tall 2"X4" Wire
- Misc. Lumber
- Gas Cans
- Lawn Chairs
- One Lot of Misc.

AUCTIONEERS NOTE:

This is a nice offering of lots of items on this Auction, with a large lot of the Tools and Sporting items in like new condition. The Guns will not be on site until Sale Day, for more info and Pictures go to the Website.

OWNER: MRS. REVA WHITE

TERMS: Everything sells as is, where is. Nothing is to be removed until settled for. Payment of Cash, Check with Proper ID, or Credit Cards. Auction Company or the Owners will not be responsible for loss of items or accidents. Statements made the Day of the Auction take Precedence over Printed Matter.

SALE CONDUCTED BY **BRUCE & Le'AN AUCTION & APPRAISAL, LLC**
THE AUCTION COMPANY THAT APPRECIATES YOUR BUSINESS

For more information and pictures go to our website at www.bruceandleanauction.com

RONNIE BRUCE - Fair Play, MO
417-777-1685 or 417-654-2214
colronbruce@gmail.com

BRANDON BRUCE
Fair Play, MO

BILLY BRUCE - Stockton, MO
417-399-4800
colbbruce@gmail.com

celebrating over
50 yrs
of Auctions

BRYANT
AUCTION.COM

celebrating over
50 yrs
of Auctions

LARGE GUNS & AMMO AUCTION



SATURDAY, MAY 16TH • 10AM

Bryant Auction, Highway 54, Osage Beach, Mo 65065 (right at the Y Road Exit)

**LARGE SELECTION OF WINCHESTER,
COLT, SMITH AND WESSON,
BROWNING, WEATHERBY, IN YEARS!**

GUNS ARE ALL IN VERY GOOD CONDITIONS FROM AVID COLLECTORS!
WILSON COMBAT VICKERS ELITE, COLT 1875 FRONTIER 6, SPRINGFIELD M1A,
ROCK RIVER AR, BROWNING POCKET, 1911 A1, OVER 25 WINCHESTERS!

OVER

260 GUNS
AT PRESS TIME!

CONSIGN NOW!
573-346-4777
SPACE IS LIMITED!

Bid online before or during the live auction!
Visit: www.proxibid.com/bryantauction

proxibid

COMPLETE LIST OF GUNS AND FULL TERMS ON BRYANTAUCION.COM



AUCTIONS EVERY THURSDAY, 5 PM FURNITURE, TOOLS, VEHICLES
BRYANT AUCTION FACILITY, OSAGE BEACH

BRYANTAUCION.COM



BRYANT
AUCTION.COM
573 346-4777
sold@BryantAuction.com

ANGELA SCHEJBAL | OFFICE MANAGER sold@bryantauction.com
RICK BRYANT | PRESIDENT/AUCTIONEER rick@bryantauction.com
573-346-4777 Office • 573-346-4068 Fax
Facebook Bryant Auction
Mail to: 335 North Frontage Rd., Osage Beach, MO 65065

**Starnes
Auto LLC**

22115 Rt. 66

Lebanon, MO 65536

417.588.3159 Office

417.718.2707 Cell

www.starnesauto.com

1996 GMC SIERRA

GREEN, EXT. CAB, 2WD, 222,XXX MI **\$1,750**

2000 CHEVY S-10

WHITE, 4X4, 144,XXX MILES..... **\$4,200**

2003 CHEVY S-10

WHITE, 4X4, 4 DOOR, 134,XXX MI **\$4,500**

2004 GMC SIERRA 1500

CHARCOAL, REG. CAB, 2WD, 134,XXX MI .. **\$4,750**

2005 CHEVY SUBURBAN

BLUE, 4X4, 202,XXX MILES **\$4,200**

2006 GMC YUKON

WHITE, 4X4, 202,XXX MI **\$4,200**

2012 CHEVY MALIBU

SILVER, 65,XXX MI **\$6,500**

2013 CHEVY IMPALA LTZ

SILVER, 119,XXX MILES..... **\$5,450**

2016 GMC TERRAIN

BLACK, 67,XXX MI..... **\$14,200**

**WE DO
ALIGNMENTS!**

ITALIAN MAREMMA GUARD DOGS:
9 male pups, 8 to 14 weeks old, raised with sheep, very beautiful, quite friendly. \$200 each. 417-682-1746.

ZERO TURN WALK BEHIND MOWER:
Hydraulic drive, electric start, 5ft cut, Kawasaki Motor, and bagger. \$1,500. 636-239-4124.

FENCE! WE STOCK FIXED KNOT10% Off: High tensile, woven, barbed, smooth. Cattle/Sheep panels! Unbeatable Prices!! Ozark Farm, 417-322-0161.

BUFFALO LIVESTOCK MARKET LLC

276 Hwy 32 West • Buffalo, Missouri

May 9th, 2020

Receipts: 1045 Head
Feeders Steady to \$4 higher. Cows Steady

Representative Steers

300-400 @ 160.00 to 196.00
400-500 @ 150.00 to 170.00
500-600 @ 145.00 to 156.00
600-700 @ 130.00 to 145.00
700-800 @ 120.00 to 132.00
800-900 @ 110.00 to 119.00

Representative Heifers

300-400 @ 140.00 to 158.00
400-500 @ 130.00 to 155.00
500-600 @ 112.00 to 140.00
600-700 @ 118.00 to 134.00
700-800 @ 107.00 to 119.50

Feeder Bulls

400-500 @ 128.00 to 155.00
500-600 @ 120.00 to 135.00
600-700 @ 108.00 to 127.00
700-800 @ 105.00 to 122.00
800-900 @ 85.00 to 107.00

Bred Cows

750.00 to 1050.00

Cow Calf Pairs

925.00 to 1325.00

Slaughter Cows

Big Fleashy 1500 lb up
60.00 to 67.00
Med Flesh 55.00 to 63.00
Thin 47.00 to 54.00
XThin 46.00 Down

Slaughter Bulls

1500 lbs to 2100 lbs

High Dressing 94.00 to 98.00
Med Dressers 85.00 to 93.00
Low Dressing 77.00 to 80.00

Special Stock Cow Sale May 19th 6:30pm Tues.
Sheep & Goat Sale May 26th 6pm Tues.
NO SALE MAY 23 MEMORIAL WEEKEND.

MON-WED MARKET REPORT

Listen to KJEL 103.7FM • Lebanon or KY00 99FM • Bolivar

VIEW OUR SALES AT CATTLEUSA.COM

CALL FOR TRUCKING OR ON-FARM VISIT

Lyle Caselman • Owner-Manager
417-345-7876 • mobile 417-533-2944
Leon Caselman • Owner
417-345-4514 • mobile • 417-588-6185
Howard Miller • Owner 417-345-8122

ABSOLUTE EVENING FARM AUCTION

Thursday, May 21, 2020 at 5:30 P.M.

SALE LOCATION: 8697 Lawrence 1050, LaRussell, MO

DIRECTIONS: From Carthage, MO: Take Hwy. 96 east 19 miles to Lawrence CR 1050 road, turn right or south, then proceed 2.5 miles to farm on right. Or from Stotts City, MO, take Hwy. 97 north 3 miles to Lawrence CR 2090, turn left or west, then proceed 1 mile to Lawrence CR 1050, turn right or north, then proceed ½ mile to farm on left. Watch for AUCTION TODAY signs day of auction!



TRACTORS

2005 John Deere 6615, cab & air, left hand reverser, 16 speed, 2-VD, 2-outlets, 3,190 hours, rear wheel weights, 18.4/R38 rear tires, with JD 740 Classic loader, joystick, bucket & bale spike, extra nice
1990 John Deere 2955, 4-post canopy, 8 speed, 2-VD, 2-outlets, 5,188 hours, 18.4/38, nice
1980 John Deere 2840, open station, 8-speed, 2-VD, 2-outlets, approximately 8,000 hours, with JD 148 loader, bucket & bale spike



HAY EQUIPMENT

2018 John Deere 469 Silage Special baler, 853 bales, net & twine, 540 pto, hyd. pickup, like new
2014 John Deere 630 MoCo discbine, center pivot, rubber rollers, 9'9" cut, 540 pto, like new
Krone AM282 3pt. disc mower, 9'2" cut, 540 pto
M&W 8-wheel pull-type V-rake
M&W 4-basket manual fold pull-type tedder
John Deere 660 side delivery rake with dolly wheel
John Deere model 38 semi-mount sickle mower
Bush Hog model 700 bale loader
Bumper Hitch 6-bale single axle hay trailer
3pt. bale unroller for tractor
New Holland model 80 3pt. bale mover
4- hay rings



Due to Covid-19, social distancing guidelines will be in place, so come prepared and please be respectful.



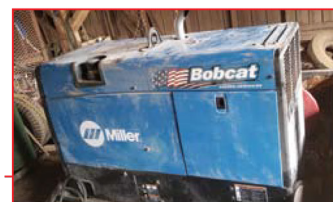
FARM EQUIPMENT

2015 Bush Hog 2815 15' batwing cutter, 540 pto, big gear boxes, deck rings, extra nice
Bush Hog model 307 7' pull-type cutter
Danuser 3pt. post hole digger, 14" auger
2003 Work Saver HDP20 3pt. 10" post driver
John Deere BW 12' wheel disc
Taylor Way 6' pull-type offset disc, 23" blades
John Deere 3-bottom 14" 3pt. plow
Athens 2-bottom disc plow
Massey Ferguson 14' 4-wheel farm wagon



PICKUP & TRUCK

1980 Ford F-600 flatbed single axle truck, 29,000 miles, 370 V-8 gas, 4+2 speed, with 14' wood bed, no hoist
1993 Ford F-250 reg. cab pickup, 4X4, 47,000 miles, 5 speed, 351 V-8 gas, with DewEze 275 bale bed, one owner



ANTIQUE WAGON

1926 Springfield wooden 4-wheel wagon, original spring seat, 38"X 10.5' box size, wheel size- fronts 44", rears 52", brakes, excellent condition, bought new by Mr. Colley's Grandpa

MISC. ITEMS

Miller Bobcat 250 portable welder/generator, 183 hours, 11K generator, with leads, like new
Oxygen & acetylene torch set with gauges & torch on cart
Bumper Hitch 5 ½'X8' single axle trailer with ramp
PNEU-DART compressed air dart gun for livestock, new
10 concrete feed bunks
50 new 6' T-posts
Woods Brothers 30" buzz saw
3-cast iron kettles
Werner 32' aluminum extension ladder

AUCTIONEER'S NOTE

Notice! the whole auction will last less than 1 hour! Reason for Auction"

Mr Colley has sold his farm and is retiring. WHAT AN OPPORTUNITY TO BUT AT AUCTION SOME VERY NICE FARM ITEMS! With the exception of one or two pieces, every item was bought new by the Colley Family! We count it a privilege to offer at auction a small but very nice line of farm equipment. Very few small items. Almost every piece is advertised. SO DON'T BE LATE! Remember, absolute Auction starts at 5:30 PM and every piece SELLS REGARDLESS OF PRICE!! Loading available evening of auction so bring your trailers! Also Friday, May 22, 9-4.

View Pictures @ www.circleeauction.com
Owner: George Colley,
Phone 417-434-1600

Online Bidding Available on Select Items at EquipmentFacts.com

Terms: Cash or Good Check with Photo ID - All Buyers Unknown to Circle E Auction MUST Furnish a Current Bank Letter of Credit if Paying by Check. Not Responsible in Case of Accident or Sickness on Premises. Everything Sells AS IS-WHERE IS with No Warranty Actual or Implied. Not Responsible for Stolen Items or Loss of Items. Nothing Removed Until Settled For. All Announcements Day of Sale Supersede Any Printed Material.

Circle E Auction LLC

Your Farm Auction Specialists!

Auctioneer
Ervin Eicher
417-310-0812

14033 Trego Rd.
Oswego, KS 67356

Auctioneer
Merlin Eicher
417-310-3324



CRAWFORD *Online* AUCTION

WEEKLY ONLINE CONSIGNMENT AUCTIONS

Specializing In
Antique Collections,
Coins, Tools,
Household and
Estate Items

**NOW
ACCEPTING
CONSIGNMENTS!**



AUCTIONS ENDING EACH SUNDAY! BID ONLINE AT:

WWW.OZARKBID.COM



**SHIPPING ON
AVAILABLE ON
MOST ITEMS**

**SELL YOUR ITEMS
NATIONWIDE**

**SAVE TIME, SAVE
MONEY, SHOP AT
ONLINE AUCTION**

- Online
CRAWFORD
Auction Service LLC

Register and bid online
@ www.OzarkBid.com *Ozarkbid*

Contact Chase Crawford, Crawford Auction Service for more info @ 417-399-1904

KUSTER LOGGING

**BUYER of Standing
Timber
Oak and Walnut**

Dozing Now Available

417-259-0047

References Available



WANTED: Walk behind commercial lawn mowers needing repair. 314-550-9314

THREE JOHN DEERE 4440'S: buy choice, 5,000-8,000 actual hours, 2 have new tires, All are quad range transmission. 417-818-9087 or 417-861-2189.

MOBILE HOMESshop on-line..... Call Tuff with questions 573-657-2176 amegamobilehomes.com

REGISTERED HEREFORD & ANGUS BULLS: Home raised, Some Show-Me Select Qualified. 573-701-7828. Belgrade

JOHN DEERE HX-10: Pull-type, 10 ft, brushcutter. \$4,200. 573-765-4406.

AUCTION REMINDER: Living Estate Auction. Saturday, May 16th @ 10am. Johnson Bay Auction. Please see our Auction Directory for more information.

AUCTION REMINDER: Spring Equipment Consignment Auction. Saturday, June 7th @ 10am. Southwest Auction. Please see our Auction Directory for more information.

HANTZ DRYWALL: 35yrs, add-ons and repairs, references. 417-322-0014.

IHC 806 DIESEL TRACTOR: w/Loader, bucket, bale spike with 8ft Brushhog. \$9,800. 573-765-4406.

NEW IDEA: 5410 Disk Mower, \$4,450. 573-765-4406.

SWAP MEET: At Treasures, 1060 Tower Road, Lebanon, June 5th & 6th, Vendors Wanted, 417-532-6666.

1986 OLDSMOBILE CUTLASS: 43,xxx actual miles, loaded, excellent condition. Best offer over \$2,000. 573-873-3440.

AUSTRALIAN SHEPHERD PUPPIES: out of working parents, shots-first round. 573-663-7459.

PUBLIC AUCTION

23575 Farm Road 2035 Crane, Mo.

Saturday, May 16th * 10:00 AM

Location: From Crane take D. Hwy. west 2 miles then right on TT Hwy. 2 miles then left on Mars Hill Rd. 1/2 mile then left 1 mile on E.R. 2035 to Sale. From Aurora take Hwy. 39 south 5 miles then left on TT Hwy. 3 mi. then right on F.R. 1222/2035 2.5 mile to Sale. *Watch for Signs* Lunch & Restrooms Available

**TRACTOR - RTV -
TRAILERS EQUIPMENT
- OUTDOOR - TOOLS
- MOTORHOME -
CATTLE EQUIPMENT -
FURNITURE -MISC.**

Auctioneers Note: Everything is Extra Clean & Well Kept Not many small so don't be late; See our website for a full listing and more info & pictures

OWNERS: DOUG & LINDA HOLLEY



Auctioneer: Larry Foster Galena, Mo
Phone: (417) 723-8329 Cell: (417) 839-6860
www.fosterauctionservice.com
Email: bidnowsold@aol.com

WERNER: 20' (16' working length) fiber-glass extension ladder. \$100 txt 417-533-0779.

WILBER'S FISH BRANCH ANGUS: Registered Yearling bulls, for sale, calving ease, good growth trait, Registered cow/calf pairs also available, 5-9yr old cows. March born calves, can be registered. Mexico, MO, 573-473-6019. www.fishbranch.com

ROME 8FT OFFSET DISK: \$3,750. 573-765-4406.

IHC 1086 DIESEL TRACTOR: Cab & Cold Air. \$8,750. 573-765-4406.

2 KITCHEN TABLES: WITH CHAIRS \$100 OR TRADE. 573-734-2822.

AUCTION REMINDER: 10th Annual Spring Consignment Auction, Tuesday, June 2nd/Wednesday, June 3rd. Please see our Auction Directory for more information.

HAROLD BELL WRIGHT BOOKS FOR SALE. The Eyes of the World, The Calling of Dan Matthews and Their Yesterdays. \$15 each. 417-532-2045, Lebanon. Leave message.

FENCING SUPPLIES - UNBEATABLE PRICES!! Ozark Farm, 417-322-0161

WANTED TO BUY: Broken down J.D. Tractor, diesel, Call 573-768-0068.

ALLIS CHALMERS WD-45: wide-front, factory power-steering, new rubber, good restoration tractor. \$2,400 573-353-6317.

ESTATE AUCTION

SATURDAY, MAY 16 • 10:00 A.M.

Directions: OLD SEARS BUILDING IN SALEM, MO - (Inside Sale) Located between Parts Tek and Town & Country Bank on Scenic Rivers Blvd. Watch for signs.

MOWER • SHOP TOOLS • TRACTOR • MISC.

Small Lot of Scaffolding
Aluminum Truck Box - Loppers
Lots of Good Dry Lumber
Rough Cut Miter Saw - Firewood
Rack Homemade Outdoor Shower
Lattice
16' Utility Trailer, Title
Power King 24-18 Tractor w/
Implements
Sawhorses - Table
Load Master 8x5 Dump Trailer
Title Generac X68000 E Generator
Hitch Haul Carrier
Rigid Tile Cutter
Gravelly 2548 XL Zero-Turn Mower
Cyclone Rake Leaf Vacuum
Wooden Boxes - 2 Shop Vacs
Standup Coleman Cooler
Lawn Seeder - Lots Clay Flower Pots
Receiver Hitch - Small LP Stove
Small Custom Cabinet - Handsaws
Extension Cords - Rope
6 Full Pcs. Drywall - Wooden Bench
DeWalt Miter Saw - Lot Chains
Boomers - Rigid Table Saw
Grizzly 10" Wet Sander
Grizzly Spindle Sander
Grizzly 12.5" Portable Planer Shop
Fan - Grain Scale - Levels Grizzly
10" Drum Sander
Grizzly Table Router
Lot Roofing Paper - Lot Sandpaper
Craftsman Jointer Planer
Some Scrap - Stihl Leaf Blower
Lot Screws & Nails - Oil Cans
Dip Nets - Lot of Drill Bits
Chimney Brush - Belt Sander Delta
Shopmaster Vacuum System
Penn State Dust Collection System
24qt. SS Pot w/Lid - Wrenches

Berger Transit Level - Transit
DeWalt Drills - Ratchet Straps
Delta Grinder on Stand
Some Harley Davidson Collectibles
Wood Clamps - Small Anvil
Welding Supplies
Hobart 135 Welder - Bar Clamps
Husqvarna Weed Trimmer
Copper Tubing - 20# Propane
Bottles Bottle Jack - Router -
Electric Stapler Grinder
Concrete Tools - Paint
Handmade Bathroom Cabinet
Rockwell 3/8 Drill Press
Craftsman Belt, Disc Sander
Grease Gun - Bench Vise
Machete - Nuts & Bolts
Pocket Knives - Clevis'
Splitting Wedges - Toolboxes
Hitch Mounted Deer Hoist
Gas Cans - Buckets
10" & 12" DeWalt Cutoff Blades
4 David Plank Pictures
Towels & Linens
Commercial Series Char-broil Gas
Grill w/Tank Glass Door
5 New Pella Windows, 4, 29x53,
Brown Highchair
Cast Iron Dinner Bell
Nice Small Wood Stove w/Blower
Blankets - Cowhide Blanket
Custom-Made Closet

AUCTIONEER'S NOTE:
Several lots of nice furniture
and other items added to sale!
See you there! - Tom



SALE OF: LATE MARK JANSON

ANNOUNCEMENTS AT AUCTION TAKE PRECEDENCE OVER PRINTED MATTER

WULFF AUCTION

Auctioneers:

Col. Tom Wulff - Col. David Wulff
498 Hwy. B, Salem, MO 65560
573-729-8476

Clerk: Tracy Strange Cashier: Nancy Inman

See Wulff Auctions at www.thesalemnews.com/auctions

TERMS: CASH OR
APPROVED CHECK -
I.D. REQUIRED
NOTHING REMOVED
UNTIL SETTLED FOR

Licensed
Appraisals



RAIN OR SHINE
OWNER & AUCTION
PERSONNEL NOT
RESPONSIBLE
FOR ACCIDENTS AT
SALE SITE

MOHESKY TRUST FARM AUCTION



The Leland Mohesky Trust has sold their farm and will sell personal property of the Trust at public auction on:

Saturday, May 16th, Beginning at 10:00 AM

Location: 1820 Wheeler Road Gerald Mo 63037

Directions: From Interstate 44, take Exit #247-Highway 50 West and go 24.8 miles to Gerald. Turn right on Highway Y, go 1.2 miles, then right on Wheeler to auction. Roads will be marked day of sale.

TRACTORS / FOUR-WHEELER



John Deere 2955 diesel tractor- cab-AC/heat-radio-dual outlets-new rear tires-has a 2846 QT loader w/6' bucket and bale spear-sells as unit, Ford 4000 gas tractor-power steering-single outlets-new rear tires, International 1066 diesel tractor-T/A-good rubber, Ford 1978 #700 truck with 16' Riechers grain bed-hoist, **FOUR WHEELER-2016** Honda Recon ES four wheeler with metal racks-

fencing work box, 30 gallon 12 volt ATV sprayer, deer stands

FARM FRESH CATTLE / HAY (will sell at 11:00 AM)



34 head of Angus cross cattle- (23) Angus cross cows, (10) 400-500 LB Angus cross steers and heifers, **BULL**; 3 year old Registered Gerloff Angus bull **HAY**; 50 round bales mixed grass hay-4'x5'-kept in shed



HAY EQUIPMENT / TRAILERS



New Idea 5209 9' discbine, New Holland 648 round baler -auto wrap-4'x5' bales-electric tie, Kuhn SR110 Speed rake-10 wheel V rake-hydraulic lift, Rhino PT405H 4 basket hay tedder-hydraulic lift, Howse 3 point 8' heavy duty brush hog-3 gear boxes, 3 point 7' blade, 3 point bale spear, **TRAILERS**; bumper hitch 7'x16' stock trailer-new floor, 10' flair side grain wagon with hoist, Case 14' hay wagon, bumper hitch flat bed trailer 6.5'x16'- new floors-ramps, Case running gear 8'x14' hay wagon, New Holland running gear 8'x12' hay wagon, Arts Way 2 ton grinder-mixer



LUNCH WILL BE SERVED BY NATHAN'S SHINING STARS / RELAY FOR LIFE

~AUCTIONEERS NOTE~
Cattle will be pregnancy tested and aged by local vet before auction.

FARM SUPPLIES / FENCING



8 round bale feeders, plastic water tanks, galvanized water troughs, 200 gallon plastic water tank, calf creep feeders, mineral feeders, 16' cattle panels, (15) 10' portable corral panels, mineral tubs, calf pullers, calf buckets/bottles, plastic baler twine, **FENCING**; (2) solar fence chargers, 6' T posts, woven wire, barbed wire, 1/2"x24" hardware cloth-50' rolls,

wooden corner posts, T post driver, Goldenrod fence stretcher, cattle oilers, electric fencers, electric fence supplies, live trap, square tubing, portable air tank, pine lumber, sheets chip board, gas cans, truck tires, water hose, **TOOLS**; Lincoln 225 stick welder, 6 HP Craftsman power washer, 4" bench vise, 6" bench grinder, tool boxes, hand tools, 2 ton floor jack, hand sprayer, rakes, forks, shovels, saw horses, extension ladders, ratchet straps, log chains, binder, building supplies, drain hose, Char Broil BBQ grill

We plan to observe the CDC guidelines and encourage our customers and buyers to do the same to keep a safe environment for all. We encourage everyone to wear a mask and maintain at least 6 feet of distancing between individuals.

VIEW OUR PHOTO GALLERY ON
www.breheauction.com



BREHE AUCTIONEERING SERVICE, LLC
Union, MO: (636) 583-0841 Owensville, MO: (573) 437-3454
www.breheauction.com
LICENSED AUCTIONEERS:
Kerry Brehe 314.954.3798 Josh Brehe 314.603.3129 Harry Engelhart 636.399.3743
Announcements made day of sale supersede all printed material.
TERMS: CASH, PERSONAL CHECKS WITH PROPER I.D., BUSINESS CHECKS WITH BANK LETTER AND NO OUT OF STATE CHECKS UNLESS APPROVED BY SELLER. Email Us At kkauction@sbcglobal.net
Everything sells as is with no guarantees.

Prime Development Land Auction

11:00 AM Saturday, June 13th

Location: 4760 E. F.R. 144,

Springfield, Mo. 65809

Directions: 2 miles East of Jct. Hwy. 65 & Sunshine (D Hwy)



94.3 Acres Prime Residential and/or Commercial Development Land.

Offered in 5 parcels from 5.2 to 25.5 acres. Offered Individually, in any Combination & it's entirety. This Property is located in the Fastest Growth Area in Greene County, just outside Springfield City Limit on East Sunshine!

Tract #1 - 25 Acres. Tract #2 - 24.6 Acres.

Tract #3 - 25.5 Acres. Tract #4 - 5.2 Acres.

Tract #5 - 14 Acres w/ 1630 ft. Of James River Frontage.



Auctioneer: Larry Foster Galena, Mo
Phone: (417) 723-8329 Cell: (417) 839-6860
www.fosterauctionservice.com
Email: bidnowsold@aol.com

AUCTION REMINDER: Personal Property and Farm Auction, Saturday, May 23rd @ 10 am. Please see our Auction Directory for more information.

15' 6" COLEMAN SCANOE: used 3 times, like new condition \$650.00 (green). ~ 17-foot (red) canoe used 4 times, like new condition, \$330.00. ~ 573-241-1351.

OLD LINN CREEK, HA HA TONKA & CAMDEN CO BOOK, "Before the Dam Waters", BY T. VICTOR JEFFRIES. \$5.50 each post paid. To order: 417-532-2045, Lebanon (leave message.)

AUCTION REMINDER: Public Auction. Sunday, May 24th @ 2pm. Johnson Auction. Please see our Auction Directory for more information.

HOLLYWOOD 4-BIKE HITCH MOUNT RACK: Excellent condition, Includes (2) Allen Stabilizer tension bars and keyed alike locking hitch pin and cable. \$175. Conway, 417-718-5347.

AUCTION REMINDER: Development Land Auction. Saturday, June 13th @ 10am. Johnson Bay Auction. Please see our Auction Directory for more information.

R-FAB BINS
(660)281-3078

Bucket Bins
Stationary or Portable

Overhead Bins
Located in Warsaw, MO

PINE LOG SIDING.. www.pineridgerustic.com 573-729-7226.

WANTED PINBALL MACHINES. 573-424-7200.

GERMAN SHEPHERD PUPPIES: born 3-29-20, 2-males, 2-females. best offer or trade. Grovespring, 417-322-0066, leave message

KUHN DISK MOWER: 10ft Nice. \$4,850. 573-765-4406.

VILLA HOMES IN ROLLA: Has NEW and USED Mobile Homes. Call David for info: 573-578-8072.

TRUCK LOAD OF FLEA MARKET & AUCTION ITEMS: \$200 or trade. 573-327-9068

Cheyenne Acres
Horse & Tack
BUY - SELL - TRADE
by Rolla, MO
Call For Directions & Availability
Call Kip
573-368-9402

IHC 1066 OPEN STATION TRACTOR: Nice. \$9,500. 573-765-4406.

SHINGLES: (new in plastic) 26 bundles (8-2/3 square) Owens Corning Sierra gray, \$40.00 a square, can deliver. txt 417-533-0779.

FENCE! WE STOCK ELECTRIC FENCE SUPPLIES: High-Powered fencers! Unbeatable Prices! Ozark Farm, 417-322-0161

12 ACRES GRASS AND CLOVER HAY: 3-miles W of Lebanon 417-532-8048.

BYLER SUPPLY

HAIL, WIND, OR STORM DAMAGE?

the builder's choice!

CALL TODAY FOR NEXT DAY SERVICE!
Call for Details



HEAVY 29 Ga. METAL #1
Limited LIFETIME WARRANTY
29 Ga. & 26 Ga. Painted

CUT TO LENGTH PANELS
GALVALUME METAL UNPAINTED
25 YEAR WARRANTY
#1 Standard Panels, 29 Ga.

\$42⁹⁵



All Buildings Quoted Have #2 Lumber And #1 Galvalume Or Limited Lifetime Painted Metal

All Buildings Are Heavy 29 Ga. Metal, Three 2"x6" T&G Splashboards, All Poles 5"x5" Or Larger, CCA Treated, Fully Trimmed With One 3'x6' Walk-Through Door & One Large Sliding Door.

24x40x10 Galvalume	\$5,797.55
Painted	\$6,401.76
24x32x10 Galvalume	\$5,616.66
Painted	\$6,098.95
30x40x10 Galvalume	\$6,430.69
Painted	\$7,099.08
30x40x12 Galvalume	\$6,886.06
Painted	\$7,598.22
40x60x12 Galvalume	\$11,272.16
Painted	\$12,461.71

Plus Tax. Labor & Delivery Available On All Building Packages.
Prices may vary due to local code restrictions.

DECK PACKAGES AVAILABLE



Roof Is Optional
Additional Sizes & Custom Shapes Available!

8x10 • 8x16 • 10x14 • 12x16

- 1 Set of Steps • Handrails • 2x2 Balusters
- All Deck Boards & Railing Screwed, Up To 4' High, All #2 Treated

Labor & Material INCLUDED!

CALL FOR PRICING!

BYLER BUILDING SUPPLY, LLC
2 1/2 MILES EAST OF SEYMOUR ON 60, 1/4 MILE NORTH AT AUTO SALVAGE WWW.BYLERSUPPLY.COM
877-556-8855 MON.-FRI. 7:30-5 SAT. 8-12 FAX NO. 417-935-2995 417-771-3100
VISIT US AT WWW.BYLERSUPPLY.COM

TYM

**YOU TAKE CARE OF THE MAN POWER.
WE'LL HANDLE THE MACHINE POWER.**
Largest TYM Dealer In Missouri
Up To 6 Year Powertrain Warranty

Spring
SALE

OFFER ENDS MAY 31, 2020



TYM 754 - 4WD, Cab w/AC, Heat, Radio, Quick Attach Loader w/Skid Steer Bucket, Free Bale Spear, Duetz Engine, Has No DEF, Fluid In Tires, 2 Sets Of Remotes, Shuttle Shift Trans - **\$36,500**



TYM 474 Shuttle Shift, 45 HP, Yanmar Diesel Engine, P/S, 4 WD, Quick Attach Loader, **\$21,750 Package Deal** 18' Trailer, 6' Woods Cutter, 6' Woods Blade - **\$25,600**



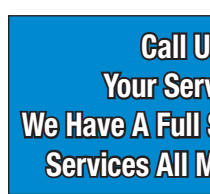
TYM T-574C - 55.1 HP, Yanmar Diesel Engine, 3,314 lb Hitch Lift Capacity, Quick Attach Loader w/Skid Steer Bucket. - **\$29,750 Package Deal** 18' Trailer, 6' Woods Cutter, 6' Woods Blade - **\$33,600**



TYM T-394 - 37.4 HP, 2,646 lb Hitch Lift Capacity, Shuttle Shift Trans., Quick Attach Loader w/Skid Steer Bucket. **\$19,800**



TYM T-264H 26 HP, 4 WD, Hydrostat, Industrial Tires, Quick Attach Loader. **\$14,300 Package Deal** 18' Trailer, 5' Woods Cutter, 5' Woods Blade - **\$14,300**



**Call Us For all
Your Service Needs!
We Have A Full Service Shop That
Services All Makes & Models.**

All Prices Shown include \$3,000 Cash Rebate, No Trade with Rebates.

DIAMOND R EQUIPMENT

Just 4 Miles South Of Westphalia • 573-455-2617
www.diamondrequisition.com
sales@diamondrequisition.com



RTR12 SERIES

ROTARY TILLERS

15-60 HP 42", 50", 58", 66", 74"

- Reverse rotation
- Offset capabilities
- Lower clevis hitch for easy hook-up
- Steel plate upper hitch
- Seven position skid shoes
- 15" Rotor swing
- 4 'C' shaped blades per flange

Getting Chores Done
LAND PRIDE
does that.

3 YEAR
Limited Lifetime
Warranty

www.landpride.com

AGRI-ENTERPRISES
7th Generation Products & Service
1-1/2 Miles South Of Licking, MO On Hwy 63
573-674-2203 • 1-800-653-7152
www.agri-enterprises.com



★ American Made Metal Roofing ★

40 Year Warranty Metal.....\$1.95 (\$60.94 Per Sq)

*29 Gauge 10 Year.....\$1.75 (\$54.69 Per Sq)

****WHILE SUPPLIES LASTS****

29 Gauge #1 Galvalume.....\$1.69.....\$1.39 (\$43.44 Per Sq)
26 Gauge 40 Year.....\$2.25 (\$70.31 Per Sq)



- ★ 17 Colors To Choose From
- ★ 21 Years In Business
- ★ We Manufacture Our Own Metal and Trusses



3 Locations To Serve You!

1239 W. Kingshighway | 1100 Pace Rd. | 35 Killdeer Rd.
Paragould, AR | Pocahontas, AR. | Seymour, MO.
870-810-2494 | 870-609-1900 | 417-952-7143

*Possibly not American made. Prices always subject to change.

Build In A Box

Stud Wall & Pole Barn Kits

	Non-Warranty Metal	10 Year Warranty	40 Year Warranty
24x30x8.....	\$3,350\$3,700\$3,850
30x40x10... ..	\$4,950\$5,350\$5,600
40x60x12... ..	\$9,300\$10,000\$10,200

• Precut Packages Also Available

\$1000 SIGN ON BONUS

ASPLUNDH

TREE EXPERT, LLC

Is seeking **EXPERIENCED** Line Clearance Tree Trimmers,

Bucket Operator and Forepersons

For work in the Lebanon and surrounding areas. **Excellent Benefits:**

401K, Health, Dental, Vision Paid Vacations and Holidays.

Must be a safe and productive worker pass a pre-employment drug test, and have valid driver's license.

\$21-\$24 per hour

Call 636-583-1175 or apply online • Asplundh.ourcareerpages.com

SPECIALIZING IN HEAVY DUTY GATES



Cow Country Gate Sales

Call Randy: 573-569-4754
or Home: 573-539-2528

Located at: Zimmerman Welding
16889 Hwy 52, Barnett, MO

A HELPING HAND TO HEROES.

NOW THROUGH JUNE 30, ELIGIBLE HEALTHCARE PROFESSIONALS GET THE CHEVROLET FIRST RESPONDER DISCOUNT.¹

LEARN MORE ABOUT OUR DISCOUNT PROGRAMS AT CHEVY.COM/DISCOUNTS

2020 SILVERADO CREW CAB LT ALL STAR Z71



FOR ELIGIBLE FIRST RESPONDERS

\$ 6,000 CASH ALLOWANCE
\$ 2,878 FIRST RESPONDER DISCOUNT¹
+ \$ 500 OPTION PACKAGE DISCOUNTS

\$9,378 TOTAL VALUE²

2020 TRAVERSE HIGH COUNTRY FWD



FOR ELIGIBLE FIRST RESPONDERS

\$ 2,500 CASH ALLOWANCE
+ \$ 2,067 FIRST RESPONDER DISCOUNT¹

\$4,567 BELOW MSRP²

2020 BLAZER RS AWD



FOR ELIGIBLE FIRST RESPONDERS

\$ 3,250 CASH ALLOWANCE
+ \$ 2,174 FIRST RESPONDER DISCOUNT¹

\$5,424 BELOW MSRP²

2020 EQUINOX PREMIER AWD



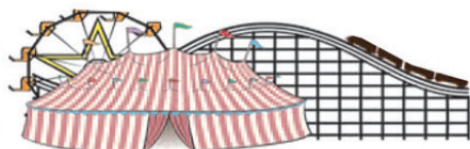
FOR ELIGIBLE FIRST RESPONDERS

\$ 4,750 CASH ALLOWANCE
+ \$ 1,888 FIRST RESPONDER DISCOUNT¹

\$6,638 BELOW MSRP²


FIND NEW ROADS[®]

CHEVROLET 



FAIRGROUND
Auto Plaza
DRIVEN TO SERVE YOU BEST...

100 Fairgrounds Road
Rolla, Missouri
(573) 364-1002

www.FairgroundGM.com 

¹ MUST BE A CURRENT FIREFIGHTER, POLICE, EMT/PARAMEDIC, OR 911 DISPATCHER OR HEALTHCARE PROFESSIONAL (AS DEFINED BY U.S. BUREAU OF LABOR STATISTICS). FIRST RESPONDERS EMPLOYED BY FEDERAL, STATE OR MUNICIPAL GOVERNMENTS MAY BE SUBJECT TO RESTRICTIONS THAT LIMIT THEIR ABILITY TO ACCEPT THIS OFFER. ACCORDINGLY, THIS OFFER IS VOID UNLESS PERMITTED BY APPLICABLE FEDERAL, STATE AND MUNICIPAL LAWS, REGULATIONS, RULES, ORDINANCES, POLICIES, CODES OF CONDUCT, AND OTHER DIRECTIVES OR STANDARDS REGARDING ETHICS AND GIFT ACCEPTANCE BY THE APPLICABLE FEDERAL, STATE OR MUNICIPAL EMPLOYEES. BY ACCEPTING THIS OFFER, YOU VERIFY THAT DOING SO COMPLIES WITH ALL LAWS, REGULATIONS, POLICIES OR OTHER RESTRICTIONS REGARDING ETHICS OR GIFT ACCEPTANCE THAT APPLY TO YOU. NOT AVAILABLE ON SELECT BASE TRIMS OR WITH SOME OTHER OFFERS. TAKE NEW RETAIL DELIVERY BY 6/30/20. ² 2020 SILVERADO CREW CAB LT ALL STAR Z71 TOTAL VALUE BASED ON \$50,625 MSRP. 2020 TRAVERSE HIGH COUNTRY BASED ON \$49,885 MSRP. 2020 BLAZER RS BASED ON \$49,945 MSRP. 2020 EQUINOX PREMIER BASED ON \$42,165 MSRP. 2020 TRAX PREMIER BASED ON \$28,595 MSRP. NOT AVAILABLE WITH SPECIAL FINANCING, LEASE AND SOME OTHER OFFERS. TAKE NEW RETAIL DELIVERY BY 6/1/20. ©2020 GENERAL MOTORS. ALL RIGHTS RESERVED.