

FREE
WEEKLY
TRADER
MAGAZINE

Vol. 26 No. 35

DECEMBER 05, 2019

800-543-8271 • 800-665-8875



Find us on
Facebook

@myweeklytrader

Auctions - Pg. 22

MYWEEKLYTRADER.COM

The Kubota
You Want
Is Waiting For You!



KEEP IT SIMPLE
WITH QUARLES SUPPLY

@quarlessupply

0% APR for **60** MOS
ZERO DOWN ON YOUR NEW KUBOTA

RATES SUBJECT TO CHANGE
*With approved credit. Tax/Insurance not included.
Some restrictions may apply. See dealer for details.



New 26HP Kubota Package Deal!

B2650HSD \$21,405
Financing Price

- NEW Kubota B2650HSD
- 4wd, DIESEL, R4 TIRES
- KUBOTA LOADER
- 4' ROTARY CUTTER
- 4' BOX BLADE
- NEW 16' KODIAK TRAILER W/RAMPS



New 33HP Kubota Package Deal!

L3301HST \$24,155
Financing Price

- NEW Kubota L3301HST
- 4wd, DIESEL, AG TIRES
- KUBOTA LOADER
- 5' ROTARY CUTTER
- 5' BOX BLADE
- NEW 18' KODIAK TRAILER W/RAMPS



New L2501DT w/Loader Deal!

L2501DT W/Loader \$16,195
Financing Price

- NEW Kubota L2501DT
- 4wd, DIESEL, AG TIRES
- KUBOTA LOADER



Kubota

PRICING REFLECTS ALL CURRENT KUBOTA PROGRAMS
*DOES NOT INCLUDE TAX AND INSURANCE

BLENDED RATES MAY APPLY ON NON KUBOTA ITEMS
KUBOTA GIVES YOU MORE OF WHAT YOU WANT!



QUARLES
SUPPLY COMPANY INC.

(417) 777-2391

quarleskubota.com
Just off Business 13 in Bolivar, MO
Open 8:00-5:00 Monday-Friday
Saturday 8:00-12:00

END OF THE YEAR PACKAGES

\$2,500 - \$11,000 LOT

Lindsay Chevrolet & Lindsay Ford

Mon.-Fri. 8 am - 7 pm
Sat. 8 am - 5 pm
Not responsible for typos.
* with approved credit

417-588-7995

West City Route 66
& South Monroe
Lebanon, MO

Bobby Rogers, Manager • Aaron Wehner, Finance • Mike Forner, Steve "Whitey" Helton, Larry Davis, Sales

TRUCKS

QT75625	2004 TOYOTA TACOMA EXT CAB V6, AUTO, SILVER	\$9,750
LT28796A2	2005 DODGE DAKOTA CREW 2WD, BLUE	\$5,900
QT75567	2005 DODGE RAM CREW V8, AUTO, 4WD PURPLE	\$9,800
QT75455A	2006 DODGE RAM ST REG CAB V8, AUTO, 2WD, WHITE	\$5,950
QT75587	2007 CHEVY SILVERADO LT EXT CAB RED	\$8,900
QT75635	2007 CHEVY AVALANCHE LT V8, AUTO, 4WD, MARRON.....	\$11,400
QT75637	2009 FORD F150 REG CAB V8, AUTO, 2WD, RED	\$10,900
LT7321B	2010 GMC SIERRA EXT. CAB V6, AUTO, RWD, RED	\$10,900



QT57685B2 **16 TRACKER 18X60 GRIZZLEY**
60HR, 4 STROKE, MERCURY, TILT & TRIM,
TROLLING MOTOR & FISH FINDER **\$9,700**

CARS

QC75331	2003 FORD T-BIRD V8, AUTO, COUPE, GRAY	\$8,900
QC75528A	2005 CHEVY MONTE CARLO LS V6, AUTO, GRAY	\$5,900
LC7408A	2008 CHEVY IMPALA LS V6, AUTO, FWD, BLUE	\$6,400
LC6943A	2009 CHEVY IMPALA LT V6, AUTO, FWD, MAROON.....	\$7,900
QC75533	2010 FORD TAURUS SHO V6, AUTO, FWD, BLACK	\$9,200
LC28856A	2012 BUICK LACROSSE 4CYL., AUTO, FWD, BROWN.....	\$8,900
QC75632	2012 CHRYSLER 200 LIMITED 4CYL, AUTO, FWD, BLUE.....	\$8,900
QC75616	2012 HYUNDAI VELOSTER COUPE, 4CYL, 5SPD, RED	\$10,350
QT75509	2012 KIA SOUL 4CYL, 5SPD, FWD, BLACK	\$5,900
QC75547	2012 CADILLAC CTS V6, AUTO, FWD, SILVER.....	\$7,900
QC75569	2013 FORD FUSION 4CYL, AUTO, FWD, WHITE	\$8,200
QC75584A	2013 FIAT 500 POP 4CYL, AUTO, FWD, BLACK	\$7,900

CARS

LC28870A	2013 CHEVY CAMARO LS V6, AUTO, BLUE.....	\$10,400
LC28795	2013 CHEVY IMPALA LS V6, FWD, BLACK	\$9,800
LC28803A	2014 CHEVY IMPALA LS V6, AUTO, WHITE.....	\$8,800
LC28713	2014 CHEVY CRUZE LS 4CYL, AUTO, RED	\$8,800
LC28811	2014 NISSAN VERSA S 4CYL, AUTO, SILVER	\$6,700
LC28803A	2014 CHEVY IMPALA LS V6, AUTO, FWD, WHITE	\$8,800
QC57473A	2015 FORD FOCUS SE 4CYL, AUTO, FWD, RED	\$8,900
QC75574A	2015 CHEVY CRUZE LT 4CYL, AUTO, FWD, GREEN	\$9,900

SUVS & VANS

QT75614	2006 HUMMER H3 5CYL, AUTO, 4WD, BLUE	\$9,400
QT75566	2007 TOYOTA RAV 4 SPORT 4CYL, AUTO, FWD, WHITE	\$8,900
LT7471D	2008 CHEVY TRAILBLAZER V6, AUTO, 4WD, MAROON	\$6,400
LT28801A	2008 BUICK ENCLAVE CXL V6, FWD, DARK CRIMSON	\$6,900
QT57457B2A	2011 TOYOTA SIENNA LE V6, AUTO, FWD, TAN	\$8,700
QT75609A	2011 FORD ESCAPE XLS 4CYL, FWD, WHITE	\$7,150
LT28824	2012 CHEVY TRAVERSE V6, AWD, SILVER	\$10,600
QT75539A	2013 FORD ESCAPE SEL 4CYL, AUTO, 4WD, WHITE	\$11,700
QT75366A	2013 SUBARU OUTBACK PREMIUM 4CYL, AUTO, BLUE	\$7,900
QT57729B	2013 FORD FLEX SE V6, AUTO, FWD, BLACK	\$11,900
QT57646B	2013 JEEP PATRIOT SPORT 4CYL, AUTO, 4WD, GREEN \$	9,400
QT75628	2013 FORD ESCAPE SE 4CYL, AUTO, FWD, MARRON	\$10,900
LT28753A	2014 FORD EXPLORER 4CYL., AUTO, 2WD, SILVER	\$10,700
QT75641	2014 MITSUBISHI OUTLAND 4CYL, AUTO, FWD, BLACK	\$8,600
QT75640	2014 DODGE JOURNEY SE 4CYL, AUTO, FWD, BLUE	\$8,900
QT75495A	2016 JEEP RENEGADE LATITUDE 4CYL, 5SPD, 4WD, GRAY	\$13,400

WWW.LINDSAYAUTOGROUP.COM

#1 Selling Farm Tractor in the World

Better traction, stability & control

"Get Superior performance with a Mahindra"

- Potential Tax Savings
- Many Financing Choices

.99%* For 60 Months

1.99%* For 72 Months

2.99%* For 84 Months

OR
Special **\$4,000+**
Aged Discount

PLUS
Finance at
5.59%*
For 60 Months



Mahindra 1533

Cab, shuttle shift or hydrostat, 4WD, with loader

* Must Qualify and finance with Mahindra. + On select models Limited Time offer. See deals for details.

www.agri-enterprises.com

For Outstanding Products & Service

AGRI-ENTERPRISES

1-1/2 Miles South Of Licking, MO On Hwy 63
573-674-2203 • 1-800-653-7152

Mahindra
Rise.



40FT TANDEM GOOSENECK DUALY TRAILER: \$6,000. 573-765-4406.

2005 INTERNATIONAL EAGLE: double bunk, good truck, local owner, auto, 500Cummins, all re-conditioned, have paperwork. \$14,000 will take trade. 417-679-4355.

AUCTION REMINDER: Wednesday, December 18th, @ 10am. Wheeler Auctions. Please see our Auction Directory for more information.

TAKUCHI 135 DIESEL EXCAVATOR: W/ hyd thump. \$15,000. 573-765-4406.

MAYTAG EXTRA LARGE CAPACITY: Heavy duty, 2 speed washer, white. \$100. Washington, 636-239-2695.

AUCTION REMINDER: Sunday, December 8th @ 11:30am, Wulff Auction. Please see our Auction Directory for more information.

TIM'S USED CARS

(573) 341-3828 • 1334 South Bishop (Hwy. 63) • Rolla, MO
Next to Hwy. CC • www.tims-used-cars.com

2018 RAM 3500 CREW CAB
DUALY, 4X4, TRADESMAN, 6.4 HEMI, AUTO, POWER EQUIPPED, 93,XXX MILES.
ONLY \$33,900

2013 RAM 1500 SLT, BIG HORN CREW CAB
4X4, 5.7 HEMI, POWER EQUIPPED, 161,XXX MILES.
ONLY \$16,900

2013 RAM 1500 SPORT CREW CAB
4X4, 5.7 HEMI, POWER EQUIPPED, LEATHER, 153,XXX MILES.
ONLY \$19,900

2014 RAM 1500 TRADESMAN QUAD CAB
4X4, 5.7 HEMI, POWER EQUIPPED, 152,XXX MILES.
ONLY \$14,500

LARGE SELECTION OF CARS, TRUCKS, SUVs & VANS!

USED EQUIPMENT

- Mahindra 5525 w/loader. Less then 100 hours.
- Mahindra 6075 w/loader, Cab, 4WD, Remainder 5 -1/2 Year Powertrain Warranty. Low Hours
- 920 Cat Wheel Loader
- Gehl Silage Chopper • 5', 6' & 7' Brush Cutter
- JD 10' Cultipacker • 3pt. 3 bottom plow
- 12' Spring Tooth Harrow 3pt. 2 Disc Disc Plow
- Other Misc Equipment

For Outstanding Products & Service

AGRI-ENTERPRISES

1-1/2 Miles South Of Licking, MO On Hwy 63
573-674-2203 • 1-800-653-7152
www.agri-enterprises.com

HORSE DRAWN BUCKET CART: plywood body, wooden wheels. \$650obo. Buckboard, 8"x32" pneumatic tires. \$575. Niangua, 417-880-0025.

Offering the Area's LOWEST METAL PRICES!



Custom Homes • Metal Roofs

Pole Barn Packages

24'x32'x10' materials only	\$5,075	30'x60'x10' materials only	\$8,600
24'x40'x10' materials only	\$5,775	40'x60'x12' materials only	\$11,525
30'x40'x10' materials only	\$6,550		

Plus Sales Tax And Delivery.
Labor available at additional cost.
Call for quote.

Compare Before You Buy.

We Use Only The **Highest Quality** Materials!



ALL MATERIAL PACKAGES INCLUDE...

- ✓ #1 Yellow Pine Lumber
- ✓ #1-40 Yr. Painted
- Metal w/Screws
- ✓ 1-10' Overhead Door
- ✓ 1-36" Entry Door

Fully Insured



PORTABLE BUILDINGS

Rent to Own
No Credit Check

29 Gauge
#1 PAINTED METAL

- ★ Lifetime Warranty - \$70.00 Sq.
- ★ 40 Year Warranty - \$67.00 Sq.
- ★ 20 Year Warranty - \$64.00 Sq.
- ★ 25 Year Galvalume - \$54.00 Sq.

Labor prices will be higher in locations over 75 miles from Marshfield, MO

1049 SCHOOLVIEW DR.
Marshfield, MO



Marshfield BUILDINGS

www.marshfieldbuildings.com



417-859-7744

Toll Free 1-866-859-7733

CHIP BOX DUMP TRUCK: 1997 GMC-6500, very good condition. Mtn Home, ARK, 480-313-5758.

AC 840 DIESEL ARTICULATING 4-WHEEL DRIVE LOADER: \$7,250. 573-765-4406.

AUCTION REMINDER: Public Auction. Friday, December 13th @ 7pm. East Central Show-Me Select. Please see our Auction Directory for more information.

FOR SALE DARK OAK CURIO CABINET: \$170. 1-636-388-5810, Leslie.

DANUSER HYD. POST DRIVER: Good. \$1,950. 573-765-4406.

OLD LINN CREEK, HA HA TONKA & CAMDEN CO BOOK "Before the Dam Water", by T. Victor Jeffries. \$3.50 plus \$2 if mailed. 417-532-2045, Lebanon.

TAYLOR TRUCKS & EQUIPMENT

417-924-2026 • 2676 Hwy. 5, Mansfield, MO

Bush-Whacker
Heavy Duty Rotary Cutter



END OF SEASON CLEARANCE ON 5' AND 6' ROTARY TILLERS

New Mowers! Bush-Whacker, Big Bee

Farm Tires, PTO's & Parts for Rotary Mowers,
Storage Containers & Dry Vans - 20' - 53'

Farm Tractor Implements

Plows, Discs, and More Skidsteer Attachments: Pallet Forks,
Buckets, Grapples, Hay Spears & Tree Sheers - RR Ties

TRAILER PARTS & REPAIR

NEW SEMI TIRES - DRIVE & STEER

We Invite You To Come By & Look Us Over! Located 2.5 Miles North Of Mansfield, MO On Hwy 5

2012 DODGE RAM: 3/4 Ton, crew, gas, rare long bed, loaded, 189,000miles. \$11,700obo. 417-399-6383.

INSIDE COMPLETE VICTOR WOOD FURNACE: Heat exchangers and inside fire-box all rebuilt. \$200. 573-729-5808.

WANTED, TIMBER TO LOG ON SHARES: Honest, reliable, references. 417-533-4607, 417-664-1195.

LAWN DUMP CART AND LAWN AERATOR: both pull behind. \$200 for both. 636-239-4124.

WEEKLY TRADER MAGAZINE

Vol. 26 November 28, 2019 No. 34

Published By

Lebanon Publishing Co. Inc.
PO Box 192, Lebanon, MO 65536

417-532-2800

www.myweeklytrader.com

Everything advertised in this publication must be made available for purchase, use or patronage without regard to race, creed, color, sex, age or national origin of the purchaser, user or patron. The Publisher will not be responsible for misinformation, misprints, typographical errors, etc. Opinions expressed are not necessarily those of the Publisher. All rights reserved. No part of this material may be reproduced by any means without permission in writing from the Publisher. We reserve the right to refuse any ad if we deem necessary. Our list and map indicate counties in which the Weekly Trader is delivered. The magazine is not necessarily placed in all communities in a particular county. A list of all retail drops for a county may be obtained by contacting the Weekly Trader office at PO Box 192, Lebanon, MO 65536.

Which Kubota Is Right For You?

Kubota *THE RIGHT EQUIPMENT IS RIGHT AROUND THE CORNER.* **Kubota**

L2501 DT PACKAGE DEAL



25HP Kubota diesel engine***
4WD, Ag Tires, 18' Trailer,
5' Box Blade, Kubota Loader,
5' Land Pride Brush Hog,
6 Year Power Train Warranty****
**\$0 Down, 0% A.P.R.
for 60 months****
\$20,995

**ONLY \$249*
per mo W.A.C.**



**Sale Ends
12/31/19**

L3901 DT PACKAGE DEAL



39 Kubota diesel engine***, 4WD, Ag Tires, 18' Trailer, 5' Box Blade, Kubota Loader, 5' Rotary Cutter.
6 Year Power Train Warranty****
**\$0 Down, 0% A.P.R.
for 60 months****
\$24,795

L3301 DT PACKAGE DEAL



33 Kubota diesel engine***
4WD, Ag Tires, 18' Trailer, 5' Box Blade, Kubota Loader,
5' Land Pride Brush Hog,
6 Year Power Train Warranty****
**\$0 Down, 0% A.P.R.
for 60 months****
\$23,995

ALL-NEW GAS-POWERED RTV-XG850 SIDEKICK

POWER • PERFORMANCE • HANDLING • STYLE

48HP***, 40 mph transport speed, gasoline engine.
* Price per month does not include insurance and sales tax if applicable.
Includes \$1,000 rebate and 3.99% APR financing for 60 mo. with approved credit**
Other purchase and finance options available. See dealer for details.

L4701 DT PACKAGE DEAL



47 Kubota diesel engine***, 4 cyl., 4WD, Ag Tires, 18' Trailer,
6' Box Blade, Kubota Loader, 6' Land Pride Rotary Cutter.
6 Year Power Train Warranty****
**\$0 Down, 0% A.P.R.
for 60 months****
\$30,995



Get unmatched Kubota quality. Kubota designed, engineered and built. More package deals available.

Visit Us In TWO Locations!

8665 Outer Road, Mtn. Grove
417-926-5454 • 877-926-5458

4973 W. US Hwy. 160, West Plains
417-256-0420 • 800-766-0420

** \$0 Down, 0% A.P.R. for 48 months. Qualifying Equipment: RTV-XG850. \$0 Down, 0% A.P.R. financing for up to 48 months on purchases of select new Kubota RTV-XG850 equipment from participating dealers' in-stock inventory is available to qualified purchasers through Kubota Credit Corporation, U.S.A.; subject to credit approval. Some exceptions apply. Example: 48 monthly payments of \$20.83 per \$1,000 financed. Offer expires 12/31/19. See us or go to KubotaUSA.com for more information. ** \$0 Down, 0% A.P.R. for 60 months. Qualifying Equipment: BX, B, L, MX and M, MH(M7), RB, DMC, DM, RA and TE Series. \$0 Down, 0% A.P.R. financing for up to 60 months on purchases of select new Kubota L2501 DT, L3301 DT, L3901 DT or L4701 DT equipment from participating dealers' in-stock inventory is available to qualified purchasers through Kubota Credit Corporation, U.S.A.; subject to credit approval. Some exceptions apply. Example: 60 monthly payments of \$16.67 per \$1,000 financed. Offer expires 12/31/19. See us or go to KubotaUSA.com for more information. *** For complete warranty, safety and product information, consult your local Kubota dealer and the product operator's manual. Power (HP/KW) and other specifications are based on various standards or recommended practices. **** Only terms and conditions of Kubota's standard Limited Warranty apply. For warranty terms, see Kubota's Limited Warranty at www.KubotaUSA.com or authorized Kubota dealers.

HOLLYWOOD 4-BIKE HITCH MOUNT RACK: Excellent condition, Includes (2) Allen Stabilizer tension bars and keyed alike locking hitch pin and cable. \$175. Conway, 417-718-5347.

SUGAR PLUM COLLECTION: Not separate. \$50. 417-288-9641.

ROME 8FT OFFSET DISK: \$3,750. 573-765-4406.

COZY SECLUDED ONE BEDROOM HOME: in gated area, includes all utilities except telephone, trash and satellite, 7 miles south of St. James. \$450/month 573-699-4351

CDL IN ONE DAY!!: Family owned and operated, Insured, Over 10 years of experience, Training available for all states, Short wait time for appointments, Contact us today to schedule your appointment!! **CREDIT CARDS EXCEPTED.** (573-353-2853).

WWW.MYWEEKLYTRADER.COM

BUTLER LOGGING

WHEN QUALITY COUNTS

ALL SPECIES OF TIMBER REFERENCES AVAILABLE

SAM BUTLER OWNER 417-448-9323

1984 CHEVROLET MOTOR HOME: trade for trucks. Bismark, 573-734-2822.

1950's KIDS WESTERN THEME TOY BOX: Has Chuckwagon, Cowboy and Cactus on it, approx. 20"x30". \$65. 573-364-7465, Rolla.

John Deer 2010 Track Loader, Recent Overhaul **\$6,800**

David Brown 1212 Diesel w/Attached Loader, 2 Sets of Remotes, 65 HP **\$5,900**

Ford 8N Sherman Transmission, Good Condition **\$1,800**

Generator PTO 15,000 **\$500**

Generac Generator 4,000 **\$350**

STARR TRACTOR • ROGERSVILLE
417-753-2747 • 417-766-1991

TRAILER PULLER 7.3 POWER STROKE: 2001, F250-XL, automatic, regular cab, 2WD, excellent. \$5,175. 417-399-6383.

Cowtown Express Car Wash

Highway 63 South, Rolla, MO
Call Wade 573-368-1430 Or 573-426-2500



Sale Price \$4,950

NEW Winchester Star & Bale Trailers
Powder Coated 18+2, 7,000 Axles
www.cowtownusainc.com

5055E JOHN DEERE TRACTOR: Open station, MFWD, H240 loader, like new, 109hours, private owner. \$26,500. Consider offers. 417-599-8089.

**Benton Co
1,425 Acres**

\$2,900,000⁰⁰

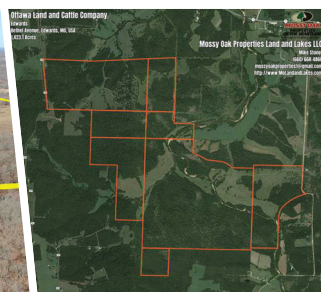
**Here is 3 Bar Ranch
located in Edwards, Mo.**

It is 1425 Acres with Rolling Hills, Creek Bottoms and Great Timber. The Ranch has Ran an Average of 250-300 Steers Every Year. Plenty of Water with Little Deer Creek Running through the Property and Several other Creeks, Ponds and Springs. Good Fencing with some Cross Fencing. One Well and Electricity Available on the Property. Great Road System with Over 5 Miles of Trails throughout the Farm. Gravel Road Access on Bethel Ave and Paved Road Frontage on Hwy VV on the West Side. This is a Great Whitetail Deer and Turkey Hunting Property, I saw Several while Touring the Ranch. Benton County is Always Towards the Top of the List for Deer Harvest Numbers. There is a Concrete Camper Pad along the Creek for your Camping Needs. Plenty of Places to put in some Great Food Plots. There are some of the Prettiest Views on this Ranch to Build a House and Overlook the Ozarks. It would Make a Great Horse Ranch with All of the Equestrian Trails Already in Place. Only a Few Minutes to the Lake of the Ozarks, and 30 Minutes to Truman Lake. Springfield, Mo Airport is 1 1/2 hours away. Just Right up Bethel Rd is Another 2118 Acre Ranch that is for Sale, if Someone Wanted to Put a Huge Ranch Together,

NOW Is The Time.

Where Else in Missouri can you put a 3500 Acre Ranch Together?!!!

**FOR MORE INFO CALL
MIKE STONER @ 573-774-9775**



**We Specialize in Selling Agricultural
and Recreational Farms!**

CALL US TODAY!!!



**Rolla Office:
12647 S. Hwy 63, Rolla
573-308-4868**

**Cole Camp Office:
14981 Centerline Ave,
Cole Camp 660-668-4868**

**MOlandandLakes.com
660.668.HUNT**

DARDEN PROFESSIONAL TIMBER HARVESTING, BUYING STANDING TIMBER: Great prices, improve wildlife habitat and improve forest health. State Certified & Fully Insured! 573-247-4808 or 573-739-1122. Salem

AUNT JEMIMA COLLECTION. \$200 All. 573-327-9068.

WR CASE & SONS Cookbook & Historical Companion. \$7.50. 417-532-2045, Lebanon.

LARGE VICTOR WOOD FURNACE: and late model 3ton Air Conditioner. \$950. 636-239-4124

AUCTION REMINDER: Church Building or Home Online Auction, bidding ends Wednesday, December 11th at 12:30 pm. Atterberry Auctions. Please see our Auction Directory for more information.

2011 OUTBACK AWD: 4cyl, auto, loaded, 153,000miles. \$7,750obo. 417-399-6383.

24 cu ft UPRIGHT FREEZER and 22 cu ft Chest Freezer. \$150 each OBO. Hartville, 417-349-1386, 417-531-3311.

LIONEL TRAIN SET: Steam engine, tender, caboose and other car, track and transformer. \$195. 573-364-7465, Rolla.

1 COMPLETE SET OF SERVICE MANUALS: parts, electrical, engine and fuel for International Cub Cadet series 82 lawn tractors. \$65. 636-239-2695.

Is Your Log Home **UGLY?**
Starting To Look
Professional Staining & Repair
(Log Homes & Wood Siding)
Call **Pine Ridge Rustic**
Log Home Building Supplies **573-729-7226**
www.pineridgerustic.com



R & A FARM LLC
Trailer Repair
►Welding ►Wiring
►Portable Welding
417-664-5954 • 30566 HWY BB LEBANON
FB: R&A FARM LLC • ROBERT BARBEAU



PINE LOG SIDING.. www.pineridgerustic.com 573-729-7226.

3 DOZEN MALLARD DECOYS: Mostly Flambeau, some new, weighed and ready to hunt. \$40 per dozen. Buffalo, 417-345-4562.

52 FORD TRUCK CAB: Good Condition. Tecumseh, 417-683-7843

MASSEY FERGUSON: 231 diesel tractor, low hours. \$5,500. 573-765-4406.

BALES GOOSENECK 14' DUMP TRAILER: w/ramps and tie-downs. 573-437-2944, Owensville.

VILLA HOMES IN ROLLA: Has NEW and USED Mobile Homes. Call David for info: 573-578-8072.

LOT OF 72: "The Antiques Journal" Magazines, years- 1974-75, 1978-80, Mar-Dec 1977, Jan-Feb 1981. \$60 for all. Grovespring, 417-533-9484.

AUCTION REMINDER: Pre Vac Sale, Friday, December 6th @ 1pm. Goat, Sheep & Hog sale, Dec 10th @6pm. Stock cow, Friday, December 13th, 6:30pm. Cattle sale every 2nd Tuesday of Month @ 6pm. Salem Livestock. Please see our Auction Directory for more information.

AUCTION REMINDER: Online Auction, bidding ends Wednesday, December 10th at 12:30 pm. Atterberry Auctions. Please see our Auction Directory for more information.



★ **American Made Metal Roofing** ★

40 Year Warranty Metal.....\$1.99 (\$62.18 Per Sq)



*29 Gauge 10 Year\$1.79 (\$55.93 Per Sq)

****While Supplies Last****

29 Gauge #1 Galvalume \$1.69....\$1.39 (\$43.44 Per Sq)

29 Gauge 40 Year *Saddle Tan*\$1.69 (\$52.81 Per Sq)

Building In A Box

Stud Wall & Pole Barn Kits

Non-Warranty Metal	10Year Warranty	40Year Warranty
24x30x8.....\$3,350\$3,700\$3,850
30x40x10.....\$4,950\$5,350\$5,600
40x60x12.....\$9,300\$10,000\$10,200

Pre-cut Packages Also Available

- ★ 17 Colors To Choose From
- ★ 20 Years In Business
- ★ We Manufacture Our Own Metal and Trusses



3 Locations To Serve You!

6952 E. 7th St. Joplin, MO. 417-317-7961
1100 Pace Rd. Pocahontas, AR. 870-609-1900
35 Killdeer Rd. Seymour, Mo. 417-952-7143

*possibly not American made

BIG TEX 140T
OVER THE AXEL, POWER TILT,
8.5 FOOT WIDE, 24 FOOT LONG, 7K AXELS.



Like Us On **facebook**

JIM'S Motors TRAILERS
TRUCKS and TRAILERS
Great Service! Great Prices! Since 1957

I-44 at Exit 208 • Cuba, MO
www.jimsmotors.com
(800) 897-9840

1979 CHEVY PICK-UP:2WD, Custom 10, 350, V-8, Automatic, new interior, new tires, new bed liner and cover, new rear bumper, runs and drives like a dream. \$7,500. 573-934-0014.



DECEMBER 26TH & JANUARY 2ND HOLIDAY ISSUE:

We are taking a week off to be with our families, so this special two-week issue will be the last chance to advertise in 2019!

Display Advertising Deadline: Wednesday, December 18 at Noon

Classifieds Deadline: Friday, December 20 at Noon

Delivery: Thursday, December 26 & Friday, December 27

THERE WILL BE NO JANUARY 2ND ISSUE PUBLISHED!

Merry Christmas & Happy New Year!

T WEEKLY
TRADER
MAGAZINE

417-532-9131 • 800-665-8875 • 100 E. Commercial, Lebanon, MO

WWW.MYWEEKLYTRADER.COM

Rustic Ozark Log Cabins, LLC

BEAUTIFUL CUSTOM HANDCRAFTED NATURAL LOG HOMES



Native Missouri Yellow Pine Logs
 • Our Log Homes Exceed the Energy Efficiency of an R-24
 • Low to NO Maintenance Log Homes!

Turn Key Packages
 Starting at \$110 Per. Sq. Ft.
 Get only the Log Skeleton
 \$25-30 Per. Sq. Ft.

• Complete Material Packages • Builders and Do It Yourself?
 • In-House Designing We help one and all!

FREE ESTIMATES!
 • We Guarantee our Workmanship

TREES

• The Renewable Natural Resource! GO GREEN-GO LOG!

O: 417-533-0644 C: 573-247-7161
Lebanon, Mo • www.RusticOzarkLogCabins.com

SMALL SQUARE BROME HAY: 70LB, horse quality, delivery available. 417-532-6686, 417-531-6686.

FIREPLACE INSERT: Very heavy duty, or free standing. \$150. 636-239-4124.

1962 IMPALA SS: Anniversary Gold, Show ready, all new, 1956 Chevy Shortbed, white, Show ready, all new. De Soto, 314-805-4838.

ROUND HAY BALES: Alfalfa grass mixed. \$35-\$40. Long Lane, 417-345-5634

JOHN DEERE 3020 TRACTOR: W/John Deere 148 Loader, good rubber, power shuttle, strong running diesel tractor, stored inside. \$11,500obo, 6' BUSH HOG CUTTER, new blades, good condition \$900. Lebanon, 573-247-7161, 417-533-0877.

Don we now our worst apparel...

UGLY CHRISTMAS SWEATER CONTEST

Now until December 24th
 come in dressed to unimpress
 with your **UGLIEST Christmas Sweater**
 and get photographed for a chance to win in store gift card
1st place \$100 • 2nd place \$50 • 3rd place \$25
 Winner will be announced on December 26th

UNIQUE-A-TOKE 42 CAMDEN COURT SE, CAMDENTON MO 65020
 573-434-2788 • Online - UNIQUE@TOKE.COM

Wright Spray Foam Insulators, Inc. Commercial & Residential
Call for FREE Estimates!

Mose Gingerich 417-746-1953
B. Eli Yoder 417-746-4932

REGISTERED CHIHUAHUA: 3 adorable boys, utd and ready for forever homes. 573-546-0573, call after 6 or leave message.

JOHN DEERE 535 ROUND BALER: mon-itor, kicker, net wrap. \$5,250. 573-765-4406

06 HYUNDAI SANTA FE: 51,000miles, AWD, total loaded, one owner. \$6,775obo. 417-399-6383.

C FARMALL FENDERS: \$100. 417-533-7126.

REGISTERED GERMAN SHEPHERD PUPPIES: Ready now, Cute!. \$150. Hartville, 417-741-2198.

JOHN DEERE 4020 TRACTOR: with Koyker 500 loader, 90% rubber, power shuttle, strong running diesel, stored inside. \$12,500obo. Lebanon, 573-247-7161, 417-533-0877.

PICK UP TRUCK BEDLINER: Standard size Ford, Fits F150-F350, good condition. \$40. Cedar Hill, 314-303-7857.

IHC 1086 DIESEL TRACTOR CAB & COLD AIR: \$8,750. 573-765-4406.

HAY FOR SALE: Square bales/\$4.50, Round bales 4x5/\$50, good mixed grass hay, no weeds. 573-368-1794.

1953 FORD JUBILEE: new tires, runs good, excellent condition. \$3,000. 417-664-3425.

CABLE PULLING JAW GRIP: Klein #1684-5, excellent condition. \$150. Cedar Hill, 314-303-7857.

WANTED PINBALL MACHINES. 573-424-7200.



MIDWEST CONSTRUCTION
Free Estimates!

- Pole Barn • Garages • Framing
- Remodels • Roofing • Concrete
- Decks & Porches

Contact Abner Glick
417-664-1794

AUCTION REMINDER: Real Estate Auction. On-Line bidding ONLY. Auction ends Friday December 13th at 1:07Pm. Mickey Duckett Auctioneer. Please see our Auction Directory for more information.

HANDCRAFTED LOG CABIN: 16"x18" half-dove tailed, 6"x8" square cut oak logs, walls only. \$5,500, You Haul. 636-543-1920.

WANTED: American, European, Japanese Cars and Motorcycles. 1900 to 1980. Local cash buyer. 573-694-3774.

HORSE HAY: Square bales, weed free, Big Blue stem, 80% pure. \$5 bale. 573-368-1794, Rolla.

04 DAKOTA XST: 4X4, 5speed, V6, reg cab, 176,000miles. \$5,175obo. 417-399-6383



Cheyenne Acres
Horse & Tack

BUY - SELL - TRADE
by Rolla, MO
Call For Directions & Availability

Call Kip
573-368-9402




YOU TAKE CARE OF THE MAN POWER. WE'LL HANDLE THE MACHINE POWER.
Largest TYM Dealer In Missouri
Up To 6 Year Powertrain Warranty

\$ TAX SEASON BLOWOUT!
Now thru December 31, 2019





TYM 754 - 4WD, Cab w/AC, Heat, Radio, Quick Attach Loader w/Skid Steer Bucket, Duetz Engine, Has No DEF, 2 Sets Of Remotes, Shuttle Shift Trans - **\$35,500**



TYM 474 Shuttle Shift, 45 HP, Yanmar Diesel Engine, P/S, 4 WD, Quick Attach Loader, **\$21,750**
Package Deal
18' Trailer, 6' Woods Cutter, 6' Woods Blade - **\$25,600**



TYM T-574C - 55.1 HP, Yanmar Diesel Engine, 3,314 lb Hitch Lift Capacity, Quick Attach Loader w/Skid Steer Bucket. - **\$29,750**
Package Deal
18' Trailer, 6' Woods Cutter, 6' Woods Blade - **\$33,600**



TYM 474C - Cab, HST 48 HP, Yanmar Diesel Engine, Shuttle Shift, 4 WD, Quick Attach Loader, Rear Remote, A/C, Heat, Front/Rear Wipers - **\$27,500**
Package Deal
18' Trailer, 6' Woods Cutter, 6' Woods Blade - **\$30,650**



TYM T-264H
26 HP, 4 WD, Hydrostat, Industrial Tires, Quick Attach Loader. **\$14,300**
Package Deal
18' Trailer, 5' Woods Cutter, 5' Woods Blade - **\$17,950**

Call Us For all Your Service Needs!
We Have A Full Service Shop That Services All Makes & Models.

All Prices Shown include \$3,000 Cash Rebate, No Trade with Rebates.

DIAMOND R EQUIPMENT

Just 4 Miles South Of Westphalia • 573-455-2617
www.diamondequipment.com

REGISTERED HEREFORD & ANGUS BULLS: Home raised, Some Show-Me Select Qualified. 573-701-7828. Belgrade

2010 TRAVERSE LTZ: Totally loaded, FWD, 165,000miles. \$4,475. 417-399-6383.

2011 LINCOLN MXZ SEDAN: 120,000 miles, very good. \$6,000obo. Plato, 417-217-1197.

TRAILER ENCLOSED: 20', bumper hitch, good. \$3,250. 573-636-8000, JC.

30 GAL PROPANE TANK: Has new valve. \$75. 417-683-7843, Tecumseh.

SEASONED FIREWOOD for sale. \$165 cord, free delivery within 15 miles from Grovespring, 417-259-2203.

BYLER SUPPLY **the builder's choice!**

Metal Roofs Designed To Look Great On Your Home!

HEAVY 29 Ga. METAL # 1
 Limited LIFETIME WARRANTY
29 Ga. & 26 Ga. Painted
 CUT TO LENGTH PANELS



NEXT BUSINESS DAY SERVICE
 Call for details.



Ask About Our Quick Service.
 Over **20** Colors and Several Styles To Choose!

GALVALUME METAL UNPAINTED 25 YEAR WARRANTY

\$48.50

#1 Standard Panels, 29 Ga.

Good quality, quick service

DECK PACKAGES AVAILABLE AT BYLER BUILDING SUPPLY



Roof Is Optional
 Additional Sizes & Custom Shapes Available!
 8x10 • 8x16 • 10x14 • 12x16

- 1 Set of Steps
- Handrails
- 2x2 Balusters
- All Deck Boards & Railing Screwed, Up To 4' High, All #2 Treated

CALL FOR PRICING!

Labor & Material INCLUDED!

DELUXE BUILDING PACKAGES



24x40x10	Galvalume	\$5,797.55
	Painted	\$6,401.76
24x32x10	Galvalume	\$5,616.66
	Painted	\$6,098.95
30x40x10	Galvalume	\$6,430.69
	Painted	\$7,099.08
30x40x12	Galvalume	\$6,886.06
	Painted	\$7,598.22
40x60x12	Galvalume	\$11,272.16
	Painted	\$12,461.71

All Buildings Quoted Have #2 Lumber And #1 Galvalume Or Limited Lifetime Painted Metal

All Buildings Are Heavy 29 Ga. Metal, Three 2"x6" T&G Splashboards, All Poles 5"x5" Or Larger, CCA Treated, Fully Trimmed With One 3'x6' Walk-Through Door & One Large Sliding Door.

*Plus Tax. Labor & Delivery Available On All Building Packages.
 Prices may vary due to local code restrictions.*

LS TRACTOR

**More Lift Capacity,
More Standard Features
More Tractor for Your Money**



**In Stock
NOW!**



\$23,890

**LS MT240E (40hp) Pkg
Rhino TW16 Cutter, 65" Box Blade
Kodiak 18ft Utility Trailer**



\$19,590

**LS MT225E (25hp) Pkg
Rhino TW15 Cutter, 65" Box Blade
Kodiak 18ft Utility Trailer**

Fall Clearance on Select In-Stock Rhino Implements



**Rhino 3150, 15ft Flex Wing Rotary Cutter
with Chain Guards & Laminated Tires
Now Only \$13,500**



**Rhino
SE8A,
8ft Pull
Type
Only
\$5,550**

Rhino SE10A, 10ft Pull Type

Only \$6,550

**Rhino
5007
7ft, 3pt
Blade**



Only \$950

Buy NOW! Best Prices this Year! Limited Quantities Available!



WCT Farm & Lawn LLC

"Big enough to get what you need, small enough to know your name"
417-859-4311 • www.wctfarmandlawn.com
3299 E Evergreen Rd, Strafford, MO 65757

EVEREST ELITE HOLOFIL II Insulated sleeping bag by Slumberjack. (Dupont). \$70. castlesprings55@gmail.com or 573-645-7876.

BRAND NEW INTERTHERM ELECTRIC FURNACES: For mobile homes. \$550. Factory Warranty. Call Charlie 573-786-4003, Steelville.

BARN WOOD SIDING: 8" & 10" wide. 573-729-7226. www.pineridgerustic.com

BLACK ANGUS BULL: 5yrs. \$1500. 573-436-0487, Potosi.

AUCTION REMINDER: Saturday, December 7th @ 10am, Wulff Auction. Please see our Auction Directory for more information.

MINI CHOPPER. \$125. 417-683-7843, Tecumseh.

★ A HERITAGE OF ★
QUALITY WHERE IT COUNTS



1023E SUB-COMPACT TRACTOR

\$99 per month¹

- Powerful Final Tier 4-compliant diesel engine
- New, easy-lift hood with dual gas-charged lift struts
- Auto-Connect™ mid-mower deck can be installed or removed in less than 5 minutes

5045E COMPACT TRACTOR

\$179 per month²

- 50 hp* engine
- Best-in-class visibility
- Thick comfortable seat
- 5-Year Powertrain Warranty†



Legendary Products. Extraordinary Service.

Find your local Heritage Tractor location or request a quote at HeritageTractor.com



JOHN DEERE

Heritage
TRACTOR

(1) Offer valid on qualifying purchases made between November 1, 2019 to December 31, 2019. Subject to approved installment credit with John Deere Financial. Down payment may be required. Average down payment is 20%. \$99 monthly payment based on a purchase of \$10,419 with \$2,084 down payment or trade-in, 84 months at 0% APR. Taxes, freight, setup and delivery charges could increase monthly payment. Available at participating U.S. dealers. Prices and models may vary by dealer. Offers available on new equipment and in the U.S. only. Prices and savings in U.S. dollars. (2) Offer valid on qualifying purchases made between November 1, 2019 to December 31, 2019. Subject to approved installment credit with John Deere Financial. Down payment may be required. Average down payment is 20%. \$179 monthly payment based on a purchase of \$18,796 with \$3,759 down payment or trade-in, 84 months at 0% APR. Taxes, freight, setup and delivery charges could increase monthly payment. Available at participating U.S. dealers. Prices and models may vary by dealer. Offers available on new John Deere SE (45-75 hp) Utility Tractors and in the U.S. only. Prices and savings in U.S. dollars. †All SE Series Utility Tractors purchased new from an authorized John Deere Dealer come standard with a 5 year/2000 hour (whichever comes first) Powertrain Warranty. See the Limited Warranty for New John Deere Turf & Utility Equipment at dealer for details.

2008 Dodge Ram 3500



\$24,500

4x4, Dually, Cummins Turbo Diesel. 2 Owners, No Accidents, 82K Miles. Clean Truck & Runs Great!
Text or Call: 573-368-8058

2014 MERCEDES E350: 4-matic, 102K miles, like new, loaded. \$18,500 OBO 417-383-8200.

MOTORHOME: 1998, F350, Catalina Sport, 22', good shape, new tires, 67K. \$8,000. 573-261-0513.

2015 CHEVROLET COLORADO: 4DR, extended truck, Price and Free carfax history at www.jimsmotorsrolla.com or call 573-364-5008

PUPPIES FOR SALE: Beagle/Dachhund mixed. Silver and Tri-Colors. UTD shots/worming. \$150/males, \$200/females. 417-322-0833. MUST SELL by Christmas.

Gooseneck and Winchester Star Pipe Cattle Trailers

the best in the business
HERE AND READY!!!!

Starting at \$9,685



Cowtown USA

I-44 Exit 203 • 413 Daniels Rd.
Cuba, MO • 573-885-6300
www.cowtownusainc.com

JOHN DEERE 2630: Diesel tractor, 70HP, w/145 JD loader. \$8,650. (573)765-4406.

BOBCAT 853 DIESEL SKID STEER LOADER CAB: \$8,950. 573-765-4406.

FORD 3000 DIESEL TRACTOR FINISH MOWER: \$5,350. 573-765-4406.

25 JIGSAW PUZZLES: Bought new, worked once. \$3 each. 573-689-2490, Bunker.

2000 S-10 PICK-UP: 159,000 miles. \$3,000. 417-532-4108.

CUSTOM SAW MILLING: Lebanon. 417-533-4607, 417-664-1195.

JOHN DEERE 567 ROUND BALER: monitor, kicker, wide pick-up, cover net wrap. \$9,650. 573-765-4406.

CUSTOM JIM SANDS RANCH SADDLE: Roughout, 15.5" padded seat, slanted 4" aluminum stirrups, QH bars. \$550. Grovespring, 417-533-9484.

WANTED: UTV (used, good condition, fair price). 270-970-8243, Lebanon.

NEW OAK ENTERTAINMENT CENTER: on wheels. \$100. 573-327-9068.

1986 OLDSMOBILE CUTLASS: 4 DR, V-6, loaded, excellent condition/transportation. 42,500 actual miles. \$2,900obo. 573-873-3440, Camdenton.

CASE DC TRACTORS: One, wide front, PS, 8' rear sickle. \$2,200. One, narrow front, 12' rear sickle. \$1,800. One, narrow front w/3pt lift. \$1,600. 417-848-8754, Springfield.

20 GAUGE SHOTGUN RELOADING WADS: 9bags of WAA20s, 15bags of WAA20F1. \$5/bag. Osage Beach, 573-302-0890.

Monday - Friday 9:00 am - 5:00 pm
Saturday
 •By appointment•

B'S MEATS Beef • Hog • Deer Processing

 Retail Meats

EST. 2016

195 Holiday St. • Fordland, MO 65652 417.738.2333






See Service

Spray Foam Insulation

Closed cell or open cell form available
 Choose the thickness of your insulation

Closed Cell	Open Cell
• Higher R. value	• Lower Cost
• Vapor barrier	• Sound Deadening
• Structural benefit	• Fire resistant
• Fire Resistant	

Both types of foam fill voids and stay where they are put to provide better insulation than fiberglass or cellulose

FINANCING AVAILABLE **WE ACCEPT**
 

Call Joseph See
 (417) 733-6936
 Located near Buffalo, MO

ARE YOU KIDDING ME???-Used double-wide, \$19,900!!!! delivery & set-up, 3 bedroom, 2 bath, Call 573-499-9993 comlumbiadiscounthomes.com

2006 CURLY TOBIANO MARE: 45" high, registered ICHO/NAC, Broke to drive, has had one foal. \$1,750. Niangua, 417-880-0025.

MODULAR STOCK SALE - It is time to move our inventory. **TRUE MODS** - Save Thousands. Call Marla, better than 20 years experience. 573-657-7040, chateauhomes.net.

07 ESCAPE XLT AWD:V6, totally loaded, 138,000miles. \$4,975obo. 417-399-6383.

06 HONDA CIVIC:4cyl, 4dr, loaded one owner, 122,000miles. \$6,275obo. 417-399-6383.

2012 TRAVERSE LS FWD:8-passenger, loaded, 171,000miles. \$4,675obo. 417-399-6383.

1-ROW INTERNATIONAL pull-type corn picker. International Square baler. Super-C Farmall tractor w/loader. 573-674-3601.

1995 MERCURY COUGAR: 4.6 V8. \$800obo, 573-315-5990

SINGLE BRAHMA HARNESS: Like new, Standardbred size. \$250. 417-533-9484, Grovespring.

RENTAL NEEDED ASAP: Moving to area, and need rental house w/pasture for our horses. Leave message, 641-226-2431 or 573-578-6476.

JOHN DEERE 4240: Diesel Tractor, cab and cold air, power shift, nice. \$29,500 573-765-4406.

MENS SIZE 11 ROLLER BLADES: Black good conditino. \$30. Cedar Hill, 314-303-7857.

AUCTION REMINDER: Online land & Home Auction, bidding ends Monday, December 16th at 12:30 pm. Atterberry Auctions. Please see our Auction Directory for more information.

KUSTER LOGGING

BUYER of Standing Timber Oak and Walnut

Dozing Now Available

417-259-0047

References Available



Buildings • Hunter's Cabins • Lawn Furniture

JAMCO BUILDERS

JAMCO Portable Buildings

800-688-2064 • 307 Enterprise Dr. • Seymour, MO • www.jamcobuilders.com

Rent To Own Plan



6 BEDROOM, 3 BATH HOUSE on 10 acres, Lebanon area, River access, wooded, 417-322-5725.

BIG SHOP TORPEDO HEATER: \$200 or trade. Bismark, 573-734-2822.

05 CANYON SLE: 4X4, extended cab, 4dr, 155,000miles, 30,000 on new motor. \$6,775obo. 417-399-6383

52 CHEVROLET MOTOR: Complete, excellent condition. Tecumseh, 417-683-7843

CHRISTMAS SPECIAL: 766 Farmall pedal tractor, very nice. \$290, 417-859-6574

FIREWOOD FOR SALE: Can deliver to Owensville-Sullivan area. 573-437-2955.

AKC FRENCH BULLDOG PUPPIES: 9 wks. Raised in my home. \$1,200, credit cards accepted. 417-458-1424, Plato.

1988 HALLMARK MEMORY TREE SHADOW BOX: Holds 27 miniature ornaments, ornaments still in box. \$75. 573-689-2490, Bunker.

HIGH COUNTRY
Timber & Stone LLC

573-674-3979 • 573-247-3989
11749 Crest Ln., Licking, MO

2018 KZ SPORTSMAN DESTINATION RV: At Hidden Valley Outfitters near Bennett Spring State Park, Lebanon. \$32,000. 309-678-0057.

2 REAR FENDERS FOR 1946-48 CHEVY COUPE: \$200 or trade. Bismark, 573-734-2822.

Barnett Repair
573-392-3050

18425 Buttercup Rd
Barnett, MO 65011

- ENGINE OVERHAULS
- TRANSMISSION REPAIR
- GENERAL REPAIR ON FARM MACHINERY

\$30 HOUR
Owners:
Paul & Levi Leinbach

CASE 660 TRENCHER: 4-wheel steering, 6-way blade, approximately 1000 hrs. \$9,500 OBO. 573-967-5355

CRAFTSMAN PROFESSIONAL 10" TABLE SAW: On rollers, Model 315-228-510, never used, missing guard and fence. \$150 firm. Hermann, 636-932-4429.

Custom Welding & Repair!

Custom Welding & Repair on Farm Machinery & All types of trailers including semi | Alum Welding | Lights & Brakes Repair

JR's Fabrication
Levi K. Zook • 417-741-2312 • 4875 Hwy BB Hartville

FOR SALE: 20KW GENERAC PROPANE GENERATOR: w/starter kit, new in box. \$4,750. 573-783-9420, Fredericktown.

AUCTION REMINDER: Farm Auction, Monday, December 16th at 1:01pm. Chupps Auction Co. Please see our Auction Directory for more information.

2015 YELLOW SILVER TOBIANO CURLY MARE: 43" high, registered ISHA, willing and gentle, saddled but not ridden. \$1,100. Niangua, 417-880-0025.

1979 LITTLE RED EXPRESS: 39,700mi, all original, air. \$15,500. 573-518-4620. Bonne-Terre.

GRAVITY FLOW WAGON: \$550. 573-765-4406.

BB & PELLET RIFLE. \$75 each. 573-327-9068.

3PT 2 SECTION HARROW. \$150. Rogersville. 417-753-2747, 417-766-1991.

2011 Ford F150 Platinum SuperCrew Cab

4X4, 3.5L V6 Ecoboost, Black, New Tires, Drives Great, 99,XXX Miles, Salvage Title, Very Minor Damage Repaired

\$15,900

417-718-5347 • Conway

EMMONS RESOLUTIONS LLC

- > Brick Restoration
- > Tuck Pointing
- > Sealing
- > Caulking
- > Red Iron Construction
- > Framing

Colton Emmons 417-664-8350
Eddy Torrey 417-630-2670

PRAIRIE PHOENIX CATTLE CARE SYSTEM: Simpler, stronger, cheaper. 417-286-3540.

SMALL SQUARE HAY BALES: Timothy, Alfalfa & Orchard Grass mixed. \$6. Alfalfa grass mixed. \$5.50. Long Lane, 417-345-5634

2011 CHEVROLET EXPRESS G1500 CARGO VAN: Price and free carfax history at www.jimsmotorsrolla.com or call 573-364-5008.

AKC PUG: male 8 mos. \$500. AKC Male Pug: 4 mos.; \$800. Credit cards accepted. 417-458-1424, Plato.

CHECKERED WALNUT WOOD STOCK PISTOL GRIP: for Marlin Model 336 or 1895. \$100. Washington. 636-239-2695.

1952 & 1959 CHEVROLET TRUCK SHOP MANUALS: Like new. Oxygen & MIG Shielding gas bottles, medium size. \$100 each. Ramps for trailer: 8' long, heavy. \$100. Hydraulic cylinder for engine hoist. Parts washer: new, never used. \$125. 55 gal barrel oil/solvent. Salem, 573-729-0272.

#32 SANITARY SKILL Meat Grinder: Complete & works. \$700. #22 Sanitary Skill: Complete and works. \$300. Hartville, 417-349-1386.

Now Stocking
Large Selection
 of
Plumbing
 PEX, PVC, & CPVC
 and
Electrical
 Supplies!



STOCKING
 Porter Paints
PPG
 Commercial Paints
Sikkens
 Stains

Seymour, Missouri 417-935-4201

Sale Ends November 30, 2019



Pole Barns & Post Framed Buildings!

Call for free quote, brochure & color chart.
 Other sizes also available.

23'x32'x10' \$4,099 Material Only \$5,319 Labor Included	23'x40'x10' \$4,799 Material Only \$6,329 Labor Included	30'x40'x10' \$5,699 Material Only \$7,699 Labor Included	40'x60'x12' \$10,099 Material Only \$14,359 Labor Included
---	---	---	---



NOBODY, BUT NOBODY BEATS OUR PRICES!!!

10 ft. Slider • Engineered Trusses 8' O.C. • 2x6 Treated Bottom Wrap • Screws • 2x10 Top Wrap • 2x4 Purlins • Full 29 Gauge Steel • Plus 3 ft. Entry Door with Lock
 OPTIONS: Sidewall Heights on all Buildings 10', 12', 14' & 16'. Overhead Garage Door. Skylights, Insulation, Wainscoting, Insulated Vinyl Windows, Cupolas. Labor Rates Slightly Higher over 50 Miles from Seymour. Call for YOUR FREE QUOTE TODAY!!!

PAINTED WHITE, GREEN OR TAN METAL\$69.99	IN STOCK
10' - \$22.10 12' - \$26.52 16' - \$35.36	
MIX & MATCH METAL\$39.99	
8' - \$10.13 10' - \$12.67 12' - \$15.21	
GALVALUME METAL\$52.50	
10' - \$16.60 12' - \$19.92 16' - \$26.56	
GALVANIZED CORRUGATED METAL\$56.75	
8' - \$9.84 10' - \$12.30 12' - \$14.75 16' - \$19.67	

40yr Painted Metal
\$72.99

KNOTTY PINE DOORS
 Starting at
\$109.99

LP SMARTSIDE T-5 LAP B GRADE \$43.59/SQ

Car Siding!
 1x6 White Pine Siding **43¢** in ft
 1x8 White Pine Siding **54¢** in ft
 * 4 Profiles to choose from!
 Broken Bundles Add 10¢ Per Ft.

4x8 Sheeting
 Less than full units Add \$1 per sheet
 3/8" Beaded Paneling \$15.99
 5/8" T111 Siding \$19.99
 Paneling \$9.99
 1/2" Plywood \$19.99
 3/4" Plywood \$23.99
 3/16 Pegboard \$12.99

Sales and Servicing

DR PROFESSIONAL POWER DONE RIGHT

Husqvarna

NEW PACKAGE HOMES

Shown with Available Options

Your Choice of either:
 Stock 5/8" T111 Wood Siding w/1x4 Pine Window & Door Trim - or -
 7/16" OSB & House Wrap ready for other finish options

2x6—16" on center-Exterior Stud Walls
 Residential Roof Trusses-2' on center
 4/12 pitch with 1' over hang
 40 year Painted Metal roofing in 20 Different Colors
 Profile Ridge Vent - Ventilated Ridge Cap
 Vinyl Center Vent Soffit
 Color Matched Metal Fascia & Gable Trim
 2 - 3' 6 Panel Entry Doors
 4 - 3'x4' Vinyl Insulated Windows

ALL FIGURED FOR SUITABLE CUSTOMER SUPPLIED SLAB OR SUB-FLOOR

Price for Basic Materials Package & Labor

20x24(480 sq. ft.)	20x32(640 sq. ft.)	20x40(800 sq. ft.)	25x40(1120 sq. ft.)	25x48(1344 sq. ft.)
\$9,050	\$10,615	\$12,119	\$15,242	\$17,075

REAL WOOD SIDING
 2x6 Log Siding - 1.09¢ In ft
 1x8 Beveled Cedar from- 64¢ In ft
 5/8 T1-11 Siding from \$19.99

DECK PACKAGES
 Materials Only

8x6\$199.99	10x12\$419.99
8x8\$239.99	10x16\$549.99
10x10\$349.99	12x12\$499.99
12x16\$649.99	

QUAKER Now Stocking Quaker Vinyl Windows

2030 \$ 99.99	3030 \$119.99
3040 \$129.99	3052 \$145.99
3040Twin \$279.99	3052Twin \$314.99

LUCKY DISCOUNT LUMBER
 417-935-4201
 455 State Hwy C • Seymour MO 65746
 www.luckydiscountlumber.com

*Some restrictions apply see store for details

FOR SALE STAINLESS STEEL BRUSH GUARD: for 2001-2007 Chevy, \$175. 573-783-9420, Fredericktown.

THOMPSON CENTER INLINE 50 cal black powder rifle, Black Diamond model w/ scope bases. \$125. Buffalo, 41-345-4562.

RARE 1937 CIVILIAN CONSERVATION CORPS (CCC) 7TH CORPS AREA OFFICIAL MANUAL. \$20. 417-532-2045, Lebanon.

WANTED G-SERIES ALLIS CHALMERS. Running condition. 314-800-6592.

CHURCH FOR SALE: Sturgeon, MO. All new outside, remodeled inside, holds 80-90 people, nice kitchen, 2 nice restrooms, on 6 corner lots. Call only, 573-881-2006.

HAY FOR SALE: Small square, 4x5 round & 4x6 round bales. Licking, 573-578-7210.

GET YOUR WORK DONE, AMERICA

FOR JUST

\$243 PER MONTH*



Mahindra

TOUGHEST TRACTORS ON EARTH

4540 2WD

- SIMPLE** to operate
- ECO-FRIENDLY**, NO DPF engine
- HEAVY-DUTY** steel construction not plastic

MAHINDRA 4540 41HP, 2WD, TRACTOR AND LOADER.

Marshfield Machinery Inc.
222 E. Madison • Marshfield, MO 65706
417-859-2117 • www.marshfieldmachinery.com

7 YEAR

LIMITED POWERTRAIN

WARRANTY

*Payment is for tractor and loader only and is calculated at 10% down and 84 months financing. With approved credit. Program restrictions may apply. See dealer for details. All offers expire December 31, 2019.

WORLD'S #1 SELLING TRACTOR

Mahindra

Tractors

NEW MAHINDRA TRACTORS	
9125 4WD CAB & LDR 125HP IN STOCK	
7085 4WD & LDR 85HP	IN STOCK
6075 4WD & LDR 71HP	IN STOCK
6065 4WD & LDR 62HP	IN STOCK
2655 4WD CAB & LDR 55HP	IN STOCK
2655 4WD, BACKHOE 55HP	IN STOCK
2655 4WD & LDR 55HP	IN STOCK
4540 4WD & LDR 41HP	IN STOCK
4540 2WD & LDR 41HP	IN STOCK
MAX26XL & LDR 26HP	IN STOCK
USED TRACTORS	
MAHINDRA 105P CAB LDR 105HP	45,500
MAHINDRA M85 CAB LDR 85HP	30,000
MAHINDRA 4035 4WD LDR 40HP	17,000
MAHINDRA MAX26XL LDR 26HP	12,500
MAHINDRA MAX22 W/ BACKHOE	11,500
MAHINDRA EMAX22 LDR 22HP	10,000
CASE IH 235 W/ MOWER 18HP	3,500
IHC 184 W/ MOWER 18HP	3,500
USED SIDE BY SIDES	
MAHINDRA 750 CREW XTV	8,500
MAHINDRA 750 XTV	7,500
USED ROUND BALERS	
MF 2745 4X5 MESH	12,500
HESSTON 745 4X5	7,500
HESSTON 555 4X6	4,500
HESSTON 560 5X6	4,000
HESSTON 550 4X6	3,500
NH 850 5X5	1,500
MF 224 SQUARE BALER	2,500
USED RAKES	
SITREX 12WHEEL	3,500
DURABUILT 8 WHEEL	1,950
VERMEER WR20 8 WHEEL	1,950
RHINO 10 WHEEL	1,750
M&W 8 WHEEL	1,500
USED NOTIL DRILLS	
HAYBUSTER 107C DRILL	17,500
HAYBUSTER 107 DRILL	11,500
HAYBUSTER 107C DRILL	9,500
TRUFX 7FT NOTIL DRILL	3,500
USED MISC.	
NEW HOLLAND 185 SPREADER	3,500
BUSH HOG 3008 8FT 3PT	3,000

Marshfield Machinery Inc.
222 E. Madison • Marshfield, MO 65706
417-859-2117
www.marshfieldmachinery.com

Starnes Auto LLC

22115 Rt. 66 • Lebanon, MO 65536
417.588.3159 Office • 417.718.2707 Cell
www.starnesauto.com

1990 CHEVY PICK UP	
RED/WHITE, 2WD	\$1,500
1996 JEEP CHEROKEE	
BLACK, 213,XXX	\$CALL
1990 CHEVY SUBURBAN	
WHITE, 2WD, 179,XXX MI	\$COMING SOON
2002 TRAILBLAZER	
WHITE, 183,XXX MILES	\$1,850
2003 CHEVY S10 EXT	
PEWTER, 68,XXX MILES	\$4,200
2003 CHEVY SILVERADO Z71	
WHITE, EXT CAB, 4X4, 230,XXX MILES	\$5,200
2005 CHEVY SILVERADO HD	
WHITE, EXT CAB, LONG BED, 8100, 210,XXX MI...	\$7,250
2005 CHEVY SUBURBAN	
BLUE, 4X4, 202,XXX MILES	\$4,200
2005 GMC YUKON DENALI	
CHARCOAL, AWD, 199,XXX MILES	\$4,200
2005 PONTIAC GRAND AM	
RED, 122,XXX MILES	\$2,650
2006 JEEP LIBERTY	
SILVER, 179,XXX MILES	\$COMING SOON
2006 GMC SIERRA	
GREEN, CREW CAB, 2WD, 69,XXX MILES	\$8,950
2006 PONTIAC TORRENT	
SIVLER, 219,XXX MILES	\$2,250
2006 PONTIAC TORRENT	
GREY, AWD, 189,XXX MILES	\$2,650
2007 CHEVY HHR	
GRAY, 92,XXX MILES	\$4,250
2008 PONTIAC G6	
SILVER, 68,XXX MILES	\$4,750
2011 GMC ACADIA SLE	
CHARCOAL, 110, XXX MILES	\$8,500
2013 HONDA CRV	
BLACK, AWD, 113 XXX MILES.....	\$10,500
2014 CHEVY EQUINOX LT	
MARROON, 50,XXX MILES	\$12,800
2014 TOYOTA SCION XB	
WHITE, 21,XXX MILES	\$9,850
2015 CHEVY EQUINOX	
DARK BLUE, 122,XXX MILES	\$8,200
2015 CHEVY EQUINOX	
BLACK, 41,XXX MILES	\$12,500
2017 CHEVY IMPALA LT	
BLACK, V6, 47,XXX MILES	\$14,500
PRIVATELY OWNED:	
2013 TOYOTA TUNDRA	
GREY, 5.1 V8 MAX, 4DR, CREW CAB, SHORT BED, 89,XXX MILES GOOD TITLE.....	\$20,000 OBO

WE DO ALIGNMENTS!

30 GAL FUEL TANK: Fiberglass. \$50. 417-753-2747, 417-766-1991, Rogersville.

5 MOUNTED TIRES: size 12-20, \$200. 417-753-2747, 417-766-1991, Rogersville.

POOL TABLES: Installations, moves, recoveries, repairs, accessories, etc. 573-646-1700.

FOR SALE: Used Reznor Waste Oil Furnace. Licking, 573-578-7210.

150 GAL PROPANE TANK: Needs new valve. \$75. 417-683-7843, Tecumseh.

CHAINLINK DOG PEN :6ftx6ftx10ft long and dog house. \$160. 636-239-4124.

2012 KIA SOUL: 4dr, 5 speed, 71,196 miles, see at www.jimsmotorsrolla.com, Price and free carfax history, or call, 573-364-5008.

WOOD FURNACE: Heats over 2,000 sqft home, good condition. \$575. 636-239-4124.



FREE 4-NIGHT VACATION!
Donate Car • Boat • RV • Motorcycle

1-800-CarAngel

www.boatangel.org

\$19,900 USED DOUBLE WIDE: nice 3 bedroom, 2 bath delivered & set-up.....Hurry, This house will **NOT** last long! Call now 573-657-2176 amegamobilehomes.com

KILL LICE DEAD: PRAIRIE PHOENIX CATTLE CARE SYSTEM. 417-286-3540.

74 MONTE CARLO: Factory sunroof, swivel bucket seats, project car. 417-683-7843, Temseh.

CRAFTSMAN 18V CIRCULAR SAW & 1/2" DRILL: W/2 Batteries, charger, carrying case, never used. \$75 firm. Hermann, 636-932-4429.



Larry Heisel Rentals
Have Rock?
How about 3,500 lbs. of Hammer
We Deliver!

Call Larry!
573-779-1500
www.larryheiselequipment.com
Rental Available in 636 or 573 area code

D&H OUTDOOR WOOD FURNACES SINCE 1986: Forced air, 90% efficient, fire proof insulated, thermostat control. Complete Heating and Cooling Systems. 573-743-6943, Salem.

FIREARMS: Professional Repairs and Restorations. Baron's Gunsmithing. 573-363-5801, Camdenton.

TAKUCHI 135 DIESEL EXCAVATOR: W/ hyd thump. \$15,000. 573-765-4406.

2 FRONT FENDERS FOR 1947-1953 TON AND HALF CHEVY TRUCK: \$100 or trade. Bismark, 573-734-2822.

DANUSER HYD. POST DRIVER: Good. \$1,950. 573-765-4406.

INVESTOR'S DREAM



FOR SALE
Mobile Home Park in Rolla, MO
\$345,000

20+ Lot Park w/ House on 4.88+/- Acres • \$50,400+ Annual Income
Outstanding Cap Rate of 12.5%
For info. Call Dayna Williams, Owner/Agent • 314-602-7706

CASE SUPER M SERIES 2 BACKHOE: 4WD, extend-a-hoe, heat/air, new rear tires, extra buckets, flip-over pads, 3,970 hrs. \$40,000 OBO. 573-967-5355

PYRENEES/ANATOLIAN PUPPIES. Cuties! Excellent pets/guard/sheep dogs. \$250. In time for Christmas! Reserve yours now. 417-322-0161.

40FT TANDEM GOOSENECK DUALY TRAILER: \$6,000. 573-765-4406.

FOR SALE DARK OAK CURIO CABINET: \$170. 1-636-388-5810, Leslie.

AUCTION REMINDER: Saturday, December 21st, @ 10am. Wheeler Auctions. Please see our Auction Directory for more information.

2005 INTERNATIONAL EAGLE: double bunk, good truck, local owner, auto, 500Cummins, all re-conditioned, have paperwork. \$14,000 will take trade. 417-679-4355.

HOLLYWOOD 4-BIKE HITCH MOUNT RACK: Excellent condition, Includes (2) Allen Stabilizer tension bars and keyed alike locking hitch pin and cable. \$175. Conway, 417-718-5347.

We Buy White Oak Logs!

Independent Stave Company welcomes all white oak suppliers!

- Top prices for your logs
- Experienced log buyers
- Professional service

www.independentstavecompany.com

Chad Cook | Salem Wood Products
417.718.2950
5 miles north of Salem, MO on Hwy 19



INDEPENDENT STAVE COMPANY
Log Procurement & Sales

CHIP BOX DUMP TRUCK: 1997 GMC-6500, very good condition. Mtn Home, ARK, 480-313-5758.

52 FORD TRUCK CAB: Good Condition. Tecumseh, 417-683-7843

SUGAR PLUM COLLECTION: Not separating. \$50. 417-288-9641.

MAYTAG EXTRA LARGE CAPACITY: Heavy duty, 2 speed washer, white. \$100. Washington, 636-239-2695.

2012 DODGE RAM: 3/4 Ton, crew, gas, rare long bed, loaded, 189,000miles. \$11,700obo. 417-399-6383.

ROME 8FT OFFSET DISK: \$3,750. 573-765-4406.

DAEWOO FORKLIFT

Model GC25S-2

Serial No 06-02352

- Propane
- Hook attachment
- Everything works great
- Always kept in a building

Call for more information!

417-532-9131 • LEBANON





1994 Shadow Cruiser
27ft. 5th Wheel
Excellent Condition

417-664-8823 • CONWAY

AUCTION REMINDER: Wednesday, December 18th, @ 10am. Wheeler Auctions. Please see our Auction Directory for more information.

AUCTION REMINDER: Sunday, December 8th @ 11:30am, Wulff Auction. Please see our Auction Directory for more information.

1984 CHEVROLET MOTOR HOME: trade for trucks. Bismark, 573-734-2822.

WANTED, TIMBER TO LOG ON SHARES: Honest, reliable, references. 417-533-4607, 417-664-1195.

HORSE DRAWN BUCKET CART: plywood body, wooden wheels. \$650obo. Buckboard, 8'x32" pneumatic tires. \$575. Niangua, 417-880-0025.

AC 840 DIESEL ARTICULATING 4-WHEEL DRIVE LOADER: \$7,250. 573-765-4406.

INSIDE COMPLETE VICTOR WOOD FURNACE: Heat exchangers and inside fire-box all rebuilt. \$200. 573-729-5808.

PINE LOG SIDING.. www.pineridgerustic.com 573-729-7226.

\$1000 SIGN ON BONUS

ASPLUNDH

TREE EXPERT, LLC

Is seeking EXPERIENCED Line Clearance Tree Trimmers,
Bucket Operator and Forepersons

For work in the Lebanon and surrounding areas. **Excellent Benefits:**
401K, Health, Dental, Vision Paid Vacations and Holidays.
Must be a safe and productive worker pass a pre-employment
drug test, and have valid driver's license.

\$21-\$24 per hour

Call 636-583-1175 or apply online • Asplundh.ourcareerpages.com






NEW MAHINDRA ROXOR FRESH OFF THE ASSEMBLY LINE!!

- Steel Body no plastic to break
- 5 Speed Manual Transmission no belt to break
- Fully-boxed, ladder construction, steel truck-style frame
- Turbo Diesel 4 cycle engine which produces 144 ft lbs of torque and 3490 lbs of towing capacity to get your jobs done. • Made in Detroit
- 3 YEAR WARRANTY OR 12,000 MILES • Starting at \$15,999
- MADE IN THE USA

[Visit us at www.cowtownusa.com](http://www.cowtownusa.com)

AUCTION REMINDER: Public Auction. Friday, December 13th @ 7pm. East Central Show-Me Select. Please see our Auction Directory for more information.

YEAR END SALES EVENT

MODELS MUST GO TO MAKE ROOM FOR 2020'S!



2018 FORD MUSTANG ECOBOOST PREMIUM CONVERTIBLE

Black, 2.3L I-4 cpl, 18,530 Miles, Wireless Phone Connectivity, Exterior Parking Camera Rear, Parking Sensors
MSRP \$26,495



QP75521

Sale Price
\$22,300

2018 FORD MUSTANG ECOBOOST PREMIUM CONVERTIBLE

White, 2.3L I-4 cpl, 30,327 Miles, Wireless Phone Connectivity, Exterior Parking Camera Rear, Parking Sensors
MSRP \$24,900



QP75601

Sale Price
\$22,900

2018 FORD FOCUS TITANIUM HATCHBACK

Hot Pepper Red Tinted, 2.0L I-4 cpl, 24,458 Miles, Leather Upholstery, Wireless Phone Connectivity, Exterior Parking Camera Rear, Power Moonroof
MSRP \$17,495



QP75548

Sale Price
\$14,900

2018 FORD FUSION

2.5L I-4 cpl, FWD, Ingot Silver, 24,116 Miles, Exterior Parking Camera Rear, Perimeter Approach Lights
MSRP \$17,900



QP75611

Sale Price
\$17,400

2018 FORD FUSION SE SEDAN

Blue, 1.5L I-4 cpl, 2,509 Miles, FWD, Wireless Phone Connectivity, Exterior Parking Camera Rear, Steering Wheel Mounted Audio Controls
MSRP \$21,495



QP75610

Sale Price
\$19,900

2019 FORD FUSION HYBRID TITANIUM

2.0L I-4 cpl, FWD, White Gold, 8,575 Miles, 43/41 MPG City/Hwy, Leather Upholstery, Power Moonroof, Blind Spot Sensor, Lane Departure, Distance Pacing Cruise Control
MSRP \$24,900



QP75595

Sale Price
\$23,400

2018 LINCOLN MKX SELECT SUV

Black, 3.7L V-6 cpl, 12,605 Miles, AWD, Leather Upholstery, Wireless Phone Connectivity, Exterior Parking Camera Rear, Heated Rear Seats, Heated Steering Wheel
MSRP \$37,900



QP75593

Sale Price
\$33,900

2017 LINCOLN MKX RESERVE

2.7L V-6 cpl, AWD, Gray, 26,699 Miles, Exterior Parking Camera Rear, Leather Upholstery, Power Moonroof, Blind Spot Sensor
MSRP \$39,900



QP75281

Sale Price
\$31,900

2017 FORD ESCAPE SE SUV

Black, 1.5L I-4 cpl, Front-Wheel, 31,781 Miles, Remote Keyless Entry, Steering Wheel Mounted Audio Controls, Power Liftgate, Heated Front Seats, BLIS w/Cross Traffic Alert
MSRP \$20,495



QP75559

Sale Price
\$15,900

2018 FORD ESCAPE SE SUV

Gray, 1.5L I-4 cyl, four-wheel, 24,617 Miles, Wireless Phone Connectivity, Exterior Parking Camera Rear, Heated Front Seats, Remote Keyless Entry, Adaptive Cruise Control & Fwd Collision Warning
MSRP \$21,495



Sale Price
\$19,400

QP75550

2018 FORD ESCAPE SEL

1.5L, I-4 cyl, Four-wheel, Red, 11,203 Miles, Leather Upholstery, Parking Sensors, Exterior Parking Camera Rear



MSRP \$23,500

Sale Price
\$20,900

QP75524

2019 FORD EXPLORER SPORT

3.5L, V-6 cyl, 4x4, Agate Black, 15,038 Miles, Leather Upholstery, Parking Sensors, Blind Spot Sensor



MSRP \$44,495

Sale Price
\$39,900

QP75558

2018 FORD EXPEDITION MAX IIT SUV

Gray, 3.5L V-6 cyl, four-wheel, 32,823 Miles, Wireless Phone Connectivity, Exterior Parking Camera Rear, 3rd Row Seats, Parking Sensors



MSRP \$48,900

Sale Price
\$46,900

QP75603

2018 FORD EXPEDITION MAX LIMITED

3.5L, V-6 cyl, 4x4, Gray, 29,939 Miles, Leather Upholstery, Exterior Parking Camera Rear, Front Dual Zone A/C



MSRP \$52,900

Sale Price
\$49,900

QP75590

2018 FORD EDGE SE SUV

Gray, 2.0L I-4 cyl, Front-wheel, 8,979 Miles, Emergency Communication System, Exterior Parking Camera Rear, Remote Keyless Entry, Steering Wheel Mounted Audio Controls



MSRP \$25,495

Sale Price
\$21,900

QP75563

2018 FORD EDGE SEL SUV

Gold, 3.5L V-6 cyl, AWD, 28,163 Miles, Wireless Phone Connectivity, Exterior Parking Camera Rear, Leather Trimmed Heated Bucket Seats, SYNC 3 Communications & Entertainment System, Premium 9 Speaker Audio System



MSRP \$26,495

Sale Price
\$23,400

QP75520

2018 FORD EDGE SPORT SUV

Silver, 2.7L V-6 cyl, AWD, 17,787 Miles, Leather Upholstery, Premium Audio System, Exterior Parking Camera Rear



MSRP \$35,495

Sale Price
\$32,300

QP75560

2019 FORD EDGE ST

2.7L, V-6 cyl, AWD, Ford Performance Blue, 24,654 Miles, Leather Upholstery, Exterior Parking Camera Rear, Front Dual Zone A/C, Lane Departure



MSRP \$

Sale Price
\$35,900

QP75620



LINDSAY FORD



260 W. Elm St • Lebanon, MO • Mon.-Fri. 8am - 6:30pm • Sat. 8am - 5pm • John Roper, Alex King, Ed Compton & Amber Uder

417-532-3146 • www.lindsayautogroup.com

**With approved credit. See dealer for details. Not responsible for typos. Actual vehicle may vary from photo.*

WEEKLY TRADER MAGAZINE



AUCTION DIRECTORY

Friday, December 6

- 12:00 PM Salem Livestock Auction.....38
- 6:00 PM R&R Auction Service24

Saturday, December 7

- 9:00 AM David Haskins Auctions.....32
- 9:30 AM Crawford Auction Service.....35
- 10:00 AM Johnson Bay Auction25
- 10:00 AM Wulff Auction26
- 10:00 AM Knight Auction Service.....34
- 12:00 PM Knight Auction Service.....34

Sunday, December 8

- 11:30 AM Wulff Auction27
- Online Crawford Online Auction.....31

Tuesday, December 10

- 10:00 AM Iman Auction Company28
- 6:00 PM Salem Livestock Auction.....38
- Online Atterberry Auction & Realty36

Wednesday, December 11

- 10:00 AM Easterly Auction33
- Online Atterberry Auction & Realty36

Friday, December 13

- 6:30 PM Salem Livestock Auction.....38
- 7:00 PM East Central Show-Me Select.....37
- Online Mickey Duckett Pro. Auctioneer30

Saturday, December 14

- 9:30 AM Crawford Auction Service.....35
- 10:00 AM Dream Dirt.....23
- 10:00 AM Iman Auction Company29
- 6:00 PM Mid Missouri Stockyards35

Monday, December 16

- 1:01 PM Chupps Auction & Real Estate35
- Online Atterberry Auction & Realty36

Wednesday, December 18

- 10:00 AM Wheeler Auctions & Real Estate34

Saturday, December 21

- 10:00 AM Wheeler Auctions & Real Estate37

#1 Rural Shopper
in Central Missouri
Reader's Choice!

Call 1-800-665-8875 to get your auction listed in the Weekly Trader.

AUCTIONEERS Did you know the WEEKLY TRADER covers more counties in rural Missouri than any other publication?

Firm deadline is 12:00 PM Friday, prior to next week's Thursday publication date.

TAKING CONSIGNMENTS NOW LIVE & ONLINE AUCTION

Saturday, December 14, 2019

21194 Maries County Rd 444 • Vichy, MO 65580

Taking Consignments Until Friday, December 13!

FARM EQUIPMENT & FEED

1953 Ford Golden Jubilee wide front, 12 volt, live power, new paint
 Ford 6610 Tractor with 660 Great Bend Loader
 John Deere 3pt. Side Delivery Rake
 27 Ton Troybilt Wood Splitter with 160cc gas motor, direct drive
 Earth Rancher 365 Hot Water Furnace - complete with concrete slab, 2 furnace exchangers and 1 hot water exchanger
 Cub International 154 Lowboy with Woods 59" mower deck
 Husqvarna IZ4817 Zero Turn Commercial Mower, Kawasaki 17hp gas motor, 1638 hrs.
 3 Fuel Tanks with stands
 Scraper Tires for waterers and feeders
 New Stout Skid Steer Grapple Attachments
 Bulk Feed Tank, 3 Ton
 Victor Wood Furnace
 Complete Above Ground Sprinkler System with gas pump, approx. 2000 ft.
 100 4x5 Round Bales Hay
 Truck load of New 8' concrete feed bunks with legs

CONSTRUCTION EQUIPMENT

2008 John Deere 160 LC Excavator with bucket
 1999 John Deere 160 LC, motor knocks, sells with bucket & thumb
 631 Liebherr Crawler Loader with cab and heat, excellent tracks and undercarriage, 10,000+ hrs.
 631 Liebherr Crawler Loader, bad motor, good tracks & under carriage, parts machine
 Hydraulic Quick Coupler for 160 John Deere Excavator
 Werk Brake 3 over 4 Demolition Grapple, hardwood tips, model 160
 Drott Case Carry Deck 3330 Crane, propane, 26'
 1997 Snorkelift 37'-8" Basket, 4WD
 300 Series Trackhoe Thumb

Set of Engine Side Panel Doors for John Deere 200 CLC
 Eaco 36" Excavator Bucket
 36" Rock Bucket, hardened
 3 Cleveland Tramrail Overhead Trolley Cranes, 3 ton with shepherd nilas, electric hoists
 Lull Highlander II 644 Telehandler, carriage slide, carriage tilt, fork tilt and rotate, factory cable, 4WD and 4 wheel steer
 4000# Steel Wrecking Ball
 2 Heavy Crane Magnets
 Caterpillar 955 L Crawler Loader, very nice working machine
 Bobcat 853 Skidsteer
 1968 Austin Western Road Grader
 1986 Chevy C65 Digger Boom Truck Auxillary Auger, 3 section boom 50', 366 motor, 5spd. with 2spd. rear end, 28,000# Bradon winch on front, 4 hydraulic outriggers, 9 door tool bed
 John Deere 5575 Skidsteer, auxillary hydraulics, 3 cylinder diesel, with toothed bucket
 Scrap Box

TRUCKS AND TRAILERS

1991 Toyota V6, 5spd., 4WD, club cab, bedliner, line new tires, 288,000 mi.
 1991 GMC 1500 V8, 5spd., 4WD, club cab, like new tires, 320,000 mi.
 1982 Suburban 4WD, auto, 366 gas motor, 35" tires
 45' Strick Van Storage Trailer
 Trailmobile 40' Gondola Scrap Trailer, sliding tandems, new 11R 22.5 tires & wheels, new brakes & drums, seals
 1988 Ford F700 Single Axle Dump Truck, 10' bed, 429 gas motor, 5spd. trans., non CDL, hydraulic brakes
 2000 Transcraft triple axle, dual wheel, 35 ton, lowboy, 43' trailer, spring ride
 1988 Ford F800 Dumptruck, single axle, 5spd. with 2spd. rear end with live hydraulic to



2008 John Deere 160 DLC Excavator with bucket, grapple will be sold separately

front & rear 9' bed, air brakes
 1961 Willys FC 4WD w/ title
 24' Triple Axle Trailer, Torsion axles, no ramps
TOOLS & SHOP EQUIPMENT
 Hydraulic Semi Transmission Jack
 Lodge & Shipley Metal Lathe with thread cutter, 1 phase 220 volt 4spd. gear box
 Flather & Company Lathe, 1 phase, 220 volt
 Several Shop Visers
 Large Air Compressor, 3 phase, 100 gal.
 10 Self-Dumping Hoppers
 Marien Hydraulic Press Baler, 3 phase with bale kicker

Drill Press Buffalo #18 with forward & reverse
 Metal Cutoff Saw
 Coat 1001 Tire Balancer
 F.J. Barnes 1883 Drill Press
 DeWalt Commercial Radial Arm Saw
 Craftsman 3spd. Table Top Drill Press
 Drum Dokter Brake Drum Lathe
 Electric Roller Conveyor
 Allen Digital Engine Analyzer
 Snap On 3000# Torque Wrench

FORKLIFTS

Allis Chalmers 4000# Pneumatic tired forklift, 6200 hrs.
 Clark Solid Tired 3000# Propane Forklift with side shift, 6886 hrs.
 Yale 10,000# capacity solid tired Forklift
GUNS
Hand Guns
 Hi-point Model C9 9mm Lugar
 Hi-point Model JHP 45 cal.
 Hi-point Model JC 40 cal. Smith & Wesson

Garate Anita
 H&R Model 922 .22 cal. long rifle
 FIE Model E15 .22 cal. long rifle
 JC Higgins Model 88 .22 cal. with holster
 FIE .44 cal. Cap & Bal with box
 Smith & Wesson .32 cal.
 Smith & Wesson .32 cal.
 H&R .32 cal.

Shotguns

Winchester Model 1200 16 ga.
 Westerfield Model 550 CD 20 ga.
 Glenfield Model 50 12 ga.
 H&R 12 ga.
 Remington 12 ga.
 SS Kreskge Co. Model 151 20 ga.
 Mossberg Model 88 12 ga. Pistol Grip
 Springfield Model 10 410 ga.

Rifles

Gunsmith Built Long Range Rifle 220 27" Hart Barrel, large ring mauser action with torn down bolt, Timmy adjustable trigger, Boyd's laminated thumbhd stock, Leopold bases and mounts
 Colt Stagecoach Gun 22 LR
 VS 30-06
 Volunteer Commando .45 cal. Remington Model 742 30-06 with scope
 Old Winchester .45 cal.
 Winchester Model 74 .22 cal.
 Winchester Model 67 .22 cal.
 Savage Mark 2 .22 cal.
 British 303
 SKS 7.62 cal.
 Saiga 7.62 cal.
 Mossberg AR style Model 715T .22 cal.



MIKE CONAWAY

FarmBid Representative

(573) 205-8037

MConaway@DreamDirt.com

@DreamDirt

AUCTIONS | REAL ESTATE | MACHINERY | FARMBID

BID NOW!

Bid.DreamDirt.com

R&R AUCTION SERVICE

CONSIGNMENT AUCTION

FRIDAY NIGHT DECEMBER 6TH AT 6 P.M.

R&R Auction House • 1644 South Ash • Buffalo, MO

We are wrapping up our 2019 auction season with a fantastic Consignment auction in the R&R auction house!

We will have collectibles, antiques, tools, Morgan and Peace Silver dollars, 1 dollar silver certificates, a brand new free-standing gas log heater model CRHQD250TA, knives, jewelry, hundreds of DVD's, several collectible shot and liquor glasses and beer mugs, brass figurines, and much more!

We want to thank all of our customers for a fantastic 2019 auction season, and look forward to serving you in 2020. We hope you have a very Merry Christmas and Happy New Year. If we can serve you and your future auction needs please don't hesitate to contact us at 417-576-7357.



PRE-BID NOW ONLINE AT RRAUCTIONSERVICE.COM!

TERMS: Cash, check, or credit card with proper I.D. nothing removed until settled for A 3% fee will be added to credit card purchases. Not responsible for errors in listing. Any announcement made sale night will take precedence over any printed matter. **Note:** Service will take every precaution to prevent accidents, but will not be responsible should any occur.

For more information contact Professional Auctioneer Russ Weeks at 417-576-7357 or check out www.rrauctionservice.com



Serving this area's auction needs since 1997 with honesty and professionalism. www.rrauctionservice.com
(417) 576-7357 or (417) 345-4140



CAGA CERTIFIED APPRAISER

Public Auction

118 Jessie St. • Lebanon Mo. 65536

Due to the death of my husband "Sammy Dismang" we will sell the following at public Auction on:

Saturday, December 7, 2019 • 10:00 A.M

ARISING

7'x16' bumper hitch enclosed trailer tandum axle w/7' side walls, 16' bumper hitch trailer w/airplane tires, 13hp. Generator

FIREARMS

Sturm Ruger .357 - 6 shot revolver, **Heritage** .22/.22mag revolver, **H. Schmidt Osthheim** Rhoen .22/.22mag revolver, **Mossberg** model 500 12ga pump, **Winchester** model 1400 12ga pump, **Westpoint** model 33 30-30 lever action rifle, **Remington** model 7400 30-06 w/Bushnell scope, **Boito - BR2** 12ga DBL barrel made for K-Mart, **Topper** model 158 H&R 12ga single shot, **Mossberg** 12ga. camouflage sighted slug barrel & vented barrel, **Noble** Mod: 66J 16ga. pump

MUSICAL INSTUMENTS

Austin, Crate & Viper ele. guitars, 5 string **Conqueror** banjo w/case, 1982 **Cremona** violin w/bow & hardcase, 2004 **Florea** violin w/bow & soft case, Col. 1 Auction PA. & handheld PA., 8 channel **Pyle** amp, **Ibanez & Austin** amps, **Pyle** dual channel VHF wireless mic,

GLASS

Lot glass Occupied Japan, Imperial, Black Amethyst, Purple Amethyst, Black Satin, White Satin, Carnival Glass, Hobnail, etched glass, Ruby Red, Indiana Glass, Smith Glass, Many

sets including glasses, plates, Bowls, dishes, cream & sugar & pitchers, Set of Calyx Ware 1657 Adams England, sets old china dishes, glass baskets,

COINS

Large 1918 one cent pieces, lot mercury dimes, Some 1964 Kennedy halves, Lot 1965 - 70 silver clad halves, lot Wheat pennies, Eisenhower, Ben Franklyn & some odd silver money

HOUSEHOLD & MISC.

Maytag washer and dryer (like new), **Samsung** 43" flat screen TV, Oak Contour adj. King size bed, matching set Oak dresser & chest of drawers, Oak secretary, Oak 8-gun cabinet, Dual reclining over stuffed sofa & matching recliner, Grandfather clock, Seth Thomas mantle clock, 2 - Kitchen clocks, 4 - 5 curved glass china hutches, Glass top entertainment center, 2-gal crock, 2 - ele. roasters, "Gone with the wind" kerosene lamp, Kerosene lamps, Long handled tools, bench grinder, kerosene heater, **Hitachi** power miter, lot folding tables, Fiberglass step ladder, **Wagner** paint sprayer, power washer, **Homelite, Ryobi & Poulan** chain saws, Floor jack, lot hand tools, drill bits, Alum. Flag pole, plastic totes w/lids, **Coleman** lantern, tool box, workmate, **Homelite** gas string trimmer, Battery charger, Two wheeled dolly, cream separator, lawn ornaments,



Many More Items Too Numerous to Mention

PATTY DISMANG



• Farm • Antiques • Livestock
• Real Estate • Household • General

JOHNSON BAY

AUCTION SERVICE



Third Generation Family Tradition Since 1942

Russell "Rusty" Johnson
660-221-4067

Phillip Yoder
660-723-3389

For Full Listing, Pictures and Details—www.auctionzip.com (ID# 20300)

PUBLIC AUCTION

SATURDAY, DECEMBER 7 • 10:00 A.M.

Directions: OLD SEARS BUILDING IN SALEM, MO -

Located between Parts Tek and Town & Country Bank on Scenic Rivers Blvd. Watch for signs.

ANTIQUES • HOUSEHOLD • TOOLS • GUNS • MISC. & MUCH MORE!

Croquet Set - 2 Workshop Tables - Electric Hand Grinder - Level - Pipe Vice - Fishing Gear - 5 Step Ladders - Carpenters Clamps - Box Fan - Electric Sanders - Drill - Craftsman Router 3/4 1/2hp - Beam Jacks - Work Bench Table - Lights - Fence Charger - Electric Motors - Squirrel Cage - Ice Tongs - Dresser & Chest - for Tools - Sewage Tape - Christmas Tree - Concrete Trowels - Outside Big Bulb Christmas Lights - Chicken Wire - Plastic Fence 4' Tall - Tomato Supports - Base Boards - Leaf Attachment for Lawn Mower Tongue and Groove Oak, Multi - 4" Drain Tile Hoses - Metal Round Table - Garden Tools - Tools - Chains - 26 Gallon Kobalt Air Compressor - Fold-up Aluminum Ladder - Tree Trimmer - Mongoose Mountain Bike - Schwinn Bicycle, Womens - Extension Cords Jumper Cables - Weights & Bench - Bug Light - Wood Spindles Electric Leaf Blower - Rabbit Trap - Tarps - Coleman Lantern 2 Craftsman Table Saws - Fan - 20 Micron Water Filters(8) - Metal & Wood Table - Wooden Crutches - DR 9hp Leaf Vac - Craftsman 42" Riding Mower (V Twin) - Electric Dryer - 2 Park Benches Splitting Maul - Lawn Mower 22", 5.75hp - Old Town Stillwater 12' Canoe - Old Town Osprey 14' Canoe - Kayak 11' - Life Jackets - Paddles - Bike Rack for Car - Metal Pieces - Wood Pieces 4, 12' 2x4's - 3' Lawn Wagon - 3 Old Metal Lawn Chairs - 2 Cattle Gates - Metal Storm Windows w/Screens - Fence Posts - 4 Wooden Screen Doors - Bread Baker - Pump Table - Footstool - Lots Kitchen Tools - Kitchen Plastic - Model Airplane - Small Fan - Small Heater - Electric Cables - Dish Pans - Portable Shark Vacuum - Duffel Bag - Sun Shade - Hanger for Towels - Yard Ornaments - Quilt Toaster Oven - 12" Crocks - 5-Shelf Bookcase - 3-Shelf Metal Table - Machinist Box w/Tools - 2 Plastic Lawn Chairs & Table - Meade Tilescape - 2 Step Folding Metal Ladders - Afghan - Back Rest for Bed - Wooden Stool - Round Table w/Cover - Artificial Flowers Towels - Sheets - Hats - Rags - Blankets - Wood Hangers - Rams Flag - 6 Lawn Chairs - 4-Drawer Metal File Cabinet - Plant Racks 2 Dog Beds - Vacuum - Metal Rocker - 6 Shelves for Knick-Knacks

Rugs - Stuffed Animals - Baskets - Standing Globe 2 Wicker End Tables - BBQ Grill - Lots of Knick-Knacks - Large Piggy Banks - Leather Elephant - Table Ironing Board - 2 Foam Stadium Seats - Insulated Bag - Air Rifle - French Provincial Chair - 2 Wood Barstools - 2 Oak End Tables - White & Wood Serving Cart - 4-Shelf, White & Wood Corner Shelf - Iron Fireplace Humidifier w/Base Artificial Hanging Plant - 6' Artificial Palm Tree - Assortment of Pictures - Wicker Loveseat w/Pads & Pillows - 4-Shelf Bookcase 4 Shelves Metal & Wood - 4 Shelves & 2 Drawers, Metal & Wood - Metal & Wood Shelf - Table - 7 Jigsaw Puzzles - New Paperback Books - Bed Pillows - Stool, Wood & White - Nursing Bucket Floor Jacks & HardWare - Hinges - Brass Kettle - Iron Kettle - Indian Pottery - Large Bible - Reference Guide - Bottles - Large Wood Bowl - Wall Hanging - 2 Hurricane Lamps - Floor Lamps - Pressure Cooker - Kitchen Canisters - Painting on Round Saw Blade - Bow & Arrow Heads - 2 Pair Western Boots - Leather Vest - Leather Men's Coat - American Flyer Train Set, Metal w/Tracks, 3/16 - Scale, Gilbert - Art Paint Kit - Sump Pump, New - Cattle Water Tanks - Stihl Chain Saw 16" - @Yamaha 2010 950cc 11,000 miles - 3-Pc. Luggage Set - Cabinet Knobs - 22 Semi Auto Marlin Rifle - Browning 40# Pull Bow, Needs String - 12ga Winchester 1200 Pump, Great Shape - Old Dresser w/Mirror - Cedar Chest - Lots of Old Pictures - Lots of Sewing Items - Old Books - Lot Pic Frames - Lot Baskets - Old Toys Sad Irons - Luggage - Crocks - Coffee - Jars - Lanterns - Marbles Lot of Christmas Decor - Edison Home Phonograph - Armoire End Tables - Wooden Shelves - Very Nice Old Walnut Shelf - Alex King Spool Cotton Holders - Winchester Ammo Box - Type Sets Buck Saw - Cow Bells - Dry Sink - Singer Sewing Machines

AUCTIONEER'S NOTE: This is a great sale for the holidays! Lots of Christmas items still in boxes, very nice antiques, great shop items.

Very clean inside sale. Good quality!

See you there! - Tom



ANNOUNCEMENTS AT AUCTION TAKE PRECEDENCE OVER PRINTED MATTER

WULFF AUCTION

TERMS: CASH OR APPROVED CHECK - I.D. REQUIRED
NOTHING REMOVED UNTIL SETTLED FOR

Licensed Appraisals

Auctioneers:
Col. Tom Wulff - Col. David Wulff
498 Hwy. B, Salem, MO 65560 • 573-729-8476
Clerk: Tracy Strange Cashier: Nancy Inman



RAIN OR SHINE OWNER & AUCTION PERSONNEL NOT RESPONSIBLE FOR ACCIDENTS AT SALE SITE

See Wulff Auctions at www.thesalemnews.com/auctions

ESTATE AUCTION

SUNDAY, DECEMBER 8 • 11:30 A.M.

Directions: SALEM - From Salem take Hwy. 19 south 13 miles, take County Road 5520 left, follow 5520 two miles. Watch for signs.
THIS SALE HAS THE BEST WOODSHOP TOOLS ASSEMBLED. LOTS OF HUNTING. LARGE BUILDING TO HAVE SALE INSIDE.

WOODSHOP TOOLS • HOUSEHOLD • TRAILER • MISC.

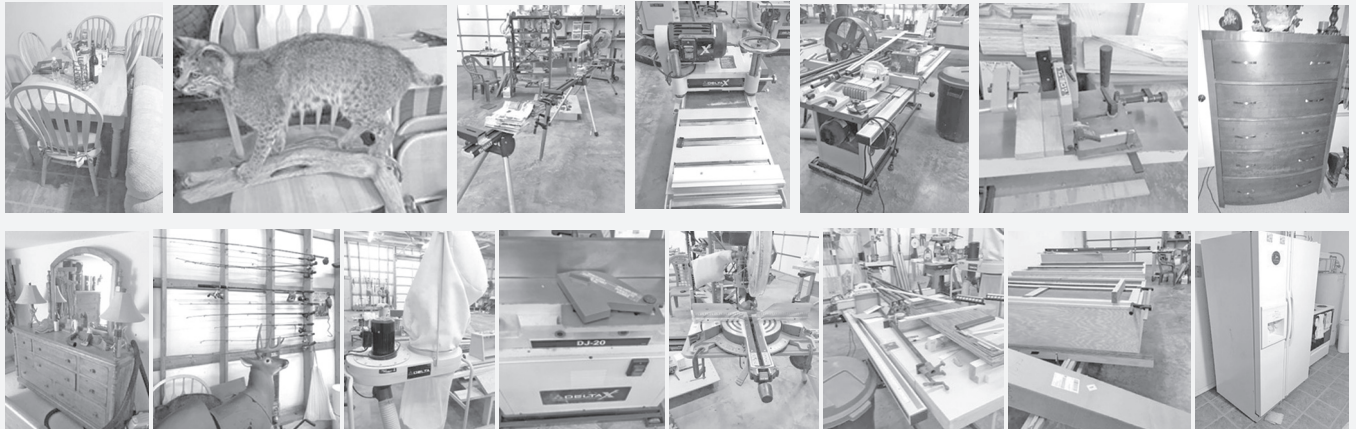
Ridget Tap & Die Set - Delta Drill Press
 Bear, Deer & Turkey Decoys & Bow Targets
 Several John Deere Signs
 5 Boxes of Tongue & Groove Flooring
 Oak Cabinets, Need Finishing
 Several Wall Mounts; Elk, Deer & Bobcat
 Tool Rest - Several Lots of Wood Clamps
 Table Saw & Table - Hunting Items
 DeWalt Work Table - Delta Guides & Wood Gigs
 Delta DJ-20 Edger - Hollow Chisel Mortiser
 Delta Wood Planer, Roller Feed
 Delta Dust Collector - Craftsman 10" Radial Saw
 2-Speed HD Wood Shaper - Delta Shaper Fence
 Several Lots of Very Nice Fishing Poles
 6' Aluminum Step Ladder
 King Size Oak Bedroom Set, Dresser w/Mirror
 15 Good Large & XL Camouflage Coats & Jackets, Clean
 2 End Tables & Dresser, Great Quality

Antler Lamps - Stereo System
 Very Nice Full Size Bedroom Suite, Bed, Round Front Dresser & Dresser w/Mirror & End Tables
 Hunting Blinds, Climbing Tree Stands
 Canoe - Oak Kitchen Table & 6 Chairs
 Electric Cook Stove - Microwave
 Set of Dishes, Pots & Pans
 Very Nice Brown/Oatmeal Stuffed Couch & Loveseat, Very Clean
 Whirlpool Side-by-Side Refrigerator, Like New
 Tackle Boxes, Full - Small Refrigerator
 Wheelbarrow - Tarps - Mop Bucket
 Large Shop Fan - 35 lb. Propane Tanks & Heater
 Craftsman Shop Vac - Small Toolbox
 Hand Tools - Office Chairs - Levels - Wood Glue
 Several Nice Handles, Shovels, Axes
 Battery Charger - 3pt. 4' Section Harrow
 3pt. Seeder - Concrete Decorative Blocks
 Portable Hunting Blind - 3pt. 5' Disk
 Patio Furniture - Wagon Wheels - Milk Can

@18' Bumper Hitch, Box Trailer, Very Nice, Will File for a Lost Title
 3pt. Adjustable Rock Rack
 100 Gallon Pickup Fuel Tank - Coffee Table
 @3 Ground Built Tree Stands, Will Have To Be Taken Down

AUCTIONEER'S NOTE: This is the cleanest sale you will attend. Equipment is industrial, like new, top quality. Furniture is showroom and very clean. Must attend!

See you there!
 - Tom



WHEAT ESTATE

ANNOUNCEMENTS AT AUCTION TAKE PRECEDENCE OVER PRINTED MATTER

WULFF AUCTION

Auctioneers:

Col. Tom Wulff - Col. David Wulff
 498 Hwy. B, Salem, MO 65560
 573-729-8476

Clerk: Tracy Strange Cashier: Nancy Inman

See Wulff Auctions at www.thesalemnews.com/auctions

TERMS: CASH OR APPROVED CHECK - I.D. REQUIRED
 NOTHING REMOVED UNTIL SETTLED FOR

Licensed Appraisals



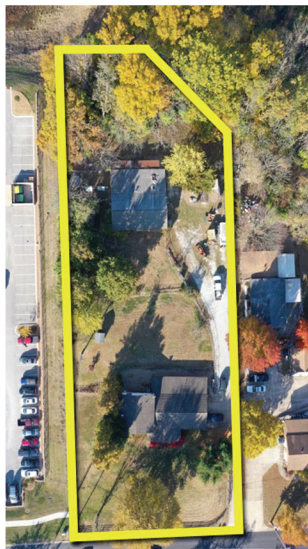
RAIN OR SHINE OWNER & AUCTION PERSONNEL NOT RESPONSIBLE FOR ACCIDENTS AT SALE SITE



EVANS MOVING AUCTION

8478 MEXICO RD - ST PETERS, MO
TUESDAY, DECEMBER 10 @ 10 AM

Bob has decided to move to Arizona & will sell his home & personal property at public auction.



REAL ESTATE: (Sells 1st @ 10 AM) 3 Bedroom, 3 bath split-level ranch home (1430 Sq ft) on 1.45 Acres M/L – 2 Car garage – Fully insulated shop w/ rollup door, heat & air & ½ bath – Chain link fenced yard – Property is a commercially zoned residence that would make a great home, daycare, construction headquarters; the possibilities are endless for this property.

**To view Real Estate or for more info. call
Karen Lovadina w/ Kosztik Realty Group 314-583-9759**



TRACTOR, TRAILER, FUEL TANKS, EQUIPMENT:

Kubota B9200 HST utility tractor, FWA, 3pt, diesel, foot controlled hydrostat, 740 hrs – Woods RM54 finish mower- 4' 3 Pt rear

tine tiller - 3 Pt wood splitter – Post hole digger - 16' utility trailer, HD model – 1985 Chevy box van w/ lift gate, propane – 500 gal propane tank – 100 gal propane pig – 500 gallon fuel tank w/ elec pump – Kubota T1560 riding mower – Cyclone yard vac cart 6 ½ hp w/ lots hose – Backpack blower - **ANTIQUES, COFFEE GRINDER,**

CYLINDER & VICTROLAS: Small dbl wheel coffee grinder by Enterprise, org paint, must see to appreciate – Butcher block w/ turned legs -

Large walnut sideboard - Very nice triple bookcase w/ claw feet, mahogany – Curved glass china cabinet - Mahogany rd dining table – Atq rocker – Walnut chairs w/ needlepoint seats - Nice Graphophone type AZ cyl player, nickel plated, org stenciling - Edison model E cyl player w/ Morning-glory horn - Harmony type D tabletop Victrola w/ horn – Victor VVSO & Victor table top Victrola - Hp Tea set – Edison Silverstone Victrola - Victrola records - Pattern & crystal bowls – House full, expect much more! **HOUSEHOLD,**



BOWFLEX: Vermont casting BBQ grill - Kenmore washer & dryer – Nice chest - Oak hutch – Tea cart - Matching sofa & loveseat – Kitchen table w/ roll about chairs - Propane wall heater – Portable a/c - Flat screen TV – Blanket box – 2 dr metal cabinets – 3 Baker racks – 2 Bowflex total gyms - Proform treadmill 730 – Farberware ss coffee – Champion elec juicers – Mikasa crystal - Lots of nice cookware – Grain grinder– Corningware – Bird cage w/ stand – Several nice Christmas trees – Boxes of Christmas – Large yard Nativity – Drafting table – **STEAM CLEANER, TOOLS, ETC:** Nice Hotsy steam cleaner – New Poulan Pro PR5020 chain saw & others - Safety Clean abrasive blaster – Marquette 12 wire welder – Dewalt & Rigid chop saws - Craftsman joiner/planer - 2 Sections of scaffolding w/ hd wheels - Torch cart – Delta table saw – Radial arm saw - Power tools – Craftsman shop vac – Elec. chainsaw sharpener - Sun roll about cabinet - Max air shop fan - Welding & work benches w/ vises – Manual tire changer – Reese V5 receiver hitch - 220v heater - Elec horse brush, groomer – Appliance dolly – Nice selection of shelving – Oak porch swing – Large animal trap – 2 Scuba tanks – 3 Air tanks – 29 1x10x8 new boards – Misc lumber – Bolt bins full - **DOG PENS, KENNELS, ETC:** Large amount of chain link dog pen panels from 5-6' tall & lengths from 8-16' - 2 More large pens made of panels 16x40/ & 10x40' - Chain link fence & more!
FULL LISTING / PHOTOS / TERMS @ ImanAuction.com!!!

Bob Evans. Seller

IMAN AUCTION COMPANY | 660-388-6235 | ImanAuction.com



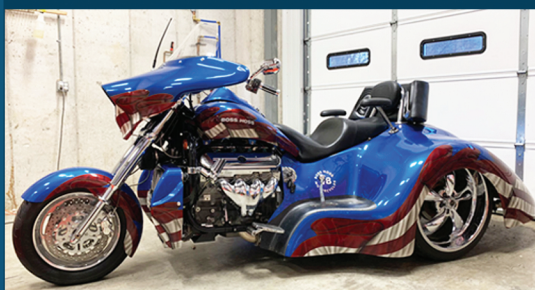
LAKE OF THE OZARKS COMMERCIAL PROPERTY & DISPERSAL AUCTION

5489 OSAGE BEACH PARKWAY - OSAGE BEACH, MO

SATURDAY, DECEMBER 14 @ 10 AM



REAL ESTATE: (Sells 1st 10 AM) TRACT 1: @ 5489 Osage Beach * Consists of a 6,000 Sq Ft m/l commercial building (3 levels) – Dbl drive through bays w/ maintenance pits – Nice showroom area w/ laminate flooring & 2 restrooms – Kitchenette w/ stainless steel appliances – Large walk-in safe room – Additional 2 rooms, 1 w/ full bath allows for potential living quarters – Mid level game room w/ laminate flooring & man cave area w/ full bath & laundry - Basement level has rollup doors, former detail shop, maintenance, etc w/ remainder in storage – Entire building has HVAC w/ separate units – Property is located in a high traffic area & has multiple possibilities. Excellent property! **TRACT 2:** Lot 33 located in block A of Cabana village, Osage Beach, MO Located on Prairie Hollow Rd – Lot size is 50'x100' – Borders US 54 & Lies west of Starbucks & Bagnall Dam Association of Realtors Office - **To view Real Estate or for more info. Call Iman Auction Co 660-388-6235**



ONLY 265 MILES!

MOTORCYCLES, PARTS: 2013 Boss Hoss Gangsta custom trike, LS445 V8 engine w/ cam, immaculate condition, 3,965 miles, air ride, Rockford Fosgate stereo, must see! – 1 Owner 2016 Harley Davidson Touring Road Glide w/ only 265 miles, 103Ho, loaded w/ options, see to appreciate - 2006 Yamaha FJR 1300, very nice, only 17,xxx miles – 1994 Honda Nighthawk 750, super nice, 24,xxx miles – 2006 Honda Shadow, leather bags - NIB HD Vance Hines dresser twin exhaust – HD parts, NIB - V Rod seat – Helmets - Top quality Giant Cypress DX bike ***POOL TABLE, HARLEY DAVIDSON ITEMS, COLLECTIBLES:** Olhausen slate top pool table w/ Harley Davidson felt – HD pool balls w/ box – HD trunk – HD motorcycle type rocking horse - Ping pong table – Fitness Gear inversion table - Corvette neon sign – Corvette pics - HD signs, rugs, dart board & 25 other man cave type signs – HD jewelry – HD clothing, bags – Quality wrist watches – Chrome bar stools – Budweiser RC car boat – Swarovski show cases – HD oak display case - Motorcycle lighters – Leatherman multi tool – Cowboy figurines – Signed Thomas C. Fetter graphic art painting * **AIR COMPRESSOR, TOOLBOXES, TOOLS:** Craftsman Professional air compressor, 5 Hp, 80 gal - Work Force air hose reel - Roll about tool chests, Snap On, Husky, etc - Shop vac – Hoover Wall mounted shop vacs – S.O. wrenches, air tools - Mac impact swivels – S.O. Craftsman & S-K skts – S.O. On & Craftsman torque wrenches – Mac & S.O. line wrenches – 12' Step & Vulcan & other folding ladders - Jacks – New Porta power - Rigid pipe bender stand – Pipe wrenches - Hd pipe cutter – Rigid tools – Shears – Milwaukee Sawzall – Dewalt metal chop saw - Ryobi & Dewalt power tools - Yellow Jacket manifold gauges, recovery system, leak detector & pump – 4' Malco metal break – New drywall hoist - Wagner 705 power painter * **BOSE STEREO's, HOUSEHOLD, TV's, FURNITURE, ICE CREAM MACHINE:** Bose Free style – 4 Bose 301V speakers – PSB sub – Bose AVM console – Other Bose components - Bose Wave radio w/ CD

w/ CD changer - Commercial Bunn O matic coffee - Flex steel leather sofa w/ recliners – Ashley leather recliner – Chest of drawers - MT ornate cabinet - Fancy floor lamp – Wine cabinet – Counter top icemaker - Pizza oven – Dorm refrigerator - Amana washer & Kenmore dryer – Haier 75", Bose 46" & Westinghouse 55" flat screen TV's - Bistro table & chairs – Adding machines, printers, paper shredder - Taylor Freeze soft serve ice cream machine - Hik Vision security system, cameras * **HVAC SYSTEMS, PARTS, HOT WATER HEATERS:** 5 GE PTAC heat & air conditioners – NIB Nordyne & Rheem Ruud air handlers – New A coils - NIB 5,000 watt window A/C – New Rheem Professional Classic hot water heaters, elec - Sanuvox Hepa filter system - Elec motors – Thermostats - 134A reclaim tanks - Water purifier – LED Emergency light combo kit – Expansion valves – New Brass valves, copper & PVC pipe, fittings – Galv. pipe – Conduit - Duct fans – 6 Cases of new braided water lines – Pipe heat cable – ¾ Pressure regulator valves – Copper line sets - Furnace filters – Freon scales – R134A, 404A & R22 refrigerant – Plumbing supplies * **PRESSURE WASHER, MOWER, KEY MACHINE, OUTDOOR ITEMS, CAR DOLLY, SHELVING:** Ariens 3,000 psi gas powered pressure washer – Husqvarna AWD self-propelled push mower – Yamaha 2600 watt generator – Echo back blower - Shop fan - Speedex key machine - Brinkman grill – ATV ramps – Chain saws – 8,000 lbs. winch - Good shelving – 22x70x19.5 tires & dually wheels * **GUNS, GUN SAFE:** 2 Remington 870's 12 ga, vr – Henry 22 L/A w/ box, Firefighter commemorative - Henry Golden Boy 22 L/A w/ box – Mossberg 464 custom 30-30 L/A " The Joplin Heritage Rifle" – Mossberg 12 ga – Marlin 22 auto, gold trigger – Ruger Charger 22 pistol – Ruger Single Six 22 revolver – Italian GT380 auto – 2 Hi Standard 9 shot 22 revolver – Bond & Cobra Deringer pistols - American Tactical M1911 Military 45 auto pistol - Mossberg 715P 22 pistol – German Werke 6.35mm pistol - Binoculars – Spear gun – Stack On digital gun safe – Bounty Hunter metal detector

FORMERLY DAN'S HEATING & COOLING * STEVEN & TRACY BRANSTETTER, SELLERS

IMAN AUCTION COMPANY

660-388-6235 | 660-788-4298 | 660-414-7830 | 660-414-7967 | ImanAuction.com



Mickey Duckett
CAL, MPPA, AARE, CES

Mickey Duckett Professional Auctioneer

P.O. Box 1575, Ozark, MO 65721

(417) 353-2768

www.mickeyduckettproauction.com



SPECTACULAR REAL ESTATE AUCTION

115 Old Well Lane, Kirbyville

ONLINE BIDDING ONLY!!

Preview: Sun., Dec. 8th, 12-3

Auction Ends: Fri., Dec. 13th, @ 1:07

Nestled in the beautiful hills of the Missouri Ozarks is this one of a kind, custom built 6 bed/ 7 bath home with approximately 8,665 sq. ft. of nothing but elegance! From the entry you will find a music room on your right, formal dining room on your left and formal living area straight ahead. The huge chef's island kitchen with large breakfast area has lots of windows to enjoy the view of your personal poolside oasis. Just a few steps from the kitchen you will find the sunken family room with huge built in entertainment area. The split bedroom design has the master suite on the main floor and three spacious bedrooms upstairs. Just a few steps down the hall leads you to the weight room with lots of windows to let in the sun and view the gorgeous pool. The combination game room and guest quarters offers not only a large bedroom, but also a small kitchenette, full bath and private deck as well! This working equestrian farm has a 160' x 60' stable complete with stalls, tack rooms and inside arena with viewing stand. There's even a 20' x 40' heated workshop with 10' doors for all of your extra toys! All of this is situated on approximately 20+/- acres of gently rolling ground with assorted shade trees and magnificent panoramic views. Just minutes to Buffalo Ridge & Murder Rock golf courses, Branson Airport and all that Branson & Arkansas have to offer. If you are ready for quiet seclusion or a new adventure, this property is for you and it's **Priced To Sell!!**

Seller: Dan & Jana Britton

Real Estate Terms: 5% Buyer's Premium. 10% down to be placed into escrow the first business day after Auction, balance due in thirty (30) days. Auction Company to receive deposit from Internet Bidders no later than Mon., Dec. 16th. Taxes prorated to day of closing. **Sale subject to meeting seller's reserve. NOT SUBJECT TO FINANCING!** Auctioneer or Seller does not guarantee the accuracy of information obtained from outside sources. Announcements the day of auction take precedence over any and all printed and/or internet materials.

Auctioneers Note: This tranquil property is absolutely breathtaking! Take a look at our Online Catalog!! For more information call Mickey at 417-353-2768. Go to www.mickeyduckettproauction.com and register to bid.



CRAWFORD *Online* AUCTION

HERMITAGE, MISSOURI

WEEKLY ONLINE CONSIGNMENT AUCTIONS

Specializing In Antique Collections, Tools, Household and Estate Items

Online Bidding Through Sunday Evenings at 7:00 PM



WWW.OZARKBID.COM



SHIPPING ON
AVAILABLE ON
MOST ITEMS

SELL YOUR ITEMS
NATIONWIDE

SAVE TIME, SAVE
MONEY, SHOP AT
ONLINE AUCTION

Online
CRAWFORD
Auction Service LLC

Register and bid online

@ www.OzarkBid.com *Ozarkbid*



Contact Chase Crawford, Crawford Auction Service for more info @ 417-399-1904



ABSOLUTE • ABSOLUTE • ABSOLUTE

PUBLIC AUCTION

RAIN OR SHINE

Saturday-December 7TH-9:00 AM

•••MOST ITEMS UNDER ROOF IN CASE OF INCLEMENT WEATHER•••
VIEW MORE PICTURES AT WWW.HASKINSAUCTIONS.COM

LOCATION: TECUMSEH, MO DIRECTIONS: From the US Hwy. 160 & Hwy. PP Jct, North on Hwy. PP 4.6th miles to the auction on the left. Follow Haskins Auction signs.

Owner-**Kathie Renken & the late Dennis Renken**

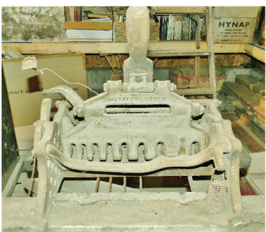
KUBOTA TRACTOR•CASE SKID STEER•WELDER/GENERATOR•TOOLS

Kubota B2620 Tractor w/ LA364 loader, w/belly mower, diesel, 26 hp, 115 hrs. 3 cyl, Hydratrans •Case 1845 skid steer 5127 hrs •Hobart Champion 8500 AC/CC 8000 watt generator/welder, Onan engine, 297 hrs on trailer w/ oxy-acet. bottles, gauges, hose reel, w/Cartmaster torch •Craftsman ProSeries 24 hp, 46" cut riding mower •Craftsman belt sander •small Powermate generator •Craftsman tool box chest •Milwaukee chop saws •Belsaw wood planer •several battery chargers •drill press •Craftsman 6.75 hp push mower •Stihl FS85 trimmer •FS45 trimmer •Milwaukee saw & chisel comb. set •B&D 18v cordless drill •Chicago hammer drill



•Milwaukee sabre saw •Craftsman 3.0 hp vacuum •4 (new) 12x16.5 RG400 NHS skid steer tires •extension cords •fuel containers •chains, boomers •bar clamps •sockets, wrenches, mostly US made •T-post driver •metal purlins •2-wheel dolly •nails & screws •buckets of nuts & bolts •6' 3-pt Sidewinder brush cutter •B&D portable drill •Chicago Electric jack hammer •(3) solar battery charger panels •ratchet straps •ladders, fiberglass step, wooden step •David White transit set •Welton table saw •Craftsman 12" radial arm saw •B&D electric chain saw •(New) work-lights •wooden boat paddles •approx. 100 small bales mixed grass hay •Wonderwood wood stove •small LP bottles •live traps •scrap metal •rotating metal shooting targets •many other items not mentioned.

• ANTIQUES • HOUSEHOLD •



Riverside oak antique stove •20 gal crock •6 gal crock •antique sorting postal desk •broad axe •wash board •old scales •cotton scales •cow bells •lanterns •old wooden small toy wagon •forge •butter churn •approx. 100 Jim Bean & collector bottles •oak table w/6 matching chairs •well



•corn sheller •old milk coolers •several Moxonmier glass bottles •meat grinder •Frigidare upright freezer •Kenmore upright freezer •patio furniture •SS BBQ grill •oak entertainment center •China cabinet •6-gun wooden cabinet •2 big wooden rocking chairs •full size bed & dresser •many other items not mentioned.



bucket •kerosene stove •wash basin & a chamber pot •weather vane •block plane •Zenith radio •2 old bells, 1 w/ bell tower •A spin wall antique potato cutter



AUCTIONEER'S NOTE: Many tools name brand to choose from. Nice tractor & welder with several nice antiques. Note early start time of 9:00. Most items can be under roof in case of inclement weather. See you Saturday. *Thanks, David*

REAL ESTATE • ESTATE • FARM & BUSINESS LIQUIDATIONS
 MO Lic. 0112 AR Lic. 1059

David HASKINS AUCTIONS

cell **417-257-4446** :: Gainesville, MO :: 417-679-4997
www.haskinsauctions.com • email: info@haskinsauctions.com

TERMS: Cash or approved check. Conditions: I.D. required to register, items sold as is, no warranty. Nothing loaded or removed until paid for in full. Announcements made day of sale take precedence over any printed material. Auction service, employees, and/or owners are not responsible for accidents. Concessions and porta-potty available.

•BUYERS ARE ENCOURAGED TO ALWAYS INSPECT MERCHANDISE PRIOR TO BIDDING•

DUTCHMAID LAUNDROMAT AUCTION

WEDNESDAY, DECEMBER 11, 2019 @ 10:00AM

526 S. National • Springfield, MO 65806

DIRECTIONS: From the intersection of Grand & National, go North on National auction will be on right.



INVENTORY LIST: Maytag Washers, 35 lb, model MFR 35 PDARS, 220- 5 total, 2 working, 3 non- working; Maytag Washers, 30lb, model MFR 30 PDCTS, 220- 2 total both working; Maytag Neptune Front load washers, model MHN30 PDBWWO, 110-2 total, both working ; Maytag top load washers, model MAT12PDBAL/ MAT12P-23 total, 15 working, 8 non working; Maytag 45 lb stack dryers model MLG45DBWW, gas-2 total , both working ; Speed Queen 30 lb stack dryer model STT30NBCB2G001, gas-1 total working; Maytag 30 lb stack dryer model MDG32PC2AL, gas- 3 total all working; Maytag 30 lb single dryer model MD630PC2AQ, gas- 9 total all working; Maytag 30 lb single dryer model DG34CQ, gas-6 total 5 working 1 non working; 3 Folding Tables 72"x 30"; 6 Folding tables 60"x 30"; 10 Laundry Cars with Hanging rack; 2 Laundry Cars without racks; 1 Laundry scale; 3 Rollings clothes Racks 48"; 1 Klopp coin counter; 1 Soap Dispenser - 9 selection; 1 Soap Dispenser- 4 Selection; 1 Standard change machine front load; 1 Soda Machine- 6 selection; 5 Molded seating units (3-5 seats each); 2 Molded seating units with tables; 1 Metal office desk; 4 Office chairs; 1 Candy machine- 3 selection; 1 Open sign ; 1 Metal storage cabinet 72" high x 36" wide;

PLUS A FEW MORE ITEMS!



FOR MORE INFORMATION GO TO WWW.EASTERLYAUCTIONCO.COM OR CALL EASTERLY'S AT 417-833-9494

EASTERLY
AUCTION CO.

Go to www.EasterlyAuction.com



auctionzip.com
ID#14770

Mike Easterly Auctioneer
417-833-9494

Not Responsible for accidents or theft.

For more information call: Easterly Auction Company, Springfield, MO.

Auction Terms: Bank Letter Of Credit Required.

Visa, Mastercard, Cash, Cashier's check or checks with proper I.D.

Announcements day of sale take precedence over printed material. Auction Notes: Although information

is obtained from sources deemed reliable, auctioneer makes no warranty or guarantee expressed or implied.

Buyers should themselves take the opportunity to make their own inspection prior to sale.

OSAGE COUNTY PUBLIC AUCTION

WEDNESDAY, DEC. 18, 2019 AT 10 AM

AUCTION LOCATION:

220 HAILE'S TRAIL, BLAND, MO 65014

Directions: From Bland, MO take Hwy. 28 west 2 miles to Hwy. NN or from Belle, MO take Hwy. 28 east 2 miles to Hwy. NN, turn north on Hwy. NN and go 4 miles to the end of the pavement, turn left on Osage Road 735A, go 120 ft. to Haile's Trail, turn right to sale site.



Selling:

TRACTOR: 2004 JD 7920 MFWT TRACTOR, 1992 HRS COMBINE, HEAD, MOVER: 1996 JD 9400 COMBINE; 1998 JD 920 - 20' GRAIN HEADER;

UNVERFERTH HT25 ADJUSTABLE HEADER WAGON
FARM EQUIPMENT: 2010 JD 1590 - 15' GRAIN DRILL; UNVERFERTH 7250 GRAIN CART; WILBECK 1934 DISC; JD 2100 4-SHANK RIPPER; JD 457 SILAGE SPECIAL BALER;

NEW HOLLAND 1431 DISC-BINE; VERMEER DT 200 - 4-BASKET HAY TEDDER; VICTOR 225 HYD. CART; WESTFIELD MX 100-63' GRAIN AUGER; HARDI RANGER 2000 SPRAYER

CONSTRUCTION EQUIPMENT: 2003 JD 650H LGP DOZER; 1997 JD 310E BACKHOE; 2005 JD 230 C LC TRACT EXCAVATOR; KENT 27 HYD. BREAKER; BOMAG BW 145 DH-3; LIEBHERR LR 632 HIGH-LIFT, HYD. 4 IN 1 BUCKET; HOLCOMB 1200 - 12-YARD HYD. SCRAPER; SET OF PALLET FORKS FOR BACKHOE LOADER

TRUCKS - TRAILERS: 1997 IH 4900 - 6 X 4 DUMP TRUCK; 1993 WHITE VOLVO ROAD TRACTOR; 2004 EAGER BEAVER 10HA-PT FLATBED TRAILER; 1999 EAGER BEAVER 50 GSL, TRIPLE-AXLE, LOW-BOY TRAILER

Visit wheelerauction.com for more information!

SELLERS: DAVID HAILE

Wheeler AUCTIONS & REAL ESTATE

23101 HWY. 24, PARIS, MO 65275 | 660-327-5890
WWW.WHEELERAUCTIONS.COM



For more information call Charlie Nordwald at 636-795-4552, wheelerauctions.com.

REAL ESTATE & ESTATE AUCTION

30158 Orchard Dr. • Lebanon, MO

SATURDAY DECEMBER 7

Starting At 10:00AM

REAL ESTATE



Come prepared to buy this nice all brick home. The home features 2 bedrooms currently (easily can be a 3 bedroom), 2 bathrooms, kitchen and family room. All setting on 3.7 acres with outbuilding and a nice pond. Close to town in a quiet neighborhood.

Terms on Real Estate: 10% down sale day with balance at closing. Shown by appointment.

HOUSEHOLD- TOOLS AND BIRDCAGES

Curio cabinet, dinette, kitchenware, refrigerator, washing machine, grandfathers clock, bedroom furniture, futon, push mowers, wagon, tiller, lawn cart, hand tools, power tools, air compressor, large lot of bird cages, scrap iron, much much more!



GEORGE ROWDEN

Go to www.knightauctionservice.com for complete list and pictures!

TERMS: Cash, Approved Check w/ID, Visa or Mastercard.



Sale By
KNIGHT AUCTION SERVICE, LLC
 417-532-7497 Lebanon, MO
 "Complete Sale Service"

www.knightauctionservice.com

REAL ESTATE AUCTION

801 Fowler • Lebanon, MO

SATURDAY DECEMBER 7

Starting At 12:00 PM

REAL ESTATE



Come prepare to buy this 4 bedroom, 2 bath home with great floor plan, featuring open dining room -kitchen, utility room, nice sized family room with fireplace and insert. All appliances sell with the house. Back yard has privacy fence, above ground pool and big deck. Maintenance free siding completes this move in ready home! Co-brokered with United Country VIP realty.

Terms on Real Estate: 10% down sale day with balance at closing. Shown by appointment.



MR AND MRS ROBERT TAYLOR

Go to www.knightauctionservice.com for complete list and pictures!

TERMS: Cash, Approved Check w/ID, Visa or Mastercard.



Sale By
KNIGHT AUCTION SERVICE, LLC
 417-532-7497 Lebanon, MO
 "Complete Sale Service"

www.knightauctionservice.com



BUFFALO LIVESTOCK MARKET LLC

276 Hwy 32 West
Buffalo, Missouri

Upcoming Sales

December 7
Regular Sale

December 14
PreVac & Regular Sale

December 17
Special Cow Sale

No Sale:
December 21
December 28

Merry
CHRISTMAS

and
HAPPY NEW YEAR



MON-WED MARKET REPORT

Listen to KJEL 103.7FM • Lebanon or KYOO 99FM • Bolivar

VIEW OUR SALES AT CATTLEUSA.COM

CALL FOR TRUCKING OR ON-FARM VISIT

Lyle Caselman • Owner-Manager
417-345-7876 • mobile 417-533-2944
Leon Caselman • Owner
417-345-4514 • mobile • 417-588-6185
Howard Miller • Owner 417-345-8122

Farm Auction

Monday, December 16, 2019

STARTS @ 1:01 P.M.

Address: 10225 N. Yale Avenue • Sperry, OK 74073

Directions: From North of Tulsa, OK, take Hwy 75N to E 106th St N. Turn East (right) on E 106th St N and go ½ mile. Turn right (South) on Yale Ave and go 3/10 mile. Auction is on the left. From Owasso, OK, at the Jct of Hwy 169 and E 106th St N, go West on E 106th St N and go 5 ½ miles. Turn left (South) on Yale Ave and go 3/10 mile. Auction is on the left.

For More Info & Pictures
www.chuppsauction.com

TRACTORS, SEMI TRUCK, SEMI GRAIN DUMP TRUCK, SPRAYER, GRAIN DRILLS, FIELD CULTIVATORS, DISCS, 12 ROW PLANTER, IMPLEMENTS, LARGE FARM EQUIP, TRUCKS, CLASSIC CAR & TRUCK



Estate of: **JOHNNY MORRISON**

Auctioneer's Note: Due to the passing of Johnny we are selling his estate. There won't be a lot of small items so don't be late. **1 AUCTION RING.** Loading assistance available the day of the sale only. Pasture parking available. Please follow us on Facebook for any updates or visit our website for pictures at www.chuppsauction.com.

TERMS: Cash – Credit Cards – Check with Proper ID – OK Sales Tax Applies unless exemption is shown. NOT RESPONSIBLE FOR ACCIDENTS. ANY ANNOUNCEMENTS DAY OF SALE SUPERSEDES PREVIOUS ADVERTISING.

CHUPPS AUCTION & REAL ESTATE

Stan Chupp
(918) 638-1157

Dale Chupp, Realtor
Coldwell Banker Neokla Select
(918) 630-0495

E. J. Chupp

LAWN DUMP CART AND LAWN AERATOR: both pull behind. \$200 for both. 636-239-4124.

3 DOZEN MALLARD DECOYS: Mostly Flambeau, some new, weighed and ready to hunt. \$40 per dozen. Buffalo, 417-345-4562.

OLD LINN CREEK, HA HA TONKA & CAMDEN CO BOOK "Before the Dam Water", by T. Victor Jeffries. \$3.50 plus \$2 if mailed. 417-532-2045, Lebanon.

AUNT JEMIMA COLLECTION. \$200 All. 573-327-9068.



MID MISSOURI STOCKYARDS

REGULAR SALE EVERY THURSDAY 11AM

SPECIAL STOCK COW SALE DECEMBER 14 @ 6PM

For Farm Visits, Market Updates, or Trucking
Call Zach Cox 417-777-1320
Dan Romine 573-578-4939

**Competitive Buyers!
Competitive Commission!
Competitive Market!**

Barn: 417-532-9292
I-44 • Exit 123 "just outside of Lebanon"
17505 Route 66, Phillipsburg, MO 65722

For weekly market updates, visit us at www.midmostockyards.com

2-Day ESTATE AUCTION

We will sell the following for Carol Cole Estate inside the Bolivar Elks building located from the Bolivar, Mo. square, 1.2 miles West on Broadway (Hwy. 32) to Elks way then North to building. Watch for Crawford auction signs.

Sat. Dec. 7, 2019 • 9:30am

• REAL ESTATE • ANTIQUES & COLLECTIBLES • MISC.

Sat. Dec. 14, 2019 • 9:30am

**• MODERN FURNITURE
• ANTIQUES • POTTERY
• GLASSWARE • MISC.**

See website for photos!
crawfordauctionservice.com

Carol Cole Estate

**Sam Crawford Auction Service
Cross Timbers, MO • 417-998-6629**

CHURCH BUILDING OR HOME ON 6 +/- ACRES

**Sells To High Bidder,
No Reserve or Minimum**



Open House / Inspection:

November 27th & December 4th,
12:00 p.m. to 1:00 p.m.

- 3,000+/- Sq. Ft. Church/ Residential Home
- Dining Room & Living Room W/ Gas Fireplaces
- Sanctuary/ Large Family Room With Windows Overlooking Grounds
 - Large Enclosed Sunroom
 - Fenced Back Yard
- Partially Finished Detached Garage/ Workshop • Shared Lake

Note: This Property Is Currently A Church, But Has So Many More Potential Uses. The Property Is Wooded With Beautiful Views From Any Direction. Easy Access To I-70 & Hwy 63!

4802 E. St. Charles Rd., Columbia, MO
Online Bidding Ends:
Wednesday, December 11th At 12:30 p.m.

“WE MAKE BUYING AND SELLING AT AUCTION EASY”
MEMBERS
Atterberry
Auction & Realty Co., LLC. MarkNet
573-474-9295 www.atterberryauction.com

For Terms, Additional Information,
Or How To Buy This Property At Auction,
Contact Your Real Estate Auction
Specialists: Atterberry Auction & Realty Co.
(573) 474-9295 Or
Email: contactus@atterberryauction.com

ONLINE AUCTION

**Firearms • Sterling Silver
Collectibles • Jewelry • Furniture
MO Waterfowl & Duck Stamp Prints**



19700 N. Hwy 124, Centralia, MO
Bidding Ends

Tuesday, December 10th at 12:30PM
This Auction Features Staggered Ending
Times & Extended Bidding On All Lots.
Bid Online At Atterberryauction.com

Preview: Monday, December 9th
from 3:00PM to 6:00PM

Payment & Pick-Up:
Wednesday, December 11th
from 2:00PM to 6:00PM

- Quality Firearms From Browning, Beretta, Winchester And Smith & Wesson • Large Collection Of Sterling Silver Pieces • 18K Gold Ruby & Diamond Ring & High End Costume Jewelry • Vintage & Antique Furniture • Nice Collection Of Missouri Waterfowl & Duck Stamp Prints & Other Pictures • Electronics • Books • Waterford Crystal & Other Brands • Glass • Figurines • Collectibles • Household • Vintage & Modern Linens • Cake Decorating Items • Men's Apparel • Home Décor • Shelving • Tools • Lawn & Garden Equipment & More Listed Online!

“WE MAKE BUYING AND SELLING AT AUCTION EASY”
MEMBERS
Atterberry
Auction & Realty Co., LLC. MarkNet
573-474-9295 www.atterberryauction.com

For complete terms, listing, catalog,
pictures & bidding,
visit atterberryauction.com,
email contactus@atterberryauction.com,
or call (573) 474-9295.
Please contact our office if you need help
with the online bidding process.

ONLINE LAND & HOME AUCTION

**9 Acres +/-
Mostly Wooded – Howard Co.**



Preview / Inspection:
Mon., Dec. 2, 12:00 –
1:00 PM &
Dec. 9, 3:00 – 4:30 p.m.

- Well Cared For 2006 Clayton Lakeshore Mobile Home
- 3 Bedroom, 2 Full Bath
- Large Kitchen Opens To Living Room
 - Metal Outbuilding & Outbuilding With Dog Kennels
 - Great For Hunting Or Weekend Get-Away
- Located Just Off Hwy. A

Note: If You're Looking For Peace & Tranquility Here It Is! Only 7 Miles North of Hwy. 124 Outside of Harrisburg Or 6 Miles South of Higbee.

Online Bidding Ends: Monday,
December 16th At 12:30PM
181 County Road 138, Higbee, MO

“WE MAKE BUYING AND SELLING AT AUCTION EASY”
MEMBERS
Atterberry
Auction & Realty Co., LLC. MarkNet
573-474-9295 www.atterberryauction.com

For Terms, Details, Or Bidding
Assistance, Call Your Real Estate At
Auction Specialists: Atterberry Auction
& Realty Co, 573-474-9295 Or
Email: contactus@atterberryauction.com

1950's KIDS WESTERN THEME TOY BOX: Has Chuckwagon, Cowboy and Cactus on it, approx. 20"x30". \$65. 573-364-7465, Rolla.

COZY SECLUDED ONE BEDROOM HOME: in gated area, includes all utilities except telephone, trash and satellite, 7 miles south of St. James. \$450/month 573-699-4351

BALES GOOSENECK 14' DUMP TRAILER: w/ramps and tie-downs. 573-437-2944, Owensville.

TRAILER PULLER 7.3 POWER STROKE: 2001, F250-XL, automatic, regular cab, 2WD, excellent. \$5,175. 417-399-6383.

CDL IN ONE DAY!: Family owned and operated, Insured, Over 10 years of experience, Training available for all states, Short wait time for appointments, Contact us today to schedule your appointment!! CREDIT CARDS EXCEPTED. (573-353-2853).

2011 OUTBACK AWD: 4cyl, auto, loaded, 153,000miles. \$7,750obo. 417-399-6383.

WWW.MYWEEKLYTRADER.COM

5055E JOHN DEERE TRACTOR: Open station, MFWD, H240 loader, like new, 109hours, private owner. \$26,500. Consider offers. 417-599-8089.

LARGE VICTOR WOOD FURNACE: and late model 3ton Air Conditioner. \$950. 636-239-4124

VILLA HOMES IN ROLLA: Has NEW and USED Mobile Homes. Call David for info: 573-578-8072.

Inventory Liquidation

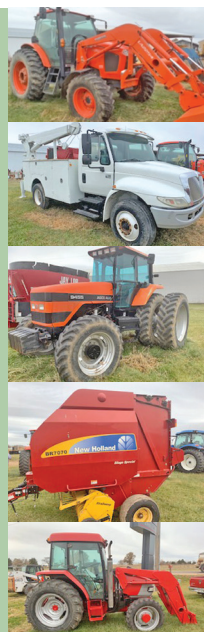
AUCTION

SATURDAY, DEC. 21 • 10 AM

**AUCTION LOCATION: SCHAEPERKOETTER SALES & SERVICE CO,
1102 West Highway 28, Owensville, MO 65066**

**TRACTORS, COMBINE AND HEADS,
PLANTERS AND SPRAYERS,
CONSTRUCTION EQUIPMENT,
TRUCKS AND VEHICLES,
GRAIN CARTS AND WAGONS,
MANURE SPREADERS, CUTTERS,
TILLAGE, MISC. EQUIPMENT,
UTV'S, LAWN MOWERS**

The Schaeperkoetter family has been in the implement business in for over 100 years, they have had an international harvester franchise since 1929. Having sold their business to Crown Power and Equipment they will host an inventory liquidation auction at their Owensville, MO location, please join us!



Wheeler
AUCTIONS & REAL ESTATE
23101 HWY. 24, PARIS, MO 65275 | 660-327-5890
WWW.WHEELERAUCTIONS.COM

**2 RINGS MAY RUN
DAY OF SALE**

Live Online Bidding Powered By proxibid

**SELLER: SCHAEPERKOETTER
SALES & SERVICE CO.
OWENSVILLE, MO | 573-437-4421**

For more info and photos:
www.wheelerauctions.com



Missouri Show-Me-Select Replacement Heifer Sale

**December 13, 2019
at 7 P.M.**

Farmington Regional Stockyards, LLC
1600 Woodlawn Dr., Farmington, MO

120 Crossbred & Purebred Spring-Calving Heifers

- Tier II (heifer out of an AI sire) and registered Angus heifers available, some genetic tested.
- Black and black-white-face Angus, red Sim-Angus and red-white-face Hereford/Red Angus.
- Many AI bred and selling with known fetal sex.

CONSIGNORS:

- Birk Cattle Company, LLC, Jackson
- Ben & Julie Davis, Farmington
- Deer Creek Cattle Co., Clarksville
- Floyd Ferrell, Sikeston
- Flieg's Farm, Ste. Genevieve
- David & Patricia Gann, Steelville
- Graham Family Farm, Farmington
- Grellner Farms, Owensville
- Hopewell Farms Livestock LLC., Paris
- Turner Farms, Belgrade
- Dean & Dallas Wilson, Dittmer

CONTACT INFORMATION:

KENDRA GRAHAM
(573) 756-4539 • grahamkk@missouri.edu
Catalog:
www.extension.missouri.edu/stfrancois
Facebook: Show Me Select Bred Heifer Sale: Farmington

SALE AGENT:
Farmington Regional Stockyards
Clay Birk, (573) 275-1387

Show-Me-Select Replacement Heifers, Inc. a non-profit organization in cooperation with: University of Missouri Extension-College of Agriculture, Food and Natural Resources-Division of Animal Sciences-Commercial Agriculture Program-MU College of Veterinary Medicine-Missouri Cattleman's Association-Missouri Department of Agriculture

DARDEN PROFESSIONAL TIMBER HARVESTING, BUYING STANDING TIMBER: Great prices, improve wildlife habitat and improve forest health. State Certified & Fully Insured! 573-247-4808 or 573-739-1122. Salem

MASSEY FERGUSON: 231 diesel tractor, low hours. \$5,500. 573-765-4406.

1 COMPLETE SET OF SERVICE MANUALS: parts, electrical, engine and fuel for International Cub Cadet series 82 lawn tractors. \$65. 636-239-2695.

WR CASE & SONS Cookbook & Historical Companion. \$7.50. 417-532-2045, Lebanon.

AUCTION REMINDER: Church Building or Home Online Auction, bidding ends Wednesday, December 11th at 12:30 pm. Atterberry Auctions. Please see our Auction Directory for more information.

AUCTION REMINDER: Real Estate Auction. On-Line bidding ONLY. Auction ends Friday December 13th at 1:07Pm. Mickey Duckett Auctioneer. Please see our Auction Directory for more information.

LOT OF 72: "The Antiques Journal" Magazines, years- 1974-75, 1978-80, Mar-Dec 1977, Jan-Feb 1981. \$60 for all. Grovespring, 417-533-9484.

24 cu ft UPRIGHT FREEZER and 22 cu ft Chest Freezer. \$150 each OBO. Hartville, 417-349-1386, 417-531-3311.

JOHN DEERE 4020 TRACTOR: with Koyker 500 loader, 90% rubber, power shuttle, strong running diesel, stored inside. \$12,500obo. Lebanon, 573-247-7161, 417-533-0877.

LIONEL TRAIN SET: Steam engine, tender, caboose and other car, track and transformer. \$195. 573-364-7465, Rolla.

FIREPLACE INSERT: Very heavy duty, or free standing. \$150. 636-239-4124.

JOHN DEERE 3020 TRACTOR: W/John Deere 148 Loader, good rubber, power shuttle, strong running diesel tractor, stored inside. \$11,500obo, **6' BUSH HOG CUTTER**, new blades, good condition \$900. Lebanon, 573-247-7161, 417-533-0877.

SMALL SQUARE BROME HAY: 70LB, horse quality, delivery available. 417-532-6686, 417-531-6686.

ROUND HAY BALES: Alfalfa grass mixed. \$35-\$40. Long Lane, 417-345-5634

Salem Livestock Auction
 Hwy. 32 Salem, MO • 573-729-8880
 Over 40 Years in the Livestock Business

Upcoming Special Sales!

Friday, December 6th
 Pre Vac Sale at 12:00 pm
 Cattle must be weaned 45 days with at least 1 round of shots

Tuesday, December 10th
 Goat, Hog & Sheep Sale @ 6:00 pm

Friday, December 13th
 Stock Cow Sale at 6:30 pm

Luke Peterson • 417-259-0036
Shawn Chadwell • 417-830-0209
Bryce Lauderdale • 417-255-5124

Field Representatives
 Wright & Surrounding Counties
 We Appreciate Your Business!

Cattle Sale Every Monday at 12:00
 Feeder Calves to sell at 12:00 pm
 Butcher Cows & Stock Cows following

All Consignments Welcome Up Until Sale
 We Appreciate Your Business!

Allen Thompson 417-932-4097	Renee Lauderdale 417-926-2682
Chuck Thompson 417-257-5610	Brandon Barton 417-259-1597

Terms of Sale: Cash or Approved Check!



TASK. TASK. DONE.

RB16 SERIES

REAR BLADES
 20-40 HP 60", 74", 84" Widths

- Cat. 1 hitch
- 7 Forward angles; 3 Reverse angles
- 5 Tilt positions
- 12" Offset left or right
- 14" Moldboard height
- 1/4" Moldboard thickness
- Landscape Rake adaptable

AGRI ENTERPRISES
 For Outstanding Products & Service
 1-1/2 Miles South Of Licking, MO On Hwy 63
573-674-2203
1-800-653-7152

Land Pride
 www.landpride.com www.agri-enterprises.com

AUCTION REMINDER: Pre Vac Sale, Friday, December 6th @ 1pm. Goat, Sheep & Hog sale, Dec 10th @6pm. Stock cow, Friday, December 13th, 6:30pm. Cattle sale every 2nd Tuesday of Month @ 6pm. Salem Livestock. Please see our Auction Directory for more information.

AUCTION REMINDER: Online Auction, bidding ends Wednesday, December 10th at 12:30 pm. Atterberry Auctions. Please see our Auction Directory for more information.

1979 CHEVY PICK-UP:2WD, Custom 10, 350, V-8, Automatic, new interior, new tires, new bed liner and cover, new rear bumper, runs and drives like a dream. \$7,500. 573-934-0014.

1962 IMPALA SS: Anniversary Gold, Show ready, all new, 1956 Chevy Shortbed, white, Show ready, all new. De Soto, 314-805-4838.

REGISTERED GERMAN SHEPHERD PUPPIES: Ready now, Cute!. \$150. Hartville, 417-741-2198.

PICK UP TRUCK BEDLINER: Standard size Ford, Fits F150-F350, good condition. \$40. Cedar Hill, 314-303-7857.

WANTED: UTV (used, good condition, fair price). 270-970-8243, Lebanon.

NEW OAK ENTERTAINMENT CENTER: on wheels. \$100. 573-327-9068.

0% for 4 Years*

*with approved credit

Outdoor Wood Furnace

as low as
HEATMOR \$168 per month

HEATMOR MIDWEST
 Licking, MO 65542
 573-674-2962




French Bulldog Puppies

AKC/APR, Brindles, Creams \$1,400-\$2,200
All Shots, Guaranteed

417-838-2212 • www.mybluegrassbabies.com

REGISTERED CHIHUAHUA: 3 adorable boys, utd and ready for forever homes. 573-546-0573, call after 6 or leave message.

JOHN DEERE 535 ROUND BALER: monitor, kicker, net wrap. \$5,250. 573-765-4406

IHC 1086 DIESEL TRACTOR CAB & COLD AIR: \$8,750. 573-765-4406.

C FARMALL FENDERS: \$100. 417-533-7126.

06 HYUNDAI SANTA FE: 51,000miles, AWD, total loaded, one owner. \$6,775obo. 417-399-6383.

52 CHEVROLET MOTOR: Complete, excellent condition. Tecumseh, 417-683-7843

WEEKLY TRADER MAGAZINE

YOUR AD GOES HERE!

Add **YELLOW** Color For An Additional **\$3** Per Reader Ad

All ads will include Phone Number (unless requested to be deleted by advertiser) and City Or Town, Phone Number with Area Code counts as one word. City or Town counts as one word.

RATE: 80¢ Per Word. All Classified Ads Require Payment Before Print.

(1) 80¢	(2) \$1.60	(3) \$2.40	(4) \$3.20
(5) \$4.00	(6) \$4.80	(7) \$5.60	(8) \$6.40
(9) \$7.20	(10) \$8.00	(11) \$8.80	(12) \$9.60
(13) \$10.40	(14) \$11.20	(15) \$12.00	(16) \$12.80
(17) \$13.60	(18) \$14.40	(19) \$15.20	(20) \$16.00
(21) \$16.80	(22) \$17.60	(23) \$18.40	(24) \$19.20
(25) \$20.00	(26) \$20.80	(27) \$21.60	(28) \$22.40
(29) \$23.20	(30) \$24.00	(31) \$24.80	(32) \$25.60
(33) \$26.40	(34) \$27.20	(35) \$28.00	(36) \$28.80
(37) \$29.60	(38) \$30.40	(39) \$31.20	(40) \$32.00

Place your Classified Ad TODAY!

417-532-2800 • 800-665-8875

Fax: 417-532-8140

Or Mail To: P.O. Box 192 • Lebanon, MO 65536

For your convenience we accept MasterCard, Visa, Discover or American Express



DEADLINE FOR CLASSIFIED ADS: MONDAY 12 NOON!!

Name _____

Address _____

City _____ Email _____

State _____ Zip Code _____ Phone _____

Ad Total \$ _____ X # Weeks _____ = Amount Enclosed \$ _____

**You pull it,
we sell it...
CHEAP!**



U★PULL★IT
SELF-SERVICE AUTO PARTS



Lebanon, MO

22395 Rt. 66

417-588-3555 • Fax 417-588-8955

**We also have a large inventory of used tires
and be sure to check out our used car lot!**

Mon.-Fri. 8:00am-6:00pm • Sat. 8:00am-4:30pm • Sun. 9:00am-4:00pm

WWW.SSUPULLIT.COM

Located next to S&S Recycling.



For All Your Metal Recycling Needs

Lebanon, MO

22395 Rt. 66

417-588-3555

Fax 417-588-8955

Mtn. Grove, MO

8930 First Rd

417-926-3360

Fax 417-926-0180

**Roll-off, Trailer, and
Mobile Crushing
Services Available**

Monday-Friday 8:00am-4:30pm (Closed 12pm-1pm Lunch)
Saturday 8:00am-Noon

email: contact@ss-recycling.com

Buyer of all types of scrap metal.