

FREE
WEEKLY
TRADER
MAGAZINE

Vol. 26 No. 50
MARCH 19, 2020
 800-543-8271 • 800-665-8875

 Find us on
Facebook
 @myweeklytrader

Auctions - Pg. 18
MYWEEKLYTRADER.COM

Honda
 OF THE
OZARKS

**VERY LIMITED
 QUANTITIES!**



2019 TRX420TM1K 4X2 RANCHER

MSRP \$5,349

SALE \$3,899



2018 PIONEER 500 CAMO

SXS500M2J

MSRP \$9,599

**SALE
 \$6,999**



2019 PIONEER 700-4

SXS700M4K

MSRP \$12,399

**SALE
 \$10,799**



2018 PIONEER 1000/5 LE

SXS10M5LEJ

MSRP \$21,899

**SALE
 \$16,999**



HondaOfTheOzarks.com

2055 E. Kerr - Springfield, MO

(417)862-4686

I-44 Exit 80

powersports.honda.com MSRP excludes destination charge. Visit Powersports.honda.com to view applicable destination charge amount. UTILITY ATVs ARE RECOMMENDED FOR RIDERS 16 YEARS OF AGE AND OLDER. ALL ATV RIDERS SHOULD TAKE A TRAINING COURSE AND READ THEIR OWNER'S MANUAL THOROUGHLY. MULTI-PURPOSE UTILITY VEHICLES CAN BE HAZARDOUS TO OPERATE. PIONEER IS ONLY FOR DRIVERS 16 YEARS AND OLDER. DRIVER AND PASSENGER MUST BE TALL ENOUGH FOR SEAT BELT TO FIT PROPERLY AND TO BRACE THEMSELVES WITH BOTH FEET FIRMLY ON THE FLOOR. PASSENGER MUST BE ABLE TO GRASP THE HANDHOLD. NEVER DRIVE WITH MORE THAN ONE PASSENGER. ALWAYS WEAR YOUR SEAT BELT, AND KEEP THE SIDE NETS AND DOORS CLOSED. ALL MUV USERS SHOULD WATCH THE SAFETY VIDEO "MULTIPURPOSE UTILITY VEHICLES: A GUIDE TO SAFE OPERATION" AND READ THE OWNER'S MANUAL BEFORE OPERATING THE VEHICLE. FOR BOTH TYPES OF VEHICLES, ALWAYS WEAR A HELMET, EYE PROTECTION AND APPROPRIATE CLOTHING. AVOID EXCESSIVE SPEEDS, AND BE CAREFUL ON DIFFICULT TERRAIN. FOR YOUR SAFETY BE RESPONSIBLE. NEVER DRIVE UNDER THE INFLUENCE OF DRUGS OR ALCOHOL, OR ON PUBLIC ROADS. RESPECT THE ENVIRONMENT WHEN DRIVING. Neither MSRP nor sale price include \$189 setup/PDI charge or \$400 destination fee for ATV. Neither MSRP nor sale price include \$229 setup/PDI charge or \$660 destination fee for Pioneer 500 or \$760 destination fee for Pioneer 700-4 or \$870 destination fee for Pioneer 1000/5 LE. Limited supplies. Call for availability.

Land

For Sale

Windyville, MO | 183 Acres



\$850,000



- Antler Bottom Farm is an amazing combo property with 1.5 miles of Niangua River frontage.
- 2014 beautiful 4400 sq. ft. custom built home with Canadian cedar and hickory and maple floors.
- All water, fencing and pens in place to support over 85 head of mother cows.
- Giant bucks abound on this with perfect food plots, bedding ares, ridges and pinch points.
- The huntability and quality of deer on this property is second to none.
- Property consists of 58 acres of hardwoods and 130 acres of rolling hills and bottom ground for pasture or crops.
- The Niangua River frontage is amazing!
- All mineral interests owned will be conveyed.
- Property is 200 miles to Kansas City, 35 miles to Springfield and minutes to Bennett Springs.
- Located on a blacktop road.
- Large 60 x 80 barn with working pens.
- Remember, buy land they're not making it anymore.



WHITETAIL PROPERTIES REAL ESTATE

HUNTING | RANCH | FARM | TIMBER

Brian Utecht | 417-766-5595

Brian.Utecht@whitetailproperties.com

WHITETAILPROPERTIES.COM

Missouri's Top Land Specialist in 2014,
2015, 2016, 2017, 2018 and 2019



TIME FOR PRECISION

Hustler's residential mowers are built stronger and perform faster, allowing you to quickly maneuver around obstacles with ease. Tackle your lawn in record time with unparalleled precision, and use the time you save to do the things you love.



For Outstanding Products & Service
AGRI-ENTERPRISES

1-1/2 Miles South Of Licking, MO On Hwy 63
573-674-2203 • 1-800-653-7152 • www.agri-enterprises.com

DETROLA MUSIC MACHINE: Plays CD'S, Records, Cassettes, AM-FM Radio, excellent condition, 20x18x12, oak finish, antique look. \$65. 573-364-7465, Rolla.

VINYL WINDOW: Double pane, 50x33. \$40. 417-322-4432.

WANTED TO RENT: 3 bedroom home, with room for horses, Rolla area, Call with any availability, 641-226-2431/573-578-6476.

SNAGGING ROD & 1049 REEL: w/100lb test. \$125. Conway, 417-589-8200.

BAKER A RESAW: W/return. \$7,000. 417-327-6240.

2015 FORD FUSION: stk# 22681, 61,000 miles, Only \$11,900. Call or visit us today for a test drive! WEHR FORD 1131 Bus. 60 • Mountain Grove, MO 1-800-288-6827



VOTED #1 BEST Preowned Car Dealership



TIM'S USED CARS
(573) 341-3828 • 1334 South Bishop (Hwy. 63) • Rolla, MO
Next to Hwy. CC • www.tims-used-cars.com

 <p>2013 CHEVY 3500HD, CREW CAB, 6.0 V-8, AUTO, POWER EQUIPPED, 169,XXX MILES. ONLY \$18,500</p>	 <p>2012 FORD F150, FX4, EXT CAB, 4X4, 5.0 V-8, POWER EQUIPPED, LEATHER, 122,XXX MILES. ONLY \$17,500</p>
 <p>2011 JEEP GRAND CHEROKEE LAREDO, 4X4, V-6, LOADED WITH OPTIONS, 146,XXX MILES. ONLY \$11,500</p>	 <p>2012 CHRYSLER 300C LUXURY, 5.7 HEMI, LOADED WITH OPTIONS, 87,XXX MILES. ONLY \$17,500</p>

LARGE SELECTION OF CARS, TRUCKS, SUVs & VANS!

USED EQUIPMENT

- 6' & 7' Brush Cutter • JD 10' Cultipacker
- Gehl Silage Chopper • 3pt. 3 bottom plow
- 12' Spring Tooth Harrow 3pt. 2 Disc Disc Plow
- Plus Other Misc Equipment Not Listed

TRACTORS

- Mahindra 6075 w/loader, Cab, 4WD, Remainder 5 -1/2 Year Powertrain Warranty. Low Hours
- Mahindra 5525 w/loader. Less than 100 hours.

AGRI-ENTERPRISES

1-1/2 Miles South Of Licking, MO On Hwy 63
573-674-2203 • 1-800-653-7152
www.agri-enterprises.com

2013 FORD F150 XLT SUPER CREW: stk# 22679, 89,265 miles. Only \$17,500. Call or visit us today for a test drive! WEHR FORD 1131 Bus. 60 • Mountain Grove, MO 1-800-288-6827

The ultimate farm tool is ready to be yours.



M Series 579-141.4 HP

Kubota Together we do more.

From the M60 to the M6, the Kubota M Series has the right tractor for any job and the right offer for any wallet.

\$0 DOWN 0% APR 60 MONTHS

VISIT US TODAY FOR THIS LIMITED-TIME OFFER

EDGELLER AND HARPER FARM EQUIPMENT

Get Unmatched Kubota Quality! Kubota Designed, Engineered & Built. Visit Us In TWO Locations!

8665 Outer Road • Mtn Grove
417-926-5454 • 877-926-5458
4973 W. US Hwy 160 • West Plains
417-256-0420 • 800-766-0420

KubotaUSA.com

© Kubota Tractor Corporation, 2020. \$0 Down, 0% A.P.R. financing for up to 60 months on purchases of select new Kubota M4 Series equipment from participating dealers' in-stock inventory is available to qualified purchasers through Kubota Credit Corporation, U.S.A.; subject to credit approval. Some exceptions apply. Example: 60 monthly payments of \$16.67 per \$1,000 financed. Offer expires 6/30/20. Terms subject to change. This material is for descriptive purposes only. Kubota disclaims all representations and warranties, express or implied, or any liability from the use of this material. For complete warranty, disclaimer, safety, incentive offer and product information, consult your local Dealer or go to KubotaUSA.com.

Versatility meets durability meets productivity.



RTV-X Hydraulic bed lift

Kubota Together we do more.

Get a great deal on North America's #1-selling diesel utility vehicle* The RTV-X. Heavy-duty, half-ton capability.

\$0 DOWN 0% APR 48 MONTHS
OR
SAVE \$400

VISIT US TODAY FOR THIS LIMITED-TIME OFFER

EDGELLER AND HARPER FARM EQUIPMENT

Get Unmatched Kubota Quality! Kubota Designed, Engineered & Built. Visit Us In TWO Locations!

8665 Outer Road • Mtn Grove
417-926-5454 • 877-926-5458
4973 W. US Hwy 160 • West Plains
417-256-0420 • 800-766-0420

KubotaUSA.com

*Based on Power Products Marketing North American 2018 sales data for the pure utility vehicle (PUV) segment. © Kubota Tractor Corporation, 2020. \$0 Down, 0% A.P.R. financing for up to 48 months or customer instant rebates of \$400 are available on purchases of new Kubota RTV-X Series equipment from participating dealers' in-stock inventory. Promotional rate available to qualified purchasers through Kubota Credit Corporation, U.S.A.; subject to credit approval. Example: 48 monthly payments of \$20.83 per \$1,000 financed. \$400 rebate is not available with 0% A.P.R. or other promotional financing. Some exceptions apply. Offers expire 6/30/20. Terms subject to change. This material is for descriptive purposes only. Kubota disclaims all representations and warranties, express or implied, or any liability from the use of this material. For complete warranty, safety, incentive offer and product information, consult your local Dealer or go to KubotaUSA.com.

600SQFT USED 5" DOUBLE LAP, CREAM COLOR VINYL SIDING: \$75, 417-457-1015.

AUSTRALIAN SHEPHERD PUPPIES: For sale or will swap for farm animals. UTD on shots, Born 11-20-19. 417-967-6493, Roby.

MURRAY RIDING MOWER: Good tires, deck, blades, 5-speed, needs motor. \$150-gun trade. 573-364-7465.

2007 GMC YUKON DENALI : 4 WD, st-#22597a, Loaded and Clean. Only \$9,800. Call or visit us today for a test drive! WEHR FORD 1131 Bus. 60 • Mountain Grove, MO 1-800-288-6827

3PT BALE SPIKE: \$100. 417-766-1991.

MODULAR STOCK SALE - It is time to move our inventory. **TRUE MODS** - Save Thousands. Call Marla, better than 20 years experience. 573-657-7040, chateauhomes.net.

\$19,900 USED DOUBLE WIDE: nice 3 bedroom, 2 bath delivered & set-up.....Hurry, This house will **NOT** last long! Call now 573-657-2176 amegamobilehomes.com

WILBER'S FISH BRANCH ANGUS: Large selection of bulls available. Yearling & 2yr old bulls, very docile. High Performance. Calving ease and good growth. Mexico, MO, 573-473-6019. www.fish-branch.com

ALLIS CHALMERS: 5 Bottom plow. \$500. 417-588-0392.

DG LUMBER: Top Quality Building Materials, Lumber, Plywood, OSB, Car siding, Insulation, Doors, Windows, Nails, Screws. Also do complete building packages. Call for Quotes 417-259-0994, Norwood.

JOHN DEERE 535 ROUND BALER: monitor, kicker, net wrap. \$4,950. 573-765-4406.

4x5 ALFALFA/GRASS: High Protein, (horse/sheep hay). \$75bale. 417-322-0161.

BROME HAY FOR SALE: \$4/square. 573-539-2060.

BARN WOOD SIDING: 8" & 10" wide. 573-729-7226. www.pineridgerustic.com

TRUCK LOAD OF FLEA MARKET & AUCTION ITEMS: \$200 or trade. 573-327-9068

3PT BALE CARRIER: \$100. 417-766-1991 417-753-2747.

5055E JOHN DEERE TRACTOR: Open station, MFWD, H240 loader, like new, 109hours, original owner. \$26,500. Consider offers. 417-599-8089.

WEEKLY TRADER MAGAZINE

Vol. 26 March 19, 2020 No. 50

Published By
Lebanon Publishing Co. Inc.
PO Box 192, Lebanon, MO 65536
417-532-2800
www.myweeklytrader.com

Everything advertised in this publication must be made available for purchase, use or patronage without regard to race, creed, color, sex, age or national origin of the purchaser, user or patron. The Publisher will not be responsible for misinformation, misprints, typographical errors, etc. Opinions expressed are not necessarily those of the Publisher. All rights reserved. No part of this material may be reproduced by any means without permission in writing from the Publisher. We reserve the right to refuse any ad if we deem necessary. Our list and map indicate counties in which the Weekly Trader is delivered. The magazine is not necessarily placed in all communities in a particular county. A list of all retail drops for a county may be obtained by contacting the Weekly Trader office at PO Box 192, Lebanon, MO 65536.

MARCH ON OVER To
YOUR MADNESS Our All New Facility
On 1621 MARTIN SPRINGS DRIVE



OFFERING GREAT DEALS AT OUR NEW LOCATION:



New 2020 Ford F-150



0% APR*
 Ford Credit Financing
for 72 Mos.



New 2019 Ford F-150

/ \$0 Cash Down
 / 0 Payments for 90 Days

PLUS: \$3,000 Bonus Cash off M.S.R.P.* **\$750** Ford Credit Financing*

-OR-

Up To \$5,000 Cash Back off M.S.R.P.* **-PLUS- \$750** Ford Credit Bonus Cash*

Up To \$4,250 Cash Back off M.S.R.P.*
On Select New 2020 Ford F-150s

On Select New 2019 Ford F-150s

*Must finance through Ford Credit Financing. Some restrictions may apply. Take new retail delivery from authorized Ford dealer's stock by 03/31/2020. See dealer for qualifications and complete details on all incentives.



SALESMEN

Al Morgan	Jon Reed	Lance Lewis	Carol Harris	Brian Parker	Chase Marler	Caleb White	Sara Myers	Morgan Weatherman



Sakelaris



Ford Lincoln Of Rolla

LINCOLN

www.sakelarisfordrolla.com

Sales Hours:
 Mon.-Fri. 8 am-6 pm
 Sat. 8 am-4 pm
Service Hours:
 Mon.-Fri. 8:00 am-6:00 pm
 Saturday 8:00 am-4:00 pm

364-1211 • 800-325-1211 • Martin Springs Drive • Rolla, Mo. 65401

LESPEDEZA SEED: Clean, bagged. Evenings, 660-693-4887.

1999 JAYCO EAGLE: 28ft fifth wheel, with slide, exceptional condition. Summersville, 970-218-1254.

1994 SHADOW CRUISER: 5th Wheel, Excellent condition, 29 ft. Located in Conway, MO. \$3,700. 417-664-8823.

AUCTION REMINDER: Antique & Estate Auction. Saturday, March 21st @ 10 am. Nance Auction. Please see our Auction Directory for more information.

FREE MOUNTAIN KUR PUPPIES : 6wks, weaned. 573-996-6744, Ask for Jack, Emi-nence.

1969 CHEVROLET ALUMINUM POW-ERGLIDE TRANSMISSION: \$200, Trades? 417-683-7843

Offering the Area's LOWEST METAL PRICES!



Custom Homes • Metal Roofs

29 Gauge

#1 PAINTED METAL

- ★ Lifetime Warranty - \$74.00 Sq.
- ★ 40 Year Warranty - \$70.00 Sq.
- ★ 20 Year Warranty - \$68.00 Sq.
- ★ 25 Year Galvalume - \$57.00 Sq.

Labor prices will be higher in locations over 75 miles from Marshfield, MO

Pole Barn Packages

24'x32'x10' materials only	\$5,425	30'x60'x10' materials only	\$9,150
24'x40'x10' materials only	\$6,200	40'x60'x12' materials only	\$12,325
30'x40'x10' materials only	\$6,975		

Plus Sales Tax And Delivery.
Labor available at additional cost.
Call for quote.

Compare Before You Buy.

We Use Only The **Highest Quality** Materials!



ALL MATERIAL PACKAGES INCLUDE...

- ✓ #1 Yellow Pine Lumber
- ✓ #1-40 Yr. Painted
- Metal w/Screws
- ✓ 1-10' Overhead Door
- ✓ 1-36" Entry Door

Fully Insured



PORTABLE BUILDINGS
Rent to Own
No Credit Check

1049 SCHOOLVIEW DR.
Marshfield, MO



Marshfield BUILDINGS
www.marshfieldbuildings.com



417-859-7744

CARRY-ALL 3pt PLATFORM CARRIER: Like new. \$150. 417-399-6687.

ROME 8FT OFFSET DISK: \$3,750. 573-765-4406.

FULL BLOOD BOER BUCKS: 1 red 100%, registered and DNA'd, 2yrs old. \$500, 1 traditional 100%, 11months old, 140lbs, \$350 w/papers, \$300 without. 573-325-8726. Birch Tree

AUCTION REMINDER: Upcoming online auctions. Sam Crawford Auction. Please see our Auction Directory for more information.

FREE PUPPIES: Born December 2019. 417-741-0042.

DARDEN PROFESSIONAL TIMBER HARVESTING, BUYING STANDING TIMBER: Great prices, improve wildlife habitat and improve forest health. State Certified & Fully Insured! 573-247-4808 or 573-739-1122. Salem

1976 CHEVROLET C10: Body Rough, runs good, title okay, no brakes. \$600, Trades? 417-683-7843

HORSE HAY: Square bales, weed free, Big Blue stem, 80% pure. \$5 bale, mixed grass hay, \$4.50/bale. 573-368-1794, Rolla.

2004 CADILLAC. \$10,000. 417-718-7882.

WANTED, TIMBER TO LOG ON SHARES: Honest, reliable, references. 417-533-4607, 417-664-1195.

CATTLE HAY FEEDER WAGON: (Needs Repair). \$200. 417-322-0161.

1953 FORD JUBILEE: new tires, runs good, excellent condition. \$3,000. 417-664-3425.

POOL TABLES: Installations, moves, recover, repairs, accessories, etc. 573-646-1700.

6 YOUTH LIFE VESTS: \$25 for all. West Plains, 417-293-0568.

GUARDIAN DOG PYRENEES/ANATOLIAN CROSS: first shot, dewormed, \$75, Registered Katahdin Ram, 2 year old Texas Bred, \$300. Vienna, 573-422-3574.

3PT QUICK HITCH: Brand New. \$100. 417-766-1991.

JOHN DEERE HX-10: Pull-type, 10 ft, brushcutter. \$4,200. 573-765-4406.

VILLA HOMES IN ROLLA: Has NEW and USED Mobile Homes. Call David for info: 573-578-8072.

FOR SALE ELECTRIC SAWMILL : Michigan articulating wheel loader, 80 BAR-KO loader, Ford 4010 Tractor, 4x4 with loader. Phone 417-349-5550 or 417-554-2719.

JOHN DEERE 435 ROUND BALER: mon-itor, kicker, 4X6. \$5,600. 573-765-4406.

2013 NISSAN MURANO: stk# 22688, Low miles, Only \$11,800. Call or visit us today for a test drive! WEHR FORD 1131 Bus. 60 • Mountain Grove, MO 1-800-288-6827



Cheyenne Acres
Horse & Tack
BUY - SELL - TRADE
by Rolla, MO
Call For Directions & Availability
Call Kip
573-368-9402

CHICKS, DUCKS AND MORE: Cackle Hatchery, 417-532-4581. Lebanon, MO. We Ship!

TAKUCHI 135 DIESEL EXCAVATOR: with Hyd Thumb. \$15,000. 573-765-4406.

2011 KUBOTA MX5100 TRACTOR: 4x4, loader & bucket, 415 hours. \$20,000. 573-598-4580, Annapolis, MO.

3 STORAGE TRAILERS: 1-48' and 2-53'. \$2,000/piece, delivery within 60miles of zip 63630. 573-438-2622.



0% for 4 Years*
*with approved credit
Outdoor Wood Furnace
as low as
HEATMOR \$168 per month
HEATMOR MIDWEST
Licking, MO 65542
573-674-2962

CHEVROLET 250 MOTOR: Runs good. \$300, Trades? 417-683-7843

CLARINET: with case. \$125 or trade. 573-327-9068.

STACK OF TIN: 30 plus sheets, 3 X, most of it 36 to 40 gauge~ very heavy. \$75.00 OBO. 573-765-3092

OVERSTUFFED BLACK LOVESEAT: W/12'X15' mauve carpet. \$50. uc1\u22 West Plains, 417-293-0568.

HAY FOR SALE: Small square, 4x5 round & 4x6 round bales. Licking, 573-578-7210.

BUYING PRE-1960 BEER SIGNS: FALLSTAFF, LEMP, BUDWEISER, GRIESE DIECK, STAG, any brands. 573-680-5377.



NEIGHBORHOOD'S HOME IMPROVEMENT STORE
25th anniversary SALE
Where **QUALITY** doesn't cost more!
• All Wood Cabinets • In-House Design • Tile • Flooring • Unbeatable Prices • Expert Service
19850 Houston Rd. • Lebanon • 417-533-5080 • neighborhood-inc.com

IHC 1066 DIESEL TRACTOR: Open station, Nice. \$9,500. 573-765-4406.

ROSSI 410 SHOTGUN: Like brand new. \$120. 870-283-5417, Evening Shade, Arkansas.

4X5 ROUND BALES BROME HAY: in barn, no weeds, horse hay. \$45/bale. Sullivan, 573-259-3216.

HAY FOR SALE: 5x4 Round Bales, plastic twine, always shedded. \$65 bale. St James, MO. 573-467-5043.

PINE LOG SIDING.. www.pineridgerustic.com 573-729-7226.

2013 FORD ESCAPE SE: stk# 22669a, 92,000 miles, \$9,800. Call or visit us today for a test drive! WEHR FORD 1131 Bus. 60 • Mountain Grove, MO 1-800-288-6827

605F VERMEER ROUND BALER. 1190 International Hay Bine: 7' cut, good condition. \$2,500 each. 417-967-4527, Houston.

DOUBLE SET OF WHEEL CHOCKS: Color is Safety Yellow. \$30. 636-239-2695, Washington

LIONEL TRAIN SET: Steam engine, tender, caboose and other car, track and transformer. \$195. 573-364-7465, Rolla.

MY PILLOW: good condition. \$15 573-265-3645.



Is Your Log Home **UGLY?**
Starting To Look
Professional Staining & Repair
(Log Homes & Wood Siding)
Call
Pine Ridge Rustic
Log Home Building Supplies **573-729-7226**
www.pineridgerustic.com

ROD AND REELS: fishing season is coming. \$5 and up. Conway, 417-589-8200.

15HP TECUMSEH LAWNMOWER MOTOR: Down shaft. \$25. 636-297-1747.

1952 FORD F6: Good cab, V-8 Flat head. Sell all or part out. Trades? 417-683-7843

AUCTION REMINDER: Real Estate Personal Property Auction. Saturday, April 4th @ 10 AM. Case Auction. Please see our Auction Directory for more information.

MOTOR HOME: 1996 Pace Arrow, 34' long, wide body, new tires, 460 Ford engine, generator, awnings, cameras, 2 AC, 2 TV's, everything works, 119,418 miles. \$10,000. Rogersville, 417-766-1991.

TO30 FERGUSON: w/Woods 5' brush mower. Good Tractor. \$3,300. Montgomery, 314-960-6652, leave message.

2006 JEEP WRANGLER: Yellow Hard Top, New Tires, 4-Cylinder, 6-Speed, 149K. \$9,000. Grovespring, 417-531-3376.

JOHN DEERE 4240: Diesel Tractor, cab and cold air, power shift, low hours. 120 hp, nice. \$29,500 573-765-4406.

2004 FORD F150: 4WD, extended cab. \$7,700. 417-718-4937.

R-FAB BINS
(660)281-3078

Bucket Bins
Stationary or Portable

Overhead Bins
Located in Warsaw, MO

AUCTION REMINDER: 15th Annual Consignment and Donation Auction. Saturday, April 18 Consign now. Hartville Lions Club. Please see our Auction Directory for more information.

ATTN, GREAT CALL USERS: New Jitterbug Smart2 Phone. Went back to flip phone. \$60 OBO. 417-457-1023.

3 TEN-TON WAGON RUNNING GEARS: Good! Floatation tires. \$750 each OBO. 417-322-0161.

1999 HONDA 750 NIGHTHAWK: \$1,500. Perryville, 573-547-7249, leave message.

FIREPLACE LOG GRATE: 28" wide. \$25. 636-239-2695, Washington.

KUSTER LOGGING

BUYER of Standing Timber Oak and Walnut

Dozing Now Available

417-259-0047

References Available

PYRENEES PUPPIES: Purebred, shots, wormed. \$200 each. 417-934-6581, Mtn View.

FIREARMS: Professional Repairs and Restorations. Baron's Gunsmithing. 573-363-5801, Camdenton.

IHC 766 DIESEL TRACTOR: cab and air, 80HP, new engine kit. \$8,500. 573-765-4406.

JOHN DEERE 567 ROUND BALER: monitor, kicker, wide pick-up, net wrap. \$9,650. 573-765-4406.

T215X70 R14: 1/4" tread. \$25/each. 573-764-2270.

HOBART 200 AMP PORTABLE WELDER: 4-cylinder gas. With trailer, \$2,900. Welder only, \$1,500. 1-573-729-0272, Salem.

4 BASKET HYDRAULIC FOLD TEDDER: \$2,500. 573-765-4406.

American Made Metal Roofing

40 Year Warranty Metal.....\$1.95 (\$60.94 Per Sq)

*29 Gauge 10 Year.....\$1.75 (\$54.69 Per Sq)

****WHILE SUPPLIES LASTS****

29 Gauge #1 Galvalume.....~~\$1.69~~.....\$1.39 (\$43.44 Per Sq)

26 Gauge 40 Year.....\$2.25 (\$70.31 Per Sq)

★ 17 Colors To Choose From
★ 21 Years In Business
★ We Manufacture Our Own Metal and Trusses

3 Locations To Serve You!

1239 W. Kingshighway Paragould, AR 870-810-2494	1100 Pace Rd. Pocahontas, AR. 870-609-1900	35 Killdeer Rd. Seymour, MO. 417-952-7143
---	--	---

*Possibly not American made. Prices always subject to change.

Build In A Box
Stud Wall & Pole Barn Kits

	Non-Warranty Metal	10 Year Warranty	40 Year Warranty
24x30x8.....	\$3,350\$3,700\$3,850
30x40x10... ..	\$4,950\$5,350\$5,600
40x60x12... ..	\$9,300\$10,000\$10,200

*Precut Packages Also Available

TRACTOR TIRE: Goodyear 16.9-34, approx 50% tread, one only, no plugs, \$150.00. 573-765-3092

CUB CADET CHALLENGER 500 ATV: Purchased October 2018, \$9,000. Want \$6,800. 400 hrs, new condition w/canvas cover, heater, cable winch. 573-697-5828, Ironton.

STEEL UTILITY CART: Mesh type, inflatable tires, 2'x4', good condition. \$75. 417-532-6561

HOLLYWOOD 4-BIKE HITCH MOUNT RACK: Excellent condition, Includes (2) Allen Stabilizer tension bars and keyed alike locking hitch pin and cable. \$175. Conway, 417-718-5347.

WE BUY

White Oak Logs!

- ✓ Top prices for your logs
- ✓ Experienced log buyers
- ✓ Professional service

Chad Cook | Salem Wood Products
417.718.2950
5 miles north of Salem, MO on Hwy 19

INDEPENDENT STAVE COMPANY
Log Procurement & Sales

www.independentstavecompany.com

ACOUSTIC ALVAREZ GUITAR: model RD8C, W/electric pick-up, w/hard case. \$200 or trade. Gerald. 573-764-4435.

3PT HARROW: 2 section. \$150. 417-766-1991.

NEW HOLLAND 853 ROUND BALER: \$1,800. 573-765-4406.

15FT HEAVY CHAIN LINK PASTURE HARROW: \$950. 573-765-4406.

JOHN DEERE 7000 CORNPLANTER: 6row, field ready, new corn meters. \$3,000. 417-588-0392.

PILE OF WEATHERED OAK LUMBER: \$25. West Plains, 417-293-0568.

MEMORY FOAM TWIN MATTRESS TOPPER: good condition. \$30. 573-265-3645.

WANTED TO BUY SMALL CATTLE FARM WITH HOME AND BUILDINGS: 75-100ac/m/l, mostly open, 85%/m/l, one mile or so from paved road, short term contract. 563-529-0612.

TAYLOR TRUCKS & EQUIPMENT
417-924-2026 • 2676 Hwy. 5, Mansfield, MO

Bush-Whacker
Heavy Duty Rotary Cutter



New Mowers! Bush-Whacker, Big Bee
 Farm Tires, PTO's & Parts for Rotary Mowers,
 Storage Containers & Dry Vans - 20' - 53'
 Farm Tractor Implements
**Plows, Discs, and More Skidsteer Attachments: Pallet Forks,
 Buckets, Grapples, Hay Spears & Tree Sheers - RR Ties**
CLEARANCE ON 5' AND 6' ROTARY TILLERS

TRAILER PARTS & REPAIR | **NEW SEMI TIRES - DRIVE & STEER**

We Invite You To Come By & Look Us Over! Located 2.5 Miles North Of Mansfield, MO On Hwy 5



MIDWEST CONSTRUCTION

Free Estimates!

- Pole Barn • Garages • Framing
- Remodels • Roofing • Concrete
- Decks & Porches

Contact Abner Glick
417-664-1794

AUCTION REMINDER: Farm & Estate Auction. Sunday, March 22nd @ 1 pm. Nance Auction. Please see our Auction Directory for more information.

HAY: 5x6 Round bales, in barn-never wet. \$50. 573-756-1615, Farmington.

2016 SUZUKI KING QUAD ATV: 4WD, 400 Fuel injected, 38 hours, elderly owned, as new. \$3,800 firm. 417-926-1614.

2017 26' KZ SPORTSMAN TRAVEL TRAILER: like new, approx 3,000 miles. \$13,500. 417-955-1724.

AUCTION REMINDER: Building Material Auction, Saturday March 21st @10am. See our directory for more information. Integrity Outlet.

ARE YOU KIDDING ME???-Used double-wide, \$19,900!!!! delivery & set-up, 3 bedroom, 2 bath. Call 573-499-9993 comlumbiadiscounthomes.com

ALFALFA HAY FOR SALE: 4X5 Round Bales 22% protein 166 Bales, high moisture, weighing 1500#s 226 bales dry hay weighing 1000#s \$100 each at the Yard Delivery Available 417-343-4958 Karen Asher

2002 MERCURY GRAND MARQUIS: Excellent condition, new tires, 171,000miles. \$2,400. 2005 Isuzu Acender SUV: 2WD, 4.2 Vortec engine, one owner, new tires, 168,000miles. \$8,500. 1995 Ford Ranger XLT: extended cab, V6 automatic, second owner, excellent condition, 142,000miles, new tires. \$2,700. 816-517-1049, Bolivar.

JOTUL WOOD STOVE: Made in Norway, f3cb-model, black. \$600. 573-247-2825.

35 FERGUSON TRACTOR & 5' BRUSH-HOG: Good rubber, runs good. \$2,500. 573-627-3421.

Buildings • Hunter's Cabins • Lawn Furniture



JAMCO Portable Buildings

800-688-2064 • 307 Enterprise Dr. • Seymour, MO • www.jamcobuilders.com

Rent To Own Plan

Commercial Lots & Building for Sale By Owner

274 W Pierce St
Lebanon, MO

**Appraisal Value:
\$53,000 Make Offer**

1-573-759-6096

JOHN DEERE CHISEL PLOW: 10ft, good shape. \$900. 417-588-0392.

9FT KNAPHIDE TOOLBED: for Chassis/cab frame truck, single-well axle, very good condition. \$2,000. 573-619-1556.

GERMAN SHEPHERD KENNEL REDUCTION: Registered adults & 1 puppy. Call for pricing. Hartville, 417-741-2198.

FENCE! FIXED KNOT 10% Off. High tensile woven, barb, smooth. Best Prices. 417-322-0161.

FORD A66 DIESEL ARTICULATING HEAVY 4- WHEEL DRIVE LOADER: \$10,500. 573-765-4406.

FREE FILL DIRT: Hartville/Grovespring area. 417-741-0440.

WANTED PINBALL MACHINES. 573-424-7200.

TROYBILT RIDING LAWNMOWER: 17HP, for parts. \$25. 636-297-1747.

FORD GAS 3000 W/QA BRUSH HOG LOADER: w/bucket and pallet fork, joy stick, remotes. Good Tractor. \$6,800. Bourbon, 573-627-3729, leave message.



LINDSAY CHEVROLET USED CAR & TRUCK DEPT.

330 W. ELM • LEBANON, MO 417-532-3114

MON.-FRI. 8-6:30 • SAT. 8-5



Joe Jeffery, Mgr. • Nikki Keller, Finance • Frankie Dublin, Brent Snook, Tina Riesinger & Cathy Landon, Sales-- Not responsible for typos.

TRUCKS

LT29029	2019 CHEVROLET COLORADO CREW Z71 4X4 GRAY, 3.6L V6, AC, LEATHER, LOADED AND ONLY 6,XXX MILES.....	\$32,400
LT28976	2018 CHEVROLET COLORADO CREW ZR2 4X4, BLACK, V6, 3.6L, AC, LEATHER, NAV., LOADED LOCAL.....	\$29,900
LT29033A	2017 CHEVROLET COLORADO EXT W/T 4X4 SILVER, 2.5L 4CYL, AC, LOADED LOCAL TRADE W/ 21,XXX MILES.....	\$21,900
LT7644A	2017 CHEVROLET SILVERADO 2500 CREW HIGH COUNTRY 4X4 BURGUNDY, 6.0L V8, AC, LEATHER, LOADED TRADE W/ 26,XXX MI.....	\$43,900
LT7357A2	2012 CHEVROLET SILVERADO CREW LT 2WD, WHITE, 5.3L, V8, LIFT KIT, AC, LOADED TRADE	\$16,500
LT29017	2014 CHEVROLET SILVERADO DBL. CAB LT 4X4 SILVER, 5.3L V8, AC, LOADED LOCAL TRUCK	\$16,900
LT7628A	2018 CHEVROLET SILVERADO DBL LT 4X4 MAROON, 5.3L V8, AC, LOADED LOCAL TRADE.....	\$30,900
LT28906	2019 CHEVROLET SILVERADO LD, DBL CAB, LT 4X4, RED, 5.3L, V8, AC, LOADED OFF LEASE VEHICLE	\$28,900
LT28836	2019 CHEVROLET SILVERADO LD DBL CAB LT 4X4 SILVER, 5.3L V8, AC, LOADED OFF LEASE VEHICLE.....	\$28,900
LT29046	2019 CHEVROLET SILVERADO LD DBL CAB LT 4X4 SILVER, 5.3L V8, AC, LOADED OFF LEASE	\$29,900
QT57694A	2018 DODGE RAM 3500 CREW DUALY 4X4 WHITE, 6.7L, DIESEL, AC, LOADED LOCAL TRADE.....	\$47,900
LT28985	2019 DODGE RAM CLASSIC CREW SLT 4X4 GRANITE, 5.7L, V8, AC, LOADED OFF LEASE VEHICLE.....	\$29,900
LT29054	2019 DODGE RAM CLASSIC CREW SLT 4X4 RED, 5.7L V8, AC, LOADED OFF LEASE WITH 23,XXX MI.....	\$28,900
QT57578A	2016 DODGE RAM CREW SPORT 4X4 YELLOW, 5.7L V8, AC, LOADED LOCAL TRADE	\$29,000
QT57844A	2014 DODGE RAM REG CAB TRADESMAN 2WD WHITE, 3.6L V6, AC, LOCAL TRADE WITH 29,XXX MILES.....	\$15,000
QT57880A1	2017 FORD F150 CREW KING RANCH FX4 4X4 MAROON, 3.5L ECOBOOST, AC, SUNROOF, LEATHER, LOADED	\$39,900
QT57691A	2011 FORD F150 CREW LARIAT 4X4 BRONZE/SAND, 5.0L V8, AC, LEATHER, LOADED LOCAL TRADE	\$20,900
QT57618A	2014 FORD F150 CREW LARIAT 4X4 ORANGE/SAND, 5.0L V8, AC, LEATHER, LOADED LOCAL TRADE.....	\$26,600
QT57700A	2017 FORD F150 CREW LARIAT 4X4 MAROON, 3.5L ECOBOOST, AC, LEATHER, LOADED LOCAL TRADE	\$34,800
QT57724A	2015 FORD F-150 CREW XL 4X4 BLACK, 2.7L ECOBOOST, AC, 20,XXX MILES	\$27,300
QT75736A	2016 FORD F150 CREW XLT 4X4 GRAY, 5.0L V8, AC, LEATHER, LOADED LOCAL TRADE.....	\$26,900
LT7387A	2018 FORD F150 CREW XLT 4X4 DK. BLUE/GRAY, 3.5L V6, AC, HEATED SEATS, LOADED	\$33,900
QT57698A	2019 FORD F-150 CREW XLT 4X4 BURGUNDY, 5.0L, V8, AC, LOADED LOCAL TRADE, 4,XXX MI	\$38,500
QT57455A	2016 FORD F150 CREW XLT FX4 4X4 MAROON, 3.5L ECOBOOST, AC, HEATED SEATS, LOADED	\$27,900
QT57398	2018 FORD F-150 EXT XL 2WD, BLACK, V6, AC, LESS THAN 100 MILES.....	\$26,320
QT57686A	2016 FORD F250 EXT XLT LONG BED 4X4 WHITE, 6.2L V8, AC, LOADED LOCAL TRADE W/ 36,XXX MILES.....	\$30,500
QT57517A	2016 FORD F350 CREW LARIAT LONG BED 4X4 SILVER/GRAY, 6.7L DIESEL, AC, LEATHER, SUNROOF, LOADED	\$41,800
LT28791A	2013 GMC SIERRA 3500 CREW SLT 4X4 WHITE, DURAMAX, AC, LEATHER, LOADED LOCAL TRADE.....	\$31,900
LT29072	2017 GMC SIERRA CREW DENALI 4X4 MAROON, 6.2L V8, AC, LEATHER, SUNROOF, FULLY LOADED	\$41,900
LT29069	2017 GMC SIERRA CREW DENALI 4X4 WHITE FROST, 6.2L V8, AC, LEATHER, SUNROOF, FULLY LOADED	\$41,900
LT7678A	2018 GMC SIERRA CREW SLT 4X4 BURGUNDY, 5.3L V8, AC, LEATHER, LOADED TRADE	\$38,900
LT29032	2019 NISSAN FRONTIER SL CREW 4X4 BLACK, 4.0L V6, AC, LEATHER, SUNROOF, LOADED.....	\$25,900

SUVS

LT28938	2019 BUICK ENCLAVE ESSENCE AWD, PEPPERDUST, 3.6L, V6, AC, SUNROOF, LOADED.....	\$32,600
---------	--	-----------------

SUVS

LT28966	2019 BUICK ENCLAVE ESSENCE AWD, MAROON, 3.6L, V6, AC, LEATHER, SUNROOF, LOADED.....	\$32,900
LT28839	2019 BUICK ENCLAVE ESSENCE AWD GRAY, 3.6L, V6, AC, LEATHER, LOADED	\$32,600
LT7661A	2019 CHEVROLET BLAZER LT, FWD GRAPHITE, 3.6L, V6, AC, LEATHER, SUNROOF LOADED W/ 5,XXX MI	\$36,900
LT28984	2016 CHEVROLET EQUINOX LT AWD, BLACK, 2.4L, 4CYL, AC, LOADED GM OFF LEASE VEHICLE.....	\$16,900
LT28982	2017 CHEVROLET EQUINOX LT AWD, BLACK METALLIC, 2.4L, 4CY, AC, LOADED OFF LEASE.....	\$17,700
LT29001	2019 CHEVROLET SUBURBAN LT 4X4, SILVER, 5.3L, V8, AC, LEATHER, DVD, SUNROOF, LOADED.....	\$46,500
LT28812	2019 CHEVROLET TRAVERSE LT FWD, WHITE, 3.6L, V6, AC, LEATHER, LOADED W/ ONLY 16,XXX MI ...	\$32,500
LT28677	2018 CHEVROLET TRAX LS FWD, WHITE, 1.4L, TURBO, AC, LOADED.....	\$13,800
QP75603	2018 FORD EXPEDITION MAX XLT GRANITE, 3.5L, ECOBOOST, AC, LEATHER, FULLY LOADED.....	\$43,800
LT28291A	2017 FORD EXPEDITION XLT 4X4, GRAY, 3.5L, ECOBOOST, AC, LOADED LOCAL TRADE	\$25,900
LT7280A	2017 FORD EXPLORER XLT 4X4, WHITE GOLD, 2.3L, ECOBOOST, AC, NICE LOCAL TRADE.....	\$22,800
LT28246	2018 GMC ACADIA SLE FWD, WHITE, 2.5L, 4CYL, AC, LOADED GM PROGRAM VEHICLE.....	\$23,000
LT28991	2017 GMC TERRAIN SLE FWD, GRAY, 2.4L, 4CYL, AC, LOADED OFF LEASE VEHICLE	\$17,900
LT28915A	2019 JEEP CHEROKEE LATITUDE FWD BURGUNDY, 2.4L, 4CYL, AC, LOADED LOCAL TRADE.....	\$17,900

CARS

LC29063	2016 BUICK VERANO BASE MAROON, 2.4L 4CYL., AC, LEATHER, LOADED OFF LEASE VEHICLE...	\$14,900
LC28999	2018 CHEVROLET CRUZE HATCHBACK LT MAROON, 1.4L, TURBO, AC, LOADED OFF LEASE W/ 15,XXX MILES...	\$15,800
LC28974	2018 CHEVROLET CRUZE LT BLUE, 1.4L, TURBO, AC, LOADED GM PROGRAM VEHICLE.....	\$16,300
LC28990	2017 CHEVROLET CRUZE LT WHITE, 1.4L TURBO, AC, LOADED GM OFF LEASE, GM CERTIFIED.....	\$14,500
LC28925	2019 CHEVROLET IMPALA LT WHITE, 3.6L, AC, LOADED OFF LEASE	\$19,900
LC7563C	2017 CHEVROLET IMPALA PREMIER DARK BLUE, 3.6L, V6, AC, LEATHER, LOADED LOCAL TRADE.....	\$16,900
LC28975	2017 CHEVROLET MALIBU LT DK GRAY, 1.5L, TURBO, AC, LOADED GM PROGRAM VEHICLE.....	\$16,900
LC29068	2017 CHEVROLET VOLT LT H/B MAROON, 1.5L, AC, LOADED OFF LEASE WITH 26,XXX MILES.....	\$18,900
QC75469A	2016 FORD FOCUS SE 4DR BLACK, 2.0L 4CYL., AC, LEATHER, LOADED LOCAL TRADE.....	\$11,700
QC75712A	2015 FORD MUSTANG PREMIUM RED, 2.3L ECO, AC, LEATHER, LOADED LOCAL TRADE	\$16,900
LC28946A	2015 FORD TAURUS SEL BLACK, 5.3L V8, AC, LEATHER, LOADED LOCAL TRADE.....	\$13,900
QC75557A	2017 HYUNDAI SONATA LIMITED WHITE, 2.4L 4CYL., AC, LEATHER, SUNROOF, LOADED LOCAL TRADE	\$17,900
LC29034	2019 TOYOTA CAMRY SE GRAY, 2.5L 4CYL., AC, LOADED OFF LEASE VEHICLE	\$20,900

VANS

LT28883	2019 CHEVROLET EXPRESS 3500 15 PASS WHITE, 4.3L, V6, AC, LOADED OFF LEASE W/ 13,XXX MILES.....	\$26,700
LT28563A	2016 DODGE, GRAND CARVAN SE GRAY, 3.6L, V6, AC, NICE LOCAL TRADE.....	\$11,500
LT29015	2019 DODGE, GRAND CARAVAN SXT SILVER, 3.6L, V6, AC, FULL POWER LOADED OFF LEASE VEHICLE.....	\$18,900
LT29073	2019 DODGE GRAND CARAVAN SXT MAROON, 3.6L V6, AC, SUEDE SEATS, FULL POWER, LOADED.....	\$19,500
LT29074	2019 DODGE GRAND CARAVAN SXT WHITE, 3.6L V6, AC, SUEDE SEATS, FULL POWER, LOADED.....	\$19,500

Spring In

For Low Payment Offers

2019 CHEVROLET BLAZER 1LT
 2.5L 4Cyl, FWD, 22 City/27 HWY MPG, Cajun Red Tintcoat, Blind Spot Sensor, Speed Limit Sign Recognition, Parking Sensors, Exterior Parking Camera Rear, Front Dual Zone A/C

Payments as Low as **\$439*** per month
 LT7536 MSRP \$36,150 **LINDSAY PRICE \$31,059**



2019 CHEVY SILVERADO 1500 LD CUSTOM TRUCK DOUBLE CAB
 5.3L V8, 4x4, 15 City/21 HWY MPG, Silver Ice, Premium Audio System, Chrome Wheels, Exterior Parking Camera Rear, High Intensity Headlights, Rear-Window Electric Defogger

Payments as Low as **\$464*** per month
 LT7629 MSRP \$42,705 **LINDSAY PRICE \$32,794**

2020 CHEVROLET EQUINOX LT
 1.5L Turbo 4 Cyl, FWD, 26 City/32 Hwy MPG, Summit White, Blind Spot Sensors, Lane Departure, Parking Sensors, Exterior Parking Camera Rear, Front Dual Zone A/C

Payments as Low as **\$359*** per month
 LT7588 MSRP \$30,740 **LINDSAY PRICE \$25,381**



2020 CHEVY SILVERADO 1500 CUSTOM TRUCK CREW CAB
 4.3L V6, 4x4, 15 City/20 Hwy MPG, Silver Ice, Exterior parking Camera Rear, Split Folding Rear Seat, Alloy Wheels, Heated Door Mirrors, Custom Convenience Package

Payments as Low as **\$494*** per month
 LT7663 MSRP \$41,835 **LINDSAY PRICE \$34,949**



CHEVROLET  **FIND NEW ROADS™**
LINDSAY CHEVROLET
 "Where The Trucks Are"

OPEN: M-F 8-7 • SAT. 8-5 IN LEBANON AT 285 W. ELM • 417-532-3114

David Bean
Manager

Jeremy Johnson
Sales

Brent Hale
Sales

Dennis Nash
Asst. Manager

Shelby Cole
Finance

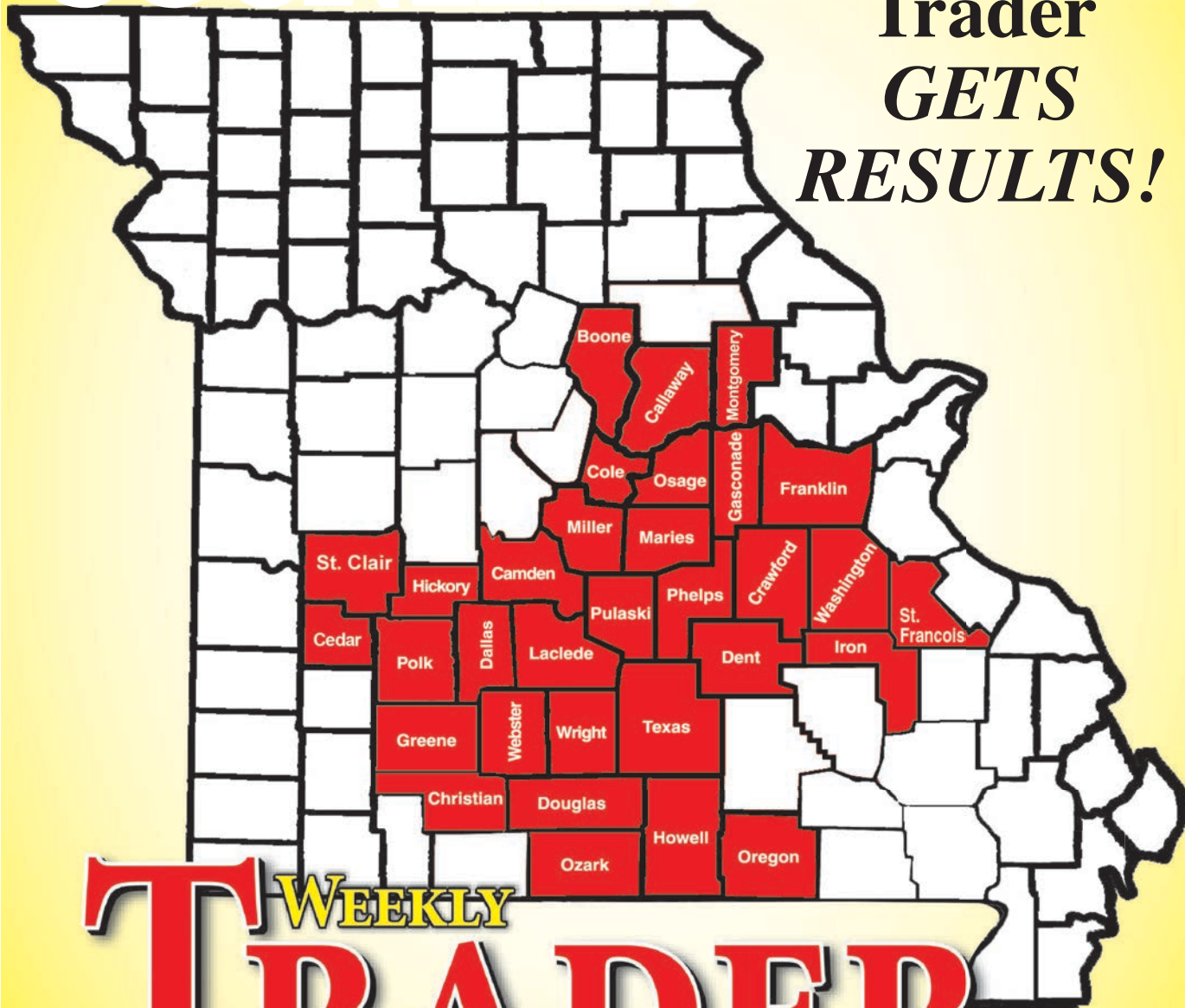
www.lindsaychevroletlebanon.com



This is...

WEEKLY TRADER COUNTRY!

The Weekly
Trader
GETS
RESULTS!



WEEKLY TRADER MAGAZINE

Place Your Ad With Us Today!

417-532-9131 CHECK US OUT ONLINE AT: myweeklytrader.com

REGISTERED HEREFORD & ANGUS BULLS: Home raised, Some Show-Me Select Qualified. 573-701-7828. Belgrade

CASE DC TRACTORS: One, wide front, PS, 7' rear sickle. \$1,900. One, narrow front, 10' rear sickle. \$1,700. One, narrow front w/3pt lift. \$1,500. 417-848-8754, Springfield.

WILLBECK 12ft CHISEL PLOW: Field ready. \$950. 417-322-0161.

KUHN 3 POINT DISK MOWER: 10 ft. \$850. 573-765-4406.

STAINED GLASS THEATRE COOK-BOOK. \$6.50. RESTAURANT RECIPES OF MISSOURI. \$7.50. FANNIE FARM-ER1896 COOKBOOK, Reprint, 567 pages. \$6. THE CAKE DOCTOR COOKBOOK. \$6.50. 417-532-2045, Lebanon. (Leave Phone Number).

NEW HOLLAND 617: 3 point disk mower, 9ft \$3,950. 573-765-4406.

OMAR'S LOGGING: Oak and Walnut, excellent prices, Amish owned and operated. 417-741-0440, leave message.

HAROLD BELL WRIGHT BOOKS FOR SALE. The Eyes of the World, The Calling of Dan Matthews and Their Yesterdays. \$15 each. 417-532-2045, Lebanon. Leave message.

2008 ROCKWOOD FREEDOM POP-UP TRAILER for sale. \$3,000. 573-859-6789, Belle.

ANTIQUE 12 GAUGE: Single barrel, shotgun. \$175. Desloge, 573-327-9068.

3PT BALE SPIKE: \$100. 417-766-1991.

Which Kubota Is Right For You?

Kubota THE RIGHT EQUIPMENT IS RIGHT AROUND THE CORNER. Kubota

<p>L2501 DT PACKAGE DEAL</p> <p>25HP Kubota diesel engine*** 4WD, Ag Tires, 18' Trailer, 5' Box Blade, Kubota Loader, 5' Land Pride Brush Hog, 6 Year Power Train Warranty**** \$0 Down, 0% A.P.R. for 60 months** \$20,995</p>	<p>L3901 DT PACKAGE DEAL</p> <p>39 Kubota diesel engine***, 4WD, Ag Tires, 18' Trailer, 5' Box Blade, Kubota Loader, 5' Rotary Cutter. 6 Year Power Train Warranty**** \$0 Down, 0% A.P.R. for 60 months** \$25,995</p>
<p>L3301 DT PACKAGE DEAL</p> <p>33 Kubota diesel engine*** 4WD, Ag Tires, 18' Trailer, 5' Box Blade, Kubota Loader, 5' Land Pride Brush Hog, 6 Year Power Train Warranty**** \$0 Down, 0% A.P.R. for 60 months** \$24,395</p>	<p>L4701 DT PACKAGE DEAL</p> <p>47 Kubota diesel engine***, 4 cyl., 4WD, Ag Tires, 18' Trailer, 6' Box Blade, Kubota Loader, 6' Land Pride Rotary Cutter. 6 Year Power Train Warranty**** \$0 Down, 0% A.P.R. for 60 months** \$31,495</p>

ALL-NEW GAS-POWERED RTV-XG850 SIDEKICK

POWER • PERFORMANCE • HANDLING • STYLE

48HP***, 40 mph transport speed, gasoline engine.
* Price per month does not include insurance and sales tax if applicable.
Includes \$1,000 rebate and 3.99% APR financing for 60 mo. with approved credit*
Other purchase and finance options available. See dealer for details.

Get unmatched Kubota quality. Kubota designed, engineered and built. More package deals available.

Visit Us In TWO Locations!

<p>8665 Outer Road, Mtn. Grove 417-926-5454 • 877-926-5458</p>	<p>4973 W. US Hwy. 160, West Plains 417-256-0420 • 800-766-0420</p>
---	--

*** \$0 Down, 0% A.P.R. for 48 months.** Qualifying Equipment: RTV-XG850. \$0 Down, 0% A.P.R. financing for up to 48 months on purchases of select new Kubota RTV-XG850 equipment from participating dealers' in-stock inventory is available to qualified purchasers through Kubota Credit Corporation, U.S.A.; subject to credit approval. Some exceptions apply. Example: 48 monthly payments of \$20.83 per \$1,000 financed. Offer expires 03/31/20. See us or go to KubotaUSA.com for more information. **** \$0 Down, 0% A.P.R. for 60 months.** Qualifying Equipment: BX, B, L, MX and M, MH(M7), RB, DMC, DM, RA and TE Series. \$0 Down, 0% A.P.R. financing for up to 60 months on purchases of select new Kubota L2501 DT, L3301 DT, L3901 DT or L4701 DT equipment from participating dealers' in-stock inventory is available to qualified purchasers through Kubota Credit Corporation, U.S.A.; subject to credit approval. Some exceptions apply. Example: 60 monthly payments of \$16.67 per \$1,000 financed. Offer expires 02/31/20. See us or go to KubotaUSA.com for more information. ******* For complete warranty, safety and product information, consult your local Kubota dealer and the product operator's manual. Power (HP/KW) and other specifications are based on various standards or recommended practices. ******** Only terms and conditions of Kubota's standard Limited Warranty apply. For warranty terms, see Kubota's Limited Warranty at www.KubotaUSA.com or authorized Kubota dealers.

ACA REGISTERED CORGI PUPPIES: DOB 02/19/20, very playful, 2 males, 6 females. \$350. Latham, 660-458-6331.

3 YORKIE- SHIH-TZU/MALTESE BLACK PUPPIES: Ready for loving home, 2-male, 1-female, male-\$175, female-\$250. Mtn Grove, 417-349-5032.

COUNTER WEIGHT FOR A CAT 977K OR L: \$125. 636-583-5074

PULL BEHIND LAWNMOWER DUMP TRAILER: Hard rubber tires. \$75. 636-297-1747.

D&H OUTDOOR WOOD FURNACES SINCE 1986: Forced air, 90% efficient, fire proof insulated, thermostat control. Complete Heating and Cooling Systems. 573-743-6943, Salem.

VERA BRADLEY PURSE AND MATCHING BILLFOLD: \$35. 573-265-3645

CUSTOM SAW MILLING: Lebanon. 417-533-4607, 417-664-1195.

ANTIQU BRASS KITCHEN CABINET HARDWARE: 2 sets of 44. \$50 per set. 636-239-2695

DETROLA MUSIC MACHINE: Plays CD'S, Records, Cassettes, AM-FM Radio, excellent condition, 20x18x12, oak finish, antique look. \$65. 573-364-7465, Rolla.

VINYL WINDOW: Double pane, 50x33. \$40. 417-322-4432.

WANTED TO RENT: 3 bedroom home, with room for horses, Rolla area, Call with any availability, 641-226-2431/573-578-6476.

SNAGGING ROD & 1049 REEL: w/100lb test. \$125. Conway, 417-589-8200.

BAKER A RESAW: W/return. \$7,000. 417-327-6240.

4x5 ALFALFA/GRASS: High Protein, (horse/sheep hay). \$75bale. 417-322-0161.



Wright Spray Foam Insulators, LLC
Commercial & Residential
Call for FREE Estimates!

Ervin Gingerich 417-926-2052
B. Eli Yoder 417-746-4932

2015 FORD FUSION: stk# 22681, 61,000 miles, Only \$11,900. Call or visit us today for a test drive! WEHR FORD 1131 Bus. 60 • Mountain Grove, MO 1-800-288-6827

2013 FORD F150 XLT SUPER CREW: stk# 22679, 89,265 miles. Only \$17,500. Call or visit us today for a test drive! WEHR FORD 1131 Bus. 60 • Mountain Grove, MO 1-800-288-6827

600SQFT USED 5" DOUBLE LAP, CREAM COLOR VINYL SIDING: \$75, 417-457-1015.

JOHN DEERE 535 ROUND BALER: monitor, kicker, net wrap. \$4,950. 573-765-4406.

BROME HAY FOR SALE: \$4/square. 573-539-2060.

Specializing in Engine Repairs for Chainsaws to Tractors
and everything in between!



Sunrise Diesel
ai products **Kawasaki** Engines

(417) 531-0048 cell • 417-345-1337 • 1341 State Hwy 64 • Tunas, MO

AUSTRALIAN SHEPHERD PUPPIES: For sale or will swap for farm animals. UTD on shots, Born 11-20-19. 417-967-6493, Roby.

\$19,900 USED DOUBLE WIDE: nice 3 bedroom, 2 bath delivered & set-up.....Hurry, This house will **NOT** last long! Call now 573-657-2176 amegamobilehomes.com

MODULAR STOCK SALE - It is time to move our inventory. TRUE MODS - Save Thousands. Call Marla, better than 20 years experience. 573-657-7040, chateauhomes.net.

2007 GMC YUKON DENALI : 4 WD, stk#22597a, Loaded and Clean. Only \$9,800. Call or visit us today for a test drive! WEHR FORD 1131 Bus. 60 • Mountain Grove, MO 1-800-288-6827



CAROLINA CARPORTS

Carports • Garages • Barns • RV Covers
Starting At \$1095.00
Delivered & Installed



RENT TO OWN • NO CREDIT CHECK

Spring Sale On Carports!

10% OFF \$2,000-\$4,999 | 12% Off Over \$5,000

METAL PANELS

29ga Painted Metal starting at **\$60.25 sq**
29ga Galvalume Metal starting at **\$56.50 sq**



Showroom & Sales Office
Bolivar, Missouri 65613
(417) 326-4228
Next to Smith's Restaurant
Hwy. 13 & U

Corporate Office
Polk, Missouri 65727
(417) 852-4228
2 Miles South of Pittsburg
on Hwy. 64



Find us on facebook
JenkinsBuildings.com
Prices Subject to Change

VISIT US @ JENKINSBUILDINGS.COM

MURRAY RIDING MOWER: Good tires, deck, blades, 5-speed, needs motor. \$150-gun trade. 573-364-7465.

WILBER'S FISH BRANCH ANGUS: Large selection of bulls available. Yearling & 2yr old bulls, very docile. High Performance. Calving ease and good growth. Mexico, MO, 573-473-6019. www.fish-branch.com

ALLIS CHALMERS: 5 Bottom plow. \$500. 417-588-0392.

1953 FORD JUBILEE: new tires, runs good, excellent condition. \$3,000. 417-664-3425.

GUARDIAN DOG PYRENEES/ANATOLIAN CROSS: first shot, dewormed, \$75, Registered Katahdin Ram, 2 year old Texas Bred, \$300. Vienna, 573-422-3574.

METRO MOTORS INC.

R.V. SALES

NEW GREY WOLF, CHEROKEE & ROCKWOOD!
GREAT SELECTION OF NEW & PREOWNED RVs

<ul style="list-style-type: none"> •2020 2509 Rockwood Trl. Sleeps 8,Sale Price \$23,900 •2020 16BH Wolfpup Trl. Sleeps 5 Light Hail DamageSale Price \$13,000 •2019 16FQ Wolfpup Trl. \$12,900 •2019 1640 ESP Rockwood Pop-up LOADED! \$10,900 •2019 1640 LTD Rockwood Pop-up LOADED! \$8,900 	<ul style="list-style-type: none"> •2019 214HW A Frame Shower & Stool LOADED! \$12,500 •2018 1225 A Frame LOADED! \$10,900 •2019 2440 BS Rockwood 5 whl, 2 Slides,Sale Price \$27,500 •1997 22' Rialita B 6cyl. Volkwagon Engine, Frt. Wheel Drive, 88,000 mi \$24,900 •2019 2650 Rockwood 5 whl, 2 Slides,Sale Price \$29,500
--	--

“Where Your Satisfaction Really Counts”

2727 S. Campbell – Springfield, MO – Visit our website at www.metro-motors.biz

417-882-6800

BYLER SUPPLY

the builder's choice!

Metal Roofs Designed To Look Great On Your Home!

HEAVY 29 Ga. METAL #1
 Limited LIFETIME WARRANTY
29 Ga. & 26 Ga. Painted
 CUT TO LENGTH PANELS



NEXT BUSINESS DAY SERVICE
 Call for details.



Ask About Our Quick Service.
 Over **20** Colors and Several Styles To Choose!

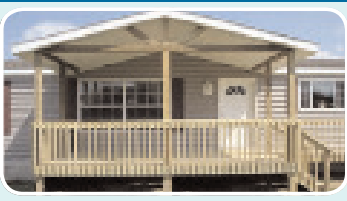
GALVALUME METAL UNPAINTED 25 YEAR WARRANTY

\$52.75

#1 Standard Panels, 29 Ga.

Good quality, quick service

DECK PACKAGES AVAILABLE AT BYLER BUILDING SUPPLY



Roof Is Optional
Additional Sizes & Custom Shapes Available!
 8x10 • 8x16 • 10x14 • 12x16

CALL FOR PRICING!

- 1 Set of Steps
- Handrails
- 2x2 Balusters
- All Deck Boards & Railing Screwed, Up To 4' High, All #2 Treated

Labor & Material INCLUDED!

DELUXE BUILDING PACKAGES



All Buildings Quoted Have #2 Lumber And #1 Galvalume Or Limited Lifetime Painted Metal

All Buildings Are Heavy 29 Ga. Metal, Three 2"x6" T&G Splashboards, All Poles 5"x5" Or Larger, CCA Treated, Fully Trimmed With One 3'x6' Walk-Through Door & One Large Sliding Door.

24x40x10	Galvalume	\$5,797.55
	Painted	\$6,401.76
24x32x10	Galvalume	\$5,616.66
	Painted	\$6,098.95
30x40x10	Galvalume	\$6,430.69
	Painted	\$7,099.08
30x40x12	Galvalume	\$6,886.06
	Painted	\$7,598.22
40x60x12	Galvalume	\$11,272.16
	Painted	\$12,461.71

*Plus Tax. Labor & Delivery Available On All Building Packages.
 Prices may vary due to local code restrictions.*



BYLER BUILDING SUPPLY, LLC

2 1/2 MILES EAST OF SEYMOUR ON 60, 1/4 MILE NORTH AT AUTO SALVAGE WWW.BYLERSUPPLY.COM
 877-556-8855 MON.-FRI. 7:30-5 SAT. 8-12 FAX NO. 417-935-2995 417-771-3100

VISIT US AT WWW.BYLERSUPPLY.COM



MATCHING EXCEPTIONAL PROPERTIES with EXTRAORDINARY PEOPLE!

MEET YOUR LAND SPECIALIST
JERRY HUNTER



NORTHSHORE RESORT
7.9+/- ACRES | MILLER COUNTY, MISSOURI

SPECIALIZING IN

- RANCHES • FARMS
- HUNTING LAND
- WATERFRONT PROPERTIES
- RECREATIONAL

MARKETING

- PROPERTY SYNDICATION TO 1400+ WEBSITES
- \$35 BILLION IN COLLECTIVE SALES SINCE 2014
- NATIONAL TV SHOW ON RFD TV REACHING 48+ MILLION PEOPLE
- PROFESSIONAL PHOTOGRAPHY AND VIDEO TO SHOWCASE YOUR PROPERTY



LITTLE PINEY CREEK HAVEN
510+/- ACRES | PHELPS COUNTY, MISSOURI

EXCLUSIVE PARTNER OF



livingthedreamland.com
(855) BUY-DIRT

Call
Jerry Hunter
(573) 578-0717 Cell

yourlandhunter@gmail.com

DG LUMBER: Top Quality Building Materials, Lumber, Plywood, OSB, Car siding, Insulation, Doors, Windows, Nails, Screws. Also do complete building packages. Call for Quotes 417-259-0994, Norwood.

TRUCK LOAD OF FLEA MARKET & AUCTION ITEMS: \$200 or trade. 573-327-9068

2004 CADILLAC. \$10,000. 417-718-7882.

LESPEDEZA SEED: Clean, bagged. Evenings, 660-693-4887.

CARRY-ALL 3pt PLATFORM CARRIER: Like new. \$150. 417-399-6687.

GET YOUR WORK DONE, AMERICA

FOR JUST

\$261 PER MONTH*



4540 2WD

- SIMPLE to operate
- ECO-FRIENDLY, NO DPF engine
- HEAVY-DUTY steel construction not plastic

MAHINDRA 4540 41HP, 2WD, TRACTOR AND LOADER.

Marshfield Machinery Inc.
222 E. Madison • Marshfield, MO 65706
417-859-2117 • www.marshfieldmachinery.com

7 YEAR
LIMITED POWERTRAIN
WARRANTY

WORLD'S #1 SELLING TRACTOR



*Payment is for tractor and loader only and is calculated at 10% down and 84 months financing. With approved credit. Program restrictions may apply. See dealer for details. All offers expire April 30, 2020.

NEW MAHINDRA TRACTORS

- 7085 4WD & LDR 85HP IN STOCK
- 6075 4WD & LDR 71HP IN STOCK
- 2655 4WD CAB & LDR 55HP IN STOCK
- 2655 4WD, BACKHOE 55HP IN STOCK
- 2655 4WD & LDR 55HP IN STOCK
- 4540 4WD & LDR 41HP IN STOCK
- 4540 2WD & LDR 41HP IN STOCK
- 2638 4WD & LDR 38HP IN STOCK
- 1626 4WD & LDR 26HP IN STOCK
- MAX26XL & LDR 26HP IN STOCK

USED TRACTORS

- MF 1710 W/ BACKHOE 22HP 14,500
- MAHINDRA MAX26XL LDR 26HP 12,500
- MAHINDRA MAX22 W/ BACKHOE 11,500
- MAHINDRA EMAX22 LDR 22HP 10,000
- MF 231 W/ LDR 38HP 7,500
- CASE IH 485 LDR 43HP 6,500
- FORD 5000 LDR 60HP 6,500
- MF 135 W/ LDR 36HP 5,500
- MF 150 38HP 4,500
- CASE IH 235 W/ MOWER 18HP 3,500
- IHC 184 W/ MOWER 18HP 3,500

USED SIDE BY SIDES

- MAHINDRA 750 CREW XTV 7,500
 - MAHINDRA 750 XTV 6,500
- USED ROUND BALERS**
- MF 2745 4X5 MESH 12,500
 - HESSTON 745 4X5 7,500
 - VERMEER 5400 REBEL 4X5 6,500
 - HESSTON 555 4X6 4,500
 - HESSTON 560 5X6 4,000
 - HESSTON 550 4X6 3,500
 - HESSTON 530 3,500
 - NH 850 5X5 1,500
 - MF 224 SQUARE BALER 2,500

USED RAKES

- SITREX 12 WHEEL 3,500
- DURABUILT 8 WHEEL 1,950
- VERMEER WR20 8 WHEEL 1,950
- M&W 8 WHEEL 1,500

USED HAY MOWERS

- CASE IH DCX 131 13FT 9,750
- NH H6750 9FT 3PT 6,500
- MF 1329 9FT 3PT 5,500
- LELY 270 9FT 3PT 3,500
- HESSTON 1091 9FT 1,000

USED MISC.

- HAYBUSTER 107C DRILL 17,500
- FRONTIER BALE PROCESSOR 8,500
- RHINO 12FT FLEX WING 8,500
- BUSH HOG 3008 8FT 3PT 2,500

Marshfield Machinery Inc.
222 E. Madison • Marshfield, MO 65706
417-859-2117
www.marshfieldmachinery.com

BIG TEX 140T

OVER THE AXEL, POWER TILT,
8.5 FOOT WIDE, 24 FOOT LONG, 7K AXELS.



Like Us On **facebook**



I-44 at Exit 208 • Cuba, MO
www.jimsmotors.com

TRUCKS and TRAILERS (800) 897-9840

Great Service! Great Prices! Since 1957

AUCTION REMINDER: Upcoming online auctions. Sam Crawford Auction. Please see our Auction Directory for more information.

DARDEN PROFESSIONAL TIMBER HARVESTING, BUYING STANDING TIMBER: Great prices, improve wildlife habitat and improve forest health. State Certified & Fully Insured! 573-247-4808 or 573-739-1122. Salem

FOR SALE ELECTRIC SAWMILL : Michigan articulating wheel loader, 80 BAR-KO loader, Ford 4010 Tractor, 4x4 with loader. Phone 417-349-5550 or 417-554-2719.

C&L All-Steel Pole Barns



Cheaper than wood barns!

573-889-7172

224 E. Hwy. 32 • Licking, MO

BARN WOOD SIDING: 8" & 10" wide. 573-729-7226. www.pineridgerustic.com

3PT BALE CARRIER: \$100. 417-766-1991 417-753-2747.

5055E JOHN DEERE TRACTOR: Open station, MFWD, H240 loader, like new, 109hours, original owner. \$26,500. Consider offers. 417-599-8089.

AUCTION REMINDER: Antique & Estate Auction. Saturday, March 21st @ 10 am. Nance Auction. Please see our Auction Directory for more information.

1999 JAYCO EAGLE: 28ft fifth wheel, with slide, exceptional condition. Summersville, 970-218-1254.

FREE MOUNTAIN KUR PUPPIES : 6wks, weaned. 573-996-6744, Ask for Jack, Eminence.

WEEKLY TRADER MAGAZINE



AUCTION DIRECTORY

Friday, March 20

6:30 PM Interstate Regional Stockyards.....39

Saturday, March 21

10:00 AM Bob Kollmeier Auctions.....20

10:00 AM Brehe Auctioneering Service.....22

10:00 AM Integrity Outlet.....24

10:00 AM Nance Auction Service26

10:00 AM Foster Auction & Appraisal.....31

10:00 AM Allen Auction & Real Estate.....34

10:00 AM Wulff Auction36

12:00 PM Buffalo Livestock Market.....38

1:00 PM Salem Livestock Auction.....39

Sunday, March 22

1:00 PM Nance Auction Service27

Monday, March 23

10:00 AM Rick Dixon Auction Service.....37

Tuesday, March 24

Online Atterberry Auction & Realty38

Thursday, March 26

Online Warden Auction & More.....35

Friday, March 27

Online Mickey Duckett Pro. Auctioneer19

Saturday, March 28

9:00 AM Bruce & Le'AN Auction.....28

10:00 AM Crawford Auction Service.....23

10:00 AM Drenon Auction.....29

10:00 AM Wheeler Auctions & Real Estate30

10:00 AM Foster Auction & Appraisal.....32

Sunday, March 29

10:00 AM Southwest Auction40

Tuesday, March 31

Online Chupps Auction & Real Estate33

Saturday, April 4

9:00 AM Adam's Auction40

10:00 AM The Case Company25

11:00 AM Foster Auction & Appraisal.....33

6:00 PM Mid Missouri Stockyards.....39

Saturday, April 18

TBD Hartville Lions Club.....37

Sunday, April 26

9:30 AM Helling's Farm Auction.....38

Saturday, May 2

10:00 AM Shannon Auctions.....40

Weekly Online Auctions

Sundays Crawford Online Auctions.....21

Call 1-800-665-8875 to get your auction listed in the Weekly Trader.

AUCTIONEERS

Did you know the WEEKLY TRADER covers more counties in rural Missouri than any other publication?

Firm deadline is 12:00 PM Friday, prior to next week's Thursday publication date.



Mickey Duckett
CAL, MPPA, AARE, CES

Mickey Duckett Professional Auctioneer

P.O. Box 1575, Ozark, MO 65721

(417) 353-2768

www.mickeyduckettproauction.com



ANTIQUE TRACTOR AND COIN-OP AUCTION

504 W. Commercial, Springfield Preview: Sat., March 21st, 12-3

Online Bidding Ends Fri., March 27th @ 1:07 Pick-Up: Sat., March 28th, 9-1

What A "Collector's & Everything Else Sale" This Is!! We have everything from Antique Tractors & Farm Equipment including 1952 John Deere Model B, 1945 McCormick W9, 1952 Massey Harris Pony, 1966 Farmall Cub, 1940's Shaw MFG Co walk behind sickle mower, John Bean Division sprayer with Wisconsin engine, **To Coin-Op items** like 1970's Diet Rite pop machine, **NEW OLD STOCK** Rockola **Tri-View Model 506** wall box, Rockola Phonette Model 503 wall box with original box, Rowe R 86 jukebox, Rockola Mystic 478 jukebox, NSM Sapphire jukeboxes, Treasure chest claw machine, Wico pinball machine dolly, pinball supplies, several **NEWER** Wurlitzer cigarette machines, lots of assorted **ORIGINAL** Rockola Service Manuals & Wiring Diagrams, large assortment of 45 rpm records, vintage Miller Lite neon sign, Chiefs Bud Light beer sign, Vintage Screwball Game, coin-op pool tables, large assortment pool cues & billiard supplies, Rxair 3000 air purification system, antique Rockola & Seeburg jukebox parts, **New Old Stock** receiver & amp tubes, lots of assorted coin-op parts and supplies. **PLUS TOOLS** including **NEW** Titan Industrial portable gas powered air compressor, Dewalt rotary laser, Grizzly portable band saw, Hitachi P20SB planer, **NEW** Titan industrial gas powered trash pump, Industrial concrete saw, and Misc. **Items** including Commercial reach-in cooler, Continental commercial 4-door cooler, Tommy gate hydraulic lift, assorted large & small ramps, **NEW** lighted EXIT signs, **NEW** Emergency lighting systems, assorted wooden & aluminum step ladders, lots of assorted heavy duty shelving units, lots of assorted tools & hardware. **If you need it or want it, we've probably got it! Over 500+ items to bid on! Take a look at our catalog!!**

Owner: Drew Harris

Auctioneer Note: Terrific antique tractors & lots of great coin-op items to bid on! Check out our Online Catalog!! For more auction terms, photos and register to bid, go to our website at www.mickeyduckettproauction.com!!



YOUR Real Estate Auction Specialist



Bob Kollmeier CAI, CAGA
Auctions/Appraisals/
Real Estate • 417-882-5664



U.S. BANKRUPTCY COURT ORDERED
405 ACRES M/L PASTURELAND W/ HOME & IMPROVEMENTS

▶▶▶ REAL ESTATE
SATURDAY, MARCH 21, 10:00 AM

2873 S. HWY 137 WILLOW SPRINGS, MO

DIRECTIONS: FROM HWY 60 & HWY 137 AT WILLOW SPRINGS, GO NORTH THROUGH TOWN ON HWY 137 TO HWY Y, THEN CONTINUE 1.7 MI. ON HWY 137 ON LEFT TO AUCTION. WATCH FOR SIGN. OR FROM MOUNTAIN VIEW, MO AT HWY 60 & HWY Y GO NORTH 16MI. TO HWY 137, THEN RIGHT ON HWY 137 1.7MI. TO RANCH. WATCH FOR SIGNS.

REAL ESTATE OPEN HOUSE
MARCH 8 & 15, 2-4PM

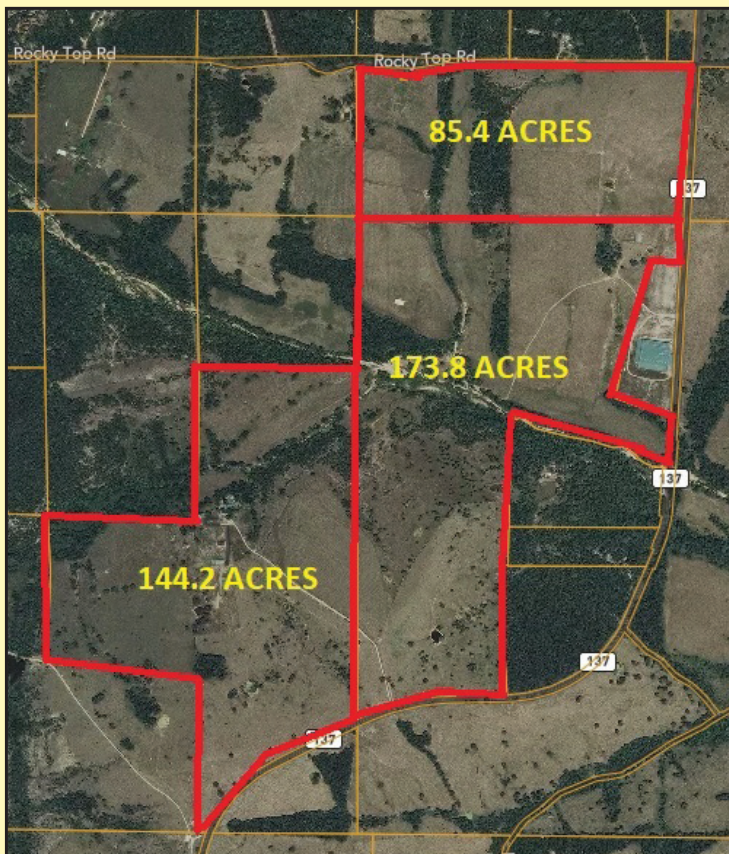
SELLS AT 10AM! Don't miss this opportunity to buy this 405 acre ranch with home, buildings, good fencing and a Jack's Fork river prong running thru it. Property is mostly open pastureland with a 3 bedroom, 2 bath home with family room and fireplace, kitchen with breakfast area and pantry, living room with fireplace, loft area and wrap around wooden deck! Home has FAG propane heat, central air, vinyl siding, metal roof, well and septic. Property also has 18'x24' storage building, 20'x80' lean to type metal frame shed, 25'x45' pole barn structure lean to, 30'x30' detached garage with concrete floor and overhead doors, 30'x80' metal shop building with electric and concrete floor and other older buildings.

REAL ESTATE TERMS: 10% down auction day, balance due on or before 30 days after auction. **REAL ESTATE SELLS "as is, where is".** If buyer desires home inspection prior to auction call office at 417-882- 5664.



AUCTIONEER'S NOTE: Real Estate sells at 10AM sharp.
FOR LISTING & PHOTOS ON THE WEB BOBKAUCTIONS.COM OR AUCTIONZIP.COM CALL OFFICE FOR MORE INFO: 417.882.5664

REAL ESTATE TERMS: 10% down auction day, balance due on or before 30 days after auction.
REAL ESTATE SELLS "as is, where is". If buyer desires home inspection prior to auction call office at 417-882- 5664.



SL-0000426478

Bob Kollmeier
AUCTIONS
APPRAISALS & REAL ESTATE
417.882.5664



RICHARD JEAN
AUCTIONEER
417.299.8401



RUSS SMITH
AUCTIONEER/SET UP MANAGER
417.844.0205

RARE & UNIQUE Coins

**AUCTIONS
ENDING
EACH
SUNDAY**



WWW.OZARKBID.COM



**SHIPPING ON
AVAILABLE ON
MOST ITEMS**

**SELL YOUR ITEMS
NATIONWIDE**

**SAVE TIME, SAVE
MONEY, SHOP AT
ONLINE AUCTION**

- Online
CRAWFORD
Auction Service LLC

Register and bid online
@ www.OzarkBid.com



Contact Chase Crawford, Crawford Auction Service for more info @ 417-399-1904

MOHESKY TRUST FARM AUCTION



The Leland Mohesky Trust has sold their farm and will sell personal property of the Trust at public auction on:

Saturday, March 21st, Beginning at 10:00 AM

Location: 1820 Wheeler Road Gerald Mo 63037

Directions: From Interstate 44, take Exit #247-Highway 50 West and go 24.8 miles to Gerald. Turn right on Highway Y, go 1.2 miles, then right on Wheeler to auction. Roads will be marked day of sale.

TRACTORS / FOUR-WHEELER



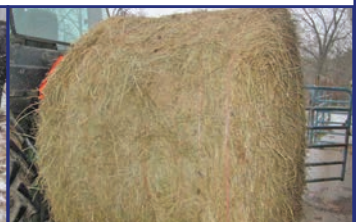
John Deere 2955 diesel tractor- cab-AC/heat-radio-dual outlets-new rear tires-has a 2846 QT loader w/6' bucket and bale spear-sells as unit, Ford 4000 gas tractor-power steering-single outlets-new rear tires, International 1066 diesel tractor-T/A-good rubber, Ford 1978 #700 truck with 16' Riechers grain bed-hoist, **FOUR WHEELER-2016** Honda Recon ES four wheeler with metal racks-

fencing work box, 30 gallon 12 volt ATV sprayer, deer stands

FARM FRESH CATTLE / HAY (will sell at 11:00 AM)



34 head of Angus cross cattle- (23) Angus cross cows, (10) 400-500 LB Angus cross steers and heifers, **BULL**; 3 year old Registered Gerloff Angus bull **HAY**; 50-75 round bales mixed grass hay-4'x5'-kept in shed



HAY EQUIPMENT / TRAILERS



New Idea 5209 9' discbine, New Holland 648 round baler -auto wrap-4'x5' bales-electric tie, Kuhn SR110 Speed rake-10 wheel V rake-hydraulic lift, Rhino PT405H 4 basket hay tedder-hydraulic lift, Howse 3 point 8' heavy duty brush hog-3 gear boxes, 3 point 7' blade, 3 point bale fork, 3 point bale spear, **TRAILERS**; bumper hitch 7'x16' stock trailer-new floor, 10' flair side grain wagon with hoist, Case 14' hay wagon, bumper hitch flat bed trailer 6.5'x16'- new floors-ramps, Case running gear 8'x14' hay wagon, New Holland running gear 8'x12' hay wagon, Arts Way 2 ton grinder-mixer



~AUCTIONEERS NOTE~
Cattle will be pregnancy tested and aged by local vet before auction.

FARM SUPPLIES / FENCING



8 round bale feeders, plastic water tanks, galvanized water troughs, 200 gallon plastic water tank, calf creep feeders, mineral feeders, 16' cattle panels, (15) 10' portable corral panels, mineral tubs, calf pullers, calf buckets/bottles, plastic baler twine, **FENCING**; (2) solar fence chargers, 6' T posts, woven wire, barbed wire, 1/2"x24" hardware cloth-50' rolls, wooden corner posts, T post driver, Goldenrod fence stretcher, cattle oilers, electric fences, electric fence supplies, live trap, square tubing, portable air tank, pine lumber, sheets chip board, gas cans, truck tires, water hose, **TOOLS**; Lincoln 225 stick welder, 6 HP Craftsman power washer, 4" bench vise, 6" bench grinder, tool boxes, hand tools, 2 ton floor jack, hand sprayer, rakes, forks, shovels, saw horses, extension ladders, ratchet straps, log chains, binder, building supplies, drain hose, Char Broil BBQ grill

VIEW OUR PHOTO GALLERY ON
www.breheauction.com



LUNCH WILL BE SERVED BY NATHAN'S SHINING STARS / RELAY FOR LIFE

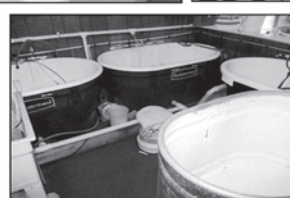
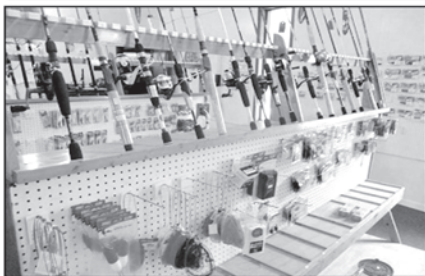
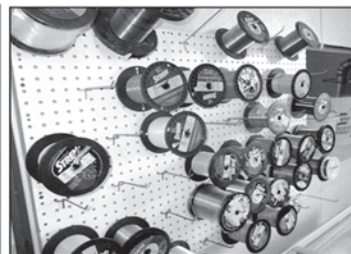
Announcements made day of sale supersede all printed material.
TERMS: CASH, PERSONAL CHECKS WITH PROPER I.D., BUSINESS CHECKS WITH BANK LETTER AND NO OUT OF STATE CHECKS UNLESS APPROVED BY SELLER. Email Us At kkauction@sbcglobal.net
Everything sells as is with no guarantees.

Sam CRAWFORD AUCTION SERVICE LLC

As we have closed the business, will sell the following located from Pittsburg, Mo. 1-1/2 miles North on Hwy. 64. Watch for Crawford Auction Service signs.

Saturday, Mar. 28, 2020 – 10 a.m.

TACKLE & BOAT SHOP INVENTORY – TRAVEL TRAILER – MISC.



Approx. 120 rods & reels, new
 10-12 Reels, Lews, Garcia, Zebco
 10 Double side peg board shelves/
 racks for rods/reels, tackle
 Lot muskie lures & smaller lures
 Lot asst. bait, hooks, sinkers, bobbers
 Minnow buckets
 Noodles; Dock bumpers
 Water toys
 Stren line winder; Asst. line
 3 Rubbermaid 100 gal, 1 galv tank for
 minnows
 Utility sink; PR water skis
 Some rope; Life jackets
 Large metal job box
 3 Paddles; Fish nets
 Triple well stainless sink
 Large standing fan
 Other fans, heaters
 Neon open signs; Office chair
 Lg plastic trash can
 Royal electric cash register
 Credit card machine

Frigidaire refrigerator
 Haier refrigerator
 Whirlpool double door
 refrigerator/freezer
 Whirlpool upright freezer
 U.S. Stove Co. pellet stove, used little
 4 Bags pellets
 2 Reach in chest freezers
 Lighted showcase
 Deer hd mt.; Pr steer horns
 8 Wood step ladders
 Halo clothes rack
 Sleep Number king & twin bed
 3-4 Lawn chairs
 Other misc.

See website for more pictures!



Travel Trailer Sells @ Noon

'07 27' Keystone 275LD B/H travel trailer, 1 slide, fully equipped w/side porch, trailer is on a lot in Cedar Haven (south of Luckys), can be left there for \$900 per year if interested.



Consigned from local Estate Sells @ 12:15

'16 Crestliner 1650 Fish Hawk WT boat & trailer w/Mercury 60HP, 4 stroke mtr, new, never been in water, shedded & covered.

Sam CRAWFORD Auction Service LLC



Cross Timbers, Mo.
 CrawfordAuctionService.com

417-998-6629



TERMS: Cash or good check. Nothing removed until settled for. Not responsible for accidents. Lunch available. Statements made day of sale take precedence over printed matter. All items sell as is No warranties given or implied.



Sam
 417-328-9137

Chase
 417-399-1904

Chance, CAI
 417-298-1751

Tom Poynter
 Jack Lancaster

Rocking W Outfitters

HUGE OVERSTOCK BUILDING MATERIAL AUCTION



THIS IS NOT A CONSIGNMENT AUCTION! ALL ITEMS FOR SALE BELONG TO INTEGRITY OUTLET!

SATURDAY, MARCH 21ST @ 10:00 AM

**3006 Hwy 62, Green Forest, AR 72638 • 3 miles west of Green Forest
Auction Inside - will be held regardless of weather**

Includes New & Overstock Inventory

DIMENSIONAL LUMBER – 2x4x116 5/8", 2x6x10's, 2x8x16's, and 2x12x18's – great selection of dimensional lumber including fire-treated

GLULAM BEAMS – 3 1/2" x 5 1/2" glue lam beams in 9' & 10' lengths

CERTAINTED BRAND SHEETROCK - 5/8"x4'x12' sheets – Fire Code X

SIDING – 1000s of In ft available in each
- 1"x8" beveled cedar
- straight edge Fiber Cement Shake Siding

CEDAR –

- 1"x4"
- 2"x8"x18"
- 1"x6" T&G

PINE – several 1000 ft

- 1"x6" v-match T&G
- 2"x6" T&G – new item!

SUB-FLOOR –

- 1 1/8" T&G
- 3/4" T&G

OSB – Norbord Trubord 7/16" 4'x8' sheets

INSULATION – R13, R21, R30

Also available in large rolls -

- R10 – 60" x 100"
- R13 – 72" x 75"

TILE including **WOOD LOOK** –

- varying styles & colors, sizes include 4"x28", 6"x24", 6"x36", 8"x36"

- several styles and colors of **MOSAIC TILE**

SUBWAY TILE –

- 3"x6" white

OTHER FLOORING – new inventory arriving

- **HARDWOOD** – prefinished with several colors available

- BAMBOO – 5"x1/2" solid prefinished hand sculpted strand woven Bamboo flooring, 3 colors available – Rum (snap/lock), Tobacco (T&G) and Munich (T&G)

- ENGINEERED BACK – several 1000 ft - 7" wide Unfinished White Oak – random length, T&G, Beveled Edge, reversible – Select Grade on one side - Cabin Grade on the other – see pics!

**- LAMINATE
- LVT Flooring**

OAK BEAMS –

- 150 yr old hand hewn Oak beams in various lengths

SHIPLAP –

- 1"x6" T&G primed MDF

TRIM – all primed MDF

- crown, base

WINDOWS – vinyl windows

- large selection of various sizes, colors & styles

KITCHEN CABINETS - multiple sets!! – - all wood. Will be sold as complete sets,

- tops & bottoms.
- Ice White Shaker
- Navy Blue
- Black Shaker
- Brown

BUTCHER BLOCK COUNTERTOPS –

- check out the pics!

QUARTZ –

- Maple White in various sizes – countertops, island panels, with & w/o sink cutouts

GRANITE –

- granite vanity tops

ICE & WATER SHIELD –

- several rolls available

APPLIANCES – **new appliances** – name brand, including Kenmore – great way to save money on your appliances!!

- stainless steel french door refrigerators
- mini-fridge - Frigidaire
- dryers – LG & Kenmore

GENERATORS – all **new**

- Briggs & Stratton 3000 watt – Powersmart series, quiet power technology, linkable for your RVs – allows you to connect two units together!

AIR CONDITIONERS –

- Kenmore brand window A/C's (18,000 & 24,500 BTU) –new

STOVES –

- Electric fireplace
- Amazablaze Corn Stoves – Model 2100

KITCHEN SINKS – including Fire Clay Farmhouse style

VANITIES

FAUCETS – large selection! - variety of kitchen, bath and freestanding tub fillers

LIGHTING - various lighting fixtures & styles including high end chandeliers

CEILING FANS

RUGS

BABY BEDS

ACE HARDWARE MERCHANDISE - new merchandise

ITEMS & PICTURES WILL BE ADDED AS THE PICTURES ARE CAPTURED SO **CHECK AUCTION ZIP REGULARLY FOR UPDATES!!**

IF YOU ARE REMODELING OR BUILDING A NEW HOME YOU MAY NEVER FIND A BETTER DEAL ON NEW BUILDING MATERIALS, bring your trucks and trailers, there is plenty of parking for long trailers.

Loadout - Sale Day - until dark; Sunday – 1:00 – 5:00; Monday – 9:00 – 4:00. No Buyers Premium.

Loadout Assistance Available - Including Forklift After Auction Ends, All Items left over 30 days will be forfeited!

INTEGRITY OUTLET

CONTACTS - CALL OR TEXT MIKE @ 870-754-4428 • TEXT ONLY @ 870-715-5479 or 870-715-2326



All announcements made the day of auction will supersede previous advertising.

REAL ESTATE - PERSONAL PROPERTY AUCTION



Saturday @ 10AM APRIL 4, 2020

1840 State Hwy W Marshfield, MO

Ron and Martha Andrews owner

**Directions: From Exit 100
in Marshfield, follow Hwy W
2 miles to sale site.**

**OPEN HOUSE
SUNDAY MARCH 29 2-4 PM**
Shown by appointment only prior to sale.

REAL ESTATE SELLS AT 10:30 AM

2000+/- sqft all brick home on 7+/- Acres • 1250+/-sqft on main level w/full basement • 2 car attached garage plus two car carport • Home is 3BD w/ 2 1/2BA • Central Heat and Air • Refrigerator, Stove, and dishwasher all sell with the home • Septic tank • Private well • Propane tank sells separately • Small shop 10x20 with concrete floor • Small storage bldg

VEHICLES

2003 GMC Sonoma SLS Pickup – 4wd – 4.3 ltr – 80% Rubber • 2012 Ford Focus – 4 Cyl. 90% rubber – 55,xxx miles.

GUNS SELL AT 10:00 AM

Smith & Wesson 38 B&W Special • Ruger 22 Caliber long rifle with aimpoint electronic scope • High Point JCP 40 S&W + Holster • Ruger LCP 380 auto + holster • Smith & Wesson 357 magnum • Stevens 12 gauge 3 inch • Assortment of Ammo including .38, 380, 40, 22, 357 and 12 gauge.

SADDLES

Circle Y 14 1/2 inch roping saddle • 13 inch Barrel Saddle • 14 inch saddle

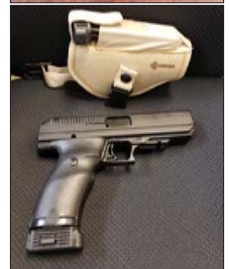
EQUIPMENT, TOOLS & TRACTOR

WD 45 AC Tractor with front end loader • 6ft blade • 3pt • Howse 5ft Bushhog • Craftsman Mower 2TS 7500 20HP 44"cut 0-Turn • Yard Machine 5 HP weed eater on wheels • Portable Air Compressor • Stihl HS 45 Chainsaw • Poulan P3314 chainsaw • Poulan 1800 chainsaw • Husqvarna leaf blower • Troy Bilt weed eater • Husqvarna 122 C weed eater • 2 power washers • Torch kit w/tanks • 5000 Watt generator • Lincoln 225 stick welder • Wagner 770 Airless paint sprayer • 4 ft Roller • Round bale Horse Hay ring • Mower jack • Aerator/seeders combo • Die hard Battery charger • 2 portable air tanks • Fence stretchers • Large 4 wheel yard cart • Small 4 wheel yard cart • Folding extension ladder • Hi Lift Jack • Electric Pole Saw • Lot long handle tools • Grease guns • Power tools • Hand tools • Ext cords

PERSONAL PROPERTY - HOUSEHOLD

Liberty Gun Safe • Sears Chest Freezer • Dining Table & 6 Chairs • Rainbow Vacuum System • Maytag Neptune front load washer • Samsung front load dryer • Panasonic microwave • China hutch • Drop leaf table • Corner ent. Center • End tables • Glider • Wood storage cabinet • Lamps • Dressers – chest of drawers • Antique desk • 3 door cabinet • Dishes • Pots & pans • Antique dishes • Pro Form Treadmill • Nordic Track • Large office desk • Bookshelves

Real Estate Terms: 5% of Purchase price paid down on sale day. Balance of purchase due and payable in 30 days.



Real Estate & Auction Services

Hoover Case - Auctioneer

Have questions, Let us know • 417.859.3204 or 417.844.6020
info@caseauction.com • auctionzip.com ID#24071 • www.caseauction.com

Terms: Announcements made sale day take precedence over all printed material.
Neither Case Auction or property owner guarantees the absolute accuracy of supplied information.

ANTIQUE & ESTATE AUCTION

Saturday, March 21st, 2020 ~ 10:00 AM

LOCATION: Nevada Eagles, 3313 East Austin, Nevada, MO (Watch For Signs)

Auction For Terry & Sheri Proctor



Antique & Primitive Furniture

Rare Style Ant Oak Pie Safe W/Wire Side Holes, Ant Oak Opossum Belly Cabinet, Ant Oak High Back Bed, Ant Oak 2 Door Wardrobe, Ant Oak Hall Tree, Ant Oak Lawyers Bookcase, Ant Library Table, 2 Ant Round Oak Kitchen Tables, Ant Oak Chairs, Ant Oak Armoire, 4 Ant Hoosier Kitchen Cabinets All Different Styles, Hoosier Granite Top Table, 2 Sm Hoosier Cabinets, Ant Metal Coca Cola Store Ice Box, Ant Gateleg Drop Leaf Table, Ant Oak Medicine Cabinets, Ant Rockers, Ant Smokers Type Table, Old Victrola, Ant Vintage Ornate Couch & 2 Chairs W/Eagle Carvings, Several Ant Trunks Of Various Kinds Inc Stagecoach Trunk, Several Ant & Prim Tables, Ant Square Walnut Table, Vintage Rope Bed, Smaller Vintage Secretary Desk, Several Ant Pictures & Mirrors Some Ornate, Ant Desk, 50's Red & White Granite Top Table, Ant 1 Door Wardrobe W/ Mirror, Ant Bedroom Suite Inc Vanity Dresser, Chest Of Drawers, Full Bed & Dresser, Ant Clocks, Several Ant Ornate Lamps, Wood Slim Lingerie Cabinet, Wood Kitchen Island, Ant Chandelier, Ant Jenny Lind & Eastlake Shelves, Several Ant & Prim Shelves & Benches, 2 Ant Iron Beds, Old Roll Top Desk, 3 Different Style Ant Dressers W/ Mirrors, Curio Cabinet, Ant Child's Metal Chair, Prim Green Pantry Cabinet, Cane Bottom Chairs, Ant School Desk, Ant Child's Roll Top Desk, Wicker Furniture, Prim Red Metal Roll Around Tea Table, Prim Doors & Windows Inc Ornate Screen Door, Several Pes Of Store Racking, Other Items

Antiques, Primitives, Collectibles & Misc

Several Ant Crocks Inc Redwing, & Others Such As Crocks, Jugs, Churn, & Water Cooler, Cast Iron Pes Inc Griswold & Waggoner (Some Unusual), Copper Spittoon, Lots Of Ant Toys Most Are Metal, Barbie Doll Collection Inc Most Vintage In Original Boxes,

Approx 100 Budweiser Steins In Original Boxes, Collection Of Old Framed Silhouettes, Old Large Glass Water Bottle In Wooden Crate, Old Straight Razors, Several Collector Coin Banks, Old Salt & Pepper Shaker Collection, 2 Sm Glass Daisy Butter Churns, Lots Of Granite & Enamel Ware Pes, El Dorado Springs Souvenir Bell, Crawford Timber Scribe W/Case, Vintage Pyrex Dish Collection, Very Lg Lot Of Cookie Jar Collection (Some Unusual), Old Washboards, Old Oil Lamps, Old Lanterns, Old Rug Beaters, Collector Monopoly Games Inc Nevada, MO & Nascar, 1960's & 70's Union Pacific Railroad Calendars, Old Ringling Brothers Circus Poster, Framed Texas Slim & 1952 Peanuts Cartoon Advertisement, Coca Cola Mirror & Some Other Coca Cola Collectibles, Carem Board W/ Parts, Shoe Shine Box, Old Red & White Luster Ware Recipe Box, Vintage Children's China Tea Set In Original Box, Vintage Hallmark Precious Moments & Other Porcelain Figurines, Lg Lot Of Vintage & Ant Glassware Of Various Kinds Stored In Boxes Unable To See, Old Books Inc Full Set Of Nancy Drew, Old Linens, Cabbage Patch Dolls In Original Boxes, 2 White Mountain Ice Cream Freezers, Beer Light Up Signs & Other Pes, Memories Of Yesterday Collectibles, Ant Phone, Several Neat Ant Advertising Wood Boxes & Pop Crates, Several Cast Iron Figurine Type Book Ends, Ant Wood Croquet Set, Child's Ant Red Wagon, Wheelbarrow, Metal Stroller & Other Child's Pes, Galvanized Pes, Lots Of Ant Bottles & Jars Some Unusual, Ant Lard Presses, Old Nail Kegs, Old Sad Irons, Ant Typewriters, Old Well Pulleys, Cartoon Glasses, Ant Bikes Inc An English Reliegh W/Original Air Pump & A 2 Seater, Iron Wheels, Ant & Prim Tools Some Unusual, Prim Metal Store Pes, Old Paper Goods, Lg Lot Of Beanie Babies Some Very Collectible, Old Tins, Old Baskets, Old Sugar Bucket, Old Pottery, Pinco Slot Machine, Old Luggage, Concrete Yard Items, Full Size Santa, Fender Guitar W/Amp & Another Electric Guitar, Acoustic Guitar, Other Items Not Listed

Auctioneers Note: It Is An Honor To Be Conducting This Auction For The Proctors As We Have Been Friends With Their Family For Many Years. Terry & Sheri Have Been Very Avid Antique & Primitive Collectors For Over 40 Years & Have Had A Very Keen Eye For The Very Best Collectible Items. This Is An Outstanding Auction With Lots Of Their Personal Years Of Collecting. There Are Several Unusual & Hard To Find Pieces In This Auction. It Is One That You Do Not Want To Miss As There Are Not Many Low End Items Here. Please Bring A Friend As We May Run 2 Rings Also Please Plan Now To Attend. **Sale Order: Antique & Primitive Furniture Will Sell First Then Move Directly Into Antiques, Primitives & Collectibles. Again You Do Not Want To Miss This Auction. See Ya There!!!**

Terms: Cash or check with proper ID. Now accepting most major credit cards. Nothing removed until settled for. Statements made the day of sale takes precedence over printed material. Everything sold as is where is. Not responsible for accidents. Restroom available. Concessions Provided By D & D Concessions. Check our website for upcoming auctions and for additional pictures!!



NANCE AUCTION SERVICE

No Matter How BIG or small, We Do Them All!

www.nanceauctionservice.com

Col. Bill Nance 417-214-0093

In God We Trust

Philippians 4:13

FARM & ESTATE AUCTION

Sunday, March 22nd, 2020 ~ 1:00 PM

LOCATION: 2390 South 1251 Road, El Dorado Springs, MO; Directions: From El Dorado Springs Go East On 54 Hwy Approx 12 Miles To W Hwy Then South On W 1 Mile To 1251 Road Then Continue On 1251 Road To Sale Site (Blackjack Area) (Watch For Signs)

Auction For The Late James & Naomi "Jeanne" Phinney



Antique, Modern Furniture & Appliances

Ant Oval Table, Ant Retro 50's Chrome Table & Chairs, Ant Iron Claw Foot Tub, 3 Pc Retro Bedroom Suite Inc Full Bed, Dresser, Chest Of Drawers, Prim Metal Pantry Cabinet, Prim Wood Cabinet, hardware Pigeon Hole Shelves, Ant Lamps, Ant Metal Store Shelf, Wood Kitchen Table & Chairs, Nice Wall Clock, 4 Pc Bedroom Suite Inc Queen Bed, Dresser & 2 Bookshelves, Oak End Tables, Wood Lamp Table, Wicker Rocking Chair, Breakfast Table, 3 Pc Bedroom Suite Inc Queen Bed, Dresser W/Mirror, Chest Of Drawers, 4 Lazy Boy Recliners 1 Is Leather, Swivel Chair, 2 & 3 Cushion Couches, Lg Ornate Mirror, Several Nice Wall Décor Items, Wildlife & Other Neat Pictures, 2 Stainless Racks, Wood TV Trays, File Cabinet, Gas Wall Heater, Humidifiers & Dehumidifiers, Stereo, Flat Screen TV, Stainless Microwave, Side By Side Refrigerator, Upright Deep Freeze Washer & Gas Dryer, Other Items Not Listed

Antiques, Collectibles & Households

Ant 1951 Military Barber Box, Ant Ever Ready Organizer, Ant Hand Oiler, Ant Metal Yard Glider, Ant Metal Yard Chairs, Iron Wheels, Stainless Cream Milk Can, Old Wood Advertising Boxes, Old Wood Ammo Box, Old Wire Baskets, Pyrex Dishes, Old Linens, Old Luggage, Lots Of Knick Knacks, Some Old Glassware, Sm Kitchen

Appliances, Kitchen Aid Mixer, Corel Dishes, Baking Ware, Pots, Pans, & Dishes, Plastic Ware, Lots Of New Ir. Box Items, VHS Tapes, Other Items Not Listed

Tractor, Side By Side, Equipment, Boat, Tiller, Farm & Tool Related Items

2008 Kubota L4400HST Diesel 4x4 Tractor W/ Loader, Hydraulics & Roll Bar (Only 320 Hours Like New), Kubota RTV900 Diesel 4x4 Side By Side W/Only 600 Hours (Like New), 3 Pt Land Pride 6 Ft RCR1872 Bush Hog, 3 Pt Land Pride 6 Ft FDR1672 Finish Mower, 1 Section Drag Harr, Some Farm Gates, Steel Posts, Bantam 3X Bass Tracker Scamp Boat (Like New), Troy Bilt Horse Rear Tine Tiller, Johnser Reds Chainsaw, 3/4 Socket Set, Five 215-70R15 Tires, Lawn Mower Pull Behind Grass Seeder, 2 Electric Weed Eaters, Stihl Gas Weed Eater, Shop Vac, Grinder, Log Chains, Come A Long, Long Handle Tools, Grease Guns, Extension Alum Ladder, Chain Link Fence Rolls, Sm Electrical Tools Most Major Brands, Lots Of Small Hand Tools Most Major Brands, Battery Charger, Wood Planes, Sm Vise, Grass Seeder, Trash Cans, Barrels, Patio Table, Dog House, Pet Taxi, Live Traps, Wind Chimes, Porch Swing, Tomato Cages, Gun Cases, Blue Rock, Fishing Poles & Supplies, Other Items Not Listed



Auctioneers Note: It Is An Honor To Be Conducting This Auction For The Phinney Family As They Are A Great Christian Family & We Have Become Great Friends. This Is An Outstanding Auction For Everyone As We Have Great Antique, Modern Furniture & Appliances Also Very Clean Antiques, Households & NIB Items. Tractor, Equipment, Side By Side & Most Of The Tools Are Just Like New & In Outstanding Working Condition. This Is An Auction That You Do Not Want To Miss As It Is Very, Very Clean!!! Please Plan Now To Attend. **Sale Order: Furniture & Appliances Will Sell First Then Antiques & Households. At Approx 3:30 PM Will Offer Tractor, Side By Side, Equipment, Boat & Large Items. Remainder Of Tools & Outdoor Will Finish Auction. See Ya There!!!**

Terms: Cash or check with proper ID. Now accepting most major credit cards. Nothing removed until settled for. Statements made the day of sale takes precedence over printed material. Everything sold as is where is. Not responsible for accidents. Restroom available. Concessions Provided By D & D Concessions. Check our website for upcoming auctions and for additional pictures!!



NANCE AUCTION SERVICE

No Matter How BIG or small, We Do Them All!

www.nanceauctionservice.com

Col. Bill Nance 417-214-0093

In God We Trust

Philippians 4:13

**ESTATE
AUCTION
BOLIVAR, MO**

AUCTION

Due to the Deaths of the late Leo & Glee Leblanc we will sell the following Automobile, Household, Collectibles, Coins, Jewelry, Tools and Misc. at the Home located at 1685 South Hedgewood in Bolivar, Mo. (southwest part of town) on

Sat. March 28, 2020 at 9:00 am

WATCH FOR AUCTION COMPANY SIGNS • LUNCH SERVED

FOR MORE PICTURES GO TO: WWW.BRUCEANDLEANAUCTION.COM



AUTOMOBILE

- 2018 Kia Optima EX 4 Door Automobile 19,000 one owner miles, 2.4L Engine,
- Automatic Transmission, Fully Loaded, Leather Heated/Cooled Seats, Sun Roof, Like New Condition

HOUSEHOLD & COLLECTIBLES

- Kenmore Side by Side Refrigerator/Freezer W/ Ice & Water in Door
- Whirlpool Cabrio Automatic Washing Machine
- Maytag Neptune Dryer
- Frigidaire Upright Deep Freeze
- 7' Mirrored Back Corner Curio Cabinet
- 55" Samsung Flat Screen TV
- 31" Dynex Flat Screen TV
- 4' Curio Cabinet
- Oak Dining Table W/6 Chairs (2 captains)
- 6' Oak Mirrored Back Buffet Hutch
- 4 Pc. King Size Bedroom Set W/Beauty Rest Mattress
- 3 Cushion Grey Divan (like new)
- 2 Cushion Matching Grey Loveseat (like new)
- 3 Pc. Glass Top Coffee & End Table Set
- 2 TV Cabinets
- Cedar Chest
- Queen Pillow Top, Mattress Set
- Night Stands
- Electric Fireplace Style Heater
- Shark Upright Vacuum
- 8 Drawer Office Desk

HOUSEHOLD & COLLECTIBLES CONT.

- Swivel Office Chair
- 2 Swivel Bar Stools
- Set of Rogers Stainless Ware
- 12 Place Setting of Pfaltzgraff Napoll Dishes
- 12 Place Setting of China
- Pots, Pans and Dishes
- Several Pcs. of Blue Glassware
- Mirror 22 Qt. Pressure Cooker

TILLERS-TOOLS-MISC

- Troy-Bilt Bronco 5 HP CRT Rear Tine Tiller
- Snapper 2650 PSI 6 3/4 HP Pressure Washer
- Allpower 6000 Watt Generator (like new)
- Craftsman Roll around Tool Box
- Misc. Hand Tools
- Worx Cordless Weed Eater
- Card Table W/Chairs
- 2 Metal Shelving Units W/Adjustable Shelves
- New Dyna Glo Kerosene Heater
- Large Gas Grill
- Garden Hose
- Lawn Ornaments
- 25 Plus 5 Gallon Loaded Survival Food Buckets
- 4 Pc. Wicker Patio Set (Divan, 2 Chairs, Table)
- 2 Wheel Dolly
- 2 Wheel Chairs
- Wheeled Walker
- Folding Lawn Chairs
- Child's Sled
- One lot of Misc.



COINS-JEWELRY-GUN

- Savage Mark II Bolt Action 22 Rifle
- Mans 1 1/4 Carat Diamond Ring
- Ladies Cluster Diamond Ring
- Costume Jewelry
- 31-Liberty Silver Dollars 1922-1929
- 73-1-oz Boston Tea Party Silver Bullion Coins
- 20-1987 1-oz Silver Eagle's Bullion Coins
- 20-1998 1-oz Silver Eagle's Bullion Coins
- 19-1990 1-oz Eagle Liberty Bullion Coins
- 21- Liberty 1-oz Liberty Bullion Coins
- 20- Liberty 1963 Half Dollars
- 2017 Trump 1oz Silver Bullion Coin
- 5-2018 Silver Bullion 1 & 2 oz Coins
- 2015 Australian Koala 5 oz Silver Bullion Coin
- 8-US Missouri State 1 oz Silver Bars
- 48-Canadian 1960-1966 One Dollar Silver Rounds
- 20-Canadian 1964 Silver .50 Coins
- 16-Canadian 2013 1 oz Fine Silver Coins
- 40-Mexican 1948 Mex Pesos Silver Coins
- 100-2017 Elizabeth II NIUE 1/2 oz One Dollar Silver Coins
- 2000-US 2005 Uncirculated Buffalo Nickels (\$1.25 per Roll)
- Misc. Pre-1964 Coins

AUCTIONEERS NOTE: This is a very nice offering of several items in Like New Condition. Late Model One Owner Automobile Garaged and in Very Good Condition, Several Nice Household Items, and a Nice Offering of Coins, Silver and Rings. Do not be late there is not a lot of small Misc.

OWNER: ESTATE OF LEO & GLEE LEBLANC

TERMS: Everything sells as is, where is. Nothing is to be removed until settled for. Payment of Cash, Check with Proper ID, or Credit Cards. Auction Company or the Owners will not be responsible for loss of items or accidents. Statements made the Day of the Auction take Precedence over Printed Matter.

SALE CONDUCTED BY **BRUCE & Le'AN AUCTION & APPRAISAL, LLC**
THE AUCTION COMPANY THAT APPRECIATES YOUR BUSINESS

For more information and pictures go to our website at www.bruceandleanauction.com

RONNIE BRUCE - Fair Play, MO
417-777-1685 or 417-654-2214
colronbruce@gmail.com

BRANDON BRUCE
Fair Play, MO

BILLY BRUCE - Stockton, MO
417-399-4800
colbbruce@gmail.com

LARRY DRENON AUCTION

ESTATE AUCTION

26286 Macks Camp Ave • Warsaw, Mo

Due to the death of my husband, Larry, and I am moving to assisted living, I will sell the following at auction located from Lincoln, go west 5 miles on C Blacktop, to T Blacktop, then 2 1/2 miles south on T to TT, then 1/2 mile on TT to Macks Camp Ave, then approx. 4 miles on Macks Camp Ave, follow sale signs on

SATURDAY, MARCH 28TH • 10 AM

BOAT: 16' Lowe Jon fishing boat, 30 hp Evinrude motor and trailer

ATV: Polaris Magnum 325 4 wheeler

FISHING: 40+ Bass, Crappie, Catfish, Spoonbill, & Cane poles • Reels include Garcia 1500, 2500, 5000, 5500; Saltwater Quatum, Shamano SSG7000, Shakespeare Sigma 41/80; Shimano 1000, Diawa 2000IA, Zebco 33, Ambassador • Lot of different bass lures, some wooden, crankbaits, also crappie jigs, flies, inc: Rapala shad rap, Berkley, etc • Lure and jig making accessories: gay blades, rubber bodies, hooks, wire, feathers, etc • Several tackle boxes, lots tackle • Several antique wooden plugs • Lot Styrofoam and metal minnow buckets • Trot lines and access. • Small chest freezer set up for live bait storage

LEAD MOLDS: 20+ Lead molds, Lure Body, Bank sinkers, Lg bank molds, egg mold, Roundhead jigs, Ponyhead jigs, etc • Lead melting pot • Several buckets of lead • Flat lead

LAWNMOWER AND LAWN TOOLS: White LT135 Hydro lawn tractor • Stihl F545 weed trimmer • Stihl leaf blower • Honda GC 190 power washer, new • Garden tools

UTILITY TRAILER: 5x8 single axle utility trailer, w/ramp

SHOP TOOLS: Fairbanks 50# weight scale • Sanborn Black Max air compressor • Coleman power generator • 2 wheel dolly • Znex 14" cut-off saw • Craftsman 10" table saw • Chicago compound miter saw • Stihl MS 250 chainsaw • Shop Smith, adapted into a Bow press • Lot screw, nut and bolt cabinets • Rockwell model 15" tabletop drill press • Swivel vise • 8" Double wheel grinder • Multi-position ladder • Aluminum ramps • Small hand tools, sanders, files, squares, etc • Sev. Wooden nail kgs

ANIMAL MOUNTS: Full Tom turkey mounted in Plexiglas showcase • Bear head mount • Full mink mount on wooden stand • Coyote, fox and raccoon head mounts

TRAPPING, ARCHERY, HUNTING: 12+ Live traps • 2 Vintage bows • Archery accessories • Tools and parts for arrow building and repair, arrows, knocks, finger tabs, strings, feathers, fletching and fletching jigs • Trapping tools and accessories, skinning knives, hide boards, trap parts, etc • Portable tree stand • Lot Camo and orange clothing and outer wear • Approx 125 duck decoys • Decoy lead mold and weights • Duck, predator and crow calls • 2 Antique wicker trapping baskets

HOUSEHOLD AND ANTIQUES: Whirlpool washer • Whirlpool Estate freezer • Gibson 17 commercial freezer • Lg chest type Whirlpool freezer • Dining table, 6 chairs • Corner curio cabinet • Sleep Number standard size bed • Handmade walnut 6 gun cabinet • Small antique wooden desk • Sewing rocker • Several Antique kitchen tools • Early American heavy wood sofa • 50's Dresser and matching chest, wooden rocker, other small furniture items • Kings Crown Ruby thumbprint goblets • Hyla vacuum • Remington tin picture • Small kitchen appliances • Pyrex, Tupperware, glassware, stoneware, pots, pans, etc

MISCELLANEOUS: 24" Galvanized hardware wire • Bushnell 20x-60 telescope • Approx. 2 cords split dry wood • Sev. Sacks black oil sunflower seed • Pet carrier • 5' water tube • Coleman lanterns • Many more items not mentioned.

Note: Everyone who knew Larry knows he was a true outdoorsman in every sense of the way. His passion was mostly in trapping and fishing, and he made sure he had everything on hand to make what was needed for the job. We will run two rings when we can. Be sure to join us, especially if you like to fish, you will not be disappointed.



PHYLLIS EVANS

Terms: Cash, approved check, credit/debit card (convenience fee applied). Nothing to be removed until settled for. Not responsible for accidents. Statements made day of sale take precedence over printed material.

LARRY
DRENON AUCTION

www.drenonauction.com



Larry
660-596-8515

Lacey
660-723-1104

Laramie
660-221-4386

660-547-2646

Osage County PUBLIC AUCTION

**SATURDAY,
MARCH 28
10 AM**

890 COUNTY ROAD 602, LOOSE CREEK, MO 65054

Directions: From Linn, MO take Hwy. 50 west 5 miles to Osage County Road 602, turn left, go one mile south on Rd. 602 to sale OR from Loose Creek, MO take Hwy. 50 east 1 mile to Co. Road 602, turn right on Rd. 602 & continue 1 mile south to sale.

TRUCKS - CAR - TRAILERS: 2002 FORD F-250 SUPER DUTY PICKUP, POWER STROKE DIESEL, AUTO. TRANS., MANUAL LOCK-OUT HUBS, EXT. CAB, LONG BED W/ FUEL TANK & TOOLBOX, GOOSENECK HITCH, 237,916 MILES; 1995 FORD L 8000 TRUCK, CUMMINS DIESEL, 9 SPD. TRANS., TANDEM AXLE, TWIN SCREW, AIR BRAKES, 16' PARKHURST BED & HOIST, ROLL-OVER TARP; 1976 FORD 9000 TRUCK, CUMMINS ENG., 9 SPD., TANDEM AXLE W/ EQUALIZE TAG W/ 20' BED, CARGO DOOR, GRAIN GATE, ROLL-OVER TARP; 1975 FORD 700 TRUCK, GAS ENG., TANDEM AXLE W/ EQUALIZE TAG, 20' BED & HOIST, TARP, DOES NOT RUN, SALVAGE; 1989 FORD RANGER PICKUP, 4 CYL., 2WD, AUTO. TRANS., REG. CAB, LONG BED; 1995 CADILLAC SEDAN DEVILLE CAR, 4 DOOR, VINYL TOP, 200,000 MILES; 1991 COOSE GOOSENECK 20' X 6.5' STOCK TRAILER, TANDEM AXLE, CENTER GATE; 1976 GOOSENECK 20' FLATBED TRAILER, TANDEM AXLE TWO-WHEEL TRAILER

TRACTORS: CASE 1175 AGRI KING TRACTOR, 2WD, CAB, DUAL HYDS., 18.4 X 38 TIRES W/ HUB DUALS, HOURS UNKNOWN; CASE 1175 AGRI KING TRACTOR, 2WD, CAB, DUAL HYDS., 18.4 X 38 TIRES W/ HUB DUALS, HOURS UNKNOWN; CASE 630 TRICYCLE FRONT DIESEL TRACTOR, 3 PT., HYD. REMOTES

COMBINE - HEADS - WAGON: 1982 JD 6620 DIESEL COMBINE, 2WD, CHOPPER, HYDRO DRIVE, 0.5 X 32 TIRES; JD 220 GRAIN HEADER; JD 443 HIGH TIN CORN HEADER; MOVE MASTER HEADER WAGON W/, TELESCOPIC TONGUE

FARM EQUIPMENT: JD 750 DRILL 15', DOLLY WHEELS, HYD. MARKERS, LIGHT KIT, NO GRASS SEEDER; JD 7000 - 6 ROW 30" PLANTER, HYD. MARKERS, CORN & BEAN METERS; KEWANEE FLAT FOLD 24' DISK; JD BWR 15' TANDEM WHEEL DISK; 3 - CASE 5 X 14" BOTTOM PLOWS, SEMI MTD.; JD 1600 - 10 SHANK PULL TYPE CHISEL PLOW; JD 400 - 15' 3 PT. ROTARY HOE; THREE SECTION 15' ROLL-UP HARROW; JD 15' HYD. FOLD ROTARY CUTTER, 1000 RPM, SOLID TIRES; HESSTON PT 10 MOWER CONDITIONER; NH 256 SIDE DELIVERY HAY RAKE; NH GRINDER-MIXER W/ LOADING & UNLOADING AUGERS; DEARBORN 7' 3 PT. BLADE; HUTCHINSON 8" X 48' GRAIN AUGER, HYD. LIFT, PTO; 6" X 38' GRAIN AUGER

GUNS: REMINGTON 572 FIELDMASTER 22, S, L, LONG RIFLE; REMINGTON 870 WINGMASTER 12 GA.; REMINGTON 760 GAMEMASTER CARBINE, 280 RCM, W/TASCO SCOPE; STEVENS 22-410, 22 LONG RIFLE, 410 GA.; FRANCHI 48AL, 12 GA.; MARLIN 336 R.C. 30-30 RIFLE; 2 - IVER JOHNSON CHAMPION 12 GA.; WINCHESTER MODEL 12, 16 GA.; WINCHESTER MODEL 67, 22 S, L, LONG RIFLE; WINCHESTER G2A, 22 S, L, LONG RIFLE; BROWNING BAR 243 /W REDFIELD SCOPE; ITALIAN 50 CAL. BLACK POWDER RIFLE; GR DOUGLAS 50 CAL.; GUN CABINET

HOUSEHOLD: ANTIQUE CAST IRON STOVE; ANTIQUE DRESSER W/ MIRROR; DUNCAN PHYFE DROP-LEAF TABLE; UPRIGHT FREEZER; SMALL CHEST FREEZER; LOT OF VARIOUS HOUSEHOLD ITEMS; BUTCHER BLOCK TABLE



*For full listing and photos
visit wheelerauctions.com.*



Wheeler
AUCTIONS & REAL ESTATE
23101 HWY. 24, PARIS, MO 65275 | 660-327-5890
WWW.WHEELERAUCTIONS.COM

**SELLER: RICHARD "DICK" GENTGES ESTATE
VICKI BINKLEY, PERSONAL REPRESENTATIVE**

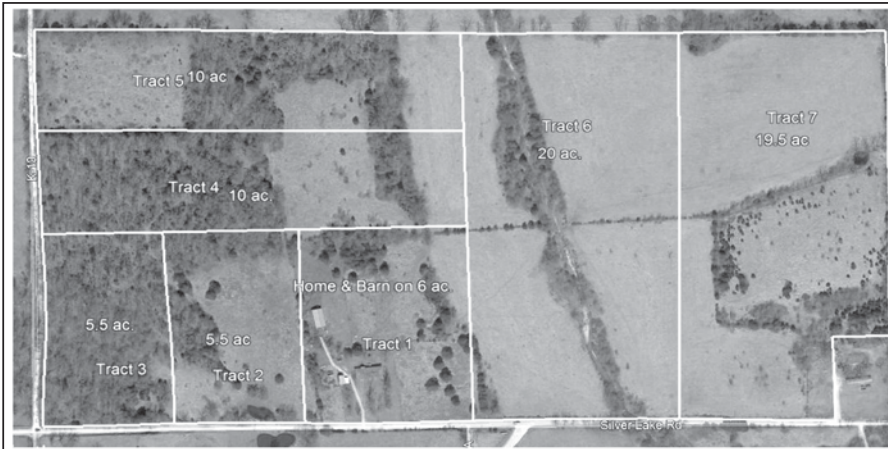
For more information call
Charlie Nordwald • 636-795-4552

REAL ESTATE & ESTATE AUCTION

10:00 A.M. * Saturday, March 21st. * 10:00 AM

Location: 3271 Silver Lake Rd., Billings Mo. (Between Clever & Hurley)

Directions: From Clever take K hwy. south 4.5 mi. then left on Silver Lake Rd. 1.2 mi. to Auction *Watch for Signs* Lunch & Restrooms Available



The property is being sold Absolute and will be sold to the highest bidder to settle the Estate of Jimmy Gold 76.5 Acres with Frontage on Silver Lake Rd. & Cabin Rd., All Tracts have access from County Road. The property will be offered in 7 separate tracts from 5.5 to 20 acre Tracts & in any Combination & in Whole. All of the Property is in Stone County & Clever School District. Just Minutes from Nixa, Republic & Springfield. Great Opportunity for Developers, Builders, or Nice Farm; Tract #1 - 6 Acres with 2700 sq. ft. 3 Bedroom, 2 Bath all Brick Home with Basement & Barn, Mostly Open; (Home is well built & solid but needs Roof & Updating); Tract #2 - 5.5 Acres, Part Open & Part Timber, fronts Silver Lake Rd.; Tract #3 - 5.5 Acres All Timber on the corner of Silver Lake Rd. & Cabin Rd; Tract #4 - 10 Acres, Mostly Timber, Partly Open, fronts Cabin Rd; Tract #5 - 10 Acres, 1/2 Open, 1/2 Timber, fronts Cabin Rd; Tract #6 - 20 Acres, Mostly Open Pasture/ Hay Field with Creek Bottom, fronts Silver Lake Rd; Tract #7 - 19.5 Acres; Mostly Open Pasture/Hay Field with Sattered Tree's, fronts Silver Lake Rd; Property Sells Absolute to the Highest Bidder Regardless of Price

Terms: 10% Down Day of Sale, Balance Due 30 Days or Less at Closing.

TRACTORS - EQUIPMENT - TOOLS

John Deere 3020 Tractor, Gas, Cab, Good Rubber (Runs but needs work); Ford Jubilee Tractor (Ran when parked in Barn); New Holland 467 Haybine; Old Side Delivery Rake; Dearborn 2 Bottom Plow 3 pt.; John Deere 3 Bottom Plow, semi-mount; 3pt. Cultivator; Old 5ft. Bushhog; 12ft. Disc; 3pt. Bale Spike; Swisher 22 ton Log Splitter; Yardman 18.5hp, 46" Cut Riding Mower; Old Snapper Riding Mower; Troy Built 2 Wheel String Trimmer; Front Tine Garden Tiller; Misc. Old Farm Equipment; (50+) New 6ft. Steel Posts; Head Gate; Older Head Chute; Misc. Panels & Gates (4) Round Bale Feeders; 100 +/- Square Bales Grass Hay (2018);

Slide in Stock Racks; 70 lb. Anvil on Stand; Misc. Lawn, Garden & Farm Tools; Lot Farm Related Items not Listed; 15ft. X 30ft. RV Carport; 12ft. X 20ft. Carport;

WAGON - TACK - ANTIQUE

2 Seat Pony Wagon with Canopy on Rubber; Pair Leather Pony Harness w/ Collars; Veach Saddle (Trenton Mo.); Old Side Saddle; Lot Old Harness & Misc. Tack; Horse Drawn Dump Rake & Sickle Mower; Horse Drawn Corn Planter; Old Iron Wheels; Wood Barn Door; Corn Sheller (2) Wash Tubs with Stands; (2) Old Metal Lawn Chairs; Metal Milk Stool; Old Wood Rockers; Kerosene Lamp; Wagner #3 Cast Iron Skillet; Old Kitchen

Glass; Hoosier style Kitchen Cabinet ; Metal Gym Lockers; Cast Iron Kitchen Sink Counter Top;

FURNITURE - HOUSEHOLD & MISC.

Maytag Washer & Dryer; Dining Table & Chairs & Hutch; (4) Wood Bar Stools; Sofa & Chairs; Lot Occasional Tables & Stands; Misc. Cabinets & Shelves; Beds, Dressers & Chests; Lot Pots, Pans, Dishes & Kitchenware; (2) Eden PURE Heaters; Lots & Lots Misc. Household Items; Outbuildings & Boxes we didn't go through; Way to much list here!

ESTATE OF : JIMMY GOLD

See our website for pictures and more info!

Auctioneer: Larry Foster Galena, Mo

Phone: (417) 723-8329 Cell: (417) 839-6860

www.fosterauctionservice.com Email: bidnowsold@aol.com



ESTATE AUCTION

10:00 A.M. * Saturday, March, 28th. * 10:00 A.M.

Location: 4760 E. Farm Rd. 144, Springfield Mo. 65809 **Directions:** From Hwy. 65 & Sunshine take Sunshine (D Hwy) east 2 mi. then left on Royal Dr. to Sale. *Watch for Signs -- Breakfast & Lunch Available*



TRACTORS - MACHINERY

1988 John Deere 4450, 140hp. Tractor, 15spd. Powershift Transmission., Duals, Good Rubber, Cold Air (79xx hrs.); 1984 John Deere 4040, 100hp. Tractor with Loader, Quad Range Transmission, Good Rubber, Cold Air, (75xx hrs.); 1973 John Deere 4030, 80hp. Tractor, Quad Range Transmission, Good Rubber, Cold Air (11xxx hrs., but only 3000 hrs. on Fresh Motor); 1985 John Deere 2950 4x4, 85hp. Tractor w/Loader, 8 spd. Transmission, (only 36xx hrs.); Allis-Chalmers CA, narrow Front, w/ Belly Mower; New Holland H7230 Discbine, 10ft.; New Holland 320 Square Baler; New Holland 679 Manure Spreader with Slop Gate, Perfect Chains & Floor; Donahue 16ft. Elec/Hyd., Tri Axle Dump Grain Trailer, Good Box & Floor, (works perfect); J&M model 250 Gravity Feed/Seed Wagon with Hydraulic Auger; (2) John Deere 5 Bottom Hydraulic Reset Plows; Krause 3948W 21ft. Flex Wing Disc; John Deere 950 14' culti-Packer/Mulcher with Crow Foot Wheels; John Deere 1010 Field Cultivator; 4 Row 36" Cultivator; (2) Rhino 15ft. Batwing Bushhog's; 3pt. Bale Unroller; Rhino 8ft. Angle/Tilt Blade; (5) Older Silage Wagons on Good Running Gears; 1000 gal. Diesel & 500 gal Gas Tanks (Good); Misc. Farm Related Items

not Mentioned; Lots & Lots Old Farm Equipment for Scrap

CATTLE EQUIPMENT HORSES - WAGONS - TACK

Wilson Portable Corral; Big Valley Silencer Deluxe Hydraulic Ranch Chute; Palco Sweep Tub; (2) Head Gates; (19) 10 ft. Corral Panels; (12) 8 ft. Concrete Feed Bunks; (2) Hanging Horse Hay/Feed Mangers; 12 ft. Concrete Cattle Guard; Large Butler Grain Bin to be Moved (Good); Dairy Barn Feed Bin; Misc. Grain Augers; (9) Older Foxtrotter Geldings & Mares (Registered); Wood Wheel Hack Wagon; Rubber Tired Horse Drawn Wagon w/ Brake; Old Monroe Veach Saddle; 1 Set Old Spurs; Full Set Leather Harness & Collars (Standard); Lots of old Misc. Horse Tack

TOOLS

Speedaire 60 Gal. Air Compressor; Forney CB Stick Welder; 8" Bench Grinder; Heavy Vise; Welding Table & Vise; Come-A-Longs; Lawn, Garden & Chore Tools; Lots of Older Farm Related Items not Listed

ANTIQUE - COLLECTIBLE

1950's A.O. Smith Gas Pump; 1970's Gas Pump; Old Wood 32 Drawer

Cabinet; 8 & 6 Gallon Crock Jars; Crock Jugs; Few Pcs. Cast Iron; Colored Refrigerator Dishes & Mixing Bowls; Wood Butter Molds; Metlox Poppytrail "Red Rooster" Dinnerware; Misc. Old Kitchen Items; (2) Cast Iron Kettle's (hole); Misc. Glassware & Silverplate; Cast Iron Claw Foot Bathtub; White Granite Water Pitcher; Iron & Wood Barn Pulley; Antique Chain & Cup Cistern Hand Pump; 10 Gallon Milk Can; Old Tubs & Buckets; Old Wood Doors; Old Farm & Barn Items; Lots not Listed

FURNITURE- APPLIANCES- HOUSEHOLD

Gas Cook Stove; Kenmore Washer & Dryer; (2) Refrigerators; Polar Water Cooler; Kitchenaid Stand Mixer; Edenpure Infrared Heater; (2) Lift Chairs; (2) Sofa's & Misc. Occasional Chairs; (2) Wood Rocking Chairs; Coffee, End & Occasional Tables; Queen Bed; Dressers & Chest; Old Wood China Cabinet; Table & 4 Chairs; (4) Ladder Back Chairs; Drop Leaf Seretary; Wash Stand; Waterfall Cedar Chest; Panasonic 32" Flatscreen TV; Window AC; Mobility Chair; Misc. Furniture & Household not Listed

ESTATE OF : ROBERT & BLANCHE WEBB

Auctioneers Note: This Farm has been in the Webb Family for over 100 years & no way to list it all. Tractors, Machinery & Vehicles sell at 12:00 Noon. See our website fosterauctionservice.com for 100's of Pictures & a Full List.



See our website for pictures and more info!



Auctioneer: Larry Foster Galena, Mo

Phone: (417) 723-8329 Cell: (417) 839-6860

www.fosterauctionservice.com Email: bidnowsold@aol.com



DEVELOPMENT LAND AUCTION

Sat., April, 4th • 11A.M.

Location: 4760 E. F.R. 144, Springfield, Mo. 65809

Directions: 2 miles East of Jct. Hwy. 65 & Sunshine(D Hwy)

94.3 Acres Prime Residential and/or Commercial Development Land

Offered in 5 parcels from 5.2 to 25.5 acres offered Individually, in any Combination & it's Entirety.

This Property is located in the Fastest Growth Area in Greene County, just outside Springfield City Limits on East Sunshine!

Tract #1 - 25 Acres with Older Farm House & Barns, Mostly Open with Scattered Mature Tree's & Large Pond, with Road Frontage on D Hwy., Royal Dr. & Farm Road 144.

Tract #2 - 24.6 Acres, Mostly Open with Scattered Mature Tree's with Beautiful Bluff Overlooking it's Pierson Creek Frontage with Road Frontage on D Hwy. & Farm Road 144.

Tract #3 - 25.5 Acres Mostly Open Bottom Land, has Pierson Creek Frontage with Road Frontage on D Hwy. & Farm Road 144.

Tract #4 - 5.2 Acres Bottom Land & Timbered Hillside, Pierson Creek Frontage with Road Frontage on D Hwy. & E. Farm Road 148.

Tract #5 - 14 Acres Bottom Land with 1630 ft. of James River Frontage, Road Frontage on D Hwy., Tract 5 is all in River Bottom Flood Plain, across from Turners Station (Perfect Private River Front

TERMS & CONDITIONS: Property sells subject to Trustee's Confirmation; 5% Buyer's Premium applies. Buyers-premium is an additional fee (5% of high-bid amount) paid by the high-bidder. All properties are being sold 'as is, where is' and are not subject to financing, inspections or any other contingencies. Foster Auction Service represents the seller only. The high bidder must make a 10% non-refundable deposit on sale day (cash, personal or cashier checks). Taxes will be prorated through date of closing. Balance and closing costs are due 45-days from trustee acceptance. Absentee bidders must pre-register and qualify through Foster Auction Service 48 hours prior to sale day.

DISCLOSURES: Tracts #1, 2, 4 & 5 are Zoned A-1 Agriculture, Tract #3 is Zoned R-1 Residential per Greene County Zoning Map. All parcels subject to any existing recorded easements. Locations of parcel signs, maps, and picture illustrations are for reference only Fence lines may not follow property boundaries per survey. All Property will be sold as-is with no contingencies. gents / Brokers must register at least 24 hours prior to Auction, NO EXCEPTIONS.

Agents/Brokers Welcome

Robert L. & Z. Blanche Webb Trust



Larry Foster

Auctioneer
Galena, Mo
Phone: (417) 723-8329
Cell: (417) 839-6860

www.fosterauctionservice.com
Email: bidnowsold@aol.com

ONLINE ONLY EQUIPMENT AUCTION

ENDS TUESDAY, MARCH 31, 2020 **SOFT CLOSE @ 12:01 P.M.**

For Online Bidding, Info & Pictures: www.chuppsauction.com

EQUIPMENT PICK UP LOCATION: 8131 E 46th St. • Tulsa, OK 74145

INDUSTRIAL * MACHINIST * ANALYTICAL EQUIPMENT, LAB EQUIPMENT & SUPPLIES

OWNER: ETI, Inc. (etitulsa.com)

SURPLUS EQUIPMENT AUCTION

Auctioneer's Note: Please contact Dale Chupp for special viewing of items. Lab equipment was purchased and never used. ALL SHIPPING ARRANGEMENTS ARE TO BE MADE BY THE BUYER. Please refer to the pictures and videos online for questions. Follow us on Facebook for updates or visit our website for pictures at www.chuppsauction.com

TERMS: Cash - Pay Day of Auction - Most Credit Cards Accepted - Check with Proper ID - Concession NOT RESPONSIBLE FOR ACCIDENTS. ANY ANNOUNCEMENTS DAY OF SALE SUPERSEDES PREVIOUS ADVERTISING.

CHUPPS AUCTION & REAL ESTATE

Stan Chupp
(918) 638-1157

Dale Chupp, Realtor
Coldwell Banker Neokla Select
(918) 630-0495

E. J. Chupp

ROME 8FT OFFSET DISK: \$3,750. 573-765-4406.

FREE PUPPIES: Born December 2019. 417-741-0042.

1976 CHEVROLET C10: Body Rough, runs good, title okay, no brakes. \$600, Trades? 417-683-7843

WANTED, TIMBER TO LOG ON SHARES: Honest, reliable, references. 417-533-4607, 417-664-1195.

POOL TABLES: Installations, moves, recover, repairs, accessories, etc. 573-646-1700.

3PT QUICK HITCH: Brand New. \$100. 417-766-1991.

VILLA HOMES IN ROLLA: Has NEW and USED Mobile Homes. Call David for info: 573-578-8072.

1994 SHADOW CRUISER: 5th Wheel, Excellent condition, 29 ft. Located in Conway, MO. \$3,700. 417-664-8823.

1969 CHEVROLET ALUMINUM POWERGLIDE TRANSMISSION: \$200, Trades? 417-683-7843

FULL BLOOD BOER BUCKS: 1 red 100%, registered and DNA'd, 2yrs old. \$500, 1 traditional 100%, 11months old, 140lbs, \$350 w/ papers, \$300 without. 573-325-8726. Birch Tree

HORSE HAY: Square bales, weed free, Big Blue stem, 80% pure. \$5 bale, mixed grass hay, \$4.50/bale. 573-368-1794, Rolla.

CATTLE HAY FEEDER WAGON: (Needs Repair). \$200. 417-322-0161.

6 YOUTH LIFE VESTS: \$25 for all. West Plains, 417-293-0568.

JOHN DEERE HX-10: Pull-type, 10 ft, brushcutter. \$4,200. 573-765-4406.

JOHN DEERE 435 ROUND BALER: monitor, kicker, 4X6. \$5,600. 573-765-4406.

2013 NISSAN MURANO: stk# 22688, Low miles, Only \$11,800. Call or visit us today for a test drive! WEHR FORD 1131 Bus. 60 • Mountain Grove, MO 1-800-288-6827

AUCTION REMINDER: Real Estate Personal Property Auction. Saturday, April 4th @ 10 AM. Case Auction. Please see our Auction Directory for more information.



Eric & Delores Mueller (Lifetime Cast Iron Collection)

Allen Auction Sale's Lot, Hawk Point, MO 63349

Saturday, March 21, 2020 @ 10:00 AM

Directions: Directions: Allen Auction Sale's Lot. From Hawk Point, MO, Take Hwy 47 South 2.5 miles, Auction on Left Side. Watch for signs day of auction.

CAST IRON (Over 500 Pieces)

Griswold, The Griswold Mfg. Erie PA USA, Erie, Wagner Ware Skillets, Wagner Anniversary Wagner's 1891 Original Cast Iron Cookware, Sidney Vollrath Ware, "MY PET" Western Foundry Co. Chicago Keeps Food Tasty, Trivets, Molds, Victor, Advertisement Skillets, Novelties, Accessories, Miniatures, Misc. (For complete of cast iron check out the list on our website @ allenauction.net



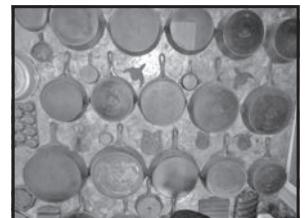
ANTIQUES

Lot – School desk	Crocks	Metal patio chairs
Platform scale w/weights	Milk Cans	PP Mast corn grinder
Step ladder	Toys	Wood Box
Wooden egg crates	Trunk	Iron Wheel wooden wheel barrow
Kerosene lanterns	Wooden dough bowl	Horse drawn walking plow
Wooden chicken crates	Metal wash tub on stand	Goat wagon
Kraut Kutter	Wooden small keg	Walking plow



GUNS

Franchi Limited Editions (only 100 made) 28 ga. semi-auto, never been shot
 Remington 700 .22-250 Bolt action, never been shot
 Baretta Ducks Unlimited magnum, 20 ga., semi-auto, never been shot
 Winchester 1400 12 ga., semi-auto • Remington 1100 12 ga. w/full choke & full choke extra barrels
 Marlin model 60, 22L w/tasco scope • Remington model 7400, 30.6 w/scope
 Winchester model 1200, 16 gauge • Remington model 110, 12 gauge
 Springfield model 87A, 22 caliber • The Pioneer BB gun model BB76
 Stoeger Condor 12 gauge over/under • Stoeger Uplander 12-gauge side by side
 Marlin Stainless D.U. model 60 SS, 22 caliber
 Henry Lever Action 22 LR rifle, never fired, new in box
 Ruger 10/22 rifle w/Weaver scope, new in Ruger case and metal target set
 Remington 870 Wingmaster 16 gauge shotgun
 Ted Williams model 200-20 gauge w/vent rib, manufactured by Winchester
 Springfield model 188 H 22, S.L. LR rifle



LAWN & GARDEN

Kubota ZG 1235-48 ZT mower • Porter lawn sweeper

Special Note:

**This is just the highlights of Eric & Delores' collection of cast iron.
 We are expecting 500 + pieces for the auction.**



CHECK OUR WEBSITE FOR PHOTOS AND COMPLETE LIST

Auctioneer's Note: Talk about an auction! Eric & Delores have traveled all across the Midwest collecting cast iron for years. These types of auctions rarely come up with this amount of quality items. Feel free to come down early to preview the items before the auction on Friday, March 20 from 1-3 pm Please note the start time & plan on spending the day with us. Thanks Nick & Kyle

ALLEN AUCTION & REAL ESTATE SERVICE LLC
(636) 338-4805 • Hawk Point, MO • www.allenauction.net

The Auctioneers, Nick Allen (636) 358-2900 • Kyle Allen (636) 236-2344 • Tec Parr (636) 661-5775 • Elden Foster (573) 239-6745

ONLINE AUCTION • ONLINE AUCTION • ONLINE AUCTION • ONLINE AUCTION • ONLINE AUCTION • ONLINE AUCTION •

ONLINE AUCTION • ONLINE AUCTION • ONLINE AUCTION • ONLINE AUCTION • ONLINE AUCTION • ONLINE AUCTION •

ONLINE AUCTION • ONLINE AUCTION • ONLINE AUCTION • ONLINE AUCTION • ONLINE AUCTION • ONLINE AUCTION •



ONLINE ONLY AUCTION



Bidding Starts to Close Thursday, March 26th, 2020, 6:00pm CST

Preview/Inspection date is: Saturday, March 21st, 2020, from 10:00 AM - 1:00 PM ONLY!

**Winning bidders will pick up items
on Saturday, March 28th, 2020, 9:30 AM - 2:00 PM**

Location: 406 Elm Street, Waynesville, MO 65583

SELLING:



**2009 Kia Rondo
96,xxx Miles**



**2005 Honda Civic Hybrid
97,xxx Miles**

Household Furnishings • Appliances
Lawn & Garden



All terms, conditions, details and photos are found at
www.wardenauction.bid or www.apro.bid & follow the links.



Sale Conducted by

WARDEN AUCTION & MORE

Ed Warden – Licensed Auctioneer/Broker

(573) 336-2367 or (573) 528-0729



ONLINE AUCTION • ONLINE AUCTION • ONLINE AUCTION • ONLINE AUCTION • ONLINE AUCTION • ONLINE AUCTION •

ESTATE AUCTION

SATURDAY, MAR. 21 • 10:00 A.M.

Directions: OLD SEARS BUILDING IN SALEM, MO - (Inside Sale)

Located between Parts Tek and Town & Country Bank on Scenic Rivers Blvd. Watch for signs.

MOWER • SHOP TOOLS • TRACTOR • MISC.

Small Lot of Scaffolding
 Aluminum Truck Box - Loppers
 Lots of Good Dry Lumber, Rough Cut
 Miter Saw - Firewood Rack
 Homemade Outdoor Shower
 Lattice - 16' Utility Trailer, Title
 Power King 24-18 Tractor
 w/Implements
 Sawhorses - Table
 Load Master 8x5 Dump Trailer, Title
 Generac X68000 E Generator
 Hitch Haul Carrier - Rigid Tile Cutter
 Gravely 2548 XL Zero-Turn Mower
 Cyclone Rake Leaf Vacuum
 Wooden Boxes - 2 Shop Vacs
 Standup Coleman Cooler
 Lawn Seeder - Lots Clay Flower Pots
 Receiver Hitch - Small LP Stove
 Small Custom Cabinet - Handsaws
 Extension Cords - Rope
 6 Full Pcs. Drywall - Wooden Bench
 DeWalt Miter Saw - Lot Chains
 Boomers - Rigid Table Saw
 Grizzly 10" Wet Sander

Grizzly Spindle Sander
 Grizzly 12.5" Portable Planer
 Shop Fan - Grain Scale - Levels
 Grizzly 10" Drum Sander
 Grizzly Table Router
 Lot Roofing Paper - Lot Sandpaper
 Craftsman Jointer Planer
 Some Scrap - Stihl Leaf Blower
 Lot Screws & Nails - Oil Cans
 Dip Nets - Lot of Drill Bits
 Chimney Brush - Belt Sander
 Delta Shopmaster Vacuum System
 Penn State Dust Collection System
 24qt. SS Pot w/Lid - Wrenches
 Berger Transit Level - Transit
 DeWalt Drills - Ratchet Straps
 Delta Grinder on Stand
 Some Harley Davidson Collectibles
 Wood Clamps - Small Anvil
 Welding Supplies
 Hobart 135 Welder - Bar Clamps
 Husqvarna Weed Trimmer
 Copper Tubing - 20# Propane Bottles
 Bottle Jack - Router - Electric Stapler

Grinder - Concrete Tools - Paint
 Handmade Bathroom Cabinet
 Rockwell 3/8 Drill Press
 Craftsman Belt, Disc Sander
 Grease Gun - Bench Vise
 Machete - Nuts & Bolts
 Pocket Knives - Clevis'
 Splitting Wedges - Toolboxes
 Hitch Mounted Deer Hoist
 Gas Cans - Buckets
 10" & 12" DeWalt Cutoff Blades
 4 David Plank Pictures
 Towels & Linens
 Commercial Series Char-broil Gas
 Grill w/Tank Glass Door
 5 New Pella Windows, 4, 29x53,
 Brown
 Highchair - Cast Iron Dinner Bell
 Nice Small Wood Stove w/Blower
 Blankets - Cowhide Blanket
 Custom-Made Closet

See you there! - Tom



SALE OF: LATE MARK JANSON

ANNOUNCEMENTS AT AUCTION TAKE PRECEDENCE OVER PRINTED MATTER

WULFF AUCTION

TERMS: CASH OR
 APPROVED CHECK - I.D.
 REQUIRED
 NOTHING REMOVED
 UNTIL SETTLED FOR -
 RAIN OR SHINE

Licensed
 Appraisals

Auctioneers:

Col. Tom Wulff - Col. David Wulff

498 Hwy. B, Salem, MO 65560 • 573-729-8476 • Cell: 573-247-3884

Clerk: Tracy Strange

Cashier: Nancy Inman



OWNER &
 AUCTION
 PERSONNEL NOT
 RESPONSIBLE
 FOR ACCIDENTS
 AT SALE SITE

See Wulff Auctions at www.thesalemnews.com/auctions



HARTVILLE LIONS CLUB
Consignment & Donation
15th Annual Auction

Saturday, April 18th

Good Consignments Needed
 Low Fee Commissions
 Donations Appreciated

To consign or donate items, contact:

Dan 531-3329	Lonnie 741-2095	Scott 741-0082	Charlie 464-8166
-----------------	--------------------	-------------------	---------------------

Consign early by April 1st for sale bill listing

CHICKS, DUCKS AND MORE: Cackle Hatchery, 417-532-4581. Lebanon, MO. We Ship!

TAKUCHI 135 DIESEL EXCAVATOR: with Hyd Thumb. \$15,000. 573-765-4406.

2011 KUBOTA MX5100 TRACTOR: 4x4, loader & bucket, 415 hours. \$20,000. 573-598-4580, Annapolis, MO.

3 STORAGE TRAILERS: 1-48' and 2-53'. \$2,000/piece, delivery within 60miles of zip 63630. 573-438-2622.

CHEVROLET 250 MOTOR: Runs good. \$300, Trades? 417-683-7843

CLARINET: with case. \$125 or trade. 573-327-9068.

STACK OF TIN: 30 plus sheets, 3 X, most of it 36 to 40 gauge~ very heavy. \$75.00 OBO. 573-765-3092

OVERSTUFFED BLACK LOVESEAT: W/12'X15' mauve carpet. \$50. uc1\u22 West Plains, 417-293-0568.

HAY FOR SALE: Small square, 4x5 round & 4x6 round bales. Licking, 573-578-7210.

BUYING PRE-1960 BEER SIGNS: FALLSTAFF, LEMP, BUDWEISER, GRIESEDECK, STAG, any brands. 573-680-5377.

IHC 1066 DIESEL TRACTOR: Open station, Nice. \$9,500. 573-765-4406.

ROSSI 410 SHOTGUN: Like brand new. \$120. 870-283-5417, Evening Shade, Arkansas.

4X5 ROUND BALES BROME HAY: in barn, no weeds, horse hay. \$45/bale. Sullivan, 573-259-3216.

ROD AND REELS: fishing season is coming. \$5 and up. Conway, 417-589-8200.

FARM AUCTION

MONDAY, MARCH 23, 2020 • 10 A.M.

LOCATION: 1034 Hwy 38, Bendavis, MO 65689

DIRECTIONS: From **Houston MO**, take Hwy 17 west, go 8 miles to Hwy 38, turn left, go 12 miles to auction. From **Mtn. Grove MO**, off 4 lane Hwy 60, take the east exit Hwy MM, go 12 miles to Hwy 38, turn left, go 3 miles to auction. From **Hartville MO**, take Hwy 38 east, go 20 miles to auction. Watch for Rick Dixon auction signs day of auction. **Visit us on the web at www.rickdixonauctions.com**

• TRACTORS • LOADERS • TRUCK • FARM EQUIPMENT • FARM SUPPLIES •

• (2) 4020 John Deere diesel tractors • 4010 John Deere diesel tractor with front end loader • Vermeer 500 Rebel round baler • 3 pt bale spike • 955K Cat track loader • 630 Case tractor • FarmStar 3 pt auger • Ariens zero turn mower • 1990 Chevy 1/2 ton 4x4 pickup for parts • 200 gal fuel tank w/pump • 300 gal fuel tank • John Deere front end loader - fits 4020 • hay dump rake • John Deere 14T square baler • Terex mod 80C loader with Detroit engine • 2005 Nissan 4x4 crew cab pickup • 12'x6' mobile home - no title, for salvage • (2) 500 gal propane tanks • EZBoard walk bandsaw sawmill • Priefert head gate • approx. 16 corral panels • approx. 10 pipe farm gates • approx. 100 used steel fence posts • round bale feeder • Vicon 3 pt 9 ft disc mower • 15 ft batwing bushhog • (2) calf creep feeders • Crustbuster 1884 disc on wheels • 3 pt bale unroller • lot of wire cattle panels • 256 New Holland side delivery rake • cattle mineral feeder • cattle water troughs • feed troughs • concrete cattle guard • Allis Chalmers antique small round baler •

TERMS: Cash or good check. Major credit cards accepted with 5% convenience fee. Driver's license or picture identification required to obtain bid number, which must match check. Nothing loaded or removed until paid for, and everything sells where is, as is. Not responsible for accidents, lost, stolen or broken items. List subject to additions or deletions. Nothing sold before auction; please do not ask. Auction day announcements take precedence over all previous advertisements.



Rick Dixon Auction Service LLC
www.rickdixonauctions.com • Rick 417-967-6604 • Josh 417-217-9627

HAY FOR SALE: 5x4 Round Bales, plastic twine, always shedded. \$65 bale. St James, MO. 573-467-5043.

15HP TECUMSEH LAWNMOWER MOTOR: Down shaft. \$25. 636-297-1747.

1952 FORD F6: Good cab, V-8 Flat head. Sell all or part out. Trades? 417-683-7843

PINE LOG SIDING.. www.pineridgerustic.com 573-729-7226.

2013 FORD ESCAPE SE: stk# 22669a, 92,000 miles, \$9,800. Call or visit us today for a test drive! WEHR FORD 1131 Bus. 60 • Mountain Grove, MO 1-800-288-6827

605F VERMEER ROUND BALER. 1190 International Hay Bine: 7' cut, good condition. \$2,500 each. 417-967-4527, Houston.

DOUBLE SET OF WHEEL CHOCKS: Color is Safety Yellow. \$30. 636-239-2695, Washington

LIONEL TRAIN SET: Steam engine, tender, caboose and other car, track and transformer. \$195. 573-364-7465, Rolla.

MY PILLOW: good condition. \$15 573-265-3645.

ATTN, GREAT CALL USERS: New Jitterbug Smart2 Phone. Went back to flip phone. \$60 OBO. 417-457-1023.

3 TEN-TON WAGON RUNNING GEARS: Good! Floatation tires. \$750 each OBO. 417-322-0161.

MOTOR HOME: 1996 Pace Arrow, 34' long, wide body, new tires, 460 Ford engine, generator, awnings, cameras, 2 AC, 2 TV's, everything works, 119,418 miles. \$10,000. Rogersville, 417-766-1991.

TO30 FERGUSON: w/Woods 5' brush mower. Good Tractor. \$3,300. Montgomery, 314-960-6652, leave message.

2006 JEEP WRANGLER: Yellow Hard Top, New Tires, 4-Cylinder, 6-Speed, 149K. \$9,000. Grovespring, 417-531-3376.

JOHN DEERE 4240: Diesel Tractor, cab and cold air, power shift, low hours. 120 hp, nice. \$29,500 573-765-4406.

2004 FORD F150: 4WD, extended cab. \$7,700. 417-718-4937.

AUCTION REMINDER: 15th Annual Consignment and Donation Auction. Saturday, April 18 Consign now. Hartville Lions Club. Please see our Auction Directory for more information.

1999 HONDA 750 NIGHTHAWK: \$1,500. Perryville, 573-547-7249, leave message.

FIREPLACE LOG GRATE: 28" wide. \$25. 636-239-2695, Washington.

PYRENEES PUPPIES: Purebred, shots, wormed. \$200 each. 417-934-6581, Mtn View.

AUCTION REMINDER: Farm & Estate Auction. Sunday, March 22nd @ 1 pm. Nance Auction. Please see our Auction Directory for more information.

BUFFALO LIVESTOCK MARKET LLC



276 Hwy 32 West
Buffalo, Missouri

March 14th, 2020
Receipts: 608 Head

Feeder calves
\$5 to \$8 Lower.

Representative Steers

300-400 @ 155.00 to 174.50
400-500 @ 154.00 to 174.00
500-600 @ 145.00 to 159.00
600-700 @ 129.00 to 143.00

Representative Heifers

300-400 @ 138.00 to 154.00
400-500 @ 135.00 to 145.00
500-600 @ 120.00 to 138.00
600-700 @ 108.00 to 119.50

Feeder Bulls

400-500 @ 126.00 to 148.00
500-600 @ 129.00 to 132.00

Slaughter Cows

High Dressing 60.00 to 64.50
Med. Flesh 47.00 to 57.00
Thin 40.00 to 52.00
XThin 40 down

Bulls

72.00 to 88.00

Stock Cows

750.00 to 1075.00

MON-WED MARKET REPORT

Listen to KJEL 103.7FM • Lebanon or KYOO 99FM • Bolivar

VIEW OUR SALES AT CATTLEUSA.COM

CALL FOR TRUCKING OR ON-FARM VISIT

Lyle Caselman • Owner-Manager
417-345-7876 • mobile 417-533-2944
Leon Caselman • Owner
417-345-4514 • mobile • 417-588-6185
Howard Miller • Owner 417-345-8122

ONLINE HAY EQUIPMENT AUCTION

Chevy Silverado • Ford Dump Truck
Hay Equipment • Livestock Equipment
11401 Johnson Cemetery Road,
Ashland, MO

Bidding Ends Tuesday, March 24th
at 12:30 P.M.

Bid Online At Atterberryauction.com



Preview: Monday, March 23rd
from 3:00 P.M. to 5:30 P.M.

Payment & Pick-Up:

Wednesday, March 25th
from 3:00 P.M. to 5:30 P.M.

2007 Chevrolet Silverado K3500 Diesel Truck
1991 Ford F800 Diesel Dump Truck
2007 Travalong Advantage 24' Livestock Trailer
Disc Mower With Caddy • 12-Wheel Hay Rake
New Holland Round Baler • Gravity Flow Wagon
Portable Squeeze Chute • John Deere 110 Lawn
Tractor • Livestock Supplies & Equipment • Bale
Rings • Feeders • Fencing Materials
Farmall Tractor Parts



For complete terms, listing,
catalog, pictures & bidding, visit
atterberryauction.com,

Email contactus@atterberryauction.com,
or call (573) 474-9295.

Please contact our office if you need help
with the online bidding process.

FIREARMS: Professional Repairs and Restorations. Baron's Gunsmithing. 573-363-5801, Camdenton.

IHC 766 DIESEL TRACTOR: cab and air, 80HP, new engine kit. \$8,500. 573-765-4406.

JOHN DEERE 567 ROUND BALER: mon-itor, kicker, wide pick-up, net wrap. \$9,650. 573-765-4406.

ACOUSTIC ALVAREZ GUITAR: model RD8C, W/electric pick-up, w/hard case. \$200 or trade. Gerald. 573-764-4435.

HELLING'S 31st Spring Farm Machinery Consignment Auction

3548 Hwy C • Leslie, MO 63056
573-484-4183

Sunday
April 26th • 9:30am

Taking Consignments Now

www.hellingsfarmauction.com
Email: hellingsfarmauction@yahoo.com
or for more information give us a call:
Peggy or Deanna 573-484-4183
As always, we appreciate your business
Peggy and Deanna

T215X70 R14: 1/4" tread. \$25/each. 573-764-2270.

TRACTOR TIRE: Goodyear 16.9-34, approx 50% tread, one only, no plugs, \$150.00. 573-765-3092

CUB CADET CHALLENGER 500 ATV: Purchased October 2018, \$9,000. Want \$6,800. 400 hrs, new condition w/canvas cover, heater, cable winch. 573-697-5828, Ironton.

HOBART 200 AMP PORTABLE WELDER: 4-cylinder gas. With trailer, \$2,900. Welder only, \$1,500. 1-573-729-0272, Salem.

4 BASKET HYDRAULIC FOLD TEDDER: \$2,500. 573-765-4406.

STEEL UTILITY CART: Mesh type, inflatable tires, 2'x4', good condition. \$75. 417-532-6561

HOLLYWOOD 4-BIKE HITCH MOUNT RACK: Excellent condition, Includes (2) Allen Stabilizer tension bars and keyed alike locking hitch pin and cable. \$175. Conway, 417-718-5347.

3PT HARROW: 2 section. \$150. 417-766-1991.

NEW HOLLAND 853 ROUND BALER: \$1,800. 573-765-4406.

AUCTION REMINDER: Building Material Auction, Saturday March 21st @10am. See our directory for more information. Integrity Outlet.



MID MISSOURI STOCKYARDS

REGULAR SALE EVERY THURSDAY 11AM

SPECIAL STOCK COW SALE APRIL 4TH @ 6PM

For Farm Visits, Market Updates, or Trucking
Call **Zach Cox 417-777-1320**
Dan Romine 573-578-4939

**Competitive Buyers!
Competitive Commission!
Competitive Market!**

Barn: 417-532-9292 
I-44 • Exit 123 "just outside of Lebanon"
17505 Route 66, Phillipsburg, MO 65722
For weekly market updates, visit us at
www.midmostockyards.com

HAY: 5x6 Round bales, in barn-never wet. \$50. 573-756-1615, Farmington.

2016 SUZUKI KING QUAD ATV: 4WD, 400 Fuel injected, 38 hours, elderly owned, as new. \$3,800 firm. 417-926-1614.

2017 26' KZ SPORTSMAN TRAVEL TRAILER: like new, approx 3,000 miles. \$13,500. 417-955-1724.

JOHN DEERE CHISEL PLOW: 10ft, good shape. \$900. 417-588-0392.

9FT KNAPHIDE TOOLBED: for Chassis/cab frame truck, single-well axle, very good condition. \$2,000. 573-619-1556.

GERMAN SHEPHERD KENNEL REDUCTION: Registered adults & 1 puppy. Call for pricing. Hartville, 417-741-2198.

15FT HEAVY CHAIN LINK PASTURE HARROW: \$950. 573-765-4406.

JOHN DEERE 7000 CORNPLANTER: 6row, field ready, new corn meters. \$3,000. 417-588-0392.

PILE OF WEATHERED OAK LUMBER: \$25. West Plains, 417-293-0568.

ARE YOU KIDDING ME???-Used double-wide, \$19,900!!!! delivery & set-up. 3 bedroom, 2 bath. Call 573-499-9993 comlumbiadiscounthomes.com

MEMORY FOAM TWIN MATTRESS TOPPER: good condition. \$30. 573-265-3645.



Regional Stockyards, Inc.
P.O. Box 97 Cuba, MO. 65453
44 & Hwy. DD North Service Rd.
Barn: (573) 885-7431
www.irslivestock.com
Scott Abolt: 573-259-9115
Mary Beth Abolt: 314-520-3211

SPECIAL COW SALE
FRIDAY, MARCH 20, 2020 • 6:30 PM

EARLY CONSIGNMENTS INCLUDE:

- **100+ hd. Blk Cows**, bred 2nd & 3rd stages, 4-6 yrs. old.
- **47 hd. Blk Cows**, bred 3rd stage, running ages, starting at 5yrs.

More to come.

Expecting 400 head Consignments Welcome

For More info call 573-885-7431
REGULAR SALE EVERY TUESDAY @ 1:00PM
website: www.irslivestock.com
Or Follow Us On Facebook

ALFALFA HAY FOR SALE: 4X5 Round Bales 22% protein 166 Bales, high moisture, weighing 1500#s 226 bales dry hay weighing 1000#s \$100 each at the Yard Delivery Available 417-343-4958 Karen Asher

FENCE! FIXED KNOT 10% Off. High tensile woven, barb, smooth. Best Prices. 417-322-0161.

FORD A66 DIESEL ARTICULATING HEAVY 4- WHEEL DRIVE LOADER: \$10,500. 573-765-4406.

FREE FILL DIRT: Hartville/Grovespring area. 417-741-0440.

WANTED TO BUY SMALL CATTLE FARM WITH HOME AND BUILDINGS: 75-100ac/m/l, mostly open, 85% m/l, one mile or so from paved road, short term contract. 563-529-0612.

2002 MERCURY GRAND MARQUIS: Excellent condition, new tires, 171,000miles. \$2,400. 2005 Isuzu Acender SUV: 2WD, 4.2 Vortec engine, one owner, new tires, 168,000miles. \$8,500. 1995 Ford Ranger XLT: extended cab, V6 automatic, second owner, excellent condition, 142,000miles, new tires. \$2,700. 816-517-1049, Bolivar.

Salem Livestock Auction
Hwy. 32 Salem, MO • 573-729-8880
Over 40 Years in the Livestock Business

Stock Cow Sale
Saturday • Mar. 21st @ 1:00 pm

- 18 Mix Cows, 4-6 yrs, 9 w/ calves, bal., 2nd & 3rd stage, bred to Black Bull •**SELL OUT**•
- 50 Black & BWF Cows, running ages, 29 w/ calves, bal., 2nd & 3rd stage, bred to Black Bull •**SELL OUT**•
- 2 Black Bulls
- 76 Mix Cows, 3-5 yrs, few w/ calves, bal., 2nd & 3rd stage bred to Black or Char Bull •**SELL OUT**•
- 7 Blk Cows, 5 yrs, 2nd & 3rd stage, bred to Red Angus Bull
- 20 Blk Cows, running ages, 9 w/ calves, bred to Angus Bull
- 1 Black Angus Bull
- 33 Angus x Cows, running ages, 17 w/ calves, bal., bred to Saler Bull
- 1 Saler Bull
- 35 Black & Char x Cows, all young, bred to Black or Char Bull

Cattle Sale Every Monday at 12:00
Feeder Calves to sell at 12:00 pm
Butcher Cows & Stock Cows following

All Consignments Welcome Up Until Sale
We Ap ecia e Yu r Business!

Allen Thompson 417-932-4097 **Renee Lauderdale 417-926-2682**

Chuck Thompson 417-257-5610 **Brandon Barton 417-259-1597**

Terms of Sale: Cash or Approved Check!

JOTUL WOOD STOVE: Made in Norway, f3cb-model, black. \$600. 573-247-2825.

35 FERGUSON TRACTOR & 5' BRUSH-HOG: Good rubber, runs good. \$2,500. 573-627-3421.

WANTED PINBALL MACHINES. 573-424-7200.

3 YORKIE-SHIH-TZU/MALTESE BLACK PUPPIES: Ready for loving home, 2-male, 1-female, male-\$175, female-\$250. Mtn Grove, 417-349-5032.

RETIREMENT AUCTION

Farm Equipment, Forklift, Complete Liquidation of Thrift Store

Held On Site At: 730 W Jefferson Ave., CONWAY, MO

SAT., APRIL 4th At 9AM

John Deere 5420 with 541 Loader, 941.9 Hrs, Sync Shuttle, SER#LV5420S143341

John Deere 830, Hours Unavailable

Clark LP GPX40 Forklift, 6472.9 Hrs, Ser#0214 GEF9330

Bale Master with Front Bale Spear, 3500lb cap, Ser#JD28984

FivePoint by King Kutter 3 Point Blade, 8' Heavy Duty

Woods RD72-S Rear Finish Mower, 3 Point, Ser#992172

Woods 3 Point Finish Mower, RD7200

King Kutter 3 Point 8' Rock Rake

John Deere 609 3 Point Spinner Mower

Rear 3 point Bale Spear

Thermostat Dual Heat Kerosene Heater

Kohler 6.5 Trash Pump with Hoses

This is just a small list of items selling!

www.adamsauctions.com



ADAM'S AUCTION

618-234-8751

LIC#444000169



ANNUAL SPRING CONSIGNMENT AUCTION

Saturday May 2nd, 10:00AM

Location - Potter Parts & Ag Supply
Mountain Grove, MO

NOW ACCEPTING CONSIGNMENTS

Call JD Shannon 417-349-0290

- Farm Equipment • Vehicles
- Tools • Lawn & Garden • Etc

SHANNON AUCTIONS
Auctioneer—JD Shannon
417-349-0290 • Mountain Grove, MO •

VERA BRADLEY PURSE AND MATCHING BILLFOLD: \$35. 573-265-3645

CUSTOM SAW MILLING: Lebanon. 417-533-4607, 417-664-1195.

ANTIQUe BRASS KITCHEN CABINET HARDWARE: 2 sets of 44. \$50 per set. 636-239-2695

HAROLD BELL WRIGHT BOOKS FOR SALE. The Eyes of the World, The Calling of Dan Matthews and Their Yesterdays. \$15 each. 417-532-2045, Lebanon. Leave message.

ANTIQUe 12 GAUGE: Single barrel, shotgun. \$175. Desloge, 573-327-9068.

VINYL WINDOW: Double pane, 50x33. \$40. 417-322-4432.

BROME HAY FOR SALE: \$4/square. 573-539-2060.

TROYBILT RIDING LAWMOWER: 17HP, for parts. \$25. 636-297-1747.

FORD GAS 3000 W/QA BRUSH HOG LOADER: w/bucket and pallet fork, joy stick, remotes. Good Tractor. \$6,800. Bourbon, 573-627-3729, leave message.

REGISTERED HEREFORD & ANGUS BULLS: Home raised, Some Show-Me Select Qualified. 573-701-7828. Belgrade

CASE DC TRACTORS: One, wide front, PS, 7' rear sickle. \$1,900. One, narrow front, 10' rear sickle. \$1,700. One, narrow front w/3pt lift. \$1,500. 417-848-8754, Springfield.

WILLBECK 12ft CHISEL PLOW: Field ready. \$950. 417-322-0161.

KUHN 3 POINT DISK MOWER: 10 ft. \$850. 573-765-4406.

ACA REGISTERED CORGI PUPPIES: DOB 02/19/20, very playful, 2 males, 6 females. \$350. Latham, 660-458-6331.

DETROLA MUSIC MACHINE: Plays CD'S, Records, Cassettes, AM-FM Radio, excellent condition, 20x18x12, oak finish, antique look. \$65. 573-364-7465, Rolla.

COUNTER WEIGHT FOR A CAT 977K OR L: \$125. 636-583-5074

PULL BEHIND LAWMOWER DUMP TRAILER: Hard rubber tires. \$75. 636-297-1747.

STAINED GLASS THEATRE COOKBOOK. \$6.50. RESTAURANT RECIPES OF MISSOURI. \$7.50. FANNIE FARMER1896 COOKBOOK, Reprint, 567 pages. \$6. THE CAKE DOCTOR COOKBOOK. \$6.50. 417-532-2045, Lebanon. (Leave Phone Number).

NEW HOLLAND 617: 3 point disk mower, 9ft \$3,950. 573-765-4406.

OMAR'S LOGGING: Oak and Walnut, excellent prices, Amish owned and operated. 417-741-0440, leave message.

D&H OUTDOOR WOOD FURNACES SINCE 1986: Forced air, 90% efficient, fire proof insulated, thermostat control. Complete Heating and Cooling Systems. 573-743-6943, Salem.

2008 ROCKWOOD FREEDOM POP-UP TRAILER for sale. \$3,000. 573-859-6789, Belle.

SOUTHWEST AUCTION SERVICE SPRING EQUIPMENT CONSIGNMENT AUCTION!

SUNDAY, MARCH 29TH • 10:00AM

151 Ste Hwy 76, Rocky Comfort, Mo 64861

Taking consignments on Farm Machinery, Shop, Tools, Trucks, Trailers, Outdoor, Sporting Goods, etc..

Some Early Consignments include: '11 Chevy 1-ton dually, 4wd, diesel, 5000 Ford Tractor w/Westendorf loader, 4000 Ford Tractor w/ front end loader, Farm Pro 26hp 2wd Tractor, 32hp Stallion 4wd Tractor w/ loader, D15 Allis Tractor w/ loader, 8N Ford Tractor, 7700 Ford Tractor-new tires, new overhaul Komatsu 25 Forklift, Twister Safe Skid steer, 7' & 8' 3pt Brushhogs, 14' Dump Trailer, JD Z425 54" Zero turn Mower, Ex Mark Stand up mower, Ex Mark Lazer zero turn Mower, Grasshopper 618 SL52 zero turn mower, Full set of Woodworking Tools & Supplies, Lot of Shop Tools & Equip, Generators, Pressure Washers, Farm Implements, Scaffolding & much more! Full sale flyer coming soon!

Call 417-652-7540 or email: kathy@swaauction.com
Website: www.swaauction.com

Early consignments will be photographed & advertised!

WANTED TO RENT: 3 bedroom home, with room for horses, Rolla area, Call with any availability, 641-226-2431/573-578-6476.

SNAGGING ROD & 1049 REEL: w/100lb test. \$125. Conway, 417-589-8200.

BAKER A RESAW: W/return. \$7,000. 417-327-6240.

2015 FORD FUSION: stk# 22681, 61,000 miles, Only \$11,900. Call or visit us today for a test drive! WEHR FORD 1131 Bus. 60 • Mountain Grove, MO 1-800-288-6827

2013 FORD F150 XLT SUPER CREW: stk# 22679, 89,265 miles. Only \$17,500. Call or visit us today for a test drive! WEHR FORD 1131 Bus. 60 • Mountain Grove, MO 1-800-288-6827

600SQFT USED 5" DOUBLE LAP, CREAM COLOR VINYL SIDING: \$75, 417-457-1015.

2007 GMC YUKON DENALI : 4 WD, stk#22597a, Loaded and Clean. Only \$9,800. Call or visit us today for a test drive! WEHR FORD 1131 Bus. 60 • Mountain Grove, MO 1-800-288-6827

AUSTRALIAN SHEPHERD PUPPIES: For sale or will swap for farm animals. UTD on shots, Born 11-20-19. 417-967-6493, Roby.

MURRAY RIDING MOWER: Good tires, deck, blades, 5-speed, needs motor. \$150-gun trade. 573-364-7465.

3PT BALE SPIKE: \$100. 417-766-1991.

MODULAR STOCK SALE - It is time to move our inventory. TRUE MODS - Save Thousands. Call Marla, better than 20 years experience. 573-657-7040, chateauhomes.net.

\$19,900 USED DOUBLE WIDE: nice 3 bedroom, 2 bath delivered & set-up.....Hurry, This house will **NOT** last long! Call now 573-657-2176 amegamobilehomes.com

WILBER'S FISH BRANCH ANGUS: Large selection of bulls available. Yearling & 2yr old bulls, very docile. High Performance. Calving ease and good growth. Mexico, MO, 573-473-6019. www.fish-branch.com

ALLIS CHALMERS: 5 Bottom plow. \$500. 417-588-0392.

DG LUMBER: Top Quality Building Materials, Lumber, Plywood, OSB, Car siding, Insulation, Doors, Windows, Nails, Screws. Also do complete building packages. Call for Quotes 417-259-0994, Norwood.

TRUCK LOAD OF FLEA MARKET & AUCTION ITEMS: \$200 or trade. 573-327-9068

JOHN DEERE 535 ROUND BALER: monitor, kicker, net wrap. \$4,950. 573-765-4406.

4x5 ALFALFA/GRASS: High Protein, (horse/sheep hay). \$75bale. 417-322-0161.

BARN WOOD SIDING: 8" & 10" wide. 573-729-7226. www.pineridgerustic.com

3PT BALE CARRIER: \$100. 417-766-1991 417-753-2747.

5055E JOHN DEERE TRACTOR: Open station, MFWD, H240 loader, like new, 109hours, original owner. \$26,500. Consider offers. 417-599-8089.

FOR SALE ELECTRIC SAWMILL : Michigan articulating wheel loader, 80 BAR-KO loader, Ford 4010 Tractor, 4x4 with loader. Phone 417-349-5550 or 417-554-2719.

**Direct
Link To
AUCTIONEERS
Website**

www.myweeklytrader.com

LESPEDEZA SEED: Clean, bagged. Evenings, 660-693-4887.

6 YOUTH LIFE VESTS: \$25 for all. West Plains, 417-293-0568.

	
2003 VW Beetle Standard, 69,xxx Miles. Runs good. \$2,895	2003 Ford Explorer Sport Trac 4x4, 189,7xx miles, backup camera. \$4,595
	2002 Sylvan with trailer with almost new 350 engine. \$4,595 OBO
573-263-2732	

AUCTION REMINDER: Antique & Estate Auction. Saturday, March 21st @ 10 am. Nance Auction. Please see our Auction Directory for more information.

1999 JAYCO EAGLE: 28ft fifth wheel, with slide, exceptional condition. Summersville, 970-218-1254.

CARRY-ALL 3pt PLATFORM CARRIER: Like new. \$150. 417-399-6687.

1953 FORD JUBILEE: new tires, runs good, excellent condition. \$3,000. 417-664-3425.

AUCTION REMINDER: Upcoming online auctions. Sam Crawford Auction. Please see our Auction Directory for more information.

DARDEN PROFESSIONAL TIMBER HARVESTING, BUYING STANDING TIMBER: Great prices, improve wildlife habitat and improve forest health. State Certified & Fully Insured! 573-247-4808 or 573-739-1122. Salem

2004 CADILLAC. \$10,000. 417-718-7882.

GUARDIAN DOG PYRENEES/ANATOLIAN CROSS: first shot, dewormed, \$75, Registered Katahdin Ram, 2 year old Texas Bred, \$300. Vienna, 573-422-3574.

FREE MOUNTAIN KUR PUPPIES: 6wks, weaned. 573-996-6744, Ask for Jack, Eminence.

2013 NISSAN MURANO: stk# 22688, Low miles, Only \$11,800. Call or visit us today for a test drive! WEHR FORD 1131 Bus. 60 • Mountain Grove, MO 1-800-288-6827

FULL BLOOD BOER BUCKS: 1 red 100%, registered and DNA'd, 2yrs old. \$500, 1 traditional 100%, 11months old, 140lbs, \$350 w/ papers, \$300 without. 573-325-8726. Birch Tree

3PT QUICK HITCH: Brand New. \$100. 417-766-1991.

CLARINET: with case. \$125 or trade. 573-327-9068.

SELL IT HERE!



WEEKLY TRADER MAGAZINE

417-532-2800 • www.myweeklytrader.com

1969 CHEVROLET ALUMINUM POWERGLIDE TRANSMISSION: \$200, Trades? 417-683-7843

ROME 8FT OFFSET DISK: \$3,750. 573-765-4406.

FREE PUPPIES: Born December 2019. 417-741-0042.

1976 CHEVROLET C10: Body Rough, runs good, title okay, no brakes. \$600, Trades? 417-683-7843

WANTED, TIMBER TO LOG ON SHARES: Honest, reliable, references. 417-533-4607, 417-664-1195.

POOL TABLES: Installations, moves, recoverers, repairs, accessories, etc. 573-646-1700.

BUYING PRE-1960 BEER SIGNS: FALLSTAFF, LEMP, BUDWEISER, GRIESEDIECK, STAG, any brands. 573-680-5377.

VILLA HOMES IN ROLLA: Has NEW and USED Mobile Homes. Call David for info: 573-578-8072.

1994 SHADOW CRUISER: 5th Wheel, Excellent condition, 29 ft. Located in Conway, MO. \$3,700. 417-664-8823.

TAKUCHI 135 DIESEL EXCAVATOR: with Hyd Thumb. \$15,000. 573-765-4406.

JOHN DEERE HX-10: Pull-type, 10 ft, brushcutter. \$4,200. 573-765-4406.

HORSE HAY: Square bales, weed free, Big Blue stem, 80% pure. \$5 bale, mixed grass hay, \$4.50/bale. 573-368-1794, Rolla.

CATTLE HAY FEEDER WAGON: (Needs Repair). \$200. 417-322-0161.

AUCTION REMINDER: Farm & Estate Auction. Sunday, March 22nd @ 1 pm. Nance Auction. Please see our Auction Directory for more information.

JOHN DEERE 435 ROUND BALER: mon-itor, kicker, 4X6. \$5,600. 573-765-4406.

IHC 1066 DIESEL TRACTOR: Open station, Nice. \$9,500. 573-765-4406.

Scenic Ridge
GREENHOUSE
ANNUALS • PERENIALS
VEGETABLES
6527 Lake Freddie Rd., Hartville
Mon.-Sat. (No Sunday Calls)

ROD AND REELS: fishing season is coming. \$5 and up. Conway, 417-589-8200.

15HP TECUMSEH LAWNMOWER MOTOR: Down shaft. \$25. 636-297-1747.

Free Alignment Check
No Appointment Needed!
LIFE TIRE SERVICE
1480 W. Elm • Lebanon
(417) 991-3800
7:30-5:30 Mon.-Fri.
7:30-2:00 Saturday

MOTOR HOME: 1996 Pace Arrow, 34' long, wide body, new tires, 460 Ford engine, generator, awnings, cameras, 2 AC, 2 TV's, everything works, 119,418 miles. \$10,000. Rogersville, 417-766-1991.

Fishing Season is almost here!
We have a great supply of: Berkley Flicker Shads, Charlie Brewers Slider Grubs, Swimming Minos & Jig Heads!
Craig's OUTDOOR Sports
9435 HWY N. Suite A (417) 926-0255
Mtn. Grove, MO craigsoutdoorsports.com
Mon-Fri 9am-5pm • Sat 9am-Noon

CHICKS, DUCKS AND MORE: Cackle Hatchery, 417-532-4581. Lebanon, MO. We Ship!

2011 KUBOTA MX5100 TRACTOR: 4x4, loader & bucket, 415 hours. \$20,000. 573-598-4580, Annapolis, MO.

HAY FOR SALE: Small square, 4x5 round & 4x6 round bales. Licking, 573-578-7210.

3 STORAGE TRAILERS: 1-48' and 2-53'. \$2,000/piece, delivery within 60miles of zip 63630. 573-438-2622.

CHEVROLET 250 MOTOR: Runs good. \$300, Trades? 417-683-7843

ROSSI 410 SHOTGUN: Like brand new. \$120. 870-283-5417, Evening Shade, Arkansas.

4X5 ROUND BALES BROME HAY: in barn, no weeds, horse hay. \$45/bale. Sullivan, 573-259-3216.

AUCTION REMINDER: Real Estate Personal Property Auction. Saturday, April 4th @ 10 AM. Case Auction. Please see our Auction Directory for more information.

WANTED TO RENT: 3 bedroom home, with room for horses, Rolla area, Call with any availability, 641-226-2431/573-578-6476.

605F VERMEER ROUND BALER. 1190 International Hay Bine: 7' cut, good condition. \$2,500 each. 417-967-4527, Houston.

DOUBLE SET OF WHEEL CHOCKS: Color is Safety Yellow. \$30. 636-239-2695, Washington

LIONEL TRAIN SET: Steam engine, tender, caboose and other car, track and transformer. \$195. 573-364-7465, Rolla.

MY PILLOW: good condition. \$15 573-265-3645.

1999 HONDA 750 NIGHTHAWK: \$1,500. Perryville, 573-547-7249, leave message.

2012 EverGreen I-Go 249RB
SALE PRICE \$7,995
Regular Price \$9,995
YOU SAVE \$2,000
Summer Kayak Package* with Purchase of this RV or New In Stock RV
*Colors and styles may vary. While supplies last.
HAPPY TRAILS RV CENTER I-44 Exit 123 - 4 miles West of Lebanon, MO
417-533-7530
www.happytrailsrvcenter.com

2017 Chevy Silverado
Diamond White, 1/2 ton, Crew Cab, 4WD, 6.2 Liter, V8
Call Toll FREE 573-569-4638 For Details or More Info.
WEIDINGER CHEVROLET
908 Highway 63 South • Vienna, MO

STACK OF TIN: 30 plus sheets, 3 X, most of it 36 to 40 gauge~ very heavy. \$75.00 OBO. 573-765-3092

OVERSTUFFED BLACK LOVESEAT: W/12'X15' mauve carpet. \$50. \uc1\u22 West Plains, 417-293-0568.

2013 FORD ESCAPE SE: stk# 22669a, 92,000 miles, \$9,800. Call or visit us today for a test drive! WEHR FORD 1131 Bus. 60 • Mountain Grove, MO 1-800-288-6827

HAY FOR SALE: 5x4 Round Bales, plastic twine, always shedded. \$65 bale. St James, MO. 573-467-5043.

1952 FORD F6: Good cab, V-8 Flat head. Sell all or part out. Trades? 417-683-7843

PINE LOG SIDING.. www.pineridgerustic.com 573-729-7226.

2004 FORD F150: 4WD, extended cab. \$7,700. 417-718-4937.

TO30 FERGUSON: w/Woods 5' brush mower. Good Tractor. \$3,300. Montgomery, 314-960-6652, leave message.

2006 JEEP WRANGLER: Yellow Hard Top, New Tires, 4-Cylinder, 6-Speed, 149K. \$9,000. Grovespring, 417-531-3376.

DETROLA MUSIC MACHINE: Plays CD'S, Records, Cassettes, AM-FM Radio, excellent condition, 20x18x12, oak finish, antique look. \$65. 573-364-7465, Rolla.

Now Stocking
Large Selection
 of
Plumbing
 PEX, PVC, & CPVC
 and
Electrical
 Supplies!



STOCKING
Porter Paints
PPG
Commercial
Paints
Sikkens
Stains

Seymour, Missouri 417-935-4201

Sale Ends March 31, 2020



Call for free quote, brochure & color chart.
 Other sizes also available.

Pole Barns & Post Framed Buildings!

23'x32'x10' \$4,199 Material Only \$5,419 Labor Included	23'x40'x10' \$4,899 Material Only \$6,429 Labor Included	30'x40'x10' \$5,849 Material Only \$7,849 Labor Included	40'x60'x12' \$10,299 Material Only \$14,559 Labor Included
---	---	---	---



NOBODY, BUT NOBODY BEATS OUR PRICES!!!

10 ft. Slider • Engineered Trusses 8' O.C. • 2x6 Treated Bottom Wrap • Screws • 2x10 Top Wrap • 2x4 Purlins • Full 29 Gauge Steel • Plus 3 ft. Entry Door with Lock
 OPTIONS: Sidewall Heights on all Buildings 10', 12', 14' & 16'. Overhead Garage Door, Skylights, Insulation, Wainscoting, Insulated Vinyl Windows, Cupolas. Labor Rates Slightly Higher over 50 Miles from Seymour. Call for YOUR FREE QUOTE TODAY!!!

PAINTED WHITE, GREEN OR TAN METAL\$69.99	IN STOCK
10' - \$22.10 12' - \$26.52 16' - \$35.36	
MIX & MATCH METAL\$39.99	
8' - \$10.13 10' - \$12.67 12' - \$15.21	
GALVALUME METAL\$52.50	
10' - \$16.60 12' - \$19.92 16' - \$26.56	
GALVANIZED CORRUGATED METAL\$56.75	
8' - \$9.84 10' - \$12.30 12' - \$14.75 16' - \$19.67	

40yr Painted Metal
\$76.69

KNOTTY PINE DOORS
 Starting at
\$109.99

LP SMARTSIDE T-5 LAP B GRADE \$43.59/SQ

Car Siding!
 1x6 White Pine Siding **43¢** in ft
 1x8 White Pine Siding **54¢** in ft
 * 4 Profiles to choose from!
 Broken Bundles Add 10¢ Per Ft.

4x8 Sheeting
 Less than full units Add \$1 per sheet

3/8" Beaded Paneling	\$15.99
5/8" T111 Siding Paneling	\$19.99
1/2" Plywood	\$9.99
3/4" Plywood	\$23.99
3/16 Pegboard	\$12.99

Sales and Servicing

NEW PACKAGE HOMES

2x6—16" on center-Exterior Stud Walls
 Residential Roof Trusses-2' on center
 4/12 pitch with 1' over hang
 40 year Painted Metal roofing in 20 Different Colors
 Profile Ridge Vent - Ventilated Ridge Cap
 Vinyl Center Vent Soffit
 Color Matched Metal Fascia & Gable Trim
 2 - 3' 6 Panel Entry Doors
 4 - 3'x4' Vinyl Insulated Windows

Shown with Available Options
 Your Choice of either:
 Stock 5/8" T111 Wood Siding w/1x4 Pine Window & Door Trim - or -
 7/16" OSB & House Wrap ready for other finish options

ALL FIGURED FOR SUITABLE CUSTOMER SUPPLIED SLAB OR SUB-FLOOR

Price for Basic Materials Package & Labor

20x24(480 sq. ft.)	20x32(640 sq. ft.)	20x40(800 sq. ft.)	25x40(1120 sq. ft.)	25x48(1344 sq. ft.)
\$9,050	\$10,615	\$12,119	\$15,242	\$17,075

REAL WOOD SIDING
 2x6 Log Siding - 1.09¢ in ft
 1x8 Beveled Cedar from- 64¢ in ft
 5/8 T1-11 Siding from \$19.99

DECK PACKAGES
 Materials Only

8x6\$199.99	10x12\$419.99
8x8\$239.99	10x16\$549.99
10x10\$349.99	12x12\$499.99
12x16\$649.99	

QUAKER Now Stocking Quaker Vinyl Windows

2030 \$ 99.99	3030 \$119.99
3040 \$129.99	3052 \$145.99
3040Twin \$279.99	3052Twin \$314.99

LUCKY DISCOUNT LUMBER
 417-935-4201
 455 State Hwy C • Seymour MO 65746
 www.luckydiscountlumber.com

*Some restrictions apply see store for details

NEW HOLLAND 853 ROUND BALER: \$1,800. 573-765-4406.

FORD A66 DIESEL ARTICULATING HEAVY 4- WHEEL DRIVE LOADER: \$10,500. 573-765-4406.

97 Freightliner, Cabover, M11 Cummins Engine, 21ft. Steel Bed, FM13 Ditch Witch Pump & Tanks **\$7,200**

John Deere 420, Wide Front, Recent Overhaul, Good Paint & Tires **\$4,800**

David Brown 1212 Diesel QA Loader, 2 Sets of Remotes, 65 HP **\$5,500**

Ford 8N Sherman Transmission, Good Condition **\$1,800**

Steel Flatbed 7.7"x9' **\$400**

Hydraulic Silage Lift **\$400**

3.8 Ft. Disc **\$900**

DU-AL Loader QA **\$1,400**

STARR TRACTOR • ROGERSVILLE
417-753-2747 • 417-766-1991

GERMAN SHEPHERD KENNEL REDUCTION: Registered adults & 1 puppy. Call for pricing. Hartville, 417-741-2198.

15FT HEAVY CHAIN LINK PASTURE HARROW: \$950. 573-765-4406.

JOTUL WOOD STOVE: Made in Norway, f3cb-model, black. \$600. 573-247-2825.

35 FERGUSON TRACTOR & 5' BRUSH-HOG: Good rubber, runs good. \$2,500. 573-627-3421.



**TASK.
TASK.
DONE.**

RB16 SERIES

REAR BLADES

20-40 HP 60", 74", 84" Widths

- Cat. 1 hitch
- 7 Forward angles; 3 Reverse angles
- 5 Tilt positions
- 12" Offset left or right
- 14" Moldboard height
- 1/4" Moldboard thickness
- Landscape Rake adaptable

For Outstanding Products & Service
AGRI ENTERPRISES



1-1/2 Miles South Of Licking, MO On Hwy 63

573-674-2203
1-800-653-7152

www.landpride.com

www.agri-enterprises.com

HAY: 5x6 Round bales, in barn-never wet. \$50. 573-756-1615, Farmington.

\$19,900 USED DOUBLE WIDE: nice 3 bedroom, 2 bath delivered & set-up.....Hurry, This house will **NOT** last long! Call now 573-657-2176 amegamobilehomes.com

SPECIALIZING IN STUD FRAME & POLE BARN BUILDINGS



30+ Years Experience

**Broeckelman
Metal Buildings**

Allen Broeckelman • Lebanon, MO
417-650-5600

2017 26' KZ SPORTSMAN TRAVEL TRAILER: like new, approx 3,000 miles. \$13,500. 417-955-1724.

JOHN DEERE CHISEL PLOW: 10ft, good shape. \$900. 417-588-0392.

9FT KNAPHIDE TOOLBED: for Chassis/cab frame truck, single-well axle, very good condition. \$2,000. 573-619-1556.

CASE DC TRACTORS: One, wide front, PS, 7' rear sickle. \$1,900. One, narrow front, 10' rear sickle. \$1,700. One, narrow front w/3pt lift. \$1,500. 417-848-8754, Springfield.

JOHN DEERE 7000 CORNPLANTER: 6row, field ready, new corn meters. \$3,000. 417-588-0392.

FENCE! FIXED KNOT 10% Off. High tensile woven, barb, smooth. Best Prices. 417-322-0161.

PILE OF WEATHERED OAK LUMBER: \$25. West Plains, 417-293-0568.

ALFALFA HAY FOR SALE: 4X5 Round Bales 22% protein 166 Bales, high moisture, weighing 1500#s 226 bales dry hay weighing 1000#s \$100 each at the Yard Delivery Available 417-343-4958 Karen Asher

FREE FILL DIRT: Hartville/Grovespring area. 417-741-0440.

MEMORY FOAM TWIN MATTRESS TOPPER: good condition. \$30. 573-265-3645.

WANTED TO BUY SMALL CATTLE FARM WITH HOME AND BUILDINGS: 75-100ac/m/l, mostly open, 85% m/l, one mile or so from paved road, short term contract. 563-529-0612.

COUNTER WEIGHT FOR A CAT 977K OR L: \$125. 636-583-5074

PULL BEHIND LAWNMOWER DUMP TRAILER: Hard rubber tires. \$75. 636-297-1747.

ACA REGISTERED CORGI PUPPIES: DOB 02/19/20, very playful, 2 males, 6 females. \$350. Latham, 660-458-6331.

2002 MERCURY GRAND MARQUIS: Excellent condition, new tires, 171,000miles. \$2,400. 2005 Isuzu Acender SUV: 2WD, 4.2 Vortec engine, one owner, new tires, 168,000miles. \$8,500. 1995 Ford Ranger XLT: extended cab, V6 automatic, second owner, excellent condition, 142,000miles, new tires. \$2,700. 816-517-1049, Bolivar.

WANTED PINBALL MACHINES. 573-424-7200.

TROYBILT RIDING LAWNMOWER: 17HP, for parts. \$25. 636-297-1747.

FORD GAS 3000 W/QA BRUSH HOG LOADER: w/bucket and pallet fork, joy stick, remotes. Good Tractor. \$6,800. Bourbon, 573-627-3729, leave message.

REGISTERED HEREFORD & ANGUS BULLS: Home raised, Some Show-Me Select Qualified. 573-701-7828. Belgrade

WILLBECK 12ft CHISEL PLOW: Field ready. \$950. 417-322-0161.

KUHN 3 POINT DISK MOWER: 10 ft. \$850. 573-765-4406.

3 YORKIE- SHIH-TZU/MALTESE BLACK PUPPIES: Ready for loving home, 2-male, 1-female, male-\$175, female-\$250. Mtn Grove, 417-349-5032.

FOR SALE ELECTRIC SAWMILL : Michigan articulating wheel loader, 80 BAR-KO loader, Ford 4010 Tractor, 4x4 with loader. Phone 417-349-5550 or 417-554-2719.



YOUR AD GOES HERE!

Add YELLOW Color For An Additional \$3 Per Reader Ad

All ads will include Phone Number (unless requested to be deleted by advertiser) and City Or Town, Phone Number with Area Code counts as one word. City or Town counts as one word.

RATE: 80¢ Per Word. All Classified Ads Require Payment Before Print.

(1) 80¢	(2) \$1.60	(3) \$2.40	(4) \$3.20
(5) \$4.00	(6) \$4.80	(7) \$5.60	(8) \$6.40
(9) \$7.20	(10) \$8.00	(11) \$8.80	(12) \$9.60
(13) \$10.40	(14) \$11.20	(15) \$12.00	(16) \$12.80
(17) \$13.60	(18) \$14.40	(19) \$15.20	(20) \$16.00
(21) \$16.80	(22) \$17.60	(23) \$18.40	(24) \$19.20
(25) \$20.00	(26) \$20.80	(27) \$21.60	(28) \$22.40
(29) \$23.20	(30) \$24.00	(31) \$24.80	(32) \$25.60
(33) \$26.40	(34) \$27.20	(35) \$28.00	(36) \$28.80
(37) \$29.60	(38) \$30.40	(39) \$31.20	(40) \$32.00

Place your Classified Ad TODAY!

417-532-2800 • 800-665-8875

Fax: 417-532-8140

Or Mail To: P.O. Box 192 • Lebanon, MO 65536

For your convenience we accept MasterCard, Visa, Discover or American Express



DEADLINE FOR CLASSIFIED ADS: FRIDAY 4:00PM!

Name _____

Address _____

City _____ Email _____

State _____ Zip Code _____ Phone _____

Ad Total \$ _____ X # Weeks _____ = Amount Enclosed \$ _____



Get more
done faster.
For less.

Z400 Gas powered 48" to 60" cutting widths

 **Kubota**. Together we do more.

Get class-leading speed*, ergonomic comfort and exclusive Hydro-Gear ZT-3600 transmission for a great offer. Demo the durable, professional-grade Z400 today

QUARLES
SUPPLY COMPANY INC.

(417) 777-2391

quarleskubota.com
Just off Business 13 in Bolivar, MO
Open 8:00-5:00 Monday-Friday
Saturday 8:00-12:00

**Keep It Simple
With Quarles Supply**

\$0 DOWN **0%** APR **48** MONTHS
OR
SAVE \$300

VISIT US TODAY FOR THIS LIMITED-TIME OFFER

New L2501DT w/Loader Deal!

**L2501DT
w/loader
\$19,700
Financing Price**

- NEW Kubota L2501DT
- 4wd, DIESEL, AG TIRES
- KUBOTA LOADER
- 5' ROTARY CUTTER
- 5' BOX BLADE
- NEW 18' KODIAK TRAILER W/RAMPS

KubotaUSA.com



*Claim is based on speeds published on company websites as of 11/25/2019 for the following 52"-54" zero-turn models: Gravely Pro-Turn ZX, Scag Patriot, Exmark Radius S Series, Toro Titan HD 2000 Series, Hustler Fastrak SDX. © Kubota Tractor Corporation, 2020. \$0 Down, 0% A.P.R. financing for up to 48 months or customer instant rebates of \$300 are available on purchases of select new Kubota Z400 Series equipment from participating dealers' in-stock inventory. Promotional rate available to qualified purchasers through Kubota Credit Corporation, U.S.A.; subject to credit approval. Example: 48 monthly payments of \$20.83 per \$1,000 financed. \$300 rebate is not available with 0% A.P.R. or other promotional financing. Some exceptions apply. Offers expire 6/30/20. Terms subject to change. This material is for descriptive purposes only. Kubota disclaims all representations and warranties, express or implied, or any liability from the use of this material. For complete warranty, disclaimer, safety, incentive offer and product information, consult your local Dealer or go to KubotaUSA.com.