

Vol. 26 No. 31

NOVEMBER 07, 2019

800-543-8271 • 800-665-8875

FREE

WEEKLY

TRADER

MAGAZINE



Find us on Facebook

@myweeklytrader

Auctions - Pg. 18

MYWEEKLYTRADER.COM

**You pull it,
we sell it...**

CHEAP!



Lebanon, MO

22395 Rt. 66

417-588-3555

Fax 417-588-8955



U★PULL★IT

SELF-SERVICE AUTO PARTS

We also have a large inventory
of used tires and be sure to check
out our used car lot!

Mon.-Fri. 8:00am-6:00pm • Sat. 8:00am-4:30pm • Sun. 9:00am-4:00pm

WWW.SSUPULLIT.COM

Located next to S&S Recycling.



For All Your Metal Recycling Needs

Lebanon, MO

22395 Rt. 66

417-588-3555

Fax 417-588-8955

Mtn. Grove, MO

8930 First Rd

417-926-3360

Fax 417-926-0180

Roll-off, Trailer, and
Mobile Crushing
Services Available

Monday-Friday 8:00am-4:30pm (Closed 12pm-1pm Lunch)
Saturday 8:00am-Noon

email: contact@ss-recycling.com

Buyer of all types of scrap metal.

BELOW MARKET PRICING ON ALL

IN HONOR OF OUR VETERANS

200+ PREOWNED VEHICLES AVAILABLE!

7533B	2002 HONDA CIVIC	\$5,988
7916A	2015 FORD ESCAPE.....	\$17,588
7920A	2018 JEEP GRAND CHEROKEE	\$31,588
7977A	2015 MINI COOPER S PACEMAN	\$11,988
7854B	2012 TOYOTA TACOMA	\$14,988
P9600A	2016 CHEVY IMPALA LIMITED	\$12,988
P9610A	2016 FORD EDGE	\$20,988
P9613	2016 TOYOTA RAV4.....	\$19,988
P9615	2019 TOYOTA RAV4.....	\$25,988
P9616	2019 TOYOTA RAV4.....	\$25,988
P9617	2018 TOYOTA CAMRY.....	\$18,988
P9618	2018 TOYOTA CAMRY.....	\$18,988
7932A	2017 TOYOTA PRIUS.....	\$19,988
P9611	2017 TOYOTA CAMRY.....	\$18,988
7059B	2013 DODGE DART	\$7,988
7741A	2015 CHEVY MALIBU	\$10,988
7251C	2017 TOYOTA TUNDRA.....	\$37,988
7956A	2017 TOYOTA TACOMA	\$24,988
8020A	2017 TOYOTA TACOMA	\$27,988
7830A	2014 CHEVY CRUZE	\$9,288
7886A	2017 TOYOTA HIGHLANDER	\$33,588
P9609	2017 TOYOTA CAMRY.....	\$17,988
8034A	2002 TOYOTA 4RUNNER	\$7,988
8002A	2017 JEEP CHEROKEE	\$25,988
P9608	2018 CHRYSLER 300C	\$22,988
7978A	2017 NISSAN ROGUE.....	\$17,988
P9603	2019 TOYOTA CAMRY.....	\$20,588
P9604	2019 TOYOTA CAMRY.....	\$20,588

P9605	2019 TOYOTA COROLLA ..	\$15,988
P9606	2019 TOYOTA COROLLA ..	\$15,988
P9607	2019 TOYOTA HIGHLANDER	\$36,988
7703E	2013 TOYOTA FJ CRUISER	\$25,988
P9602	2017 TOYOTA TACOMA	\$29,988
P9597	2019 TOYOTA COROLLA ..	\$16,988
P9598	2017 TOYOTA CAMRY.....	\$18,588
P9599	2016 TOYOTA COROLLA ..	\$15,988
P9601	2011 FORD F150	\$16,988
7824B	2016 FORD EXPLORER....	\$23,988
7994A	2018 JEEP GRAND CHEROKEE	\$33,988
P9596	2017 TOYOTA COROLLA ..	\$13,988
7678A	2016 FORD EXPLORER....	\$24,988
7895B	2015 JEEP GRAND CHEROKEE	\$24,988
7991A	2013 ACURA ILX.....	\$10,988
7998A	2014 CHEVY IMPALA.....	\$11,588
P9594	2016 FORD EXPLORER....	\$26,988
P9557B	2016 DODGE GRAND CARAVAN	\$15,988
7636B	2018 GMC SIERRA 1500 ...	\$41,988
7981A	2018 KIA SPECTRA	\$34,988
7831A	2015 FORD FUSION.....	\$13,588
7786B	2017 CHRYSLER PACIFICA.....	\$19,588
P9590A	2013 HONDA CIVIC	\$11,988
P9593	2014 TOYOTA CAMRY.....	\$11,988
7593A	2015 CHEVY TAHOE.....	\$34,988
7357B	2013 TOYOTA PRIUS C	\$8,988
7822A	2013 TOYOTA PRIUS C	\$10,988

7822B	2016 TOYOTA SIENNA	\$22,988
P9592	2018 FORD MUSTANG	\$27,988
7827A	2016 CHRYSLER TOWN & COUNTRY	\$16,988
7766B	2013 FORD EDGE	\$13,988
P9580A	2017 CHRYSLER 300C	\$22,988
7892A	2018 TOYOTA C-HR	\$20,988
7540A	2018 TOYOTA 4RUNNER ..	\$37,988
7435A	2013 JEEP WRANGLER ...	\$23,988
7584A	2018 RAM 1500.....	\$33,988
P9587	2016 TOYOTA HIGHLANDER	\$33,988
P9547A	2011 DODGE GRAND CARAVAN	\$10,988
7708A	2017 SUBARU WRX.....	\$29,988
7833B	2015 GMC ACADIA	\$21,988
P9585	2013 TOYOTA 4RUNNER ..	\$21,588
7388A	2018 JEEP GRAND CHEROKEE	\$32,588
7352A	2017 CHEVY TRAVERSE ...	\$22,988
7334A	2016 JEEP GRAND CHEROKEE	\$28,988
7855B	2015 TOYOTA 4RUNNER ..	\$21,988
7692A	2013 TOYOTA TUNDRA.....	\$29,988
7825A	2017 HONDA CIVIC	\$19,988

FREE RECALL VIN CHECK!



PROUD WINNER OF THE PRESIDENT'S AWARD FOR THE 2ND YEAR IN A ROW!



TOYOTA
Let's Go Places

Doing Business the Right Way The Seeger Way



ENGINES FOR LIFE

Call for details
Non-Factory Lifetime Limited Warranty
Good at participating dealerships



SATURDAY SERVICE 8AM-4PM



EXPERIENCE THE LOOK
EXPERIENCE THE FEEL
EXPERIENCE THE ATMOSPHERE



800-844-6026

Next to Walmart, St Robert | 573-336-7111 | SeegerTOYOTA.net

SEEGER CARE*

200+ PREOWNED VEHICLES COME WITH SEEGER CARE!

- 1 **FREE** (3) SCHEDULED OIL AND FILTER CHANGES
- 2 **FREE** MULTI-POINT INSPECTION WITH EVERY OIL CHANGE
- 3 **FREE** EXTERIOR CAR WASH WITH EVERY SERVICE VISIT
- 4 **FREE** LIFETIME SAFETY AND EMISSION TESTING
- 5 **FREE** SAME-DAY SERVICE LOANER CAR
- 6 **FREE** TANK OF GAS

Service Only at Seeger St Robert/St Louis

*Does not include tax, title, and license. * Seeger Care offer good for Less than 85K Miles and Less than 10 years old Prices do not include any College Grad or Military Rebate. See sales rep to see if you would qualify for additional savings. Prices does not include \$199 dealer administrative fee. Cannot be combined with any other offer. Prior sales final. See dealer for details. Advertised vehicle may not be exactly as pictured and are subject to prior sale. We cannot be responsible for typography or photography.

Cutting **Land Pride**
GET WORK DONE.

RCR18 SERIES

ROTARY CUTTERS

20-65 HP 60", 72"- Widths

- Cat. 1 Hitch
- 2" Cutting capacity
- Fully welded deck
- Full length skid shoes



LP CONSISTENTLY LEADING THE WAY...

AGRI-ENTERPRISES
For Outstanding Products & Service
 1-1/2 Miles South Of Licking, MO On Hwy 63
 573-674-2203 • 1-800-653-7152
www.agri-enterprises.com

NORWEGIAN ELKHOUND PUPPIES: Cute, family raised on farm, very friendly parents. Will make good family pets. Starting at \$100. 417-241-0394, Hartville.

4 CHAIN LINK DOG PENS: 3 dog houses, 3 metal cages with trays, 3 plastic cages w/ doors. Make Offer. 636-239-4124.

CAST IRON WOOD STOVE: w/2 front cast iron bi-fold doors. \$150. 636-239-4124.

AKC GERMAN SHEPHERDS: 7wks, 9wks, 16wks. \$600. 417-260-0266.


LANDPRIDE RCF3010: pull type brush hog, 10'. \$5,900. 417-270-1505.

AMISH FORECART: Single or double, shafts & pole, rubber tires, hydraulic disc brakes, lights & newer marine battery. \$1,000. Grovespring. 417-533-9484.


26 ROUND BALES: Wrapped, mixed grass, 1st cutting. \$20 each. Good used lumber. Make offer. 417-532-8048.



VOTED #1 BEST Preowned Car Dealership



TIM'S USED CARS
 (573) 341-3828 • 1334 South Bishop (Hwy. 63) • Rolla, MO
 Next to Hwy. CC • www.tims-used-cars.com

 <p>2018 RAM 3500 TRADESMAN CREW CAB, DUALY, 4X4, 6.4 HEMI, AUTO, POWER EQUIPPED. ONLY \$33,900</p>	 <p>2015 RAM 3500 CREW CAB, DUALY, 4X4, SLT, BIG HORN, 6.7 DIESEL, AUTO, POWER EQUIPPED, NAVIGATION. ONLY \$26,500</p>
 <p>2011 CADILLAC ESCALADE ESV AWD, 6.2 V-8, LOADED WITH OPTIONS, 161,XXX MILES. ONLY \$15,900</p>	 <p>2016 CHEVY IMPALA LS 4 CYL, POWER EQUIPPED, 110,XXX MILES. ONLY \$9,900</p>

LARGE SELECTION OF CARS, TRUCKS, SUVs & VANS!

USED EQUIPMENT

920 Cat Wheel Loader

Gehl Silage Chopper
 7' Brush Cutter
 JD 10' Cultipacker
 3pt. 3 bottom plow
 12' Spring Tooth Harrow 3pt. 2 Disc Disc Plow
 Other Misc Equipment

For Outstanding Products & Service

AGRI-ENTERPRISES
 1-1/2 Miles South Of Licking, MO On Hwy 63
 573-674-2203 • 1-800-653-7152
www.agri-enterprises.com

3 HEALER PUPPIES: 12wks, males. \$50. 417-533-4994. Grovespring.

JOHN DEERE 535 ROUND BALER: monitor, kicker, net wrap. \$5,250. 573-765-4406.

Offering the Area's LOWEST METAL PRICES!



Pole Barn Packages

24'x32'x10' materials only	\$5,075	30'x60'x10' materials only	\$8,600
24'x40'x10' materials only	\$5,775	40'x60'x12' materials only	\$11,525
30'x40'x10' materials only	\$6,550		

Plus Sales Tax And Delivery.
Labor available at additional cost.
Call for quote.

Compare Before You Buy.

We Use Only The **Highest Quality** Materials!

ALL MATERIAL PACKAGES INCLUDE...

- ✓ #1 Yellow Pine Lumber
- ✓ #1-40 Yr. Painted
- Metal w/Screws
- ✓ 1-10' Overhead Door
- ✓ 1-36" Entry Door

Fully Insured

PORTABLE BUILDINGS

Rent to Own
No Credit Check



Custom Homes • Metal Roofs

29 Gauge

#1 PAINTED METAL

- ★ Lifetime Warranty - \$70.00 Sq.
- ★ 40 Year Warranty - \$67.00 Sq.
- ★ 20 Year Warranty - \$64.00 Sq.
- ★ 25 Year Galvalume - \$54.00 Sq.

Labor prices will be higher in locations over 75 miles from Marshfield, MO

Marshfield BUILDINGS

www.marshfieldbuildings.com

1049 SCHOOLVIEW DR.
Marshfield, MO



417-859-7744

Toll Free 1-866-859-7733

2013 MAHINDRA 4WD DIESEL TRACTOR: 30HP HST, 60 hrs, w/5' bush hog & 5' box blade. \$10,700. 573-637-2450, Lester-ville.

2007 TOYOTA CAMRY: 250,000 miles (Commuter Car), well maintained, gray color, good tires. REAL NICE CAR. \$2,500. 417-533-2228.

EVEREST ELITE HOLOFIL II Insulated sleeping bag by Slumberjack. (Dupont). \$70. Email Spiritfm89.9@gmail.com or 573-645-7876.

7 COWS FOR SALE: 5 are 2-3 stage, 2-open 1-calf. \$6,700 Rogersville, 417-753-2747, 417-766-1991.

VILLA HOMES IN ROLLA: Has NEW and USED Mobile Homes. Call David for info: 573-578-8072.

18 STUB GUARDS: for Hesston PT7 or 10 Haybine. \$15. Gerald, 573-764-2270.

Rotating Hay Carriage

Starting at \$4,995

Cowtown USA • 1-800-258-6898
I-44 & Hwy F • Exit 203 • Cuba, MO
View At cowtownusainc.com - See Video

BoatAngel

FREE 4-NIGHT VACATION!
Donate Car • Boat • RV • Motorcycle

1-800-CarAngel
www.boatangel.org

WEEKLY TRADER MAGAZINE

Vol. 26 November 07, 2019 No. 31

Published By
Lebanon Publishing Co. Inc.
PO Box 192, Lebanon, MO 65536
417-532-2800
www.myweeklytrader.com

Everything advertised in this publication must be made available for purchase, use or patronage without regard to race, creed, color, sex, age or national origin of the purchaser, user or patron. The Publisher will not be responsible for misinformation, misprints, typographical errors, etc. Opinions expressed are not necessarily those of the Publisher. All rights reserved. No part of this material may be reproduced by any means without permission in writing from the Publisher. We reserve the right to refuse any ad if we deem necessary. Our list and map indicate counties in which the Weekly Trader is delivered. The magazine is not necessarily placed in all communities in a particular county. A list of all retail drops for a county may be obtained by contacting the Weekly Trader office at PO Box 192, Lebanon, MO 65536.

HOLLYWOOD 4-BIKE HITCH MOUNT RACK: Excellent condition, Includes (2) Allen Stabilizer tension bars and keyed alike locking hitch pin and cable. \$175. Conway, 417-718-5347.

AUCTION REMINDER: Online Home Auction in Columbia, MO ends Thursday, November 21st @ 12:30pm. Atterberry Auctions. Please see our Auction Directory for more information.

AUCTION REMINDER: Secluded Home Online Auction ends Friday, November 22nd @ 12:30pm. Atterberry Auctions. Please see our Auction Directory for more information.

CLIPPER SEED CLEANER: \$150. 417-646-8807.

SET OF NYLON DOUBLE HARNESS: W/ collars. \$450. 417-533-9484, Grovespring.

AUCTION REMINDER: Real Estate & Estate Auction. Saturday, November 9th @ 9am. Foster Auction. Please see our Auction Directory for more information.

2004 HONDA PILOT: AWD, 3rd row seat, high mileage. Runs, drives & operates good. Sell or consider trade for pick-up. 417-599-8089.

MX5100 KUBOTA: 4wd tractor w/loader, low hours. \$21,500. 417-270-1505.

Buildings • Hunter's Cabins • Lawn Furniture

JAMCO BUILDERS

JAMCO Portable Buildings

800-688-2064 • 307 Enterprise Dr. • Seymour, MO • www.jamcobuilders.com

Rent To Own Plan

0% for 4 Years*

*with approved credit

Outdoor Wood Furnace

as low as **\$168** per month

HEATMOR MIDWEST

Licking, MO 65542
573-674-2962

OLD LINN CREEK, HA HA TONKA & CAMDEN CO BOOK "Before the Dam Water", by T. Victor Jeffries. \$3.50 plus \$2 if mailed. 417-532-2045, Lebanon.

COYOTE NX5010 CAB TRACTOR: 4x4, hydrastat trans, w/loader, 460 hrs, excellent condition. \$26,900obo. 417-293-1767.

RARE 1937 CIVILIAN CONSERVATION CORPS (CCC) 7TH CORPS AREA OFFICIAL MANUAL. \$20. 417-532-2045, Lebanon.

A&M SAWMILL: Buying Cedar Logs. Monday, Wednesday & Friday. 3626 S 21st Rd, Dunnegan, MO 65640. 417-754-1173.

LIKE NEW PEDESTAL: for front loader washer or dryer, 12"x24 3/8"x 27". \$50. Gerald, 573-764-2270.

AUCTION REMINDER: Multi-Estate Auction. Thursday, November 14th @ 9:21AM. Chupps Auction Co. Please see our Auction Directory for more information.

9 HEALER PUPPIES: 5 males, 4 females. 8 wks old. \$200. 417-533-4994. Grovespring.

NEW & USED PARTS FOR ANYTHING. 800-807-9612.

DEER RIFLE: 30.06, Savage model 110. \$300. Columbia, 573-999-1803.

AKC GERMAN SHEPHERD: Sable, 5months, male, Champion bloodlines. \$350. Edgar Springs, 573-308-6189..

1979 LITTLE RED EXPRESS: 39,700mi, all original, air. \$18,500. 573-518-4620. Bonne-Terre.

WANTED, TIMBER TO LOG ON SHARES: Honest, reliable, references. 417-533-4607, 417-664-1195.

HAY FOR SALE: Round and Square, call for prices. 417-345-5634

WHEEL FOR FORD 8N TRACTOR: 3"X 19". \$30. Gerald, 573-764-2270.



★ American Made Metal Roofing ★

40 Year Warranty Metal.....\$1.99 (\$62.18 Per Sq)



*29 Gauge 10 Year\$1.79 (\$55.93 Per Sq)

****While Supplies Last****

29 Gauge #1 Galvalume \$1.69....\$1.39 (\$43.44 Per Sq)

29 Gauge 40 Year ***Saddle Tan***\$1.69 (\$52.81 Per Sq)

- ★ 17 Colors To Choose From
- ★ 20 Years In Business
- ★ We Manufacture Our Own Metal and Trusses



3 Locations To Serve You!

6952 E. 7th St. Joplin, MO. 417-317-7961 | 1100 Pace Rd. Pocahontas, AR. 870-609-1900 | 35 Killdeer Rd. Seymour, Mo. 417-952-7143

*possibly not American made

Building In A Box

Stud Wall & Pole Barn Kits

	Non-Warranty Metal	10Year Warranty	40Year Warranty
24x30x8.....	\$3,350	\$3,700	\$3,850
30x40x10.....	\$4,950	\$5,350	\$5,600
40x60x12.....	\$9,300	\$10,000	\$10,200

Precut Packages Also Available

2010 FORD TRANSIT CONNECT



106,137 Miles, Auto, Air, Has Shelves.

JIM'S MOTORS OF ROLLA
573-364-5008

712 S. Bishop • Hwy. 63 South • Rolla, MO 65401

See Car Fax At:
www.jimsmotorsrolla.com

USED OAK BARN WOOD FOR BUILDING OR KINDLING. \$30. 417-293-7113, West Plains.

WHEAT STRAW. \$4 Bale, 20 or more, \$3.75. 573-378-7326.

LIONEL TRAIN SET: Steam engine, tender, caboose and other car, track and transformer. \$195. 573-364-7465, Rolla.

PUPPIES FOR SALE: Beagle/Dachshund mixed. Silver, Tri-Color and Chocolate colors. \$250 males, \$300 females. 417-322-0833.

Gooseneck and Winchester Star Pipe Cattle Trailers
the best in the business
HERE AND READY!!!!

Starting at **\$9,685**



Cowtown USA
 1-44 Exit 203 • 413 Daniels Rd.
 Cuba, MO • 573-885-6300
 www.cowtownusainc.com

BEAUTIFUL DOBERMAN PUPPIES: Born 8/26, one Red/Rust and one Black/Rust male. \$650. One Red/Rust female. \$500. Parents are Double Registered AKC & CKC. Puppies are CKC Registered. UTD on shots and come with Health Records. Tails docked and declaws removed. 417-531-0483.

MILLER 225 BOBCAT WELDER: W/323 hours, 150ft lead +/-, welding trailer with title. \$2,000. Richland, 573-512-2059.

BEEFALO, The Forage Fed Breed: weaning age bulls and heifers. \$950. 573-732-5763, Bourbon.

INTERNATIONAL SQUARE HAY BALER. Also JD square baler. 573-674-3601.

KUSTER LOGGING
BUYER of Standing Timber
Oak and Walnut

Dozing Now Available

417-259-0047

References Available



REGISTERED HEREFORD & ANGUS BULLS: Home raised, Some Show-Me Select Qualified. 573-701-7828. Belgrade

INTERNATIONAL 400 TRACTOR W/ LOADER: 573-674-3601.

AUCTION REMINDER: Online Auction in Columbia, MO ends Tuesday, November 12th @ 12:30pm. Atterberry Auctions. Please see our Auction Directory for more information.

CAT #12 ROAD GRADER: \$3,500. 417-664-2090.

AUCTION REMINDER: 2 Properties Online Auction, bidding ends Monday, Nov 25th. Atterberry Auctions. Please see our Auction Directory for more information.

POOL TABLES: Installations, moves, recoverers, repairs, accessories, etc. 573-646-1700.

★ A HERITAGE OF ★
QUALITY WHERE IT COUNTS



1023E SUB-COMPACT TRACTOR



\$99 per month¹

- Powerful Final Tier 4-compliant diesel engine
- New, easy-lift hood with dual gas-charged lift struts
- Auto-Connect™ mid-mower deck can be installed or removed in less than 5 minutes

5045E COMPACT TRACTOR

\$179 per month²

- 50 hp* engine
- Best-in-class visibility
- Thick comfortable seat
- 5-Year Powertrain Warranty*



Legendary Products. Extraordinary Service.

Find your local Heritage Tractor location or request a quote at HeritageTractor.com




(1) Offer valid on qualifying purchases made between November 1, 2019 to December 31, 2019. Subject to approved installment credit with John Deere Financial. Down payment may be required. Average down payment is 20%. \$99 monthly payment based on a purchase of \$10,419 with \$2,084 down payment or trade-in. 84 months at 0% APR. Taxes, freight, setup and delivery charges could increase monthly payment. Available at participating U.S. dealers. Prices and models may vary by dealer. Offers available on new equipment and in the U.S. only. Prices and savings in U.S. dollars. (2) Offer valid on qualifying purchases made between November 1, 2019 to December 31, 2019. Subject to approved installment credit with John Deere Financial. Down payment may be required. Average down payment is 20%. \$179 monthly payment based on a purchase of \$18,796 with \$3,759 down payment or trade-in. 84 months at 0% APR. Taxes, freight, setup and delivery charges could increase monthly payment. Available at participating U.S. dealers. Prices and models may vary by dealer. Offers available on new John Deere SE (45-75 hp) Utility Tractors and in the U.S. only. Prices and savings in U.S. dollars. *All SE Series Utility Tractors purchased new from an authorized John Deere Dealer come standard with a 5 year/2000 hour (whichever comes first) Powertrain Warranty. See the Limited Warranty for New John Deere Turf & Utility Equipment at dealer for details.

AUSTRALIAN SHEPHERD PUPPIES: out of working parents, shots-first round. 573-663-7459.

100+ NEW STEEL POSTS. \$2. 417-259-3437.

DARK BROWN LARGE STORAGE OTTOMAN: Or coffee table with lid. PERFECT. \$75. 417-588-2176.

40FT GOOSENECK DUALY TRAILER: good. \$6,000. 573-765-4406.

BRUSHOGS: 5 to choose from, 5ft-6ft, 3pt and/or pull. \$350/up. Disc 8ft tandem, like new. \$900. 417-753-2747/417-766-1991, Rogersville.

MEAT RABBITS FOR SALE: 417-664-5684.

WOOD FURNACE: heats whole house, blower, ash clean-out door, uses 2ft wood. \$575. 636-239-4124.

NEW HOLLAND TC-40 DIESEL M.F.D. TRACTOR: with New Holland loader. \$14,500. 573-765-4406.

AUCTION REMINDER: Online Real Estate Auction, ends Tuesday, November 12th @ 12:30pm. Atterberry Auctions. Please see our Auction Directory for more information.

3PT BALE CARRIER: \$100. Rogersville. 417-753-2747, 417-766-1991.



CAN YOU DIG IT?

POWER PROTECTION PLANS AVAILABLE

ZERO-TAIL-SWING COMPACT EXCAVATORS

Can you dig the all-new Zero-Tail-Swing Compact Excavators from Mustang? Built with powerful Yanmar engines, efficient hydraulics, and the new zero-tail-swing design, these compact excavators are truly groundbreaking.



1650RT 69 Hp Yanmar Diesel Engine, 19 GPM, Aux Remote, 6122 Operating Weight, 152" Operating Height **\$38,750**



350Z Yanmar Diesel Engine, 10.8 Gallon Fuel Tank, 7905 lb Operating Weight, 10'8" Digging Depth, 17'3.5" Max Reach, Hydraulic Thumb

36 Hrs - DEMO FULL WARRANTY

Price **\$43,500** or **\$375 /Day Rent**

Come and See Our Rental Fleet

Call Us For All Your Rental Needs



250Z EXCAVATOR
Price **\$36,500** or **\$300 /Day Rent**



1900 R Rent \$220.00 A Day
\$36,500 Reg. Price
\$27,500 Demo Model

DIAMOND R EQUIPMENT

6 Miles North of Freeburg, MO • 573-455-2617
19677 NW Outer Rd., Higginsville, MO • 660-584-8757
Located Next to Kleinschmidt's Western Store
www.diamondequipment.com
Open 6 Days A Week • Monday - Friday 8:00 am to 5:00 pm / Saturday - 8 am to Noon



BUILT RIGHT!
POLE BARN!
POLE BARN!
POLE BARN!

Alron Metal Buildings

35 Years Experience

Stud Wall Buildings

Allen Broeckelman, Lebanon, MO
417-288-1133

ACA REGISTERED LAB PUPPIES: good breeding stock, 6 months old. \$50. Hartville. Also mature dogs. 417-741-2198.

DARK BROWN LARGE STORAGE OTTOMAN: Or coffee table with lid, perfect. \$75. 417-588-2176.

FIREARMS: Professional Repairs and Restorations. Baron's Gunsmithing. 573-363-5801, Camdenton.

JOHN DEERE 2755: Diesel tractor, cab & cold air, 75hp, w/146 JD Loader, good. \$23,000. 573-765-4406.






NEW MAHINDRA ROXOR FRESH OFF THE ASSEMBLY LINE!!

- Steel Body no plastic to break
- 5 Speed Manual Transmission no belt to break
- Fully-boxed, ladder construction, steel truck-style frame
- Turbo Diesel 4 cycle engine which produces 144 ft lbs of torque and 3490 lbs of towing capacity to get your jobs done. • Made in Detroit
- 3 YEAR WARRANTY OR 12,000 MILES • Starting at \$15,999
- MADE IN THE USA

Visit us at www.cowtownusa.com

PULL BEHIND LAWN LEAF CATCHER: 38" and lawn dump cart. Both \$200. 636-239-4124.

2014 4DR CHEVY 4X4: One owner truck. \$19,900, 573-210-0595.

PINE LOG SIDING.. www.pineridgerustic.com 573-729-7226.

DYNO CHARGE 990 ELECTRIC FENCER: Solid state for 20 miles. \$50. 636-239-2695.

26 ACRES, 16x24 cabin, HH Road frontage, electric, telephone, open ground, no flooding, timber, fenced. One side, can sub divide. Farm, Hunt, 9 miles clear water lake. 4000 Ford Tractor. \$89,000. All good view site. 573-663-7769

COLE'S TRACTOR & EQP, INC.

1 mile east of Farmington on Highway 32 • 573-756-4353

LS MT235E 35HP 4WD DIESEL TRACTOR PACKAGE

No Payment for
90 DAYS*
Limited Time Offer

- With Deluxe Skid Steer
- QA Bucket Front Loader
- 5FT Brush Hog
- 5FT Box Blade
- AND 7000LB GVW Deluxe
- Car Hauler Flatbed Trailer

★★ **SPECIAL PROMOTION** ★★
**BUY THIS PACKAGE AND YOU GET A FREE PRESSURE
WASHER WITH 2 RATCHET TIE DOWNS!**

PLUS YOU GET THE BEST 6 YEAR PARTS AND LABOR WARRANTY!

ALL THIS FOR ONLY \$21,495
Financing Available on Location!



* 4.99% with a 90 Day No Payment option for the holiday shopper. Must finance thru Wells Fargo Equipment Finance. Based on buyers qualification. Limited Time offer. See Dealer for details.

SNOWBLOWERS: 1-Snapper, 1-Craftsman, both like new, might trade for guns, \$225/each. Springfield, 417-833-8351/ 417-234-0629.

M7040 KUBOTA 4WD LOADER: bucket, 2300 hours, double remotes, power reverser, open station. \$21,500. 573-539-2273, Barnett.

BORDER COLLIE PUPPIES: Dewormed, first shots. \$150. working parents from Canada. Amos, 20269 Maries CR635, Dixon, MO 65459.

AUCTION REMINDER: Online Auction, Starts November 4th and ends November 14th, Lorts Auction. Please see our Auction Directory for more information.

2005 IMPALA: PW, tilt, cruise, AM-FM/CD, 3.4, cloth seats, 212,000 miles. \$1,750. 636-931-2451, Festus.

AUCTION REMINDER: Monroe County Land and Estate Auction, Saturday, November 9th @9am. Marquette Auction Service. Please see our Auction Directory.

2001 IMPALA: Runs good, body rough. \$500 OBO. 1999 Cavalier: Runs good, paint fair. \$750 OBO. 573-257-0782.

2012 29' COACHMAN CATALINA DELUXE: 29' Bumper-pull travel trailer w/ super slide. Very good condition, garaged. \$12,500. 417-989-1867, Dora.

AUCTION REMINDER: Saturday, November 9th, 10am. Buckner & Gately Auctions. Please see our Auction Directory for more information.



NEIGHBORHOOD'S HOME
IMPROVEMENT STORE
Where QUALITY Doesn't Cost MORE

19850 HOUSTON RD.
LEBANON, MO 65536
417-533-5080
1-888-776-0038
www.neighborhoods-inc.com

A Beautiful Kitchen... Cost Less Than You Think!!!

VALUE, QUALITY & SELECTION

- Elegant design at affordable prices
- Bring in your measurements for a FREE estimate!



ALL Wood Cabinets FOR LESS

1000's of Cabinets In Stock Ready for Immediate Delivery!

BIG TEX 140T
OVER THE AXEL, POWER TILT,
8.5 FOOT WIDE, 24 FOOT LONG, 7K AXELS.



Like Us On facebook

JIM'S TRAILERS I-44 at Exit 208 • Cuba, MO
www.jimsmotors.com
TRUCKS and TRAILERS (800) 897-9840
Great Service! Great Prices! Since 1957

L4400 KUBOTA: 4wd tractor with loader and 3rd function valve, Low hours. \$22,500. 417-270-1505.

CDL IN ONE DAY!!: Family owned and operated, Insured, Over 10 years of experience, Training available for all states, Short wait time for appointments, Contact us today to schedule your appointment!! **CREDIT CARDS EXCEPTED.** (573-353-2853).

\$19,900 USED DOUBLE WIDE: nice 3 bedroom, 2 bath delivered & set-up.....Hurry, This house will **NOT** last long! Call now 573-657-2176 amegamobilehomes.com

BULLS- Limousin- Limflex- Red Angus registered bulls for sale. 13-18 months old. AI sired & semen tested. Contact Josh at 417-664-0913.

SNOWBLOWER: Craftsman, 46", like new. \$200. Rogersville, 417-753-2747, 417-766-1991.

10 TASTE OF HOME Hardback cookbooks. \$2.50 each or all for \$20. 417-532-2045, Lebanon.

AKC LAB PUPPIES: 5/male, 4/female, all yellow, shots and wormed, ready, parents on premises. \$400, call/text for pics. 417-349-0919.

WANTED CATTLE FARM TO LEASE OR PURCHASE: within 20 miles of Belle, Mo. 573-578-3945.

COMPLETE SCRAGG & PALLET OPERATION: Property, Equipment, Timber contracts, Lots more, Selling due to health reasons, Too Much to List, may separate & owner finance. 417-650-0402

DOUBLE SET OF WHEEL CHOCKS: Color is Safety Yellow. \$30. 636-239-2695, Washington

BS201 BALE SPIKE: w/Bush Hog quick tach system. \$400. 417-270-1505.

WR CASE & SONS Cookbook & Historical Companion. \$7.50. 417-532-2045, Lebanon.

AUCTION REMINDER: Saturday, November 9th @ 10am, Wulff Auction. Please see our Auction Directory for more information.

KUBOTA TRACTOR M7060HD: front loader, 8' brush-hog. \$35,000. 417-300-5146, Pleasant Hope.

AUCTION REMINDER: Estate Auction. Sunday, November 10th @ 1pm. Nance Auction. Please see our Auction Directory for more information.

AUCTION REMINDER: Special Sales Coming Up. Cattle Sale every Monday at Noon. Goat, Sheep & Hog sale 2nd Tuesday of Month @ 6pm. Salem Livestock. Please see our Auction Directory for more information.

GUARDIANWARE: 1930-1950's, Turkey roaster with lid. \$195. 573-364-7465.

\$17,900, 2010 DODGE CARAVAN: Wheelchair accessible van only, 72,000 miles, very good condition, power wheelchair included. 573-216-8844.

24X48 1995 REDMAN: 3 bedroom 2 bath, one owner, very clean, total electric, white vinyl, Storm King White metal roof, central air, skirting, delivered, set-up. Guaranteed. \$24,995. Call Charlie 573-786-4003, Steelville.

OLIVER TRACTORS. 77NF, \$2,500. 37 Hart/Parr, NF, \$1,750. 88WF, \$2,000. 417-865-4173, 417-839-5248. Springfield.

NEW TURKEY FRYER: With all accessories. \$100. 573-327-9068.

CASE 580C: Diesel Backhoe, Loader. \$8,850. 573-765-4406.

SHORTBED PICK-UP BED: step-side, Z71, older model truck. \$200 or trade. 573-734-2822.

AUCTION REMINDER: Saturday, November 2, 9am. Brehe Auction. Please see our Auction Directory for more information.

32FT INLINE BALE TRAILER: \$3,500. 573-765-4406.



FARM FEST PRE-SALE SAVE \$300
Limited Quantities Available
 Now installing beds in both locations!
GET YOUR TRUCK OUTFITTED WITH A CHISHOLM TRAIL HAYBED TODAY!
LET US BE YOUR PEOPLE!!

WESTGATE TRAILER & EQUIP.
417-351-6974 • 417-926-7733
 www.westgatetrailer.net
 8920 W Business 60 • Mtn. Grove, MO
 7136 W Farm Road 140 • Springfield, MO
FULL SERVICE SHOP
 OPEN: Mon.-Fri. 8-5 And "YES!" Sat. 8-Noon!

EMMONS RESOLUTIONS LLC

- > Brick Restoration
- > Tuck Pointing
- > Sealing
- > Caulking
- > Red Iron Construction
- > Framing

Colton Emmons 417-664-8350
 Eddy Torrey 417-630-2670



MIDWEST CONSTRUCTION
 Free Estimates!

- Pole Barn • Garages • Framing
- Remodels • Roofing • Concrete
- Decks & Porches

Contact Abner Glick
417-664-1794

JERSEY HEIFER: \$600. Jersey Steers. \$500 each. Jersey Steers, \$250 each. Steelville, 573-775-2564.

ACA REGISTERED BLACK POMERANIAN: Male, Intact, weighs 6lbs, 4yrs. \$275 Firm, Cash only. Ask for Amy, 417-426-5767, Eldridge.

110 ELECTRIC HEATER: New, Lasko. \$125 or trade. 573-327-9068.

1998 CHEROKEE GN: aluminum 3 horse slant with dressing room, collapsible rear tack, removable rear post. ~ 17' L x 7' H x 6'6" W. \$10,500. OBO 417-880-0025 Niangua

WINNEBAGO SIGHTSEER 2004 RV: 35' of luxury, excellent condition, well maintained, near new tires and bed. \$16,000. 870-710-8217, Mammoth Springs, Arkansas.

HAY FOR SALE: Square bales/\$4.50, Round bales 4x5/\$50, good mixed grass hay, no weeds. 573-368-1794.

IHC 1086 DIESEL CAB & COLD AIR TRACTOR: \$8,750. 573-765-4406.

FRESIANS AND ARABIANS: For sale and Stallion service. Piglets \$30. Hogs and Nubian goats. Bees and equipment. Raymondville, 573-548-0219, 931-292-0151.

AUCTION REMINDER: Auction, Saturday, November 9th, 9am, Lorts Auction. Please see our Auction Directory for more information.

2004 OPEN RANGE FIFTH WHEEL CAMPER: 34', all weather, in good condition. \$10,500. Lebanon, 417-718-5520.

CHECKERED WALNUT WOOD STOCK PISTOL GRIP: for Marlin Model 336 or 1895. \$100. Washington. 636-239-2695.

PYRENEES/ANATOLIAN PUPPIES. Cuties! Excellent pets/guard/sheep dogs. \$250. In time for Christmas! Reserve yours now. 417-322-0161.



Wright Spray Foam Insulators, Inc.
 Commercial & Residential
Call for FREE Estimates!

Mose Gingerich 417-746-1953
 B. Eli Yoder 417-746-4932

1965 FORD 1 TON TRUCK: 12' flatbed. \$3,500. 1959 Chevrolet 38 1 ton truck: 10' dump bed. \$4,500. Best offers considered, 573-729-0272, Salem.

Awesome Truck Load Sale

- 1st Quality OSB Sheathing in 7/16" thickness with straight edges - 7.75 each
- 1st Quality OSB Tongue and Groove 3/4" Sheathing - 16.50 each
- 6x6 Treated Posts up to 24' lengths - 2.00 per running foot



DG Lumber
 in Norwood, MO
 2440 S. Highway E
417-259-0994
 We Offer Good Value With Great Customer Service

FORD JUBILEE INDUSTRIAL FRONT LOADER: Wide front, 3pt, runs and brakes work, power steering not working. \$1,800. Rogersville. 417-753-2747/417-766-1991.

Now Stocking
Large Selection
 of
Plumbing
 PEX, PVC, & CPVC
 and
Electrical
 Supplies!



STOCKING
 Porter Paints
PPG
 Commercial Paints
Sikkens
 Stains

Seymour, Missouri 417-935-4201

Sale Ends November 30, 2019



Pole Barns & Post Framed Buildings!

Call for free quote, brochure & color chart.
 Other sizes also available.

23'x32'x10' \$4,099 Material Only \$5,319 Labor Included	23'x40'x10' \$4,799 Material Only \$6,329 Labor Included	30'x40'x10' \$5,699 Material Only \$7,699 Labor Included	40'x60'x12' \$10,099 Material Only \$14,359 Labor Included
---	---	---	---



NOBODY, BUT NOBODY BEATS OUR PRICES!!!

10 ft. Slider • Engineered Trusses 8' O.C. • 2x6 Treated Bottom Wrap • Screws • 2x10 Top Wrap • 2x4 Purlins • Full 29 Gauge Steel • Plus 3 ft. Entry Door with Lock
 OPTIONS: Sidewall Heights on all Buildings 10', 12', 14' & 16'. Overhead Garage Door. Skylights. Insulation. Wainscoting. Insulated Vinyl Windows. Cupolas. Labor Rates Slightly Higher over 50 Miles from Seymour. Call for YOUR FREE QUOTE TODAY!!!

PAINTED WHITE, GREEN OR TAN METAL	\$69.99
10' - \$22.10 12' - \$26.52 16' - \$35.36	
MIX & MATCH METAL	\$39.99
8' - \$10.13 10' - \$12.67 12' - \$15.21	
GALVALUME METAL	\$52.50
10' - \$16.60 12' - \$19.92 16' - \$26.56	
GALVANIZED CORRUGATED METAL	\$56.75
8' - \$9.84 10' - \$12.30 12' - \$14.75 16' - \$19.67	

IN STOCK

40yr Painted Metal
\$72.99

KNOTTY PINE DOORS
 Starting at
\$109.99

LP SMARTSIDE T-5 LAP B GRADE \$43.59/SQ

Car Siding!
 1x6 White Pine Siding **43¢** in ft
 1x8 White Pine Siding **54¢** in ft
 * 4 Profiles to choose from!
 Broken Bundles Add 10¢ Per Ft.

4x8 Sheeting
 Less than full units Add \$1 per sheet
 3/8" Beaded Paneling \$15.99
 5/8" T111 Siding \$19.99
 Paneling \$9.99
 1/2" Plywood \$19.99
 3/4" Plywood \$23.99
 3/16 Pegboard \$12.99

Sales and Servicing

PROFESSIONAL DONE RIGHT

NEW PACKAGE HOMES

2x6—16" on center-Exterior Stud Walls
 Residential Roof Trusses-2' on center
 4/12 pitch with 1' over hang
 40 year Painted Metal roofing in 20 Different Colors
 Profile Ridge Vent - Ventilated Ridge Cap
 Vinyl Center Vent Soffit
 Color Matched Metal Fascia & Gable Trim
 2 - 3' 6 Panel Entry Doors
 4 - 3'x4' Vinyl Insulated Windows

Stock 5/8" T111 Wood Siding w/1x4 Pine Window & Door Trim - or -
 7/16" OSB & House Wrap ready for other finish options

ALL FIGURED FOR SUITABLE CUSTOMER SUPPLIED SLAB OR SUB-FLOOR

Price for Basic Materials Package & Labor

20x24(480 sq. ft.)	20x32(640 sq. ft.)	20x40(800 sq. ft.)	25x40(1120 sq. ft.)	25x48(1344 sq. ft.)
\$9,050	\$10,615	\$12,119	\$15,242	\$17,075

REAL WOOD SIDING
 2x6 Log Siding - 1.09¢ In ft
 1x8 Beveled Cedar from- 64¢ In ft
 5/8 T1-11 Siding from \$19.99

DECK PACKAGES
 Materials Only

8x6\$199.99	10x12\$419.99
8x8\$239.99	10x16\$549.99
10x10\$349.99	12x12\$499.99
12x16\$649.99	

QUAKER Now Stocking Quaker Vinyl Windows

2030 \$ 99.99	3030 \$119.99
3040 \$129.99	3052 \$145.99
3040Twin \$279.99	3052Twin \$314.99

LUCKY DISCOUNT LUMBER
 417-935-4201
 455 State Hwy C • Seymour MO 65746
 www.luckydiscountlumber.com

*Some restrictions apply see store for details

BYLER SUPPLY

the builder's choice!

DELUXE BUILDING PACKAGES



24x40x10	Galvalume	\$5,797.55
	Painted	\$6,401.76
24x32x10	Galvalume	\$5,616.66
	Painted	\$6,098.95
30x40x10	Galvalume	\$6,430.69
	Painted	\$7,099.08
30x40x12	Galvalume	\$6,886.06
	Painted	\$7,598.22
40x60x12	Galvalume	\$11,272.16
	Painted	\$12,461.71

All Buildings Quoted Have #2 Lumber And #1 Galvalume Or Limited Lifetime Painted Metal

All Buildings Are Heavy 29 Ga. Metal, Three 2"x6" T&G Splashboards, All Poles 5"x5" Or Larger, CCA Treated, Fully Trimmed With One 3'x6' Walk-Through Door & One Large Sliding Door.

Plus Tax. Labor & Delivery Available On All Building Packages. Prices may vary due to local code restrictions.

DECK PACKAGES AVAILABLE AT BYLER BUILDING SUPPLY



Roof Is Optional
Additional Sizes & Custom Shapes Available!
8x10 • 8x16 • 10x14 • 12x16

CALL FOR PRICING!

- 1 Set of Steps
- Handrails
- 2x2 Balusters
- All Deck Boards & Railing Screwed, Up To 4' High, All #2 Treated

Labor & Material INCLUDED!

Metal Roofs Designed To Look Great On Your Home!

HEAVY 29 Ga. METAL # 1
Limited LIFETIME WARRANTY
29 Ga. & 26 Ga. Painted

CUT TO LENGTH PANELS



NEXT BUSINESS DAY SERVICE
Call for details.

\$48.50



Ask About Our Quick Service.

Over **20** Colors and Several Styles To Choose!

GALVALUME METAL UNPAINTED 25 YEAR WARRANTY

#1 Standard Panels, 29 Ga.

Good quality, quick service



BYLER BUILDING SUPPLY, LLC



2 1/2 MILES EAST OF SEYMOUR ON 60, 1/4 MILE NORTH AT AUTO SALVAGE WWW.BYLERSUPPLY.COM
877-556-8855 MON.-FRI. 7:30-5 SAT. 8-12 FAX NO. 417-935-2995 417-771-3100

VISIT US AT WWW.BYLERSUPPLY.COM

ROME 8FT OFFSET DISK: \$3,750. 573-765-4406.

MINT WINCHESTER MODEL 63. \$1,200. 573-346-7575.

2008 GMC ACADIA: new tires. \$3,200. 417-880-7782.

IHC 806 DIESEL TRACTOR W.F. 3PT w/ LOADER: \$7,800. (573)765-4406.

ADORABLE MALTESE PUPPIES: \$400. 417-664-9565.

VALVE GRINDING MACHINE: with all hardware. \$200 sale or trade. 573-734-2822.

Starnes Auto LLC
 22115 Rt. 66 • Lebanon, MO 65536
 417.588.3159 Office • 417.718.2707 Cell
 www.starnesauto.com

2002 CHEVY S-10 PEWTER, REG CAB, 2 WD, 5 SPEED, 254,XXX MI	\$2,400
2002 TRAILBLAZER WHITE, 183,XXX MILES	\$1,850
2002 CHEVROLET AVALANCHE GREEN, GOOD TITLE ,192,XXX MILES	\$5,200
2003 CHEVY S10 BLUE, 2WD, 103,XXX MILES	\$3,500
2003 CHEVY SILVERADO Z71 WHITE, EXT CAB, 4X4, 230,XXX MILES	\$5,200
2003 GMC YUKON WHITE, 4X4, 210,XXX MILES	\$4,850
2005 CHEVY SILVERADO HD EXT CAB, LONG BED, 8100, 210,XXX MILES	\$7,250
2005 GMC ENVOY SILVER, 2WD, 172,XXX MILES	\$2,650
2008 PONTIAC G6 BLUE GOLD, 215,XXX MILES	\$2,200
2011 GMC ACADIA SLE CHARCOAL, 110, XXX MILES	\$8,500
2011 CHEVY MALIBU LS WHITE, GOOD TITLE, 90, XXX MILES	\$6,200
2012 CHEVY MALIBU LT RED, 120, XXX MILES	\$5,850
2014 CHEVY MALIBU GOLD, GOOD TITLE, 59,XXX MILES	\$9,200
2014 TOYOTA SCION XB WHITE, 21,XXX MILES	\$9,850
2015 NISSAN FRONTIER CHARCOAL, 73,XXX MILES, GOOD TITLE	\$14,950
2017 CHEVY IMPALA LT BLACK, V6, 47,XXX MILES	\$14,500

WE DO ALIGNMENTS!

BRAND NEW INTERTHERM ELECTRIC FURNACES: For mobile homes. \$550. Factory Warranty. Call Charlie 573-786-4003, Steelville.

AMERICAN BULLDOG PUPPIES: 573-548-2428, 573-453-8376.

3150 15ft. Flex Wing with Chains & Lam Tires

Only \$13,500

*Financing Available. See Dealer for Details.

WCT Farm & Lawn LLC
 3299 Evergreen Rd., Strafford, MO
 417-859-4311
 www.wctfarmandlawn.com

TRUCK LOAD OF FLEA MARKET & AUCTION ITEMS: \$200 or trade. 573-327-9068

2000 S-10 PICK-UP: Regular cab, 158,000miles. \$3,200. 417-532-4108.

OPEN AMISH BUGGY: 1 seat, fiberglass shafts, new brakes, new cushioned seat. \$650. 417-533-9484, Grovespring.

JOHN DEERE HX-10: Pull-type brushcutter. \$4,200. 573-765-4406.

1964 FORD TRACTOR: Super Dexta, 4 cylinder diesel, runs but needs restored. \$900 OBO. 417-679-4355.

9 RED ANGUS BULLS: registered, 2 1/2 yr old. 573-300-8112, after 7pm 573-593-4299.

TAKUCHI 135 DIESEL EXCAVATOR: W/ hyd thumb. \$15,000. 573-765-4406.

ALLIS CHALMERS WD: gas, XL cab, wide front, PS, 3pt, loader w/forks, good tires & paint. \$3,000. Rogersville. 417-753-2747, 417-766-1991.

GIBSON HEATING & COOLING UNIT: Working condition. \$400. Whirlpool 25' cu ft side-by-side refrigerator freezer, excellent condition. \$400. Whirlpool, 40gal electric water heater, extra heat elements. \$100. Kenmore Elite dishwasher. \$25. GE Dryer \$25. Will negotiate, make offer. 417-241-0394, Hartville.

JOHN DEERE 567 ROUND BALER: monitor, kicker, wide pick-up, cover wrap. \$9,650. 573-765-4406.

INTERNATIONAL TRACK LOADER TD9: W/clam shell bucket, excellent shape. \$7,950. 573-377-4872, leave message.

2000 FORD EXPEDITION: 4x4, Eddie Bauer Edition, 190,000mi, over \$2000 new parts. Asking \$3,300 OBO. 417-848-8754.

NOTES

AUCTION REMINDER: Land/Home Auction ends November 20th @ 12:30pm. Atterberry Auctions. Please see our Auction Directory for more information.

BLUE-EYED BOBTAIL CATAHOULA PUPS: 5 Months. \$50. 417-543-4816.

HIGH COUNTRY
Timber & Stone LLC

573-674-3979 • 573-247-3989
11749 Crest Ln., Licking, MO

2018 JOHN DEERE 3025 4WD TRACTOR: loader, bale spike, 6' bushhog, yard trailer, John Deere fertilizer spreader w/3pt attachment, very low hours, still under warranty, Always garage kept. \$16,500. 573-247-0084, West Plains.

AKC GERMAN SHEPHERD PUPPIES: UTD, vet-checked, large breed. 417-589-2039.

GERMAN SHEPHERD KENNEL REDUCTION: Good breeding stock. \$50. Also pets. Hartville, 417-741-2198.

BLUE HEELER PUPPIES: Good working stock, UTD. \$150. 417-664-5926.

OLD SCHOOL ENGINE ANALYZER: \$150 or trade. 573-734-2822.

Barnett Repair 18425 Buttercup Rd
Barnett, MO 65011
573-392-3050

- ENGINE OVERHAULS
- TRANSMISSION REPAIR
- GENERAL REPAIR ON FARM MACHINERY

\$30 HOUR
Owners:
Paul & Levi Leinbach

2 BARREL WOOD STOVE: Good Condition. \$80. 636-239-4124.

WANTED PINBALL MACHINES. 573-424-7200.

LEBANON HISTORY BOOK-A PART OF OUR LIVES, 1949-1976. \$10. 417-532-2045.

TRACTORS: Massey Harris-30, w/3pt lift. \$2,200. Farmall-H w/triploader bucket and Bushhog. Only \$2,500. 417-848-8754.

R & A FARM LLC

Trailer Repair

▷Welding ▷Wiring
▷Portable Welding

417-664-5954 • 30566 HWY BB LEBANON
FB: R&A FARM LLC • ROBERT BARBEAU

COWBOY CORGI PUPPIES: 6 wks, ready to go. \$300. 417-241-1216, Seymour.

BOSTON TERRIER PUPPIES: 573-548-2428, 573-453-8376.

2017 FORD ESCAPE: like new, 7,792miles. \$15,000. 417-818-5369

MODULAR STOCK SALE - It is time to move our inventory. **TRUE MODS -** Save Thousands. Call Marla, better than 20 years experience. 573-657-7040, chateauhomes.net.

6"x52' TRANSPORT AUGER 573-437-2076.

CUSTOM SAW MILLING: Lebanon. 417-533-4607, 417-664-1195.

BUTLER LOGGING

WHEN QUALITY COUNTS

ALL SPECIES OF TIMBER REFERENCES AVAILABLE

SAM BUTLER OWNER 417-448-9323

JOHN DEERE HX 15 FT: hyd fold brush-cutter. \$9,750. 573-765-4406.

MODEL A REAR CAR AXLE. \$150. 417-293-7113.

We Specialize in Selling Agricultural and Recreational Farms!



MOSSY OAK
PROPERTIES
OF THE HEARTLAND
 Land & Lakes Properties
 America's Land Specialist

CALL US TODAY!!!

Rolla Office:

12647 S. Hwy 63, Rolla • 573-308-4868

Cole Camp Office:

14981 Centerline Ave, Cole Camp • 660-668-4868

MOlandandLakes.com • 660.668.HUNT



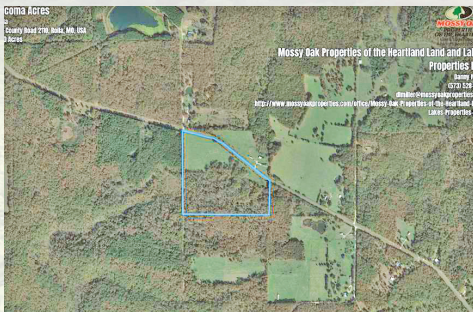
Morgan Co-584 Acres **\$960,000**

Combination Farm that has right at 100 acres of open ground, perimeter fenced, and would and does support several head of cattle. There is 3 older barns for hay storage or to get the cows out of the weather. Property has a spring and a creek in the south east portion of the farm. Very good deer and turkey hunting. You cannot come to this property without seeing them! The north portion has some pretty good timber, and some thick bedding areas. It has paths made years ago by logging , so trails are already in place. It has good county road frontage, behind a locked gate for privacy, this farm in sandwiched between bigger farms, so pressure won't be an issue. Only 10 minutes from Stover, Mo. For more information call **Mike Stoner at 573-774-9775** mstoner@mossyoakproperties.com



Pulaski Co.-1 Acres **\$8,500**

This one acre lot has electricity on site and the owner has installed more than 150 feet of lateral line for sewer. Located at the corner of State HWY 133 and Crest road the lot would make a great site for a home or an outstanding site for a convenience store. Easy access due to the location and proximity to Dixon, Missouri. the price is right so Call **Danny L. Miller at 573-528-1489** or email at dlmiller@mossyoakproperties.com for a showing.



Dent Co-32 Acres **\$56,000**

Northern Dent County property with one quarter mile State Highway frontage now on the market. Thirty two acre (with an adjoining 40 acres also available) mix of open field and oak timber bordering the R. F. Clement Missouri Department of Conservation five hundred twenty acre tract. Whitetail deer and turkey are in abundance and the parcel is only fourteen miles from Rolla, Missouri. A small pond provides water for the wildlife and the hay field is loaded with clover.. Secluded and quiet, yet easy access makes this a very attractive location for a new residence or hunting base camp. For a viewing call **Danny L. Miller at 573-528-1489** or email at dlmiller@mossyoakproperties.com



Benton Co-6 Acres **\$145,000**

Nice 3BR, 1BA home on 6 acres! Vinyl & brick exterior, metal roof, covered front porch & covered deck in back. Huge detached 36x30 4-car outbuilding w/roll-up doors. Fish cleaning station with standing shower and lavatory; nice peaceful area. Open floor plan in living area; all tile flooring throughout home. Call today for an appointment to see this affordable property! Owner has seen and harvested whitetail deer & turkey. Lincoln school district in Benton County close to Truman Lake for freshwater fishing. Call **Aleshia Gillespie 573-552-5401**

\$2,500 - \$11,000 LOT

Lindsay Chevrolet & Lindsay Ford

Mon.-Fri. 8 am - 7 pm
Sat. 8 am - 5 pm
Not responsible for typos.
* with approved credit

417-588-7995

West City Route 66
& South Monroe
Lebanon, MO

Bobby Rogers, Manager • Aaron Wehner, Finance • Mike Forner, Steve "Whitey" Helton, Larry Davis, Sales

TRUCKS

LT28796A2	2005 DODGE DAKOTA CREW 2WD, BLUE	\$5,900
LT7302B	2010 FORD F150 CREW V8 4WD, TAN	\$13,900
LT7364A1	2014 DODGE RAM REG CAB V6, AUTO, 2WD, RED	\$10,500
QT75625	2004 TOYOTA TACOMA EXT CAB V6, AUTO, SILVER	\$9,750
QT75567	2005 DODGE RAM CREW V8, AUTO, 4WD PURPLE	\$9,800
QT75455A	2006 DODGE RAM ST REG CAB V8, AUTO, 2WD, WHITE	\$5,950
QT75587	2007 CHEVY SILVERADO LT EXT CAB RED	\$8,900
QT75552	2007 DODGE DAKOTA SLT V8, AUTO, 4WD, BLACK	\$8,200
QT75635	2007 CHEVY AVALANCHE LT V8, AUTO, 4WD, MARRON.....	\$11,400
QT75637	2009 FORD F150 REG CAB V8, AUTO, 2WD, RED	\$10,900

CARS

QC75622	2012 FIAT 500 SPORT 4CYL, AUTO, FWD, BLACK	\$7,400
QC75616	2012 HYUNDAI VELOSTER COUPE, 4CYL, 5SPD, RED	\$10,350
QT75509	2012 KIA SOUL 4CYL, 5SPD, FWD, BLACK	\$5,900
QC75547	2012 CADILLAC CTS V6, AUTO, FWD, SILVER.....	\$7,900
QC75569	2013 FORD FUSION 4CYL, AUTO, FWD, WHITE	\$8,200
QC75584A	2013 FIAT 500 POP 4CYL, AUTO, FWD, BLACK	\$7,900
QCS7473A	2015 FORD FOCUS SE 4CYL, AUTO, FWD, RED	\$8,900
QC75574A	2015 CHEVY CRUZE LT 4CYL, AUTO, FWD, GREEN	\$9,900

SUVS & VANS

LT28801A	2008 BUICK ENCLAVE CXL V6, FWD, DARK CRIMSON	\$6,900
LT28772B	2012 NISSAN ROGUE 4CYL, AWD, WHITE	\$8,300
LT28824	2012 CHEVY TRAVERSE V6, AWD, SILVER	\$10,600
QT75614	2006 HUMMER H3 5CYL, AUTO, 4WD, BLUE	\$9,400
QT75566	2007 TOYOTA RAV 4 SPORT 4CYL, AUTO, FWD, WHITE	\$8,900
QT57457B2A	2011 TOYOTA SIENNA LE V6, AUTO, FWD, TAN	\$8,700
QT75609A	2011 FORD ESCAPE XLS 4CYL, FWD, WHITE	\$7,150
QT75539A	2013 FORD ESCAPE SEL 4CYL, AUTO, 4WD, WHITE	\$11,700
QT75366A	2013 SUBARU OUTBACK PREMIUM 4CYL, AUTO, BLUE	\$7,900
QT75636	2013 FORD EXPLORER XLT V6, AUTO, 4WD, WHITE	\$11,900
QT57729B	2013 FORD FLEX SE V6, AUTO, FWD, BLACK	\$11,900
QT57646B	2013 JEEP PATRIOT SPORT 4CYL, AUTO, 4WD, GREEN \$	9,400
QT75628	2013 FORD ESCAPE SE 4CYL, AUTO, FWD, MARRON	\$10,900
QT75641	2014 MITSUBISHI OUTLAND 4CYL, AUTO, FWD, BLACK	\$8,600
QT75640	2014 DODGE JOURNEY SE 4CYL, AUTO, FWD, BLUE	\$8,900
QT75495A	2016 JEEP RENEGADE LATITUDE 4CYL, 5SPD, 4WD, GRAY	\$13,400



QT57685B2 **16 TRACKER 18X60 GRIZZLEY**
60HR, 4 STROKE, MERCURY, TILT & TRIM,
TROLLING MOTOR & FISH FINDER **\$9,700**

CARS

LC28795	2013 CHEVY IMPALA LS V6, FWD, BLACK	\$9,800
LC28713	2014 CHEVY CRUZE LS 4CYL, AUTO, RED	\$8,800
LC28811	2014 NISSAN VERSA S 4CYL, AUTO, SILVER	\$6,700
LC28803A	2014 CHEVY IMPALA LS V6, AUTO, FWD, WHITE	\$8,800
QC75331	2003 FORD T-BIRD V8, AUTO, COUPE, GRAY	\$8,900
QC75528A	2005 CHEVY MONTE CARLO LS V6, AUTO, GRAY	\$5,900
QC75533	2010 FORD TAURUS SHO V6, AUTO, FWD, BLACK	\$9,200
QC75632	2012 CHRYSLER 200 LIMITED 4CYL, AUTO, FWD, BLUE.....	\$8,900

WWW.LINDSAYAUTOGROUP.COM

Which Kubota Is Right For You?

Kubota THE RIGHT EQUIPMENT IS RIGHT AROUND THE CORNER. Kubota

L2501 DT PACKAGE DEAL

25HP Kubota diesel engine***
4WD, Ag Tires, 18' Trailer,
5' Box Blade, Kubota Loader,
5' Land Pride Brush Hog,
6 Year Power Train Warranty****
**\$0 Down, 0% A.P.R.
for 60 months****
\$20,995

**ONLY \$249*
per mo W.A.C.**

**Sale Ends
11/30/19**

L3901 DT PACKAGE DEAL

39 Kubota diesel engine***, 4WD, Ag Tires, 18' Trailer, 5' Box Blade, Kubota Loader, 5' Rotary Cutter.
6 Year Power Train Warranty****
**\$0 Down, 0% A.P.R.
for 60 months****
\$24,795

L3301 DT PACKAGE DEAL

33 Kubota diesel engine***
4WD, Ag Tires, 18' Trailer, 5' Box Blade, Kubota Loader,
5' Land Pride Brush Hog,
6 Year Power Train Warranty****
**\$0 Down, 0% A.P.R.
for 60 months****
\$23,995

ALL-NEW GAS-POWERED RTV-XG850 SIDEKICK

POWER • PERFORMANCE • HANDLING • STYLE

48HP***, 40 mph transport speed, gasoline engine.
* Price per month does not include insurance and sales tax if applicable.
Includes \$1,000 rebate and 3.99% APR financing for 60 mo. with approved credit**
Other purchase and finance options available. See dealer for details.

L4701 DT PACKAGE DEAL

47 Kubota diesel engine***, 4 cyl., 4WD, Ag Tires, 18' Trailer, 6' Box Blade, Kubota Loader, 6' Land Pride Rotary Cutter.
6 Year Power Train Warranty****
**\$0 Down, 0% A.P.R.
for 60 months****
\$30,995

Get unmatched Kubota quality. Kubota designed, engineered and built. More package deals available.

Visit Us In TWO Locations!

8665 Outer Road, Mtn. Grove
417-926-5454 • 877-926-5458

4973 W. US Hwy. 160, West Plains
417-256-0420 • 800-766-0420

* \$0 Down, 0% A.P.R. for 48 months. Qualifying Equipment: RTV-XG850. \$0 Down, 0% A.P.R. financing for up to 48 months on purchases of select new Kubota RTV-XG850 equipment from participating dealers' in-stock inventory is available to qualified purchasers through Kubota Credit Corporation, U.S.A.; subject to credit approval. Some exceptions apply. Example: 48 monthly payments of \$20.83 per \$1,000 financed. Offer expires 11/30/19. See us or go to KubotaUSA.com for more information. ** \$0 Down, 0% A.P.R. for 60 months. Qualifying Equipment: BX, B, L, MX and M, MH(M7), RB, DMC, DM, RA and TE Series. \$0 Down, 0% A.P.R. financing for up to 60 months on purchases of select new Kubota L2501 DT, L3301 DT, L3901 DT or L4701 DT equipment from participating dealers' in-stock inventory is available to qualified purchasers through Kubota Credit Corporation, U.S.A.; subject to credit approval. Some exceptions apply. Example: 60 monthly payments of \$16.67 per \$1,000 financed. Offer expires 11/30/19. See us or go to KubotaUSA.com for more information. *** For complete warranty, safety and product information, consult your local Kubota dealer and the product operator's manual. Power (HP/KW) and other specifications are based on various standards or recommended practices. **** Only terms and conditions of Kubota's standard Limited Warranty apply. For warranty terms, see Kubota's Limited Warranty at www.KubotaUSA.com or authorized Kubota dealers.

2012 GMC ACADIA SLT: 80,000 miles, red w/tan interior, leather/power heated seats, 3rd row seats, double sunroof, lots extras, new tires/brakes. \$13,500. 417-718-0085.

3PT HITCH: Fits Farmall HorM or other Internationals. \$200. Rogersville. 417-753-2747/417-766-1991.

AUCTION REMINDER: Public Auction. Sunday, November 10th @ 1pm. Foster Auction. Please see our Auction Directory for more information.

GLASS SHOWCASE: 6' long, 3' high, 2' deep, lighted w/glass shelves, glass top/sides, sliding rear doors. \$195. 573-364-7465, Rolla.

BARN WOOD SIDING: 8" & 10" wide.
573-729-7226. www.pineridgerustic.com

ARE YOU KIDDING ME???-Used double-wide, \$19,900!!!! delivery & set-up, 3 bedroom, 2 bath, Call 573-499-9993 comlumbiadiscounthomes.com

We Buy White Oak Logs!

**Independent Stave Company
welcomes all white oak suppliers!**

- Top prices for your logs
- Experienced log buyers
- Professional service

www.independentstavecompany.com

Chad Cook | Salem Wood Products
417.718.2950
5 miles north of Salem, MO on Hwy 19

**INDEPENDENT
STAVE COMPANY**
Log Procurement & Sales

See Service

Spray Foam Insulation

Closed cell or open cell form available
Choose the thickness of your insulation

<p>Closed Cell</p> <ul style="list-style-type: none"> • Higher R. value • Vapor barrier • Structural benefit • Fire Resistant 	<p>Open Cell</p> <ul style="list-style-type: none"> • Lower Cost • Sound Deadening • Fire resistant
--	---

Both types of foam fill voids and stay where they are put to provide better insulation than fiberglass or cellulose

FINANCING AVAILABLE WE ACCEPT

Call Joseph See
(417) 733-6936
Located near Buffalo, MO

WEEKLY TRADER MAGAZINE



AUCTION DIRECTORY

Friday, November 8

5:00 PM Show-Me Auction.....21

Saturday, November 9

9:00 AM David Haskins Auctions.....22
 9:00 AM Brehe Auctioneering Service.....23
 9:00 AM Foster Auction & Appraisal.....28
 9:00 AM Lorts Auction Service43
 9:00 AM Marquette Auction Services43
 9:30 AM Martin Auctions.....19
 9:30 AM Warden Auction & More.....35
 10:00 AM Wulff Auction20
 10:00 AM Buckner & Gately Auction24
 10:00 AM Tooley Auction Services, LLC.....37
 12:00 PM Buffalo Livestock Market LLC43
 1:00 PM Nance Auction Service.....27

Sunday, November 10

1:00 PM Sellers Auction Service38
 1:00 PM Foster Auction & Appraisal.....42

Monday, November 11

10:00 AM Gary Sexton Auctioneers.....39

Tuesday, November 12

Online Atterberry Auction & Realty.....40
 Online Atterberry Auction & Realty.....41

Wednesday, November 13

10:00 AM Foster Auction & Appraisal.....29
 6:00 PM Easterly Auction Co.....31

Thursday, November 14

9:21 AM Chupps Auction & Real Estate42
 11:00 AM Mid Missouri Stockyards42
 Online Warden Auction & More.....34

Saturday, November 16

9:00 AM Bruce & Le'AN Auction25
 10:00 AM Melton Auction & Realty Co26
 10:00 AM Easterly Auction Co.....32
 11:00 AM Bryant Auction.....30

Wednesday, November 20

Online Atterberry Auction & Realty.....40

Thursday, November 21

Online Atterberry Auction & Realty.....40

Friday, November 22

12:00 PM Easterly Auction Co.....33
 Online Atterberry Auction & Realty.....41

Monday, November 22

Online Atterberry Auction & Realty.....41

Monday, December 2

TBD Salem Livestock Auction.....42

Saturday, December 14

Online Dream Dirt.....36

#1 Rural Shopper
 in Central Missouri
Reader's Choice!

Call 1-800-665-8875 to get your auction listed in the Weekly Trader.

AUCTIONEERS Did you know the WEEKLY TRADER covers more counties in rural Missouri than any other publication?

Firm deadline is 12:00 PM Friday, prior to next week's Thursday publication date.

CONSIGNMENT AUCTION

Saturday, November 9, beginning at 9:30 A.M.

Located at: The old Elementary School in Fortuna, MO. Will start serving biscuits and gravy at 8:00 AM and lunch will be available. Watch for auction today signs.

GUNS

Ruger 10-22 carbine .22 cal. — Remington .22 cal pump 2-lthaca super single 20 ga — Mauser style military gun Hopkins and Allen single shot 12 ga — Marlin Arms bolt action .22 cal — British high power rifle New England single shot 410 ga — 410 ga single shot — Iver Johnson single shot 16 ga — Kmart corp. .22 cal Steven Arms model 167 410 ga pump — Rogers .22 cal — H and R 22 cal. Bolt action — Central Arms single shot 12 ga — Remington .22 cal long Mossberg bolt action 410 ga — 32 cal semi-auto hand gun 2-lthaca .22 cal. Lever action — Stevens 12 ga single shot Coast to coast Master Mag 12 ga pump — Older Mauser — Knight 50 cal muzzle loader — Cva 50 cal muzzle loader — Pellet gun — 6.5x55 Swedish Mauser carabine — 2-22 cal revolvers — Marlin 12 ga pump shot gun magnum 25-06 bolt action rifle (Mauser action) — Remington 700 30-06 wood stock (very nice) — Ruger Model 22 45 .22 cal S.S. Hand Gun

LIVESTOCK EQUIPMENT

2-12' panels w/ 5' walk through gates — 2-12' bow gates 10-12' bows — 25-12' panels heavy — 43-lighter panels 10' 2-4' walk through gates — 24-green panels — 12-light panels 11-misc. gates and panels — 4-Preifert panels — 5-8' gates 1-16' gate — Poly rying bale feeder

FARM EQUIPMENT & HAY

Bobcat T190 Skid Loader, 3100 hrs., good running machine — 1943 9N Ford Tractor, restored, runs good — John Deere 13-hole Grain Drill — 3pt. Bale Spike — 50 Bales of Mixed Grass Hay

LUMBER /NEW METAL TRIMS

53- 2 x 12 x 16' — 9- 2 x 12 x 20' — 3- 2 x 12 x 22'
13- 2 x 12 x 14' — 32- 2 x 12 x 12' — 2- 2 x 12 x 10'
18- 2 x 10 x 16' — 20- 2 x 10 x 14' — 4- 2 x 10 x 22'
9- 2 x 10 x 12' — 13- 2 x 10 x 10' — 16- 2 x 10 x 8'
27- 2 x 8 x 26' fir — 38- 2 x 8 x 16' — 3- 2 x 8 x 20'
10- 2 x 8 x 14' — 3- 2 x 8 x 12' — 7- 2 x 8 x 10'
2x4 and 2x6 various lengths, some treated — 8'x12' new portable building, 36" walk-in door, metal siding & roof New metal trims including: corners, ridge cap, drip edge, angle trim, track cover, J channel, rat guard, side wall flashing, z bar, eave trim, aluminum door rail, and overhang trim — In colors of bright white, white, brown, black, red, charcoal, green, clay, burnished slate, burgundy, blue, gray, and galvalume

ANTIQUES & COLLECTIBLES

Diecast: JD travel air model airplane bank — JD 1955 pickup truck bank—JD 1937 Ahrens for fire truck — JD 1925 Kenworth truck bank—JD vintage truck & tractor set — 2-JD 1934 model A tractors — 2-Ford 8N tractors — Ford 8N tractor w/ Dearborn plow — Barn lanterns — 2-sets 8 mini JD tractors — JD grain wagon w/ racks — Tru-scale grain elevator — Pepsi-cola transistor radio — 175 lb Peter Wright anvil — Wooden JD tool box — Good No. 3 cast iron bell (no yoke) — 2 gallon crock jug — 2-Keen kutter grinders — Enterprise cherry pitter — Wooden wagon seat original springs — 3-Old wooden barn doors — No. 8 universal grinder — Faultless Feeds old wooden feeder — 4-Wooden buggy wheels — Several sets steel wheels — Old wringer — 10'x20' fishing net 1" squares — Old Fairbanks Morse farm scale (nice condition) — Homemade primitive butcher block — Old barn doors 1800s original glass

MISC.

New LP 30 lb.- 40 tanks—Small wood ladders — Floor fans — Portable tool box on wheels — Fish baits, lures—Fishing spear — Lot S.S. bowls — Wicker baskets — Quilt rack — Heated dog bowl — Misc. tools — Old electric lights — Pet taxi — Galvanized wash tubs — Old egg basket — Old cut glass — Metal tool boxes — 6' foot step ladders — Throw rugs (oriental) — Rubber backed carpet various sizes — Oil paintings — Kerosene lamps — Table saw on stand — Kenmore Refridgerator, good condition

DOORS - WINDOWS

Right hand out swing entry door with brick mold 1 lite — 5'x6'8" double bore door internal blinds 6 9/16 jamb — 2-36"x 60" sandstone windows —7-white picture windows 16"x4' 71"x79 1/2" sandstone sliding patio door—3-pair shutters 14x43 — 6'x6'8" hinged patio door new (was installed) — 6 panel right hand in swing 6 9/16 jamb therma tru — 99 series 3'x6'8" entry door —6-pairs 12"x12" vents — 2-6 panel right hand in swing 6 9/16 jamb aluminum doors — 6-pair shutters 14 3/4x35—3-pair shutters 14x71

SMALL FURNITURE & CRAFT ITEMS

**Consignments coming
in daily! Much more to come!**

For more auctions go to www.auctionzip.com ID # 47012

Commission and concession proceeds to local school. For commission rates or to consign call Larry at 660-337-6471. Hope to see you there! *Thanks, Larry*

Auctioneers
Larry Martin & Loren Martin



MARTIN AUCTIONS

1-660-337-6471



Auctioneer
Willard Miller

Terms: Cash or check with ID. Not responsible for accidents. Statements made day of auction take precedence over printed material

ESTATE AUCTION

SATURDAY, NOVEMBER 9 • 10:00 A.M.

Directions: OLD SEARS BUILDING IN SALEM, MO - Located between Parts Tek & Town & Country Bank on Scenic Rivers Blvd. Watch for signs.

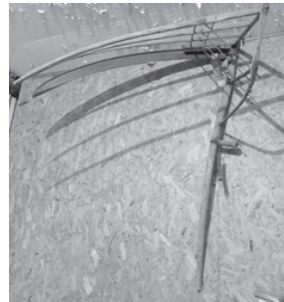
TOOLS • BOAT • HOUSEHOLD • FURNITURE • MISC.

Queen Bed Head Board, Rails, Boxspring, & Mattress
 Dryer - Hutch - Couch - 2 Recliners
 4 Dining Room Chairs - New TV - Older TV
 Entertainment Center - 2 Chest Drawers
 Dresser w/Mirror - 2 End Tables
 Desk Chair - Porch Glider
 Sewing Machine - Sit & Peddle Exerciser
 Walker - Adult Potty Chair
 Child Potty Chair - Mixer - Electric Knife
 Can Opener - Coffee Pot - Tool Chest
 2 Roller Boxes - Lots Wrenches - Lots Sockets
 Socket Sets - Screw Drivers - Bench Grinder
 Chisels - Files - Welding Vise Grips
 Crescent Wrenches - Lots Pliers
 Cutting Gauges (New) & (Old)
 Box of Cutting Torches
 ¾ Drive Socket Set - Air Jack
 2 ½ Ton Floor Jack - Pullers (Small to Large)
 Chains - 18 Large Boomers
 6 Medium Boomers - 10 Ratchet Boomers
 Air Tools - Chain Saw & Parts
 Electric Hand Tools - Small Boomers
 Hurley Air Compressor - Small Tool Boxes
 2 Pipe Vises - 1 Large Regular Vise
 Air Grinder - Chop Saw - Barbedwire Pliers
 Craftsman Hand Plane - Pipe Wrenches
 Squares - Parts Cleaner - Post Driver
 Boat Paddle - Old Sickle
 110v Electric Boxes - Electric Step Truck
 12v Trailer Jack - New Ceiling Fan
 Old Hoist Rollers - Tractor PTO Shafts
 Tractor Drawbars - 12v Winches
 Table Saw - Router Table & Saw
 Old Radial Arm Saw - Old School Desk
 Miter Saw - Claw Foot Tub - 4 Pickup Toolboxes

2 Wood Benches - Flyer Kids Wagon
 24" Saw Blade - 31" Saw Blade
 48" Saw Blade - Old Cast Hand Pump
 Old Tractor Metal Seat - 5 Cross Cut Saws
 Old Bullet Welder
 2 Service Station Kerosene Tanks
 New High Jack - Old High Jack - Band Saw
 3 Propane Tanks (Camper Size)
 Kota Trolling Motor - Jet Water Pump
 Roll Barbedwire - 99 Ford Grill Guard
 Old Feed Store Scale - Reese 5th Wheel Hitch
 Old Pull Plow - Elgin Motor (No Title)
 Boat, Motor & Trailer (No Titles)
 Shovels - Axe - Rake
 60 or More Flats: Bolts, Hardware, Tools, Paint,
 Electrical
 12v 15 Gallon Sprayer - Lawn Cart
 Old Large Roll Top Desk - Old Desk Chair
 Wood Swing - Picnic Baskets
 Kitchen Enamel & Granite Pans
 Galvanized Buckets - Galvanized Tubs
 Galvanized Chicken Feeders - DVDs - CDs
 Meat Grinder - Bench Grinder - Bats
 Toolbox - BBQ Grill - Roller Trash Bin
 Metal Shelves - Trunks - Toy Chest
 2 End Tables - Misc. Chairs
 Misc. Glass Collectibles - Ceiling Lights
 Bikes - Ladders - Pictures
 Metal Bed Head Board - Wood Table
 Old Wire Wheels
 New Metal Signs (Coke & Gas)



See you there! - Tom



PACE ESTATE

ANNOUNCEMENTS AT AUCTION TAKE PRECEDENCE OVER PRINTED MATTER

WULFF AUCTION

TERMS: CASH OR
 APPROVED CHECK -
 I.D. REQUIRED
 NOTHING REMOVED
 UNTIL SETTLED FOR

Licensed
 Appraisals

Auctioneers:
Col. Tom Wulff - Col. David Wulff
498 Hwy. B, Salem, MO 65560 • 573-729-8476
 Clerk: Tracy Strange Cashier: Nancy Inman



RAIN OR SHINE
 OWNER & AUCTION
 PERSONNEL NOT
 RESPONSIBLE
 FOR ACCIDENTS AT
 SALE SITE

See Wulff Auctions at www.thesalemnewsonline.com/auctions

PUBLIC AUCTION

Friday, November 8th • 5:00 p.m.

SHOW-ME AUCTION CENTER

17829 Shadey Brook Dr. • Versailles, MO 65084

Lunch will be served



LAWN & GARDEN

- Wrought Iron Love Seat
- 2-Wheel Metal Flower Cart
- Several Bird Baths
- Bird Feeder
- Lot Yard Ornaments
- Garden Hose
- Lot Flower Pots (Various Sizes)
- Patio Chairs
- Trellises
- Rainbow Fountain (for Pool)

- Wheelbarrow
- Wagon
- Portable Deer Blind - Wooden Shelter

For more photos and information, see auctionarrows.com or auctionzip.com (ID# 30027)

HOUSEHOLD & FURNITURE

- Small Appliances
- Pots & Pans
- Bedding & Pillows (Many New)
- Nice Wood Office Desk
- Office Cupboards
- La-Z-Boy Double Recliner (Leather)
- Lots of Highly Collectible Decor
- Luggage
- Throw Rugs

- Old Picture Frames
- Electric Cook Range
- Wrought Iron Table & Chairs & Wrought Iron Baker's Rack
- 250+ Cushioned Chairs
- 2 Raffle Ticket Mixers
- Podium
- Coffee Pots & Coffee Cups
- Lot of Large Kettles & Cookware
- Serving Trays & Baskets

- Large Lot Water Pitchers
- 2 - Microwaves
- 2 - Card Tables
- 3 - Small Wooden Cabinets
- 3 - File Cabinets, 2-Drawer
- 4 - File Cabinets, 4-Drawer
- Lot Miscellaneous Office Equipment
- 2 - Tall Curio Cabinets, 1 w/Curved Glass

ANTIQUES & COLLECTIBLES

- Heavy Brass Bed
- Antique Love Seat
- Old Wicker Couch & Chairs
- Ornate Victorian Chair
- King-Size Bed
- Pie Safe
- Curio Cabinet w/Curved Glass Front
- Curio Cabinet w/Painted Design Front
- 7ft Tall Ornate Armoire
- Large Buffet w/Heavy Wood Carving
- Blue Granite Kitchen Range, Excellent Condition - Rare Find

- 4ft Glass Showcase w/Walnut Frame, Red Velvet Lining
- Several Renaissance Side Chairs
- Wrought Iron Picture Stand
- Old Children's Furniture - Folding Table & Chairs, Chest of Drawers, Stove & Sink Set
- 24-Karat Gold Plated Tableware Set
- American Classical Bench
- Griswold Pan w/Lid #10
- Coffee Grinder
- Ceramic Chamber Pot
- Lot Old Baskets

- Lot Gold Carnival Glass
- Fenton Glass
- Lot Old Wooden Toys
- Small Wagon
- 6ft Tall Iron Birdcage
- Wash Stand
- Framed Copies of Harper's Weekly, Year of 1863
- Old Records
- Bottle Opener Collection on Display Rack
- Hamm's Advertising Sign w/Clock & Light

- 40" Brass Patio Vases
- Plant Pillar Stands
- Mantle Clock
- Antique & Exotic Vases
- Statues
- Lots & Lots of Pictures
- Old Tin Ceiling in Good Condition w/Panels, Corners & Trim
- Several Sets Golf Clubs & Caddy
- Copper Sprinkling Can
- Genuine Snake Skin Black Mens Shoes, Size 13

- Coors Car Drink Cooler
- Dale Earnhardt & Dale Jr. Figures
- Life-Size Racing Icon Posters
- Erte Case IH Metal Semi
- Hand-Crank Drill Press
- Horse-Hair Buggy Robe
- Granite Top Hoosier Cabinet
- 2 - Electric Brass Wall Sconce Lights, Fancy
- Wood Ornate Corner Shelf
- Matching Marble Top Stands & Table
- Several Room Divider Screens



SHOP ITEMS

- Airco Stick Welders
- Propane Heaters
- Radial Arm Saw
- Large Shop Vac
- 7 - Metal Parts Cabinets

- Lot of Nails & Screws
- Lot Electric Lights & Electric Parts
- Assorted Hand Tools
- Bench Grinder
- Extension Cords

- Saws & Drills
- Large Plastic Totes on Steel Pallet, 4'x4' for Liquids
- Many More Items too Numerous to Mention

HAM RADIO EQUIPMENT

- Palmor
- Golden Eagle Mark III
- Golden Eagle Mark III SSB
- Dactron Auto Stac
- Pearce Simpson Guardian 23

- GC Electronic Transmitter
- Siltronix Model 90 VFD
- Astatic Model 10-DA Mic
- Golden Eagle SS 03546 Mic, Model D104 Limited Edition 18K Gold Plated Engraved American Eagle Insignia



AUCTION NOTES: Pat Scott was a lifelong collector. She traveled and collected lots of beautiful and unique souvenirs as well as antiques. She was the Morgan County Circuit Judge and retired in 2002. Don't miss this sale of highly collectible items. *Wilmer*

Show-Me Auction Center Owners:
WILMER & ANNIE HOOVER
573-378-4908 • 573-789-2215

Auctioneers:
Col. Doug Dieckman - 660-287-1962
Col. Matt Lehman

For Information, Call
Earl Ray Zimmerman
573-378-4335

Not responsible for accidents. TERMS: Cash or Check with Proper I.D. • All statements made date of sale take precedence over printed material.

REAL ESTATE & PERSONAL PROPERTY

PUBLIC AUCTION

RAIN OR SHINE

Saturday-November 9TH-9:00 AM

VIEW MORE PICTURES AT WWW.HASKINSAUCTIONS.COM

LOCATION ADDRESS: 459 CO. RD. 917, THEODOSIA, MO **DIRECTIONS:** From the 160 & 95 Jct west of Theodosia, go north 5.6th miles to Longrun at Co. Rd. 908, turn left, continue 0.2th mile to Co. Rd. 915, turn right, continue 0.5th mile to Co. Rd. 917, turn left, continue 0.5th mile to auction on right. Follow Haskins Auction signs.

Owner-Estate of William C. Dugan
John Turner, Personal Representative

REAL ESTATE @ 10:30 • Guns Sell Just Before Real Estate



This country 2-bed, 1 bath unfinished home has 1547 adj. sq. ft. Built in 2001, and sits on 19 ac +/- . Large living room, spacious closets, patio in front. Outbuildings or shop/garage areas for the do-it-yourselfer. Land is mostly in timber and joins the National Forest. Taxes for 2018 were \$368.15. Shingle roof and vinyl siding. This home is not completely finished. **Open house is October 27 and November 3 from 2:00-3:00 pm or by appointment by contacting David Haskins at 417-257-4446. This real estate sells subject to probate court approval.**

Terms and conditions of the sale are: Ten percent (10%) down on the day of auction. Balance due in full the day of closing. Sale of this real estate shall not be contingent upon any financing, appraisal, sale of other property, inspection or otherwise by the buyer(s) and that they understand that this real estate is being sold in an "AS-IS" condition, without any warranties or guarantees as to its condition of any kind, expressed or implied. Buyer(s) understand and agrees that the personal representative and auctioneer makes no claim(s) as to exact boundaries, corners, and fences are not on the line, and must satisfy themselves as to such. Closing cost such as (closing fee, title search-examination, attorney fees, title insurance, title service charge, and recording fee) shall be split equally between buyer(s) and seller(s). Taxes will be prorated, and surveying, if any, shall be paid by the buyer(s). Commission is to be paid by the seller(s).

ALL PERSONAL PROPERTY SELLS ABSOLUTE

TRACTORS • VEHICLES • FARM IMPLEMENTS • TOOLS • DOZER



2016 JD 4105 w/H165 loader, 65 hrs, 4x4, 41 hp, 540 PTO Hydrostatic trans •2006 New Holland TC45A w/250TL loader, 1485 hrs, 4x4, 45 hp •2002 Dodge Ram 3500, SLT Laramie, 122, 092 miles w/flat bed, Cummins diesel, standard •2008 Pontiac G6, V6, 218,336 miles •Woods BH70-X backhoe attachment

w/thumb (Like new) •King Kutter 5' 3-pt rear tine tiller (new) •Case 1968 Dozer model G310G, 4 cyl gas •Tufline 6' 3-pt blade •Cosmo 3-pt seeder •Land Pride 3-pt rock rake •Dearborn 3-pt disc plow •3-pt digger •3-pt auger w/attachment •3-pt 6' brush cutter King Kutter 3-pt disc (near new) •Cub Cadet 27T log splitter •2003 16' tri-axle bumper trailer •24' Belshe 1989 dual wheel tandem axle gooseneck trailer •6' bumper trailer •Yamaha Timberwolf 4-wheeler •Cub Cadet

RZTL 0-Turn mower, 103 hrs, 54" cut, 24 hp • Powerhouse 4" wood chipper (new) •Lincoln AC/DC 225 amp electric welder •Troy-Bilt Super Bronco tiller •All-Power 6000 watt 13h. generator •abrasive blaster •20T press •Craftsman 33 gal air compressor •Porter Cable 6-gal air compressor •Duraheat kerosene space heater •Karcher pressure washer •Craftsman 10" radial arm saw •Dewalt 12" wood planer •Bosch router •Milwaukee metal bandsaw (like new) •Bostitch nail guns •box of router bits •Oregon chain saw sharpener •ShopVac 10 gal. •Craftsman drill press 12" •Craftsman wood



band saw •Craftsman jointer & lathe •Stihl 018 chain saw •Stihl BG55 blower •chains & boomers •hand held grinders & drills •Schumacher battery charger •wire cattle panels •nice nut & bolt bins •Craftsman chest tool boxes •shovels, rakes, etc. •bottle jacks •250 gal. LP tank •many other items not mentioned.



• GUNS • GUITARS • ANTIQUES • HOUSEHOLD

Mossberg 410 ga pump •Mossberg 20 ga •Buckhorn Magnum 50 cal B.P. •Connecticut 50 cal B.P. •Powermaster .177 pellet gun •Bushwacker 150 Crossbow w/Red Hot scope (Guns on premises day of auction only) •Martin and Guild guitars w/cases •MWCo antique wagon •antique dump rake •New World standard series cream separator •old flat irons •cookie jars •old metal wagon wheels •Ridgeway grandfather clock •Whirlpool washer & dryer •Whirlpool 22 cu ft SS Ref/Freezer •Panasonic microwave •oak 6-gun cabinet •nice oak queen bedroom suite •oak kitchen table w/matching chairs •kitchen utensils, pots, pans, dishes •knick-knacks •couch and chair •RCA TV & stand •many other items not mentioned,



AUCTIONEER'S NOTE: NOTE early start time of 9:00. Real estate auctioned at 10:30. Many nice pieces of personal property to sell absolute. An opportunity to purchase a piece of Real Estate with potential of making it your home, a rental property, or investment property. See you Saturday. **Thanks,**

REAL ESTATE • ESTATE • FARM & BUSINESS LIQUIDATIONS
MO Lic. 0112 AR Lic. 1059

David HASKINS AUCTIONS

call **417-257-4446** :: Gainesville, MO :: 417-679-4997

www.haskinsauctions.com • email: info@haskinsauctions.com

TERMS: Cash or approved check. Conditions: I.D. required to register, items sold as is, no warranty. Nothing loaded or removed until paid for in full. Announcements made day of sale take precedence over any printed material. Auction service, employees, and/or owners are not responsible for accidents. Concessions and porta-potty available. **•BUYERS ARE ENCOURAGED TO ALWAYS INSPECT MERCHANDISE PRIOR TO BIDDING•**

HOWELL ESTATE AUCTION



Carole Howell will sell her and the late Gary Howell's personal property at public auction on:

Saturday, November 9th 2019, Beginning at 9:00 AM

Location: 1550 Highway 50 West, Union Mo 63084

Directions: From Interstate 44, take Exit #247-Highway 50 West 7.38 miles to auction, just on West edge of Union. Road will be marked day of sale.

TRACTORS RESTORATION PROJECTS/PARTS TRACTORS WILL SELL AT 12:00 NOON (over 35 tractors)



(2) Oliver 1250 tractors, John Deere 420 tractor-loader-backhoe, Case 200 tractor- wide front end, International Harvester 454 w/loader, Farmall McCormick 240-narrow front end, Massey Ferguson 65 tractor, Massey Ferguson 50 Diesel Deluxe, Farmall H tractor-hydraulics-3 point, (4) Cub Cadet Lo Boy 154 tractors, Ferguson 35 diesel tractor, Ferguson TO 35-good rear tires, (2) Ferguson TO35 tractors, (6) Ford 8N tractors, Massey Ferguson 30 tractors, Ferguson 30, MF TO35 tractor, Massey Ferguson 20-D diesel-roll bar-turf tires, Ferguson TO35 Deluxe, MF 35 tractors, **INDUSTRIAL TRACTORS:** Massey Ferguson 2200, John Deere 440 diesel backhoe, Ford diesel, Massey Ferguson 135, Davis Fleetline 20A reticulating trencher, Case 530 diesel w/loader, Massey Ferguson 200 gas with loader, MF backhoe-loader-power steering, Hyster forklifts, M Ferguson 204 forklift



RIDING MOWERS / YARD MACHINES



(30 plus riding mowers) Jacobson professional diesel T422D, Case 220 yard tractor, John Deere F935 Professional mower, Montgomery Ward riding mower, (2) IH Cub Cadet 1250 riding mowers, Craftsman mower, Ford 100, Troy Bilt, Sears SS/18 Twin, Snapper, J Deere 111, Gilson, MTD, White, Wheel Horse, lot other riding mowers, lot push mowers, Ariens Rocket VII tiller, Gravely brush cutters, Gravely yard tractors, mower decks, tillers

LUNCH WILL BE SERVED BY CAROLS CATERING

VIEW OUR PHOTO GALLERY ON
www.breheauction.com



AUCTIONEERS NOTE

There will be a preview of tractors on Friday, November 8th from 1-3 PM. Because of space constraints there will be no loading of tractors and equipment until after the end of the auction and again on Sunday from 10-3. During the load out time, a loader/operator will be available to assist loading. You will have until December 15 to remove your items.

TOOLS / SUPPLIES



Marvel #2 cut saw, heavy duty grinder on stand, Craftsman drill press on stand, router, circular saws, belt sanders, jig saw, B&D reciprocating saw, rotary hammers, hammer drill, Makita angle drill, Dewalt 1/2" drill, Dewalt screw gun, Dewalt drill, Dewalt 1/2" hammer drill, large tap-die set, files, corner clamps, heat gun, Drill Dr sharpener, 6" hand grinder, Milwaukee impact wrench, 1/2 angle drill, Bosch angle grinder-hammer drill-drill, Bosch 3/4" rotary hammer, battery charger, die grinder, machinist chest, 1/2" sockets, Craftsman tool set, porta power, 3-6 ton jacks, 1500-600W power inverters, extension cords, compression tester, spark plug repair kit, saw blades, hammers, portable cut-off saw, C clamps, volt meters, plumbing-electrical supplies, lot all types nuts-bolts-screws, work lights, sanders, lot 1/2 drills, sockets-ratchets, wedges, torch hoses, wrenches, vise grips, bolt cutters, **PNEUMATIC TOOLS:** lot impact wrenches, angle grinder, chisel, wrenches, lot air ratchets, rotary tool, tap-die sets, screw bits, drill bits, Craftsman chisel set, tin snips, masonry nail gun, micrometers, measuring calipers, drop lights, cutting torches, welding tips, Sears engine analyzer, Napa paint sprayer, chainsaw blades, **TOOLBOXES:** job site tool chests, rolling tool cabinet, PU tool boxes, tool boxes, diamond plate tool box, parts bins, tools shelves, file cabinets, **YARD:** sections iron fencing, scaffolding, load chains, mole trap, jack stands, load straps, gas cans, pump sprayers, space heaters, 2 wheel dollies, car ramps, propane tanks, metal extension ladder, lots bicycles-old Murray-Lemans-Schwinn, metal double tree

FARM EQUIPMENT / TRACTOR PARTS



King Kutter 3 pt 6' rock rake, Ford 3 pt 7' blade, brush hog 5'-3 pt, 5' pull type brush hog, (2) Dearborn 3 pt 2-12" plows, 3 pt 6' blade, Ford slip scoop, 3 pt 5' Land Pride box blade, MF 5' 3 pt brush hog, (3) 3 pt cone wood splitters, (2) 3 pt 5' brush hogs, heavy duty 3 pt 3' disc, rot hoe, 3 pt boom, 4' 3 pt notch blade disc (new), 3 pt Land Pride 6' blade, Allis Chalmers 2 bottom plow, bale spear, 3' disc, **TRACTOR PARTS:** John Deere back hoe, Ford industrial loader parts, back hoe bucket, steel tractor wheels-rubber coated, tractor cowlings, tractor weights-Oliver-Farmall-Ferguson-Ford-front/rear, center hubs, tires, rims, J Deere rims-metal, Farmall rims, steel wheels-Ferguson-Ford, Ford fenders, Ford grills, Case grill, Ferguson fenders, tractor seats, Ford bumpers, PTO covers, Case grill, Ferguson hood, Ford/Ferguson gas tanks, Ford bumpers, 8N front ends, top links, cross bars, stabilizing bars, hitch pins, 3 pt arms

VEHICLE / TRAILERS / UTILITY VEHICLES

Chevy 30 step van, **TRAILERS:** 18' tandem axle trailer w/drop gate, tandem axle 12'x5' w/side rails-drop gate, 16' single axle trailer, heavy duty tandem axle trailer-pintle hitch, 12' tandem axle trailer, propane tank hauling trailer, 12' tandem axle diamond plate floor trailer, car hauler trailer, lot smaller utility trailers, job site storage trailers, trailer jacks (new), **UTILITY:** Turf Cruiser side-by-side with dump bed-roll bar, Cushman industrial utility carts, Cushman enclosed utility vehicle, lot camper shells



BREHE AUCTIONEERING SERVICE, LLC
Union, MO: (636) 583-0841 Owensville, MO: (573) 437-3454
www.breheauction.com



LICENSED AUCTIONEERS:
Kerry Brehe 314.954.3798 Josh Brehe 314.603.3129 Harry Engelhart 636.399.3743
Announcements made day of sale supersede all printed material.
TERMS: CASH, PERSONAL CHECKS WITH PROPER I.D., BUSINESS CHECKS WITH BANK LETTER AND NO OUT OF STATE CHECKS UNLESS APPROVED BY SELLER. Email Us At kkauction@sbcglobal.net
Everything sells as is with no guarantees.
Not responsible for accidents.



SATURDAY, NOVEMBER 9, 2019 • 10:00 A.M.

LOCATION: In Licking, Mo. on Cedar St. at Old Rawlings Building. Watch for signs.

Go to auctionzip.com to view photos. Auctioneer #28367

Hide-a-bed Couch, Matching Loveseat	Coat Rack	Old First Aid Kit
Glider Rocker, Rocking Chair	Small File Cabinet	Ceiling Fan
Recliner	Lot Cookie Jars – McCoy Cow	Plant Stands
Couch	Cookie Jar, Goldilocks Cookie Jar, old	Christmas Tree & Lights
Corner China Hutches	Quilt Rack	Squirrel Feeder
China Hutch	Table Lamps & Floor Lamps	Ax Handles
Buffet, old, nice	Record Player & Records	Bumper Jack
Dining Table w/6 Chairs	Board Games	Lawn Chairs
Small round Kitchen Table & Chairs	Clocks	Lot Tools, Hand & Garden
Odd Kitchen Chairs	Crock Pot, Deep Fryer	Bench Grinder
Bedroom Set, Queen complete w/ Dressers & Mirror	Burger Maker, Lean Mean Grilling Machine	Heavy Duty Metal Vise
Antique Mirror	Pyrex Casserole Dish	DeWalt 12" Sliding Compound Saw
Chest of Drawers, Dresser, Night Stand	Metal Trays	Wen Variable Speed Drill Press, table top, big
Book Shelves	Serving Bowls	Riding Lawn Mower, 42 inch cut
Coffee Table, Drop Leaf, End Tables	Wood Bowl	Push Mower
Sewing Machine in Cabinet	Vintage Platters & Picnic Plates	Table Saw
Weaving Loom, Weaving Threads, Loom Tools	Tea Pot	2-wheel Lawn Cart
Roper Washer & Dryer	Bamboo Trays & Butterfly	Porch Glider
Gas Range	Pans, Plates, Knives	Metal Chairs
Refrigerator	Kitchen Utensils	Squirrel Plant Stand, concrete
Washer & Dryer	Blenders, Coffee Pot	Bird Bath
	Shoe Rack	Lot Power Tools, hand
	Lot Pictures, Dishes	4-ft. Level
	Fabric	Several totes not unpacked yet.
	Lot What Nots	Lots Misc. not listed.

B. Lyle, V. Stark, R. Kirkman - Owners

Terms-Cash or Approved Check. Nothing Removed Until Settled For. Not Responsible For Accidents.
Must show ID to get Buyers #. Announcements Made Day Of Sale Take Precedence Over Printed Matter.
All guarantees are between buyer and seller.

**Buckner & Gately Auction Service
Auctioneers**

Steve Buckner 573-674-2686

Neal Gately 573-202-3132

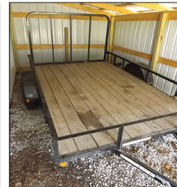
PUBLIC AUCTION BOLIVAR, MO

AUCTION

As we are moving to town we will sell the following Tractor, Automobile, Guns, Tools, Household and Misc. at the Home located 2 miles West of Bolivar, Mo. on 32 Hwy. to F.R. 82 go North ½ mile to the sale on
Sat. November 16, 2019 at 9:00 am

WATCH FOR AUCTION COMPANY SIGNS • LUNCH SERVED

FOR MORE PICTURES GO TO: WWW.BRUCEANDLEANAUCTION.COM



TRACTOR-IMPLEMENTS

- Case DX-29 Diesel 25 HP Tractor W/757 Hours, Second Owner, Hydro Transmission, Turf Tires, 3 Pt. Hitch, Finish Belly Mower (Good Condition)
- 3 Pt. 5' Five Point
- 3 Pt. Five Point Tumble Bug
- 4' New spring Harrow

AUTOMOBILE-TRAILER

- 2004 Jeep Liberty 4X4 SUV, Auto. Trans, 6 Cyl. Motor, 202,650 Miles Good Rubber (Runs & Drives needs Transmission Work)
- 10' X 76" Single Axle Trailer W/Drop End Gate (with title)

MOWERS-SPLITTER-TOOLS MISC

- Cub Cadet 24 HP 54" Zero Turn Riding Mower W/593 hrs.
- Troy Bilt 27 Ton Wood Splitter W/160 Honda Motor
- 6200 Watt Elite Series Generator W/Electric Start
- Craftsman 7 ¼ HP 2700 PSI Pressure Washer (like new)
- Big Wheel Push Mower
- White HWT 4 HP Wheeled String Trimmer
- MTD 19" Rear Tine Tiller
- Sm. Delta Table Saw
- Double Stone Bench Grinder
- Sm. Portable Air Compressor
- Bench B/D Drill Press
- Husqvarna Model 55 Chain Saw
- Sm. Echo Chain Saw
- Stainless Tread Plate P/U Tool Box
- Poly Tool Box
- Misc. Small Tool Boxes
- Werner 16' Alum. Folding Ladder
- Werner 16' Alum Ext. Ladder
- Misc. Hand Power Tools
- Misc. Hand Tools

MOWERS-SPLITTER-TOOLS MISC

- Sm. Wood Lathe
- Floor Jack
- 6 HP Shop Vacc.
- Approx. 25-6' Steel Post
- Gas Cans
- 4' Round Fan
- Propane Heater
- Large RV Cover 24'
- Misc. Lumber
- 2 Schwinn Bikes (Boys & Girls)
- Lrg. 24' RV Cover
- Brake Buddy Brake Control for RV
- Receiver Tow Bar
- Live Trap
- Lrg Huntington Gas Grill
- Char-Broil Big Easy Propane Cooker
- Childs Sled
- Tread Mill
- One Lot of Misc.

HOUSEHOLD COLLECTIBLES

- Whirlpool Side by Side Refrigerator W/Ice & Water in Door
- Refrigerator W/Cross Top Freezer
- Med. Chest Freezer
- Ant. Poster Bed W/ Box Springs & Mattress
- Ant. 8' X 7' Tall Glass Fronted Store Show Case
- Ant. Mason Treadle Sewing Machine
- 4 Drawer Oak Dresser
- 2-4 Drawer Chest
- Roll Top Desk
- Flat Back Trunk
- 2 Aladdin Lamps (no globes)
- Gone With the Wind Style Lamp
- Misc. Quilts (old & new)
- Stand Table
- Small Wardrobe Cabinet
- Kenmore Dehumidifier
- Divan
- Occasional Chairs
- Stone Jars
- Cast Pots



HOUSEHOLD COLLECTIBLES

- Lrg Cast Kettle
- One lot of Pots, Pans & Dishes
- Bissell Carpet Cleaner
- Fruit Jars

GUNS

- Remington Model 550-1 Semi-Automatic 22 Cal. Rifle s-l-r
- New England Fire Arms 410 Ga Single Shot 3" Shotgun
- Browning Belgium 16 Gauge Semi-Auto Shotgun sn 43919
- Marlin Model 336W 30-30 Cal. Lever Action Rifle
- Remington Model 870LW Pump Shot Gun 3" Mag. 20 Ga W/Rib
- Remington Model 870 Express 410 Pump Shot Gun 3" W/Rib, Matt Finish
- Remington 30-06 Model 7400 Semi-Auto Rifle W/Simmons Scope
- Revelation Model 300 Pump 12 Ga Shotgun W/Rib
- One lot of Misc. Ammo
- Gun Cases
- Binoculars
- 2 Sentry Lock Boxes
- One lot of Misc. Fishing

OWNERS: LEROY & JANE MEREDITH

TERMS: Everything sells as is, where is. Nothing is to be removed until settled for. Payment of Cash, Check with Proper ID, or Credit Cards. Auction Company or the Owners will not be responsible for loss of items or accidents. Statements made the Day of the Auction take Precedence over Printed Matter.

SALE CONDUCTED BY **BRUCE & Le'AN AUCTION & APPRAISAL, LLC**
 THE AUCTION COMPANY THAT APPRECIATES YOUR BUSINESS

For more information and pictures go to our website at www.bruceandleanauction.com

RONNIE BRUCE - Fair Play, MO
 417-777-1685 or 417-654-2214
 colonbruce@gmail.com

BRANDON BRUCE
 Fair Play, MO

BILLY BRUCE - Stockton, MO
 417-399-4800
 colbbruce@gmail.com

REAL ESTATE-AUTOMOBILE-FURNITURE-ANTIQUE GLASSWARE-DISHES-LAWN MOWER

Real Estate & Personal Property

AUCTION

SATURDAY, NOVEMBER 16, 2019 10:00 AM

LOCATED: 125 REMINGTON CIRCLE, HOUSTON MO: FROM SOUTH CITY LIMITS ON HWY 63, TURN WEST ON REMINGTON CIRCLE TO SECOND HOUSE ON LEFT. FOLLOW SALE SIGNS.



OPEN HOUSE SUNDAY NOVEMBER 10, 2-4PM



REAL ESTATE

APPROX 1800 SQ FT 3 BEDROOM, 2 BATH HOME WITH BRICK AND VINYL SIDING, OPEN FLOOR PLAN WITH VAULTED CEILINGS, HARDWOOD FLOORS, LARGE KITCHEN WITH BREAKFAST BAR, CHERRY CABINETS, GRANITE COUNTER TOPS. MASTER SUITE OFFERS TREY CEILING, LARGE MASTER BATH WITH 2 WALK IN CLOSETS. 2 CAR ATTACHED GARAGE, COVERED BACK DECK, DECK OFF MASTER SUITE, CITY WATER, CITY SEWER, ALSO SELLING WITH THE REAL ESTATE 10' X 24' STORAGE BUILDING. BUILT IN 2006 SITTING ON 0.48 ACRE LOT.

2018 TAXES: \$878.15

TO PREVIEW CALL 417-830-0153

TERMS: 10% DOWN DAY OF AUCTION, BALANCE @ CLOSING WITHIN 30 DAYS OR BEFORE

AUTOMOBILE

2014 BUICK ENCLAVE, LEATHER LOADED, 1 OWNER 67,000 MILES



FURNITURE-APPLIANCES

ASHLEY LEATHER DUAL RECLINING ELECTRIC SOFA* (2) ASHLEY LEATHER RECLINERS* LAZY BOY LEATHER RECLINER* OAK ENTERTAINMENT CENTER* OAK CLAW FOOT COFFEE/END TABLES* OAK DROP LEAF TABLE* 11 PC OAK DINETTE SET* (2) OAK CORNER CURIO CABINETS* OAK WASH STAND* (3) OAK ROUND FRONT CURIO CABINETS* LG OAK CHINA CABINET* ANTIQUE OAK ENTRY TABLE W/MIRROR AND MARBLE TOP* OAK BAR STOOLS* CHERRY 5 PC BEDROOM SUITE* OAK 5 PC BEDROOM SUITE* MAPLE 5 PC BEDROOM SUITE* ANTIQUE OAK CLAW AND GLASS BALL SWIVEL CHAIR* NUMEROUS SMALL FURNITURE PC'S* GE LG CAPACITY MATCHING WASHER/DRYER SET* ROPER WHITE REFRIGERATOR* MAIAR CHEST DEEP FREEZE

DISHES-KITCHENWARE-ANTIQUE GLASSWARE

LG COLLECTION OF AMERICAN FOSTORIA TO INCLUDE SEVERAL HARD TO FIND PIECES* LG COLLECTION OF CRYSTAL BLUE BIRD GLASSWARE* FIRE KING BLUE DELPHITE TEAR DROP BOWL SET* SEVERAL PIECES OF FIRE KING BLUE DELPHITE* FIRE KING BLUE DELPHITE SALT/PEPPER SHAKER SETS* REDWING CROCK ROLLING PIN* LG SET OF ANTIQUE MIKASA DISHWARE* MCKEE ROOSTER BOWL SET* (2) SETS BANDED CROCK BOWL SETS USA* FIRE KING MODERN TULIP BOWL SET W/GREASER AND SHAKERS* FIRE KING KITCHEN AID DESIGN BOWL SET W/GREASER AND SHAKERS* MCKEE RED DOT BOWL SET* LG COLLECTION OF BLUE LONGABERGER DISHWARE* LONGABERGER AMERICAN PRIDE DISHWARE* LONGABERGER IVORY DISHWARE* LONGABERGER BLUE SERVING WARE* PYREX IVY BOWL SET* PYREX BLUE FLOWER BOWL SET* PYREX RARE PINK BOWL SET* KITCHEN AID WHITE MIXER W/ATTACHMENTS* (2) COMPLETE SETS OF SALADMASTER COOKWARE* SALADMASTER OIL FILLED ELECTRIC FRYING PAN* SEVERAL STAINLESS STEEL BOWL AND SETS* (2) SETS ONEIDA MICHELANGELO FLATWARE* HULL TEAPOTS* MCCOY PIECES* SEVERAL PIECES OF CORNINGWARE* FIRE KING JADEITE SALT AND PEPPER* FIRE KING JADEITE PIECES* MCKEE HOLIDAY DOT PUNCH BOWL AND CUP SET* SEVERAL MCKEE SALT AND PEPPER SETS* LG COLLECTION OR RARE "EYE WINKLER" PATTERN GLASSWARE* SEVERAL PIECES OF CLEAR SANDWICH PATTERN GLASSWARE* WAGNER CAST IRON SKILLET* GRISWOLD CAST IRON SKILLET*

LAWN MOWER AND OUTDOOR ITEMS

TROY BILT PONY RIDING LAWN MOWER* GARDEN CART TRAILER* SEVERAL GARDEN TOOLS* CAST IRON FLORAL CHAIR SET* DECORATIVE FLOWER FOUNTAIN* METAL OUTDOOR BENCH* METAL OUTDOOR PATIO CHAIRS* METAL OUTDOOR PATIO TABLE AND CHAIR SET* CAST IRON PATIO TABLE AND CHAIR SET* SEVERAL SMALL OUTDOOR CONCRETE STATUES*

FOR MORE PICTURES SEE WEBSITE OR AUCTION ZIP.COM

OWNER: ESTATE OF WILMER & BETTIE HILL

SALE CONDUCTED BY: MELTON AUCTION & REALTY CO LLC

ROGER MELTON, NIXA MO • PH 417-830-0153 OR 417-725-1801

BRAD COLE NIXA MO PH 417-840-2950

ANNOUNCEMENTS MADE ON SALE DAY WILL TAKE PRECEDENCE OVER ANY OTHER PRINTED MATERIALS. NOT RESPONSIBLE FOR ACCIDENTS OR LOSS OF ARTICLES ON OR NEAR SALE SITE.

EMAIL: roger@meltonauction.com • WEBSITE: MELTONAUCTION.COM

ESTATE AUCTION

Sunday, November 10th, 2019 ~ 1:00 PM

LOCATION: Sac Valley Estates At 17147 South 1539 Road, Stockton, MO; Directions: From Stockton Go South On 39 Hwy To 1674 Rd (Airport) Then Go East To Sac Valley Estates Sign Turn Right Go To First Left Then To Sale Site (Watch For Signs)

Auction For Carole Lane



Antique & Modern Furniture & Sauna

Dynamic Walk In Sauna W/Bench (Like New), Ant School Desk, Ant Bookshelves, Ant Magazine Rack, Prim Metal Cabinet, Prim Wood Chest Of Drawers, King Size Air Mattress Bed, 2 Directors Chairs, Lg Kitchen Table W/Chairs, China Cabinet, 6 Ft Glass Store Display Case, 4 Recliners Inc 2 Over Size & 1 Electric, 3 Cushion Couch, 2 Setting Chairs, Queen Bed W/Pillow Top Mattress, Chest Of Drawers, Queen Size Bed Podium Lift, White Sewing Machine In Cabinet, Wood Fold Up Chairs, Barstools, French Clock, End & Coffee Tables, Ornate Pictures, Quilt Rack, Roll Around Metal Work Table, Wicker Table W/Glass Top, Wood Tables, Newer Style Bookcases, Office Desks & Chairs, File Cabinet, Stand Up Stands, Microwave, Stereo, Lg Gun Cabinet, Other Items Not Listed

Antiques, Collectibles & Households

Early 1900's Doll That Is Numbered, Ant Cameras Inc 1 Used To Photograph President Harry S. Truman, Degravia Collector Pcs, Spod Platter & Other Pcs, Black Americana Salt & Pepper Shakers, Ant Wicker Baby Buggy, Sharps Metal Beer Sign, Old Buttons, Old Marbles, Old Luggage, Old Books (Some From 1800's), Old Pottery, Old Linens & Upholstery Items, Wood Birdhouses, Lots Of Old Knick Knacks, Old Flower Juice Glass Set, Pink & Green Depression Glass, Old Crystal Glass, Blue Glass, Blue & White Dishes, Old Painted

Dishes, Stemware, Several Other Ant Dishes, Cookbooks, Old Paper Goods, Cowboy Hats, Christmas Décor, Lots Of CD's, Office Supplies, Lg Lot Of Antiques, Collectibles & Households Stored In Boxes In The Basement From Floor To Ceiling Unable To See. Hundreds Of Surprises Sale Day

Boats, Storage Building, Mower, Pressure Washer, New Drywall & Paneling, Also Tools & Outdoor Items

8x10 Storage Building On Skids, 1984 X180 BR Delta Conic IMP Boat W/Trailer, 14 Ft Alum Boat, 42" Craftsman LT2000 Riding Mower, Yard Pull Behind Cart, Pull Behind Yard Aerator, Generator, Pressure Washer, Upright Air Compressor, Chipper/Shredder, Delta Table Saw, Ryobi Chop Saw, Shop Vac, Fold Up Work Ladder, Extension Ladders, Reese Hitch Frame, Hand Pull Yard Cart, Electrical Cords, Lots Of Small Electric & Cordless Tools Most Name Brand, Long Handle Tools, Roll Around Toolbox, Sm Hand Tools, Shop Shelving, Creeper, Lg Lot Of Construction Supplies Inc 18 Sheet Of New Drywall, Several Sheets Of Paneling & Other Supplies, Johnson 30 Boat Motor, Skis, Boat Oars, Fishing Poles & Tackle, Horse Shoe Set, BBQ Grill, Outdoor Swing & Furniture, Yard Décor Inc Stepping Stones, Concrete Blocks, Other Items Not Listed



Auctioneers Note: As Mrs. Lane Is Selling Her Home & Moving To The City We Will Offer A Fine Line Of Very Clean Furniture & Great Antiques & Households, Outstanding Sauna, Excellent & In Good Working Tools As Well As Nice Boat & Storage Building. This Is Most Definitely A Very Clean & Excellent Auction. Recliners & Furniture Are Outstanding. This Will Be An Auction You Do Not Want To Miss So Please Plan Now To Attend. **Sale Order: Sauna, Antique & Modern Furniture Will Sell First Followed By Antiques, Collectibles & Households Then Will Move In To Small Outdoor & Tool Related Items. At Approx 3:30 PM Will Offer Storage Building, Boat, Mower & Larger Related Items. Remainder Of Small Tools & Outdoor Related Items Will Finish Auction. See Ya There!!!**

Terms: Cash or check with proper ID. Now accepting most major credit cards. Nothing removed until settled for. Statements made the day of sale takes precedence over printed material. Everything sold as is where is. Not responsible for accidents. Restroom available. Concessions Provided. Check our website for upcoming auctions and for additional pictures!!



NANCE AUCTION SERVICE

No Matter How BIG or small, We Do Them All!!!

Col. Bill Nance 417-214-0093

REAL ESTATE & ESTATE AUCTION

Location: 393 Heather Row, Branson West, (Talking Rocks Area)

9:00 A.M. * Saturday, November 9th * 9:00 A.M.

Directions: From Wal-Mart in Branson West go South on Business Hwy. 13 1 mi. then left on Talking Rocks Rd. 3 mi. then right on Heather Row 1/2 mi. to Sale. *Watch for Signs* Breakfast, Lunch & Restrooms Available.



LARGE SHOP & 2 LARGE LOTS

Tract #1 is 4000 Sq Ft, Metal Building, Insulated with Concrete Floor. Building is 50 ft. x 80 ft. X 16 ft., Clear Span Steel Truss Construction with Well & Septic on .79 acre Lot. **Tract #2** is .59 Acre Lot. Each Lot will be offered separately then offered together.

Property sells subject to Probate Court Approval!

Terms: 10% Down Day of Sale Balance Due at Closing in 45 Days or less.



BOATS - MOTORS - JET SKI'S CANOE - GOLF CART

1989 Wellcraft Antigua 28ft. Cabin Cruiser, I/O; (Nice) on Triple Axle Trailer; 1988 VIP 1950SS 19ft. Runabout, 4.3 I/O & Trailer; 1986 Hunter 23ft. Sailboat & Trailer; 1996 SeaDoo GTX 110 hp, 782cc, Jet Ski & 1993 Yamaha VXR WRB650R 650 cc Waverunner on Double Ski Trailer; 1986 Nissan 5HP Boat Motor (long shaft, like new) 17ft. Coleman Canoe; Lifetime Boat Trailer foOr 16ftw. Boant; er: Older Laher Battery Powered Golf Cart; Carry-On 4800 BTU Portable Boat Air Conditioner

BACKHOE - TRUCK - MOWERS

1964 Case 530 Backhoe; 1974 Ford F-650 Flatbed Dump Truck, (both were running when parked) Kubota T1400 Riding Mower, Hydro Transmission Runs Good, Bad Deck; Push Mower

TOOLS - TOOLS - TOOLS

Speeco 5hp. 20 Ton Log Splitter (Like New); Power-Mate 160 amp Wire Feed Welder on Cart; Lincoln 225 amp Stick Welder; Victor Cutting Torch Set with Bottles; (2) 100 amp Battery Booster/Chargers; 12 spd. Floor Model Drill Press; 5 spd. Bench Top Drill Press; (2) 3hp, 30 gallon Air Compressors; 6 Gallon Portable Air Compressor (NEW); Honda 9hp Power Washer; Heavy Grinder on Stand; Heavy Vise on Stand; Heavy Vise on Cart; Allied Parts Washer; Horizontal Metal Cutting Bandsaw; Makita Cut-Off Saw (NEW); 2 ton & 3 ton Floor Jacks; Hydraulic Motorcycle Jack; (6)

Heavy Jack Stands; Spark Plug Cleaner/Tester; Craftsman Table Saw, Radial Arm & 12" Bandsaw; Craftsman 1/2hp Joints/Planer (NEW); Craftsman Belt/Disc Sander (NEW); Craftsman 16" Scroll Saw (NEW); Schaben 12v. 15gal. 2 Wheel Boom Lawn Sprayer; Large Steel 2 Wheel Lawn/Garden Cart; Stihl 025 Chainsaw (Like New); Stihl FS94R Weedeater (Like New); Weedeaters & Hedge Trimmers; Transit with Stand & Stick; Lot Good Electric Saws, Grinders, Drills, Sanders; Air Grease Pump with Grease Barrel; Vintage Bennett Oil Tank & Pump; Heavy Duty 12ft. Aluminum Ramps; Several Aluminum Extension Ladders up to 35ft.; Ridgid Pipe Vise/ Bender on Stand; Ridgid Pipe Threaders; Porta Power; Barrel Dolly & Wheel Barrow & 2 Wheel Dollies;(4) 4 Wheel Vehicle Dollies; Engine Stand; Heavy Duty Electric Concrete Mixer; Binks Paint Tank & Spray Guns; Graco Pro X7 Airless Paint Sprayer; Wagner Power Painter Airless Paint Sprayer; Lot Misc. Air Tools incl. (2) 1" Impacts; 9 Drawer Lumidor Mechanics Tool Box; Lots of Mechanics Hand Tools; Wrench set up to 2" (Allied); 3/4" & 1" Impact Socket Sets (Proto); Blue Point Bearing Puller Set; Lots & Lots Shop Related Items & Supplies; Lot Lawn & Garden Tools; Sm. Lot Fishing & Outdoor Items

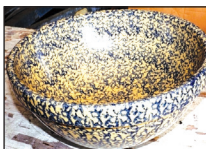
Chicago & New York Railroad Lantern; Crock Bowls & Copper Boiler; Old Wood Butter Churn & Spinning Wheel; License Plates; Kerosene Can & Milk Strainer; Keen Kutter Hatchet; (5) Old Wood Sleds; (2) Older Schwinn Bicycles; Parking Meter Lamp; Laurel & Hardy Dolls; Future Antique Woodworking Tools Time/Life Civil War Complete Book Set; Avon Cape Cod Pcs; Lots of Nice Collector Plates; Griswold Cast iron Skillet w/ Lid; Lots More Antiques & Collectibles not Listed

FURNITURE - SEWING - HOUSEHOLD

Singer 1500-2 Upholstery Sewing Machine; Fancy Old White Treadle Sewing Machine & More; Large Lot Nice Furniture including some Ethan Allen & Kincaid; Sofa's & Love Seats; (3) Bedroom Suites w/ Chests, Dressers, Mattresses;(2) Dining Room Sets: Roll Top Desk & Wood Filing Cabinet; Lots of Very Nice Wood Chairs, Tables, Stands; Samsung Flatscreen TV; Several Very Nice Pictures some Oil & Prints; Misc. Nice Decorative Items; Wood & Metal Outside Benches; Several Beautiful Hurricane Electric Lamps; Lot Small Kitchen Appliances; Lot Dishes, Cookware & Kitchen Items; Misc. Bed & Bath Linen; Lots & Lots of Furniture not Listed

ANTIQUE - COLLECTIBLE

Antique Dump Rake; Old Wood Wagon Wheel & Seat; Metal Tractor & Implement Seats; Several 10 gallon Milk Cans; Few Iron Wheels; Old Hames Sets, Single Tree's & Horse Bits; Ox Yoke; Eclipse Reel Type Lawn Mower (Perfect); 1953 Fire Hydrant;



OWNER: FRANK BATY

Auctioneers Note: Very Large Auction so bring a friend as we may sell 2 rings part of the day See our website for a full listing and more info on Real Estate. Call for an Appointment. Boats sell at 11:00, Real Estate Sells at 12:00 Noon.

See our website for pictures and more info!



Auctioneer: Larry Foster Galena, Mo

Phone: (417) 723-8329 Cell: (417) 839-6860

www.fosterauctionservice.com Email: bidnowsold@aol.com

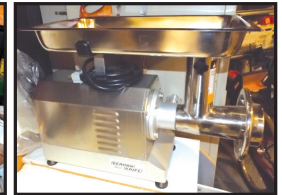


Stickley Furniture * Karastan Rugs * Jukebox * JD Mower * Meat Grinder & Saw
PUBLIC AUCTION

Location: 3848 E. Hawthorne Hill Ln., Springfield, Mo.

10:00 A.M. * Wednesday, November 13th * 10:00 A.M.

Directions: From Hwy. 65 & Battlefield take Battlefield East 2 blocks then Left on Blackman Rd. 2 blocks then Right on Hawthorne Hills Lane to Sale.



HIGH END FURNITURE

Stickley # 4357 Chippendale Clipped Corner Mahogany Dining Table with 2 Arm Chairs & 6 Side Chairs; Stickley #4785 Chippendale Mahogany Buffet; Stickley #4783 Mahogany with Brass Gallery Hepplewhite Sideboard; **(All Absolutely Beautiful & Look New)**; (2) Wesley Hall (Dorian) Settee's; Key City Loveseat; Fantastic 1880's Eastlake Oak Bedroom Suite, Bed, Dresser & Washstand; Early Wood Spindle Platform Rocker; (2) Antique Wood Rockers; Oak Child's Rocker; Fine Carved & Inlaid Stands & Tables; Marble Top Eastlake Stand; Tiger Maple Bow Front China Cabinet; Antique Oak Dresser & Washstand; Mid-Century Lane Cedar Chest; (3) 30" Bar Stools; Misc. Other Furniture not Listed

JUKEBOX

Seeburg L-100 Select-O-Matic High Fidelity Jukebox, Wonderful all Original Condition, sn#204863 (mfg. 1957)

ANTIQUES & COLLECTIBLE

Vintage 3 Slot Pay Telephone; 1940's Silver King 1 Cent Gumball Machine; Old Hamilton Beach Malt Mixer; Birdseye Maple Rolling Pin; Hy-Line Chicks Adv. Thermometer; Red Wing Beater Jar (Hartley, Iowa); Milk Bottles (Iowa Dairy's); Original Remington & Peters Wood Shotgun Shell Boxes; Wood Coke Boxes; C&S Bell #2 Cast Iron Bell w/ Yoke; Cast Iron 3 Footed Pot; (2) Finger Oil Lamps; (2) 1920's Flapper Dresses; 1930's K & K Germany Bisque Doll; Ryan's Room Wooden Dollhouse with lots of Furniture (like new); Roseville Jardiniere; Wardle England Jardiniere; Misc. Nice China & Glass Pcs; Bavarian Crest China; Schwinn Cruiser Deluxe Bicycle; Super 8 Bugs Bunny & Daffy Movies; Lot CD's & VHS Movies including Disney Black Diamond Versions; Hand Pieced Quilts; Nancy Drew Books; Lot Hummel Bells; 1980's Store Display Hallmark Teddy Bear

GARDEN TRACTOR - TRAILER - TOOLS - OUTDOOR

John Deere 425 Lawn & Garden Tractor, Liquid Cooled 20hp, Hydro Transmission, 54" Deck, has Rear 3 Point Hitch & Hydraulic Front Blade (Nice Tractor with only 485 Hrs); John Deere 15 cu.ft. Lawn Cart; 2 Wheel Lawn/ Garden Hand Cart; 8ft. x 5ft. 2 Wheel Flatbed Trailer; Honda Self Propelled Push Mower; TORO CCR 2450 5hp. Snow Blower; Honda Mini-Tiller & Gas Edger; 2600 PSI Power Washer w/ 6.5 Honda; 1700 PSI Electric Power Washer; 40 Gallon 12v Lawn Sprayer with Booms & Spot Wand on 2 Wheel Cart; Ridgid Portable Air Compressor; Stihl 024 Chainsaw; Kawasaki Gas Weedeater; 2 Wheel Lawn Seeder; 100 Gallon Poly Liquid Tank; 30" Lasko Shop Fan on Stand; Craftsman 6" Bench Grinder on Stand; 3 Ton Floor Jack; Makita Power Miter Saw; Misc. Hand Tools; Lot Lawn, Garden Tools & Chemicals; (2) Metal Storage Cabinets; 6 Drawer Metal Pattern Cabinet; Fancy Rectangle Portable Gazebo; Misc Outdoor Furniture; Misc. Tool & Outdoor Items not Listed.

KARASTAN RUGS

(10) Beautiful Karastan Wool Rugs up to 10ft. X 14ft.

PRINTS & PICTURES

(2) Bill Jaxon Western Art Prints; Western Train Watercolor Art; (4) Sir William Jardine Framed Hummingbird Prints; Misc. Prints & Pictures

PIANO

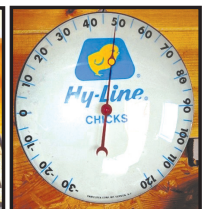
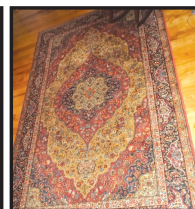
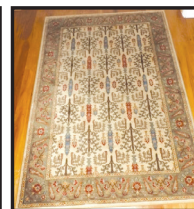
Beautiful Yamaha Console Piano

MEAT CUTTING

German Knife model GG22 Meat Grinder (top quality & like new); Biro model 22 Meat Saw; Lot Misc. Meat Cutting Supplies

APPLIANCES - HOUSEHOLD - MISC.

LG Top Load Washer (Near New); Bosch Nexxt 500 plus Series Dryer; Sun-Twin Electric Heater; Vintage Medco-Sonlator Ultrasound Therapy Unit; Back-Tech 2000 Back Machine.



OWNERS: MR. & MRS. MAURICE CUMMINGS

Auctioneers Note: Probably the Finest Quality Furniture & Rugs we have had the opportunity to sell. Everything here is Top Quality & Extra Clean There is no way to list everything here. Mr. & Mrs. Cummings have sold their home & can't take it all with them.

See our website for pictures and more info!



Auctioneer: Larry Foster Galena, Mo

Phone: (417) 723-8329 Cell: (417) 839-6860

www.fosterauctionservice.com Email: bidnowsold@aol.com





Warehouse Liquidation

Out of Business Closed

Saturday, November 16
11:00AM
1175 E. 8th Street, Eldon, Mo



**Tools, Guns, Waverunners,
Scooters, ATVs, Wildcat Scissor
Lift, New Rugs, Furniture,**



Upcoming Auctions

**November 2nd Auction
for Iguana Marine
RESCHEDULED
for March 28th, 2020**

*bryantauction.com for details.

Tuesday, November 26th, Noon
1724 River Canyon Road, Macks Creek, Mo 65786
3,000 Sq. Ft., 5 Bedroom- 3.5 Baths
Cape Cod Home On 63 Acres
Selling To High Bidder! Estate Settlement

Gun Auction
Saturday November 30 • 10AM
CONSIGN NOW!
National Marketing Underway

All information was gathered from sources deemed to be reliable and is believed to be correct, however, this information is not guaranteed by the Seller, Bryant Auction Services, LLC, or their agents and/or clients. All bidders are urged to conduct their own due diligence and verify all information as to improvements, sizes, condition, etc. Bryant Auction is an agent for the seller in this transaction. All announcements day of sale take precedence over all previous advertisement. Any manufacture warranties are responsibility of the Buyer to procure. Do not operate any vehicle, equipment, or merchandise until you have had item checked by a qualified mechanic and or service technician to insure mechanical safety and operation. This is the Buyers responsibility! Bryant Auction and its agents, staff and clients are not responsible for any accidents. Buyer assumes all risks, and agrees to hold Bryant Auction and its staff harmless. Please be careful. By attending the auction you agree to hold all parties staining the auction harmless to all claims. Bryant Auction reserves the right to reject any bid, and decide bidding increments regardless of qualification to buy. Some items may have reserve. Auctioneer may protect reserve items by bidding to reserve. Items purchased are not to be removed from auction site until paid for. All purchases are your responsibility. Full payment for all purchases must be made same day as auction. No arrangements or time is allowed for payment. If you cannot afford the purchase do not bid! All bids are considered legal obligations to pay. If you cannot find your purchases or have changed your mind for any reason you are still required to pay for all items purchased before sale ends. High bid is the purchase price; clerical errors, electronics, etc. will not allow Buyer to pay less than his highest bid. Inventory changes, some items may sell prior to auction, and some may be added up to auction. It is the Buyers responsibility to unhook electrical and fuel lines safety and secure them as per municipal codes, National Electrical Codes, and local ordinances. Announcements at auction take precedence over all other marketing and comments. Bryant Auction, LLC or its staff members are not experts in appraisal value of any items for sale. All statements of value are personal opinions only. ALL ITEMS UNDER \$1,000 HAVE A 10% BUYERS PREMIUM. ALL SINGLE ITEMS OVER \$1,000 WILL HAVE A 5% BUYERS PREMIUM. We add 3% as a convenience fee to the total purchase when using credit cards. The property will be sold "as is" and "where is" with all faults and defects. All items must be paid for before leave auction sale day, any items not settled for sale day constitute theft. MUST HAVE SCANNABLE GOVERNMENT ISSUED ID. WE PROVIDE VIDEO SURVEILLANCE. Visit bryantauction.com for a list of items at auction and full terms. Some items are similar, some photos may be facsimile. All firearms that require a NICS background check will be subject to Buyers background check. Buyer agrees they have done their due diligence when placing bids. Absentee bidding is the responsibility of the Buyer. Bryant Auction is not responsible for call loss or drop, or any weather issue preventing bids from being placed. Bryant Auction recommends bidding in person. Pre registering is available by stopping at the Bryant Auction Facility, 335 North Frontage Road, Osage Beach, Mo 65065. All items must be removed one week after auction date. You have 7 days after auction to make arrangements to remove purchase or you may forfeit it. All Auction are with Reserve unless noted. Auctioneer may protect Sellers reserve if one exists or may bid personally.



ANGELA SCHEJBAL | OFFICE MANAGER sold@bryantauction.com
RICK BRYANT | PRESIDENT/AUCTIONEER rick@bryantauction.com
573-346-4777 Office • 573-346-4068 Fax
Facebook Bryant Auction
Mail to: 335 North Frontage Rd., Osage Beach, MO 65065

2-DAY LIONEL TRAIN AUCTION

November 13 & 14, 2019 @ 6:00PM
2350 N Clifton • Springfield, MO 65803

Directions: From the intersection of Kansas expressway & Kearney go West on Kearney, Turn left on Clifton and auction will be on left.



684 LOTS

ONLINE
bidding
AVAILABLE



FOR MORE INFORMATION GO TO WWW.EASTERLYAUCTIONCO.COM OR CALL EASTERLY'S AT 417-833-9494

EASTERLY AUCTION CO.

Go to www.EasterlyAuction.com



auctionzip.com
ID#14770

Mike Easterly Auctioneer 417-833-9494

Not Responsible for accidents or theft.

For more information call: Easterly Auction Company, Springfield, MO.

Auction Terms: Bank Letter Of Credit Required.

Visa, Mastercard, Cash, Cashier's check or checks with proper I.D.

Announcements day of sale take precedence over printed material. Auction Notes: Although information

is obtained from sources deemed reliable, auctioneer makes no warranty or guarantee expressed or implied.

Buyers should themselves take the opportunity to make their own inspection prior to sale.

REAL ESTATE AND PERSONAL PROPERTY AUCTION

SATURDAY, NOVEMBER 16, 2019 @ 10:00AM 828 N Washington • Strafford, MO 65757

DIRECTIONS: From I44 east towards Rolla, take exit MO-125/ exit 88 towards Strafford. Turn left onto S State Hwy 125, turn left onto E Farm rd 84, take 2nd left onto N Washington. Auction will be on the left.



REAL ESTATE

This home has approx 1803 sq ft. of living space with 3 bedrooms, 2 baths, sun room, nice deck on back of home, fenced in backyard, 2 car garage, and a utility shed.

Legal: Strafford IRR .35A M/L BEG 208 FT W & 15 FT S NE COR W1/2 NE 1/4 34/30/20/S 100FT W 150FT N 100FT E to BEG 34/30/20

Taxes: \$1283.48

Terms and Conditions: Real estate terms: 10% DOWN DAY OF AUCTION WITH BALANCE DUE AT CLOSING. POSSESSION AT CLOSING WITH CLOSING IN 45 DAYS OR LESS FROM AUCTION DATE.

OPEN VIEWING NOVEMBER 10, 2019 FROM 2-4 PM



INVENTORY LIST: 2009 Dodge Charger. 48,000 miles; 1998 Nissan Sentra SE. new tires; Craftsman professional tool box; Water bed headboard; Entertainment center; Leather furniture; Chest of drawers; South western pine living room furniture; A lot of western frames no pictures; 2 max AP canopy. Still in box. 10' x 20'; Longhorns with leather; Craftsman air compressor in box; Craftsman workbench and locks; Miscellaneous tools in garage; The American cowboy history shadow box; Battery charger; work light; Covered wagon lamp; Small electric chainsaw; Craftsman drill; Western lamp three way light flickering Bulb; Craftsman tools; Craftsman weedeater; Craftsman air hose new; four black 6 foot tables; LG flatscreen TV Onkyo surround sound system with speakers and other ; electronics; Miscellaneous hydraulic bottle jacks; Old Remington premier typewriter in case; Lots of miscellaneous boxes in garage; Concrete cowboy statue approximately 42 inches tall; Western mirror and bench; Violin in a case; Bedroom set; Train set; Lionel Train clock; Trumpet in case; Children's rocker; 110 room air conditioner in box; Cowboy pig approximately 2 feet tall; Large commercial computer desk estimated 9 foot long upper cabinets lower ; cabinets side table; butter churn; Bulk cabinets; Three swivel wooden bar stools; Assortment of pictures; Water cooler; Pair of lamps; Antique toys; Touch lamp; Large George foreman grilling machine; Round table; Multiple pig cookie jars; Plastic flower pot; Pencil art. Pictures; Six piece oak bedroom set by Oakwood interiors solid wood doors are cedar line; Lamps; Lots of tools handtools craftsman; Early 1980s Atari 2600 with games; Craftsman 3.5 ton floor jack like new; Mill Can; Outdoor table with four chairs; Bicycles; Wheel barrel ; electric trimmer; Steel wheels in planners; Nintendo entertainment center in box with lots of games; Bench grinder; reciprocating saw; scrolling saber saw **AND MORE!**



FOR MORE INFORMATION GO TO WWW.EASTERLYAUCTIONCO.COM OR CALL EASTERLY'S AT 417-833-9494



Go to www.EasterlyAuction.com



auctionzip.com
ID#14770

Mike Easterly Auctioneer
417-833-9494

Not Responsible for accidents or theft.

For more information call: Easterly Auction Company, Springfield, MO.

Auction Terms: Bank Letter Of Credit Required.

Visa, Mastercard, Cash, Cashier's check or checks with proper I.D.

Announcements day of sale take precedence over printed material. Auction Notes: Although information

is obtained from sources deemed reliable, auctioneer makes no warranty or guarantee expressed or implied.

Buyers should themselves take the opportunity to make their own inspection prior to sale.

ABSOLUTE REAL ESTATE & BUSINESS AUCTION

FRIDAY, NOVEMBER 22, 2019 AT NOON

941 & 943 N. Main Ave. • Springfield, Mo 65802

DIRECTIONS: From the intersection of Kansas Expressway & Chestnut Expressway turn East on Chestnut expressway, turn left on N.Main ave auction will be on left.



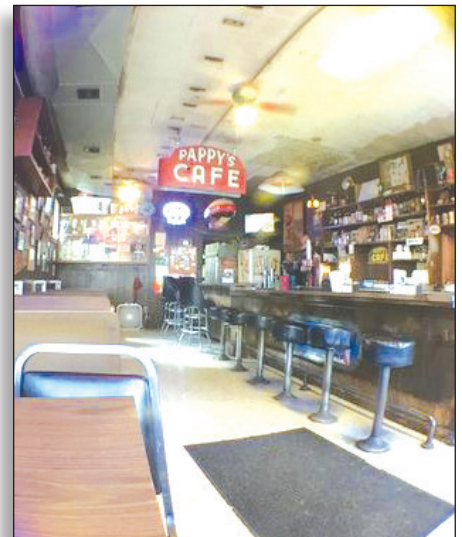
REAL ESTATE

The history of this property dates back a grocery store being built in 1903 and then as a cafe in 1933. It had the first beer by the drink license in Springfield after prohibition but today 943 N. Main endures as the oldest continuously operating restaurant location in Springfield and is one of the last old-fashioned neighborhood places left.

The auction of this business will be for a turn key operation.

Legal: Root & Tracy 2nd add 5 30 ft E 60 Ft lot 6 & all lot 7 **Taxes:** \$1733.01
Terms: 10% down day of auction with balance due at closing. Possession at closing with closing within 45 days or less from auction date.

OPEN VIEWING NOVEMBER 10TH FROM 2-4



FOR MORE INFORMATION GO TO WWW.EASTERLYAUCTIONCO.COM OR CALL EASTERLY'S AT 417-833-9494

EASTERLY AUCTION CO.

Go to www.EasterlyAuction.com



auctionzip.com
ID#14770

Mike Easterly Auctioneer
417-833-9494

Not Responsible for accidents or theft.

For more information call: Easterly Auction Company, Springfield, MO.

Auction Terms: Bank Letter Of Credit Required.

Visa, Mastercard, Cash, Cashier's check or checks with proper I.D.

Announcements day of sale take precedence over printed material. Auction Notes: Although information is obtained from sources deemed reliable, auctioneer makes no warranty or guarantee expressed or implied.

Buyers should themselves take the opportunity to make their own inspection prior to sale.

ONLINE AUCTION • ONLINE AUCTION • ONLINE AUCTION • ONLINE AUCTION • ONLINE AUCTION • ONLINE AUCTION •

ONLINE ONLY AUCTION

Bidding starts Nov 4th & will end Nov 14th

Preview/Inspection date is: Monday, 11 Nov 2019 between 1:30pm-4:00pm

Winning bidders will pick up items on Sunday afternoon, Nov 17th.

Location: 18299 Deer Run Lane,
Saint James, Missouri 65559

Selling: Complete Household Liquidation. Quality very clean home furnishings & decor, Washer/Dryer, Ethan Allen furniture, and MORE!

All terms, conditions, details and photos are found at www.wardenauction.bid or www.wardenauction.com & follow the links.



Owner: Harold & Shirley Wright Trust
Sale Conducted by

WARDEN AUCTION & MORE

Ed Warden – Auctioneer/Broker

(573) 336-2367 or (573) 528-0729

ONLINE AUCTION • ONLINE AUCTION • ONLINE AUCTION • ONLINE AUCTION • ONLINE AUCTION • ONLINE AUCTION •

ONLINE AUCTION • ONLINE AUCTION • ONLINE AUCTION • ONLINE AUCTION • ONLINE AUCTION • ONLINE AUCTION •

ONLINE AUCTION • ONLINE AUCTION • ONLINE AUCTION • ONLINE AUCTION • ONLINE AUCTION • ONLINE AUCTION •

PUBLIC AUCTION

MORNING SALE

SATURDAY, NOVEMBER 9, 2019

STARTING AT 9:30 A.M.

Location: 22180 Harlan Lane, St Robert, MO 65584

Directions: Between Exits 163 & 161 Take the North Outer Road and follow to Harlan Lane.

Turn north on Harlan Lane and follow to the sale site.

Household & Collectibles

Whirlpool 3 door fridge
Kenmore Elite Microhood
Numerous Scales
Numerous Decorative
Masks
Bags of Men's Neckties
Assorted Handbooks
Waterfall Armoire
2 China Hutches
Bookshelves
Game Station
Metal Frog Bird Bath
Assorted Gemstones &
Rocks
Belt Buckles
Large Collection of Zippo
& other Lighters
Coated Cast Iron Pots &
Pans
Large Collection of
Simulated Marble Clocks
& Artwork

Large Collection of
Paintings & Prints
Large Collection of
Seashells
Plastic Totes, Tubs, Storage
Containers
Plastic Shelf Units
China Tea Cups & Saucers
Christmas Ornaments
Christmas Ornament
Holders
Military Chaplain's Field
Communion Set
Chess Boards
Lots of Books
Wooden Shoe Shine Boxes
Handpainted Saw Blades
Double Pedestal Desk
Set of 3 Graduated Tables
Minion Toys
Snake Head Belt Buckle

Shop and Outdoor

**Ruger 10/22 w/ scope
Winchester Model 290 22
rifle**
Husqvarna 2448 riding
mower
Engine Stand
Engine Hoist
Large 220V Air
Compressor
2 - Kayaks
Fiberglass Canoe
Craftsman Self Propelled
Lawn Mower
3-point Bucket
1949 Ford 8N Tractor

Vehicles:

1994 Buick Roadmaster
Estate Wagon

**Other items too numerous
to mention**

Announcements Day Of Auction Take Precedence Over Any Other Advertising

3% Convenience fee added to all credit/debit card transactions

Sale Conducted by

WARDEN AUCTION & MORE

Ed Warden – Auctioneer

(573) 336-2367 or (573) 528-0729

www.wardenauction.com

TERMS

Cash, Credit,
Debit or Approved
Check

ID Required for
Bid Number

TERMS

Not Responsible
For Accidents
or Losses

Nothing Removed
Until Settled For

TAKING CONSIGNMENTS NOW LIVE & ONLINE AUCTION

Saturday, December 14, 2019

21194 Maries County Rd 444
Vichy, MO 65580

**Taking Consignments Until
Friday, December 13, 2019!**



2008 John Deere 160 DLC Excavator
with bucket, grapple will be sold separately



Ford Service Truck with knuckle boom



John Deere 5575 Skid steer



Several Forklifts



24' Triple Axle Gooseneck Trailer



39' 4wd Diesel Snorkle Lift with 8' bucket



40' Sided Scrap Trailer



631 Liebherr Crawler Loader with Cab and heat



644 Lull Telehandler 34' 4wd 4 wheel steer



1986 F800 Ford Dump Truck Gas



1988 Ford F800 Diesel Dump Truck



1993 Mack Day Cab Twins Crew Tractor



2000 Transcraft 35 ton triple axle lowboy



Bobcat 853 Skid steer

**Contact Mike Conaway @ 573 205 8037
or Jim Fleshman @ 573 465 7766 to consign
your item or items, www.bid.dreamdirt.com**



MIKE CONAWAY
FarmBid Representative
☎ (573) 205-8037
✉ MConaway@DreamDirt.com

@DreamDirt



100 4x5 2nd cutting bales of good weed free mixed grass hay already consigned



Cat 955L Loader Crawler with ripper



Ford 6610 Tractor with loader, bucket and bale spike

AUCTIONS | REAL ESTATE | MACHINERY | FARM BID

BID NOW! Bid.DreamDirt.com

Real Estate Auction

Saturday, November 9th ★ 10 A.M.

Location: 1722 County Road 1030, Willow Springs, MO

Directions: Willow Springs business route turn on 10th street across from fire department then immediate left on Old Springfield Road and stay left at the fork, follow approx. 2 miles to auction.

Real Estate

Located just off of blacktop county road close to town, sits this 3 bed 2 bath home on 8 to 10 acres. (survey will be done by auction day to determine land amount) Home features an office, oversized utility/mudroom, recently updated kitchen, steel siding, architectural shingled roof, spacious cover front deck and cover concrete back patio. Property has a 24x36 garage/workshop, small green house and garden shed. Terms: 10% down day of auction, balance at closing in 30 to 45 days. Highest bid presented to family for acceptance or rejection. Taxes to be prorated to closing date. Buyer and Seller split title closing cost 50/50. Call Travis at 417-293-6909 for an appointment to view the property in advance.



Personal Property

Tools, Household, Appliances, Garden, Misc.



Auctioneers Note: Great opportunity to own a very well maintained, conveniently located home. Come prepared to buy and ready to move! See you at the auction.

Tooley Auction Services, LLC

417-293-6909 • Willow Springs, MO • tooleyauctions@gmail.com



Travis Tooley, Auctioneer
Bruce Scheets, Auctioneer



is what we say best.



Follow us on Facebook!
Tooley Auction Services, LLC

Drivers license or photo ID. Cash or check. Announcements made on the day of the sale take precedence over any printed material. Not responsible for accidents, theft or lost articles.

Clerks & Cashiers: Jennifer Tooley, Penny Tooley, Shelly Cauldwell

Ringmen: Josh Wheeler, Vance Farmer, Terry McCallister





AUCTION

Due to selling their home Rick and Pat Barnes will sell the following personal property on:

Sun. November 10, 2019 @ 1PM

LOCATION: (21995 PVT Dr. 3588 St. James, MO) **DIRECTIONS:** From I-44 Exit 195 Hwy 68 and 8, travel Hwy 8 east 8 miles to Mound Ridge Rd, travel 4.5 miles to Pvt. Dr. 3588, travel 3588 to auction site.

Watch for Sellers Auction Signs on sale day.

12'x24' Freeburg Hardwood Portable Building

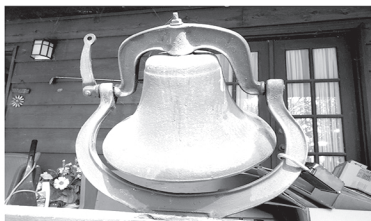
Trailers: 24'x8' Bumper Hitch Flatbed ~ 25ft Gooseneck Flatbed ~ 12'x8' DBL Axle Homemade Trailer ~ WW 16' Box Trailer ~ Rockwood Popup Camper ~ 10'x6' Coose Box Trailer ~ 48' Fruehauf Trailer

Large Lot of Cattle Panels including 10+) 16ft, 14+) 12ft, & 30+) 10ft

Guns: Hi-Point Mod 4095, 40 S&W ~ Sears Ted Williams Mod 53, 30-06 ~ Wards Western Field 22LR ~ Connecticut Valley Arms (Stag Horn) 54cal Black Powder ~ Connecticut Valley Arms (Hunter Bolt Magnum) 50cal ~ Heritage Mfg 22LR Rough Rider ~ Bersa Thunder 380 ~ Large Lot of Ammo including 30-06 & 380

Tools: Kobalt 60gal Air Compressor ~ Craftsman Tool Chest ~ Tool Master 6" Bench Grinder ~ 16 Sp. Drill Press ~ Lincoln Sp 135T Wire Welder ~ K-T #4 Vise ~ Honda 2000 Generator

Furniture & Misc: #2 Crystal Metal Dinner Bell ~ Antique Amish Country Kitchen Cabinet ~ Pelonis Portable AC Unit ~ Ducks Unlimited Pictures ~ Coffee & End Tables ~ Glass Display Case ~ Brown Leather Love Seat ~ Cherry Wood Desk



Auctioneer's Note: Lots of items not listed. Nice Sale with many very useful items. Plenty of parking, plan to attend.

Sellers Auction Service
"We Were Born Sellers"

Complete Auction Service

www.sellersauctionservice.com

Terms: Cash or Check with proper I.D. Not responsible for accidents or losses. Items will be sold As Is/Where Is with No Guarantees. Nothing to be removed until paid for. Refreshments available. Announcements made on sale day take precedence over any printed materials.



GREGG SELLERS, AUCTIONEER
573-480-4400

PUBLIC AUCTION

MONDAY, NOVEMBER 11 • 10:00 A.M.

Location: 6202 CR 3210, Peace Valley, Mo. From West Plains, Mo travel east on Hwy. 160 to Hwy. 17 North to Hwy. W then right 2.2 miles to CR 3210, then approx. 1 mile to auction down private drive.

Reason for auction: As we plan to sell our life-long family farm & equipment.

OUTSTANDING REAL ESTATE

Custom Home - 120 Acres



AT PUBLIC AUCTION: Located on well-kept county road south of Peace Valley in close proximity of West Plains, Mo. This life-long family farm features outstanding custom home with an array of amenities! You will enjoy the spacious 3 levels, garage, gorgeous setting & ornate pipe-fenced yard! The home has a large open floor plan with stunning granite countertops & Schribers, fabulous cabinets & dining room along with fireplaces, gleaming hardwood floors/tile & Pella windows! Space is reserved for you with 6 bedrooms, 5 baths and lots of room for the cattle on the 120 acres of lush pastures, machine sheds & 2 wells! Real estate sells approx. 10:30 – 11 a.m. Owner will sell in increments of 20 to 120 acres **TERMS:** 10% down day of auction, balance due in 30-45 days. **INSPECTION:** by appointment. **CONDITIONS:** Low starting bid. Final bid to be presented to family for acceptance or rejection.



JD GATOR - TRAILERS - WELDER - VEHICLES

No equipment sold prior to auction. 2016 UV550 John Deere Gator ATV with windshield, canopy, MWFD, gas, 1 owner, 625 hours! 2012 Diamond T High Tensile 32" flatbed trailer, dual wheel, tandem heavy duty axles with 27' flat decks, 5' dove tail, ramp & pop-up center platform #5FWEP32270R015092; 225 Miller Bobcat AC-DC welder generator, 1100 watt, less than 2 years old! (2 sets of 50 leads sell separate.) 2006 Chevrolet Colorado pickup 4x4, 5 speed, single cab, AC, 4 cyl., high mileage, but well-cared for, good truck! 2007 Ford Expedition XLT, 5.4 Triton motor, burgundy color, new tires, high mileage,



every day driver, good vehicle! Model 15, 14' aluminum fishing boat with Dilly trailer & 20 hp motor, just serviced at Whisnants, good boat! 1970 Chevrolet CST/10 1/2 ton pickup, original family owners, bought new by Grandpa Paul Woody, 350, 4-barrel carb, auto, 94,600 miles, barn kept! Shop full of wrenches, tools, supplies, fishing equipment, Ford Suitcase tractor weights; lawn equipment; cargo carrier, farm items. **GUNS:** AL390 Beretta Silver Mallard 12 ga. auto with chokes, nice! 870 Remington 16 ga. vent ribs, auto, gold trigger, beautiful walnut stock, nice! 870 Remington magnum, special purpose, 12 ga. with slug barrel, nylon, Bushnell scope. (Rifles on premises day of auction only.) **HOUSEHOLD:** Oak dining table, 5 chairs; coffee table/end tables; oak bench; corner gun cabinet; holiday décor; living room furniture; king bedroom set, metal bed, canopy bed with dresser, bench chest, vanity, night stands & matching lamp set! Exercise equipment; small refrigerator; kids items, toys; wall décor; books; entire house full of items! Visit our website: garysexton.com/photos.

AUCTIONEER NOTES: Owners are planning on visiting the grandkids & slower pace of life. Be sure and preview the long-time family farm. All items are very clean!

OWNERS: DONNIE & VICKIE BROTHERTON

Gary Sexton
Since 1978 Auctioneers, LLC

Todd Hornback
Oregon Co. Rep

Gene Summers
Ozark Co. Rep



E-mail: gary@garysexton.com
AR Broker #PB00043890, AR License #1568

NAA www.garysexton.com • 417-255-7001
1028 Porter Wagoner • West Plains, MO



All announcements made day of sale supersede any written material. Not responsible for lost or stolen property or accidents.

ONLINE AUCTION

FAMILY HOME CLOSE TO PARK & SCHOOLS!



Open House / Inspection:
Tues., Oct. 29th, 4:30 – 5:30 pm
& Nov. 5th, 12:00 – 1:00 pm

**Sells With No Minimum
To The High Bidder!**

- 3 Bedroom, 2 Bath Brick Ranch
 - Unfinished Basement
- Eat-in Kitchen & Dining Room
 - Newer Central Air & Roof
- Located On Dead-End Street
 - Lg. Two Car Garage

Note: You're Sure To Love This Well Cared For Home. Within Walking Distance of Southern Boone Middle School, High School & Pool.

Bidding Ends:

Tuesday, November 12th @ 12:30 p.m.
404 E. Meadowmere View, Ashland, MO

For Terms, Information or How To Purchase This Property At Auction, Call Your Real Estate At Auction Specialists: Atterberry Real Estate Auctioneers at 573-474-9295 or Email: contactus@atterberryauction.com



ONLINE LAND & HOME AUCTION

27 Acres +/- (Open & Wooded)



Inspection Dates:
Wed. Nov. 6th, 3:00 - 4:30 p.m.
& Nov. 13th, 12:00 - 1:30 p.m.

American Colonial Style Home Centralia Schools

- 5 Bedroom, 3 Bath Home
- Living Room W/ Fireplace & Wet Bar
- Lower Level Family Room W/ Fireplace
- Spacious Master Suite W/ Vaulted Ceiling
 - Formal Living & Dining Rooms
 - 1 Ac. +/- Stocked Pond
 - 24' x 24' Metal Building
- 2 Car Garage & Redwood Rear Deck

Note: Property Sells To High Bidder With No Reserve. Conveniently Located Just South of Centralia On Hwy. 124. Property Could Be Developed Or Pasture For Livestock. Seller Wants The New Owner To Give This Home The TLC It Deserves.

**Online Bidding Ends Wednesday,
November 20th At 12:30PM**
19700 N. Hwy 124, Centralia, MO



For Terms, Details, Or Bidding Assistance, Call Your Real Estate At Auction Specialists: Atterberry Auction & Realty Co, 573-474-9295 Or Email: contactus@atterberryauction.com

Wonderful Family Home In Vanderveen Crossing Offered At Online Auction



Open House / Inspection:
Friday, Nov. 8th, 3:00 to 4:00 p.m.
& Nov. 14th, 3:30 to 4:30 p.m.

- 2,200 +/- Sq. Ft., 3 Bdrm., 2 Ba. Ranch Style Home
- Spacious Master Suite W/ Jetted Tub
- Lg. Living Room W/ Gas Fireplace
 - Lower Level Family Room
 - Walkout Basement & Workshop Area
- 2 Car Garage, Rear Deck & Concrete Patio

Note: This Is Truly A Nice Home That Is Perfect For A Young Family, Professional Or Retiree.

You Will Love This Move-In Ready Home Located On A Quiet Cul-De-Sac Street!

3704 Jaguar Ct., Columbia, MO
**Online Bidding Ends: Thursday,
November 21st @ 12:30 p.m.**



For Information On How To Buy This Home At Auction, Or How To Obtain Financing, Please Call Your Real Estate At Auction Specialists at (573) 474-9295 Or Email: contactus@atterberryauction.com

AKC AUSTRALIAN CATTLE DOG: Red Healer, female adult. \$350. Edgar Springs, 573-308-6189.

JOHN DEERE 2630: Diesel tractor, 70HP, w/145 JD loader. \$8,650. (573)765-4406.

WANTED: Small, 4-cyl Chrysler car, 1995 or below. Must have good body, doesn't need to run. 636-584-9476.

4 CHAIN LINK DOG PENS: 3 dog houses, 3 metal cages with trays, 3 plastic cages w/ doors. Make Offer. 636-239-4124.

OLDER FRONT-TINE TILLER: 5HP, Runs Good. \$125 OBO. 573-257-0782.

NORWEGIAN ELKHOUND PUPPIES: Cute, family raised on farm, very friendly parents. Will make good family pets. Starting at \$100. 417-241-0394, Hartville.

LANDPRIDE RCF3010: pull type brush hog, 10'. \$5,900. 417-270-1505.

26 ROUND BALES: Wrapped, mixed grass, 1st cutting. \$20 each. Good used lumber. Make offer. 417-532-8048.

AMISH FORECART: Single or double, shafts & pole, rubber tires, hydraulic disc brakes, lights & newer marine battery. \$1,000. Grovespring, 417-533-9484.

CAST IRON WOOD STOVE: w/2 front cast iron bi-fold doors. \$150. 636-239-4124.

AKC GERMAN SHEPHERDS: 7wks, 9wks, 16wks. \$600. 417-260-0266.

7 COWS FOR SALE: 5 are 2-3 stage, 2-open 1-calf. \$6,700 Rogersville, 417-753-2747, 417-766-1991.

SECLUDED HOME ON WOODED ACREAGE ONLINE AUCTION ENJOY SOUTHERN BOONE COUNTY LIVING ON 7+ AC



Open House / Inspection Dates:
Friday, November 8th & 15th,
12:00 p.m. – 1:00 p.m.

- 2,400+/-Sq. Ft., 4 Bedroom, 2 1/2 Bath
 - Cozy Living Room W/ Woodburning Stove
 - Kitchen/Dining Combination
 - Beautiful Hardwood Floors
- Covered Front Porch & Rear Wood Deck
- Two Car Garage & Lawn Shed

Note: A Private Wooded Driveway Leads You Back To This Very Charming One Level Home. Quick Access To Hwy 63 And Located Between Columbia And Jefferson City.

11622 S. Blackhawk Trail, Ashland, MO
Online Bidding Ends:
Friday, November 22nd @ 12:30 p.m.

For Additional Terms Or Details visit: atterberryauction.com or Call Your Real Estate At Auction Specialists: Atterberry Auction & Realty (573) 474-9295 Or Email: contactus@atterberryauction.com

"WE MAKE BUYING AND SELLING AT AUCTION EASY" MEMBERS
Atterberry Auction & Realty Co., L.L.C. MarkNet
573-474-9295 www.atterberryauction.com

ONLINE AUCTION

**Ford 861 • Hit & Miss Engines
Maytag Engines • Equipment
Implements • Tools**



**5001 N. Rt. E, Columbia, MO
Bidding Ends**

Tuesday, November 12th at 12:30PM
This Auction Features Staggered Ending Times & Extended Bidding On All Lots.
Bid Online At Atterberryauction.com

Note: This is an outstanding online estate auction that features a lifetime collection of hit and miss engines, a Ford 861 Powermaster, Maytag engines, collectibles and so much more! **Make sure to attend the preview to view these items in person!**

Preview: Monday, November 11th
from 3:00PM to 6:00PM

Payment & Pick-Up:
Wednesday, November 13th
from 10:00AM to 6:00PM

Ford 861 Powermaster • HUGE Outstanding Collection Of Hit & Miss Engines • Maytag Engines • John Deere 400 Lawn Tractor Trailers • Equipment • Implements Large Assortment Of Tools
Vintage Maytag Oil Cans & Detergent Cups
Honda QA50 Bike • Outboard Motors
Welder • Antique Wringer Washers
Much More Listed Online!

"WE MAKE BUYING AND SELLING AT AUCTION EASY" MEMBERS
Atterberry Auction & Realty Co., L.L.C. MarkNet
573-474-9295 www.atterberryauction.com

For complete terms, listing, catalog, pictures & bidding, visit atterberryauction.com, email contactus@atterberryauction.com, or call (573) 474-9295.

Please contact our office if you need help with the online bidding process.

ONLINE AUCTION

Two Properties In Williamsburg Sells To High Bidder!



10718 Old Hwy. 40:

- 2 Bedroom, 1 Bath Ranch Style Home
- Eat-In Kitchen & Living Room
- Partially Fenced Backyard
- Home Needs TLC
- Large Lot Near Crane's Country Store

3810 CR 1005:

- 744 Sq. Ft. Building on Concrete Slab
- Blacktop Frontage • Building Needs TLC
- Large Lot Next To Williamsburg Post Office
- Online Personal Property Auction Bidding Ends Monday, November 25th At 3:00PM

Open House / Inspection: Monday, Nov. 18th | 11:00 – 1:00 pm

Note: The two properties will be offered separately with online bidding ending at 12:30 pm on the home & at 1:30 pm on the building.

Bidding Ends: Monday, November 25th

"WE MAKE BUYING AND SELLING AT AUCTION EASY" MEMBERS
Atterberry Auction & Realty Co., L.L.C. MarkNet
573-474-9295 www.atterberryauction.com

For Information On How To Buy This Home At Auction Or Terms, Visit: www.atterberryauction.com Or Call Your Real Estate Auction Specialists: Atterberry Real Estate Auctioneers: 573-474-9295

3 HEALER PUPPIES: 12wks, males. \$50. 417-533-4994. Grovespring.

JOHN DEERE 535 ROUND BALER: monitor, kicker, net wrap. \$5,250. 573-765-4406.

2013 MAHINDRA 4WD DIESEL TRACTOR: 30HP HST, 60 hrs, w/5' bush hog & 5' box blade. \$10,700. 573-637-2450, Lester-ville.

VILLA HOMES IN ROLLA: Has NEW and USED Mobile Homes. Call David for info: 573-578-8072.

HOLLYWOOD 4-BIKE HITCH MOUNT RACK: Excellent condition, Includes (2) Allen Stabilizer tension bars and keyed alike locking hitch pin and cable. \$175. Conway, 417-718-5347.

2007 TOYOTA CAMRY: 250,000 miles (Commuter Car), well maintained, gray color, good tires. REAL NICE CAR. \$2,500. 417-533-2228.

COYOTE NX5010 CAB TRACTOR: 4x4, hydrastat trans, w/loader, 460 hrs, excellent condition. \$26,900obo. 417-293-1767.

AUCTION REMINDER: Online Home Auction in Columbia, MO ends Thursday, November 21st @ 12:30pm. Atterberry Auctions. Please see our Auction Directory for more information.

EVEREST ELITE HOLOFIL II Insulated sleeping bag by Slumberjack. (Dupont). \$70. Email Spiritfm89.9@gmail.com or 573-645-7876.

A&M SAWMILL: Buying Cedar Logs. Monday, Wednesday & Friday. 3626 S 21st Rd, Dunnegan, MO 65640. 417-754-1173.

Salem Livestock Auction
 Hwy. 32 Salem, MO • 573-729-8880
 Over 40 Years in the Livestock Business

Upcoming Special Sales!

Monday, December 2nd
 Customer Appreciation Day!
 Lunch will be served 11:00 am - 2:00 pm

Friday, December 6th
 Pre Vac Sale at 12:00 pm
 Cattle must be weaned 45 days with at least 1 round of shots

Friday, December 13th
 Stock Cow Sale at 6:30 pm

Cattle Sale Every Monday at 12
 Feeder calves to sell at 12, butcher cows & stock cows following

All Consignments Welcome Up Until Sale

Allan Thompson 417-932-4097	Renee Lauderdale 417-926-2682	
Chuck Thompson 417-257-5610	Brandon Barton 417-259-1597	

Terms of Sale: Cash or Approved Check!

Multi-Estate Huge Auction

Thursday, November 14, 2019 STARTS @ 9:21 AM

Address: Mayes County Fairgrounds • 2150 NE 1st St. • Pryor, OK

Directions: From Jct Hwy 69 & Hwy 20 in Pryor, OK go E on Hwy 20 1/2 mile to Elliott St. Turn L onto Elliott St. and then immediately R onto NE 1st St / Old Hwy 20. Go E 1 1/4 miles- Fair Grounds on R. Watch for auction signs.

For More Info & Pictures:
www.chuppsauction.com



75+ GUNS, GUN ACCESSORIES and COINS, TRAILERS, GOLF CART, PORTABLE BLDG, GAS PUMPS, SIGNS, ZERO TURN MOWER, SHOP TOOLS, JUKEBOX, ANTIQUE 16' BAR, ANTIQUES & COLLECTIBLES, HOUSEHOLD FURNITURE, POOL TABLE, SHUFFLEBOARD, QUILTS

ESTATE OF: Leon Mangrum OWNER: Mary Mangrum

TERMS: Cash - Credit Cards - Check with Proper ID - OK Sales Tax Applies unless exemption is shown. NOT RESPONSIBLE FOR ACCIDENTS. ANY ANNOUNCEMENTS DAY OF SALE SUPERSEDES PREVIOUS ADVERTISING.

CHUPPS AUCTION & REAL ESTATE

Stan Chupp
 (918) 638-1157

Dale Chupp, Realtor
 Coldwell Banker Neokla Select
 (918) 630-0495

E. J. Chupp

18 STUB GUARDS: for Hesston PT7 or 10 Haybine. \$15. Gerald, 573-764-2270.

AUCTION REMINDER: Secluded Home Online Auction ends Friday, November 22nd @ 12:30pm. Atterberry Auctions. Please see our Auction Directory for more information.

CLIPPER SEED CLEANER: \$150. 417-646-8807.

OLD LINN CREEK, HA HA TONKA & CAMDEN CO BOOK "Before the Dam Water", by T. Victor Jeffries. \$3.50 plus \$2 if mailed. 417-532-2045, Lebanon.

AUCTION REMINDER: Real Estate & Estate Auction. Saturday, November 9th @ 9am. Foster Auction. Please see our Auction Directory for more information.

RARE 1937 CIVILIAN CONSERVATION CORPS (CCC) 7TH CORPS AREA OFFICIAL MANUAL. \$20. 417-532-2045, Lebanon.

NEW & USED PARTS FOR ANYTHING. 800-807-9612.

DEER RIFLE: 30.06, Savage model 110. \$300. Columbia, 573-999-1803.


AUCTION REMINDER: Multi-Estate Auction. Thursday, November 14th @ 9:21AM. Chupps Auction Co. Please see our Auction Directory for more information.

LIKE NEW PEDESTAL: for front loader washer or dryer, 12"x24 3/8"x 27". \$50. Gerald, 573-764-2270.

SET OF NYLON DOUBLE HARNESS: W/ collars. \$450. 417-533-9484, Grovespring.

MX5100 KUBOTA: 4wd tractor w/loader, low hours. \$21,500. 417-270-1505.

9 HEALER PUPPIES: 5 males, 4 females. 8 wks old. \$200. 417-533-4994. Grovespring.



MID MISSOURI STOCKYARDS

REGULAR SALE EVERY THURSDAY 11AM

For Farm Visits, Market Updates, or Trucking
 Call Zach Cox 417-777-1320
 Dan Romine 573-578-4939

**Competitive Buyers!
 Competitive Commission!
 Competitive Market!**

Barn: 417-532-9292 
I-44 • Exit 123 "just outside of Lebanon"
17505 Route 66, Phillipsburg, MO 65722
 For weekly market updates, visit us at www.midmostockyards.com

Classic Cars & Trucks * Motorcycles * Car Hauler
 * Trailers * Guns * Fender Guitars * Coins

PUBLIC AUCTION

Sunday, November 10th * 1:00 P.M.

Location: 1030 Peaceful Dr., Galena Mo. 65656 Directions: From Crane take D hwy. south 1/2 mi. then left on Muskytime Rd. 1/2 mi. then left on Red Hill Rd. 1/2 mi. then left on Peaceful Dr. to Sale * Watch for Signs * Lunch & Restrooms Available *

Classic Cars - Pickups - Parts - Motorcycles - RV - Car Hauler - Trailers - Guns - Guitars - Banjo - Mandolin - Amps - Coins

Auctioneers Note: Outstanding Auction you won't want to miss! Auction Starts at 1:00 with Cars, Trucks & Trailers then Music Instruments followed by Guns & Coins. Online Bidding Available on Cars, Trucks & Music Instruments only. Please see our website for a complete list & details for Online Bidding.

OWNER: FRANK BATY

Auctioneer: Larry Foster Galena, Mo
 Phone: (417) 723-8329 Cell: (417) 839-6860
www.fosterauctionservice.com
 Email: bidnowsold@aol.com    



ST. JAMES TRACTOR & REPAIR AUCTION

Due to bad health and retiring from the tractor business after 60 years, I will sell the following personal property at auction located at 220 W. James Blvd. in St. James, Missouri. Follow Lorts Auction Today signs on

Sat., Nov. 9, 2019 • 9AM

Tractors & Farm Machinery

- | | |
|---|---|
| 7070 Allis-Chalmers w/cab, good rubber (all original) | 3 pt. 5 ft. King Kutter tiller, all (made in USA, like new) |
| 190 Allis-Chalmers, diesel, good rubber, runs good (all original) | 3 pt. 6 ft. Farmhand box blade w/ripper (new) |
| 601 Workmaster, new rear rubber, rear hydraulics | 3 pt. Herd seeder |
| Fordson Major diesel tractor | 3 pt. 13 ft. chisel plow |
| 8N Ford tractor, 12 volt, turf tires | 3 pt. pond scoop w/cylinder |
| 340 International utility tractor, gas, like-new rubber | 3 pt. Ford haymower |
| 35 MF tractor w/loader, gas, good rubber | 3 pt. 6 ft. finish mower |
| 200 Allis-Chalmers w/loader, diesel, good rubber | Tractor snow plow |
| 175 Allis-Chalmers w/loader, diesel, good rubber | 3 pt. 1 bottom plow |
| WD 45 Allis Chalmers | 3 pt. boom pole (new) |
| 3 pt. Land Pride cutter | 3 pt. 4 ft & 5 ft. blades (new) |
| 3 pt. 4 ft. rock rake | 3 pt. bale unroller w/cylinder (new) |
| Pull type lawnmower | 3 pt. 7 ft. Branson disc w/ notched blade (new) |
| Pull type 4 1/2 ft. brush hog | 3 pt. 5 ft. Branson disc w/ notched blade (new) |
| 3 pt. scoop — 3 pt. bale spike | 3 pt. bale spike |
| | 3 pt. Hearing pipe line disc |
| | Pull type finish mower |
| | 14 ft. hay wagon |
| | Wood Dixie 3 pt. brush hog |

A lot of New Tractor Parts & Supplies • Metal Toys

Real Estate

Corner lot on West James Blvd. & North Bourbeuse w/heated shop, 2 bay building & office, new siding & roof, 25 ft. x 50 ft. building w/work benches, 220 air compressor & Lincoln welder, parts washer & drill press, new 10 ft. x 16 ft. storage building in back, 12 ft. x 20 ft. x 10 ft. carport building. Currently used as an every day operated business/tractor repair shop. Owner has the right to reject last & final bid

Many more articles too numerous to mention

"like" us on facebook - Lorts Auction Service or view this auction online at auctionzip.com (auctioneer ID #42353).

Owner: Kenneth Happel
220 W James Blvd., St. James, MO 65559

AUCTIONEER'S NOTE: Kenny is retiring and selling his business. Lots of good usable equipment and misc. on this auction. Mark your calendar!

Lorts Auction Service

TERMS: Cash or check with proper I.D. Not responsible for accidents or losses, should they occur. Nothing removed until paid for. Lunch Served — ALL ANNOUNCEMENTS MADE SALE DAY TAKE PRECEDENCE OVER ALL PRINTED MATERIALS —

SALE CONDUCTED BY **LORTS AUCTION SERVICE**
ST. JAMES, MO 65559 • 573-699-4308 • 573-263-0243
AUCTIONEERS: Larry W. Lorts & Gary R. Lorts
Licensed and Bonded

BUFFALO LIVESTOCK MARKET LLC

276 Hwy 32 West
Buffalo, Missouri

November 2nd, 2019 Receipts: 1190 Head

Feeders \$4-\$8 Higher; Cows Steady to \$2 Higher; Wean Cattle selling at top end; Unweaned at bottom of quote.

Representative Steers

- 300-400 @ 150.00 to 186.00
- 400-500 @ 145.00 to 172.00
- 500-600 @ 138.00 to 155.00
- 600-700 @ 134.00 to 144.00
- 700-800 @ 138.00 to 143.00

Representative Heifers

- 300-400 @ 120.00 to 149.00
- 400-500 @ 128.00 to 150.50
- 500-600 @ 122.00 to 137.00
- 600-700 @ 120.00 to 135.00
- 700-800 @ 115.00 to 131.00

Feeder Bulls

- 300-400 @ 140.00 to 160.00
- 400-500 @ 132.00 to 158.00
- 500-600 @ 125.00 to 135.00
- 600-700 @ 121.00 to 131.00
- 700-800 @ 110.00 to 134.00
- 800-900 @ 82.00 to 109.00

Bred Cows

800.00 to 975.00

Cow-Calf Pairs

750.00 to 1100.00

Slaughter Cows

- Big Fleшы Cows 1500# 52.00 to 59.00
- Boning Cows 1000# to 1300# 42.00 to 50.00
- Thin Cows 37.00 to 46.00
- X Thin 37.00 Down

Slaughter Bulls

64.00 to 76.50

Wean-Vac Sale November 9
Call to Consign

MON-WED MARKET REPORT

Listen to KJEL 103.7FM • Lebanon or KY00 99FM • Bolivar

VIEW OUR SALES AT CATTLEUSA.COM

CALL FOR TRUCKING OR ON-FARM VISIT

Lyle Caselman • Owner-Manager
417-345-7876 • mobile 417-533-2944
Leon Caselman • Owner
417-345-4514 • mobile • 417-588-6185
Howard Miller • Owner 417-345-8122

MARQUETTE AUCTION SERVICES

Caleb Marquette
Owner/Auctioneer
Phone: 573-721-1106

Find us on Facebook!

CENTURY 21 Chris Weaver, Real Estate Agent
McKeown & Associates, Inc. 573-489-6416
cweaver@c21mckeown.com

Monroe County Land & Estate Auction



83 acres +/- 34.64 +/- FSA open acres & 48.36 +/- in woods/homesite, land sells @ 9 a.m.

Seller: Kenneth Sly Estate

15908 Monroe Rd 965, Madison, MO

Saturday, Nov 9th @ 9 A.M.

Real estate Terms & Conditions: Land will sell by confirmation of seller on sight. 10% non-refundable earnest down payment due on day of auction in the form of personal check, business check or cashier's check upon signing a purchase agreement immediately following the close of bidding. Since earnest money is non-refundable, MAKE SURE YOUR FINANCING IS IN ORDER. All announcements made on the day of auction take precedence over all written advertisements. Closing will be within 30 days of the sale date at Monroe County Abstract in Paris, MO. Contact Chris Weaver with Century 21 McKeown and Associates for your private showing and questions, 573-489-6416.

See additional details & auction listing online @ www.marquetteauctionservices.com

AKC GERMAN SHEPHERD: Sable, 5months, male, Champion bloodlines. \$350. Edgar Springs, 573-308-6189..

2004 HONDA PILOT: AWD, 3rd row seat, high mileage. Runs, drives & operates good. Sell or consider trade for pick-up. 417-599-8089.

HAY FOR SALE: Round and Square, call for prices. 417-345-5634

WHEEL FOR FORD 8N TRACTOR: 3"X 19". \$30. Gerald, 573-764-2270.

1979 LITTLE RED EXPRESS: 39,700mi, all original, air. \$18,500. 573-518-4620. Bonne-Terre.

AUCTION REMINDER: 2 Properties Online Auction, bidding ends Monday, Nov 25th. Atterberry Auctions. Please see our Auction Directory for more information.



Cheyenne Acres
Horse & Tack
BUY - SELL - TRADE
by Rolla, MO
Call For Directions & Availability
Call Kip
573-368-9402

WANTED, TIMBER TO LOG ON SHARES: Honest, reliable, references. 417-533-4607, 417-664-1195.

BRUSHOGS: 5 to choose from, 5ft-6ft, 3pt and/or pull. \$350/up. Disc 8ft tandem, like new. \$900. 417-753-2747/417-766-1991, Rogersville.



Built Stronger to Last Longer
Gooseneck
Trailer Mfg. Co., Inc.
Savings Start Here!
24 x 6'8" Gooseneck Brand Stock Trailer
Several In Stock
Same day financing with Ag Direct (with approved credit)
LET US BE YOUR PEOPLE!!
WESTGATE TRAILER & EQUIP.
417-351-6974 • 417-926-7733
www.westgatetrailer.net
8920 W Business 60 • Mtn. Grove, MO
7136 W Farm Road 140 • Springfield, MO
FULL SERVICE SHOP
OPEN: Mon.-Fri. 8-5 And "YES!" Sat. 8-Noon!

USED OAK BARN WOOD FOR BUILDING OR KINDLING. \$30. 417-293-7113, West Plains.

AUCTION REMINDER: Online Auction in Columbia, MO ends Tuesday, November 12th @ 12:30pm. Atterberry Auctions. Please see our Auction Directory for more information.



417-924-2026 • 2676 Hwy. 5, Mansfield, MO
Bush-Whacker Heavy Duty Rotary Cutter
END OF SEASON CLEARANCE ON 5' AND 6' ROTARY TILLERS New Mowers! Bush-Whacker, Big Bee
Farm Tires, PTO's & Parts for Rotary Mowers, Storage Containers & Dry Vans - 20' - 53' Farm Tractor Implements
Plows, Discs, and More Skidsteer Attachments: Pallet Forks, Buckets, Grapples, Hay Spears & Tree Sheers - RR Ties
TRAILER PARTS & REPAIR | **NEW SEMI TIRES - DRIVE & STEER**
We Invite You To Come By & Look Us Over! Located 2.5 Miles North Of Mansfield, MO On Hwy 5

WHEAT STRAW. \$4 Bale, 20 or more, \$3.75. 573-378-7326.

INTERNATIONAL 400 TRACTOR W/ LOADER: 573-674-3601.

CAT #12 ROAD GRADER: \$3,500. 417-664-2090.

MILLER 225 BOBCAT WELDER: W/323 hours, 150ft lead +/-, welding trailer with title. \$2,000. Richland, 573-512-2059.

SNOWBLOWERS: 1-Snapper, 1-Craftsman, both like new, might trade for guns, \$225/each. Springfield, 417-833-8351/ 417-234-0629.

BEEFALO, The Forage Fed Breed: weaning age bulls and heifers. \$950. 573-732-5763, Bourbon.

AUCTION REMINDER: Online Real Estate Auction, ends Tuesday, November 12th @ 12:30pm. Atterberry Auctions. Please see our Auction Directory for more information.



Is Your Log Home UGLY?
Starting To Look
Professional Staining & Repair
(Log Homes & Wood Siding)
Call
Pine Ridge Rustic
Log Home Building Supplies **573-729-7226**
www.pineridgerustic.com

LIONEL TRAIN SET: Steam engine, tender, caboose and other car, track and transformer. \$195. 573-364-7465, Rolla.

PUPPIES FOR SALE: Beagle/Dachshund mixed. Silver, Tri-Color and Chocolate colors. \$250 males, \$300 females. 417-322-0833.

BEAUTIFUL DOBERMAN PUPPIES: Born 8/26, one Red/Rust and one Black/Rust male. \$650. One Red/Rust female. \$500. Parents are Double Registered AKC & CKC. Puppies are CKC Registered. UTD on shots and come with Health Records. Tails docked and declaws removed. 417-531-0483.

MEAT RABBITS FOR SALE: 417-664-5684.

INTERNATIONAL SQUARE HAY BALER. Also JD square baler. 573-674-3601.

REGISTERED HEREFORD & ANGUS BULLS: Home raised, Some Show-Me Select Qualified. 573-701-7828. Belgrade

AUSTRALIAN SHEPHERD PUPPIES: out of working parents, shots-first round. 573-663-7459.

100+ NEW STEEL POSTS. \$2. 417-259-3437.

BORDER COLLIE PUPPIES: Dewormed, first shots. \$150. working parents from Canada. Amos, 20269 Maries CR635, Dixon, MO 65459.

POOL TABLES: Installations, moves, recoveries, repairs, accessories, etc. 573-646-1700.

\$19,900 USED DOUBLE WIDE: nice 3 bedroom, 2 bath delivered & set-up.....Hurry, This house will **NOT** last long! Call now 573-657-2176 amegamobilehomes.com

DARK BROWN LARGE STORAGE OTTOMAN: Or coffee table with lid. PERFECT. \$75. 417-588-2176.

ACA REGISTERED LAB PUPPIES: good breeding stock, 6 months old. \$50. Hartville. Also mature dogs. 417-741-2198.

PULL BEHIND LAWN LEAF CATCHER: 38" and lawn dump cart. Both \$200. 636-239-4124.

WOOD FURNACE: heats whole house, blower, ash clean-out door, uses 2ft wood. \$575. 636-239-4124.

GET YOUR WORK DONE, AMERICA

FOR JUST **\$241** PER MONTH*



4540 2WD

- SIMPLE** to operate
- ECO-FRIENDLY**, NO DPF engine
- HEAVY-DUTY** steel construction not plastic

MAHINDRA 4540 41HP, 2WD, TRACTOR AND LOADER.

7 YEAR LIMITED POWERTRAIN WARRANTY

Marshfield Machinery Inc.
 222 E. Madison • Marshfield, MO 65706
 417-859-2117 • www.marshfieldmachinery.com

*Payment is for tractor and loader only and is calculated at 10% down and 84 months financing. With approved credit. Program restrictions may apply. See dealer for details. All offers expire November 30, 2019.

WORLD'S #1 SELLING TRACTOR



NEW MAHINDRA TRACTORS

9125 4WD CAB & LDR 125HP	IN STOCK
7085 4WD & LDR 85HP	IN STOCK
6075 4WD & LDR 71HP	IN STOCK
6065 4WD & LDR 62HP	IN STOCK
2655 4WD CAB & LDR 55HP	IN STOCK
2655 4WD, BACKHOE 55HP	IN STOCK
2655 4WD & LDR 55HP	IN STOCK
4540 4WD & LDR 41HP	IN STOCK
4540 2WD & LDR 41HP	IN STOCK
MAX26XL & LDR 26HP	IN STOCK

USED TRACTORS

NH T5.115 CAB 4WD	
LDR 115HP	55,000
MAHINDRA 105P CAB LDR 105HP	45,500
MAHINDRA M85 CAB LDR 85HP	30,000
MAHINDRA MAX26XL LDR 26HP	12,500
MAHINDRA MAX22 W/ BACKHOE	11,500
CASE IH 235 W/ MOWER 18HP	3,500
IHC 184 W/ MOWER 18HP	3,500

USED SIDE BY SIDES

MAHINDRA 750 CREW XTV	8,500
MAHINDRA 750 XTV	7,500

USED ROUND BALERS

MF 2745 4X5 MESH	12,500
HESSTON 745 4X5	7,500
HESSTON 555 4X6	4,500
HESSTON 560 5X6	4,000
HESSTON 550 4X6	3,500
NH 850 5X5	1,500
MF 224 SQUARE BALER	2,500

USED RAKES

SITREX 12WHEEL	3,500
DURABUILT 8 WHEEL	1,950
VERMEER WR20 8 WHEEL	1,950
RHINO 10 WHEEL	1,750
M&W 8 WHEEL	1,500

USED MISC.

HAYBUSTER 107C DRILL	17,500
BUSH HOG 3008 8FT 3PT	3,000

Marshfield Machinery Inc.
 222 E. Madison • Marshfield, MO 65706
 417-859-2117
 www.marshfieldmachinery.com

Cowtown Express Car Wash

Highway 63 South, Rolla, MO
 Call Wade 573-368-1430 Or 573-426-2500



NEW Winchester Star & Bale Trailers
 Powder Coated 18+2, 7,000 Axles
www.cowtownusainc.com

NEW HOLLAND TC-40 DIESEL M.F.D. TRACTOR: with New Holland loader. \$14,500. 573-765-4406.

DYNO CHARGE 990 ELECTRIC FENCER: Solid state for 20 miles. \$50. 636-239-2695.

DARK BROWN LARGE STORAGE OTTOMAN: Or coffee table with lid, perfect. \$75. 417-588-2176.

FIREARMS: Professional Repairs and Restorations. Baron's Gunsmithing. 573-363-5801, Camdenton.

Larry **Heisel Rentals**

**Crawler Loaders
Excavators
Backhoes**



Call Larry! **We Deliver!**

Rental Available in 636 or 573 Area Codes
573-779-1500
www.larryheiselequipment.com

PINE LOG SIDING.. www.pineridgerustic.com 573-729-7226.

3PT BALE CARRIER: \$100. Rogersville. 417-753-2747, 417-766-1991.

40FT GOOSENECK DUALY TRAILER: good. \$6,000. 573-765-4406.

2014 4DR CHEVY 4X4: One owner truck. \$19,900, 573-210-0595.

WR CASE & SONS Cookbook & Historical Companion. \$7.50. 417-532-2045, Lebanon.

BS201 BALE SPIKE: w/Bush Hog quick tach system. \$400. 417-270-1505.

JOHN DEERE 2755: Diesel tractor, cab & cold air, 75hp, w/146 JD Loader, good. \$23,000. 573-765-4406.

26 ACRES, 16x24 cabin, HH Road frontage, electric, telephone, open ground, no flooding, timber, fenced. One side, can sub divide. Farm, Hunt, 9 miles clear water lake. 4000 Ford Tractor. \$89,000. All good view site. 573-663-7769

COMPLETE SCRAGG & PALLET OPERATION: Property, Equipment, Timber contracts, Lots more, Selling due to health reasons, Too Much to List, may separate & owner finance. 417-650-0402

DOUBLE SET OF WHEEL CHOCKS: Color is Safety Yellow. \$30. 636-239-2695, Washington

AUCTION REMINDER: Online Auction, Starts November 4th and ends November 14th, Lorts Auction. Please see our Auction Directory for more information.

2005 IMPALA: PW, tilt, cruise, AM-FM/CD, 3.4, cloth seats, 212,000 miles. \$1,750. 636-931-2451, Festus.

L4400 KUBOTA: 4wd tractor with loader and 3rd function valve, Low hours. \$22,500. 417-270-1505.

2001 IMPALA: Runs good, body rough. \$500 OBO. 1999 Cavalier: Runs good, paint fair. \$750 OBO. 573-257-0782.

2012 29' COACHMAN CATALINA DE-LUXE: 29' Bumper-pull travel trailer w/ super slide. Very good condition, garaged. \$12,500. 417-989-1867, Dora.

AUCTION REMINDER: Saturday, November 9th, 10am. Buckner & Gately Auctions. Please see our Auction Directory for more information.

ADORABLE MALTESE PUPPIES: \$400. 417-664-9565.

HYDRABED
BY TRIPLE C, INC.

- 3,000 lb. Lift Capacity
- Synchronized Bale Arms
- Engine Driven Hydraulics
- Free-Float Bale Unrolling
- 12" Total Main Hinge Length
- Six Sizes Available
- Full Two Year Warranty

Starting At **\$9,225** Installed
Several Sizes in Stock



LET YOUR SAVINGS BEGIN NOW!
2 Toolboxes for \$575.00
Prices Good On In Stock Beds Only!!
LET US BE YOUR PEOPLE!!

WESTGATE TRAILER & EQUIP.

417-351-6974 • 417-926-7733
www.westgatetrailer.net
8920 W Business 60 • Mtn. Grove, MO
7136 W Farm Road 140 • Springfield, MO
FULL SERVICE SHOP
OPEN: Mon.-Fri. 8-5 And "YES!" Sat. 8-Noon!

STARTING AT \$2,199

PRICE SUBJECT TO CHANGE WITHOUT NOTICE. SEE DEALER FOR DETAILS

HUSTLER
For Outstanding Products & Service

AGRI-ENTERPRISES

1-1/2 Miles South Of Licking, MO On Hwy 63
573-674-2203 • 1-800-653-7152
www.agri-enterprises.com



AUCTION REMINDER: Monroe County Land and Estate Auction, Saturday, November 9th @9am. Marquette Auction Service. Please see our Auction Directory.

AUCTION REMINDER: Saturday, November 9th @ 10am, Wulff Auction. Please see our Auction Directory for more information.

GUARDIANWARE: 1930-1950's, Turkey roaster with lid. \$195. 573-364-7465.

CDL IN ONE DAY!!: Family owned and operated, Insured, Over 10 years of experience, Training available for all states, Short wait time for appointments, Contact us today to schedule your appointment!! **CREDIT CARDS EXCEPTED.** (573-353-2853).

TAKUCHI 135 DIESEL EXCAVATOR: W/ hyd thumb. \$15,000. 573-765-4406.

VALVE GRINDING MACHINE: with all hardware. \$200 sale or trade. 573-734-2822

Monday - Friday
9:00 am - 5:00 pm
Saturday
By appointment

B'S MEATS

EST. 2016

Beef • Hog • Deer Processing
Retail Meats

417.738.2333

195 Holiday St. • Fordland, MO 65652



M7040 KUBOTA 4WD LOADER: bucket, 2300 hours, double remotes, power reverser, open station. \$21,500. 573-539-2273, Barnett.

WANTED CATTLE FARM TO LEASE OR PURCHASE: within 20 miles of Belle, Mo. 573-578-3945.

AUCTION REMINDER: Special Sales Coming Up. Cattle Sale every Monday at Noon. Goat, Sheep & Hog sale 2nd Tuesday of Month @ 6pm. Salem Livestock. Please see our Auction Directory for more information.

KUBOTA TRACTOR M7060HD: front loader, 8' brush-hog. \$35,000. 417-300-5146, Pleasant Hope.

AUCTION REMINDER: Estate Auction. Sunday, November 10th @ 1pm. Nance Auction. Please see our Auction Directory for more information.

BULLS- Limousin- Limflex- Red Angus registered bulls for sale. 13-18 months old. AI sired & semen tested. Contact Josh at 417-664-0913.

SNOWBLOWER: Craftsman, 46", like new. \$200. Rogersville, 417-753-2747, 417-766-1991.

WEEKLY TRADER MAGAZINE

YOUR AD GOES HERE!

Add YELLOW Color For An Additional \$3 Per Reader Ad

All ads will include Phone Number (unless requested to be deleted by advertiser) and City Or Town, Phone Number with Area Code counts as one word. City or Town counts as one word.

RATE: 80¢ Per Word. All Classified Ads Require Payment Before Print.

(1) 80¢	(2) \$1.60	(3) \$2.40	(4) \$3.20
(5) \$4.00	(6) \$4.80	(7) \$5.60	(8) \$6.40
(9) \$7.20	(10) \$8.00	(11) \$8.80	(12) \$9.60
(13) \$10.40	(14) \$11.20	(15) \$12.00	(16) \$12.80
(17) \$13.60	(18) \$14.40	(19) \$15.20	(20) \$16.00
(21) \$16.80	(22) \$17.60	(23) \$18.40	(24) \$19.20
(25) \$20.00	(26) \$20.80	(27) \$21.60	(28) \$22.40
(29) \$23.20	(30) \$24.00	(31) \$24.80	(32) \$25.60
(33) \$26.40	(34) \$27.20	(35) \$28.00	(36) \$28.80
(37) \$29.60	(38) \$30.40	(39) \$31.20	(40) \$32.00

Place your Classified Ad TODAY!

417-532-2800 • 800-665-8875

Fax: 417-532-8140

Or Mail To: P.O. Box 192 • Lebanon, MO 65536

For your convenience we accept MasterCard, Visa, Discover or American Express



DEADLINE FOR CLASSIFIED ADS: MONDAY 12 NOON!!

Name _____

Address _____

City _____ Email _____

State _____ Zip Code _____ Phone _____

Ad Total \$ _____ X # Weeks _____ = Amount Enclosed \$ _____

**The Kubota
You Want
Is Waiting For You!**



Kubota

**KEEP IT SIMPLE
WITH QUARLES SUPPLY**

**0% APR for 60^{MOS}
ON YOUR
NEW KUBOTA**



New 26HP Kubota Package Deal!

**B2650HSD \$21,405
Financing Price**

- NEW Kubota B2650HSD
- 4wd, DIESEL, R4 TIRES
- KUBOTA LOADER
- 4' CUTTER

- 4' BLADE
- NEW 16" KODIAK TRAILER W/RAMPS
- NEW TIRES

RATES SUBJECT TO CHANGE
*With approved credit. Tax/Insurance not included.
Some restrictions may apply. See dealer for details.



New 33HP Kubota Package Deal!

**L3301HST \$24,155
Financing Price**

- NEW Kubota L3301HST
- 4wd, DIESEL, AG TIRES
- KUBOTA LOADER
- 5' CUTTER

- 5' BLADE
- NEW 18" KODIAK TRAILER W/RAMPS
- NEW TIRES

PRICING REFLECTS ALL CURRENT KUBOTA PROGRAMS
*DOES NOT INCLUDE TAX AND INSURANCE
BLENDED RATES MAY APPLY ON NON KUBOTA ITEMS



New 52HP Kubota Package Deal!

**MX5200HST \$34,635
Financing Price**

- NEW Kubota MX5200HST
- 4wd, DIESEL, AG TIRES
- KUBOTA LOADER
- 6' CUTTER

- 6' BLADE
- NEW 20" KODIAK TRAILER W/RAMPS
- NEW TIRES

**KUBOTA GIVES
YOU MORE OF WHAT
YOU WANT!**

**GET SET
TO SAVE!**



Kubota

QUARLES
SUPPLY COMPANY INC.

(417) 777-2391

quarleskubota.com
Just off Business 13 in Bolivar, MO
Open 8:00-5:00 Monday-Friday
Saturday 8:00-12:00