

FREE
WEEKLY
TRADER
MAGAZINE

Vol. 26 No.1
APRIL 11, 2019
 800-543-8271 • 800-665-8875

Find us on Facebook
 @myweeklytrader

Auctions - Pg. 23
 MYWEEKLYTRADER.COM

CONNECTING BUYERS & SELLERS

Looking for Land?

151.5 Acres

The farm consists of high yielding/productive Barden Silt Loam soils. The farm is showing 114.56 acres tillable, 35 acres of pasture/hay field, and 2 acres of timber that surrounds an old homestead. There is a solid 24x30 metal shop building on the property for storing tractors and equipment.



1221 Acres

This spectacular ranch is comprised of 1221 contiguous acres in coveted Henry County, Missouri. This is arguably the finest cattle ranch to come to market! With the current owners' hard work, knowledge of great grazing practices, wise stewardship and love of the land. This is a must see for hard-working cattlemen... and anyone dreaming of owning a remarkable ranch.



MOSSY OAK[®]
PROPERTIES
OF THE HEARTLAND
 Farm & Home Sales, LLC

Call your local agent today!
417-276-4868

ON THE FARM OR ON THE ROAD

**We've
got you
covered!**

LETTERMAN

**TRIPLE T
REPAIR, LLC**

**TRUCKS, TRAILERS,
& TRACTORS**

417-630-2249

417-664-0829

**739 Honey Locust Rd.
Niangua, MO 65713**

MAKE TIME

TO DO THE THINGS YOU LOVE



Hustler's residential family of mowers are built stronger and perform faster, allowing you to quickly maneuver around obstacles with ease, including life's most difficult obstacle time.



AGRI-ENTERPRISES

For Outstanding Products & Service

1-1/2 Miles South Of Licking, MO On Hwy 63
573-674-2203 • 1-800-653-7152
www.agri-enterprises.com

CLIPPER SEED CLEANER. \$200, needs motor. 417-321-1928.

1995 GOLDWING: Ultimate road bike. One owner. \$3,250. 417-399-6383.

HEAVY DUTY WALKER: 400 lb rated, brand spanking new, large seat/storage, four 7" pivoting wheels, hand brakes. \$200. 417-686-0032, Ava.

AUCTION REMINDER: Saturday, April 20th @ 10am. Gary Sexton Auctions. Please see our Auction Directory for more information.


ADORABLE REGISTERED GERMAN SHEPHERD PUPPIES: Ready 4-15, UTD, shots, wormed. \$300. \$100. 417-741-2198.

H&R 12 GA SINGLE SHOT SHOTGUN: 3" shells w/Williams sights and screw in choke. \$180. 636-239-2695.

VOTED #1 BEST Preowned Car Dealership

TIM'S USED CARS

(573) 341-3828 • 1334 South Bishop (Hwy. 63) • Rolla, MO
 Next to Hwy. CC • www.tims-used-cars.com

| | |
|---|---|
|  <p>2005 DODGE 1500 QUAD CAB, ST 2X4 V-6 AUTO, 112,XXX MILES ONLY \$5,400</p> |  <p>2009 GMC YUKON DENALI AWD, 6.2 V-8, LOADED WITH OPTIONS ONLY \$9,800</p> |
|  <p>2009 FORD FLEX LIMITED FWD, LEATHER, 3RD ROW SEATING ONLY \$6,900</p> |  <p>2014 FORD MUSTANG GT 5.0, 6 SPEED, 97,XXX MILES ONLY \$16,500</p> |

LARGE SELECTION OF CARS, TRUCKS, SUVs & VANS!

USED EQUIPMENT

New at Used Price!

- Mahindra 2565 with loader, cab, 4WD, 13 hours
- Mahindra 4110 w/loader, 41HP
- Kubota B7200 4 WD, w/Belly Mower • MF 50, Diesel
- Gehl Silage Chopper • NH 163 Tedder
- 6' & 7' Brush Cutter • Landpride 10' Brush Cutter
- JD 10' Cultipacker • 3pt. 3 bottom plow
- 12' Spring Tooth Harrow 3pt. 2 Disc Disc Plow
- Gravely 2T 2148XL Zero Turn Mower Rider
- Other Misc Equipment

For Outstanding Products & Service

AGRI-ENTERPRISES

1-1/2 Miles South Of Licking, MO On Hwy 63
573-674-2203 • 1-800-653-7152
www.agri-enterprises.com

66ac/ml: In Northern Wright County. Reduced \$1,700 acre. 417-349-1116.

JOHN DEERE 2940: Diesel tractor, 80HP. \$8,500. (573)765-4406.



It's what helps make America the beautiful.

The durable Kubota L Series compact tractor makes handling easier and helps get jobs done right. It's why the L Series has been the #1 selling compact tractor in America for over ten years.* Visit us today.



Get Unmatched Kubota Quality!
Kubota Designed, Engineered & Built.
Visit Us In TWO Locations!



8665 Outer Road • Mtn Grove
417-926-5454 • 877-926-5458
4973 W. US Hwy 160 • West Plains
417-256-0420 • 800-766-0420

KubotaUSA.com

*Based on UCC filings for tractors financed in 2017 for the utility tractor segments.
© Kubota Tractor Corporation 2019. This material is for descriptive purposes only. Kubota disclaims all representations and warranties, express or implied, or any liability from the use of this material. For complete warranty, safety and product information, consult your local Kubota dealer. For the complete disclaimer, go to KubotaUSA.com/disclaimers and see the posted disclaimer.



Built for bigger yards. Priced for smaller payments.

Smooth controls driven by a commercial-grade transmission. The Z400 KommanderPRO brings the biggest yards down to size. And gets the job done right every time. Now available with payments cut to your liking. Visit us today.



\$102 A MONTH **48** MONTHS

Get Unmatched Kubota Quality!
Kubota Designed, Engineered & Built.
Visit Us In TWO Locations!



8665 Outer Road • Mtn Grove
417-926-5454 • 877-926-5458
4973 W. US Hwy 160 • West Plains
417-256-0420 • 800-766-0420

KubotaUSA.com

© Kubota Tractor Corporation 2019. 0.00% A.P.R., 20% down, financing for 48 months on purchases of new Z400 models from participating dealers in-stock inventory is available to qualified purchasers through Kubota Credit Corporation USA, subject to credit approval. Example: 48 monthly payments of \$20.85 per \$1,000 financed. Example amount based on sales price of \$9,999. Each dealer sets own price. Price and payments may vary. Offer expires 6/30/19. This material is for descriptive purposes only. Kubota disclaims all representations and warranties, express or implied, or any liability from the use of this material. For complete warranty, safety and product information, consult your local Kubota dealer. For the complete disclaimer, go to KubotaUSA.com/disclaimers and see the posted disclaimer.

WANTED CONVERSION VAN: 2000-2010 GMC, Chevy, or Dodge, prefer one owner, high top, low miles, excellent condition. Reasonably priced. Smoke Free. Doniphan, MO 573-255-3191.

CASE 580D: Diesel backhoe loader, 2400hrs, power shuttle, nice. \$12,000. 573-765-4406.

AIRBAGS OFF OF 96' DODGE: Like new condition. \$150. 417-766-1991 or 417-753-2747.

WOMENS MERREL: Insulated Snow Boots, sz 8M, waterpooof, mid calf height, easy pull on style, fur trim at top, dark chocolate brown color. Nice! \$35, 417-718-5347.

MOTORCYCLE 1/2 HELMET: \$25. Stearns Riding Gloves: large, new.\$20 417-457-1023.

3 OUTBOARD MOTOR PROPELLERS: 1 is 11.4x10, 1 is 10x13, 1 is 14.5x15. good to like new condition. \$95all. Rolla, 573-364-7465.

Bring this ad in for 10% OFF all your bulk materials!

- Bulk Rock
- Bulk Mulch
- Rail Road Ties
- Blocks
- Decorate Rock (48 bins to choose from, something for everyone!)
- Mexican Yard Art
- Pottery
- Luxcraft Outdoor Furniture

573-346-4096 • Hours: Mon.-Sat. 8am-5pm
On top of hill - corner of Hwy. 54 & A Road • Camdenton

WEEKLY TRADER MAGAZINE

Vol. 26 April 11, 2019 No. 1

Published By

Lebanon Publishing Co. Inc.

PO Box 192, Lebanon, MO 65536

417-532-2800

www.myweeklytrader.com

Everything advertised in this publication must be made available for purchase, use or patronage without regard to race, creed, color, sex, age or national origin of the purchaser, user or patron. The Publisher will not be responsible for misinformation, misprints, typographical errors, etc. Opinions expressed are not necessarily those of the Publisher. All rights reserved. No part of this material may be reproduced by any means without permission in writing from the Publisher. We reserve the right to refuse any ad if we deem necessary. Our list and map indicate counties in which the Weekly Trader is delivered. The magazine is not necessarily placed in all communities in a particular county. A list of all retail drops for a county may be obtained by contacting the Weekly Trader office at PO Box 192, Lebanon, MO 65536.



THE RIGHT EQUIPMENT FOR EVERY JOB

Always ready when YOU need it.

+ From general construction to manufacturing, and every project in between, Fabick Cat is ready to serve your industry. We have the equipment you need to get the job done.

+ NEW | USED | RENTAL | SERVICE
WE DO IT ALL

800.845.9188 | www.fabickcat.com

"TO EVER SERVE OUR CUSTOMERS BETTER"



2007 FIFTH WHEEL: 38' Wyoming by Coachman, 4 Seasons, 3 Slides. \$13,750. 417-399-6383.

L2501D KUBOTA: 4wd tractor with loader, 25HP, hydro transmission, with 5' Landpride bush hog. \$16,900. 417-270-1505.

LIMOUSIN BULLS: 18-30 mos. old, Homo Black, polled, AI sired. 573-301-2316, 573-301-2074.

AUCTION REMINDER: Estate Auction Sat. April 14th 1 PM. BRUCE SCHEETS AUCTION. Please see our Auction Directory for more information.

SPRING TOOTH HARROW AND DOUBLE CULTI PACKER: 9ft pull-type. \$350. Bumper Hitch 6x18ft Livestock trailer, no title, \$1,200. 417-766-1991.

AUCTION REMINDER: Every Wednesday at 10:30 am. Farmington Livestock. Please see our Auction Directory for more information.

We Buy White Oak Logs!

Independent Stave Company welcomes all white oak suppliers!

- ✓ Top prices for your logs
- ✓ Experienced log buyers
- ✓ Professional service

www.independentstavecompany.com

Chad Cook | Salem Wood Products

417.718.2950

5 miles north of Salem, MO on Hwy 19



Larry Heisel Rentals

We Rent!

Call Larry!

Rental Available in 636 or 573 Area Codes

573-779-1500

www.larryheiselequipment.com

REGISTERED BLACK ANGUS BULLS: 417-453-6332. Plato.

TV ANTENNA, SICKLE Grinder & SERVICER. \$100 for all. 417-646-8807.

Spring Clearance Event

Our lowest prices of the season on hundreds of new and pre-owned vehicles.

FIND YOUR NEXT CAR @ DONVANCEAUTOGROUP.COM

2013 Ford Fusion SE



Turbo • FWD
Mileage 102,733
Stock # 29842A

\$9,990

2017 Ford Fiesta S



FWD • Automatic • Black
Mileage 24,412
Stock # 29893A

\$10,990

2014 Ford Edge SEL



3.5L V6 • AWD • Gray
Mileage 101,068
Stock # 28983C

\$14,990

2015 Ford Taurus SEL



Dark Side Metallic • 3.5L V6 • Flexible Fuel • Mileage 94,821
Stock # 28960A

\$11,975

2012 Ford Edge Limited



Red Candy • 3.5L V6 • Station Wagon
Mileage 100,219
Stock # 30120A

\$12,990

2010 Jeep Wrangler Sport Convertible



3.8L V6 • 4WD • Manual
Mango Orange • Mileage 99,781
Stock # 29888A

\$16,475

2017 Jeep Renegade Latitude



Alpine White • 4 Cyl • Sport Utility 4WD • Mileage 39,083
Stock # 29570A

\$17,990

2010 Dodge Grand Caravan SXT



Bright Silver • Mini- Van Passenger 6 Cyl • FWD • Mileage 125,860
stock # 8255A

\$9,990

2017 Jeep Compass Latitude



2.4L 4WD • Automatic Black • Mileage 9
Stock # 1628U

\$20,975


2016 Jeep Wrangler Unlimited



Rubicon • Convertible • 3.6L V6 4WD • Automatic • Silver
Mileage 38,080 • Stock # 29204A

31,975

2015 Dodge Dart GT



Bright White • 4 Cyl • Manual FWD • Mileage 61,363
Stock # 8554A

\$12,990

2011 Ford Ranger Sport



Red • 4.0L V6 Extended Cab Pickup • 4WD • Mileage: 102,346
Stock #: 30113A

\$14,990

2014 Jeep Compass Sport



Billet Silver • 4 Cyl • Sport Utility 4WD • Automatic • Mileage 47,229
Stock # 6552RA

\$13,990

2016 Jeep Patriot Sport



Granite Crystal • 4 Cyl • FWD Variable Transmission • Mileage 29,488
Stock # 1647U

\$13,990

2016 Chevrolet Equinox LT



Pearl White • 4 Cyl • FWD Automatic • Mileage 41,674
Stock # 7923A

\$15,975

2017 Cadillac XT5 Platinum AWD



6 Cyl • Automatic • White
Mileage 31,094
Stock # 8383A

\$38,475

2007 Chevy Tahoe LT



Flexible Fuel • 4wd • Automatic White • Mileage 177,126
Stock # 29343A

\$10,990

2014 Ford Escape SE



Magnetic • Turbo • Sport Utility 4WD • Mileage 91,360
Stock # 30039A

\$13,990

2015 Dodge Challenger SXT



Pitch Black • 3.6L V6 • 2 Door RWD Automatic • Mileage 33,520
Stock # 29730A

\$18,975

2014 Chevrolet Silverado 1500 LTZ



Crew Cab • 4WD • Automatic
Mileage 66,456
Stock # 28790A

\$27,975

Actual Vehicle May Differ From Photo



AUTO GROUP

Upfront pricing. Downhome service.

donvanceautogroup.com



SEE SALESMAN FOR DETAILS. ALL VEHICLES IN STOCK AT TIME OF AD SUBMISSION BUT SUBJECT TO SALE PRIOR TO PRINTING. NOT RESPONSIBLE FOR TYPOGRAPHICAL ERRORS & OMISSIONS. GRAPHICS MAY NOT ACCURATELY REPRESENT AD VEHICLE. PAYMENTS BASED ON 3.99% @ 72 MONTHS SUBJECT TO CREDIT APPROVAL AND PRODUCT AVAILABILITY.

ONLY 17 MINUTES EAST OF SPRINGFIELD ON I-44 • DONVANCEAUTOGROUP.COM
800-947-7567 • 417-859-2600



2004 OPEN RANGE FIFTH WHEEL CAMPER: 34', all weather, in good condition. \$10,500. Lebanon, 417-718-5520.

JD 6140M: Cab, 4WD, triple remotes, 16-speed. \$46,500. 870-458-2580, Viola.

FOR SALE: Pallet Fork & Manure Fork for John Deere 640 Loader. \$1,000 pair. 573-378-4172, Barnett.

11 BLACK ANGUS COWS 5 w/calves and Angus Bull. \$13,500. 573-714-2012.

2 BIG PARAKEET CAGES: and misc. \$120 for all. 417-646-8807.

WILLIAMS PEEP SIGHT: with target knobs. Fits Marlin Model 39a. \$50. 636-239-2695. Washington.



★ A HERITAGE OF ★

SPENDING LESS AND DOING MORE



JOIN US FOR OUR DRIVE GREEN EVENT
April 11th & 12th • 8am–5pm | April 13th • 8am–Noon
 ALL Heritage Tractor locations

\$500 off¹

1–5 Series Tractors



3025E COMPACT TRACTOR

\$139 per month²

(based on 0% for 84 months)



Legendary Products. Extraordinary Service.
 Find your local Heritage Tractor location or request a quote at HeritageTractor.com



JOHN DEERE



(1) Coupon valid for \$500.00 off the agreed upon purchase price of any new 1 Series through 5 Series tractor (up to 125 hp) from an authorized John Deere Dealer made within 21 days of 2019 Drive Green Event registration. Coupon valid only at participating US and Canadian John Deere dealers. Subject to availability and may be discontinued or modified at any time. Other restrictions may apply. Digital coupon must be surrendered at time of purchase. No reproductions will be accepted. Limit of one coupon per person per purchase. Savings applied to the total consistent with applicable sales and use taxes and provincial environmental fees and shipping/delivery charges. Dollar amounts referenced are in currency of country of residence. (2) Offer ends 10/26/19. Subject to approved installment credit with John Deere Financial. Up to a 20% down payment may be required. Example: based on a purchase of \$14,556 with \$2,911 down payment, monthly payment of \$139 at 0% APR for 84 months. Taxes, freight, set up and delivery charges could increase the monthly payment. Price and model availability vary by dealer. Valid only at participating US dealers. *Offer ends 10/31/19. Heritage Tractor Powertrain 10 year warranty details are located at heritagetractor.com/tractorwarranty. Eligible on 1-5E (3Cyl) models. See the warranty manual for full details. Some restrictions may apply.

HTR4X70411WT-4C



- 3,000 lb. Lift Capacity
- Synchronized Bale Arms
- Engine Driven Hydraulics
- Free-Float Bale Unrolling
- 12" Total Main Hinge Length
- Six Sizes Available
- Full Two Year Warranty

Starting At \$9,225
 Several Sizes in Stock *Installed*



LET YOUR SAVINGS BEGIN NOW!
 2 Toolboxes for \$575.00
 Prices Good On In Stock Beds Only!!

LET US BE YOUR PEOPLE!!

WESTGATE TRAILER & EQUIP.

417-351-6974 • 417-926-7733
www.westgatetrailer.net
 8920 W Business 60 • Mtn. Grove, MO
 7136 W Farm Road 140 • Springfield, MO
FULL SERVICE SHOP
 OPEN: Mon.-Fri. 8-5 And "YES!" Sat. 8-Noon!

FOR SALE: Whirlpool undercounter dishwasher, 1 year old. \$200. Works Perfect. 573-765-3603, 573-692-1492.

BEAUTIFUL DOBERMAN PINSCHER PUPPIES: Males \$650, Females, \$500. Parents are Double Registered AKC and CKC. Puppies are CKC Registered. UTD on shots, come with health records. Tails docked and dewclaws removed. 417-531-0483.

BARN WOOD SIDING: 8" & 10" wide. 573-729-7226. www.pineridgerustic.com

10x10x6 DOG PEN: With gate. \$125. 815-904-4248.

RIGID 14" Bandsaw: \$200, Lebanon, 573-247-2598.

WANTED GOOD USED MOBILE HOMES: Singles & doubles. Call David Hayes, 573-578-8072.

WOODS 15' BUSHHOG: Chains excellent condition, paint on blades. \$8,750. 870-458-2238.

1-HORSE WALK BEHIND PLOW: Very good condition. \$175. 417-457-1023, Raymondville.

JET 4" JOINTER: \$100. Grizzly Hydraulic Lift Table. \$100. Lebanon, 573-247-2598.

LARGE BIRD CAGE OR COCKATIAL CAGE: \$85. 636-239-4124

AUCTION REMINDER: Saturday, April 13th @ 9am. MR Clark Auction Service. Please see our Auction Directory for more information.

AUCTION REMINDER: Estate Auction Sat. April 20, 10am. Drenon Auction Service. Please see our Auction Directory for more information.

AUCTION REMINDER: 2 Day Farm Sale, Saturday & Sunday, April 13 & 14 @9am. Berti Auction. Please see our Auction Directory for more information.

Built Stronger to Last Longer
Gooseneck
 Trailer Mfg. Co., Inc.
Savings Start Here!



24 x 6'8" Gooseneck Brand Stock Trailer
Several In Stock
 Same day financing with Ag Direct (with approved credit)

LET US BE YOUR PEOPLE!!

WESTGATE TRAILER & EQUIP.

417-351-6974 • 417-926-7733
 www.westgatetrailer.net
 8920 W Business 60 • Mtn. Grove, MO
 7136 W Farm Road 140 • Springfield, MO
FULL SERVICE SHOP
 OPEN: Mon.-Fri. 8-5 And "YES!" Sat. 8-Noon!

1954 Chevy BelAir
 Good Condition, Been Stored Inside
\$10,000 obo
573-308-8091



Komatsu WB 156



Low hours, cab, air, 4x4
\$22,500
Call Mark (314) 560-3112

JOHN DEERE 265 DISK MOWER: 3pt, nice, 300 acres. \$6900. Viola, 870-458-2580.

FOR SALE: Set of 4 tires, 255-50/R20. \$100. 573-765-3603, 573-692-1492.

IHC 806 DIESEL TRACTOR: with loader \$7,800, W.F. 3pt. (573)765-4406

CLEANING OUT KITCHEN CABINETS & CUPBOARDS: Inside only. \$125 or trade. 573-327-9068.

AUCTION REMINDER: 178+/-Acre Real Estate Auction. On-Line bidding ONLY. Auction ends April 27th at 1:07Pm. Mickey Duckett Auctioneer. Please see our Auction Directory for more information.

GIRLS HUFFY BICYCLE: Rode one time 26". \$75. 417-589-8200.

AUCTION REMINDER: Saturday, April 13th @ 9 am. Rick Dixon Auction. Please see our Auction Directory for more information.

WILBER'S FISH BRANCH ANGUS: Large selection of yearling and 2yr old bulls available, Calving ease, good growth and carcass traits, very docile. Mexico, Mo. 573-473-6019. www.fishbranch.com

2014 FORD F-150 4X4: 6cyl, reg-cab, short bed, alloy wheels, 36,000miles, sharp, prior salvage. \$13,500. 417-924-6061.

SAM MILLERS LOGGING looking for standing timber. 417-589-0346

42" BRUSH HOG: \$250. 815-904-4248.

M8540 KUBOTA: 4wd tractor with loader, 85HP, open station, low hours, hydraulic shuttle, 12 speed. \$32,500. 417-270-1505.

NEW IDEA: Manure spreader, 125 bushel, always shedded, needs tires. \$500. Warsaw, 660-723-0103

WW CATTLE CHUTE: On wheels, heavy-duty, \$1,000. Warsaw, 660-723-0103.

WANTED: Winchester Commemorative Rifles. 573-690-1761

TRANSMISSION AND TRANSFER CASE: 86 Ford F250. \$200obo. Rolla, 573-308-5884.

Early Spring Special



2019 Forest River Flagstaff Tent MAC/LTD 206LTD
 Retail **\$12,536** | Now **\$9,910**
A/C INCLUDED AND INSTALLED
Brand New!

I-44 Exit 123 - 4 miles West of Lebanon, MO
417-533-7530
 www.happytrailsvrcenter.com

HAPPY TRAILS RV CENTER

KUSTER LOGGING
BUYER of Standing Timber
Oak and Walnut
Dozing Now Available
417-259-0047
References Available



WOOD STOVE: cast iron, front opening, on legs, used only one season. Rolla, 928-514-0505.

TED WILLIAMS: Model-200, 12-gauge pump. \$225. JC Higgins: Model-20, 12-gauge pump. \$225. 573-756-1065, Doe Run.

INDIAN ARCHERY 1950'S: wood, recurve bow, with original box of Ben Pearson arrows. \$195. Rolla, 573-364-7465.

SAM MILLERS LOGGING looking for standing timber. 417-589-0346

TWO BUMPERS: For 62-64 Chevy 2 Nova. \$100. 573-734-2822, Bismarck.

17 JD HX-15 BUSHHOG: Chains like new. \$14,750. 870-458-2238.

WANTED LIVE IN LADY: Own apartment. Call for work details, 573-364-2660.

2009 HARLEY ULTRA ELECTRIC GLIDE CLASSIC: 12,000mi., Asking \$13,000 or trade for Side by side four wheeler drive and or small jon boat for fishing. 812-390-1128, 417-265-1121. Thornfield.

Is Your Log Home **UGLY?**
Starting To Look
Professional Staining & Repair
 (Log Homes & Wood Siding)

Call
Pine Ridge Rustic
 Log Home Building Supplies **573-729-7226**
www.pineridgerustic.com



TOMATO PLANTS, 25 VARIETIES AVAILABLE After 25 April. **CHARLIE'S FARMS, MILE WEST ROUTE 66, LEBANON.**

AUCTION REMINDER: Online Auction going on now for Home. Atterberry Auctions. Please see our Auction Directory for more information.

JOHN DEERE MODEL-60 TRACTOR: overall good condition. \$2,500. 636-584-3605.

USED OLD LUMBER: from large barn, will sell to highest bidder. 573-759-6885.

FOUR COOPER 245X75X16 TIRES: No cuts, plugs, patches, 10 ply. \$175. 417-399-6687.

AUCTION REMINDER: 13th Annual Spring Consignment Auction. Saturday, April 13th @ 10AM. Please see our Auction Directory for more information.

RED ANGUS BULLS: 20 months old, Red Balancers, 15 months old. Pinnacle Ranch. 417-679-4269, 417-679-2330, Gainesville. MO.

GLEANER K COMBINE: 10ft header, always sheded, good fescue machine. \$1,500. Warsaw, 660-723-0103.

8-WHEEL V-RAKE: Hydraulic fold. \$1,800. Eldridge, 573-363-5213.

CATTLE RACK: Metal, slide-in for 16' trailer. \$425. 636-239-4124.

Cowtown Express Car Wash
 Highway 63 South, Rolla, MO
 Call Wade 573-368-1430 Or 573-426-2500

\$4,500
 And 10% Down
 \$95 Per MO
 w.a.c.



NEW Winchستر Star & Bale Trailers
 Powder Coated 18+2, 7,000 Axles
www.cowtownusainc.com

NEW NEW NEW DISPLAY HOUSE!!!
 Call Marla to hear what is new inside 573-657-7040, chateauhomes.net.

CHECKERED WALNUT WOOD STOCK PISTOL GRIP: for Marlin Model 336 or 1895. \$100. Washington. 636-239-2695.

\$\$\$\$\$ MOBILE HOME SAVINGS That is what we are about for the last 36 years. New, Used, All Sizes. 573-657-2176 amegamobile-homes.com

GRIZZLY TABLESAW: 10", left tilt, w/ extension table. \$1,200. AOM paint sprayer. \$250. Kremlin pump & spray gun. Lebanon, 573-247-2598.

See Service
 Spray Foam Insulation

Closed cell or open cell form available
 Choose the thickness of your insulation

| | |
|----------------------|-------------------|
| Closed Cell | Open Cell |
| • Higher R. value | • Lower Cost |
| • Vapor barrier | • Sound Deadening |
| • Structural benefit | • Fire resistant |
| • Fire Resistant | |

Both types of foam fill voids and stay where they are put to provide better insulation than fiberglass or cellulose

Call Joseph See
 (417) 733-6936
 Located near Buffalo, MO

2011 Ford F150 Platinum SuperCrew Cab

**4X4, 3.5L V6 EcoBoost,
 Black, New Tires,
 Drives Great, 95,XXX Miles,
 Salvage Title, Very Minor
 Damage Repaired**

\$17,500

417-718-5347 • Conway



MYOTONIC FAINTING GOATS: Moms w/kids. Mom & buckling. \$200. Mom & female. \$300. OBA, 417-741-1375, Hartville.

LITTLE TYKES TOYS: 8 Different large pieces, like washer and dryer, doll house and desk. All for \$125. 636-239-4124.

0% for 4 Years*

*with approved credit

Outdoor Wood Furnace

as low as **\$168** per month

HEATMOR MIDWEST

Licking, MO 65542
573-674-2962

AKC AKITA PUPPIES: Born Jan 26. \$500. 417-458-4242.

CUB CADET FT-24 TILLER: excellent condition. \$399. 573-836-2530.

AUCTION REMINDER: Tuesday, April 12th @ 9 am. Rick Dixon Auction. Please see our Auction Directory for more information.

STANDING KENMORE FREEZER: working, light, easy to move. \$50. 636-297-1747.

DARDEN PROFESSIONAL TIMBER HARVESTING, BUYING STANDING TIMBER: Great prices, improve wildlife habitat and improve forest health. State Certified & Fully Insured! 573-247-4808 or 573-739-1122. Salem

WANTED, TIMBER TO LOG ON SHARES: Honest, reliable, references. 417-533-4607, 417-664-1195.

I BUY.... used mobile homes. Call or text 573-338-6250 or email GregS.CDH@outlook.com

HEAVY 10FT FIELD ROLLER: \$1,500. 573-765-4406.

AUCTION REMINDER: Saturday, April 13th, 9am. Buckner & Gately Auctions. Please see our Auction Directory for more information.

FOUR 17" TIRES FOR VAN. \$35. 573-734-2822, Bismarck.

2 MENS LEATHER MOTORCYCLE JACKETS: size 44 and 42, one like new. \$50 each. Mammoth Spring, 870-966-3483.

BRUSHOG HEAVY DUTY: 3pt disk, Nice. \$1,600. 573-765-4406.

AUCTION REMINDER: Every Wednesday at 10:30 am. Farmington Livestock. Please see our Auction Directory for more information.

PORTER CABLE NAIL GUN: BN138, 18ga brad nailer, new in case, manual, 1 3/8th-1 5/8th. \$48 OBO. Ava, 417-686-0032

JOHN DEERE 4240: Diesel Tractor, cab and air, power shift, 3,900hrs, 110 HP, nice. \$29,500. 573-765-4406



Freedom to roam is closer than you think.

With best-in-class acceleration and handling with cargo*, the new gas-powered Sidekick delivers durability and speed. All the way up to 40 mph. And with a great offer available, tasting freedom just got a whole lot sweeter. Visit us today.

SIDEKICK
Durability meets speed



Best-in-Class acceleration and handling with cargo
40mph • Gas Powered • 2 year/1000 hour warranty

Kubota
Shape your world.

\$0 DOWN \$196 A MONTH FOR 72 MONTHS

KUBOTA OF THE OZARKS

1660 E CHESTNUT EXPWY
SPRINGFIELD, MO
417-866-5588

SCHAEPERKOETTER'S

2715 HWY A
MT. STERLING, MO
573-943-6323

1102 W HWY 28
OWENSVILLE, MO
573-437-4421

SINCE 1893

Sidekick.KubotaUSA.com

*Class is based on these models: Polaris Ranger XP 900, John Deere X11N/835M & Kawasaki Mule PRO-FXR. The handling comparison was performed on the FSAE SKIDPAD course in gravel conditions.
© Kubota Tractor Corporation 2019. 2.99% A.P.R., 0% down, financing for 72 months on purchases of a new Sidekick model from participating dealers' in-stock inventory is available to qualified purchasers through Kubota Credit Corporation USA, subject to credit approval. Example: 72 monthly payments of \$15.19 per \$1,000 financed. Example amount based on sales price of \$12,849. Each dealer sets own price. Prices and payments may vary. Offer expires 6/30/19. This material is for descriptive purposes only. Kubota disclaims all representations and warranties, express or implied, or any liability from the use of this material. For complete warranty, safety and product information, consult your local Kubota dealer. For the complete disclaimer, go to KubotaUSA.com/disclaimers and see the posted disclaimer.

2004 CHEVY Z71: 4X4 extended cab, 4-door. 190,000 miles. \$5,975. 417-399-6383.

CUSTOM SAW MILLING: Lebanon. 417-533-4607, 417-664-1195.

LOOKING FOR WATER BICYCLE: Any shape. Leave message, 618-758-2830.

VOYAGER MOTORCYCLE TANK BAG: Never out of original bag. \$50. 417-457-1023.

CATAHOULA PUPPIES: Some bob-tailed, blue eye, merles, \$150. 417-543-4816.

TWO GAITED TRAIL GELDINGS, Registered purebred Arabian horses and Nubian goats. Rabbits \$7, Free roosters. Raymondville, 573-548-0219, 573-201-5901.

BOSE CABINET: 25x60", all new wood, counter top, small sink. \$50. Mountain View, 801-592-6301.

SACAGAWEA GOLDEN DOLLARS: Face value \$1. Original issue 2000, uncirculated. In rolls of 5. \$30. 417-686-0032, Ava.

LAKE OF THE OZARKS- Family Fun-2 lot Special \$6,995-\$95 down, \$89 per month. Own for investment. Owner Financing. Free lake access and boat ramps. Also: close to a handicapped accessible covered fishing dock with lighted area. Prices goes through APRIL 15th. Take Lake Road 135-12 to Ivy Bend Office. Open Thurs, Fri, Sat, Sun, Mon and Tues. Call until 7PM everyday. 573-372-6493.

Starnes Auto LLC
 22115 Rt. 66 - Lebanon, MO 65536
 417.588.3159 Office - 417.718.2707 Cell
 www.starnesauto.com

| | |
|--|-----------------|
| 1998 CHEVY S10 | |
| REG CAB, GOOD TITLE | \$4,000 |
| 2000 GRAND PRIX | |
| GOLD, 184,XXX MILES..... | \$2,500 |
| 2000 BUICK LESABRE | |
| BLUE, 141,XXX MILES | \$2,800 |
| 2001 NISSAN FRONTIER SE | |
| 2WD, 145, XXX MILES | \$4,650 |
| 2003 OLDSMOBILE SILHOUETTE | |
| 110, XXX MILES..... | \$3,500 |
| 2006 CHEVY SUBURBAN LS | |
| BLUE, 2WD, 185,XXX MILES..... | \$5,200 |
| 2008 CHEVY IMPALA | |
| RED, 152,XXX MILES | \$2,800 |
| 2008 CHEVY IMPALA LT | |
| GRAY..... | \$3,250 |
| 2008 SATURN AURA | |
| GRAY, 141,XXX MILES | \$3,400 |
| 2009 CHEVY MALIBU LT | |
| BLUE, 84,XXX MILES | \$5,600 |
| 2013 CHEVY EQUINOX | |
| GOLD, 58,XXX MILES..... | \$11,500 |
| 2014 GMC TERRAIN | |
| SILVER, 50,XXX MILES | \$13,500 |
| 2015 CHEVY EQUINOX LS | |
| LIGHT BLUE, GOOD TITLE, 68,XXX MILES | \$11,250 |
| 2015 CHEVY EQUINOX LT | |
| MAROON, SUNROOF, GOOD TITLE, 39,XXX MILES | \$14,500 |
| 2015 GMC TERRAIN | |
| BLACK, AWD, GOOD TITLE, 65,XXX MILES | \$15,900 |
| 2015 GMC TERRAIN | |
| WHITE, 26,XXX MILES..... | \$17,500 |
| 2015 GMC TERRAIN DENALI | |
| WHITE, AWD, V6, 62,XXX MILES | \$17,500 |
| 2016 BUICK ENCOR | |
| WHITE, 28,XXX MILES..... | \$13,500 |
| 2017 BUICK ENCORE | |
| WHITE, 8,XXX MILES..... | \$17,500 |

WE DO ALIGNMENTS!

Remnant BLOW OUT SALE!

| | |
|--|-------------|
| 12 X 8⁸ SAW GRASS | \$99 |
| REG. \$260.00 | |
| 12 X 12 THYME | \$99 |
| REG \$289.00 | |
| 12 X 10² BLONDE | \$99 |
| REG \$324.00 | |
| 12 X 13³ BEACH FRONT | \$99 |
| REG \$353.00 | |
| 13 X 10¹ CAMEO | \$99 |
| REG \$568.00 | |
| 12 X 12¹⁰ HUNTER GREEN | \$99 |
| REG \$463.00 | |
| 12 X 10⁴ GALAXY | \$99 |
| REG \$371.00 | |
| 12 X 9⁶ WALNUT RIDGE | \$99 |
| REG \$240.00 | |
| 12 X 12¹ KHAKI | \$99 |
| REG \$482.00 | |
| 13²X 12⁸ LOKI | \$99 |
| REG \$183.00 | |
| 12 X 11¹⁰ SAPHIRE | \$99 |
| REG \$157.00 | |

LARGE SELECTION AVAILABLE ONLINE.
 CHECK OUT OUR WEBSITE FOR PICTURES AND MORE DETAILS AT
WWW.FALCONFLOORCOVERING.COM



FALCON
 FLOOR COVERING
 Family Owned Since 1972
 417-532-3118
 109 E. Commercial, Lebanon, MO

Cheyenne Acres
 Horse & Tack

BUY - SELL - TRADE
 by Rolla, MO
 Call For Directions & Availability

Call Kip
573-368-9402



C-HWY PRODUCE AUCTION: FRIDAYS 10AM STARTING APRIL 5th, RUNNING THRU END OF APRIL. THEN TUESDAYS AND FRIDAYS MAY THRU OCTOBER.
 *COLE CROPS *BEDDING PLANTS *EARLY PRODUCE *FLOWERS-HANGING BASKETS. NORTH OF SEYMOUR, MO ON HWY C FIVE MILES, 1/4 MILE EAST ON SHORT STATES HWY P. FOR MORE INFORMATION CONTACT SAMMY J.M. SCHWARTS 4773 HAZELWOOD DR. SEYMOUR. AUCTIONEER: STEVE CANTRELL, (417)380-0562. DON'T FORGET ANNUAL MOTHER'S DAY FLOWER SALE MAY 7th!

USED AMERICAN FAMILY DOUBLE-WIDE These do not last! Excellent condition. Call Quick, 573-499-9993 columbiadiscountohomes.com.

John Deere 160CLC Excavator



\$23,500, 2 available.

Call Mark (314) 560-3112

TWIN BED W/FRAME: Clean. \$40. 815-904-4248.

100 BALES GOOD HAY: 5x6, never wet, in barn, \$100/bale. Warsaw, 660-723-0103.

NEW LOVESEAT: Chocolate. \$75. 815-904-4248.

NEW HOLLAND: 1411 diskbine w/roller. \$7,250. 573-765-4406.

OLD LINN CREEK, HA HA TONKA & CAMDEN COUNTY BOOK: "Before the Dam Waters" by Victor Jeffries. 72 pages, \$6.50. \$2.00 postage if mailed. Lebanon, 417-532-2045.

LINDSAY CHRYSLER/DODGE PREOWNED

DRIVE ONE HOME TODAY



2018 Dodge Challenger
SXT +, Htd/Cld Leather, Sunroof, 20's Tech Grp, 11K miles
P-7732 **\$24,900**



2018 Dodge Challenger
SXT Plus; Htd/Cld Leather; Sunroof; 20s; Technology Group; 13K miles
P-7730 **\$24,000**



2016 Chevy Impala
LT, 39k miles
P-7714A **\$15,800**



2018 Dodge Charger
SXT Plus; V6; 24K miles
P-7626 **\$20,400**



2018 Chevy Malibu
LT, 33K miles
P-7691 **\$15,800**



2018 Chrysler 300
Touring, Chrome App. Pkg., 7K miles
P-14483A **\$20,500**



2016 Chevy Malibu
LT; 57K miles
P-14880A **\$13,700**



2018 Ford Mustang GT
5.0 V8, 6spd., 9K miles
P-14613A **\$29,495**



2018 Chrysler 300
AWD, Limited, HD/CD Leather, Navigation, Dual Sunroof, 14K miles
P-7851 **\$24,995**



2019 Chevy Impala
Lt, 20K miles
P-7865 **\$22,495**



2018 Chevy Cruze
LT, 17K miles
P-7783 **\$15,500**



2018 Chevy Camaro
LT; RS; Sunroof; 20s; 25K miles
P-7685 **\$22,500**



2014 Ford Mustang
V6, Auto 60K miles
P-7798A **\$13,995**



2017 Honda Accord
Sport, 4 cyl, 37K miles
P-14853A **\$20,995**



2018 Chevy Cruze
Hatchback; LT; 14k mile
P-7782 **\$15,500**



2016 Chevy Camaro
LT, V6, 52K miles
P-7537A **\$18,495**



2016 Chrysler T & C
Touring - L, Leather, DVD, Navigation, 37K miles
T-14920A **\$23,495**



2017 Dodge Grand Caravan
SXT, 50K miles
T-7746 **\$15,800**



2018 Chrysler Pacifica
Touring-L, Leather, 22K miles
T-7750 **\$26,800**



2016 Chrysler Town & Country
Touring; Leather; DVD; 72K miles
T-14856A1 **\$14,700**



2018 Chrysler Pacifica
Touring -L Plus, Leather, Navigation, UConnect Theater, 34K miles
T-7762 **\$28,995**



2018 Jeep Grand Cherokee
Limited, 4x4, Htd/Cld Leather, Navigation, 19K miles
T-7812 **\$32,995**



2018 Jeep Grand Cherokee
Limited, 4x4, Htd/Cld Leather, Dual Sunroof, Navigation, 23K miles
T-7838 **\$33,995**



2018 Jeep Compass
Limited, 4x4, Leather, Navigation, Safety & Security Group, 17K miles
T-7840 **\$23,495**



2018 Jeep Renegade
Lat; 4X4; 20K miles
T-7656 **\$17,800**



2018 Hyundai Santa Fe
Sport; AWD; 28K miles
T-7661 **\$17,700**



2018 Dodge Durango
GT, AWD, Leather, 32K miles
T-7770 **\$31,495**



2017 GMC Terrain
SLE; FWD; 27K miles
T-7586 **\$17,700**



2019 Jeep Cherokee
Overland; 4X4; 2.0 Turbo; Htd/Cld Lthr; Tech. Grp; 22K miles
T-7711 **\$27,700**



2018 Jeep Compass
Latitude, 4x4, Pop, Equip Group, Safety & Sec. Grp, 22K miles
T-7843 **\$19,995**

Not all actual photo's shown

LINDSAY CHRYSLER/DODGE PRE-OWNED 573-336-2698

809 MISSOURI AVE., ST. ROBERT, MO • OPEN 8 A.M. - 6:30 P.M. MON.-FRI. & SAT. - 9 A.M. - 5 P.M.

LINDSAY CHRYSLER/DODGE PRE-OWNED IN ST. ROBERT

Over 400 Vehicles Online or on the lot - We've got what you Want!

WWW.LINDSAYCHRYSLERDODGE.COM



2016 Honda CR-V
EX-L; FWD; Sunroof;
Leather; 41K miles
T-7575A **\$19,500**



2014 Jeep Grand Cherokee
Limited, 4x4, Htd/Cld
Leather, Dual Sunroof,
Navigation, 20's 63K miles
T-14807A **\$23,500**



2018 Jeep Grand Cherokee
Limited, 4x4, Htd/Cld
Leather, Dual Sunroof,
Navigation, 24K miles
T-7848 **\$33,495**



2019 Jeep Cherokee
Lat. Plus; 4X4; 4 Cyl;
20K miles
T-7752 **\$22,495**



2018 Jeep Grand Cherokee
Overland, 4x4, Htd/Cld Leather,
Dual Sunroof, Navigation,
Trailer Tow Grp IV, 22K miles
T-7849 **\$37,495**



2018 Jeep Wrangler
Unlimited
Sahara, 4x4, Auto,
Hard Top, 31K miles
T-7842 **\$30,995**



2018 Jeep Grand Cherokee
Summit, 4x4, V6, HD/CD
Leather, Navigation, Dual
Sunroof, Loaded, 22K miles
T-7847 **\$39,495**



2018 Dodge Journey
GT; V6; Leather;
14K miles
T-7688 **\$18,800**



2018 Dodge Journey
SE, 4cyl, Blacktop Pkg,
Only 2500 miles
T-7659 **\$18,200**



2013 Dodge Durango SXT
AWD, V6, Nav., 3rd Row
Seat, 89K miles
T-14817A **\$15,500**



2014 Ram 1500
Quad, 4x2, Express, Hemi,
20s, 42K miles
T-14667A **\$18,900**



2018 Chevy 1500
Dbl. Cab; 4X4; LT; V8;
28K miles
T-7774 **\$29,495**



2018 Chevy Colorado
Crew, 4x4, LT, Nav,
23K miles
T-7758 **\$28,995**



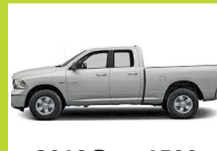
2019 Ram 1500
Classic, Crew, 4x4 SLT,
Hemi, 20K miles
T-7829 **\$31,495**



2018 Ram 2500
Crew, 4x4, SLT, Diesel,
Auto, 35K miles
T-7854 **\$41,995**



2018 Ram 1500
Quad, 4x4, SLT, V6,
22K miles
T-7806 **\$26,495**



2018 Ram 1500
Quad; 4x4; SLT; V6;
15K miles
T-7794 **\$26,995**



2016 Chevy Colorado
Crew; 4X4; Z71; V6; 50K miles
T-146288 **\$26,500**



2018 Ram 1500
Quad, 4x2; SLT; V6;
26K miles
T-7793 **\$23,495**



2003 F150
Salvage Title, Ext cab, XLT,
4x4, 100K miles
T-7562B **\$8,495**



2007 Honda Civic
EX, Auto, 131K miles
P-7836A **\$5,995**



2011 VW GTI
6 Speed, Heated Cloth,
107K miles
P-7809B **\$9,495**



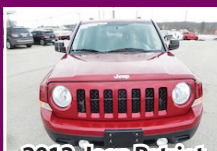
2014 Nissan Versa
S, 105K miles
P-7786 **\$8,995**



2009 Nissan Maxima
Leather, Sunroof, 142K miles
P-7701A **\$5,995**



2010 Ford Edge
Limited, Front Wheel, V6,
87K miles
T-14649A2 **\$9,800**



2012 Jeep Patriot
Latitude, 4x4, Heated
Cloth, 86K miles
T-7627B1 **\$10,995**



2009 Jeep Grand Cherokee
Laredo; 4X4; 122K miles
T-7796A **\$9,495**



2012 Chevy Captiva
FWD, LS, 127K miles
T-7791 **\$7,700**



2006 Chevy HHR
LT, Leather, Sunroof,
124K miles
T-7771 **\$5,995**



2005 Honda Shadow
750cc, 9K miles
T-14487C **\$1,700**

573-336-2698

Not all actual photo's shown

**809 MISSOURI AVE., ST. ROBERT, MO • OPEN 8 A.M. - 6:30 P.M. MON.-FRI. & SAT. - 9 A.M. - 5 P.M.
LINDSAY CHRYSLER/DODGE PRE-OWNED IN ST. ROBERT**

JD 555G



from **\$18,500** to **\$23,500**

Call Mark @ (314) 560-3112

WE SELL HIGH TENSILE FENCE: All woven, barbed, smooth! Best prices! Call Michael 417-322-0161, Lebanon.

2011 FORD F150 PLATINUM SUPER CREW CAB: 4x4, 3.5L, V6 EcoBoost, Black, new tires, drive great, 95,000 miles, salvage title, very minor damage repaired. \$17,500. Conway, 417-718-5347.

25HP HUSQVAVARNA RIDING MOWER: 54" cut can deliver, pull behind cart and aerator. \$1,250. 636-239-4124.

AUCTION REMINDER: Liquidation Auction Saturday, April 20 at 2:00pm. Rough Country Rustic Furniture Freeman Auctions & Appraisals. Please see our Auction Directory for more information.

TRUCK, TRAILER, AND SEMI TIRES

on sale now!



IRONMAN TIRES
YOKOHAMA
MASTERTRACK
FALKEN TIRE

LETTERMAN TRIPLE T REPAIR LLC
TRUCKS, TRAILERS, & TRACTORS
417-630-2249
417-664-0829

MASTERTRACK Trailer Tire (265/75/16) 10-Ply • Mounted \$121.44*
FALKEN AT3 Wild Peak (265/75/16) \$150.00*

YOKOHAMA (295/75/22) 5Ry617 • Steer \$419.00*
Ironman 1208 Drive Tire Close Shoulder • 11R22.5 \$293.76*

**Tax not included*

739 Honey Locust Rd. • Niangua, MO 65713

AUCTION REMINDER: Consignment Auction. Saturday, April 13 @ 10am. Turner Auction. Please see our Auction Directory for more information.

CHEVY 6-CYLINDER MOTOR: fit 1947-52 car or truck. \$200 or trade. 573-734-2822, Bismarck.

WANTED PINBALL MACHINES. 573-424-7200.

NEW HEAVY DUTY 3PT BALE UNROLLER: \$925. 573-765-4406.

IHC 684: Diesel tractor, 62 HP, w/loader. \$9,850. 573-765-4406.



Which Kubota Is Right For You?



Kubota THE RIGHT EQUIPMENT IS RIGHT AROUND THE CORNER. Kubota

L2501 DT PACKAGE DEAL



25HP Kubota diesel engine***
4WD, Ag Tires, 18' Trailer,
5' Box Blade, Kubota Loader,
5' Land Pride Brush Hog,
6 Year Power Train Warranty***
\$0 Down, 0% A.P.R. for 60 months..
\$20,495



ALL-NEW GAS-POWERED RTV-XGB50 SIDEKICK

POWER • PERFORMANCE • HANDLING • STYLE

48HP¹ • 40 mph transport speed, gasoline engine.
Sidekick is a multi-purpose utility vehicle. 4 colors to choose from.
\$0 Down, 0% A.P.R. for 48 months¹

L3901 DT PACKAGE DEAL



39 Kubota diesel engine***, 4WD, Ag Tires, 18' Trailer,
5' Box Blade, Kubota Loader, 5' Rotary Cutter.
6 Year Power Train Warranty***
\$0 Down, 0% A.P.R. for 60 months**
\$24,795

L3311 OT PACKAGE DEAL



33 Kubota diesel engine***
4WD, Ag Tires, 18' Trailer, 5' Box Blade, Kubota Loader,
5' Land Pride Brush Hog,
6 Year Power Train Warranty***
\$0 Down, 0% A.P.R. for 60 months..
\$23,495

L4701 DT PACKAGE DEAL



47 Kubota diesel engine***, 4 cyl., 4WD, Ag Tires,
18' Trailer, 6' Box Blade, Kubota Loader,
6' Land Pride Rotary Cutter.
6 Year Power Train Warranty***
\$0 Down, 0% A.P.R. for 60 months**
\$30,995

EDGELLER AND HARPER FARM EQUIPMENT

Get unmatched Kubota quality. Kubota designed, engineered and built. More package deals available.

Visit Us In TWO Locations!


8665 Outer Road, Mtn. Grove 4973 W. US Hwy. 160, West Plains
417-926-5454 • 877-926-5458 417-256-0420 • 800-766-0420

* \$0 Down, 0% A.P.R. for 48 months. Qualifying Equipment: RTV-XG850. \$0 Down, 0% A.P.R. financing for up to 48 months on purchases of select new Kubota RTV-XG850 equipment from participating dealers' in-stock inventory is available to qualified purchasers through Kubota Credit Corporation, U.S.A.; subject to credit approval. Some exceptions apply. Example: 48 monthly payments of \$20.83 per \$1,000 financed. Offer expires 4/30/19. See us or go to KubotaUSA.com for more information. ** \$0 Down, 0% A.P.R. for 60 months. Qualifying Equipment: BX, B, L, MX and M MH(M7), FB, DMC, DM, RA and TE Series. \$0 Down, 0% A.P.R. financing for up to 60 months on purchases of select new Kubota L2501 DT, L3301 DT, L3901 DT, L3301 OT or L4701 DT equipment from participating dealers' in-stock inventory is available to qualified purchasers through Kubota Credit Corporation, U.S.A.; subject to credit approval. Some exceptions apply. Example: 60 monthly payments of \$16.67 per \$1,000 financed. Offer expires 4/30/19. See us or go to KubotaUSA.com for more information. For complete warranty, safety, and product information, consult your local Kubota dealer and the product operator's manual. Power (HP/KW) and other specifications are based on various standards or recommended practices. *** Only terms and conditions of Kubota's standard Limited Warranty apply. For warranty terms, see Kubota's Limited Warranty at www.KubotaUSA.com or authorized Kubota dealers.

USED AMERICAN FAMILY DOUBLE-WIDE These do not last! Excellent condition. Call Quick, 573-499-9993 columbiadiscounthomes.com.

CEDAR GAP TOPSOIL: Garden Ready topsoil, Only water required, delivery within 50-mile radius, Seymour. 417-935-2877. For more info: www.cedargaptopsoil.com

AUCTION REMINDER: Government Auction. Tuesday, April 16 @10am. BID NOW! Purple Wave Auction. Please see our Auction Directory for more information.



Getting Fit
just became enjoyable *and* awe inspiring.

There are lots of fitness center options out there, but only GreatLife offers a state of the art, 24/7 fitness center with a view like no other overlooking our beautiful 18 hole golf course.

Come see for yourself.
We'll be happy to show you around.

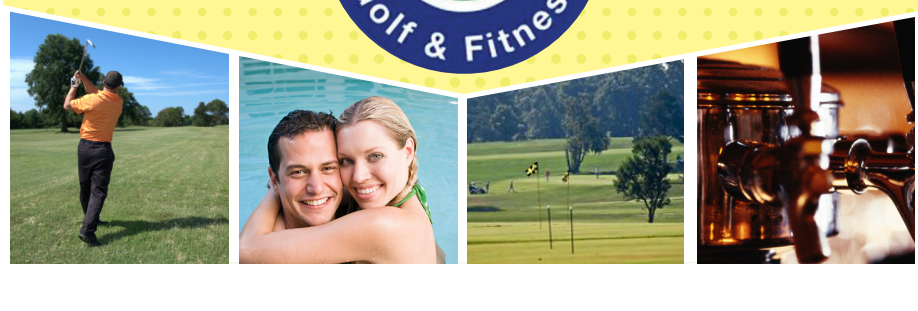
- Huge state-of-the-art fitness center
- Special classes available
- Personal Training available
- Outdoor pool
- Bar and Grill

\$15 Per Month
If you join with a friend by April 30, 2019

Join by yourself
\$25 per month or \$300 annually
Every membership is a family membership!

Give Mike, Zach or Doug a call or just stop by!

GreatLife Golf & Fitness
16744 Highway 64 (417) 532-2901



Rotating Hay Carriage



Cowtown USA • 1-800-258-6898
I-44 & Hwy F • Exit 203 • Cuba, MO
View At cowtownusainc.com - See Video

\$5,150
\$510 Down
\$90 Per Week
W.A.C.

2014 HARLEY DAVIDSON STREET-GLIDE LIMITED: 103 6speed, dual exhaust, bluetooth, touch screen navigation, one owner, garage kept, only 6,402miles, asking \$16,500. 870-404-0388.

14' GOOSENECK STOCK TRAILER: \$2,250. 573-699-4861.

MOSSBERG MODEL-500: 20 or 12 gauge pumps, \$200 each or gun trade. 573-756-1065, Doe Run.

GLEANER 24' Rigid Header: \$750. 417-646-8807.

FRENCH BULLDOG PUPPIES: Blue/Black, Chocolate & Lilac Carriers, M/F. White/Cream Male. 6wks-8mos. Guarantee, \$1,500-\$2,500. 573-238-3873, 573-208-0485, Glenn Allen.

AB MACHINE: lay down on. \$35. 636-297-1747.

GUN BOXES: Several shapes & sizes. \$10 and up. 417-589-8200.

JOHN DEERE 535 ROUND BALER: monitor, kicker, net wrap, good. \$7,200. 573-765-4406.

1987 SHELBY TURBO Z DAYTONA: 74,000 miles, excellent condition. \$5,500. 314-616-9862.

PUT MORE \$\$\$ IN YOUR POCKET!!
Lewis Cattle Oiler. 417-286-3540 or 774-696-2344.

ESKIMO MIX PUPS: White with some gray markings, shots and wormed. Conway, Mo. 417-589-0227.

AGCO ALLIS 6690 DIESEL TRACTOR: cab & air, 80hp, with Westendorf TA 26 Loader. \$15,750. 573-765-4406.

2001 FORD WINDSTAR: St. James 573-699-4651.

QUALITY BEEF FOR SALE: No stress, no hormones, no anti-biotics. Available April 25th. We're proud of our beef! Ethical operation and integrity. Gatewood, 573-255-3191.

ROD AND REELS: fishing season is coming. \$5 and up. Conway, 417-589-8200.

Hydraulic Dovetail Trailers
By the Best Manufacturers in America!



PJ TRAILERS | IRONBULL
32' Hydraulic Dovetail Trailers
in stock today starting at **\$12,000**
Low Profile • 10k Dexter Axles • Dual Spring Loaded Jacks • Radial Tires • Torque Tube Underframe Bridging
LET US BE YOUR PEOPLE!!
WESTGATE TRAILER & EQUIP.
417-351-6974 • 417-926-7733
www.westgatetrailer.net
8920 W Business 60 • Mtn. Grove, MO
7136 W Farm Road 140 • Springfield, MO
FULL SERVICE SHOP
OPEN: Mon.-Fri. 8-5 And "YES!" Sat. 8-Noon!

TIRES FOR SALE: set of 4, 255x50XR20s. \$100. Richland, 573-286-8423.

2012 KUBOTA RTV 1100: Cab heat/air, new tires, diesel, camo color, 1430hrs. \$9200. 417-543-5164

JOHN DEERE 7000: 6x30in Planter, no till. \$3350. 573-765-4406.

ANTIQUE GE ICEBOX: working. \$200. 636-297-1747.

TWO NEW VINYL WINDOWS: Open upright, double pane. 62.5x38.5 \$100 OBO. 49.5x36.5 \$75 OBO. Rolla, 928-514-0505.

JOHN DEERE: 7300 air planter, 3pt, 8row, 36sp, vertical fold. \$5500. Viola, 870-458-2580.

01 CHYRSLER TOWN & COUNTRY: Limited van. \$1400. 636-584-9476.

27HP X-MARK ZERO TURN: 5ft deck, runs great, can deliver. \$2,900 636-239-4124.

PAYING CASH for Used Doublewides & Select Singles. Call Charlie, 573-205-7252.

QUILT BOOKS FOR SALE: 101 Fabulous Rotary Cut Quilts. \$10. The Quilting Bible, over 30 quilting projects. \$8.50. Charm Quilts. \$6.50. Lebanon, 417-532-2045.

PUPPIES TO GIVE AWAY: Black Lab, Australian Shepherd and Great Pyrenees mix. Black. Wormed, ready to go. 573-202-4105.

TYM TRACTORS
YOU TAKE CARE OF THE MAN POWER. WE'LL HANDLE THE MACHINE POWER.
Largest TYM Dealer In Missouri
Up To 6 Year Powertrain Warranty

Spring sale
Now thru April 30, 2019

| | |
|---|--|
|  <p>TYM 754 - 4WD, Cab w/AC, Heat, Radio, Quick Attach Loader w/Skid Steer Bucket, 2 Sets Of Remotes, Shuttle Shift Trans - \$37,500</p> |  <p>TYM 474 New in 2019! HST 48 HP, Diesel, P/S, 4 WD, Quick Attach Loader, \$25,500</p> |
|  <p>TYM 554 - 55 Hp, 4WD, Shuttle Shift Trans, Quick Attach Loader w/Skid Steer Bucket, 2 Sets Of Remotes - \$24,250 Package Deal Bale Spear, Ballast, 7' Cutter, 7' Blade - \$28,900</p> |  <p>TYM 474C New in 2019!! Cab, HST 48 HP, Diesel, PS, 4 WD, Quick Attach Loader, Rear Remote, A/C, Heat, Front/Rear Wipers \$31,500</p> |

When You're Up to Your Ears in Work, The Last Thing You Need Is Down Time. Call Us For all Your Service Needs! We Have A Full Service Shop That Services All Makes & Models.

Specializing in Montana, Farmtrac, Mahindra & TYM Parts
All Prices Shown include \$3,000 Cash Rebate, No Trade with Rebates.

DIAMOND R EQUIPMENT
Just 6 Miles North Of Freeburg On Hwy 63 • 573-455-2617
Just North Of Hwy 50 On E. McCarty, Jefferson City, MO • 573-635-4500 • www.diamondreequipment.com

OLDER ELECTRIC FLOUR GRINDER: \$120. 417-321-1928.

CHEVY RALLY WHEELS: 75/60R15, 5 Hole, Set of 4. \$35 each. Rolla, 573-578-4605.

TAYLOR 8FT OFFSET DISK, very little use. \$4,850. 573-765-4406.

NEW HOLLAND: 1411 diskbine w/roller. \$9,850. 573-765-4406.

\$2,500 - \$11,000 LOT

Lindsay Chevrolet & Lindsay Ford

Mon.-Fri. 8 am - 7 pm
Sat. 8 am - 5 pm
Not responsible for typos.
* with approved credit

417-588-7995

West City Route 66
& South Monroe
Lebanon, MO

Bobby Rogers, Manager • Aaron Wehner, Finance • Mike Forner, Steve "Whitey" Helton, Larry Davis, Sales

Cars

| | | |
|----------|--|----------|
| QC75331 | 2003 FORD T-BIRD CONV. V8, AUTO, FWD, GRAY..... | \$11,900 |
| QC75294B | 2007 MITSUBISHI ECLIPSE GS 4CYL., 5SPD., COUPE, ORANGE..... | \$5,600 |
| QC75393 | 2009 CHEVY AVEO LS 4CYL., 5SPD., WHITE..... | \$5,900 |
| QC75376 | 2010 HONDA CIVIC LX 4CYL., AUTO, FWD, BLACK..... | \$10,600 |
| QC57553A | 2013 FORD FUSION SE 4CYL., AUTO, SILVER..... | \$8,900 |
| QC75215B | 2013 CHRYSLER 200 LX 4CYL., AUTO, FWD, MAROON..... | \$7,700 |
| QC75444 | 2013 FIAT 500 POP 4CYL., AUTO, FWD, BRONZE..... | \$8,800 |
| LT28470 | 2013 NISSAN JUKE S 4CYL., AUTO, FWD, GRAY..... | \$8,900 |
| QC75320 | 2014 DODGE DART SXT 4CYL., AUTO, SEDAN, FWD, BLUE..... | \$9,600 |
| LC28496 | 2014 FORD FOCUS S 4CYL., AUTO, FWD, BLACK..... | \$10,200 |
| LC6541B | 2014 FORD FUSION 4CYL., AUTO, FWD, BLUE..... | \$7,900 |
| QC75443 | 2014 CHEVY SONIC LS 4CYL., AUTO, FWD, BLACK..... | \$8,900 |
| LC28499 | 2014 CHEVY SPARK LT 4CYL., AUTO, FWD..... | \$9,900 |
| LC28359 | 2014 CHEVY SONIC LT 4CYL., AUTO, FWD, RED..... | \$8,900 |
| LC28385 | 2014 CHEVY SPARK LT 4CYL., AUTO, FWD, WHITE..... | \$9,800 |
| LC28539 | 2015 CHEVY MALIBU LT 4CYL., AUTO, FWD, WHITE..... | \$11,200 |
| LC28469 | 2015 CHEVY SONIC LS 4CYL., AUTO, FWD, WHITE..... | \$10,900 |
| QC75386 | 2015 CHRYSLER 200 LIMITED 4CYL., AUTO, FWD, BLUE..... | \$9,400 |
| LC7050A | 2015 CHEVY SPARK LS 4CYL., 5SPD., FWD, BLUE..... | \$9,300 |
| LC28497 | 2016 HYUNDAI ELANTRA 4CYL., AUTO, SILVER..... | \$11,700 |
| QC75363 | 2016 CHEVY CRUZE LS 4CYL., AUTO, FWD, RED..... | \$11,400 |

Trucks

| | | |
|---------|--|----------|
| QT75292 | 2005 DODGE RAM CREW V8, AUTO, 4WD, BEIGE..... | \$9,900 |
| LT7061A | 2006 FORD F450 6.0 D. MOTOR AUTO, RWD, FLAT BED, WHITE..... | \$7,300 |
| LT28260 | 2006 CHEVY SILVERADO V6, AUTO, 2WD, BLACK..... | \$6,300 |
| QT75460 | 2007 FORD SPORTRACK V8, AUTO, 4WD, GRAY..... | \$12,400 |

Trucks

| | | |
|-----------|--|----------|
| LT28410B1 | 2008 FORD F150 CREW LARIAT V8, AUTO, 4WD, BLACK..... | \$11,900 |
| QT75475 | 2008 FORD F150 REG. CAB V8, AUTO, 4WD, XL, WHITE..... | \$9,900 |
| QT75446A | 2008 FORD F150 CREW LARIAT V8, AUTO, 4WD, RED..... | \$9,800 |
| LT28393 | 2011 DODGE DAKOTA ST EXT. CAB, V6, AUTO, RWD, WHITE..... | \$7,900 |
| QT75395 | 2012 GMC CANYON SLE REG. CAB, 5CYL., AUTO, RWD, BLUE..... | \$9,400 |

SUVs

| | | |
|-----------|--|----------|
| QT75476 | 2005 JEEP GRAND CHEROKEE LIMITED V8, AUTO, 4WD, WHITE..... | \$7,900 |
| QT75420 | 2007 CHEVY SUBURBAN LS V8, AUTO, 4WD, BLUE..... | \$11,900 |
| QT75268 | 2007 DODGE NITRO R/T V6, AUTO, 4WD, WHITE..... | \$8,600 |
| LT28432A | 2008 FORD ESCAPE XLT 4CYL., AUTO, FWD, GRAY..... | \$6,900 |
| QT75456 | 2008 HUMMBER H3 5CYL., AUTO, AWD, RED..... | \$10,900 |
| QT57284B | 2011 KIA SPORTAGE SX 4CYL., AUTO, FWD, ORANGE..... | \$11,425 |
| QT75196B2 | 2011 CHEVY EQUINOX LT 4CYL., AUTO, AWD, GRAY..... | \$11,900 |
| LT28377 | 2012 FORD ESCAPE XLT V6, AUTO, FWD, WHITE..... | \$8,500 |
| LT28418A | 2013 CHEVY CAPTIVA SPORT LT 4CYL., AUTO, FWD, SILVER..... | \$10,400 |
| QC75392A | 2013 HYUNDAI SONATA LIMITED 4CYL., AUTO, FWD, BLUE, 71K MILES..... | \$10,900 |
| LT28543 | 2014 DODGE JOURNEY SXT 4CYL., AUTO, FWD, WHITE..... | \$9,450 |
| QT75335 | 2014 JEEP COMPASS 4CYL., AUTO, 4WD, SPORT, RED..... | \$10,900 |
| QT75405A2 | 2014 CHEVY CAPTIVA SPORT LTZ 4CYL., AUTO, FWD, 88K MILES, SILVER..... | \$11,600 |

Vans

| | | |
|---------|---|----------|
| QC75394 | 2016 DODGE GRAND CARAVAN SE V6, AUTO, FWD, GRAY..... | \$12,900 |
| QT75394 | 2016 DODGE GRAND CARAVAN SE V6, AUTO, FWD, 107K MILES..... | \$12,900 |

\$5,000 or Less!

| | | |
|-----------|--|---------|
| QT57489B1 | 2002 DODGE RAM V8, AUTO, 2WD, REG. CAB, WHITE..... | \$4,900 |
| QT75375 | 2008 MITSUBISHI ENDEAVOR LS V6, AUTO, 4WD, BLACK..... | \$4,900 |

WWW.LINDSAYAUTOGROUP.COM

AWARD-WINNING DEPENDABILITY. YEAR AFTER YEAR AFTER YEAR AFTER

AWARDS BASED ON 2013, 2014, 2015 AND 2016 YEAR VEHICLE



NEW 2019 CHEVROLET CRUZE, MALIBU'S EQUINOX



For a detailed list of eligible discounts and transparent pricing please visit
www.wherethetrucksare.com



CHEVROLET 

FIND NEW ROADS™

LINDSAY CHEVROLET

"Where The Trucks Are"

OPEN: M-F 8-6:30 • SAT. 8-5 IN LEBANON AT 285 W. ELM • 417-532-3114



David Bean
Manager

Jeremy Johnson
Sales

Brent Hale
Sales

Dennis Nash
Asst. Manager

Shelby Cole
Finance

www.lindsaychevroletlebanon.com

*Price includes all applicable factory rebates including GM Financial Cash which requires financing with GMF. Also included is dealer trade assist which requires trade in of 2005 or newer vehicle that is retail eligible. May also include GM Conquest Cash which requires ownership of 2005 or newer Non GM passenger vehicle or GM Loyalty which requires ownership of a 2005 or newer GM passenger vehicle. Silverado prices include GM Card Member earnings up to \$1500.

YEAR
VEHICLES.



ALMOST \$15,000 OFF



LC6144

Our NEW Fully Loaded 2017 Camaro 2LT!
Now ONLY \$25,000!



LT6860

UP TO \$16,500 OFF MSRP!

Close Out 2018 Silverado 1500 Crew Cab 4x4

ALMOST \$13,000 OFF



All New 2019 Silverado 1500 Crew Cab 4x4



CHEVROLET 

FIND NEW ROADS™

LINDSAY CHEVROLET

"Where The Trucks Are"

OPEN: M-F 8-6:30 • SAT. 8-5 IN LEBANON AT 285 W. ELM • 417-532-3114



David Bean
Manager

Jeremy Johnson
Sales

Brent Hale
Sales

Dennis Nash
Asst. Manager

Shelby Cole
Finance



www.lindsaychevroletlebanon.com

*Price includes all applicable factory rebates including GM Financial Cash which requires financing with GMF. Also included is dealer trade assist which requires trade in of 2005 or newer vehicle that is retail eligible. May also include GM Conquest Cash which requires ownership of 2005 or newer Non GM passenger vehicle or GM Loyalty which requires ownership of a 2005 or newer GM passenger vehicle. Silverado prices include GM Card Member earnings up to \$1500.

Stay In The Know About Your Favorite Pastime With
TROUT TALK

Get your monthly subscription started today for all the information you'll need to plan your next trip to Bennett Spring State Park and the Lebanon Area.

Plus, all the latest news about fishing, hiking, camping, floating, and so much more! We'll see you there!

**All 8 Issues
 Delivered
 To Your Home
 for only**

\$14⁰⁰

Published Once Per Month March-September

YES! Start My Trout Talk Subscription

Name: _____

Address: _____

Phone: _____

Email: _____

Mail a \$14⁰⁰ check to: Trout Talk c/o Lebanon Publishing Company
 P.O. Box 192 • Lebanon, MO 65536 or Call 417-532-9131

Please include your name, address, city, state, and zip code



417-967-3004

S. Hwy. 63 • Houston, MO
M-F 9am-5pm
Sat 9am-12noon



We have been in business since 1984 and we appreciate every Customer - Big or Small!



FAITH, FAMILY & PANELS

John 14:6 Jesus said to him, "I am the way, the truth, and the life. No one comes to the Father except through Me."

**WE'RE A FAMILY OF FARMERS...
WORKING FOR THE FAMILY FARMER!**

We Appreciate Every Customer Big or Small!



**Buy 20 Panels
Get 5 FREE Panels**

**Buy 10 Panels
Get 2 FREE Panels**

(Bring flatbed trailer & ratchet straps or Delivery Available)

✓ **Out the Average for 25 Panels**

Heavy Galvanized 6'x10' 8-Bar Panels ~~\$99⁹⁵~~ **20panels**

\$79⁹⁶ Average

Reg. ~~\$109⁹⁵~~

Special \$99⁹⁵

While Supplies Last Reg. \$109.95

plus \$10⁰⁰ OFF Additional Pieces

OVER 500 PANELS IN STOCK AT ALL TIMES!

WE WILL HELP DESIGN CUSTOM CORRALS FOR ANY SIZE OPERATION!



\$1,595

GWS 3 Ton Stationary Bulk Feed Bin's With Site Glass & Ladder



GWS 5 Ton Stationary Bulk Feed Bin's With Site Glass & Ladder

\$1,895

New!

Come Check Out Our Goat Panels And Working Systems.



2007 Chevy Trailblazer

LS, 4X4, PW/PL



Reg. \$5,750

Special Of The Week \$3,995

2008 Chevy Suburban LTZ

4X4, Leather, 3rd Row Seating, PW/PL, New Tires, 20" Wheels



Reg. \$11,950

Special Of The Week \$9,995

\$\$\$\$\$ MOBILE HOME SAVINGS That is what we are about for the last 36 years. New. Used. All Sizes. 573-657-2176 amegamobile-homes.com

AUCTION REMINDER: Online Acreage Auction going on now. Atterberry Auctions. Please see our Auction Directory for more information.

1967 JD 30/20 GAS TRACTOR: \$4500. 417-241-0006. CONWAY

FOR SALE: Whirlpool Electric Range, self-cleaning double oven, glass top. \$200. Works Perfect. 573-765-3603, 573-692-1492.

VILLA HOMES IN ROLLA: Has NEW and USED Mobile Homes. Call David for info: 573-578-8072.

WANTED TO BUY: Rokon two wheel drive trail breaker. Camdenton, 573-480-3664.

DOG PEN AND DOG HOUSE: 6ft tall. \$160. 636-239-4124.

BAGGED FERTILIZER: 6-28-28/\$660T, 16-16-16/\$620T, Soybeans GTS/40, \$37bu delivered. 800-807-9612.

4 REGISTERED POLLED HEREFORD BULLS: 2yr, CHB-Top 48%, Baldy Maternal-Top 44%, DNA Tested. \$2,100-\$2,300 OBO. 573-244-3157.

OLD 20 GAUGE: Single barrel shotgun. \$175. Desloge, 573-327-9068.

1999 FORD RANGER: 105,000 miles, 2WD, extended cab, 4-door. \$5,175. 417-399-6383.

AUCTION REMINDER: Antiques and collectables Auction Sat. April 13 10 a.m. Martin Auctions. Please see our Auction Directory for more information.

FLIES ARE COMING! Lewis Cattle Oiler. 417-286-3540 or 774-696-2344.

AUCTION REMINDER: Real Estate Auction. On-Line bidding ONLY. Auction ends May 17th at 1:07Pm. Mickey Duckett Auctioneer. Please see our Auction Directory for more information.

2006 SPRINGDALE FIFTH WHEEL CAMPER: 28ft, excellent condition, Large slide-out. \$8,000. Lebanon, 417-588-9358.

FOR SALE: Farm Utility Trailer steel floor, removable wood sides, 14'x7'6" tandem axle. \$800. Beaufort, 636-584-3605.

2009 HONDA ACCORD EXL: Loaded 150,000 miles, nice. \$6,775. 417-399-6383.

AUCTION REMINDER: Saturday, April 13th, 10am. Brehe Auction. Please see our Auction Directory for more information.

SANDBLASTER: 5 gallon, helmet. \$70 417-646-8807.

18' DECK BOAT AND TRAILER: 135hp, Evinrude outboard, good condition. \$3,500. 573-261-0271.

Meet...

Shawna Bradley

Your Auction Specialist



Call or email me today to get your next auction in Central Missouri's #1 Shopper!



WEEKLY
TRADER
MAGAZINE

office: 417-532-9131 ext. 215 • 417-895-9324
cell: 417-322-3814 • shawna@weekly-trader.com

REGISTERED HEREFORD & ANGUS BULLS: Home raised, Some Show-Me Select Qualified. 573-701-7828. Belgrade

2013 SUZUKI KING QUAD 4-WHEELER: 4WD. \$2,800. Eldridge, 573-363-5213.

BRUSH CLEARING: 417-650-0596. www.brushmasterlandclearing.com

L3400D KUBOTA: 4wd tractor with loader, 34HP, gear drive, low hours with 5' bush hog. \$16,900. 417-270-1505

WEEKLY TRADER MAGAZINE



AUCTION DIRECTORY

Thursday, April 11

11:00 AM Mid Missouri Stockyards.....44

Friday, April 12

9:00 AM Rick Dixon Auction Service
with Gary Sexton Auctioneers25

Saturday, April 13

8:00 AM Rick Dixon Auction Service
with Gary Sexton Auctioneers26
 9:00 AM Berti Auction Service28
 9:00 AM Buckner & Gately Auction Service30
 9:00 AM M.R. Clark Auction.....32
 10:00 AM Brehe Auctioneering Service24
 10:00 AM Nance Auction Service34
 10:00 AM J&J Sales, LLC36
 10:00 AM B&D Consignment Auction37
 10:00 AM R&R Auction Service.....40
 10:00 AM Turner Auction Services.....41
 10:00 AM Martin Auction Company.....44
 12:00 PM Buffalo Livestock Market44

Sunday, April 14

1:00 PM Bruce Scheets Auctions39

Tuesday, April 16

Online Purple Wave Auction45
 6:30 PM Buffalo Livestock Market44

Wednesday, April 16

10:30 AM Farmington Livestock45

Friday, April 19

7:00 PM Missouri Show-Me Select Heifer Sale ..43

Saturday, April 20

9:00 AM Bruce & Le'AN Auction.....38
 10:00 AM Rick Dixon Auction Service
with Gary Sexton Auctioneers27
 10:00 AM Drenon Auction31
 10:00 AM Crawford Auction Service33
 12:00 PM Freeman Auction & Appraisals.....35
 1:00 PM Salem Livestock Auction43

Saturday, April 27

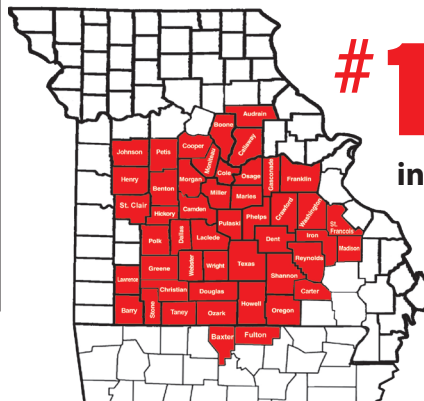
10:00 AM R&R Auction40

Thursday, April 25

Online Atterberry Auction.....43

Tuesday, April 30

Online Atterberry Auction.....42



#1 Rural Shopper
in Central Missouri

Reader's Choice!

Call 1-800-665-8875 to get your auction listed in the Weekly Trader.

AUCTIONEERS Did you know the WEEKLY TRADER covers more counties in rural Missouri than any other publication?

Firm deadline is 12:00 PM Friday, prior to next week's Thursday publication date.

CLINE FARM AUCTION



Thomas Cline, having sold his cattle and retiring from farming, will sell personal property and farm equipment at public auction on:

Saturday, April 13th, 2019, Beginning at 10:00 AM

Location: 256 Valley View Drive Cuba Mo 65453

Directions: From Interstate 44, take Exit #208-Highway 19 Exit in Cuba. Go right (North) and make first left on Highway DD, go 2.5 miles, then right on Ridge View Drive and first right on Valley View Drive to auction. Roads will be marked day of sale.

TRACTORS / HAY EQUIPMENT (Will sell after guns at Noon)



Allis Chalmers 8010 Turbo diesel tractor-cab-AC-heat-power shift-front wheel assist-110 HP-4,000 hours-new tires-triple hydraulics, 1957 John Deere 620 gas tractor-power steering-new rear tires 13.6-38-new front tires-front and rear weights, **EQUIPMENT**; New Holland H7320 Mow Max 9.5' disc mower-flail hydraulic swing-540 PTO (never used), New Holland Pro Cart 819 hydraulic 8 wheel rake (like new), New Holland BR7090 round baler with monitor-makes 5'x6' bales-bale kicker-540 PTO, 2011 New Holland BC5060 high capacity square baler with hydraulic tensioner and swings-like new, Turbo Rake TR-10 ten wheel V rake-hydraulic fold, Rossi G4EL 4 basket hydraulic tedder, Bush Hog brand Legend 2615 rotary cutter with safety chains-hydraulic fold-540 PTO, Kory 250 bushel gravity flow wagon w/6" hydraulic fold auger, 3 point 6' King Kutter finishing mower, Allis Chalmers 3 pt 6' brush hog, Extreme Duty 4' pallet forks (new), 2010 JD Z910A commercial zero turn mower 54" 7 guage deck 21hp Kawasaki engine 275 hours one owner



TRACTOR PARTS / FARM SUPPLIES

John Deere parts for 620 and 420 tractors, (2) John Deere hydraulic cylinders, top links, front tractor rims and tires, John Deere snow blower, John Deere umbrella, stock tanks, rolls barbed wire, 300 gallon fuel tank on stand, Lincoln battery on grease gun

TOY TRACTORS

AC 6080 tractor in box, AC 6070 tractor in box, N6 Gleaner-Combine in box, Deutz Allis 9150 4x4, Deutz Allis 9150 row crop tractor, (2) AC 8010 4x4 tractors in box

LUNCH WILL BE SERVED BY CAROLS CATERING

VIEW OUR PHOTO GALLERY ON

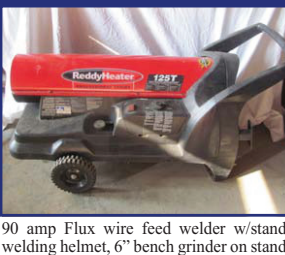
www.breheauction.com

GUNS (will sell at 12:00 Noon)



Mossberg Model 590 12 ga pump with pistol grip-collapsible stock, Sig Saur M 522 Commando .22 caliber semi-auto, Uberti M 1873 .357 cal lever action rifle, Winchester M 1894 .22 cal lever action, American Tactical AR15 w/Millet red dot and 30 round clip, Savage Axis .223 w/scope, Winchester M 1300 12 ga with cammo stock-choke tube, Remington M 1900 SXS 12 gauge, Weatherby M 82 12 ga w/choke tube, Westernfield 410 ga pump shotgun, Hi Point 9MM carbine w/10 rd mag, **PISTOLS**; Walther M P22 .22 cal semi-auto pistol, Mauser .32 cal semi-auto 7.65, Ruger Black Hawk .45 cal NIB, Springfield XDM .40 cal pistol in box, Jimenez 9MM in box, Glock Model 22 .40 cal in box

SHOP TOOLS / YARD TOOLS



90 amp Flux wire feed welder w/stand, welding helmet, 6" bench grinder on stand, Craftsman bench top drill press, drill

press vise NIB, Wagner 1/2 HP airless paint sprayer, airless paint sprayer NIB, electric hoist, Craftsman finish nailer, Bosch 1/2" drill, Milwaukee Sawzall, wet tile saw, 1/4" plunge router, circular saw, jig saw, palm sanders, B&D 7" sanderbuffer, .22 cal nailer, solder gun, Dremel rotary saw, Rigid flaring tool kit, Mighty Vac, Master Mechanic 40 pc tap-die set, drill Doctor, drill, drill bits, pipe wrenches, hammers, mallets, crow's foot wrenches, lot socket sets, lots sockets, ratchets, open-box end wrenches, large wrench set to 1 1/2", ratcheting wrenches, vise grips, tape measures, ruler, Craftsman Laser Trac, hand staplers, crowbars, bottle jack, 4" Craftsman level, 3' level, Craftsman screwdrivers, Craftsman sockets-1/4"-3/8"/1/2", socket holders, allen wrenches, hack saws, tool sets, **AUTOMOTIVE**; Mac tools-rolling work stool, Mac mini die grinder set, air wrenches, Mac air drill, air chisels, lot pneumatic tools-sander, set pneumatic sockets metric-standard, Snap On punch set, offset wrenches, torque wrench, auto body tools-dent puller, tachometer, timing light, car creeper, ball joint puller, gear pullers, auto parts-wiring-audio, electric buffers, set good used tires, tire chains, lot misc. hardware, lot parts bins, electrical wire, heavy copper wire, conduit parts, electrical supplies, work lights, plumbing supplies, rolls copper tubing, shelf brackets, organizing hooks, **TOOL CABINET**; Husky 5'x3' side-by-side rolling tool cabinet-ball bearing drawer pulls-side storage cabinet-nice, Craftsman tool box, B&D Workmate, 6' metal storage cabinet, **YARD**; Craftsman 5 HP front tine tiller, Craftsman 6 HP 2350 PSI 2.2 GPM power washer, Craftsman 2200 PSI 6.75 HP power washer, Craftsman lawn cart w/dump, 2 wheelbarrows, pump sprayers, broadcast spreader, Toro snowblower, Sears 50,000 BTU torpedo heater, lot weed eaters, Poulan chain saw, rakes, shovels, axe, snow shovel, gas cans, wooden step ladders, BBQ set, hose reel, Rubbermaid patio storage chest, patio fire pit, bug zapper, propane tanks, coolers, glass patio tables, patio chairs, umbrellas, rolling golf carts, horse shoe set, small animal cage, wooden storage boxes, fans, small bar size refrigerator

BREHE AUCTIONEERING SERVICE, LLC
 Union, MO: (636) 583-0841 Owensville, MO: (573) 437-3454
www.breheauction.com
 LICENSED AUCTIONEERS:

Kerry Brehe 314.954.3798 Josh Brehe 314.603.3129 Harry Engelhart 636.399.3743

Announcements made day of sale supersede all printed material.
 TERMS: CASH, PERSONAL CHECKS WITH PROPER I.D., BUSINESS CHECKS WITH BANK LETTER AND NO OUT OF STATE CHECKS UNLESS APPROVED BY SELLER. Email Us At kkauction@sbcglobal.net
 Everything sells as is with no guarantees.



ESTATE FARM AUCTION

Friday, April 12, 2019 • 9 a.m.

LOCATION: 1040 Shelton St, Cabool, MO 65689

DIRECTIONS: Off 4 lane Hwy 60 in Cabool MO, take Hwy 181 north, go 1 block to Shelton St, turn left, go 1 mile to auction.

Watch for Rick Dixon auction signs day of auction. For photos, visit us on the web at www.rickdixonauctions.com

• TRACTORS • SKID STEER •

- 4050 John Deere w/cab, duals, 4600 hrs • 2755 John Deere w/245 front end loader, 4 wheel drive, 2400 hrs • 2755 John Deere w/ cab, 6670 hrs
- 2640 John Deere w/weights, 3512 hrs • 2040 John Deere w/148 front end loader, 1685 hrs
- 2355 John Deere Industrial, 4 wheel drive, 2819 hrs • 2350 John Deere, 923 hrs • 2155 John Deere Industrial, 902 hrs • 2150 John Deere w/hyd reverse, 4730 hrs • 955 John Deere 4 wheel drive garden tractor w/Cozycab, diesel, hydrostat, 725 hrs • attachments for 955: 70A front end loader/72" mower deck/60" mower deck/wheel weights/ tires/snowblower/leaf bagger/front pto • 655 John Deere lawn tractor, diesel, 1197 hrs • 644 D John Deere, needs work • 60 John Deere • A John Deere, w/wide front end, styled • 3T D7 Caterpillar cable dozer, elec start, direct drive • CAT 60 cable scraper
- Case 1845 skidsteer, 1133 hrs • attachments for skidsteer: 6' bucket/ (3)6'smooth edge buckets/ Worksite Pro John Deere grapple bucket/Grace Man.heavy duty tree shear/McMillen hyd auger/ hyd jack hammer/Coneqtec LPB 1800 sweeper
- G6 Minneapolis Moline diesel w/power steering
- WD Allis Chalmers • CA Allis Chalmers (these two tractors came from Ross Lumber when they sold tractors) • International Cub w/Woods belly mower • International Cub w/Cub belly mower
- Bell Super T tree cutter • Grove 60' shoot & boom manlift • CAT IT 18F loader, 9500 hrs • attachments for CAT IT loader: bale spike/truss boom/8' forks/grapple bucket/8' hyd broom • Fiat mod 65B road grader, in pieces, burnt, all there
- Grasshopper 721D diesel zero-turn lawn mower, 1374 hrs

• VEHICLES • TRUCKS • UTVs • MOTORCYCLES •

- 1963 Chevy Corvette, split window, 383 Stroker engine, Muncie close ratio 4 speed trans. (Has been in storage, Mike owned this since 1980s).
- 1993 Fatboy Harley Davidson motorcycle, 5641 miles • 1994 Peterbilt 379 w/ CAT 3406 engine, 15 spd, day cab, 956XXX miles • 64" Peterbilt stand-up sleeper • 2004 Kenworth T800 dump truck, C15 CAT engine, 8 spd, 20000 lb front end, tandem axle, 46000 lb locking rear end, 212XXX miles, prior salvage title - fixed right, in use every day • 1989 International dump truck, 8 spd, tandem axle, Cummins engine, runs good

- 2007 Freightliner M2 ext cab, Mercedes Benz engine, hyd brakes, standard • 2008 Chevy 3500HD, 4x4, crew cab, Duramax diesel, 1 T, auto, w/DewEze 475 bale bed, 146XXX miles • 2000 Ford F450 diesel, 6 spd, w/B&W flatbed, crew cab, 4x4, 78XXX miles • 2000 Ford 4x4, 1 T, crew cab, 7.3 lt diesel, dually, 6 spd, 140XXX miles, runs good • 2001 Ford Excursion, Eddie Bauer edition, 4x4, 7.3 lt diesel, auto, loaded, 138XXX miles • 1997 Ford F350 1 T, 7.3 lt diesel, 5 spd • 1952 Chevy pickup • 1980 Jeep CJ7 • 1977 Jeep CJ7 Renegade 304 auto/ ac/SnoWay plow • 1964 Willys Jeep • 1955 Chevy pickup • 1985 Ford 1/2 T pickup • 1988 Chevy 1 T, 4x4, long wheel base • (4) CT110 Honda Trail motorcycles • CT90 Honda Trail motorcycle • John Deere CX Gator, gas, 2 wheel drive • 2012 Polaris Ranger XP800 w/ full cab, heat/defrost, power steering, bought new w/244 hrs • 2012 Polaris Ranger 800 4x4 w/power steering, limited edition, 880 hrs
- 2013 Polaris Ranger, 327 hrs • 1996 Ford 3/4 T pickup frame • 1995 Ford 8' pickup bed w/ tailgate
- 2000 Ford dually pickup bed • 1986 Ford 1/2 T for parts • (3) 1995-1997 3/4 & 1 T Ford pickups for parts • 2000 Chevy S10, 4 cyl, auto, ext cab, for parts • 1994 Chevy S10 4x4, ext cab, for parts • (2) Honda dirt bikes for parts • (2) 4 wheelers for parts • 1995 Ford 6' pickup bed •

• TRAILERS •

- 25 box trailers, from 28 to 48 ft • Land Haul 32' equip trailer, dual axle & wheel, w/hyd pump, all steel bed • Delta 2008 flatbed gooseneck, 20' w/4' dove, flip-up ramps, w/winch • ProStock 16' fully enclosed cargo trailer, bumper hitch • 24'6"8' gooseneck stock trailer, built by ag class - nice • Coose 16' bumper hitch stock trailer • 2000 gooseneck half-top stock trailer, 24'x6' • 2004 Wilson 24'x7' alum gooseneck stock trailer • 3 axle, 30' hay trailer, no title • motorcycle trailer • small motorcycle trailer • tilt 10' bumper hitch trailer • Century 48'x8' gooseneck, 3 axle, enclosed • King Man 32' gooseneck bale trailer • Blue Diamond 26' gooseneck dual tandem axle flatbed w/4' dove • Loadcraft 31' gooseneck flatbed, tandem axle, hyd tilt • 4Star alum 32' toy hauler w/ac • Interstate 16' flatbed, pintle hitch • 12'x6.5' single axle utility trailer • 18' bumper hitch tandem axle flatbed • Pipeliner welding trailer • 1989 Tommy's Trailers 16' alum car trailer • homemade heavy duty, pintle hitch welding

- trailer w/tool boxes • homemade 30' gravel dump trailer • 1950 Chevy pickup bed trailer • Easley 1984 single axle stock trailer 16'x5' • Starlite 2011 flatbed gooseneck 20' w/ramps • Overbilt 22' flatbed w/4' dove w/ramps tandem axle, dual wheels • Felling 12' dump trailer, hyd w/ramps • 20' gooseneck tandem axle • 1978 Hobbs 50' flatbed • VWV 16' stock trailer • 16' flatbed utility w/ramps • 2 wheel boat trailer • Tow Master 25 T triaxle pintle hitch • 2003 Utility 45' flatbed air ride w/salvage title • Rogers 35 T lowboy • 1997 Crosley 20 T tilt top pintle hitch lowboy • 1996 Trail King TKT tilt top 5th wheel heavy trailer • 1973 Freuhauf 44' drop deck • Lufkin alum pup trailer • 32' hay trailer, bumper hitch •

• FARM EQUIP • WELDERS • STEEL • CATTLE WORKING SYSTEM •

- Powder River cattle working system w/ tub, adj alley, palpitation cage, calf alley & head gate
- 2 Powder River calf tables • John Deere CX20 20' batwing bush hog • Rhino FM15 15' batwing bush hog • Woods 315 15' batwing bush hog • Sidewinder 6' bush hog, tire drive • Sidewinder 7' drag-type bush hog • Brushcutter 6' hyd steer bush hog • John Deere farm wagon that dumps, w/silage rack • farm wagon • ABI irrigation reel on trailer w/ approx. 1000' of pipe • Kifco pto-driven water pump • intake hose for irr. pump • 200 gal 3 pt hitch sprayer • John Deere 6620 combine parts: chaff spreader & straw chopper • John Deere 920 combine 20' flex head • (3) John Deere 246 broom sweepers • Harley rock rake, 3 pt • Highline XL78 rock rake • 12' rock rake • Brillion Surestand seeder, 12' • 3 pt seeder, pto-driven • Bafco 15' batwing finish mower • John Deere 3 pt sickle mower • 3 pt 5' finish mower • Woods RM990 finish mower • Allis Chalmers sickle mower • 5'sheep-foot roller • 5'x8' oil-filled roller • 10'x30' roller • 8' roller, needs repair • draw-type tow bar • old Maxi-lite generator w/ lights • KBA 27 generator w/John Deere engine w/500 gal fuel tank, mounted on Maxey 16' trailer • dozer blades for John Deere quick attach loader • John Deere heavy-duty 7' grader blade • Gannon 7' box blade, 3 pt w/hyd scarifier • Road Boss 3 pt grader attachment • Atlas 4' box blade • (2) Allis Chalmers grader blades • 3 pt small blade • Caterpillar 3 pt hyd boom lift • Stoltzfus fertilizer spreader, 8 T, dual spreaders

- John Deere 1350-1450 3 pt 4 bottom plow
- Giant 12 shank chisel plow, 3 pt • John Deere 3 pt 5 bottom plow • Allis Chalmers 2 bottom plow • 2 bottom plow • 3 pt 2 disc plow • Johnson 20 T crane hook block • Landa hot water pressure washer w/11 hp Honda engine on 8' trailer • Danhuser post driver, pto, 3 pt • Shafer hyd post driver • Lincoln SA250 welder w/Perkins Cummins diesel, on welding trailer • Bobcat 225G welder w/424 hrs, w/ vise & toolboxes on homemade 3/4T frame 8' trailer • Lincoln SA200 arc welder, gas, lots of leads, on trailer • set oxygen/acetylene tanks • John Deere 12' disc on wheels • Krause 18' hyd fold disc • John Deere 8' pull-type disc on wheels • International 20' disc • 6' 3 pt disc • 8' harrow • Vibrashank 17' cultipacker • Brillion 14' cultipacker • Chattanooga cultipacker • 3' wide steel culvert • large concrete bucket • 3 pt pto-driven concrete mixer • Stow 2 bag mortar mixer w/Honda engine • steel hot tank • Vicon Fanex 6918 28' tedder • John Deere 756 17' tedder • John Deere side delivery rake w/ front wheel • square bale hay elevators • Super Split log splitter w/8 hp Honda motor • 3 pt boom pole • boat rigging rack • Danhuser 3 pt auger • John Deere 2 row corn planter • Paul portable livestock scales • John Deere category 1 weight box • John Deere wheel elevators • John Deere implement wheels • John Deere dual wheel hubs • John Deere weights • mod 348 bale shoot for John Deere square baler • blade for Cub tractor • plastic & steel 3 T feed bins • large amount of steel beams 12/14/16/24", various lengths up to 40' • large amount of 4/6" square tubing, heavy walled, up to 40' long • large steel rack • (2) John Deere fenders fitting 20-30-40 series tractors • 3000 Ford brush guard • 3 pt attachment for 580 Case • horse walker on wheels • steel bar joists • 3 pt carryall • stack of heavy metal decking, approx. 20' long • 1/2-3/4" cable, large lot •

• TANKS • CONTAINERS •

- 2 large fuel tanks, one on skids w/pump • 1000 gal diesel tank w/cage • plastic 425 gal water tank • 500 gal fuel tank w/12 vt pump • 100 gal propane tank • forklift propane tanks • alum fuel tank for big trucks • 700 gal fuel tank on stand • 40 ft Conex container • (3) 16' truck van bodies •

ALL SELLS ABSOLUTE TO THE HIGHEST BIDDER!

Auction has been moved from the farm to this great location for ample parking, easy access, and under cover.

Sandra and the late Mike Manier, Owners

AUCTIONEERS NOTE:

Please make plans to be with us for this huge, outstanding farm and equipment auction. You can't imagine all the quality items unless you see it! We want to thank you for your attendance in advance, and thank the Manier family for giving us the opportunity to sell this quality auction. Note the date and time **FRIDAY APRIL 12, 2019 AT 9 AM!** Thanks, Rick and the auction crew.

TERMS: Cash or good check. Major credit cards accepted with 5% convenience fee. Driver's license or picture identification required to obtain bid number, which must match check. If personally not known to Rick Dixon Auction Service, please have a bank letter of credit addressed to Rick Dixon Auction Service (No Exceptions). Nothing loaded or removed until paid for, and everything sold where is, as is. Not responsible for accidents, lost, stolen or broken items. List subject to additions and/or deletions. Nothing sold before auction; please do not ask. Auction day announcements take precedence over all previous advertisements.



Rick Dixon
Auction Service, LLC

www.rickdixonauctions.com
Rick Dixon 417-967-6604
Josh Dixon 417-217-9627



Gary Sexton
Auctioneers LLC

www.garysexton.com
Gary Sexton 417-255-7001

ESTATE AUCTION

Saturday, April 13, 2019 • 8 A.M.

LOCATION: 1040 Shelton St, Cabool, MO 65689

DIRECTIONS: Off 4 lane Hwy 60 in Cabool MO, take Hwy 181 north, go 1 block to Shelton St, turn left, go 1 1/2 miles to auction. Watch for Rick Dixon auction signs day of auction. For photos, visit us on the web at www.rickdixonauctions.com

• FORGES • ANVILS • BLACKSMITH TOOLS •

• (2) Foundry tables from Houston High School • gas forge from Houston High School • Multiple blacksmith shops including step cones, cones, Little Giant 25 lb triphammer, Novelty Iron Works triphammer, drill press, 100's of tongs & hammers, nippers, metal bender, blower, vise on stands, large metal shear, huge table vise, wagon vises, (2) pedal-type grindstones and hand-cranked drill press • (2) large forges • (4) small forges • gas forge • 35+ anvils, various brands, ranging from 70 - 420 lbs. •

• SHOP ITEMS • TRUCK ITEMS • TOOLS •

• (6) steel shop tables, some w/vises • steel shop table • large lot of scaffolding • steel barrel stoves • 30"x60" layout table • (3) drafting tables • planer • elec motor • tail pulley • hand tools • steel cart • 2 old gas pumps • large complete wood furnace • pallet racks • alum entrance cable • radial arm saw • cart • antique kerosene heaters • elec boxes • lots of elec wire • steel wheels • 4" & 6" PVC pipe • gas-powered air compressor • air drill hammer • (2) air

rock drills • gas cans • steel sawhorses • chainsaw sharpener on stand • Knaack contractors tool box • DeWalt hand tools • steel shop A frame on rollers • Campbell Hauser 80 gal air compressor • Miller SCP200C wire feed welder • Miller plasma cutter • bolt bin • lots of good bolts • John Deere 1032 snow blower • heavy log chain • concrete form dogs • air hose • small tar pot • grease guns • carousel nail bins (out of Ross Lumber) • plumbing fittings • (2) shop stoves • Black Iron pipe fittings • steel racks • propane heaters • copper water pipe • (20) metal 400 watt shop lights • truck tool boxes • brush guard for 1990's Ford pickup • 1995-1997 Ford pickup parts • alum loading ramps • Jeep hood • Polaris Ranger tires, parts & wheels • jumper cables • engine blocks • antifreeze • 7.3 lt power stroke engine for parts • bed mats • truck bumpers • steel tire cages • Reese hitches • gear reducers •

• TIRES • TOOLS •

• huge amount of tires & wheels - some new, variety of sizes • 48' van load of tractor/truck/auto parts • van load of tools - won't know what till auction day •

• FARM SUPPLIES • HORSE ITEMS •

• (2) new Quonset huts, never put together, sizes unknown • stack 1" plywood • ladders • misc. gates & panels • tack room, removable, out of trailer • horse tack • (9) roping/(1) pony/(1) kids saddles • lariat ropes • saddle racks • strap-on horns & horn wraps for calves • hay rack for horse trailer • Hobart elec stick welder • wall-mount square bale feeders • dog box • chainsaws • commercial cotton scales • hip lifts • (3) hay elevators • steel barrels • air post driver • hand & garden tools, some new • elec fence supplies • T-post adapter for post driver • (2) UTV sprayers • John Deere backpack leaf blower • bench grinder • plow points • chicken wire • hay hooks •

• HOUSEHOLD • ANTIQUES • CANOES •

• antique table • large new Quaker windows • oak wardrobe • wooden desk • Oasis water fountain • headboard & footboard • round & square oak tables • dressers • oak display cabinet • small cast iron cookstove • old Coke machine • Tonka toys • parlor-type wood heat stove • antique Superior Drill Co. cider press - nice & complete

• warm morning gas stove • old metal lawn chairs • (2) 3-legged kettles • washtubs • metal desk • unicycle seat • old white cabinet • (4) alum canoes • shop-built smoker on wheels •

• REAL ESTATE •

• Real estate sells at 12 noon at Cabool auction site • Parcel #1: 12-5.1-21-000-000-015.00 28 ac m/l, located approx. 2 miles north of Raymondville MO on plat #T31N R8W sec. 21 • Parcel #2: 20-0.3-05 003-020-003.00 lot located at the corner of Walnut & Second Streets in downtown Houston MO • Parcel #3: 13-0.6-14-000-000-003.00 3.62 acres located approx. 1/2 way in between Houston MO and Licking MO on US Hwy 63 at Twin Bridges on plat T31 R9W sec. 14 • Parcel #4: 20-0.2-10-000-000-002.1 lot located in Oakwood Estates at the Golf Course off B Hwy in Houston MO plat T30N R9W • Parcel #5: 10-0.2-10-000-000-005.00 40 acres of Bean Creek Rd in Licking MO. Landlocked. Plat T32N R8W Sec 10.

REAL ESTATE TERMS: 10% down day of auction, balance due upon closing, to close within 30 days. Taxes prorated, buyer pays closing costs. Sells with no contingencies of any kind.

ALL SELLS ABSOLUTE TO THE HIGHEST BIDDER!

Auction has been moved from the farm to this great location for ample parking, easy access, and under cover.

Sandra and the late Mike Manier, Owners

LOTS, LOTS MORE. COME SEE WHAT ELSE WE FIND. POSSIBILITY OF RUNNING TWO AUCTION RINGS.

AUCTIONEERS NOTE: Please be with us for this huge estate auction! Note the date and time - SATURDAY APRIL 13, 2019 AT 8 AM! Plan to spend the day with us as you can't imagine the amount of items we have to auction. We look forward to seeing you, and we always appreciate your business. Thanks, *Rick*

TERMS: Cash or good check. Major credit cards accepted with 5% convenience fee. Driver's license or picture identification required to obtain bid number, which must match check. If personally not known to Rick Dixon Auction Service, please have a bank letter of credit addressed to Rick Dixon Auction Service (No Exceptions). Nothing loaded or removed until paid for, and everything sells where is, as is. Not responsible for accidents, lost, stolen or broken items. List subject to additions and/or deletions. Nothing sold before auction; please do not ask. Auction day announcements take precedence over all previous advertisements.



Rick Dixon
Auction Service, LLC

www.rickdixonauctions.com
Rick Dixon 417-967-6604
Josh Dixon 417-217-9627



Gary Sexton
Auctioneers LLC

www.garysexton.com
Gary Sexton 417-255-7001



NO RESERVE MACHINERY RETIREMENT AUCTION

Jenkins Farms · Falcon MO

SATURDAY APRIL 20, 2019 AT 10:00 A.M. CDT

12292 Hwy Z, Falcon, MO, 65470 (Competition Area)

DIRECTIONS: From Lebanon MO, take Hwy 5 south 12 miles to O Hwy, go 14 miles to Z Hwy, turn left, go 1 1/2 miles to auction. From Mt. Grove MO, take Hwy 95 north 22 miles to AF Hwy, go 4 miles to O Hwy, turn left, go 4 miles to Z Hwy, turn right, go 1 1/2 miles to auction. Watch for auction signs off O and Z Hwy day of auction.



Equipment Questions: Wesley 417-247-9239 • 704-902-3108

JOHN DEERE TRACTORS - HARVESTERS - PLANTER

- 1980 JD 4840 Tractor New Cab Kit
New John Deere Stamped Re-manufactured JD Crate Motor (#18,000), Duals, LWD - 6 Cyl.
- 4450 JD Tractor, 120 hp - 2WD, 2000 Hours On New Motor Rebuild
- 2003 6850 JD Forage Harvester (Self Propelled) Very Good Condition
6 Row Kemper head, 3200 Hours
- 2000-2001 1750 John Deere 6 Row Planter, Air Vacuum, Rigid 3 Bushel seed hoppers (1 Job to go Relinquish date after sale)
- 1999 750 JD Grain Drill, Yetter Marking arms, good Condition - Low Use!
- 1517 JD Bat Wing Brush Hog
- 220 JD Semi Mount 5 Bottom Plow, New hoses - Shedded
- 220 JD 22' Folding disk, good condition!
- 1210A JD Grain Cart 500 bushel, 1988 JD 500 Bushel grain cart; 110 JD Grain Wagon
- 7' JD Front H.D. Bucket Fits 10-20-30 Series

COMBINES - HAY EQUIPMENT - GRAIN HANDLING

- 1660 Case - International Combine 3800 hours Field Ready
- 25' Seed Head Platform
- 25' Header Wagon
- Tindenberg 10' hyd. Box Blade
- N5 Gleaner Diesel Combine 315 Head 3750 hours
- 1989 International Cab Over Semi Tractor 440 Cummins 9 Speed - Sleeper
- 48' Timpote hopper grain trailer good condition
- Krause 24' Fold up disk good condition
- 60' & 80' Fertil - West Grain Augers with belly pans
- 1998 Prentice 210 E Boom Model K8385 Loggers Cherry Picker
- SR112 G11 Kuhn 12 Wheel Hay Rake Like New
- 3710 Hesston Hay Tedder
- 65 & 55 Gehl Grinder Mixers, 352 NH Grinder Mixer

FARM EQUIPMENT - IMPLEMENTS - TOOLS - MISC.

- 250 Bushel gravity Flow Wagon
- 112 Scat Hoe Backhoe (Fits Skid Steer)
- Clark 500 gal. Sprayer 45' Booms
- 2-4X4 Farm Pickups, 4 Wheeler dump Trailer
- 2006 Arctic Cat Prowler KT650 4wd
- Can-Am 4 Wheeler - 650 - 500cc
- Bush Hog 5 Shank Ripper, HD Field Roller
- Several NH Farm Wagons
- 400 gal Fuel Trailer, Ford 3 pt disk
- Case Field Cultivator, Skid Steer ID Tree Puller
- 1200 gal Tip Tank, Grain augers
- 8"X6" Irrigation pipe
- Hay elevator, Feed Bunks, 3 Pt wood splitter. Nice
- JD Goat Wagon, 1300# of JD Weights, Pipe/Steel
- Picnic table, Chick Coops, Trailer axles
- Shop of Tools - Acetylene Torch Sets - ATV Sprayer
- Chain Saws - Salt Treated Lumber - Farm Supplies
- VAC Slab Saw, Some Farm House Antiques
- Household - Furniture Items
- Bins Full of New Backup Farm Machinery Parts!

Terms of Auction: Cash or good check with positive ID. If personally not known to auction company or Wesley Jenkins. Please have a bank letter of credit addressed to Wesley Jenkins (NO EXCEPTIONS). Drivers license or picture ID required to obtain bid number. Auction day announcements take precedence over all previous advertisements. List subject to Additions/Deletions.

Jenkins Farms · Falcon MO

AUCTIONEERS NOTE:

After a long successful farm career Wesley is retiring. Majority of items were purchased new. Very few small items - be prompt! Lunch will be on the grounds. Not Responsible for accidents.

Auction Managers

RICK DIXON 417-967-6604
Info@rickdixonauctions.com
GARY SEXTON 417-255-7001 • gary@garysexton.com

Rick Dixon
Auction Service, LLC
www.rickdixonauctions.com



Gary Sexton
Auctioneers LLC
www.garysexton.com

FOR ADDITIONAL PHOTO'S GO TO AUCTIONEER'S WEBSITE

SUPER BIG TWO DAY FARM AUCTION!!!



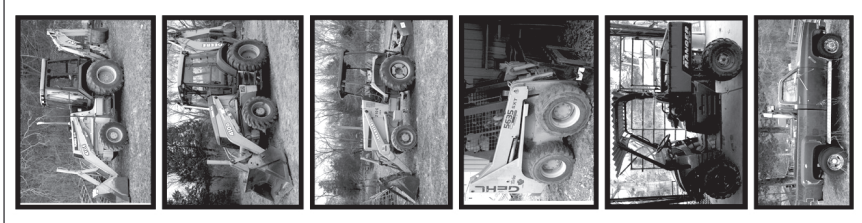
BERTI FARM AUCTION

Additional listing of items available on our website, Facebook page, and auctionzip.com!!

SATURDAY & SUNDAY APRIL 13-14, 2019 ~ 9:00 AM

Owner: Betty Berti

Due to the death of my husband, Jerry Berti, I, Betty Berti, will sell the following list of personal property to the highest bidder at auction located at 7880 Seminary Rd. in Sullivan, MO. From Sullivan, take Hwy. 185 North to the four way stop at the intersection of Hwy. 185 and Hwy. H. At the intersection, go straight onto Hwy. H. Go approximately 1/2 mile to Seminary Rd. and make a left. Go approximately 9/10 mile to driveway of the residence located on the left. Follow BERTI AUCTION signs day of auction.



HEAVY MACHINERY & EQUIPMENT

Gehl S635 SXT Series II Turbo Skid Loader, 984 Hours; Skid Loader Tree Terminator Tree Shearer; Skid Loader Hyd. Auger; 6 Ft. Skid Loader USA Hyd. Brush Cutter; John Deere Skid Loader Forks; Skid Loader 2 in 1 Buckets; Skid Loader Grapple Bucket; 4x4 John Deere 410G Backhoe w/Extended Hoe; Diesel Turbo and 3 in 1 Bucket-RESERVE; 410E 4x4 John Deere Backhoe w/Extended Hoe, Turbo, 4448 Hrs.-RESERVE; 555G John Deere High Lift w/5442 Hrs.; Cab and AC-RESERVE; John Deere 210C Utility Tractor w/ Hyd. Box Blade, Forks, Scarifiers, 5696 Hrs.

FARM SUPPLIES

3 Round Bale Feeders; Portable Homemade Diesel Fuel Tank with Hand Pump; 2 Ton Portable Upright Feed Bin on Wheels; EIGHT TO TEN 10 SEMI LOADS of Angle Iron, Pipe, Channel, Round Pipe, Round Stock, I-Beam, etc.; 4 New Rolls Woven Wire; Hay Wagon Running Gear; Farm Jack; Hay Hooks; Smooth Fence Wire; Squeeze Chute-Needs Repair; Running Gear for Portable Chute; 4 Rolls Barb Wire; 8 Ft. Metal Slide In Truck Rack; 150 Steel Posts, New but Weathered; Tractor Brush Guard; Post Mauls; Oxygen/Acetylene Torch Set; Two 48 Ft. Semi Trailers

ANTIQUES & COLLECTIBLES

Antique Case VAC Gas Tricycle Front 3 Pt. Hitch Tractor; Antique Gas McCormick Farmall Tractor on Steel; 2 Old Texaco Grease Cans; Cream Can; Wrought Iron Baby Bed; 4 Old Horse Collars; 1 Gal. Crock Jug; Old Metal Lantern; 4 Metal Toy Dump Trucks; Ant. Safe w/Brass Handle; One Man Saw; Hay Fork; 2 Man Saw; Deer Horns; No. 3 Dinner Bell; Cow Skulls; Ramco Piston Ring Clock; Ant. Anchor; Ant. Vise; Ant. Oscillating Fan; Sun Drop Thermometer; Old License Plates; Oil Lanterns; Ant. Metal Chairs; Bird Cage; Amco Tin; Blacksmith Blower; Tie Tongs; 3 Metal Wolf's Head Gas Cans

TOOLS & MISC.

Metal Glider; Outdoor Patio Set with Table & 4 Chairs; 8.5 hp DR String Trimmer; Stihl FS590R Weed Eater; Aluminum Diamond Tread Storage Box with Rollers; Stihl MS192 Chainsaw; Stihl MS260 Chainsaw with 16" Bar; Quincy Air Master Air Compressor, Upright, 2 Stage, 80 Gal.; Stinson Aluminum Walk Board; Craftsman 10" Table Saw; One Roll-Now Triplex Electric Wire; One Lot C-Clamps; Five 6" Wilton Craftsman Vises; One Lot Bar Clamps; No. 22 Railroad Jack; 10 Grease Guns; 16 Ft. Alum. Extension Ladder; Ryobi Gas Blower; Power Trimmer/Limb Saw; One Lot Dayton Electric Motors; Machinist Tools; Pipe Cutters; Allen Wrenches; 10-12 Pipe Wrenches; 1 Lot TRW Taps; Fish Gigs; Craftsman Chisel Sets; 10 to 20 Wizard Crescent Wrenches; Sledge Hammers; Shovels; Rock Bars; Pitch Forks; 3/8" Log Chains; Funnel; 460 Jonserved Gas Weed Eater; Crow Bars; Impact Sockets; Craftsman Deep Well Sockets; New Sets Craftsman Ratchet Wrenches; Williams Open End Wrenches; 2 Ft. Pipe Wrench; Metal Tool Chest; Stihl HT131 Limb Saw; Power King Drill Press; Jumper Cables; Jonserved 490 Chain Saw; Stihl 028 Chain Saw; 4" Black & Decker Grinder; Fence Pliers; Channel Locks; Jonserved 20 lb. Propane Cylinders; Limb Nippers; Weather Guard Aluminum Truck Box; 6 Short Chains with Hooks; DeWalt 3/8" Drill; East Wing Hammers; Craftsman Jig Saw; 1/2" DeWalt Impact with Case; Trouble Light; 1 Lot Electric Tape; 3/4" Air Hose; 6" Grinding Wheel; Stabilizer Bars; Oil Pans; Fireplace Stove Insert; 1 Lot Rope; Chain Boom; Horse Bridle; 1 Lot Metal Stools; CB; 1 Lot Truck Fog Lights; 1 Lot Tractor Lights; Chain Hoist; 55 Gal. Barrels; Weber Grill; 1 Lot Chain Pieces, Various Sizes; Chip Hammers; Hub Caps; Buckets; 3 Craftsman 1/2" Drills; Fence Stretchers; 1 Lot Metal Carts on Wheels, Dollies; Hand Saws; File Cabinets; Belts; Brace & Bits; Bushel Baskets; Draw Knives; Large Lot American Made Drill Bits; Welding Helmet; Open End Wrenches; Tin Snips; Screw Drivers; Ball Peen Hammers; Bolt Paddles; Life Jackets; Coleman Lantern; Come-A-Longs; Metal Storage Chests; Shop Welding Tables; Oil Cans; Mop Bucket; 20+ Tarps; Truck 5th Wheel Ball; Chain Hooks; Car Care Products; 2 Pair 24" Bolt Cutters; Splitting Mauls; RN Battery Charger with Boost; Metal Trash Cans; TRAILER LOAD OF NUTS, BOLTS, NAILS, SCREWS, BARN SCREWS, SHEET ROCK SCREWS, etc.; 1 Lot Hatchets; Hammer Handles; Tool Belts; Metal Shelving; Metal Job Box; Chain Link Fence; 500 Gal. Propane Tank; 1 Lot Metal Grates

AUCTIONEER'S NOTE: The amount of personal property on this auction is unbelievable! This is the first two day sale of this estate and there will be more auctions held in order to disperse of all items. If you want quality American made tools, there will be TRAILER LOADS! This is a PARTIAL LISTING!! All large equipment will sell on Sunday at approximately 12:00 PM. Please note the 9:00 AM start time on BOTH DAYS. Bring a friend to help with the bidding as we will be running two rings for much of the time. Checks written for amounts in excess of \$2000 will need to either be pre-approved, paid for with a check accompanied by a bank credit letter, or paid for with a cashier's check. We will sell on Saturday until 5:00 PM with the remaining items to be sold on Sunday. Due to the exceptional amount of items on this auction, we are limited on space and have listed additional items on our website, Facebook page, and auctionzip.com. Believe me when I say these are going to be HUGE AUCTIONS you won't want to miss!!

See Ya There!! Robby

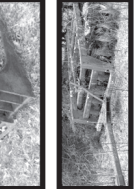
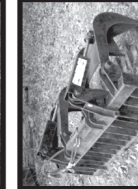
Berti Auction Service, LLC and Appraisals

Col. Robby Berti, Licensed Auctioneer • Col. Meghan Berti, Licensed Auctioneer

7786 Seminary Rd., Sullivan, MO 65080

Your trusted name in auctioneering since 1940

573-468-5511



TRACTORS, IMPLEMENTS, & FARM MACHINERY

Ford 5000 Diesel Tractor with 777F Front Loader; 535 John Deere Round Baler with Monitor; Allis Chalmers 7030 Diesel Tractor with 24.5 x 32 Rubber; 9 Ft. John Deere Model 9 PK H-02 Roam Disk with Cylinder; Hustler Super Z Zero Turn 60" Cut Riding Mower; 3 Pt. Hitch Tree Terminator Tree Shearer; 3 Pt. Hitch 7 Ft. Brush Hog; 3 Pt. Hitch Bale Spike; 3 Pt. Bale Feeder; New Idea 5209 Disk Mower/Conditioner; 3 Pt. 7 Ft. Blade; 3 Pt. 6 Ft. Brush Hog; Vermeer 360 Tether Rake Combo; 3 Pt. Danuser Post Hole Digger; 3 Pt. SW-66 Side Winder Brush Hog; 15 Ft. Older Model Hydraulic Brush Hog; 18 hp Pull Type Wood Splitter; 256 New Holland Side Delivery Rake; 3 Pt. 5 hp Post Driver; Universal Bale Spike; International Tractor Roll Bar; 3 Pt. Boom; 3 Pt. Dirt Scoop; 3 Pt. Gill-Co Industrial Box Splitter with Scarfies; Timbenwolf Log Splitter with Hydraulic Lift-Arm, Pull Type; 3 Pt. Carry All

VEHICLES/TRAILERS

2007 Polaris Ranger XP 4x4; 1985 3500 GMC Sierra Classic 4x4 Dually; 1980 GMC Brigadier Truck, Semi Hitch; 1970 White 4000 Dump Truck-Needs Work; 2001 18 Ft. Belshe Trailer with Spring Ramps and Pintle Hitch; 1978 20 Ft. Cattle Trailer; 12 Ft. Horse Trailer-No Title; Hay Wagon; 16 Ft. Goose Neck Trailer Frame-No Title; 1991 20 Ft. Wilson Gooseneck Aluminum Cattle Trailer; 1973 14 Ft. Duracraft Boat and Trailer with Evinrude 66 hp Motor with Title

APPROVED CHECK OR CASH-ANNOUNCEMENTS MADE DAY OF AUCTION TAKE PRECEDENCE OVER ALL PRINTED MATTER- LUNCH SERVED-NOTHING REMOVED UNTIL PAID FOR
"EVERYTHING SOLD "AS IS, WHERE IS"

www.ber tiauction.com





Saturday, April 13 • 9 a.m.

LOCATION: In Licking, Mo. on Cedar St. at Old Rawlings Building. Watch for signs.

Go to auctionzip.com to view photos.

EARLY START!!

AUCTIONEER #28367

EARLY START!!

Furniture & Appliances

Marble top kitchen table,
white w/6 chairs
China Hutch – 2
Kitchen tables, one w/4 chairs and
one w/2
chairs
Rocker
Hide-a-bed love seat
Oak Kitchen Table w/6 chairs
Baker's rack
Hall tree
Small apartment size refrigerator
Brass Headboard
Big lot of lamps
Microwave
Hoover vacuum
Hanson Scales
Kitchen cabinet
Patio set
Metal chairs
Table & 4 chairs
Wingback chairs
Stackable chairs
Glider chair
Wall clock
Lamps
Picnic table
Electric smoker
Lawn chairs

Kitchenware, Collectibles

Crocks, 3 gal. & 8 gal., 10 gal. &
12 gal.
Jar w/glass lid
Glass Wagner Cornbread pan
Lot cast iron skillet
Glasses
Canister sets
Fire King bowls
Wagner skillet, 10B
Meat grinder, Dormeyer
Canner jars
40 pc. set of Sheffield
Brown dishware
Tea jugs

Salt & pepper shakers
Mixing bowls
Red and clear butter dishes
Sad Iron
Mixer
Cake stands
Crock
Bridge cutlery
Silverware with cases
Pots & pans
Plates
Stainless mixing bowls
Pressure cooker
Range Queen pot
Green cast pot
Deep fryer
Teacups & saucer
Knives
Metal fruit bowls
Metal tea kettle
Car Banks
Airplane bank
Cigar Boxes
Mickey Mouse Figurine
Mickey & Minnie phone
Cast iron Mickey Mouse
Cast iron pony
Pedal fire truck
Rooster
Lot Precious Moments
Snow babies
Baskets, woven & glass
Hallmark kiddie car
Hen cookie jar
Cardinals replica rings
Hockey rings
David Eckstein bobblehead
Allen Craig bat
Rawlings Baseball
Franklin Ball glove
Baseball cards, lots
Fenton Bear
Jewelry
Kerson lamps
Cabbage Patch dolls

Electric heaters
Deer antlers
Yarn
Bud steins
Carnival glass
Cardinal light
Sword
Dartboard
Tonka truck
Crackle glass
Lot what-nots
Fenton shoe
Fenton vase
Vases
Crystal vases
Care Bear glasses
Elvis glasses
Green hen on nest
Christmas
M&M dispenser
Turkey clock
Coca Cola clock
Coca Cola trays
NASCAR mugs
Die cast cars 24 & 31 scale
1956 Chevy Bel-Air die cast
1963 Beetle die cast
Die cast truck
Silver Dollar belt buckles
Indian Head belt buckles
Matchbox
Metal wall art
DVD's
Radio on stand
Tools, miscellaneous
3 Metal pet crates
Dog supplies
Cat house
Schwinn Bikes
Coolers
Westinghouse fan
Propane bottles
Air compressor
Belt sander
Extension cords

Wrenches box and open end
Weights
Fence clips
Scales
Bed cover for Ford shortbed (came off
2013)
Truck mat
Rocker panels Dakota 05-10 models
Wooden ladders
500 ft. well pump wire
Nails
Socket set
Stanley thermostat
Hummingbird feeders
Blow up swimming pool
Cream cans
Hornets' nest

Fishing Equipment

Ambassador's:

5500 C with Ambassador 2000 rod
5600 CA with Ocean City rod
UC 5600 C New in box
5000 C

Martin:

Martin Fly reel/8' Martin rod

Rod and reels:

Mitchell – Garcia – Johnson - and more

Fishing rods:

Browning – Heddon – Garcia – Berkley
Cherrywood - Lew's

Old reels in box:

Mitchell 300 – Southbend Model A
Shakespeare 1973 Sportcast Model PM
35+ rod and reels

20+ reels

Tackle boxes

Fishing plugs

Fishing line

Reels

Fly Rod reels

Vehicle

2009 Chevy Impala LT, 78,000 miles,
bright
red (extra nice car), 4 door, V6, 30 mpg.
See ya there! Steve and Neal

Haryl Patterson - Owner

Terms-Cash or Approved Check. Nothing Removed Until Settled For. Not Responsible For Accidents.
Must show ID to get Buyers #. Announcements Made Day Of Sale Take Precedence Over Printed Matter.

Buckner & Gately Auction Service

Auctioneers

Steve Buckner 573-674-2686

Neal Gately 573-202-3132

LARRY DRENON AUCTION

ESTATE AUCTION

18400 Stirrup Rd • Warsaw, Mo

To settle the estate of Maron "Gene" Lee, the following will sell from Warsaw, north on Hwy 65 3 miles to Marina Rd (Sterett Creek), then right on Sterett Creek Village Drive 7/10ths mile to Stirrup Rd, watch for sale signs on:

SATURDAY, APRIL 20TH • 10 AM



HAND GUNS

Colt 175th anniversary 45 revolver, gold engraving, in case * Great Western model 1873 357 revolver, laser engraved, simulated ivory grips w/Liberty Eagle, in box * Taylors and Co model 1873 45 Colt * Ruger Blackhawk 45 revolver * Ruger 357 revolver * Ruger 45 New Vaquero * Cimarron 357 revolver * Taurus "The Judge" 45 * Thunderball 45 Colt revolver * Bond Arms 45 long Colt derringer, matching holster and hard case * Crossman .177 cal pellet pistol



LONG GUNS

Rossi "Circuit Judge" .410/45 * Stevens model 9478 20 ga * Pioneer model 30 12 gauge * SKS Chinese Military w/Banana clips * Zhongzhou Machine Works lever action 12 gauge * .177 Pellet rifle

GUN RELATED

2- Small Sentry Gun safes * 6 gun cabinet * Lot of Ammo * Tasco 20EB sighting scope * Colima Guatemala machete



HOUSEHOLD

Ethan Allen 4 post bed, queen, matching bookshelf and 2 night stands * Ridgeway grandfathers clock * Howard Miller wall clock * Ethan Allen dining table, 48" round, 6 chairs * Ethan Allen china hutch, small hutch, and Book shelf hutch * Heavy wood

day bed * Sofa and love seat, blue plaid * Heavy wood rocker and ottoman * Wooden love seat bench * Floor model weigh scales * Pyrex, corningware, other dishes * Small kitchen appliances * Owl collection, other whatnots * Tower metal desk/filing cabinet * Drop side craft table * Other small furniture items

COLLECTIBLES

"The General" 4-4-0 Locomotive, Several Lionel train pieces, other model train items * John Wayne cast bronze statue * 2 Small Michael Garman bust statues * 12 drawer metal cubby from Navy ship * Sadler Blue Willow tea pot * Few pieces of FireKing * Some costume jewelry * Cast iron tea kettle, oil lamps, etc * Monkey pod bowl, crock bowl, other dishes

PRINTS AND BOOKS

Remington "The Scout-Friends or Enemies" framed * Kenneth McDonough "Camel Flight" 138 of 850 made, has facsimile signature of Aircraft designer Sir Thomas Sopwith, framed * Kenneth McDonough "Baron von Richthofen Jagdstaffel", framed * Gerald Coulson "The Bristol Bulldog", framed * War Era books: War Birds, Falcons of France, Patton, WW history, etc * Aviation, Western and gun history books * Novels: Bill O'Reilly set, Louis Lamour, others

TOOLS

Craftsman table saw * Craftsman electric chain saw * Werner 6' step ladder * 16' Aluminum ladder * Workmate bench * Metal shelving * B&D leaf blower * Craftsman snow blower * Nut and bolt cabinets * Small hand tools * Garden tools

MISCELLANEOUS

D60 F700 Astronomical telescope * Binoculars * Electric wheel chair, needs battery * Handicap items * Collapsible picnic table

Other items too numerous to mention



Terms: Cash, approved check, debit/credit card (convenience fee applied). Nothing to be removed until settled for. Not responsible for accidents. Statements made day of sale take precedence over printed material. Lunch served

ESTATE OF MARON E. "GENE" LEE



Larry
660-596-8515

Lacey
660-723-1104

Laramie
660-221-4386

660-547-2646

RALPH SHELTON TRUST AUCTION

SATURDAY, APRIL 13TH, 2019 • 9 AM

2180 SKYLINE DRIVE, PACIFIC, MO 63069

Directions: From the Gray Summit exit at I-44 and Hwy 100 East drive east on Hwy 100, 3.6 miles to a right turn on Thornton Rd. Drive 9/10 of a mile to a right turn on Skyline. Continue on Skyline ½ mile to residence on the Left. **Watch for auction signs.** Auction route will be well marked on sale day.

Crocks: #8 applied handle decorated crock, #5 Crown, #2 unmarked, 15 gal Redwing, #15 Western, #12 Western, Western one gallon applied top jug, 5 gal Redwing churn, 5 gal bale handle with lid, applied handle ovoid crock, #3 Redwing applied top jug, #12 Redwing bale handle crock w/1915 patent #, #6 Monmouth, #5 Western jug, crock bowls, #30 Whitehall crock w/bale handles, glazed pitcher, English ironstone pitcher/basin, (2) #4 green stoneware bowls,

Antiques, Butter Churns, Collectibles: "one minute washer" (fantastic), Mission style grandfathers clock, Seth Thomas mantle case clock, Seth Thomas mantle clock, Butter churns-1qt, #20, #30, #40, #60, #80, 4 qt Dazey churn, several whet stone wheels (various sizes), barber shop sign, bayonets, vintage ladies compact, Dutch tin coaster set, national washboard, 3 gallon milk can, cast iron coffee/tea kettle, various wooden rolling pins, white tail mounts, turkey mount, HB & M sharpening stone, several quilts and afghans, primitive handle wooden square bucket, chenille, tied quilt, granite ware chamber pot, kraut cutter, sewing basket, oil lamps, cast iron skillets (1-Wagner), (2) cast iron #8 buckets, cast iron wash boiler, cast iron dog boot scraper, (4) cast iron kettles, Fries #2 mixer, old popcorn popper, vintage child's tin scooter, Munsey, unmarked coffee wall grinder, Westinghouse FM wood case radio, glass washboard, #2 Dietz lantern, universal meat grinder, steel pulley, Framed print The Becky Thatcher by Godwin, 1985 reprint of the St. Louis Worlds Fair 1904, Alta coffee jar, razor strope, Life magazines, Emerson Northwind brass blade fan, Goodell apple peeler, bee smoker, draw knife, hay hooks, wooden stirrups, full vision beater set, early mixing beaters, Laclède lard press, antlers, snapping turtle shell, broad axe, buck saw, hames, Blackhawk corn sheller, cow bell, calf wieners, vintage tin scooter for toddler, rug beater, large wooden mallet, flat irons, Pepsi cooler, bottles and carriers, single tree, oxen yoke, vintage slide case, double tree, bushel basket, old food press, scythe, vintage collectible push garden tools/cultivator, Chatillon scale, fruit picker, vintage one man saw, two man saw, glass bulb fire extinguisher, folk art airplanes, sprinkling cans, concrete bird bath, JR fruit press for parts, old cold packer,

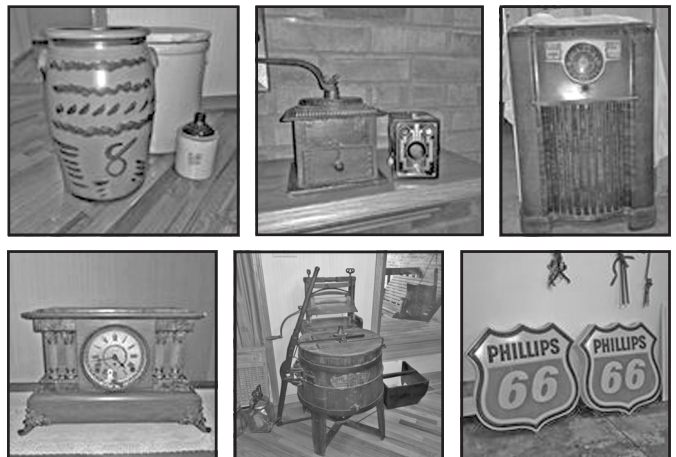
Antique Furniture, Appliances: Grand rapids refrigerator oak, Victorian lamp table w/drawer, oak book case secretary, Mission side board w/ silvered mirror back, nice waterfall bedroom furniture-bed w/foot board, dresser, chest and wardrobe (well taken care of), antique dresser mirror,

(2) Zenith cabinet console radio, white painted step back cupboard w/ flour bin, oak pedestal table, four oak ladder back chairs, black leather seat pressed back rocker, primitive kitchen cupboard, primitive white painted wash stand, floral sofa & arm chair, brown leather rocker recliner, hand painted gone with the wind style lamp, expanded metal patio set, corner shelf, 1970's bedroom furniture, wooden porch swing, Magnavox flat screen TV, lane cedar chest, wicker style laundry hamper, folding vinyl picnic table, folding table, painted porch bench, mission style porch rocker, Whirlpool electric dryer, Whirlpool top load washer, Kenmore microwave, Weber Kettle, step stool,

Gas/Oil: old Sho-me motor oil 5gal can, Havoline motor oil 5gal can, "Shell" letters, Circle K, Phillips 66, Shell plastic signs, Mobile sign plastic, Phillips 66 canopy pieces for gas pump island, Route 66 Chevrolet Motor Co. signs,

Stihl, John Deere Equipment, Automotive: Stihl BG 72 leaf blower, Stihl F555 straight shaft string trimmer, Stihl 26 chainsaw, JD snow blower-like new, JD push seeder, pull behind spreader, JD lawn aerator, large barrel fan, (2) Vulcan anvils, unmarked anvil, Craftsman 16gal shop vac, Craftsman 3hp shop vac, John Deere #50 yard wagon, game feeder, wheel barrow, two turkey fryer burners/bases, Craftsman vice, barrel of rope, various long handle tools, bench grinder, log chains, assorted mechanics tools, wrenches, pipe wrenches, Michelin 3 ½ ton floor jack, AC Delco 2 ¼ ton floor jack, Craftsman top tool box, Rigid 36" pipe wrench, Craftsman tool sets, garden seeders, portable air tank, battery charger, Parmak fence charger, Husky fiberglass step ladder, log tongs, Campbell Hausfield air compressor, horse drawn cultivator, (2) horse drawn plows, old grain drill, disk cultivator, bucket of lead,

ITEMS TOO NUMEROUS TO MENTION AT THE TIME OF THIS LISTING!



Payment Terms: CASH, CHECKS WITH PROPER ID UP TO \$2,000.00. NO OUT OF STATE CHECKS, NO CREDIT CARD CHECKS, NO MONEY ORDERS AND NO TRAVELERS CHECKS. WE ALSO ACCEPT MASTER CARD, VISA, DISCOVER CARD, AMERICAN EXPRESS AND DEBIT CARDS ACCEPTED. ALL CARD PAYMENTS WILL REQUIRE A 4% PROCESSING FEE. NOTE: M R CLARK AUCTION AND STAFF, WILL NOT BE HELD LIABLE IF THE ELECTRONIC CARD READING SYSTEM IS UNABLE TO READ OR PROCESS YOUR CARD FOR ANY REASON. YOU WILL NEED TO PRESENT CASH.

BANK LETTER OF CREDIT REQUIRED FOR ALL CHECKS OVER \$2,000.00. **ON ORIGINAL BANK LETTERHEAD-NO COPIES.**

TERMS: Photo registration. Nothing to be removed until settled for. Everything sells "As Is, Where Is, Without Warranty." Not Responsible for accidents. Announcements made day of auction supersede printed material. Lunch will be available.

See this auction listing on our website: www.mrclarkauktion.com. See many photos of what we are selling on Auctionzip.com Our auctionzip ID# 3218

Auctioneer's note: As always, we appreciate your attendance! Mike, Julie and the Whole Auction Team.

M.R. CLARK AUCTION & APPRAISAL LTD

CAGA
Certified
Appraiser

Lunch will be available.
See this auction listing on our website:
www.mrclarkauktion.com

WASHINGTON, MO 63090

636-390-2220 • 314-650-7317

E MAIL: fasttalk@mrclarkauktion.com • www.mrclarkauktion.com

Lunch will be
available.



Sam
CRAWFORD AUCTION SERVICE LLC

As we have sold our farm, will sell the following located from Cross Timbers, Mo., 5 miles East on Hwy. P.
Watch for Crawford Auction Service signs.

Saturday, April 20, 2019 – 10 a.m.

GUNS – CORVETTE – TRACTOR – MACHINERY – CATTLE – TOOLS – HOUSEHOLD



Corvette
Sells @ 12 Noon

'94 Chevrolet Corvette 350, 300hp, auto, removable top, black, leather, 115K miles, shedded & kept covered, nice car



Cattle

Sells near 1 p.m.

12 Cross bred cows, mostly black, most raised on this farm
3 Calves on ground (more calves by sale day)
5 Yr Angus/Simm cross bull
Cows & bull are all big & good shape



Guns

Sells @ 10 a.m.

Smith & Wesson 38 special, long barrel
Chappa 22 LR, NIB
Davis 22 mag derringer
Remington 1100 12ga 3" mag
Springfield 1898 30-40 Craig, sporterized
Davis & Sons double barrel 12 ga
Spain double barrel 12 ga 3" mag
(2) Italy black powder pistols 44 cal
Wolf black powder 50 cal, new
Turkey blinds; 6 Deer stands
Black powder 54 cal w/Simmons scope
Asst hunting gear & supplies; Lots 22 ammo

Coins

Sells after Guns

3 Rolls Buffalo nickels
4-5 Rolls silver quarter, dimes, halves
Mint sets; Canadian mint set
Other coins
15-20 Arrowheads spears



Household

5 Pc. 4 poster B/R set, queen, nice
3 Pc. Oak B/R set, queen, nice
Oak dining table, 6 chairs, hutch
Breakfast table & 2 chairs
Chest of drawers
4 Flat screen TVs; Elec fireplace
3 Sets patio furniture; BBQ grill
Curved glass curio cabinet
Sq. curio cabinet
Sofa table, coffee table & end tables
Wood office desk; Couch & love seat
Couch w/end recliners
Bissell shampooer; Fans & heaters
Asst dishes, small appliance, household misc
Tea pot collection; Angel collection
Pictures & wall decor; VCR/DVD players
Purses & luggage; Craft & sewing items
Sev pieces exercise equipment
Bedding; Elec guitar & amp; Lot other misc



Antique-Collectibles

2 HO train sets, some N gauge
NWTF bronze white tail statue & knife collection
Barrister bookcase
2 Oak drop front secretaries
Lg oak wardrobe; Window bench
Chest of drawers & vanity under paint
Some baskets; Some glassware

Tractor-Machinery

Sells @ 12:15

IH574 gas w/IH front loader 52 hp, shedded & good
Horse 7' 3pt brush cutter
3pt post hold digger
3pt bale spear; 3pt 6' blade
2 Bale spears for loader

See website for more pictures!

Tools-Farm Misc.

Polaris Sportsman 500 AWD, ex. clean
2000 Yamaha 350 4x4 w/front winch
Troy Bilt ZTR mower 25hp 50"
Troy Bilt 8.75hp power washer
Tilt trailer for 4 wheeler, mower
Stihl 311 & 210 chain saws
Stihl weed eater; Front tire tiller
12V sprayer; Lawn cart
Lincoln 225 elec welder
Generac 4000 port. generator
1HP Craftsman double grinder
10" table saw; Long handle tools
Asst power hand tools
Bass Pro elec smoker
Alum ext ladder; Wood ladders
Used tires; Duck decoys
Pond paddle boat; Calf puller
6 poly feed bunk; 2 bale rings
(10) 12' cattle panels

Hay

Sells after cattle

(30) 5x6 mixed hay in barn

Auctioneers Note: Good auction!
Everything well cared for. Rare chance to buy cattle off the farm. Loader & trucking available

Sam
CRAWFORD Auction Service LLC



Cross Timbers, Mo.
CrawfordAuctionService.com

417-998-6629



TERMS: Cash or good check. Nothing removed until settled for. Not responsible for accidents. Lunch available. Statements made day of sale take precedence over printed matter. All items sell as is. No warranties given or implied.



Sam
417-328-9137

Chase
417-399-1904

Chance, CAI
417-298-1751

Tom Poynter
Jack Lancast-

Barry & Ruth Lind

ESTATE AUCTION

Saturday, April 13th, 2019 ~ 10:00 AM

LOCATION: 4050 East 150 Road, El Dorado Springs, MO; Directions: From North Vernon Street In El Dorado Springs Go East On 150 Rd (Lakeview) Approx 1 Mile To Sale Site (Watch For Signs)

Auction For Long Estate



Antique, Modern Furniture & Appliances

Ant Smoker Stand, Ant Kitchen Table, Sm Ant Tables, Ant Full Bed, Ant Vanity, Ant Dresser, Wood Armoire, Wood Dresser W/Mirror, Several Chests Of Drawers (Most Wood), China Hutch, Wood Coffee & End Tables, Oak Armoire, Wood Desk, Oak Fireplace Insert, Ant Wood Fold Up Chairs, Several Old Kitchen Chairs (Some Prim), Several Pcs Of Prim Furniture, Breakfast Table, Ant Metal Yard Chairs, Bakers Rack, Matching Couch & Loveseat, Lift Chair, Bookshelves, Old Paintings & Pictures Inc Home Interior, Metal File Cabinet, Ornate & Ant Lamps, Singer Sewing Machine, Handicap Supplies, New Shower Unit, New Flooring, Electric Organ, Exercise Equipment, Shark & Rainbow Vacuum Sweepers, Heaters & Fans, Lg Flat Screen TV W/Stand, Sm TV, New Never Used HP Laptop Computer, Frigidaire Front Load Washer & Electric Dryer, 12 Cu Ft Chest Deep Freeze, A/C Unit, Oxygen Concentrate Machine, Several Other Furniture & Related Items Not Listed

Coins, Antiques, Collectibles & Households

Coins Inc Silver Dollars, Silver Halves, Quarters, & Dimes, Collector Currency Items & Key Foreign Coins & Currency Items, Ant Lap Harp, #3 Redwing Crock, Cast Iron Pcs, Approx 1500 Salt & Pepper Shakers (Some Unusual), Old Red-Blue-Yellow Wagons, Old Milk Cans, Brass Pcs, Very Lg Lot Of Old Records Inc Rare Hank Williams Sr. & His Wife Mrs. Williams Together, Willie Nelson W/O Beard, Elvis, & Many Other Rare Records, Graniteware, Old Pottery, Old Jewelry, Old Paper Machete Pcs, Old Dolls, Old Linens, Indian Collectibles, Old Jars & Bottles, Old Colored & Clear Glass,

Old Baskets, Old Books, Beanie Babies, Lg Lot Of Old Knick Knacks, Lots Of Craft Items, Corning Ware, Pots, Pans, & Dishes (Some Old), Kitchen Aid Mixer & Other Kitchen Appliances, Lots Of New In Box Items Never Opened, CD's & Cassette Tapes, DVD & VHS Tapes, This Is Only A Partial Listing As There Is 1 Semi Trailer Loaded From Front To Back Not Gone Through

Truck, Tractors, Equipment, Guns, Tools & Outdoor Related Items

1999 Dodge 1500 Two Wheel Drive Truck W/ Auto Trans, V8 Motor & Approx 250,000 Miles, AC WD45 Gas Tractor W/ Wide Front End, 8N Ford Tractor, 3 Pt 5 Ft Bush Hog, 3 Pt Blade, Bernelli 12 Ga Semi Auto Shotgun, Sears Ted Williams 12 Ga Pump Shotgun, Bolt Action 22 Rifle, FIE Model "Tex" 22 Revolver, JD Saurer Made In Germany "Texas Marshal" Stainless W/ Pearl Handle 22 Revolver, Haws Arms Made In Germany "Western Six Shooter" 22 Revolver, RG Made In Germany 22 Revolver, Colt Police Positive 38 Special Revolver, Browning 35 Cal Semi Auto Pistol, Llama 380 Semi Auto Pistol, 2-Bauer 25 Cal Semi Auto Pistols, Metal Gun Cabinet, Reloader, Camping Supplies, Fishing Poles & Tackle, Pull Type Lg Easy Vac Machine, 20 Ton Press, 10 Ton Porta Power Unit, Chainsaws, Engine Stand, Truck Cherry Picker, 5 Push Mowers, Wheelbarrows, Weed Eater, Leaf Blower, Shop Vac, Seeder, Sm Hand Tools, Come A Long, Ladders, Electrical Cords, Long Handle Tools, Some Lumber, Several Ricks Of Wood, New Purgula W/Electric, Iron Porch Swing, Porch Glider, Lg Lot Of Yard Furniture Most Wrought Iron, Yard Metal Rack, Yard Arbor, Lots Of Yard Ornaments, Wind Chimes, Turtle Sandbox, BBQ Grills & Smoker, Lg Lot Of Other Items Not Listed

Auctioneers Note: WOW!!! What An Auction! It Is An Honor To Be Conducting This Auction For The Long Family Estate. This Is A Very Large Auction That Will Have Something Here For Everyone. Quality Collector Guns, Good Antique Furniture & Antique Items Also Truck, Tractors, Equipment & Shop Items. As Stated Above There Is A Semi Trailer Loaded From Front to Back Full Unsearched. Come Join Us For Several Surprises. **Sale Order: Furniture & Appliances Will Sell First Followed By Antiques, Collectibles & Households. At Approx 1:00 PM Will Offer Truck, Tractors, Equipment & Guns. Tools & Outdoor Related Items Will Finish Auction. See Ya There!!!**
Terms: Cash or check with proper ID. Now accepting most major credit cards. Nothing removed until settled for. Statements made the day of sale takes precedence over printed material. Everything sold as is where is. Not responsible for accidents. Restroom available. Concessions Provided By Connie's Concessions. Check our website for upcoming auctions and for additional pictures!!



NANCE AUCTION SERVICE

No Matter How BIG or small, We Do Them All!
www.nanceauctionservice.com

Col. Bill Nance 417-214-0093

AUCTION TIME!

By order of the United States Bankruptcy Court, Western District, Southern Division of Missouri
we will be liquidating the assets at public auction formerly doing business as

ROUGH COUNTRY RUSTIC FURNITURE

539 West Norwood Street Norwood, Missouri

**SATURDAY, APRIL 20TH
 AT 12 NOON**

Directions: U.S. Highway 60 east to the Norwood exit.
 South on "C" 2/10s mile to the stop sign. Now west 6/10s
 of a mile to 539 West Norwood Street.

**A 26,000 square foot plant where they
 manufactured hand-crafted gun concealment
 rustic furniture and concealment wall art.**

This inventory includes: chairs, bookshelves,
 dressers, nightstands, approximately 26 head
 and footboard sets, many partially finished
 gun concealment wall art pieces. **PLUS!** wood
 benches, wood shelving, pallet shelving and a
 large quantity of lumber.

Note: The entire plant inventory will be offered in its entirety.

ONE BID BUYS IT ALL!



Freeman Auction & Appraisals, LLC

Auctioneers: Steve Freeman & Jon Joyce
 (417)343-1891 sfauctionetime.com

Spring Firearms Auction

Saturday, April 13, 2019 • 10 a.m. Sale Preview - Friday, April 12th • 6-9 p.m.

Location: The Red Shed • 169 Truman St / Hwy T • Doolittle, MO 65550 • I-44 to exit 179



LOT 025



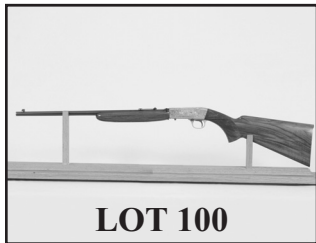
LOT 069



LOT 075



LOT 080



LOT 100

Selling 344 firearms WITHOUT RESERVE.

Some of the highlights are:

- Belgium Browning Grade III .22
- Ed Brown 1911 Centennial .45ACP New
- Belgium Browning Hi-Power 9mm NIB
- Winchester Model 42 .410
- Grunel Super Target 200 .308 Target Rifle
- Franchi SPAS-12L 12ga
- Colt Python .357 • Colt King Cobra .357
- Colt 1911 LW Commander .45
- Colt SAA .357 2nd Gen • Colt 1902 .38 Rimless
- Ruger 77 Custom 25-06 • Ruger 77 Magnum 416 Rigby
- Smith & Wesson Revolvers Models 10, 25, 27, 29
- 296 Titanium, 625, 629, 642
- Smith & Wesson M&P 9mm Competition,
- Glock Models 17, 20, 21, 23, 26, 30
- Ruger Revolvers Red Hawks, Black Hawks,
- Security Six, Single Six
- Nice Selection of Nikko and SKB Over/Under Shotguns
- LC Smith, Parker, LeFever Side by Sides
- Collection of Remington Model 11-48 Shotguns – 12ga, 16ga,
- 20ga, 28ga & 410
- Winchester Models 61, 62, 63 and 1890



LOT 102



LOT 139



LOT 245

For Military Collectors Over 100 Military Handguns:

- Large selection of Webley Revolvers of every description including two Webley Fosbery Revolvers.
- Eighteen Luger Pistols – Some with Swiss, Dutch, Portuguese Proofs. Also a German Artillery Model and a German Royal Navy Model
- Swiss 1882 and 1929 7.5 caliber revolvers
- Colt New Service .455 Eley with British Proofs
- Smith & Wesson 1st Model .455 CF with British Proofs
- Adams 1872 .450 Adams caliber Revolver
- Tranter 1868 .450 Boxer caliber Revolver
- Kongsberg 1914 11.25 caliber Pistol
- Kaufmann 2nd Model .455 Revolver
- Springfield M1 National Match 30-06
- Springfield M1A National Match .308



LOT 250



LOT 311

J & J Sales, LLC

jjsales@fidmail.com Additional pictures on www.auctionzip.com (auctioneer ID #28053)

573-341-5450
Office

573-465-4647
Julie Reagan

573-465-0642
JD Roach, Auctioneer

573-762-2227
Sale Day Number

NEW ATF RULE - For ATF Form 4473, current name & address must exactly match the photo ID such as drivers license. **MUST MATCH!!** If not, we need supplemental government issued documentation with matching current address such as vehicle registration, property taxes, county or city utility bill. Cannot be a PO Box!

Terms of Sale: Sale day announcements supercede any and all printed material. Photo I.D. required for buyer's number. No buyer's premium. Payment accepted by cash, check, debit/credit card. There is a 3% convenience fee unless paid by cash or check. Nothing removed until settled for. All state and federal firearms regulations will be followed. Not responsible for loss or accidents.

13TH ANNUAL SPRING CONSIGNMENT AUCTION SATURDAY APRIL 13, 2019 @ 10 A.M. 951 W. Rosedale Rd. Nixa, MO 65714 (Missouri Horse Auction Barn)

TRACTORS AND FARM EQUIPMENT

Ford 5000 Diesel, Massey Ferguson 50, (2)Cub Lo-Boy 154, Buhler Farm King 5' Mower, Bushhog Brand 6', 7' Bushhog, Wolverine Skid Steer Hydraulic Brush Cutter, Massey Ferguson 6' Disc, Ford 2 Bottom Plow, King Kutter 4' Bushhog, 72" Quick Attach Grapple Bucket, 3Pt Harrow, King Kutter Middle Buster, 6' Box Blade, 1h In-Line Hyd Bale Mover, 8' Offset Disc, 7' Heavy Field Roller, 5' Woods Finish Mower, Kuhn Speedrake Sr110, Frontier Wr10 V Rake, 2016 New Holland Br7070 Net 3K Bales, Countyline 3Pt 5' Tiller, New Holland 56 Rake, New Holland 3Pt Sickel Mower, 1h 8440 Round Baler, 1h Square Baler, 9' Kuhn Disc Mower, John Deere 5030 w/loader cab heat/air, New Holland 7330 discbine, 32' Gooseneck in-line hay trailer, Danuser 3pt auger, Cat 236D skid steer cab heat/air, 3000 hrs

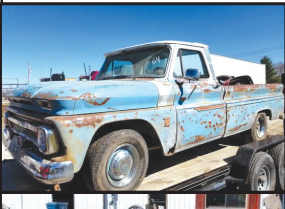
TRUCKS, TRAILERS & CARS

2003 Ford Thunderbird, 2006 Chevy 1500 Crew 4X4, 1964 Chevy Pickup, 53' Reefer Trailer, Coose 40'X8' Gooseneck Livestock, 16' Homemade Gooseneck Livestock, 20' Gooseneck Livestock, 4'X10' Flatbed Utility W/Liftgate, 6'X12' Flatbed Utility, 1999 Volvo Vnl Daycab N14 Cummins 9Spd, 3 Horse Gooseneck Slant, Bbq Smoker Trailer, 1999 Chevy 3500 Crew Cab 4x4

GUNS & KNIVES

Remington 788 .308, Marlin Mod 336 Cowboy 30.30, Marlin Mod 60 .22, Stevens .17Hmr, Glock Mod 21 .45 Cal, Inertec .22, Charter .22 Revolver, H&R 9 Shot .22, Smith & Wesson Mod 19 .357, Savage .308, Cz .223, 4 Bricks .22 Shells 40 Grain, Several Case Xx Trapper Knives

**WE ALREADY HAVE SEVERAL CONSIGNMENTS ON SIGHT
AND WILL BE UPDATING LISTINGS AS THEY COME IN.
WATCH AUCTIONZIP.COM (ID# 19479) FOR UP TO DATE LISTINGS!**



WATCH AUCTIONZIP.COM (ID# 19479) FOR UP TO DATE LISTINGS

Call for more information or to consign

B & D CONSIGNMENT AUCTION • NIXA, MISSOURI

Dwight Glossip (417)818-5488 • Brad Cole - Auctioneer (417)967-6374

**ESTATE
AUCTION
BOLIVAR, MO**

AUCTION

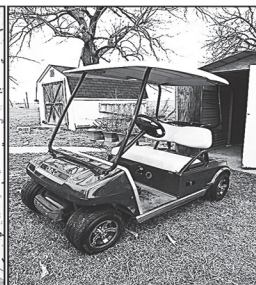
Due to the death of the late Eugene Smith we will sell the following Real Estate, Household, Collectables, Golf Carts, Mowers, Tools and Misc. at the located 1 1/2 miles West of Bolivar, Mo. on T Highway to F.R. 450 go West 1 mile to F.R. 85 then go South 1/4 mile to the Auction on:

Sat. April 20, 2019 at 9:00 a.m.

**WATCH FOR AUCTION COMPANY SIGNS • LUNCH SERVED
FOR MORE PICTURES GO TO: WWW.BRUCEANDLEANAUCTION.COM**

REAL ESTATE

3 Bedroom, 2 Bath Modern Home of Approx. 1500 sq. footage sitting on 3 Acres M/L, Home has Kitchen/Dining Room, Large Living/Family Room Combination w/Brick Fireplace w/Gas Log, large Sunroom of Approx. 16' X 24', Laundry Room, Lots of Cabinet & Closet Space, Ceiling Fans Throughout, One Car Attached Garage, Home has Propane Heat and Central Air, Home has Vinyl Siding and a Metal Roof. Real Estate has a Good Well and Septic System, Paved Driveway. Real Estate has 3 small Metal Shop/Storage Buildings. Home would be a good first time Home or a Good Rural Retirement Home located close to town. Real Estate sells with Owner Confirmation. Terms 10% down day of Auction Balance upon closing. For more info. Contact Auction Co.



- Sunheat Heater
- 2 Recliners
- Love Seat
- 31 Day Grandfather Clock
- Rope Legged Wash Stand Table
- Walnut Full Bed
- Round Oak Coffee Table
- Round Oak Claw Footed Table
- 5 Drawer Oak Chest
- Large Curved & Flat Glass China Cabinet
- Twin Metal Bed
- Coffee & End Tables
- 3 Oak Stand Table 2/with Rope Legs
- 2 Chest of Drawers
- Jewel T Stack Bowl Set
- Pots, Pans and Dishes
- Kerosene Lamp
- Cabinet Sewing Machine
- Electronic Items
- 2 Person Hot Tub
- One Lot of Misc.

- (has been sitting)
- Craftsman 22 Wheeled 6 3/4 HP Trimmer
 - Craftsman 8 1/2 HP Snow Blower (like new)
 - Craftsman 14" Rear Tine Tiller
 - Mantis Flower Bed Tiller
 - 48" Lawn Sweeper
 - Stihl MS 211c Chain Saw
 - Poulan Pro 34cc Chain Saw
 - Honda EU 3000 Watt Generator
 - Pro-Force 2500 Watt Generator
 - 2 Craftsman Pressure Washers
 - Poulan Gas Leaf Blower
 - Craftsman 15 Drawer Roll Around Tool Box
 - Craftsman 11 Drawer Roll Around Tool Box
 - Craftsman 19.2 Volt Drill and Tools
 - Large Older Air Compressor
 - Chicago Compound Miter Saw
 - Misc. Hand Power Tools
 - 2- 12' Folding Alum Ladders
 - Step Ladders
 - Powder River Head Gate
 - Handyman Jack
 - 12 Volt Winch
 - Yard Wind Mill
 - 2 Iron Wheels
 - 2- 177 Pellet Pistols
 - Schwinn Large Exercise Bike
 - 2 Four Wheel Garden Wagons
 - One lot of Misc.

TOOLS-MOWERS & MISC.

- Craftsman Gold 19 HP 46" Cut Riding Mower (like new)
- Craftsman LTS 2000 19 1/2 HP 42" Cut Riding Mower
- Toro Wheel Horse 16 HP Riding Mower

GOLF CARTS-TRAILER

- 5' X 8' Pup Single Axle Tilt Trailer
- Club Car Electric Golf Cart W/Top
- Yamaha Gas Golf Cart W/Top

HOUSEHOLD-COLLECTABLES

- Amana Side By Side Black Refrigerator W/ Ice & Water in Door
- Amana Black Refrigerator
- Whirlpool Upright Freezer
- Roper Washer
- Hot Point Dryer
- Oval Drop Leaf Kitchen Table W/4 Chairs
- Kitchen Table W/4 Chairs
- Glass Fronted Maple Hutch
- 18" Flat Screen TV
- Craft-Matic II King Size Bed
- Full Size Bed
- 2 Fireplace Style Electric Heaters

OWNER: ESTATE OF EUGENE SMITH

TERMS: CASH or CHECK with I.D. Nothing removed until settled for. Not responsible for accidents. Statements made sale day take precedence over printed matter.

SALE CONDUCTED BY **BRUCE & Le'AN AUCTION & APPRAISAL, LLC**
THE AUCTION COMPANY THAT APPRECIATES YOUR BUSINESS

For more information and pictures go to our website at www.bruceandleanauction.com

RONNIE BRUCE - Fair Play, MO
417-777-1685 or 417-654-2214
colronbruce@gmail.com

BRANDON BRUCE
Fair Play, MO

BILLY BRUCE - Stockton, MO
417-399-4800
colbbruce@gmail.com

INDOOR ESTATE AUCTION

Seating Available

SUNDAY, APRIL 14th - 1:00 PM

Location: Chamber of Commerce Building, Texas County Fairgrounds - 1585 N. Hwy 63, Houston, MO. Climate controlled facility with seating available.

Directions: From Houston at Hwy 63 & Hwy 17 stoplight, go north on Hwy 63 one mile to auction location.

Watch for Bruce Scheets Auctions Signs.

Visit www.brucescheetsauctions.com to view more photos!

PAYMENT SYSTEM: Cash • Checks accepted with proper identification • Debit/Credit Card (Amount up to \$1500)

Estate of The Late Dr. I.C. & Margaret KEENEY

2007 Lincoln Town Car Signature Series (loaded) One Owner - 75,614 miles Excellent Condition



Pencil Drawing of Flat Rock Bridge, Sedalia, MO by McClung 1976

Pencil Drawing of Rock Bridge Mill by James Burkhart

ANTIQUES & COLLECTIBLES

Crock jars and whiskey jugs • Jars of marbles • Large collection colored medicine bottle • Child's Little Bo Peep bowl • Child's Humpty Dumpty drinking glasses • Green Jadite candy dish • Longaberger cookie jar and baskets • Wooden yarn and thread spindles • Records • Milk stool • Organ stool • Fenton glassware and collector plates • Sad iron • Pitcher & bowl • Milk glass • Cobalt blue glassware • Depression glass • Pewterware • Hen on a nest • Mr. Peanut salt & pepper shaker • Perkins red globe marine oil lamp • Walking canes from abroad • Remington 500 round cardboard ammo box nice • Thomas Kinkade plates • VHS tapes incl. I Love Lucy collector state spoons • Cast iron store string dispenser • Russian nesting dolls • Porcelain silver & thimble collection • Hudson Dairy milk bottle • Wood butter molds • 1978 Houston High School Piney MO • Sausage grinder Best Made • Rogers Brothers flatware

JAZZY HANDICAP POWER SCOOTER

GUNS

Dakota 45 long Colt revolver • Mod. 110 Savage 30-06 • Remington Target Master 22 cal auto • Mossberg 835 Ultra Mag 12 ga 2 ¼ & 3 ½ in vent rib choke tubes • Remington & Browning 22 cal short only auto • Lorcin 9mm pistol auto • Assorted ammo

FURNITURE & HOUSEHOLD

Uphol. love seat area rugs • Wall mirrors • Maple cabinet • Leather la-Z-Boy recliner • Dexter buffet w/leaded glass doors • Uphol. couch • End tables • GE microwave • Lamps • Oval dining table • Westminster quartz wall clock • Night stands • Tupperware • Brass fireplace tools • Wood carved animal & bird figurines • Oil paintings • Kodak carousel projector • Dell keyboard, monitor, and tower • Samsung TV with VCR • Cannon copier and printer • RCA tape recorder • Revere reel to reel projector • Voyager weather alert radio and cell phone • Christmas decor • Magazine rack • Brass umbrella stand • Board games and puzzles • Books • Linens bedding, towels & tablecloths • Fruit jars • Kirby upright vac. • Wicker baskets • Floral arrangements • Baby scales • Sewing notions • 4 drawer metal file cabinet • Metal shelving • Metal storage cabinet • Large selection of cook books • Large lot of figurines including elephant figurines • Assorted kitchen appliances • Other



AUCTIONEER'S NOTE: Extremely clean quality merchandise. Several items from their travels overseas. Come spend the afternoon with us. *Thanks, Bruce*

DRIVER'S LICENSE OR PICTURE I.D. REQUIRED • TERMS: CASH OR APPROVED CHECK   **OR** 

BRUCE SCHEETS AUCTIONS

www.brucescheetsauctions.com • HOUSTON, MO • We Accept Mastercard, Visa & Discover

Auctioneers:
COL. BRUCE SCHEETS
 417-967-2510
 Cell: 417-260-2118
COL. ERVIN BONTRAGER
 417-260-0464
COL. TRAVIS TOOLEY
 417-293-6909



All announcements made day of sale take precedence over any printed matter. Not responsible for lost or stolen merchandise. Not responsible for accidents.

LUNCH WAGON • APPRAISAL SERVICE • RAIN OR SHINE

Cashiers / Clerks:
Andi, Jennifer & Camryn Scheets,
Shelly Sigman, Lena Walsh
 Ringmen:
Jarid Scheets, Martin Walsh,
Terry McCallister, Kirby Caudwell

R&R AUCTION SERVICE

ABSOLUTE AUCTION SATURDAY, APRIL 13TH • 10:00AM

651 South Locust • Buffalo, MO



We will sell this 4 bedroom 2 bath house with over 1400 square foot of living space plus a attached carport and detached storage building. Sitting on a beautiful corner lot at South Locust and McDonald street. Owner Pauline Brown must sell all personal property and real estate.

Personal property will start at 10am and Real Estate will sell to the highest bidder at 11am sharp!

Appliances and 500 gallon propane tank with 80% will sell following real estate.

For further information please check out our website at <http://www.rrauctionservice.com> or contact professional auctioneer Russ Weeks at 417-576-7357



West 64 STORAGE AUCTION

SATURDAY, APRIL 27TH • 10:00AM

18946 MO-64 • Lebanon, MO

We have 14 units at this point to sell.

Perimeter never broken, 5 minutes to look from outside.

CASH ONLY! \$50 deposit per unit refundable when cleaned out. You have 7 days to empty.

WEST 64 STORAGE



417-588-3538

417-531-0743

TERMS: Cash, check, or credit card with proper I.D. nothing removed until settled for A 3% fee will be added to credit card purchases. Not responsible for errors in listing. Any announcement made sale night will take precedence over any printed matter. **Note:** Service will take every precaution to prevent accidents, but will not be responsible should any occur.

For more information contact Professional Auctioneer Russ Weeks at 417-576-7357 or check out www.rrauctionservice.com



Serving this area's auction needs since 1997 with honesty and professionalism. www.rrauctionservice.com
(417) 576-7357 or
(417) 345-4140



**CAGA
CERTIFIED
APPRAISER**

TURNER AUCTION SERVICES 4TH ANNUAL CONSIGNMENT AUCTION



April 13th 2019 @10am



Valley Lions Club Belgrade Mo • Now Accepting Consignments

Accepting tractors, vehicles, trailers, farm machinery, implements, forestry equipment, lawn and garden equipment, firearms, ammo, new and used tools, and livestock equipment

REASONABLE COMMISSION

10% FIRST \$500 • 5% NEXT \$9500 • 2% AMOUNT ABOVE \$10,000

ADVERTISING DEADLINE: MARCH 23

**CONSIGNMENTS ACCEPTED UNTIL 9AM SALE DAY • NO FEE FOR NO-SALES
TO CONSIGN CALL ANDREW TURNER 573-760-3755**

CRAWLERS/TRACTORS/COMBINE

John Deere 555G (GREAT Under carriage) • John Deere 555G (5000hrs) • John Deere 455G (4800hrs) • 1981 John Deere 7720 combine with John Deere 220 Flex Header (3515hrs) • Kubota M6060 with LA1154 loader (4wd, 147hrs) • New Holland Workmaster 35 with 110TL quick attach loader (4wd, 12 speed, 242hrs) • Mahindra 6000 (55hp, 3478hrs) • Massey Ferguson 1455 with loader (4wd, 1136hrs) • John Deere 650 with single bottom plow (4wd, 1000hrs) • John Deere 3020 • Farmall H (new paint, 12volt) • Ford 8N

VEHICLES/TRAILERS/POP-UP CAMPER

2005 Chevy Colorado (4x4, 260,000 miles) • 1992 Geo Tracker (4x4, auto) • Trail King Flat Bed trailer (20ft+5ft dove, pintle hitch, rated for 30,000lb, air brakes, oak floor) • 1997 Big Valley 14ft stock trailer (10000lb electric jack, storage compartment in neck, lined walls, and cut gate) 2014 Heartland 16ft bumper pull flat bed trailer • 2007 Flagstaff Pop-Up Camper • Homemade dump trailer

HAY EQUIPMENT

Heston 5500 round baler (5x5) • New Holland 852 round baler (5x6) • New Holland 850 round baler • John Deere 336 square baler • New Holland 273 square baler • John Deere 24T square baler • 4 basket Hay Tedder • New Holland 56 side delivery rake • New Holland 55 side delivery rake • Massey Ferguson side delivery rake • New Holland 7ft disc mower • Vicon 7ft disc mower • John Deere 1209 haybine • 3pt hay unroller • (2) 3pt bale forks • Square Bale Hay Loader

SKIDSTEER ATTACHMENTS

Grapple Buckets (various sizes) • Rock Buckets (various sizes)

FARM EQUIPMENT

Killbros 475 grain cart • Case manure spreader (pto) • New Idea #12A manure spreader • Koyker 210 quick attach loader • Danhuser 3pt post driver • Bush Hog brand 3pt post hole digger • 10ft pull type brush hog • Woods 2080 3pt 8ft brush hog • John Deere 3pt 7ft brush hog • Bush Hog brand 3pt 5ft brush hog • 3pt 4ft brush hog • Field General 3pt stainless steel 7ft finish mower • Howse 3pt 5ft finish mower • 18ft harrow (folds) • 6ft 3pt disc • Love 6ft 3pt disc • 6ft pull type disc • Ford 3 bottom 16" plow • Oliver 3pt 3 bottom plow • 3pt 2 bottom disc plow • 3pt 2 bottom plow • (2) 2pt 2 bottom plows • Midwest Plow Harrow • 3pt 7 shank field cultivator • 3pt 5ft cultivator • 6ft box blade • DR Power Grader 5ft • 8ft 3pt blade • 7ft 3pt fully adjustable tilt and angle blade • 6ft 3pt fully adjustable tilt and angle blade • (2) 3pt 6ft blade • 3pt 4ft blade • (2) 3pt reversible slip scoop

LIVESTOCK EQUIPMENT

Lot of New 12ft corral panels • Lot of New 10ft corral panels • Lot of New portable 4ft walk thru gates • Lot of New gates • Lot of New woven wire • Lot of New welded wire • Lot of New barbed wire • Saddle • Lot of horse tack • Used 12ft gate • Wooden Trough • (20) round corner posts • (100+) T posts • Antique Sears and Robuck chicken brooder

LAWN AND GARDEN/SHOP/TOOLS/GENERATORS

Generac 3 phase generator (diesel, 156hrs) • (NEW) Coleman Power Mate 6250 generator • John Deere zero turn mower (60" deck, Kohler motor) • John Deere LA 115 lawn mower (38in deck, 300hrs) • Woods 60in belly mower • Craftsman 900 series rear tine roto tiller • Troy Built wood chipper (10hp) • Huskey wood splitter (12.5 hp, 35 ton) • Graco Magnum Pro LTS 17 paint sprayer • NEW IN BOX Craftsman 7in Tile Wet Saw • Lot of NEW Tools • Several gallons of Shell Rotella anti freeze

GUNS/SPORTING GOODS/COINS

Savage 110 243 with Redfield 3x9 scope • Stevens Crack-Shot 22LR • Lot of ammo • Large Lot of Coins

FOR COMPLETE LISTING GO TO WWW.AUCTIONZIP.COM AUCTIONEER ID 43766

TA TURNER AUCTION SERVICES

For more information, call Andrew Turner at 573-760-3755

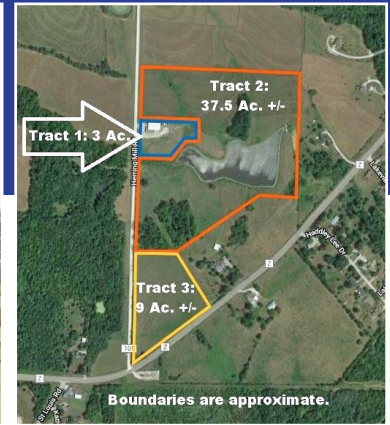
Auctioneers: Col Andrew Turner, Co. Jeff Richards

Terms & Conditions: Cash or Good Check - proper ID required -
Not Responsible for accidents or stolen articles.

All announcements made on sale day take precedence over printed material.

"No Alcohol" Lunch Provided by Vally Lions Club

Commercial – Development – Grazing Land Online Auction – Sells To High Bidder!



49 +/- Acres Offered In Combinations & The Entirety
Located Only 2 ½ Miles From Downtown Fulton

Preview / Inspection Dates:

Tuesday, April 16th & 23rd, 12:00 - 1:30 p.m.

Tract 1: 3 +/- Acres With A Well Built 7,400 +/- Sq. Ft. Steel Framed Metal Building Which Includes An Attractive Brick & Stone Front Office W/ Lg. Reception Area & Breakroom. Shop Area Has Several Overhead Doors, Commercial Lighting and Insulation, Workshop Room With Heated Floors & Loft Area.

Tract 2: 37 +/- Acres With A Nice Lake, Gently Rolling With Good Road Frontage, Great Building Sites, Possible Development

Tract 3: 9 +/- Acres With Hwy. Z & County Road Frontage. Zoned R-2 Residential Development Potential.

5276 County Road 105, Fulton, MO

Online Bidding Ends: Tuesday, April 30th @ 12:30 p.m.

Note: This Is A Wonderful Property With Tons Of Possibilities! Convert The Office Into Living Quarters & Have Your Own Shouse Or A Great Place For Your Business. This Is A Pretty Piece Of Land With Great Building Sites.

**For Information On How To Buy This Property At Auction Or Other Questions,
 Call Your Real Estate At Auction Specialists: Atterberry Auction & Realty Co. 573-474-9295 Or
 Email: contactus@atterberryauction.com**

“WE MAKE BUYING AND SELLING AT AUCTION EASY”

Atterberry MEMBERS

Auction & Realty Co., LLC.  

573-474-9295 www.atterberryauction.com 

Wonderful Home In A Family Neighborhood



(Sells To High Bidder, Regardless Of Price!)

- **Gorgeous Colonial Style 2 Story Home W/ Stone Front & Vinyl Siding**
- **2,400 + Sq. Ft. Living Space, 5 Bedrooms, 3 1/2 Baths & Hardwood Flooring**
- **Newer Main Level Addition - Master Suite W/ Rear Screened-in Porch & Laundry Room**
- **Spacious Family Room W/ FP, Dining Room & Eat-In Kitchen**
- **Large 2 Car Garage & Full Basement**

Note: This One Owner Home Is Very Well Cared For, Backs-Up To Green Space, YMCA & Is Close To Schools. Newer Updates Include - Main Level Master Suite, Newer Roof & Windows.

607 Kleewood Ave., Fulton, MO

Online Bidding Ends:

Thursday, April 25th @ 12:30 p.m.

Inspection Dates:

Thurs., April 11th & 18th

12:00 to 1:00 p.m.

For Information On How To Buy This Home At Auction Or To Obtain Financing, Call Your Real Estate At Auction Specialists:

Atterberry Auction & Realty Co.

(573) 474-9295 Or

Email: contactus@atterberryauction.com

“WE MAKE BUYING AND SELLING AT AUCTION EASY”

Atterberry MEMBERS
Auction & Realty Co., LLC. MarkNet
573-474-9295 www.atterberryauction.com

REFURBISHED 1974 PLAYMOR: 15ft camper, fresh paint, new tires, refrigerator, toilet and shower. \$1,800. Vienna, 573-759-7143.

ANTIQU 12 GAUGE: Single barrel, shotgun. \$175. Desloge, 573-327-9068.

FIREARMS: Professional Repairs and Restorations. Baron's Gunsmithing. 573-363-5801, Camdenton.

WANTED: old Franklin County Plat books. 573-468-4924

COW SALE Sat., April. 20th 1:00 pm

- 97 Black Cows, 5yrs, Home Raised
67 • Cows, will be 2nd & 3rd stage, bred to BLK or Hereford Bulls
30 • Cows, w/250lbs calves
Cows, & calves have been worked—**COMPLETE SELL OUT**
- 13 Black & Charolais Heifers, will start calving in May, bred to Red Angus Bull
- 27 Black cows, running ages, 250lb calves bal, 2nd & 3rd stage, bred to Black Bull
- 21 Black cows, 3-5yrs, 2nd stage, Bred to Black or Hereford Bull
- 26 Black Cows, 6yrs, SS, 2nd & 3rd Stage
- 25 Black & Charolais X Cows, 3-6yrs, 2nd & 3rd stage
- 30 Mix cows, running ages, few w/calves, bal, 2nd & 3rd stage
- 22 BLK Cows 3-5yrs- 2nd & 3rd stage- Bred to BLK or Hereford Bull,
SELL OUT
- COMPLETE SELL OUT-**
- 35 Hereford cows, 4-8yrs all w/calves running back w/Angus Bull
- 15 Angus cows, 4-8 yrs w/calves, running back w/Journagan Registered Bull
- 2 BWF Heifers, 15 months, Bonebrake & Kaczmarek bloodlines

Cattle Sale Every Monday at 12:00

Feeder Calves to sell at 12:00 pm Butcher Cows & Stock Cows following

All Consignments Welcome Up Until Sale
We Appreciate Your Business!

Salem Livestock Auction

Hwy 32 Salem, Mo
Barn - 573-729-8880

Allen Thompson
417-932-4097

Terms of Sale: Cash or
Approved Check!

Renee Lauderdale
417-926-2682

Chuck Thompson
417-257-5610

Keith Robertson
314-560-3285

79 CHEVROLET 250: 6cyl, manual transmission, new starter and alternator, running when taken out for V8 changeover. \$200. Call after, 573-756-3937.

1999 KODIAK 24' FLATBED GN TRAILER: Wood floor, slide out ramps, dual jacks, tandem axle, 14,000 GVW, elec brakes, 14 Ply tires. \$3,800. Conway, 417-718-5347.

AUCTION REMINDER: Estate Auction. Saturday, April 13 @ 10am. Nance Auction. Please see our Auction Directory for more information.



Missouri Show-Me-Select

Bred Heifer Sale

**Friday, April 19, 2019
7:00 P.M.**

Farmington Regional Stockyards
1600 Woodlawn Dr., Farmington, MO 63640

Crossbred & Purebred Fall-Calving Heifers

130 BRED HEIFERS AVAILABLE:

- Artificially inseminated and natural bred heifers available many with known fetal sex.
- Tier II (heifer out of an AI sire) and registered Angus heifers available, some genetic tested.
- 99% black and black-white-face, few reds. Tested negative for BVD/PI, health papers available.
- Sorted into uniform lots by breed, color, size, calving date, and some fetal sexed lots.
- Heifers have met minimum standards for reproductive soundness, pelvic size, and vaccinations.
- Heifers have been bred to bulls meeting strict calving ease/birth weight EPD requirements.

CONSIGNORS:

Ar-Ke Farms, LLC,
Jefferson City
Big River Angus,
St. Charles
David Gann, Steelville
Graham Family Farm,
Farmington
Grellner Farms,
Owensville

James Mckinney, Bucyrus
Denny Pogue, St. James
Schulte Brothers, Meta
Mike Steinman, Argyle
Kurt Strope, Westphalia
Steve Strubberg,
New Haven
Turner Farms, Belgrade
Dean & Dallas Wilson,
Dittmer

CONTACT INFORMATION:

KENDRA GRAHAM

(573) 756-4539 • grahamkk@missouri.edu

Catalog:

www.extension.missouri.edu/stfrancois

SALE AGENT:

Farmington Regional Stockyards

Clay Birk, (573) 275-1387

Show-Me-Select Replacement Heifers, Inc. a non-profit organization in cooperation with: University of Missouri Extension-College of Agriculture, Food and Natural Resources-Division of Animal Sciences-Commercial Agriculture Program-MU College of Veterinary Medicine-Missouri Cattleman's Association-Missouri Department of Agriculture

TRADES?? CONTRACTORS ALUMINUM DIAMOND TRED PICK-UP BED COVER: yellow strobe light, air compressor built-in, \$250 trade for almost anything. Vienna, 573-759-7143.

LIONEL TRAIN SET: Steam engine, tender, caboose and other car, track and transformer. \$195. 573-364-7465, Rolla.

80x16 1999 HOUSE TRAILER: 3 bedroom, 2 bath, gas, with appliances, AC, deck, 500 gallon propane tank. Good condition. \$13,500. 815-904-4248.



MID MISSOURI STOCKYARDS

REGULAR SALE EVERY THURSDAY 11AM

For Farm Visits, Market Updates, or Trucking
 Call **Zach Cox 417-777-1320**
Dan Romine 573-578-4939

**Competitive Buyers!
 Competitive Commission!
 Competitive Market!**


Barn: 417-532-9292 
I-44 • Exit 123 "just outside of Lebanon"
17505 Route 66, Phillipsburg, MO 65722
 For weekly market updates, visit us at
www.midmostockyards.com

SOLID WOOD TWIN BED: 4ft high, nice storage underneath, with covered new mattress, still in plastic. \$100obo. Rolla, 928-514-0505.

BOBCAT 853 DIESEL SKID STEER LOADER: Cab, 58hp. \$8,950. 573-765-4406.

GRASSHOPPER 120 LAWN MOWER: 48in cut, 20hp Kohler, 211hrs. \$2,500. Rogersville, 417-753-2747, 417-766-1991.

AUCTION REMINDER: Estate Auction. Saturday, April 20 @ 9:00 a.m. Bruce and Le'An Auction. Please see our Auction Directory for more information.



BUFFALO LIVESTOCK MARKET LLC
 276 Hwy 32 West, Buffalo, Missouri 65622
 417.345.8122 Barn

Special Stock Cow & Bull Sale
Tuesday, April 16th • 6:30PM

EARLY CONSIGNMENTS:

Dispersal:
 28 - Blk Cows, 5 to BM, bred back just weaned calves.

Dispersal:
 36 - Mix Cows w/ some calves and balance bred cows.
 15 - Fancy Angus Cows, bred fall calves.
 5 - Blk Angus Heifers, early fall calves.

Bradley Farms Bulls:
 10 - Red Angus Bulls, 2 yrs. old.
 2 - Reg. Charolais Bulls, 2 yrs. old.
 3 - Horned Hereford Bulls, 2 yrs. old.
Super set of Bulls with EPD's. Gentle, registered, trick and semen tested by Dr. Waide.


D&R Angus:
 1 - Reg. Angus Bull, 1 1/2 yrs. old, extra nice.

To Consign or For Info: 417-345-8122

Lyle Caselman • Owner-Manager
417-345-7876 • mobile 417-533-2944
Leon Caselman • Owner
417-345-4514 • mobile • 417-588-6185

POOL TABLES: Installations, moves, recoverers, repairs, accessories, etc. 573-646-1700.

AUCTION REMINDER: Cow Sale, April 28th, 1pm. Cattle Sale every Monday at Noon. Salem Livestock. Please see our Auction Directory for more information.



BUFFALO LIVESTOCK MARKET LLC
 276 Hwy 32 West
 Buffalo, Missouri

April 6th, 2019

Receipts: 1157 Head
Feeders \$3-\$5 Higher; Cows \$3-\$4 Higher

Representative Steers
 300-400 @ 175.00 to 199.00
 400-500 @ 165.00 to 188.00
 500-600 @ 160.00 to 176.50
 600-700 @ 150.00 to 165.50
 700-800 @ 138.00 to 144.50
 800-900 @ 130.00 to 134.00

Representative Heifers
 300-400 @ 152.00 to 166.00
 400-500 @ 145.00 to 162.00
 500-600 @ 135.00 to 155.00
 600-700 @ 126.00 to 140.00
 700-800 @ 117.00 to 128.00
 800-900 @ 110.00 to 127.50

Feeder Bulls
 400-500 @ 160.00 to 180.00
 500-600 @ 138.00 to 169.00
 600-700 @ 130.00 to 147.00
 700-800 @ 117.00 to 131.00
 800-900 @ 110.00 to 118.00

Holstein Steers
 400-800 @ 67.50 to 72.50

Bred Cows:
 3 to 6 2nd & 3rd 750.00 to 1075.00

Slaughter Cows:
 1500# & up Heavy Flesh @ 50.00 to 59.50
 1000# to 1350# Med. Boner Flesh @ 47.00 to 60.00
 Thin Flesh Cows @ 30.00 to 44.00

Slaughter Bulls:
 High Dressing @ 83.00 to 86.50
 Med Dressing @ 73.00 to 82.00
 Low Dressing @ 67.50 to 72.00

MON-WED MARKET REPORT
 Listen to KJEL 103.7FM • Lebanon or
 KYOO 99FM • Bolivar

VIEW OUR SALES AT CATTLEUSA.COM

CALL FOR TRUCKING OR ON-FARM VISIT

Lyle Caselman • Owner-Manager
417-345-7876 • mobile 417-533-2944
Leon Caselman • Owner
417-345-4514 • mobile • 417-588-6185
Howard Miller • Owner 417-345-8122

Antiques & Collectibles

AUCTION

Saturday, April 13th, 2019 at 10a.m.
Cooper County Youth Fairgrounds
Boonville, Missouri



Sellers: RoofTop Antiques

For a complete listing and photos visit our website.
www.martinauctioncompany.com
 Cody Martin 660-888-3460 Teresa Martin 660-888-9518 Terry Quinlan 660-888-9493

GOVERNMENT AUCTION

TUES., APR. 16

375+ ITEMS SELL REGARDLESS OF PRICE!

Bidding closes at 10 a.m. CDT



DG3902 '90 Simon Duplex 5186-90 rescue truck



DF7137 '03 Freightliner MT55 DWI enforcement truck



DE0026 '15 Int'l TerraStar SFA refuse truck



EU9585 '07 Int'l 7400 refuse truck



DE6059 '15 Ford F150 XL SuperCab pickup truck

INVENTORY INCLUDES: tractors, skid steers, refuse trucks, pavers, backhoes, wheel loaders, cargo trailers, SUVs, shuttle buses, school buses, passenger vehicles and more. *All items are sold "AS IS." 10% buyers premium applies.* **866.608.9283**



BID NOW!

purplewave.com

8 BORDER COLLIE PUPS: born 2/9/19 up-to-date shots, working parents, farm raised, \$150 each, Mansfield, 417-830-8374.

WINCHESTER MODEL-61 PUMP-22: \$1,100. Rolla. 573-308-2550.

AUCTION REMINDER: Every Wed. @10:30AM Farmington Livestock. Please see our Auction Directory for more information.

AUCTION REMINDER: Spring Firearms April 13, 10 a.m. J&J Sales. Please see our Auction Directory for more information.

JOHN DEERE 337 SQUARE BALER. \$2,250. 573-765-4406.

NEW NEW NEW DISPLAY HOUSE!!! Call Marla to hear what is new inside 573-657-7040. chateauhomes.net.

AUCTION REMINDER: East Central Show Me Select Auction, Friday, April 19th @7 PM. Please see our Auction Directory for more information.

L4400 KUBOTA: 4wd tractor with loader. \$21,500. 417-270-1505.

FARMINGTON LIVESTOCK

Hwy 67 • Farmington, MO
Office Phone: **573-756-5769**

Regular Sale Every Week Wednesday
Starting at 10:30 am

All Consignments Welcome
Keith Robertson
Cell: **314-560-3285**
Home Ph: **573-732-4987**

VERMEER 505 SUPER I ROUND BALER. Shredded. Excellent Paint. \$4,650. 573-247-1125, Lebanon.

JEFFERSON NICKEL BOOK: coin set from 1938-1964. \$200. 573-764-3517. call in p.m.

AUCTION REMINDER: Public Auction Wednesday, April 24 at 10am. Sam Crawford Auction Service. Please see our Auction Directory for more information.

2005 INTERNATIONAL EAGLE SEMI: Good condition, many new parts. 417-679-4355, Wasola.

2015 KUBOTA TRACTOR: 25hp, 4x4 w/ hydrostat, includes loader, boxblade and disc. \$16,500. Rolla, 573-308-2550.

PINE LOG SIDING SALE: \$1.19 per L.F. www.pineridgerustic.com 573-729-7226, 573-247-2823.

REMINGTON MODEL-870 WINGMASTER: 12-gauge pump. \$275. Remington Model-870 Wingmaster, 16-gauge. \$275. 573-756-1065, Doe Run.

CLIPPER SEED CLEANER. \$200, needs motor. 417-321-1928.

HEAVY DUTY WALKER: 400 lb rated, brand spanking new, large seat/storage, four 7" pivoting wheels, hand brakes. \$200. 417-686-0032, Ava.

1995 GOLDWING: Ultimate road bike. One owner. \$3,250. 417-399-6383.

GET YOUR WORK DONE, AMERICA

FOR JUST
\$ **238** PER MONTH*



4540 2WD

- ✓ **SIMPLE** to operate
- ✓ **ECO-FRIENDLY**, NO DPF engine
- ✓ **HEAVY-DUTY** steel construction not plastic

MAHINDRA 4540 41HP, 2WD, TRACTOR AND LOADER.

Marshfield Machinery Inc.

222 E. Madison • Marshfield, MO 65706
417-859-2117 • www.marshfieldmachinery.com



*Payment is for tractor and loader only and is calculated at 10% down and 84 months financing. With approved credit. Program restrictions may apply. See dealer for details. All offers expire May 30, 2019.

WORLD'S #1 SELLING TRACTOR



NEW MAHINDRA TRACTORS

| | |
|--------------------------|----------|
| 7085 4WD & LDR 85HP | IN STOCK |
| 6025 4WD & LDR 62HP | IN STOCK |
| 5570 2WD & LDR 70HP | IN STOCK |
| 2655 4WD, CAB & LDR 55HP | IN STOCK |
| 2655 4WD, BACKHOE 55HP | IN STOCK |
| 2655 4WD & LDR 55HP | IN STOCK |
| 2555 4WD & LDR 55HP | IN STOCK |
| 4540 4WD & LDR 41HP | IN STOCK |
| 4540 2WD & LDR 41HP | IN STOCK |
| 2638 4WD & LDR 37HP | IN STOCK |
| 2538 4WD, CAB & LDR 37HP | IN STOCK |
| 1626 4WD, BACKHOE 26HP | IN STOCK |
| 1626 4WD & LDR 26HP | IN STOCK |

USED TRACTORS

| | |
|-----------------------------|--------|
| MAHINDRA 105P CAB LDR 105HP | 45,500 |
| MAHINDRA 2565 CAB LDR 65HP | 28,500 |
| MF GC1705 4WD, LDR 23HP | 10,500 |
| MF GC1705 4WD, MWR 23HP | 10,500 |
| MF GC1705 4WD 23HP | 7,750 |
| IHC 460 49 HP | 3,500 |

USED UTV

| | |
|-----------------------|-------|
| MAHINDRA 750 CREW XTV | 8,500 |
|-----------------------|-------|

USED ROUND BALERS

| | |
|-------------------|--------|
| MF 2946A 4X6 MESH | 24,000 |
| MF 2846A 4X6 MESH | 24,000 |
| MF 2846A 4X6 MESH | 20,000 |
| MF 2745 4X5 MESH | 12,500 |
| MF 1745 4X5 | 9,500 |
| HESSTON 845 4X5 | 7,500 |
| GEHL 2480 4X5 | 4,500 |
| HESSTON 545 4X5 | 4,500 |
| HESSTON 555T 4X6 | 4,500 |
| CASE IH RS451 4X5 | 4,500 |
| HESSTON 560 5X6 | 4,000 |
| NH 850 5X5 | 1,500 |

USED DISC MOWERS

| | |
|--------------------------|--------|
| MF 1383 13FT MOWER/COND | 19,500 |
| HESSTON 1008 10.5 FT 3PT | 5,500 |
| JD 275 9FT 3PT | 3,500 |
| HESSTON 1120 MOWER/COND | 2,000 |

USED RAKES

| | |
|----------------------|-------|
| BUSH HOG BSR10 | 3,500 |
| GEHL 418 8 WHEEL | 2,000 |
| VERMEER WR20 8 WHEEL | 1,950 |

USED MISC.

| | |
|----------------------------|--------|
| HAYBUSTER 107C NOTIL DRILL | 16,500 |
| BUSH HOG 2615 15FT | 6,000 |
| BUSH HOG M346 LOADER | 3,500 |

Marshfield Machinery Inc.
222 E. Madison • Marshfield, MO 65706
417-859-2117
www.marshfieldmachinery.com

AUCTION REMINDER: Estate Auction Sat. April 14th 1 PM. BRUCE SCHEETS AUCTION. Please see our Auction Directory for more information.

L2501D KUBOTA: 4wd tractor with loader, 25HP, hydro transmission, with 5' Landpride bush hog. \$16,900. 417-270-1505.

SPRING TOOTH HARROW AND DOUBLE CULTI PACKER: 9ft pull-type. \$350. Bumper Hitch 6x18ft Livestock trailer, no title, \$1,200. 417-766-1991.

LIMOUSIN BULLS: 18-30 mos. old, Homo Black, polled, AI sired. 573-301-2316, 573-301-2074.

AUCTION REMINDER: Every Wednesday at 10:30 am. Farmington Livestock. Please see our Auction Directory for more information.

REGISTERED BLACK ANGUS BULLS: 417-453-6332. Plato.

TV ANTENNA, SICKLE Grinder & SERVICER. \$100 for all. 417-646-8807.

WOODS 15' BUSHHOG: Chains excellent condition, paint on blades. \$8,750. 870-458-2238.

FOR SALE: Pallet Fork & Manure Fork for John Deere 640 Loader. \$1,000 pair. 573-378-4172, Barnett.

1-HORSE WALK BEHIND PLOW: Very good condition. \$175. 417-457-1023, Raymondville.

WILLIAMS PEEP SIGHT: with target knobs. Fits Marlin Model 39a. \$50. 636-239-2695. Washington.

FOR SALE: Whirlpool undercounter dishwasher, 1 year old. \$200. Works Perfect. 573-765-3603, 573-692-1492.

BARN WOOD SIDING: 8" & 10" wide. 573-729-7226. www.pineridgerustic.com

WANTED GOOD USED MOBILE HOMES: Singles & doubles. Call David Hayes, 573-578-8072.

AUCTION REMINDER: Saturday, April 13th @ 9am. MR Clark Auction Service. Please see our Auction Directory for more information.

WANTED: Winchester Commemorative Rifles. 573-690-1761

2004 OPEN RANGE FIFTH WHEEL CAMPER: 34', all weather, in good condition. \$10,500. Lebanon, 417-718-5520.

JD 6140M: Cab, 4WD, triple remotes, 16-speed. \$46,500. 870-458-2580, Viola.

BEAUTIFUL DOBERMAN PINSCHER PUPPIES: Males \$650, Females, \$500. Parents are Double Registered AKC and CKC. Puppies are CKC Registered. UTD on shots, come with health records. Tails docked and dewclaws removed. 417-531-0483.

www.gatorjetboats.com

Jet Drive & Performance Parts

IN-STOCK!

(573) 885-0052

86 Hwy. UU Cuba, MO (2 Miles East of Cuba)

Custom Built Aluminum Inboard Jets

WEEKLY TRADER MAGAZINE

This is...

WEEKLY TRADER COUNTRY!



Place Your Ad With Us Today!

417-532-9131 CHECK US OUT ONLINE AT: myweeklytrader.com



SEEGER TOYOTA



SPRING SERVICE SPECIALS



March 29 thru April 30, 2019



BUY 3 TIRES GET THE FOURTH FOR \$1*

GET A \$25 PREPAID CARD WITH BRAKE PAD PURCHASE & INSTALLATION**



*Restrictions apply. See participating Toyota dealer for details. Offer valid on select brands, OEM, OEA and WIN replacement tires only. Tires must be dealer-installed. Three tires at regular price, fourth tire for one dollar. Fourth tire must be of equal or lesser value. Excludes mounting and balancing, sales tax, shop supplies, tire disposal and other applicable taxes. Excludes previous purchases. Toyota and Scion vehicles only. Offer only available at participating Toyota dealers 3/29/19 - 4/30/19.

**Restrictions apply. See participating Toyota dealers for details. Offer valid 3/1/19-4/30/19 on Toyota Complete Maintenance Care (TCMC) brake or OEM brake pads if TCMC brake pad is not available for the vehicle. Brake pads must be installed by authorized dealer. Additional parts may be needed. Offer excludes all applicable tax, installation costs, and previous purchases. Not valid with any other offer or advertised special. Toyota and Scion vehicles only. Void where prohibited. Offer only available at participating Toyota dealers. For \$25 prepaid card, original redemption form required. Photocopies will not be honored. Rebate submissions must be received by 5/30/2019. Please allow 6-8 weeks for receipt of your card. Please retain copies of the materials you submit. No responsibility for late, lost, illegal, misdirected or incomplete submissions. To check the status of your rebate, visit www.checkyourrebate.com/Toyota or call 855-307-4572.

OIL & FILTER CHANGE WITH MULTI-POINT INSPECTION

| | |
|---------------------|------------------|
| CONVENTIONAL | SYNTHETIC |
| \$5 OFF | \$10 OFF |

- Up to 5 quarts of oil, filter and installation
- Multi-point inspection

Must present when service order is written. One coupon per customer. May not be combined with other offers. Not applicable to prior purchases. Not responsible for typographical or printing errors. Other restrictions may apply Toyota vehicles only. Expires 04/30/2019 DLOF-002_N

4-WHEEL ALIGNMENT

\$99⁹⁵ OR \$79⁹⁵

WITH PURCHASE OF 4 TIRES

- Check front and rear wheel caster, camber and toe-in on applicable vehicles
- Check all specifications to achieve proper thrust and centerline angles
- Inspect steering linkages and shocks
- Check tire pressure and tire wear

Must present when service order is written. One coupon per customer. May not be combined with other offers. Not applicable to prior purchases. Not responsible for typographical or printing errors. Other restrictions apply Toyota vehicles only. Expires 04/30/2019 ALN-112B

PARTS & LABOR BONUS COUPON

| | |
|----------------------------|-------------------|
| Spend \$100-199 | Save \$10 |
| Spend \$200-299 | Save \$20 |
| Spend \$300-399 | Save \$30 |
| Spend \$400-499 | Save \$40 |
| Spend \$500-599 | Save \$50 |
| Spend \$600-699 | Save \$60 |
| Spend \$700-799 | Save \$70 |
| Spend \$800-899 | Save \$80 |
| Spend \$900-999 | Save \$90 |
| Spend \$1000 or more | Save \$100 |

Must present when service order is written. One coupon per customer. May not be combined with other offers. Not applicable to prior purchases. Not responsible for typographical or printing errors. Other restrictions may apply Toyota vehicles only. Excludes tires, batteries and subset services. Expires 04/30/2019 STS-017A

PROUD WINNER OF THE PRESIDENT'S AWARD FOR THE 2ND YEAR IN A ROW!



TOYOTA
Let's Go Places

Doing Business the Right Way The Seeger Way



ENGINES FOR LIFE

Call for details
Non-Factory Lifetime Limited Warranty
Good at participating dealerships



SATURDAY SERVICE 8AM-4PM



Toll Free:
800-844-6026

Next to Walmart, St Robert
573-336-7111
SeegerTOYOTA.net



SEEGER CARE

ALL PREOWNED VEHICLES COME WITH SEEGER CARE!

- FREE** (3) SCHEDULED OIL AND FILTER CHANGES
- FREE** MULTI-POINT INSPECTION WITH EVERY OIL CHANGE
- FREE** EXTERIOR CAR WASH WITH EVERY SERVICE VISIT
- FREE** LIFETIME SAFETY AND EMISSION TESTING
- FREE** SAME-DAY SERVICE LOANER CAR
- FREE** TANK OF GAS

Service Only at Seeger St Robert/St Louis

†Does not include tax, title, and license. * Seeger Care offer good for Less than 85K Miles and Less than 10 years old Prices do not include any College Grad or Military Rebate. See sales rep to see if you would qualify for additional savings. Prices does not include \$199 dealer administrative fee. Cannot be combined with any other offer. Prior sales final. See dealer for details. Advertised vehicle may not be exactly as pictured and are subject to prior sale. We cannot be responsible for typography or photography. ** St. Robert, Mo. Inventory

TRANSMISSION AND TRANSFER CASE: 86 Ford F250. \$200obo. Rolla, 573-308-5884.

WOOD STOVE: cast iron, front opening, on legs, used only one season. Rolla, 928-514-0505.

AUCTION REMINDER: Estate Auction Sat. April 20, 10am. Drenon Auction Service. Please see our Auction Directory for more information.

JOHN DEERE 265 DISK MOWER: 3pt, nice, 300 acres. \$6900. Viola, 870-458-2580.

IHC 806 DIESEL TRACTOR: with loader \$7,800, W.F. 3pt. (573)765-4406

AUCTION REMINDER: 13th Annual Spring Consignment Auction. Saturday, April 13th @ 10AM. Please see our Auction Directory for more information.

facebook

Email or Phone Password Log In

Forgot account?

WT
WEEKLY TRADER MAGAZINE

Weekly Trader
@myweeklytrader

Home About Photos Reviews issuu Posts Community Info and Ads Create a Page

Like Share ... Send Message

Search for posts on this Page

Broadcasting & Media Production Company in Lebanon, Missouri

5.0 ★★★★★

Community See All

324 people like this

333 people follow this

About See All

PHOTOS

KEN & KATHLEEN ARD AUCTION
August 11, 2018 • 9:30am
HWY 19 S to CR 6250, Gladden, MO

VEHICLES & EQUIPMENT
Jodge Grand Caravan 172K
Chuckwagon 4x2 UTV
ama 46" Zero-turn mower 2246
bob trailer
John Deere rake
oland Round Baler 5x5 twine
y Ferguson 725 Mower Conditioner
rickle
Sweeper
erator

GUNS
ing bolt action 25-06 w/scope
Double barrel shotgun
39A 22LR w/scope
jean 1100 70ga modified choke 2-3/4
erg pump 20ga
Hains 54 cal muzzleloader
He Stack-on 24 gun
ests
amera
g blind

HOUSEHOLD
glassware
c couch
recliner
cedar log bed
to bed and mattress

Glass and wood display cabinet
Occasional chair
Lot of misc kitchen ware
Miscellaneous knock knacks
TV trays

OUTDOOR
BBQ grill made from fuel tank
2 - Outdoor swings
Bird Houses
Coolers
Lawn chairs
5 piece patio set
Rakes
Shovels
Misc yard tools

TOOLS
Chest tool cabinet
2 sets of MAC tools
Various MAC tools
Ball Joint sockets
Let misc tools
34-ton log splitter
Nail guns
Sihl 200 chainsaw
Table saw
Wood planer
Woodworking tools

REAL ESTATE
To be offered day of sale

Gary Sexton Auctioneers
ABSOLUTE REAL ESTATE AUCTION
SATURDAY, AUGUST 11, 10:00 A.M.
For Auction: Owners are purchasing another home.
P.O. Box 1013 Hutchinson, MO 64501
CR6330 (Just South of Hwy 101) on a 1/4 Section for Gary Sexton Auction Sign

OUTSTANDING REAL ESTATE
The Home at Jelliff Spring

OUTSTANDING PERSONAL PROPERTY

CHUCK & MELISSA SWIFT, OWNERS
Howell, Oregon & Clark Counties Since 1978
www.garysexton.com
Hutchinson, Mo. 64520-2889

ING ESTATE AUCTION
Sunday, August 12, 2018 @ 1 p.m.
Hutchinson, Mo. 64520-2889

Lebanon, MO

NEW IDEA: Manure spreader, 125 bushel, always shedded, needs tires. \$500. Warsaw, 660-723-0103

FOR SALE: Set of 4 tires, 255-50/R20. \$100. 573-765-3603, 573-692-1492.

17 JD HX-15 BUSHHOG: Chains like new. \$14,750. 870-458-2238.

WW CATTLE CHUTE: On wheels, heavy-duty, \$1,000. Warsaw, 660-723-0103.

M8540 KUBOTA: 4wd tractor with loader, 85HP, open station, low hours, hydraulic shuttle, 12 speed. \$32,500. 417-270-1505.

WANTED LIVE IN LADY: Own apartment. Call for work details, 573-364-2660.



DECK Season Is HERE



- Complete Building Packages
- No Order Too Big Or Too Small

**Floor To Roof Building Supplier,
Complete Indoor Lumber Yard**



13737 Hwy. 52 ▪ Versailles, MO 65084
PHONE: **573-569-4800** ▪ FAX: **573-569-4801**
www.frontiermetal.biz

Complete Building Supplies For The Pro Contractor And The DIY Remodeler

CLEANING OUT KITCHEN CABINETS & CUPBOARDS: Inside only. \$125 or trade. 573-327-9068.

AUCTION REMINDER: Saturday, April 13th @ 9 am. Rick Dixon Auction. Please see our Auction Directory for more information.

TED WILLIAMS: Model-200, 12-gauge pump. \$225. JC Higgins: Model-20, 12-gauge pump. \$225. 573-756-1065, Doe Run.

GIRLS HUFFY BICYCLE: Rode one time 26". \$75. 417-589-8200.

AUCTION REMINDER: 2 Day Farm Sale, Saturday & Sunday, April 13 & 14 @9am. Berti Auction. Please see our Auction Directory for more information.

JOHN DEERE MODEL-60 TRACTOR: overall good condition. \$2,500. 636-584-3605.

WILBER'S FISH BRANCH ANGUS: Large selection of yearling and 2yr old bulls available, Calving ease, good growth and carcass traits, very docile. Mexico, Mo. 573-473-6019. www.fishbranch.com

2014 FORD F-150 4X4: 6cyl, reg-cab, short bed, alloy wheels, 36,000miles, sharp, prior salvage. \$13,500. 417-924-6061.

SAM MILLERS LOGGING looking for standing timber. 417-589-0346

42" BRUSH HOG: \$250. 815-904-4248.

INDIAN ARCHERY 1950'S: wood, recurve bow, with original box of Ben Pearson arrows. \$195. Rolla, 573-364-7465.

TOMATO PLANTS, 25 VARIETIES AVAILABLE After 25 April. CHARLIE'S FARMS, MILE WEST ROUTE 66, LEBANON.

AUCTION REMINDER: Online Auction going on now for Home. Atterberry Auctions. Please see our Auction Directory for more information.

USED OLD LUMBER: from large barn, will sell to highest bidder. 573-759-6885.

NEW HOLLAND: 1411 diskbine w/roller. \$7,250. 573-765-4406.

**You pull it,
we sell it...
CHEAP!**



U★PULL★IT
SELF SERVICE AUTO PARTS

Lebanon, MO
22395 Rt. 66
417-588-3555
Fax 417-588-8955

Mon-Fri 8am - 6pm • Sat 8am - 4:30pm • Sun 9am - 4pm

WWW.SSUPULLIT.COM
Located next to S&S Recycling.



S&S RECYCLING
LEBANON - MTN. GROVE
417-588-3555 417-926-3360

Roll-off, Trailer, and Mobile Crushing Services Available

For All Your Metal Recycling Needs

| | |
|-----------------------------|------------------------------|
| Lebanon, MO | Mtn. Grove, MO |
| 22395 Rt. 66 • 417-588-3555 | 8930 First Rd • 417-926-3360 |
| Fax 417-588-8955 | Fax 417-926-0180 |

Monday-Friday 8:00am-4:30pm (Closed 12pm-1pm Lunch)
Saturday 8:00am-Noon
email: contact@ss-recycling.com
Buyer of all types of scrap metal.

AUCTION REMINDER: 178+/-Acre Real Estate Auction. On-Line bidding ONLY. Auction ends April 27th at 1:07Pm. Mickey Duckett Auctioneer. Please see our Auction Directory for more information.

SAM MILLERS LOGGING looking for standing timber. 417-589-0346

TWO BUMPERS: For 62-64 Chevy 2 Nova. \$100. 573-734-2822, Bismarck.

FOUR COOPER 245X75X16 TIRES: No cuts, plugs, patches, 10 ply. \$175. 417-399-6687.

NEW LOVESEAT: Chocolate. \$75. 815-904-4248.

RED ANGUS BULLS: 20 months old, Red Balancers, 15 months old. Pinnacle Ranch. 417-679-4269, 417-679-2330, Gainesville, MO.

8-WHEEL V-RAKE: Hydraulic fold. \$1,800. Eldridge, 573-363-5213.

CATTLE RACK: Metal, slide-in for 16' trailer. \$425. 636-239-4124.

2009 HARLEY ULTRA ELECTRIC GLIDE CLASSIC: 12,000mi., Asking \$13,000 or trade for Side by side four wheeler drive and or small jon boat for fishing. 812-390-1128, 417-265-1121. Thornfield.

NEW NEW NEW DISPLAY HOUSE!!! Call Marla to hear what is new inside 573-657-7040, chateauhomes.net.

CHECKERED WALNUT WOOD STOCK PISTOL GRIP: for Marlin Model 336 or 1895. \$100. Washington. 636-239-2695.

AUCTION REMINDER: Tuesday, April 12th @ 9 am. Rick Dixon Auction. Please see our Auction Directory for more information.

\$\$\$\$\$ MOBILE HOME SAVINGS That is what we are about for the last 36 years. New. Used. All Sizes. 573-657-2176 amegamobile-homes.com

GRIZZLY TABLESAW: 10", left tilt, w/ extension table. \$1,200. AOM paint sprayer. \$250. Kremlin pump & spray gun. Lebanon, 573-247-2598.

MYOTONIC FAINTING GOATS: Moms w/kids. Mom & buckling. \$200. Mom & female. \$300. OBA, 417-741-1375, Hartville.

LITTLE TYKES TOYS: 8 Different large pieces, like washer and dryer, doll house and desk. All for \$125. 636-239-4124.

AKC AKITA PUPPIES: Born Jan 26. \$500. 417-458-4242.

CUB CADET FT-24 TILLER: excellent condition. \$399. 573-836-2530.

AUCTION REMINDER: Saturday, April 13th, 9am. Buckner & Gately Auctions. Please see our Auction Directory for more information.

STANDING KENMORE FREEZER: working, light, easy to move. \$50. 636-297-1747.

DARDEN PROFESSIONAL TIMBER HARVESTING, BUYING STANDING TIMBER: Great prices, improve wildlife habitat and improve forest health. State Certified & Fully Insured! 573-247-4808 or 573-739-1122. Salem

WANTED, TIMBER TO LOG ON SHARES: Honest, reliable, references. 417-533-4607, 417-664-1195.

I BUY.... used mobile homes. Call or text 573-338-6250 or email GregS.CDH@outlook.com

HEAVY 10FT FIELD ROLLER: \$1,500. 573-765-4406.

FOUR 17" TIRES FOR VAN. \$35. 573-734-2822, Bismarck.

LOOKING FOR WATER BICYCLE: Any shape. Leave message, 618-758-2830.

VOYAGER MOTORCYCLE TANK BAG: Never out of original bag. \$50. 417-457-1023.

WEEKLY TRADER MAGAZINE



Let us help you grow your business!

For your advertising needs

Call Debbie Calvin • 573.465.3753

weeklytrader@gmail.com



CHISHOLM TRAIL BALE BEDS

SAVE \$300
 UNTIL MAY 31, 2019

GET YOUR TRUCK OUTFITTED WITH A CHISHOLM TRAIL HAYBED TODAY!
LET US BE YOUR PEOPLE!

WESTGATE TRAILER & EQUIP.

417-351-6974 • 417-926-7733
 www.westgatetrailer.net
 8920 W Business 60 • Mtn. Grove, MO
 7136 W Farm Road 140 • Springfield, MO
FULL SERVICE SHOP
 OPEN: Mon.-Fri. 8-5 And "YES!" Sat. 8-Noon!

2 MENS LEATHER MOTORCYCLE JACKETS: size 44 and 42, one like new. \$50 each. Mammoth Spring, 870-966-3483.

BOSE CABINET: 25x60", all new wood, counter top, small sink. \$50. Mountain View, 801-592-6301.



BoatAngel

FREE 4-NIGHT VACATION!
 Donate Car • Boat • RV • Motorcycle

1-800-CarAngel
 www.boatangel.org

BRUSHOG HEAVY DUTY: 3pt disk, Nice. \$1,600. 573-765-4406.

TWIN BED W/FRAME: Clean. \$40. 815-904-4248.



ROXOR **Cowtown USA**
 CUBA, MO 573-885-4366

NEW MAHINDRA ROXOR FRESH OFF THE ASSEMBLY LINE!!

- Steel Body no plastic to break
- 5 Speed Manual Transmission no belt to break
- Fully-boxed, ladder-construction, steel truck-style frame
- Turbo Diesel 4 cycle engine which produces 144 ft lbs of torque and 3490 lbs of towing capacity to get your jobs done. • Made in Detroit
- 2 YEAR WARRANTY OR 12,000 MILES • Starting at *\$15,999

Visit us at www.cowtownusainc.com

AUCTION REMINDER: Every Wednesday at 10:30 am. Farmington Livestock. Please see our Auction Directory for more information.

2004 CHEVY Z71: 4X4 extended cab, 4-door. 190,000 miles. \$5,975. 417-399-6383.

CUSTOM SAW MILLING: Lebanon. 417-533-4607, 417-664-1195.

PORTER CABLE NAIL GUN: BN138, 18ga brad nailer, new in case, manual, 1 3/8th-1 5/8th. \$48 OBO. Ava, 417-686-0032

JOHN DEERE 4240: Diesel Tractor, cab and air, power shift, 3,900hrs, 110 HP, nice. \$29,500. 573-765-4406

CATAHOULA PUPPIES: Some bob-tailed, blue eye, merles, \$150. 417-543-4816.

100 BALES GOOD HAY: 5x6, never wet, in barn, \$100/bale. Warsaw, 660-723-0103.



R-FAB BINS
 (660)281-3078

Bucket Bins
 Stationary or Portable

Overhead Bins
 Located in Warsaw, MO

TWO GAITED TRAIL GELDINGS, Registered purebred Arabian horses and Nubian goats. Rabbits \$7, Free roosters. Raymondville, 573-548-0219, 573-201-5901.

SACAGAWEA GOLDEN DOLLARS: Face value \$1. Original issue 2000, uncirculated. In rolls of 5. \$30. 417-686-0032, Ava.



NEW BIG TEX 22GN FLATBED TRAILER

JIM'S Motors

facebook

JIM'S Motors TRAILERS
 I-44 at Exit 208 • Cuba, MO
 www.jimsmotors.com
(573)885-2595
(800)897-9840

GREAT SERVICE!
 1957-2018 GREAT PRICES!

LAKE OF THE OZARKS- Family Fun-2 lot Special \$6,995-\$95 down, \$89 per month. Own for investment. Owner Financing. Free lake access and boat ramps. Also: close to a handicapped accessible covered fishing dock with lighted area. Prices goes through APRIL 15th. Take Lake Road 135-12 to Ivy Bend Office. Open Thurs, Fri, Sat, Sun, Mon and Tues. Call until 7PM everyday. 573-372-6493.

C-HWY PRODUCE AUCTION: FRIDAYS 10AM STARTING APRIL 5th, RUNNING THRU END OF APRIL. THEN TUESDAYS AND FRIDAYS MAY THRU OCTOBER. *COLE CROPS *BEDDING PLANTS *EARLY PRODUCE *FLOWERS- HANGING BASKETS. NORTH OF SEYMOUR, MO ON HWY C FIVE MILES, 1/4 MILE EAST ON SHORT STATES HWY P. FOR MORE INFORMATION CONTACT SAMMY J.M. SCHWARTS 4773 HAZEL/tabWOOD DR. SEYMOUR. AUCTIONEER: STEVE CANTRELL, (417)380-0562. DON'T FORGET ANNUAL MOTHER'S DAY FLOWER SALE MAY 7th!



MIDWEST CONSTRUCTION

Free Estimates!

- Pole Barn • Garages • Framing
- Remodels • Roofing • Concrete
- Decks & Porches

Contact Abner Glick
 417-664-1794

USED AMERICAN FAMILY DOUBLE-WIDE These do not last! Excellent condition. Call Quick, 573-499-9993 columbiadiscountohomes.com.

1987 SHELBY TURBO Z DAYTONA: 74,000 miles, excellent condition. \$5,500. 314-616-9862.

WEEKLY TRADER MAGAZINE

YOUR AD GOES HERE!

Add **YELLOW** Color For An Additional **\$3** Per Reader Ad

All ads will include Phone Number (unless requested to be deleted by advertiser) and City Or Town, Phone Number with Area Code counts as one word. City or Town counts as one word.

RATE: 80¢ Per Word. All Classified Ads Require Payment Before Print.

| | | | |
|--------------|--------------|--------------|--------------|
| (1) 80¢ | (2) \$1.60 | (3) \$2.40 | (4) \$3.20 |
| (5) \$4.00 | (6) \$4.80 | (7) \$5.60 | (8) \$6.40 |
| (9) \$7.20 | (10) \$8.00 | (11) \$8.80 | (12) \$9.60 |
| (13) \$10.40 | (14) \$11.20 | (15) \$12.00 | (16) \$12.80 |
| (17) \$13.60 | (18) \$14.40 | (19) \$15.20 | (20) \$16.00 |
| (21) \$16.80 | (22) \$17.60 | (23) \$18.40 | (24) \$19.20 |
| (25) \$20.00 | (26) \$20.80 | (27) \$21.60 | (28) \$22.40 |
| (29) \$23.20 | (30) \$24.00 | (31) \$24.80 | (32) \$25.60 |
| (33) \$26.40 | (34) \$27.20 | (35) \$28.00 | (36) \$28.80 |
| (37) \$29.60 | (38) \$30.40 | (39) \$31.20 | (40) \$32.00 |

Place your Classified Ad TODAY!

417-532-2800 • 800-665-8875

Fax: 417-532-8140

Or Mail To: P.O. Box 192 • Lebanon, MO 65536

For your convenience we accept MasterCard, Visa, Discover or American Express



DEADLINE FOR CLASSIFIED ADS: MONDAY 12 NOON!!

Name _____

Address _____

City _____ Email _____

State _____ Zip Code _____ Phone _____

Ad Total \$ _____ X # Weeks _____ = Amount Enclosed \$ _____

**You pull it,
we sell it...
CHEAP!**



U★PULL★IT
SELF-SERVICE AUTO PARTS



Lebanon, MO

22395 Rt. 66

417-588-3555 • Fax 417-588-8955

**We also have a large inventory of used tires
and be sure to check out our used car lot!**

Mon.-Fri. 8:00am-6:00pm • Sat. 8:00am-4:30pm • Sun. 9:00am-4:00pm

WWW.SSUPULLIT.COM

Located next to S&S Recycling.



For All Your Metal Recycling Needs

Lebanon, MO

22395 Rt. 66

417-588-3555

Fax 417-588-8955

Mtn. Grove, MO

8930 First Rd

417-926-3360

Fax 417-926-0180

**Roll-off, Trailer, and
Mobile Crushing
Services Available**

Monday-Friday 8:00am-4:30pm (Closed 12pm-1pm Lunch)
Saturday 8:00am-Noon

email: contact@ss-recycling.com

Buyer of all types of scrap metal.