

GO Lake Country

FREE

ELY • LAKE VERMILION • VOYAGEURS

Summer 2023



- YOUR MAP OF THE LAKE COUNTRY...PG 8
- LOCAL EVENTS...PGS 10-13
- CATCH YOUR SUPPER...PG 14
- AND MUCH, MUCH MORE!

Published by The Timberjay, Inc.

BEARS



photo © Jim Stroner

And so much more!

NORTH AMERICAN BEAR CENTER

NORTHWOODS ECOLOGY HALL

1926 Hwy 169, Ely, Minnesota
1 mile west of Ely • 2 hours north of Duluth

Visit Bear.org for more info

WELCOME to the LAKE COUNTRY!

Whether you're new to our area, or a regular visitor, we're happy to have you in the Lake Country and we've produced this guide specifically to make your stay here the best it can be. The word is certainly out that our region has some of the best outdoor recreation opportunities found anywhere in the Upper Midwest. While we know many of you are here for the fishing, camping, boating, or hiking, the Lake Country is also known for its full schedule of summer events. You'll find our events listing starting on page 10 and stories throughout highlighting the wide range of other things to do here in the Lake Country.

For us, home is the Lake Country, extending from Voyageurs National Park to Lake Vermilion to the Ely area. We know it well and are excited to share it with you. And we hope as you get to know our little piece of paradise, you'll come to love it here as much as we do. Maybe, someday, we'll even be able to call you neighbor!



shoes & things
clothing footwear accessories
M-F 10-5 Sat 10-3 downtown virginia



On Lake Vermilion!

4066 Cty Rd 77, Tower, MN
218-753-6004 • pier77minigolf.com

Featuring:

**18 Hole Mini Golf • Ice Cream
Malts & Shakes • Pizza
Coffees • Cold Drinks**

OPEN: Memorial Day Weekend through Labor Day
HOURS: Mon-Sat: 10 AM to 7 PM, Sun: 10 AM to 5 PM
(Call or check website for most current hours)

EXPLORE >>

LAKE COUNTRY COMMUNITIES



Far left: Lots of summertime celebrations in the Lake Country.

Middle: The grounds of the Nelimark Museum in Embarrass.

Left: Great walleye fishing comes naturally in the Lake Country!

Ash River Trail

Located on the edge of Voyageurs National Park, this small resort community is the perfect destination if you're looking to really get away from it all. From the six distinctive resorts found here, you have direct access to over a thousand miles of pristine, pine-studded shoreline.

Babbitt

Located on the eastern end of the Mesabi Iron Range, Babbitt remains an active mining town. Nearby Birch Lake, a sprawling reservoir just northeast of town, offers scenic vistas and great fishing. Only two portages away from the Boundary Waters Canoe Area Wilderness.

Cook

A thriving timber town, Cook serves the western end of Lake Vermilion and the Little Fork River Valley. This bustling community hosts interesting shops, an active arts scene, and a wide range of medical services for when you twist your ankle out on the trail.

Crane Lake

If you're looking to relax, you've come to the right place. Located at the border, with Canada on the opposite shore, Crane Lake offers a full service outpost, with a wide range of resorts, houseboat rentals, and outfitters, whether you're headed to the Boundary Waters or Voyageurs National Park.

Ely

The community at the end of the road. Once a mining town, it's become the gateway to the Boundary Waters and with outfitters galore, it is now widely viewed as one of the top outdoors towns in America. It's got the best shopping north of Duluth, a thriving arts community, and great restaurants.

Embarrass

Once a Finnish enclave, this is a community that is still proud of its heritage and its reputation as the coldest place in the Lower '48. You can visit the Darwin S. Myers WMA for bird and wildlife watching. The Nelimark Homestead Museum is opening Memorial weekend.

Lake Kabetogama

Well-known as a fishing hotspot, Lake Kabetogama is home to numerous top-notch resorts all located right on the edge of Voyageurs National Park. From here, you can access all of the park's major lakes.

Orr

If you want colorful history, Orr has it in spades. This former frontier town has stories that put the Wild West to shame and you can read about it in the book "Unforgettable Orr," available at the Orr Visitors Center. It's the gateway to Voyageurs National Park and the Vince Shute Wildlife Sanctuary, the best place in North America to see wild black bears.

Tower-Soudan

They're the oldest communities north of Duluth, founded in 1883 just ahead of the opening of the Soudan Mine, Minnesota's first and deepest iron mine. These former mining towns are tying their future to beautiful Lake Vermilion, a top destination for visitors and new residents to the area. Don't miss the newly-developed Lake Vermilion-Soudan Underground Mine State Park.

And While You're Here...

Your directory of just about everything there is to do in the Lake Country

DON'T MISS >>

SHOP FOR LOCAL FOODS

Farmers markets are held weekly during the summer in Ely (Tues. 5-7 p.m. starting June 6), Tower (Fri. 4-6 p.m. starting June 16), and Cook (Sat. 8 a.m.-Noon, starting June 17). Enjoy fresh, quality produce, artisan breads, preserves, and local specialties produced by area residents. It's a great way to "shop locally!"



RIDE THE LAKE VERMILION MAIL BOAT

Looking for a great way to explore Lake Vermilion with a seasoned captain at the helm? You can see over 80 miles of this scenic lake by catching a ride on the mail boat, based out of Aronson Boat Works, located just west of Tower on Hwy. 169.

Lake Vermilion is home to hundreds of water-access-only residents during the summer months, and it's one of the few places in the country where the U.S. Post Office still delivers the mail each day in the summer by boat. The mail boat departs from Aronson's six mornings a week, at 9 a.m., from June 1-Labor Day. The cost is \$25 for adults, \$12 for children 12 and under. Call 218-753-4190 for reservations.



WILD BEARS >>



VINCE SHUTE SANCTUARY

If you want to see black bears in the wild, this is the place, named after an Orr area logger who lived his life in the deep woods and came to befriend the wild creatures around him. Today, the sanctuary provides a safe viewing platform to watch the bears that come to feed on sunflower seeds and other foods put out by sanctuary staff.

See more details on pgs. 32-33

Just the Facts

Lake Vermilion/Soudan Mine State Park
Soudan, MN • Hiking trails open. New surface tours Memorial - Labor Day. Underground tours suspended due to ongoing mine shaft maintenance. Call 218-300-7000 or www.dnr.state.mn.us for latest information

Bear Head Lake State Park
Ely, MN • Park activities, camping, hiking trails, swimming beach, and fishing. Call 218-235-2520 or www.dnr.state.mn.us for latest information

International Wolf Center
Ely, MN • Open daily 9-5, May 26 - Oct. 22, reservations suggested. 218-365-4695 www.wolf.org

Embarrass Heritage Homestead Tours
Embarrass, MN • Call 218-984-2084 for details. www.embarrass.org

Orr Visitor Center and Wetlands Walk
Orr, MN • Bogwalk • Call for special activities 218-757-3288

VNP Kabetogama Visitor Center
County Rd. 123 • Open late May to late Sept., closed some holidays. www.nps.gov/voya 218-875-2111

VNP Ash River Visitor Center
Off County Rd. 129 • Open late May to late Sept., closed some holidays. • www.nps.gov/voya 218-374-3221

Dorothy Molter Museum
2002 E. Sheridan St., Ely, MN • Open 10-5 daily May 27 - Sept. 4. Then Open 10-4, Friday-Sunday in September. And 10-4, Friday-Saturday in Oct. 218-365-4451 • www.rootbeerlady.com

Ely Chamber of Commerce
1600 E. Sheridan St., Ely, MN. www.ely.org • 218-365-6123

North American Bear Center
Ely, MN • Open daily May 5 - 26, 10-4; May 27 - Sept. 3, 9-6; Sept 4 - Oct. 29, 10-4; Dates/times subject to change. 218-365-7879 • www.bear.org

Vince Shute Wildlife Sanctuary
Orr, MN • Open Tues. - Sat., May 27 - Sept. 3. Open Sunday of Memorial Day, Fourth of July, and Labor Day weekends. www.americanbear.org for more information. 218-757-0172 bears@americanbear.org

GO Lake Country
Minnesota's Boundary Waters

Office Location:

414 Main St., PO Box 636,
Tower, MN 55790

Call (218) 753-2950 or email
editor@timberjay.com for
advertising information.

Cover photo by J. Summit

DWIGHT ZAUDTKE
- Realtor -
Keller Williams Premier Realty

651-261-4032
dwightzaudtke@kw.com

BARB HEGG
- Associate Broker -
Vermilion Land Office

218-742-2369
barb@vermilionland.com



ST. MARY'S POINT - LAKE VERMILION

Looking for your dream lakefront home? Look no further! This stunning year-round Lake Vermilion home is a true showcase, featuring floor to ceiling windows that provide breathtaking views of the lake and its surroundings. The main home boasts 3 BR and 2 BA, providing ample space for you and your family to relax and unwind. Additionally, there's a 2 BR, 1 BA guest cabin, perfect for hosting family and friends. Relax and rejuvenate in the sauna and store your boat in the boathouse for easy access to the lake. New metal roofs on all the buildings and many updates! The undeveloped lake shore joining state and federal land means you can enjoy ultimate privacy and seclusion on this 2.5 acre/800 ft+ shoreline while still having easy access to all the lake has to offer. Enjoy stunning sunsets and moonrises from the wrap-around deck, or prepare delicious meals in the updated kitchen featuring Knotty Alder cabinets, new appliances, granite counters and hickory flooring. This property is truly a gem, offering everything you need for a perfect lakefront lifestyle. Don't miss out on this incredible opportunity! Easy water-access! \$1,500,000



SURFACE TOURS OFFERED DAILY

Soudan Mine Tour Info
mndnr.gov/soudanmine



Bed & Breakfast • Retreat & Conference Center

Cozy Bedrooms (Private Or Shared Bath)
Continental Breakfast / Wifi
Outdoor Decks / Campfire Area
Near Lake Vermilion Beach / Public Access

Adjacent To Mesabi Hike-Bike Trail
Near Soudan Underground Mine
Close To Fortune Bay Resort Casino
Two State Parks Close By



218-753-2333 • Book Online • vermilionparkinn.com
30 Center St., Soudan • vermilionparkinn@gmail.com



VERMILION
LAND OFFICE
Real Estate • Appraisals

BARB HEGG
- Associate Broker -
Vermilion Land Office

218-742-2369
barb@vermilionland.com



Client Review...

We recently had the pleasure of working with Barb who truly went above and beyond to market and sell our lake home. From the moment we contacted her, she was fast, responsive, and extremely professional. She has an in-depth knowledge of the local area and were able to provide us with valuable insights into the market. What impressed us the most was her dedication. Barb was always available to answer our questions and address our concerns. We highly recommend Barb to anyone selling or in the market for a new home. Her commitment to her clients, her professionalism, and her local knowledge are truly exceptional.

CONTACT BARB for a FREE MARKET ANALYSIS!

Vermilion Land Office • vermilionland.com
PO Box 518, 210 S. Highway 53, Cook, MN 55723





"Simply the Finest" in GIFTS, RUGS & SEATING

Nordic Home North

GIFTS

GOURMET & DECOR

RECLINERS & RELAXERS

IMG

SCANDINAVIAN COMFORT

LUNA CHAIRS

IMG

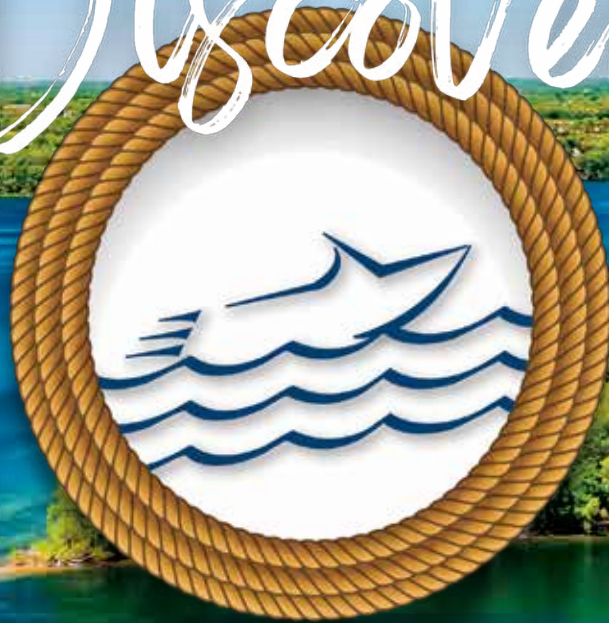
WE LOVE RELAXATION

RUGS

CUSTOM SIZES & COLORS

303 Main St, TOWER • 218-753-3313 • www.NordicHomeNorth.com • marit@nordic-home.com

Discover



YOUR BOAT CLUB



DAILY RENTALS, BOAT CLUB
MEMBERSHIPS, AND SO MUCH MORE.
DISCOVER YOUR BOAT CLUB TODAY!

LIFE IS BETTER
on the Water

YOURBOATCLUB.COM | 612-208-1800

Summer

EVENTS & FESTIVALS

There's always something happening in the Lake Country!

JUNE

ELY'S HISTORIC STATE THEATER, Special events all summer long. Check elystatetheater.org for showtimes. 218-235-6300.

MINNESOTA DISCOVERY CENTER SUMMER CONCERT SERIES, June thru September at the Discovery Center Amphitheater. Visit mndiscoverycenter.com for concert information and tickets.

GREENSTONE ARTS KIDS ARTS CAMPS, Miners Dry Building in Ely. June 6-8, for ages 7-12, and Aug. 1-3, for ages 13-18. Both camps are \$50 per student, scholarships available through Ely Community Resource. More info on Facebook at Greenstone Arts or contact artsgreenstone@gmail.com.

SPRING ART EXPO, June 7-23, with reception set for June 9, 5-7 p.m. Local art exhibited at businesses throughout Cook. Sponsored by Northwoods

Friends of the Arts. See nwfamn.org.

COOK TIMBER DAYS, June 9-11, celebrating the impact of the timber industry on Cook and the surrounding area. Parade, food, live music, softball tourney, pet show, fireworks, and more. Visit their Facebook page.

TAKE-A-KID FISHING, June 9-11. Minnesota residents 16 and older fish for free when they accompany an angler 15 and younger. For more, visit www.dnr.state.mn.us.

SAUNA DAY, June 10, at the Nelimark Homestead and Museum in Embarrass. 9 a.m. to 4 p.m. Traveling saunas on display, live music, games, demonstrations, Finnish foods and goods for sale. See www.sisuseritage.org for more.






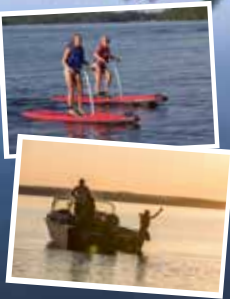
NORTHWOODS KIDS FISHING DERBY, June 10, at Veterans on the Lake in Ely. Activities include fishing, water safety, skills, invasive species, and art. Register with the Ely Chamber of Commerce by June 5. For more info, visit ely.org.

COOK MUSIC IN THE PARK, Featuring local musicians every Wednesday evening at 6 p.m., beginning June 14 through Aug. 30. Held at the gazebo in downtown Cook, or at the nearby VFW in case of rain. Food available in the park.

EXPERIENCE THE *Classic* MINNESOTA VACATION

PEHRSON LODGE

ON LAKE VERMILION

Relax & Enjoy:
 Clean Lakeside Cabins
 Spectacular New Lodge
 Large Rental Boat Fleet
 Kayaks, SUP Boards, Sailboats
 Family Activities
 Renowned Fishing

Call (218) 666-5478 or visit www.pehrsonlodge.com to see all we have to offer!

Irma's
FINLAND HOUSE
 Gifts 🌿 Jewelry 🌿 Sauna 🌿 Kitchen

OUR SAUNA SHOP FEATURES:

- PREFAB & PRECUT SAUNAS • ELECTRIC SAUNA HEATERS
- HARVIA WOODBURNING STOVES
- SAUNA ACCESSORIES




Hours: M-Sat: 10 AM-5 PM 218.741.0204
 625 9th St. North, Virginia, MN 55792 IrmansFinlandHouse@gmail.com



PETER MITCHELL FUN DAYS, June 16-18. 65th anniversary of Babbitt's biggest festival of the year. Check out their Facebook page for more information on events and times.

LAND OF THE LOON FESTIVAL, June 17-18 in Virginia's Olcott Park, celebrates the culture and customs of the diverse people who settled in Northeastern Minnesota. Kick-off parade at 9 a.m. on Saturday. Food, music, ethnic arts and crafts. Visit landoftheloonfestival.com.

YOUTH MENTAL HEALTH NIGHT, Minnesota Discovery Center, June 22 from 5-8 p.m. Join in for an evening of fun while learning about healthy living strategies, local mental

health resources and education, and much more! There will be vendors, live music, food, special guests, games, prizes, and RideMN BMX stunt shows. Contact at info@mndiscoverycenter.com or by phone at 218-254-6002.

LAKE VERMILION POWWOW, June 23-25. Traditional dancing, drumming and food on the Vermilion Reservation. Camping available. Call 218-750-7772 or 218-780-1478 for more information.

JULY

NORTHERN LIGHTS MUSIC FESTIVAL, June 30-July 22, presents three weeks of youth music camps, opera, solo recitals, orchestral and chamber music at various



venues. This year's opera is La bohème. Visit northernlightsmusic.org.

ROCK THE PARK MUSIC EVENT, July 1, 5-11 p.m. in Ely. This music event will be held in Whiteside Park with two musical acts. Beverages provided by the Ely Fire Relief Association and food trucks will be in the park for this fun, family event.

JULY 3RD FUN DAY, downtown Orr. 5K Walk/Run, beanbag tourney, street dance, fireworks at night. Visit their Facebook page.

TOWER-SOUDAN 4TH OF JULY CELEBRATION, July 1-4. One of the oldest, largest and best celebrations in the area. July 4 events include: 5K/10K run at

COME CELEBRATE OUR COUNTRY'S RICH HOCKEY HISTORY!

USHOCKEYHALL.COM

Pike River Products

Handcrafted Canvas & Leather Bags
- Gift items made by local artisans also available

515 Main St., Tower, MN • 218-735-3828
Hours: Tues-Sat, 10am-5pm
Pikeriverproducts.com

TOWER'S GATHERING GALLERY

A premier, cozy, short-term rental space created for Artisans, Makers, Vendors, Professionals and the Community.

Classes and events coming soon so please check our website.

To rent this space call for an appointment or Visit our website:
towersgatheringgallery.com

218-780-4806
515 Main Street
Suite 104, Tower MN
(off Birch Street)



8 a.m., parade at 11 a.m., pancake breakfast, children's activities, entertainment! Community Picnic in Soudan on July 2.

4TH OF JULY IN ELY, 4 Mile Run/Walk at 8 a.m. at Miner's Lake. Parade at 1 p.m. Family activities, children's games, and food in Whiteside Park sponsored by Ely Young Life. Fireworks at 10 p.m. over Miner's Lake.

CRANE LAKE 4TH OF JULY, July 4.



Boat parade begins at 3 p.m., with food, music, and fireworks at dusk. See www.visitcranelake.com or call 218-993-2901 for more.

ELY'S BLUEBERRY/ART FESTIVAL, July 28-30, Whiteside Park in Ely. 270 exhibitors displaying original art and handcrafts. Food vendors, music, children's events, stage shows. 218-365-6123 or events@ely.org.

AUGUST

CRANE LAKE, Aug. 1 celebration of National Night Out.

FESTIVAL OF SKALDS, Aug. 12-13, from 10-5. 8182 Carpenter Rd., Angora.

Join us for a weekend of Olde Norse Merriment. Follow us on Facebook for the most up to date info. Food, vendors, entertainment, ancient games, archery, and more. www.ironrangearts.com.

GREAT RIVER ENERGY/MESABI TRAIL TOUR '23, Aug. 5. We will be riding a brand new route, between Ely & Soudan, showcasing the newest completed section of the Mesabi Trail. Option of a 12, 30 or 50-mile route. All start and end at Miners Dry Building in Ely. Call 218-749-4331 or visit mesabi-trail.com.

EMBARRASS REGION FAIR, Aug. 25-27 at the Timber Hall in Embarrass.

Vermilion
CLASSIC BOATWORKS

Visit Our Shop In Tower!

We Can Help With Your Wood Boat Needs

- Restoration, Repair and Service
- Restored and Unrestored Boats for Sale from Recreational to Collectable

Dana Hein & Jeff Larson

202 N. Cedar Street, Tower, MN 55790
218-235-8163 • 218-251-3700
vermilionclassicboatworks.com
vermilionclassicboatworks@gmail.com

Engage and Grow at the Ely Folk School

EFS fosters mutually-beneficial connection between people, craft, and material

We have classes in:

- Blacksmithing
- Fiber arts
- Cooking
- Ceramics
- Foraging
- Visual Arts
- Kids Makers Morning

...and more!

ELY FOLK SCHOOL teach · learn · create
 Northwoods Skills & Crafts

209 E Sheridan St. Ely 218 235 0138 ElyFolkSchool.org



An old-fashioned fair with demolition derby, mud run, animals, garden exhibits, 5K walk/run and much more. Visit their Facebook page for more information.

SEPTEMBER

LAKE VERMILION ANTIQUE AND CLASSIC BOAT SHOW, Sept. 3, noon to 4 p.m. If you love the look of lovingly restored wooden boats, this is the show for you. It's a free annual event held at The Landing on the western-most tip of Lake Vermilion. Email lakevermilion-boatshow@aol.com



FEST DU NORD, Sept. 1-4. 11th anniversary of the Family-friendly outdoor music weekend at YMCA's Camp du Nord outside of Ely. See ymcanorth.org for more information.

ELY'S HARVEST MOON FESTIVAL, Sept. 8-10. More than 140 artists and crafters, demonstrations, food, live music at Whiteside Park. See www.ely.org for more.

SISU COMMUNITY NIGHT OUT, Sept. 10, 4 p.m. Tours, live music, and supper at the restored Seitaniemi House-barn in Waasa. 218-984-3012 or www.sisuheritage.com for more.

ELY MARATHON, Sept. 23. Full, half, and kids' marathon races, plus canoe portage races. 5K Glow Run on Sept. 22 at 7 p.m. See elymarathon.com for more info and to register.

Instant Vacation...

JUST ADD WATER!



1-877-LUDLOWS
WWW.LUDLOWSRESORT.COM





CATCH YOUR SUPPER!

Area fishing guides offer advice to get you started

You made it. You drove six hours with the family to get to that Lake Country resort you've been dreaming of for six months. You've checked in for a week, unpacked, and the kids are happily splashing in the water while your spouse lounges on the beach with a good book.

That boat you reserved for the week is parked at the dock, gassed, and ready to go. The walleyes are out there. You just need to go find them.

Ah, but where to begin?

There's a lot of water here in the Lake Country, far more than you could possibly explore in a week. So, we talked to some area fishing guides for tips on how to make

the most of your time on the water. Here's a breakdown of what they had to say.

Hire a guide:

You might expect fishing guides to offer such a suggestion, but we agree this is probably the best money you can spend, especially if you're planning to fish one of the big lakes in the region, like Vermilion, Burntside or Kabetogama. Even a half-day spent with a guide, which will run you anywhere from \$325-\$450 for up to two people, will leave you far better prepared for a week of good fishing than anything else you could do. Schedule time with a guide early on in your stay, so you can take advantage of what you'll learn for the next several days.

According to Lake Vermilion guide Rob Bryers (218-780-7939), your guide will not only take you to a few of his hot spots, he'll give you even more valuable information, such as the proper depths to fish, the types of presentation to use, and which baits are working at the moment. That's all critical information for successful fishing.

Get a good map of the lake:

You'll find that most of the popular fishing lakes in the Lake Country have detailed maps, complete with depth contours and, often, a few tips on spots that tend to produce fish. These maps are typically available at most bait shops. Lake Vermilion guide Cliff Wagenbach

DWIGHT SWANSTROM COMPANY

We specialize in insuring your home or seasonal cabin located on the lake or islands with or without vehicle access. We can also insure your toys that go with it.

LIFE • AUTO • BUSINESS • HOME OWNERS



Greg Brisky

Licensed Insurance Agent
218-727-8324

Don't be risky...insure with Brisky
gbrisky@dwightswanstrom.com



Nick Ferrell

Licensed Insurance Agent
715-392-5177

nferrell@centuryins.net
www.centuryins.net



graph, I generally won't even drop a line," said Wagenbach.

Think structure:

"For me, checking out a new lake is always about structure," says retired Ely area fishing guide Steve Foss. While most anglers think of structure as humps and lake points, which frequently hold fish, area guides agree that depth breaks, particularly the first break off shore, where a relatively shallow shoreline shelf falls off into deeper water, is an excellent place to work for fish. And

Foss says don't forget to think of weedbeds as part of the lake's structure since fish tend to frequent those areas, particularly the weedlines.

While the traditional paper maps offer this kind of information, Foss also likes some of the new fishing apps, like Navionics, that provide detailed information and mapping direct to your smartphone. "Navionics varies in accuracy from lake to lake, but most lakes are pretty well represented, and it's great for bottom contour and structure," said Foss. "There are other apps that can help with weedlines and transitions," he said.

On a big lake, like Vermilion, the amount of structure to consider is almost limitless, so Bryers says he likes to focus on

a smaller area, such as a single bay. "Take that bay and pretend it's its own lake," he said. Scope out the depth breaks, look for weedbeds, and use your electronics to start marking fish.

Troll:

In the hunt for fish, few methods can be as effective as trolling. Whether you're fast trolling with a rapala or slow trolling with a lindy rig or jig and minnow over a soft bottom, this method allows you to cover a lot of territory. Work along points and known reefs, or any new shoreline you haven't tried before. The fish will let you know where they are. "In the early season, especially, trolling can be pretty effective for finding fish," said Wagenbach.

Ask a local bait dealer:

Even when you find the right places, getting fish to bite can still be a challenge. And that's where a conversation with a local bait shop owner can be critical. Let's face it, you can fill your tackle box with lures from a discount center, but the local bait shop still survives because most anglers recognize that these are the folks who have their finger on the pulse, which makes them a must-stop. Pick up an extra lure or two, some live bait, and throw in a six-pack of pop and some ice and you're ready to hit the water. Most of all, ask the guy or gal behind the counter where the fish are biting, and what they're biting on. When the bite switches from minnows to leeches, they'll know right

away. When the fish are moving into deeper water, or setting up along the weedlines, they'll hear about it. They may be selling tackle and bait, but they also know they're selling information, so don't be shy about asking. You'll get useful intel from your local bait dealer, and they'll often have recent reports from some of the lesser-fished lakes as well as the most popular ones.

(218-753-2005) says maps will reveal structure that tend to hold fish, and will also indicate depth breaks, where fish tend to congregate. These maps are particularly valuable for many of the smaller fishing lakes in the Lake Country, that often are not serviced by guides. If you don't have a guide, you'll definitely want a map.

Trust your fish finder:

Whether you've brought your own fishing boat or are renting from a resort, you're likely to have access to an electronic fish locator. When you understand how they work, they can be an extremely valuable tool to help you put fish in the live well. In combination with a map, they can help you quickly locate key locations and even tell you whether fish are actually present. "If I don't see fish on the

Ely's Old-Fashioned CANDY
228 E Sheridan St. Downtown Ely

SALT-WATER TAFFY

More than a candy store, it's memories!

best loads of TAFFY
nostalgic CANDIES
old time SODA POP
gourmet CHOCOLATES
& so much more!

MINI GOLF!

Virginia, MN
greensonforeteenth.com

(218)780-0041

GREENS ON FORETEENTH
MINI GOLF! BIG FUN!

Bookstore Online: boundarywaterscatalog.com

Canoes
Packs
Painted Paddles
Knives
Axes
Jewelry

Clothing
Tents
Speciality Food
Yokes
Lanterns
Cookwear

Providers of the best outdoor experience

105 N Central Ave, Ely MN • 1-800-223-6565

LAKES, TRAILS & HISTORY

LAKE COUNTRY STATE PARKS HAVE SOMETHING FOR EVERYONE

With two of Minnesota's premier state parks located virtually next door to each other, the Lake Country has a wide range of outdoor fun and activities available all year round. And, not surprisingly, both state parks are centered

around spectacular lakes, that offer opportunities for fishing, canoeing, boating, swimming, along with all the land-based activities like hiking and biking, as well as exceptional opportunities for viewing birds and other wildlife.

POP the TOP on SUMMER



ELY LIQUOR
Ely Minn.

Hours:
M-Sat: 8-10, Sun 11-6

1406 E Sheridan St,
Ely • 218-365-4011

- Largest selection in the area
- Easy in and out parking for vehicles and trailers
- Fine cigars and accessories
- Climate controlled fine wine cellar
- Hard to find liquor, wine, beer at great prices
- Friendly, helpful service
- Delivery available

SHOP LOCAL • GREAT PRICE • HUGE SELECTION



Smaller incision.

MAXIMUM PRECISION.

Robotic-assisted surgery is at EBCH in Ely!

Advanced technology is now available right here in Ely with the da Vinci surgical system. Our highly-experienced experts can provide robotic-assisted surgery for hernias and gallbladders, giving surgeons greater control – so our patients have better outcomes.

PATIENT BENEFITS

-  Faster recovery times
-  Lower rates of complication or infection
-  Less pain and scarring

EBCH
Ely-Bloomenson
Community Hospital

Avoid unnecessary travel and find out how we make scheduling easy by calling **218-365-8724** or visit **ebch.org** to see if robotic surgery is right for you.



Historic Stuntz Bay boathouses now part of Lake Vermilion State Park

Lake Vermilion Soudan Underground Mine State Park

Founded in 2010, the Minnesota state park with the longest official name, has a remarkable diversity of activities available to visitors. There's plenty of history to be learned with a tour of Minnesota's oldest and deepest iron mine. You can hike through towering old growth pines to scenic overlooks, canoe in a quiet bay on Lake Vermilion, or camp in the Vermilion Ridge Campground, which opened in

2019.

The new campground includes 32 large and widely-spaced camp sites, all of which are capable of servicing either tents or RVs. Three spectacular group camps are also located at the campground, and each can house between 30-50 people. One of the camps is designed for tents, with more rustic bathroom accommodations, while the other two can house both tents and RVs, and share a full, modern bathroom and shower facility. Each of the group

Soudan Mine tours



Interpretive staff at the Lake Vermilion Soudan Underground Mine State Park will be offering a guided surface tour of the former mining operation here this summer. The surface tour will highlight the above-ground facilities at the former iron mine and the role those buildings played in the operations there. It's a great way to learn more about the operations at the former iron mine, which is Minnesota's oldest and deepest. Surface tours will begin every hour on the hour from 10 a.m. to 4 p.m. and cost \$5 per person for ages five and older, while visitors ages four and under are free.



Freshest Produce
Quality Meat
Full Service Deli
Homemade Sausage



201 Hwy 53 SE
 Cook, MN 55723
218-666-0205



Romantic log and stone housekeeping cabins on Burntside Lake for 1-10 guests



CAMP VAN VAC
 A Lakeside Resort
 ELY, MINNESOTA

Boats, Canoes, Swimming, Playground, WiFi
 Summer rates from \$600-\$1,800 per week
 Phone: 218-365-3782 www.campvanvac.com

Visit Us Again!

Nothing Beats Fall in the Lake Country

Let Summer Sparkle

WITH...CUSTOM DESIGNS



Designs by
Claude Thibaudeau



Offering

- On-site jewelry repair
- Custom remount
- Jewelry appraisals
- Watch batteries



WE BUY

GOLD • SILVER • PLATINUM • COINS • DIAMONDS

Consistently The Highest Prices Paid In The Area!

ROCKS THE JEWELERS

314 Chestnut St, Virginia, MN • 218-741-ROCK (7625) 

HOURS: Mon-Fri 10:30-4, Closed Sat & Sun    



camp also features a large, fully screened picnic shelter with a long counter and shelves for food preparation and serving, and electrical service.

The park also has eight new camper cabins, which are now open for overnight stays. The cabins are small and fairly rustic, but they're a huge step up from tent camping. The cabins have proven

to be extremely popular in other state parks, so competition for reservations is stiff.

At the same time, the park offers a number of remote campsites, that visitors can hike or paddle to, any of which offers plenty of seclusion.

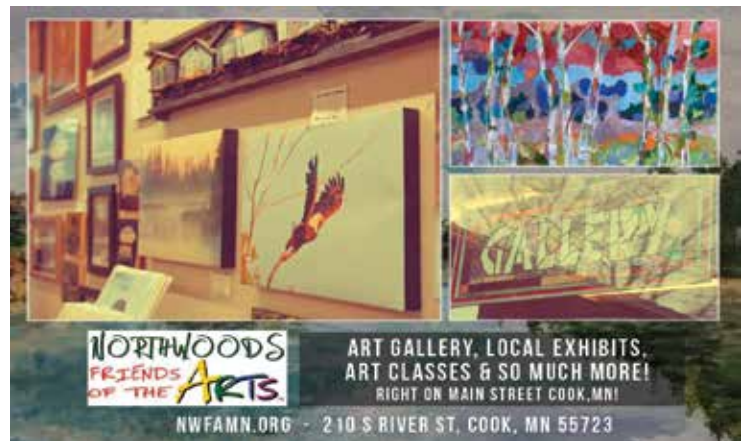
And those are just the lodging possibilities. The park hosts a growing network of hiking trails across its 4,000 acres, some offering spectacular overlooks of Lake Vermilion or some of the park's wetland complexes. Others pass through spectacular stands of old-growth red and white pine.

If you'd rather ride a bike, you're in luck. A newly-completed stretch of the Mesabi Bike Trail, which runs from Grand Rapids to Ely, is now in place and makes for fantastic biking through beautiful rolling terrain.

And, of course, there's Lake Vermilion, with hundreds of miles of winding, pine-studded shoreline and 365 islands. It isn't just one of America's most beautiful lakes—it also offers world class fishing for walleye, northern pike, smallmouth bass, or muskie. While Vermilion is sometimes too big for novice-level canoers, some of Vermilion's quieter and more protected bays, like Armstrong and Mattson Bays (both within the park), provide excellent opportunities for kayaking or canoeing.

And no trip to the park would be complete without a visit to the historic Soudan Mine. While underground tours are still suspended while the park staff undertakes a major refurbishment of the mine's elevator shaft, interpretive staff will be hosting walking tours of the above-ground facilities that were part of the mining operation there.

If you only have time for a short visit, the park has a beautiful day use area, located at the entrance to Armstrong Bay, in the northeast corner of the park. The facility is accessible by both vehi-



cle and by boat. You'll find picnic facilities, bathrooms, and a large fishing pier.

The park staff is now beginning the planning for the park's newest attraction, a main lodge, to be built on a ridge overlooking Lake Vermilion. It will provide the centerpiece for this spectacular park within the next few years.

For more information, you can contact the state park at 218-300-7000.

Bear Head Lake State Park

If you're looking for a real taste of the Northwoods, you'll find it at Bear Head Lake State Park, located just up the road from Lake Vermilion. Watch for the park cutoff along Hwy. 169, about halfway between Tower and Ely. This idyllic 4,500-acre park is heavily forested with pine, spruce, and birch and is well-known for its hiking trails, camping, and fishing. The clear waters of the park's namesake, the 674-acre Bear Head Lake, features walleye, northern pike, and crappies, while two small kettle lakes within the park are regularly stocked with brook and rainbow trout and offer good fishing throughout the year.

If you're looking for great swimming, the park's picnic area offers an excellent sandy beach. Just watch the youngsters, since the water drops off fairly quickly.

The park is a favorite destination for hikers, with 17 miles of hiking trails, nine of which are groomed for cross-country skiing in winter. The rugged, wooded terrain in the park is home to bear, deer, gray wolves, and moose, as well as many smaller mammals and dozens of species of northern forest birds, like crossbills, boreal chickadees, red-breasted nuthatches, and evening grosbeaks. It's also a great spot to view many species of neo-tropical migrants, especially warblers and vireos, in the summer months. In past years, the park has offered Saturday morning bird walks, check with the park office for naturalist-led activities.

The park also offers plenty of camping opportunities, with 73 drive-in sites, two water access sites as well as four remote hike-in campsites spread around the park. The park also has a guest house that can sleep up to ten, and five year-round camper cabins are available as well if you're lucky enough to score a reservation. Reservations for all camping at the park are recommended. You can contact the park for more information or to check for campsite availability at 218-235-2520.

Uffda Thrifts & Gifts



**Cards • Gifts • Puzzles • T-shirts
Souvenirs • Games • Toys
New & Used: Clothing, Tools,
Household, Decor, Books, DVDs**



Open Daily, Year-Round 10-5

Next to Ubetcha Antiques & Uniques • 603 Main St, Tower



Collectibles • Vintage • Artisan • Old Stuff

ubetchashop.com • "for Up-North shopping from home!"

FIND IT IN TOWER!

Open Daily, Year-Round 10-5
601 Main St, Tower • 218-753-3422



You Are Invited To A Southern Slavic Midsummer

June 17, 2023 • Tower, MN

Herb Lamppa Civic Center • 4:30 PM



Auction, Slavic Dinner & More!
*Entertainment follows at the
Lake Vermilion Cultural Center*

Register at 218-753-4100 lv. message OR
Online link: vermilionculturalcenter.org

A Benefit for the Lake Vermilion Cultural Center

Your Co-op is your Community

Power is a way of building community. At Lake Country Power, we are your energy community, and the power we provide is much more than a way to keep the lights on. It's how you plug into your family, friends and neighbors that make up your local cooperative.



Energy that Powers Our Lives

800-421-9959 • lakecountrypower.coop

Enjoy Canoe Country all year with The Boundary Waters & Quetico Calendar!



© Gary Hamer



© David Jackson



© Jim Schwartz



© Gary McGuffin

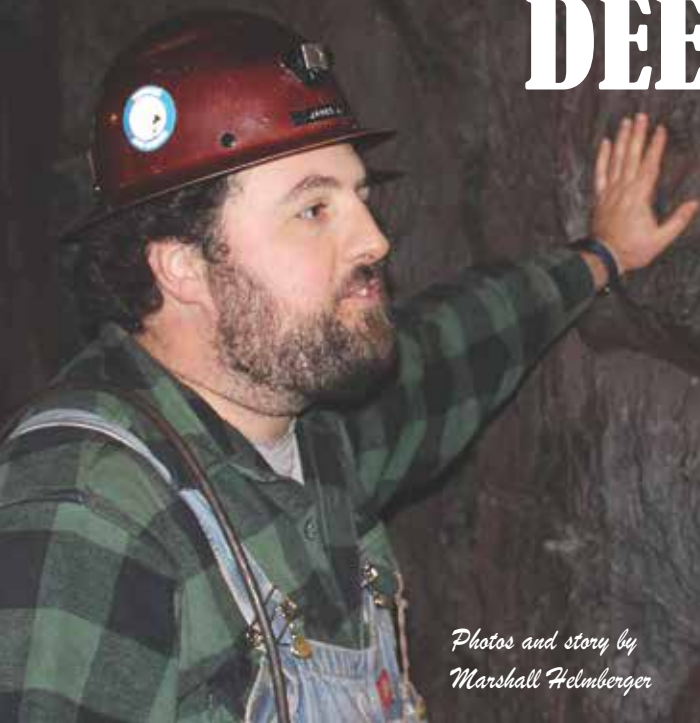
\$15.95 at your favorite stores, by mail, phone, or online

+ \$6.50 per shipping address. MN delivery add 6.875% sales tax.

PO Box 188, Ely, MN 55731 • 218-365-3375 • www.RavenWordsPress.com

RavenWords PRESS 

THE STORY OF DEEP DOWN UNDER



*Photos and story by
Marshall Helmberger*

SUDAN UNDERGROUND MINE— Minnesota's first and deepest iron ore mine still holds some of the purest hematite ever found on earth. But during the eighty years that this mine operated, finding that rich ore was like searching for a needle in a haystack, which is why this famous underground mine ceased operations more than half a century ago.

While the public often thinks of the ore deposits at Soudan as vast columns of hematite that extended from the surface down into the earth, in fact, most of the hematite was found in small pockets located within a vast formation of two billion-year-old metamorphic greenstone. The geologists who worked in the mine were under constant pressure to locate pockets large enough to justify extraction. "They generally had to be the size of a two-story house [to be viable],"



Call or text 612-749-1337

• **SEAPLANE RIDES** •

DHC-2 Beaver Flights-up to 7 people
Cessna 185 on Amphibs-3/4 people &
ON DEMAND CHARTER SERVICE
Cessna 172-2/3 people

Competitive Charter Rates & Excellent Availability

Custom amphibious seaplane charters are limited only by your imagination! Virtually any Minnesota, Canada, Wisconsin destination with an airport or a lake or River is available as a charter destination. We would love to chat with you about your getaway. Ideas below!

Fly In Fishing destination, camping, hiking, breakfast/lunch/dinner flights. Hunting trips, golf trips, wedding arrival, scenic proposal, honeymoon departure, seaplane getaway, girls trip, wine tasting, business meetings

SCENIC SEAPLANE TOURS

Taking a seaplane flight is a quintessential Minnesota experience and we make it easy to enjoy the unique thrill of flying off the water and soaring over one of the most beautiful regions in the world.

Everyone gets a window seat!

www.adventureseaplanes.com



**Lake Vermilion
TOWER • MN**

218-753-4190

- Boat Storage
- Sales & Service
- Gas & Launching



MAIL BOAT RIDES!
See 80 miles of Lake Vermilion • June through Labor Day
Reservations recommended
218-753-4190 or text



6143 Pike Bay Drive, Tower, MN 55790
email: aronsonboatworks@frontiernet.net
www.aronsonboatworks.com





according to James Juip, an interpreter at the park.

The geologists drilled thousands of expensive test cores in a sometimes-desperate search for new deposits. “Talk about a high-pressure job,” said Juip, noting that one early geologist who had miscalculated in his search for ore was later found drowned in Lake Vermilion. Over the years, men in the mine drilled thousands of miles of core, starting at the surface and moving further into the earth as the mine

expanded downward and outward. “We could take all the cores from Soudan and lay them out and we could run them out to Seattle and there’d be maybe a mile or two left over,” said Juip.

And locating a deposit was only part of the process. Once located, men called “drifters” were deployed to blast tunnels, or drifts, through the surrounding greenstone to reach the new deposit, and that process could take years. Standing near the main shaft at the 27th level, Juip pointed down the drift that miners built here in the

1950s. “Geologists told us there was ore three-quarters of a mile in that direction, and it took them three years of constant drilling and blasting to drive this drift out to the pocket of ore.”

The cost of production in such a mine was extraordinary, but the absolute purity of the hematite found at Soudan made it a crucial component of steel production for the better part of eighty years. “This ore is so pure that you can weld two chunks together,” says Juip. “It’s 99.9125 percent pure.”



living well
PHYSICAL THERAPY

402 Spruce Street, Tower MN

Independent and Locally Owned
Hands-On Physical Therapy,
Individualized Exercise &
Advanced Treatment Options:

- Dry Needling
- Graston
- Myofascial Cupping
- Pilate Reformer
- Running Analysis
- Group Exercise Classes

In-network with most insurance plans
and out-of-pocket payment options

living-well-therapy.com 218-481-7603

Go for a ride up north.

It's a cycling adventure unlike anywhere else. But don't take our word for it. Come and see for yourself.

Don't miss the
GREAT RIVER ENERGY - MESABI TRAIL
Tour
Ely to Soudan & back
August 5, 2023

For more information go to mesabitrail.com



TS HANDYMAN SERVICES

We are here to help with any of your needs.

Do you want help fixing up your property or house? We are here to help with any of your needs. Serving Northeast Minnesota, Lake Vermilion, Bear Head Lake, Ely, and more.

- Landscaping
- Construction
- Home Repairs
- Boat Maintenance
- Yearly and Monthly Services

Contact us for details at:
Phone: 218-208-0196

Email: tstatelakepm@gmail.com

Visit our website to learn more at:
www.tristatelakepm.com

Before the discovery of the Soudan hematite, most steel produced in the U.S. was of relatively low quality due to high levels of impurities. Adding Soudan ore (about 100 pounds for every ton of steel) to the mix, however, helped to strengthen the steel significantly, which made the ore valuable enough to justify the high cost of production. But by the late 1950s, steel production technology had changed and the Soudan ore was no longer necessary, which meant there was no longer an economic justification for producing ore that was many times more expensive than the newfangled taconite pellets being produced on the Mesabi Range.

While most of the Soudan ore was found in relatively small pockets, there was one exception, according to Juip—the Montana ore body, which extended from the surface at least as far down as the 27th level, located a half-mile underground. “This is the ore body

that kept us in business,” says Juip, “It’s the only pure column of ore,” he said, and it extends one thousand feet across in many places. “If it wasn’t for this ore body, we probably would have quit mining here about 1910 or 1920.”

Tough conditions

While conditions at Soudan were safer and more pleasant than in most underground mines, it still took its toll on many who worked underground. While the miners who blasted and loaded the iron ore generally maintained their health, the men who dug the miles of drifts through the greenstone suffered the effects of the rock’s high silica content. “This stuff is about 80-percent silica,” said Juip. “This dust will give you silicosis and kill you,” he said. “The men who created these drifts here in Soudan, every single one of them died within six years of the mine closing. And a number of them had lung cancer and they didn’t smoke.”

Frank's MARINE

*Not Only
SALES...But
SERVICE*



- Complete Line of Famous Lund & Crestliner Boats
- Mercury Motors
- Boat Accessories

LUND



MERCURY
"1 On The Water"

Family Owned Since 1978

4495 S. Hwy 53 • Orr, MN 55771
www.franksmarinesales.com • franksmarine@centurytel.net
218-757-3150

In the earlier years of the mine, before the establishment of unions and the transition to underground mining, the conditions were far worse. While record-keeping was limited in the mine's early years, says Juip, "we know that at least 150 men died in the open pits," and the number could be as high as 220, he said.

"Believe it or not, here in Soudan, the underground mining was actually safer than open pit mining," he said. "I definitely wouldn't have wanted to have been a guy in the open pit. It must have been a terrifying experience."

For the mine's owners, notes Juip, the deaths of miners were considered just another cost of business and the mine's early superintendent, D. H. Bacon, urged the creation of a night shift as early as 1885, even as miner deaths rose. In a recently-obtained 1885 letter from Bacon to mine owner Charlemagne Tower, Bacon noted that with a steady stream

of new workers who appeared at the mine daily, the mine could operate 24 hours a day. "Every day," wrote Bacon, "there are more than 50 people standing waiting for work. If we put those people to work on the night shift, with the acceptable losses that we discussed, there's still enough people coming in on a daily basis that we can replace the people lost and actually make a profit with a day and a night shift."

"That's the way things were looked at in the 1880s," said Juip, "and there's written proof of that."

Signs of life, on Mars?

Some of the deepest bore holes in the mine are located on the 27th level and Juip notes that some of those holes accessed pockets of ancient sea brines that have been trapped underground for billions of years. And found within those brines are previously unknown iron-eating bacteria that require no free oxygen and that appear

able to survive temperatures as hot as 2,000 degrees and as cold as near-absolute zero.

That's one of the reasons these ancient brines have attracted research attention from NASA, as Juip recently learned from one of the visitors to the mine who explained the reasons for the interest. "He told me that chemical for chemical, the rocks you guys see here today are like the rocks that were picked up by the last Mars rover probe. Iron, banded iron forma-

tions, and greenstone, all that stuff was also found on Mars."

Given the ability of the bacteria in the brines to survive extreme conditions, NASA scientists believe very similar bacteria could very well exist on Mars today. "So, he said, 'we're studying this because we think maybe our first contact with alien life is the same bacteria that makes this water right here kind of a yellowish color.'"

"How cool is that?" asks Juip.



The Natural Choice Smoke Shop

CBD - THC - Tobacco - Pre-Rolls

Nicotine Juice - Vapes - 25 flavors of Cannabis Infused Beverages
Delta 9 Edibles - Cannabis Infused Chocolate's - Glass Artwork



Spring & Summer Hours
Monday - Friday 10-8
Saturday 11-6



"The Best Smoke Shop North of the Laurentian Divide"
"Fantastic selection and great prices!"

thcgummystore.com



TRAILS TO ADVENTURE

When it comes to hiking, we've got you covered here in the Lake Country

The Lake Country is well known for its gorgeous lakes and world class fishing. Yet the region is also home to some of the most spectacular hiking trails in the Upper Midwest. No matter where you are in the Lake Country there are excellent trails designed for a wide range of ability levels and stamina, from the half-mile-long Orr Bogwalk, a fully-accessible boardwalk for all ability levels, to the 39-mile long Kekekabic Trail that winds its way through the heart of the Boundary Waters Canoe

ELY FLOWER & SEED

- All Your Garden Lovelies
- Pet Supplies

365-6555
145 W. Camp St, Ely
Open: M-Sat: 9-5:30

BRAIN STORM BAKERY

Crapola World Headquarters

GRANOLA
• HANDMADE IN ELY •
COFFEE SHOP BAKERY

402 E Sheridan St., Ely
218-235-6161
www.brainstormbakery.com
Summer: Open 7 days a week

VERMILION CLUB & POOR GARY'S PIZZA

Chicken • Wraps • Pasta • Steak
Fish • Burgers • Sandwiches • More!

Bar/Restaurant • Fine Dining • Take-Out Entertainment

Home of the "Bamboozler" Pizza

Check Facebook or call for hours

753-6277 Bar/Restaurant / 753-5707 Pizza • 3191 Hwy 77, Tower (Daisy Bay, Lake Vermilion)

STEGER MUKLUKS

We are open for curbside fittings by appointment at our factory!
Call 218-365-6634

100 Miners Dr • 10a - 5p Daily
Just a few blocks from main street!
or Order at mukluks.com
MADE IN ELY, MINNESOTA!

Area Wilderness.

Here's a sampling of just some of the trails you may want to try out during your stay:

The Ancient Cedars Trail

Created just three years ago, this remarkable trail quickly transports visitors from "downtown" Tower to a unique and untouched upland cedar forest that dates back 150 years. The site is not just extraordinary, it is a reminder of an ecological period that no longer exists in Minnesota.

Had this site burned in recent years, the regeneration of white cedar would likely not have occurred due to the presence of whitetail deer, which browse heavily on white cedar. But when these trees grew up in the late 1880s, the forests of this area were populated by woodland caribou and moose, which subsisted mostly on other foods of the forest. That makes this forest unique as a relic of a bygone era in Minnesota.

Yet the area is spectacular for more than just trees. The site also includes rugged rock outcrops, the remains of ancient mountains, that offer views of portions of the city and nearby Lake Vermilion. As you walk along the bases of these outcrops, under the deep shade of the old cedars, the rock faces are draped in mosses and ferns.



Previous page: The boardwalk on the Ancient Cedars Trail.
Above: Hike through open stands of red pine on the Pine Ridges Trail.

It's a return to the forest primeval.

Sturdy shoes or hiking boots are recommended and hiking sticks or poles may be of assistance as well.

To reach the trail, just follow the directional signs on the paved Mesabi Trail, which begins next to the Tower Train Depot Museum. In three-tenths of a mile, watch for a right turn down a grassy lane. From there, the trailhead is about 500

feet away, just over a wooden snowmobile bridge. Watch for the trailhead and an interpretive sign on your left.

The first 500 feet of the trail is on boardwalk, through a wetland area. The rest of the trail is upland, and parts of it are fairly rugged. The main trail is just under a mile in length, while a number of loops and alternative routes, provide a total of two miles of hiking opportunity.

The Pine Ridges Trail

Spectacular views of Lake Vermilion from pine-studded outcrops are among the highlights of the Pine Ridges Trail system, which is mostly completed on Tower's



JULY 1 - 22, 2023

A FULL SEASON OF PROFESSIONAL OPERA, CHAMBER MUSIC AND SYMPHONIC CONCERTS!

OPENING NIGHT CONCERT

July 1, Aurora

FESTIVE FOURTH! CONCERT

July 4, Aurora

La boheme for Teens & Tweens

July 13, Aurora

Puccini's *La boheme*

July 14, Aurora | July 16, Chisholm

Vivaldi's *Four Seasons*

July 8, Aurora | July 10, Ely

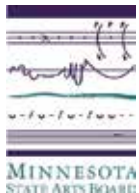
NLMF Orchestra & Concerto Competition Winners

July 20, Hibbing High School

The Schools That Did It: History of the Iron Range Schools

July 7, Aurora | July 11, B'nai Abraham CC | July 20, Hibbing High School

Celebrating 20 years of great music on the historic Iron Range



THIS ACTIVITY IS MADE POSSIBLE BY THE VOTERS OF MINNESOTA THROUGH A GRANT FROM THE MINNESOTA STATE ARTS BOARD, THANKS TO A LEGISLATIVE APPROPRIATION FROM THE ARTS AND CULTURAL HERITAGE FUND.



For additional info & a full schedule visit: northernlightsmusic.org





north side. The trails work their way up to the top of Tower's big hill, where you'll find interesting rock formations in addition to the spectacular views. One of the outcrops overlooks the Tower Airport, which provides a bird's eye view of the activity at this busy airport and seaplane base. Take the connection over to the historic Lee Mine, now a small, nearly bottomless, mine pit lake, with impressive cliffs along the northwest side.

To get there, take Tower's Pine

Left: Hiking on the oak-covered escarpment on the Herriman Lake Trail
 Next page: An overlook on Ennis Lake along the Secret/Blackstone Trail.

Street north from Hwy. 169 (Main Street) to the intersection with Birch St. N. You'll find the trailhead sign at the end of Birch St.

Herriman Lake Trail

If you're looking for some real adventure in unusual terrain, head towards Crane Lake and the signs for the Herriman Lake Trail. Most of this trail system, which totals 13 miles, winds in and around the BWCAW. The main trail runs east to Little Vermilion Lake and ends at a sandy beach, which is a great destination on a warm day. The Dovre Lake loop passes through mature red and white pines among rock outcrops, while the Echo River route ends on a high and open escarpment covered in widely scattered scrub oak. The views along the escarpment are fantastic and are especially worth the effort when the fall colors are at their peak. This is a rugged trail at times and in places it can be easy to lose the trail altogether so bring a map and compass and know how to use

them. Sturdy footwear, snacks, and water are highly recommended. Or pack for an overnight and take advantage of some of the wilderness campsites along the route. Stop in at the LaCroix Ranger District visitors center, on Hwy. 53 in Cook for a map of the trail.

Vermilion Gorge Trail

The Vermilion Gorge trailhead is located in the community of Crane Lake, 27 miles northeast of Orr. Trail parking is 0.1 mile past the U.S. Park Service office on the left. At a leisurely pace, you can hike this 1.5-mile one-way trail in about three hours. The first two-thirds of the trail is relatively easy, with a wide, gravel trail bed.

But once you reach the river, the trail turns upstream and narrows and the gravel fades to a natural trail surface. This is the steepest and most interesting part of the trail, and you'll notice a dramatic change in vegetation as you climb. The aspen/birch forest, with its dense understory, gives way to an open, park-like grove of red pine. Interpretive signs describe the historical development of the area, including logging, mineral prospecting, and the colorful fur trade era.

The deep gorge formed where the

Shop Our Brand New Ely Store!
 218-365-3188 • Hours: 7 to 7 Daily

1500 E Sheridan St, Ely

WAREHOUSE LIQUOR

Huge Selection of Wine, Beer, Liquor and Cordials

CHECK OUT OUR BEER CAVE

OVER 5,000 NEW ITEMS ADDED!

Expanded Deli and Meat and Produce Sections!

Rental Repair Sales

Summer Hours:
 Tues-Sat 9 AM-5 PM

Weekly Group Rides
 See Our Website
elybikeandkicksled.com

125 North Central Ave. • Ely, MN
 218.365.BIKE (2453)

Seasonal Hours
Main Street Tower

Tower's Only Wireless Hot Spot

Gourmet Coffee
 Fresh Baked Goods
 Soup, Sandwiches & Salads

218-753-5610

OPEN FRIDAYS

4-6 p.m. at the Tower Train Depot



overlooks, waterfalls, sandy beaches, and more.

Allow yourself at least four hours to hike the trail, longer if you want to pack a lunch, a swimsuit, and make a day of it. You'll want sturdy footwear, since the trail is rugged in many spots.

Bass and Low lakes occupy a long narrow basin that glaciers carved out of Pre-Cambrian rock. Prior to 1925, the two lakes were separated by a ridge of glacial gravel which

acted as a natural dam between them. Logging operations in the area led to the construction of a sluiceway to move logs from Bass Lake to Low Lake, a drop of nearly 60 feet. Seepage soon weakened the sluiceway as water moved through the gravel adjacent to the structure. In April of 1925, the sluiceway

and glacial ridge collapsed in a giant washout that created a 250-foot gorge in a matter of hours.

This catastrophe lowered the level of Bass Lake 55 feet in just ten hours. Bass Lake was reduced to about half its original size and two small lakes became isolated in the old lake bed. Approximately 250 acres of land was then exposed and a portion of the trail now winds along the former lakebed.

Pick up a trail guide at the U.S. Forest Service visitors center, located on Hwy. 169 on the east end of Ely.

Secret/Blackstone Trails

This gem of a trail system can be found near the end of the Fernberg Road, about 18 miles east of Ely. The 3.5-mile loop trail follows a winding path of moderate terrain, with a few steeper hills. The trail leads hikers from high scenic overlooks, to wetlands, to waterfalls. A mixed forest provides habitat for many species of wildlife, so don't be surprised to see signs of bear, wolves, or even moose.

Much of the surrounding forest was heavily damaged by the massive 1999 blowdown that flattened nearly 350,000 acres of the Superior National Forest, so it is a good spot to see the effects of that storm, as well as the forest's recovery.

The trail's ultimate destination is a rock cliff overlooking Ennis Lake. The cliff is popular with rock climbers and it provides an outstanding vista.

Pick up a trail guide at the U.S. Forest Service visitors center, located on Hwy. 169 on the east end of Ely.

Vermilion River empties into Crane Lake is a dramatic sight and definitely worth the hike. But be careful with small children on this portion of the trail. The steep cliffs can be dangerous.

Stop in at the LaCroix Ranger District visitors center, on Hwy. 53 in Cook for a map of the trail.

Bass Lake Trails

Located six miles north of Ely just off the Echo Trail, the Bass Lake trails are among the most popular in the area. A series of loop trails circumnavigate Bass and Dry lakes, and a portion of Low Lake, and they take hikers through historically and ecologically unique terrain along the way. These trails have it all, including remote backpacking campsites, scenic



B.I.C. Realty

218-666-5352
www.bicrealty.com

 Julia Maki Owner/ Broker	 Taryn Sandberg Owner Sales Associate	 Emily LaPatka Sales Associate	 Steven Baker Sales Associate
 William "Bill" Tibbitts Assoc. Broker	 Judd "Mark" Ludlow Assoc. Broker	 Sally Ludlow Assoc. Broker	 Kayla Towner Office Manager

We Sell The North

- ➔ Customized marketing plan from our experienced realtors
- ➔ Aggressive print, social media and digital marketing
- ➔ Complete and professional service pre-listing to post-closing
- ➔ Drone, virtual tours & free property valuations



at the
Cook
City Park

SATURDAYS

8-NOON

June - September

STARTING
JUNE 17



MARJO MOTEL

Internet-Fridges-Microwaves-TVs



Highway 169 • Tower, MN
on the left as you
enter from the west

218-753-4851

www.marjomoteltowermn.com

VERMILLION



- We Use Cook Building Center & Voyageur Lumber of Ely Products
- Premium Shingles & Metal Roofing Options
- We do Commercial Flat roof EPDM (Rubber) roofing

218-350-3550
Open by appointment or chance



Insured • License #BC785662

We do FREE estimates
VermillionRoofing.com

ROOFING.com



**Come check out
the Latest Roofing
Products at our
NEW OFFICE IN TOWER!
502 Main St.**

**VERMILLION
ROOFING.COM**

Serving the Ely, Tower
and Vermilion Areas

FREE ESTIMATES

License # Lic. #DCT85682



“Serving the entire Iron Range”

VermillionRoofing@gmail.com

A SENSE OF HISTORY>>

MUSEUMS & MORE



TOWER-SOUDAN DEPOT MUSEUM

Learn about Tower-Soudan history at this small, but fascinating museum, located inside Tower's historic train depot. You can also tour the restored train cars and caboose located next to the museum. Train cars open daily from 9 a.m. - 6 p.m. Depot Museum is open Friday/Saturday from 10 a.m. - 4 p.m. and Sunday from 11:30 a.m. - 4 p.m., but expanded/daily hours are being planned this summer. It's located just off Hwy. 169 in Tower, adjacent to the Tower Civic Center.

NELIMARK HOMESTEAD

Located on Hwy. 21, just across from Timber Hall in "downtown" Embarrass, the Nelimark Homestead is open 10 a.m.-4 p.m., Thursday, Friday and Saturday from



Memorial Day weekend through Labor Day weekend.

Fridays are bread days, with fresh bread and treats like Finnish biscuit and cinnamon rolls. Historic buildings on the property are open for viewing, decorated with authentic items from the past.

The museum offers handcrafted items, books on local and Finnish history, and baked goods. For more information, call 218-290-0882.



DOROTHY MOLTER MUSEUM

Learn about the life of the last resident of the Boundary Waters Wilderness at the Dorothy Molter Museum in Ely. Her original wilderness log cabin was painstakingly moved and re-assembled in Ely and is now home to the museum that bears her name. Dorothy was famous for her homemade root beer, which prompted her common nickname, "The Root Beer Lady."

The museum is open 10 a.m.-5 p.m. daily May 27 - Sept. 4. Limited fall hours. Call 218-365-4451.

ELY-WINTON HISTORY MUSEUM

Located on Ely's Vermilion Community College campus, this center shows the local history of logging and mining through artifacts, photographs, oral histories, and displays. They're open noon to 4 p.m., Tues.-Fri. and on Saturdays during the summer. Call 218-365-3226 for info.

FIND YOUR PLACE

NOW ENROLLING: 7th - 12th Grade

Small Classes	Outdoor Classroom
One-On-One Attention	Transportation Options
Life Skills	Real Life Learning
Tech Applications	Environmental Education
Performing Arts	Hands-On Learning

breakfast/lunch • math • science • language arts
social studies • yearbook/newspaper

Vermilion Country School
Developing successful adults with skills to enrich their communities and the environment

218.753.1246 info@vermilioncountry.org

Vermilion Country School is located in Tower, MN and is authorized by the State of MN and Osprey Wilds

EXPERIENCE LAKE VERMILION!

RESORT - MARINA - RV PARK
AMAZING DINING - GAMING - GOLF COURSE & MORE!

Fortune Bay
RESORT CASINO
ON BEAUTIFUL LAKE VERMILION!
FORTUNEBOY.COM

FOR RESERVATIONS CALL: 800.555.1714
FOR CASINO CALL: 800.992.7529

MINNESOTA DISCOVERY CENTER



Located in Chisholm, the Minnesota Discovery Center is the largest museum complex outside the Twin Cities. It tells the story of the Iron Range through exhibits, interpretation, and research materials. Take the hour-long trolley ride and tour the historic mining sites. And don't forget your mountain bike, since the Discovery Center is now home to the fabulous Redhead Mountain biking trails, which take riders deep into a former open pit mine.

The Discovery Center is located right off Hwy. 169 in Chisholm. Check out their website at www.mndiscovery-center.com or call 218-254-7959.

US HOCKEY HALL OF FAME

Hockey fans visiting the Lake Country won't want to miss a stop at the U.S. Hockey Hall of Fame Museum, in Eveleth. It's America's hockey showcase, highlighting and honoring the contributions to the game from outstanding coaches, players, and others who have helped promote American hockey through the years.

Eveleth has long been known as "The Capital of American Hockey" and enjoys a rich hockey tradition, having produced more top quality players than any community of its size in the country.

You'll find the Hall of Fame just off Hwy. 53 in Eveleth. It's open Monday-Saturday, 9 a.m.-5 p.m., Sunday 10 a.m.-3 p.m., Memorial Day-Labor Day. After Labor Day, it's open Friday 10 a.m. to 5 p.m., Saturday 9 a.m.-5 p.m., and Sunday 10 a.m.-3 p.m. Visit www.ushockeyhall.com for more information.

THE GREYHOUND BUS MUSEUM

If you're intrigued by some of the many offbeat museums



found throughout the country, you just might enjoy a visit to this kid-friendly museum in

Hibbing, which highlights the history of the Greyhound Bus Company, which was founded in this Iron Range city by Andy Anderson and Carl Wickman as a means of transporting miners to and from work.

You'll find lots of Greyhound memorabilia and examples of actual Greyhound buses over the years. For anyone who has ever ridden a Greyhound bus, it will definitely bring back memories. This small town museum is certainly worth a visit.

Visit Us At...615 Main Street, Tower



Healthy & Organic Foods,
Gifts, Clothing, Kitchenware,
Antiques & More!



FLEXSPACE
A NEW WAY TO WORK

A place for Entrepreneurs,
Freelancers, Creatives, Learners,
Do-ers, Artists, Hobbyists,
Outside the Box Thinkers,
& Everyone Else.
More than just a shared desk!



- General Store with Gas, Live Bait, Soft-Serve Ice Cream
- Liquor, Beer & Wine
- Full-Time Mechanic for Boat Repair, Services & Shrinkwrapping
- Cabin Rental for a Fun-Filled Vacation!

See us at: www.grubens.com
Call us at: 218.753.5000
4296 Arrowhead Point Rd,
Tower MN 55790



Subscribe to the
Timberjay Newspaper
(218) 753-2950
timberjay.com

9240 HWY 115 • Cook, MN 55723 • 218-666-6021 • manickdocks.com

LIFE IN THE WILD>>

BIRDS & BEARS

Few places in the Lower 48 states have the variety of wildlife found in the Lake Country, and that's one reason that wildlife watching has become such a big draw.

Summer in the Lake Country is prime time for most area wildlife, whether it's the more than 150 species of breeding birds, or large mammals like moose, wolves, and black bears. If you're hoping to spot some interesting wildlife during your visit, here's what you need to know.

ELY AREA

There are plenty of opportunities to view wildlife at the "end of the road." The International Wolf Center and the North American Bear Center, both located on the edge of town, provide a great way to learn more about these two large predators.

The Bear Center, located on Ely's west side, features live bears in an outdoor enclo-



You can watch wild bears as they climb trees and interact at the Vince Shute Sanctuary near Orr. The center is open to the public in the evenings, Tues.-Sat. through Sept. 3.

sure as well as indoor exhibits highlighting the work of renowned bear researcher Lynn Rogers. Call 1-218-365-7879 or visit www.bear.org for more.

The International Wolf Center, found on the east side of Ely, has live wolves on display as well as indoor exhibits and special educational programs offered daily. Call 218-365-4695 or visit wolf.org.

VINCE SHUTE SANCTUARY

If you want to see black bears in the wild, this is the place to go. The sanctuary,

located about 15 miles west of Orr, is known around the world as a gathering spot for hundreds of black bears, who visit the sanctuary for the smorgasbord of food put out by sanctuary staff.

It was Vince Shute, a logger, who began the feeding of the bears decades ago. While he once shot bears that raided his camp, at some point Vince realized that the bears weren't mean, they were just hungry, and over the years he became a fast friend to many of the bears in his woods. When he died, the American Bear Association

CABIN QUILTING

• 5-Star Rated Shop •

Quilting Fabric & Supplies
Longarm Quilting Services, Gifts



Susan Covey • 218-666-3146
227 1st St SW & Hwy 53, Cook MN 55723
cabinquilting@gmail.com



Orr Municipal Liquor Store

- Appetizers & Pizza
- Charitable Gambling
- Bar & Liquor Store

Open M-Thurs: 9 AM-Midnite, Fri & Sat: 9 AM-1 AM
Sun: 11 AM-6 PM

218.757.3935 • Hwy. 53, Downtown Orr, MN

Norman's One Stop & Motel

PELICAN LAKE, ORR, MINNESOTA

• Live Bait	• Satellite TV
• Huge Tackle Selection	• Free WiFi
• Gas (non-oxy premium & unleaded)	• Very Clean Rooms
• Clothing	• Large Parking Area
• Gifts	• Private Boat Launch
• Licenses	• Fish Cleaning House
	• Friendly Service

One Stop: 218-757-3291 / Motel: 218-757-3272
normansonestopandmotel.net



assumed control of the property and switched the bears from their former diet of donuts and other sweets to healthier foods, like sunflower seeds, nuts, and dried fruit. The organization also built a viewing platform that now allows the public to view bears, often dozens at a time, as they feed and relax on the sanctuary grounds. The sanctuary is open Tues.-Sat., from 5-8 p.m., May 27-Sept. 3. A modest entry fee (\$12 adults, \$10 seniors, \$5 children 4-17, free under three) is required to help defray the cost of the nonprofit operation. Learn more at americanbear.org, stop at the sanctuary's visitor center located at 4303 Hwy. 53 for a map, or call 218-757-0172.



A pine marten

located north of Ely. The Stuart River portage is also scenic and long enough, at a mile and three-quarters, to provide your morning's exercise. Next time, try it with a canoe on your back!

If you're a birder, the varied habitat along the Echo Trail gives you one more good reason to go. It passes through the heart of the region's true boreal forest and it offers excellent habitat for species like three-toed woodpeckers, Cape May and pine warblers, yellow-bellied flycatchers, boreal chickadees and spruce grouse.

THE ORR BOG WALK

This half-mile-long boardwalk, located next to the Orr City Hall and visitors center, traverses varied wetlands, from spruce and tamarack bog, to ash and alder swamp,



to the marshy edge of the Pelican River. Because of the varied habitat, you can see a large number of different birds on this short trek, from warblers and thrushes in the wooded portions to pelicans, grebes, and ducks in the Pelican River. Interpretive signs point out other things of interest along the way. It's wheelchair accessible, but watch for occasional uneven tread along the floating river section. It's a great way to stretch your legs if you're headed to Voyageurs National Park or points beyond.

THE ECHO TRAIL

Stretching 70 miles from near Ely to Echo Lake, north of Orr, the Echo Trail offers a fascinating journey through some of the most spectacular scenery in the Upper Midwest. It's located along the edge of the Boundary Waters Canoe Area Wilderness, so wildlife is abundant. For anyone hoping to spot a moose or a timber wolf, a day trip of exploration along the Echo Trail or one of its many side trails, is a good bet. Try the Bass Lake or Anglworm trails, both

North Country Inn Motel

218.757.3778



Located on Pelican Lake and Hwy. 53 at the gateway to Voyageurs National Park.

- We offer year-round accommodations with hospitality at its best
- Over 26 years experience • Pontoon rental
- Fish-cleaning house & dock

Online reservations • www.northcountryinn.com
4483 Hwy. 53 • Orr, MN • info@northcountryinn.com



ARROW

AUTO GLASS & SUPPLY

Automotive Glass Repair & Replacement
Custom Shower Glass
Residential Window Glass Replacement
Commercial Windows & Doors
Auto Body Paint, Tools & Supplies

All Labor Warrantied • Same Day Service Available
✓ **Call Today for a Free Estimate!**

411 N 1st St, Virginia, MN 55792
(218)741-2993 • arrowautosupply.com

RUSTIC RAILINGS & Furniture, Inc.

Cedar & Pine Log or Timber Railings & Staircases

- Spiral Staircases
- Character Logs
- Trusses

Specializing in Fireplaces & Stone



www.rusticrailings.com

RUSTIC CABIN SHOP

Cabin Furnishings and Cabin Décor
Log Beds, Tables, Chairs, Dressers & More



www.rusticcabinshop.com

Open Daily 9 AM to 7 PM
3393 Hwy. 53, Orr • 218.757.3329



DON'T FORGET YOUR BINOCULARS

For birders, the Darwin S. Myers Wildlife Management Area is a must-visit

There are some places that just seem to have that secret sauce when it comes to attracting birds and, in our region, there are few places saucier than the Darwin S. Myers Wildlife Management Area, otherwise known as the Embarrass rice paddies.

The former commercial operators of the paddies, who discontinued operations decades ago, created a series of dikes in a broad, nearly thousand-acre valley to hold back water diverted from the Embarrass River, to enable the production of domesticated wild rice.

The wild rice is gone, but the vast wetland created by the operation has been maintained by a series of subsequent own-

ers over the years and it's currently overseen by the Department of Natural Resources as a wildlife management area.

Visitors can explore the area by walking or biking the portion of the Mesabi Trail that now bisects the paddies as well as simply walking on any of dikes that criss-cross the area.

At first, the vast, open area seems like unlikely bird habitat to those of us used to birding in the forest. But once you've adjusted to the big sky and tuned your senses to a more distant horizon, backdropped to the south by the Giants Range, the sights and sounds of a place that's full of life begin to emerge in a kind of soft cacophony. The trumpeting of sandhill cranes off in the



Above: A sora rail peaks out of a cattail thicket at the Darwin Myers WMA. Below: The entrance sign to the WMA.



ADVANCED OPTICAL
Family Eye Care Center

COSTA

30+ frame choices in stock!
Mt. Iron/Virginia 741-3000 advoptical.com



INSULA

LUNCH~DINNER
Full Bar featuring MN Spirits~Beers~Wine
Gift Cards Available
~Open year round~

145 E. Sheridan St. Ely, MN • 218-365-4855



distance merges with the bizarre calls of distant pied-billed grebes mixed with the whinnying of sora rails arising from seemingly every direction. Mallards are quacking from one of the nearby pools, still filled in late May with the remains of last summer's vegetation. Canada geese are honking and far out in one of the larger paddies, there's a pair of trumpeter swans languidly feeding.

And there's so much more. Redwings are calling from every direction, their shrill call notes interspersed with their more pleasing "konk-a-reee!"

The liquid notes of legions of tree swallows fill the air as well, as they swoop all around in their search for flying insects. Over the years, someone has erected nest boxes for the swallows, or anything else that might need a home and the

swallows seemed to have filled every one of them during my recent visit there.

One of the walkable dikes travels along the bank of the Embarrass River. The river is lined mostly with willows and it attracts large numbers of birds, from any of a number of warbler species, to catbirds, to flycatchers. The paddies provide habitat for any number of birds of more open country, like bobolinks or meadowlarks, birds not often associated with the North Country. Opposite of the river, you'll find cattails and other aquatic vegetation and it's a good place to watch for rails.

And don't forget to take a moment, while you're here to ponder the broad sweep of this wetland valley, which seems to attract so many and such a variety of birds. Just what is its secret sauce? You can contemplate that on your next

MUSH YOUR OWN TEAM

Enjoy a Dogsled Vacation at America's Top Dogsled Center

Ely

WINTERGREEN DOGSLED LODGE

- 3 & 4 night Lodge-based Dogsled Vacations
- Boundary Waters Dogsled Camping Trips
- For all ages, no gear or skills needed
- Friendly, beautiful pure-bred Eskimo dogs
- Arctic Trips with explorer Paul Schurke

(218)349-6128
www.dogsledding.com

TIMBUKTU MARINE

LAKE VERMILION

2475 Vermilion Dr - Cook, MN 55723
218-666-2276 www.TIMBUKTUMARINE.com

Premier Pontoons

YAMAHA

TRACKER OFF ROAD

ATV's and Side by Sides

Ranger BOATS

MERCURY

REATA by Ranger

SUZUKI



VOYAGEUR COUNTRY

**Big border lakes
create a natural
playground**

Left: Paddling a traditional voyageur canoe on Rainy Lake.

Facing page: Kayaking at Voyageurs National Park.

connected lakes like a highway to transport tons of beaver pelts every year. The visitors centers provide interpretive materials on this rich history as well as gift shops so you can take home something to remember your visit.

HIT THE WATER

The park's two tour boats will be operating again this season, departing mostly from either the Rainy Lake or Kabetogama visitors centers. Several different tour options are available and they are a great way to see this water-based park if you don't have a boat of your own. Reservations are recommended since tours do fill up. You can reserve your tickets at recreation.gov or by calling 1-877-444-6777. You can also make a reservation in person at any of the park's visitors centers.

TAKE A HIKE

Numerous trails, all accessible by car, open up the beauty and variety of Voya-

While Voyageurs National Park offers limitless opportunities for days-long excursions of its maze of interconnected waterways and backcountry, day-trippers will discover a variety of enjoyable experiences to get a taste of the park's wonders as well.

The park's three visitors centers, lo-

cated on Rainy Lake, Lake Kabetogama, and Ash River, will once again be staffed and open to the public daily, from 9 a.m.-5 p.m. between late May and late September. Rangers will be available to talk about the park and the history of the region, including the fur trade era and the colorful voyageurs who once used the park's inter-

Mountain Bikes **E-Bikes** **Fat Bikes**

REPAIRS • PARTS • ACCESSORIES • APPAREL

Mesabi Recreation

218-749-6719
720 9th St. N., Virginia
www.mesabirecreation.net
Open: 10-5-Mon, Tue, Thur, Fri; 10-4 Sat

Northland Lodge
Discover and Enjoy A Truly Unique Dining Experience

Lunch Served
M-F: 11 AM to 1 PM

Dinner Served
Nightly at 6 PM

One Entree Each Night
Home Cooked Meals
Full Bar

• **Thursday: Prime Rib Night**
Open Memorial Weekend through end of Sept.

4499 Schweiger Rd, Orr • (218) 757-3445

No credit or debit cards

Reservations Required
218-757-3445
Call For MENU!

WE FINANCE DREAM HOMES

STEPHANIE
218-666-4026
NMLS: #421853

LINDSEY
218-666-4023
NMLS: #2366708

LORI
218-722-2720
NMLS: #454495

LOCAL & FAST DECISION MAKING

WWW.NORTHSTARCREDITUNION.ORG

NMLS: #407735

geurs to day-trippers.

If you're looking for variety in a concentrated area, look to the trails along Mead River Rd. on the way to the Ash River Visitor Center. The Voyageurs Forest, Beaver Pond, and Kabetogama Lake overlook trails provide strikingly different windows on the park, and all are a half-mile or less round trip. Birders may find particularly good viewing opportunities along the Beaver Pond trail.

Two other trails there provide longer hiking experiences. Sullivan Bay Trail is a 1.5-mile round trip along an old road that leads to a rewarding view of Sullivan Bay. Blind Ash Bay Trail, a 2.5-mile loop, is a narrow, winding forest trail with spectacular scenery.

The Echo Bay Trail, about three miles northwest of the Kabetogama Lake Visitor Center on County Road 122, is a wide 2.5-mile loop trail that meanders through aspens and pines as you pass through lowlands and rocky outcrops. Birding opportunities are excellent.

Two of the three trails starting at the Rainy Lake Visitor Center are ADA-accessible. The Ethno-Botanical Garden Trail is a short quarter-mile loop that steps back



in time to a reconstructed Ojibwe encampment surrounded by a garden of plants native to the region. The paved Rainy Lake Recreation Trail is a 1.75-mile trek with benches and interpretive exhibits that describe cultural aspects of the area, including such things as gold mines and logging.

A third trail, the Oberholtzer Trail, includes two overlooks to view the diversity of forest and wetland types in the park. The first quarter-mile of the 1.7-mile hike is handicapped-accessible.

It would take days to hike all of the 27.9-mile Kab-Ash Trail system that connects Kabetogama and Ash River, but

with four trail heads day-trippers can tackle longer hikes on individual sections to experience backcountry and wetland areas.

LOOK TO THE SKIES

Voyageurs National Park was designated a "dark sky park" in 2020 by the International Dark Sky Association, one of only about 80 parks worldwide that have been certified for having the best conditions for night sky viewing.

So, you don't need a boat, a tent, or a long weekend to explore Voyageurs National Park. All you need is a car, a day, and a sense of adventure.

RE/MAX
RE/MAX
Lake Country
Serving Lake Vermilion
to Rainy Lake

www.thelakecountry.com
218.757.3233
Ray Ingebretsen-Broker/Owner

#1 NOBODY IN THE WORLD SELLS MORE REAL ESTATE THAN RE/MAX
As measured by residential transaction sides

VOYAGEURS NATIONAL PARK AND BOUNDARY WATERS NEARBY

- ◆ Large fireside lobby
- ◆ Lakeside balcony suites with fireplaces and whirlpool tubs
- ◆ FREE WiFi throughout
- ◆ Pool
- ◆ 15-minute drive to golf course
- ◆ Daily, weekly, monthly, seasonal, CIC

Experience the Heart of Northeastern Minnesota.

1-800-860-3613 • 218-757-3613
ovesonpelicanlakeresortandinn.com
ovesonpelicanlake@live.com • 4675 Hwy. 53, Orr, MN 55771



Waters Canoe Area Wilderness. You'll need a canoe, and a willingness to pack your gear across sometimes difficult portages to access these spectacular camping opportunities.

See the following list for information on the many camping opportunities in the Lake Country.

PUBLIC CAMPGROUNDS

Ash River Campground
 Cty. Rd. 126, Kabetogama, MN
 218-235-2520 • 866-857-2757
 Operated by Minnesota DNR

Bear Head Lake State Park
 9301 Bear Head Lake State Park Rd
 Ely • 218-235-2520
 Operated by Minnesota DNR

Birch Lake Campground
 Located 13 miles SE of
 Ely off of Forest Rd 429
 480-737-3002 or 218-365-7600
 Operated by U.S. Forest Service

Echo Lake Campground
 Located 22 miles NE of Orr
 218-666-0020
 Operated by U.S. Forest Service

Fall Lake Campground
 Located six miles E of Ely
 14197 Fall Lake Rd., Ely
 218-365-2963 or 877-444-6777
 Operated by U.S. Forest Service

Fenske Lake Campground
 Located on the Echo Trail,
 ten miles N of Ely
 218-365-7600 or 480-737-0417
 Operated by U.S. Forest Service

Heritage Park and Campground
 4789 Salo Rd, Embarrass
 218-984-2084 or 218-410-7743
 Operated by Town of Embarrass

Hinsdale Island, Lake Vermilion
 218-300-7000 • 866-857-2757

Hoodoo Point Campground
 5788 Hoodoo Point Rd
 Tower • 218-753-6868
 Operated by City of Tower

Lake Vermilion State Park
 MN's newest state park on Lake
 Vermilion • 218-300-7000
 Operated by Minnesota DNR

Lake Jeanette Campground
 Located 32 miles NE of Orr
 218-666-0020
 Operated by U.S. Forest Service

McKinley Park Campground
 Located on Lake Vermilion, Soudan
 218-753-5921 or 218-780-6860
 Operated by Breitung Township

Pfeiffer Lake Campground
 Located 12 miles SW of Tower
 218-453-8650 • 218-229-8800
 Operated by U.S. Forest Service

South Kawishiwi River Campground
 Located ten miles S of Ely
 off Hwy. 1 • 218-365-7600
 Operated by U.S. Forest Service

Wakemup Bay Campground
 Located seven miles NE of Cook on
 Lake Vermilion • 218-235-2520
 Operated by Minnesota DNR

Woodenfrog Campground
 Lake Kabetogama
 218-235-2520
 Operated by Minnesota DNR

In addition to these public campgrounds, many area resorts also offer space for tent or RV camping.

LET'S CAMP

From rustic wilderness campsites to fully-modern RV camping grounds, the Lake Country offers camping options for all tastes and budgets.

The U.S. Forest Service operates several campgrounds in the area, and all include wells, comfortable camping sites, and most have swimming beaches and docking.

The Minnesota DNR also offers camping opportunities at Bear Head Lake State Park, the new Lake Vermilion State Park, and at other lesser-used campgrounds on Lake Vermilion and Lake Kabetogama.

Campers can access remote campsites managed by the U.S. Park Service at Voyageurs National Park, but almost all require boat access. The same is true for hundreds of remote wilderness campsites managed by the Forest Service and located in the 1.1 million-acre Boundary

Hoodoo Point Campground

LAKE VERMILION OFFERS MORE THAN JUST GREAT FISHING

Our campground offers: Electric and water hook-ups, dump station, laundromat, convenience store, 2 boat launches, bathroom/shower facilities, boating/waterskiing, fishing, picnic area, playground, paved hiking trails, swimming, ice cream, old-fashioned candy and more!

Adjacent to Tower Airport - 3,200 ft. asphalt lighted runway. Gas 24 hrs w/ credit card.



hoodoopointmn.com
 LOCATED IN TOWER, MINNESOTA

CALL FOR RESERVATIONS
 218-753-6868

Area Churches



BABBITT

St. Pius X Catholic Church
15 Ash Blvd., Babbitt, MN 55706. 218-827-2291. Masses Wednesday and Sunday at 8 a.m.

COOK

First Baptist Church
210 1st Ave. NE, Cook, MN 55723
218-666-5979 • Sunday Worship 10 a.m.
Worship available on our Facebook page
Vacation Bible School, June 12-16, 9 a.m. -
12 noon • www.firstbaptistcook.org.

Trinity Lutheran Church (ELCA)

231 2nd St SE, Cook, MN 55723
218-666-5965 • www.trinitycook.org
Sunday Service 9:30 a.m. Holy Communion
Weekly. Worship is available on our Facebook
page and YouTube channel. Sunday School
Wednesdays during school year. VBS June 19-
23, 5 years through sixth grade.

St. Mary's Catholic Church

124 5th St SE, Cook, MN 55723
218-666-5334 • Masses: Sunday 8 a.m.,
Tuesday 9 a.m., Thursday 9 a.m.
Confessions are a half hour before Masses.
Adoration: Tuesday and Thursday at 8 a.m.
1st Friday Mass 7 a.m., 1st Saturday Mass 9
a.m. (no confessional prior) • www.stmmhc.com

Cook Covenant Church

11 2nd St. E, Cook, MN 55723. 218-666-
2266. Sunday Worship at 10:30 a.m. Adult
and child Bible study Sunday 9:15 a.m.
(adults), and 10:30 a.m. (children). Face-
book.com/ecovenantchurch

St. Paul's Lutheran Church (LCMC)

9808 Hwy. 22, Angora, MN 55703. 218-
290-4419. Sunday Worship 10 a.m. "Pot-
bless" food after service. Communion every
Sunday. www.stpaulslc.org. Come and be
blessed.

CRANE LAKE

Crane Lake Chapel
7399 Handberg Rd, Crane Lake, MN
55725. 218-252-2180. Sunday Worship
9:30 a.m. (coffee an' 9 a.m.), VBS Aug.
1-4, ages 5-13. Come as you are. Facebook
page is [https://Facebook.com/CraneLake-
Chapel](https://Facebook.com/CraneLake-Chapel). YouTube channel is youtube.
com/@cranelakechapel

EMBARRASS

Evangelical Free Church of Embarrass
5606 Taylor Rd, Embarrass, MN 55732
218-984-3402 • www.efreechurch.com.
Sunday School classes at 9 a.m.
Worship Service at 10 a.m.

ELY

St. Anthony's Catholic Church
231 E Camp St, Ely, MN 55731
218-365-4017 • Masses:
Saturday 5 p.m., Sunday 10 a.m.
Tues 5 p.m., Thurs & Fri 8 a.m.
Please visit our website for parish events
and offerings, www.stanthonysely.org

First Lutheran Church (LCMS)

915 E Camp St, Ely, MN 55731
218-365-3348 • Sunday Worship
Service 10:30 a.m. • *Pastor Zachariah
Burgdorf*. secretary@firstlutheranely.org
www.FirstLutheranEly.org

Praise Fellowship Church

27 S 1st Ave. E, Ely, MN 55731
218-235-9541 • Sunday Bible Class
9 a.m. • Sunday Worship 10 a.m.
[praisefellowship0.wixsite.com/
praisefellowship](http://praisefellowship0.wixsite.com/praisefellowship).

Ely United Methodist Church

305 E Camp St., Ely, MN 55731
Pastor Craig Haberman
218-365-3355. www.elyumc.org
Sunday Worship Service 10 a.m.
Live streaming services on
YouTube Channel: Elyumc1
Facebook page at Eumc MN

Ledgerock Community Church

1515 E Camp St, Ely, MN 55731
218-365-4890. Sunday Worship 9:30 a.m.
Men's & Women's Bible Study,
Tuesday 9:30 a.m.
www.ledgerockchurch.com.
Live streaming our services on Facebook

Ely Gospel Church

3 E Allaire St., Ely, MN 55731
218-365-5272 • Sunday Worship 10 a.m.
Bible Study Wednesday 6 p.m.
www.elygospel.com.
Livestreaming services on Facebook

St. Mary's Episcopal Church

715 S Central Ave, Ely, MN 55731
All ages Outdoor Worship Service, 9:30
a.m. (indoors if raining). Online: Search
St. Mary's Ely Minnesota. 218-409-6870
elystmarys@gmail.com

Grace Lutheran Church (ELCA)

301 E Conan St, Ely, MN 55731
graceinely.org • 218-365-5605
Pastor Eric Thiele. Worship at 9:30 a.m. in
person, and on Facebook Live. Online op-
tion at facebook.com/gracelutheranely

ORR

Holy Cross Catholic Church
10696 Shady Grove Ln, Orr, MN 55771
218-666-5334 • Mailing address: PO Box
609, Cook, MN 55723. Mass: Saturday 5
p.m., Confessions are a half hour before Mass.
www.stmmhc.com

Calvary Lutheran Church

10700 Hwy. 23, Orr, MN 55771
218-757-3228 • Sunday Service 9 a.m.
email calvalrylutheran@centurylink.net
Services available on our YouTube Chan-
nel: Calvary LutheranYT

SOUDAN

St. Paul's Lutheran Church
36 Church St, Soudan, MN 55782
218-753-5341 • Services: Sunday
8:30 a.m. with Communion • *Pastor Greg
Anderson* • Contemporary service last
Sunday of month with music. Sunday
School at 9 a.m. Vacation Bible School
July 17-20.

TOWER

St. Martin's Catholic Church
108 N Second St, Tower, MN 55790
218-753-4310 • Masses: Sunday 10:30
a.m., Wednesday 9 a.m., Friday 9 a.m.
Adoration: Monday 2 - 8 p.m., Wednes-
day and Friday at 8 a.m.
Confessions: Half-hour before all Masses.
www.stmmhc.com

St. James Presbyterian Church

302 Spruce St, Tower, MN 55790
218-753-6005 • Sunday Worship 10 a.m.
Adult Sunday School, 9 a.m.
stjamespres.wixsite.com/stjamestowermn

Immanuel Lutheran Church

304 Spruce St., PO Box 466, Tower, MN
55790 • 218-753-2378. *Pastor Liz Cheney*
Sunday School 9:10 - 9:50 a.m.
Worship at 10:00 a.m.
Vacation Bible School July 31 - Aug. 4
www.towerlutheran.com
Facebook: Immanuel Lutheran Church of
Tower

VIRGINIA

Gloria Dei Lutheran Church
6959 Hwy. 169, Virginia, MN 55792
Sunday Service 9 a.m.
www.gdrlutheran.com

SUMMER fun with kids

by Stephanie Ukkola

The Lake Country provides unlimited opportunity for summer fun, wherever your interests lie; whether it be fishing, biking or water skiing, there's a lot to do. But what about little kids? It can be hard to fish out what is age-appropriate in a sea of opportunity.

Fortunately, children are not hard to please. A trip out for ice cream and a visit to the park will make their day. Lucky for us, ice cream abounds in the North Country. Several spots on Tower's Main Street sell ice cream, as does the store at Hoodoo Point Campground. Soudan's Only Store, located by the state park entrance, has a whopping sixteen flavors of hard serve ice cream. Many Sheridan Street businesses in Ely offer ice cream cones and treats. The Comet Theater in Cook has a wide selection of cold and frosty treats, as well as hot coffee-based ones for parents. The Comet also has a unique boutique that little ladies and their mothers will love – and movies too, of course.

I love hiking, but my kids are one and three, so they're too heavy to carry and not super good at walking themselves. We compromise with short hikes. My favorite, albeit the most dangerous, is the little hike to Kawishiwi Falls just north of Ely. The waterfall itself is stunning, but there are many unique trees along the way that make this hike fascinating. The path has a lot of roots and rocks to trip on and no safety rails at the falls, so please be careful. We also love the little trail behind the Ely Bear



Center. This interpretive hike has signs posted to help explain everything you see.

Another opportunity is the Orr Bog Walk, which winds through a wide variety of wetland types, making it a good place for kids to learn about nature.

Want to see a gold mine? Okay, it's more like a little pond now and there never really was much gold, but it's still really cool. Head over to Fortune Bay, near the marina where you'll find their Gold Mine Trail that leads hikers to this pit where the region's earliest prospectors first tried to find gold in 1866.

Would you like to go to a museum? North American Bear Center and the International Wolf Center, both in Ely, have fun interactive exhibits for children to play, plus live bears and wolves. It doesn't get any better than this. The Bois Forte Heritage museum has a birch bark dwelling, a beautiful starry ceiling, and exhibits that both children and parents will enjoy.

Above: Who wouldn't want to climb on an old train, like this one at the Depot in Tower. Below: There are several nice beaches in the area, which can keep kids occupied for hours.







Comfort
INN & SUITES
by CHOICE HOTELS

Your Choice for Confident Comfort
"The Comfort Inn and Suites".

- Newly Remodeled/Renovated
- Hot Breakfast Buffet
- Indoor Pool, Whirlpool, Fitness Center
- High-Speed Wireless Internet
- Microwave & Fridge In Every Room
- Just 20 Minutes To Giants Ridge

Located 1 mile W of Hwy 53 on Hwy 169, Mt. Iron

8570 Rock Ridge Dr., Mt. Iron, MN 55768 | 218-741-7411 | 866-987-7411
choicehotels.com/minnesota/mountain-iron



Make Waves On Lake Vermilion To...

WOLF BAY LODGE Lodging, Bar & Restaurant

Casual Dining and Take-out

218.666.6106

Dining Room - 12 noon-9 p.m.
Bar & Lounge - 12 noon-Close

CLOSED MONDAYS

Live Music
"Fat Tuesday" 
Hosted by "Cowboy
Angel Blue"

Starts June 13
7 p.m. - 10 p.m.

22 miles north of Cook on Hwy. 24, take #422, then right on #667, 1/2 mile to lodge

HIT THE LINKS



The Lake Country has quietly become one of the hottest golf destinations in the Upper Midwest, thanks to the construction of three top-rated courses in recent years. The Wilderness at Fortune Bay, The Quarry at Giants Ridge, and The Legend, also at Giants Ridge, have been rated as some of the top courses in Minnesota, year after year.

☛ The 9-hole **Ely Golf Club**, just south of town on County Road 21, is open seven days a week. Call 218-365-5932 for more information.

☛ The 18-hole **Wilderness at Fortune Bay** on Lake Vermilion near Tower has won so many top awards, we don't have room to list them all. For information, or a tee time, call 218-753-8917.

☛ **The Legend and The Quarry at Giants Ridge** in Biwabik, have both consistently been rated among the top public courses in the

country. Call 218-865-8030 for information or tee times.

☛ **Wolfridge Golf Course** is located west of Lake Vermilion, in Angora. It has a reputation as an interesting and challenging course. Call 877-666-0218 for more information.

☛ The 18-hole, par 71, **Virginia Golf Course** is open to the public and offers a full service golf shop. It is located at 18th Street North in Virginia. Call 218-748-7530 for more information or to reserve a tee time.

☛ **Vermilion Fairways** in Cook is located on Highway 24, about two miles north of the city limits. The 9-hole course is open seven days a week. Call 218-666-2679 for more information.

☛ **Babbitt Golf Course** is located on Hwy. 21, just west of Babbitt. Call 218-827-2603 for more information.

Gracie's
PLANT WORKS

*Hanging Baskets, Annuals, Perennials
Vegetables, Trees, Shrubs
- Landscaping -
Ely, Lake Vermilion & Surrounding Areas*

Open Daily 10-6 • 218-365-7644
218-365-7644 • graciesplantworks.com • 22 W Sheridan St, Ely

Area public beaches

Pfeiffer Lake Beach

Located between Tower and Cook about four miles south of Hwy. 1. It's a nice, quiet beach on a small clear water lake with an adjacent U.S. Forest Service campground.

Bear Head Lake Beach

Located between Tower and Ely, at Bear Head Lake State Park. This small beach is lightly used and the water is clear.

Semer's Park Beach

Located on Shagawa Lake in Ely, it's busier than most other area beaches, but it has a pavilion and nearby restaurant that make it attractive.

McKinley Park Beach

Located on Lake Vermilion, near Soudan, it's a popular spot with a campground store, showers, playground.

Hoodoo Point Beach

Located on Lake Vermilion, near Tower, the shallow water makes this a good option for young children. There are also pockets of natural clay along the shore that keep the kids entertained. Campground store, showers, playground.

Orr Public Beach

Located on Pelican Lake just north of Orr's downtown, this is a popular spot with local residents.

Babbitt Public Beach

Located off Scott Rd. on Birch Lake, this family-friendly beach boasts swimming rafts and a waterslide, restrooms/ changing rooms, picnic shelters and playground.

VIRGINIA GOLF COURSE

- Par 71 • 6,256 Yards
- Tee Times Available - Call to Schedule
- Twilight Specials after 5 p.m.
- Full Service Golf Shop
- Call for Information on Very Affordable Tournaments & Outings
- Michael's on the Course Restaurant & Lounge - Outside Dining Available

Public Welcome!

Just 15 minutes west of Giants Ridge Golf Resort, this 18 hole layout is an enjoyable challenge for every level of golfer.
virginiamngolf.com



COUPON

1308 18th St. North, Virginia, MN 55792
218-748-7530

Please redeem at check-in
\$5.00 OFF Round of Golf

Cart fee required
Valid Mon-Fri Anytime / Sat-Sun after Noon
Not valid tournament, league or twilight

THE BOUNDARY WATERS MADE EASY

Outfitters can help you navigate the process

For many visitors to the Lake Country, a trip into the 1.1 million-acre Boundary Waters Canoe Area Wilderness is the quintessential northwoods experience. But for those who haven't ventured into the wilderness before, planning a trip can be a daunting task.

There are so many things to consider. Where do you go? How do you obtain a permit? What should you pack? And, perhaps most importantly, with more

than a thousand lakes and at least as many portage trails, how will you keep from getting lost?

All are good questions. Luckily, they all come with easy answers, if you know the right people. There are more than a dozen reliable, experienced outfitters in the Ely and Crane Lake areas who can provide you with everything you need, whether it's for an afternoon's paddle, or a month-long journey deep into the wil-

derness. Outfitters make it easy—providing you with canoes, camping gear, and even pre-packed meals for everyone (you can also choose to bring your own food if you prefer).

If you're just looking for an easy adventure, a day trip is a great option, says Jane Koschak, who operates River Point Outfitting Co. near Ely. Pack a lunch, your swim trunks, and a bucket for blueberries and you've got the makings of an



RIVER POINT
RESORT & OUTFITTING CO.

- Exceptional Family Vacations
- BWCA Canoe Trips
- Marina, Gift Shop, Hiking Trail
- Romance Packages

*"A Naturally Superior
Destination"™*



*Take A Tour
8.5 miles SE
of Ely on Hwy. 1
on Birch Lake*

info@riverpointresort.com | Ely, MN | 1.218-365-6604 | www.riverpointresort.com | www.elyoutfitters.com

Outfitters Guide

LATOURELL'S MOOSE LAKE OUTFITTERS

14793 Moose Lake Rd., PO Box 239, Ely, MN 55731 • 218-365-4531 or info@fishbwca.com, www.latourells.com. LaTourell's is the closest resort and canoe trip outfitter to the BWCA and Quetico.

RIVER POINT OUTFITTING CO.

PO Box 397, 12007 River Point Rd., Ely, MN 55731 • 218-365-6604 or www.elyoutfitters.com, info@elyoutfitters.com, Boundary Waters canoe outfitting and canoe rentals. Paddle the Quiet Side®.

PIRAGIS NORTHWOODS CO.

105 N. Central Ave., Ely, MN 55731, 218-365-6745 or 1-800-223-6565, www.piragis.com • BWCA trips, full service outfitting, partial outfitting, canoe, kayak, SUP, and gear rentals.

ELY OUTFITTING COMPANY & BOUNDARY WATERS GUIDE SERVICE

529 E. Sheridan St., Ely, MN 55731, 218-343-7951 • info@elyoutfittingcompany.com, www.ElyOutfittingCompany.com, Successful Boundary Waters canoe trips for friends and families.

VOYAGEUR NORTH OUTFITTERS

1829 E Sheridan St., Ely, MN 55731, 218-365-3251 • www.vnorth.com. BWCA-Quetico canoe outfitting, full-service bait, retail store. Over 40 years of knowledgeable, friendly staff. Open year-round.

Come Explore in 2024 Ely Winter Festival

FEB 11 2024 NOBODY celebrates WINTER BETTER

elywinterfestival.com

This activity is made possible by the voters of Minnesota through grants from the Minnesota State Arts Board and the Arrowhead Regional Arts Council, thanks to a legislative appropriation from the arts and cultural heritage fund.

On Lake Vermilion Open Year Round!

PIKE BAY LODGE

- » Fishing, boating, boat rentals
- » Great views, sight-seeing, and trails
- » Snowmobiling, ice fishing or skiing
- » Golf and Minutes to Casino!

218-753-2430 or 1-800-474-5322
 9422 Hearthside Drive • Tower, MN 55790
www.pikebaylodge.com • info@pikebaylodge.com

Pelican Bay FOODS
 Hwy. 53, Orr, MN
 218.757.3900

follow the road to Orr!

- Full line of groceries, fresh meat & produce
- Convenience store
- Gas/Diesel with 24 hour credit card readers
- Laundromat & self-serve car wash
- Deli: chicken, sandwiches, pizza
- EBT & WIC accepted

Kekekabic Studios
 Art Glass Restoration & Creation

Stained Glass • Custom Work Classes • Fine Woodworking • Restoration • Supplies

118 E Chapman St • Ely, MN • 231.342.2842 • rfshepherd@gmail.com

outstanding day in the wilderness.

Most outfitters will provide you with a canoe for the day, and can even supply a guide if you'd like. A guide is particularly helpful if you're looking to catch some fish, or if you've never attempted a back-country adventure before.

There are also many great day-trip options that can give even the novice adventurer a taste of the Boundary Waters without spending a lot, or having to camp overnight. And while overnight stays in the wilderness require permits that are subject to quotas, there's no limit on day use in the Boundary Waters. The Forest Service does require a free, self-issuing permit, but you'll find those readily available at every established wilderness entry point.

Still, for many, the true wilderness experience can only come from a longer venture into the canoe country, and that's where outfitters can really be your friend.

Before contacting an outfitter, however, think about a few questions. Such as, how many days would you like to be out? How many will be in your party? And what kind of a trip are you looking for?

Trips generally fall into one of three categories, including:

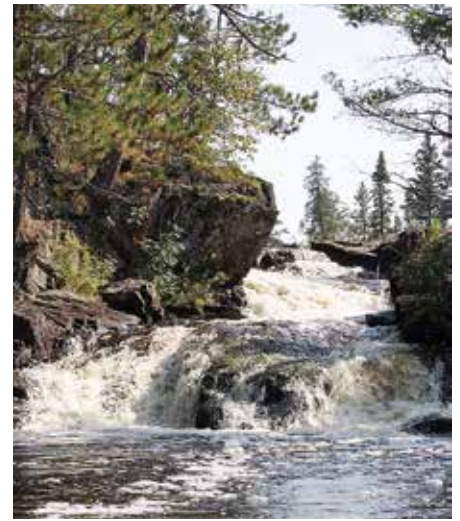
☞ **Base camp**— which involves paddling to a nice campsite and using that as your home base for various activities.

☞ **Touring**— which involves a longer journey, typically with a new camp every evening.

☞ **Fishing**— you get the idea.

The focus of your trip will help determine the best routes, gear, and destinations. While every Boundary Waters lake has fish, some offer a lot better fishing than others. If you just want to see the sights, your outfitter can recommend some of the most scenic routes in the area. If you're base-camping, you'll really want a nice campsite, probably with a beach and some good fishing or berry-picking nearby.

While entry permits can be a hassle for the uninitiated, your outfitter knows how to navigate the bureaucracy as well as the portages, and they'll take care of that for you. That's not to say that a permit is always available for every entry point. Sometimes, you might have to settle for your second or third choice entry, unless you've



Picturesque Sioux Falls on the Little Indian Sioux River. It makes a nice destination for a wilderness day trip.

reserved a permit well in advance.

The bottom line is, a visit to the Boundary Waters is an experience you'll remember for a lifetime, so don't be intimidated by the logistics involved. Contact an outfitter and you'll find smooth paddling ahead.



CAPTURE

Every Moment
- As you explore Minnesota history!



Venture north and explore the Minnesota Discovery Center's 660-acre award-winning museum campus, the trailhead to the 1,250-acre world-class Redhead Mountain Bike Park and **CAPTURE EVERY MOMENT!**

YOU'LL DISCOVER: Trolley Tours, Museum, Dining, Research Center, MN Media Arts School, Paleontology, Mini Golf, Concerts, Programming, Theater, Gift Shop, Water Recreation Rentals, Bike Rentals, Snowshoe Rentals, Heritage Park, Special Events, and More! What will YOU discover?

MnDiscoveryCenter.com | 218.254.7959 | 1005 Discovery Drive Chisholm, Mn 55719

ICONIC EXPERIENCES>>

SHORE LUNCH

Your best meal in the Lake Country

When it comes to iconic Lake Country experiences, few things can top a shore lunch after a morning spent catching walleye. Pulling up to a bedrock point or pine-studded island on a beautiful day for a meal of fresh fish, fried up with a few onions and spuds over a wood fire, is as close to heaven as it gets. Throw in some beans, warm bread and your beverage of choice, and you just may forget to go back to fishing!

Depending on where you are, just about any flat, open location will do for a shore lunch. The Lake Country is home to thousands of miles of public shoreland, particularly on lakes in the Superior National Forest, so there are plenty of locations from which to choose.

On Lake Vermilion, you can take advantage of eight shore lunch locations maintained by the Vermilion Lake Association. These are ideal spots, scattered across the big

lake, complete with a fire grate and a wilderness latrine. They're available for day use on a first-come, first-served basis.

On Vermilion's west end, you'll find two shore lunch spots near the entrance to Norwegian Bay, one on the north shore and the other on the south. You'll also find one toward the northeastern tip of Black Bay. In the lake's mid-section, you'll find lunch spots at Bystrom Bay and Wolf



Bay, and on the Tower end, you'll find sites on the lake's north shore, near Bear Creek, in Mattson Bay and Swedetown Bay, both located in the new Lake Vermilion Soudan Underground Mine State Park. You'll find GPS coordinates and a map at www.vermilionlakeassociation.org/shore-lunch-sites.

If you do enjoy a shore lunch, just remember to clean up after yourself, so the next person can enjoy it as much as you!

CLEAN.DRAIN.DRY.

CLEAN

- ✔ Boats, PWCs, trailers, and gear
- ✔ Remove all weeds, mud, and hitchhiking contaminants from axles, wheels, undercarriage, motor, prop, skis, wakeboards, ropes, and life jackets before leaving

DRAIN

- ✔ Water from boat, bilge, motor, ballast tanks, and bladders. PWCs - run motor for 10 seconds to blow water out of jet drive
- ✔ Remove drain plug and open all water draining devices
- ✔ Trash unused bait

DRY

- ✔ Everything at least five days before going to other waters
- ✔ (Or) Decontaminate with high pressure water (120°F or warmer)

STOP INVASIVE SPECIES! LEARN MORE AT CLEANDRAIN.DRY.ORG



Our Specialty is You

**24-Hour
Emergency
Room**

Acute Care

**Outpatient
Services**

Care Center



cookhospital.org

218-666-5945

10 Fifth Street SE, Cook, MN 55723
218-361-3287 • Tower Lab





One Mile of Shoreline and 46 Acres on Lake Vermilion

Absolute Solitude and Seclusion on Vermilion

COOK, MINNESOTA This is a one-of-a-kind private waterfront estate on one of National Geographic's Top 10 Most Scenic Lakes In The USA, Lake Vermilion and is located in an area of breathtaking scenery in Wakemup (Wake Em Up) Bay where there are miles of pristine coastline. The property includes a private island, a private bay, one mile of shoreline, 46 acres adjoining state/state forest lands, and three cabins grandfathered in at the waters edge. The main cabin features four bedrooms and a huge stone fireplace. A sleeping cabin is perched cliffside with a spectacular view of the bay. The sauna/bunk cabin is set right at waters edge and is a perfect spot to have morning coffee or watch your guests arrive at the dock. There is excellent swimming & fishing

at many locations on the property. Due to its vast size and layout, the property provides opportunities to view the sunrise and sunset vistas across sparkling blue water from a variety of peaceful spots. Permanent electricity is being installed. Surveyed. Potential to divide. Currently water access w/potential to build road. Stewardship of this land dates back to the Lakota/Ojibwe & the Voyageurs. Several generations have gathered here to share major life events. Create your own stories with every visit!

OFFERED AT	\$1,998,500
DETAILS	4 BED/1 BATH 2,080 SF
	46 ACRES 5,288 FT SHORELINE
ON THE WEB	JANISCHREALTY.COM MLS#142576



A Burntside Lake Estate

57 Acres of Privacy on Burntside

ELY, MINNESOTA A secluded estate on coveted Burntside Lake offers ultimate privacy in a sheltered bay. There are epic views through the towering pines with the opposite shoreline pristine wilderness. This property is situated in an ideal location between the main body & the North Arm of the lake and includes 57 acres and 2,100 feet of lakeshore. The immaculate home features 3,710 square feet, 3 bedrooms, and 3 baths and is sided with cedar. A two story great room includes a stone fireplace and glass doors to the huge lakefront deck. A stainless and granite Wolf kitchen with an island opens to the great room, dining room and deck, all of which are lakeside. The luxurious lakeside primary suite includes a spa bath overlooking the bay. Upstairs

there are an additional two bedrooms, each with a private deck. A reading/game room with water views completes the upper level. Amenities include in-floor heat, air conditioning, central vacuum, a drilled well, main floor laundry and a backup generator. Also on the property is a guest cabin situated at waters edge, a sauna, a boathouse, and a storage garage. Make this unique property your retreat!

OFFERED AT	\$2,998,500
DETAILS	3 BED/3 BATH 3,710 SF
	57 ACRES 2,100 FT SHORELINE
ON THE WEB	JANISCHREALTY.COM MLS#143908



Blue Water Vistas on Vermilion

Epic Big Bay Views from Indian Point

TOWER, MINNESOTA A private estate on Lake Vermilion's coveted Indian Point peninsula. This property commands sunrise to sunset views - see three miles into the new State Park in one direction and all the way across Big Bay (a six mile view) in the other direction. The home is set back off a private gated road on 4.5 acres and 690 feet of lakeshore which includes a swimming cove. You are just 20 miles to Ely. The main home was built in 2013 and has 2,240 square feet, three bedrooms, and 3 baths. A two story great room has hardwood floors, natural light pouring in through the Marvin windows and is warmed by a massive fireplace. There are glass doors to the lakefront deck. The kitchen features granite and stainless Wolf appliances and an island

that opens to the great room, dining room and three season porch, all are lakeside. There is an expansive main floor master suite and a main floor laundry room. Upstairs there are two huge bedrooms, a bath, and a reading area with a water view. The home also includes air conditioning, central vacuum, a drilled well, and metal roof. There is also a year round cedar guest cabin, a cedar sauna, a large three stall garage, a boathouse, and two docks. This property comes furnished so you can just bring the groceries!

OFFERED AT	\$1,495,000
DETAILS	3 BED/3 BATH 2,240 SF
	4.5 ACRES 690 FT SHORELINE
ON THE WEB	JANISCHREALTY.COM MLS#143943



Timber Frame Beauty

COOK, MN Gorgeous Lake Vermilion timber frame home w/swimming beach, private gradual lot. Central location on lake out of the wind behind the islands on beloved Frazer Bay, just 12 mi to town. This is a cedar sided home with a 2 stall garage, a 2 stall wet boathouse w/2BR guest quarters over the water. 2 story great rm w/natural light pouring in Loewen windows, glowing oak floor, glass doors open to lakefront deck & screen porch, lake breezes. Stainless/oak kitchen w/granite counters & copper island open to LR, dining & blue water views. Main flr BR w/glassed porch. Upstairs, catwalk w/copper stiles, 2 lakeside BRs, each w/its own BA & WIC, one w/pvt waterfront deck. Wlkout LL offers rec rm, BR, BA, laundry, room for sauna. Lakeside decks w/exterior fireplace & grape arbor. In flr heat main, LL & garage. Whole house back up generator. Dock.



OFFERED AT \$1,495,000
DETAILS 4 BED/4 BATH 3,129 SF
 1 ACRE 175 FT SHORELINE
ON THE WEB JANISCHREALTY.COM MLS#144036



Vermilion One Level Living

COOK, MN A contractor's own Lake Vermilion home built for 1 level lake living. Gorgeous 2 acre parcel w/206 ft South facing excellent swimming shoreline and sunrise to sunset island studded vistas. The home is set back off a paved rd just 9 mi to town. Built 2015, 2,564 SF, 3BR(2 Suites)/4 Kohler BTH, LP Smart sided home, att 2.5 st garage, 36x32 pole barn, cart path to firepit patio & dock. Lakefront LR w/high ceilings, massive wd burning stone firepl, wall of Marvin windows open to 3 season porch & maint-free deck. Stunning Rebecca Lindquist kitchen w/island & buffet open to living, dining & screen porch, all lakeside. Lakeside primary suite w/WIC & laundry. 2 guest BRs & BA can be closed off w/door for private 2BR guest suite. Huge lakeside rec rm w/log bar, bath & extra sleeping. In flr heat and A/C.



OFFERED AT \$1,450,500
DETAILS 3 BED/4 BATH 2,564 SF
 2 ACRES 206 FT SHORELINE
ON THE WEB JANISCHREALTY.COM MLS#144098

Log Cabin on Clear Lake

ELY, MN Right out of Log Home Living! Secluded hand hewn log home at end of rd on Clear Lake (no public access) near Ely & BWCA w/excellent swimming, gradual lot, mesmerizing views—see all the way across the lake. Set on 8 acres & 780 ft E & S facing shore adjoining hundreds of acres of undeveloped state land & thousands of feet of state shore, just minutes to town. Custom built 2007, 2,500SF, 3BR/2BTH, sauna, 3 car heated gar w/Tesla charger & potential guest quarters above, 2 docks, boat launch. Vaulted great rm w/natural light pouring in two story tall Anderson windows, hardwood flr, glass doors to lakefront deck. Gourmet kitchen w/ island open to great rm, dining & covered porch. 2 main flr BRs & BTH w/spa tub. Up log stairs is open loft BR. Downstairs, walk out fam rm, sauna & BTH. Cent air.

OFFERED AT \$1,100,000
DETAILS 3 BED/2 BATH 2,500 SF
8.3 ACRES 805 FT SHORELINE
ON THE WEB JANISCHREALTY.COM MLS#143716



Burntside Paradise

ELY, MN Burntside Lake handscripted log home in private bay at the end of a pristine granite fjord. Set on 1,703 feet of shoreline and 38.75 acres of park-like forest w/walking trails, surrounded on 3 sides by Federal forests at the edge of the BWCA. Huisman custom built 2010, 800 SF, 1 BR/1 BTH home with wrap around deck. Open great room with a wood burning fireplace and a wall of windows showcasing majestic panoramic views over the lake and surrounding forest. Surveyed, drilled well, full septic system, fire suppression system, permanent electricity (no generator), dock. A spectacular retreat from the distractions of everyday life. Relax in the total peace and quiet of the forest & the extraordinary beauty of Burntside!

OFFERED AT \$985,000
DETAILS 1 BED/1 BATH 800 SF
38.75 ACRES 1,703 FT SHORELINE
ON THE WEB JANISCHREALTY.COM MLS#141299





ELY, MN Private point retreat at waters edge on the White Iron Lake Chain with direct BWCA access, like driving to your own Island! Open 1.3 acres with a gentle slope to 550 feet of excellent swimming shoreline, just 5 miles to Ely. 1,800 square feet, 3 bedroom cedar cabin with original handmade doors. Lakefront living room with wood floor & double doors to wrap-around porch. Kitchen, dining & guest bedrooms all lakeside. Walkout basement could be workshop, rec room, 4th BR. Metal roof. Renovated windows. Updated electric. Compliant septic. New: bath, pex water lines, furnace & central air, dishwasher, stove, water heater. Water, electric, propane & septic installed for garage/guest cabin or RV. Grandfathered boat slip. Furnished.

OFFERED AT \$798,500
DETAILS 3 BED/1 BATH 1,800 SF
 1.3 ACRES 550 FT SHORELINE
ON THE WEB JANISCHREALTY.COM MLS#143026



Beach Home Living

TOWER, MN End of road 3BR/4BA Lake Vermilion home w/attached 3 stall garage, addl garage w/potential guest quarters above, 2.25 acres w/open yard & 145 ft lakeshore w/sand beach, boat launch & big water views, easy yr round access to Hwy 169! Secluded end of road location just 4 mi to town/airport. Built 2001, 3,258 SF home w/maint-free exterior. Open floorplan offers lake views from most rooms & lots of natural light. Kitchen w/SS apls & island open to dining room w/glass doors to 50 ft lakefront deck. LR w/ gas fireplace. Friends & family rm w/in-flr heat & glass doors to deck. Lakeside primary BR has walk in closet w/washer/dryer, en suite spa bath & private lakefront deck. Wlkout finished garden level w/in-flr heat offers rec rm w/glass doors to lakeside patio. Electric sauna. Permanent dock.

OFFERED AT \$748,500
DETAILS 3 BED/4 BATH 3,258 SF
 2.25 ACRES 145 FT SHORELINE
ON THE WEB JANISCHREALTY.COM MLS#144726

Private Island - Shawaga Lake

ELY, MN Secluded island retreat w/mesmerizing views set in towering pines & rock outcroppings on Shawaga Lake, short boat ride across calm water to launch. Built 2012, knotty pine cabin w/lakeside deck connecting kitchen cabin, dock w/walk in swimming area. In 1800's, island was summer home of one of Ely's original doctors & the iron ring attached to the west end was used to corral logs.

OFFERED AT \$498,500
DETAILS 2 BED/PRIVY 560 SF
1.75 ACRES 920 FT SHORELINE
ON THE WEB JANISCHREALTY.COM MLS#142312



Riverside Country Sanctuary

MT. IRON, MN High end cedar home on a thousand feet of private riverfront, private pond w/fish in river & pond, beautiful country views & abundant wildlife. Ideal location between Virginia & Hibbing. Unbelievably well built home with att. massive garage w/high ceilings, in-flr heat & office/guest quarters above. Stunning hickory, granite & butcher block kitchen w/SubZero & top quality appliances.

OFFERED AT \$749,500
DETAILS 26.2 ACRES 1,000 FT RIVERFRONT
ON THE WEB JANISCHREALTY.COM MLS#143219



Sunny Frazer Bay Cabin

COOK, MN Lake Vermilion classic log retreat with Southern exposure! See all the way across Frazer Bay! Private end of road location, 12 mi to town. Gradual lot. Original 1/2 log sided resort cabin remodeled, updated and lovingly cared for. Waters edge LR w/wall of waterfront windows, wd burning stove, glass door to lakefront deck. Kitchen open to LR & dining. Lakeside & guest King BRs. 2 docks.

OFFERED AT \$498,500
DETAILS 2 BED/1 BATH 748 SF
0.5 ACRES 130 FT SHORELINE
ON THE WEB JANISCHREALTY.COM MLS#144401



Great Shop Space on the River

MT. IRON, MN Gorgeous 12 Acre wooded building lot on the river flowing from Buhl to McQuade Lake, including 48x36 shop w/in-flr heat & 60x36 garage w/36 x 20 heated workshop. Fish in river, beautiful country views & abundant wildlife. Ideal location between Virginia & Hibbing. 48x36 bldg is currently used as a cabinet shop, has potential to be converted to a home. High speed internet available.

OFFERED AT \$349,500
DETAILS 12.1 ACRES 1,000 FT RIVERFRONT
ON THE WEB JANISCHREALTY.COM MLS#143220





Gold Mine Resort - Vermilion River

ORR, MN Rare historic gold mine w/Vermilion River frontage & view of opp shoreline pristine forest. Yr-rnd home, 8 guest cabins, boat launch, dock. 60 mi N. of Ely up the Echo Trail & 12 mi to Crane Lake, near BWCA & Voyageurs Nat Park. High ground property has road access & diesel generator for power. Most of the river is wild w/excellent fishing & lots of wildlife. Adj 38 acres also for sale.

OFFERED AT \$749,500

DETAILS 7.25 ACRES 704 FT SHORELINE
8 CABINS - BOAT LAUNCH - DOCK

ON THE WEB JANISCHREALTY.COM MLS#144007



Lady Bug Lodge - Shagawa Lake

ELY, MN Well maintained full service BWCA area resort with books supporting the asking price. Set on paved road with 10.7 acres and 1,015 ft S.-facing lakeshore on Shagawa Lake, just 7 miles to Ely. Property offers 10 cabins, fishing boat rentals & the largest fleet of pontoon boat rentals in the area. Ample room for expansion. Turn key opportunity to own your own popular business on a popular lake!

OFFERED AT \$2,250,000

DETAILS 10.7 ACRES 1,015 FT SHORELINE
10 CABINS - BOAT LAUNCH - BOAT RENTALS

ON THE WEB JANISCHREALTY.COM MLS#143773



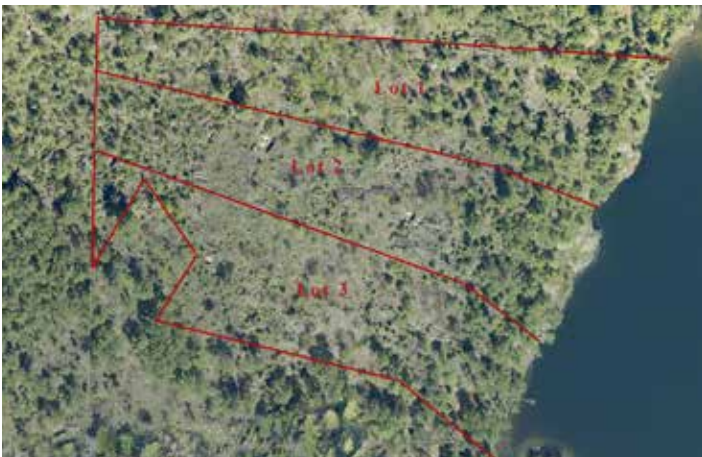
Vermilion Niles Bay Lots

COOK, MN Drive home to the Lake Vermilion retreat of your dreams! Gorgeous S/SW facing building sites offer unforgettable sunrise to sunset, island studded big water views all the way across Niles Bay. Set on acres of towering pines gently sloping to the shoreline. Great location—4 mi to Wolf Bay Lodge, 20 to town. Driveway already stubbed in. Surveyed, approved for septic sites, elec. nearby.

OFFERED AT \$524,500-\$598,500

DETAILS 6.2-7.4 ACRES 200-402 FT SHORELINE

ON THE WEB JANISCHREALTY.COM MLS#143507, 8, 9



Waters Island Lots - Burntside

ELY, MN Waters Island, Burntside Lake! Incredible setting for the lake home or cabin of your dreams! One of the best views on Burntside overlooking the lake & forest below! Three apx. 3 acre lots in a park like forest of towering pines & rock outcroppings with island-studded 2 mile blue water & sunshine vistas NE, E & SE. Surveyed, approved for septic & electricity on site.

OFFERED AT \$175,000-\$235,000

DETAILS 3-3.1 ACRES 225-280 FT SHORELINE

ON THE WEB JANISCHREALTY.COM MLS#141068, 69, 70



Lake Superior

HOVLAND, MN Prime Lake Superior lots! Beautiful building sites, private protected location on Chicago Bay, Lake Superior. Just 18

mi to Grand Marais, 4 to trout & salmon fishing & 15 to Isle Royale ferry. Panoramic blue water vistas, beautiful trees, protective covenants, community septic system, electricity.

OFFERED AT \$245,000-\$275,000
DETAILS 1.19-1.47 ACRES 211-343 FT SHORELINE
ON THE WEB JANISCHREALTY.COM MLS#142307, 8, 9



Pine Island

TOWER, MN Take in the beautiful sunsets from your nest on this fantastic island property w/S and W exposure. Short boat ride across calm water to marina. Large & unspoiled parcel. Just a few minutes boat ride to the BWCA at Lake Vermilion's Trout Lake portage. Power is onsite at the back of the property.

OFFERED AT \$151,500
DETAILS 4.5 ACRES 448 FT SHORELINE
ON THE WEB JANISCHREALTY.COM MLS#141990



Norwegian Bay

COOK, MN Incredible evergreen covered acres & excellent swimming shoreline on pristine Norwegian Bay, Lake Vermilion! Includes

deep pond at N. border & adjoins 100's of acres of St land. Stunning building sites with S. facing views, Relax around the camp fire as you watch the sunsets this lake is named for!

OFFERED AT \$249,500-299,500
DETAILS 11.4-23 ACRES 405-705 FT SHORELINE
ON THE WEB JANISCHREALTY.COM MLS#142556, 7



Eshquaguma

GILBERT, MN Dig your toes into the sand beach or relax on the deck or patio as the sun sinks down—see all the way across Lake Eshquaguma. Master Architect Damberg designed year round beachhouse on private peninsula, private level lot at end of road. 2 garages.

SOLD FOR \$750,000
DETAILS 3 BED/2 BATH 2,032 SF
2.25 ACRES 619 FT SHORELINE



Canfield Bay

TOWER, MN Put your feet up & relax as the sun sinks down into the water—see 5 miles all the way across Big Bay. Secluded Lake Vermilion building site commands unrestricted S & W facing Big Bay views. Moderate elevation with a gradual slope to the shoreline, choice of stunning building sites.

OFFERED AT \$198,500
DETAILS 7.63 ACRES 1,095 FT SHORELINE
ON THE WEB JANISCHREALTY.COM MLS#140509



Niles Bay

COOK, MN Rare South-facing road accessible parcel adjoining 1,000's of acres of State land - unrestricted South/Southwest sunset views all the way across Niles Bay. Park like forest of giant whispering pines. Surveyed, septic sites, electricity nearby.

OFFERED AT \$275,000
DETAILS 16.1 ACRES 455 FT SHORELINE
ON THE WEB JANISCHREALTY.COM MLS#140717



Burntside Island

ELY, MN Ideal setting for secluded island retreat w/ warm Southern exposure & panoramic faraway views set in towering pines & rock

outcroppings on beloved Burntside Lake, short boat ride to mainland. Choice of building sites offer sunset views towards Dollar Island or sunrise views to the east. Dock included.

OFFERED AT \$325,000
DETAILS 4.5 ACRES 640 FT SHORELINE
ON THE WEB JANISCHREALTY.COM MLS#142263



Daisy Bay

TOWER, MN Lake Vermilion cabin & sauna guest cabin at waters edge w/ sandy swimming, Level lot & blue water views all the

way to Isle of Pines! Includes 60x28 metal bldg w/kitchen & bath, 3 RV hookups, L dock, apx 4.6 acres off paved Hwy 77 on prime Daisy Bay, close to town, golf, dining.

OFFERED AT \$474,500
DETAILS 3 BED/1 BATH 1,426 SF
4.6 ACRES 86 FT SHORELINE



Tower Cafe

TOWER, MINNESOTA Outstanding opportunity for Restaurant, Catering, Bakery with Bed & Breakfast or apartments above! The Tower Café was an extremely popular restaurant located on the road to Ely & minutes to Lake Vermilion landing, championship golf, State parks & snowmobile trails. Includes furniture, fixtures & equipment to reopen restaurant or pursue another business. Upstairs is an owner's 2-3 BR apartment plus Bed & Breakfast rooms—5 BDs and 3 BTHs. Dining room w/railroad lanterns, memorabilia, A/C, easy access bathrms. Kitchen w/ prep station, dishwasher, fryer, 2 grills, range, frig/freezer, icemaker. 2,108 SF basement w/additional frig/freezers, walk in cooler, lots of storage. 30 x 26 heated garage. Don't miss this opportunity! Sold as-is.



OFFERED AT \$224,900
DETAILS RESTAURANT W/APTS ABOVE
 7,868 SF
ON THE WEB JANISCHREALTY.COM MLS#143917



Deluxe Catering

EVELETH, MN Outstanding business opportunity! Profitable catering business, restaurant, bar & banquet facility with 2 upstairs apartments. Main Street location. Well maintained facility. Recent appraisal available. Don't miss this opportunity!



OFFERED AT \$425,000
DETAILS BAR & BANQUET FACILITY
 CATERING BUSINESS - 12,985 SF
ON THE WEB JANISCHREALTY.COM MLS#142137



"The finest Realtor I've ever worked with in my life." - Tim K.



Daisy Bay Sunsets on the Sand

TOWER, MINNESOTA Lake Vermilion furnished like new dream home at waters edge w/150 feet of sunset sand beach, gradual yard, island studded views of Daisy Bay! Ideal location on paved road, just minutes to town, golf, dining. Architect designed & custom built by licensed contractors in 2020 with 4,153 square feet, 4 bedrooms, 4 Kohler bths, 2 kitchens, 2 fireplaces, 2 decks, and 2 docks. The vaulted great room includes a stone (gas) fireplace and glass doors to a lakefront wrap around deck. The kitchen features natural cherry and leath-ered granite w/double ovens and an island open to the great room, dining & deck, all lakeside. A luxuri-ous main floor lakeside master suite has glass doors

to the deck. Upstairs are 2 huge bedrooms, a bath, and a TV/game room w/water view. Downstairs fea-tures a rec room w/a gas fireplace, glass doors to a rain proof patio & the beach, a Cambria kitchen, sauna, and lakeside bedroom. Main floor laundry, in-floor heat, A/C, drilled well, compliant septic. No steps from garage to main floor. There is also an at-tached 3 stall garage w/in-floor heat, an additional grandfathered garage, and a sauna/wet boathouse.

OFFERED AT	\$1,698,500
DETAILS	4 BED/4 BATH 4,153 SF 0.7 ACRES 150 FT SHORELINE
ON THE WEB	JANISCHREALTY.COM MLS#143418



Let's Make Sold Happen For You Too! 218-780-6644 www.JanischRealty.com

