

FREE

RAKE IN THE FUN PUZZLE BOOK



Enjoy this fun-filled book, containing
a variety of over 30 puzzles!
A publication of the Timberjay Newspaper



Fall 2022



**RELAX
KEEP SHARP
DO PUZZLES**

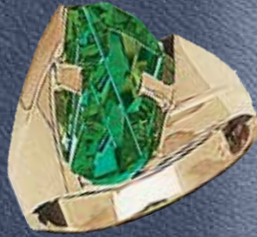
STUNNING CUSTOM DESIGNS

Claude Thibaudeau
Montreal



Offering...

- On-site jewelry repair
- Custom jewelry design
 - Jewelry appraisals
 - Watch batteries
 - Stone remounting



WE BUY...GOLD • SILVER • PLATINUM
COINS • DIAMONDS

ROCKS THE JEWELERS

314 Chestnut St, Virginia, MN • Hours: M-F 10:30 AM-4 PM



218-741-ROCK (7625)



GROCERIES and GAS



- Zup's famous homemade sausage
- Fresh fruits & vegetables
- USDA choice meats
- Full service deli
- Fresh baked goods...daily
- Catering-no party too big or too small



- The New Cook Store

Welcome!

Zup's is a family-owned business originally established in Ely in 1916 by John Zupancich. "Grandpa John" operated the business with his seven sons, and it quickly became popular for its wide variety of products and Old-World sausages.

Today, Zup's, an Iron Range tradition, has grocery stores in Ely, Babbitt, Tower, Silver Bay and Cook, and close to 200 employees. Our stores were created out of our family's love and passion for delicious foods and inspired by families looking for a place where they'd love to shop and be proud to call their own.

Whether it's your first time shopping with us or you've been a loyal customer for years, we promise to always do our best to make you feel like family.

The Zup's family would like to invite you to join us, shop a bit, try a few new items. We are sure you will be delighted with what you find and taste.



OPEN DAILY: Mon-Sat 7 AM-7 PM; Sunday 7 AM-4 PM
201 Hwy 53, Cook MN • 218-666-0205

King Crossword

ACROSS

- 1 Listening device
- 4 Iota
- 7 Bright star
- 11 Shapeless mass
- 13 Get older
- 14 Eden evictee
- 15 U2 lead singer
- 16 Sailor
- 17 Air outlet
- 18 Attempts
- 20 Judicial garb
- 22 Gaiety
- 24 "Weeping" tree
- 28 Macaroon ingredient
- 32 Wilderness Road pioneer

1	2	3		4	5	6		7	8	9	10	
11			12		13			14				
15					16			17				
18				19		20		21				
			22		23		24			25	26	27
28	29	30				31		32				
33					34		35		36			
37					38		39		40			
41					42		43					
			44			45		46		47	48	49
50	51	52			53		54		55			
56					57				58			
59					60					61		

- 33 Unoriginal one
- 34 Actress Arthur
- 36 Hindu royal
- 37 Gold-loving king
- 39 Country named for an imaginary line
- 41 Eye, slangily
- 43 Tax form ID
- 44 One of the Fab Four
- 46 Cairo's nation
- 50 Hoosegow
- 53 Perched
- 55 Slithery
- 56 Shrek, for one
- 57 Part of TNT
- 58 Dance move
- 59 Pitch
- 60 Chatter
- 61 Wedding words
- 8 Poetic tribute
- 9 Moving day rental
- 10 Invoice fig.
- 12 Partake in a Halloween game
- 19 Day light?
- 21 Clothing protector
- 23 Gist
- 25 Burden
- 26 — account (never)
- 27 Dam
- 28 Bivouac
- 29 Mayberry moppet
- 30 Give up
- 31 Golf prop
- 35 Rm. coolers
- 38 Salty expanse
- 40 Exploit
- 42 Out of practice
- 45 Zhivago's love
- 47 Bigfoot's cousin
- 48 Begged
- 49 Printing error
- 50 Scribble (down)
- 51 Past
- 52 Apr. check cashier
- 54 Gratuity

DOWN

- 1 Recedes
- 2 Oodles
- 3 Novelist Jaffe
- 4 Purse
- 5 Composer Stravinsky
- 6 Former quarterback Tim
- 7 Easy-to-peel citrus fruits

© 2022 King Features Synd., Inc.

Tower-Soudan Agency



We Can Insure:
Residential, Auto
and Seasonal/Island Properties

218-753-2101 • 415 Main St., Tower, MN
tsagency@frontiernet.net

VERMILION CLUB & POOR GARY'S PIZZA



Bar/Restaurant

Fine Dining • Take-Out • Entertainment

Chicken • Wraps
Pasta • Steak
Fish • Burgers
Sandwiches • More!



Home of the
“Bamboozler” Pizza

Check FACEBOOK For
Updated Hours



753-6277 Bar/Restaurant / 753-5707 Pizza • 3191 Hwy 77, Tower (Daisy Bay, Lake Vermilion)

Take Out Available

Visit our Bookstore



105 North Central Avenue in Ely, Minnesota

“Where Good Books Find You”

piragis.com • boundarywaterscatalog.com

Open Daily • 1-800-223-6565



Timberjay readers are puzzle fans!

Thank you to the following businesses for participating in our Cabin Fever Puzzle Book. We hope you enjoy all the puzzles.

Favorite Business Word Search

F W K I F N X O G L A T I P S O H K O O C B M T
 E L Q J Y I F G N I T L I U Q N I B A C W F N F
 D N B Z G E S R E L E W E J E H T S K C O R N K
 O J S C W N N O R T H S T A R C U K A E U U O B
 A J Z E L T I T T S A E H T R O N R Y F P D Z V
 P D A G V K D D X Y A J D A L J E I N S U L A E
 E L V B N V V U L W C G C X Z C E O C X E D S R
 A A K A Y I H I W I S N M L E W S O J I D L R M
 D S N O N X V V G L U W E N M R V D R H E J M I
 N T O B O C N I B Z P B T G E H G F A J Q F N L
 A C R T T C E V L K T E K D A T D U Y F Q I M I
 L H T N U K S D J R R O N O O S O J K L E S L O
 S A H O A A T P O F O A A N O X T Y Z L O C E N
 D N E H T H W I U P J I N P J C A L Y W B E T L
 O C R T S J C O J Z T I N V I B B B X U N N O A
 O E N H U Y X T R D K I P E E R L C L P K I M N
 W R C C N Q R K E R X N C N S O A C R U D C O D
 H Y O I D Y R U A B A C U A O M M G T N N R J Z
 T P M S E J A P M X U T C M L R R T I L A I R U
 R W F N L F M F R G R T E V E R K E Z S V V A P
 O K O A L R O G J O E N S V R V O Q V R T E M S
 N A R J E I X M F S S L J I J L H A Y A B R K E
 X D T V Y B D F W O N O R D I C H O M E P S C L
 F I R R E U F I N E E D G E L U N D G R E N S Y

ZUPSCOOK
 VERMCLUB
 SCENICRIVERS
 NORTHERNCOMFORT
 MARJOMOTEL
 INSULA
 COOKHOSPITAL
 VERMILIONLAND

ZUPSELY
 UBETCHA
 ROCKSTHEJEWELERS
 NORTHEASTTITLE
 LUNDGRENS
 FORTUNE BAY
 COOKBUILDING
 ARROWAUTO

VERMSENIORLIVING
 TSAGENCY
 PIRAGIS
 NORTHSTARCU
 LASTCHANCE
 FINEEDGE
 CABINQUILTING
 ANDERSONFURN

VERMPARKINN
 SUNDELLEYE
 NORTHWOODSLAND
 NORDICHOME
 JANSICH
 ELYBLOOMENSON
 BWCARECENTER
 ADVANCEDOPTICAL

**Rake in the Fun Puzzle Book is a publication of
 The Timberjay Newspaper**

Published each spring and fall.

Call to reserve your spot in our next puzzle book!

(218) 753-2950 • editor@timberjay.com • www.timberjay.com

Nordic Home North



GIFTS GALORE



RECLINERS



SCANDINAVIAN COMFORT

NORDIC FURNISHINGS

LUNA CHAIRS



MAKING LIFE COMFORTABLE™

RUGS



CUSTOM SIZES & COLORS

303 Main St, Tower • 218-753-3313 • 612-280-9195

www.NordicHomeNorth.com

marit@nordic-home.com • Special November Hours: Thurs-Sat. 11-3

MARJO MOTEL



Direct Access to Lake Vermilion and Local Trails

**Cable TV • Internet • Microwaves • Coffee
Refrigerators • Single & Double Rooms**

Tower, MN

Hwy. 169 on the left as you enter Tower from the west.

218-753-4851

www.marjomoteltowermn.com

King Crossword

ACROSS

- 1 Red Planet
- 5 Dandy guy
- 8 Espy
- 12 Part of Q.E.D.
- 13 Lennon's lady
- 14 Frau's mate
- 15 Mater lead-in
- 16 Old Oldsmobile
- 17 Notion
- 18 Head honcho
- 20 Desolate
- 22 Presidential nickname
- 23 Dol. fractions
- 24 "Toodle-oo!"
- 27 Shun liquor
- 32 Actress Thurman
- 33 Hostel
- 34 Pie — mode

1	2	3	4		5	6	7		8	9	10	11
12					13				14			
15					16				17			
18				19			20	21				
			22				23					
24	25	26			27	28	29				30	31
32					33					34		
35			36	37					38			
		39					40	41				
42	43				44		45			46	47	48
49					50	51			52			
53					54				55			
56					57				58			

- 35 Gifted
- 38 "Roots" author Haley
- 39 Altar affirmative
- 40 Sushi fish
- 42 Demand
- 45 Zealous
- 49 Gestation location
- 50 Gun the engine
- 52 Black-and-white cookie
- 53 Spoken
- 54 "As I see it," to a texter
- 55 Cold War ini-
- tials
- 56 Prime-time hour
- 57 Owned by us
- 58 — good example
- 7 Crawl space?
- 8 Japanese faith
- 9 Statue base
- 10 Baseball's Hersher
- 11 Tea carrier
- 19 Letters of approval?
- 21 Calendar abbr.
- 24 Boy king
- 25 Docs' org.
- 26 Amulet
- 28 Away from WSW
- 29 Try
- 30 Pub order
- 31 Remiss
- 36 Safe to consume
- 37 Refusals
- 38 Novelist Huxley
- 41 Hectic hosp. area
- 42 Victor's cry
- 43 Sushi wrapper
- 44 Half a sextet
- 46 Gaelic
- 47 Tree home
- 48 Afghanistan's — Bora region
- 51 Outback bird

DOWN

- 1 Potatoes partner
- 2 Folksinger Guthrie
- 3 Wheelchair access
- 4 Sports venues
- 5 "Never mind!"
- 6 Single

© 2022 King Features Synd., Inc.

WORD SCRAMBLE

Rearrange the letters to spell something pertaining to baking.

O P S S N O

--	--	--	--	--	--

Answer: Spoons

King Crossword

ACROSS

- 1 Felines
- 5 Discoverer's call
- 8 Brewer's kiln
- 12 Owl call
- 13 Massage
- 14 Leg joint
- 15 Not-so-noble protagonist
- 17 Rat- —
- 18 Green sauce
- 19 Realm
- 21 Penny
- 24 Help
- 25 Persian leader
- 28 Knitter's need
- 30 Assoc.
- 33 Bit of wit
- 34 Rehab process
- 35 — chi
- 36 Even so
- 37 Slanted type (Abbr.)
- 38 Darned
- 39 Hollywood's Lupino
- 41 Take five
- 43 Burning
- 46 Leslie of "Gigi"
- 50 Songs for one
- 51 Daughter of Oedipus
- 54 Mon. follower
- 55 Half of XIV
- 56 Send forth

1	2	3	4		5	6	7		8	9	10	11
12					13				14			
15				16					17			
18							19	20				
			21		22	23		24				
25	26	27			28		29			30	31	32
33				34						35		
36				37					38			
		39	40			41		42				
43	44				45			46		47	48	49
50					51	52	53					
54					55				56			
57					58				59			

- 57 Teeny
- 10 Char
- Cameron
- 58 Ecol. watch-dog
- 11 Head, to Henri
- 38 Put on, as a play
- 59 Pixels
- 16 Weeding tool
- 40 Dagwood's dog
- DOWN**
- 22 Russian refusal
- 42 High school subj.
- 1 Bloke
- 23 Early Mongolian
- 43 Wine region
- 2 First-rate
- 25 Covert agent
- 44 Boxing match
- 3 Youngsters
- 26 Coloration
- 45 Roof overhang
- 4 Do needle-work
- 27 Cuba, Jamaica, etc.
- 46 Leslie of "Gigi"
- 29 Actor's quest
- 47 Former Dallas QB Tony
- 50 Songs for one
- 31 Cold and damp
- 48 Taking action
- 51 Daughter of Oedipus
- 32 Tonic's mixer
- 49 Tennis barriers
- 54 Mon. follower
- 34 Actress
- 52 Wee bite
- 55 Half of XIV
- 53 Spanish aunt
- 56 Send forth

© 2022 King Features Synd., Inc.



**News You Can Trust
Each Week
In Print and Online**



(218) 753-2950 • www.timberjaya.com

SCRABBLE® SCRAMBLE

Noun: Contact lenses, or simply contacts, are thin ocular device lenses placed directly on the surface of the eyes.



35 two or three letter playable words can be made from the word "CONTACTS". How many can you make?

2-letter words (10 total)

__	__	__	__	__
__	__	__	__	__

3-letter words (25 total)

___	___	___	___	___
___	___	___	___	___
___	___	___	___	___
___	___	___	___	___
___	___	___	___	___

Answers
2-letter words: an, as, at, na, no, on, os, so, to, ta
3-letter words: act, ant, att, can, cat, con, cos, cot, nos, not, oat, oca, ons, sac, san, sat, soc, son, act, tan, tao, tas, tat, ton, tot



ADVANCED



Family Eye Care Center

Mtn. Iron/
 Virginia
741-3000
advoptical.com

At Advanced Optical – Our focus is on you!



Barb Hegg
Associate Broker, GRI
barb@vermilionland.com

Office: 218-666-6183
Home Office: 218-666-0144
Mobile: 218-742-2369

*"Barb was very professional and attentive;
we'd recommend her to anyone." client*



Choose An Agent Who Is...

Experienced, Professional, Knowledgeable

- **BARB is:** Honest, hardworking and reliable
- **BARB does:** Professional photography and drone videos
 - **BARB offers:** Virtual tours
 - **BARB offers:** Advice on staging
 - **BARB is:** A Full-time agent
- **BARB does:** Advertising on social media, and in national magazines

Member of the Range MLS, LSAR MLS (Lake Superior area),
and Northstar MLS (Mpls/St. Paul area)

CONTACT BARB
for a **FREE MARKET ANALYSIS!**
218-742-2369 or
barb@vermilionland.com

PO Box 518, 210 S. Highway 53,
Cook, MN 55723



King Crossword

ACROSS

- 1 Mimics
- 5 Satchel
- 8 Blue hue
- 12 Tibetan monk
- 13 Crew tool
- 14 Galoots
- 15 Spring flower
- 17 Marathon fraction
- 18 Vagrant
- 19 Nearsighted
- 21 Pie-in-the-face sound
- 24 Blueprint
- 25 San — Obispo, CA
- 26 Lose weight
- 30 Web address
- 31 April forecasts
- 32 Pi follower
- 33 Pained expressions

1	2	3	4		5	6	7		8	9	10	11
12					13				14			
15				16					17			
			18				19	20				
21	22	23				24						
25					26					27	28	29
30				31					32			
33			34						35			
			36					37				
38	39	40					41					
42					43	44				45	46	47
48					49				50			
51					52				53			

- 35 Egyptian deity
- 36 911 responders
- 37 Garden statuette
- 38 Shrimp recipe
- 41 Gloomy guy
- 42 Horseback game
- 43 Record holder?
- 48 Sharif of "Funny Girl"
- 49 Melody
- 50 Long tale
- 51 Theater award

- 52 Texter's chuckle
 - 53 Yon folks
- DOWN**
- 1 Jungfrau, for one
 - 2 Standard
 - 3 Brit. record label
 - 4 Brazilian dances
 - 5 Prosperous period
 - 6 Small batteries
 - 7 Glitch makers

- 8 Candy bar nut
- 9 Witticism
- 10 Wrinkled fruit
- 11 In — (shortly)
- 16 Trench
- 20 Orange veggies
- 21 Punch
- 22 Kitten's sound
- 23 Leslie Caron film
- 24 Snoops
- 26 Strategic
- 27 Guesser's words
- 28 Caprice
- 29 Proboscis

- 31 Wheelchair access
- 34 "Cats" show-stopper
- 35 Demand
- 37 Wrigley product
- 38 Espy
- 39 Lake of Lombardy
- 40 Arkin or Alda
- 41 Lass
- 44 2016 Olympics city
- 45 "Unh-unh"
- 46 Census stat
- 47 Non-clerical

© 2022 King Features Synd., Inc.

WORD SCRAMBLE

Rearrange the letters to spell something pertaining to the body.

N J I O T

--	--	--	--	--

Answer: Joint

**LOCAL & FAST DECISION MAKING
FOR ALL YOUR MORTGAGE LOAN NEEDS**



LORI ASTLEFORD
218-666-4025

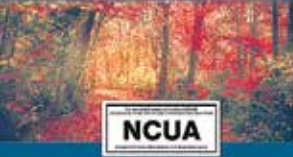
LASTLEFORD@NORTHSTARCREDITUNION.ORG
NMLS:#424495

LINDSEY WENDT
218-666-4023

LWENDT@NORTHSTARCREDITUNION.ORG
NMLS:#2366708

STEPHANIE BURCKHARDT
218-666-4026

SBURCKHARDT@NORTHSTARCREDITUNION.ORG
NMLS:#421833



FEDERALLY INSURED BY NCUA



NMLS:#407735



EQUAL HOUSING LENDER

NORTHSTARCREDITUNION.ORG

CABIN QUILTING

Your North Country

• *5-Star Rated Shop* •



Quilting Fabric & Supplies
Longarm Quilting Services, Gifts

Susan Covey • 218-666-3146
227 1st St SW & Hwy 53, Cook MN 55723
cabinquilting@gmail.com



**PICTURE YOURSELF
ON LAKE VERMILION!**

Fortune Bay
RESORT CASINO®
ON BEAUTIFUL LAKE VERMILION!
FORTUNE BAY.COM



**Our
Specialty
is You**

**24-Hour Emergency Room • Acute Care
Outpatient Services • Care Center**



**218-666-5945 • cookhospital.org
10 Fifth Street SE, Cook, MN 55723
218-361-3287 Tower Lab**

LUNDGREN'S

...Drive away with a deal!



Stop and visit with the friendly staff at Lundgren's!

Since 1929
Lundgren's

Visit us at lundgrenford.com
900 Old Hwy 53, Eveleth MN
(218) 744-4821



ARROW
AUTO GLASS & SUPPLY

Automotive Glass Repair & Replacement
Custom Shower Glass
Residential Window Glass Replacement
Commercial Windows & Doors
Auto Body Paint, Tools and Supplies

All Labor Warrantied • Same-Day Services Available

✓ Call Today for a Free Estimate!

(218) 741-2993

411 N 1st St, Virginia, MN 55792

www.arrowautosupply.com

"We Sell Real Estate"

Northwoods

L a n d O f f i c e

Office 218.753.2300 • www.northwoodsland.com

Looking for a Real Estate Agency that knows the local market?

Northwoods Land Office, Inc.

Has been serving the entire Iron Range community since 1969.

- LAKE HOMES * LAKE CABINS * LAKE BUILDING LOTS
- * COUNTRY HOMES * FIRST TIME HOME BUYERS
- * DOWNSIZING HOME OWNERS
- * HOME OWNERS WHO NEED LARGER HOMES
- * HUNTING PROPERTIES * COMMERCIAL BUSINESSES

Whatever your real estate needs are –
you are in good hands with Northwoods Land Office!

Stop by our office at 407 Main Street, Tower!



Betsy Clark
Broker
Cell (218)290-3619



Rick Clark
Owner
Cell (218)290-1670



Rachel Novosel
Assoc. Broker
Cell (218)780-0355

INFO@NORTHWOODSLAND.COM
407 Main Street, Tower, MN 55790

MEMBER: Local Range Multiple Listing Service
MEMBER: Twin Cities NorthStar Multiple Listing Service



WILKINSON LISTING SERVICE
MLS



King Crossword

ACROSS

- 1 Sharp turn
- 4 Help a crook
- 8 Feudal slave
- 12 — bind
- 13 Put on
- 14 Tow
- 15 Up to
- 16 Taj Mahal city
- 17 Canadian gas brand
- 18 Gorgonzola, for one
- 21 Hairy Addams cousin
- 22 Bit of advice
- 23 Forgeries
- 26 Clear the deck?
- 27 Melancholy
- 30 Incursion

1	2	3		4	5	6	7		8	9	10	11
12				13					14			
15				16					17			
18				19					20			
			21				22					
23	24	25				26				27	28	29
30					31				32			
33				34				35				
			36				37					
38	39	40				41				42	43	44
45					46					47		
48					49					50		
51					52					53		

- 31 Ruin the veneer
- 49 Hurler
- uct
- 32 Jekyll's bad side
- 32 Robust
- 50 Book-spine abbr.
- 8 Bo Peep's charges
- 34 — chi
- 33 Thanksgiving veggie
- 51 "— the Knife"
- 9 Lighten
- 35 Caravan mammals
- 34 Prom rental
- 52 Tiny amounts
- 10 Senator Feingold
- 36 Sly one
- 35 Washer phase
- 53 Request
- 11 Drifting ice
- 37 Yawning, maybe
- 36 Droop
- DOWN**
- 20 Trendy
- 38 Pesky email
- 37 Abysmal
- 1 Tubular pasta
- 23 Saute
- 39 Tower city
- 38 Brunch entree
- 2 "What's — for me?"
- 24 Bond rating
- 40 Sir Guinness
- 45 Heap
- 3 Fancy party
- 25 Kipling lad
- 41 Wife of Zeus
- 46 Roll call reply
- 4 Expects
- 26 Upper limit
- 42 Volcanic flow
- 47 Literary collection
- 5 Sired
- 27 Pouch
- 43 Eve's grandson
- 48 On the briny
- 6 Deserve
- 28 100 percent
- 44 Chat
- 7 Deere prod-
- 29 Scottish river
- 31 Hood's photo

© 2022 King Features Synd., Inc.

WORD SCRAMBLE

Rearrange the letters to spell something pertaining to roller skating.

S E A T K S

--	--	--	--	--	--

Answer: Skates

King Crossword

ACROSS

- 1 Hotel amenity
- 4 Beach bucket
- 8 "— it going?"
- 12 Sandwich meat
- 13 Roughly
- 14 "Garfield" dog
- 15 Class that includes newts and frogs
- 17 Style
- 18 Corn serving
- 19 Took the helm
- 21 Clara of the Red Cross
- 24 Guffaw syllable
- 25 Lawyers' org.
- 26 Label
- 28 Potato, for one
- 32 Toy block name
- 34 "Uh-huh"
- 36 The Big Easy acronym
- 37 Put in office
- 39 Sea, to Henri
- 41 Kimono closer
- 42 Nanny's charge
- 44 Beach robe
- 46 Boris' cartoon partner
- 50 Twitch
- 51 Hgt.
- 52 Highway turn-

1	2	3		4	5	6	7		8	9	10	11
12				13					14			
15			16						17			
		18				19		20				
21	22				23		24					
25				26		27		28		29	30	31
32			33		34		35		36			
37				38		39		40		41		
			42		43		44		45			
46	47	48				49		50				
51					52		53				54	55
56					57					58		
59					60					61		

- 32 off
- 32 Aachen article
- 32 wheeler-deal-
- 32 Exile isle
- 56 Snitch
- 56 er
- 31 Picnic spoiler
- 57 — -jongg
- 6 Egyptian deity
- 33 Scale ranges
- 58 June honor-
- 7 Reluctant
- 35 Chest muscle
- 59 ees
- 8 Four-bagger
- 38 Lean- —
- 60 Sheltered
- 9 Air freshener
- (sheds)
- 61 Group of
- 10 Broad
- 40 Baby's toy
- seals
- 11 Feeder filler
- 43 Letter before
- iota
- 16 Fez, e.g.
- 45 Fragrant tree
- 20 "Dig in!"
- 46 Must have
- 1 Na Na lead-in
- 21 Hay bundle
- 47 Inter —
- 2 Nonstick
- 22 First victim
- 48 See to
- spray
- 23 Opposing
- 49 Skater's leap
- 3 Electrical
- vote
- 53 — -de-France
- strength
- 27 Wrigley prod-
- 54 Chinese
- 4 Christie sleuth
- uct
- chairman
- 5 Wall St.
- 29 Training site
- 55 Prof's degree

© 2022 King Features Synd., Inc.

WORD SCRAMBLE

Rearrange the letters to spell something pertaining to vegetarianism.

E G M E U L

--	--	--	--	--	--

Answer: Legume

YOUR HOME-DECOR STORE



ANDERSON
FURNITURE
& KITCHENS

AndersonFurnitureCompany.com

214 2nd Ave. S, Virginia, MN • 218-741-9356

INTEREST
FREE
FINANCING
AND
LAYAWAY
AVAILABLE



LUNCH & DINNER

Full Bar featuring MN Spirits~Beers~Wine

OPEN:

Tues. thru Sat: 11 AM-8 PM

Sun. & Mon. CLOSED

145 E. Sheridan St. Ely, MN • 218-365-4855

www.insularestaurant.com

King Crossword

ACROSS

- 1 Ancient Brit
- 5 Started
- 8 Fail to see
- 12 River to the Baltic
- 13 Spanish gold
- 14 "Do — others ..."
- 15 Opera set in Egypt
- 16 Used a Hoover, say
- 18 Baseball divisions
- 20 Diving ducks
- 21 Leb. neighbor
- 22 Ostrich's kin
- 23 Sousa composition
- 26 Empty, as a stare

1	2	3	4		5	6	7		8	9	10	11
12					13				14			
15					16			17				
18				19				20				
			21				22					
23	24	25				26				27	28	29
30					31					32		
33			34	35				36	37			
			38				39					
40	41	42				43				44	45	46
47					48					49		
50					51				52			
53					54					55		

- 30 Commotion
- 54 NBC week-end show
- vested — ..." (Abbr.)
- 31 Melody
- 55 Scarce
- 10 Leftovers recipe
- 29 "Mayday!"
- 32 "Top Hat" studio
- 11 Lays down the lawn
- 31 Reply (Abbr.)
- 33 Flu forestaller
- 17 Gomer Pyle's org.
- 34 Suez and Erie, e.g.
- 36 Autocrats
- 19 Show to a seat, slangily
- 35 "Yeah, right"
- 38 Tummy muscles
- 22 Hearing thing
- 36 Levy
- 39 Chatter
- 23 Dallas hooper, briefly
- 37 Web master?
- 40 Skirt style
- 24 Nabokov novel
- 39 Streisand title role
- 43 Set of words
- 25 Sinbad's bird
- 40 Hertz rival
- 47 Work break
- 26 Compete
- 41 Young fellows
- 49 Nitwit
- 27 Man-mouse link
- 42 PC picture
- 50 Pedestal occupant
- 28 Kiev's land
- 43 Pork cut
- 51 In shape
- 44 Musical finale
- 44 Bloodhound's clue
- 52 Ancient Dead Sea land
- 46 Alaskan city
- 45 Bloodhound's clue
- 53 Taxpayer IDs
- 48 Conditions

© 2022 King Features Synd., Inc.

WORD SCRAMBLE

Rearrange the letters to spell something pertaining to kindergarten.

U T Y H O

--	--	--	--	--

Answer: Youth

King Crossword

ACROSS

- 1 Battery fluid
- 5 Sandwich meat
- 8 Barks
- 12 Leaf
- 13 Out — limb
- 14 Ganges wrap
- 15 Warner —
- 16 Naughtiness
- 18 Flashing disco light
- 20 Trumpet's cousin
- 21 Legal wrong
- 23 Wee dollop
- 24 Sushi bar bowlful
- 28 NYC gallery
- 31 Dos Passos trilogy
- 32 Fizzy drinks
- 34 Bankroll
- 35 Humorist Sahl
- 37 Chooses the wrong actor
- 39 Prattle
- 41 Unpaid TV spots (Abbr.)
- 42 John of "Full House"
- 45 Morals
- 49 Blunders
- 51 "Damn Yankees" vamp
- 52 Celestial bear
- 53 Hosp. section
- 54 McGregor of

1	2	3	4		5	6	7		8	9	10	11
12					13				14			
15					16			17				
18				19			20					
			21			22		23				
24	25	26				27		28		29	30	
31				32				33		34		
35			36		37			38				
		39		40		41						
42	43				44		45			46	47	48
49					50				51			
52					53				54			
55					56				57			

- 55 Euclidean
- 7 Fem. counterpart
- face
- 30 Billboards
- 37 Chooses the wrong actor
- 8 Hindu retreat
- 33 "Shoo!"
- 36 Large gong
- 39 Prattle
- 9 Colorful arcs
- 38 Actress Judd
- 40 Fluffy neck-piece
- 41 Unpaid TV spots (Abbr.)
- 10 Gratis
- 42 Overconfident
- 42 John of "Full House"
- 11 Winnow
- 43 Lose energy
- 45 Morals
- 17 Massachusetts cape
- 44 Omit
- 49 Blunders
- 19 Pear choice
- 46 Hawkeyes' home
- 51 "Damn Yankees" vamp
- 22 Dutch bloom
- 47 Chowder morsel
- 52 Celestial bear
- 24 Silent
- 48 Without
- 53 Hosp. section
- 25 Equal (Pref.)
- 50 Author Umberto
- 54 McGregor of
- 26 Sea of the North Atlantic
- 27 Refuses, as an offer
- 29 Wrestling sur-

DOWN

© 2022 King Features Synd., Inc.

WORD SCRAMBLE

Rearrange the letters to spell something pertaining to golf.

L A B L

--	--	--	--

Answer: Ball

PUZZLE #9

9						3		1
			7		6			5
			2			4	9	
		9			3			
8				5		7		
					4		1	8
	1							
		7				6		
	2		9					

Level: Advanced

PUZZLE #10

		3		7	5			
		8					4	2
		2						
		6		8		7	1	4
7								
	3			5				
	8				9		6	
	4		1					
				4		9		5

Level: Advanced

PUZZLE #11

	2			3			6	
						2	4	1
	7	1				3		
	1			4		7	9	
	8				1			
6				7	8			
4					6			
				1				5
		6		5	3			

Level: Intermediate

		9						
	7						5	9
3				4				
	4		5	3				1
	5			6				
7					4	8		
		1	4	9				8
		2	1					
8					2		1	3

PUZZLE #12

Level: Advanced

PUZZLE #13

	6					4	9	3
		7	3	4				
5			1					
			9		6		5	
	1				2		6	
2						8		
			6			9		
		4			1			
	8					7		6

Level: Intermediate

				1			5	
		3					1	4
		9	3		2	8		
			6		3	5		
		7		5	4			
			8					
1	2							7
9		8				2		
4								

PUZZLE #14

Level: Intermediate

PUZZLE #15

	8	1	6					3
4		2		1	7			5
7			8			2	9	
				4				6
				2		4	8	
5	2		7		6			9
8								
1		7						
	6	5	3		8			

Level: Beginner

	4					1	9	
			8					6
		5	4	2	1	8		
5					3	2		
		6					1	7
		1	7	6		5		8
		3		8			2	
7	8	9			6	3		
				1	7			9

PUZZLE #16

Level: Beginner

PUZZLE #17

					2	5		
		1		5				
2	4		3		1			7
6			9	2		7		
					7	4		9
			5				8	
			8					2
	1			9			5	
			4					

Level: Advanced

	7	6	8	4				
		2				7		
			6					
3	5			2			6	
		7				2		
8						3		9
5				3				7
			1		4	6		
		8		5		9	4	

PUZZLE #18

Level: Advanced



Real Estate Closing Services
and Title Insurance

Buying, Selling, or Refinancing?

*We are committed to providing fast,
reliable service to
assure that your real estate transaction
is a pleasurable experience.*

www.netitle.com

**Ely and
Surrounding Areas**

545 E. Sheridan Street
Ely, MN 55731
Phone (218)365-5256

Angie Mikulich-Licensed Closing Agent
Elizabeth Hubbard-Licensed Closing Agent
Shonna Kowarsch-Licensed Closing Agent

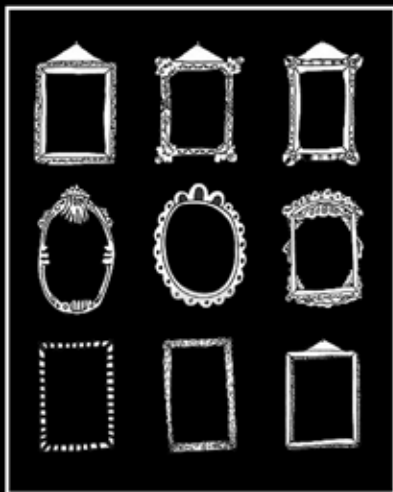
**Virginia and
Surrounding Areas**

612 13th Street South
Virginia, MN 55792
Phone (218)741-1515

Jodee Micheletti-Owner &
Licensed Closing Agent
Sharon Maronick-Licensed Closing Agent
Merella Marsyla-Licensed Closing Agent
Ailie Marsyla-Licensed Closing Agent

We have a Board Certified Real Estate Attorney and four Title Examiners

fine **EDGE**
custom framing



**WE
SOLVE
DECORATING
PUZZLES :)**

**107 North 4th Ave Virginia
218-749-3377 follow us on faceBook**

PUZZLE #19

	9				7		4	
						6	9	
1					6	3		
		5				9	7	
		8	4					
				7		5		3
	2	3	6	4				
9								
	6			3	1			9

Level: Intermediate

6						7		2
3			4					5
		2			6			
			1	4		3		
			6		9		4	
							9	
		7	8				5	9
5		8					2	
4				7	1			

PUZZLE #20

Level: Intermediate

PUZZLE #21

6						7		2
3			4					5
		2			6			
			1	4		3		
			6		9		4	
							9	
		7	8				5	9
5		8					2	
4				7	1			

Level: Intermediate

	1					3		7
		7	1			4		8
8			4		7		6	1
		5	7		8	1	3	9
6	8		2		9			
						2		
					6		7	
			9		1	8		2
7		2	8		4			

PUZZLE #22

Level: Beginner

PUZZLE #23

		5	3	7			6	
		3	1	6				9
	1					5		8
3	6		9					7
	7		6		2			
								1
9						8		6
2	3						7	
7	8			1		9		

Level: Beginner

1	5				2			
		9						6
	4			7				
3		4	1					2
7					6		9	1
					7	4		
	1				5		6	
	6			2	9		5	
			8			9		

PUZZLE #24

Level: Advanced

PUZZLE #25

	6			4				
							9	3
8								
					5		7	
	2				4	3		
6				9	2	4		
				1		6		
		9		6		1	2	7
				7	8			9

Level: Advanced



Open Year Round • 601 Main St, Tower
218.753.3422

**ARTISAN + VINTAGE
ANTIQUES + COLLECTIBLES**

Stop in Soon and Browse our Shop or
Shop online: ubetchashop.com

OPEN YEAR ROUND - EVERY DAY 10-5



Uffda Thrifts & Gifts

*Lake Vermilion gifts, Minnesota,
Bigfoot, Smokey the Bear Collectibles*



New, Old, Greeting Cards, Puzzles, Giftware, DIY, Decor,
Man Stuff, Toys, Furnishings, Housewares, Books,
Records, Socks, Underwear, New Items Every Week



**Located next to Ubetcha Antiques & Uniques
at 603 Main St, Tower**



OPEN YEAR ROUND - EVERY DAY 10-5

PUZZLE #26

3								6
			9			2		
6		4				8	3	
	7		3	1				
		1						
		5	2		7	4		1
5					4	6		
				8	3			
				9		7		2

Level: Advanced



NORTHERN COMFORT COMPANY

“Something for everybody!”



furniture



apparel



gifts



décor



& more

“Stop in and see us!”

218.666.9891 Open: Mon- Sat 10 AM - 5 PM
123 2nd St. SE, Cook, MN 55723



Email: ncccookmn@gmail.com

FOOD SAFETY WORD SEARCH

G O E R L S G N P A C K A G I N G M M D
 O T Q N T P L N N O I T M E I A C G I F N T G R W B E C T Y
 P B P U W C O N N T A I T M I N T A R Y S T G C S L B B U A O T T
 Q E P T Q B M B O N N T G F E B T Y R O N S N L G O F R Y I S I N N T
 B K N F E S W G A N C C I T C A O N S N L G O F R Y I S I N N T
 O G D I A T M C N E I E I C I O U R K E L L S D L P I A C M R D
 K Y E U Y I I R N I E T C I U L K E L L S D L P I A C M R D
 C Y R K L L R N I E T C I U L K E L L S D L P I A C M R D
 Q T R E P I F A T E S R T D F L R A E R E G L L O A C M R D
 Y E G E P I F A T E S R T D F L R A E R E G L L O A C M R D
 Q Q B M A E A P E S R T D F L R A E R E G L L O A C M R D
 L A O D C R F A A P E S R T D F L R A E R E G L L O A C M R D
 Q N R G L N C E F E Y U F D P Q K L D M Y E G D T
 P D F E I D R E I L P P U S Q K L D M Y E G D T
 Y E C N A R U S S A M S A N I L O L A C U U D I F I
 T A U I D O O Q U E R A W B K Q A S M Q S
 A D A F P Q L E R A W B K Q A S M Q S
 P O G M Y D N S D R A D N A T S M Q S

Find the words hidden vertically, horizontally, diagonally, and backwards.

FOOD SAFETY
WORD SEARCH

ANIMAL
ASSURANCE
AUDIT
BACTERIA
CERTIFICATION
COMPLIANCE

CONSUMER
CONTAMINANT
DISINFECT
FACILITY
FOOD
INGREDIENTS

INSPECTION
LABELING
PACKAGING
QUALITY
RAW
SAFETY

SANITARY
STANDARDS
SUPPLIER

WS229400

ACCEPTABLE
AIRLOCK
ALLERGEN

PUZZLE #27

GOOD DOG WORD SEARCH

S O H T C R A T E A B A S S G R A R C L
 D O O V I N O I P M A H C L S R W U P L U
 Y M K C L G M R I C B B B Y K A A W N D
 E D T O B I O Y L L E B E E V P U A E G
 D A E N M N V O B Y B C U K A Y H V U H
 G V P K M V P D U A A Y I I T R P R T W
 I S H E C E K S R G R T A I L K D W E D
 H K A C A O E K R A V V L N C A D Y R A
 C U Y A S Y D B N W R I S I G B V I Y R
 R B M P L B E I G U G G K T B A I V C M
 O R W E I C R L M A W D B H Y L B N I M
 U I D G B E D R D I B L A Y I A A S B D
 P N M E T H D Y T E W V M L T N B N I V
 K D B E E O T H T V Y I V E A C V V T D
 M L V U G R E B U T L P U M S E W O H S
 N E G D L R B Y E H D U L Y G D P Y R R
 G E U G S C U T M B O Y P E N I N A C O
 I H O D N D H O C K S P B S I O M C S I P
 I U E V G R E S G R Y V R W Y A P S E P
 B G G K T D E U P U L H L H U D K B P N

Find the words hidden vertically, horizontally, diagonally, and backwards.

GOOD DOG
WORD SEARCH

BELLY
BREED
BRINDLE
CANINE
CAPE
CHAMPION
CLUB
CRATE

CROUP
DOCKED
DOG
HOCKS
NEUTER
PET
SHOW
SPAY

TAIL
VETERINARY
WITHERS

WS229100

AGILITY
APRON
BALANCE
BARK
BEARD

PUZZLE #28

PRODUCE AISLE WORD SEARCH

S	W	N	P	P	D	K	P	S	Q	K	U	K	A	L	R	U	B	P	A
T	K	H	S	E	W	S	I	S	A	E	P	S	Y	C	E	L	E	R	Y
O	A	S	O	O	P	K	H	D	S	R	P	T	U	Z	F	P	K	T	H
R	O	A	O	B	E	E	T	S	T	T	T	U	H	U	T	O	H	T	U
R	C	U	L	R	T	Q	O	N	G	O	T	U	Q	C	S	T	B	T	E
A	C	Q	S	N	E	P	P	E	P	S	H	R	R	C	R	A	S	I	Y
C	L	S	A	R	T	I	C	H	O	K	E	P	N	H	L	T	M	E	C
H	Y	K	T	D	O	U	E	C	I	B	A	S	G	I	Q	O	U	C	I
R	M	Y	I	P	T	A	C	H	P	M	M	S	P	N	P	E	K	U	L
Z	Q	H	N	I	K	P	M	U	P	P	H	L	P	I	D	S	K	T	R
Z	S	E	O	T	A	M	O	T	Q	S	M	E	E	A	A	N	F	T	A
S	T	O	L	L	A	H	S	L	E	B	F	S	G	M	R	R	O	E	G
F	T	N	T	A	L	D	P	T	W	T	G	H	S	R	A	F	A	Q	L
M	T	I	N	G	C	B	A	E	R	T	A	U	D	R	B	K	G	Y	D
O	Q	O	A	G	M	N	R	E	O	C	N	R	O	C	F	B	M	U	Y
F	Z	N	L	U	Y	O	S	K	E	E	L	B	B	D	M	I	A	D	S
U	F	S	P	W	Z	A	N	D	Q	Z	F	M	L	K	L	Y	F	C	U
E	B	S	G	K	Y	P	I	C	A	U	L	I	F	L	O	W	E	R	U
M	Y	H	G	K	R	E	P	O	F	F	U	Z	C	Z	O	D	P	Q	T
T	S	Z	E	W	A	A	S	E	I	L	W	Q	N	C	H	A	R	D	Y

Find the words hidden vertically, horizontally, diagonally, and backwards.

PRODUCE AISLE WORD SEARCH

ARTICHOKE
ASPARAGUS
BEETS

BRUSSELS
SPROUTS
CABBAGE
CARROTS
CAULIFLOWER
CELERY

CHARD
CORN
EGGPLANT
GARLIC
LEEKS
LETTUCE

ONIONS
PARSNIPS
PEAS
PEPPERS
POTATOES
PUMPKIN

SHALLOTS
SQUASH
TOMATOES
TURNIPS
ZUCCHINI

PUZZLE #29

ROLLER RINK WORD SEARCH

Y	H	R	T	H	R	S	W	Q	E	N	P	F	G	X	R	B	R	B	D
X	S	I	M	E	S	C	P	P	I	A	S	P	P	M	E	F	Y	A	W
D	K	N	O	O	A	B	F	I	T	M	R	O	O	I	U	E	E	H	I
I	A	L	S	D	L	R	Y	I	N	S	Y	T	O	U	R	Q	B	O	A
P	T	I	I	R	C	A	R	O	P	O	S	Q	H	G	K	I	I	S	C
P	I	N	G	A	H	K	L	I	I	G	U	L	G	T	N	P	E	W	C
I	N	E	A	B	O	E	N	S	H	D	A	T	C	B	H	T	Y	K	W
N	G	M	R	F	W	D	Y	C	N	N	O	K	A	D	C	H	W	N	I
G	N	W	D	R	Y	H	I	U	O	O	A	L	Y	D	E	T	Y	I	Q
C	H	W	T	O	D	B	E	I	Q	U	A	C	N	O	T	E	X	K	R
R	P	E	M	B	A	W	S	Q	S	N	Y	C	D	P	F	E	D	E	L
S	E	M	L	C	S	S	Q	T	C	B	K	U	S	E	U	E	L	E	D
A	U	X	N	B	E	K	O	E	R	K	C	D	E	O	E	X	E	H	Q
F	U	U	I	F	P	P	D	E	O	U	R	B	H	S	U	E	Y	T	N
E	S	I	O	N	P	P	D	G	U	A	N	O	E	D	B	Y	C	B	T
T	P	R	H	E	G	I	E	N	W	H	N	Q	C	G	N	U	O	P	U
Y	P	U	R	F	D	A	O	K	E	H	A	O	Y	E	I	M	O	T	Y
S	L	F	S	C	R	R	C	W	T	L	E	S	F	I	N	C	C	T	E
M	S	Q	G	H	N	A	W	O	O	P	R	B	W	R	P	F	O	T	S
T	P	O	G	Y	B	U	U	K	N	P	L	Y	G	F	I	I	S	O	G

Find the words hidden vertically, horizontally, diagonally, and backwards.

ROLLER RINK WORD SEARCH

BACKWARDS
BALANCE
BOOT

BRAKE
DERBY
DIPPING
DRAG
FEET
FRIENDS

GEAR
INLINE
LACES
PROFESSIONAL
REXING
RINK

SAFETY
SALCHOW
SKATING
SLALOM
SPIN
SPINOUT

STOPPER
TECHNIQUE
TOE
WS22A300

PUZZLE #30

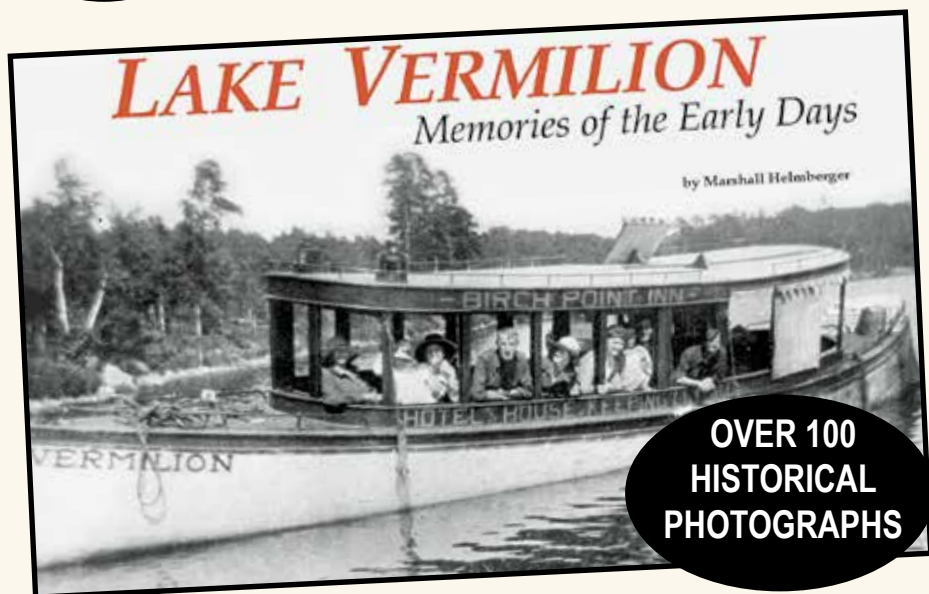
Back By Popular Demand!

Memories of the Early Days

Call today to
reserve your
copies!

A fascinating look back at the early history
of the Lake Vermilion area

Written by Marshall HelMBERGER • Published by the Timberjay



Just \$29.95

+ Tax

Don't miss your chance
to own Lake Vermilion's most definitive history!

Pick up book(s) at Timberjay office in Tower
or have book(s) mailed, for \$39.95 each.

Pick up book(s) at Timberjay office in Tower or have book(s) mailed, for \$39.95 each.



The Timberjay
P.O. Box 636, 414 Main St
Tower, MN 55790 • 218-753-2950

BOOK ORDER FORM

Quantity of Books _____

Name _____

Address _____

City _____ State _____ ZIP Code _____ Tel.# _____

Credit Card Information VISA MC DISCOVER

Exp. Date ____/____/____ CVV _____

Billing address if different from above _____

Book Total - Pick Up \$29.95 + tax (\$32.16)

Book Total - Mail \$39.95

Total charged to credit card \$ _____ Paid by check \$ _____ Check # _____

Pick Up | Mail

PUZZLE #1

E	A	R			B	I	T		N	O	V	A	
B	L	O	B		A	G	E		A	D	A	M	
B	O	N	O		G	O	B		V	E	N	T	
S	T	A	B	S		R	O	B	E				
				F	U	N		W	I	L	L	O	W
C	O	C	O	N	U	T		B	O	O	N	E	
A	P	E	R		B	E	A		R	A	N	I	
M	I	D	A	S		E	C	U	A	D	O	R	
P	E	E	P	E	R		S	S	N				
				P	A	U	L		E	G	Y	P	T
J	A	I	L		S	A	T		E	E	L	Y	
O	G	R	E		T	R	I		S	T	E	P	
T	O	S	S		Y	A	P			I	D	O	

PUZZLE #2

M	A	R	S		F	O	P		S	P	O	T
E	R	A	T		O	N	O		H	E	R	R
A	L	M	A		R	E	O		I	D	E	A
T	O	P	D	O	G		L	O	N	E	L	Y
				I	K	E		C	T	S		
T	A	T	A		T	E	E	T	O	T	A	L
U	M	A			I	N	N		A	L	A	
T	A	L	E	N	T	E	D		A	L	E	X
				I	D	O			E	E	L	
I	N	S	I	S	T		A	R	D	E	N	T
W	O	M	B		R	E	V		O	R	E	O
O	R	A	L		I	M	O		U	S	S	R
N	I	N	E		O	U	R		S	E	T	A

PUZZLE #3

C	A	T	S		O	H	O		O	A	S	T
H	O	O	T		R	U	B		K	N	E	E
A	N	T	I	H	E	R	O		A	T	A	T
P	E	S	T	O			E	M	P	I	R	E
				C	E	N	T		A	I	D	
S	H	A	H		Y	A	R	N		O	R	G
P	U	N		D	E	T	O	X		T	A	I
Y	E	T		I	T	A	L		S	E	W	N
				I	D	A		R	E	S	T	
A	B	L	A	Z	E			C	A	R	O	N
S	O	L	I		A	N	T	I	G	O	N	E
T	U	E	S		V	I	I		E	M	I	T
I	T	S	Y		E	P	A		D	O	T	S

PUZZLE #4

A	P	E	S		B	A	G		A	Q	U	A	
L	A	M	A		O	A	R		L	U	G	S	
P	R	I	M	R	O	S	E		M	I	L	E	
				B	U	M		M	Y	O	P	I	C
S	P	L	A	T		P	L	A	N				
L	U	I	S		T	R	I	M	D	O	W	N	
U	R	L		R	A	I	N	S		R	H	O	
G	R	I	M	A	C	E	S		I	S	I	S	
				E	M	T	S		G	N	O	M	E
S	C	A	M	P	I		G	U	S				
P	O	L	O		C	R	I	M	I	N	A	L	
O	M	A	R		A	I	R		S	A	G	A	
T	O	N	Y		L	O	L		T	H	E	Y	

PUZZLE #5

Z	I	G		A	B	E	T		S	E	R	F
I	N	A		W	E	A	R		H	A	U	L
T	I	L		A	G	R	A		E	S	S	O
I	T	A	L	I	A	N	C	H	E	E	S	E
				I	T	T		T	I	P		
F	A	K	E	S		M	O	P		S	A	D
R	A	I	D		M	A	R		H	A	L	E
Y	A	M		T	U	X		C	Y	C	L	E
				S	A	G		B	A	D		
S	P	A	N	I	S	H	O	M	E	L	E	T
P	I	L	E		H	E	R	E		A	N	A
A	S	E	A		O	R	E	L		V	O	L
M	A	C	K		T	A	D	S		A	S	K

PUZZLE #6

S	P	A		P	A	I	L		H	O	W	S		
H	A	M		O	R	S	O		O	D	I	E		
A	M	P	H	I	B	I	A		M	O	D	E		
				E	A	R		S	T	E	E	R	E	D
B	A	R	T	O	N		H	A	R					
A	B	A		T	A	G		T	U	B	E	R		
L	E	G	O		Y	U	P		N	O	L	A		
E	L	E	C	T		M	E	R		O	B	I		
				T	O	T		C	A	F	T	A	N	
N	A	T	A	S	H	A		T	I	C				
E	L	E	V		E	X	I	T	R	A	M	P		
E	I	N	E		T	E	L	L		M	A	H		
D	A	D	S		A	L	E	E		P	O	D		

PUZZLE #7

C	E	L	T		L	E	D		M	I	S	S
O	D	E	R		O	R	O		U	N	T	O
A	I	D	A		V	A	C	U	U	M	E	D
L	E	A	G	U	E	S		S	M	E	W	S
			I	S	R		E	M	U			
M	A	R	C	H		V	A	C	U	O	U	S
A	D	O			A	I	R			R	K	O
V	A	C	C	I	N	E		T	S	A	R	S
			A	B	S		Y	A	P			
A	L	I	N	E		L	E	X	I	C	O	N
V	A	C	A	T	I	O	N		D	O	D	O
I	D	O	L		F	I	T		E	D	O	M
S	S	N	S		S	N	L		R	A	R	E

PUZZLE #8

A	C	I	D		H	A	M		A	R	F	S
P	A	G	E		O	N	A		S	A	R	I
B	R	O	S		M	I	S	C	H	I	E	F
S	T	R	O	B	E		C	O	R	N	E	T
			T	O	R	T		D	A	B		
M	I	S	O	S	O	U	P		M	O	M	A
U	S	A		C	O	L	A	S		W	A	D
M	O	R	T		M	I	S	C	A	S	T	S
		G	A	B		P	S	A	S			
S	T	A	M	O	S		E	T	H	I	C	S
M	I	S	T	A	K	E	S		L	O	L	A
U	R	S	A		I	C	U		E	W	A	N
G	E	O	M		P	O	P		Y	A	M	S

PUZZLE #9

9	6	2	5	4	8	3	7	1
4	3	1	7	9	6	8	2	5
7	8	5	2	3	1	4	9	6
1	7	9	8	2	3	5	6	4
8	4	6	1	5	9	7	3	2
2	5	3	6	7	4	9	1	8
6	1	4	3	8	7	2	5	9
5	9	7	4	1	2	6	8	3
3	2	8	9	6	5	1	4	7

PUZZLE #10

4	9	3	2	7	5	1	8	6
1	7	8	3	9	6	5	4	2
6	5	2	4	1	8	3	9	7
5	2	6	9	8	3	7	1	4
7	1	9	6	2	4	8	5	3
8	3	4	7	5	1	6	2	9
2	8	7	5	3	9	4	6	1
9	4	5	1	6	7	2	3	8
3	6	1	8	4	2	9	7	5

PUZZLE #11

8	2	4	1	3	9	5	6	7
9	6	3	5	8	7	2	4	1
5	7	1	4	6	2	3	8	9
3	1	2	6	4	5	7	9	8
7	8	5	2	9	1	4	3	6
6	4	9	3	7	8	1	5	2
4	5	7	8	2	6	9	1	3
2	3	8	9	1	4	6	7	5
1	9	6	7	5	3	8	2	4

PUZZLE #12

6	2	9	3	1	5	7	8	4
1	7	4	2	8	6	3	5	9
3	8	5	7	4	9	1	6	2
9	4	8	5	3	7	6	2	1
2	5	3	8	6	1	9	4	7
7	1	6	9	2	4	8	3	5
5	6	1	4	9	3	2	7	8
4	3	2	1	7	8	5	9	6
8	9	7	6	5	2	4	1	3

PUZZLE #13

8	6	1	5	2	7	4	9	3
9	2	7	3	4	8	6	1	5
5	4	3	1	6	9	2	8	7
4	3	8	9	7	6	1	5	2
7	1	9	8	5	2	3	6	4
2	5	6	4	1	3	8	7	9
3	7	2	6	8	5	9	4	1
6	9	4	7	3	1	5	2	8
1	8	5	2	9	4	7	3	6

PUZZLE #14

7	8	4	9	1	6	3	5	2
2	6	3	7	8	5	9	1	4
5	1	9	3	4	2	8	7	6
8	4	2	6	7	3	5	9	1
3	9	7	1	5	4	6	2	8
6	5	1	8	2	9	7	4	3
1	2	6	5	9	8	4	3	7
9	7	8	4	3	1	2	6	5
4	3	5	2	6	7	1	8	9

PUZZLE #15

9	8	1	6	5	2	7	4	3
4	3	2	9	1	7	8	6	5
7	5	6	8	3	4	2	9	1
3	7	8	1	4	9	5	2	6
6	1	9	5	2	3	4	8	7
5	2	4	7	8	6	3	1	9
8	9	3	4	7	1	6	5	2
1	4	7	2	6	5	9	3	8
2	6	5	3	9	8	1	7	4

PUZZLE #16

8	4	7	6	3	5	1	9	2
1	3	2	8	7	9	4	5	6
9	6	5	4	2	1	8	7	3
5	7	8	1	9	3	2	6	4
3	2	6	5	4	8	9	1	7
4	9	1	7	6	2	5	3	8
6	1	3	9	8	4	7	2	5
7	8	9	2	5	6	3	4	1
2	5	4	3	1	7	6	8	9

PUZZLE #17

7	9	8	6	4	2	5	3	1
3	6	1	7	5	9	8	2	4
2	4	5	3	8	1	6	9	7
6	3	4	9	2	8	7	1	5
5	8	2	1	3	7	4	6	9
1	7	9	5	6	4	2	8	3
9	5	6	8	7	3	1	4	2
4	1	7	2	9	6	3	5	8
8	2	3	4	1	5	9	7	6

PUZZLE #18

9	7	6	8	4	2	5	3	1
4	8	2	5	1	3	7	9	6
1	3	5	6	9	7	4	8	2
3	5	9	7	2	1	8	6	4
6	4	7	3	8	9	2	1	5
8	2	1	4	6	5	3	7	9
5	6	4	9	3	8	1	2	7
2	9	3	1	7	4	6	5	8
7	1	8	2	5	6	9	4	3

PUZZLE #19

3	9	6	2	5	7	1	4	8
5	8	2	3	1	4	6	9	7
1	7	4	9	8	6	3	5	2
2	1	5	8	6	3	9	7	4
7	3	8	4	9	5	2	6	1
6	4	9	1	7	2	5	8	3
8	2	3	6	4	9	7	1	5
9	5	1	7	2	8	4	3	6
4	6	7	5	3	1	8	2	9

PUZZLE #20

6	8	4	3	9	5	7	1	2
3	7	1	4	8	2	9	6	5
9	5	2	7	1	6	8	3	4
2	9	5	1	4	8	3	7	6
7	1	3	6	5	9	2	4	8
8	4	6	2	3	7	5	9	1
1	6	7	8	2	3	4	5	9
5	3	8	9	6	4	1	2	7
4	2	9	5	7	1	6	8	3

PUZZLE #21

6	8	4	3	9	5	7	1	2
3	7	1	4	8	2	9	6	5
9	5	2	7	1	6	8	3	4
2	9	5	1	4	8	3	7	6
7	1	3	6	5	9	2	4	8
8	4	6	2	3	7	5	9	1
1	6	7	8	2	3	4	5	9
5	3	8	9	6	4	1	2	7
4	2	9	5	7	1	6	8	3

PUZZLE #22

5	1	4	6	8	2	3	9	7
3	6	7	1	9	5	4	2	8
8	2	9	4	3	7	5	6	1
2	4	5	7	6	8	1	3	9
6	8	3	2	1	9	7	4	5
9	7	1	5	4	3	2	8	6
1	5	8	3	2	6	9	7	4
4	3	6	9	7	1	8	5	2
7	9	2	8	5	4	6	1	3

PUZZLE #23

4	9	5	3	7	8	1	6	2
8	2	3	1	6	5	7	4	9
6	1	7	4	2	9	5	3	8
3	6	8	9	4	1	2	5	7
1	7	9	6	5	2	3	8	4
5	4	2	7	8	3	6	9	1
9	5	4	2	3	7	8	1	6
2	3	1	8	9	6	4	7	5
7	8	6	5	1	4	9	2	3

PUZZLE #24

1	5	3	6	8	2	7	4	9
8	7	9	5	1	4	2	3	6
2	4	6	9	7	3	5	1	8
3	9	4	1	5	8	6	7	2
7	8	5	2	4	6	3	9	1
6	2	1	3	9	7	4	8	5
9	1	2	4	3	5	8	6	7
4	6	8	7	2	9	1	5	3
5	3	7	8	6	1	9	2	4

PUZZLE #25

3	6	2	9	4	7	8	1	5
7	4	1	8	5	6	2	9	3
8	9	5	3	2	1	7	6	4
4	1	8	6	3	5	9	7	2
9	2	7	1	8	4	3	5	6
6	5	3	7	9	2	4	8	1
2	7	4	5	1	9	6	3	8
5	8	9	4	6	3	1	2	7
1	3	6	2	7	8	5	4	9

PUZZLE #26

3	5	9	8	4	2	1	7	6
7	1	8	9	3	6	2	5	4
6	2	4	5	7	1	8	3	9
4	7	2	3	1	9	5	6	8
9	6	1	4	5	8	3	2	7
8	3	5	2	6	7	4	9	1
5	9	7	1	2	4	6	8	3
2	4	6	7	8	3	9	1	5
1	8	3	6	9	5	7	4	2

⊙ ** ☐ ☺ ☼ ~ ☾ ☽ ✧ * ✨ × ✨ + ☼ * ☾ ♀ * ☽ ☽ ☽ ☽

A B C D E F G H I J K L M N O P Q R S T U V W X Y Z

CRYPTO FUN

☐ ☾ ☽ ✨ ♀ ☼ ~ ★ +

Determine the code to reveal the answer!

Solve the code to discover words related to food safety.
 Each number corresponds to a letter.
 (Hint: 25 = E)

A. 15 9 3 22 22
Clue: Cool down

B. 9 25 13 11
Clue: Warm up

C. 11 9 25 24 5 14 5 25 11 25 24
Clue: Measures temperature

D. 16 13 15 11 25 24 3 13
Clue: Microorganisms

Answers: A. chill B. heat C. thermometer D. bacteria

PUZZLE #27

G O E R L S G N P A C K A G I N G M M D
O T Q N T P L N O I T A C I F I T R E C
P B P U W C O N T A M I N A N T G W B T
Q E T Q B M B R G F E B T R Y G C S B Y
B K N F E S W G A C A D Y O S O F L U A
O G D I A Q C G N C I T A N N R R S N O
K B G F T M N A T S I C O S L T Y I N T
C Y E U Y I I E I L C I U R G Y M G M T
Q T R K L L R N I E T M L K E A O W R R
Y E G E P I F C P C E D K I L L S D K R D
Q Q B M A E A T E R D F L R A U R L P W
O A O D C F A P S T N E I D E R G N I M
L C P T R B S I F K K N E G R E L L A R
Q N R G L N C E F E Y U F D P Q P O C L
P D F E I D R E I L P P U S Q K L D M N
Y E C N A R U S S A M S A N I T A R Y E
Y A A I D O O F G E E A I R L O C K I G
T B U C P G Q U A L I T Y D F L U C F D
A D A F E Q L E R A W B K Q I A U D I T
P O G M Y D N S D R A D N A T S M Q S G

PUZZLE #28

S O H T C R A T E A B A S S G R A R C L
D O O V I N O I P M A H C L S R W U P L U
Y M K C L G M R I C B B Y K A A W A N D
E D T O B I O Y L L E B E E V P U A E N G
D A E N M N V O B Y B C U K A Y H V U H
G V P K M V P D U A A Y I I T R P R T W
I S H E C E K S R G R T A I L K D W E D
H K A C A O E K R A V V L N C A D Y R A
C U Y A S Y D B N W R I S I G B V I Y R
R B M P L B E I G U G G K T B A I V C K
O R W E I C R L M A W D B H Y L B N I M
U I D G B E D R D I B L A Y I A A S B D
P N M E T H D Y T E W V M L T N B N I V
K D B E E O T H T V Y I V E A C V V T D
M L V O L G R E B U T L P U M S E W O H S
N E G D L R B Y E H D U L Y G D P Y R R
G E U G S C U T M B O Y P E N I N A C O
I H O D N D H O C K S P B S I O M C S I
I U E V G R E S G R Y V R W Y A P S E P
B G G K T D E U P U L H L H U D K B P N

PUZZLE #29

S W N P P D K P S Q K U K A L R U B P A
T K H S E W S I S A E P S Y C E L E R Y
O A S Y O P K H D S R P T U Z F P K T H
R O A O B E E T S T T U H U T O H T U
R C U L N T Q O N G O U O Q C S T B U E
A C Q S R E P P E P S H R R C R A S I Y
C L S A R T I C H O K E P N H L T M E C I
H Y K T D O U E C I B A S G I Q E U C I L
R M Y I P T A C H P M M S P N P O K U L
Z Q H N I K P M U P P H L P I D S K T R
Z S E O T A M O T Q S M E E A A N F T A
S T O L L A H S L E B F S G M R R O E G
F T N T A L D P T W G H S R A F A Q L P
M T I N G C B A G R T A U D R B K G Y D
O Q O A G M N R E O C N R O C F B M U Y
F Z N L U Y O S K E E L B B D M I A D S
U F S P W Z A N D Q Z F M L K L Y F C U
E B S G K Y P I C A U L I F L O W E R U
M Y H G K R E P O F F U Z C Z O D P Q T
T S Z E W A A S E I L W Q N C H A R D Y

PUZZLE #30

Y H R T H R S W Q E N P F G X R B R B D
X S I M E S C P P I A S P P M E F Y B A W
D K N O O S C P P I A S P P M E F Y B A W
I K A L S O O S C P P I A S P P M E F Y B A W
P T I N O O S C P P I A S P P M E F Y B A W
P I N G M A R F W D Y C N N O A L Y D C E T H C E I P S E O C W K N I Q L L
I N G N W D R Y H I U O O A L Y D C E T H C E I P S E O C W K N I Q L L
G N W D R Y H I U O O A L Y D C E T H C E I P S E O C W K N I Q L L
C H W T O D B E I Q U A C N D O P F U E X E L E D Q N T Y
R P E M L C S S Q T C B K U S E O S D B U I M C C O T S G
S A U X N B E K O E R K C D E O S D B U I M C C O T S G
A U U I F P P D E O U A N O E E B U I M C C O T S G
F U S I O N P P D G U A N O E E B U I M C C O T S G
E S P R H E G I E N W N Q C G E N E I N P I F I S
T Y P U R F D A O K E H A O Y F I R F I N P I F I S
S L F S C R R C W O P L E S F W G I N P I F I S
M S Q G H N A W O P L E S F W G I N P I F I S
T P O G Y B U U K N P L Y G F I I S O G

Cook
OFF SALE

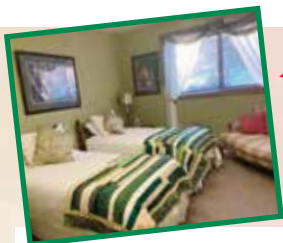
LAST CHANCE LIQUOR

BEER • WINE • SPIRITS
Low Prices & Great Selection

218-666-2072

Mon-Sat: 9 AM - 9 PM, Sun: 11 AM - 4 PM
ATM • LOTTERY • Located on Hwy 53

Read the Timberjay online at timberjay.com



In the historic Soudan Hospital 12 room Bed & Breakfast

NEW: Charming 2 bedroom cottage with living room and kitchenette. (2 night minimum)

The Inn offers private bath OR shared bath rooms. In addition, we have a family room that sleeps four.

Continental Breakfast Included!

We also have an efficiency apartment FOR RENT.

Near: * Soudan Store * Hiking and Snowmobile Trails * 2 state parks
* 25 minutes to Ely * 20 minutes from Fortune Bay Resort Casino

*** CALL FOR SPECIAL GROUP RATES**

*** Inquire about our craft/meeting/party spaces**

BOOK ONLINE • VERMILIONPARKINN.COM

218.753.2333 • 30 Center St., Soudan MN 55782

vermilionparkinn@gmail.com



Vermilion Senior Living

Affordable • Comfortable • Senior Living

- Fully trained staff available 24/7
- Planned activities and outings
- 3 home-cooked meals and snacks daily
- Medication management
- Assistance with bathing, dressing and grooming
- Weekly laundry and housekeeping
- Scheduled transportation for local medical visits

**Call and schedule
a tour today!**



Hailey Brondum, LSW • Director • 701-960-8678

1232 Birch Street North, Tower • 218-753-7788 • vermilionseiorliving.com



Dr. Bridget Sundell and
Dr. Krystal Eckstein



Call today
to book
your
appointment!

*Because your vision is precious,
please remember the importance
of routine eye care.*

Sundell Eye Associates is always
accepting new patients!

602 N 6th Ave W, Virginia, MN 55792

Hours: 8 AM–4:30 PM

218.741.4411

sundelleye.com





Smaller incision.

MAXIMUM PRECISION.

Robotic-assisted surgery is at EBCH in Ely!

Advanced technology is now available right here in Ely with the da Vinci surgical system. Our highly-experienced experts can provide robotic-assisted surgery for hernias, gallbladders, and appendectomies, giving surgeons greater control – so our patients have better outcomes.

PATIENT BENEFITS



Faster recovery times



Lower rates of complication or infection



Less pain and scarring



Ely-Bloomenson
Community Hospital

Avoid unnecessary travel and find out how we make scheduling easy by calling **218-365-8724** or visit **ebch.org** to see if robotic surgery is right for you.



*Stores in Ely,
Tower, Babbitt
& Silver Bay*

1500 E SHERIDAN ST, ELY • 218-365-3188

Huge Deli and Meat and Produce Sections!



WAREHOUSE LIQUOR



**Huge Selection
of Wine,
Liquor and
Cordials**

**CHECK OUT
OUR BEER
CAVE**



SUPER ZUPER COUPON Ely Store Only
FREE PEARSON'S SALTED NUT ROLL

FREE



FREE

**Ely Store
Only**

#9522 Limit one per customer. Coupon expires Dec. 31, 2022



Scenic Rivers — Clinics —

Medical, Dental, and Behavioral Health Services

Cook • Bigfork • Tower

Northome • Floodwood • Big Falls

Quality and Compassion
For Every Patient
For *Life*



COVID-19 Testing Available



24-Hour Emergency Care Available in Cook and Bigfork

(877) 541-2817 www.ScenicRiversHealth.org



Caring
Above and
Beyond

Offering-Skilled Nursing

Skilled nursing care at Boundary Waters Care Center offers around-the-clock care for people who require the services of a professional nursing staff or are unable to live independently. Our staff includes registered and licensed nurses, as well as certified nursing assistants, working together to provide the highest quality clinical and personal care.

Offering-Rehabilitation Services

Convenient, Comfortable, and Close to Home with orthopedic surgery or another major medical procedure in your future, post-operative care and rehabilitative therapy are a fact of life. You want to get better and you want to get home. That's why we offer comprehensive rehabilitative care at Boundary Waters Care Center.


Call Us For More Information • 218-365-8045

200 W Conan St, Ely, MN 55731



HOLIDAY KITCHENS & CAMBRIA

~ the perfect marriage for your new kitchen



Offering diverse
cabinetry designs that
suit the way people
live in their kitchens



HOLIDAY **HK** KITCHENS

Keeping customer
service as the
priority of every
crafted design,
process, and finish



At Cambria, we pride ourselves
on being the only family-owned,
American-made producer
of natural quartz surfaces.

For our customers, it results in
quality that can be felt from start
to finish, in products and
our customers' experience.



CAMBRIA



FROM CABINS TO CASTLES
cbe
COOK BUILDING CENTER
www.cookbuildingcenter.com

Hours: Mon-Fri 7-5, Sat 8-12
P 218-666-5344
F 218-666-5033
info@cookbuildingcenter.com

NEXT TIME COME HOME!

**JANISCH
REALTY**

218-780-6644



"The finest Realtor I've ever worked with in my life." -Tim K.



PRIVATE ISLAND, ELY: Secluded island retreat w/mesmerizing views set in towering pines & rock outcroppings on Shagawa Lake, short boat ride across calm water to launch. Tucked among small undeveloped islands, the picturesque coastline to the W & SW is Superior Natl Forest. Built 2012, knotty pine cabin w/lakeside deck connecting kitchen cabin, dock w/walk in swimming area. In 1800's, island was summer home of one of Ely's original doctors.

OFFERED AT \$498,500 2 BED/PRIVY
DETAILS 1.75 ACRES 560 SF 900 FT SHORELINE

**JANISCH
REALTY**



Gorgeous 3BR/3BA hand hewn log home set back off paved rd, 2 stall gar + 36x32 garage w/ htd wkshop, dock on Little Fork River, 57 wooded acres w/feed plot & meadow, over a mile of mowed ATV trails, beautiful country views & abundant wildlife! Built 2008. Just 9 mi to Cook, 30 to Hibbing. Easy access to area lakes & trails. Vaulted great rm w/massive stone firepl, white cedar ceiling, wood floors, natural light pouring in wall of windows open to covered riverside deck. Black Ash kitch w/granite counters, island & buffet open to great rm & dining, all riverside. Main flr suite w/WIC, bth w/shower & soaking tub. Great country home! Ready to move in!

OFFERED AT \$599,000 3 BED/3 BTH
DETAILS 57 ACRES 3,192 SF 2,800 FT SHORELINE

NE Minnesota & Lake Superior
Lake Vermilion - Ely - Giants Ridge



www.JanischRealty.com

