

**FREE**

# **Cabin Fever**



## **PUZZLE BOOK**

**STAY HOME  
&  
DO PUZZLES**

**Early Spring 2022**

Enjoy this fun-filled book, containing  
a variety of over 30 puzzles!

A publication of the Timberjay Newspaper





**Barb Hegg**  
**Associate Broker, GRI**  
**barb@vermilionland.com**

Office: 218-666-6183  
Home Office: 218-666-0144  
Mobile: 218-742-2369

*"Barb was very professional and attentive;  
we'd recommend her to anyone." client*



## **Choose An Agent Who Is...**

**Experienced, Professional, Knowledgeable**

- **BARB is:** Honest, hardworking and reliable
- **BARB does:** Professional photography and drone videos
- **BARB offers:** Virtual tours
- **BARB offers:** Advice on staging
- **BARB is:** A Full-time agent
- **BARB does:** Advertising on social media, and in national magazines

Member of the Range MLS, LSAR MLS (Lake Superior area),  
and Northstar MLS (Mpls/St. Paul area)

**CONTACT BARB**  
for a **FREE MARKET ANALYSIS!**  
**218-742-2369 or**  
**barb@vermilionland.com**

PO Box 518, 210 S. Highway 53,  
Cook, MN 55723

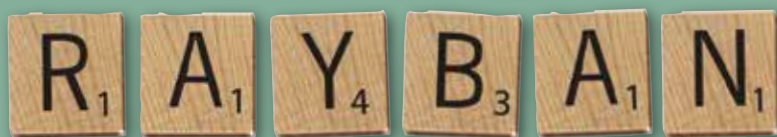


# SCRABBLE® SCRAMBLE

noun

pl. **RayBan**

Luxury sunglasses brand created by Bausch & Lomb in 1936



32 playable words can be made from the word "RAYBAN". How many can you make?



**2-letter words (9 total)**

\_\_\_      \_\_\_      \_\_\_      \_\_\_      \_\_\_

**3-letter words (16 total)**

\_\_\_      \_\_\_      \_\_\_      \_\_\_      \_\_\_

**4-letter words (6 total)**

\_\_\_      \_\_\_      \_\_\_      \_\_\_      \_\_\_

**5-letter words (1 total)**

\_\_\_\_\_

5-letter words: barny

4-letter words: barn, bran, bray, nary, raya, yarn

3-letter words: rya, yar

3-letter words: aba, aby, ana, any, arb, baa, ban, bar, bay, bra, nab, nay, ran, ray,

2-letter words: aa, ab, an, ar, ay, ba, by, na, ya

Answers



*Family Eye Care Center*

**Mtn. Iron/  
Virginia  
741-3000  
advoptical.com**

**At Advanced Optical – Our focus is on you!**

# King Crossword

## ACROSS

- 1 Biting remark  
5 Spheres  
9 Victory  
12 Skin care brand  
13 Joel or Ethan of Hollywood  
14 Parisian pal  
15 Hourly pay  
16 Batman's hood  
17 Beer container  
18 Rebuff  
19 Acting coach Hagen  
20 Crazy  
21 Actor Brynner  
23 Old Olds  
25 Mourn  
28 Hit song by the Oak Ridge Boys

- 32 Grown-up  
33 Snake poison  
34 Autobiography  
36 Herbal tea  
37 Geese formation  
38 Computer key  
39 Lose color  
42 TiVo precursor  
44 Idle or Clapton  
48 Khan title  
49 Close

1	2	3	4		5	6	7	8		9	10	11
12					13					14		
15					16					17		
18					19				20			
			21	22			23	24				
25	26	27					28			29	30	31
32								33				
34					35		36					
			37				38					
39	40	41			42	43			44	45	46	47
48				49					50			
51					52				53			
54					55				56			

50 Handle

51 Dict. info

52 Adriatic port

53 Author Hunter

54 Bygone jet

55 Staff leader?

56 Faxed

## DOWN

1 Fiddle sticks

2 Arkin of "Argo"

3 Prego rival

4 1957 Everly

Brothers song

5 Supernatural

6 Cheer (for)

7 Caveat word

8 NBC sketch show

9 Texas city

10 Apple computer

11 Boy, in Barcelona

20 Features of romantic comedies

22 Loosen

24 Graceland idol

25 Felon's flight

26 Citric beverage

27 Silent

29 Pig-poke link

30 Director Howard

31 Soul, to Sartre

35 Disclose

36 "Fab!"

39 Crazes

40 Mellows

41 Loony

43 Give a darn

45 Carry on

46 One-named supermodel

47 Penny

49 "The Voice" network

© 2022 King Features Synd., Inc.

## Tower-Soudan Agency



**We Can Insure:**  
**Residential, Auto**  
**and Seasonal/Island Properties**

218-753-2101 • 415 Main St., Tower, MN  
tsagency@frontiernet.net





Massages  
can be booked  
online

**218-343-9563 • harborviewspa.com**

**A Variety of Massages!**

**Shop The Boutique**

**Gifts, Bath Items, Candles,**

**NEW Women's Fashion**

**Sizes Small to 3XL,**

**Accessories,**

**Treats and Much More**

**We Do  
Consignment!**

**Remember...**

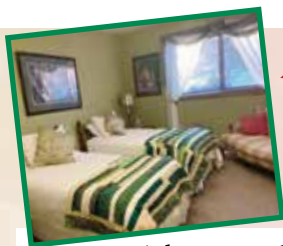
**WE HAVE GIFT CERTIFICATES**



check out our Facebook page

**Hours: Fri. 10-5:30, Sat. 10-5, Sun. 12-3**

**615 Main St, Suite 102 & 103 • Tower, MN**



***In the historic Soudan Hospital  
12 room Bed & Breakfast***

**NEW: Charming 2 bedroom cottage with  
living room and kitchenette. (2 night minimum)**

**The Inn offers private bath OR  
shared bath rooms. In addition, we have  
a family room that sleeps four.**

***Continental Breakfast Included!***



**Near: \* Soudan Store \* Hiking and Snowmobile Trails \* 2 state parks  
\* 25 minutes to Ely \* 20 minutes from Fortune Bay Resort Casino**

**\* CALL FOR SPECIAL GROUP RATES**

**\* Inquire about our craft/meeting/party spaces**

**BOOK ONLINE • VERMILIONPARKINN.COM**

**218.753.2333 • 30 Center St., Soudan MN 55782**

**vermilionparkinn@gmail.com**





# Timberjay readers are puzzle fans!

Thank you to the following businesses for participating in our Cabin Fever Puzzle Book. We hope you enjoy all the puzzles.

## Favorite Business Word Search

J A N I S C H R E A L T Y R A D V Z G V K O N H  
 G V Q B V E C O O K B L D G C E N T E R H A O C  
 Z E H N L H G U I V E R M I L I O N C L U B R G  
 H R O G O X G D S U N D E L L M E D I C A L T T  
 U M L Q B S T M E L A P S W E I V R O B R A H U  
 I S M Q A A N W X E N M S A O X I A E B O J S L  
 O E E V R R K E T W N L B Q I L D U Y M E L T D  
 N N S L B R Z S M R K I F T Z V F C L N A X A F  
 N I E T H O U Q H O A K F H A P N Y I G X X R X  
 I O X M E W P Y H D O U B N P E X A L O W G I H  
 K R C I G A S I B N C L C V G M S E X E O N N X  
 R L A Y G U E U N R E E B A R C O L X A N I S B  
 A I V V Z T L L A S D T S Y E V F A U K A T U W  
 P V A K M O Y T Y O U T I N L R T T V Z B L R C  
 N I T F N X S I P A B L I T O E G I S Z E I A A  
 O N I R F H R T U A U C A N L G I P I E A U N R  
 I G N I T R I C Y B R T T R O E C S G L R Q C E  
 L I G R F C F V E I J P O V Q J N O A L C N E C  
 I W O B A V I T V X O G W H N H T H R A E I D E  
 M N W L E E C E Q R B R O C K S Y K I S N B U N  
 R E V V W H R R C V V J K L Z P T O P A T A Q T  
 E E I R A S G H N H H Z L U Y L W O X V E C C E  
 V N F Q F O R T U N E B A Y W F B C M R R Z E R  
 S Y A D L O D O O G X B D C L E A R A L L V U L

answers on page 32

ZUPSELY  
 VERMSENIORLIVING  
 SUNDELLMEDICAL  
 NETITLE  
 HARBORVIEWSPA  
 INSULA  
 FINEEDGE  
 ELYBLOOMENSON  
 CABINQUILTING  
 ADVANCEDOPTICAL

VLOBARBHEGG  
 VERMILIONPARKINN  
 SCENICRIVERS  
 NORTHSTARINSURANCE  
 REMAX  
 HOLMESEXCAVATING  
 EVFCU  
 ELYAUTO  
 BWCARECENTER

VERMILIONCLUB  
 UBETCHA  
 ROCKS  
 NORTHSTARCU  
 JENIAS  
 GOODOLDAYS  
 FRONTPORCH  
 COOKHOSPITAL  
 BAYVIEW

BDCLEARALL  
 TSAGENCY  
 PIRAGIS  
 NABEARCENTER  
 JANISCHREALTY  
 FORTUNEYBAY  
 ELYFLOWER  
 COOKBLDGCENTER  
 ARROWAUTO

**Cabin Fever Puzzle Book is a publication of  
 The Timberjay Newspaper**

Published each spring and fall.

Call to reserve your spot in our next puzzle book!

(218) 753-2950 • editor@timberjay.com • www.timberjay.com



**Our  
Specialty  
is You**

**24-Hour Emergency Room • Acute Care  
Outpatient Services • Care Center**



**218-666-5945 • [cookhospital.org](http://cookhospital.org)**

**10 Fifth Street SE, Cook, MN 55723**

218-361-3287 Tower Lab



*Caring*  
Above and  
Beyond

### **Offering-Skilled Nursing**

Skilled nursing care at Boundary Waters Care Center offers around-the-clock care for people who require the services of a professional nursing staff or are unable to live independently. Our staff includes registered and licensed nurses, as well as certified nursing assistants, working together to provide the highest quality clinical and personal care.

### **Offering-Rehabilitation Services**

**Convenient, Comfortable, and Close to Home** with orthopedic surgery or another major medical procedure in your future, post-operative care and rehabilitative therapy are a fact of life. You want to get better and you want to get home. That's why we offer comprehensive rehabilitative care at Boundary Waters Care Center.

**Call Us For More Information • 218-365-8045**

200 W Conan St, Ely, MN 55731



**RE/MAX**  
Lake Country

Serving  
Lake Vermilion  
To Rainy Lake

218-757-3233 • [www.TheLakeCountry.com](http://www.TheLakeCountry.com)



**Orr-\$69,995**

40 remote acres surrounded by public lands. Mix of trees and open fields.

**MLS#142784**



**Orr-\$155,000**

61 wooded acres on the Crane Lake Rd with mowed trails throughout the land.

**MLS#142631**



**Orr-\$79,900**

8 wooded acres on the Vermilion River with 324 ft of shoreline. Near many area lakes and trails. **MLS#141328**



**Orr-\$69,900**

Ash River lot in Bear Ridge on Ash River CIC comes with septic and electric. 155 ft of shared shoreline, personal slip and dock, gazebo near lake with grill and 1/10 share of all common areas. **MLS#140956**



**Elbow Lake-\$159,000**

530 ft of shoreline on 3.83 acres with towering pines. Road-access! **MLS#136256**



**Daniels Pond, Buyck-\$198,999**

46.5 acres, 1,650 ft airstrip with 3,487 ft of shoreline on a pond. ATV trails and area lakes nearby. **MLS#141325**



**Ray Ingrebretsen**

Broker/Owner

218-780-3007

[Ray@TheLakeCountry.com](mailto:Ray@TheLakeCountry.com)



"As measured by residential transaction sides."



**Jeff Miller**

Realtor

218-290-4469

[Jeff@TheLakeCountry.com](mailto:Jeff@TheLakeCountry.com)



Visit our website to view virtual tours on most residential properties



## ACROSS

- 1 "Keep it down!"  
 4 Tax pro  
 7 Whizzes (by)  
 12 Horse chow  
 13 Owned  
 14 Emanations  
 15 Shred  
 16 Pennsylvania city  
 18 Guitar's kin  
 19 Symbol of freshness  
 20 Lancaster or Reynolds  
 22 "Blue Bloods" airer  
 23 Fly high  
 27 Flamenco cheer  
 29 Oliver Twist, for one  
 31 French composer Gabriel  
 34 Hilo hello  
 35 Snowman's nose  
 37 Links org.  
 38 Prop for Dr. House  
 39 Devilish laugh  
 41 Body powder  
 45 "I'm with you!"  
 47 Meadow  
 48 Pennsylvania city  
 52 Conditions  
 53 Boredom

1	2	3		4	5	6		7	8	9	10	11
12				13				14				
15				16			17					
18				19								
20			21		22				23	24	25	26
			27	28			29	30				
31	32	33						34				
35					36		37					
38					39	40			41	42	43	44
				45				46		47		
48	49	50	51							52		
53						54				55		
56						57				58		

- 54 Kimono sash  
 55 Packed away  
 56 "The Dapper Don"  
 57 Fixed  
 58 Snake's sound  
 8 "Shoo!"  
 9 Acapulco gold  
 10 Gullet  
 11 Capitol Hill  
 17 Old U.S. gas brand  
 21 Baseball manager Joe  
 23 Pie-in-the-face sound  
 24 Discoverer's call  
 25 Satisfied sigh  
 26 Genetic letters  
 28 Summer sign  
 30 Cleaning cloth  
 31 TV watchdog  
 org.  
 32 Small battery  
 33 Coffee vessel  
 36 Biblical pronoun  
 37 "Friends" role  
 40 Community spirit  
 42 Fake name  
 43 Some jabs  
 44 Attorney's load  
 45 Roman 1052  
 46 Skip  
 48 Plead  
 49 Rock's Brian  
 50 Potent stick  
 51 Shack

## DOWN

- 1 Bush  
 2 Japanese verse  
 3 High-strung  
 4 Sudan neighbor  
 5 Royal home  
 6 Extemporize  
 7 Madcap

© 2022 King Features Synd., Inc.

## YOUR HOME-DECOR STORE

Dining sets, sofas, chairs, end tables, lamps, beds, dressers and more!

**ANDERSON**  
 F U R N I T U R E  
 & K I T C H E N S

**AndersonFurnitureCompany.com**

214 2nd Ave. S, Virginia, MN • 218-741-9356

INTEREST  
 FREE  
 FINANCING  
 AND  
 LAYAWAY  
 AVAILABLE



# King Crossword

ACROSS

- 1 Fine, to NASA
- 4 "Misery" star James
- 8 Garbage barge
- 12 — -mo (replay speed)
- 13 Taj Mahal city
- 14 Ocean motion
- 15 Sunbather's goal
- 16 Insect organ
- 17 Oklahoma city
- 18 Patsy Cline song
- 21 Shoe width
- 22 Little rascal
- 23 Brilliance
- 26 6 on a phone
- 27 Gaiety
- 30 "Dream on!"
- 31 Ginormous
- 32 Flintstones' pet
- 33 Abolish
- 34 Curse
- 35 Summoned with a beeper
- 36 Frenzied
- 37 Jewel
- 38 Words of empathy
- 45 Made into lumber
- 46 Drescher or Tarkenton
- 47 TV schedule abbr.
- 48 Currier's

1	2	3		4	5	6	7		8	9	10	11
12				13					14			
15				16					17			
18				19					20			
			21				22					
23	24	25				26				27	28	29
30					31				32			
33				34				35				
			36				37					
38	39	40				41				42	43	44
45					46					47		
48					49					50		
51					52					53		

- partner
- 49 Plane-related
- 50 Debussy's "La —"
- 51 Antitoxins
- 52 Lincoln in-law
- 53 Farm pen
- 8 Precipitous
- 9 Title akin to POTUS
- 10 "Garfield" dog
- 11 Marries
- 19 Piece of lettuce
- 20 "As I see it," via text
- 23 Hearing thing
- 24 Hit CBS series
- 25 Cover
- 26 Blend
- 27 Pear-shaped fruit
- 28 French article
- 29 Affirmative
- action?
- 31 Adipose tissue
- 32 Slightly wet
- 34 Chum
- 35 Anise-flavored liqueur
- 36 High-IQ group
- 37 Sentry
- 38 Egyptian deity
- 39 Top choice, for short
- 40 Pitcher
- 41 Crunchy cookie
- 42 \$ dispensers
- 43 "Yeah, right"
- 44 Not even one

DOWN

- 1 Wine region
- 2 Norwegian saint
- 3 Hawaiian coast
- 4 Pill variety
- 5 Marble type
- 6 Woody's son
- 7 Taking a siesta

© 2022 King Features Synd., Inc.



News You Can Trust  
Each Week  
In Print and Online

(218) 753-2950 • [www.timberjay.com](http://www.timberjay.com)



# Stunning Custom Designs!

## *We Offer*

- *On-site jewelry repair*
- *Custom jewelry design*
- *Jewelry appraisals*
- *Watch batteries*
- *Stone remounting*

Claude Thibaudeau  
Montreal



WE BUY...GOLD • SILVER • PLATINUM  
COINS • DIAMONDS

## ROCKS THE JEWELERS

314 Chestnut St, Virginia, MN • Hours: M-F 10:30 AM-4 PM



218-741-ROCK (7625)



PUZZLE #4

	1	2	3	4	5		6	7	8	9	10	11	
12						13	14						15
16			17									18	
19			20			21				22		23	
24		25			26				27		28	29	
	30			31			32		33		34		
		35	36					37		38			
	39								40				
41					42			43					
44				45		46		47			48	49	
50			51		52		53			54			55
56			57	58		59			60			61	
62			63		64				65			66	
67		68									69		
	70							71					

CLUES ACROSS

- 1. Struck firmly
- 6. Shirt part
- 12. Nevertheless
- 16. Article
- 17. Adornment
- 18. Educator's helper
- 19. Healthcare pro
- 20. Atomic number 28
- 21. Extinct flightless bird
- 22. Mystic syllable
- 23. College sports decision maker (abbr.)
- 24. Edible mushrooms
- 26. Venerable English monk
- 28. Surrounded by
- 30. Forming fractional numbers from 4 onwards
- 31. Eastern France river
- 32. Short cry or yelp
- 34. Brew
- 35. Ornamental box
- 37. In a way, surfaced
- 39. Attired
- 40. Peculation
- 41. Netted
- 43. It shows you paid (abbr.)
- 44. Payroll firm
- 45. Antidiuretic hormone
- 47. Japanese classical theater
- 48. The first two
- 50. Ancient burial chamber

- 52. Type of card
- 54. Expression of sorrow or pity
- 56. Hectoliter
- 57. Morning
- 59. NYC subway dweller
- 60. Law enforcement
- 61. Sodium
- 62. Elevated subway
- 63. Facility where wild animals are kept
- 66. Integrated circuit
- 67. Seaman's tool
- 70. Drink to
- 71. Small group

CLUES DOWN

- 1. Poem
- 2. Everest is one (abbr.)
- 3. Olympic legend Jesse
- 4. Portable tent
- 5. When you hope to get there
- 6. Unwavering
- 7. Back muscle
- 8. Within
- 9. Excessive fluid accumulation in tissues
- 10. Six
- 11. Involved as a necessary part
- 12. 2002 Liotta, Patric film
- 13. Living thing
- 14. Type of gin
- 15. Moved around in pursuit of

- fun
- 25. Makes light bulbs
- 26. Story of one's life
- 27. Small island in a river
- 29. A type of bliss
- 31. Genus of large herons
- 33. A way to make dry
- 36. One's grandmother
- 38. Vocal style
- 39. Pronunciation mark
- 41. American Indian chief or leader
- 42. Insecticide
- 43. Go bad
- 46. Capital of Zimbabwe
- 47. Polish river
- 49. Cast out
- 51. People of India and Sri Lanka
- 53. Cleaning fabrics
- 54. Very skilled
- 55. Pouches
- 58. Restaurant must-have
- 60. Native Americans from Arizona
- 64. Remaining after all deductions
- 65. Fleece
- 68. Dorm official
- 69. It cools your home





**STEPHANIE BURCKHARDT**  
**218-666-4026**

[SBURCKHARDT@NORTHSTARCREDITUNION.ORG](mailto:SBURCKHARDT@NORTHSTARCREDITUNION.ORG)

NMLS:#421853

**LORI ASTLEFORD**  
**218-666-4025**

[LASTLEFORD@NORTHSTARCREDITUNION.ORG](mailto:LASTLEFORD@NORTHSTARCREDITUNION.ORG)

NMLS:#454495

**LOCAL & FAST DECISION MAKING  
FOR ALL YOUR MORTGAGE LOAN NEEDS**



FEDERALLY INSURED BY NCUA

EQUAL HOUSING LENDER

NMLS:#407735

**[NORTHSTARCREDITUNION.ORG](http://NORTHSTARCREDITUNION.ORG)**



**Contact us for all your insurance needs**



**Cathy: 218-666-4030**

**Lisa: 218-666-4011**

**Downtown Cook | [InsurewithNorthStar.com](http://InsurewithNorthStar.com)**

PUZZLE #5

1	2	3	4			5	6	7		8	9	10	11
12				13		14				15			
16					17	18				19			
20						21				22			
				23		24				25			
26	27	28	29					30					
31								32					
33									34	35	36	37	38
				39	40	41		42	43				
			44	45				46					
		47					48						
49					50			51		52	53	54	55
56					57			58					
59					60				61				
62					63					64			

CLUES ACROSS

- 1. Requests
- 5. Calendar month
- 8. Invests in little enterprises
- 12. Bird sound
- 14. S. American plant cultivated for tubers
- 15. Car
- 16. Bullfighter
- 18. Hill (Celtic)
- 19. Strong criticism
- 20. Detector
- 21. When you hope to get there
- 22. Having the skill to do something
- 23. Legendary MLB broadcaster
- 26. Vulcanite
- 30. C. Asian mountain range
- 31. In a way, healed
- 32. Midway between east and southeast
- 33. Small appendages of insects
- 34. \_\_\_ Greene, "Bonanza" actor
- 39. A place to bathe
- 42. Postal worker accessory
- 44. Classical music
- 46. A way of wrecking
- 47. Terminator
- 49. You eat three a day

- 50. Pointed end of a pen
- 51. NATO official (abbr.)
- 56. Genus of clams
- 57. Boxing's "G.O.A.T."
- 58. A colorless, odorless gas used as fuel
- 59. Covered thinly with gold paint
- 60. Bachelor of Laws
- 61. Red fluorescent dye
- 62. Engineering group
- 63. Female sibling
- 64. Adjacent

CLUES DOWN

- 1. What a thespian does
- 2. Footwear
- 3. Adjust spacing between
- 4. Witnesses
- 5. Who shows excessive fondness
- 6. Distinct form of a plant
- 7. National capital
- 8. Hunting expedition
- 9. Related to medulla oblongata
- 10. European country
- 11. Cola
- 13. Excluded from use or mention
- 17. Speak

- 24. Bloodshot
- 25. Make better
- 26. Keyboard key
- 27. Type of degree
- 28. Paddle
- 29. Peacock network
- 35. Not young
- 36. Baseball stat
- 37. One's grandmother
- 38. Breakfast food
- 40. Bathroom features
- 41. Disease-causing bacterium
- 42. NY ballplayer
- 43. Got up
- 44. Prophet
- 45. Part of the mouth
- 47. Unnatural
- 48. Acronym for brain science study
- 49. Three are famous
- 52. Languages spoken in Patagonia
- 53. Freedom from difficulty
- 54. Widely used OS
- 55. Many people pay it



## Home of Minnesota's *Best Bloody Mary*

316 Main St • Tower • 218-753-6097

OPEN: Mon-Thur: 6 AM-10 PM

Fri & Sat: 6 AM-1 AM; Sun: 8 AM-Noon



## The Good Ol' Days Features:

- 6 am breakfast Mon-Sat
- 8 am breakfast Sunday
- 5-7 pm happy hour Mon-Fri
- Daily meal specials
- Homemade soups and chili
- Friday fish fry
- Pool Table and enough TVs to catch all the action

SEE OUR MENU AT: [www.goodolddaystower.com](http://www.goodolddaystower.com)





# SEE BEARS

*guaranteed!*



*More than just bears!*

## NORTH AMERICAN BEAR CENTER

NORTHWOODS ECOLOGY HALL

1926 Hwy 169, Ely, Minnesota

1 mile west of Ely • 2 hours north of Duluth

Open for the season in April 2021 • visit [Bear.org](http://Bear.org) for hours



PUZZLE #6

	1	2	3	4					5	6	7	8	
9					10				11				12
13						14		15					
16				17			18						
19			20		21							22	
	23			24		25					26		
		27			28		29			30			
			31			32		33					
		34					35		36			37	
	38				39			40		41			42
43					44				45		46		47
48			49	50						51		52	
53								54			55		
56									57				
	58									59			

CLUES ACROSS

- 1. Breathe noisily
- 5. \_\_\_ Nui, Easter Island
- 9. Reddish browns
- 11. Simple shoes
- 13. Produce alcohol illegally
- 15. Home to famed golf tournament
- 16. Tax collector
- 17. Famous people
- 19. Urban area
- 21. Units of syllable weight
- 22. Pituitary hormone (abbr.)
- 23. Dismounted
- 25. Actor Damon
- 26. Vietnamese offensive
- 27. Retail term
- 29. Netted
- 31. Partner to carrots
- 33. Witnesses
- 34. Caulked
- 36. Satisfy
- 38. R&B performer \_\_\_ Lo
- 39. Monetary units of Macao
- 41. Give advice, explain
- 43. Possesses
- 44. Turn back

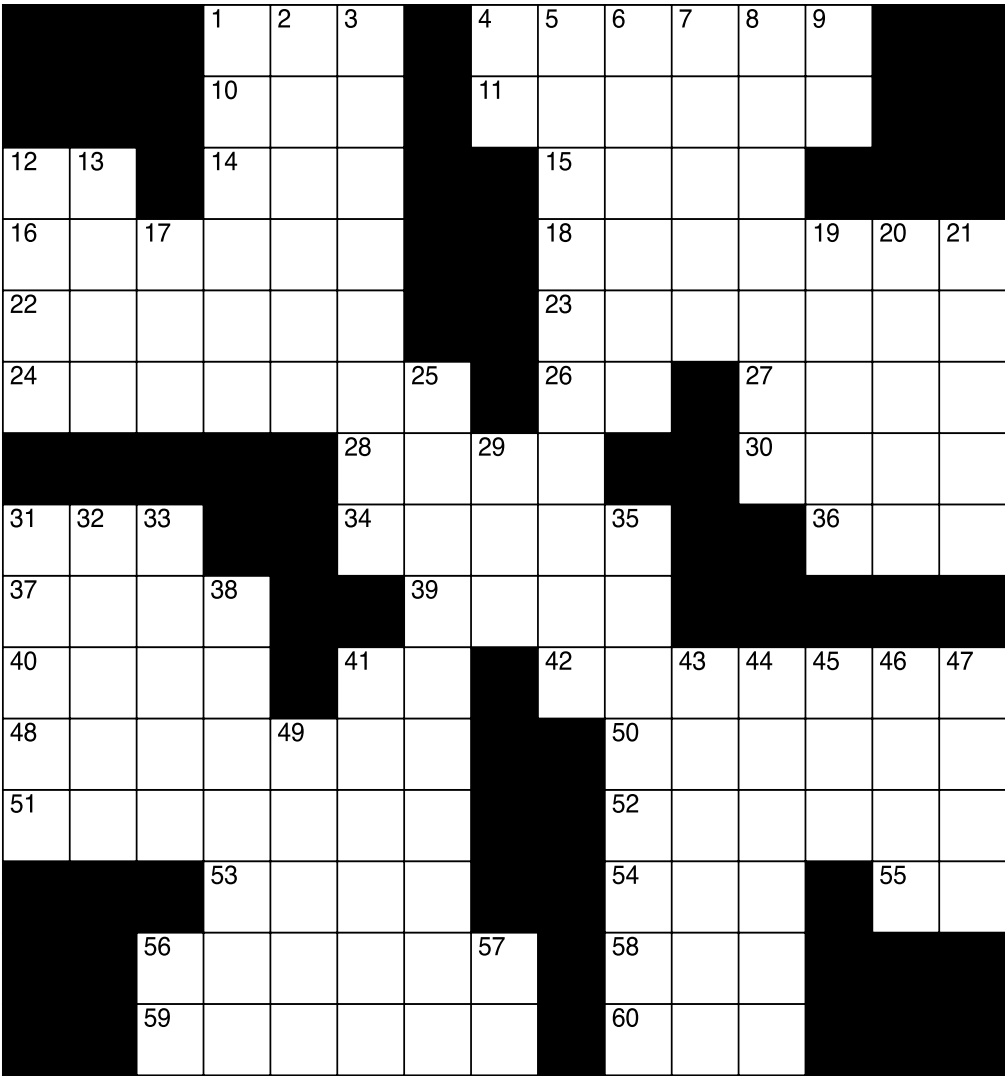
- 46. Gentlemen
- 48. One who fertilizes
- 52. Italian monk title (prefix)
- 53. Parties
- 54. Type of horse
- 56. Cuts in half
- 57. Raises
- 58. Expresses contempt or disgust
- 59. Ancient Italian-Greek colony

CLUES DOWN

- 1. Illinois city
- 2. One of the original disciples chosen by Christ
- 3. Young form of a louse
- 4. Type of powder
- 5. Finger millet
- 6. Share a common boundary
- 7. Assumed as a fact
- 8. Provide clear evidence of
- 9. Invests in little enterprises
- 10. A way to be
- 11. Monies given in support
- 12. Fashion accessory
- 14. Steal
- 15. Becomes less intense

- 18. Geological times
- 20. Hooray!
- 24. Monetary unit
- 26. Male reproductive organs
- 28. Earnings
- 30. Close by
- 32. Small integers
- 34. Fixed in place
- 35. Used to treat Parkinson's disease
- 37. Large, imposing building
- 38. A rooflike shelter
- 40. Stiff, hairlike structure
- 42. Print errors
- 43. To show disapproval
- 45. Body of traditions
- 47. Without
- 49. \_\_\_ Clapton, musician
- 50. Dangerous illegal drug
- 51. Infrequent
- 55. Sound unit

PUZZLE #7



- CLUES ACROSS

  - 1. One point east of due south
  - 4. City in Maine
  - 10. Inquire too closely
  - 11. Make dirty
  - 12. Small Greek island
  - 14. Bitterly regret
  - 15. Millisecond
  - 16. \_\_\_ the ante
  - 18. Without value
  - 22. Eurasian ryegrass
  - 23. Authentic
  - 24. Having a mournful quality
  - 26. Not out
  - 27. Salvador \_\_\_, Spanish artist
  - 28. Cargo (abbr.)
  - 30. This (Spanish)
  - 31. Sino-Soviet block (abbr.)
  - 34. Slang for trucks with trailers
  - 36. Helps you hear
  - 37. Steer a boat
  - 39. British School
  - 40. Genus of olive
  - 41. Computer term (abbr.)
  - 42. Horse gear
48. Give off

50. A type of salt

51. Exposing human vice or folly to ridicule

52. One who watches birds

53. Sailboat

54. A major division of geological time

55. Sodium

56. American state

58. Soak in water

59. Thin decorative covering of fine wood

60. Affirmative
9. Atomic number 45

12. Ill-mannered

13. Opaque gem

17. Indicates before

19. Remove

20. Populous Argentine city

21. More cunning

25. Rich dessert

29. Payment (abbr.)

31. Footwear

32. Famed Alabama city

33. Sheep's cry

35. Arrogance

38. Clergical vestment

41. Serving no practical purpose

43. An evening party

44. Print errors

45. Not good

46. Egyptian Sun god

47. Industrial German city

49. Scottish island

56. Early multimedia

57. Atomic number 18



# ELY AUTO SERVICES & TOWING

1614 Harvey Street, Ely • Locally Owned & Operated

**Tires/flat repairs (big or small), Rotations,  
Tire balances, Alignments, Brakes, Batteries,  
Starting systems, Front and rear suspensions,  
AC and heating, Transmissions, Engines,  
Oil changes**

**Towing • Recovery • Lockouts  
• Roadside assistance  
• Most Insurance accepted and AAA approved**



Phone: 218-365-5994 • Fax: 218-365-8110

[elyautoservice@frontiernet.net](mailto:elyautoservice@frontiernet.net)



# ELY FLOWER & SEED

**The Greenhouses  
are Full of Plants!**



**PET FOOD  
& Supplies!**

**We can meet all your  
landscaping needs!**



**We have all  
kinds of  
YARD ART**



145 W. Camp St, Ely • 365-6555  
Summer Hours (starting May 1)  
Mon-Sat: 8-6, Sun: 9-1

- ACROSS**
- 1 Atlas page
- 4 Ivy League University
- 9 Science room
- 12 GPS suggestion
- 13 Haunting
- 14 Docs' org.
- 15 1989 Al Pacino film
- 17 Decks in the ring
- 18 Small battery
- 19 Yard tools
- 21 "Understood"
- 24 Membership
- 25 Tolkien beast
- 26 Civil War soldier
- 28 Pulitzer category
- 31 Abound
- 33 Narc's org.
- 35 Dr. McGraw
- 36 Anticipate
- 38 Chips go-with
- 40 Sugar suffix
- 41 Mark Harmon TV series
- 43 School break
- 45 Shun
- 47 Owned
- 48 Sashimi fish
- 49 New York City's — Park
- 54 Decay
- 55 Ryan or Tatum

1	2	3		4	5	6	7	8		9	10	11
12				13						14		
15				16						17		
				18				19		20		
21	22	23					24					
25				26		27		28			29	30
31			32		33		34		35			
36				37		38		39		40		
			41			42		43		44		
45	46						47					
48				49		50				51	52	53
54				55						56		
57				58						59		

- 56 Gaiety
- 57 Sauce source
- 58 Actions
- 59 Turf
- DOWN**
- 1 "— Miniver"
- 2 Packed away
- 3 Shell-game item
- 4 "No cheating!"
- 5 Akin
- 6 Acapulco gold
- 7 "The First — Club"
- 8 Required
- 9 Sierra Nevada resort
- 10 Cupid's specialty
- 11 Low range
- 16 Granola grain
- 20 John Irving hero
- 21 Teeny bit
- 22 Got bigger
- 23 Maryland beach town
- 27 Nap site
- 29 Avoid
- 30 Pub orders
- 32 Lansing's st.
- 34 Dunce
- 37 Steering system part
- 39 Gems from oysters
- 42 Pigs
- 44 LPs' successors
- 45 Jug handles
- 46 "Scram!"
- 50 Churchill gesture
- 51 Conditions
- 52 Pair
- 53 Conclusion

© 2022 King Features Synd., Inc.

WORD SCRAMBLE

Rearrange the letters to spell something pertaining to baking.

B L S W O

--	--	--	--	--

Answer: Bows



# King Crossword

ACROSS

- 1 Offend
- 5 Vegas lead-in
- 8 Biting remark
- 12 Jacob's twin
- 13 Antlered animal
- 14 Latin love
- 15 Printout
- 17 Earring site
- 18 Roscoe
- 19 More slothful
- 21 Filled fully
- 24 — colada
- 25 Cupid's alias
- 26 Street vendor's vehicle
- 30 Sawbuck
- 31 Attorney's load
- 32 Bee follower
- 33 Barber's offerings

1	2	3	4		5	6	7		8	9	10	11
12					13				14			
15					16				17			
				18				19	20			
21	22	23				24						
25					26					27	28	29
30				31						32		
33				34					35			
				36					37			
38	39	40					41					
42					43	44				45	46	47
48					49				50			
51					52				53			

- 35 Panache
- 36 Aachen article
- 37 Utter impulsively
- 38 Architectural style
- 41 Hero sandwich
- 42 Actress Perlman
- 43 Ski lodge cupful
- 48 "A Room of — Own"
- 49 Prior night
- 50 Not so hot?

- 51 "Holy cow!"
- 52 Enervate
- 53 Trade
- 8 French novelist
- 9 Mine, to Marcel
- 10 Judicial garb
- 11 Rabbit's title
- 16 Cow's chew
- 20 &&&&
- 21 Actor Rogen
- 22 Location
- 23 Singer Braxton
- 24 Stickum
- 26 Hindquarters
- 27 Rights advocacy org.
- 28 Bring up
- 29 Bivouac shelter
- 31 Roman 202
- 34 Go over again
- 35 Macaroni shapes
- 37 Tampa Bay NFLer
- 38 Pirate's drink
- 39 "It can't be!"
- 40 Golf props
- 41 Dance move
- 44 Eggs
- 45 Cornfield noise
- 46 Mouths (Lat.)
- 47 Music booster

DOWN

- 1 "I'm not impressed"
- 2 "This — recording"
- 3 Distant
- 4 Fakes, as figures
- 5 Author Uris
- 6 Jungfrau, for one
- 7 Urban silhouettes

## WORD SCRAMBLE

Rearrange the letters to spell something pertaining to autumn.

S H N K T A

--	--	--	--	--	--

PUZZLE #10

	6	8		5			7	1
				1		4		
	2						9	5
2	5	6	8					
		9	6	3		8		7
		3	9	2	1			
		5				9		
	8	4	5		2	6		3
6				8	3	7		4

Level: Beginner

PUZZLE #11

	6	3		2				
9		2	5				7	1
	5						2	
	3							
		8	4		2			
2			7		3		6	
5					6			
			3		4	8		
				7			9	2

Level: Intermediate

PUZZLE #12

	9				3		6	
7						1		
		3					4	5
		2		8		6		
5							1	
3		4		9	6			
		5		6	7			2
						5		
9	3							

Level: Intermediate

PUZZLE #13

			4	7		9	2	
	1						3	
	5	7	2					
7			8	4				
	3	5						
					2			
9					8	5		
5								6
	4	6		9		1		

Level: Advanced

PUZZLE #14

			7			8		
				4	8			
2				5	6			
1	8					2		
				8	9	3	7	
		6				5		
				2			4	
				7		6	3	
	3		5			7		

Level: Advanced

PUZZLE #15

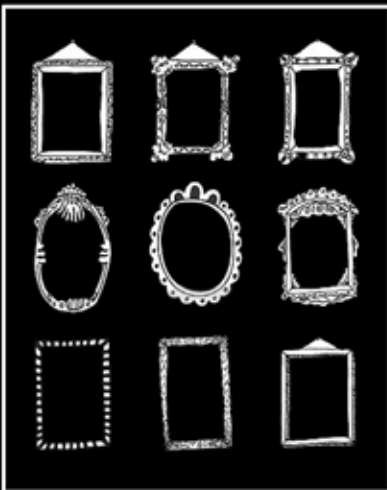
				4				
			9		1			8
		6			7	3		9
	4	2	5					
	7					8		1
	8	3						
				3		7	2	
4	5				6			
		7					6	

Level: Advanced

	2		5		6	9	3	
1			2			8		
3				9		4		7
	1	7	6	2				
	5		8					4
			9	7				
		2				1		6
5	4			6	1			
	3				2	5		9

Level: Beginner

*fine* **EDGE**  
custom framing



WE  
SOLVE  
DECORATING  
PUZZLES : )

107 North 4th Ave Virginia  
218-749-3377 follow us on faceBook



PUZZLE #17

2	4	6	5	1				
7		1	3					2
	3		7		6			
	9	8		6		1	2	
				3		5	8	
			8			7		4
8		3	2				4	
1		7					3	6
4	2	9	6	5				

Level: Beginner

PUZZLE #18

								9
	8			6				
2							3	
	6		2				4	
			8				5	3
		3			4	6		
	2		4					7
	3				8	4		
	7	5				9	1	

Level: Intermediate



# A Place to Gather & Connect



Fair Trade Coffee & Espresso • 20 Varieties of Loose Leaf Teas  
Fruit Smoothies & Frappes • Breakfast & Lunch Burritos  
Quiche & More

Relaxed Atmosphere • Outdoor Seating  
Friendly Staff & Great Customer Service  
Desserts & Gifts

WiFi, Printer, Computers for Your Use

343 East Sheridan St, Ely • 218-365-BEAN  
Open: Mon-Sat 7 AM-2 PM; Sun 8 AM-2 PM

## FOR ALL.... YOUR APPLIANCE NEEDS

We carry the TOP BRANDS of  
all Appliances and Electronics

**Amana**

  
**MAYTAG**

 **LG**



**KitchenAid**  
FOR THE WAY IT'S MADE

  
**Whirlpool**  
CORPORATION

 **Hotpoint**



102 Chestnut St, Virginia, MN  
741-3615

PUZZLE #19

		6	4	3				5
					9			
		4					8	
4		2	5			7	6	
	5						4	
	8				1			
	6			1				
1					8		3	9
		9		5		6		

Level: Intermediate

PUZZLE #20

	2		8	9			5	
	1		2					7
		4			7	9		
					6	4		
				7	8		1	
			1			6		9
	7				1	8		
5								4
		6				5		

Level: Advanced

	7							4
					9			
3			5	8	2			
	2		1		7			
7								8
			6			9		
		1	2	6				
			8	9		1	2	
		4						5

Level: Advanced



Real Estate Closing Services  
and Title Insurance

## *Buying, Selling, or Refinancing?*

*We are committed to providing fast,  
reliable service to  
assure that your real estate transaction  
is a pleasurable experience.*

*[www.netitle.com](http://www.netitle.com)*

### **Ely and Surrounding Areas**

545 E. Sheridan Street  
Ely, MN 55731  
Phone (218)365-5256

**Angie Mikulich**-Licensed Closing Agent  
**Elizabeth Hubbard**-Licensed Closing Agent  
**Shonna Kowarsch**-Licensed Closing Agent

### **Virginia and Surrounding Areas**

612 13th Street South  
Virginia, MN 55792  
Phone (218)741-1515

**Jodee Micheletti**-Owner &  
Licensed Closing Agent  
**Sharon Maronick**-Licensed Closing Agent  
**Merella Marsyla**-Licensed Closing Agent  
**Ailie Marsyla**-Licensed Closing Agent

**We have a Board Certified Real Estate Attorney and four Title Examiners**

PUZZLE #22

		9	1	4	7	2		
			5		2		1	
5		1						8
	4	5	6	1				
			7					5
9	7	6		2			3	
1					8	3		6
4							2	
8	9	7		6	3		4	

Level: Beginner

PUZZLE #23

					1	2		
		6				3	5	
5	2	8	9		6			
7	6			4		1		
	4	9	5		7		2	
8		2	6					
	7		8	6		5		4
2			3	9	5	7	1	6
	9	5	1	7	4			2

Level: Beginner



PUZZLE #24

6		5						
		4	3		1			
		1	5			9		8
	6							
3					4			
7						8		6
				3		4		
8			2					7
	5			8			2	

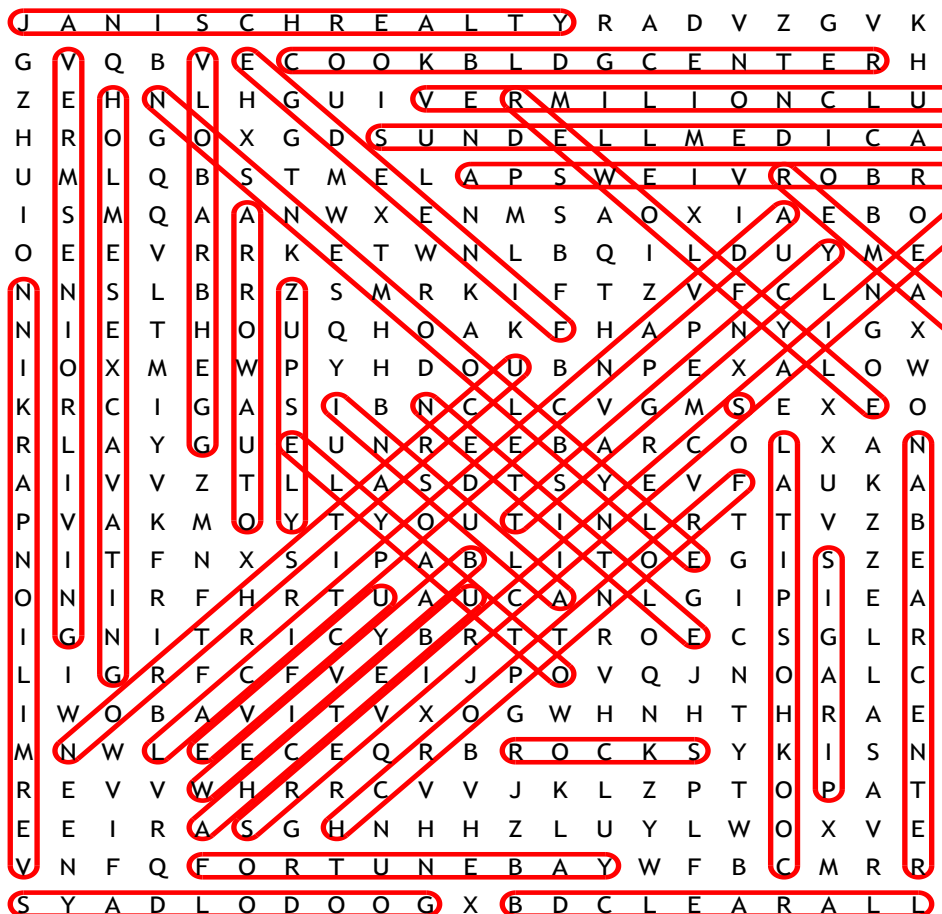
Level: Intermediate

PUZZLE #25

	5			2				3
		2		3			1	8
7							9	1
	4	1		6			2	
				9	2			
3	9	6				7		
4			7				6	

Level: Intermediate

## Favorite Business Word Search Answers



**Ubetcha Antiques  
& Uniques**

Open Year Round • 601 Main St, Tower

**218.753.3422**

## ARTISAN + VINTAGE ANTIQUES + COLLECTIBLES

Stop in Soon and Browse our Shop!



OPEN YEAR ROUND - EVERY DAY 10-5



like us  
on facebook



## Uffda Thrifts & Gifts

*Check out our NEW LINE of cards,  
gifts, t-shirts and decor!*

New, Old, Greeting Cards, Puzzles, Giftware, DIY, Decor,  
Man Stuff, Toys, Furnishings, Housewares, Books,  
Records, Socks, Underwear, New Items Every Week



**Located next to Ubetcha Antiques & Uniques  
at 603 Main St, Tower**

OPEN YEAR ROUND - EVERY DAY 10-5



# CHEESE AND MORE WORD SEARCH

PUZZLE #26

## WORDS

- AMERICAN
- BRIE
- BUTTER
- CHEDDAR
- CHEESE
- COLBY
- GRATED
- GRILLED
- HARD
- MELTED
- MONTEREY JACK
- MOZZARELLA
- MUNSTER
- PAN
- PANINI
- PECORINO
- PEPPER
- RICOTTA
- SLICED
- SOFT

F Z D T Y O K A I A F H P Y D M J A B N  
B L D U G R A T E D J A A B U M J C P D  
R E T T U B C F E O O F U E S F G P R S  
S R J N Z H K G P U S N N A G N K A D N  
Z Z Y M E H I G F U C S I F O T H Y A B  
Y R A D A M E A K H T T Z R O T L D K O  
G K D P E L T K T E F Y I B O S O F T J  
U A C L O T L L R I G C F R I C E P S R  
R G T A O S H E H U I G N I T A E P R D  
P E M C J R J J R D Y R G E I A I P J C  
D D I F C Y O S L A F U L P E P P E R L  
E R P C A P E D U A Z P S E T P S M I P  
G A P C E S Y R M K B Z Y Z C A G P A T  
O K P E O F L E E J C E O H H N R N O L  
N J F D K L R I T T D S E M Y I I M U S  
R G O G S I B L C J N E R U C N L M K E  
T P M J C Z O Y J E S O Z G G I L G I C  
F Y I A B C U H R E D D M A H F E B K E  
I R N D J H P L Z F L D T Z M A D C L A  
F T T P R U R E M J F T I L B H B O T P

Find the words hidden vertically, horizontally, diagonally, and backwards.



Smaller incision.

**MAXIMUM PRECISION.**

### Robotic-assisted surgery is at EBCH in Ely!

Advanced technology is now available right here in Ely with the da Vinci surgical system. Our highly-experienced experts can provide robotic-assisted surgery for hernias, gallbladders, and appendectomies, giving surgeons greater control – so our patients have better outcomes.

#### PATIENT BENEFITS



Faster recovery times



Lower rates of complication or infection



Less pain and scarring

# NOVEL WRITING WORD SEARCH

L W R O T A R R A N C A C M W H L S U C  
G C B T W K M E S O L L E D I T O R R R C  
Y N Y D W E E R U R V L A N G U A G E U  
M O I N P I K S L S N B T R N O K I T Y  
T I E W T F R P O A G U R E M X F A C G  
O T O U O P V B R R B O P H S S N B X A U  
A C G I G D I R H B P T P O K O O D R A M  
V I L O M O A R C V S G R L C V M E A K  
H F U B B T L H C W H C K U H E V N H S  
C L H X I T F A S S E L D Y T S L V O C W  
O U B V X K B N I E U S I I F N N T A M T  
C U E K X X U V O D R N G O W S X A N T  
T R W E M F M K B I D O A N D C X T T O  
V H U Y O F D L W X T O F M W O G I A L  
T S G B O H T G N E L I I Y F P Y O G P  
F T Y A O D R E A N F Y F B S F V Y A N O M V  
A Y K A K C O N F L I C T O O O N V  
R C F R I V W X A M I L C P P R R X I H  
D I H D X K W A A L K F U E S X N M S D  
Y L K T X S W I I Y R E G A M I E E T V

Find the words hidden vertically, horizontally, diagonally, and backwards.

## PUZZLE #27

### WORDS

ANTAGONIST  
CHARACTER  
CLIMAX  
CONFLICT  
COPY  
DENOTATION  
DIALOGUE  
DRAFT  
EDITOR  
EXPOSITION  
FICTION  
FORESHADOWING  
IMAGERY  
KEYBOARD  
LANGUAGE  
LENGTH  
MANUSCRIPT  
MOOD  
NARRATIVE  
NARRATOR  
NOVEL  
PLOT  
PROSE  
RESOLUTION

# GET ORGANIZED WORD SEARCH

L T B G T C L E A N U L E B A M I T T E  
E W E A T T I U H D L R F L D H G G D F  
B O Z R V Y I B Y V A Z I C C L B H L I  
A E I A S B R O L D S D O S S T C I E L  
L Z R G D T A E T R O S H R I Y V A I I  
N I O E T Y N M C E M D O N A T E N H N  
C N G P A T R E O Y T S G O L Y N C V G  
M A E M A U G S M Z C A P W E K V E K M  
U G T C V L T S L N U L N P G I K I H E  
M R A B B F P S G A G V E I K S E D Y G  
E O C W D S S H H D N I K S D D P R K A  
T G I T O D E T A O K O S A R R V D T B  
S Y L G W O Y R S B U K I S Z E O A F R  
Y D C V R B C T O H E S Y S A W O I A  
S F B L C Z E B S H E T E I S Y G A C G  
E A D D M S U W C A C L I H N E M P R T  
R N U H O V E U G E B O V Z O H F B K D  
B L H L O L L K C Z R N R I E L S O N T  
I T C C S L O M P B O L T L N F D U R N  
L S G G L V E F B D R R V N G R E T P

Find the words hidden vertically, horizontally, diagonally, and backwards.

## PUZZLE #28

### WORDS

ALPHABETIZE  
ASSIGNMENTS  
CATEGORIZE  
CHORES  
CLEAN  
CLOSET  
COORDINATE  
CULL  
DESK  
DONATE  
DRAWERS  
FILING  
GARAGE  
GARBAGE  
HOUSEHOLD  
LABEL  
MESS  
ORGANIZE  
PROFESSIONAL  
RECYCLE  
SHELVING  
SORT  
SYSTEM

# WORD SCRAMBLE

Rearrange the letters to spell  
something pertaining to spirituality.

T F H I A

--	--	--	--	--

Answer: Faith

# Scenic Rivers — Clinics —

Medical, Dental, and Behavioral Health Services

**Cook • Bigfork • Tower • Eveleth  
Northome • Floodwood • Big Falls**  
**Quality and Compassion  
For Every Patient  
For *Life***



**COVID-19 Testing Available**



24-Hour Emergency Care Available in Cook and Bigfork  
**(877) 541-2817** [www.ScenicRiversHealth.org](http://www.ScenicRiversHealth.org)



## Vermilion Senior Living

**Affordable • Comfortable • Senior Living**

- Fully trained staff available 24/7
- Planned activities and outings
- 3 home-cooked meals and snacks daily
- Medication management
- Assistance with bathing, dressing and grooming
- Weekly laundry and housekeeping
- Scheduled transportation for local medical visits

**Call and schedule  
a tour today!**



For more information contact Licensed Director - Demetrius Bray  
1232 Birch Street North, Tower • 218-753-7788 • [vermilionseiorliving.com](http://vermilionseiorliving.com)





Dr. Bridget Sundell and  
Dr. Krystal Eckstein



Call today  
to book  
your  
appointment!

*Because your vision is precious,  
please remember the importance  
of routine eye care.*

Sundell Eye Associates is always  
accepting new patients!

602 N 6th Ave W, Virginia, MN 55792

Hours: 8 AM–4:30 PM

**218.741.4411**

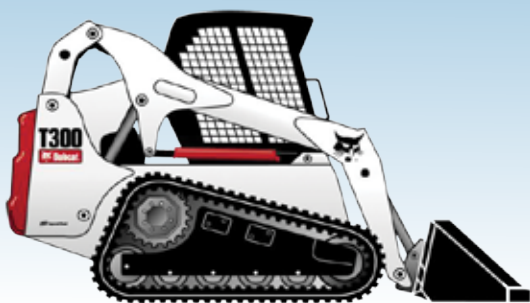
[sundelleye.com](http://sundelleye.com)



**Brandt & Dennis Debeltz**

# **B&D CLEARALL**

- **Commercial & Residential  
Snow Plowing**
- **Land Clearing**
- **Right-of-way Clearing**



5341 Wahlsten Rd.  
Embarrass, MN 55732  
218-491-4828 (Brandt)  
218-343-2497 (Dennis)



# **HOLMES EXCAVATING**



**Serving  
Lake Vermilion and  
surrounding  
communities**

**Septic Systems • Road Building  
Basements • Site Preparation  
Land Clearing • Licensed Septic Design**

**Brandt Debeltz: 218-491-4828**

**Jerry Holmes: 218-742-2714**

7704 Sauna Rd, Embarrass, MN



PUZZLE #29

8	6	9	1	5	4	2	3	7
4	5	3	2	6	7	8	9	1
2	1	7	3	8	9	6	5	4
5	2	4	7	3	1	9	8	6
9	3	1	6	4	8	7	2	5
6	7	8	5	9	2	1	4	3
3	9	5	8	7	6	4	1	2
1	4	6	9	2	5	3	7	8
7	8	2	4	1	3	5	6	9



**BREAKFAST~LUNCH~DINNER**  
**Full Bar featuring MN Spirits~Beers~Wine**

OPEN:  
Tues. thru Thurs: 8 AM-8 PM;  
Fri. & Sat: 8 AM-9 PM; Sun. & Mon. CLOSED

145 E. Sheridan St. Ely, MN • 218-365-4855  
[www.insularestaurant.com](http://www.insularestaurant.com)

PUZZLE #1

B	A	R	B		O	R	B	S		W	I	N
O	L	A	Y		C	O	E	N		A	M	I
W	A	G	E		C	O	W	L		C	A	N
S	N	U	B		U	T	A		L	O	C	O
			Y	U	L		R	E	O			
L	A	M	E	N	T		E	L	V	I	R	A
A	D	U	L	T			V	E	N	O	M	
M	E	M	O	I	R		T	I	S	A	N	E
			V	E	E		E	S	C			
F	A	D	E		V	C	R		E	R	I	C
A	G	A		N	E	A	R		N	A	M	E
D	E	F		B	A	R	I		E	V	A	N
S	S	T		C	L	E	F		S	E	N	T

PUZZLE #2

S	H	H		C	P	A		Z	O	O	M	S
H	A	Y		H	A	D		A	U	R	A	E
R	I	P		A	L	L	E	N	T	O	W	N
U	K	E		D	A	I	S	Y				
B	U	R	T		C	B	S		S	O	A	R
			O	L	E		O	R	P	H	A	N
F	A	U	R	E				A	L	O	H	A
C	A	R	R	O	T		P	G	A			
C	A	N	E		H	E	H		T	A	L	C
				M	E	T	O		L	E	A	
B	E	T	H	L	E	H	E	M		I	F	S
E	N	N	U	I		O	B	I		A	T	E
G	O	T	T	I		S	E	T		S	S	S

PUZZLE #3

A	O	K		C	A	A	N		S	C	O	W
S	L	O		A	G	R	A		T	I	D	E
T	A	N		P	A	L	P		E	N	I	D
I	F	A	L	L	T	O	P	I	E	C	E	S
				E	E	E		I	M	P		
E	C	L	A	T		M	N	O		F	U	N
A	S	I	F		B	I	G		D	I	N	O
R	I	D		P	O	X		P	A	G	E	D
				M	A	D		G	E	M		
I	F	E	E	L	Y	O	U	R	P	A	I	N
S	A	W	N		F	R	A	N		T	B	A
I	V	E	S		A	E	R	O		M	E	R
S	E	R	A		T	O	D	D		S	T	Y

PUZZLE #4

S	M	O	T	E		S	L	E	E	V	E			
N	O	T	W	I	T	H	S	T	A	N	D	I	N	G
A	N		E	P	A	U	L	E	T	T	E		T	A
R	N		N	I		M	O	A		O	M		A	D
C	E	P	S		B	A	E	D	A		A	M	I	D
	T	H		A	I	N	Y	I	P		A	L	E	
		I	N	R	O				T	A	R	R	E	D
		C	L	A	D				R	A	I	D		
S	E	I	N	E	D				R	C	P	T		
A	D	P		A	D	H		N	O	H		A	B	
C	I	S	T		T	A	R	O	T		A	L	A	S
H	L		A	M		R	A	T		P	D		N	A
E	L		M	E	N	A	G	E	R	I	E		I	C
M	A	R	I	N	E	R	S	C	O	M	P	A	S	S
S	A	L	U	T	E			B	A	T	C	H		

PUZZLE #5

A	S	K	S					D	E	C		S	B	I	C
C	H	E	E	P				O	C	A		A	U	T	O
T	O	R	E	R	O			T	O	R		F	L	A	K
S	E	N	S	O	R			E	T	A		A	B	L	E
E	B	O	N	I	T	E		P	A	M	I	R			
S	C	A	B	B	E	D		E	S	E					
C	E	R	C	I								L	O	R	N
				T	U	B				M	A	I	L	B	A
				O	P	E	R	A		E	R	O	D	I	N
				E	R	A	D	I	C	A	T	O	R		
M	E	A	L		N	I	B			S	A	C	E	U	R
A	R	C	A		A	L	I			E	T	H	A	N	
G	I	L	T		L	L	B			E	O	S	I	N	
I	E	E	E		S	I	S					N	E	X	T

PUZZLE #6

	P	A	N	T							R	A	P	A	
S	E	P	I	A	S					S	A	B	O	T	S
B	O	O	T	L	E	G			A	U	G	U	S	T	A
I	R	S		C	E	L	E	B	R	I	T	I	E	S	
C	I	T	Y		M	O	R	A	E			T	S	H	
	A	L	I	T		M	A	T	T		T	E	T		
		E	P	O	S		S	E	I	N	E	D			
			P	E	A	S		S	E	E	S				
			S	E	A	L	E	D		S	A	T	E		
		C	E	E		A	V	O	S		R	E	D	E	
H	A	S		R	E	P	E	L		S	I	R	S		
I	N	S	E	M	I	N	A	T	O	R		F	R	A	
S	O	I	R	E	E	S		A	R	A	B	I	A	N	
S	P	L	I	T	S				E	R	E	C	T	S	
Y	E	C	H							E	L	E	A		

PUZZLE #7

		S	B	E		B	A	N	G	O	R			
		P	R	Y		S	M	I	R	C	H			
R	O		R	U	E		M	S	E	C				
U	P	P	I	N	G		U	S	E	L	E	S	S	
D	A	R	N	E	L		N	A	T	U	R	A	L	
E	L	E	G	I	A	C		I	N	D	A	L	I	
			S	H	P	T		E	S	T	E			
S	S	B		S	E	M	I	S		E	A	R		
H	E	L	M		E	T	O	N						
O	L	E	A		O	S		N	O	S	E	B	A	G
E	M	A	N	A	T	E		B	O	R	A	T	E	
S	A	T	I	R	I	C		B	I	R	D	E	R	
			P	R	O	A		E	R	A		N	A	
			A	L	A	S	K	A		R	E	T		
			V	E	N	E	E	R		Y	E	A		

PUZZLE #8

M	A	P		B	R	O	W	N		L	A	B		
R	T	E		E	E	R	I	E		A	M	A		
S	E	A	O	F	L	O	V	E		K	O	S		
			A	A	A		E	D	G	E	R	S		
I	G	O	T	I	T		S	E	A	T				
O	R	C		R	E	B		D	R	A	M	A		
T	E	E	M		D	E	A		P	H	I	L		
A	W	A	I	T		D	I	P		O	S	E		
			N	C	I	S		R	E	C	E	S	S	
E	S	C	H	E	W		H	A	D					
A	H	I		R	I	V	E	R	S	I	D	E		
R	O	T		O	N	E	A	L		F	U	N		
S	O	Y		D	E	E	D	S		S	O	D		

PUZZLE #9

M	I	F	F		L	A	S		B	A	R	B		
E	S	A	U		E	L	K		A	M	O	R		
H	A	R	D		C	O	P	Y		L	O	B	E	
				G	U	N		L	A	Z	I	E	R	
S	A	T	E	D		P	I	N	A					
E	R	O	S		H	A	N	D		C	A	R	T	
T	E	N		C	A	S	E	S		C	E	E		
H	A	I	R		C	U	T	S		E	L	A	N	
				E	I	N	E		B	L	U	R	T	
G	O	T	H	I	C		S	U	B					
R	H	E	A		H	O	T		C	O	C	O	A	
O	N	E	S		E	V	E		W	A	R	M		
G	O	S	H		S	A	P		S	W	A	P		

PUZZLE #10

9	6	8	3	5	4	2	7	1						
5	3	7	2	1	9	4	6	8						
4	2	1	7	6	8	3	9	5						
2	5	6	8	4	7	1	3	9						
1	4	9	6	3	5	8	2	7						
8	7	3	9	2	1	5	4	6						
3	1	5	4	7	6	9	8	2						
7	8	4	5	9	2	6	1	3						
6	9	2	1	8	3	7	5	4						

PUZZLE #11

8	6	3	1	2	7	9	4	5						
9	4	2	5	3	8	6	7	1						
1	5	7	6	4	9	3	2	8						
4	3	5	9	6	1	2	8	7						
6	7	8	4	5	2	1	3	9						
2	9	1	7	8	3	5	6	4						
5	8	4	2	9	6	7	1	3						
7	2	9	3	1	4	8	5	6						
3	1	6	8	7	5	4	9	2						

PUZZLE #12

4	9	1	2	5	3	7	6	8						
7	5	8	6	4	9	1	2	3						
6	2	3	7	1	8	9	4	5						
1	7	2	5	8	4	6	3	9						
5	6	9	3	7	2	8	1	4						
3	8	4	1	9	6	2	5	7						
8	1	5	4	6	7	3	9	2						
2	4	7	9	3	1	5	8	6						
9	3	6	8	2	5	4	7	1						

PUZZLE #13

3	6	8	4	7	1	9	2	5	
---	---	---	---	---	---	---	---	---	--

PUZZLE #15

7	9	8	3	4	2	5	1	6
5	3	4	9	6	1	2	7	8
2	1	6	8	5	7	3	4	9
1	4	2	5	8	3	6	9	7
9	7	5	6	2	4	8	3	1
6	8	3	7	1	9	4	5	2
8	6	9	1	3	5	7	2	4
4	5	1	2	7	6	9	8	3
3	2	7	4	9	8	1	6	5

PUZZLE #16

7	2	8	5	4	6	9	3	1
1	9	4	2	3	7	8	6	5
3	6	5	1	9	8	4	2	7
9	1	7	6	2	4	3	5	8
2	5	6	8	1	3	7	9	4
4	8	3	9	7	5	6	1	2
8	7	2	3	5	9	1	4	6
5	4	9	7	6	1	2	8	3
6	3	1	4	8	2	5	7	9

PUZZLE #17

2	4	6	5	1	8	3	9	7
7	8	1	3	4	9	6	5	2
9	3	5	7	2	6	4	1	8
5	9	8	4	6	7	1	2	3
6	7	4	1	3	2	5	8	9
3	1	2	8	9	5	7	6	4
8	6	3	2	7	1	9	4	5
1	5	7	9	8	4	2	3	6
4	2	9	6	5	3	8	7	1

PUZZLE #18

7	5	6	3	4	1	2	8	9
3	8	1	9	6	2	5	7	4
2	9	4	5	8	7	1	3	6
5	6	7	2	3	9	8	4	1
9	4	2	8	1	6	7	5	3
8	1	3	7	5	4	6	9	2
1	2	8	4	9	5	3	6	7
6	3	9	1	7	8	4	2	5
4	7	5	6	2	3	9	1	8

PUZZLE #19

8	1	6	4	3	2	9	7	5
5	3	7	8	6	9	1	2	4
9	2	4	1	7	5	3	8	6
4	9	2	5	8	3	7	6	1
7	5	1	2	9	6	8	4	3
6	8	3	7	4	1	5	9	2
3	6	8	9	1	4	2	5	7
1	7	5	6	2	8	4	3	9
2	4	9	3	5	7	6	1	8

PUZZLE #20

3	2	7	8	9	4	1	5	6
9	1	8	2	6	5	3	4	7
6	5	4	3	1	7	9	8	2
1	9	2	5	3	6	4	7	8
4	6	3	9	7	8	2	1	5
7	8	5	1	4	2	6	3	9
2	7	9	4	5	1	8	6	3
5	3	1	6	8	9	7	2	4
8	4	6	7	2	3	5	9	1

PUZZLE #21

5	7	2	3	1	6	8	9	4
1	8	6	4	7	9	5	3	2
3	4	9	5	8	2	7	6	1
9	2	8	1	5	7	3	4	6
7	6	5	9	4	3	2	1	8
4	1	3	6	2	8	9	5	7
8	3	1	2	6	5	4	7	9
6	5	7	8	9	4	1	2	3
2	9	4	7	3	1	6	8	5

PUZZLE #22

6	8	9	1	4	7	2	5	3
7	3	4	5	8	2	6	1	9
5	2	1	3	9	6	4	7	8
3	4	5	6	1	9	7	8	2
2	1	8	7	3	4	9	6	5
9	7	6	8	2	5	1	3	4
1	5	2	4	7	8	3	9	6
4	6	3	9	5	1	8	2	7
8	9	7	2	6	3	5	4	1





*Stores in Ely, Tower, Babbitt & Silver Bay*

**ELY STORE • 1500 E SHERIDAN ST**

## **Expanded** Deli, Meat and Produce Sections!



## **WAREHOUSE LIQUOR**

**CHECK OUT  
OUR BEER  
CAVE**

**Huge Selection  
of Wine,  
Liquor and  
Cordials**



# CABIN QUILTING

*Your North Country*

• *5-Star Rated Shop* •



Quilting Fabric & Supplies  
Longarm Quilting Services, Gifts

**Susan Covey • 218-666-3146**

227 1st St SW & Hwy 53, Cook MN 55723

cabinquilting@gmail.com



**Automotive Glass Repair & Replacement**

**Custom Shower Glass**

**Residential Window Glass Replacement**

**Commercial Windows & Doors**

**Auto Body Paint, Tools and Supplies**

**All Labor Warrantied • Same-Day Services Available**

**✓ Call Today for a Free Estimate!**

**(218) 741-2993**

411 N 1st St, Virginia, MN 55792

**www.arrowautosupply.com**

# VERMILION CLUB & POOR GARY'S PIZZA



*Bar/Restaurant*  
*Fine Dining • Take-Out • Entertainment*

Chicken • Wraps  
Pasta • Steak  
Fish • Burgers  
Sandwiches • More!

Home of the  
**"Bamboozler" Pizza**



Check FACEBOOK For  
Updated Hours



753-6277 Bar/Restaurant / 753-5707 Pizza • 3191 Hwy 77, Tower (Daisy Bay, Lake Vermilion)  
*Take Out Available*



## A GREAT PLACE TO GATHER!

- Delicious Food Specials • Tasty Appetizers
- Refreshing Drinks • Entertainment
- Large Bar & Dining Area



**FULL MENU AND BAR**

• OPEN WEEKENDS •

Check FACEBOOK  
for updated hours



2007 Cty Road 77, Tower, MN • 218-753-2964



PUZZLE #23

9	3	7	4	5	1	2	6	8
4	1	6	7	2	8	3	5	9
5	2	8	9	3	6	4	7	1
7	6	3	2	4	9	1	8	5
1	4	9	5	8	7	6	2	3
8	5	2	6	1	3	9	4	7
3	7	1	8	6	2	5	9	4
2	8	4	3	9	5	7	1	6
6	9	5	1	7	4	8	3	2

PUZZLE #24

6	7	5	4	9	8	2	3	1
9	8	4	3	2	1	7	6	5
2	3	1	5	6	7	9	4	8
5	6	9	8	1	2	3	7	4
3	1	8	6	7	4	5	9	2
7	4	2	9	5	3	8	1	6
1	2	6	7	3	5	4	8	9
8	9	3	2	4	6	1	5	7
4	5	7	1	8	9	6	2	3

PUZZLE #25

8	3	9	5	7	1	2	4	6
1	5	4	8	2	6	9	7	3
6	7	2	9	3	4	5	1	8
7	2	3	4	5	8	6	9	1
9	4	1	3	6	7	8	2	5
5	6	8	1	9	2	4	3	7
2	8	7	6	4	3	1	5	9
3	9	6	2	1	5	7	8	4
4	1	5	7	8	9	3	6	2

PUZZLE #29

8	6	9	1	5	4	2	3	7
4	5	3	2	6	7	8	9	1
2	1	7	3	8	9	6	5	4
5	2	4	7	3	1	9	8	6
9	3	1	6	4	8	7	2	5
6	7	8	5	9	2	1	4	3
3	9	5	8	7	6	4	1	2
1	4	6	9	2	5	3	7	8
7	8	2	4	1	3	5	6	9

PUZZLE #26

F	Z	D	T	Y	O	K	A	I	A	F	H	P	Y	D	M	J	A	B	N	
B	L	D	U	G	R	A	T	E	D	J	A	A	B	U	M	J	C	P	D	
R	E	T	T	U	B	C	F	E	O	O	F	U	E	S	F	G	P	R	S	
S	R	J	N	Z	H	K	G	P	U	S	N	N	A	G	N	K	A	D	N	
Z	Z	Y	M	E	H	I	G	F	U	C	S	I	F	O	T	H	Y	A	B	
Y	R	A	D	A	M	E	A	K	H	T	T	Z	R	O	T	L	D	K	O	
G	K	D	P	E	L	T	K	T	E	F	Y	I	B	O	S	O	F	T	J	
U	A	C	L	O	T	L	L	R	I	G	C	F	R	I	C	E	P	S	R	
R	G	T	A	O	S	H	E	H	U	I	G	N	E	I	T	A	E	P	R	
P	E	M	C	J	R	J	J	R	D	Y	R	G	E	I	I	A	I	P	J	
D	D	I	F	C	Y	O	S	L	A	F	U	L	P	E	P	P	E	R	L	
E	R	P	C	A	P	E	D	U	A	Z	P	S	E	T	P	S	M	I	P	
G	A	P	C	E	S	Y	R	M	K	B	Z	Y	Z	C	A	G	P	A	T	
O	K	P	E	O	F	L	E	E	J	C	E	O	H	H	A	N	R	N	O	L
N	J	F	D	K	L	R	I	T	T	D	S	E	M	Y	I	L	M	U	S	
R	G	O	G	S	I	B	L	C	J	N	E	R	U	C	N	L	M	K	E	
T	P	M	J	C	Z	O	Y	J	E	S	O	Z	G	G	I	L	G	I	C	
F	Y	T	A	B	C	U	H	R	E	D	D	M	A	H	F	E	B	K	E	
I	R	N	D	J	H	P	L	Z	F	L	D	T	Z	M	A	D	C	L	A	
F	T	T	P	R	U	R	E	M	J	F	T	I	L	B	H	B	O	T	P	

Read the Timberjay

A 15x15 grid of letters with 15 words highlighted in yellow. The words are: LOST, GIVE, TOWN, FEAR, WARD, CURE, BURN, DANCE, FISH, RAIN, PAIN, SURE, MIND, FEAR, and WARD. The grid is filled with letters, and the words are highlighted in a yellow, slightly irregular font.

T W O E Z I N A G R O G Y D F A N L T S  
 B E Z I R O G E T A C I L C B D U H C G  
 G A R A G E P M C B W T G V L D H L C G  
 T T V S D T A A V B D O W R C M O S L  
 C T Y B T Y T U L F S D O B Z S V L V  
 L I R A N R G T P S E Y C E U E L O E  
 E U B O E M E S S H A S O S C G C P B  
 A H Y L T C O M L G H A S O S C G C P B  
 N D V D R E Y Z N A D O B H A E Z B D  
 U L A S O M T C U G N K U E C B R O R  
 L R Z D S D S A L V I O K S T L O N L R  
 E F I O H O S G P N E K S I Y E I V R T V  
 B L C S R N O W P I S A S I H Z I L N  
 A D C S I A L E G K S D R Z A S N O E N R  
 M H L T Y A T Y K I S D R R E A Y E H L F G  
 I G B C V N V K E P V O W G M F S D R  
 T G H I A N C E I D R D A O A P B O U E  
 T D L E I H V K H Y K T F I C R K N R T  
 F I L I N G M E G A B R A G T D T N P

*Answer: Editing*





# EMBARRASS VERMILLION FEDERAL CREDIT UNION

*No need to look any further...*

**We Offer:** Savings • Checking • Debit Cards • Gift Cards  
Christmas Club • Junior Savers Club • IRAs  
Time Deposits (CDs) • Remote Deposits • Travel Cards

## **Loan Products & Services:**

Personal • Auto • Mortgage • Recreational • Credit Card

Also Offering Online Account Access & Bill Pay

"Not for profit, not for charity, but for service."



**Five Locations To Serve You Better • [www.evfcu.org](http://www.evfcu.org)**

### **Embarrass Office**

4880 Hwy. 21 • Embarrass, MN 55732  
(218)984-3501 • Mon-Fri. 9-5:30

### **Tower Office**

505 Main St. • Tower, MN 55790  
(218)753-4311 • Mon-Fri. Lobby 9-4:30  
Drive-up 7:30-5:30

### **Aurora Office**

600 W 3rd Ave. N • Aurora, MN 55705  
(218)229-2048 • Mon-Fri. Lobby 9-4:30  
Drive-up 7:30-5:30

### **Vermilion Branch**

1432 Bois Forte Rd • Tower, MN 55790  
(218)753-7878 • Mon-Fri. Walk-up 1-5

### **Nett Lake Branch**

5342 Lake Shore Drive • Nett Lake, MN 55772  
(218)757-0299 • Mon-Fri. 8:30-5

# *Visit our Bookstore*



105 North Central Avenue in Ely, Minnesota

"Where Good Books Find You"

[piragis.com](http://piragis.com) • [boundarywaterscatalog.com](http://boundarywaterscatalog.com)

Open Daily • 1-800-223-6565



# HOLIDAY KITCHENS & CAMBRIA

~ the perfect marriage for your new kitchen



Offering diverse cabinetry designs that suit the way people live in their kitchens

HOLIDAY **HK** KITCHENS

Keeping customer service as the priority of every crafted design, process, and finish



At Cambria, we pride ourselves on being the only family-owned, American-made producer of natural quartz surfaces.

For our customers, it results in quality that can be felt from start to finish, in products and our customers' experience.



  
CAMBRIA®

FROM CABINS TO CASTLES  
**ebe**  
COOK BUILDING CENTER  
[www.cookbuildingcenter.com](http://www.cookbuildingcenter.com)

Hours: Mon-Fri 7-5, Sat 8-12  
P 218-666-5344  
F 218-666-5033  
[info@cookbuildingcenter.com](mailto:info@cookbuildingcenter.com)



*"The finest Realtor I've ever worked with in my life." -Tim K.*



PRIVATE ISLAND, ELY: Secluded island retreat w/mesmerizing views set in towering pines & rock outcroppings on Shagawa Lake, short boat ride across calm water to launch. Tucked among small undeveloped islands, the picturesque coastline to the W & SW is Superior Natl Forest. Built 2012, knotty pine cabin w/lakeside deck connecting kitchen cabin, dock w/walk in swimming area. In 1800's, island was summer home of one of Ely's original doctors.

**OFFERED AT** \$498,500 2 BED/PRIVY  
**DETAILS** 1.75 ACRES 560 SF 900 FT SHORELINE



Drive to your classic 1930s Boundary Waters Area log cabin set on 2.4 acres & 300 ft of sunset facing SAND BEACH at the edge of the BWCA, short boat ride from your dock to the BW entry & only 7 miles to Ely. Fall Lake is 2258 acres with the NE portion in the BWCA, 32 ft deep & known for walleye fishing. Original log cabin at waters edge, handmade by great grandparents who cut the logs on Fall Lake & used horses to bring them to site. Old time stacked log sauna on beach, placed so sunlight shines to back of sauna. 2nd sauna from 60's. One of a kind secluded boreal forest retreat. Renovate or potential to build new Boundary Waters beach cabin!

**OFFERED AT** \$524,500 1 BED/1 BTH  
**DETAILS** 2.4 ACRES 618 SF 300 FT SHORELINE

NE Minnesota & Lake Superior  
 Lake Vermilion - Ely - Giants Ridge



[www.JanischRealty.com](http://www.JanischRealty.com)

