

**FREE**

# **RAKE IN THE FUN PUZZLE BOOK**



**Enjoy this fun-filled book, containing  
a variety of over 40 puzzles!  
A publication of the Timberjay Newspaper**



## **Fall 2021**




**STAY SAFE  
KEEP SHARP  
DO PUZZLES**



# HOLIDAY KITCHENS & CAMBRIA

~ the perfect marriage for your new kitchen



Offering diverse  
cabinetry designs that  
suit the way people  
live in their kitchens



HOLIDAY **HK** KITCHENS

Keeping customer  
service as the  
priority of every  
crafted design,  
process, and finish



At Cambria, we pride ourselves  
on being the only family-owned,  
American-made producer  
of natural quartz surfaces.

For our customers, it results in  
quality that can be felt from start  
to finish, in products and  
our customers' experience.



CAMBRIA



FROM CABINS TO CASTLES  
**cbe**  
COOK BUILDING CENTER  
[www.cookbuildingcenter.com](http://www.cookbuildingcenter.com)

Hours: Mon-Fri 7-5, Sat 8-12  
P 218-666-5344  
F 218-666-5033  
[info@cookbuildingcenter.com](mailto:info@cookbuildingcenter.com)

**OPENING  
SOON**

**OCTOBER**

**27**



**ZUP'S**

**FOOD MARKETS**

*Stores in Ely, Tower, Babbitt & Silver Bay*

**NEW ELY STORE • 1500 E SHERIDAN ST**

**Expanded Deli and  
Meat and Produce Sections!!**



**WAREHOUSE  
LIQUOR**

**CHECK OUT  
OUR BEER  
CAVE**

**Huge Selection  
of Wine,  
Liquor and  
Cordials**



# King Crossword

**ACROSS**

- 1 Lingo
- 6 Slopes regular
- 12 Tenant
- 13 Sheathe
- 14 Schedules
- 15 Pumpkin relatives
- 16 Appointment
- 17 Spring melt-down
- 19 Cooking fuel
- 20 Libertine
- 22 Poseidon's home
- 24 Satisfied sigh
- 27 La Scala solo
- 29 Fine spray
- 32 Fruity rum cocktail
- 35 Author Wiesel
- 36 Eve's third son

	1	2	3	4	5		6	7	8	9	10	11
12							13					
14							15					
16					17	18				19		
			20	21			22	23				
24	25	26		27			28		29		30	31
32			33				34					
35					36				37			
		38		39		40			41			
42	43			44	45			46	47	48	49	
50			51				52	53				
54							55					
56							57					

- 37 That girl
- 38 "Awesome, dude!"
- 40 Pop
- 42 Trojans' sch.
- 44 Org.
- 46 Forget-me- (flowers)
- 50 Paris art museum
- 52 Athlete's woe
- 54 Tempt
- 55 Point maker
- 56 Op-ed pieces
- 57 Dwelling

**DOWN**

- 1 Actress Ward
- 18 Patty Hearst, for one
- Prejudice" suitor
- 2 Aspiring atty.'s exam
- 21 Feed-bag morsel
- 41 Pear variety
- 3 Fall bloom
- 23 Outback bird
- 42 Peter Fonda's beekeeper role
- 4 Formerly called
- 24 Mimic
- 43 Male deliveries?
- 5 Hand signals
- 25 100 percent offerings
- 45 Beholds
- 6 Video game giant
- 28 Flabbergast
- 47 Partially mine
- 7 Recognizes
- 30 Learning ctr.
- 48 Genealogy chart
- 8 Hosp. section
- 31 Common title start
- 49 Neighbor of Leb.
- 9 Haggles
- 33 Museum-funding org.
- 51 By way of
- 10 Fed. food inspector
- 34 Prof's degree
- 53 Sgt., e.g.
- 11 GI dining hall
- 39 "Pride and

© 2021 King Features Synd., Inc.

## Tower-Soudan Agency



**We Can Insure:**  
**Residential, Auto**  
**and Seasonal/Island Properties**

**218-753-2101 • 415 Main St., Tower, MN**  
[tsagency@frontiernet.net](mailto:tsagency@frontiernet.net)



Home of Minnesota's *Best Bloody Mary*

316 Main St • Tower • 218-753-6097

OPEN: Mon, Tu, Thur: 6 AM-10 PM; Closed Wed  
Fri, Sat: 6 AM-1 AM; Sun: 8 AM-Noon

Step back in time at the  
Good Ol' Days Bar and Grill  
on  
Tower's  
Main Street  
with a  
nostalgic  
pictorial tour  
through the  
local and  
cinematic  
past, set in a  
1930s style  
bar and grill.



## The Good Ol' Days

### Features:

- 6 am breakfast Mon, Tu, Thur, Fri, Sat and 8 am breakfast on Sunday
- 5-7 pm happy hour Mon, Tu, Thur, Fri
- Daily meal specials
- Homemade soups and chili
- Friday fish fry
- Dart board and enough TVs to catch all the action

SEE OUR MENU AT: [www.goodolddaystower.com](http://www.goodolddaystower.com)



# Scenic Rivers — Clinics —

Medical, Dental, and Behavioral Health Services

Cook • Bigfork • Tower

Northome • Floodwood • Big Falls

Quality and Compassion  
For Every Patient  
For *Life*



COVID-19 Testing Available



24-Hour Emergency Care Available in Cook and Bigfork

(877) 541-2817 [www.ScenicRiversHealth.org](http://www.ScenicRiversHealth.org)



# Timberjay readers are puzzle fans!

Thank you to the following businesses for participating in our Cabin Fever Puzzle Book. We hope you enjoy all the puzzles.

## Favorite Business Word Search

F Q J C A B I N Q U I L T I N G C L U I T D L Y  
 B D C L E A R A L L E L T I T T S A E H T R O N  
 V B Z J T C T U C R A T S H T R O N M C F G M Q  
 V N E G D E E N I F N R U F N O S R E D N A Q V  
 R M O W P E T G N I V I L R S M R E V F E P A G  
 B U L C N O I L I M R E V T E A R R O W A U T O  
 E E F J H H R K L F E M A T E R I A L G I R L U  
 X Z C N S I N S U R A N C E U B R U D U W M I W  
 S F M G H B A U B S E U Q T N A A H C T E B U S  
 R O U Q I L E C N A H C T S A L D M A X N F W R  
 J K Q X C N N H Y E G D O L Y L E D N A R G V E  
 N O R D I C H O M E N O R T H E L E E G Q P E V  
 T C U G N I T A V A C X E S E M L O H T Y S A I  
 V E R M I L I O N P A R K I N N M M V C U O S R  
 J Q V J S P U Z V J P P R A E S A E N N M Y X C  
 N O S N E M O O L B Y L E I K S K E D H A Q T I  
 U Z R C T C O O K B U I L D I N G E X D H K S N  
 P N H C R O P T N O R F Y L E A L V L T Z Y E E  
 V G B M U E S S A I N E J K S L H O S G U A N C  
 R D Z D E L Y A U T O H U T E H D W C D A A Z S  
 J I Z M C W E I V Y A B L Y D O O L O N J H L S  
 C O O K H O S P I T A L E H O A V S H D M F C Z  
 J A D V O P T I C A L H Q G E V F C U N U Z D O  
 A I C X V E J A N I S C H R E A L T Y Z S C X Y

VERMSRLIVING  
 TSAGENCY  
 NORTHSTARCU  
 LASTCHANCELIQUOR  
 GRANDELYLODGE  
 ELYFRONTPORCH  
 COOKHOSPITAL  
 BAYVIEW

ZUPS  
 SUNDELLEYE  
 NSINSURANCE  
 JENIAS  
 GOODOLDAYS  
 ELYBLOOMENSON  
 COOKBUILDING  
 ARROWAUTO

VERMILIONPARKINN  
 SCENICRIVERS  
 NORDICHOMENORTH  
 JANISCHREALTY  
 FINEEDGE  
 ELYAUTO  
 VERMILIONCLUB  
 ANDERSONFURN

UBETCHAANTQUES  
 NORTHEASTTITLE  
 MATERIALGIRL  
 HOLMESEXCAVATING  
 EVFCU  
 CABINQUILTING  
 BDCLEARALL  
 ADVOPTICAL

**Rake in the Fun Puzzle Book is a publication of  
 The Timberjay Newspaper**

Published each spring and fall.

Call to reserve your spot in our next puzzle book!

(218) 753-2950 • editor@timberjay.com • www.timberjay.com

Nordic Home  
North



GIFTS GALORE



RECLINERS



SCANDINAVIAN COMFORT

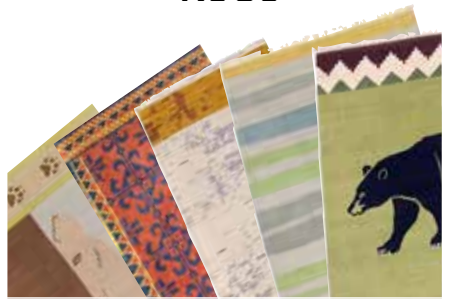
NORDIC FURNISHINGS

LUNA CHAIRS



MAKING LIFE COMFORTABLE™

RUGS



CUSTOM SIZES & COLORS

303 Main St, Tower • 218-753-3313 • 612-280-9195

[www.NordicHomeNorth.com](http://www.NordicHomeNorth.com)

[marit@nordic-home.com](mailto:marit@nordic-home.com) • M-Sat 10-4ish

Material



Girl



Fabric & Crafts

Custom Frame Shop • Quilt Quality Fabric

Fine Art Supplies • Kids Crafts

Scrapbooking • Home Decor • Beading

Silk Florals • Yarn Shoppe & More

309 Chestnut Street, Virginia, MN

218.749.1390

[materialgirlfabricandcrafts.com](http://materialgirlfabricandcrafts.com)



# King Crossword

**ACROSS**

- 1 Billboards
- 4 Competent
- 8 Pretzel topper
- 12 Fib
- 13 Work hard
- 14 Spiced tea
- 15 In toto
- 17 Frees (of)
- 18 Bug barrier
- 19 "Gosh!"
- 21 Reply (Abbr.)
- 22 Also
- 26 "It's a Wonderful Life" director
- 29 French article
- 30 "— -haw!" (rodeo cry)
- 31 "Hi, sailor!"
- 32 Follower (Suff.)
- 33 Nota —
- 34 Airline to Sweden
- 35 "Today" rival, briefly
- 36 Fragrant wood
- 37 Typically
- 39 X-ray's cousin
- 40 — -de-France
- 41 Oregon city
- 45 Apple computer
- 48 Prescription phrase
- 50 Opulent
- 51 Attic buildup
- 52 Historic time

1	2	3		4	5	6	7		8	9	10	11
12				13					14			
15			16						17			
18							19	20				
			21				22			23	24	25
26	27	28				29				30		
31					32				33			
34				35				36				
37			38				39					
			40				41			42	43	44
45	46	47			48	49						
50					51					52		
53					54					55		

- 53 Needing liniment
- 54 Pro votes
- 55 — de plume
- 9 Sashimi fish
- 10 Young bloke
- 11 Frank McCourt memoir
- 16 Tired
- 20 Language suffix
- 23 Kept tabs on
- 24 Sultry Horne
- 25 Ogler's look
- 26 Juan's home
- 27 Cries of discovery
- 28 Stance
- 29 G8 member
- 32 "Let's do this!"
- 33 Ecu
- 35 Solidify
- 36 Vinegar bottles
- 38 French spa town
- 39 High-IQ group
- 42 Idyllic place
- 43 Sleuth Wolfe
- 44 Dutch cheese
- 45 Lyricist Gershwin
- 46 Karaoke prop, for short
- 47 Koeln cry
- 49 Take to court

**DOWN**

- 1 "Sad to say ..."
- 2 Platter
- 3 Char
- 4 Goddess of wisdom
- 5 Benefits
- 6 Dogpatch adjective
- 7 Graceful
- 8 Threaded hardware

© 2021 King Features Synd., Inc.

## WORD SCRAMBLE

Rearrange the letters to spell something pertaining to warm days.

O P S O L

--	--	--	--	--

*Answer: Pools*



# King Crossword

**ACROSS**

- 1 Met melody
- 5 "CSI" settings
- 9 Apply cream
- 12 Fender bend-er
- 13 Gumbo need
- 14 Mode lead-in
- 15 Instrument panel
- 17 Homer's neighbor
- 18 Thread hold-ers
- 19 "Tiny Alice" playwright
- 21 "Heavens!"
- 22 Spud
- 24 Green gem
- 27 Church seat
- 28 Ken or Barbie
- 31 Glamorous Gardner

1	2	3	4		5	6	7	8		9	10	11
12					13					14		
15				16						17		
18								19	20			
			21			22	23					
24	25	26			27				28		29	30
31					32					33		
34			35		36					37		
		38		39				40				
41	42						43			44	45	46
47				48	49	50						
51				52						53		
54				55						56		

- 32 Shoe width
- 33 Teeny
- 34 Baseball glove
- 36 British "Inc."
- 37 — B'rith
- 38 Soil
- 40 Opposite of nyet
- 41 "Yippee!"
- 43 Vile
- 47 Ghostly greet-ing
- 48 Music group at a New Year's Eve party
- 51 Wall St. debut
- 52 Jacob's twin
- 53 Author Ferber
- 54 "A mouse!"
- 55 Peel
- 56 Optimistic
- DOWN**
- 1 Tosses in
- 2 Harvest
- 3 Not — many words
- 4 Not on the road
- 5 Novelist Anita
- 6 Alias letters
- 7 "It's c-c-cold!"
- 8 Nasser's suc-cessor
- 9 "The Da Vinci Code" author
- 10 Out of the storm
- 11 Ordered
- 16 Journalist Nellie
- 20 Started
- 22 Pearly whites
- 23 Dumbstruck
- 24 Bread spread
- 25 Bird (Pref.)
- 26 Appointment tracker
- 27 Hide
- 29 Meadow
- 30 Tiki bar neck-lace
- 35 Eastern path
- 37 Sweeney Todd, for one
- 39 Actress Winona
- 40 Female hare
- 41 Theater award
- 42 Aspiration
- 43 Gulf War mis-sile
- 44 Pedestal part
- 45 Hostels
- 46 Crucial time
- 49 "— was say-ing ..."
- 50 Indian bread

© 2021 King Features Synd., Inc.



**News You Can Trust  
Each Week  
In Print and Online**



**(218) 753-2950 • www.timberjaya.com**



**MASKS  
REQUIRED!  
if not  
vaccinated.**

*In the historic Soudan Hospital  
12 room Bed & Breakfast*

**NEW: Charming 2 bedroom cottage with  
living room and kitchenette. (2 night minimum)**

The Inn offers private bath OR shared bath rooms.  
In addition we have a family room that sleeps four.  
**We also have a lovely efficiency apartment for rent.**

***Continental Breakfast Included!***



Near: \* Soudan Store \* Hiking and Snowmobile Trails \* 2 state parks  
\* 25 minutes to Ely \* 20 minutes from Fortune Bay Resort Casino

**\* CALL FOR SPECIAL GROUP RATES**

**\* Inquire about our craft/meeting/party spaces**

**BOOK ONLINE • VERMILIONPARKINN.COM**

218.753.2333 • 30 Center St., Soudan MN 55782

vermilionparkinn@gmail.com



# CABIN QUILTING

*Your North Country*

**• 5-Star Rated Shop •**



**Quilting Fabric & Supplies  
Longarm Quilting Services, Gifts**

**Susan Covey • 218-666-3146**

227 1st St SW & Hwy 53, Cook MN 55723

cabinquilting@gmail.com



# SCRABBLE® SCRAMBLE

noun

pl. **eyewear**

A device worn on or over the eyes.



50 playable words can be made from the word "EYEWEAR".  
How many can you make?

## 2-letter words (10 total)

\_\_\_      \_\_\_      \_\_\_      \_\_\_      \_\_\_  
 \_\_\_      \_\_\_      \_\_\_      \_\_\_      \_\_\_

## 3-letter words (24 total)

\_\_\_      \_\_\_      \_\_\_      \_\_\_      \_\_\_  
 \_\_\_      \_\_\_      \_\_\_      \_\_\_      \_\_\_  
 \_\_\_      \_\_\_      \_\_\_      \_\_\_      \_\_\_  
 \_\_\_      \_\_\_      \_\_\_      \_\_\_      \_\_\_  
 \_\_\_      \_\_\_      \_\_\_      \_\_\_      \_\_\_

## 4-letter words (16 total)

\_\_\_      \_\_\_      \_\_\_      \_\_\_      \_\_\_  
 \_\_\_      \_\_\_      \_\_\_      \_\_\_      \_\_\_  
 \_\_\_      \_\_\_      \_\_\_      \_\_\_      \_\_\_  
 \_\_\_      \_\_\_      \_\_\_      \_\_\_      \_\_\_

### Answers

**2-letter words:** ae, ar, aw, ay, er, ew, re, we, ya, ye

**3-letter words:** are, awe, aye, ear, eaw, era, ere, ewe, eye, eya, eyre, ray, rea, rya, rye, wae, war, way, wee, wry, wye, yar, yaw, yea, yew

**4-letter words:** aery, awee, awry, eeew, eery, ewer, eyer, eyra, eyre, ware, wary, wear, weer, were, yare, year



Mtn. Iron/  
 Virginia  
**741-3000**  
 advoptical.com

**At Advanced Optical – Our focus is on you!**

# King Crossword

**ACROSS**

- 1 Borscht veggie
- 5 Nourished
- 8 Great Lakes fish
- 12 Choir voice
- 13 "— been real"
- 14 Plane-related
- 15 Pear variety
- 17 Fury
- 18 Away from WSW
- 19 Mine yield
- 20 Say
- 21 Snoop
- 22 Upscale auto
- 23 Golf great Sam
- 26 Husband of Eurydice
- 30 Level

1	2	3	4		5	6	7		8	9	10	11
12					13				14			
15				16					17			
18				19			20					
			21				22					
23	24	25				26				27	28	29
30					31				32			
33				34				35				
			36				37					
38	39	40				41				42	43	44
45					46				47			
48					49				50			
51					52				53			

- 49 Ostrich's kin
- 8 Sideways somersault
- 28 Half of bi-
- 32 Sicilian peak
- 50 Sultry Horne
- 29 Bando of baseball
- 33 New Mexico's capital
- 51 Male turkeys
- 9 Miami team
- 35 Director DeMille
- 52 — Moines
- 10 Desire
- 36 "Nasty!"
- 53 Retain
- 11 Afrikaner
- 37 Cowboy's sweetie
- 27 Tennyson
- 34 Do something
- 38 Brag
- 20 Strike caller
- 35 Quitter's word
- 41 Gaiety
- 21 Devoted supporters
- 37 Mentors
- 42 Mauna —
- 22 Bikini top
- 38 Small statue
- 45 Pac-12 sch.
- 23 Rds.
- 39 Twice cuatro
- 46 Cocktails garnished with olives
- 24 Actress Long
- 40 Grad
- 48 Avoid
- 25 Still, in verse
- 41 Notoriety
- 26 Small bill
- 42 Leg joint
- 27 List-ending abbr.
- 43 Aachen article
- 44 Now, on a memo
- 46 Club —
- 47 Sort

**DOWN**

- 1 Innocent one
- 2 Flair
- 3 French 101 verb
- 4 Preschooler
- 5 Red-hot
- 6 Diminutive suffix
- 7 "Spring ahead" hrs.

© 2021 King Features Synd., Inc.

## WORD SCRAMBLE

Rearrange the letters to spell something pertaining to water quality.

I R S A N

--	--	--	--	--

*Answer: Rains*



# EMBARRASS VERMILLION FEDERAL CREDIT UNION

*No need to look any further...*

**We Offer:** Savings • Checking • Debit Cards • Gift Cards  
Christmas Club • Junior Savers Club • IRAs  
Time Deposits (CDs) • Remote Deposits • Travel Cards

## **Loan Products & Services:**

Personal • Auto • Mortgage • Recreational • Credit Card

Also Offering Online Account Access & Bill Pay

“Not for profit, not for charity, but for service.”



NCUA

**Five Locations To Serve You Better • [www.evfcu.org](http://www.evfcu.org)**

#### **Embarrass Office**

4880 Hwy. 21 • Embarrass, MN 55732  
(218)984-3501 • Mon-Fri. 9-5:30

#### **Tower Office**

505 Main St. • Tower, MN 55790  
(218)753-4311 • Mon-Fri. Lobby 9-4:30  
Drive-up 7:30-5:30

#### **Aurora Office**

600 W 3rd Ave. N • Aurora, MN 55705  
(218)229-2048 • Mon-Fri. Lobby 9-4:30  
Drive-up 7:30-5:30

#### **Vermilion Branch**

1432 Bois Forte Rd • Tower, MN 55790  
(218)753-7878 • Mon-Fri. Walk-up 1-5

#### **Nett Lake Branch**

5342 Lake Shore Drive • Nett Lake, MN 55772  
(218)757-0299 • Mon-Fri. 8:30-5



## Vermilion Senior Living

**Affordable • Comfortable • Senior Living**

- Fully trained staff available 24/7
- Planned activities and outings
- 3 home-cooked meals and snacks daily
- Medication management
- Assistance with bathing, dressing and grooming
- Weekly laundry and housekeeping
- Scheduled transportation for local medical visits

**Call and schedule  
a tour today!**

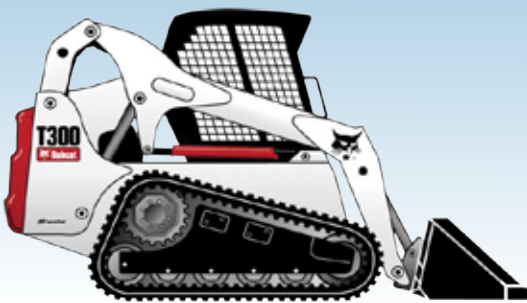


1232 Birch Street North, Tower • 218-753-7788 • [vermilionseniorliving.com](http://vermilionseniorliving.com)

Brandt & Dennis Debeltz

# B&D CLEARALL

- Commercial & Residential Snow Plowing
- Land Clearing
- Right-of-way Clearing



5341 Wahlsten Rd.  
Embarrass, MN 55732  
218-491-4828 (Brandt)  
218-343-2497 (Dennis)



# HOLMES EXCAVATING



Serving  
Lake Vermilion and  
surrounding  
communities

Septic Systems • Road Building  
Basements • Site Preparation  
Land Clearing • Licensed Septic Design

**Brandt Debeltz: 218-491-4828**

**Jerry Holmes: 218-742-2714**

7704 Sauna Rd, Embarrass, MN



# VERMILION CLUB & POOR GARY'S PIZZA

*Bar/Restaurant*

*Fine Dining • Take-Out • Entertainment*



Chicken • Wraps  
Pasta • Steak  
Fish • Burgers  
Sandwiches • More!



Home of the  
**"Bamboozler" Pizza**

Check FACEBOOK For  
Updated Hours



753-6277 Bar/Restaurant / 753-5707 Pizza • 3191 Hwy 77, Tower (Daisy Bay, Lake Vermilion)

*Take Out Available*



## Bayview Bar & Grill

### A GREAT PLACE TO GATHER!

- Delicious Food Specials • Tasty Appetizers
- Refreshing Drinks • Entertainment
- Large Bar & Dining Area



**FULL MENU AND BAR**

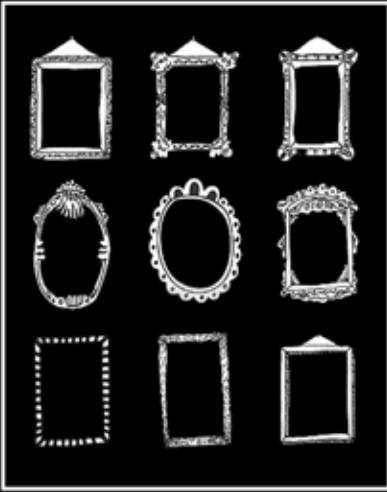
• OPEN WEEKENDS •

Check FACEBOOK  
for updated hours



2007 Cty Road 77, Tower, MN • 218-753-2964

*fine* **EDGE**  
custom framing



WE  
SOLVE  
DECORATING  
PUZZLES : )

107 North 4th Ave Virginia  
218-749-3377 follow us on faceBook



**Automotive Glass Repair & Replacement**  
**Custom Shower Glass**  
**Residential Window Glass Replacement**  
**Commercial Windows & Doors**  
**Auto Body Paint, Tools and Supplies**

**All Labor Warrantied • Same-Day Services Available**

**✓ Call Today for a Free Estimate!**

**(218) 741-2993**

411 N 1st St, Virginia, MN 55792

**[www.arrowautosupply.com](http://www.arrowautosupply.com)**



# King Crossword

**ACROSS**

- 1 Actress Farrow
- 4 Carries
- 9 "Blue Bloods" network
- 12 Fireplace residue
- 13 WWII sub
- 14 "2001" computer
- 15 William and Kate's daughter
- 17 Lawyers' org.
- 18 Cato's 502
- 19 Noah's landfall
- 21 Summaries
- 24 Garr of "Tootsie"
- 25 Berliner's cry
- 26 Hog haven
- 28 Quartet doubled
- 31 Ella's style
- 33 Congeal
- 35 iPhone voice
- 36 King of Judea
- 38 Dazzle
- 40 Right angle
- 41 "I've Got — in Kalamazoo"
- 43 Sneaky sort
- 45 Secret matters
- 47 Request
- 48 Perched
- 49 Fraud
- 54 Candle count

1	2	3		4	5	6	7	8		9	10	11
12				13						14		
15			16							17		
			18				19		20			
21	22	23					24					
25				26		27		28			29	30
31			32		33		34		35			
36				37		38		39		40		
		41			42		43		44			
45	46						47					
48				49		50				51	52	53
54				55						56		
57				58						59		

- 55 Violin piece
- 56 Bird (Pref.)
- 57 Standard
- 58 Wimp
- 59 Poke
- DOWN**
- 1 Buddy
- 2 Somewhat (Suff.)
- 3 "Caught ya!"
- 4 Dutch exports
- 5 Woodwind players
- 6 Youngster
- 7 Really annoy
- 8 Sound system
- 9 Donor's beneficiaries
- 10 Rum cake
- 11 Venetian-blind part
- 16 Vitamin stat
- 20 Story lines
- 21 Impetuous
- 22 Caesar's "Behold!"
- 23 Role
- 27 Evergreen tree
- 29 Perry's creator
- 30 Cash drawer
- 32 Forum wear
- 34 In the direc-
- tion of
- 37 Does the mambo
- 39 "Blade" actor Snipes
- 42 Christine of "Chicago Hope"
- 44 Alias abbr.
- 45 Now, in a memo
- 46 Sitar music
- 50 Ger. neighbor
- 51 Mahal pre-ceder
- 52 Gardner of film
- 53 Pen tip

© 2021 King Features Synd., Inc.

## WORD SCRAMBLE

Rearrange the letters to spell something pertaining to parks.

F E D L I

--	--	--	--	--

*Answer: Field*

# PUZZLE #6

1	2	3	4		5	6	7	8	9	10			
11					12						13	14	15
16					17				18				
19				20	21			22	23			24	
25							26				27		
28						29				30			
				31	32					33			
34	35	36	37						38				
39						40	41	42					
43					44					45	46	47	48
49				50					51	52			
53			54					55					
56		57				58				59			
60					61	62				63			
			64							65			

## CLUES ACROSS

- 1. Leg shank
- 5. A way to recognize
- 11. "VeggieTales" character
- 12. Getting out of by cunning
- 16. Mythological mountain
- 17. Atomic #18
- 18. Viscous liquid
- 19. 2010 Denzel film
- 24. 12th star in a constellation
- 25. Made better
- 26. Pouches
- 27. Nervous twitch
- 28. This (Spanish)
- 29. Tennis legend Bjorn
- 30. Hand (Spanish)
- 31. Afrikaans
- 33. Int'l interpreters organization (abbr.)
- 34. Treated with kid gloves
- 38. Leaseholder
- 39. Frogs, toads, tree toads

- 40. Popular dance
- 43. Sailing maneuver: tack & \_
- 44. Indicates speed of rotation (abbr.)
- 45. Mark
- 49. Health insurance
- 50. Custom clothing brand
- 51. One who makes suits
- 53. Execute or perform
- 54. Degree of pleasantness when tasting
- 56. Equal to roughly 5.6 bushels
- 58. Blood group
- 59. Imaginary line
- 60. Hopeless
- 63. Darken
- 64. Spoke
- 65. Work units

## CLUES DOWN

- 1. A way to fit out
- 2. Football carries
- 3. Force out
- 4. Maintaining equilibrium

- 5. Sealed with a kiss
- 6. Type of container
- 7. Hollywood
- 8. We
- 9. Small freshwater ducks
- 10. Norse personification of old age
- 13. Says who you are
- 14. Candidate
- 15. Sugar found in honey and sweet fruits
- 20. Defunct language (abbr.)
- 21. Take too much
- 22. Iranian province
- 23. Records electric currents
- 27. \_\_\_ and feathers
- 29. Beloved Mr. T character
- 30. More (Spanish)
- 31. Beverage
- 32. Promotional material
- 33. Green vegetable
- 34. National capital
- 35. To any further extent

- 36. Swollen, inflamed lymph node
- 37. Anger
- 38. Pound
- 40. Popular Yugo
- 41. Salt of acetic acid
- 42. Millihenry
- 44. Israeli city \_\_\_ Aviv
- 45. Make wider
- 46. Drink containing medicine
- 47. Acknowledging
- 48. Private, romantic rendezvous
- 50. Calvary sword
- 51. Disease of the lungs
- 52. 2001 Spielberg film
- 54. Fleshy, watery fruit
- 55. In one's chambers
- 57. Set of information (abbr.)
- 61. Dorm employee
- 62. Indicates position



BIG Town Service With  
Small Town Heart!

# ELY AUTO SERVICES & TOWING

1614 Harvey Street, Ely • Locally Owned & Operated

**Tires/flat repairs (big or small), Rotations,  
Tire balances, Alignments, Brakes, Batteries,  
Starting systems, Front and rear suspensions,  
AC and heating, Transmissions, Engines,  
Oil changes**

**Towing • Recovery • Lockouts  
• Roadside assistance  
• Most Insurance accepted and AAA approved**



Phone: 218-365-5994 • Fax: 218-365-8110

[elyautoservice@frontiernet.net](mailto:elyautoservice@frontiernet.net)



## A Place to Gather & Connect

Fair Trade Coffee & Espresso • 20 Varieties of Loose Leaf Teas  
Fruit Smoothies & Frappes • Breakfast Burritos, Quiche & More  
Lunch Burritos, Wraps & Sandwiches Made-To-Order

**Relaxed Atmosphere • Outdoor Seating  
Friendly Staff & Great Customer Service  
Desserts & Gifts**

WiFi, Printer, Computers for Your Use

**WiFi Hot Spot**

**343 East Sheridan St, Ely • 218-365-BEAN  
Open Daily 6:30 AM**

# King Crossword

**ACROSS**

- 1 Fashion
- 6 Cougars
- 11 Copier part
- 12 Sanford of "The Jeffersons"
- 14 Sweatshirt variety
- 15 "The Raven" maiden
- 16 Off-roader (Abbr.)
- 17 Burn with steam
- 19 Khan title
- 20 "Moonstruck" star
- 22 — -la-la
- 23 War god
- 24 "Praying" singer

	1	2	3	4	5		6	7	8	9	10	
11							12					13
14							15					
16				17		18				19		
20			21		22				23			
24				25		26		27				
			28		29		30					
31	32	33				34		35		36	37	38
39					40		41		42			
43				44				45		46		
47			48				49		50			
51							52					
	53						54					

- 26 TV actor
- 28 Business mag
- 30 Melancholy
- 31 Dagwood's lady
- 35 Chic again
- 39 Lariat
- 40 Neither mate
- 42 Actress de Matteo
- 43 — -de-France
- 44 Red Square figure
- 46 Last (Abbr.)
- 47 Sister of
- 49 Restaurant fan
- 51 Sports venues
- 52 Not as small
- 53 Admin. aides
- 54 Plant firmly
- 6 Columns
- 7 Secondhand
- 8 Chess piece
- 9 On the train
- 10 Composer Prokofiev
- 11 Crude cabin
- 13 Rental contract
- 18 Canine cry
- 21 Bonn's river
- 23 Threw in
- 25 Moreover
- 27 Corn serving
- 29 Movie houses
- 31 Hat edges
- 32 Nabokov novel
- 33 Puccini works
- 34 Very long time
- 36 Plod
- 37 Counted (on)
- 38 Western flick
- 41 Sentry's weapon
- 44 Cannes milk
- 45 Linguist Chomsky
- 48 Check-cashing needs
- 50 Sphere

**DOWN**

- 1 Mollify
- 2 Caches
- 3 Pay stub abbr.
- 4 Floral rings
- 5 Upright

© 2021 King Features Synd., Inc.

## WORD SCRAMBLE

Rearrange the letters to spell something pertaining to cats.

**M J S U P**

--	--	--	--	--

*Answer: jumps*

# King Crossword

**ACROSS**

- 1 — Valley, Calif.
- 5 Indent key
- 8 Booty
- 12 Portent
- 13 Hot temper
- 14 Corduroy ridge
- 15 Arm of the Arctic Ocean
- 17 Desire
- 18 Sub detector
- 19 Sunflower State
- 21 Study all night
- 24 Pvt.'s superior
- 25 Salamander
- 28 Canal feature
- 30 Acapulco gold
- 33 "The Greatest"
- 34 Continental cash
- 35 "Awesome!"
- 36 Sweetie
- 37 Apple computer
- 38 Memory unit
- 39 A billion years
- 41 Crazy
- 43 Treat badly
- 46 Available
- 50 Contented sounds
- 51 Left the band
- 54 "— Rhythm"
- 55 Actress Mendes
- 56 Now, on a

1	2	3	4		5	6	7		8	9	10	11
12					13				14			
15				16					17			
18							19	20				
			21		22	23		24				
25	26	27			28		29			30	31	32
33				34						35		
36				37					38			
		39	40			41		42				
43	44				45			46		47	48	49
50					51	52	53					
54					55				56			
57					58				59			

- 34 Continental memo
- 57 Cuts off
- 32 Poetic tribute
- 35 "Awesome!"
- 58 Gym unit
- 9 Veteran's tale
- 34 Drei minus
- 36 Sweetie
- 59 Egyptian deity
- 10 Pond growth
- zwei
- 37 Apple computer
- 11 Pop music's
- 38 Dwarf tree
- 38 Memory unit
- 16 Goof up
- 40 Expels
- 39 A billion years
- 20 Requests
- 42 Camp bed
- 41 Crazy
- 22 Grad
- 43 Postal delivery
- 43 Treat badly
- 23 Aesopian ending
- 44 "Othello" villain
- 46 Available
- 25 "Unh-unh"
- 45 Ornamental jug
- 50 Contented sounds
- 26 "Evil Woman" gp.
- 47 Pitch
- 51 Left the band
- 27 Port authority?
- 48 Jai —
- 54 "— Rhythm"
- 29 Designer Chanel
- 49 Band in Boston?
- 55 Actress Mendes
- 31 Squealer
- 52 Prior night
- 56 Now, on a
- 30 Acapulco gold
- 53 Snooze

© 2021 King Features Synd., Inc.

## WORD SCRAMBLE

Rearrange the letters to spell something pertaining to a kitchen or bathroom.

T C A E I B N

--	--	--	--	--	--	--	--

Answer: Cabinet

PUZZLE #9

	2	5	1					
			3				9	
				4				5
4		7	9			2	5	
	1		6		7			8
8		3	2					
							1	9
		4	5		3		2	
7								

Level: Advanced

PUZZLE #10

9	5	6				1		
	3	1	2		6		9	
4								8
			7	2				4
	7			8				
5				3		8		
	4		6		9	5		
						9		

Level: Advanced

PUZZLE #11

	2					1		
5		3	9		6		4	
			6		7			
		1			8			9
		2					5	
			3	4				
7	9					5	2	
8								6

Level: Advanced

	8		1		6			4
4		6	2				8	
7		3		8	9			1
8				2	7		6	
	6		3				9	
5	9							3
	2	1				3		
			8	3			7	9
	7		5					6

PUZZLE #12

Level: Beginner

PUZZLE #13

7								9
				7	5	2		
					2		3	
	8		1					
4	5		6			9		3
3		2						6
		3			8	6		7
				1	3			
			9				1	5

Level: Intermediate

		6			4			2
	1							
						7	3	9
		2						
1	7					6		3
				9	1	8		
2								1
	3			8		5		
4			5	3				7

PUZZLE #14

Level: Intermediate



PUZZLE #15

		2	3			5		
							9	
7		9						
5		1						
	4		7	9			2	
	2			4	5	8		
	8			5	3	4		2
					4	1		
		4			2		8	

Level: Advanced

	3		5					9
		6						2
						1	7	
8		9						
					8	6		
	6			3	5			
		3				7		5
		8		7	4		2	1
	9				3		8	

PUZZLE #16

Level: Advanced

PUZZLE #17

			7	2			9	
	7				8			
6						2		
1			3	9				8
		3						9
	9	7		8	2		6	
				1				
		9				6	4	
		1	6			7	5	

Level: Advanced

4						6		1
				6				
			1		8	3		5
7	4	6	5		9		1	
8								
1			8				2	6
			9			5		
	1	5		4	2			9
9			6	5		1		2

PUZZLE #18

Level: Beginner

⊙ \*\* ☐ ☹ ☘ ~ ● ☯ ✧ \* ☼ ✕ \* + ≡ \* ▲ ☾ \* ☿ \* ≡ ♃ ♄ ♅ ♆ ♇ ♈ ♉ ♊ ♋ ♌ ♍ ♎ ♏ ♐ ♑ ♒ ♓

# CRYPTO FUN

☐ ☾ ♁ \* ☿ ≡ ~ ★ +  
Determine the code to reveal the answer!

Solve the code to discover words related to American cheese.  
Each number corresponds to a letter.  
(Hint: 21 = E)

Answers: A. cheese B. melt C. sandwich D. yellow

- A. 7 18 21 21 15 21**  
*Clue: Dairy food*
- B. 23 21 3 8**  
*Clue: Make or become liquified*
- C. 16 6 4 26 22 13 7 18**  
*Clue: Meal of food between bread*
- D. 17 21 3 3 19 22**  
*Clue: Sunny color*

⊙ \*\* ☐ ☹ ☘ ~ ● ☯ ✧ \* ☼ ✕ \* + ≡ \* ▲ ☾ \* ☿ \* ≡ ♃ ♄ ♅ ♆ ♇ ♈ ♉ ♊ ♋ ♌ ♍ ♎ ♏ ♐ ♑ ♒ ♓

# CRYPTO FUN

☐ ☾ ♁ \* ☿ ≡ ~ ★ +  
Determine the code to reveal the answer!

Solve the code to discover words related to baking.  
Each number corresponds to a letter.  
(Hint: 15 = L)

Answers: A. flour B. sugar C. salt D. oven

- A. 7 15 14 12 24**  
*Clue: Wheat-based baking ingredient*
- B. 21 12 4 19 24**  
*Clue: Sweetener*
- C. 21 19 15 18**  
*Clue: Sodium chloride*
- D. 14 26 10 8**  
*Clue: Cooking appliance*

PUZZLE #19

	4	3						9
						7	6	3
	8		3			1	2	
8	1	2			5		4	
			6	2	8			1
		6			9	2		
9	5		4	1	2			
4		7		5				
					3		9	

Level: Beginner

					6			2
	2			7		6		
			9			4		
7					2			9
		5		1		2	8	
		1	8	3				
					4	3		
	3							6
	9		2	5			4	

PUZZLE #20

Level: Intermediate

PUZZLE #21

5						3		2
				2				6
					1	4		
					4		9	
		8	9				2	
1		3	8					
				7				
2		7		9			8	
	4					5		

Level: Advanced

				7	6			
	7		1			9		
	9							
						6		1
		5		4	3			
	8						3	7
		2	3				8	
		4			5	3		
					8		6	9

PUZZLE #22

Level: Advanced

PUZZLE #23

6	5				7	9	2	
9				1			8	
			5				6	3
7						8	9	
8			4	2	5	7		
		2						6
			7	5		3		9
1	2	7		8	9	6		
	9		6		1	2		8

Level: Beginner

						3	4	
			6		4	7	5	1
						6		8
8		4						
5			4	7	1		3	
		7						
				2			8	
	6	1	5		7			
		8	9					2

PUZZLE #24

Level: Intermediate

PUZZLE #25

		8					7	
				5				1
			7			6		
							4	
6		2		7	8	3		
			5					
	9	7	2	6		1		
	2			3			8	
	5			4	9			

Level: Advanced

# YOUR HOME-DECOR STORE



**ANDERSON**  
 FURNITURE  
 & KITCHENS

AndersonFurnitureCompany.com

214 2nd Ave. S, Virginia, MN • 218-741-9356

INTEREST  
 FREE  
 FINANCING  
 AND  
 LAYAWAY  
 AVAILABLE



PUZZLE #26

2		6		3				7
	5	1	9					2
9			1		2			6
	1		2				6	
6					1			
5	8	2		7				
	6	3			4	9	8	
							4	1
		8	5		9		7	

Level: Beginner



Real Estate Closing Services  
and Title Insurance

*Buying, Selling, or Refinancing?*

*We are committed to providing fast,  
reliable service to  
assure that your real estate transaction  
is a pleasurable experience.*

*[www.netitle.com](http://www.netitle.com)*

**Ely and  
Surrounding Areas**

545 E. Sheridan Street  
Ely, MN 55731  
Phone (218)365-5256

**Angie Mikulich**-Licensed Closing Agent  
**Elizabeth Hubbard**-Licensed Closing Agent  
**Shonna Kowarsch**-Licensed Closing Agent

**Virginia and  
Surrounding Areas**

612 13th Street South  
Virginia, MN 55792  
Phone (218)741-1515

**Jodee Micheletti**-Owner &  
Licensed Closing Agent  
**Sharon Maronick**-Licensed Closing Agent  
**Merella Marsyla**-Licensed Closing Agent  
**Ailie Marsyla**-Licensed Closing Agent

**We have a Board Certified Real Estate Attorney and four Title Examiners**



# HEART HEALTH WORD SEARCH

L T C O L U S E I R A L L I P A C C V S  
 T N M I T U S H I E C R V C B K N H Y I  
 R C R U M A O B U N O A E H S O L F A K  
 A H L F I E N I O Y I G A K V N G G A H  
 E A V V V R H T E E F A F M A K I F K Y  
 H M U V V E N T C I Y A Y P M E M I E M Y  
 M B T Y C U A A S C H L H L M B E U V D  
 H E R G A H C A R D I O L O G I S T C A D E  
 R R I N O S I D N C U A T G A N G I N B A T L  
 Y Y I G C E R I C O T O L A G S U Y C S B T P  
 R U F I A V F I O K O H C V T T H B Y L S  
 M C B O R L S B B O C B V T T L H B Y L S  
 O O U P D A A E L S T I A T T A C K P B M  
 L R U L I V T G N L A T I N N E G N O C M  
 R O L A O H Y P E R T E N S I O N T I G U  
 A N Y S G N Y V E N T R E I C L E Y O S A  
 O A E T R G R S E I R E T R A A T R O D  
 I R V Y A L P U S P L F V D H N C R E D L C  
 D Y Y Y M I G E H V Y A S G D R U C I Y  
 A N G I O G R A M C U T S C A T H E T

Find the words hidden vertically, horizontally, diagonally, and backwards.

- |                             |   |   |  |   |
|-----------------------------|---|---|--|---|
| HEART HEALTH<br>WORD SEARCH | ANGIOPLASTY<br>ANTICOAGU-<br>LANTS<br>AORTA<br>ARTERIES<br>ATRIUM | ATTACK<br>CAPILLARIES<br>CARDIOLOGIST<br>CATHETER<br>CHAMBER<br>CHEST | CONGENITAL<br>CORONARY<br>ECHOCARDIO-<br>GRAM<br>HEART<br>HYPERTENSION | ISCHEMIC<br>PACEMAKER<br>VALVES<br>VEINS<br>VENTRICLE |
|-----------------------------|---|---|--|---|

PUZZLE #27

# WILDERNESS WORD SEARCH

C R F Y R O S S E C C A Y M C E P T H C  
 E E Y I M T M E N G S S D M E N K Y N H  
 I N L P E M R Y G L E B F N S U H B Y K  
 N I I H I L D I A N C T G E A R F E D B  
 K B N T N D D Y V M I P I S S E G I G M H I  
 O A O T L B E A L E C R S S E G K N O V  
 S R V R D R O C I E L R S F O E P Y V G Y O  
 G A K U I L D O E M S H O E E M F F P U  
 R C L N E U R N R V R G Y O T V A C F A  
 H V G Y M G S T O O B E V U T N T C D C  
 T E E H S D N U O R G S H G S P E V S R  
 A B A C K C O U N T R Y D T E M R I E H  
 N H G N A V I G A T I O N K O E V I R Y  
 D P H K A E P O V H D I B I I P C C N O  
 M L I Y B P E K C A S K C U R H Y H K T  
 M V H U I M G I A R D I A N V I N H A A  
 V L N L L A N D S C A P E N K F T U N I  
 T K B C N B R A S E I Y F D T R A C K S  
 K D V Y A V M Y C L A N T E R N U S A P  
 B A K C A P K C A B K A H A S D R H H A

Find the words hidden vertically, horizontally, diagonally, and backwards.

- |                           |   |  |                                       |
|---------------------------|---|--|---------------------------------------|
| WILDERNESS<br>WORD SEARCH | CAMPSITE<br>CARABINER<br>CORD<br>FIELD<br>FOOTPRINT<br>GEAR<br>GIARDIA<br>GROUNDSHEET | HYPOTHERMIA<br>LANDSCAPE<br>LANTERN<br>LAYERING<br>NAVIGATION<br>ORIENTEERING<br>PEAK<br>RIVER | RUCKSACK<br>SKI<br>TRACKS<br>WS219300 |
|---------------------------|---|--|---------------------------------------|

PUZZLE #28

# PAYCHECK WORD SEARCH

G X H A U E E X I M N Y L K E E W N R T  
 H E L B L T B A I Y N O B R T Y S W N U R T H  
 A M G R R A Y T R A N S A C T I O N S T M P I N  
 T O A R R C Y C X Y X S X E X E M P T E L N G  
 I C S T K L M O W K P T W E H P S R R E L O I N  
 K N I X R C O P S S D E D U E C T E I S O N B S A O Y G  
 L A C I W D A E S N T N G L E D G U R N T R R X  
 G D P C E S N B U D I B G Y M K U E U X P  
 E I U R N R S B U D I B G Y M K U E U X P  
 L S N E H K A E M X G N I P W N S G I P B  
 E C P Y N T T D H L I N G K D N A W B B  
 M X A B L M I B D D B M C I D S O R H W  
 E R A C C E T O C L O L D E P O S I T L W  
 K P O O C K N O X Y E R T L K N N P G D  
 T B D N E R H U H G M D B W D U D U S O R  
 C M L C Y T H U H E N I O A W A G S S G O  
 X O L Y T G R I E A A R A N I N G S H P S  
 N P S I Y T I L I B A I L T A U I T P E S  
 I A W H R K R N H I P A W O I I T I G H

Find the words hidden vertically, horizontally, diagonally, and backwards.

## PAYCHECK WORD SEARCH

COMPENSATION  
 DEBT  
 DEDUCTIONS  
 DEPOSIT  
 EARNINGS  
 ELIGIBLE

EMPLOYER  
 EXEMPT  
 EXPENSES  
 GROSS  
 INCOME  
 LEDGER

LEGAL  
 LIABILITY  
 NET  
 RATE  
 TAXES  
 TRANSACTIONS

WAGES  
 WEEKLY  
 WITHHOLDING

ACCRUE  
 BASE  
 BONUS

WS219400

PUZZLE #29

# FARM SAFETY WORD SEARCH

H P O O T P S G O O U C H E M I C A L S  
 O N I S D R E S T O S Y P H T I V O K N B R P  
 H R D T K A N E K E N O Z T H G Z I L F O  
 M I N N B A G R S P A R R C B V B V Q O S A P  
 B H N G N P R I O S M T A C B S T F F N G F R O  
 Y A I E S Z G E L T O O E L S T I F E B B O L  
 H I R G H T V L T C R F L L T R P E E L  
 A G O Z M O P N D D E T P T O R G N B L O  
 F M U L I F E L I N E L O T E R T U B O V  
 A B S V O M R L E G A E F C Y R C Y L V  
 C S Z Z P B Q F Q U F H A E A O Z Q L E  
 C O A I H E L M F E T S U U P R A Z F F K R R  
 I P U F M E N I F Y U T U G M C N A S Z S D R R  
 D Q V I E G I U Y O Q N F A Q P Y O S V E T  
 E T Q T Z T G Y O Q N F A Q P Y O S V E T  
 N Y P F N N Y N A T N R I L O C K O U T B  
 T Y N T P Z S S S M M T O U I Z B D K B  
 R F G S G R A I N B I N P D L H Z F Y H

Find the words hidden vertically, horizontally, diagonally, and backwards.

## FARM SAFETY WORD SEARCH

DANGEROUS  
 ENTRAPMENT  
 EQUIPMENT  
 FARM  
 FLAGS  
 FLIGHT ZONE

GRAIN BIN  
 HANDLER  
 HELMET  
 LIFELINE  
 LIGHTS  
 LOCK-OUT

PANIC  
 PRECAUTIONS  
 PTO  
 REFLECTORS  
 ROLL BAR  
 ROLL OVER

SAFETY  
 SEATBELT  
 TRANSPORT

ACCIDENT  
 AUGER  
 CHEMICALS

WS219500

PUZZLE #30

**Ubetcha Antiques  
& Uniques**

Open Year Round • 601 Main St, Tower

**218.753.3422**

**ARTISAN + VINTAGE  
ANTIQUES + COLLECTIBLES**

Stop in Soon and Browse our Shop!



OPEN YEAR ROUND - CALL AHEAD FOR SEASONAL HOURS



**Uffda Thrifts & Gifts**



New, Old, Greeting Cards, Puzzles,  
Giftware, DIY, Decor, Man Stuff, Toys,  
Furnishings, Housewares, Books, Records,  
Socks, Underwear, New Items Every Week



Located next to Ubetcha Antiques & Uniques  
at 603 Main St, Tower

OPEN YEAR ROUND - CALL AHEAD FOR SEASONAL HOURS

**COOK  
OFF SALE**

**LAST CHANCE LIQUOR**

**BEER • WINE • SPIRITS**

**Low Prices & Great Selection**

**218-666-2072**



**Mon-Sat: 8 AM - 10 PM, Sun: 11 AM - 4 PM**

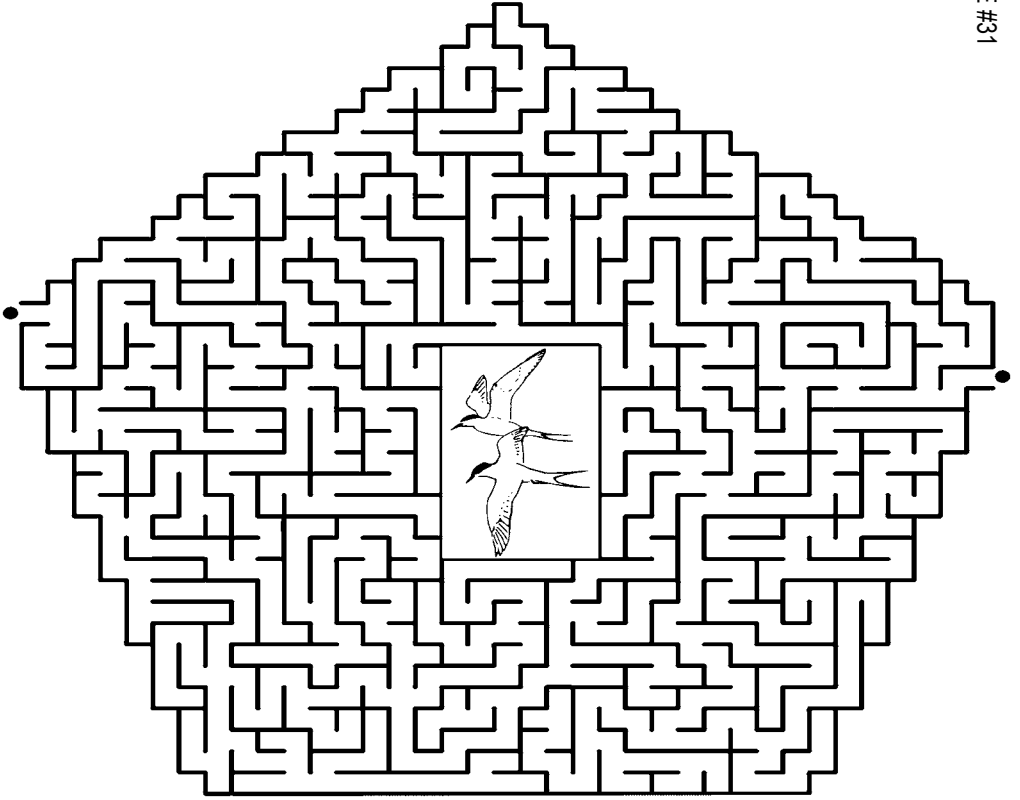
**ATM • LOTTERY • Located on Hwy 53**



# Mega Maze

©2021 King Features Syndicate, Inc.

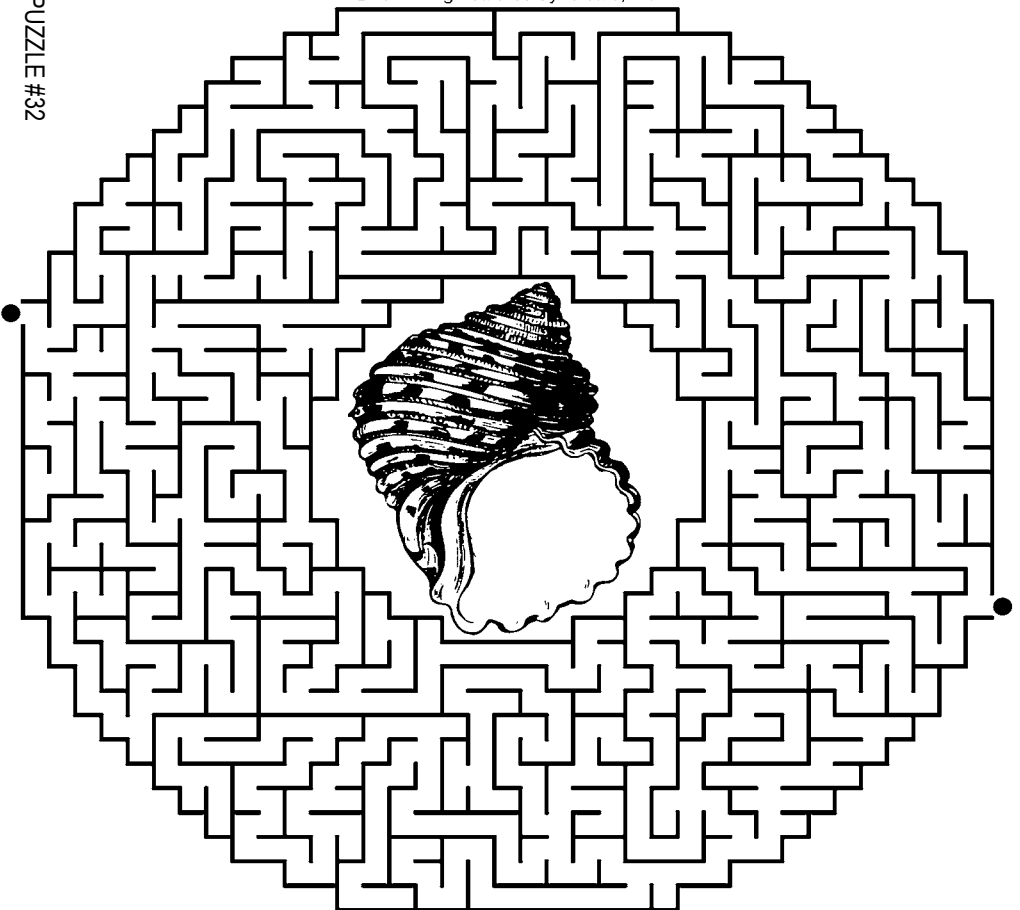
PUZZLE #31



# Mega Maze

©2021 King Features Syndicate, Inc.

PUZZLE #32



# FOR ALL.... YOUR APPLIANCE NEEDS

We carry the TOP BRANDS of  
all Appliances and Electronics



102 Chestnut St, Virginia, MN  
741-3615



**Our  
Specialty  
is You**

**24-Hour Emergency Room · Acute Care  
Outpatient Services · Care Center**



**218-666-5945 • [cookhospital.org](http://cookhospital.org)  
10 Fifth Street SE, Cook, MN 55723  
218-361-3287 Tower Lab**

**PUZZLE #1**

— **King Crossword** —

*Answers*

**Solution time: 21 mins.**

S	L	A	N	G		S	K	I	B	U	M	
L	E	S	S	E	E		E	N	C	A	S	E
S	L	A	T	E	S		G	O	U	R	D	S
D	A	T	E		T	H	A	W		G	A	S
			R	O	U	E		S	E	A		
A	A	H		A	R	I	A		M	I	S	T
P	L	A	N	T	E	R	S	P	U	N	C	H
E	L	I	E		S	E	T	H		S	H	E
			R	A	D		S	O	D	A		
U	S	C		A	S	S	N		N	O	T	S
L	O	U	V	R	E		I	N	J	U	R	Y
E	N	T	I	C	E		S	C	O	R	E	R
E	S	S	A	Y	S		H	O	U	S	E	

**PUZZLE #2**

— **King Crossword** —

*Answers*

**Solution time: 26 mins.**

A	D	S		A	B	L	E		S	A	L	T
L	I	E		T	O	I	L		C	H	A	I
A	S	A	W	H	O	L	E		R	I	D	S
S	C	R	E	E	N		G	E	E			
			A	N	S		A	S	W	E	L	L
C	A	P	R	A		U	N	E		Y	E	E
A	H	O	Y		I	S	T		B	E	N	E
S	A	S		G	M	A		C	E	D	A	R
A	S	E	V	E	R		M	R	I			
			I	L	E		E	U	G	E	N	E
I	M	A	C		A	S	N	E	E	D	E	D
R	I	C	H		D	U	S	T		E	R	A
A	C	H	Y		Y	E	A	S		N	O	M

**PUZZLE #3**

— **King Crossword** —

*Answers*

**Solution time: 25 mins.**

A	R	I	A		L	A	B	S		D	A	B
D	E	N	T		O	K	R	A		A	L	A
D	A	S	H	B	O	A	R	D		N	E	D
S	P	O	O	L	S			A	L	B	E	E
			M	Y		T	A	T	E	R		
J	A	D	E		P	E	W		D	O	L	L
A	V	A			E	E	E			W	E	E
M	I	T	T		L	T	D		B	N	A	I
			E	A	R	T	H		D	A		
O	H	B	O	Y		S	O	R	D	I	D	
B	O	O		D	A	N	C	E	B	A	N	D
I	P	O		E	S	A	U		E	D	N	A
E	E	K		R	I	N	D		R	O	S	Y

**PUZZLE #4**

— **King Crossword** —

*Answers*

**Solution time: 23 mins.**

B	E	E	T		F	E	D		C	H	U	B	
A	L	T	O		I	T	S		A	E	R	O	
B	A	R	T	L	E	T			R	A	G	E	
E	N	E			O	R	E		U	T	T	E	R
			P	R	Y		B	M	W				
S	N	E	A	D		O	R	P	H	E	U	S	
T	I	E	R		R	N	A		E	T	N	A	
S	A	N	T	A	F	E		C	E	C	I	L	
			I	C	K		G	A	L				
B	O	A	S	T		F	U	N		K	E	A	
U	C	L	A		M	A	R	T	I	N	I	S	
S	H	U	N		E	M	U		L	E	N	A	
T	O	M	S		D	E	S		K	E	E	P	

**PUZZLE #5**

— **King Crossword** —

*Answers*

**Solution time: 22 mins.**

M	I	A		T	O	T	E	S		C	B	S	
A	S	H		U	B	O	A	T		H	A	L	
C	H	A	R	L	O	T	T	E		A	B	A	
			D	I	I		A	R	A	R	A	T	
R	E	C	A	P	S		T	E	R	I			
A	C	H		S	T	Y		O	C	T	E	T	
S	C	A	T		S	E	T		S	I	R	I	
H	E	R	O	D		W	O	W		E	L	L	
			A	G	A	L		W	E	A	S	E	L
A	R	C	A	N	A		A	S	K				
S	A	T		C	H	A	R	L	A	T	A	N	
A	G	E		E	T	U	D	E		A	V	I	
P	A	R		S	I	S	S	Y		J	A	B	

**PUZZLE #6**

C	R	U	S			S	A	L	U	T	E					
L	U	N	T			W	E	A	S	E	L	I	N	G		
O	S	S	A			A	R			A	L	D	O	L		
T	H	E	B	O	O	K	O	F	E	L	I		M	U		
H	E	A	L	E	D		S	A	C	S		T	I	C		
E	S	T	E			B	O	R	G		M	A	N	O		
						T	A	A	L	S		P	A	R	E	S
B	A	B	I	E	D					L	E	S	S	E	E	
A	N	U	R	A		S	A	M	B	A						
G	Y	B	E		T	A	C	H			D	E	N	T		
H	M	O		S	E	N	E		T	A	I	L	O	R		
D	O		P	A	L	A	T	A	B	I	L	I	T	Y		
A	R	D	E	B			A	B			A	X	I	S		
D	E	S	P	E	R	A	T	E			T	I	N	T		
						O	R	A	T	E	D		E	R	G	S

**PUZZLE #7**

— **King Crossword** —  
Answers

Solution time: 21 mins.

S	S	T	L	E		P	U	M	A	S	
S	O	R	T	E	R		I	S	A	B	E
H	O	O	D	I	E		L	E	N	O	R
A	T	V		S	C	A	L	D		A	G
C	H	E	R		T	R	A		A	R	E
K	E	S	H	A		F	R	E	D	D	I
				I	N	C		S	A	D	
B	L	O	N	D	I	E		R	E	T	R
R	O	P	E		N	O	R		D	R	E
I	L	E		L	E	N	I	N		U	L
M	I	R	I	A	M		F	O	O	D	I
S	T	A	D	I	A		L	A	R	G	E
A	S	S	T	S		E	M	B	E	D	

**PUZZLE #9**

3	2	5	1	6	9	8	7	4
6	4	8	3	7	5	1	9	2
9	7	1	8	4	2	6	3	5
4	6	7	9	3	8	2	5	1
2	1	9	6	5	7	3	4	8
8	5	3	2	1	4	9	6	7
5	3	2	7	8	6	4	1	9
1	8	4	5	9	3	7	2	6
7	9	6	4	2	1	5	8	3

**PUZZLE #11**

4	2	9	5	7	3	1	6	8
1	6	7	2	8	4	3	9	5
5	8	3	9	1	6	7	4	2
9	4	8	6	5	7	2	3	1
3	5	1	4	2	8	6	7	9
6	7	2	1	3	9	8	5	4
2	1	6	3	4	5	9	8	7
7	9	4	8	6	1	5	2	3
8	3	5	7	9	2	4	1	6

**PUZZLE #13**

7	2	4	3	6	1	8	5	9
8	3	9	4	7	5	2	6	1
5	1	6	8	9	2	7	3	4
6	8	7	1	3	9	5	4	2
4	5	1	6	2	7	9	8	3
3	9	2	5	8	4	1	7	6
1	4	3	2	5	8	6	9	7
9	6	5	7	1	3	4	2	8
2	7	8	9	4	6	3	1	5

**PUZZLE #8**

— **King Crossword** —  
Answers

Solution time: 24 mins.

S	I	M	I		T	A	B		S	W	A	G
O	M	E	N		I	R	E		W	A	L	E
W	H	I	T	E	S	E	A		U	R	G	E
S	O	N	A	R			K	A	N	S	A	S
		C	R	A	M		S	G	T			
N	E	W	T		L	O	C	K		O	R	O
A	L	I		E	U	R	O	S		R	A	D
H	O	N		I	M	A	C		B	Y	T	E
		E	O	N		L	O	C				
M	I	S	S		S	E		O	N	T	A	P
A	A	H	S		W	E	N	T	S	O	L	O
I	G	O	T		E	V	A		A	S	A	P
L	O	P	S		R	E	P		I	S	I	S

**PUZZLE #10**

9	5	6	3	4	8	1	2	7
8	3	1	2	7	6	4	9	5
7	2	4	5	9	1	3	8	6
4	1	2	9	6	3	7	5	8
3	8	9	7	2	5	6	1	4
6	7	5	1	8	4	2	3	9
5	9	7	4	3	2	8	6	1
2	4	8	6	1	9	5	7	3
1	6	3	8	5	7	9	4	2

**PUZZLE #12**

2	8	9	1	7	6	5	3	4
4	1	6	2	5	3	9	8	7
7	5	3	4	8	9	6	2	1
8	3	4	9	2	7	1	6	5
1	6	7	3	4	5	8	9	2
5	9	2	6	1	8	7	4	3
9	2	1	7	6	4	3	5	8
6	4	5	8	3	1	2	7	9
3	7	8	5	9	2	4	1	6

**PUZZLE #14**

3	9	6	8	7	4	1	5	2
7	1	5	9	2	3	4	6	8
8	2	4	6	1	5	7	3	9
5	8	2	3	6	7	9	1	4
1	7	9	4	5	8	6	2	3
6	4	3	2	9	1	8	7	5
2	5	8	7	4	6	3	9	1
9	3	7	1	8	2	5	4	6
4	6	1	5	3	9	2	8	7

**PUZZLE #15**

4	6	2	3	1	9	5	7	8
8	3	5	4	2	7	6	9	1
7	1	9	5	8	6	2	3	4
5	7	1	2	3	8	9	4	6
6	4	8	7	9	1	3	2	5
9	2	3	6	4	5	8	1	7
1	8	7	9	5	3	4	6	2
2	9	6	8	7	4	1	5	3
3	5	4	1	6	2	7	8	9

**PUZZLE #16**

1	3	4	5	2	7	8	6	9
9	7	6	8	4	1	5	3	2
5	8	2	3	6	9	1	7	4
8	4	9	7	1	6	2	5	3
3	2	5	4	9	8	6	1	7
7	6	1	2	3	5	9	4	8
4	1	3	6	8	2	7	9	5
6	5	8	9	7	4	3	2	1
2	9	7	1	5	3	4	8	6

**PUZZLE #17**

3	1	5	7	2	6	8	9	4
9	7	2	4	3	8	5	1	6
6	4	8	9	5	1	2	3	7
1	5	6	3	9	7	4	2	8
2	8	3	5	6	4	1	7	9
4	9	7	1	8	2	3	6	5
7	6	4	2	1	5	9	8	3
5	2	9	8	7	3	6	4	1
8	3	1	6	4	9	7	5	2

**PUZZLE #18**

4	9	8	2	3	5	6	7	1
5	3	1	7	6	4	2	9	8
2	6	7	1	9	8	3	4	5
7	4	6	5	2	9	8	1	3
8	2	3	4	1	6	9	5	7
1	5	9	8	7	3	4	2	6
3	7	2	9	8	1	5	6	4
6	1	5	3	4	2	7	8	9
9	8	4	6	5	7	1	3	2

**PUZZLE #19**

7	4	3	2	6	1	5	8	9
1	2	9	5	8	4	7	6	3
6	8	5	3	9	7	1	2	4
8	1	2	7	3	5	9	4	6
5	9	4	6	2	8	3	7	1
3	7	6	1	4	9	2	5	8
9	5	8	4	1	2	6	3	7
4	3	7	9	5	6	8	1	2
2	6	1	8	7	3	4	9	5

**PUZZLE #20**

5	1	4	3	8	6	9	7	2
3	2	9	4	7	5	6	1	8
6	7	8	9	2	1	4	3	5
7	8	3	5	4	2	1	6	9
9	4	5	6	1	7	2	8	3
2	6	1	8	3	9	7	5	4
8	5	2	7	6	4	3	9	1
4	3	7	1	9	8	5	2	6
1	9	6	2	5	3	8	4	7

**PUZZLE #21**

5	8	6	7	4	9	3	1	2
3	1	4	5	2	8	9	7	6
7	2	9	6	3	1	4	5	8
6	7	2	3	1	4	8	9	5
4	5	8	9	6	7	1	2	3
1	9	3	8	5	2	7	6	4
8	6	5	1	7	3	2	4	9
2	3	7	4	9	5	6	8	1
9	4	1	2	8	6	5	3	7

**PUZZLE #22**

5	2	1	9	7	6	8	4	3
6	7	8	1	3	4	9	2	5
4	9	3	8	5	2	1	7	6
3	4	9	2	8	7	6	5	1
7	1	5	6	4	3	2	9	8
2	8	6	5	1	9	4	3	7
9	5	2	3	6	1	7	8	4
8	6	4	7	9	5	3	1	2
1	3	7	4	2	8	5	6	9



PUZZLE #23

6	5	1	8	3	7	9	2	4
9	3	4	2	1	6	5	8	7
2	7	8	5	9	4	1	6	3
7	4	5	1	6	3	8	9	2
8	6	9	4	2	5	7	3	1
3	1	2	9	7	8	4	5	6
4	8	6	7	5	2	3	1	9
1	2	7	3	8	9	6	4	5
5	9	3	6	4	1	2	7	8

PUZZLE #24

1	7	6	2	5	8	3	4	9
9	8	2	6	3	4	7	5	1
3	4	5	7	1	9	6	2	8
8	1	4	3	6	2	9	7	5
5	2	9	4	7	1	8	3	6
6	3	7	8	9	5	2	1	4
4	9	3	1	2	6	5	8	7
2	6	1	5	8	7	4	9	3
7	5	8	9	4	3	1	6	2

PUZZLE #25

5	6	8	3	9	1	4	7	2
2	7	3	4	5	6	8	9	1
9	1	4	7	8	2	6	5	3
1	8	5	6	2	3	9	4	7
6	4	2	9	7	8	3	1	5
7	3	9	5	1	4	2	6	8
8	9	7	2	6	5	1	3	4
4	2	6	1	3	7	5	8	9
3	5	1	8	4	9	7	2	6

PUZZLE #26

2	4	6	8	3	5	1	9	7
8	5	1	9	6	7	4	3	2
9	3	7	1	4	2	8	5	6
3	1	9	2	5	8	7	6	4
6	7	4	3	9	1	5	2	8
5	8	2	4	7	6	3	1	9
1	6	3	7	2	4	9	8	5
7	9	5	6	8	3	2	4	1
4	2	8	5	1	9	6	7	3

☉ \*\* ☐ ☺ ✖ ~ ● ☽ ✧ \* ✨ × ✨ + ☼ ✨ \* ▲ ☾ \* ♀ \* ✨ ☽ ♁ ♃ ♄ ♅

**A B C D E F G H I J K L M N O P Q R S T U V W X Y Z**

**CRYPTO FUN**

☐ ☾ ♃ ✨ ♀ ☼ ~ ✨ +

Determine the code to reveal the answer!

Solve the code to discover words related to kitchens and baths.  
Each number corresponds to a letter.  
(Hint: 18 = O)

- A. 13 17 4 5 20 10**  
*Clue: Where water comes out*
- B. 5 18 4 15 10 20 11**  
*Clue: Flat-topped fixture*
- C. 11 20 15 18 22 17 10 20**  
*Clue: Restore or rebuild*
- D. 13 9 18 18 11 6 15 26**  
*Clue: What's underfoot*

Answers: A. faucet B. counter C. renovate D. flooring

**PUZZLE #27**

L	T	C	O	L	U	S	E	I	R	A	L	L	I	P	A	C	C	V	S
T	R	N	M	T	A	S	H	I	E	C	R	V	C	B	K	N	H	Y	I
A	R	A	H	A	M	B	E	R	R	A	S	O	L	F	A	K	H	Y	
H	A	M	B	E	R	R	A	S	O	L	F	A	K	H	Y	I	P	A	
M	H	R	Y	Y	G	G	C	A	R	D	I	O	L	G	I	S	T	C	
H	R	Y	Y	G	G	C	A	R	D	I	O	L	G	I	S	T	C	A	
R	U	F	I	O	R	L	S	B	B	O	C	B	V	T	L	H	B	Y	
M	O	L	R	O	L	A	O	H	Y	P	E	R	T	E	N	S	I	O	
R	O	L	A	O	H	Y	P	E	R	T	E	N	S	I	O	M	T	T	
A	O	I	R	Y	Y	M	L	P	U	P	L	F	D	H	N	C	R	D	
A	N	G	I	O	G	R	A	M	C	U	T	C	A	T	H	E	T	E	

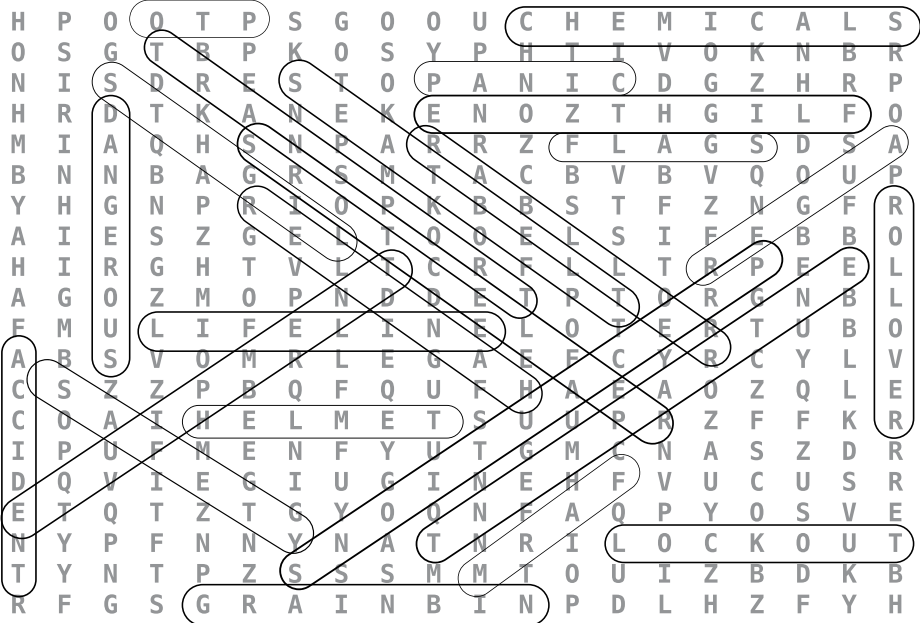
**PUZZLE #28**

C	R	F	Y	R	O	S	S	E	C	C	A	Y	M	C	E	P	T	H	C
E	Y	I	M	T	M	E	N	G	S	S	D	M	E	N	K	Y	N	H	C
I	N	I	H	I	L	D	T	A	N	E	T	G	E	A	R	F	E	D	B
K	B	N	T	N	D	Y	V	M	I	F	I	S	G	I	G	M	H	I	B
O	A	O	T	L	B	E	L	E	C	R	S	S	E	G	K	N	O	V	O
S	R	V	R	D	R	O	C	I	L	R	F	E	P	P	Y	V	G	Y	O
G	A	K	U	I	L	D	O	E	M	S	H	O	E	E	M	F	F	P	U
R	C	L	N	E	U	R	N	R	V	R	G	Y	O	T	V	A	C	D	F
H	V	G	Y	M	G	S	T	O	O	B	E	V	U	T	N	T	C	D	A
T	E	E	H	S	D	N	U	O	R	G	S	H	G	S	P	F	E	V	S
A	B	A	C	K	C	O	U	N	T	R	Y	D	T	E	M	R	I	E	H
N	H	G	N	A	V	I	G	A	T	I	O	N	K	O	F	V	I	R	Y
D	P	H	K	A	E	P	O	V	H	D	I	B	I	I	P	C	C	N	O
M	L	I	Y	B	P	E	K	C	A	S	K	C	U	R	H	Y	H	K	T
M	V	H	U	I	M	G	T	A	R	D	I	A	N	V	I	N	H	A	A
V	L	N	L	L	A	N	D	S	C	A	P	E	N	K	F	T	U	N	I
T	K	B	C	N	B	R	A	S	E	T	Y	F	D	T	R	A	C	K	S
K	D	V	Y	A	V	M	Y	C	L	A	N	T	E	R	N	U	S	A	P
B	A	K	C	A	P	K	C	A	B	K	A	H	A	S	D	R	H	H	A

**PUZZLE #29**

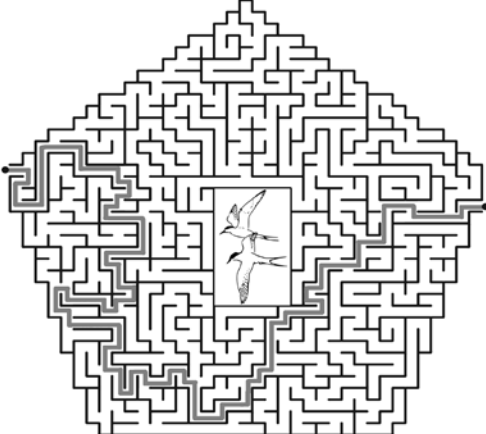
G	X	H	A	U	E	E	X	I	M	N	Y	L	K	E	E	W	N	R	T
H	A	M	G	R	A	Y	T	R	A	N	S	A	C	T	I	O	N	S	M
A	T	I	C	N	S	K	L	M	M	O	S	K	P	T	W	E	H	P	S
K	I	X	R	C	O	P	S	T	A	X	E	S	E	H	D	B	A	Y	D
L	A	G	E	L	C	I	W	D	A	E	K	E	T	E	O	E	B	U	S
L	A	G	E	L	C	I	W	D	A	E	K	E	T	E	O	E	B	U	S
E	M	X	A	B	L	M	I	B	D	D	B	M	C	T	I	D	S	O	R
E	R	A	C	C	E	T	O	C	L	O	L	D	E	P	O	S	I	T	L
K	P	O	O	C	K	N	O	X	Y	E	R	T	L	K	N	N	P	G	D
T	B	D	N	E	R	H	G	M	D	B	W	D	U	D	U	S	O	G	R
C	M	L	C	Y	H	U	H	N	I	O	A	W	A	G	E	S	G	O	S
X	O	L	Y	T	G	R	B	E	A	R	N	I	N	G	S	H	P	S	H
N	P	S	I	Y	T	I	L	I	B	A	I	L	T	A	U	T	E	S	W
I	A	W	H	R	K	R	N	H	I	P	A	W	O	I	I	T	I	G	H

**PUZZLE #30**



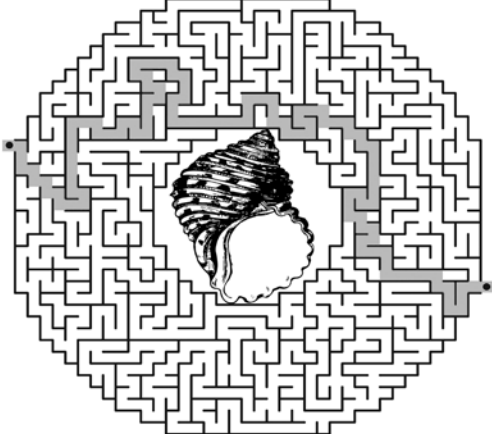
**PUZZLE #31**

**Mega Maze**  
Solution



**PUZZLE #32**

**Mega Maze**  
Solution





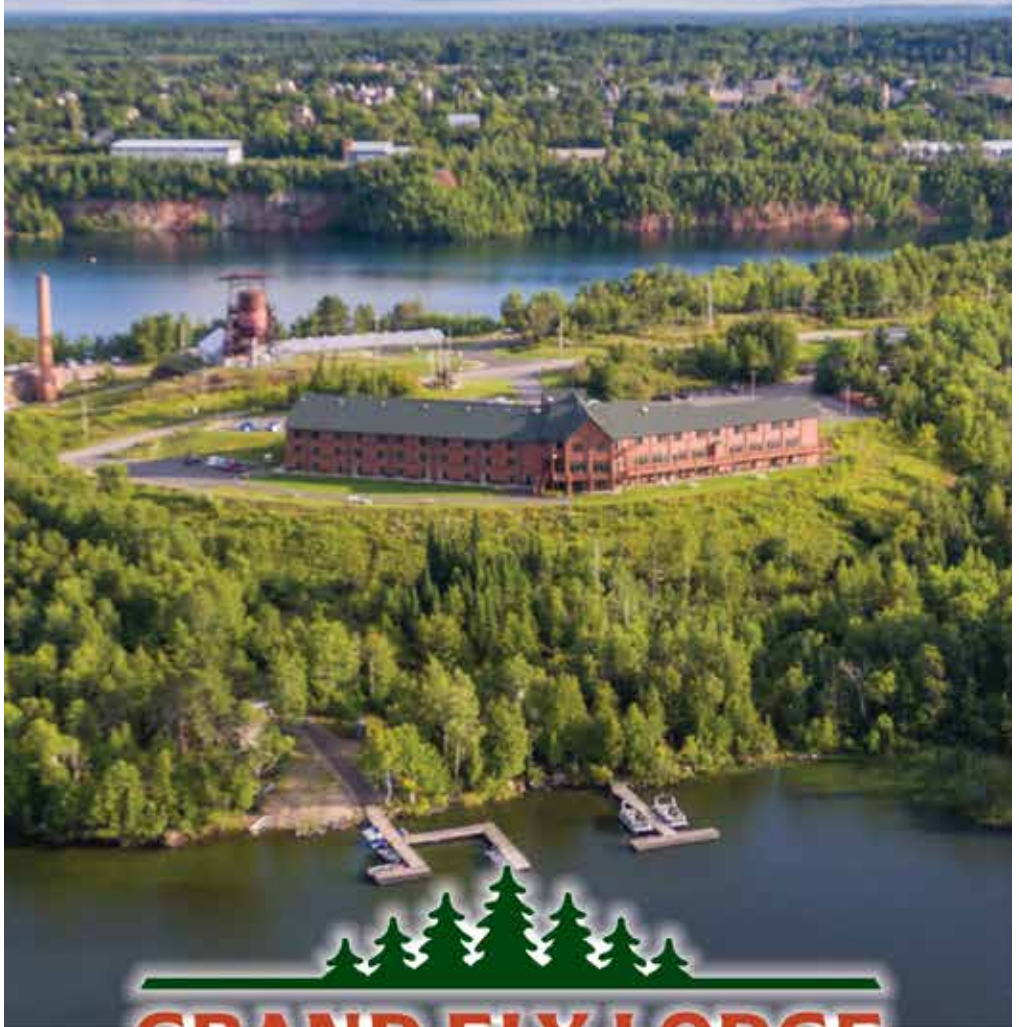
## News You Can Trust Each Week In Print and Online



**Subscribe Today**  
**(218) 753-2950**  
**[www.timberjay.com](http://www.timberjay.com)**



**SPACIOUS GUEST ROOMS • RESTAURANT  
BAR & LOUNGE • HEATED POOL • HOT TUB • SAUNA  
WATERCRAFT RENTALS • MEETING ROOMS  
HISTORIC LOCATION**



**GRAND ELY LODGE**  
**RESORT & EVENT CENTER**

400 North Pioneer Road • Ely, MN 55731  
explore more at [grandelylodge.com](http://grandelylodge.com)  
(218) 365-6565



Smaller incision.

**MAXIMUM PRECISION.**

## Robotic-assisted surgery is at EBCH in Ely!

Advanced technology is now available right here in Ely with the da Vinci surgical system. Our highly-experienced experts can provide robotic-assisted surgery for hernias, gallbladders, and appendectomies, giving surgeons greater control – so our patients have better outcomes.

### PATIENT BENEFITS



**Faster recovery times**



**Lower rates of complication or infection**



**Less pain and scarring**



Ely-Bloomenson  
Community Hospital

Avoid unnecessary travel and find out how we make scheduling easy by calling **218-365-8724** or visit **ebch.org** to see if robotic surgery is right for you.



**STEPHANIE BURCKHARDT**

**218-666-4026**

[SBURCKHARDT@NORTHSTARCREDITUNION.ORG](mailto:SBURCKHARDT@NORTHSTARCREDITUNION.ORG)

NMLS:#421853

**LORI ASTLEFORD**

**218-666-4025**

[LASTLEFORD@NORTHSTARCREDITUNION.ORG](mailto:LASTLEFORD@NORTHSTARCREDITUNION.ORG)

NMLS:#454495

**LOCAL & FAST DECISION MAKING  
FOR ALL YOUR MORTGAGE LOAN NEEDS**



FEDERALLY INSURED BY NCUA

EQUAL HOUSING LENDER

NMLS:#407735

**[NORTHSTARCREDITUNION.ORG](http://NORTHSTARCREDITUNION.ORG)**



**Contact us for all your insurance needs**



**Cathy: 218-666-4030**

**Lisa: 218-666-4011**

**Downtown Cook | [InsurewithNorthStar.com](http://InsurewithNorthStar.com)**



Dr. Bridget Sundell and  
Dr. Krystal Eckstein



Call today  
to book  
your  
appointment!

*Because your vision is precious,  
please remember the importance  
of routine eye care.*

Sundell Eye Associates is always  
accepting new patients!

602 N 6th Ave W, Virginia, MN 55792

Hours: 8 AM–4:30 PM

**218.741.4411**

[sundelleye.com](http://sundelleye.com)



# NEXT TIME COME HOME!®

**JANISCH**  
— REALTY —

218-780-6644



*"The finest Realtor I've ever worked with in my life." -Tim K.*



**PRIVATE ISLAND, ELY:** Secluded island retreat w/mesmerizing views set in towering pines & rock outcroppings on Shagawa Lake, short boat ride across calm water to launch. Tucked among small undeveloped islands, the picturesque coastline to the W & SW is Superior Natl Forest. Built 2012, knotty pine cabin w/lakeside deck connecting kitchen cabin, dock w/walk in swimming area. In 1800's, island was summer home of one of Ely's original doctors.

**OFFERED AT** \$498,500 2 BED/PRIVY  
**DETAILS** 1.75 ACRES 560 SF 900 FT SHORELINE

**JANISCH**  
— REALTY —



Drive to your classic 1930s Boundary Waters Area log cabin set on 2.4 acres & 300 ft of sunset facing SAND BEACH at the edge of the BWCA, short boat ride from your dock to the BW entry & only 7 miles to Ely. Fall Lake is 2258 acres with the NE portion in the BWCA, 32 ft deep & known for walleye fishing. Original log cabin at waters edge, handmade by great grandparents who cut the logs on Fall Lake & used horses to bring them to site. Old time stacked log sauna on beach, placed so sunlight shines to back of sauna. 2nd sauna from 60's. One of a kind secluded boreal forest retreat. Renovate or potential to build new Boundary Waters beach cabin!

**OFFERED AT** \$524,500 1 BED/1 BTH  
**DETAILS** 2.4 ACRES 618 SF 300 FT SHORELINE

NE Minnesota & Lake Superior  
Lake Vermilion - Ely - Giants Ridge



[www.JanischRealty.com](http://www.JanischRealty.com)

