

# GO Lake Country

ELY • LAKE VERMILION • VOYAGEURS

FREE

Summer 2021



- YOUR MAP OF THE LAKE COUNTRY...PG 8
- LOCAL EVENTS...PGS 10-13
- JOURNEY BACK IN TIME...PG 17
- AND MUCH, MUCH MORE!

Published by The Timberjay, Inc.



ESCAPE TO YOUR OWN

# PRIVATE ISLAND



KIDS ACTIVITIES, WATER TOYS, AND  
MORE INCLUDED WITH YOUR STAY

info@LudlowsResort.com • www.LudlowsResort.com



VOTED THE NUMBER THREE FAMILY RESORT IN AMERICA BY USA TODAY READERS IN 2020



## B.I.C. REALTY

AGGRESSIVE MARKETING \* EXPERIENCED REALTORS \* DEPENDABLE RESULTS

Servicing the Lake Vermilion area and from the Iron Range up to the Canadian Border!

- \* Customized marketing plan and pricing strategy
- \* Aggressive print, social media and digital marketing
- \* Drone and virtual tours
- \* Listed on multiple MLS's
- \* Experienced negotiations to get the highest value
- \* Direct marketing to our large list of buyers
- \* Complete service from pre-listing to post closing



### INVENTORY IS LOW!

We have eager buyers!  
Contact us for a free  
market analysis. No  
obligation.



B.I.C. REALTY | 218.666.5352

INFO@BICREALTY.COM | WWW.BICREALTY.COM





# WELCOME to the LAKE COUNTRY

Whether you're new to our area, or a regular visitor, we're happy to have you in the Lake Country and we've produced this guide specifically to make your stay here the best it can be. As we emerge from the COVID-19 pandemic, we anticipate it will be an exceptional summer here in the Lake Country. Even last year, visitors flocked to our area to take advantage of the abundance of outdoor recreation opportunities available here. The word is definitely out and we expect an even busier season in 2021. The good news is that we expect most summer events will go on as scheduled this year, so there will be even more to enjoy this summer, than last. You'll find our events listing starting on page 10 and stories throughout highlighting the wide range of other things to do here in the Lake Country.

For us, home is the Lake Country that extends from Voyageurs National Park to Lake Vermilion to the Ely area, and we know it well and are excited to share it with you. And we hope as you get to know our little piece of paradise, you'll come to love it here as much as we do. Maybe, someday, we'll even be able to call you neighbor!



## Family Fun All Summer Long!

**Your Boat Club - Lake Vermilion**

### Boat Rentals & Memberships

Also: Slips, Storage, Gas,  
Repair, & In/Out Service



Lake Vermilion  
1 Marina Drive,  
Tower, MN 55790

[www.yourboatclub.com](http://www.yourboatclub.com) | 612-208-1800

**YOUR BOAT CLUB**







Call or text 218-410-2935

**New for 2021**

**WE ARE NOW A FAR PART 135 CERTIFIED AIR CARRIER  
OFFERING ON DEMAND AIR CHARTER SERVICE**

**PRIVATE FLIGHTS IN A SANITIZED PLANE!**

Competitive Charter Rates & Excellent Availability

Custom amphibious seaplane charters are limited only by your imagination! Virtually any Minnesota, Canada, Wisconsin destination with a airport or a lake or River is available as a charter destination. We would love to chat with you about your getaway. Ideas below!

Fly In Fishing destination, camping, hiking, breakfast/lunch/dinner flights, Hunting trips, golf trips, wedding arrival, scenic proposal, honeymoon departure, seaplane getaway, girls trip, wine tasting, business meetings

### SCENIC SEAPLANE TOURS

Taking a seaplane flight is a quintessential Minnesota experience and we make it easy to enjoy the unique thrill of flying off the water and soaring over one of the most beautiful regions in the world.

Everyone gets a window seat!

[www.adventureseaplanes.com](http://www.adventureseaplanes.com)

EXPERIENCE THE *Classic* MINNESOTA VACATION

## PEHRSON LODGE

ON LAKE VERMILION



*Relax & Enjoy:*

Clean Lakeside Cabins

Spectacular New Lodge

Large Rental Boat Fleet

Kayaks, SUP Boards, Sailboats

Children's Activities

Renowned Fishing

Call (218) 666-5478 or visit [www.pehrsonlodge.com](http://www.pehrsonlodge.com)  
to see all we have to offer!



## WE PUMPED UP OUR REBATES SO YOU CAN SHRINK DOWN YOUR ENERGY BILL

SAVE ENERGY AT HOME WHEN YOU INSTALL A DUCTLESS  
(MINI-SPLIT) AIR SOURCE HEAT PUMP.

| Ductless (Mini-Split) Air Source Heat Pump  | Rebate | Additional Rebate |
|---|--------|-------------------|
| Primary heat is delivered fuels   | \$300  | \$200*            |
| Primary heat is hard-wired electric   | \$500  | \$200*            |
| *Must be metered on the cycled air conditioning or dual fuel program and must have auto-restart control |        |                   |

Install an Energy Star® rated ductless ASHP in 2021 for rebates up to **\$700!**\*\*

Ductless air source heat pumps provide **home cooling and heating**, using **less electricity** than conventional air conditioners and furnaces. Turn it on for instant comfort and control.

Visit [www.lakecountrypower.coop](http://www.lakecountrypower.coop) to learn more!

Or contact a member service representative at 800-421-9959 (press 6).

\*\*Limited funds are available and awarded on a first-come, first-served basis. Rebate amounts and programs are subject to change without notice.



EXPLORE >>

# LAKE COUNTRY COMMUNITIES



Far left: Live music is found throughout the Lake Country in summer.

Middle: The grounds of the Nelimark Museum in Embarrass.

Left: Great walleye fishing comes naturally in the Lake Country!

## Ash River Trail

Located on the edge of Voyageurs National Park, this small resort community is the perfect destination if you're looking to really get away from it all. From the six distinctive resorts found here, you have direct access to over a thousand miles of pristine, pine-studded shoreline.

## Babbitt

Located on the eastern end of the Mesabi Iron Range, Babbitt remains an active mining town. Nearby Birch Lake, a sprawling reservoir just northeast of town, offers scenic vistas and great fishing. Only two portages away from the Boundary Waters Canoe Area Wilderness.

## Cook

A thriving timber town that serves the western end of Lake Vermilion and the Little Fork River Valley. This bustling community hosts interesting shops, an active arts scene, and a wide range of medical services for when you twist your ankle out on the trail.

## Crane Lake

If you're looking to relax, you've come to the right place. Located at the border, with Canada on the opposite shore, Crane Lake offers a full service outpost, with a wide range of resorts, houseboat rentals, and outfitters, whether you're headed to the Boundary Waters or Voyageurs National Park.

## Ely

The community at the end of the road. Once a mining town, it's become the gateway to the Boundary Waters and with outfitters galore, it is now widely viewed as one of the top outdoors towns in America. It's got the best shopping north of Duluth, a thriving arts community, and great restaurants.

## Embarrass

Once a Finnish enclave, this is a community that is still proud of its heritage and its reputation as the coldest place in the Lower '48. You can visit the Darwin S. Myers WMA for bird and wildlife watching. The Nelimark Homestead Museum is expected to open in June.

## Lake Kabetogama

Well-known as a fishing hotspot, Lake Kabetogama is home to numerous top-notch resorts all located right on the edge of Voyageurs National Park. From here, you can access all of the park's major lakes.

## Orr

If you want colorful history, Orr has it in spades. This former frontier town has stories that put the Wild West to shame and you can read about it in the book *Unforgettable Orr*, available at the Orr Visitors Center. It's the gateway to Voyageurs National Park and the Vince Shute Wildlife Sanctuary.

## Tower-Soudan

They're the oldest communities north of Duluth, founded in 1883 just ahead of the opening of the Soudan Mine, Minnesota's first and deepest iron mine. These former mining towns are tying their future to beautiful Lake Vermilion, a top destination for visitors and new residents to the area. Don't miss the newly-developed Lake Vermilion-Soudan Underground Mine State Park.



# GET LISTED GET SOLD

## WHY LIST NOW?

- 🐻 Interest rates are low, and money is available
- 🐻 Inventory is low, supply and demand
- 🐻 Has turned into a sellers market
- 🐻 Covid has turned the market demand
- 🐻 Nation wide trend to rural areas
- 🐻 Off grid is popular
- 🐻 Land market is becoming of interest



## WHY LIST WITH BEAR ISLAND LAND CO., INC.?

- 🐻 Bear Island Land Co., Inc. is ranked #1 in sales in our region
- 🐻 Only company with marketing department, drone operator
- 🐻 Locally, independently owned with a global reach
- 🐻 We have qualified buyers ready to buy
- 🐻 All agents are brokers
- 🐻 Specialize in recreational properties
- 🐻 Professional aerial & still photography
- 🐻 User friendly website
- 🐻 Owned by a Licensed Land Surveyor
- 🐻 Celebrating over 25 years in business

CALL US FOR A FREE  
MARKET ANALYSIS  
218-365-2800



**BEAR ISLAND LAND CO., INC.**

[www.bearislandland.com](http://www.bearislandland.com)  
943 East Sheridan St., Ely, MN 55731  
218-365-2800



# And While You're Here...

Your directory of just about everything there is to do in the Lake Country

## DON'T MISS >>

### SHOP FOR LOCAL FOODS

Farmers markets are held weekly during the summer in Ely (Tues. 5-7 p.m. starting in June), Tower (Fri. 4-6 p.m. starting June 18), and Cook (Sat. 8 a.m.-Noon, starting June 19).



Enjoy fresh, quality produce, artisan breads, preserves, and local specialties produced by area residents. It's a great way to "shop locally!"

### RIDE THE LAKE VERMILION MAIL BOAT

Looking for a great way to explore Lake Vermilion with a seasoned captain at the helm? You can see over 80 miles of this scenic lake by catching a ride on the mail-boat, based out of Aronson Boat Works, located just west of Tower on Hwy. 169.

Lake Vermilion is home to hundreds of water-access-only residents during the summer months, and it's one of the few places in the country where the U.S. Post Office still delivers the mail each day by boat. The mail boat departs from Aronson's six mornings a week, at 9 a.m. The cost is \$20 for adults, \$12 for children 12 and under. Call 218-753-4190 for reservations.



## WILD BEARS >>



### VINCE SHUTE SANCTUARY

If you want to see black bears in the wild, this is the place, named after an Orr area logger who lived his life in the deep woods and came to befriend the wild creatures around him. Today, the sanctuary provides a safe viewing platform to watch the bears that come to feed on sunflower seeds and other foods put out by sanctuary staff.

*See more details on pgs. 30-31*

## Just the Facts

**Lake Vermilion/Soudan Mine State Park**  
Soudan, MN • Hiking trails open, status of mine tours and park exhibits was uncertain at press time.  
Call 218-300-7000 for the latest information.

**Bear Head Lake State Park**  
Ely, MN • Park, hiking trails and fishing are open but status of the campground was uncertain at press time. • Call 218-235-2520 for the latest information.

**International Wolf Center**  
Ely, MN • Open daily in summer, reservations required, 9-5 p.m., through Oct. 24. 218-365-4695 • wolf.org

**Embarrass Heritage Homestead Tours**  
Embarrass, MN • Call 218-984-2084 for details.  
www.embarrass.org

**Orr Visitor Center and Wetlands Walk**  
Orr, MN • Bogwalk under construction, should be reopened in mid-June • 218-757-3288

**VNP Kabetogama Visitor Center**  
County Rd. 123 • Open Memorial Day to Labor Day.  
www.nps.gov/voya • 218-875-2111

**VNP Ash River Visitor Center**  
Off County Rd. 129 • Open Memorial Day to Labor Day. www.nps.gov/voy • 218-374-3221

**Dorothy Molter Museum**  
2002 E. Sheridan St., Ely, MN • Open 10-5 daily starting Memorial Day Weekend, reservations will be required • 218-365-4451 • www.rootbeerlady.com

**Ely Chamber of Commerce**  
1600 E. Sheridan St., Ely, MN  
www.ely.org • 218-365-6123 • 800-777-7281

**North American Bear Center**  
Ely, MN • Open daily through Oct. 3. Call for hours.  
218-365-7879 • bear.org

**Vince Shute Wildlife Sanctuary**  
Orr, MN • Open 5-8 pm Tues-Sun, May 29 - Sept. 5.  
check www.americanbear.org for more information

**GO Lake Country**  
Minnesota's Boundary Waters

**Office Location:**  
414 Main St., PO Box 636,  
Tower, MN 55790

Call (218) 753-2950 or email  
editor@timberjay.com for  
advertising information.

Cover photo by J. Summit

Please call sites in advance as hours may change due to COVID-19





**CABIN QUILTING**  
 • 5-Star Rated Shop •  
 Quilting Fabric & Supplies  
 Longarm Quilting Services, Gifts



Susan Covey • 218-666-3146  
 227 1st St SW & Hwy 53, Cook MN 55723  
 cabinquilting@gmail.com



**Duane's Marine** **ALUMACRAFT** **SYLVAN**  
 218.741.8532  
 8327 Unity Dr., Virginia / Mt. Iron

**EVINRUDE** Service  

**YAMAHA**

**Summer Fun Starts Here!**  
 We Have Docks,  
 Lifts & Pontoons





## Area public beaches

### Pfeiffer Lake Beach

Located between Tower and Cook about four miles south of Hwy. 1. It's a nice, quiet beach on a small clear water lake with an adjacent U.S. Forest Service campground.

### Bear Head Lake Beach

Located between Tower and Ely, at Bear Head Lake State Park. This small beach is lightly used and the water is clear. But watch out for the drop-off if you have young kids.

### Semer's Park Beach

Located on Shagawa Lake in Ely, it's busier than most other area beaches, but it has a pavilion and nearby restaurant that make it attractive.

### McKinley Park Beach

Located on Lake Vermilion, near Soudan, it's a popular spot with a campground store, showers, playground.

### Hoodoo Point Beach

Located on Lake Vermilion, near Tower, the shallow water makes this a good option for young children. There are also pockets of natural clay along the shore that keep the kids entertained. Campground store, showers, playground.

### Orr Public Beach

Located on Pelican Lake just north of Orr's downtown, this is a popular spot with local residents.

## COOK AREA FARMERS MARKET

We're Back... (To Almost Normal)

**Starting...June 19**

**Saturdays, 8 AM-Noon**

**City Park • River St. • Cook**



**Please observe COVID precautions.**

**Booths will be set up to  
promote social distancing.**

**Masks preferred**



**Online Pre-ordering  
Available From  
Participating Vendors**



# EAST DHU RIVER SAWMILL INC

*"Put A Piece Of Northern Minnesota  
In Your Home"*

## Speciality Products

**mouldings • beams • trims  
table tops • step slabs  
paneling • flooring  
distressed flooring**



**SUPERIOR  
QUALITY**



## Native Woods

**cedar  
red pine  
white pine  
birch  
basswood  
black ash  
tamarack  
red oak  
white oak**



**218-744-1788**

**8825 Hwy 101, Iron, MN 55751**



# Summer EVENTS & FESTIVALS

There's always something happening in the Lake Country!

Editor's Note: Please be aware that many traditional summer events in our region have been canceled this year due to the COVID-19 pandemic. Organizers of some other events had not made final decisions when GO Lake Country hit the press, so some of the events listed here may have subsequently been canceled. We apologize for any inconvenience.

## JUNE

**ELY'S HISTORIC STATE THEATER,** Special events all summer long. Vintage movies Tues. and Thurs. Tickets \$5. World famous live performances on the big screen Wed. and Sun. Tickets \$15. Check [elystatetheater.org](http://elystatetheater.org) for showtimes.

**SAUNA DAY,** June 12, at the Nelimark Homestead and Museum in Embarrass. 9 a.m. to 4 p.m. Traveling saunas on display, live music, games, demonstrations, Finnish foods and goods for sale. See [www.sisuheritage.org](http://www.sisuheritage.org) for more.

**SPRING ART EXPO,** June 3-26. Local art exhibited at businesses throughout Cook. Sponsored by Northwoods Friends of the Arts. See [nwfamn.org](http://nwfamn.org).

**TAKE-A-KID FISHING,** June 11-13. Minnesota residents 16 and older fish for free when they accompany an angler 15 and younger. For more, visit [www.dnr.state.mn.us](http://www.dnr.state.mn.us).

**COOK TIMBER DAYS,** June 11-13, celebrating the impact of the timber industry on Cook and the surrounding area. Parade, food, live music, softball tourney, pet show, fireworks, and more. Visit their Facebook page.

**COOK MUSIC IN THE PARK,** Featuring local musicians every Wednesday evening at 6 p.m., beginning June 16 through Aug. 25. Held at the gazebo in downtown Cook, or at the nearby VFW

in case of rain. Food available.

**PETER MITCHELL FUN DAYS,** June 18-20. 63rd anniversary of Babbitt's biggest festival of the year. Check out their Facebook page for more information on events and times.

**LAKE VERMILION POWWOW,** June 25-27. Traditional dancing, drumming and food on the Vermilion Reservation. Camping available. Call 218-750-7772 or 218-780-1478 for more information.



**ELY WINTER FESTIVAL**  
February 3-13, 2022  
[elywinterfestival.com](http://elywinterfestival.com) Festival Hotline 218-365-SNOW(7669)  
**Nobody does winter better!**

- Snow Sculpting Symposium
- Ely ArtWalk
- Kubb Tournament
- Ice Fishing Contest
- Ely Folk School Classes
- Outdoor Gear Demo
- Guided Snowshoe Hikes
- Downtown Arts Market
- Food, Music, and More

This activity is made possible by the voters of Minnesota through grants from the Minnesota State Arts Board, and the Arrowhead Regional Arts Council, thanks to a legislative appropriation from the arts and cultural heritage fund. This activity is made possible in part by the Donald G. Gardner Humanities Trust and the Ely Chamber of Commerce.

**ADVANCED OPTICAL**  
Family Eye Care Center

**30+ frame choices in stock!**  
Mt. Iron/Virginia 741-3000 [advoptical.com](http://advoptical.com)

**STEGER MUKLUKS**

THE STORE IS CURRENTLY CLOSED DUE TO COVID19  
CHECK OUR WEBSITE FOR UPDATES REGARDING  
CURBSIDE FITTINGS AND PICK-UP AT OUR  
FACTORY ON 100 MINERS DR. E  
JUST A FEW BLOCKS FROM OUR RETAIL STORE.  
Call 218-365-6634 for instructions  
Order at [mukluks.com](http://mukluks.com)  
**BUY AMERICAN MADE!**





## JULY

**NORTHERN LIGHTS MUSIC FESTIVAL**, July 1-26, presents three weeks of opera, solo recitals, orchestral and chamber music at various venues. This year's opera is *La Cenerentola* (Cinderella).

**JULY 3RD FUN DAYS**, downtown Orr. Boat parade, family fun during the day and fireworks at night.

**TOWER-SOUDAN 4TH OF JULY CELEBRATION**, July 3 & 4. One of the oldest, largest and best celebrations in the area. 10K run, parade, children's activities, entertainment, fireworks! Events may change due to pandemic concerns.

**4TH OF JULY IN ELY**, Events are still being determined due to pandemic concerns. Expected fireworks beginning at 10 p.m. over Miner's Lake.

**CRANE LAKE 4TH OF JULY**, July 4. Boat parade begins at 3 p.m., with food, music, and fireworks at dusk. See [visitcranelake.com](http://visitcranelake.com) for more.

**CRANE LAKE'S VOYAGEUR DAYS**, July 29-31. A decision on whether or not the event can be held this summer was not available at press time. Please check [www.visitcranelake.com](http://www.visitcranelake.com) for up-to-date information. Celebrate the rich History of Crane Lake with Pierre and the rest of our fun-loving community. Individuals and businesses are teaming together to bring

guests an unforgettable experience as a true Crane Lake Voyageur.

**ELY'S BLUEBERRY/ART FESTIVAL**, July 23-25, Whiteside Park in Ely. 250 exhibitors displaying original art and handcrafts. Food vendors, music, children's events, stage shows. 218-365-6123 or [events@ely.org](http://events@ely.org).

**GREAT RIVER ENERGY/MESABI TRAIL TOUR '21**, July 31. Minnesota Discovery Center, Chisholm. Music, food, exercise and fun. Registration open June 19 - July 18. Option of a 24-mile or 52-mile route. Call 218-744-1388 or visit [mesabitrail.com](http://mesabitrail.com).



# Lake Vermilion

## TOWER • MN

218-753-4190

- Boat Storage
- Sales & Service
- Gas & Launching





## MAIL BOAT RIDES!

See 80 miles of Lake Vermilion • June through Labor Day  
Reservations recommended  
218-753-4190 or text

6143 Pike Bay Drive, Tower, MN 55790  
email: [aronsonboatworks@frontiernet.net](mailto:aronsonboatworks@frontiernet.net)  
[www.aronsonboatworks.com](http://www.aronsonboatworks.com)

Find us on facebook



## Now Showing

- Latest Blockbusters
- Live Event Screenings
- Summer Classics

## \$5

movies

### Cafe Now Offering

- Beer • Wine • Hard Cider •
- Belgian Drinking Chocolate •
- Popcorn-2-Go • Snack Waffles •

For tickets and showtimes visit

# ElyStateTheater.org





**AUGUST**  
**BLUEGRASS CONCERT**, Aug. 19.  
 Monroe Crossing to perform at the Cook  
 Community Center, in Cook, at 7 p.m.  
 See [nwfamn.org](http://nwfamn.org) for more information.

**GREAT RIVER ENERGY/MESABI**  
**TRAIL TOUR '21**, Aug. 28. Itasca  
 County Fairgrounds, Grand Rapids.  
 Music, food, exercise and fun. Registra-  
 tion open July 19 - Aug. 15. Option of a



24-mile or 48-mile route. Call 218-744-  
 1388 or visit [mesabitrail.com](http://mesabitrail.com).

**EMBARRASS REGION FAIR**,  
 Aug. 27-29 at Timber Hall in Embarrass. An  
 old-fashioned fair with demolition derby, mud  
 run, animals, garden exhibits, 5K walk/run  
 and much more. Visit their Facebook page.

**SEPTEMBER**  
**LAKE VERMILION ANTIQUE AND**  
**CLASSIC BOAT SHOW**, Sept. 5, noon  
 to 4 p.m. If you love the look of lovingly  
 restored wooden boats, this is the show  
 for you. It's an annual event held at The  
 Landing on the westernmost tip of Lake  
 Vermilion.

**FEST DU NORD**, Sept. 3-5.  
 Family-friendly outdoor music weekend at  
 YMCA's Camp du Nord outside of Ely.  
 See [ely.org](http://ely.org) for more information.

**ELY'S HARVEST MOON FESTIVAL**,  
 Sept. 10-12. More than 125 artists and  
 crafters, demonstrations, food, live music  
 at Whiteside Park. See [www.ely.org](http://www.ely.org) for  
 more.

**SISU COMMUNITY NIGHT OUT**,  
 Sept. 12, 4 p.m. Tours, live music, and  
 supper at the restored Seitaniemi House-  
 barn in Waasa. 218-984-3012 or [www.sisuheritage.com](http://www.sisuheritage.com) for more.



**July 1-23**

*Join us!*

A full, live season of opera, chamber music  
 and symphonic concerts!

**Festive Fourth!**  
 AURORA • CHISHOLM

**Rossini's Cinderella**  
 for children and their parents!  
 AURORA • CHISHOLM

**Chamber Music**  
 B'NAI ABRAHAM, VIRGINIA • ELY  
 AURORA • CHISHOLM

**Opera Arias**  
 ELY • AURORA

*Sharing the Range* Lecture Series B'NAI ABRAHAM, VIRGINIA

*Ojibwe Nation...  
 Before There Was  
 an Iron Range*

*The Ethnicities  
 that Made  
 the Range*

*The Iron  
 Range Jewish  
 Community*

*Which Side  
 Are You On?  
 Music for Social Protest:  
 the Aurora Strike of 1916*

[northernlightsmusic.org](http://northernlightsmusic.org)

THIS ACTIVITY IS MADE POSSIBLE BY THE VOTERS OF  
 MINNESOTA THROUGH A GRANT FROM THE MINNESOTA  
 STATE ARTS BOARD. THANKS TO A LEGISLATIVE  
 APPROPRIATION FROM THE ARTS AND CULTURAL  
 HERITAGE FUND.

**m**  
 EXPLORE  
 MINNESOTA

**m**  
 IRON RANGE RESOURCES  
 & REHABILITATION BOARD

**ARROWHEAD REGIONAL ARTS COUNCIL**

**Good Gardeners Humaneity Trust**



**SUNRISE RIVER**  
 Boatworks

**Visit Our Shop In Tower!**

**We Can Help With Your Wood Boat Needs**

- Restoration, Repair and Service
- Restored and Unrestored Boats for Sale  
 from Recreational to Collectable

Dana Hein, Jeff Larson, Aaron Starke

202 N. Cedar Street, Tower, MN 55790

**218-235-8163**

[www.sunriseriverboatworks.com](http://www.sunriseriverboatworks.com)  
[sunrisetowerboatshop@gmail.com](mailto:sunrisetowerboatshop@gmail.com)





**GREAT RIVER ENERGY/MESABI TRAIL TOUR '21**, Sept. 18. Olcott Park, Virginia. Music, food, exercise and fun. Registration opens August 16, closes Sept. 6. Option of a 26-mile or 50-mile route. Call 218-744-1388 or visit [mesabi-trail.com](http://mesabi-trail.com).

**ELY MARATHON**, Sept. 24-25. Full, half, and kids' marathon races, plus canoe portage races. See [elymarathon.com](http://elymarathon.com) for more info and to register.

**ALL SUMMER LONG TOWER-SOUDAN HISTORY TALKS**-The Tower-Soudan Historical Society will be sponsoring a series of short history talks

at Main Street businesses this summer. Learn about Tower's history, its buildings, and historic characters! There is no cost to attend. A map of historic landmarks and local points of interest will be provided. Watch for more information in the *Timberjay* throughout the summer.

**NORTHWOODS FRIENDS OF THE ARTS**

**COOK • MN Art Gallery • OPEN**  
Open: 10-4 Wed., Thurs., Fri. 9-1 Sat.  
210 S River St, Cook  
218-780-7130

**JUNE 3 to 26**  
**Spring Art Expo**  
Visual Arts • Performing Arts  
special exhibits at the gallery

**EVERY Wednesday**  
Music In The Park • Cook Gazebo  
June 16 thru August • 6-8 PM

**JULY: Art Classes**  
and Activities, Writers' Workshop  
"A Canvas and You" Fundraiser

**AUGUST: Art Classes, Garage Sale and CONCERT • August 19**  
"Monroe Crossing"  
Advanced Ticket Sale \$20 • Door Sales \$25  
7 PM • Cook Community Center

For more information contact:  
[NWFAAMN.org](http://NWFAAMN.org)  
Email: [nwfamn.org@gmail.com](mailto:nwfamn.org@gmail.com)

**COOK**  
HOSPITAL & CARE CENTER

**Our Specialty is You**

**24-Hour Emergency Room**

**Acute Care**

**Outpatient Services**

**Care Center**

[cookhospital.org](http://cookhospital.org)  
**218-666-5945**  
10 Fifth Street SE, Cook, MN 55723  
218-361-3287 • Tower Lab

**COOK OFF SALE**

**LAST CHANCE LIQUOR**

**BEER • WINE • SPIRITS**

**Low Prices & Great Selection**

**218-666-2072**

**Mon-Sat: 8 AM - 10 PM, Sun: 11 AM - 4 PM**  
**ATM • LOTTERY • Located on Hwy 53**





# TRAILS TO ADVENTURE

When it comes to biking and hiking, we've got you covered here in the Lake Country

While you might think of the Lake Country as your go-to destination for great fishing, world class canoeing, and quiet afternoons relaxing on a dock, it has also quickly become one of the Midwest's top spots for exceptional mountain

biking.

A state agency, known as the Department of Iron Range Resources and Rehabilitation (DIRRR), has made a major financial investment in new trails and it's paid off in

See **BIKING...**page 20



**RE/MAX**  
Lake Country  
Serving Lake Vermilion  
to Rainy Lake

[www.thelakecountry.com](http://www.thelakecountry.com)

**218.757.3233**



**#1** NOBODY IN THE  
WORLD  
SELLS MORE  
REAL ESTATE THAN  
**RE/MAX**

As measured  
by residential  
transaction sides



Irma's

**FINLAND HOUSE**

Gifts 🌿 Jewelry 🌿 Sauna 🌿 Kitchen

**OUR SAUNA SHOP FEATURES:**

- PREFAB & PRECUT SAUNAS • ELECTRIC SAUNA HEATERS
- HARVIA WOODBURNING STOVES
- SAUNA ACCESSORIES



**HARVIA**



Hours: M-Sat: 10 AM-5 PM 218.741.0204  
625 9th St. North, Virginia, MN 55792 [IrmasFinlandHouse@gmail.com](mailto:IrmasFinlandHouse@gmail.com)



## TRAIL HIKING>>



### VERMILION GORGE TRAIL

The Vermilion Gorge trailhead is located in the community of Crane Lake, 27 miles northeast of Orr. Trail parking is 0.1 mile past the U.S. Park Service office on the left. At a leisurely pace, you can hike this 1.5-mile one-way trail in about three hours. The first two-thirds of the trail is

relatively easy, with a wide, gravel trail bed.

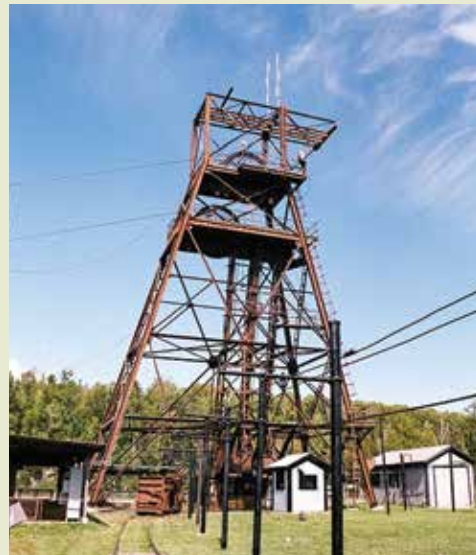
But once you reach the river, the trail turns upstream and narrows and the gravel fades to a natural trail surface. This is the steepest and most interesting part of the trail, and you'll notice a dramatic change in vegetation as you climb. The aspen/birch forest, with its dense understory, gives way to an open, park-like grove of red pine. Interpretive signs describe the historical development of the area, including logging, mineral prospecting, and the colorful fur trade era.

The deep gorge formed where the Vermilion River empties into Crane Lake is a dramatic sight and definitely worth the hike. But be careful with small children on this portion of the trail. The steep cliffs can be dangerous.

Stop in at the LaCroix Ranger District visitors center on Hwy. 53 in Cook for a map of the trail.

### BEAR HEAD LAKE & LAKE VERMILION STATE PARK TRAILS

While most people probably think of these parks for their namesake attractions, they each offer excellent hiking opportunities. Bear Head Lake, located halfway



between Tower and Ely, offers a great selection of hiking trails through a wide variety of hilly terrain. Stop at the park office at the entry and pick up a trail map.

For years, visitors to the Soudan Underground Mine took the mine tour and assumed they'd seen all the park had to offer. In fact, there has long been great hiking at this park, much of it through beautiful old-growth pine. Park trails are generally



**Gruben's**  
MARINA & VILLAGE  
*The Heart of Lake Vermilion*

- Cabin Rental  
for a fun filled vacation!
- Marina Services
- Store & Off-Sale

See us at: [www.grubens.com](http://www.grubens.com)  
Call us at: 218.753.5000  
4296 Arrowhead Point Rd,  
Tower MN 55790



**Material Girl**  
Fabric & Crafts

Custom Frame Shop • Quilt Quality Fabric  
Fine Art Supplies • Kids Crafts  
Scrapbooking • Home Decor • Beading  
Silk Florals • Yarn Shoppe & More

309 Chestnut Street, Virginia, MN  
218.749.1390  
Hours: 9-5 Tues, Wed, Thurs; 9-4 Fri; 9-3 Sat  
Closed: Sun/Mon • [materialgirlfabricandcrafts.com](http://materialgirlfabricandcrafts.com)



**NATURAL HARVEST**  
*Locally owned, organically grown.* FOOD CO-OP  
COMMUNITY OWNED  
GROCERY STORE & DELI



Everyone Welcome!  
732 N 4th St • Virginia  
[naturalharvest.coop](http://naturalharvest.coop)

# Hoodoo Point Campground

## LAKE VERMILION OFFERS MORE THAN JUST GREAT FISHING

**Our campground offers:** Electric and water hook-ups, dump station, laundromat, convenience store, 2 boat launches, bathroom/shower facilities, boating/waterskiing, fishing, picnic area, playground, paved hiking trails, swimming, ice cream, old-fashioned candy and more!

Adjacent to Tower Airport - 3,200 ft. asphalt lighted runway. Gas 24 hrs w/ credit card.

**[hoodoopointmn.com](http://hoodoopointmn.com)**  
LOCATED IN TOWER, MINNESOTA

CALL FOR RESERVATIONS  
218-753-6868





wide and flat, and accessible to hikers of all abilities.

With the 3,500-acre addition that formed Lake Vermilion State Park, the number of trails has expanded and more trails are in the works. Visit the Soudan Mine visitors center for a map of all the latest trails.

### BASS LAKE TRAILS

Located six miles north of Ely just off the Echo Trail, the Bass Lake trails are among the most popular in the area. A series of loop trails circumnavigate Bass and Dry lakes, and a portion of Low Lake, and they take hikers through historically and ecologically unique terrain along the way. These trails have it all, including remote backpacking campsites, scenic overlooks, waterfalls, sandy beaches, and more.

Allow yourself at least four hours to hike the trail, longer if you want to pack a lunch, a swimsuit, and make a day of it. You'll want sturdy footwear, since the trail is rugged in many spots.

Bass and Low lakes occupy a long narrow basin that glaciers carved out of Pre-Cambrian rock. Prior to 1925, the two lakes were separated by a ridge of glacial gravel which acted as a natural dam be-



tween them. Logging operations in the area led to the construction of a sluiceway to move logs from Bass Lake to Low Lake, a drop of nearly 60 feet. Seepage soon weakened the sluiceway as water moved through the gravel adjacent to the structure. In April of 1925, the sluiceway and glacial ridge collapsed in a gigantic washout that created a 250-foot gorge in a matter of hours.

This catastrophe lowered the level of Bass Lake 55 feet in just ten hours. Bass Lake was reduced to about half its original size and two small lakes became isolated in the old lake bed. Approximately 250 acres

of land was then exposed and a portion of the trail now winds along the former lakebed.

Pick up a trail guide at the U.S. Forest Service visitors center, located on Hwy. 169 on the east end of Ely.

### SECRET/BLACKSTONE TRAIL

This gem of a trail system can be found near the end of the Fernberg Road, about 18 miles east of Ely. The 3.5-mile loop trail follows a winding path of moderate terrain, with a few steeper hills. The trail leads hikers from high scenic overlooks, to wetlands, to waterfalls. A mixed forest provides habitat for many species of wildlife, so don't be surprised to see signs of bear, wolves, or even moose. Much of the surrounding forest was heavily damaged by the massive 1999 blowdown that flattened nearly 350,000 acres of the Superior National Forest, so it is a good spot to see the effects of that storm, as well as the forest's recovery.

The trail's ultimate destination is a rock cliff overlooking Ennis Lake. The cliff is popular with rock climbers and it provides an outstanding vista.

Pick up a trail guide at the U.S. Forest Service visitors center, located on Hwy. 169 on the east end of Ely.

## RIDE THE Mesabi Trail™

From the Mississippi River to the Boundary Waters Canoe Area - more than 135 miles of paved bicycle trail in northeast Minnesota.



GREAT RIVER ENERGY - MESABI TRAIL™



Don't miss the **Great River Energy/Mesabi Trail Tour Series**

For trail and tour information:  
**mesabitrail.com**



## On Lake Vermilion!

4066 Cty Rd 77, Tower, MN  
218-753-6004 • pier77minigolf.com

### Featuring:

**18 Hole Mini Golf • Ice Cream  
Malts & Shakes • Sven & Ole's Pizza  
Coffees • Cold Drinks**

OPEN: Memorial Day Weekend through Labor Day  
HOURS: Mon-Sat: 10 AM to 7 PM, Sun: 10 AM to 5 PM  
(Call or check website for most current hours)





# JOURNEY back in time

Ancient Cedars Trail a new must-see

A community initiative to develop new hiking trails in Tower is opening up some spectacular opportunities for anyone looking to get a real feel for the northwoods.

The Ancient Cedars Trail, which opened last year, will quickly transport visitors from “downtown” Tower to a unique portion of untouched upland cedar forest that dates back 150 years. Back in the late 1870s, before the founding of Tower-Soudan, fire burned much of what is now the south side of Tower. A forest dominated by northern white cedar grew back in the wake of the fire and a portion of that forest has stood undisturbed ever since, making this area truly extraordinary as one of the only known examples of a primary forest site (never



Above: The boardwalk into the Ancient Cedar Forest.

Left: Hiking along the trail.

Right: Marsh marigolds brighten the wet spots along the trail during May and early June.



YOUR HOME-DECOR STORE



All furniture may not be as shown.

**ANDERSON**  
FURNITURE  
& KITCHENS

AndersonFurnitureCompany.com  
214 2nd Ave. S, Virginia, MN • 218-741-9356

INTEREST  
FREE  
FINANCING  
AND  
LAYAWAY  
AVAILABLE



**Pelican Bay  
FOODS**  
Hwy. 53, Orr, MN  
218.757.3900

follow  
the road  
to Orr!

- Full line of groceries, fresh meat & produce
- Convenience store
- Gas with 24 hour card readers
- Diesel also available
- Laundromat & self-serve car wash
- Deli: chicken, sandwiches, pizza
- EBT & WIC accepted

**drink  
dorothy's**  
and discover her story with us!

OPEN MAY 23 - OCT 31\*  
\*subject to change, please call or go online for current hours

Museum Tours  
Events  
Kid's Camp  
Root Beer  
Making  
Nature Walks

MEMBER, MILITARY &  
GROUP DISCOUNTS

www.rootbeerlady.com  
218.365.4451  
info@rootbeerlady.com



2020  
SEASON





Left: Rock outcrops along the way are draped in moss and polypody ferns.

Facing page: You'll get peeks of Lake Vermilion along the way.

logged) found within the limits of a Minnesota city.

This site is not just extraordinary, it is a reminder of an ecological period that no longer exists in Minnesota. Had this site burned in recent years, the regeneration of white cedar would likely not have occurred due to the presence of

whitetail deer, which browse heavily on white cedar. But when these trees grew up in the late 1880s, the forests of this area were populated by woodland caribou, which subsisted mostly on other foods of the forest. That makes this forest unique as a relic of a bygone era in Minnesota.

Yet the area is spectacular for more than just trees. The site also includes rugged rock outcrops, the remains of ancient mountains, that offer views of portions of the city and nearby Lake Vermilion. As you walk along the bases of these outcrops, under the deep shade of the old cedars, the rock faces are draped in mosses and ferns. It's a return to the forest primeval.

As you explore this trail, you will find the forest to be quite open under the thick canopy above, which can make it difficult to follow the trail unless you're paying attention. Watch for the painted blazes on trees along the way, which are designed to keep you on the right path. You'll also find maps at key intersections to help you navigate along the way. Blazes along alternate trails and spurs will be made with other colors.

Please keep in mind that this is a wilderness-type trail, which means you

## VICTOR'S REASON...

**Victor**  
RADIOLOGY  
TEAM LEADER

Helping people  
in a time of  
uncertainty.

When Victor was young, his father suffered complete paralysis of his lower body. Seeing that as a sign to pursue a career in healthcare, Victor makes it his priority to be supportive when patients receive imaging services that may make them feel anxious or uneasy. Taking every opportunity to provide support.

**And every effort to show compassion. EBCH.**

### SAFELY RESUMING CARE. COME BACK WITH CONFIDENCE!

At Ely-Bloomenson Community Hospital, your safety has always been our highest priority. For information on EBCH's additional precautions, visit [ebch.org](http://ebch.org).

**EBCH**  
Ely-Bloomenson  
Community Hospital

601 MAIN ST,  
TOWER

**Ubetcha**  
Antiques & Uniques

OPEN  
YEAR ROUND

FIND  
IT IN  
TOWER!



**Collectibles • Vintage  
Artisan • Old Stuff**

Check our facebook for current hours or call 218.753.3422

## Uffda Thrifts & Gifts



**Gifts • Decor**

**Thrift Items • Rocks • Tools**

**Useful Stuff**

**FIND IT IN TOWER.**

Check our current hours on facebook or call  
218-753-6607

Located next to Ubetcha Antiques & Uniques • 603 Main St, Tower







assume some risks inherent with wilderness travel. Watch for loose rocks, roots, and steep and slippery slopes that could pose hazards along the way. Sturdy shoes or hiking boots are recommended and hiking sticks or poles may be of assistance as well.

To reach the trail, just follow the di-

rectional signs on the paved Mesabi Trail, which begins next to the Tower Train Depot Museum. In three-tenths of a mile, watch for a right turn down a grassy lane. From there, the trailhead is about 500 feet away, just over a wooden snowmobile bridge. Watch for the trailhead and an interpretive sign on your left.

The first 500 feet of the trail is on boardwalk, through a wetland area. The rest of the trail is upland, and parts of it are fairly rugged. The main trail is just under a mile in length, while a number of loops and alternative routes, provide a total of two miles of hiking opportunity.

And don't limit your visits to the summer. These woods are even more spectacular when draped in winter white, so dust off your snowshoes and enjoy this area year-round!

The trail is open for hiking in the spring, summer, and fall, and will become a snowshoe trail for the winter months.

The trail is a joint effort of the Tower Economic Development Authority, the Wagoner Trails Club, and Friends of Vermilion Country School. The trail clearing and boardwalk construction were completed with all volunteer labor. Funding for the boardwalk materials and signage came from the North St. Louis County Trails Task Force, which is funded by the Department of Iron Range Resources and Rehabilitation. Additional funding came from Lake Country Power's Operation Round-Up.

**THE BIKE AND BREWHAUS**

**Paddle**

**Pedal**

**Play**

**E-BIKE, PADDLE BOARD & KAYAK RENTALS**

**On the Mesabi Iron Range!**

10% off with promo code OFF THE GRID

**Customized Stress Free Packages!**

**PLAN YOUR NEXT ADVENTURE!**  
[WWW.THEBIKEANDBREWHAUS.COM](http://WWW.THEBIKEANDBREWHAUS.COM)

**No Limit Experiences.**  
**Providing EVERYONE the ability to explore EVERYWHERE**

218.290.2688

**Bayview Bar & Grill**

**LOOK AHEAD TO SUMMER!**

- Delicious Food Specials • Tasty Appetizers
- Refreshing Drinks • Entertainment
- Outdoor Decks • Tiki Bar

**FULL MENU AND BAR**  
 Check FACEBOOK for updated hours

**2007 Cty Road 77, Tower, MN • 218-753-2964**

**VERMILION CLUB & POOR GARY'S PIZZA**

Chicken • Wraps • Pasta • Steak  
 Fish • Burgers • Sandwiches • More!

*Bar/Restaurant • Fine Dining • Take-Out Entertainment*

**Home of the "Bamboozler" Pizza**

**OPEN DAILY: Check FACEBOOK For Updated Hours**

753-6277 Bar/Restaurant / 753-5707 Pizza • 3191 Hwy 77, Tower (Daisy Bay, Lake Vermilion)



**BIKING...**Continued from page 14  
some truly epic riding designed for skill levels from beginner to expert.

Giants Ridge, in Biwabik, which is owned and operated by the DIRRR, has many miles of mountain biking trails that wind throughout the hundreds of acres maintained by the ski area there. Most are accessed via the area's main lift, which operates during the summer (call 218-865-8000 for hours of operation) and gets you to the top without breaking a sweat.

They have a variety of gravity trails that are a great way to build skills as you experiment with different levels of difficulty. Most of the trails can also be accessed the traditional way, as well, by grinding your way up mountain.

While Giants Ridge already has miles of trails, construction on additional trail miles will be ongoing through 2021, so check back throughout the summer to try out the latest trails as they're completed.

While the Giants Ridge trails take advantage of the spectacular forests and overlooks that surround the ski area, the Redhead trail system near Chisholm was carved out of a former mine pit and offers a truly unique experience. As you drop down



off the rim and descend into the mine pit, it's easy to forget you're anywhere in the Midwest. It's been called the "Grand Canyon of the North," and, sure, there's a bit of hyperbole there, but it gives you an idea that this isn't going to be like exploring a typical northern Minnesota logging road. The trails, variously designed for all skill levels, twist and turn through numerous switchbacks that wind through open forests of aspen and birch, with frequent stunning

views of steep, multi-colored rock walls and crystalline pit lakes. You can even bike over the top of a waterfall!

With roughly thirty miles of trail at the Redhead, you're going to want to make a couple days of it, at least. The trail starts at the Minnesota Discovery Center in Chisholm, where the parking is free and great food is available at the Rustic Pig Restaurant, located within the center grounds. And if not everyone is up for mountain biking, the center has a day's worth of interesting exhibits on Iron Range mining history and culture.

While all of these trails are professionally designed for mountain biking, the Lake Country also has hundreds of miles of forest roads and logging trails that can keep a mountain biker happily exploring for weeks. Many will take you to out-of-the-way places that few people ever see.

The bottom line is increasingly clear. If you're headed to the Lake Country, don't leave your mountain bike in the garage. And makes plans to come back soon, because there's way too much ground to cover in a single visit. When it comes to great trail riding, the opportunities are almost endless. So start pedaling!



**Barb Hegg • Associate Broker, GRI**

**barb@vermillionland.com**

Office: 218-666-6183 • Home Office: 218-666-0144 • Mobile: 218-742-2369

**Vermilion Land Office • vermillionland.com**

PO Box 518, 210 S. Highway 53, Cook, MN 55723

### *Client Reviews...*

- ☞ "Barb is one of the most knowledgeable and hardworking realtors in the area. She convinced me that 2020 would be a strong seller's market and it was, we sold our lake home for more than the asking price!"
- ☞ "Barb has a firm grasp on lake property values, intricacies of county regulations, and is willing to fight to get her client a fair deal."



**Barb Hegg**  
Associate Broker, GRI

**CONTACT BARB**  
for a  
**FREE MARKET ANALYSIS!**  
**218-742-2369 or**  
**barb@vermillionland.com**

- ☞ "I found Barb to be a well-informed real estate agent who offered sound advice, helped with the details, and sold my property quickly. She was highly recommended to me and I would highly recommend her to others."



**"Contact Barb for information on other available properties."**



# It's Time to Buy Your Getaway

Beautiful, cozy home for sale in Superior National Forest



## Contact

**BARB HEGG**

Associate Broker

Vermilion Land Office

218-742-2369

[barb@vermilionland.com](mailto:barb@vermilionland.com)



It started as a simple trapper's cabin adjacent to thousands of acres of Superior National Forest.

The new owners bought the property and turned it into a secluded self-sufficient home paradise on Lake Vermilion. Building a home in a secluded forest brings challenges, but by barge and ice road the materials were hauled in to create this utopia up north. With 42 acres, 2,200 feet of lakeshore and all the amenities you could want for a weekend (or longer) away, you won't find many properties as unique as this one on the market.

"You just don't find 42 acres in the middle of the Superior National Forest," says broker Barb Hegg. "For seclusion, it is incredible."

Situated on Wolf Bay, this three bedroom, two bathroom lake home combines the solitude of a woodland getaway with the comfort of a family home. The cozy complex features solar power and a fully automatic electrical system, keeping you safe and warm while totally off the grid, as well as a full septic system and a fire prevention sprinkler system. A full master suite, in-floor heating, wood-burning fireplace, granite countertops and log accents throughout will keep you cozy throughout the four seasons.

A boathouse, sauna, garage, storage building and two docks round out the property. You're only 10 minutes from mainland marina access and a short distance to the Boundary Waters Canoe Area.

By the way, that humble trapper's cabin? It's still there, and the owners have renovated it to include a bedroom, bathroom, kitchen and living area. This guest house even features a wood-burning stove.

Properties like this one aren't often available. Don't miss your chance to own your dream getaway.





# VOYAGEUR COUNTRY

**Big border lakes  
create a natural  
playground**

**W**hile Voyageurs National Park offers limitless opportunities for days-long excursions of its maze of interconnected waterways and backcountry, day-trippers will discover a variety of enjoyable experiences to get a taste of the park's wonders as well.

Closed last year because of coronavi-

rus restrictions, the park's three visitor centers – Rainy Lake, Kabetogama, and Ash River, will once again be staffed and open to the public between Memorial Day and Labor Day. Plans are for Rainy Lake to be open seven days a week, Senior Interpretive Specialist Erik Ditzler said, with Kabetogama and Ash River operating on more

Left: Paddling a traditional voyageurs canoe on Rainy Lake.

Facing page: Kayaking at Voyageurs National Park.

limited daily schedules. Rangers will be available to talk about the park. Interpretive materials will be available, and the gift shops will be open. Visitors must follow masking and social distancing protocols. If indoor access must be closed, rangers will still be available outdoors on days the centers are open, Ditzler said.

## HIT THE WATER

Suspended last summer, two boat tours will be available this season, both leaving from the Rainy Lake Visitor Center. The Discover Rainy Lake Cruise is a two-hour, 20-mile tour of the lake that passes abandoned gold mines, a historic commercial fish camp, and abundant wildlife. The Little American Island tour is a 90-minute, 20-mile tour to its namesake isle. Reservations must be booked online at Recreation.gov. Tour capacity is limited to 25 percent of normal due to COVID-19 restrictions.

## North Country Inn Motel

218.757.3778



**Located on Pelican Lake  
and Hwy. 53 at the gateway  
to Voyageurs National Park.**

- We offer year-round accommodations with hospitality at its best
- Over 21 years experience
- Pontoon rental
- Fish-cleaning house & dock

**Online reservations · [www.northcountryinn.com](http://www.northcountryinn.com)**  
4483 Hwy. 53 · Orr, MN · [info@northcountryinn.com](mailto:info@northcountryinn.com)

## Northland Lodge

*Discover and Enjoy A Truly Unique Dining Experience  
on Pelican Lake!*

**Lunch Served**  
M-F: 11 AM to 1 PM

**Dinner Served**  
Nightly at 6 PM

- One Entree Each Night
- Home Cooked Meals
- Full Bar

• **Thursday: Prime Rib Night**

Open Memorial Weekend through end of Sept.

**4499 Schweiger Rd, Orr • (218) 757-3445**

**Reservations  
Required  
218-757-3445  
Call For  
MENU!**

No credit  
or debit cards



## Norman's One Stop & Motel

**PELICAN LAKE, ORR, MINNESOTA**

- |                                    |                       |
|------------------------------------|-----------------------|
| • Live Bait                        | • Satellite TV        |
| • Huge Tackle Selection            | • Free WiFi           |
| • Gas (non-oxy premium & unleaded) | • Very Clean Rooms    |
| • Clothing                         | • Large Parking Area  |
| • Gifts                            | • Private Boat Launch |
| • Licenses                         | • Fish Cleaning House |
|                                    | • Friendly Service    |

**218-757-3291 / 218-757-3272 / [normansorrmn.com](http://normansorrmn.com)**





## TAKE A HIKE

Numerous trails, all accessible by car, open up the beauty and variety of Voyageurs to day-trippers.

If you're looking for variety in a concentrated area, look to the trails along Mead River Rd. on the way to the Ash River Visitor Center. The Voyageurs Forest, Beaver Pond, and Kabetogama Lake overlook trails provide strikingly different windows on the park, and all are a half-mile or less round trip. Birders may find particularly good viewing opportunities along the Beaver Pond trail.

Two other trails there provide longer hiking experiences. Sullivan Bay Trail is a 1.5-mile round trip along an old road that leads to a rewarding view of Sullivan Bay. Blind Ash Bay Trail, a 2.5-mile loop, is a narrow, winding forest trail with spectacular scenery.

The Echo Bay Trail, about three miles northwest of the Kabetogama Lake Visitor Center on County Road 122, is a wide 2.5-mile loop trail that meanders through aspens and pines as you pass through lowlands and rocky outcrops. Birding opportunities are excellent.

Two of the three trails starting at the Rainy Lake Visitor Center are ADA-accessible. The Ethno-Botanical Garden Trail



is a short quarter-mile loop that steps back in time to a reconstructed Ojibwe encampment surrounded by a garden of plants native to the region. The paved Rainy Lake Recreation Trail is a 1.75-mile trek with benches and interpretive exhibits that describe cultural aspects of the area, including such things as gold mines and logging.

A third trail, the Oberholtzer Trail, includes two overlooks to view the diversity of forest and wetland types in the park. The first quarter-mile of the 1.7-mile hike is handicapped-accessible.

It would take days to hike all of the 27.9-mile Kab-Ash Trail system that connects Kabetogama and Ash River, but with four trail heads day-trippers can tackle longer hikes on individual sections to expe-

rience backcountry and wetland areas.

## LOOK TO THE SKIES

Voyageurs National Park was designated a "dark sky park" last December by the International Dark Sky Association, one of only about 80 parks worldwide that have been certified for having the best conditions for night sky viewing. There will be ranger-led night skies programs twice a week, on Mondays and Fridays, either at Rainy Lake or Ash River Visitor Centers for guided tours of the brilliant night skies.

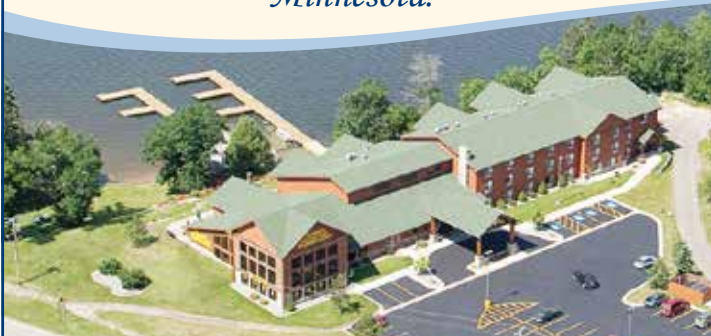
So, you don't need a boat, a tent, or a long weekend to explore Voyageurs National Park. All you need is a car, a day, and a sense of adventure.

## VOYAGEURS NATIONAL PARK AND BOUNDARY WATERS NEARBY



- ◆ Large fireside lobby
- ◆ Lakeside balcony suites with fireplaces and Jacuzzi tubs
- ◆ FREE WiFi throughout
- ◆ Pool & hot tub
- ◆ Seaplanes welcome
- ◆ 15-minute drive to golf course

*Experience the Heart of Northeastern Minnesota.*



1-800-860-3613 • 218-757-3613  
ovesonpelicanlakeresortandinn.com  
ovesonpelicanlake@live.com • 4675 Hwy. 53, Orr, MN 55771

RYAN'S  
RUSTIC  
RAILINGS  
& Furniture, Inc.

Cedar & Pine Log  
or Timber Railings  
& Staircases

- Spiral Staircases
- Character Logs
- Trusses

Specializing in  
Fireplaces & Stone



[www.rusticrailings.com](http://www.rusticrailings.com)

RUSTIC  
CABIN  
SHOP

Cabin Furnishings  
and Cabin Décor  
Log Beds, Tables,  
Chairs, Dressers  
& More



[www.rusticcabinshop.com](http://www.rusticcabinshop.com)

WILKINING  
Homes

Open Daily 9 AM to 7 PM  
3393 Hwy. 53, Orr • 218-757-3329





Left: A Green-striped Darner in flight.

Lower left: A pair of mating Common Green Darners.

Facing page (clockwise from left): David Smith capturing an image in a Lake Country bog; a Four-spotted Skimmer; an Ebony Jewelwing; a Widow Skimmer, and a River Jewelwing.

story by Marshall Helmberger  
photos by David Smith

# DRAGONS ON THE HUNT



For most folks here in the Lake Country, our knowledge and interest in dragonflies can be as fleeting as their appearance over the dock, the patio, or the garden. I've always looked at the dragonflies as my allies when I'm working in my vegetable beds. By early June, the mosquitoes and deer flies are typically out in full force, which can make it pretty miserable to spend time outdoors, at least on the edge of the Lost Lake Swamp.

But then the dragonflies arrive, having emerged from the watery world in which they live most of their lives, to spend a few weeks putting the fear of the dragon into those pesky biting bugs. Often, they arrive like a squadron of fighter jets and, just like magic, the deer flies seem to disappear.

For a long time, I was content to cheer them on, without paying

much more attention.

It was much the same for many years for David Smith and Suzanne Winckler, who spend the warmer months on their former Finnish homestead in Pike Township. They've been students of the natural world for years. Yet, up until last year, the subject of dragonflies never really came up. It's now their newest obsession.

"It's a little embarrassing I've overlooked them all these years," said Suzanne, who initially followed David's lead into the world of these remarkable insects, but has since found them to be as fascinating as he does. Longtime, avid birders, they more often train their binoculars on these smaller subjects these days. Even with binoculars, however, it can be difficult to identify dragonflies in the field. So, David has begun photographing them as

**Enjoy Canoe Country all year with *The Boundary Waters Calendar!***



© Gary Hamer



© Dave Freeman



© Steve Piragis



© Layne Kennedy

**\$13.95 at your favorite stores, by mail, phone, or online**

+ \$6 per shipping address. MN delivery add 6.875% sales tax.

PO Box 188, Ely, MN 55731 • 218-365-3375 • [www.RavenWordsPress.com](http://www.RavenWordsPress.com)

**RavenWords** PRESS 





well, which makes identification far easier. "I've always wanted to know what I was looking at but was always frustrated trying to remember details in order to identify them in a guide," said David. "When I started taking photos of insects, it made all the difference. You can sit at home at your leisure and figure out what these things are."

Dragonflies make a particularly appealing target for his photography, both because they're large for insects and because they are often brightly colored. Suzanne offers a more superlative description: "They are absolutely stunningly gorgeous," she said.

The couple's interest in dragonflies now extends well beyond their backyard in Embarrass. They observe and document dragonflies during the winter months near their home in northwestern Mexico. And

they have traveled to northern Wisconsin to look for species they haven't found here in Minnesota.

Just as birders go "birding", they even have a name for their treks in search of dragonflies.

"We call it 'odonating,'" said Suzanne, a reference to the family of insects, Odonata (pronounced on-doh-NAH-tah), which includes the dragonflies and their close relatives, the typically-more delicate damselflies, both of which appeal to David and Suzanne. The North Country is home to about 70 species of dragonflies and another 25 species of damselflies.

David, a retired research cell biologist for the Mayo Clinic, is detail oriented and that's where he finds the most satisfaction from his newfound interest. "As you really look at the detail, you just get fascinated by

the beauty of these creatures," he said.

For David, in particular, the interest in Odonates goes beyond just hunting, photographing, and identifying species he hasn't seen before. He's also delved into learning much more about the lives of the species he finds. While there isn't a vast literature on the Odonata, there are certainly some books that David has found extremely helpful as he pursues his newfound passion. You'll find more on his recommended books at the end of this story.

The number of books on the subject is likely to continue to increase as interest in the Odonata grows. Some have compared "dragonflying" as it's more often described, to the early days of birding, and it has attracted a wide spectrum of interest, from the casual to the hardcore.

David admits he's moved beyond mere



## Bed & Breakfast • Retreat & Conference Center

12 Bedrooms (Private Or Shared Bath)  
Continental Breakfast / Wifi  
Reception / Party / Conference Area  
Outdoor Decks / Campfire Area  
Near Lake Vermilion Beach / Public Access

Adjacent To Mesabi Hike-Bike Trail  
Near Soudan Underground Mine  
Close To Fortune Bay Resort Casino  
Two State Parks Close By  
Near Soudan Convenience Store



**218-753-2333 • Book Online • [vermilionparkinn.com](http://vermilionparkinn.com)**

30 Center St., Soudan • [vermilionparkinn@gmail.com](mailto:vermilionparkinn@gmail.com)





**Above:** A Blue Dasher rests on a twig.

**Above right:** A White-faced Meadowhawk rests with its wings held high.

**Left:** A pair of mating Saffron-winged Meadowhawks.

casual interest. “You could call me an enthusiast,” he said. His involvement now includes corresponding with some of the top experts in the world on the Odonata, whom he has found to be remarkably accessible and encouraging of his work.

“Turns out all these people are extremely nice, at least as long as you’re talking about dragonflies,” he said. “They’re interested in novel reports, and share in the excitement of seeing something unusual.”

While David hasn’t found anything out of the ordinary in Minnesota, at least not yet, he’s had more interesting finds near his winter home in Alamos, Sonora, Mexico, so he’s had plenty to talk about with some of the field’s top researchers.

It’s all helped to fuel his interest in the hunt for new Odonata, and both he and

Suzanne are routinely exploring new habitats around the North Country. Suzanne, a semi-retired journalist and longtime birder, notes that Odonates are often as tied to specific habitats as birds. The damselflies, in particular, are found along streams, but even within that broad category of habitat are numerous micro-habitats, that depend on the type of vegetation found streamside, or whether the location is sunny or shaded. “It’s fun to go into all the different habitats and have an idea of what might just turn up where,” said Suzanne.

There’s also the question of when. While most of us recognize that dragonflies are only active in the summer here in the North Country, the summer can actually be divided into many of its own “seasons” when you can expect to find certain Odonata. These insects spend the vast majority of their lives as underwater nymphs, and only live as modern day dragons for a few

weeks each summer. Certain species emerge for their reign in the sky in early June, only to be replaced by other species in turn as the summer wears on. With many dozens of species, it’s a lot to learn, but for now David and Suzanne are eagerly soaking it all up.

And their hunt for new species shows how interest in Odonates can lead to new explorations. David is now on the hunt for a highly specialized species of dragonfly, known as the elfin skimmer, which at just three-quarters of an inch in length, is the smallest dragonfly in North America. They’re found almost exclusively in alkaline or calcareous floating bogs. He’s now researching the locations of such formations in hopes of adding one of these tiny, bright blue dragons to his Odonata life list.

For Suzanne, delving into the world of the Odonata is simply an extension of her and David’s longtime interest in the natural world. “I can’t imagine not having that base of interest in what’s around me,” she said. “It’s what makes life rich.”

#### **Books on Odonata**

*Dragonflies of the North Woods,*  
by Kurt Mead

*Dragonflies and damselflies: A natural history,* by Dennis Paulson.



**Gracie's**  
Plant Works  
BOTANICAL TREASURES  
ELY, MN

*Hanging Baskets • Annuals  
Perennials • Vegetables  
Trees • Shrubs • Fruit Trees  
Specialty Conifers  
Landscaping*

**Garden  
Gift Shop**

OPEN: 10 AM- 6 PM DAILY  
218-365-7644 • 22 W SHERIDAN ST, ELY



**The  
RESCENT  
Bar & Grill**

**Open Everyday  
at 11 am**

**Excellent Food, Great Service, Fun Atmosphere**  
**2 Private Dining Rooms, Game Room & Sports Bar!**  
**Catering, Private Parties, Benefits, Wedding Receptions**  
**LOW PRICE OFF-SALE • LIVE MUSIC**  
**OUTDOOR PATIO • VOLLEYBALL • BEAN BAGS**

9257 E. Olson Rd., Lake Vermilion, Cook • 218-666-0100  
Only 3 miles north of Cook off Hwy. 24



# WHEN IT RAINS ON YOUR PARADE

## TAKE A TRIP TO ELY

If you haven't made a trip to Ely yet, get in the car. The International Wolf Center, the North American Bear Center, or the Dorothy Molter Museum will keep the kids entertained without spending a lot of money. The Wolf Center's indoor viewing area is a series of carpeted stairs, a perfect place for children to burn off some energy. Then have lunch at any of the fine eating establishments in town and check out some of the shops and galleries in downtown Ely afterwards.



## TAKE A TOUR OF THE SOUDAN MINE



You can experience what work was like for Soudan's iron miners on a tour at the Soudan Underground Mine State Park. It's a great choice when the weather's not so nice, since it's always a constant 55-degrees a half-mile underground. You'll descend in the original elevator to the mine's 27th level,

where you'll take a train ride to underground exhibits, all with an experienced interpreter. The Soudan Mine was Minnesota's first and richest iron mine. Call 218-300-7000 for more information.

## EXPLORE AMERICAN INDIAN HERITAGE

The Bois Forte Heritage Center tells the story of the Bois Forte people, who have called the Lake Country home for more than 250 years. The center is very nicely designed and extremely informative. You can explore the facility on your own, or center staff will happily offer a guided tour.

The center is open Tues.-Sat., 9 a.m.-5 p.m. and is located on the Fortune Bay Resort grounds, on Lake Vermilion. Admission is \$8 for adults, \$6 for kids 4-12 and seniors, \$20 for families of four or more. 218-753-6017.



## READ A NEW BOOK

Local libraries are located in Cook, Orr, Ely, Virginia and Babbitt.



## VISIT A FAMILY FRIENDLY FARM

Connecting people to animals and the land is the mission of Cook's Country Connection, near Cook. It's a petting zoo filled with everything from barnyard chickens, to llamas, to exotic pigs, and it's open to the public. Visit [www.cookscountryconnection.com](http://www.cookscountryconnection.com) for times and prices.



## FIND A FORECAST FOR THE NORTH SHORE

The weather is often different along the North Shore of Lake Superior. Check the weather for places like Silver Bay or Grand Marais and consider a day trip to the big lake. It's a lot closer than you think!

**THE art corner**  
Products that Inspire  
[www.theartcorner.net](http://www.theartcorner.net)  
**218.365.2263**  
PRODUCTS | CLASSES | DEMOS  
301 W SHERIDAN ST, ELY MN  
Dafne Caruso - Artist  
[www.dafnecaruso.com](http://www.dafnecaruso.com) | @dafnecaruso.artist  
301 W. Sheridan St., Ely, MN 55731

**MUSH YOUR OWN TEAM**  
Enjoy a Dogsled Vacation at America's Top Dogsled Center  
**Ely**  
**WINTERGREEN DOGSLED LODGE**  
• 3 & 4 night Lodge-based Dogsled Vacations  
• Boundary Waters Dogsled Camping Trips  
• For all ages, no gear or skills needed  
• Friendly, beautiful pure-bred Eskimo dogs  
• Arctic Trips with explorer Paul Schurke  
(218) 365-6022 • 1-877-753-3386  
[www.dogsledding.com](http://www.dogsledding.com)





hundreds of remote wilderness campsites managed by the Forest Service and located in the 1.1 million-acre Boundary Waters Canoe Area Wilderness. You'll need a canoe, and a willingness to pack your gear across sometimes difficult portages to access these spectacular camping opportunities.

See the following list for information on the many camping opportunities in the Lake Country.

### PUBLIC CAMPGROUNDS

#### Bear Head Lake State Park

9301 Bear Head Lake State Park Rd  
Ely • 218-235-2520  
Operated by Minnesota DNR

#### Birch Lake Campground

Located 13 miles SE of  
Ely off of Forest Rd 429  
218-235-1299 or 218-365-7600  
Operated by U.S. Forest Service

#### Echo Lake Campground

Located 22 miles NE of Orr  
218-666-0020  
Operated by U.S. Forest Service

#### Fall Lake Campground

Located six miles E of Ely  
218-365-2963 or 218-365-7600  
Operated by U.S. Forest Service

#### Fenske Lake Campground

Located on the Echo Trail,  
ten miles N of Ely  
218-235-1299 or 218-365-7600  
Operated by U.S. Forest Service

#### Heritage Park and Campground

4789 Salo Rd, Embarrass  
218-984-2084 or 218-410-7080  
Operated by Town of Embarrass

#### Hoodoo Point Campground

5788 Hoodoo Point Rd  
Tower • 218-753-6868  
Operated by City of Tower

#### Lake Vermilion State Park

Brand new public campground  
now open • 218-300-7000  
Operated by Minnesota DNR

#### Lake Jeanette Campground

Located 32 miles NE of Orr  
218-666-0020  
Operated by U.S. Forest Service

#### McKinley Park Campground

Located on Lake Vermilion, Soudan  
218-753-5921 or 218-780-6860  
Operated by Breitung Township

#### Pfeiffer Lake Campground

Located 12 miles SW of Tower  
218-229-8800  
Operated by U.S. Forest Service

#### South Kawishiwi River Campground

Located ten miles S of Ely  
off Hwy. 1 • 218-235-1299  
or 218-365-7600  
Operated by U.S. Forest Service

#### Wakemup Bay Campground

Located 7 miles NE of Cook on  
Lake Vermilion • 218-235-2520  
Operated by Minnesota DNR

#### Woodenfrog Campground

Lake Kabetogama  
218-235-2520  
Operated by Minnesota DNR

In addition to these public campgrounds, many area resorts also offer space for tent or RV camping.

# LET'S CAMP

From rustic wilderness campsites to fully-modern RV camping grounds, the Lake Country offers camping options for all tastes and budgets.

The U.S. Forest Service operates several campgrounds in the area, and all include wells, comfortable camping sites, and most have swimming beaches and docking.

The Minnesota DNR also offers camping opportunities at Bear Head Lake State Park, the new Lake Vermilion State Park, and at other lesser-used campgrounds on Lake Vermilion and Lake Kabetogama.

Campers can access remote campsites managed by the U.S. Park Service at Voyageurs National Park, but almost all require boat access. The same is true for





**NORTH STAR**  
CREDIT UNION

**FINANCING DREAM HOMES**



**STEPHANIE BURCKHARDT**  
**218-666-4026**  
NMLS:#421853

**NORTHSTARCREDITUNION.ORG**  
COOK | NASHWAUK | DULUTH | BROOKS  
NMLS:#407735  
EQUAL HOUSING LENDER | FEDERALLY INSURED BY NCUA

**LORI ASTLEFORD**  
**218-666-4025**  
NMLS:#454495



## Area Churches



### COOK

#### Trinity Lutheran Church (ELCA)

231 2nd St SE, Cook, MN 55723  
218-666-5965 • [www.trinitycook.org](http://www.trinitycook.org)  
Sunday Service 9:30 a.m. Holy Communion Weekly. Worship is available on our Facebook page and YouTube channel.

#### St. Mary's Catholic Church

124 5th St SE, Cook, MN 55723  
218-666-5334 • Masses: Sunday 8 a.m., Tuesday 9 a.m., Thursday 8 a.m.  
Confessions are a half hour before Masses. Adoration: Tuesday 8 a.m., Thursday 7 a.m. and 2 - 8 p.m. Traditional Latin Mass 1st Saturday of the month 9 a.m. [www.stmmhc.com](http://www.stmmhc.com)

### CRANE LAKE

#### Crane Lake Chapel

7399 Handberg Rd, Crane Lake, MN 55725. Sunday Service 11:30 a.m.  
Parsonage 218-757-3336

### ELY

#### St. Anthony's Catholic Church

231 E Camp St, Ely, MN 55731  
218-365-4017 • Masses: Saturday 5 p.m., Sunday 10 a.m., Tues, Thurs & Fri 8 a.m.  
Please visit our website for parish events and offerings, [www.stanthonysely.org](http://www.stanthonysely.org)

#### First Lutheran Church (LCMS)

915 E Camp St, Ely, MN 55731  
218-365-3348 • Sunday Worship Service 10:30 a.m. • *Pastor Zachariah Burgdorf*. [secretary@firstlutheranely.org](mailto:secretary@firstlutheranely.org)  
[www.FirstLutheranEly.org](http://www.FirstLutheranEly.org)

#### Praise Fellowship Center

302 E Boundary St, Ely, MN 55731  
218-365-6033 • Sunday Bible Class 9 a.m. • Sunday Worship 10 a.m.  
[praisefellowship0.wixsite.com/praisefellowship](http://praisefellowship0.wixsite.com/praisefellowship)

#### Ely United Methodist Church

305 E Camp St., Ely, MN 55731  
*Pastor Craig Haberman*  
218-365-3355. [www.elyumc.org](http://www.elyumc.org)  
Sunday Worship Service 10 a.m.  
Live streaming services on Facebook:  
Ely United Methodist Church

#### Ledgerrock Community Church

1515 E Camp St, Ely, MN 55731  
218-365-4890. Sunday Worship 9:30 a.m.  
Men's & Women's Bible Study, Tuesday 9:30 a.m.  
[www.ledgerrockchurch.com](http://www.ledgerrockchurch.com). Live streaming our services on Facebook

#### St. Mary's Episcopal Church

715 S Central Ave, Ely, MN 55731  
218-409-6870 • Outdoor Intergenerational Communion Sunday Service at 9:30 a.m.

#### Grace Lutheran Church (ELCA)

301 E Conan St, Ely, MN 55731  
218-365-5605 • In-person Sunday Worship Service 9:30 a.m. with reservations required (<https://rsvp.church/r/wdlzF8NB>). Facebook live option available at [facebook.com/gracelutheranely](https://facebook.com/gracelutheranely). Handicap accessible. Nursery available.

### EMBARRASS

#### Evangelical Free Church of Embarrass

5606 Taylor Rd, Embarrass, MN 55732  
218-984-3402 • Please call or check our website for current service schedules.  
[www.efreechurch.com](http://www.efreechurch.com). Listen to messages at [sermonaudio.com/efce](http://sermonaudio.com/efce)

### ORR

#### Holy Cross Catholic Church

10696 Shady Grove Ln, Orr, MN 55771  
218-666-5334 • Mailing address: PO Box 609, Cook, MN 55723. Masses: Saturday 5 p.m., Thursday 5:30 p.m. Confessions are a half hour before Masses. Adoration Thursday 4:30 p.m. [www.stmmhc.com](http://www.stmmhc.com)

### SOUDAN

#### St. Paul's Lutheran Church

36 Church St, Soudan, MN 55782  
218-753-5341 • Services: Sunday 8:30 a.m. with Communion • *Pastor Greg Anderson* • Contemporary service last Sunday of month with music. Sunday School at 9 a.m.

### TOWER

#### St. Martin's Catholic Church

108 N Second St, Tower, MN 55790  
218-753-4310 • Masses: Sunday 10:30 a.m., Wednesday 9 a.m., Friday 8 a.m. Confessions are a half hour before Masses Adoration: Monday 2 - 8 p.m., Wednesday 8 a.m., and Friday 7 a.m.  
[www.stmmhc.com](http://www.stmmhc.com)

#### St. James Presbyterian Church

302 Spruce St, Tower, MN 55790  
218-753-6005 • Sunday Worship 10 a.m.  
*Pastor Doug Workman*  
[stjamespres.wixsite.com/stjamestowermn](http://stjamespres.wixsite.com/stjamestowermn)  
Find us on YouTube: st james presbyterian tower mn

#### Immanuel Lutheran Church

304 Spruce St., PO Box 466, Tower, MN 55790 • 218-753-2378. *Pastor Liz Cheney*  
10:00 a.m. [www.towerlutheran.com](http://www.towerlutheran.com)  
Facebook: Immanuel Lutheran Church of Tower

**Please be sure to call  
or check the church  
website for service times  
and information  
due to COVID-19...**

*Romantic log and stone housekeeping cabins  
on Burntside Lake for 1-10 guests.*



**CAMP VAN VAC**  
A Lakeside Resort  
ELY, MINNESOTA

**Sauna, Boats, Canoes, Swimming, Playground, WiFi**  
**Summer rates from \$550-\$1,650 a week. Spring and fall discounts.**  
**PHONE: 218-365-3782 [www.campvanvac.com](http://www.campvanvac.com)**



LIFE IN THE WILD>>

# BIRDS & BEARS

Few places in the Lower 48 states have the variety of wildlife found in the Lake Country, and that's one reason that wildlife watching has become such a big draw.

Summer in the Lake Country is prime time for most area wildlife, whether it's the more than 150 species of breeding birds, or large mammals like moose, wolves, and black bears. If you're hoping to spot some interesting wildlife during your visit, here's what you need to know.

## ELY AREA

There are plenty of opportunities to view wildlife at the "end of the road." The International Wolf Center and the North American Bear Center, both located on the edge of town, provide a great way to learn more about these two large predators.

The Bear Center, located on Ely's west side, features live bears in an outdoor enclo-



You can watch wild bears as they climb trees and interact at the Vince Shute Sanctuary near Orr. The center is open to the public in the evenings, Tues.-Sun. through Sept. 5.

sure as well as indoor exhibits highlighting the work of renowned bear researcher Lynn Rogers. Call 1-218-365-7879 or visit [www.bear.org](http://www.bear.org) for more.

The International Wolf Center, found on the east side of Ely, has live wolves on display as well as indoor exhibits and special educational programs offered daily. Call 218-365-4695 or visit [wolf.org](http://wolf.org).

## VINCE SHUTE SANCTUARY

If you want to see black bears in the wild, this is the place to go. The sanctuary,

located about 15 miles west of Orr, is known around the world as a gathering spot for hundreds of black bears, who visit the sanctuary for the smorgasbord of food put out by sanctuary staff.

It was Vince Shute, a logger, who began the feeding of the bears decades ago. While he once shot bears that raided his camp, at some point Vince realized that the bears weren't mean, they were just hungry, and over the years he became a fast friend to many of the bears in his woods. When he died, the American Bear Association



**RELIABLE, PROFESSIONAL,  
AFFORDABLE**

**GARAGE DOOR  
INSTALLATION  
&  
REPAIR**

**FLOOR TO  
CEILING  
HANDYMAN  
SERVICE**

**218-235-0372**

**NORTHERN-FRONTIERS**  
**THRIFT**

**Unique & Affordable for All Ages**

**A STORE DESIGNED  
WITH YOU IN MIND**

**LOCATED IN THE  
BABBITT SHOPPING CENTER**

**31 CENTRAL BLVD.  
SUITE 400  
BABBITT, MN 55706  
218-827-0777**



assumed control of the property and switched the bears from their former diet of donuts and other sweets to healthier foods, like sunflower seeds, nuts, and dried fruit. The organization also built a viewing platform that now allows the public to view bears, often dozens at a time, as they feed and relax on the sanctuary grounds. The sanctuary is open Tues.-Sun., from 5-8 p.m., May 29-Sept. 5. A modest entry fee (\$12 adults, \$10 seniors, \$5 children 4-17, free under three) is required to help defray the cost of the non-profit operation. Learn more at [americanbear.org](http://americanbear.org), stop at the Orr Visitor Center on Hwy. 53 for a map, or call 218-757-0172.

## THE ECHO TRAIL

Stretching 70 miles from near Ely to Echo Lake, north of Orr, the Echo Trail offers a fascinating journey through some of the most spectacular scenery in the Upper Midwest. It's located along the edge of the Boundary Waters Canoe Area Wilderness, so wildlife is abundant. For anyone hoping to spot a moose or a timber wolf, a day trip of exploration along the Echo Trail or one of its many side trails, is a good bet. Try the Bass Lake or Anglemorm trails, both



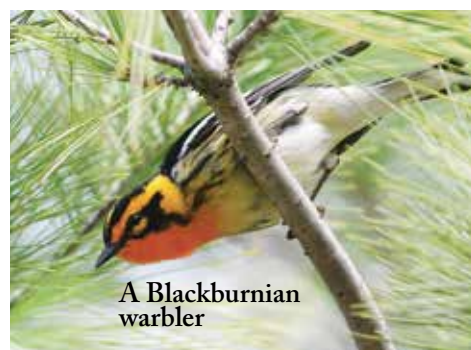
A pine marten

located north of Ely. The Stuart River portage is also scenic and long enough, at a mile and three-quarters, to provide your morning's exercise. Next time, try it with a canoe on your back!

If you're a birder, the varied habitat along the Echo Trail gives you one more good reason to go. It passes through the heart of the region's true boreal forest and it offers excellent habitat for species like three-toed woodpeckers, Cape May and pine warblers, yellow-bellied flycatchers, boreal chickadees and spruce grouse.

## DARWIN MYERS WMA

The Darwin S. Myers State Wildlife Management Area in Embarrass encompasses a 748-acre wetland area that had been turned into wild rice paddies and then



A Blackburnian warbler

abandoned. The area is important habitat for many birds and other animals, including nesting sandhill cranes.

You'll find the WMA about two miles southeast of the junction of Hwy. 135 and County Road 21 in Embarrass. From the junction, travel south about two miles to Soini Road (County 558). Head east about a mile and you'll find the WMA on your right. There's a small parking lot and walking trails that follow the old dike system created during its wild rice production days. The dikes form a number of separate large pools that are highly attractive to a wide range of birds. A portion of Mesabi Bike Trail now runs through the WMA, so bring your bikes along with your binoculars.

# SEE BEARS

*guaranteed!*

*More than just bears!*

## NORTH AMERICAN BEAR CENTER

NORTHWOODS ECOLOGY HALL

1926 Hwy 169 • Ely, MN  
1 mile west of Ely  
2 hours north of Duluth

For hours and more info  
visit: [www.bear.org](http://www.bear.org)

Since 1926

# Handberg's MARINA

*Crane Lake, Minnesota*

Boat & Motors Sales & Service  
Pontoon / Boat Rentals  
RV Sites on the Water with Docks  
Kayak / Paddleboard Rental  
Marina Slips

Ice Cream!  
Clothing  
Gifts  
Supplies  
Gas & Bait

**YAMAHA**  
**EVINRUDE**  
**MERCURY**  
Outboards

218-993-2214 • [handbergs.com](http://handbergs.com)





# CATCH YOUR SUPPER!

Area fishing guides offer advice to get you started

**Y**ou made it. You drove six hours with the family to get to that Lake Country resort you've been dreaming of for six months. You've checked in for a week, unpacked, and the kids are happily splashing in the water while your spouse lounges on the beach with a good book.

That boat you reserved for the week is parked at the dock, gassed, and ready to go. The walleyes are out there. You just need to go find them.

Ah, but where to begin?

There's a lot of water here in the Lake Country, far more than you could possibly explore in a week. So, we talked to some area fishing guides for tips on how to make

the most of your time on the water. Here's a breakdown of what they had to say.

## **Hire a guide:**

You might expect fishing guides to offer such a suggestion, but we agree this is probably the best money you can spend, especially if you're planning to fish one of the big lakes in the region, like Vermilion, Burntside or Kabetogama. Even a half-day spent with a guide, which will run you anywhere from \$325-\$450 for up to two people, will leave you far better prepared for a week of good fishing than anything else you could do. Schedule time with a guide early on in your stay, so you can take advantage of what you'll learn for the next several days.

According to Lake Vermilion guide Rob Bryers (218-780-7939), your guide will not only take you to a few of his hot spots, he'll give you even more valuable information, such as the proper depths to fish, the types of presentation to use, and which baits are working at the moment. That's all critical information for successful fishing.

## **Get a good map of the lake:**

You'll find that most of the popular fishing lakes in the Lake Country have detailed maps, complete with depth contours and, often, a few tips on spots that tend to produce fish, and these maps are typically available at most bait shops. Lake Vermilion guide Cliff Wagenbach

## Simply the Finest in Rugs, Gifts & Décor

**Nordic Home North**

**GIFTS**

**GOURMET & DECOR**

**MORE GIFTS**

**EKELUND LINENS**

**NORDIC FURNISHINGS**

**CHAIRS & RECLINERS**

**RUGS**

**CUSTOM SIZES & COLORS**

303 Main St, Tower • 218-753-3313 • [www.NordicHomeNorth.com](http://www.NordicHomeNorth.com) • [marit@nordic-home.com](mailto:marit@nordic-home.com)





graph, I generally won't even drop a line," said Wagenbach.

#### ☛ **Think structure:**

"For me, checking out a new lake is always about structure," says Ely area fishing guide Steve Foss (218-235-1147). While most anglers think of structure as humps and lake points, which frequently hold fish, area guides agree that depth breaks, particularly the first break off shore, where a relatively shallow shoreline shelf falls off into deeper water, is an excellent place to work for fish. And Foss says don't forget to think of weedbeds as part of the lake's structure since fish tend to frequent those areas, particularly the weedlines.

While the traditional paper maps offer this kind of information, Foss also likes some of the new fishing apps, like Navionics, that provide detailed information and mapping direct to your smartphone. "Navionics varies in accuracy from lake to lake, but most lakes are pretty well represented, and it's great for bottom contour and structure," said Foss. "There are other apps that can help with weedlines and transitions," he said.

On a big lake, like Vermilion, the amount of structure to consider is almost limitless, so Bryers says he likes to focus on a smaller area, such as a single bay. "Take that bay and pretend it's its own lake," he said. Scope out the depth breaks, look for weedbeds, and use your electronics to start marking fish.

#### ☛ **Troll:**

In the hunt for fish, few methods can be as effective as trolling. Whether you're fast

trolling with a rapala or slow trolling with a lindy rig or jig and minnow over a soft bottom, this method allows you to cover a lot of territory. Work along points and known reefs, or any new shoreline you haven't tried before. The fish will let you know where they are. "In the early season, especially, trolling can be pretty effective for finding fish," said Wagenbach.

#### ☛ **Ask a local bait dealer:**

Even when you find the right places, getting fish to bite can still be a challenge. And that's where a conversation with a local bait shop owner can be critical. Let's face it, you can fill your tackle box with lures from a discount center, but the local bait shop still survives because most anglers recognize that these are the folks who have their finger on the pulse, which makes them a must-stop. Pick up an extra lure or two, some live bait, and throw in a six-pack of pop and some ice and you're ready to hit the water. Most of all, ask the guy or gal behind the counter where the fish are biting, and what they're biting. When the bite switches from minnows to leeches, they'll know right away. When the fish are moving into deeper water, or setting up along the weedlines, they'll hear about it. They may be selling tackle and bait, but they also know they're selling information, so don't be shy about asking. You'll get useful intel from your local bait dealer, and they'll often have recent reports from some of the lesser-fished lakes as well as the most popular ones.

(218-753-2005) says maps will reveal structure that tend to hold fish, and will also indicate depth breaks, where fish tend to congregate. These maps are particularly valuable for many of the smaller fishing lakes in the Lake Country, that often are not serviced by guides. If you don't have a guide, you'll definitely want a map.

☛ **Trust your fish finder:** Whether you've brought your own fishing boat or are renting from a resort, you're likely to have access to an electronic fish locator. When you understand how they work, they can be an extremely valuable tool to help you put fish in the live well. In combination with a map, they can help you quickly locate key locations and even tell you whether fish are actually present. "If I don't see fish on the

**MARJO MOTEL**  
Internet-Fridges-Microwaves-TVs



Highway 169 • Tower, MN  
on the left as you  
enter from the west  
**218-753-4851**  
[www.marjomoteltowermn.com](http://www.marjomoteltowermn.com)

Subscribe to the  
Timberjay Newspaper  
(218) 753-2950  
[timberjay.com](http://timberjay.com)



**FLOE**  
DOCKS & LIFTS

**Manick**  
DOCKS & RECREATION  
SYLVAN PONTOON AND SMOKECRAFT BOAT DEALER

9240 HWY 115 • Cook, MN 55723 • 218-666-6021 • [manickdocks.com](http://manickdocks.com)



KEEP IT SIMPLE>>

# SUMMER fun with kids

by Stephanie Ukkola

The Lake Country provides unlimited opportunity for summer fun, wherever your interests lie; whether it be fishing, biking or water skiing, there's a lot to do. But what about little kids? It can be hard to fish out what is age-appropriate in a sea of opportunity.

Fortunately, children are not hard to please. A trip out for ice cream and a visit to the park will make their day. Lucky for us, ice cream abounds in the North Country. I'm looking forward to a new ice cream shop opening this summer, the South Shore Creamery, on Tower's Main Street. Soudan's Only Store, located by the state park entrance, has a whopping sixteen flavors of hard serve ice cream. Red Cabin Custard in Ely is outdoor window-service – and delicious. The Comet Theater in Cook has a wide selection of cold and frosty treats, as well as hot coffee-based ones for parents. The Comet also has a unique boutique that little ladies and their mothers will love – and movies too, of course.

I love hiking, but my kids are one and three, so they're too heavy to carry and not super good at walking themselves. We compromise with short hikes. My favorite, albeit the most dangerous, is the little hike to Kawishiwi Falls just north of Ely. The waterfall itself is stunning, but there are many unique trees along the way that make this hike fascinating. The path has a lot of roots and rocks to trip on and no safety rails at the falls, so please be careful. We also love the little trail behind the Ely Bear



Center. This interpretive hike has signs posted to help explain everything you see.

The Orr Bog Walk, which is being rebuilt this summer, should be available for use by the latter half of the season. It winds through a wide variety of wetland types, making it a good place for kids to learn about nature.

Want to see a gold mine? Okay, it's more like a little pond now and there never really was much gold, but it's still really cool. Head over to Fortune Bay, near the marina where you'll find their Gold Mine Trail that leads hikers to this pit where the region's earliest prospectors first tried to find gold in 1866.

Would you like to go to a museum? North American Bear Center and the International Wolf Center, both in Ely, have fun interactive exhibits for children to play, plus live bears and wolves. It doesn't get any better than this. The Bois Forte Heritage museum has a birch bark dwelling, a beautiful starry ceiling, and exhibits that both children and parents will enjoy.

In the land of 10,000 lakes we are lucky to have so many places to swim. Some lakes are better than others though! Our favorite is Pfeiffer Lake, near Tower. It has very nice swim and picnic areas. It also has a playground, campground and hiking trails, but watch out for the biting flies! Other great area beaches (with playgrounds) include HooDoo Point in Tower, McKinley Park in Soudan, Semer's Park in Ely, the Orr public beach, and Birch Lake Campground near Babbitt. McKinley Park's campground store sells children's fishing nets to catch the abundant small crayfish that come to the shore. The crayfish are not native, so catching is encouraged!

If your kids just need to run off some energy, and you don't want to tempt them with water, make their day by taking them to the park. The North Country has an abundance of fun parks to play at. The Tower Mini-Park has a big playground and is also right next door to the Tower-Soudan Historical Society Depot Museum.

## DWIGHT SWANSTROM COMPANY

We specialize in insuring your home or seasonal cabin located on the lake or islands with or without vehicle access. We can also insure your toys that go with it.

**LIFE • AUTO • BUSINESS • HOME OWNERS**



**Greg Brisky**

Licensed Insurance Agent  
**218-727-8324**

*Don't be risky...insure with Brisky*  
gbrisky@dwrightswanstrom.com



**Nick Ferrell**

Licensed Insurance Agent  
**715-392-5177**  
nferrell@centuryins.net  
www.centuryins.net







Facing page:  
Exploring the  
old train engine  
at the Tower  
Depot  
Museum.

Above:  
Playing at the  
McKinley Park  
beach.

Children can play inside some restored railroad cars, and also can ring the railroad bell. Greenwood Township has a new playground, covered picnic pavilion, bocce ball, and a tennis (or pickleball) court. Ely's Whiteside Park is very big, has play areas for big and little kids and unique musical instruments. We also like the Cook Park which also has playgrounds for both smaller and older children.

## YOU DESERVE A VACATION

**FLY LOCAL  
& SAVE**

**DELTA**   
Operated by SkyWest Airlines

Skip the drive, avoid large  
crowds & park for **FREE!**

**FLY LOCAL - FLY HIB**



11038 Hwy 37 • Hibbing, MN 55746 | 218-262-3451  
[RangeRegionalAirport.com](http://RangeRegionalAirport.com)

## Summer Sparkle

**Offering** On-site jewelry repair • Custom jewelry design  
Jewelry appraisals • Watch batteries



*Strellman's*  
since 1948  
Made right here on  
the Iron Range!

Designs by  
Claude Thibodeau

**We Buy**

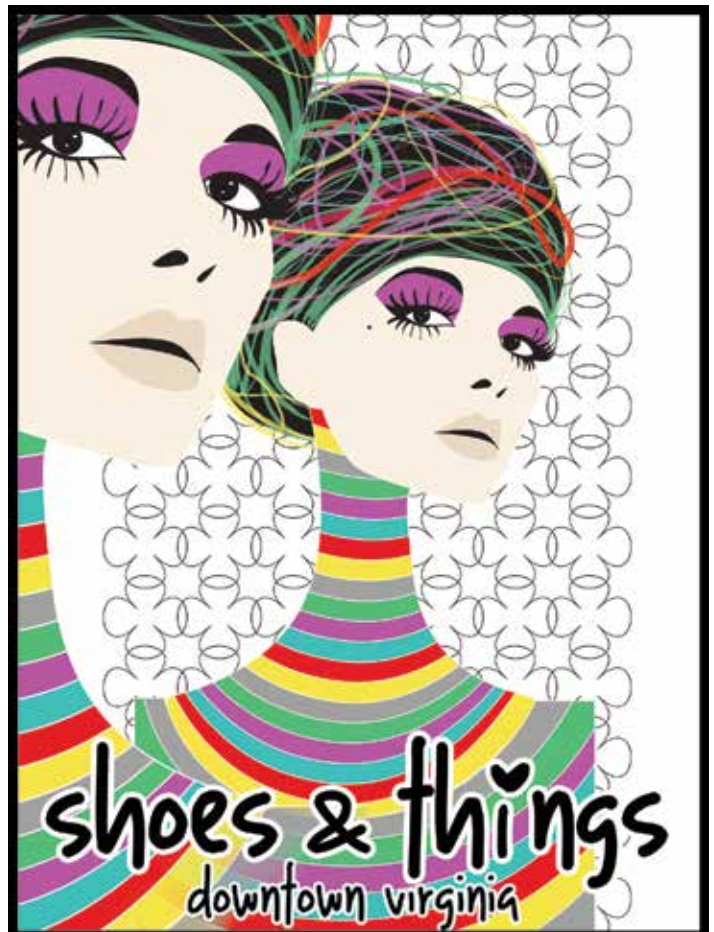
**GOLD • SILVER • PLATINUM • COINS • DIAMONDS**  
Consistently The Highest Prices  
Paid In The Area!

**ROCKS THE JEWELERS**

314 Chestnut St, Virginia • 218-741-7625



Join us on FACEBOOK







# THE BOUNDARY WATERS MADE EASY

Outfitters can help you navigate the process

For many visitors to the Lake Country, a trip into the 1.1 million-acre Boundary Waters Canoe Area Wilderness is the quintessential northwoods experience. But for those who haven't ventured into the wilderness before, planning a trip can be a daunting task.

There are so many things to consider. Where do you go? How do you obtain a permit? What should you pack? And, perhaps most importantly, with more than a thousand lakes and at least as many portage trails,

how will you keep from getting lost?

All good questions. Luckily, they all come with easy answers, if you know the right people. There are more than a dozen reliable, experienced outfitters in the Ely and Crane Lake areas who can provide you with everything you need, whether it's for an afternoon's paddle, or a month-long journey deep into the wilderness. Outfitters make it easy—providing you with canoes, camping gear, and even pre-packed meals for everyone (you can also choose to bring your

Bookstore Online: [boundarywaterscatalog.com](http://boundarywaterscatalog.com)

|   |   |  |
|---|---|--|
| Canoes<br>Packs<br>Painted Paddles<br>Knives<br>Axes<br>Jewelry                                   |  | Clothing<br>Tents<br>Specialty Food<br>Yokes<br>Lanterns<br>Cookwear |
| <p>Providers of the best outdoor experience</p> <p>105 N Central Ave, Ely MN • 1-800-223-6565</p> |   |  |



Make Waves On Lake Vermilion To...

**WOLF BAY LODGE** Lodging, Bar & Restaurant

*Casual Dining and Take-out*

**218.666.6106**

Dining Room - 12 noon-9 p.m.

Bar & Lounge - 12 noon-Close

**CLOSED MONDAYS**

*Live Music*  
**"Fat Tuesday"**  
Hosted by the Wolf Bay Bros.

**Starts June 15**  
7 p.m. - 10 p.m.

22 miles north of Cook on Hwy. 24, take #422, then right on #667, 1/2 mile to lodge





## Outfitters Guide

Making your canoe adventure easier

### LATOURELL'S OUTFITTERS

14793 Moose Lake Rd., PO Box 239, Ely, MN 55731 • 218-365-4531 or [info@fishb-wca.com](mailto:info@fishb-wca.com), [www.latourells.com](http://www.latourells.com). LaTourell's is the closest resort and canoe trip outfitter to the BWCA and Quetico Park.

### RIVER POINT OUTFITTING CO.

PO Box 397, 12007 River Point Rd. Ely, MN 55731 • 218-365-6604 or [www.elyoutfitters.com](http://www.elyoutfitters.com), [info@elyoutfitters.com](mailto:info@elyoutfitters.com), Boundary Waters canoe outfitting and canoe rentals. Paddle the Quiet Side®.

### CANOE COUNTRY OUTFITTERS

629 E. Sheridan St., PO Box 30 Ely, MN 55731 • 218-365-4046 [www.canoe-countryoutfitters.com](http://www.canoe-countryoutfitters.com) BWCA-Quetico canoe trips, campground, cabins, towboat services.

### PIRAGIS NORTHWOODS CO.

105 N. Central Ave., Ely, MN 55731 218-365-6745 or 1-800-223-6565 [www.piragis.com](http://www.piragis.com) • BWCA/Quetico trips, full service outfitting, partial outfitting, canoe, kayak, SUP, and gear rentals.

### ELY OUTFITTING COMPANY & BOUNDARY WATERS GUIDE SERVICE

529 E. Sheridan St., Ely, MN 55731 218-343-7951 • [info@elyoutfittingcompany.com](mailto:info@elyoutfittingcompany.com), [www.ElyOutfittingCompany.com](http://www.ElyOutfittingCompany.com), [www.BoundaryWatersGuideService.com](http://www.BoundaryWatersGuideService.com) Successful Boundary Waters canoe trips for friends and families.

[WWW.YOURBOATCLUB.COM](http://WWW.YOURBOATCLUB.COM)

# SIDE-BY-SIDE RENTALS

**TOWER & ELY, MN**

## YOUR BOAT CLUB

## RIVER POINT RESORT & OUTFITTING CO.

- Exceptional Family Vacations
- BWCA Canoe Trips
- Marina, Gift Shop, Hiking Trail
- Romance Packages

*"A Naturally Superior Destination"™*

*Take A Tour  
8.5 miles SE  
of Ely on Hwy. 1  
on Birch Lake*

[info@riverpointresort.com](mailto:info@riverpointresort.com) | Ely, MN | 1.800.456.5580 | [www.riverpointresort.com](http://www.riverpointresort.com) | [www.elyoutfitters.com](http://www.elyoutfitters.com)



**Open 7 AM Daily!**  
4th & Sheridan, Ely • 365-2326

**Homemade**  
Breakfast, Lunch,  
Desserts, Pastries, Gifts

A place  
to gather  
& connect!

**WiFi  
Hot Spot**

own food if you prefer).

If you're just looking for an easy adventure, a day trip is a great option, says Jane Koschak, who operates River Point Resort and Outfitters near Ely. Pack a lunch, your swim trunks, and a bucket for blueberries and you've got the makings of an outstanding day in the wilderness. Most outfitters will provide you with a canoe for the day, and can even supply a guide if you'd like. A guide is particularly helpful if you're looking to catch some fish, or if you've never attempted a backcountry adventure before.

There are also many great day-trip options that can give even the novice adventurer a taste of the Boundary Waters without spending a lot, or having to camp overnight. And while overnight stays in the wilderness require permits that are subject to quotas, there's no limit on day use in the Boundary Waters.

The Forest Service does require a free, self-issuing permit, but you'll find those readily available at every established wilderness entry point.

Still, for many, the true wilderness experience can only come from a longer venture into the canoe country, and that's where outfitters can really be your friend.

Before contacting an outfitter, however, think about a few questions. Such as, how many days would you like to be out? How many will be in your party? And what kind of a trip are you look-

ing for?

Trips generally fall into one of three categories, including:

☛ **Base camp**— which involves paddling to a nice campsite and using that as your home base for various activities.

☛ **Touring**— which involves a longer journey, typically with a new camp every evening.

☛ **Fishing**— you get the idea.

The focus of your trip will help determine the best routes, gear, and destinations. While every Boundary Waters lake has fish, some offer a lot better fishing than others. If you just want to see the sights, your outfitter can recommend some of the most scenic routes in the area. If you're base-camping, you'll really want a nice campsite, probably with a beach and some good fishing or berry-picking nearby.

While entry permits can be a hassle for the uninitiated, your outfitter knows how to navigate the bureaucracy as well as the portages, and they'll take care of that for you. That's not to say that a permit is always available for every entry point. Sometimes, you might have to settle for your second or third choice entry, unless you've reserved a permit well in advance.

The bottom line is, a visit to the Boundary Waters is an experience you'll remember for a lifetime, so don't be intimidated by the logistics involved. Contact an outfitter and you'll find smooth paddling ahead.

**BIKE STORE**

Mesabi Trail Passes

- New Bikes
- Repairs
- Accessories
- Parts

**Mesabi Recreation**  
218-749-6719  
720 9th St. N., Virginia  
M, Tu, Th, F: 10 AM-5 PM  
Sat: 10 AM-4 PM

**Scenic Rivers Clinics**

COVID-19 Vaccines and Testing Available  
at all Scenic Rivers Medical Clinics!  
Call to Schedule an Appointment.

**Cook Medical**  
20 5th St SE  
(218) 666-5941

**Cook Dental**  
12 S River Street  
(218) 666-5958

**Tower Medical and Dental**  
415 N 2nd St, Suite 2 **Medical: (218) 753-2405**  
Former High School Building **Dental: (218) 753-6061**

Chronic Disease Management • Acute Care • Women's Health  
Immunizations • Well Child Care • Sports Physicals • Behavioral Health  
Crowns • Dentures • Fillings • Checkups • Cleanings  
Telehealth Services Available!

**1-877-541-2817** 24 Hour Emergency Care  
Available Through  
Cook Hospital  
[www.ScenicRiversHealth.org](http://www.ScenicRiversHealth.org)

We have extensive policies/  
procedures in place for  
your safety in these  
unprecedented times.

**Comfort INN & SUITES**  
Your Choice for Confident Comfort  
"The Comfort Inn and Suites".

- Newly Remodeled/Renovated
- Room Service For Hot Breakfast Or Breakfast To Go Bags
- Indoor Pool, Whirlpool, Fitness Center
- High-Speed Wireless Internet
- Microwave & Fridge In Every Room
- Just 20 Minutes To Giants Ridge

Located 1 mile W of Hwy 53 on Hwy 169, Mt. Iron

8570 Rock Ridge Dr., Mt. Iron, MN 55768 | 218-741-7411 | 866-987-7411  
[choicehotels.com/minnesota/mountain-iron](http://choicehotels.com/minnesota/mountain-iron)

**Boundary Waters Care Center**

*Caring  
Above and  
Beyond*

200 W Conan St, Ely  
(218) 365-8045



# MAKE A DAY OF IT

If you're looking for a taste of the Boundary Waters but don't have the time for a longer adventure, there are a number of great day trips that offer a true wilderness experience, even if it's only for an afternoon. Here's a couple of our favorites:

## NORTH HEGMAN LAKE

While the easy paddle to North Hegman Lake is most famous for its pictographs, there's so much more to do on this popular day trip that starts just off the Echo Trail. Your only real portage starts at the Hegman Lake parking lot, located about 15 miles north of Ely. From there, most people make a beeline for the lift-over portage into North Hegman Lake, but you'd do well to explore South Hegman if you have time. A large bay on the east side of the lake is worth exploring for its interesting rock formations and a picturesque little waterfall.

You'll find the region's most famous pictographs on an impressive east-facing rock cliff at the northern tip of North Hegman. Enjoy them, but don't head back to

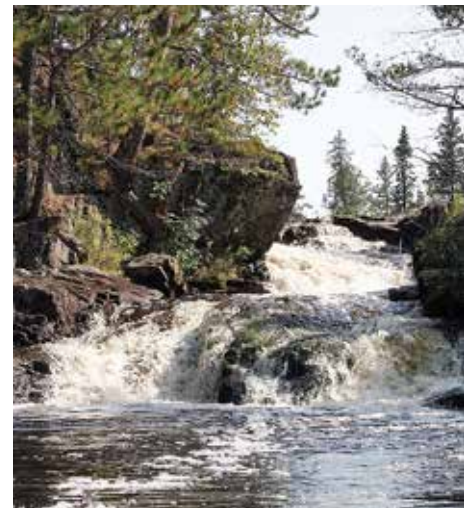
the parking lot until you've slowly paddled the narrow channel that takes you into Trease Lake just a few hundred yards to the north. The channel is lined by floating bog and you'll find insect-eating pitcher plants and tiny sundews if you look closely enough.

This trip can easily be done in three hours, but why not pack a lunch and make a day of it?

## LITTLE INDIAN SIOUX RIVER

Paddling rivers is a very different experience from lake paddling, and many folks prefer it. You're always close to shore, and each new river bend offers a new vista. The Little Indian Sioux River is on the far western end of the BWCAW, and is as readily accessible from the west side of the Echo Trail as from Ely.

From the entry point, most travelers head north, and to do that you'll need to use the westerly access. If you're heading south, look for a small pull-off near where the river crosses the Echo Trail and park there.

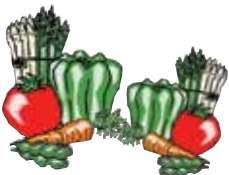


Picturesque Sioux Falls on the Little Indian Sioux River. It makes a nice destination for a wilderness day trip.

Heading north, many travelers use the gorge, known as Devil's Cascade, at the north end of Lower Pauness Lake as their destination. To the south, a good cut-off for a day trip is Sioux Falls, which is bordered by a nice flat rock outcropping which makes a great spot for a picnic lunch.



**Freshest Produce**  
**Quality Meat**  
**Full Service Deli**  
**Homemade Sausage**



201 Hwy 53 SE  
Cook, MN 55723  
**218-666-0205**

## COME CELEBRATE OUR COUNTRY'S RICH HOCKEY HISTORY!



[USHOCKEYHALL.COM](http://USHOCKEYHALL.COM)



## ICONIC EXPERIENCES>>

# SHORE LUNCH

Your best meal in the Lake Country

When it comes to iconic Lake Country experiences, few things can top a shore lunch after a morning spent catching walleye. Pulling up to a bedrock point or pine-studded island on a beautiful day for a meal of fresh fish, fried up with a few onions and spuds over a wood fire, is as close to heaven as it gets. Throw in some beans, warm bread and your beverage of choice, and you just may forget to go back to fishing!

Depending on where you are, just about any flat, open location will do for a shore lunch. The Lake Country is home to thousands of miles of public shoreland, particularly on lakes in the Superior National Forest, so there are plenty of locations from which to choose.

On Lake Vermilion, you can take advantage of eight shore lunch locations maintained by the Vermilion Lake Association. These are ideal spots, scattered across the big lake, complete with a fire grate and a wilderness latrine. They're available for day use on a first-come, first-served basis.

On Vermilion's west end, you'll find two shore lunch spots near the entrance to Norwegian Bay, one on the north shore and the other on the south. You'll also find one toward the northeastern tip of Black Bay. In the lake's mid-section, you'll find lunch spots at Bystrom Bay and Wolf Bay, and on the Tower end, you'll find sites on the lake's north shore, near Bear Creek, in Mattson Bay and Swedetown Bay, both



located in the new Lake Vermilion Soudan Underground Mine State Park. You'll find GPS coordinates and a map at [www.vermilionlakeassociation.org/shore-lunch-sites](http://www.vermilionlakeassociation.org/shore-lunch-sites).

If you do enjoy a shore lunch, just remember to clean up after yourself, so the next person can enjoy it as much as you!

# CLEAN.DRAIN.DRY.

### CLEAN

- Boats, trailers, and gear
- Remove all weeds, mud, and hitchhiking contaminants from axles, wheels, undercarriage, motor, prop, nets, and gear before leaving boat landing

### DRAIN

- Water from boat, bilge, motor, and live well
- Remove drain plug and open all water draining devices
- Trash unused bait

### DRY

- Everything at least five days before going to other waters
- (Or) Decontaminate with high pressure water (120° F or warmer)

**STOP INVASIVE SPECIES!** LEARN MORE AT [CLEANDRAIN.DRY.ORG](http://CLEANDRAIN.DRY.ORG)

## Ely's Old-Fashioned CANDY

228 E Sheridan St. Downtown Ely

**SALT-WATER TAFFY**

**BIG HUNK**

**More than a candy store, it's memories!**

boat loads of TAFFY  
nostalgic CANDIES  
old time SODA POP  
gourmet CHOCOLATES  
& so much more!

Subscribe to the  
Timberjay Newspaper  
(218) 753-2950  
[timberjay.com](http://timberjay.com)



# HIT THE LINKS



The Lake Country has quietly become one of the hottest golf destinations in the Upper Midwest, thanks to the construction of three top-rated courses in recent years. The Wilderness at Fortune Bay, The Quarry at Giants Ridge, and The Legend, also at Giants Ridge, have been rated as some of the top courses in Minnesota, year after year.

☛ The 9-hole **Ely Golf Club**, just south of town on County Road 21, is open seven days a week. Call 218-365-5932 for more information.

☛ The 18-hole **Wilderness at Fortune Bay** on Lake Vermilion near Tower has won so many top awards, we don't have room to list them all. For information, or a tee time, call 1-800-992-4680.

☛ **The Legend and The Quarry at Giants Ridge** in Biwabik, have both consistently been rated among the top public courses in the

country. Call 1-800-688-7669 for information or tee times.

☛ **Wolfridge Golf Course** is located west of Lake Vermilion, in Angora. It has a reputation as an interesting and challenging course. Call 877-666-0218 for more information.

☛ The 18-hole, par 71, **Virginia Golf Course** is open to the public and offers a full service golf shop. It is located at 18th Street North in Virginia. Call 218-748-7530 for more information or to reserve a tee time.

☛ **Vermilion Fairways** in Cook is located on Highway 24, about two miles north of the city limits. The 9-hole course is open seven days a week. Call 218-666-2679 for more information.

☛ **Babbitt Golf Club** is located on St. Louis County Road 70, just west of Babbitt. Call 218-827-2603 for more information.

Lake Country  
News & Views  
each week –  
online at  
[timberjay.com](http://timberjay.com)



"Helping to Guide you Home"

Phone: 218-206-2080

Toll Free: 888-439-4909

[truenorthhomeinspection.com](http://truenorthhomeinspection.com)



associate member

## VIRGINIA GOLF COURSE

- Par 71 • 6,256 Yards
- Tee Times Available - Call to Schedule
- Twilight Specials after 5 p.m.
- Full Service Golf Shop
- Call for Information on Very Affordable Tournaments & Outings
- Michael's on the Course Restaurant & Lounge - Outside Dining Available

**Public Welcome!**

Just 15 minutes west of Giants Ridge Golf Resort, this 18 hole layout is an enjoyable challenge for every level of golfer.  
[virginiamnngolf.com](http://virginiamnngolf.com)



### COUPON

1308 18th St. North, Virginia, MN 55792  
**218-748-7530**

Please redeem at check-in  
**\$5.00 OFF Round of Golf**

Cart fee required  
Valid Mon-Fri Anytime / Sat-Sun after Noon  
Not valid tournament, league or twilight

# Wolfridge Golf Course

- Great views, fast smooth greens and lush fairways
- You can't beat the affordability of Wolfridge Golf Course
- Only 25 minutes from the Wilderness Golf Course
- Only 45 minutes from Giants Ridge Golf Course

*Want to play 18 of the most beautiful and challenging holes of golf in the Northland?*

No Tee Times  
Needed!

[wolfridgegolf.com](http://wolfridgegolf.com) • [wolfridgegolf@hotmail.com](mailto:wolfridgegolf@hotmail.com)  
Located off Hwy 53 between Cook and Virginia  
**Call for info: 218-666-0218 or 877-666-0218**





## A SENSE OF HISTORY>>

# MUSEUMS & MORE



### TOWER-SOUDAN DEPOT MUSEUM

Learn about Tower-Soudan history at this small, but fascinating museum, located inside Tower's historic train depot. You can also tour the restored train cars and caboose located next to the museum. Train cars open daily from 9 a.m. - 6 p.m. Depot Museum open Friday/Saturday from 10 a.m. - 4 p.m. and Sunday from 11:30 a.m. - 4 p.m. It's located just off Hwy. 169 in Tower, adjacent to the Tower Civic Center.

### NELIMARK HOMESTEAD

Located on Hwy. 21, just across from Timber Hall in "downtown" Embarrass, the Nelimark Homestead is open 10 a.m.-4 p.m., Thursday, Friday and Saturday from June 3 through September.

Fridays are bread days, with fresh bread and treats like Finnish biscuit and cinnamon rolls.

Historic buildings on the property are open for viewing, decorated with authentic

items from the past.

Longtime resident Gary Rantala will offer Conversational Finnish classes at 1 p.m. on Thursdays.

The museum offers handcrafted items, books on local and Finnish history, and baked goods. For more information, call 218-290-0882.

### DOROTHY MOLTER MUSEUM

Learn about the life of the last resident of the Boundary Waters Wilderness at the Dorothy Molter Museum in Ely. Her original wilderness log cabin was painstakingly moved and re-assembled in Ely and is now home to the museum that bears her name. Dorothy was famous for her homemade root beer, which prompted her common nickname, "The Root Beer Lady."



The museum is open 10 a.m.-5 p.m. daily beginning May 29 by reservation only. Limited fall hours. Call 218-365-4451.

### US HOCKEY HALL OF FAME

Hockey fans visiting the Lake Country won't want to miss a stop at the U.S. Hockey Hall of Fame Museum, in Eveleth. It's America's hockey showcase, highlighting and honoring the contributions to the game from outstanding coaches, players, and others who have helped promote American hockey through the years.

Eveleth has long been known as "The Capital of American Hockey" and enjoys a rich hockey tradition, having produced more top quality players than any community of its size in the country.

You'll find the hall of fame just off Hwy. 53 in Eveleth. It's open Monday-Saturday, 9 a.m.-5 p.m., Sunday 10 a.m.-3 p.m., Memorial Day-Labor Day. After Labor Day, it's open Friday 10 a.m. to 5 p.m., Saturday 9 a.m.-5 p.m., and Sunday 10 a.m.-3 p.m. Visit [www.ushockeyhall.com](http://www.ushockeyhall.com) for more information.



**KUUMA**  
Smokeless Wood Furnaces  
and Fantastic Sauna Stoves!

**Call about the 26% tax credit!**

**WORLD'S #1**  
HOT AIR WOODBURNING FURNACE!

.45 gr/hr. emissions  
99.4% comb efficiency  
99% smokeless burns

**833-660-1064**

[lampmfg@gmail.com](mailto:lampmfg@gmail.com) [lappakuuma.com](http://lappakuuma.com)



**Centrally located  
on beautiful  
Lake Vermilion  
in protected Everett Bay**




One of Minnesota's  
"Nine Great  
Fishing Getaways."  
-MN Sportsman's  
Magazine

10 cabins, 1-5+ beds  
Satellite TV, Internet  
Full Kitchens, fireplaces  
Reserved dock spaces  
Paved roads & boat launch  
Pool, sauna, kayaks and fire pit  
Guide service, gas, bait and ice  
Fishing boat rental  
Numerous other amenities!

We cater to serious anglers as well as  
families looking for a classic, northern  
Minnesota vacation!

Contact us for reservations  
[everettbaylodge.com](http://everettbaylodge.com) | 218-753-5115



**Wintergreen  
NORTHERN WEAR**

**HANDMADE ON THE MAIN STREET  
ELY, MN**



## ELY-WINTON HISTORY MUSEUM

Located on Ely's Vermilion Community College campus, this center shows the local history of logging and mining through artifacts, photographs and displays. Open Tuesday-Saturday, 12-4 p.m., Memorial Day-Labor Day. Call 218-365-3226 for more.

## ELY ARTS & HERITAGE CENTER

Located at Pioneer Mine on Ely's north side, the site is managed by Ely Greenstone Public Art (elygreenstone.org). The mine is listed on the National Register of Historic Places. The Shaft House, 401 North Pioneer Rd., is open Memorial Day through Labor Day on Tuesdays from 2-5 p.m. and Fridays, 3-6 p.m., or by appointment. Photos and artifacts from the underground mine which closed in 1967 are displayed. The Miner's Dry House, 105 Miner's Lake Landing Rd., features events, art shows and classes throughout the year and is located alongside the Trezona Trail. Call 218-365-2142 for more information.

### Tiny Bubbles Laundromat

**316 Main Street in Tower**  
 Next to Good 'Ol Days  
 Open 24/7 • FREE Wifi



## Orr Municipal Liquor Store

- Appetizers & Pizza
- Charitable Gambling
- Bar & Liquor Store

Open M-Thurs: 9 AM-Midnite, Fri & Sat: 9 AM-1 AM  
 218.757.3935  
 Hwy. 53 • Downtown Orr, MN

## THE OLD MUNI BAR & LOUNGE



OPEN SUN.-THURS. 10 AM-1 AM, FRI. & SAT. 8 AM-1 AM  
 218.780.8242 • DOWNTOWN COOK, MN

## FIND YOUR PLACE



NOW ENROLLING: 7th - 12th Grade

**Math**

**Science**

**Language Arts**

**Social Studies**

**Life Skills**

**Tech Applications**

**Performing Arts**

**Yearbook/Newspaper**

**Small Classes**

**One on One Attention**

**Outdoor Classroom**

**Transportation Options**

**Breakfast/Lunch**

**Community Service**

**Environmental Education**

**Hands-on Learning**



## Vermilion Country School

Developing successful adults with skills  
to enrich their communities and the environment

218.753.1246    [info@vermilioncountry.org](mailto:info@vermilioncountry.org)

Vermilion Country School is located in Tower, MN  
and is authorized by the State of MN and Osprey Wilds

316 Main St • Tower  
218-753-6097

OPEN DAILY  
M-Sat 6 am • Sun 8 am



“Best Bloody Mary  
in Minnesota”



Step back in  
time at the  
Good Ol' Days  
Bar and Grill on  
Tower's Main Street  
with a nostalgic  
pictorial tour  
through the local &  
cinematic past, set  
in a 1930s style  
bar and grill.

### The Good Ol' Days Features:

- 6 am breakfast Mon.—Sat. and 8 am breakfast on Sun.
- 5-7 pm happy hour Mon.—Fri.
- Daily meal specials
- Home made soups & chili
- Friday fish fry
- Pool table, dart board & enough TVs to catch all the action

SEE OUR MENU AT [www.goodolddaystower.com](http://www.goodolddaystower.com)







**FEATURE >>**

# LAKE COUNTRY 365

Summertime is great in the Lake Country, but those who have experienced all four seasons up here know that there's just as much to do the rest of the year.

Unfortunately, many visitors only experience one season, and undoubtedly head home wondering what those of us who live here do the other nine months of the year.

They might be surprised to learn that we spend almost as much time in the great outdoors those other months as we do in the summer. That's because each season brings its own unique weather and a whole host of fun activities that keep Lake Country residents busy the entire year.

In fact, believe it or not, most residents here will tell you their favorite season isn't summer, it's autumn. It's a spectacular time to enjoy the area's forests and lakes. The weather is often still mild right through September. The fall color season is amazing, starting with the oranges and scarlets of the red maples in mid-to-late September, followed quickly by the brilliant golden hues of the aspen and birch. Mix in the deep greens of the pine, spruce and balsam fir,

and it's a tough combination to beat.

Autumn is a great time to be in the woods. The crisp days make for perfect weather for hiking or hunting, both popular fall activities. And we won't even mention how good the fishing gets as the water starts to cool. We'll keep that little secret for the locals!

By November, it's deer hunting season, which is essentially an extended holiday here in the Lake Country. Hunters of all ages, both men and women, boys and girls, fan out through the woods, often spending a week or more at their remote hunting cabins. It's a time when families across the generations get together without all the distractions that seem to intrude on normal life these days. For many it's the highlight of the year, and bagging a deer is just a bonus.

By the time deer season winds down, the first snow of the winter is usually on the ground and folks are gearing up for the long cold season. Up here, the snow usually lasts from mid-November to mid-April, which is one reason so many residents take up winter sports. By Thanksgiving, the lakes are frozen up and the ice fishing season is underway, since the local anglers all know that the best fishing



comes with the early ice. It's often the best fishing of the year, and fishing enthusiasts make the most of it. By mid-December, there's usually enough snow for skiing, dog sledding, snowshoeing, and snowmobiling and that's when winter in the Lake Country hits high gear.

Winter festivals and special events are popular. Ely's Winter Festival, held each year in early February, features exquisite snow sculptures and ten days worth of activities. Later in the month, the Wolftrack Classic Sled Dog race is another popular event.

While winter is an active time for many residents, it's also a time of year when things

slow down and the hubbub of the busier seasons quiets down. Here, where many weeks can pass between even the briefest thaws, the winter snow blankets the trees, often for months at time. It's like a Christmas card, but in real life.

Does it get cold? You bet it does...really cold at times. But even a minus 45-degree morning has its own unique appeal. It's a time to bundle up, strap on the snowshoes, and trek out into the woods to experience the rarified air, to hear the sounds of booming lake ice and the crack of trees as they pop in the intense cold. When you return home to find your face frosted all the way up to your eyebrows, you know it's deep winter

in the Lake Country.

While it takes its own sweet time, spring does eventually arrive here in the north, and it's a well-earned celebration after the long winter. Spring can be a time of setbacks, and it's not uncommon to see snow in the Lake Country even for fishing opener. But spring means summer can't be far behind, and another busy season is about to get underway.

So, we hope you enjoy your visit to the Lake Country this summer. And we'd sure like to see you back this fall or winter. You might be surprised at how much fun it can be.



*A Regional Favorite*

**STOP IN TODAY OR CALL...**

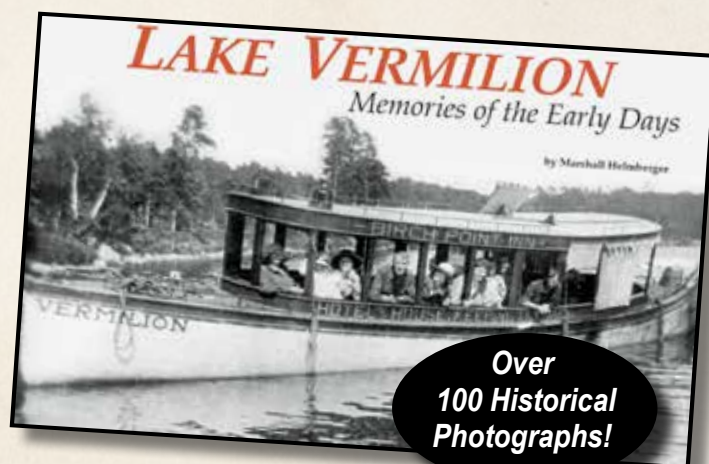
**Just \$29.95** + Tax

*Don't miss your chance to own Lake Vermilion's most definitive history!*

## *Memories of the Early Days*

**A fascinating look back at the early history of the Lake Vermilion area**

**Written by Marshall Helmberger • Published by the Timberjay**



**Pick up book(s) at Timberjay office in Tower or have book(s) mailed, for \$39.95 each.**



**The Timberjay**  
P.O. Box 636, 414 Main St  
Tower, MN 55790 • 218-753-2950

### **BOOK ORDER FORM**

Quantity of Books \_\_\_\_\_

Name \_\_\_\_\_

Address \_\_\_\_\_

City \_\_\_\_\_ State \_\_\_\_\_ ZIP Code \_\_\_\_\_ Tel.# \_\_\_\_\_

Credit Card Information VISA MC DISCOVER

Exp. Date \_\_\_\_/\_\_\_\_/\_\_\_\_ CVV \_\_\_\_\_

Billing address if different from above \_\_\_\_\_

**Book Total - Pick Up \$29.95 + tax (\$32.16)**

**Book Total - Mail \$39.95**

Total charged to credit card \$ \_\_\_\_\_ Paid by check \$ \_\_\_\_\_ Check # \_\_\_\_\_

☐ Pick Up ☐ Mail





**JANISCH**  
— REALTY —



## Private Peninsula on Vermilion's Norwegian Bay

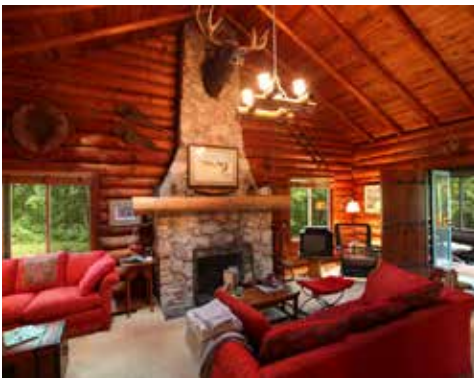
Like Driving to Your Own Island.

**COOK, MINNESOTA** A private peninsula estate on Lake Vermilion. Set in an ideal location in Norwegian Bay - this property is just 18 miles from town or the airport. The estate consists of 18.5 acres and 2,780 feet of lakeshore with the opposite shoreline mainly undeveloped. This home was custom built in 2014 to showcase views of the water from almost every room. There are four Master suite bedrooms, seven baths, four fireplaces, and a hidden limestone wine cellar. A two story great room with a massive fireplace is a wonderful gathering place. There is an alder, granite and marble kitchen with a walk-in pantry and island open to the great room, dining room, bar and screen porch, all of which are lakeside. The main floor lakeside King suite has it's

own fireplace and glass doors to the lakeside patio. Upstairs there are 3 more Master suites, a library, and a 3rd floor scotch room with a lakeside deck. Other amenities include an attached three stall garage with a fitness room and sauna above. A timeless limestone exterior includes a slate roof and copper gutters, chimneys and turrets. In floor heat, central air, a drilled well, main floor laundry, a back up generator, and manicured grounds complete the package. At the lake there is a boat-house with two rails, a boat launch, and two docks.

|                   |                   |                    |
|-------------------|-------------------|--------------------|
| <b>OFFERED AT</b> | \$3,985,000       |                    |
| <b>DETAILS</b>    | 4 BED/7 BATH      | 8,000 SF           |
|                   | 18.5 ACRES        | 2,780 FT SHORELINE |
| <b>ON THE WEB</b> | JANISCHREALTY.COM | MLS#137821         |





# Commanding Big Bay Views and Privacy

Watch the Sun Rise and Set from the Lighthouse on this Spectacular Property.

**TOWER, MINNESOTA** A secluded retreat on Lake Vermilion, this vast property features two classic cabins - one of them a log structure. A historic lighthouse/gazebo on the point adds a unique touch. There is also an extra large wet boathouse with electricity and water, a sauna, and a perfect building site at the location of a Steamboat Era resort lodge. The lot gradually slopes to the waters edge. This is in a convenient location between Canfield Bay and Big Bay. See sunrise views across Big Bay into Armstrong Bay in one direction and sunset views all the way into Daisy Bay - 5 mile views! Set on 110 acres and 6,743 feet of South, Southwest, East & North-facing shoreline. The original lodge burned in approximately 1959, leaving a huge level

building site, secluded so privacy is assured and commanding outstanding views. The original year round caretakers cabin has one bedroom and a bath, an old fashioned vaulted sun room that opens to the deck, stone paths, and even an outdoor stone hearth. The year round log cabin has two bedrooms and a bath, a massive fireplace, and a screened front porch. There are nostalgic lighted paths on the developed portions of this property. There is also plenty of protected shoreline for a floatplane harbor and even room for a helipad.

|                   |                                 |                    |
|-------------------|---------------------------------|--------------------|
| <b>OFFERED AT</b> | \$1,295,000                     |                    |
| <b>DETAILS</b>    | 3 BED/2 BATH                    | 1,044 SF           |
|                   | 110 ACRES                       | 6,743 FT SHORELINE |
| <b>ON THE WEB</b> | JANISCHREALTY.COM    MLS#139622 |                    |



## Burntside Paradise

ELY, MN Burntside Lake handcrafted log home in a private bay at the end of a pristine granite fjord. Set on 1,703 feet of shoreline and 38.75 acres of park-like forest w/walking trails, surrounded on 3 sides by Federal forests at the edge of the BWCA. Huisman custom built 2010, 800 SF, 1 bed/1 bath home with a wrap around deck. Open great room with a wood burning fireplace and a wall of windows showcasing majestic panoramic views over the lake and surrounding forest. Surveyed, drilled well, full septic system, fire suppression system, permanent electricity (no generator), dock. A spectacular retreat from the distractions of everyday life. Relax in the total peace and quiet of the forest & the extraordinary beauty of Burntside!

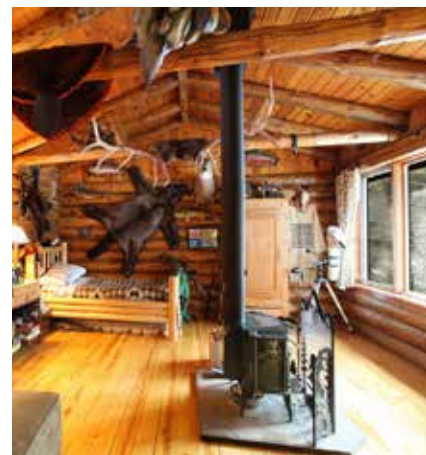
**OFFERED AT** \$1,085,000  
**DETAILS** 1 BED/1 BATH 800 SF  
38.75 ACRES 1,703 FT SHORELINE  
**ON THE WEB** JANISCHREALTY.COM



## Cedar Island Lake Estate

GILBERT, MN Private estate on Cedar Island Lake! Convenient location! Secluded in towering pines on lake & river. 3 miles to town/7 to Giants Ridge Golf & Ski Resort, 29 to airport. 20 acres & 437 ft lakeshore. Built 2004, stone & cedar home, attached 2 stall garage w/in-floor heat & guest quarters above. Two story timber frame trussed great room, cherry wood floor, Rumford fireplace. Wolf/SubZero/granite kitchen w/island open to great room, dining & expansive deck, all lakeside. Luxurious lakeside King suite w/private deck, walk-in closet & marble bath. Main floor laundry. 2 spacious main floor bedrooms & baths. Downstairs, huge rec room, sauna, workshop/wine cellar, doors to deck. Greenhouse. Dock. Adjoining 23 acres w/lake & river frontage & 2 cabins also for sale.

**OFFERED AT** \$748,500 and \$349,500  
**DETAILS** 4 BED/5 BATH 6,277/660 SF  
20/23 ACRES 437/2,034 FT SHORELINE  
**ON THE WEB** JANISCHREALTY.COM MLS#140739 & 140654



JANISCH REALTY | EXCELLENCE. EFFORT. EXPERTISE. | (218) 780-6644 | INFO@JANISCHREALTY.COM | WWW.JANISCHREALTY.COM





## Riverside Country Sanctuary

**MT. IRON, MN** Private estate built by contractor for his family, set on wooded acres featuring a river & 2 ponds. Beautiful country views & abundant wildlife! Just 15 mi to Virginia or 10 to Hibbing. Custom built 2003, cedar sided home w/ lg attached garage, covered & enclosed porches riverside. Cedar sauna log cabin, 48x36 detached garage w/in-flr heat, 60x36 detached garage w/36x20 heated workshop. Vaulted great rm w/massive firepl & natural light pouring in two story tall windows, open to covered porch, firepit patio & 3 season porch w/hanging bed—all along the river. Hickory/granite/SubZero kitchen features Aga stove & 2 islands, open to DR & south patio. Main flr master BR, bth & laundry. Upstairs master BR & fam rm/office/potential BR, each open to a private deck overlooking river. Spacious loft BR. Wine cellar. Addl acreage available.

**OFFERED AT** \$889,500  
**DETAILS** 3 BED/3 BATH 5,240 SF  
 32 ACRES 3,858 FT RIVERFRONT  
**ON THE WEB** JANISCHREALTY.COM MLS#140852



## Farm Lake Woods & Water

**ELY, MN** Secluded lake home across bay from BWCA, like driving to your home in the Boundary Waters! Just 6 miles to Ely, 2.28 acres of gradual forest & 310 feet East-facing excellent swimming shore, Farm Lake—a 1,291 acre lake, 56 feet deep, stocked w/ Walleye on a 5 lake chain. Custom one owner 4,913 SF, 3+B/3B cedar sided home w/ metal roof, attached 2 car garage, detached 2 car garage. Great room w/natural light pouring in Marvin windows, native stone wood burning fireplace, door to deck. JennAir kitchen w/island, open to great room. Main floor bedroom and bath. Upstairs suite w/ bedroom, bath & living. Walkout lower level w/family room, bedroom, bath, sauna, laundry, sewing room & workshop. Brick drive, covered entry, forest fire sprinkler system.

**OFFERED AT** \$798,500  
**DETAILS** 3 BED/3 BATH 4,913 SF  
 2.28 ACRES 328 FT SHORELINE  
**ON THE WEB** JANISCHREALTY.COM MLS#140967



## Pelican Lake Private Island

ORR, MN Your own private island & vintage lodge on beautiful Pelican Lake! 4 mile sunrise views, sun all day long & 3 mile sunset vistas. Excellent swimming. Exceptional fishing. Comfortably sleeps 16. 15.75 acres & 3,330 ft lakeshore w/opp shoreline mostly undeveloped, just 6 mi to airport/9 to town. Well maintained lodge at waters edge, originally built to entertain VIPs of bygone era now updated w/modern amenities, 3+BR/1.5 BTH, 3 fireplaces. Lodge features vaulted great rm w/granite firepl & sunsets streaming in wall of windows right on the water. Old fashioned kitchen open to great rm, dining & screen porch, all lakeside. Main flr lakeside King suite w/firepl. Main flr 2 bed guest rm w/firepl. Main flr 6 bunk BR. Yr rnd bunkhouse rebuilt 2 yrs ago w/firepl & screen porch. Huge wet boathouse. Cent air. Walking path around shore. Large docks.

**OFFERED AT** \$695,000  
**DETAILS** 3 BED/2 BATH 2,117 SF  
 15.75 ACRES 3,330 FT SHORELINE  
**ON THE WEB** JANISCHREALTY.COM MLS#139846



## Wakemup Village Retreat

COOK, MN Private Lake Vermilion one level 3 bedroom year-round home w/3 stall heated garage. The home is set back off a paved road on 145 feet of SW-facing shoreline—clear water, excellent swimming, 5 mi to town, 1 to golf. 1,230 SF home w/new cement board siding. Livingroom w/gas fireplace & picture window capturing sunsets. Lakeside kitchen offers bar w/island & glass doors to new deck. Lakeside bedroom w/new deck plus 2 King bedrooms. Updated full bath. Laundry. All new: Pella windows, doors, minisplit air conditioning, dual fuel electric boiler, attic insulation. Updated electric. Newer septic. Drilled well. Beautiful yard w/shade trees, gentle slope to water. Lakeside sauna/storage building. Dock.

**OFFERED AT** \$434,500  
**DETAILS** 3 BED/1 BATH 1,230 SF  
 0.6 ACRES 145 FT SHORELINE  
**ON THE WEB** JANISCHREALTY.COM MLS#140216







## White Iron Beauty

ELY, MN Easy 1 level living & incredible sunsets! Private lake home at waters edge on White Iron. Excellent swimming shoreline, pvt location on dead end road, 8 miles to Ely. White Iron Lake chain has direct access to BWCA. Maint-free sided home w/living, dining, kit, rec rm & all BRs lakeside. Att 30x26 & det 26x26 gar. Walkout LL has 2 BRs, sauna bath. Level from house to lake. Dock.

**OFFERED AT** \$724,500  
**DETAILS** 3 BED/2 BATH 2,288 SF  
 2.9 ACRE 380 FT SHORELINE  
**ON THE WEB** JANISCHREALTY.COM



## Peace and Privacy on Farm Lake

ELY, MN Beautiful Farm Lake home on White Iron chain, custom built to showcase art collection. S-facing shoreline. Pvt location. 7 miles to Ely. Cedar sided home, vaulted great rm w/firepl, wall of windows lakeside, kitchen w/ island open to lakefront 3 season porch, great rm & dining. Lakeside King BR w/bth & WIC. Walkout LL w/rec room & firepl, lakeside deck, 2 BDs, bath, hot tub. 3 stall gar.

**OFFERED AT** \$649,500  
**DETAILS** 3 BED/3 BATH  
 2.4 ACRES 285 FT SHORELINE  
**ON THE WEB** JANISCHREALTY.COM



## Lake Fourteen Convenience

BRITT, MN 1 level lake home on level lot — gorgeous views! On paved road in the pines w/att. 2 stall gar, Crescent beach shoreline & 1.7 acres adj. Superior Natl Forest, 18 mi to Virginia. 1/2 log sided home, pvt park like yard. Lakefront livingrm w/wd firepl, wall of windows & door to lakeside deck. Kitchen open to living & water view. Lakeside master w/pvt bth. 2 guest BRs, den. Good internet.

**OFFERED AT** \$349,500  
**DETAILS** 3 BED/2 BATH 1,575 SF  
 1.7 ACRES 194 FT SHORELINE  
**ON THE WEB** JANISCHREALTY.COM MLS#140981



## Pine Island Sunrises

TOWER, MN Like new secluded island retreat w/island studded views set in pine forest & rock outcroppings on Lake Vermilion, short boat ride to Glenwood Lodge/launch. Set on E.-facing shoreline w/opp. shoreline Fed. forest, just 2 mi to BWCA. Vaulted tongue and groove great room w/wall of windows lakeside open to deck. Large modern kitchen open to livingroom & water view.

**OFFERED AT** \$298,500  
**DETAILS** 2 BEDS/1 BATH 823 SF  
 2.6 ACRES 263 FT SHORELINE  
**ON THE WEB** JANISCHREALTY.COM MLS#141064



## Secluded Charmer - Garden Lake

ELY, MN Custom one owner yr-rnd home w/deeded access to Garden Lake on White Iron chain - lakes which offer direct access to BWCA. Secluded in beautifully wooded acres. 1/2 log sided home. Vaulted great rm, massive stone firepl & floor-ceiling glass open to deck. Kitchen w/island. Main flr King BR. Spacious loft w/BR, BTH, room for office. Walkout garden level w/craft rm, fam/rec rm, bath.

**OFFERED AT** \$398,500

**DETAILS** 2 BED/3 BATH 1,947 SF

2 ACRES DEEDED ACCESS - GARDEN LAKE

**ON THE WEB** JANISCHREALTY.COM



## Fall Lake Vistas

ELY, MN Custom Boundary Waters lake home on Fall Lake! Home offers sandy swimming, private gradual lot, beautiful views! (Opp. shoreline mostly undeveloped.) 7 mi to Ely & 1 mi ride from your dock to the BWCA. 1/2 log sided home w/metal roof + 3 stall gar w/1BR/1BTH aptmt above. Lakeside dining & living w/2-sided firepl, lakeside kitchen, lakefront deck. Walkout LL.

**OFFERED AT** \$698,500

**DETAILS** 3 BED/2 BATH

1.2 ACRES 200 FT SHORELINE

**ON THE WEB** JANISCHREALTY.COM



## Frazer Bay - Vermilion

TOWER, MN Pvt island on Frazer Bay, Lake Vermilion, Secluded retreat in towering pines, short ride across calm water to choice of landings. Located in an area of breathtaking scenery. Gradual park like grounds w/majestic white pines & rock outcroppings. Main & guest cabin grandfathered at waters edge - renovate to keep the waters edge footprint or remove to build your dream. Boathouse.

**OFFERED AT** \$398,500

**DETAILS** 2 BED/1 BATH 1,008 SF

5.25 ACRES 2,200 FT SHORELINE

**ON THE WEB** JANISCHREALTY.COM MLS#139923



## Burntside Refuge

ELY, MN Safe haven. Peaceful refuge. Leave your other life on the mainland & relax to the wind in the towering pines & waves lapping the shore of your private island. Secluded in Natl Forest, w/360° blue water vistas. This is an area of breathtaking scenery W. of Listening Pt, behind Snellman Island. Buildable following Planning & Zoning guidelines. Includes permanent elec. and 10 ft lift dock.

**OFFERED AT** \$398,500

**DETAILS** 4.5 ACRES 2,070 FT SHORELINE

**ON THE WEB** JANISCHREALTY.COM MLS#141123







## Black Duck Bay Island

**TOWER, MN** Whole private island near the center of Lake Vermilion, just offshore from public landing & Shamrock Marina, short ride across calm water. Potential building site at E end of island offers nearly 360° water views. Protected cove on S side offers area for dock & excellent swimming. Watch eagles, pick berries, swim or catch Walleyes right off your own private island.

**OFFERED AT** \$324,500  
**DETAILS** 4 ACRES 1,615 FT SHORELINE

**ON THE WEB** JANISCHREALTY.COM MLS#140130



## Vermilion East End Lot

**TOWER, MN** Secluded Lake Vermilion acreage — 17 acres at end of the road, towering pines! Just 5 mi to town, championship golf, dining. Cabin or lake home could be positioned just 75 ft from water. Choice of building sites, potential to subdivide. Easy year round road access & electric nearby.

**OFFERED AT** \$298,500  
**DETAILS** 17 ACRES 424 FT SHORELINE

**ON THE WEB** JANISCHREALTY.COM MLS#140752

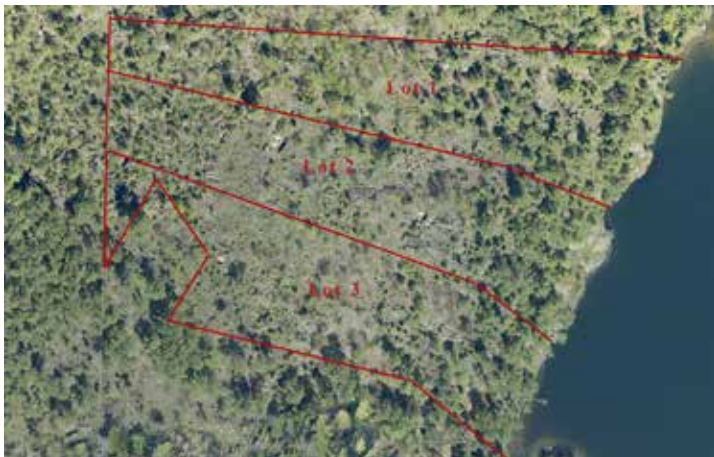


## Vermilion Niles Bay Lots

**COOK, MN** Rare South-facing road accessible parcels adjoining 1,000's of acres of State land - unrestricted South/Southwest sunset views all the way across Niles Bay. Park like forest of giant whispering pines. Surveyed, septic sites, electricity nearby. Adjacent lots available.

**OFFERED AT** \$214,500-\$275,000  
**DETAILS** 4.6-16.1 ACRES 247-455 FT SHORELINE

**ON THE WEB** JANISCHREALTY.COM MLS#140715, 6, 7



## Waters Island Lots - Burntside

**ELY, MN** Waters Island, Burntside Lake! Incredible setting for the lake home or cabin of your dreams! One of the best views on Burntside overlooking the lake & forest below! Three apx. 3 acre lots in a park like forest of towering pines & rock outcroppings with island-studded 2 mile blue water & sunshine vistas NE, E & SE. Surveyed, approved for septic & electricity on site.

**OFFERED AT** \$175,000-\$235,000  
**DETAILS** 3-3.1 ACRES 225-280 FT SHORELINE

**ON THE WEB** JANISCHREALTY.COM MLS#141068





## Lake Superior

HOVLAND, MN The Lake Superior homesite of your dreams! Beautiful level building site w/gradual slope to water on Chicago Bay & stunning views of Lake Superior. Spectacular rock outcropping behind building site. Community septic system and electricity.

**OFFERED AT** \$234,500  
**DETAILS** 1.24 ACRES 215 FT SHORELINE  
**ON THE WEB** JANISCHREALTY.COM MLS#140355



## Lake Fourteen

BRITT, MN Rare, level lake lot set back off paved road in the pines on sought after Lake Fourteen. Crescent beach shoreline & open level lot adj. Superior Natl Forest, 18 mi to Virginia. Lake Fourteen is a 376 acre lake in the Superior Natl Forest, awaiting your lake home or cabin. Adjoining lake home also for sale.

**OFFERED AT** \$198,500  
**DETAILS** 1.35 ACRES 205 FT SHORELINE  
**ON THE WEB** JANISCHREALTY.COM MLS#140982



## Canfield Bay

TOWER, MN Put your feet up & relax as the sun sinks down into the water—see 5 miles all the way across Big Bay. Secluded Lake Vermilion building site commands unrestricted S & W facing Big Bay views. Moderate elevation with a gradual slope to the shoreline, choice of stunning building sites.

**OFFERED AT** \$198,500  
**DETAILS** 7.63 ACRES 1,095 FT SHORELINE  
**ON THE WEB** JANISCHREALTY.COM MLS#140509



## Black Duck Island

TOWER, MN Secluded island retreat, Lake Vermilion! Mesmerizing W, S & E views—see 4 mi sunsets all the way to the end of Frazer Bay, island studied views S & 2 mi E toward Moc Pt for magnificent sun & moon rises! Short ride from choice of marinas to this pvt peninsula ready for your cabin. Central location. Protected bay for docking.

**OFFERED AT** \$198,500  
**DETAILS** 3.56 ACRES 1,250 FT SHORELINE  
**ON THE WEB** JANISCHREALTY.COM MLS#140939



## Giants Ridge

BIWABIK, MN Prime lake-shore lot - Voyageurs Retreat at Giants Ridge Golf & Ski Resort - largest lot in Northwoods Block - wooded acres gradually sloping to sandy shore. Driveway to building site w/sunset views. City water, sewer, elec, & cable stubbed into lot. Gas & high speed internet at Voyageurs Trail.

**OFFERED AT** \$119,500  
**DETAILS** 2.3 ACRES 155 FT SHORELINE  
**ON THE WEB** JANISCHREALTY.COM MLS#140864



## Eagles Nest

ELY, MN 10 acre building site set off paved road in Eagles Nest Chain Of Lakes. 12 miles to Ely or Tower & minutes from choice of public landings and marinas, including Lake Vermilion. Enjoy lake living without lake taxes. Privacy, seclusion & wildlife, short distance to BWCA, close to golf & dining.

**OFFERED AT** \$39,500  
**DETAILS** 10 ACRES  
**ON THE WEB** JANISCHREALTY.COM MLS#139602



## Giants Ridge

BIWABIK, MN Imagine curling up in front of the fireplace as the snow falls & the lights of the ski hill twinkle or relaxing on your deck with views up Fairway 12! Secluded 1/2 acre building lot on paved drive on The Legend Golf Course, access to Wynne & Sabin Lakes. City utilities.

**OFFERED AT** \$34,500  
**DETAILS** 0.54 ACRES  
**ON THE WEB** JANISCHREALTY.COM MLS#140522



## Wynne Lake

BIWABIK, MN Wynne Lake Sunset Shores Development. Lots A, B, C, D, Outlot E, F, G H, and I. Simple covenants and city utilities at Voyageurs Trail.

**All lots sold in 2020!**

**OFFERED AT** \$129,500-\$259,000  
**DETAILS** 2.5-13 ACRES  
**ON THE WEB** JANISCHREALTY.COM





## Glenwood Lodge

**TOWER, MN** Opportunity Zone Investment. Lake Vermilion resort just 5 miles to the BWCA Trout Lake entry point (closest entry point to the Twin Cities) & only 4 hours North of Mpls/St Paul, 20 miles to Ely. Strong base of repeat customers plus growth potential. 21 forested acres of which the resort uses approximately 4 acres. 710 feet of shoreline includes a sandy beach, a boat launch and 8 docks, a protected cove, and warm southern exposure. 7 furnished cabins at waters edge (2 are newer log cabins), RV sites, popular lakeside bar, boat storage buildings, sauna/laundry building, bait building, boat gas sales & rental boats. One of the few commercially zoned parcels on Lake Vermilion.

**OFFERED AT** \$1,590,000  
**DETAILS** 7 CABINS - SLEEPS 46 + RV SITES  
 21 ACRES 710 FT SHORELINE  
**ON THE WEB** JANISCHREALTY.COM MLS#141227



## Good Ol' Days Bar & Grill

**TOWER, MN** Good Ol' Days is an extremely popular restaurant & bar located on the road to Ely & minutes to Lake Vermilion landing, championship golf, State parks & snowmobile trails. Well maintained bldg includes Tiny Bubbles laundromat (only one in town; 22 washers, 11 dryers.) & 4 apartments (3 2BR & 1 1BR, all w/separate electric, hot water heat, new windows 2016, new rubber roof apx 2014). Corner lot w/ample parking. 2,300 SF circa 1887 barroom w/original hwd flr & 1910 tin ceiling w/model train running the perimeter, African mahogany bar, 1930's back bar, memorabilia, 11 TVs, air cond, easy access bathrms. Kitch w/8 frig/freezers, 2 fryers, 2 grills, charbroiler, cooktop, dishwasher. 3,500 SF basement w/7 frig/freezers, walk in cooler, icemaker & easy access to exterior for deliveries. Don't miss this opportunity!

**OFFERED AT** \$425,000  
**DETAILS** BAR & GRILL - LAUNDROMAT  
 4 APARTMENTS - 10,500 SF

**ON THE WEB** JANISCHREALTY.COM MLS#140950





*"The finest Realtor I've ever worked with in my life." - Tim K.*



## Silver Rapids Lodge

**ELY, MINNESOTA** Silver Rapids Lodge is For Sale. This business is a well maintained full service Boundary Waters Area resort. Financeable books and excellent development opportunities with an assumable SBA Loan! A one of a kind property at the confluence of White Iron and Farm Lake includes 59.7 acres with 3,040 feet of lakeshore that is split between White Iron & Farm Lake. They are multiple use lakes & also a direct entry to the BWCA. The property features individual small cabins, large group cabins, hotel units, camping and RV sites, a large dining area with a full commercial kitchen, a full bar, banquet areas, retail space, a marina, boat gas sales, rental boats, a 40 person sauna, laundry

facilities, recreation space. Ample room for expansion. Just 3.5 miles to town, the resort is convenient to Ely area amenities such as the North American Bear Center, the International Wolf Center, shopping, and fine dining. Don't miss this turn key opportunity to own your own popular business in the Boundary Waters Area. This offering represents an opportunity to acquire a well maintained and full service profitable resort in a growing market.

|            |                                 |                    |  |
|------------|---------------------------------|--------------------|--|
| OFFERED AT | \$2,625,000                     |                    |  |
| DETAILS    | 12 CABINS & 42 CAMPSITES        |                    |  |
|            | 59.7 ACRES                      | 3,040 FT SHORELINE |  |
| ON THE WEB | JANISCHREALTY.COM    MLS#136512 |                    |  |



Let's Make Sold Happen For You Too! 218-780-6644 [www.JanischRealty.com](http://www.JanischRealty.com)

