

STAY ALERT

BALDWIN COUNTY

INSIDE

SHELTER INFORMATION
EVACUATION ROUTES
BEACH SAFETY
VOLUNTEERING
EMPOWERING RESILIENCE

2025 ALABAMA GULF COAST EMERGENCY PREPAREDNESS GUIDE



A publication of **GULF COAST MEDIA**

The Northern Gulf Coast's Most Experienced
Hurricane, Decorative & Security Shutter Experts!



easyshutter
services, LLC



Custom Solutions for Home, Condo or Business

Easy Shutter Services, LLC

2804 E. 2nd St., Gulf Shores, AL 36542

(one block East of Lulu's)

Call Today For Free Estimate!

(251) 968-0008

shutterservicesllc@gmail.com • easyshutterservices.com



DURING A POWER OUTAGE, THE BRIGGS AND STRATTON GENERATOR PROVIDES POWER FOR YOUR HOME OR BUSINESS



Medium to Large Home

New Managed Whole House Solution

Our new 22KW and 26KW Standby Generator is our smartest generator ever. It features ground-breaking power management technology, advanced safeguarding features that meet rigorous industry fire protection standards and a new airflow design allowing flexible placement options. There has never been a better time to protect your family and biggest investment.

Take Advantage of SPECIAL SALE PRICES

*22KW Model #040786

NOW \$5,399.00

With aluminum enclosure and Stainless Steel Base,
7 Year Warranty

*22KW Model #040780

NOW \$5,899.00

With aluminum enclosure and Stainless Steel Base,
10 Year Warranty

*26KW Model #040800

NOW \$6,499.00

With aluminum enclosure and Stainless Steel Base,
10 Year Warranty

*Prices may change without notice! Limited to products in stock!

- Why buy a Briggs and Stratton Generator System?
- Patented Symphony II, Power Management technology allows you to power more for less.
- Smarter smaller and more fuel efficient.
- Briggs and Stratton a leader in energy innovation.
- Durable all weather finish.
- Electronic friendly.
- Remote monitoring system.
- Call today for a FREE on site estimate!

Come on over to **ELBERTA HARDWARE!**

"We service and finance what we sell."

25320 U.S. Hwy. 98, Elberta, AL 36530 • 251-986-5233

THANK YOU FOR VOTING US BEST SMALL ENGINE REPAIR



BALDWIN COUNTY EMA

Statement from Director, Tom Tyler

Bad things will happen, and our job is to make them less bad and get ourselves back to normal faster. This is a simple way of expressing the mission of the Baldwin County Emergency Management Agency. Our role is to plan, prepare for, mitigate, respond to, and recover from disasters, whether they are natural or manmade. When considering each thing that we do, we always ask ourselves "How will this task make disasters less impactful and help Baldwin County recover faster?"

Preparation requires effort from all of us: Individuals and families; organizations; private businesses; and local, state, Tribal, and Federal Government. The main purpose of this publication is to inform our readers about disaster preparation and the variety of players that interact to create and maintain a culture of preparedness. Baldwin County faces a variety of hazards not associated with tropical weather. Our job is to prepare for all hazards that we may face.

Preparedness begins with the individual and family unit. Individuals who are adequately prepared are less likely to find themselves in danger, which allows our emergency services to operate more efficiently during a disaster. Those who evacuate when instructed to do so by proper authorities reduce the number of calls for rescue during a very challenging time. Families with an emergency kit and an emergency plan should be more capable of withstanding extended periods of time in which response efforts are restricted by disaster conditions. Organizations and businesses that prepare are generally able to resume operations faster following an event. The more individuals, families, and organizations prepare, the more effective the response will be. It's that simple.

I cannot over stress the vital importance of our partnerships. By design, the emergency management effort is a network of organizations and individuals working together to greatly expand our capabilities. During a disaster, the Emergency Operations Center will expand to prioritize efforts and manage resources, which requires coordination of multiple groups and locations. Our partners are crucial to our efforts to be successful for the residents and visitors of Baldwin County during a time of need.

Volunteers make up a special part of the coordinated response effort. Baldwin County EMA coordinates volunteer efforts through the Baldwin County VOAD, which stands for Voluntary Organizations Active in Disaster. VOAD provides a single entity with which we communicate unmet needs in our area, and VOAD coordinates with its member groups to meet those needs. This helps to maximize volunteer efficiency by minimizing oversaturation of assistance in one location while another area is suffering

with no help on the way. In Baldwin County, we have many civic groups, faith-based organizations, and other associations that are standing ready to assist in their own way during times of need: We ask that they join with Baldwin County VOAD, stay connected, and be ready! Many commonly think of volunteers only in terms of work boots and heavy lifting, but help is also needed in other ways, from serving meals, answering phones, and performing light clerical work. VOAD meets on a quarterly basis, and membership costs only \$10 per year. Refer to the VOAD page later in this publication for more information.

Although tropical weather is our most prolific natural hazard, other weather events also have the potential to impact Baldwin County. Our partners at the National Weather Service in Mobile provide invaluable information that informs our decisions and recommendations to partner agencies, and our local radio and television meteorologists do an outstanding job of informing the public. We urge our residents and visitors to obtain their weather information from local sources: National television and internet weather sources provide a big-picture perspective and can be entertaining, but nothing can replace the expertise from forecasters who live and work in our area and have a vested interest in keeping our residents and guests safe. Stay weather aware by signing up for local alerts by visiting Alert-Baldwin.com. We strongly encourage having multiple ways of receiving alerts and warnings, and a NOAA weather radio is a must for every household.

Elsewhere in this publication you will find a section dedicated to the BEach SAFE campaign. Here you will find valuable information on staying safe while swimming in the Gulf of Mexico, as well as an appeal to our residents and especially to our tourism industry to help us spread the BEach SAFE word: Visitors are distressingly overrepresented among rip current fatalities along the northern Gulf Coast, and a major effort of this campaign seeks to inform visitors before their feet hit the sand. We need everyone's assistance to ensure that our guests return home with only wonderful memories of Baldwin County with plans of coming back the following year.

By reading this message, you're already showing your interest in staying alert and preparing for disasters. Please take the time to become familiar with the articles that follow, and share with your family, friends, and visitors. It takes all of us to create a Culture of Preparedness!

TABLE OF CONTENTS

It's All Here.....	7
Empowering Resilience.....	9
Baldwin County 911.....	13
Beach Safe.....	14
National Weather Service.....	15
Storm Technology.....	16
Shelters of Last Resort.....	17
Evacuation Information.....	18
Flood Information.....	19
Stay Informed.....	22
Pet Preparedness.....	23
Senior Considerations.....	24
Returning Home	25
Business Tips.....	26
Volunteer Organizations.....	27
Safer Places.....	28
Training.....	29
Tornado Shelters.....	30
Contact Information.....	34

THE APPS TODAY



We want to remind you that we are no longer using the Baldwin EMA App. You can now stay plugged in with Baldwin County EMA by using the Baldwin County Commission App!

To receive local, emergency alerts and other important community news, sign up for AlertBaldwin.com. This free system enables us to rapidly provide residents and visitors with critical information in local situations such as severe weather, hazardous materials releases, unexpected road hazards and closures, missing persons, evacuations and more. Stay prepared, informed, and connected.



TO SIGN UP
FOR LOCAL
ALERTS



TO STAY
CONNECTED WITH
BALDWIN COUNTY
COMMISSION

JOIN ALERT BALDWIN TODAY
www.AlertBaldwin.com



BALDWIN COUNTY EMERGENCY MANAGEMENT AGENCY



GULF COAST MEDIA

PUBLISHER

Vince Johnson
vince@gulfcoastmedia.com

EXECUTIVE EDITOR

Kayla Green
kayla@gulfcoastmedia.com

EDITORIAL ASSISTANT

Whisper Edwards
whisper@gulfcoastmedia.com

COPY EDITING

Kayla Green

DESIGN AND LAYOUT

McKinzie Daniels
graphics@gulfcoastmedia.com

ADVERTISING

Frank Kustura
frank@gulfcoastmedia.com
251.923.8129

Bethany Summerlin
bethany@gulfcoastmedia.com
251.266.9982

Shawna Stefankiewicz
shawna@gulfcoastmedia.com
660.676.2083

Stay Alert Baldwin magazine is published by Gulf Coast Media, in partnership with Baldwin County Emergency Management Agency.

All rights reserved.
Reproduction without permission is prohibited.
Gulf Coast Media accepts no responsibility in the guarantee of goods and services advertised herein.



Find the e-edition by visiting
issuu.com and searching for
Stay Alert Baldwin or
Gulf Coast Media.

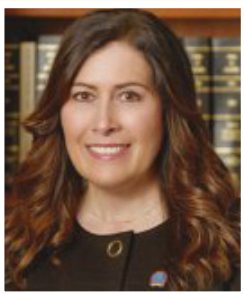
You can also access our
e-editions through
GulfCoastMedia.com/Magazines.



"I have lived in Baldwin County my whole life. I was born and raised here. I can remember going through Hurricane Frederic as a child and how there was not an opportunity to get prepared in a timely manner. This was a very scary time for us. I have been through every storm system or weather event since then, and preparedness has come a long way since the days of plotting on paper. Our current EMA

and all the staff are on the cutting edge of preparedness. I am highly confident that the citizens of this county, as well as the visitors, will be given the proper notices needed when having to deal with any severe weather event."

James E. "Jeb" Ball
Baldwin County Commissioner District 1



"The growth and development of Baldwin County is incredible; however, as a commissioner, resident and business owner we all must remember contingency planning and the need to prepare before we are faced with tropical weather. As I am born and raised in Baldwin County, I have maintained a clear understanding of what Baldwin County offers. From Little River to the Gulf Coast, you will find

the most beautiful landscape. We must be ready to prepare for, respond to, recover from and mitigate against storm surge, flooding and other hazards associated with tropical weather events."

Billie Jo Underwood
Baldwin County Commissioner District 3



"As a retired Alabama State Trooper, I have had the opportunity to work on many disasters that have hit the Alabama Gulf Coast during my tenure. I was assigned to the Alabama State Emergency Management Agency as the liaison between state agencies and the local agencies and saw first hand the devastations caused by Hurricane Katrina and Hurricane Sally caused

to our Baldwin County citizens. As a new Commissioner, I feel it is paramount that all residents, visitors, organizations, and businesses have a plan and stay informed. It is very important to prepare and have an evacuation plan for you, your family, and your pets. We as a commission are confident that our Emergency Management Agency is prepared for any emergency that comes our way."

Matthew P. McKenzie
Baldwin County Commissioner District 2



"With more than 35 years experience working with the Baldwin County Highway Department and more than 19 years serving as your county commissioner, I have witnessed many disasters that have impacted our home. It is imperative that we plan as an individual, as a family, as a community and as a county. With the rapid influx of new residents, we want to help provide information for residents to plan appropriately for

natural and man-made disasters. It is equally important that we do not become complacent in our preparedness efforts. Disasters are unpredictable, and we must maintain our state of readiness."

Charles ("Skip") F. Gruber
Baldwin County Commissioner District 4

IT'S ALL HERE

Whether you love the diversity of recreational activities, the incredibly beautiful scenery or the good ol' Southern charm of South Alabama, Baldwin County has it all. Coastal Alabama is a beautiful place to live, work and play. That is evident not only by the millions of visitors to Baldwin County but also with the thousands of people relocating to our area each year. The face of Baldwin County is changing rapidly.

Baldwin County is one of the fastest growing counties in the State of Alabama. We are living in a dynamic and evolving community where we strive to maintain a safe place to reside, work and vacation. Public safety, resilience and support for our community are top priorities for Baldwin County Emergency Management Agency (EMA). It is this mindset of planning, preparedness and mitigation that Baldwin County EMA, a department within the Baldwin County Commission, has provided this publication.

Our top priority is the safety of our residents and visitors alike. We also understand that education regarding disaster preparedness is critical so that residents can make informed and wise decisions

when it comes to personal safety and property protection. Throughout this publication, we hope you find helpful information and resources that will assist you in emergency preparedness so that you are equipped to respond and that you are knowledgeable of the resources available to you.

Together, we can develop mitigation measures to protect our unique community from hazards that threaten our region. Our economy is heavily dependent on tourism. Public sector, private sector, volunteer organizations and our residents must all work together to ensure that we are prepared, resilient and ready for disasters that may impact our region.

This publication is designed to help inform you, connect you with resources and help you plan and prepare your family, your business and your community for disasters.

Let's prepare together!



**PREPARED.
INFORMED.
CONNECTED.
ALERT BALDWIN.**

BALDWIN COUNTY

EMERGENCY MANAGEMENT AGENCY

Receive alerts about emergencies and other important community news by signing up for AlertBaldwin. This free system enables us to rapidly provide residents and visitors with critical information in local situations such as severe weather, hazardous materials releases, unexpected road hazards and closures, missing persons and evacuations. Be prepared, be informed, and stay connected.

JOIN ALERT BALDWIN TODAY
www.alertbaldwin.com



23100 McAuliffe Dr. Robertsdale, AL 36567
www.baldwincountyal.gov/ema

ALERT!
BALDWIN
BALDWIN COUNTY EMERGENCY NOTIFICATIONS



EMPOWERING RESILIENCE

BEING PROACTIVE WITH DISASTER PREPAREDNESS

By: Jessica Waters (Public Information Officer, Baldwin County EMA)

In our fast-paced lives, the belief that disasters will never personally impact us often serves as the primary excuse for neglecting essential preparedness measures. However, the reality is that disasters can strike unexpectedly, causing fear and anxiety. Proactive preparation not only alleviates these concerns but also significantly reduces the overall impact of disasters on individuals, families, and communities.

By taking preventive measures, individuals can potentially avoid some dangers altogether. Disasters, ranging from fires and tornadoes to hurricanes, disrupt lives daily and can have lasting effects that take years to recover or rebuild. Recognizing the local nature of disasters, it is imperative for individuals to

take personal responsibility for preparedness.

While disaster relief organizations may offer temporary assistance, the ultimate responsibility lies with each individual and household. Understanding the hazards specific to your area is key. In Baldwin County, hazards such as hurricanes, severe weather, tornadoes, flooding, extreme heat, earthquakes, and terrorism are acknowledged and planned for by the Baldwin County Emergency Management Agency.

To be a prepared resident, it is crucial to assemble essential items that enable self-sufficiency for a minimum of five days. These provisions should include food, water, medications, a weather radio, and more. You will see a

more extensive list of suggested items in this publication.

Establishing and maintaining an Emergency Kit is vital for navigating through disasters effectively.

This publication aims to inspire a more proactive mindset towards disaster preparedness, emphasizing the importance of personal responsibility and self-sufficiency in the face of unexpected events. We are hoping to educate the residents and visitors of Baldwin County with local hazards and steps to mitigate their impacts, so that individuals can empower themselves and their communities to withstand and recover from disasters more effectively.



NOAA Extreme Weather INFORMATION SHEET



STATE INFORMATION

To download the latest updated version of this sheet: www.ncei.noaa.gov/resources/newis

Alabama Emergency Management Agency (https://ema.alabama.gov).....	1-800-843-0699 or 205-280-2200
Ready Alabama.....	www.readyalabama.gov
Alabama Department of Transportation (www.dot.state.al.us).....	334-353-6554
ALDOT Emergency Call Center (Info on Alabama travel conditions during an emergency event)	1-888-588-2848
.....	https://miscwapps.dot.state.al.us/ECC/
Official State Website.....	www.alabama.gov
Alabama Highway Patrol (www.alea.gov/dps/highway-patrol).....	334-676-6003 (*HP from any cell phone)
Alabama Official Travel Site (https://alabama.travel)	1-800-252-2262
Alabama Law Enforcement Agency	https://www.alea.gov
Governor's Office (https://governor.alabama.gov).....	334-242-7100
Alabama Attorney General (www.alabamaag.gov).....	334-242-7300
Alabama Department of Insurance (www.aldoi.gov)	334-269-3550
Alabama Department of Conservation and Natural Resources (www.outdooralabama.com).....	334-242-3465
Alabama Department of Environmental Management (www.adem.state.al.us/default.cnt).....	334-271-7700
National Weather Service Forecast Office (Mobile/Pensacola) (www.weather.gov/mob).....	251-633-6443
National Weather Service Forecast Office (Tallahassee, FL) (www.weather.gov/tae)	850-942-8851
National Weather Service Southern Region	www.weather.gov/srh
StormSmart Coasts.....	http://gom.stormsmart.org
US Coast Guard, 8th District.....	www.atlanticarea.uscg.mil/Our-Organization/District-8/
Alabama Power (www.alabamapower.com).....	Outage: 1-800-888-2726
Dothan Utilities (www.dothan.org/153/Dothan-Utilities)	334-615-3302
Baldwin EMC (www.baldwinemc.com).....	Outage: 1-800-837-3374 or 251-989-6247
Covington Electric Cooperative (https://covington.coop).....	Outage: 1-800-239-1193
Southern Pine Electric (www.southernpine.coop)	1-800-231-5240
Wiregrass Electric (www.wiregrass.coop).....	Outage: 1-888-469-6882

FOR EMERGENCIES CALL 911

• FOR NON-EMERGENCIES CALL 211

COUNTY INFORMATION

BALDWIN

Emergency Management

.....South Baldwin 251-972-6807

.....North Baldwin 251-937-0317

.....Eastern Shore 251-990-4605

..... <https://baldwincountyal.gov/departments/EMA>

Sheriff

..... 251-937-0202

..... <https://sheriff.baldwincountyal.gov/home>

COVINGTON

Emergency Management 334-428-2670

..... www.covcounty.com/emergency-management-agency

Sheriff 334-428-2610

..... www.covcounty.com/sheriff

ESCAMBIA

Emergency Management 251-867-0232

..... www.co.escambia.al.us/emergency.html

Sheriff 251-809-0741

..... www.escambiacysheriffal.org

GENEVA

Emergency Management 334-684-5600

..... www.genevacountyal.gov/ema/

Sheriff 334-684-6947

..... www.genevacountyalsheriff.org

HOUSTON

Emergency Management 334-794-9720

..... www.dothanhoustoncountyma.org

Sheriff 334-677-4882

..... www.houstoncountysheriff.org

MOBILE

Emergency Management 251-460-8000

..... www.mcema.net

Sheriff 251-574-2423

..... www.mobileso.com

A
L
A
B
A
M
A

NATIONAL INFORMATION

American Red Cross..... 1-800-RED-CROSS (1-800-733-2767)
..... www.redcross.org
Centers for Disease Control..... www.cdc.gov
Environmental Protection Agency www.epa.gov
Federal Emergency Management Agency (FEMA)..... 1-800-621-FEMA (3362)
..... www.fema.gov
Agencia Federal para el Manejo de Emergencias (FEMA) www.fema.gov/es
National Oceanic and Atmospheric Administration (NOAA) www.noaa.gov
National Weather Service www.weather.gov
Gulf of Mexico Disaster Response Center <https://oceanservice.noaa.gov/hazards/drc>
National Data Buoy Center www.ndbc.noaa.gov
National Hurricane Center www.nhc.noaa.gov
National Centers for Environmental Information (NCEI).. www.ncei.noaa.gov
National Environmental Satellite, Data, and Information Service (NESDIS)
..... www.nesdis.noaa.gov
US Department of Homeland Security www.dhs.gov



DOWNLOAD THE FREE NEWS APP

Compatible with iPhone, iPod Touch, and iPad! Search 'NEWS' in the App Store to download on your Apple device.

The National Hurricane Center normally issues public advisories on their website and to the media for Atlantic tropical cyclones every six hours at 4:00 AM CDT, 10:00 AM CDT, 4:00 PM CDT, and 10:00 PM CDT. Intermediate public advisories are issued every 3 hours when coastal watches or warnings are in effect. Additionally, special public advisories may be issued at any time due to significant changes in warnings or in the cyclone.

NATIONAL HURRICANE CENTER MOBILE DATA

Graphical Tropical Weather Outlook RSS/XML feed

..... www.nhc.noaa.gov/gtwo.xml

Website for Tablets and Smartphones..... www.nhc.noaa.gov/mobile

RADIO STATIONS

WOOF 99.7 FM (DOTHAN)	WABD 97.5 FM (MOBILE)
WRWA 88.7 FM (DOTHAN)	WHIL91.3 FM (MOBILE)
WKMx 106.7 FM (ENTERPRISE)	WMFC 99.3 FM (MONROEVILLE)
WZEW 92.1 FM (FAIRHOPE)	WDLT 104.1 FM (SARALAND)

NOAA WEATHER RADIO

Not manufactured by NOAA, NWR receivers can be purchased at many retail outlets and on the Internet

NOAA Weather Radio (NWR) All Hazards is a nationwide network of radio stations broadcasting continuous weather information directly from a nearby National Weather Service office. NWR broadcasts National Weather Service warnings, watches, forecasts, and other hazard information 24 hours a day.

162.400	162.425	162.450	162.475	162.500	162.525	162.550
MHz	MHz	MHz	MHz	MHz	MHz	MHz

ALABAMA CONTRAFLOW FOR HURRICANE EVACUATION

To provide additional roadway capacity during hurricane evacuations from the Gulf Coast, a portion of I-65 may operate entirely in the northbound direction, meaning both southbound lanes of I-65 would be converted into northbound lanes. These lanes are called contraflow lanes. An I-65 lane reversal is not automatic in every hurricane.

I-65 NORTHBOUND

Contraflow begins in Baldwin County just south of Exit 31 (State Road 225). A paved crossover at that location allows motorists traveling in the normal Northbound lanes to transition (crossover) to the contraflow lanes.

Contraflow ends in Montgomery just north of Exit 167 (U.S. 80). Motorists in the contraflow lanes will crossover into the two left lanes of the normal northbound lanes. Motorists traveling in the normal northbound lanes will merge into the two right lanes and continue north and onward to their destinations.

I-65 SOUTHBOUND

During contraflow, southbound traffic traveling on I-65 through Montgomery will be directed to exit the interstate at Exit 167 at U.S. 80 and then onto U.S. 31 South. From Montgomery southward, all southbound I-65 traffic is detoured to U.S. 31. Eastbound traffic on U.S. 80 cannot enter I-65 at Exit 167 and will be directed to U.S. 31. **Southbound traffic cannot use I-65 between Montgomery and Mobile during contraflow.**

Tune into the Highway Advisory Radio System (HARS) for updated information. Look for advisory signs in these areas. Mobile area – 1630 AM • Montgomery area – 1690 AM

For additional information go to:

www.dot.state.al.us

PREPARED BY

NOAA National Centers for
Environmental Information

1-866-732-2382 or email:
NCEI.Info@noaa.gov

To download the latest pdf version of this sheet go to:

www.ncei.noaa.gov/resources/news

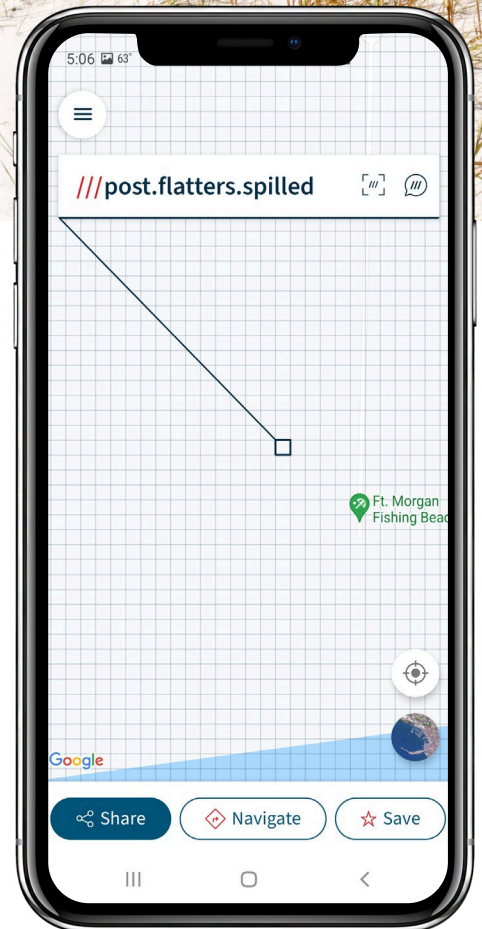
///post.flatters.spilled

Tell 9-1-1 exactly where help is needed with what3words

what3words is an easy way to give an exact location.
Every 10ft square in the world has been given a
unique combination of three words.

To give a what3words address in an emergency:

1. Open the what3words app.
2. Wait for the blue GPS dot to stabilize, then tap the current location icon (📍 iOS icon, 📍 Android icon).
3. Read the three words to the 911 call operator.



Search for the free app

what3words



BALDWIN COUNTY 9-1-1:

HELPING PEOPLE IN TROUBLE

By: Scott Warner, GIS / Addressing Manager

Did you know that the first 9-1-1 call was made in Haleyville, Alabama on February 16, 1968? The call was made by Alabama State Representative Rankin Fite. He dialed the emergency number, 9-1-1, from the mayor's office in Haleyville, Alabama, marking the beginning of the nationwide implementation of the emergency telephone number. Baldwin County Emergency Communication District (Baldwin County 9-1-1) was established in 1988 and handles approximately 120,000 9-1-1 calls a year. Baldwin County 9-1-1 dispatches for all 37 fire departments, Emergency Medical Service, and the Summerdale, Elberta, Silverhill

Police Departments.

A long time ago, people had to remember different phone numbers to call for help. But then, an idea of using just three numbers: 9-1-1 was established. That way, everyone could easily remember it when they needed help fast.

Nowadays, 9-1-1 is evolving as part of the NextGeneration 9-1-1 because you can text us, too! If you can't talk on the phone, like if it's not safe or if you can't hear well, you can send a message to 9-1-1. We'll still know you need help and send someone to help you.

And guess what? You can even send videos to 9-1-1! If you see something dangerous or if

someone is hurt, you can use your phone to show us what's happening. This helps our first responders so they can provide help faster.

But remember, if you call 9-1-1 by accident, it's important to stay on the line and tell us it was a mistake. That way, they can make sure everyone who really needs help gets it quickly.

So, whether you need the police, firefighters, or medical services, 9-1-1 is there to help you in Baldwin County. It's like having superheroes on speed dial, ready to save the day whenever you need them!

DURING A POWER OUTAGE, THE BRIGGS AND STRATTON GENERATOR PROVIDES POWER FOR YOUR HOME OR BUSINESS



Medium to Large Home

New Managed Whole House Solution

Our new 20KW and 26KW Standby Generator is our smartest generator ever. It features ground-breaking power management technology, advanced safeguarding features that meet rigorous industry fire protection standards and a new airflow design allowing flexible placement options. There has never been a better time to protect your family and biggest investment.

Take Advantage of SPECIAL SALE PRICES

***20KW Model #040662**

NOW \$5,299.00

With aluminum enclosure and Stainless Steel Base,
6 Year Warranty

***20KW Model #040657**

NOW \$6,016.00

With aluminum enclosure and Stainless Steel Base,
10 Year Warranty

***26KW Model #040664**

NOW \$6,881.00

With aluminum enclosure and Stainless Steel Base,
10 Year Warranty

***Prices may change without notice! Limited to products in stock!**

- Why buy a Briggs and Stratton Generator System?
- Patented Symphony II, Power Management technology allows you to power more for less.
- Smarter smaller and more fuel efficient.
- Briggs and Stratton a leader in energy innovation.
- Durable all weather finish.
- Electronic friendly.
- Remote monitoring system.
- Call today for a FREE on site estimate!

Come on over to **ELBERTA HARDWARE!**

"We service and finance what we sell."

25320 U.S. Hwy. 98, Elberta, AL 36530 • 251-986-5233

THANK YOU FOR VOTING US BEST SMALL ENGINE REPAIR



BEACH SAFE

FIRST YEAR SEES DRAMATIC RESULTS, BUT THE MISSION IS LONG-TERM

Early in 2022, multiple city and county agencies across Baldwin County, along with Gulf Shores & Orange Beach Tourism, worked together to expand beach safety education for Baldwin County residents and visitors to ensure their day at the beach is a safe one.

With Baldwin County being one of the fastest-growing counties in Alabama and seeing close to 8 million visitors a year, many newcomers are not familiar with the waters of the Gulf of Mexico. BEach SAFE aims to increase awareness among locals and guests on topics including beach conditions, warning flag systems, rip current awareness, safe swimming practices, and more. Recognizing that not all beach areas on Alabama's Gulf Coast have lifeguards, beach flags and patrols, BEach SAFE is designed to help individuals stay informed and understand potential dangers. Core message points for the campaign include:

CHECK WEATHER AND SURF CONDITIONS DAILY

- By phone:
- Gulf Shores: 251-968-SURF
- Orange Beach: 251-981-SURF
- Online: VisitALBeaches.com/safety

KNOW YOUR LIMITATIONS

- Learn to swim; non-swimmers should stay out of the water
- Don't overestimate your swimming ability
- Don't rely on inner tubes, floats or other inflatable toys
- Use Coast Guard approved lifejackets
- Designate a water-watcher and supervise children closely
- Never swim alone

SWIM NEAR A LIFEGUARD

- Lifeguards are stationed seasonally at all public beaches in Gulf Shores and Orange Beach (March through September)
- Currently, no lifeguard protection is available in the Fort Morgan area

SIGN UP FOR DAILY BEACH CONDITIONS TEXT ALERTS

- Text "ALBEACHES" to "888777"
- Text "STOP" to opt out of notifications upon your departure

KNOW AND HEED THE BEACH WARNING FLAGS

- Yellow: Moderate surf and/or currents
- Purple: Dangerous marine life
- Red: High surf and/or strong currents
- Double Red: Water closed to the public

LEARN HOW TO ESCAPE A RIP CURRENT

Rip currents are powerful currents of water moving away from shore. They can sweep even the strongest swimmer away from shore.

- If caught in a rip current, remain calm
- Escape the current by swimming parallel to the shoreline
- When free of the current, swim at an angle—away from the current—toward shore
- Float or tread water if unable to escape by swimming
- If unable to reach shore, draw attention to yourself by facing the shore and calling or waving for help

KNOW WHAT TO DO IF SOMEONE ELSE IS IN DANGER

- First, CALL 9-1-1
- Seek help from a lifeguard; if no lifeguard is present, yell instructions on how to escape the current
- Throw the victim something that floats
- Don't attempt to perform a rescue as you could also get caught in the current

In just the first year of Beach SAFE, water rescues were down 46.4%, drownings decreased by 66.6%, and 15,247 people signed up for daily beach conditions text message alerts. But leaders know the effort has to be long-term and consistent.

"We know from the Leave Only Footprints and Worth the Wait campaigns we have launched in recent years that it takes all aspects of our community – the cities, local businesses, and residents – sharing a consistent message with our guests to make an impact. BEach SAFE is a united message across the entire county, which means we need businesses and residents from the northern part of Baldwin County all the way down to the beaches to promote it every single day, regardless of if they operate in the tourism industry." Says Beth Gendler, CEO of Gulf Shores & Orange Beach Tourism.

BEach SAFE was developed by Gulf Shores and Orange Beach Tourism (GSOBT), Gulf Shores Fire Department, Orange Beach Fire Department, Fort Morgan Volunteer Fire Department, Baldwin County Emergency Management Agency, Baldwin County Commission and Baldwin County 9-1-1.

NATIONAL WEATHER SERVICE MOBILE/PENSACOLA

By: Jessica Chace (Warning Coordination Meteorologist)

Did you know that all of the weather watches and warnings for Baldwin County come from local meteorologists living in this community? That's right! The National Weather Service (NWS) in Mobile, AL, is responsible for the forecasts, watches, warnings, and advisories for 20 Mississippi, Alabama, and Florida counties, including Baldwin County. We operate 24 hours a day, seven days a week, 365 days a year. Even on Christmas morning, at least two meteorologists are working. If it's like the Christmas of 2012 when tornadoes impacted our region, that number is quadrupled!

The NWS is a federal agency comprising 122 Weather Forecast Offices around the county, each with its own County Warning Area. A smaller area of counties or parishes allows us to provide localized information to our partners and the communities we serve. Our mission is to "provide weather, water, and climate data, forecasts, warnings, and impact-based decision support services for the protection of life and property and enhancement of the national economy." Simply put, we are here to protect life and property, and countless people are working around the clock to ensure we can meet our mission. Every local NWS office is made up of around 15 meteorologists, three electronic technicians, an Information Technology Office, and an Administrative Service Assistant, all of whom work

diligently to ensure that we have the resources and capabilities to meet our mission.

During quiet weather, we work closely with our partners through meetings and detailed exercises. When significant weather approaches, we routinely brief state, county, and city leaders on what to expect so they can make the best decisions for their residents. After the storm, we conduct post-storm surveys to accurately assess storm damage and provide weather updates to emergency responders as they respond to the storm's aftermath. At the same time, we provide the public with up-to-date information before, during, and after a storm that is available on our website (weather.gov/mob) and Facebook and X (@NWSMobile). You can also reach us at (251) 633-6443. Have you ever heard a tornado warning and wondered where that came from? It came directly from your local National Weather Service office!

What are some ways you can prepare for hazardous weather before it happens? Have a plan! It's important to know where you are located and what type of weather hazards may your location, even on vacation! Having a plan helps you be better prepared so that when the bad weather strikes, you can put your plan into action and protect yourself and your loved ones. Also, staying weather aware is essential so you know beforehand when you may

have to implement your safety plan. We encourage everybody to have more than one way of receiving critical weather alerts. There are several methods of obtaining warnings: weather radios, cell phones, local TV, and radio. We encourage everybody to ensure they have a weather safety plan. For Baldwin County residents, this means not just knowing what to do in the event of a tornado or flood but having a plan developed ahead of time for when the next hurricane approaches. Your local National Weather Service and Baldwin County Emergency Management Agency can provide helpful information to help develop your plan!

HURRICANE NAMES 2025

**Andrea
Barry
Chantal
Dexter
Erin
Fernand
Gabrielle
Humberto
Imelda
Jerry
Karen
Lorenzo**

**Melissa
Nestor
Olga
Pablo
Rebekah
Sebastien
Tanya
Van
Wendy**

STORM TERMINOLOGY

Storm Surge Warning: There is a danger of life-threatening inundation from rising water moving inland from the shoreline somewhere within the specified area, generally within 36 hours. If you are under a storm surge warning, check for evacuation orders from your local officials.

Hurricane Warning: Hurricane conditions (sustained winds of 74 mph or greater) are expected somewhere within the specified area. NHC issues a hurricane warning 36 hours in advance of tropical storm-force winds to give you time to complete your preparations. All preparations should be complete. Evacuate immediately if so ordered.

Tropical Storm Warning: Tropical storm conditions (sustained winds of 39 to 73 mph) are expected within your area within 36 hours.

Extreme Wind Warning: Extreme sustained winds of a major hurricane (115 mph or

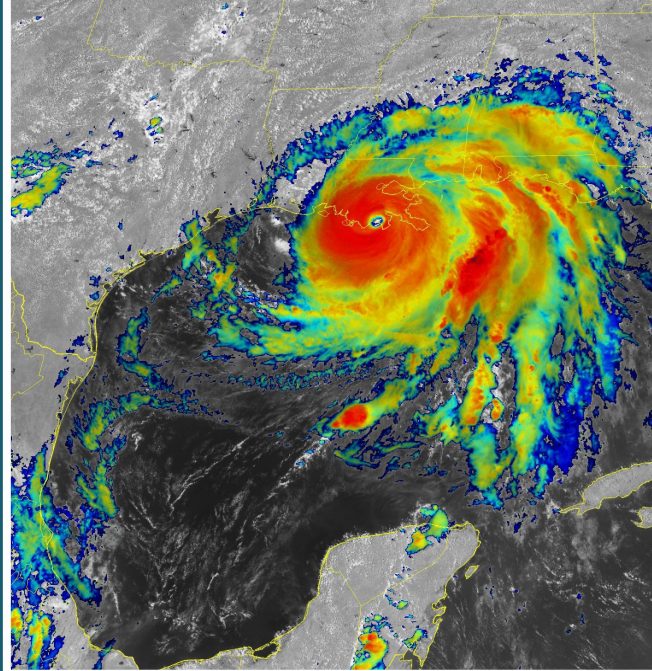
greater), usually associated with the eyewall, are expected to begin within an hour. Take immediate shelter in the interior portion of a well-built structure.

Storm Surge Watch: There is a possibility of life-threatening inundation from rising water moving inland from the shoreline somewhere within the specified area, generally within 48 hours.

Hurricane Watch: Hurricane conditions (sustained winds of 74 mph or greater) are possible within your area. Because it may not be safe to prepare for a hurricane once winds reach tropical storm force, The NHC issues hurricane watches 48 hours before it anticipates

tropical storm-force winds.

Tropical Storm Watch: Tropical storm conditions (sustained winds of 39 to 73 mph) are possible within the specified area within 48 hours.



Fairhope Public Utilities



Know what's below.
Call before you dig.

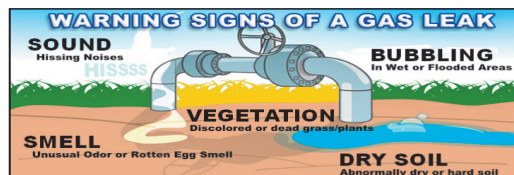
Residents of Fairhope, Daphne, Belforest, Montrose, Barnwell, Spanish Fort and Bay Minette: Fairhope Public Utilities strives to deliver a safe and reliable Natural Gas service to your homes and businesses. Here are some important items to know while living and working around our pipelines:

To avoid damage to underground utilities, PLEASE

CALL BEFORE YOU DIG!

If you are planning any type of excavation, please call 811 or 800-292-8525 and wait two full business days before you dig to allow the underground utilities to be marked.

IT'S THE LAW!



If you experience ANY of these signs call Fairhope Public Utilities to report a gas leak!

OUTDOORS: Call Fairhope Public Utilities immediately at 251-928-8003
INDOORS: Exit the building, avoid causing any spark or operating a light switch, and call Fairhope Public Utilities at 251-928-8003

For more information please call us at 251-928-8003 or visit our website at www.fairhopeal.gov



CHECK OUT THE LATEST WEATHER FORECASTS WITH NATIONAL WEATHER SERVICE OF MOBILE

www.weather.gov/mob/#

Sign up for local emergency alerts with
AlertBaldwin.com



BALDWIN COUNTY EMERGENCY MANAGEMENT AGENCY

SHELTERS OF LAST RESORT

INFORMATION ABOUT BALDWIN COUNTY COMMISSION SHELTERS

By: Amanda Thweatt (Emergency Management Specialist, Baldwin County EMA)

The shelters of last resort are opened on an as needed basis once the Baldwin County Commission has declared a State of Local Emergency due to the threat of a tropical storm or hurricane. The two main facilities will be the Baldwin County Coliseum in Robertsdale, and the Baldwin County Level II Shelter in Bay Minette. The county is happy to provide this space to residents that are unable to leave the county, but need a safer place to stay until hurricane conditions have subsided and it is safe for residents to return home.

What is provided at the shelters?

Breakfast, lunch, and dinner with a light snack between meals. Though we try to have a menu that all can eat, we are aware that there are some dietary restrictions we cannot meet, therefore, please bring any foods that you need to meet your dietary needs (at least 3 days). Baldwin County EMA will have a limited number of cots, blankets, and pillows available. Amenities provided will be washer & dryer, restrooms, and showers.

We welcome you to drive to the shelter, but be aware Baldwin County EMA, Baldwin County Commission and the owner of the shelter are not responsible for damage sustained to the vehicle by other shelter residents or storm impacts. You may also call Baldwin Regional Area Transportation Systems (BRATS) at 251-972-6817 to schedule a ride to the Baldwin County Shelter. Once a State of Local Emergency has been declared, BRATS will WAIVE fees to and from the shelters.

What do you need to bring to the shelter?

Personal care items (i.e. toothbrush, toothpaste, soap, towels, washcloths, deodorant, etc.), at least 3 days' worth of clothes per person, personal identification, medications, cell phone and charger, sleeping bags, blankets and pillows are suggested as items to bring to a shelter.

You will be required to register with the administration staff. Photo identification is required. If you need to leave for any reason, please sign in and out with shelter staff, and let them know if you do not plan to return to the shelter.

Security will be provided at each of the shelters by local law enforcement.

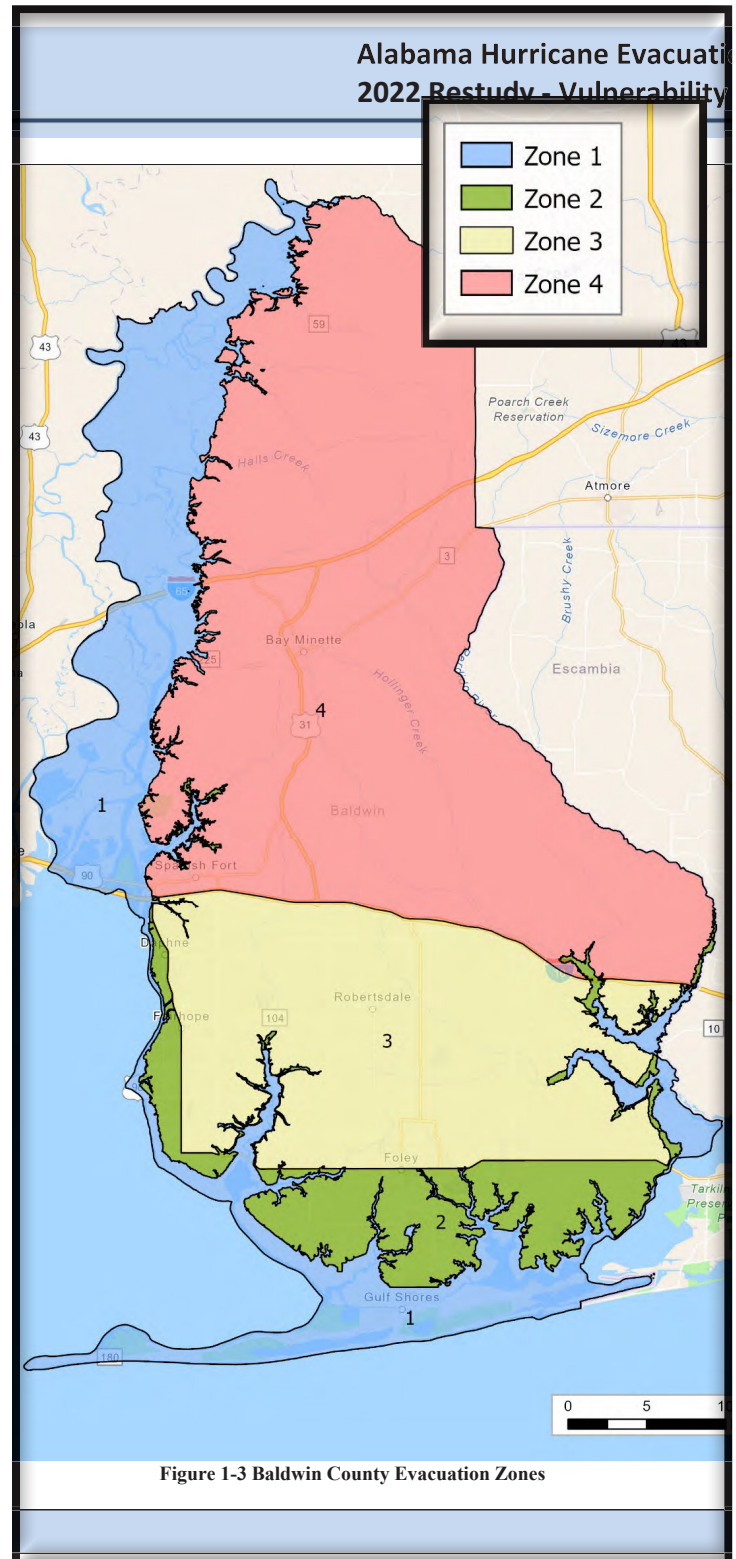


Figure 1-3 Baldwin County Evacuation Zones

EVACUATION INFORMATION

NAVIGATING EVACUATIONS AND KEY GUIDANCE

By: Amanda Thweatt (Emergency Management Specialist, Baldwin County EMA)

Evacuations may be ordered under circumstances where lives are in danger due to a threat. For example, evacuations may be ordered because of a fire, gas leak, hazardous materials accident, flood or tropical weather. If at any time circumstances exist where you or your family feel threatened or endangered, you may choose to leave your home, school, or workplace to avoid those situations. There are two types of evacuations affiliated with hurricanes: mandatory and voluntary. Mandatory evacuations are orders issued by the Governor of Alabama. Voluntary evacuation orders may be issued in advance of hurricane impacts prior to the mandatory evacuation. Anytime there is an evacuation order, please follow the guidance of the local officials and leave the area of danger!

BALDWIN COUNTY EVACUATION ROUTES:

- Gulf Shores and Orange Beach residents: Highway 59, Foley Beach Express & Baldwin Beach Express
- Central & South Baldwin County residents: Highway 59 North & Baldwin Beach Express
- Eastern Shore residents: State Highway 181 & Highway 98 North
- Lillian area residents: County Road 87

East side of Pleasure Island (Orange Beach & Ono Island): Foley Beach Express via toll bridge & Baldwin Beach Express (toll will be lifted for northbound traffic during evacuations.)

Baldwin County EMA releases pertinent information to the public on shelter openings and evacuations through public service announcements. During a local state of emergency, Baldwin County residents with no means of transportation will need to contact Baldwin Regional Area Transportation System (BRATS) for home pick-up service and transport to local shelters. BRATS has buses readily available for wheelchair bound clients. Following the execution of a mandatory evacuation order, BRATS will suspend its fees and additionally transport residents wishing to evacuate the county to pre-designated Evacuation Pick-up Points (PUPs), listed below:

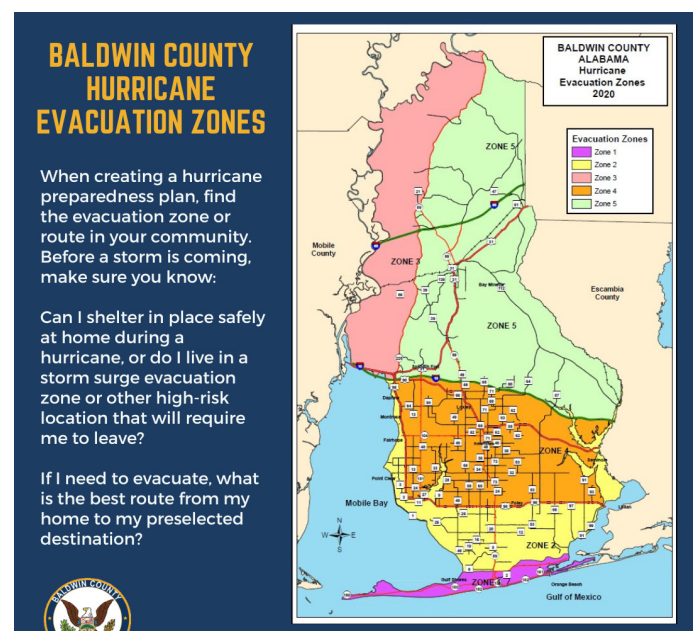
- **BALDWIN COUNTY HIGH SCHOOL, THE HUB**
- **DAPHNE HIGH SCHOOL**
- **FAIRHOPE HIGH SCHOOL**
- **FOLEY HIGH SCHOOL**
- **LOXLEY MUNICIPAL PARK**
- **ROBERTSDALE HIGH SCHOOL**

Baldwin County Board of Education (BCBE) school buses will then pick residents up from the PUPs and transport them to Baldwin County High School in Bay Minette. Citizens are encouraged to schedule transportation in advance. BRATS may be contacted by calling: (251) 972-6817.

Citizens who are non-ambulatory, bed-bound or who have special medical conditions should contact local Emergency Medical Services (EMS) for assistance.

Once a local state of emergency or mandatory evacuation order has been issued, EMS professionals will begin picking up South Baldwin, Eastern Shore, and Central Baldwin residents and will transport them to local hospitals, and local medical needs shelters and electrical support shelters.

Residents are encouraged to schedule transportation with local EMS professionals in advance. Please be aware, a fee could be charged.



FLOOD INFORMATION

BE AWARE OF FLOOD INFORMATION PERTAINING TO BALDWIN COUNTY

FLOOD PROTECTION MEASURES

Every year, flooding causes more property damage in the United States than any other type of natural disaster. There are many ways you can help protect your property and your possessions from flood damage. Property protection measures publications and assistance is available to you by contacting the Baldwin County Building Department at (251) 972-6837 or by visiting your local libraries.

MAP OF THE LOCAL FLOOD HAZARD

The Baldwin County Building Department maintains Federal Insurance Rate Maps (FIRMs). These maps are available for public inspection during normal business hours or can be accessed on the Building Department website at www.BaldwinCountyAL.gov. They may also be viewed at your local library. Upon written request, you may obtain a Flood Determination of your property as it relates to a local flood hazard area by contacting the Baldwin County Building Department at (251) 972-6837. Copies of Elevation Certificates can also be obtained at this office and from their website.

FLOOD HAZARD

To determine if your property is located in a Special Flood Hazard Area (SFHA), contact the Baldwin County Building Department at (251) 972-6837 or view the flood maps on their website.

FLOOD WARNING SYSTEM

Baldwin County's Emergency Management Agency wants to encourage residents and visitors to sign up for local, emergency alerts by visiting AlertBaldwin.com. This system allows National Weather Service of Mobile to provide emergency notifications for hazardous weather and/or emergency incidents, such as flooding. In the event of flood hazards, tune into local radio and TV stations for information. For additional information on Baldwin County's Flood Warning Threat Recognition Program or a list of the area television and radio stations contact the Emergency Management Agency at (251) 972-6807.

FLOODPLAIN DEVELOPMENT PERMITS

Within the floodplains of Baldwin County, ALL development, not just construction, require permits. Extra requirements are involved when developing in the floodplain. Before you alter (fill, grade, clear, etc.) your property, construct a building or otherwise develop your property, contact the Baldwin County Building Department at (251) 972-6837; the Planning & Zoning Department at (251) 580-1655; and the Highway Subdivision Permitting Department at (251) 937-0278 to determine if you will be required to obtain a permit or to report any possible unauthorized development within the floodplain.

FLOOD INSURANCE

Most mortgage lenders require flood insurance based on the location and elevation of the property. Flood damage, unlike wind damage, is not covered by homeowner's policies and must be purchased separately. All properties secured by a federally backed mortgage must carry flood insurance. Baldwin County is an active participant in the National Flood Insurance Program (NFIP) which provides federally backed flood insurance in communities that enact and enforce floodplain regulations. Baldwin County began its participation in the National Flood Insurance (NFIP) Community Rating System (CRS) Program in 1994. Baldwin County currently holds a Class 7 CRS rating, which equates to a 15% discount on new or renewing flood insurance policies for all SFHA properties. For additional information regarding the NFIP or CRS Program, contact the office of the Baldwin County Building Department at (251) 972-6837 or Planning & Zoning Department at (251) 580-1655.



“ WE PROVIDE POWER ”
CALL TODAY! (251) 202-9114



The A-Letric Company logo is a circular emblem with a blue outer ring containing the text "A-LECTRIC" at the top and "COMPANY" at the bottom. Inside the ring is a white circle with a black outline of a hand holding a yellow lightning bolt. The background of the advertisement features a dark blue sky with white lightning bolts and several large, grey industrial generator units. The Kohler logo is in the bottom left and the Generac logo is in the bottom right of this section.

KOHLER®

GENERAC®

Commercial & Residential Generator sales.
Certified sales and service for
Generac, Kohler, and Briggs.

A-LETRIC COMPANY

301 NE 1st St, Summerdale, AL 36580 ⚡ www.a-lectriccompany.com

ACI Advisors



LEE AKINS
Licensed Agent

acihealthins@gmail.com
251-279-7007

Serving the Gulf Coast Region
NPN#8674235

YOUR LOCAL REPRESENTATIVE FOR:

- Affordable Health Insurance
- Long-term care Insurance
- Medicare
- Health Insurance for kids in sports
- Life Insurance
- Tax Advising Services
- College Planning

www.goaciadvisors.com Licensed in AL, FL, TN, MS, TX

Protecting You and Your Future

Downed and Dangerous

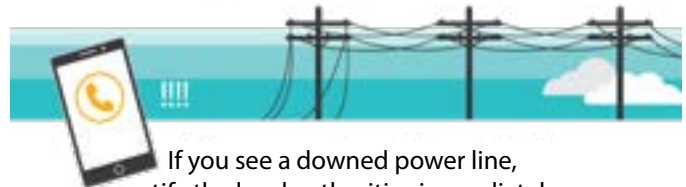
If you see a downed power line, assume it's energized and dangerous. Avoid going near it or putting anything in contact with it.



Downed power lines can energize the ground up to 35 ft. away - so keep your distance.



Never drive over a downed power line or through water that's touching the power line.



If you see a downed power line, notify the local authorities immediately.



Never try to move a downed power line. Even if you think it's deenergized or you're using a non-conductive item, this won't prevent injury or death!

KEEPING COMMUNITIES CONNECTED.

COME SEE US!

413 E. Laurel Ave.
Foley, AL 36535

700 Whispering Pines Rd.
Daphne, AL 36526

FOR MORE:

DAPHNE | 251-626-5000
FOLEY | 251-943-5001

www.rivierautilities.com



www.baldwinemc.com
251-989-6247

STAY INFORMED

MISINFORMATION DURING EMERGENCIES

By: Jessica Waters (Public Information Officer, Baldwin County EMA)

In today's digital age, information spreads rapidly across social media platforms, sometimes at the speed of a click. While this can be a powerful tool for disseminating important updates during emergencies, it also opens the door to the spread of misinformation and fake news. As your trusted source for emergency information, the Baldwin County Emergency Management Agency (EMA) urges residents to be vigilant and discerning when consuming news on social media platforms.

Fake news and misinformation can pose significant risks during emergencies, leading to confusion, panic, and even harm. That's why it's crucial to rely on credible and accredited sources for accurate information. Here are some key tips to help you navigate social media safely during emergencies:

1. VERIFY THE SOURCE:

Before sharing or acting on information received through social media, take a moment to verify the source. Look for information from reputable sources such as local news media, the National Weather Service of Mobile, and the Baldwin County EMA. These organizations adhere to strict standards of accuracy and reliability.

2. CHECK FOR OFFICIAL STATEMENTS:

Official statements from government agencies, emergency services, and local authorities are your best source of reliable information during emergencies. Follow the social media accounts of these organizations to receive timely updates directly from the source.

3. BE CAUTIOUS OF RUMORS:

Rumors and unverified information can escalate quickly on social media platforms. Avoid spreading rumors or unconfirmed reports and encourage others to do the same. Stick to sharing information from credible sources to help prevent the spread of misinformation.

4. REPORT SUSPICIOUS CONTENT:

If you come across content on social media that appears to be fake news or misinformation, report it to the platform's administrators. Reporting suspicious content helps mitigate its spread and ensures that social

media platforms remain safe and reliable sources of information during emergencies.

5. STAY INFORMED THROUGH ACCREDITED CHANNELS:

Make it a habit to stay informed through accredited channels such as local news media, official government websites, and trusted weather services. These sources provide verified and up-to-date information to help you make informed decisions and stay safe during emergencies.

By staying vigilant and relying on trusted sources for information, we can combat the spread of fake news and ensure that accurate information reaches our community during emergencies. Together, let's stay informed, stay connected, and stay safe.

For the latest updates and information during emergencies, follow the Baldwin County Emergency Management Agency on social media and visit our website. Remember, when it comes to your safety and well-being, trust matters.



PET PREPAREDNESS

ENSURING PAW-SITIVE PREPAREDNESS AHEAD OF EMERGENCIES

By: Jessica Waters (Public Information Officer, Baldwin County EMA)

Our furry companions are integral members of our families, and ensuring their safety and well-being during challenging times is so important.

Pets rely on us for their care and protection, especially in times of crisis. Therefore, it is essential for pet owners to have a comprehensive plan in place to safeguard their beloved animals. Here are some key steps to consider:

1. IDENTIFICATION AND DOCUMENTATION:

Make sure your pets are properly identified with collars, tags, and microchips containing up-to-date contact information. Keep recent photos of your pets along with their medical records and vaccination history in a waterproof container.

2. EMERGENCY SUPPLIES:

Prepare an emergency kit for your pets, including food, water, medications, first aid supplies, sanitation items, and comfort items such as blankets or toys. Ensure you have at least a week's supply of essentials stored in a portable container for easy transport.

3. SAFE SHELTER:

Identify pet-friendly shelters or hotels in advance where you can evacuate with your pets if needed. Baldwin County emergency shelters DO NOT accept animals, so it's crucial to have alternatives lined up beforehand. Reach out to local animal shelters or veterinary clinics for assistance if necessary. To view a list of pet-friendly hotels in Alabama, please visit www.petswelcome.com/pet-friendly-hotels/alabama.

4. TRANSPORTATION:

Have a sturdy carrier or crate for each pet to safely transport them during evacuations. Practice getting your pets accustomed to being confined in their carriers to reduce stress during emergencies.

5. EMERGENCY CONTACTS:

Keep a list of emergency contacts, including veterinarians, animal shelters, and pet-friendly hotels, both locally and out-of-state. This will be invaluable in case you need assistance or information during an evacuation.

6. EMERGENCY PLAN:

Develop an evacuation plan that includes your pets. Assign specific responsibilities to family members or friends to ensure a smooth evacuation process.

7. STAY INFORMED:

Stay informed about potential emergencies or disasters in your area through local news, weather alerts, and official channels. Follow instructions from authorities and be prepared



to evacuate if necessary, ensuring your pets are included in your evacuation plans.

Remember, being prepared is the key to effectively managing emergencies and keeping your pets safe. By taking proactive steps to plan for their well-being, you can minimize stress and ensure the best possible outcome for both you and your furry friend during challenging times.

For more information and resources on pet preparedness, please visit our website or contact the Baldwin County Emergency Management Agency. Together, let's ensure the safety and security of all members of our community, including our beloved pets.



SENIOR CONSIDERATIONS

COUNCIL ON AGING

By: Kelly Childress (Director, Council on Aging)

FUNCTIONAL ACCESS AND MEDICAL NEEDS FOR SENIOR ADULTS

Evacuating your home is difficult under any circumstance, but for individuals with medical, functional access or special needs, the evacuation process requires a bit more planning effort. Having a plan will alleviate some of the stress and anxiety that often accompanies disasters. Talk to your doctor to include an emergency supply of essential medications in your emergency kit. Filling prescriptions after a disaster or out of state can be challenging following a disaster. It's a good idea to include critical medical documents in your emergency kit with your other important documents. Should you evacuate and require medical attention, it will be helpful to have your medical records for responders.

CAREGIVER'S GUIDE FOR SHELTERING & EVACUATING

Caregivers may have special considerations and additional items to supplement the standard emergency kit should an emergency or evacuation occur. Considerations will be dependent on the individual needs of the patient. Some considerations may include:

- Special equipment for respiratory, dietary or mobility
- Personal care items
- Medications
- Communication needs
- Service animals and supplies for the service animal
- Electrical needs for supportive equipment

HURRICANE REASSURANCE - S.E.E.K. PROGRAM

Senior Essentials Emergency Kit (SEEK)

The Baldwin County Council on Aging is helping the elderly homebound and seniors in their preparedness planning. Seniors who will be evacuating to a shelter OR staying home in the event of a hurricane can both benefit from this program.

This program emphasizes the importance of an evacuation plan, assisting seniors in gathering and organizing important information, emergency contacts, identifying special needs, shelter or evacuation options. Participants in the SEEK program will be contacted prior Hurricane Season and an impending Hurricane to make certain they have an

updated plan in place. If you or someone you know is a senior, homebound or will be evacuating to a shelter please call the Council on Aging at 251-972-8506.

CONSIDERATIONS FOR SERVICE ANIMALS

Service animals will be impacted by disasters just as people are. Be patient with your service animals as well as pets as they find a routine and adapt to evacuation, relocation or the return to damaged property.

- Identification
- Food and water
- Veterinary records
- Kennel/crate
- Leash and collar
- Toy or comfort items

DEALING WITH THE STRESS OF DISASTERS

Remember to be patient during the aftermath of a disaster. Understand that clean up and recovery will take time. The anger, disbelief, anxiety and depression are natural responses to a traumatic event. Many even find themselves on an emotional roller-coaster. Know that you are NOT alone. Be mindful that the impacts of stress will affect young children and older adults more significantly. Here are some identifiers that indicate stress:

- Irritability
- Depression
- Confusion
- Anxiety
- Hyperactivity
- Eating disorders
- Sleeping disorders
- Exhaustion

Additional love and support to disaster victims will be critical to helping them cope. People need reassurance that they are safe and that life will return to normal. Some things that you can do to help alleviate some of the symptoms of stress are:

- Eat healthy
- Exercise
- Talk with counselors, spiritual leaders or trusted friends
- Try to maintain a schedule where you consistently rest and eat at regular intervals.

RETURNING HOME

NAVIGATING THE RETURN AFTER A DISASTER

By: Jessica Waters (Public Information Officer, Baldwin County EMA)

The aftermath of a disaster can be a challenging and emotional time for residents as they navigate the process of returning home and rebuilding their lives. Here are some essential tips to consider as you safely return home after a disaster:

For Official Clearance: Before returning home after a disaster, wait for official clearance from local authorities and Baldwin County EMA. Even if the immediate danger has passed, there may still be hazards such as unstable structures, downed power lines, or contaminated water that pose risks to residents. Follow evacuation orders and instructions from local authorities

to ensure your safety.

Assess the Damage: Once you have been cleared to return home, assess the damage to your property carefully. Take photographs or videos of any damage for insurance purposes and documentation. Be cautious when entering your home, as structural damage may not be immediately visible, and hazards may be present.

Check Utilities: Before re-entering your home, check utilities such as water, gas, and electricity. If you suspect any damage or if utilities have been turned off during the evacuation, contact the appropriate authorities or utility companies

for assistance. Do not attempt to turn utilities back on yourself.

Be Mindful of Health Risks: After a disaster, there may be health risks associated with returning home, such as mold, contaminated water, or hazardous materials. Take precautions to protect yourself and your family by wearing appropriate personal protective equipment, such as gloves and masks, when cleaning up debris or handling damaged materials. Follow guidelines from health authorities to minimize health risks.

Plan for Recovery: As you begin the recovery process, develop a plan for rebuilding and restoring your home and community. Work with local authorities, insurance companies, and disaster assistance agencies to access resources and support for recovery efforts. Take one step at a time and prioritize tasks based on safety and necessity.

Stay Informed: Stay informed about recovery efforts, assistance programs, and community resources through official channels such as the Baldwin County EMA, local government websites, and community organizations. Regularly check for updates and follow instructions from authorities to ensure a smooth recovery process.

Returning home after a disaster can be a daunting task, but with careful planning, patience, and support, residents can rebuild and recover. For more information and resources on disaster recovery, visit our website or contact our office.



REPORT STORM DAMAGE

www.BaldwinCountyAL.gov/EMA



BALDWIN COUNTY EMERGENCY MANAGEMENT AGENCY



STAYING IN BUSINESS AFTER DISASTER

A GUIDE FOR SMALL BUSINESSES

Yolanda Devine Johnson (Business Advisor with the Alabama Small Business Development Center)

Disasters can strike without warning, disrupting lives and businesses alike. As a business advisor with the Alabama Small Business Development Center, www.asbdc.org, you understand that resilience is critical. Below are practical strategies to help small businesses recover and thrive after a disaster:

1. PRIORITIZE SAFETY AND SECURE YOUR ASSETS

- **Ensure Physical Safety:** Protect employees and customers during and after the disaster. Follow evacuation plans and safety protocols.
- **Assess Property Damage:** Conduct a thorough inspection to identify structural or equipment damage.
- **Protect Vital Records:** Backup critical documents and digital files. Cloud storage solutions can safeguard data even during disasters.

2. COMMUNICATE EFFECTIVELY

- **Inform Your Team:** Keep employees updated on the status of operations and recovery efforts.
- **Stay Connected with Customers:** Use social media, email, or text alerts to inform customers of closures, reopening dates, or changes in services.

3. ASSESS FINANCIAL HEALTH

- **Evaluate Losses:** Document damages and calculate the financial impact to prepare for insurance claims or loan applications.
- **Review Cash Flow:** Prioritize expenses, delay non-essential purchases, and create a recovery budget.

4. LEVERAGE AVAILABLE RESOURCES

- **Access Disaster Assistance:** Programs like SBA Disaster Loans, FEMA assistance, and state resources can provide financial relief.
- **Seek Professional Guidance:** Connect with advisors at local SBDCs for tailored advice.

5. REASSESS YOUR BUSINESS PLAN

- **Adapt to New Norms:** Consider shifting to e-commerce, diversifying revenue streams, or adjusting product offerings to meet changing customer needs.
- **Strengthen Business Continuity Plans:** Build a robust disaster preparedness strategy to minimize disruptions in the future.

6. ENGAGE YOUR COMMUNITY

- **Partner with Local Businesses:** Collaborative efforts can lead to mutual support and shared

recovery efforts.

- **Highlight Resilience:** Share your recovery story with customers to inspire loyalty and demonstrate strength.

7. BUILD RESILIENCE FOR THE FUTURE

- **Invest in Insurance:** Review and update policies to cover potential risks.
- **Diversify Supply Chains:** Ensure alternative suppliers are available to avoid bottlenecks.
- **Train Your Team:** Provide disaster-response training to employees for enhanced readiness.

CONCLUSION

Recovering from a disaster is challenging but achievable with the right steps. By staying organized, leveraging resources, and planning for the future, small businesses can not only survive but emerge stronger.

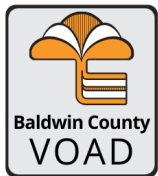
For personalized support and resources, reach out to the Alabama Small Business Development Center. We're here to help you navigate the path to recovery. www.asbdc.org



VOLUNTEER ORGANIZATIONS

THE CRUCIAL ROLE OF BALDWIN COUNTY VOAD IN DISASTER RESPONSE

By: Jessica Waters (Public Information Officer, Baldwin County EMA)



In times of crisis, the strength of a community is measured not just by the efficiency of its emergency services, but also by the collective response of its citizens and organizations. In Baldwin County, we recognize the paramount importance of coordination, communication, and collaboration among various entities during times of disaster. This is precisely why the Baldwin County Voluntary Organizations Active in Disaster (BCVOAD) plays a pivotal role in ensuring our community's resilience and recovery.

At the heart of BCVOAD lies a simple yet powerful mission: to foster efficient and coordinated service to people in Baldwin County affected by disaster while eliminating unnecessary duplication of effort.

BCVOAD serves as a platform for diverse volunteer organizations including churches, private businesses, nonprofits, Chambers of Commerce, and more. We know that so many of these organizations in our area have a heart to serve and will likely be helping our community following a major disaster. BCVOAD is meant to serve as the coordination of those resources and volunteers.

In times of crisis, the importance of BCVOAD cannot be overstated. Here's why:

1. By pooling resources, expertise, and manpower, BCVOAD ensures that assistance reaches those in need swiftly and efficiently. Rather than working alone, member organizations collaborate seamlessly, maximizing the impact of their efforts.

2. Disasters often leave communities grappling

with several challenges, from shelter and food to medical care and emotional support. BCVOAD facilitates a disaster response that ensures no aspect of recovery is overlooked.

3. In the chaotic aftermath of a disaster, the risk of duplication of efforts is high, leading to inefficiencies and wasted resources. BCVOAD serves as a central coordinating body, streamlining efforts, ensuring that resources are allocated fairly, and maximizing the impact of every dollar and volunteer hour contributed.

4. Ultimately, the goal of BCVOAD extends beyond immediate disaster response. By fostering collaboration and coordination among diverse stakeholders, BCVOAD contributes to the long-term resilience of our communities. Through shared knowledge, resources, and best practices, BCVOAD empowers communities to better prepare for, respond to, and recover from future disasters.

As we navigate the uncertainties of an ever-changing world, the importance of organizations like BCVOAD cannot be overstated.

At Baldwin EMA, we are proud to support BCVOAD and the invaluable work the organization does in keeping our community strong. There's a good chance, if you've met anyone from Baldwin EMA, you've heard us speak about VOAD. This is because we know how important it is to continue recruiting membership for VOAD. If your organization is interested in becoming a member, please visit baldwincountyal.gov/EMA/VOAD. We look forward to seeing you at the quarterly meetings.



SAFER PLACES

A COMMUNITY DRIVEN RESOURCE FOR BALDWIN COUNTY

By: Doug Hattan (Operations Division Manager, Baldwin County EMA)

In Baldwin County, the safety of residents and visitors is a top priority, especially during severe weather events. While shelters are a critical resource, Safer Places offer an alternative option for those needing a safe place during hazardous conditions. Unlike designated shelters, Safer Places are community-based facilities like churches, businesses, or other local establishments that voluntarily open their doors to those seeking refuge from severe weather.

It is important to understand that Safer Places are not formal shelters. They are not operated, managed, or inspected by Baldwin County or the State of Alabama. Instead, they are made available through the goodwill of local organizations that want to help keep the community safe during emergencies. Safer Places offer a temporary location to wait out storms, but they may not have the same resources or level of oversight as official shelters.

To ensure a safer environment, Baldwin County Emergency Management Agency (EMA) encourages local businesses, churches, and other community spaces to consider becoming a registered Safer Place. By registering, these locations can be listed as available options for residents and visitors in need during severe weather. It's an opportunity for local organizations to give back to the community by providing an extra layer of safety when it's needed



most.

If your business or place of worship is interested in becoming a Safer Place, reach out to the Baldwin County EMA for more information on how to register. Together, we can create

a stronger, safer community in Baldwin County, ready to face whatever challenges come our way.

TRAINING OPPORTUNITIES

PREPAREDNESS FOR COMMUNITY PARTNERS, FIRST RESPONDERS, AND VOLUNTEERS

By: Doug Hattan (Operations Division Manager, Baldwin County EMA)

The Baldwin County Emergency Management Agency (BCEMA) is excited to announce a range of upcoming training programs aimed at strengthening the skills and readiness of both emergency personnel and the wider community. Currently, BCEMA staff are diligently working to obtain the necessary certifications that will enable them to teach a variety of Incident Command System (ICS) and National Incident Management System (NIMS) courses. These essential courses are designed to help participants understand how to respond to emergencies effectively and coordinate with other agencies during times of crisis.

Additionally, BCEMA is collaborating with several key partners, including FEMA's Emergency Management Institute and the Texas A&M Engineering Extension Service (TEEX). These partnerships will help bring even more training opportunities to Baldwin County's first responders and emergency preparedness



partners, enhancing the county's overall readiness and response capabilities.

Stay tuned for more information on these training opportunities. Whether you are a first responder, an emergency preparedness professional, or local volunteer, BCEMA's

upcoming classes will provide valuable skills to help make Baldwin County a safer place for all. Future course offerings and training dates will be posted on BCEMA's website and social media channels.



TEXT **ALBEACHES** TO 888777



Visit AlertBaldwin.com

TORNADO SHELTERS

The Baldwin County Commission owns or has access to community safe rooms for Tropical Weather events, but these are not designed for the quick access needed in severe storms and tornadoes. Any tornado shelters in Baldwin County are privately owned.

The county shelters of last resort/safe rooms (listed on our website: baldwincountyal.gov) are opened as needed during a hurricane.

Those staying in condos, RV sites, and mobile home communities should speak to managers/owners at the facility about where they recommend sheltering on or off site.

We also recommend seeking shelter with friends or family if you have loved ones nearby, especially for those who live in mobile or manufactured homes.

The primary consideration should be individual and family plan identification of a safer place for severe weather and tornadoes.

SHELTERING IN PLACE, OR SAFER PLACES

Whether you are at home, work or anywhere else you frequent regularly, there may be situations when it's best to stay where you are and avoid any uncertainty outside.

HERE ARE SOME INDICATORS AND STEPS TO TAKE IF THE SITUATION ARISES:

- Use common sense and available information to assess the situation and determine if there is immediate danger.
- Watch TV and listen to the radio often for official news and instructions as they become available.
- Bring your family and pets inside.
- Lock doors, close windows, air vents and fireplace dampers.
- Turn off fans, air conditioning and forced air heating systems.
- Take your emergency supply kit unless you have reason to believe it has been contaminated.
- Go into an interior room on the lowest floor with the fewest windows
- Protect yourself by covering your head or neck with your arms and putting materials such as furniture and blankets around or on top of you.

IF YOU'RE IN YOUR CAR, DO NOT TRY TO OUTFRAN A TORNADO. ADDITIONALLY:

- Do not go under an overpass or bridge. You're safer in a low, flat location.
- Watch out for flying debris that can cause injury or death.

EVEN AFTER A TORNADO PASSES, IT'S IMPORTANT TO STAY ALERT AND USE CAUTION WHEN CLEARING DEBRIS.

- Stay clear of fallen power lines or broken utility lines.
- Wear appropriate gear during clean-up, such as thick-soled shoes, long pants, and work gloves, and use appropriate face coverings or masks if cleaning mold or other debris.
- Do not enter damaged buildings until you are told they are safe.

DIFFERENCE BETWEEN A TORNADO WATCH AND A TORNADO WARNING

- Tornado Watch: Be Prepared! Tornadoes are possible in and near the watch area. Review and discuss your emergency plans and check supplies and your safe room. Be ready to act quickly if a warning is issued or you suspect a tornado is approaching. Acting early helps to save lives! Watches are issued by the Storm Prediction Center for counties where tornadoes may occur. The watch area is typically large, covering numerous counties or even states.
- Tornado Warning: Take Action! A tornado has been sighted or indicated by weather radar. There is imminent danger to life and property. Move to an interior room on the lowest floor of a sturdy building. Avoid windows. If in a mobile home, a vehicle or outdoors, move to the closest substantial shelter and protect yourself from flying debris. Warnings are issued by your local forecast office. Warnings typically encompass a much smaller area (around the size of a city or small county) that may be impacted by a tornado identified by a forecaster on radar or by a trained spotter/law enforcement who is watching the storm.

DISASTER EDUCATION WEBSITES:

Baldwin County Emergency Management Agency (BCEMA) - www.baldwincountyal.gov/ema

Federal Emergency Management Agency (FEMA) - www.fema.gov

Alabama Emergency Management Agency (AEMA) - www.ema.alabama.gov

Be Ready Campaign - www.ready.gov

Agency for Toxic Substance and Disease Registry - www.atsdr.cdc.gov

Centers for Disease Control and Prevention - www.cdc.gov/disasters

Citizen Corps - www.citizencorps.gov

Department of Commerce - www.doc.gov

Department of Education - www.ed.gov

Baldwin County Board of Education - www.bcbe.org/

Department of Energy - www.energy.gov

Department of Health and Human Services - www.hhs.gov/disasters

Department of Homeland Security - www.dhs.gov

Alabama Department of Homeland Security - www.alea.gov/office-of-the-secretary/homeland-security

National Fire Protection Association - www.nfpa.org

National Oceanic and Atmospheric Administration (NOAA) - noaa.gov and

National Weather Service of Mobile (NWS) - weather.gov/mob/



HURRICANE PREPAREDNESS INFORMATION WEBSITE:

<https://www.gulfshoresutilities.com/emergency-preparedness/>

1629 E 1st Street, Gulf Shores, AL 36542

251-968-6323

24 Hour Emergencies

HELLMICH ELECTRIC, INC.
Since 1986

State License #1001

Commercial & Residential

**All Work Guaranteed
Free Estimates**



Gary & Beth Hellmich, Owners
903 West Laurel Ave., Foley, AL 36535

251-943-2350
gary@hellmichelectric.com

Island Enclosures

& Improvements LLC

251-968-9777

3757 Gulf Shores Parkway Suite E, Gulf Shores, AL 36542

Locally Owned * Licensed & Insured * Alabama Home Builders License #16880



- Colonials ■ Crimsafe
- Eyewall Armor Fabric
- Fabric Shield
- Bahamas
- Accordion Shutters
- Roll Shutters
- Aluminum/Clear Panels
- Custom Closets
- Outdoor Kitchens
- Retractable Screens
- Shutters, Solar Shades
- Blinds, Woven Woods
- Sun Room, Screen Room
- Kitchen Remodel
- Bathroom Remodel
- Pergola, Pool Enclosure
- Retractable Awnings





Baldwin Regional Area Transit System, "BRATS," is a department of the Baldwin County Commission. BRATS offers safe, affordable and reliable transportation to help enhance lives, promote a strong economy, protect our environment by reducing traffic congestion and conserve energy. Our transit operation consists of a fleet of over 40 ADA accessible buses. BRATS provides transportation throughout Baldwin County at a minimum mileage-based cost. Funding for BRATS is provided by the fares collected, the Baldwin County Commission and grants from the Federal Transit Administration. To schedule non-emergency transportation with BRATS, please call (251) 972 6817 or download the convenient mobile app, "BRATS On Demand."

Transportation plays a vital role in emergency response in Baldwin County, and BRATS is an active partner with the Baldwin County Emergency Management Agency. Our partnership supports the needs of our community by assisting with mass transit evacuations resulting from natural disasters, fires, vehicle accidents, chemical spills, etc. This alliance and properly executed emergency plans aid in lowering the significant risk of loss of life among those dependent on mass transit for evacuation to escape harm's way.

Public transit provides many with increased independence and provides greater access to our community. We believe in "Connecting Communities," so if you have a transportation need, please contact BRATS today!

Ann Simpson,
Director of Transportation

(251) 972-6817
www.ridebrats.com

LOCAL RESOURCES

AREA TELEVISION STATIONS

Channel 3 (ABC) WEAR TV
Channel 5 (CBS) WKRG TV
Channel 10 (NBC) WALA TV
Channel 15 (FOX) WPML TV
Channel 35 WFGX TV
Channel 44 WJTC TV

AREA RADIO STATIONS

WABB AM 1480
WABB FM 97.5
WABF AM 1480
WQUA FM 102.1
WAVH FM 106.5
WBCA AM 1110
WBHY AM 840
WBHY FM 88.5
WBLX FM 92.5
WCSN FM 105.7
WDLT FM 98.3
WDLT AM 600
WBUB FM 104.1
WMXC FM 99.9
WRKH FM 96.1
WGOK AM 900
WHEP AM 1310
WHIL FM 91.3
WJLQ FM 100.7
WJLQ FM 100.7
WNTM AM 710

WNXP FM 105.5
WKSJ FM 94.9
WPCS FM 89.3
WUWF FM 91
WXBW FM 102.5
WZEW FM 92.1
WTKK FM 101.5
WXWY AM 100
WMOB AM 1360

BALDWIN COUNTY EVACUATION SHELTERS

MASS CARE SHELTERS (GENERAL PUBLIC):

Baldwin County Coliseum
19477 Fairground Road
Robertsdale, AL 36567

BAY MINETTE MIDDLE SCHOOL

1311 West 13th St.
Bay Minette, AL 36507

DAPHNE EAST ELEMENTARY

26651 County Road 13
Daphne, AL 36526

MEDICAL NEEDS SHELTER:

Baldwin County Coliseum
19477 Fairground Road
Robertsdale, AL 36567

ELECTRICAL SUPPORT SHELTERS:

Baldwin County Coliseum
19477 Fairground Road
Robertsdale, AL 36567

Baldwin County Level II
Community Shelter
207 North White Ave.
Bay Minette, AL 36507

Fairhope Satellite Courthouse
1100 Fairhope Ave.
Fairhope, AL 36532

Foley Satellite Courthouse
201 East Section Ave.
Foley, AL 36535

OTHER CONTACT INFORMATION:

BALDWIN COUNTY EMERGENCY MANAGEMENT AGENCY

251-972-6807
BCEMA.BaldwinCountyAL.gov
www.BaldwinCountyAL.gov/
EMA

BALDWIN COUNTY SHERIFF'S OFFICE

251-937-0202
251-972-6802

BALDWIN REGIONAL AREA TRANSPORTATION SYSTEM

Baldwin Regional Area Transit Systems (BRATS) offers safe, affordable, and reliable transportation to residents and visitors throughout Baldwin County. BRATS provides door-to-door public transit for medical appointments, job access, retail shopping, etc. Riding BRATS is easier than ever with the new smart phone app. Download the "BRATS On Demand" app at the Google or Apple stores or schedule a ride through your web browser at <https://brats.app.ridewithvia.com>. For more information on our services, visit the BRATS website at www.bratsondemand.com. P.O. Box 907, Robertsdale, AL 36567
Office Hours: Monday through Friday, 7:00 a.m. – 4:30 p.m.
251-972-6817

UTILITIES

ALABAMA POWER

Provides electric service to surrounding areas
800-888-2726
CustomerService.Southern-Company.com

BALDWIN COUNTY SEWER SERVICE

251-971-3022

BALDWIN EMC

Provides electric for all of Gulf Shores and Orange Beach; most unincorporated areas
251-989-6247; 800-837-3374
BaldwinEMC.com

EAST CENTRAL BALDWIN WATER AUTHORITY

East Central Baldwin County water, sewer and fire protection authority.
251-942-1242

NORTH BALDWIN UTILITIES

Natural gas, water and waste water.
251-580-1626
NorthBaldwinUtilities.com

PERDIDO BAY WATER

Provides water, sewer and fire for Lillian, Perdido Beach, Josephine and Elberta.
251-987-5816
PerdidoBayWater.com

RIVIERA UTILITIES

The electric department provides service for Daphne, Spanish Fort, Point Clear, Loxley, Silverhill, Summerdale, Foley, Elberta, Lillian, Bon Secour and Magnolia Springs.

The gas department directly serves customers in Foley, Magnolia Springs, Summerdale, Elberta, Miflin, Gulf Shores and Silverhill. Additionally, Riviera supplies wholesale natural gas to the municipalities of Loxley, Robertsdale and Clark / Mobile counties gas district in Orange Beach.

Provides water service to households in South Baldwin County.
Provides waste water service to city of Foley only.
251-943-5001 Eastern Division
Foley
251-626-5000 Western Division
Daphne
RivieraUtilities.com

WHITE HOUSE WATER AUTHORITY

Water authority to White House Fork areas.
251-937-2430

MUNICIPALITIES

DAPHNE UTILITIES

Water, sewer and natural gas.
251-626-2628
DaphneUtilities.com

FAIRHOPE UTILITIES

Set up new service for water, sewer, natural gas, electric and sanitation.
251-990-0121
COFairhope.com

GULF SHORES UTILITIES

Water and sewer.
251-968-6323

LOXLEY UTILITIES

Water, waste water, gas, solid waste, streets, animal control, mosquito control, grass and drainage maintenance.
251-964-7644

ROBERTSDALE UTILITIES

Electric, sewer, water, natural gas and sanitation.

251-947-8950
Robertsdale.org

SUMMERDALE WATER

251-989-6470

SUMMERDALE SEWER

251-989-2437
SummerdaleAlabama.com

OTHER INFORMATION PERTAINING TO UTILITIES

ALABAMA 1: 811 ALL
BALDWIN COUNTY
800-972-2631
ALICall.com

UTILITIES OVERVIEW WEBSITE

BaldwinEDA.com

ELECTED OFFICIALS

BALDWIN COUNTY COURTHOUSE

312 Courthouse Square, Suite 22, Bay Minette, AL 36507.

CIRCUIT COURT JUDGES

This circuit comprises the geographical limits of Baldwin County and is composed of five circuit court judges, two district court judges, one circuit clerk and one district attorney. The Circuit Court hears all civil matters where the amount in controversy exceeds \$10,000, all criminal prosecutions involving felony offenses and family court matters. The Circuit Court has concurrent jurisdiction with the District Court and in all civil matters where the amount in controversy exceeds \$3,000 but does not exceed \$10,000, exclusive of interest and costs. Additionally, the Circuit Courts exercise appellate jurisdiction over cases appealed from the District Courts, Probate Court, Baldwin County Municipal Courts and certain administrative and municipal boards.

TWENTY-EIGHTH JUDICIAL DISTRICT CIRCUIT

HONORABLE J. CLARK STANKOSKI
Presiding Circuit Judge
251-937-0237

HONORABLE SCOTT P. TAYLOR
Circuit Judge
251-580-2570

HONORABLE CARMEN E. BOSCH
Circuit Judge
251-937-0235

HONORABLE JODY W. BISHOP
Circuit Judge
251-937-0290

HONORABLE C. JOSEPH NORTON
Circuit Judge
251-937-0273

HONORABLE KAROL KEMP
Circuit Judge

DISTRICT JUDGES

The District Court has original jurisdiction over criminal misdemeanors, holds preliminary hearings in felony prosecutions and can receive guilty pleas in felony cases not punishable by death. The two district judges exercise concurrent jurisdiction with the Circuit Courts in juvenile matters and in civil actions where

the amount in controversy does not exceed \$10,000; furthermore, the district judges have exclusive jurisdiction over all civil actions where the amount in controversy, exclusive of interest and costs, does not exceed \$3,000, which are considered "small claims cases."

MICHELLE M. THOMASON
Presiding judge Courtroom #7
251-972-8573
251-972-6815 (Fax)

WILLIAM E. SCULLY JR.
251-580-1647

HONORABLE MICHAEL HOYT

CIRCUIT CLERK

The Circuit Clerk serves as the chief administrative and fiscal officer for the court system. Also serves as an election official for the county and has magistrate duties, working with law enforcement for the issuance of warrants and for the filing of court documents.

BRENDA GANEY
312 Courthouse Square, Suite 10
Bay Minette, Alabama 36507
brenda.ganey@alacourt.gov

DISTRICT ATTORNEY

ROBERT WILTERS
Elected 2016
Administrative Office
101 Hand Ave.
Bay Minette, AL 36507
251-937-0274
BaldwinDA@baldwincountyal.gov

FEDERAL AND STATE REPRESENTATIVES

U.S. SEN. TOMMY TUBERVILLE
United States Senator Tommy Tuberville was elected to the U.S. Senate in 2020 and is currently serving his first term representing Alabama. His constituents still know him as Coach Tuberville, following his 40-year career coaching college football. Sen. Tuberville serves on the Committee on Agriculture, Nutrition and Forestry, the Committee on Armed Services, the Committee on Health, Education, Labor and Pensions and the Committee on Veterans' Affairs.

MOBILE OFFICE:
BB&T Centre 41 West I-65, Service Road North, Suite 2300-A
Mobile, AL 36608
Phone 251-414-3083

WASHINGTON D.C. OFFICE:
142 Russell Senate Office Building
Washington DC 20510
202-224-4124

U.S. SEN. KATIE BRITT
Elected to the Senate in 1986. Sen. Shelby serves as the chairman of the Committee on Banking, Housing and Urban Affairs and is a member of the Committee on Appropriations as well as the Committee on Rules and Administration.

MOBILE OFFICE:
113 St. Joseph St.
445 U.S. Federal Courthouse
Mobile, AL 36602
Phone: 251-694-4164 • Fax: 251-694-4166

WASHINGTON, D.C. OFFICE:
304 Russell Senate Office Building
Washington, D.C. 20510
Phone: 202-224-5744 • Fax: 202-224-3416 •
Website: Shelby.Senate.gov

U.S. REP. BARRY MOORE
Alabama's First District
Elected in 2020. He sits on the House Agriculture Committee and the House Judiciary Committee.
Website: barrymoore.house.gov/

BALDWIN COUNTY OFFICE:
502 W. Lee Ave.
Summerdale, AL 36580
Phone: 251-989-2664

WASHINGTON D.C. OFFICE:
1504 Longworth House Office Building
Washington, DC 20515
Phone: 202-225-2901 • Fax: 202-225-0562 •
Website: Byrne.House.gov

BALDWIN COUNTY LEGISLATIVE CONSTITUENT SERVICES OFFICE DIRECTOR, CLIFF MCCOLLUM
cliff.mccollum@baldwincountyal.gov
1100 Fairhope Ave.
Fairhope, AL 36532
251-990-4615

STATE SEN. CHRIS ELLIOTT
(R) - State Senate District No. 32
Elected to the State Senate in 2018
Represents all or a portion of the incorporated Baldwin municipalities of Daphne, Elberta, Fairhope, Foley, Gulf Shores, Loxley, Magnolia Springs, Orange Beach, Perdido Beach, Robertsedale, Silverhill, Spanish Fort and Summerdale; the unincorporated communities of Elsanor, Seminole, Belforest, Marlow, Point Clear, Barnwell, Lillian, Josephine, Mifflin, Bon Secour, Fort Morgan and Ono Island.
Alabama State Senate, Room 738-B
1100 Fairhope Avenue
Fairhope, AL 36532
334-261-0897 • celliott@baldwincountyal.gov

STATE SEN. GREG ALBRITTON

(R) - State Senate District No. 22
Elected to the State Senate in 2014
Represents all or a portion of the incorporated municipalities of Bay Minette, Loxley and Robertsdale and the unincorporated communities of Little River, Blacksher, Tensaw, Lottie, Latham, Vaughn, Stockton, Crossroads, Bromley, Malbis, Stapleton, Plantation Hills, Ellisville and Belforest.
Alabama State Senate, Room 721
203 Oak St.
Bay Minette, AL 36507
334-261-0843
galbritton@baldwincountyal.gov

STATE REP. ALAN BAKER

(R) - State House District No. 66
Elected to the House in 2006
Represents the incorporated municipality of Loxley; the unincorporated communities of Perdido, Phillipsville, Pine Grove, Gateswood, Clear Springs, Loxley-Ellisville and Stapleton.
Alabama House of Representatives,
Room 427-B
203 Oak Street
Bay Minette, AL 36507
334-261-0420
StateRep@co.escambia.al.us

STATE REP. JENNIFER FIDDLER

(R) - State House District No. 94
Elected to the House in 2002
Represents all or a portion of the incorporated municipalities of Fairhope, Robertsdale and Silverhill; the unincorporated communities of Malbis, Belforest, Plantation Hills, Point Clear, Barnwell, Marlow, Elsanor, Rosinton, Seminole and Lillian.
Alabama House of Representatives,
Room 426
1100 Fairhope Avenue.
Fairhope, AL 36532
334-261-0409
JFaust@baldwincountyal.gov

STATE REP. FRANCES HOLK-JONES

(R) - State House District No. 95
Elected to the House in 1980
Represents the incorporated municipalities of Elberta, Foley, Gulf Shores, Magnolia Springs, Orange Beach, Perdido Beach, Robertsdale and Summerdale; the unincorporated communities of Barnwell, Lillian, Josephine, Miflin, Bon Secour, Fort Morgan and Ono Island.
Alabama House of Representatives,
Room 532
11 S. Union St.
Montgomery, AL 36130
334-261-0523

STATE REP. DONNA GIVENS

(R) - State House District No. 64
Elected to the House in 2006
Represents all or a portion of the incorporated municipality of Bay Minette; the unincorporated communities of Little River, Blacksher, Lottie, Tensaw, Rabun, Latham, Vaughn, Stockton, Crossroads, Whitehouse Fork and Bromley.
Alabama House of Representatives,

Room 526-D
11 S. Union St.
Montgomery, AL 36130
334-261-0445
HarryShiver@aol.com

STATE REP. MATT SIMPSON

(R) - State House District No. 96
Elected to the House in 2018
Represents all or a portion of the incorporated communities of Daphne and Spanish Fort; the unincorporated communities of Bromley, Stapleton and Malbis.
Alabama House of Representatives,
Room 417-G
1100 Fairhope Avenue
Fairhope, AL 36532
334-261-0424
MattSimpsonAL96@gmail.com

BALDWIN COUNTY OFFICIALS

Baldwin County Commission
(baldwincountyal.gov)

BALDWIN COUNTY COMMISSIONER HONORABLE JAMES E. (JEB) BALL

(R) - District No. 1 -
North Baldwin County
First elected in 2018
Municipality: City of Bay Minette
Communities: Little River, Blacksher, Latham, Vaughn, Stockton, Redtown, Lot-tie, Rabun, Perdido, Carpenter, Blakeley, Bromley, Cottage Hill, Pine Grove, White-house Fork, Crossroads, Dyas, Phillipsville, Vangordon, Stapleton and Steelwood
Baldwin County - Administration
Building
312 Courthouse Square, Suite 12
Bay Minette, AL 36507
Phone: 251-937-0330
Administrative Staff: Barbara Pate
Email: barbara.pate@baldwincountyal.gov

HONORABLE MATTHEW P. MCKENZIE

(R) District No. 2 - Eastern Shore
Elected 2022
Municipalities: City of Spanish Fort, City of Daphne and City of Fairhope
Communities: Belforest, Historic Marlow, Fish River, Barnwell, Battles Wharf, Point Clear and Montrose
Baldwin County (Fairhope) Satellite Courthouse
1100 Fairhope Avenue
Fairhope, AL 36532
Phone: 251-990-4620 Ext. 4620
Auxiliary Office: Baldwin County Administration Building (County Seat)
312 Courthouse Square, Suite 12
Bay Minette, AL 36507
Phone: 251-937-9561
Administrative Staff: Michelle Howard
Phone 251-990-4606 Ext. 4606, 2601
Email: Michelle.Howard@baldwincountyal.gov

HONORABLE BILLIE JO UNDERWOOD

(R) - District No. 3 - Central
Baldwin County

First Elected in 2018
Municipalities: Town City of Loxley, City of Robertsdale, Town of Silverhill and Town of Summerdale
Communities: Gateswood, Clear Springs, Rosinton, Elsanor and Seminole
Baldwin County - Central Annex
22251 Palmer St.
Robertsdale, AL 36567
Phone: 251-972-8515
Auxiliary Office: Baldwin County Administration Building
312 Courthouse Square, Suite 12
Bay Minette, AL 36507
Administrative Staff: Tiffany Givens
Tiffany.Givens@baldwincountyal.gov

HONORABLE CHARLES F. (SKIP) GRUBER

(R) - District No. 4 - South Baldwin County
First Elected 2006
Municipalities: City of Foley, Town of Elberta, City of Gulf Shores, Town of Magnolia Springs, City of Orange Beach and Town of Perdido Beach
Communities: Historic Marlow, Fish River, Bon Secour, Oyster Bay, Miflin, Josephine, Ono Island, Fort Morgan and Lillian
Baldwin County Commission
(Foley) Satellite Courthouse
201 E. Section Ave.
Foley, AL 36535
Phone: 251-972-6833, Ext. 2804
Auxiliary Office: Baldwin County Administration Building
312 Courthouse Square, Suite 12
Bay Minette, AL 36507
Administrative Staff:
Phone: 251-937-0264, 251-972-6833, ext. 2801

BALDWIN COUNTY SHERIFF ANTHONY LOWERY

The sheriff's office is the principal law enforcement agency for Baldwin County. The sheriff serves as an officer of the courts and is responsible for service of court papers and documents. He also maintains the Baldwin County Corrections Center which houses up to 649 inmates.
Non-Emergencies: 251-937-0202 or 251-972-6802
Telecommunications Device for the Deaf: 251-580-2516

BALDWIN COUNTY CORONER BRIAN PIERCE

Elected in 2018
Phone: 251-970-4051
Email: brian.pierce@baldwincountyal.gov
The coroner is responsible for the determination of the cause and manner of death of a person who dies and is not under medical care.
All traumatic deaths, such as murder, suicide, accidental, motor vehicle and drowning are required by law to be reported to the coroner. Any person who may have died of natural causes, but was not under a doctor's care, by law, must also be reported to the coroner's office. It is the final responsibility of the coroner

to execute and file a Certificate of Death with the Baldwin County Health Department (251-947-3618). The coroner must also review and certify all persons who desire to be cremated at the time of their death. In order to determine the cause and manner of death, the coroner may request an autopsy be conducted by the Alabama Department of Forensic Sciences located in Mobile; 251-471-7026 adfs.alabama.gov.

**PROBATE JUDGE
HARRY D'OLIVE JR.**

The Probate Judge in Baldwin County is a publicly elected representative of the people for the administration of the Probate Court, License Office and the "Recorder's" Office — for official public recordation of documents.

MAIN OFFICE:

220 Courthouse Square
Bay Minette, AL 36507
Phone: 251-580-2596

SATELLITE OFFICES:

22251 Palmer St., Robertsedale, AL 36567
Phone: 251-943-5061
1102 Fairhope Ave., Fairhope, AL 36532
Phone: 251-928-3002
201 E. Section Ave., Foley, AL 36535
Phone: 251-943-5061

**BALDWIN COUNTY REVENUE
COMMISSIONER TEDDY J. FAUST JR.**
Elected 2009

The Revenue Commissioner's Office is responsible for mapping, appraising and assessing each parcel of property, and then collecting tax based upon each parcel's assessed value. These property taxes support the state of Alabama, Baldwin County, Baldwin County public schools, hospitals, law enforcement, fire departments and municipalities.
Main Office:

1705 U.S. Highway 31 S.
Bay Minette, AL 36507
Phone: 251-937-0245
Email: tfaust@baldwincountyal.gov

COUNTY ADMINISTRATION

**COUNTY ADMINISTRATOR
ROGER RENDLEMAN**

Email: roger.rendleman@baldwincountyal.gov

**COUNTY ENGINEER
FRANK LUNDY**

Email: Flundy@baldwincountyal.gov

MEDIA INQUIRIES

If you are a news media professional with a question for the Baldwin County Commission please submit your request using the form below. Please include as much information as possible with your request. All requests will be considered in the order received.

This Media request form is dedicated to responding to requests from credentialed journalists. If this is a non-media inquiry please reach out to our Citizen Service Center. You can reach them by phone at 251.937.9561 • 251.928.3002 • 251.943.5061

<https://baldwincountyal.gov/departments/county-administration/media-request>

ORANGE BEACH SCHOOL SYSTEM

ORANGE BEACH ELEMENTARY

4900 Wilson Blvd.
251-981-5662

ORANGE BEACH MIDDLE & HIGH SCHOOL

4900 Wilson Blvd., Orange Beach
251-967-5306
Bcbe.org/OBHS

GULF SHORES CITY SCHOOLS

GULF SHORES BOARD OF EDUCATION

300 East 16th Ave., Gulf Shores
251-968-9873
Gsboe.org

**GULF SHORES ELEMENTARY SCHOOL
(K-5)**

1600 East 3rd Ave., Gulf Shores
251-968-7375
Gsboe.org/GSES

GULF SHORES MIDDLE SCHOOL (6-8)

450 East 15th Ave., Gulf Shores
251-968-8719
Gsboe.org/GSMS

GULF SHORES HIGH SCHOOL (9-12)

600 East 15th Ave., Gulf Shores
251-968-4747
Gsboe.org/GSHS

HOSPITALS

NORTH BALDWIN INFIRMARY
(251) 937-5521

**SOUTH BALDWIN REGIONAL MEDICAL
CENTER**
(251) 949- 3400

**SOUTH BALDWIN REGIONAL MEDICAL
CENTER FREE-STANDING EMERGENCY
DEPARTMENT**
(251) 215-4853

THOMAS HOSPITAL
(251) 928-2375

**THOMAS FREESTANDING EMERGENCY
DEPARTMENT – MALBIS**
(251) 279-5423

BALDWIN COUNTY CHAMBERS OF COMMERCE

NORTH BALDWIN CHAMBER
301 McMeans Ave.
Bay Minette, AL 36507
(251) 937-5665

CENTRAL BALDWIN CHAMBER
23150 Hwy 59
Robertsedale, AL 36567
(251) 947-2626

SOUTH BALDWIN CHAMBER
112 West Laurel Ave.
Foley, AL 36535
(251) 943-3291

EASTERN SHORE CHAMBER
327 Fairhope Ave.
Fairhope, AL 36532
(251) 928-6387

COASTAL AL BUSINESS CHAMBER
3150 Gulf Shores Parkway
Gulf Shores, AL 36547
(251) 968-7200

BALDWIN COUNTY PUBLIC SCHOOLS

DISTRICT 1

BALDWIN COUNTY HIGH (9-12)

1 Tiger Drive, Bay Minette
251-937-2341
Bcbe.org/BCHS

BALDWIN COUNTY VIRTUAL ELEMENTARY / MIDDLE SCHOOL

605 US 98, Daphne
251-404-6209
Bcbe.org

BALDWIN COUNTY VIRTUAL HIGH SCHOOL

605 US 98, Daphne
251-404-6209
Bcbe.org

BAY MINETTE ELEMENTARY (K-6)

400 E. 9th St., Bay Minette
251-937-7651
Bcbe.org/BME

BAY MINETTE MIDDLE (7-8)

1311 W. 13th St., Bay Minette
251-580-2960
Bcbe.org/BMMS

DELTA ELEMENTARY (K-6)

10251 Whitehouse Fork Road Extension, Bay Minette
251-937-3657
Bcbe.org/Delta

NORTH BALDWIN CENTER FOR TECHNOLOGY (9-12)

505 W. Hurricane Road, Bay Minette
251-937-6751
Bcbe.org/NBCT

PERDIDO SCHOOL (K-8)

23589 County Road 47, Perdido
251-937-8456
Bcbe.org/Perdido

PINE GROVE ELEMENTARY (K-6)

43980 Pine Grove Road, Bay Minette
251-937-0453
Bcbe.org/PineGrove

STAPLETON ELEMENTARY (K-6)

35480 Harriot Ave., Stapleton
251-937-2038
Bcbe.org/Stapleton

DISTRICT 2

BELFOREST ELEMENTARY

11364 County Road 64, Daphne
Bcbe.org/belforest

DAPHNE EAST ELEMENTARY (K-6)

26651 County Road 13, Daphne
251-626-1663
Bcbe.org/DEE

DAPHNE ELEMENTARY (K-3)

2307 Main St., Daphne
251-626-2424
Bcbe.org/DE

DAPHNE HIGH (9-12)

9300 Champions Way, Daphne
251-626-8787
Bcbe.org/DHS

DAPHNE MIDDLE (7-8)

1 Jody Davis Circle, Daphne
251-626-2845
Bcbe.org/DMS

W.J. CARROLL INTERMEDIATE (4-6)

1000 Main St., Daphne
251-626-0277
Bcbe.org/Carroll

DISTRICT 3

C. F. TAYLOR ALTERNATIVE SCHOOL

19150 Wilters St., Robertsdale
251-970-4415

CENTRAL BALDWIN MIDDLE SCHOOL (7-8)

24545 Highway 59, Robertsdale
251-947-2327
Bcbe.org/CBMS

ELSANOR ELEMENTARY (K-6)

23440 U.S. Highway 90, Robertsdale
251-947-5401
Bcbe.org/Elsanor

LOXLEY ELEMENTARY (K-6)

4999 S. Magnolia St., Loxley
251-964-5334
Bcbe.org/LoxleyElem

ROBERTSDALE ELEMENTARY (K-6)

1 Cub Drive, Robertsdale
251-947-4003
Bcbe.org/RobertsdaleElem

ROBERTSDALE HIGH (9-12)

1 Golden Bear Drive, Robertsdale
251-947-4154
Bcbe.org/RHS

ROSINTON ELEMENTARY (K-6)

19757 County Road 64, Robertsdale
251-964-5210
Bcbe.org/Rosinton

SOUTH BALDWIN CENTER FOR TECHNOLOGY (9-12)

19200 Carolina St., Robertsdale
251-947-5041
Bcbe.org/SBCT

SILVERHILL ELEMENTARY (K-6)

15800 Fourth Ave., Silverhill
251-945-5188
Bcbe.org/Silverhill

DISTRICT 4

FLORENCE B. MATHIS ELEMENTARY (K-6)

600 Ninth Ave., Foley
251-943-1244
Bcbe.org/MathisElementary

FOLEY ELEMENTARY (K-6)

450 N. Cedar St., Foley
251-943-8861
Bcbe.org/FoleyElem

FOLEY HIGH (9-12)

1 Pride Place, Foley
251-943-2221
Bcbe.org/Foley

FOLEY MIDDLE (7-8)

200 N. Oak St., Foley
251-943-1255
Bcbe.org/FoleyMS

MAGNOLIA SCHOOL (K-6)

1 Jaguar Loop, Foley
251-965-6200
Bcbe.org/Magnolia

SUMMERDALE SCHOOL (K-8)

400 E. Broadway St., Summerdale
251-989-6850
Bcbe.org/Summerdale

SWIFT CONSOLIDATED (K-6)

6330 Bon Secour Highway, Bon Secour
251-949-6422
Bcbe.org/Swift

DISTRICT 5

ELBERTA ELEMENTARY (K-6)

25820 U.S. Highway 98, Elberta
251-986-5888
Bcbe.org/Elberta

ELBERTA HIGH (9-12)

13355 Main St., Elberta
251-968-8127
Bcbe.org/ElbertaHigh

ELBERTA MIDDLE (7-8)

13355 Main St., Elberta
251-986-8127
Bcbe.org/EMS

DISTRICT 6

FAIRHOPE EAST ELEMENTARY (K-6)

20698 Bishop Road, Fairhope
251-928-7841
Bcbe.org/FairhopeEastElemen

FAIRHOPE HIGH (9-12)

1 Pirate Drive, Fairhope
251-928-8309
Bcbe.org/FHS

FAIRHOPE MIDDLE (7-8)

2 Pirate Drive, Fairhope
251-928-2573
Bcbe.org/FMS

FAIRHOPE WEST ELEMENTARY (K-6)

408 N. Section St., Fairhope
251-928-8400
Bcbe.org/FairhopeWestElemen

J. LARRY NEWTON SCHOOL (K-6)

9761 County Road 32, Fairhope
251-990-3858
Bcbe.org/Newton

DISTRICT 7

ROCKWELL ELEMENTARY (K-5)

10183 U.S. Highway 31, Spanish Fort
251-626-5528
Bcbe.org/Rockwell

SPANISH FORT ELEMENTARY (K-5)

30900 Highway 225, Spanish Fort
251-626-9751
Bcbe.org/SpanishFortElem

SPANISH FORT HIGH (9-12)

1 Plaza de Toros Drive, Spanish Fort
251-625-3259
Bcbe.org/SFHS

SPANISH FORT MIDDLE (6-8)

33899 Jimmy Faulkner Drive, Spanish Fort
251-625-3271
Bcbe.org/SFMS

Life Less Interrupted...

**Receive a
40 Gallon
Water Heater
When You
Switch To
Natural Gas**

WITH NATURAL GAS YOUR LIFE WILL BE LESS INTERRUPTED AFTER A HURRICANE...

You will still be able to cook with a gas range, gas outdoor grill and enjoy a hot shower with a natural gas water heater.



Gas Fireplaces



Generac Generators



**Call Us Today
To Find Out About
Switching To Natural Gas**



Wilmington Grill



Coppersmith Gas Lanterns

CLARKE-MOBILE COUNTIES GAS DISTRICT

24831 Canal Road • Post Office Box 3069 • Orange Beach, AL 36561

251-974-5432

Serving Orange Beach Alabama

**YOU LIVE IN
BALDWIN COUNTY...**

**YOUR NEWS
SHOULD, TOO**

50% Off All Subscriptions

* New Subscribers only

GulfCoastMedia.com/Subscribe

Promo Code: BESTDEAL

GULF  AST MEDIA