

STAY ALERT

BALDWIN COUNTY

INSIDE

EVACUATION ROUTES
FLOOD HAZARDS
PET PREPAREDNESS
VOLUNTEERING
STAYING CONNECTED

2023 ALABAMA GULF COAST
EMERGENCY PREPAREDNESS GUIDE



A publication of **GULF COAST MEDIA**

The Northern Gulf Coast's Most Experienced
Hurricane, Decorative & Security Shutter Experts!



Custom Solutions for Home, Condo or Business

Easy Shutter Services, LLC

2804 E. 2nd St., Gulf Shores, AL 36542

(one block East of Lulu's)

Call Today For Free Estimate!

(251) 968-0008

shutterservicesllc@gmail.com • easyshutterservices.com



BE PREPARED

Battery backup weather radios provide safety for your family with advance weather hazard warnings



NO POWER? NO WORRIES!
COOK A HOT & HEALTHY MEAL
ON YOUR WEBER GRILL

GENERAC GENERATORS



**Eastern
Shore** **ACE**
Hardware

YOUR SOURCE FOR EMERGENCY SUPPLIES:

- Portable Generators
- Tarps • Batteries • Propane
- Sandbags • Chainsaws
- Flashlights • and more...

Corner of Hwy 31 & Hwy 90 in Spanish Fort **251-626-3350**
10058 Belgrove Ave. in Daphne (opening in 2023)

BALDWIN COUNTY EMA

We are into a new tropical weather season and projections indicate we may have a below average season. As I reflect on exactly what that means, I am easily reminded of the numerous storms that made landfall along the Gulf Coast with a below average season forecast. The point here is that one storm can create a season that we all would remember forever. We should always look to understand what we need to prepare our families, businesses, and communities, to be ready and aim to help others as well. I always ask as I have opportunity to speak publicly, "what do you love the most about Baldwin County?". The most popular answer is, "the people of Baldwin County". I couldn't agree more. I will never forget how the county pulled together during the 2020 Hurricane Season. The various organizations, churches, and even our businesses both large and small contributed to quickly get our county cleaned up and open to serve. My challenge for you this year is to investigate our Volunteer Organizations Active in Disaster (VOAD) program and make the decision to get involved. Each one of you are a part of many civic groups, agencies,



organizations, and private non-profits and are always

looking to serve in some capacity.

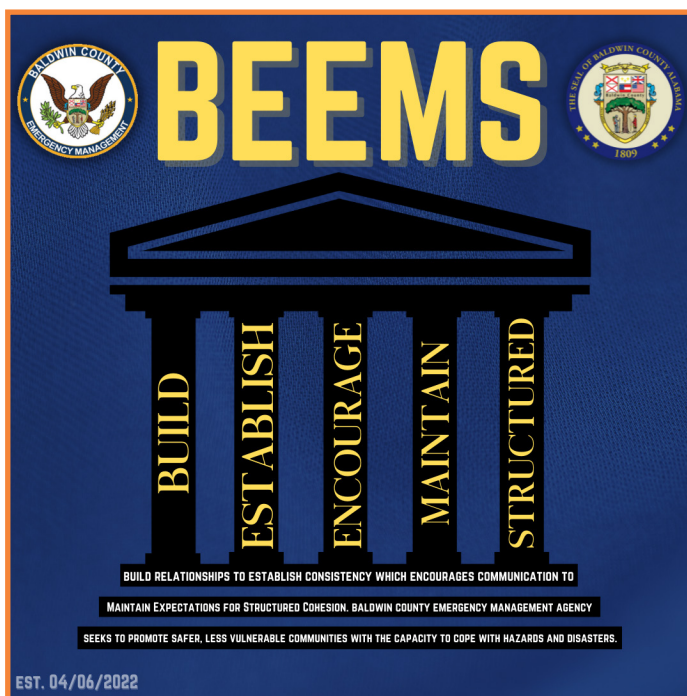
Why not join a team that stands ready to respond

during times of

disaster from a local and regional perspective? My hope is this is something that you have wanted to do, but simply did not know how to be involved. There

are many great networking and training opportunities that will not only better prepare our communities but would give us all purpose. You can make a great difference. We would love for you to be a part of Baldwin County Emergency Management Agency by joining VOAD.

This year we have worked with Gulf Coast Media to create our second publication of "Stay Alert Baldwin." This is not your average magazine with advertisements. The publication includes a rundown of what the Emergency Management Agency staff has identified as what you need to know here in Baldwin County. This publication is created knowing that this is something of value for lifetime residents, newcomers, and our tourists. Please retain a copy either via print, or on our website and download the PDF to your mobile device. We hope you utilize this as a local resource with useful information to use before, during, and after a disaster. In conclusion, we all hope for the best, but we must prepare for the worst. It's not if there will be a disaster on our coastal community, but when. We are extremely motivated to improve how we communicate and always looking for opportunity to build our program in a way that supports Baldwin County, Alabama. Thank you in advance for being a great community member and preparing your home and business in a way that will allow you to help others during times of need and as always Stay Alert Baldwin.



Zach Hood
Director, Baldwin County EMA

TABLE OF CONTENTS

It's All Here 7

What is EMA? 9

Why Should I Prepare?.....13

Tornado Shelters.....14

Beach Safe..... 15

Evacuation Routes.....18

Volunteer Organizations..... 21

Local Resiliency23

Flood Information..... 24

Hurricane Map 26

Pet Preparedness..... 29

National Weather Service..... 30

Storm Terminology 31

Protect Your Identity 34

Senior Considerations..... 35

Returning Home 36

Business Tips.....37

Expecting the Unexpected..... 39

A Guide to Information You Need to Know.....42

GULF COAST MEDIA

PUBLISHER

Vince Johnson
vince@gulfcoastmedia.com

EXECUTIVE EDITOR

Kayla Green
kayla@gulfcoastmedia.com

MANAGING EDITOR

Allison Marlow
allisonm@gulfcoastmedia.com

COPY EDITING

Kayla Green
Allison Marlow

DESIGN AND LAYOUT

McKinzie Daniels
graphics@gulfcoastmedia.com

ADVERTISING

Frank Kustura
frank@gulfcoastmedia.com
251.923.8129

Bethany Summerlin
bethany@gulfcoastmedia.com
251.266.9982

Shawna Stefankiewicz
shawna@gulfcoastmedia.com
660.676.2083

Stay Alert Baldwin magazine is published by Gulf Coast Media, in partnership with Baldwin County Emergency Management Agency.

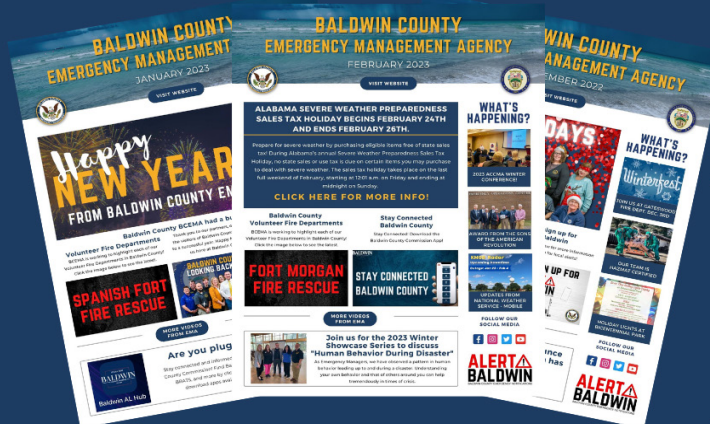
All rights reserved. Reproduction without permission is prohibited. Gulf Coast Media accepts no responsibility in the guarantee of goods and services advertised herein.



Find the e-edition by visiting issuu.com and searching for Stay Alert Baldwin or Gulf Coast Media.

You can also access our e-editions through GulfCoastMedia.com/Magazines.

SIGN UP FOR OUR MONTHLY NEWSLETTER!



USE THE QR CODE

SIGN UP TODAY!

www.BaldwinCountyAL.gov/EMA



ARE YOU SEVERE WEATHER READY?



BEFORE THE STORM:

- Check that your cleanout is properly sealed (if yours is visible)
- Bathe, wash dishes, wash clothes
- Read and save/print all suggestions and troubleshooting tips on our Severe Weather Tips site in case you don't have internet and phone service after the storm

DURING & AFTER STORM:

- When power is out in the area or your pump is turned off, limit water usage in home/building as much as possible
- Reference recommendations from our Severe Weather Tips that pertain to you

Read detailed Severe Weather Tips at:
www.baldwincountysewer.com



Important apps to use during a storm

FEMA

Receive emergency alerts and information. Provides safety notifications, emergency preparedness tips and disaster resources.

NOAA Now

Provides the latest information from the National Oceanic and Atmospheric Administration including: hurricanes and tropical storms in the Atlantic, Pacific and Indian oceans; mainland storms, including the latest tornado and severe thunderstorm alerts; worldwide animated satellite views; the latest marine conditions from the National Data Buoy Center; the ultraviolet index.

Weather.gov

Receive up to the minute weather forecasts from NOAA

Local city alert systems

Municipalities such as Fairhope and Daphne have city-wide alert systems that deliver important information about flooding, road blockages and severe weather. Check with your local city leaders about apps and alert systems available in your area.

IT'S ALL HERE



Whether you love the diversity of recreational activities, the incredibly beautiful scenery or the good ol' Southern charm of South Alabama, Baldwin County has it all. Coastal Alabama is a beautiful place to live, work and play. That is evident not only by the millions of visitors to Baldwin County but also with the thousands of people relocating to our area each year. The face of Baldwin County is changing rapidly.

Baldwin County is one of the fastest growing counties in the State of Alabama. We are living in a dynamic and evolving community where we strive to maintain a safe place to reside, work and vacation. Public safety, resilience and support for our community are top priorities for Baldwin County Emergency Management Agency (EMA). It is this mindset of planning, preparedness and

mitigation that Baldwin County EMA, a department within the Baldwin County Commission, has provided this publication.

Our top priority is the safety of our residents and visitors alike. We also understand that education regarding disaster preparedness is critical so that residents can make informed and wise decisions when it comes to personal safety and property protection. Throughout this publication, we hope you find helpful information and resources that will assist you in emergency preparedness so that you are equipped to respond and that you are knowledgeable of the resources available to you.



"I have lived in Baldwin County my whole life. I was born and raised here. I can remember going through Hurricane Frederic as a child and how there was not an opportunity to get prepared in a timely manner. This was a very scary time for us. I have been through every storm system or weather event since then, and preparedness has come a long way since the days of plotting on paper. Our current EMA and all the staff

are on the cutting edge of preparedness. I am highly confident that the citizens of this county, as well as the visitors, will be given the proper notices needed when having to deal with any severe weather event."

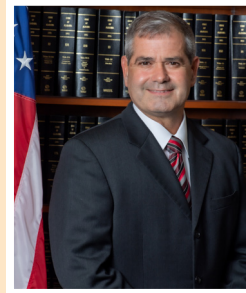
James E. "Jeb" Ball
Baldwin County Commissioner District 1



"The growth and development of Baldwin County is incredible; however, as a commissioner, resident and business owner we all must remember contingency planning and the need to prepare before we are faced with tropical weather. As I am born and raised in Baldwin County, I have maintained a clear understanding of what Baldwin County offers. From Little River to the Gulf Coast, you will find

the most beautiful landscape. We must be ready to prepare for, respond to, recover from and mitigate against storm surge, flooding and other hazards associated with tropical weather events."

Billie Jo Underwood
Baldwin County Commissioner District 3



"As a retired Alabama State Trooper, I have had the opportunity to work on many disasters that have hit the Alabama Gulf Coast during my tenure. I was assigned to the Alabama State Emergency Management Agency as the liaison between state agencies and the local agencies and saw first hand the devastations caused by Hurricane Katrina and Hurricane Sally caused to our Baldwin County citizens. As a new Commissioner,

I feel it is paramount that all residents, visitors, organizations, and businesses have a plan and stay informed. It is very important to prepare and have an evacuation plan for you, your family, and your pets. We as a commission are confident that our Emergency Management Agency is prepared for any emergency that comes our way."

Matthew P. McKenzie
Baldwin County Commissioner District 2



"With more than 34 years experience working with the Baldwin County Highway Department and more than 17 years serving as your county commissioner, I have witnessed many disasters that have impacted our home. It is imperative that we plan as an individual, as a family, as a community and as a county. With the rapid influx of new residents, we want to help provide information for residents to plan appropriately for

natural and man-made disasters. It is equally important that we do not become complacent in our preparedness efforts. Disasters are unpredictable, and we must maintain our state of readiness."

Charles ("Skip") F. Gruber
Baldwin County Commissioner District 4

Together, we can develop mitigation measures to protect our unique community from hazards that threaten our region. Our economy is heavily dependent on tourism. Public sector, private sector, volunteer organizations and our residents must all work together to ensure that we are prepared, resilient and ready for disasters

that may impact our region.

This publication is designed to help inform you, connect you with resources and help you plan and prepare your family, your business and your community for disasters.

Let's prepare together!

BUILD AN EMERGENCY KIT

A FEW SUGGESTED ITEMS:



- Water (one gallon per person per day for several days, for drinking and sanitation)

- Food (at least a three-day supply of non-perishable food) & Manual can opener

- Weather Radio

- Flashlight & Extra Batteries

- First Aid Kit & Medications

- Cell Phone with Backup Charger & Battery

- Copies of Important Documents

- Whistle (to signal for help)

- Hygiene Items

- Moist Towelettes, Garbage bags and Plastic Ties (for personal sanitation)

- Generators & Fuel

BALDWIN COUNTY EMERGENCY MANAGEMENT AGENCY

DISASTER EDUCATION WEBSITES:

Baldwin County Emergency Management Agency (BCEMA) - www.baldwincountyal.gov/ema

Federal Emergency Management Agency (FEMA) - www.fema.gov

Alabama Emergency Management Agency (AEMA) - www.ema.alabama.gov

Be Ready Campaign - www.ready.gov

Agency for Toxic Substance and Disease Registry - www.atsdr.cdc.gov

Centers for Disease Control and Prevention - www.cdc.gov/disasters

Citizen Corps - www.citizencorps.gov

Department of Commerce - www.doc.gov

Department of Education - www.ed.gov

Baldwin County Board of Education - www.bcbe.org/

Department of Energy - www.energy.gov

Department of Health and Human Services - www.hhs.gov/disasters

Department of Homeland Security - www.dhs.gov

Alabama Department of Homeland Security - www.alea.gov/office-of-the-secretary/homeland-security

National Fire Protection Association - www.nfpa.org

National Oceanic and Atmospheric Administration (NOAA) - noaa.gov and

National Weather Service of Mobile (NWS) - weather.gov/mob/

WHAT IS EMA?

The Baldwin County Emergency Management Agency is a vital part of the community, working hand in hand with our partners and the residents of Baldwin County to ensure that the place we live and work is safe and prepared in the event of an unforeseen emergency or disaster event. If you have any questions or wish to schedule a presentation from EMA, please feel free to reach out to us.

1. RESPONSE

EMA responds to all kinds of disasters and emergencies 24 hours a day, seven days a week. With a vast array of knowledge and access to resources such as heavy machinery and generators, EMA can be a valuable asset to first responders on scene. In addition, EMA coordinates public advisories and press releases to keep the public informed.

2. PREPAREDNESS

EMA is responsible for planning the best response for emergencies or disasters that may occur

within the county. These incidents may include a hurricane, tornado, flood, train derailment, large truck accident, hazardous material spill, etc. EMA works with many governmental agencies and civic groups at the local, state and federal levels to prepare for emergencies and disasters. Being as prepared as possible for an incident reduces the time needed to rescue victims, clean up debris and return the community back to normal. EMA coordinates with stakeholders and partners around the county to ensure residents, organizations and businesses are educated about the risks and hazards they face and have a disaster plan in place.

3. RECOVERY

It is very important that recovery from a disaster or emergency begins as quickly as possible. EMA may procure and coordinate the necessary supplies and equipment for recovery personnel to use as they work to bring the community back to normal. EMA works in a supporting role with the Federal

Emergency Management Agency (FEMA) to provide damage assessment and financial assistance to disaster victims.

4. MITIGATION

This is a big word that means “to make less severe and reduce future impacts.” EMA works with local governmental agencies to obtain funding for projects such as elevating homes in flood-prone areas, providing wind retrofits for roofs or purchasing specialized rescue equipment for responders. With these things in place, our community becomes more resilient.

The Baldwin County Emergency Management Agency is a vital part of the community, working hand in hand with our partners and the citizens of Baldwin County to ensure that the place they live and work is safe and prepared in the event of an unforeseen emergency or disaster event. If you have any questions or wish to schedule a presentation from EMA, please feel free to reach out to us.



STATE INFORMATION

To download the latest updated version of this sheet: www.ncei.noaa.gov/resources/newis

Alabama Emergency Management Agency (https://ema.alabama.gov).....	1-800-843-0699 or 205-280-2200
Ready Alabama.....	www.readyalabama.gov
Alabama Department of Transportation (www.dot.state.al.us).....	334-353-6554
ALDOT Emergency Call Center (Info on Alabama travel conditions during an emergency event)	1-888-588-2848
.....	https://miscwapps.dot.state.al.us/ECC/
Official State Website.....	www.alabama.gov
Alabama Highway Patrol (www.alea.gov/dps/highway-patrol).....	334-676-6003 (*HP from any cell phone)
Alabama Official Travel Site (https://alabama.travel).....	1-800-252-2262
Alabama Law Enforcement Agency	https://www.alea.gov
Governor’s Office (https://governor.alabama.gov).....	334-242-7100
Alabama Attorney General (www.alabamaag.gov).....	334-242-7300
Alabama Department of Insurance (www.aldoi.gov).....	334-269-3550
Alabama Department of Conservation and Natural Resources (www.outdooralabama.com).....	334-242-3465
Alabama Department of Environmental Management (www.adem.state.al.us/default.cnt).....	334-271-7700
National Weather Service Forecast Office (Mobile/Pensacola) (www.weather.gov/mob).....	251-633-6443
National Weather Service Forecast Office (Tallahassee, FL) (www.weather.gov/tae)	850-942-8851
National Weather Service Southern Region	www.weather.gov/srh
StormSmart Coasts.....	http://gom.stormsmart.org
US Coast Guard, 8th District.....	www.atlanticarea.uscg.mil/Our-Organization/District-8/
Alabama Power (www.alabamapower.com).....	Outage: 1-800-888-2726
Dothan Utilities (www.dothan.org/153/Dothan-Utilities)	334-615-3302
Baldwin EMC (www.baldwinemc.com).....	Outage: 1-800-837-3374 or 251-989-6247
Covington Electric Cooperative (https://covington.coop).....	Outage: 1-800-239-1193
Southern Pine Electric (www.southernpine.coop)	1-800-231-5240
Wiregrass Electric (www.wiregrass.coop).....	Outage: 1-888-469-6882

FOR EMERGENCIES CALL 911 • FOR NON-EMERGENCIES CALL 211

COUNTY INFORMATION

BALDWIN

Emergency Management
South Baldwin 251-972-6807
North Baldwin 251-937-0317
Eastern Shore 251-990-4605
<https://baldwincountyal.gov/departments/EMA>
 Sheriff 251-937-0202
<https://sheriff.baldwincountyal.gov/home>

COVINGTON

Emergency Management 334-428-2670
www.covcounty.com/emergency-management-agency
 Sheriff 334-428-2610
www.covcounty.com/sheriff

ESCAMBIA

Emergency Management251-867-0232
www.co.escambia.al.us/emergency.html
 Sheriff 251-809-0741
www.escambiacysherriffal.org

GENEVA

Emergency Management 334-684-5600
www.genevacountyal.gov/ema/
 Sheriff 334-684-6947
www.genevacountyalsheriff.org

HOUSTON

Emergency Management 334-794-9720
www.dothanhoustoncountyma.org
 Sheriff334-677-4882
www.houstoncountysheriff.org

MOBILE

Emergency Management 251-460-8000
www.mcema.net
 Sheriff 251-574-2423
www.mobileso.com

**A
L
A
B
A
M
A
B
A
L
D
W
I
N
C
O
U
N
T
Y
I
N
F
O
R
M
A
T
I
O
N**

NATIONAL INFORMATION

American Red Cross..... 1-800-RED-CROSS (1-800-733-2767)
..... www.redcross.org
Centers for Disease Control..... www.cdc.gov
Environmental Protection Agency www.epa.gov
Federal Emergency Management Agency (FEMA)..... 1-800-621-FEMA (3362)
..... www.fema.gov
Agencia Federal para el Manejo de Emergencias (FEMA) www.fema.gov/es
National Oceanic and Atmospheric Administration (NOAA) www.noaa.gov
National Weather Service www.weather.gov
Gulf of Mexico Disaster Response Center <https://oceanservice.noaa.gov/hazards/drc>
National Data Buoy Center www.ndbc.noaa.gov
National Hurricane Center www.nhc.noaa.gov
National Centers for Environmental Information (NCEI).. www.ncei.noaa.gov
National Environmental Satellite, Data, and Information Service (NESDIS)
..... www.nesdis.noaa.gov
US Department of Homeland Security www.dhs.gov



DOWNLOAD THE FREE NEWS APP

Compatible with iPhone, iPod Touch, and iPad! Search 'NEWS' in the App Store to download on your Apple device.

The National Hurricane Center normally issues public advisories on their website and to the media for Atlantic tropical cyclones every six hours at 4:00 AM CDT, 10:00 AM CDT, 4:00 PM CDT, and 10:00 PM CDT. Intermediate public advisories are issued every 3 hours when coastal watches or warnings are in effect. Additionally, special public advisories may be issued at any time due to significant changes in warnings or in the cyclone.

NATIONAL HURRICANE CENTER MOBILE DATA

Graphical Tropical Weather Outlook RSS/XML feed
..... www.nhc.noaa.gov/gtwo.xml
Website for Tablets and Smartphones..... www.nhc.noaa.gov/mobile

RADIO STATIONS

WOOF 99.7 FM (DOTHAN)	WABD 97.5 FM (MOBILE)
WRWA 88.7 FM (DOTHAN)	WHIL91.3 FM (MOBILE)
WKMX 106.7 FM (ENTERPRISE)	WMFC 99.3 FM (MONROEVILLE)
WZEW 92.1 FM (FAIRHOPE)	WDLT 104.1 FM (SARALAND)

NOAA WEATHER RADIO Not manufactured by NOAA, NWR receivers can be purchased at many retail outlets and on the Internet

NOAA Weather Radio (NWR) All Hazards is a nationwide network of radio stations broadcasting continuous weather information directly from a nearby National Weather Service office. NWR broadcasts National Weather Service warnings, watches, forecasts, and other hazard information 24 hours a day.

162.400	162.425	162.450	162.475	162.500	162.525	162.550
MHz	MHz	MHz	MHz	MHz	MHz	MHz

ALABAMA CONTRAFLOW FOR HURRICANE EVACUATION

To provide additional roadway capacity during hurricane evacuations from the Gulf Coast, a portion of I-65 may operate entirely in the northbound direction, meaning both southbound lanes of I-65 would be converted into northbound lanes. These lanes are called contraflow lanes. An I-65 lane reversal is not automatic in every hurricane.

I-65 NORTHBOUND

Contraflow begins in Baldwin County just south of Exit 31 (State Road 225). A paved crossover at that location allows motorists traveling in the normal Northbound lanes to transition (crossover) to the contraflow lanes.

Contraflow ends in Montgomery just north of Exit 167 (U.S. 80). Motorists in the contraflow lanes will crossover into the two left lanes of the normal northbound lanes. Motorists traveling in the normal northbound lanes will merge into the two right lanes and continue north and onward to their destinations.

I-65 SOUTHBOUND

During contraflow, southbound traffic traveling on I-65 through Montgomery will be directed to exit the interstate at Exit 167 at U.S. 80 and then onto U.S. 31 South. From Montgomery southward, all southbound I-65 traffic is detoured to U.S. 31. Eastbound traffic on U.S. 80 cannot enter I-65 at Exit 167 and will be directed to U.S. 31. **Southbound traffic cannot use I-65 between Montgomery and Mobile during contraflow.**

Tune into the Highway Advisory Radio System (HARS) for updated information. Look for advisory signs in these areas. Mobile area – 1630 AM • Montgomery area – 1690 AM

For additional information go to:

www.dot.state.al.us

PREPARED BY

NOAA National Centers for
Environmental Information

1-866-732-2382 or email:
NCEI.Info@noaa.gov

To download the latest pdf version of this sheet
go to:

www.ncei.noaa.gov/resources/newis



Baldwin Regional Area Transit System, “BRATS,” is a department of the Baldwin County Commission. BRATS offers safe, affordable and reliable transportation to help enhance lives, promote a strong economy, protect our environment by reducing traffic congestion and conserve energy. Our transit operation consists of a fleet of over 40 ADA accessible buses. BRATS provides transportation throughout Baldwin County at a minimum mileage-based cost. Funding for BRATS is provided by the fares collected, the Baldwin County Commission and grants from the Federal Transit Administration. To schedule non-emergency transportation with BRATS, please call (251) 972 6817 or download the convenient mobile app, “BRATS On Demand.”

Transportation plays a vital role in emergency response in Baldwin County, and BRATS is an active partner with the Baldwin County Emergency Management Agency. Our partnership supports the needs of our community by assisting with mass transit evacuations resulting from natural disasters, fires, vehicle accidents, chemical spills, etc. This alliance and properly executed emergency plans aid in lowering the significant risk of loss of life among those dependent on mass transit for evacuation to escape harm’s way.

Public transit provides many with increased independence and provides greater access to our community. We believe in “Connecting Communities,” so if you have a transportation need, please contact BRATS today!

**Ann Simpson,
Director of Transportation**

(251) 972-6817
www.ridebrats.com

WHY SHOULD I PREPARE?

THERE ARE GREAT BENEFITS TO BEING PREPARED

“It will never happen to me,” is often the primary excuse people will use when it comes to preparing for disasters. Disasters can and will happen, often without warning. Being prepared can reduce fear and anxiety that accompanies disasters. Individuals, families and communities should know what to do and where to go if threatened by a fire, tornado or hurricane. There are numerous measures that a person can take to reduce the impacts of a disaster. Reducing those impacts is known as mitigation. You may avoid some dangers all together with mitigation efforts.

THE NEED TO PREPARE IS REAL

Disasters disrupt lives daily. Disasters have long-lasting effects and may take years to recover or rebuild. Ultimately, YOU are responsible for the personal preparedness of you and your household. There are disaster relief organizations that may respond and assist, but often that assistance is temporary.

Disasters begin and end locally. It is important that you become familiar with hazards that affect our area. Hazards such as hurricanes, severe weather, tornadoes, flooding, extreme heat, earthquakes and terrorism are examples of the threats EMA recognizes, plans and prepares for Baldwin County.

As a prepared resident, you should prepare essential items to be self-sufficient for a minimum of five days. You should make provisions for shelter, food, water, first aid and sanitation. Establishing and maintaining an EMERGENCY KIT will be vital during a disaster.



Natural Gas Before, During & After the Storm

With underground pipes, natural gas is a reliable energy source during severe weather. Occasionally, however, uprooted trees or clean-up efforts can damage these pipelines. Be prepared by knowing how to prevent and respond to a leak before, during and after severe weather.

251-580-1626 Mon-Fri / 8a-4:30p
251-580-2559 After-Hours



CALL 811 BEFORE YOU DIG
no matter the size of the project.

HOW TO DETECT A LEAK
by using your senses.

You may SMELL rotten eggs.
This is an odor added to Natural Gas which is naturally odorless.

You may SEE a white cloud, mist, fog & bubbles in standing water, blowing dust, and vegetation that looks dead or dying for no reason.

You may HEAR an unusual noise like roaring, hissing or whistling.

HOW TO RESPOND TO A LEAK

- Leave area immediately.
- DON'T smoke or do anything to create a flame.
- DON'T turn on lights / equipment that may produce a spark.
- Call IMMEDIATELY.
- DON'T assume someone else will report the condition.
- Provide the exact location.
- Let us know if construction or digging is going on in the area.

WWW.NORTHBALDWINUTILITIES.COM



WE MAKE LIFE BETTER.

www.rivierautilities.com

COME SEE US!
413 E. Laurel Ave.
Foley, AL 36535

700 Whispering Pines Rd.
Daphne, AL 36526

FOR MORE:
DAPHNE | 251-626-5000
FOLEY | 251-943-5001



TORNADO SHELTERS

The Baldwin County Commission owns or has access to community safe rooms for Tropical Weather events, but these are not designed for the quick access needed in severe storm and tornadoes. Any tornado shelters in Baldwin County are privately owned.

The county shelters of last resort/safe rooms (listed on our website: baldwincountyal.gov) are opened as needed during a hurricane.

Those staying in condos, RV sites, and mobile home communities should speak to managers/owners at the facility about where they recommend sheltering on or off site.

We also recommend seeking shelter with friends or family if you have loved ones nearby, especially for those who live in single family mobile or manufactured homes.

The primary consideration should be individual and family plan identification of a safer place for severe weather and tornadoes.

SHELTERING IN PLACE, OR SAFER PLACES

Whether you are at home, work or anywhere else you frequent regularly, there may be situations when it's best to stay where you are and avoid any uncertainty outside.

HERE ARE SOME INDICATORS AND STEPS TO TAKE IF THE SITUATION ARISES:

- Use common sense and available information to assess the situation and determine if there is immediate danger.
- Watch TV and listen to the radio often for official news and instructions as they become available.
- Bring your family and pets inside.
- Lock doors, close windows, air vents and fireplace dampers.
- Turn off fans, air conditioning and forced air heating systems.
- Take your emergency supply kit unless you have reason to believe it has been contaminated.

- Go into an interior room on the lowest floor with the fewest windows
- Protect yourself by covering your head or neck with your arms and putting materials such as furniture and blankets around or on top of you.

IF YOU'RE IN YOUR CAR, DO NOT TRY TO OUTFRAN A TORNADO. ADDITIONALLY:

- Do not go under an overpass or bridge. You're safer in a low, flat location.
- Watch out for flying debris that can cause injury or death.

EVEN AFTER A TORNADO PASSES, IT'S IMPORTANT TO STAY ALERT AND USE CAUTION WHEN CLEARING DEBRIS.

- Stay clear of fallen power lines or broken utility lines.
- Wear appropriate gear during clean-up, such as thick-soled shoes, long pants, and work gloves, and use appropriate face coverings or masks if cleaning mold or other debris.
- Do not enter damaged buildings until you are told they are safe. "

WARNINGS & ALERTS

Receive alerts about emergencies and other important community news by signing up for AlertBaldwin. This free system enables us to rapidly provide residents and visitors with critical information in local situations such as severe weather, hazardous materials releases, unexpected road hazards and closures, missing persons and evacuations.



**PREPARED.
INFORMED.
CONNECTED.
ALERT BALDWIN.**

JOIN ALERT BALDWIN TODAY
www.alertbaldwin.com



BALDWIN COUNTY EMERGENCY MANAGEMENT AGENCY

BEACH SAFE

First year sees dramatic results, but the mission is long-term

Early in 2022, multiple city and county agencies across Baldwin County, along with Gulf Shores & Orange Beach Tourism, worked together to expand beach safety education for Baldwin County residents and visitors to ensure their day at the beach is a safe one.

With Baldwin County being one of the fastest-growing counties in Alabama and seeing close to 8 million visitors a year, many newcomers are not familiar with the waters of the Gulf of Mexico. **BEach SAFE** aims to increase awareness among locals and guests on topics including beach conditions, warning flag systems, rip current awareness, safe swimming practices, and more. Recognizing that not all beach areas on Alabama's Gulf Coast have lifeguards, beach flags and patrols, **BEach SAFE** is designed to help individuals stay informed and understand potential dangers. Core message points for the campaign include:

CHECK WEATHER AND SURF CONDITIONS DAILY

- By phone:
- Gulf Shores: 251-968-SURF
- Orange Beach: 251-981-SURF
- Online: VisitALBeaches.com/safety

KNOW YOUR LIMITATIONS

- Learn to swim; non-swimmers should stay out of the water
- Don't overestimate your swimming ability
- Don't rely on inner tubes, floats or other inflatable toys
- Use Coast Guard approved

lifejackets

- Designate a water-watcher and supervise children closely
- Never swim alone

SWIM NEAR A LIFE-GUARD

- Lifeguards are stationed seasonally at all public beaches in Gulf Shores and Orange Beach (March through September)
- Currently, no lifeguard protection is available in the Fort Morgan area

SIGN UP FOR DAILY BEACH CONDITIONS TEXT ALERTS

- Text "ALBEACHES" to "888777"
- Text "STOP" to opt out of notifications upon your departure

KNOW AND HEED THE BEACH WARNING FLAGS

- Yellow: Moderate surf and/or currents
- Purple: Dangerous marine life
- Red: High surf and/or strong currents
- Double Red: Water closed to the public

LEARN HOW TO ESCAPE A RIP CURRENT

- Rip currents are powerful currents of water moving away from shore. They can sweep even the strongest swimmer away from shore.
- If caught in a rip current, remain calm

- Escape the current by swimming parallel to the shoreline
- When free of the current, swim at an angle—away from the current—toward shore
- Float or tread water if unable to escape by swimming
- If unable to reach shore, draw attention to yourself by facing the shore and calling or waving for help

KNOW WHAT TO DO IF SOMEONE ELSE IS IN DANGER

- First, CALL 9-1-1
- Seek help from a lifeguard; if no lifeguard is present, yell instructions on how to escape the current
- Throw the victim something that floats
- Don't attempt to perform a rescue as you could also get caught in the current

In just the first year of **BEach SAFE**, water rescues were down 46.4%, drownings decreased by 66.6%, and 15,247 people signed up for daily beach conditions text message alerts. But leaders know the effort has to be long-term and consistent.

"We know from the Leave Only Footprints and Worth the Wait campaigns we have launched in recent years that it takes all aspects of our community – the cities, local businesses, and residents – sharing a consistent message with our guests to make an impact. **BEach SAFE** is a united message across the entire county, which means we need businesses and residents from the northern part of Baldwin County all the way down to the beaches to promote it every single day, regardless of if they operate in

the tourism industry.”

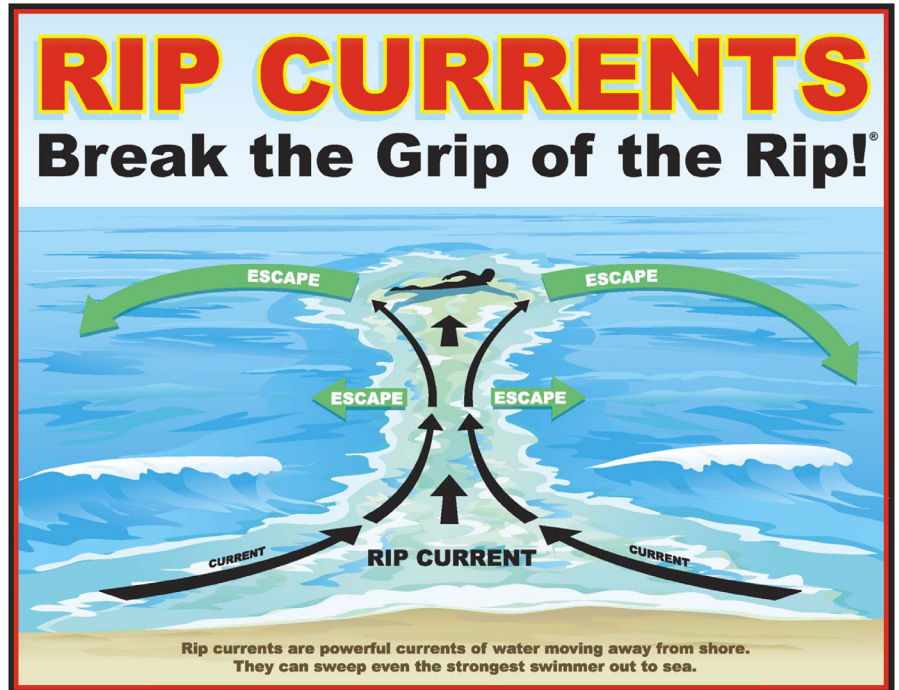
“Research has shown that people need to hear or read something at least seven times for it to stick in their memory. That means seeing BEach SAFE on a billboard, on a sign in a place of business, a brochure on a rack or put in their shopping bag, a magnet on the back of the car in front of them,” stresses Gendler. “These BEach SAFE messages can’t be overshared or overcommunicated because they truly can help save lives.”

The two local fire chiefs responsible for initiating the BEach SAFE effort echo this message.

“We’ve got to look at all things that are a threat to all of us,” said Gulf Shores Fire Chief Mark Sealy. “Creating awareness about this program can save lives each and every day.”

“We’ve continued to work on our messaging related to beach safety,” said Orange Beach Fire Chief Mike Kimmerling. “But we are so blessed to have the support of all of these involved parties (across the county).”

BEach SAFE was developed by Gulf Shores and Orange Beach Tourism (GSOBT), Gulf Shores Fire Department, Orange Beach Fire Department, Fort Morgan Volunteer Fire Department, Baldwin County Emergency Management Agency, Baldwin County Commission and Baldwin County 9-1-1.



IF CAUGHT IN A RIP CURRENT

- ◆ Don't fight the current
- ◆ Swim out of the current, then to shore
- ◆ If you can't escape, float or tread water
- ◆ If you need help, call or wave for assistance

SAFETY

- ◆ Know how to swim
- ◆ Never swim alone
- ◆ If in doubt, don't go out

More information about rip currents can be found at the following web sites:

www.ripcurrents.noaa.gov
www.usla.org



BEACH SAFE

KNOW BEFORE YOU GO

TEXT ALBEACHES TO 888777

Visit AlertBaldwin.com



Serving the Gulf Coast for over 44 years.



251.943.5031 FrancesHolkJones.com

Did you just find out your Medicare insurance will no longer be accepted by your hospital or your doctors office?

Call Renee James and let her help you with your changes so your insurance will work for you! Don't wait until you need a procedure, test or emergency.

Call Renee James today, YOUR Insurance Specialist.

251-943-2728

Insurance specialist, 402 E Laurel Ave, Foley





DRYER VENT WIZARD
a neighborly company

Saving lives, one dryer at a time!





It is recommended that you inspect and clean your dryer vent annually by appliance manufacturers.

The following are warning signs that your dryer needs to be cleaned:

- Drying times are longer
- Excess lint behind dryer
- Odor of mold
- Clothing with excessive lint
- Hot dryer and clothes

Thank you for choosing DVW to keep Coastal AL and West Pensacola safe - over 1,000 systems serviced.

- Increase efficiency
- Prevent fires
- Save time



251-275-6587 | 850-202-9099
DryerVentWizard.com

Independently owned and operated franchise. © 2023 Dryer Vent Wizard SPV LLC. All rights reserved.

EVACUATION ROUTES

BALDWIN COUNTY EVACUATION ROUTES:

GULF SHORES AND ORANGE BEACH RESIDENTS:

Highway 59, Foley Beach Express & Baldwin Beach Express

CENTRAL & SOUTH BALDWIN COUNTY RESIDENTS:

Highway 59 North & Baldwin Beach Express

EASTERN SHORE RESIDENTS:
State Highway 181 & Highway 98 North

LILLIAN AREA RESIDENTS:
County Road 87

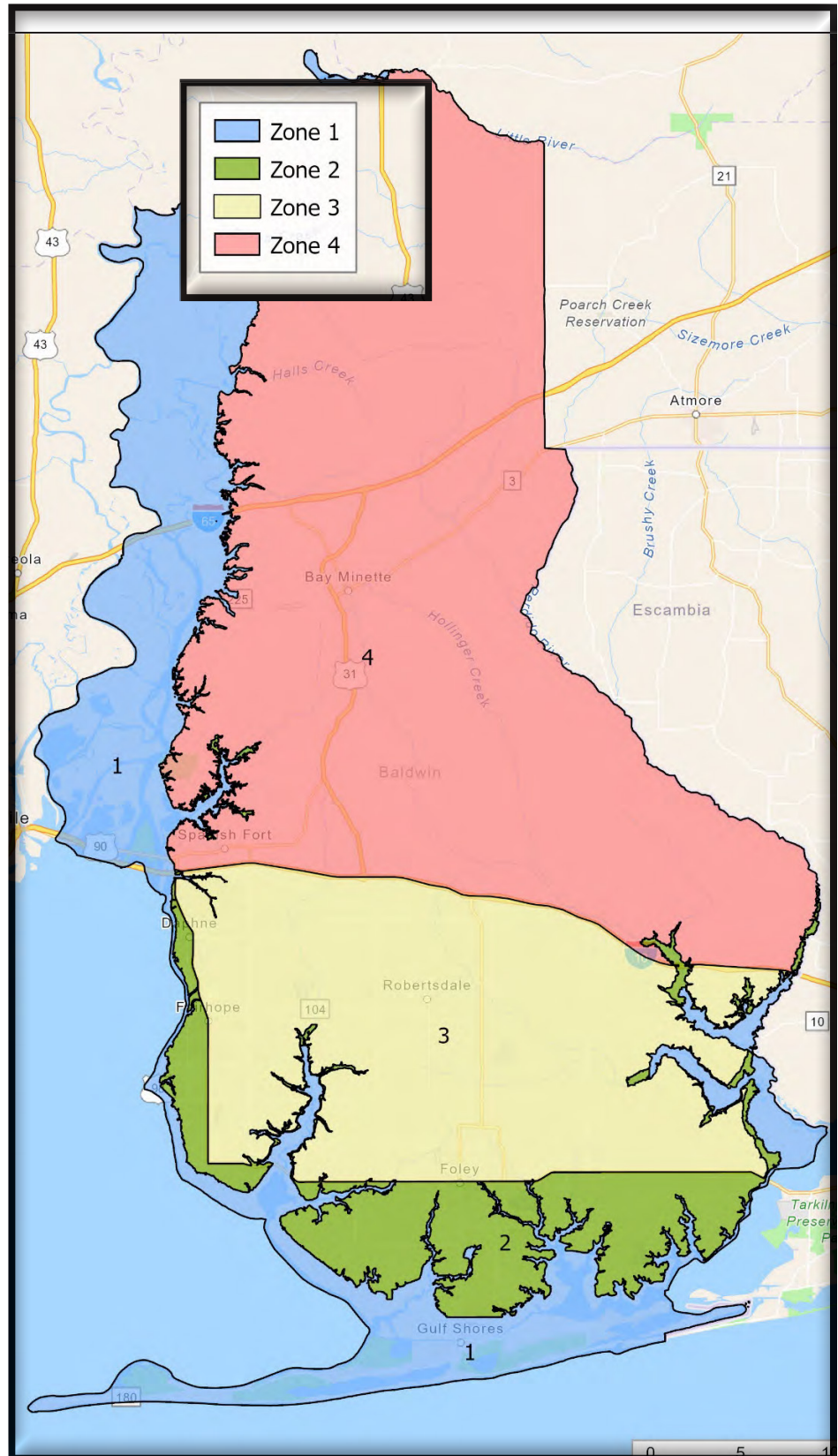
EAST SIDE OF PLEASURE ISLAND (ORANGE BEACH & ONO ISLAND): Foley Beach Express via Toll Bridge & Baldwin Beach Express

Toll will be lifted for northbound traffic during evacuation

Baldwin County Emergency Management Agency (BCEMA) releases pertinent information to the public on shelter openings and evacuations through public service announcements.

During a local state of emergency, Baldwin County residents with no means of transportation will need to contact Baldwin Rural Area Transportation System (BRATS) for home pick-up service and transport to local shelters. BRATS has buses readily available for wheelchair bound clients.

Following the execution of a mandatory evacuation order however, for a Category 3, 4 or 5 hurricane, BRATS will suspend its fees and additionally transport residents wishing to evacuate the county to pre-designated Evacuation Pick-up Points (PUPs), listed below:



HIGHWAY DEPARTMENT:

DUE TO THE POSSIBILITY OF SEVERE STORMS IN OUR AREA, PLEASE USE CAUTION WHEN TRAVELING. WATCH FOR DEBRIS ON ROADS AND DO NOT DRIVE THROUGH FLOODED ROADWAYS. IF YOU HAVE AN EMERGENCY ROAD ISSUE TO REPORT, PLEASE CALL (251) 937-0371.

BALDWIN COUNTY EVACUATION ROUTES:

GULF SHORES AND

ORANGE BEACH RESIDENTS: Highway 59, Foley Beach Express & Baldwin Beach Express

CENTRAL & SOUTH

BALDWIN COUNTY RESIDENTS: Highway 59 North & Baldwin Beach Express

EASTERN SHORE RESIDENTS: State Highway 181 & Highway 98 North

LILLIAN AREA RESIDENTS: County Road 87

EAST SIDE OF PLEASURE ISLAND (ORANGE BEACH & ONO ISLAND): Foley Beach Express via Toll Bridge & Baldwin Beach Express

Toll will be lifted for northbound traffic during evacuation

Baldwin County Emergency Management Agency (BCEMA) releases pertinent information to the public on shelter openings and evacuations through public service announcements.

During a local state of emergency, Baldwin County residents with no means of transportation will need to contact Baldwin Rural Area Transportation System (BRATS) for home pick-up service and transport to local shelters. BRATS has buses readily available for wheelchair bound clients.

Following the execution of a mandatory evacuation order however, for a Category 3, 4 or 5 hurricane, BRATS will suspend its fees and additionally transport residents wishing to evacuate the county to pre-designated Evacuation Pick-up Points (PUPs), listed below:

- Baldwin County High School, the Hub
- Daphne High School
- Fairhope High School

• Foley High School

• Loxley Municipal Park

• Robertsedale High School

Baldwin County Board of Education (BOE) school buses will then pick residents up from the PUPs and transport them to Baldwin County High School in Bay Minette, also known as the hub, where they will offload school buses, register and board motor coach buses, contracted by the state, for transport to outside-county community shelters. In the event there is a shortfall of motor coach buses, BOE school buses will be used to assist with evacuation efforts. This service is provided free, and residents will be returned when weather conditions are deemed safe and no longer hazardous.

Citizens are encouraged to schedule transportation in advance. BRATS may be contacted by calling: (251) 972-6817

Citizens who are non-ambulatory, bed-bound or who have special medical conditions should contact MedStar Emergency Medical Services for assistance.

Once a local state of emergency or mandatory evacuation order has been issued, MedStar will begin picking up South Baldwin, Eastern Shore, and Central Baldwin residents and will transport them to local hospitals, and local medical needs shelters and electrical support shelters.

For those infirmed individuals wishing to evacuate the county, MedStar will pick up residents from their homes and evacuate them to outside-county hospitals and outside-county medical needs shelters, which will be announced at the time of event.

Residents are encouraged to schedule transportation with MedStar in advance. A fee will be charged.

MedStar may be contacted by calling (251) 971-3775 or (1) (866) 298-8884 (Toll Free).

WHAT TO BRING TO A SHELTER

A FEW SUGGESTED ITEMS:



- Photo identification (Driver's License)
- Change of clothing
- Blankets
- Sleeping bags
- Pillows
- Hygiene or sanitary products
- Medications
- Eyeglasses
- Dentures
- Social security card
- Proof of residence (deed or lease)
- Insurance policies
- Birth certificate
- Marriage certificate
- Stocks, bonds, and other negotiable certificates
- Wills, deeds, copies of recent tax returns
- Baby food/formula, diapers, wipes, teething gel, etc
- Water in plastic containers, 3 day supply
- Food & snacks, non-perishable, 3 day supply
- Cell phone
- Flashlight & extra batteries
- Battery powered radio & extra batteries
- First-aid kit
- Entertainment (toys, books, games, etc.)

BALDWIN COUNTY EMERGENCY MANAGEMENT AGENCY

POWER UP SAFELY

Four safety tips for your portable electric generator:

1. Never use a portable generator indoors or near windows or doors.
2. Do not plug generators into standard electrical outlets.
3. Use heavy-duty extension cords to connect appliances to the generator.
4. Start the generator before connecting appliances.



For more important generator safety information, scan the QR code or go to:

www.baldwinemc.com/safety/generator-safety

BALDWIN



Your Touchstone Energy Cooperative 

baldwinemc.com

(251) 989-6247



OLD TYME FEED & GARDEN SUPPLY

*Lawn care, garden needs,
pet supplies & plants*

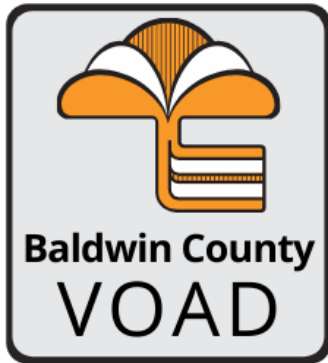
**OLD FASHION VALUES &
FRIENDLY SERVICE**

19580 Greeno Rd. • Fairhope • 928-1156





VOLUNTEER ORGANIZATIONS



BCVOAD promotes cooperation, communication, coordination and collaboration and fosters more effective delivery of services to communities affected by disaster. As our name says, this is a group of volunteer organizations

BALDWIN COUNTY VOLUNTARY ORGANIZATIONS ACTIVE IN DISASTER

working together. The mission of BCVOAD is to foster efficient, coordinated service delivery to people affected by disaster while eliminating unnecessary duplication of effort through cooperation in the four phases of disaster: preparation, response, recovery and mitigation.

It is important for the health and resiliency of our communities that organizations from churches, corporations, private

businesses, nonprofits, Chambers of Commerce and more are members.

Currently, BCVOAD is operating a COVID-19 Pandemic Long Term Recovery known as Baldwin Together that has expanded to include hosting the Baldwin County Commission's Emergency Rental Assistance Program. To join, baldwincountyvoad@gmail.com or find us on social media @Baldwin County VOAD.

Baldwin County Voluntary Organizations Active in Disaster

The mission of BCVOAD is to foster efficient, coordinated services to Baldwin County residents affected by disaster through cooperation in the four phases of disaster: preparation, response, recovery, and mitigation.

Baldwin County VOAD works together to help Baldwin County families during disasters. The different agencies unite to offer a quick response in the face of adversity.

There is a \$10 annual membership fee to join.

ARE YOU INTERESTED IN JOINING YOUR LOCAL VOLUNTEER FIRE DEPARTMENT?

BARNWELL VOLUNTEER FIRE DEPARTMENT **STATION 38**
BEAT VOLUNTEER FIRE DEPARTMENT
BELFOREST VOLUNTEER FIRE DEPARTMENT **STATION 64**
BON SECOUR VOLUNTEER FIRE DEPARTMENT **STATION 24**
CROSS ROADS VOLUNTEER FIRE DEPARTMENT **STATION 78**
ELBERTA VOLUNTEER FIRE DEPARTMENT **STATION 31**
ELSANOR VOLUNTEER FIRE DEPARTMENT **STATION 53**
FAIRHOPE VOLUNTEER FIRE DEPARTMENT **STATION 58**
FOLEY VOLUNTEER FIRE DEPARTMENT **STATION 30**
FORT MORGAN VOLUNTEER FIRE DEPARTMENT **STATION 28**
GATESWOOD VOLUNTEER FIRE DEPARTMENT **STATION 67**
JOSEPHINE VOLUNTEER FIRE DEPARTMENT **STATION 33**
LILLIAN VOLUNTEER FIRE DEPARTMENT **STATION 37**
LOTTIE VOLUNTEER FIRE DEPARTMENT **STATION 91**
LOXLEY VOLUNTEER FIRE DEPARTMENT **STATION 60**
MAGNOLIA SPRINGS VOLUNTEER FIRE DEPARTMENT **STATION 34**
MARLOW VOLUNTEER FIRE DEPARTMENT **STATION 44**
OYSTER BAY ROADS VOLUNTEER FIRE DEPARTMENT **STATION 22**
PERDIDO VOLUNTEER FIRE DEPARTMENT **STATION 22**
PERDIDO BEACH VOLUNTEER FIRE DEPARTMENT **STATION 35**
PINE GROVE VOLUNTEER FIRE DEPARTMENT **STATION 71**
RABUN VOLUNTEER FIRE DEPARTMENT **STATION 80**
ROBERTSDALE VOLUNTEER FIRE DEPARTMENT **STATION 50**
ROSINTON VOLUNTEER FIRE DEPARTMENT **STATION 63**
SEMINOLE VOLUNTEER FIRE DEPARTMENT **STATION 57**
SILVERHILL VOLUNTEER FIRE DEPARTMENT **STATION 52**
SPANISH FORT VOLUNTEER FIRE DEPARTMENT **STATION 68**
STAPLETON VOLUNTEER FIRE DEPARTMENT **STATION 72**
STOCKTON VOLUNTEER FIRE DEPARTMENT **STATION 88**
STYX RIVER VOLUNTEER FIRE DEPARTMENT **STATION 65**
SUMMERDALE VOLUNTEER FIRE DEPARTMENT **STATION 40**
TENSAW VOLUNTEER FIRE DEPARTMENT **STATION 90**
WHITE HOUSE FORKS VOLUNTEER FIRE DEPARTMENT **STATION 74**

CONTACT: BCEMA@BALDWINCOUNTYAL.GOV



LOCAL RESILIENCY

April 12, 2023

By: Danon Smith, Baldwin County EMA Emergency Management Officer

Baldwin County, Alabama, is an ecologically, culturally, and socioeconomically diverse community. While there are boundless benefits and opportunities in this beautiful county, there are also steps residents need to take to reduce risks and mitigate property vulnerabilities. Two of the most prevalent natural hazards faced by Baldwin County are severe weather (storms), tropical weather (hurricanes and tropical storms); and both of these can lead to flooding, erosion, and land subsidence if properties are not maintained. For example, when someone buys property and removes vegetation like plants, trees, shrubs, and bushes to enhance a view the root structure which was keeping the ground stable can be compromised leading to land subsidence or erosion over time when there is heavy rainfall and flooding. Knowing the features of your property which make it resilient is important when deciding how to develop or maintain it in a way which protects your investment and the environment.

There are a multitude of resources which can help property owners make assessments of property which will aid in decisions which lead to resilience and not degradation and damages from weather and natural disasters. Reputable and licensed builders, engineers, landscapers, and insurance providers (commercial, residential, and flood) can all be sources of

information on what plans and improvements can be executed and implemented to protect property and promote viability and longevity of buildings and property. The Baldwin County Commission has information on their website, www.baldwincountyal.gov, under both the Emergency Management Agency and Building Department's pages which inform property owners about resources for information on both hazards and potential mitigation measures. Viewing property during period of "blue sky" and rain can allow one to see drainage attributes, potential areas of "ponding" on property, and if the property may need minor or significant improvements to increase viability for its intended use, whether commercial, agricultural, or residential, etc. Although Baldwin County is subject to risk from many natural hazards, flooding is among the greatest of hazards. The Flood Management and Hazard Mitigation sections under the EMA page of the Baldwin County Commission Website are valuable sources of information. This information includes links to the FEMA Map Service Center, which is a tool used to view Flood Insurance Rate Maps, or FIRMs, which can indicate the level of risk flooding poses to a piece of property.

Hazard Mitigation and Flood Hazard Management Plans, Floodplain Management Ordinances, National Flood Insurance Program

information, Ready.gov, and Real Time Flood Gauge Information are just a few of the online resources available in Baldwin County. The Baldwin County Building Department can answer questions about Fortified Construction, the benefits of this type of construction for homeowners, and the current adopted building codes. Local resources also include the Baldwin County Emergency Management Agency (EMA) Staff, especially the Planning & Grants and Mitigation Staff. The Baldwin County EMA Staff can help residents find information about flood risk, mitigation information, and help residents get to the right contact or agency, such as the Building Department for Floodplain Administration. To have their questions addressed. Residents can call (251) 972-6807 to speak with an emergency manager about the resources available to help mitigate flood risk. Baldwin County is beautiful and contains some of the most ideal pieces of property in the United States for living, visiting, farming, and operating a business. The best way for us to protect our communities and our resources is to evaluate our plans, property characteristics, and use the resources available, like those from the Baldwin County Commission, to promote sustainable living and enjoyment of our beautiful Baldwin County for generations to come.

FLOOD INFORMATION

SUBSTANTIAL IMPROVEMENT/ DAMAGE REQUIREMENTS

The National Flood Insurance Program (NFIP) and Baldwin County Building Department requires that if the cost of reconstruction, rehabilitation, addition or other improvements to a building equals or exceeds 50% of the market value, then the building must meet the same construction requirements as a new building. The permits required for construction ensure that buildings are in compliance with the NFIP and Baldwin County Flood Damage Prevention Ordinance. Contact the Baldwin County Building Department at (251) 972-6837 to obtain additional information on the 50% rule and a copy of the Flood Damage Prevention Ordinance.

FLOOD PROTECTION MEASURES

Every year, flooding causes more property damage in the United States than any other type of natural disaster. While recent construction practices and regulations have made new homes less prone to flooding, many existing structures remain susceptible. Throughout the country there is a growing interest from property owners to develop practical and cost-effective methods for reducing or eliminating exposure to flooding. There are many ways you can help protect your property and your possessions from flood damage. Property protection measures publications and assistance is available to you by contacting the Baldwin County Building Department at (251) 972-6837 or by visiting your local libraries.

NATURAL AND BENEFICIAL FUNCTIONS

The wetlands within Baldwin County are indispensable and fragile natural resources with significant development constraints due to flooding, erosion and soil limitations. In their natural state, wetlands serve man and nature. They provide habitat areas for fish, wildlife and vegetation; water quality maintenance and pollution control; flood control; erosion control; natural resource education; and many other functions. Damaging or destroying wetlands threatens public safety and the general welfare. It is therefore necessary for

Baldwin County to ensure maximum protection for wetlands by discouraging development activities that may adversely affect wetlands.

Baldwin County regulates stormwater management policies through the Subdivision Regulations Department for all new developments. Developments that produce an increase in the amount of stormwater runoff are required to construct stormwater management facilities.

Baldwin County has provisions that impose requirements on persons engaged in land disturbing activities that require planning and implementation of effective sedimentation controls for individual lots and subdivision development sites.

For more information regarding erosion, sedimentation or stormwater management requirements for new developments, contact the Baldwin County Planning & Zoning Department at (251) 580-1655 or the Subdivision Permitting Department at (251) 937-0278.

MAP OF THE LOCAL FLOOD HAZARD

The Baldwin County Building Department maintains Federal Insurance Rate Maps (FIRMs). These maps are available for public inspection during normal business hours or can be accessed on the Building Department website at www.BaldwinCountyAL.gov. They may also be viewed at your local library. Upon written request, you may obtain a Flood Determination of your property as it relates to a local flood hazard area by contacting the Baldwin County Building Department at (251) 972-6837. Copies of Elevation Certificates can also be obtained at this office and from their website.

FLOOD HAZARD

Baldwin County is virtually surrounded by water, with the exception of several miles in the extreme northeast bordering Escambia County, with numerous bays, rivers, streams and tributaries within the interior portions of the county. Baldwin County faces its greatest threat of flooding from hurricanes and tropical storms, but coastal flooding can occur year-round. These storms can destroy many properties and cause damage to countless others. Even though property may have escaped flooding or damage from previous storms, it may not escape flooding or damage from the next storm. To determine if your property is located in a Special Flood Hazard Area (SFHA), contact the Baldwin County Building Department at (251) 972-6837 or view the flood maps on their website.

FLOOD WARNING SYSTEM

Baldwin County's Emergency Management Agency uses several different warning devices to warn residents and visitors of storms and potential rising water hazards.

The Local Area Emergency Alert System was developed by the State Emergency Management Agency, Local Emergency Management Agency and the Federal Communications Commission to provide emergency notification of hazardous weather and/or emergency incidents. This emergency system is activated by Emergency Management Personnel and the National Weather Service.

The Early Alert System – 911 (EAS) allows the emergency operations center to receive weather related messages and alerts from the National Weather Service.

The Reverse 911 notification is a prerecorded message sent to all home phones that are non-restrictive and cell phones that are registered with the Emergency 911 Agency.

There are four Flood Monitoring Stations located within Baldwin County that are monitored by the U.S. Department of the Interior, U.S. Geological Survey Water Resources Division, the National Weather Service and the Baldwin County Emergency Management Agency. This information is used to monitor stream flow and stream height for early detection of rising waters.

Baldwin County Emergency Management Agency uses Doppler radar monitoring as well as several satellite imagery programs to monitor local weather.

Baldwin County uses the EAS alerting system through local radio stations and the National Weather Service as well as local media outlets.

NOAA Weather Radios are installed in all public and private schools as well as all county and municipal buildings.

In the event of flood hazards, tune into local radio and TV stations for information. For additional information on Baldwin County's Flood Warning Threat Recognition Program or a list of the area television and radio stations contact the Emergency Management Agency at (251) 972-6807.

FLOODPLAIN DEVELOPMENT PERMITS

Within the floodplains of Baldwin County, ALL development, not just construction, require permits. Extra requirements are involved when developing in the floodplain. Before you alter (fill, grade, clear, etc.) your property, construct a building or otherwise develop your property, contact the Baldwin County Building Department at (251) 972-6837; the Planning & Zoning Department at (251) 580-1655; and the Highway Subdivision Permitting Department at (251) 937-0278

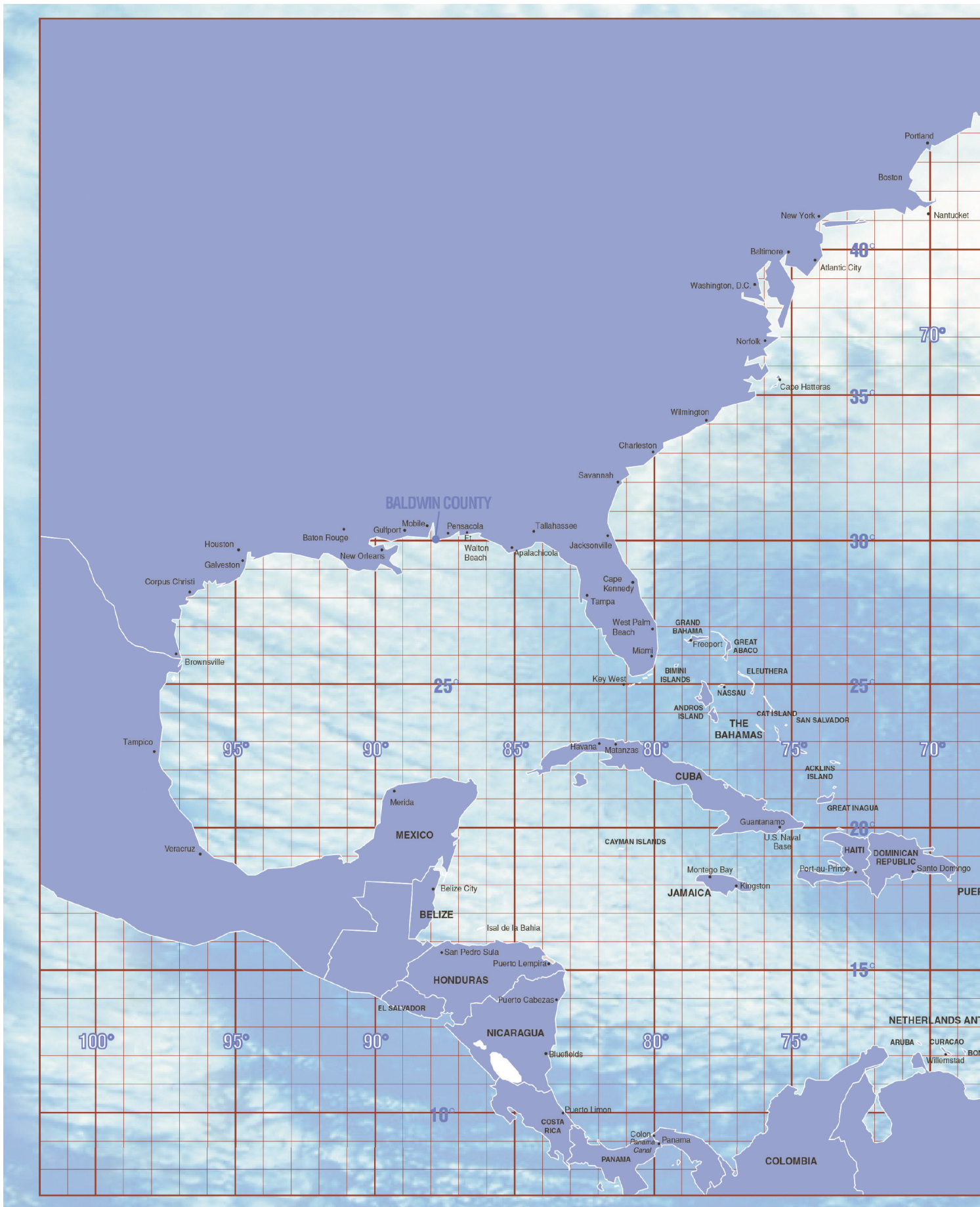
to determine if you will be required to obtain a permit or to report any possible unauthorized development within the floodplain.

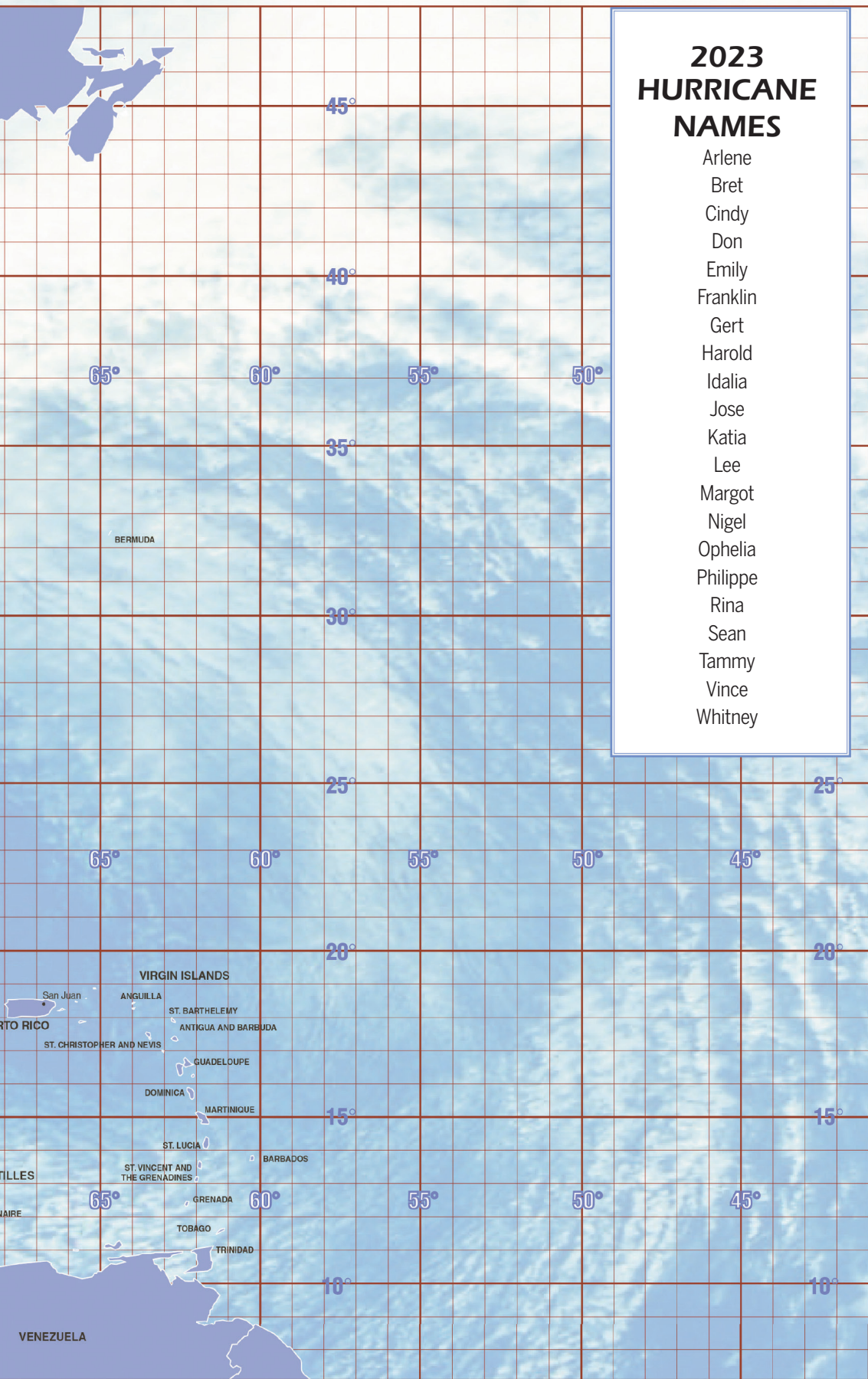
FLOOD SAFETY

Flood safety protection measures that are to be taken in the event of a hurricane or any other major storm. These measures include having your electricity and gas turned off by the power company; not driving or walking through flowing water or any flooded area; and staying clear of any unstable stream banks. Be sure and stay tuned to your local television or radio station for weather updates. If you are required to evacuate, try to move to the house of a friend or family member not affected by the impending flood hazard. If you live in a mobile home, plan to evacuate at the first notice. Everyone should rehearse your evacuation plans with all household members and plan to leave early to avoid traffic delays. For additional information regarding Baldwin County's flood warning program, contact Baldwin County Emergency Management Agency at (251) 972-6807.

FLOOD INSURANCE

Most mortgage lenders require flood insurance based on the location and elevation of the property. Flood damage, unlike wind damage, is not covered by homeowner's policies and must be purchased separately. Since Baldwin County is an NFIP community, federally backed flood insurance is available. There is typically a 30-day waiting period before a new flood insurance policy becomes effective. You are eligible for flood insurance, regardless of whether your property has never flooded, or has flooded several times in the past. All properties secured by a federally backed mortgage must carry flood insurance. For more information about flood insurance, property owners should contact their insurance agent or call the NFIP's toll Baldwin County is an active participant in the National Flood Insurance Program (NFIP) which provides federally backed flood insurance in communities that enact and enforce floodplain regulations. Since its inception in 1968, the program has been successful in helping flood victims get back on their feet. This is important since property owners who hold a federally backed mortgage must purchase flood insurance if the property is located within a Special Flood Hazard Area (SFHA). Baldwin County began its participation in the National Flood Insurance (NFIP) Community Rating System (CRS) Program in 1994. Baldwin County currently holds a Class 7 CRS rating, which equates to a 15% discount on new or renewing flood insurance policies for all SFHA properties. For additional information regarding the NFIP or CRS Program, contact the office of the Baldwin County Building Department at (251) 972-6837 or Planning & Zoning Department at (251) 580-1655.





2023 HURRICANE NAMES

- Arlene
- Bret
- Cindy
- Don
- Emily
- Franklin
- Gert
- Harold
- Idalia
- Jose
- Katia
- Lee
- Margot
- Nigel
- Ophelia
- Philippe
- Rina
- Sean
- Tammy
- Vince
- Whitney

SAFFIR-SIMPSON HURRICANE SCALE

Category/Damage	Winds/MPH	Pressure/Inches	Storm Surge/Feet
1 - Minimal	74-95	28.94	4-5
2 - Moderate	96-110	28.50-28.91	6-8
3 - Extensive	111-130	27.91-28.47	9-12
4 - Extreme	131-155	27.17-27.88	13-18
5 - Catastrophic	> 155	< 27.17	18+

**HURRICANE SEASON
JUNE 1ST-NOVEMBER 30TH**



Island Enclosures



3757 Gulf Shores Parkway, Suite E, Gulf Shores
251-968-9777

www.islandenclosures.com

Board & Batten



Colonials



CrimSafe



Bahamas



Fabric Shield



Aluminum Panels



Accordions



Rolling Shutters



Clear Panels



Hurricane Preparedness

Living along the beautiful Gulf Coast, hurricanes are a part of life. You can't prevent hurricanes, but you can prepare for them. To protect against the possible explosion of the building structure — caused by the increase of interior air pressure — protect all openings of your home or business against hurricane force winds, rain, and flying debris. Island Enclosures is a home improvement company that has a large showroom displaying a diverse selection of hurricane protection products.

Get started today to protect your home for tomorrow! Visit or call us today!

Check us out for these projects too!

Blinds & Shutters

Plantation Shutters, Hunter Douglas, Draperies, Solar Screen Shades, Window Treatments

Custom Closets

Closet, Garage, Pantries, Offices

Enclosures

Sun Room, Screen Rooms, Pool Enclosures, Decks, Handrails, Remodel

Windows & Doors

Impact Glass, Specialty Doors, Vinyl Windows, Screen Doors

Outdoor Kitchens



AL Licensed Homebuilder/Remodeler # 16880



PET PREPAREDNESS

KEEPING YOUR PETS SAFE DURING DISASTER

You must admit that our pets are more than just pets... they are family. It is important to not only consider the needs of your human family but of your pet family members during times of emergency. It is important to plan for your pets for the possibility of disaster. Pets are NOT allowed in the Baldwin County Shelters of Last Resort, pursuant to the ADA Baldwin County Shelters of Last Resort will accommodate service animals.

Some essential items to consider for your pets include water, food, medications, vaccination records, collar, ID tag, leash, pet carrier, toys, blankets, and sanitation items. Plan to find out if your local vet or animal daycare will be accept-



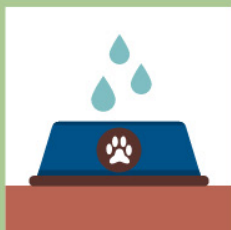
ing animals during a disaster. Make sure to keep a recent photo of your pet in your important papers that you take with you.

Pre-determine possible destinations and multiple routes

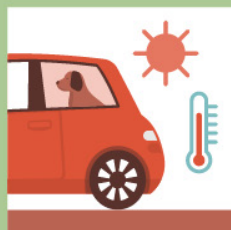
in which to travel. Visit <https://hotels.petswelcome.com/Alabama> to find pet friendly hotels in the area of your destination.



Hot Weather Rules For Pets



KEEP YOUR PET HYDRATED



DON'T LEAVE YOUR PET IN THE CAR



KEEP PAWS AWAY FROM HOT PAVEMENT



KNOW SIGNS OF OVERHEATING

NATIONAL WEATHER SERVICE

By Jessica Chase, Warning Coordination Meteorologist - NWS Mobile

Like most meteorologists, I grew up fascinated and fearing the weather, which led to my dream job of working for the National Weather Service. I moved to the state of Alabama shortly after graduating college and have had the pleasure of serving the communities in three of the National Weather Service (NWS) offices across the state for almost 13 years. The first big event I worked on in my career was April 15, 2011, quickly followed by the deadly tornado outbreak of April 27th. While I wasn't from the state of Alabama, those events forever engrained in me how amazing the citizens of Alabama are and solidified my plan to serve in this state for my career. I am proud to be a part of this community and work alongside the incredible partners in southern Alabama.

The NWS is an agency made up of 122 Weather Forecast Offices around the county, each with its own County Warning Area. A smaller area of counties or parishes allows us to provide localized information to our partners and the communities we serve. Our mission is to "provide weather, water, and climate data, forecasts, warnings, and impact-based decision support services for the protection of life and property and enhancement of the national economy." To put it simply, we are here to protect life and property, and countless people are working around the clock to ensure we are able to meet our mission. Your local NWS office is located at the Mobile Regional Airport. NWS Mobile serves 20 counties across southeast Mississippi, southwest and southcentral Alabama, and the western Florida Panhandle and operates 24 hours a day, seven days a week, 365 days a year. Even on Christmas morning, at least two meteorologists are working. If it's like the Christmas of 2012 when tornadoes impacted our region, that number is quadrupled!

During quiet weather, we work closely with our partners through meetings and detailed exercises. When significant weather approaches, we routinely brief state, county, and city leaders on what to expect so they can make the best decisions for their residents. After the storm, we conduct post-storm surveys to accurately assess storm damage and provide weather updates to emergency responders as they respond to the storm's aftermath. At the

same time, we provide the public with up-to-date information prior to, during, and after a storm that is available on our website (weather.gov/mob) and on Facebook and Twitter (@NWSMobile). You are also welcome to reach us at (251) 633-6443. Have you ever heard a tornado warning and wondered where that came from? It came directly from your local National Weather Service office! We encourage everybody to have more than one way of receiving critical weather alerts. There are several methods of obtaining warnings: weather radios, cell phones, local TV, and radio. We also encourage everybody to ensure they have a weather safety plan. For Baldwin County residents, this means not just knowing what to do in the event of a tornado or flood but having a plan developed ahead of time for when the next hurricane approaches. Your local National Weather Service and Baldwin County Emergency Management Agency can provide helpful information to help develop your plan!

HELLMICH ELECTRIC, INC.
Since 1986

State License #1001

Commercial & Residential
All Work Guaranteed
Free Estimates

2020 BIG BEAUTIFUL BALDWIN'S BEST
2021 BIG BEAUTIFUL BALDWIN'S BEST
GULF COAST MEDIA BEST OF BALDWIN 2022
GULF COAST MEDIA BEST OF BALDWIN 2023

Gary & Beth Hellmich, Owners
903 West Laurel Ave., Foley, AL 36535
251-943-2350
gary@hellmichelectric.com

STORM TERMINOLOGY

Storm Surge Warning: There is a danger of life-threatening inundation from rising water moving inland from the shoreline somewhere within the specified area, generally within 36 hours. If you are under a storm surge warning, check for evacuation orders from your local officials.

Hurricane Warning: Hurricane conditions (sustained winds of 74 mph or greater) are expected somewhere within the specified area. NHC issues a hurricane warning 36 hours in advance of tropical storm-force winds to give you time to complete your preparations. All preparations should be complete. Evacuate immediately if so ordered.

Tropical Storm Warning: Tropical storm conditions (sustained winds of 39 to 73 mph) are expected within your area within 36 hours.

Extreme Wind Warning: Extreme sustained winds of a

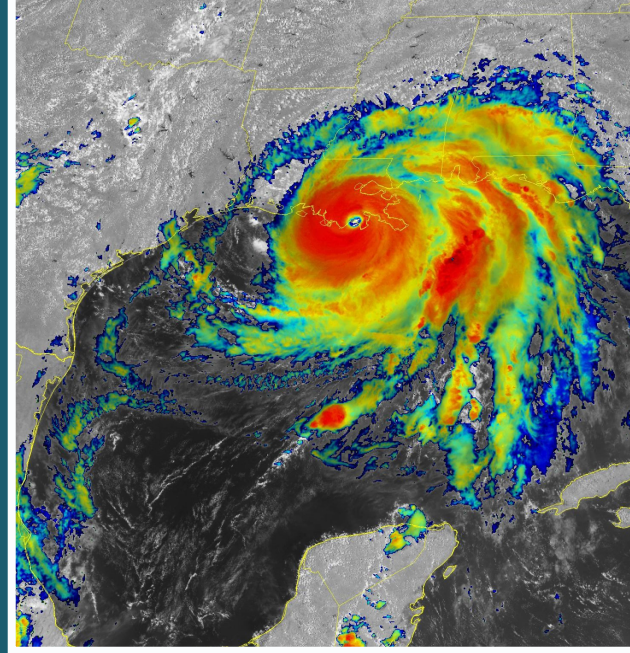
major hurricane (115 mph or greater), usually associated with the eyewall, are expected to begin within an hour. Take immediate shelter in the interior portion of a well-built structure.

Storm Surge Watch: There is a possibility of life-threatening inundation from rising water moving inland from the shoreline somewhere within the specified area, generally within 48 hours.

Hurricane Watch: Hurricane conditions (sustained winds of 74 mph or greater) are possible within your area. Because it may not be safe to prepare for a hurricane once winds reach tropical storm force, The NHC issues hurricane watches 48 hours before it anticipates tropical storm-

force winds.

Tropical Storm Watch: Tropical storm conditions (sustained winds of 39 to 73 mph) are possible within the specified area within 48 hours.



Disaster Smart Inspection & Consulting

The Leader in Coastal Risk Solutions

FORTIFIED Home Evaluations

Underwriting Inspections

Wind Mitigation Inspections

Aerial Imaging and Drone Inspections

Mobile Inspection Technology and Design

Inspection Management and Logistics

www.Disaster-Smart.com

251-206-5625



**SMART HOME
AMERICA**



Don't lose your FORTIFIED Insurance Credits, Call us to re-certify your home for another 5 years.

DIFFERENCE BETWEEN A TORNADO WATCH AND A TORNADO WARNING

• **Tornado Watch: Be Prepared!** Tornadoes are possible in and near the watch area. Review and discuss your emergency plans and check supplies and your safe room. Be ready to act quickly if a warning is issued or you suspect a tornado is approaching. Acting early helps to save lives! Watches are issued by the Storm Prediction Center for counties where tornadoes may occur. The watch area is typically large, covering numerous counties or even states.

• **Tornado Warning: Take Action!** A tornado has been sighted or indicated by weather radar. There is imminent danger to life and property. Move to an interior room on the lowest floor of a sturdy building. Avoid windows. If in a mobile home, a vehicle or outdoors, move to the closest substantial shelter and protect yourself from flying debris. Warnings are issued by your local forecast office. Warnings typically encompass a much smaller area (around the size of a city or small county) that may be impacted by a tornado identified by a forecaster on radar or by a trained spotter/law enforcement who is watching the storm.

HURRICANE HAZARDS

Hurricanes are incredibly powerful and devastating storms that can pack a real PUNCH to our area. On average, 12 tropical storms, six of which will develop into hurricanes, form in the Atlantic and Gulf of Mexico each year. Hurricane Season begins June 1 and ends Nov. 30 of each year. Peak activity for the season is mid-August through mid-September. You need to know what precautions and actions to take before the threat of a storm arrives.

BEFORE HURRICANE SEASON

Here are some preparedness activities you can take BEFORE hurricane season:

- Know your evacuation zone
- Make your emergency kit
- Learn about the risks associated with hurricanes:
- Storm surge

- High winds
 - Flooding
 - Long-term power outages
 - Property damages
 - Tornadoes
 - Rip currents & high surf
- Review your insurance policies
- Verify your coverage
- Make sure you have flood insurance
- Visit www.floodsmart.gov to learn about your flood risk
 - Know where your insurance documents are and make a copy to take with you
 - Maintain trees trimmed around your residence to prevent property damage.
 - Prepare your emergency plan:
 - Consider evacuation plans & routes
 - Consider communication methods among family and friends
 - Determine a re-unification plan if separated by an emergency
 - Make arrangements for family members with special need

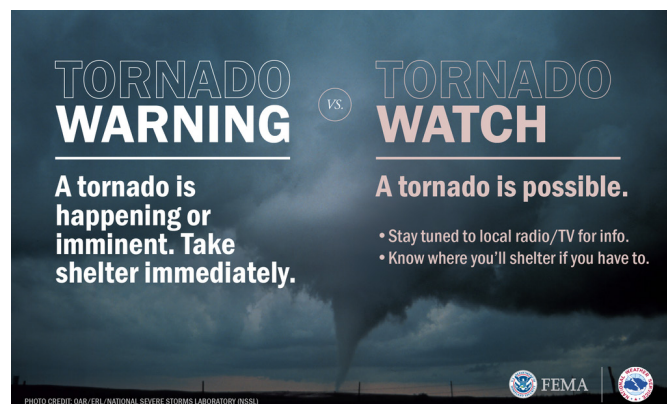
IF A STORM THREATENS OUR AREA

Monitor the weather. Identify reliable sources of information. The National Hurricane Center (NHC) and the National Weather Service (NWS) are the professional experts providing information to local emergency managers. Listen to authorities regarding evacuation orders and heed the warnings.

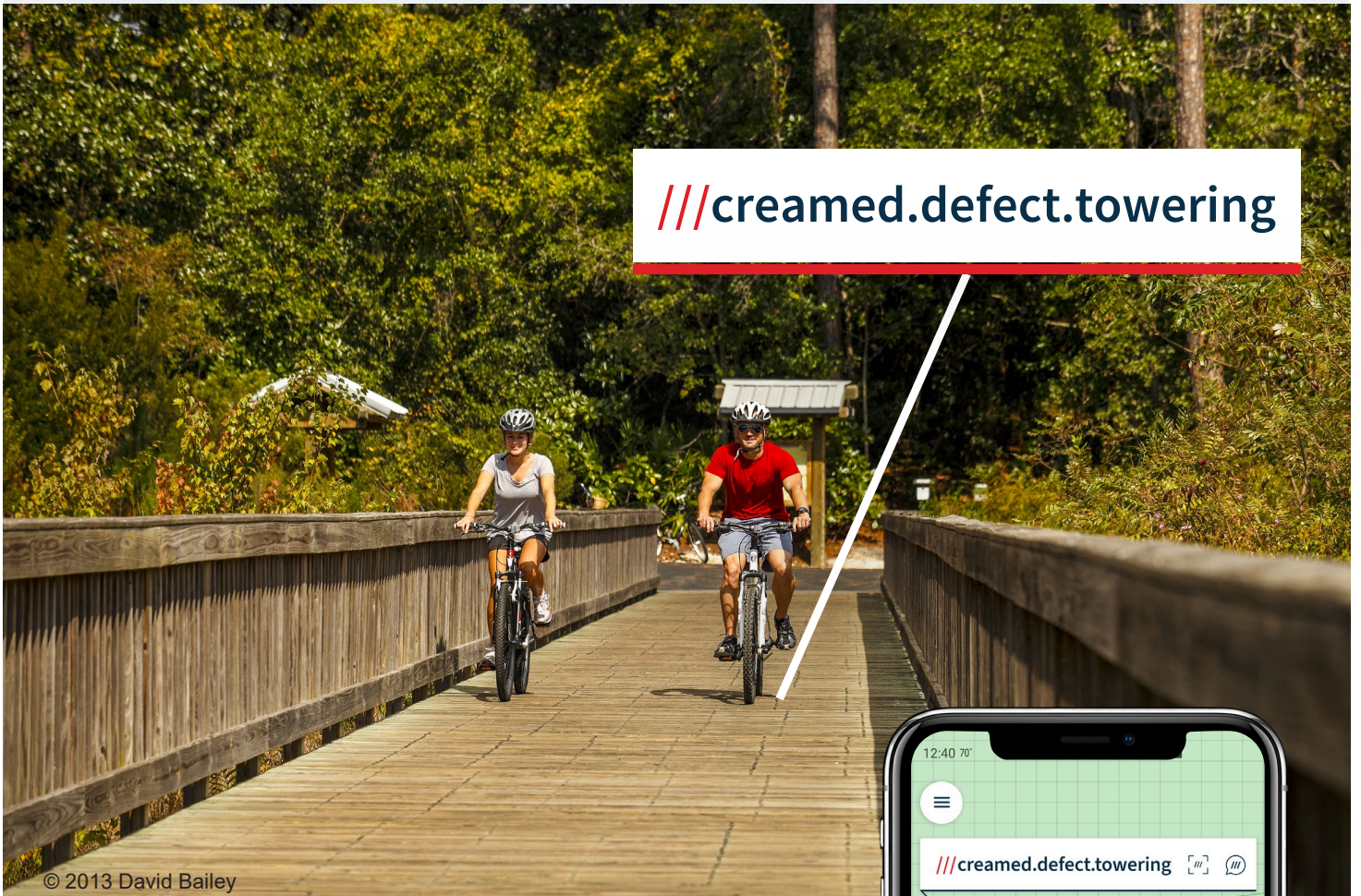
Here are some activities you can do should Baldwin County fall under a Hurricane Warning:

- To mitigate damages to your residence, you can board up your windows and doors
- Secure outdoor furniture and lawn décor
- Secure your doors.

When evacuating, take your emergency supplies and important documents with you. Leave early to avoid traffic congestion.



///creamed.defect.towering



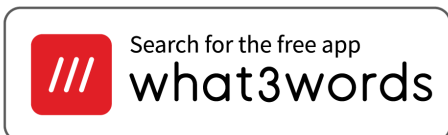
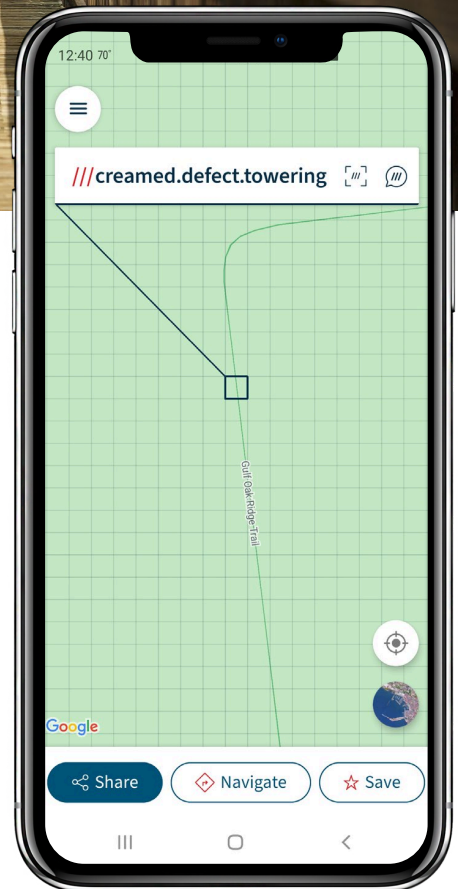
© 2013 David Bailey

Find and share locations easily with what3words

what3words is an easy way to give an exact location. Every 10ft square in the world has been given a unique combination of three words.

To give a what3words address in an emergency:

1. Open the what3words app.
2. Wait for the blue GPS dot to stabilize, then tap the current location icon (↗ iOS icon, 📍 Android icon).
3. Read the three words to the 911 call operator.



PROTECT YOUR IDENTITY

Our personal information and identity are essential information for our daily lives. During times of disaster, it will be vital that you have access and/or copies to important documents verifying personal information and property. Included in your emergency kit, you will need waterproof containers to store your important information and critical records. In today's age of technology, we can easily store our records digitally and can store those records in multiple locations to ensure safekeeping. In many instances following a large-scale disaster, utilities and technology may be unusable. It is not uncommon for long-term power outages to occur following a hurricane. For this reason, you will want to maintain a paper copy of these important documents in your emergency kit to take with you when you evacuate. The following is a list of suggested document copies to include in your waterproof container:

- Copy of identification (driver's licenses, work ID, Social Security card, birth certificate, marriage license, etc.)
 - Current photographs of family members
 - Copy of credit cards with company names, addresses and phone numbers
 - Contact list of important names and phone numbers
 - Medications and prescription information as well as medical records
 - Banking information such as account numbers, debit cards, and contact information for your bank
 - Insurance information and policies
 - Deeds, titles, mortgage information for your property
 - Portable hard drive of computer files
 - A complete inventory of your household belongings and photograph items to verify value.
- Keep a hard copy record, and you may also email a digital copy to a friend or relative for safe keeping.

You can take measures to secure this information TODAY. Collecting these copies of your important documents BEFORE an emergency will be much easier than trying to collect it after. You may be unable to access your home or property for a period of time, or your documents may be destroyed. Cell phones may be unusable due to damaged cell towers or no battery life.

ALERT 
BALDWIN
BALDWIN COUNTY EMERGENCY NOTIFICATIONS



VISIT ALERTBALDWIN.COM TO RECEIVE LOCAL EMERGENCY ALERTS

SENIOR CONSIDERATIONS

FUNCTIONAL ACCESS AND MEDICAL NEEDS FOR SENIOR ADULTS

Evacuating your home is difficult under any circumstance, but for individuals with medical, functional access or special needs, the evacuation process requires a bit more planning effort. Having a plan will alleviate some of the stress and anxiety that often accompanies disasters. Talk to your doctor to include an emergency supply of essential medications in your emergency kit. Filling prescriptions after a disaster or out of state can be challenging following a disaster. It's a good idea to include critical medical documents in your emergency kit with your other important documents. Should you evacuate and require medical attention, it will be helpful to have your medical records for responders.

CAREGIVER'S GUIDE FOR SHELTERING & EVACUATING

Caregivers may have special considerations and additional items to supplement the standard emergency kit should an emergency or evacuation occur. Considerations will be dependent on the individual needs of the patient. Some considerations may include:

- Special equipment for respiratory, dietary or mobility
- Personal care items
- Medications
- Communication needs
- Service animals and supplies for the service animal
- Electrical needs for supportive equipment

BALDWIN COUNTY COUNCIL ON AGING - S.E.E.K. PROGRAM

Senior Essentials Emergency Kit (SEEK)

The Baldwin County Council on Aging is helping the elderly homebound and seniors in their preparedness planning. Seniors who will be evacuating to a shelter OR staying home in the event of a hurricane can both benefit from this program.

This program emphasizes the importance of an evacuation plan, providing individuals with a packet organizing and containing personal information, emergency contacts, medical history and special needs. Participants in the SEEK program will be notified by a representative from the Council on Aging prior to an impending

disaster/emergency to make certain they have a plan in place and all necessary supplies for their kits, including their medications. If you or someone you know is a senior homebound or will be evacuating to a shelter, please call the Council on Aging at (251) 972-8506 for more details.

CONSIDERATIONS FOR SERVICE ANIMALS

Service animals will be impacted by disasters just as people are. Be patient with your service animals as well as pets as they find a routine and adapt to evacuation, relocation or the return to damaged property.

- Identification
- Food and water
- Veterinary records
- Kennel/crate
- Leash and collar
- Toy or comfort items

DEALING WITH THE STRESS OF DISASTERS

Remember to be patient during the aftermath of a disaster. Understand that clean up and recovery will take time. The anger, disbelief, anxiety and depression are natural responses to a traumatic event. Many even find themselves on an emotional rollercoaster. Know that you are NOT alone. Be mindful that the impacts of stress will affect young children and older adults more significantly. Here are some identifiers that indicate stress:

- Irritability
- Depression
- Confusion
- Anxiety
- Hyperactivity
- Eating disorders
- Sleeping disorders
- Exhaustion

Additional love and support to disaster victims will be critical to helping them cope. People need reassurance that they are safe and that life will return to normal. Some things that you can do to help alleviate some of the symptoms of stress are:

- Eat healthy
- Exercise
- Talk with counselors, spiritual leaders or trusted friends
- Try to maintain a schedule where you consistently rest and eat at regular intervals.

RETURNING HOME

The first task for you to complete upon returning home following a disaster is to document the damages.

- Take photographs of your property damages. You may be asked to provide this information for insurance.
- Survey your property for down power lines, gas leaks and structural damage. If your residence is severely damaged and you are concerned about safe entry, contact the local building inspector to evaluate your residence.
- Be watchful for snakes, insects, and stray animals that may have been displaced by the disaster
- Check for utility services (power and water)
- Ensure that the water supply is safe. After flooding, the water supplies may become contaminated. Check with your provider to ensure the water supply is safe for consumption and use.
- Ensure that your sewer and septic systems are working properly
- Sort your contents for repair or discard
- Maintain records of the expenses related to cleanup and repairs. You may be asked to provide those records to insurance or financial assistance organizations.
- If your residence has damage due to flooding, dry the areas as soon as safely possible.

You must remove moisture to prevent mold and mildew.

- Resources in the community may be available to assist. Baldwin County has an active Volunteer Organizations Active in Disasters (VOAD), American Red Cross, United Way, Ecumenical Ministries, Food Pantries, Catholic Social Services and other agencies that can provide assistance to disaster victims.

PROTECT YOUR PROPERTY

Standard homeowners insurance does NOT cover flooding. It is important to have protection against flooding that may result from hurricanes, tropical events, heavy rainfall, and drainage issues. The National Flood Insurance (NFIP) was created to help provide property owners means to protect them financially. The NFIP offers flood insurance to renters, business owners, and homeowners if the community participates in the program. The community adopts and enforces ordinances that meet or exceed the FEMA requirements to reduce flood risk. Find out more at <http://www.floodsmart.gov>.



**Gulf Shores
Utilities**

**HURRICANE PREPAREDNESS
INFORMATION WEBSITE:**
[https://www.gulfshoresutilities.com/
emergency-preparedness/](https://www.gulfshoresutilities.com/emergency-preparedness/)

1629 E 1st Street, Gulf Shores, AL 36542
251-968-6323
24 Hour Emergencies



BUSINESS TIPS

Tips from The Better Business Bureau

PROTECT YOURSELF FROM STORM CHASERS

Hurricanes and tornadoes often bring out the best in people, as strangers reach out to help others in need. Unfortunately, “storm chasers” emerge on devastated areas after a storm scamming those residents who are in desperate need of clean-up help. The Better Business Bureau Serving Central & South Alabama offers these specific tips for victims of natural disasters.

ASSESS THE DAMAGE AND TAKE PICTURES

Documenting your damage after a storm is of great importance for insurance claims.

CONTACT YOUR INSURANCE COMPANY

Ask about your coverage. Save receipts including food, temporary lodging or other expenses covered by your policy.

DO YOUR RESEARCH

Find businesses you know you can trust on BBB.org. Get all bids in writing.

RESIST HIGH-PRESSURE SALES

Storm chasers use tactics such as “good deal” Disaster victims should never feel forced to make a hasty decision or to choose an unknown contractor.

BE ESPECIALLY CAREFUL OF DOOR-TO-DOOR CONTRACTORS

Make sure businesses are licensed. Ask for identification.

DON'T SIGN OVER INSURANCE CHECKS TO CONTRACTORS

Get an invoice from the contractor and pay them directly preferably with a credit card.

BBB is also warning contractors to beware of storm chasers who offer to pay local construction companies substantial amounts of money to use the business's established names, reputation and phone. They masquerade as local business, collect the insurance money and then move on, leaving the real business to deal with unsatisfied customers.

The BBB also has several tips Baldwin County residents should keep in mind when preparing for severe weather. These include keeping insurance policies, birth certificates and other personal documents in safe and secure spot, having a banking app on your phone to be able to access your finance, s photographing the inside and outside of your house and knowing the location of your utility cutoffs.

To contact the BBB go to BBB.org or call 800-828-5274. The BBB has many storm -related resources. The Better Business Bureau Serving Central and South Alabama can also be found on Facebook, Twitter and LinkedIn.

We are here for you, no matter the weather.

DAPHNE UTILITIES
WATER • NATURAL GAS • SEWER

www.daphneutilities.com

**PREPARED.
INFORMED.
CONNECTED.
ALERT BALDWIN.**

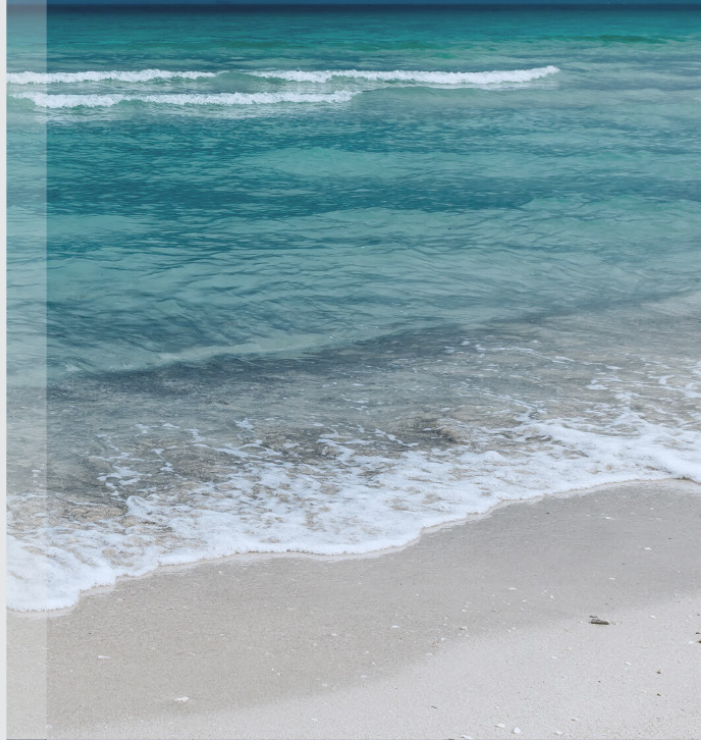
BALDWIN COUNTY

EMERGENCY MANAGEMENT AGENCY

Receive alerts about emergencies and other important community news by signing up for AlertBaldwin. This free system enables us to rapidly provide residents and visitors with critical information in local situations such as severe weather, hazardous materials releases, unexpected road hazards and closures, missing persons and evacuations. Be prepared, be informed, and stay connected.

JOIN ALERT BALDWIN TODAY

www.alertbaldwin.com



23100 McAuliffe Dr. Robertsdale, AL 36567
www.baldwincountyal.gov/ema

ALERT 
BALDWIN
BALDWIN COUNTY EMERGENCY NOTIFICATIONS

EXPECTING THE UNEXPECTED

WHY WOULD THERE BE AN EVACUATION?

Evacuations may be ordered under dangerous circumstances where lives are in danger due to a threat. For example, evacuations may be ordered as a result of a fire, gas leak, hazardous materials accident, flood or tropical weather. If at any time circumstances exist where you or your family feel threatened or endangered, you may choose to leave your home, school or workplace to avoid those situations. There are two types of evacuations affiliated with hurricanes: mandatory and voluntary. Mandatory evacuations are orders issued by the Governor of Alabama.

Voluntary evacuations orders may be issued in advance of hurricane impacts prior to the mandatory evacuation. Anytime there is an evacuation order, please follow the guidance of the local officials and leave the area of danger!

HOW WILL I FIND OUT ABOUT THE EVACUATION?

Emergency notifications may be disseminated in a number of ways. If the situation occurs suddenly, rapid notification using reverse 911, emergency alert system (EAS), wireless emergency alerts (WEA) and all public media avenues may be used. Public safety officials have access to systems that will assist in emergency messaging. You may also subscribe to the Reverse 911 Service offered through the Emergency 911 Office. This service allows you to link your cell phone number with the physical address of your residence. In emergency situations, you may receive important messages regarding evacuation notices. Visit <https://baldwin911.org/> to enroll in the program.

WHAT SHOULD I TAKE WITH ME?

Evacuation orders may be issued with little or NO notice. This is one reason why you should keep a full tank of gas in your vehicle. Gas stations may close or be unable to pump gas during power outages or other emergencies. Traffic congestion and delays may be unavoidable during travel so having emergency food and water in your vehicle emergency kit will be extremely beneficial.

Voluntary evacuation orders may be issued in

advance of hurricane impacts prior to the mandatory evacuation. Any time there is an evacuation order, please follow the guidance of the local officials and leave the area of danger!

An emergency kit for your vehicle will be critical for assisting others that you may encounter during an emergency. Here are suggested items you may want to include in your vehicle emergency kit:

- Food and water
- Blanket, clothes and extra shoes
- Tool kit
- Jumper cables
- First aid kit
- Fire extinguisher
- Flashlight
- Batteries
- Portable Battery Powered radio
- Important Documents - Insurance, identification, contact information, maps

WHERE DO I GO AND HOW DO I GET THERE?

Here is where planning is important. While making your family plans for emergencies, pre-determine options for safe evacuation locations. Once you have identified your safe locations, you can identify multiple routes in which to reach your destination. Be sure to share your evacuation plans with friends and family so that they are aware of your safety.

Should you have transportation challenges, Baldwin County Regional Area Transit System (BRATS) can assist you with your transportation needs. You may contact BRATS in advance of an emergency and plan for your transport to a local shelter.



WHAT DO I NEED TO PREPARE FOR?

To properly prepare for disasters, you must first become aware of the hazards that may impact your community, the risks that are involved with these hazards and what plans are in place for warning and evacuation of residents and visitors. The Baldwin County Emergency Management Agency is responsible for maintaining emergency operations plans that encompass these hazards. Periodically, the community officials will update and revise the plans. The information is available to you and can be found on the Baldwin County Commission website - [bit.ly/37Pz8zB](https://www.baldwincountyga.gov/37Pz8zB)

There are three general categories of hazards that we must plan for:

1. Natural Hazards
2. Technological Hazards
3. Terrorism

Category 1. Natural Hazards include the following:

- Floods
- Hurricanes
- Thunderstorms/Lightning
- Tornadoes
- Extreme Heat
- Earthquakes
- Winter Storms/Extreme Cold
- Drought
- Landslides Tsunamis Fires/Wildfires

Category 2. Technological Hazards include the following:

- Hazardous Materials
- Nuclear Power Plants

Category 3. Terrorism include the following:

- Explosions
- Biological Threats
- Chemical Threats
- Nuclear Blasts
- Radiological Dispersion Devices

FLOODING

Flooding is the most common and costly disaster. Severe

weather, tropical systems and hurricanes typically lead to high rainfall amounts that frequently flood low-lying, rivers and coastal areas across Baldwin County. Annually, Alabama receives about 56 inches of rainfall. Baldwin County participates in the National Flood Insurance Program (NFIP) Community Rating System. This system is a voluntary incentive program that encourages community floodplain management activities that will mitigate flood impacts. As a result, the insurance premium rates are discounted. Visit <https://www.floodsmart.gov/> for more information.

Baldwin County Emergency Management Agency actively monitors river gages, particularly during rain events, to assist in emergency notification and warning should flooding create dangerous conditions. You may also subscribe to river and streamflow data and be alerted to river flooding by visiting <https://waterdata.usgs.gov/al/hwis/rt>.

DO YOU NEED FLOOD INSURANCE?

Source: FEMA & NFIP Website

Here are some important facts to keep in mind:

- FACT: Homeowners and renters insurance does not typically cover flood damage.
- FACT: More than 20% of flood claims come from properties outside high-risk flood zones.
- FACT: Flood insurance can pay regardless of whether or not there is a Presidential Disaster Declaration.
- FACT: Disaster assistance comes in two forms: a U.S. Small Business Administration loan, which must be paid back with interest, or a FEMA disaster grant, which is about \$5,000 on average per household. By comparison, the average flood insurance claim is nearly \$30,000 and does not have to be repaid.

It's easy to see that having flood insurance provides important

recovery help.

FEMA Flood Map Service Center is a public source of flood hazard information. Use the website <https://msc.fema.gov/portal/home> to find your official flood map and other information to assist you understanding your hazard risk. Enter your address into the website, and you will find interactive flood maps for your area.

EMERGENCY ALERTS AND WARNINGS

Should a hazard, such as flooding, pose a threat to our area, you may receive an alert on your cell phone, radio or television. These emergency alerts are part of the Emergency Alert System (EAS), which is designed to alert people if there is a grave threat or emergency. The National Oceanic & Atmospheric Administration (NOAA) oversees the weather radio systems that will alert you if there is a weather threat such as a tornado warning or flood warning. The weather alert radios continually broadcast weather information. However, when the weather becomes severe and poses a threat, the weather radio will alert you to the "watch" or "warning." Many of these same alerts may be transmitted to your cell phone via the Wireless Emergency Alert (EAS) system. There are also numerous weather applications for your smartphone that may assist you in receiving alert notifications during times of severe weather or other types of emergencies such as an amber alert.

UNDERSTANDING TERMINOLOGY IS IMPORTANT TO YOUR SAFETY

It is also important that you distinguish between the weather terms "watch" or "warning."

STAY INFORMED, DOWNLOAD THE APPS TODAY



We want to remind you that we are no longer using the Baldwin EMA App. You can now stay plugged in with Baldwin County EMA by using the Baldwin County Commission App!

To receive local, emergency alerts and other important community news, sign up for AlertBaldwin.com. This free system enables us to rapidly provide residents and visitors with critical information in local situations such as severe weather, hazardous materials releases, unexpected road hazards and closures, missing persons, evacuations and more. Stay prepared, informed. and connected.



TO SIGN UP FOR LOCAL ALERTS



TO STAY CONNECTED WITH BALDWIN COUNTY COMMISSION

JOIN ALERT BALDWIN TODAY

www.AlertBaldwin.com



BALDWIN COUNTY EMERGENCY MANAGEMENT AGENCY



Free Local News Email Updates

Sign up today for Gulf Coast Media's new email updates sent to you twice a week for free. You'll get the first look at upcoming stories from Gulf Coast Media's publications. And, get updates on breaking news.

www.gulfcoastmedia.com/newsletter

GULF COAST MEDIA

LOCAL RESOURCES

AREA TELEVISION STATIONS

Channel 3 (ABC) WEAR TV
Channel 5 (CBS) WKRG TV
Channel 10 (NBC) WALA TV
Channel 15 (FOX) WPXI TV
Channel 35 WFGX TV
Channel 44 WJTC TV

AREA RADIO STATIONS

WABB AM 1480
WABB FM 97.5
WABF AM 1480
WQUA FM 102.1
WAVH FM 106.5
WBCA AM 1110
WBHY AM 840
WBHY FM 88.5
WBLX FM 92.5
WCSN FM 105.7
WDLT FM 98.3
WDLT AM 600
WBUB FM 104.1
WMXC FM 99.9
WRKH FM 96.1
WGOK AM 900
WHEP AM 1310
WHIL FM 91.3
WJLQ FM 100.7
WJLQ FM 100.7
WNTM AM 710
WNXP FM 105.5
WKSJ FM 94.9
WPCS FM 89.3
WUWF FM 91
WXBW FM 102.5
WZEW FM 92.1
WTKK FM 101.5
WXWY AM 100

WMOB AM 1360

BALDWIN COUNTY EVACUATION SHELTERS

The Baldwin County Commission may provide Shelters of Last Resort to residents seeking refuge from hurricanes and other emergencies. Shelters of Last Resort are facilities made available by the Baldwin County Commission during emergencies for sheltering, although the structural integrity of facilities cannot be "guaranteed." The shelters are just that, shelters of last resort. Baldwin County Commission tries to provide a clean, safe, and secure shelter for the citizens. Not all shelters will open at the same time. Shelters will open on an "as-needed" basis and are subject to change. Please stay tuned to local television and radio stations for public service announcements regarding shelter openings. Please remember the first 72 hours are on you. Please find updated information at www.baldwincounty.al.gov/ema/shelters.

We do highly recommend that citizens bring a few self-sustaining items with them.

Personal Items

- Photo identification (Driver's License)
- Change of clothing

- Blankets
- Sleeping bags
- Pillows
- Hygiene or sanitary products
- Prescription & over the counter medications
- Eyeglasses
- Dentures
- Baby food/formula, diapers, wipes, teething gel, ointment
- Water in plastic containers, 3-day supply
- Food & snacks, non-perishable, 3-day supply
- Cell phone
- Flashlight & extra batteries
- Battery powered radio & extra batteries.
- First-aid kit
- Entertainment (toys, books, games, etc.)

Important Papers

- Social security card
- Proof of residence (deed or lease)
- Insurance policies
- Birth certificate
- Marriage certificate
- Stocks, bonds, and other negotiable certificates
- Wills, deeds, copies of recent tax returns

MASS CARE SHELTERS (General Public):

Baldwin County Coliseum
19477 Fairground Road
Robertsdale, AL 36567

BAY MINETTE MIDDLE SCHOOL

1311 West 13th St.
Bay Minette, AL 36507

DAPHNE EAST ELEMENTARY

26651 County Road 13
Daphne, AL 26526

MEDICAL NEEDS SHELTER:

Baldwin County Coliseum
19477 Fairground Road
Robertsdale, AL 36567

ELECTRICAL SUPPORT SHELTERS:

Baldwin County Coliseum
19477 Fairground Road
Robertsdale, AL 36567

Baldwin County Level II
Community Shelter
207 North White Ave.
Bay Minette, AL 36507

Fairhope Satellite Courthouse
1100 Fairhope Ave.
Fairhope, AL 36532

Foley Satellite Courthouse
201 East Section Ave.
Foley, AL 36535

OTHER CONTACT INFORMATION:

BALDWIN COUNTY
EMERGENCY MANAGEMENT
251-972-6807
BCEMA.BaldwinCountyAL.gov
www.BaldwinCountyAL.gov/EMA

BALDWIN COUNTY
SHERIFF'S OFFICE
251-937-0202
251-972-6802

UTILITIES

ALABAMA POWER

Provides electric service to surrounding areas
800-888-2726
CustomerService.SouthernCompany.com

BALDWIN COUNTY SEWER SERVICE

251-971-3022

BALDWIN EMC

Provides electric for all of Gulf Shores and Orange Beach; most unincorporated areas
251-989-6247; 800-837-3374
BaldwinEMC.com

EAST CENTRAL BALDWIN WATER AUTHORITY

East Central Baldwin County water, sewer and fire protection authority.
251-942-1242

NORTH BALDWIN UTILITIES

Natural gas, water and waste water.
251-580-1626
NorthBaldwinUtilities.com

PERDIDO BAY WATER

Provides water, sewer and fire for Lillian, Perdido Beach, Josephine and Elberta.
251-987-5816
PerdidoBayWater.com

RIVIERA UTILITIES

The electric department provides service for Daphne, Spanish Fort, Point Clear, Loxley, Silverhill, Summerdale, Foley, Elberta, Lillian, Bon Secour and Magnolia Springs.

The gas department directly serves customers in Foley, Magnolia Springs, Summerdale, Elberta, Mifflin, Gulf Shores and Silverhill. Additionally, Riviera supplies wholesale natural gas to the municipalities of Loxley, Robertsdale and Clark / Mobile counties gas district in Orange Beach.

Provides water service to households in South Baldwin County. Provides waste water service to city

of Foley only.
251-943-5001 Eastern Division Foley
251-626-5000 Western Division Daphne
RivieraUtilities.com

WHITE HOUSE WATER AUTHORITY

Water authority to White House Fork areas.
251-937-2430

MUNICIPALITIES

DAPHNE UTILITIES

Water, sewer and natural gas.
251-626-2628
DaphneUtilities.com

FAIRHOPE UTILITIES

Set up new service for water, sewer, natural gas, electric and sanitation.
251-990-0121
COFairhope.com

GULF SHORES UTILITIES

Water and sewer.
251-968-6323

LOXLEY UTILITIES

Water, waste water, gas, solid waste, streets, animal control, mosquito control, grass and drainage maintenance.
251-964-7644

ROBERTSDALE UTILITIES

Electric, sewer, water, natural gas and sanitation.
251-947-8950
Robertsdale.org

SUMMERDALE WATER

251-989-6470

SUMMERDALE SEWER

251-989-2437
SummerdaleAlabama.com

OTHER INFORMATION PERTAINING TO UTILITIES

ALABAMA 1: 811 ALL
BALDWIN COUNTY
800-972-2631
ALICall.com

UTILITIES OVERVIEW WEBSITE

BaldwinEDA.com

ELECTED OFFICIALS

BALDWIN COUNTY COURTHOUSE

312 Courthouse Square, Suite 22, Bay Minette, AL 36507.

CIRCUIT COURT JUDGES

This circuit comprises the geographical limits of Baldwin County and is composed of five circuit court judges, two district court judges, one circuit clerk and one district attorney. The Circuit Court hears all civil matters where the amount in controversy exceeds \$10,000, all criminal prosecutions involving felony offenses and family court matters. The Circuit Court has concurrent jurisdiction with the District Court and in all civil matters where the amount in controversy exceeds \$3,000 but does not exceed \$10,000, exclusive of interest and costs. Additionally, the Circuit Courts exercise appellate jurisdiction over cases appealed from the District Courts, Probate Court, Baldwin County Municipal Courts and certain administrative and municipal boards.

SEVENTH JUDICIAL DISTRICT CIRCUIT

HONORABLE J. CLARK STANKOSKI
Presiding Circuit Judge
251- 937-0237

HONORABLE SCOTT P. TAYLOR
Circuit Judge
251-580-2570

HONORABLE CARMEN E. BOSCH
Circuit Judge
251- 937-0235

HONORABLE JODY W. BISHOP
Circuit Judge
251 - 937-0290

HONORABLE C. JOSEPH NORTON
Circuit Judge
251 - 937-0273

DISTRICT JUDGES

The District Court has original jurisdiction over criminal misdemeanors, holds preliminary hearings in felony prosecutions and can receive guilty pleas in felony cases not punishable by death. The two district judges exercise concurrent jurisdiction with the Circuit Courts in juvenile matters and in civil actions where the amount in controversy does not exceed \$10,000; furthermore, the district judges have exclusive jurisdiction over all civil actions where the amount in controversy, exclusive of interest and costs, does not exceed \$3,000, which are considered "small claims cases."

MICHELLE M. THOMASON
Presiding judge Courtroom #7
251-972-8573
251-972-6815 fax

WILLIAM E. SCULLY JR.
251-580-1647

CIRCUIT CLERK

The Circuit Clerk serves as the chief administrative and fiscal officer for the court system. Also serves as an election official for the county and has magistrate duties, working with law enforcement for the issuance of warrants and for the filing of court documents.

BRENDA GAINEY
312 Courthouse Square, Suite 10
Bay Minette, Alabama 36507
brenda.ganey@alacourt.gov

DISTRICT ATTORNEY

ROBERT WILTERS
Elected 2016
Administrative Office
101 Hand Ave.
Bay Minette, AL 36507
251-937-0274
BaldwinDA@baldwincountyal.gov

FEDERAL AND STATE REPRESENTATIVES

U.S. SEN TOMMY TUBERVILLE
United States Senator Tommy Tuberville was elected to the U.S. Senate in 2020 and is currently serving his first term representing Alabama. His constituents still know him as Coach Tuberville, following his 40-year career coaching college football. Sen. Tuberville serves on the Committee on Agriculture, Nutrition and Forestry, the Committee on Armed Services, The Committee on Health, Education, Labor and Pensions and the Committee on Veterans' Affairs.

Mobile Office:
BB&T Centre 41 West I-65, Service Road North, Suite 2300-A
Mobile, AL 36608
Phone 251-414-3083

Washington D.C. Office:
142 Russell Senate Office Building
Washington DC 20510
202-224-4124

U.S. SENATE KATIE BRITT
Elected to the Senate in 1986. Sen. Shelby

serves as the chairman of the Committee on Banking, Housing and Urban Affairs and is a member of the Committee on Appropriations as well as the Committee on Rules and Administration.

Mobile office:
113 St. Joseph St.
445 U.S. Federal Courthouse
Mobile, AL 36602
Phone: 251-694-4164 · Fax: 251-694-4166

Washington, D.C. office:
304 Russell Senate Office Building
Washington, D.C. 20510
Phone: 202-224-5744 · Fax: 202-224-3416 · Website: Shelby.Senate.gov

U.S. REP. JERRY CARL
Alabama's First District
Elected in 2020. He sits on the House Armed Services Committee and the House Committee on Natural Resources.
Website: Carl.House.gov

Baldwin County Office:
502 W. Lee Ave.
Summerdale, AL 36580
Phone: 251-989-2664

Washington D.C. Office:
119 Cannon House Office Building
Washington, D.C. 20515
Phone: 202-225-4931 · Fax: 202-225-0562 · Website: Byrne.House.gov

BALDWIN COUNTY LEGISLATIVE CONSTITUENT SERVICES OFFICE DIRECTOR, CLIFF MCCOLLUM
cliff.mccollum@baldwincountyal.gov
1100 Fairhope Ave.
Fairhope, AL 36532
251-990-4615

STATE SEN. CHRIS ELLIOTT
(R) - State Senate District No. 32
Elected to the State Senate in 2018
Represents all or a portion of the incorporated Baldwin municipalities of Daphne, Elberta, Fairhope, Foley, Gulf Shores, Loxley, Magnolia Springs, Orange Beach, Perdido Beach, Robertsedale, Silverhill, Spanish Fort and Summerdale; the unincorporated communities of Elsanor, Seminole, Belforest, Marlow, Point Clear, Barnwell, Lillian, Josephine, Mifflin, Bon Secour, Fort Morgan and Ono Island.
Alabama State Senate, Room 738-B
1100 Fairhope Avenue
Fairhope, AL 36532
334-261-0897 · celliott@baldwincountyal.gov

STATE SEN. GREG ALBRITTON
(R) - State Senate District No. 22
Elected to the State Senate in 2014
Represents all or a portion of the incorporated municipalities of Bay Minette, Loxley and Robertsedale and the unincorporated communities of Little River, Blacksher, Tensaw, Lottie, Latham, Vaughn, Stockton, Crossroads, Bromley, Malbis, Stapleton,

Plantation Hills, Ellisville and Belforest.
Alabama State Senate, Room 721
203 Oak St.
Bay Minette, AL 36507
334-261-0843 · galbritton@baldwincoun-
ty.al.gov

STATE REP. ALAN BAKER

(R) - State House District No. 66
Elected to the House in 2006
Represents the incorporated municipality
of Loxley; the unincorporated communi-
ties of Perdido, Phillippsville, Pine Grove,
Gateswood, Clear Springs, Loxley-Ellisville
and Stapleton.
Alabama House of Representatives, Room
427-B
203 Oak Street
Bay Minette, AL 36507
334-261-0420 · StateRep@co.escambia.
al.us

STATE REP. JENNIFER FIDDLER

(R) - State House District No. 94
Elected to the House in 2002
Represents all or a portion of the incor-
porated municipalities of Fairhope, Rob-
ertsdale and Silverhill; the unincorporated
communities of Malbis, Belforest, Planta-
tion Hills, Point Clear, Barnwell, Marlow,
Elsanor, Rosinton, Seminole and Lillian.
Alabama House of Representatives, Room
426
1100 Fairhope Avenue.
Fairhope, AL 36532
334-261-0409 · JFaust@baldwincounty.al.gov

STATE REP. FRANCES HOLK-JONES

(R) - State House District No. 95
Elected to the House in 1980
Represents the incorporated municipal-
ities of Elberta, Foley, Gulf Shores, Mag-
nolia Springs, Orange Beach, Perdido
Beach, Robertsdale and Summerdale; the
unincorporated communities of Barnwell,
Lillian, Josephine, Miflin, Bon Secour, Fort
Morgan and Ono Island.
Alabama House of Representatives, Room
532
11 S. Union St.
Montgomery, AL 36130
334-261-0523

STATE REP. DONNA GIVENS

(R) - State House District No. 64
Elected to the House in 2006
Represents all or a portion of the incor-
porated municipality of Bay Minette; the
unincorporated
communities of Little River, Blacksher,
Lottie, Tensaw, Rabun, Latham, Vaughn,
Stockton, Crossroads, Whitehouse Fork
and Bromley.
Alabama House of Representatives, Room
526-D
11 S. Union St.
Montgomery, AL 36130
334-261-0445 · HarryShiver@aol.com

STATE REP. MATT SIMPSON

(R) - State House District No. 96
Elected to the House in 2018
Represents all or a portion of the incorpo-

rated communities of Daphne and Spanish
Fort; the unincorporated communities of
Bromley, Stapleton and Malbis.
Alabama House of Representatives, Room
417-G
1100 Fairhope Avenue
Fairhope, AL 36532
334-261-0424 · MattSimpsonAL96@gmail.
com

BALDWIN REGIONAL AREA TRANSPORTATION SYSTEM

Baldwin Regional Area Transit Systems
(BRATS) offers safe, affordable, and reliable
transportation to residents and visitors
throughout Baldwin County. BRATS pro-
vides door-to-door public transit for med-
ical appointments, job access, retail shop-
ping, etc. Riding BRATS is easier than ever
with the new smart phone app. Download
the "BRATS On Demand" app at the Google
or Apple stores or schedule a ride
through your web browser at [https://brats.
app.ridewithvia.com](https://brats.app.ridewithvia.com). For more information
on our services, visit the BRATS website at
www.bratsondemand.com.
P.O. Box 907, Robertsdale, AL 36567
Office Hours: Monday through Friday, 7:00
a.m. – 4:30 p.m.
251-972-6817

BALDWIN COUNTY OFFICIALS

*Baldwin County Commission (baldwin-
county.al.gov)*

BALDWIN COUNTY SHERIFF HUEY "HOSS" MACK

The sheriff's office is the principal law en-
forcement agency for Baldwin County. The
sheriff serves as an officer of the courts
and is responsible for service of court pa-
pers and documents. He also maintains
the Baldwin County Corrections Center
which houses up to 649 inmates.
Non-Emergencies: 251-937-0202 or 251-
972-6802
Telecommunications Device for the Deaf:
251-580-2516

BALDWIN COUNTY COMMISSIONER HONORABLE JAMES E. (JEB) BALL

(R) - District No. 1 -
North Baldwin County
First elected in 2018
Municipality: City of Bay Minette
Communities: Little River, Blacksher,
Latham, Vaughn, Stockton, Redtown, Lottie,
Rabun, Perdido, Carpenter, Blakeley,
Bromley, Cottage Hill, Pine Grove, White-
house Fork, Crossroads, Dyas, Phillippsville,
Vangordon, Stapleton and Steelwood
Baldwin County - Administration
Building
312 Courthouse Square, Suite 12
Bay Minette, AL 36507
Phone: 251-937-0330
Administrative Staff: Barbara Pate
Email: barbara.pate@baldwincounty.al.gov
HONORABLE MATTHEW P. MCKENZIE
(R) District No. 2 – Eastern Shore
Elected 2022
Municipalities: City of Spanish Fort, City of
Daphne and City of Fairhope

Communities: Belforest, Historic Marlow,
Fish River, Barnwell, Battles Wharf, Point
Clear and Montrose
Baldwin County (Fairhope) Satellite Court-
house
1100 Fairhope Avenue
Fairhope, AL 36532
Phone: 251.990.4620 Ext. 4620
Auxiliary Office: (Mailing Address)
Baldwin County Administration Building
(County Seat)
312 Courthouse Square, Suite 12
Bay Minette, AL 36507
Phone: 251.937.0264
Administrative Staff: Michelle Howard
Phone 251.990.4606 Ext. 4606, 2601
Email: Michelle.Howard@baldwincounty.al.gov

HONORABLE BILLIE JO UNDERWOOD

(R) - District No. 3 - Central
Baldwin County
First Elected in 2018
Municipalities: Town City of Loxley, City of
Robertsdale, Town of Silverhill and Town
of Summerdale Communities: Gateswood,
Clear Springs, Rosinton, Elsanor and Semi-
nole
Baldwin County - Central Annex
22251 Palmer St.
Robertsdale, AL 36567
Phone: 251-972-8515
Auxiliary Office: Baldwin County
Administration Building
312 Courthouse Square, Suite 12
Bay Minette, AL 36507
Administrative Staff: Tiffany Givens
Tiffany.Givens@baldwincounty.al.gov

HONORABLE CHARLES F. (SKIP) GRUBER

(R) - District No. 4 - South Baldwin County
First Elected 2006
Municipalities: City of Foley, Town of Elberta,
City of Gulf Shores, Town of Magnolia
Springs, City of Orange Beach and Town
of Perdido Beach
Communities: Historic Marlow, Fish River,
Bon Secour, Oyster Bay, Miflin, Josephine,
Ono Island, Fort Morgan and Lillian
Baldwin County Commission
(Foley) Satellite Courthouse
201 E. Section Ave.
Foley, AL 36535
Phone: 251-972-6833, Ext. 2804
Auxiliary Office: Baldwin County
Administration Building
312 Courthouse Square, Suite 12
Bay Minette, AL 36507
Administrative Staff:
Jeannie Peerson
Phone: 251-937-0264, 251-972-6833, ext. 2801
Email: jpeerson@baldwincounty.al.gov

PROBATE JUDGE HARRY D'OLIVE JR.

The Probate Judge in Baldwin County is a
publicly elected representative of the people
for the administration of the Probate Court,
License Office and the "Recorder's" Office —
for official public recordation of documents.

MAIN OFFICE:

220 Courthouse Square
Bay Minette, AL 36507
Phone: 251-580-2596

ORANGE BEACH SCHOOL SYSTEM

ORANGE BEACH ELEMENTARY

4900 Wilson Blvd.
251-981-5662

ORANGE BEACH MIDDLE & HIGH SCHOOL

4900 Wilson Blvd., Orange Beach
(251) 967-5306
Bcbe.org/OBHS

GULF SHORES CITY SCHOOLS

GULF SHORES BOARD OF EDUCATION

300 East 16th Ave., Gulf Shores
251-968-9873
Gsboe.org

GULF SHORES ELEMENTARY SCHOOL (K-5)

1600 East 3rd Ave., Gulf Shores
251-968-7375
Gsboe.org/GSES

GULF SHORES MIDDLE SCHOOL (6-8)

450 East 15th Ave., Gulf Shores
251-968-8719
Gsboe.org/GSMS

GULF SHORES HIGH SCHOOL (9-12)

600 East 15th Ave., Gulf Shores
251-968-4747
Gsboe.org/GSHS

HOSPITALS

NORTH BALDWIN INFIRMARY

(251) 937-5521

SOUTH BALDWIN REGIONAL MEDICAL CENTER

(251) 949-3400

SOUTH BALDWIN REGIONAL MEDICAL CENTER FREE-STANDING EMERGENCY DEPARTMENT

(251) 215-4853

THOMAS HOSPITAL

(251) 928-2375

THOMAS FREESTANDING EMERGENCY DEPARTMENT - MALBIS

(251) 279-5423

SATELLITE OFFICES:

22251 Palmer St., Robertsdale, AL 36567
Phone: 251-943-5061
1102 Fairhope Ave., Fairhope, AL 36532
Phone: 251-928-3002
201 E. Section Ave., Foley, AL 36535
Phone: 251-943-5061

BALDWIN COUNTY REVENUE COMMISSIONER TEDDY J. FAUST JR.

Elected 2009

The Revenue Commissioner's Office is responsible for mapping, appraising and assessing each parcel of property, and then collecting tax based upon each parcel's assessed value. These property taxes support the state of Alabama, Baldwin County, Baldwin County public schools, hospitals, law enforcement, fire departments and municipalities.

Main Office:

1705 U.S. Highway 31 S.
Bay Minette, AL 36507
Phone: 251-937-0245
Email: tfaust@baldwincountyal.gov

BALDWIN COUNTY CORONER BRIAN PIERCE

Elected in 2018

Phone: 251-970-4051
Email: brian.pierce@baldwincountyal.gov

The coroner is responsible for the determination of the cause and manner of death of a person who dies and is not under medical care.

All traumatic deaths, such as murder, suicide, accidental, motor vehicle and drowning are required by law to be reported to the coroner. Any person who may have died of natural causes, but was not under a doctor's care, by law, must also be reported to the coroner's office. It is the final responsibility of the coroner to execute and file a Certificate of

Death with the Baldwin County Health Department (251-947-3618). The coroner must also review and certify all persons who desire to be cremated at the time of their death. In order to determine the cause and manner of death, the coroner may request an autopsy be conducted by the Alabama Department of Forensic Sciences located in Mobile; 251-471-7026
adfs.alabama.gov.

COUNTY ADMINISTRATION

COUNTY ADMINISTRATOR/BUDGET DIRECTOR

RONALD J. CINK

Email: rcink@baldwincountyal.gov

ADMINISTRATIVE SERVICES MANAGER

ANU GARY

Email: agary@baldwincountyal.gov

PUBLIC INFORMATION AND COMMUNICATIONS SPECIALIST

TAYLOR BUFKIN

Email: taylor.bufkin@baldwincountyal.gov

BALDWIN COUNTY CHAMBERS OF COMMERCE

NORTH BALDWIN CHAMBER

301 McMeans Ave.
Bay Minette, AL 36507
(251) 937-5665

EASTERN SHORE CHAMBER

327 Fairhope Ave.
Fairhope, AL 36532
(251) 928-6387

CENTRAL BALDWIN CHAMBER

23150 Hwy 59
Robertsdale, AL 36567
(251) 947-2626

COASTAL AL BUSINESS CHAMBER

3150 Gulf Shores Parkway
Gulf Shores, AL 36547
(251) 968-7200

SOUTH BALDWIN CHAMBER

112 West Laurel Ave.
Foley, AL 36535
(251) 943-3291

BALDWIN COUNTY PUBLIC SCHOOLS

DISTRICT 1

BALDWIN COUNTY HIGH (9-12)

1 Tiger Drive, Bay Minette
251-937-2341
Bcbe.org/BCHS

BALDWIN COUNTY VIRTUAL ELEMENTARY / MIDDLE SCHOOL

605 US 98, Daphne
251-404-6209
Bcbe.org

BALDWIN COUNTY VIRTUAL HIGH SCHOOL

605 US 98, Daphne
251-404-6209
Bcbe.org

BAY MINETTE ELEMENTARY (K-6)

400 E. 9th St., Bay Minette
251-937-7651
Bcbe.org/BME

BAY MINETTE MIDDLE (7-8)

1311 W. 13th St., Bay Minette
251-580-2960
Bcbe.org/BMMS

DELTA ELEMENTARY (K-6)

10251 Whitehouse Fork Road Extension, Bay Minette
251-937-3657
Bcbe.org/Delta

NORTH BALDWIN CENTER FOR TECHNOLOGY (9-12)

505 W. Hurricane Road, Bay Minette
251-937-6751
Bcbe.org/NBCT

PERDIDO SCHOOL (K-8)

23589 County Road 47, Perdido
251-937-8456
Bcbe.org/Perdido

PINE GROVE ELEMENTARY (K-6)

43980 Pine Grove Road, Bay Minette
251-937-0453
Bcbe.org/PineGrove

STAPLETON ELEMENTARY (K-6)

35480 Harriot Ave., Stapleton
251-937-2038
Bcbe.org/Stapleton

DISTRICT 2

BELFOREST ELEMENTARY

11364 County Road 64, Daphne
Bcbe.org

DAPHNE EAST ELEMENTARY (K-6)

26651 County Road 13, Daphne
251-626-1663
Bcbe.org/DEE

DAPHNE ELEMENTARY (K-3)

2307 Main St., Daphne
251-626-2424
Bcbe.org/DE

DAPHNE HIGH (9-12)

9300 Champions Way, Daphne
251-626-8787
Bcbe.org/DHS

DAPHNE MIDDLE (7-8)

1 Jody Davis Circle, Daphne
251-626-2845
Bcbe.org/DMS

W.J. CARROLL INTERMEDIATE (4-6)

1000 Main St., Daphne
251-626-0277
Bcbe.org/Carroll

DISTRICT 3

C. F. TAYLOR ALTERNATIVE SCHOOL

19150 Wilters St., Robertsdale
251-970-4415

CENTRAL BALDWIN MIDDLE SCHOOL (7-8)

24545 Highway 59, Robertsdale
251-947-2327
Bcbe.org/CBMS

ELSANOR ELEMENTARY (K-6)

23440 U.S. Highway 90, Robertsdale
251-947-5401
Bcbe.org/Elsanor

LOXLEY ELEMENTARY (K-6)

4999 S. Magnolia St., Loxley
251-964-5334
Bcbe.org/LoxleyElem

ROBERTSDALE ELEMENTARY (K-6)

1 Cub Drive, Robertsdale
251-947-4003
Bcbe.org/RobertsdaleElem

ROBERTSDALE HIGH (9-12)

1 Golden Bear Drive, Robertsdale
251-947-4154
Bcbe.org/RHS

ROSINTON ELEMENTARY (K-6)

19757 County Road 64, Robertsdale
251-964-5210
Bcbe.org/Rosinton

SOUTH BALDWIN CENTER FOR TECHNOLOGY (9-12)

19200 Carolina St., Robertsdale
251-947-5041
Bcbe.org/SBCT

SILVERHILL ELEMENTARY (K-6)

15800 Fourth Ave., Silverhill
251-945-5188
Bcbe.org/Silverhill

DISTRICT 4

FLORENCE B. MATHIS ELEMENTARY (K-6)

600 Ninth Ave., Foley
251-943-1244
Bcbe.org/MathisElementary

FOLEY ELEMENTARY (K-6)

450 N. Cedar St., Foley
251-943-8861
Bcbe.org/FoleyElem

FOLEY HIGH (9-12)

1 Pride Place, Foley
251-943-2221
Bcbe.org/Foley

FOLEY MIDDLE (7-8)

200 N. Oak St., Foley
251-943-1255
Bcbe.org/FoleyMS

MAGNOLIA SCHOOL (K-6)

1 Jaguar Loop, Foley
251-965-6200
Bcbe.org/Magnolia

MATHIS ELEMENTARY

600 Ninth Ave.
251-943-1244

SUMMERDALE SCHOOL (K-8)

400 E. Broadway St., Summerdale
251-989-6850
Bcbe.org/Summerdale

SWIFT CONSOLIDATED (K-6)

6330 Bon Secour Highway, Bon Secour
251-949-6422
Bcbe.org/Swift

DISTRICT 5

ELBERTA ELEMENTARY (K-6)

25820 U.S. Highway 98, Elberta
251-986-5888
Bcbe.org/Elberta

ELBERTA HIGH (9-12)

13355 Main St., Elberta
251-968-8127

Bcbe.org/ElbertaHigh

ELBERTA MIDDLE (7-8)

13355 Main St., Elberta
251-986-8127
Bcbe.org/EMS

DISTRICT 6

FAIRHOPE EAST ELEMENTARY (K-6)

20698 Bishop Road, Fairhope
251-928-7841
Bcbe.org/FairhopeEastElemen

FAIRHOPE HIGH (9-12)

1 Pirate Drive, Fairhope
251-928-8309
Bcbe.org/FHS

FAIRHOPE MIDDLE (7-8)

2 Pirate Drive, Fairhope
251-928-2573
Bcbe.org/FMS

FAIRHOPE WEST ELEMENTARY (K-6)

408 N. Section St., Fairhope
251-928-8400
Bcbe.org/FairhopeWestElemen

J. LARRY NEWTON SCHOOL (K-6)

9761 County Road 32, Fairhope
251-990-3858
Bcbe.org/Newton

DISTRICT 7

ROCKWELL ELEMENTARY (K-5)

10183 U.S. Highway 31, Spanish Fort
251-626-5528
Bcbe.org/Rockwell

SPANISH FORT ELEMENTARY (K-5)

30900 Highway 225, Spanish Fort
251-626-9751
Bcbe.org/SpanishFortElem

SPANISH FORT HIGH (9-12)

1 Plaza de Toros Drive, Spanish Fort
251-625-3259
Bcbe.org/SFHS

SPANISH FORT MIDDLE (6-8)

33899 Jimmy Faulkner Drive, Spanish Fort
251-625-3271
Bcbe.org/SFMS

Life Less Interrupted...

Receive a
40 Gallon
Water Heater
When You
Switch To
Natural Gas

WITH NATURAL GAS YOUR LIFE WILL BE LESS INTERRUPTED AFTER A HURRICANE...

You will still be able to cook with a gas range, gas outdoor grill and enjoy a hot shower with a natural gas water heater.



Gas Fireplaces



Coppersmith Gas Lanterns



Generac Generators



*Call Us Today
To Find Out About
Switching To Natural Gas*



Wilmington Grills

CLARKE-MOBILE COUNTIES GAS DISTRICT

24831 Canal Road • Post Office Box 3069 • Orange Beach, AL 36561

251-974-5432

877-393-7547

Serving Orange Beach Alabama

America's vast underground gas pipeline infrastructure provides transportation of clean, energy efficient gas for homes, schools, hospitals, factories, mills, industries & power plants.

DURING A POWER OUTAGE, THE BRIGGS AND STRATTON GENERATOR PROVIDES POWER FOR YOUR HOME OR BUSINESS



Medium to Large Home New Managed Whole House Solution

Our new 20KW and 26KW Standby Generator is our smartest generator ever. It features ground-breaking power management technology, advanced safeguarding features that meet rigorous industry fire protection standards and a new airflow design allowing flexible placement options. There has never been a better time to protect your family and biggest investment.

Take Advantage of SPECIAL SALE PRICES

*20KW Model #040662

NOW \$5,299.00

With aluminum enclosure and Stainless Steel Base,
6 Year Warranty

*20KW Model #040657

NOW \$6,016.00

With aluminum enclosure and Stainless Steel Base,
10 Year Warranty

*26KW Model #040664

NOW \$6,860.00

With aluminum enclosure and Stainless Steel Base,
10 Year Warranty

*Prices may change without notice! Limited to products in stock!

- Why buy a Briggs and Stratton Generator System?
- Patented Symphony II, Power Management technology allows you to power more for less.
- Smarter smaller and more fuel efficient.
- Briggs and Stratton a leader in energy innovation.
- Durable all weather finish.
- Electronic friendly.
- Remote monitoring system.
- Call today for a FREE on site estimate!

Come on over to ELBERTA HARDWARE!

"We service and finance what we sell."

25320 U.S. Hwy. 98, Elberta, AL 36530 • 251-986-5233



The Yanmar 221
SUB-COMPACT UTILITY TRACTOR



The Yanmar 324
SUB-COMPACT UTILITY TRACTOR



The Yanmar 424
SUB-COMPACT UTILITY TRACTOR

NEW
10
YEAR

PROVEN QUALITY

LIMITED POWERTRAIN
WARRANTY



PRODUCT QUALITY
TECH SUPPORT
PARTS AVAILABILITY

2018 EQUIPMENT DEALERS ASSOCIATION
SECURITY / FUNCTIONALITY RFP, INC.



WHEN YOU CLIMB ON BOARD, YOU'RE TAKING A STEP UP.

COME ON OVER TO
ELBERTA HARDWARE

25320 US Hwy 98, Elberta, AL
www.elbertahardware.com

251-986-5233

"We Service and Finance What We Sell!"

YANMAR

Learn more at YanmarTractor.com

RATE APPLICABLE TO NEW YANMAR COMPACT TRACTOR EQUIPMENT. RATE INFORMATION DOES NOT CONSTITUTE AN OFFER OR EXTENSION OF CREDIT. ALL TRANSACTIONS ARE SUBJECT TO CREDIT APPROVAL AND SUCH OTHER TERMS AND CONDITIONS AS WE MAY REQUIRE IN OUR SOLE DISCRETION. ALL RATE, TERMS, AND CONDITIONS SUBJECT TO CHANGE WITHOUT FURTHER NOTICE. MONTHLY PAYMENT PLAN BASED ON RATE OF 0%. ACTUAL RETAIL PRICES ARE SET BY DEALER AND MAY VARY. TAXES, FREIGHT, SETUP, AND HOLDING CHARGES MAY BE ADDITIONAL AND MAY VARY. MODELS SUBJECT TO LIMITED AVAILABILITY. OFFER IS NOT AVAILABLE WITH ANY OFFER. ***See your local dealer for limited warranty details and information. Certain restrictions apply. Engine Manufacturer specifications and programs are subject to change without notice. Images may not reflect dealer inventory and/or unit specifications.

THANK YOU FOR VOTING US BEST TRACTOR DEALER!