



# 71ST BALDWIN COUNTY FAIR

★ FALL FAIR FESTIVAL ★



Sept. 20 - 24  
[baldwincofair.com](http://baldwincofair.com)





# DURING A POWER OUTAGE, THE BRIGGS AND STRATTON GENERATOR PROVIDES POWER FOR YOUR HOME OR BUSINESS

**BRIGGS & STRATTON**



Medium to Large Home

## New Managed Whole House Solution

Our new 20KW and 26KW Standby Generator is our smartest generator ever. It features ground-breaking power management technology, advanced safeguarding features that meet rigorous industry fire protection standards and a new airflow design allowing flexible placement options. There has never been a better time to protect your family and biggest investment.

### Take Advantage of SPECIAL SALE PRICES

\*20KW Model #040662

**NOW \$5,299.00**

With aluminum enclosure and Stainless Steel Base, 6 Year Warranty

\*20KW Model #040657

**NOW \$6,016.00**

With aluminum enclosure and Stainless Steel Base, 10 Year Warranty

\*26KW Model #040664

**NOW \$6,860.00**

With aluminum enclosure and Stainless Steel Base, 10 Year Warranty

\*Prices may change without notice! Limited to products in stock!

- Why buy a Briggs and Stratton Generator System?
- Patented Symphony II, Power Management technology allows you to power more for less.
- Smarter smaller and more fuel efficient.
- Briggs and Stratton a leader in energy innovation.
- Durable all weather finish.
- Electronic friendly.
- Remote monitoring system.
- Call today for a FREE on site estimate!

Come on over to **ELBERTA HARDWARE!**

**"We service and finance what we sell."**

**25320 U.S. Hwy. 98, Elberta, AL 36530 • 251-986-5233**



**The Yanmar 221**  
SUB-COMPACT UTILITY TRACTOR



**The Yanmar 324**  
SUB-COMPACT UTILITY TRACTOR



**The Yanmar 424**  
SUB-COMPACT UTILITY TRACTOR

NEW  
**10**  
YEAR

PROVEN QUALITY

LIMITED POWERTRAIN  
**WARRANTY**

#**1**  
RANKED

PRODUCT QUALITY  
TECH SUPPORT  
PARTS AVAILABILITY

2018 EQUIPMENT DEALER ASSOCIATION  
UTILITY TRACTOR/UTV/UTV/UTV/UTV/UTV

**WHEN YOU CLIMB ON BOARD,  
YOU'RE TAKING A STEP UP.**

COME ON OVER TO  
**ELBERTA HARDWARE**

25320 US Hwy 98, Elberta, AL  
[www.elbertahardware.com](http://www.elbertahardware.com)

**251-986-5233**

"We Service and Finance What We Sell!"

**YANMAR**

Learn more at [YanmarTractor.com](http://YanmarTractor.com)

RATE APPLICABLE TO NEW YANMAR COMPACT TRACTOR EQUIPMENT. RATE INFORMATION DOES NOT CONSTITUTE AN OFFER OR EXTENSION OF CREDIT. ALL TRANSACTIONS ARE SUBJECT TO CREDIT APPROVAL AND SUCH OTHER TERMS AND CONDITIONS AS WE MAY REQUIRE IN OUR SOLE DISCRETION. ALL RATE, TERMS, AND CONDITIONS SUBJECT TO CHANGE WITHOUT FURTHER NOTICE. MONTHLY PAYMENT PLAN BASED ON RATE OF 0%. ACTUAL RETAIL PRICES ARE SET BY DEALER AND MAY VARY. TAXES, FREIGHT, SETUP, AND HOLDING CHARGES MAY BE ADDITIONAL AND MAY VARY. MODELS SUBJECT TO LIMITED AVAILABILITY. OFFER IS NOT AVAILABLE WITH ANY OFFER. \*\*\*See your local dealer for limited warranty details and information. Certain restrictions apply. Engine Manufacturer specifications and programs are subject to change without notice. Images may not reflect dealer inventory and/or unit specifications.



# 71st Baldwin Fair

## Fair Manager's Message



Sonny and Melinda Hankins receive a certificate of Appreciation for Honorable Achievement from Richard Branum, president of Association of Alabama Fairs.

A Fall Fair Festival marks the end of Summer and welcomes a new season of Fun and Food. Amusement Rides fill the night air with screams of excitement, and that aroma of deep fried is a must try. Our native Fall Fair Festival celebration

is a generational connection for a walk back in time or a peek into the future, for families and friends. It's steeped with traditions among families, clubs, exhibitors, entertainers, musical performers and, in our county, a two-night rodeo! What other venue will you find that much great entertainment for all age groups and all special interest groups? Doesn't it make you glad to live in Baldwin County?

The Fall of 2022 marks our 71st Baldwin County Fair that opens Tuesday, September 20, and continues through Saturday the 24th of that week. The Baldwin County Cattle & Fair Association recently won awards for our Fair from other state and local groups, the 2021 Best of Fairs in class AAA, and a certificate of Appreciation for Honorable Achievement from the Association of Alabama Fairs. The Alabama Department of Agriculture and Industries welcomes our Fair as a perfect venue to honor farmers and their contribution to our food supply and rural communities. The City of Robertsdale has welcomed us as our Host City since our

inception in 1950. The Baldwin County Commission has proclaimed September 20 – 24, 2022, as Baldwin County Fair Week.

Artists & Attractions president Mr. Bobby McLamb, by special arrangement, will feature a Tiger Encounter, an educational show raising awareness about the plight of tigers in the wild and their rapid rate of extinction. Since we already have bears in South Alabama, this is an opportunity to see Bengal tigers and a rare white lion. This is a must not miss show, right here in Robertsdale.

Gulf Coast Media has printed our program schedule, Creative Arts Exhibits Competition Handbook, and advertising sponsors since the beginning. As in all the past 70 years, they will insert our four-color tabloid program in their newspaper in the coming weeks. Our entire Fair board appreciates their expertise and commitment to ensuring our success each year.

*Gonny*



## Baldwin County Cattle and Fair Board of Directors

**A.B. (Sonny) Hankins**, Robertsdale, AL

**Neil McMillan**, Stockton, AL

**Carl Brian Johnson**, Silverhill, AL

**Robert (Bob) McMillian**, Stockton, AL

**H.L. (Buddy) Long**, Orange Beach, AL

**Robert (Bob) Shallow**, Orange Beach, AL

**Elmer McDaniel**, Robertsdale, AL

**Clarence E. Burke**, Robertsdale, AL



*As Host City...*

The City Administration & Citizens of Robertsdale

**WELCOME**

*You To The 71st Annual Baldwin County*



City Of  
**Robertsdale**

*The Hub of Baldwin County*

**September 20 through  
September 24**



*City Of*  
**Robertsdale**  
*The Hub of Baldwin County*

# Officials

---

**Mayor:**

Charles Murphy

**Council Member:**

Sue Cooper, Joseph Kitchens,  
Ruthie Campbell, Paul Hollingsworth,  
Russell Johnson

**City Clerk:**

Shannon Burkett

**City Attorney:**

Ken Raines

**Chief Financial Officer:**

Lewis Shealy

**Chief Of Police:**

Brad Kendrick

**Public Works Director:**

Scott Gilbert

**City Engineer:**

Greg Smith





# From The Office Of Rick Pate

## Alabama's Commissioner of Agriculture and Industries

### Welcome to the Fair!

As Commissioner of Agriculture and Industries, it is my pleasure to welcome you to the fair. County fairs are much more than rides and entertainment, they provide an opportunity to showcase Alabama agriculture. We all appreciate the harvest season and are grateful for another year to experience the tradition of attending our local fair.

Since the 1850's, fairs have been held across our state to encourage young people as they participate in livestock competitions, showcase local gardeners' handiwork, and support the artistic talents of citizens by displaying their artwork. Even in our fast-paced world, the fair experience preserves the tradition of celebrating agriculture.

We are blessed to live in a state that has an abundance of natural resources and hard-working farmers. With a potential recession ahead of us, market prices are uncertain for all Alabama farmers, but remember our farmers are constantly working to improve efficiency by embracing technology and innovations. Over the last 70 years, U.S. farms nearly tripled their production while using roughly the same amount of land, energy and fertilizer. In fact, Alabama cotton farmers produce 160,000 more bales on 1/3 of the acres and peanut farmers grow twice as many peanuts on 1/2 the acres compared to 1950. Farmers are efficient, dedicated stewards of the land and committed to feeding the world. The fair is a perfect venue to honor farmers for their contribution to our food supply and rural communities.

I hope you take the opportunity while at the fair to visit the exhibits and learn about livestock, local foods, and those who produce them. The employees of the Alabama Department of Agriculture and Industries send best wishes to those who play a part in making our county fairs successful each year. We appreciate your continued support for Alabama farmers, foresters and agribusinesses!

Sincerely,



Commissioner Rick Pate



**Rick Pate**



### Published by Gulf Coast Media

**Publisher – Vince Johnson**  
**Executive Editor – Kayla Green**  
**Editor – Jessica Vaughn**  
**Layout and Design - Janel Strieter**  
**Sales – Bethany Summerlin**  
**Event Coordinator – Melinda Hankins**  
 6 • 71 Baldwin County Fair 2022

# Table of Contents

The Baldwin County Fair complies with all state of Alabama COVID-19 regulations.

<b>71 Fair Manager Update .....</b>	<b>3</b>
<b>Board of Directors .....</b>	<b>3</b>
<b>Commissioner of Agriculture .....</b>	<b>6</b>
<b>Schedule of Events and Attractions .....</b>	<b>8-16</b>
<b>Pioneering Family - Johnson .....</b>	<b>18-19</b>
<b>In Memory .....</b>	<b>20</b>
<b>Flashback Band .....</b>	<b>20</b>
<b>Sweet Potato Contest .....</b>	<b>22</b>
<b>Rodeo Queens .....</b>	<b>22</b>
<b>Rodeo Clown: T.J. Williams .....</b>	<b>23</b>
<b>Tiger Encounter .....</b>	<b>26</b>
<b>Blue Ribbon Day .....</b>	<b>28</b>
<b>Teeny Weeny Circus .....</b>	<b>28</b>
<b>Tractor and Antique Engine Club .....</b>	<b>30</b>
<b>Ronnie Carrol .....</b>	<b>31</b>
<b>Special Visitors .....</b>	<b>33</b>
<b>Blue Ribbon Winners .....</b>	<b>33</b>
<b>Rules, Regulations &amp; Premiums .....</b>	<b>34-35</b>
<b>Exhibit Departments .....</b>	<b>36-42</b>
<b>Registration Form .....</b>	<b>44</b>
<b>Child ID Program .....</b>	<b>46</b>

# Advertiser Index

<b>Amelia &amp; Verla Title Services... 30</b>	<b>Kendrick Electric Inc. .... 14</b>
<b>Arnold Amusements ..... 48</b>	<b>Loxley Auto Parts &amp; Hardware .. 13</b>
<b>Alton Hankins ..... 27</b>	<b>Miller Grand Events ..... 33</b>
<b>Baldwin EMC ..... 21</b>	<b>Old Tyme Feed &amp; Garden</b>
<b>Baldwin County Pumpkin</b>	<b>Supply ..... 27</b>
<b>Festival..... 29</b>	<b>Parkway Equipment..... 9</b>
<b>Bill Patterson Construction ..... 24</b>	<b>Professional Cowboy</b>
<b>City of Robertsdale ..... 4</b>	<b>Association ..... 23</b>
<b>Coastal Alabama Community</b>	<b>Racine's Feed, Garden &amp;</b>
<b>College ..... 32</b>	<b>Supply ..... 15</b>
<b>Coca-Cola Bottling Company... 17</b>	<b>Remax Bob Shallow ..... 15</b>
<b>Ebert Insurance Agency ..... 27</b>	<b>Robertsdale Feed, Seed &amp;</b>
<b>Elberta Farmers Cooperative... 11</b>	<b>Supply ..... 32</b>
<b>Elberta Hardware..... 2</b>	<b>Robertsdale Power</b>
<b>Emerald Homes ..... 7</b>	<b>Equipment ..... 15</b>
<b>Gruenloh &amp; Associates, P.C. .... 32</b>	<b>Town of Loxley ..... 20</b>
<b>Harry D'Olive..... 10</b>	<b>United Bank ..... 47</b>
<b>Hellmich Electric Inc..... 30</b>	
<b>Hoss Mack ..... 16</b>	



Open House  
Daily

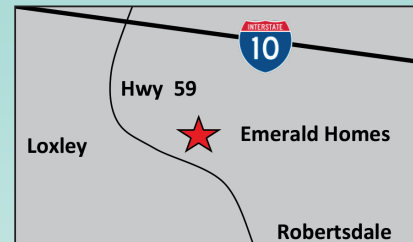


*Voted best of Baldwin three years in a row!*



In House Financing Land & Home Available

**24950 HWY. 59 S.  
(251) 947-2311**



**South AL #1 Volume Dealer**

**www.emeraldhomesllc.com**

# Welcome To The 71st Baldwin County Fair

19477 Fairground Road • Robertsdale, Alabama 36567  
251.947.3247 • Fax: 251.947.3471  
www.Facebook.com/BaldwinCountyFair • www.Twitter.com/BaldwinFair  
• www.BaldwinCoFair.com

*"CLASS AAA Fair" • Association of Alabama Fairs Merit Award Program*

## FALL FAIR FESTIVAL

### SCHEDULE OF EVENTS & ATTRACTIONS

**TUESDAY, SEPTEMBER 20 - SATURDAY, SEPTEMBER 24, 2022**

*Free Parking*

#### **PAY ONE PRICE DAYS**

Tuesday, Wednesday and Thursday

\$25 Day = Admission and All Midway Rides FREE (All Over 36" Tall)

Includes All Rides and Entertainment FREE

No Passes Honored

#### **EXHIBITORS REGISTRATION & EXHIBIT SET-UP**

Friday, Saturday & Monday, September 16-17 and 19, 9 a.m. to 6 p.m.

Exhibit Animal Check In 8 a.m. - 4 p.m. Tuesday

#### **FAIR HOURS**

Tuesday, Wednesday, Thursday 5:00 p.m. - 11:00 p.m.

Friday 5:00 p.m. - 1:00 a.m. • Saturday 2:00 p.m. - 11:00 a.m.





**Free Loader. Zero Down.**  
**Low Interest for 84 Months.**  
**On All Models.**

**LS** Tractor



PARKWAY EQUIPMENT INC  
 25091 STATE HWY 59, Between Robertsdale &  
 Loxley | Loxley AL 36551  
 251-964-6733 | [www.parkwayequipment.com](http://www.parkwayequipment.com)

Offer expires December 31, 2021. Excludes taxes and fees. A \$200 assembly fee may be assessed. Offer only valid upon purchase of a new qualifying tractor from a participating dealer's in-stock inventory. Subject to dealer participation and participating dealer inventory. Some exceptions apply. This material is for descriptive purposes only. LS Tractor USA, LLC disclaims all representations and warranties, express or implied, or any liability from the use of this material. Offer may not be valid in all states or situations. Residence restrictions may apply. All promises and terms may change or end at any time without notice. Additional terms and conditions may apply. See participating dealer for details. For complete warranty, disclaimer, safety, incentive offer and product information, see participating dealer.



**ZT HD 52**  
 23 HP KAWASAKI®  
 52 IN. DECK

**ZERO PERCENT**  
**FOR 48 MONTHS**  
 WITH APPROVED CREDIT



**PARKWAY EQUIPMENT INC**

25091 State Hwy 59 | Loxley, AL | [www.parkwayequipment.com](http://www.parkwayequipment.com)

# FAIRGROUND & COLISEUM SPECIAL EVENTS

## Showtimes Posted

ARNOLD AMUSEMENTS, INC.  
TIGER ENCOUNTER  
TEENY WEENY CIRCUS  
FLASHBACK BAND  
BO CAMPBELL RODEO PRODUCTIONS  
CREATIVE ARTS EXHIBIT  
SOUTH ALABAMA ANTIQUE TRACTOR & ENGINE EXHIBIT  
EXHIBITS: ANTIQUE TRACTORS & ENGINES, CORN SHELLING  
AGRICULTURAL EDUCATION WORKSHOP  
FCCLA SWEET POTATO CONTEST  
NORTH & SOUTH BALDWIN TECHNOLOGY CENTERS  
BALDWIN COUNTY DEPT. OF ARCHIVES & HISTORY  
BALDWIN COUNTY HERITAGE MUSEUM  
DAPHNE MUSEUM  
FAIRHOPE MUSEUM  
FIVE RIVERS DELTA CENTER  
FORT MIMS MUSEUM  
GULF SHORES MUSEUM  
HISTORIC BLAKELEY PARK  
STOCKTON MUSEUM  
SWIFT-COLES HOME  
YOUTH DEVELOPMENT PROGRAMS

**Baldwin County Now offers Online Renewals**  
Renew online at <https://baldwincounty.al.gov/government/probate-office/renew-online>  
or call 251-239-4311 to schedule an appointment.

Courtesy of The Honorable Harry D'Olive, Jr.,  
Judge of Probate, Baldwin County



Enjoy our friendly staff and the convenience of four locations to serve you.

**Bay Minette Probate Office**  
220 Courthouse Square  
Bay Minette, AL 36507

**Fairhope Office**  
Satellite Courthouse  
1100 Fairhope Avenue  
Fairhope, AL 36532

**Foley Office**  
Satellite Courthouse  
201 East Section Avenue  
Foley, AL 36535

**Robertsdale Office**  
Central Annex  
22251 Palmer Street  
Robertsdale, AL 36567



**COLISEUM**  
Creative Arts Exhibits  
**ARENA AREA**  
Barnyard Exhibits



# ELBERTA FARMERS CO-OP

**2nd  
Saturday  
Chicken  
Swap**

**Certified Horticultural Retailer  
Off Road & Marine Fuel  
Garden Center**

**Equine, Livestock & Poultry Supplies • Bulk & Bagged Feed  
Animal & Pet Supplies • Lawn & Garden Supplies • Seed Treating**



## ELBERTA FARMERS CO-OP

**13320 Main St. • Elberta, AL • 251-986-8103**

**Mon.-Fri 7:30am-5:00pm • Sat. 7:30am-12:00pm**

**Where Everyone's Welcome!**

**BALDWIN COUNTY'S ORIGINAL FULL SERVICE FARM CENTER**

# TUESDAY, SEPTEMBER 20, 2022

*Free Parking*

**Arnold Amusements opens at 5 p.m.**

**\$25 Day = Admission and All Midway Rides FREE (All Over 36" Tall)  
Includes All Rides and Entertainment FREE • No Passes Honored**

**5:00 P.M.**

**Arnold Amusement Opens  
Tiger Encounter  
Baldwin County Museum Exhibits  
Duck Pond and Baby Chicks  
South Alabama Antique Tractor & Engine Exhibition  
Teeny Weeny Circus**

*Street Fair Music & Food*

# WEDNESDAY, SEPTEMBER 21, 2022

*Free Parking*

**Arnold Amusements opens at 5 p.m.**

**\$25 Day = Admission and All Midway Rides FREE (All Over 36" Tall)  
Includes All Rides and Entertainment FREE • No Passes Honored**

**5:00 P.M.**

**FCCLA Sweet Potato Contest in the Coliseum  
Arnold Amusement Opens  
Tiger Encounter  
Baldwin County Museum Exhibits  
Duck Pond and Baby Chicks  
South Alabama Antique Tractor & Engine Exhibition  
Teeny Weeny Circus**

*Street Fair Music & Food*

# THURSDAY, SEPTEMBER 22, 2022

*Free Parking*

**Arnold Amusements opens at 5 p.m.**

**\*\$25 Day = Admission and All Midway Rides FREE (All Over 36" Tall)  
Includes All Rides and Entertainment FREE • No Passes Honored**

**5:00-7:00 P.M.\***

**Admission free for Senior Citizens and Veterans.**

**5:00 P.M.**

**Arnold Amusement Opens  
Flashback band live  
Tiger Encounter  
Baldwin County Museum Exhibits  
Duck Pond and Baby Chicks  
South Alabama Antique Tractor & Engine Exhibition  
Teeny Weeny Circus**

*Street Fair Music & Food*

*\*free entry Senior Citizens and Veterans from 5:00-7:00 P.M. on Thursday, September 22, 2022*



# LOXLEY AUTO PARTS & HARDWARE

## *Auto Repair Shop*

*You'll find it at your locally owned Loxley Auto Parts.*

Check out our new  
in store mechanic  
shop and AC and  
break options.



**AUTO PARTS**

## **Your 1 Stop Shop**

QUALIFIED COUNTER PROS • COAST-TO-COAST GUARANTEE •  
IMPORT PARTS SPECIALIST • FULL LINE OF HARDWARE

**1051 North Hickory Street, Loxley, Alabama 36551**

**(251) 964-5013**

**FAX (251) 964-5015**



# FRIDAY, SEPTEMBER 23, 2022

*Free Parking*

**Arnold Amusements opens at 5 p.m.**

**Admission: Adults \$10 - Children FREE (12 and Under)**

**Midway Rides - 5:00 -10:00 P.M. - Tickets Only**

**Midnight Madness Midway Rides - 10:00 P.M. - 1:00 A.M.**

**\$30 Arm Bands For Unlimited Midway Rides**

**5:00 P.M.**

**Arnold Amusements Midway Opens**

**Tiger Encounter**

**Baldwin County Museum Exhibits**

**Duck Pond and Baby Chicks**

**South Alabama Antique Tractor & Engine Exhibition**

**Teeny Weeny Circus**

**7:00 P.M.**

**Bo Campbell Rodeo Productions at the Arena**

Clown: TJ Williams; plus Special Entertainment

**8:30 P.M.**

**Calf Scramble at the Arena**

**11:00 P.M.**

**Coliseum Closes**

**1:00 A.M.**

**Midway Closes**

*Street Fair Music & Food*

## *Kendrick Electric, Inc.*

**Residential-Commercial Contractor  
State Licensed**



*"Proud to be a part of the  
Baldwin County Fair"*

**251-947-4762**

**PO Box 421 | Robertsdale, Al.**



# ROBERTSDALE POWER EQUIPMENT

SCAG • STIHL • HUSQVARNA  
ECHO • HONDA • TORO  
DR TRIMMERS

*Commercial and Residential*



robertsdalepower.com

(251) 947-5372

**Robertsdale Power Equipment**

22965 Hwy. 59 Robertsdale, AL 36567

**251-947-5372**

robertsdalepower.com

18250



# Racine's

**Feed, Garden & Supply, Inc.**

*"Your Complete Garden Center"*

**Feed, Seed & Supplies**



**TIME TO  
PLANT!**

*(Mixes & Attractants)*

**BULK  
LIVESTOCK  
FEED**

• Flowering Plants  
& Herbs

**BULK  
SHELLED  
CORN**

- Fruit & Citrus Trees
- Selection of Quality Hay
- Horse Feed, Pet Feed & Supplies

 **Nutrena®**

**Hwy. 104, Robertsdale, AL**

(1/4 mi. W. of Hwy.59)

**251-947-3003**

**Mon-Fri 7:30am-5:00pm  
Sat 7:30am-4pm**

Visit  
Racine's on



#1 RE/MAX Agent in the USA 2005, 2006, & 2007

**Bob Shallow**

Direct: (251) 948-8888

**RE/MAX Paradise**

24037 Perdido Beach Blvd.  
Orange Beach, Al 36561



Cell: (251) 979-0500 Bob@BobShallow.com  
www.BobShallow.com



# SATURDAY, SEPTEMBER 24, 2022

Free Parking

**Arnold Amusements opens at 2 p.m.**

**Admission: Adults \$10 - Children FREE (12 and Under)**

**Midway Rides - 2:00 P.M. - 5:00 P.M. - Arm Bands \$25 (Individual Tickets Available)**

**5:00 P.M. until Closing - Last Blast Arm Bands \$30**

**2:00 P.M.**

**Arnold Amusement Opens**

**Tiger Encounter**

**Baldwin County Museum Exhibits**

**Duck Pond and Baby Chicks**

**South Alabama Antique Tractor & Engine Exhibition**

**Teeny Weeny Circus**

**7:00 P.M.**

**Bo Campbell Rodeo Productions at the Arena**

Clown: TJ Williams; plus Special Entertainment

**8:30 P.M.**

**Calf Scramble at the Arena**

**10:00 P.M.**

**Midnight Madness Begins**

**11:00 P.M.**

**Coliseum and Midway Closes**

*Street Fair Music & Food*



**Hoss  
MACK**

**SHERIFF**

Pd pol ad by Huey "Hoss" Mack, P.O. Box 1964 Robertsdale, AL 36567





Savor every  
drop of summer

*Coca-Cola*®

Real Magic™

© 2022 The Coca-Cola Company.



# PIONEERING FAMILY – CORTE FAMILY MAKES FARMING DREAMS A REALITY IN BALDWIN COUNTY



**Madalena and A.A. Corte, seated, surrounded by their children. Standing are: Julio, Adele, Ferdinand, Albert, Atilio, Ernest and Arthur.**

The Baldwin County Cattle and Fair Association has named the Corte family as the 2022 Pioneering Family at this year's Baldwin County Fair, which is coming to the Baldwin County Coliseum and Fairgrounds in Robertsdale from Sept. 20 – 24.

Arthur Angelo Corte was born in Valle di Cadore, Italy, on March 9, 1867.

In 1887, at the age of 20, he headed to the United States. He moved to Michigan and found work in the coal mines. While in Michigan, he married Madalena Bertolla and had one son, John Arthur Corte.

He then moved to Minnesota, where their second son, Ernest Daniel Corte, was born. They bought 10 acres of land in Baldwin County in 1896, and moved there to pursue their dream of farming. They started their farming operation by clearing land with axes and shovels. During the next few years, they had five more children: Atilio Ignatius, Albert, Ferdinand Angelo, Madeline Adele and Julio.

Following their settling in Baldwin County, they formed a partnership in the name of A.A. Corte & Sons. All seven



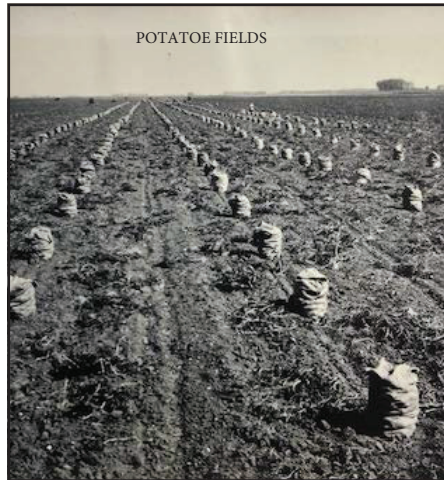
**Packing cucumbers**

SUBMITTED PHOTOS





**Truck used to carry produce to market**



**Corte Potato Fields**



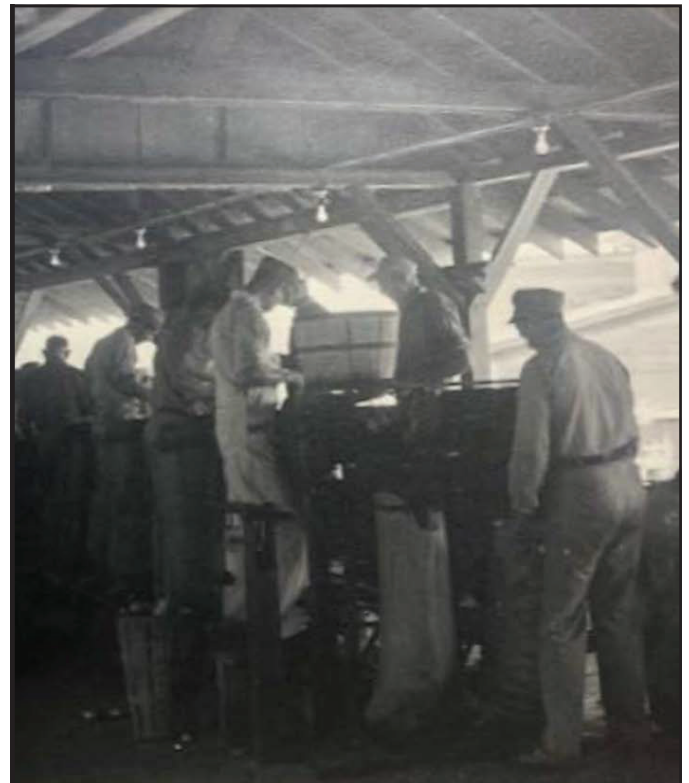
**Fresh corn at market**

children as well as their parents were partners in this company for their entire lives. They continued to purchase land and grow their produce and cattle business. At one point, A.A. Corte & Sons was considered the largest shipper of Southern Irish potatoes in the country. During the potato harvest season, they would ship 100 railroad carloads of potatoes a day to the Northern markets. Also, they were the first farmers to introduce Silver Queen corn to Baldwin County. They shipped 12,000 crates of corn per day, covering all 48 states and Canada. The Corte family was instrumental in bringing pure-bred Angus cattle to Baldwin County.

The next generation included 13 brothers, sisters or cousins, of which 12 lived in Baldwin County all their lives. Today, some of the remaining family still continue to grow and expand the businesses, diversifying into residential subdivisions, apartment complexes, shopping centers and industrial warehouses.

The Corte family is presently in its sixth generation of descendants living in Baldwin County.

“The Cortes still remain active in the community,” said Sonny Hankins, Fair manager. “The Corte family is still engaged in different agricultural purposes in Baldwin County.”



# IN MEMORY

**William James (Bo) Campbell,**

*Bo Campbell Rodeo Producer*

**Mary Lois Childress,**

*Past President of State & Baldwin County Cattlemen Association*

**Floyd Burie (F.B.) Ellison,**

*Former Baldwin County Cattle & Fair Association Board Member*

**Anita Irvine,**

*Office Management Volunteer*

**Emily Krchak Kostelecky,**

*Creative Arts Youth Volunteer*

**Honorable Steven A. McMillan,**

*Former Alabama State House of Representatives Member*

**Ronald Walker Northcutt,**

*Former Baldwin County Cattle & Fair Association Board Member*

**Elizabeth (Betty) Hovark Sykora,**

*Dedicated Creative Arts Exhibitor*

**Taylor D. (Red) Wilkins,**

*Former Baldwin County Cattle & Fair Association Attorney*

**Verla Ledlow Wilters,**

*Dedicated Sponsor for Many Years*

## SPECIAL ENTERTAINMENT - FLASHBACK BAND

The Flashback Band will provide special entertainment at the 2022 Baldwin County Fair on Thursday, Sept. 22, at the Baldwin County Fairgrounds in Robertsedale. Based in Georgia, the home of Hank Williams Sr., but drawing members from all over, the band features a variety of music from country to Oldies. They will be performing on Thursday from 5 to 7 p.m., when there will be free admission for senior citizens and veterans at the Fair.







# WE'RE PEOPLE POWERED

From the folks behind the scenes, to the members who make it all possible, we're powered by people. And from county fairs to family dinners, we're proud to power the things our people love.

**BALDWIN**



Your Touchstone Energy<sup>®</sup> Cooperative 

Learn more about the power of co-op membership at [www.baldwinemc.com](http://www.baldwinemc.com) or follow us on social media.



# CITY OF LOXLEY

*Gateway to Alabama's Paradise*



1089 South Hickory Street - PO Box 9 - Loxley, AL 36551 - Phone: 251-964-5162 - Fax: 251-964-5371 - Website: [townofloxley.org](http://townofloxley.org)



# SWEET POTATO CONTEST

Dawn Hopper, volunteer host for Baldwin County Farmer's Federation Sweet Potato Grower's Association, with contestants of the 2021 Sweet Potato Contest: McKenzie Holcomb, first place, from Foley HS; Mia Marshall, second place, from Elberta HS; Libby Doane, third place, from South Baldwin Center of Technology, Culinary; Jasmine Mullen, Robertsdale HS; and Margaret Premo, Daphne HS. First place in Junior Division is Chris Richardson, Central Baldwin MS; and second place, Julia Aguilar Diaz, Foley MS.



SUBMITTED PHOTO



## JENNIFER CLAIRE MOORE FOUNDATION 2022 PROFESSIONAL RODEO QUEENS

Three local gals were crowned rodeo queens during the 2022 Jennifer Claire Moore Foundation's 24th-annual Professional Rodeo. Princess Sophia Scoville (middle), of Fairhope, is the 12-year-old daughter of Teresa and Shane Scoville, granddaughter of Jimmy and Norma Grantham of Gulf Shores, and also granddaughter of Barry Scoville of Fairhope.

Queen Emily Emerson (right), of Summerdale, is the 13-year-old daughter of Tim Emerson and Brandy Gonzales, and granddaughter of David and Brenda Gonzales of Summerdale.

Sr. Queen Julie Bates Malgaglio (left), of Robertsdale, is the wife of Mario Malgaglio, and mother of daughter, Jacy, and son, Trent.



# RODEO CLOWN

## T.J. Williams: Rodeo Entertainer Extraordinaire

From Gorilla's caught to Going Green inventions, get ready to Live, Laugh and Love with Rodeo Entertainer Extraordinaire T.J. Williams at the 2022 Baldwin County Fair and Rodeo.

For almost 40 years, Williams has been involved with professional rodeo. He started as a bull rider and moved into clowning and bullfighting. As a clown/barrel man, he was featured at major IPRA Rodeos and on Primetime Country. He also was included in a special feature on Miranda's Outdoor Adventure magazine on ESPN.

In the mid '90s a strange set of circumstances put Williams' clown career on hold. The announcer he traveled with was injured by a bull and put in the hospital. He filled in for his friend and took on the announcing role for the remainder of the performances.

"I didn't like announcing but it liked me," he said. His efforts landed him at the prestigious International Finals Rodeo in Oklahoma City twice. He also landed the IPRA National All Region Finals twice and kept the bills paid.

Even with professional success in the announcing position, his heart has always called him back to clowning. A resurgence of offers came his way in 2018 and if there is one thing Williams knows is that one thing in life is certain, change.



"I got the chance to return to what I love and I took it," he says. "I literally got an opportunity to get my act together!"

## 2022 PROFESSIONAL COWBOY ASSOCIATION FINALS RODEO

celebrating 71 years of  
the Baldwin County Fair

Mississippi Coast Coliseum Biloxi

Visit our website for more details  
[www.pcarodeo.com/pca/pca-finals](http://www.pcarodeo.com/pca/pca-finals)

**Bo Campbell Rodeo Productions**





# CALL TODAY



18044 VAUGHN ROAD SUMMERDALE, AL 36580  
OFFICE: (251) 947-7018



# Bill Patterson Constr.



## BILL PATTERSON CONSTRUCTION, INC.

- > **PAVING & GRADING**
- > **SITE WORK**
- > **SEAL COATING**
- > **HAULING**
- > **DRIVEWAYS**
- > **SUBDIVISIONS**
- > **WATER**
- > **SEWER**

# TIGER ENCOUNTER

## From Artists & Attractions



**, PRESENTED BY ARTISTS & ATTRACTIONS PRESIDENT MR. BOBBY MCLAMB**, is an education, conservation and preservation animal show, featuring Bengal tigers and a rare white lion, and the youngest and only performing female tiger trainer in the USA!

The Tiger Encounter is an educational show raising awareness about the plight of tigers in the wild and their rapid rate of extinction.

Tiger encounter has created a unique way of connecting the audience to these amazing animals in hopes of sparking an interest in wanting to protect tigers in the wild by showing the relationship they share with their trainer, Felicia Frisco. Felicia is a ninth-generation animal trainer who is one of the youngest, and currently the only female, big cat trainers performing in the USA. In her shows she teaches audiences about the importance of protecting these animals, as well as showing off their natural abilities as they run, jump, kiss and roll around with their trainer.

Not only can audiences see these animals during the show, but they can see them after shows or in the evening running and playing as an all-day attraction. Felicia and her big cats have a growing 1.5 million following on TikTok and social media and are a crowd favorite of all ages!

Visit [www.artistsandattractions.com](http://www.artistsandattractions.com) for more information.





BALDWIN COUNTY  
**FREEZER  
BEEF**

[BaldwinCountyFreezerBeef.com](http://BaldwinCountyFreezerBeef.com)



**OLD TYME  
FEED & GARDEN SUPPLY**

*Lawn care, garden needs,  
pet supplies & plants*



19580 Greeno Road  
Fairhope, AL  
928-1156



**OLD FASHION VALUES &  
FRIENDLY SERVICE**



**E Ebert**  
**Insurance Agency**

Serving Baldwin County Since 1928

**INSURANCE • BONDS**

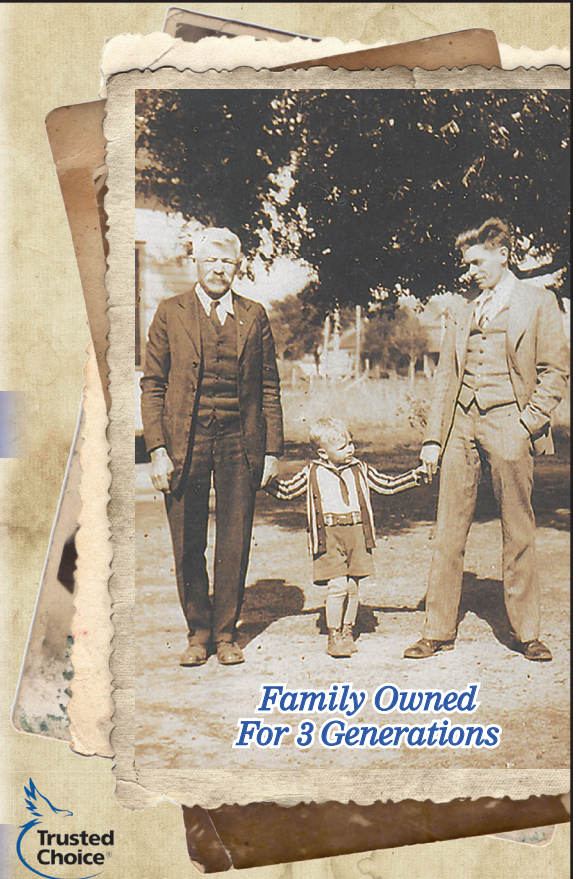
**Charles J. Ebert, III**  
*President*

222 West Laurel Ave., Foley, Alabama

**251-943-2281**

Fax: 251-943-3801 • [cebert@ebertagency.com](mailto:cebert@ebertagency.com)

[www.EbertAgency.com](http://www.EbertAgency.com)



*Family Owned  
For 3 Generations*





## TEENY WEENY CIRCUS

The Teeny Weeny Circus returns to the 71st Annual Baldwin County Fair as an outdoor attraction for 2022, starring world-renowned circus clown Elmo Gibb with his performing dogs and pony!

The half hour show will have daily performances at the Fair!

A performer's performer, Gibb is a veteran of more than 35 seasons, performing with major circuses all over the U.S. He has also performed in Canada, Mexico, the former Soviet Union, Japan and the Peoples Republic of China. Gibb has been presenting his show since 1996.



PHOTO PROVIDED

## BLUE RIBBON DAY



GCM STAFF PHOTO

**'Tada!**

**Ana Lopez, granddaughter of GCM Sales Representative Bethany Summerlin, is a magician in the making! As her skills continue to grow, she might just have her own show one day.**

**While she practices, you can catch all kinds of entertaining shows at this year's Baldwin County Fair, including a Tiger Encounter, Teeny Weeny Circus, the Flashback Band, a two-night rodeo and more! Ana doesn't want you to miss all the fun at the 71st Baldwin County Fair, coming to town on Tuesday, Sept. 20!**

BALDWIN COUNTY

Pumpkin

FESTIVAL

OCTOBER 1<sup>ST</sup> 31<sup>ST</sup>

ACTIVITIES AND COMPETITIONS WITH A FUN FAMILY-FRIENDLY ATMOSPHERE

PUMPKIN OLYMPICS



PUMPKIN QUEEN & COURT

PUMPKIN PIE EATING CONTEST

KIDS CRAFTS

LASER-TAG

COSTUME CONTEST

ESCAPE ROOMS

FOOD

LIVE MUSIC

FACE PAINTING

PUMPKIN CARVING

HAUNTED HOUSE

Z-TAG

HAY RIDES

BALDWIN COUNTY FAIRGROUNDS

ROBERTSDALE, AL

WWW.BCPUMPKINFEST.COM



# SOUTH ALABAMA TRACTOR AND ANTIQUE ENGINE CLUB

Don't miss your chance to see numerous blue ribbon winning tractors from the SouthAlabama Tractor and Antique Engine Club at the 71st Baldwin County Fair, coming to town Sept. 20 - 24.

The South Alabama Tractor and Antique Engine Club will bring nearly 100 tractors to the 71st Baldwin County Fair in Robertsdale, Tuesday through Saturday, Sept. 20 - 24. Plans are to have between 80 and 100 restored antique tractor and engines on display. SAATEC also has antique farm machinery on display. According to its Facebook page, "SAATEC is an organization that promotes the restoration, preservation, collection and exhibition of antique tractors, engines and farm machinery."

Visit the Facebook page for membership information.

GCM FILE PHOTOS



## HELLMICH ELECTRIC, INC.

Since 1986

Commercial & Residential

All Work Guaranteed

Free Estimates



Gary & Beth Hellmich, Owners

903 West Laurel Ave., Foley, Al 36535

251-943-2350

gary@hellmichelectric.com

State License #1001

## AMELIA & VERLA

TITLE SERVICES, INC.

Amelia G. Reiss

22885 Highway 59  
Robertsdale, AL 36567

Phone: (251) 947-2798

Fax (251) 947-4599

Email: avtitleservices@gmail.com





PHOTOS PROVIDED

## RONNIE CARROLL

### BALDWIN COUNTY FAIR VOLUNTEER OF THE YEAR

#### Learn about antique tractors, farming history from Ronnie Carroll at the Fair.

Ronnie Carroll is a long-time resident of Baldwin County and, together with his wife Judy, a regular at social events all year long. One of his favorite events is the fair that happens every fall, put on by the Baldwin County Cattle and Fair Association. Ronnie was instrumental in bringing the South Alabama Antique Tractor and Small Engine Club as an exhibit to the fair, and is proud to display the restored treasures for everyone to admire and enjoy. You can find this display at the arena, where he spends countless hours answering questions, allowing photos to be taken and educating the youth on the historic value of the work-horse that is the antique tractor. Ronnie himself was helping his father at a very young age by driving a tractor, so he is thrilled to show them off to the young folks of Baldwin County.

Ronnie is a devoted family man. He is a husband, father, grandfather and mentor. You will find him volunteering his time at Robertsdale FBC, where he is a long-standing member. He can also be found helping family, friends and neighbors on a regular basis. He can often be seen around Foley, Robertsdale, Magnolia Springs and Fairhope, hauling a trailer to help someone out. He's never said "no" when he's been called upon to help. Baldwin County is a better place because Ronnie Carroll calls it home.

So, while you are enjoying the many sights, sounds, smells and experiences that the Baldwin County Fair has to offer, take a step back in time and look for the antique tractors and small engines on display. Make a point to shake Ronnie's hand and take a photo while your little one stands in awe at the roaring sound of an old Ford or John Deere sputtering to life. And you can smile knowing that you've just met a legend, and you've had the privilege of being part of the Baldwin County Fair.







**YOUR COMMUNITY.  
YOUR COLLEGE.**



The Official College of the Baldwin County College System Coastal Alabama Community College that operates on the departmental system for the purpose of any program or activity is a trademark of the Baldwin County College System. All other trademarks are the property of their respective owners.

# Gruenloh Hardy & ASSOCIATES

Certified Public Accountants

**22193 Hwy 59 S. - Suite C • P.O. Box 895  
Robertsdale, AL 36567**

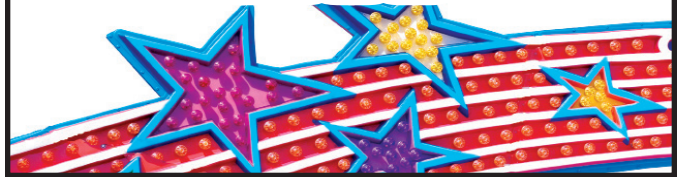
**(251) 947-1040**

**1-800-788-1040**

**FAX: (251) 947-4040**

*We Salute The 71st Baldwin County*

# FAIR



# Robertsdale Feed, Seed & Supply

*Since 1931*

**The  
Chicken  
Swap**

**EVERY 3RD  
SATURDAY  
8AM-NOON**

**Time  
To Plant  
Deer  
Plots**



**Feed - Seed - Fertilizer - Garden Supplies  
Deer Plot Seed - Propane Available  
Easy RV Access**



Purina Mills

**Hrs.: 7:30-5:30 M-F • 7:30-3:30 SAT**

**21353 HWY 59**

**251-947-5252**



# SPECIAL VISITORS FOR MARDI GRAS



PHOTO PROVIDED

The Baldwin County Fair is one of the most anticipated annual events in the county, but Mardi Gras is also an exciting time at the Baldwin County Coliseum. Here, Sonny Hankins, Fair manager, welcomes special visitors to the Coliseum during Mardi Gras season – Clydesdales horses!

Don't forget to check throughout the year to see all the fun happenings at the Coliseum!

**MILLER'S**  
**GRAND EVENTS**  
PARTY RENTALS & SUPPLIES  
251-625-4910

The advertisement features a logo at the top with the text "MILLER'S GRAND EVENTS PARTY RENTALS & SUPPLIES 251-625-4910". Below the logo is a photograph of a large, white-tented dining area with several round tables set with white tablecloths, plates, and chairs. Large windows in the background offer a view of the outdoors.

## BLUE RIBBON WINNERS



PHOTO PROVIDED

Linda Sykora Gilmore and her mother, Elizabeth Hovark Sykora, show off their blue ribbons at the Baldwin County Fair! Elizabeth won first place three years in a row with her butter-scotch oatmeal cookies!



# Baldwin County Fair General Rules, Regulations & Premiums

**DUE TO COVID-19, ALL PREMIUM AWARDS PENDING.**

## Individual Agricultural Exhibits

The Baldwin County Fair is scheduled to start on Tuesday, Sept. 21 and end the following Saturday, Sept. 25, 2021.

All agricultural articles and products for exhibit or competition in the fair must be entered on Friday, Sept. 17, 9 a.m.-5 p.m., Saturday, Sept. 18 or Monday, Sept. 20, 9 a.m.-6 p.m.

All items on display are entered in the name of the grower, maker, or owner, unless the Fair Management has approved otherwise.

The Fair will furnish competitive judges and their decisions are final. Judging is scheduled for Tuesday, Sept. 21, at 9 a.m. Only judges and their assistants are allowed in the Fair building during the selection process.

Competition is open to the general public.

Premiums positively will not be paid on items not listed. Ribbons will be awarded.

The Fair reserves the right to change the dates, any and all rules and declare off any classes or premiums because of acts of God, excessive rains or cause not within the power of the management to control, including the COVID-19 outbreak.

## Entries

**Premium awards are: 1st Place - \$10; 2nd Place - \$8; 3rd Place - \$6, except as noted. All winners are awarded for articles listed in this catalog.**

In any class where entries are made by only one exhibitor, the Fair will award one premium. The decisions of the judges are final.

Exhibitors are limited to one entry in each class. All winners are awarded ribbons or cash premiums.

Tag stubs will be given to exhibitors when exhibits are entered. The stubs must be presented to identify the exhibit. Entry blanks can be found online at [www.baldwincountyfair.com](http://www.baldwincountyfair.com).

Premium checks are mailed ASAP following the last day of the fair.

Entries found to perpetrate a fraud are automatically disqualified and no premium shall be awarded, regardless of the judges' decision.

All entries must be original & completed within the previous 24 months.

The Fair reserves the right to judge the suitability of the entry.

Agronomy exhibits must have variety identification labels attached. The entries are not returned and become the property of the Baldwin County Fair.

Professional entries will be entered in the professional category.

**All Exhibits must remain on display for the entire period of the Fair.**

**No premiums will be paid if exhibits are removed before stated time of release.**

All special rules in other departments are equally binding as their general rules.

The Fair shall take every precaution for the safeguarding of exhibits. However, it should be understood that exhibits are entered in competition for premiums and that the owner assumes all responsibility for any loss or damage that may occur.

The Baldwin County Fair, owner of the Fair Grounds, will not be responsible or liable for accidents occurring upon any part of the said Fair Grounds, Concession Booths, Agriculture Building, Stock Barns or any other building, or tents. The management will undertake reasonable precaution in an endeavor to prevent any accidents.

The Baldwin County Fair, the owners of the Fair Grounds, are not responsible for said autos, trucks, or other vehicles or their contents, etc. while parked on the fair grounds, in the Agriculture Building or Stock Barns, etc. Management will endeavor to guard against loss or damage by using responsible precautions.

Children are forbidden to play near or around the agriculture exhibits, commercial displays, concession booths, or stock barns. Parents/guardians are responsible for behavior of minors under their care.

## Decorations/Booth Exhibits:

Booth space shall be approximately 50 sqft. (Additional space see management.) All decorations must be freestanding and removed after the event. Use of nails, screws, staples, self adhering tape are prohibited. No decorations leaning against walls, doors or columns. No open-flame candles or gas-filled balloons are permitted. No landscape plants, portable fish ponds, fountains, or water prone exhibits. No cooking shall be

allowed on premises without approval of management. No alcohol or tobacco given away in exhibits. No exhibit booths shall be used that would encumber or cut off view of other exhibit booths. All booth space users shall clean up and remove all garbage after event is over. No smoke machines shall be used in buildings. Any and all other exhibit material not mentioned in these requirements, that are deemed harmful to the building or other booth space, by management, shall not be used. Free samples by approval only. All signs must be approved.

## Exhibit of Livestock:

All livestock entered will be shown as an "Exhibition Entry." An "exhibition entry" will consist of a "pen of animals." One pen shall consist of less than 3 and no more than 5 head of uniform type animals of the same species. All awards will be given per pen not individual. No intact male animal will be allowed on grounds for exhibit judging. Due to limited space only 1 pen entry per person per farm.

- \$5 per poultry entry
- \$75 per pen of cattle. \$100 for three or more.
- \$75 per pen of goats. \$100 for for three or more.
- \$20 per head for goats
- \$5 per entry for rabbits
- \$75 per pen of exotic animals
- \$10 per head for sheep
- \$50 per hive (protective) apiary
- Due to accommodations, no registration for swine

## Entries based on pen availability

WARNING Under Alabama law, an equine activity sponsor is not liable for injury or to the death of a participant in equine activities resulting from the inherent risks of equine activities, pursuant of the equine activities. Liability Protection Act.'

## Livestock Exhibitor Code of Conduct:

The Baldwin County Fair is committed to responsible animal care and treatment. This Code of Conduct outlines what is expected of livestock exhibitors in the handling and exhibiting of all animals at our fair.

***This Code has been developed to meet the following objectives:***

- To ensure the health and well-being of all animals at the fair.
- To demonstrate an accurate and responsible animal care message to the public.
- To maintain the integrity of all livestock competitions, displays and sales.
- Livestock and poultry must be transported to and from the fair in accordance with all humane transport regulations and standards.
- Loading and unloading must be undertaken using proper equipment and procedures.
- All animals must be treated and handled in a responsible manner. The well-being of the animals shall take precedence over the demands of owners, sellers, buyers, organizers, sponsors and officials.
- The care of all animals must be as consistent as possible with their normal schedules and standards. High standards of nutrition, health, sanitation, environment and safety must be met at all times.
- Livestock should be prepared with proper training, fitting and grooming prior to the fair. Excessive disciplining of animals at the fair is unacceptable.
- Exhibitors are expected to provide adequate training for anyone handling their livestock. Untrained individuals, including fair personnel and visitors should not be permitted to handle animals or equipment.
- Exhibitors should take every opportunity to enhance public awareness, education and appreciation of proper livestock management and handling practices.

### **Rules and Regulations for Goats, Sheep, Poultry and Rabbits**

- The judging of all animals will be judged on accomplishments.
- All animal exhibits will stay on exhibit for the full duration of the fair. Removal of the animals before the designated dismissal time will result in forfeiture of awards, unless approved by a fair official.
- All individuals exhibiting live animals are required to register their exhibits at the livestock registration table on Monday from 8 a.m. to 4 p.m. the week of the fair. Contestant numbers and stall/pen cards will be assigned at this time.
- If the animal does not fall into a specific recognized breed, it will be classified in an "Other" breed category. The same limit applies in this category (\*See specific breed limitation)
- Stalls/pens, water and bedding will be

provided by the management. Each exhibitor will be responsible for furnishing their animal's water and feed devices and for keeping his/her area clean and neat during the fair.

- General care, grooming, cleaning stall and feeding of animals will be the responsibility of the exhibitor with assistance only from a parent, guardian or fellow exhibitor.
- Exhibitors and parents offering guidance are expected to demonstrate courtesy and respect toward all livestock, peer exhibitors and all individuals in the fairgrounds. Anyone exhibiting inappropriate behavior may be disqualified and/or asked to leave the premises.
- All animals must be the actual property of the exhibitor and registered at the fair under his or her name, not a group or farm name. Should any entry be found to be otherwise entered, any award by judges will be forfeited.
- In the event there is but one entry in a class, the placing shall depend on the merit of the entry and the award made at the discretion of the judge.
- Each exhibitor is encouraged to fill out a fact sheet about their exhibits to be displayed for additional interesting information about the particular animal or breed.

### **Specifics for Goats and Sheep**

1. Exhibits must be does or ewes only. NO BUCKS, RAMS OR WITHERS ALLOWED.
2. The exhibitor may register up to 6 entries in the goat/sheep division.
3. Goats and ewes can be placed in stalls together as long as they are of the same breed and size is not an issue. Each goat or ewe will be judged as a single entry.

### **Specifics for Poultry**

1. The exhibitor may register up to 3 chickens per breed.
2. Chickens may be a hen, rooster or a combination. Grouped by recognized breed. There will be a limit of 3 breeds that can be entered.
3. Each exhibitor entering more than 1 and up to 3 of a breed will place them in the same pen. Each pen will be judged as a single entry.
4. Exhibits of turkeys will be limited to a gobbler, hen or breeding pair of a recognized breed.
5. Exhibits of quail will be a limit of 6 per pen by recognized breed.
6. All other fowl for exhibit not mentioned

will be classed the day of registration.

### **Specifics for Rabbits**

1. Each exhibitor member can exhibit a doe with or without litter and a buck from a recognized breed. No limits on the number of breeds.
2. Each pen will count as a single entry.

### **DEFINITIONS**

**Age Groups** – Adult (A) – 19 years & over; and Senior (S) – ages 14 to 18; Intermediate (I) – ages 11 to 13; Elementary (E) – ages 6 to 10;

**Agronomy** – The application of soil and plant sciences to land management and crop production.

**Amateur** – A person who engages in an event or activity as a pastime rather than a professional – hobbyist.

**Class** – A group of like exhibits that are judged together: a sub-category of a department – same as lot.

**Class Number** – The number assigned to each class or lot.

**Department** – A generalized category of exhibits or a group of classes/lots.

**Entry** – An eligible exhibit that is entered and judged.

**Exhibitor** – Owner of the exhibit as shown on the entry form.

**Exhibition Number** – A permanent number that is assigned an exhibitor.

**Handbook** – A book that contains rules and regulation regarding entries in the Baldwin County Fair.

**Horticulture** – The cultivation of plants.

**Professional** – A person who engages in an event or activity for monetary profit. A skilled worker who practices some trade or handicraft. A creator of great skill in the manual arts. A person who teaches and/or instructs a particular craft or skill.

## **Registration**

**Friday, Saturday & Monday,**

**Sept. 16, 17 & 19**

Entries accepted

9 a.m. to 5 p.m. Friday,

9 a.m. to 6 p.m.

Saturday and Monday

**Pickup Days Following Week**

Pickup entries 9 a.m. to 5 p.m.



# DEPARTMENT A Arts & Crafts

## ANTIQUES

### All Ages

#### Rules

- Items must be at least 50 years old.
- Will be judged on rarity, craftsmanship, beauty, and age.
- Inside entry limited to 15".

Total Premiums \$777

#### Lot

- 01 Advertising Item
- 02 Antique Ag Equipment (Outside Only)
- 03 Antique Tractors (Outside Only)
- 04 Bank
- 05 Books
- 06 Camera
- 07 Carnival/Depression Glass
- 08 China
- 09 Clock/Watch
- 10 Clothing
- 11 Cut Glass
- 12 Document (Paper, Magazine, newspapers)
- 13 Dolls
- 14 Eye Glasses
- 15 Figurine
- 16 Glass Item
- 17 Gloves
- 18 Handcraft Item
- 19 Handkerchief
- 20 Item of Wood
- 21 Jewelry
- 22 Kitchen Item
- 23 Lamp
- 24 Leather Item
- 25 Metal Article
- 26 Milk Glass
- 27 Musical Instrument
- 28 Needlework
- 29 Other
- 30 Photograph
- 31 Pottery Article
- 32 Pressed Glass
- 33 Quilts
- 34 Silver
- 35 Small Tool for Hand Use
- 36 Sports
- 37 Telephone
- 38 Toy

## ART

Total Premiums \$378

### Adult (19 and older)

#### Class Entries

- 39 Pastel – Drawing
- 40 Pencil, Ink, Charcoal or Marker – Drawing
- 41 Acrylic – Painting
- 42 Oil – Painting
- 43 Watercolor – Painting

### Youth

#### Class Entries

#### Art - Elementary (Ages 6 - 10)

- 44 Drawing – Other
- 45 Bead Art
- 46 Collage
- 47 Foil
- 48 Mixed Media
- 49 Other
- 50 Pastel – Drawing
- 51 Pencil, Ink, Charcoal, Marker or Crayon
- 52 Sculpture in the Round
- 53 Sculpture Relief
- 54 Acrylic – Painting
- 55 Oil – Painting
- 56 Watercolor – Painting

#### Art - Intermediate (Ages 11 - 13)

- 57 Drawing – Other
- 58 Bead Art
- 59 Collage
- 60 Foil
- 61 Mixed Media
- 62 Other
- 63 Pastel – Drawing
- 64 Pencil, Ink, Charcoal, Marker or Crayon
- 65 Sculpture in the Round
- 66 Sculpture Relief
- 67 Acrylic – Painting
- 68 Oil Painting
- 69 Watercolor – painting

#### Art - Senior (ages 14 - 18)

- 70 Drawing – other
- 71 Bead Art
- 72 Collage
- 73 Foil
- 74 Mixed Media
- 75 Other
- 76 Pastel – Drawing
- 77 Pencil, Ink, Charcoal or Marker – Drawing
- 78 Sculpture in the Round
- 79 Sculpture Relief
- 80 Acrylic Painting
- 81 Oil – Painting

- 82 Watercolor – Painting

## HANDICRAFTS

### Elementary (ages 6 - 10)

#### Class Entries

- 83 Articles in Leather
- 84 Bracelet
- 85 Bread Dough
- 86 Candle Wicking
- 87 Candles
- 88 Ceramics
- 89 Clay
- 90 Constructed Woodcrafts
- 91 Counted Cross Stitch
- 92 Crochet
- 93 Dream Catchers
- 94 Earrings
- 95 Embroidery
- 96 Gourd Painted
- 97 Hair Barrettes
- 98 Hair Bows
- 99 Handmade Doll
- 100 Individual Exhibit
- 101 Knitted Belt
- 102 Knitting
- 103 Lamp
- 104 Latch Hook
- 105 Miscellaneous Other Crafts
- 106 Mobiles
- 107 Necklace
- 108 Other
- 109 Paper Mache
- 110 Pillow
- 111 Potholders
- 112 Quilt
- 113 Sand Bottle Art
- 114 Shawl
- 115 Shell Craft
- 116 Toboggans

### Intermediate (ages 11 - 13)

#### Class Entries

- 117 Constructed Woodcrafts
- 118 Articles in Leather
- 119 Bracelet
- 120 Bread Dough
- 121 Candle Wicking
- 122 Candles
- 123 Ceramics
- 124 Clay
- 125 Counted Cross Stitch
- 126 Crochet
- 127 Dream Catchers
- 128 Earrings
- 129 Embroidery
- 130 Gourd Painted
- 131 Hair Barrettes
- 132 Hair Bows
- 133 Handmade Doll

- 134 Individual Exhibit
- 135 Knitted Belt
- 136 Knitting
- 137 Lamp
- 138 Latch Hook
- 139 Miscellaneous Other Crafts
- 140 Mobiles
- 141 Necklace
- 142 Other
- 143 Paper Mache
- 144 Pillow
- 145 Potholders
- 146 Quilt
- 147 Sand Bottle Art
- 148 Shawl
- 149 Shell Craft
- 150 Toboggans

### Seniors (Ages 14 - 18)

#### Class Entries:

- 151 Articles in Leather
- 152 Bread Dough
- 153 Candle Wicking
- 154 Candles
- 155 Ceramics
- 156 Clay
- 157 Constructed Woodcrafts
- 158 Counted Cross Stitch
- 159 Crochet
- 160 Dream Catchers
- 161 Embroidery
- 162 Hair Barrettes
- 163 Hair Bows
- 164 Individual Exhibit
- 165 Knitted Belt
- 166 Knitting
- 167 Lamp
- 168 Latch Hook
- 169 Mobiles
- 170 Other
- 171 Paper Mache
- 172 Pillow
- 173 Potholders
- 174 Quilt
- 175 Sand Bottle Art
- 176 Shawl
- 177 Shell Craft
- 178 Toboggans
- 179 Miscellaneous Other Crafts
- 180 Gourd Painted
- 181 Bracelet
- 182 Necklace
- 183 Handmade Doll

### Adults (ages 19 and Older)

#### Class Entries

#### Afghans

- 184 Crochet
- 185 Knitted

186 Miscellaneous Other

**Christmas**

- 187 Decorations
- 188 Tree Skirts
- 189 Stockings
- 190 Religious
- 191 Tree Ornaments

**Crochet**

- 192 Tablecloth
- 193 Doily
- 194 Sweater or Blouse
- 195 Baby Items

**Dolls - Adults (19 and older)**

- 196 Porcelain
- 197 Other

**Embroidery, Cross Stitch & Needlepoint**

- 198 Punch Embroidery
- 199 Liquid Embroidery
- 200 Ribbon Embroidery
- 201 Candle Wicking
- 202 Crewel Items
- 203 Counted Cross Stitch
- 204 Stamped Cross Stitch
- 205 Holiday Decorations - Needlework
- 206 Baby Items - Needlework
- 207 Needlepoint
- 208 Tatting

**Hand Woven Work**

- 209 Baby Blankets
- 210 Woven Blankets
- 211 Place Mats
- 212 Rugs

**Knitted**

- 213 Baby Articles
- 214 Sweater
- 215 Miscellaneous Items
- 216 Poncho
- 217 Scarves

**Other Decorative Artwork**

- 218 Aprons
- 219 Decoupage
- 220 Bathroom Accessories
- 221 Bath Towels
- 222 Hand Towels
- 223 Calligraphy
- 224 Ceramic
- 225 Copper Tooling
- 226 Gourd Painted
- 227 Household Accessories, i.e. kitchen, etc.
- 228 Stained Glass

- 229 Leather items
- 230 Macrame Items
- 231 Faux Stained Glass
- 232 Mobiles
- 233 Pine Needle Weaving
- 234 Plastic Craft
- 235 Pottery
- 236 Tole Painting
- 237 Toy - handmade
- 238 Wall Hanging - Decorative

**Pillows**

- 239 Decorative
- 240 Embroidery
- 241 Pieced
- 242 Quilted
- 243 Other

**Shirts Decorated**

- 244 T-shirt or Sweatshirt
- 245 Regular Shirt
- 246 Vests
- 247 Other Appropriated Apparel - Blouses, Etc.

**Wood**

- 248 Sculpture - Scroll
- 249 Woodcraft
- 250 Wood Burning
- 251 Woodworking
- 252 Woodcarving
- 253 Bird House/ Feeder
- 254 Ornament/ Cane/ Mixed Wood

**Jewelry/ Hair Accessories**

- 255 Handmade Jewelry - Necklace
- 256 Handmade Jewelry - Bracelet
- 257 Handmade jewelry - Earrings
- 258 Handmade Jewelry - Other
- 259 Embroidery
- 260 Hair Barrettes
- 261 Other

**ENVIRONMENTAL**

**Rules**

- Clearly label all collections.

**Adults**

**Class Entries**

- Art**
- 262 Driftwood Art
- 263 Feather
- 264 Miscellaneous
- 265 Pine Cone Decoration
- 266 Pine Needle Art

- (non-woven)
- 267 Sand Painting

**Educational**

- 268 Insect Collection
- 269 Leaf Collection
- 270 Rock/ Gem/ Mineral Collection
- 271 Sea Shell Collection

**Youth**

**Class Entries**

**Art - Elementary (Ages 6 - 10)**

- 272 Driftwood Art
- 273 Feather
- 274 Miscellaneous
- 275 Pine Cone Decoration
- 276 Pine Needle Art (non-woven)
- 277 Sand Painting

**Educational - Elementary (Ages 6 - 10)**

- 278 Insect Collection
- 279 Leaf Collection
- 280 Rock/ Gem/ Mineral Collection
- 281 Sea Shell Collection

**Art - Intermediate (Ages 11 - 13)**

- 282 Driftwood Art
- 283 Feather
- 284 Miscellaneous
- 285 Pine Cone Decoration
- 286 Pine Needle Art (non-woven)
- 287 Sand Painting

**Educational - Intermediate (Ages 11 - 13)**

- 288 Insect Collection
- 289 Leaf Collection
- 290 Rock/ Gem/ Mineral Collection
- 291 Sea Shell Collection

**Art - Seniors (Ages 14 - 18)**

- 292 Driftwood Art
- 293 Feather
- 294 Miscellaneous
- 295 Pine Cone Decoration
- 296 Pine Needle Art (non-woven)
- 297 Sand Painting

**Educational - Seniors (Ages 14 - 18)**

- 298 Insect Collection
- 299 Leaf Collection
- 300 Rock/ Gem/ Mineral Collection
- 301 Sea Shell Collection

**SCRAPBOOKING**

**Adults**

**Class Entries**

- 302 Achievements
- 303 Birthdays
- 304 Family Heritage
- 305 Holidays
- 306 Seasons
- 307 Weddings
- 308 Vacations/ Trips

**Youth**

**Elementary (Ages 6 - 10)**

- 309 Achievements
- 310 Birthdays
- 311 Family Heritage
- 312 Holidays
- 313 Seasons
- 314 Weddings
- 315 Vacations/ Trips

**Intermediate (Ages 11 - 13)**

- 316 Achievements
- 317 Birthdays
- 318 Family Heritage
- 319 Holidays
- 320 Seasons
- 321 Weddings
- 322 Vacations/Trips

**Seniors (Ages 14 - 18)**

- 323 Achievements
- 324 Birthdays
- 325 Family Heritage
- 326 Holidays
- 327 Seasons
- 328 Weddings
- 329 Vacations/ Trips

**SEWING**

**Adult**

**Class Entries**

- 330 Active Sportswear
- 331 Blouses
- 332 Bonnet or Hat
- 333 Children's Dress Clothes
- 334 Children's Play Clothes
- 335 Dress
- 336 Dress with Jacket
- 337 Dressy Apparel (formal dress long/ short or skirt)
- 338 Jacket and blouse
- 339 Jacket or Coat
- 340 Other
- 341 Pants
- 342 Purse
- 343 Scarves
- 344 Shirt
- 345 Shorts



- 346 Skirts
- 347 Sleepwear – gowns, pajamas, robe
- 348 Smocked Baby Garment
- 349 Smocked Bonnet
- 350 Smocked Children’s Dress Clothing
- 351 Smocked Garmet
- 352 Suits – includes skirt or pants

**Quilts**

- 353 Appliqued
- 354 Baby
- 355 Hand quilted
- 356 Handmade
- 357 Lap Quilt
- 358 Machine quilted
- 359 Other

**Youth**

**Class Entries**

**Intermediate (Ages 11 – 13)**

- 360 Apron
- 361 Blouse or Shirt
- 362 Dress
- 363 Handbag
- 364 Other
- 365 Pants
- 366 Scarves
- 367 Shorts
- 368 Skirt
- 369 Suit

**Senior (Ages 14 – 18)**

- 370 Apron
- 371 Blouse or shirt
- 372 Dress
- 373 Handbag
- 374 Other
- 375 Pants
- 376 Scarves
- 377 Shorts
- 378 Skirt
- 379 Suit

**DEPARTMENT C**  
**Community Exhibits**

- 01 – School and Education Exhibits
- 02 – Civic and Public Service Exhibits
- 03 – Governmental Exhibits
- 04 – Armed Forces Exhibits & Veteran’s Organizations

- 05 – Youth Groups Exhibits
- 06 – Religious and Church Exhibits
- 07 – Extension Homemakers & Community Club Exhibit
- 08 – 4-H Clubs Exhibits
- 09 – FFA, FHA, FCCLA Exhibits
- 10 – Total Commercial Exhibits

**Rules:**

**Clubs may use any of the following subjects for an exhibit:**

- Recreation
- Foods and Nutrition
- Food Preservation
- Clothing
- Safety
- Health
- Housing, energy & environment, furnishings
- Family relationship & child development
- Family resource management
- Gardening

**1. Exhibits are judged as follows:**

1. Theme originality & consistency	15
2. Educational value	25
3. Quality of material and workmanship	40
4. Attractiveness of arrangement	10
5. Presentation	10
<b>Total .....</b>	<b>100</b>

**2. Premium Awards:**

- \* Best in Show Award \$125.00
- 1st Place - \$100
- 2nd Place - \$ 75
- 3rd Place - \$ 50

**3. Clubs whose exhibits meet all the judges’ requirements will receive an entry premium of \$25.00. Clubs that win premiums will not receive an entry premium.**

**4. 4-H, FCCLA, Scout Troops and FFA Clubs are judged separately. Any youth clubs other than 4-H, FCCLA, FFA and Scouts are judged as a group.**

**5. All clubs and groups are invited to exhibit in the education**

**area. (1) 8’ table provided. Exhibits must be free standing. Displays must be no more than 8’ high.**

**6. Each club/community exhibit and/or livestock entry will receive TWO gate passes. – No Exceptions and No rain checks!**

**7. All banners must be approved.**

**DEPARTMENT F**  
**Food Preparation & Preservation**  
**BAKING**

**Rules:**

- Package all baked items with transparent wrap on a paper plate.
- Bring one third cake, pie, or bread with a slice cut and wrapped for judging.
- Bring six cookies or candies wrapped for judging.
- Products baked with a mix or prepared pie crust are not eligible for judging.
- Label your product (example: banana bread, chocolate chip cookies)
- Age Categories: Adult (19 & up), Senior (14-18) & Intermediate (11-13)

**Adults**

**Class Entries:**

- 01 Biscuits
- 02 Brownies
- 03 Cake – Angel Food, un-iced
- 04 Cake – Bundt – iced or un-iced
- 05 Cake - Chiffon Cake
- 06 Cake – Date Cake, un-iced
- 07 Cake – Decorated
- 08 Cake – Fruit Cake, un-iced
- 09 Cake – Layer Cake with icing
- 10 Cake – Loaf Cake with icing
- 11 Cake – Pound
- 12 Cake – Sourdough
- 13 Cake – Spice
- 14 Candies/ Cookies – Bars and Squares
- 15 Candies Cookies – Chocolate Chip Cookies
- 16 Candies/ Cookies – Date Cookies
- 17 Candies/ Cookies – Divinity
- 18 Candies/ Cookies – Drop Cookies
- 19 Candies/ Cookies – Fudge
- 20 Candies/ Cookies – Oatmeal Cookies
- 21 Candies/ Cookies – Other Candies
- 22 Candies/ Cookies – Peanut Brittle
- 23 Candies/ Cookies – Peanut Butter Cookies
- 24 Candies/ Cookies – Pralines
- 25 Candies/ Cookies – Rolled Cookies
- 26 Other Baked Goods – Cheese Straws
- 27 Other Baked Goods – Cinnamon Rolls
- 28 Other Baked Goods – Danish Pastry
- 29 Other Baked Goods – Muffins
- 30 Other Baked Goods – Quick Bread
- 31 Other Breads – Banana Bread
- 32 Other Breads – Fruit Bread
- 33 Other Breads – Zucchini Bread
- 34 Other – Fruit Bread
- 35 Pies – Apple Pie
- 36 Pies – Pecan Pie
- 37 Pies – Sweet Potato Pie
- 38 Yeast Bread – One-Third Swedish Tea Ring
- 39 Yeast Breads – One-Third Coffee Cake
- 40 Yeast Breads – One-Third Fruit Bread
- 41 Yeast Breads – One-Third Loaf Bread
- 42 Yeast Breads – One-Third Loaf, Bread Machine (white)
- 43 Yeast Breads – One-Third Nut Bread
- 44 Yeast Breads –

45	One-Third Strudel	83	Drop Cookies – 6		Peanuts	151	Jams or Preserves – Strawberry Preserves
	Yeast Breads – One-Third Yeast Bread, Rye	84	Fudge – 6 pieces	119	Canned Vegetables – Peas – English	152	Jams or Preserves – Watermelon Rind Preserves
46	Yeast Breads – One-Third Yeast Bread, White	85	Muffins – 6	120	Canned Vegetables – Peas – Field	153	Jelly – Apple
47	Yeast Breads – One-third yeast bread, Whole Wheat	86	Oatmeal Cookies	121	Canned Vegetables – Potato – Irish	154	Jelly – Blackberry
48	Yeast Breads – Rolls – 6	87	One-Third Layer Cake, Iced	122	Canned Vegetables – Potato – Sweet	155	Jelly – Blueberry/Huckleberry
49	Yeast Breads – Sourdough Breads	88	One-Third Loaf, Quick Bread	123	Canned Vegetables – Pumpkin	156	Jelly – Elderberry
50	Yeast Breads – Whole Wheat Cheese Bread	89	One-Third Loaf Yeast Bread	124	Canned Vegetables – Rutabaga	157	Jelly – Kumquat
		90	One-Third Pound Cake	125	Canned Vegetables – Sauerkraut	158	Jelly – Loquat
		91	One-Third yeast Coffee Cake	126	Canned Vegetables – Soup Mixtures	159	Jelly – Other Jellies
		92	Other Cakes	127	Canned Vegetables – Spices	160	Jelly – Pear
		93	Peanut Brittle	128	Canned Vegetables – Squash	161	Jelly – Pepper
		94	Other Candy	129	Canned Vegetables – Tomato Juice	162	Jelly – Pepper
		95	Peanut Butter Cookies	130	Canned Vegetables – Tomatoes	163	Jelly – Plums
		96	Popcorn Balls	131	Dried Foods – Jerky, Beef, Venison, Etc.	164	Jelly – Scuppernong/Muscadine
		97	Rolls – 6	132	Dried Foods – Other Foods	165	Jelly – Strawberry
				133	Dried Fruit	166	Pickles & Relishes – Beet Pickles
				134	Dried Herbs	167	Pickles & Relishes – Bread and Butter Pickles
				135	Dried Vegetables	168	Pickles & Relishes – Chow Chow
				136	Jams or Preserves – Apple Butter	169	Pickles & Relishes – Cinnamon Stick Pickles
				137	Jams or Preserves – Blackberry Jam	170	Pickles & Relishes – Corn Relish
				138	Jams or Preserves – Fig Preserves	171	Pickles & Relishes – Cucumber or Tomato
				139	Jams or Preserves – Marmalade	172	Pickles & Relishes – Dill Pickles
				140	Jams or Preserves – Other Jams	173	Pickles & Relishes – Fruit
				141	Jams or Preserves – Other Jams	174	Pickles & Relishes – Green Tomato Pickles
				142	Jams or Preserves – Other Preserves	175	Pickles & Relishes – Hot Pepper Pickles
				143	Jams or Preserves – Peach Jam	176	Pickles & Relishes – Other Pickles
				144	Jams or Preserves – Peach Pickles	177	Pickles & Relishes – Pear Pickles
				145	Jams or Preserves – Peach Preserves	178	Pickles & Relishes – Pepper Sauces
				146	Jams or Preserves – Pear Butter	179	Pickles & Relishes – Pickled Eggs
				147	Jams or Preserves – Pear Jam	180	Pickles & Relishes – Pickled Okra
				148	Jams or Preserves – Pear Preserves	181	Pickles & Relishes – Salsa
				149	Jams or Preserves – Plum Preserves	182	Pickles & Relishes – Sauces
				150	Jams or Preserves – Strawberry Jam	183	Pickles & Relishes – Squash Pickles
						184	Pickles & Relishes – Sweet Pepper Pickles
						185	Pickles & Relishes – Sweet Pickles

### Youth

#### Class Entries

#### Intermediate (Ages 11 – 13)

51	Biscuits
52	Brownies – 6 pieces
53	Candied Nuts
54	Candy – 6 pieces
55	Cheese Straws
56	Chocolate Chip Cookies – 6
57	Cinnamon Rolls
58	Cupcakes - 6
59	Date Cookies
60	Divinity – 6 pieces
61	Drop Cookies
62	Fudge – 6 pieces
63	Muffins – 6
64	Oatmeal Cookies – 6
65	One-Third Coffee Cake, Yeast
66	One-Third Loaf Bread, Quick
67	One-Third Loaf, Yeast Bread
68	Other Cookies – 6
69	Peanut Brittle – 6 pieces
70	Peanut Butter Cookies – 6
71	Popcorn Balls
72	Sourdough Bread
73	Yeast Rolls – 6

#### Seniors (ages 14 – 18)

74	Biscuits
75	Brownies
76	Candied Nuts
77	Cheese Straw
78	Chocolate Chip Cookies – 6
79	Cinnamon Rolls
80	Cupcakes – 6
81	Date Cookies
82	Divinity – 6 pieces

### Adults

98	Canned Fruits – Blackberries or Dewberries
99	Canned Fruits – Blueberries
100	Canned Fruits – Figs
101	Canned Fruits – Other Fruits
102	Canned Fruits – Peaches
103	Canned Fruits – Pears
104	Canned Fruits – Plums
105	Canned Meats – Beef
106	Canned Meat – Fish
107	Canned Meat – Pork
108	Canned Meat – Poultry
109	Canned Meat – Wild Game
110	Canned Vegetables – Beets
111	Canned Vegetables – Butterbeans
112	Canned Vegetables – Carrots
113	Canned Vegetables – Corn
114	Canned Vegetables – Green or Wax Beans
115	Canned Vegetables – Mixed Vegetables
116	Canned Vegetables – Okra
117	Canned Vegetables – Other Vegetables
118	Canned Vegetables –

## CANNING



186 Pickles & Relishes – Vegetables	220 Canned Vegetables – Tomatoes	256 Pickles & Relishes – Chow Chow	• Presentation
187 Syrups – Cane Syrup	221 Dried Foods – Dried Fruit	257 Pickles & Relishes – Cinnamon Stick Pickles	• Uniqueness of plant selections
188 Syrups – Sorghum	223 Dried Foods – Dried Herbs	258 Pickles & Relishes – Corn	
<b>Youth</b>	224 Dried Foods – Dried Vegetables	259 Pickles & Relishes – Cucumber or Tomato	<b>Specimen House Plant – Class H</b>
<b>Seniors (Ages 14 – 18)</b>	225 Dried Foods – Jerky	260 Pickles & Relishes – Dill Pickles	1 African Violet
189 Canned Fruits – Figs	226 Dried Foods – Other Foods	261 Pickles & Relishes – Fruit	2 Fichus
190 Canned Fruits – Other Fruits	227 Jams or Preserves – Apple Butter	262 Pickles & Relishes – Green Tomato Pickles	3 Peace Lily
191 Canned Fruits – Peaches	228 Jams or Preserves – Blackberry Jam	263 Pickles & Relishes – Hot Pepper Pickles	4 Etc
192 Canned Fruits – Pears	229 Jams or Preserves – Fig Preserves	264 Pickles & Relishes – Other Pickles	<b>Specimen Patio Plant – Class I.</b>
193 Canned Fruits – Plums	230 Jams or Preserves – Marmalade Jam	265 Pickles & Relishes – Peach	(Minimum 8-inch container with maximum height of 7 feet including container).
194 Canned Meats – Beef	231 Jams or Preserves – Other Jams	266 Pickles & Relishes – Pear	5 Citrus
195 Canned Meat – Fish	232 Jams or Preserves – Other Preserves	267 Pickles & Relishes – Pickled Eggs	6 Shrubs
196 Canned Meat – Pork	233 Jams or Preserves – Peach Jam	268 Pickles & Relishes – Pickled Okra	7 Trees
197 Canned Meat – Poultry	234 Jams or Preserves – Peach Preserves	269 Pickles & Relishes – Salsa	8 Etc.
198 Canned Meat – beef	235 Jams or Preserves – Pear Butter	270 Pickles & Relishes – Sauces	<b>Hanging Baskets (No Ferns) – Class M</b>
199 Canned Vegetables – beets	236 Jams or Preserves – Pear Jam	271 Pickles & Relishes – Squash Pickles	(Minimum 8-inch container)
200 Canned Vegetables – Butterbeans	237 Jams or Preserves – Pear Preserves	272 Pickles & Relishes – Sweet Pepper Pickles	9 Heartleaf
201 Canned Vegetables – Carrots	238 Jams or Preserves – Plum Preserves	273 Pickles & Relishes – Sweet Pickles	10 philodendron
202 Canned Vegetables – Corn	239 Jams or Preserves – Strawberry Jam	274 Pickles & Relishes – Vegetables	11 Pothos
203 Canned Vegetables – Green or Wax Beans	240 Jams or Preserves – Strawberry Preserves		12 Annual Display
204 Canned Vegetables – Mixed Vegetables	241 Jams or Preserves – Watermelon Rind Preserves		13 Herb Garden
205 Canned Vegetables – Okra	242 Jelly – Apple		14 Topiary
206 Canned Vegetables – Other Vegetables	243 Jelly - Blackberry		15 Perennial Display
207 Canned Vegetables – Peanuts	244 Jelly – Blueberry/Huckleberry		16 Etc.
208 Canned Vegetables – Peas – English	245 Jelly - Elderberry		<b>Container Gardens, Novelty and Display – Class N</b>
209 Canned Vegetables – Peas – Field	246 Jelly - Grape		12 Annual Display
210 Canned Vegetables – Peppers	247 Jelly - Loquat		13 Herb Garden
211 Canned Vegetables – Potato – Irish	248 Jelly – Other Jellies		14 Topiary
212 Canned Vegetables – Potato – Sweet	249 Jelly - Pear		15 Perennial Display
213 Canned Vegetables – Pumpkin	250 Jelly - Pepper		16 Etc.
214 Canned Vegetables – Rutabaga	251 Jelly - Plum		<b>Cut Flowers – Class O</b>
215 Canned Vegetables – Sauerkraut	252 Jelly – Scuppernong/Muscadine		• Entries must be displayed in suitable containers
216 Canned Vegetables – Soup Mixtures	253 Jelly – Strawberry		17 Aster hardy (Michaelmas Daisy)
217 Canned Vegetables – Spices	254 Pickles & Relishes – Beet Pickle		18 Cardinal's Guard
218 Canned Vegetables – Squash	255 Pickles & Relishes – Bread & butter Pickles		19 Celosia: Sub Color
219 Canned Vegetables – Tomato Juice			20 Chrysanthemum

## DEPARTMENT H Horticulture & Agronomy HORTICULTURE

### Rules:

- Amateur Horticulturist may enter examples of their accomplishment.
- All entries should be pest and disease free.
- Label entries with the common and botanical name (example: Split leaf Philodendron: *Monstera deliciosa*).
- Judging Criteria:
- Color, vigor and general appearance

- 21 Annual Display
- 22 Topiary
- 23 Perennial Display
- 24 Etc.
- 25 Annual Display
- 26 Herb Garden
- 27 Topiary
- 28 Perennial Display
- 29 Etc.
- 30 Aster hardy (Michaelmas Daisy)
- 31 Cardinal's Guard
- 32 Celosia: Sub Color
- 33 Chrysanthemum
- 34 Celosia (Spider Flower)
- 35 Cornflower
- 36 Dianthus
- 37 Gerbera Daisy
- 38 Marigolds – 1 Spray
- 39 Pentas – 3 Spray
- 40 Petunia – 1 Spray
- 41 Phlox Perennial – 1 Stalk
- 42 Salvia
- 43 Sunflowers
- 44 Verbena – 3 Stems
- 45 Zinnia
- 46 Flowers from Bulbs
- 47 Ginger

35	Etc.	71	Loquat	113	Corn – 3 ears – any variety	Okra (6 or more pods)	
36	Spider Lily	72	Oats	114	Cucumbers	158	Best Category of Peas – any variety
37	Roses	73	Onions	115	Eggplants	159	Best Tomatoes (6 or more)
<b>Floral Design – Class P</b>							
38	Tablescapes	74	Oranges	116	Eggs – 3	160	Biggest Pumpkin
<b>AGRONOMY</b>							
<b>Rules:</b>							
• Entries must be the product of the current calendar year.							
• All entries must have labels/tags attached clearly identifying the variety name.							
<b>Adult (19 and older)</b>							
39	Best 5 lbs. Bahia Grass Seed (all varieties)	75	Ornamental Vegetables	117	Figs	161	Biggest Watermelon
40	Best Citrus Fruits (Satsumas, Kumquats, Lemons)	76	Other Fruit	118	Gourds	162	Banana Pepper (sweet)
41	Best Display of Garden Products (5 or more products)	77	Peanuts	119	Grain Sorghum	163	Banana
42	Best Category of Irish Potatoes	78	Pears	120	Grapefruit	164	Beans
43	Best Category of Okra (6 or more pods)	79	Pecans – Quart jar – all shell varieties	121	Hot Pepper	165	Bell Pepper
44	Best Category of Peas – any variety	80	Peppers	122	Honey-Pint Jar	166	Butter Beans
45	Best Tomatoes (6 or more)	81	Pomegranates	123	Jalapeno Peppers	167	Cabbage (1 head)
46	Biggest Pumpkin	82	Satsuma	124	Japanese Persimmons (6 or more)	168	Chili Peppers
47	Biggest Watermelon	83	Scuppernongs/Muscadines	125	Japanese Radish	169	Chinquapins
48	Banana Pepper (sweet)	84	Soybeans- Quart Jar – Any Variety	126	Kumquats	170	Corn – 3 ears – any variety
49	Banana	85	Squash (any variety)	127	Lemons	171	Cucumbers
50	Beans	86	Sweet Potatoes (best dozen/ any variety)	128	Loquats	172	Eggplants
51	Bell pepper	87	Wheat – Quarter Jar- Any Variety	129	Oats	173	Eggs – 3
52	Butter Beans	88	Winter Squash	130	Onions	174	Figs
53	Cabbage (1 head)	89	Millet	131	Oranges	175	Gourds
54	Chili Peppers	90	Other	132	Ornamental Vegetables	176	Grain sorghum
55	Cinquapins	91	Pumpkin	133	Other Fruit	177	Grapefruit
56	Corn – 3 ears –any variety	92	Comb Honey	134	Peanuts	178	Hot Pepper
57	Cucumbers	93	Okra (6 pods)	135	Pears	179	Honey-pint jar
58	Eggplants	94	Watermelon	136	Pecans – Quart Jar – all shell varieties	180	Jalapeno Peppers
59	Eggs	95	Nuts	137	Peppers	181	Japanese Persimmons (6 or more)
60	Figs	<b>Elementary (ages 6 - 10)</b>		138	Pomegranates	182	Japanese Radish
61	Gourds	96	Best 5 lbs. Bahia Grass Seed (all varieties)	139	Satsuma	183	Kumquats
62	Grain sorghum	97	Best Citrus Fruits (Satsumas, Kumquats, Lemons)	140	Scuppernongs/Muscadines	184	Lemons
63	Grapefruit	98	Best Display of Garden Products (5 or more products)	141	Soybeans- Quart Jar – any variety	185	Loquats
64	Hot Pepper	99	Best Category of Irish Potatoes	142	Squash (any variety)	186	Oats
65	Honey-Pint Jar	100	Best Category of Okra (6 or more pods)	143	Sweet Potatoes (best dozen/ any variety)	187	Onions
66	Jalapeno Peppers	101	Best Category of Peas – any variety	144	Wheat – Quarter Jar – any variety	188	Oranges
67	Japanese Persimmons (6 or more)	102	Best Tomatoes (6 or more)	145	Winter Squash	189	Ornamental Vegetables
68	Japanese Radish	103	Biggest Pumpkin	146	Millet	190	Other Fruit
69	Kumquats	104	Biggest Watermelon	147	Other	191	Peanuts
70	Lemons	105	Banana Pepper (sweet)	148	Pumpkin	192	Pears
		106	Banana	149	Comb Honey	193	Pecans – Quart Jar – all shell varieties
		107	Beans	150	Okra (6 pods)	194	Peppers
		108	Bell Pepper	151	Watermelon	195	Pomegranates
		109	Butter Beans	152	Nuts	196	Satsuma
		110	Cabbage (1 head)	<b>Intermediate (Ages 11 - 13)</b>		197	Scuppernongs/Muscadines
		111	Chili Peppers	153	Best 5 lbs. Bahia Grass Seed (all varieties)	198	Soybeans- Quart Jar – any variety
		112	Chinquapins	154	Best Citrus Fruits (Satsumas, Kumquats, Lemons)	199	Squash (any variety)
				155	Best Display of Garden Products (5 or more products)	200	Sweet Potatoes (best dozen/ any variety)
				156	Best Category of Irish Potatoes	201	Wheat – Quarter Jar – any variety
				157	Best Category of	202	Millet
						203	Other
						204	Pumpkin
						205	Comb Honey
						206	Okra (6 pods)



- |  |  |   |  |
|--|--|---|--|
| 207 Watermelon   | 223 Butter Beans                         | 248 Pecans – Quart Jar –<br>all shell varieties | <b>Rules</b>   |
| 208 Nuts   | 224 Cabbage (1 head)                     | 249 Peppers                                     | • Exhibitors are permitted to<br>show only one picture per class<br>in any one category. |
| <b>Seniors (ages 14 – 18)</b>                                    | 225 Chili Peppers                        | 250 Pomegranates                                | • All photographs must be<br>mounted on 8"x 10" construction<br>paper or stronger paper. |
| 209 Best 5 lbs. Bahia<br>Grass Seed (all<br>varieties)           | 226 Chinquapins                          | 251 Satsuma                                     | • Photographs exceeding 20"x<br>24" are acceptable if space pre-<br>mits.                |
| 210 Best Citrus Fruits<br>(Satsumas,<br>Kumquats, Lemons)        | 227 Corn – 3 ears –<br>any variety       | 252 Scuppernongs/Mus-<br>cadines                | • Additional Premium • Best<br>Photo in Show \$25  |
| 211 Best Display of Gar-<br>den Products (5 or<br>more products) | 228 Cucumbers                            | 253 Soybeans – Quart Jar<br>– any variety       | <b>All Ages</b>  |
| 212 Best Category of Irish<br>Potatoes                           | 229 Eggplants                            | 254 Squash (any variety)                        | <b>Class Entries</b>   |
| 213 Best Category of<br>Okra (6 or more<br>pods)                 | 230 Eggs – 3                             | 255 Sweet Potatoes (best<br>dozen/ any variety) | <b>Black and White</b>   |
| 214 Best Category  | 231 Figs                                 | 256 Wheat – Quarter Jar –<br>any variety        | 01 Animals   |
| 215 Best Category of Peas<br>– any variety                       | 232 Gourds                               | 257 Winter Squash                               | 03 Floral  |
| 216 Best Tomatoes (6 or<br>more)                                 | 233 Grain Sorghum                        | 258 Millet                                      | 05 People  |
| 217 Biggest Pumpkin  | 234 Grapefruit                           | 259 Other                                       | 07 Scenic  |
| 218 Biggest Watermelon   | 235 Hot Pepper                           | 260 Pumpkin                                     | 11 Other   |
| 219 Banana Pepper<br>(sweet)                                     | 236 Honey-Pint jar                       | 261 Comb Honey                                  |  |
| 220 Banana   | 237 Jalapeno Peppers                     | 262 Okra (6 pods)                               |  |
| 221 Beans  | 238 Japanese Persim-<br>mons (6 or more) | 263 Watermelon                                  |  |
| 222 Bell Pepper  | 239 Japanese Radish                      | 264 Nuts  |  |
|  | 240 Kumquats                             |   |  |
|  | 241 Lemons                               |   |  |
|  | 242 Loquats                              |   |  |
|  | 243 Oats                                 |   |  |
|  | 244 Onions                               |   |  |
|  | 245 Oranges                              |   |  |
|  | 246 Ornamental Vegeta-<br>bles           |   |  |
|  | 247 Other Fruit                          |   |  |
|  | 248 Peanuts                              |   |  |
|  | 249 Pears                                |   |  |

## PHOTOGRAPHY

**PREMIUMS AWARDED TO  
AMATEURS ONLY.  
PROFESSIONAL WORK FOR  
SHOW ONLY!**

### Color

- 02 Animals
- 04 Floral
- 06 People
- 08 Scenic
- 09 One person selfies
- 10 Group selfies
- 12 Other

**Free Local News Email Updates**

Sign up today for Gulf Coast Media's new email updates sent to you twice a week for free. You'll get the first look at upcoming stories from Gulf Coast Media's publications. And, get updates on breaking news.

**GULF COAST MEDIA**

[www.gulfcoastmedia.com/newsletter](http://www.gulfcoastmedia.com/newsletter)





Bay Minette Middle School students set up Art Exhibits during the 2021 Baldwin County Fair. Teacher, Pam Coffman, worked with students to express their creativity and show off their handiwork. Head out to the 71st Annual Baldwin County Fair to see lots of new exhibits, displays and competitions, Tuesday, Sept. 20 – Saturday, Sept. 24!

Vegetable exhibit at the Baldwin County Fair.







Go online at [www.baldwincofair.com](http://www.baldwincofair.com) for REGISTRATION FORM or use form below

19477 Fairground Rd.  
 Robertsdale, AL 36567  
 E-mail: [bcfair@gulftel.com](mailto:bcfair@gulftel.com)  
 Office: 251-947-3247  
 Registration Information:  
 251-947-3492  
 Fax: 251-947-3471

**REGISTRATION**  
**Friday, Saturday & Monday, September 16th, 17th & 19th**  
 Entries accepted 9:00 a.m. to 6:00 p.m. Friday, 9:00 a.m. to 6:00 p.m., Saturday and Monday  
**Pickup Days Following Week**  
 Pickup entries 9:00 a.m. to 5:00 p.m.

TYPE OR PRINT ALL INFORMATION									
Exhibitor Name					E-mail Address			F a i r E x h i b i t o r N u m b e r (Assigned by Fair)	
Address					City		State	Zip	
Daytime Phone Number			Evening Phone Number		Cell/Mobile Number			Received By:	
Dept No.	Class No.	Mark Age Group Entry				Entry - Use description specified in hand book	Tag No.	Placing	Amount Paid
		A	E	I	S				
Total Entries						Total Premiums			
Please accept for exhibition at the Baldwin County fair the entries described above. I herby certify that exhibits are in accordance with premium lists and understand that the rules set forth in the premium book will govern exhibition of same.									
Signature					Date				

**Closed on Sundays before and after fair dates.**

**RULES**

CONTINUED FROM 2

- asked to leave the premises.
- All animals must be the actual property of the exhibitor and registered at the fair under his or her name, **not a group or farm name**. Should any entry be found to be otherwise entered, any award by judges will be forfeited.
- In the event there is but one entry in a class, the placing shall depend on the merit of the entry and the award made at the discretion of the judge.
- Each exhibitor is encouraged to fill out a fact sheet about their exhibits to be displayed for additional interesting information about the particular animal or breed.

**Specifics for Goats and Sheep**

- Exhibits must be does or ewes only. NO BUCKS, RAMS OR WITHERS ALLOWED.
- The exhibitor may register up to 6 entries in the goat/sheep division.
- Goats and ewes can be placed in stalls together as long as they are of the same breed and size is not an issue. Each goat or ewe will be judged as a single entry.

**Specifics for Poultry**

- The exhibitor may register up to 3 chickens per breed.
- Chickens may be a hen, rooster or a combination. Grouped by recognized breed. **There will be a limit of 3 breeds that can be entered.**
- Each exhibitor entering more than 1 and up to 3 of a breed will place them in the same pen. Each pen will be judged as

a single entry.

- Exhibits of turkeys will be limited to a gobbler, hen or breeding pair of a recognized breed.
- Exhibits of quail will be a limit of 6 per pen by recognized breed.
- All other fowl for exhibit not mentioned will be classed day of registration.

**Specifics for Rabbits**

- Each exhibitor member can exhibit a doe with or without litter and a buck from a recognized breed. **There is a limit of three on the number of breeds.**
- Each pen will count as a single entry.



# LET'S GO TO THE FAIR

It's almost time again – fair time!

The Baldwin County Fair is heading to town on Tuesday, Sept. 20 – Saturday, Sept. 24. Do you love rides and thrills? The Fair has you covered. Are you craving some delicious fried food, cotton candy or delectable caramel apples? You can find them at the Fair. Kids excited about watching the Teeny Weeny Circus, or viewing the South Alabama Antique Tractor & Engine Club exhibits? Make family memories at the Fair.

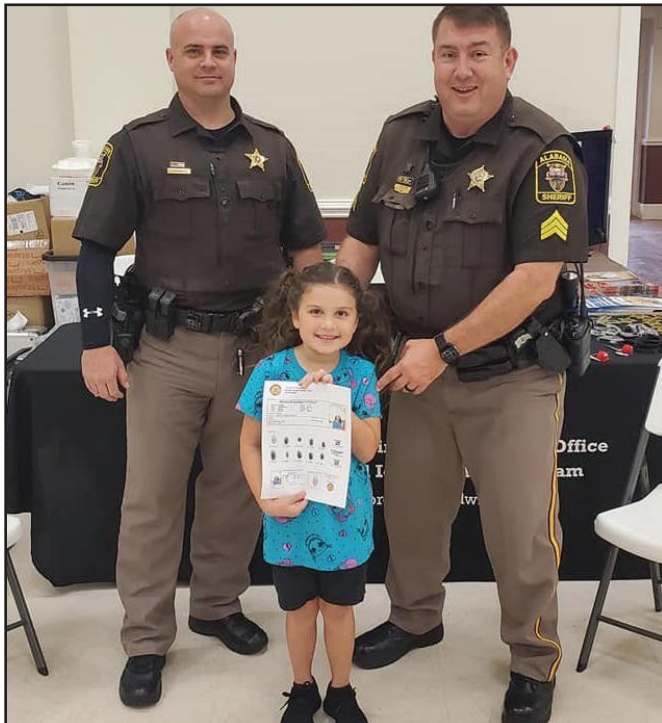
Plus, two nights of an epic rodeo, and a Tiger Encounter show with one of the youngest, and currently only female, trainers in the United States?

If these photos from 2021's Fair are any indication, this is an event you do not want to miss!





# BALDWIN COUNTY SHERIFF'S OFFICE CHILD ID PROGRAM



The Baldwin County Sheriff's Office School Resource Unit has participated in the Baldwin County Fair for many years to provide valuable information and services to the citizens of Baldwin County. In 2016, the unit introduced the Baldwin County Sheriff's Office Child Identification Program. The program involves providing fingerprint printouts to families free of charge. The families can then provide these printouts to law enforcement in the event their child goes missing. The information used for the printouts is not retained. According to the manufacturer of the technology used for this service, "Every day, 2,000 children are reported missing. Every year, 200,000 children are taken by family members, and 58,000 children are

victims of non-family abductions. The key to recovering these children is quick action by parents and law enforcement." A statistic by the National Center for Missing and Exploited Children states that, "The first two hours after a child is abducted are the most critical."

The comprehensive digital fingerprinting child identification system is up to law enforcement standards. A digital fingerprint analysis software package is included in the equipment used to make the fingerprints to make sure all the necessary points for fingerprints are obtained. Vital information is captured that is required by the Amber Alert system. The fingerprint system obtains all 10 fingerprints which are vital for identification and recovery. To help

protect from identity theft, the software was written so that no information from the child is saved on the computer. Once the process is started over, all the data is permanently erased. The parent is the only person who retains their child's information. All this technology aids in decreasing the reporting time if a child is abducted. The parents can take the printout to law enforcement authorities to be aid in the investigation.

The Baldwin County Sheriff's Office School Resource/Community Outreach Unit has proudly provided this service in partnership with Baldwin EMC to hundreds of families throughout Baldwin County since 2016 and continues to provide this service annually at the Baldwin County Fair.

## BILL PATTERSON CONSTRUCTION INC.'S 1ST-ANNUAL THANKS CELEBRATION FOR FIRST RESPONDERS!

**What:** Bill Patterson Construction, Inc., is hosting its first annual THANKS celebration for all county, EMA, Police Departments, Fire Departments, municipalities, highway departments, electrical companies, water providers, sewer providers and all organizations that had a hand in putting Baldwin County back in operation after Hurricane Sally.

**When:** Thursday, Nov. 3, from 11 a.m. to 2 p.m. The celebration will take place in two shifts, so all can attend in rotation.

**Where:** Baldwin County Coliseum



# Dedicated Agribusiness BANKING

Serving Southwest Alabama and Beyond

Our very first loan was for a farmer in 1904, and our dedicated AG team includes officers from farming families. We understand running your farm or operation is about more than planting and harvesting.

Let us show you how we can be a resource for all your farming and business needs.



Crop Production  
Loans and Lines<sup>1</sup>



Timber and Ag  
Property Financing<sup>1</sup>



Equipment  
Financing<sup>1</sup>



Checking and  
Savings Options



Retirement  
Planning



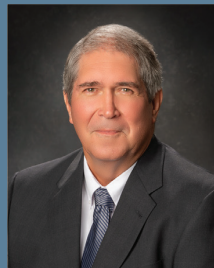
**Rachel Holland**

Senior VP/Ag Lending  
rachel.holland@unitedbank.com  
251.446.6022



**Terri Metts**

Vice President/Ag Lending  
terri.metts@unitedbank.com  
251.267.3161



**John Winters**

Ag/Commercial Lender  
john.winters@unitedbank.com  
251.743.3161



**Dawn Hollingsworth**

Ag Lending Officer  
dawn.hollingsworth@unitedbank.com  
850.675.6066

United Bank NMLS 494759

<sup>1</sup> Loans, lines of credit, credit cards subject to credit approval.







71st ANNUAL  
**FAIR**

**September 20-24, 2022**

19477 Fairground Rd. Robertsdale  
251-947-3247 • 251-747-2082

[www.Facebook.com/BaldwinCountyFair](http://www.Facebook.com/BaldwinCountyFair)  
[www.Twitter.com/BaldwinFair](http://www.Twitter.com/BaldwinFair)  
[www.baldwincofair.com](http://www.baldwincofair.com)  
email: [bcfair@gulftel.com](mailto:bcfair@gulftel.com)

**SCHEDULE OF EVENTS  
& ATTRACTIONS**

(FOR COMPLETE SCHEDULE GO TO WEBSITE)

**Admission:**

**FRIDAY AND SATURDAY  
ADULTS \$10.00**

**CHILDREN UNDER 12 FREE**

SEE REVERSE SIDE FOR ARMBAND ADMISSION

**EXHIBITORS REGISTRATION  
& EXHIBIT SET-UP**

Friday, Sept. 16, 2022 - 9am-6pm

Saturday, Sept. 17, 2022 - 9am-6pm

Monday, Sept. 19, 2022 - 9am-6pm

**FAIR HOURS**

Tues., Wed., Thurs. - 5pm-11pm

Fri. - 5pm-1am • Sat. - 2pm-11pm

**DEBIT/  
CREDIT  
CARDS  
ACCEPTED  
ON SITE**

**FREE  
PARKING**

**FAIRGROUND &  
COLISEUM EVENTS**

Show Times Posted

Arnold Amusements, Inc.

Tiger Encounter

Teeny Weeny Circus

Creative Arts Exhibit

Bo Campbell Rodeo Productions

Petting Zoo

South Alabama Antique Tractor & Engine Exhibit

Exhibits: Antique Tractors & Engines, Blacksmithing,

Corn Shelling

FFA Agriculture Education Workshop & Livestock Show

FCCLA Sweet Potato Contest

North \* South Baldwin Technology Centers

Baldwin County Dept. of Archives & History

Baldwin County Heritage Museum

Daphne Museum

Fairhope Museum

Five Rivers Delta Center

Fort Mims Museum

Gulf Shores Museum

Historic Blakeley Park

Stockton Museum

Swift Coles House

Youth Development Programs

Flashback Band

\*Times and prices subject to change.