

\$20 Day (Tues. - Thurs.) = Admission & All Rides FREE



70TH BALDWIN COUNTY FAIR

Sept. 21st - 25th



19477 Fairground Road
Robertsdale, AL 36567
251-947-3247
251-747-2082

baldwincofair.com

Arnold Amusements | Free Parking

DURING A POWER OUTAGE, THE BRIGGS AND STRATTON GENERATOR PROVIDES POWER FOR YOUR HOME OR BUSINESS



Medium to Large Home New Managed Whole House Solution

Our new 17KW and 20KW Standby Generator is our smartest generator ever. It features ground-breaking power management technology, advanced safeguarding features that meet rigorous industry fire protection standards and a new airflow design allowing flexible placement options. There has never been a better time to protect your family and biggest investment.

Take Advantage of SPECIAL SALE PRICES

***20KW Model #040586
NOW \$4,319.00**

***20KW Model #040609
NOW \$5,165.00**
With aluminum enclosure and
Stainless Steel Base, 10 yr warranty

- Why buy a Briggs and Stratton Generator System?
- Patented Symphony II, Power Management technology allows you to power more for less.
- Smarter smaller and more fuel efficient.
- Briggs and Stratton a leader in energy innovation.
- Durable all weather finish.
- Electronic friendly.
- Remote monitoring system.
- Call today for a FREE on site estimate!

***Prices may change without notice! Limited to products in stock!**

Come on over to **ELBERTA HARDWARE!**

"We service and finance what we sell."

25320 U.S. Hwy. 98, Elberta, AL 36530 • 251-986-5233



The Yanmar 221
SUB-COMPACT UTILITY TRACTOR



The Yanmar 324
SUB-COMPACT UTILITY TRACTOR



The Yanmar 424
SUB-COMPACT UTILITY TRACTOR

NEW
10
YEAR
PROVEN QUALITY
LIMITED POWERTRAIN
WARRANTY

#1
RANKED
PRODUCT QUALITY
TECH SUPPORT
PARTS AVAILABILITY
2016 EQUIPMENT DEALER ASSOCIATION
SUB-COMPACT UTILITY TRACTOR

WHEN YOU CLIMB ON BOARD, YOU'RE TAKING A STEP UP.

COME ON OVER TO
ELBERTA HARDWARE

25320 US Hwy 98, Elberta, AL
www.elbertahardware.com

251-986-5233

"We Service and Finance What We Sell!"

YANMAR

Learn more at Yanmar.com

RATE APPLICABLE TO NEW YANMAR COMPACT TRACTOR EQUIPMENT. RATE INFORMATION DOES NOT CONSTITUTE AN OFFER OR EXTENSION OF CREDIT. ALL TRANSACTIONS ARE SUBJECT TO CREDIT APPROVAL AND SUCH OTHER TERMS AND CONDITIONS AS WE MAY REQUIRE IN OUR SOLE DISCRETION. ALL RATE, TERMS, AND CONDITIONS SUBJECT TO CHANGE WITHOUT FURTHER NOTICE. MONTHLY PAYMENT PLAN BASED ON RATE OF 0%. ACTUAL RETAIL PRICES ARE SET BY DEALER AND MAY VARY. TAXES, FREIGHT, SETUP, AND HOLDING CHARGES MAY BE ADDITIONAL AND MAY VARY. MODELS SUBJECT TO LIMITED AVAILABILITY. OFFER IS NOT AVAILABLE WITH ANY OFFER. ***See your local dealer for limited warranty details and information. Certain restrictions apply. Engine Manufacturer specifications and programs are subject to change without notice. Images may not reflect dealer inventory and/or unit specifications.

70th Baldwin Fair

Fair Manager's Message

"Seven Decades Serving Baldwin County!" is the theme for observing our 2021 Birthday Fair. On June 9, 1948, a small group of local farmers and businessmen envisioned a county-wide coliseum building to have an annual County Fair and host area community meetings and agricultural activities. The 15 incorporating directors named the project the Baldwin County Cattle & Fair Association and received a 99-year lease, signed by Mayor Amos Garrett for property on Palmer Street from the City of Robertsdale. They solicited help from local citizens and neighboring community clubs to donate labor and supplies to establish the original building. The original building operated from 1950 to 2006 as the Baldwin County Fair site, hosting agriculture exhibits, youth and homemaker programs, amusement shows, and general community usage.

On February 22, 2008, The Baldwin County Cattle & Fair Association moved to a new Coliseum and Arena located on 19477 Fairground Road in Robertsdale, Alabama.

The very successful 2019 Fair exhibited over 1,600 individual competitive exhibits, more than 130 commercial exhibits and approximately 28,000 attendees.

It is with great pleasure that I, and the entire Fair board members invite you to attend this year's 70th Fair and once again enjoy all the programs and services.



Sonny and Melinda Hankins

Sonny



Baldwin County Cattle and Fair Board of Directors

A.B. (Sonny) Hankins, Robertsdale, AL

Neil McMillan, Stockton, AL

Carl Brian Johnson, Silverhill, AL

Robert (Bob) McMillian, Stockton, AL

H.L. (Buddy) Long, Orange Beach, AL

Robert (Bob) Shallow, Orange Beach, AL

Elmer McDaniel, Robertsdale, AL

Clarence E. Burke, Robertsdale, AL



The Baldwin County Legislative Delegation welcomes you to the 70th annual Baldwin County Fair.
We hope you enjoy the exhibits, food, fun and events.
Thank you for supporting the Fair!

STATE SENATORS



Greg Albritton
(R) - State Senate District No. 22



Chris Elliott
(R) - State Senate District No. 32

STATE REPRESENTATIVES



Harry Shiver
(R) - State House District No. 64



Alan Baker
(R) - State House District No. 66



Joe Faust
(R) - State House District No. 94



Steve McMillan
(R) - State House District No. 95



Matt Simpson
(R) - State House District No. 96





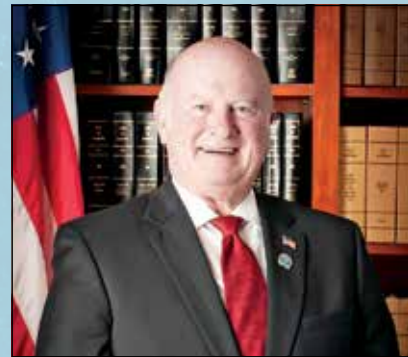
The Baldwin County Commission welcomes you to the 70th annual Baldwin County Fair.

We hope you enjoy the exhibits, food, fun and events.

Thank you for supporting the Fair!



District 1: James E. (Jeb) Ball



District 2: Joe Davis III



District 3: Billie Jo Underwood



District 4: Charles F. (Skip) Gruber



From The Office Of Rick Pate Alabama's Commissioner of Agriculture and Industries

Welcome to the Fair!

As Commissioner of Agriculture and Industries, it is my pleasure to welcome you to the fair. County fairs are much more than rides and entertainment, they provide an opportunity to showcase Alabama agriculture. Many of you missed attending fairs in 2020 due to Covid-19, but we will all appreciate this fall season a little more as we resume the tradition of attending our local fair.

Since the 1850's fairs have been held across our state to encourage young people as they participate in livestock competitions, showcase local gardeners' handiwork, and support the artistic talents of citizens by displaying their artwork. Even in our fast-paced world, the fair experience has not lost the tradition of celebrating agriculture.

We are blessed to live in a state that has an abundance of natural resources. Our farmers continue to work hard every day to increase productivity by embracing technology and innovations. Over the last 70 years, U.S. farms nearly tripled their production while using roughly the same amount of land, energy and fertilizer. In fact, Alabama cotton farmers produce 160,000 more bales on 1/3 of the acres and peanut farmers grow twice as many peanuts on 1/2 the acres compared to 1950. Farmers are efficient, dedicated stewards of the land and committed to feeding the world. The fair is a perfect venue to honor farmers for their contribution to our food supply and rural communities.

I hope you take the opportunity while at the fair to visit the exhibits and learn about livestock, local foods, and those who produce them. The employees of the Alabama Department of Agriculture and Industries send best wishes to those who play a part in making our county fairs successful each year. We appreciate your continued support for Alabama farmers, foresters, and agribusinesses!

Sincerely,



Commissioner Rick Pate



Rick Pate



Published by Gulf Coast Media

Parks Rogers
John Underwood
Paige Marmolejo
Melinda Hankins
Capt. Mark Robinson

Publisher
Editor
Layout and Design
Event Coordinator
Official Fair Photographer

Table of Contents

The Baldwin County Fair complies with all state of Alabama COVID-19 regulations.

70th Fair Manager Update	3
Board of Directors	3
Commissioner of Agriculture	6
Schedule of Events and Attractions	8-16
Pioneering Family - Johnson	18-19
In Memory	20
Flashback Band	20
Petting Zoo	22
Rodeo Clown: T.J. Williams	23
Rodeo Queen: Emma Watts	26
South Baldwin Tractor & Antique Engine Club	26
Blue Ribbon Day	28
Teeny Weeny Circus	28
Animal Science 4-H Club	28
FCCLA Sweet Potato Contest	30
Enjoying the Fair	32
Rules, Regulations & Premiums	34-35
Exhibit Departments	36-43
Registration Form	44

Advertiser Index

Amelia & Verla Title Services... 33	Loxley Auto Parts & Hardware .. 17
Arnold Amusements 48	Mid State Stockyards 23
Baldwin County Cattlewoman's Association 33	Old Tyme Feed & Garden Supply 31
Baldwin County Commission..... 5	Parkway Equipment..... 37
Baldwin County Legislative..... 4	Professional Cowboy Association 22
Baldwin EMC 14	Racine's Feed, Garden & Supply 29
Baldwin Tractor 9, 11, 24	Remax Bob Shallow 30
City of Robertsdale 15	Rick's Gun & Pawn 23
Coastal Alabama Community College 29	Riviera Utilities 46
Coca-Cola Bottling Company 21	Robertsdale Feed, Seed & Supply 45
Ebert Insurance Agency 31	Robertsdale Power Equipment 31
Elberta Farmers Cooperative.... 27	Robertsdale Rent All..... 25
Elberta Hardware..... 2	The Hangout..... 13
Emerald Homes 7	Town of Loxley 33
Gruenloh & Associates, P.C. 28	United Bank 47
Harry D'Olive..... 10	
Hellmich Electric Inc..... 16	
Hoss Mack 41	
Kendrick Electric Inc. 45	



Where EVERY DAY
is OPEN House!

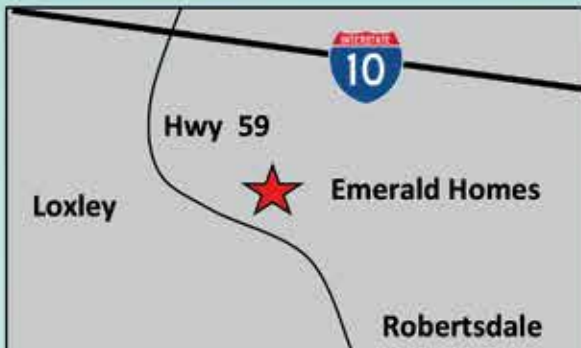
South AL #1 Volume Dealer



NEW
USED
REPO



IN HOUSE FINANCING
Land & Home Available



Serving Baldwin County for 30+ years!

24950 HWY 59 S. 251-947-2311
WWW.EMERALDHOMESLLC.COM

Welcome To The 70th Baldwin County Fair

19477 Fairground Road • Robertsdale, Alabama 36567
251.947.3247 • Fax: 251.947.3471

www.Facebook.com/BaldwinCountyFair • www.Twitter.com/BaldwinFair

Email: BCFair@Gulftel.com • www.BaldwinCoFair.com

"CLASS AAA Fair" • Association of Alabama Fairs Merit Award Program

Seven Decades Serving Baldwin

SCHEDULE OF EVENTS & ATTRACTIONS

TUESDAY, SEPTEMBER 21 - SATURDAY, SEPTEMBER 25, 2021

Free Parking

PAY ONE PRICE DAYS

Tuesday, Wednesday and Thursday

\$20 Day = Admission and All Midway Rides FREE (All Over 36" Tall)

Includes All Rides and Entertainment FREE

No Passes Honored

EXHIBITORS REGISTRATION & EXHIBIT SET-UP

Friday, Saturday & Monday, September 17-18 and 20, 9 a.m. to 6 p.m.

Exhibit Animal Check In 8 a.m. - 4 p.m. Tuesday

FAIR HOURS

Tuesday, Wednesday, Thursday 5:00 p.m. - 11:00 p.m.

Friday 5:00 p.m. - 1:00 a.m. • Saturday 1:00 p.m. - 12:00 a.m.

Easy to own. Highly capable.



RTV520

17.4 HP

VHT Transmission



Experience the RTV520 for yourself by visiting your local dealer today.

- Kubota EFI gasoline engine and VHT transmission for a smooth, quiet and easy ride
- Semi-independent suspension and comfortable seat deliver operator comfort
- Designed for simplified maintenance
- Nimble stature and great maneuverability

Together we do more.®

Baldwin Tractor & Equipment

22463 State Hwy. 59 S.

Robertsdale, AL 36567

251-947-4171

www.BaldwinTractor.com



KubotaUSA.com

© Kubota Tractor Corporation, 2021. This material is for descriptive purposes only. Kubota disclaims all representations and warranties, express or implied, or any liability from the use of this material. For complete warranty, safety and product information, consult your local Kubota dealer. For the complete disclaimer, go to KubotaUSA.com/disclaimers and see the posted disclaimer.

FAIRGROUND & COLISEUM SPECIAL EVENTS

Showtimes Posted

Arnold Amusements, Inc.
Teeny Weeny Circus
Bo Campbell Rodeo Productions
Tim Brown Entertainment
Petting Zoo
South Alabama Antique Tractor & Engine Exhibition
*Exhibits: Antique Tractors & Engines, Blacksmithing, Corn Shelling,
Sugar Cane Press, Slab Cutter Saw*
Duck Pond & Baby Chicks
Baldwin County 4-H Animal Science Club Workshop
FCCLA Sweet Potato Contest
North & South Baldwin Technology Centers
Baldwin County Dept. of Archives & History
Baldwin County Heritage Museum
Daphne Museum
Fairhope Museum
Five Rivers Delta Center
Fort Mims Museum
Gulf Shores Museum
Historic Blakeley Park
Stockton Museum
Swift Coles House

Baldwin County Now offers Online Renewals
Renew online at <https://baldwincountyal.gov/government/probate-office/renew-online>
or call 251-239-4311 to schedule an appointment.

Courtesy of The Honorable Harry D'Olive, Jr.,
Judge of Probate, Baldwin County



Enjoy our friendly staff and the convenience of four locations to serve you.

Bay Minette Probate Office
220 Courthouse Square
Bay Minette, AL 36507

Fairhope Office
Satellite Courthouse
1100 Fairhope Avenue
Fairhope, AL 36532

Foley Office
Satellite Courthouse
201 East Section Avenue
Foley, AL 36535

Robertsdale Office
Central Annex
22251 Palmer Street
Robertsdale, AL 36567



COLISEUM
Creative Arts Exhibits
ARENA AREA
Barnyard Exhibits

A heavy-duty offer for a heavy-duty tractor.

L Series Performance-matched attachments 20.9-62 HP



Save big on our L Series tractor. They have the versatility to handle every job and a wide range of performance-matched attachments. Kubota tractors under 100 HP are rated #1 for reliability*. Stop in for a demo and to claim this offer on select models today.

\$0 DOWN 0% APR UP TO 84 MONTHS
PLUS
SAVE UP TO \$1,400

VISIT US TODAY FOR THIS LIMITED-TIME OFFER



Baldwin Tractor & Equipment

22463 State Hwy. 59 S.
Robertsdale, AL 36567
251-947-4171



www.BaldwinTractor.com

KubotaUSA.com

*2020 Progressive Farmer Reader Insights Award for Fewest Reported Problems Overall in the category of Small Tractor (Under 100 Horse Power). Award based on 2020 Progressive Farmer Readers Insights Tractors Study. © Kubota Tractor Corporation, 2021. \$0 Down, 0% APR financing for up to 84 months available on purchases of new Kubota L01 series equipment from participating dealers' in-stock inventory is available to qualified purchasers through Kubota Credit Corporation, U.S.A.; subject to credit approval. Example: 84 monthly payments of \$11.90 per \$1,000 financed. Customer instant rebates of \$1000 are available on qualifying finance or \$1,500 on cash purchases of L01 series equipment. Additional instant rebate of \$400 is available with purchase of one new qualifying implement. Some exceptions apply. Offers expire 12/31/21. Terms subject to change. This material is for descriptive purposes only. Kubota disclaims all representations and warranties, express or implied, or any liability from the use of this material. For complete warranty, disclaimer, safety, incentive offer and product information, consult your Dealer or KubotaUSA.com.

1KB803467_L3301_F1_8-1_0716

TUESDAY, SEPTEMBER 21, 2021

Arnold Amusements opens at 5 p.m.

**\$20 Day = Admission and All Midway Rides FREE (All Over 36" Tall)
Includes All Rides and Entertainment FREE • No Passes Honored**

5:00 P.M. Baldwin County 4-H Animal Science Club Workshop,
"How to Take Care of Animals and their supplies while at the Fair." Arena
Arnold Amusement Opens
Tim Brown Entertainment
Baldwin County Museum Exhibits
Duck Pond and Baby Chicks
Petting Zoo
South Alabama Antique Tractor & Engine Exhibition
Teeny Weeny Circus
Street Fair Music & Food

WEDNESDAY, SEPTEMBER 22, 2021

Arnold Amusements opens at 5 p.m.

**\$20 Day = Admission and All Midway Rides FREE (All Over 36" Tall)
Includes All Rides and Entertainment FREE • No Passes Honored**

5:00 P.M. FCCLA Sweet Potato Contest in the Coliseum, Dawn Hopper, Coordinator
Arnold Amusement Opens
Tim Brown Entertainment
Baldwin County Museum Exhibits
Duck Pond and Baby Chicks
Petting Zoo
South Alabama Antique Tractor & Engine Exhibition
Teeny Weeny Circus
Street Fair Music & Food

THURSDAY, SEPTEMBER 23, 2021

Arnold Amusements opens at 5 p.m.

**\$20 Day = Admission and All Midway Rides FREE (All Over 36" Tall)
Includes All Rides and Entertainment FREE • No Passes Honored**

5:00-7:00 P.M. Admission free for senior citizens and veterans.
Special entertainment, Flashback band live
5:00 P.M. Arnold Amusement Opens
Tim Brown Entertainment
Baldwin County Museum Exhibits
Duck Pond and Baby Chicks
Petting Zoo
South Alabama Antique Tractor & Engine Exhibition
Teeny Weeny Circus
Street Fair Music & Food



WHERE Food MEETS Fun



Scan with your phone's camera to visit:
THEHANGOUT.COM
101 EAST BEACH BLVD. GULF SHORES, AL
251.948.3030



FRIDAY, SEPTEMBER 24, 2021

Arnold Amusements opens at 5 p.m.

Admission: Adults \$10 - Children FREE (Under 12 Years)

Midway Rides - 5:00 -10:00 P.M. - Tickets Only

Midnight Madness Midway Rides - 10:00 P.M. - 1:00 A.M.

\$20 Arm Bands For Unlimited Midway Rides

5:00 P.M.

Arnold Amusements Midway Opens

5:00 P.M.

Tim Brown Entertainment

Baldwin County Museum Exhibits

Duck Pond and Baby Chicks

Petting Zoo

South Alabama Antique Tractor & Engine Exhibition

Teeny Weeny Circus

7:00 P.M.

Bo Campbell Rodeo Productions at the Arena

Clown: TJ Williams; plus Special Entertainment

8:30 P.M.

Calf Scramble at the Arena

11:00 P.M.

Coliseum Closes

1:00 A.M.

Midway Closes

Street Fair Music & Food



WE'RE PEOPLE POWERED

From the folks behind the scenes, to the members who make it all possible, we're powered by people. And from county fairs to family dinners, we're proud to power the things our people love.

BALDWIN



Your Touchstone Energy[®]
Cooperative 

Learn more about the power of co-op membership at
www.baldwinemc.com or follow us on social media.



As Host City...

The City Administration & Citizens of Robertsdale

WELCOME

You To The 70th Annual Baldwin County

FAIR

**September 21
thru
September 25**



City Of
Robertsdale

The Hub of Baldwin County

Mayor: Charles Murphy

Council:

Sue Cooper, Joseph Kitchens, Ruthie Campbell
Paul Hollingsworth, Brent Kendrick

City Clerk: Shannon Burkett

City Attorney: Ken Raines

Chief Financial Officer: Joe Driver

Chief Of Police: Brad Kendrick

Public Works Director: Scott Gilbert

City Engineer: Greg Smith



SATURDAY, SEPTEMBER 25, 2021

Arnold Amusements opens at 1 p.m.

Admission: Adults \$10 - Children FREE (Under 12 Years)

Midway Rides - 1:00 P.M. - 5:00 P.M. - Arm Bands \$20 (Individual Tickets Available)
5:00 P.M. until Closing - Last Blast Arm Bands \$25

- 1:00 P.M.** Arnold Amusement Opens
Tim Brown Entertainment
Baldwin County Museum Exhibits
Duck Pond and Baby Chicks
Petting Zoo
South Alabama Antique Tractor & Engine Exhibition
Teeny Weeny Circus
- 7:00 P.M.** Bo Campbell Rodeo Productions at the Arena
Clown: TJ Williams; plus Special Entertainment
- 8:30 P.M.** Calf Scramble at the Arena
- 11:00 P.M.** Coliseum Closes
- 12:00 A.M.** Midway Closes
- Street Fair Music & Food*

HELLMICH ELECTRIC, INC.

Commercial/Residential
All Work Guaranteed
Licensed & Insured

Beth & Gary Hellmich, Owners
903 West Laurel Ave., Foley, AL 36535
251-943-2350
www.hellmichelectricinc.com



LOXLEY AUTO PARTS & HARDWARE

1051 North Hickory Street, Loxley, Alabama 36551

(251) 964-5013

FAX (251) 964-5015

*You'll find it at your locally
owned Loxley Auto Parts.*

**Check out our new
frontend alignment shop**



*Now
selling
tires*



Your 1 Stop Shop

QUALIFIED COUNTER PROS • COAST-TO-COAST GUARANTEE •
IMPORT PARTS SPECIALIST • FULL LINE OF HARDWARE

Auto Repair Shop

PIONEERING FAMILY – JOHNSON FAMILY CONTINUES TO SERVE BALDWIN COUNTY AGRICULTURE NEEDS

By John Underwood
john@gulfcoastmedia.com

SILVERHILL — The Baldwin County Cattle and Fair Association is pleased to honor the Johnson Family of Silverhill as the 2021 Pioneering Family at this year's Baldwin County Fair, which will be held Sept. 21-25 at the Baldwin County Coliseum and Fairgrounds in Robertsdale.

A native of Door County, Wisconsin, located north of Green Bay near the Sister Bay Community, John Emery Johnson was the youngest of three children, the son of John Carl and Lena Johnson, both born in the vicinity of Stockholm, Sweden.

The Johnson family, which included older siblings Mabel and Carlolgot, moved to Chicago in 1897, then to Baldwin County in 1899 by way of Mobile, traveling by rail, boat, and horse and wagon.

The elder Johnson was in the timber business before moving to Chicago, then later became a carpenter by trade and had a hand in building many of the residential and commercial structures in the early days of Silverhill.

He was also a farmer with extensive holdings and raised cattle.

John Emery Johnson was educated in Silverhill area schools and worked on his father's farm until, at the age of 19, he purchased a cotton gin in Silverhill from Charles and Patrick Norman that had been established in 1906.

"He established himself in business at a young age with the purchase of the cotton gin," said his son, Carl Johnson, "then later expanded that into a grist mill."

That same year, just one day before leaving for World War I, he lost his right arm in an accident at the plant.

"He ended up not serving in the War," Carl Johnson said. "He learned to do a lot of things with one arm that seemed difficult or impossible for somebody with one arm to do. I remember he would reach down and wiggle his hand above his shoe and somehow manage to tie a knot. I never did figure out how he could do that."

In 1923, back in Wisconsin Johnson married Alice Movine Seaquist, whose parents were also from Sweden and they had four children, Mildred, Lois, Helen and Carl.

In 1924, Johnson established the Robertsdale Grist & Feed Mill on the east side of the Louisville and Nashville Railroad.



SUBMITTED PHOTOS

Carl Emory Johnson around 1920.



Carl Emory Johnson and employees in front of the Robertsdale Grist & Feed Mill which was established in 1924 along the old L & N Railroad line.



Photos show the expansion of the Robertsdale Grist & Feed Mill.



Carl Emory Johnson with employees inside the mill.



The original gristmill on the family's property in Silverhill, taken in the summer of 1983.

Before World War II, Silverhill was the site of the Baldwin County Fair, sponsored by the Silverhill Chamber of Commerce, which Johnson served as president.

He served as past chairman of the Chamber, was active in the Baldwin County Farm Bureau (today known as the Alabama Farmer's Federation or Alfa), and was active as treasurer of the Parent Teachers Association.

In 1928, Johnson was elected to the Silverhill town council, then became mayor in 1934, an office which he served until his death in 1960. The business was sold in 1963.

Carl Johnson was born on the family's property in Silverhill near the original mill and cotton gin and still lives on the farm property today with his wife Sharon. Their children, Brian, Paul, Amy and their families also live on the property.

Carl Johnson's son, Carl Brian Johnson, owns and operates Robertsdale Feed, Seed & Supply, which was established by J.W. Clark in 1961 and has recently been named to serve on the Board of Directors for the Baldwin County Cattle and Fair Association.



IN MEMORY

Joyce Ellison, Fair secretary/treasurer, assistant manager, manager
George Campbell, longtime Board member and Board Member Emeritus
Tom Arnold Sr., owner of Arnold Brothers Amusement
Lila H. Fisk, longtime Fair volunteer



George Campbell: 1940-2021

George William Campbell, longtime Baldwin County Cattle and Fair Association Board member and Board Member Emeritus, passed away on Aug. 15, 2021 in Robertsdale where he lived his entire life.

Known affectionately as Uncle George, Campbell served on the Cattle and Fair Association Board for more than 40 years, including many years as President.

He was a 25-year member of the Robertsdale Masonic Lodge #821 and a charter member of the Baldwin County Sheriff's Posse.

He was also a longtime Board member for the Baldwin County Cattlemen's Association and was named a Lifetime Board Member by the Association.



Joyce Ellison: 1932-2021

The Baldwin County Fair family is mourning the loss of Joyce Amelia Dossett Ellison of Rosinton, who passed away on July 7, 2021. She was born in Eight Mile, graduated from Fairhope High School and was married to F.B. Ellison for more than 60 years, who served for many years on the Baldwin County Cattle and Fair Association's Board of Directors. Joyce served as secretary and treasurer for the Baldwin County Fair for many years, serving as assistant manager under Mayor Pervy Thames, following him as Fair manager.

SPECIAL ENTERTAINMENT- FLASHBACK BAND

The Flashback band will provide special entertainment at the 2021 Baldwin County Fair on Thursday, Sept. 23 at the Baldwin County Fairgrounds in Robertsdale. Based in Georgiana, the home of Hank Williams Sr., but drawing members from all over, the band features a variety of music from country to Oldies. They will be performing on Thursday from 5 to 7 p.m., when there will be free admission for senior citizens and veterans at the Fair.



ICE COLD REFRESHMENT



PETTING ZOO

ADPH release

MONTGOMERY — The Alabama Department of Public Health encourages using safe practices to prevent the spread of disease while attending petting zoos and animal exhibits during the 70th annual Baldwin County Fair.

ADPH encourages all those attending, especially children, to observe the “Wash Your Hands” and “No Food or Drink” signs that will be posted at points of entry and exit of animal exhibits.

Below are some simple and effective steps recommended to reduce the hazards to visitors of animal areas:

- Visitors should not eat or drink in the animal area.
- All visitors should wash their hands after leaving the animal area.
- Convenient hand-washing stations (using only potable water) with an available waterless hand sanitizer should be provided at the exit of the animal area.
- As an additional precaution, it is recommended that rabies vaccinations be given to all animals in petting zoo areas. Also, all animals which exhibit signs of illness should be removed from public contact immediately.

For more information visit the Alabama Department of Public Health website, alabamapublichealth.gov.



SUBMITTED PHOTO

Animals of all shapes and sizes will be available for kids of all shapes and sizes to enjoy at the 70th Baldwin County Fair Tuesday through Saturday, Sept. 21-25 at the Baldwin County Fairgrounds in Robertsdale.

2021 PROFESSIONAL COWBOY ASSOCIATION FINALS RODEO

CELEBRATING 70 YEARS OF
THE BALDWIN COUNTY FAIR!

Mississippi Coast Coliseum Biloxi

Visit our website for more details
www.pcarodeo.com/pca/pca-finals

Bo Campbell Rodeo Productions



RODEO CLOWN

T.J. Williams: Rodeo Entertainer Extraordinaire

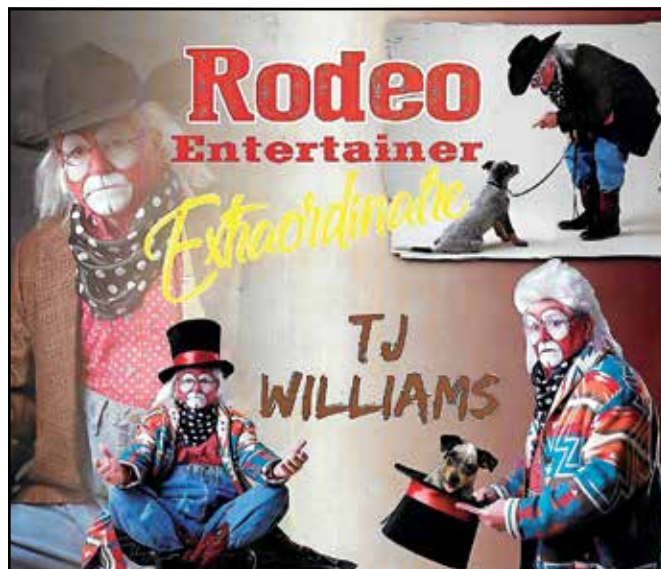
From Gorilla's caught to Going Green inventions, get ready to Live, Laugh and Love with Rodeo Entertainer Extraordinaire T.J. Williams at the 2021 Baldwin County Fair and Rodeo.

For almost 40 years, Williams has been involved with professional rodeo. He started as a bull rider and moved into clowning and bullfighting. As a clown/barrel man, he was featured at major IPRA Rodeos and on Primetime Country. He also was included in a special feature on Miranda's Outdoor Adventure magazine on ESPN.

In the mid '90s a strange set of circumstances put Williams' clown career on hold. The announcer he traveled with was injured by a bull and put in the hospital. He filled in for his friend and took on the announcing role for the remainder of the performances.

"I didn't like announcing but it liked me," he said. His efforts landed him at the prestigious International Finals Rodeo in Oklahoma City twice. He also landed the IPRA National All Region Finals twice and kept the bills paid.

Even with professional success in the announcing position, his heart has always called him back to clowning. A resurgence of offers came his way in 2018 and if there is one thing Williams knows is that one thing in life is certain,



change.

"I got the chance to return to what I love and I took it," he says. "I literally got an opportunity to get my act together!"

MID STATE STOCKYARDS LLP.

8415 State Highway 97 South, Letohatchee, AL 36047 - Interstate 65 Exit 151

Sale Day: Tuesdays 10:00 a.m.

1-877-334-5229 | 334-227-8000 www.midstatestockyards.com

"Serving the Southeast since our beginning in 2003"

The Fall Sale - November 6, 2021

Pharo Cattle - November 13, 2021

Partners:

Billy Younkin
334-313-3542

Scott Garrett
334-303-1488

Dick Farrior
334-399-0170

Drop-Off Locations:

Clanton -
205-288-6298

Wetumpka -
334-313-3695

East AL -
706-577-1900

Covington Co. -
334-488-0934

SW AL -
251-989-3992



BALDWINCOFAIR.COM



Celebrating 49 years

Owner: Rick Lowell

1050 S. Hickory, Loxley, AL
251.964.5834

Hwy. 59 N., Foley, AL • 251.943.5834

Power and performance to get the job done right.



SVL75-2 & New KX057-5

Durable Kubota engines

Comfortable cabs



Stop by to demo a Kubota excavators and track loaders today.

- The world's #1 selling compact excavator for over 15 years*
- SVL75-2 delivers incredible operator comfort with AC and suspension seat
- New KX057-5 features improved technology and spacious cab
- Renowned reliability and backed by broad dealer support

Together we do more.®

Baldwin Tractor & Equipment

22463 State Hwy. 59 S.

Robertsdale, AL 36567

251-947-4171

www.BaldwinTractor.com



KubotaUSA.com

*According to 2019 data from Off-Highway Research including all Kubota Group brand sales.

© Kubota Tractor Corporation, 2021. This material is for descriptive purposes only. Kubota disclaims all representations and warranties, express or implied, or any liability from the use of this material. For complete warranty, safety and product information, consult your local Kubota dealer. For the complete disclaimer, go to KubotaUSA.com/disclaimers and see the posted disclaimer.

ROBERTSDALE
RENT ALL

**RENTALS • SALES •
SERVICE • CONTRACTORS •
BUSINESSES • HOMEOWNERS**

OPEN
MON.-FRI. 7 AM - 5 PM
SAT. 7 AM - 12 PM



***"PROUD TO SERVE BALDWIN COUNTY'S
RENTAL EQUIPMENT NEEDS SINCE 1992"***

22463 Hwy. 59 So., Robertsdale, AL • 251-947-4567 • www.baldwintractor.com

BALDWINCOFAIR.COM



70th Baldwin County Fair 2021 • 25

ALABAMA HIGH SCHOOL RODEO QUEEN

Emma Watts

Emma Watts of St. Stephens, Alabama, is this year's Alabama High School Rodeo Queen.

She has held the title for three consecutive years, a first for the state of Alabama.

She competed during the High School Rodeo at the Baldwin County Cattle & Fair Arena.

She recently returned from Lincoln, Nebraska, where she competed for the National High School Rodeo Queen title. She placed 5th in the national competition.

She attends Leroy High School in Leroy.



SOUTH ALABAMA TRACTOR AND ANTIQUE ENGINE CLUB

New President Darrell Sudduth and the South Alabama Tractor and Antique Engine Club will bring nearly 100 tractors to the 70th Baldwin County Fair in Robertsdale Tuesday through Saturday, Sept. 21-25. Plans are to have between 80 and 100 restored antique tractor and engines on display. SAATEC also has antique farm machinery on display. According to its website, saatec.org, "The South Alabama Antique Tractor and Engine Club was founded to preserve the rich culture of agriculture from the past in order to educate the current generation of activities involved in the daily life of the past, present and future; to participate in shows, to display all types of items and activities relating to farming."



GCM FILE PHOTOS

Antique tractors from the South Alabama Tractor and Antique Engine Club earned blue ribbons at the 2019 Baldwin County Fair.



26 • 70th Baldwin County Fair 2021



BALDWINCOFAIR.COM

SOILKIT
A WOERNER FAMILY PARTNER

WWW.SOILKIT.COM

PERFECT FOR LAWN, GARDEN OR WILDLIFE PLANT	SOIL & SALTY COLLECTION
SCIENTIFIC RESULTS YOU CAN UNDERSTAND	FERTILIZER & NUTRIENT RECOMMENDATIONS

WE ANALYZE. YOU FERTILIZE.

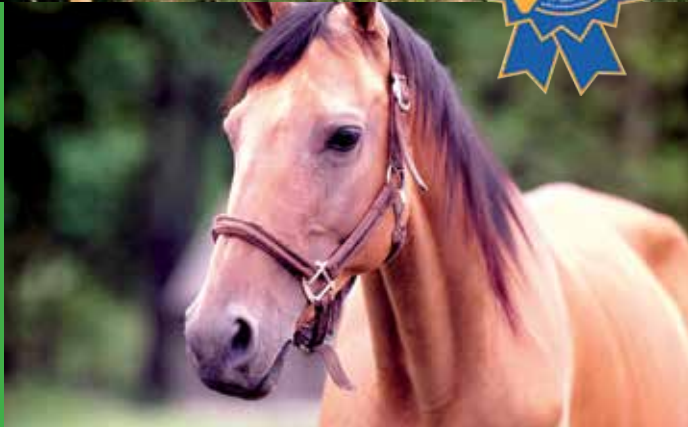
SOIL SAMPLE TEST IS PRE-PAID & MEASURES:
SOIL PH, PHOSPHORUS, POTASSIUM, MACROBIUM,
CALCIUM, BORON, ZINC, MANGANESE, IRON, COPPER

KIT INCLUDES: 1 SOIL SAMPLE BAG & 1 POSTAGE PAID ENVELOPE

Developed by Woerner Family Partners



Equine, Livestock & Poultry Supplies
Bulk & Bagged Feed
Animal & Pet Supplies
Lawn & Garden Supplies
Seed Treating



 **PURINA**

Now offering the complete line of Purina products!
3-Way Blends • 5-Way Blends • All Co-Op Brands
Bagged Feed for Wildlife

Certified Horticultural Retailer
Off Road & Marine Fuel
Garden Center



ELBERTA FARMERS CO-OP

13320 Main St. • Elberta, AL • 251-986-8103

Mon.-Fri 7:30am-5:00pm • Sat. 7:30am-12:00pm

Where Everyone's Welcome!

BALDWIN COUNTY'S ORIGINAL FULL SERVICE FARM CENTER

TEENY WEENY CIRCUS

The Teeny Weeny Circus returns to the 70th Annual Baldwin County Fair as an outdoor attraction for 2021.

Featuring veteran circus clown Elmo Gibb, the Teeny Weeny Circus needs just a 60-foot by 60-foot space for the equipment, the ring and the spectators. It is a half-hour show starring the Fido 5 performing dogs, Snickers, the mind-reading pony, along with Gibb.

A performer's performer, Elmo Gibb is a veteran of more than 35 seasons performing with major circuses all over the U.S. He has also performed in Canada, Mexico, the former Soviet Union, Japan and the Peoples Republic of China.

Elmo has been presenting Snickers, the mind-reading pony, and his canine friends, the Fido 5, since 1996.



BLUE RIBBON DAY



SUBMITTED PHOTO

Baldwin County Fair Manager A.B. "Sonny" Hankins Jr. presents blue ribbons to 100-year-old Elizabeth Sykora and her daughter Linda Sykora Gilmore at the 2019 Fair. Once again, residents will be vying for ribbons at the 70th Annual Baldwin County Fair which will be held Sept. 21-25 at the Baldwin County Fairgrounds in Robertsdale.

Gruenloh Hardy & ASSOCIATES

Certified Public Accountants

22193 Hwy 59 S. - Suite C • P.O. Box 895
Robertsdale, AL 36567

(251) 947-1040

1-800-788-1040

FAX: (251) 947-4040

We Salute The 70th Baldwin County

FAIR



18250



Racine's

Feed, Garden & Supply, Inc.

"Your Complete Garden Center"

Feed, Seed & Supplies



TIME TO PLANT!
(Mixes & Attractants)

BULK LIVESTOCK FEED

- Flowering Plants & Herbs
- Fruit & Citrus Trees
- Selection of Quality Hay
- Horse Feed, Pet Feed & Supplies

BULK SHELLED CORN



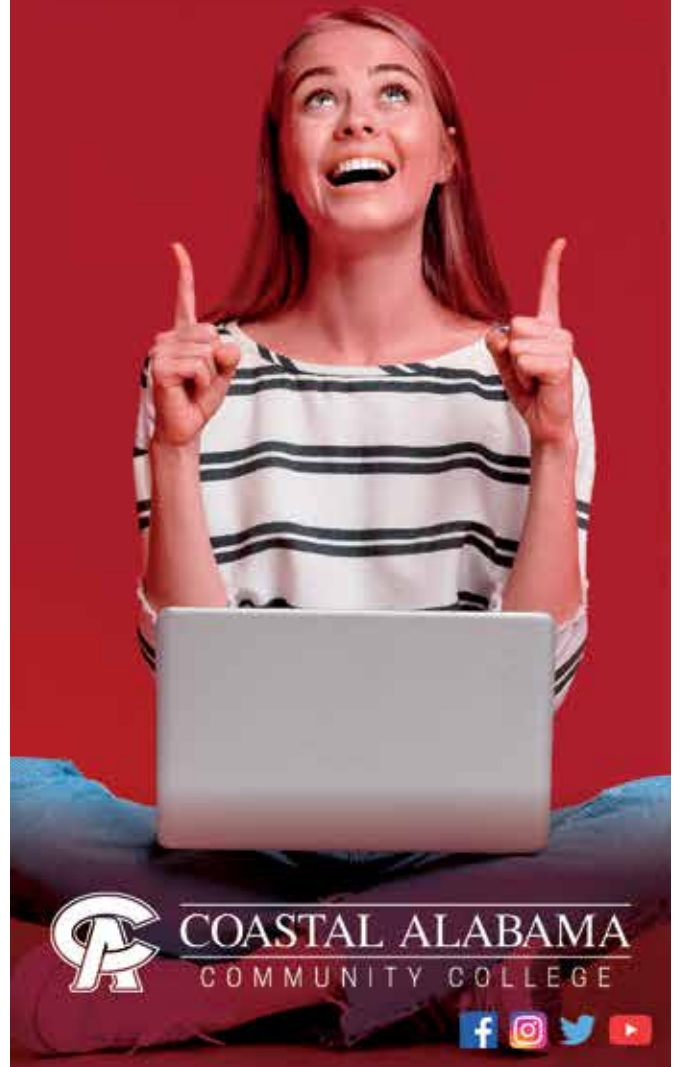
Hwy. 104, Robertsdale, AL
(1/4 mi. W. of Hwy.59)

251-947-3003

Mon-Fri 7:30am-5:00pm
Sat 7:30am-4pm

Visit Racine's on

YOU CAN AFFORD COLLEGE!



COASTAL ALABAMA
COMMUNITY COLLEGE



FCCLA SWEET POTATO CONTEST



PHOTO BY JOHN UNDERWOOD

Participants in the 2019 FCCLA Sweet Potato Contest prepare their entries for judging. The 2021 Baldwin County Fair will once again host the FCCLA Sweet Potato Contest beginning at 5 p.m. Thursday, Sept. 23 inside the Baldwin County Coliseum. Contact Dawn Hopper for more information.



Bob Shallow

Direct: 251-948-8888

#1 RE/MAX Agent in the USA 2005, 2006, & 2007

30+ years serving the Alabama Gulf Coast

RE/MAX Paradise

24037 Perdido Beach Blvd.
Orange Beach, AL 36561



www.BobShallow.com Cell: 251-979-0500 Bob@BobShallow.com 

ROBERTSDALE POWER EQUIPMENT

SCAG • STIHL • HUSQVARNA
ECHO • HONDA • TORO
DR TRIMMERS

Commercial and Residential



robertsdalepower.com

(251) 947-5372

Robertsdale Power Equipment

22965 Hwy. 59 Robertsdale, AL 36567

251-947-5372
robertsdalepower.com

OLD TYME FEED & GARDEN SUPPLY

*Lawn care, garden needs,
pet supplies & plants*



19580 Greeno Rd.
Fairhope, AL
928-1156



**OLD FASHION VALUES &
FRIENDLY SERVICE**

E Ebert Insurance Agency

Serving Baldwin County Since 1928

INSURANCE • BONDS

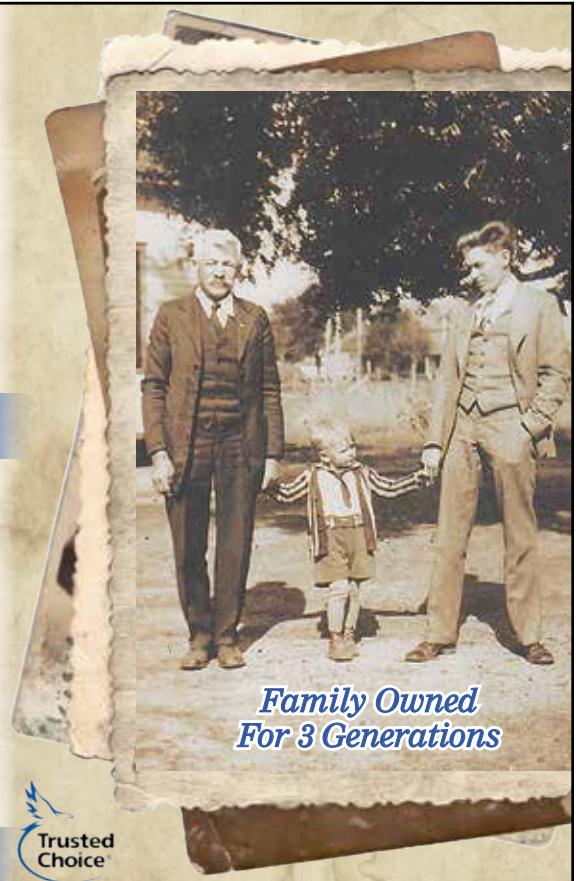
Charles J. Ebert, III
President

222 West Laurel Ave., Foley, Alabama

251-943-2281

Fax: 251-943-3801 • cebert@ebertagency.com

www.EbertAgency.com



*Family Owned
For 3 Generations*



ENJOYING THE FAIR



SUBMITTED PHOTOS

Residents of all ages enjoyed the 2019 Baldwin County Fair and are looking to come back again this year for the Fair, which will be held Sept. 21-25 at the Baldwin County Fairgrounds, Coliseum and Arena. Pictured at left, Sandra Edson and friend of Elberta supply poultry for the fair and are looking forward to coming back this year. Below, fast friends enjoy nature's harvest that is celebrated every year at the fair.



AMELIA & VERLA

TITLE SERVICES, INC.

Amelia G. Reiss

22885 Highway 59
Robertsdale, AL 36567

Phone: (251) 947-2798

Fax (251) 947-4599

Email: avtitleservices@gmail.com

COME JOIN US FOR THE LATEST

MOO's

Meetings monthly September – May;
Call for more information.

Baldwin Co Cattlemen FACS Jr. & Sr, State Competition

Scholarship • Beef promotions

**Come to our Cattlewomen's booth and sign up
for a chance to win a \$25.00 Beef Certificate.**

Drawing is nightly and do not need to be present to win.

Baldwin County Cattlewomen's Association

Dawn Hopper, President: 251-331-9028
Bobbie Lane, Vice-President: 251-508-0289

Secretary - Marjorie Ard

Treasurer - Shelly Yntema

Parliamentarian - Diane Sopr

Historian - Jesi Ward

Sunshine Coordinator - Evelyn Wright

Chaplain - Ruthie Campbell



TOWN OF LOXLEY

Gateway to Alabama's Paradise



1089 South Hickory Street, Loxley, AL 36551

Post Office Box 9, Loxley, AL 36551

Phone: 251-964-5162 or 251-964-6444

Fax: 251-964-5371

Website: www.townofloxley.org

Baldwin County Fair General Rules, Regulations & Premiums

DUE TO COVID-19, ALL PREMIUM AWARDS PENDING.

Individual Agricultural Exhibits

The Baldwin County Fair is scheduled to start on Tuesday, Sept. 21 and end the following Saturday, Sept. 25, 2021.

All agricultural articles and products for exhibit or competition in the fair must be entered on Friday, Sept. 17, 9 a.m.-5 p.m., Saturday, Sept. 18 or Monday, Sept. 20, 9 a.m.-6 p.m.

All items on display are entered in the name of the grower, maker, or owner, unless the Fair Management has approved otherwise.

The Fair will furnish competitive judges and their decisions are final. Judging is scheduled for Tuesday, Sept. 21, at 9 a.m. Only judges and their assistants are allowed in the Fair building during the selection process.

Competition is open to the general public.

Premiums positively will not be paid on items not listed. Ribbons will be awarded.

The Fair reserves the right to change the dates, any and all rules and declare off any classes or premiums because of acts of God, excessive rains or cause not within the power of the management to control, including the COVID-19 outbreak.

Entries

Premium awards are: 1st Place - \$10; 2nd Place - \$8; 3rd Place - \$6, except as noted. All winners are awarded for articles listed in this catalog.

In any class where entries are made by only one exhibitor, the Fair will award one premium. The decisions of the judges are final.

Exhibitors are limited to one entry in each class. All winners are awarded ribbons or cash premiums.

Tag stubs will be given to exhibitors when exhibits are entered. The stubs must be presented to identify the exhibit. Entry blanks can be found online at www.baldwincountyfair.com.

Premium checks are mailed ASAP following the last day of the fair.

Entries found to perpetrate a fraud are automatically disqualified and no premium shall be awarded, regardless of the judges' decision.

All entries must be original & completed within the previous 24 months.

The Fair reserves the right to judge the suitability of the entry.

Agronomy exhibits must have variety identification labels attached. The entries are not returned and become the property of the Baldwin County Fair.

Professional entries will be entered in the professional category.

All Exhibits must remain on display for the entire period of the Fair.

No premiums will be paid if exhibits are removed before stated time of release.

All special rules in other departments are equally binding as their general rules.

The Fair shall take every precaution for the safeguarding of exhibits. However, it should be understood that exhibits are entered in competition for premiums and that the owner assumes all responsibility for any loss or damage that may occur.

The Baldwin County Fair, owner of the Fair Grounds, will not be responsible or liable for accidents occurring upon any part of the said Fair Grounds, Concession Booths, Agriculture Building, Stock Barns or any other building, or tents. The management will undertake reasonable precaution in an endeavor to prevent any accidents.

The Baldwin County Fair, the owners of the Fair Grounds, are not responsible for said autos, trucks, or other vehicles or their contents, etc. while parked on the fair grounds, in the Agriculture Building or Stock Barns, etc. Management will endeavor to guard against loss or damage by using responsible precautions.

Children are forbidden to play near or around the agriculture exhibits, commercial displays, concession booths, or stock barns. Parents/guardians are responsible for behavior of minors under their care.

Decorations/Booth Exhibits:

Booth space shall be approximately 50 sqft. (Additional space see management.) All decorations must be freestanding and removed after the event. Use of nails, screws, staples, self adhering tape are prohibited. No decorations leaning against walls, doors or columns. No open-flame candles or gas-filled balloons are permitted. No landscape plants, portable fish ponds, fountains, or water prone exhibits. No cooking shall be

allowed on premises without approval of management. No alcohol or tobacco given away in exhibits. No exhibit booths shall be used that would encumber or cut off view of other exhibit booths. All booth space users shall clean up and remove all garbage after event is over. No smoke machines shall be used in buildings. Any and all other exhibit material not mentioned in these requirements, that are deemed harmful to the building or other booth space, by management, shall not be used. Free samples by approval only. All signs must be approved.

Exhibit of Livestock:

All livestock entered will be shown as an "Exhibition Entry." An "exhibition entry" will consist of a "pen of animals." One pen shall consist of less than 3 and no more than 5 head of uniform type animals of the same species. All awards will be given per pen not individual. No intact male animal will be allowed on grounds for exhibit judging. Due to limited space only 1 pen entry per person per farm.

- \$5 per poultry entry
- \$75 per pen of cattle. \$100 for three or more.
- \$75 per pen of goats. \$100 for for three or more.
- \$20 per head for goats
- \$5 per entry for rabbits
- \$75 per pen of exotic animals
- \$10 per head for sheep
- \$50 per hive (protective) apiary
- Due to accommodations, no registration for swine

Entries based on pen availability

WARNING Under Alabama law, an equine activity sponsor is not liable for injury or to the death of a participant in equine activities resulting from the inherent risks of equine activities, pursuant of the equine activities. Liability Protection Act.'

Livestock Exhibitor Code of Conduct:

The Baldwin County Fair is committed to responsible animal care and treatment. This Code of Conduct outlines what is expected of livestock exhibitors in the handling and exhibiting of all animals at our fair.

This Code has been developed to meet the following objectives:

- To ensure the health and well-being of all animals at the fair.
- To demonstrate an accurate and responsible animal care message to the public.
- To maintain the integrity of all livestock competitions, displays and sales.
- Livestock and poultry must be transported to and from the fair in accordance with all humane transport regulations and standards.
- Loading and unloading must be undertaken using proper equipment and procedures.
- All animals must be treated and handled in a responsible manner. The well-being of the animals shall take precedence over the demands of owners, sellers, buyers, organizers, sponsors and officials.
- The care of all animals must be as consistent as possible with their normal schedules and standards. High standards of nutrition, health, sanitation, environment and safety must be met at all times.
- Livestock should be prepared with proper training, fitting and grooming prior to the fair. Excessive disciplining of animals at the fair is unacceptable.
- Exhibitors are expected to provide adequate training for anyone handling their livestock. Untrained individuals, including fair personnel and visitors should not be permitted to handle animals or equipment.
- Exhibitors should take every opportunity to enhance public awareness, education and appreciation of proper livestock management and handling practices.

Rules and Regulations for Goats, Sheep, Poultry and Rabbits

- The judging of all animals will be judged on accomplishments.
- All animal exhibits will stay on exhibit for the full duration of the fair. Removal of the animals before the designated dismissal time will result in forfeiture of awards, unless approved by a fair official.
- All individuals exhibiting live animals are required to register their exhibits at the livestock registration table on Monday from 8 a.m. to 4 p.m. the week of the fair. Contestant numbers and stall/pen cards will be assigned at this time.
- If the animal does not fall into a specific recognized breed, it will be classified in an "Other" breed category. The same limit applies in this category (*See specific breed limitation)
- Stalls/pens, water and bedding will be

provided by the management. Each exhibitor will be responsible for furnishing their animal's water and feed devices and for keeping his/her area clean and neat during the fair.

- General care, grooming, cleaning stall and feeding of animals will be the responsibility of the exhibitor with assistance only from a parent, guardian or fellow exhibitor.
- Exhibitors and parents offering guidance are expected to demonstrate courtesy and respect toward all livestock, peer exhibitors and all individuals in the fairgrounds. Anyone exhibiting inappropriate behavior may be disqualified and/or asked to leave the premises.
- All animals must be the actual property of the exhibitor and registered at the fair under his or her name, not a group or farm name. Should any entry be found to be otherwise entered, any award by judges will be forfeited.
- In the event there is but one entry in a class, the placing shall depend on the merit of the entry and the award made at the discretion of the judge.
- Each exhibitor is encouraged to fill out a fact sheet about their exhibits to be displayed for additional interesting information about the particular animal or breed.

Specifics for Goats and Sheep

1. Exhibits must be does or ewes only. NO BUCKS, RAMS OR WITHERS ALLOWED.
2. The exhibitor may register up to 6 entries in the goat/sheep division.
3. Goats and ewes can be placed in stalls together as long as they are of the same breed and size is not an issue. Each goat or ewe will be judged as a single entry.

Specifics for Poultry

1. The exhibitor may register up to 3 chickens per breed.
2. Chickens may be a hen, rooster or a combination. Grouped by recognized breed. There will be a limit of 3 breeds that can be entered.
3. Each exhibitor entering more than 1 and up to 3 of a breed will place them in the same pen. Each pen will be judged as a single entry.
4. Exhibits of turkeys will be limited to a gobbler, hen or breeding pair of a recognized breed.
5. Exhibits of quail will be a limit of 6 per pen by recognized breed.
6. All other fowl for exhibit not mentioned

will be classed the day of registration.

Specifics for Rabbits

1. Each exhibitor member can exhibit a doe with or without litter and a buck from a recognized breed. No limits on the number of breeds.
2. Each pen will count as a single entry.

DEFINITIONS

Age Groups – Adult (A) – 19 years & over; and Senior (S) – ages 14 to 18; Intermediate (I) – ages 11 to 13; Elementary (E) – ages 6 to 10;

Agronomy – The application of soil and plant sciences to land management and crop production.

Amateur – A person who engages in an event or activity as a pastime rather than a professional – hobbyist.

Class – A group of like exhibits that are judged together: a sub-category of a department – same as lot.

Class Number – The number assigned to each class or lot.

Department – A generalized category of exhibits or a group of classes/lots.

Entry – An eligible exhibit that is entered and judged.

Exhibitor – Owner of the exhibit as shown on the entry form.

Exhibition Number – A permanent number that is assigned an exhibitor.

Handbook – A book that contains rules and regulation regarding entries in the Baldwin County Fair.

Horticulture – The cultivation of plants.

Professional – A person who engages in an event or activity for monetary profit. A skilled worker who practices some trade or handicraft. A creator of great skill in the manual arts. A person who teaches and/or instructs a particular craft or skill.

Registration

Friday, Saturday & Monday,

Sept. 17, 18 & 20

Entries accepted

9 a.m. to 5 p.m. Friday,

9 a.m. to 6 p.m.

Saturday and Monday

Pickup Days Following Week

Pickup entries 9 a.m. to 5 p.m.

DEPARTMENT A Arts & Crafts

ANTIQUES

All Ages

Rules

- Items must be at least 50 years old.
- Will be judged on rarity, craftsmanship, beauty, and age.
- Inside entry limited to 15".

Total Premiums \$777

Lot

- 01 Advertising Item
- 02 Antique Ag Equipment (Outside Only)
- 03 Antique Tractors (Outside Only)
- 04 Bank
- 05 Books
- 06 Camera
- 07 Carnival/Depression Glass
- 08 China
- 09 Clock/Watch
- 10 Clothing
- 11 Cut Glass
- 12 Document (Paper, Magazine, newspapers)
- 13 Dolls
- 14 Eye Glasses
- 15 Figurine
- 16 Glass Item
- 17 Gloves
- 18 Handcraft Item
- 19 Handkerchief
- 20 Item of Wood
- 21 Jewelry
- 22 Kitchen Item
- 23 Lamp
- 24 Leather Item
- 25 Metal Article
- 26 Milk Glass
- 27 Musical Instrument
- 28 Needlework
- 29 Other
- 30 Photograph
- 31 Pottery Article
- 32 Pressed Glass
- 33 Quilts
- 34 Silver
- 35 Small Tool for Hand Use
- 36 Sports
- 37 Telephone
- 38 Toy

ART

Total Premiums \$378

Adult (19 and older)

Class Entries

- 39 Pastel – Drawing
- 40 Pencil, Ink, Charcoal or Marker – Drawing
- 41 Acrylic – Painting
- 42 Oil – Painting
- 43 Watercolor – Painting

Youth

Class Entries

Art - Elementary (Ages 6 - 10)

- 44 Drawing – Other
- 45 Bead Art
- 46 Collage
- 47 Foil
- 48 Mixed Media
- 49 Other
- 50 Pastel – Drawing
- 51 Pencil, Ink, Charcoal, Marker or Crayon
- 52 Sculpture in the Round
- 53 Sculpture Relief
- 54 Acrylic – Painting
- 55 Oil – Painting
- 56 Watercolor – Painting

Art - Intermediate (Ages 11 - 13)

- 57 Drawing – Other
- 58 Bead Art
- 59 Collage
- 60 Foil
- 61 Mixed Media
- 62 Other
- 63 Pastel – Drawing
- 64 Pencil, Ink, Charcoal, Marker or Crayon
- 65 Sculpture in the Round
- 66 Sculpture Relief
- 67 Acrylic – Painting
- 68 Oil Painting
- 69 Watercolor – painting

Art - Senior (ages 14 - 18)

- 70 Drawing – other
- 71 Bead Art
- 72 Collage
- 73 Foil
- 74 Mixed Media
- 75 Other
- 76 Pastel – Drawing
- 77 Pencil, Ink, Charcoal or Marker – Drawing
- 78 Sculpture in the Round
- 79 Sculpture Relief
- 80 Acrylic Painting
- 81 Oil – Painting

- 82 Watercolor – Painting

HANDICRAFTS

Elementary (ages 6 - 10)

Class Entries

- 83 Articles in Leather
- 84 Bracelet
- 85 Bread Dough
- 86 Candle Wicking
- 87 Candles
- 88 Ceramics
- 89 Clay
- 90 Constructed Woodcrafts
- 91 Counted Cross Stitch
- 92 Crochet
- 93 Dream Catchers
- 94 Earrings
- 95 Embroidery
- 96 Gourd Painted
- 97 Hair Barrettes
- 98 Hair Bows
- 99 Handmade Doll
- 100 Individual Exhibit
- 101 Knitted Belt
- 102 Knitting
- 103 Lamp
- 104 Latch Hook
- 105 Miscellaneous Other Crafts
- 106 Mobiles
- 107 Necklace
- 108 Other
- 109 Paper Mache
- 110 Pillow
- 111 Potholders
- 112 Quilt
- 113 Sand Bottle Art
- 114 Shawl
- 115 Shell Craft
- 116 Toboggans

Intermediate (ages 11 - 13)

Class Entries

- 117 Constructed Woodcrafts
- 118 Articles in Leather
- 119 Bracelet
- 120 Bread Dough
- 121 Candle Wicking
- 122 Candles
- 123 Ceramics
- 124 Clay
- 125 Counted Cross Stitch
- 126 Crochet
- 127 Dream Catchers
- 128 Earrings
- 129 Embroidery
- 130 Gourd Painted
- 131 Hair Barrettes
- 132 Hair Bows
- 133 Handmade Doll

- 134 Individual Exhibit
- 135 Knitted Belt
- 136 Knitting
- 137 Lamp
- 138 Latch Hook
- 139 Miscellaneous Other Crafts
- 140 Mobiles
- 141 Necklace
- 142 Other
- 143 Paper Mache
- 144 Pillow
- 145 Potholders
- 146 Quilt
- 147 Sand Bottle Art
- 148 Shawl
- 149 Shell Craft
- 150 Toboggans

Seniors (Ages 14 - 18)

Class Entries:

- 151 Articles in Leather
- 152 Bread Dough
- 153 Candle Wicking
- 154 Candles
- 155 Ceramics
- 156 Clay
- 157 Constructed Woodcrafts
- 158 Counted Cross Stitch
- 159 Crochet
- 160 Dream Catchers
- 161 Embroidery
- 162 Hair Barrettes
- 163 Hair Bows
- 164 Individual Exhibit
- 165 Knitted Belt
- 166 Knitting
- 167 Lamp
- 168 Latch Hook
- 169 Mobiles
- 170 Other
- 171 Paper Mache
- 172 Pillow
- 173 Potholders
- 174 Quilt
- 175 Sand Bottle Art
- 176 Shawl
- 177 Shell Craft
- 178 Toboggans
- 179 Miscellaneous Other Crafts
- 180 Gourd Painted
- 181 Bracelet
- 182 Necklace
- 183 Handmade Doll

Adults (ages 19 and Older)

Class Entries

Afghans

- 184 Crochet
- 185 Knitted



Free Loader. Zero Down.
Low Interest for 84 Months.
On All Models.

LS Tractor



PARKWAY EQUIPMENT INC
 25091 STATE HWY 59, Between Robertsdale &
 Loxley | Loxley AL 36551
 251-964-6733 | www.parkwayequipment.com

Offer expires December 31, 2021. Excludes taxes and fees. A \$200 assembly fee may be assessed. Offer only valid upon purchase of a new qualifying tractor from a participating dealer's in-stock inventory. Subject to dealer participation and participating dealer inventory. Some exceptions apply. This material is for descriptive purposes only. LS Tractor USA, LLC disclaims all representations and warranties, express or implied, or any liability from the use of this material. Offer may not be valid in all states or situations. Residency restrictions may apply. All promotions and terms may change or end at any time without notice. Additional terms and conditions may apply. See participating dealer for details. For complete warranty, disclaimer, safety, incentive offer and product information, see participating dealer.



COMPACT-PRO® 34

15.5 HP KAWASAKI®
34 IN. DECK

ZERO PERCENT
FINANCING.

WITH APPROVED CREDIT



PARKWAY EQUIPMENT INC

25091 State Hwy 59 | Loxley, AL | www.parkwayequipment.com

186 Miscellaneous Other

Christmas

- 187 Decorations
- 188 Tree Skirts
- 189 Stockings
- 190 Religious
- 191 Tree Ornaments

Crochet

- 192 Tablecloth
- 193 Doily
- 194 Sweater or Blouse
- 195 Baby Items

Dolls - Adults (19 and older)

- 196 Porcelain
- 197 Other

Embroidery, Cross Stitch & Needlepoint

- 198 Punch Embroidery
- 199 Liquid Embroidery
- 200 Ribbon Embroidery
- 201 Candle Wicking
- 202 Crewel Items
- 203 Counted Cross Stitch
- 204 Stamped Cross Stitch
- 205 Holiday Decorations - Needlework
- 206 Baby Items - Needlework
- 207 Needlepoint
- 208 Tatting

Hand Woven Work

- 209 Baby Blankets
- 210 Woven Blankets
- 211 Place Mats
- 212 Rugs

Knitted

- 213 Baby Articles
- 214 Sweater
- 215 Miscellaneous Items
- 216 Poncho
- 217 Scarves

Other Decorative Artwork

- 218 Aprons
- 219 Decoupage
- 220 Bathroom Accessories
- 221 Bath Towels
- 222 Hand Towels
- 223 Calligraphy
- 224 Ceramic
- 225 Copper Tooling
- 226 Gourd Painted
- 227 Household Accessories, i.e. kitchen, etc.
- 228 Stained Glass

- 229 Leather items
- 230 Macrame Items
- 231 Faux Stained Glass
- 232 Mobiles
- 233 Pine Needle Weaving
- 234 Plastic Craft
- 235 Pottery
- 236 Tole Painting
- 237 Toy - handmade
- 238 Wall Hanging - Decorative

Pillows

- 239 Decorative
- 240 Embroidery
- 241 Pieced
- 242 Quilted
- 243 Other

Shirts Decorated

- 244 T-shirt or Sweatshirt
- 245 Regular Shirt
- 246 Vests
- 247 Other Appropriated Apparel - Blouses, Etc.

Wood

- 248 Sculpture - Scroll
- 249 Woodcraft
- 250 Wood Burning
- 251 Woodworking
- 252 Woodcarving
- 253 Bird House/ Feeder
- 254 Ornament/ Cane/ Mixed Wood

Jewelry/ Hair Accessories

- 255 Handmade Jewelry - Necklace
- 256 Handmade Jewelry - Bracelet
- 257 Handmade jewelry - Earrings
- 258 Handmade Jewelry - Other
- 259 Embroidery
- 260 Hair Barrettes
- 261 Other

ENVIRONMENTAL

Rules

- Clearly label all collections.

Adults

Class Entries

- Art**
- 262 Driftwood Art
- 263 Feather
- 264 Miscellaneous
- 265 Pine Cone Decoration
- 266 Pine Needle Art

- (non-woven)
- 267 Sand Painting

Educational

- 268 Insect Collection
- 269 Leaf Collection
- 270 Rock/ Gem/ Mineral Collection
- 271 Sea Shell Collection

Youth

Class Entries

Art - Elementary (Ages 6 - 10)

- 272 Driftwood Art
- 273 Feather
- 274 Miscellaneous
- 275 Pine Cone Decoration
- 276 Pine Needle Art (non-woven)
- 277 Sand Painting

Educational - Elementary (Ages 6 - 10)

- 278 Insect Collection
- 279 Leaf Collection
- 280 Rock/ Gem/ Mineral Collection
- 281 Sea Shell Collection

Art - Intermediate (Ages 11 - 13)

- 282 Driftwood Art
- 283 Feather
- 284 Miscellaneous
- 285 Pine Cone Decoration
- 286 Pine Needle Art (non-woven)
- 287 Sand Painting

Educational - Intermediate (Ages 11 - 13)

- 288 Insect Collection
- 289 Leaf Collection
- 290 Rock/ Gem/ Mineral Collection
- 291 Sea Shell Collection

Art - Seniors (Ages 14 - 18)

- 292 Driftwood Art
- 293 Feather
- 294 Miscellaneous
- 295 Pine Cone Decoration
- 296 Pine Needle Art (non-woven)
- 297 Sand Painting

Educational - Seniors (Ages 14 - 18)

- 298 Insect Collection
- 299 Leaf Collection
- 300 Rock/ Gem/ Mineral Collection
- 301 Sea Shell Collection

SCRAPBOOKING

Adults

Class Entries

- 302 Achievements
- 303 Birthdays
- 304 Family Heritage
- 305 Holidays
- 306 Seasons
- 307 Weddings
- 308 Vacations/ Trips

Youth

Elementary (Ages 6 - 10)

- 309 Achievements
- 310 Birthdays
- 311 Family Heritage
- 312 Holidays
- 313 Seasons
- 314 Weddings
- 315 Vacations/ Trips

Intermediate (Ages 11 - 13)

- 316 Achievements
- 317 Birthdays
- 318 Family Heritage
- 319 Holidays
- 320 Seasons
- 321 Weddings
- 322 Vacations/Trips
- Seniors (Ages 14 - 18)**
- 323 Achievements
- 324 Birthdays
- 325 Family Heritage
- 326 Holidays
- 327 Seasons
- 328 Weddings
- 329 Vacations/ Trips

SEWING

Adult

Class Entries

- 330 Active Sportswear
- 331 Blouses
- 332 Bonnet or Hat
- 333 Children's Dress Clothes
- 334 Children's Play Clothes
- 335 Dress
- 336 Dress with Jacket
- 337 Dressy Apparel (formal dress long/ short or skirt)
- 338 Jacket and blouse
- 339 Jacket or Coat
- 340 Other
- 341 Pants
- 342 Purse
- 343 Scarves
- 344 Shirt
- 345 Shorts

- 346 Skirts
- 347 Sleepwear – gowns, pajamas, robe
- 348 Smocked Baby Garment
- 349 Smocked Bonnet
- 350 Smocked Children's Dress Clothing
- 351 Smocked Garmet
- 352 Suits – includes skirt or pants

Quilts

- 353 Appliqued
- 354 Baby
- 355 Hand quilted
- 356 Handmade
- 357 Lap Quilt
- 358 Machine quilted
- 359 Other

Youth

Class Entries

Intermediate (Ages 11 - 13)

- 360 Apron
- 361 Blouse or Shirt
- 362 Dress
- 363 Handbag
- 364 Other
- 365 Pants
- 366 Scarves
- 367 Shorts
- 368 Skirt
- 369 Suit

Senior (Ages 14 - 18)

- 370 Apron
- 371 Blouse or shirt
- 372 Dress
- 373 Handbag
- 374 Other
- 375 Pants
- 376 Scarves
- 377 Shorts
- 378 Skirt
- 379 Suit

DEPARTMENT C
Community Exhibits

- 01 – School and Education Exhibits
- 02 – Civic and Public Service Exhibits
- 03 – Governmental Exhibits
- 04 – Armed Forces Exhibits & Veteran's Organizations

- 05 – Youth Groups Exhibits
- 06 – Religious and Church Exhibits
- 07 – Extension Homemakers & Community Club Exhibit
- 08 – 4-H Clubs Exhibits
- 09 – FFA, FHA, FCCLA Exhibits
- 10 – Total Commercial Exhibits

Rules:

Clubs may use any of the following subjects for an exhibit:

- ◆ Recreation
- ◆ Foods and Nutrition
- ◆ Food Preservation
- ◆ Clothing
- ◆ Safety
- ◆ Health
- ◆ Housing, energy & environment, furnishings
- ◆ Family relationship & child development
- ◆ Family resource management
- ◆ Gardening

1. Exhibits are judged as follows:

1. Theme originality & consistency	15
2. Educational value	25
3. Quality of material and workmanship	40
4. Attractiveness of arrangement	10
5. Presentation	10
Total	100

2. Premium Awards:

- * Best in Show Award \$125.00
- 1st Place - \$100
- 2nd Place - \$ 75
- 3rd Place - \$ 50

3. Clubs whose exhibits meet all the judges' requirements will receive an entry premium of \$25.00. Clubs that win premiums will not receive an entry premium.

4. 4-H, FCCLA, Scout Troops and FFA Clubs are judged separately. Any youth clubs other than 4-H, FCCLA, FFA and Scouts are judged as a group.

5. All clubs and groups are invited to exhibit in the education

area. (1) 8' table provided. Exhibits must be free standing. Displays must be no more than 8' high.

6. Each club/community exhibit and/or livestock entry will receive TWO gate passes. - No Exceptions and No rain checks!

7. All banners must be approved.

DEPARTMENT F
Food Preparation & Preservation
BAKING

Rules:

- Package all baked items with transparent wrap on a paper plate.
- Bring one third cake, pie, or bread with a slice cut and wrapped for judging.
- Bring six cookies or candies wrapped for judging.
- Products baked with a mix or prepared pie crust are not eligible for judging.
- Label your product (example: banana bread, chocolate chip cookies)
- Age Categories: Adult (19 & up), Senior (14-18) & Intermediate (11-13)

Adults

Class Entries:

- 01 Biscuits
- 02 Brownies
- 03 Cake – Angel Food, un-iced
- 04 Cake – Bundt – iced or un-iced
- 05 Cake - Chiffon Cake
- 06 Cake – Date Cake, un-iced
- 07 Cake – Decorated
- 08 Cake – Fruit Cake, un-iced
- 09 Cake – Layer Cake with icing
- 10 Cake – Loaf Cake with icing
- 11 Cake – Pound
- 12 Cake – Sourdough
- 13 Cake – Spice
- 14 Candies/ Cookies – Bars and Squares
- 15 Candies Cookies – Chocolate Chip Cookies
- 16 Candies/ Cookies – Date Cookies
- 17 Candies/ Cookies – Divinity
- 18 Candies/ Cookies – Drop Cookies
- 19 Candies/ Cookies – Fudge
- 20 Candies/ Cookies – Oatmeal Cookies
- 21 Candies/ Cookies – Other Candies
- 22 Candies/ Cookies – Peanut Brittle
- 23 Candies/ Cookies – Peanut Butter Cookies
- 24 Candies/ Cookies – Pralines
- 25 Candies/ Cookies – Rolled Cookies
- 26 Other Baked Goods – Cheese Straws
- 27 Other Baked Goods – Cinnamon Rolls
- 28 Other Baked Goods – Danish Pastry
- 29 Other Baked Goods – Muffins
- 30 Other Baked Goods – Quick Bread
- 31 Other Breads – Banana Bread
- 32 Other Breads – Fruit Bread
- 33 Other Breads – Zucchini Bread
- 34 Other – Fruit Bread
- 35 Pies – Apple Pie
- 36 Pies – Pecan Pie
- 37 Pies – Sweet Potato Pie
- 38 Yeast Bread – One-Third Swedish Tea Ring
- 39 Yeast Breads – One-Third Coffee Cake
- 40 Yeast Breads – One-Third Fruit Bread
- 41 Yeast Breads – One-Third Loaf Bread
- 42 Yeast Breads – One-Third Loaf, Bread Machine (white)
- 43 Yeast Breads – One-Third Nut Bread
- 44 Yeast Breads –

45	One-Third Strudel	83	Drop Cookies – 6			151	Jams or Preserves – Strawberry Preserves
	Yeast Breads – One-Third Yeast Bread, Rye	84	Fudge – 6 pieces	119	Canned Vegetables – Peas – English	152	Jams or Preserves – Watermelon Rind Preserves
46	Yeast Breads – One-Third Yeast Bread, White	85	Muffins – 6	120	Canned Vegetables – Peas – Field	153	Jelly – Apple
47	Yeast Breads – One-third yeast bread, Whole Wheat	86	Oatmeal Cookies	121	Canned Vegetables – Potato – Irish	154	Jelly – Blackberry
48	Yeast Breads – Rolls – 6	87	One-Third Layer Cake, Iced	122	Canned Vegetables – Potato – Sweet	155	Jelly – Blueberry/Huckleberry
49	Yeast Breads – Sourdough Breads	88	One-Third Loaf, Quick Bread	123	Canned Vegetables – Pumpkin	156	Jelly – Elderberry
50	Yeast Breads – Whole Wheat Cheese Bread	89	One-Third Loaf Yeast Bread	124	Canned Vegetables – Rutabaga	157	Jelly – Kumquat
		90	One-Third Pound Cake	125	Canned Vegetables – Sauerkraut	158	Jelly – Loquat
		91	One-Third yeast Coffee Cake	126	Canned Vegetables – Soup Mixtures	159	Jelly – Other Jellies
		92	Other Cakes	127	Canned Vegetables – Spices	160	Jelly – Pear
		93	Peanut Brittle	128	Canned Vegetables – Squash	161	Jelly – Pepper
		94	Other Candy	129	Canned Vegetables – Tomato Juice	162	Jelly – Pepper
		95	Peanut Butter Cookies	130	Canned Vegetables – Tomatoes	163	Jelly – Plums
		96	Popcorn Balls	131	Dried Foods – Jerky, Beef, Venison, Etc.	164	Jelly – Scuppernong/Muscadine
		97	Rolls – 6	132	Dried Foods – Other Foods	165	Jelly – Strawberry
				133	Dried Fruit	166	Pickles & Relishes – Beet Pickles
				134	Dried Herbs	167	Pickles & Relishes – Bread and Butter Pickles
				135	Dried Vegetables	168	Pickles & Relishes – Chow Chow
				136	Jams or Preserves – Apple Butter	169	Pickles & Relishes – Cinnamon Stick Pickles
				137	Jams or Preserves – Blackberry Jam	170	Pickles & Relishes – Corn Relish
				138	Jams or Preserves – Fig Preserves	171	Pickles & Relishes – Cucumber or Tomato
				139	Jams or Preserves – Marmalade	172	Pickles & Relishes – Dill Pickles
				140	Jams or Preserves – Other Jams	173	Pickles & Relishes – Fruit
				141	Jams or Preserves – Other Jams	174	Pickles & Relishes – Green Tomato Pickles
				142	Jams or Preserves – Other Preserves	175	Pickles & Relishes – Hot Pepper Pickles
				143	Jams or Preserves – Peach Jam	176	Pickles & Relishes – Other Pickles
				144	Jams or Preserves – Peach Pickles	177	Pickles & Relishes – Pear Pickles
				145	Jams or Preserves – Peach Preserves	178	Pickles & Relishes – Pepper Sauces
				146	Jams or Preserves – Pear Butter	179	Pickles & Relishes – Pickled Eggs
				147	Jams or Preserves – Pear Jam	180	Pickles & Relishes – Pickled Okra
				148	Jams or Preserves – Pear Preserves	181	Pickles & Relishes – Salsa
				149	Jams or Preserves – Plum Preserves	182	Pickles & Relishes – Sauces
				150	Jams or Preserves – Strawberry Jam	183	Pickles & Relishes – Squash Pickles
						184	Pickles & Relishes – Sweet Pepper Pickles
						185	Pickles & Relishes – Sweet Pickles

Youth

Class Entries

Intermediate (Ages 11 – 13)

51	Biscuits
52	Brownies – 6 pieces
53	Candied Nuts
54	Candy – 6 pieces
55	Cheese Straws
56	Chocolate Chip Cookies – 6
57	Cinnamon Rolls
58	Cupcakes - 6
59	Date Cookies
60	Divinity – 6 pieces
61	Drop Cookies
62	Fudge – 6 pieces
63	Muffins – 6
64	Oatmeal Cookies – 6
65	One-Third Coffee Cake, Yeast
66	One-Third Loaf Bread, Quick
67	One-Third Loaf, Yeast Bread
68	Other Cookies – 6
69	Peanut Brittle – 6 pieces
70	Peanut Butter Cookies – 6
71	Popcorn Balls
72	Sourdough Bread
73	Yeast Rolls – 6

Seniors (ages 14 – 18)

74	Biscuits
75	Brownies
76	Candied Nuts
77	Cheese Straw
78	Chocolate Chip Cookies – 6
79	Cinnamon Rolls
80	Cupcakes – 6
81	Date Cookies
82	Divinity – 6 pieces

CANNING

Adults

98	Canned Fruits – Blackberries or Dewberries
99	Canned Fruits – Blueberries
100	Canned Fruits – Figs
101	Canned Fruits – Other Fruits
102	Canned Fruits – Peaches
103	Canned Fruits – Pears
104	Canned Fruits – Plums
105	Canned Meats – Beef
106	Canned Meat – Fish
107	Canned Meat – Pork
108	Canned Meat – Poultry
109	Canned Meat – Wild Game
110	Canned Vegetables – Beets
111	Canned Vegetables – Butterbeans
112	Canned Vegetables – Carrots
113	Canned Vegetables – Corn
114	Canned Vegetables – Green or Wax Beans
115	Canned Vegetables – Mixed Vegetables
116	Canned Vegetables – Okra
117	Canned Vegetables – Other Vegetables
118	Canned Vegetables –

186 Pickles & Relishes – Vegetables	204 Canned Vegetables – Mixed Vegetables	Tomato Juice	Pear Jam
187 Syrups – Cane Syrup	205 Canned Vegetables – Okra	220 Canned Vegetables – Tomatoes	237 Jams or Preserves – Pear Preserves
188 Syrups – Sorghum	206 Canned Vegetables – Other Vegetables	221 Dried Foods – Dried Fruit	238 Jams or Preserves – Plum Preserves
Youth	207 Canned Vegetables – Peanuts	223 Dried Foods – Dried Herbs	239 Jams or Preserves – Strawberry Jam
Seniors (Ages 14 - 18)	208 Canned Vegetables – Peas – English	224 Dried Foods – Dried Vegetables	240 Jams or Preserves – Strawberry Preserves
189 Canned Fruits – Figs	209 Canned Vegetables – Peas – Field	225 Dried Foods – Jerky	241 Jams or Preserves – Watermelon Rind Preserves
190 Canned Fruits – Oth- er Fruits	210 Canned Vegetables – Peppers	226 Dried Foods – Other Foods	242 Jelly – Apple
191 Canned Fruits – Peaches	211 Canned Vegetables – Potato – Irish	227 Jams or Preserves – Apple Butter	243 Jelly - Blackberry
192 Canned Fruits – Pears	212 Canned Vegetables – Potato – Sweet	228 Jams or Preserves – Blackberry Jam	244 Jelly – Blueberry/ Huckleberry
193 Canned Fruits – Plums	213 Canned Vegetables – Pumpkin	229 Jams or Preserves – Fig Preserves	245 Jelly - Elderberry
194 Canned Meats – Beef	214 Canned Vegetables – Rutabaga	230 Jams or Preserves – Marmalade Jam	246 Jelly - Grape
195 Canned Meat – Fish	215 Canned Vegetables – Sauerkraut	231 Jams or Preserves – Other Jams	247 Jelly - Loquat
196 Canned Meat – Pork	216 Canned Vegetables – Soup Mixtures	232 Jams or Preserves – Other Preserves	248 Jelly – Other Jellies
197 Canned Meat – Poul- try	217 Canned Vegetables – Spices	233 Jams or Preserves – Peach Jam	249 Jelly - Pear
198 Canned Meat – beef	218 Canned Vegetables – Squash	234 Jams or Preserves – Peach Preserves	250 Jelly - Pepper
199 Canned Vegetables – beets	219 Canned Vegetables –	235 Jams or Preserves – Pear Butter	251 Jelly - Plum
200 Canned Vegetables – Butterbeans		236 Jams or Preserves –	252 Jelly – Scuppernong/ Muscadine
201 Canned Vegetables – Carrots			253 Jelly – Strawberry
202 Canned Vegetables – Corn			254 Pickles & Relishes – Beet Pickle
203 Canned Vegetables – Green or Wax Beans			255 Pickles & Relish- es –Bread & butter Pickles



Pd pol ad by Huey "Hoss" Mack, P.O. Box 1964 Robertsdale, AL 36567

- 256 Pickles & Relishes – Chow Chow
- 257 Pickles & Relishes – Cinnamon Stick Pickles
- 258 Pickles & Relishes - Corn
- 259 Pickles & Relishes – Cucumber or Tomato
- 260 Pickles & Relishes – Dill Pickles
- 261 Pickles & Relishes -Fruit
- 262 Pickles & Relishes – Green Tomato Pickles
- 263 Pickles & Relishes – Hot Pepper Pickles
- 264 Pickles & Relishes – Other Pickles
- 265 Pickles & Relishes - Peach
- 266 Pickles & Relishes - Pear
- 267 Pickles & Relishes – Pickled Eggs
- 268 Pickles & Relishes – Pickled Okra
- 269 Pickles & Relishes -Salsa
- 270 Pickles & Relishes - Sauces
- 271 Pickles & Relishes – Squash Pickles
- 272 Pickles & Relishes – Sweet Pepper Pickles
- 273 Pickles & Relishes – Sweet Pickles
- 274 Pickles & Relishes – Vegetables

DEPARTMENT H

Horticulture & Agronomy

HORTICULTURE

Rules:

- Amateur Horticulturist may enter examples of their accomplishment.
- All entries should be pest and disease free.
- Label entries with the common and botanical name (example: Split leaf Philodendron: *Monstera deliciosa*).
- Judging Criteria:
- Color, vigor and general appearance

- Presentation
- Uniqueness of plant selections

Specimen House Plant – Class H

- 1 African Violet
- 2 Fichus
- 3 Peace Lily
- 4 Etc

Specimen Patio Plant – Class I.

(Minimum 8-inch container with maximum height of 7 feet including container).

- 5 Citrus
- 6 Shrubs
- 7 Trees
- 8 Etc.

Hanging Baskets (No Ferns) – Class M

(Minimum 8-inch container)

- 9 Heartleaf philodendron
- 10 Pothos
- 11 Etc.

Container Gardens, Novelty and Display – Class N

- 12 Annual Display
- 13 Herb Garden
- 14 Topiary
- 15 Perennial Display
- 16 Etc.

Cut Flowers – Class O

- Entries must be displayed in suitable containers
- 17 Aster hardy (Michaelmas Daisy)
- 18 Cardinal's Guard
- 19 Celosia: Sub Color
- 20 Chrysanthemum
- 21 Celosia (Spider Flower)
- 22 Cornflower
- 23 Dianthus
- 24 Gerbera Daisy
- 25 Marigolds – 1 Spray
- 26 Pentas – 3 Spray
- 27 Petunia – 1 Spray
- 28 Phlox Perennial – 1 Stalk
- 29 Salvia
- 30 Sunflowers
- 31 Verbena – 3 Stems
- 32 Zinnia
- 33 Flowers from Bulbs
- 34 Ginger

- 35 Etc.
- 36 Spider Lily
- 37 Roses

Floral Design – Class P

- 38 Tablescapes

AGRONOMY

Rules:

- Entries must be the product of the current calendar year.
- All entries must have labels/ tags attached clearly identifying the variety name.

Adult (19 and older)

- 39 Best 5 lbs. Bahia Grass Seed (all varieties)
- 40 Best Citrus Fruits (Satsumas, Kumquats, Lemons)
- 41 Best Display of Garden Products (5 or more products)
- 42 Best Category of Irish Potatoes
- 43 Best Category of Okra (6 or more pods)
- 44 Best Category of Peas – any variety
- 45 Best Tomatoes (6 or more)
- 46 Biggest Pumpkin
- 47 Biggest Watermelon
- 48 Banana Pepper (sweet)
- 49 Banana
- 50 Beans
- 51 Bell pepper
- 52 Butter Beans
- 53 Cabbage (1 head)
- 54 Chili Peppers
- 55 Cinquapins
- 56 Corn – 3 ears –any variety
- 57 Cucumbers
- 58 Eggplants
- 59 Eggs
- 60 Figs
- 61 Gourds
- 62 Grain sorghum
- 63 Grapefruit
- 64 Hot Pepper
- 65 Honey-Pint Jar
- 66 Jalapeno Peppers
- 67 Japanese Persimmons (6 or more)
- 68 Japanese Radish
- 69 Kumquats
- 70 Lemons

- 71 Loquat
- 72 Oats
- 73 Onions
- 74 Oranges
- 75 Ornamental Vegetables
- 76 Other Fruit
- 77 Peanuts
- 78 Pears
- 79 Pecans – Quart jar – all shell varieties
- 80 Peppers
- 81 Pomegranates
- 82 Satsuma
- 83 Scuppernongs/Muscadines
- 84 Soybeans- Quart Jar – Any Variety
- 85 Squash (any variety)
- 86 Sweet Potatoes (best dozen/ any variety)
- 87 Wheat – Quarter Jar- Any Variety
- 88 Winter Squash
- 89 Millet
- 90 Other
- 91 Pumpkin
- 92 Comb Honey
- 93 Okra (6 pods)
- 94 Watermelon
- 95 Nuts

Elementary (ages 6 - 10)

- 96 Best 5 lbs. Bahia Grass Seed (all varieties)
- 97 Best Citrus Fruits (Satsumas, Kumquats, Lemons)
- 98 Best Display of Garden Products (5 or more products)
- 99 Best Category of Irish Potatoes
- 100 Best Category of Okra (6 or more pods)
- 101 Best Category of Peas – any variety
- 102 Best Tomatoes (6 or more)
- 103 Biggest Pumpkin
- 104 Biggest Watermelon
- 105 Banana Pepper (sweet)
- 106 Banana
- 107 Beans
- 108 Bell Pepper
- 109 Butter Beans
- 110 Cabbage (1 head)
- 111 Chili Peppers
- 112 Chinquapins

113	Corn – 3 ears – any variety	Okra (6 or more pods)	207	Watermelon	249	Peppers		
114	Cucumbers	158	Best Category of Peas – any variety	208	Nuts	250	Pomegranates	
115	Eggplants	159	Best Tomatoes (6 or more)	Seniors (ages 14 – 18)			251	Satsuma
116	Eggs – 3	160	Biggest Pumpkin	209	Best 5 lbs. Bahia Grass Seed (all varieties)	252	Scuppernongs/Muscadines	
117	Figs	161	Biggest Watermelon	210	Best Citrus Fruits (Satsumas, Kumquats, Lemons)	253	Soybeans – Quart Jar – any variety	
118	Gourds	162	Banana Pepper (sweet)	211	Best Display of Garden Products (5 or more products)	254	Squash (any variety)	
119	Grain Sorghum	163	Banana	212	Best Category of Irish Potatoes	255	Sweet Potatoes (best dozen/ any variety)	
120	Grapefruit	164	Beans	213	Best Category of Okra (6 or more pods)	256	Wheat – Quarter Jar – any variety	
121	Hot Pepper	165	Bell Pepper	214	Best Category	257	Winter Squash	
122	Honey-Pint Jar	166	Butter Beans	215	Best Category of Peas – any variety	258	Millet	
123	Jalapeno Peppers	167	Cabbage (1 head)	216	Best Tomatoes (6 or more)	259	Other	
124	Japanese Persimmons (6 or more)	168	Chili Peppers	217	Biggest Pumpkin	260	Pumpkin	
125	Japanese Radish	169	Chinquapins	218	Biggest Watermelon	261	Comb Honey	
126	Kumquats	170	Corn – 3 ears – any variety	219	Banana Pepper (sweet)	262	Okra (6 pods)	
127	Lemons	171	Cucumbers	220	Banana	263	Watermelon	
128	Loquats	172	Eggplants	221	Beans	264	Nuts	
129	Oats	173	Eggs – 3	222	Bell Pepper			
130	Onions	174	Figs	223	Butter Beans			
131	Oranges	175	Gourds	224	Cabbage (1 head)			
132	Ornamental Vegetables	176	Grain sorghum	225	Chili Peppers			
133	Other Fruit	177	Grapefruit	226	Chinquapins			
134	Peanuts	178	Hot Pepper	227	Corn – 3 ears – any variety			
135	Pears	179	Honey-pint jar	228	Cucumbers			
136	Pecans – Quart Jar – all shell varieties	180	Jalapeno Peppers	229	Eggplants			
137	Peppers	181	Japanese Persimmons (6 or more)	230	Eggs – 3			
138	Pomegranates	182	Japanese Radish	231	Figs			
139	Satsuma	183	Kumquats	232	Gourds			
140	Scuppernongs/Muscadines	184	Lemons	233	Grain Sorghum			
141	Soybeans- Quart Jar – any variety	185	Loquats	234	Grapefruit			
142	Squash (any variety)	186	Oats	235	Hot Pepper			
143	Sweet Potatoes (best dozen/ any variety)	187	Onions	236	Honey-Pint jar			
144	Wheat – Quarter Jar – any variety	188	Oranges	237	Jalapeno Peppers			
145	Winter Squash	189	Ornamental Vegetables	238	Japanese Persimmons (6 or more)			
146	Millet	190	Other Fruit	239	Japanese Radish			
147	Other	191	Peanuts	240	Kumquats			
148	Pumpkin	192	Pears	241	Lemons			
149	Comb Honey	193	Pecans – Quart Jar – all shell varieties	242	Loquats			
150	Okra (6 pods)	194	Peppers	243	Oats			
151	Watermelon	195	Pomegranates	244	Onions			
152	Nuts	196	Satsuma	245	Oranges			
		197	Scuppernongs/Muscadines	246	Ornamental Vegetables			
		198	Soybeans- Quart Jar – any variety	247	Other Fruit			
		199	Squash (any variety)	248	Peanuts			
		200	Sweet Potatoes (best dozen/ any variety)		Pears			
		201	Wheat – Quarter Jar – any variety		Pecans – Quart Jar – all shell varieties			
		202	Millet					
		203	Other					
		204	Pumpkin					
		205	Comb Honey					
		206	Okra (6 pods)					

Intermediate (Ages 11 – 13)

153	Best 5 lbs. Bahia Grass Seed (all varieties)
154	Best Citrus Fruits (Satsumas, Kumquats, Lemons)
155	Best Display of Garden Products (5 or more products)
156	Best Category of Irish Potatoes
157	Best Category of

PHOTOGRAPHY

PREMIUMS AWARDED TO AMATEURS ONLY. PROFESSIONAL WORK FOR SHOW ONLY!

Rules

- Exhibitors are permitted to show only one picture per class in any one category.
- All photographs must be mounted on 8"x 10" construction paper or stronger paper.
- Photographs exceeding 20"x 24" are acceptable if space permits.
- Additional Premium • Best Photo in Show \$25

All Ages

Class Entries **Black and White**

- | | |
|----|---------|
| 01 | Animals |
| 03 | Floral |
| 05 | People |
| 07 | Scenic |
| 11 | Other |

Color

- | | |
|----|--------------------|
| 02 | Animals |
| 04 | Floral |
| 06 | People |
| 08 | Scenic |
| 09 | One person selfies |
| 10 | Group selfies |
| 12 | Other |



19477 Fairground Rd.
Robertsdale, AL 36567

E-mail:
bcfair@gulftel.com



Office: 251-947-3247

Registration Information:
251-947-3492

Fax:
251-947-3471

**Go online at www.baldwincofair.com
for **REGISTRATION FORM** or use form below**

TYPE OR PRINT ALL INFORMATION

Exhibitor Name		E-mail Address		Exhibitor Number (Assigned by Fair)					
Address		City		State		Zip		F a i r C o u n t y	
Daytime Phone Number		Evening Phone Number		Cell/Mobile Number		Received By:			
Dept No.	Class No.	Mark Age Group Entry				Entry – Use description specified in hand book	Tag No.		Placing
		A	E	I	S				
Total Premiums									

Please accept for exhibition at the Baldwin County fair the entries described above. I hereby certify that exhibits are in accordance with premium lists and understand that the rules set forth in the premium book will govern exhibition of same.

Signature _____

Date _____

Kendrick Electric, Inc.

Residential - Commercial Contractor
State Licensed



*"Proud to be a part of the
Baldwin County Fair"*

251-947-4762

PO Box 421 | Robertsdale, Al.

Robertsdale Feed, Seed & Supply

Since 1931

**The
Chicken
Swap**

**EVERY 3RD
SATURDAY
8AM-NOON**

**Time
To Plant
Deer
Plots**

Feed - Seed - Fertilizer - Garden Supplies
Deer Plot Seed - Propane Available
Easy RV Access



Purina Mills

Hrs.: 7:30-5:30 M-F • 7:30-3:30 SAT

21353 HWY 59

251-947-5252

Serving South Baldwin County Since 1916



Riviera Utilities

413 E. Laurel Ave. • Foley, AL 36353

251-943-5001

700 Whispering Pines Rd. • Daphne, AL 36526

251-626-5000

www.rivierautilities.com

“Riviera Salutes the 70th Annual Baldwin County Fair”



Agri-Finance Services

www.unitedbank.com / 800.423.7026

Dedicated Agribusiness BANKING

Serving Southwest Alabama and Beyond

Our very first loan was for a farmer in 1904, and our dedicated AG team includes officers from farming families. We understand running your farm or operation is about more than planting and harvesting.

Let us show you how we can be a resource for all your farming and business needs.



Crop Production
Loans and Lines¹



Timber and Ag
Property Financing¹



Equipment
Financing¹



Checking and
Savings Options



Retirement
Planning



Trust
Services²



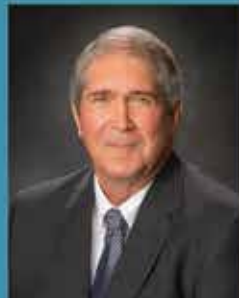
Rachel Holland

Senior VP/Ag Lending
rachel.holland@unitedbank.com
251.446.6022



Terri Metts

AVP/Ag Lender
terri.metts@unitedbank.com
251.267.3161



John Winters

Ag/Commercial Lender
john.winters@unitedbank.com
251.743.3161



Dawn Hollingsworth

Ag Lender
dawn.hollingsworth@unitedbank.com
850.675.0066

United Bank NMLS 494759

¹ Loans, lines of credit, credit cards subject to credit approval.

² Trust Services provided by the 1919 Investment Counsel and Trust.





**TUESDAY, WEDNESDAY, & THURSDAY
SEPTEMBER 21, 22, & 23**

Pay One Price Day

Arnold Amusements Opens 5pm

\$20 Day = Admission & All Rides Free

Pay One Price Days \$20.00

(All Over 36" Tall) Includes all Rides & Entertainment FREE No Passes Honored

**FREE
PARKING**

FRIDAY AND SATURDAY

ADULTS \$10.00, CHILDREN UNDER 12 FREE

FRIDAY, SEPTEMBER 24

Arnold Amusements Opens 5pm-10pm

Tickets Only!

10pm - 1am **Midnight Madness**

Arm Bands \$20 Unlimited Rides

**ATM
ON SITE**

SATURDAY, SEPTEMBER 25

Arnold Amusements opens 1pm

1pm until 5pm Arm Bands..... \$20.00

5pm until closing - Last Blast! Arm Bands..... \$25.00

(Individual Tickets Available)

www.arnoldamusementsinc.com